

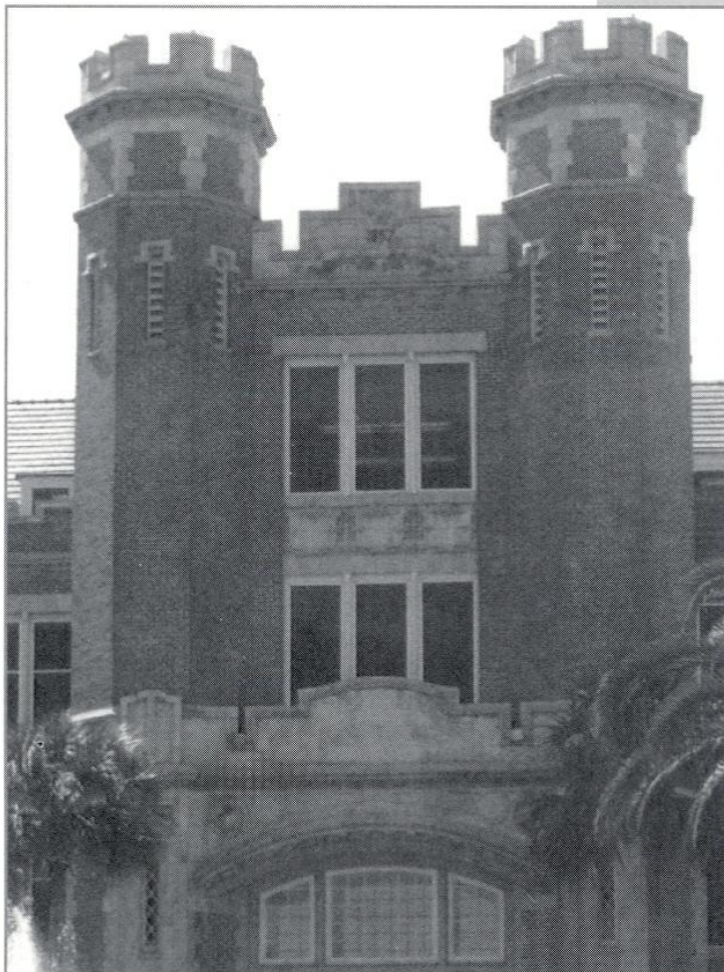
1 9 9 6

*Florida State  
Womens'*

# GOLF



# FSU Fingertip Facts



Location: .....Tallahassee, FL  
Enrollment: .....28,500  
Founded: .....1857  
Nickname: .....Seminoles  
Colors: .....Garnet & Gold  
Conference: .....Atlantic Coast  
President: ..Talbot "Sandy" D'Alemberte  
Athletic Director: .....Dave Hart, Jr.  
Women's Golf Coach: ..Debbie Dillman  
Coach's Phone: .....(904) 644-7290  
Sports Information Dir.: ....Rob Wilson  
Golf Contacts: .....Joanna Sparkman,  
.....Craig O'Halloran  
Sports Information Office:  
.....(904) 644-1403  
Sports Information Fax: ..(904) 644-3820

## *Mailing Address:*

P.O. Box 2195  
Tallahassee, FL 32316

## *Overnight Address:*

Moore Athletic Center  
Pensacola St./Stadium Dr.  
Tallahassee, FL 32306

## *Credits*

Editor: .....Joanna Sparkman  
Writing/Research: ....Joanna Sparkman  
Photography: .....Ross Obley,  
.....Debbie Dillman, FSU Photo Lab  
Design: .....Mamatey Graphic Design  
Printing: .....Florida Printing

This document is available upon request in alternate formats for individuals with print related disabilities. Contact the ADA office, 301 Westcott Administration Building, for more information.

## A Quick Look at the Lady Seminoles

<i>Returning Letterwinners</i> .....	<i>Stroke Avg.</i>
Mabel Pascual del Pobil, Sr.....	78.9
Kate Burton, Sr.....	79.9
Aguri Okura, So.....	80.5

<i>Letterwinners Lost/Stroke Avg.:</i>	
Tiffany Faucette, Sr.....	77.7
Karen Stupples, Jr.....	75.0

<i>By Class:</i>	
Freshmen - .....	6
Sophomores - .....	2
Seniors - .....	3

<i>By State/Country:</i>	
Florida - .....	5
Georgia - .....	1
Illinois - .....	1
Michigan - .....	1
England - .....	1
Japan - .....	1
Spain - .....	1

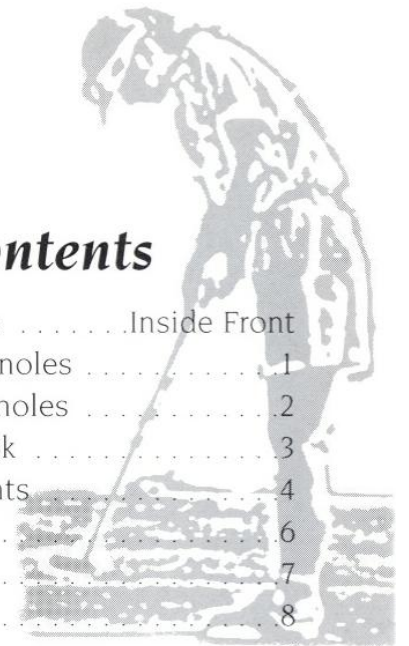
*1995 Best Finish:*  
1st out of 12, Beacon Woods Inv.  
1st out of 13, Lady Gator Inv.

*1995 ACC Finish:*  
2nd out of 4, 301-300-307=908

*1995 NCAA Finish:*  
NCAA East Regional  
10th out of 18, 307-304-315=926

## Table of Contents

FSU Fingertip Facts .....	Inside Front
A Look at the Seminoles .....	1
1995-96 Lady Seminoles .....	2
Spring 1996 Outlook .....	3
1995-96 Tournaments .....	4
Fall 1995 Review .....	6
Fall 1995 Results .....	7
1994-95 in Review .....	8
1994-95 Results .....	9
Head Coach Debbie Dillman .....	10
Assistant Coach Sue Urry .....	11
Golfer Biographies .....	12
FSU in the ACC .....	18
Women's Golf in the 90's .....	19
Seminoles in the Pros/Hall of Fame ..	20
Strength & Conditioning .....	22
Academic Support & Success .....	23
This is FSU .....	24
1995-96 Schedule .....	Back Cover



## GOLFACTS

Five Florida State golfers have been named to All-American teams over the years. The list of Lady Seminole All-Americans include: Lisa Young (1981), Michele Guilbault (1981), Barb Bunkowsky (1982), Nadia Ste-Marie (1989) and Karen Stupples (1995).



Front: Kate Burton, Amy Spooner; Middle: Amy Hill Sarah Capie, J.J. Swindle, Kelly Hoffmeyer  
 Back: Head Coach Debbie Dillman, Amy Bond, Betsy Jaeger, Mabel Pascual del Pobil, Aguri Okura,  
 Asst. Coach Sue Urry

## 1995-96 LADY SEMINOLE GOLF ROSTER

Name	Class	Hometown	High School
Amy Bond	Fr.-R	Ocala, FL	Vanguard
Kate Burton	Sr.	Surrey, England	Wallington
Sarah Capie	Fr.	Carterville, IL	Carterville
Amy Hill	Fr.	Ft. Myers, FL	Ft. Myers
Kelly Hoffmeyer	Fr.-R	East Lansing, MI	East Lansing
Betsy Jaeger	So.	Naples, FL	St. John Neumann
Stacey Manger	Sr.	Venice, FL	Venice
Aguri Okura	So.	Osaka, Japan	Kobe College
Mabel Pascual del Pobil	Sr.	Cadia, Spain	San Luis Gonzaga
Amy Spooner	Fr.	Margate, FL	M.S. Douglas
Jessica Swindle	Fr.	Camilla, GA	Mitchell-Baker

# Spring '96 Outlook




While ideas and strategies may look good on paper, things don't always work out as planned. Such is the case with the Florida State women's golf team. In using this fall's four tournaments as a stepping stone to a challenging spring schedule, the ladies found themselves frustrated; however, they've channeled that frustration into renewed energy, hard work, and positive attitudes for the spring.

"I anticipate a much-improved squad in the spring," said Coach Debbie Dillman. "We've sat down and identified our shortcomings, and we're very dedicated to fixing those."

According to Coach Dillman, the Lady Seminoles are "fired up" about their spring schedule. They start off in March with the Lady Gator Invitational in Gainesville and the LSU-Fairwood Invite in Baton Rouge, both of which feature very strong fields.

The Lady Gamecock tourney in Columbia, S.C. features a mix of teams from the South and West districts, assembling "one of the strongest fields that we've had," said Coach Dillman.

The Ryder-Florida State Champion-



ship also promises to be very exciting. With 11 Florida colleges participating, the FSU golfers realize that while the competition is stiff, they do have a chance to win the championship.

"It's not a one-horse race this year," Coach Dillman said. "I see about five teams that

have the chance to come away with the (Ryder) title. It should be really exciting."

After the state championship, the post-season playoffs begin with the ACC Championships in April. "There's none tougher than the ACC," said Dillman. "There's only four teams, but that's like saying there's only four teams in the Final Four. Everyone is good."

The NCAA South Regional takes place in Auburn, Ala. There the top teams from the south district compete for spots in the NCAA Championship. This year the nation's top collegiate golfers will head west to Los Angeles as UCLA hosts the 1996 Tournament.

Coach Dillman will look to seniors Kate Burton and Mabel Pascual del Pobil, for continued leadership in the spring. A talented freshman class brings much potential to the team, including newcomer Amy Spooner who competed in all four fall tournaments. Sophomore Aguri Okura and redshirt freshmen Amy Bond and Kelly Hoffmeyer, as well as three hard-working walk-ons add to the depth of the team. With this mix of talented golfers, the Lady Seminoles have great potential for success in 1996.

# 1995-96 Tournaments

## ***Lady Seminole Invitational***

Dates: September 29-October 1, 1995

Host: Florida State University

Location: Tallahassee, FL

Course: Seminole Golf Course (par 73, 6,038 yards)

Contact: Craig O'Halloran, Joanna Sparkman (904) 644-1403

Participating Teams: Alabama-Birmingham, Arkansas-Little Rock, Central Florida, Florida Atlantic, Florida International, Florida Southern, Florida St., Jacksonville, Louisiana St., Lynn, Mississippi St., Rollins, South Alabama, Stetson, Vanderbilt

## ***Diet Coke-Lady Roadrunner Invitational***

Dates: October 8-10, 1995

Host: New Mexico State University

Location: Las Cruces, NM

Course: University Golf Course (par 74, 6,100 yards)

Contact: John Gilger (505) 646-3929

Participating Teams: Arizona St., Florida St., Georgia, Hardin-Simmons, Lamar, Nebraska, New Mexico, New Mexico St., North Texas, Oklahoma, Southern Methodist, Texas A & M, Texas-El Paso, Texas-Pan American, Texas Tech, Wichita St.

## ***Lady Paladin-Furman Invitational***

Dates: October 20-22, 1995

Host: Furman University

Location: Greenville, SC

Course: Furman University Golf Course (par 72, 5,917 yards)

Contact: Teri Brinkman (803) 294-3065

Participating Teams: Alabama, Appalachian St., Auburn, Central Florida, Coastal Carolina, College of Charleston, Florida, Florida St., Furman,

Georgia, Kentucky, Memphis, Miami, Michigan St., North Carolina, Oklahoma, Oklahoma St., South Carolina, Tennessee, Texas, Texas A & M, Texas Christian, UNC-Greensboro, Wake Forest

## ***GOLFACTS***

*Each fall, the FSU women's golf team hosts the Lady Seminole Invitational. This tournament has become one of the most widely known tournaments on the collegiate circuit. The 21st annual Invitational took place on September 29-October 1, 1995 at Seminole Golf Course. Louisiana State came away with the team title for the second consecutive year, while the host Seminoles finished in second place. Angie Stafford of the University of South Alabama won the individual title. Mabel Pascual del Pobil led the FSU team with a 7th place finish.*

## ***Carolyn Cudone Invitational***

Dates: November 3-5, 1995

Host: Coastal Carolina University

Location: Myrtle Beach, SC

Course: Prestwick Golf Club (par 72, 5,862 yards)

Contact: Wayne White (803) 349-2822

Participating Teams: Alabama, Auburn, Coastal Carolina, College of Charleston, Duke, Florida, Florida St., Furman, Georgia, Kentucky, Louisiana St., Miami, North Carolina, Oklahoma St., South Florida

## ***Lady Gator Invitational***

Dates: March 1-3, 1996

Host: University of Florida

Location: Gainesville, FL

Course: University of Florida Golf Course (par 72, 5,821 yards)

Contact: Mary Howard (904) 375-4683,  
ext. 6110

Participating Teams: Alabama, Auburn,  
Central Florida, Coastal Carolina,  
Florida, Florida International, Florida St.,  
Georgia, Louisiana St., Miami, Ohio St.,  
Oklahoma St., Rollins, South Carolina

### **LSU-Fairwood Invitational**

Dates: March 15-17, 1996

Host: Louisiana State University

Location: Baton Rouge, LA

Course: Fairwood Country Club (par 72,  
6,300 yards)

Contact: Kent Lowe (504) 388-8226

Participating Teams: Alabama, Arkansas,  
Arkansas-Little Rock, Arizona, Auburn,  
Florida St., Lamar, Louisiana St.,  
Memphis, Mississippi, Mississippi St.,  
North Texas, New Mexico St., Oregon  
St., Southern Illinois, Texas Tech, Tulane,  
UNC-Wilmington, Vanderbilt

### **Lady Gamecock Classic**

Dates: March 22-24, 1996

Host: University of South Carolina

Location: Columbia, SC

Course: The University Club (par 71,  
6,051 yards)

Contact: Brian Binette (803) 777-7875

Participating Teams: Alabama, Arkansas,  
Coastal Carolina, Florida Florida  
Atlantic, Florida International, Florida  
State, Jacksonville, Lynn, Miami, Rollins  
South Florida, Stetson

### **Ryder-Florida State Championship**

Dates: April 5-7, 1996

Host: University of Miami

Location: Miami Lakes, FL

Course: Don Shula's Golf Club (par 72,  
5,962 yards)

Contact: Sam Henderson (305) 284-  
3244

Participating Teams: Central Florida,  
Florida, Florida Atlantic, Florida  
International, Florida State, Jacksonville,  
Lynn, Miami, Rollins, South Florida,  
Stetson

### **ACC Championship**

Dates: April 19-20, 1996

Location: Greensboro, NC

Course: Joseph Koury Golf Club -  
Landover Course

Contact: Dee Todd (910) 854-8787

Participating Teams: Duke, Florida St.,  
North Carolina, Wake Forest

### **NCAA South Regional**

Dates: May 9-11, 1996

Host: Auburn University

Location: Opelika, AL

Course: Grand National - Lakes Course  
(par 72, 5,948 yards)

Contact: Neal Reid (334) 844-9701



### **NCAA Championships**

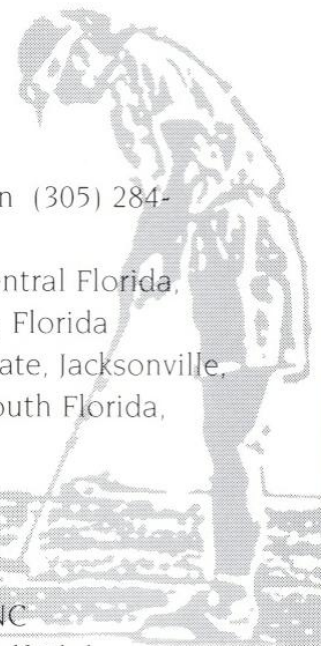
Dates: May 22-25, 1996

Host: UCLA

Location: La Quinta, CA

Course: La Quinta Resort & Club -  
Dunes Course (par 72, 6,087 yards)

Contact: John Dolak (310) 206-6831



# 1995 Fall Review

The Florida State women's golf team teed off their 1995-96 campaign on familiar territory as the team hosted the 21st annual Lady Seminole Invitational at Seminole Golf Course on September 29-October 1. The Lady Seminoles, pre-season ranked #21, faced a challenge from defending champion and pre-season ranked #18 Louisiana State. LSU took the lead in the first round and never looked back, finishing with a 904, 22 strokes ahead of second place Florida State.

Senior Mabel Pascual del Pobil overcame a first-round 82 to turn in the low score in the final round for a 7th place finish. FSU's other top 10 showing was Kate Burton, who finished in a tie for 8th.

The Seminoles then headed west to New Mexico for the Diet Coke-Lady Roadrunner Invitational at New Mexico State University. Pascual del Pobil chalked up her second top 10 finish of the season with a tie for 9th. The team finished in the middle of the pack, 8th out of 16 teams.

The next tournament was the Lady Paladin-Furman Invitational in Greenville, S.C., featuring a strong 23-team field. Nine teams were ranked in the Rolex Top 25 at the time of the tournament. The Seminoles made it through the first two rounds in 9th place, but shot a 28-over par to drop to 14th in the final round. Once again, Pascual del Pobil had the highest finish for FSU, finishing in a tie for 19th.

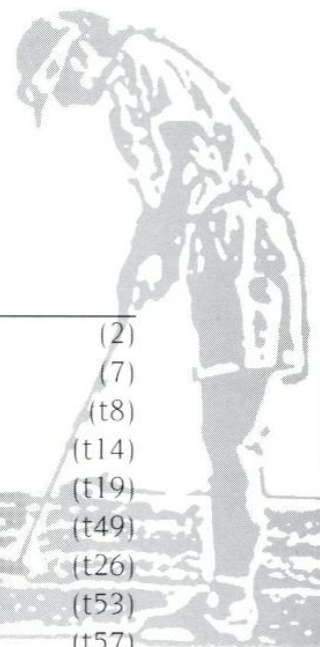


For the final tournament of the fall, the Lady Seminoles returned to South Carolina for the prestigious Carolyn Cudone Intercollegiate in Myrtle Beach. Seven of the tourney's 15 teams were represented in the Rolex Top 25. FSU finished the first round in 8th place, dropped to 9th after the second round, and had the fifth-best score in the final round to finish back in 8th place. Freshman Amy Spooner had her best finish of the season, tying with Pascual del Pobil for 18th.

Although the results weren't exactly what the team had hoped for, the experience of playing in these four tournaments gave the Seminoles a valuable warm-up for a challenging spring schedule.



# 1995 Fall Results



## *Lady Seminole Invitational*

Seminole Golf Course, Tallahassee, FL  
September 29-October 1, 1995

Team Result	311-310-305	926	(2)
Mabel Pascual del Pobil	82-74-73	229	(7)
Kate Burton	77-74-79	230	(t8)
Aguri Okura	76-82-76	234	(t14)
Amy Spooner	80-80-77	237	(t19)
Sarah Capie	78-83-89	250	(t49)
Amy Bond (Ind.)	80-80-80	240	(t26)
Kelly Hoffmeyer (Ind.)	80-88-84	252	(t53)
Stacy Manger (Ind.)	85-84-86	255	(t57)

## *Diet Coke-Lady Roadrunner Invitational*

New Mexico State University Golf Course, Las Cruces, NM  
October 8-10, 1995

Team Results	325-312-313	950	(8)
Mabel Pascual del Pobil	79-74-75	228	(t9)
Aguri Okura	84-80-77	241	(t35)
Amy Spooner	84-80-78	242	(t37)
Amy Bond	80-78-86	244	(t51)
Kate Burton	82-83-83	248	(t59)

## *Lady Paladin-Furman Invitational*

Furman University Golf Course, Greenville, SC  
October 20-22, 1995


Team Results	310-312-316	938	(t14)
Mabel Pascual del Pobil	77-74-80	231	(t19)
Amy Spooner	76-78-81	235	(t45)
Kate Burton	77-80-78	235	(t45)
Aguri Okura	80-80-77	237	(t57)
Amy Bond	82-81-82	245	(t89)

## *Carolyn Cudone Intercollegiate*

Prestwick Golf Club, Myrtle Beach, SC  
November 3-5, 1995

Team Results	312-319-313	944	(8)
Amy Spooner	78-76-80	234	(t18)
Mabel Pascual del Pobil	79-79-76	234	(t18)
Kate Burton	77-84-77	238	(t30)
Aguri Okura	78-80-81	239	(t33)
Amy Bond	84-85-80	249	(t58)

## 1994-95 Year in Review



**T**he Lady Seminoles experienced yet another very successful season in 1994-95. With the senior leadership of Tiffany Faucette and the abilities of three talented juniors, Coach Debbie Dillman's squad was primed for accomplishments.

Karen Stupples highlighted the Lady Seminole roster with an All-American season. The junior from Kent, England, placed in the top 10 in eight tournaments, including a first-place victory at the Lady Gator Invitational.

The team started off the 1994-95 campaign at home with the Lady Seminole Invitational. Rain on the first day shortened the tournament to 36 holes. FSU shot a 312 and a 311 to finish 3rd, 14 strokes off the champion Louisiana State.

The 'Noles captured the first of two tournament titles at the Beacon Woods Invitational, hosted by the University of South Florida. Stupples shot a 3-under par in the first round as the team jumped to an early lead and never looked back. FSU finished 10 strokes ahead of 2nd place USF, while Stupples shot one stroke off the leader for a 2nd place finish.

Over the next three tournaments, FSU accumulated a 10th place finish in the Lady Paladin-Furman Invitational, a 4th in the Carolyn Cudone, and an impressive 5th place in the Northern Telecom National Intercollegiate, which featured 22 of the nation's top teams.

Down in Gainesville, the Seminoles posted their second tournament win of the season at the Lady Gator Invitational. Stupples also emerged as individual champion, finishing one stroke ahead of Florida's Dina Taylor.

FSU's next three tournaments brought home three 2nd place finishes—at the LSU Fairwood, the Ryder-Florida Women's Intercollegiate, and the ACC Championship, which was held at Killearn Country Club in Tallahassee. Faucette came on strong at the end of the season, tying for 3rd at the Ryder and 2nd in the ACC tournament.

With eight top five finishes out of nine tournaments, the Lady Seminoles headed into the NCAA East Regional Tournament poised for post-season success. However, strong competition from the ACC as well as the Southeastern Conference blocked FSU's path to the NCAA Championships as the 'Noles finished in 10th place.

The Lady 'Noles kept up their winning ways in the classroom as well. Four members of the team appeared on the ACC Honor Roll, while Tiffany Faucette, Aguri Okura, and Mabel Pascual del Pobil were named to the NGCA All-Scholar Academic Team. Pascual del Pobil was also named an Academic All-American for the second consecutive year.

With proven success on the course and additional honors in the classroom, the 1994-95 Lady Seminole golf team made its mark in FSU history.

# 1994-95 Results

Lady Seminole Invitational  
Seminole Golf Course, Tallahassee, FL  
September 17-18, 1994

Team Results	312-311	623	(3)
Karen Stupples	77-76	153	(t8)
Mabel Pascual del Pobil	76-78	154	(t10)
Kate Burton	80-78	158	(t22)
Tiffany Faucette	79-79	158	(t22)
Aguri Okura	88-82	170	(t59)

Beacon Woods Invitational  
Beacon Woods Golf Club, Bayonet Point, FL  
October 14-16, 1994

Team Results	296-311-302	909	(1)
Karen Stupples	69-75-75	219	(2)
Kate Burton	75-78-76	229	(t9)
Tiffany Faucette	73-83-75	231	(t14)
Mabel Pascual del Pobil	82-76-76	234	(21)
Aguri Okura	79-82-81	242	(t35)

Lady Paladin-Furman Invitational  
Furman University Golf Course,  
Greenville, SC  
October 21-23, 1995

Team Results	308-306-307	921	(10)
Karen Stupples	73-73-75	221	(6)
Kate Burton	77-77-78	232	(t33)
Mabel Pascual del Pobil	80-75-77	232	(t33)
Tiffany Faucette	78-82-77	237	(t55)
Aguri Okura	83-81-81	245	(t87)

Carolyn Cudone Invitational  
Prestwick Golf Club, Myrtle Beach, SC  
November 4-6, 1995

Team Results	304-304-297	905	(4)
Karen Stupples	74-72-75	221	(7)
Mabel Pascual del Pobil	77-73-72	222	(8)
Kate Burton	75-79-73	227	(t20)
Tiffany Faucette	78-81-78	237	(t38)
Aguri Okura	83-80-77	240	(t43)

Northern Telecom National Intercollegiate  
Landfall Club, Wilmington, NC  
November 11-13, 1995

Team Results	328-307-310	945	(5)
Karen Stupples	80-74-74	228	(t4)
Kate Burton	82-76-75	233	(t14)
Mabel Pascual del Pobil	82-76-80	238	(t31)
Tiffany Faucette	84-81-81	246	(57)
Aguri Okura	91-84-90	265	(t95)

Lady Gator Invitational  
University of Florida Golf Course,  
Gainesville, FL

March 3-5, 1995			
Team Results	305-302-312	919	(1)
Karen Stupples	73-76-76	225	(1)
Mabel Pascual del Pobil	77-76-76	229	(t9)
Tiffany Faucette	78-76-78	232	(t12)
Aguri Okura	77-74-82	233	(t17)
Kate Burton	WD-WD-WD		

LSU-Fairwood Invitational  
Fairwood Country Club, Baton Rouge, LA  
March 17-19, 1995

Team Results	308-309-306	923	(2)
Karen Stupples	77-76-75	228	(t7)
Aguri Okura	77-78-77	232	(14)
Tiffany Faucette	77-82-75	234	(18)
Kate Burton	79-77-79	235	(t19)
Mabel Pascual del Pobil	77-78-80	235	(t19)

Ryder/Florida Women's Intercollegiate  
State Championships  
Don Shula's Golf Club, Miami Lakes, FL

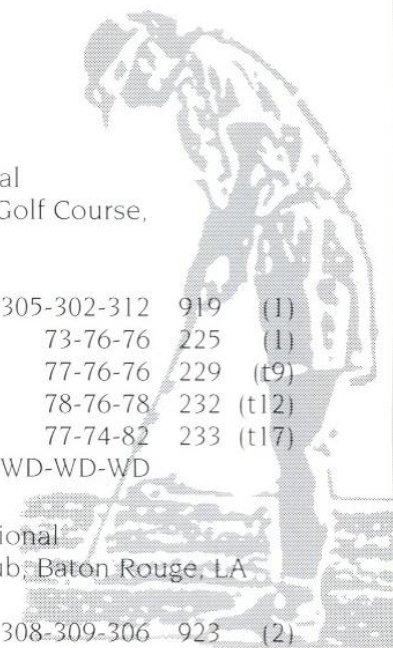
April 7-9, 1995			
Team Results	298-311-294	903	(2)
Tiffany Faucette	77-73-71	221	(t3)
Mabel Pascual del Pobil	73-79-76	228	(10)
Kate Burton	72-78-79	229	(t11)
Karen Stupples	78-81-71	230	(t14)
Aguri Okura	76-85-76	237	(t27)

Atlantic Coast Conference Championship  
Killearn Country Club, Tallahassee, FL  
April 21-23, 1995

Team Results	301-300-307	908	(2)
Tiffany Faucette	72-74-76	222	(t2)
Karen Stupples	74-74-77	225	(6)
Kate Burton	76-76-76	228	(7)
Mabel Pascual del Pobil	79-78-78	235	(12)
Aguri Okura	79-76-85	240	(t17)

NCAA East Regional Championship  
Quail Ridge Golf Course, Bartlett, TN  
May 11-13, 1995

Team Results	307-304-315	926	(10)
Karen Stupples	73-73-80	226	(t13)
Kate Burton	78-74-80	232	(t41)
Tiffany Faucette	77-77-80	234	(t52)
Mabel Pascual del Pobil	79-86-75	240	(t78)
Aguri Okura	82-80-85	247	(t90)



# Head Coach Debbie Dillman



In her 12th year at the helm of the Lady Seminole golf team, head coach Debbie Dillman will not rest on her laurels, although she has accumulated many over the years. The experienced and knowledgeable coach has placed Florida State in a prominent position in collegiate golf.

The Davison, Michigan native grew up in an active golf family. Both of Dillman's parents were involved in country club management. Dillman captained her high school golf team for four years and twice was runner-up at the Michigan State Championship. For three consecutive years she also captured the Flint Junior Golf Championship, considered one of the top junior tournaments in the state.

Dillman brought her talents down south to Tallahassee where she attended FSU as an undergraduate and played golf for the Lady Seminoles from 1979-82. During that time she also worked at Seminole Golf Course, enabling her to learn both the competitive and management sides of the sport.

Over the past 12 years, the Lady Seminoles have emerged as one of the perennial golf powers in the nation. With Dillman at the helm, the Seminoles have walked away from a tournament with the overall team championship 13 times. Under her coaching, eight Seminole golfers have captured 13 individual champion honors.

While members of the team have

garnered many honors, Dillman herself has been honored as well. In the Seminoles' inaugural season in the Atlantic Coast Conference, Dillman's fellow coaches selected her as ACC Coach of the Year. This past spring Dillman was named the National Golf Coaches Association (NGCA) District Coach of the Year for the South District.

In addition to her coaching responsibilities, the 35-year-old Dillman is once again serving on the NCAA South Regional Selection Committee. During the summer she also serves as the Tournament Director for the Big Bend Junior Golf Association.

Dillman interests vary from the golf course to the farm. In her spare time she raises Tennessee Walking horses on her farm just outside of Tallahassee. She also has a daughter, Annie Lynn, who is two years old.



# Assistant Coach Sue Urry



Both the men's and women's golf team benefit from the experience and service of assistant coach Sue Urry. Urry, in

her second year at Florida State, performs a variety of duties to assist coach Debbie Dillman and men's coach Dr. Ernie Lanford in the day-to-day operations of the Seminole golf program.

Urry grew up in Peoria, Illinois, where her father first introduced her to the game of golf. Under the influence of Jerry Barber, a player on the senior tour, Urry became more serious with golf in addition to playing volleyball.

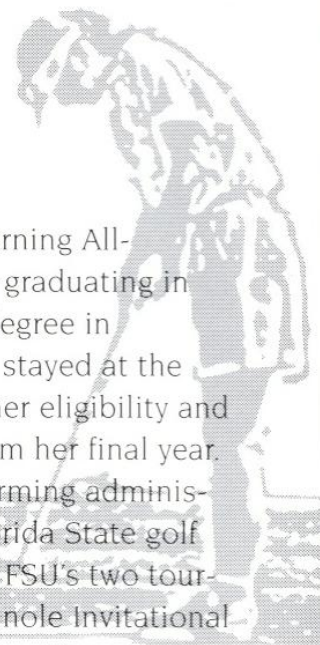
Urry's athletic talents attracted attention from college coaches. She headed south to Miami to attend Florida International University on a volleyball scholarship. She played four years for

the Golden Panthers, earning All-American honors. After graduating in December 1986 with a degree in Computer Science, Urry stayed at the university to complete her eligibility and compete on the golf team her final year.

In addition to performing administrative duties for the Florida State golf teams, Urry assists with FSU's two tournaments, the Lady Seminole Invitational and the Seminole Classic. She also does publicity to help the golfers become more visible in the community.

"I also get to play a lot with the teams when they practice," Urry said. She also occasionally competes in professional tournaments.

In her spare time away from the course, Urry enjoys boating, playing volleyball, and other outdoor sports. She and her husband, Keith, share their home with two yellow labs.



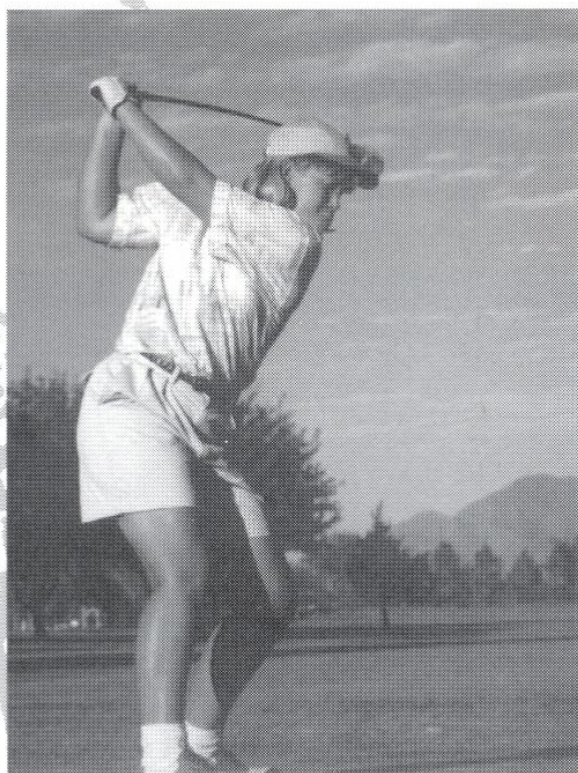
# Bios



**Amy Bond**

Freshman-R  
Ocala, Florida

One of the most physically strong golfers ever at FSU...Working on short game skills...Has shown steady improvement over the past year...**1994-95:** Redshirted due to medical hardship...**Prep:** Four year varsity team member at Vanguard High School...All-Area team for four years...Won the 1994 District Tournament...Won Ocala championship three consecutive years...**Personal:** Majoring in Sports Administration...Born: March 1, 1976.



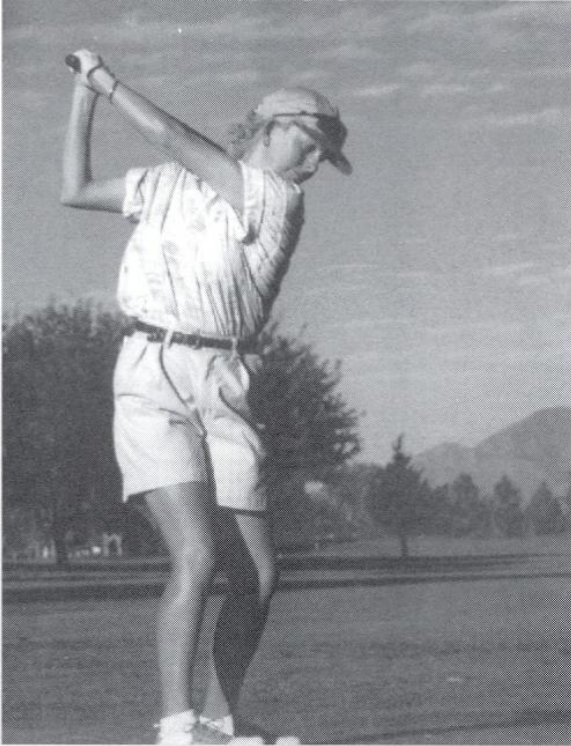
**Kate Burton**

Senior  
Wallington, Surrey, England

Serving as 1995-96 team captain... Invaluable leader...Keeps the team upbeat...**Best Finish Last Season:** Placed 7th in the ACC Championships...**1994-95:** Played in 26 rounds and had a scoring average of 77...Low round was a 72 at the Ryder-Florida Women's Championship which helped her finish tied for 11th...Tied for 9th at the Beacon Woods Invitational and tied for 14th at the Northern Telecom Intercollegiate...**1993-94:** Played all 26 rounds, compiling an 82 average...Fired a season-low 76 at the Ryder Tournament which led to a tie for 25th...**1992-93:** Played in five tournaments her freshman year...appeared in all four fall events...fired a season-best 74 on the final day of the Lady Seminole Invitational...averaged 80.7 strokes per round...**Prep:** Highly acclaimed British prepster...Surrey School champion 1990-92...Surrey Girls Champion 1989-91...1990 South Eastern Girls Champion...South Eastern/England Champion 1991-92...Set Wimbledon course record with a four under-par 66...Qualified for the English stroke play and made it to the quarterfinals in English Intermediate Championship Course...**Personal:** Double-majoring in Spanish and French language studies...Listed on the ACC Academic Honor Roll for the second consecutive year...Member of FSU's Student-Athlete Advisory Board...Born: October 2, 1973.

Burton at FSU...

Yrs	Evnts	Rnds	Strks	Avg	Low	Top10
1992-93	5	14	1,130	80.7	74	—
1993-94	11	33	2,711	82.2	76	—
1994-95	9	26	2,003	77.0	72	2
Fall '95	4	12	951	79.3	74	1
Career	29	85	6,795	79.9	72	3



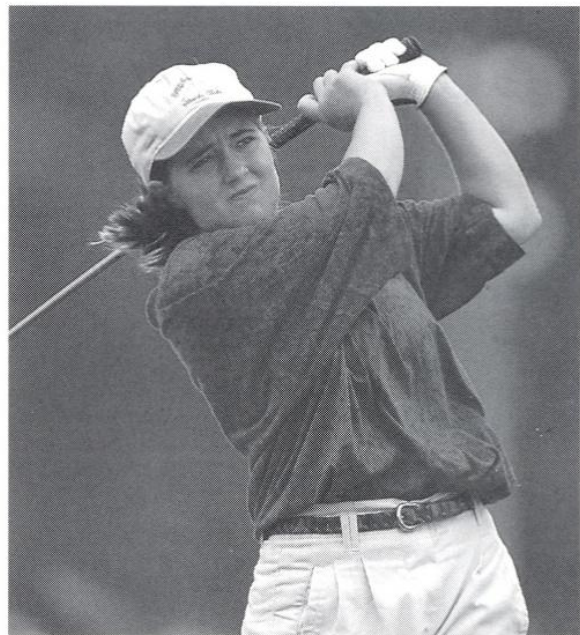
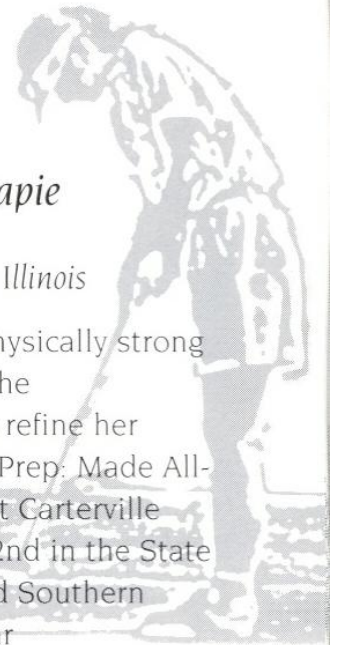
**Sarah Capie**

*Freshman*  
*Carterville, Illinois*

Another physically strong golfer for the

Seminoles...Learning to refine her strength...Great player...Prep: Made All-South team four years at Carterville High School...Finished 2nd in the State Championships...Named Southern Illinois Player of the Year

twice...Personal: Enrolled in FSU's undergraduate studies program...Born: June 16, 1977.



**Amy Hill**

*Freshman*  
*Ft. Myers, Florida*

Walk-on to 1995-96 squad...Hard worker whose dedication will pay off...Prep: Four-year letterwinner at Ft. Myers High...Named to All-Conference and All-Southwest Florida teams...Personal: A pre-law major...Born: January 8, 1977.

# Bios



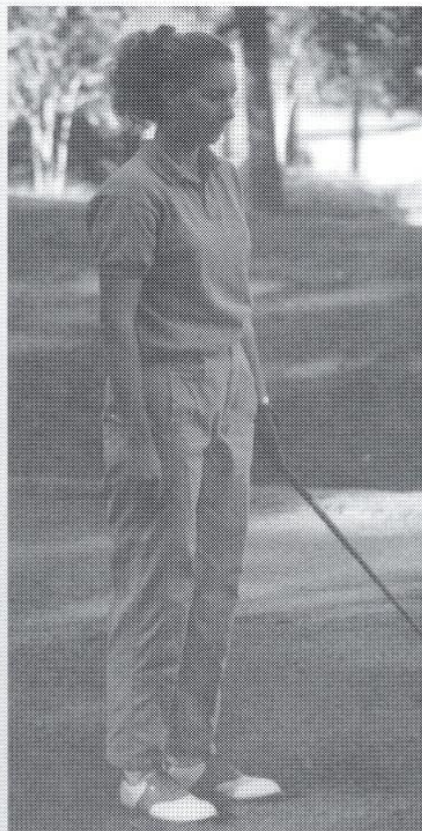
**Kelly Hoffmeyer**  
Freshman-R  
East Lansing, Michigan

Another team leader...Considered the team's cheerleader...**1994-95:** Redshirted...**Prep:** Member of state championship team at East Lansing High School...1994 All-State Honorable Mention...1994 All-City team...Twice named to All-Area team...**Personal:** Majoring in Elementary Education...Member of FSU's Student-Athlete Advisory Board...Born: September 5, 1976.



**Betsy Jaeger**  
Sophomore  
Naples, Florida

Another hard-working walk-on for the Lady Seminoles...Very strong player...**Prep:** Dual-sport athlete at St. John Neumann High School...Named to All-County golf team as well as All-County basketball team twice...**Personal:** Majoring in Business...Newcomer to golf team, but served as a member of the Seminole Links support group last year...Born: September 26, 1976.







**Stacey Manger**

Senior  
Venice, Florida

Talented player... Been away from the game for a year since transferring from the University of Wyoming... Two-year letterwinner at Wyoming... **Prep:** Most Valuable Player at Venice High School... Also named Outstanding Senior... Member of National Honor Society... **Personal:** Majoring in General Communication... Active on campus as a member of Kappa Kappa Gamma sorority, Seminole Ambassadors and a writer for FSView student newspaper... Born: January 2, 1974.



Okura



**Aguri Okura**

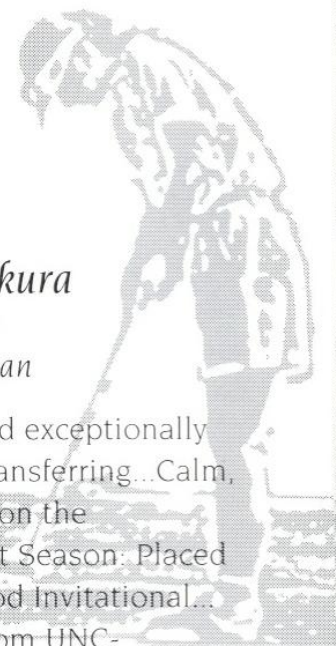
Sophomore  
Osaka, Japan

Talented ball striker... Did exceptionally well last season after transferring... Calm, clearheaded demeanor on the course... Best Finish Last Season: Placed 14th at the LSU Fairwood Invitational...

**1994-95:** Transferred from UNC-Greensboro, walked on to the team and made the top five... Competed in all 29 rounds... Stroke average of 81.4... Tied for 17th at both the Lady Gator Invitational and the ACC Tournament... **Prep:** Played in the Collegiate Players Tournament and took 6th place... Also played in the Trans National... **Personal:** Majoring in International Business... Named to the 1995 ACC Academic Honor Roll and the NGCA All-Scholar Academic Team... Born: May 1, 1974.

Okura at FSU

Yrs	Evnts	Rnds	Strks	Avg	Low	Top10
1994-95	10	29	2,351	81.1	74	—
Fall '95	4	12	951	79.3	76	—
Career	14	41	3,302	80.5	74	—



# Bios



## Mabel Pascual del Pobil

Senior  
Cadia, Spain

Co-captain of 95-96 squad...True team leader by action...Great work ethics on the course and in the classroom...

European experience has been very beneficial to her game...Has the ability to be an All-American this season...Best Finish Last Season: Placed 8th at the Carolyn Cudone Invitational at Myrtle Beach, South Carolina... **1994-95:**

Appeared in every tournament for the Lady 'Noles...Compiled a 77.5 stroke average...Tied for 9th at the Lady Gator Invitational...Placed 10th in the Ryder/Florida State Championship and tied for 10th at the Lady Seminole Invitational... **1993-94:** Tied for 8th at the Lexel/USF Invitational...Tied for 13th at the Lady Seminole Invitational...Placed 15th at the ACC Tournament...Had low round of 73 at the LSU-Fairwood...

**1992-93:** Participated in all nine tournaments...Only top 10 finish came at the ACC Championship where she tied for 10th...Averaged 80.4 strokes per round...Fired a season-low 73 in the first round of the Ryder Championships...

**Prep:** Claimed first place at the Netherland's Junior International competition in 1990 and fourth in '92...Captured the Topolino's Trophy in 1989...Member of the Spanish National team which won the 1990 International Girls Team Championship and the '91 European Girls Team Championship...

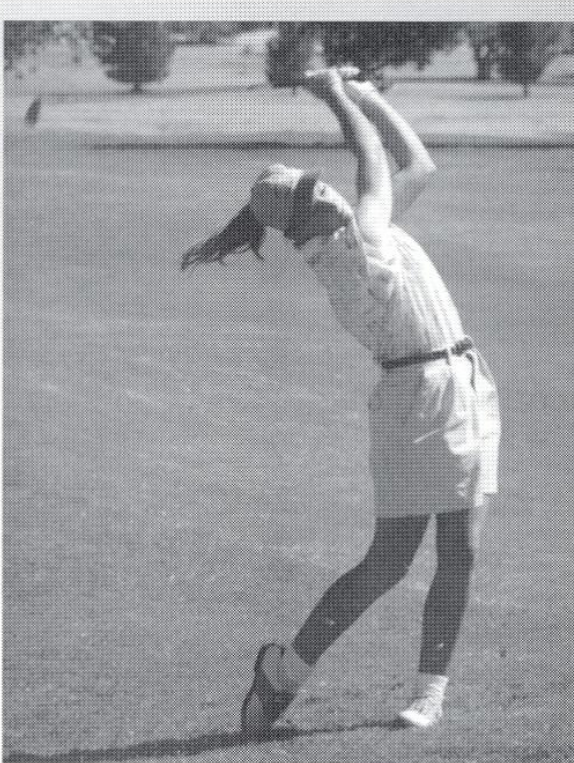
**Personal:** Majoring in Business...Three-time ACC Academic Honor Roll selec-



tion...Also named to the NGCA All-Scholar Academic Team... Born: January 5, 1975.

### Pascual del Pobil at FSU...

Yrs	Evnts	Rnds	Strks	Avg	Low	Top10
1992-93	10	28	2,264	80.8	73	1
1993-94	11	33	2,611	79.1	74	2
1994-95	10	29	2,247	77.4	72	4
Fall '95	4	12	922	76.8	73	2
Career	35	102	8,044	78.9	72	9



**Amy Spooner**  
Freshman  
Margate, Florida

Listed as a "Freshman to Watch" by Golfweek magazine... Came off her best summer as a multiple winner in the AJGA... Has excellent attitude... Has the ability to be an All-American at FSU...

**Prep:** Lettered four years at M.S. Douglas High School... Named to first team All-County three times... 1995 Player of the Year... Won Bubba Conley National Junior Championship and Polo AJGA Championship... Had six, top five finishes... **Personal:** Plans to major in Business... Born: May 2, 1977.



**J.J. Swindle**  
Freshman  
Camilla, Georgia

Will be a name to be heard from in coming years... Will use this year as a red-shirt to refine skills... Incredible strength... **Prep:** Won Regional Championship four consecutive years while at Mitchell-Baker High School... 1993 Georgia State Champion... 2nd runner-up in the State in 1994 and '95...

**Personal:** Plans to major in Sports Medicine... Born: April 14, 1977.



## GOLFacts

The FSU women's golf team claimed its first national title in 1981 when the Seminoles captured the AIAW National Championship. The Seminoles won the tournament in quite dramatic fashion. After the front nine of the final round, FSU found itself two strokes behind the leader, the University of Georgia. But on the 17th hole, four FSU golfers birdied to give the Seminoles a three-stroke lead over the Bulldogs and the national championship as well.

# The Seminoles in the ACC

The Atlantic Coast Conference boasts a rich tradition of success in women's golf. Although only four conference schools have women's golf teams, those four teams have made their mark on the national level.

Since Florida State joined the ACC in 1991, the women's golf team has been a major contributor to FSU's success in the ACC. The Lady 'Noles have finished second in the conference twice, in 1992 and 1995. Coach Debbie Dillman was named ACC Coach of the Year in 1992, and former Seminoles Erica Firnhaber, Marie Josee Rouleau, and Karen Stupples have been All-ACC selections, with Stupples attaining that honor in both 1994 and 1995.

For the 1995-96 season, all four ACC teams were represented in the Rolex/College Golf Foundation preseason polls. Last year's league champion, Wake Forest, leads the conference contingent with a preseason ranking of #4. Duke comes in at #9, North Carolina at #16, and Florida State at #21.

Last season's ACC individual champion, Laura Philo of Wake Forest was preseason ranked #11 nationally, while teammate Alexandra Armas is right behind her at #12.

After hosting the ACC Tournament at Killearn Country Club last year, FSU will meet its conference rivals for the 1996 ACC Championship on April 19-20 at the Landover Course of the Joseph Koury Golf Club in Greensboro, NC.

## 1995 ACC Tournament Results

April 21-23, 1995

Killearn Country Club

Tallahassee, FL

### Team Results:

1. Wk. Forest	906
2. Florida St.	908
3. N. Carolina	918
4. Duke	918

### Individual Results:

1. Laura Philo (WF)	216
2. Rachel Poston (NC)	222
2. Tiffany Faucette (FSU)	222
3. Alicia Allison (DU)	223

### FSU Results:

Tiffany Faucette	222	(t2)
Karen Stupples	225	(6)
Kate Burton	228	(7)
Mabel P. del Pobil	235	(t12)
Aguri Okura	240	(t17)

### Player of the Year

Stephanie Neill, Wake Forest

### Rookie of the Year

Alexandra Armas, Wake Forest

### Coach of the Year

Dianne Dailey, Wake Forest

1995

### All-Atlantic Coast Conference Team

Alexandra Armas, Wake Forest

Stephanie Neill, Wake Forest

Laura Philo, Wake Forest

Kathi Poppmeier, Duke

Karen Stupples, Florida State

# FSU Golf in the 90's

Lady Seminole Golf has been highly successful in the first half of this decade. Since the spring of 1990, Florida State has come away from a tournament as the team champion eight times. Equally as impressive are the 37, top five finishes the squad has compiled over 61 tournaments during those years.

Individual golfers have made their marks in the record book as well. Five Lady Seminoles have captured tournament championships, with Karen Stupples (1993-95) adding two tourney titles to her list of accomplishments. Stupples was named a second-team All-American in the spring of 1995. In all, 10 FSU golfers have posted 41 individual top 5 finishes since 1990.

The women have made appearances in NCAA post-season play each spring since 1991. Three times they've gone to the championships, while in other years they were selected to participate in regional play.

## GOLFACTS

*Seminole Golf Course serves as home for the FSU men's and women's teams. Designed by William W. Amick, the front nine was completed in 1963, with the back nine added in 1968. The women's course measures 6,038 yards with a par 73.*

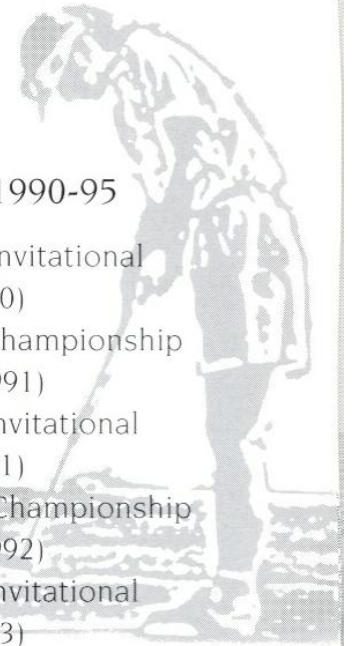
*Located approximately two miles west of the campus, the course and practice facilities are considered among the best in collegiate golf. Seminole Golf Course is operated by Club Consultation and Management.*

## Team Titles - 1990-95

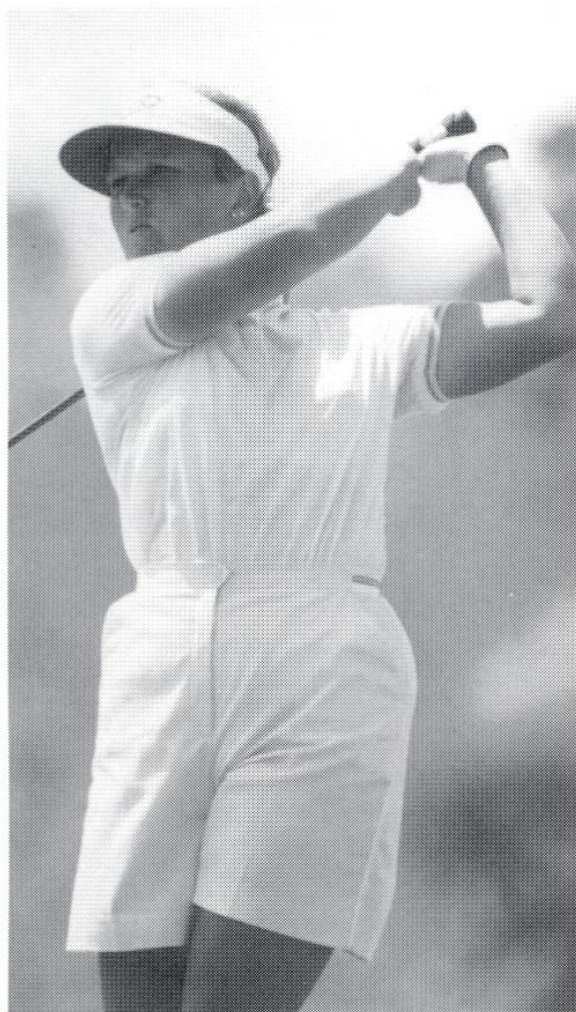
- FIU-Pat Bradley Invitational  
(Fall 1990)
- Metro Conference Championship  
(Spring 1991)
- Lady Seminole Invitational  
(Fall 1991)
- Ryder/Florida State Championship  
(Spring 1992)
- Lady Seminole Invitational  
(Fall 1993)
- Spalding/Peggy Kirk Bell  
(Spring 1994)
- Beacon Woods Invitational  
(Fall 1994)
- Lady Gator Invitational  
(Spring 1995)

## Individual Titles - 1990-95

- Kathy Grant  
Metro Conf. Championship  
(Spring 1990)
- Emma Rundle  
Metro Conf. Championship  
(Spring 1991)
- Mary Lee Cobick  
Beacon Woods Invitational  
(Fall 1991)
- Erica Firnhaber  
Lady Seminole Invitational  
(Fall 1991)
- Karen Stupples  
Spalding/Peggy Kirk Bell  
(Spring 1994)
- Lady Gator Invitational  
(Spring 1995)



# Seminoles in the Pros



## **Barb Bunkowsky Scherbak**

Joined LPGA: January 1983...Career Earnings: \$863,904...Rank: 32...Career Highlights: Won first tournament, the Chrysler-Plymouth Charity Classic, in 1984...In 1990, a career-low round of 65 helped her tie for fourth in the Northgate Classic...Tied for 2nd at the 1991 Standard Register Ping...Finished in third place at the 1993 LPGA Championship... Tied for third at the 1994 ShopRite Classic.

## **Jane Geddes**

Joined LPGA: August 1983...Career Earnings: \$2,601,295...Rank: 15...Career Highlights: First two victories came in 1986 at the US Women's Open and the Boston Five Classic...Had a banner year in 1987, capturing five tournament titles, including the Mazda LPGA Championship...In 1989, became the 17th player to cross the \$1 million mark in earnings...Ranks 11th in career earnings...Captured her 11th career victory at the Chicago Challenge where she posted four sub-par rounds of 68-69-68-67.

## **Leigh Mills**

Joined LPGA: October 1992...Career Earnings: \$113,246...Rank: 100...Career Highlights: Competed on the European and Asian Tours prior to joining the LPGA...Champion of the 1991 International Women's Open...Career-best LPGA finish was a tie for 15th at the 1994 HEALTHSOUTH Palm Beach Classic...Recorded a career-low round of 66 at the du Maurier Ltd. Classic in 1994.



## **Lisa Young Walters**

Joined LPGA: October 1983... Career Earnings: \$712,390... Rank: 73... Career Highlights: Tied for third in the 1987 McDonald's Championship... Has posted two holes-in-one during her LPGA career... Won the Itoki Hawaiian Ladies Open twice, in 1992 and '93... Recorded six top-20 finishes in 1993.



## **Colleen Walker**

Joined LPGA: January 1982... Career Earnings: \$2,264,999... Rank: 37... Career Highlights: Won her first title in 1987 at the Mayflower Classic... Awarded the Vare Trophy in 1988 for the season's lowest scoring average of 71.26... Also won the 1988 Boston Five Classic... Captured the 1990 Circle K LPGA Tuscon Open, tying her career-low of 65 on the third day of the tournament... Won three tournaments in 1992... Posted her second hole-in-one in 1994... Currently ranks 15th in career earnings.

## **Seminole Golf Hall of Fame**

In order to qualify as a member of the Seminole Golf Hall of Fame, an FSU golfer must have either: won a PGA or LPGA event, been an NCAA Individual Champion, or been a USGA Amateur Champion.

### **Hall of Famers:**

Mary Lena Faulk	(1949)
Colleen Walker	(1978)
Barb Bunkowsky	(1982)
Jane Geddes	(1982)
Lisa Walters	(1982)

# Strength & Conditioning



Superior strength and conditioning are two reasons why the Lady Seminole golf team is among the top programs in the nation every year. The golf team's commitment to excellence does not start on the practice green, it starts in the weight room every Monday, Wednesday and Friday at 6:45 a.m.



Miller

Assistant Strength Coach Ron Miller works with the women's golf team and has created a special program so that each golfer can reach maximum potential on the course.

"With physical fitness the women can help themselves two different ways," Miller said. "The first is injury prevention and the second is they will be able to play better, longer."

The Lady Seminoles start their workout with 30 minutes of cardiovascular training. This can range from running to riding a stationary bike. Cardiovascular training will help the overall endurance of a player so she is not tired after walking for 36 holes.

Next the women go through the "Seminole Circuit" which is a total body strength program devised specifically for golfers.

"The main areas we work are the wrist, forearms, and abdominals," Miller said. "Once again we are working toward muscular endurance."

The Seminoles work out in the Tully Gymnasium weight room which is a carpeted and mirrored area which includes state

of the art exercise systems by Cybex Eagle, as well as free weight equipment. A variety of exercise bicycles, rowing machines and stairmasters incorporate both strength, conditioning and cardiovascular endurance. The weight room is open every weekday, year-round, at the most convenient hours to give all student-athletes time to work a strength and conditioning routine into their busy schedules.

Words of encouragement and guidance come from Miller and his staff, who take a personal interest in every Seminole athlete. Miller works with the individual to tailor a weight program that specifically meets her needs and goals. His office is located in Tully Gym, where he can remain close to the action at all times.

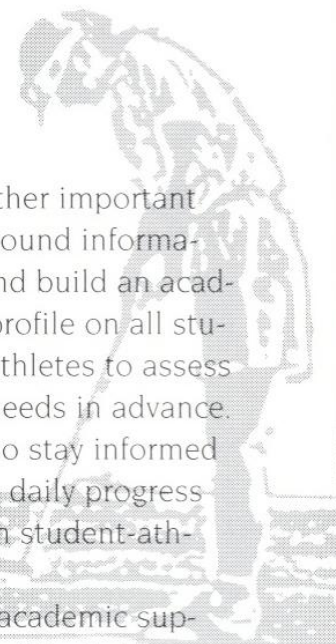
Miller is working towards training the athletes to condition themselves year-round and not just during the season.

"I want working out to become a lifestyle for these women," he said.

At Florida State we believe "the strong shall survive." FSU takes pride in its strength and conditioning programs to help student-athletes reach their maximum potential.



# Academic Support & Success



*Academic Staff: Mark Meleney, Trudy Rayburn, Chris Helms, Magdi El Shahawy, Kevin Carr, Director Dr. Roger Grooters, Amy White*

Academic, personal, and professional support are essential to college success. At Florida State University, we have developed an outstanding support program which enables student-athletes to reach their full potential.

Our philosophy is "to offer an academic support program integrated with the total university that will assist all student-athletes with the transition into college and provide continued support in all phases of academic and professional development culminating with graduation, job placement, or graduate school."

To accomplish this goal we have developed an academic environment which facilitates the academic success of student-athletes. Student success is encouraged through competent academic counseling, career exploration, planning and placement and academic assistance through tutorial programs.

Our program operates on a "proactive" rather than "reactive" approach. At Florida State, our academic staff does not wait for academic crises to occur.

We gather important background information and build an academic profile on all student-athletes to assess their needs in advance. We also stay informed on the daily progress of each student-athlete.

The academic support staff includes a director, five counselors, and three graduate interns forming a group of professionals serving the needs of all student-athletes. The director, Dr. Roger Grooters, is starting his third year as the head of the program coming to FSU after developing a premier program at the University of Nebraska.

In 1994, the academic programs moved to the state-of-the-art University Center and are located on the sixth floor of the \$126 million facility. It includes private study carrels, a tutorial study area and a computer lab outfitted with 16 new IBM computers and laser printers. In addition, athletic sky boxes are utilized for group and individual tutorial instruction.

Women's Golf	
Academic All-Americans	
Kelly Pittman	.....1990, '92, '93
Tiffany Faucette	.....1993, '94
Mabel Pascual del Pobil	.....1994, '95
1995 ACC Honor Roll	
Kate Burton	
Aguri Okura	
Mabel Pascual del Pobil	
Sarah Stimac	

# This is FSU

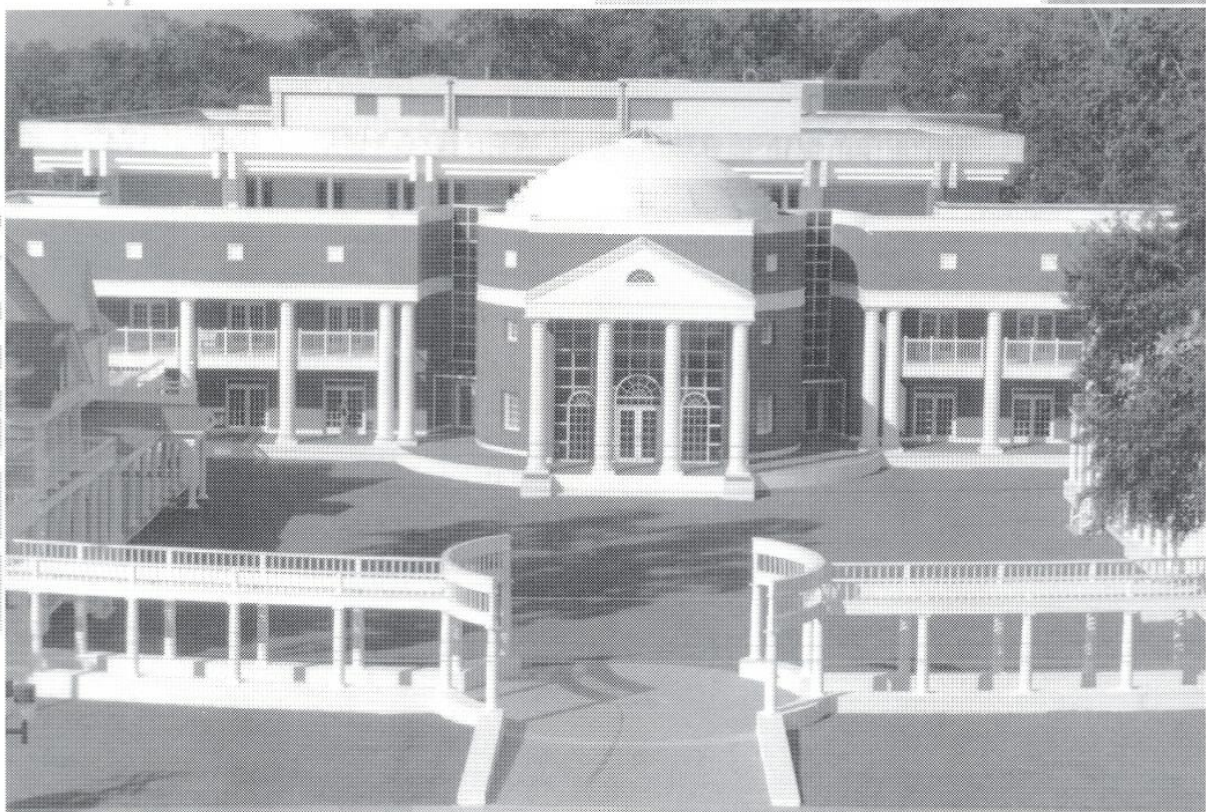
Florida State University, nearing its golden anniversary as a coeducational graduate research institution, has joined the nation's elite in both academics and athletics. Located on the oldest continuous site of higher education in Florida and building rapidly on the framework of a highly regarded liberal arts college for women, the University has emerged over the past 48 years as an institution of national and international esteem.


A senior member of the 10-member State University System, FSU was founded as an institution of higher learning in 1852 and began in Tallahassee with its first students in 1857.

Florida State continues to progress and grow—from its pre-Civil War foundation as the Seminary West of the

Suwanee, through the early 20th century as the academically respected Florida State College for Women, returning to coeducational status as a university in 1947, to its modern development as an acclaimed research institution, a top-ranked competitor in intercollegiate athletics and as a standard-setter in the basic sciences and the performing arts.

Today, Florida State's operating budget is \$442 million. Faculty and administrators generate more than \$95 million annually in external funding to supplement state-sponsored research. Three direct-support organizations serve to bolster the University: the FSU Foundation, which raises millions in private gifts to support academics, the Seminole Boosters and the FSU Alumni Association.





Florida State offers 275 graduate and undergraduate degree programs through its eight colleges—Arts & Sciences; Business; Communication; Education; Engineering (operating jointly with Florida A&M University); Human Sciences; Law; and Social Sciences (which also incorporates the school of Public Administration and Policy)—and eight schools—Criminology & Criminal Justice; Library & Information Studies; Motion Picture, Television & Recording Arts; Music; Nursing; Social Work; Theatre; and Visual Arts & Dance.

With 1,568 members, the FSU faculty currently includes five members of the National Academy of Sciences and eight members of the National Academy of Arts and Sciences, and has included five Nobel Laureates. It is backed by 2,987 administrative, professional, and support staff.

Library holdings at Florida State include 2.06 million book titles, 18,498 serials, and 4.25 million microforms. The main library facility, the Robert M. Strozier Library, is linked via computer-

ized information systems to other state university and national research libraries. The Paul A.M. Dirac Science Center Library is located at the heart of the university's science research complex. FSU also maintains extensive music, library science, and law libraries, and the Mildred and Claude Pepper Library houses the personal and professional papers of one of Florida's best known political couples.

Florida State ranks first in popularity nationwide among high school seniors, based on the number of students who request their Scholastic Aptitude Test (SAT) and American College Test (ACT) scores be sent to an institution. FSU was the only institution listed among the top ten choices of both black and white college bound students. Florida State is also tops in the state for community college transfers as FSU admits over 3,000 transfer students every fall semester.

In its mission of excellence in teaching, research and public service, Florida State University is advancing boldly into the 21st century.

## GOLFacts

*The Seminole Links are a group of FSU students who assist with the day-to-day operations of the men's and women's golf teams. They assist with recruiting visits and serve as hostesses for the Seminole Classic and the Lady Seminole Invitational golf tournaments.*

## 1995-96 Women's Golf Schedule

Lady Seminole Invitational  
Florida State University  
Tallahassee, FL  
September 29 - October 1, 1995

Diet Coke-Lady Roadrunner Invitational  
New Mexico State University  
Las Cruces, NM  
October 9-10, 1995

Lady Paladin-Furman Invitational  
Furman University  
Greenville, SC  
October 20-22, 1995

Carolyn Cudone Invitational  
Coastal Carolina University  
Myrtle Beach, SC  
November 3-5, 1995

Lady Gator Invitational  
University of Florida  
Gainesville, FL  
March 1-3, 1996

LSU-Fairwood Invitational  
Louisiana State University  
Baton Rouge, LA  
March 15-17, 1996

Lady Gamecock Invitational  
University of South Carolina  
Columbia, SC  
March 22-24, 1996

Ryder-Florida  
State Championship  
University of Miami  
Miami Lakes, FL  
April 5-7, 1996

ACC Championships  
Greensboro, NC  
April 19-20, 1996

NCAA South Regional  
Auburn University  
Auburn, AL  
May 9-11, 1996

NCAA Championship  
UCLA  
La Quinta, CA  
May 22-25, 1996

