

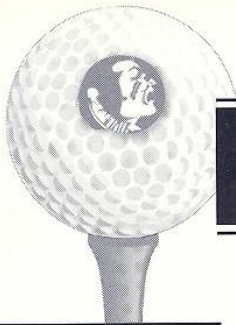
FLORIDA STATE UNIVERSITY

WOMEN'S GOLF

1994-95

Karen Stupples
Junior
All American Candidate





FSU QUICKFACTS 1995

FSU INFORMATION

Location	Tallahassee, FL
Enrollment	28,500
Founded	1857
Nickname	Lady Seminoles
Colors	Garnet & Gold
Conference	Atlantic Coast
President	Talbot "Sandy" D'Alemberte
Athletic Director	Dave Hart
Coach	Debbie Dillman
Office Phone	(904) 644-7290
Golf SID	Sheldon Bream
Sports Information Office	(904) 644-1403
Sports Information Fax	(904)644-3820
Sports Information Address:	P.O. Drawer 2195 Tallahassee, FL 32316
Sports Information Overnight Address:	Moore Athletic Center Pensacola/Stadium Dr. Tallahassee, FL 32306

FLORIDA STATE WOMEN'S GOLF QUICK FACTS

1994 Best Finish

1st out of 15, Lady Seminole Inv., 298-297-307=902

1994 NCAA Championship Finish

1st out of 18, Peggy Kirk Bell Inv. 314-311-306=931

1994 NCAA East Regional Finish

18th, 311-317-317 327=1272

1994 ACC Finish/Score

6th, 318-318-311=947

Letter Winners Returning

4th, 315-323-321=959

Kate Burton, JR, 82.2 avg./11 tournaments

Tiffany Faucette, SR, 78.7 avg./11 tournaments

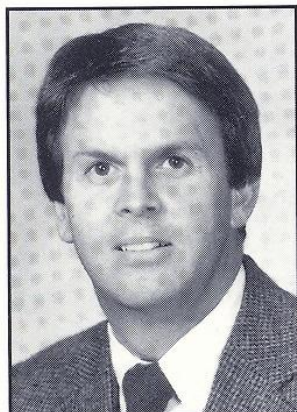
Mabel Pascual del-Pobil, JR, 79.1 avg./11 tournaments

Karen Stupples, JR, 76.3 avg./10 tournaments

Maria Castellucci, 77.8avg./11 tournaments

Seminole Golf Course, Par 72, 5,930 yards

Letter Winners Lost Home Course



Dave Hart
Athletic Director



Cecile Reynaud
Assoc. Athletic Director

Note to the Media

Florida State will host the 1995 Women's ACC Golf Championship at Killearn Country Club on April 21-23. If any assistance is needed in covering the tournament contact Sheldon Bream at the FSU Sports Information Office (904) 644-1403

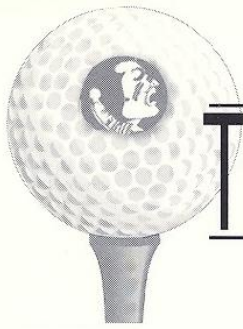
Credits

Editor-Sheldon Bream

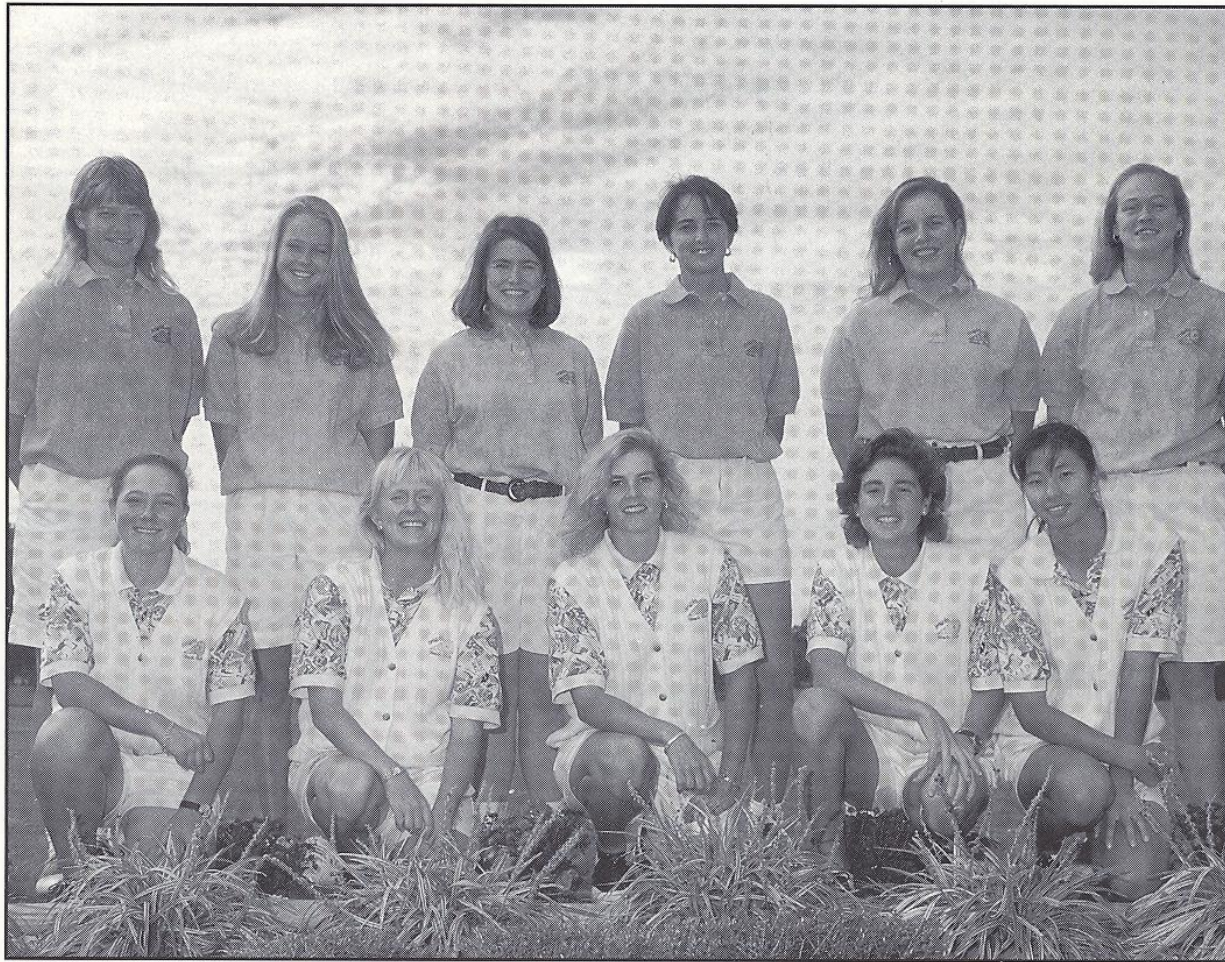
Photography- Ross Obley, FSU PHOTO LAB

Design & Type- Mark Marsiglio, FSVIEW

Printing- FSU Printing Services



THE SEMINOLES 1995



NAME	CL.	HGT.	HOMETOWN	H. S. or College
Cindy Bissett	SO	5-8	Trophy Club, TX	Northwest
Amy Bond	FR	5-9	Ocala, FL	Vanguard
Kate Burton	JR	5-5	Surrey, England	Lallington
Tiffany Faucette	SR	5-5	Ormond Beach, FL	Seabreeze
Kelly Hoffmeyer	FR	5-6	Lansing, MI	East Lansing
Amy O'Daniel	FR	5-8	Prospect, KY	Ballard
Aguri Okura	FR	5-8	Osaka, Japan	UNC-Greensboro
Mabel Pascual del Pobil	JR	5-9	Cadiz, Spain	San Luis Gonzaga
Sarah Stimac	JR	5-1	Ft. Walton Beach, FL	Choctawhatchee
Karen Stupples	JR	5-5	Kent, England	Arkansas State



'95 OUTLOOK

1995

Coach Debbie Dillman has built the Florida State women's golf program into a perennial national power. With the consistent play and leadership of senior Tiffany Faucette and the outstanding ability of All-American candidate Karen Stupples, the Lady Noles look forward to their best NCAA finish to date.

Faucette has the capability of winning tournaments. However, her senior leadership may be the most important contribution to the team this season. After walking on and red-shirting as a freshman, Tiffany has worked her way into the starting five over the course of her career.

Last season Stupples finished in the top five, five times in seven tournaments including a first place finish in the Peggy Kirk Bell Invitational in Winter Springs, Florida. In the ACC Championship, she earned first team all-conference by finishing tied for fourth. Karen has the opportunity to be FSU's first conference player of the year.

Also looking to make a contribution this season is junior Kate Burton of Surrey, England. Burton played in all 26 rounds for the Seminoles last year and will be looked to for leadership and consistency as well as comic relief.

Junior, Mabel Pascual del Pobil has shown signs of brilliance throughout her career at FSU. With added strength, the Cadiz, Spain native will look to lower her average and possibly compete for individual championships.

After transferring from UNC-Greensboro to enroll in the hospitality management program, Aguri Okura of Osaka, Japan has been a pleasant surprise for coach Debbie Dillman. Okura has played in all five tournaments this season and has been very consistent in her play.

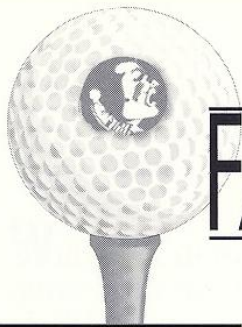
Sophomore Cindy Bissett and junior Sarah Stimac will also look to contribute throughout the season. The pair will need to lower scores and push the top five to improve the team's opportunity to advance to the NCAA's.

With a fine recruiting class of three freshmen, Coach Dillman has assured the program's future success. Amy Bond, Kelly Hoffmeyer, and Amy O'Daniel all are capable of being tomorrow's stars. The three will most likely red-shirt to ensure four years of eligibility.

We look for Amy Bond to step up into the spring line-up, with the added experience of qualifying pressures in the Fall.



Mabel Pascual del Pobil
Junior



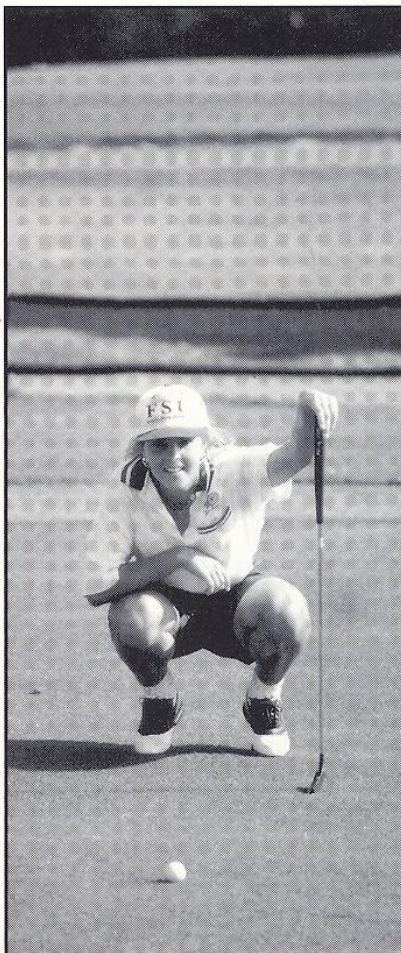
FALL REVIEW 1994

With their performance in the fall season, the Lady Seminoles have put themselves into a position to continue their recent winning ways. The Lady 'Noles brought home the Beacon Woods Invitational team championship and finished in the top five in three other tournaments. With continued improvement, Coach Debbie Dillman should take her team to the NCAA championships for the fifth straight season.

Florida State started the season by hosting the Lady Seminole Invitational. Stormy weather washed out the opening round of play, so the ladies teed it up on Saturday. Although they stayed at the top of the field during both rounds, they could not pull off the repeat championship of their own tournament, finishing in third place behind LSU and South Florida.

Next, the Seminoles traveled to Bayonet Point, Florida to play in the Beacon Woods Invitational hosted by the University of South Florida. From the opening round FSU was the team to beat. A first round 296 distanced them from the field and they cruised to a ten stroke win over South Florida with Georgia placing third, 14 strokes behind. Individually, the Lady Seminoles almost had their first winner of the season. Stupples fired an opening round 69 but could not hold onto the lead and finished one stroke behind Miami's Caroline Culler. Kate Burton finished tied for ninth, her first top ten finish in her college career.

Over one month later, FSU traveled out of state for the first time to the Lady Paladin/Furman Invitational in Greenville, South Carolina. The 23 team field featured several top twenty teams



and national recognition was on the line. The ladies finished the tournament in tenth place but knew they were capable of better play. Karen Stupples added another top ten finish by placing sixth.

The following tournament sent the team to Myrtle Beach, South Carolina, home of some of the finest golf courses in America. The Carolyn Cudone Intercollegiate Tournament, hosted by Coastal Carolina University, was played at the beautiful Prestwick Golf Club. A slow start placed the Lady 'Noles in the middle of the pack after the first round. In the final round, they came alive with a 294 that brought them back to finish the tournament in fourth place. Stupples made it four straight top-ten finishes as she finished seventh. Mabel Pascual del Pobil broke into the top-ten for the first time with a tie for eighth.

To conclude the fall season, the Lady Seminoles played in the prestigious Northern Telecom National Collegiate Invitational. The Fall Preview was played at the site of the 1995 NCAA Championships, the Landfall Club in Wilmington, North Carolina. The best teams in America were featured, including the defending national champions Arizona State Lady Sun Devils. A good finish in this tournament would give great confidence going into the spring season. FSU ended the tournament with a fifth place finish just one stroke behind the University of Arizona. Karen Stupples ended the tournament tied for fourth place, once again proving she is among the top collegiate women's golfers in the country. Kate Burton finished an outstanding fall season by finishing tied for 14th.



TEAMBIOS 1995

debbie dillman florida state '82

For over a decade the women's golf program at Florida State has been recognized as a national power. Under the guidance of eleventh year coach Debbie Dillman, the team has become a mainstay in the collegiate golf top-25 polls. The Lady 'Noles finished last season by placing 18th in the NCAA Championships and will again contend for national prominence this year.

A former player at FSU, Dillman possesses the qualities that are crucial for nurturing young players and helping them to realize their full potential. She is able to strike a balance between teaching, motivating, caring, listening, leading and discipline.



coach debbie dillman

In teaching her teams, Dillman draws on the experience she has gained from her work on and off the golf course. Her knowledge of the game in the areas of competition, management, and rules and regulations has put her among the top in the profession.

In Florida State's first year of competition in the Atlantic Coast Conference, Dillman's peers named her ACC Coach of the Year. With Dillman at the helm, the Seminoles have walked away from a tournament with the overall team championship at least once a year for the last ten straight seasons. With her tutelage, seven Seminole golfers have captured individual champion honors.

Dillman has led the Seminoles to the NCAA tournament three years running. Last year, the first season of regional qualifying, the Seminoles were invited to compete in the NCAA East Regional Tournament. The year before, FSU placed 14th at the national championship tournament. And in 1991, after a 10 year hiatus, Florida State returned to the NCAA Championship Tournament in grand fashion, again finishing 14th.

This year the 34 year old Dillman will again have the extra responsibilities of being a member of the NCAA South Regional Selection Committee. In her spare time she raises Tennessee Walking horses on her farm just outside of Tallahassee. She also has a daughter, Annie Lynn, who is one year old.

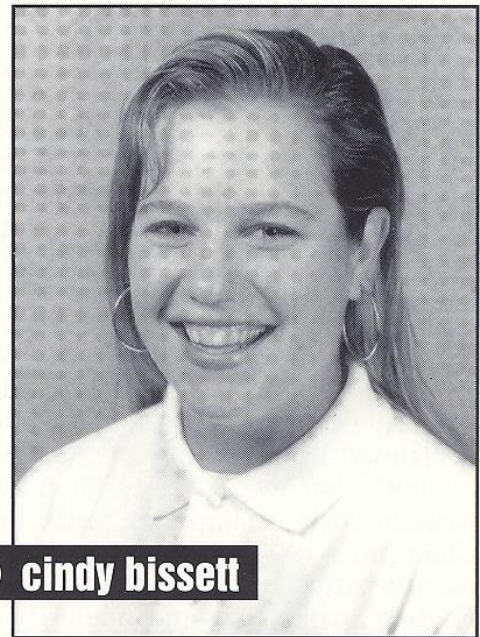
Dillman was an undergraduate student at Florida State from 1979-82. In addition to playing on the golf team, she worked at Seminole Golf Course. The experience enabled her to learn golf from both the competitive and management sides of the game.

A native of Davidson, Michigan, Dillman grew up in a golf family. Both her parents were involved in country club management. During her high school career she was a three time Flint Junior Golf Champion from 1977-79. The tournament has long been recognized as one of the top junior tournaments in Michigan. She twice was runner-up at the Michigan State Championship and captained her high school team all four years.

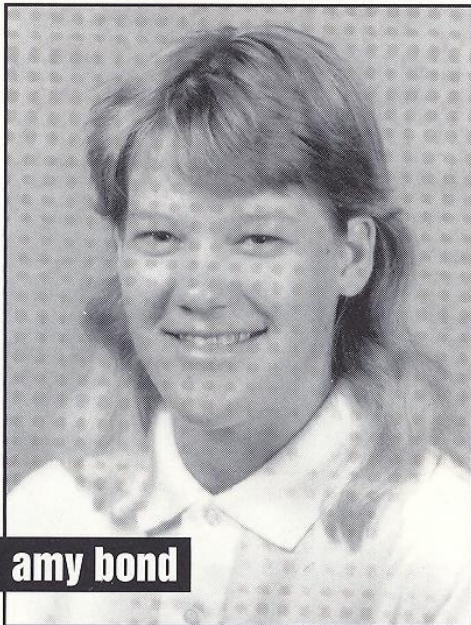
Cindy Bissett


Sophomore
Trophy Club, TX

Will push those ahead of her for playing time...big hitter who needs more experience...could possibly work her way into the top five...**Prep:** Three year MVP at Northwest HS...claimed two second-place and one third-place finish in the Texas High School District Championships...placed in the top-ten in the Texas High School Regionals all four years...selected Sophomore of the Year...played in the AJGA Big Red Team Championship...this past summer Bissett tried to qualify in the women's U.S. Open and Amateur...also played on the collegiate tour...**Personal:** Grew up on Seminole Drive in her home town of Trophy Club, TX...majoring in business marketing...**Born:** July 5, 1975.



 cindy bissett



 amy bond

Amy Bond

Freshman
Ocala, Florida

Strong player with incredible length...an extremely hard worker in the gym and on the course...has an excellent chance to make the top 5 on the team...**Prep:** Four year varsity team member at Vanguard High School...All-Area team all four years...winner of the 1994 District Tournament and 11 letters...**Personal:** Plans to major in Sports Administration...**Born:** March 1, 1976.



kate burton

Junior

Wallington, Surrey, England

Should contribute to this season success...may be the key to the Seminoles season...a consistent player who has a lot of international tournament experience...adds laughter to the team and keeps them loose...**Best Finish Last Season:** Finished 19th in the ACC Tournament...**1993-94 Season:** Played all 26 rounds and had a scoring average of 82...low round was a 76 at the Ryder-Florida Women's Championship which helped her finish tied for 25th...**Prep:** Highly acclaimed British prepster...Surrey School champion 1990-92...Surrey Girls Champion 1989-91...1990 South Eastern Girls Champion...South Eastern/England Champion 1991-92...set the Wimbledon course record with a four under-par 66...qualified for the English Stroke Play and made it to quarterfinals in English Intermediate Championship Course...**Personal:** One of two team members to hail from Great Britain...majoring in Spanish and French language studies...**Born:** October 2, 1973.



kate burton

YEARS	EVENTS	ROUNDS	STROKES	AVG.	LOW	TOP 10
1992-93	5	14	1,130	80.7	74	0
1993-94	10	33	2,711	82.2	76	0
Fall 94	5	14	1,079	77.0	73	1
Total	20	61	4,920	80.7	73	1



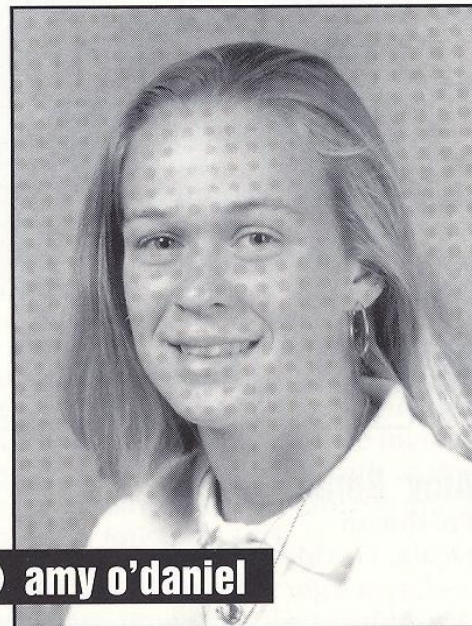
kelly hoffmeyer

kelly hoffmeyer

Freshman

Lansing, Michigan

Probable redshirt with good potential...needs to build strength...has a great attitude and is the team's cheerleader...**Prep:** 1994 All State Honorable Mention...placed second in the All-City Tournament in 1994...member of the All-Area team...**Personal:** Plans to major in Elementary Education...**Born:** September 5, 1976.



amy o'daniel

amy o'daniel

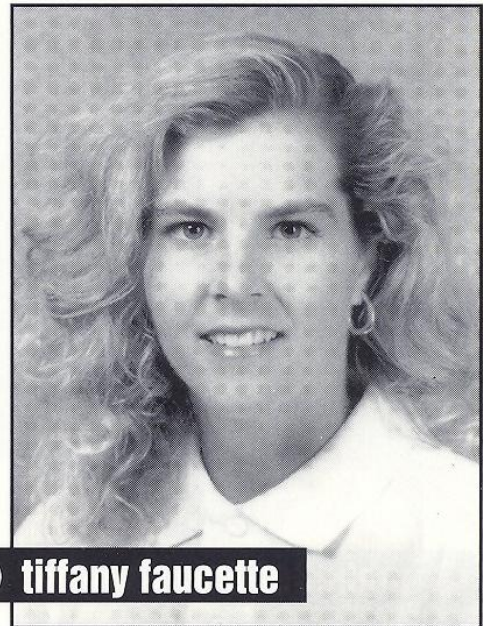
Freshman

Prospect, Kentucky

Long hitter that needs to improve her short game...player of the future...good attitude will aid in her progress...**Prep:** Winner of three letters...placed second in the Kentucky State Junior - Amateur...**Personal:** Enrolled in the undergraduate studies program...**Born:** September 4, 1975.

tiffany faucette

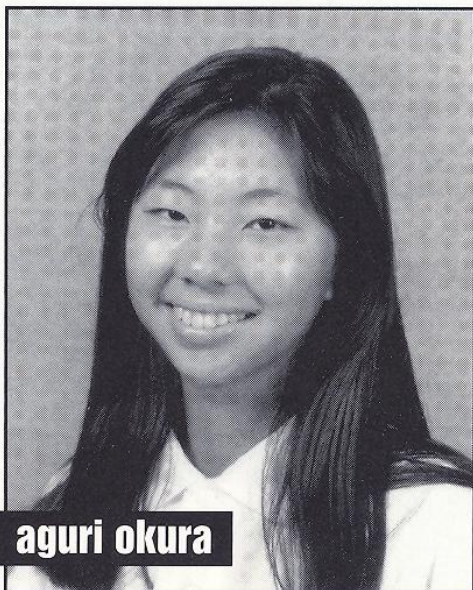
Senior
Ormond Beach, Florida



tiffany faucette

Good athlete who possesses natural golf ability...team leader...true success story...was a walk-on who worked her way into a scholarship position...an Academic All-American...placed on the ACC Honor Roll two years running...golf team representative to FSU's Golden Torch Gala recognizing outstanding academic achievement the last two years...this past summer placed second after losing in a playoff in the Pepsi Invitational...finished second in the Collegiate Players Tournament at Osprey Ridge at Disney World...had a 5th place finish at the Collegiate Players Tour National Championships in Dallas, Texas...**Best Finish Last Season:** Placed 7th in the '94 Ryder-Florida Women's Tournament...**1993-94 Season:** Stroke average of 78.7 was third best on the team...competed in every round of the year for the Lady 'Noles... Placed 8th in the NCAA East Regional...11th in the Carolyn Cudone Women's Tournament and 13th in Lady Seminole Invitational...Tied for 64th in the NCAA Championships...**1992-93 Season:** Saw action in eight tournaments...averaged just over 81 strokes a round...totaled 240 strokes three times and twice tallied a 238...**1991-92 Season:** Competed in one event as a freshman...fired a 239 to finish 33rd in the Lady Seminole Invitational...**1990-91 Season:** Redshirted...**Prep:** Captained her high school golf team to a fourth place finish...garnered all county honors as a junior and senior...placed second in the District Championships...Killearn Bert Yancy Tournament Champion...Volusia and Flagler Counties Junior Champion.....**Personal:** Majoring in Marketing and minoring in psychology...**Born:** April 28, 1972.

<u>YEARS</u>	<u>EVENTS</u>	<u>ROUNDS</u>	<u>STROKES</u>	<u>AVG.</u>	<u>LOW</u>	<u>TOP 10</u>
1990-91			Redshirted			
1991-92	1	3	239	79.6	77	0
1992-93	9	25	2,043	81.7	76	0
1993-94	11	33	2,597	78.7	71	2
Fall '94	5	14	1,109	79.2	73	0
Total	26	75	5,988	79.84	71	2



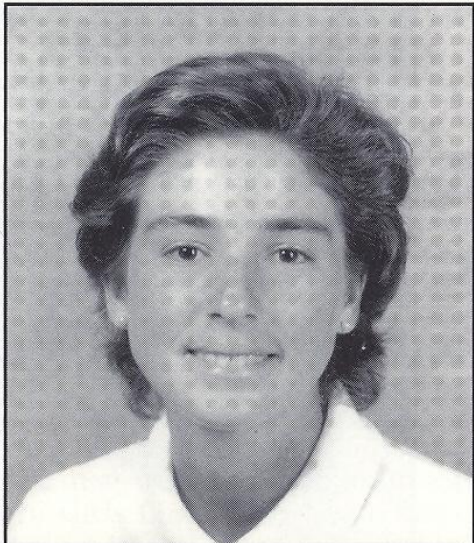
aguri okura

aguri okura

Freshman
Osaka, Japan

Transfer student from UNC Greensboro...walked on but will see playing time...extremely hard worker...very dedicated and consistent... **Prep:** This past summer played in the Collegiate Players Tournament at Pinehurst, NC, shot 85,79,77 and took sixth place...played in the Trans National...**Personal:** Decided to transfer to FSU because of the hospitality administration major in which she is currently enrolled...**Born:** May 1, 1974.

<u>YEARS</u>	<u>EVENTS</u>	<u>ROUNDS</u>	<u>STROKES</u>	<u>AVG.</u>	<u>LOW</u>	<u>TOP 10</u>
Fall 94	5	14	1,162	83.0	77	0
Total	5	14	1,162	83.0	77	0



mabel pascual-del-pobil

mabel pascual-del-pobil

Junior
Cadia, Spain

BBrings an array of international experience to the team...fierce competitor...has gotten stronger and scores have leveled out...excellent student...was 1994 Academic All-American...member of the ACC Honor Roll past two years...this past summer placed 5th in the Spanish Womens National Amateur Tournament and played for Spain in the University World Championship...**Best Finish Last Season:** Tied for 3rd in the '94 LSU-Fairwood ...**1993-94 Season:** tied for 8th at the Lexel/USF Invitational...tied for 13th at the Lady Seminole Invitational...placed 15th at the ACC Tournament...had low round of 73 at the LSU-Fairwood...**1992-93 Season:** Participated in all nine tournaments...only top-ten finish came at the

ACC Championship Tournament where she tied for tenth place...averaged 80.41 strokes per round...fired a season-low 73 in the first round of the Ryder/Florida Championships...**Prep:** Claimed first place at the Netherland's Junior International competition in 1990 and fourth in '92...captured the Topolino's Trophy in 1989...member of the Spanish National team which won the 1990 International Girls Team Championship and the '91 European Girls Team Championship in 1991... **Personal:** Majoring in business...**Born:** January 5, 1975.

<u>YEARS</u>	<u>EVENTS</u>	<u>ROUNDS</u>	<u>STROKES</u>	<u>AVG.</u>	<u>LOW</u>	<u>TOP 10</u>
1992-93	10	28	2,264	80.8	73	1
1993-94	11	33	2,611	79.1	74	2
Fall '94	5	14	1,080	77.1	72	2
Total	21	75	5,955	79.4	72	5

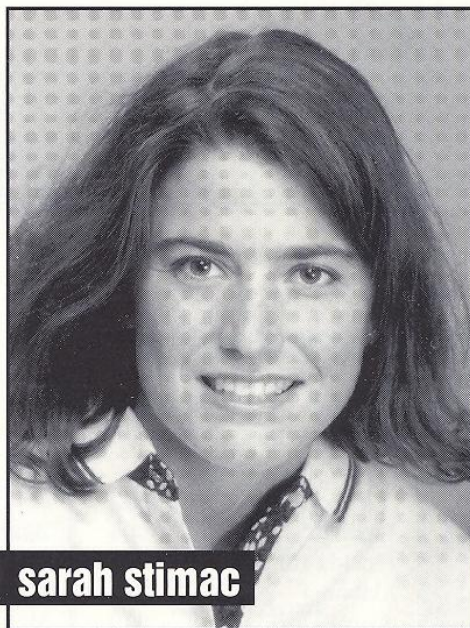


sarah stimac

Junior

Ft. Walton Beach, Florida

One of six Lady Seminole golfers to make the 1993-94 Atlantic Coast Conference Honor Roll...dedicated player with good work habits...provides quality depth as she pushes those ahead of her for a starting role...**1992-93 Season:** Walk-on who made her only appearance in the Lady Seminole Invitational...shot a 260 to finish 61st...**Prep:** District 1 individual champion for Ft. Walton Beach in 1989...high school team took the District 1 team championship in 1990 and '91...**Personal:** Majoring in English/Communication...**Born:** October 22, 1973.



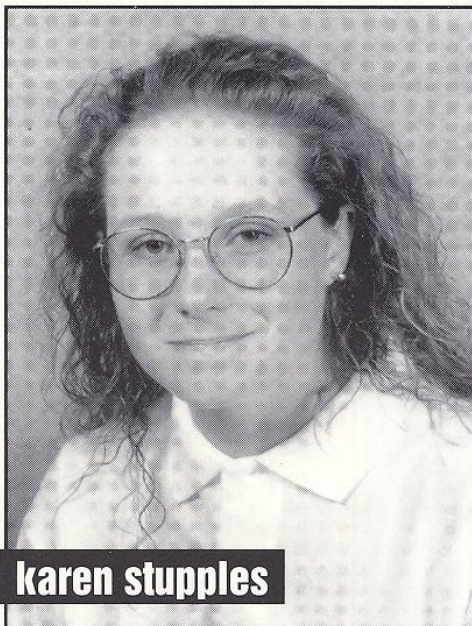
sarah stimac

<u>YEARS</u>	<u>EVENTS</u>	<u>ROUNDS</u>	<u>STROKES</u>	<u>AVG.</u>	<u>LOW</u>	<u>TOP 10</u>
1992-93	1	3	260	86.6	85	0

karen stupples

Junior

Kent, England

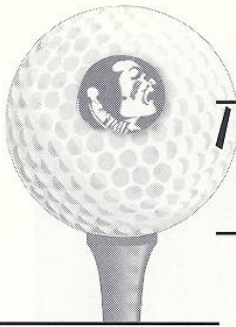


karen stupples

Solid all-around player who will contend for all-America honors...transfer from Arkansas State...one of two Brit's on the squad...won three tournaments as a freshman...All around strong player...this past summer Stupples shot a 7 under 66 in the Keighly AM...she qualified in the English Amateur Championship...her second round score of 68 was a course record (6 under par)...**Best Finish Last Season:** Finished first at the Peggy Kirk Bell Invitational...**1993-94 Season:** Led the team with a 76.3 stroke average...consistent throughout the year with six top ten finishes...finished in the top fifteen in eight out of twelve tournaments...low round was a 71 at the Beacon Woods Invitational...won the Peggy Kirk Bell Invitational with a final round 72...finished fourth in the Beacon Woods Invitational and tied for fourth in the ACC Tournament...finished tied for 27th at

the NCAA East Regional...**1992-93 Season:** Played her freshman year at Arkansas State...placed in the top five in seven of her team's nine tournament appearances...finished first (155) at the Mardi Gras Classic...first (158) at the Southwest Missouri State Invitational...first (157) at the Eagle's Nest Collegiate Classic...fired a season best 73 in the first round of the Southwest Missouri State Invitational...averaged 79.8 strokes per round...finished in the top ten in all but one tournament...**Prep:** Southeast England Girls Classic 1991 champion...1991 English Ladies Championship runner-up...three year member of the English Girls Under 18 National Team...also played on the 1992 Under 21 National Team...**Personal:** Majoring in biology...**Born:** June 24, 1973.

<u>YEARS</u>	<u>EVENTS</u>	<u>ROUNDS</u>	<u>STROKES</u>	<u>AVG.</u>	<u>LOW</u>	<u>TOP 10</u>
1992-93	9	21	1,675	79.7	73	8
1993-94	10	30	2,289	76.3	71	6
Fall '94	5	14	1,042	74.4	69	5
Total	19	65	5,006	77.0	69	19



'93-'94 RESULTS

1994

Lady Seminole Invitational

Seminole Golf Course
Tallahassee, FL
September 17-19, 1993

- | | |
|-------------------------|------------|
| 1. Florida State | 902 |
| 2. Furman | 904 |
| 3. Florida Int'l | 909 |
| 4. Alabama | 911 |
| 5. South Florida | 919 |

Top FSU Individual

- | | |
|----------------|-----|
| 4. Castellucci | 222 |
| 4. Stupples | 222 |

Beacon Woods Invitational

Beacon Woods Country Club
Bayonet Point, FL
October 15-17, 1993

- | | |
|-------------------------|------------|
| 1. South Florida | 903 |
| 2. Florida State | 910 |
| 3. Florida Int'l | 922 |
| 3. Iowa State | 922 |
| 5. Louisiana State | 923 |

Top FSU Individual

- | | |
|----------------|-----|
| 3. Castellucci | 218 |
|----------------|-----|

Tiger-Tide Women's Intercollegiate

Seascape Golf Course
Destin, FL
October 29-31, 1993

- | | |
|-------------------------|------------|
| 1. Louisiana State | 618 |
| 2. Texas A&M | 622 |
| 3. Furman | 626 |
| 4. Florida State | 627 |
| 5. Central State | 631 |

Top FSU Individual

- | | |
|----------------|-----|
| 2. Castellucci | 145 |
|----------------|-----|

Carolyn Cudone Women's Collegiate

Prestwick Golf Club
Myrtle Beach, SC
November 12-14, 1993

- | | |
|-------------------------|------------|
| 1. South Carolina | 910 |
| 2. Florida State | 923 |
| 3. Auburn | 932 |

- | | |
|-------------------|-----|
| 4. Georgia | 935 |
| 5. North Carolina | 940 |

Top FSU Individual

- | | |
|----------------|-----|
| 5. Castellucci | 226 |
|----------------|-----|

Spalding/Peggy Kirk Bell

Tuscawilla Country Club
Winter Springs, FL
March 13-15, 1994

- | | |
|-------------------------|------------|
| 1. Florida State | 931 |
| 2. South Carolina | 936 |
| 3. Indiana | 939 |
| 3. Iowa State | 939 |
| 5. Michigan State | 955 |

Top FSU Individual

- | | |
|-------------|-----|
| 1. Stupples | 222 |
|-------------|-----|

LSU-Fairwood

Fairwood Country Club
Baton Rouge, LA
March 18-20, 1994

- | | |
|-------------------------|------------|
| 1. Texas Tech | 912 |
| 2. Texas | 913 |
| 3. South Florida | 924 |
| 4. Florida State | 934 |
| 5. Lamar | 936 |

Top FSU Individual

- | | |
|----------------------|-----|
| 3. Pascual del Pobil | 224 |
|----------------------|-----|

Ryder/Florida Women's Championship

Don Shula's Golf Resort
Miami Lakes, FL
April 1-3, 1994

- | | |
|-------------------------|------------|
| 1. South Florida | 902 |
| 2. Miami | 908 |
| 3. Florida Int'l | 911 |
| 4. Florida State | 922 |
| 5. Florida | 924 |

Top FSU Individual

- | | |
|-------------|-----|
| 5. Stupples | 222 |
|-------------|-----|

Lexel Golf/USF Invitational

USF Golf Course
Tampa, FL
April 8-10, 1994

- | | |
|-------------------|-----|
| 1. Wake Forest | 922 |
| 2. Duke | 923 |
| 3. South Florida | 932 |
| 4. Auburn | 944 |
| 5. North Carolina | 951 |
| 10. Florida State | 963 |

Top FSU Individual

- | | |
|----------------------|-----|
| 8. Pascual del Pobil | 235 |
|----------------------|-----|

ACC Championship

Old North State Course
Uwharrie Point, NC
April 14-16, 1994

- | | |
|-------------------------|------------|
| 1. Wake Forest | 924 |
| 2. North Carolina | 930 |
| 3. Duke | 932 |
| 4. Florida State | 957 |

Top FSU Individual

- | | |
|-------------|-----|
| 4. Stupples | 221 |
|-------------|-----|

NCAA East Regional

Forest Akers West Golf Course
East Lansing, MI
May 12-14, 1994

- | | |
|------------------|-----|
| 1. Wake Forest | 925 |
| 2. Duke | 930 |
| 3. Furman | 934 |
| 4. Indiana | 936 |
| 5. Tennessee | 938 |
| 6. Florida State | 947 |

Top FSU Individual

- | | |
|-------------|-----|
| 8. Faucette | 229 |
|-------------|-----|

NCAA Championship

Oregon Golf Club
West Linn, OR
May 25-28, 1994

- | | |
|--------------------------|-------------|
| 1. Arizona State | 1189 |
| 2. Southern Cal | 1205 |
| 3. San Jose State | 1220 |
| 4. Duke | 1224 |
| 5. Texas | 1234 |
| 18. Florida State | 1272 |

Top FSU Individual

- | | |
|-----------------|-----|
| 64. Castellucci | 320 |
|-----------------|-----|



FALL RESULTS 1994

Lady Seminole Invitational

Seminole Golf Course
Tallahassee, FL
September 16-18, 1994

- | | |
|-------------------------|------------|
| 1. Louisiana State | 609 |
| 2. South Florida | 610 |
| 3. Florida State | 623 |
| 4. Tulane | 629 |
| 5. Central Florida | 630 |

Florida State Individuals

- | | |
|-----------------------|-----|
| 8. Stupples | 153 |
| 10. Pascual del Pobil | 154 |
| 22. Burton | 158 |
| 22. Faucette | 158 |
| 59. Okura | 170 |

Beacon Woods Invitational

Beacon Woods Golf Club
Bayonet Point, FL
October 14-16, 1994

- | | |
|-------------------------|------------|
| 1. Florida State | 909 |
| 2. South Florida | 919 |
| 3. Georgia | 923 |
| 4. Miami | 924 |
| 5. Iowa State | 925 |

Florida State Individuals

- | | |
|-----------------------|-----|
| 2. Stupples | 219 |
| 9. Burton | 229 |
| 14. Faucette | 231 |
| 21. Pascual del Pobil | 234 |
| 35. Okura | 242 |

Lady Paladin/Furman Invitational

Greenville, SC
October 21-23, 1994

- | | |
|--------------------------|------------|
| 1. Wake Forest | 897 |
| 2. Georgia | 903 |
| 3. Furman | 906 |
| 4. Texas | 914 |
| 4. Oklahoma | 914 |
| 10. Florida State | 921 |

Florida State Individuals

- | | |
|-----------------------|-----|
| 6. Stupples | 221 |
| 33. Burton | 232 |
| 33. Pascual del Pobil | 232 |
| 55. Faucette | 237 |
| 87. Okura | 245 |

Carolyn Cudone

Prestwick Golf Club
Myrtle Beach, SC
November 4-6, 1994

- | | |
|-------------------------|------------|
| 1. Florida | 883 |
| 2. Duke | 896 |
| 3. Louisiana State | 903 |
| 4. Florida State | 905 |
| 5. North Carolina | 906 |

Florida State Individuals

- | | |
|----------------------|-----|
| 7. Stupples | 221 |
| 8. Pascual del Pobil | 222 |
| 20. Burton | 227 |
| 38. Faucette | 237 |
| 43. Okura | 240 |

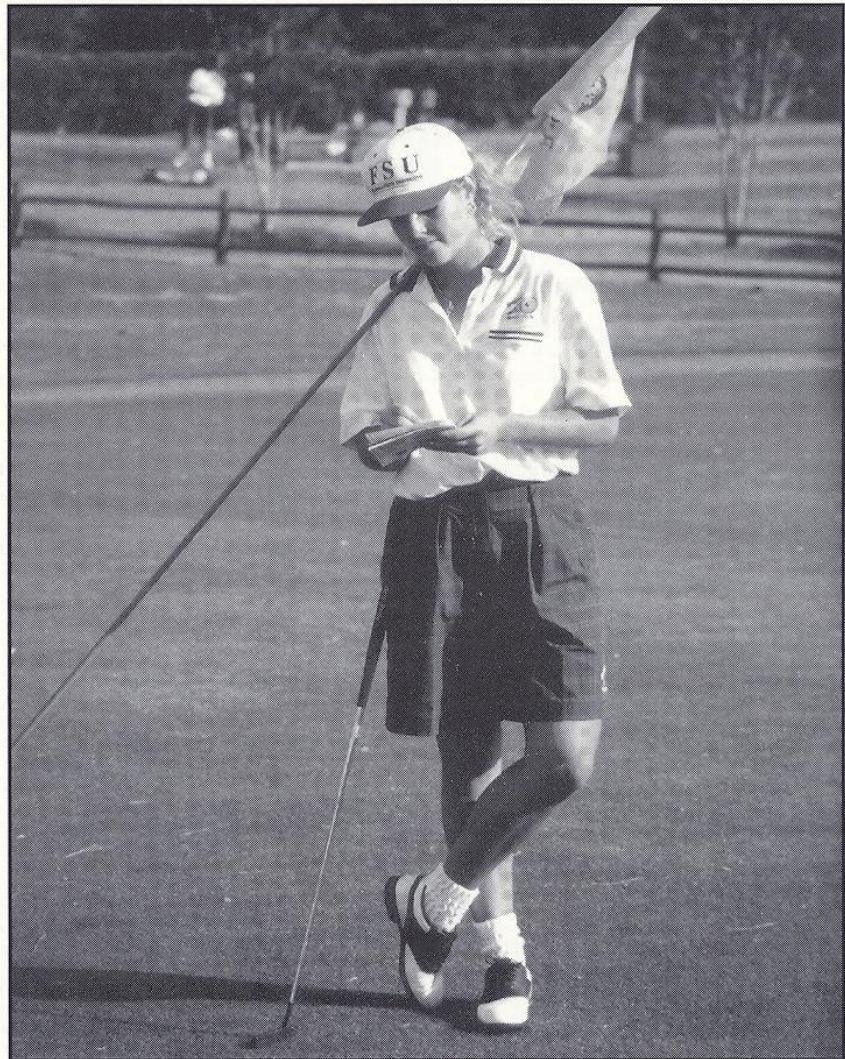
Northern Telecom National Invitational

Landfall Club
Wilmington, NC
November 11-13, 1994

- | | |
|-------------------------|------------|
| 1. Arizona State | 900 |
| 2. North Carolina | 935 |
| 3. South Carolina | 941 |
| 4. Arizona | 944 |
| 5. Florida State | 945 |

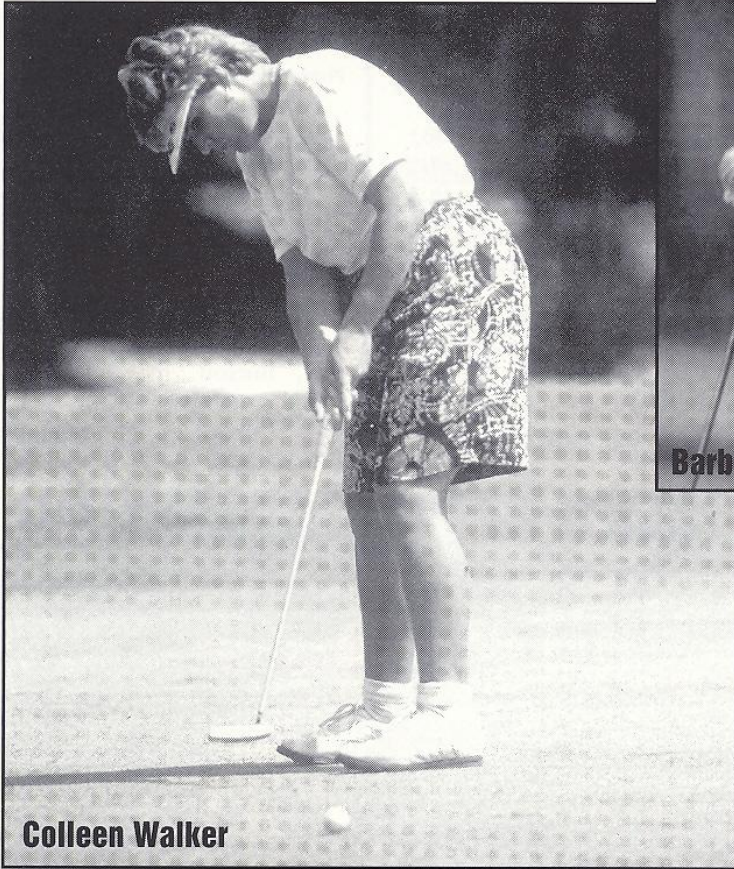
Florida State Individuals

- | | |
|-----------------------|-----|
| 4. Stupples | 228 |
| 14. Burton | 233 |
| 31. Pascual del Pobil | 238 |
| 57. Faucette | 246 |
| 95. Okura | 265 |





NOLES IN THE PROS 1995



Colleen Walker



Barb Bunkowsky

**barb bunkowsky
jane geddes
leigh mills
nadia ste-marie
colleen walker
lisa walters**

Seminole Golf Hall of Fame

In order to qualify as a member of the Seminole Golf Hall of Fame, an FSU golfer must have either: Won a PGA or LPGA event, been an NCAA Individual Champion, been a USGA Amateur Champion.

Current FSU Golf Hall of Famers

1949	Mary Lena Faulk
1978	Colleen Walker
1982	Barb Bunkowsky
1982	Jane Geddes
1982	Lisa Walters

All Americans

1989	Nadia Ste-Marie
1982	Barb Bunkowsky
1981	Michele Gilbault
1981	Lisa Young



ACC HISTORY

1995

CHAMPIONS

YEAR	CHAMPION (SCORE)
1994	Wake Forest (924)
1993	Duke (920)
1992	North Carolina (921)

INDIVIDUAL (SCORE)

Katharina Poppmeier, Duke	(221)
Stephanie Neill, WFU	(219)
Debbie Doniger, UNC	(220)

AWARD WINNERS

Coach of the Year

1994 Dianne Dailey, Wake Forest
1993 Dan Brooks Duke
1992 Debbie Dillman Florida State

ALL ACC SELECTIONS

1994

Kathi Poppmeier, Duke
 Stephanie Neill, Wake Forest
 Tonya Blosser, Duke
 Karen Stupples, Florida State
 Stephanie Sparks, Duke

1993

Kimberly Byham, North Carolina
 Stephanie Neill, Wake Forest
 Marie Josee Rouleau, Florida State
 Stephanie Sparks, Duke
 Jessica Wood, North Carolina

1992

Kimberly Byham, North Carolina
 Kim Cayce, Duke
 Debbie Doniger, North Carolina
 Erica Firnhaber, Florida State
 Stephanie Neill, Wake Forest

TOURNAMENT RESULTS

1994

Old North State Club	
Bermuda Run, NC	
Wake Forest	924
North Carolina	930
Duke	932
Florida State	957

1993

Bryan Park Golf Club	
Greensboro, NC	
Duke	920
North Carolina	923
Wake Forest	926
Florida State	941

1992

Bermuda Run Country Club	
Advance, NC	
North Carolina	921
Florida State	923
Duke	934
Wake Forest	957

FLORIDA STATE AT THE ACC'S

1994

Karen Stupples	77-81-73=231 (t4)
Tiffany Faucette	80-79-82=241 (t13)
Mabel P. del Pobil	78-82-82=242 (15)
Maria Castellucci	80-81-82=243 (16)
Kate Burton	81-83-87=251 (19)
Total	315-323-319=957 (4)

1993

Kelly Pittman	77-73-79=229 (6)
Mabel Pascual del Pobil	79-79-80=238 (t10)
Marie Josee' Rouleau	75-83-80=238 (t10)
Maria Castellucci	76-82-81=239 (t12)
Tiffany Faucette	79-80-81=240 (t14)
Total	307-314-320=941 (4)

1992

Mary Lee Cobick	69-75-79=223 (2)
Erica Firnhaber	76-82-76=234 (t7)
Marie Josee' Rouleau	80-81-73=234 (t7)
Emma Rundle	82-79-78=239 (14)
Kelly Pittman	86-75-80=241 (15)
Total	307-310-306=923 (2)





STRENGTH & CONDITIONING

1995

Superior strength and conditioning are two reasons why the Lady Seminole golf program is among the top programs in the nation every year. The golf team's commitment to excellence does not start on the practice green; it starts in the weight room every Monday, Wednesday and Friday at 7:15 a.m.

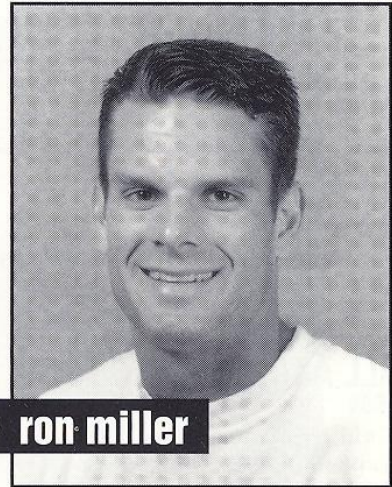
Assistant Strength Coach Ron Miller works with the women's golf team and has created a special program so that each golfer can reach maximum potential on the golf course. "With physical fitness the women can help themselves two different ways," says an enthusiastic Miller. "The first is injury prevention and the second is they will be able to play better longer."

The Lady Seminoles start their workout with 30 minutes of cardiovascular training. This can range from running to riding a stationary bike. Cardiovascular training will help the overall endurance of a player so she is not tired after walking for 36 holes.

Next, the women go through the "Seminole circuit" which is a total body strength program devised specifically for golfers. "The main areas we work are the wrist, forearms, and abdominals," says Miller. "Once again we are working toward muscular endurance."

The Seminoles work out in the Tully Gymnasium weight room which is a carpeted and mirrored area which includes state of the art exercise systems by Cybex Eagle, as well as free weight equipment. A variety of exercise bicycles, rowing machines and stairmasters incorporate both strength conditioning and cardiovascular endurance. The weight room is open every weekday, year-round, at the most convenient hours to give all student athletes time to work a strength and conditioning routine into their busy schedules.

Words of encouragement and guidance come from Miller and his staff, who take a personal interest in each and every Seminole athlete. Miller works with the individual to tailor a weight program that specifically meets her needs and goals. His office is located in Tully Gym, where he can remain close to the action at all times.

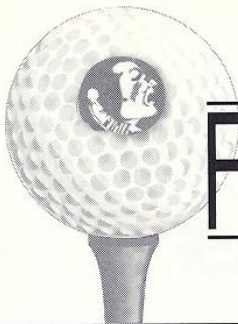


 **ron miller**

Miller is working towards training the athletes to condition themselves year-round and not just during the season. "I want working out to become a life-style for these women."

At Florida State we believe "the strong shall survive." It is the philosophy that has made the Seminoles women's golf team among the strongest, fittest, and most flexible anywhere.





FSU ACADEMICS

1995

Academic All-Americans

1994	Tiffany Faucette
1994	Mabel Pascual del Pobil
1993	Tiffany Faucette
1993	Kelly Pittman
1992	Kelly Pittman
1990	Kelly Pittman

1994 ACC Honor Roll

Kate Burton
Tiffany Faucette
Amy Girard
Mabel Pascual del Pobil
Sarah Stimac
Rhoda Ward

FSU-Women's Athletic Team Academic Award

1988-89	Tennis
1989-90	Golf
1990-91	Golf
1991-92	Golf
1992-93	Tennis
1993-94	Golf

Academic, personal and professional support are essential to college success. At Florida State University, we have developed an outstanding support program which enables student-athletes to reach their full potential.

Our philosophy is "to offer an academic support program integrated with the total university that will assist all student-athletes with the transition into college and provide continued support in all phases of academic and professional development culminating with graduation, job placement or graduate school."

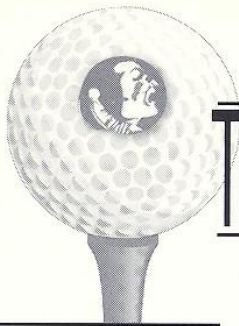
To accomplish this goal we have developed an academic environment which facilitates the academic success of student-athletes. Student success is encouraged through competent academic counseling, career exploration, planning and placement and academic assistance through tutorial programs.

Our program operates on a "proactive" rather than "reactive" approach. At Florida State, our academic staff does not wait for academic crises to occur. We gather important background information and build an academic profile on all student-athletes to assess their needs in advance. We also stay informed on the daily progress of each student athlete.

The academic programs are moving to the state-of-the-art University Center and will be located on the sixth floor of the \$126,000,000 facility. It includes private study carrels, a tutorial study area and a computer lab outfitted with 16 new IBM computers and laser printers. In addition, athletic sky boxes are utilized for group and individual tutorial instruction.

FSU Schools and Colleges

Arts and Sciences	Engineering	Nursing
Business	Human Sciences	Social Sciences
Communication	Interdisciplinary	Social Work
Criminology	Motion Picture, Television, and Recording Arts	Theatre
Education	Music	Visual Arts and Dance



THIS IS FLORIDA STATE

1995

Florida State University, nearing its golden anniversary as a co-educational graduate research institution, is poised on the brink of joining the nation's academic elite. A senior member of the 10-member State University System of Florida, FSU was founded as an institution of higher learning in 1851 by legislative act and began operation in Tallahassee with its first students in 1857.

Today, Florida State's operating budget is \$415 million. Faculty and administrators generate more than \$100 million annually in external funding to supplement state-sponsored research. Three direct-support organizations serve to bolster the university: the private, non-profit FSU Foundation, which raises millions in private gifts to support academics, the Seminole Boosters and the FSU Alumni Association.

The main campus is spread over 418 acres in Tallahassee. FSU, which has the smallest campus in the SUS, has been actively acquiring land in the 1990s after many years of being landlocked at 347 acres. The university owns a total of 1,248 acres in Leon, Bay and Franklin counties.

Within the state, FSU maintains facilities at its 25-acre campus in Panama City, its Marine Laboratory on the Gulf of Mexico and the Appleton Museum in Ocala. The university's



Kate Burton
Junior

graduate theatre and film professional-training programs, the FSU/Asolo Conservatory of Professional Actor Training and FSU/Asolo Conservatory of Motion Picture, Television and Recording Arts, are both located in the Asolo Performing Arts Center in Sarasota. The Center for Professional Development and Public Service, housed in the Florida State Conference Center on the edge of the main campus, provides extensive credit and non-credit continuing education programs statewide.

For years FSU has reached far beyond Florida through international programs in Switzerland, France, Panama, Costa Rica and the Caribbean. FSU's study centers in Florence, Italy, and London, England, are considered by many to be the best American universities in Europe.

Florida State offers 273 graduate and undergraduate degree programs through its eight

colleges — Arts and Sciences; Business; Communication; Education; Engineering (operating jointly with Florida A&M University); Human Sciences; Law; and Social Sciences (which also incorporates the school of Public Administration and Policy) — and eight schools — Criminology and Criminal Justice; Library and Information Studies; Motion Picture, Television and Recording Arts; Music; Nursing; Social Work; Theatre; and Visual Arts and Dance.

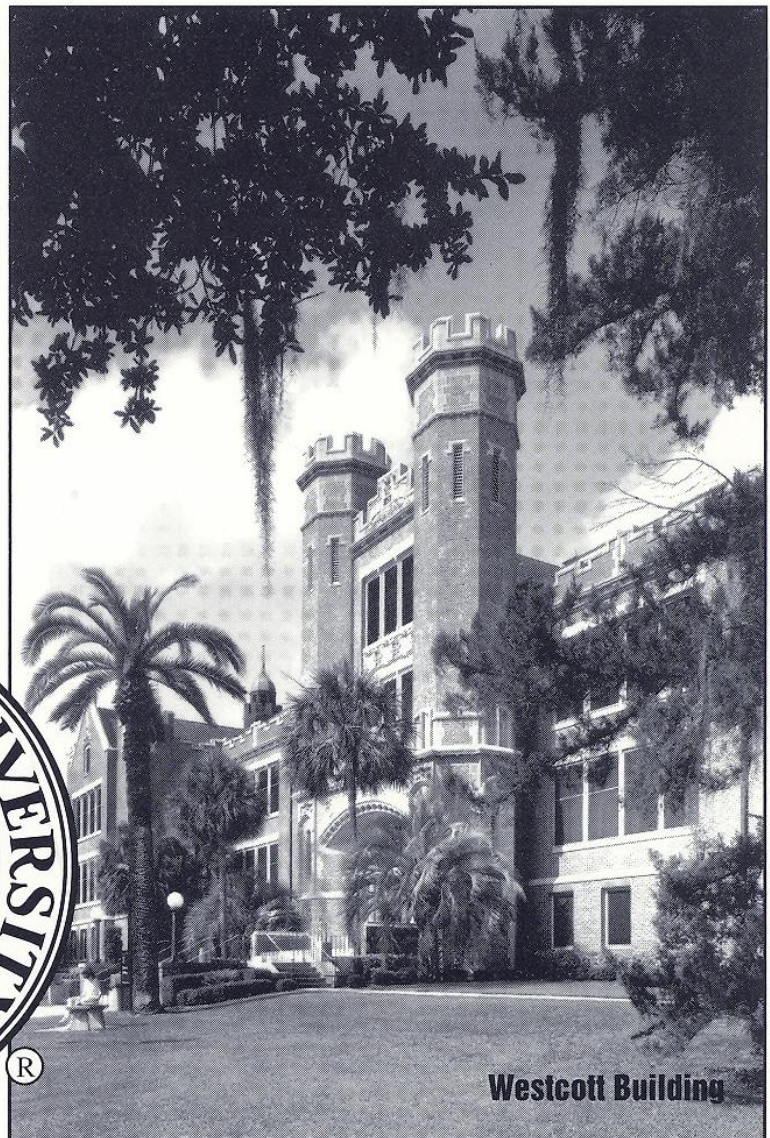
With 1,558 members, the FSU faculty currently includes five members of the National Academy of Sciences and eight of the American Academy of Arts and Sciences, and has included five Nobel Laureates. It is backed by 2,915 administrative, professional and support staff.

Library holdings at Florida State include 2.03 million book titles, 18,420 serials and 4.1 million microforms. The main library facility, the Robert M. Strozier Library, is linked via a computerized information system to other state university and national research libraries. The Paul A.M. Dirac Science Center Library is located at the heart of the university's main science research complex. FSU also maintains extensive music, library science and law libraries. The Mildred and Claude Pepper Library houses the personal and professional papers of one of Florida's best known political couples.

On the top floor of the Dirac Library is the headquarters of the Supercomputer Computations Research Institute, a multidisciplinary, multinational program established in 1984 which brings together some 50 scientists, engineers and technicians. SCRI is electronically linked to an off-campus research complex at Innovation Park and the university's two powerful supercomputers.

Also providing unique research opportunities is the physics department's tandem Van de Graaff Superconducting Accelerator Laboratory, which houses two powerful atom smashers and is ranked among the top four nuclear research centers in the nation by the National Science Foundation.

In its mission of excellence in teaching, research and public service, Florida State University is advancing boldly into the 21st century.



1994-95 Women's Golf Schedule

Tiffany Faucette
Senior
Academic All American

Lady Seminole Invitational

Florida State University
Tallahassee, FL
Sept. 16-18

Beacon Woods Invitational

University of South Florida
New Port Richey, FL
Oct. 14-16

Lady Paladin-Furman Invitational

Furman University
Greenville, SC
Oct. 21-23

Carolyn Cudone Invitational

Coastal Carolina University
Myrtle Beach, SC
Nov. 4-6

Fall Preview Classic

UNC-Wilmington
Wilmington, NC
Nov. 11-13

Lady Gator Invitational

University of Florida
Gainesville, FL
Mar. 3-5

LSU-Fairwood Invitational

Louisiana State University
Baton Rouge, LA
Mar. 17-19

Ryder-Florida State Championships

State Tournament
Miami Lakes, FL
Apr. 7-9

ACC Championships

Florida State University
Tallahassee, FL
Apr. 21-23

East Regional

University of Memphis
Memphis, TN
May 11-13

NCAA Championships

UNC-Wilmington
Wilmington, NC
May 24-27

