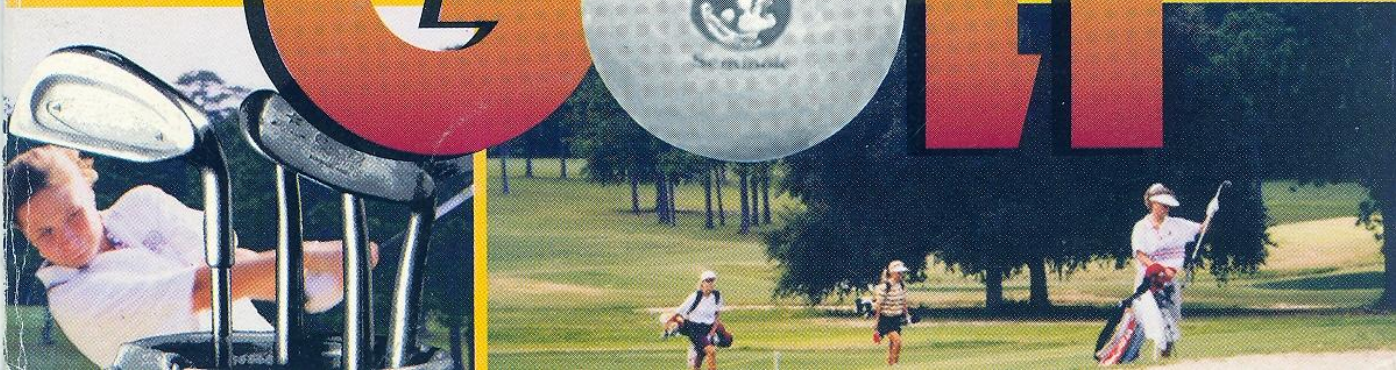


1993-1994
Florida State
University



Women's
Golf



Head Coach

Debbie Dillman
(Florida State, '82)

Years at FSU

Ten (1983-1993)

1992-93 YEAR IN REVIEW

Best Finish

2nd out of 17
LSU/Fairwood Inv.
Fairwood Country Club
Baton Rouge, LA
March 19-21, 1993
308-307-rain=615

**1992-93 NCAA East
Regional Finish/Score**

18th out of 18,
323-320-327=970

1993 ACC Finish/Score

4th out of four
307-314-320=941

1992-93 Team Low Score

917 (3rd out of 12)
310-305-302
Beacon Woods (hosted by USF)
Beacon Woods GC, Bayonet Point, FL
October 9-11, 1992

917 (3rd out of 11)
305-304-308
Ryder/Florida Golf Championship
Don Shula's GC, Miami Lakes, FL
April 2-4, 1993

1992-93 Team High Score

970 (18th out of 18)
323-320-327
NCAA East Regional
Santa Maria GC, Baton Rouge, LA
May 13-15, 1993

**1992-93 Individual
Top-Ten Finishes**

Maria-Josée' Rouleau
LSU/Fairwood Inv. 150 (3)
Duke Fall Inv. 152 (t5)
Beacon Woods 225 (t8)
SJSU/Josten's Inv. 233 (t9)

Kelly Pittman

Lady Seminole Inv. 222 (t4)
ACC Championship 229 (6)

Maria Castellucci

LSU/Fairwood Inv. 149 (2)
Ryder/Florida Champ. 222 (4)

Mabel P. del Pobil

ACC Championship 238 (t10)

1992-93 Top-Ten Finishes

Eight out of 10 tournaments
Lady Seminole Invitational - 5th
319-306-318=938
Duke Fall Invitational - 5th
322-312=634
Beacon Woods Invitational - 3rd
310-305-302=917
Lady Gator Invitational - 5th
322-322-320=964
San Jose State/Josten's Invitational - 8th
327-324-315=958
LSU/Fairwood Invitational - 2nd
308-307=615
Ryder/Florida Golf
Championship - 3rd
305-304-308=917
Atlantic Coast Conference Tourn. - 4th
307-314-320-941

Letter Winners Returning

Kate Burton, *Sophomore*
80.7 avg./5 tournaments
Maria Castellucci, *Senior*
78.4 avg./6 tournaments
Tiffany Faucette, *Junior*
81.7 avg./9 tournaments
Mabel Pascual del Pobil, *Sophomore*
80.8 avg./10 tournaments

Letter Winners Lost

Marie Josée' Rouleau
78.8 avg./8 tournaments
Kelly Pittman
78.1 avg./9 tournaments

Florida State University Home Course

Hole	Par	Yardage
1	5	468
2	4	335
3	4	330
4	3	175
5	4	320
6	5	490
7	7	345
8	3	140
9	5	472
Par 37		3075



1992-93 ACC Honors

Kelly Pittman
ACC Post-Graduate Scholarship Award

Kelly Pittman
ACC Scholar-Athlete of the Year

Kelly Pittman
ACC Honor Roll

Tiffany Faucette
ACC Honor Roll

Amy Girard
ACC Honor Roll

Mabel Pascual del Pobil
ACC Honor Roll

Marie Josee' Rouleau
ACC Honor Roll

Sarah Stimac
ACC Honor Roll

Seminoles In The Pros

*Barb Bunkowsky, Jane Geddes
Leigh Mills, Nadia Ste-Marie
Colleen Walker, Lisa Walters
Rebecca Ward*

Seminole Golf Hall Of Fame

In order to qualify as a member of the Seminole Golf Hall of Fame, an FSU golfer must have either: Won a PGA or LPGA event, been an NCAA Individual Champion, been a USGA Amateur Champion.

The current FSU Golf Hall of Famers are:

1968	Hubert Green
1978	Kenny Knox
1978	Colleen Walker
1980	Jeff Sluman
1981	Paul Azinger
1949	Mary Lena Faulk
1982	Barb Bunkowsky
1982	Jane Geddes
1982	Lisa Walters
1987	Nolan Henke

All Americans

1989	Nadia Ste-Marie
1982	Barb Bunkowsky
1981	Michele Guilbault
1981	Lisa Young

Seminole Golf Course, Par 72 – 5,930 yards

Hole	Par	Yardage
10	4	330
11	4	348
12	4	346
13	5	500
14	4	326
15	3	150
16	4	330
17	3	140
18	4	385
Par 35		2855

Academic All-Americans

1993	Tiffany Faucette
1993	Kelly Pittman
1992	Kelly Pittman
1990	Kelly Pittman

TABLE OF CONTENTS

Quick Facts	2-3
This Is FSU	4
Academics	5
Outlook	6
1992-93 Year In Review	7
Head Coach	8
Player Biographies	9-12
Strength and Conditioning	13
Player Roster	13
ACC Tournament History	14
FSU Individual and Team Titles	15
Current Individual Career Stats	16
1992-93 Team Results	17
1993-94 Golf Schedule	Back Cover

FSU INFORMATION

Location	Tallahassee, Florida
Enrollment	28,500
Founded	1857
Nickname	Lady Seminoles
Colors	Garnet & Gold
Conference	Atlantic Coast
President	Dr. Bernie Sliger
Athletic Director	Bob Goin
Coach	Debbie Dillman
Office Phone	904/644-7290
Golf SID	Bob Burda
Office Phone	904/644-1065
Sports Information Office	904/644-1403
Sports Information Fax	904/644-3820
Sports Information Address	P.O. Drawer 2195, Tallahassee, FL 32316
Sports Information Overnight Address	Moore Athletic Center, Pensacola St. Tallahassee, FL 32306



Kate Burton

I came over from England to play golf and see what America was really like. I found the perfect place to do both. Florida State is everything I thought it would be.

This Is FSU



Florida State University, nearing its golden anniversary as a coeducational graduate research institution, is poised on the brink of joining the nation's academic elite.

Located on the oldest continuous site of higher education in Florida and building rapidly on the framework of a highly regarded liberal arts college for women, the university has emerged over the past 46 years as an institution of national and international esteem.

A senior member of the 10-member State University System of Florida, FSU was founded as an institution of higher learning in 1851 by legislative act and began operating in Tallahassee with its first students in 1857.

Today, Florida State's operating budget is \$401 million. Faculty and administrators generate more than \$100 million annually in external funding to supplement state-sponsored research. Three direct-support organizations serve to bolster the university: the private, non-profit FSU Foundation, which raises millions in private gifts to support academics, the Seminole Boosters and the FSU Alumni Association.

The main campus is spread over 405 acres in Tallahassee; FSU, which has the smallest campus in the SUS, acquired about 58 acres in 1991-92 after many years of being landlocked at 347 acres. The university owns a total of 1,230 acres in Leon, Bay and Franklin counties.

Florida State offers 275 graduate and undergraduate degree programs through its eight colleges — Arts and Sciences; Business; Communication; Education; Engineering (operated jointly with Florida A&M University, a historically black institution); Human Sciences; Law; and Social Sciences (which also incorporates the School of Public Administration and Policy) — and eight schools — Criminology and Criminal Justice; Library and Information Studies; Motion Picture, Television and Recording Arts; Music; Nursing; Social Work; Theatre; and Visual Arts and Dance.

With 1,526 members, the FSU faculty currently includes five members of the National Academy of Sciences and eight of the American Academy of Arts and Sciences, and has included five Nobel laureates. It is backed by 2,837 administrative, professional and support staff.

Library holdings at Florida State include 1.98 million book titles, 18,436 serials and 3.9 million microforms. The main library facility, the Robert M. Strozier Library, is linked via a computerized information system to other state university and national research libraries. The Paul A.M. Dirac Science Center Library is located at the heart of the university's main science research complex. FSU also maintains extensive music, library science and law libraries, and the Mildred and Claude Pepper Library houses the personal and professional papers of one of Florida's best known political couples.

Graduate students, who number more than 5,700, pursue advanced degrees in fields as diverse as business administration and theoretical particle physics. A majority of research done at FSU is the direct result of student effort, culminating in numerous books, monographs and journal articles relating to the whole spectrum of intellectual interests and the practical needs of society.

FSU, a residential campus, places a high priority on its 28,500 students and their needs and interests. The Honors and Scholars program, the Distinguished Lecture Series, Student Government, the all-collegiate Flying High Circus and intramural sports are among more than 200 organizations and activities in which students can participate.

Situated in the heart of the state's thriving capital city, Florida State's main campus blends Gothic and modern styles of architecture with the oaks, pines, dogwoods, palms and azaleas of North Florida.

In all areas of its mission of excellence in teaching, research and public service, Florida State University is advancing boldly into the 21st century.

FSU
Women's
Golf



María Castellucci

I like FSU because I felt like they could give the best opportunity to improve my skills and have fun doing it.



Florida State student-athletes are enjoying just as much success in the classroom as they are on the playing fields. Just last spring, Florida State placed 97 student-athletes on the Atlantic Coast Conference's Academic Honor Roll.

One reason for the Seminoles' success in the classroom is the academic team behind FSU's teams. A full staff of academic professionals work with the student athletes to improve their academic performances.

Florida State's academic support group is headed by Dr. Roger Grooters, who joined the university's staff this past July as the new Director of Academic Support Services.

Dr. Grooters came to Tallahassee after a seven year stint as the director of athletic academic programs at the University of Nebraska. While at Nebraska in 1990, Grooters' program was honored as the top academic support unit in the nation. His philosophy towards his job ensures that FSU's academic success will continue.

"My job is to make sure that the student-athlete is truly that, a student-athlete," Grooters commented. "Their number one priority is that of being a student. Our staff must create an environment that enhances a student's chance for success."

That environment consists of top notch facilities. Included in the expansion of the Moore Athletic Center is a state-of-the-art academic center which will be a part of the new Daisy Parker Flory Wing.

The center will include a study hall with tutoring rooms, the most modern in computer technology, and a research area. It will also mark the first time that the academic support staff will be housed in the same set of offices in the university's history.

Aside from the best facilities, Grooters feels that student-athletes need to be surrounded by top support people.

"One of the key factors in determining whether or not a student-athlete will succeed is having good support personnel," added Grooters.

Florida State is fortunate to have just that. Five people make up the Tribe academic support unit. Grooters, Mark Meleney, Trudy Raybun, Brian Maggard and Kevin Carr.

The academic support staff coordinates study hall, tutorial programs, career counseling, orientation, and registration for Florida State's student-athletes. Grooters oversees the staff while serving as a liaison between the athletic department and the academic faculty. Grooters and his staff are also implementing a mentor/tutor program for FSU athletes.

The staff also monitors class and study hall attendance, offers personal counseling, and holds workshops on resume and cover letter writing and internships.

The most important job of the Florida State academic support staff is to ready the school's student-athletes for life after their playing days are behind them.

FSU-Women's Athletic Team Academic Award

1979-80	Swimming & Diving
1980-81	Swimming & Diving
1981-82	Swimming & Diving
1982-83	Swimming & Diving
1983-84	Volleyball
1984-85	Tennis
1985-86	Tennis
1986-87	Tennis
1987-88	Swimming & Diving
1988-89	Tennis
1989-90	Golf
1990-91	Golf
1991-92	Golf
1992-93	Tennis
1993-94	Golf

94-95 GOLF



Sarah Stimac

I love playing for FSU because of the Seminole tradition for excellence.

Outlook

Clemson University University of Virginia Georgia Tech North Carolina State University



If the Lady Seminole's start to the 1993-94 season is any indication, then the squad is poised for one of the most successful years in school history. Florida State hit the ground running by capturing the team championship at the Lady Seminole Invitational. For only the third time in the tournament's 19 year history has the host school taken the tournament crown.

Played at the Seminoles' home course in Tallahassee on September 17-19, Florida State led all three days. "I can't tell you how proud I am of this young group," said tenth year coach Debbie Dillman. "Even though they struggled on the final day, they did what it took down the stretch in a pressure situation to get the job done. I think this is an indication of great things to come from this group."

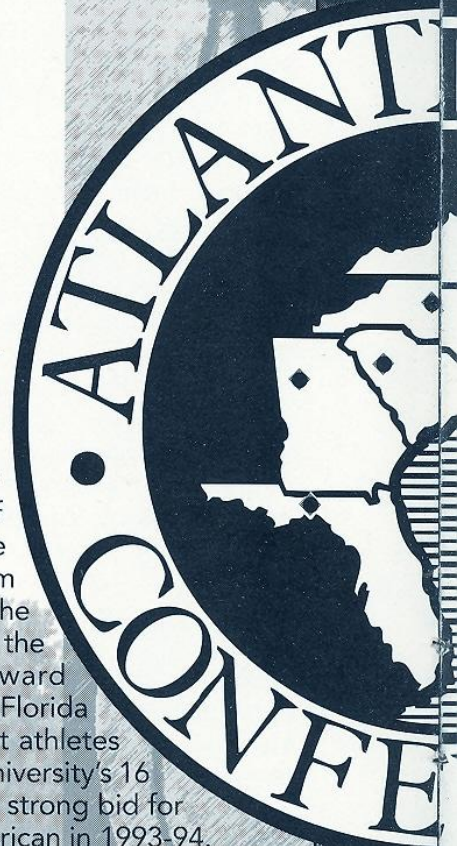
This year's team returns four starters to the lineup. Led by the squad's lone senior, Maria Castellucci will be called upon to provide leadership to the young team. Castellucci must provide steady scoring in her All-American quest if the team is to continue its success.

In addition to Castellucci, upperclassman Tiffany Faucette returns after a full

summer of tournament play. As the only junior on the squad she too will have to shoulder the responsibility of helping to nurture this young team along. Faucette, the team's recipient of the Golden Torch Award given annually to Florida State's top student athletes from each of the university's 16 sports, will make a strong bid for Academic All-American in 1993-94.

"I think this team will be personally challenging for me," noted Dillman. "It's been many years since we have had such a young team. Their enthusiasm and talent should carry us to another NCAA Regional invitation, and hopefully beyond."

The Seminoles have made a habit of reaching the NCAA's. For the last three years Florida State has made it to the big dance. If the team is to make it four in a row, some big shoes are going to have to be filled.



FSU
Women's
Golf

6



Cindy Bissett

Why I choose FSU—because of the team spirit and the closeness that they have.

Duke University

Wake Forest University

University of Maryland

University of North Carolina



Gone are Kelly Pittman and Marie Josee' Rouleau. Both have graduated after successful careers. Pittman advanced to the U.S. Women's Amateur semifinals this past summer in San Diego, California. Both Pittman and Rouleau were the driving forces behind Florida State's seven top-five finishes last year.

This season's squad will also consist of four sophomores and two freshman. Overall, a young team with plenty of enthusiasm and determination will compete this year. Sophomores Kate Burton and Mabel Pascual del Pobil return with a full season of experience under their belts. Their knowledge and adjustments to college life have them pointed toward very encouraging campaigns.

Burton hails from Wallington, Surrey, England where she has amassed a world

of experience including the South Eastern Championship in 1990, '91 and '92. Pascual del Pobil comes to Tallahassee via Cadiz, Spain, where she competed internationally as a member of the Spanish National Junior Team.

Sophomore Karen Stupples plans to add strength to the Seminole lineup after transferring to FSU from Arkansas State. Last year she claimed three tournament victories for ASU. She'll be called upon early to help fill in for the loss of Pittman and Rouleau, and will look to compete for the team's number one playing spot. Sarah Stimac, a relative new comer to the game, has worked hard and gained needed tournament experience over the summer.

A pair of freshmen round out the team. Cindy Bissett from Trophy Club, TX is a strong player who will challenge for playing time. Oddly enough she grew-up on Seminole Drive in her home town. Another new face comes from just down the road in Gainesville, FL. Rhoda Ward is another big-hitter that has impressed Dillman with her work ethic on the golf course and in the weight room.

Teams of the ACC

**FSU
Women's
Golf**

7



Coach Debbie Dillman

Florida State has so much to offer an athlete . . . great facilities, strong support and tradition.



Debbie Dillman

Florida State '82

For a decade the women's golf program at Florida State has been recognized as a national power. Under the guidance of tenth year coach Debbie Dillman, the team has become a mainstay in the collegiate golf top-25 polls.

A former player at FSU, Dillman possesses the qualities that are crucial for nurturing young players and helping them to realize their full potential. She is able to strike a balance between teaching, motivating, caring, listening, leading and discipline.

In teaching her teams, Dillman draws on the experience she gained from her work on and off the golf course. Her knowledge of the game in the areas of competition, management, and rules and regulations has put her among the top in the profession.

In Florida State's first year of competition in the Atlantic Coast Conference, Dillman's peers named her ACC Coach of the Year. With Dillman at the helm, the Seminoles have walked away from a tournament with the overall team championship at least once a year for the last nine straight seasons. With her tutelage, seven Seminole golfers have captured individual champion honors.

Dillman has led the Seminoles to the NCAA tournament three years running. Last year, the first season of regional qualifying, the Seminoles were invited to compete in the NCAA East Regional Tournament. The year before, FSU placed 14th at the national championship tournament. And in 1991, after a 10 year hiatus, Florida State returned to the NCAA Championship Tournament in grand fashion, again finishing 14th.

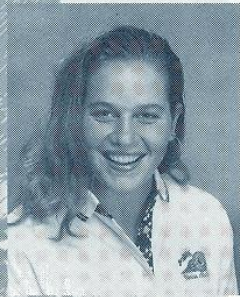
This year the 33 year old Dillman adds to her responsibilities by becoming a member of the NCAA South Regional Selection Committee. In her spare time she and her husband raise Tennessee Walking horses on their farm just outside of Tallahassee.

Dillman was an undergraduate student at Florida State from 1979-82. In addition to playing on the golf team, she also worked at Seminole Golf Course. The experience enabled her to learn golf from both the competitive and management sides of the game.

A native of Davidson, Michigan, Dillman grew up in a golf family. Both her parents were involved in country club management. During her high school career she was named a three time Flint Junior Golf Champion. Long recognized as one of the top junior tournaments, she held the championship crown from 1977-79. She twice was runner-up at the Michigan State Championship and captained her high school team all four years.



In turn, we are able to bring in the best student-athletes in the country. And success is something we have learned to expect.



Cindy Bissett

Freshman

Trophy Club, TX

True freshman who will compete for playing time...grew up on Seminole Drive in her home town of Trophy Club, TX...strong player with good mental approach...**Prep:** Three year MVP at Northwest HS...claimed two second-place and one third-place finish in the Texas High School District Championships...placed in the top-ten in the Texas High School Regionals all four years...selected Sophomore of the Year...played in the AJGA Big Red Team Championship...**Personal:** Business marketing major...**Born:** July 5, 1975.



Kate Burton

Sophomore

Wallington, Surrey, England

One of two team members to hail from Great Britain...savvy player with a plethora of tournament experience...popular with teammates...sense of humor keeps things light hearted...needs to become a consistent scorer...**Best Finish Last Season/Career:** Tied for 14th (232) at the Lady Seminole Invitational, September 18-20, 1992, Tallahassee, FL...**1992-93 Season:** Played in five tournaments her freshman year...appeared in all four fall events...fired a season-best 74 on the final day of the Lady Seminole Invitational...averaged 80.7 strokes per round...only spring tournament was the San Jose State/Josten's Invitational...**Prep:** Highly acclaimed British prepster...Suney School Champion 1990-92...Suney Girls Champion 1989-91...1990 South Eastern Girls Champion...South Eastern/England Champion 1991-92...set the Wimbledon course record with a four under-par 66...**Personal:** Double major, French and Spanish...**Born:** October 2, 1973.

YEARS	EVENTS	ROUNDS	STROKES	AVG.	LOW	TOP 10
1992-93	5	14	1,130	80.7	74	0



Maria Castellucci

Senior

Orlando, Florida

Candidate for All-American honors her senior year...lone senior on the squad...counted on to play in the number one or two position...**Best Career Finish:** Second (224) at the Florida International/Pat Bradley Invitational, November 11-13, 1990, Miami, FL...**Best Finish Last Season:** Second (149) at the LSU/Fairwood Invitational, March 19-21, Baton Rouge, LA...**1992-93 Season:** Played in all six spring tournaments with the Lady Seminoles...averaged 78.29 strokes per round...shot a season-low 73 in the first round of the LSU/Fairwood Invitational...twice finished in the top-five, placing second at the LSU/Fairwood Invitational and fourth at the Ryder/Florida Championships...missed



Tiffany Faucette

The strong sports program at Florida State along with its traditions and excellent

the fall semester portion of the schedule earning her A.A. degree at Valencia Junior College...**1991-92 Season:** Played in six tournaments as a sophomore...tied for fifth place at the New Mexico State Diet Coke/Lady Roadrunner Classic for only top-ten finish of the year...**1990-91 Season:** Competed in all ten events...career best second place finish at the Pat Bradley/FIU Invitational...also had top-ten finishes at the Ryder/Florida State Championships (6), McDonalds/UCF Classic (7), Metro Conference Championship (8) and Diet Coke/Roadrunner Classic (t10)...**Prep:** Two-time American Junior Golf Association Woodlands Champion ('89, '90)...1990 USF&G Classic Champion...1990 Sawgrass Champion...1990 Midwestern Champion...five-time *Golf Magazine* Junior Player of the Year...won four of the seven 1990 AJGA tournaments...a three-time Orlando Amateur Athletic Association Player of the Year (OAAA)...high school team MVP in 1989 and '90...**Personal:** Social work major...**Born:** February 21, 1972.

YEARS	EVENTS	ROUNDS	STROKES	AVG.	LOW	TOP 10
1990-91	10	28	2,176	77.7	72 (twice)	5
1991-92	6	18	1,437	79.8	74	1
1992-93	6	17	1,334	78.4	73	2
Total	22	63	4,947	78.5	72	8



Tiffany Faucette

Junior

Ormond Beach, Florida

Good athlete who possesses natural golf ability...outstanding student-athlete...will contend for Academic All-American honors...placed on the ACC Honor Roll two years running...golf team representative to FSU's Golden Torch Gala, recognizing outstanding academic achievement, the last two years...**Best Finish Last Season/Career:** Twice tied for 14th place, Lady Gator Invitational (240), February 12-14, 1993, Gainesville, FL and ACC Championship Tournament (240), April 15-17, 1993, Greensboro, NC...**1992-93 Season:** Saw action in nine tournaments...did not play in the San Jose State/Josten Invitational...shot a season-low 76 on Day Three of the Beacon Woods Invitational...averages just over 81 strokes a round...totaled 240 strokes in three tournaments and twice tallied 238's...**1991-92 Season:** Competed in one event as a freshman...fired a 239 to finish 33rd in the Lady Seminole Invitational...**1990-91 Season:** Redshirted her first year...**Prep:** Captained her high school golf team to a fourth place state finish...garnered all county honors as a junior and senior...placed second in the District Championships...Killearn Bert Yancey Tournament Champion...Volusia and Flagler Counties Junior Champion...**Personal:** Majoring in Marketing...**Born:** April 28, 1972.

YEARS	EVENTS	ROUNDS	STROKES	AVG.	LOW	TOP 10
1990-91			Redshirted			
1991-92	1	3	239	79.6	77	0
1992-93	9	25	2,043	81.7	76	0
Total	10	28	2,282	81.5	76	0

FSU
Women's
Golf

10



business school attracted me to Tallahassee. Plus, I wanted to steal Chief Osceola's outfit and ride Renegade to class.



Amie Girard

Freshman
Longwood, Florida

Redshirt freshman ready to contribute...has promising future...possesses a natural swing...**1992-93:** Redshirted...**Prep:** Four year varsity team member at Lake Brantley High School...three time all-conference selection...garnered first team all-district honors twice...finished fifth in the Oklahoma Junior Classic...placed third in the Florida State Junior Girls Championship...**Personal:** Majoring in Geology...**Born:** November 11, 1974.



Mabel Pascual del Pobil

Sophomore
Cadiz, Spain

Brings an array of international experience to the team...fierce competitor...works hard on and off the links...one of three foreigners on the squad...should contend for Academic All-American honors...member of the 1992-93 ACC Honor Roll...**Best Finish Last Season/Career:** Tied for 10th at ACC Championship Tournament, April 15-17, Greensboro, NC...**1992-93 Season:** Participated in all ten tournaments...only top-ten finish came at the ACC Championship Tournament where she tied for tenth place...averages 80.41 strokes per round...fired a season-low 73 in the first round of the Ryder/Florida Championships...**Prep:** Claimed first place at the Netherland's Junior International competition in 1990 and fourth in '92...captured the Topolino's Trophy in 1989...member of the Spanish National team which won the 1990 International Girls Team Championship and the '91 European Girls Team Championship...**Personal:** Majoring in Business...**Born:** January 5, 1975.

YEARS	EVENTS	ROUNDS	STROKES	AVG.	LOW	TOP 10
1992-93	10	28	2,264	80.8	73	1



Sarah Stimac

Junior
Ft. Walton Beach, Florida

One of six Lady Seminole golfers to make the 1992-93 Atlantic Coast Conference Honor Roll...dedicated player with good work habits...provides quality depth...**Best Finish Last Season/Career:** 61st (260) in the Lady Seminole Invitational, September 18-20, 1992, Tallahassee, FL...**1992-93 Season:** Walk-on who made her only appearance in the Lady Seminole Invitational...shot a 260 to finish 61st...**Prep:** District 1 individual champion for Ft. Walton Beach in 1989...high school team took the District 1 team championship in 1990 and '91...**Personal:** Majoring in English/Communication...**Born:** October 22, 1973.

YEARS	EVENTS	ROUNDS	STROKES	AVG.	LOW	TOP 10
1992-93	1	3	260	86.6	85	0



Karen Stupples

I came here because its a great school with a great golf team.



Karen Stupples

Sophomore
Kent, England

Transfer from Arkansas State...one of two Brits on the squad...won three tournaments last year as a freshman...expected to contribute...should contend for the team's number one spot...will have to adjust to 54-hole format after playing a majority of 36-hole tournaments last year...**Best Finish Last Season/Career:** First (155) at the Mardi Gras Classic, February, 12-14, Mobil, AL...first (158) at the Southwest Missouri State Invitational, March 29-30, Springfield, MO...first (157) at the Eagle's Nest Collegiate Classic, April 4... **1992-93 Season:** Played her freshman year at Arkansas State...placed in the top five in seven of her team's nine tournament appearances...fired a season best 73 in the first round of the Southwest Missouri State Invitational...played in three 54-hole tournaments...averaged 79.76 strokes per round...finished in the top ten in all but one tournament...**Prep:** Southeast England Girls Classic 1991 champion...1991 English Ladies Championship runner-up...three year member of the English Girls Under 18 National Team...also played on the 1992 Under 21 National Team...**Personal:** Biology major...**Born:** June 24, 1973.

YEARS	EVENTS	ROUNDS	STROKES	AVG.	LOW	TOP 10
1992-93	9	21	1,675	79.7	73	8



Rhoda Ward

Freshman
Gainseville, FL

Big-hitter with a promising career...player of the future for Florida State...possesses good work habits...dedicated player who works hard on the course and in the weight room...**Prep:** Twice named *Gainesville Sun's* Golfer of the Year (1992 and '93)...also garnered Golfer of the Year honors in 1992 from the *Tampa Tribune*...**Personal:**

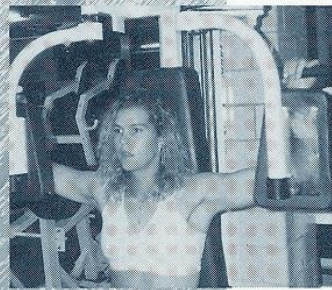
Majoring in Engineering...**Born:** November 20, 1975.





he Strong Shall Survive." It's the motto of Florida State strength and conditioning coach Dave Van Halanger and his staff in the FSU weight room. It's also the philosophy that has made Seminole athletes in all sports among the strongest, fastest, fittest and most flexible anywhere.

At Florida State, the strong not only survive, they win. That's why the Lady Seminole golf team is dedicated to year-round conditioning and weight training as a way to improve their game's.



The Seminole weight room is a carpeted and mirrored area which includes state-of-the-art exercise systems by Cybex Eagle, as well as free-weight equipment. A variety of exercise bicycles, rowing machines and Stairmasters incorporate both strength conditioning and cardiovascular endurance. The weight room is open every weekday, year-round, at the most convenient hours to give all student athletes time to work a strength and conditioning routine into their busy schedules.

Florida State athletes achieve their goals in a state-of-the-art facility in the

Moore Athletic Center. The weight room measures over 8,000 square feet and contains 125 pieces of equipment.



Words of encouragement and guidance come from Van Halanger and his staff, who take a personal interest in each and every Seminole student athlete. Van Halanger works with the individual to tailor a weight program that specifies his or her needs and goals. His office is located right in the weight room, where he is close to the action at all times.

He is assisted by three graduate assistants who help in maintaining the weight room, working with all sports. Florida State student athletes begin the strength and conditioning process the minute they step on campus. In addition to the physical work, Van Halanger and his staff believe in a three-pronged approach.

"The mental aspect of conditioning, combined with a solid spiritual base, is vital for our athletes to perform at the peak of their physical potential," says Van Halanger.

Superior strength and conditioning, just one more reason why the Seminole golf program is among the top in the nation.

Seminole Womens Golf Roster

Name	Cl	Hometown	High School
Cindy Bissett	Fr.	Trophy Club, TX	Northwest
Kate Burton	So.	Surrey, England	Wallington
Maria Castellucci	Sr.	Orlando, FL	Oakridge
Tiffany Faucette	Jr.	Ormond Beach, FL	Seabreeze
Amie Girard	Fr.-R	Longwood, FL	Lake Brantley
Mabel Pascual del Pobil	So.	Cadiz, Spain	San Luis Gonzaga
Karen Stupples	So.	Kent, England	Thanet Technical
Sarah Stimac	Jr.	Ft. Walton Beach, FL	Choctawhatchee
Rhoda Ward	Fr.	Gainesville, FL	Buckholz





CHAMPIONS

Year	Champion	(Score)
1984	Duke	(924)
	Mary Anne Widman, Duke	(224)
1985	Duke	(912)
	Evelyn Orley, Duke	(218)
1986	Wake Forest	(899)
	Brenda Corrie, Wake Forest	(216)
1992	North Carolina	(921)
	Debbie Doniger, N. Carolina	(220)
1993	Duke	(920)
	Stephanie Neill, Wake Forest	(219)

AWARD WINNERS

Coach of the Year

1985	Dot Gunnells, North Carolina
1986	Mary Beth McGirr, Wake Forest
1992	Debbie Dillman, Florida State
1993	Dan Brooks, Duke

ALL ACC SELECTIONS

1985

Jamie Bronson, N.C. State
Brenda Corrie, Wake Forest
Sarah LeBrun, Duke
Jodi Logan, Duke
Page Marsh, North Carolina

1986

Brenda Corrie, Wake Forest
Jodi Logan, Duke
Sharon Minnich, N.C. State
Evelyn Orley, Duke

1992

Kimberly Byham, North Carolina
Kim Cayce, Duke
Debbie Doniger, North Carolina
Erica Firnhaber, Florida State
Stephanie Neill, Wake Forest

1993

Kimberly Byham, North Carolina
Stephanie Neill, Wake Forest
Marie Josee Rouleau, Florida State
Stephanie Sparks, Duke
Jessica Wood, North Carolina

TOURNAMENT RESULTS

1984

Duke Golf Course, Durham, NC	
Duke	924
North Carolina	936
Wake Forest	942
N.C. State	952

1985

Keith Hill Country Club, Buies Creek, NC	
Duke	912
North Carolina	915
Wake Forest	934
N.C. State	938

1986

Keith Hill Country Club, Buies Creek, NC	
Wake Forest	899
Duke	922
North Carolina	930
N.C. State	933

1992

Bermuda Run Country Club, Advance, NC	
North Carolina	921
Florida State	923
Duke	934
Wake Forest	957

1993

Bryan Park Golf Club, Greensboro, NC	
Duke	920
North Carolina	923
Wake Forest	926
Florida State	941

FLORIDA STATE AT THE ACC'S

1992

Mary Lee Cobick	69-75-79=223	(2)
Erica Firnhaber	76-82-76=234	(t7)
Marie Josee' Rouleau	80-81-73=234	(t7)
Emma Rundle	82-79-78=239	(14)
Kelly Pittman	86-75-80=241	(15)
Total	307-310-306=923	(2)

1993

Kelly Pittman	77-73-79=229	(6)
Mabel Pascual del Pobil	79-79-80=238	(t10)
Marie Josee' Rouleau	75-83-80=238	(t10)
Maria Castellucci	76-82-81=239	(t12)
Tiffany Faucette	79-80-81=240	(t14)
Total	307-314-320=941	(4)

INDIVIDUAL TITLES

1979-80

Michelle Giulbault
Auburn Invitational
Beacon Woods Invitational
Peggy Kirk Bell Invitational

1980-81

Michelle Giulbault
Dick McGuire Invitational
Lady Paladin Invitational
Lisa Young
Lady Gator Invitational

1984-85

Lorraine Elder
Lady Gamecock Invitational
LSU-Lou Besson Invitational

1987-88

Sarah Nicklin
Hudson Invitational

1988-89

Nadia Ste. Marie
Beacon Woods Invitational
Lady Seminole Invitational
Metro Conference Championship Tournament

1989-90

Kathy Grant
Metro Conference Championship Tournament

1990-91

Emma Rundle
Diet Coke-Lady Roadrunner Classic
Metro Conference Championship Tournament

1991-92

Erica Firnhaber
Lady Seminole Invitational
Mary Lee Cobick
Beacon Woods Invitational

93-94 Stupples-1
TEAM TITLES *94-95 Stupples-1*

1980-81

Dick McGuire Invitational
Lady Gator Invitational
South Florida Invitational
Lady Paladin Invitational
AIAW National Championship Tournament

1982-83

Metro Conference Championship Tournament

1985-86

Metro Conference Championship Tournament

1986-87

LSU-Fairwood Invitational

1987-88

LSU-Fairwood Invitational
Metro Conference Championship Tournament

1988-89

LSU-Fairwood Invitational
Metro Conference Championship Tournament

1989-90

FIU-Pat Bradley Invitational

1990-91

Metro Conference Championship Tournament

1991-92

Lady Seminole Invitational
Ryder-Florida Intercollegiate

Individual and Team Titles

FSU
Women's
Golf

15



Mabel Pascual del Pobil

It's a good experience for me to be living, studying and practicing my favorite sport with people from a different country, with a different culture. And people at FSU are being very friendly and

Current Individual Career Stats

KATE BURTON

1992-93

Lady Seminole Invitational	82	76	74	232 (t14)
Duke Fall Invitational	80	85		165 (t37)
Beacon Woods Invitational	77	78	78	233 (t24)
Georgia Preview Tournament	76	82	79	237 (t36)
SJSU/Jostens Invitational	92	87	84	263 (t75)

TIFFANY FAUCETTE

1992-93

Lady Seminole Invitational	79	80	79	238 (t28)
Duke Fall Invitational	86	82		168 (t44)
Beacon Woods Invitational	82	80	76	238 (t32)
Georgia Preview Tournament	97	88	80	265 (t95)
Lady Gator Invitational	80	80	80	240 (t14)
LSU/Fairwood Invitational	80	82		162 (t38)
Ryder/Florida Championships	80	83	77	240 (t28)
ACC Championships	79	80	81	240 (t14)
NCAA East Regional	82	85	85	252 (t94)

1991-92

Lady Seminole Invitational	82	77	80	239 (t33)
----------------------------	----	----	----	-----------

SARAH STIMAC

1992-93

Lady Seminole Invitational	90	85	85	260 (t61)
----------------------------	----	----	----	-----------

MABEL PASCUAL DEL POBIL

1992-93

Lady Seminole Invitational	81	80	85	246 (t48)
Duke Fall Invitational	80	80		160 (t22)
Beacon Woods Invitational	77	76	79	232 (t21)
Georgia Preview Tournament	83	82	82	247 (t67)
Lady Gator Invitational	84	83	81	248 (t30)
SJSU/Jostens Invitational	81	82	82	245 (t37)
LSU/Fairwood Invitational	81	79		160 (t30)
Ryder/Florida Championships	73	83	78	234 (t17)
ACC Championships	79	79	80	238 (t10)
NCAA East Regional	86	84	84	254 (t97)

KAREN STUPPLES

1992-93

Vanderbilt/Tennessee Tech Inv.	77	85		162 (t8)
Samford Classic	78	79		157 (3)
Lamar Lady Cardinal	78	77	78	233 (t3)
Tiger/Tide Classic	82	81	93	256 (t68)
Mardi Gras Classic	77	78		155 (1)
Spring Hill College Invitational	74	81		155 (2)
Southwest Missouri State Inv.	73	85		158 (1)
Eagle's Nest Collegiate Classic	80	77		157 (1)
Sunbelt Conference Championship	82	82	78	242 (4)

MARIA CASTELLUCCI

1992-93

Lady Gator Invitational	81	82	79	242 (t18)
SJSU/Jostens Invitational	87	84	77	248 (t48)
LSU/Fairwood Invitational	73	76		149 (3)
Ryder/Florida Championships	74	74	74	222 (4)
ACC Championships	76	82	81	239 (t12)
NCAA East Regional	78	76	80	234 (t38)

1991-92

Diet Coke/Lady Roadrunner	78	74	78	230 (t5)
Lady Seminole Invitational	77	78	78	233 (t18)
Beacon Woods Invitational	77	80	83	240 (t32)
Lady Paladin Invitational	85	79	83	247 (58)
Palmetto Dunes Intercollegiate	75	79	81	235 (t20)
UCF Intercollegiate	88	83	81	252 (t40)

1990-91

Diet Coke/Roadrunner	78	78	78	234 (t10)
Lady Seminole Invitational	81	75	76	232 (t20)
Beacon Woods Invitational	76	76	79	231 (24)
Tiger-Tide Intercollegiate	79	78	78	235 (t13)
FIU/Pat Bradley Invitational	76	74	74	224 (2)
Lady Gator Invitational	84	86	80	250 (t43)
McDonald's UCF Golf Classic	79	75		154 (t7)
LSU Fairwood Invitational	82	81	72	235 (t18)
Ryder/Florida State Championships	75	72	76	223 (6)
Metro Conference Championship	82	76		158 (8)



helpful to me. Also, all sport activities are well organized and athletes get good facilities to study and at the same time practice and go to tournaments.

Lady Seminole Invitational

September 18-20, 1992
Seminole Golf Course
Tallahassee, Florida
319-306-318=938
(5th in a field of 14)

Kelly Pittman	77	70	75	222 (t4)
Kate Burton	82	76	74	232 (t14)
Tiffany Faucette	79	80	79	238 (t28)
Mabel P. del Pobil	81	80	85	246 (t48)
Sarah Stimac	90	85	85	260 (61)
Carrie Wallace (Ind)	98	87	92	277 (71)

Duke Fall Invitational

October 2-4, 1992
Durham, NC, Duke Golf Course
322-312=634
(5th in a field of 18) * Only two rounds played due to weather.

Marie-Josée Rouleau	76	76		152 (t5)
Kelly Pittman	86	74		160 (t22)
Mabel P. del Pobil	80	80		160 (t22)
Kate Burton	80	85		165 (t37)
Tiffany Faucette	86	82		168 (t45)

Beacon Woods Invitational

October 9-11, 1992
Beacon Woods Golf Club
Bayonet Point, FL (hosted by USF)
310-305-302=917
(3rd in a field of 12)

Marie-Josée' Rouleau	76	73	76	225 (t8)
Kelly Pittman	80	78	72	230 (t18)
Mabel P. del Pobil	77	76	79	232 (t21)
Kate Burton	77	78	78	233 (t24)
Tiffany Faucette	82	80	76	235 (t32)

Georgia Preview Tournament

October 23-25, 1992
University Golf Course, Athens, Georgia
313-328-319=960
(tied for 12th with Southern Cal- out of 20)

Marie-Josée' Rouleau	77	81	78	236 (t30)
Kate Burton	76	82	79	237 (t36)
Kelly Pittman	77	83	85	245 (t62)
Mabel P. del Pobil	83	82	82	247 (t67)
Tiffany Faucette	97	88	80	265 (t95)

Lady Gator Invitational

February 12-14, 1993
University of Florida Golf Course
Gainesville, Florida
322-322-320=964
(5th in a field of 12)

Kelly Pittman	77	83	80	240 (t14)
Tiffany Faucette	80	80	80	240 (t14)
Maria Castellucci	81	82	79	242 (t18)
Mari-Josée' Rouleau	84	77	83	244 (t23)
Mabel P. del Pobil	84	83	81	248 (t30)

1993 SJSU/Jostens Invitational

March 5-7, 1993
Fort Ord-Bayonet Golf Course
Monterey, California
327-324-315=958
(8th in a field of 17)

Marie-Josée' Rouleau	79	78	76	233 (t9)
Kelly Pittman	80	80	80	240 (t27)
Mabel P. del Pobil	81	82	82	245 (t37)
Maria Castellucci	87	84	77	248 (t48)
Kate Burton	92	87	84	263 (t75)

LSU/Fairwood Invitational

March 19-21, 1993
Fairwood Country Club
Baton Rouge, LA
308-307=615
(2nd place out of 17 teams) * Only two rounds played due to weather.

Maria Castellucci	73	76		149 (2)
Marie-Josée' Rouleau	76	74		150 (3)
Kelly Pittman	79	78		157 (t18)

Mabel P. del Pobil	81	79		160 (t30)
Tiffany Faucette	80	82		162 (t38)

Ryder/Florida Golf Championship

April 2-4, 1993
Don Shula's Golf and Country Club
Miami Lakes, Florida
305-304-308=917
(3rd in a field of 11)

Maria Castellucci	74	74	74	222 (4)
Kelly Pittman	78	73	79	230 (t12)
Mabel P. del Pobil	73	83	78	234 (t17)
Marie-Josée' Rouleau	80	74	81	235 (t20)
Tiffany Faucette	80	83	77	240 (t28)

Fifth Atlantic Coast Conference Tournament

April 15-17, 1993
Bryan Park Championship Course
Greensboro, NC,
307-314-320=941
(4th in a field of 4)

Kelly Pittman	77	73	79	229 (6)
Mabel P. del Pobil	79	79	80	238 (t10)
Marie-Josée' Rouleau	75	83	80	238 (t10)
Maria Castellucci	76	82	81	239 (t12)
Tiffany Faucette	79	80	81	240 (t14)

NCAA East Regional

May 13-15, 1993
Santa Maria Golf Course
Baton Rouge, LA
323-320-327=970
(18th in a field of 18)

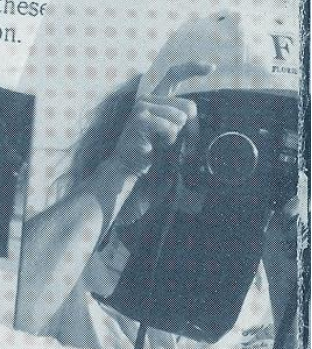
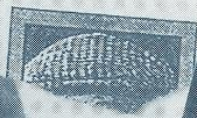
Maria Castellucci	78	76	80	234 (t38)
Kelly Pittman	77	78	79	234 (t38)
Tiffany Faucette	82	85	85	252 (t94)
Marie-Josée' Rouleau	86	82	84	252 (t94)
Mabel del Pobil	86	84	84	254 (97)



Future LPGA stars line up at Lady

The first Lady Invitation-

invited to come out and see these LPGA players-to-be in action.



STATE UNIVERSITY
GOLF HALL OF FAME

STATE UNIVERSITY
GOLF HALL OF FAME

FSU women place second

BAYONET POINT, Fla. — The Florida State women's golf team finished out of 12 teams in the Bayonet Point Invitational at Bayonet Point Golf Course on Oct. 10. Backed by a strong finish from Maria Castellucci, the team finished a 910 for third behind South Florida. Finishing in a tie with South Florida, the 922 were Iowa State.

- 1968
- 1978
- 1981
- 1982
- 1983
- 1984
- 1985
- 1986
- 1987
- 1988
- 1989
- 1990
- 1991
- 1992
- 1993
- 1994
- 1995
- 1996
- 1997
- 1998
- 1999
- 2000
- 2001
- 2002
- 2003
- 2004
- 2005
- 2006
- 2007
- 2008
- 2009
- 2010
- 2011
- 2012
- 2013
- 2014
- 2015
- 2016
- 2017
- 2018
- 2019
- 2020
- 2021
- 2022
- 2023
- 2024

KENNY KNOWLTON
JEFF SLUM
BARB BUNN
NOLAN HARRIS



Brand of...
beating...



Women golfers place second

The Florida State women's golf team fired a fine round 298 for a runnerup finish in the Beacon Invitational in Bayonet Point. Host South Florida had the day score of 295 to win by seven strokes. Senior Maria Castellucci led FSU with a 72. Mabel... contributing to...

FINAL SCORES

Florida State	298-297-3
Furman	303-294-3
Florida International	307-295-3
Alabama	298-308-3
South Florida	298-315-3
Louisiana State	312-305-3
Mississippi State	314-312-3
Central Florida	313-315-3
South Alabama	311-318-3
Stetson	327-310-3
Wichita State	324-321-3
UNC-Wilmington	328-335-3
Florida Atlantic	331-346-3

Women golfers place
The Florida State women's golf team finished out of 12 teams in the Bayonet Point Invitational at Bayonet Point Golf Course on Oct. 10.



Journalist

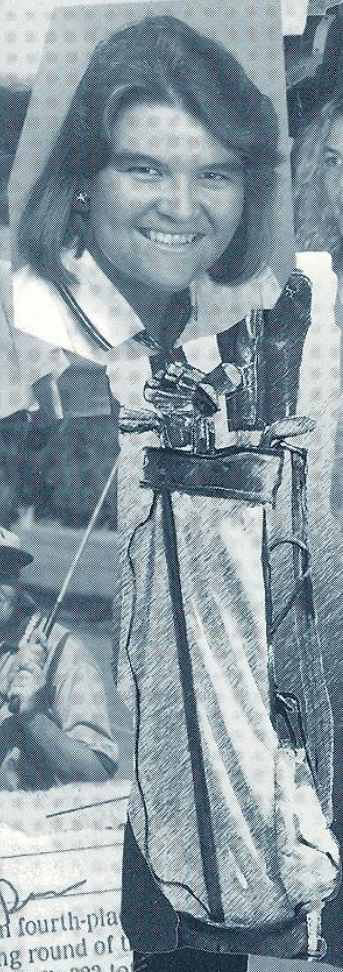
Seminole Invitatio

Club in Inviting fe

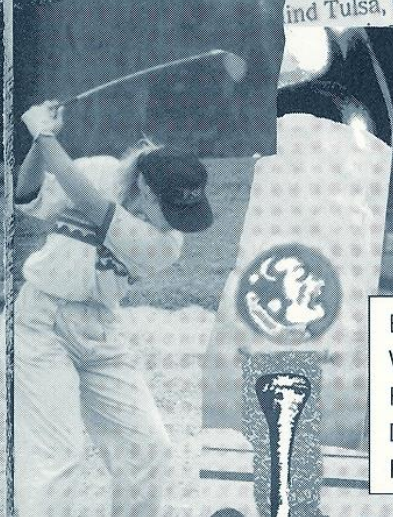
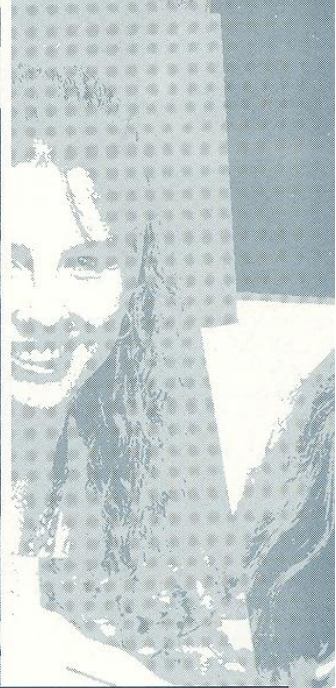


STATE U LF HALL O

1968
1978
1981
1982



◆ FLORIDA STATE 2130
■ The women's golf team is in fourth-pla
with Auburn after Friday's opening round of t
Invitational in G... FSU's 322 to
and Tulsa, G



Editor	Bob Burda
Written By	Bob Burda
Photography	Debbie Dillman, FSU Photo Lab, Ross Obley
Design & Photo Illustration	Wilder & Wilder Computer Graphics
Printing	Florida Printing

1993-94 GOLF SCHEDULE

September 17-19, 1993

Lady Seminole Invitational, Tallahassee, FL

October 15-17, 1993

*Beacon Woods Invitational,
New Port Richey, FL*

October 29-31, 1993

Tiger-Tide Invitational, Destin, FL,

November 12-14, 1993

*Carolyn Cudone Women's Collegiate, Myrtle
Beach, SC*

March 13-15, 1994

Peggy Kirk Bell, Orlando, FL

March 18-20, 1994

LSU-Fairwood Invitational, Baton Rouge, LA

April 1-3, 1994

Ryder-Florida State Championships, Miami, FL

April 8-10, 1994

USF Invitational, Tampa, FL

April 14-16, 1994

ACC Championships, Bermuda Run, NC

May 12-14, 1994

NCAA Regionals, TBA

May 25-28

NCAA Championships, Portland, OR

