

Florida State University



1991-1992

Women's Golf



Table of Contents

1991-92 Schedule	Back Cover
91-92 NCAA Results	Inside Back cover
This Is FSU	1
Outlook	2
FSU Joins ACC	3
Coaching Staff	4
Player Biographies	5-7
Strength	8
Academic Advising	8
Prevention Care and Treatment	8
FSU Golf Roster & Course Layout	9
FSU 1990-91 Team Results	10
Pro Seminoles	11
FSU 1981 Championship	12

Fingertip Facts

Location	Tallahassee, Florida
Enrollment	29,000+
Founded	1857
Nickname	Seminoles, Lady Seminoles
President	Dr. Dale Lick
Athletic Director	Bob Goin
Women's Coach	Debbie Miles-Dillman
Golf Phone	(904) 644-7290
Home Course	Seminole Golf Course, par 72, 5930 yards
1991 Metro Conference	1st place Women
1991 NCAA Championship	14th place Women
Sports Info. Director	Wayne Hogan
Sports Info. Phone	(904) 644-1403
Golf Course Phone	(904) 644-2582
Golf SID Contact.	Jessica Reo

Editor	Jessica Reo
Written By	Jessica Reo
Photography	Ross Obley
Design	Wilder & Wilder Computer Graphics
Printer	Florida Printing



This is FSU



Florida State University, nearing its golden anniversary as a coeducational graduate research institution, is poised on the brink of joining the nation's academic elite.

Building rapidly from the framework of a highly regarded liberal arts college for women, located on the oldest continuous site of higher education in Florida, the university has emerged as an institution of national and international esteem, evidenced by a number of exciting recent additions to its record of excellence. Florida State has begun the 1990s with exceptional strength, energy and vision for the future. And, under the new leadership of the university's 11th president, Dr. Dale W. Lick, FSU will continue to build on the foundation of its long history of excellence in scholarship, research and humanity.

A public university and a senior member of the State University System, Florida State was founded as an institution of higher learning in 1851 by legislative act and began operating in Tallahassee with its first students in 1857.

The main campus is spread over 347 acres in Tallahassee; the university owns a total of 1,172 acres in Leon, Bay and Franklin counties. For many years FSU has extended its reach far beyond Florida through international study programs in England, Italy, Switzerland, Yugoslavia, France, Panama, Costa Rica and the Caribbean.

These far-reaching programs are but a few of the 271 graduate and undergraduate degree programs offered through Florida State's eight independent colleges—Arts and Sciences; Business, Communication; Education; Engineering; Human Sciences; Law; and Social Sciences (incorporating the School of Public Administration and Policy)—and eight independent schools—Criminology and Criminal Justice; Library and Information Studies; Motion Picture, Television and Re-

cording Arts; Music; Nursing; Social Work; Theatre; and Visual Arts and Dance.

With 1,533 members, the FSU faculty currently includes five members of both the National Academy of Sciences and the American Academy of Arts and Sciences, and has included five Nobel laureates. The main library facility, the Robert M. Strozier Library, is linked via computerized information system to other state university and national research libraries. The Paul A.M. Dirac Science Center Library places scientific resources close by the university's main science research complex.

On the top floor of the Dirac Library is the headquarters of the Supercomputer Computations Research Institute, a program that brings together some 100 scientists, engineers and technicians. SCRI is electronically linked to an off-campus research complex and the university's two powerful supercomputers.

Also providing unique research opportunities is the physics department's Tandem Van de Graaff Superconducting Accelerator Laboratory, which houses two powerful atom smashers and is ranked among the top four in the nation by the National Science Foundation.

FSU places a high priority on its nearly 29,000 students, their needs and interests. The Honors and Scholars program, the FSU Distinguished Lecture Series, student government, the one-of-a-kind, all-collegiate Flying High Circus, and intramural sports are among more than 200 organizations and activities in which students can participate.

In the heart of the state's thriving capital city, Florida State bonds the educational and social aspects of campus life just as it blends Gothic and modern styles of architecture with the oaks, pines, dogwoods, palms and azaleas of North Florida.

In all areas of teaching, research and service, Florida State University is advancing boldly into the 21st century.



Outlook

Looking forward to the 1991-92 season, the Lady Seminoles have begun their year with outstanding rounds of golf. The coach of the Florida State women's golf team, Debbie Miles-Dillman, is expecting only the best from her golfers. The ladies had an excellent 1990-91 season and consummated it with a first time appearance in the NCAA Championships in April of 1991.

This year, Dillman expects nothing less than power golf from her women's starting team, which consists of two seniors, Mary Lee Cobick and Emma Rundle, two juniors, Erica Firnhaber and Marie-Josée' Rouleau, and one sophomore, Maria Castellucci. This starting line-up is the same team that made its appearance in the nationals and placed 14th last year.

This same team also worked well together academically and won the academic award of excellence with a 3.06 overall GPA. The team has won this award once in the past and it is an astounding accomplishment and a credit to both the team members and the coach.

Since beginning the season, Dillman has observed many things about this team. "There is still no number one starter. All of the girls have excellent skills and they all show at different times." Their overall wellness as a team has paid off and will continue to pay off throughout the year. Four of the five starters have been named to Preseason All-America by *Golfweek Magazine*: Erica Firnhaber, Mary Lee Cobick, Maria Castellucci, and Marie-Josée' Rouleau.

This is the team that Florida State coach Debbie Dillman thinks will have the chance to "go all the way." "I think that this team will prove to be the one in a top five spot at the nationals in 1992. They have the ability, they're more comfortable with the competition now, they have the strength, and most of all, they have the determination."

Senior Emma Rundle out of Boca Raton, Florida has many of the qualities to become one of the toughest contenders in the nation. During last season she was consistently

one of the top finishers for the Lady Seminoles. Dillman is looking for Emma and her senior status to lead the team into one of its best seasons since winning the AIAW Championships in 1981.

Mary Lee Cobick, the second senior on the Florida State women's golf team, has improved in all facets of her game and will again be competing with the top five players on the team. This golfer from Quebec, Canada, is hoping to intensify her playing during the 1991-92 season.

Junior Erica Firnhaber, out of Shelbyville, Illinois, finished within the top five spots in five tournaments last season. She, as well as Dillman, is looking for the same competitiveness during this season. Her lowest round was a 68 during the LSU Fairwood Invitational last year, showing that it is foreseeable that she is one of the top golfers in the nation.

Marie-Josée' Rouleau, out of Quebec, Canada, has been another one of the top finishers for the Lady Seminoles in the past. During the 1990-91 season, Josée' finished in the top ten in four out of 11 tournaments. She is expected to have some astounding finishes in the coming season.

Sophomore Maria Castellucci, a golfer out of Orlando, Florida, was one of the toughest competitors for the Lady Seminoles in the 1990-91 season. She consistently placed in the top 20 in seven of 11 tournaments during her first season at FSU. She will be expected to be one of the top competitors in the Florida State line-up in the fall and spring.

The Lady Seminoles have consistent, driven players. They are currently competing in an ACC schedule, probably one of the toughest in the nation and new to Florida State as of July 1, 1991. The ladies are better than ever and are striving to win the national championship. There are many tournaments to participate in over the season, but this team has the ability to be the best. They have the strength, the knowledge of the game, and the ability to win some of the main competitions in the nation.

FSU Joins the ACC

ACC

ATLANTIC COAST CONFERENCE

OPPONENTS

University of Virginia

Location: Charlottesville, VA
Enrollment: 18,137
Nickname: Cavaliers
Colors: Orange & Blue



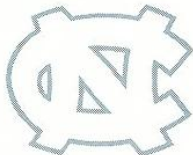
North Carolina State University

Location: Raleigh, NC
Enrollment: 24,514
Nickname: Wolfpack
Colors: Red & White



University of North Carolina

Location: Chapel Hill, NC
Enrollment: 23,592
Nickname: Tar Heels
Colors: Carolina Blue & White



University of Maryland

Location: College Park, MD
Enrollment: 26,863
Nickname: Terrapins
Colors: Red, White, Black & Gold



Duke University

Location: Durham, NC
Enrollment: 6,300
Nickname: Blue Devils
Colors: Royal Blue & White



Clemson University

Location: Clemson, SC
Enrollment: 16,303
Nickname: Lady Tigers
Colors: Orange & Purple



Georgia Tech

Location: Atlanta, GA
Enrollment: 12,000
Nickname: Lady Jackets
Colors: Old Gold & White



Seminole Coaching Staff



Debbie Miles-Dillman

Florida State '82

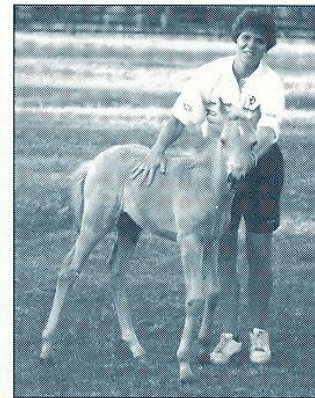
Debbie Miles-Dillman, the coach of Florida State University's women's golf team, has entered her eighth year in that position. Essentially the backbone of the women's team, Dillman is in charge of coaching the team, as well as completing administrative duties.

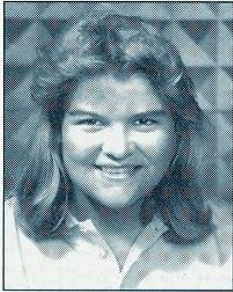
Last year, Dillman coached the Lady Seminole golf team to its first NCAA National Championship appearance since 1981. The Lady Seminoles were nationally ranked in fourth place before the National Championship and played extremely well under the coaching of Dillman by placing 14th in the competition. The last time the Lady Seminoles went to the National Championship was in 1981, the AIAW tournament. Dillman won the Regional Coach of the Year in 1991 at the NCAA Championships, enforcing her excellent status as a coach.

Dillman was an undergraduate student from 1979-82 at Florida State and worked at the Seminole Golf Course in various capacities. This experience helped Debbie by giving her useful exposure to the many complications and incidents that can arise when handling a golf course and a competition. In teaching her teams, Debbie uses much of the knowledge she gained from her work both on and off the golf course. Her knowledge of the sport of golf in the areas of management, competition regulations and rules, and entertainment has grown from the various work and competitive experiences that she has had.

Currently in her free time, Dillman raises Tennessee Walking horses on a farm in the nearby area of Tallahassee.

A native from Davison, Michigan, Dillman grew up with golf in her family. Her parents were heavily involved in country club management. During her high school career, Dillman was named three time Flint Junior Golf Champion from 1977-79, which was named the number one golf program in the country. She was the captain of her high school team for four years and was twice a runner-up at the Michigan State Championship, while shooting a tournament record and winning the regional title her senior year.





Maria Castellucci

Sophomore
Orlando, Florida

1991 Summer: Was a semi-finalist in the North/South Women's Amateur, won the Ohio State Girls Invitational, qualified for the US Women's Amateur. 1990-91 Season: Best finish of the season was when she placed second in the Pat Bradley/FIU Invitational...Also had high finishes in the McDonalds/UCF Classic where she tied for seventh, the Ryder/Florida State Championships where she placed sixth, and the Metro Championships where she placed eighth. Prep: A two-time AJGA (American Junior Golf Association) Woodlands Champion ('89, '90); the 1990 USF & G Classic Champion, the 1990 Sawgrass Champion, and the 1990 Midwestern Champion; a five-time Junior Player of the Year by *Golf Magazine*...won four of the seven AJGA tournaments she participated in 1990...a three-time Orlando Amateur Athletic Association Player of the Year (OAAA)...the MVP on her high school team in 1989 and 1990. Personal: Undeclared major. Born: February 21, 1972.



Mary Lee Cobick

Senior
Quebec, Canada

1990-91 Season: Had some great performances in her junior year...tied for seventh in the LSU Fairwood Invitational and placed fifth in the Metro Championships...was one of the highest finishers on the team in the NCAA Championships where she tied for 58th. 1989-90 Season: Best finish of the season came in the Metro Championships where she tied for sixth place...other finishes of the season included a 20th place finish in the Lady Seminole Invitational, a 17th place finish in the 5th Annual Roadrunner/Diet Coke Invitational, and a 22nd place finish in the 1990 Ryder/Florida State Women's Intercollegiate Golf Championships. 1988-89 Season: Won the 1989 Northern Ontario Amateur...placed 12th in the Quebec Ladies Amateur 1989...finished seventh in the 1988 Lady Seminole Invitational and placed 16th in the 1989 Metro Conference Championship. 1987-88 Season: Won the Ontario Junior Championship with rounds of 78, 77, and 69...finished second at the prestigious Canadian Junior Championship. Prep: Labeled one of the most talented golfers to come to FSU in the 1980's and has lived up to that expectation...one of the top junior players to come out of Canada in 1987. Personal: Business major. Born: May 21, 1970.



Tiffany Faucette

Sophomore
Ormond Beach, Florida

1990-91 Season: Tiffany was redshirted her freshman season and is expected to be an asset to the 1991-92 team. Prep: The captain of her high school golf team and a member of the all county team in both her junior and senior years...placed second in the District Championships...the Killearn Bert Yancy Tournament Champion, and the Volusia and Flagler Junior Champion...high school team placed fourth in the state in 1989. Personal: Majoring in Biological Sciences. Born: April 28, 1972.

Seminole Bios



Erica Firnhaber

Junior
Shelbyville, Illinois

Summer 1991: Erica won the Illinois Women's State Amateur Championship and placed in eighth in the Ohio Girls Invitational. 1990-91 Season: Erica had one of the best seasons of her career in 90-91 with a total of five top five finishes. Her best finishes of the year included placing second in the Beacon Woods Invitational, the LSU Fairwood Invitational, and the Metro Championships. She tied for third in the Lady Seminole Invitational, and placed fifth in the FIU/Pat Bradley Invitational. Her FSU season culminated with the highest finish for the Lady Seminoles in the NCAA Championships with a tie for 40th place. 1990: The Southern Illinois Signe Solversorn Memorial Champion in June of 1990...won the Illinois State Amateur...placed second in the Ohio Girls Invitational...the Decatur City Women's Open champion in both '89 and '90...qualified for the 90th US Women's Amateur in August of 1990. 1989-90 Season: Sat out after transferring from Southern Illinois. Prep: Team captain in high school...won All-Conference Mid-State, and won the Illinois Women's Coaches Association Award. Personal: Majoring in Hospitality Administration. Born: March 24, 1990.



Kathleen Garrahan

Junior
Naples, Florida

1990-91 Season: Kathleen golfed in one event this past season, the Lady Seminole Invitational. She tied for 67th in the tournament held on the Seminole Golf Course. 1989-90: Kathleen participated in six tournaments this season. Her first competition was the Lady Seminole Invitational in which she tied for 21st. Some other top finishes for Kathleen were a tie for 14th in the 1990 Metro Conference Championships, a tie for 35th in the Ryder/Florida State Women's Intercollegiate Golf Championships, and a 38th place finish in the Lady Gator Invitational. Her low for the season was a 73. Prep: Earned all-conference, all-district and all-state honors in both her junior and senior years...top golfer on her high school squad. Personal: Business major. Born: July 25, 1971.



Kelly Pittman

Junior
Vidalia, Georgia

1989-90 Season: Had her best finish in the 1990 Ryder/Florida State Women's Intercollegiate with a placing of 29th...in addition, finished tied for 36th in the Beacon Woods Invitational, 26th in the Lady Seminole Invitational, and 16th in the 1990 Metro Conference Championships. 1988-89 Season: Redshirted. Prep: Won back-to-back GSGA State Junior Championships in 1987 and 1988...placed second in the Georgia PGA Junior Championship...finished 10th in the Mission Inn Girls Invitational...the MVP on her high school golf team in 1988...led her high school golf team to the Georgia AA state championships as a sophomore. Personal: Public Relations major. Born: July 4, 1970.

Seminole Bios



Marie-Josée Rouleau

Junior
Quebec, Canada

1990-91 Season: Rouleau was another of Florida State's strongest golfers in 1990-91 with four top ten finishes in the season. She tied for third in the Lady Gator Invitational, placed fourth in the Metro Championships, and placed eighth in both the Tiger Tide Invitational and the FIU/Pat Bradley Invitational. 1990 Season: Runner-up in the Montreal Districts. 1989 Season: The Provincial (Quebec) Champion...a Canadian Ladies Golf Association national team member...served as the Quebec Junior team captain from 1987 to 1989. 1988 Season: Placed second in the Canadian Junior Championship. 1987 Season: The Canadian Junior Champion. Personal: Majoring in Communication. Born: December 7, 1970.



Emma Rundle

Senior
Coral Springs, Florida

1991 Summer: Participated in North and South Amateur and finished in the top 20, placed sixth in the Florida State Amateur. 1990-91 Season: Rundle had an astounding 90-91 season with six top ten finishes. In the Diet Coke/Roadrunner Invitational Rundle lost first place in a third hole playoff, she won the Metro Championships, placed second in the Ryder/Florida State Championships, tied for seventh in the LSU Fairwood Invitational, tied for eighth in the Tiger-Tide Intercollegiate, and tied for tenth in the Lady Gator Invitational. 1989-90 Season: Qualified for the US Amateur and made it to the top 32 in 1989...also qualified in 1990...had her top finish of the season with a tie for fifth place in the Diet Coke/Roadrunner Invitational...tied for sixth in the 1990 Lady Gator Invitational...placed eighth in the 1990 Ryder/Florida State Women's Intercollegiate Golf Championships...placed in the top 20 in eight of the FSU's nine tournaments...in the Metro Conference Championships, tied for sixth. 1988-89 Season: Tournament finishes included eighth in the Metro Conference Championship, 11th in the Florida State Collegiate Championship, the LSU Invitational, and the Hudson Industries Invitational, and 12th in the 1989 Ryder/Florida State Intercollegiate...qualified for the 1989 US Amateur and made it to the second round of match play. Personal: Majoring in Hotel and Restaurant Management. Born: February 13, 1971.



1991-92 Golf Team

Top Row (L to R):
Emma Rundle,
Kathy Garrahan,
Marie-Josée Rouleau,
Lindsey Wilkes,
Mary Lee Cobick.
Bottom Row (L to R):
Tiffany Faucette,
Erica Firnhaber,
Kelly Pitman,
Maria Castelucci.



Strength Training and Conditioning

Strength training and conditioning is an important part of an athlete's performance on the course or on the field. At Florida State, a supervised program is developed for each sport, emphasizing the objectives of not only building bodies, but strengthening and conditioning them. Strength coach Mat Hamparian individually customizes programs for each of the athletes beginning with pre-conditioning before the season gets underway. A combination of weight training on Body Master, Nautilus, and free weights along with possible workouts, improve each individual's body composition and increases muscle strength.

Once in season, Mat works with the players to improve their strength by concentrating on the same muscle groups. FSU takes pride in customizing the programs to help student-athletes reach their maximum potential.

Academic Advising

The primary concern of being a student-athlete at Florida State University is getting an education and taking advantage of the many opportunities offered to assist golfers. Trudy Raybun's Office of Academic Advising aids students who participate in all of the non-revenue sports with their admissions, class schedules, registration process, and the normal progress towards a degree. Raybun and her two graduate assistants also monitor each athlete in their class performance and recommend tutors when necessary.

Academic Support is supervised by Nick Menacof, who oversees the study hall area and tutorials his office provides. As student-athletes learn to juggle practicing 20 hours a week and making eight road trips during their season, plus a full class load, they find comfort in knowing there is a support staff to help them accomplish the ultimate goal of receiving a quality education.

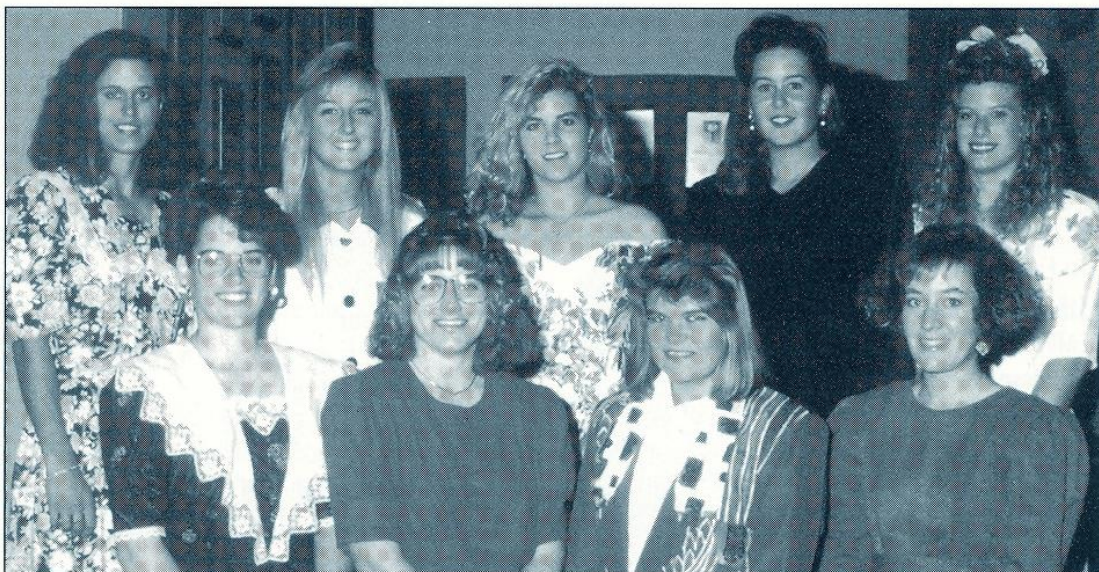
The Lady Seminole Golfers take the concern of schooling to heart and have consistently held one of the top grade point averages among all of the university's teams. They won the award of academic excellence for their 1990-91 season with a combined grade point average of 3.06 and have a history of winning this award. The ladies won the same award in 1989, again with a combined grade point average of 3.06.

Prevention Care and Treatment

Being an athlete at Florida State University means receiving the best care and treatment possible. All of the student-athletes undergo pre-season screening so a certified trainer can detect any potential injuries an athlete may incur throughout the season. If a problem is detected, the athlete is placed on a prevention care program which may include any kind of treatment from icing to exercising. The program is closely monitored by Head Trainer Robin Gibson or one of her nine staff members.

Rehabilitation is another important component of the Seminole training room. Even though preventing injuries is the main objective, they are unavoidable for the 125 athletes who participate in the non-revenue sports. More serious injuries and illnesses are referred to the Seminole team physicians at Haney, Henderson, & Stowers who, for many years, have worked in conjunction with the FSU training room in successfully rehabilitating numerous athletes after an injury.

Body fat, weight control and drug testing are all responsibilities of the athletic training team which is dedicated to providing the best care possible for all FSU student-athletes.



Florida State University Lady Seminoles 1991-92 Women's Golf Roster

Name	Ht	CL	Hometown	High School
Maria Castellucci*	5-4	So.	Orlando	Oak Ridge HS
Mary Lee Cobick*	5-8	Sr.	Amos, Quebec	Pavillon La Foret
Tiffany Faucette	5-5	So.	Ormond Beach	Seabreeze HS
Erica Firnhaber*	5-5	Jr.	Shelbyville, IL	Shelbyville HS
Kathleen Garrahan	5-6	Jr.	Naples	Lely HS
Kelly Pittman	5-3	Jr.	Vidalia, GA	Vidalia HS
Marie-Josée' Rouleau*	5-9	Jr.	St. Lambert, Quebec	Villa Maria
Emma Rundle*	5-9	Sr.	Coral Springs	JP Taravella HS
Carrie Wallace	5-6	Jr.	Huntington, WV	Huntington HS
Lindsey Wilkes		Fr.	Tampa, FL	

Coach: Debbie Miles-Dillman

FSU-Women's Athletic Team Academic Award

1979-80	Swimming & Diving
1980-81	Swimming & Diving
1981-82	Swimming & Diving
1982-83	Swimming & Diving
1983-84	Volleyball
1984-85	Tennis
1985-86	Tennis
1986-87	Tennis
1987-88	Swimming & Diving
1988-89	Tennis
1989-90	Golf
1990-91	Golf

Seminole Golf Course

The Seminole Golf Course is located approximately two miles west of the university campus. The course was designed by William W. Amick. The first nine holes were completed in 1963 and the completion of the additional nine in 1968.

The golf course measures 7,033 yards from the championship tees, and is considered an excellent test of golf. The greens, TIFTON 328 (*Bermuda*) are of medium size, approximately 6,200 square feet each. The course rating is 72.0.

The course and practice facilities are considered to be among the best in the country. The Seminole Golf Course is now run and operated by *Club Consultation and Management*, a private golf course management firm. There have been many improvements made and within the next five years it should prove to be one of the finest courses in the area.

WOMEN'S YARDAGE

Hole	Par	Yardage
1	5	468
2	4	335
3	4	330
4	3	175
5	4	320
6	5	490
7	7	345
8	3	140
9	5	472
Par 37		3075
10	4	330
11	4	348
12	4	346
13	5	500
14	4	326
15	3	150
16	4	330
17	3	140
18	4	385
Par 35		2855
Par 72		5930

Team Results 1990-91

Women's Golf

7th Annual Diet Coke/Roadrunner Invitational

University Golf Course

Las Cruces, N.M. Sept. 14-16

TEAM TOTAL: 317-315-308 = 940 (3 of 13)

Emma Rundle	77	76	72	225 (t1)*
Maria Castellucci	78	78	78	234 (t10)
Mary Lee Cobick	85	78	80	243 (t24)
Marie-Josée Rouleau	77	88	78	243 (t24)
Erica Firnhaber	85	83	80	248 (t32)

16th Annual Lady Seminole Invitational

SEMINOLE GOLF COURSE

Tallahassee, Florida. Sept. 21-23

TEAM TOTAL: 306-308-302 = 916 (3 of 14)

Erica Firnhaber	73	78	72	223 (t3)
Marie-Josée Rouleau	76	78	77	231 (t15)
Maria Castellucci	81	75	76	232 (t20)
Emma Rundle	80	77	77	234 (t29)
Mary Lee Cobick	77	79	78	234 (t29)
Kelly Pittman	80	81	86	247 (56)
Kathleen Garrahan	87	87	85	259 (t67)
Carrie Wallace	89	88	89	266 (73)

Beacon Woods Invitational

Bayonet Point, Florida. Oct. 12-14

TEAM TOTAL: 303-303-309 = 915 (5 of 11)

Erica Firnhaber	74	71	72	217 (2)
Maria Castellucci	76	76	79	231 (24)
Marie-Josée Rouleau	77	76	79	232 (t25)
Mary Lee Cobick	76	80	79	235 (34)
Emma Rundle	87	81	79	247 (t53)

Tiger-Tide Intercollegiate

SEASCAPE RESORT

Destin, Florida. Nov. 2-4

TEAM TOTAL: 312-310-319 = 941 (3 of 19)

Emma Rundle	78	76	79	233 (t8)
Marie-Josée Rouleau	79	76	78	233 (t8)
Maria Castellucci	79	78	78	235 (t13)
Erica Firnhaber	76	80	84	240 (t34)
Mary Lee Cobick	82	81	85	248 (t61)

FIU-Pat Bradley Invitational

Miami, Florida. Nov. 11-13

TEAM TOTAL: 301-311-309 = 921 (1 of 12)

Maria Castellucci	76	74	74	224 (2)
Erica Firnhaber	74	74	80	228 (5)
Marie-Josée Rouleau	75	79	78	232 (8)
Mary Lee Cobick	76	84	78	238 (t17)
Emma Rundle	82	90	79	251 (t40)

SPRING RESULTS

Lady Gator Invitational

Gainesville, Florida. February 15-17, 1991

TEAM TOTAL: 329-322-312=963 (8 of 12)

Marie-Josée Rouleau	78	77	74	229 (t3)
Emma Rundle	82	77	78	237 (t10)
Erica Firnhaber	85	82	80	247 (t37)
Maria Castellucci	84	86	80	250 (t43)
Mary Lee Cobick	88	87	89	264 (57)

McDonald's UCF Golf Classic

University of Central Florida

Orlando, Florida. March 1-3, 1991

TEAM TOTAL: 322-309 = 631

(tournament shortened due to weather)

Maria Castellucci	79	75		154 (t7)
Erica Firnhaber	85	73		158 (t14)
Emma Rundle	81	79		160 (t21)
Marie-Josée Rouleau	82	82		164 (t34)
Mary Lee Cobick	80	87		167 (t44)

LSU Fairwood Invitational

Louisiana State University, Baton Rouge, Louisiana

Fairwood Country Club

TEAM TOTAL: 302-309-295=906 (2 of 13)

Erica Firnhaber	68	76	74	218 (2)
Mary Lee Cobick	75	77	76	228 (t7)
Emma Rundle	80	75	73	228 (t7)
Maria Castellucci	82	81	72	235 (t18)
Marie-Josée Rouleau	79	84	76	239 (t29)

Ryder/Florida State Championships

University of Miami, Miami, Florida

Miami Lakes Country Club and Resort

TEAM TOTAL: 295-293-306=894 (2 of 10)

Emma Rundle	71	71	77	219 (2)
Maria Castellucci	75	72	76	223 (6)
Erica Firnhaber	76	77	76	229 (t13)
Marie-Josée Rouleau	73	84	77	234 (t18)
Mary Lee Cobick	83	73	81	237 (t27)

Metro Conference Championships

Sandestin Resort

Destin, Florida

Sandestin Links Course

TEAM TOTAL: Rain-301-299= 600 (1 of 8)

Emma Rundle	Rain	74	74	148 (1)
Erica Firnhaber	Rain	75	74	149 (2)
Marie-Josée Rouleau	Rain	77	75	153 (4)
Mary Lee Cobick	Rain	75	78	154 (5)
Maria Castellucci	Rain	82	76	158 (8)

NCAA Championships

Scarlet Golf Course, Columbus, Ohio

Ohio State University

TEAM TOTAL: 309-325-309-312=1255 (14th out of 17)

Erica Firnhaber	76	80	76	78	310 (t40)
Marie-Josée Rouleau	77	84	75	79	315 (t58)
Mary Lee Cobick	76	83	80	76	315 (t58)
Maria Castellucci	80	78	79	79	316 (t63)
Emma Rundle	83	86	79	82	330 (93)

Pro Seminoles

BARB BUNKOWSKY

Joined LPGA: January, 1983; Career Earnings: \$307,677; Rank: 92; Career Highlights, 1990: Tied for fourth in the Northgate Classic and tied a career-low round of 65 in the first round of this tournament. 1988: Third place finish at the USX Golf Classic; 1987: Fourth place finish in the du Maurier Classic; 1984: Won the Chrysler-Plymouth Charity Classic and earned over \$70,000.

JANE GEDDES

Joined LPGA: August, 1983; Career Earnings: \$1,253,138; Rank: 17; Career Highlights, 1990: Had six top-ten finishes including a season-best of a tie for second in The Jamaica Classic...had three ties for sixth at the Circle K LPGA Tucson Open, the McDonald's Championship and the Rochester International. 1989: 17th player in LPGA history to reach the \$1 million mark in career earnings... placed second at the Women's Kemper Open; 1987: Won five tournaments, including the Mazda LPGA Championship...two titles came after sudden-death playoffs — the Women's Kemper Open against Cathy Gerring and the GNA/Glendale Federal Classic against Robin Walton; 1986: Captured her first victory at the US Women's Open...captured the Boston Five Classic for her second win; 1985: Second place finish at the du Maurier Ltd. Classic.

COLLEEN WALKER

Joined LPGA: January, 1982; Career Earnings: \$1,090,295; Rank: 20; LPGA Holes In One: 1; Career Highlights, 1990: Won the Circle K LPGA Tucson Open and tied her career low of 65 on the third day of this tournament, tied for second in the Sara Lee Classic, became the 21st LPGA player to cross the \$1 million mark in career earnings after her tie for sixth in the McDonald's Championship. 1989: Tied for third at the Orix Hawaiian Ladies Open...tied for fourth at the Nippon Travel-MBS Classic...tied for fifth at both the Sara Lee Classic and the Mazda Japan Classic...tied for sixth at the Al Star/Centinel Hospital Classic...tied for seventh at the Circle K LPGA Tucson Open; 1988: Had season's lowest scoring average at 71.26 and collected the Vale Trophy...claimed the title of the 1988 Boston Five Classic...she and partner Dave Hill captured the Mazda Champions title; 1987: Captured her first LPGA title at the 1987 Mayflower Classic.

LISA WALTERS

Joined LPGA: October, 1983; Career Earnings: \$275,745; Rank: 107; LPGA Career Holes-in-One: 1; Career Highlights, 1990: Her best finish was a tie for ninth in the Lady Keystone Open...also tied for 16th in the Circle K LPGA Tucson Open. 1989: Tied for 15th in the Safeco Classic...also tied for 15th in the Konica San Jose Classic; 1987: Tied for third at the McDonald's Championship.

REBECCA WARD

Joined LPGA: October, 1986; Career Earnings: \$5,199; Rank: 340; Career Highlights, 1988: Tied for 37th at the Planters Pat Bradley International; 1987: Posted her career low score of 69 at the Circle K LPGA Tucson Open.



Sophomore Tiffany Faucette receives an Academic award from FSU President Dale Lick

Florida State Women Win 1981 Championship

Florida State won its fourth and most important tournament championship of 1981 at the AIAW National Championships. By rallying on the back nine on the final day of the tournament, the Lady Seminoles surged to the lead over the Lady Bulldogs of Georgia.

After the third round, FSU led by one stroke over the host Lady Bulldogs. A stumble on the front nine of the final round pushed the Tribe back two shots behind Georgia. Florida State, however, came back on the final nine and when four of the five FSU players birdied the 17th hole, Florida State was on its way to finishing three shots ahead of Georgia.

Three Lady Seminole golfers from that team were named All-American during their careers. Lisa Young was FSU's top finisher in third place; Barb Bunkowsky did her part on the final day with birdies on the last five holes and came in a tie for 14th; Michele Guilbault, who had won the Dick McGuire Invitational earlier in the season, was the third player in the 1981 selection.

Final Team Standings		FSU Individual Standings			
1. Florida State University	307-307-298-308=1220	Lisa Young	71-80-71-75=297	Michele Guilbault	83-74-78-80=315
2. University of Georgia	299-307-307-310=1223	Barb Bunkowsky	75-78-79-74=306	Marla Anderson	78-84-75-83=320
3. Southern Methodist	307-316-298-305=1226	Jane Geddes	83-75-74-79=311		

Lady Seminoles Return to NCAA's for 10 Year Anniversary

The Lady Seminole golf team participated in the 10th NCAA anniversary championships in Columbus, Ohio during the week of May 23, 1991. The championship also marked the 50 year anniversary of women's competition in collegiate sports. It was the first time since 1981 that the Lady Seminoles participated in such an event. Going into the tournament, Florida State was tied for fourth in the NCAA Collegiate rankings.

Starting the first day in eighth place the Lady Seminoles struggled to find their place in the competition. They played against the toughest teams in the country, including Miami (FL), University of Florida, UCLA, Arizona, San Jose State, University of South Florida, and Georgia among others in the 17 field team. On the second day, Florida State fell to 14th place and remained there for the rest of the tournament.

Florida State in the NCAA Championships

The Florida State Seminoles participated in the 1990 NCAA Championships, held at the Island Golf Course in Tarpon Springs, Florida and came away with one of the best finishes in school history under the present format of the championship. The Seminoles placed eighth last year with a four-day total of 1169, one stroke behind the seventh place finishers, North Carolina. Senior Andy Purnell tied for sixth place and was the highest finisher for the Seminoles. Other FSU finishers included: Roger Winchester (tied 17th), Dustin Phillips (tied 61st), Christian Williams (tied 87th), and John Tighe (tied 126th).

Florida State's best-ever finish was in 1987 at the Scarlet Golf Course in Columbus, Ohio. The Seminoles placed seventh that year, led by All-American Nolan Henke who tied for second, six shots behind the leader. The final four day score of the Seminoles was 1191, four strokes behind sixth-place Arkansas.

1990 Final Team Standings

1. Arizona State	296-288-292-279=1155
2. Florida	287-283-295-292=1157
3. Arizona	288-285-299-287=1159
4. Oklahoma State	294-294-288-287=1163
5. Oklahoma	290-300-287-290=1167
6. Fresno State	299-300-285-283=1167
7. North Carolina	298-301-287-282=1168
8. Florida State	293-293-291-292=1169

Lady Seminole All-Americans

1990	Kelly Pittman
1989	Nadia Ste-Marie (first team)
1982	Barb Bunkowsky
1981	Michele Guilbault Lisa Young

1987 Final Team Standings

1. Oklahoma State	298-289-285-288=1160
2. Wake Forest	297-290-306-283=1176
3. Oklahoma	291-299-296-291=1177
4. Ohio State	301-296-294-294=1185
5. Houston Baptist	291-304-302-289=1186
6. Arkansas	304-290-297-296=1187
7. Florida State	304-299-300-288=1191



1991-92 FSU Women's Team Results

8th Annual Diet Coke Roadrunner Invitational September 13-15, 1991

University Golf Course (Par 74)
Las Cruces, NM
315-301-311=927 (2nd place)

Maria Castellucci	78	74	78	230 (t5)
Marie-Josée' Rouleau	79	75	79	233 (t11)
Emma Rundle	81	78	75	234 (t17)
Mary Lee Cobick	78	76	81	235 (t21)
Erica Firnhaber	80	76	79	235 (t21)

17th Annual Lady Seminole Invitational September 27-29, 1991

Seminole Golf Course (Par 72)
Tallahassee, FL
300-293-300=893 (1st place out of 14)

Erica Firnhaber	71	71	76	218 (1)
Marie-Josée' Rouleau	74	76	72	222 (t2)
Emma Rundle	80	69	79	228 (7)
Mary Lee Cobick	78	77	74	229 (t8)
Kelly Pittman	77	81	74	232 (t15, Ind)
Maria Castellucci	77	78	78	233 (t18)
Tiffany Faucette	82	77	80	239 (t33, Ind)
Kathleen Garrahan	87	84	87	258 (59, Ind)
Carrie Wallace	83	93	91	267 (67, Ind)

Beacon Woods Invitational October 11-13, 1991

Bayonet Point (Par 72)
Bayonet Point, FL (hosted by USF)
296-298-307=901 (2nd place out of 12)

Mary Lee Cobick	72	73	72	217 (1)
Erica Firnhaber	74	71	75	220 (t3)
Marie-Josée' Rouleau	76	74	82	232 (t16)
Emma Rundle	74	81	78	233 (20)
Maria Castellucci	77	80	83	240 (t32)

The Lady Paladin Invitational Furman University October 18-20, 1991

Greenville, South Carolina
303-311-323=937 (9th out of 15)

Emma Rundle	74	76	79	229 (t12)
Marie-Josée' Rouleau	76	78	79	233 (t24)
Erica Firnhaber	75	78	83	236 (t33)
Mary Lee Cobick	78	81	82	241 (t44)
Maria Castellucci	85	79	83	247 (58)

Palmetto Dunes Intercollegiate Palmetto Dunes November 15-17, 1991

Hilton Head, South Carolina
312-315-315=942 (8th out of 12)

Maria Castellucci	75	79	81	235 (t20)
Mary Lee Cobick	79	81	76	236 (t24)
Marie-Josée' Rouleau	82	77	79	238 (29)
Kelly Pittman	77	78	88	243 (39)
Emma Rundle	81	88	79	248 (t47)



Fall 1991 Women's Golf Schedule

- Sept. 13-15, 1991Diet Coke/Lady Roadrunner Invitational
Las Cruces, NM
- Sept. 27-29, 1991Lady Seminole Invitational
Tallahassee, FL
- Oct. 11-13, 1991Beacon Woods Invitational
New Port Richey, FL
- Oct. 18-20, 1991Lady Paledin/Furman Invitational
Greenville, SC
- Nov. 15-17, 1991Golf World/Palmetto Dunes Collegiate
Hilton Head Island, SC

Spring 1992 Women's Golf Schedule

- Feb. 21-23, 1992UCF Invitational
Orlando, FL
- Mar. 20- 22, 1992LSU Fairwood Invitational
Baton Rouge, LA
- Mar. 27-29, 1992Ryder/Florida State Championship
Miami, FL
- Apr. 16-18, 1992ACC Golf Championships
TBA
- May 27-30, 1992NCAA Women's Golf Championships
Arizona State University