

FLORIDA STATE UNIVERSITY

LADY SEMINOLE

BASKETBALL 1988-89



COMING AT YOU

**FLORIDA STATE UNIVERSITY
LADY SEMINOLE BASKETBALL 1988-89**

	OPONENT	SITE	TIME(S)
November	12 Swedish National Team	Tallahassee	2:00 PM
	25 Lady Sunshine Classic/Miami vs. Southwest Missouri State	Lake Mary, FL	6:00 PM
	Central Michigan vs. Florida State		8:00 PM
December	2-3 Tallahassee Hilton Classic FIRST ROUND GAMES	Tallahassee	
	Georgia Tech vs. Georgia Southern		5:30 PM
	Florida State vs. North Carolina-Asheville		7:30 PM
	11 @ Miami	Miami, FL	2:00 PM
	13 @ Florida	Gainesville, FL	7:30 PM
	17 Stetson	Tallahassee	7:00 PM
	19 @ Alabama-Birmingham	Birmingham	7:00 PM
January	2 North Carolina	Tallahassee	7:00 PM
	7 Southern Mississippi	Tallahassee	7:00 PM
	9 Memphis State	Tallahassee	7:00 PM
	14 @ Cincinnati	Cincinnati, OH	2:00 PM
	16 @ Louisville	Louisville, KY	7:30 PM
	21 @ Virginia Tech	Blacksburg, VA	7:30 PM
	23 @ South Carolina	Columbia, SC	5:00 PM
	25 South Florida	Tallahassee	7:00 PM
	28 Virginia Tech	Tallahassee	7:00 PM
	30 @ Alabama	Tuscaloosa, AL	7:00 PM
	February	4 @ Southern Mississippi	Hattiesburg, MS
6 Howard University		Tallahassee	7:00 PM
9 Florida A&M		Tallahassee*	7:00 PM
11 Cincinnati		Tallahassee	7:00 PM
13 Louisville		Tallahassee	7:00 PM
16 @ Georgia		Athens, GA	7:30 PM
20 South Carolina		Tallahassee	7:00 PM
24 @ South Florida		Tampa, FL	7:30 PM
March	2 @ Memphis State	Memphis, TN	7:30 PM
	8-11 METRO CHAMPIONSHIPS	Memphis, TN @ Memphis State	TBA

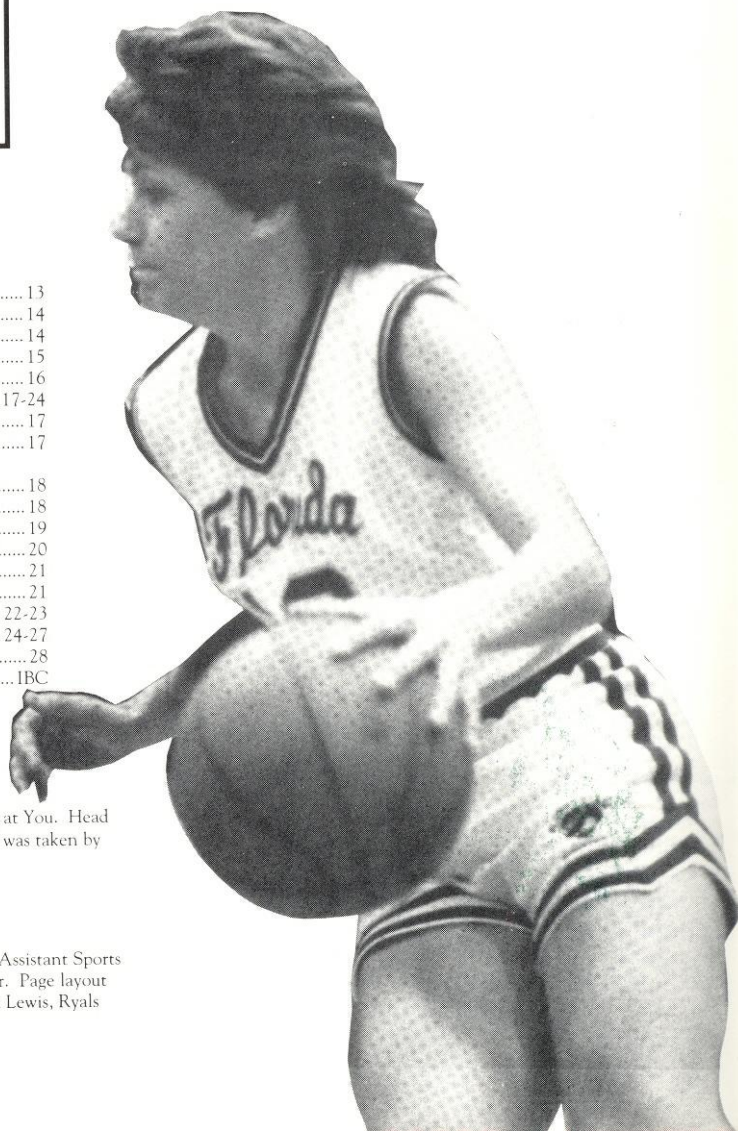
All Home Games Played at Tully Gymnasium

* Denotes Game to be Played at Tallahassee-Leon County Civic Center

TABLE OF CONTENTS

1988-89 Schedule IFC
 University and Athletic Department
 Quick Facts 1
 1988-89 Season Outlook: Coming At You 2-3
 Head Coach Marynell Meadors 4
 Assistant Coaches: Freda Glover, Robyn Markey,
 Julie Brown 5
PLAYER BIOGRAPHIES: 6-11
 Bev Burnett 6
 Aline Harvis, Robin Storey 7
 Maria Lardie, Wanda Burns, Robin Corn 8
 Chris Davis, Sarah Grimes 9
 Kelli Test, Karen Thomas, Debra Collins 10
 Tanya Fowler, Luz Lopez, Tia Paschal 11
LADY SEMINOLE ROSTER:
 Alphabetical and Numerical 12
 Lady Seminole Support Staff 12
1987-88 STATS AND RESULTS: 13-16
 1987-88 Individual statistics for total and
 Metro games 13

1987-88 Game-by-Game results 13
 Individual Game-by-Game totals 14
 Individual and Team Highs & Lows 14
 Team Game-by-Game totals 15
 1987-88 Season highs for returning players 16
THE RECORD BOOK: 17-24
 All-time letterwinners 17
 1988-89 Team travel 17
 Individual single game records for FSU
 and opponents 18
 Florida State single game highs 18
 Single Season Records 19
 Career Records 20
 Florida State against all opponents 21
 Metro Conference Tournaments 21
 Year-by-Year results 22-23
1988-89 FSU OPPONENTS: 24-27
 This is Florida State University 28
 1988-89 Lady Seminoles IBC



ABOUT THE COVER

With 14 new players filling the Lady Seminole lineup, Florida State women's basketball is Coming at You. Head Coach Marynell Meadors is pictured on the cover proudly displaying her 1988-89 squad. Cover photo was taken by Steve Spencer in Tully Gymnasium, site of all FSU home games.

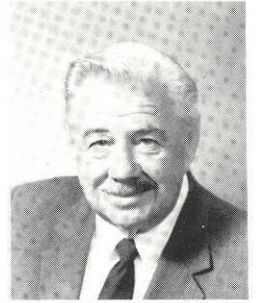
BROCHURE CREDITS

The 1988-89 Florida State women's basketball brochure was designed and written by Nick Gandy, Assistant Sports Information Director with editorial assistance by Donna Turner, Assistant Sports Information Director. Page layout and design by Vision Marketing, Inc., Tallahassee. Photography was provided by Steve Spencer, Sam Lewis, Ryals Lee and the University Photo Lab.

UNIVERSITY AND ATHLETIC DEPARTMENT QUICK FACTS

About Florida State

Location	Tallahassee, FL
Enrollment	26,000
Founded	1857
Nickname	Lady Seminoles
Colors	Garnet and Gold
President	Dr. Bernard F. Sliger
Conference	Metro
Home Court	Tully Gymnasium
Affiliation	NCAA Division I



Dr. Bernard F. Sliger
President

About the Athletic Staff

Athletic Director	C.W. "Hootie" Ingram
Associate Director	Bob Goin
Assistant Director	Dr. Jan Stocker
Administrative Asst.	Missy Garrett
Promotions and Marketing	Terry Hume
Academic Advisor	Greg Padgett
Athletic Dir. Phone	Trudy Raybun (904) 644-1060
Stocker Phone	(904) 644-1091



C.W. "Hootie" Ingram
Athletic Director

About Women's Basketball

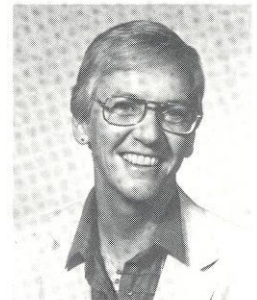
Head Coach	Marynell Meadors (Middle Tennessee St., 1965)
Record At FSU/Years	18-37/Two years
Career Record/Years	381-176/18 years
Assistant Coach	Freda Glover, Cheyney, 1981
Assistant Coach	Robyn Markey, Tennessee Tech, 1982
Graduate Assistant	Julie Brown
Athletic Trainer	Karen Swanson
Managers	Juli Jacoby, Stephanie Hensley
1987-88 Finish	9-18
Conference Record/Finish	4-8, Sixth



Bob Goin
Associate Athletic Director

About the Sports Information Staff

Director	Wayne Hogan (904) 644-1060
SID Office Phone	Nick Gandy (904) 644-1091
SID For Women's Basketball	(904) 877-0668
Gandy Office Phone	(904) 644-3820
Gandy Home Phone	P.O. Box 2195
SID Telecopier Phone	Tallahassee, FL 32316
SID Mailing Address	



Dr. Jan Stocker
Assistant Athletic Director

NOTE TO MEDIA

OBTAINING PRESS CREDENTIALS: Requests for working credentials should be made to Nick Gandy, FSU Sports Information Office (904) 644-1091, at least one week prior to the game for which credentials are being requested. For FSU home games at Tully Gymnasium, media will be placed along the press table on the floor in front of the North stands. Ample parking is readily available and no pass is required.

PHOTOGRAPHERS: Accredited photographers will be admitted to Tully Gym upon presentation of appropriate credentials. Working credentials should be requested at least one week in advance from the FSU Sports Information Office.

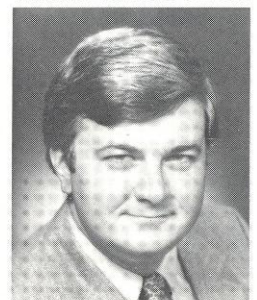
PLAYER AND COACH INTERVIEWS: Head coach Marynell Meadors and her players will be more than happy to accommodate the media with interviews. Media representatives may contact Nick Gandy at (904) 644-1091 to set up telephone or personal interviews with players for a convenient time. The best time to reach Coach Meadors by phone is in the mornings before 11AM. If unable to reach the coach, contact Gandy for interview times.

POST GAME INTERVIEWS: Following a five- to ten-minute cooling off period, Coach Meadors and her team will be available for media interviews downstairs in the Tully Gymnasium study hall area.

RADIO: Sections for radio broadcast are reserved at Tully Gym for opponents. WVFS-FM (89.7) will broadcast all home games locally.

TELEPHONES: Telephone service is available at Tully Gym. In order to obtain an individual line for broadcasting, contact Centel Telephone Company of Tallahassee. Call Centel at (904) 681-6600 and have them contact FSU Sports Information for placement.

GAME SERVICES: A running play-by-play will be provided along with half time and final statistics.



Nick Gandy
Assistant SID
(Women's Basketball)

1988-89 SEASON OUTLOOK

LADY SEMINOLES MAKING BOLD IMPRESSION

On the verge of her third season at Florida State University, head women's basketball coach Marynell Meadors is using the word **BOLD** when speaking of her team.

She says that it's a **bold** new team and by the looks of their **bold** new gold uniforms, that's certainly true of their attire on the court. But she also says that this team will be making a **bold** statement about the future of women's basketball at Florida State.

Although she has struggled through two frustrating years, the Lady Seminoles are right where they want to be. All 16 players on the current roster are products of the Meadors and staff recruiting process. The kind of players that have totalled 381 victories in an 18-year career for the soft-spoken, sandy-haired native of Nashville, TN.

Meadors, looking down the roster of her 1988-89 club, has a problem, though. One that, to an innocent bystander might be concerning. She can't decide on a starting five. But to Meadors, that's not a problem. "When you can't name a starting five," said Meadors. "That's a good problem to have. The team is 10 or 11 deep right now and that's just sophomores and up. Our freshmen are untested but have great credentials."

Two banner recruiting years have bolstered the Lady Seminole lineup into one which Meadors claims will be a running and defensive club. "Florida State will have speed in the open court this season," she says. "We are going to press and we are going to run. With the excellent depth we possess, we will be able to utilize this type of game."

A fact which immediately brings a smile to the face of Meadors is that 53 of the team total of 73 points which were averaged last season returns for the 1988-89 campaign. The newcomers of last season saw a considerable amount of playing time with four first-year players playing in 20 or more games. Senior captain Bev Burnett, the leading scorer of the Metro Conference with 21.3 ppg last season, returns to anchor the Lady Seminoles. Burnett, who has been accustomed to handling a majority of

the scoring chores for FSU, will not feel quite a burden this season, according to Meadors.

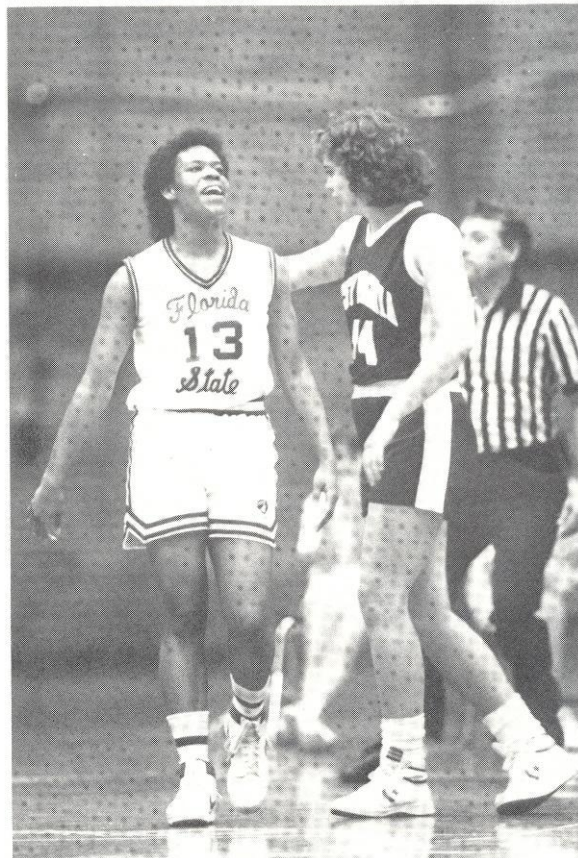
"This will be a balanced scoring team with the ability to average more than 73 points a game," said Meadors. "We will be able to score points from all around the court. We won't have to look for Bev or Chris Davis (sophomore who averaged 12.7 ppg last season) to do all the scoring for us this year."

To round out the scoring duties, Meadors has brought in four newcomers along with the nine which brought their talents to FSU last season. The 1987-88 list of recruits was strong on quick guards and shooters while the 1988-89 newcomers are dominant post players. The number one prize of the current recruiting haul was 6-3 junior center Maria Lardie, a transfer from Cuyahoga Community College in Cleveland, Ohio. Toss her into the middle with 6-4 sophomore Sarah Grimes, who added a year of experience in 1987-88 and the two form quite a team under the basket.

The guard position is loaded. Meadors has even talked of running an offensive scheme at times which features four guards and a post player. As freshmen, Chris Davis and Robin Corn, were perhaps, the only rookie guard tandem in the division I collegiate ranks. Davis, who fell to injury in mid-season missing eight games, came back to form near the end of the season earning Metro Conference Player of the Week honors. Corn, surely one of the most dedicated and all-out players in FSU women's basketball history, returns as the lone player to start in all 27 games of the 1987-88 season.

But there's more. Senior Robin Storey led the Lady Seminoles in three-point shooting last season and is determined to improve on her efforts of last season which saw her average 8.8 ppg. Sophomores Wanda Burns, who Meadors calls one of the quickest guards I've ever seen, and Kelli Test, a three-point threat, will be included in the rotation. Add incoming freshman Tanya Fowler, from nearby Live Oak, who led the Big Bend in high school scoring and you've got quite a cavalcade of guards.

At the forward position, Florida State will feature quick, jumping athletes who should make a difference in the pressing defense. "We want to have the type of players on this year's team



As a freshman, Chris Davis was the team's second leading scorer averaging 12.7 ppg.

that will be able rebound and be one of the first ones down the floor for a layup on the fast break," said Meadors.

Senior Aline Harvis is the epitome of that type of forward. She was integral part of the FSU defense of last year. Starting in 19 games, Harvis was often outmatched in the middle last season. With the added height of the 1988-89 team, she should be able to play her position more effectively. The rest of the forward troops are young, yet have the perfect stature for the position. At 5-11, sophomore Karen Thomas has drawn raves from Meadors for her physical abilities, as well as freshman Debra Collins, a former teammate of Thomas at Macon (GA) Southwest HS. Another freshman, Tia Paschal, at 6-1 will play the forward position now, but Meadors has different plans for her in the future. "I would like to move her to a shooting guard position after this year," she says.

.....

"My staff and I have worked to bring in the best players available and we have signed 14 quality players in the last two years. Right now we have a good mix of players. They're awfully young, but that's the way I like to have it."

– Marynell Meadors

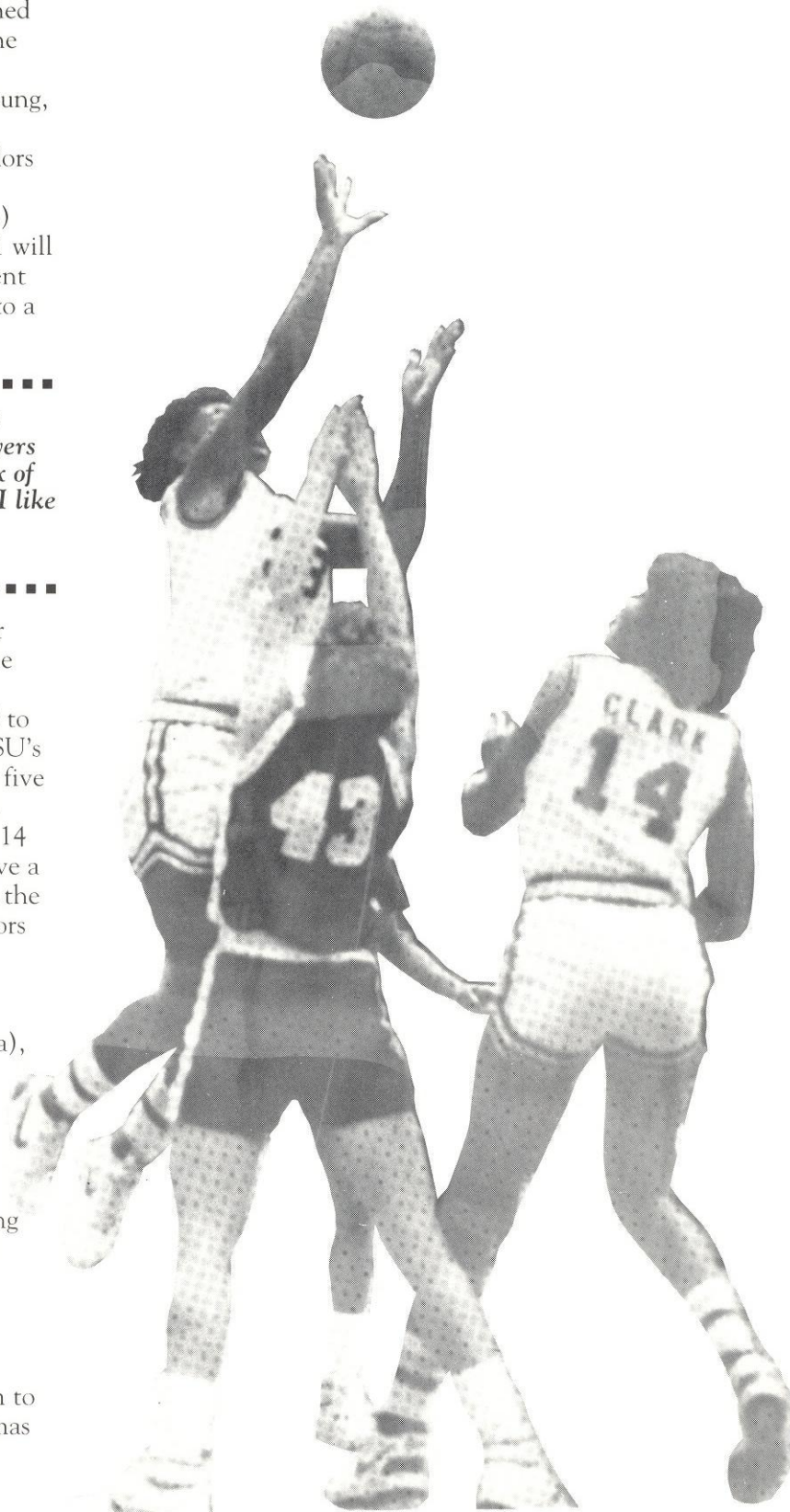
.....

Following consecutive nine-win seasons, a number which Meadors is highly unaccustomed to seeing in the win column, the former Tennessee Tech mentor has finally assembled a group of players which she is proud to present on the court. "When a program is down, as FSU's was when I took over," said Meadors. "It takes four or five years to turn it around. My staff and I have worked to bring in the best players available and we have signed 14 quality players in the last two years. Right now we have a good mix of players. They're awfully young, but that's the way I like to have it. I just wish I had the three seniors another year."

Besides twelve Metro Conference contests, three NCAA Tournament participants appear on the Lady Seminole slate (Alabama, Georgia and South Carolina), intra-state games with Miami, Florida South Florida, Florida A&M and Stetson are also featured. Florida State will also compete in a pair of tournaments, opening the season at the Lady Sunshine Classic in Orlando on November 26 featuring Miami, Central Michigan and Southwest Missouri State. The following weekend, FSU will open its home season as defending champions of the Tallahassee Hilton Classic at Tully Gym. Also participating will be Georgia Southern, Georgia Tech and North Carolina-Asheville.

In a bold prediction for the early 1988 season, Meadors has set a goal with her team. She wants them to match the nine wins of last season by the time Christmas rolls around.

A bold statement by a team striving to excel.



FLORIDA STATE COACHING STAFF



HEAD COACH MARYNELL MEADORS MIDDLE TENNESSEE STATE, (1965) OVERALL RECORD: 381-186 (.672), 18 years FLORIDA STATE RECORD: 18-37 (.327), Entering third season

Entering her third season at Florida State, head coach Marynell Meadors can't say enough good things about the team she will present on the court in 1988-89.

She's told everyone along the way that the players which would wear the Florida State Garnet and Gold this season would be some of the best athletes to ever hit the court in Tully Gym.

After two successful recruiting hauls which brought in 14 new faces to the Lady Seminole lineup, Meadors believes that now is the time to lift Florida State among the nation's elite in women's basketball.

Meadors has proven herself a winner prior to Florida State and will not be satisfied at FSU until the win column outweighs the loss column. In 16 seasons at Tennessee Technological University, Meadors accumulated 363 wins after starting the program from scratch in 1970. She became the first women's coach to win 300 games at one institution and ranks among national leaders in career wins.

In her 18 years as a head coach, Meadors has produced 13 20-win seasons, won the Ohio Valley Conference Championship four times while at Tennessee Tech and was named the Ohio Valley Conference Coach of the Year in 1978 and 1984. Twelve times, under Meadors, Tennessee Tech

advanced into post-season play.

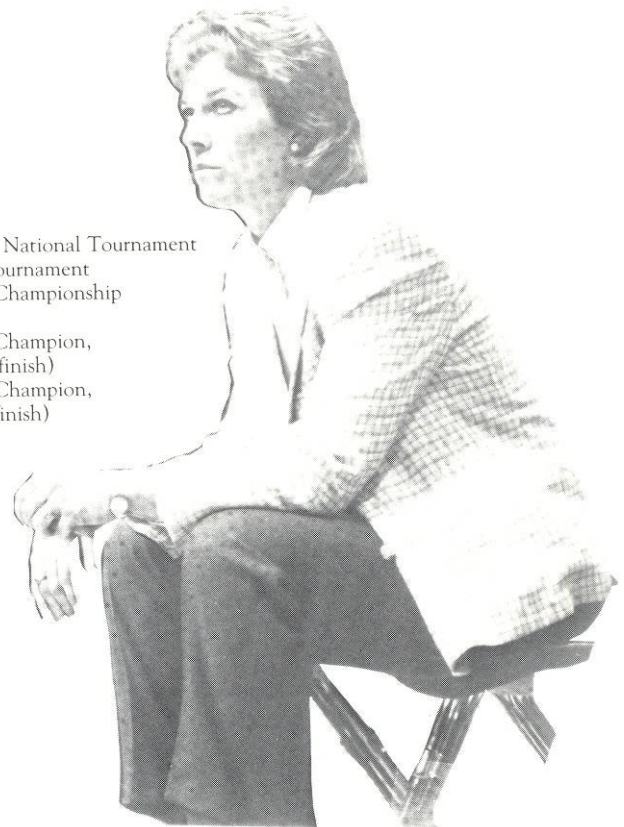
As one of the spokespersons on the sport, Meadors has been honored with positions on several selection committees during her coaching career. Since 1976, she has been a member of the Selection Committee for Women's Basketball Top 20. She has also held posts on the Kodak All-American Selection Committee, the Stayfree Coach and Player of the Year Awards, the Converse Coach of the Year Award, the National Sports Festival Selection Committee, the U.S. Olympic trials and the NCAA Midwest Basketball Committee.

At Florida State, Meadors has worked to educate the community on women's basketball. She is a regular speaking guest at local functions, has worked to publicize Lady Seminole basketball through newspapers by being available for interviews at any time and has worked to have the Lady Seminole Report broadcast on a local radio station. For the 1988-89 season, Meadors has initiated the broadcast of all FSU games on radio and is attempting to put the finishing touches on a weekly television show reviewing past games and previewing the upcoming opponents.

Meadors believes that the group assembled for the coming season is the one to produce the first winning season for the Lady Seminoles in five years. If you don't think so, just ask her. She'll tell you all about them..

COACHING RECORD

YEAR	SCHOOL	RECORD	ACCOMPLISHMENTS
1970-71	Tennessee Tech	23-7 .767	TCWSF State Runner-up
1971-72	Tennessee Tech	26-6 .813	TCWSF State Champion, Qualified for AIA National Tournament
1972-73	Tennessee Tech	24-6 .800	TCWSF State Champion, AAU National Tournament
1973-74	Tennessee Tech	26-5 .839	TCWSF State Champion, AIAW National Championship (Sixth place finish)
1974-75	Tennessee Tech	27-5 .844	TCWSF State Champion, AIAW Regional Champion, AIAW National Championship (12th place finish)
1975-76	Tennessee Tech	28-2 .933	TCWSF State Champion, AIAW Regional Champion, AIAW National Championship, (5th place finish)
1976-77	Tennessee Tech	28-8 .778	TCWSF State Champion, AIAW National Championship (7th place finish)
1977-78	Tennessee Tech	19-14 .576	Ohio Valley Conference Championship
1978-79	Tennessee Tech	23-10 .697	AIAW Regional Bid
1979-80	Tennessee Tech	23-11 .676	AIAW Regional Championship Bid
1980-81	Tennessee Tech	23-11 .676	OVC Champion, NWIT Tournament
1981-82	Tennessee Tech	20-11 .645	OVC Champion, NCAA Championships
1982-83	Tennessee Tech	14-13 .519	OVC 2nd Place
1983-84	Tennessee Tech	17-11 .607	OVC 2nd Place
1984-85	Tennessee Tech	20-9 .690	OVC 2nd Place, NCAA at-large selection
1985-86	Tennessee Tech	20-7 .741	OVC 2nd Place, WNIT participant
1986-87	Florida State	9-19 .321	Tallahassee Hilton Classic Champion
1987-88	Florida State	9-18 .333	Tallahassee Hilton Classic Champion
TOTAL		381-176 .684	



FLORIDA STATE COACHING STAFF



ASSISTANT COACH
FREDA GLOVER
SECOND YEAR, (Cheyney, 1981)

Freda Glover returns for her second season at Florida State after shunning a hopeful career in the political world to assist leading Florida State women's basketball into national prominence.

After four years as a player at Cheyney University and two years as a coach at the University of Missouri, Glover fulfilled a personal objective to work in the political world. But after three years as a budget analyst for the Executive Office of the Governor for the state of Illinois, her basketball ties were still strong and once given the opportunity, she jumped at the chance to come to Florida State.

Glover earned her bachelor's degree in business administration from Cheyney University in Cheyney, Pennsylvania while starting for the highly-successful basketball team. Playing the center position, Glover consistently ranked in the nation's top scorers and rebounders.

Glover continued her education at Missouri while beginning her coaching career. As an assistant coach at Missouri, the Lady Tigers won the Big 8 Conference in the 1982-83 season. She received her master's degree in public administration in 1983.

Glover's primary duties with the Lady Seminoles includes working with the inside post players, scouting opponents and following the academic progress of the team. Along with her on-floor coaching duties, she assists Robyn Markey with recruiting and scheduling. During the off-season, she works with the Marynell Meadors Basketball Camp.



ASSISTANT COACH
ROBYN MARKEY
THIRD YEAR, (Tennessee Tech, 1982)

Entering her third season on the Florida State coaching staff, Robyn Markey, has learned the ins and outs of the women's basketball world as one of the finest recruiters in the nation.

Markey's recruiting talents over the past three years has brought in a new corps of players to fulfill the Marynell Meadors dream of bringing FSU to the top of the women's basketball pack.

Markey is no stranger to the Meadors' style of coaching. She was the starting point guard for the Meadors-led Tennessee Tech Golden Eaglettes from 1977-81, a period which Tennessee Tech won 88 games. She holds a spot in the Tech record book with 134 games played to rank first and also is listed in five all-time categories including scoring and rebounding. She capped her career at Tech as the captain of the squad her senior year.

After serving as a volunteer coach at Tennessee Tech for the 1981-82 season, Markey moved on to an assistant coach position at the University of Delaware for the 1982-83 season. She then accepted the head coach position at the University of Vermont.

In addition to her collegiate coaching experience, Markey has served as director of several basketball camps—including ones in Vermont, New Jersey and Belgium. She currently assists in the Marynell Meadors Basketball Camp. She also has gained valuable promotional experience working with the Kargaroo and Pro Keds shoe companies. Besides her recruiting talents which she devotes to FSU women's basketball, Markey tutors the Lady Seminole guards and assists with on-floor coaching duties.



GRADUATE ASSISTANT
JULIE BROWN
FIRST YEAR, (Rhodes College, 1988)

Fresh out of college, Julie Brown begins her coaching career at Florida State as a graduate assistant.

Brown, a graduate of Rhodes College with a degree in psychology, will split her time between the FSU women's basketball program and graduate school. The Knoxville, TN native will be working toward a master's degree in sports psychology.

A spot starter her first three years at Rhodes, a division III institution in Memphis, TN, earned a full-time starting spot at the wing position her senior year and averaged 12.0 points per game.

As a graduate assistant, Brown will handle team travel when the Lady Seminoles play away from Tallahassee, situate the team housing, set up Tully Gym for daily practices and will assist in the Marynell Meadors Basketball Camp this summer.



LADY SEMINOLE BIOGRAPHIES

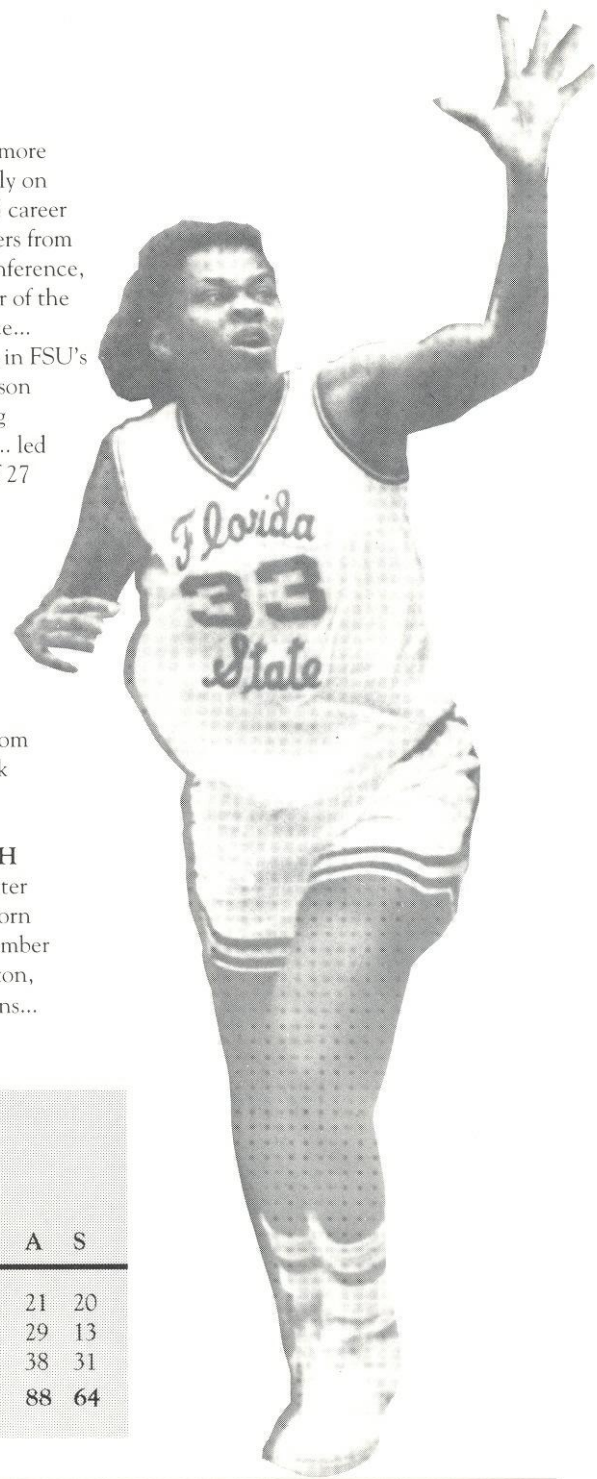


#33 BEV BURNETT

SENIOR, FORWARD, 5-9
TALLAHASSEE, FL (Rickards)

★★★★★★★★★★★★★★★★★★★★
1988 All-Metro Selection
★★★★★★★★★★★★★★★★★★★★

...will round out her career in 1988-89 as one of Florida State's most prolific scorers... with a more balanced offensive attack this season, Meadors hopes the scoring chores will not fall as heavily on Burnett... enters the season with 1,144 total points, sixth on the career scoring list... her 15.5 career scoring average ranks fourth in FSU career records... **1987-88:** Led Metro Conference scorers from start to finish of the season, capping it with a 21.3 average... named first team All-Metro Conference, third team American Women's Sports Federation All-America and Metro Conference Player of the Week on two occasions... the only player in the conference to earn the award more than once... earned MVP of the Tallahassee Hilton Classic, scoring 50 points and collecting 12 rebounds in FSU's two wins en route to the championship... her 21.3 scoring average ranks second in single-season totals behind Sue Galkantas' 21.6 average during the 1980-81 season... team's second leading rebounder with 6.3 per game... had a career high 15 rebounds in a 73-70 win over Louisville... led the squad with a 77.5 free throw accuracy in 169 attempts... led Florida State scorers in 18 of 27 games... had only one game in which she did not score in double figures, a game which she attempted to return from an injury too soon... injured an ankle in game against Memphis State and sat out two games (Florida A&M and Southern Miss)... played only eight minutes against South Carolina... scored more than 20 points on 10 occasions and tallied 30 or more four times (30 vs. Cincinnati, Georgia Southern, Louisville and 34 against Virginia Tech)... named team captain prior to the 1987-88 season ... **1985-86:** leading scorer with 17.3 ppg... played in only 21 games, starting only 14... leading scorer in 11 games... had 30 point outings in successive games against South Florida (32) and Florida A&M (34)... averaged 6.1 rebounds per game... shot 70.4 percent from the free throw line, hitting 81 of 115... earned her first Metro Conference Player of the Week award in December 1985... **1984-85:** Played in all 28 games as a freshman, averaging 19.8 minutes of playing time... the team's third leading scorer with 8.8 points per game... was the leading scorer for the Lady Seminoles in four games and the leading rebounder twice... **HIGH SCHOOL:** earned All-Big Bend honors as a senior at Rickards High School... averaged better than 30 points per game... scored over 2,000 career points in high school... **PERSONAL:** born February 26, 1966... majoring in physical education... set to graduate in summer 1989... a member of Fellowship of Christian Athletes... daughter of Annis Burnett... cousin of Clifford Charleton, formerly a linebacker for the Florida Gators and currently a rookie with the Cleveland Browns...



BURNETT AT FSU...

	G	FG-FGA	PCT	FT-FTA	PCT	PTS-Avg.	REB-Avg	A	S
1984-85	28	96-222	.432	55-83	.663	248-8.8	93-3.3	21	20
1985-86	21	141-299	.472	81-115	.704	363-17.3	128-6.1	29	13
1987-88	25	201-459	.438	131-169	.775	533-21.3	158-6.3	38	31
	74	438-980	.447	267-367	.728	1144-15.5	379-5.1	88	64

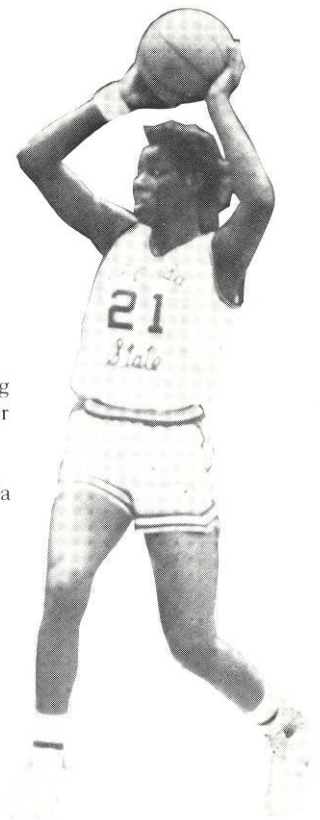
LADY SEMINOLE BIOGRAPHIES



#21 ALINE HARVIS

SENIOR, FORWARD, 5-10
LYNN HAVEN, FL (Pensacola JC)

... started and came off-the-bench last season... one of FSU's quickest players... plays a big part in the pressing defense the Lady Seminoles run... the most experienced post player in the Florida State lineup this year... Meadors says that Harvis is working harder than ever showing senior leadership... "she's starting to push the younger players"... **1987-88:** started 19 of 25 games, averaging 26 minutes of playing time... the team's fourth leading scorer with 8.3 ppg and chipped in 5.6 rebounds per game... scored in double figures 10 times with a season-high 17 coming against Wisconsin-Green Bay ... grabbed a season-high 14 rebounds against Georgia Southern in an 83-77 overtime win... shot 57 percent from the floor, the highest of Florida State regulars... **JUNIOR COLLEGE:** named All-Panhandle conference after leading Pensacola Junior college in scoring and rebounding her sophomore year... **HIGH SCHOOL:** attended Mosely High School where she was a three-time track and field MVP and two-time basketball MVP... **PERSONAL:** a member of Fellowship of Christian Athletes... born April 20, 1967... a business major... daughter of Ida Lois Harvis...



HARVIS AT FSU...

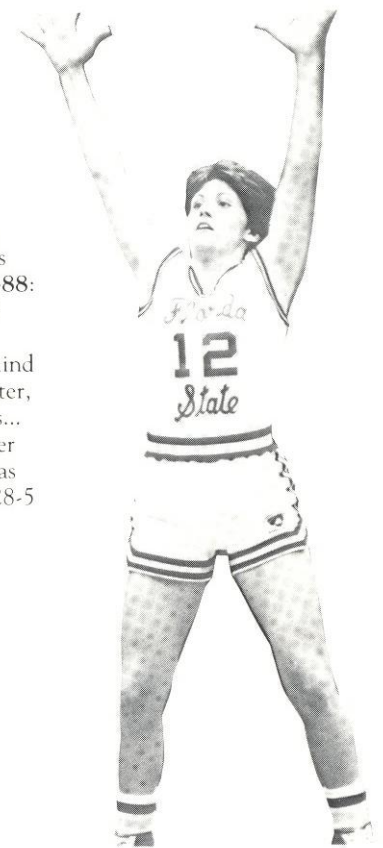
	G	FG-FGA	PCT	FT-FTA	PCT	PTS-Avg	REB-Avg	A	S
1987-88	25	82-142	.577	43-67	.642	207-8.3	140-5.6	10	19



12 ROBIN STOREY

SENIOR, GUARD, 5-7
MOUNTAIN VIEW, AR (N. Arkansas JC)

... returns as FSU's main three-point threat... a player who's got to be in the lineup because of her speed and on-court leadership, according to Meadors... has added much needed strength ... can play either point or shooting guard... **1987-88:** played a big part in FSU's guard rotation, averaging 8.8 ppg while starting in 14 games... earned a starting nod when Davis fell to ankle injury... made such an impact Meadors could not leave her out of the game... shot 34 percent from behind the three-point stripe, connecting 28 times... chalked up 50 assists... the team's second-leading free throw shooter, hitting 73.7 (42-57)... scored a season-high 21 points against Memphis State which included five three-pointers... scored in double figures in eight games... **JUNIOR COLLEGE:** averaged 15 points and four assists per game her sophomore season at North Arkansas JC... selected to the All-Arkansas Junior College Conference team and was also the team captain as a sophomore... during her two years at North Arkansas, the Lady Pioneers compiled a 28-5 record... **HIGH SCHOOL:** a three-year all-conference selection at Mountain View (AR) High School... **PERSONAL:** born January 1, 1967... daughter of James and Toni Storey... a physical therapy major...



STOREY AT FSU...

	G	FG-FGA	PCT	FT-FTA	PCT	PTS-Avg	REB-Avg	A	S
1987-88	27	84-253	.332	42-57	.737	238-8.8	74-2.7	50	25

LADY SEMINOLE BIOGRAPHIES



#50 MARIA LARDIE

JUNIOR, CENTER, 6-3

SHAKER HEIGHTS, OHIO (Cuyahoga CC)

... a physical 6-3 player who could fill FSU's biggest problem in the middle. .. her presence in the post position will also open more scoring opportunities as opponents won't be able to key on only one position ... desperately needing a post player, Lardie was the number one priority on Meadors' recruiting list for 1987-88... **JUNIOR COLLEGE:** helped lead Cuyahoga CC to an Ohio Junior College Conference Championship and a number 12 national ranking with a 25-5 record her sophomore year... contributed 16.2 ppg... led the team with 12.0 rpg and 2.0 blocked shots per game... participated in track as a freshman and advanced to National Junior College competition in the 200 meters, 4 X 100 and 4 X 400 relays... **PERSONAL:** Born September 12, 1967... daughter of James and Deane Lardie... will major in exercise physiology at FSU...



#22 WANDA BURNS

SOPHOMORE, GUARD, 5-8

MACON, GA (Southwest)

... "one of the fastest, most explosive guards I've ever seen," says Meadors... will join a talented group of guards for the Lady Seminoles... likely to see action at point guard... a great ball-handler with tremendous court sense... a three-point threat... **1987-88:** sat out the year due to restrictions imposed by Proposition 48... **HIGH SCHOOL:** teamed with Karen Thomas and Debra Collins at Macon Southwest High School and with Thomas on the 1987 National Championship 18-and-under Macon AAU team... led Macon Southwest to a USA Today Top 20 ranking during the 1986-87 year... averaged 21 points, eight assists, and four steals per game... garnered several honors her senior year, including USA Today honorable mention All-America, first team all-State, All-Middle Georgia and All-City... scored 1,134 points in three years at Macon Southwest... **PERSONAL:** born November 17, 1969... daughter of Patricia Burns... a social work major at FSU...

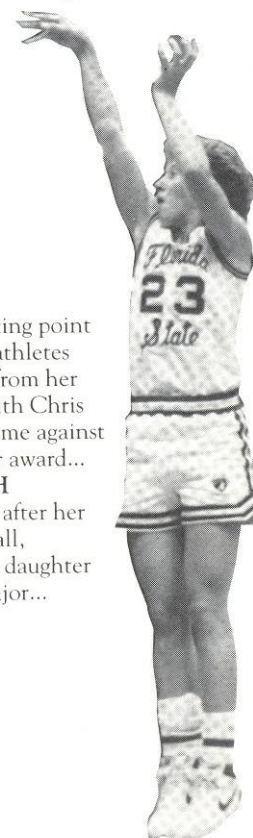


#23 ROBIN CORN

SOPHOMORE, GUARD, 5-9

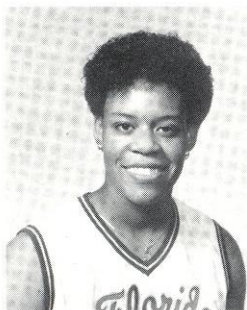
ASHEVILLE, NC (Roberson)

... returns as the only Lady Seminole to start all 27 games last season... "she's the starting point guard until someone beats her out," says Meadors. "She is one of the most dedicated athletes I've ever coached"... the Florida State coaching staff hopes for more offensive output from her this season... **1987-88:** averaged 4.8 ppg and led the squad with 75 assists at point guard last year... combined with Chris Davis as one of the only freshmen guard tandems in the country... season-highs in points, rebounds and assists came against Memphis State Jan. 16, accumulating 10 points, eight rebounds and six assists... earned the best defensive player award... accumulated 37 steals including a season-high five against Wisconsin in the Tallahassee Hilton Classic... **HIGH SCHOOL:** named Student-Athlete of the Year in Western North Carolina and Western North Carolina MVP after her 17 ppg, 7 rpg senior season... closed out her high school career as the first female to letter in four sports (basketball, softball, track and field and volleyball)... won 11 total high school letters... **PERSONAL:** born March 11, 1969, daughter of Bob and Kathy Corn, who attended every Lady Seminole game last year, both home and away... a business major...



CORN AT FSU...

	G	FG-FGA	PCT	FT-FTA	PCT	PTS-Avg	REB-Avg	A	S
1987-88	27	59-125	.472	12-24	.500	130-4.8	79-2.9	75	37



#13 CHRIS DAVIS

SOPHOMORE, GUARD, 5-9
PENSACOLA, FL (Washington)

...although she made quite an impact her freshman season, there could have been more had she not missed seven games with an ankle injury... scored 16 points per game before injuring the ankle in a mid-January game against Memphis State... finished the season with a 12.7 ppg average... "will be a dominating force for the rest of her career," said Meadors... **1987-88:** saw action in 21 games, starting 10... averaged 24.7 minutes of playing time... hit 44 percent of her shots... FSU's leading scorer in two games... a season-high 27 points in the first round game of the Metro Tournament against Cincinnati... led a second-half charge by scoring 19 second half points to bring FSU back from a 15-point deficit with 10 minutes to play in the game... "The Cincinnati game was a sign of things to come," said Meadors... earned Metro Player of the Week honors for her performance in late-season wins against Louisville and Cincinnati... led the team in steals with 41, despite missing seven games... used her great leaping ability to block nine shots, second on the team... nabbed a team-high six steals against Wisconsin and North Carolina... **HIGH SCHOOL:** Followed her 22 ppg, 7 rpg senior season at Booker T. Washington High School, Davis was named to the Gatorade National team as its Florida Player of the Year, USA Today Honorable Mention All-America, Orlando Sentinel Dixie Dozen Player of the Year and Pensacola News-Journal all-area Player of the Year... scored a total of 1,657 points to become the school's second leading all-time scorer... **PERSONAL:** born August 29, 1969... daughter of Joe and Nancy Davis... majoring in business administration...



DAVIS AT FSU...

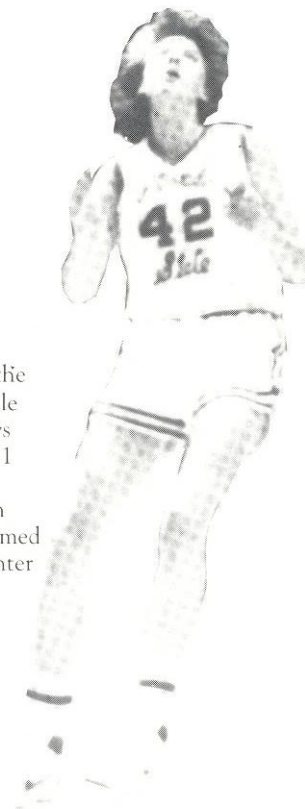
	G	FG-FGA	PCT	FT-FTA	PCT	PTS-Avg	REB-Avg	A	S
1987-88	21	106-240	.441	54-80	.675	267-12.7	89-4.2	32	41



#42 SARAH GRIMES

SOPHOMORE, CENTER, 6-4
ROSWELL, GA (Milton)

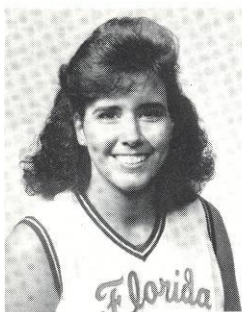
...made great strides toward the end of her freshman season... played in seven of the last eight games of 1987-88... an off-season weight training program has added muscle and strength to her lean stature... "Sarah's added strength is now an added plus," says Meadors. "She can now hold her own and play defense inside."... **1987-88:** saw action in 16 games... scored 31 points for an average of 1.9 ppg... chipped in a season-high in points was eight against South Carolina... pulled down a season-high of five rebounds against Southern Miss... **HIGH SCHOOL:** named MVP of North Fulton County after leading Milton High School to a 19-5 record... averaged 22 ppg and 12 rpg her senior season... named team MVP and selected to Atlanta Super Stars Select team... **PERSONAL:** born September 18, 1969... daughter of Gerry and Danielle Grimes... majoring in communication...



GRIMES AT FSU...

	G	FG-FGA	PCT	FT-FTA	PCT	PTS-Avg	REB-Avg	A	S
1987-88	16	14-23	.609	3-4	.750	31-1.9	15-0.9	0	1

LADY SEMINOLE BIOGRAPHIES



#24 KELLI TEST

SOPHOMORE, GUARD, 5-9
RINGGOLD, GA (Ringgold)

...saw limited action her freshman season, but established herself as a three-point threat... "Kelli comes into the season with a good attitude and knows exactly what to do to contribute to this team," says Meadors. "I'm very proud of her."... **1987-88:** played in only 13 games and scored only nine points... all three of her fields goals were three pointers... scored six of her 1987-88 points in the first game of the year against DePaul in a come-from-behind effort... credited with two steals her freshman season... **HIGH SCHOOL:** averaged 18.8 ppg her senior season at Ringgold HS... named the Chattanooga News-Free Press MVP... high school retired her jersey after her senior year... **PERSONAL:** born October 10, 1969... daughter of Eddie and Nora Test... a business major at FSU...

TEST AT FSU...

	G	FG-FGA	PCT	FT-FTA	PCT	PTS-Avg	REB-Avg	A	S
1987-88	13	3-14	.214	0-0	.000	9-0.7	3-0.2	0	2



#31 KAREN THOMAS

SOPHOMORE, FORWARD, 5-11
MACON, GA (Southwest)

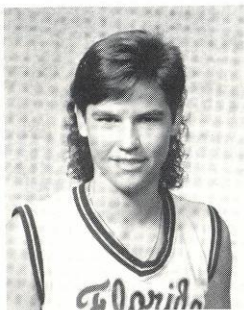
...using her physical abilities and strength, Thomas should be able to contribute right away at the forward position... 1987-88: sat out the season due to restrictions imposed by Proposition 48... **HIGH SCHOOL:** averaged 14 points, 12 rebounds and four assists per game her senior year at Macon Southwest High School, where she was a teammate of guard Wanda Burns... claimed Georgia all-state honorable mention, all-middle Georgia and all-city awards before moving on to FSU... named the Best Offensive Player of the USA Today Top 20 ranked Macon SW team... also competed with Burns on the 1987 National Championship 18-and-under Macon AAU team... **PERSONAL:** born November 4, 1968... daughter of Elizabeth Thomas... a computer science major at FSU...



#35 DEBRA COLLINS

FRESHMAN, FORWARD, 5-11
MACON, GA (Southwest)

...another Macon Southwest alum to wear the Garnet and Gold... a very powerful inside player... "plays taller than her 5-11 stature by using excellent jumping ability and strategic positioning on rebounds," says Meadors... will provide much depth at forward and should be able to contribute this year... **HIGH SCHOOL:** averaged 16 points and 12 rebounds per game her senior year... earned all-middle Georgia and all-city honors... tied a school record by scoring 35 points in a single game... **PERSONAL:** born December 26, 1968... daughter of Peggy Collins... will major in social work at Florida State...



#14 TANYA FOWLER

FRESHMAN, GUARD, 5-9

LIVE OAK, FL (Suwannee)

... comes to Florida State after leading the Big Bend in scoring during her senior season at Suwannee High School... averaged 25.0 ppg... a valuable addition to the Florida State guard corps... "a real aggressive player who always seems to be around the ball," says Meadors... **HIGH SCHOOL:** averaged 18.8 ppg in her four years at Suwannee while grabbing 6.8 rpg... holds school season records in scoring average, total points and assists and career records in total points, assists and steals... once scored 32 points in a single game... lettered in three sports (basketball, volleyball and softball) during her high school career... twice named All-Big Bend at Suwannee... drew a recommendation from United States congressman Bill Grant... **PERSONAL:** born March 18, 1970... daughter of Ivie Fowler... plans to major in secondary education at Florida State...

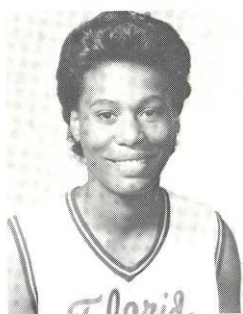


#44 LUZ LOPEZ

FRESHMAN, GUARD, 5-6

BAYAMON, PR (Nuestra Sra. Belen)

...a valuable late addition to the Lady Seminole lineup at guard... has caught coach's eye with her quickness and speed... played on the Puerto Rican National team which competed in the Central American Games in Mexico City... coached a junior team while competing on her Nuestra Sra. Belen high school team... a determined player, according to Meadors... **PERSONAL:** born September 4, 1970... daughter of Felix Lopez... an advertising major at Florida State...



#30 TIA PASCHAL

FRESHMAN, FOWARD, 6-1

THOMSON, GA, (Thomson)

...was FSU's lone signee of the November 1987 signing period... was very highly recruited... injured knee in pre-season workouts and will need to undergo reconstructive surgery... will receive a medical redshirt for the 1988-89 season... **HIGH SCHOOL:** led her Thomson team to a 17-2 record while averaging 25 ppg, 13.0 rpg and 5.0 steals per game... captured the Miss Georgia Basketball Player of the Year... earned first team All-State and was named District 3A Player of the Year... selected to play in the North/South All-Star Basketball team... a Converse All-America nomination her senior year... **PERSONAL:** Born March 22, 1969... daughter of Percy and Ola Mae Paschal... a criminal justice major...

1988-89 LADY SEMINOLE ROSTERS

ALPHABETICAL ROSTER

#	NAME	POS.	HT.	CLASS	HOMETOWN (HS OR JC)
33	Bev Burnett	F	5-9	SR	Tallahassee, FL (Rickards)
22	Wanda Burns	G	5-7	SO	Macon, GA (Southwest)
35	Debra Collins	F	5-11	FR	Macon, GA (Southwest)
23	Robin Corn	G	5-9	SO	Asheville, NC (Roberson)
13	Chris Davis	G/F	5-9	SO	Pensacola, FL (B.T. Washington)
14	Tanya Fowler	G	5-9	FR	Live Oak, FL (Suwannee)
42	Sarah Grimes	F/C	6-4	SO	Roswell, GA (Milton)
21	Aline Harvis	F	5-10	SR	Lynn Haven, FL (Pensacola JC)
11	Shannon Hodge	F	5-10	FR	Mechanicsburg, PA (Cumberland Valley)
50	Maria Lardie	F/C	6-3	JR	Shaker Heights, Ohio (Cuyahoga CC)
44	Luz Lopez	G	5-6	FR	Bayamon, PR (Nuestra Sra. Belen)
30	Tia Paschal	F	6-1	FR	Thomson, GA (Thomson)
12	Robin Storey	G	5-7	SR	Mountain View, ARK (N. Arkansas JC)
24	Kelli Test	G	5-9	SO	Ringgold, GA (Ringgold)
31	Karen Thomas	F	5-10	SO	Macon, GA (Southwest)

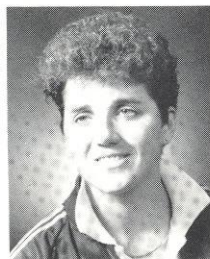
NUMERICAL ROSTER

#	NAME	POS.	HT.	CLASS	HOMETOWN (HS OR JC)
11	Shannon Hodge	F	5-10	FR	Mechanicsburg, PA (Cumberland Valley)
12	Robin Storey	G	5-7	SR	Mountain View, ARK (N. Arkansas JC)
13	Chris Davis	G/F	5-9	SO	Pensacola, FL (B.T. Washington)
14	Tanya Fowler	G	5-9	FR	Live Oak, FL (Suwannee)
21	Aline Harvis	F	5-10	SR	Lynn Haven, FL (Pensacola JC)
22	Wanda Burns	G	5-7	SO	Macon, GA (Southwest)
23	Robin Corn	G	5-9	SO	Asheville, NC (Roberson)
24	Kelli Test	G	5-9	SO	Ringgold, GA (Ringgold)
30	Tia Paschal	F	6-1	FR	Thomson, GA (Thomson)
31	Karen Thomas	F	5-10	SO	Macon, GA (Southwest)
33	Bev Burnett	F	5-9	SR	Tallahassee, FL (Rickards)
35	Debra Collins	F	5-11	FR	Macon, GA (Southwest)
42	Sarah Grimes	F/C	6-4	SO	Roswell, GA (Milton)
44	Luz Lopez	G	5-6	FR	Bayamon, PR (Nuestra Sra. Belen)
50	Maria Lardie	F/C	6-3	JR	Shaker Heights, Ohio (Cuyahoga CC)

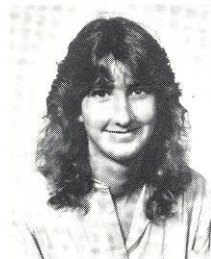
HEAD COACH: Marynell Meadors, Middle Tennessee State, 1965
Enters third season at Florida State

ASSISTANTS: Freda Glover, Robyn Markey
GRADUATE ASSISTANT: Julie Brown

LADY SEMINOLE BASKETBALL SUPPORT STAFF



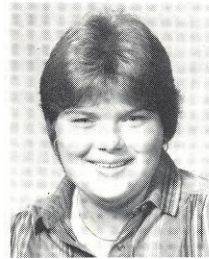
KAREN SWANSON
Athletic Trainer



JULI JACOBY
Manager



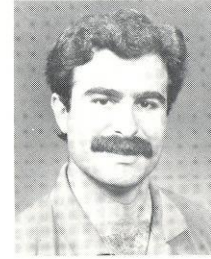
STEPHANIE HENSLEY
Manager



TRUDY RAYBUN
Academic Advisor



TERRY HUME
Promotions & Marketing



CARL GENTILE
Strength Coach

1987-88 STATISTICS AND RESULTS

1987-88 FINAL LADY SEMINOLE BASKETBALL STATISTICS

Overall Record: 9-18 (.333); Home: 5-9 (.359); Away: 3-8 (.273); Neutral: 1-1 (.500); Overtime: 2-1 (.667)

NAME, POSITION	G-GS	PTS-AVG	REB-AVG	FG-FGA	PCT	FT-FTA	PCT	PF-D	A	TO	BK	ST	MIN-AVG
BURNETT, Bev, F	25-25	533-21.3	158-6.3	201-459	43.8	131-169	77.5	79-5	38	96	0	31	738-29.5
DAVIS, Chris, G	21-10	267-12.7	89-4.2	106-240	44.1	54-80	67.5	34-0	32	71	9	41	520-24.7
STOREY, Robin, G	27-14	238-8.8	74-2.7	84-253	33.2	42-57	73.7	47-1	50	59	0	25	673-24.9
HARVIS, Aline, F	25-19	207-8.3	140-5.6	82-142	57.7	43-67	64.2	56-1	10	37	3	19	650-26.0
HALL, Sarah, C	27-9	196-7.3	173-6.4	82-175	46.9	32-62	51.6	83-7	13	57	24	25	592-21.9
CLARK, Gussie, C	27-22	143-5.3	125-4.6	55-108	50.9	33-59	55.9	78-2	5	37	5	17	600-22.2
GARRETT, Valerie, G	21-0	109-5.2	51-2.4	43-107	40.2	23-42	54.8	26-0	21	36	0	19	209-10.0
CORN, Robin, G	27-27	130-4.8	79-2.9	59-125	47.2	12-24	50.0	59-1	75	66	1	37	740-27.4
PIATNIK, Jan, G	27-5	81-3.1	32-1.2	30-107	28.0	10-16	62.5	33-0	53	56	1	22	372-13.8
GRIMES, Sarah, C	16-0	31-1.9	15-0.9	14-23	60.9	3-4	75.0	5-0	0	2	2	1	90-5.6
TUCKER, Angela, F	18-0	20-1.1	34-1.9	9-22	41.0	2-4	50.0	24-0	0	6	4	2	94-5.2
McCARTY, Terri, F	16-5	16-1.0	25-1.6	8-18	44.4	0-0	00.0	13-0	0	9	1	2	116-7.3
TEST, Kelli, G	13-0	9-0.7	3-0.2	3-14	21.4	0-0	00.0	8-0	0	8	0	2	31-2.4
RUCKER, Tina, G	2-0	0-0.0	1-0.5	0-0	00.0	0-0	00.0	0-0	0	0	0	0	3-1.5
FLORIDA STATE	27	1980-73.3	1119-41.4	776-1793	43.3	385-584	65.9	545-18	297	540	50	243	5475
OPPONENTS	27	2029-75.1	1120-41.5	798-1768	45.1	385-616	62.5	533-10	321	531	76	245	5475

Florida State rebound totals include 120 team rebounds but not 103 dead ball rebounds.
Opponents rebound totals include 95 team rebounds but not 87 dead ball rebounds.

THREE-POINT SHOTS

Storey	28-82	(34.1)
Piatnik	11-48	(22.9)
Test	3-11	(27.4)
Davis	1-4	(25.0)
Clark	0-1	(00.0)
TOTALS	43-147	(29.3)
OPPONENTS	42-147	(28.6)



Florida State celebrates after winning the 1987 Tallahassee Hilton Classic. Gussie Clark (14) was named to the All-Tournament team.

METRO CONFERENCE STATISTICS

Metro Conference: 4-8 (.333); Home: 2-4 (.333); Away: 2-4 (.333); Neutral: 0-0 (.000); Overtime: 0-1 (.000)

NAME, POSITION	G-GS	PTS-AVG	REB-AVG	FG-FGA	PCT	FT-FTA	PCT	PF-D	A	TO	BK	S	MIN-AVG
BURNETT, Bev, F	11-11	212-19.3	66-6.0	73-165	44.2	66-87	75.9	34-3	18	45	0	10	310-28.2
STOREY, Robin, G	12-9	145-12.1	44-3.7	54-160	33.8	23-32	71.9	26-1	28	27	0	12	361-30.1
HALL, Sarah, F	12-6	103-8.6	86-7.2	42-90	46.7	19-35	54.3	44-5	4	29	15	13	284-23.7
HARVIS, Aline, F	10-10	80-8.0	61-6.1	32-55	58.2	16-27	59.3	26-0	4	16	0	6	284-28.4
DAVIS, Chris, G	9-2	66-7.3	23-2.6	27-59	45.8	11-17	64.7	10-0	9	18	2	4	141-15.7
CORN, Robin, G	12-12	72-6.0	39-3.3	32-68	47.1	8-14	57.1	32-1	39	26	0	15	345-28.8
CLARK, Gussie, C	12-8	69-5.8	66-5.5	27-57	47.4	15-24	62.5	24-1	3	12	1	11	267-22.3
GARRETT, Valerie, G	10-0	57-5.7	24-2.4	24-56	42.9	9-18	50.0	12-0	9	20	0	10	110-11.0
PIATNIK, Jan, G	12-2	43-3.6	14-1.2	15-59	25.4	6-7	85.7	16-0	25	28	0	9	169-14.1
GRIMES, Sarah, C	9-0	24-2.7	10-1.1	11-19	57.9	2-3	66.7	5-0	0	2	1	1	71-7.9
TUCKER, Angela, F	6-0	10-1.7	5-0.8	5-6	83.3	0-0	00.0	3-0	0	0	0	0	20-3.3
McCARTY, Terri, F	5-0	6-1.2	5-1.0	3-4	75.0	0-0	00.0	6-0	0	2	0	1	38-7.6
TEST, Kelli, G	6-0	0-0.0	1-0.2	0-1	00.0	0-0	00.0	4-0	0	5	0	1	16-2.7
FLORIDA STATE	12	887-73.9	494-41.2	345-798	43.2	175-264	66.3	246-11	139	230	20	92	2425
OPPONENTS	12	936-78.0	521-43.4	380-825	46.1	154-270	57.0	248-4	186	211	37	110	2425

Florida State rebound totals include 50 team rebounds but not 40 dead ball rebounds.
Opponent rebound totals include 50 team rebounds but not 39 dead ball rebounds.

1987-88 STATISTICS AND RESULTS

FLORIDA STATE GAME-BY-GAME RESULTS

OPPONENT	W/L	SCORE	FSU HIGH SCORER	REBOUNDER	RECORD	STREAK	ATTEN
New Mexico State ¹	W	73-64	Burnett, 27	Burnett, 6	1-0	W-1	250
DePaul ¹	L	68-82	Davis, 18	Burnett, 10	1-1	L-1	475
Wisconsin ²	W	100-67	Burnett, 28	Davis, Corn, 7	2-1	W-1	490
West Virginia ² (OT)	W	68-58	Burnett, 22	Hall, 11	3-1	W-2	550
at Stetson	L	69-75	Burnett, Davis, 15	Davis, Garrett, 8	3-2	L-1	215
at Georgia Southern (OT)	W	83-77	Burnett, 30	Harvis, 14	4-2	W-1	350
at North Carolina	L	79-82	Burnett, 29	Davis, Corn, Harvis, Hall, 7	4-3	L-1	150
Georgia	L	72-91	Burnett, 25	Burnett, 6	4-4	L-2	800
Wisconsin-Green Bay	L	64-67	Burnett, 18	Harvis, 10	4-5	L-3	400
New Orleans	L	61-71	Burnett, 16	Burnett, Harvis, 6	4-6	L-4	350
Memphis State (M)(OT)	L	90-91	Burnett, 29	Hall, 16	4-7	L-5	329
Southern Mississippi (M)	L	60-69	Harvis, 16	Harvis, 10	4-8	L-6	213
Florida A&M (N)	L	68-73	Harvis, 14	Hall, 9	4-9	L-7	2,108
South Carolina (M)	L	55-85	Garrett, 20	Garrett, 7	4-10	L-8	200
at Valdosta State	L	77-83	Burnett, 21	Hall, 13	4-11	L-9	500
Virginia Tech (M)	W	61-59	Burnett, 29	Burnett, 10	5-11	W-1	280
Alabama	L	64-70	Garrett, 17	Hall, 7	5-12	L-1	173
Cincinnati (M)	L	59-70	Storey, 19	Harvis, 7	5-13	L-2	350
Louisville (M)	W	99-65	Burnett, 30	Hall, 9	6-13	W-1	167
at Memphis State (M)	L	89-94	Burnett, 24	Clark, 11	6-14	L-1	429
at Southern Miss (M)	L	68-84	Storey, 16	Clark, 10	6-15	L-2	289
at Virginia Tech (M)	L	81-97	Burnett, 34	Hall, 11	6-16	L-3	250
at South Carolina (M)	L	86-96	Storey, 18	Hall, 6	6-17	L-4	789
Florida	W	71-55	Burnett, 27	Clark, 8	7-17	W-1	380
at Louisville (M)	W	73-70	Burnett, 19	Burnett, 15	8-17	W-2	300
at Cincinnati (M)	W	66-58	Davis, 17	Clark, 7	9-17	W-3	358
Cincinnati ³	L	76-78	Burnett, 30	Harvis, Burnett, 7	9-18	L-1	370

¹Coopers & Lybrand Invitational, Chicago, Illinois (2nd Place)

²Tallahassee Hilton Classic, Tallahassee, Florida (1st Place)

³Metro Conference Tournament, Tallahassee, Florida

1987-88 FLORIDA STATE INDIVIDUAL POINTS/REBOUNDS GAME-BY-GAME

OPPONENT	Hall	Piat	Garr	Clark	Tuck	McCar	Burn	Davis	Stor	Harv	Corn	Test	Grms	Ruck
New Mexico St.	2/2	0/0	0/1	2/5	0/0	4/3	27/6	20/5	14/1	0/5	4/0	DNP	DNP	DNP
DePaul	5/5	0/1	1/1	6/1	3/7	0/4	17/10	18/8	6/3	4/1	2/1	6/0	0/0	DNP
Wisconsin	14/6	6/1	4/4	8/3	2/3	2/4	28/4	17/7	8/2	0/3	4/7	0/2	7/3	0/1
West Virginia	6/11	0/1	DNP	13/9	0/2	0/0	22/8	15/8	3/0	4/6	5/3	DNP	DNP	DNP
Stetson	6/7	0/0	6/8	4/3	0/0	0/1	15/4	15/8	5/2	12/4	6/4	0/0	0/0	DNP
Georgia Southern	2/2	2/0	0/0	9/8	2/6	0/4	30/12	21/7	3/3	14/14	0/6	DNP	DNP	DNP
North Carolina	4/7	3/1	DNP	2/1	2/0	0/0	29/5	14/7	3/1	16/7	6/7	DNP	DNP	DNP
Georgia	2/1	9/4	2/0	0/1	0/0	2/0	25/6	20/2	0/1	8/5	4/2	DNP	DNP	DNP
Wisc-Green Bay	1/3	2/0	2/1	3/3	0/3	2/2	18/6	8/4	2/1	17/10	6/3	3/0	DNP	DNP
New Orleans	10/4	2/2	DNP	2/2	DNP	0/2	16/6	14/4	5/1	10/6	2/0	0/0	0/1	DNP
Memphis State	17/16	3/3	DNP	8/10	DNP	DNP	29/3	2/2	9/2	12/6	10/8	DNP	DNP	DNP
Southern Miss	10/8	13/1	2/1	0/1	2/0	DNP	INJ	INJ	8/2	16/10	9/3	0/1	DNP	DNP
Florida A&M	8/9	9/3	13/6	9/4	DNP	DNP	INJ	INJ	9/3	14/3	6/2	0/0	0/1	DNP
South Carolina	3/5	2/0	20/7	5/1	2/1	0/0	0/1	0/1	7/2	4/6	8/2	0/0	4/3	DNP
Valdosta State	16/13	0/2	7/3	2/2	1/4	DNP	21/10	INJ	15/4	11/3	4/1	DNP	DNP	DNP
Virginia Tech	3/5	2/1	4/2	10/5	0/0	DNP	29/10	INJ	7/3	2/3	4/2	DNP	0/0	DNP
Alabama	2/7	5/1	17/2	4/6	0/4	DNP	16/3	INJ	10/1	7/4	3/3	DNP	0/0	DNP
Cincinnati	11/3	0/1	4/2	6/3	DNP	DNP	10/9	INJ	19/3	4/7	5/3	0/0	DNP	DNP
Louisville	9/9	5/1	13/5	11/4	DNP	DNP	30/3	4/2	9/4	7/6	5/2	0/0	6/1	DNP
Memphis State	16/10	6/2	6/4	6/11	0/0	4/3	24/7	0/0	21/7	ILL	6/4	DNP	0/0	DNP
Southern Miss	11/7	0/0	0/1	8/10	0/0	0/2	11/6	10/3	16/2	ILL	6/6	0/0	6/5	DNP
Virginia Tech	8/11	5/2	DNP	4/2	DNP	2/0	34/6	7/1	6/2	8/10	7/2	DNP	0/0	DNP
South Carolina	6/6	5/2	0/0	0/5	6/4	0/0	14/3	11/3	18/4	12/5	6/1	0/0	8/1	DNP
Florida	9/7	0/1	0/1	8/8	0/0	0/0	27/5	12/3	7/5	2/3	6/0	0/0	0/0	0/0
Louisville	7/4	0/0	2/0	7/7	DNP	DNP	19/15	15/7	14/10	5/5	4/3	DNP	0/0	DNP
Cincinnati	2/2	2/1	6/2	4/7	DNP	DNP	12/3	17/4	11/3	10/3	2/3	DNP	0/0	DNP
Cincinnati	6/3	0/1	DNP	2/3	DNP	DNP	30/7	27/3	3/2	8/7	0/1	DNP	DNP	DNP

1987-88 STATISTICS AND RESULTS

1987-88 FLORIDA STATE TEAM GAME-BY-GAME TOTALS

GAME	FGM-FGA	PCT	FTM-FTA	PCT	REB-	PF-DQ	POINTS	AST	TO	BS	S
FLORIDA STATE NEW MEXICO STATE	28-60 27-63	.467 .429	15-20 6-11	.750 .545	34 41	13-0 16-1	30-43 27-37	3 9	20 23	2 2	11 5
FLORIDA STATE DEPAUL	26-71 28-72	.367 .389	13-18 24-30	.722 .800	48 50	23-0 16-0	30-32 29-53	3 11	19 9	2 2	6 9
FLORIDA STATE WISCONSIN	41-86 25-73	.477 .342	15-22 12-22	.682 .545	51 52	20-0 18-0	51-49 27-40	11 4	14 31	3 3	20 8
FLORIDA STATE WEST VIRGINIA	24-65 24-65	.369 .369	19-37 8-14	.514 .571	52 42	16-0 26-2	23-31-14 27-27-4	5 10	26 29	1 2	13 6
FLORIDA STATE STETSON	30-74 29-55	.405 .527	8-16 12-23	.500 .572	43 44	25-1 16-0	39-30 39-36	17 24	20 26	1 1	5 5
FLORIDA STATE GEORGIA SOUTHERN	28-79 34-86	.354 .395	26-34 9-21	.765 .429	70 48	20-0 25-1	36-37-10 36-37-4	9 14	21 12	4 3	6 10
FLORIDA STATE NORTH CAROLINA	34-73 26-61	.466 .426	9-13 29-32	.692 .928	40 41	21-2 16-0	42-37 36-46	11 14	28 28	2 3	16 15
FLORIDA STATE GEORGIA	29-61 36-58	.475 .620	12-16 19-21	.750 .904	26 30	17-0 17-0	26-46 42-49	5 17	21 17	2 4	8 9
FLORIDA STATE WISCONSIN-GREEN BAY	25-60 26-59	.416 .440	13-20 15-21	.650 .714	40 35	21-0 18-0	30-34 27-40	6 6	20 21	4 3	11 12
FLORIDA STATE NEW ORLEANS	25-59 28-62	.424 .452	10-14 15-24	.714 .625	34 42	18-1 14-0	28-33 33-38	12 13	19 13	6 4	6 12
FLORIDA STATE MEMPHIS STATE	39-85 36-82	.458 .439	10-18 17-19	.555 .894	53 44	12-1 18-0	36-42-12 26-52-13	10 15	19 18	2 7	11 7
FLORIDA STATE SOUTHERN MISS	26-54 29-68	.481 .426	7-11 11-27	.636 .407	30 46	24-1 18-1	30-30 33-36	8 10	24 12	1 1	8 10
FLORIDA STATE FLORIDA A&M	26-55 31-57	.527 .543	9-19 11-18	.473 .611	38 26	22-1 21-0	33-35 37-36	29 20	31 26	2 3	15 11
FLORIDA STATE SOUTH CAROLINA	20-61 38-75	.327 .506	14-22 5-13	.636 .384	33 54	19-1 24-0	24-31 42-43	5 15	24 21	3 3	15 12
FLORIDA STATE VALDOSTA STATE	30-69 25-54	.430 .460	15-24 32-39	.630 .820	46 33	26-0 20-0	35-42 32-51	11 7	17 13	1 0	7 8
FLORIDA STATE VIRGINIA TECH	20-48 27-59	.416 .458	21-26 4-11	.808 .364	35 30	13-0 21-0	25-36 29-30	7 4	25 20	1 1	6 11
FLORIDA STATE ALABAMA	20-51 30-69	.392 .435	24-30 8-25	.800 .320	34 43	26-2 28-2	31-33 34-36	9 12	23 21	2 2	7 12
FLORIDA STATE CINCINNATI	24-59 23-59	.406 .389	8-23 24-29	.347 .827	36 46	23-2 20-1	31-28 30-40	9 10	10 10	1 2	5 5
FLORIDA STATE LOUISVILLE	37-62 29-62	.596 .467	23-31 6-22	.742 .272	41 35	18-0 25-0	45-54 31-34	13 5	16 22	1 1	17 7
FLORIDA STATE MEMPHIS STATE	33-78 39-84	.428 .464	16-22 12-23	.727 .522	50 49	22-2 20-0	44-45 49-45	16 22	17 13	2 6	6 9
FLORIDA STATE SOUTHERN MISSISSIPPI	28-66 28-60	.424 .466	11-20 28-39	.550 .717	46 38	30-2 22-0	31-37 38-46	12 21	32 21	3 2	5 16
FLORIDA STATE VIRGINIA TECH	33-83 41-81	.409 .506	13-18 12-18	.722 .667	45 49	18-0 16-0	41-40 42-55	14 28	17 14	1 5	2 5
FLORIDA STATE SOUTH CAROLINA	34-76 36-61	.447 .590	15-22 22-36	.682 .611	40 38	26-2 20-0	43-43 39-57	19 29	12 13	1 7	7 9
FLORIDA STATE FLORIDA	29-68 23-58	.426 .396	12-24 9-16	.500 .562	37 42	17-0 22-1	36-35 29-26	12 6	15 30	0 3	12 7
FLORIDA STATE LOUISVILLE	28-66 30-76	.424 .395	17-24 8-17	.708 .471	56 42	22-0 20-0	35-38 27-43	14 16	21 15	3 2	6 3
FLORIDA STATE CINCINNATI	23-60 24-58	.383 .414	20-27 9-16	.741 .563	29 50	19-0 24-2	26-40 23-35	12 11	14 32	1 0	10 14
FLORIDA STATE CINCINNATI	33-68 30-51	.485 .588	10-14 18-29	.714 .620	32 30	23-0 15-0	32-44 41-37	15 15	16 16	1 4	8 6

1987-88 STATISTICS AND RESULTS

FLORIDA STATE HIGHS/LOWS 1987-88

	FSU	OPPONENT
Most FG Made	41, vs. Wisconsin 12-4-87	41, Virginia Tech, 2-20-88
Fewest FG Made	20, Three times	23, Cincinnati & Florida
Most FG Attempted	86, vs. Wisconsin, 12-4-87	86, Georgia Southern, 12-16-87
Fewest FG Attempted	48, vs. Virginia Tech, 1-30-88	51, Cincinnati, 3-10-88
High FG Percentage	59.6, vs. Louisville, 2-8-88	62.0, Georgia, 1-3-88
Low FG Percentage	32.7, vs. South Carolina, 1-25-88	36.9, West Virginia, 12-5-87
Most 3-pt FG Made	7, vs. Memphis State, 2-13-88	5, Wisconsin, 12-4-87
		Stetson, 12-12-87
Fewest 3-pt FG Made	0, Five times	0, Eight times
Most 3-pt FG Attempted	13, Three times	24, Wisconsin, 12-4-87
Fewest 3-pt FG Attempted	0, vs. Virginia Tech, 1-30-88	0, Two times
High 3-pt Percentage	100.0, Three times (1-1)	55.5, Stetson, 12-12-87
Low 3-pt Percentage	00.0, Four times	00.0, Seven times
Most FT Made	26, vs. Georgia Southern, 12-16-87	32, Valdosta State, 1-28-88
Fewest FT Made	7, vs. Southern Miss, 1-18-88	4, Virginia Tech, 1-30-88
High FT Percentage	80.8, vs. Virginia Tech, 1-30-88	92.8, North Carolina, 12-8-87
Low FT Percentage	34.7, vs. Cincinnati, 2-6-88	27.2, Louisville, 2-8-88
High Rebounds	70, vs. Georgia Southern, 12-16-87	54, South Carolina, 1-25-88
Low Rebounds	26, vs. Georgia, 1-3-88	26, Florida A&M, 1-21-88
Personal Fouls	30, vs. Southern Miss, 2-15-88	28, Alabama, 2-1-88
Low Personal Fouls	12, vs. Memphis State, 1-16-88	16, Cincinnati, 3-10-88
High Point Total	100, vs. Wisconsin, 12-4-87	97, Virginia Tech, 2-20-88
Low Point Total	55, vs. South Carolina, 1-25-88	55, Florida, 2-27-88
High Assists	29, vs. Florida A&M, 1-21-88	29, South Carolina, 2-22-88
Low Assists	3, vs. DePaul & New Mexico State	4, Wisconsin, 12-4-87
High Turnovers	32, vs. New Orleans, 1-13-88	32, Cincinnati, 3-5-88
Blocks	6, vs. New Orleans, 1-13-88	7, Memphis State, 1-16-88
		South Carolina, 2-28-88
Steals	20, vs. Wisconsin, 12-4-87	16, Southern Miss, 2-15-88
Low Steals	2, vs. Virginia Tech, 2-20-88	4, Cincinnati, 3-5-88

1987-88 FLORIDA STATE INDIVIDUAL HIGHS

FG Made	13, Burnett, Three times Davis, vs. Cincinnati, 3-10-88	16, Franklin, Southern Miss, 2-15-88
FG Attempted	34, Burnett vs. Georgia Southern, 12-16-87	27, Ehrhard, DePaul, 11-28-87
FT Made	13, Burnett vs. Virginia Tech, 1-30-88	15, Watts, North Carolina, 12-18-87
FT Attempted	15, Burnett vs. Virginia Tech, 1-30-88	15, Vines, DePaul, 11-28-87
Points	34, Burnett, vs. Virginia Tech, 2-20-88	Watts, North Carolina, 12-18-87
		33, Vines, DePaul, 11-28-87
Rebounds	16, Hall vs. Memphis State, 1-16-88	S. Williams, Valdosta State, 1-28-87
Assists	10, Piatnik, vs. Florida A&M, 1-21-88	21, Vines, DePaul, 11-28-87
Turnovers	10, Hall, vs. Florida A&M, 1-21-88	12, Diaz, South Carolina, 2-22-88
Blocks	3, Hall, Three times	11, Sweat, Cincinnati, 3-5-88
Steals	6, Davis vs. Wisconsin, 12-4-87 Davis, vs. North Carolina, 12-18-87	4, Upshaw, New Orleans, 1-13-88
		6, Pyles, Alabama, 2-1-88

1987-88 FLORIDA STATE INDIVIDUAL SEASON HIGHS

PLAYER	POINTS	REBOUNDS	ASSISTS	BLOCKED SHOTS	STEALS
BEV BURNETT	34 VIRGINIA TECH 2-20-88	15 LOUISVILLE 3-3-88	2 EIGHT TIMES	-	4 NORTH CAROLINA 12-18-87
CHRIS DAVIS	27 CINCINNATI 3-10-88	8 THREE TIMES	6 STETSON 12-12-87	2 THREE TIMES	6 WISCONSIN, N CAROLINA 12-4, 12-18-87
ROBIN STOREY	21 MEMPHIS ST 2-13-88	10 LOUISVILLE 3-3-88	5 CINCINNATI 3-5-88	-	4 WISCONSIN 12-4-87
ROBIN CORN	10 MEMPHIS ST 1-16-88	8 MEMPHIS ST 1-16-88	6 MEMPHIS ST 2-13-88	1 N CAROLINA 12-18-87	5 WISCONSIN 12-4-87
ALINE HARVIS	17 WISC-GB 12-16-87	14 GA SOUTHERN 12-16-87	2 FLORIDA A&M & USC	1 THREE TIMES	4 N CAROLINA 12-18-87
KELLI TEST	6 DEPAUL 11-28-87	1 WISCONSIN 12-4-87	-	-	1 WISCONSIN 12-4-87
SARAH GRIMES	8 S CAROLINA 2-22-88	5 SOUTHERN MISS 2-15-88	-	1 WISCONSIN & USC	1 CINCINNATI 3-5-88

ALL TIME LETTERWINNERS

A-B-C

Joanne Abraham	1971-72-73
Vicki Alexander	1977
Deb Allen	1972-73-74
Jackie Arnold	1978-79
Jan Bailey	1974-75-76
Jill Baker	1981-82-83-84
Karen Barineau	1978-79
Judy Battles	1975-76-77
Diane Blaydes	1979-80
Cindy Boehmer	1973-74-75-76
Veronica Bouknight	1986
Chris Brokas	1976-77
Susan Brown	1974-75-76
Mary Buchanan	1987
Ruthann Burgun	1981
Bev Burnett	1985-86-88
Joye Burroughs	1982
Mary Anne Cannon	1973-74-75-76
Gussie Clark	1985-86-87-88
Brenda Cliette	1983, 1987
Ann Collins	1977-78
Emma Colquitt	1973-74-75-76
Robin Corn	1988

D-E-F

Chris Davis	1988
Melissa Davis	1978
Vicki Davis	1971-72-73
Tizza Drew	1977
Debbie Edwards	1970-71-72
Denise Eilbacher	1977-78
Meg Fahey	1982
Cindy Frank	1971-72-73
Lisa Foglio	1981-82-83

G-H-I

Becky Gailey	1978
Nancy Galkantas	1982-83
Sue Galkantas	1981-82-83-84
Val Garrett	1985-86-87-88
Cheryl Glover	1986
Scooby Golden	1979-80
Jan Gomez	1970-71
Clara Gonzalez	1975-76-77
Marlene Graham	1973-74-75-76
Joan Gray	1970-71-72
Linda Gray	1979-80-81
Sarah Grimes	1988
Moody Gwyn	1986
Sarah Hall	1985-86-87-88
Gina Harden	1979-80
Rose Harper	1978-79-80-81
Valene Harris	1986-87
Aline Harvis	1988
Peggy Harstvedt	1976-77-78
Brauna Hatzell	1978
Candi Houston	1970-71
Rita Ivy	1970-71-72

J-K-L

Sheri Kaminski	1984-85-86-87
Francene Kocsis	1975-76
Barb Koontz	1974-75-76
Martha Lappe	1978-79
Charlene Lain	1970-71-72
June Lasseter	1980
Laine Lasseter	1979-80-81-82

M-N-O-P

Stacy Macon	1977
Lynn Marnie	1980-81-82-83
Terri McCarty	1985-87-88
Lynn Dee McDonald	1980-81
Linda-Ann McGowan	1984-85-86
Yvette McKinney	1973-74-75
Val Nelson	1977
LeeVayn Oliver	1981-82-83-84
Sunnie O'Neal	1980-81-82
Anne Owen	1970-71
Karyn Palgut	1982
Barb Parr	1974-75-76
Jan Piatnik	1985-86-87-88
Patti Pink	1976-77
Kris Podulka	1979-80-81
Gayle Preston	1975-76
Debbie Putzi	1981

Q-R-S

Kim Rickardson	1977
Lorraine Rimson	1984-85
Cherry Rivers	1977-78-79-80
Sandra Ruffo	1978
Meg Shuler	1979
Susan Seamon	1971-72-73
Darlene Shannon	1978-79
Joanne Sharpe	1970-71-72
Jode Shaw	1975
Dawn Shields	1980
Celia Slater	1984-85
Lori Smith	1984
Vicki Spercing	1971-72
Shirley Sildsby	1976-77-78
Glenda Stokes	1980-81-82-83
Penny Stone	1985
Robin Storey	1988

T-U-V

Kelli Test	1988
Terry Thomas	1978
Susie Thrapp	1981
Teresa Tinsley	1979-80
Debbie Tippins	1977
Angela Tucker	1987-88

W-X-Y-Z

Cheryl Weigand	1976-77-78
Lahna Wood	1983
Diane Wright	1971-72
Monica Wright	1970-71-72

Commissioner's List

Each year, Metro Conference commissioner Ralph McFillen honors Metro athletes that have excelled in both academics and athletics. The following Lady Seminole basketball players have been named to this honor roll since the 1984-85 academic year:

Maurine Martin 1985
 Celia Slater 1985
 Penny Stone 1985
 Terri McCarty 1986, 1987, 1988
 Sarah Hall 1986, 1987, 1988

1988-89 Travel Itinerary

Date	Opponent	Hotel
November 23-27	Lady Sunshine Classic	Sheraton Orlando North (407/660-9000)
December 10-12	Miami	Mariott Dadeland (305/663-1035)
December 12-13	Florida	Gainesville Hilton (904/377-4000)
December 18-20	Alabama-Birmingham	Holiday Inn Homewood (205/942-2041)
January 13-15	Cincinnati	Clarion Hotel (512/352-2100)
January 15-17	Louisville	Hyatt Hotel (502/587-3434)
January 20-22	Virginia Tech	Blacksburg Marriott (703/552-7001)
January 22-24	South Carolina	Columbia Mariott (803/771-7000)
January 29	Alabama	Shoney's Inn (205/556-7950)
February 3	Southern Mississippi	Hampton Inn (601/264-8080)
February 15-17	Georgia	Holiday Inn (404/549-4433)
February 24-26	South Florida	Sheraton Grand Hotel (813/286-4400)
March 1-3	Memphis State	Park Place Suites (901/452-7275)
March 7-12	Memphis-Metro Conference Tournament	Park Place Suites (901/452-7275)

INDIVIDUAL SINGLE GAME RECORDS

INDIVIDUAL SINGLE GAME RECORDS

Florida State

Points - 37, Sue Galkantas vs. Florida (12/3/80)
Points (Half) - 25, Sue Galkantas vs. Georgia State (11/21/80)
Field Goals Made - 17, Laine Lasseter vs. SE Louisiana (12/13/79)
Field Goals Attempted - 34, Bev Burnett vs. Georgia Southern (12/16/87)
Free Throws Made - 14, Sue Galkantas vs. Tulane (2/5/83) and vs. Memphis State (1/25/82)
Free Throws Attempted - 17, Sue Galkantas vs. Tulane (1/25/82)
Rebounds - 23, Laine Lasseter vs. South Florida (12/2/78)
Assists - 14, Shirley Silsby vs. Flagler (2/6/76)
Steals - 8, Glenda Stokes vs. Oral Roberts (12/15/79)
Blocked Shots - 6, Brenda Cliette vs. Army (1/2/83) and Laine Lasseter vs. Mercer (11/17/78)

Opponents

Points - 44, Wanda Hightower, Alabama-Birmingham (1/13/80)
Points (Half) - 25, Wanda Hightower, Alabama-Birmingham (1/13/80)
Field Goals Made - 18, several players; last Wanda Hightower, Alabama-Birmingham (1/13/80)
Field Goals Attempted - 32, Cheryl Cook, Cincinnati (2/29/84)
Free Throws Made - 15, Chris Watt, North Carolina (12/18/87)
Free Throws Attempted - 17, Robin Lee, Virginia Tech (1/16/82)
Rebounds - 21, Diana Vines, DePaul, (11/28/87)
Assists - 14, Jackie Spencer, Louisville (1/12/85)
Steals - 9, Several, Last Shelia Collins, Tennessee (2/18/85)
Blocked Shots - 7, several players, last Marilyn Stephens, Temple (1/6/83)

Florida State Single Game Highs

Points

37, Sue Galkantas vs. Florida, 1980
 34, Sue Galkantas vs. Tulane, 1983
 34, Sue Galkantas vs. Florida A&M, 1981
 34, Laine Lasseter vs. SE Louisiana, 1980
 34, Bev Burnett vs. Florida A&M, 1986
 34, Bev Burnett vs. Virginia Tech, 1988
 33, Sue Galkantas vs. Middle Tennessee State, 1983
 33, Laine Lasseter vs. Mercer, 1981
 33, Sue Galkantas vs. Georgia State, 1980
 33, Sue Galkantas vs. Virginia Tech, 1982
 32, Bev Burnett, vs. South Florida, 1986
 32, Sue Galkantas vs. South Alabama, 1981
 32, Sue Galkantas vs. Miami, 1980
 32, Laine Lasseter vs. Florida, 1979
 31, Laine Lasseter vs. Alabama, 1978
 30, Cherry Rivers vs. Miami, 1980
 30, Sue Galkantas vs. Kent State, 1982
 30, Lisa Foglio vs. Miami (0), 1982
 30, Sue Galkantas vs. Memphis State, 1982
 30, Sue Galkantas vs. Tulane, 1982
 30, Bev Burnett vs. Cincinnati, Louisville, Ga. Southern, 1988

Rebounds

23, Laine Lasseter vs. South Florida, 1978
 21, Glenda Stokes vs. Virginia Tech, 1982
 19, Chris Brokas vs. Troy State, 1979
 19, LeeVayn Oliver vs. Cincinnati, 1981
 18, Sarah Hall vs. Central Florida, 1986
 17, Laine Lasseter vs. Florida, 1979
 17, Sue Galkantas vs. Florida, 1980
 17, Brenda Cliette vs. Montclair State, 1983
 17, Sarah Hall vs. West Georgia, 1986
 17, Sue Galkantas vs. Georgia Tech, 1980
 17, Lorraine Rimson, vs. Georgetown, 1986
 17, Lorraine Rimson vs. Radford, 1986
 16, Cherry Rivers vs. Miami, 1980
 16, Laine Lasseter vs. Alabama-Birmingham, 1978
 16, Cherry Rivers vs. Louisville, 1979
 16, Laine Lasseter vs. Appalachian State, 1979
 16, Lorraine Rimson vs. Florida A&M, 1984
 16, Lorraine Rimson vs. Cincinnati, 1984
 16, Sarah Hall vs. Memphis State, 1988



Valerie Garrett (left) and Sarah Hall (right) closed out their four-year careers at FSU last season.

SINGLE SEASON RECORDS

Total Points

Name	Season	Games	Points
Sue Galkantas	1982	29	710
Sue Galkantas	1981	34	627
Cherry Rivers	1980	31	514
Bev Burnett	1988	25	533
Sue Galkantas	1984	28	495
Sue Galkantas	1983	29	491
Cherry Rivers	1979	36	464
Lorraine Rimson	1984	31	459
Lisa Foglio	1983	29	445
Lisa Foglio	1982	26	439
Jackie Arnold	1978	23	410
Laine Lasseter	1979	22	405
Brenda Cliette	1983	29	392

Scoring Average

Name	Season	Games	Points	AVG.
Sue Galkantas	1981	29	627	21.6
Bev Burnett	1988	25	533	21.3
Sue Galkantas	1980	34	710	20.9
Laine Lasseter	1979	22	405	18.4
Cherry Rivers	1979	26	464	17.8
Jackie Arnold	1978	23	410	17.8
Sue Galkantas	1984	31	495	17.7
Laine Lasseter	1980	21	371	17.6
Bev Burnett	1986	21	363	17.3
Sue Galkantas	1983	29	491	16.9
Lisa Foglio	1982	26	439	16.9
Cherry Rivers	1980	31	514	16.6
Lorraine Rimson	1985	24	391	16.3
Lisa Foglio	1983	29	445	15.3

Steals

Name	Year	Games	Steals
Brenda Cliette	1987	24	94
Brenda Cliette	1983	29	77
Glenda Stokes	1982	37	68
Lisa Foglio	1982	26	64
Sunnie O'Neal	1982	37	61
Lisa Foglio	1983	29	59
Sheri Kaminski	1984	31	55
Glenda Stokes	1980	35	54
LeeVayn Oliver	1982	35	52
Lori Smith	1984	31	51

Total Rebounds

Name	Season	Games	Rebounds
Cherry Rivers	1977	24	336
Brenda Cliette	1987	24	302
Sue Galkantas	1982	34	296
Glenda Stokes	1980	35	294
Glenda Stokes	1982	37	276
Sue Galkantas	1981	29	270
Brenda Cliette	1983	29	269
Lorraine Rimson	1984	31	269
LeeVayn Oliver	1982	35	260
Cherry Rivers	1980	31	257
Sarah Hall	1986	28	233
LeeVayn Oliver	1983	29	248
Cherry Rivers	1978	22	226
LeeVayn Oliver	1984	31	223

Rebounding Average

Name	Season	Game	Rebounds	AVG.
Cherry Rivers	1977	24	336	14.0
Brenda Cliette	1987	24	302	12.6
Cherry Rivers	1978	22	226	10.3
Laine Lasseter	1979	22	222	10.0
Sue Galkantas	1981	29	270	9.3
Brenda Cliette	1983	29	269	9.3
Sue Galkantas	1982	34	296	8.7
Lorraine Rimson	1984	31	269	8.7
Glenda Stokes	1980	35	294	8.4
LeeVayn Oliver	1983	30	298	8.3
Cherry Rivers	1980	31	257	8.3
Sarah Hall	1986	28	233	8.3

Assists

Name	Season	Games	Assists
Shirley Silsby	1977	23	184
Sheri Kaminski	1984	31	155
Lynn Marnie	1982	36	135
Rose Harper	1980	35	125
Sunnie O'Neal	1982	37	120
Teresa Tinsley	1979	27	102
Lisa Foglio	1981	27	98
Lisa Foglio	1983	29	96
Teresa Tinsley	1980	35	95
Sheri Kaminski	1987	26	93
Lynn Marnie	1983	23	93
Celia Slater	1984	27	83
Lisa Foglio	1982	26	80

Field Goal Percentage

Name	Season	Games	FG-FGA*	PCT.
Glenda Stokes	1983	29	103-171	.602
Lisa Foglio	1982	26	190-319	.596
Sue Galkantas	1983	29	184-323	.570
Laine Lasseter	1980	21	162-290	.560
LeeVayn Oliver	1984	31	140-262	.534
Sue Galkantas	1982	34	282-536	.526
LeeVayn Oliver	1983	30	147-281	.523
LeeVayn Oliver	1982	35	160-307	.521
Laine Lasseter	1981	28	154-296	.520
Lisa Foglio	1982	29	184-357	.515
Lisa Foglio	1981	27	139-270	.515

*100 made min.

Free Throw Percentage

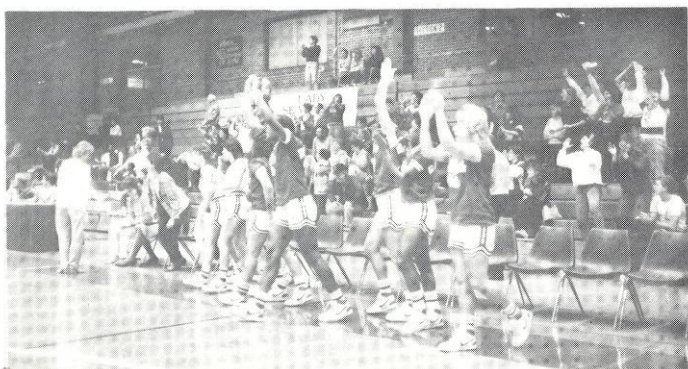
Name	Season	Games	FT-FTA*	PCT.
Lisa Foglio	1983	29	77-94	.819
Sheri Kaminski	1985	24	51-63	.809
Lisa Foglio	1981	27	65-81	.802
Sue Galkantas	1983	29	123-154	.799
Bev Burnett	1988	25	131-169	.775
Sue Galkantas	1984	28	111-144	.771
Sue Galkantas	1981	29	109-139	.755
Sheri Kaminski	1986	17	38-51	.745
Lisa Foglio	1982	26	59-80	.739
Sheri Kaminski	1984	31	64-88	.727
Lorraine Rimson	1984	31	95-134	.709
Lynn Dee McDonald	1980	28	103-150	.687
Sue Galkantas	1982	29	146-214	.682

* 50 made min.

Benjamin "Buzz" Narbut Award

Presented annually to the Lady Seminole Basketball player that exhibits outstanding character, dedication and desire. Named after Benjamin "Buz" Narbut, former FSU assistant coach who was killed in a tragic automobile accident in 1984.

1984 - Lee Vayn Oliver
 1985 - Celia Slater
 1986 - Penny Stone
 1987 - Terri McCarty
 1988 - Jan Piatnik



CAREER RECORDS

Total Points

Name	Seasons	Games	Points
Sue Galkantas	1980-84	120	2323
Cherry Rivers	1976-80	103	1636
Laine Lasseter	1978-82	86	1265
Lisa Foglio	1980-83	82	1227
LeeVayn Oliver	1981-84	122	1166
Bev Burnett	1984-88	74	1144
Glenda Stokes	1979-83	130	1118
Lorraine Rimson	1983-85	78	1135
Sarah Hall	1984-1988	110	960
Chris Brokas	1976-79	64	833
Shirley Silsby	1976-79	69	799
Rose Harper	1977-81	111	799

Scoring Average

Name	Seasons	Games	Points	AVG.
Sue Galkantas	1980-83	120	2323	19.4
Cherry Rivers	1976-80	103	1636	15.9
Jackie Arnold	1977-79	46	727	15.8
Bev Burnett	1984-88	74	1144	15.5
Lisa Foglio	1981-83	82	1227	15.0
Laine Lasseter	1978-82	86	1265	14.6
Lorraine Rimson	1983-85	78	1138	14.6
Brenda Cliette	1982-87	53	746	14.1
Chris Brokas	1976-79	64	833	13.0
Shirley Silsby	1976-79	69	799	11.6
LeeVayn Oliver	1980-84	122	1166	9.6
Celia Slater	1983-85	55	525	9.5
Lynn Dee McDonald	1979-81	47	433	9.2

Steals

Name	Seasons	Games	Steals
Glenda Stokes	1979-83	130	201
Cherry Rivers	1976-80	103	189
Lisa Foglio	1980-83	82	181
Brenda Cliette	1982-87	53	171
Sheri Kaminski	1983-87	98	171
Sue Galkantas	1980-84	120	162
Sunnie O'Neal	1980-82	72	140
LeeVayn Oliver	1980-84	122	122
Rose Harper	1977-81	111	107
Sarah Hall	1984-1988	110	105
Lynn Marnie	1980-83	86	93
Lori Smith	1983-85	51	88

Total Rebounds

Name	Seasons	Games	Rebounds
Cherry Rivers	1976-80	103	1029
Sue Galkantas	1980-84	120	1006
Glenda Stokes	1979-83	130	938
LeeVayn Oliver	1980-84	122	869
Sarah Hall	1984-88	110	785
Lorraine Rimson	1983-86	78	652
Laine Lasseter	1978-82	86	624
Chris Brokas	1976-79	64	580
Brenda Cliette	1982-87	53	571
Rose Harper	1977-81	111	384
Jackie Arnold	1977-79	46	325
Linda Gray	1978-82	82	309
Lisa Foglio	1980-83	82	269

Rebounding Average

Name	Seasons	Games	Rebounds	AVG.
Brenda Cliette	1982-87	53	571	10.8
Cherry Rivers	1976-80	103	1029	10.0
Chris Brokas	1976-79	64	530	9.1
Sue Galkantas	1980-84	122	1006	8.4
Lorraine Rimson	1983-85	78	652	8.4
Sarah Hall	1984-88	110	785	7.1
Glenda Stokes	1979-83	130	938	7.2
Laine Lasseter	1978-82	86	624	7.2
LeeVayn Oliver	1980-84	122	869	7.1
Jackie Arnold	1977-79	46	325	7.1

Assists

Name	Seasons	Games	Assists
Sheri Kaminski	1983-87	98	355
Shirley Silsby	1976-79	69	348
Lynn Marnie	1980-83	86	293
Lisa Foglio	1980-83	82	274
Rose Harper	1977-81	111	268
Sunnie O'Neal	1980-83	72	253
Sue Galkantas	1980-84	120	240
Jan Piatnik	1984-88	110	236
Teresa Tinsley	1978-81	67	198
Glenda Stokes	1979-83	130	148

Field Goal Percentage

Name	Seasons	Games	FG-FGA*	PCT.
Lisa Foglio	1980-83	82	513-946	.542
Sue Galkantas	1980-84	120	919-1753	.524
Laine Lasseter	1978-82	86	540-1036	.521
LeeVayn Oliver	1980-84	122	498-957	.520
Glenda Stokes	1979-83	130	417-827	.504
Lynn Dee McDonald	1979-81	47	154-330	.467
Brenda Cliette	1982-87	53	309-665	.465
Celia Slater	1983-85	55	240-530	.453
Bev Burnett	1984-88	74	438-980	.447
Cherry Rivers	1976-80	82	669-1513	.442
Linda Gray	1978-82	82	197-450	.437

*300 Attempts Min.

Free Throw Percentage

Name	Seasons	Games	FT-FTA	PCT
Lisa Foglio	1980-83	82	201-255	.788
Sue Galkantas	1980-84	120	485-651	.745
Sheri Kaminski	1983-87	98	208-284	.732
Bev Burnett	1984-88	74	267-367	.727
Lorraine Rimson	1983-85	78	232-338	.686
Lynn Dee McDonald	1979-81	47	125-185	.675
Lynn Marnie	1980-83	86	91-141	.667
LeeVayn Oliver	1980-84	122	170-257	.661
Sunnie O'Neal	1980-83	72	65-101	.644
Linda Gray	1978-82	82	123-197	.624
Rose Harper	1977-81	111	101-163	.620
Laine Lasseter	1978-82	86	184-301	.611

*100 Attempts Min.

Games Played

Name	Seasons	Games
Glenda Stokes	1979-83	130
LeeVayn Oliver	1980-84	122
Sue Galkantas	1980-84	120
Rose Harper	1977-81	111
Sarah Hall	1984-88	110
Jan Piatnik	1984-88	110
Cherry Rivers	1976-80	103
Sheri Kaminski	1983-87	98
Laine Lasseter	1978-82	86
Lynn Marnie	1980-83	86
Lisa Foglio	1980-83	82
Linda Gray	1978-82	82



RECORDS AGAINST OPPONENTS

Opponent	First Meeting	Last Meeting	W-L	Opponent	First Meeting	Last Meeting	W-L
Alabama	1980	1988	2-3	Middle Tennessee	1983	1983	1-0
Alabama-Birmingham	1978	1987	2-5	Mississippi	1980	1983	1-2
Alabama State	1976	1979	0-2	Mississippi College	1979	1982	1-1
Alaska	1984	1984	1-0	Mississippi State	1978	1979	0-2
Albany State	1975	1987	4-8	Mississippi - Women	1980	1982	2-0
Appalachian State	1979	1979	0-1	Mississippi Valley	1982	1982	0-1
Arizona State	1983	1983	0-1	Missouri	1984	1984	0-1
Army	1983	1983	1-0	Montclair State	1983	1983	1-0
Auburn	1975	1985	0-4	Nebraska	1983	1983	1-0
Barry College	1973	1973	1-0	New Mexico State	1987	1987	1-0
Belhaven	1980	1980	1-0	New Orleans	1978	1988	0-4
Brigham Young	1982	1983	1-1	North Carolina	1982	1988	2-1
Central Florida	1976	1986	4-2	Northeast Missouri	1978	1978	1-0
Central Missouri	1980	1980	0-1	Northwest Louisiana	1980	1980	1-0
Cincinnati	1978	1988	6-6	Old Dominion	1982	1982	0-1
Clemson	1980	1980	0-1	Oklahoma State	1983	1983	1-0
College of Charleston	1976	1976	0-1	Oral Roberts	1979	1979	0-1
Colorado	1984	1984	1-0	Oregon State	1982	1982	0-1
Colorado State	1986	1986	1-0	Pensacola JC	1973	1977	2-0
Dayton	1976	1976	1-0	Penn State	1982	1984	0-2
Delta State	1977	1982	1-2	Pepperdine	1982	1982	1-0
Denver	1980	1980	1-0	Purdue	1981	1981	1-0
DePaul	1987	1987	0-1	Radford	1986	1986	0-1
East Carolina	1980	1981	0-2	Rice	1987	1987	1-0
Fairfield	1985	1985	0-1	Rollins College	1975	1979	4-0
Flagler	1973	1975	3-4	St. Joseph's	1983	1983	1-0
Florida	1974	1988	21-22	St. Louis	1981	1982	2-0
Florida Atlantic	1987	1987	0-1	Savannah College	1974	1974	0-1
Florida A&M	1975	1988	12-7	Shorter College	1974	1975	0-4
Florida International	1976	1983	4-0	South Alabama	1976	1987	4-3
Florida Southern	1980	1980	1-0	South Carolina	1977	1988	0-11
Fordham	1984	1984	1-0	Southeast Louisiana	1980	1981	1-1
Fort Valley	1975	1975	0-1	Southern Mississippi	1979	1988	1-11
Georgetown	1984	1986	0-2	South Florida	1974	1985	24-2
Georgia	1988	1988	0-1	Stanford	1984	1984	1-0
Georgia Southern	1975	1988	1-4	Stetson	1976	1988	7-4
Georgia State	1980	1980	0-1	Talladega College	1975	1975	0-1
Georgia Tech	1974	1980	1-1	Tampa	1975	1986	4-1
Idaho	1984	1984	0-1	Temple	1983	1983	1-0
Indiana	1980	1980	0-1	Tennessee	1985	1986	0-2
John Abbott	1976	1977	2-0	Texas	1984	1984	0-1
Judson College	1981	1981	1-0	Tift	1974	1974	1-0
Kansas	1983	1983	1-0	Tennessee-Chattanooga	1982	1982	1-0
Kent State	1981	1981	1-0	Toledo	1987	1987	1-0
Lewis State	1982	1982	1-0	Troy State	1977	1979	1-1
Louisville	1978	1988	4-10	Tulane	1978	1986	6-7
McNeese State	1981	1981	1-0	Valdosta State	1975	1988	1-11
Memphis State	1977	1988	3-12	Virginia Tech	1980	1988	5-7
Mercer	1974	1984	1-6	Western Kentucky	1983	1983	0-1
Miami	1975	1987	14-4	West Florida	1975	1975	1-0
Miami (OH)	1982	1982	1-0	West Georgia College	1975	1986	2-2
Miami Dade CC-Dtn.	1976	1976	1-0	West Virginia	1987	1987	1-0
Miami Dade CC-North	1975	1975	1-0	Wichita State	1984	1984	0-1
Miami Dade CC-South	1974	1976	1-1	Winthrop College	1979	1979	1-2
Michigan	1984	1984	0-1	Wisconsin	1987	1987	1-0
				Wisconsin-Green Bay	1988	1988	0-1



Metro Conference Tournaments



Year	Site	Champion	Outstanding Player
1979-80	Tallahassee, FL	Louisville	Betty Booker, Memphis State
1980-81	New Orleans, LA	Louisville	Stephanie Edwards, Louisville
1981-82	Memphis, TN	Memphis State	Regina Street, Memphis State
1982-83	Louisville, KY	Louisville	Janet McNew, Louisville
1983-84	Cincinnati, OH	Louisville	Stephanie Edwards, Louisville
1984-85	Hattiesburg, MS	Memphis State	Portland McCaskill, Southern Miss.
1985-86	Columbia, SC	South Carolina	Brantley Southers, South Carolina
1986-87	Blacksburg, VA	Southern Miss.	Lesha Franklin, Southern Miss
1987-88	Tallahassee, FL	South Carolina	Martha Parker, South Carolina

YEAR BY YEAR RESULTS

1973-74 (7-3)	FSU	OPP
Florida	39	49
Barry College	50	33
Florida	52	36
Flagler	53	35
Florida	32	31
Mercer	45	64
Flagler	31	41
South Florida	62	41
Flagler	76	38
Florida	48	45

1974-75 (15-17)	FSU	OPP
Albany State	62	55
Valdosta State	42	53
Florida A&M	77	34
Shorter College	52	65
Shorter College	63	78
Savannah State	48	70
South Florida	68	40
Miami-Dade South	59	41
Rollins College	61	48
Florida	44	67
Flagler College	51	60
Florida	53	47
Georgia Tech	58	22
Shorter College	36	54
Tift	58	47
Valdosta State	50	54
Shorter College	35	69
Georgia Southern	53	65
Valdosta State	32	49
Albany State	43	61
Florida A&M	47	26
Florida	41	49
Tampa	48	36
Flagler	52	59
Miami	59	45
South Florida	70	53
Florida	44	28
Flagler	59	55
Flagler	45	53
Miami-Dade North	59	40
Auburn	51	64
Fort Valley	43	58

1975-76 (12-12)	FSU	OPP
Rollins	56	43
Albany State	50	71
West Florida	100	16
South Florida	57	41
Tampa	66	48
Rollins	64	56
Valdosta State	44	91
Tampa	82	50
West Georgia College	61	88
Talladega College	55	100
College of Charleston	61	93
Albany State	44	73
Miami-Dade South	67	70
Florida International	58	35
Pensacola J.C.	73	51
Florida	65	59
Georgia Southern	54	83
Florida	45	64
Miami-Dade Downtown	73	51
Florida International	81	44
Florida	45	68
Valdosta State	50	101
Florida	39	55

1976-77 (10-12)	FSU	OPP
Albany State	38	87
Mercer	53	96
Florida	54	80
Valdosta State	65	104
John Abbot College	62	60
Setson	78	29
Florida	65	67
Rollins	87	52
Central Florida	77	63
Dayton	104	33
South Alabama	87	66
Albany State	73	80
Alabama State	73	80
West Georgia	54	79
Judson College	97	79
Setson	72	57
Pensacola J.C.	86	40
Valdosta State	60	92
South Florida	69	46
Florida	67	72
Florida	60	72
Delta State	60	106

1977-78 (8-8)	FSU	OPP
Valdosta State	57	92
Florida	93	66
Tryo State	71	61
South Florida	72	58
Memphis State	69	91
South Carolina	52	115
Georgia Southern	71	79
John Abbot College	71	67
Florida A&M	84	59
Florida	63	102
Albany State	86	94
Florida	100	80
South Florida(OT)	84	76
*South Florida	65	70
*South Florida	86	61
*South Florida	59	61
*State Tournament		

1978-79 (18-15)	FSU	OPP
Mississippi State	60	64
South Alabama	76	43
Mercer	73	83
N.E. Missouri	87	67
Setson	61	63
South Florida	89	80
Florida	88	79
New Orleans	101	66
Tulane	65	78
Louisville	60	94
Cincinnati	61	57
Alabama-Birmingham	85	87
Memphis State	78	101
South Florida	73	56
Florida	91	72
Miami	79	53
New Orleans	101	66
Florida A&M(H)	79	84
Louisville	73	77
West Georgia College	73	59
Alabama State	73	95
Alabama-Birmingham	79	95
Miami	79	72
Appalachian State	83	89
Winthrop College	63	71
Setson	59	61
Florida A&M (A)	61	77
Setson	89	56
South Florida	90	56
Miami	83	57
Florida	89	85
Florida	101	94
Delta State	64	93

1979-80 (13-22)	FSU	OPP
Mississippi State	61	73
Alabama-Birmingham	85	95
South Carolina	68	93
South Carolina	87	58
Florida A&M(H)	74	61
Southern Miss.	65	107
Troy State	78	92
Belhaven	81	75
Miami	82	64
Oral Roberts	68	74
Virginia Tech	67	57
Louisville	67	86
Tulane	74	95
Mississippi College	50	90
Alabama	61	88
Alabama-Birmingham	82	96
Florida	92	77
Miami	93	74
East Carolina	61	69
Mississippi	52	80
Louisville	60	77
Mercer	86	100
Northwest Louisiana	85	81
Florida	88	84
Florida Southern	97	58
Virginia Tech	54	77
Southeast Louisiana	70	73
Tulane	65	75
Florida A&M(A)	60	67
South Florida	100	88
Florida	67	78
Miami	72	61
Florida	84	76
Florida	71	84
Mercer	75	84

1980-81 (14-15)	FSU	OPP
Georgia Tech(A)	84	97
Georgia Southern (A)	79	96
South Alabama (A)	79	82
Valdosta State*	58	62
Alabama (N)**	77	76
Florida (H)	90	48
Miami (H)	87	73
Central Florida (H)	92	75
Denver (H)	93	41
Mississippi-Women (A)**	73	70
Central Missouri (N)**	60	69
Clemson (N)**	59	78
Indiana (H)	76	79
East Carolina (H)	67	78
Cincinnati (A)	65	91
Florida A&M(H)	76	64
South Florida(H)	79	41
Southeast Louisiana (A)	94	68
Southern Miss (A)	69	73
Mercer (H)	76	80
South Carolina (A)	57	69
Miami (A)	62	55
Tulane(A)+	60	70
St. Louis (N)+	78	56
Florida (A)	81	83
South Florida (A)	71	61
Florida A&M (A)	76	61
South Alabama (H)	80	67
Miami (N)++	70	79

*Lady Sunshine Classic
 **MUW Christmas Tournament
 +Metro Conference Tournament
 ++FAIA State Tournament

1981-82 (28-10)	FSU	OPP
Setson (H)	81	54
McNeese State (N)*	69	62
Valdosta State (N)*	82	69
Central Florida (H)	75	65
Kent State (N)**	80	66
Purdue (A)**	65	39
Florida (H)	60	63
Florida International (A)	74	64
Miami (A)	77	74
South Alabama (H)	99	44
Lewis University (N)+	94	46
Miami (Ohio)(N)	+89	68
North Carolina (N)	+77	68
South Florida (A)	80	60
Mississippi U for Women (H)	76	54
Florida (A)	86	79
Virginia Tech (A)	92	82
Old Dominion (A)	65	100
Florida A&M (A)	86	87
Memphis State (H)	90	104
South Carolina (H)	81	82
Southern Miss (H)	84	94
Louisville (A)	73	89
Tulane (H)	89	70
Florida A&M(H)	59	58
Miami (H)	66	52
Mississippi(H)	63	61
Tampa(H)	90	50
South Florida (H)	77	49
Miami (N)++	84	80
Florida A&M(N)++	76	65
Mississippi College (H)@	71	69
Georgia Southern (H)	@78	81
Mississippi Valley (H)	@83	95
Pepperdine (N)	@76	63
Brigham Young (N)	&75	71
Oregon State (N)	&60	76

*Lady Seminole Classic
 **Boilermaker Premiere
 +Hurricane New Year's Classic
 ++FAIAW State Tournament
 @FAIAW Region III Tournament
 &NWTT
 Includes forfeit win over St. Louis

YEAR BY YEAR RESULTS

1982-83 (24-6)	FSU	OPP
Tennessee-Chat. (N)*	94	77
North Carolina (N)*	75	74
Albany State (H)	94	52
Stetson (H)	102	42
Alabama (A)	73	64
Penn State (N)**	84	86
Delta State(N)**	75	67
Nebraska (N)#	100	84
Army (N)#	69	60
Oklahoma State (N)#	72	52
Temple (A)	74	69
St. Joseph's (A)	59	55
Montclair State (H)OT	89	81
Tulane (H)	81	56
Memphis State (H)OT	89	81
Tulane (H)	81	56
Memphis State (H)	90	82
Florida A&M(A)	66	60
Alabama-Birmingham (A)	73	75
Auburn (A)	43	73
Florida (A)	68	63
Stetson (A)	77	64
South Florida (H)	71	52
Tulane (A)	91	65
Florida A&M(H)	82	65
Florida International (H)	77	65
Alabama (H)	61	65
Florida (H)	89	67
Memphis State (A)	68	66
Louisville (A)#	56	67
Cincinnati (N)#	84	61
Mississippi (A)+	76	86

*Lady Sunshine Classic
 **Mid-American Classic
 #Hurricane Christmas Classic
 ##Metro Conference Tournament
 +First Round NCAA Playoffs

1983-84 (13-18)	FSU	OPP
Arizona State (N)*	70	85
Brigham Young (N)*	61	76
Middle Tennessee State (H)	75	67
Western Kentucky (N)€	74	79
Kansas (N)€	91	62
Central Florida (H)	67	60
South Florida (A)	81	73
Alabama-Birmingham (H)	82	75
Penn State (N)+	68	96
Stanford (N)+	73	58
Missouri (N)+OT	66	83
Louisville(H)	65	81
Miami (H)#	76	64
Mercer (H)#	66	57
Florida (H)	74	70
Memphis State (H)	67	83
Tulane (A)	71	77
Southern Miss (A)	75	84
Auburn (H)	53	72
Virginia Tech (A)	63	68
South Carolina (A)	62	69
Southern Miss (H)	53	58
Florida (A)	57	65
Florida A&M (A)	80	64
Tulane (H)	86	79
Alaska (N)&	77	63
Texas (N)&	43	89
Idaho (N)&	74	75
Cincinnati (H)	83	72
Memphis State (A)	64	80
Louisville (A)!	77	88

*Lady Buff Classic-Colorado
 €La. Tech Classic
 +Hurricane Classic
 #Duval Hotel Classic
 &Northern Lights Shootout
 !Metro Conference Tournament

1984-85 (7-21)	FSU	OPP
Albany State (H)	66	60
Colorado (H)	70	61
Georgetown (A)	69	77
Central Florida (H)	76	93
Michigan (H)	71	76
Wichita State (H)	54	70
Miami (A)	65	79
Fordham (N)*	88	81
Fairfield (N)*	64	71
Virginia Tech (H)	85	77
Cincinnati (A)	73	83
Louisville (A)	74	89
S. Florida (H) OT	71	79
Florida (A)	43	64
S. Carolina (H)	61	70
Southern Miss (A)	52	81
Tulane (A)	56	59
Auburn (A)	58	76
Tennessee (H)	56	67
Tulane (H)	81	47
Florida A&M (H)	57	61
Southern Miss (H)	61	66
Florida (H)	58	79
Memphis State (A)	64	76
Miami (H)	67	74
Memphis State (H)	76	84
S. Florida (A)	74	69
Virginia Tech (N)**	65	86

*Women's Court Classic
 **Metro Conference Tournament

1985-86 (12-18)	FSU	OPP
West Georgia (H)	67	57
Georgia SW (H)	51	58
Colorado St.(N)*	68	53
Monmouth(N)*3OT	71	69
Tampa (H)	88	77
Georgetown (H)@	78	74
Radford (H) @ OT	80	87
Stetson (A)	76	72
South Carolina (A)	57	81
Virginia Tech (A)	68	73
Louisville (H)	67	64
Cincinnati (H)	75	72
Central Florida (A)	90	98
South Florida (A)	58	47
Florida (H)	68	77
Tulane (H)	71	70
Tennessee (A)	43	89
Albany State (A)	72	69
Memphis State (H)	66	95
Southern Miss (A)	67	74
Tulane (A)	60	75
South Florida (H)	78	68
Florida A&M (A)	65	83
Southern Miss (H)	76	89
Florida (A)	76	81
Memphis State (A)	70	81
Stetson (H)	68	74
Cincinnati (N) Metro	45	77

*Pizza Hut Classic; Wichita Kansas - 1st Place
 @Southernare Invitational - 2nd Place

1986-87 (9-19)	FSU	OPP
Albany State (H)	71	72
Toledo (H)*	80	64
Rice (H)*	62	50
Stetson (H)	50	55
Miami (A)	75	74
Florida Atlantic (A)	38	42
Alabama-Birmingham (H)	75	62
Valdosta State (H)	66	75
Virginia Tech (A) (M)	78	91
Louisville (H) (M)	66	63
Cincinnati (H) (M)	53	55
Florida (H)	65	69
South Alabama (H)	58	76
South Carolina (H)(M)	56	63
S. Mississippi (A)(M)	64	62
Memphis State (A)(M)	68	75
Miami (H)	73	75
Virginia Tech (H)(M)	70	65
South Alabama (H)	64	99
Louisville (A)(M)	64	77
Cincinnati (A)(M)	70	50
Florida A&M (H)	79	72
South Carolina (A)(M)	61	64
Florida (H)	59	70
Southern Miss (H)(M)	75	84
Memphis State (H)(M)	75	84
New Orleans (A)	59	87
Virginia Tech (A)(M)@	67	68

*Tallahassee Hilton Classic 1st Place
 @Metro Conference Tournament

1987-88 (9-18)	FSU	OPP
New Mexico State (A)	73	64
DePaul (A)	68	82
Wisconsin (H)*	100	67
West Virginia* (OT)	68	58
Stetson (A)	69	75
Georgia Southern (A) (OT)	83	77
North Carolina (A)	79	82
Georgia (H)	72	91
Wisconsin-Green Bay (H)	64	67
New Orleans (H)	61	71
Memphis State (M)(OT)(H)	90	91
S. Miss (H) (M)	60	69
Florida A&M (N)	68	73
South Carolina (M)(H)	55	85
South Carolina (H)(M)	56	63
S. Mississippi (A)(M)	64	62
Memphis State (A)(M)	68	75
Miami (H)	73	75
Virginia Tech (H)(M)	70	65
South Alabama (H)	64	99
Louisville (A)(M)	64	77
Cincinnati (A)(M)	70	50
Florida A&M (H)	79	72
South Carolina (A)(M)	55	85
Valdosta State (A)	77	83
Virginia Tech (H)(M)	61	59
Alabama (H)	64	70
Cincinnati (M)(H)	59	70
Louisville (H)(M)	99	65
Memphis State (M)(A)	89	94
Southern Miss (M)(A)	68	84
Virginia Tech (M)(A)	81	97
South Carolina (M)(A)	86	96
Florida (H)	71	55
Louisville (M)(A)	73	70
Cincinnati (M)(A)	66	58
Cincinnati &	76	78

@Coopers & Lybrand Invitational 2nd Place
 *Tallahassee Hilton Classic 1st Place
 & Metro Conference Tournament



Coaching Records

Year	Head Coach	Record	Pct.
1973-74	Millie Usher	7-3	.700
1974-75	Millie Usher	15-17	.469
1975-76	Diane Murphy	12-12	.500
1976-77	Diane Murphy	10-12	.455
1977-78	Diane Murphy	8-8	.500
1978-79	Diane Murphy	18-15	.545
1979-80	Janice Dykehouse	13-22	.371
1980-81	Janice Dykehouse	14-15	.483
1981-82	Janice Dykehouse	28-10	.737
1982-83	Janice Dykehouse	24-6	.800
1983-84	Janice Dykehouse	13-18	.419
1984-85	Jan D. Allen	6-21	.286
1985-86	Jan D. Allen	12-16	.428
1986-87	Marynell Meadors	9-19	.321
1987-88	Marynell Meadors	9-18	.333

1988-89 LADY SEMINOLE OPPONENTS

LADY SUNSHINE CLASSIC

November 25-26
Lake Mary, FL

First Round Games:

SW Missouri State vs. Miami
Central Michigan vs. Florida State

Southwest Missouri State



Nickname: Lady Bears
Head Coach: Cheryl Burnett
Record at School/Years: 9-17/One season
Career Record/Years: Same
Coaches Phone: (417) 836-4136
SID Contact for Women's
Basketball: Jon Ripperger
SID Office Phone: (417) 836-5402
1987-88 Record: 9-17
Series Record with Florida State: First meeting
Letterwinners Returning/Lost: 7/6
Starter Returning/Lost: 1/4
Top Returning Scorer: Patty Porter, 13.4 ppg
Top Returning Rebounder: Patty Porter, 5.0 rpg

University Of Miami



Nickname: Hurricanes
Head Coach: Ferne Labati
Record at School/Years: First year
Career Record/Years: 136-120/Nine years
Coaches Phone: (305) 284-5802
SID Contact for Women's
Basketball: Tom Piero
SID Office Phone: (305) 284-3244
1987-88 Record: 14-13
Series Record with Florida State: 15-4, FSU leads
Letterwinners Returning/Lost: 3/7
Starter Returning/Lost: 1/4
Top Returning Scorer: Chountelle Bullock, 9.4 ppg
Top Returning Rebounder: Chountelle Bullock, 6.8 rpg

Central Michigan University



Nickname: Chippewas
Head Coach: Donita Davenport
Record at School/Years: 70-45/Four years
Career Record/Years: 70-45/Four years
Coaches Phone: (517) 774-6675
SID Contact for Women's
Basketball: Rob Kaminski
SID Office Phone: (517) 774-3277
1987-88 Record: 16-13
Series Record with Florida State: First meeting
Letterwinners Returning/Lost: 8/1
Starter Returning/Lost: 4/1
Top Returning Scorer: Sue Nissen, 17.5 ppg
Top Returning Rebounder: Sue Nissen, 9.8 rpg

TALLAHASSEE HILTON CLASSIC

December 2-3
Tully Gym

First Round Games:

Georgia Tech vs. Georgia Southern
UNC-Ashville vs. Florida State

Georgia Southern College



Nickname: Lady Eagles
Head Coach: Drema Greer
Record at School/Years: 21-8/One year
Career Record/Years: 67-23/Three years
Coaches Phone: (912) 681-5849
SID Contact for Women's
Basketball: Mark McClellan
SID Office Phone: (912) 681-5239
1987-88 Record: 21-8
Series Record with Florida State: 5-1, FSU trails
Letterwinners Returning/Lost: 4/7
Starter Returning/Lost: 2/3
Top Returning Scorer: Phyllette Blake, 19.0 ppg
Top Returning Rebounder: Phyllette Blake, 11.3 rpg

UNC-Asheville



Nickname: Bulldogs
Head Coach: Mary Ann Myers
Record at School/Years: 21-56/Three years
Career Record/Years: 28-73/Four years
Coaches Phone: (704) 251-6459
SID Contact for Women's
Basketball: Mike Gore
SID Office Phone: (704) 251-6459
1987-88 Record: 11-14
Series Record with Florida State: First meeting
Letterwinners Returning/Lost: 7/3
Starter Returning/Lost: 3/2
Top Returning Scorer: Wendy Beecher, 15.2 ppg
Top Returning Rebounder: Wendy Beecher, 9.8 rpg

Georgia Tech



Nickname: Lady Jackets
Head Coach: Agnus Berenato
Record at School/Years: First season
Career Record/Years: 60-55/Four years
Coaches Phone: (404) 894-5406
SID Contact for Women's
Basketball: Allison George
SID Office Phone: (404) 894-5445;
Home: 892-4780
1987-88 Record: 11-16
Series Record with Florida State: 1-1
Letterwinners Returning/Lost: 6/4
Starter Returning/Lost: 2/3
Top Returning Scorer: Ida Neal, 9.7 ppg
Top Returning Rebounder: Ida Neal, 4.3 rpg

1988-89 LADY SEMINOLE OPPONENTS

University of Miami

Away, Dec. 11
(see Information under Lady Sunshine Classic)

University of Florida

Away - Dec. 13



Nickname: Lady Gators
Head Coach: Carol Higginbottom
Record at School/Years: 31-52/Three years
Career Record/Years: 31-52/Three years
Coaches Phone: (904) 375-4683
SID Contact for Women's Basketball: Lisa Weller
SID Office Phone: (904) 375-4683, ext. 6120
1987-88 Record: 9-18
Series Record with Florida State: 21-22, FSU trails
Letterwinners Returning/Lost: 8/2
Starter Returning/Lost: 4/1
Top Returning Scorer: Angie Scott, 10.8 ppg
Top Returning Rebounder: Casandra Washington 6.0 rpg

Stetson University

Home - Dec. 17



Nickname: Lady Hatters
Head Coach: Nancy Nichols
Record at School/Years: 60-55/Four years
Career Record/Years: 60-55/Four years
Coaches Phone: (904) 734-4121
SID Contact for Women's Basketball: Ted Gumbart
SID Office Phone: (904) 734-4121, ext. 621
1987-88 Record: 17-12
Series Record with Florida State: 6-3, FSU leads
Letterwinners Returning/Lost: 6/4
Starter Returning/Lost: 4/1
Top Returning Scorer: Michelle Michael, 14.3 ppg
Top Returning Rebounder: Courtney Hall, 7.6 rpg

Alabama - Birmingham

Away - Dec. 19



Nickname: Lady Blazers
Head Coach: Jeannie Milling
Record at School/Years: 15-14/One season
Career Record/Years: 176-124/11 seasons
Coaches Phone: (205) 934-2048
SID Contact for Women's Basketball: Calli Theisen
SID Office Phone: (205) 934-7257
1987-88 Record: 15-14
Series Record with Florida State: 2-5, FSU trails
Letterwinners Returning/Lost: 2/3
Starter Returning/Lost: 2/3
Top Returning Scorer: Geraline Handsome, 9.7 ppg
Top Returning Rebounder: Gina Sutko, 5.4 rpg

University of North Carolina

Home - Jan. 2



Nickname: Tar Heels
Head Coach: Sylvia Hatchell
Record at School/Years: 29-27/Entering third year
Career Record/Years: 302-107/Entering 14th year
Coaches Phone: (919) 962-5411
SID Contact for Women's Basketball: Scott Jared
SID Office Phone: (919) 962-2123
1987-88 Record: 10-17
Series Record with Florida State: 2-1, FSU trails
Letterwinners Returning/Lost: 7/4
Starter Returning/Lost: 2/3
Top Returning Scorer: Marsha Matthews, 8.9 ppg
Top Returning Rebounder: Merlaine Oden, 7.9 rpg

University of Southern Mississippi

Home - Jan. 7
Away - Feb. 4



Nickname: Lady Golden Eagles
Head Coach: Kay James
Record at School/Years: 185-118/11 Years
Career Record/Years: 270-138/16 Years
Coaches Phone: (601) 266-5574
SID Contact for Women's Basketball: Shirley Jones-Hill
SID Office Phone: (601) 266-4503
1987-88 Record: 12-16
Series Record with Florida State: 1-12, FSU trails
Letterwinners Returning/Lost: 6/5
Starter Returning/Lost: 4/1
Top Returning Scorer: Gwen Jones, 11.6 ppg
Top Returning Rebounder: Gwen Jones, 7.4 rpg

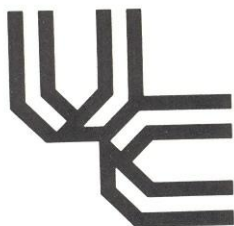
Memphis State

Home - Jan. 9
Away - March 2



Nickname: Lady Tigers
Head Coach: Mary Lou Johns
Record at School/Years: 356-168, 17 years
Career Record/Years: 356-168, 17 years
Coaches Phone: (901) 678-2315
SID Contact for Women's Basketball: Sherilyn Fiveash
SID Office Phone: (901) 678-2337
1987-88 Record: 15-15
Series Record with Florida State: 3-12, FSU trails
Letterwinners Returning/Lost: 7/4
Starter Returning/Lost: 2/3
Top Returning Scorer: Glynetha Davis, 14.6 ppg
Top Returning Rebounder: Glynetha Davis, 7.0 rpg

1988-89 LADY SEMINOLE OPPONENTS



University of Cincinnati

Away - Jan. 14
Home - Feb. 11

Nickname: Lady Bearcats
Head Coach: Laurie Pirtle
Record at School/Years: 24-33/Two years
Career Record/Years: 107-49/Six years
Coaches Phone: (513) 556-6762
SID Contact for Women's
Basketball: Kevin Shaw
SID Office Phone: (513) 556-5191
1987-88 Record: 18-11
Series Record with Florida State: 7-6, FSU leads
Letterwinners Returning/Lost: 7/5
Starter Returning/Lost: 3/2
Top Returning Scorer: Bev Obringer, 17.5
ppg
Top Returning Rebounder: Bev Obringer, 8.8
rpg

University of Louisville

Away - Jan. 16
Home - Feb. 13



Nickname: Lady Cardinals
Head Coach: Peggy Fiehrer
Record at School/Years: 116-115/Eight years
Career Record/Years: 116-115/Eight years
Coaches Phone: (502) 588-6581
SID Contact for Women's
Basketball: Nancy Allison Smith
SID Office Phone: (502) 588-7010
1987-88 Record: 12-16
Series Record with Florida State: 4-10, FSU trails
Letterwinners Returning/Lost: 1/5
Starter Returning/Lost: 1/4
Top Returning Scorer: Troya Landrum, 6.7
ppg
Top Returning Rebounder: Troya Landrum, 7.4 rpg

Virginia Tech

Away - Jan. 21
Home - Feb. 28



Nickname: Lady Hokies
Head Coach: Carol Alfano
Record at School/Years: 139-141/10 years
Career Record/Years: 139-141/10 years
Coaches Phone: (703) 961-5037
SID Contact for Women's
Basketball: Mark Owens
SID Office Phone: (703) 961-6726
1987-88 Record: 12-16
Series Record with Florida State: 5-7, FSU trails
Letterwinners Returning/Lost: 4/5
Starter Returning/Lost: 1/4
Top Returning Scorer: Stephanie Green, 9.6
ppg
Top Returning Rebounder: Stephanie Green, 4.4 rpg



"Gamecocks"

South Carolina

Away - Jan. 23
Home - Feb. 20

Nickname: Lady Gamecocks
Head Coach: Nancy Wilson
Record at School/Years: 78-44/Four years
Career Record/Years: 271-108/12 years
Coaches Phone: (803) 777-3829
SID Contact for Women's
Basketball: Mike Nicholson
SID Office Phone: (803) 777-5204
1987-88 Record: 23-11
Series Record with Florida State: 0-11, FSU trails
Letterwinners Returning/Lost: 8/5
Starter Returning/Lost: 4/1
Top Returning Scorer: Martha Parker, 16.6
ppg
Top Returning Rebounder: Schonna Banner, 7.3 rpg

South Florida

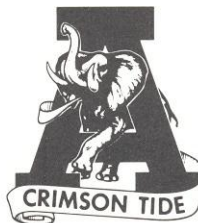
Away - Jan. 25
Home - Feb. 24



Nickname: Lady Bulls
Head Coach: Trudi Lacey
Record at School/Years: First year
Career Record/Years: 53-12/Two years
Coaches Phone: (813) 974-3699
SID Contact for Women's
Basketball: Jack Heilig
SID Office Phone: (813) 974-2125
1987-88 Record: 11-16
Series Record with Florida State: 24-2, FSU leads
Letterwinners Returning/Lost: 6/3
Starter Returning/Lost: 3/2
Top Returning Scorer: Wanda Guyton, 19.9
ppg
Top Returning Rebounder: Wanda Guyton, 12.4 rpg

University of Alabama

Away - Jan. 30

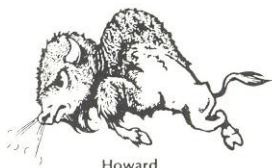


Nickname: Crimson Tide
Head Coach: Lois Myers
Record at School/Years: 57-29/Three years
Career Record/Years: 57-29/Three years
Coaches Phone: (205) 348-6161
SID Contact for Women's
Basketball: Becky Hopf
SID Office Phone: (205) 348-6084
1987-88 Record: 18-10
Series Record with Florida State: 3-2, FSU trails
Letterwinners Returning/Lost: 8/3
Starter Returning/Lost: 4/3
Top Returning Scorer: Laura Vaughn, 13.0
ppg
Top Returning Rebounder: Laura Heard, 7.1
rpg

1988-89 LADY SEMINOLE OPPONENTS

Howard University

Home - Feb. 6



Nickname: Lady Bison
Head Coach: Sanya Tyler
Record at School/Years: 109-109/Seven years
Career Record/Years: 109-109/Seven years
Coaches Phone: (202) 636-7140
SID Contact for Women's
Basketball: Jesse Batten
SID Office Phone: (202) 636-7182
1987-88 Record: 19-11
Series Record with Florida State: First meeting
Letterwinners Returning/Lost: 6/4
Starter Returning/Lost: 2/3
Top Returning Scorer: Lisa Lewis, 7.6 ppg
Top Returning Rebounder: Lisa Lewis, 7.4 rpg

Florida A&M University

Home - Feb. 9



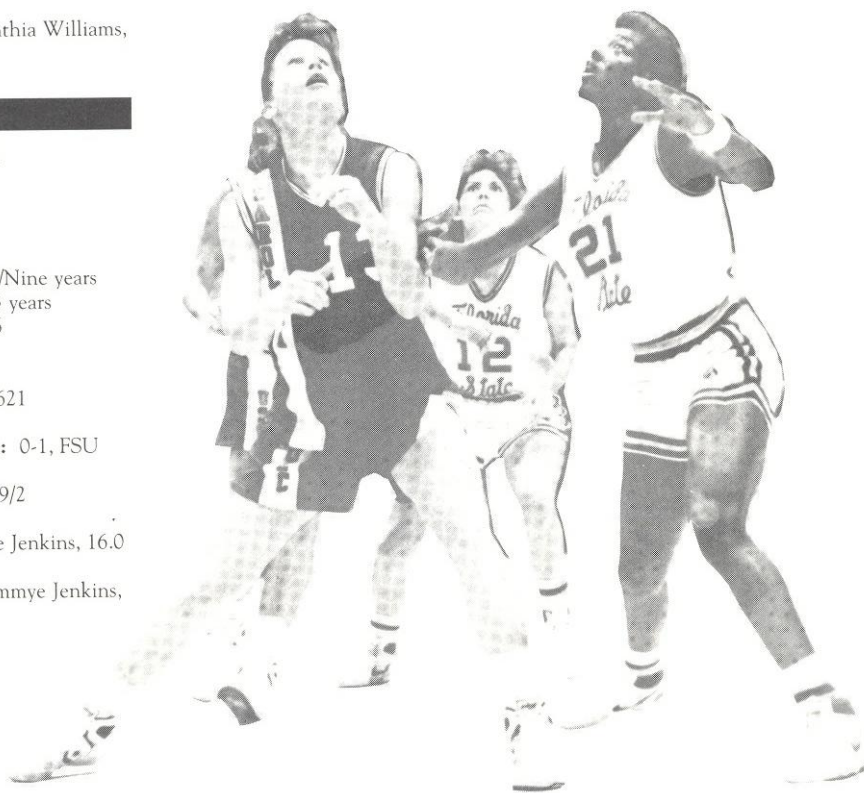
Nickname: Rattlerettes
Head Coach: Mickey Clayton
Record at School/Years: 183-117/11 years
Career Record/Years: 183-117/11 years
Coaches Phone: (904) 599-3272
SID Contact for Women's
Basketball: Alvin Hollins
SID Office Phone: (904) 599-3206
1987-88 Record: 21-9
Series Record with Florida State: 12-7, FSU leads
Letterwinners Returning/Lost: 5/6
Starter Returning/Lost: 2/3
Top Returning Scorer: Cynthia Williams, 15.6 ppg
Top Returning Rebounder: Cynthia Williams, 9.3 rpg

University of Georgia

Away - Feb. 16



Nickname: Lady Bulldogs
Head Coach: Andy Landers
Record at School/Years: 228-63/Nine years
Career Record/Years: 310-84/13 years
Coaches Phone: (404) 542-1176
SID Contact for Women's
Basketball: Tim Hix
SID Office Phone: (404) 542-1621
1987-88 Record: 21-10
Series Record with Florida State: 0-1, FSU trails
Letterwinners Returning/Lost: 9/2
Starter Returning/Lost: 5/0
Top Returning Scorer: Tammye Jenkins, 16.0 ppg
Top Returning Rebounder: Tammye Jenkins, 8.6 rpg



THIS IS FLORIDA STATE UNIVERSITY

Florida State University, home of the world's fastest supercomputer, is setting the pace as higher education in the state prepares to enter the 21st century. The FSU Supercomputer Computations Research Institute attracts international attention with scientists from many nations using the University's two powerful supercomputers in their research.

The Department of Physics' Tandem Van de Graaff Superconducting Accelerator Laboratory, ranked in the top four in the nation by the National Science Foundation, houses two powerful atom smashers which also provide unique research opportunities.

Located in Tallahassee, the capital of Florida, FSU is a public, coeducational university and a senior member of the State University System. More than 24,000 students are enrolled, representing all 50 states and 100 foreign countries. The University offers more than 250 graduate and undergraduate degrees in its 15 schools and colleges. Outstanding programs in the colleges of arts and sciences, business, communication, education, engineering, home economics, law and social sciences combine with the schools of criminology, library and information studies, music, nursing, social work, theater and visual arts to make Florida State a nationally acclaimed university.

The Florida State campus, located just blocks away from the state capitol, is beautiful in all seasons. Its 347 acres mirror the picturesque features of the surrounding North Florida region. The buildings are nestled among evergreen live oaks, pines and palms, as well as hardwoods that provide fall color, and dogwoods and azaleas that are covered with a profusion of springtime blossoms.

As an institution, FSU began as coeducational Seminary West of the Suwannee River, approved by the Florida Legislature in 1851 and assigned to Tallahassee in 1857. Name changes over the years included Florida State College in 1901; then in 1905, Florida Female College and, in 1909, Florida State College for Women. Gov. Millard Caldwell signed a bill in 1947 which again made the institution coeducational and changed the name to Florida State University.

The University's location affords excellent research and internship opportunities in government, law and the social sciences. The reputation of Florida State's research programs and the ex-

pertise of its more than 1,500 faculty members—including four members of the National Academy of Sciences and four members of the American Academy of Arts and Sciences—represent major strengths of the University. FSU prides itself on pursuing academic quality while maintaining a friendly, welcoming atmosphere.

Programs in music, dance and theater at Florida State have earned well-deserved national recognition. The visual and performing arts exhibited and produced on campus offer students and the community a wealth of enrichment opportunities.

Student activities at FSU create an important balance between the classroom experience and the personal life of the individual scholar. Honors programs, student government, intramural sports and more than 200 organizations are available for student involvement. Furthermore, the Flying High Circus, the world's only all-collegiate circus, makes its home here.

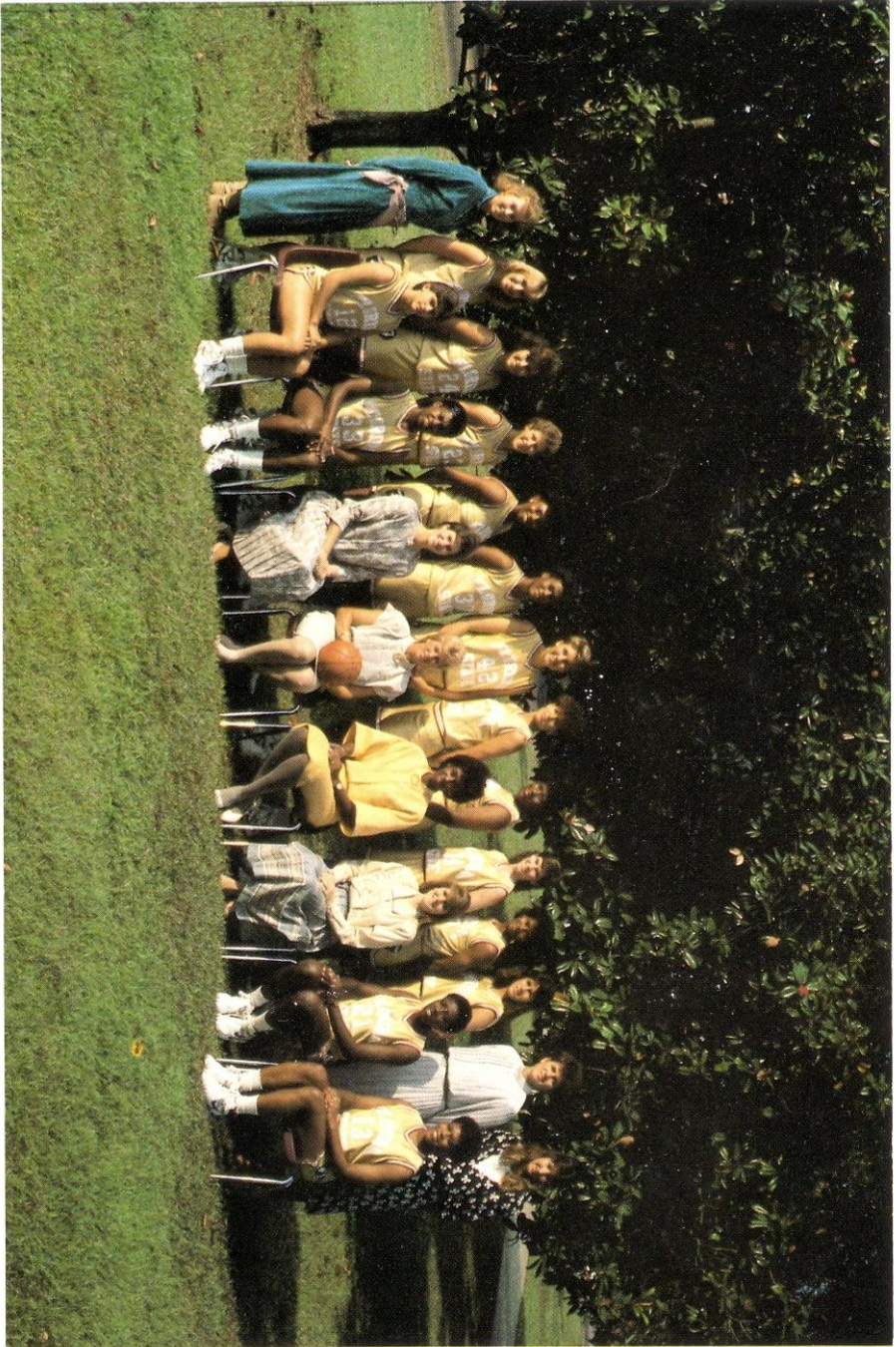
Florida State academic programs extend well beyond Tallahassee. The FSU Marine Laboratory is located on the Gulf of Mexico, 45 miles away. Students participate in professional training programs at the Asolo State Theater in Sarasota and the Burt Reynolds Institute for Theatre Training in Jupiter. The Panama City Campus of Florida State offers upper-level courses which lead to bachelor's and master's degrees. The Center for Professional Development and Public Service, housed in the Florida State Conference Center on the edge of the main campus, manages educational outreach activities from Pensacola to Miami.

The physical growth of the University during the 11-year administration of President Bernard Sliger represents new construction expenditures of more than \$100 million. It includes such additions as the University Union expansion project, the new Paul A.M. Dirac Science Library Building, the Jeffersonian-style Village Green project at the College of Law, the new wing of the Rovetta Business Building, and the new FAMU/FSU College of Engineering at Innovation Park.

It is not only the academic programs and facilities of Florida State, but also its people—students, faculty, alumni, administrators and staff—who make this University such a proud monument to learning.



The newly renovated Westcott Building and fountain at the entrance of campus.



From Row (Left to Right)—Robin Storey, Bev Burnett, assistant coach Robyn Markey, head coach Marynell Meudens, assistant coach Freda Glover, graduate assistant Julie Brown, Aline Harris, Chris Davis
 Back Row (Left to Right)—Manager Stephanie Hensley, Christy Couherd, Kelli Test, Robin Corn, Karen Thomas, Tia Paschal, Sarah Grimes, Maria Lardie, Debra Collins, Tanya Fowler, Wanda Burns,
 Luz Lopez, athletic trainer Karen Swanson, manager Julie Jacoby