

# Lady Seminole Basketball



—1987-1988—

Pointing in a  
New Direction



# Table of Contents

Lady Seminole Basketball Quick Facts .....	IFC
1987-88 Schedule .....	1
Media Information .....	1
1987-88 Season Outlook .....	2
Head Coach Marynell Meadors .....	3
Assistant Coaches .....	4
Meet the Lady Seminoles .....	5
Profiles .....	6-10
Gussie Clark, Valerie Garrett .....	6
Sarah Hall, Terri McCarty .....	7
Jan Piatnik, Angela Tucker .....	8
Bev Burnett, Aline Harvis, Robin Storey .....	9
Robin Corn, Chris Davis, Sarah Grimes, Kelli Test .....	10
1986-87 Season Statistics .....	11-12
1987-88 Team Picture and Roster .....	13
Team Handball Feature .....	14
All-time Letter Winner List, Travel Itinerary .....	15
Single Game Records .....	16
Career Records .....	18
Record Against Opponents .....	19
Year-by-Year Results .....	20-21
Opponent Information .....	22-24
This is Florida State .....	IBC



## Florida State Facts

Location .....	Tallahassee, FL
Enrollment .....	22,500
Founded .....	1857
Nickname .....	Lady Seminoles
Colors .....	Garnet and Gold
President .....	Dr. Bernard F. Slinger
Conference .....	Metro
Home Court .....	Tully Gymnasium (3,000)
Affiliation .....	NCAA Division I

## Basketball Quick Facts

Head Coach .....	Marynell Meadors, Middle Tennessee State '66
Record at School/Years .....	9-19, 1 year
Career Record/Years .....	372-158/17 years
Assistant Coach .....	Robyn Markey, Tennessee Tech '82
Assistant Coach .....	Freda Glover, Cheyney '81
Graduate Assistant .....	Wrenetta Gaw, Tennessee Tech '86
1986-87 Record .....	9-19
Conference Record/Finish .....	4-8, Sixth

## Athletic Staff

Director .....	C.W. "Hootie" Ingram
Associate Director .....	Bob Goins
Assistant Director .....	Dr. Jan Stocker
Administrative Assistant .....	Missy Garrett
Promotions and Marketing .....	Terry Hume
Women's Athletic Phone .....	(904) 644-1091

## Sports Information

Director .....	Wayne Hogan
Women's Basketball Contact .....	Nick Gandy
Sports Information Phone .....	(904) 644-1060
Gandy Home Phone .....	(904) 222-4936
Mailing Address .....	P.O. Box 2195 Tallahassee, FL 32316

## Credits

The 1987-88 Florida State Women's basketball media guide was written by Nick Gandy, Sports Information Assistant, for use by media covering the Lady Seminoles.

Graphic design by Michael Hunter and photography by Chris Edwards, Ryals Lee, Jr., Phil Sears, Jim Midgett of Bradley Photography, Dallas Texas and FSU Photo Lab Services.



## On the Cover

Florida State's seven newcomers point toward head coach Marynell Meadors who will attempt to point them one way, in the direction of a winning season.

Pictured left to right are freshmen Kelli Test, Robin Corn, Chris Davis and Sarah Grimes; Coach Marynell Meadors and juniors Aline Harvis, Bev Burnett and Robin Storey.

Photo by Jim Midgett of Bradley Photographers, Dallas Texas.



# 1987-88 Lady Seminole Schedule

Date	Opponent	Time	Site
Nov. 27-28	Coopers & Lybrand Invitational New Mexico State, Washington State, DePaul, Florida State)	Chicago, IL	6:00 & 8:00 pm 1:00 & 3:00 pm
Dec. 4-5	Tallahassee Hilton Classic (West Virginia, Wisconsin- Madison, Alabama—Birmingham Florida State)	Tully Gym	5:50 & 7:30 pm
12	Stetson	DeLand, FL	7:00 pm
16	Georgia Southern	Statesboro, GA	5:15 pm
18	North Carolina	Chapel Hill, NC	7:30 pm
January 3	GEORGIA	Tully Gym	2:00 pm
6	WISCONSIN-GREEN BAY	Civic Center	5:15 pm
8	Cincinnati	Cincinnati, OH	7:30 pm
10	Louisville	Louisville, KY	2:00 pm
13	NEW ORLEANS	Civic Center	5:15 pm
16	MEMPHIS STATE	Tully Gym	7:00 pm
18	SOUTHERN MISSISSIPPI	Tully Gym	7:00 pm
21	FLORIDA A&M	Civic Center	7:00 pm
25	SOUTH CAROLINA	Civic Center	5:15 pm
28	Valdosta State	Valdosta, GA	7:30 pm
30	VIRGINIA TECH	Tully Gym	7:00 pm
February 1	ALABAMA	Tully Gym	7:00 pm
6	CINCINNATI	Civic Center	5:15 pm
8	LOUISVILLE	Tully Gym	7:00 pm
13	Memphis State	Memphis, TN	7:30 pm
15	Southern Mississippi	Hattiesburg, MS	7:00 pm
20	Virginia Tech	Blacksburg, VA	7:30 pm
22	South Carolina	Columbia, SC	7:30 pm
27	FLORIDA	Tully Gym	7:00 pm
Mar. 5	MIAMI	Tully Gym	7:00 pm
10-12	METRO TOURNAMENT	Tallahassee, FL	TBA

Home Games in CAPS

## MEDIA INFORMATION

Florida State's 1987-88 Women's basketball guide has been designed for use by the media. Any questions not covered in this brochure concerning FSU Women's Basketball should be directed to the Florida State Sports Information Office.

**WORKING MEDIA** - Requests for working credentials should be made to Nick Gandy, FSU Sports Information Office, at least one week prior to the game for which credentials are being requested. At the Leon-County Civic Center, working media will be seated at the press table on the floor in front of the East stands. For games at Tully Gym, media will be placed along the press table on the floor in front of the North stands.

**PARKING** - For games played at the Leon-County Civic Center, a parking pass must be requested along with game credentials. Parking will be at the Civic Center Lot or at the FSU Law Library. For games at Tully Gym, ample parking is readily available and no pass is required.

**PHOTOGRAPHERS** - Accredited photographers will be admitted to both the Leon-County Civic Center and Tully Gym upon presentation of appropriate credentials. Working credentials should be requested at least one week in advance from FSU Sports Information Office.

**RADIO** - Sections for radio broadcast are reserved at both Tully Gym and at the Leon-County Civic Center.

**PHONES** - Telephone service is available at both Tully and the Leon-County Civic Center. In order to obtain an individual line for broadcasting, contact Centel Telephone Company of Tallahassee. Call Centel at (904) 222-2236 and have them contact FSU Sports Information Office for placement.

**SERVICES** - Half time and final stats will be made available to the media.



# Outlook

When looking at the factors surrounding the Florida State Lady Seminole 1987-88 basketball season, one can easily see the program is definitely pointing to a new direction.

There's a long checklist of positives: head coach Marynell Meadors, second-ranked among active collegiate coaches with 372 career wins; a talented bunch of newcomers who have known nothing but winning throughout their days of playing organized basketball; and a group of seniors who are hungry to go out winners after struggling through a record of 31-55 since their arrival at Florida State.

Certainly, this season will be Phase One of the new direction in which the Lady Seminoles are heading.

Two weeks into pre-season workouts, Meadors assessed the difference between this squad and last year's 9-19 team. "I checked my practice schedule and we're a week and a half ahead of where we were at this time last year," she says. "I can see good things coming out of this team."

Meador's banner recruiting year, which brought in six new faces was bolstered by the return of Bev Burnett, the leading scorer from 1985-86. The newcomers are expected to blend smoothly with six returnees to give the Lady Seminoles plenty of depth. "This year will be a treat," says Meadors. "We'll be able to go to the bench frequently without being hurt. We'll be able to keep players fresh, ones who will be able to score consistently."

No doubt, Florida State will possess a wide variety of scoring threats. "We've got a good shooting team," says Meadors. "There is so much talent at guard and forward and we are an intelligent team. They've played in summer leagues and AAU camps. They've put in time at basketball."

With the addition of the 3-point play this season, FSU will look to the guard position for a good deal of its scoring. Battling it out at that position will be returnees Jan Piatnik and Val Garrett. In Piatnik's three previous seasons, she has played the role of a spot starter and has averaged 3.6 ppg over the course of 83 games. The senior from St. Petersburg has been placed in the leadership role as co-captain. Garrett, one of the quickest members on the team, returns after her best offensive season which she averaged 5.4 points.

Three newcomers also figure prominently at the guard slot. Junior college transfer Robin Storey comes to FSU from North Arkansas Community College where she averaged 15 ppg and four assists last season. Freshman Robin Corn of Asheville, NC and Kelli Test of Ringgold, GA will see playing time with hopes of improvement for the future. "Robin Corn is one of the most determined athletes I've ever seen," says Meadors. "She is always working to improve her game."

At a swing position will be two athletes similar in stature and style of play. Tallahassee native Bev Burnett and freshman Chris Davis of Pensacola could both play a major role in the FSU offense this season. Burnett, a junior, returns to captain the squad after finishing the 1985-86 season as the leading scorer with a 17.3 average. Davis,

the Naismith Florida Player of the Year and *USA Today* Honorable Mention All-American, lights up her coaches' eyes knowing that she will be around for three more years after this one.

Also competing for playing time at forward will be returnees Sarah Hall, Gussie Clark and Angela Tucker along with junior college transfer Aline Harvis. Hall, the most consistent player for the Lady Seminoles over the past three years, has a career average of 7.4 rebounds to rank her sixth on the all-time FSU list. Clark, a senior, saw the most playing time of her career last year and hopes to improve on her 5.6 ppg and 3.8 rpg that she produced. Tucker, a junior, has shown signs of improvement and could be a factor this season.

Harvis transferred from Pensacola Junior College and could step in and contribute immediately. Her aggressive inside play brought her all-Panhandle Conference honors as she led PJC in both scoring and rebounding.

Center is a clear cut case of experience and youth with 6-2 senior Terri McCarty and 6-4 freshman Sarah Grimes. McCarty returned to the Lady Seminoles last season after sitting out her sophomore year. In 25 games she contributed 4.9 points and 4.2 rebounds per game. As a high school senior, Grimes averaged 12 rebounds per game at Milton High School in Roswell, GA.

This group will certainly be tested due in part to the schedule Meadors has set up. To begin the season, the Lady Seminoles will take part in two tournaments. The season opener will be at Coopers & Lybrand Tournament Thanksgiving weekend in Chicago, IL. The following weekend, Florida State returns home to the Tallahassee Hilton Classic which features West Virginia, Alabama-Birmingham and Wisconsin. The rest of the schedule includes home-and-home contest with six always-tough Metro Conference opponents as well as home games

with New Orleans, Alabama, Florida, Miami and Georgia. The yearly contest with cross-town rival Florida A&M is set for the Tallahassee-Leon County Civic Center January 21. Topping off the regular season will be the Metro Conference Tournament which will be held in Tallahassee for only the second time in its nine-year existence.

The 1987-88 edition of the Lady Seminoles has set some realistic goals as well as some that followers may consider lofty. The seniors would like nothing more than to go out winners while others are shooting for 20 wins and the Metro Championship. Meadors has little doubt about a winning season and is not skeptical about the Metro crown. "If you look at our Metro losses last year, we were only blown out of the game," says Meadors.

Overall, FSU's second year coach likes the first of what she can call her own team. "At first I was concerned about losing speed from last year," says Meadors, "but we gained an equal amount and gained so much more depth. We might be a year or two away from being an excellent team, but this team will definitely turn some heads this season."







# MARYNELL MEADORS

Head Coach



In her first season as the head coach of the Florida State Lady Seminoles, Marynell Meadors had her first losing season in 17 years of collegiate coaching.

"It about drove me nuts," she says.

One look at the record of the woman who ranks second among active women's collegiate coaches with a 372-158 mark will tell you why.

In 17 seasons, Meadors has produced 13 20-win seasons, appeared in 12 post season tournaments, became the first women's basketball coach to win 300 games at one institution, won the Ohio Valley Conference Championship on four occasions and six times won the TCWSF state championship. Individually, Meadors' 372 wins ranks her second behind Texas' Jody Conradt in career victories. She was named the Ohio Valley Conference Coach of the Year in 1978 and 1984.

This all came after she started the Tennessee Tech program from scratch in 1970.

Quite possibly, the Florida State heirarchy had an idea of Meadors impact when the Nashville, TN native was linked to a contract to turn around a struggling program.

Putting aside Meadors' impressive coaching

record, she is also an avid promoter of women's basketball. While at Tennessee Tech, the Golden Eaglettes averaged better than 1,500 fans in attendance at every home game. She is determined to improve the attendance figures at Florida State. In her first year at the helm of the Lady Seminoles, Meadors raised the average home attendance by over 500. And that came in a disappointing 9-19 campaign. She is well aware of the fact that along with a winning team comes an influx of fans. Her exciting brand of basketball and an attractive schedule will be an added incentive to local fans.

As one of the spokespersons on the sport, Meadors has been honored with positions on several selection committees during her coaching career. Since 1976, she has been a member of the Selection Committee for Women's Basketball Top 20. She has also held posts on the Kodak All-American Selection Committee, the Stayfree Coach and Player of the Year Awards, the Converse Coach of the Year Award, the National Sports Festival Selection Committee, the U.S. Olympic trials and the NCAA Midwest Basketball Committee.

Meadors has also become very successful coordinating and directing summer women's

basketball camps for both teams and individual players. While in Tennessee, she guided nearly 1,300 high school age girls through valuable learning experiences in a limited three week period each summer. She also gave instruction to as many as 50 teams during one summer camp period. Since her arrival in Tallahassee, she has already built a solid foundation for the Marynell Meadors Basketball Camp, which last summer attracted more than 200 participants in its inaugural season.

As a person, Meadors is easy-going and friendly to everyone she encounters in her daily activities—whether it be a fan offering suggestions, co-workers, the media or athletic administrators. As a coach, she expects only the best from her players. And due to her warm personality and genuine care, players want to give her only their best.

Last season, Meadors got her first sour taste of a losing season. It was unfamiliar and she did not enjoy it. Going into the 1987-88 season she has a fresh new group of faces, ones that can blend into her own style of play, mixed with a group of experienced returnees. Together as a team, they would like nothing better than to enjoy the sweet taste of victory with which their coach is so familiar.

## COACHING RECORD

Year	School	Record	Accomplishments
1970-71	Tennessee Tech	23-7 .767	TCWSF State Runner-up
1971-72	Tennessee Tech	26-6 .813	TCWSF State Champion, Qualified for AIAW Nationals
1972-73	Tennessee Tech	24-6 .800	TCWSF State Champion, AAU National Tournament
1973-74	Tennessee Tech	26-5 .839	TCWSF State Champion, AIAW National Championship (Sixth place finish)
1974-75	Tennessee Tech	27-5 .844	TCWSF State Champion, AIAW Regional Champion, AIAW National Championship (12th place finish)
1975-76	Tennessee Tech	28-2 .933	TCWSF State Champion, AIAW Regional Champion, AIAW National Championship, (5th place finish)
1976-77	Tennessee Tech	28-8 .778	TCWSF State Champion, AIAW National Championship (7th place finish)
1977-78	Tennessee Tech	19-14 .576	Ohio Valley Conference Championship
1978-79	Tennessee Tech	23-10 .697	AIAW Regional Bid
1979-80	Tennessee Tech	23-11 .676	AIAW Regional Championship Bid
1980-81	Tennessee Tech	23-11 .676	OVC Champion, NWIT Tournament
1981-82	Tennessee Tech	20-11 .645	OVC Champion, NCAA Championships
1982-83	Tennessee Tech	14-13 .519	OVC 2nd Place
1983-84	Tennessee Tech	17-11 .607	OVC 2nd Place
1984-85	Tennessee Tech	20-9 .690	OVC 2nd Place, NCAA at-large selection
1985-86	Tennessee Tech	20-7 .741	OVC 2nd Place, WNIT participant
1986-87	Florida State	9-19 .231	Duval Hilton Classic Champion

372-158 .702



# ROBYN MARKEY



## Assistant Coach

After following Marynell Meadors' coaching philosophy for four years as a player at Tennessee Tech, Robyn Markey begins her second season following Meadors philosophy in the role of assistant coach at Florida State.

As a starting guard for the Golden Eaglettes from 1977 through 1981, Markey began to establish herself in the world of women's collegiate basketball. During her four years she worked her way into the Tech record book in several categories. Her 134 games played ranks her at the top of the career games played list. She is listed in five other career top 15 categories, including scoring and rebounding. She capped her career at Tennessee Tech as the captain of the Golden Eaglettes her senior year.

On the way to earning her degree from Tennessee Tech in physical education in 1982, the Mt. Laurel, NJ native worked as a volunteer coach for her alma mater during the 1981-82 season. She then moved on to an assistant coach position at the University of Delaware for the 1982-83 season.

Following her stop at Delaware, Markey accepted the head coach position at the University of Vermont. In her three years at Vermont, Markey attempted to turn around a struggling women's basketball program.

In addition to her collegiate coaching experience, Markey has served as director of several basketball camps—including ones in Vermont, New Jersey and Belgium. She currently assists in the Marynell Meadors Basketball Camp. She also has gained valuable promotional experience working with the Kangaroo and Pro Keds shoe companies.

Along with her floor coaching duties, where she tutors the FSU guards, Markey also coordinates FSU recruiting efforts.

# FREDA GLOVER



## Assistant Coach

After a three-year stint away from basketball, Freda Glover returns to the sport as the newest member of the Lady Seminoles coaching staff.

After four years as a player at Cheyney University and two years as a coach at the University of Missouri, Glover fulfilled a personal objective to work in the political world. But after three years as a budget analyst for the Executive Office of the Governor for the State of Illinois, her basketball ties were still strong and once given the opportunity, she jumped at the chance to come to Florida State.

Glover earned her bachelor's degree in business administration from Cheyney University in Cheyney, Pennsylvania while starting for the highly-successful basketball team. Playing at the center position, Glover consistently ranked in the nation's top scorers and rebounds.

Glover continued her education at Missouri while beginning her coaching career. As an assistant coach at Missouri from 1981-1983, the Lady Tigers had a successful 48-15 record and won the Big 8 Conference in the 1982-83 season. She received her master's degree in public administration in 1983.

Glover then took the job with the Illinois Office of the Governor and through her work as a budget analyst, was credited with saving the state millions of dollars.

Glover's primary duties with the Lady Seminoles includes working with the inside post players, scouting opponents and following the academic progress of the team. Along with her on-floor coaching duties, she assists Robyn Markey with recruiting and scheduling. During the off-season, she will work with the Marynell Meadors Basketball Camp.

# WRENETTA GAW



## Graduate Assistant

Wrenetta Gaw begins her second season as a graduate assistant coach for the Lady Seminoles.

Gaw, a 1986 graduate of Tennessee Tech, is no stranger to working with Meadors-led teams. During her four school years at Tech, the Cookeville, TN native worked closely with the Golden Eaglettes as the head manager.

She continues her experience in collegiate basketball at FSU while working toward a master's degree in athletic administration.

Gaw has also toured in South America as a member of the Athletes in Action squad during the summer of 1986. During the six week tour she served as the tour's administration director. She has also assisted in basketball camps in Tennessee as well as the Marynell Meadors Basketball Camp.

Gaw coordinates FSU team travel, helps set up pre-season workouts and assists with on-floor coaching assignments as well as other administrative duties.

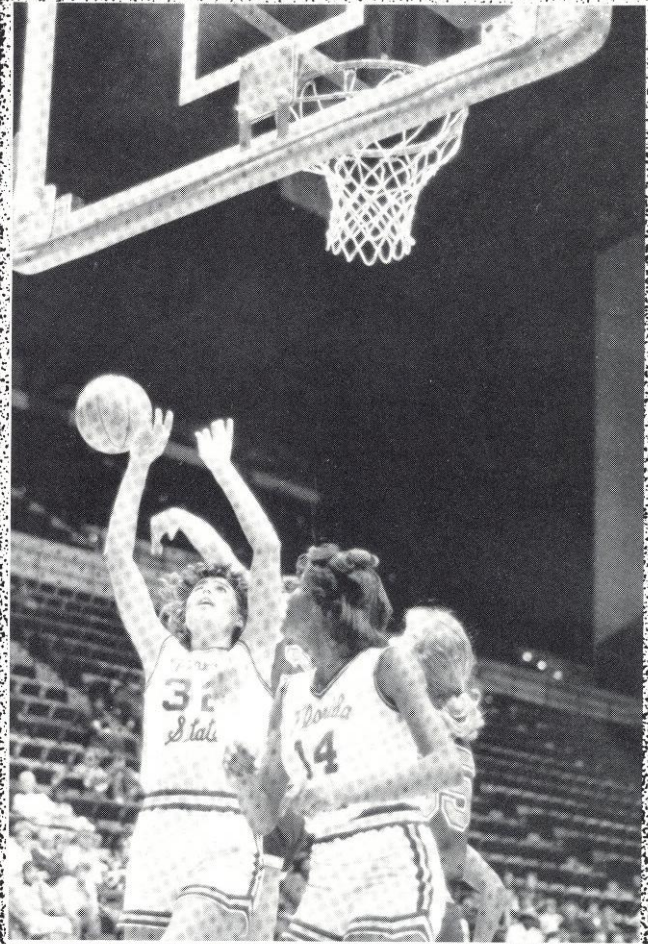


Robyn Markey, Marynell Meadors, Freda Glover, Wrenetta Gaw.





Co-Captain Jan Piatnik discusses strategy with Coach Meadors.



Terri McCarty (32) and Gussie Clark (14) battle it out under the goal.



Bev Burnett, pictured here with Jan Piatnik, once again graces the Lady Seminole lineup after a year's absence.

## Breakdown of 1987-88 Roster

**Starters Lost:** (3) Brenda Cliette (14.8 ppg, 6.8 rpg), Valene Harris (13.8 ppg, 6.3 rpg), Sheri Kaminski (7.3 ppg, 2.5 rpg)

**Starters Returning:** (1) Sarah Hall, C, (10.1 ppg, 6.8 rpg)

**Letterwinners Lost:** (4) Cliette, Harris, Kaminski, Mary Buchanan (3.1 ppg, 3.0 rpg)

**Letterwinners Returning:** (6) Hall, Garrett (5.4 ppg, 3.0 rpg), Jan Piatnik (4.2 ppg, 1.1 rpg), Gussie Clark (5.6 ppg, 3.8 rpg), Terri McCarty (4.9 ppg, 4.2 rpg), Angela Tucker (1.9 ppg, 2.6 rpg).

**Newcomers:** (7) Bev Burnett, Jr., 5-9, F, Tallahassee, FL  
 Robin Corn, Fr., 5-9, G, Asheville, NC  
 Chris Davis, Fr., 5-9, F, Pensacola, FL  
 Sarah Grimes, Fr., 6-4, C, Roswell, GA  
 Aline Harvis, Jr., 5-10, F, Lynn Haven, FL  
 Robin Storey, Jr., 5-7, G, Mountain View, AR  
 Kelli Test, Fr., 5-9, G, Ringgold, GA

**Freshmen:** (4) Robin Corn  
 Chris Davis  
 Sarah Grimes  
 Kelli Test

**Sophomores:** (0)

**Juniors:** (4) Bev Burnett  
 Aline Harvis  
 Robin Storey  
 Angela Tucker

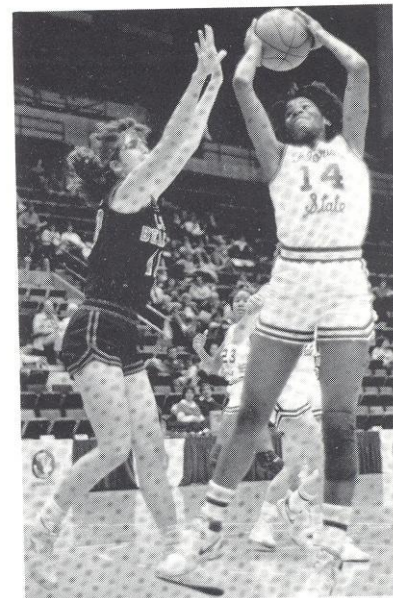
**Seniors:** (5) Gussie Clark  
 Sarah Hall  
 Terri McCarty  
 Jan Piatnik  
 Valerie Garrett



# Returning Lady Seminoles

## GUSSIE CLARK

Senior  
6-0, Forward  
Homerville, GA (Clinch)



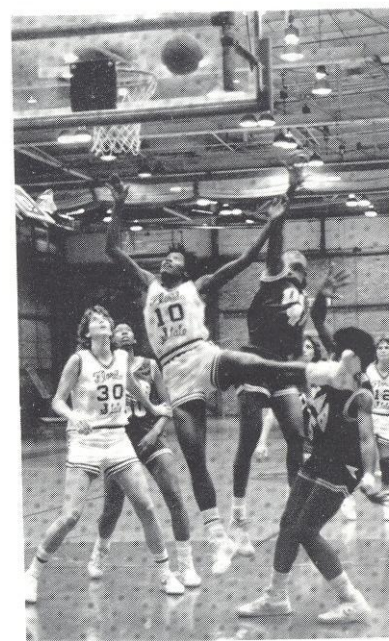
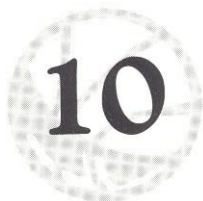
Clark returns for her senior year after playing in 28 games last season, the most of her previous two years ... one of only three players to play in all 28 ... her 5.6 ppg and 3.8 rpg were career highs and her 47% field goal average led Florida State last season ... achieved career highs in points (16) against Miami and rebounds (11) against Cincinnati ... was the leading rebounder for the Lady Seminoles in two games during the 86-87 season ... Clark's appearance is deceptive, according to Coach Meadors: "although she looks awkward out there on the court, she gets the job done and you've got to give her credit," ... played in only 31 games over her first two seasons at FSU, averaging 1.2 ppg and 1.7 rpg ... in her senior season at Clinch High School, she was named MVP ... was also named to the *Florida Times-Union* Super 12 all-star team that season ... daughter of Mr. and Mrs. Kingston Clark, Sr. ... majoring in mathematics.

Clark at FSU

	G	FG-FGA	Pct.	FT-FTA	Pct.	PTS-Avg.	REB-Avg.	A	S
1984-85	19	12-35	34.3	2-14	14.3	26-1.4	41-2.2	1	7
1985-86	12	3-8	37.5	4-6	66.7	10-0.9	13-1.1	0	0
1986-87	28	50-106	47.0	50-87	57.0	150-5.6	107-3.8	4	25
	59	65-149	43.6	56-107	52.3	186-3.2	161-2.7	5	32

## VALERIE GARRETT

Senior  
5-9, Guard  
Cypress, FL (Grand Ridge)



This quick-footed guard returns for her senior season vying for one of the starting guard positions ... played in 24 games, averaging 5.4 ppg last season and getting the starting nod in 12 games ... had a higher scoring average in Metro contests at 6.5 ... had a season high 15 points against Virginia Tech ... her career high of 18 points came against Albany State during the 1985-86 season ... is one of the quickest players on the team according to Meadors, "If she channels that speed and quickness into our offensive and defensive scheme, she could be a dominating guard in the Metro Conference" ... in 70 games as a Lady Seminole, Garrett has averaged 4.4 points ... has averaged 25 steals per season her first three years at FSU ... hit 24 of 26 free throws as a freshman ... lettered four years at Grand Ridge High School, earning MVP honors all four seasons ... selected to Big Bend all-star team during her senior season ... Jackson County Player of the Year in 1984 ... daughter of Wesley Lee and Elnora Garrett ...majoring in criminology.

Garrett at FSU

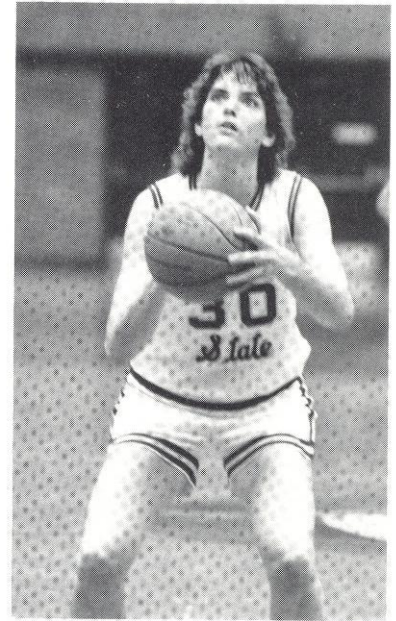
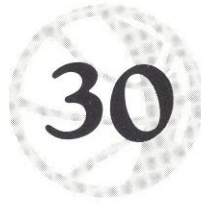
	G	FG-FGA	Pct.	FT-FTA	Pct.	PTS-Avg.	REB-Avg.	A	S
1984-85	24	30-88	34.1	24-26	92.3	84-3.5	65-2.7	11	25
1985-86	22	41-120	34.2	15-36	41.6	93-4.2	50-2.4	12	25
1986-87	24	47-141	33.0	35-62	56.0	129-5.4	71-3.0	15	26
	70	118-349	33.8	74-124	59.7	306-4.4	186-2.7	38	76



# Returning Lady Seminoles

## SARAH HALL

Senior  
6-3, Forward  
Bradenton, FL (Manatee)



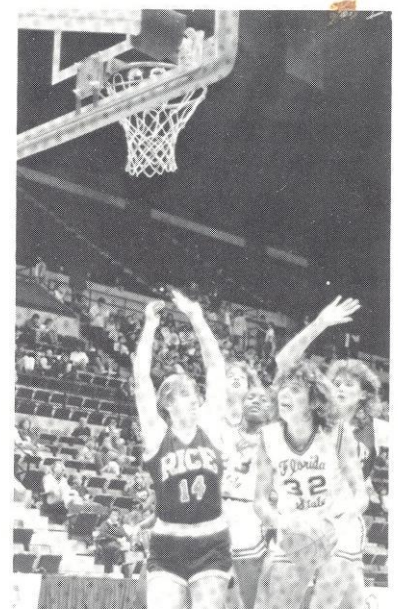
Returns for her senior season as FSU's top returning scorer and rebounder ... enjoyed her most productive season scoring-wise as a junior, averaging 10.1 ppg ... played in all 28 games ... going into this season, Hall ranks among leaders in career rebounds, rebounding average and games played ... had higher average in scoring and rebounding in 1986-87 Metro games with 12.7 ppg and 8.0 rpg ... was high scorer in three games last season and high rebounder in seven games ... season highs were 21 points against Florida and 13 rebounds against Memphis State and Albany State ... scored in double digits 15 times and had eight or more rebounds 11 times last season ... "Sarah could be the winning link for this 87-88 team if she provides the scoring and rebounding punch we need with our inside game," says Meadors ... played with gold medal-winning USA South Team Handball squad during the Olympic Summerfest prior to 1987 season along with teammates Jan Piatnik and Terri McCarty ... competed with Athletes in Action which toured South America prior to 1986-87 season ... made Metro Conference Commissioner's Academic List for Spring 1986 and 1987 semesters ... is the most consistent player on the team ... career highs came in 1985-86 with 22 points and 18 rebounds against Central Florida ... played three years at Manatee High School earning all-state honors during her senior year ... was also named team MVP her senior year ... daughter of Merrill and Kaythryn Hall ... majoring in communication.

Hall at FSU

	G	FG-FGA	Pct.	FT-FTA	Pct.	PTS-Avg.	REB-Avg.	A	S
1984-85	27	71-157	45.2	43-75	57.3	183-6.8	189-7.0	21	21
1985-86	28	126-296	42.6	46-88	52.3	193-7.7	233-8.3	15	25
1986-87	28	113-260	43.0	57-104	55.0	283-10.1	190-6.8	12	34
	83	310-713	43.4	146-267	54.7	659-7.9	612-7.4	48	80

## TERRI McCARTY

Senior  
6-2, Forward  
Brattleboro, VT (Brattleboro)



Will compete for playing time at the center position in her senior season ... after sitting out sophomore season, McCarty returned to have her most productive year as a junior, averaging 4.9 points and 4.2 rebounds in 25 games ... did not play in four games last season due to a stress fracture of her foot ... her 76 percent from the free throw line was the best on the 1986-87 team ... high rebounder (12) in Florida State's 80-64 win over Toledo in the Tallahassee Hilton-Lady Seminole Classic ... eclipsed that total in the following game with 14 boards against Rice as FSU took the championship with a 62-50 win over Toledo ... her 26 rebounds earned her a spot on the Tallahassee Hilton-Lady Seminole Classic all-tournament team ... "Terri's rebounding and defensive abilities will be a definite must for FSU this season," says Meadors ... in her freshman season, McCarty played in only 11 games, averaging 4.6 minutes per game ... participated in gold medal winning USA South Team Handball squad this past summer along with teammates Sarah Hall and Jan Piatnik in the 1987 Olympic Summerfest ... received five athletic letters at Brattleboro High School; three in basketball and two in tennis ... earned Metro Conference Commissioner's Academic List honors following spring 1987 semester ... will graduate in December with a degree in interior design.

McCarty at FSU

	G	FG-FGA	Pct.	FT-FTA	Pct.	PTS-Avg.	REB-Avg.	A	S
1984-85	11	3-15	20.0	0-0	.000	6-0.5	11-1.0	0	1
1985-86	DID NOT PLAY								
1986-87	25	45-176	25.1	33-44	76.0	123-4.9	104-4.2	11	17
	36	48-191	25.1	33-44	76.0	129-3.6	115-3.2	11	18



# Returning Lady Seminoles

## JAN PIATNIK

Senior  
5-5, Guard  
St. Petersburg, FL (Lakewood)



Continued in her role as a part-time starter last season, getting the starting nod in 19 games ... one of three Lady Seminoles who played in all 28 games ... should figure in the new 3-point play rule in the women's game ... averaged 4.1 ppg and was third on the team with 43 assists ... started in 12 of FSU's 13 Metro Conference games and averaged 5.5 ppg ... equalled a career-high when she scored 16 points against Southern Miss last season ... was the leading scorer in that contest ... has 183 career assists, ranking her on the FSU all-time list ... her 83 games played also ranks her in FSU's career records ... "Jan will be counted on heavily for the leadership role she will have to play at the point guard position and from being elected co-captain of the team," says Meadors ... led the team with 80 assists her sophomore year and had 60 her freshman season to rank her second on the team ... participated with the USA South Team Handball squad during 1987 Olympic Summerfest in Chapel Hill, NC, winning a gold medal along with teammates Sarah Hall and Terri McCarty ... lettered four years at Lakewood High School ... earned all-state honors as a senior after averaging better than 20 points per game ... daughter of Janet Anastasakis ... majoring in physical education.

Piatnik at FSU

	G	FG-FGA	Pct.	FT-FTA	Pct.	PTS-Avg.	REB-Avg.	A	S
1984-85	28	23-70	32.9	16-23	69.6	162-2.2	31-1.1	60	25
1985-86	27	55-151	36.4	17-27	55.5	122-4.5	39-1.4	80	24
1986-87	28	49-132	36.0	21-32	66.0	117-4.2	32-1.1	43	28
	83	126-353	35.6	54-82	65.8	301-3.6	102-1.2	183	77

## ANGELA TUCKER

Junior  
5-11, Forward  
Kansas City, KS (Bishop Ward)



This determined junior will attempt to see more action this season than she has in her previous two years ... has only played in 21 games for the Lady Seminoles ... averaged only 7.4 minutes of playing time in eight games during the 1986-87 season ... averaged 1.9 ppg and 2.6 rpg ... has shown signs of promise in pre-season workouts, getting plenty of rebounds on the inside ... best production of the 1986-87 season came against Memphis State when she scored 5 points and grabbed 5 rebounds ... scored 22 points and grabbed 29 rebounds in her freshman season of 1985-86 while playing in 13 games ... was a three-year starter and letterwinner at Bishop Ward High School in Kansas City ... won team MVP award in both her junior and senior years ... daughter of Clinton and Odevia Brown ... majoring in commercial art.

Tucker at FSU

	G	FG-FGA	Pct.	FT-FTA	Pct.	PTS-Avg.	REB-Avg.	A	S
1985-86	13	11-28	39.3	0-3	.000	22-1.7	29-2.4	4	4
1986-87	8	5-20	25.0	5-7	71.0	15-1.9	21-2.6	1	4
	21	16-48	33.3	5-10	50.0	37-1.8	50-2.4	5	8



# Newcomers

## BEV BURNETT



**Junior**  
**5-9, Forward**  
**Tallahassee, FL (Rickards)**



Returns to the Lady Seminoles lineup in the best shape of her life after a year's absence according to Coach Meadors ... her teammates were so impressed with Burnett's attitude and determination and named her team captain for the 1987-88 season ... over her two previous seasons, Burnett has averaged 12.5 ppg and 4.5 rpg ... was the team high scorer 15 times during the course of those two years; 11 times during the 1985-86 season and four times in 1984-85 ... missed the first seven games of the 1985-86 season due to an automobile accident but wound up as the team's leading scorer with an average of 17.3 ppg ... named Metro Conference Player of the Week in December 1985 ... had a career high of 17 rebounds against South Florida during the 1985-86 season ... had a career high 34 points in an 83-65 loss to Florida A&M during the 1985-86 season ... the total is the second highest in FSU history ... scored over 20 points nine times during her career and over 30 three times ... should prove to be a prime source of scoring again this season ... will be counted on to play a swing position ... played in all 28 games as a freshman, averaging 8.8 points ... earned All-Big Bend honors as a senior at Rickards High School while averaging better than 30 points ... scored over 2000 career points in high school ... majoring in physical education ... daughter of Annis Burnett.

Burnett at FSU									
	G	FG-FGA	Pct.	FT-FTA	Pct.	PTS-Avg.	REB-Avg.	A	S
1984-85	28	96-222	43.2	55-83	66.3	248-8.8	93-3.3	21	20
1985-86	21	141-299	47.2	81-115	70.4	363-17.3	128-6.1	29	13
	49	237-521	45.4	136-198	68.6	611-12.5	221-4.5	50	33

## ALINE HARVIS



**Junior**  
**5-10, Forward**  
**Lynn Haven, FL (Pensacola JC)**



This talented newcomer could be a savior to Florida State's inside game, according to Coach Meadors, who says "Aline is very physical and is not afraid to mix it up under the basket," ... will be looked upon to contribute immediately ... comes to FSU from Pensacola Junior College where she was named All-Panhandle Conference after leading the team in scoring and rebounding ... was team MVP her sophomore season at PJC ... named to PJC's Lady Pirate Tip-Off all-tournament team ... earned best female academic award at PJC her sophomore year ... attended Mosley High School where she was three-time track and field MVP and two-time basketball MVP ... a member of the Fellowship of Christian Athletes ... daughter of Ida Lois Harvis ... majoring in accounting.

## ROBIN STOREY



**Junior**  
**5-5, Guard**  
**Mountain View, AR**  
**(North Arkansas CC)**



This junior college transfer should play a big part in the new three-point play which goes into effect in women's basketball this season ... comes to FSU from North Arkansas Community College where she averaged 15 points and four assists per game ... as a sophomore, was selected all-region II which encompasses Arkansas and Oklahoma ... was also selected to the All-Arkansas Junior College Conference team ... during her two years at North Arkansas, the Lady Pioneers compiled a 28-5 record ... was team captain her sophomore year and earned all-tournament team honors at the Pensacola JC Lady Pirate Tip-Off Classic along with current teammate Aline Harvis ... was three-year all-conference selection at Mountain View (AR) High School ... was also co-captain of her high school team ... daughter of James and Toni Storey ... majoring in physical therapy.



# Freshmen

## ROBIN CORN

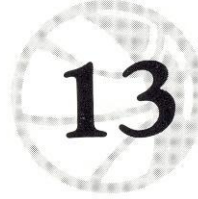
Freshman  
5-9, Guard  
Asheville, NC (T.C. Roberson)



Comes to FSU after a stellar career at T.C. Roberson High School ... Coach Meadors hopes that Corn will develop into a consistent 3-point shooter ... was named Student-Athlete of the Year in Western Carolina and Western North Carolina MVP after her 17 ppg, 7 rpg senior season ... it also earned her a spot on the All-Western North Carolina team ... closed out her high school career being the first girl to letter in four sports (basketball, softball, track and field, and volleyball) in one year, Corn was named Roberson's Most Outstanding Athlete ... holds 10 school records in the four sports she lettered in ... an outstanding student with a near 4.0 GPA ... showed determination with perfect attendance throughout her school years, a feat which impressed Meadors ... daughter of Bob and Kathy Corn ... will major in business.

## CHRIS DAVIS

Freshman  
5-9, Forward  
Pensacola, FL  
(Booker T. Washington)



With a handful of high school accolades backing her up, Meadors is high on this talented freshman ... following her 22 ppg, seven rpg senior season at Booker T. Washington High School, Davis was named to the Gatorade National Team as its Florida Player of the Year ... also was Naismith Florida Player of the Year, *USA Today* Honorable Mention All-America, *Orlando Sentinel* Dixie Dozen Player of the Year and *Pensacola News-Journal* all-area Player of the Year for the second consecutive year ... chose Florida State after being recruited by almost every top women's basketball program in the country ... while racking up individual honors, Davis led Washington to a *USA Today* Top 20 ranking with a 30-1 record ... Washington's lone loss came in the Class 4A state final ... in four years at Washington, Davis scored 1,657 total points, making her the schools second all-time scoring leader ... Davis also brings a fine academic background to FSU as she was nominated for the *Pensacola News-Journal's* Scholar Athlete of the Year with a 3.4 high school GPA ... plans to major in business administration or communication...

## SARAH GRIMES

Freshman  
6-4, Center  
Roswell, GA (Milton)



Comes to FSU after a fine season at Milton High School where she averaged 22 ppg and 12 rpg to make her the team MVP ... under the tutelage of assistant Freda Glover, Coach Meadors hopes that Grimes will develop into a fine inside player at FSU ... her scoring average of 22 ppg set a school record at Milton ... set another school record with 38 points in a single game ... named 1986-87 MVP of North Fulton County ... after leading Milton to a 19-5 record, Grimes was named to the Atlanta Super Stars Select team ... daughter of Gerry and Daneille Grimes ... plans to major in communication...

## KELLI TEST

Freshman  
5-8, Guard  
Ringgold, GA (Ringgold)



Coaches are hopeful that Test will find the same success at FSU that she enjoyed at Ringgold High School where she had her jersey number retired ... averaged 18 ppg her senior season on her way to being named the *Chattanooga News-Free Press* MVP ... was a three-time All-North Georgia selection as well as a three-time all-Tri State selection an area which encompasses Georgia, Tennessee and Alabama ... was named the Georgia region 6AAA Player of the Year ... named team MVP in both basketball and slowpitch softball her senior year ... should figure in FSU's 3-point scheme this season ... brings to FSU a 3.4 high school GPA ...daughter of Eddie and Nora Test ... will major in business.



# 1986-87 Basketball Statistics

Name	G-GS	PTS-AVG	REB-AVG	FG-FGA	PCT	FT-FTA	PCT	PF-D	A	TO	BK	ST	MIN-AVG
Brenda Cliette	24-22	354-14.8	302-12.6	146-345	.420	65-130	.510	71-1	54	116	15	94	774-32.3
Valene Harris	27-8	373-13.8	170-6.3	161-374	.430	51-90	.570	60-2	17	78	10	51	741-27.4
Sarah Hall	28-16	283-10.1	190-6.8	113-260	.430	57-104	.550	96-4	12	66	24	34	680-24.3
Sheri Kaminski	26-10	189-7.3	65-2.5	66-207	.320	55-82	.670	74-4	93	97	2	49	690-26.5
Gussie Clark	28-18	150-5.6	107-3.8	50-106	.470	50-87	.570	56-2	4	30	5	25	651-22.1
Val Garrett	24-12	129-5.4	71-3.0	47-141	.330	35-62	.560	34-0	15	78	2	26	376-15.7
Terri McCarty	25-15	123-4.9	104-4.2	45-176	.260	33-44	.760	42-2	11	37	18	17	558-22.3
Jan Piatnik	28-19	117-4.2	32-1.1	48-132	.360	21-32	.660	33-0	43	91	2	28	574-20.5
Mary Buchanan	27-9	83-3.1	79-3.0	37-102	.360	11-21	.520	74-3	4	23	34	6	388-14.4
Angela Tucker	8-0	15-1.9	21-2.6	5-20	.250	5-7	.710	11-0	1	9	1	4	59-7.4
Rachel Dooley	4-0	3-0.8	4-1.0	1-4	.250	1-3	.330	5-0	5	6	0	2	34-8.5
<b>FSU Totals</b>	<b>28</b>	<b>1833-65.5</b>	<b>1280-45.7</b>	<b>724-1892</b>	<b>.380</b>	<b>385-667</b>	<b>.580</b>	<b>564-19</b>	<b>268</b>	<b>644</b>	<b>116</b>	<b>341</b>	<b>5625</b>
<b>OPP Totals</b>	<b>28</b>	<b>1963-70.1</b>	<b>1164-41.6</b>	<b>782-1719</b>	<b>.450</b>	<b>399-653</b>	<b>.610</b>	<b>588-22</b>	<b>362</b>	<b>621</b>	<b>85</b>	<b>258</b>	<b>5625</b>

FSU totals include 116 team rebounds—do not include 110 deadball rebounds

OPP totals include 107 team rebounds—do not include 103 deadball rebounds

# 1986-87 Metro Statistics

Name	G-GS	PTS-AVG	REB-AVG	FG-FGA	PCT	FT-FTA	PCT	PF-D	A	TO	BK	ST	MIN-AVG
Valene Harris	13-6	176-13.5	92-7.1	73-176	.410	30-49	.600	25-0	13	36	7	22	374-28.8
Sarah Hall	13-10	165-12.7	103-8.0	66-144	.460	33-53	.620	48-2	4	27	6	18	359-27.6
Brenda Cliette	11-10	122-11.1	93-8.5	52-144	.360	18-55	.330	29-2	26	61	9	36	303-27.5
Sheri Kaminski	12-2	94-7.8	32-2.7	29-77	.380	36-41	.880	26-2	42	42	1	19	269-22.4
Val Garrett	13-7	85-6.5	37-2.8	30-82	.370	25-41	.610	14-0	6	37	1	19	233-17.7
Jan Piatnik	13-12	72-5.5	19-1.5	29-65	.450	14-24	.580	18-0	24	38	1	13	304-23.8
Gussie Clark	13-11	70-5.4	58-4.5	24-57	.420	22-38	.580	32-1	2	16	2	18	365-28.1
Mary Buchanan	12-2	35-3.0	31-2.6	15-42	.360	5-10	.500	30-0	1	12	15	3	173-14.0
Rachel Dooley	1-0	3-3.0	0-0.0	1-1	1.000	1-2	.500	1-0	0	1	0	2	9-9.0
Terri McCarty	9-5	26-2.9	36-4.0	9-34	.260	8-11	.730	12-1	2	12	0	1	175-19.4
Angela Tucker	4-0	11-2.8	12-3.0	4-10	.400	3-5	.600	6-0	1	6	0	3	41-10.3
<b>FSU Totals</b>	<b>13</b>	<b>859-66.1</b>	<b>572-44.0</b>	<b>332-832</b>	<b>.400</b>	<b>195-329</b>	<b>.590</b>	<b>241-9</b>	<b>121</b>	<b>288</b>	<b>39</b>	<b>154</b>	<b>2600</b>
<b>OPP Totals</b>	<b>13</b>	<b>911-70.1</b>	<b>531-40.8</b>	<b>373-832</b>	<b>.450</b>	<b>165-274</b>	<b>.600</b>	<b>260-6</b>	<b>174</b>	<b>279</b>	<b>23</b>	<b>123</b>	<b>2600</b>

## Metro Rebounds

FSU totals include 59 team rebounds—do not include 48 deadball rebounds.

# 1986-87 Game-by-Game Results

FSU	OPP	W/L	REC	ATT.	FSU Hi Points	FSU Hi Rebounds
71 Albany State (H)	72	L	0-1	1,070	Cliette 23	Cliette 14
80 Toledo (H)@	64	W	1-1	456	Harris, Kaminski 15	Cliette, McCarty 12
62 Rice (H)@	50	W	2-1	1,030	Cliette 15	Cliette 21
50 Stetson (H)	55	L	2-2	387	Cliette 16	Cliette 11
75 Miami (A)	74	W	3-2	310	Cliette, McCarty 17	Harris 10
38 Florida Atlantic (A)	42	L	3-3	375	Cliette 16	Cliette 15
75 Alabama-Birmingham (H)	62	W	4-3	453	Cliette 25	Cliette 7
66 Valdosta State (H)	75	L	4-4	725	Cliette 15	Cliette 10
78 Virginia Tech (A) (M)	91	L	4-5	230	Harris 20	Hall 10
66 Louisville (H) (M)	63	W	5-5	1,043	Harris 24	Cliette 9
53 Cincinnati (H) (M)	55	L	5-6	575	Hall 18	Cliette 11
65 Florida (H)	69	L	5-7	800	Hall 21	Cliette, Hall 9
58 South Alabama (H)	76	L	5-8	349	Cliette 20	Cliette 14
56 South Carolina (H)(M)	63	L	5-9	315	Hall 19	Hall 9
64 S. Mississippi (A)(M)	62	W	6-9	237	Cliette, Garrett 14	Cliette 10
68 Memphis State (A)(M)	75	L	6-10	457	Harris 17	Hall 13
73 Miami (H)	80	L	6-11	415	Harris 21	Cliette 12
70 Virginia Tech (H)(M)	65	W	7-11	423	Cliette 15	Cliette, Harris 10
64 South Alabama (H)	99	L	7-12	279	Harris 19	Harris, Garrett 6
64 Louisville (A)(M)	77	L	7-13	350	Kaminski 18	Harris 15
70 Cincinnati (A)(M)	50	W	8-13	177	Harris 20	Clark 11
79 Florida A&M (H)	72	W	9-13	2,207	Cliette 18	Clark 7
61 South Carolina (A)(M)	64	L	9-14	428	Cliette 16	Hall 7
59 Florida (H)	70	L	9-15	447	Cliette, Harris 16	Hall 10
75 Southern Miss (H)(M)	84	L	9-16	452	Piatnik 16	Cliette 8
67 Memphis State (H)(M)	94	L	9-17	630	Harris 16	Cliette, Hall 7
59 New Orleans (A)	87	L	9-18	516	Harris 14	Buchanan 9
67 Virginia Tech (A)(M)*	68	L	9-19	775	Kaminski 21	Cliette 7

@Tallahassee Hilton Classic, Tallahassee, FL (1st Place)

\*Metro Conference Tournament, Blacksburg, VA (6th Place)



# Individual Single Game Records

## 1986-87 Individual Game-by-Game Results

	Piatnik	Kaminski Clark	Garrett	Cliette	Harris	Hall	McCarty	Tucker	Buchanan	Dooley	Gwyn	
Albany State	0/0	8/5	0/0	DNP	23/14	16/6	4/13	15/5	DNP	5/9	DNP	0/1
Toledo	6/2	15/3	0/0	DNP	15/12	17/3	8/5	6/12	0/0	8/6	0/1	5/3
Rice	0/0	9/4	4/1	DNP	15/21	11/7	10/9	11/14	0/0	0/4	0/0	2/4
Stetson	0/0	4/1	2/0	0/2	16/11	8/4	12/6	4/2	DNP	2/4	DNP	2/3
Miami	4/0	8/3	2/2	2/0	17/9	15/10	10/1	17/5	DNP	0/5	DNP	0/6
Florida Atlantic	4/1	4/1	1/2	2/2	15/16	6/5	2/5	0/4	0/0	2/0	0/0	2/0
Valdosta St.	0/1	6/1	6/4	5/3	15/10	14/6	4/2	10/4	DNP	6/4	DNP	DNP
Virginia Tech	8/2	7/3	7/4	15/3	5/6	20/7	14/10	2/6	DNP	0/2	DNP	DNP
Louisville	2/2	2/2	0/1	11/7	13/9	24/5	13/7	0/4	DNP	1/3	DNP	DNP
Cincinnati	9/1	0/0	6/6	2/3	10/11	6/8	18/5	DNP	DNP	2/1	DNP	DNP
Florida	4/1	6/1	4/4	10/5	20/9	DNP	21/9	0/1	DNP	0/1	DNP	DNP
South Alabama	0/1	8/3	6/9	4/4	20/14	14/6	6/4	0/0	0/2	0/2	DNP	DNP
South Carolina	6/3	DNP	4/4	8/2	10/7	9/8	19/9	DNP	DNP	DNP	DNP	DNP
Southern Miss	4/0	0/2	8/6	14/2	14/10	9/6	9/8	DNP	2/1	4/6	DNP	DNP
Memphis State	11/0	2/1	0/2	4/1	15/9	17/3	15/13	DNP	2/2	2/4	DNP	DNP
Miami	0/3	4/2	16/9	3/2	19/12	21/4	2/2	14/7	DNP	4/0	DNP	DNP
Virginia Tech	8/2	10/4	3/5	6/2	15/10	14/10	14/8	0/1	DNP	0/0	DNP	DNP
South Alabama	4/0	9/3	8/4	3/6	DNP	19/6	8/5	7/3	4/4	2/0	0/1	DNP
Louisville	6/2	18/3	4/2	1/5	DNP	17/15	5/5	6/5	0/4	7/5	DNP	DNP
Cincinnati	0/1	14/3	12/11	3/2	DNP	20/10	13/9	7/5	DNP	1/4	DNP	DNP
Florida A&M	12/2	0/2	9/7	4/1	18/5	14/6	8/5	6/6	DNP	8/1	DNP	DNP
South Carolina	0/1	11/4	3/4	6/1	16/6	4/4	13/7	4/2	DNP	4/1	DNP	DNP
Florida	0/1	7/0	4/2	1/1	16/6	16/6	10/10	0/2	DNP	5/2	DNP	DNP
Southern Miss	16/2	6/3	8/4	9/4	12/8	6/6	10/6	4/6	DNP	4/2	DNP	DNP
Memphis State	2/2	9/4	4/2	2/3	8/7	16/4	6/7	2/5	5/5	10/2	3/0	DNP
New Orleans	1/1	6/2	10/4	4/2	DNP	14/6	7/6	9/3	2/6	6/9	0/2	DNP
Virginia Tech	0/1	15/3	11/7	6/2	4/10	15/6	15/9	1/2	DNP	0/1	DNP	DNP

## Individual Highs FSU and Opponents

	FSU	Opponent
Points	25, Brenda Cliette, vs. Alabama-Birm.	33, Renee Dennis, Virginia Tech
Field Goals	11, Brenda Cliette, vs. Alabama-Birm. Valene Harris, vs. Louisville	14, Renee Dennis, Virginia Tech
Field Goal Attempts	22, Brenda Cliette, vs. S. Alabama	24, Renee Dennis, Virginia Tech
Free Throws	11, Brenda Cliette, vs. Albany St.	10, Sharon Varnado, Southern Miss.
Free Throw Attempts	13, Brenda Cliette, vs. Albany St.	14, by 4 players
Rebounds	21, Brenda Cliette, vs. Rice	16, Sharon Varnado, Southern Miss. Adrian Vickers, S. Alabama
Assists	11, Sheri Kaminski, vs. Alabama-Birm.	9, Maureen Donovan, Virginia Tech
Turnovers	10, Brenda Cliette, vs. Florida	9, by three players
Blocks	5, Mary Buchanan, vs. Valdosta St.	5, Deidre Hillary, Stetson
Steals	8, Brenda Cliette, vs. Alabama-Birm.	6 Monica Williams, S. Carolina Paula Perczynski, Louisville

## Team Highs FSU and Opponents

	FSU	Opponent
Points	80, vs. Toledo	99, South Alabama
Field Goals	37, vs. Toledo	42, S. Alabama, Memphis St.
Field Goal Attempts	82, vs. Stetson	75, Albany State
Field Goal %	55.5%, vs. Florida	62%, South Alabama
Free Throws	27, vs Albany State	25, Virginia Tech
Free Throw Attempts	47, vs. Rice	41, South Alabama
Field Goal %	100%, vs. Stetson (6-6)	100% Cincinnati (5-5)
Rebounds	69, vs. Rice	55, South Alabama
Fouls	30, vs. Virginia Tech	31, Albany St., Virginia Tech
Assists	16, vs. New Orleans	27, Memphis State
Turnovers	35, vs. New Orleans	32, Alabama-Birm.
Blocks	8, vs. Valdosta St.	7, Albany St, Florida A&M
Steals	19, vs. Alabama-Birm.	17, South Carolina



Brenda Cliette was a dominant factor in 1986-87 for the Lady Seminoles.





Front Row: Jan Piatnik, Bev Burnett, Sarah Hall; Second Row: Robin Storey, Chris Davis, Robin Corn, Valerie Garrett, Angela Tucker; Third Row: Terri McCarty, Sarah Grimes, Kelli Test, Aline Harvis, Gussie Clark; Back Row: Assistant Coach Robyn Markey, trainer Robin Gibson, assistant coach Freda Glover, graduate assistant Wrenette Gaw, head coach Marynell Meadors, manager Juli Jacoby.

## Florida State Lady Seminole Basketball 1987-88 Roster

NO.	NAME	POS.	HT.	YR.	HOMETOWN/H.S.-J.C.
33	Bev Burnett	G/F	5-9	Jr.	Tallahassee, FL/Rickards
14	Gussie Clark	F/C	6-0	Sr.	Homerville, GA/Clinch Co.
23	Robin Corn	G	5-9	Fr.	Asheville, NC/Roberson
13	Chris Davis	G/F	5-9	Fr.	Pensacola, FL/Washington
10	Val Garrett	G	5-9	Sr.	Cypress, FL/Grand Ridge
42	Sarah Grimes	F/C	6-4	Fr.	Roswell, GA/Milton
30	Sarah Hall	C	6-3	Sr.	Bradenton, FL/Manatee
21	Aline Harvis	F	5-10	Jr.	Lynn Haven, FL/Pensacola J.C.
32	Terri McCarty	F	6-2	Sr.	Brattleboro, VT/Brattleboro
11	Jan Piatnik	G	5-5	Sr.	St. Petersburg, FL/Lakewood
50	Tina Rucker	G	5-8	Fr.	Frankfort, IN/Frankfort
12	Robin Storey	G	5-7	Jr.	Mountain View, AR/N. Arkansas J.C.
24	Kelli Test	G	5-9	Fr.	Ringgold, GA/Ringgold
44	Angela Tucker	F	5-11	So.	Kansas City, KS/Bishop Ward

### Numerical Roster

- 10 Valerie Garrett
- 11 Jan Piatnik
- 12 Robin Storey
- 13 Chris Davis
- 14 Gussie Clark
- 21 Aline Harvis
- 23 Robin Corn
- 24 Kelli Test
- 30 Sarah Hall
- 32 Terri McCarty
- 33 Bev Burnett
- 42 Sarah Grimes
- 44 Angela Tucker
- 50 Tina Rucker

**Head Coach:** Marynell Meadors, Middle Tennessee State

**Assistant Coaches:** Robyn Markey, Freda Glover

**Graduate Assistant:** Wrenette Gaw

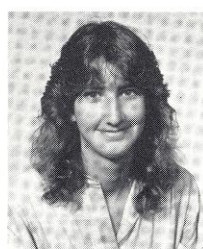
**Manager:** Juli Jacoby

**Trainer:** Robin Gibson

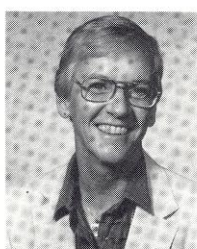
### Support Staff



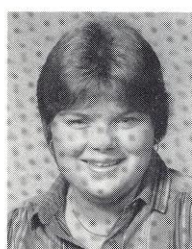
**Robin Gibson**  
Trainer



**Juli Jacoby**  
Equipment Manager



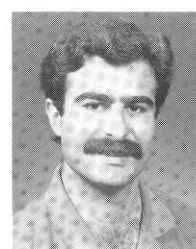
**Dr. Jan Stocker**  
Asst. Athletic Director



**Trudy Rayburn**  
Academic Advisor



**Terry Hume**  
Promotions and Marketing



**Carl Gentile**  
Strength Coach



---

---

# Lady Seminoles Help Build Team Handball Tradition

---

---

At Florida State, there seems to be a connection to the second most popular sport in the world. Specifically, a connection to the Lady Seminole basketball team.

It might be a while before coming up with team handball as a sport which boasts 4.2 million players in 88 countries, according to the Team Handball Federation. It ranks behind soccer as the world's most popular sport.

On this year's Lady Seminole basketball team are three enthusiasts of the sport which is described as "exactly like basketball except for the goals and the physical contact." It can also be likened to ice hockey and soccer.

Seniors Sarah Hall, Terri McCarty and Jan Piatnik were members of the gold-medal winning USA South Team Handball squad which participated in the Olympic Summer Festival in Chapel Hill, NC in July of 1987. Piatnik says that she was drawn to the sport by its fast-paced excitement. "It's a contact sport with much movement like basketball," she says. "I play a wing position, which starts the offense and makes penetration to set the offense. It's a lot like the guard position I play in basketball."

Piatnik and the others were drawn to the sport by former FSU basketball player Penny Stone, who played the 1985-86 season. Stone has been a leading catalyst for the game and had been a standout for many years. Another USA South team member with Lady Seminole connections is Celia Slater who played basketball from 1982-86.



---

---

**USA  
SOUTH**

---

---



*Terri McCarty, Jan Piatnik, Sarah Hall*

The sport incorporates facets of various team sports, but most closely resembles basketball, having roughly the same number of players, dribbling and passing, picks and rolls, and fast breaks. It has been called ice hockey without sticks and ice, water polo without water and indoor soccer without kicking.

The object of the game is to hurl the hard leather ball, about the size of a large cantaloupe, into a two-meter by three-meter goal. A successful scoring attempt results in the award of a single point. Typical final scores in this explosive game run in the high teens.

Although relatively unknown in the United States, Piatnik says that it is more on the rise in the north than south. "In the Olympic Summer Festival, our team was the underdog," she says. "The north team was favored to beat all three other teams (south, east, and west), but we won by one goal."

Most of team handball's following is in West and East Germany where the sport was originated in the 1920's. The top 10 teams in the world are mostly made up of Eastern block nations, such as Czechoslovakia, Romania, Poland and Hungary. The Soviet Union is, and has been, number one in the world for many years.

The United States is just beginning to catch on to this exciting sport. With contributions added by the three current members of the Florida State women's basketball team, team handball will continue to be on the upswing.



# All Time Letterwinners

## A-B-C

Joanne Abraham	1971-72-73
Vicki Alexander	1977
Deb Allen	1972-73-74
Jackie Arnold	1978-79
Jan Bailey	1974-75-76
Jill Baker	1981-82-83-84
Karen Barineau	1978-79
Judy Battles	1975-76-77
Diane Blaydes	1979-80
Cindy Boehmer	1973-74-75-76
Veronica Bouknight	1986
Chris Brokas	1976-77
Susan Brown	1974-75-76
Mary Buchanan	1987
Ruthann Burgun	1981
Bev Burnett	1985-86
Joye Burroughs	1982
Mary Anne Cannon	1973-74-75-76
Gussie Clark	1985-86-87
Brenda Cliette	1983, 1987
Ann Collins	1977-78
Emma Colquitt	1973-74-75-76

## D-E-F

Melissa Davis	1978
Vicki Davis	1971-72-73
Tizza Drew	1977
Debbie Edwards	1970-71-72
Denise Eilbacher	1977-78
Meg Fahey	1982
Cindy Frank	1971-72-73
Lisa Foglio	1981-82-83

## G-H-I

Becky Gailey	1978
Nancy Galkantas	1982-83
Sue Galkantas	1981-82-83-84
Val Garrett	1985-86-87
Cheryl Glover	1986
Scoby Golden	1979-80
Jan Gomez	1970-71
Clara Gonzalez	1975-76-77
Marlene Graham	1973-74-75-76
Joan Gray	1970-71-72
Linda Gray	1979-80-81
Moody Gwyn	1986
Sarah Hall	1985-86-87
Gina Harden	1979-80
Rose Harper	1978-79-80-81
Valene Harris	1986-87
Peggy Harstvedt	1976-77-78
Brauna Hatzell	1978
Candi Houston	1970-71
Rita Ivy	1970-71-72

## J-K-L

Sheri Kaminski	1984-85-86-87
Francene Kocsis	1975-76
Barb Koontz	1974-75-76
Martha Lappe	1978-79
Charlene Lain	1970-71-72
June Lasseter	1980
Laine Lasseter	1979-80-81-82

## M-N-O-P

Stacy Macon	1977
Lynn Marnie	1980-81-82-83
Terri McCartney	1985-87
Lynn Dee McDonald	1980-81
Linda-Ann McGowan	1984-85-86
Yvette McKinney	1973-74-75
Val Nelson	1977
LeeVayn Oliver	1981-82-83-84
Sunnie O'Neal	1980-81-82
Anne Owen	1970-71
Karyn Palgut	1982
Barb Parr	1974-75-76
Jan Piatnik	1985-86-87
Patti Pink	1976-77
Kris Podulka	1979-80-81
Gayle Preston	1975-76
Debbie Putzi	1981

## Q-R-S

Kim Rickardson	1977
Lorraine Rimson	1984-85
Cherry Rivers	1977-78-79-80
Sandra Ruffo	1978
Meg Shuler	1979
Susan Seamon	1971-72-73
Darlene Shannon	1978-79
Joanne Sharpe	1970-71-72
Jode Shaw	1975
Dawn Shields	1980
Celia Slater	1984-85
Lori Smith	1984
Vicki Spencing	1971-72
Shirley Sildsby	1976-77-78
Glenda Stokes	1980-81-82-83
Penny Stone	1985

## T-U-V

Terry Thomas	1978
Susie Thrapp	1981
Teresa Tinsley	1979-80
Debbie Tippins	1977

## W-X-Y-Z

Cheryl Weigand	1976-77-78
Lahna Wood	1983
Diane Wright	1971-72
Monica Wright	1970-71-72

## Commissioner's List

Each year, Metro Conference commissioner Ralph McFillen honors Metro athletes that have excelled in both academics and athletics. The following Lady Seminole basketball players have been named to this honor roll since the 1984-85 academic year:

Maurine Martin 1985  
 Celia Slater 1985  
 Penny Stone 1985  
 Terri McCarty 1986, 1987  
 Sarah Hall 1986, 1987

## 1987-89 Travel Itinerary

Date	Opponent	Hotel
November 25-29	DePaul Tournament	Ramada-O'Hare (312/827-5153)
December 11-13	Stetson	Hilton Inn (904/738-5200)
December 15-17	Georgia Southern	Holiday Inn (912/764-6121)
December 17-19	North Carolina	Holiday Inn (919/929-2171)
January 7-9	Cincinnati	Clarion Hotel (513/352-2100)
January 9-10	Louisville	Holiday Inn (502/964-3311)
February 12-14	Memphis State	Radisson (901/528-1800)
February 14-16	Southern Mississippi	Hampton Inn (601/264-8080)
February 19-21	Virginia Tech	Marriott (703/552-7001)
February 21-23	South Carolina	Holiday Inn (803/799-7800)



## INDIVIDUAL SINGLE GAME

### RECORDS

#### Florida State

**Points** - 37, Sue Galkantas vs. Florida (12/3/80)  
**Points (Half)** - 25, Sue Galkantas vs. Georgia State (11/21/80)  
**Field Goals Made** - 17, Laine Lasseter vs. SE Louisiana (12/13/79)  
**Field Goals Attempted** - 30, Laine Lasseter vs. Mercer (1/26/81)  
**Free Throws Made** - 14, Sue Galkantas vs. Tulane (2/5/83) and vs. Memphis State (1/25/82)  
**Free Throws Attempted** - 17, Sue Galkantas vs. Tulane (1/25/82)  
**Rebounds** - 23, Laine Lasseter vs. South Florida (12/2/78)  
**Assists** - 14, Shirley Silsby vs. Flagler (2/6/76)  
**Steals** - 8, Glenda Stokes vs. Oral Roberts (12/15/79)  
**Blocked Shots** - 6, Brenda Cliette vs. Army (1/2/83) and Laine Lasseter vs. Mercer (11/17/78)

#### Opponents

**Points** - 44, Wanda Hightower, Alabama-Birmingham (1/13/80)  
**Points (Half)** - 25, Wanda Hightower, Alabama-Birmingham (1/13/80)  
**Field Goals Made** - 18, several players; last Wanda Hightower, Alabama-Birmingham (1/13/80)  
**Field Goals Attempted** - 32, Cheryl Cook, Cincinnati (2/29/84)  
**Free Throws Made** - 14, Robin Lee, Virginia Tech (1/16/82)  
**Free Throws Attempted** - 17, Robin Lee, Virginia Tech (1/16/82)  
**Rebounds** - 19, several players, last Wilhelmina Smith, Southern Miss (1/30/84)  
**Assists** - 14, Jackie Spencer, Louisville (1/12/85)  
**Steals** - 9, Several, Last Shelia Collins, Tennessee (2/18/85)  
**Blocked Shots** - 7, several players, last Marilyn Stephens, Temple (1/6/83)

## Florida State Single Game Highs

### Points

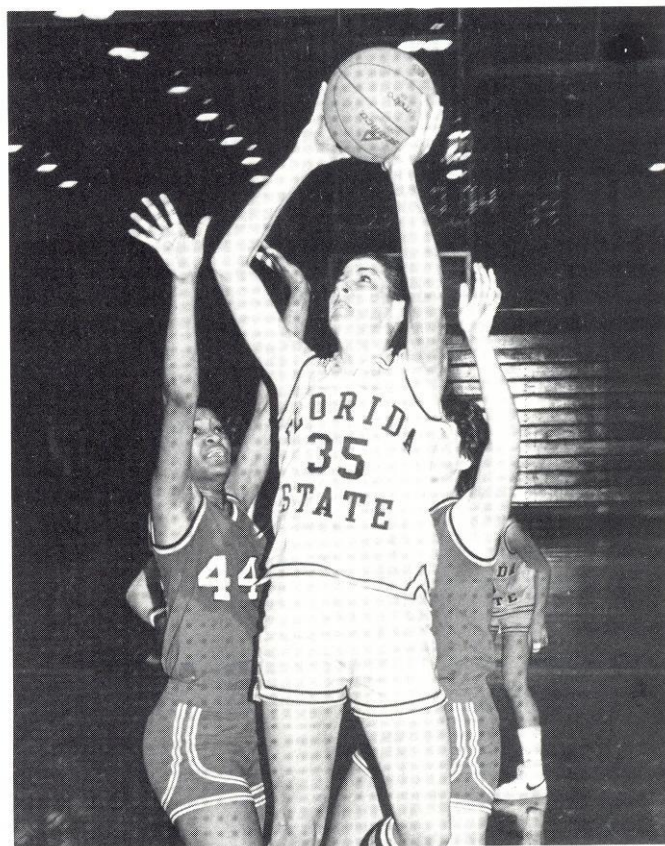
37, Sue Galkantas vs. Florida, 1980  
34, Sue Galkantas vs. Tulane, 1983  
34, Sue Galkantas vs. Florida A&M, 1981  
34, Laine Lasseter vs. SE Louisiana, 1980  
34, Bev Burnett vs. Florida A&M, 1986  
33, Sue Galkantas vs. Middle Tennessee State, 1983  
33, Laine Lasseter vs. Mercer, 1981  
33, Sue Galkantas vs. Georgia State, 1980  
33, Sue Galkantas vs. Virginia Tech, 1982  
32, Bev Burnett, vs. South Florida, 1986  
32, Sue Galkantas vs. South Alabama, 1981  
32, Sue Galkantas vs. Miami, 1980  
32, Laine Lasseter vs. Florida, 1979  
31, Laine Lasseter vs. Alabama, 1978  
30, Cherry Rivers vs. Miami, 1980  
30, Sue Galkantas vs. Kent State, 1982  
30, Lisa Foglio vs. Miami (0), 1982  
30, Sue Galkantas vs. Memphis State, 1982  
30, Sue Galkantas vs. Tulane, 1982

### Rebounds

23, Laine Lasseter vs. South Florida, 1978  
21, Glenda Stokes vs. Virginia Tech, 1982  
19, Chris Brokas vs. Troy State, 1979  
19, LeeVayn Oliver vs. Cincinnati, 1981  
18, Sarah Hall vs. Central Florida, 1986  
17, Laine Lasseter vs. Florida, 1979  
17, Sue Galkantas vs. Florida, 1980  
17, Brenda Cliette vs. Montclair State, 1983  
17, Sarah Hall vs. West Georgia, 1986  
17, Sue Galkantas vs. Georgia Tech, 1980  
17, Loraine Rimson, vs. Georgetown, 1986  
17, Loraine Rimson vs. Radford, 1986  
16, Cherry Rivers vs. Miami, 1980  
16, Laine Lasseter vs. Alabama-Birmingham, 1978  
16, Cherry Rivers vs. Louisville, 1979  
16, Laine Lasseter vs. Appalachian State, 1979  
16, Lorraine Rimson vs. Florida A&M, 1984  
16, Lorraine Rimson vs. Cincinnati, 1984



Sue Galkantas is the only Lady Seminole basketball player to have her jersey number retired.



Laine Lasseter holds the single-game record with 23 rebounds.



# Single Season Records

## Total Points

Name	Season	Games	Points
Sue Galkantas	1982	29	710
Sue Galkantas	1981	34	627
Cherry Rivers	1980	31	514
Sue Galkantas	1984	28	495
Sue Galkantas	1983	29	491
Cherry Rivers	1979	36	464
Lorraine Rimson	1984	31	459
Lisa Foglio	1983	29	445
Lisa Foglio	1982	26	439
Jackie Arnold	1978	23	410
Laine Lasseter	1979	22	405
Brenda Cliette	1983	29	392

## Scoring Average

Name	Season	Games	Points	AVG.
Sue Galkantas	1981	29	627	21.6
Sue Galkantas	1980	34	710	20.9
Laine Lasseter	1979	22	405	18.4
Cherry Rivers	1979	26	464	17.8
Jackie Arnold	1978	23	410	17.8
Sue Galkantas	1984	31	495	17.7
Laine Lasseter	1980	21	371	17.6
Bev Burnett	1986	21	363	17.3
Sue Galkantas	1983	29	491	16.9
Lisa Foglio	1982	26	439	16.9
Cherry Rivers	1980	31	514	16.6
Lorraine Rimson	1985	24	391	16.3
Lisa Foglio	1983	29	445	15.3

## Steals

Name	Year	Games	Steals
Brenda Cliette	1987	24	94
Brenda Cliette	1983	29	77
Glenda Stokes	1982	37	68
Lisa Foglio	1982	26	64
Sunnie O'Neal	1982	37	61
Lisa Foglio	1983	29	59
Sheri Kaminski	1984	31	55
Glenda Stokes	1980	35	54
LeeVayn Oliver	1982	35	52
Lori Smith	1984	31	51

## Total Rebounds

Name	Season	Games	Rebounds
Cherry Rivers	1977	24	336
Brenda Cliette	1987	24	302
Sue Galkantas	1982	34	296
Glenda Stokes	1980	35	294
Glenda Stokes	1982	37	276
Sue Galkantas	1981	29	270
Brenda Cliette	1983	29	269
Lorraine Rimson	1984	31	269
LeeVayn Oliver	1982	35	260
Cherry Rivers	1980	31	257
Sarah Hall	1986	28	233
LeeVayn Oliver	1983	29	248
Cherry Rivers	1978	22	226
LeeVayn Oliver	1984	31	223



Lisa Foglio's .819 free throw percentage in 1983 is an FSU single-season record.

## Rebounding Average

Name	Season	Game	Rebounds	AVG.
Cherry Rivers	1977	24	336	14.0
Brenda Cliette	1987	24	302	12.6
Cherry Rivers	1978	22	226	10.3
Laine Lasseter	1979	22	222	10.0
Sue Galkantas	1981	29	270	9.3
Brenda Cliette	1983	29	269	9.3
Sue Galkantas	1982	34	296	8.7
Lorraine Rimson	1984	31	269	8.7
Glenda Stokes	1980	35	294	8.4
LeeVayn Oliver	1983	30	298	8.3
Cherry Rivers	1980	31	257	8.3
Sarah Hall	1986	28	233	8.3

## Assists

Name	Season	Games	Assists
Shirley Silsby	1977	23	184
Sheri Kaminski	1984	31	155
Lynn Marnie	1982	36	135
Rose Harper	1980	35	125
Sunnie O'Neal	1982	37	120
Teresa Tinsley	1979	27	102
Lisa Foglio	1981	27	98
Lisa Foglio	1983	29	96
Teresa Tinsley	1980	35	95
Sheri Kaminski	1987	26	93
Lynn Marnie	1983	23	93
Celia Slater	1984	27	83
Lisa Foglio	1982	26	80

## Field Goal Percentage

Name	Season	Games	FG-FGA*	PCT.
Glenda Stokes	1983	29	103-171	.602
Lisa Foglio	1982	26	190-319	.596
Sue Galkantas	1983	29	184-323	.570
Laine Lasseter	1980	21	162-290	.560
LeeVayn Oliver	1984	31	140-262	.534
Sue Galkantas	1982	34	282-536	.526
LeeVayn Oliver	1983	30	147-281	.523
LeeVayn Oliver	1982	35	160-307	.521
Laine Lasseter	1981	28	154-296	.520
Lisa Foglio	1982	29	184-357	.515
Lisa Foglio	1981	27	139-270	.515

\*100 made min.

## Free Throw Percentage

Name	Season	Games	FT-FTA*	PCT.
Lisa Foglio	1983	29	77-94	.819
Sheri Kaminski	1985	24	51-63	.809
Lisa Foglio	1981	27	65-81	.802
Sue Galkantas	1983	29	123-154	.799
Sue Galkantas	1984	28	111-144	.771
Sue Galkantas	1981	29	109-139	.755
Sheri Kaminski	1986	17	38-51	.745
Lisa Foglio	1982	26	59-80	.739
Sheri Kaminski	1984	31	64-88	.727
Lorraine Rimson	1984	31	95-134	.709
Lynn Dee McDonald	1980	28	103-150	.687
Sue Galkantas	1982	29	146-214	.682

\* 50 made min.

## Benjamin "Buzz" Narbut Award

Presented annually to the Lady Seminole Basketball player that exhibits outstanding character, dedication and desire. Named after Benjamin "Buz" Narbut, former FSU assistant coach who was killed in a tragic automobile accident in 1984.

1984 - Lee Vayn Oliver  
 1985 - Celia Slater  
 1986 - Penny Stone  
 1987 - Terri McCarty



# Career Records

## Total Points

Name	Seasons	Games	Points
Sue Galkantas	1980-84	120	2323
Cherry Rivers	1976-80	103	1636
Laine Lasseter	1978-82	86	1265
Lisa Foglio	1980-83	82	1227
LeeVayn Oliver	1981-84	122	1166
Glenda Stokes	1979-83	130	1118
Lorraine Rimson	1983-85	55	850
Chris Brokas	1976-79	64	833
Shirley Silsby	1976-79	69	799
Rose Harper	1977-81	111	799
Sarah Hall	1984-Present	83	764

## Scoring Average

Name	Seasons	Games	Points	AVG.
Sue Galkantas	1980-83	120	2323	19.4
Cherry Rivers	1976-80	103	1636	15.9
Jackie Arnold	1977-79	46	727	15.8
Lisa Foglio	1981-83	82	1227	15.0
Laine Lasseter	1978-82	86	1265	14.6
Lorraine Rimson	1983-85	78	1138	14.6
Brenda Cliette	1982-87	53	746	14.1
Chris Brokas	1976-79	64	833	13.0
Shirley Silsby	1976-79	69	799	11.6
LeeVayn Oliver	1980-84	122	1166	9.6
Celia Siater	1983-85	55	525	9.5
Lynn Dee McDonald	1979-81	47	433	9.2

## Steals

Name	Seasons	Games	Steals
Glenda Stokes	1979-83	130	201
Cherry Rivers	1976-80	103	189
Lisa Foglio	1980-83	82	181
Brenda Cliette	1982-87	53	171
Sheri Kaminski	1983-87	98	171
Sue Galkantas	1980-84	120	162
Sunnie O'Neal	1980-82	72	140
LeeVayn Oliver	1980-84	122	122
Rose Harper	1977-81	111	107
Lynn Marnie	1980-83	86	93
Lori Smith	1983-85	51	88
Sarah Hall	1984-Present	83	80

## Total Rebounds

Name	Seasons	Games	Rebounds
Cherry Rivers	1976-80	103	1029
Sue Galkantas	1980-84	120	1006
Glenda Stokes	1979-83	130	938
LeeVayn Oliver	1980-84	122	869
Lorraine Rimson	1983-86	78	652
Laine Lasseter	1978-82	86	624
Sarah Hall	1984-Present	83	612
Chris Brokas	1976-79	64	580
Brenda Cliette	1982-87	53	571
Rose Harper	1977-81	111	384
Jackie Arnold	1977-79	46	325
Linda Gray	1978-82	82	309
Lisa Foglio	1980-83	82	269

## Rebounding Average

Name	Seasons	Games	Rebounds	AVG.
Brenda Cliette	1982-87	53	571	10.8
Cherry Rivers	1976-80	103	1029	10.0
Chris Brokas	1976-79	64	530	9.1
Sue Galkantas	1980-84	122	1006	8.4
Lorraine Rimson	1983-85	78	652	8.4
Sarah Hall	1984-Present	83	612	7.4
Glenda Stokes	1979-83	130	938	7.2
Laine Lasseter	1978-82	86	624	7.2
LeeVayn Oliver	1980-84	122	869	7.1
Jackie Arnold	1977-79	46	325	7.1

## Assists

Name	Seasons	Games	Assists
Sheri Kaminski	1983-87	98	355
Shirley Silsby	1976-79	69	348
Lynn Marnie	1980-83	86	293
Lisa Foglio	1980-83	82	274
Rose Harper	1977-81	111	268
Sunnie O'Neal	1980-83	72	253
Sue Galkantas	1980-84	120	240
Teresa Tinsley	1978-81	67	198
Glenda Stokes	1979-83	130	148

## Field Goal Percentage

Name	Seasons	Games	FG-FGA*	PCT.
Lisa Foglio	1980-83	82	513-946	.542
Sue Galkantas	1980-84	120	919-1753	.524
Laine Lasseter	1978-82	86	540-1036	.521
LeeVayn Oliver	1980-84	122	498-957	.520
Glenda Stokes	1979-83	130	417-827	.504
Lynn Dee McDonald	1979-81	47	154-330	.467
Brenda Cliette	1982-87	53	309-665	.465
Celia Slater	1983-85	55	240-530	.453
Cherry Rivers	1976-80	82	669-1513	.442
Linda Gray	1978-82	82	197-450	.437

\*300 Attempts Min.

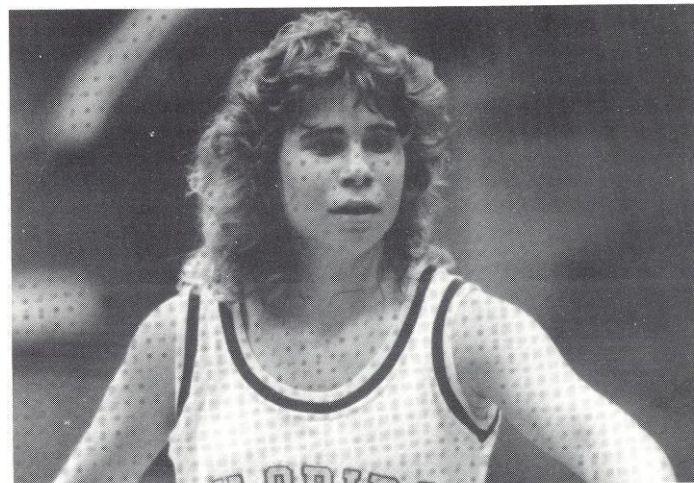
## Free Throw Percentage

Name	Seasons	Games	FT-FTA	PCT
Lisa Foglio	1980-83	82	201-255	.788
Sue Galkantas	1980-84	120	485-651	.745
Sheri Kaminski	1983-87	98	208-284	.732
Lorraine Rimson	1983-85	78	232-338	.686
Lynn Dee McDonald	1979-81	47	125-185	.675
Lynn Marnie	1980-83	86	91-141	.667
LeeVayn Oliver	1980-84	122	170-257	.661
Sunnie O'Neal	1980-83	72	65-101	.644
Linda Gray	1978-82	82	123-197	.624
Rose Harper	1977-81	111	101-163	.620
Laine Lasseter	1978-82	86	184-301	.611

\*100 Attempts Min.

## Games Played

Name	Seasons	Games
Glenda Stokes	1979-83	130
LeeVayn Oliver	1980-84	122
Sue Galkantas	1980-84	120
Rose Harper	1977-81	111
Cherry Rivers	1976-80	103
Sheri Kaminski	1983-87	98
Laine Lasseter	1978-82	86
Lynn Marnie	1980-83	86
Sarah Hall	1984-Present	83
Jan Piatnik		83
Jan Piatnik	1980-83	82
Lisa Foglio	1978-82	82
Linda Gray	1978-82	82





# Record Against Opponents

Opponent	First Meeting	Last Meeting	W-L
Alabama	1980	1983	2-2
Alabama-Birmingham	1978	1987	2-5
Alabama State	1976	1979	0-2
Alaska	1984	1984	1-0
Albany State	1975	1987	4-8
Appalachian State	1979	1979	0-1
Arizona State	1983	1983	0-1
Army	1983	1983	1-0
Auburn	1975	1985	0-4
Barry College	1973	1973	1-0
Belhaven	1980	1980	1-0
Brigham Young	1982	1983	1-1
Central Florida	1976	1986	4-2
Central Missouri	1980	1980	0-1
Cincinnati	1978	1987	5-4
Clemson	1980	1980	0-1
College of Charleston	1976	1976	0-1
Colorado	1984	1984	1-0
Colorado State	1986	1986	1-0
Dayton	1976	1976	1-0
Delta State	1977	1982	1-2
Denver	1980	1980	1-0
East Carolina	1980	1981	0-2
Fairfield	1985	1985	0-1
Flagler	1973	1975	3-4
Florida	1974	1987	20-22
Florida Atlantic	1987	1987	0-1
Florida A&M	1975	1987	12-6
Florida International	1976	1983	4-0
Florida Southern	1980	1980	1-0
Fordham	1984	1984	1-0
Fort Valley	1975	1975	0-1
Georgetown	1984	1986	0-2
Georgia Southern	1975	1982	0-4
Georgia State	1980	1980	0-1
Georgia Tech	1974	1980	1-1
Idaho	1984	1984	0-1
Indiana	1980	1980	0-1
John Abbott	1976	1977	2-0
Judson College	1981	1981	1-0
Kansas	1983	1983	1-0
Kent State	1981	1981	1-0
Lewis State	1982	1982	1-0
Louisville	1978	1987	2-10
McNeese State	1981	1981	1-0
Memphis State	1977	1987	3-10
Mercer	1974	1984	1-6
Miami	1975	1987	14-4
Miami (OH)	1982	1982	1-0
Miami Dade CC-Dtn.	1976	1976	1-0
Miami Dade CC-North	1975	1975	1-0
Miami Dade CC-South	1974	1976	1-1
Michigan	1984	1984	0-1
Middle Tennessee	1983	1983	1-0

Opponent	First Meeting	Last Meeting	W-L
Mississippi	1980	1983	1-2
Mississippi College	1979	1982	1-1
Mississippi State	1978	1979	0-2
Mississippi - Women	1980	1982	2-0
Mississippi Valley	1982	1982	0-1
Missouri	1984	1984	0-1
Montclair State	1983	1983	1-0
Nebraska	1983	1983	1-0
New Orleans	1978	1987	0-3
North Carolina	1982	1982	2-0
Northeast Missouri	1978	1978	1-0
Northwest Louisiana	1980	1980	1-0
Old Dominion	1982	1982	0-1
Oklahoma State	1983	1983	1-0
Oral Roberts	1979	1979	0-1
Oregon State	1982	1982	0-1
Pensacola JC	1983	1977	2-0
Penn State	1982	1984	0-2
Pepperdine	1982	1982	1-0
Purdue	1981	1981	1-0
Redford	1986	1986	0-1
Rice	1987	1987	1-0
Rollins College	1975	1979	4-0
St. Joseph's	1983	1983	1-0
St. Louis	1981	1982	2-0
Savannah College	1974	1974	0-1
Shorter College	1974	1975	0-4
South Alabama	1976	1987	4-3
South Carolina	1977	1987	0-9
Southeast Louisiana	1980	1981	1-1
Southern Mississippi	1979	1987	1-9
South Florida	1974	1985	24-2
Stanford	1984	1984	1-0
Stetson	1976	1987	7-3
Talladega College	1975	1975	0-1
Tampa	1975	1986	4-1
Temple	1983	1983	1-0
Tennessee	1985	1986	0-2
Texas	1984	1984	0-1
Tift	1974	1974	1-0
Tennessee-Chattanooga	1982	1982	1-0
Toledo	1987	1987	1-0
Troy State	1977	1979	1-1
Tulane	1978	1986	6-7
Valdosta State	1975	1987	1-10
Virginia Tech	1980	1987	4-6
Western Kentucky	1983	1983	0-1
West Florida	1975	1975	1-0
West Georgia College	1975	1986	2-2
Wichita State	1984	1984	0-1
Winthrop College	1979	1979	1-2



## Metro Conference Tournaments



Year	Site	Champion	Outstanding Player
1979-80	Tallahassee, FL	Louisville	Betty Booker, Memphis State
1980-81	New Orleans, LA	Louisville	Stephanie Edwards, Louisville
1981-82	Memphis, TN	Memphis State	Regina Street, Memphis State
1982-83	Louisville, KY	Louisville	Janet McNew, Louisville
1983-84	Cincinnati, OH	Louisville	Stephanie Edwards, Louisville
1984-85	Hattiesburg, MS	Memphis State	Portland McCaskill, Southern Miss.
1985-86	Columbia, SC	South Carolina	Brantley Southers, South Carolina
1986-87	Blacksburg, VA	Southern Miss.	Leshia Franklin, Southern Miss



# Year By Year Results

1973-74 (7-3)	FSU	OPP
Florida	39	49
Barry College	50	33
Florida	52	36
Flagler	53	35
Florida	32	31
Mercer	45	64
Flagler	31	41
South Florida	62	41
Flagler	76	38
Florida	48	45

1974-75 (15-17)	FSU	OPP
Albany State	62	55
Valdosta State	42	53
Florida A&M	77	34
Shorter College	52	65
Shorter College	63	78
Savannah State	48	70
South Florida	68	40
Miami-Dade South	59	41
Rollins College	61	48
Florida	44	67
Flagler College	51	60
Florida	53	47
Georgia Tech	58	22
Shorter College	36	54
Tift	58	47
Valdosta State	50	54
Shorter College	35	69
Georgia Southern	53	65
Valdosta State	32	49
Albany State	43	61
Florida A&M	47	26
Florida	41	49
Tampa	48	36
Flagler	52	59
Miami	59	45
South Florida	70	53
Florida	44	28
Flagler	59	55
Flagler	45	53
Miami-Dade North	59	40
Auburn	51	64
Fort Valley	43	58

1975-76 (12-12)	FSU	OPP
Rollins	56	43
Albany State	50	71
West Florida	100	16
South Florida	57	41
Tampa	66	48
Rollins	64	56
Valdosta State	44	91
Tampa	82	50
West Georgia College	61	88
Talladega College	55	100
College of Charleston	61	93
Albany State	44	73
Miami-Dade South	67	70
Florida International	58	35
Pensacola J.C.	73	51
Florida	65	59
Georgia Southern	54	83
Florida	45	64
Miami-Dade Downtown	73	51
Florida International	81	44
Florida	45	68
Valdosta State	50	101
Florida	39	55

1976-77 (10-12)	FSU	OPP
Albany State	38	87
Mercer	53	96
Florida	54	80
Valdosta State	65	104
John Abbot College	62	60
Stetson	78	29
Florida	65	67
Rollins	87	52
Central Florida	77	63
Dayton	104	33
South Alabama	87	66
Albany State	73	80
Alabama State	73	80
West Georgia	54	79
Judson College	97	79
Stetson	72	57
Pensacola J.C.	86	40
Valdosta State	60	92
South Florida	69	46
Florida	67	72
Florida	60	72
Delta State	60	106

1977-78 (8-8)	FSU	OPP
Valdosta State	57	92
Florida	93	66
Tryo State	71	61
South Florida	72	58
Memphis State	69	91
South Carolina	52	115
Georgia Southern	71	79
John Abbot College	71	67
Florida A&M	84	59
Florida	63	102
Albany State	86	94
Florida	100	80
South Florida(OT)	84	76
*South Florida	65	70
*South Florida	86	61
*South Florida	59	61
*State Tournament		

1978-79 (18-15)	FSU	OPP
Mississippi State	60	64
South Alabama	76	43
Mercer	73	83
N.E. Missouri	87	67
Stetson	61	63
South Florida	89	80
Florida	88	79
New Orleans	101	66
Tulane	65	78
Louisville	60	94
Cincinnati	61	57
Alabama-Birmingham	85	87
Memphis State	78	101
South Florida	73	56
Florida	91	72
Miami	79	53
New Orleans	101	66
Florida A&M(H)	79	84
Louisville	73	77
West Georgia College	73	59
Alabama State	73	95
Alabama-Birmingham	79	95
Miami	79	72
Appalachian State	83	89
Winthrop College	63	71
Stetson	59	61
Florida A&M (A)	61	77
Stetson	89	56
South Florida	90	56
Miami	83	57
Florida	89	85
Florida	101	94
Delta State	64	93

1979-80 (13-22)	FSU	OPP
Mississippi State	61	73
Alabama-Birmingham	85	95
South Carolina	68	93
South Florida	87	58
Florida A&M(H)	74	61
Southern Miss.	65	107
Troy State	78	92
Belhaven	81	75
Miami	82	64
Oral Roberts	68	74
Virginia Tech	67	57
Louisville	67	86
Tulane	74	95
Mississippi College	50	90
Alabama	61	88
Alabama-Birmingham	82	96
Florida	92	77
Florida	93	74
Miami	61	69
East Carolina	52	80
Mississippi	60	77
Louisville	60	77
Mercer	86	100
Northwest Louisiana	85	81
Florida	88	84
Florida Southern	97	58
Virginia Tech	54	77
Southeast Louisiana	70	73
Tulane	65	75
Florida A&M(A)	60	67
South Florida	100	88
Florida	67	78
Florida	72	61
Miami	84	76
Florida	71	84
Mercer	75	84

1980-81 (14-15)	FSU	OPP
Georgia Tech(A)	84	97
Georgia Southern (A)	79	96
South Alabama (A)	79	82
Valdosta State*	58	62
Alabama (N)**	77	76
Florida (H)	90	48
Miami (H)	87	73
Central Florida (H)	92	75
Denver (H)	93	41
Mississippi-Women (A)**	73	70
Central Missouri (N)**	60	69
Clemson (N)**	59	78
Indiana (H)	76	79
East Carolina (H)	67	78
Cincinnati (A)	65	91
Florida A&M(H)	76	64
South Florida(H)	79	41
Southeast Louisiana (A)	94	68
Southern Miss (A)	69	73
Mercer (H)	76	80
South Carolina (A)	57	69
Miami (A)	62	55
Tulane(A)+	60	70
St. Louis (N)+	78	56
Florida (A)	81	83
South Florida (A)	71	61
Florida A&M (A)	76	61
South Alabama (H)	80	67
Miami (N)++	70	79

\*Lady Sunshine Classic  
 \*\*MUW Christmas Tournament  
 +Metro Conference Tournament  
 ++FAIA State Tournament

1981-82 (28-10)	FSU	OPP
Stetson (H)	81	54
McNeese State (N)*	69	62
Valdosta State (N)*	82	69
Central Florida (H)	75	65
Kent State (N)**	80	66
Purdue (A)**	65	39
Florida (H)	60	63
Florida International (A)	74	64
Miami (A)	77	74
South Alabama (H)	99	44
Lewis University (N)+	94	46
Miami (Ohio)(N)	+89	68
North Carolina (N)	+77	68
South Florida (A)	80	60
Mississippi U tor Women (H)	76	54
Florida (A)	86	79
Virginia Tech (A)	92	82
Old Dominion (A)	65	100
Florida A&M (A)	86	87
Memphis State (H)	90	104
South Carolina (H)	81	82
Southern Miss (H)	84	94
Louisville (A)	73	89
Tulane (H)	89	70
Florida A&M(H)	59	58
Miami (H)	66	52
Mississippi(H)	63	61
Tampa(H)	90	50
South Florida (H)	77	49
Miami (N)++	84	80
Florida A&M(N)++	76	65
Mississippi College (H)@	71	69
Georgia Southern (H)	@78	81
Mississippi Valley (H)	@83	95
Pepperdine (N)	@76	63
Brigham Young (N)	&75	71
Oregon State (N)	&60	76

\*Lady Seminole Classic  
 \*\*Boilermaker Premiere  
 +Hurricane New Year's Classic  
 ++FAIAW State Tournament  
 @AIAW Region III Tournament  
 &NWIT  
 Includes forfeit win over St. Louis



# Year By Year Results

1982-83 (24-6)	FSU	OPP
Tennessee-Chat. (N)*	94	77
North Carolina (N)*	75	74
Albany State (H)	94	52
Stetson (H)	102	42
Alabama (A)	73	64
Penn State (N)**	84	86
Delta State(N)**	75	67
Nebraska (N)#	100	84
Army (N)#	69	60
Oklahoma State (N)#	72	52
Temple (A)	74	69
St. Joseph's (A)	59	55
Montclair State (H)OT	89	81
Tulane (H)	81	56
Memphis State (H)OT	89	81
Tulane (H)	81	56
Memphis State (H)	90	82
Florida A&M(A)	66	60
Alabama-Birmingham (A)	73	75
Auburn (A)	43	73
Florida (A)	68	63
Stetson (A)	77	64
South Florida (H)	71	52
Tulane (A)	91	65
Florida A&M(H)	82	65
Florida International (H)	77	65
Alabama (H)	61	65
Florida (H)	89	67
Memphis State (A)	68	66
Louisville (A)#	56	67
Cincinnati (N)#	84	61
Mississippi (A)+	76	86

\*Lady Sunshine Classic  
 \*\*Mid-American Classic  
 #Hurricane Christmas Classic  
 ##Metro Conference Tournament  
 +First Round NCAA Playoffs

1983-84 (13-18)	FSU	OPP
Arizona State (N)*	70	85
Brigham Young (N)*	61	76
Middle Tennessee State (H)	75	67
Western Kentucky (N)‡	74	79
Kansas (N)‡	91	62
Central Florida (H)	67	60
South Florida (A)	81	73
Alabama-Birmingham (H)	82	75
Penn State (N)+	68	96
Stanford (N)+	73	58
Missouri (N)+OT	66	83
Louisville(H)	65	81
Miami (H)#	76	64
Mercer (H)#	66	57
Florida (H)	74	70
Memphis State (H)	67	83
Tulane (A)	71	77
Southern Miss (A)	75	84
Auburn (H)	53	72
Virginia Tech (A)	63	68
South Carolina (A)	62	69
Southern Miss (H)	53	58
Florida (A)	57	65
Florida A&M (A)	80	64
Tulane (H)	86	79
Alaska (N)&	77	63
Texas (N)&	43	89
Idaho (N)&	74	75
Cincinnati (H)	83	72
Memphis State (A)	64	80
Louisville (A)	77	88

\*Lady Buff Classic-Colorado  
 ‡La. Tech Classic  
 +Hurricane Classic  
 #Duval Hotel Classic  
 &Northern Lights Shootout  
 !Metro Conference Tournament



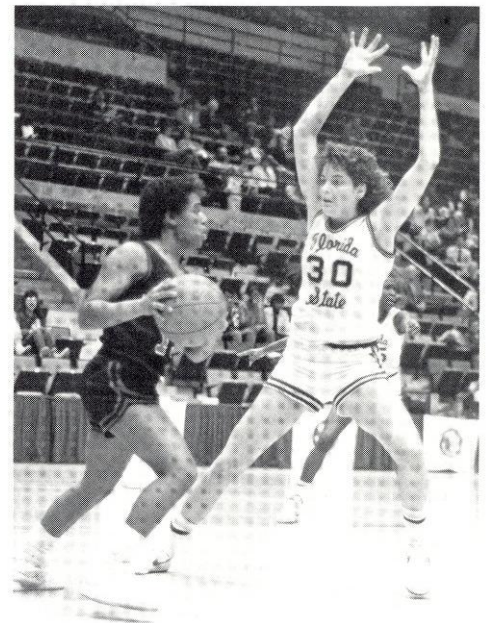
1984-85 (7-21)	FSU	OPP
Albany State (H)	66	60
Colorado (H)	70	61
Georgetown (A)	69	77
Central Florida (H)	76	93
Michigan (H)	71	76
Wichita State (H)	54	70
Miami (A)	65	79
Fordham (N)*	88	81
Fairfield (N)*	64	71
Virginia Tech (H)	85	77
Cincinnati (A)	73	83
Louisville (A)	74	89
S. Florida (H) OT	71	79
Florida (A)	43	64
S. Carolina (H)	61	70
Southern Miss (A)	52	81
Tulane (A)	56	59
Auburn (A)	58	76
Tennessee (H)	56	67
Tulane (H)	81	47
Florida A&M (H)	57	61
Southern Miss (H)	61	66
Florida (H)	58	79
Memphis State (A)	64	76
Miami (H)	67	74
Memphis State (H)	76	84
S. Florida (A)	74	69
Virginia Tech (N)**	65	86

\*Women's Court Classic  
 \*\*Metro Conference Tournament

1985-86 (12-18)	FSU	OPP
West Georgia (H)	67	57
Georgia SW (H)	51	58
Colorado St.(N)*	68	53
Monmouth(N)*3OT	71	69
Tampa (H)	88	77
Georgetown (H)@	78	74
Radford (H) @ OT	80	87
Stetson (A)	76	72
South Carolina (A)	57	81
Virginia Tech (A)	68	73
Louisville (H)	67	64
Cincinnati (H)	75	72
Central Florida (A)	90	98
South Florida (A)	58	47
Florida (H)	68	77
Tulane (H)	71	70
Tennessee (A)	43	89
Albany State (A)	72	69
Memphis State (H)	66	95
Southern Miss (A)	67	74
Tulane (A)	60	75
South Florida (H)	78	68
Florida A&M (A)	65	83
Southern Miss (H)	76	89
Florida (A)	76	81
Memphis State (A)	70	81
Stetson (H)	68	74
Cincinnati (N) Metro	45	77

Pizza Hut Classic; Wichita Kansas - 1st Place  
 @Southernaire Invitational - 2nd Place

1986-87 (9-19)	FSU	OPP
Albany State (H)	71	72
Toledo (H)	80	64
Rice (H)	62	50
Stetson (H)	50	55
Miami (A)	75	74
Florida Atlantic (A)	38	42
Alabama-Birmingham (H)	75	62
Valdosta State (H)	66	75
Virginia Tech (A) (M)	78	91
Louisville (H) (M)	66	63
Cincinnati (H) (M)	53	55
Florida (H)	65	69
South Alabama (H)	58	76
South Carolina (H)(M)	56	63
S. Mississippi (A)(M)	64	62
Memphis State (A)(M)	68	75
Miami (H)	73	75
Virginia Tech (H)(M)	70	65
South Alabama (H)	64	99
Louisville (A)(M)	64	77
Cincinnati (A)(M)	70	50
Florida A&M (H)	79	72
South Carolina (A)(M)	61	64
Florida (H)	59	70
Southern Miss (H)(M)	75	84
Memphis State (H)(M)	75	84
New Orleans (A)	59	87
Virginia Tech (A)(M)	67	68



## Coaching Records

Year	Head Coach	Record	Pct.
1973-74	Millie Usher	7-3	.700
1974-75	Millie Usher	15-17	.469
1975-76	Diane Murphy	12-12	.500
1976-77	Diane Murphy	10-12	.455
1977-78	Diane Murphy	8-8	.500
1978-79	Diane Murphy	18-15	.545
1979-80	Janice Dykehouse	13-22	.371
1980-81	Janice Dykehouse	14-15	.483
1981-82	Janice Dykehouse	28-10	.737
1982-83	Janice Dykehouse	24-6	.800
1983-84	Janice Dykehouse	13-18	.419
1984-85	Jan D. Allen	6-21	.286
1985-86	Jan D. Allen	12-16	.428
1986-87	Marynell Meadors	9-19	.321



# Opponents

## NEW MEXICO STATE

**Nickname:** Road Runners  
**Head Coach:** Joe McKeown  
**Record at School/Years:** 23-7, 1 yr.  
**Career Record/Years:** 23-7, 1 yr.  
**Coaches Phone:** (505) 646-4126  
**SID Contact:** Brian McCann  
**SID Office Phone:** (505) 646-3929  
**1986-87 Record:** 23-7  
**Series Record:** 1st meeting  
**Lettermen Returning/Lost:** 9/2  
**Starters Returning/Lost:** 4/1  
**Top Returning Scorer:**  
 Kris Veatch, 19.4  
**Top Returning Rebounder:**  
 Kris Veatch, 7.5

## ALABAMA-BIRMINGHAM

**Nickname:** Lady Blazers  
**Head Coach:** Jeanie Milling  
**Record at School/Years:** First year  
**Career Record/Years:** 116-110, 10 yrs.  
**Coaches Phone:** (205) 934-2048  
**SID Contact:** Todd Thompson  
**SID Office Phone:** (205) 934-7252  
**1986-87 Record:** 12-19  
**Series Record:** 5-2, FSU trails  
**Lettermen Returning/Lost:** 7/2  
**Starters Returning/Lost:** 5/0  
**Top Returning Scorer:**  
 Sandra King, 13.2  
**Top Returning Rebounder:**  
 Angela King, 10.5

Coopers & Lybrand Tournament  
 Nov. 27 & 28  
 Away

Tallahassee Hilton-Lady Seminole Classic  
 Dec. 4 & 5  
 Home

## DEPAUL UNIVERSITY

**Nickname:** Lady Blue Demons  
**Head Coach:** Jim Izard  
**Record at School/Years:** 63-24, 3 yrs.  
**Career Record/Years:** 136-45, 6 yrs.  
**Coaches Phone:** (312) 341-8543  
**SID Contact:** John Lancot  
**SID Office Phone:** (312) 341-8551  
**1986-87 Record:** 23-8  
**Series Record:** 1st meeting  
**Lettermen Returning/Lost:** 12/1  
**Starters Returning/Lost:** 5/1  
**Top Returning Scorer:**  
 Diana Vines, 22.5  
**Top Returning Rebounder:**  
 Diana Vines, 13.7

## WEST VIRGINIA

**Nickname:** Mountaineers  
**Head Coach:** Kittie Blackmore,  
 Scott Harrelson  
**Coaches Phone:** (304) 293-3508  
**SID Contact:** Shelly Poe  
**SID Office Phone:** (304) 293-2821  
**1986-87 Record:** 14-15  
**Series Record:** 1st meeting  
**Lettermen Returning/Lost:** 10/1  
**Starters Returning/Lost:** 4/1  
**Top Returning Scorer:**  
 Jenny Hillen, 12.3  
**Top Returning Rebounder:**  
 Dionne Morris, 7.2

## WASHINGTON STATE

**Nickname:** Cougars  
**Head Coach:** Harold Rhodes  
**Record at School/Years:** 42-92, 5 yrs.  
**Career Record/Years:** 42-92, 5 yrs.  
**Coaches Phone:** (509) 335-0276  
**SID Contact:** Scott Hill  
**SID Office Phone:** (509) 335-0270  
**1986-87 Record:** 10-18  
**Series Record:** 1st meeting  
**Lettermen Returning/Lost:** 7/3  
**Starters Returning/Lost:** 4/1  
**Top Returning Scorer:**  
 Penny Bowden, 13.6  
**Top Returning Rebounder:**  
 Julie Reynvann, 6.4

## WISCONSIN

**Nickname:** Lady Badgers  
**Head Coach:** Mary Murphy  
**Record at School/Years:** 9-19, 1 yr.  
**Career Record/Years:** 9-19, 1 yr.  
**Coaches Phone:** (608) 263-5506  
**SID Contact:** Tamara Flarup  
**SID Office Phone:** (608) 263-5502  
**1986-87 Record:** 9-19  
**Series Record:** 1st meeting  
**Lettermen Returning/Lost:** 5/9  
**Starters Returning/Lost:** 3/2  
**Top Returning Scorer:**  
 Lisa Bonnell, 16.9  
**Top Returning Rebounder:**  
 Lisa Bonnell, 7.5

## STETSON

Dec. 12  
 Away



**Nickname:** Lady Hatters  
**Head Coach:** Nancy Nichols  
**Record at School/Years:** 43-43, 3 yrs.  
**Career Record/Years:** 43-43, 3 yrs.  
**Coaches Phone:** (904) 734-4121  
**SID Contact:** Dick Westervelt  
**SID Office Phone:** (904) 734-4121

## GEORGIA SOUTHERN

Dec. 16  
 Away



**Nickname:** Lady Eagles  
**Head Coach:** Drema Greer  
**Record at School/Years:** First Year  
**Career Record/Years:** 46-15, 2 yrs.  
**Coaches Phone:** (912) 681-5327  
**SID Contact:** Mark McClellan  
**SID Office Phone:** (912) 681-5239

## NORTH CAROLINA

Dec. 18  
 Away



**Nickname:** Tar Heels  
**Head Coach:** Sylvia Hatchell  
**Record at School/Years:** 19-10, 1 yr.  
**Career Record/Years:** 290-91, 12 yrs.  
**Coaches Phone:** (919) 962-5411  
**SID Contact:** Scott Jared  
**SID Office Phone:** (919) 962-2123

**1986-87 Record:** 21-8  
**Series Record:** 7/3, FSU leads  
**Lettermen Returning/Lost:** 11/0  
**Starters Returning/Lost:** 5/0  
**Top Returning Scorer:**  
 Dee Hillery, 16.5  
**Top Returning Rebounder:**  
 Dee Hillery, 7.8

**1986-87 Record:** 20-8  
**Series Record:** 3-1, FSU Trails  
**Lettermen Returning/Lost:** 10/4  
**Starters Returning/Lost:** 5/0  
**Top Returning Scorer:**  
 Phyllette Blake, 18.8  
**Top Returning Rebounder:**  
 Phyllette Blake, 14.0

**1986-87 Record:** 19-10  
**Series Record:** 2-0, FSU leads  
**Lettermen Returning/Lost:** 9/3  
**Starters Returning/Lost:** 2/3  
**Top Returning Scorer:**  
 Kathy Wilson, 10.0  
**Top Returning Rebounder:**  
 Tia Poindexter, 5.8



# Opponents

## GEORGIA

Jan. 3  
Home



**Nickname:** Lady Bulldogs  
**Head Coach:** Andy Landers  
**Record at School/Years:** 207-53, 8 yrs.  
**Career Record/Years:** 289-74, 12 yrs.  
**Coaches Phone:** (404) 542-1176  
**SID Contact:** Tim Hix  
**SID Office Phone:** (404) 542-1621

**1986-87 Record:** 27-5  
**Series Record:** First Meeting  
**Lettermen Returning/Lost:** 5/4  
**Starters Returning/Lost:** 1/4  
**Top Returning Scorer:**  
Carla Green, 11.0  
**Top Returning Rebounder:**  
Sherelle Warren, 4.5

## WISCONSIN- GREEN BAY

Jan. 6  
Home



**Nickname:** Fighting Phoenix  
**Head Coach:** Carol A. Hammerle  
**Record at School/Years:** 236-125, 14 yrs.  
**Career Record/Years:** 253-129, 16 yrs.  
**Coaches Phone:** (414) 465-2145  
**SID Contact:** Steve Swan  
**SID Office Phone:** (414) 465-2145

**1986-87 Record:** 24-6  
**Series Record:** First Meeting  
**Lettermen Returning/Lost:** 8/2  
**Starters Returning/Lost:** 3/2  
**Top Returning Scorer:**  
Donna Gunville, 13.6  
**Top Returning Rebounder:**  
Karen Kupper, 5.8

## UNIVERSITY OF CINCINNATI

Jan. 8 Away  
Feb. 6 Away



**Nickname:** Lady Bearcats  
**Head Coach:** Laurie Pirtle  
**Record at School/Years:** 6-22, 1 yr.  
**Career Record/Years:** 89-39, 5 yrs.  
**Coaches Phone:** (513) 475-6762  
**SID Contact:** TBA  
**SID Office Phone:** (513) 475-5091

**1986-87 Record:** 6-22  
**Series Record:** 6-4, FSU leads  
**Lettermen Returning/Lost:** 9/3  
**Starters Returning/Lost:** 3/2  
**Top Returning Scorer:**  
Regina Williams, 12.4  
**Top Returning Rebounder:**  
Regina Williams, 5.9

## UNIVERSITY OF LOUISVILLE

Jan. 10 Away  
Feb. 8 Home



**Nickname:** Lady Cardinals  
**Head Coach:** Peggy Fiehrer  
**Record at School/Years:** 104-99, 10 yrs.  
**Career Record/Years:** 104-99, 10 yrs.  
**Coaches Phone:** (502) 588-6499  
**SID Contact:** Nancy Smith  
**SID Office Phone:** (502) 588-6581

**1986-87 Record:** 11-17  
**Series Record:** 10-2, FSU trails  
**Lettermen Returning/Lost:** 9/3  
**Starters Returning/Lost:** 3/2  
**Top Returning Scorer:**  
Marilyn Reckelhoff, 12.5  
**Top Returning Rebounder:**  
Marilyn Reckelhoff, 4.8

## UNIVERSITY OF NEW ORLEANS

Jan. 13  
Home



**Nickname:** Buc-kettes  
**Head Coach:** Joey Favaloro  
**Record at School/Years:** 148-57, 7 yrs.  
**Career Record/Years:** 148-57, 7 yrs.  
**Coaches Phone:** (504) 286-6239  
**SID Contact:** Troy C. Wampold  
**SID Office Phone:** (504) 286-7027

**1986-87 Record:** 25-7  
**Series Record:** 2-1, FSU leads  
**Lettermen Returning/Lost:** 6/3  
**Starters Returning/Lost:** 4/1  
**Top Returning Scorer:**  
Carvie Upshaw, 18.1  
**Top Returning Rebounder:**  
Carvie Upshaw, 10.7

## MEMPHIS STATE UNIVERSITY

Jan. 16 Home  
Feb. 13 Away



**Nickname:** Lady Tigers  
**Head Coach:** Mary Lou Johns  
**Record at School/Years:** 341-153, 16 yrs.  
**Career Record/Years:** 341-153, 16 yrs.  
**Coaches Phone:** (901) 454-2315  
**SID Contact:** TBA  
**SID Office Phone:** (901) 454-2337

**1986-87 Record:** 20-9  
**Series Record:** 11-2, MSU leads  
**Lettermen Returning/Lost:** 6/3  
**Starters Returning/Lost:** 3/2  
**Top Returning Scorer:**  
Wanda Dillard, 18.3  
**Top Returning Rebounder:**  
Wanda Dillard, 5.8

## UNIVERSITY OF SOUTHERN MISSISSIPPI

Jan. 18 Home  
Feb. 15 Away



**Nickname:** Lady Golden Eagles  
**Head Coach:** Kay James  
**Record at School/Years:** 173-102, 10 yrs.  
**Career Record/Years:** 258-122, 15 yrs.  
**Coaches Phone:** (601) 266-5574  
**SID Contact:** Shirley Jones-Hill  
**SID Office Phone:** (601) 266-4503

**1986-87 Record:** 21-9  
**Series Record:** 10-0, FSU leads  
**Lettermen Returning/Lost:** 11/0  
**Starters Returning/Lost:** 5/0  
**Top Returning Scorer:**  
Brenda Williams, 15.5  
**Top Returning Rebounder:**  
Leshia Franklin, 9.1



# Opponents

## FLORIDA A&M UNIVERSITY

Jan. 21  
Home



Nickname: Rattlerettes  
Head Coach: Mickey Clayton  
Record at School/Years: 162-108, 10 yrs.  
Career Record/Years: 162-108, 10 yrs.  
Coaches Phone: (904) 599-3272  
SID Contact: Alvin Hollins  
SID Office Phone: (904) 599-3206

1986-87 Record: 16-13  
Series Record: 12-6, FSU leads  
Lettermen Returning/Lost: 7/2  
Starters Returning/Lost: 3/2  
Top Returning Scorer:  
Sharon Cliett, 12.8  
Top Returning Rebounder:  
Cynthia Williams, 8.0

## UNIVERSITY OF SOUTH CAROLINA

Jan. 25 Home  
Feb. 22 Away



Nickname: Lady Gamecocks  
Head Coach: Nancy Wilson  
Record at School/Years: 55-33, 3 yrs.  
Career Record/Years: 248-97, 11 yrs.  
Coaches Phone: (803) 777-3829  
SID Contact: David Rosinski  
SID Office Phone: (803) 777-5204

1986-87 Record: 18-12  
Series Record: 9-0, FSU trails  
Lettermen Returning/Lost: 9/1  
Starters Returning/Lost: 4/1  
Top Returning Scorer:  
Martha Parker, 15.5  
Top Returning Rebounder:  
Schonna Banner, 6.3

## VALDOSTA STATE

Jan. 28  
Away



Nickname: Lady Blazers  
Head Coach: Charles Cooper  
Record at School/Years: 128-40, 6 yrs.  
Career Record/Years: 128-40, 6 yrs.  
Coaches Phone: (912) 333-5890  
SID Contact: Steve Roberts  
SID Office Phone: (912) 333-5890

1986-87 Record: 18-8  
Series Record: 1-10, FSU trails  
Lettermen Returning/Lost: 8/4  
Starters Returning/Lost: 2/3  
Top Returning Scorer:  
Shannon Williams, 21.5  
Top Returning Rebounder:  
Shannon Williams, 9.6

## VIRGINIA TECH

Jan. 30 Home  
Feb. 20 Away



Nickname: Lady Hokies  
Head Coach: Carol Alfano  
Record at School/Years: 127-125, 9 yrs.  
Career Record/Years: 127-125, 9 yrs.  
Coaches Phone: (703) 961-5037  
SID Contact: Sam Newkirk  
SID Office Phone: (703) 961-6726

1986-87 Record: 15-14  
Series Record: 6-4, FSU trails  
Lettermen Returning/Lost: 9/3  
Starters Returning/Lost: 2/3  
Top Returning Scorer:  
Michelle Bain, 10.7  
Top Returning Rebounder:  
Michelle Bain, 6.7

## UNIVERSITY OF ALABAMA

Feb. 1  
Home



Nickname: Crimson Tide  
Head Coach: Lois Myers  
Record at School/Years: 39-19, 3 yrs.  
Career Record/Years: 39-10, 3 yrs.  
Coaches Phone: (205) 348-6161  
SID Contact: Becky Hopf  
SID Office Phone: (205) 348-6084

1986-87 Record: 19-10  
Series Record: 2-2  
Lettermen Returning/Lost: 11/2  
Starters Returning/Lost: 4/2  
Top Returning Scorer:  
Tracey Rutledge, 16.0  
Top Returning Rebounder:  
Shelly Pyles, 4.6

## UNIVERSITY OF FLORIDA

Feb. 27  
Home



Nickname: Lady Gators  
Head Coach: Carol Higginbottom  
Record at School/Years: 22-34, 2 yrs.  
Career Record/Years: 22-34, 2 yrs.  
Coaches Phone: (904) 392-0664  
SID Contact: Scott Burson  
SID Office Phone: (904) 392-0641

1986-87 Record: 12-16  
Series Record: 22-20, FSU leads  
Lettermen Returning/Lost: 6/3  
Starters Returning/Lost: 4/1  
Top Returning Scorer:  
Janna Bragg, 15.7  
Top Returning Rebounder:  
Lisa Born, 8.5

## UNIVERSITY OF MIAMI

Mar. 5  
Home



Nickname: Hurricanes  
Head Coach: Ken Patrick  
Record at School/Years: First Year  
Career Record/Years: First Year  
Coaches Phone: (305) 284-5802  
SID Contact: John Hahn  
SID Office Phone: (305) 284-3244

1986-87 Record: 15-15  
Series Record: 19-6, FSU leads  
Lettermen Returning/Lost: 5/5  
Starters Returning/Lost: 4/1  
Top Returning Scorer:  
Maria Rivera, 20.9  
Top Returning Rebounder:  
Hope Butler, 8.9



# This Is FSU

Florida State is the University which boasts of such diverse assets as the world's most powerful supercomputer and the greatest all-collegiate show on Earth, the Flying High Circus.

Located in Tallahassee, the capital of Florida, FSU is a public, coeducational university and a senior member of the State University System.

About 23,500 students representing all 50 states and more than 100 foreign countries work toward more than 250 different graduate and undergraduate degrees in the 15 schools and colleges of Florida State. The colleges of arts and sciences, business, communication, education, engineering, home economics, law and social sciences combine with the schools of criminology, library and information studies, music, nursing, social work, theatre and visual arts to make FSU a nationally acclaimed university.

The Florida State campus, located just a few blocks from the state Capitol, is one of the most beautiful in the southeast. Traditional Gothic-style structures combine with the latest in modern architecture, all brought together by an array of oaks, pines, palms, dogwoods and azaleas. The natural beauty of the 347-acre main campus mirrors the picturesque features of the surrounding North Florida region.

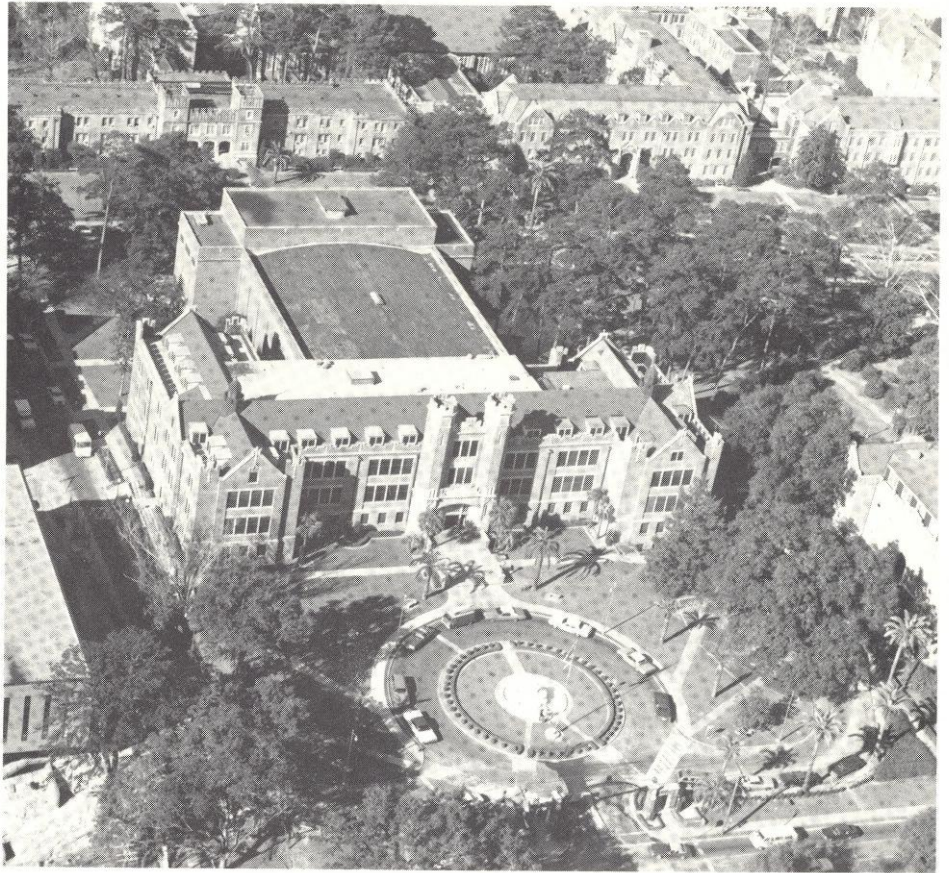
Florida State was founded in 1857 as the Seminary West of the Suwannee River. Name changes over the years included Florida State College and, in 1909, Florida State College for Women. Governor Millard Caldwell signed a bill in 1947 which again made the institution coeducational and named it Florida State University.

Today, Florida State faculty and administrators generate more than \$35 million annually in external funding to supplement state sponsorship of research. In addition, almost \$13 million in private gifts was raised through the FSU Foundation during the past fiscal year. These contributions from alumni, friends, corporations, the university community and charitable foundations are for the sole benefit of Florida State's academic programs.

The FSU Supercomputer Computations Research Institute has attracted international attention to the University, home of the world's fastest supercomputer. The ETA10 has the capacity to perform 10 billion calculations per second.

The Tandem Van De Graaf-Superconducting Accelerator Laboratory in the Department of Physics houses two powerful atom smashers and has been ranked in the top four in the nation by the National Science Foundation.

The University's location affords excellent research and internship opportunities in government, law and the social



sciences. The reputation of Florida State's research programs, the expertise of its more than 1,500 faculty members—including four members of the National Academy of Sciences—and the quality of the graduate students involved in research represent major strengths of the University.

Programs in music, dance and theater at Florida State have earned well-deserved national recognition. The visual and performing arts exhibited and produced on campus offer students and the community a wealth of enrichment opportunities.

Student activities at FSU create an important balance between the classroom experience and the personal life of the individual scholar. Honors programs, student government, intramural sports and more than 200 organizations are available for student involvement.

Students from every academic major have a chance to become stars on the highwire or flying trapeze by participating in the Flying High Circus, the only one of its kind in the nation.

Florida State academic programs extend well beyond Tallahassee. The FSU Marine Laboratory is located on the Gulf of Mexico, 45 miles away. Students participate in professional training programs at the Asolo State Theater in Sarasota and the Burt Reynolds Institute for

Theatre Training in Jupiter. The Panama City Campus of Florida State offers upper-level courses which lead to bachelor's and master's degrees. The Center for Professional Development and Public Service, housed in the Florida State Conference Center on the edge of campus, manages educational outreach activities from Pensacola to Miami. In addition, Florida State maintains programs of study in England, Italy, Costa Rica, Switzerland, Yugoslavia, the Panama Canal Zone and even the People's Republic of China.

The physical growth of the University during the Sliger administration is best evidenced by such additions as the new wing of the Rovetta Business Building, the University Union expansion project, the new Paul A.M. Dirac Science Library Building, the Panama City Campus, the Jeffersonian Village Green project at the College of Law and the new building for the FAMU/FSU College of Engineering, now under construction.

Florida State is setting the pace as higher education in Florida prepares to enter the 21st century. And President Sliger takes pride not only in the academic programs and facilities of the University, but also in the people—students, faculty, alumni, administrators and staff—who make Florida State a successful monument to learning.