

**THE
FLORIDA
STATE
UNIVERSITY
TALLAHASSEE**



Bud Kennedy
BASKETBALL



Bim Stults
SWIMMING

**BASKETBALL
1960 - 1961
SWIMMING**

FLORIDA STATE AT A GLANCE

Name	Florida State University
Location	Tallahassee, Fla. (50,000)
President	Dr. Gordon W. Blackwell
Vice-President	Dr. Milton W. Carothers
Enrollment	9,019
Conference	Independent
Team Nickname	Seminoles
Colors	Garnet and Gold
Gymnasium	Robert Tully (capacity 4,200)
Band	The Marching Chiefs
Band Director	Dr. Manley Whitcomb

INTERCOLLEGIATE ATHLETICS

A varied group of seven sports makes up the intercollegiate athletic program at Florida State University. The finest facilities, equipment, and coaching talent are provided in football, basketball, baseball, golf, swimming, tennis, and track.

THE ATHLETIC STAFF

Vaughn Mancha	Director of Athletics
J. K. (Bud) Kennedy	Basketball Coach
Hugh Durham	Assistant Basketball Coach
Fred Powers	Freshman Basketball Coach
N. B. (Bim) Stults	Swimming Coach
Dee Edington	Assistant Swimming Coach
Danny Litwhiler	Baseball Coach
Bill Odeneal	Golf Coach
Mike Long	Track Coach
Bill Peterson	Head Football Coach
Dick Flowers	Assistant Football Coach
Bob Harbison	Assistant Football Coach
John Coatta	Assistant Football Coach
Ken Meyer	Assistant Football Coach
Don James	Assistant Football Coach
Vince Gibson	Assistant Football Coach
Bubba McGowan	Assistant Football Coach, Tennis Coach
Charlie LaPradd	Freshman Football Coach
Don Fauls	Trainer
Tillman Dixon	Equipment Manager
Ronald Melton	Athletic Business Manager
Eddie Cubbon	Director of Development
Pat Hogan	Sports Publicity Director
Neil LaBar	Assistant Sports Publicity Director
Jim Martin	Sports Photographer

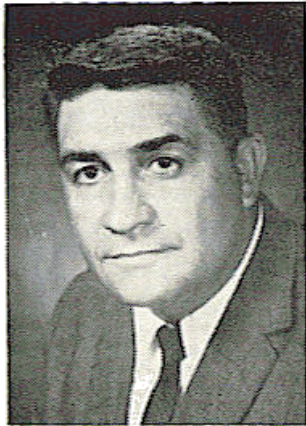
THE ATHLETIC COMMITTEE

Chairman, Mode Stone; Donald Loucks, George Fortin, Coyle Moore, J. M. Plant, Elston Roady, Mary Alexander.

VAUGHN MANCHA

The Athletic Director . . .

Whenever Alabama disciples gather to talk football, the conversation invariably gets around to Vaughn Hall Mancha, a living symbol of the Crimson Tide's great teams of the mid-forties.



Mancha is practically as legendary in Alabama football circles as Don Hutson and Harry Gilmer. For Florida State University's personable director of athletics was a 240-pound All-Southeastern Conference center at Alabama for four seasons (1944-47) and everyone's All-America center.

Mancha was a solid choice to return to FSU as athletic director in November, 1959, ending a three-year absence from the Seminole campus. He gained wide popularity with Florida State officials and fans while serving as line coach at FSU

from 1952 through 1956.

Born in Sugar Valley, Ga., in 1921, Mancha moved to Birmingham at an early age. He entered Alabama in 1944, when he was issued jersey No. 41, a number Alabama's football opponents tried to dodge for four years. During Mancha's four seasons, Alabama rolled to a 30-9-2 record and played in three major bowl games. Vaughn was a starter when the Crimson Tide met Duke in the 1945 Sugar Bowl, Southern Cal in the 1946 Rose Bowl, and Texas in the 1948 Sugar Bowl.

He was such a standout in the '45 Sugar Bowl—on one sparkling play he threw Duke's great George Clark for an 18-yard loss—that he was named to the All-Time Sugar Bowl Team (1945-52 period). In 1955, he was named to Alabama's All-Time Crimson Tide.

Mancha earned a B.S. Degree in Education at Alabama in 1947 and played with the professional Boston Yankees in 1948. In 1949, he returned to Alabama to earn a Masters Degree in Education. Turning to coaching, Mancha put in a highly-successful three-year tenure as head coach and athletic director at Livingston (Ala.) State.

Mancha first came to Florida State in 1952 as assistant football coach and also served as an assistant professor of Physical Education. In 1957, he went to Columbia University as an assistant football coach and associate member of the Department of Physical Education, positions he held for three years. While at Columbia, he completed all work for the Doctorate with the exception of the dissertation.

Married to the former Sybil Little of Birmingham, he is the father of three children: Clare, 11; Nan, 9, and Vaughn, Jr., 2.

BASKETBALL

J. K. (BUD) KENNEDY, Head Coach

Hoping that it won't prove to be an unlucky number, J. K. (Bud) Kennedy moves into his thirteenth year as head basketball coach at Florida State. He has a young, promising team that is facing the toughest schedule in FSU's 14 years of basketball.



Heading a list of seven returning lettermen is All-Florida forward David Fedor. The 6-6 junior from Zephyrhills, Fla.—he played high school basketball in Germany—led the Seminoles in six statistical departments as a sophomore, establishing all-time school records in rebounding (400) and field goal percentage (47.2).

Florida State, which annually plays one of the toughest independent schedules in the South, again will participate in the Gator Bowl Tournament, now expanded to six entries. Other teams entered in the three-day tournament set for Jacksonville's new Coliseum Dec. 28-30 are Georgia, Florida, Georgia Tech, Navy, and Jacksonville University.

Overall, the Seminoles will meet seven Southeastern Conference teams during 1960-61—Kentucky, Vanderbilt, Auburn, Florida, Georgia, Tennessee, and Alabama. FSU also meets highly-regarded Miami (Fla.) twice.

Kennedy, whose 12 previous Seminole teams have won 148 games and lost 145, was born at Lawrence, Kan.—a natural basketball setting. He attended the University of Kansas, Baker University, and Kansas State Teachers College, playing basketball at all three schools. He was a standout football player at Baker and Kansas State Teachers.

His first coaching experience before leaving college was at San Diego, Calif., where he was playing coach of the San Diego Athletic Club for two years. Through his next few years, Kennedy coached various high school teams in the Midwest with marked success. He also coached while serving as a Naval Officer.

Kennedy came to Florida State in 1948 as Athletic Business Manager, assisted in the basketball program that year, and became head coach the following season.

HUGH DURHAM, Assistant Coach

One of the finest basketball guards in Florida State history, Hugh Durham moves up as assistant basketball coach after coaching FSU's freshman team to a sparkling 8-1 record last season.

An All-Florida choice for three years (1957-59), Durham averaged a shade under 19 points a game during three brilliant campaigns. He shares FSU's single-game scoring record of 43 points with current Seminole Dave Fedor.

FRED POWERS, Freshman Coach

Fred Powers, an FSU graduate last June, takes over as head freshman coach this season.

Powers is working on a masters degree in physical education while serving as the new freshman coach. Fred served as manager for the FSU varsity for three years after playing guard for the 1956-57 freshman squad.

1960-61 BASKETBALL SCHEDULE

Dec. 1—Tampa	Tallahassee
Dec. 3—Kentucky	Lexington, Ky.
Dec. 5—Vanderbilt	Nashville, Tenn.
Dec. 10—Auburn	Auburn, Ala.
Dec. 12—Clemson	Tallahassee
Dec. 14—Florida	Tallahassee
Dec. 17—South Carolina	Columbia, S. C.
Dec. 19—Clemson	Clemson, S. C.
Dec. 28-30—*Gator Bowl	Jacksonville
Jan. 4—Tennessee	Knoxville, Tenn.
Jan. 9—Loyola (La.)	Tallahassee
Jan. 14—Miami (Fla.)	Tallahassee
Jan. 17—Auburn	Columbus, Ga.
Jan. 28—Rollins	Winter Park
Jan. 31—Alabama	Tallahassee
Feb. 6—The Citadel	Tallahassee
Feb. 16—Georgia	Athens, Ga.
Feb. 18—The Citadel	Charleston, S. C.
Feb. 20—Furman	Tallahassee
Feb. 22—Florida	Gainesville
Feb. 24—Tampa	Tampa
Feb. 25—Miami (Fla.)	Miami
Feb. 28—Loyola (La.)	New Orleans, La.

*Gator Bowl: Georgia Tech, Navy, Florida, Georgia,
Jacksonville University.

ALL HOME GAMES AT 7:45 P.M. (EST)

LETTERMEN RETURNING

ASHWORTH
COTTON
DAVIS
EDNEY
FEDOR
SMITH
SWAIN

LETTERMEN LOST

CASTEEL
FREUDENSTEIN
RICHTER
SAVAGE
WHITEHEAD
WOODWARD

COLLEGE TRANSFER

EADS

SOPHOMORES

COOGLE
LONG
RICKETTS

1960-61 VARSITY BASKETBALL ROSTER

No.	Name	Pos.	Ht.	Wt.	Age	Class	High School	Hometown
11	*Jack Davis	G	5-10	155	21	Jr.	Hagerstown	Hagerstown, Ind.
13	Charlie Long	F	6-4	190	19	So.	Eastern	Louisville, Ky.
21	*Bill Cotton	G	6-1	172	21	Jr.	Aurora	Aurora, Ind.
23	*Rufus Ashworth	G	6-3	175	20	Jr.	Coral Gables	Coral Gables
25	*Tim Edney	G	6-0	178	21	Jr.	Lanier	Montgomery, Ala.
31	Dale Ricketts	G	6-1	170	19	So.	Versailles	Versailles, Ind.
33	*Ray Swain	C	6-4	181	20	Jr.	Landon	Jacksonville
35	*Jerry Smith	F	6-4	195	21	Sr.	Greensboro	Chattahoochee
41	Clyde Eads	C	6-5	180	21	So.	St. Clairsville	St. Clairsville, Ohio
43	*Dave Fedor	F	6-6	193	20	Jr.	Zephyrhills	Zephyrhills
45	Faurest Coogle	F	6-3	184	19	So.	Shawnee	Louisville, Ky.

*Denotes letterman.

1959-60 BASKETBALL STATISTICS
(Varsity—25 Games)

	G	FGA	FG	PCT.	FTA	FT	PCT.	SM	REB.	PF	PTS.	AVG.
David Fedor	25	453	214	.472	131	99	.756	271	400	69	527	21.1
John Richter	25	235	103	.438	106	64	.604	174	185	90	270	10.8
Jack Davis	25	227	70	.308	134	91	.679	200	80	68	231	9.2
Ray Swain	25	206	78	.379	89	50	.562	167	175	68	206	8.2
Rufus Ashworth	16	208	76	.365	41	24	.585	149	56	44	176	11.0
Jim Savage	23	185	53	.286	68	44	.647	156	55	70	150	6.5
Fred Woodward	14	109	48	.440	18	17	.944	62	13	19	113	8.1
Tim Edney	19	48	17	.354	46	31	.674	46	30	26	65	3.4
Roger Freudenstein	8	68	25	.368	24	14	.583	53	21	15	64	8.0
Bill Cotton	8	51	17	.333	15	12	.800	37	19	15	46	5.8
Bud Whitehead	15	36	15	.417	17	12	.706	26	38	19	42	2.8
Jerry Smith	17	36	10	.278	7	1	.143	32	24	20	21	1.2
Bob Casteel	12	21	4	.190	17	9	.529	25	18	24	17	1.4
TEAM	25							191				
FSU TOTALS	25	1883	730	.388	713	468	.656	1398	1305	547	1928	77.1
OPP. TOTALS	25	1683	719	.427	783	512	.654	1235	1328	505	1950	78.0

GAME-BY-GAME SCORING 1959-1960		L S U	Loyola (La.)	Florida	Auburn	Alabama	Clemson	Auburn	Jacksonville U.	Georgia	South Carolina	The Citadel	Centenary	Miss. Southern	Memphis State	Tampa	Miami (Fla.)	Morehead State	Tampa	Memphis State	Rollins	Furman	The Citadel	Loyola (La.)	Miami (Fla.)	Georgia	TOTALS
Dave FEDOR	19	11	18	11	26	17	14	12	23	28	20	18	23	21	21	17	12	15	37	29	17	20	43	34	527		
John RICHTER	17	6	22	12	4	11	19	3	9	10	23	10	23	14	14	6	4	2	2	13	5	18	4	19	270		
Jack DAVIS	16	6	4	6	7	11	13	5	7	8	11	10	8	5	7	15	11	2	2	13	11	10	17	13	231		
Ray SWAIN	0	12	6	2	7	5	7	17	8	11	10	0	0	9	7	12	2	8	9	9	8	14	14	17	206		
Rufus ASHWORTH	12	23	11	13	6	6	2	14	6	14	17	10	6	4	4	18	18	6	6	19	0	0	0	7	150		
Jim SAVAGE	12	4	0	4	20	3	9	15	6	9	5	8	8	10	4	1	2	3	6	19	0	0	0	3	113		
Fred WOODWARD	0	0	0	0	14	3	0	2	4	6	0	12	15	8	13	2	18	18	4	0	1	0	0	2	65		
Tim EDNEY	0	10	10	8	4	2	2	2	9	4	1	0	4	4	4	4	4	4	4	0	1	0	0	0	0	64	
Rog. FREUDENSTEIN																											
Bill COTTON																											
Bud WHITEHEAD																											
Jerry SMITH	2	2	0	0	0	0	2	2	2	4	2	0	2	0	2	6	7	4	2	0	6	7	4	0	42		
Bob CASTEEL																											

..... Did not play

SCANNING THE SEMINOLES



23—RUFUS ASHWORTH. Junior, Guard, 20, 6-3, 175, Coral Gables. One of squad's most accurate shots, Rufe had second best average (11.0) and fifth most points (176) as sophomore despite missing last nine games with fractured jaw. Kennedy rates this former Miami All-City performer, converted from forward to guard this season, as perhaps most improved player. New-found aggressiveness, one-hand accuracy from long range make Ashworth good bet for starting spot.

45—FAUREST COOGLE. Sophomore, Forward, 19, 6-3, 184, Louisville, Ky. One of the promising sophs up from once-beaten freshman team, Coogle may miss early part of season with a shoulder dislocation. A tough competitor who prepped at Louisville's Shawnee high, Faurest is good shot, should provide bench strength when recovered.

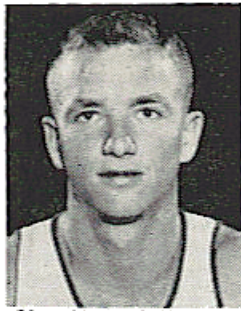


21—BILL COTTON. Junior, Guard, 21, 6-1, 172, Aurora, Ind. One of three Hoosiers on team, Cotton has developed rapidly since averaging about six points a game while playing in final eight games last year. Becoming eligible in late season, Bill displayed much hustle and promise for future. Constant scrap makes him defensive threat and a possible fixture at a starting berth.



11—JACK DAVIS. Junior, Guard, 21, 5-10, 155, Hagerstown, Ind. Jinxed in pre-season practice with a bad back strain and then a severe ankle injury, Davis may be late rounding into form. A starter as a sophomore, Davis was real sparkplug, scoring 231 points (9.2 average) for third best effort on team. A nine-letter-winner in four sports at Hagerstown High School, this fiery redhead will co-captain the Seminoles along with junior Dave Fedor.

41—CLYDE EADS. Sophomore, Center, 21, 6-5, 180, St. Clairsville, O. A loose, easy playing style and excellent spring in legs make this transfer from West Liberty, W. Va., move into the frontline picture. Eads has fine potential and sense of timing but must get oriented with team's offensive patterns. With effort and hard work, Clyde could challenge for starting center position.



clinging-vine tactics were required.

25—TIM EDNEY. Junior, Guard, 21, 6-0, 178, Montgomery, Ala. Muir Jennings (Tim) Edney, Jr., was a four-sport flash at Sidney Lanier High in Montgomery and is continuing as a two-sport letterman (basketball, track) at FSU. Tim appeared in 19 games as sophomore, was used mostly to harass opposition in tight spots when speed and



With finesse and a "natural" touch, this gifted south-paw scored 527 points (21.1 average) and pulled down a school-record 400 rebounds—ranking high nationally in both departments—while hitting better than 47 per cent of his field-goal attempts last year. Named most valuable player in the 1959 Gator Bowl Tournament, Dave is playing 15 pounds heavier at 193 this season.

43—DAVID FEDOR. Junior, Forward, 20, 6-6, 193, Zephyrhills. Beyond any doubt, Samuel David Fedor is the most promising player in Seminole history. Amazing as a sophomore, when he set a host of school records and earned All-America honorable mention, co-captain Fedor has ability to become FSU's first basketball major All-American.

13—CHARLIE LONG. Sophomore, Forward, 19, 6-4, 190, Louisville, Ky. Scoring leader of last year's freshman team, when he hit a fantastic 62 per cent of his shots and averaged 25 points a game, Long's shooting talent may earn him a starting spot for a long while to come. Deadly with a long, arching one-hand shot, the erstwhile Louisville Eastern High player needs varsity experience but has the tools.

31—DALE RICKETTS. Sophomore, Guard, 19, 6-1, 170, Versailles, Ind. More confidence could help this fine-feeding soph become a dangerous backcourt man. A lefthanded shooter who loves to drive, Dale is in thick of battle for a first-team guard nomination. Second-best point producer as a freshman, Ricketts should draw numerous fouls on his dashes under the basket.



35—JERRY SMITH. Senior, Forward, 21, 6-4, 195, Chattahoochee. An All-Big Bend high school whiz at Greensboro High, Jerry will be playing his second season with the Tribe after a fine career at Chipola Junior College. Only senior on an 11-man varsity squad, Smith appeared in 17 games last season.



33—RAY SWAIN. Junior, Center, 20, 6-4, 181, Jacksonville. A former All-State selection at Jacksonville's Landon High, "Swish" was team's fourth best scorer in 1959-60. Playing in all 25 games, Ray scored 206 points (8.2 average) and pulled down 175 rebounds—third best on team—in a fine sophomore year. Nearly 10 pounds lighter

this season, Swain figures stronger and faster as he moves into all-important No. 1 center post. Has fine, high-arching one-hander.

A LOOK AT THE RECORD BOOK

TEAM

Most championships, season (District 25 NAIB, 1951)	1
Best season, won and lost (1955)	22-4
Most total points, season (1955)	2,295
Most total points, game (vs. Rollins, 1955)	110
Most field goals, season (1955)	794
Most field goals, game (vs. Furman, 1960)	44
Most free throws, game (vs. Miami, 1954)	32
Most free throws, season (1955)	707
Best per game point average (1955)	88.3

INDIVIDUAL

Most points, career (Jim Oler, 1953-54-55-56)	1,820
Most points, season (Oler, 1956)	743
Most points, game (Hugh Durham, vs. Stetson, 1956 and Dave Fedor, vs. Miami, 1960)	43
Most field goals, career (Ham Wernke, 1952-53-54-55)	508
Most field goals, season (Oler, 1956)	216
Most field goals, game (Fedor, vs. Miami 1960)	16
Most free throws, career (Oler, 1953-54-55-56)	761
Most free throws, season (Oler, 1956)	311
Most free throws, game (Oler, 1955-56)	22
Best percentage on field goal attempts, season (Fedor, 1960) ..	47.2
Best percentage on free throw attempts, season (Oler, 1956) ..	81.8
Best per game point average, season (Oler, 1956)	29.7
Most personal fouls, career (Tom McLaughlin, 1949-50-51-52) ..	324
Most personal fouls, season (Dan Boltz, 1957)	102

SERIES RECORDS WITH OPPONENTS

Team	W	L	Team	W	L
Alabama	1	0	Miami (Fla.)	8	13
Arkansas State	1	1	Millikin	0	1
Army	0	1	Millsaps	2	0
Auburn	0	4	Mississippi	1	1
Beloit	0	2	Mississippi College ..	5	1
Birmingham South'n ..	0	2	Mississippi Southern ..	3	3
Boston University	1	0	Mississippi State	3	3
Bradley	0	1	Montana State	1	0
Centenary	1	2	Morehead State	1	1
Central (Mo.)	0	2	Murray State	1	1
Charleston	2	0	New York Univ.	1	0
Citadel	0	3	N. Carolina State	0	2
Clemson	0	3	Oglethorpe	1	1
Connecticut State	1	0	Ohio U.	0	1
Culver-Stockton	0	1	Oklahoma City	1	2
David Lipscomb	1	1	Pepperdine	1	0
Drury	0	1	Rollins	15	2
Duke	0	1	Santa Clara	0	1
Duquesne	0	1	Sewanee	3	3
East Tennessee	0	2	South Carolina	1	0
Erskine	1	1	S. Dakota State	1	0
Florida	1	5	Southwestern	0	1
Florida Southern	13	8	SW Missouri State	0	1
Furman	3	1	Spring Hill	3	3
Georgia	9	5	Stetson	15	10
Georgia (Savannah) ..	0	2	Steubenville (O.)	0	1
Georgia Teachers	6	4	Tampa	16	9
Howard	6	0	Tennessee	0	1
Jax (Ala.) State	2	0	Tennessee Tech	1	0
Jacksonville U.	1	0	Texas A & M	0	1
Kentucky	0	1	Troy State Teachers ..	6	1
Lambuth	0	1	Union	0	1
Loyola (La.)	5	12	Wake Forest	0	1
Louisiana State	1	2	West Virginia	0	3
Marshall	0	1	Wofford	0	2
Memphis State	0	7	Xavier (O.)	0	1
Mercer	7	8			

BASKETBALL THRU THE YEARS

Year	Coach	Captain	W	L
1947-48	Don Loucks	Jim Pavy	5	13
1948-49	Bud Kennedy	Art Adams	12	12
1949-50	Bud Kennedy	Dick Trobaugh- Lee Benjamin	15	10
1950-51	Bud Kennedy	Bob Hartman	18	9
1951-52	Bud Kennedy	Bob Whitmer	5	20
1952-53	Bud Kennedy	Game Captains	11	11
1953-54	Bud Kennedy	Ham Wernke	13	7
1954-55	Bud Kennedy	Ham Wernke	22	4
1955-56	Bud Kennedy	Jim Oler	16	9
1956-57	Bud Kennedy	Game Captains	9	17
1957-58	Bud Kennedy	Larry Strom- Bobby Waits	9	16
1958-59	Bud Kennedy	Hugh Durham	8	15
1959-60	Bud Kennedy	Game Captains	10	15
			153	158

YEAR-BY-YEAR

1947-48—Won 5, Lost 13

Team	FSU	Opp.	Team	FSU	Opp.
Spring Hill	39	36	Erskine	45	47
Troy State	57	37	Wofford	38	77
Wofford	45	48	Georgia	42	44
Stetson	56	65	Fla. Southern ..	41	47
Ga. Teachers ..	56	60	Ga. Teachers ..	47	65
Georgia	46	65	Fla. Southern ..	55	48
Mercer	48	61	Stetson	41	38
Spring Hill	54	76	Erskine	49	48
Troy State	48	49			
Mercer	43	68		850	979

1948-49—Won 12, Lost 12

Team	FSU	Opp.	Team	FSU	Opp.
Miss. College ..	53	21	Tampa	60	58
Fla. Southern ..	46	38	Miss. College ..	46	57
Fla. Southern ..	53	45	Millsaps	49	46
Troy State	68	64	Oglethorpe	47	46
Lambuth	50	57	Sewanee	35	43
Union	52	56	Sewanee	47	39
Southwestern (Memphis)	47	54	Birm.-Southern	44	50
Stetson	49	40	Dixie Conference Tournament		
Stetson	40	36	Mercer	52	46
Tampa	56	58	Tampa	47	56
Mercer	56	65	Lambuth	49	65
Troy State	63	45			
Oglethorpe	52	64		1,220	1,211
Mercer	59	62			

1949-50—Won 15, Lost 10

Team	FSU	Opp.	Team	FSU	Opp.
Miss. College ..	43	24	Mercer	61	69
Miss. College ..	51	45	Howard	50	39
Troy State	61	27	David Lipscomb	57	53
Charleston	72	37	Tampa	58	56
Central (Mo.) ..	50	62	Troy State	79	71
Drury	52	59	Sewanee	80	59
S.W. Mo. State	52	79	Sewanee	85	65
Tampa	60	80	Stetson	74	68
Fla. Southern ..	65	71			
Fla. Southern ..	48	59	Dixie Conference Tournament		
Mercer	63	45	Fla. Southern ..	56	68
Howard	59	53	Miss. College ..	74	63
Birm.-Southern	45	55			
Millsaps	62	45		1,508	1,427
Stetson	61	70			

1950-51—Won 18, Lost 9

Team	FSU	Opp.	Team	FSU	Opp.
Charleston	74	54	Tampa	80	69
Mercer	55	52	Howard	58	51
Conn. State			Tampa	66	76
Teach. (O.T.)	76	68	Stetson	53	71
Howard	60	44	Rollins	60	57
Fla. Southern	86	55	Loyola (La.)	65	75
Miami (Fla.)	61	80	Ole Miss.	75	79
David Lipscomb	73	88	Miss. College	77	54
Ole Miss.	63	58	Mercer	69	64
Stetson	66	67	Rollins	62	45
Fla. Southern	44	41			
Dixie Conference Tournament			National NAIB Tournament		
Howard	64	54	South Dak. St.	85	70
Mercer	65	69	Pepperdine	61	59
District 25 NAIB Tournament			Millikin	60	91
Stetson	65	58			
Ga. Teachers	69	67		1,792	1,716

1951-52—Won 5, Lost 20

Team	FSU	Opp.	Team	FSU	Opp.
Parris Island	46	78	Fla. Southern	72	53
Culver-Stockton	56	59	Parris Island	62	64
Miss. State	47	75	Rollins	74	71
Miss. Southern	43	84	Stetson	48	58
Miss. Southern	70	78	Rollins	55	69
Spring Hill	54	64	Miami (Fla.)	63	76
Sewanee	48	58	Tampa	63	76
Georgia	50	79	Tampa	64	66
Clemson	56	62	District 25 NAIB Tournament		
Florida	51	61	Miami (Fla.)	73	70
Loyola (La.)	52	74	Tampa	57	78
Miami (Fla.)	56	93			
Tampa	72	66		1,404	1,683
Fla. Southern	51	54			
Ga. Teachers	75	93			

1952-53—Won 11, Lost 11

Team	FSU	Opp.	Team	FSU	Opp.
Mercer	62	78	Ark. State	77	88
Ga. Teachers	68	63	Stetson	76	66
Rollins	90	83	Fla. Southern	79	77
Mercer (O.T.)	77	76	Tampa	83	74
Central (Mo.)	59	62	Loyola (La.)	77	85
Sewanee	58	69	Miami (Fla.)	81	75
Miss. State	82	52	Stetson	83	79
Loyola (La.)	66	72	District 25 NAIA Tournament		
Miami (Fla.)	65	93	Mercer	87	77
Tampa	73	77	Stetson	81	94
Fla. Southern	71	89			
Rollins	79	82		1,647	1,698
Memphis State	73	87			

1953-54—Won 13, Lost 7

Team	FSU	Opp.	Team	FSU	Opp.
Miss. State	75	87	Fla. Southern	98	80
Mercer	72	70	Stetson	60	82
Ga. Teachers	66	58	Rollins	85	68
Jax. State	72	61	Fla. Southern	99	71
Stetson	74	71	Mercer	63	70
Spring Hill	60	69	Miami (Fla.)	76	69
Tampa	74	58	Loyola (La.)	72	88
Loyola (La.)	76	80	Ga. Teachers	89	85
Miami (Fla.)	61	78	Ark. State	78	68
Rollins	82	72			
Tampa	73	63		1,505	1,448

1954-55—Won 22, Lost 4

Team	FSU	Opp.	Team	FSU	Opp.
Jax. State	103	76	Rollins	86	74
Ga. Teachers	75	67	Fla. Southern	84	63
Tampa	90	62	Georgia	88	79
Stetson	94	79	Rollins	110	82
Miami (Fla.)	71	66	Loyola (La.)	95	101
Florida	79	82	Miss. State	102	86
Georgia	97	87	Loyola (La.)	87	84
Duke	75	97	Miami (Fla.)	86	80
Fla. Southern	73	69	Stetson	86	77
Tampa	96	61	Ga. Teachers	91	83
Georgia	90	81	Montana State	93	84
Spring Hill	81	72	Beloit	88	110
Miss. State	91	76			
Stetson	84	73		2,295	2,051

1955-56—Won 16, Lost 9

Team	FSU	Opp.	Team	FSU	Opp.
N. C. State	63	88	Georgia	79	76
E. Tenn. State	54	80	Ga. Teachers	81	90
Rollins	101	67	Loyola (La.)	85	75
Stetson	91	78	Troy State	90	65
Tampa	89	67	Tampa	88	73
Morningside	104	83	Fla. Southern	92	74
Clemson	76	94	Fla. Southern	85	81
Boston Univ.	86	52	Stetson	89	83
Miss. State	71	79	Miami (Fla.)	85	91
W. Virginia	69	78	Loyola (La.)	72	75
Santa Clara	59	61	Georgia	80	75
N. Y. U.	85	83			
Miami (Fla.)	78	76		2,023	1,914
Rollins	71	70			

1956-57—Won 9, Lost 17

Team	FSU	Opp.	Team	FSU	Opp.
Duquesne	55	70	Georgia	86	63
Steubenville	64	79	Tampa	82	67
W. Virginia	54	88	Rollins	97	94
Bradley	66	90	Fla. Southern	63	78
Florida	65	67	Fla. Southern	67	73
Texas A & M	74	83	Rollins	96	79
E. Tenn. St.	59	65	Miss. Southern	81	72
Georgia	68	72	Loyola (La.)	79	77
Morehead St.	75	97	Miami (Fla.)	82	98
Furman	108	96	Tampa	88	57
N. C. State	59	64	Centenary	74	92
Miami (Fla.)	77	85	Loyola (La.)	56	82
Stetson	70	97			
Stetson	104	86		1,949	2,071

1957-58—Won 9, Lost 16

Team	FSU	Opp.	Team	FSU	Opp.
Tenn. Tech.	74	71	W. Virginia	51	103
Murray State	84	60	Marshall	68	109
Tennessee	57	74	Ohio U.	66	86
Florida	70	71	Xavier (O.)	60	76
Furman	89	95	Army	62	71
Loyola (La.)	56	82	Okla. City	57	52
L S U	65	67	Rollins	80	61
The Citadel	57	59	Memphis State	51	68
Georgia	92	80	Miami (Fla.)	66	86
Loyola (La.)	67	79	Tampa	56	79
Tampa	72	53	Georgia	85	77
Memphis State	56	59			
Stetson	77	60		1,689	1,848
Miami (Fla.)	71	70			

1958-59—Won 8, Lost 15

Team	FSU	Opp.	Team	FSU	Opp.
Kentucky	68	91	Miami (Fla.) ..	93	69
Furman	73	72	Georgia	91	94
Spring Hill ...	100	70	Okla. City	75	103
Wake Forest ..	64	73	Centenary	63	87
Florida	82	60	Loyola (La.) ..	61	60
Auburn	74	95	Murray State ..	71	96
Miami (Fla.) ..	79	85	Memphis State	69	93
Georgia	72	83	Okla. City	84	98
L S U	82	67	Stetson	91	98
Auburn	62	69	Rollins	94	83
Miss. Southern	65	62	Miami (Fla.) ..	85	92
Memphis State	72	75			
				1,770	1,785

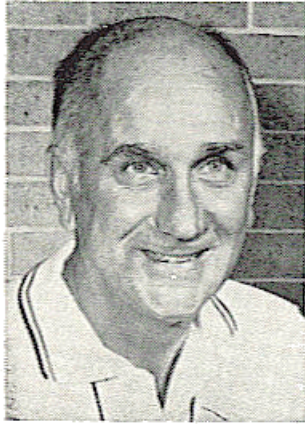
1959-60—Won 10, Lost 15

Team	FSU	Opp.	Team	FSU	Opp.
L S U	78	89	Memphis State	71	86
Loyola (La.) ..	64	71	Tampa	72	67
Florida	71	81	Miami (Fla.) ..	91	93
Auburn	58	62	Morehead State	78	75
Alabama	86	74	Tampa	68	83
Clemson	64	68	Memphis State	67	83
Auburn	63	76	Rollins	101	58
Jacksonville U.	86	69	Furman	105	98
Georgia	66	69	The Citadel	60	100
South Carolina	93	75	Loyola (La.) ..	69	50
The Citadel	74	76	Miami (Fla.) ..	89	107
(OT)			Georgia	95	82
Centenary	81	71			
Miss. Southern	78	87		1,928	1,950

SWIMMING

N. B. (BIM) STULTS, Head Coach

Florida State's swimming team opens its thirteenth year under the leadership of Coach N. B. (Bim) Stults with an amazing record of 90 victories, 17 losses, and two ties in dual meet competition. That is a championship percentage of .835.



This impressive record marks FSU's swimmers as one of the outstanding collegiate squads in the nation. The Seminoles swept past ten opponents last year and entered this season with a 16-meet victory string that began after a loss to Southern Methodist, perennial Southwest Conference power, in 1958.

Stults has guided the Seminoles through four undefeated seasons—1951, 1954, 1955, and 1960—and only ten dual losses since 1950. At one point his teams carried a 25-meet streak that spread over three seasons.

Among Stults' outstanding achievements at Florida State has been the development of five All-Americans, including two returning members of this year's squad. The All-Americans are Buck Hiles, 440 freestyle, 1959; Curt Genders, diver, 1959 and 1960; Bob Weber, diver, 1959 and 1960; Ernie Stock, breaststroke, 1954, and Roger Slater, diver, 1950 and 1951.

Stults' 12-year reign at Florida State also has produced some noteworthy team championships. The Seminoles won the inaugural Florida Intercollegiate championship in 1959 and repeated last year. They won the Florida AAU title from 1956 through 1958 and the Georgia AAU crown in 1957, 1958, and 1960.

Stults was graduated from Washington & Lee in 1930 with a B.A. Degree. He went directly to Ross High School in Fremont, O., as head swimming coach, where his teams won the Ohio state championship five times and were runners-up twice. His Ross High swimmers finished third in national competition on four occasions.

In 1939, Bim served as assistant swimming coach at Ohio State University. After serving as a Lt. Comdr. in the Navy from 1942 through 1946, he returned to Ohio State until he came to Florida State in 1948.

DEE EDINGTON, Assistant Coach

A former All-America swimmer at Michigan State, Dee Edington is in his second year as assistant coach under Bim Stults.

The 22-year-old product of Huntington, Ind., national YMCA breaststroke champion in 1959, helped Michigan State win the Big Ten championship in 1957 and to earn second and third-place national finishes in 1958 and 1959, respectively.

Edington was voted the outstanding freshman swimmer in 1956 while setting a Big Ten freshman record in the 200-yard breaststroke. He earned All-America recognition in the long-distance freestyle (14 miles) event in 1955.

Holder of numerous medals and trophies, Edington is completing graduate work in the Department of Physical Education.

1961 SWIMMING SCHEDULE

Date	Opponent	Site	Time
Jan. 11	—Georgia	Tallahassee	8 P.M.
Feb. 1	—Texas A & M	College Station	3 P.M.
Feb. 3	—South. Methodist	Dallas	8 P.M.
Feb. 9	—Alabama	Tallahassee	8 P.M.
Feb. 10	—Sewanee	Tallahassee	8 P.M.
Feb. 17	—Florida	Tallahassee	8 P.M.
Feb. 23	—Georgia Tech	Atlanta	2 P.M.
Feb. 24	—Georgia	Athens	2 P.M.
Feb. 25	—Georgia AAU	Athens	9 A.M.
Feb. 28	—East Carolina	Tallahassee	8 P.M.
Mar. 11	—Florida	Gainesville	3 P.M.
Mar. 18	—Florida	Gainesville	9 A.M.
Mar. 23-25	—NCAA Championships	Seattle, Wash.	-----
Mar. 30-Apr. 1	—NAAU Championships	New Haven, Conn.	-----

SWIMMING THRU THE YEARS

Year	Coach	W	L	T
1949	Bim Stults	3	5	0
1950	Bim Stults	7	2	0
1951	Bim Stults	7	0	0
1952	Bim Stults	5	2	1
1953	Bim Stults	7	1	0
1954	Bim Stults	9	0	0
1955	Bim Stults	6	0	0
1956	Bim Stults	9	2	0
1957	Bim Stults	9	3	0
1958	Bim Stults	10	1	1
1959	Bim Stults	8	1	0
1960	Bim Stults	10	0	0
		90	17	2

FSU'S SWIMMING ALL-AMERICANS

Roger Slater, diving, 1950, 1951.
 Ernie Stock, breaststroke, 1954.
 Buck Hiles, freestyle, 1959.
 Curt Genders, diving, 1959, 1960.
 Bob Weber, diving, 1959, 1960.

THE 1960 RESULTS

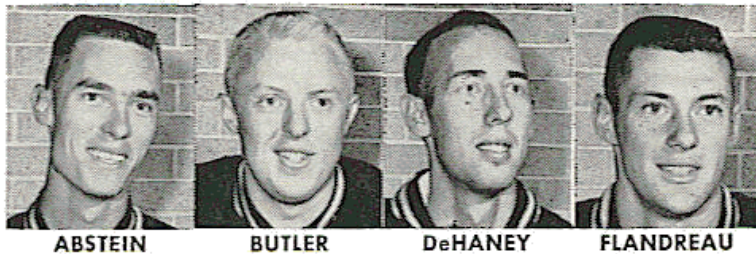
(10-0)

FSU	Opponent	Opp.
55	Georgia	40
56	Georgia Tech	34
50	Sewanee	45
56	Miami (O.)	39
53	Bowling Green	42
65	Florida	30
52	Miami (Fla.)	37
59	Georgia	24
54	East Carolina	40
50	Florida	45
(Won Georgia AAU, Florida Intercollegiate Championships)		

1961 VARSITY SWIMMING ROSTER

Name	Event	Age	Ht.	Wt.	Class	High School	Hometown
*Abstein, Bob	Backstroke	20	6-3	160	Jr.	Lee	Jacksonville
Banks, Mike	Freestyle	19	6-1	175	So.	Miles Township	Skokie, Ill.
Bissland, Ron	Freestyle	19	5-9	160	So.	Winter Park	Winter Park
*Braden, Gerry	Butterfly	20	5-8	150	Jr.	Ft. Myers	Ft. Myers
*Briley, Paxton	Freestyle	20	6-0	183	Sr.	Leon	Tallahassee
*Butler, Carl	Freestyle	21	5-10	160	Sr.	Murrah	Jackson, Miss.
Combes, Pete	Butterfly	19	5-11	160	So.	Sarasota	Sarasota
Davis, Pete	Backstroke	20	5-9	150	So.	Atherton	Louisville, Ky.
*DeHaney, Bob	Breaststroke	20	6-2	166	Jr.	Leon	Tallahassee
Dunlap, Jack	Freestyle	20	6-0	170	So.	Bolles	Jacksonville
Fisher, Jim	Breaststroke	19	6-1	175	So.	Plant	Tampa
*Flandreau, Denny	Diving	21	6-1	175	Jr.	G. M. A.	Paris, Ky.
*Genders, Curt	Diving	21	5-7	145	Sr.	Sarasota	Sarasota
*Hiles, Buck	Freestyle	21	5-11	170	Sr.	Bass	Atlanta, Ga.
*Mitchell, Glenn	Backstroke	21	6-1	165	Jr.	G. M. A.	Hampton, Ga.
Moore, George	Backstroke	21	5-10	170	Jr.	Murrah	Jackson, Miss.
Owen, Mark	Diving	19	5-9	175	So.	Jackson	Miami
Pykko, Risto	Butterfly	21	5-11	175	So.	Brooklyn	Brooklyn, N. Y.
Quayle, Bill	Freestyle	19	6-0	160	So.	Naples	Naples
Ray, John	Backstroke	20	6-1	175	Jr.	Leon	Tallahassee
Richardson, Bill	Breaststroke	18	5-8	130	So.	Hillsborough	Tampa
*Smith, Greg	Freestyle	21	5-11	160	Sr.	Bolles	Jacksonville
Steele, Nathan	Freestyle	19	5-10	150	So.	Clearwater	Clearwater
*Thompson, Paul	Freestyle	20	6-1	200	Jr.	Leon	Tallahassee

*Denotes letterman.



A LOOK AT THE LETTERMEN

BOB ABSTEIN, junior from Jacksonville . . . captain of high school swimming team . . . backstroker . . . wants to be a minister when he is graduated.

GERRY BRADEN, junior from Fort Myers . . . in 1959 was a member of record 200-yard medley and 400-yard medley relay freshman teams . . . butterflyer . . . majoring in biology.

PAXTON BRILEY, senior from Tallahassee . . . has made rapid improvement . . . freestyler . . . majoring in chemistry.

CARL BUTLER, senior from Jackson, Miss . . . member of record 400-yard medley relay team in 1960 . . . President of Student Body . . . steady performer . . . freestyler.

BOB DeHANEY, junior from Tallahassee . . . breast-stroker . . . steady improvement . . . counted on to add point power.

DENNY FLANDREAU, junior from Paris, Ky. . . . diver . . . national diving champion in high school . . . is an all-round athlete, earned 12 letters in high school.

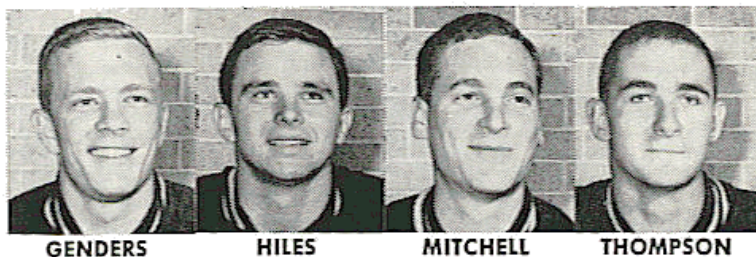
CURT GENDERS, senior from Sarasota . . . diver . . . two-time All-America diver in NCAA low-board championships.

BUCK HILES, senior from Atlanta, Ga. . . . freestyler . . . was All-America in 440-freestyle as a sophomore . . . holds 400 and 440-freestyle school records along with the 100-butterfly and member of record holding 400-medley relay team . . . was top point-getter for team in 1960.

GLENN MITCHELL, junior from Hampton, Ga. . . . backstroker . . . member of record holding 400-medley relay team . . . has made rapid progress.

GREG SMITH, senior from Jacksonville . . . freestyler . . . good clutch performer . . . played baseball and basketball in high school.

PAUL THOMPSON, junior from Tallahassee . . . freestyler . . . holds two pool records in the 200 and 220-freestyle events . . . was a top point-getter for team as a sophomore . . . expected to develop into one of the Seminoles' all-time best swimmers . . . can swim almost any event or distance.



FSU SCHOOL RECORDS

Event	Name	Year	Time
50—Freestyle	Ken Abbott	1958	23.1
100—Freestyle	Ken Abbott	1958	51.3
200—Freestyle	Paul Thompson	1960	1:56.3
220—Freestyle	Paul Thompson	1960	2:07.5
400—Freestyle	Buck Hiles	1959	4:16.8
440—Freestyle	Buck Hiles	1959	4:36.9
1500-Meter—Freestyle	Walt Jardina	1950	21:18.6
100—Butterfly	Buck Hiles	1959	56.8
200—Butterfly	Buck Hiles	1959	2:19.9
220—Butterfly	Ernie Stock	1953	2:47.5
200—Breaststroke	Chick Belden	1960	2:30.7
220—Breaststroke	Joel Jacobs	1955	2:54.0
100—Breaststroke	Roger Simmons	1960	1:09.1
100—Back (LC)	George Cooper	1953	1:06.0
200—Back (LC)	George Cooper	1953	2:26.5
100—Backstroke	Ken Abbott	1956	1:02.2
200—Backstroke	Jerry Glancy	1959	2:13.8
220—Backstroke	Jerry Glancy	1959	2:31.7
150—Backstroke	George Cooper	1953	1:41.3
220—Backstroke	Ken Abbott	1956	2:37.7
200—Medley Relay	John Risher	1955	1:49.4
	Joel Jacobs		
	Ernie Stock		
	James Julian		
200—Ind. Medley	Buck Hiles	1960	2:14.6
300—Medley Relay	George Cooper	1953	2:58.8
	Ernie Stock		
	Dick Wells		
400—Medley Relay	Glenn Mitchell	1960	4:00.9
	Roger Simmons		
	Buck Hiles		
	Carl Butler		
400—Freestyle Relay	Ryan Ray	1958	3:32.2
	Paul Hammond		
	Glen Thatcher		
	Ken Abbott		

FSU FRESHMAN RECORDS

Event	Name	Year	Time
50—Freestyle	Rafferty	1959	24.3
100—Freestyle	Thompson	1959	52.5
200—Freestyle	Thompson	1959	1:58.5
220—Freestyle	Hiles	1958	2:14.5
400—Freestyle	Hiles	1958	4:23.6
440—Freestyle	Hiles		4:52.0
100—Butterfly	Pyykko	1960	59.0
200—Butterfly	Pyykko	1960	2:22.1
220—Butterfly	Thompson	1959	2:41.5
100—Breaststroke	Beldon	1959	1:09.2
220—Breaststroke	Beldon	1959	2:52.0
200—Breaststroke	Beldon	1959	2:34.2
100—Backstroke	Davis	1960	1:02.0
200—Backstroke	Davis	1960	2:22.5
200—Medley Relay	Mitchell	1959	1:49.5
	Beldon	1959	
	Braden	1959	
	Rafferty	1959	
400—Medley	Mitchell, Beldon	1959	4:06.6
	Braden, Thompson		
200—Freestyle Relay	Hill	1959	1:36.4
	Taylor, King		
400—Freestyle Relay	Hill, Tesch	1959	3:37.1
	Rafferty, Thompson		
150—Individual Medley	Hiles	1958	1:36.8
200—Individual	Pyykko	1960	2:16.2
400—Individual	Hiles	1958	5:07.7

FSU POOL RECORDS

Event	Name	School	Year	Time
50—Freestyle	Abbott	FSU	1958	23.2
	Patterson	Ga.	1954	23.2
100—Freestyle	Patterson	Ga.	1954	51.1
200—Freestyle	Thompson	FSU	1960	1:56.3
220—Freestyle	Thompson	FSU	1960	2:08.0
400—Freestyle	Hiles	FSU	1959	4:16.8
440—Freestyle	Hiles	FSU	1960	4:37.5
200—Butterfly	Nelson	Miami	1959	2:11.3
100—Butterfly	Hiles	FSU	1959	56.8
200—Breaststroke	Belden	FSU	1960	2:30.7
220—Breaststroke	Browning	FSU	1951	3:00.5
100—Breaststroke	Stock	FSU	1959	1:09.4
150—Backstroke	Fetterman	Miami	1950	1:39.3
200—Backstroke	Glancy	FSU	1959	2:14.9
150—Individual	Stock	FSU	1955	1:35.2
200—Individual	Galyao	SMU	1956	2:15.7
300—Medley Relay	Ufer	Texas A&M	1956	2:57.4
	Klippel			
	Weick			
	Hammond	FSU		
400—Free Relay	Ray		1956	3:33.7
	Tschirret			
	Julian			
	Mitchell	FSU		
400—Medley Relay	Simmons		1960	4:00.9
	Hiles			
	Butler			

YEAR-BY-YEAR

1959

(8-1)

FSU	Opponent	Opp.
70	Georgia	16
56	Texas A&M	30
31	SMU	55
55½	Florida	30½
51	Miami (Fla.)	35
55	Georgia Tech	30
59	Georgia	26
63	East Carolina	23
52	Florida	34

(Florida Intercollegiate Champions.)

1958

(10-1-1)

FSU	Opponent	Opp.
68	Georgia	18
34	SMU	52
57	Rice	29
66	Birmingham Southern	15
59	Kentucky	25
62	Louisville	24
57	Oberlin	29
58	Georgia Tech	27
43	Florida	43
54	Miami (Fla.)	32
53	Georgia	31
45	Florida	41

(Won Florida AAU and Georgia AAU titles.)

1957 (9-3)		
FSU	Opponent	Opp.
57	Georgia	29
76	Emory	10
40	Georgia Tech	46
63	Kentucky	20
56	Rice	30
52	Texas A&M	34
33	SMU	53
46	Florida	40
60	Georgia	25
53	Miami (Fla.)	33
35	Florida	51
10 (Forfeit)	Miami (Fla.)	0

(Won Florida AAU and Georgia AAU titles.)

1956 (9-2)		
FSU	Opponent	Opp.
59	Georgia	25
60	Emory	24
51	SMU	33
34½	Texas A&M	49½
55	Kentucky	23
56	Vanderbilt	24
58	Georgia Tech	26
66	Florida	18
58½	Miami (Fla.)	24½
48	Georgia	36
41	Florida	43

(Florida AAU and Georgia AAU champions.)

1955 (6-0)		
FSU	Opponent	Opp.
62	Georgia	22
52	SMU	32
45	Texas A&M	39
68	Georgia Tech	16
50	Georgia	34
58	Emory	24

(Won Florida AAU Championships.)

1954 (9-0)		
FSU	Opponent	Opp.
60	Jacksonville Navy	21
49	Georgia	35
57	Jacksonville Navy	26
51	Texas A&M	33
57	Georgia Tech	27
54	N. E. Louisiana State	30
47	Georgia	37
46	Emory	38
55	Kentucky	29

(Third in Southern Regional, third in Florida and Georgia AAU.)

1953 (7-1)		
FSU	Opponent	Opp.
43	Jacksonville Navy	40
39	Georgia	45
50	Jacksonville Navy	33
48	Georgia Tech	36
51	N. W. Louisiana	33
55	Texas A&M	29
46	Georgia	38
57	Emory	26

(Runner-up Florida AAU, second Southern Regional AAU, tied for seventh National AAU.)

1952 (5-2-1)		
FSU	Opponent	Opp.
42	Georgia	42
47	Emory	37
54	Georgia Tech	30
52	Clemson	32
29	Georgia	55
46	Miami (Fla.)	38
50	Texas A&M	34
32	Miami (Fla.)	52

(Runner-up Florida AAU meet.)

1951 (7-0)		
FSU	Opponent	Opp.
43	Georgia	32
47	Pensacola Navy	28
41	Georgia	34
41	Georgia Tech	34
41	Miami (Fla.)	34
44	Emory	31
43	Clemson	32

(Tied for Southeastern AAU championship, Florida AAU champions.)

1950 (7-2)		
FSU	Opponent	Opp.
47	Emory	28
35	Georgia	42
37	Miami (Fla.)	38
46	Georgia	29
51	Georgia Tech	24
43	Clemson	32
64	South Carolina	11
40	Miami (Fla.)	35
40	Pensacola Navy	35

1949 (3-5)		
FSU	Opponent	Opp.
33	Miami (Fla.)	42
32	Emory	43
23	Georgia	52
27	Pensacola Navy	47
47	Emory	27
35	Miami (Fla.)	30
50	Clemson	25
33	Pensacola Navy	42