



**FLORIDA  
STATE  
UNIVERSITY**  
1964 SPRING SPORTS

CHRONOLOGICAL SCHEDULE  
(Home Events Capitalized)

MARCH

3	TUES.	TENNIS	VALDOSTA STATE	TALLAHASSEE
5	Thurs.	Golf	Florida Invitational	Cape Coral
6	Fri.	Golf	Florida Invitational	Cape Coral
7	Sat.	Golf	Florida Invitational	Cape Coral
		TENNIS	FLORIDA	TALLAHASSEE
		TRACK	MIAMI	TALLAHASSEE
13	FRI.	TENNIS	TULANE	TALLAHASSEE
14	SAT.	TPACK	FURMAN	TALLAHASSEE
		Tennis	Mississippi State	Pensacola
16	MON.	BASEBALL	FLORIDA SOUTHERN	TALLAHASSEE
17	TUES.	BASEBALL	FLORIDA SOUTHERN	TALLAHASSEE
19	THURS.	BASEBALL	CLEMSON	TALLAHASSEE
		TENNIS	GEORGIA	TALLAHASSEE
20	FRI.	BASEBALL	TENNESSEE, CLEMSON	TALLAHASSEE
		GOLF	GEORGIA	TALLAHASSEE
		TENNIS	GEORGIA	TALLAHASSEE
21	SAT.	FOOTBALL	ANNUAL GARNET & GOLD SPRING GAME	TALLAHASSEE
		BASEBALL	TENNESSEE, CLEMSON	TALLAHASSEE
		Tennis	Naval Academy	Jacksonville
23	MON.	BASEBALL	FLORIDA STATE INVITATIONAL TOURNAMENT*	TALLAHASSEE
		GOLF	GEORGIA TECH, SPRINGFIELD	TALLAHASSEE
24	TUES.	BASEBALL	FLORIDA STATE INVITATIONAL TOURNAMENT	TALLAHASSEE
		GOLF	SPRINGFIELD, SOUTH CAROLINA	TALLAHASSEE
		TENNIS	NORTHWESTERN	TALLAHASSEE
25	WED.	BASEBALL	FLORIDA STATE INVITATIONAL TOURNAMENT	TALLAHASSEE
		TENNIS	NORTHWESTERN	TALLAHASSEE
26	THURS.	BASEBALL	FLORIDA STATE INVITATIONAL TOURNAMENT	TALLAHASSEE
		Golf	Miami Invitational	Miami
		TENNIS	NOTRE DAME	TALLAHASSEE
		TRACK	SOUTH CAROLINA	TALLAHASSEE
27	FRI.	BASEBALL	FLORIDA STATE INVITATIONAL TOURNAMENT	TALLAHASSEE
		Golf	Miami Invitational	Miami
		Tennis	Clemson	Clemson, S. C.
28	SAT.	BASEBALL	FLORIDA STATE INVITATIONAL TOURNAMENT	TALLAHASSEE
		Golf	Miami Invitational	Miami
		Tennis	Georgia Tech	Atlanta, Ga.
		Track	Florida Relays	Gainesville
30	MON.	BASEBALL	FLORIDA STATE INVITATIONAL TOURNAMENT	TALLAHASSEE
		TENNIS	AMHERST, HOPE COLLEGE	TALLAHASSEE
31	TUES.	BASEBALL	FLORIDA STATE INVITATIONAL TOURNAMENT	TALLAHASSEE

APRIL

1	WED.	BASEBALL	FLORIDA STATE INVITATIONAL TOURNAMENT	TALLAHASSEE
		Tennis	Valdosta State	Valdosta, Ga.
2	THURS.	BASEBALL	FLORIDA STATE INVITATIONAL TOURNAMENT	TALLAHASSEE
		Golf	All Florida Tournament	Cape Coral
3	FRI.	BASEBALL	FLORIDA STATE INVITATIONAL TOURNAMENT	TALLAHASSEE
		Golf	All Florida Tournament	Cape Coral
4	SAT.	BASEBALL	FLORIDA STATE INVITATIONAL TOURNAMENT	TALLAHASSEE
		Golf	All Florida Tournament	Cape Coral
		Tennis	Florida	Gainesville
		Track	Carolina Relays	Columbia, S. C.
6	MON.	GOLF	AUBURN	TALLAHASSEE
		Track	Tennessee	Knoxville, Tenn.
18	Sat.	Track	Florida	Gainesville
20	Mon.	Baseball	Auburn	Auburn, Ala.
		Tennis	Clemson	Clemson, S. C.
21	Tues.	Baseball	Georgia Tech	Atlanta, Ga.
		Tennis	Presbyterian	Clinton, S. C.
22	Wed.	Baseball	Georgia	Athens, Ga.
		Tennis	Georgia Tech	Atlanta, Ga.
23	Thurs.	Baseball	Georgia	Athens, Ga.
24	Fri.	Baseball	Georgia Southern	Statesboro, Ga.
		Tennis	Florida Intercollegiate Tournament	Cape Coral
		Track	Pennsylvania Relays	Philadelphia, Pa.
25	Sat.	Baseball	Georgia Southern	Statesboro, Ga.
		Tennis	Florida Intercollegiate Tournament	Cape Coral
		Track	Pennsylvania Relays	Philadelphia, Pa.
27	MON.	BASEBALL	MIAMI	TALLAHASSEE
		Golf	Auburn	Auburn, Ala.
		Tennis	Miami	Miami
28	TUES.	BASEBALL	MIAMI	TALLAHASSEE
		Tennis	Miami	Miami
30	Thurs.	Golf	Southern Invitational	Athens, Ga.

MAY

1	Fri.	Golf	Southern Invitational	Athens, Ga.
2	SAT.	TRACK	FLORIDA INVITATIONAL AAU	TALLAHASSEE
		Golf	Southern Invitational	Athens, Ga.
4	MON.	BASEBALL	AUBURN	TALLAHASSEE
5	TUES.	BASEBALL	AUBURN	TALLAHASSEE
11	MON.	BASEBALL	GEORGIA SOUTHERN	TALLAHASSEE
12	TUES.	BASEBALL	GEORGIA SOUTHERN	TALLAHASSEE
13	Wed.	Baseball	Jacksonville University	Jacksonville
15	Fri.	Baseball	Auburn	Auburn, Ala.
16	Sat.	Baseball	Auburn	Auburn, Ala.
18	MON.	BASEBALL	JACKSONVILLE UNIVERSITY	TALLAHASSEE
22	FRI.	BASEBALL	FLORIDA	TALLAHASSEE
23	SAT.	BASEBALL	FLORIDA	TALLAHASSEE
		Track	Georgia AAU	Atlanta, Ga.
28	Thurs.	Baseball	NCAA District III Tournament Begins	Gastonia, N. C.
29	Fri.	Baseball	Florida	Gainesville
30	Sat.	Baseball	Florida (Double Header)	Gainesville

JUNE

5	Fri.	Tennis	Eastern Intercollegiate Tournament Begins	Hamilton, N. Y.
8	Mon.	Baseball	College World Series Begins	Cuba, Neb.
12	Fri.	Track	National Federation Meet Begins	Seattle, Wash.
15	Mon.	Golf	NCAA Tournament Begins	Colorado Spgs, Colo
18	Thurs.	Track	NCAA Championships Begin	Exene, Ore.

\*Participants - Georgia Tech, N. E. Louisiana State, Arberst, Duke, North Carolina, Wake Forest, Michigan State, Mississippi State.

FLORIDA STATE UNIVERSITY

SPRING SPORTS 1964

CONTENTS

GENERAL INFORMATION

The University and its personnel; a winning tradition ..... 2- 7

BASEBALL

A new era begins with a solid foundation of talent ..... 8-15

TRACK

An injury prone squad looks for improvement .....16-21

TENNIS

An international star and the nation's youngest coach .....22-27

GOLF

A host of outstanding sophomores and a new schedule .....28-32

PRESS INFORMATION

This booklet was compiled by the Florida State University Sports Information Department. It is designed as a guide for members of the Press, Radio and Television in their coverage of Spring Sports at Florida State.

For further information contact:

**BILL BUNKER**

Director of Sports Information  
Room 200, Tully Gymnasium  
Florida State University  
Tallahassee, Florida

OFFICE PHONE 599-2095

HOME PHONE 244-8453

~~~~~

ON THE COVER: Four Seminole stars demonstrate their championship form. (Read clockwise from top) Al Williams—4th place, shot put, NCAA Championships, 1963; Mike Augustine—NCAA first team All America centerfielder; Lex Wood—Eastern Intercollegiate singles champion and 22nd ranked tennis player in the nation; John Parsons—Florida Intercollegiate Tournament medalist, 1963.

## FLORIDA STATE UNIVERSITY

### GENERAL INFORMATION

**LOCATION:** Tallahassee, Florida, capital city of the Sunshine State, population 50,000.

**FOUNDED:** 1947 as co-educational; established 1857 as West Florida Seminary.

**ENROLLMENT:** 11,100.

**PRESIDENT:** Dr. Gordon W. Blackwell.

**VICE-PRESIDENT FOR ADMINISTRATION:**  
Dr. John E. Champion.

**ATHLETIC CONFERENCE:** None, Independent.

**COLORS:** Garnet and Gold.

**STADIUM:** Doak S. Campbell (25,000).

**NICKNAME OF TEAMS:** Seminoles.

**BAND:** Marching Chiefs.

**GYMNASIUM:** Robert Tully (4,500).

### ATHLETIC STAFF

**DIRECTOR OF ATHLETICS:** Vaughn Mancha

**FOOTBALL COACH:** Bill Peterson

**BASKETBALL COACH:** Bud Kennedy

**BASEBALL COACH:** Fred Hatfield

**SWIMMING COACH:** Bim Stults

**TRACK COACH:** Mike Long

**TENNIS COACH:** Paul Scarpa

**GOLF COACH:** Hugh Durham

**TICKET SALES MANAGER:** Claude Thigpen

**EQUIPMENT MANAGER:** Tillman Dixon

**TRAINER:** Don Fauls

**TEAM PHYSICIAN:** Dr. R. P. Johnson

**ATHLETIC BUSINESS MANAGER:** Ronald Melton

**SPORTS PUBLICITY DIRECTOR:** Bill Bunker

**ATHLETIC COMMITTEE:** Mode Stone, Chairman; Claude Flory, Thomas Wright, Coyle Moore, J. M. Plant, Elston Roady, Mary Alexander.

## FLORIDA STATE UNIVERSITY



PRESIDENT BLACKWELL

One of the two senior universities in Florida's university system, Florida State University has shown spectacular growth since, in 1947, it was converted from Florida State College for Women with about 2,500 students to co-educational Florida State University. It has become for instance, one of the foremost centers of graduate education in the

South and in 11 years has awarded more than 500 doctorates. The doctorate is offered in 34 fields. Enrollment has passed 10,000 and by 1970 is expected to be 15,000, including 4,000 graduate students.

Freshmen enter the Division of Basic Studies in the College of Arts and Sciences and for two years their instruction is in the basic knowledge and skills of communication, history, social science, humanities, natural sciences and personal development. At the start of the junior year students may continue in the College of Arts and Sciences or specialize in professional training in any of EIGHT other schools. FSU offers professional training in business, education, engineering science, music, social welfare, nursing, home economics and library work.

A main campus of more than 315 acres contains a growing number of functionally designed classroom and laboratory buildings and large dormitories. Among the newest structures is one housing the Institute of Molecular Biophysics, which is supported by a \$3 million grant from the Atomic Energy Commission. A Nuclear Research Building is nearby and this science center area of the campus eventually will have 19 large buildings devoted to studies in biology, chemistry, physics, meteorology, mathematics, geology, oceanography, space biosciences and other sciences.

A \$2 million University Union near the center of the campus is now being constructed, along with a third large dormitory for men to join two 10-story men's dormitories. In addition to the main campus FSU has a university farm two miles from the campus and an off-campus apartment village housing several hundred married students and their families.

## DIRECTOR OF ATHLETICS

### VAUGHN MANCHA



A former Florida State assistant football coach, Vaughn Mancha assumed duties as Director of Athletics in 1959. Mancha's fame as an all-time Alabama football great make him a natural for attracting friends for Florida State. His skill as an administrator matches his one-time skill on the gridiron for Red Drew's Crimson Tide.

Born in Sugar Valley, Ga., Mancha moved to Birmingham at an early age. He entered Alabama in 1944; four years of varsity football and selection to the All-SEC and All-America teams followed. His finest season was as a sophomore in 1945, when the Tide had a perfect 10-0 record behind Mancha and Harry Gilmer. Mancha starred in the '45 and '47 Sugar Bowl games (he was named to all-time Sugar Bowl team), and the '46 Rose Bowl game.

After graduation he played a year of professional football with the Boston Yanks (franchise later became the Baltimore Colts in the NFL). Meanwhile, Mancha earned his BS and MA at Alabama. In 1949, he became head coach at Livingston (Ala.) State College. During his three years there Mancha dominated Alabama small-college football.

In 1952, Mancha came to FSU as football assistant. He left in 1957 for Columbia University, where he coached, taught, and worked toward a doctorate.

Married to the former Sybil Little of Birmingham, he is the father of three children: Clare, 14; Nan, 12; and Dit, 4.



New nine hole course provides a home for FSU golfers

# COACHES

## FRED HATFIELD



When popular Danny Litwhiler left for Michigan State taking his nine year 189-81 won-lost record with him, Florida State methodically went about the business of finding a replacement.

The man selected is a sure bet to continue the Litwhiler tradition. He's Fred Hatfield, former major leaguer and veteran of 23 years in professional baseball.

Hatfield, 39, played for the Boston Red Sox, Detroit Tigers and Chicago White Sox during his seven years in the American league. He led the league in fielding as a third baseman for Detroit in 1952.

The Tallassee, Alabama native is a graduate of Troy State College in Troy, Alabama, where he was a stand-out football and basketball player. He and his wife Dorothy have a son, Jimmy, 17.

## HUGH DURHAM



One of Florida State's all-time great basketball players departs the hardcourt for the fairways when spring rolls around.

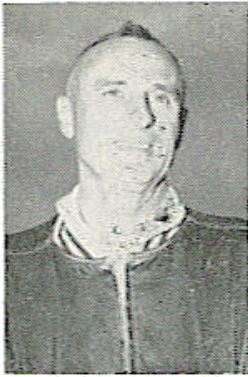
Hugh Durham, 26, is now in his first full year as golf coach of the Seminoles. Regarded as one of the best basketball players in the school's history, Durham assists in that sport during the winter.

The Louisville, Ky. native took over half way through last year's season, and saw the Seminoles to an 18-5 record. This year, he's in charge from the start with a new team and a new golf course.

Although he denies any coaching skill outside the gymnasium, Durham's golfers claim their new coach has a definite knack and knowledge of the game. He's a sub-par golfer himself, though he's been playing the game seriously for only two years.

Durham is married to the former Malinda Dixon of Jacksonville. They have one son, David, 3.

## MIKE LONG



When an ex-Minnesota pole vaulter took over as Florida State's track coach in 1955, he wasted no time in taking the Seminoles to the top.

During Mike Long's first season, he lost only one meet, and it took him only four years to produce his first undefeated team.

Now in his ninth year, Long has won 39 dual meets, lost seven, and has brought home several major

relay victories.

Not only that, he's made Florida State track and field a family affair. His oldest son, Steve, 25, was an outstanding high jumper and hurdler for the Seminoles. Next in line as a hurdler was Terry, now 24 and a graduate student at FSU. Curtis, 20, is regarded as a good prospect in the hurdles, and Jim, 15, runs cross country and—you guessed it—hurdles for Florida High School in Tallahassee.

There's also six year old Susan of whom Mike says: "She doesn't hurdle. I'd like for her to be a golfer."

Long came to FSU in 1953 after coaching high school sports in Sarasota and Fort Myers. He was an assistant football and basketball coach for the Seminoles before assuming full time track duties.

He won an Olympic regional pole vault title in 1936 while participating at the University of Minnesota.

## PAUL SCARPA



The man who directs Florida State's tennis fortunes is probably the youngest major college head coach in the nation at 24. However, if his coaching ability is anywhere close to his skill on the court, Paul Scarpa's team should be in contention for national honors.

The Charleston, S. C. bachelor was the Eastern Intercollegiate Singles Champion as a Seminole netter in 1962, and played on the winning doubles team.

Scarpa lost only three matches during his senior year at Florida State. He is currently the top ranked player in his home state, South Carolina.

He is starting his first season as head coach.



## SPRING SPORTS AT FLORIDA STATE

It's often said there are no minor sports at Florida State and the success of the University's spring sports program provides strong evidence in support of this statement.

Since entering intercollegiate competition in 1948, Florida State's baseball, track, golf and tennis teams have won 660 victories against 307 losses and eight ties. Under Coach Mike Long, FSU track teams have had three undefeated seasons. The 1957 golf team was undefeated in 11 matches.

Only six losing seasons mar the record. Baseball is the only sport at Florida State which has never experienced a losing season, while track, golf and tennis have had but two each in 15 years of competition.

Tallahassee has become a regular stop on the itinerary of major league baseball talent scouts. The Seminoles have won 276 games, lost only 133 since 1948.

Seven Florida State teams have gone to the District III NCAA tournament, and three have participated in the College World Series. Six FSU baseball players have received All American recognition. Two time All American Dick Howser is now with the Cleveland Indians, and last year's shortstop Woody Woodward will be with the Milwaukee Braves this season.

Seminole track teams have won 59 dual meets, lost 22, and several major invitational trophies have found a home in the FSU trophy case. The 1961 team won the Piedmont Relays and Florida AAU championship. In 1962 the Seminoles were undefeated, repeated their Piedmont victory and added the Memphis Indoor Carnival championship. Florida State received a place in the national rankings last season as a result of Al Williams' fourth place finish in the shot put at the NCAA Championships.

FSU golfers have a 148-54-6 record, and are regular participants in the NCAA championships. Ex-Seminole Downing Gray is recognized as one of the country's top amateurs and was a member of last year's Walker Cup team.

Always a power in the South, FSU's tennis team won the Eastern Intercollegiate title in 1962, and finished a close second last year. The Seminoles boast the 22nd ranking player in the nation in Lex Wood, a 26-year old South African said to be the best ever to play at Florida State.

FSU tennis teams have won 175 matches, lost 96, tied one.

Completion of the new nine hole golf course last summer gives Florida State's campus some of the best facilities in the country for spring sports, including a major league caliber baseball diamond, excellent quarter-mile clay track, and numerous asphalt and clay tennis courts.

These facilities, combined with the Florida climate and the outstanding past records of Seminole teams, insure the success of spring sports at Florida State for years to come.

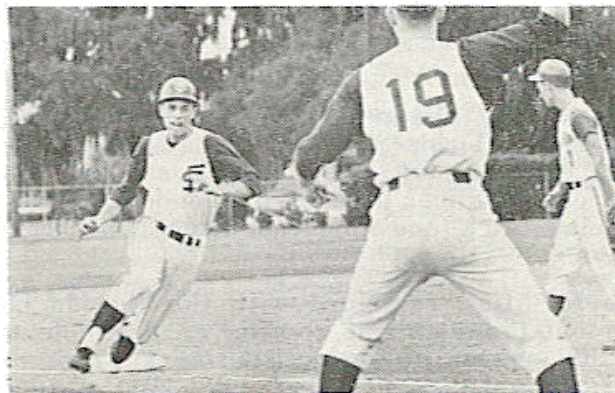
# BASEBALL

## 1964 VARSITY SCHEDULE

| Date         | Opponent                                                                                                                                                                          | Site                                         |
|--------------|-----------------------------------------------------------------------------------------------------------------------------------------------------------------------------------|----------------------------------------------|
| March 16, 17 | Florida Southern .....                                                                                                                                                            | Tallahassee                                  |
| 19, 20       | Clemson .....                                                                                                                                                                     | Tallahassee                                  |
| 20, 21       | Tennessee .....                                                                                                                                                                   | Tallahassee                                  |
| 23-April 4   | Florida State Invitational<br>Tournament: Georgia<br>Tech, N. E. Louisiana<br>State, Amherst, Duke,<br>North Carolina, Wake<br>Forest, Michigan State,<br>Mississippi State ..... | Tallahassee                                  |
| April 20     | Auburn .....                                                                                                                                                                      | Auburn                                       |
| 21           | Georgia Tech .....                                                                                                                                                                | Atlanta                                      |
| 22, 23       | Georgia .....                                                                                                                                                                     | Athens                                       |
| 24, 25       | Georgia Southern .....                                                                                                                                                            | Statesboro                                   |
| 27, 28       | Miami .....                                                                                                                                                                       | Tallahassee                                  |
| May 4, 5     | Auburn .....                                                                                                                                                                      | Tallahassee                                  |
| 11, 12       | Georgia Southern .....                                                                                                                                                            | Tallahassee                                  |
| 13           | Jacksonville University ...                                                                                                                                                       | Jacksonville                                 |
| 15, 16       | Auburn .....                                                                                                                                                                      | Auburn                                       |
| 18           | Jacksonville Univ. ....                                                                                                                                                           | Tallahassee                                  |
| 22, 23       | Florida .....                                                                                                                                                                     | Tallahassee                                  |
| 29, 30       | Florida .....                                                                                                                                                                     | Gainesville                                  |
| 28, 30       | NCAA District III<br>Tournament .....                                                                                                                                             | Gastonia, N. C.<br>(FSU Defending Champion)  |
| June 8       | College World Series .....                                                                                                                                                        | Omaha, Neb.<br>Home Games Begin at 3:30 P.M. |

## 1963 RESULTS

|                               |                               |
|-------------------------------|-------------------------------|
| FSU 2, Auburn 1               | FSU 7, Ga. Southern 0         |
| FSU 8, Auburn 3               | FSU 10, Ga. Tech 5            |
| FSU 10, Clemson 7             | Ga. Tech 5, FSU 4             |
| Clemson 12, FSU 7             | FSU 9, Georgia 6              |
| FSU 12, Clemson 3             | FSU 4, Georgia 3              |
| Navy 8, FSU 7                 | FSU 6, Florida 2              |
| FSU 5, Auburn 1               | FSU 5, Florida 1              |
| FSU 9, Auburn 7               | Florida 3, FSU 1              |
| FSU 6, Fla. Southern 0        |                               |
| FSU 2, Miami 1                | <b>District III Playoffs,</b> |
| Miami 4, FSU 1                | <b>Gastonia, N. C.</b>        |
| FSU 13, Furman 3              | FSU 4, Auburn 3               |
| FSU 9, Furman 2               | FSU 12, Wake Forest 4         |
| FSU 14, Valdosta State 0      | Wake Forest 6, FSU 5          |
| FSU 10, Ga. Southern 8        | FSU 11, Wake Forest 5         |
| FSU 5, North Carolina 2       |                               |
| NC State 8, FSU 7             | <b>College World Series,</b>  |
| FSU 6, Duke 0                 | <b>Omaha, Nebraska</b>        |
| Wake Forest 7, FSU 3          | FSU 5, Western Michigan 2     |
| FSU 6, East Carolina 1        | Arizona 4, FSU 3              |
| Camp LeJeune Marines 6, FSU 5 | USC* 4, FSU 3                 |
| Florida 3, FSU 1              | *Eventual Champion            |
| Florida 6, FSU 3              |                               |
| FSU 10, Ga. Southern 6        |                               |



FSU's Jim Reed rounds third to score against Florida

## 1964 BASEBALL OUTLOOK

Can a team lose the best coach in college baseball, its all time home run king, two All-Americans and two pitchers who won 21 games between them last season; and still expect to maintain its position as one of the best in the country?

It can if that team is Florida State. The formula: Hire a coach with 23 years of professional experience, stick the remaining All-American in centerfield and surround him with a few veterans, sophomores and Jr. College transfers, then sit back and pray the pitching holds up.

The Seminoles have taken many crippling losses. Coach Danny Litwhiler is gone to Michigan State, taking his nine year 189-81 record with him. All-American catcher Buddy Teagle has graduated, and All-American shortstop Woody Woodward is with the Milwaukee Braves with \$50,000 bonus money in his pocket. Pitchers Al Beccaccio (12-1), and Allen Thomas (9-3), have graduated. Left fielder Bill Williamson, who set the school's all time home run record of eight in 1962, is gone also.

New coach Fred Hatfield is not faced with a complete rebuilding job, however. Though Litwhiler is gone, he left a winning tradition and a considerable amount of baseball talent behind on the Tallahassee campus. Enough, perhaps, to land the Seminoles back in Omaha this summer.

Back for his senior year is center fielder Mike Augustine, a first team All-American choice last season and the leading Seminole hitter with a .399 average. His running mates will be picked from an array of outfield talent including power hitters Gary Nichols and Lynn Powell, speedster Monty McBryde, transfers Harry Frank (Chipola J. C.) and Leon Chalhub (Palm Beach J. C.), and sophomores Rick Hutchinson, Ray Perez and Tom Thomas. Also returning after a year's absence is Bob Wilcox who hit .365 as a soph in 1962.

The infield will be anchored by veteran first baseman George Rountree, second baseman Jim Reed, and third baseman Larry Johnson. Dave Dahlen and Bill Bearse get the job of trying to fill Woodward's slot at shortstop.

Despite the loss of Teagle, catching is one of the team's strong points with proven performers Ken Suarez and Paul Dirks.

The Seminole pitching staff took the biggest graduation blow. Beccaccio and Thomas carried the major part of the load throughout last year. Beccaccio's 12 victories is a school record for most wins in a season. The big righthander also struck out 86 and had an ERA of 1.96.

The returnees and newcomers are long on talent and short on experience. Southpaw Marty Howell, righthander Bob Kull and fastballer Gary Williamson head the staff. Don Murray and Tom Davis seem to have recovered from last year's sore arms. Transfers are Cliff Ranew (Norman Park J. C.) and Wayne Boyd (Gulf Coast J. C.). Ranew is the brother of Chicago Cubs catcher Merritt Ranew. Ken Creely is the top sophomore prospect.

## PLAYER PROFILES

**MIKE AUGUSTINE** . . . Senior centerfielder . . . 5-9, 150 . . . Philadelphia, Pa. . . . This nifty lefthander hustled his way to a first team All American berth last summer at Omaha . . . finished regular season with a .430 batting average, then slumped through the tournaments, finishing with a highly respectable .399 . . . a consistent hitter, he struck out only eight times last year . . . probably the best all around centerfielder in FSU history . . . his 65 hits last year set a school record . . . a speedster with a quick arm, he should be ready for his greatest season.

**JIM REED** . . . Senior second baseman . . . 5-9, 160 . . . Sarasota . . . This peppery little hustler is the team sparkplug . . . he hit .293 from his lead off slot last season . . . led the team in stolen bases with 12 . . . a good glove man, Reed made only eight errors in 203 chances in 1963 . . . an All American at Manatee Jr. College before coming to FSU.

**MARTY HOWELL** . . . Senior pitcher . . . 5-10, 170 . . . Bartow . . . The third pitcher on the staff last season, this lefthander was used primarily in relief, however he came through with an important victory in the District III playoffs . . . Howell will head the Seminole staff this year . . . has fair speed, good curve.

**GARY NICHOLS** . . . Junior rightfielder, 6-0, 185 . . . Williamsville, N. Y. . . . Became the regular Seminole rightfielder late last season . . . hits with authority from the left side . . . hit three home runs and drove in 20 runs in 97 at bats last season . . . made only two errors to lead the team in fielding . . . can also play first base.

**GEORGE ROUNTREE** . . . Senior first baseman . . . 5-11, 180 . . . St. Simons Island, Ga. . . . By the end of last season, this lefty was the most reliable hitter on the squad . . . good glove man, led the Seminoles in putouts last year . . . made only three errors at first base.

**DAVE DAHLEN** . . . Senior shortstop . . . 5-10, 180 . . . West Palm Beach . . . The most versatile player on the squad . . . this ex-Marine has played every position on the team except catcher and first base . . . good speed, strong arm . . . leading candidate for shortstop, but will play somewhere, regardless.

**LARRY JOHNSON** . . . Senior third baseman . . . 6-0, 175 . . . Thomasville, Ga. . . . The best glove man on the squad, Johnson's hitting improved through the latter part of last season . . . excellent hands and arm . . . he can play any infield or outfield position.



GARY NICHOLS



DAVE DAHLEN



JIM REED



GEORGE  
ROUNTREE



MARTY HOWELL



KEN SUAREZ

## 1964 BASEBALL AT A GLANCE

**LETTERMEN LOST (8):** Pitchers—Al Beccaccio (12-1), Allen Thomas (9-3), Bob Ferrar (0-1), Frank Echols (1-1). Infielders—Woody Woodward (ss .305), Buddy Teagle (c .281). Outfielders—Billy Williamson (lf .330), Jim Loftin (rf .367).

**LETTERMEN RETURNING (16):** Pitchers—Marty Howell (2-4), Bob Kull (1-0), Gary Williamson (0-1), Tom Davis\*. Infielders—Jim Reed (2b .293), George Rountree (1b .266), Dave Dahlen (ss .243), Gerry Chmielewski (3b .281), Larry Johnson (3b .272), Ken Suarez (c .214), Paul Dirks (c .142). Outfielders—Mike Augustine (cf .399), Gary Nichols (rf .268), Monty McBryde (rf .200), Woody Litwhiler (cf .067), Bob Wilcox\*.

**SOPHOMORES (20):** Pitchers—Ken Creely, Mike Hussey, Munroe Hunt, Don Murray, John Smith, Walter Sparkman. Infielders—Bill Bearnse, Lee Byers, Ralph Cross, Dave Proctor, Jim Suarez, Walter Wells, Bob Moon, Ken Hey. Outfielders—Frank Calabretti, Mike Haney, Rick Hutchinson, Ken Leakey, Ray Perez, Tom Thomas.

**JR. COLLEGE GRADUATES (6)** Pitchers—Don Hamm, Clifford Ranew. Infielders—Mike Maynard. Outfielders—Leon Chalhub, Harry Frank, Dallas Parks.

\* Lettered in 1962.

FLORIDA STATE'S BASEBALL HISTORY

| Year   | Coach     | Captain                          | W   | L   | T | Runs | Opp. |
|--------|-----------|----------------------------------|-----|-----|---|------|------|
| 1948   | Armstrong | Ron Nettles                      | 9   | 8   | 0 | 101  | 121  |
| 1949   | Armstrong | Sam Cox                          | 11  | 8   | 0 | 126  | 103  |
| 1950   | Armstrong | Bob Throwbridge                  | 11  | 7   | 0 | 122  | 104  |
| 1951   | Armstrong | Augie Pompelia                   | 13  | 6   | 0 | 161  | 97   |
| 1952   | Matherly  | Bob Throwbridge                  | 17  | 4   | 0 | 158  | 72   |
| 1953   | Matherly  | Cooter Mills                     | 13  | 10  | 1 | 156  | 111  |
| 1954   | Matherly  | Bob Hudson                       | 14  | 9   | 0 | 164  | 101  |
| 1955   | Litwhiler | { Billy Campbell<br>{ Bob Hudson | 17  | 6   | 0 | 189  | 98   |
| 1956   | Litwhiler | Max Long                         | 24  | 5   | 0 | 244  | 121  |
| 1957   | Litwhiler | Carlee Hendrix                   | 22  | 9   | 0 | 232  | 120  |
| 1958   | Litwhiler | Dick Howser                      | 21  | 7   | 0 | 198  | 104  |
| 1959   | Litwhiler | Dale Koch                        | 22  | 11  | 0 | 258  | 166  |
| 1960   | Litwhiler | Ray Bazzell                      | 13  | 9   | 0 | 183  | 136  |
| 1961   | Litwhiler | { Frank Davis<br>{ Jack Dull     | 21  | 7   | 0 | 167  | 121  |
| 1962   | Litwhiler | { Ray McShane<br>{ Bob Madison   | 23  | 14  | 0 | 254  | 221  |
| 1963   | Litwhiler | Al Bececcio                      | 26  | 13  | 0 | 253  | 152  |
| TOTALS |           |                                  | 276 | 133 | 1 | 2966 | 1948 |

INDIVIDUAL RECORDS

|                                                                       |          |
|-----------------------------------------------------------------------|----------|
| Best batting average, season (Bob Clem, 1959)                         | .....436 |
| Most hits, season (Mike Augustine, 1963)                              | .....65  |
| Most 2b hits, season (Bob Throwbridge, 1952, and Neil Martin, 1959)   | .....9   |
| Most 3b hits, season (Doug Walker, 1961)                              | .....7   |
| Most home runs, season (Billy Williamson, 1962)                       | .....8   |
| Most runs batted in, season (Dull, 1959)                              | .....37  |
| Most walks, season (Martin, 1959)                                     | .....38  |
| Most times struck out, season (Carlee Hendrix, 1956 and Martin, 1959) | .....23  |
| Most stolen bases, season (Owen McCarron, 1958)                       | .....16  |
| Most putouts, season (Charlie Rodgers, 1959)                          | .....238 |
| Most assists, season (Woody Woodward, 1963)                           | .....126 |
| Most errors, season (Woodward, 1963)                                  | .....22  |
| Best pitching record, season (Max Long, 1956)                         | .....7-0 |
| Most pitching wins, season (Al Bececcio)                              | .....12  |
| Most pitching wins, career (Frank Davis, 1959-61)                     | .....22  |
| Most strikeouts, game (Tony Avitable vs Furman, 1956)                 | .....25  |
| Most strikeouts, season (Avitable, 1956)                              | .....112 |
| Most strikeouts, career (Davis, 1959-61)                              | .....191 |
| Most bases on balls, season (Ed Lockard, 1951)                        | .....51  |
| Most bases on balls, career (Lockard 1950-53)                         | .....125 |

ALL-TIME BASEBALL RECORDS

|                                                      |           |
|------------------------------------------------------|-----------|
| Best won-lost record (1956)                          | .....24-5 |
| Most won, season (1963)                              | .....26   |
| Most lost, season (1962)                             | .....14   |
| Most runs scored (1959)                              | .....258  |
| Most runs allowed (1962)                             | .....221  |
| Most runs, game (vs. Jacksonville, Ala. State, 1954) | .....24   |
| Most hits, season (1962)                             | .....388  |
| Most doubles, season (1962)                          | .....66   |
| Most triples, season (1958)                          | .....20   |
| Most home runs, season (1962)                        | .....30   |
| Most runs batted in, season (1963)                   | .....200  |
| Most stolen bases, season (1962)                     | .....71   |
| Most double plays, season (1962)                     | .....36   |
| Longest winning streak (1958)                        | .....13   |
| Longest losing streak (1959)                         | .....4    |

1963 BASEBALL STATISTICAL LEADERS

Batting

RUNS: Mike Augustine, 41  
 HITS: Mike Augustine, 65  
 DOUBLES: Mike Augustine and Woody Woodward (tie), 8  
 TRIPLES: Woody Woodward, 3  
 HOMERS: Woody Woodward, 6  
 TOTAL BASES: Mike Augustine, 81  
 WALKS: Woody Woodward, 27  
 STRIKEOUTS: Billy Williamson and Jimmy Reed (tie), 19  
 BAT. AVERAGE: Mike Augustine, .399  
 STOLEN BASES: Jimmy Reed, 12  
 RUNS BATTED IN: Woody Woodward, 35

Fielding

PUTOUTS: George Rountree, 198  
 ASSISTS: Woody Woodward, 126  
 ERRORS: Woody Woodward, 22  
 FLDG. PCTG.: Gary Nichols, .986

PITCHING

| Player     | G  | IP                | R  | H  | ER  | ERA   | SO | BB | W-L   | AVG.  |
|------------|----|-------------------|----|----|-----|-------|----|----|-------|-------|
| BECCACCIO  | 14 | 121 $\frac{1}{3}$ | 40 | 82 | 26  | 1.96  | 86 | 59 | 12-1  | .923  |
| THOMAS     | 16 | 100 $\frac{2}{3}$ | 39 | 74 | 29  | 2.49  | 39 | 35 | 9-3   | .750  |
| HOWELL     | 15 | 50 $\frac{2}{3}$  | 31 | 42 | 20  | 3.55  | 34 | 34 | 2-4   | .666  |
| G. W'YMSON | 5  | 8 $\frac{1}{3}$   | 12 | 6  | 10  | 10.84 | 8  | 8  | 0-1   | .000  |
| ECHOLS     | 6  | 14 $\frac{1}{3}$  | 4  | 11 | 4   | 2.52  | 8  | 8  | 1-1   | .500  |
| KULL       | 8  | 19 $\frac{2}{3}$  | 7  | 15 | 5   | 2.29  | 9  | 9  | 1-0   | 1.000 |
| FERRAR     | 5  | 6 $\frac{1}{3}$   | 6  | 8  | 5   | 7.11  | 2  | 9  | 0-1   | .000  |
| LOFTIN     | 2  | 7 $\frac{2}{3}$   | 6  | 5  | 5   | 5.88  | 3  | 10 | 0-1   | .000  |
| DAHLEN     | 2  | 5 $\frac{1}{3}$   | 2  | 5  | 2   | 3.38  | 2  | 0  | 0-1   | .000  |
| TEAGLE     | 2  | 4                 | 4  | 6  | 4   | 9.00  | 3  | 4  | 1-0   | 1.000 |
| MALPHRUS   | 1  | 1 $\frac{1}{3}$   | 1  | 2  | 1   | 6.67  | 0  | 1  | 0-0   | .000  |
| FSU        | 39 | 339 $\frac{1}{3}$ | 10 | 19 | 99  | 2.34  | 19 | 15 | 26-13 | .666  |
| OPP.       | 39 | 338               | 11 | 24 | 196 | 5.21  | 19 | 20 | 13-26 | .333  |

1963 BASEBALL STATISTICS

Individual Batting

| PLAYER, POS.    | G  | AB   | R   | H   | 2B | 3B | HR | BI  | TB  | SB | BB  | SO  | AVG. |
|-----------------|----|------|-----|-----|----|----|----|-----|-----|----|-----|-----|------|
| AUGUSTINE, cf   | 39 | 163  | 41  | 65  | 8  | 1  | 2  | 22  | 81  | 10 | 10  | 8   | .399 |
| STILLE, c       | 8  | 8    | 2   | 3   | 0  | 0  | 0  | 0   | 4   | 0  | 1   | 1   | .375 |
| LOFTIN, of      | 22 | 42   | 5   | 18  | 3  | 0  | 0  | 3   | 21  | 5  | 1   | 11  | .367 |
| B. W'YMSON, lf  | 30 | 121  | 19  | 40  | 4  | 0  | 3  | 12  | 53  | 2  | 4   | 19  | .330 |
| WOODWARD, ss    | 39 | 131  | 27  | 40  | 8  | 3  | 6  | 35  | 74  | 5  | 27  | 10  | .305 |
| REED, 2b        | 39 | 160  | 37  | 47  | 5  | 0  | 0  | 15  | 52  | 12 | 24  | 19  | .293 |
| CHMIELEWSKI, 3b | 17 | 57   | 8   | 16  | 3  | 1  | 1  | 8   | 24  | 3  | 5   | 14  | .281 |
| TEAGLE, c       | 36 | 121  | 20  | 34  | 6  | 1  | 4  | 26  | 54  | 0  | 21  | 17  | .281 |
| JOHNSON, 3b     | 21 | 55   | 11  | 15  | 3  | 1  | 0  | 0   | 11  | 4  | 10  | 10  | .272 |
| NICHOLS, of     | 28 | 97   | 23  | 26  | 4  | 1  | 3  | 20  | 41  | 1  | 12  | 17  | .268 |
| ROUNTREE, 1b    | 32 | 109  | 18  | 29  | 3  | 2  | 1  | 14  | 39  | 4  | 8   | 8   | .266 |
| DAHLEN, 3b      | 24 | 78   | 11  | 19  | 1  | 2  | 1  | 9   | 27  | 2  | 4   | 15  | .243 |
| BECCACCIO, p    | 20 | 53   | 10  | 12  | 1  | 2  | 1  | 8   | 20  | 1  | 2   | 9   | .226 |
| SUAREZ, c       | 16 | 28   | 5   | 6   | 0  | 0  | 0  | 3   | 6   | 0  | 5   | 0   | .214 |
| McBRYDE, rf     | 24 | 30   | 6   | 6   | 2  | 0  | 0  | 7   | 8   | 5  | 5   | 9   | .200 |
| DIRKS, c        | 6  | 7    | 0   | 1   | 0  | 0  | 0  | 1   | 1   | 1  | 0   | 3   | .142 |
| THOMAS, p       | 16 | 32   | 5   | 4   | 0  | 0  | 0  | 3   | 4   | 2  | 5   | 9   | .125 |
| HOWELL, p       | 14 | 14   | 0   | 1   | 0  | 0  | 0  | 0   | 1   | 1  | 1   | 7   | .071 |
| LITWILER, of    | 12 | 15   | 3   | 1   | 0  | 0  | 0  | 1   | 1   | 0  | 2   | 3   | .067 |
| FERRAR, p       | 5  | 1    | 0   | 0   | 0  | 0  | 0  | 0   | 0   | 0  | 0   | 0   | .000 |
| G. W'YMSON, p   | 4  | 1    | 0   | 0   | 0  | 0  | 0  | 0   | 0   | 0  | 0   | 0   | .000 |
| OTHERS          |    | 20   | 3   | 4   | 1  | 0  | 0  | 4   | 4   | 0  | 1   | 5   | .200 |
| FSU             | 39 | 1354 | 253 | 387 | 54 | 15 | 22 | 200 | 535 | 56 | 148 | 196 | .278 |
| OPP.            | 39 | 1205 | 152 | 256 | 30 | 12 | 12 | 115 | 346 | 12 | 183 | 192 | .213 |

1964 VARSITY BASEBALL ROSTER

| NAME               | POS. | B-T   | HT.  | WT. | AGE | CLASS | STATUS   | HOMETOWN               |
|--------------------|------|-------|------|-----|-----|-------|----------|------------------------|
| Augustine, Mike    | of   | L-L   | 5-9  | 150 | 22  | St.   | 2 VL     | Philadelphia, Pa.      |
| Bearse, Bill       | 88   | R-R   | 5-8  | 140 | 19  | So.   | Frosh    | Decatur, Ga.           |
| Chalhub, Leon      | of   | L-L   | 5-9  | 170 | 21  | Jr.   | Jr. Col. | West Palm Beach        |
| Chmielewski, Gerry | 3b   | R-R   | 6-2  | 195 | 21  | Jr.   | 1 VL     | West Allis, Wis.       |
| Creely, Ken        | D    | R-R   | 6-0  | 190 | 19  | So.   | Frosh    | Bradenton              |
| Dahlen, Dave       | if   | R-R   | 5-10 | 175 | 21  | Jr.   | 1 VL     | West Palm Beach        |
| Davis, Tom         | p    | R-R   | 5-10 | 175 | 21  | Jr.   | 1 VL     | Miami                  |
| Dicks, Paul        | c    | R-R   | 5-10 | 180 | 21  | St.   | 2 VL     | Arlington, Va.         |
| Frank, Harry       | of   | L-R   | 5-8  | 165 | 20  | Jr.   | Jr. Col. | Marianna               |
| Gooch, Clay        | p    | R&L-R | 6-1  | 180 | 19  | Jr.   | None     | St. Augustine          |
| Hamm, Donald       | D    | R-R   | 6-0  | 170 | 20  | Jr.   | Jr. Col. | Cairo, Ga.             |
| Haney, Mike        | of   | L-L   | 6-0  | 175 | 20  | So.   | Squad    | Atlanta, Ga.           |
| Howell, Marty      | p    | R-R   | 5-10 | 170 | 21  | St.   | 2 VL     | Atlanta, Ga.           |
| Hunt, Munroe       | D    | R-R   | 5-11 | 170 | 19  | So.   | Frosh    | Cordale, Ga.           |
| Hussey, Mike       | p    | L-L   | 5-7  | 160 | 20  | So.   | Frosh    | Tampa                  |
| Hutchinson, Rick   | D    | L-R   | 6-0  | 180 | 19  | So.   | Frosh    | Holmes Beach           |
| Johnson, Larry     | 3b   | R-R   | 6-0  | 185 | 21  | St.   | 2 VL     | Thomasville, Ga.       |
| Kull, Bob          | D    | R-R   | 6-0  | 195 | 20  | Jr.   | 1 VL     | Daytona Beach          |
| Litwhiler, Woodrow | of   | R-R   | 5-10 | 170 | 22  | St.   | 1 VL     | Verona, N. J.          |
| McBryde, Monty     | of   | L-R   | 6-0  | 175 | 20  | Jr.   | 1 VL     | Pensacola              |
| Murray, Don        | p    | L-L   | 5-11 | 175 | 21  | So.   | Frosh    | Panama City            |
| Nichols, Gary      | 1b   | R-R   | 6-0  | 185 | 20  | Jr.   | 1 VL     | Williamsville, N. Y.   |
| Perez, Ray         | of   | R-R   | 5-9  | 175 | 19  | So.   | Frosh    | Tampa                  |
| Ranew, Clifford    | p    | R-R   | 6-5  | 185 | 20  | Jr.   | Jr. Col. | Albany, Ga.            |
| Reed, Jim          | 2b   | R-R   | 5-9  | 160 | 20  | St.   | 1 VL     | Sarasota               |
| Rountree, George   | 1b   | L-L   | 5-11 | 175 | 21  | St.   | 2 VL     | St. Simons Island, Ga. |
| Smith, John        | D    | R-R   | 5-7  | 150 | 19  | So.   | Frosh    | Quincy                 |
| Sparkman, Walter   | c    | R-R   | 6-1  | 195 | 19  | So.   | Frosh    | Plant City             |
| Suarez, Kenneth    | c    | R-R   | 5-9  | 175 | 20  | Jr.   | 1 VL     | Tampa                  |
| Thomas, Tom        | of   | L-R   | 6-0  | 185 | 19  | So.   | Frosh    | Farmington, Mich.      |
| Wells, Walter      | 1b   | L-L   | 6-1  | 175 | 19  | So.   | Frosh    | Jacksonville           |
| Wilcox, Bob        | of   | R-R   | 6-2  | 195 | 21  | Jr.   | 1 VL     | Melbourne              |
| Williamson, Gary   | p    | R-R   | 6-0  | 170 | 20  | St.   | 1 VL     | Palm Harbor            |



| SERIES STANDING<br>WITH 1964 OPPONENTS | FSU             | FSU  |
|----------------------------------------|-----------------|------|
|                                        | Won             | Lost |
| Amherst .....                          | 6               | 1    |
| Auburn .....                           | 15              | 11   |
| Clemson .....                          | 3               | 3    |
| Duke .....                             | 7               | 4    |
| Florida .....                          | 9               | 12   |
| Florida Southern .....                 | 20              | 12   |
| Georgia .....                          | 19              | 9    |
| Georgia Southern .....                 | 7               | 2    |
| Georgia Tech .....                     | 4               | 1    |
| Miami .....                            | 15              | 7    |
| Michigan State .....                   | 0               | 2    |
| Mississippi State .....                | (First Meeting) |      |
| North Carolina .....                   | 4               | 1    |
| N. E. Louisiana State .....            | (First Meeting) |      |
| Tennessee .....                        | 2               | 0    |
| Wake Forest .....                      | 4               | 1    |
| Total: .....                           | 115             | 62   |
| FSU's 15 year baseball record .....    | 276             | 133  |



DICK HOWSER



WOODY  
WOODWARD

### ALL AMERICANS

**DICK HOWSER, 1957-58:** A string of "firsts" follows Howser's name . . . The 5-7, 145 pound shortstop was FSU's first All American baseball player, the first FSU grad to crack the major leagues, and the only two time All American in the school's diamond history. Howser broke in with Kansas City and was chosen "Rookie of the Year" by the Sporting News in 1960. Now with the Cleveland Indians, he is an established big league shortstop.

**BUDDY TEAGLE, 1962:** Teagle became Florida State's second first team All American as a junior when his big bat and rifle arm helped the Seminoles into their second World Series berth in Omaha, Neb. . . . A fine defensive catcher and a power hitter at 6-4, 230 pounds . . . Also a key performer in 1963.

**MIKE AUGUSTINE, 1963:** This swift outfielder is back with a chance to equal Howser's two year feat . . . Led Seminoles in hitting last year with a .430 regular season average and a .399 overall.

**BOB CLEM, 1959:** Chosen to a second team berth as a sophomore when he hit .436, a school record that still stands. A power-hitting second baseman, Clem turned pro following his junior year.

**JACK DULL, 1961:** Dull moved into Clem's second base slot during his senior year and led the Seminoles in every batting department, plus participating in a record 20 double plays out of 25 for the team . . . Was a third team choice.

**WOODY WOODWARD, 1963:** Woodward passed up his senior year and a sure shot at further honors for a lucrative professional offer . . . Now with Milwaukee after a season in Denver . . . Third team last year.

# TRACK

## TRACK AND FIELD SCHEDULE 1964

|          |       |                                                    |                             |
|----------|-------|----------------------------------------------------|-----------------------------|
| January  | 30    | Orange Bowl .....                                  | Miami                       |
| February | 8     | Chattanooga<br>Invitational .....                  | Chattanooga,<br>Tennessee   |
|          | 15    | Coliseum Relays .....                              | Montgomery,<br>Alabama      |
| March    | 7     | Miami .....                                        | Tallahassee                 |
|          | 14    | Furman .....                                       | Tallahassee                 |
|          | 26    | South Carolina .....                               | Tallahassee                 |
|          | 28    | Florida Relays .....                               | Gainesville                 |
| April    | 4     | Carolina Relays .....                              | Columbia,<br>South Carolina |
|          | 6     | Tennessee .....                                    | Knoxville, Tennessee        |
|          | 18    | Florida .....                                      | Gainesville                 |
|          | 24-25 | Pennsylvania Relays, Philadelphia,<br>Pennsylvania |                             |
| May      | 2     | Florida Invitational<br>AAU .....                  | Tallahassee                 |
|          | 23    | Georgia AAU .....                                  | Atlanta, Georgia            |
| June     | 12-13 | National Federation<br>Meet .....                  | Seattle, Wash.              |
| June     | 18-20 | N.C.A.A.<br>Championships .....                    | Eugene, Oregon              |

## 1963 TRACK RESULTS

(Varsity-Won 3, Lost 2 in Dual Competition)

| FSU | OPPONENT                                                                                                         | OPP |
|-----|------------------------------------------------------------------------------------------------------------------|-----|
|     | Coliseum Relays, Montgomery, Ala.<br>(1st Place, Independent Division, with 35<br>points, won five of 10 events) |     |
|     | Chattanooga, Tenn., Indoor Invitational<br>(4th place)                                                           |     |
|     | Jaycee Indoor Carnival, Memphis, Tenn.<br>(3rd Place)                                                            |     |
| 69½ | Miami                                                                                                            | 70½ |
| 67  | Furman                                                                                                           | 78  |
|     | Memphis, Tenn., Relays<br>(3rd place with 35 points)                                                             |     |
| 107 | Roanoke College                                                                                                  | 32  |
| 98  | Tennessee                                                                                                        | 35  |
|     | Carolina Relays, Columbia, S. C.<br>(No official team point totals tallied)                                      |     |
| 95½ | Florida                                                                                                          | 49½ |
|     | Drake Relays, Des Moines, Iowa<br>(Williams 3rd in shot put, Giswold 4th in<br>triple jump)                      |     |
|     | Florida Invitational, Gainesville**<br>(Competed as Tallahassee Athletic Club, 2nd<br>with 8 pts.)               |     |
|     | Georgia AAU, Athens, Ga.<br>(Competed as Tallahassee Athletic Club, 1st<br>place with 36 points)                 |     |
|     | United States Track & Field Federation Meet,<br>Houston, Tex.<br>(Williams 5th in shot, 6th in discus)           |     |
|     | NCAA Championships, Albuquerque, N. M.<br>(Williams 4th in shot, did not compete in<br>discus)                   |     |
| 437 | TOTAL POINTS DUAL MEET COMPETITION                                                                               | 265 |

\*\*Later sanctioned as official Florida AAU state meet

## 1964 TRACK OUTLOOK

With a little luck and a bushel of bandaids, Florida State's injury prone track squad could piece together its usual respectable record this season.

However, every time Coach Mike Long gets optimistic, he runs into a nightmare of problems—both scholastic and physical.

"We should be some improved over last season," says Long. "However, we'll need every break in the game to make a good showing.

"As I see it now, every meet is a tossup. We won't be able to win any this year by exploiting our opponents' weaknesses. We're going to have to meet them strength for strength."

Florida State's main strength lies in the dashes and relays with Al Cato, Hutch Johnson, and Jerry McDaniel. However, both Cato and Johnson have a history of physical ailments.

McDaniel is the strongest runner on the team. The Tallahassee boy was the only runner on the team to make the qualifying time for the NCAA Championships last year. His performance keynotes the Seminole squad this year.

In the quarter mile, letterman Tom Houston is a steady point producer who turns in a good effort each time out. Long is banking heavily on ex-basketballer Ross Winter in the half-mile—provided both his bad knees hold up. Hank Raehn is a returning letterman in the 880 and Andrew Watson is a transfer from Dade Junior College who may help out.

The team's best distance man is Dick Roberts, but again the injury question arises. A senior this year, Roberts ran the mile in 4:21 as a sophomore, and hasn't been healthy since. A lot depends on his physical condition. Jim Lankford, Richard Carrico and Tom Graham are hopefuls.

There're no hurdlers in the Seminole camp, But Floyd Lorenz and Doug Ferry will have a try at the event. Lorenz is also the squad's best high-jumper and Ferry is the number two quartermiler.

Big Al Williams, school record holder and fourth place in the NCAA last year dominates the shot put and discus, and is still looking for the South's first 60 foot shot put. His longest is 59'10", the best in the history of the South.

Al Hoxit and Clark Robinson are also promising weight men. Gary Oates throws the discus and the javelin. He's joined by Darryl Guthrie in the latter event. Both are promising sophomores.

One of the biggest weak spots is the broad jump where there are no returnees. Hutch Johnson and Ed Johnson show the best potential, and Guthrie may be called upon.

Lorenz and Bill Maxwell are the high jumpers. Sophomore Doug Pharis is the team's only pole vaulter.

## PROFILES

**AL WILLIAMS . . . Senior . . . Shot, Discus . . .** 6-2, 240 . . . Atlanta, Ga. The best collegiate shot putter in the history of the South is back for another run at national honors . . . Williams' throw of 59'10" in the Georgia AAU was the fourth longest in the country last year . . . He finished fourth in the NCAA Championships last June, behind NYU's Gary Gubner and two seniors . . . He's hoping to go over 60 feet in his final season, and those who know say the ambitious giant can do it . . . Also holds the FSU record in the discus.

**JERRY McDANIEL . . . Junior . . . Sprints . . .** 6-1, 180 . . . Tallahassee. A strong powerful runner . . . Particularly effective at 220 yards, but runs well over and under this distance . . . Just reaching his potential . . . Has his best running yet to do . . . Ran his specialty in 21.3 on the turn last year . . . Should qualify for nationals.

**HUTCH JOHNSON . . . Senior . . . Sprints . . .** 6-2, 175 . . . Atlanta, Ga. Squad's best at 100 yards . . . A willowy, picture-book runner . . . Had a wind-assisted 9.6 last season . . . Good competitor . . . Great style.

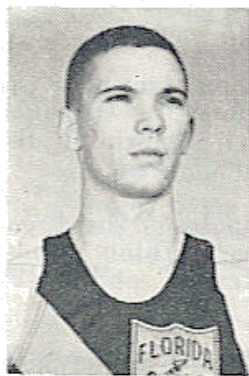
**AL CATO . . . Junior . . . Sprints . . .** 5-9, 155 . . . Sumner, Ga. Pulled muscles have plagued this determined sprinter . . . A bulldog type runner who can often beat Johnson despite the former's edge in ability . . . His fierce competitive spirit gives the Seminoles a strong team in the short dashes.

**DICK ROBERTS . . . Senior . . . Distance . . .** 5-9, 150 . . . St. Petersburg. Ran the mile in 4:21 as a soph, but injuries have kept his performance down ever since . . . Looks better than ever this year . . . This solid competitor is the team's best miler.

**DOUG FERRY . . . Junior . . . Middle Distance . . .** 6-0, 145 . . . Melbourne. Success in the 440, intermediate hurdles and relays will depend largely on his performance . . . A strong aggressive runner . . . He's having his first crack at the hurdles and progressing nicely.

**FLOYD LORENZ . . . Junior . . . High Jump, Hurdles . . .** 6-2, 170 . . . Mascouta, Ill. Leading man in high jump and high hurdles . . . Great team man . . . Highly skilled in his events . . . Development of speed and strength is the key to his performance.

**ROSS WINTER . . . Junior . . . Middle Distance . . .** 6-2, 165 . . . Mobile, Ala. An ex-basketballer forced to track by knee injuries . . . Good middle distance runner . . . Should have good times before the season is out.



FLOYD LORENZ



AL CATO

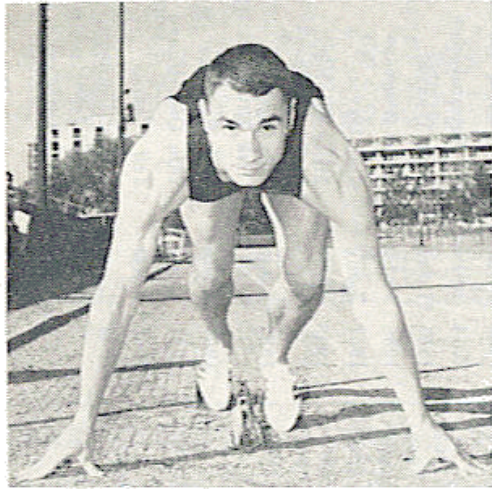
## TRACK AT A GLANCE

LETTERMEN LOST (2): Herb Kraft (BJ, S), Craig Johnson (S, H)

LETTERMEN RETURNING (14): Al Williams (W), Al Cato (S), Doug Ferry (MD), Jerry McDaniel (S), Tom Houston (MD), Hutch Johnson (S), Jim Lankford (D), Floyd Lorenz (HJ, H), Hank Raehn (D), Dick Roberts (D), Clark Robinson (W), Bob Sable (S), Ross Winter (MD), Bill Maxwell (HJ)

SOPHOMORES (2): Richard Carrico (D), Darryl Guthrie (J, TJ)

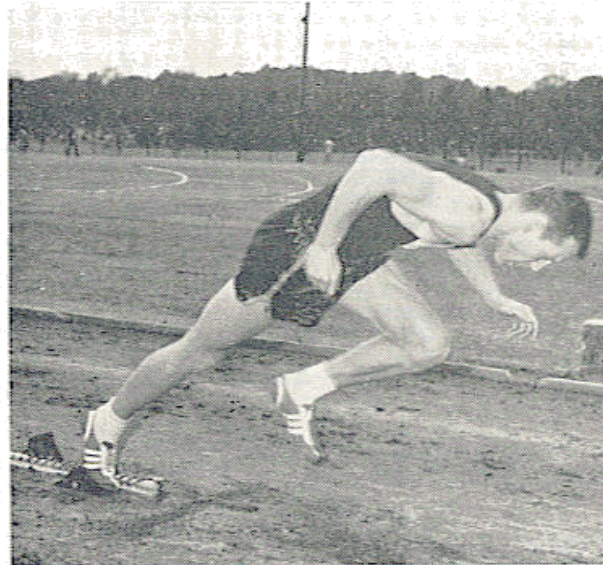
OTHERS (5): Ray Hoxit (W-JR. Col.), Ed Johnson (TJ, BJ-Jr. Col.), Steve Olsen (H-None), Steve Schatz (TJ, HJ—Sqd.), Irv Watson (D, Jr. Col.)



JERRY McDANIEL



DOUG FERRY



HUTCH JOHNSON

## SERIES STANDINGS

| WITH 1964 OPPONENTS<br>(DUAL MEETS) | FSU<br>Won | FSU<br>Lost |
|-------------------------------------|------------|-------------|
| Florida .....                       | 6          | 2           |
| Furman .....                        | 6          | 0           |
| Miami .....                         | 7          | 6           |
| South Carolina .....                | 1          | 0           |
| Tennessee .....                     | 2          | 0           |
| Totals: .....                       | 22         | 8           |
| FSU's 14 year track record: .....   | 59         | 22          |

FLORIDA STATE'S TRACK HISTORY

| Year | Coach  | Captain                        | W | L | T | FSU<br>Pts. | Opp.<br>Pts. |
|------|--------|--------------------------------|---|---|---|-------------|--------------|
| 1949 | Miller | None                           | 0 | 3 | 0 | 143 1/2     | 244 1/2      |
| 1950 | Miller | Al Bradford                    | 5 | 1 | 0 | 495 1/6     | 279 5/6      |
| 1951 | Miller | Max Watson                     | 5 | 1 | 0 | 436 5/6     | 330 1/2      |
| 1952 | Miller | John Poston                    | 6 | 1 | 0 | 510 1/2     | 402          |
| 1953 | Miller | Dick Mize                      | 3 | 3 | 0 | 408 1/3     | 359 1/6      |
| 1954 | Miller | C. Fraundorfer                 | 1 | 6 | 0 | 390         | 429          |
| 1955 | *Long  | Ron Weaver                     | 5 | 1 | 0 | 435 1/3     | 322          |
| 1956 | Long   | Ron Weaver                     | 7 | 1 | 0 | 605 1/2     | 389 5/12     |
| 1957 | Long   | Joe Davis                      | 4 | 1 | 0 | 388         | 253          |
| 1958 | Long   | Mike Conley,<br>J. Terwilliger | 4 | 0 | 0 | 342 2/5     | 175 3/5      |
| 1959 | Long   | Jim Casteel,<br>Dick Etwood    | 3 | 1 | 0 | 333 1/2     | 201 1/2      |
| 1960 | Long   | Ted Keen                       | 4 | 0 | 0 | 339 2/3     | 203 1/3      |
| 1961 | Long   | Don Ostergaard                 | 4 | 1 | 0 | 464 5/6     | 239 1/6      |
| 1962 | Long   | Jeff Clark                     | 5 | 0 | 0 | 408         | 251 /        |
| 1963 | Long   | Craig Johnson,<br>Herb Craft   | 3 | 2 | 0 | 437         | 265          |

\* Coach Mike Long's nine-year record 39-7-0.

FSU TRACK AND FIELD RECORDS

| Event                | Holder                                 | Mark   | Year | Two-Mile Relay                    | 880 Relay | Distance Medley | Shot Put | Discus | Javelin | Pole Vault | High Jump | Broad Jump | Triple Jump | Most Points, meet            | Most Points, season | Most Points, career |
|----------------------|----------------------------------------|--------|------|-----------------------------------|-----------|-----------------|----------|--------|---------|------------|-----------|------------|-------------|------------------------------|---------------------|---------------------|
| 100                  | John Poston                            | 9.6    | 1962 | Roberts, Smith, Brocksmith, Davis | 7:49.0    | 1962            | 59-10    | 160-7  | 227-5   | 14-2 1/2   | 6-6       | 23-7 3/4   | 45-4 3/4    | 28                           | 152 1/4             | 287 3/4             |
| 220                  | Jack Terwilliger                       | 9.6    | 1958 |                                   | 1:27.2    | 1962            |          |        |         |            |           |            |             | (Tom Bowman vs Howard, 1960) |                     |                     |
| 440                  | Ron Harrison                           | 20.3   | 1960 | Till, Davis, Long, C. Johnson     |           |                 |          |        |         |            |           |            |             |                              |                     |                     |
| 880                  | Jim Casteel                            | 47.0   | 1958 |                                   |           |                 |          |        |         |            |           |            |             |                              |                     |                     |
| Mile                 | Jack Brocksmith                        | 1:54.5 | 1962 | Smith, Brocksmith, Davis, Roberts | 10:42.4   | 1962            |          |        |         |            |           |            |             |                              |                     |                     |
| Two-Mile             | Mike Conley                            | 4:05.7 | 1958 |                                   |           |                 |          |        |         |            |           |            |             |                              |                     |                     |
| 180 Hights           | Kent Mills                             | 9:31.4 | 1959 |                                   |           |                 |          |        |         |            |           |            |             |                              |                     |                     |
| 220 Lows             | Terry Long                             | 14.7   | 1962 |                                   |           |                 |          |        |         |            |           |            |             |                              |                     |                     |
| Intermediate Hurdles | Terry Long                             | 22.6   | 1962 |                                   |           |                 |          |        |         |            |           |            |             |                              |                     |                     |
| 440 Relay            | C. Johnson                             | 39.8   | 1963 |                                   |           |                 |          |        |         |            |           |            |             |                              |                     |                     |
| Hurdles              | McDaniel, H. Johnson, Cato, C. Johnson | 41.7   | 1963 |                                   |           |                 |          |        |         |            |           |            |             |                              |                     |                     |
| Sprint Medley        | Gasteel, Butner, Terwilliger, Conley   | 3:24.6 | 1958 |                                   |           |                 |          |        |         |            |           |            |             |                              |                     |                     |
| Mile Relay           | Terwilliger, Ruff, Conley, Casteel     | 3:14.4 | 1958 |                                   |           |                 |          |        |         |            |           |            |             |                              |                     |                     |

**VARSITY TRACK AND FIELD ROSTER 1963-1964**

| NAME            | HT   | WT. | CLASS | AGE | 1963 STATUS | EVENT        | HOMETOWN        |
|-----------------|------|-----|-------|-----|-------------|--------------|-----------------|
| RICHARD CARRICO | 5-9  | 150 | So.   | 20  | Fr.         | Distance     | Tallahassee     |
| AL CATO         | 5-8  | 160 | Jr.   | 21  | 1 VL        | Dashes       | Sumner, Ga.     |
| DOUG FERRY      | 6-0  | 145 | Jr.   | 20  | 1 VL        | 440, Int H,  | Melbourne       |
| TOM GRAHAM      | 5-10 | 135 | Jr.   | 20  | RS          | Distance     | Ft. Lauderdale  |
| DARRYL GUTHRIE  | 5-11 | 170 | So.   | 24  | Fr.         | Jav, TJ      | Ft. Myers       |
| TOM HOUSTON     | 5-10 | 170 | Sr.   | 22  | 2 VL        | 440          | Orlando         |
| RAY HOXIT       | 6-5  | 225 | Jr.   | 21  | Jr Col      | Shot, Discus | Rosman, N. C.   |
| ED JOHNSON      | 5-10 | 145 | Jr.   | 20  | Jr Col      | TJ, BJ       | Pensacola       |
| HUTCH JOHNSON   | 6-2  | 175 | Sr.   | 22  | 2 VL        | Dashes, BJ,  | Atlanta, Ga.    |
| JIM LANKFORD    | 5-10 | 133 | Sr.   | 21  | 2 VL        | Distance     | Shreveport, La. |
| FLOYD LORENZ    | 6-2  | 170 | Jr.   | 20  | 1 VL        | Hurdles, HJ  | Mascoutah, Ill. |
| BILLY MAXWELL   | 6-0  | 165 | Jr.   | 20  | 1 VL        | HJ           | Cairo, Ga.      |
| JERRY McDANIEL  | 6-1  | 195 | Jr.   | 21  | 1 VL        | 220, 440     | Tallahassee     |
| GARY OATES      | 6-2  | 200 | So.   | 19  | Fr.         | Discus, Jav  | Daytona Beach   |
| STEVE OLSEN     | 6-0  | 165 | Jr.   | 21  | None        | Hurdles      | Sarasota        |
| DON PHARIS      | 6-0  | 160 | So.   | 21  | RS          | PV           | Douglas, Ga.    |
| HANK RAEHN      | 6-0  | 155 | Jr.   | 21  | 1 VL        | 880, Mile    | Orlando         |
| DICK ROBERTS    | 5-9  | 150 | Sr.   | 22  | 2 VL        | Distance     | St. Petersburg  |
| CLARK ROBINSON  | 6-2  | 210 | Jr.   | 20  | 1 VL        | Shot, Discus | St. Petersburg  |
| BOB SABLE       | 5-9  | 145 | Jr.   | 21  | 1 VL        | Dashes       | Pittsburgh, Pa. |
| STEVE SCHATZ    | 5-8  | 140 | Jr.   | 20  | Sqd.        | TJ, HJ       | Albany, Ga.     |
| ANDREW WATSON   | 6-1  | 160 | Jr.   | 20  | Jr Col      | 880, Mile    | Miami           |
| AL WILLIAMS     | 6-2  | 240 | Sr.   | 22  | 2 VL        | Shot, Discus | Atlanta, Ga.    |

**FRESHMAN TRACK FIELD AND FIELD ROSTER 1963-64**

| NAME           | HT.  | WT. | AGE | EVENT    | HOMETOWN        |
|----------------|------|-----|-----|----------|-----------------|
| HULL CARR      | 6-0  | 140 | 18  | PV, HJ   | Cairo, Ga.      |
| DONALD CASTEEL | 5-10 | 140 | 18  | 440, 220 | Atlanta, Ga.    |
| GARY CASTNER   | 5-9  | 135 | 18  | Distance | Jacksonville    |
| SIDNEY GAINES  | 5-9  | 132 | 18  | BJ, TJ   | Cairo, Ga.      |
| RICHARD HOGAN  | 6-0  | 160 | 17  | Dashes   | New York, N. Y. |
| STEVE LANDIS   | 5-9  | 155 | 18  | Hurdles  | Atlanta, Ga.    |
| TYLER MAXWELL  | 5-8  | 138 | 18  | PV, BJ   | Cairo, Ga.      |
| WILLIAM NELSON | 5-10 | 125 | 18  | Distance | Largo           |
| ROY PLUMMER    | 6-0  | 145 | 18  | 440, 220 | St. Petersburg  |
| JOHN RICHARDS  | 5-8  | 145 | 18  | Distance | Melbourne       |
| MIKE WHITWORTH | 5-9  | 155 | 18  | Dashes   | Atlanta, Ga.    |

# TENNIS

## 1964 TENNIS SCHEDULE

| DATE        | OPPONENT                                    | SITE            |
|-------------|---------------------------------------------|-----------------|
| February 29 | Rollins .....                               | Tallahassee     |
| March 4     | Valdosta State .....                        | Tallahassee     |
| 7           | Florida .....                               | Tallahassee     |
| 13          | Tulane .....                                | Tallahassee     |
| 14          | Mississippi State .....                     | Pensacola       |
| 19, 20      | Georgia .....                               | Tallahassee     |
| 21          | Navy .....                                  | Jacksonville    |
| 24, 25      | Northwestern .....                          | Tallahassee     |
| 26          | Notre Dame .....                            | Tallahassee     |
| 27          | Clemson .....                               | Clemson, S. C.  |
| 28          | Georgia Tech .....                          | Atlanta, Ga.    |
| 30          | Amherst (10 a.m.) .....                     | Tallahassee     |
|             | Hope College (2:30 p.m.) ...                | Tallahassee     |
| April 1     | Valdosta State .....                        | Valdosta, Ga.   |
| 4           | Florida .....                               | Gainesville     |
| 20          | Clemson .....                               | Clemson, S. C.  |
| 21          | Presbyterian .....                          | Clinton, S. C.  |
| 22          | Georgia Tech .....                          | Atlanta, Ga.    |
| 24-26       | Florida Intercollegiate<br>Tournament ..... | Cape Coral      |
| 27, 28      | Miami .....                                 | Miami           |
| June 5-10   | Eastern Intercollegiate<br>Tournament ..... | Hamilton, N. Y. |

## 1963 VARSITY TENNIS RESULTS

(18-5)

| FSU | OPPONENT                    | OPP. |
|-----|-----------------------------|------|
| 5   | Fort Eustis, Va. ....       | 1    |
| 5   | Fort Eustis, Va. ....       | 1    |
| 5   | Georgia .....               | 3    |
| 4   | Miss. State .....           | 5    |
| 7   | Pensacola Tennis Club ..... | 2    |
| 6   | Ga. Tech .....              | 3    |
| 3   | Northwestern .....          | 6    |
| 6   | Florida .....               | 3    |
| 9   | Valdosta (Ga.) State .....  | 0    |
| 9   | Valdosta (Ga.) State .....  | 0    |
| 8   | Hope College .....          | 1    |
| 9   | Amherst .....               | 0    |
| 7   | Hope College .....          | 2    |
| 7   | Columbia .....              | 2    |
| 6   | Columbia .....              | 3    |
| 7   | Columbia .....              | 3    |
| 3   | Presbyterian .....          | 6    |
| 9   | Cincinnati .....            | 0    |

### FLORIDA INTERCOLLEGIATES, CAPE CORAL

(Placed second; Miami 1st, Florida 3rd)

|   |                                  |   |
|---|----------------------------------|---|
| 6 | Columbus, Ga., Tennis Club ..... | 3 |
| 3 | Ga. Tech .....                   | 6 |
| 4 | Georgia .....                    | 5 |
| 9 | Mercer .....                     | 0 |
| 5 | Rollins .....                    | 4 |

### EASTERN INTERCOLLEGIATES, HAMILTON, N. Y.

(2nd Place, 35 match wins; Lex Wood\* singles champion)

\* Wood also won the Eastern Clay Courts Championships single in New York City, the Maryland State Championship singles, the Wilmington, Del., Invitationals, and was a member of the winning doubles team in the Detroit, Mich., Invitational.



## 1964 TENNIS OUTLOOK

There are two sides to tennis at Florida State this spring, and Coach Paul Scarpa has a hard time trying to figure which one will come up when he twirls the racket.

First there's potentially the best team in Seminole history. It's possibly one of the best in the nation with four top players back from last year's outfit which finished 18-5, and placed second in the Eastern Intercollegiate at Hamilton, N. Y. last summer.

On the other hand there's a schedule which has to rank as one of the country's toughest. Four FSU opponents achieved national ranking last season as a result of points scored in the NCAA Championships. Northwestern was third, Miami fourth, Florida 19th and Tulane 23rd. Miami has not lost a dual match since 1957.

Others who appear formidable are Presbyterian, Georgia, Georgia Tech and Clemson.

The best reason for Seminole optimism is a slight, balding South African, Lex Wood, who won 22 of 23 matches last year and the Eastern Intercollegiate Singles Championship. He and Don Caton made a strong run at the doubles title, losing in five sets of a marathon match.

Wood lost to Chuck McKinley in the quarterfinals of the Nationals at Forest Hills, but spent a successful summer touring the East, winning the Eastern Clay Courts Championships in Philadelphia soon after his Hamilton victory. He is currently the 22nd ranking player in the country, and although most players are not ranked at all during their first year of U. S. competition, some observers feel Wood deserved an even higher standing.

Behind Wood are Don Caton and Paul Bennett. Caton won 20 of 23 matches last year, Bennett 21 of 23. Their consistent performances played a big role in the team's success last season.

Don Monk, who played the number four position last year, is also back, but he faces a stiff challenge from three sophomores—Steve Guse, Steve Burt and Randy Cameron.

Also on hand is Stewart Bruner, a transfer who is given a good chance to break in.

Scarpa has big ambitions for the Seminoles in his first year of coaching. Hopes are for a successful regular season, then the recapture of the Eastern Intercollegiate title, which he and Gordie Smith won for FSU in 1962.

With Lex Wood and an improved team behind him, the Seminoles also hope to make a strong appearance in the NCAA Championships this summer.

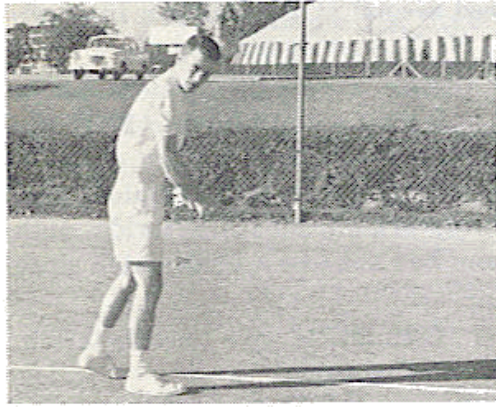
TENNIS AT A GLANCE

LETTERMEN LOST: None

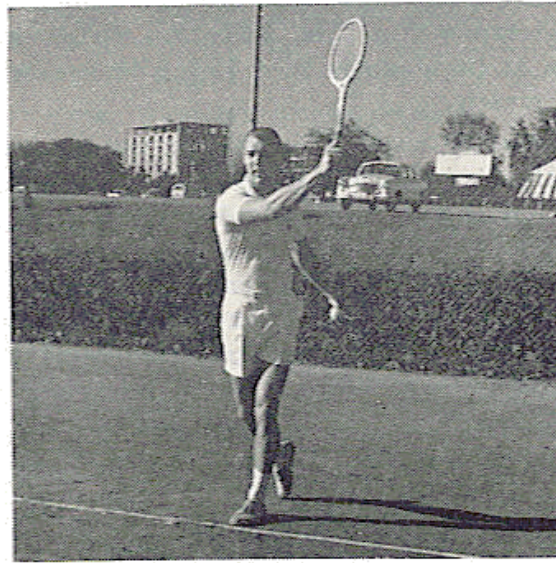
LETTERMEN RETURNING (4): Lex Wood, Don Caton, Paul Bennett, Don Monk.

SOPHOMORES (4): Steve Guse, Stewart Bruner, Randy Cameron, Steve Burtt.

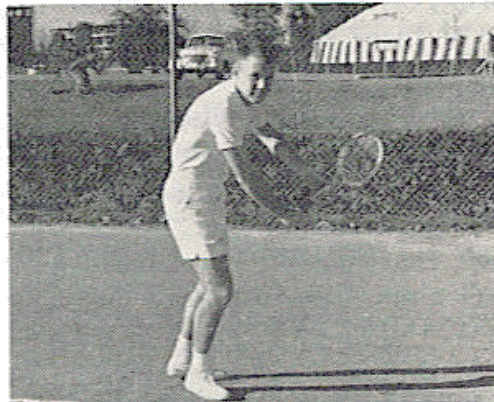
OTHERS (1): Pete Lohmann (Sqd.)



DON CATON



STEW BRUNER



RANDY CAMERON

## PROFILES

**LEX WOOD** . . . Junior . . . 5-10, 145 . . . King William's, S. Africa. Last year's Intercollegiate Singles Champ . . . Ranked 22nd nationally in his first year of competition in this country . . . Lost only one match last year . . . Tremendously smart player with all the shots which he uses to best advantage to put opponent out of position . . . Plenty of power on the deep volley . . . An almost sure bet for the nationals.

**DON CATON** . . . Senior . . . 5-10, 140 . . . Pensacola. Considered one of Florida's best when he played in the Junior Division . . . Smart with lots of touch and ability . . . Past record shows him capable of beating anyone on a given day . . . Tremendous doubles player . . . Outstanding backhand . . . Consistency is only problem.

**PAUL BENNETT** . . . Junior . . . 5-10, 142 . . . Charleston, W. Va. Most improved player on team . . . Won 22 of 24 matches last year in number three position . . . Desire is his strong point . . . Can be counted on to win against a man of his caliber or slightly above, and will seldom ever lose to an inferior player . . . Flawless all-court game.

**DON MONK** . . . Junior . . . 6-0, 190 . . . Mansfield, O. Did a creditable job in number four position last season . . . Should be better this year . . . Has shown tremendous desire for improvement . . . Good doubles player . . . Reliable.

**STEVE GUSE** . . . Sophomore . . . 5-7, 140 . . . Little Rock, Ark. State high school champ in Arkansas . . . Lost only two freshman matches . . . Strong net attack with improving backcourt game . . . Great potential . . . Could break into top six this season.

**STEWART BRUNER** . . . Sophomore . . . 6-0, 195 . . . Tampa. Hardest serve on team . . . Plenty of determination . . . His game is best at the net . . . Capable of giving anyone a go on the right day . . . Could break in.

**STEVE BURTT** . . . Sophomore . . . 5-8, 140 . . . Wellesley, Mass. Steady baseline player with a good backcourt game . . . Needs experience.

**RANDY CAMERON** . . . Sophomore . . . 6-2, 160 . . . Clearwater. Determined player with all the shots . . . Needs experience.

**PETE LOHMANN** . . . Junior . . . 5-7, 145 . . . Philadelphia, Pa. One of the best liked men on the squad . . . Could improve and break into lineup.

### A FUTURE STAR

**PAUL DEZEEUW** . . . Freshman . . . 6-2, 168 . . . East London, S. Africa. A successor to Lex Wood from below the equator . . . Only 17 years old with one more year in Junior Division which should get him a top ranking . . . Has every shot and plays the net extremely well . . . Has a typical big game.

### 1964 TENNIS ROSTER

#### VARSITY

| Name            | Ht.  | Wt. | Class | Status | Age | Hometown                    |
|-----------------|------|-----|-------|--------|-----|-----------------------------|
| Bennett, Paul   | 5-10 | 142 | Jr.   | 1 VL   | 20  | So. Charleston, W. Va.      |
| Bruner, Stewart | 6-3  | 195 | Soph. | Incl.  | 19  | Tampa                       |
| Burt, Steve     | 5-7  | 145 | Soph. | Frosh  | 20  | Wellesley, Mass             |
| Cameron, Randy  | 6-2  | 170 | Soph. | Frosh  | 20  | Clearwater                  |
| Caton, Don      | 5-10 | 140 | Sr.   | 1 VL   | 22  | Pensacola                   |
| Guse, Steve     | 5-7  | 140 | Soph. | Frosh  | 19  | Little Rock, Ark.           |
| Lehmann, Peter  | 5-7  | 145 | Jr.   | Sqd.   | 20  | Philadelphia, Pa.           |
| Monk, Don       | 6-0  | 190 | Sr.   | 1 VL   | 22  | Mansfield, Ohio             |
| Wood, Lex       | 5-9  | 145 | Jr.   | 1 VL   | 26  | King Williams, South Africa |

#### FRESHMAN

|               |     |     |    |                           |
|---------------|-----|-----|----|---------------------------|
| DeZeeuw, Paul | 6-2 | 168 | 17 | East London, South Africa |
| Gross, Jerry  | 6-0 | 165 | 18 | Plant City                |

### FLORIDA STATE'S TENNIS HISTORY

| Year | Coach     | Captain                    | W             | L          | T         | Pts.     | Pts.        |            |
|------|-----------|----------------------------|---------------|------------|-----------|----------|-------------|------------|
| 1948 | Loucks    | Jim Delonch                | 9             | 4          | 0         | 78       | 35          |            |
| 1949 | Loucks    | Jim Costello               | 11            | 2          | 0         | 78       | 30          |            |
| 1950 | Loucks    | Herb Quay<br>Larry Dickson | 9             | 7          | 0         | 79       | 60          |            |
| 1951 | Matherly  | Larry Dickson              | 7             | 8          | 0         | 63       | 64          |            |
| 1952 | Loucks    | Tom Babione                | 9             | 5          | 0         | 71       | 49          |            |
| 1953 | Loucks    | Jack Eagan                 | 15            | 2          | 0         | 119      | 33          |            |
| 1954 | Pitchford | Hal Schaus                 | 13            | 5          | 0         | 105      | 51          |            |
| 1955 | Pitchford | Hal Schaus                 | 10            | 6          | 0         | 86       | 54          |            |
| 1956 | Pitchford | Hal Schaus                 | 8             | 7          | 0         | 71       | 64          |            |
| 1957 | Pitchford | Sonny Sellers              | 5             | 11         | 0         | 50       | 87          |            |
| 1958 | Pitchford | Lex Hester                 | 9             | 7          | 0         | 72       | 70          |            |
| 1959 | Powless   | Lex Hester                 | 14            | 6          | 0         | 109½     | 70½         |            |
| 1960 | Powless   | Rebel Bellamy              | 11            | 8          | 1         | 98½      | 72½         |            |
| 1961 | McGowan   | Rebel Bellamy              | 16            | 5          | 0         | 131      | 54          |            |
| 1962 | Cubbon    | None                       | 11            | 8          | 0         | 73       | 87          |            |
| 1963 | Cubbon    | None                       | 18            | 5          | 0         | 144      | 59          |            |
|      |           |                            | <b>TOTALS</b> | <b>175</b> | <b>96</b> | <b>1</b> | <b>1328</b> | <b>940</b> |

### SERIES STANDINGS WITH 1964 OPPONENTS

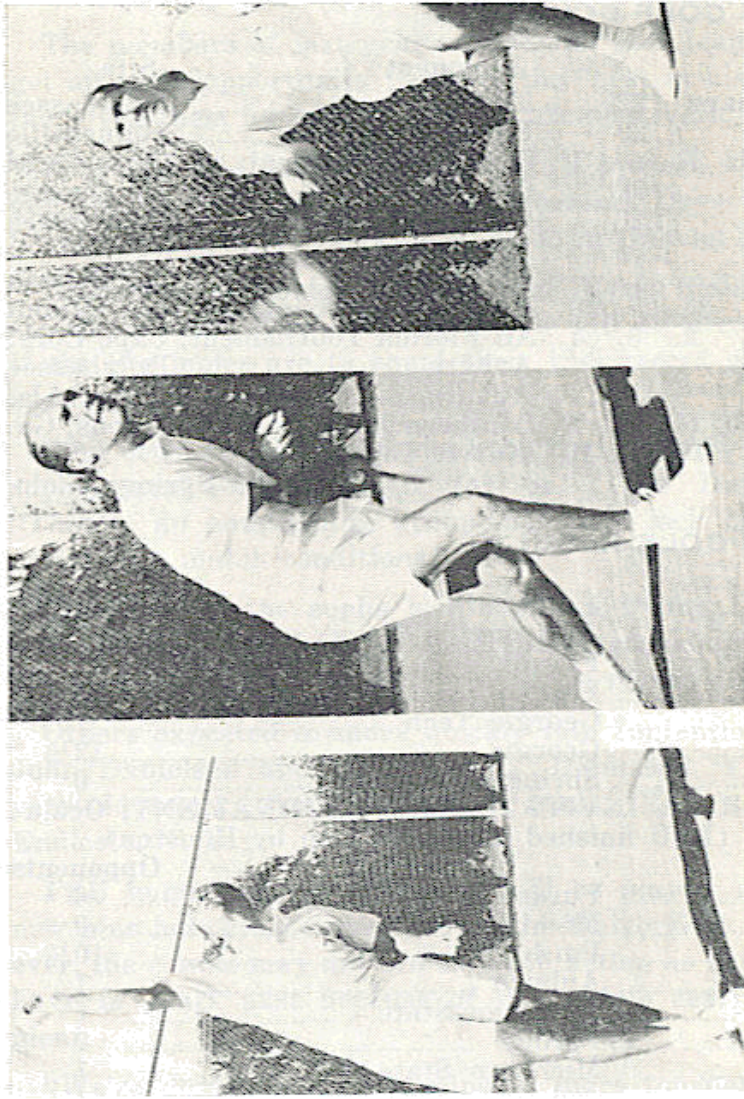
|                                 | FSU             |           |
|---------------------------------|-----------------|-----------|
|                                 | Won             | Lost      |
| Amherst                         | 3               | 0         |
| Clemson                         | 0               | 2         |
| Florida                         | 4               | 8         |
| Georgia                         | 10              | 10        |
| Georgia Tech                    | 6               | 9         |
| Miami                           | 0               | 11        |
| Northwestern                    | 0               | 1         |
| Notre Dame                      | (First Meeting) |           |
| Presbyterian                    | 0               | 5         |
| Rollins                         | 2               | 11        |
| Tulane                          | (First Meeting) |           |
| <b>Totals:</b>                  | <b>25</b>       | <b>55</b> |
| FSU's 15 year<br>tennis records | 175             | 96        |
|                                 | 1               | 1         |



**PAUL BENNETT**



**STEVE GUSE**



**Lex Wood demonstrates the form which has made him one of the nation's top players**

# GOLF

## 1964 GOLF SCHEDULE

| Date            | Opponent                           | Site                    |
|-----------------|------------------------------------|-------------------------|
| February 22     | Florida .....                      | Tallahassee             |
| 29              | Florida .....                      | Gainesville             |
| March 5, 6, 7   | Florida Invitational .....         | Cape Coral              |
| 20              | Georgia .....                      | Tallahassee             |
| 23              | Ga. Tech, Springfield ..           | Tallahassee             |
| 24              | Springfield,<br>So. Carolina ..... | Tallahassee             |
| 26, 27, 28      | Miami Invitational .....           | Miami                   |
| April 2, 3, 4   | All Florida Tournament, Cape Coral |                         |
| 6               | Auburn .....                       | Tallahassee             |
| 27              | Auburn .....                       | Auburn, Ala.            |
| 30, May 1, 2    | Southern Invitational ..           | Athens, Ga.             |
| June 17, 18, 19 | NCAA Tournament                    | Colorado Springs, Colo. |

## 1963 GOLF RESULTS

| FSU       | Opponents               |
|-----------|-------------------------|
| 24½ ..... | Jacksonville Navy ..... |
| 9 .....   | Florida .....           |
| 3½ .....  | Florida .....           |
| 20 .....  | Georgia Tech .....      |
| 14½ ..... | Georgia .....           |
| 27 .....  | Springfield .....       |

FLORIDA INVITATIONAL TOURNAMENT, Ocala  
(FSU finished 6th; Meet won by Houston)

| FSU       | Opponents            |
|-----------|----------------------|
| 12 .....  | Purdue .....         |
| 15 .....  | Michigan State ..... |
| 7½ .....  | Purdue .....         |
| 26 .....  | Auburn .....         |
| 13½ ..... | Michigan State ..... |
| 11 .....  | Purdue .....         |
| 14 .....  | Michigan State ..... |
| 12½ ..... | Auburn .....         |
| 15 .....  | Alabama .....        |

FLORIDA INTERCOLLEGIATE CHAMPIONSHIPS,  
Tallahassee (FSU 1st with 580 points; Rollins 2nd  
with 596; Florida 3rd with 604. Others: Miami,  
Stetson, Fla. Southern).

SOUTHERN INTERCOLLEGIATE CHAMPION-  
SHIPS, Athens, Ga. (FSU 11th; Meet won by North  
Texas State)

NCAA CHAMPIONSHIPS, Wichita, Kan.  
(Dave Philo competed individually; placed 35th)

DUAL MEET COMPETITION  
221½ .....



RICHIE KARL



FRANK McDONALD

## GOLF OUTLOOK

The members of last year's freshman golf team will get an early opportunity to prove the "best in history" tag given them by many Florida State observers.

Four out of Coach Hugh Durham's top six varsity golfers have gone, including All American Dave Philo, lettermen Roger Kennedy, Roy Beale and Doug Davis.

Returning are John Parsons and Mark Blair, but strong performances by sophomores will be necessary if the Seminoles are to equal their 18-5 record of last season.

"Our season will depend almost entirely on how these sophomores come through for us," says Durham. "They're an outstanding group, but they lack experience under match conditions."

Tops among the sophs is diminutive Denny Lyons, a 5-6 shotmaker from St. Petersburg, considered one of the finest golfers to come to FSU in recent years.

Others expected to move quickly into contention are John Danielson and Richie Karl. Danielson is a 26 year old veteran from Watertown, Mass. Karl is from Endicott, N. Y.

FSU home matches this year will be played on the new nine hole course operated by the University. However, the course may not see as much action as it might have in years past because of a schedule rearrangement.

"We're going to start playing in more tournaments and fewer dual matches," says Durham. "The players want it that way because they get to compete against the better golfers more often."

The Seminoles will participate in the Florida Invitational and the All Florida Tournament at Cape Coral, The Southern Invitational at Athens, Georgia, and the NCAA championships.

## GOLF AT A GLANCE

**LETTERMEN LOST (4):** Dave Philo, Roy Beall, Doug Davis, Roger Kennedy

**LETTERMEN RETURNING (2):** John Parsons, Mark Blair

**SOPHOMORES (6):** Denny Lyons, Richie Karl, John Danielson, Ron Mielnikowski, Joe Endry, Bill Boutwell

## PROFILES

**JOHN PARSONS** . . . Junior . . . 5-10, 150 . . . Sarasota. One of two returning lettermen . . . Outstanding potential . . . Won Florida Intercollegiate last year with 4 under par . . . If he develops consistency, he could push the top spot . . . Played number 4 last season.

**MARK BLAIR** . . . Senior . . . 5-10, 150 . . . Chicopee Falls, Mass. Team's only senior . . . An additional year of experience should make him an improved golfer . . . Counted on to win most of his matches . . . Could play anywhere between 3 and 6 position . . . Hard work could establish him as a fine player capable of consistent par golf.

**DENNY LYONS** . . . Sophomore . . . 5-6, 150 . . . St. Petersburg. One of the finest sophomore prospects ever at FSU . . . Tied Capital City Country Club's course record with a 63 last year . . . Competing as a freshman, he finished two strokes behind defending NCAA Champ Kermit Zarley in Florida Invitational . . . Son of a Jamestown, N. Y. Pro . . . Has an excellent short game.

**RICHIE KARL** . . . Sophomore . . . 6-0, 160 . . . Endicott, N. Y. Longest hitter on squad . . . Another top soph prospect . . . He and Lyons hold FSU course record of 67 . . . Needs work on fairway accuracy . . . Consistency is big question . . . Capable of breaking par any time out . . . Once carded a 338 hole in one on FSU course.

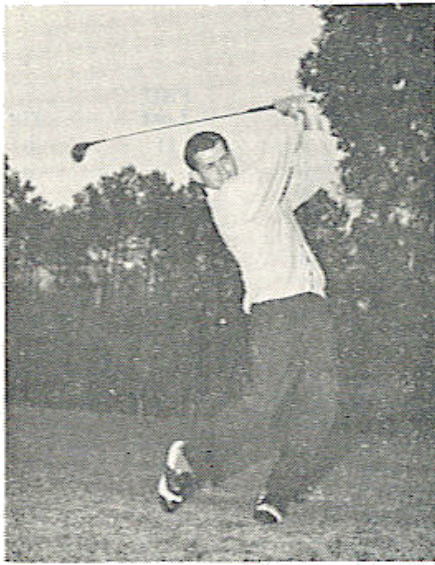
**JOHN DANIELSON** . . . Sophomore . . . 6-10, 180 . . . Watertown, Mass. Oldest player on squad at 26 . . . Four years Navy service before coming to FSU as a freshman last year . . . One of the squad's steadiest players . . . Best student on squad . . . Good pressure golfer.

**BILL BOUTWELL** . . . Didn't play last year . . . A pleasant surprise in fall qualifying . . . His reaction to match play could mean a lot . . . Hits a long ball.

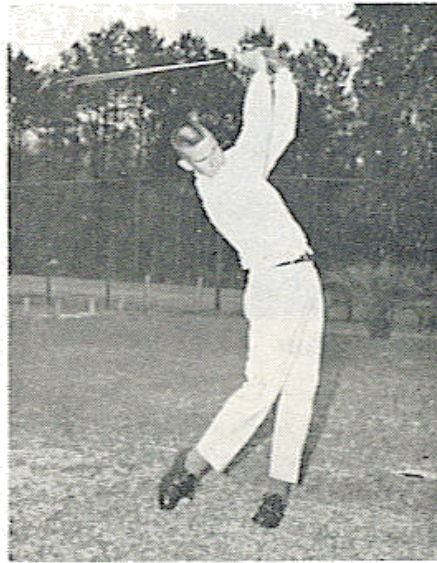
**RON MIELNIKOWSKI** . . . Sophomore . . . 6-0, 155 . . . Chicopee, Mass. Another soph with possibilities . . . Played fourth man on frosh team last year . . . Could make top six . . . His effort will be the determining factor.

**JOE ENDRY** . . . His recovery from a recent illness could give the team added strength . . . Hits a consistently straight ball.

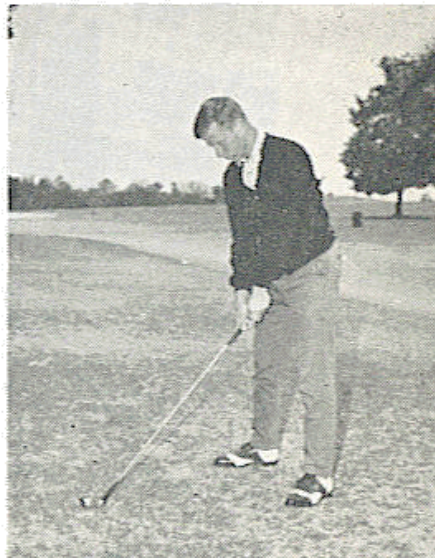




**MARK BLAIR**



**BILL BOUTWELL**

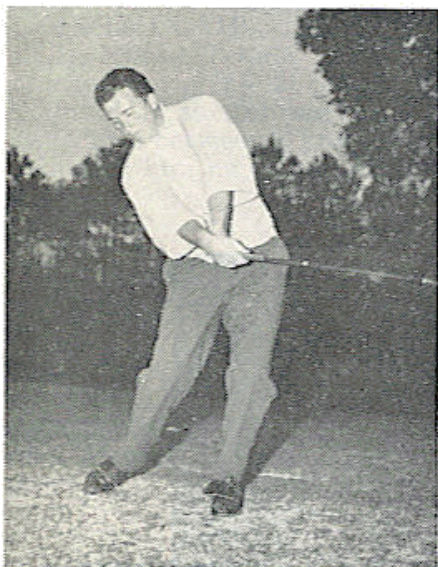


**RON MIELNIKOWSKI**

## SERIES STANDINGS

### WITH 1964 OPPONENTS

|                                  | FSU<br>Won | FSU<br>Lost | Tie |
|----------------------------------|------------|-------------|-----|
| Florida .....                    | 9          | 11          | 0   |
| Georgia .....                    | 10         | 6           | 0   |
| Georgia Tech .....               | 9          | 3           | 0   |
| Jacksonville Navy .....          | 5          | 2           | 0   |
| Springfield .....                | 4          | 0           | 0   |
| Totals: .....                    | 37         | 22          | 0   |
| FSU's 15 year golf record: ..... | 148        | 54          | 6   |



**JOHN DANIELSON**



**DENNY LYONS**

# FLORIDA STATE'S 1964 FOOTBALL SCHEDULE

|          |                         |                                  |
|----------|-------------------------|----------------------------------|
| Sept. 19 | Miami .....             | *Miami                           |
| Sept. 26 | T. C. U. ....           | Ft. Worth                        |
| Oct. 3   | New Mexico State .....  | *Tallahassee                     |
| Oct. 10  | Kentucky .....          | Tallahassee<br>(Homecoming)      |
| Oct. 17  | Georgia .....           | Athens                           |
| Oct. 24  | V. P. I. ....           | Blacksburg                       |
| Oct. 31  | Univ. of So. Miss. .... | *Tallahassee                     |
| Nov. 7   | Houston .....           | Houston                          |
| Nov. 14  | N. C. State .....       | Tallahassee<br>(Legislative Day) |
| Nov. 21  | Florida .....           | Tallahassee                      |

\* Night games.