

1963
ESPRESSO
SPORTS

BASEBALL • GOLF
TENNIS • TRACK



Spring Sports
Florida State
University • 1963

baseball

golf

tennis

track

1963 SPRING SPORTS

This Spring Brochure has been prepared to aid the press, radio, and television in its coverage of Florida State University spring sports events. Should you desire additional information or services, contact **PAUL HEMPHILL**, Director of Sports Publicity, Florida State University, Tallahassee, Florida. (Telephone 222-8000, Ext. 2095).

FLORIDA STATE UNIVERSITY AT A GLANCE

Name The Florida State University
 Location Tallahassee, Florida (55,000)
 President Dr. Gordon W. Blackwell
 Vice-President Dr. John E. Champion
 Enrollment 10,500
 Conference Independent
 Nickname of Teams Seminoles
 Colors Garnet and Gold

THE ATHLETIC STAFF

Vaughn Mancha	Director of Athletics	Bob Harbison	Assistant Football Coach
Danny Litwhiler	Baseball Coach	Don James	Assistant Football Coach
Bill Odeneal	Golf Coach	Bubba McGowan	Assistant Football Coach
Eddie Cubbon	Tennis Coach	Bill Proctor	Assistant Football Coach
Mike Long	Track Coach	Bud Kennedy	Basketball Coach
Bill Peterson	Head Football Coach	Bim Stults	Swimming Coach
Bobby Bowden	Assistant Football Coach	Don Fauls	Trainer
John Coatta	Assistant Football Coach	Tillman Dixon	Equipment Manager
Dick Flowers	Assistant Football Coach	Ronald Melton	Athletic Business Manager
Vince Gibson	Assistant Football Coach	Paul Hemphill	Sports Publicity Director

THE ATHLETIC COMMITTEE

Chairman, Mode Stone; Claude Flory, Thomas Wright, Coyle Moore, J. M. Plant, Elston Roady, Mary Alexander.

THE DIRECTOR OF ATHLETICS

Not many persons have enjoyed such a varied and successful career as Vaughn Hall Mancha, who has devoted inestimable time and energy to athletics as a player, coach, teacher, and administrator.

Practically as legendary in Alabama football circles as Don Hutson and Harry Gilmer, Mancha began his present pursuit as director of Florida State's seven-sport program of intercollegiate athletics in November, 1959. He has tackled his newest role with all the fervor that characterized the performances that made him a 240-pound All-Southeastern Conference center at Alabama for four seasons (1944-1947) and everyone's All-American.

Mancha, who gained wide popularity with FSU officials and fans while serving as line coach from 1952 through 1956, returned to FSU as athletic director following three years at Columbia University as an assistant football coach and associate member of the Department of Physical Education.

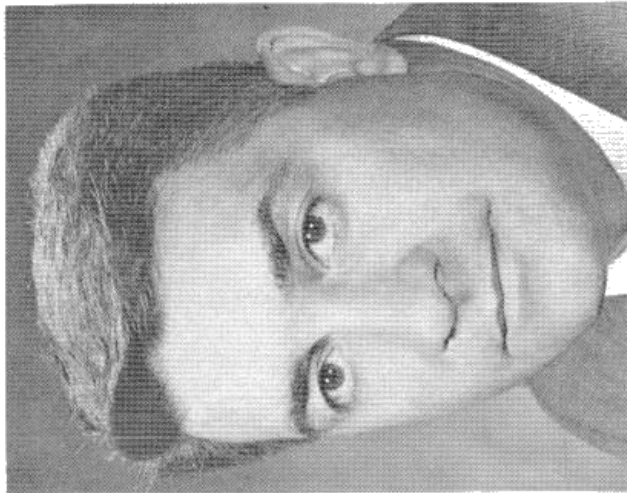
Born in Sugar Valley, Ga., in 1921, Mancha moved to Birmingham at an early age. He entered Alabama in 1944, when he was issued jersey No. 41, a number Alabama's football opponents tried to dodge for four years. During Mancha's four seasons, Alabama rolled up a 30-9-2 record and played in three major bowl games. Vaughn was a starter when the Crimson Tide met Duke in the 1945 Sugar Bowl, Southern Cal in the 1946 Rose Bowl, and Texas in the 1948 Sugar Bowl.

He was such a standout in the '45 Sugar Bowl that he was named to the All-Time Sugar Bowl team (1945-52 period). In 1955, he was named to Alabama's All-Time Crimson Tide.

He sandwiched in a year of play with the professional Boston Yankees (1948) while earning B.S. and M.A. degrees at Alabama. In 1949 he accepted an appointment as head coach and athletic director at Livingston (Ala.) State, where he put in a highly successful three-year tenure.

Mancha first came to Florida State in 1952 as an assistant football coach and an assistant professor of Physical Education. In 1957, he left for Columbia, where in addition to his teaching and coaching duties he completed all work for the Doctorate with the exception of the dissertation.

Married to the former Sybil Little of Birmingham, he is the father of three children: Clare, 13; Nan, 11; and Dit, 3.



VAUGHN MANCHA

Director of Athletics



DANNY LITWHILER
Head Baseball Coach

BASEBALL

Summing up the tremendous baseball record compiled at Florida State since former big-league outfielder Danny Litwhiler became head coach eight years ago is easiest done in one, two, three order:

Over eight seasons: (1) FSU has recorded a 163-68 won-lost mark, (2) the Seminoles have gone to six district NCAA playoffs and two College World Series, and (3) four Seminoles have made All-America, with scores of others graduating into professional baseball.

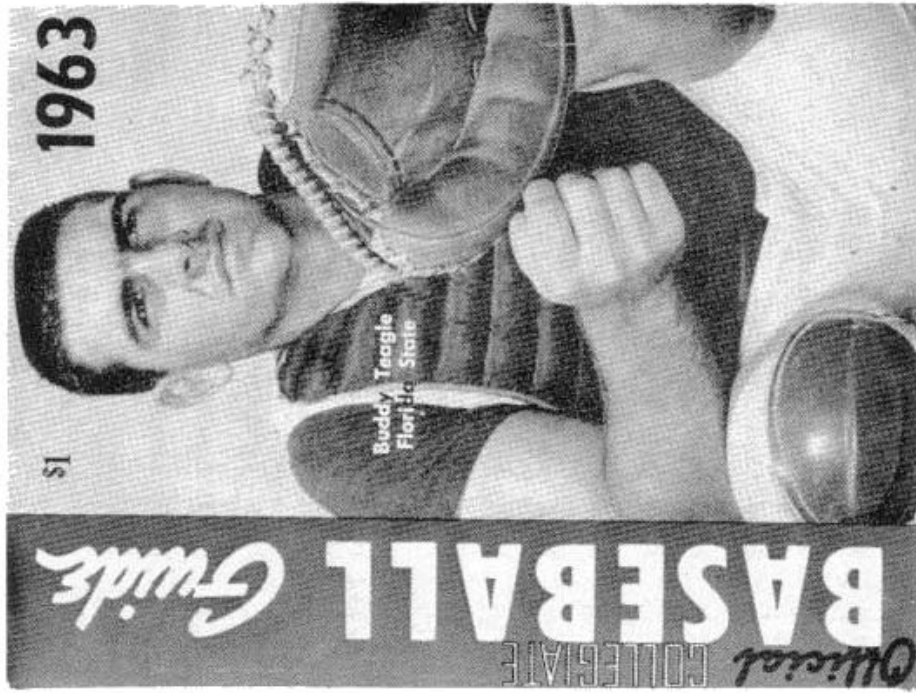
The records have firmly established FSU as one of the top baseball schools in the nation—and, at the same time, Litwhiler as just about the top college coach.

This year's team should rival the '62 outfit which went all the way to the College World Series semifinals. The usual starting lineup includes two potential All Americas (catcher Buddy Teagle, who made first-team in '62, and shortstop Woody Woodward), three other lettermen, two top up-coming frosh and a pair of hot-shot transfers. Pitching is the question-mark, says Litwhiler.

Litwhiler spent a dozen years in the major leagues, retiring as an active player in 1950 after playing with the St. Louis Cardinals, Philadelphia Phillies, Cincinnati Reds and the extinct Boston Braves. A 46-year-old graduate of Bloomsburg (Pa.) State Teachers College, he coached one year at Cincinnati and managed four minor league clubs.

1963 BASEBALL SCHEDULE

Date	Opponent	Site
March 16	Auburn University	Tallahassee
March 21, 22, 23	Clemson College	Tallahassee
March 25, 26	Auburn University	Auburn, Ala
March 30	Florida Southern	Lakeland
April 1, 2	University of Miami	Coral Gables
April 5, 6	Furman University	Tallahassee
April 9	Valdosta State	Tallahassee
April 20	Georgia Southern	Statesboro, Ga.
April 22	North Carolina	Chapel Hill, N. C.
April 23	Wake Forest	Winston-Salem, N. C.
April 24	North Carolina State	Raleigh, N. C.
April 25	Duke University	Durham, N. C.
April 26	East Carolina College	Greenville, N.C.
April 27	Camp Lejeune	
	Marines	Camp Lejeune N. C.
May 3, 4	University of Florida	Gainesville
May 11	Valdosta State	Valdosta, Ga.
May 13, 14	Georgia Southern	Tallahassee
May 16	Georgia Tech	Atlanta
May 17, 18	University of Georgia	Athens, Ga.
May 24, 25	University of Florida	Tallahassee
June 8	Jacksonville University	Tallahassee



ALL-TIME BASEBALL RECORDS

Best won-lost record (1956)	24-5
Most won, season (1956)	24
Most lost, season (1962)	14
Most runs scored (1959)	258
Most runs allowed (1962)	221
Most runs, game (vs. Jacksonville, Ala. State, 1954)	24
Most hits, season (1962)	388
Most doubles, season (1962)	66
Most triples, season (1958)	20
Most home runs, season (1962)	30
Most runs batted in, season (1962)	199
Most stolen bases, season (1962)	71
Most double plays, season (1962)	36
Longest winning streak (1958)	13
Longest losing streak (1959)	4

INDIVIDUAL RECORDS

Best batting average, season (Bob Clem, 1959).....	.436
Most hits, season (Bob Clem, 1959).....	44
Most 2b hits, season (Bob Trowbridge, 1952, and Neil Martin, 1959).....	9
Most 3b hits, season (Doug Walker, 1961).....	7
Most home runs, season (Fred Twomey, 1955, and Jack Dull, 1959).....	6
Most runs batted in, season (Dull, 1959).....	37
Most walks, season (Martin, 1959).....	38
Most times struck out, season (Carlee Hendrix, 1956 and Martin, 1959).....	23
Most stolen bases, season (Owen McCarron, 1958)...	16
Most put outs, season (Charlie Rodgers, 1959).....	238
Most assists, season (Pfil Hunt, 1955).....	90
Most errors, season (Dale Koch, 1959).....	19
Best pitching record, season (Max Long, 1956).....	7-0
Most pitching wins, season (Frank Slusser, 1958 and Frank Davis, 1959 and 1960).....	8
Most pitching wins, career (Davis, 1959-61).....	22
Most strikeouts, game (Tony Avitable, vs. Furman, 1956).....	25
Most strikeouts, season (Avitable, 1956).....	112
Most strikeouts, career (Davis, 1959-61).....	191
Most bases on balls, season (Ed Lockard, 1951).....	51
Most bases on balls, career (Lockard 1950-53).....	125

FLORIDA STATE'S BASEBALL HISTORY

Year	Coach	Captain	W	L	T	Runs	Opp.
1948	Armstrong	Ron Nettles	9	8	0	101	121
1949	Armstrong	Sam Cox	11	8	0	126	103
1950	Armstrong	Bob Trowbridge	11	7	0	122	104
1951	Armstrong	Augie Pompelia	13	6	0	161	97
1952	Matherly	Bob Trowbridge	17	4	0	158	72
1953	Matherly	Cooter Mills	13	10	1	156	111
1954	Matherly	Bob Hudson	14	9	0	164	101
1955	Litwhiler	{ Billy Campbell Bob Hudson }	17	6	0	189	98
1956	Litwhiler	Max Long	24	5	0	244	121
1957	Litwhiler	Carlee Hendrix	22	9	0	232	120
1958	Litwhiler	Dick Howser	21	7	0	198	104
1959	Litwhiler	Dale Koch	22	11	0	258	166
1960	Litwhiler	Ray Bazzell	13	9	0	183	136
1961	Litwhiler	{ Frank Davis Jack Dull }	21	7	0	167	121
			TOTALS			228	106
						1	2459
						1575	

1963 BASEBALL ROSTER

Name	Pos.	B-T	Ht.	Wt.	Age	Class	1962		Hometown
							Status	Class	
Augustine, Mike	CF	L-L	5-9	150	21	Sr.	IvL	Philadelphia, Pa.	
Beccaccio, Al	P-2B	R-R	6-2	195	22	Sr.	IvL	Newburgh, N.Y.	
Bondank, Phil	P	L-L	5-7	175	22	Sr.	Squad	St. Petersburg	
Byers, Lee	OF-1F	R-R	5-9	160	19	So.	Frosh	Orlando	
Chmielewski, Gerald	3B	R-R	6-2	195	20	So.	RS	West Allis, Wis.	
Dahlen, Dave	Inf.	R-R	5-10	180	22	Jr.	JrCol	West Palm Beach	
Davis, Tom	P	R-R	5-10	175	20	Jr.	IvL	Miami	
Dirks, Paul	C	R-R	5-10	180	20	Jr.	IvL	Arlington, Va.	
Echols, Frank	P	R-R	6-1	190	21	Sr.	2VL	Tallahassee	
Elliott, Gary	RF	R-R	5-11	175	21	Sr.	2VL	Quincy	
Ferrar, Robert	P	R-R	5-9	190	21	Sr.	Squad	Florida City	
Hancock, Bill	OF	R-R	5-9	150	20	Jr.	JrCol	Sarasota	
Haney, Arthur	OF	R-R	6-0	175	19	So.	Frosh	Atlanta, Ga.	
Howell, Martin	OF	L-L	5-10	160	20	Jr.	IvL	Bartow	
Jarrett, Lincoln	C	R-R	5-10	170	21	Sr.	Squad	Allentown, Pa.	
Johnson, Larry	P	R-R	6-0	175	20	Jr.	IvL	Thomasville, Ga.	
Kull, Robert	Inf	R-R	6-0	195	19	So.	Frosh	Daytona Beach	
Litwiler, Woody	OF	R-R	5-10	170	21	Jr.	Squad	Verona, N.J.	
Lofstin, Jim	OF	L-R	6-1	180	20	So.	None	Pensacola	
McBride, Clyde	OF	L-R	6-0	175	19	So.	Frosh	Pensacola	
McConaughay, John	OF	R-R	6-0	195	21	Sr.	None	Ocala	
Murray, Don	P	L-L	5-11	175	20	So.	Frosh	Panama City	
Nichols, Gary	IB	L-L	6-0	185	19	So.	Frosh	Williamsville, N.Y.	
Powell, Lynn	OF	R-R	5-11	175	19	So.	Frosh	Chattanooga, Tenn.	
Reed, Jim	2B	R-R	5-9	160	19	Jr.	JrCol	Sarasota	
Rountree, George	IB	L-L	5-11	180	20	Jr.	IvL	St. Simons Island, Ga.	
Stille, Kent	OF	R-R	5-10	170	21	So.	RS	Storm Lake, Iowa	
Suarez, Ken	C	R-R	5-9	170	10	So.	Frosh	Tampa	
Teagle, Buddy	C	R-R	6-4	220	20	Sr.	2VL	West Palm Beach	
Thomas, Allen	P	R-R	6-0	175	22	Sr.	IvL	Cairo, Ga.	
Williamson, Billy	OF	R-R	6-0	180	21	Sr.	IvL	Palm Harbor	
Williamson, Gary	P	R-R	6-0	170	19	Jr.	JrCol	Palm Harbor	
Woodward, Woody	SS	R-R	6-2	185	20	Jr.	IvL	Coral Gables	

•KEY: VL-No. of varsity letters won in 1962; JrCol-Played at junior college last year; Frosh-On FSU frosh team in '62; None-Did not play college ball last year.

1962 BATTING

Player, Pos.	C	AB	R	H	2B	3B	HR	TB	SB	BB	SO	RBI	Avg.
Howell, p	4	3	1	2	1	0	0	3	0	0	0	2	.667
Woodward, ss	37	148	38	54	9	5	7	94	7	21	20	33	.365
Williamson, 2b-of	37	154	33	56	10	2	8	94	13	15	29	32	.364
Dirks, c	3	9	2	3	0	0	1	6	0	2	0	3	.333
Teagle, c-1b	36	123	23	40	11	1	4	65	3	28	13	20	.325
Mangin, 1b-3b	37	145	27	47	10	2	1	64	5	14	16	24	.324
Rountree, 1b	12	32	4	10	1	0	0	11	1	1	0	4	.313
Madison, cf-1b	32	124	32	37	8	4	6	71	12	23	23	21	.298
Beccaccio, 3b-p-2b	25	84	17	25	2	3	1	36	8	8	11	9	.298
French, of	16	31	9	9	1	0	0	10	8	4	1	3	.290
Spitzer, 3b	10	25	6	7	0	0	0	7	0	4	1	4	.280
Elliott, of	17	40	7	11	0	0	0	11	3	5	3	3	.275
Wilcox, of	26	88	12	24	2	0	1	29	4	9	16	11	.273
Augustine, of	18	57	10	15	3	0	0	18	2	5	5	6	.263
Fergusson, 3b	21	55	6	14	0	0	0	14	2	9	14	4	.255
Smith	21	40	10	10	1	0	0	11	3	6	3	2	.250
Litwhiler, of	4	4	1	1	0	0	0	1	0	1	0	1	.250
Jarett, c	2	4	1	1	0	0	0	1	0	0	0	0	.250
McShane, p	14	29	2	7	2	0	0	9	0	7	10	5	.241
Thomas, p	15	17	2	3	1	1	0	6	0	1	7	3	.176
Ross, p-of-1b	18	24	3	4	1	0	0	5	0	6	3	3	.167
Johnson, 2b-ss	10	33	2	5	2	0	0	7	0	2	5	3	.152
Hawkins, p	13	28	4	3	1	0	1	7	0	1	6	3	.107
Davis, p	12	4	0	0	0	0	0	0	0	0	2	0	.000
Tucker, p	5	4	0	0	0	0	0	0	0	0	3	0	.000
Shiflett, of	3	3	2	0	0	0	0	0	0	2	1	0	.000
Ferrar, p	5	2	0	0	0	0	0	0	0	0	1	0	.000

FSU TOTALS	37	1311	154	388	66	18	30	580	71	174	194	199	.296
OPP. TOTALS	37	1293	221	334	42	20	25	491	15	200	236	190	.258

1962 PITCHING RECORDS

Player	C	CG	IP	H	R	ER	ERA	BB	SO	W	L	Pct.
Bondank, L	2	0	2	2	0	0	0.00	0	0	0	0	.000
Beccaccio, R	5	0	12 $\frac{1}{3}$	8	7	3	2.19	7	14	0	0	.000
Thomas, R	14	2	49 $\frac{2}{3}$	40	26	16	2.90	27	31	5	2	.714
Ross, L	11	1	39 $\frac{1}{3}$	44	27	13	2.98	30	34	3	1	.750
McShane, L	14	5	92 $\frac{1}{3}$	89	55	40	3.90	47	66	6	3	.667
Hawkins, R	13	1	74 $\frac{2}{3}$	74	53	38	4.58	51	55	5	3	.625
Tucker, R	5	0	12 $\frac{1}{3}$	17	7	7	5.11	3	9	2	0	1.000
Echols, R	6	0	12	12	9	7	5.25	8	4	0	1	.000
Davis, R	12	0	19	20	13	13	6.16	14	17	1	2	.333
Howell, L	3	0	9	13	11	10	10.00	6	5	0	2	.000
Ferrar, R	5	0	5 $\frac{1}{3}$	13	12	8	13.50	6	0	1	0	1.000
FSU Totals	37	9	329	334	221	156	4.27	200	236	23	14	.622
Opp. Tot.	37	10	324	388	254	194	5.39	174	194	14	23	.378

PAST BASEBALL RESULTS

1962 (23-14)	1962 (23-14)	1962 (23-14)	1962 (23-14)	1962 (23-14)	1962 (23-14)	1962 (23-14)	1962 (23-14)	1962 (23-14)	1962 (23-14)	1962 (23-14)
13 Georgia	3 Furman	9 N. Carolina State	3 Florida	3 Florida	1	10 Wake Forest	8	7 Auburn	5 Georgia Southern	1
6 Georgia	6 Auburn	7 Georgia Southern	1	10 Wake Forest	8	3 Wake Forest	2	2 Auburn	9 Fla. Southern	7
7 Auburn	3 Auburn	5 Fla. Southern	7	3 Wake Forest	2	3 Wake Forest	1	2 Auburn	12 Fla. Southern	11
10 Georgia Tech	4 Miami	6 Fla. Southern	11	5 Santa Clara	4	5 Santa Clara	1	10 Georgia Tech	2 Ga. Southern	4
9 Georgia Tech	9 Miami	8 Ga. Southern	4	5 Ithaca	4	5 Ithaca	4	7 Georgia Tech	2 Ga. Southern	2
7 Georgia Tech	11 Clemson	14 Ga. Southern	2	7 Michigan	10	7 Michigan	11	8 Navy	5 Florida	9
8 Navy	4 Duke	1 Florida	9	6 Santa Clara	11	6 Santa Clara	11	14 Clemson	6 Florida	2
2 Furman	2 East Carolina	0 Florida	1	254	221	254	221	2 Furman	6 Florida	1
	9 North Carolina	6 West Virginia	5							

1961 (21-7)	1961 (21-7)	1961 (21-7)	1961 (21-7)	1961 (21-7)	1961 (21-7)	1961 (21-7)	1961 (21-7)	1961 (21-7)	1961 (21-7)	1961 (21-7)
9 Georgia	10 Duke	6 Western Michigan	6 Georgia	9 Georgia	10	17 Georgia Southern	8	11 Georgia	4 Georgia Southern	1
11 Georgia	4 Duke	0 Georgia Southern	4	3 West Virginia	1	3 West Virginia	1	10 Auburn	9 Georgia Southern	7
10 Auburn	7 Duke	5 Georgia Southern	1	2 Duke	4	2 Duke	7	5 Auburn	5 Florida Southern	4
10 Auburn	8 Duke	2 Florida Southern	4	3 West Virginia	4	3 West Virginia	4	5 Auburn	13 Florida Southern	2
5 Auburn	10 North Carolina	1 Florida Southern	2	203	138	203	138	9 Navy	2 Miami	0
9 Navy	2 Florida	3 Miami	0					3 Navy	14 Miami	6
3 Navy	8 Florida	5 Miami	6						5 Georgia	3
	2 Western Michigan	10 Georgia	3							

1960 (13-9)	1960 (13-9)	1960 (13-9)	1960 (13-9)	1960 (13-9)	1960 (13-9)	1960 (13-9)	1960 (13-9)	1960 (13-9)	1960 (13-9)	1960 (13-9)
6 Miami	11 Auburn	4 Fla. Southern	11 Florida	8 Florida	4	13 Florida	11	10 Georgia	3 Fla. Southern	5
10 Miami	8 Navy	3 Fla. Southern	5	16 Miami	3	16 Miami	3	7 Ohio State	12 Ga. Southern	5
10 Georgia	9 Georgia	2 Ga. Southern	10	9 Miami	5	9 Miami	5	4 Auburn	9 Ga. Southern	10
7 Ohio State	8 Georgia	11 Ga. Southern	8	5	5	5	5	4 Auburn	3 Auburn	8
4 Auburn	10 Miss. College	2 Auburn	6	183	136	183	136	22 Auburn	5 Auburn	6
22 Auburn	8 Miss. College	4 Auburn	6							

1959 (22-11)	14	Camp Lejeune	4	9	North Carolina	11	2	Michigan State	8	4	Auburn	3	1959 (22-11)
	11	Camp Lejeune	3	16	Illinois	9	3	Florida	6	8	Auburn	6	
	10	Camp Lejeune	8	8	Florida	7	7	Florida	9	3	George Washington	2	
	8	Auburn	4	5	Michigan State	2	1	Fla. Southern	2	2	Clemson	24	
	11	Auburn	3	3	Duke	6	7	Ca. Teachers	1	16	Georgia Tech	9	
	1	Georgia	4	2	Western Michigan	3	19	Tampa	1	0	Clemson	5	
	16	Georgia	4	5	Duke	1	4	Ga. Teachers	5	—	—	166	
	17	Stetson	0	2	Western Michigan	0	8	Georgia	2	258	—	—	
	21	Stetson	12	11	Michigan	0	4	Georgia	2	—	—	—	
1958 (21-7)	3	Auburn	4	3	Wisconsin	1	11	Fla. Southern	1	17	Ga. Teachers	3	1958 (21-7)
	7	Auburn	10	7	Florida	8	4	Stetson	2	3	George Washington	1	
	3	Knoxville (SAL)	2	1	Florida	8	9	Stetson	1	1	Florida	2	
	12	Wisconsin	4	18	Miami	0	9	Miami	2	5	Clemson	8	
	5	Notre Dame	2	7	Miami	12	6	Miami	1	—	—	—	
	14	West Virginia	7	5	Auburn	1	7	Rollins	1	198	—	104	
	7	Wisconsin	3	4	Auburn	2	7	Rollins	6	—	—	—	
	3	Notre Dame	2	5	Fla. Southern	0	15	Ga. Teachers	10	—	—	—	
1957 (22-9)	8	Auburn	2	11	Yale	8	13	Ga. Teachers	2	5	Rollins	0	1957 (22-9)
	10	Auburn	5	1	Duke	8	8	Ga. Teachers	3	5	Ga. Teachers	3	
	15	Stetson	0	7	Ithaca	6	9	Auburn	10	3	Duke	2	
	2	Stetson	3	21	Ithaca	4	10	Auburn	4	6	Duke	8	
	3	Michigan State	8	2	Florida	13	4	Fla. Southern	0	4	Duke	1	
	7	Yale	0	4	Florida	1	10	Fla. Southern	2	0	Penn State	7	
	2	Duke	0	15	Miami	3	15	Miami	3	3	Connecticut	5	
	7	Michigan State	4	21	Miami	3	1	Miami	2	—	—	—	
										232			120

1956 (24-5)	6 Furman	1	3 North Carolina	2	1 Wisconsin	0	5 Ga. Teachers	3	1956 (24-5)
	20 Furman	0	5 Wisconsin	3	5 Florida	7	9 Georgia	8	
	6 Ga. Teachers	5	12 Notre Dame	5	8 Cincinnati	2	6 Georgia	2	
	10 Ga. Teachers	5	12 West Virginia	13	8 Stetson	1	7 Rollins	9	
	9 Fla. Southern	2	13 Illinois	10	23 Stetson	2	9 Rollins	0	
	8 Fla. Southern	5	4 Wisconsin	3	0 Georgia	2	-----	-----	
	11 Indiana	6	12 Illinois	0	13 Miami	5	244	121	
	14 Indiana	10	3 Wisconsin	10	2 Miami	0	-----	-----	

1955 (17-6)	4 Fla. Southern	1	6 Georgia	7	7 Wisconsin	2	12 Ga. Teachers	2	1955 (17-6)
	15 Fla. Southern	0	10 Amherst	1	7 Rollins	2	14 Georgia	5	
	17 Furman	3	7 Amherst	9	3 Rollins	9	3 Georgia	17	
	6 Furman	3	7 Stetson	8	4 Miami	3	6 Stetson	4	
	5 LSU	3	16 Stetson	2	4 Miami	5	14 Stetson	5	
	9 Georgia	2	3 Wisconsin	2	10 Ga. Teachers	3	-----	-----	
							189	98	

1954 (14-9)	1 Jax Navy	2	7 Davidson	1	2 Duke	6	0 Stetson	7	1954 (14-9)
	7 Jax Navy	4	24 Jax (Ala.) State	0	7 Georgia	8	13 Tampa	1	
	8 Tallahassee Rebels (pro)	4	2 Tallahassee Rebels (pro)	5	4 Stetson	3	7 Tampa	2	
	8 Georgia	7	11 Amherst	3	4 Stetson	10	10 Fla. Southern	1	
	7 Tennessee	4	10 Amherst	6	7 Ga. Teachers	4	16 Fla. Southern	1	
	2 Auburn	7	4 Duke	8	3 Stetson	7	-----	-----	
							164	101	

1953 (13-10-1)	14	Ga. Teachers	6	4	Amherst	3	14	Cincinnati	1	0	Stetson	1	1954
	15	Ga. Teachers	4	0	Rollins	4	4	Jax Navy	2	9	Stetson	6	13-10-1)
	0	Georgia	3	2	Rollins	4	4	Jax Navy	7	2	Fla. Southern	7	
	8	Jax (Ala.) Teachers	4	8	Tampa	8	2	Ga. Teachers	6	15	Fla. Southern	4	
	1	Southeastern La.	6	1	Tampa	4	15	Ga. Teachers	6				
	5	Southeastern La.	4	14	Stetson	7	6	Georgia	12	156			
	5	Amherst	0	8	Stetson	2							111
	21	Kenyon	1	7	Loyola (La.)	0	0	Tampa	4	2	Rollins	1	1952
	11	Kenyon	2	3	Miami	1	16	Tampa	11	2	Rollins	0	(17-4)
	3	Georgia	8	7	Miami	0	13	Tampa	3	4	Stetson	2	
8	Georgia	3	2	Stetson	7	9	Fla. Southern	3					
4	Amherst	2	11	Stetson	0	5	Fla. Southern	0	158			72	
1	Loyola (La.)	0	7	Tampa	4	22	Fla. Southern	11					
1951 (13-6)	10	Tennessee	9	22	Miss. College	9	2	Stetson	3	8	Stetson	2	1951
	9	Georgia	5	6	Miss. College	2	8	Georgia	6	5	Stetson	7	(13-6)
	2	Miami	11	9	Rollins	2	0	Georgia	2				
	13	Miami	4	16	Tallahassee	6	6	Fla. Southern	5	161			97
	15	Fla. Southern	6	0	Citizens (pro)	6	10	Miss. College	4				
	13	Fla. Southern	3	0	Stetson	3	7	Miss. College	8				
	11	Miss. College	6	10	Fla. Southern	6	7	Tampa	6	7	Tampa	9	1950
	13	Miss. College	4	3	Bradley	2	12	Tampa	3	6	Mercer	10	(11-7)
	2	Rollins	14	1	Bradley	10	3	Mercer	1	11	Mercer	7	
	4	Rollins	6	0	Stetson	5	12	Mercer	4				
2	Fla. Southern	4	8	Stetson	6	10	Tampa	1	122			104	

CHRONOLOGICAL SCHEDULE

(Home Events Capitalized)
F E B R U A R Y

15	FRI.	GOLF	JACKSONVILLE NAVY	TALLAHASSEE
16	Sat.	Track	Caliseum Relays	Montgomery, Ala.
18	Mon.	Golf	University of Florida	Gainesville
23	SAT.	FOOTBALL	OPENING DAY, SPRING FOOTBALL DRILLS	
		Track	Chattanooga Federation Champ's	Chattanooga, Tenn.
M A R C H				
1	FRI.	GOLF	UNIVERSITY OF FLORIDA	TALLAHASSEE
2	Sat.	Track	Jaycee Indoor Carnival	Memphis, Tenn.
6	WED.	TENNIS	FT. EUSTIS (VA.)	TALLAHASSEE
9	SAT.	TENNIS	UNIVERSITY OF FLORIDA	TALLAHASSEE
		Track	University of Miami (Fla.)	Miami
14	THURS.	TENNIS	UNIVERSITY OF GEORGIA	TALLAHASSEE
15	FRI.	TENNIS	UNIVERSITY OF GEORGIA	TALLAHASSEE
16	Sat.	Tennis	Mississippi State University	Pensacola
		TRACK	FURMAN UNIVERSITY	TALLAHASSEE
		BASEBALL	AUBURN UNIVERSITY	TALLAHASSEE
18	MON.	TENNIS	GEORGIA TECH	TALLAHASSEE
		TRACK	UNIVERSITY OF TENNESSEE	TALLAHASSEE
		GOLF	FSU, GEORGIA TECH, GEORGIA, SPRINGFIELD COLLEGE	TALLAHASSEE
19	TUES.	GOLF	SPRINGFIELD COLLEGE	TALLAHASSEE
20	Wed.	Golf	Florida Intercollegiate	Ocala
21	Thurs.	Golf	Florida Intercollegiate	Ocala
		BASEBALL	CLEMSON COLLEGE	TALLAHASSEE
22	Fri.	Golf	Florida Intercollegiate	Ocala
		BASEBALL	CLEMSON COLLEGE	TALLAHASSEE
23	Sat.	Golf	Florida Intercollegiate	Ocala
		BASEBALL	CLEMSON COLLEGE	TALLAHASSEE
		Track	Memphis Relays	Memphis, Tenn.
		TENNIS	NORTHWESTERN	TALLAHASSEE
25	MON.	GOLF	FSU, PURDUE, MICHIGAN STATE	TALLAHASSEE
		Baseball	Auburn University	Auburn, Ala.
26	TUES.	GOLF	FSU, PURDUE, AUBURN, MICHIGAN STATE	TALLAHASSEE
		Baseball	Auburn University	Auburn, Ala.
		Tennis	University of Florida	Gainesville
27	WED.	TRACK	ROANOKE COLLEGE	TALLAHASSEE
		GOLF	PURDUE, MICHIGAN STATE, FSU	TALLAHASSEE
28	THURS.	TENNIS	VALDOSTA STATE COLLEGE	TALLAHASSEE
30	Sat.	Tennis	Valdosta State College	Valdosta, Ga.
		Track	Florida Relays	Gainesville
		Baseball	Florida Southern	Lakeland
A P R I L				
1	MON.	TENNIS	FSU, HOPE COLLEGE, AMHERST	TALLAHASSEE
		Baseball	University of Miami	Coral Gables
		Golf	Auburn University	Auburn, Ala.
2	TUES.	TENNIS	HOPE COLLEGE	TALLAHASSEE
		Baseball	University of Miami	Coral Gables
		Golf	University of Alabama	Tuscaloosa, Ala.
4	THURS.	TENNIS	FSU, COLUMBIA, FURMAN	TALLAHASSEE
		GOLF	FSU, COLUMBIA, MIAMI, STETSON, FLORIDA, FLA. SOUTHERN, ROLLINS	TALLAHASSEE
5	FRI.	TENNIS	FSU, COLUMBIA, FURMAN	TALLAHASSEE
		BASEBALL	FURMAN UNIVERSITY	TALLAHASSEE
		GOLF	FSU, COLUMBIA, MIAMI, STETSON, FLORIDA, FLA. SOUTHERN, ROLLINS	TALLAHASSEE
6	SAT.	TENNIS	COLUMBIA UNIVERSITY	TALLAHASSEE
		Track	Carolina Relays	Columbia, S.C.
9	TUES.	BASEBALL	FURMAN UNIVERSITY	TALLAHASSEE
11	THURS.	BASEBALL	VALDOSTA STATE COLLEGE	TALLAHASSEE
19	FRI.	TENNIS	PRESBYTERIAN	TALLAHASSEE
20	SAT.	TENNIS	UNIVERSITY OF CINCINNATI	TALLAHASSEE
		Baseball	UNIVERSITY OF CINCINNATI	TALLAHASSEE
		TRACK	Georgia Southern	Statesboro, Ga.
22	Mon.	Tennis	UNIVERSITY OF FLORIDA	TALLAHASSEE
		Baseball	Georgia Tech	Atlanta, Ga.
23	Tues.	Tennis	North Carolina	Chapel Hill, N.C.
		Baseball	University of Georgia	Athens, Ga.
24	Wed.	Baseball	Wake Forest	Winston-Salem, N.C.
		Tennis	Mercer	Macon, Ga.
25	Thurs.	Baseball	North Carolina State	Raleigh, N.C.
26	Fri.	Baseball	Duke University	Durham, N.C.
		Tennis	Rollins	Winter Park
		Baseball	East Carolina College	Greenville, N.C.
		Track	Penn Relays	Philadelphia, Pa.
27	Sat.	Tennis	Rollins	Winter Park
		Baseball	Camp Lejeune Marines	Camp Lejeune, N.C.
		Track	Penn Relays	Philadelphia, Pa.
30	TUES.	TENNIS	UNIVERSITY OF MIAMI	TALLAHASSEE
M A Y				
2	Thurs.	Golf	Southeastern Intercollegiate	Athens, Ga.
3	Fri.	Golf	Southeastern Intercollegiate	Athens, Ga.
		Baseball	University of Florida	Gainesville
4	Sat.	Golf	Southeastern Intercollegiate	Athens, Ga.
		Baseball	University of Florida	Gainesville
		Track	Florida AAU Meet	Gainesville
11	Sat.	Baseball	Valdosta State College	Valdosta, Ga.
13	MON.	BASEBALL	GEORGIA SOUTHERN	TALLAHASSEE
14	TUES.	BASEBALL	GEORGIA SOUTHERN	TALLAHASSEE
16	Thurs.	Baseball	Georgia Tech	Atlanta, Ga.
17	Fri.	Baseball	University of Georgia	Athens, Ga.
18	Sat.	Baseball	University of Georgia	Athens, Ga.
24	FRI.	BASEBALL	UNIVERSITY OF FLORIDA	TALLAHASSEE
25	SAT.	BASEBALL	UNIVERSITY OF FLORIDA	TALLAHASSEE
		Track	Georgia AAU Meet	Atlanta, Ga.
J U N E				
8	SAT.	BASEBALL	JACKSONVILLE UNIVERSITY	TALLAHASSEE

TRACK

It's easy to paint a picture of 1963 track at Florida State, and the picture isn't as pretty as it might be: six lettermen returning, but 13 of them lost—including five school record-holders.

The Seminoles, during Coach Mike Long's eight-year tenure in Tallahassee, have established themselves as one of the South's top track powers. They've lost only two of the last 22 dual meets; won 36 of 41 dual meets in the Long era. But matching last year's 5-0 record (including championships in the Piedmont Relay and Memphis Indoor Carnival) presents perhaps Long's most formidable challenge.

Challenges are what appeal to Long, however. Don't bet he won't meet it.

The '63 team will be built around the six returning lettermen and a quartet of good-looking sophomores. Returnees are Co-Captains Craig Johnson and Herb Kraft, Al Williams, Dick Roberts, Jim Lankford and Hutch Johnson.

Craig Johnson is a sprinter-hurdler who did the 100 in 9.7 last Spring; Kraft is the school record-holder in the broad jump (23-7 $\frac{3}{4}$) and has never lost in that event as a collegian; Williams, Long says, is "potentially one of the best weight men in the south," and put the shot 52 feet as a soph last year; Roberts and Langford are the two best distance men from last year, and Hutch Johnson is a promising sprint prospect.

Among the sophomores, most promising are Floyd Lorenz (high jump and hurdles), Al Cato (9.8 sprinter and relay man), Jerry McDaniel (220, 440 and relays) and hurdler-sprinter Ross Winter, who could be slowed due to basketball knee injuries.

Long came to FSU in 1963 after coaching high school sports in Sarasota and Ft. Myers. He won an Olympic regional pole vault title in 1936 while participating at the University of Minnesota.



MIKE LONG
Head Track Coach

FSU 1963 TRACK SCHEDULE

Date	Opponent	Site
Feb. 16	Coliseum Relays...	Montgomery, Ala.
Feb. 23	Chattanooga Federation Championships...	Chattanooga, Tenn.
March 2	Jaycee Indoor Carnival	Memphis, Tenn.
March 9	University of Miami (Fla)	Miami
March 16	Furman University	Tallahassee
March 18	University of Tennessee	Tallahassee
March 23	Memphis Relays	Memphis, Tenn.
March 27	Roanoke College	Tallahassee
March 30	Florida Relays	Gainesville
April 6	Carolina Relays	Columbia, S.C.
April 20	University of Florida	Tallahassee
April 26-27	Penn Relays	Philadelphia, Pa.
May 4	State AAU Meet	Gainesville
May 25	Georgia AAU Meet	Atlanta, Ga.
June 13, 14, 15	NCAA Championships	Albuquerque, N.M.

FSU TRACK AND FIELD RECORDS

Event	Holder	Mark	Year
100	John Poston	9.6	1962
	Jack Terwilliger	9.6*	1958
220	Ron Harrison	20.3*	1960
440	Jim Casteel	47.0	1958
880	Jack Brocksmith	1:54.5	1962
1-Mile	Mike Conley	4:05.7	1958
2-Mile	Kent Mills	9:31.4	1959
120 HH	Terry Long	14.7	1962
220 LH	Terry Long	22.6*	1962
440 Relay	Till, H. Johnson, Long, C. Johnson	42.0	1962
Sprint Medley	Casteel, Butner, Terwilliger,		
	Conley	3:24.6	1958
Mile Relay	Terwilliger, Ruff, Conley, Casteel	3:14.4	1958
2-Mile Relay	Roberts, Smith, Brocksmith,		
	Davis	7:49.0	1962
880 Relay	Till, Davis, Long,		
	C. Johnson	1:27.2	1962
Dis. Med. Relay	Smith, Brocksmith, Davis, Roberts	10:42.4	1962
Shot Put	Jeff Clark	55-3 1/4	1962
Discus	Charles Drago	154-10 1/2*	1959
Javelin	Ferry Henderson	227-5	1958
Pole Vault	Ed Hays	14-2 1/2	1962
High Jump	George Smith	6-6*	1961
Broad Jump	Herb Kraft	23-7 3/4	1962

*Denotes FSU track record.

Most Points, meet	28
(Tom Bowman vs. Howard, 1950)	
Most Points, season	152 1/4
(Tom Bowman, 1950)	
Most Points, career	287 3/4
(C. Fraundorfer, 1952-55)	

FLORIDA STATE'S TRACK HISTORY

Year	Coach	Captain	W	L	T	Own Pts.	Opp. Pts.
1949	Miller	None	0	3	0	143 1/2	244 1/2
1950	Miller	Al Bradford	5	1	0	495 1/6	279 5/6
1951	Miller	Max Watson	5	1	0	436 5/6	330 1/2
1952	Miller	John Poston	6	1	0	510 1/2	402
1953	Miller	Dick Mize	3	3	0	408 1/3	359 1/6
1954	Miller	C. Fraundorfer	1	6	0	390	429
1955	*Long	Ron Weaver	5	1	0	435 1/3	322
1956	Long	Ron Weaver	7	1	0	605 1/2	389 5/12
1957	Long	Joe Davis	4	1	0	388	253
1958	Long	Mike Conley, J. Terwilliger	4	0	0	342 2/5	175 3/5
1959	Long	Jim Casteel, Dick Elwood	3	1	0	333 1/2	201 1/2
1960	Long	Ted Keen	4	0	0	339 2/3	203 1/3
1961	Long	Don Ostergaard	4	1	0	464 5/6	239 1/6
1962	Long	Jeff Clark	5	0	0	408	261 /

*Coach Mike Long's eight-year record: 36-5-0.

VARSITY TRACK ROSTER

Name	Event	Ht.	Wt.	1962 Status	Class	Hometown	HI-H	6-2	170	Frosh	Soph	Mascoutah, Ill. Cairo, Ga. Tallahassee Sarasota Orlando St. Petersburg St. Petersburg Pittsburgh, Pa. Atlanta, Ga. Mobile, Ala.
BARTON, Dennis	D	6-0	150	None	Sr.	Ft. Lauderdale	HJ-H	6-2	170	Frosh	Soph	
CATO, Al	S	5-9	155	Frosh	Soph	Sumner, Ga.	HJ	6-0	155	Frosh	Soph	
FERRY, Doug	MD	6-0	145	Frosh	Soph	Melbourne	S	6-1	180	None	Soph	
FORD, Franklin	PV-BJ-H	6-1	175	Squad	St.	Montgomery, Ala.	PV	5-9	160	Frosh	Soph	
GISWOLD, Bill	HJ-BJ	6-3	180	Squad	Jr.	Madison, Wis.	D	6-0	155	Jr. Col.	Soph	
HOUSTON, Tom	MD	5-11	170	Incl.	Jr.	Orlando	D	5-9	150	IVL	Jr.	
JAEGER, Wayne	W-J	6-0	200	Frosh	Soph	Haines City	W	6-2	210	None	Soph	
JOHNSON, Craig (Capt)	S-H	5-11	160	2VL	Sr.	Houston, Tex.	S	5-9	145	Incl.	Soph	
JOHNSON, Hutch	S	6-2	175	1VL	Jr.	Atlanta, Ga.	HJ	5-8	140	Frosh	Soph	
KRAFT, Herb (Capt)	BJ-S	6-0	150	2VL	Sr.	Atlanta, Ga.	W	6-2	230	IVL	Jr.	
LANKFORD, Jim	D	5-11	145	1VL	Jr.	Shreveport, La.	H	6-2	165	Frosh	Soph	

FRESHMAN TRACK ROSTER

CARRICO, Richard	D	5-10	160			Jacksonville	W	6-4	225			Decatur, Ga.
FORD, Mickey	H	6-1	155			Jacksonville	MD	6-2	185			Houston, Tex.
GUTHRIE, Darryl	HJ-BJ	5-11	160			Ft. Myers	W-J	6-2	200			Daytona Beach
HAWARAH, Joe	J	5-7	160			Jacksonville	MD	5-9	145			Sandy Springs, Ga.
KIRK, Frank	S	5-10	150			St. Petersburg	HJ	5-10	150			Jacksonville
LONG, Curtis	H	5-9	145			St. Tallahassee	H	5-9	145			Jacksonville
LOPOTRO, Bill	J	5-9	140			W. Orange, N.J.	H	5-8	145			Jacksonville
MASON, Mike	J	6-0	155			Thomasville, Ga.	PV	5-8	145			Jacksonville

KEY: S-Sprints; MD-Middle Distance; D-Distance; H-Hurdles; PV-Pole Vault;

BJ-Broad Jump; J-Javelin; W-Weights.

GOLF

Florida State Golf Coach Bill Odeneal is bubbly over the future of golf at FSU. But whether or not 1963 is in the "future" remains to be seen.

Only two lettermen (Dave Philo and Doug Davis) return from last year, when the Seminoles won 14 and lost only three dual matches. And on top of that, scholastic troubles felled several promising newcomers.

"We'll have less depth than we've had in a long time," says Odeneal, whose teams have established a 56-22-3 record over the past five years.

Philo, says Odeneal, is "one of the nation's best" collegiate golfers. A junior from Tallahassee, he had a 74.3 average last Spring—best on the squad. Davis, the other letterman, had a 76.8 average.

Others who should be winners this year are Roger Kennedy, Mark Blair, John Parsons and Dick Ross.

The future, again, looks rosy. "Beginning with this year's freshmen," promises Odeneal, "we're going to pull in the greatest crop of young golfers we've ever had. We will be a real strong contender for national honors in the next four years."

Odeneal graduated from Springfield College, where he lettered in track and football and was a member of the Volleyball Club. He gained widespread fame when his volleyball teams won three national titles before the sport was dropped at FSU in 1957.



BILL ODENEAL
Head Golf Coach

PAST GOLF RESULTS

Year	Opp.	Score	Opp.	Score	Opp.	Score	Opp.	Score	Opp.	Score
1962 (14-3)	Florida	18½	Florida	8½	13½	Florida	4½	19	Rollins	17
	Ga. Tech	17	Ga. Tech	10	13	Navy	5	13	Florida	23
	Springfield	27	Springfield	0	13½	Yale	4½	15½	Auburn	11½
	Springfield	26½	Springfield	0	16½	Miami	19½	4	Florida	23
	14	Navy	4	22½	23½	Fla. Southern	13½	14½	Auburn	12½
					Stetson	12½				
1961 (15-3)	Florida	5½*	Florida	21½	14	Jax. University	4	18	Alabama	9
	Vanderbilt	26	Vanderbilt	1	474	Navy	507	5½	LSU	21½
	Georgia Tech	15	Georgia Tech	12	474	Miami	488	18	Fla. Southern	9
	Vanderbilt	26	Vanderbilt	1	474	Jax. University	563	12	Florida	15
	Auburn	20½	Auburn	6½	474	Augustana	514			
					Navy	21	8			
						11	18½			
1960 (9-4-2)	Florida	12	Florida	15	27	Jacksonville U.	0	15½	Alabama	11½
	Rollins	9½	Rollins	17½	5½	Florida	21½	18	Auburn	9
	Georgia Tech	16	Georgia Tech	11	18½	Miami	8½	17½	Auburn	9½
	LSU	15	LSU	12	13½	Florida Southern	13½		Totals	179½
	25	Navy	2	13½	5	Rollins	22	225½		
					Spring Hill	13				
1959 (8-5-1)	Florida	21½	Florida	5½	5	Florida	22	3	Auburn	0
	Louisiana State	13½	Louisiana State	13½	11	Rollins	16	3	Alabama	0
	Rollins	12½	Rollins	14½	11	Spring Hill	16		Totals	141
	Georgia	18½	Georgia	8½	11½	Auburn	15½	189		
	21	Georgia Tech	6	21	21	W. Illinois	6			
					Fla. Southern	11½				
					Auburn	6				
1958 (10-7)	Wisconsin	20	Wisconsin	7	11	Georgia	16	18½	Auburn	8½
	Florida	8	Florida	19	12	Spring Hill	15	14	Fla. Southern	13
	Moody AFB	24	Moody AFB	3	20½	Jax Navy	6½	6½	Rollins	20½
	Jax Navy	27	Jax Navy	0	23	Moody AFB	4	278	Totals	181
	11	Rollins	16	25½	13	Auburn	14			
					Georgia Tech	14				
					Florida	5½				
						9½				

FLORIDA STATE'S GOLF HISTORY

Year	Coach	Captain	W	L	T	Own Pts.	Opp. Pts.
1948	Harbison	Eddie Andrews	3	7	0	90	103
1949	Harbison	Hank Mercer	8	1	0	172	62
1950	Harbison	Joe Bassett	6	2	2	119	84
1951	Harbison	Ted Hewitt	8	3	1	175½	106½
1952	Harbison	Sonny Tinney	6	7	0	117	140
1953	Veller	Jimmy James	5	4	0	128	107
1954	Veller	Jimmy James	8	2	0	185½	78½
1955	Veller	No Captain	10	1	0	214	86
1956	Veller	Bob Dunn	11	0	0	240½	74½
1957	Veller	Ed Jenkins	9	1	0	177	69
1958	*Odeneal	No Captain	10	7	0	278	181
1959	Odeneal	Bob Shave	8	5	1	189	141
1960	Odeneal	Mel Fleischer					
		Wayne Timberman	9	4	2	225½	179½
1961	Odeneal	Downing Gray					
		Dick Dunlap	15	3	0		
1962	Odeneal	Bryan Bergeron,					
		Charles Keating	14	3	0	298½	175½

*Coach Bill Odeneal's record: 56-22-3

TENNIS

Coaches habitually groaning about "lack of depth" should take a gander at Florida State Tennis Coach Eddie Cubbon as he begins his second year in that position: Cubbon doesn't have a single man—letterman or otherwise—returning from last year, when the Seminoles finished with a 11-8 record.

But Cubbon has come up with a pair of hot-shot junior college grads to play the first two positions and four sophomores to back them up; and chances are the Seminoles will be stronger than last year when they won the Eastern Intercollegiate title at Hamilton, N. Y.

Brightest star should be junior Lex Wood, from Dale Junior College in King William's, South Africa. Wood, a slight (5-10, 145) 25-year-old, is "the best we've ever had at FSU," says Cubbon. Wood has crossed raquets with many top Davis Cup stars and even defeated Nicola Pietrangeli in straight sets during a friendly match.

Wood will play No. 1, and will be backed by another junior college grad: Don Caton of Pensacola. The other four spots will be filled, in order, by rookies up from the freshman team: Paul Bennett, Donald Monk, Kenny Alcorn and Dick Fischer.

"Our first two are as strong or stronger than last year," says Cubbon, "and the other four give us much more depth. For instance, we didn't win a point at No. 5 or No. 6 last year, or in No. 3 doubles, and we're much stronger there this time."

Cubbon, 54 this April 9, has as varied and interesting a background as you'll find. He has been an all-state football player, a two-sport star at West Virginia University, a professional basketball player (Clarksburg, W. Va.) and has coached several sports for more than 20 years. He has completed all classwork toward a Ph.D., was once a Lt. Cmdr. in the Navy at Guantanamo, Cuba, and belongs to the Masons and Shriners. At FSU, he also lends academic counsel to scholarship athletes.



EDWARD H. (EDDIE) CUBBON
Head Tennis Coach

1963 TENNIS SCHEDULE

Date	Opponent	Site
March 6	Fort Eastis, Va.	Tallahassee
March 9	University of Florida	Tallahassee
March 14-15	University of Georgia	Tallahassee
March 16	Mississippi State University	Pensacola
March 18	Georgia Tech	Tallahassee
March 23	Northwestern	Tallahassee
March 26	University of Florida	Gainesville
March 28	Valdosta State College	Tallahassee
March 30	Valdosta State College	Valdosta, Ga.
April 1	Hope College, Amherst	Tallahassee
April 2	Hope College	Tallahassee
April 4-5	Columbia, Furman	Tallahassee
April 6	Columbia	Tallahassee
April 11	Presbyterian	Tallahassee
April 19-20	University of Cincinnati	Tallahassee
April 22	Georgia Tech	Atlanta
April 23	University of Georgia	Athens, Ga.
April 24	Mercer	Macon, Ga.
April 26-27	Rollins	Winter Park
April 30	University of Miami (Fla.)	Tallahassee
June 10-15	Eastern Inter-collegiate (FSU Defending Champion)	Hamilton, N. Y.

1963 TENNIS ROSTER

Name	Ht.	Wt.	Class	Status	Age	Hometown
Alcorn, Kenny	6-0	135	Soph	Frosh.	20	Winter Haven
Bennett, Paul	5-10	142	Soph	Frosh.	19	Charleston, W. Va.
Caton, Don	5-10	140	Jr.	Jr. Col.	21	Pensacola
Dickey, Reggie	5-10	170	Soph	Frosh.	20	Auburndale
Fischer, Dick	5-11	140	Soph	Frosh.	19	Miami
Monk, Don	6-0	190	Soph	Frosh.	22	Mansfield, O.
Wood, Lex	5-10	145	Jr.	Jr. Col.	25	King William's, So. Africa

FRESHMAN TENNIS ROSTER

Name	Ht.	Wt.	Age	Hometown
Baldwin, Mike	6-0	160	18	Miami
Burt, Steve	5-8	140	18	Wellesley, Mass.
Cameron, Randy	6-2	160	19	Clearwater
Guse, Steve	5-7	140	18	Little Rock, Ark.
Jemison, Jack	5-8	142	18	Boca Raton, Fla.
Vephula, Doug	5-11	145	20	Washington, D. C.

FLORIDA STATE'S TENNIS HISTORY

Year	Coach	Captain	W	L	T	Pts.
1948	Loucks	Jim Deloach	9	4	0	78
1949	Loucks	Jim Costello	11	2	0	78
1950	Loucks	Herb Quay Larry Dickson	9	7	0	79
1951	Matherly	Larry Dickson	7	8	0	63
1952	Loucks	Tom Babione	9	5	0	71
1953	Loucks	Jack Eagan	15	2	0	119
1954	Pitchford	Hal Schaus	13	5	0	105
1955	Pitchford	Hal Schaus	10	6	0	86
1956	Pitchford	Hal Schaus	8	7	0	71
1957	Pitchford	Sonny Sellters	5	11	0	50
1958	Pitchford	Lex Hester	9	7	0	72
1959	Powless	Lex Hester	14	6	0	109½
1960	Powless	Rebel Bellamy	11	8	1	98½
1961	McGowan	Rebel Bellamy	16	5	0	131
1962	Cubbon	None	11	8	0	73
TOTALS			157	91	1	1184
						881

PAST TENNIS RESULTS

Year	(Eastern Intercollegiate Champions)	1962	1961	1960	1959	1958	1957		
(11-8)	Lamar Tech Georgia Georgia Pennsylvania Georgia Tech	8 7 5 4 3	4 3 6 3 3	3 3 6 3 3	5 6 4 3 0	Amherst Cincinnati Citadel Presbyterian Clemson	4 0 5 4 4	Furman Clemson Rollins Florida	3 9 4 5 -- 87
1961 (16-5)	Georgia Georgia Georgia Tech Sou. Illinois Auburn Navy	2 1 1 2 0 1	7 2 7 8 7 6	2 7 2 1 0 1	8 2 9 6 9 3	Rollins Miami Auburn Mississippi State Alabama Florida	1 7 0 3 0 6	Miami Mississippi State Rollins	9 2 2 6 54
1960 (11-8-1)	Presbyterian Georgia Pensacola Navy Southern Illinois Minnesota Miss. Southern	7 4 0 4 2 0	9 5 8 4 4 0	0 4 1 5 5 7	7 9 5 4 4 2	Concordia Kentucky Miss. State Rollins Georgia Florida	0 0 4 5 4 7	Miami Rollins	9 4
1959 (14-6)	Louisiana State Georgia Miami Georgia Tech Southern Illinois Minnesota	3½ 5 0 4 7 6	6 8 6 8 8 3	3 1 3 1 1 3	7 9 8 5 0 8	Murray State Jacksonville U. Pensacola Navy Georgia Georgia Tech Stetson	2 0 1 4 9 1	Rollins Miami	5 8 70½
1958 (9-7)	Georgia Georgia Tech Michigan State Jacksonville State Howard	4 7 4 0 1	6 1 7 0 1	3 8 2 7 8	0 9 8 1 1	Florida Mercer Stetson Georgia Georgia Tech	9 0 1 8 8	Mercer	0 70
1957 (5-11)	Georgia Mercer Ga. Tech Michigan State Duke	5 1 6 6 7	1 4 0 2 2	8 3 9 7 7	0 9 6 2 2	Rollins Florida Southern Mercer Georgia Georgia Tech	9 0 3 7 7	Emory	2 87

FLORIDA STATE'S 1963 FOOTBALL SCHEDULE

Sept. 20— <i>Fri.</i>	Miami (Fla.)	Miami	8:15 p.m. EST
Sept. 28— <i>Sat.</i>	Texas Christian	TALLAHASSEE	8:00 p.m. EST
Oct. 12— <i>Sat.</i>	Wake Forest	TALLAHASSEE	2:00 p.m. EST
Oct. 19— <i>Sat.</i>	Southern Mississippi	Mobile, Ala.	8:00 p.m. CST
Oct. 26— <i>Sat.</i>	Virginia Tech	TALLAHASSEE	2:00 p.m. EST
Nov. 2— <i>Sat.</i>	Furman	TALLAHASSEE	2:00 p.m. EST
Nov. 9— <i>Sat.</i>	Georgia Tech	Atlanta, Ga.	2:00 p.m. EST
Nov. 16— <i>Sat.</i>	North Carolina State (H'ocming)	TALLAHASSEE	2:00 p.m. EST
Nov. 23— <i>Sat.</i>	Auburn	Auburn, Ala.	2:00 p.m. CST
Nov. 30— <i>Sat.</i>	Florida	Gainesville	2:00 p.m. EST