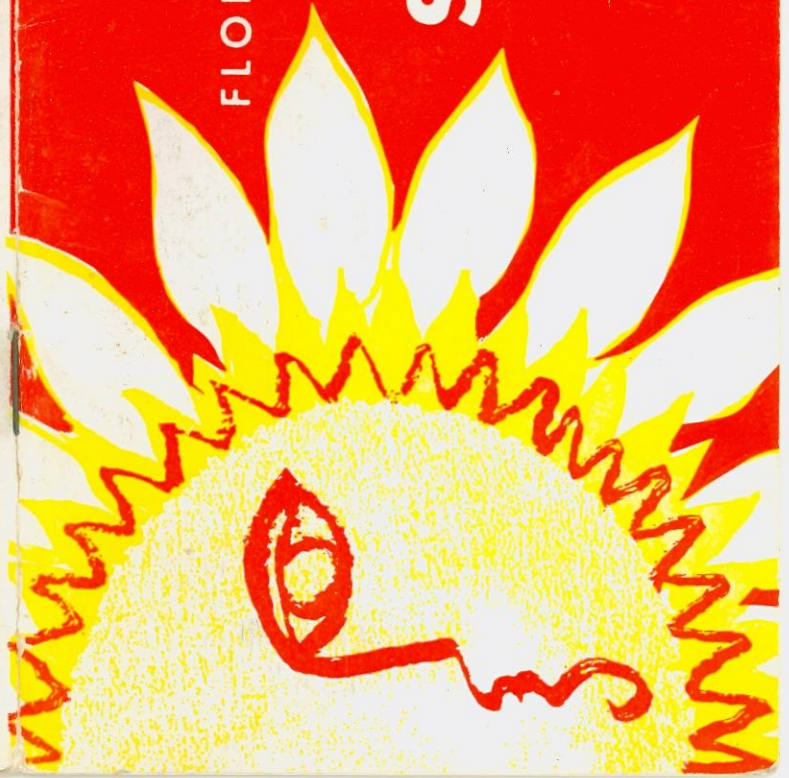


FLORIDA STATE'S 1962 FOOTBALL SCHEDULE

Sept. 15	The Citadel	TALLAHASSEE	8:00 P.M.
Sept. 22	Kentucky	Lexington, Ky.	8:00 P.M.
Sept. 29	Furman	TALLAHASSEE	8:00 P.M.
Oct. 5	Miami	Miami (Fla.)	8:15 P.M.
Oct. 13	Open Date		
Oct. 20	Georgia	Athens, Ga.	2:00 P.M.
Oct. 27	Virginia Tech	TALLAHASSEE	8:00 P.M.
Nov. 3	Houston (Homecoming)	TALLAHASSEE	2:30 P.M.
Nov. 10	Georgia Tech	Atlanta, Ga.	2:00 P.M.
Nov. 17	Florida	Gainesville	2:00 P.M.
Nov. 24	Auburn	Auburn, Ala.	2:00 P.M.



FLORIDA STATE UNIVERSITY

1962

Spring Sports

- BASEBALL
- GOLF
- TENNIS
- TRACK

Spring Sports
Florida State
University • 1962

baseball

golf

tennis

track

1962 SPRING SPORTS

This Spring Brochure has been prepared to aid the press, radio, and television in its coverage of Florida State University spring sports events. Should you desire additional information or services, contact: **NEIL LaBAR**, Director of Sports Publicity, Florida State University, Tallahassee, Florida. (Telephone 222-8000, Ext. 2095).

FLORIDA STATE UNIVERSITY AT A GLANCE

Name.....The Florida State University
 Location.....Tallahassee, Florida (50,000)
 President.....Dr. Gordon W. Blackwell
 Vice-President.....Dr. Milton W. Carothers
 Enrollment.....9,659
 Conference.....Independent
 Nickname of Teams.....Seminoles
 Colors.....Garnet and Gold

THE ATHLETIC STAFF

Vaughn Mancha.....	Director of Athletics	Charlie LaPradd.....	Assistant Football Coach
Danny Litwhiler.....	Baseball Coach	Bubba McGowan.....	Assistant Football Coach
Bill Odeneal.....	Golf Coach	Ken Meyer.....	Assistant Football Coach
Eddie Cubbon.....	Tennis Coach	Bud Kennedy.....	Basketball Coach
Mike Long.....	Track Coach	Bim Stults.....	Swimming Coach
Bill Peterson.....	Head Football Coach	Don Pauls.....	Trainer
John Coatta.....	Assistant Football Coach	Tillman Dixon.....	Equipment Manager
Dick Flowers.....	Assistant Football Coach	Ronald Melton.....	Athletic Business Manager
Vince Gibson.....	Assistant Football Coach	Neil LaBar.....	Sports Publicity Director
Bob Harbison.....	Assistant Football Coach	Jim Martin.....	Sports Photographer
Don James.....	Assistant Football Coach		

Chairman, Mode Stone; Donald Loucks, George Fortin, Coyle Moore, J. M. Plant, Elston Roady, Mary Alexander.

THE ATHLETIC COMMITTEE

THE DIRECTOR OF ATHLETICS

Not many persons have enjoyed such a varied and successful career as Vaughn Hall Mancha, who has devoted inestimable time and energy to athletics as a player, coach, teacher, and administrator.

Practically as legendary in Alabama football circles as Don Hutson and Harry Gilmer, Mancha began his present pursuit as director of Florida State's seven-sport program of intercollegiate athletics in November, 1959. He has tackled his newest role with all the fervor that characterized the performances that made him a 240-pound All-Southeastern Conference center at Alabama for four seasons (1944-1947) and everyone's All-American.

Mancha, who gained wide popularity with FSU officials and fans while serving as line coach from 1952 through 1956, returned to FSU as athletic director following three years at Columbia University as an assistant football coach and associate member of the Department of Physical Education.

Born in Sugar Valley, Ga., in 1921, Mancha moved to Birmingham at an early age. He entered Alabama in 1944, when he was issued jersey No. 41, a number Alabama's football opponents tried to dodge for four years. During Mancha's four seasons, Alabama rolled up a 30-9-2 record and played in three major bowl games. Vaughn was a starter when the Crimson Tide met Duke in the 1945 Sugar Bowl, Southern Cal in the 1946 Rose Bowl, and Texas in the 1948 Sugar Bowl.

He was such a standout in the '45 Sugar Bowl that he was named to the All-Time Sugar Bowl team (1945-52 period). In 1955, he was named to Alabama's All-Time Crimson Tide.

He sandwiched in a year of play with the professional Boston Yankees (1948) while earning B.S. and M.A. degrees at Alabama. In 1949 he accepted an appointment as head coach and athletic director at Livingston (Ala.) State, where he put in a highly successful three-year tenure.

Mancha first came to Florida State in 1952 as an assistant football coach and an assistant professor of Physical Education. In 1957, he left for Columbia, where in addition to his teaching and coaching duties he completed all work for the Doctorate with the exception of the dissertation.

Married to the former Sybil Little of Birmingham, he is the father of three children: Clare, 12; Nan, 10; and Dit, 2½.



VAUGHN MANCHA
 Director of Athletics

On a warm January day at St. Petersburg's Al Lang Field in 1959, former baseball greats from all corners of the nation gathered for the fourth annual Oldtimers' game.

It was a scoreless duel until the bottom of the sixth inning, when a husky National League outfielder stepped to the plate. He was Florida State's Danny Litwhiler, who promptly settled the issue with a booming home run out of the park.

That game-winning smash is typical of Litwhiler's determination, as a player and as a molder of players.

Danny, who serves on the Executive Committee of the American Assn. of College Baseball Coaches, has been described as one of college baseball's most imaginative and dynamic coaches. When he came to Florida State seven years ago, his expressed desire was to put the Seminoles out front in the collegiate baseball scramble.

In seven seasons, Litwhiler's Seminoles have won 240 games while losing only 54, appearing in five NCAA District playoffs and one College World Series (1957). It adds up to a .722 percentage, a championship pace in anybody's league.

There have been extra measures of success. During the past few seasons, scores of Seminole players have signed with major league clubs. One of Litwhiler's prodigies, 145-pound shortstop Dick Howser of West Palm Beach, was named to the NCAA's first-team All-America squad in both 1957 and '58.

Howser was runner-up in the American League for rookie honors last year while being the captain of the Kansas City Athletics. Dick had the highest batting average for regular

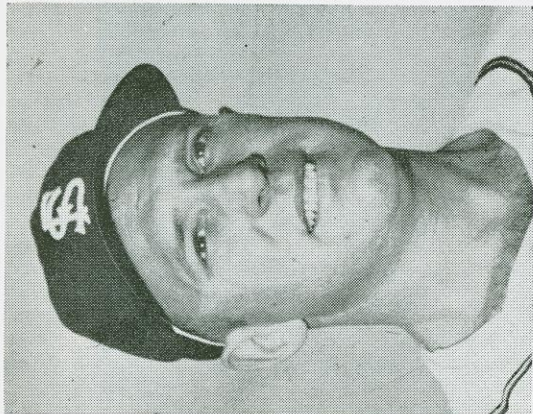
1962 BASEBALL SCHEDULE

Date	Opponent	Site
March 14-15	Georgia	Tallahassee
March 16-17	Auburn	Tallahassee
March 19-21	Georgia Tech	Tallahassee
March 23	Navy and Jacksonville	Jacksonville
March 24	Navy	Jacksonville
March 30-31	Clemson	Tallahassee
April 2-3	Furman	Tallahassee
April 9-10	Auburn	Auburn
April 16-17	Miami	Tallahassee
April 19	Clemson	Clemson
April 20-21	Duke	Duke
April 23	E. Carolina, N. Carolina	Chapel Hill
April 24	N. C. State	N. C. State
April 25	Georgia Southern	Georgia Southern
May 11-12	Florida Southern	Tallahassee
May 14-15	Georgia Southern	Tallahassee
May 18-19	Florida	Gamesville

FRESHMAN SCHEDULE

March 23-24	Manatee	Tallahassee
April 6-7	Florida	Tallahassee
April 14	South Georgia College	Tallahassee
April 27-28	Florida	Gainesville
April 30-May 1	Dade County Jr. College	Tallahassee
May 4	Pensacola Junior College	Tallahassee

BASEBALL



DANNY LITWHILER

Head Baseball Coach

shortstops in the league, and he is the first rookie ever to be named captain of a major league club.

In 1959, FSU's Bob Clem won a second-team All-America spot as a second baseman. Jack Dull was named to the third-team All-America second base for the Seminoles last season.

Litwhiler has the perfect background to be a solid baseball coach. He built up a storehouse of ideas during his major league playing career with the St. Louis Cardinals, Philadelphia Phillies, Cincinnati Reds, and the old Braves.

Danny went down in the books for several outstanding performances before retiring as an active player in 1950. He batted safely in 21 straight games in his first major league season. He belted a home run in every National League park in 1941.

In 1942, he became the first major league player to play a complete errorless season. He handled 317 chances in 151 games that year and over a period of two seasons set a record of playing 187 consecutive games without an error.

The glove Litwhiler used in that string is retired in baseball's Hall of Fame.

In 1942 and 1943, Danny tied a National League record for the most years (two) leading in fielding percentage by an outfielder appearing in 100 or more games.

Litwhiler, 45, was born in Ringtown, Pa., and is a graduate of Bloomsburg (Pa.) State Teachers College.

After retiring as an active player, Danny coached with Cincinnati in 1951 and has managed minor league clubs at Fargo, N. D.; Wilkes-Barre, Pa.; Jamestown, N. Y.; and Duluth, Minn.

ALL-TIME BASEBALL RECORDS

Best season won and lost record (1956).....	24-5
Most games won, season, (1956).....	24
Most games lost, season, (1959).....	11
Most runs scored, season, (1959).....	258
Most runs allowed, season, (1959).....	166
Most runs scored, game, (vs. Jacksonville, Ala. State, 1954).....	24
Most hits, season, (1961).....	302
Most 2b hits, season, (1959).....	41
Most 3b hits, season, (1958).....	20
Most home runs, season, (1957 and '58).....	16
Most runs batted in, season, (1959).....	180
Most stolen bases, season, (1958).....	67
Most double plays, season, (1961).....	28
Longest winning streak (1958).....	13
Longest losing streak (1959).....	4

INDIVIDUAL RECORDS

Best batting average, season (Bob Clem, 1959).....	.436
Most hits, season (Bob Clem, 1959).....	44
Most 2b hits, season (Bob Trowbridge, 1952, and Neil Martin, 1959).....	9
Most 3b hits, season (Doug Walker, 1961).....	7
Most home runs, season (Fred Twomey, 1955, and Jack Dull, 1959).....	6
Most runs batted in, season (Dull, 1959).....	37
Most walks, season (Martin, 1959).....	38
Most times struck out, season (Carlee Hendrix, 1956 and Martin, 1959).....	23
Most stolen bases, season (Owen McCarron, 1958).....	16
Most put outs, season (Charlie Rodgers, 1959).....	238
Most assists, season (Phil Hunt, 1955).....	90
Most errors, season (Dale Koch, 1959).....	19
Best pitching record, season (Max Long, 1956).....	7-0
Most pitching wins, season (Frank Slusser, 1958 and Frank Davis, 1959 and 1960).....	8
Most pitching wins, career (Davis, 1959-61).....	22
Most strikeouts, game (Tony Avitable, vs. Furman, 1956).....	25
Most strikeouts, season (Avitable, 1956).....	112
Most strikeouts, career (Davis, 1959-61).....	191
Most bases on balls, season (Ed Lockard, 1951).....	51
Most bases on balls, career (Lockard 1950-53).....	125

FLORIDA STATE'S BASEBALL HISTORY

Year	Coach	Captain	W	L	T	Runs	Opp.
1948	Armstrong	Ron Nettles	9	8	0	101	121
1949	Armstrong	Sam Cox	11	8	0	126	103
1950	Armstrong	Bob Trowbridge	11	7	0	122	104
1951	Armstrong	Augie Pompelia	13	6	0	161	97
1952	Matherly	Bob Trowbridge	17	4	0	158	72
1953	Matherly	Cooter Mills	13	10	1	156	111
1954	Matherly	Bob Hudson	14	9	0	164	101
1955	Litwhiler	{Billy Campbell {Bob Hudson	17	6	0	189	98
1956	Litwhiler	Max Long	24	5	0	244	121
1957	Litwhiler	Carlee Hendrix	22	9	0	232	120
1958	Litwhiler	Dick Howser	21	7	0	198	104
1959	Litwhiler	Dale Koch	22	11	0	258	166
1960	Litwhiler	Ray Bazzell	13	9	0	183	136
1961	Litwhiler	{Frank Davis {Jack Dull	21	7	0	167	121
			228	106	1	2459	1575

1962 BASEBALL ROSTER

Name	Pos.	Ht.	T	B	Wt.	Age	Class	Hometown
Augustine, Michael	OF	5-9	L	L	150	20	So.	Philadelphia, Pa.
Barnes, William	P	6-0	R	R	180	20	Jr.	Pensacola
Beccaccio, Albert	2B	6-2	R	R	195	22	Sr.	Newburgh, N.Y.
Bondank, Philip	P	5-7	L	L	172	21	Jr.	St. Petersburg
Dirks, Paul	C	5-10	R	R	180	19	So.	Arlington, Va.
Echols, Frank	P	6-1	R	R	190	20	Jr.	Tallahassee
Elliott, Gary	RF	5-11	R	R	175	20	Jr.	Quincy
Ferguson, George	P	5-11	R	R	170	22	Sr.	W. Palm Beach
Ferrari, Robert	P	5-9	R	R	190	21	Jr.	Florida City
French, Douglas	OF	6-4	R	R	170	21	Sr.	Elmira, N.Y.
Hawkins, Howell	P	5-10	R	R	180	21	Jr.	St. Petersburg
Howell, Martin	P	5-10	R	R	160	19	So.	Barrow
Jarrett, Lincoln	C	5-10	R	R	170	20	So.	Allentown, Pa.
Johnson, Larry	IF	6-0	L	L	175	19	So.	Thomasville, Ga.
Lamb, Fred	IF	5-9	L	L	180	19	So.	Miami
Littlen, John	3B	5-9	R	R	180	21	Jr.	Opelika, Ala.
Litwhiler, Woodrow	OF	2-10	R	R	160	20	So.	Verona, N.J.
Madison, Robert	CF	5-10	R	R	170	20	So.	Atlanta, Ga.
Maiphrus, Wallace	P	5-11	L	L	150	19	So.	Ridgeland, S.C.
Mangin, Harold	IF	6-2	R	R	175	22	Sr.	Willow Grove, Pa.
McShane, Ray	P	6-0	R	R	195	20	Sr.	West Palm Beach
Moore, Jerry	IF	6-0	R	R	205	22	So.	Mulberry
Passmore, Mike	IF	6-0	R	R	190	19	So.	Pompano Beach
Pitchford, Keith	P	6-2	R	R	195	21	Sr.	Tallahassee
Ready, Tom	OF	5-10	R	R	170	20	So.	Lakeland
Ross, Jack	P	6-0	L	L	180	20	So.	Coral Gables
Roundtree, George	IF	5-11	L	L	160	19	So.	St. Simons Island, Ga.
Shifflett, Darwin	OF	5-11	L	L	160	22	Jr.	Cocoa
Smith, Dwight	LF	5-11	R	R	170	21	Jr.	St. Augustine
Spitzer, Kyle	SS	5-10	R	R	170	19	Sr.	Aruba, Neth. Antilles
Teagle, Buddy	C	6-4	R	R	223	22	Jr.	West Palm Beach
Thomas, Allen	P	6-0	R	R	165	20	Jr.	Cairo, Ga.
Tucker, John	P	6-4	R	R	195	22	Sr.	Tallahassee
Wilcox, Bob	OF	6-3	R	R	180	19	So.	Melbourne
Williamson, Bill	2B	6-0	R	R	180	20	Jr.	Palm Harbor
Woodward, William	SS	6-2	R	R	175	19	So.	Coral Gables

1961 BATTING

1961 PITCHING RECORDS

Player, Pos.	G	AB	R	H	2B	3B	HR	TB	SB	BB	SO	RBI	Avg.	Player, Pos.	PO	A	E	Pct.
Ross, p	13	15	2	7	0	0	0	7	0	1	1	2	.467	Elliot, cf	23	0	0	1.000
Dull, 2b	28	108	29	40	7	0	5	62	9	19	11	27	.370	Johnston, c	9	1	0	1.000
Spitzer, ss	12	11	4	4	0	0	0	4	1	4	0	2	.364	Hutchison, c	9	0	0	1.000
Martin, rf	28	105	26	36	5	1	1	46	4	33	22	12	.343	Ross, p	2	4	0	1.000
Hutchison, c	6	6	0	2	0	0	0	2	0	0	1	2	.333	Tucker, p	1	0	0	1.000
Madison, cf	24	85	20	28	4	1	1	37	8	6	9	17	.329	Mangin, lb	44	21	1	.985
Walker, lb	26	101	25	33	5	7	0	52	4	10	9	22	.327	Teagle, c	157	17	3	.983
Teagle, c	28	91	16	28	4	2	0	36	1	14	17	13	.308	White, lf	35	2	1	.974
Mangin, lb	17	47	8	14	0	1	0	16	1	3	3	5	.298	Madison, cf	42	2	2	.957
Zimmerman, ss	28	100	14	29	4	1	2	41	4	9	8	19	.290	Walker, lb	206	6	10	.955
White, lf	23	86	19	24	0	3	1	33	5	13	6	12	.279	Martin, rf	37	1	2	.950
Fergusson, 3b	22	76	13	21	1	0	2	28	2	10	21	16	.276	Dull, 2b	79	65	9	.941
Elliot, cf	15	33	7	9	0	0	1	12	8	5	8	4	.273	Spitzer, ss	13	7	2	.909
French, 3b	16	11	2	3	1	0	0	4	4	3	3	3	.273	Smith, lf	8	2	1	.909
Davis, p	13	28	0	7	0	0	0	7	0	3	8	5	.250	Davis, p	3	21	3	.889
McShane, p	8	23	3	5	0	0	0	5	0	1	2	0	.217	Daniel, p	3	12	2	.882
Smith, lf	14	35	9	7	0	0	1	10	1	3	2	2	.200	Zimmerman, ss	26	77	15	.873
Daniel, p	11	28	5	5	1	0	0	6	2	1	6	4	.179	Fergusson, 3b	33	29	13	.827
Turner, p	6	4	1	0	0	0	0	0	0	0	2	0	.000	French, 3b	2	9	3	.786
Johnson, c	7	4	0	0	0	0	0	0	0	0	1	0	.000	McShane, p	2	9	4	.733
Echols, p	6	2	0	0	0	0	0	0	0	0	2	0	.000	Turner, p	1	2	2	.600
Others	4	0	0	0	0	0	0	0	0	0	2	0	.000	Others	0	2	0	1.000
FSU TOTALS	28	1003	203	302	32	16	14	408	54	138	144	167	.301	FSU TOTALS	735	289	73	.933
OPPONENTS	28	988	138	253	31	8	11	333	7	112	169	121	.256	OPPONENTS	710	282	84	.922

PAST BASEBALL RESULTS

Year	Opponent	W	L	T
1961 (21-7)	Georgia	9	1	0
	Georgia Southern	11	0	0
	Auburn	10	0	0
	Auburn	5	0	0
	Auburn	9	0	0
	Navy	3	0	0
	Navy	3	0	0
	Western Michigan	10	0	0
	Western Michigan	6	0	0
	Georgia	6	0	0
1960 (13-9)	Miami	6	3	0
	Miami	10	0	0
	Georgia	10	0	0
	Ohio State	7	0	0
	Auburn	4	0	0
	Auburn	10	0	0
	Auburn	8	2	0
	Auburn	22	0	0
	Auburn	22	0	0
	Auburn	22	0	0
1959 (22-11)	Camp Lejeune	14	0	0
	Camp Lejeune	11	0	0
	Camp Lejeune	10	0	0
	Auburn	8	0	0
	Auburn	11	0	0
	Auburn	1	0	0
	Georgia	16	0	0
	Georgia	17	0	0
	Stetson	17	0	0
	Stetson	21	0	0
1961 (21-7)	Georgia	10	0	0
	Georgia Southern	9	0	0
	West Virginia	1	0	0
	Duke	2	0	0
	West Virginia	3	0	0
	West Virginia	2	0	0
	West Virginia	3	0	0
	West Virginia	3	0	0
	West Virginia	2	0	0
	West Virginia	2	0	0
1960 (13-9)	Florida	8	0	0
	Florida	13	0	0
	Miami	16	0	0
	Miami	9	0	0
	Miami	10	0	0
	Miami	8	0	0
	Miami	4	0	0
	Miami	5	0	0
	Miami	6	0	0
	Miami	6	0	0
1959 (22-11)	Auburn	4	0	0
	Auburn	6	0	0
	George Washington	3	0	0
	George Washington	9	0	0
	Clemson	2	0	0
	Clemson	24	0	0
	Georgia Tech	16	0	0
	Georgia Tech	9	0	0
	Clemson	1	0	0
	Clemson	5	0	0

1958 (21-7)	3 Auburn	4	3 Wisconsin	1	11 Fla. Southern	1	17 Ga. Teachers	3	1958 (21-7)
	7 Auburn	10	7 Florida	8	4 Stetson	2	3 George Washington	1	
	3 Knoxville (SAL)	2	1 Florida	8	9 Stetson	1	1 Florida	2	
	12 Wisconsin	4	18 Miami	0	6 Miami	2	5 Clemson	8	
	5 Notre Dame	2	7 Miami	12	7 Rollins	1	198	104	
	14 West Virginia	7	5 Auburn	1	7 Rollins	1			
	7 Wisconsin	3	4 Auburn	2	7 Rollins	6			
	3 Notre Dame	2	5 Fla. Southern	0	15 Ga. Teachers	10			

1957 (22-9)	8 Auburn	2	11 Yale	8	13 Ga. Teachers	2	5 Rollins	0	1957 (22-9)
	10 Auburn	5	1 Duke	8	8 Ga. Teachers	3	5 Ga. Teachers	3	
	15 Stetson	0	7 Ithaca	6	9 Auburn	10	3 Duke	2	
	2 Stetson	3	21 Ithaca	4	10 Auburn	4	6 Duke	8	
	3 Michigan State	8	2 Florida	13	4 Fla. Southern	0	4 Duke	1	
	7 Yale	0	4 Florida	1	10 Fla. Southern	2	0 Penn State	7	
	2 Duke	0	15 Miami	3	15 Miami	3	3 Connecticut	5	
	7 Michigan State	4	21 Miami	3	1 Miami	2	232	120	

1956 (24-5)	6 Furman	1	3 North Carolina	2	1 Wisconsin	0	5 Ga. Teachers	3	1956 (24-5)
	20 Furman	0	5 Wisconsin	3	5 Florida	7	9 Georgia	8	
	6 Ga. Teachers	5	12 Notre Dame	5	8 Cincinnati	2	6 Georgia	2	
	10 Ga. Teachers	5	13 West Virginia	13	8 Stetson	1	7 Rollins	9	
	9 Fla. Southern	2	13 Illinois	10	23 Stetson	2	9 Rollins	0	
	8 Fla. Southern	5	4 Wisconsin	3	0 Georgia	2	244	121	
	11 Indiana	6	12 Illinois	0	13 Miami	5			
	14 Indiana	10	3 Wisconsin	10	2 Miami	0			

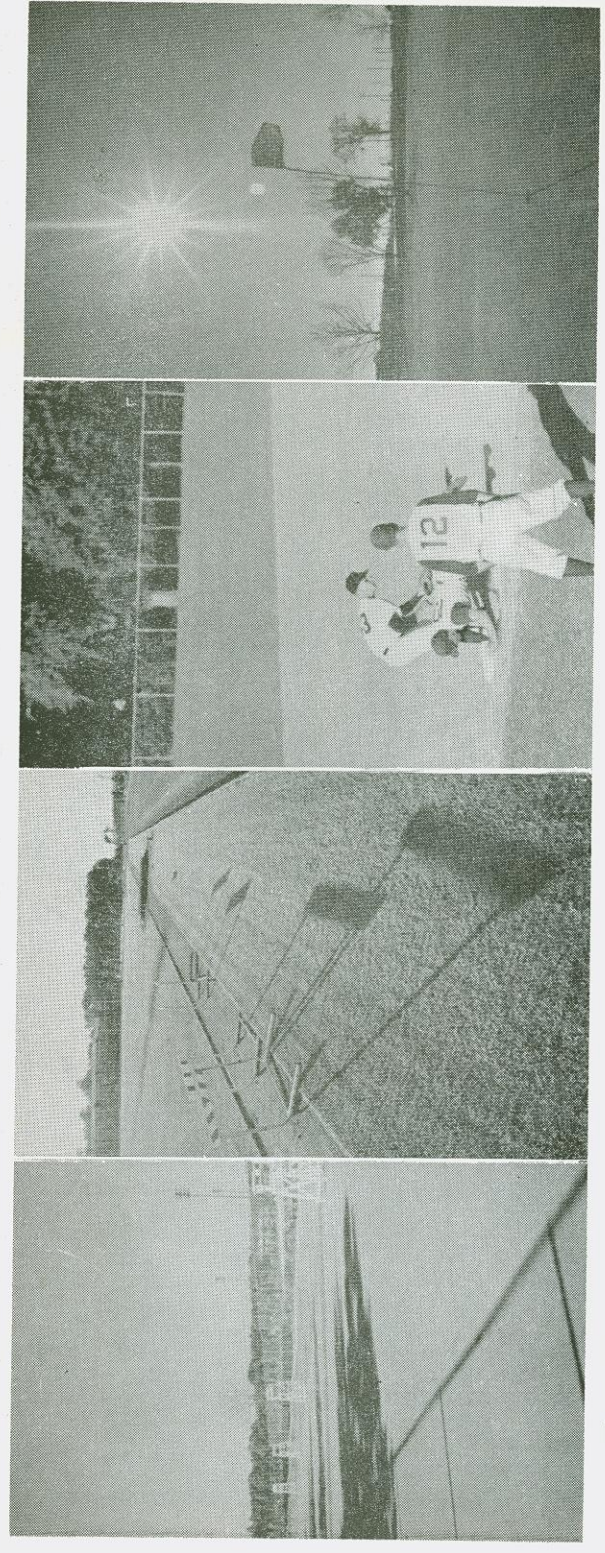
1955 (17-6)	4 Fla. Southern	1	6 Georgia	7	7 Wisconsin	2	12 Ga. Teachers	2	1955 (17-6)
	15 Fla. Southern	0	10 Amherst	1	7 Rollins	2	14 Georgia	5	
	17 Furman	3	7 Amherst	9	3 Rollins	9	3 Georgia	17	
	6 Furman	3	7 Stetson	8	4 Miami	3	6 Stetson	4	
	5 LSU	3	16 Stetson	2	4 Miami	5	14 Stetson	5	
	9 Georgia	2	3 Wisconsin	2	10 Ga. Teachers	3	189	98	

1954 (14-9)	1 Jax Navy	2	7 Davidson	1	2 Duke	6	0 Stetson	7	1954 (14-9)
	7 Jax Navy	4	24 Jax (Ala.) State	0	7 Georgia	8	13 Tampa	1	
	8 Tallahassee Rebels (pro)	4	2 Tallahassee Rebels (pro)	5	4 Stetson	3	7 Tampa	2	
	8 Georgia	7	11 Amherst	3	4 Stetson	10	10 Fla. Southern	1	
	7 Tennessee	4	10 Amherst	6	7 Ga. Teachers	4	16 Fla. Southern	1	
	2 Auburn	7	4 Duke	8	3 Stetson	7	164	101	

1953 (13-10-1)	14 Ga. Teachers	6	4 Amherst	3	14 Cincinnati	1	0 Stetson	1	1954 (13-10-1)
	15 Ga. Teachers	4	0 Rollins	4	4 Jax Navy	2	9 Stetson	6	
	0 Georgia	3	2 Rollins	4	2 Jax Navy	7	15 Fla. Southern	7	
	8 Jax (Ala.) Teachers	4	8 Tampa	8	2 Ga. Teachers	6	15 Fla. Southern	4	
	1 Southeastern La.	6	1 Tampa	4	15 Ga. Teachers	6	156	111	
	5 Southeastern La.	4	14 Stetson	7	6 Georgia	12			
	5 Amherst	0	8 Stetson	2					

1952 (17-4)	21 Kenyon	1	7 Loyola (La.)	0	0 Tampa	4	2 Rollins	1	1952 (17-4)
	11 Kenyon	2	3 Miami	1	16 Tampa	11	2 Rollins	0	
	3 Georgia	8	7 Miami	0	13 Tampa	3	4 Stetson	2	
	8 Georgia	3	2 Stetson	7	9 Fla. Southern	3			
	4 Amherst	2	11 Stetson	0	5 Fla. Southern	0	158	72	
	1 Loyola (La.)	0	7 Tampa	4	22 Fla. Southern	11			

1951 (13-6)	10 Tennessee	9	22 Miss. College	9	2 Stetson	3	8 Stetson	2	1951 (13-6)
	9 Georgia	5	6 Miss. College	2	8 Georgia	6	5 Stetson	7	
	2 Miami	11	9 Rollins	2	0 Georgia	2	161	97	
	13 Miami	4	16 Tallahassee	6	6 Fla. Southern	5			
	15 Fla. Southern	6	Citizens (pro)	6	10 Miss. College	4			
	13 Fla. Southern	3	0 Stetson	3	7 Miss. College	8			
1950 (11-7)	11 Miss. College	6	10 Fla. Southern	6	7 Tampa	6	7 Tampa	9	1950 (11-7)
	13 Miss. College	4	3 Bradley	2	12 Tampa	3	6 Mercer	10	
	2 Rollins	14	1 Bradley	10	3 Mercer	1	11 Mercer	7	
	4 Rollins	6	0 Stetson	5	12 Mercer	4	122	104	
	2 Fla. Southern	4	8 Stetson	6	10 Tampa	1			
1949 (11-8)	7 Mississippi	3	10 Millsaps	8	10 Stetson	1	2 Stetson	4	1949 (11-8)
	6 Mississippi	5	3 Fla. Southern	5	8 Stetson	9	4 Stetson	2	
	3 Mercer	8	8 Fla. Southern	10	8 Tampa	7	1 Fla. Southern	3	
	5 Oglethorpe	7	5 Miss. College	4	10 Tampa	4	1 Fla. Southern	3	
	18 Miss. College	13	11 Miss. College	6	6 Mercer	1			
							126	103	
1948 (9-8)	6 Miss. College	0	6 Miss. College	7	5 Ga. Teachers	2	2 Rollins	8	1948 (9-8)
	3 Miss. College	13	14 Mercer	12	12 Ga. Teachers	8	6 Troy State	5	
	5 Rollins	20	5 Middle Georgia	4	7 Middle Georgia	6	101	121	
	5 Rollins	8	4 Ga. (Savannah)	9	8 Ga. (Savannah)	3			
	6 Miss. College	5	2 Troy State	3	5 Rollins	8			



The tennis courts

... the track

... the baseball field

... and the golf course.

TRACK

Recognized as one of the finest track coaches in the nation, personable, hardworking Mike Long is in his eighth year as Florida State University's track coach.

Take a look at the Seminole record during Long's seven seasons—a host of impressive team championships and 31 victories against only 5 losses in dual competition. Victors in 15 of their last 17 dual starts, the Seminoles have an .861 winning percentage under Long.

Long's building program for the Seminoles reached a zenith in 1958, when FSU was undefeated in dual meets and was generally recognized as one of the South's best teams. In the past three years, the Seminoles have won eleven of thirteen dual meets, winning four of five last year.

The Seminoles again see tough competition in a rugged schedule including five dual meets and nine other invitational meets.

Heading up this year's squad will be school record holders Bill Welch, Terry Long, George Smith, and Herb Kraft. Co-captains Jeff Clark and Quentin Till will provide added depth. Young Terry Long, son of coach Mike, holds the FSU record of 23.2 in the low hurdles.

Long came to Florida State in 1953 as an assistant coach in football and basketball. As head track man, he now limits his abilities to running the show on the cinders. Before graduating from Minnesota in 1937, Mike established himself as an outstanding performer by winning the regional Olympic pole vault title in 1936.

Mike came to FSU from Ft. Myers, where he was head basketball and track coach and assistant football coach. Previously he had coached high school sports in Sarasota.



MIKE LONG
Head Track Coach

FSU 1962 TRACK SCHEDULE

Date	Opponent	Site
Feb. 3	Coliseum Relays	Montgomery, Ala.
Feb. 17	Mason-Dixon Games	Louisville, Ky.
March 10	Miami (Fla.)	Tallahassee
March 16	Furman	Tallahassee
March 24	South Carolina	Columbia, S. C.
March 29	Louisiana State	Tallahassee
March 31	Florida Relays	Gainesville
April 6-7	Texas Relays	Austin, Texas
April 14	Piedmont Relays	Greenville, S. C.
April 21	Florida	Gainesville
April 27-28	Penn Relays	Philadelphia, Pa.
May 5	Florida Invitational	Tallahassee
May 19	Georgia AAU	Atlanta, Ga.
June 15-16	NCAA	Eugene, Ore.

FSU TRACK AND FIELD RECORDS

Event	Holder	Mark	Year
100	John Poston	9.6	1952
	Jack Terwilliger	9.6*	1958
220	Ron Harrison	20.3*	1960
440	Jim Casteel	47.0	1958
880	Doyle Ruff	154.9	1959
Mile	Mike Conley	4:05.7	1958
Two-mile	Kent Mills	9:31.4	1959
120 HH	Bill Welch	14.8	1961
220 LH	Terry Long	23.2	1961
440 Relay	Terwilliger, Butner, Keen, Casteel	42.2	1958
Sprint Medley	Casteel, Butner, Terwilliger, Conley	3:24.6	1958
Mile Relay	Terwilliger, Ruff, Conley, Casteel	3:13.4	1958
Two-mile Relay	Nye, Ruff, Jones, Keeney	7:49.1	1959
Shot Put	Don Ostergaard	54-1/2	1961
Discus	Charles Drago	154-10 1/2*	1959
Javelin	Jerry Hend'son	227-5	1958
Pole Vault	Dick Elwood	13-7 3/4	1959
High Jump	George Smith	6-6*	1961
Broad Jump	Herb Kraft	23-5 1/2	1961

*Denotes FSU track record.

Most points, meet (Tom Bowman, 1950 vs. Howard) 28

Most points, season (Tom Bowman, 1950) 152 1/4

Most points, career (C. Fraundorfer, 1952-55) 287 1/2

FLORIDA STATES TRACK HISTORY

Year	Coach	Captain	W	L	T	Own Pts.	Opp. Pts.
1949	Miller	None	0	3	0	143 1/2	244 1/2
1950	Miller	Al Bradford	5	1	0	495 1/6	279 5/6
1951	Miller	Max Watson	5	1	0	436 5/6	330 1/2
1952	Miller	John Poston	6	1	0	510 1/2	402
1953	Miller	Dick Mize	3	3	0	408 1/3	359 1/6
1954	Miller	C. Fraundorfer	1	6	0	390	429
1955	Long	Ron Weaver	5	1	0	435 1/3	322
1956	Long	Ron Weaver	7	1	0	605 1/12	389 5/12
1957	Long	Joe Davis	4	1	0	388	253
1958	Long	Mike Conley J. Terwilliger	4	0	0	342 2/5	175 3/5
1959	Long	Jim Casteel Dick Elwood	3	1	0	333 1/2	201 1/2
1960	Long	Ted Keen	4	0	0	339 2/3	203 1/3
1961	Long	Don Ostergaard	4	1	0	464 5/6	239 1/6

1962 TRACK ROSTER

Name	Event	Ht.	Wt.	Age	Class	Hometown	BJ	5-11	145	21	Jr.	Atlanta, Ga.
Bourne, Tommy	HJ	5-9	155	20	So.	Atlanta, Ga.	D	5-10	132	19	So.	Shreveport, La.
*Brooksmith, Jack	MD	6-0	150	23	Sr.	Atlanta, Ga.	H-S	5-8	150	22	Sr.	Tallahassee
*Clark, Jeff (Capt.)	W	6-4	255	21	Sr.	Miami	S	5-10	170	22	Sr.	Jackson, Miss.
Crotty, Bill	PV	6-0	170	19	So.	Pompano Beach	HJ	5-9	145	22	Sr.	Coral Gables
*Davis, Bill	MD	5-11	155	22	Sr.	Miami	H	6-0	150	20	So.	Rochelle, Ill.
Edwards, Jackson	S	6-1	165	19	So.	Atlanta, Ga.	D	5-8	140	19	So.	St. Petersburg
*Ellis, Dave	H	6-2	160	22	Jr.	Orlando	MD	6-2	175	23	So.	Ft. Myers
*Ford, Franklin	PV-H	6-1	175	20	Jr.	Orlando	HJ	6-4	180	22	Sr.	Miami
*Giddens, Gene	BJ	5-10	150	22	Sr.	Montgomery, Ala.	S	5-10	150	21	Sr.	Miami
*Hays, Ed	PV	6-1	160	21	Sr.	Fernandina Beach	W-J	5-11	210	21	Jr.	Titusville
*Johnson, Craig	S	5-11	155	20	Jr.	Thomasville, Ga.	H	6-2	165	21	Sr.	Jacksonville
Johnson, Hutch	S	6-2	175	20	So.	Houston, Tex.	W	6-1	210	20	So.	Atlanta, Ga.
						Atlanta, Ga.						

FRESHMAN TRACK ROSTER

Name	Event	Ht.	Wt.	Age	Hometown	Ferry, Doug	MD	6-0	150	19	Eau Gallie
Atnew, Merrill	S	5-7	135	18	Jacksonville	Hohnadel, Bob	MD	5-8	140	19	Tampa
Butler, Morey	PV	5-11	178	18	Ft. Myers	Jaeger, Wayne	W	6-0	195	18	Haines City
Cato, Al	S	5-9	150	18	Sumner, Ga.	Maxwell, Bill	HJ	6-0	160	18	Cairo, Ga.
Connell, Buel	MD	5-10	154	19	Cairo, Ga.	Newman, Jim	MD	5-11	150	18	Palmetto
Ernst, Al	J	5-9	160	19	Edison, N.J.	Schatz, Steve	HJ	5-8	140	19	Albany, Ga.

*Denotes lettermen.
 KEY: S-Sprints; MD-Middle Distance; D-Distance; H-Hurdles; PV-Pole Vault; BJ-Broad Jump; HJ-High Jump; J-Javelin; W-Weights.

PAST TRACK RESULTS

1961	1957	1954	1951	1950	1949
(4-1)	(4-1)	(1-6)	(5-1)	(5-1)	(0-3)
102	89	84	28	35	49
71 1/2	Miss. Sou.	53 1/2	80 2/3	89 1/3	82
86	Georgia	53 1/2	80 1/3	100 1/3	60 1/2
61	Ca. Tech	53 1/2	80 1/3	86	34
104 1/3	Miami (Fla.)	38 1/2	82 1/2	75 1/2	Miss. College
464 5/6	Florida	38 1/2	85	109	70 1/2
239 1/6	239 1/6	60	436 5/6	495 1/6	244 1/2
(Won Piedmont Relays and Fla. AAU championships)		62	330 1/2	(Dixie Conference Champions)	
1960	1956	1953	1950	1949	
(4-0)	(7-1)	(3-3)	(5-1)	(0-3)	
95	89	85 1/3	35	49	
85 2/3	83 1/3	83 1/3	89 1/3	82	
79 1/2	87	72 1/2	100 1/3	60 1/2	
79 1/2	87	72 1/2	86	34	
339 2/3	92 3/4	55	75 1/2	70 1/2	
1959	64 1/3	65	86	82	
(3-1)	64 1/3	58	109	70 1/2	
90 1/3	41	408 1/3	436 5/6	279 5/6	
53	605 1/12	389 5/12	330 1/2	244 1/2	
108	1955	1952	330 1/2	244 1/2	
82 1/6	(5-1)	(6-1)	330 1/2	244 1/2	
333 1/2	101	72 1/3	330 1/2	244 1/2	
1958	67 1/3	52	330 1/2	244 1/2	
(4-0)	97 1/3	78 1/2	330 1/2	244 1/2	
101 1/3	58 2/3	66 1/2	330 1/2	244 1/2	
79	73	86	330 1/2	244 1/2	
74 1/15	68	88 2/3	330 1/2	244 1/2	
88	435 1/3	510 1/2	330 1/2	244 1/2	
342 2/5		402	330 1/2	244 1/2	
175 3/5		402	330 1/2	244 1/2	

TENNIS

Edward H. (Eddie) Cubbon, one of the most popular personalities in Florida State's athletic department, begins his first season as head tennis coach.

A 1932 graduate of West Virginia University and a native West Virginian, Eddie came to FSU in 1954 from Morris Harvey College in Charleston, W. Va., where he was director of athletics for four years. Cubbon headed the FSU athletic business office for several years before being named Director of Development in 1959.

Although Cubbon has an extensive background in administrative work, tennis coaching is right down his alley. In fact, Eddie has the distinction of being West Virginia's first varsity tennis coach—a post he held in 1933. He also guided the local Morgantown Tennis Club to an outstanding record during 1934-40, and coached the Mountaineer freshman basketball team during 1932-33.

From 1942 to 1945, Cubbon served in the U. S. Navy where he continued his work in athletics in connection with military training. He coached Naval tennis teams at Harvey Point, N. C., Guantanamo Bay, Cuba, and Corpus Christi, Tex. Eddie left the Navy a Lt. Commander and has continued to remain active in the Naval Reserve.

Cubbon has three lettermen returning from last year's team which compiled a 16-5 record. Of the two lettermen lost through graduation, one (Rebel Bellamy) was probably the best netter ever to play on a Seminole tennis squad. Seniors Paul Scarpa, Gordy Smith, and Ed Fasula are among the top prospects from this year's squad.

Roger Nichols, a tennis coach for more than 17 years who was the top pro at Cincinnati, Ohio during 1959-61, will serve as associate coach under Cubbon.

1962 TENNIS SCHEDULE

Date	Opponent	Site
March 8	Lamar Tech	Tallahassee
March 15-16	Georgia	Tallahassee
March 17	Pennsylvania	Tallahassee
March 19	Georgia Tech	Tallahassee
March 23-24	Navy	Jacksonville
March 26	Presbyterian	Tallahassee
March 29	Louisiana State	Tallahassee
March 31	Florida	Tallahassee
April 2	Furman	Tallahassee
April 3	Hope College	Tallahassee
April 4	Amherst	Tallahassee
April 7	Miami	Tallahassee
April 14	Cincinnati	Tallahassee
April 16	The Citadel	Charleston, S.C.
April 17	Presbyterian	Clinton, S.C.
April 18	Clemson	Clemson, S.C.
April 19	Furman	Greenville, S.C.
April 24	Clemson	Tallahassee
May 2	Rollins	Tallahassee
May 7	Florida	Gainesville

1962 FRESHMAN SCHEDULE

March 15-16	Georgia	Tallahassee
March 19	Georgia Tech	Tallahassee
March 31	Florida	Tallahassee
April 1	Hope College	Tallahassee
April 16	Concordia	Tallahassee
May 7	Florida	Gainesville

1962 TENNIS ROSTER

Name	Ht.	Wt.	Age	Class	Hometown
Berry, Bob	6-1	170	19	So.	Coral Gables
Dunlap, Craig	5-10	168	19	So.	Coral Gables
Dyer, Mike	6-4	205	19	So.	Windermere
*Fasula, Ed	5-10	165	24	Sr.	Syracuse, N.Y.
*Jameison, Jamie	6-0	175	21	Jr.	Coral Gables
John, Floyd	5-9	150	22	Sr.	Erie, Pa.
Oliver, Bob	5-9	150	19	So.	Pensacola
*Scarpa, Paul	5-10	160	23	Sr.	Mansfield, Ohio
*Smith, Gordy	5-10	160	23	Sr.	Charleston, S.C.

*Denotes Lettermen

FRESHMAN TENNIS ROSTER

Name	Ht.	Wt.	Hometown
Akir, John	6-0	150	Babson Park
Alcorn, Kenny	6-0	140	Winter Haven
Bartlett, Charles	5-9	160	Tampa
Bennett, Paul	5-10	138	S.Charl'ton, W.V.a
Dickey, Reggie	6-0	180	Auburndale
Dunson, Kenneth	5-8	140	Homestead
Fisher, Dick	5-10	135	Miami
Gurevitz, Allen	5-9	150	Hammond, Ind.
Newcomb, Dick	5-9	168	Cambridge, Md.
Suher, Matt	5-10	160	Springfield, Mass.
Storrie, Mike	5-9	142	Blue Mtn. Beach

FLORIDA STATE'S TENNIS HISTORY

Year	Coach	Captain	W	L	T	Pts.
1948	Loucks	Jim Deloach	9	4	0	78
1949	Loucks	Jim Costello	11	2	0	78
1950	Loucks	Herb Quay Larry Dickson	9	7	0	79
1951	Matherly	Larry Dickson	7	8	0	63
1952	Loucks	Tom Babione	9	5	0	71
1953	Loucks	Jack Eagan	15	2	0	119
1954	Pitchford	Hal Schaas	13	5	0	105
1955	Pitchford	Hal Schaas	10	6	0	86
1956	Pitchford	Hal Schaas	8	7	0	71
1957	Pitchford	Sonny Sellers	5	11	0	50
1958	Pitchford	Lex Hester	9	7	0	72
1959	Fowless	Lex Hester	14	6	0	109½
1960	Fowless	Rebel Bellamy	11	8	1	98½
1961	McCowan	Rebel Bellamy	16	5	0	131

TOTALS 146 83 1 111 1 794



EDWARD H. (EDDIE) CUBBON
Head Tennis Coach

PAST TENNIS RESULTS

Year	W	L	W/L	W	L	W/L	W	L	W/L	W	L	W/L	W	L	W/L	W	L	W/L	W	L	W/L
1961 (16-5)	7	8	7/8	Georgia	2	7	2	8	2/8	Rollins	1	0	1/0	0	7	0	7/0	Miami	9	2	9/2
	8	1	8/1	Georgia Tech	1	7	2	9	2/9	Miami	7	7	7/7	Mississippi State	3	3	3/3	Rollins	6	6	6/6
	8	2	8/2	Sou. Illinois	2	8	1	6	6/6	Auburn	0	3	0/3	Mississippi State	3	3	3/3	Alabama	54	54	54/54
	9	0	9/0	Auburn	0	6	1	3	3/3	Florida Southern	0	6	0/6	Florida	6	6	6/6	Florida			
	8	1	8/1	Navy	1	6	1	3	3/3	Louisiana State	1	0	1/0	Alabama	0	131	0/131	Alabama			
1960 (11-8-1)	3	7	3/7	Presbyterian	7	9	4	7	7/7	LSU	0	0	0/0	Concordia	0	0	0/0	Miami	9	4	9/4
	5	4	5/4	Georgia	4	5	0	9	4/9	Navy	0	3	0/3	Kentucky	0	3	0/3	Rollins	4	4	4/4
	9	0	9/0	Pensacola Navy	0	8	1	5	5/5	Amherst	4	4	4/4	Miss. State	4	4	4/4	Miss. State			
	5	4	5/4	Southern Illinois	4	4	4	4	4/4	Michigan State	5	5	5/5	Rollins	5	5	5/5	Rollins	72 1/2	72 1/2	72 1/2/72 1/2
	7	2	7/2	Minnesota	2	4	2	4 1/2	4 1/2/4 1/2	Michigan State	4	4	4/4	Georgia	4 1/2	4 1/2	4 1/2/4 1/2	Georgia			
	9	0	9/0	Miss. Southern	0	4	7	2	2/2	Miami	7	7	7/7	Florida	7	7	7/7	Florida			
1959 (14-6)	3 1/2	5 1/2	3 1/2/5 1/2	Louisiana State	5 1/2	6	3	7	7/7	Florida	2	4	2/4	Murray State	2	4	2/4	Rollins	5	8	5/8
	5	4	5/4	Georgia	4	8	3	9	3/9	Michigan State	1	1	1/1	Jacksonville U.	1	1	1/1	Miami	.8	.8	.8/.8
	0	9	0/9	Miami	9	6	3	8	8/8	Indiana	0	1	0/1	Pensacola Navy	0	1	0/1	Georgia	70 1/2	70 1/2	70 1/2/70 1/2
	4	2	4/2	Georgia Tech	2	8	1	5	5/5	Indiana	4	4	4/4	Georgia	4	4	4/4	Georgia			
	7	8	7/8	Southern Illinois	8	8	1	0	0/0	Howard	9	9	9/9	Georgia Tech	9	9	9/9	Georgia Tech			
	6	3	6/3	Southern Illinois	3	6	3	8	8/8	Florida	1	1	1/1	Stetson	1	1	1/1	Stetson			
	5	4	5/4	Georgia	4	6	1	8	8/8	Indiana	0	0	0/0	Florida	0	0	0/0	Florida	0	0	0/0
	5	7	5/7	Georgia Tech	7	6	3	9	9/9	Florida	3	9	3/9	Merced	3	9	3/9	Merced			
	5	4	5/4	Michigan State	4	1	1	8	8/8	Florida	0	72	0/72	Stetson	0	72	0/72	Stetson	70	70	70/70
	5	4	5/4	Michigan State	4	7	2	8	8/8	Mississippi State	7	7	7/7	Georgia	7	7	7/7	Georgia			
	8	1	8/1	Jacksonville State	0	0	8	1	1/1	Louisiana State	8	8	8/8	Georgia Tech	8	8	8/8	Georgia Tech			
	8	1	8/1	Howard	1	1	1	1	1/1	Rollins	8	8	8/8	Georgia Tech	8	8	8/8	Georgia Tech			
1957 (5-11)	0	8	0/8	Georgia	5	1	1	0	0/0	Florida	8	7	8/7	Rollins	9	7	9/7	Emory	2	2	2/2
	8	3	8/3	Merced	3	4	3	9	9/9	Murray State	3	9	3/9	Florida Southern	0	9	0/9	Emory	87	87	87/87
	3	6	3/6	Ga. Tech	6	0	2	6	6/6	Miami	9	50	9/50	Merced	3	50	3/50	Merced			
	3	6	3/6	Michigan State	6	2	2	2	2/2	Indiana	7	2	7/2	Georgia	7	2	7/2	Georgia			
	1	7	1/7	Duke	7	2	2	2	2/2	Florida	7	7	7/7	Georgia Tech	7	7	7/7	Georgia Tech			
1956 (8-7)	3	6	3/6	Georgia	6	0	9	0	0/0	Florida	9	2	9/2	Georgia Tech	9	2	9/2	Florida	7	7	7/7
	9	0	9/0	Ohio State	0	3	6	8	8/8	Indiana	6	7	6/7	Emory	1	7	1/7	Emory	64	64	64/64
	7	2	7/2	Southern Illinois	2	9	7	7	7/7	Emory	2	7	2/7	Florida Southern	2	7	2/7	Florida Southern			
	6	3	6/3	Georgia Tech	3	7	2	7	7/7	Merced	6	7	6/7	Merced	6	7	6/7	Merced			
	0	9	0/9	Miami	9	3	3	6	6/6	Georgia	6	6	6/6	Georgia	6	6	6/6	Georgia			

Year	W	L	W/L	W	L	W/L	W	L	W/L	W	L	W/L	W	L	W/L	W	L	W/L	W	L	W/L
1955 (10-6)	0	9	0/9	Presbyterian	9	3	4	1	1/1	Georgia Tech	4	8	4/8	Indiana	8	9	8/9	Emory	0	0	0/0
	9	0	9/0	Georgia	0	8	1	8	8/8	Florida Southern	1	8	1/8	Emory	1	8	1/8	Emory	54	54	54/54
	7	8	7/8	Auburn	1	0	9	8	8/8	Rollins	0	86	0/86	Auburn	0	86	0/86	Auburn			
	8	1	8/1	Ohio State	1	6	1	4	4/4	Stetson	5	5	5/5	Georgia Tech	5	5	5/5	Georgia Tech			
	3	6	3/6	Pensacola Navy	6	9	0	1	1/1	Mississippi	0	1	0/1	Pensacola Navy	8	1	8/1	Pensacola Navy			
1954 (13-5)	7	0	7/0	Tampa	0	5	4	7	7/7	Davidson	4	7	4/7	Concordia	0	8	0/8	Merced	1	1	1/1
	8	1	8/1	Miami	1	10	0	6	6/6	Georgia Tech	1	6	1/6	Georgia	3	7	3/7	Tampa	0	0	0/0
	1	8	1/8	Florida Southern	8	9	0	3	3/3	Stetson	0	3	0/3	Emory	1	6	1/6	Florida Southern	1	1	1/1
	10	0	10/0	Rollins	0	8	1	1	1/1	Emory	8	8	8/8	Georgia Tech	8	8	8/8	Florida Southern	51	51	51/51
	10	0	10/0	Stetson	0	2	2	2	2/2	LSU	8	1	8/1	Rollins	8	105	8/105	Rollins			
1953 (15-2)	6	8	6/8	Georgia	3	7	2	0	0/0	Kenyon	2	0	2/0	Rollins	9	1	9/1	Auburn	1	1	1/1
	8	1	8/1	Jacksonville (Ala.) State	1	8	1	9	9/9	Auburn	1	9	1/9	Valdosta State	0	9	0/9	Florida Southern	0	0	0/0
	1	8	1/8	Spring Hill	8	1	0	7	7/7	Merced	0	7	0/7	Georgia	1	119	1/119	Florida Southern	33	33	33/33
	1	8	1/8	LSU	8	9	0	7	7/7	Valdosta State	0	7	0/7	Emory	2	2	2/2	Emory			
	5	5	5/5	Loyola (N.O.)	4	9	0	9	9/9	Florida Southern	0	9	0/9	Merced	0	9	0/9	Merced			
1952 (9-5)	3	6	3/6	Loyola (N.O.)	5	6	3	9	9/9	Georgia	3	9	3/9	Valdosta State	0	9	0/9	Orlando AFB	0	0	0/0
	5	4	5/4	Merced	4	0	9	0	0/0	Michigan	7	0	7/0	Miami	9	2	9/2	Rollins	7	7	7/7
	5	4	5/4	Concordia (St. Louis)	0	0	9	0	0/0	Indiana	9	9	9/9	Florida Southern	2	71	2/71	Rollins	49	49	49/49
	6	3	6/3	Merced	3	3	0	9	9/9	Valdosta State	0	9	0/9	Florida Southern	0	9	0/9	Rollins			
1951 (7-8)	3	5	3/5	Georgia	5	3	6	7	7/7	Davidson	6	7	6/7	Emory	2	9	2/9	Florida Southern	0	0	0/0
	1	8	1/8	Concordia (St. Louis)	1	1	1	2	2/2	Loyola (N.O.)	5	2	5/2	Jax Navy	6	63	5/63	Florida Southern	64	64	64/64
	5	1	5/1	Miami	8	2	7	7	7/7	Indiana	7	7	7/7	Merced	2	63	2/63	Merced			
	9	0	9/0	Florida Southern	0	8	1	0	0/0	Emory	1	0	1/0	Miami	9	9	9/9	Miami			
	0	9	0/9	Rollins	9	6	3	6	6/6	Merced	3	6	3/6	Emory	9	9	9/9	(Dixie Conference Champions)			
1950 (9-7)	0	9	0/9	Pensacola Navy	9	9	0	7	7/7	Florida Southern	0	7	0/7	Stetson	3	0	3/0	Chapultepec Sporting Club	9	9	9/9
	7	0	7/0	Davidson	9	9	0	6	6/6	Merced	0	6	0/6	Florida Southern	1	0	1/0	Chapultepec Sporting Club			
	9	0	9/0	Mississippi College	0	4	2	1	1/1	Georgia	5	6	5/6	Stetson	3	79	5/79	Stetson	60	60	60/60
	9	0	9/0	Merced	0	4	2	1	1/1	Emory	5	6	5/6	Birm. Southern	6	6	6/6	Emory			
	3	8	3/8	Emory	1	1	1	1	1/1	Presbyterian	7	7	7/7	Presbyterian	7	7	7/7	(Dixie Conference Champions)			
	3	8	3/8	Indiana	6	6	6	6	6/6	Indiana	6	6	6/6	Presbyterian	7	7	7/7	(Dixie Conference Champions)			
1949 (11-2)	6	5	6/5	Merced	1	5	4	4	4/4	Florida Southern	4	4	4/4	Stetson	5	6	5/6	Stetson	3	3	3/3
	9	1	9/1	Oglethorpe	1	1	1	3	3/3	Mississippi College	3	5	3/5	Emory	2	78	3/78	Emory	30	30	30/30
	5	0	5/0	Mississippi College	0	7	2	8	8/8	Mississippi College	2	8	2/8	Merced	1	78	2/78	Merced			
	5	0	5/0	Millsaps	0	3	3	5	5/5	Florida Southern	5	5	5/5	Merced	1	78	5/78	Merced			
	5	0	5/0	Charleston College	3	3	3	5	5/5	Florida Southern	5	5	5/5	Merced	1	78	5/78	Merced			
1948 (9-4)	3	6	3/6	Stetson	6	9	0	1	1/1	Georgia (Savannah Br.)	0	1</									