

FLORIDA STATE'S 1961 FOOTBALL SCHEDULE

Sept. 16	George Washington	TALLAHASSEE	8:00 PM EST
Sept. 30	Florida	Gainesville	2:00 PM EST
Oct. 7	Mississippi	Oxford	2:00 PM CST
Oct. 14	Georgia	TALLAHASSEE	8:00 PM EST
Oct. 21	Richmond	TALLAHASSEE	8:00 PM EST
Oct. 28	Virginia Tech	Blacksburg	2:00 PM EST
Nov. 4	Kentucky	Lexington	2:00 PM CST
Nov. 11	The Citadel	TALLAHASSEE	8:00 PM EST
Nov. 18	Miss. Southern (Homecoming)	TALLAHASSEE	2:30 PM EST
Nov. 25	Houston	Houston	2:00 PM CST



-track



-tennis



-golf



-baseball

florida state university - SPRING SPORTS - 1961

Spring Sports

Florida State

University • 1961

baseball

golf

tennis

track

1961 SPRING SPORTS

This Spring Sports Brochure has been prepared to aid the press, radio, and television in its coverage of Florida State University spring sports events. Should you desire additional information or services, contact: **PAT HOGAN**, Director of Sports Publicity, Florida State University, Tallahassee, Florida. (Telephone 222-8000, Ext. 2095).

FLORIDA STATE UNIVERSITY AT A GLANCE

Name.....The Florida State University
 Location.....Tallahassee, Florida (50,000)
 President.....Dr. Gordon W. Blackwell
 Vice-President.....Dr. Milton W. Carothers
 Enrollment.....9,019
 Conference.....Independent
 Nickname of Teams.....Seminoles
 Colors.....Garnet and Gold

THE ATHLETIC STAFF

Vaughn Mancha	Director of Athletics	Vince Gibson	Assistant Football Coach
Danny Litwhiler	Baseball Coach	Charlie LaPradd	Freshman Football Coach
Bill Odeneal	Golf Coach	Bud Kennedy	Basketball Coach
Bubba McGowan	Tennis Coach	Bim Stults	Swimming Coach
	and Assistant Football Coach	Don Fauls	Trainer
Mike Long	Track Coach	Tillman Dixon	Equipment Manager
Bill Peterson	Head Football Coach	Ronald Melton	Athletic Business Manager
Dick Flowers	Assistant Football Coach	Eddie Cubbon	Director of Development
Bob Harbison	Assistant Football Coach	Pat Hogan	Sports Publicity Director
John Coatta	Assistant Football Coach	Neil LaBar	Assistant Sports Publicity Director
Ken Meyer	Assistant Football Coach	Jim Martin	Sports Photographer
Don James	Assistant Football Coach		

THE ATHLETIC COMMITTEE

Chairman, Mode Stone; Donald Loucks, George Fortin, Coyle Moore, J. M. Plant, Elston Roady, Mary Alexander.

THE DIRECTOR OF ATHLETICS



VAUGHN MANCHA
 Director of Athletics

Whenever Alabama disciples gather to talk football, the conversation invariably gets around to Vaughn Hall Mancha, a living symbol of the Crimson Tide's great teams of the mid-forties.

Mancha is practically as legendary in Alabama football circles as Don Hutson and Harry Gilmer. For Florida State University's personable director of athletics was a 240-pound All-Southeastern Conference center at Alabama for four seasons (1944-47) and everyone's All-America center.

Mancha was a solid choice to return to Florida State as athletic director in November, 1959, ending a three-year absence from the FSU campus. He gained wide popularity with Florida State officials and fans while serving as line coach at FSU from 1952 through 1956. During that time, Mancha was credited with the recruitment of a number of players that led FSU to success.

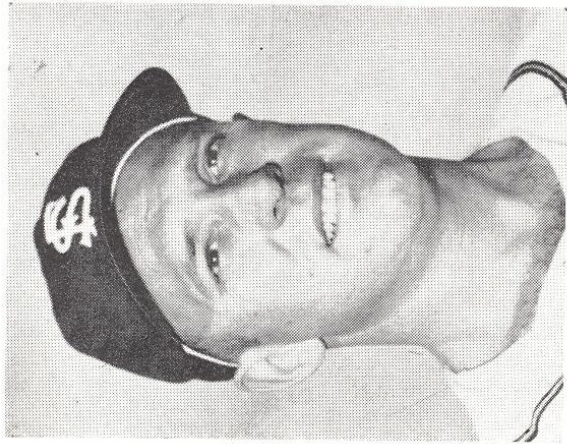
Born in Sugar Valley, Ga., in 1921, Vaughn entered Alabama in 1944. He was issued Jersey No. 41, a number that Alabama's football opponents tried to dodge for the next four years. Mancha earned a B.S. Degree in Education at Alabama in 1947 and played one season of professional football with the old Boston Yankees in 1948. In 1949, he returned to Alabama to earn a Masters Degree in Education.

Turning to the coaching field, Mancha put in a highly-successful three-year tenure as coach, head of the Department of Physical Education, and athletic director at Livingston (Ala.) State.

Mancha first came to Florida State in 1952 as assistant football coach under Dr. Don Veller and as an instructor of Physical Education.

In 1957, Mancha went to Columbia University as an assistant football coach and associate member of the Department of Physical Education, positions he held for three years. While at Columbia, he completed all work for the Doctorate with the exception of the dissertation.

Married to the former Sybil Little of Birmingham, he is the father of three children: Clare, 11; Nan, 9, and Vaughn, Jr., 2.



DANNY LITWHILER
Head Baseball Coach

BASEBALL

On a warm, January day at St. Petersburg's Al Lang Field in 1959, former baseball greats from all corners of the nation gathered for the fourth annual Oldtimers' game.

It was a scoreless duel until the bottom of the sixth inning, when a husky National League outfielder stepped to the plate. He was Florida State's Danny Litwhiler, who promptly settled the issue with a booming home run out of the park.

That game-winning smash is typical of Litwhiler's determination, as a player and as a molder of players.

Danny, who serves on the Executive Committee of the American Assn. of College Baseball Coaches, has been described as one of college baseball's most imaginative and dynamic coaches. When he came to Florida State seven years ago it was his expressed desire to put the Seminoles out front in the collegiate baseball scramble.

In six seasons, Litwhiler's Seminoles have won 119 games while losing only 47, appearing in four NCAA District playoffs and one College World Series (1957). It adds up to a .717 percentage, a championship pace in anybody's league.

There have been extra measures of success. During the past few seasons, scores of Seminole players have signed with major league clubs. One of Litwhiler's prodigies, 145-pound shortstop Dick Howser of West Palm Beach, was named to the NCAA's first-team All-America squad in both 1957 and

1961 BASEBALL SCHEDULE

Date	Opponent	Site
March 15-16	Georgia	Tallahassee
March 21-22	Auburn	Tallahassee
March 24-25	Navy	Jacksonville
March 27-30	Duke	Tallahassee
March 31	{ North Carolina vs. Duke { North Carolina vs. FSU	Tallahassee
April 1	{ Duke vs. Western Michigan { North Carolina vs. FSU	Tallahassee
April 3	{ Florida vs. FSU { Western Mich. vs. Florida	Tallahassee
April 4	{ Florida vs. FSU { FSU vs. Western Mich.	Tallahassee
April 5	Western Michigan	Tallahassee
April 8	Georgia Southern (2)	Collegeboro, Ga.
April 14-15	Florida Southern	Lakeland
April 17-18	Miami	Miami
April 21-22	Georgia	Athens, Ga.
May 8-9	Georgia Southern	Tallahassee
May 12-13	Auburn	Auburn, Ala.

1958. Howser appears a good bet for a starting shortstop role with the Kansas City Athletics this season. In 1959, FSU's Bob Clem won a second-team All-America spot as a second baseman.

Litwhiler has the perfect background to be a solid baseball coach. He built up a storehouse of ideas during his major league playing career with the St. Louis Cardinals, Philadelphia Phillies, Cincinnati Reds, and the old Boston Braves.

Danny went down in the books for several outstanding performances before retiring as an active player in 1950. He batted safely in 21 straight games in his first major league season. He belted a home run in every National League park in 1941.

In 1942 he became the first major league player to play a complete errorless season. He handled 317 chances in 151 games that year and over a period of two seasons set a record of playing 187 consecutive games without an error.

The glove Litwhiler used in that string is retired in baseball's Hall of Fame.

In 1942 and 1943 Danny tied a National League record for the most years (two) leading in fielding percentage by an outfielder appearing in 100 or more games.

Litwhiler, 44, was born in Ringtown, Pa., and is a graduate of Bloomsburg (Pa.) State Teachers College.

After retiring as an active player, Danny coached with Cincinnati in 1951 and has managed minor league clubs at Fargo, N.D.; Wilkes-Barre, Pa.; Jamestown, N.Y., and Duluth, Minn.

ALL-TIME BASEBALL RECORDS

Best season won and lost record (1956)	24-5
Most games won, season, (1956)	24
Most games lost, season, (1959)	11
Most runs scored, season, (1959)	258
Most runs allowed, season, (1959)	166
Most runs scored, game, (vs. Jacksonville, Ala. State, 1954)	24
Most runs allowed, game, (vs. Clemson, 1959)	24
Most hits, season, (1959)	291
Most 2B hits, season, (1959)	41
Most 3B hits, season, (1958)	20
Most home runs, season, (1957 and 58)	16
Most runs batted in, season, (1959)	180
Most stolen bases, season, (1958)	67
Most double plays, season, (1960)	24
Longest winning streak (1958)	13
Longest losing streak (1959)	4

INDIVIDUAL RECORDS

Best batting average, season (Bob Clem, 1959)	436
Most hits, season (Bob Clem, 1959)	44
Most 2B hits, season (Bob Trowbridge, 1952, and Neil Martin, 1959)	9
Most 3B hits, season (Bob Hudson, 1953, and Clem, 1960)	5
Most home runs, season (Fred Twomey, 1955, and Jack Dull, 1959)	6
Most runs batted in, season, (Dull, 1959)	37
Most walks, season, (Martin, 1959)	38
Most times struck out, season (Carlee Hendrix, 1956, and Martin, 1959)	23
Most stolen bases, season (Owen McCarron, 1958)	16
Most putouts, season (Charlie Rodgers, 1959)	238
Most assists, season (PH Hunt, 1955)	90
Most errors, season (Dale Koch, 1959)	19
Best pitching record, season (Max Long, 1956)	7-0
Most pitching wins, season (Frank Slusser, 1958, and Frank Davis 1959 and 1960)	8
Most pitching wins, career (Davis, 1959-60)	16
Most strikeouts, game (Tony Avitable vs. Furman, 1956)	25
Most strikeouts, season (Avitable, 1956)	112
Most strikeouts, career, (Tom Garcia, 1955-56-57-58)	145
Most bases on balls, season (Ed Lockard, 1951)	51
Most bases on balls, career (Lockard, 1950-53)	125

FLORIDA STATE'S BASEBALL HISTORY

YEAR	COACH	CAPTAIN	W	L	T	RUNS	OPP.	
1948	Armstrong	Ron Nettles	9	8	0	101	121	
1949	Armstrong	Sam Cox	11	8	0	126	103	
1950	Armstrong	Bob Trowbridge	11	7	0	122	104	
1951	Armstrong	Augie Pompelia	13	6	0	161	97	
1952	Matherly	Bob Trowbridge	17	4	0	158	72	
1953	Matherly	Cooter Mills	13	10	1	156	111	
1954	Matherly	Bob Hudson	14	9	0	164	101	
1955	Litwhiler	{ Billy Campbell Bob Hudson	17	6	0	189	98	
1956	Litwhiler	Max Long	24	5	0	244	121	
1957	Litwhiler	Carlee Hendrix	22	9	0	232	120	
1958	Litwhiler	Dick Howser	21	7	0	198	104	
1959	Litwhiler	Dale Koch	22	11	0	258	166	
1960	Litwhiler	Ray Bazzell	13	9	0	183	136	
			TOTALS	207	99	1	2292	1454

1961 BASEBALL ROSTER

NAME	POS.	B	T	HT.	WT.	AGE	CLASS	HOMETOWN
Bondank, Phil	P	L	L	5-7	163	20	So.	St. Petersburg
Bowler, Pat	IF	R	R	5-9	165	19	So.	Alcoa, Tenn.
*Daniel, Jim	P	R	R	6-4	190	21	Sr.	Atlanta, Ga.
*Davis, Frank (Co-Captain)	P	R	R	6-0	170	22	Sr.	Miami
*Dull, Jack (Co-Captain)	IF	R	R	6-0	185	21	Sr.	Tallahassee
Echols, Frank	P	R	R	6-2	178	19	So.	Tallahassee
Elliott, Gary	CF	R	R	5-10	162	19	So.	Quincy
Feely, Eddie	2B	R	R	5-7	169	19	So.	Gainesville
Ferguson, George	IF	R	R	5-11	167	21	Jr.	West Palm Beach
French, Doug	IF	R	R	5-9	160	20	Jr.	Elmira, N. Y.
Howell, Bill	OF	R	R	5-9	165	20	Jr.	Winter Park
Hutchison, George	C	L	R	6-0	185	20	So.	Manchester, Ia.
Jane, John	OF	R	R	5-9	175	20	So.	West Palm Beach
Johnston, Gordon	C	R	R	5-10	180	21	So.	West Palm Beach
Krausche, Charlie	P	L	L	6-1	190	19	So.	Tallahassee
Long, Charlie	P	R	R	6-4	190	19	So.	Tallahassee
*Madison, Rick	P	R	R	5-11	165	21	Sr.	Louisville, Ky.
*Madison, Bob	OF	R	R	6-1	170	19	So.	Atlanta, Ga.
*Mangin, Harold	IF	R	R	5-11	175	23	Jr.	Atlanta, Ga.
*Martin, Neil	LF	L	L	5-7	170	21	Sr.	Willow Grove, Pa.
*McShane, Ray	P	L	L	6-2	188	20	Jr.	St. Petersburg
Pitchford, Keith	P	L	R	6-2	195	20	Jr.	West Palm Beach
*Ross, Jack	P, OF	L	L	6-0	180	20	Jr.	Tallahassee
Sherman, Bob	C	R	R	6-0	200	18	So.	Miami
Smith, Dwight	OF	L	R	5-11	190	19	So.	New Rochelle, N. Y.
*Spitzer, Kyle	IF	L	L	5-10	155	21	Jr.	St. Augustine
Stangland, Bill	P	L	L	6-1	170	20	Jr.	Aruba, N. A.
Teagle, Buddy	IF, C, OF	R	R	6-4	224	19	So.	Wolf Lake, Ind.
Tracy, John	IF, OF	R	R	6-0	210	21	So.	West Palm Beach
Tucker, Ed	P	R	R	6-3	190	21	So.	Wyandotte, Mich.
Tucker, Jerry	P	R	R	5-11	180	21	Sr.	Aruba, N. A.
*Walker, Doug	IF	L	L	6-2	195	21	Sr.	Birmingham, Ala.
*Walker, Jimmy	1B	L	L	5-10	160	20	Jr.	Fairfax, Va.
Zimmerman, Roger	RF	L	L	5-10	180	23	So.	Tampa
*Denotes letterman.	SS	R	R	6-1	180	23	So.	Walkersville, Md.

1960 BATTING

PLAYER, POS.	G	AB	R	H	2B	3B	HR	TB	SB	BB	SO	RBI	Avg.
French, 2b	9	5	3	4	0	0	0	4	0	2	1	1	.800
Benson, 1b	7	7	3	4	0	0	0	6	0	0	0	0	.571
J. Ross, lf-p	10	18	2	7	0	0	0	7	0	3	1	0	.389
Clem, cf	22	94	23	36	7	5	3	62	10	14	11	24	.383
Bazzell, 2b	22	87	28	31	4	1	2	43	8	21	3	16	.356
White, rf	22	89	14	31	6	1	2	45	3	11	10	17	.348
Walker, 1b	22	84	17	29	5	2	0	38	0	13	10	17	.345
McCormick, lf	16	32	13	11	2	0	2	19	3	1	4	12	.344
Walbolt, lf	5	3	2	1	0	0	0	1	0	1	1	0	.333
H. Ross, c	12	29	9	9	3	0	0	12	1	13	4	4	.310
Westendick, c	15	44	11	13	2	0	2	21	2	10	6	8	.295
Dull, 3b	21	82	18	23	2	3	4	43	3	11	12	15	.280
Lanford, ss	22	79	14	22	0	2	0	26	1	8	11	10	.278
Spitzer, ss	12	12	3	3	0	0	0	3	0	1	3	2	.250
McShane, p	8	8	1	2	0	0	0	2	0	0	3	1	.250
Davis, p	13	30	7	6	1	0	0	7	0	2	5	2	.200
Daniel, p	7	15	2	3	0	0	0	3	0	0	0	4	.200
Hohne, p	9	5	1	1	0	1	0	3	0	0	2	3	.200
Slaton, 1b	7	5	1	1	0	0	0	1	1	3	3	0	.200
King, lf	13	36	3	7	1	0	0	8	0	5	8	6	.194
Madison, lf	13	25	7	4	1	0	0	5	0	3	5	3	.160
Nelson, p	6	4	0	0	0	0	0	0	0	0	1	0	.000
Others	13	3	1	0	0	0	0	0	0	0	1	0	.000
FSU TOTALS	22	796	183	248	34	16	15	359	32	122	109	142	.312
OPPONENTS	22	760	136	193	22	5	9	252	13	102	159	116	.254

1960 PITCHING RECORDS

PLAYER	G	CG	IP	H	R	ER	ERA	BB	SO	W	L	Pct.
Davis	13	4	80	2/3	77	34	2.24	12	67	3	3	.727
Hohne	9	0	18	2/3	17	17	8.89	13	15	1	1	.500
McShane	0	0	21	1	17	13	5.86	13	18	1	1	.500
Daniel	0	0	39	3	35	22	7.79	24	27	3	3	.750
Nelson	0	0	17	1/3	20	20	10.63	18	18	3	3	.250
Benson	0	0	6	6	6	6	9.00	6	0	0	0	.000
J. Ross	0	0	4	2/3	6	6	9.63	3	3	0	0	.000
Others	7	0	13	13	14	14	11.17	13	0	0	0	.000
FSU TOTALS	22	4	195	1/3	193	136	92	4.24	102	159	13	.591
OPPONENTS	22	8	191		248	183	130	6.13	122	109	9	.409

1960 FIELDING

PLAYER	PO	A	E	Pct.
Benson, 1b	10	2	0	1.000
J. Ross, p-lf	9	1	0	1.000
Madison, lf	9	0	0	1.000
Brown, c	6	0	0	1.000
McShane, p	1	5	0	1.000
French, 2b	3	1	0	1.000
Slaton, 1b	3	0	0	1.000
Walbolt, lf	3	0	0	1.000
Hohne, p	1	2	0	1.000
Nelson, p	0	2	0	1.000
Ferrari, p	1	0	0	1.000
H. Ross, c	71	5	2	.974
Westendick, c	99	8	5	.955
Walker, 1b	148	4	8	.950
White, rf	27	7	2	.944
King, lf	12	2	1	.933
Fazzell, 2b-3b	56	54	8	.932
Clem, cf	53	1	5	.915
McCormick, lf	10	0	1	.909
Davis, p	3	22	3	.893
Dull, 3b-2b	25	39	9	.877
Lanford, ss	29	55	13	.866
Rodgers, 1b	4	0	1	.800
Daniel, p	1	6	2	.778
Spitzer, ss	2	10	4	.750
Turner, p	0	0	1	.000
FSU TOTALS	586	226	65	.926
OPPONENTS	573	233	66	.923

PAST BASEBALL RESULTS

1960	(13-9)	1960
6 Miami	11 Auburn	8 Florida
10 Miami	8 Navy	13 Florida
10 Georgia	4 Georgia	16 Miami
7 Ohio State	11 Ga. Southern	9 Miami
4 Auburn	2 Miss. College	8 Auburn
22 Auburn	2 Miss. College	183
FSU TOTALS	22	183
OPPONENTS	22	136

1959	(22-11)	1959
14 Camp Lejeune	21 Stetson	4 Georgia
11 Camp Lejeune	9 North Carolina	4 Auburn
10 Camp Lejeune	16 Illinois	8 Auburn
8 Auburn	8 Florida	3 George Washington
11 Auburn	5 Michigan State	2 Clemson
1 Georgia	2 Duke	24 Georgia Tech
16 Georgia	2 Western Michigan	16 Georgia Tech
17 Stetson	4 Duke	0 Clemson
	2 Western Michigan	5
		258
		166

1958	(21-7)	1958
3 Auburn	3 Notre Dame	15 Ga. Teachers
7 Auburn	3 Wisconsin	17 Ga. Teachers
3 Knoxville (SAL)	7 Florida	3 George Washington
12 Wisconsin	1 Florida	1 Florida
5 Notre Dame	4 Miami	5 Clemson
14 West Virginia	2 Miami	8
7 Wisconsin	14 West Virginia	198
	7 Wisconsin	104

1957

(22-9)
8 Auburn
10 Auburn
15 Stetson
2 Stetson
3 Michigan State
7 Yale
2 Duke
7 Michigan State

11 Yale
1 Duke
7 Ithaca
21 Ithaca
2 Florida
4 Florida
15 Miami
3 Miami
21 Miami
13 Ga. Teachers

8 Ga. Teachers
9 Auburn
10 Auburn
4 Fla. Southern
10 Fla. Southern
15 Miami
1 Miami
3 Rollins
5 Ga. Teachers

3 Duke
6 Duke
1 Duke
0 Penn State
3 Connecticut
232
120

1957

1956

(24-5)
6 Furman
20 Furman
6 Ga. Teachers
10 Ga. Teachers
9 Fla. Southern
8 Fla. Southern
11 Indiana
14 Indiana

3 North Carolina
5 Wisconsin
12 Notre Dame
12 West Virginia
13 Illinois
4 Wisconsin
12 Illinois
3 Wisconsin
1 Wisconsin

2 Florida
5 Florida
8 Cincinnati
8 Stetson
23 Stetson
0 Georgia
13 Miami
2 Miami
5 Ga. Teachers
9 Georgia

6 Georgia
7 Rollins
9 Rollins
244
121

1956

1955

(17-6)
4 Fla. Southern
15 Fla. Southern
17 Furman
6 Furman
5 LSU
9 Georgia

6 Georgia
10 Amherst
7 Amherst
7 Stetson
16 Stetson
3 Wisconsin
2 Wisconsin
7 Wisconsin

7 Rollins
3 Rollins
4 Miami
4 Miami
10 Ga. Teachers
12 Ga. Teachers
14 Georgia

3 Georgia
6 Stetson
14 Stetson
189
98

1955

1954

(14-9)
Jax Navy
Jax Navy
Tallahassee
Rebels (pro)
Georgia
7 Tennessee

2 Auburn
Davidson
24 Jax (Ala.) State
2 Tallahassee
Rebels (pro)
11 Amherst
10 Amherst

4 Duke
2 Duke
7 Georgia
4 Stetson
4 Stetson
7 Ga. Teachers
3 Stetson

8 Duke
13 Tampa
7 Tampa
10 Fla. Southern
16 Fla. Southern
164

1954

1953

(13-10-1)
Ga. Teachers
Ga. Teachers
Georgia
Jax (Ala.) Teachers
1 Southeastern La.
5 Southeastern La.

5 Amherst
4 Amherst
0 Rollins
2 Rollins
8 Tampa
1 Tampa
14 Stetson

8 Stetson
14 Cincinnati
4 Jax Navy
4 Jax Navy
2 Ga. Teachers
15 Ga. Teachers
6 Georgia

0 Stetson
9 Stetson
2 Fla. Southern
15 Fla. Southern
156
111

1953

1952

(17-4)
Kenyon
Kenyon
Georgia
Georgia
4 Amherst

1 Loyola (La.)
7 Loyola (La.)
3 Miami
7 Miami
2 Stetson
11 Stetson

7 Tampa
0 Tampa
16 Tampa
13 Tampa
9 Fla. Southern
5 Fla. Southern

22 Fla. Southern
2 Rollins
2 Rollins
4 Stetson
158
72

1952

1951

(13-6)
Tennessee
9 Georgia
2 Miami
13 Miami
15 Fla. Southern

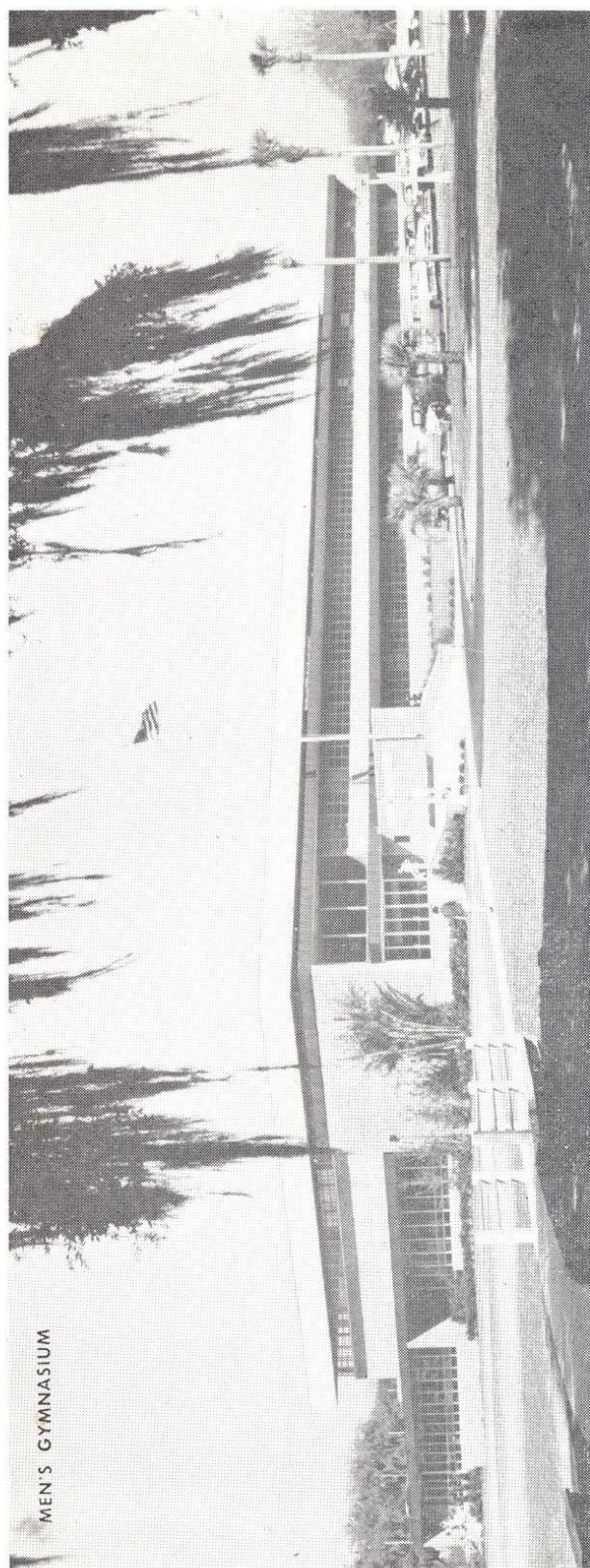
13 Fla. Southern
22 Miss. College
5 Miss. College
11 Rollins
16 Tallahassee
6 Citizens (pro)

0 Stetson
2 Stetson
8 Georgia
0 Georgia
6 Fla. Southern
10 Miss. College

7 Miss. College
8 Stetson
5 Stetson
161
97

1951

1950		(11-7)		10	Fla. Southern	6	12	Tampa	3	11	Mercer	7	1950
11	Miss. College	6	3	Bradley	2	3	Mercer	1	—	—	—	—	
13	Miss. College	4	1	Bradley	10	12	Mercer	4	122	—	—	104	
2	Rollins	14	0	Stetson	5	10	Tampa	1	—	—	—	—	
4	Rollins	6	8	Stetson	6	7	Tampa	9	—	—	—	—	
2	Fla. Southern	4	7	Tampa	6	6	Mercer	10	—	—	—	—	
1949		(11-8)		10	Millsaps	8	8	Stetson	9	1	Fla. Southern	3	1949
7	Mississippi	3	3	Fla. Southern	5	8	Tampa	7	1	Fla. Southern	3	—	
6	Mississippi	5	8	Fla. Southern	10	10	Tampa	4	—	—	—	—	
3	Mercer	8	5	Miss. College	4	6	Mercer	1	126	—	—	103	
5	Oglethorpe	7	11	Miss. College	6	2	Stetson	4	—	—	—	—	
18	Miss. College	13	10	Stetson	1	4	Stetson	2	—	—	—	—	
1948		(9-8)		6	Miss. College	5	2	Troy State	3	5	Rollins	8	1948
6	Miss. College	0	6	Miss. College	7	5	Ga. Teachers	2	2	Rollins	8	—	
3	Miss. College	13	14	Mercer	12	12	Ga. Teachers	8	6	Troy State	5	—	
5	Rollins	20	5	Middle Georgia	4	7	Middle Georgia	6	—	—	—	—	
5	Rollins	8	4	Ga. (Savannah)	9	8	Ga. (Savannah)	3	101	—	—	121	



The Men's Gymnasium is named for a former FSU athlete, Robert Tully.

GOLF

Bill Odeneal has enjoyed just about every success a coach could want in his few years, but he is always looking for a new challenge.

This season the challenge will be in keeping Florida State's highly-regarded golf team topside in the nation's collegiate circle. In the past five years, Seminole golfers finished 5th (1956), 4th (1957), and 14th (1958) in NCAA tournament action. FSU did not compete in the NCAA tournament the past two seasons.

Odeneal is in his fourth year as FSU's golf coach. His Seminole volleyball teams won three national collegiate titles before the sport was dropped from the intercollegiate athletic program in 1957.

Two lettermen, Phil Fagan and Wayne Timberman, have graduated. But Odeneal has some outstanding returnees to balance the loss. Lettermen returning are Dick Dunlap, Ashley Fraleigh, Rock Malara, Frank Malar, Dave Onstad, and Downing Gray.

Facing a tough schedule, the Seminoles hope to improve on last year's 11-8-1 record in dual matches.

A fine golfer and all-around athlete in his own right, Odeneal was graduated from Springfield College with a BS and a Masters. During his undergraduate days, he lettered in track and football and was a member of the Volleyball Club.

Odeneal also was a member of the Golf Club and was twice winner of the annual Senior-Alumni golf trophy at Springfield. In addition to his athletic activities, he was president of the junior class, member of Alpha Phi Omega (national scouting fraternity) and Sigma Delta Psi (honorary athletic fraternity).



BILL ODENEAL
Head Golf Coach

1961 GOLF SCHEDULE

DATE	OPPONENT	SITE
March 6	Florida	Gainesville
March 15	Rollins-Florida	Ocala
March 16-18	Florida Intercollegiate	Ocala
March 20	Vanderbilt-Georgia Tech	Tallahassee
March 21	Vanderbilt-Augustana (Ill.)	Tallahassee
March 22	Vanderbilt	Tallahassee
March 24-25	Navy-Miami-Jax. U.	Jacksonville
March 29-April 1	Alt-American Invitational	Houston
April 6	Kentucky	Tallahassee
April 8	Florida	Tallahassee
April 14-15	Alabama-Auburn	Dothan
April 18	Florida Southern	Tallahassee
April 27-29	Southern Intercollegiate	Athens

1961 FRESHMAN SCHEDULE

March 6	Florida	Gainesville
March 16-18	Florida Intercollegiate	Ocala
March 20	Georgia Tech	Tallahassee
March 27	Moody AFB	Tallahassee
March 29-April 1	Miami Invitational	Miami
April 5	Central Florida JC	Tallahassee
April 8	Florida	Tallahassee
April 11	Pensacola JC	Tallahassee
April 12	Jacksonville U.	Tallahassee
April 17	Turner AFB	Tallahassee

1961 GOLF ROSTER

HT.	WT.	AGE	CLASS	HOMETOWN
6-0	160	27	Jr.	Clewiston
6-2	175	19	So.	Pompano Beach
6-1	160	21	Jr.	Valdosta, Ga.
5-11	160	21	So.	Pensacola
5-9	150	21	So.	Madison
5-10	140	22	So.	Madison
5-9	150	22	So.	Pensacola
5-11	160	19	Jr.	Corning, N.Y.
6-2	160	18	So.	Pompano Beach
6-0	160	19	So.	Jacksonville
5-9	163	24	So.	Elmsford, N.Y.
5-8	150	22	Jr.	Syracuse, N.Y.
6-4	185	22	Jr.	Miami
5-8	150	19	So.	Springfield, O.
5-10	150	20	Jr.	Ithaca, N.Y.
5-9	165	21	So.	Neptune Beach

* Denotes Letterman.

FRESHMAN GOLF ROSTER

HT.	WT.	AGE	HOMETOWN
6-3	175	18	Jacksonville
5-9	160	18	Pensacola
5-10	160	18	Bath, N.Y.
6-0	165	18	Tallahassee
5-10	175	18	Bowling Green, O.

1960 GOLF RESULTS

(9-4-2)

HT.	WT.	AGE	CLASS	HOMETOWN
15	17 1/2	13	So.	Florida
13	17 1/2	13	So.	Rollins
13	17 1/2	13	So.	Georgia Tech
13	17 1/2	13	So.	Georgia
13	17 1/2	13	So.	LSU
13	17 1/2	13	So.	Navy
13	17 1/2	13	So.	Jacksonville U.
13	17 1/2	13	So.	Florida
13	17 1/2	13	So.	Miami
13	17 1/2	13	So.	Fla. Southern
13	17 1/2	13	So.	Rollins
13	17 1/2	13	So.	Spring Hill
13	17 1/2	13	So.	Alabama
13	17 1/2	13	So.	Auburn
13	17 1/2	13	So.	Auburn
13	17 1/2	13	So.	Average

PAST GOLF RESULTS

Year	Score	Location	Score	Location	Score	Location	Score	Location
1960	12	(9-4-2) Florida Rollins	15	Navy Jacksonville U.	2	Spring Hill Alabama	13	1960
	9 1/2	Georgia Tech	17 1/2	Miami	0	Auburn	11 1/2	
	16	Georgia	18 1/2	Florida Southern	21 1/2	Auburn	9	
	15	LSU	13 1/2	Rollins	8 1/2	Auburn	9 1/2	
	13 1/2				22		179 1/2	
1959	21 1/2	(8-5-1) Florida Rollins	5 1/2	Auburn Florida	6	W. Illinois Fla. Southern	6	1959
	13 1/2	Louisiana State	13 1/2	Rollins	22	Auburn	11 1/2	
	12 1/2	Georgia	14 1/2	Spring Hill	3	Alabama	0	
	18 1/2	Georgia Tech	8 1/2	Auburn	16	Totals	141	
	21		6		15 1/2			
1958	20	(10-7) Wisconsin Florida	7	Florida Georgia	9 1/2	Georgia Auburn	21 1/2	1958
	8	Florida	19	Spring Hill	16	Rollins	8 1/2	
	24	Moody AFB	3	Jax Navy	15	Fla. Southern	13	
	27	Jax Navy	20 1/2	Moody AFB	6 1/2	Rollins	20 1/2	
	11	Rollins	0	Auburn	4	Totals	181	
	11	Georgia Tech	23 1/2	Georgia Tech	14			
	21		13					
1957	20	(9-1) Auburn Florida	1	Georgia Miami (Fla.)	0	Auburn	6 1/2	1957
	12 1/2	Georgia Tech	14 1/2	Rollins	4	Totals	69	
	19 1/2	Alabama	7 1/2	Florida	12			
	22		5		17			
					11 1/2			
1956	27	(11-0) Stetson Florida	0	Alabama	2 1/2	Florida	12	1956
	22 1/2	Auburn	4 1/2	Maxwell AFB	15	Rollins	14 1/2	
	27	Auburn	15 1/2	Georgia Tech	11 1/2	Totals	74 1/2	
	14 1/2	Georgia	12 1/2	Auburn	1 1/2			

FLORIDA STATE'S GOLF HISTORY

Year	Score	Location	Score	Location	Score	Location	Score	Location
1948	Harbison	CAPTAIN	W	L	T	OWN	OPP.	
1949	Harbison	Eddie Andrews	3	3	0	90	103	
1950	Harbison	Hank Mercer	3	1	0	172	62	
1951	Harbison	Joe Bassett	3	2	2	119	84	
1952	Harbison	Ted Hewitt	3	3	1	175 1/2	106 1/2	
1953	Veller	Sonny Tinney	3	3	0	117	140	
1954	Veller	Jimmy James	3	4	0	128	107	
1955	Veller	Jimmy James	3	2	0	185 1/2	78 1/2	
1956	Veller	No Captain	10	1	0	214	86	
1957	Veller	Bob Dunn	11	0	0	240 1/2	74 1/2	
1958	Odeneal	Ed Jenkins	9	1	0	177	69	
1959	Odeneal	No Captain	10	0	0	278	181	
		Bob Shave	8	5	1	189	141	
		Mel Fleischer						
1960	Odeneal	Wayne Timberman	9	4	2	225 1/2	179 1/2	
		TOTALS	101	44	6	2311	1412	

1955	26	Auburn	1	24	Stetson	3	15	Auburn	12	1955
	11 1/2	Georgia Tech	15 1/2	18 1/2	Rollins	8 1/2	2 1/2	Totals	86	
	7	Georgia	12	21 1/2	Stetson					
	8	Kentucky	4							
1954	13	Rollins	14	20 1/2	Rollins	6 1/2	10	Georgia Tech	17	1954
	13	Stetson	5					Totals	78 1/2	
	6	W. Illinois	9	18	Southwestern of Memphis	3				
	5 1/2	Wake Forest	0							
		Ill. St. Normal								
1953	9 1/2	Davidson	17 1/2	23	W. Illinois	4	17 1/2	Pensacola Navy	9 1/2	1953
	12 1/2	Georgia	15 1/2	7	Georgia	20		Totals	107	
	8	Rollins	12 1/2	13	Auburn	14	128			
1952	11 1/2	Miami	5 1/2	2 1/2	Rollins	15 1/2	5	Georgia	7	1952
	14 1/2	Georgia Tech	12 1/2	19 1/2	Mercer	7 1/2	4 1/2	Alabama	7 1/2	
	4 1/2	Georgia	22 1/2	5	Stetson	13		Totals	140	
	6	The Citadel	21	12	Mercer	6	117			
1951	9 1/2	Jax Navy	17 1/2	18	Stetson	0	10	Emory	8	1951
	15	Davidson	21	13 1/2	Rollins	2 1/2		Totals	106 1/2	
	2	Mercer	13	19	Georgia	23	175 1/2			
	2	Emory	13	19	Mercer	8				
1950	14	Rollins	14	11	Stetson	7		(Dixie Conference Champions)		1950
	18 1/2	Stetson	8 1/2		Totals	84				
	7	Miami	11	119						
	2 1/2	Rollins	15 1/2							
	9	Fla. Southern	9							
1949	20	Jax Navy	7	10 1/2	Stetson	16 1/2	23 1/2	Stetson	3 1/2	1949
	13	Fla. Southern	3	13 1/2	Mercer	4 1/2		Totals	62	
	1	Fla. Southern	8 1/2	22	Jax Navy	5	172			
	1	Fla. Southern	9							
1948	16 1/2	Mercer	19 1/2	3 1/2	Oklahoma A&M	14	8 1/2	Fla. Southern	12 1/2	1948
	9 1/2	Georgia (Savannah Br.)	5 1/2	15	Stetson	15 1/2	14 1/2	Rollins	3 1/2	
	3	Rollins			Georgia (Savannah Br.)	5	90	Totals	103	

TENNIS

William Albert (Bubba) McGowan, one of the most popular coaches on the Seminole athletic staff, takes over this year as head tennis coach.

An assistant football coach at FSU for the past two years, Bubba has the distinction of being the first person to have coached at both the University of Florida and Florida State University. A well-rounded athlete keenly interested in almost every form of athletics, McGowan was a teammate of FSU freshman football coach Charlie LaPradd at the University of Florida.

A former left halfback at Florida—he played as a freshman and sophomore under Bear Wolff, as a junior and senior under Bob Woodruff—McGowan served on the Florida coaching staff when the Gators made their first trip to the Gator Bowl, in 1952.

McGowan's first FSU tennis team faces a tough schedule heavy with Southeastern Conference opponents. Four of seven lettermen return from last year's team that compiled an 11-8-1 record. Returnees are seniors Rebel Bellamy and Buddie McClain and juniors Ed Fasula and Gordy Smith. Newcomer Paul Scarpa, a junior, and sophomores Jamie Jameison, Don Loop, and Don Monk will challenge for top spots on the Seminole tennis ladder.

McGowan, 31, was track coach and football assistant to fellow FSU assistant coach Dick Flowers at Gainesville High School from 1955-58. An easy-going, sincere person who was a three-sport standout at Dothan, Ala., High School, McGowan was the smallest football player in the Southeastern Conference during his four years with Florida. Bubba in 1953 and 1954 was football coach of the Fort Jackson, S.C., Army team.

1961 TENNIS SCHEDULE

Date	Opponent	Site
March 16	Georgia	Tallahassee
March 18	Auburn	Tallahassee
March 20	Georgia Tech	Tallahassee
March 21	Southern Illinois	Tallahassee
March 23-24	Navy	Jacksonville
March 25	Florida	Tallahassee
March 28	Amherst	Tallahassee
March 29	East Carolina	Tallahassee
April 4	Florida Southern	Tallahassee
April 8	Louisiana State	Baton Rouge, La.
April 14	Rollins	Winter Park
April 15	Miami	Miami
April 27	Auburn	Auburn, Ala.
April 28	Mississippi State	Starkville, Miss.
April 29	Alabama	Tuscaloosa, Ala.
May 3	Florida	Gainesville
May 6	Miami	Tallahassee
May 10	Mississippi State	Tallahassee
May 13	Rollins	Tallahassee

1961 FRESHMAN SCHEDULE

March 16	Georgia	Tallahassee
March 18	Auburn	Tallahassee
March 25	Florida	Tallahassee
May 2	Gulf Coast Jr. College	Tallahassee
May 3	Florida	Gainesville
May 10	Mississippi State	Tallahassee

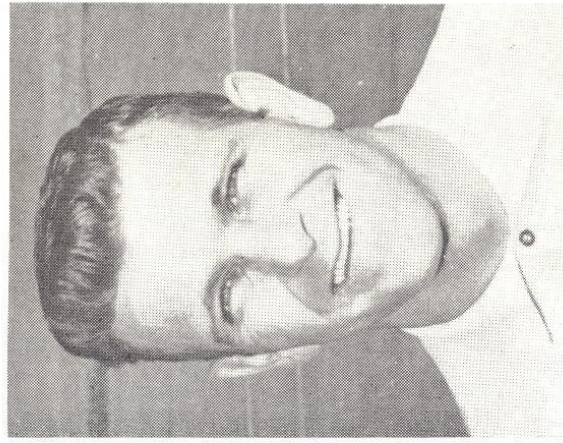
1961 TENNIS ROSTER

Name	Ht.	Wt.	Age	Class	Hometown
*Bellamy, Rebel	6-2	175	20	Sr.	Bakersfield, Cal.
*Fasula, Ed	5-10	160	23	Jr.	Syracuse, N. Y.
Jameison, Jamie	6-0	175	20	So.	Coral Gables
Loop, Don	5-10	170	20	So.	Jacksonville
*McClain, Buddie	6-1	190	23	Sr.	Manchester, Ga.
Monk, Don	6-0	190	20	So.	Mansfield, O.
Scarpa, Paul	5-10	160	22	Jr.	Charleston, S. C.
*Smith, Gordy	5-9	165	20	Jr.	Mansfield, O.

*Denotes letterman.

FRESHMAN TENNIS ROSTER

Name	Ht.	Wt.	Age	Hometown
Co'e, Ben	5-11	160	19	Orlando
Latz, Steve	5-10	135	18	Massapequa, N. Y.
Oliver, Bob	5-7	160	18	Pensacola
Schuck, Dick	6-1	160	18	Collingswood, N. J.
Simon, Les	6-0	155	18	Camden, N. J.



BUBBA MCGOWAN
Head Tennis Coach

FLORIDA STATE'S TENNIS HISTORY

Year	Coach	Captain	W	L	T	Own Pts.	Opp. Pts.
1948	Loucks	Jim DeLoach	9	4	0	78	35
1949	Loucks	Jim Costello	11	2	0	78	30
1950	Loucks	Herb Quay Larry Dickson	9	7	0	79	60
1951	Matherly	Larry Dickson	7	8	0	63	64
1952	Loucks	Tom Babione	9	5	0	71	49
1953	Loucks	Jack Egan	15	2	0	119	33
1954	Pitchford	Hal Schaus	13	5	0	105	51
1955	Pitchford	Hal Schaus	10	6	0	86	54
1956	Pitchford	Hal Schaus	8	7	0	71	64
1957	Pitchford	Sonny Sellers	5	11	0	50	87
1958	Pitchford	Lex Hester	9	7	0	72	70
1959	Powless	Lex Hester	14	6	0	109½	70½
1960	Powless	Rebel Bellamy	11	8	1	98½	72½
TOTALS			130	78	1	1080	740

PAST TENNIS RESULTS

1960	(11-8-1) Presbyterian Georgia Pensacola Navy Southern Illinois Minnesota	7 4 0 4 2	9 9 3 8 4	Miss. Southern LSU Navy Amherst Michigan State Michigan State	0 0 4 1 5 4 4	0 7 9 5 4 1 1/2	Miami Kentucky Miss. State Rollins Georgia	7 0 3 4 5 4 1/2	Florida Miami Rollins	7 9 4 — 72 1/2	1960
1959	(14-6) Louisiana State Georgia Miami Georgia Tech Southern Illinois	5 1/2 4 9 5 2	6 8 6 8 8	Minnesota Florida Michigan State Indiana Indiana Howard	3 1 3 3 1 1	6 7 9 8 5 0	Florida Murray State Jacksonville U. Pensacola Navy Georgia Tech	3 2 0 1 4 9	Stetson Rollins Miami	1 5 8 — 70 1/2	1959
1958	(9-7) Georgia Georgia Tech Michigan State Jacksonville State	4 7 4 0	8 6 1 7	Howard Indiana Florida Mississippi State Louisiana State	1 3 8 2 7	1 0 9 8 8	Rollins Florida Mercer Stetson Georgia	1 9 9 72 —	Georgia Tech Mercer	8 0 — 70	1958
1957	(5-11) Georgia Mercer Ga. Tech Michigan State	5 1 6 5	1 4 0 2	Duke Florida Murray State Miami Indiana	2 0 3 6 7	2 0 9 6 2	Florida Rollins Florida Southern Mercer Georgia	7 9 0 3 7	Georgia Tech Emory	7 2 — 87	1957
1956	(8-7) Georgia Ohio State Southern Illinois Georgia Tech	6 0 2 3	0 3 9 7	Miami Florida Indiana Emory Mercer	9 9 6 0 2	2 7 7 7 2	Georgia Georgia Tech Emory Florida Southern Mercer	6 9 1 2 2	Florida	7 — 64	1956
1955	(10-6) Presbyterian Georgia Auburn Ohio State	9 0 7 1 8	3 5 8 0 2	Pensacola Navy Georgia Tech Florida Southern Rollins Stetson	6 4 1 9 1	9 8 8 8 2	Mississippi Indiana Emory Auburn Georgia Tech	0 8 1 86 5	Pensacola Navy Emory	8 0 — 54	1955
1954	(13-5) Tampa Miami Florida Southern Rollins Stetson	0 0 1 8 0	5 8 9 9 7	Davidson Georgia Tech Stetson Emory LSU Concordia	4 1 0 0 8 0	6 7 3 1 8 7	Georgia Emory Georgia Tech Rollins Mercer Tampa	3 1 105 8 1 0	Florida Southern	1 — 51	1954
1953	(15-2) Georgia Jacksonville (Ala.) State Spring Hill LSU	3 1 1 8 1	5 8 9 9 9	Loyola (N.O.) Kenyon Auburn Mercer Valdosta State Florida Southern	4 2 1 0 0 0	0 9 7 7 9 8	Rollins Valdosta State Georgia Emory Mercer Auburn	9 0 119 2 0 1	Florida Southern	0 — 33	1953
1952	(9-5) Loyola (N.O.) Mercer Concordia (St. Louis)	5 4 0 0	6 6 2 9	Mercer Michigan Indiana Valdosta State	3 7 9 0	9 0 7 9	Valdosta State Miami Florida Southern Florida Southern Orlando AFB	0 0 71 2 0	Rollins	7 — 49	1952
1951	(7-8) Georgia Concordia (St. Louis) Miami	5 3 1 8	9 3 1 2	Florida Southern Rollins Davidson Loyola (N.O.) Indiana	0 9 6 5 7	8 6 7 2 7	Emory Mercer Emory Jax Navy Mercer	1 3 2 63 2	Miami Florida Southern Florida Southern (Dixie Conference Champions)	9 0 — 64	1951
1950	(9-7) Pensacola Navy Davidson Mississippi College Mercer Emory	9 9 0 4 1	3 9 9 4 7	Indiana Florida Southern Mercer Georgia Emory Presbyterian	6 0 0 5 2 7	7 8 6 1 1	Stetson Florida Southern Stetson Birm. Southern	2 1 3 6	Chapultepec Sporting Club (Dixie Conference Champions)	9 — 60	1950
1949	(11-2) Mercer Oglethorpe Mississippi College Mississippi College Millsaps	1 1 0 0 0	5 6 7 3 3	Charleston College Florida Southern Mississippi College Mississippi College Florida Southern	3 4 3 2 5	4 5 8 3 5	Stetson Emory Mercer	5 2 1 78	Stetson (Dixie Conference Champions)	3 — 30	1949
1948	(9-4) Stetson Florida Southern Mercer Middle Georgia	6 1 0 0	9 9 5 6	Georgia (Savannah Br.) Troy State Emory Stetson	0 0 2 3	1 9 9 2	Emory Middle Georgia Georgia (Savannah Br.) Stetson	6 0 0 0 78	Florida Southern Troy State (Dixie Conference Champions)	9 1 — 35	1948

TRACK

Recognized as one of the finest track coaches in the nation, personable, hard-working Mike Long is in his seventh year as Florida State University's track coach.

Take a look at the Seminole record during Long's six seasons—a host of impressive team championships and 27 victories against only four losses in dual competition. Victors in 11 of their last 12 dual starts, the Seminoles have an .871 winning percentage under Long.

Long's building program for the Seminoles reached a zenith in 1958, when FSU was undefeated in dual meets and was generally recognized as one of the South's best teams. In the past two years, the Seminoles have won seven of eight dual meets, going unbeaten in four starts last year.

The Seminoles have their work cut out this season. They will face six tough opponents in dual action and compete in some of the nation's outstanding team meets (Florida Relays, Piedmont Relays, Penn Relays).

Long has 13 of 18 lettermen returning from last year's squad. Among the graduated, however, were top point producers Ron Harrison and Ted Keen, sprinters; hurdler Claude Grizzard, and miler Tom Keeney. Heading the returnees are senior weightman Don Ostergaard, hurdler Bill Welch, middle distance runners Bill Davis and Quentin Till, distance runner Kent Mills, and high jumper Steve Long, one of two sons Coach Long has on the varsity squad.

Long came to Florida State in 1953 as an assistant coach in football and basketball. As head track coach, he now limits his abilities to running the show on the cinders. Before graduating from Minnesota in 1937, Mike established himself as an outstanding performer by winning the regional Olympic pole vault title in 1936.

Mike came to FSU from Fort Myers, where he was head basketball and track coach and assistant football coach. Previously he had coached high school sports in Sarasota.



MIKE LONG
Head Track Coach

1961 TRACK SCHEDULE

DATE	OPPONENT	SITE
Feb. 4	Coliseum Relays	Montgomery, Ala.
Feb. 25	Memphis J.C. Indoor Track Carnival	Memphis, Tenn.
March 11	Miami (Fla.)	Miami
March 18	Hollywood Optimists Meet	Hollywood
March 23	Alabama	Tallahassee
March 25	Florida Relays	Gainesville
March 27	Furman	Tallahassee
April 1	South Carolina	Tallahassee
April 8	Louisiana State	Baton Rouge, La.
April 15	Piedmont Relays	Greenville, S.C.
April 22	Florida	Tallahassee
April 28-29	Penn Relays	Philadelphia, Pa.
May 6	Florida AAU	Gainesville
May 20	Georgia AAU	Atlanta, Ga.
June 9	Meet of Champions	Houston, Tex.
June 16-17	NCAA Championships	Philadelphia

FSU TRACK AND FIELD RECORDS

EVENT	HOLDER	MARK	YEAR
100	John Poston	9.6	1952
	Jack Terwilliger	9.6*	1958
220	Ron Harrison	20.3*	1960
440	Jim Casteel	47.0	1958
880	Doyle Ruff	1:54.9	1959
Mile	Mike Conley	4:05.7	1958
Two-Mile	Kent Mills	9:31.4	1959
120 HH	Bill Welch	14.9	1960
220 LH	Jim Casteel	23.6	1958
	Claude Grizzard	23.5	1960
440 Relay	Terwilliger, Butner, Keen, Casteel	42.2	1958
Sprint Medley	Casteel, Butner, Terwilliger, Conley	3:24.6	1958
Mile Relay	Terwilliger, Ruff, Conley, Casteel	3:14.4	1958
Two-Mile Relay	Nye, Ruff, Jones, Keeney	7:49.1	1959
Shot Put	Don Ostergaard	53-7 3/4	1960
Discus	Charles Drago	154-10 1/2*	1959
Javelin	Jerry Henderson	227-5	1958
Pole Vault	Dick Elwood	13-7 3/4	1959
High Jump	Steve Long	6-5 3/4*	1960
Broad Jump	C. Fraundorfer	23-3 1/2	1954

*—Denotes FSU track record.
 Most points, meet (Tom Bowman, 1950 vs. Howard)
 Most points, season (Tom Bowman, 1950) -----152 1/4
 Most points, career (C. Fraundorfer, 1952-55) -----287 3/4

FLORIDA STATE'S TRACK HISTORY

YEAR	CAPTAIN	W	L	T	OWN PTS.	OPP. PTS.			
1949	Miller	0	3	0	143 1/2	244 1/2			
1950	Miller	5	1	0	495 1/6	279 5/6			
1951	Miller	5	1	0	436 5/6	330 1/2			
1952	Miller	6	1	0	510 1/2	402			
1953	Miller	3	3	0	408 1/3	359 1/6			
1954	Miller	6	0	0	390	429			
1955	Long	5	1	0	435 1/3	322			
1956	Long	7	1	0	605 1/12	389 5/12			
1957	Long	4	1	0	388	253			
1958	Long	4	0	0	342 2/5	175 3/5			
1959	Long	3	1	0	333 1/2	201 1/2			
1960	Long	4	0	0	339 2/3	203 1/3			
TOTALS					47	19	0	4828 2/3	3590 1/3

