

# FLORIDA STATE UNIVERSITY



## TRACK 1971



1971 SEMINOLE TRACK SQUAD



## FLORIDA STATE UNIVERSITY 1971 TRACK SCHEDULE

| Date       | Opponent                       | Place                |
|------------|--------------------------------|----------------------|
| Mar. 6     | Jesuit Invitational            | Tampa                |
| Mar. 12-13 | NCAA Indoor<br>Championships   | Detroit, Mich.       |
| Mar. 13    | FAMU Relays                    | Tallahassee          |
| Mar. 20    | Southern Illinois              | Tallahassee          |
| Mar. 26-27 | Florida Relays                 | Gainesville          |
| Apr. 3     | Kentucky Relays                | Lexington, Ky.       |
| Apr. 8     | Southwestern Relays            | Lafayette, La.       |
| Apr. 17    | Gulf Coast 5-Way               | State College, Miss. |
| Apr. 23-24 | Drake Relays                   | Des Moines, Iowa     |
| Apr. 23-24 | Penn Relays                    | Philadelphia, Pa.    |
| Apr. 30    | Florida                        | Tallahassee          |
| May 8      | LSU —<br>Oklahoma State        | Baton Rouge, La.     |
| May 22     | Florida AAU                    | Gainesville          |
| May 29     | Auburn Invitational            | Auburn, Ala.         |
| June 10-12 | USTFF Outdoor<br>Championships | Wichita, Kan.        |
| June 17-19 | NCAA                           | Seattle, Wash.       |



## FLORIDA STATE UNIVERSITY

### 1970 MEET RESULTS

| DUAL MEETS        | FSU | OPP |
|-------------------|-----|-----|
| Southern Illinois | 74  | 66  |
| Auburn            | 103 | 39  |
| Tennessee         | 58  | 87  |
| Florida           | 85  | 60  |
| Alabama           | 73  | 72  |
| Florida A&M       | 91  | 42  |

In addition to their 5-1 dual meet record, the Seminoles also made strong showings in the Jesuit Invitational Meet and the Gulf States Five-Way Meet. The Tribe won the Jesuit meeting and placed second in the five-way. The Seminoles also had fine individual performances in many relay and invitational meets around the South.

### ON THE COVER:

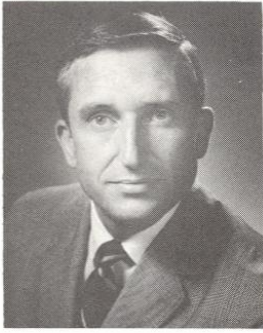
Florida State's Bill Jackson, holds the Seminoles' varsity record in the pole vault.

## FLORIDA STATE UNIVERSITY

|                           |   |
|---------------------------|---|
| LOCATION                  | Tallahassee, Florida 32306  |
| PRESIDENT                 | Dr. Stanley Marshall  |
| ENROLLMENT                | 18,000  |
| COLORS                    | Garnet and Gold   |
| NICKNAME                  | Seminoles   |
| ATHLETIC DIRECTOR         | Vaughn Mancha (599-3413)  |
| ATHLETIC BUSINESS MANAGER | Doug Messer (599-3414)  |
| ATHLETIC TICKET MANAGER   | Claude Thigpen (599-4625)   |
| SPORTS INFORMATION        | Lonnie Burt, Director (599-2095)<br>Hank Schomber, Assistant Director |
| CONFERENCE                | Independent   |







## FLORIDA STATE UNIVERSITY

Florida State University this year celebrates its 113th year as an institution of higher learning but is just now reaching the age of 24 as a major co-educational public university.

For almost 40 years the university was a college for women. It achieved university status and its present name in 1947, and its growth during the last 24 years has been termed "an educational miracle."

### DR. MARSHALL

The University was founded in 1857 as the Seminary West of the Suwannee. It went successively through a series of name changes and primary missions until it became Florida State College for Women in the early 1900's.

The enrollment last fall topped 18,000 and it is one of 24 institutions in the country which confers more than 100 Ph.D. degrees in a year. (More than 200 yearly in recent years).

Since its inception in 1957, the University's Nuclear Science Program has gained international prominence as the earliest, and to date, the largest interdisciplinary program of its kind to be initially equipped with state funds. A \$4.8 million grant from the National Science Foundation has provided for the development of centers of excellence at Florida State in the specific areas of physics, chemistry, statistics and psychobiology; and the State of Florida has provided \$2 million in matching funds for these endeavors.

Overseeing the operation of the second largest of the nine universities comprising the State University System of Florida is Dr. Stanley Marshall. Energetic and enthusiastic, Dr. Marshall brought a "fight-to-win" frame of mind with him to the presidency, which he assumed in June 1969.

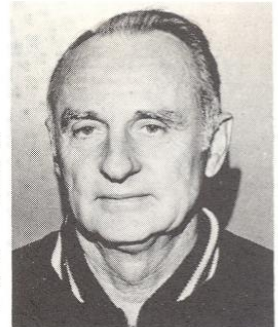
He is a firm believer in and a supporter of athletics as a means of building character and releasing the tensions of modern living — not to mention those of a university president in this era. "Athletics contribute a great deal to the development of the individual," says Marshall. One of his favorite expressions is: "When you enter the fray, expect to take whatever wounds the game involves; and if you don't want to get hurt, don't play the game."

### ATHLETIC BOARD

Mode Stone (Chairman); Richard Baker, Ernest Burkman, Jack Dobson, Charles Ehrhardt, Vernon Fox, Harold Goldstein, Kenneth Gatlin, Joshua Morse, Janet Wells. Ex Officio Members: Tommy Waits, Executive Vice President, Athletic Director, Ray Gross, Arthur Munroe.

## TRACK COACH

### MIKE LONG



Few coaches in the country are able to match the 16 years of success that Mike Long has brought to the Florida State track program.

Until Long took over the Seminole track team in 1955, the Tribe was just barely able to keep its head above water during its brief history. That 1955 club won five of six meets, after losing six of seven the year before. In his first four seasons, Long's teams ran up a 20-3 record and quickly established a reputation as one of the South's top track schools — a distinction they have never relinquished.

Long's teams have lost no more than one dual meet in 12 of his 16 years as head coach, five of his teams have been undefeated. His overall record is 80-19.

But developing winners is not Long's only strong suit. Whether or not a Seminole performer wins, it can be almost certain that he gave his very best effort in his event. Considered by many of his contemporaries as one of the nation's finest "on the field coaches", Long has that much sought after knack of bringing out the very best a youngster has to offer.

His coaching approach to the squad also brings about a tight camaraderie among the members that makes them an even tougher dual meet team. He received perhaps his greatest honor in 1968, when several former members of his track teams got together and presented Mike and his wife, Louise, an all-expense paid trip to the 1968 Olympics at Mexico City.

A graduate of the University of Minnesota where he competed as a pole vaulter, Long had six years coaching experience in Gopher State high schools and another 10 in Florida before he came to the Seminoles in the fall 1953 as an assistant coach in track, football and basketball. After a year, he assumed full responsibility for the track squad.

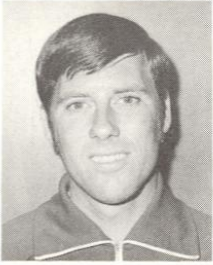
The Long's have four sons and a daughter. All of his sons have participated in the Florida State program, and the youngest, Jim, is presently assisting with the coaching duties.

## UNIVERSITY TRACK

Florida State's outdoor track facilities are among the finest in the nation. A completely enclosed quarter mile track is located in the heart of campus. It's surrounded by tall pine trees which help make the wind factor almost negligible. In addition, Florida State is one of the few tracks where a straight 220 could be run if necessary. This long front straightaway also makes it possible to run the 100 or 120 high hurdles from either end, in the event there is a wind factor. The track itself is a clay-cinder composition that many of the nation's top athletes have called one of the finest they have run on. Florida State runners also agree they prefer it over most all other track surfaces they have participated on. A large field area enclosed by track is completely sodded and only the finest equipment is used.



## DICK ROBERTS



### Assistant and Cross Country Coach

One of Florida State's top distance runners, Dick Roberts has returned to his Alma-Mater as Cross Country and Assistant Track Coach.

The 28-year old native of St. Petersburg returned to Florida State last year, after three highly successful seasons as track and cross country coach at Dunedin High School. His Dunedin teams captured the state cross country championship, won 10 individual championships and set 13 state high school records.

The 1970 Seminole cross country team, under his guidance, was the Tribe's best ever and won the State Collegiate CC championship.

An energetic and highly successful recruiter, Roberts successfully brought many of the Southeast's most talented track athletes into the Seminole fold last spring. His "on the track" duties will include working with the one and three-mile runners and the high jump.

Dick and his wife, Judy, have no children.

## DARRYL GUTHRIE



### Assistant

Darryl is in his third year as a Seminole assistant coach. A native of Ft. Myers, Guthrie competed in track under Coach Long in both junior high school and at Florida State.

Prior to returning to assist his former coach, Darryl served as track coach at Ft. Myers Junior High School. His responsibilities include the shot, discus, javelin, long jump and triple jump.

The 29-year old Guthrie and his wife, Nicki, have no children.

## JIM LONG



### Assistant

This will be Jim's second year assisting his Dad with the Seminole coaching duties. The former Seminole runner proved himself to be a capable coach last year, when he stepped in and filled a void left when his brother Curt, left Florida State to serve in the Air Force. Jim's responsibilities are the 100 and 220 yard dashes and the high hurdles.

## 1971 OUTLOOK

The 1971 Seminole Track Team could be one of the finest in school history, and that places it in some pretty good company by any comparison. But if it is to happen a lot of things are going to have to fall into place, with little margin for error.

"There are just too many things that have to be figured in, to come right out and say that this is going to be an outstanding track team," cautions Tribe mentor Mike Long. "But it COULD be."

At the worst the Seminole staff figures it will be a "good" squad. "We aren't going to be embarrassed by anybody, even if we don't get all the breaks," says the veteran Tribe mentor. "We have a lot of talented individuals. It is too early to tell just to what extent they are going to perform."

Among the "ifs" that have Long perplexed are standouts Barry Smith and Eddie McMillan. Both are varsity football players and the Seminoles have a new football coach this spring. "I can understand perfectly that Coach Larry Jones wants to have everyone out for spring practice," said Long. "He has no argument from me there. But both Barry and Eddie will be important members of our program. If we begin to rely on them, their points will be important in the bigger meets."

And there are other "ifs", such as "if" the freshmen perform up to their capabilities from the start; "if" key figures in "thin" events come up with much needed strong showings.

"There are a lot of pieces which must fit," said Long. "I just hope we can make the right choices."

The Seminoles are sporting a veteran team. Eighteen lettermen return, 11 of them are seniors, five are school record holders. In addition, some of the most promising freshman talent in the Southeast is ready to make a contribution.

The veterans are paced by senior All-American Ken Misner. The school record holder in the two and three mile. Other record setters back are George Frank (Discus), Charlie Galloway (Triple Jump), Bill Jackson (Pole Vault) and Jim Sauers (High Jump).

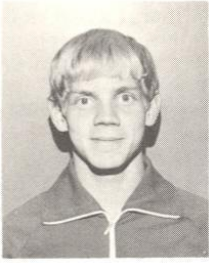
Among the newcomers the Seminoles will be looking for big performances from are Bobby Brooks, the fastest high school distance man in Florida prep history, Jim Buck, the National JC Javelin champion, Rudy Falana, the best long jumper in Florida High School history, and Joel Garren the state high school 440 champion.

## 1971 TRACK ROSTER

| NAME              | EVENT         | CLASS | HT.  | WT. | AGE | EXP. | HOMETOWN             | HIGH SCHOOL (Coach)      |
|-------------------|---------------|-------|------|-----|-----|------|----------------------|--------------------------|
| Steve Adams       | Mid. Dist.    | Fr.   | 6-2  | 155 | 18  | --   | Tallahassee          | Florida High (Smith)     |
| Pat Barrett       | Pole Vault    | Soph. | 5-11 | 153 | 19  | Sq.  | Washington, D.C.     | St. Johns (Chen)         |
| James Brown       | Hurdles       | Soph. | 5-10 | 140 | 19  | 1VL  | Sarasota             | Ft. Myers (Kendrick)     |
| Bobby Brooks      | Distances     | Fr.   | 5-9  | 140 | 18  | --   | St. Petersburg       | Northeast (B. Roberts)   |
| Doug Brown        | Sprints       | Sr.   | 5-11 | 165 | 21  | 3VL  | Sarasota             | Riverview (Hood)         |
| Jim Buck          | Javelin       | Jr.   | 5-11 | 165 | 20  | JC   | Orlando              | Seminole J.C. (Thomas)   |
| James Cofer       | Sprints       | Jr.   | 5-10 | 160 | 21  | Sq.  | Aracadia             | DeSoto Co. (Thompson)    |
| Chuck Crowder     | Discus        | Jr.   | 6-2  | 255 | 20  | 2VL  | Nocatu               | DeSoto Co. (Thompson)    |
| Jim Dobson        | Distances     | Jr.   | 6-5  | 190 | 21  | Sq.  | Orlando              | Atlanta-Therrell (Wells) |
| Glenn Duncan      | Long Jump     | Fr.   | 5-11 | 145 | 18  | --   | --                   | --                       |
| Rudy Falana       | LJ-TJ=Sprints | Fr.   | 5-11 | 165 | 18  | --   | --                   | Largo                    |
| Bob Fleming       | Mid. Dist.    | Fr.   | 5-11 | 140 | 19  | --   | Winter Park          | Winter Park (Mosher)     |
| George Frank      | Discus        | Sr.   | 6-4  | 225 | 22  | 2VL  | Tallahassee          | Leon (Culbreath)         |
| John Fuss         | Hurdles       | Sr.   | 6-1  | 155 | 24  | 2VL  | St. Petersburg       | Boca Ciega (Wikline)     |
| Charlie Galloway  | LJ-Hurdles    | Sr.   | 6-0  | 165 | 21  | 3VL  | Atlanta, Ga.         | Westminster (Koshewa)    |
| Joel Garren       | 220-400       | Fr.   | 6-0  | 170 | 18  | --   | Bradenton            | Manatee (Short)          |
| Gary Hill         | Discus-Jav.   | Fr.   | 6-2  | 180 | 18  | --   | Winter Park          | Winter Park (Mosler)     |
| Hugh Illsley      | Mid. Dist.    | Jr.   | 5-11 | 155 | 21  | Sq.  | Dunedin              | Dunedin (D. Roberts)     |
| Bill Jackson      | Pole Vault    | Sr.   | 5-10 | 157 | 22  | 2VL  | Thomasville, Ga.     | Central (Hall)           |
| Bod Jarry         | Javelin       | Fr.   | 6-1  | 185 | 18  | --   | East Northport, N.Y. | --                       |
| George Kaiser     | Mid. Dist.    | Soph. | 5-11 | 150 | 20  | 1VL  | Sarasota             | Riverview (Newton)       |
| Allan Landis      | Javelin       | Fr.   | 5-8  | 140 | 22  | 2VL  | Atlanta, Ga.         | North Fulton (Fraiser)   |
| Bruce McCampbell  | Discus        | Sr.   | 6-3  | 220 | 22  | --   | Tenn.                | --                       |
| Eddie McMillan    | Sprints       | Soph. | 6-1  | 178 | 19  | 1VL  | Tampa                | Black (Brown)            |
| Ken Misner        | Distances     | Sr.   | 6-0  | 140 | 22  | 3VL  | St. Petersburg       | Boca Ciega (Wickline)    |
| Dennis Moran      | Distances     | Fr.   | 6-1  | 145 | 18  | --   | Ft. Myers            | Ft. Myers (Kendrick)     |
| Mark O'Brien      | Distances     | Fr.   | 5-10 | 150 | 18  | --   | Tallahassee          | Leon (Murry)             |
| Robert Piccirilli | LJ-TJ         | Soph. | 6-1  | 178 | 20  | Sq.  | Tampa                | Jesuit (Fernandez)       |
| Del Ramers        | Distances     | Soph. | 5-11 | 140 | 18  | 1VL  | Dunedin              | Dunedin (D. Roberts)     |
| Jim Sauers        | High Jump     | Sr.   | 6-5  | 190 | 22  | 2VL  | St. Petersburg       | Boca Ciega (Wickline)    |
| Dan Schert        | High Jump     | Jr.   | 6-4  | 175 | 21  | JC   | Jacksonville         | Florida J.C. (Monts)     |
| Barry Smith       | Hurdles       | Soph. | 6-1  | 185 | 20  | 1VL  | Miami                | Coral Park (Downing)     |
| Steve Smith       | HJ-TJ         | Soph. | 6-6  | 170 | 19  | Sq.  | Richmond, Va.        | Freeman (Jones & Long)   |
| John Snyder       | Weights       | Sr.   | 6-4  | 250 | 22  | 2VL  | Daytona Beach        | Daytona J.C.             |
| Bill Stinson      | High Jump     | Fr.   | 5-10 | 145 | 18  | --   | Atlantic Beach       | Avon-Ohio (Burkin)       |
| John Starnes      | IM Hurdles    | Fr.   | 5-8  | 140 | 18  | --   | Tallahassee          | Leon (Murry)             |
| Randy Stow        | 440-Relays    | Sr.   | 5-10 | 150 | 21  | 3VL  | Atlanta, Ga.         | North Fulton (Frazier)   |
| James Thomas      | Sprints-TJ    | Soph. | 6-1  | 188 | 19  | --   | Macon, Ga.           | Lanier                   |
| Don Wagner        | LJ-TJ         | Jr.   | 6-2  | 173 | 20  | 2VL  | Vero Beach           | Vero Beach (Giannamore)  |
| Bernie Waxman     | Sprints-TJ    | Sr.   | 5-8  | 150 | 21  | 1VL  | Merritt Island       | Merritt Island (Kent)    |
| Jack Wise         | Mid. Dist.    | Jr.   | 6-0  | 145 | 21  | RS   | Montgomery, Ala.     | Sidney Lanier (Brock)    |
| Jay Young         | Pole Vault    | Soph. | 6-0  | 165 | 20  | Sq.  | Vero Beach           | Vero Beach (Giannamore)  |



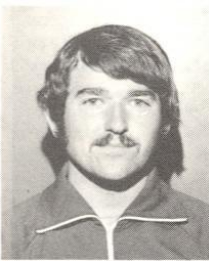
## PROFILES



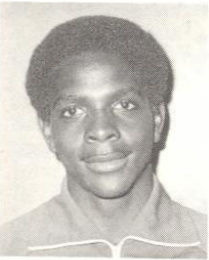
**BOBBY BROOKS** -- Freshman distance man from St. Petersburg...fastest prep miler and two-miler in state history... ran the mile in 4:09.7 and two-mile in 9:13.8, the best in the South last year...has great talent and is durable...however he needs experience in college competition...a hard worker, he works as long and hard as any distance man on the squad...as he continues the transition to collegiate track and gains confidence, his times should fall.



**DOUG BROWN** -- Senior sprinter from Sarasota...a dedicated athlete and team leader...one of the finest sprinters in school history...performance last year was slightly off that as a sophomore, but appears ready to have his best year... was sixth in National Federation Meet two years ago...outstanding competitor...a key to the 440 relay as well as individual events.



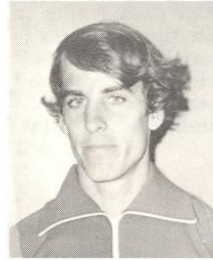
**JIM BUCK** -- Junior Javelin thrower from Orlando...junior college transfer...was National JC javelin champion last year...has best throw of 237-2, well over Seminole record...a hard worker and barring injury should become best javelin thrower in school history...will be counted on for big meet points.



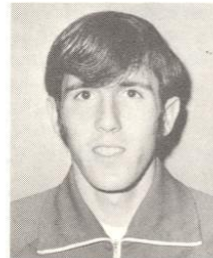
**RUDY FALANA** -- Freshman from Largo...a superb athlete, he will see duty in both the 440 and mile relays as well as long and triple jumps...has unlimited potential...coaches think he could become a national class performer as both a jumper and runner...has jumped over 25' in high school...is the state record holder and placed second in the Golden West national prep meet...injuries have slowed his progress this winter, but should come on strong.



**GEORGE FRANK** -- Senior discus thrower from Tallahassee...holds school record in discus and is considered one of the better ones in the Southeast...has worked hard since last year and is bigger and stronger than ever...he is determined to make his senior year his best.



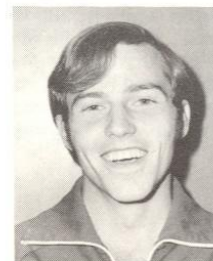
**KEN MISNER** -- Senior distance man from St. Petersburg...a first class athlete who has dedicated himself to becoming a premier distance runner...earned All-America cross country honors in 1969...very independent, but a strong team man... his dedication and willingness for self-sacrifice are unsurpassed...determined to become a national class distance runner...holds the school record in both two and three-mile as well as over the four mile cross country course...his senior season should be his best.



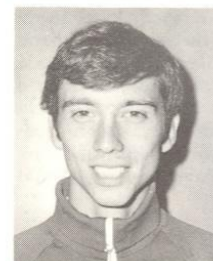
**DEL RAMERS** -- Sophomore distance runner from Dunedin...another dedicated distance runner...came to Florida State because he wanted to work and run with Misner...does not have the physical tools of some of the other runners, but few are tougher mentally...outstanding competitor...accepts a challenge and hates to lose...looks ready to make a big break through.



**BARRY SMITH** -- Sophomore hurdler from Miami...former state high school high hurdle champion...made a good showing last year in short time he was out...is a starting wide-receiver on football team and will miss part of this track season to attend spring practice...needs conditioning to get more flexibility and speed...has been slow in getting ready because of a minor leg injury...could be an outstanding hurdler before he graduates.

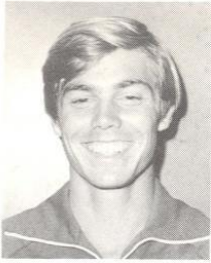


**RANDY STOW** -- Senior quarter-miler from Atlanta...one of the most dependable performers on the squad...was the leading quarter miler last year...one of the team's most competitive performers...a dedicated athlete...is majoring in Engineering Science and demanding class load has cut into regular workout times, but has compensated by adding morning practice sessions...fine relay performer...reliable point getter.

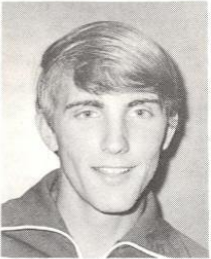


**JACK WISE** -- Junior from Montgomery, Ala...was a member of the Seminoles' 1970 cross country team...will run mile and half-mile...is former Alabama state prep champion in half mile...red shirted last year after transferring from Alabama.





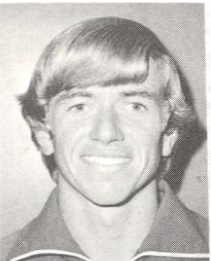
**CHARLIE GALLOWAY** -- Senior from Atlanta, Ga...most versatile athlete on squad...took up decathlon just last season and placed 10th in the nation...was also top performer in long and triple jumps...injured ankle may cut his triple jump work this year, but will be counted on in long jump and high hurdles as well as decathlon.



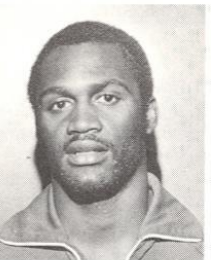
**JOEL GARREN** -- Freshman from Bradenton...one of the brightest prospects in long while...a strong competitor with an abundance of raw physical talent...he will get better as he improves his technique...has unlimited potential.



**BILL JACKSON** -- Senior pole vaulter from Thomasville, Ga...coaches have nothing but the highest of praise for Jackson...completely dedicated to excellence...very hard worker and excellent competitor...holds school record at just over 15' and looks ready to go higher...state champion when in high school...has good talent and pushes himself to get the best possible results.



**GEORGE KAISER** -- Sophomore half-miler from Sarasota...only returning letterman in 880...had a very promising fall session when he made considerable progress...however he injured his back over Christmas holidays and has been slowed...has good physical ability and with experience and confidence should be a good half-miler.



**EDDIE McMILLAN** -- Sophomore sprinter from Tampa...much improved over last year...is bigger and stronger and has a great deal more self-confidence...starting cornerback on football squad last fall...has made strong showings in early work and during indoor season...reported in good physical condition...tough competitor and has good speed...will be counted on in relays and individual sprints.

## MEET RECORDS

### FSU vs Southern Illinois

|              |           |                       |      |
|--------------|-----------|-----------------------|------|
| 440 Relay    | 42.0      | Patterson, Mobley     | 1970 |
|              |           | Rockett, Cooper (SIU) |      |
| Mile run     | 4:09.7    | Alan Robinson (SIU)   | 1970 |
| High Hurdles | 14.7      | Frank Whitman (SIU)   | 1966 |
| 440          | 48.8      | Gary Carr (SIU)       | 1966 |
| 100          | 9.6       | Ken White (FSU)       | 1966 |
| 880          | 1:52.8    | Jeff Duxbury (SIU)    | 1966 |
| 220          | 22.4      | Ken White (FSU)       | 1966 |
| 440 Hurdles  | 53.8      | Steve Landis (FSU)    | 1966 |
| Two Mile Run | 8:54.7    | Oscar Moore (SIU)     | 1966 |
| Mile Relay   | 3:17.1    | Gardner, Duxbury      | 1966 |
|              |           | Fendrich, Carr (SIU)  |      |
| Pole Vault   | 14'       | Rich Ellison (SIU)    | 1966 |
| High Jump    | 6' 83/8"  | Tom Ashman (SIU)      | 1966 |
| Long Jump    | 24' 1/2"  | Don Miller (SIU)      | 1970 |
| Triple Jump  | 49' 83/4" | John Vernon (SIU)     | 1966 |
| Shot Put     | 59' 3/2"  | George Woods (SIU)    | 1966 |
| Discus       | 160' 9"   | Fil Blackiston (SIU)  | 1970 |
| Javelin      | 226' 3"   | Dan Tindall (SIU)     | 1970 |
| Three Mile   | 14:14.2   | Alan Robinson (SIU)   | 1970 |

## FLORIDA MEET RECORDS

|              |            |                                     |      |
|--------------|------------|-------------------------------------|------|
| 440 Relay    | 41.4       | FSU (Brown, Kaufman, Pepper, Guy)   | 1969 |
| Mile Run     | 4:09.0     | Ken Misner (FSU)                    | 1970 |
| High Hurdles | 13.9       | Mike Kelly (FSU)                    | 1969 |
| 440          | 47.1       | Gerry Fannin (UF)                   | 1969 |
| 100          | 9.5        | Al Cate (FSU)                       | 1965 |
| 880          | 1:50.9     | Bob Lang (UF)                       | 1968 |
| 440 Hurdles  | 51.5       | Mike Kelly (FSU)                    | 1968 |
| 220          | 21.5       | Jerry McDaniel (FSU)                | 1967 |
| Three Mile   | 14:22.9    | Ken Misner (FSU)                    | 1970 |
| Mile Relay   | 3:14.8     | UF (Dyson, Vaughn, Kingry, O'Keefe) | 1970 |
| Shot Put     | 56' 4"     | Al Williams (FSU)                   | 1966 |
| Discus       | 183' 9"    | John Morton (UF)                    | 1969 |
| Javelin      | 230' 6"    | Mike Burton (UF)                    | 1968 |
| High Jump    | 7' 3/4"    | Ren Jourdan (UF)                    | 1968 |
| Pole Vault   | 15' 1 3/4" | Miie Flanagan (UF)                  | 1968 |
| Long Jump    | 23' 10"    | Charlie Galloway (FSU)              | 1970 |
| Triple Jump  | 49' 1/2"   | Charlie Galloway (FSU)              | 1970 |

## VARSITY RECORDS

| EVENT                   | MARK    | HOLDER                                  | YEAR |
|-------------------------|---------|---|------|
| 100 Yd. Dash            | 9.5     | Cato, White                             | 1965 |
| 220 Yd. Dash (curve)    | 21.2    | McDaniel                                | 1964 |
| 440 Yd. Dash (2 curves) | 47.4    | Link                                    | 1968 |
| 880 Yd. Run             | 1:51.4  | Oulman                                  | 1969 |
| Mile Run                | 4:05.7  | Conley                                  | 1958 |
| 3 Mile Run              | 13:52.4 | Misner                                  | 1970 |
| High Hurdles            | 13.7    | Kelly                                   | 1969 |
| 440 Hurdles             | 50.2    | Kelly                                   | 1969 |
| 440 Relay               | 40.9    | Brown, Kaufman,<br>Lewis, Guy           | 1969 |
| Mile Relay              | 3:14.3  | Oulman, Waxman,<br>Link, Stow           | 1970 |
| Triple Jump             | 49-11   | Galloway                                | 1970 |
| Long Jump               | 24-11   | Gainey                                  | 1966 |
| High Jump               | 6-8     | Sauers                                  | 1970 |
| Pole Vault              | 15-7    | Jackson                                 | 1970 |
| Javelin                 | 227-5   | Henderson                               | 1958 |
| Shot Put                | 59-10   | Williams                                | 1963 |
| Discus                  | 168-5   | Frank                                   | 1969 |
| 2 Mile Run              | 8:54.5  | Misner                                  | 1970 |
| 220 Yd. Dash (straight) | 20.3    | Harrison                                | 1960 |
| (1 curve)               | 47.0    | J. Casteel                              | 1958 |
| 220 Low Hurdles         | 22.6    | T. Long                                 | 1962 |
| High Hurdles Shuttle    | 58.1    | Smith, Fuss,<br>Galloway, Peterson      | 1970 |
| 880 Relay               | 1:26.8  | Till, Davis,<br>Long, C. Johnson        | 1962 |
| 2 Mile Relay            | 7:32.2  | Nelson, Hohndel,<br>Winter, Brogle      | 1966 |
| Sprint Medley           | 3:24.6  | Casteel, Butner,<br>Terwilliger, Conley | 1958 |
| Distance Medley         | 10:05.9 | Ling, Griffin,<br>Thomas, Misner        | 1968 |
| Decathlon               | 6821    | Galloway                                | 1970 |

## UNIVERSITY TRACK RECORDS

| EVENT        | RECORD     | HOLDER & SCHOOL   | YEAR |
|--------------|------------|---|------|
| 440 Relay    | 41.1       | FSU (Doug Brown,<br>Greg Kaufman,<br>Denson Pepper, Andy Guy)             | 1969 |
|              |            | FSU (Greg Kaufman,<br>Doug Brown, Randy Stow,<br>Ed McMillan)             | 1970 |
| Mile Run     | 4:09.2     | Ken Misner (FSU)  | 1970 |
| High Hurdles | :13.9      | Mike Kelly (FSU)  | 1969 |
| 440          | 46.6       | David Adkins (Ala)  | 1968 |
| 100          | 09.5       | Al Cato (FSU)   | 1965 |
| 880          | 1:49.4     | Larry Kelly (Tenn)  | 1967 |
| 440 I.H.     | 51.9       | Mike Kelly (FSU)  | 1969 |
| 220          | 21.3       | David Adkins (Ala)  | 1968 |
| 3 Mile       | 13:52.4    | Ken Misner (FSU)  | 1970 |
| Mile Relay   | 3:13.8     | TENN (Fred Marjenhof,<br>Abe Henderson, Audrey<br>Hardy, Hardy McAlhancy) | 1970 |
| Pole Vault   | 15' 7"     | Bill Jackson (FSU)  | 1970 |
| High Jump    | 7' 3/4"    | Ron Jourdan (Fla)   | 1968 |
| Long Jump    | 24' 11"    | Sid Gainey (FSU)  | 1966 |
| Triple Jump  | 49' 8 3/4" | Vernon (So. Ill.)   | 1966 |
| Shot Put     | 59' 3 1/2" | Woods (So. Ill.)  | 1966 |
| Discus       | 183' 9"    | John Morton (Fla)   | 1968 |
| Javelin      | 243' 9"    | Bill Skinner (Tenn)   | 1970 |

## RECORDS VS. ALL-OPPONENTS

| Opponent             | FSU |   | First Meet | Last Meet | Score  |        |
|----------------------|-----|---|------------|-----------|--------|--------|
|                      | W   | L |            |           | FSU    | Opp    |
| Alabama              | 4   | 1 | 1954       | 1970      | 73     | 72     |
| Auburn               | 3   | 2 | 1965       | 1970      | 103    | 39     |
| Davidson             | 3   | 0 | 1951       | 1956      | 83 1/3 | 76 1/2 |
| Duke                 | 0   | 1 | 1951       | 1951      | 28     | 104    |
| East Carolina        | 1   | 0 | 1969       | 1969      | 111    | 33     |
| Emory                | 2   | 0 | 1950       | 1951      | 80 1/3 | 8 1/2  |
| Florida              | 9   | 6 | 1956       | 1970      | 85     | 60     |
| Florida A&M          | 2   | 0 | 1969       | 1970      | 91     | 42     |
| Florida Southern     | 1   | 0 | 1950       | 1950      | 86     | 40     |
| Furman               | 6   | 1 | 1958       | 1965      | 96     | 40     |
| Georgia              | 5   | 1 | 1952       | 1957      | 77     | 53     |
| Georgia Tech         | 5   | 1 | 1952       | 1957      | 77     | 42     |
| Howard               | 2   | 0 | 1950       | 1951      | 85     | 46     |
| Louisiana State      | 3   | 2 | 1959       | 1962      | 85     | 50     |
| Loyola               | 1   | 4 | 1952       | 1956      | 87     | 44     |
| Mercer               | 7   | 1 | 1949       | 1956      | 83 1/3 | 3      |
| Miami                | 13  | 5 | 1949       | 1967      | 99     | 44     |
| Mississippi College  | 3   | 1 | 1949       | 1952      | 86     | 45     |
| Mississippi Southern | 3   | 2 | 1953       | 1957      | 89     | 42     |
| Roanoke College      | 2   | 0 | 1958       | 1963      | 107    | 32     |
| South Carolina       | 3   | 0 | 1962       | 1965      | 85     | 60     |
| Southern Illinois    | 1   | 1 | 1966       | 1970      | 74     | 66     |
| Quantico Marines     | 1   | 0 | 1968       | 1968      | 44     | 39     |
| Tennessee            | 1   | 1 | 1969       | 1970      | 58     | 87     |

## TRACK HISTORY

| Year | Coach  | Capt.       | W | L | FSU PTS. | OPP. PTS. |
|------|--------|-------------|---|---|----------|-----------|
| 1949 | Miller | None        | 0 | 3 | 143 1/2  | 244 1/2   |
| 1950 | Miller | Bradford    | 5 | 1 | 495 1/6  | 279 5/6   |
| 1951 | Miller | Watson      | 5 | 1 | 436 5/6  | 330 1/2   |
| 1952 | Miller | Poston      | 6 | 1 | 510 1/2  | 402       |
| 1953 | Miller | Mize        | 3 | 3 | 408 1/3  | 359 1/6   |
| 1954 | Miller | Fraundorfer | 1 | 6 | 390      | 429       |
| 1955 | Long   | Weaver      | 5 | 1 | 435 1/3  | 322       |
| 1956 | Long   | Weaver      | 7 | 1 | 605 1/2  | 389 5/12  |
| 1957 | Long   | Davis       | 4 | 1 | 388      | 243       |
| 1958 | Long   | Conley      | 4 | 0 | 342 2/5  | 175 3/5   |
|      |        | Terwilliger |   |   |          |           |
| 1959 | Long   | Casteel     | 3 | 1 | 333 1/2  | 201 1/2   |
|      |        | Elwood      |   |   |          |           |
| 1960 | Long   | Keen        | 4 | 0 | 339 2/3  | 203 1/3   |
| 1961 | Long   | Ostergaard  | 4 | 1 | 464 5/6  | 239 1/6   |
| 1962 | Long   | Clark       | 5 | 0 | 408      | 251       |
| 1963 | Long   | Johnson     | 3 | 2 | 437      | 265       |
|      |        | Kraft       |   |   |          |           |
| 1964 | Long   | None        | 5 | 0 | 428 1/2  | 295 1/2   |
| 1965 | Long   | Cato        | 5 | 0 | 466 1/2  | 158 1/2   |
|      |        | McDaniel    |   |   |          |           |
| 1966 | Long   | White       | 1 | 4 | 369      | 356       |
|      |        | Winter      |   |   |          |           |
| 1967 | Long   | Gainey      | 1 | 4 | 334      | 389       |
|      |        | Landis      |   |   |          |           |
| 1968 | Long   | Manning     | 3 | 2 | 376      | 281       |
|      |        | Vickers     |   |   |          |           |
| 1969 | Long   | Kelly       | 3 | 1 | 373 1/2  | 205 1/2   |
| 1970 | Long   |             | 5 | 1 | 484      | 366       |