



FLORIDA STATE UNIVERSITY



TRACK and FIELD

1970

UNIVERSITY TRACK

Florida State's outdoor track facilities are among the finest in the nation. A completely enclosed quarter mile track is located in the heart of campus. It's surrounded by tall pine trees which help make the wind factor almost negligible. In addition, Florida State is one of the few tracks where a straight 220 could be run if necessary. This long front straightaway also makes it possible to run the 100 or 120 high hurdles from either end, in the event there is a wind factor. The track itself is a clay-cinder composition that many of the nation's top athletes have called one of the finest they have run on. Florida State runners also agree they prefer it over most all other track surfaces they have participated on. A large field area enclosed by track is completely sodded and only the finest equipment is used:

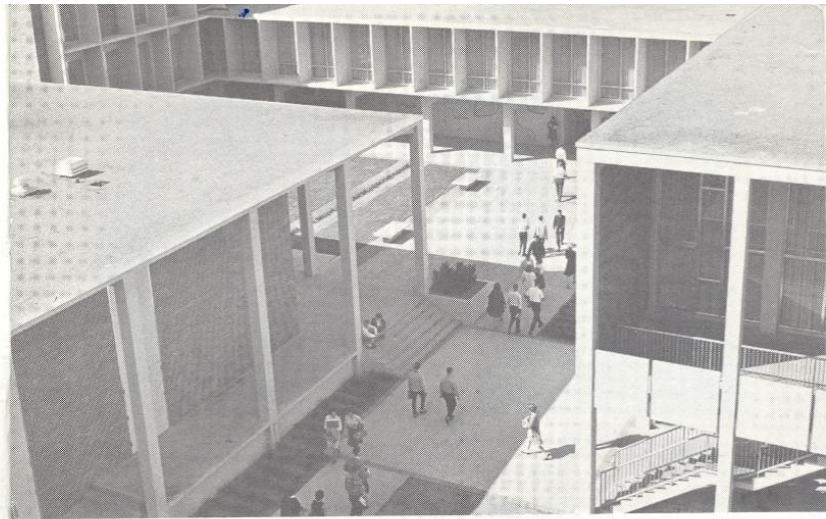
1969 SUMMARY

Florida State's sophomore laden team was highly successful in 1969. The Seminoles won three of four dual meets (a fifth was rained out), ran away with the Montgomery Coliseum Relays Championships and placed second in the Gulf Coast 5-Way meet.

Highest individual honors went to hurdler Mike Kelly, who was named the outstanding performer at Montgomery, placed third in the National Federation 440 hurdle championship and fourth in the highs. The world ranked Seminole runner was disqualified on two close calls in the NCAA championships, but was credited by Track and Field News with the world's best double in 1969. Other individuals who placed well were Doug Brown (sixth in the 100 at the USTFF meet), Phil Parker (sixth in the triple jump at USTFF) and Ken Misner, who although only a sophomore proved he could run with the nation's top distance men. The Seminoles' dual meet results were Florida A&M (106½-38½), East Carolina (111-33), Florida (63-82) and Alabama (93-52). In the Gulf Coast Five Way, the Tribe (70½) placed second behind Florida (79½), but ahead of Auburn (57), Alabama (54) and Mississippi State (11).

COVER:

Sprinter Doug Brown and All-America Ken Misner are keys to Florida State success.



FLORIDA STATE UNIVERSITY GENERAL INFORMATION

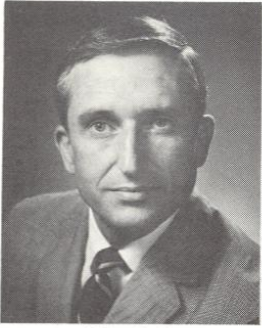
Location	Tallahassee, Florida 32306
Enrollment	17,010
President	Stanley Marshall
Conference	Independent
Colors	Garnet and Gold
Nickname	Seminoles
Track Coach	Mike Long

ATHLETIC STAFF

	Phone (AC 904)
Athletic Director—Vaughn Mancha	599-3413
Business Manager—Doug Messer	599-3414
Sports Information Director—Lonnie Burt	599-2095
Assistant SID—Hank Schomber	599-2095
Trainer—Don Fauls	599-2775
Head Coaches:	
Baseball—Jack Stallings	599-2640
Basketball—Hugh Durham	599-3080
Football—Bill Peterson	599-2775
Golf—Scott Fletcher	576-5325
Swimming—Bim Stults	599-2640
Tennis—Pete Barizon	599-2640
Track Coach—Mike Long	599-2640

FLORIDA STATE ATHLETIC COMMITTEE

Dr. Mode Stone, Professor Education Administration (Chairman); Dr. Ralph Bradley; Mr. Charles Sherman; Mr. Charles Griggs; Dr. Fred Metzke; Dr. William Rogers; Dr. John Simmons; Mr. Thomas Waits.



Marshall

THE UNIVERSITY

Now in its 112th year of service, Florida State University continues its energetic quest for unprecedented excellence in education as well as in athletics. Founded in 1857 as The Seminary West of the Suwanee, Florida State served as a women's college from the early part of this century until 1947 when it achieved co-educational and full university status.

In the 23 years since, Florida State has built a program in academics as well as in athletics that places it among the nation's finest in both areas.

Located among the rolling hills of North Florida, the campus and surrounding countryside offers unlimited scenic beauty. In addition, year-round moderate weather conditions make it possible for outdoor activity from the time school starts in the fall through graduation in the summer.

Responsible for much of the University's present growth and vigor is its president, Dr. Stanley Marshall, who is a firm believer in athletics as a means of building character and releasing the tensions of modern living.

Named President on June 6, 1969, following a four month term as acting president, Dr. Marshall had to give up his membership on the University's Athletic Committee, which he served while Dean of the College of Education; but he has not given up his interest in competitive sports. Dr. Marshall claims no personal expertise in any sport, but asserts a genuine "love of the contest" which all involve. He is a frequent visitor at all university athletic contests.

Shooting for "All-America" ratings in each of the University's ten schools and colleges, President Marshall has watched the institution's fantastic growth since he joined the faculty as a professor of science education back in 1958. In the 11 years he has been here the University's enrollment has grown from 7,515 to more than 17,000 and is expected to reach a peak of 28,000 students in 1975. Just 16 years ago the University awarded its first doctorate and in 1967, it conferred its one-thousandth Ph.D. degree. Florida State today is one of only 24 institutions granting 100 doctoral degrees each year and is rapidly gaining national distinction as a leading graduate education and research center.

Just across the street from the University Track is the high rising science complex — a network of buildings devoted to research and instruction of an interdisciplinary nature that will number more than a score when completed in 1975. Support for research programs is currently approaching \$15 million per year for studies ranging through all of the natural and physical sciences, the social and behavioral sciences, the humanities and the arts.

Energizing the progress of this \$100 Million, coeducational state university are the University's 45,000 living alumni and more than 3,800 faculty and staff members. An annual operating budget of some \$60 million supports the University's key academic units — the College of Arts and Sciences, College of Education, College of Law, School of Music, School of Library Science, School of Social Welfare, School Business, School of Nursing and School of Engineering Science.



Vaughn Mancha

VAUGHN MANCHA Director of Athletics

Since Vaughn Mancha returned to Florida State University as Athletic Director he has been the guiding hand in building a balanced, nationally prominent athletic program.

The fruits of his endeavors have culminated in the last two and one-half years when seven Seminole clubs have been invited to post-season NCAA events. In addition several athletes have gained individual

prominence.

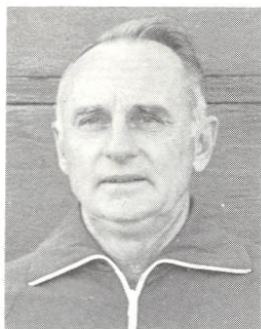
When Mancha first returned to Florida State after a two-year absence to do doctoral work at Columbia University, he was primarily concerned with improvement of staff, program and facilities. Under Mancha an unprecedented period of building and expansion of facilities has taken place and plans call for construction of an athletic dormitory, a coliseum and a grand stand complex for baseball in the near future.

Mancha first came to Florida State in 1952 as an assistant football coach. The Sugar Valley, Ga. native was an All-America center for Alabama.

He is married to the former Sybil Little of Birmingham, Ala. They have two daughters, Clare and Nan, and a son Dit.

1970 TRACK SCHEDULE

Date	Opponent	Place
Feb. 7	Tennessee - Western Kentucky	Knoxville, Tenn.
Feb. 13-14	Federation National Indoor Championships	Houston, Tex.
Feb. 27-28	Coliseum Relays	Montgomery, Ala.
Mar. 7	Jesuit Invitational	Tampa
13-14	NCAA Indoor Championships	Detroit, Mich.
14	Florida A&M Relays	TALLAHASSEE
21	SOUTHERN ILLINOIS	TALLAHASSEE
27-28	Florida Relays	Gainesville
Apr. 4	AUBURN	TALLAHASSEE
13	TENNESSEE	TALLAHASSEE
18	Gulf Coast 5-Way	Gainesville
24-25	Carolina Relays	Chapel Hill, N.C.
May 2	Florida	Gainesville
9	Alabama	Tuscaloosa, Ala.
15	Florida A&M	TALLAHASSEE
23	Southeastern Regional Championships	Atlanta, Ga.
Jun. 12-13	National Federation	Wichita, Kan.
19-20	NCAA Championships	Des Moines, Ia.



Mike Long

MIKE LONG Track Coach

For the last 15 seasons, Florida State's Mike Long has built one of the finest track and field programs in the South. The Seminoles' track record under his guidance is one of the best in the nation.

Overall Mike Long coached Seminole teams have won 57 of 75 meets. In 11 of his 15 seasons, the Seminoles have lost no more than one meet and six times they have been undefeated in dual competition.

In 1964 and '65, the Seminoles went through a total of 10 dual meets without a loss.

Coach Long is considered one of the nation's finest "on the field" coaches in the country by his contemporaries. He has a knack that brings out the very best that a young prospect has to offer. Also, he has been able to develop a spirit of camaraderie that makes the Seminoles an even stronger dual meet team.

Long came to Florida State in 1953 as an assistant coach in track, football and basketball. He brought with him 16 years coaching experience, 10 in Florida and 6 in Minnesota high schools. After one year here he assumed full responsibility of the Seminole track squad.

A graduate of the University of Minnesota, Long was a pole vaulter for the Gophers and won an Olympic Regional Pole Vault Title. He is married and he and wife, Louise, have four sons and a daughter. All the sons have participated in the Seminole Track program.

The personable, well liked track mentor was given a special honor in 1968 when the former members of his track teams contributed to a fund to provide Mike and his wife and all expense paid trip to the Olympic Games in Mexico City.

DICK ROBERTS Assistant

Dick Roberts returns for his second tenure as an assistant coach in the Florida State track program. An outstanding distance runner for the Seminoles during the early '60's, he served as a graduate assistant from 1964-66.

The last three seasons Roberts has been head coach at Dunedin High School. There his teams won the state cross country championship, captured 10 individual championships and set 13 state records.

The 28 year old native of St. Petersburg is working on his doctorate in physical education.

Dick's responsibilities in track include working with the Tribe's distance and middle distance runners as well as the cross country team in the fall.

He is married to the former Judy Goggin, they have no children.

DARRYL GUTHRIE Assistant

Darryl is in his second year as a track assistant to his former coach. The Florida State graduate will handle the men competing in the field events for the Seminoles.

A native of Ft. Myers, Guthrie competed in junior high school under Long's guidance. After his high school graduation and a tour with the army, Guthrie came to Florida State where Long was coaching.

He has served as track coach at Ft. Myers Junior High and is back at Florida State as a graduate student in educational administration.

Guthrie is 29 years old. He and his wife Nicki have no children.

1970 TRACK OUTLOOK

Florida State's 1970 track team may be the best in a long line of good one's fielded by the Seminoles.

Coach Mike Long had great success with a young team last year. This season with most of those people back, he has added key personnel in the weak areas. On top of this put the always high Seminole team spirit developed by the 15 year veteran coach and you have the makings of an outstanding track team — which is what the Seminoles expect.

Long himself is reluctant to talk about this team — not because he is at a loss for words, but he is afraid people will not really believe what he feels is true about this group.

"This is one of the strongest and best balanced teams we have ever had," said Long. "I know when you say that, a lot of people are going to say 'uh-huh' what he really means is a mediocre team."

"Well that's not our case. I really think this team is strong all the way through. If everyone performs as well as he is capable we will not have a weak area.

"That doesn't mean I expect us to go out and win every event of every meet, but we will be in it all the way.

"The thing that has me most pleased, however, is our team spirit. It has really been something. Last year Mile Kelly was the spearhead of this. He's gone now, and I was afraid the spirit might have left with him, but it didn't. This squad is as dedicated as any I have ever had.

"That was the big thing Kelly gave to the club last year. Dedication — the desire to make the sacrifices needed to win."

Among the leaders on the team this spring will be distance man Ken Misner and sprinter Doug Brown. Both are outstanding performers and could be among the best in the country in their events.

Misner already has taken All-America honors in cross country and has his sights set on the same in the longer events this spring. He will run the mile on up.

Brown was one of the South's leading 100 and 220 men last year and he has shown remarkable improvement.

Misner is one of five school record holders back. The St. Pete native holds the two and three mile marks. The others are George Frank (discus), Bill Jackson (pole vault), Mike Link (440, two curves) and Steve Oulman (880).

In addition three fourths of the record setting mile relay team returns, (the regular fourth member of that group, Link, was sick the day the record was set and did not run, but he is also back this year) and half the record holding 440 relay is back.

In all there will be 19 lettermen on hand.

The schedule will give the club plenty of competition, and may be as strong as the team. It includes two meets with Tennessee (indoor at Knoxville and outdoor in Tallahassee), plus single engagements with Florida, Alabama, and Auburn. Championship meets include the Coliseum Relays in Montgomery, Federation Championships in Houston, Jesuit Invitational in Tampa and the Gulf Coast Five-Way in Gainesville. Relay carnivals include the Florida Relays and the Carolina Relays.

1970 TRACK ROSTER

NAME	Class	EVENT	Ht.	Wt.	Age	Stat.	HOMETOWN	HIGH SCHOOL (Coach)
Pat Barrett	Fr	Pole Vault	5-11	153	18		Washington, D.C.	St. John's (Chen)
David Barton	Sr	Weights	6-2	240	23	1VL	Winter Haven	Winter Haven
Jim Broun	Fr	Hurdles	5-10	140	18		Sarasota	Ft. Myers (Kendrick)
Doug Brown	Jr	Sprints	5-11	165	20	2VL	Sarasota	Riverview (Hood)
Jack Castner	Sr	Distance	6-3	160	22	Sq	Jacksonville	Lee (Arnold)
Jimmy Cofer	So	Sprints	5-10	160	20	Sq	Arcadia	DeSoto Co. (Thompson)
Jim Dobson	So	Distance	6-5	190	20	Sq	Orlando	Therrell (Atlanta)(Wells)
Roy Dunn	Jr	Javelin	6-2	205	21	JC	Sanford	Seminole JC (Thomas)
George Frank	Jr	Discus	6-4	225	21	1VL	Tallahassee	Leon (Culbreath)
Don Fuchs	Sr	Pole Vault	6-1	165	21	Sq	Ft. Lauderdale	Fairleigh Dickinson U. (Maguysn)
John Fuss	Jr	Hurdles	6-1	155	22	1VL	St. Petersburg	Boca Ciega (Wickline)
Charlie Galloway*	Jr	LJ-TJ-Hurdles	6-0	165	20	2VL	Atlanta, Ga.	Westminster (Kosheva)
Sandy Garland	Sr	Mid. Dist.	6-2	175	21	Sq	Lakeland	Polk JC (Wood)
Roy Gentry	Fr	IM Hurdles	6-2	170	18		Clearwater	Dunedin (Roberts)
Hugh Illsley	So	Mid Dist.	5-11	155	20	Sq	Dunedin	Dunedin (Roberts)
Bill Jackson	Jr	Pole Vault	5-10	157	21	1VL	Thomasville, Ga.	Central (Hall)
George Kaiser	Fr	Mid. Dist.	5-11	150	19		Sarasota	Riverview (Newton)
George Kaufman	Sr	440-Relay	5-8	150	22	3VL	Newport News, Va.	Baker (Georgia) (Roberts)
Allan Landis	Jr	Javelin	5-8	140	21	1VL	Atlanta, Ga.	North Fulton (Fraiser)
Mike Link	Sr	440 Relay	6-1	170	21	3VL	St. Petersburg	St. Petersburg (Strouse)
Dave Marcinkoski	Sr	Javelin	5-11	170	21	Sq	Attleboro, Mass.	Palm Beach JC
Eddie McMillan	Fr	Sprints	6-1	178	18		Tampa	Blake (Brown)
Ken Misner*	Jr	Distance	6-0	140	21	2VL	St. Petersburg	Boca Ciega (Wickline)
Wade Morris	Sr	L.J.	6-0	170	22		Ponte Vedra	Fletcher (Jacksonville)(Poppel)
Steve Oulman	So	Mid. Dist	6-5	170	20	1VL	Sarasota	Riverview (Newton)
Rodger Peterson	So	Hurdles	6-3	165	21	1VL	Coral Gables	Coral Gables (Injaychock)
Bob Piccirilli	Fr	LJ-TJ	6-1	178	19		Tampa	Jesuit (Fernandez)
Del Ramers	Fr	Distance	5-11	140	18		Dunedin	Dunedin (Roberts)
Dennis Rogers	Sr	Javelin	6-1	175	22		Coral Gables	Wheaton College
Jerry Rowe	Fr	Distance	6-3	160	19		Williamsburg, Pa.	Jim Blair (Spaulding)
James Sauers	Sr	High Jump	6-5	190	21	1VL	St. Petersburg	St. Petersburg JC
Paul Sepulveda	So	Sprints	6-1	160	19	Sq	Palm Harbor	Dunedin (Roberts)
Barry Smith	Fr	Hurdles	6-1	185	19		Miami	Coral Park (Downing)
Steve Smith	Fr	HJ-TJ	6-6	170	18		Richmond, Va.	Freeman (Jones, Long)
John Snyder	Jr	Weights	6-4	250	21	1VL	Daytona Beach	Daytona JC
Randy Stow*	Jr	440-Relays	5-10	150	20	2VL	Atlanta, Ga.	North Fulton (Frazier)
Don Wagner	So	L.J.	6-2	173	19	1VL	Vero Beach	Vero Beach
Bernie Waxman	Jr	Sprints-TJ	5-8	150	20		Merritt Island	Merritt Island (Kent)
Bob Weber	Fr	Shot Put	5-9	190	18		Ft. Lauderdale	Largo (DeCola)
Steve Wright	So	Javelin	6-2	205	19	Sq	Meridian, Miss.	N.B. Forrest (McPhilomy)
Jay Young	Fr	Pole Vault	6-0	165	19		Vero Beach	Vero Beach (Giannamore)

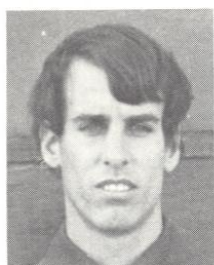
* Tricaptain

Bill Jackson



Charlie Galloway

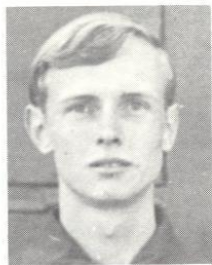




Misner



Brown



Peterson

TRACK PROFILES

KEN MISNER, Jr., St. Petersburg, Distances—The best distance man in school history . . . captured All-America honors last fall with a 14th place finish in the NCAA cross country championships . . . a dedicated worker, he has set goal to be the best and will not settle for less . . . Ken has the potential to be the South's first four minute miler, but is gearing mainly for longer distances . . . holds high school records in two mile (9:00.7) and three mile (13:54.5).

DOUG BROWN, Jr., Sarasota, Sprints—A top competitor, he hates to finish second . . . made outstanding improvement last year . . . placed sixth in the National Federation meet last summer . . . running stronger this year . . . a dedicated athlete and team leader.

BILL JACKSON, Jr., Thomasville, Ga., Pole Vault—School record holder (15-1/2) in pole vault . . . outstanding competitor always working to improve . . . was Georgia State champion in high school . . . made outstanding progress last season and is still improving.

MIKE LINK, Sr., St. Petersburg, Middle Distance—Set school 440 record (47.4) as a sophomore . . . injury prone last year and never regained top form . . . outstanding physical potential, if he could overcome injury tendency he could be among the nation's top quarter men . . . probable anchor man on mile relay.

STEVE OULMAN, So., Sarasota, Middle Distance—Made change from hurdles to half mile last January (1969) and before school was set out had set new 880 record (1:51.4) . . . big, strong runner is still unpolished . . . best half mile prospect in school history . . . should run with the best before he's through.

SANDY GARLAND, Jr., Lakeland, Middle Distance—Strong runner, great competitor . . . type of runner know you can rely on every time out . . . always gives 100 percent . . . just now coming into own . . . determined athlete who works hard at improving.

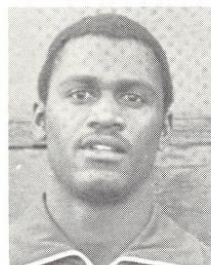
ROY DUNN, Jr., Orlando, Javelin—State junior college champion in javelin . . . has thrown 218 feet . . . bothered by arm problems but is coming along.

GEORGE FRANK, Jr., Tallahassee, Discus—As a sophomore was one of the top three discus men in southeast . . . has made fine progress . . . was throwing consistently in 160's by end of last season . . . still improving . . . another competitor who can be relied on every time out.

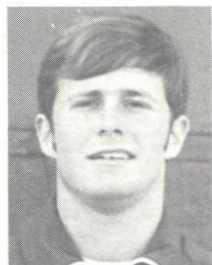
JOHN FUSS, Jr., St. Petersburg, Hurdles—Only returning



Ramers



McMillan



Smith

intermediate hurdler . . . bordered on greatness last year . . . may have made the necessary adjustments to run with the best . . . good hurdler and great competitor . . . east to work with, likes to come up to challenge.

CHARLIE GALLOWAY, Jr., Atlanta, Ga., Triple and Long Jumps—Most versatile athlete on team . . . will carry substantial load as top man in two events . . . outstanding competitor, best on squad . . . can also run hurdles . . . if he can concentrate solely on jumps, could be outstanding.

RANDY STOW, Jr., Atlanta, Ga., Middle Distance—Has ability to run with the better quarter milers in Southeast . . . key figure in depth figuring . . . has potential to move to top of the pack . . . could also figure prominently in both 440 and mile relays.

JOHN SNYDER, Jr., Daytona Beach, Shot and Discus—Will see duty primarily in shot, but is capable discus man as well . . . threw 53-5 last year and is improving all the time as he works on technique . . . dedicated to becoming a top weight man.

DEL RAMERS, Fr., Dunedin, Distance—Best freshman prospect on team . . . state mile record holder, best high school distance man to ever come from state . . . expected to make big contribution in both mile and three mile . . . had fine cross country season . . . when makes final adjustment to college running should be among best . . . has run 4:10.4.

BARRY SMITH, Fr., Miami, Hurdles—State AA high hurdle champion . . . ran 14.0 last year . . . top wide receiver prospect on football team as well . . . likes and wants to run track, too . . . sees it helping his football future . . . figures predominantly in high's and possibly on 440 relay.

EDDIE McMILLAN, Fr., Tampa, Sprints—May be fastest man on team . . . another top football prospect, plays defensive back . . . one of better sprinters in state last year, did not compete in state meet because of injury . . . will be active in 100, 220 and 440 relay.

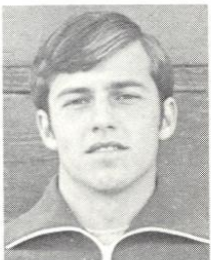
JAY YOUNG, Fr., Vero Beach, Pole Vault—Fine prospect in a demanding event . . . cleared 14 feet in early workouts and should do appreciably better by end of season . . . has physical capabilities to be an outstanding vaulter, but is a relative newcomer to event . . . has good future.

RODGER PETERSON, So., Coral Gables, Hurdles—As a high school sophomore was the brightest prep prospect around . . . finished close second in state championships but since has shown tendency to be fragile . . . fastest freshman time was 14.4 in highs, but has run 14.1 . . . if he stays healthy his potential is unlimited.

Jackson

Link

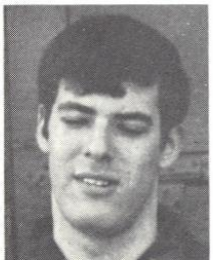
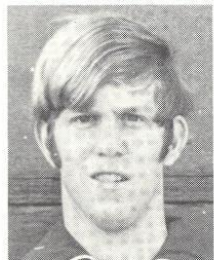
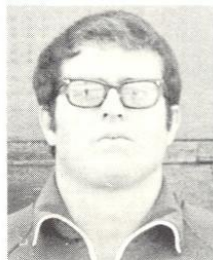
Stow



Snyder

Oulman

Frank



THE OPPONENTS

TENNESSEE: Feb. 7, 1970 (Indoor) at Knoxville, Tenn.
Apr. 13, 1970 (Outdoor) at Tallahassee

Location: Knoxville, Tenn. Coach: Chuck Rohe
Nickname: Volunteers Colors: Orange and White
SID: Haywood Harris Phone: (615) 974-3371
Meet Standing: 3-2, Tennessee, (Last Meeting: 1968-95-44, FSU)

Meet Records (Outdoor):

Event	Record	Holder	Year
440 Relay	42.5	Wagner, Keltner, Whitenack, Flowers (Tenn)	1967
Mile Run	4:10.9	Storey (Tenn)	1967
High Hurdles	14.1	Flowers (Tenn)	1967
440	49.3	Reeves (Tenn)	1966
100	9.6	Webster (Tenn)	1966
880	1:49.4	L. Kelly (Tenn)	1966
220	21.9	Whitenack (Tenn)	1967
440 Hurdles	53.5	Landis (FSU)	1966
		Landis - Vickers (FSU)	1967
Two Mile	9:17.1	Storey (Tenn)	1967
Mile Relay	3:18.0	Moore, Witer, Sellmer, Reeves (Tenn)	1966
		Rose, Witer, Stewart, Kelly (Tenn)	1967
Pole Vault	14'7¾"	Jobe (Tenn)	1966
High Jump	6'3"	Lorenz (FSU)	1964
Long Jump	23'¾"	Gainey (FSU)	1966
Triple Jump	46'8"	Gainey (FSU)	1966
Shot Put	56'1½"	Williams (FSU)	1964
Discus	168'10"	Beal (Tenn)	1966
Javelin	210'8"	Wilkins (Tenn)	1966

SOUTHERN ILLINOIS: Mar. 21, 1970 at Tallahassee

Location: Carbondale, Ill. Coach: Lewis Hartzog
Nickname: Salukis Colors: Maroon and White
SID: Fred Huff Phone: (618) 453-5311
Meet Standing: 0-1, So. Ill., (Last Meeting: 1966-65-80 So. Ill.)

Meet Records:

Event	Record	Holder	Year
440 Relay	42.3	Campbell, Long, Gainey, White (FSU)	1966
Mile Run	4:11.6	Oscar Moore (SI)	1966
High Hurdles	14.7	Frank Whitman (SI)	1966
440	48.8	Gary Carr (SI)	1966
100	9.6	Ken White (FSU)	1966
880	1:52.8	Jeff Duxbury (SI)	1966
220	22.4	Ken White (FSU)	1966
440 Hurdles	53.8	Steve Landis (FSU)	1966
Two Mile Run	8:54.7	Oscar Moore (SI)	1966
Mile Relay	3:17.1	Gardner, Duxbury, Fendrich, Carr (SI)	1966
Pole Vault	14'	Rich Ellison (SI)	1966
High Jump	6'8 3/8"	Tom Ashman (SI)	1966
Long Jump	23'5½"	Sid Gainey (FSU)	1966
Triple Jump	49'8¾"	John Vernon (SI)	1966
Shot Put	59'3½"	George Woods (SI)	1966
Discus	150'10"	George Woods (SI)	1966
Javelin	202'10"	Joe Beachell (SI)	1966

AUBURN: Apr. 4, 1970 at Tallahassee
Apr. 18, 1970 Gulf Coast 5-Way at Gainesville

Location: Auburn, Ala. Coach: Melvin Rosen
Nickname: Tigers Colors: Orange and Blue
SID: Buddy Davidson Phone: (205) 826-4750
Meet Standing: Tied, 2-2 (Last Meeting: 1968, 80-65 FSU)

Meet Records:

Event	Record	Record Holder & School	Year
440 Relay	41.2	Auburn	1967
Mile	4:12.5	Marc Williamson (FSU)	1967
Highs	14.2	Mike Kelly (FSU)	1968
440	47.4	Joe Bush (Aub)	1968
100	9.7	Ken White (FSU)	1966
		Al Bressler (Aub)	1968
880	1:53.5	George Griffin (FSU)	1968
440 Hurdles	52.5	Charlie Vickers (FSU)	1968
220	21.4	Don Fuller (Aub)	1967
3 Mile	14:45.6	Ken Misner (FSU)	1968
Mile Relay	3:18.0	Florida State	1966
Shot Put	54'1½"	Barry Erwin (Aub)	1968
Discus	163'8"	Barry Erwin (Aub)	1968
Javelin	205'11"	Bud Manning (FSU)	1968
Pole Vault	15'7"	Tim Christopher (Aub)	1967
High Jump	6'6¾"	Tim Christopher (Aub)	1967
Long Jump	24'11"	Sid Gainey (FSU)	1966
Triple Jump	48'9½"	Don Casteel (FSU)	1965

ALABAMA: Apr. 18, 1970 Gulf Coast 5-Way at Gainesville
May 9, 1970 at Tuscaloosa, Ala.

Location: Tuscaloosa, Ala. Coach: Ralph Genito
Nickname: Crimson Tide Colors: Crimson and White
SID: Charlie Thornton Phone: (205) 348-6161
Meet Standing: 3-1 FSU (Last Meeting: 1969-93-52 FSU)

FLORIDA: April 18, 1970 Gulf Coast 5-Way, Gainesville
May 2, 1970 at Gainesville

Location: Gainesville, Fla. Coach: Jimmy Carnes
Nickname: Gators Colors: Orange and Blue
SID: Norm Carlson Phone: (904) 392-0641
Meet Standing: 8-6, FSU (Last Meeting: 1969-82-63, Fla.)

FLORIDA A & M: May 16, 1970 at Tallahassee

Location: Tallahassee Coach: Bobby Lane
Nickname: Rattlers Colors: Orange and Green
SID: Eddie Jackson Phone: (904) 224-8060
Meet Standing: 1-0, FSU (Last Meeting: 1969, 106½-38½ FSU)

Meet Records:

Event	Record	Holder	Year
440 Relay	41.5	Corbett, Hill, Davis, Reed (FAMU)	1969
Mile Run	4:18.6	Ken Misner (FSU)	1969
High Hurdles	14.7	Mike Kelly (FSU)	1969
440	48.8	Hill (FAMU)	1969
100	10.0	Davis (FAMU)	1969
880	1:56.2	Bob Thomas (FSU)	1969
220	22.0	Davis (FAMU)	1969
440 Hurdles	53.0	Scofield (FAMU)	1969
Two Mile	9:25.8	Ken Misner (FSU)	1969
Mile Relay	3:23.2	Kaufman, Kelly, Stow, Link (FSU)	1969
Pole Vault	13'6"	Bill Jackson (FSU)	1969
High Jump	6'7"	Mike Kelly (FSU)	1969
Long Jump	23'6¾"	Phil Parker (FSU)	1969
Triple Jump	49'¼"	Phil Parker (FSU)	1969
Shot Put	50'6¼"	John Snyder (FSU)	1969
Discus	143'4½"	George Frank (FSU)	1969
Javelin	173'11"	Alan Landis (FSU)	1969

VARSITY RECORDS

Event	Holder	Mark	Year
100 Yd. Dash	Cato, White	9.5	1965
220 Yd. Dash (curve)	McDaniel	21.2	1964
220 Yd. Dash (straight)	Harrison	20.3	1960
440 Yd. Dash (1 curve)	J. Casteel	47.0	1958
440 Yd. Dash (2 curves)	Link	47.4	1968
880 Yd. Run	Oulman	1:51.4	1969
Mile Run	Conley	4:05.7	1958
2 Mile Run	Misner	9:00.7	1969
3 Mile Run	Misner	13:54.5	1969
High Hurdles	Kelly	13.7	1969
Triple Jump	Parker	49'0"	1969
Long Jump	Gainey	24'11"	1966
High Jump	Manning	6'7½"	1967
Pole Vault	Jackson	15'0"	1969
Javelin	Henderson	227'5"	1958
Shot Put	Williams	59'10"	1963
Discus	Frank	168'5"	1969
440 Hurdles	Kelly	50.2	1969
220 Low Hurdles	T. Long	22.6	1962
High Hurdles-Shuttle	Galloway, Fuss	58.5	1969
440 Relay	Peterson, Kelly		
	Brown, Kaufman, Lewis, Guy	40.9	1969
880 Relay	Till, Davis, Long, C. Johnson	1:26.8	1962
Mile Relay	Kaufman, Stow, Oulman, Kelly	3:13.5	1969
2 Mile Relay	Nelson, Hohnadel, Winter, Brogle	7:32.2	1966
Sprint Medley	Casteel, Butner, Terwilliger, Conley	3:24.6	1958
Distance Medley	Link, Griffin, Thomas, Misner	10:05.9	1968

UNIVERSITY TRACK RECORDS

Event	Record	Holder and School	Year
440 Relay	:41.1	Brown, Kaufman, Pepper, Guy (FSU)	1969
Mile Run	4:09.9	Lagotic (Fla)	1967
High Hurdles 440	:13.9	Kelly (FSU)	1969
100	:46.6	David Adkins (Ala)	1968
880	:09.5	Cato (FSU)	1965
440 Hurdles	1:49.4	L. Kelly (Tenn)	1967
220	:51.9	Kelly (FSU)	1969
Three Mile	:21.3	David Adkins (Ala)	1968
Two Mile	14:09.0	Misner (FSU)	1969
Mile Relay	8:54.7	Moore (So. Ill.)	1966
	3:14.8	Griffin, Stow, Kaufman Link (FSU)	1968
Pole Vault	15'6¾"	Christopher (Aub)	1966
High Jump	7'¾"	Jourdan (Fla)	1968
Long Jump	24'11"	Gainey	1966
Triple Jump	49'8¾"	Vernon (So. Ill.)	1966
Shot	59'3½"	Woods (So. Ill.)	1966
Discus	183'9"	Morton (Fla)	1968
Javelin	143'7½"	Duckworth (Atl. Stiders)	1960

RECORDS VS. ALL-OPPONENTS TRACK HISTORY

Opponent	FSU		First Meet	Last Meet	Score	
	W	L			FSU	Opp
Alabama	3	1	1954	1969	93	52
Auburn	2	2	1965	1968	80	65
Davidson	3	0	1951	1956	83 1/3	76½
Duke	0	1	1951	1951	28	104
East Carolina	1	0	1969	1969	111	33
Emory	2	0	1950	1951	80 1/3	8½
Florida	8	6	1956	1969	63	82
Florida A&M	1	0	1969	1969	106½	38½
Florida Southern	1	0	1950	1950	86	40
Furman	6	1	1958	1965	96	49
Georgia	5	1	1952	1957	77	53
Georgia Tech	5	1	1952	1957	77	42
Howard	2	0	1950	1951	85	46
Louisiana State	3	2	1959	1962	85	50
Loyola	1	4	1952	1956	87	44
Mercer	7	1	1949	1956	83 1/3	3
Miami	13	5	1949	1967	99	44
Mississippi College	3	1	1949	1952	86	45
Mississippi Southern	3	2	1953	1957	89	42
Roanoke College	2	0	1958	1963	107	32
South Carolina	3	0	1962	1965	85	60
Southern Illinois	0	1	1966	1966	65	80
Quantico Marines	1	0	1968	1968	44	39
Tennessee	1	0	1969	1969	106½	38½

TRACK HISTORY

Year	Coach	Capt.	W	L	FSU PTS.	OPP. PTS.
1949	Miller	None	0	3	143½	244½
1950	Miller	Bradford	5	1	495 1/6	279 5/6
1951	Miller	Watson	5	1	436 5/6	330½
1952	Miller	Poston	6	1	510½	402
1953	Miller	Mize	3	3	408 1/3	359 1/6
1954	Miller	Fraundorfer	1	6	390	429
1955	Long	Weaver	5	1	435 1/3	322
1956	Long	Weaver	7	1	605½	389 5/12
1957	Long	Davis	4	1	388	243
1958	Long	Conley	4	0	342 2/5	175 3/5
		Terwilliger				
1959	Long	Casteel	3	1	333½	201½
		Elwood				
1960	Long	Keen	4	0	339 2/3	203 1/3
1961	Long	Ostergaard	4	1	464 5/6	239 1/6
1962	Long	Clark	5	0	408	251
1963	Long	Johnson	3	2	437	265
		Kraft				
1964	Long	None	5	0	428½	295½
1965	Long	Cato	5	0	466½	158½
		McDaniel				
1966	Long	White	1	4	369	356
		Winter				
1967	Long	Gainey	1	4	334	389
		Landis				
1968	Long	Manning	3	2	376	281
		Vickers				
1969	Long	Kelly	3	1	373½	205½
TOTALS			77	33		