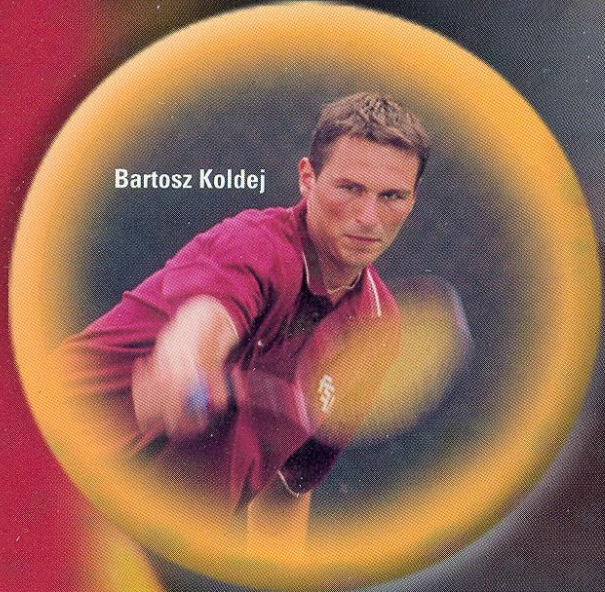


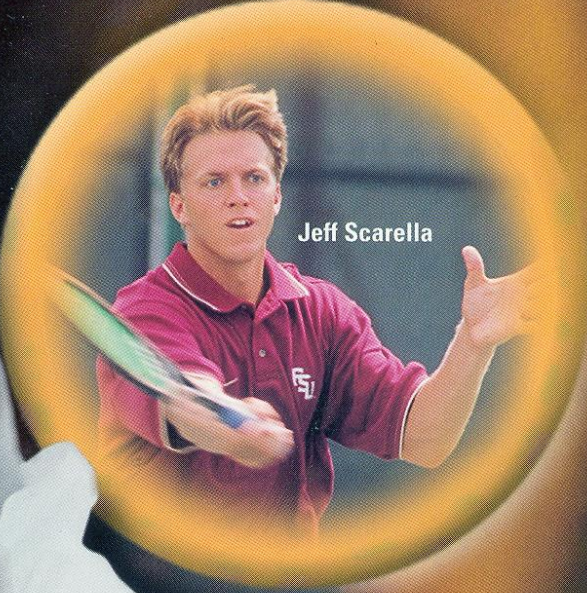
2001
2002

S
E
M
I
N
O
L
E
S

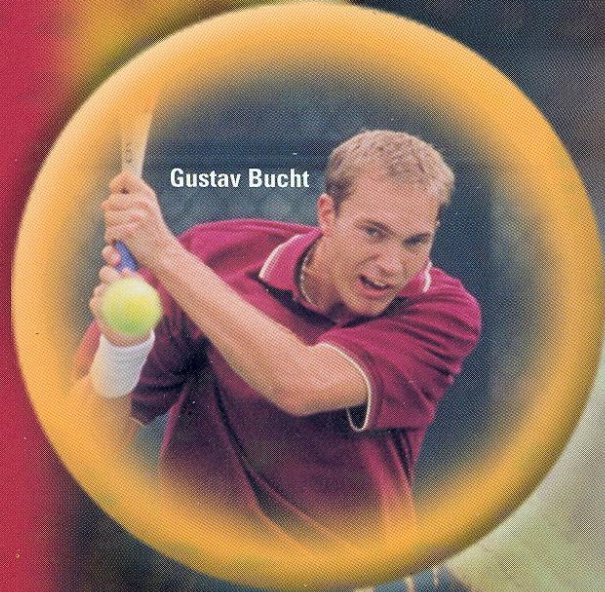
M
E
N
S
T
E
N
N
I
S



Bartosz Koldej



Jeff Scarella



Gustav Bucht



Xavier Luscan

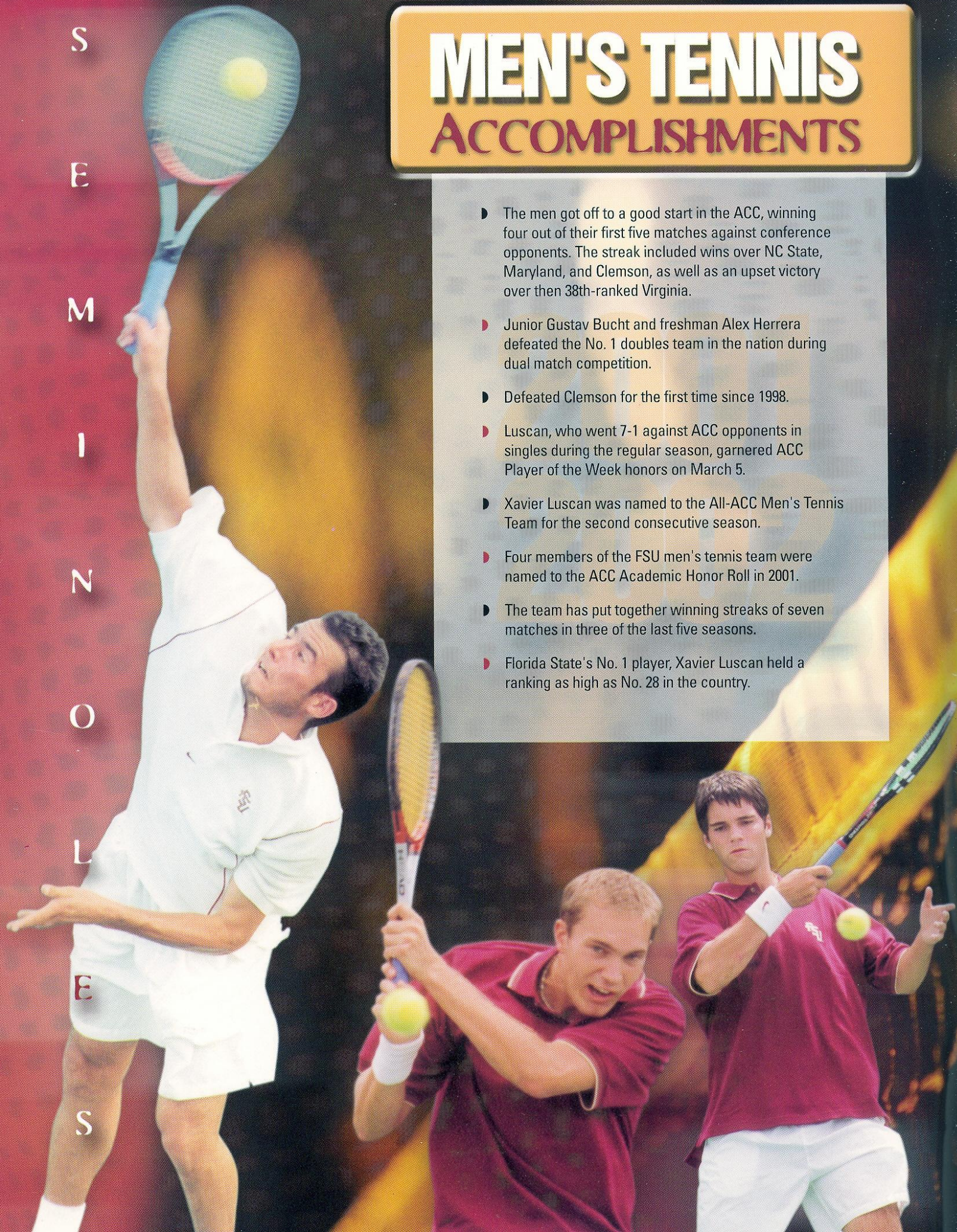
Florida State

S
E
M
I
N
O
L
S

MEN'S TENNIS

ACCOMPLISHMENTS

- ▶ The men got off to a good start in the ACC, winning four out of their first five matches against conference opponents. The streak included wins over NC State, Maryland, and Clemson, as well as an upset victory over then 38th-ranked Virginia.
- ▶ Junior Gustav Bucht and freshman Alex Herrera defeated the No. 1 doubles team in the nation during dual match competition.
- ▶ Defeated Clemson for the first time since 1998.
- ▶ Luscan, who went 7-1 against ACC opponents in singles during the regular season, garnered ACC Player of the Week honors on March 5.
- ▶ Xavier Luscan was named to the All-ACC Men's Tennis Team for the second consecutive season.
- ▶ Four members of the FSU men's tennis team were named to the ACC Academic Honor Roll in 2001.
- ▶ The team has put together winning streaks of seven matches in three of the last five seasons.
- ▶ Florida State's No. 1 player, Xavier Luscan held a ranking as high as No. 28 in the country.



Media Info/Quick Facts

QUICK FACTS

Florida State University

Location	Tallahassee, Florida
Founded	1851
Enrollment	35,000
Symbol	Seminoles
School Colors	Garnet and Gold
President	Talbot "Sandy" D'Alemberte

Florida State Athletics

Affiliation	NCAA Division I
Conference	Atlantic Coast
Athletics Director	Dave Hart, Jr.
Senior Associate Athletics Director/SWA	Kim Record
Sports Information Director	Rob Wilson
Tennis SID	Jennifer Dowling
SID Office Phone	(850) 644-4836
SID Fax	(850) 644-3820
SID Email	jmd2642@garnet.acns.fsu.edu
Mailing Address	P.O. Box 2195 Tallahassee, Fl. 32316

FSU Men's Tennis

Home Facility	Scott Speicher Tennis Center
Head Coach	Dwayne Hultquist (3rd Season)
Assistant Coach	Ty Braswell (2nd Season)
Tennis Office Phone	(850) 644-5946
Tennis Office Fax	(850) 644-3451

2000-2001 Review

Overall Record	10-14
ACC Record/Finish	4-4 record / 5th in the ACC
Final ITA Ranking	59th

A NOTE TO THE MEDIA, FANS AND OPPONENTS

Florida State tennis contact Jennifer Dowling of the Sports Information Office is ready to assist you with any questions or requests you may have about the 2000-2001 Seminole Tennis program, media guide, coaches and student-athletes. Please do not hesitate to phone, fax or write a letter to the sports information office at P.O. Box 2195, Tallahassee, Florida 32316; (850) 644-1403 phone; (850) 644-3820 fax, if we can further assist you.

HOW TO COVER THE SEMINOLES

Members of the media are supplied with weekly press releases, including updated individual tournament and career statistics, as well as conference and national rankings and information on upcoming matches or events. Results and statistics may be obtained in the sports information office or off the www.seminoles.com. Pertinent team and player information will also be available at the Scott Speicher Tennis Center for all home matches. If you would like to schedule personal interviews with the coaches or players contact Dowling in the FSU Sports Information office at least 24 hours in advance. Head Coach Dwayne Hultquist is generally available in his office during weekday mornings.

WHERE THE HOME MATCHES WILL BE

All 2001-2002 Seminole Tennis home matches take place at the Scott Speicher Tennis Center (capacity 1000). The courts are located off of Chieftain Way directly behind the Bobby E. Leach Center. Parking for the facility is located to the west of the site. Media members will be provided parking passes and will be seated in a designated area. Please notify the sports information office prior to home matches for credentials to be assigned. Any accredited photographer wishing to shoot the matches must check in with Dowling prior to game day so proper credentials can be assigned.

FSU ON THE WEB

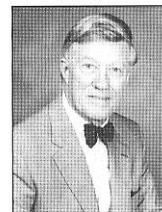
Check out the Florida State tennis program on the web. Go to your internet site and type in www.seminoles.com. Once you are in the site follow the directions to the home of the Seminoles web page.



N O L E S

TABLE OF CONTENTS

Media Information	1
2001-2002 Outlook	2
Hultquist Bio	4
Braswell Bio	5
Player Bios	6
Newcomer Bios	13
2000-2001 Review	14
Dual Match Records	15
ACC Bio	16
Around the ACC	17
ACC History	18
History Before the ACC	19
All-Time Dual Match Roster	20
Series Records	21
Records Section	22
Year-by-Year Results	24
Tennis Center	28
USTA Challenger	29
Top Noles	30
Support Services/Strength and Conditioning	32
Life Skills/NCAA Compliance	34
This is Tallahassee	36
This is FSU	40
Year-by-Year Coaches	44



Sandy D'Alemberte
FSU President



Dave Hart, Jr.
Director of Athletics



Kim Record
Senior Associate
Director of Athletics



Jennifer Dowling
Tennis SID



Mary Foster
Marketing Assistant

FLORIDA STATE UNIVERSITY MEDIA OUTLETS

Newspapers:

TALLAHASSEE DEMOCRAT

P.O. Box 990; Tallahassee, Florida 32302
phone: (850) 599-2166 fax: (850) 599-2301
FSVIEW

P.O. Box 20331; Tallahassee, Florida 32316
phone: (850) 561-6653 fax: (850) 561-6578

THE OSCEOLA

402 Dunwoody Street; Tallahassee, Florida 32304
phone: (850) 222-7733 fax: (850) 224-3627

FLORIDA TIMES-UNION

One Riverside Avenue, Suite 304; Tallahassee, Florida 32301
phone: (850) 224-7515 fax: (850) 681-2961

ORLANDO SENTINEL

336 East College Avenue, Suite 303; Tallahassee, Florida 32301
phone: (850) 222-5564 fax: (850) 224-0979

Television/Radio:

WCTV - TV (CBS affiliate)

P.O. Box 3048; Tallahassee, Florida 32315
phone: (850) 893-2126 fax: (850) 668-3851

WTLX - TV (ABC affiliate)

8927 Thomasville Road; Tallahassee, Florida 32312
phone: (850) 893-1313 fax: (850) 668-3851

WNLS - Sports Radio 1270 AM

325 John Knox Road, Suite E-200; Tallahassee, Florida 32303
phone: (850) 386-6143 fax: (850) 385-8789

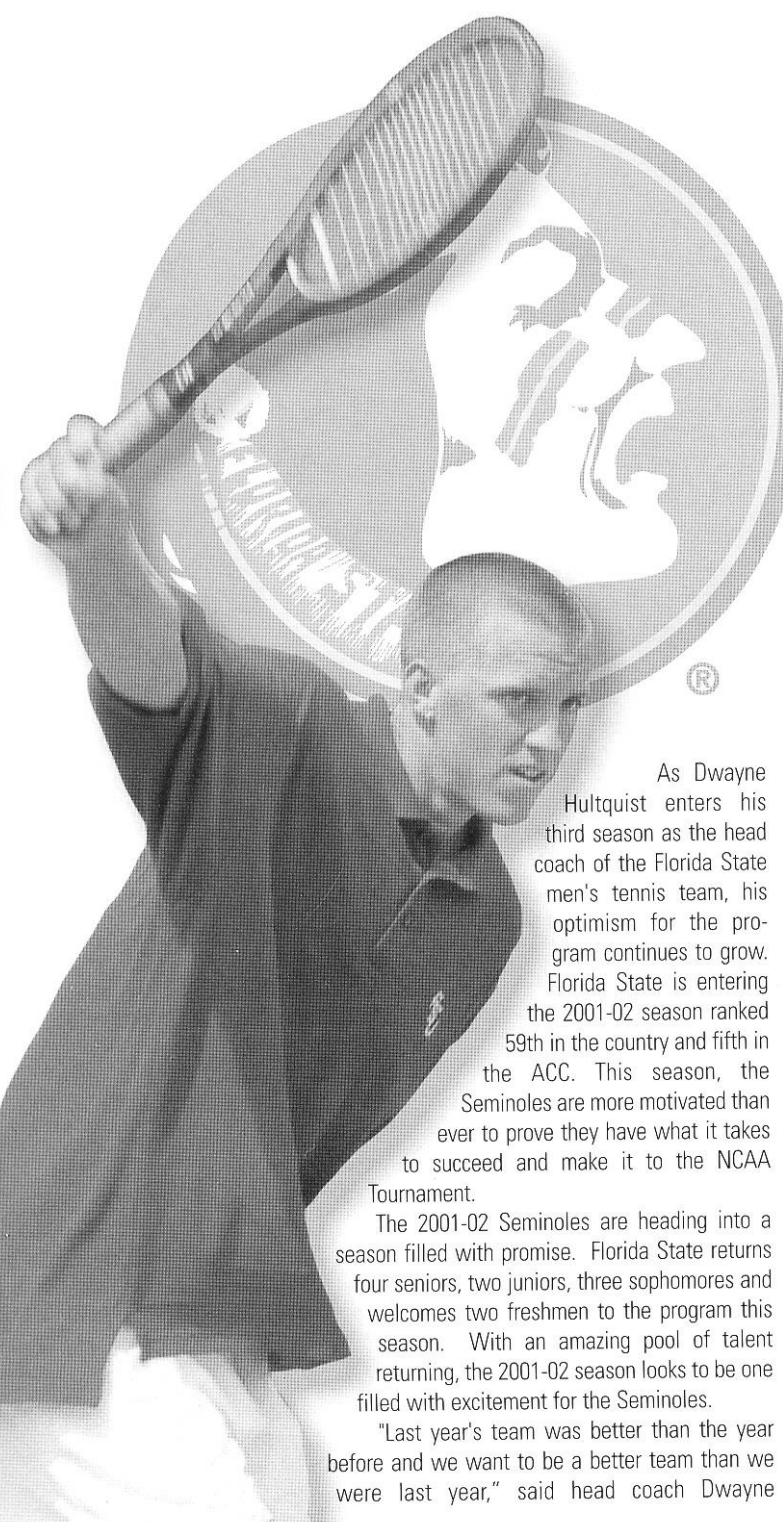
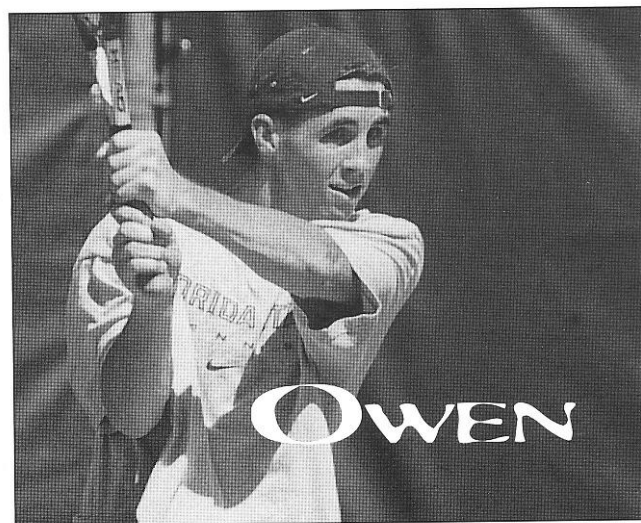
MEDIA GUIDE CREDITS

The 2001-2002 Seminole Tennis media guide is a publication of the Florida State University Sports Information Office. Edited and written by Jennifer Dowling and Kia Asberg. Writing and research assistance by Chad Beattie and Ben Tario. Designed by Cade & Associates Advertising. Photography by Tom Casazza, Landa Oz Photography, Ross Obley, Ryals Lee and the University Photo Lab. Printing by FSU Printing Services.

The Florida State University offers equal opportunity in its employment and educational activities in compliance with Title IX, Section 5-4 of the Rehabilitation Act of 1973 and other civil rights laws. This document is available upon request in alternate formats for individuals with print related disabilities. Contact the ADA office, 301 Westcott Administration Building, for more information.

2001 Outlook: FSU 2002

Hultquist. "All of our top eight are returning and we are adding Chip Webb who was ranked as a top 15 player in the nation. Last season we had three freshmen in the starting line up. Given the fact that they have now played a year of college tennis, last year's experience is going to make us a lot better for this year, plus some of the guys have worked really hard this summer. We should definitely push to be one of the better teams this year. Obviously we would like to make the NCAA Tournament and see how far we can go with that."



As Dwayne Hultquist enters his third season as the head coach of the Florida State men's tennis team, his optimism for the program continues to grow. Florida State is entering the 2001-02 season ranked 59th in the country and fifth in the ACC. This season, the Seminoles are more motivated than ever to prove they have what it takes to succeed and make it to the NCAA Tournament.

The 2001-02 Seminoles are heading into a season filled with promise. Florida State returns four seniors, two juniors, three sophomores and welcomes two freshmen to the program this season. With an amazing pool of talent returning, the 2001-02 season looks to be one filled with excitement for the Seminoles.

"Last year's team was better than the year before and we want to be a better team than we were last year," said head coach Dwayne

Team leader, Xavier Luscan, enters his senior season with 51 career singles and doubles wins. He finished his junior campaign winning seven of eight matches against ACC opponents while being named to the 2001 All-ACC Men's tennis team.

"Xavier is probably the first thing you would look at when it comes to strengths," said Hultquist. "Being a two-time All ACC selection, he will probably be a top 30 or 40 player in the country. He is definitely a key to our strength. I think we have a lot of good players. We are looking for certain players to emerge, but whoever plays No. 6 is going to be very good and we probably have more good players than almost any team in the country."

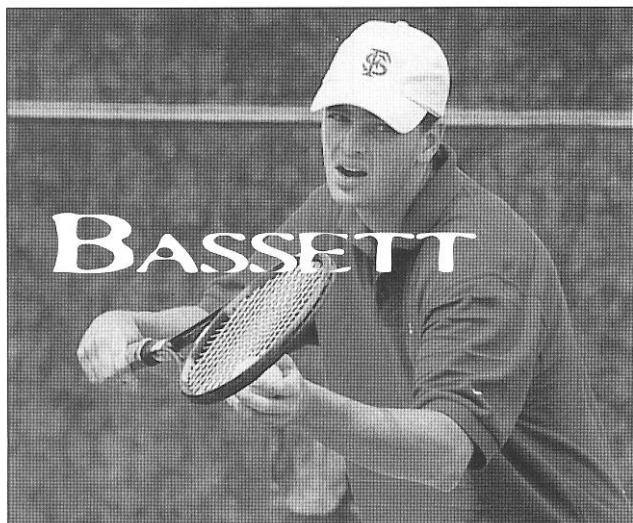
Joining Luscan in a quest for the NCAA Tournament are seniors, Bartosz Koldej, Gustav Bucht and Jeff Scarella. Koldej made an immediate impact in doubles competition last season going on a four-match winning streak with teammate Xavier Luscan where the two took wins over ACC opponents Clemson, Maryland and UNC. Bucht opened up his first spring season with the Seminoles on a four-match winning streak with teammate Alex Herrera while playing primarily at the No. 2 position in singles action. Four-year standout Scarella finished his junior season with a winning record of 14-12 going on an eight-match winning streak during the spring season and winning four matches at the No. 5 position and three at No. 6.

Rodrigo Laub and Joe Bassett stand as the Seminoles juniors on the 2001 squad. Laub completed last season as one of five Seminoles to finish with a winning record of 15-11. Laub would see three different, three-match win streaks in spring action while going undefeated at the No. 2 and No. 3 positions.

Men's Tennis

With one year of experience behind them, Florida State sophomores Jarrod Owen, Alex Herrera, Reid McCree and Romain Jurd are sure to build on their impressive performances from 2000 to be strong contributors this season.

Owen began his spring season on a four-match win streak including a win against Florida's Matt Behrmann. Owen played primarily at the No. 3, 4 and 5 positions finishing his freshman campaign with a record of 16-16. Herrera started his freshman spring season playing at the No.



1 position while Luscan was injured. Herrera went 1-0 at the No. 2 position and 2-2 at the No. 4 position. An outstanding athlete with a variety of abilities, Herrera should be a key contributor to the team. Jurd made an immediate impact on the 2000 squad while winning his first four matches as a Seminole and advancing to the doubles finals round of the Seminole Classic with teammate Owen.

Hultquist brings two newcomers to the program this year in freshmen Chip Webb and Brad Kolowich. After distinguished careers in high school, these rookies will look to build on the success of those before them.

"Chip is going to have an immediate impact, to what level I am unsure, but he will have a big impact on this year's team," said Hultquist. "He has beaten a lot of top ranked players, those who are professional and top collegiate players. He may take a little time to adjust coming off of an injury, but we expect great things to come out of Chip."

This year's schedule will consist of two teams ranked in the top 15 at the end of last year in ACC rival Duke and the University of Miami, with nine others ranked in the top 50. The men's team will start off the fall at the Southern Intercollegiate in Georgia, September 21-23, and will then head to Stone Mountain Georgia for the ITA All-American Tournament before returning home. On October 19-21, the team will host their annual Seminole Fall Classic.

"We would like to have our guys show that they can play on the national level and get into the rankings to give them confidence and show them where they stand nationally," said Hultquist. "What I am really looking for this fall is someone other than Xavier to breakthrough and show they are at that same level. The fall is really going to show who is going to stack up and play at the two, three and four positions."

The team will complete this fall at the Rolex Regional in Chapel Hill, N.C., October 23-28, before Spring action begins.

"We have the kind of schedule I like, where we are playing more at home than away," said Hultquist. "The ACC this year is going to be stronger than probably the past two years. Duke should not be quite as strong as they have been in the past. They lost a lot of key players this year to graduation, although they will still be very good and most likely will still be the team to beat. Georgia Tech is also very good, along with Wake Forest and North Carolina. I sense that it will be an even better conference than it was last year."

January will set the stage for the Seminoles spring dual match season as they begin with the ACC Indoor Championships, and then return home to host the Seminole Team Tournament, before hosting Furman. The men's team will stay close to home this year playing 12 of 20 dual matches within the friendly confines of the Scott Speicher Tennis Center.

"There are some things we are trying to build outside the tennis courts," said Hultquist. "We had a lot of community spirit and involvement and we would like to continue that, we would like to see more people coming out to our matches, and to keep building on the attendance each year."

The final month of action for the Seminoles will be packed with ACC matches for the 'Noles. The team will first face North Carolina at home on April 6, then travel to Atlanta to face Georgia Tech, and finish at home with the last match of the season vs. Duke on April 14.

The 2001-2002 season promises to be exciting as usual in Tallahassee with two home tournaments as well as the third year of hosting the USTA Challenger. Hultquist will rely on the leadership of his returners to guide this squad to a winning season.



2000-2001 MEN'S TENNIS WITH THE GOLDEN ACE GIRLS

DWAYNE HULTQUIST

Head Coach

Dwayne Hultquist's program is coming into its own as the head coach begins his third season in Tallahassee. When he took over the program, Hultquist insisted that Florida State would contend among the Atlantic Coast Conference's top teams, challenge FSU's non-conference opponents and grow stronger as a program. His third team appears ready to make that commitment happen.

With a passion for the sport of tennis, Hultquist has always wanted to accomplish one thing. That one thing is the desire to become a successful Division I collegiate coach. In the summer of 1999, Hultquist's hiring as the Seminole head men's tennis coach culminated a decade-long journey to fulfill his dream. Hultquist's immediate goal for FSU was to strengthen its schedule and to provide for upward movement in the rankings. He is a firm believer that better opponents will bring about higher rankings. Hultquist has stayed firm in this belief by bringing tougher competition to the Seminoles each year. Entering his third year, Hultquist maintains high hopes for the future of his Seminole program.

In his first year, Hultquist brought the Seminoles a winning record of 14-10, marking the 'Noles 14th consecutive winning season. In his second year, the men's team finished out the season going 10-14 and will enter the 2001-02 season ranked No. 59 in the Intercollegiate Tennis Association's rankings.

Hultquist arrived at Florida State after serving eight years as an assistant coach at the University of Texas. While working under legendary coach Dave Snyder at Texas, Hultquist became known for his excellent recruiting abilities. He was also responsible for scheduling, fundraising, individualized coaching and many of the day-to-day operations of the program. While at Texas, Hultquist helped lead the Longhorns to the NCAA Tournament Sweet 16 in each of his eight years.

Hultquist began his tennis career at Penn State where he was a four-year letterman, and team captain in 1986. During that same year, he was an NCAA Tournament qualifier in doubles, and earned all-conference honors in both singles and doubles. After graduating from Penn State, Hultquist turned pro, playing in the United States, Israel and Asia. During his career, Hultquist was selected to play on

national teams that traveled to Korea and China for competition. He also participated in a goodwill tour for the United States in Okinawa, Japan, where he participated

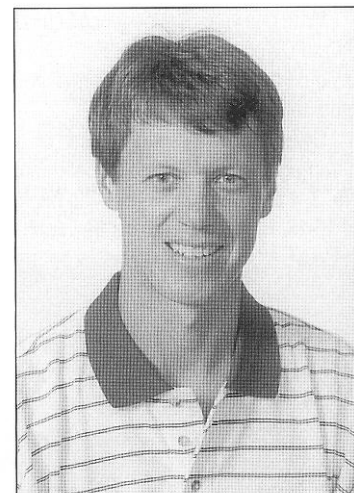
in exhibition matches and helped direct clinics for the U.S. Military.

Hultquist's coaching career began after his playing days were over when he accepted a job with the USTA in 1988. His playing experience helped prepare him to become the USTA's Boy's National Team Coach. There he was able to travel overseas for international tournaments, as well as tourna-

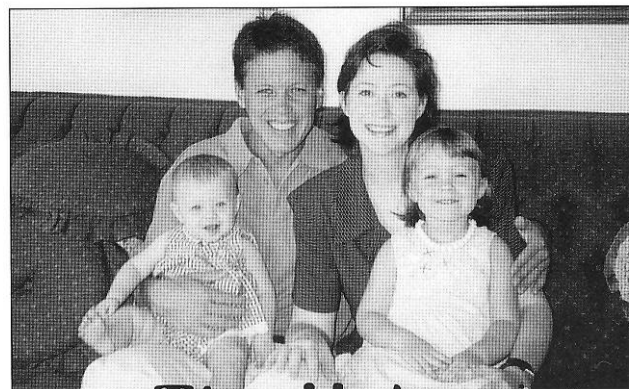
ments such as the Orange Bowl, Easter Bowl and the Reebok Cup. Hultquist also received the opportunity to coach at the Nick Bollettieri Tennis Academy. It was at the Bollettieri Academy that he coached world class players like Lihini Weerasuriya, who went on to win a USTA National Championship as well as another talented junior who went on to win the doubles championship at the 1989 Orange Bowl. During his year at the Academy, he coached nine All-Americans and was promoted to women's traveling coach.

In 1991, Hultquist began his collegiate coach career when he accepted a graduate assistant position at the University of Kentucky, where he was responsible for individualized coaching, recruiting and co-directing the National Collegiate Indoor Team Championships. When the position at Texas opened up, Hultquist jumped at the chance and has never looked back.

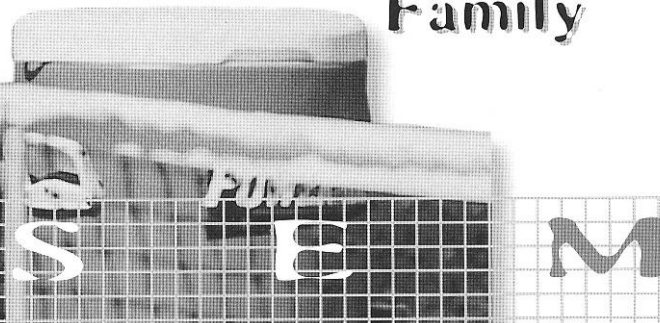
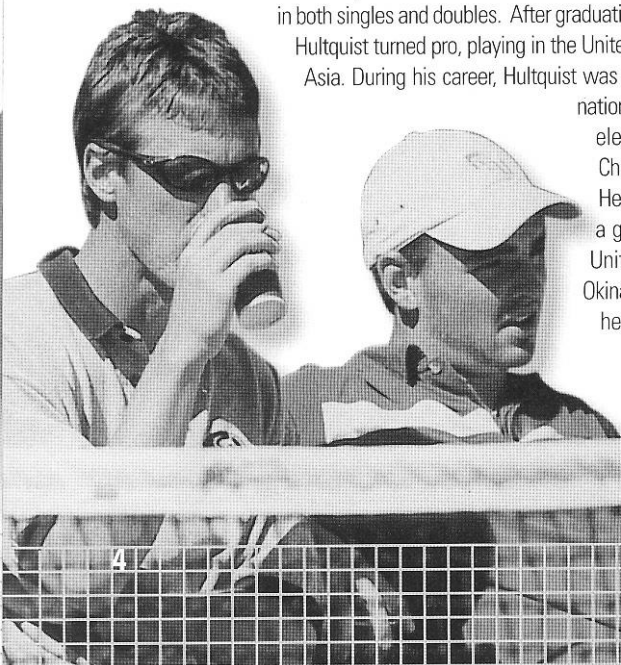
Hultquist is married to the former Angela White. The couple has a four-year old daughter, Devan and one-year old daughter, Avery.



Pennsylvania State '86
3rd Season



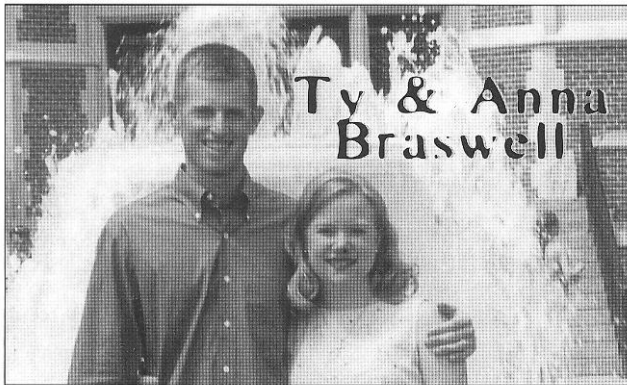
The Hultquist
Family



TY Assistant Coach BRASWELL

Ty Braswell knows Florida State tennis. He knows the program, the people and the competition. As Braswell enters his second season as the Seminoles assistant men's tennis coach, he brings with him even more aspirations than the year prior.

In his second year as assistant coach, Braswell will be able to offer his leadership and knowledge of the game that is sure to be of benefit to each of the players. Having graduated from Florida State only three years ago, where he was a celebrated member of the men's tennis team himself and



team captain from 1997-99, Braswell knows what it will take to lead this team to victory. Braswell will continue to assist in helping head coach Dwayne Hultquist in taking the Seminole men's tennis program to the next level.

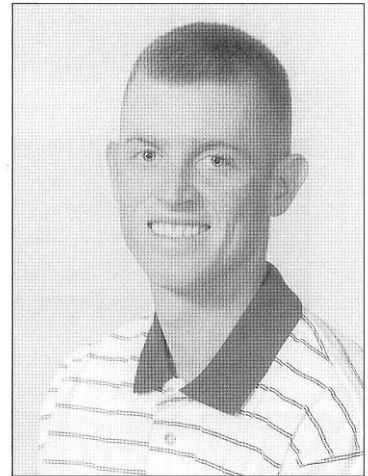
Braswell became the newest member of the Florida State University coaching staff when he accepted the position as assistant men's tennis coach on July 1, 2000. Accepting this position on the tennis team, Braswell switched from player to coach.

2001-2002 ROSTER

Joe Bassett	Junior	Monticello, FL
Gustav Bucht	Senior	Lund, Sweden
Alex Herrera	Sophomore	Gadsden, AL
Romain Jurd	Sophomore	Paris, France
Bartosz Koldej	Senior	Warsaw, Poland
Brad Kolowich	Freshman	Acworth, GA
Rodrigo Laub	Junior	Atlanta, GA
Xavier Luscan	Senior	Paris, France
Jarrod Owen	Sophomore	Vero Beach, FL
Jeff Scarella	Senior	New Smyrna Beach, FL
Chip Webb	Freshman	Chattanooga, TN

Dwayne Hultquist (Head Coach)
Ty Braswell (Assistant Coach)

Dustin Mathews (Manager)
Mike Johnson
(Sport Psychologist Intern)



Florida State University '99
2nd Season

During his senior campaign in 1998-99, Braswell was the only ranked Seminole in singles and tied his career high with 19 wins. Braswell also won the Flight one Singles Championship at the Seminole Fall Classic and advanced to the quarterfinals of the ITA Region II Indoor Championships where he defeated the No. 13th player in the nation.

In his 1997-98 season, he boasted 17 victories in doubles and gained an ACC tournament victory over Georgia Tech's nationally ranked doubles team. Braswell played at the No. 1 and 2 singles position all season where he held a singles ranking as high as 60 in the ITA Singles Rankings.

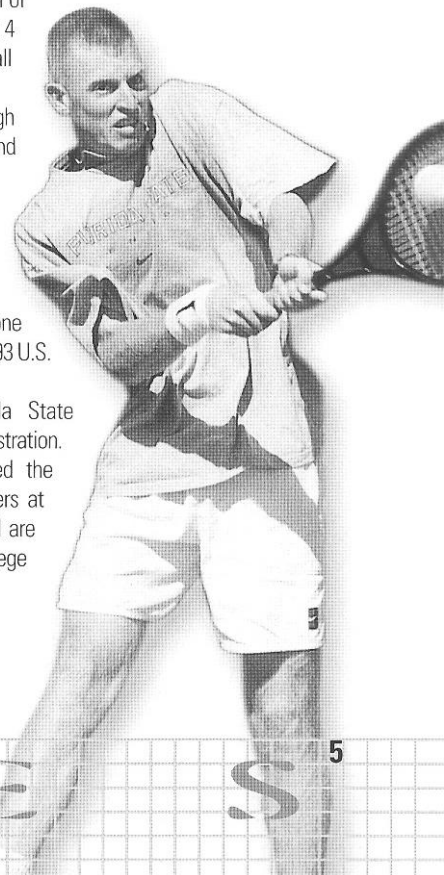
The previous season (1996-97) Braswell played at the No. 1 and 2 singles positions while defeating five nationally ranked players including Florida's Jon Glover to clinch a 4-3 victory over the 10th ranked Gators. Braswell teamed with Yvo Niks to win the ACC No. 2 doubles championship.

As a freshman in 1995-96, he played at the No. 3, 4, and 5 singles positions where he put together a respectable 18-13 singles record which was third best on the team. In addition, Braswell was 10-7 at No. 2 and 3 doubles where he and his partner defeated a nationally ranked duo in the team's biggest win of the season. He also clenched the flight 4 singles championship in the Seminole Fall Classic.

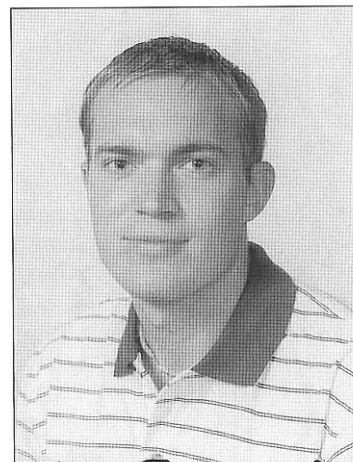
In high school he was ranked as high as No. 5 in the country in the Boys 18 and under division, while being ranked as high as No.1 in Florida in Boys 18 and under division.

Braswell participated in the 1995 U.S. Olympic Festival in Colorado where he won two gold medals and one silver medal. He was a finalist in the 1993 U.S. National Clay Court Championship.

Braswell graduated from Florida State in 1999 with a degree in Sports Administration. In October of 1999 Braswell married the former Anna Nixon. Both are members at First Baptist Church in Tallahassee and are Bible Study Teachers with the College Ministry.



GUSTAV BUCHT Senior



BUCHT CAREER STATISTICS

SINGLES							Duals	Overall	Total
Year	@1	@2	@3	@4	@5	@6			
00-01	0-2	2-7					2-9	1-1	3-10

DOUBLES						Duals	Overall	Total
Year	@1	@2	@3					
00-01	3-5	2-1	2-1			7-7	2-2	9-9 w/Herrera, Laub

BUCHT SPRING 2001 RESULTS

DATE	OPPONENT	SCHOOL	W/L	SCORE	POSITION
2/9	Nathan Overholser	Florida	L	6-4, 6-4	#1
2/16*	James Cameron	Furman	W	6-3, 6-3	#2
2/24	Tomas Smid	Miami	L	6-4, 6-7, 6-1	#2
3/3	Brian Vahaly	Virginia	L	6-0, 6-3	#1
3/6	Bobby Reynolds	Vanderbilt	L	6-4, 7-5	#2
3/10	Matt Lucas	NC State	W	6-3, 4-6, 6-3	#2
3/12	David Bere	Wake Forest	L	6-2, 6-3	#2
3/17	Craig Edmondson	Texas	L	7-6, 6-7, 6-3	#2
3/23	Darren Knight	Clemson	W	6-0, 6-3	#2
3/25	Nik Malone	Brown	L	6-3, 6-3	#2
3/31	Nicholas Monroe	UNC	L	7-6, 7-6	#2
4/20	Raul Munoz	Wake Forest	L	6-4, 6-4	#1
4/29	Tiago Ruffoni	Auburn	L	6-3, 6-2	#2

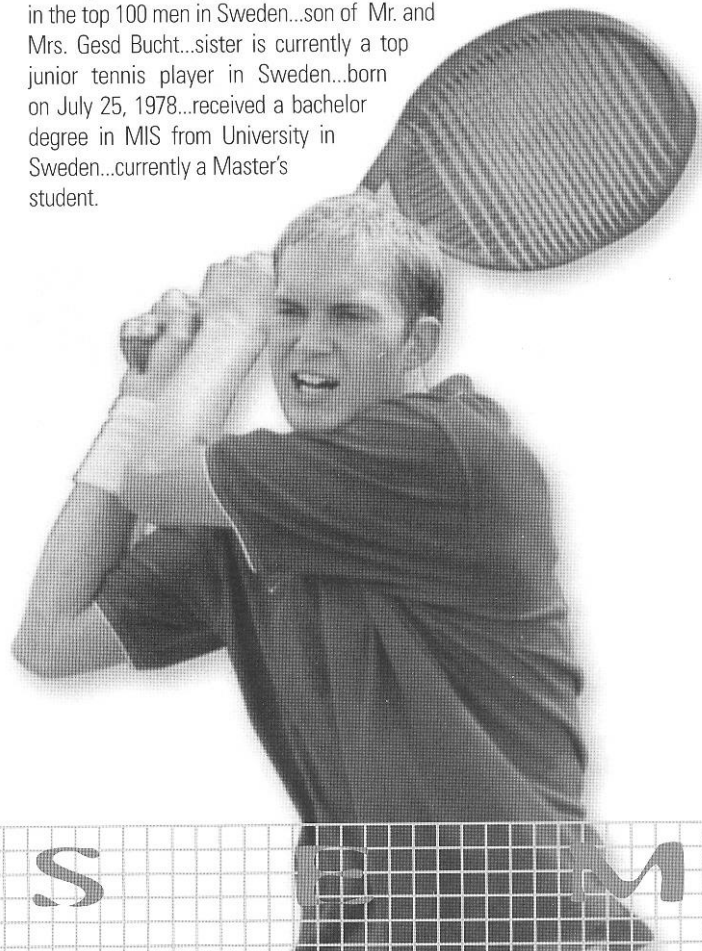
*Seminoles Classic Tournament

Lund, Sweden

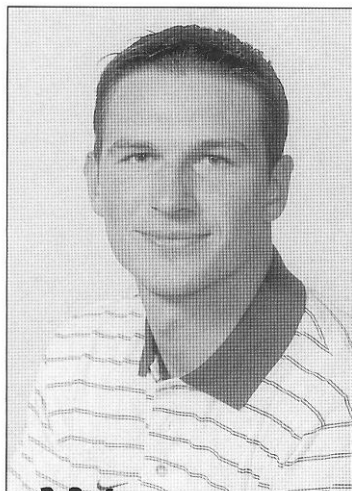
2000-01: Opened up his first spring season with the Seminoles on a four match winning streak with teammate Alex Herrera...Bucht finished his doubles season with a record of 9-9, going 2-1 at both the No. 2 and 3 positions...played primarily at the No. 1 and 2 positions in singles play for Florida State...**Personal:** Transferred from Georgia Perimeter...lost only two matches in his one year at Junior College...National Team Champion and All-American in '98...doubles runner up in '98...singles flight #2 National Champion in '98...Swedish Outdoor Team Champion in '98...highest junior ranking #12 in Sweden...ranked in the top 100 men in Sweden...son of Mr. and Mrs. Gesd Bucht...sister is currently a top junior tennis player in Sweden...born on July 25, 1978...received a bachelor degree in MIS from University in Sweden...currently a Master's student.

HULTQUIST On Gustav:

"Gustav has had some real good wins this summer and has gotten himself in better shape. We would like to see him be a little more aggressive, come up to the net more and get a little quicker."



Senior BARTOSZ KOLDEJ



Warsaw, Poland

KOLDEJ CAREER STATISTICS

SINGLES		@1	@2	@3	@4	@5	@6	Duals	Overall	Total
Year	00-01			0-3	1-1	1-0	0-1	2-5	0-1	2-6
DOUBLES		@1	@2	@3	Duals	Overall	Total			
Year	00-01	5-3	7-4	1-0	13-7	2-1	15-8 w/Owen, Scarella, Luscan, Jurd			

KOLDEJ SPRING 2001 RESULTS

DATE	OPPONENT	SCHOOL	W/L	SCORE	POSITION
3/25	Alex Walden	Brown	W	7-6, 6-3	#4
3/31	Trystan Menaine	North Carolina	L	6-4, 6-2	#4
4/1	Andres Pedroso	Duke	L	6-0, 5-8, 6-1	#3
4/6	David Wright	Georgia Tech	L	6-3, 6-7, 6-2	#3
4/8	Martin Wetzell	South Florida	L	6-1, 6-1	#3
4/13	John Richards	FAMU	W	6-3, 7-6	#5
4/20	Justin Kaufmann	Wake Forest	L	5-7, 6-3, 6-3	#6
4/29	Ryan Sanders	Auburn	L	6-4, 7-5	#6

2000-01: Signed with Florida State in November of 2000...made an immediate impact in doubles competition...went on a four-match winning streak in doubles with teammate Xavier Luscan where the two took wins over ACC opponents Clemson, Maryland, and UNC...finished off the spring season with a winning doubles record of 12-8...

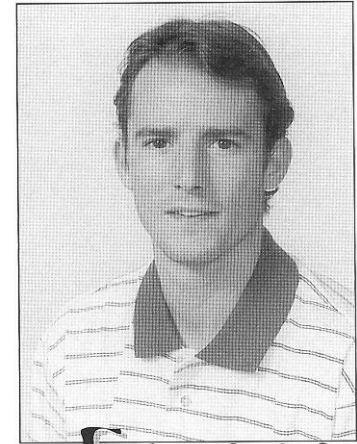
Personal: Transferred from Georgia Perimeter...four time All American at GP ('99, '00 singles and '99, '00 doubles)...two-time National Team Champion ('99 and '00) with GP...Polish Indoor Team Champion in '95 and '96...ranked No. 4 in juniors in Poland...ranked No. 19 as a senior in Poland...finished 3rd in the Polish National Singles Indoor Championships in '95. born on May 9, 1978...son of Marian and Helena Koldej...his major is Economics.

HILTOQUIST On Koldej:

"Bartosz did a good job for us last year in doubles and we will be looking for him to do even better things this year. He has a great serve, is a good athlete and he has worked really hard physically this summer to get himself in better shape so we will look for better things from him this year."



XAVIER LUSCAN Senior



Paris, France

LUSCAN SPRING 2001 RESULTS

DATE	OPPONENT	SCHOOL	W/L	SCORE	POSITION
2/9	Oliver Levant	Florida	L	7-6, 6-3	#2
2/16*	Lee Nickell	Furman	W	6-3, 6-1	#1
2/17	William Campos	Troy State	W	3-6, 6-4, 6-3	#1
2/24	Mike Lang	Miami	L	6-4, 6-0	#1
3/3	Huntly Montgomery	Virginia	W	6-3, 6-4	#2
3/6	Eddie Coates	Vanderbilt	L	6-4, 7-5	#1
3/10	Eric Jackson	NC State	W	7-6, 4-6, 6-1	#1
3/12	Raul Munoz	Wake Forest	W	6-1, 6-3	#1
3/17	Jean Simon	Texas	L	6-1, 3-6, 7-5	#1
3/18	Chris Chui	Maryland	W	6-3, 6-3	#1
3/23	Brad Emendorfer	Clemson	W	6-2, 6-3	#1
3/25	Chris Wolfe	Brown	W	6-2, 6-2	#1
3/31	Marcio Petrone	UNC	W	6-7, 6-2, 6-2	#1
4/1	Ramsey Smith	Duke	L	6-0, 6-1	#1
4/6	Romain Coirault	Georgia Tech	W	6-2, 6-4	#1
4/8	Paco Antelo	South Florida	L	6-4, 6-4	#1
4/13	Isaac Yarrell	FAMU	W	6-1, 6-4	#1
4/29	Rameez Junaid	Auburn	L	2-6, 7-5, 6-3	#1

*Seminole Classic Tournament

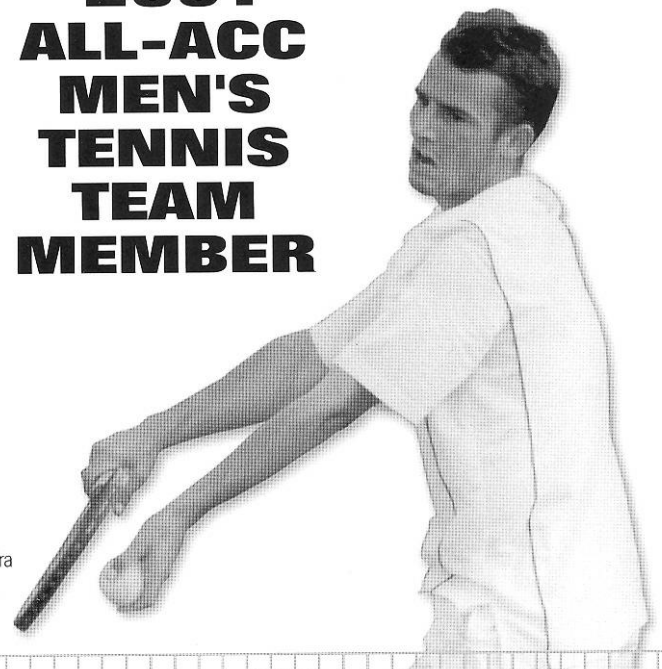
2000-01: Named to the 2001 All ACC Men's Tennis Team...had an outstanding 7-1 run against ACC opponents...named ACC player of the week March 5th...held an ITA singles ranking of No. 99 in March...finished the spring season playing mainly at the No. 1 position with a winning record of 11-7 after missing the first three matches of the season due to an injury...went 12-9 in doubles action with four different partners, winning five matches at the No. 1 position and five at the No. 2 position...played in three fall tournaments going 4-4 in singles action...Golden Nole Award winner for men's tennis...Seminole MVP in 2001...named to the ACC Academic Honor Roll...**1999-00:** Finished the season ranked No. 63 in the nation...defeated 10th-ranked Matt Amgerwerd of New Mexico in late January...performed well in No. 1 position, winning 15 of 22 matches...an All-ACC selection...won three of seven matches against ranked opponents including two against top 20 ranked players...teamed with Laub to play No. 1 doubles...led team with 16 dual match wins and a 5-3 conference record...

Personal: Transferred from UCLA in January of 2000...son of Richard and Anne Luscan...born on September 11, 1979...International Affairs major.

HULTQUIST On Luscan:

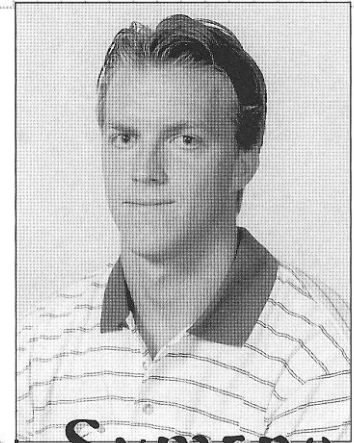
"Xavier has worked very hard to improve his game and should prove to be one of the best players in the country this season."

2001 ALL-ACC MEN'S TENNIS TEAM MEMBER



LUSCAN CAREER STATISTICS	SINGLES							Duals	Overall	Total
	Year	@1	@2	@3	@4	@5	@6			
	99-00	15-7						15-7	1-1	16-8
	00-01	8-6	1-1					9-7	6-4	15-11
	Totals	23-13	1-1					24-14	7-5	31-19
	DOUBLES							Duals	Overall	Total
	Year	@1	@2	@3	Duals	Overall	Total			
	99-00	3-7	1-4	4-2	8-13	0-0	8-13 w/Mooney, Scarella Laub			
	00-01	5-3	5-2	0-1	10-6	2-3	12-9 w/Koldej, Owen, Jurd, Herrera			
	Totals	8-10	6-6	4-3	18-19	2-3	20-22			

JEFF SCARELLA Senior



New Smyrna Beach, FL

SCARELLA CAREER STATISTICS	SINGLES										
	Year	@1	@2	@3	@4	@5	@6	Duals	Overall	Total	
	98-99					1-2	3-3	4-5	2-5	6-10	
	99-00				0-2	3-2	3-3	6-7	8-3	14-10	
	00-01				2-0	2-3	2-4	6-7	9-4	15-11	
	Totals				2-2	6-5	8-10	16-19	19-12	35-31	
	DOUBLES										
	Year	@1	@2	@3	Duals	Overall	Total				
	98-99	4-3	1-2	3-2	8-7	3-2	11-9 w/Ingham, Mooney, Braswell, Casas, Koslowski, Schnell				
	99-00	2-3	2-2	5-4	9-9	5-4	14-13 w/Ingham, Schnell, Travis				
00-01	3-0	1-2	5-5	9-7	3-4	12-11 w/Schnell, Koldej, Laub Own Herrera					
Totals	9-6	4-6	13-11	26-23	11-10	37-33					

SCARELLA SPRING 2001 RESULTS

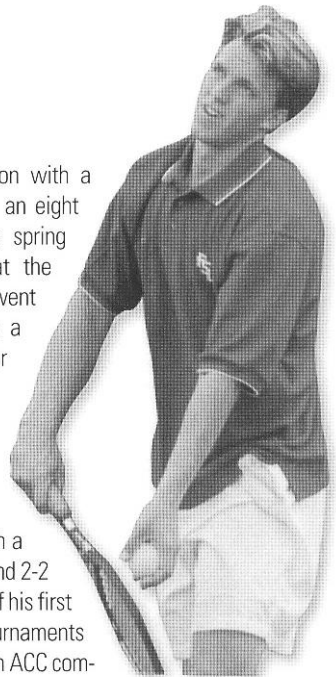
DATE	OPPONENT	SCHOOL	W/L	SCORE	POSITION
1/20	Matt Frakes	Penn State	L	7-6, 4-6, 6-0	#5
1/20	Jared Anderson	West Virginia	L	6-4, 6-1	#6
2/4	Darren Clark	Ga Southern	W	6-4, 3-6, 6-4	#5
2/11	Chris McRae	Alabama	L	3-6, 6-1, 6-2	#5
2/16*	Razvan Ilie	Tennessee Tech	W	6-2, 6-2	#5
2/16*	Patrick Fillnow	Furman	W	6-3, 6-4	#6
2/17*	Matias Mosso	Troy State	W	6-7, 6-1, 6-2	#5
2/24	Andrew Golub	Miami	W	7-5, 6-3	#6
3/3	Johnathan Chou	Virginia	W	7-5, 7-6	#6
3/6	Zach Daily	Vanderbilt	W	7-6, 2-6, 6-4	#5
3/10	Reinaldo Valor	NC State	W	3-6, 6-3, 6-3	#4
3/12	Trent Brendon	Wake Forest	L	6-2, 6-4	#5
3/17	Will Clinton	Texas	L	6-4, 6-1	#5
3/23	Lee Taylor Walker	Clemson	W	7-5, 6-1	#6
4/1	Michael Yani	Duke	L	6-4, 6-1	#6
3/31	Joao Menano	Georgia Tech	L	7-5, 6-1	#6

*Seminole Classic Tournament

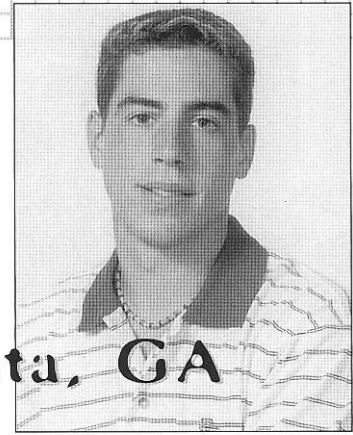
HULTQUIST On Scarella:

"Jeff has improved every year, and we need him to keep improving. He is a big doubles player and has won some good singles matches for us as well."

2000-01: Finished his junior season with a winning record of 15-11...went on an eight match winning streak during the spring season, winning four matches at the No. 5 position and three at No. 6...went 2-4 in ACC competition including a win at No. 4 against Reinaldo Valor of NC State...compiled an overall doubles record of 12-11 with four different partners in the spring and with Noah Schnell in the fall...played in four fall tournaments finishing the fall season with a winning record of 6-4 in dual play and 2-2 in fall action...**1999-00:** Won eight of his first 10 matches...played in three fall tournaments comprising a 6-2 record...went 1-1 in ACC competition including a win at No.5 against Kenshalo from Maryland...played doubles with Ingham, Schnell, Travis and Luscan...finished season on a three-match winning streak in singles...**1998-99:** Finished the season playing No. 1 doubles with senior Davidson Koslowski...compiled an overall doubles record of 11-9 with five different partners during the spring...started nine matches in the spring dual match season, winning three matches at No. 6 singles and one at No. 5...played in two tournaments in the fall of his rookie season posting a 2-5 singles record...won two of his last four singles matches in the Seminole Fall Classic...was the Seminoles most improved tennis player his freshman season... **High School and Other Accomplishments:** Earned district title as a senior at New Smyrna Beach High School...most valuable player on high school tennis team all four years...high school team was the District Champs...also played basketball at New Smyrna High...earned distinction as a Superintendent Scholar all four years of high school...also an Honor Roll student all four years...**Personal:** Born March 21, 1980...pursuing a degree in Physical Therapy...coached by his father in high school...father (Bob) is a tennis pro and mother (Sue) ran track in college...nicknamed "The Shocker" in high school.



RODRIGO LAUB Junior



Atlanta, GA

LAUB SPRING 2001 RESULTS

DATE	OPPONENT	SCHOOL	W/L	SCORE	POSITION
1/20	Damon Accardi	Penn State	L	7-6, 4-6, 6-0	#4
1/20	Alex Paschalides	West Virginia	L	6-1, 6-2	#3
2/4	Uli Ebensperger	Ga Southern	W	6-1, 7-6, (7-3)	#4
2/9	West Nott	Florida	W	6-4, 6-2	#6
2/11	Stephen Mitchell	Alabama	L	7-5, 5-7, (10-7)	#4
2/16	Simon Tremblay	Tennessee Tech	L	7-5, 6-3	#4
2/17	Mark Prior	Troy State	W	6-4, 6-0	#6
3/6	Josh Tarkoff	Vanderbilt	W	7-6, 3-6, 7-5	#6
3/10	Ryan Boward	NC State	W	6-2, 6-2	#6
3/12	Justin Kaufmann	Wake Forest	L	7-6(4), 6-3	#6
3/17	Alastair Jenkin	Texas	W	3-6, 6-3, 6-3	#6
3/18	Luan Nguyen	Maryland	W	6-1, 6-3	#4
3/23	Joe Hopke	Clemson	W	6-3, 6-4	#5
3/31	Chad Riley	North Carolina	L	6-4, 6-2	#6
4/1	Alex Bose	Duke	L	6-3, 6-3	#5
4/6	Sergio Aguirre	Georgia Tech	W	6-7, 7-5, 10-4	#5
4/8	Max Dockhorn	South Florida	L	4-6, 6-1, 7-6	#4
4/13	Lenin Mongerie	FAMU	W	6-0, 6-2	#2
4/20*	Mike Murray	Wake Forest	DNF		#2
4/29	George Matijasevic	Auburn	W	7-6, 3-6, 6-2	#3

*Seminole Classic Tournament

*ACC Tournament

HULTQUIST On Laub:

"Rodrigo has been a strong player for us for two years winning a lot of big matches. He has worked hard and has improved his ground shot. He is an all-around great player."

LAUB CAREER STATISTICS	SINGLES									
	Year	@1	@2	@3	@4	@5	@6	Duals	Overall	Total
	99-00						2-2	9-4	11-6	9-3
00-01		1-0	2-0	2-3	2-1	4-2	11-6	4-5	15-11	
Totals		1-0	2-0	2-3	4-3	13-6	22-12	13-8	35-20	
LAUB CAREER STATISTICS	DOUBLES									
	Year	@1	@2	@3	Duals	Overall	Total			
	99-00	4-8	1-3	2-0	7-11	0-0	7-11 w/Luscan			
00-01	0-0	3-1	4-4	7-5	0-4	7-9 w/Owen, Jurd, Schnell, Scarella, Bucht				
Totals	4-8	4-4	6-4	14-16	0-4	14-20				

2000-01: One of five members of the Seminoles

to finish the season with a winning record...in fall action Rodrigo went 2-4 in singles play and in doubles play had an 0-1 record while playing with Jarrod Owen...after losing his first match of the spring season Laub went on a three-match winning streak including a win against Florida's West Nott...Laub would again go on a three-match win streak two more times throughout the season...finished the season with a record of 15-11...**1999-00:** Started off his collegiate career with six straight wins including the Southern Intercollegiate Flight IV Championship ...excelled in conference competition by posting a 5-2 record in the ACC... impressed coaches during freshman campaign by holding down the No. 6 spot with a 9-4 record...earned a straight set victory against Clemson's Marko Dojanovic, the only ranked competitor he faced all year...had the most wins by an FSU freshman since Michael Ingham's 26 in 1996-97...**High School and Other Accomplishments:** Named MVP of high school tennis team his junior and senior year...won the state championship his senior year going undefeated...in two years at Chamblee he lost only one match, to a top 10 nationally ranked high school player...competed in the Orange Bowl tournament his junior year as well as the Eddie Herr tournament...earned ATP ranking in doubles...**Personal:** Son of Paulo and Dora Laub...enjoys playing soccer in his free time...majoring in Sport Management...born on April 28, 1980.



JOE Junior BASSETT

BASSETT CAREER STATISTICS

SINGLES

Year	@1	@2	@3	@4	@5	@6	Duals	Overall	Total
98-99						2-1	2-1	2-3	4-4
00-01								3-6	3-6
Totals						2-1	2-1	5-9	7-10

DOUBLES

Year	@1	@2	@3	Duals	Overall	Total
99-00			1-0	1-0	0-1	1-1 w/Mooney

Monticello, FL



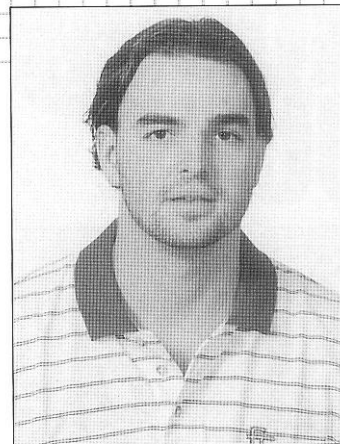
HULTQUIST On Bassett:

"Joe is coming off of knee surgery, so we need him to get back in the game and get healthy as soon as possible."

On Herrera:

"Alex plays really big. He has a great serve and is extremely athletic. We would like for him to hit his forehand a little bigger and keep coming up to the net. We are really looking for him to make a commitment to being an elite player."

2000-01: Started off the fall season on a three match winning streak at the Southern Collegiate...saw action in three more tournaments through fall play including the Seminole Fall Classic, the Racquet Club Collegiate Invitational and the ITA Regional II...was unable to compete in the spring season due to injuries...**1999-00:** Won the first dual match of his career

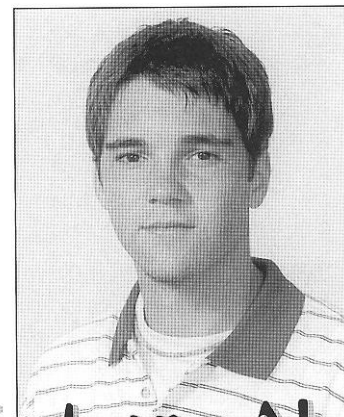


on Feb. 12th against UNC-Asheville...won only ACC match of the season against Maryland...advanced to the semifinals in the "B" Draw of the Seminole Fall Classic in October...**High School and Other Accomplishments:** MVP of tennis team all four years...named MVP of basketball team junior and senior seasons...earned seven letters in high school between basketball and tennis...**Personal:** Son of Bill and Donna Bassett...father, Bill, played tight end at the University of Georgia...majoring in Business...born on August 24, 1981.

Sophomore ALEX HERRERA

2000-01: Started out his fall season on a three match winning streak at the Southern Collegiate Tourney... would finish his fall season with a record of 6-3 in singles action and 1-2 in doubles playing with Xavier Luscan...began spring action playing at the No. 1 position...went 1-0 at the No. 2 position and 2-2 at the No. 4 position...an outstanding athlete with a variety of abilities...should be a key contributor to the team in the future...**High School and Other Accomplishments:** Played

soccer, baseball, basketball and tennis...made all-state and all-tournament in basketball junior and senior seasons... won tennis Alabama qualifier three years...ranked number 1 tennis player in Alabama and number 5 in the South...finalist in singles at Peachtree National and Florida Open... semifinalist in doubles at National Indoors and Florida Open...Academic Honor Roll four years...**Personal:** Son of Pat and Margaret Herrera...major is undecided... born on November 8, 1981.



Gadsden, AL

HERRERA CAREER STATISTICS

SINGLES

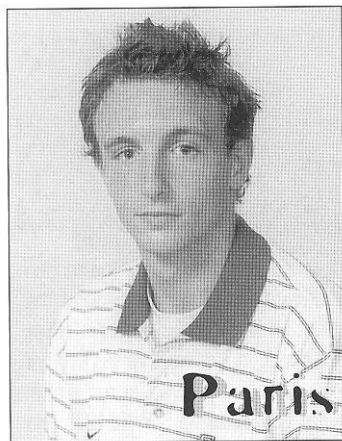
Year	@1	@2	@3	@4	@5	@6	Duals	Overall	Total
00-01	0-3	1-0	0-1	2-2	1-1	1-0	5-7	8-5	13-12

DOUBLES

Year	@1	@2	@3	Duals	Overall	Total
00-01	5-3	5-2	0-1	10-6	2-3	12-9 w/Scarella, Luscan, Bucht, Owen

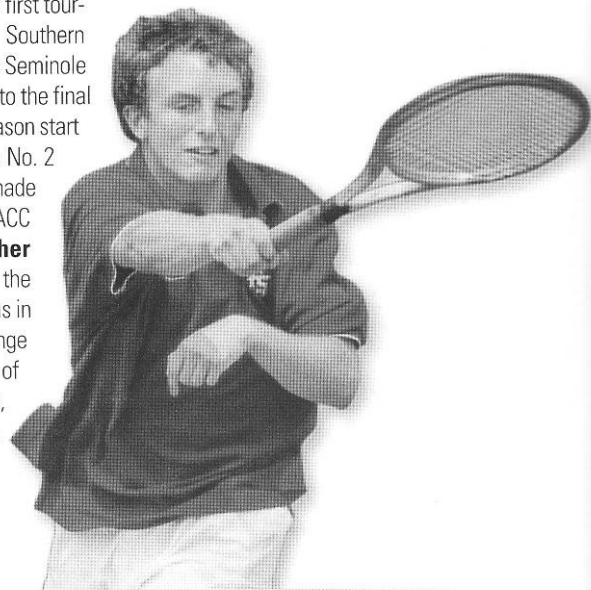
ROMAIN JURD

Sophomore



Paris, France

2000-01: Started off his collegiate career with a win at his first tournament of the fall season for Florida State at the Southern Intercollegiate...won his first career doubles match at the Seminole Fall Classic with teammate Jarrod Owen advancing them to the final round of doubles competition...had a successful spring season start on a four match winning streak...went 4-4 playing at the No. 2 singles position and 1-0 at the No. 2 doubles position...made an immediate impact on this year's team...named to the ACC Academic Honor Roll...**High School and Other Accomplishments:** Ranked in the Top 10 for juniors in the 18 and under division in France...played in the quarterfinals in the National French Championship...played in the Orange Bowl Tennis Tournament in Miami...**Personal:** Son of Bernard Jurd and Francoise Nargo...mother, Francoise, was his first coach at the age of five...celebrates a November 21, 1982 birthday...major is International Business.



HULTQUIST

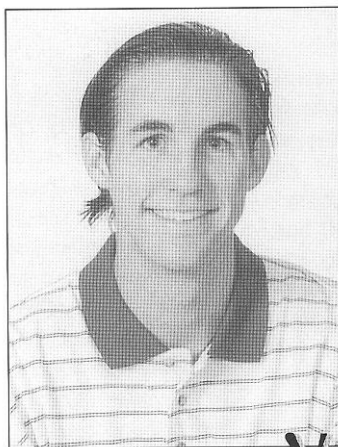
On Jurd:

"Romain had a solid freshman year. We need his serve to improve and for him to hit the ball harder."

On Owen:

"Jarrod is coming off of shoulder surgery, and we are going to need him to build his body up."

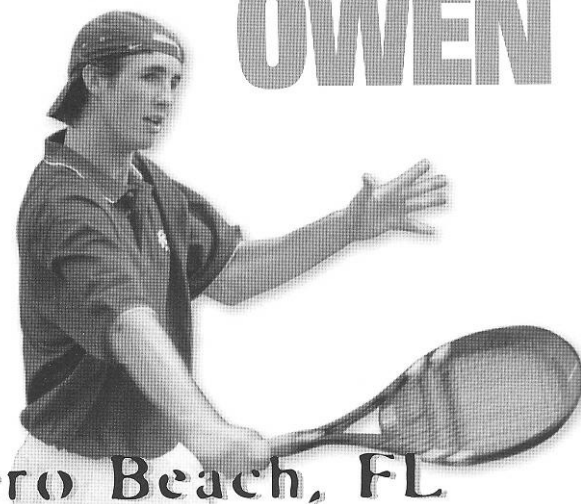
2000-01: In doubles action Owen went on two four-match winning streaks during the spring season...finished with a winning record in doubles play going 12-8...started his spring season off on yet another four-match win streak, including a win against Florida's Matt Behrmann...played primarily at the No. 3, 4 and 5 position, finishing 3-2 at the No. 3 position.. finished out the spring season with a record of 16-16...**High School and Other Accomplishments:** Played basketball and tennis...regional champion in singles and doubles freshman, sophomore, junior and senior year...district champion in singles and doubles freshman, junior and senior year...district finalist in doubles his sophomore year...state finalist in singles and doubles freshman and senior year...State champion in doubles junior year...state doubles semifinalist sophomore year...Florida Open Doubles finalist in 1997 and 1999...U.S. National Clay Court semifinalist in 2000...maintained a 3.0 grade point average while enrolled in honor classes...**Personal:** Son of Steve and Mitzi Owen...lives with twin brother Josh...enjoys golf, fishing, surfing and diving...father, Steve, played in U.S. and British Amateur Golf qualifying for the quarterfinals of the US Amateur...is a Business major... born on August 28, 1981.



Vero Beach, FL

JARROD OWEN

Sophomore



JURD CAREER STATISTICS

SINGLES		@1	@2	@3	@4	@5	@6	Duals	Overall	Total
Year										
00-01			4-4	4-5	1-1			9-10	4-6	13-16

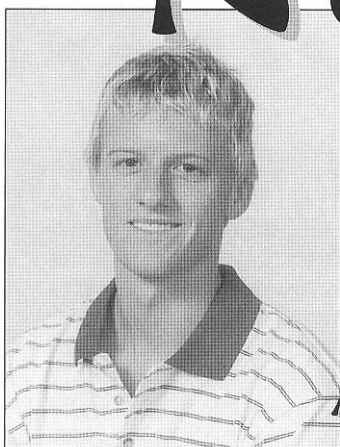
DOUBLES		@1	@2	@3	Duals	Overall	Total
Year							
00-01			1-0	2-3	3-3	1-2	4-5 w/Owen, Laub, Luscan, Koldej

OWEN CAREER STATISTICS

SINGLES		@1	@2	@3	@4	@5	@6	Duals	Overall	Total
Year										
00-01		0-0	0-0	3-2	2-4	2-5	1-0	8-11	8-5	16-16

DOUBLES		@1	@2	@3	Duals	Overall	Total
Year							
00-01		1-0	4-2	4-5	9-7	3-1	12-8 w/Koldej, Luscan, Scarella, Laub, Jurd, Herrera

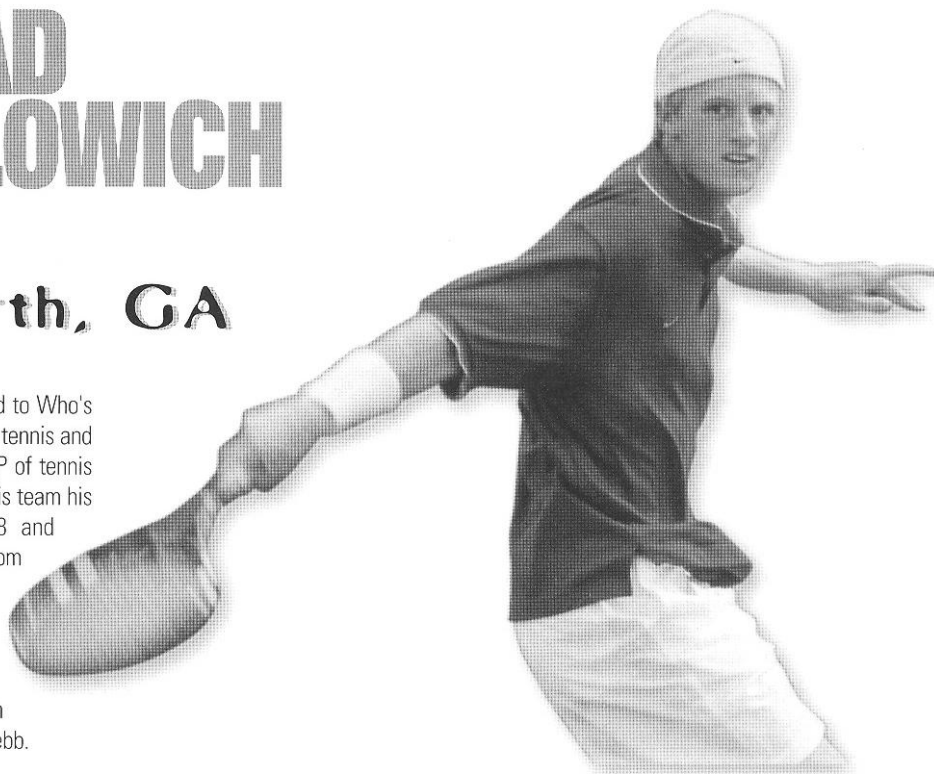
Newcomers



BRAD KOLOWICH

Acworth, GA

High School and Other Accomplishments: Was named to Who's Who among American High School Students...played varsity tennis and basketball...basketball team was all-state...was named MVP of tennis team his junior and senior years...named captain of the tennis team his junior and senior years...nationally ranked in boys 18 and under...ranked No. 4 in the state of Georgia...DiVarsity.Com Athlete of the Week in March 2001...Fulton County Georgia Player of the year 2001...finished in 6th place in the 18 and under Stone Mountain National Open...**Personal:** Son of Brad Sr. and Beth Kolowich...father, Brad Sr., played baseball at Jacksonville University...major is undecided...born on June 23, 1982...roommates are Alex Herrera and Chip Webb.



HULTQUIST

On Kolowich:

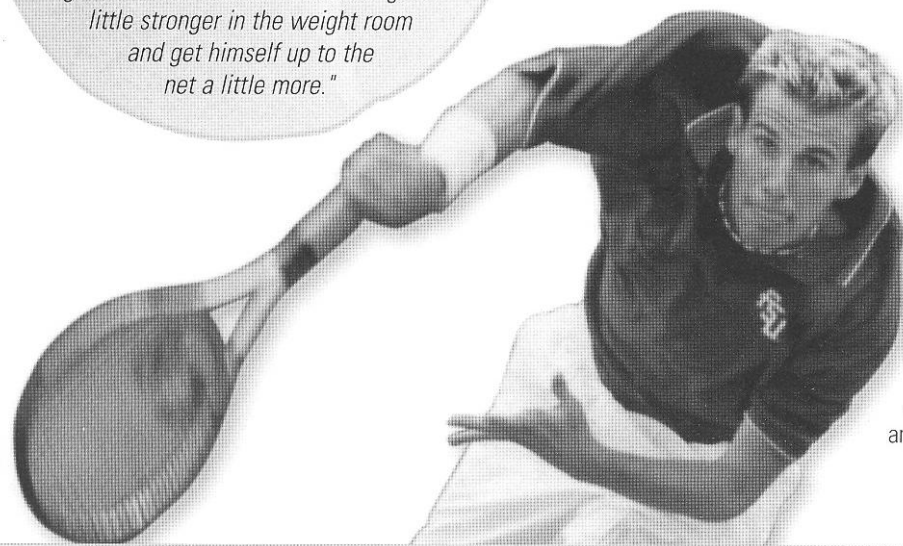
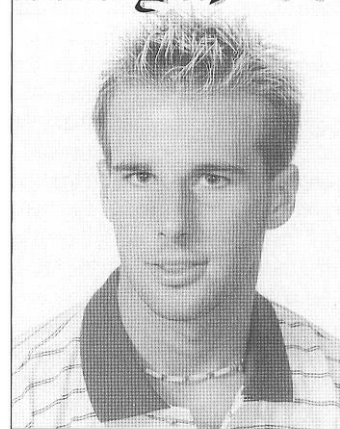
"Brad is an outstanding athlete with the potential to be a very good player. He is still young in his development, but he should have a good year."

On Webb:

"Chip plays an aggressive all-around game. We would like to see him get a little stronger in the weight room and get himself up to the net a little more."

Chattanooga, TN

CHIP WEBB



High School and Other Accomplishments: Chip was the state high school champion in tennis in 9th, 10th and 11th grade...was ranked in the top 15 in the boys 18 and under National Rankings...was also a member of the honor roll throughout high school...**Personal:** Son of Earl and Donna Webb...father, Earl, was the state wrestling champ...sister played tennis at Appalachian State...major is Biology...born on January 26, 1982...roommates are Alex Herrera and Brad Kolowich.

2000 2001 Season Review

Despite individual accomplishments, the 2000-01 men's tennis team had a season full of ups and downs. The men's tennis team not only started out the 2000 season with four incoming freshmen, but also a new assistant coach. Ty Braswell, a former graduate and member of the Florida State tennis team joined the staff in July of 2000.

As January approached, the Florida State men's tennis team began a season that they hoped would bring them to the NCAA Tournament. At the start of the season, the 'Noles received some bad news in that Seminole standout, Xavier Luscan, would be forced to sit out the beginning of the season due to injuries.

The team's first match of the season began with a sweep of Penn State in doubles action taking the doubles point. In the singles portion of the dual match four of the six matches went to a third and decisive set. Unfortunately, the Seminoles were unable to hang on and fell in an upset match to Penn State, 4-3. That same night, Florida State found itself in its second match of the season going up against West Virginia. Determined to come away with a win, they defeated the Mountaineers, 6-1.

The next two matches on the FSU schedule brought the team home to face Georgia Southern and rival Florida. With Luscan still out, the 'Noles prepared to take on Georgia Southern with the help of freshman Alex Herrera and Jarrod Owen, who both had stepped up their play in the absence of Luscan. Florida State came away with the win against Georgia Southern making them 2-1 on the season and opening its home schedule with a win. Following their second win in a row, the 55th ranked Seminoles prepared to face the ninth-ranked Florida Gators. While bringing Luscan back into the mix, the Noles lost to the Gators in a heartbreaker, 4-3.

The team found itself in a bit of a losing streak losing to No. 49 Alabama and then to Tennessee Tech in the Seminole Spring Tournament. Following the three losses, the team saw a 4-1 win against Furman and another win against Troy State on the final day of the Seminole Tourney.

Riding a two-match win streak, the Seminoles prepared to face an unbeaten Miami team on the road. Florida State began the match winning two of the three doubles matches and taking the point, unfortunately for the 'Noles it would not be enough. Miami took five of the six singles matches. Jeff Scarella won the lone point in the singles competition at the No. 6 position.

The team headed back to Tallahassee to prepare for its first ACC match of the season against Virginia. The 'Noles had the home advantage on their side, but they would have to overcome the rain and wind to claim their ACC opener win. The team fought hard in difficult conditions to defeat the 38th ranked Cavaliers, 4-3.

With the team facing a record of 5-6, following a loss to Vanderbilt, the Seminoles went on their longest road trip of the season, a three-match trip that took them to North Carolina and then over to Texas. After winning their next ACC match of the season against NC State and improving their ACC record to 2-0, the 'Noles fell to Wake Forest. Arriving in Texas prepared to play SMU, the team found the match cancelled due to the weather.

Once home, the Seminoles faced two more ACC opponents in Maryland and Clemson receiving their first shut-out of the season. The 'Noles defeated Maryland in a 7-0 sweep and would carry that momentum with them to their match vs. Clemson where they took the match, 4-3, bringing their ACC record to 4-1.

With two back-to-back wins under their belts, the Seminoles were determined to keep the streak going with their match against Brown. FSU

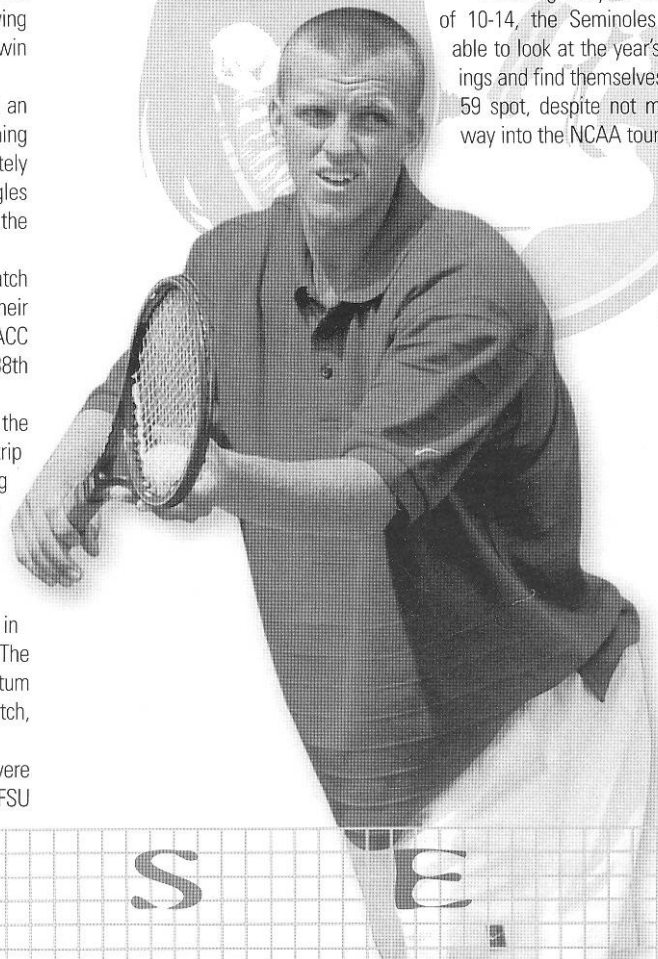
took the first point of the match after a sweep in the doubles competition. In the singles competition the men needed to make every match count. The first two matches to come in were wins for Brown, putting the opponents on top, 2-1. Luscan would be the next match to finish and stepping it up a notch to tie the match at 2-2. Two matches later, the score would once again be tied with only one final match left. Jurd, who was playing at the No. 3 position, lost the first set to his opponent, but came back strong to take the second set and the third and decisive set to name Florida State the winners.

Following their longest win streak of the season (four), the Seminoles prepared for a tough stretch of opponents. With three ACC opponents next on the schedule and with a tough South Florida team to follow, the men experienced their longest losing streak of the season (four). It would take their final match before the ACC Tournament before the team would see their next win. Facing Florida A&M, the men made the win a good one, sweeping the Rattlers, 7-0, and heading into the ACC Tourney with a win.

Individually, the Seminoles had four players who completed the season with winning records, two with match wins of 15 and over (Luscan and Owen). Luscan led the team by being the lone Seminole to hold an ITA ranking during dual match play. Luscan also had an impressive run against ACC opponents going 7-1 during regular season play, a performance that put him in the runner-up position behind Virginia's Brian Vahaly for the No. 1 singles flight award.

The team finished off the season at the ACC Tournament, dropping their first round match to fourth-seeded Wake Forest. FSU took the doubles point to start the match but could only take two of the singles matches, Laub's victory at No.2 and Herrera's victory at the No. 4 position, and lost 4-2.

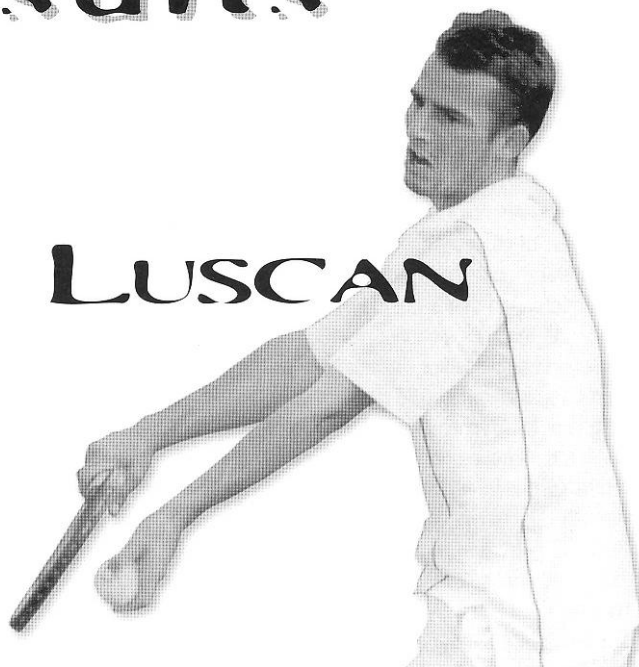
Finishing the year with a record of 10-14, the Seminoles were still able to look at the year's final rankings and find themselves at the No. 59 spot, despite not making their way into the NCAA tournament.



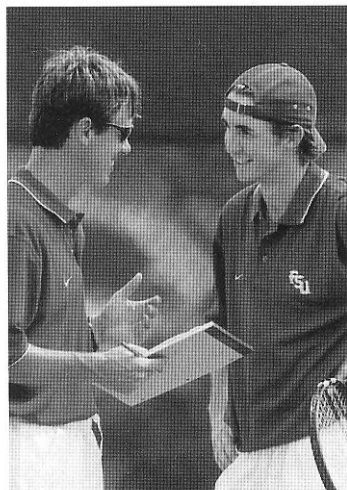
Dual Match Results

2000-2001 Season

Penn State	L	3-4
West Virginia	W	6-1
Georgia Southern	W	6-1
Florida	L	3-4
Alabama	L	0-7
Tennessee Tech	L	3-4
Furman	W	4-1
Troy State	W	4-3
Miami	L	2-5
Virginia	W	4-3
Vanderbilt	L	3-4
NC State	W	5-2
Wake Forest	L	1-6
Texas	L	2-5
Maryland	W	7-0
Clemson	W	4-3
Brown	W	4-3
North Carolina	L	1-6
Duke	L	0-7
Georgia Tech	L	2-5
South Florida	L	1-6
Florida A & M	W	7-0
Wake Forest (ACC)	L	2-4
Auburn	L	2-4



Doubles	Career	Overall	ACC	Dual	1	2	3
Bucht/Herrera	5-6	5-6	3-5	1-2	3-5	0-0	0-0
Bucht/Laub	3-3	3-3	3-3	1-3	0-0	2-2	1-1
Herrera/Scarella	7-5	7-5	6-3	2-3	3-0	1-2	2-1
Herrera/Luscan	1-2	1-2	0-0	0-0	0-0	0-0	0-0
Herrera/Owen	4-0	4-0	4-0	1-0	2-0	2-0	0-0
Jurd/Laub	3-1	3-1	3-1	0-0	0-0	1-0	2-1
Jurd/Luscan	0-2	0-2	0-1	0-0	0-0	0-1	0-1
Jurd/Owen	0-2	0-2	0-1	0-1	0-0	0-0	0-1
Koldej/Jurd	1-0	1-0	0-0	1-0	0-0	1-0	0-0
Koldej/Luscan	10-5	10-5	10-5	5-3	5-3	5-2	0-0
Koldej/Scarella	1-1	1-1	0-0	0-0	0-0	0-0	1-1
Koldej/Owen	0-2	0-2	0-2	0-0	0-0	0-2	0-0
Laub/Owen	0-3	0-3	0-1	0-1	0-0	0-0	0-1
Laub/Scarella	0-2	0-2	0-1	0-0	0-0	0-1	0-1
Laub/Schnell	0-1	0-1	0-0	0-0	0-0	0-0	1-0
Luscan/Owen	1-0	1-0	0-0	0-0	0-0	0-0	1-0
Owen/Scarella	2-3	2-3	2-3	1-3	0-0	0-0	2-3
Scarella/Schnell	4-4	2-2	0-0	0-0	0-0	0-0	0-0
Team Totals		40-40	31-26	12-16	13-8	12-11	9-11



Singles	Career	Overall	Dual	ACC	1	2	3	4	5	6
Joe Bassett	7-10	3-6	0-0	0-0	0-0	0-0	0-0	0-0	0-0	0-0
Gustav Bucht	3-10	3-10	2-9	2-4	0-2	2-7	0-0	0-0	0-0	0-0
Alex Herrera	13-12	13-12	5-7	2-2	0-3	1-0	0-1	2-2	1-1	1-0
Romain Jurd	13-16	13-16	9-10	2-7	0-0	4-4	4-5	1-1	0-0	0-0
Bartosz Koldej	2-6	2-6	2-5	0-4	0-0	0-0	0-3	1-1	1-0	0-1
Rodrigo Laub	35-20	15-11	11-6	4-3	0-0	1-0	2-0	2-3	2-1	4-2
Xavier Luscan	32-20	15-11	9-7	7-1	8-6	1-1	0-0	0-0	0-0	0-0
Reid McCree	2-4	2-4	0-0	0-0	0-0	0-0	0-0	0-0	0-0	0-0
Chad Mooney	15-21	2-7	3-2	1-0	0-0	0-0	0-0	0-0	1-0	2-2
Jarrod Owen	16-16	16-16	8-11	2-6	0-0	0-0	3-2	2-4	2-5	1-0
Jeff Scarella	29-19	15-11	6-7	2-4	0-0	0-0	0-0	2-0	2-3	2-4
Noah Schnell	18-20	3-2	0-1	0-0	0-0	0-0	0-0	0-0	0-0	0-1
Team Totals		101-106	55-65	22-31	8-11	9-12	9-11	10-11	9-10	10-10

ACC Bio

THE TRADITION

Consistency. It's the mark of true excellence in any endeavor.

However, in today's intercollegiate athletics, competition has become so balanced and so competitive that it is virtually impossible to maintain a high level of consistency.

Yet the Atlantic Coast Conference has defied the odds. Now in its 49th year of competition, the ACC has long enjoyed the reputation as one of the strongest and most competitive intercollegiate conferences in the nation. And that is not mere conjecture, the numbers support it. Since the league's inception in 1953, ACC schools have captured 82 national championships, including 40 in men's competition and 42 in women's. In addition, 120 men and 31 women have earned the coveted title of NCAA champion.

The conference had an immediate impact on the national college football scene in the fall of 1953 when the University of Maryland captured the first of what would eventually be five national football titles for the ACC. Clemson laid claim to the league's second national title in 1981 while Georgia Tech followed suit in 1990. Florida State pocketed national titles No. 4 and 5 in 1994 and 1999.

The nine schools that take to the field this fall under the ACC banner have produced 373 first or second team gridiron All-Americans and 54 first-team academic All-Americans. ACC teams have had 1,485 players selected in the annual professional football draft, including 109 first round selections. A year ago, the nine ACC member institutions had 186 former players on NFL rosters during the regular season or playoffs.

If success is best measured in terms of wins and losses, then the ACC over the years has proved itself to be among the elite in Division I-A football. The ACC is the nation's second-winningest bowl conference as the nine current league teams are a combined 84-77-5 (.521) in post-season play. Since 1990, the ACC is one of only five conferences to have each of its schools play in a bowl game.

Georgia Tech and Florida State rank among the nation's winningest bowl teams. Among teams with 20-or-more bowl appearances, the Yellow Jackets are second with a 19-10 (.655) post-season record while the Seminoles are third at 17-10-2 (.621).

Over the past three years, ACC teams have posted a 17-14 mark against non-league AP-ranked opponents. This past season the ACC had five consensus All-Americans and over the past four years has produced 22 consensus All-Americans. Since 1997, the ACC has had more first round draft picks (27) in the annual NFL draft than any other conference except the 12-team Southeastern Conference. The ACC also set two attendance marks during the 2000 season, drawing 2,653,816 fans over 54 home dates for a 49,145 per game mark.

2000-01 IN REVIEW

The 2000-01 academic year concluded with the league pocketing three more national team titles and four individual NCAA crowns. In all, the ACC has won 39 national team titles over the last 11 years.

The ACC's 2000-01 national champions were North Carolina in women's soccer, Duke in men's basketball and Maryland in women's lacrosse. Overall, ACC teams posted a 73-56 (.566) mark in NCAA Tournament play.

The ACC placed at least one team in the Top 10 nationally in 15 of the 25 sports sponsored by the league. Other records of note during the 2000-01 season include 98 teams competing at NCAA Championships five bowl teams and 43 Top 10 showings.

The ACC Academic Honor Roll record was broken for the 14th-straight year in 1999-2000 as 1,664 student-athletes were recognized for their work in the classroom.

THE CHAMPIONSHIPS

The conference will conduct championship competition in 25 sports during the 2000-01 academic year — 12 for men and 13 for women.

The first ACC championship was held in swimming on February 25, 1954 at NC State. The conference did not conduct championships in cross country, wrestling or tennis during the first year.

The 12 sports for men include football, cross country, soccer, basketball, swimming, indoor and outdoor track, wrestling, baseball, tennis, golf and lacrosse. Fencing, which was started in 1971, was discontinued in 1981.

Women's sports were initiated in 1977 with the first championship meet being held in tennis at Wake Forest University. Championships for women are currently conducted in cross country, volleyball, field hockey, soccer, basketball, swimming, indoor and outdoor track, tennis, golf, lacrosse, softball and rowing.

A HISTORY

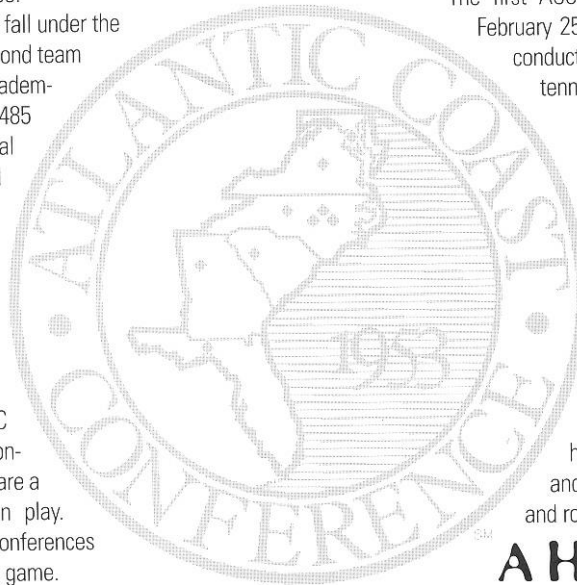
The Atlantic Coast Conference was founded on May 8, 1953, at the Sedgefield Inn near Greensboro, N.C., with seven charter members - Clemson, Duke, Maryland, North Carolina, North Carolina State, South Carolina and Wake Forest - drawing up the conference by-laws.

The withdrawal of seven schools from the Southern Conference came early on the morning of May 8, 1953, during the Southern Conference's annual spring meeting. On June 14, 1953, the seven members met in Raleigh, N.C., where a set of bylaws was adopted and the name became officially the Atlantic Coast Conference.

On December 4, 1953, conference officials met again at Sedgefield and officially admitted the University of Virginia. The first, and only, withdrawal of a school from the ACC came on June 30, 1971 when the University of South Carolina tendered its resignation.

The ACC operated with seven members until April 3, 1978, when Georgia Tech was admitted. The Atlanta school withdrew from the Southeastern Conference in January of 1964.

The ACC expanded to nine members on July 1, 1991, with the addition of Florida State.



Around the ACC

ACC

(Affiliation began in 1992)

Honors

Year	Team Champion	Head Coach	Runner-Up	Tournament Site
1992	North Carolina	Allen Morris	Duke	Charlotte, North Carolina
1993	Duke	Jay Lapidus	North Carolina	Charlotte, North Carolina
1994	Duke	Jay Lapidus	Georgia Tech	Charlotte, North Carolina
1995	Duke	Jay Lapidus	Clemson	Greenwood, South Carolina
1996	Duke	Jay Lapidus	North Carolina	Greenwood, South Carolina
1997	Clemson	Chuck Kriese	Duke	Norcross, Georgia
1998	Duke	Jay Lapidus	Virginia	Atlanta, Georgia
1999	Duke	Jay Lapidus	Georgia Tech	Norcross, Georgia
2000	Duke	Jay Lapidus	North Carolina	Norcross, Georgia
2001	Duke	Jay Lapidus	Clemson	Orlando, Florida

Year	Tournament MVP	Coach of the Year	Player of the Year	Rookie of the Year
1992	Bryan Jones, UNC	Allen Morris, UNC	Bryan Jones, UNC	
1993	Willy Quest, Duke	Jay Lapidus, Duke	Roland Thornqvist, UNC	
1994	Chris Pressley, Duke		Jean Desdunes, Ga. Tech	David Caldwell, UNC
1995	Phillippe Moggio, Duke		Jay Lapidus, Duke	David Caldwell, UNC
1996	Rob Chess, Duke		Sam Paul, UNC	David Caldwell, UNC
1997	Bruce Li, Clemson		Chuck Kriese, Clemson	Mitch Sprengelmeyer, Clemson
1998	Dmitry Muzyka, Duke		Jay Lapidus, Duke	Roberto Bracone, NC State
1999	Pedro Escudero, Duke		Kenny Thorne, Ga. Tech	Benjamin Cassaigne, Ga. Tech
2000	Ramsey Smith, Duke		Sam Paul, North Carolina	Brian Vahaly, Virginia
2001	Ramsey Smith, Duke		Jay Lapidus, Duke	Brian Vahaly, Virginia

SINGLES & DOUBLES

Flight Champions

NO. 1 SINGLES

1992	Geoff Grant, Duke
1993	Rob Givone, Ga. Tech
	Roland Thornqvist, UNC
1994	David Caldwell, UNC
1995	David Caldwell, UNC
1996	David Caldwell, UNC
1997	Roberto Bracone, NC State
1998	Roberto Bracone, NC State
1999	Benjamin Cassaigne, Ga. Tech
2000	Brian Vahaly, Virginia

NO. 4 SINGLES

1992	Glen Philp, N.C. State
1993	Mark Ottinger, Ga. Tech
1994	Mitch Sprengelmeyer, Clemson
1995	Jason White, Florida State
1996	Bear Schofield, UVA
1997	Tony Thomas, UNC
1998	Hyon You, UVA
1999	Tomsaz Boniecki, UNC
2000	Marcio Petrone, UNC

NO. 1 DOUBLES

1992	Mike Herb/Glen Philp, NC State
1993	Roland thornqvist/Daryl Wyatt, UNC
1994	Scott Cotton/Rob Givone, Ga. Tech
1995	Frank Salazar/Mitch Sprengelmeyer, Clemson
1996	Mitch Sprengelmeyer/Bruce Li, Clemson
1997	Doug Root/Jordan Wile, Duke
1998	Myles Clouston/ Raul Munoz, Wake Forest
1999	Myles Clouston/ Raul Munoz, Wake Forest
2000	Doug Root/ Ramsey Smith, Duke

NO. 2 SINGLES

1992	Bryan Jones, UNC
1993	David Caldwell, UNC
1994	Ken McKenzie, Florida State
	Brint Morrow, UNC
1995	B.J. Traub, Ga. Tech
1996	Rob Tedesco, UNC
1997	Alberto Brause, Duke
1998	Alberto Brause, Duke
1999	Matt Cozad, Ga. Tech
2000	Tomasz Boniecki, Clemson

NO. 5 SINGLES

1992	Chris Mumford, UNC
1993	Brint Morrow, UNC
1994	B.J. Traub, Ga. Tech
1995	Cris Robinson, Clemson
1996	Alex Golub, Florida State
1997	Pablo Bellagamba, Clemson
1998	John Winer, Virginia
1999	Tommy Croker, Virginia
2000	Brian Hunter, Virginia

NO. 2 DOUBLES

1992	Scott Cotton/Mark Ottinger, Ga. Tech
1993	Peter Ayers/Rob Chess, Duke
1994	Art Martinez/Jason White, Florida State
1995	Antonio Prieto/Jason White, Florida State
1996	Tony Thomas/Tripp Phillips, UNC
1997	Ty Braswell/Yvo Niks, Florida State
1998	Huntley Montgomery/ Brian Vahaly, Virginia
1999	Tommy Croker/John Winter, Virginia
2000	Andres Pedros/Ted Rueger, Duke

NO. 3 SINGLES

1992	Chris Pressley, Duke
1993	Peter Ayers, Duke
1994	Peter Ayers, Duke
1995	Ken McKenzie, Florida State
1996	Brint Morrow, UNC
1997	Paul Harsanyi, UNC
1998	Adam Seri, UNC
1999	Josh Goffi, Clemson
2000	David Cheatwood, UNC

NO. 6 SINGLES

1992	Joe Frierson, UNC
1993	Cooper Pulliam, UNC
1994	Scott Schuhriemen, Florida State
1995	David Britt, UNC
1996	Tony Thomas, UNC
1997	Ryan Bauer, Clemson
1998	Marko Cerenko, Duke
1999	Marko Cerenko, Duke
2000	Chad Riley, North Carolina

NO. 3 DOUBLES

1992	Ford Lankford/Brian Stanton, Florida State
1993	David Caldwell/Brint Morrow, UNC
1994	Scott Athey/Quentin Huff, Wake Forest
1995	Charly Rasheed/ Cris Robinson, Clemson
1996	Paul Harsanyi/Rob Tedesco, UNC
1997	Matt Lee/Markus Magnusson, Ga. Tech
1998	Roberto Suarez/Robert Wright, Ga. Tech
1999	Sergio Aguirre/Matt Cozad, Ga. Tech
2000	Sandon Barth/Eric Cohn, Clemson

ACC Conference History

TEAM BY TEAM

ALL-TIME FSU vs. ACC
(since joining the conference in 1992 to the Present)

VS. CLEMSON		
Year	W/L	Score
1992	W	5-4
1993	W	6-1
	W	5-2
1994	L	3-4
	L	3-4
1995	W	4-3
	L	2-4
1996	L	3-4
1997	L	3-4
	L	2-4
1998	W	5-2
1999	L	1-6
2000	L	2-5
2001	W	4-3
Total	6-8	48-50

VS. DUKE		
Year	W/L	Score
1992	L	2-5
	L	3-5
1993	L	0-7
1994	L	3-4
1995	L	3-4
1996	W	4-3
	L	2-4
	L	0-4
1997	L	2-5
1998	L	2-4
	L	0-4
1999	L	1-6
2000	L	2-5
2001	L	0-7
Total	1-13	24-67

VS. GEORGIA TECH		
Year	W/L	Score
1992	W	5-4
1993	W	4-3
1994	W	4-3
	L	2-4
1995	W	5-2
1996	W	4-3
1997	W	4-3
1998	L	3-4
	W	4-1
1999	L	1-6
	L	2-4
2000	W	4-3
2001	L	2-5
Total	8-5	44-45



SCARELLA

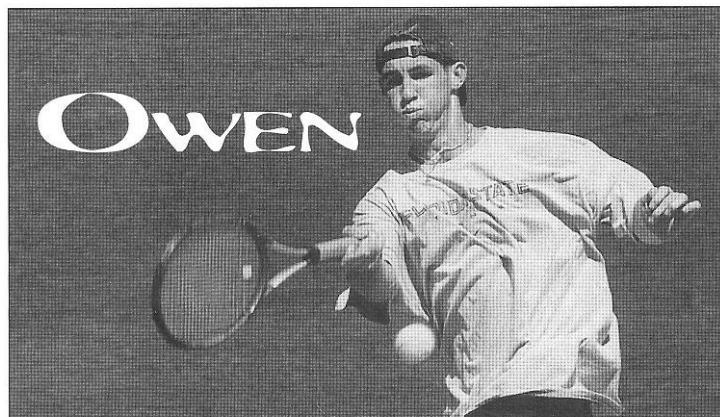
VS. MARYLAND		
Year	W/L	Score
1992	W	5-2
1993	W	7-0
1994	W	7-0
1995	W	7-0
1996	W	7-0
1997	W	5-0
1998	W	6-0
1999	W	7-0
2000	W	7-0
2001	W	7-0
Total	10-0	65-2

VS. NORTH CAROLINA		
Year	W/L	Score
1992	L	3-6
1993	L	1-6
	L	2-5
1994	L	3-4
1995	W	4-3
1996	L	1-6
1997	L	2-5
	W	4-2
1998	L	2-5
1999	L	3-4
2000	W	4-3
2001	L	1-6
Total	3-9	30-55

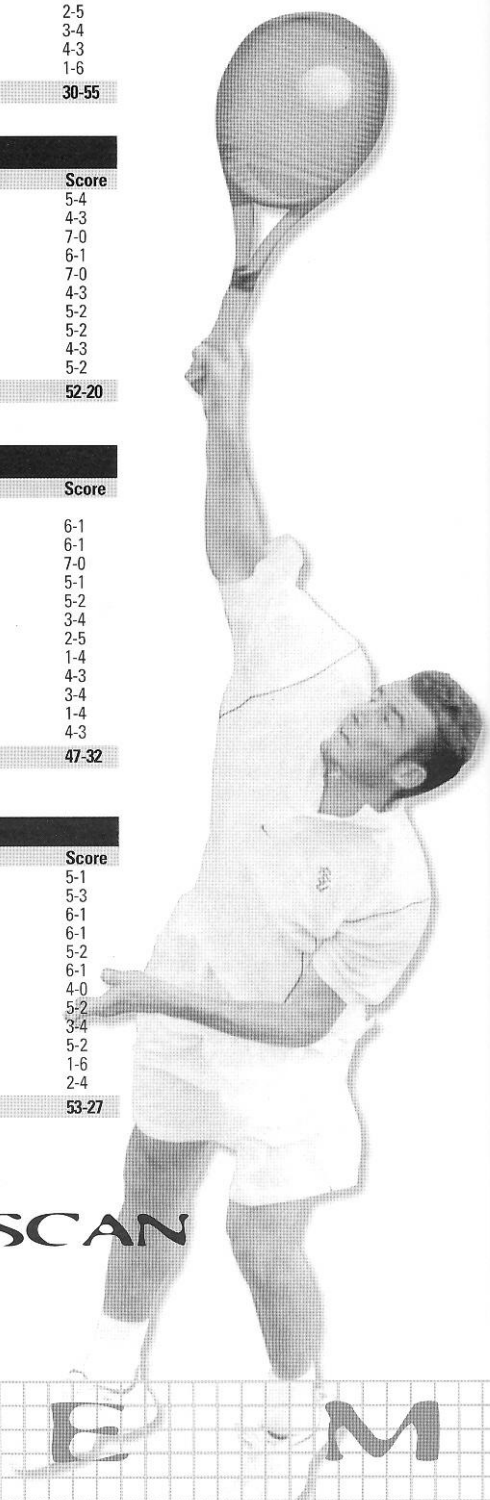
VS. NC STATE		
Year	W/L	Score
1992	W	5-4
1993	W	4-3
1994	W	7-0
1995	W	6-1
1996	W	7-0
1997	W	4-3
1998	W	5-2
1999	W	5-2
2000	W	4-3
2001	W	5-2
Total	10-0	52-20

VS. VIRGINIA		
Year	W/L	Score
1992		
1993	W	6-1
1994	W	6-1
1995	W	7-0
	W	5-1
1996	W	5-2
1997	L	3-4
1998	L	2-5
	L	1-4
1999	W	4-3
2000	L	3-4
	L	1-4
2001	W	4-3
Total	7-5	47-32

VS. WAKE FOREST		
Year	W/L	Score
1992	W	5-1
	W	5-3
1993	W	6-1
1994	W	6-1
1995	W	5-2
1996	W	6-1
1997	W	4-0
1998	W	5-2
1999	L	3-4
2000	W	5-2
2001	L	1-6
	L	2-4
Total	9-3	53-27



OWEN



LUSCAN

Conference History

BEFORE THE ACC

TEAM COMPETITION

Year	Team Champion	Head Coach	Runner Up	Site
1976	Memphis State		Georgia Tech	Memphis, TN
1977	Memphis State		Cincinnati	Memphis, TN
1978	Memphis State		Florida State	Tallahassee, FL
1979	Memphis State		Virginia Tech	Tallahassee, FL
1980	Memphis State		Florida State	Tallahassee, FL
1981	Florida State	Randy Jobson	Memphis State	Tallahassee, FL
1982	Virginia Tech		Memphis State	Memphis, TN
1983	Florida State	Randy Jobson	Memphis State	New Orleans, LA
1984	Florida State	Richard McKee	Memphis State	New Orleans, LA
1985	South Carolina			Memphis, TN
1986	South Carolina			Columbia, SC
1987	South Carolina		Florida State	Hattiesburg, MS
1988	Florida State	Richard McKee	South Carolina	Tallahassee, FL
1989	South Carolina		Florida State	Cincinnati, Ohio
1990	South Carolina		Florida State	Louisville, KY
1991	South Carolina		Florida State	Memphis, TN

METRO CONFERENCE CHAMPIONSHIP HISTORY (1976-91)

The 1949, 1950 and 1951 teams, coached by Florida State tennis pioneer, H. Don Loucks (1949-50) and Ralph Matherly (1951), won the Dixie Conference team championship for three consecutive years. The Dixie Conference was made up of seven small schools within the Southeast including Florida State, Stetson, Millsaps, Mercer, Howard, Lambuth and Oglethorpe.

DIXIE CONFERENCE AFFILIATION (1949-1951)

The Metro Conference, originally tabbed the Metro Six, was formed on June 13, 1975. Its charter members included Cincinnati, Georgia Tech, Louisville, Memphis State, St Louis and Tulane.

Expansion was soon on the horizon, as the league membership increased its size to seven schools when the Florida State University was admitted on July 28, 1976.

After Georgia Tech left the conference following the 1978 season, Virginia Tech quickly filled the void. Then St. Louis left the Metro. But waiting in the wings was the University of South Carolina who joined in 1983 to increase the membership to eight schools. However, Tulane forfeited its membership when its basketball program was discontinued following the 1984-85 season.

POST SEASON HONORS...

Year	Tournament MVP	Year	Tournament MVP	Year	Tournament MVP
1976	Keith West, Memphis State	1981	Marco Abilhoa, Florida State	1986	Jan Sandberg, S. Carolina
1977	Roger Webb, Memphis State	1982	Marco Abilhoa, Florida State	1987	Paul Haaruis, Florida State
1978	Jim Ladyman, Memphis State	1983	Jon Ramthun, Virginia Tech	1988	Paul Haaruis, Florida State
1979	Bob Kronague, Cincinnati	1984	Marco Abilhoa, Florida State	1989	Mike Longley, S. Carolina
1980	Jeff Player, Virginia Tech	1985	Joey Rive, Florida State	1990	Stephane Simian, S. Carolina

FSU ATHLETIC HALL OF FAME

Alexander T. "Lex" Wood (1982)
H. Donald Loucks (1985)
Dr. Ray Bellamy (1992)
Paul Haaruis (1993)

ALL-AMERICANS

Ken McKenzie - 1995 (doubles)
Brian Stanton - 1995 (doubles)

NCAA INVITATIONS

TEAM

1983

SINGLES

Ricardo Bernd - 1972
Rejean Genois - 1973
Gordon Jones - 1976
Joey Rive - 1985
Paul Haaruis - 1988
Stephen Notebloom - 1991
Brian Stanton - 1995
Antonio Prieto - 1995
Jason White - 1996

DOUBLES

Paul Haaruis - 1987
Henner Lenhardt - 1987
Ken McKenzie - 1995
Brian Stanton - 1995

METRO CONFERENCE CHAMPIONS

1981, 1983, 1984, 1988

DIXIE CONFERENCE CHAMPIONS

1949-51

METRO CONFERENCE COACH OF THE YEAR

Randy Jobson

METRO CONFERENCE TOURNAMENT MVP

Marco Abilhoa - 1981-82, 1984
Joey Rive - 1985
Paul Haaruis - 1987-88

DIXIE CONFERENCE SINGLE CHAMPIONS

Herbert Quay, Class "B" - 1949
Robert Lanigan, Class "C" - 1949

DIXIE CONFERENCE DOUBLES CHAMPIONS

Donald Seiffert, Class "A" - 1949
Herbert Quay Class "B" - 1949

ALL-ACC

Ken McKenzie - 1992-95
Brian Stanton - 1993-95
Jason White - 1995-96
Antonio Prieto - 1995
Xavier Luscan - 2001

ACC FLIGHT CHAMPIONS

Brian Stanton - 1992, No. 3 doubles
Ford Lankford - 1992, No. 3 doubles
Ken McKenzie - 1994, No. 2 singles;
1995 No. 3 singles
Jason White - 1994, No. 2 doubles,
1995 No. 4 singles & No. 2 doubles
Scott Schuhriemen - 1994, No. 6 singles
Art Martinez - 1994, No. 2 doubles
Antonio Prieto - 1995, No. 2 doubles
Alex Golub - 1996, No. 5 singles
Ty Braswell - 1997, No. 2 doubles
Yvo Niks - 1997, No. 2 doubles

METRO CONFERENCE FLIGHT CHAMPIONS

Scott Gilmore - 1977, No. 5 singles

Allan Bellamy - 1979, No. 3 singles &
No. 1 doubles
Jose Salbi Neto - 1979, No. 1 doubles
John McLean - 1980, No. 2 singles;
1981, No. 1 doubles; 1983, No. 3
doubles

Marco Abilhoa - 1980, No. 2 doubles;
1981, No. 1 singles & No. 1 doubles;
1982, No. 1 singles

Hernan Luque - 1980, No. 2 doubles;
1981, No. 3 doubles; 1982, No. 3
doubles; 1983, No. 1 doubles

Steve Layton - 1980, No. 5 singles
Robert Burgess - 1981, No. 5 singles &
No. 2 doubles

Jeff Horine - 1983, No. 3 singles & No.
2 doubles

Scott Blessing - 1983, No. 5 singles &
No. 2 doubles

Myron Flainski - 1983, No. 3 doubles
Joey Rive - 1983, No. 4 singles & No. 1
doubles; 1984, No. 1 singles; 1985,
No. 1 singles & No. 1 doubles

Todd Collings - 1987, No. 5 singles

Neil Krefsky - 1991, No. 1 doubles

Stephen Notebloom - 1991, No. 1
doubles

MISCELLANEOUS CHAMPIONSHIPS

FLORIDA INTERCOLLEGIATE CHAMPIONS

Lex Wood - 1965 (No. 1 singles)
Hernan Luque - 1980 (No. 2 singles)
Darryl Weiner - 1980 (No. 4 singles)

INTERCOLLEGIATE TENNIS ASSOCIATION

(ITA) CHAMPIONSHIPS

Paul Haaruis - 1987 (singles)
Rolex Region II Championships
Brian Stanton - 1995 (doubles)
Ken McKenzie - 1995 (doubles)

SEMINOLE FALL CLASSIC

Ken McKenzie - 1991-94 (singles)
Brian Stanton - 1991-94 (doubles)
Ford Lankford - 1991-92 (doubles)
Rick Jacob - 1993 (doubles)
Jason White - 1993-94 (singles); 1994
(doubles)

Antonio Preto - 1994 (singles &
doubles)

Alex Golub - 1994 (singles)

Scott Schuhriemen - 1994 (singles)

Ty Braswell - 1995 (singles); 1998
(singles)

Steve Weinstein - 1996 (singles)

Mike Ingham - 1998 (singles & doubles)

Chad Mooney - 1998 (doubles)

NATIONAL COLLEGIATE TENNIS

CLASSIC CHAMPIONS

Jason White - 1995 (singles)

Antonio Prieto - 1996 (singles)

CLEMSON FALL CLASSIC CHAMPIONS

Adam Baron - 1993-94

Antonio Prieto - 1994

Yvo Niks - 1996

Jay Travis - 1996

CRIMSON TIDE CLASSIC

Jeff Horine - 1983 (singles)

Myron Falinski - 1983 (singles &
doubles)

John McLean - 1983 (doubles)

SAN DESTIN INVITATIONAL

Stephen Notebloom (champion)

Davis Cup Play

Ricardo Bernd, Brazil, 1971-72

Rejean Genois, Canada, 1973-74

Enrique Andrade, Ecuador, 1975-76

Hernan Luque, Ecuador, 1979-80

GOLDEN TORCH AWARD (HIGHEST MEN'S GPA)

Team - 1987-91, 1998

ACC ACADEMIC HONOR ROLL

Dean Erlich - 1992-93

Adam Baron - 1993, 1996

Jason White - 1993-95

Ty Braswell - 1996, 1998-99

Michael Ingham - 1997-01

Yvo Niks - 1997-99

Jay Travis - 1997-00

Chad Mooney - 1998, 2001

Elliot Elias - 2000-01

Noah Schnell - 2001

Romain Jurd - 2001

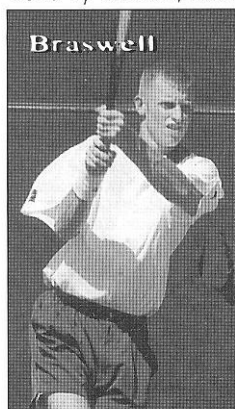
Xavier Luscan - 2001

All-Time Dual Match Roster

Marco Abilhoa, 1979-84
 Kenny Alcorn, 1963
 Greg Anderson, 1988-89
 Enrique Andrade, 1974-76
 Thomas Babione, 1950-52
 Dale Baker, 1969, 1970
 Mike Baldwin, 1963
 Adam Baron, 1993-96
 Mike Barton, 1966

Joe Bassett, 2000-01

Mick Bassinger, 1970-73
 Tom Batchelor, 1955
 Stephan Becouarn, 1996
 Allan Bellamy, 1976-79
 Rebel Bellamy, 1959-61
 Paul Bennett, 1963-65
 Chet Benson, 1976
 Andris Bergvalds, 1978-79
 Ricardo Bernd, 1972-74
 Jeff Bingo, 1987
 Donald Blair, 1991
 Scott Blessing, 1982-84
 Dan Boda, 1950-53
 Robert Boland, 1972-73
 Anthony Boule, 1980-82
 Richard Bradley, 1950
 David "Ty" Braswell, 1996-99



Shelby Brewer, 1955
 Scott Bristol, 1968-70
 Stewart Bruner, 1964-66
Gustav Bucht, 2001
 Mark Burchett, 1979
 Robert Burgess, 1980-82
 Steve Burt, 1963
 Dave Calvert, 1974-76
 Randy Cameron, 1963
 Andre Cantin, 1974-76
 Joe Carnley, 1996-97
 Gerald Casas, 1998-99
 Don Caton, 1963
 Henri Cawthon, 1973
 Don Chao, 1966-67
 Todd Collins, 1987-88

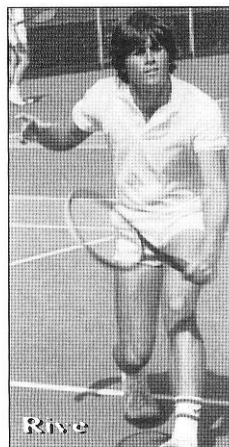
Robert Cooney, 1988-89
 Gerald Casas, 1998-
 Jim Costello, 1948-50
 Shelby Creagh, 1950-55
 Casey Creely, 1988-89
 Ken Crosina, 1984
 Jim Crowther, 1953
 Tom Cundy, 1953-55
 David Danielson, 1967-69
 Jim DeLoach, 1948
 John de Zeeuw, 1966-71
 Steve Diamond, 1972-74
 Reggie Dickey, 1963
 Lawrence Dickson, 1949-51
 Charlie Diggans, 1972-74
 Martin Dundics, 1966-68
 Chris Durham, 1988-91
 John Dwight, 1977-80
 Dean Ehrlich, 1991-95
 Jack Egan, 1953
 Scott Espenship, 1987
 Mike Etchevarria, 1977
 Myrin Falinski, 1982-1984
 Hamid Faquir, 1969-70
 Dick Fischer, 1963
 Patrik Filipsson, 1993
 Jim Gardner, 1965-67
 Rejean Genois, 1972-74
 Sterling Gibson, 1974
 Scott Gilmore, 1976-79
 Robert Golin, 1979-80
 Alex Golub, 1995-98
 Jason Green, 1994
 Kevin Green, 1980-81
 Steve Guse, 1965-66
 Greg Gusky, 1989-91
 Paul Haarhuis, 1987-88
 Chris Hagman, 1978-79
 Joe Harris, 1955
 Herb Hathcox, 1955
 Jack Heiss, 1980-81

Alex Herrera, 2001

Lex Hester, 1957-59
 Randy Hock, 1983-85
 Jeff Horine, 1983-84
 Bernard Houle, 1972
 Michael Ingham, 1997-00
 Rick Jacob, 1992-93
 Jack Jemison, 1963
 Randy Jobson, 1966-68
 Gordon Jones, 1974-76

Romain Jurd, 2001

Neal Karadbil, 1972-73
 Dave Kennedy, 1953
 Shawn Kerns, 1982-83
 Muhammed Baber Ali Khan,
 1978-79



Drew Kirkley, 1993-94
 Bruce Knittle, 1976-78
Bartosz Koldej, 2001
 Davidson Kozlowski, 1998-99
 Nel Krefsky, 1989-92
 Shannon Krieger, 1987-88
 Jeff Krotenberg, 1976
 Brian Lafferman, 1989-90
 Brad Lamontagne, 1977-78
 Ford Lankford, 1992
 Russ Langstroth, 1966
 Robert Lanigan, 1950

Rodrigo Laub, 2000-01

Steve Layton, 1978-80
 Richard Legendre, 1972-73
 Mike Lelievre, 1972
 Henner Lenhardt, 1987
 Richard Lewis, 1966-67
 Hernan Luque, 1980-1983

Xavier Luscan, 2000-01

Bobby Marcher, 1966-68
 George Martin, 1950
 Joel Martin, 1976
 Art Martinez, 1993-94
 Reid McCree, 2001
 Dave McElroy, 1953
 Ken McKenzie, 1992-95
 John McLean, 1980-83
 Don Monk, 1963
 Chad Mooney, 1998-01
 Tom Morgan, 1953-55
 Clint Murphy, 1966-68
 Clifford Murphy, 1966-68
 Bob Neinken, 1976
 Yvo Niks, 1996-99
 Jose Salibi Neto, 1978-80
 Stephen Notebloom, 1990-91
 Mike O'Neal, 1972, 1973-74
 Juan Ortiz, 1972, 1973-74

Jarrod Owen, 2001

Murphy Payne, 1994-97
 Craig Pendrys, 1982

Terry Poore, 1964-66
 Antonio Prieto, 1994-95, 96-97
 Peter Prinos, 1979-81
 Al Procopio, 1968-70
 Herbert Quay, 1950
 Herb Rapp, 1968-70
 Joey Rive, 1982-84
 Jack Rogers, 1966-68
 Geoff Roper, 1984
 Alex Rucker, 1987-88
 Jeff Russell, 1978

Jeff Scarella, 1999-01

Paul Scarpa, 1960-62
 Hal Schaus, 1953-56
 Brian Schleiffer, 1991
 Noah Schnell, 1999-01
 Scott Schuhrimen, 1993-96
 Adam Schwartz, 1989-92
 Donald Seifert, 1950
 Sonny Sellers, 1957
 Scott Shepard, 1989
 Scott Shields, 1988-91
 Sam Smith, 1950
 Cary Sochin, 1987-88



Brian Stanton, 1992-95
 Sidney Stringer, 1950
 John Stupka, 1989-90
 Hiro Takata, 1991-92
 Rick Thomas, 1974-77
 Matt Thoren, 1989
 Jay Travis, 1997-00
 Nathan Turney, 1995-96
 Erik Ullsten, 1991-92
 Doug Vepchula, 1963
 Jim Vick, 1968
 Jean Paul Vissepo, 1996
 Jimmy Wade, 1955
 Dick Walker, 1955
 Bill Weeks, 1966, 1968
 Darryl Weiner, 1981-82
 Steve Weinstein, 1996-99
 Jason White, 1993-96
 George Williams, 1955
 Lex Wood, 1963-65
 Don Wylly, 1953, 1955

All-Time Records

OPPONENT	W	L	FIRST	LAST
Abraham Baldwin Ag. Coll.	9	0	1978	1991
Akron	1	0	1984	1984
Alabama	8	12	1961	2001
Alabama-Birmingham	4	2	1980	1991
Amherst	7	0	1960	1967
Anderson JC	3	0	1982	1984
Appalachian State	1	0	1979	1979
Arizona State	0	1	1986	1986
Arkansas	0	2	1988	1991
Arkansas-Little Rock	1	1	1979	1986
Auburn	13	10	1953	2001
Auburn-Montgomery	5	2	1983	1989
Austin-Peay	1	0	1983	1983
Baylor	2	0	1970	1986
Belhaven	1	0	1987	1987
Birmingham Southern	0	1	1950	1950
Boston College	1	0	1979	1979
Brown University	1	0	2001	2001
California-Irvine	0	1	1983	1983
Cal.St.-Long Beach	3	0	1984	1991
Cal.St.-Santa Barbara	2	0	1991	1991
Calvin	3	0	1969	1976
Central Florida	7	0	1983	2000
Central Florida CC	4	0	1978	1981
Chapultepec Sporting Club	0	1	1950	1950
Charleston	1	0	1949	1949
Cincinnati	3	0	1962	1978
Citadel	2	0	1962	1978
Clemson	9	14	1962	2001
Colorado	0	1	1993	1993
Columbia	5	0	1963	1989
Columbus	8	0	1968	1973
Concordia	4	0	1951	1960
Cumberland (TN)	1	0	1973	1973
Davidson	1	2	1950	1954
DePaul	4	0	1967	1990
Duke	3	16	1957	2001
East Carolina	1	0	1961	1961
Eastern Kentucky	3	0	1969	1975
Emory	15	1	1948	1985
Evansville	1	0	1984	1984
Flagler	12	3	1975	1998
Florida	19	41	1956	2001
Florida A&M	5	0	1970	2001
Florida Atlantic	7	0	1982	2000
Florida International	14	3(1)	1973	1999
Florida Jun. College	4	0	1983	1987
Florida Southern	15	3	1948	1961
Florida Tech	3	2	1973	1978
Fort Eustis	2	0	1963	1963
Furman	24	4	1962	2001
Georgia	15	24(1)	1950	1999
Georgia - Savannah	2	0	1948	1948
Georgia Southern	26	5	1969	2000
Georgia State	11	0	1984	1999
Georgia Tech	30	21	1954	2001
Hampton	1	2	1976	1987
Hope	3	0	1962	1964
Houston	0	3	1969	1974
Howard	2	0	1958	1959
Huntingdon	1	1	1989	1989
Illinois	2	0	1970	1979
Illinois - Chicago	1	0	1980	1980
Illinois State	1	0	1977	1977
Indiana	6	8	1950	1987
Jacksonville	23	1	1959	2000
Jacksonville Navy	0	1	1951	1951
Jacksonville State (AL)	2	0	1953	1958
Kalamazoo	15	1	1967	1988
Kansas	1	5	1976	1997
Kent State	1	0	1977	1977
Kentucky	5	3	1960	1986
Kenyon	1	0	1953	1953
Lamar Tech	0	1	1962	1962
Lander	1	0	1983	1983
Louisiana State	5	8	1953	1984
Louisiana Tech	0	1	1986	1986
Louisville	2	0	1978	1987

OPPONENT	W	L	FIRST	LAST
Loyola (LA)	1	2	1951	1953
Maryland	11	1	1982	2001
McNeese State	2	2	1985	1990
Memphis (State)	2	0	1984	1991
Mercer	19	0	1948	1963
Miami (FL)	5	42	1951	2001
Miami (OH)	1	0	1994	1994
Michigan	0	4	1952	1983
Michigan State	5	3	1957	1969
Middle Georgia	2	0	1948	1948
Middle Tennessee State	4	0	1970	1992
Millsaps	1	0	1949	1949
Minnesota	4	0	1959	1973
Mississippi	4	2	1955	1993
Mississippi Coll.	4	0	1949	1950
Mississippi Southern	1	0	1960	1960
Mississippi State	10	16	1958	1997
Murray State	5	0	1957	1984
Navy	9	0	1960	1966
Nebraska	2	0	1982	1988
New Orleans	3	0	1979	1984
New Mexico	2	0	1997	2000
Nicholls State	1	2	1979	1982
North Carolina	5	20	1966	2001
North Carolina - Asheville	3	0	1983	2000
NC State	9	2	1981	2001
North Florida	7	1	1985	1992
Northeast Louisiana	2	0	1979	1984
Northeast Missouri State	1	0	1965	1965
Northern Illinois	2	0	1968	1972
Northwestern	2	3	1963	1970
Notre Dame	2	1	1964	1992
Oglethorpe	2	0	1949	1968
Ohio State	3	1	1955	1991
Ohio Wesleyan	2	0	1966	1966
Okaloosa-Walton CC	1	0	1984	1984
Oklahoma	1	1	1968	1989
Oklahoma State	0	1	1986	1986
Old Dominion	5	0	1978	1998
Orlando AFB	1	0	1952	1952
Palm Beach Comm. Coll.	1	0	1984	1984
Pan American	2	2	1970	1980
Penn State	0	1	2001	2001
Pennsylvania	1	0	1962	1962
Pensacola Navy	5	2	1950	1967
Presbyterian	8	6	1950	1974
Princeton	0	1	1981	1981
Purdue	2	0	1981	1982
Rice	1	3	1969	1988
Rollins	18	21	1951	1992
Rutgers	2	0	1965	1965
Saint Francis	1	0	1979	1979
Samford	2	0	1974	1975
San Diego State	0	1	1989	1989
South Alabama	10	6	1979	2000
South Carolina	5	6	1971	1996
South Florida	18	17	1969	2001
Southeastern Louisiana	6	4	1979	1991
Southern Illinois	10	2	1956	1986
Southern Methodist	1	0	1992	1992
Southern Mississippi	10	0	1984	2000
Southwestern (TN)	1	0	1966	1966
Southwestern Louisiana	10	9	1976	1996
Southwest Texas State	1	0	1991	1991
Spring Hill	1	0	1953	1953
Stetson	11	3	1948	2000
Tampa	3	0	1954	1970
Tennessee	1	3	1966	1976
Tennessee-Chattanooga	1	0	1998	1998
Tennessee - Martin	1	0	1985	1985
Tennessee Tech	3	0	1972	1990
Texas	0	3	1996	2001
Texas A&M	1	6	1983	1995
Texas Christian	0	2	1994	2000
Texas - Dallas	1	0	1977	1977
Texas Tech	0	1	1970	1970
Trinity	0	1	1974	1974
Trinity of Ireland	2	0	1989	1989

OPPONENT	W	L	FIRST	LAST
Troy State	2	0	1948	1999
Tulane	4	2(1)	1964	1997
Valdosta State	27	0	1952	1989
Vanderbilt	0	2	1987	2001
Virginia	11	6	1968	2001
Virginia Commonwealth	2	4	1989	1997
Virginia Tech	3	0	1984	1989
Wake Forest	14	5	1972	2001
Washington (MO)	1	0	1966	1966
West Florida	3	0	1971	1986
West Virginia	5	0	1985	2001
Western Carolina	1	0	1984	1984
Western Kentucky	1	0	1979	1979
Western Michigan	3	0	1979	1982
Wingate	1	0	1971	1971
Wisconsin	1	0	1993	1993
Yale	1	0	1985	1985



LAUB

TOP NOTCH RECORDS

Top Ten

Single Seasons win percentage

1.	1.000	Paul Haarhuis	24-0	1988
2.	.956	Lex Wood	22-1	1964
3.	.926	Paul Haarhuis	25-2	1987
4.	.869	Jason White	20-3	1995
5.	.868	Joey Rive	33-5	1983
6.	.852	Joey Rive	23-4	1985
7.	.833	Yvo Niks	20-4	1998
8.	.818	Stephen Noteboom	36-8	1991
9.	.813	Scott Blessing	26-6	1985
10.	.806	Greg Gusky	22-10	1989

Career Singles Wins

1.	Jason White	1992-96	95
2.	Yvo Niks	1995-99	89
3.	Michael Ingham	1996-00	85
4.	Brian Stanton	1992-95	85
5.	Paul Haarhuis	1986-89	78
6.	Ken McKenzie	1991-95	77
7.	Joey Rive	1982-85	74 [†]
8.	Ty Braswell	1995-99	73
9.	Neil Krefsky	1989-92	69
10.	Greg Gusky	1989-91	67

Singles Wins

1.	Stephen Noteboom	1991	36
2.	Joey Rive	1983	33
3.	Hernan Luque	1982	26
4.	Scott Blessing	1983	26
5.	Jeff Horine	1983	26
6.	Scott Blessing	1985	26
7.	Paul Haarhuis	1987	25
8.	Greg Gusky	1989	25
9.	Marco Abilhoa	1982	24
10.	Hernan Luque	1983	24

[†]missing stats from 1984

Doubles Tandem Single Season Wins

White-Prieto	1995	25
Haarhuis-Lenhardt	1987	24
Luque-Rive	1983	24
Blessing-Horine	1985	23
Stanton-McKenzie	1995	23
Blessing-Horine	1983	22
Rive-Roper	1985	21
Falinski-McLean	1983	20
Luque-Rive	1982	20
Crosina-Rucker	1985	20
Stanton-McKenzie	1994	17
Noteboom-Krefsky	1991	15

Career Overall Doubles wins

1.	Ty Braswell	1995-99	52
2.	Alex Rucker	1985-88	52
3.	Ken McKenzie	1991-95	49
4.	Neil Krefsky	1989-92	47
5.	Cary Sochin	1986-88	46
6.	Alex Golub	1994-98	46
7.	Michael Ingham	1996-00	42
8.	Jason White	1992-96	41
9.	Yvo Niks	1995-99	37
10.	Brian Stanton	1992-95	37

Career Overall Wins*

Yvo Niks	1995-99	159	(89,70)
Jason White	1992-96	156	(95,61)
Ty Braswell	1995-99	146	(73,73)
Michael Ingham	1996-00	138	(85,53)
Brian Stanton	1992-95	136	(85,51)
Ken McKenzie	1991-95	133	(77,56)
Alex Rucker	1985-88	125	(66, 59)
Joey Rive	1982-85	121	(74,47) [†]
Paul Haarhuis	1986-89	111	(78,33)
Alex Golub	1994-98	109	(58,51)

*career singles victories, (career doubles victories)

[†]missing stats from 1984

20 Dual Match Singles Wins in One Season

1964	Lex Wood	22-1	1985	Joey Rive	23-4
1982	Marco Abilhoa	24-11	1985	Alex Rucker	23-6
	Robert Burgess	22-6	1987	Paul Haarhuis	25-2
	Hernan Luque	26-10	1988	Paul Haarhuis	24-0
1983	Scott Blessing	26-11	1989	Greg Gusky	25-6
	Jeff Horine	26-12	1990	Stephen Noteboom	22-10
	Joey Rive	33-5	1990	Scott Shields	22-9
	John McLean	22-16	1991	Stephen Noteboom	36-8
	Hernan Luque	24-14		Neil Krefsky	20-10
1985	Scott Blessing	26-6	1995	Jason White	20-3
1985	Jeff Horine	22-7	1998	Yvo Niks	20-4



BASSETT

RECORDS BY POSITION

NUMBER ONE POSITION BY WINS

Noteboom	1991	36
Brian Stanton	1994	18
Xavier Luscan	2000	16
Jason White	1996	16
Brian Stanton	1995	13
Brian Stanton	1993	13
Antonio Prieto	1997	12
Ty Braswell	1998	10
Xavier Luscan	2001	8
Yvo Niks	1999	7
Neil Krefsky	1992	6

NUMBER TWO POSITION BY WINS

Antonio Prieto	1995	14
Ken McKenzie	1994	14
Ty Braswell	1997	12
Mike Ingham	2000	11
Ken McKenzie	1993	10
Krefsky & Shields	1991	8
Yvo Niks	1998	6
Braswell & Niks	1999	5
Scott Schuhriemen	1996	5
Ken McKenzie	1992	5
Romain Jurd	2001	4

NUMBER THREE POSITION BY WINS

Yvo Niks	1998	13
Ken McKenzie	1995	13
Art Martinez	1993	11
Gusky	1991	10
Art Martinez	1994	6
Ken McKenzie	1992	6
Alex Golub	1997	5
Scott Schuhriemen	1996	4
Romain Jurd	2001	4
Chad Mooney	2000	4
D. Kozlowski	1999	4

KOLDEJ



KOLOWICH

NUMBER FOUR POSITION BY WINS

Jason White	1995	15
Michael Ingham	1998	11
Jason White	1994	11
Yvo Niks	1997	8
Michael Ingham	1999	7
Ty Braswell	1996	6
Martinez & Schuhriemen	1993	6
Krefsky, Gusky, Shields	1991	6
Brian Stanton	1992	5
Mooney & Schnell	2000	3
Herrera, Laub, Scarella, Owen	2001	2

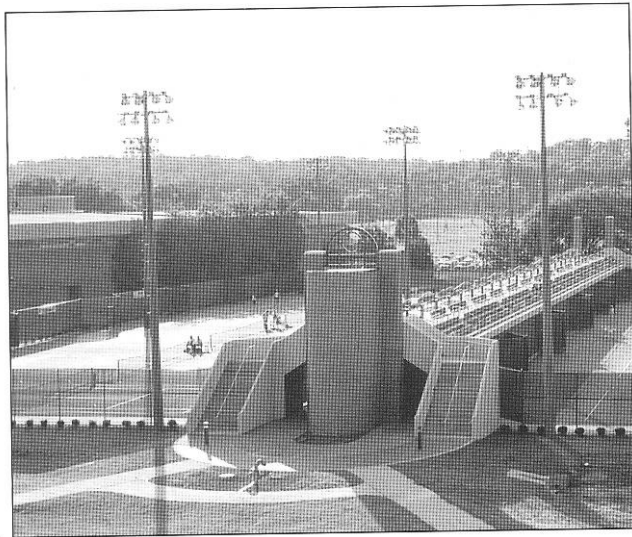
NUMBER FIVE POSITION BY WINS

Schleifer	1991	11
Chad Mooney	1999	10
Alex Golub	1996	9
Steve Weinstein	1998	8
Brian Stanton	1992	8
Michael Ingham	1997	6
Alex Golub	1995	6
Adam Baron	1994	6
Noah Schnell	2000	5
White & Baron	1993	5
Owen, Scarella, Laub	2001	2

NUMBER SIX POSITION BY WINS

Scott Schuhriemen	1994	12
Jason White	1993	12
Adam Schwartz	1992	9
Michael Ingham	1998	8
Yvo Niks	1996	8
Schwartz	1991	8
Rodrigo Laub	2000	6
Noah Schnell	1999	6
Michael Ingham	1997	6
Alex Golub	1995	6
Rodrigo Laub	2001	4

Scott Speicher Tennis Center



With the first stage of construction completed in the Summer of 1993, the Scott Speicher Tennis Center at the Donald Loucks Courts opened its gates to the public for the first time at a Children's Miracle Network charity tournament. Since then, many successful tournaments including the 1996 NCAA Women's Championships, have graced the courts at one of Florida State University's premier athletic facilities.

Costing \$1.2 million to build and then another \$800,000 for recent additions, Florida State's Speicher Tennis Center has become an example of the increasing dedication and commitment the University has to all of its 17 varsity athletic programs.

The Speicher Tennis Center houses 12 lighted hard courts, over 1,000 court level seats, coaching offices, men's and women's locker rooms, equipment and storage rooms, a team lounge and a public address system. The growing pride Florida State has for its tennis program and it's premier tennis center was honored just after it's opening in 1994, when the United States Tennis Association (USTA) awarded the structure with it's "Top Notch" facility award.

The Speicher Tennis Center was named in honor of Lieutenant Commander Michael Scott Speicher, a graduate of Florida State University and the first American casualty during Operation Desert Storm. By Presidential directive, the facility bears the name the "Scott Speicher Tennis Center."

H. Donald Loucks was the program's first tennis coach and is aptly known as the pioneer of Florida State tennis. He began his

coaching career in 1936 at the University School of Florida State College for Women where he coached all sports. This was the beginning of an association with Florida State which crossed six decades, 1936 - 1980, ending in his retirement as Professor Emeritus of Physical Education. In 1942, while serving as an officer in the Army, Loucks was stationed at West Point where he coached plebe basketball and tennis teams.

In 1947, Loucks became Florida State's first basketball coach and a year later was named the school's first tennis coach. His tennis team was the first athletic team to have a winning season. The varsity tennis courts were named for Loucks in 1981. He served as Dean of Men from 1957 - 1967 and was known as a servant of leadership, service and devotion to many worthy causes.

The Speicher Tennis Center was designed by EMO/Architects, Inc., a Tallahassee-based architectural firm, in collaboration with Global Consult Group, Inc., an internationally recognized Tennis Facility Design Consultant. The complex was funded by private sources and supervised through the state university system of Florida.

Through its eight year existence, the Scott Speicher Tennis Center at the Donald Loucks Courts has served as the home courts for all Florida State men's and women's home dual matches, the annual Seminole Fall Classics, City of Tallahassee tennis championships, various USTA regional and zonal tournaments, the 1994 and 1995 Men's Intercollegiate tournament and the annual Children's Miracle Network Charity Invitational benefitting Shands Hospital in Gainesville.

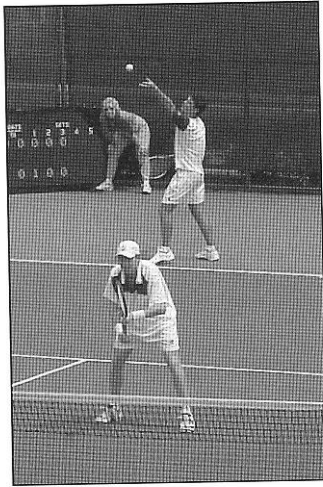


SPEICHER DID YOU KNOW? TENNIS CENTER

- Florida State University's Scott Speicher Tennis Center held its first ever USTA Challenger tournament in June 2000.
- Tallahassee was selected to join the ATP tour with cities such as Atlanta, Chicago, Houston and Los Angeles.

USTA Challenger

For the second straight year, Florida State University has hosted the USTA Tallahassee Tennis Challenger at the Scott Speicher Tennis Center. The tournament, which is presented by Meridian Healthcare Group, was a complete success for everyone involved. This year's event again raised money to benefit the D. Mark Vogter M.D. Memorial Endowment for the Neuro-Intensive Care Unit at Tallahassee Memorial Hospital, as well as having top class tennis action with a 64-player pool.



Founded in 1881, the USTA is a not-for-profit organization with more than 530,000 individual members and more than 6,000 organizational members. As the national governing body for the sport of tennis in America, the USTA uses its \$154 million annual budget to promote and develop the growth of tennis, from the grass roots to the professional levels. The USTA owns and stages the US Open and also selects the teams that compete in Davis Cup, Fed Cup, the Pan American Games and the Olympic Games.

Five Seminoles, four FAMU Rattlers and the top player from the University of Miami joined other top collegians in trying to capture the lone wildcard spot available into the qualifying round of the tournament. Once there, the opportunity to qualify for the main draw was only five matches away.



Four of the five Seminole team members won their first round matches. The highest seeded 'Nole, Rodrigo Laub, seeded fifth, lost in the first round to Hagen Endler of North Florida.

Two other seeded Seminole men's tennis players, No. 6 Alex Herrera and No. 8 Jarrod Owen, won in straight sets. Seminole Xavier Luscan would receive the chance to see action in this year's tournament after receiving a wildcard entry into the main draw.

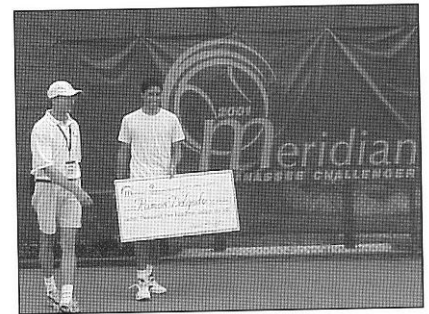
Luscan faced adversity early in the competition falling in the first round to seventh seeded Robert Kendrick of Fresno, Calif., in straight sets, 6-4, 6-4.

Last year's winner, Jeff Salzenstein of Denver, Colo., returned to defend his title in the Tallahassee Tennis Challenger, along with last year's runner up, Cecil Mammitt of Eagle Rock, Calif. Yaoki Ishii of Japan, a newcomer to the Tallahassee tourney, halted Salzensteins bid for a repeat in the second round by beating him in straight sets. On the second to last day of the tournament, only one seeded player remained in the singles draw, No. 2 seed Justin Gimelstob.

For the second year in a row, an unseeded player in singles play and the number one seed in doubles play won the Tallahassee Tennis Challenger. Just as last year, Salzenstein came from out of the shadows and won as an unseeded player, Paraguay's Ramon Delgado would attempt to do the same.

Though unseeded in this year's tournament, Delgado was no stranger to the big players on the pro circuit. At the 1998 French Open, the 6'1" right-hander defeated none other than Pete Sampras in the second round. Also, Delgado reached the final

round of the Centura USTA Challenger in Rocky Mount, N.C., in 2001. In Rocky Mount, he took out two players ranked in the top 200, including the No. 2 seed Ronald Agenor of Haiti and American Robby



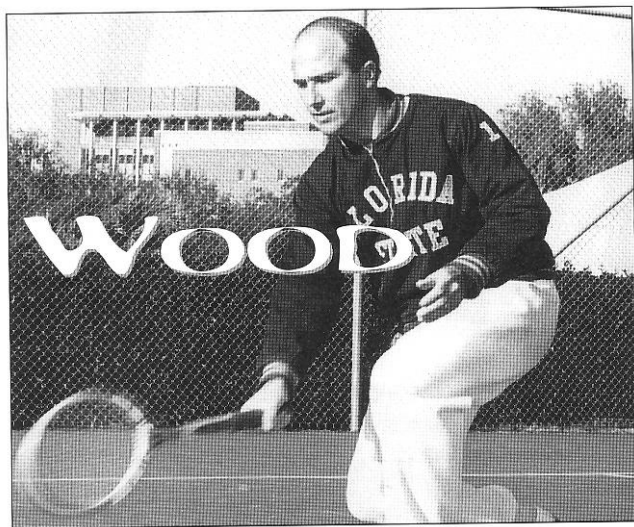
Ginepri. The win marks a return to form for Delgado who peaked at 51st in the world rankings a few years ago. Delgado finished off his Cinderella run by defeating number two seed Gimelstob of Morristown, N.J. in straight sets, 7-5, 6-3, to capture his first Tallahassee Challenger Title.

In doubles play, again the number one seed took the cake, though it was a little more difficult for the doubles team. Brandon Hawk of Clyde TX found himself playing again in the final round of doubles competition for the title along with Robert Kendrick. Hawk would once again be shut down, falling to Australia's Matthew Breen and Lee Pearson who had to win two matches on the final day and captured the championship win in straight sets, 6-4, 6-2. The win was the first of the year for the team of Pearson and Breen and it was the largest purse the team had ever won since joining forces on the tour.

Top Notes

In 1982, **Lex Wood** became the first player from the Florida State tennis program to be inducted into the FSU Athletics Hall of Fame. He was first a player for the Seminoles from 1961 through the 1963 season, then the program's head coach from the 1965 through 1969.

When Wood arrived from his native South Africa in 1962, head coach Eddie Cubbon knew he had a leader amongst his new crop of tennis players. For the following three seasons he would become a mainstay among the nation's top 20 players, playing at No. 1 singles and doubles.



In 1964, his singles match record was 22-1 and his career mark was 51 victories in 54 singles matches. In the course of his Florida State career, Wood defeated many great collegiate players including a former U.S. Davis Cup player, Marty Riessen. As the head coach, his Seminoles went an impressive 89-33 during his tenure. His last two teams in 1968 and 1969 went 19-3 and 23-5 in dual match play, respectively.

A fine student, Wood received his master's and doctoral degrees from FSU in Education. Following his near-decade with FSU, Wood traveled south to the University of Central Florida, where he served as an educator and coach for many more years to follow.

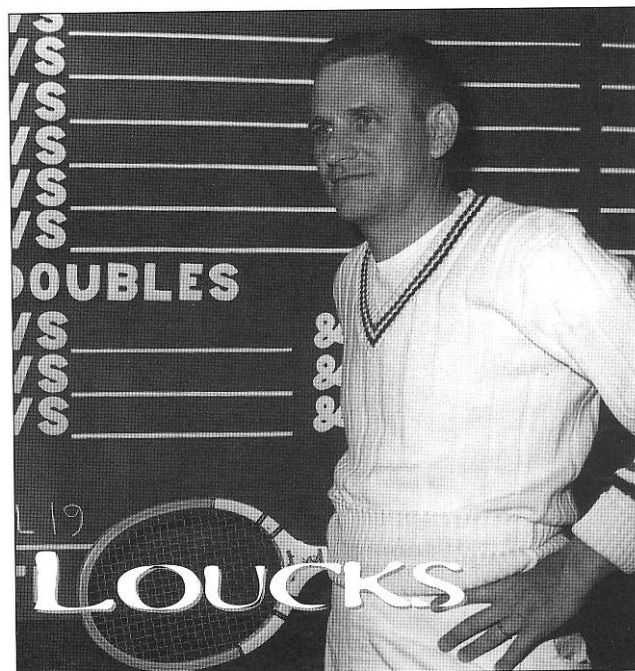
Over six decades of service to Florida State athletics, **Don Loucks** was inducted to the Florida State Athletic Hall of Fame in 1985. In 1936, Loucks started off his relationship with FSU as the coach of all sports for the University School of Florida State College for Women. He was the "pioneer" of many of the successful athletic programs that currently thrive.

In 1947, he was the first basketball coach for the men's basketball team and a year later was named the first tennis coach. His hoops team scored the first victory for the newly-formed athletic program. His tennis team was the first to have a winning season, going 9-4.

He served as Dean of Men from 1957 through 1967 and during this time he served as a lead figure in the Seminole athletic program, as well as in the department of education. He retired from the Athletic Department in 1980 as Professor Emeritus of Physical Education. His dedication did not go unnoticed as the Varsity Tennis Courts were renamed in his honor. The Scott Speicher Tennis Center was built around his courts.

His accolades go far beyond the tennis courts, yet **Dr. Ray Bellamy's** triumphs at the net still stand out as one of the best as he was inducted into the Florida State Athletic Hall of Fame in 1992. He served as his team's captain in 1960 and 1961, and during those two years he only lost a total of three matches.

As a model student and athlete during his undergraduate years, 1957 through 1961, Bellamy was involved in many facets of the University that continue to show the benefits of his early presence. He was vice-president of his senior class, a member of the Gold Key honorary society and



Omicron Delta Kappa honorary fraternity. In addition, Bellamy was president of the Sigma Chi Fraternity. He then went on to earn a doctorate in medical studies.

After leaving FSU and joining the United States Navy, Bellamy went on to become the All-Navy doubles champion and played on the All-Navy team in 1967 and 1968 while serving as flight surgeon.

After returning to the state of Florida to begin his practice, Bellamy became the state's 35-and-over singles and doubles champion during the 1970's.

Paul Haarhuis, the "Dutchman" from Eindhoven, The Netherlands, came to Florida State in 1986 after transferring from Armstrong State College in Savannah, Georgia. He went on to become the best tennis player ever to come out of FSU. His induction into the Florida State Athletic Hall of Fame in 1993 is a symbol of the university's appreciation for the positive presence he added to the program during his undergraduate years, 1986 through 1988.

His first two seasons prior to joining the Seminoles went quickly as he garnered a 64-2 overall record, including a 35-0 sophomore season. With the Seminoles, his first season was a true success as he went 35-5 in singles competition and 25-5 in doubles. His biggest feat was claiming the first-ever Men's Intercollegiate Invitational Tennis Championships held in Panama City.

At one point, he had 24 consecutive wins, including his reign as the

Top Notes

Metro Conference Most Valuable Player. He was given this honor by way of winning the number one singles and doubles crowns, including an invitation to the NCAA Championships for doubles.

Once his collegiate career was finished he had a 72-9 overall singles record for his two years and consecutive Metro Conference MVP awards. As a pro, he still thrives. His list of victories over top-opponents includes John McEnroe and Boris Becker.

Marco Abilhoa, the native of Brazil was one of the great Florida State Seminole tennis players make an impact on the collegiate scene. Prior to enrolling, he was ranked No. 3 in the Brazilian Juniors, when former FSU head coach Randy Jobson discovered him.

A five-year member of the Seminole tennis program from 1980 through 1984, Abilhoa was at the tops of the Metro Conference. He was the No. 1 singles and doubles champion in 1981 and 1982. After dominating for his first two seasons he was then sidelined and redshirted for the 1983 season. Upon his return in 1984, he went straight back to the place where he left off, at the top of the Metro Conference. His dominating presence earned him a record three Metro MVP awards in 1981, 1982 and 1984.

"If Marco can get himself so that he's pumped and psyched to play, and can keep his mind clear of distractions, there isn't anyone in the country that he can't beat," added Jobson.

Joey Rive, a West Palm Beach native, played for the Seminoles from 1981 through 1985. He was one of the top players ever to compete at Florida State, Rive led the team in wins in 1983, 1984 and 1985. During his period at number one singles, he was nationally ranked among the Top 25 in the nation.

His stellar performance for the Tribe resulted in three Metro Conference singles championships in 1983, 1984 and 1985 and two doubles championships in 1983 and 1985, including the conference's top crown, the MVP in 1985. His Metro success led to his invitation to the 1985 NCAA tournament and to the 1987 Tennis Magazine Sportsman of the Year award.

Following his FSU career, Rive played the ATP tour where he reached as high as No. 57 in the world in 1988. He returned back to Tallahassee, where

he served as an assistant coach from 1993 to 1994.

He is currently the head coach at the University of Alabama.

After earning All-American honors at NAIA Huntington College in Montgomery, Ala., **Stephen Notebloom**, the second "Dutchman" to thrive at Florida State joined the Seminoles for the 1990 through 1992 seasons.

Almost immediately making his presence known, Notebloom grabbed the Metro Conference's coveted MVP award for winning

the title at No. 1 singles and doubles. That same year, he earned an invitation to the 1991 NCAA Championships for singles. A feat that has been duplicated by very few Seminoles, Notebloom went onto the professional level following graduation.

Brian Stanton of Coral Springs and **Ken McKenzie** of Tallahassee finished up their playing careers with the Tribe in 1995. As a doubles team, the duo ended their final campaign earning collegiate tennis' top honor, ITA All-America.

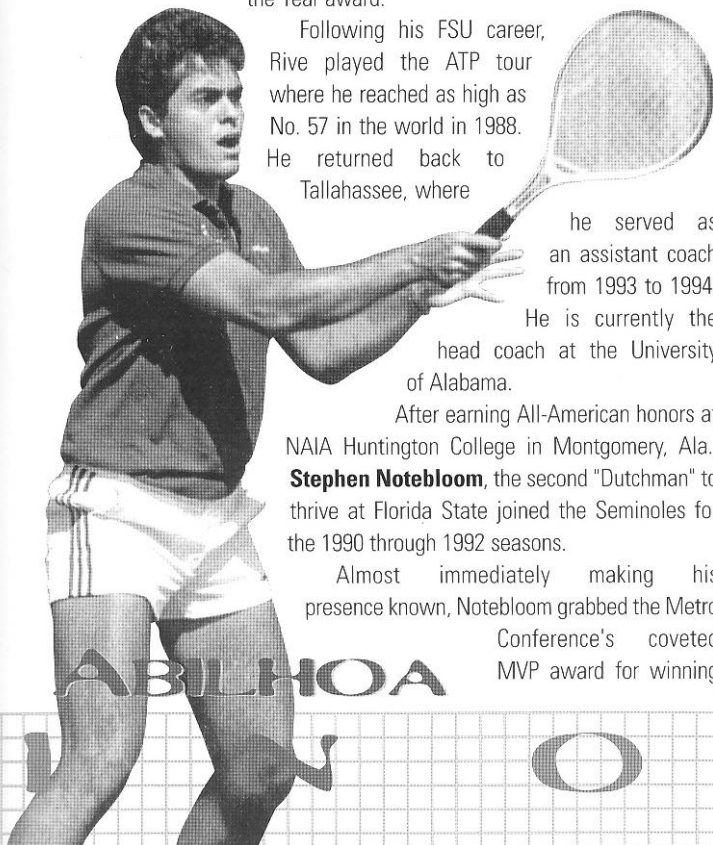
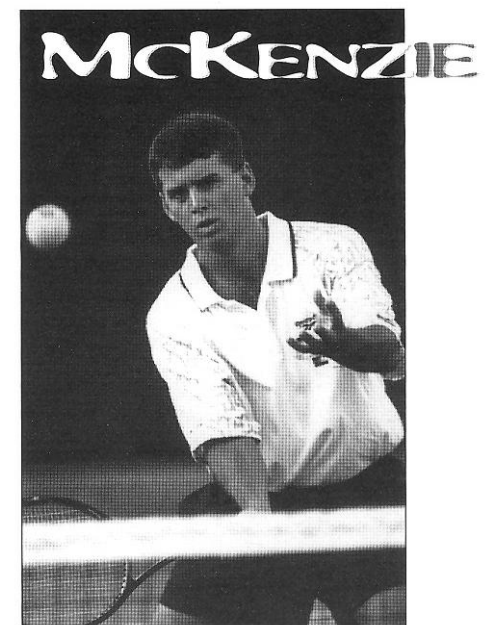
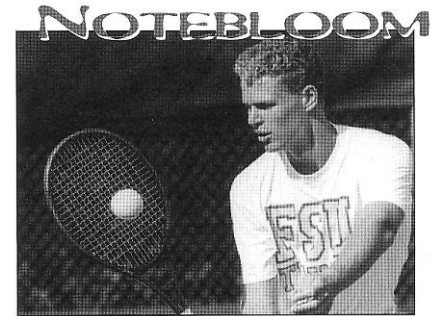
The doubles pair received the 1995 award after a superb run in the NCAA Championships. What may be the most impressive feat for them was being ranked among the nation's top 10 doubles tandems throughout the season.

During his stay at FSU, Stanton won back to back Junior Davis Cup singles titles in 1993 and 1994, won the 1993 Junior Davis Cup in doubles and was named to the All-ACC team his sophomore and junior seasons. He then served as graduate assistant coach in 1996.

McKenzie leaves behind a void in doubles that will be a great challenge to fill. He and Stanton guided No. 1 doubles to an impressive No. 3 national ranking, the highest ranking the program has ever received. He also was also impressive on the singles side earning ACC Flight Championships at No. 2 singles in 1994 and No. 3 singles in 1995.

Jason White recently finished up his four-year run with the Seminoles in 1995, his best season as a player by far. As the top singles and doubles player, White was charged with a lot of responsibility as the team's captain.

Even though he won the ACC Championship at No. 4 singles in 1994 and a pair of championships at No. 2 doubles in 1994 and 1995, White was still on top of ACC tennis in 1996. The senior from Longwood, who was nationally ranked in singles and doubles for nearly the entire season, went down to the wire and was edged out of the championship at No. 1 singles by just one loss. Not to go unnoticed he received an invitation to the 1996 NCAA Championships in singles or his conference efforts.



Support Services

Academic, personal and professional support are essential to college success. At the Florida State University, we have developed an outstanding support program which enables student-athletes to reach their full potential. Our philosophy is "to offer an academic support program integrated with the total university that will assist all student-athletes with the transition into college and provide continued support in all phases of academic and professional development culminating with graduation, job placement or graduate school."

To accomplish this goal we have developed an academic environment which facilitates the academic success of student-athletes. Student success is encouraged through competent academic counseling, career exploration, planning and placement and academic assistance through tutorial programs.

Our program operates on a "proactive" rather than "reactive" approach. At Florida State, our academic staff does not wait for academic crises to occur. We gather important background information and build an academic profile on all student-athletes to assess their needs in advance. We also stay informed on the daily progress of each student-athlete.

The academic support services are located in the state-of-the-art University Center and are on the sixth floor of the \$126 million facility. It includes private study carrels, a tutorial study area and a computer lab outfitted with 16 new IBM computers and laser printers. In addition, athletic sky boxes are utilized for group in individual tutorial instruction.

FSU offers 16 Schools and Colleges with 99 undergraduate degrees and 75 post-baccalaureate degrees.

Mark Meloney became Florida State's Director of Athletic Support Programs in 1997 and brings 14 years of advising experience to the position. Over the past seven years, meloney has played an integral role in development of a comprehensive program of student athlete support, which in 1996 won the "Program of Excellence" award from Athletic Management Magazine.

A native of Iowa, Meloney began his college education at Buena Vista College, where he earned varsity letters in football and baseball. Upon transferring to Florida State, he earned Bachelor's degree's in Management and Finance in 1986 and received a Masters in Athletic Administration from FSU in 1997.

Meloney oversees an academic staff comprised of five academic counselors, and administrative assistant, several graduate assistants, individualized learning specialists and a cadre of about 70 tutors and mentors.

Meloney and his wife Sarah are the parents of a seven year old daughter, Montana Shea.

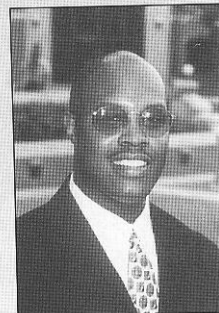


Mark Meloney
Director, Athletic
Academic Support
Programs



Kevin White is in his fifth year as a member of Florida State's academic support staff and serves as the tennis program's academic counselor. White is responsible for coordinating and monitoring completion of degree requirements as well as overseeing study hall and tutorial services while watching over academic progress of the Seminole student-athletes. In addition, he assists the department in the recruitment of prospective student-athletes when they come to campus.

A native of Seat Pleasant, Md., White attended James Madison University on a football scholarship. He was a three-year letterwinner for the Dukes and received his bachelor's degree in sociology in communication in May of 1991.



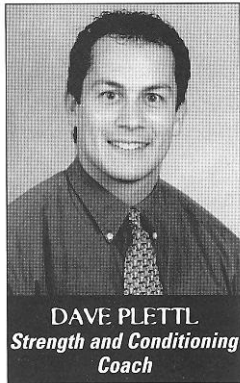
Kevin White
Men's Tennis
Academic Counselor

Strength and Conditioning

STRENGTH/CONDITIONING

"The Strong Shall Survive" is the motto of the strength and conditioning staff at Florida State. It is also this philosophy that has made Seminole athletes in all sports among the strongest, fastest and fittest anywhere. At Florida State, the strong not only survive, they win too!

Strength training, conditioning, medical care and treatment are vital aspects of an athlete's performance on the court. At Florida State, a specially designed program is developed for the men's tennis team, emphasizing the objectives along with the proper medical attention and injury prevention.



DAVE PLETTL
Strength and Conditioning Coach

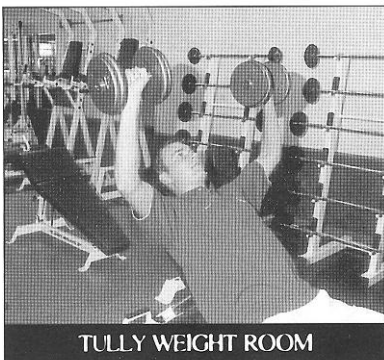
Strength coach Dave Plettl, who is in his second year on the Florida State strength and conditioning staff, individually customizes programs for each of the athletes beginning with pre-conditioning before the season gets underway.

Plettl, a native of Bailey, Colorado, is a 1991 graduate of the University of Colorado, where he earned a Bachelor's degree in political science and history. He comes to Florida State from the University of Texas where he served the past two years as an assistant strength and conditioning

coach with the football, men's tennis, women's golf and rowing programs.

While at Colorado, Plettl worked as a student assistant athletic trainer his first year and then moved to the strength and conditioning staff in 1987 where he spent the next 10 years. Plettl was a student assistant/graduate assistant from 1987-92, the interim coach from 1992-93 and associate strength and conditioning coach from 1993-97. He worked primarily with the football, men's basketball, volleyball and soccer programs at Colorado.

Plettl, who is a certified Level II specialist in sports conditioning, works with both the men's and women's basketball programs at Florida State University while adding women's tennis this season. He is married to the former Christa Miller. The couple had their first child, Lydia in April of 2001.



TULLY WEIGHT ROOM

in 1996 and additional improvements have been made to the facility every year since. The weight room went from 1,500 square feet to 3,500 square feet in size in 1996, fresh with a new stereo system, drop ceiling, lighting and mondo rubber flooring. Over \$140,000 worth of new exercise equipment was added to the Lady Seminole weight room, including 16 cardio-vascular pieces such as Life Fitness, Stairmaster and Tatrix. The facility was expanded to 4,500 square feet this past summer with a new squat rack and platform.

WEIGHT ROOM

The Tully Gymnasium weight room took on a whole new look following a complete renovation

MEDICAL CARE AND TREATMENT

An athlete can expect to receive the best care and treatment possible from the athletic training staff at Florida State University. Prior to competition, all FSU student-athletes undergo screening in order to detect any potential injuries. If a problem is detected, the athlete may be placed on a prevention care system which may include any kind of treatment from icing to exercising.

Athletes at Florida State University receive the best care and treatment possible. All of the student athletes undergo a preseason examination in order to prevent and detect any potential injuries that an athlete may incur. If a problem is detected, the athlete is placed on a prevention care program which may include any kind of treatment from icing to exercising.

Sam Lunt, who is in his 18th season as a member of the Florida State University athletic staff, oversees the athletic training duties for the men's tennis team. Lunt originally came to Florida State in 1983 as a graduate assistant after receiving his bachelor's degree in athletic training from the University of Miami. While at Miami, he worked as a student trainer in the Hurricane athletic department and served as an assistant trainer with the Miami Dolphins of the NFL during the summer of 1982.

As a graduate assistant at Florida State, Lunt worked with the Seminole football team while earning his master's degree in sports psychology. During the 1985 spring football season, he worked for the Jacksonville Bulls of the USFL. He returned to the collegiate ranks that summer when he was named an assistant trainer at the University of Louisville.

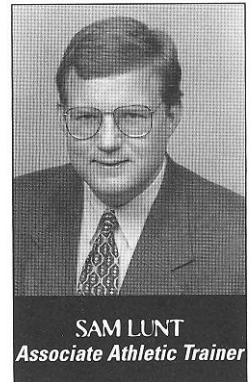
The Fort Myers, Fla., native returned to Florida State in 1986. His duties included assisting head trainer Randy Oravetz with the Seminole football team as well as working with all of the men's varsity teams. Lunt then became the head trainer for the men's basketball team while overseeing all men's sports.

During his career at Florida State, Lunt has been involved with athletes at both the national and international level. He worked closely with FSU's team of physicians in planning and coordinating the medical coverage for the 1991 AAU Junior Olympics which were held in Tallahassee.

Lunt is a certified member of the National Athletic Trainers Association. He worked as a volunteer trainer at the United States Olympic Training Center in Colorado Springs, Colo., during the 1987 U.S. Olympic Festival. He was also a member of the training staff at the 1989 World University games in Duisburg, Germany.

Lunt, 40, is married to the former Agnes Bundick. The couple have three children: Ryan, a four-year-old son, and one-year-old twins, Sean and Erin.

Though the prevention of injuries is the main objective, some injuries are unavoidable. Rehabilitation is another component of the Florida State training room. The FSU athletic training staff will work with the athlete and provide an intense rehabilitation schedule that will allow the athlete to successfully rehabilitate after an injury. Some injuries and illnesses may be referred to the Seminole team physicians at the Tallahassee Orthopedic Center, who, for many years, have worked in conjunction with the FSU athletic training staff in successfully rehabilitating athletes after an injury.

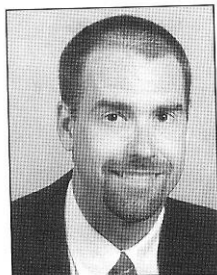
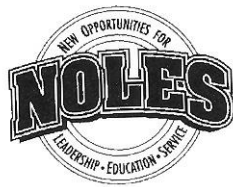


SAM LUNT
Associate Athletic Trainer

Life Skills and Student Development

THE NOLES PROGRAM

New
Opportunities for
Leadership,
Education and
Service



JOHN LATA
Coordinator

Developed by the Florida State University Department of Athletics, the NOLES program represents a commitment to the total growth and development of the student-athlete. This program establishes an administrative commitment to academic and athletic excellence. Those efforts will be supported with programs and services in personal development, career development and community service.



**AMY
MAGNUSON**
Sports Nutritionist

PERSONAL DEVELOPMENT

Fostering the development of personal growth is a fundamental component of the NOLES program. These support programs ensure that the student-athlete will be provided opportunities to focus on personal growth issues such as values clarification, goal setting, fiscal planning, decision making and personal responsibility. Programming focuses on helping student-athletes

develop a healthy lifestyle while they are at Florida State and habits that will benefit them for life.

CAREER DEVELOPMENT

Preparing for life after college sports is a major focus of the NOLES Career Development program. The program is designed to work cooperatively with the University's Career Services to acquaint students with the job search process, provide networking opportunities and ultimately assist with job placement. This program places a priority on the development of the total person, with the goal of developing individuals who will have rewarding careers and productive lifestyles after they leave Florida State.

COMMUNITY SERVICE

Serving the community is the focus of our Seminole Spirit program. Student-athletes are challenged to give service to our community and individuals who are in need. With a clearly defined program of service, student-athletes are given the opportunity to develop the foundation for a lifelong commitment to volunteerism. The Seminole

Spirit Student-Athlete Speakers' Bureau enables student-athletes to improve their speaking skills, develop effective communication and impact the lives of others through their service as role models in our community.

LEADERSHIP DEVELOPMENT

The Florida State University Department of Athletics is committed to developing programs of excellence that foster leadership development. The foundation of the leadership development program are the Seminole Leadership Institutes that are held four times a year. These Institutes offer student-athletes the opportunity to learn skills that will benefit them as students, as athletes, and as they pursue their goals after leaving Florida State. The Institutes are based on building communication skills. Students have the opportunity to use the values and work ethic taught by athletic participation as the framework for their leadership development. The Institutes attract outstanding guest speakers who challenge Seminole student-athletes to achieve their greatest potential and use their leadership skills to positively influence others.

The Student-Athlete Advisory Council (SAAC) serves as the advisory board to the NOLES program and the athletics administration.

The prestigious board, comprised of two representatives of each athletic team at FSU, also recommends programming and serves as a liaison between student-athletes and the athletics administration. The Advisory Council plans and implements various events for student-athletes and serves as the department's most visible ambassadors. The SAAC hosts the annual Golden Nole banquet and plans such events as orientation for incoming student athletes and the back-to-school picnic.



Associate Athletics Director For Student Services Pam Overton was presented with the first annual Dr. Gene Hooks Award for the outstanding CHAMPS program coordinator as chosen by the Division I-A Athletics Directors.

NCAA Compliance

The following information is provided by the Florida State Office of Compliance for prospective student athletes. It is intended as a guideline to introduce some of the rules governing NCAA athletic involvement.

WHO IS PERMITTED TO RECRUIT FOR FSU?

Only Florida State University coaches who have successfully completed the NCAA Recruiting Rules Examination on an annual basis may be involved in the recruitment process. Representatives of our athletics interests may not make any recruiting contacts. This includes letters, telephone calls or face-to-face contact on or off campus with a prospect or the prospect's parents.

KEY TERMS YOU SHOULD KNOW

You become a prospective student-athlete if you have started classes for the ninth grade. Before the ninth grade, you become a prospective student-athlete if the college provides you (or your relatives or friends) any financial aid or other benefits that the college does not provide to prospective students generally.

A contact is any face-to-face encounter between a prospect or the prospect's legal guardian and an institutional staff member or athletic representative during which any dialogue occurs in excess of an exchange of greeting. NOTE: At the Division I level, athletic representatives (boosters) may not contact you for the purpose of recruiting. A college coach may contact you in person off the college campus beginning July 1 after completion of your junior year in high school.

An evaluation is any off-campus activity designed to assess your academic qualifications or athletic ability, including any visit to your high school (during which no contact occurs) or the observation of any practice or competition in which you participate.

During your senior year, you can have one expense-paid official visit to a particular campus. You may receive no more than five visits. During your official visit, which may not exceed 48 hours, you may receive round-trip transportation between your home and the campus, and you (and your parents) may receive meals, lodging and complimentary admission to campus athletics events.

PHONE CALLS & LETTERS

Phone calls from faculty members and coaches (but not boosters) are permitted beginning July 1 after completion of your junior year. A college coach or faculty member is limited to one telephone call per week except when it is:

- During the five days immediately before your official visit to the university
- On the day of a coach's off-campus contact with you
- During the time beginning with the initial National Letter of Intent signing date in your sport through the two days after signing date

Letters from coaches and faculty members (but not boosters) are not permitted until September 1 at the beginning of your junior year in high school. A Division I university may provide you with the following printed materials:

- General correspondence, including letters, U.S. Postal Service postcards and institutional note cards
- Game programs which may not include posters and one Student Athlete Handbook can be provided only during official or unofficial visits to the university's campus

- NCAA educational information
- Pre-enrollment information subsequent to signing a National Letter of Intent with the university
- One athletic publication which may include only one color of printing inside the covers
- Official academic, admissions and student services publications published or videotapes produced by the institution and available to all students
- Schedule cards
- Questionnaires which may be provided prior to your junior year
- Summer camp brochures which may be provided prior to your junior year.

ALUMNI & BOOSTERS DO'S & DON'TS

You **may** forward information about prospective student-athletes to the appropriate coaches.

You **may** have contact with a prospect regarding permissible pre-enrollment activities such as summer employment, provided the prospect has already signed a National Letter of Intent and the Compliance Office is aware that you are making these contacts in regard to employment.

You **may** have a telephone conversation with a prospect only if the prospect initiates the call. Such a call may not be prearranged by an institutional staff member and you are not permitted to have a recruiting conversation, but may exhibit normal civility. You must refer any questions about our athletics programs to an athletics department staff member/coach.

You **may** view a prospect's contest at your own initiative provided you do not contact the prospect or his/her parents. In addition, you may not contact a prospect's coach, principal, or counselor in an attempt to evaluate the prospect.

You **may** continue established family relationships with friends and neighbors. Contacts with sons and daughters of these families are permitted as long as they are not made for recruiting purposes or encouraged by Florida State University coaches.

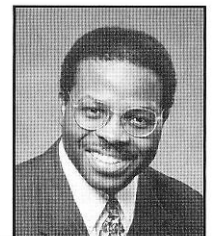
You **may not** become involved in making arrangements to receive money or financial aid of any kind for a prospect or the prospect's family and friends.

You **may not** make contact with a prospective student-athlete and his/her parents when the prospect is on campus for an official or unofficial recruiting visit.

You **may not** transport, pay or arrange for payment of transportation costs for a prospect, and his/her relatives or friends to visit campus (or elsewhere).

You **may not** pay or arrange for payment of summer camp registration fees for a prospect.

You **may not** provide anything to a prospect, the prospect's family or friends without prior approval from the athletics' Compliance Office.



ROBERT MINNIX
Assoc. AD for Compliance
and Legal Affairs



PENNIE PARKER
Director of Compliance



BRIAN BATTLE
Assistant Director
of Compliance

This is T

Among low, rolling hills, down moss-draped canopy roads, within picturesque historical districts, and across seas of flowering azaleas lies a magical part of the Sunshine State-Tallahassee, Florida's capital city. With its intriguing combination of power-play politics and classic character splashed with a twist of Southern beauty and charm, Tallahassee is a side of Florida few expect to find.

With the Gulf of Mexico just 25 miles south and the Georgia border only 14 miles north, Tallahassee rests between the foothills of the Appalachian Mountains and the juncture of Florida's panhandle and peninsula in an area known as "The Big Bend." Nearer in miles to Atlanta than to Miami, Tallahassee more closely resembles its Georgia neighbor than Florida in topography, climate and lifestyle.

Like the city itself, the story of how Tallahassee was chosen as the state capital is rich in history. In 1823, two explorers set out — one on horseback from St. Augustine and the other by boat from Pensacola — to establish a permanent, central location for the seat of government. The two met at a beautiful site that the Creek and Seminole Indians called "tallahassee" — derived from the words "talwa," meaning town, and "ahassee," meaning old. This historic meeting place remains Florida's capital today.

Boasting more than 145 properties listed on the National Register of Historic Places, Tallahassee is a living showcase of Florida history and heritage. The crowning jewel of

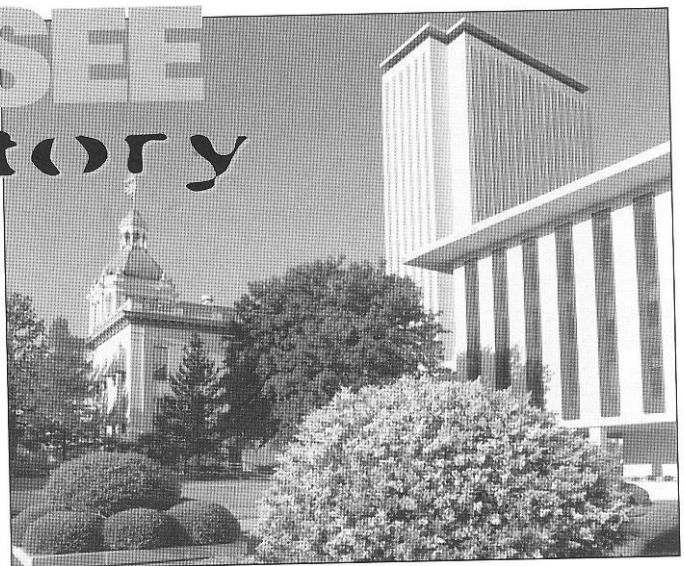
Florida's historic "Capitol Hill" is the Old Capitol, beautifully restored to its 1902 splendor complete with the red-and-white striped awnings, a dome adorned with stained glass, antique furnishings and political memorabilia. The 22nd-floor observatory of the New Capitol Building offers a breathtaking view of this surprising Southern city, awash in flowering azaleas, snowy dogwoods, towering pines, fragrant magnolias, and hundreds of lakes, springs, swamps, rivers and sink holes.

Charming downtown historic districts graced with lush linear parks lead visitors to the Knott House Museum, The Columns, First Presbyterian Church, John G. Riley House Museum and Old City Cemetery. Free walking tours and replica turn-of-the-century street cars carry passengers to antebellum mansions, picturesque churches and other downtown delights. Minutes from downtown lies the lush 52-acre natural habitat and 1880s farm of the Tallahassee Museum of History and Natural Science, home to the rare Florida panther and other furry "natives."

The area surrounding Tallahassee reveals numerous other historic and archaeological treasures, such as De Soto State Archaeological and Historical Site, Lake Jackson State Archaeological Site, Mission San Luis, Natural Bridge Battlefield and San Marcos de Apalache. Visitors can explore prehistoric Florida at the Museum of Florida History, where they are greeted by a giant 12,000-year-old mastodon pulled from nearby Wakulla Springs.

TALLAHASSEE FLA Our History

In 1823, the first civilian governor, William Pope DuVal, desired a central location for the legislature to meet. He sent one explorer on horseback from St. Augustine and another by boat from Pensacola — their rendezvous point was declared Florida's capital. Nestled among the rolling foothills of the Appalachian Mountains and located in a region of the Gulf of Mexico known as the Big Bend, the Capital region is known for its Southern characteristics, gracious hospitality and lush topography.



tallahassee

On the shores of Wakulla Springs, alligators still laze under the watchful eyes of “snake birds” perched on twisted cypress trees. The site of many underwater scenes in “Tarzan” movies, it’s one of the world’s deepest freshwater springs. Glass-bottomed boat tours across these mystical waters are available.

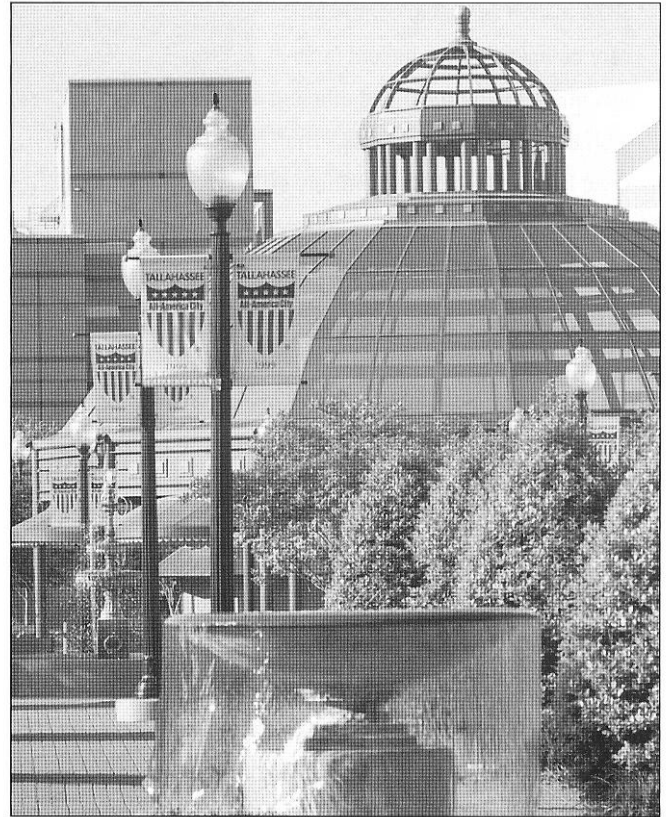
Other sightseeing favorites include the floral masterpiece of Alfred B. Maclay State Gardens; Bradley’s Country Store; FAMU Black Archives; and the Tallahassee Antique Car Museum. Nearby small towns offer fascinating excursions to places such as Pebble Hill Plantation, Florida Caverns State Park, Monticello Opera House and St. George Island.

Tallahassee is almost as rich in cultural treasures as it is in history. A widely-acclaimed collection of art, science and history museums and galleries, year-round festivals and non-stop entertainment at the 14,000-seat Tallahassee-Leon County Civic Center, feed a variety of cultural appetites.

Visitors with a hunger for the great outdoors will find Tallahassee ideal for all types of outdoor recreation—from canoeing down dark, cypress-lined rivers and biking up steep slopes to exploring backcountry wildernesses and hunting for bobwhite quail. Area lakes, rivers, ponds and the Gulf — just 30 minutes away — offer a paradise for boating and fishing. Lakes Jackson and Talquin are renowned in the bass fishing world for yielding the “big ones.” Local wildlife areas, such as the St. Marks National Wildlife Refuge and Apalachicola National Forest, are perfect spots for camping, picnicking, swimming, biking and exploring.

And while Tallahassee also features eight golf courses and plenty of places to raise a racquet, it’s a wild array of spectator sports that leave the crowds screaming for more. The Florida State Seminoles and Florida A&M Rattlers provide collegiate action while the Tallahassee Thunder is the city’s featured arena football team. And always a sure bet are the nearby greyhound races.

For another favorite “sport” — shopping — two large regional malls and many specialty centers offer an array of “playing options,” from popular chains to curiosity and antique shops. Unique shopping locales include downtown parks, lakeside cottages and small Southern towns. Tallahassee serves a scrumptious selection of tantalizing



POPULATION...

City	148,400
County	243,300

restaurants ranging from fast food to five-star. Local specialties include homemade country sausage, melt-in-your-mouth steaks, wild game and succulent seafood fresh from the Gulf.

From luxury to economy, accommodations are plentiful and include restored bed and breakfast’s, rustic “gentlemen” lodges, beachside escapes and comfortable chain hotels. For those who choose to follow in the footsteps of early travelers, Tallahassee also boasts 15 beautiful campsites. Continuous air service, Amtrak and four major highways make it easy for visitors to get to Tallahassee. But no matter how you arrive, the history and hospitality of Tallahassee make it difficult to ever leave for long.

TALLAHASSEE-LEON COUNTY CIVIC CENTER

It is easy to understand why over one million people a year flock to the Tallahassee-Leon County Civic Center, what with the varied array of attractions it offers. Consider: a

This is T

\$33.8 million versatile, contemporary complex with excellent facilities and a cooperative and efficient staff that knows its business. The Civic Center hosts a wide variety of concerts, family shows, Broadway shows, ice shows and sporting events. Some people come to the Civic Center to enjoy the sounds of rock, country, pop and urban concerts. Some come for the thrills of basketball, ice hockey, rodeos, arena football and three-ring spectaculars.



CLIMATE

Tallahassee has the mild, moist climate characteristics of the Gulf States and experiences a subtropical summer similar to the rest of Florida. In contrast to the Florida peninsula, however, the panhandle, of which Tallahassee is a part, experiences four seasons.

TALLAHASSEE TEMPS...

Annual January temperature:	40-63° F
Annual July temperature:	72-91° F
Yearly average maximum temperature:	78.7° F
Yearly average minimum temperature:	55.7° F
Yearly average days above 90 degrees:	.91.0
Yearly average days below 32 degrees:	.35.7

MUSEUMS AND CULTURE

The federal Institute of Museum and Library Services (IMLS) named the Tallahassee Museum of History and Natural Science as one of the nation's exemplary museums on September 19, 2000. The Tallahassee Museum, along with 176 other museums, was selected out of a field of 823 applications from museums throughout the nation in a highly competitive competition. The museum features a 52-acre natural habitat zoo, nature trails, authentic 1880s farmstead, hands-on Discovery Center, birds of prey aviary, reptile exhibits, annual events and more!

Other points of interest include:

Mary Brogan Museum of Art & Science

Interactive hands-on science center and national traveling art and science exhibitions.

Mission San Luis

Site of Spanish/Indian village settled from 1656-1704. Ongoing excavations/ exhibits/reconstructions.

Museum of Florida History

Permanent exhibits include a nine-foot mastodon, Spanish galleon treasures, Civil War memorabilia, reconstructed steamboat and Prehistoric Florida plus traveling exhibits.

OLD CAPITOL MUSEUM

Restored to 1902 appearance featuring red candy-striped awnings, stained glass dome, House and Senate Chambers, Supreme Court and Governor's office.

MACLAY STATE GARDENS

Enchanting floral architecture surrounds 1930s home of NY financier Alfred B. Maclay. Impressive grounds feature 200+ floral varieties plus hiking, biking and nature trails, swimming, fishing and boating.

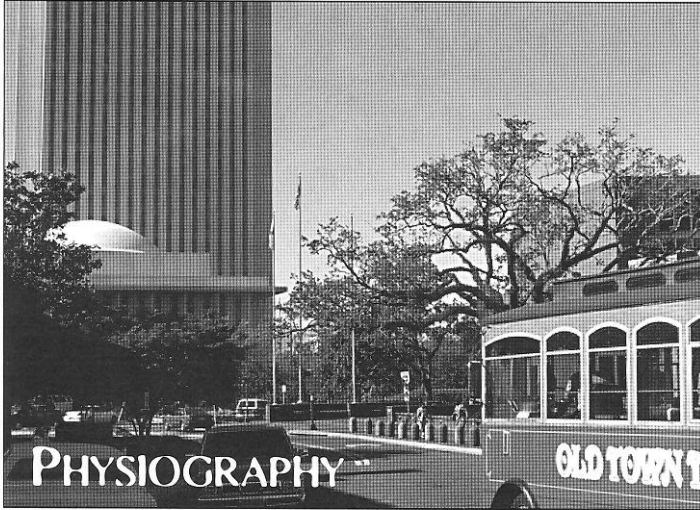
TALLAHASSEE ANTIQUE CAR MUSEUM

Impressive showroom features award winning Chevys, one-of-a-kind Ford Roadster, 1913 CarNation Tourer, 1931 Duesenberg, 1956 T-Bird, Delorean, Cadillacs, Corvettes and more. Plus two original Bat Mobiles.

THE CAPITOL

One of 5 tower Capitols in the U.S. features panoramic view from 22-floor observatory/art gallery, House and Senate viewing galleries.

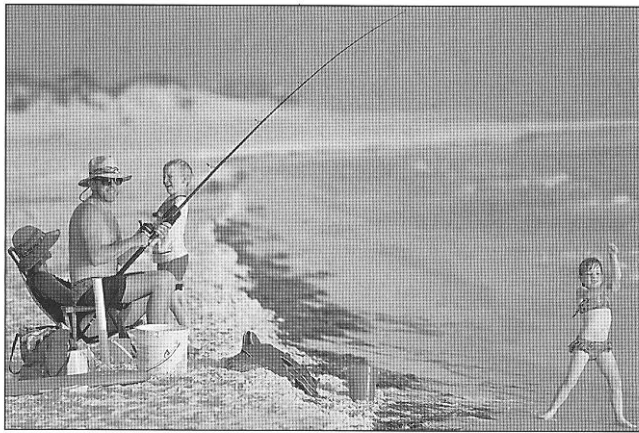
tallahassee



Tallahassee's rolling landscape, typical of regions further north, is unique among the major cities of Florida. Some areas of the county, including the downtown ridge encompassing the Capitol complex, City Hall and the County Courthouse, exceed elevations of 200 feet. The highest elevation in Leon County is 288 feet, found in the northern part of the county. To the south of the city, the hills yield to the flat terrain that is typical throughout the peninsula of Florida.

WHERE'S THE BEACH?

Where sunny days are filled with the great outdoors... where time is measured by tides and life's rhythms move with the surf...beaches are just a short drive from Tallahassee.



ALLIGATOR POINT

Natural dune public beach, 45 miles south of Tallahassee

CARRABELLE

Coarse public beach, featuring swimming and shelling, 60 miles southwest of Tallahassee

DEKLE BEACH

Pristine sandy beach, clear water featuring

boating, swimming, picnicking and more, 70 miles east of Tallahassee

MASHES SANDS BEACH

Public beach, shallow bay water featuring swimming and crabbing, 40 miles southwest of Tallahassee

ST. GEORGE ISLAND

Pristine 29-mile barrier island beach, clear water, featuring swimming, shelling, boating, and fishing, 80 miles southwest of Tallahassee

SHELL POINT

Lovely, small peninsula surrounded by St. Marks Wildlife refuge. Secluded beach and clear water that is popular for sailing and windsurfing, 25 miles south of Tallahassee

CANOPY ROADS

The abundance of trees and timber is a resource uncommon to many other areas of the state. The beauty of the local trees is exemplified in Maclay Gardens State Park, which is the site of several of Florida's champion trees including the flowering Dogwood, the Hawthorn tree, the Horsesugar tree, the Sweetbay Magnolia and the Silverbell tree. These trees and others often extend their branches over the roadway to create a canopied effect, a feature that is held in high esteem by local residents and visitors.



This is Florida



Florida State University, a graduate research institution, stands among the nation's elite in both academics and athletics, as it celebrates its sesquicentennial anniversary in 2001.

Located on the oldest continuous site of higher education in Florida, the university is situated in the heart of the state's capital city. The university's main campus blends Jacobean Revival and modern styles of architecture with the oaks, pines, dogwoods and azaleas of North Florida.

As the university has progressed and grown — from its pre-Civil War beginnings as the Seminary West of the Suwannee, to the Florida State College for Women and, finally, returning to coeducational status as a university in 1947 — it has developed into an acclaimed research institution, a top-ranked competitor in intercollegiate athletics and as a standard-setter in the basic sciences and the performing arts.

The university has entered the 21st century with excellence in all areas of its mission — teaching, research and public service, including such milestones as:

- In June 2001, NBC Nightly News anchor Tom Brokaw donated more than 5,000 collections of World War II memorabilia that had been sent to him as the result of his three-book series on "The Greatest Generation" to the FSU Institute on World War II and the Human Experience. FSU created the institute in 1998 to "save the memories of those who saved the world" by collecting letters, diaries, memoirs and photos from participants in the war effort, in order to preserve the materials for classroom teaching, scholarly research and public viewing.
- In May 2001, FSU welcomed the charter class of its College of Medicine. The allopathic medical school, the first to be established in the nation in more than 20 years, will focus on treating the elderly and people in underserved areas such as rural communities and inner cities.
- In March 2001, FSU opened the Center for the Advancement of Human Rights that will train undergraduate students from nine FSU colleges and schools to be human rights advocates and be placed with international human rights organizations.
- In the blackenterprise.com 2001 "Top Fifty Colleges for African Americans" rankings, FSU was rated 23rd in the nation, up from 26th in 1999.
- In the March-April 2001 issue of National Jurist that rated the nation's "most wired" law schools, the FSU College of Law was ranked 13th.
- The FSU School of Motion Picture, Television and Recording Arts was named among the nation's top 12 film schools in the fall 2000 "special showbiz issue" of Entertainment Weekly magazine.
- During the fall of 2000, FSU had 243 National Merit Scholars, 77 National Achievement Scholars and 28 Hispanic Scholars enrolled.
- In 2000, the Florida Legislature placed under FSU's control the Ringling Center for the Cultural Arts in Sarasota, which includes the John and Mable Ringling Museum of Art, the state art museum of Florida.
- In 2000, FSU bought the most powerful university-owned supercomputer in the world. The IBM RS/6000 Supercomputer can perform 2.5 trillion calculations per

State University



second. Located in the School of Computational Science and Information Technology, the supercomputer will be used by FSU researchers to predict hurricanes and compare DNA sequences as complex as those of the human genome.

- The Challenger Learning Center of Tallahassee, a project of the FAMU-FSU College of Engineering, is scheduled to open in March 2002. The center, to be built on Kleman Plaza in downtown Tallahassee, will feature a space mission simulator common to all of the centers, and a 300-seat IMAX theater and a domed planetarium laser theater. It will serve middle schools in a 66-county area of North Florida, Southeast Alabama and South Georgia.
- In 2000, the doctoral program in the College of Business had the highest minority enrollment of any Ph.D. business program in the United States. In recent years, it has graduated more minority doctoral students than any other Ph.D. granting institution.
- In 2000, the National Geographic Society and FSU started the Florida Geographic Alliance to bolster geographic education among Florida school children by preparing and equipping Florida's K-12 teachers with better information and tools.
- In 1999, FSU was selected by the U.S. Department of Energy to become one of the research institutions to operate the Oak Ridge National Laboratory (ORNL), a multiprogram science and technology laboratory in Oak Ridge, Tenn., headed by the University of Tennessee-Battelle. The five-year management and operations con-

tract is valued at about \$2.5 billion. FSU was invited to join ORNL because of its strong faculty research activities in material sciences, structural biology, computational sciences and magnet technologies.

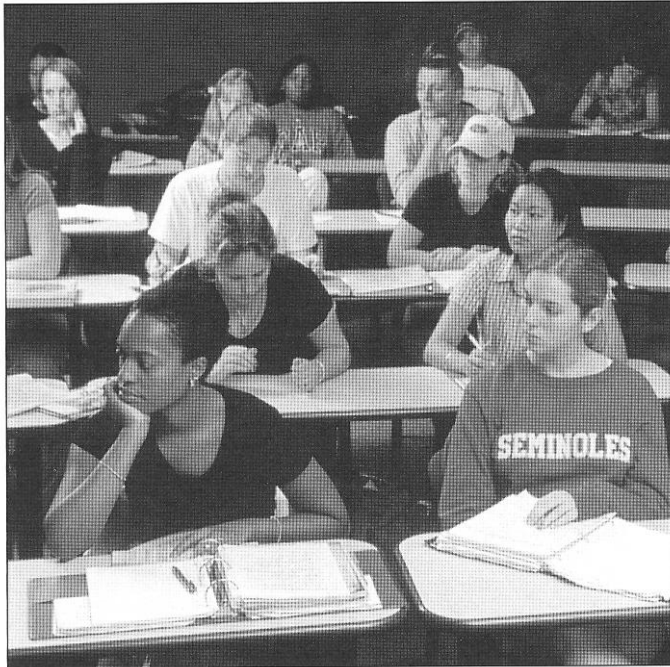
- At more than \$287.4 million, FSU's endowment has been ranked 150th in the nation by the National Association of College and University Business Officers, the benchmark of higher education fundraising success, in 2000. Since 1994, FSU's endowment ranking has surpassed 156 other institutions.
- In December 1999, researchers at the National High Magnetic Field Laboratory used a hybrid magnet to conduct the lab's first research in continuous magnetic fields of 45 tesla, or one million times Earth's magnetic field. The \$100 million magnet lab, which was established in 1990 by the National Science Foundation, is run by FSU in partnership with the University of Florida and the Los Alamos National Laboratory.
- In 1994, Florida State was classified a "Research University I" by the Carnegie Foundation, placing it among the nation's top research universities. In 2000, the distinction was renamed "Doctoral/Research University-Extensive."

Under the leadership of the university's 12th president, Talbot "Sandy" D'Alemberte, who took office in January 1994, FSU continues to build on the foundation of its history of excellence in scholarship, research and service.

A senior member of the State University System, FSU was founded as an institution of higher learning in 1851 by legislative act. It began in Tallahassee with its first class of male students in 1857 and added women in 1858.



This is Florida



FSU's operating budget is \$656 million. Faculty and administrators generate more than \$116 million annually in external funding to supplement state-sponsored research. Three direct-support organizations serve to bolster the university: the FSU Foundation, which raised \$301 million in private gifts during the university's first capital campaign, Seminole Boosters and the FSU Alumni Association.

The main campus is spread over 463.4 acres in Tallahassee; FSU, which has one of the smallest campuses in the SUS, has been actively acquiring land in the 1990s. FSU encompasses 1,422.7 acres in Leon, Bay, Franklin, Gadsden and Sarasota counties.

Within the state, the university maintains facilities at its 25-acre campus in Panama City, its Marine Laboratory at Turkey Point on the Gulf of Mexico, the Appleton Museum in Ocala and the Asolo Performing Arts Center in Sarasota. The Center for Professional Development and Public Service, housed in the Augustus B. Turnbull III Florida Conference Center on the edge of the campus, provides extensive credit and non-credit continuing education programs statewide.

For years, FSU has reached far beyond Florida through international programs in Switzerland, France, Panama, Costa Rica, Spain, Russia, Vietnam and the Caribbean. FSU's student centers in Florence, Italy, and London, England, are considered by many to be the nation's best in Europe.

Florida State offers 294 graduate and undergraduate degree programs through its nine colleges — Arts and Sciences; Business; Communication; Education; Engineering (operated jointly with Florida A&M



State University



University); Human Sciences; Law; Medicine; and Social Sciences (which also incorporates the Reubin O'D Askew School of Public Administration and Policy) — and eight schools — Criminology and Criminal Justice; Information Studies; Motion Picture, Television and Recording Arts; Music; Nursing; Social Work; Theatre; and Visual Arts and Dance. With 1,897 members, the FSU faculty has included nine National Academy of Sciences elected members, 10 American Academy of Arts and Sciences fellows and five Nobel laureates. It is backed by 3,136 administrative/professional and support staff.

Library holdings at Florida State include 2.3 million book titles and 6.6 million microforms. The main library facility, the Robert M. Strozier Library, is linked by computer to other state university and national research libraries. The Paul A.M. Dirac Science Library is located at the heart of the university's science research complex. FSU also maintains music, library science and law libraries, and the Mildred and Claude Pepper Library.

FSU's 6,367 graduate students pursue advanced degrees in fields as diverse as business administration and theoretical particle physics. A majority of research done at FSU is the direct result of student effort, culminating in numerous books, monographs and journal articles relating to the whole spectrum of intellectual interests and the practical needs of society.

Of FSU's 34,477-student population, 43.8 percent are male; 56.2 percent are female; 22.3 percent are minorities; and 3.7 percent are foreign students.

FSU TRUSTEES

Erich Bloch	Delmar Johnson III
June Duda	Harold Knowles
David Ford	Stanley Marshall
Dr. Jessie Furlow	Ann McGee
Manny Garcia	Alan Sundberg
Lee Hinkle	John Thrasher
Steve Uhfelder	

MISSION STATEMENT FLORIDA STATE ATHLETICS DEPARTMENT

The Mission of the Department of Intercollegiate Athletics at Florida State University shall be to produce National Collegiate Athletics Association (NCAA) Division I programs for men and women equally characterized by excellence. It is the philosophy of the Department of Athletics, first and foremost, that our staff and program develop and hold the concept of the student-athlete at the highest level of importance. This important principle will never be compromised. In fact, it must be encouraged and supported. Our student-athletes will be at the core of departmental priorities and decisions. Our student-athletes will be viewed as individuals first, students second, and only then as athletes. The department will focus on producing graduates who are successful, well rounded people ready to make a positive contribution to society.

The Department shall strive at the same time to be a leader in areas of ethics, non-discrimination, diversity and unquestioned fiscal integrity throughout the campus, the state and the country. A consistent priority is the fulfillment of the student-athletes undergraduate degree. At the same time, student-athletes must be given the best opportunity possible to strive for the highest athletic standards through the best preparation, motivation and support.

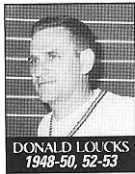
Excellence in intercollegiate athletics programs is determined by academic achievement in the classroom, as well as the development of character, maturity and a sense of fair play in athletic competition. Such excellence engenders support for the University among its constituent groups including students, faculty, alumni, and friends at all levels of interest. The Department shall subscribe fully to the philosophy and regulations set forth by the National Collegiate Athletic Association and operate within the fiscal regulations and non-discriminatory procedures established by the Florida Board of Regents and the Florida legislature.

Year-by-Year Coaches

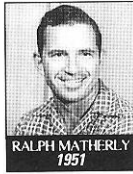
CURRENT COACH



DWAYNE HULTQUIST
2000-



DONALD LOUCKS
1948-50, 52-53



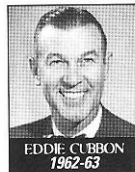
RALPH MATHERLY
1951



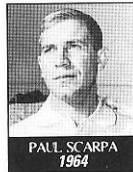
KEITH PITCHFORD
1954-58



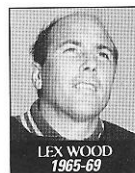
BUBBA MCGOWAN
1961



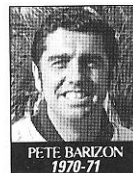
EDDIE CUBBON
1962-63



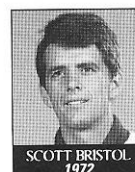
PAUL SCARPA
1964



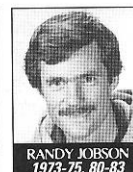
LEX WOOD
1965-69



PETE BARIZON
1970-71



SCOTT BRISTOL
1972



RANDY JOBSON
1973-75, 80-83



KEN VINSON
1976-77



JUAN ORTIZ
1978-79



RICHARD MCKEE
1984-90



DAVID BARRON
1991-99

Year	Coach	Asst. Coach	W-L-T	PCT	Conf. (finish)	Post-Season (seed)	Final Ranking
1948	Don Loucks		9-4	.692	Dixie (2nd)		
1949	Don Loucks		11-2	.846	Dixie (1st)		
1950	Don Loucks		9-7	.562	Dixie (1st)		
1951	Ralph Matherly		7-8	.467	Dixie (1st)		
1952	Don Loucks		9-5	.643	Independent		
1953	Don Loucks		15-2	.882	Independent		
1954	Keith Pitchford		13-5	.722	Independent		
1955	Keith Pitchford		10-6	.625	Independent		
1956	Keith Pitchford		8-7	.533	Independent		
1957	Keith Pitchford		5-11	.313	Independent		
1958	Keith Pitchford		9-7	.563	Independent		
1959	John Powless		14-6	.700	Independent		
1960	John Powless		11-8-1	.550	Independent		
1961	Bubba McGowan		16-5	.762	Independent		
1962	Eddie Cubbon		11-8	.579	Independent	Eastern Intercol. (1st)	
1963	Eddie Cubbon		18-5	.783	Independent		
1964	Paul Scarpa		12-10	.546	Independent		
1965	Lex Wood		11-7	.611	Independent		
1966	Lex Wood		13-10	.565	Independent		29 NCAA
1967	Lex Wood		16-7	.696	Independent		
1968	Lex Wood		21-3	.875	Independent		
1969	Lex Wood		22-5-1	.786	Independent		#23 NCAA
1970	Pete Barizon		21-12	.636	Independent		
1971	Pete Barizon		18-3	.857	Independent		#15 NCAA
1972	Scott Bristol		18-4	.818	Independent	NCAA Chmps. (16th)	#33 NCAA
1973	Randy Jobson		11-4	.733	Independent		#19 NCAA
1974	Randy Jobson		10-8	.555	Independent		
1975	Randy Jobson		14-6	.700	Independent		#25 NCAA
1976	Ken Vinson		4-19	.174	Independent		
1977	Ken Vinson		5-15-1	.238	Metro (3rd)		
1978	Juan Ortiz		17-5	.773	Metro (2nd)		
1979	Juan Ortiz		17-8	.680	Metro (3rd)		
1980	Randy Jobson		12-7	.632	Metro (2nd)		
1981	Randy Jobson		12-14	.462	Metro (1st)		
1982	Randy Jobson		23-10	.697	Metro (3rd)		
1983	Randy Jobson		19-13	.594	Metro (1st)		
1984	Richard McKee		30-8	.790	Metro (1st)		
1985	Richard McKee		25-4	.862	Metro (2nd)		#16
1986	Richard McKee		10-13	.435	Metro (2nd)		
1987	Richard McKee	John Vinson	13-10	.565	Metro (2nd)		
1988	Richard McKee	John Vinson	14-10	.583	Metro (1st)		
1989	Richard McKee	Shannon Krieger	18-12	.600	Metro (2nd)		
1990	Richard McKee	Casey Creely	19-8	.701	Metro (2nd)		
1991	David Barron	Peter Maller	16-7	.696	Metro (2nd)		
1992	David Barron	Peter Maller	14-9	.610	ACC (3rd)	ARV	
1993	David Barron	Joey Rive	17-8	.680	ACC (3rd)	NCAA Regionals (2nd)	#35
1994	David Barron	Joey Rive	15-9	.625	ACC (3rd)	NCAA Regionals (2nd)	#24
1995	David Barron	John Vinson	18-9	.692	ACC (2nd)	NCAA Regionals (3rd)	#37
1996	David Barron	John Vinson	15-13	.536	ACC (2nd)	NCAA Regionals (7th)	#34
1997	David Barron	John Vinson	16-12	.571	ACC (6th)	NCAA Regionals (6th)	#47
1998	David Barron	John Vinson	17-8	.680	ACC (5th)		#56
1999	David Barron	John Vinson	13-10	.565	ACC (7th)		#46
2000	Dwayne Hultquist	John Roddick	14-10	.583	ACC (5th)		#59
2001	Dwayne Hultquist	Ty Braswell	10-14	.416	ACC (5th)		

Note: Up until 1977, the NCAA champion was decided by the total of the individual scoring of all players on each team. One point was awarded for each match won, including singles and doubles. A single-elimination tournament featuring 16 teams began in 1977 and has since expanded to 32.

POINT OF INTEREST

FSU TENNIS HISTORY

Lex Wood and H. Donald Loucks, were the first male tennis players to be inducted into the FSU Athletics Hall of Fame.



RODRIGO LAUB

Has had two consecutive double digit winning seasons...one of only four Seminoles to win 15 or more singles matches in 2000-01.

Enters the 2001-02 season with the highest number of career singles wins (35) on the Seminole squad.



JARROD OWEN

Finished the 2000-01 season with 16 singles wins...began spring action on a four-match winning streak.

In doubles action went on two, four-match winning streaks during the spring and finished with a record of 12-8.



ALEX HERRERA

Went undefeated at both the No. 2 and No. 6 positions during his freshman campaign...finished the season with a winning record in doubles action going 12-9.

Teamed with Gustav Bucht to defeat the No. 2 doubles team in the nation.



ROMAIN JURD

Started off his collegiate career with a win at the Southern Intercollegiate.

Would see his first career doubles win with teammate Jarrod Owen at the Seminole Fall Classic advancing them to the final round of doubles competition.



JOE BASSETT

Started off the 2000 fall season on a three-match winning streak at the Southern Collegiate...was unable to compete in the spring due to injury.



Florida State TENNIS

FALL 2001

September	21-23	Southern Collegiate (Athens, GA)	ALL DAY
October	5-14	ITA All American (Stone Mountain, GA)	ALL DAY
	19-21	Seminole Fall Classic (Tallahassee, FL)	ALL DAY
	23-28	Rolex Regional (Chapel Hill, NC)	ALL DAY

SPRING 2002

January	18-21	ACC Indoor (Winston-Salem, NC)	ALL DAY
	26	Seminole Team Tournament	ALL DAY
	27	Furman	1:00 P.M.
February	1	Central Florida	2:00 P.M.
	2	Georgia Southern	1:00 P.M.
	3	Southern Methodist University	1:00 P.M.
	9	Miami	1:00 P.M.
	16	@Vanderbilt	12:00 P.M.
	19	Stetson	3:00 P.M.
	22	Alabama	5:00 P.M.
March	2	@South Florida	TBA
	6	Penn State	3:30 P. M.
	9	@Virginia	TBA
	10	@Maryland	TBA
	12	@Clemson	2:00 P.M.
	15	@Arizona State	1:30 P.M.
	23	@Florida	2:00 P.M.
	27	NC State	3:30 P.M.
	30	Wake Forest	1:00 P.M.
April	6	North Carolina	1:00 P.M.
	12	@Georgia Tech	2:30 P.M.
	14	Duke	1:00 P.M.
	19-22	ACC Tournament	ALL DAY