

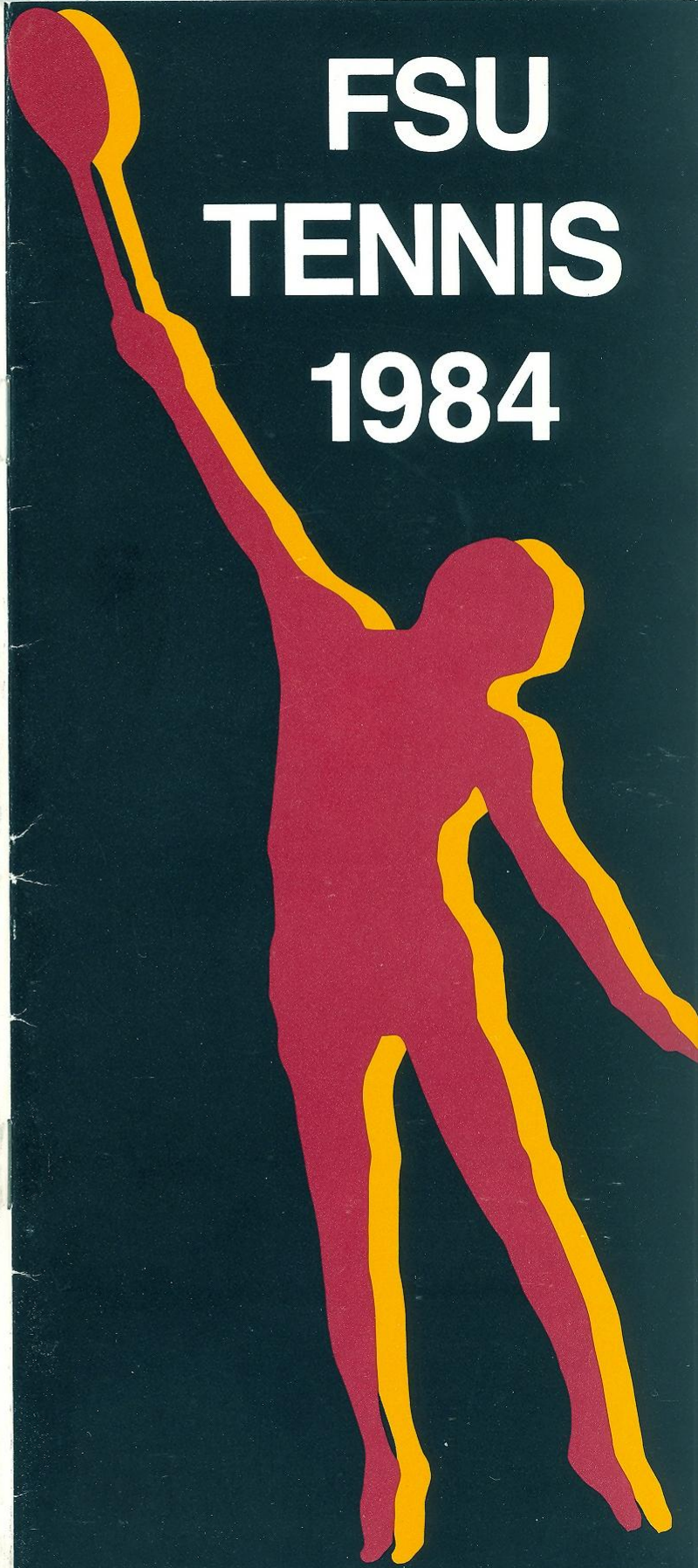


FLORIDA STATE UNIVERSITY 1984 Schedule

Date	Opponent	Time
Jan. 10	CENTRAL FLORIDA	2:00 p.m.
Jan. 28	AUBURN-MONTGOMERY	1:00 p.m.
Feb. 3	FLAGLER	2:00 p.m.
Feb. 10	Georgia Southern	10:00 a.m.
Feb. 11	South Florida	1:00 p.m.
Feb. 12	Central Florida	9:30 a.m.
	Rollins College	2:30 p.m.
Feb. 16	Tulane	2:00 p.m.
Feb. 17-19	LSU Invitational	All Day
Feb. 20	Southwest Louisiana	2:00 p.m.
Feb. 24	South Carolina	TBA
Feb. 25	Virginia Tech	TBA
Feb. 26	Memphis State	TBA
Feb. 28	EVANSVILLE	2:00 p.m.
Mar. 1	Florida	2:00 p.m.
Mar. 4	Georgia Southern	2:00 p.m.
Mar. 5	Georgia	2:00 p.m.
Mar. 6	Georgia Tech	2:00 p.m.
Mar. 8	Florida International	2:00 p.m.
Mar. 12	SOUTHERN MISSISSIPPI	2:00 p.m.
Mar. 13	OLE MISS	2:00 p.m.
Mar. 15	WAKE FOREST	2:00 p.m.
Mar. 16	WESTERN CAROLINA	2:00 p.m.
Mar. 18	ANDERSON	2:00 p.m.
Mar. 21	GEORGIA STATE	2:00 p.m.
Mar. 22	KALAMAZOO COLLEGE	2:00 p.m.
Mar. 24	HOWARD	2:00 p.m.
Mar. 25	AKRON	2:00 p.m.
Mar. 28	ABRAHAM-BALDWIN	3:00 p.m.
Apr. 3	FLORIDA	2:00 p.m.
Apr. 4	NEW ORLEANS	3:00 p.m.
Apr. 6-8	Crimson Tide Classic	All Day
Apr. 11	Abraham-Baldwin	3:00 p.m.
Apr. 18-21	Metro Tournament	All Day

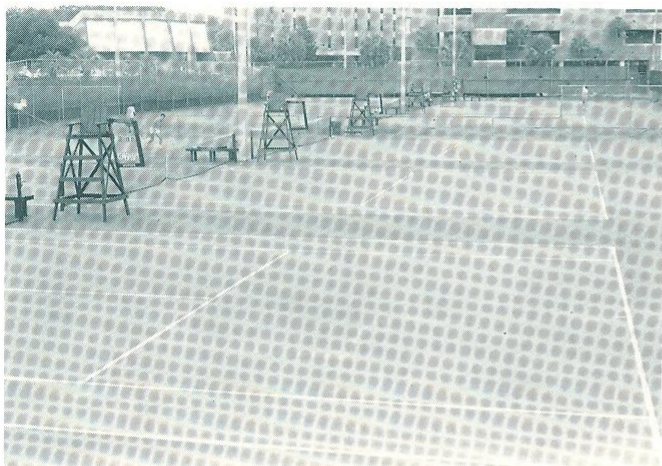
All home matches in caps.

FSU TENNIS 1984



—TENNIS INFORMATION—

Head Coach.....Richard McKee
 Years at FSU.....Enters First Season
 1983 Record.....19-13
 Metro Conference Champions.....1981, 1983
 Highest NCAA Finish.....1971 — 16th
 Tennis Phone.....(904) 644-2793
 Home Facility.....Donald C. Loucks Varsity Courts



—SPORTS INFORMATION STAFF—

Director.....Wayne Hogan
 Associate Director.....Lisa Morton
 Assistant Director.....Dan Pearson
 Secretary.....Judy Greve

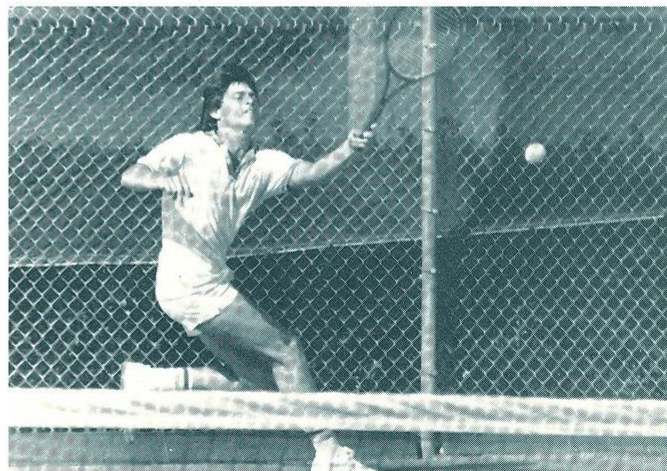
—FSU FACTS—

Location.....Tallahassee, Fla.
 Enrollment.....22,000
 Nickname.....Seminoles
 Colors.....Garnet and Gold
 Conference.....Metro
 President.....Dr. Bernard F. Sliger
 Athletic Director.....C. W. "Hootie" Ingram

FLORIDA STATE UNIVERSITY 1984 TENNIS MEDIA GUIDE

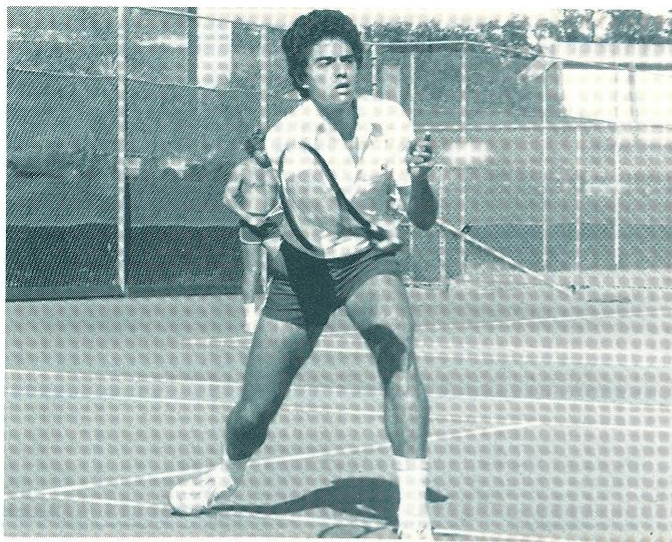
—TABLE OF CONTENTS—

Tennis Information.....	IFC
Sports Information.....	IFC
FSU Facts.....	IFC
1984 Outlook.....	2-3
1984 Roster.....	3
Head Coach Richard McKee.....	4
1983 Results.....	5
1983 Statistics.....	5
Player Profiles.....	6-7
Year-by-Year Record.....	8
This is Florida State.....	IBC
1984 Schedule.....	BC



—Credits—

The 1984 FSU Men's Tennis Guide is published by the Department of Intercollegiate Athletics for use by the media, alumni and friends of Florida State. The guide was written and edited by Donna Turner, Sports Information Assistant with editorial assistance from Lisa Morton. Photographs used in this guide were supplied by the University Photo Lab. Cover design by Gail Turner.



1984 OUTLOOK

Improving on a 19-13 dual match record, winning a second Metro Conference title and a first-ever bid to the National Invitational Tournament are not easy tasks for any tennis team. But those are exactly the goals the 1984 Florida State men's tennis team has set for itself under new coach Richard McKee.

Although the Seminoles lost the top two players from that 1983 squad to graduation, the experience of the returning players and the skills of two Canadian newcomers should combine in 1984 to give the Tribe another potent lineup.

Gone from last season's squad are John McLean and Hernan Luque, the Seminoles' number one and two players respectively. McLean leaves after amassing a 56-47 record in his four years at FSU while Luque's career mark was 70-38.

McKee shouldn't have too much trouble finding capable replacements for the two though. He has five returning players waiting for a chance at the top spot.

First on the list of those ready to take over McLean's place is Marco Abilhoa, returning for his fifth year at FSU. Abilhoa was the Tribe's number one player in 1981 and 1982 and won Metro Conference singles crowns both those years, but a variety of arm and shoulder injuries forced him to take last year off. His return to the lineup in 1984 will be a big boost to the netters in both singles and doubles play.

Abilhoa is not the only player who will be vying for the spots vacated by McLean and Luque. Returning lettermen Jeff Horine, Joey Rive, Scott Blessing and Myron Falinski all have excellent chances to move up in the lineup.

In 1983, Horine compiled a 26-12 singles record at the third singles position and won the Metro Conference title at number three. The best records on the team last year belonged to juniors Joey Rive and Scott Blessing. Rive, who held down the number four position, owned the squad's best record at 33-5 and was named MVP of the team. Blessing put together a 26-11 mark at the fifth spot. Florida State's remaining returning player is last year's number six netter Myron Falinski.

Added to that list of experienced Seminole veterans are two players new to Florida State. Freshman Ken Crosina and junior Geoff Roper should provide heavy competition for Abilhoa and the rest. Roper comes to FSU after two years of tennis success at Palm Beach Junior College. Crosina will join the squad for the first time in January.

Along with a powerful singles lineup again this season, FSU should be strong in doubles. Strong play by FSU's doubles teams last year was the key to the Seminole's success at the Metro Conference Tournament.

"Despite the loss of two good players, I'm optimistic about this year's team," said McKee. "The returning players are all capable of producing good tennis and our new recruits add a lot of depth to our squad."

Florida State's 1984 schedule will feature a series of tournaments in the fall and a lineup of dual matches in the spring. Among the opponents for those dual matches are Southeastern Conference schools Alabama, Auburn and Georgia and many Metro Conference opponents.

As McKee approaches his initial year as FSU head coach his hopes are high.

"Our goals this year are to repeat as conference champions and to equal the number of wins we had in 1983," said McKee. "We also want to add to that an NCAA tournament bid."

That's a big extra. No FSU team has been invited to play in NCAA Championship competition since 1971. But with the competitive experience and history of tennis success behind this year's players, 1984 could be the year for the Seminole netters.



1984 FSU TENNIS ROSTER

Name	Cl.	Hgt.	Wgt.	Hometown
Marco Abilhoa	Sr.	6-1	180	Parana, Brazil
Scott Blessing	Jr.	6-1	170	Point Pleasant, N.J.
Ken Crosina	Fr.	5-11	140	West Hill, Canada
Myron Falinski	Jr.	5-10	160	Utica, N.Y.
Jeff Horine	So.	5-10	160	West Palm Beach, Fla.
Joey Rive	Jr.	6-1	170	West Palm Beach, Fla.
Geoff Roper	Jr.	6-0	165	Montreal, Canada



HEAD COACH Richard McKee

Richard McKee brings an impressive list of coaching and playing credentials with him as he takes over as head tennis coach at Florida State.

McKee came to FSU from Presbyterian College in Clinton, S.C. where he coached for the past six years. While at Presbyterian, McKee's teams achieved NAIA rankings of seventh (1979), 12th (1981) and 15th

(1982) and two of his players were awarded NAIA All-American status.

Prior to his coaching experience at Presbyterian, McKee was head tennis coach at Winthrop College in Rock Hill, S.C. for one year. He also served as head professional at Rock Hill Country Club during his time at Winthrop.

Before beginning his coaching career, McKee played on the Florida Satellite Professional Circuit and in qualifying tournaments for World Championship of Tennis events for two years. While on the circuit, McKee worked as a teaching professional at Sea Pines Racquet Club on Hilton Head Island, S.C.

McKee graduated from the University of North Carolina-Chapel Hill in 1974 with a bachelor's degree in history. As a collegiate tennis player for the Tar Heels, McKee compiled a singles record of 85-12 and won two Atlantic Coast Conference singles titles at the number three and four positions. He was named to the NCAA All-American tennis team three of his four years at North Carolina. He also held the record for the longest winning streak in Atlantic Coast Conference history with 37 straight singles match victories. That record stood until 1980. McKee also played number one doubles for four years at UNC and in 1973 reached the NCAA doubles finals before losing to Stanford's top-ranked duo.

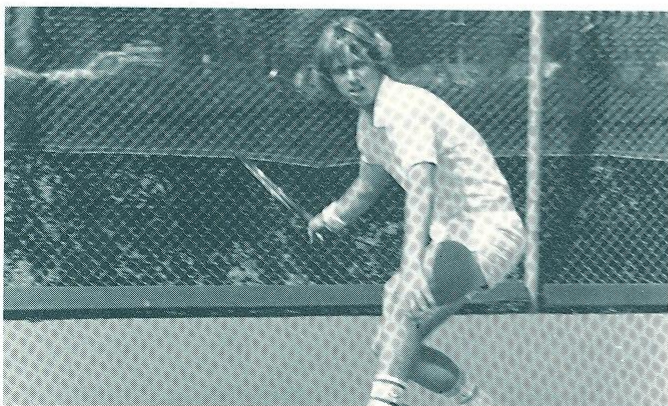
McKee is married to the former Mary Kate Jeter of Jacksonville, Fla. The couple has two daughters, Kendall (age 3) and Scottie (age 1).

Coach McKee's philosophy of collegiate tennis is simple.

"Team unity is the key to winning the close, hard-fought matches and our players get an extra emotional lift when they hear words of encouragement from their teammates," says McKee. "Each player must concentrate on his own match but not forget the concept of team unity.

"At Florida State our goal is to play an aggressive style of tennis which includes approaching the net often, so that our opponents will be forced into making errors. This is the key to winning matches for us this year.

"I don't think we, either individually or as a team, can do anything this season unless we believe in ourselves. 'They conquer who think they can.'"



—1983 MEN'S TENNIS RESULTS—

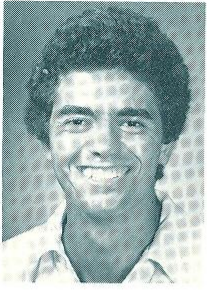
Won 19 Lost 13

Opponent	FSU	OPP.
Abraham-Baldwin J.C.	7	2
Auburn-Montgomery	9	0
*Michigan	3	6
*South Alabama	6	3
*California-Irvine	4	5
Central Florida	6	3
Georgia Southern	2	7
Jacksonville	9	0
South Florida	3	6
South Alabama	4	5
Rollins	7	2
Rice	6	3
Furman	6	2
Florida Atlantic	9	0
North Carolina	6	3
Lander College	6	3
Anderson J. C.	9	0
Wake Forest	6	3
North Carolina-Asheville	9	0
Texas A&M	2	7
South Alabama	7	2
Austin Peay	7	2
Ohio State	7	2
Florida J. C.	9	0
Auburn	2	7
Southwest Louisiana	4	5
Abraham Baldwin J.C.	6	1
Florida	2	7
Miami	1	5
Louisiana State	4	5
Georgia	4	5
Georgia Southern	3	6
*Seminole Invitational		3rd
Crimson Tide Classic		1st
Metro Conference Tournament		1st

—1983 STATISTICS—

Singles	Won	Lost	Pct.
Marco Abilhoa	0	2	.000
Scott Blessing	26	11	.703
Myron Falinski	12	11	.522
Jack Heiss	0	1	.000
Jeff Horine	26	12	.684
Shawn Kerns	6	6	.500
Hernan Luque	24	14	.631
Mitch McFrederick	0	2	.000
John McLean	22	16	.579
Joey Rive	33	5	.868
TOTALS	149	80	.651
Doubles	Won	Lost	Pct.
Abilhoa-McLean	1	1	.500
Abilhoa-Rive	1	0	1.000
Blessing-Falinski	0	1	.000
Blessing-Horine	22	12	.647
Falinski-Heiss	0	2	.000
Falinski-McLean	20	7	.741
Falinski-Rive	0	1	.000
Kerns-McLean	2	1	.667
Luque-Rive	24	11	.686
McFrederick-McLean	1	1	.500
TOTALS	71	37	.717

PLAYER PROFILES

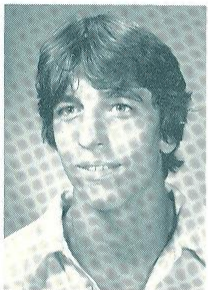


MARCO ABILHOA

Senior
Parana, Brazil

Returns for his senior year after being red-shirted in 1983 with arm and shoulder injuries . . . hopes to return to the form which won him 24 matches in 1982 . . . Metro Conference number one singles champion in 1981 and 1982 . . . highest collegiate ranking was 66 in 1982 . . . also holds two Metro Conference doubles crowns . . . a good serve-and-volley player who is also capable of playing a strong

backcourt game . . . a Dean's List student at FSU in finance.



SCOTT BLESSING

Junior
Point Pleasant, N.J.

His 26-11 singles record in 1983 was the second-best mark on the squad . . . that record was good for a .703 winning percentage . . . career record at Florida State is 33-20 . . . finalist at the 1983 Crimson Tide Classic . . . won the Metro Tournament at number five singles and teamed with Jeff Horine to take the number two doubles title . . . he and Horine tallied a 22-12 record last season . . . played

the USTA National Amateur Circuit during the summer to keep his game sharp . . . named to the all-state team two consecutive years while at Christian Brothers Academy . . . likes to play a serve-and-volley game . . . major is economics.



MYRON FALINSKI

Junior
Utica, N.Y.

Did a solid job in holding down the sixth singles and third doubles spots for Florida State last year . . . Metro Conference runnerup at number six singles . . . posted a 12-11 singles record during the regular season . . . won Metro doubles title with John McLean . . . they won 20 doubles matches while losing only seven last year . . . also captured the Crimson Tide Classic crown in singles and doubles . . .

all-county tennis and soccer players during high school . . . also an all-state soccer goalkeeper . . . one of the top athletes on the squad . . . has the potential to move up in the lineup in 1984 . . . is majoring in criminology.



JEFF HORINE

Sophomore
West Palm Beach, Fla.

Finished a great freshman year for FSU with a 26-12 singles record and a Metro Conference championship at the third singles and second doubles positions . . . also won the number three singles title at the Crimson Tide Classic . . . teamed with Scott Blessing to play number two doubles in 1983 . . . they have a 22-12 record . . . National Amateur doubles champion in 1982 with Seminole teammate Joey

Rive . . . enjoyed success on the USTA National Amateur Circuit this past summer . . . came to FSU as one of the top three high school players in Florida . . . career high school singles record was 68-3 . . . received the Athletic Sportsmanship Trophy at Forest Hill High School his senior year . . . a good competitor . . . major is business administration.



JOEY RIVE

Junior
West Palm Beach, Fla.

Posted a phenomenal 33-5 record last year for the Seminoles . . . named MVP of the 1983 team for his play at number four singles and number one doubles . . . won Metro Conference titles at both those positions . . . has compiled a 51-17 singles record in two seasons for a .750 winning percentage . . . in doubles play, he and Hernan Luque recorded a 44-17 career mark . . . only southpaw on the squad . . . played well on the USTA National Amateur Circuit the past summer . . . former National Amateur doubles champion . . . uses a variety of spins on all shots and has great touch around the net . . . excellent match player . . . has not decided on a major.



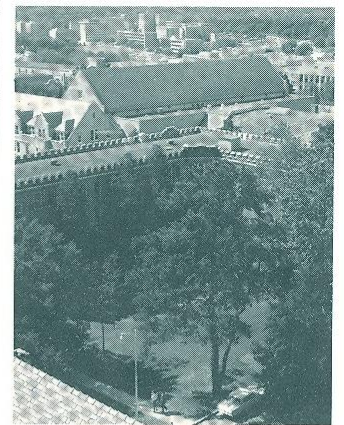
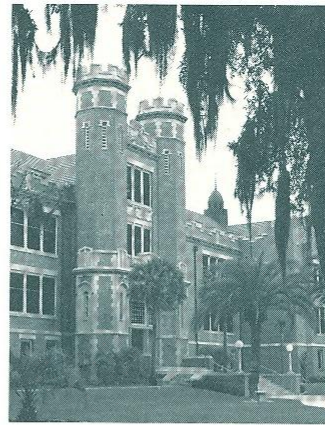
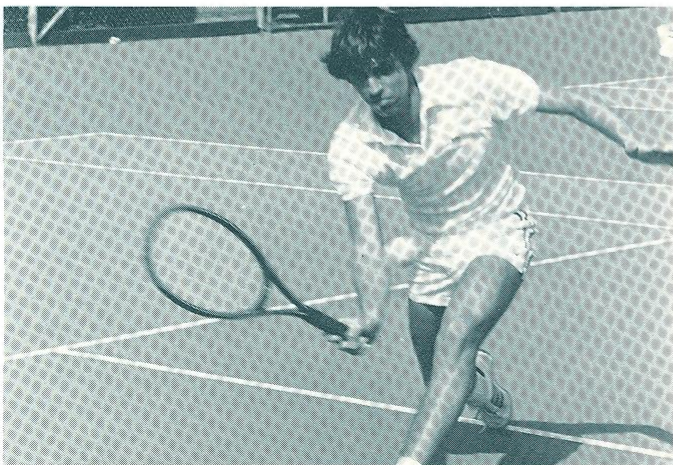
GEOFF ROPER

Junior
Montreal, Canada

Transfer from Palm Beach Junior College who should move into the starting lineup for the Seminoles . . . state junior college champion at number three singles in 1983 . . . a good athlete who moves well on the court . . . reached the Hampton Collegiate Tournament doubles final in October of 1983 with teammate Myron Falinski . . . likes to play a serve-and-volley game . . . will also play doubles for FSU this season . . . one of two Canadians to join the squad this year . . . majoring in finance at Florida State.

—YEAR - BY - YEAR RECORD—

Year	Coach	W	L	T	Pct.
1948	Don Loucks	9	4	0	.692
1949	Don Loucks	11	2	0	.846
1950	Don Loucks	9	7	0	.562
1951	Ralph Matherly	7	8	0	.467
1952	Don Loucks	9	5	0	.643
1953	Don Loucks	15	2	0	.882
1954	Keith Pitchford	13	5	0	.722
1955	Keith Pitchford	10	6	0	.625
1956	Keith Pitchford	8	7	0	.533
1957	Keith Pitchford	5	11	0	.313
1958	Keith Pitchford	9	7	0	.562
1959	John Powless	14	6	0	.700
1960	John Powless	16	5	0	.762
1961	Bubba McGowan	16	5	0	.762
1962	Eddie Cubbon	11	8	0	.579
1963	Eddie Cubbon	18	5	0	.783
1964	Paul Scarpa	12	11	0	.522
1965	Lex Wood	15	9	0	.625
1966	Lex Wood	16	9	0	.640
1967	Lex Wood	16	7	0	.696
1968	Lex Wood	19	3	0	.864
1969	Lex Wood	23	5	1	.793
1970	Pete Barizon	17	7	0	.708
1971	Pete Barizon	18	3	0	.857
1972	Scott Bristol	18	4	0	.818
1973	Randy Jobson	11	4	0	.733
1974	Randy Jobson	13	8	0	.619
1975	Randy Jobson	14	6	0	.700
1976	Ken Vinson	3	16	0	.158
1977	Ken Vinson	7	17	0	.292
1978	Juan Ortiz	20	8	0	.714
1979	Juan Ortiz	16	6	0	.727
1980	Randy Jobson	12	7	0	.632
1981	Randy Jobson	12	14	0	.461
1982	Randy Jobson	23	10	0	.697
1983	Randy Jobson	19	13	0	.593
TOTALS		484	260	1	.650



—This is Florida State—

Florida State University, nestled in the center of Florida's capital city, is home to more than 22,000 students from all over the nation and from 115 foreign countries. FSU was founded in 1857 as the Seminary West of the Suwannee. Today, the main campus, with more than 340 green acres, is one of the prettiest in the South. Camellias, azaleas and dogwoods blossom under towering moss-draped oaks from the stately Gothic-styled structures on the eastern end of campus to the contemporary science complex on the west. FSU has grown and changed with the times. Enrollment has quadrupled since the school became coeducational in 1947, following nearly half a century as FSCW — Florida State College for Women.

Today, students at Florida State can choose from more than 100 career options made available by 14 schools and colleges including arts and sciences, business, communication, criminology, education, home economics, law, library science, music, nursing, social sciences, social work, theatre and visual arts. Also, the FAMU/FSU Institute for Engineering began this fall.

The University's location in the capital city of Florida affords excellent study and research opportunities in the areas of government, social sciences and policy sciences. Additionally, the presence of state government provides widespread opportunities for internships and on-the-job study.

In terms of scientific research, FSU excels as a basic research-oriented university. The nuclear physics laboratory is ranked by the National Science Foundation as one of the top four in the nation. FSU also maintains a large marine laboratory on the coast of the Gulf of Mexico.

Florida State counts among its faculty six members of the National Academy of Sciences, including Paul Dirac, a Nobel Prize winner in physics. Kurt Waldheim, former secretary general of the United Nations, recently joined the university faculty as a distinguished visiting lecturer in international relations and law.

The University is home to the only collegiate circus in the country. The Flying High Circus carries a reputation of quality, professional aerial and stage entertainment for children of all ages.

But it's not just good programs that make the university great. As President Bernard Sliger proclaims, it's the people who make Florida State the successful monument to learning that it is. And he takes special pride in the people — students, faculty, administrators and staff — who are Florida State University.