

1981  
**FLORIDA STATE UNIVERSITY**  
**MEN'S VARSITY TENNIS SCHEDULE**

DATE	OPPONENT	LOCATION	TIME
January 31 Sat.	SOUTH FLORIDA	Tallahassee	1:00 p.m.
February 13 Fri.	UNIVERSITY OF CENTRAL FLORIDA	Tallahassee	1:30 p.m.
14 Sat.	Valdosta State College	Valdosta, GA	10:00 a.m.
14 Sat.	University of Alabama-Birmingham	Valdosta, GA	2:00 p.m.
15 Sun.	JACKSONVILLE UNIVERSITY	Tallahassee	1:30 p.m.
March 1 Sun.	GEORGIA SOUTHERN	Tallahassee	1:30 p.m.
3 Tues.	WESTERN MICHIGAN	Tallahassee	1:30 p.m.
7 Sat.	AUBURN	Tallahassee	1:30 p.m.
8 Sun.	PURDUE	Tallahassee	1:00 p.m.
9 Mon.	UNIVERSITY OF NORTH CAROLINA	Tallahassee	1:30 p.m.
13 Fri.	UNIVERSITY OF ALABAMA	Tallahassee	1:30 p.m.
20 Fri.	Clemson Spring Tennis Classic	Clemson, S.C.	Daily
21 Sat.	Clemson Spring Tennis Classic	Clemson, S.C.	Daily
22 Sun.	Rain Date	Clemson, S.C.	Daily
23 Mon.	Clemson University	Clemson, S.C.	2:00 p.m.
24 Tues.	University of Michigan	Ann Arbor, MI	TBA
27 Fri.	North Carolina State	Raleigh, N.C.	2:15 p.m.
30 Mon.	Duke University	Durham, N.C.	12 noon
31 Tues.	Princeton University	Princeton, N.J.	3:00 p.m.
April 6 Mon.	FLAGLER COLLEGE	Tallahassee	1:30 p.m.
10 Fri.	TALLAHASSEE OPEN TENNIS	Tallahassee	Killearn
11 Sat.	CHAMPIONSHIP	Tallahassee	Golf &
12 Sun.	" " "	Tallahassee	C. C. Daily
14 Tues.	Georgia Southern	Statesboro, GA	2:00 p.m.
15 Wed.	University of Georgia	Athens, GA	2:00 p.m.
16 Thur.	University of South Carolina	Columbia, S.C.	2:00 p.m.
18 Sat.	FLORIDA INTERNATIONAL UNIV.	Tallahassee	12 noon
20 Mon.	UNIVERSITY OF FLORIDA	Tallahassee	1:30 noon
22 Wed.	VALDOSTA STATE COLLEGE	Tallahassee	5:00 p.m.
29 Wed.	ROLLINS	Tallahassee	1:30 p.m.
May 1 Fri.	Nichols State	Mobile, AL	9:00 a.m.
1 Fri.	University of Alabama-Birmingham	Mobile, AL	2:00 p.m.
2 Sat.	University of South Alabama	Mobile, AL	9:00 a.m.
15 Fri.	METRO CONFERENCE TENNIS	Tallahassee	Daily
16 Sat.	CHAMPIONSHIPS	Tallahassee	Daily
17 Sun.	" " "	Tallahassee	Daily
May 16-24	NCAA Championships	Athens, GA	Daily

**PRACTICE MATCHES**

January 16 Fri.	Seminole Jr. College	Tallahassee	1:30 p.m.
17 Sat.	Seminole Jr. College	Tallahassee	9:00 a.m.
23 Fri.	Okaloosa Walton Jr. College	Tallahassee	1:30 p.m.
24 Sat.	City of Tallahassee Allstars	Tallahassee	1:30 p.m.
February 25 Wed.	Abraham-Baldwin Agricultural	Tallahassee	2:00 p.m.
April 24 Fri.	Central Florida C.C.	Tallahassee	5:00 p.m.
25 Sat.	Central Florida C.C.	Tallahassee	10:00 a.m.
May 5 Tues.	Abraham-Baldwin Agricultural	Tallahassee	3:00 p.m.

*All Home Matches held at Tully Gym unless otherwise specified.*



## SEMINOLE TENNIS

### ALL-TIME RECORD

YEAR	COACH	CAPTAIN	W	L	T
1948	Loucks	Jim DeLoach	9	4	0
1949	Loucks	Jim Costello	11	2	0
1950	Loucks	Herb Quay	9	7	0
		Larry Dickson			
1951	Matherly	Larry Dickson	7	8	0
1952	Loucks	Tom Babione	9	5	0
1953	Loucks	Jack Eagan	15	2	0
1954	Pitchford	Hal Schaus	13	5	0
1955	Pitchford	Hal Schaus	10	6	0
1956	Pitchford	Hal Schaus	8	7	0
1957	Pitchford	Sonny Sellers	5	11	0
1958	Pitchford	Lex Hester	9	7	0
1959	Powless	Lex Hester	14	6	0
1960	Powless	Rebel Bellamy	16	5	0
1961	McGowan	Rebel Bellamy	16	5	0
1962	Cubbon	None	11	8	0
1963	Cubbon	None	18	5	0
1964	Scarpa	None	12	11	0
1965	Wood	Paul Bennett	15	9	0
1966	Wood	Steve Guse	16	9	0
1967	Wood	Paul DeZeeuw	16	7	0
1968	Wood	Dave Danielson	19	3	0
1969	Wood	Dave Danielson	23	5	1
1970	Barizon	Herb Rapp	17	7	0
1971	Barizon	John DeAeeuw	18	3	0
1972	Bristol	None	18	4	0
1973	Jobson	Rejean Genois	11	4	0
1974	Jobson	None	13	8	0
1975	Jobson	None	14	6	0
1976	Vinson	Gordon Jones	3	16	0
1977	Vinson	Rick Thomas	7	17	0
1978	Ortiz	Bruce Knittle	20	8	0
1979	Ortiz	Allan Bellamy	16	6	0
1980	Jobson	Steve Layton	12	7	0
		Jon Dwight			

## TABLE OF CONTENTS

All-Time Seminole Records .....	IFC
1981 Outlook .....	2
Randy Jobson, Head Coach .....	3
Assistant Coaches .....	3
Seminole Netters .....	3
1981 Tennis Roster .....	4-5
Player Profiles .....	6-7
1980 Results .....	8
Metro Results .....	8
Florida State .....	IBC
1981 Schedule .....	BC

### FLORIDA STATE FACTS

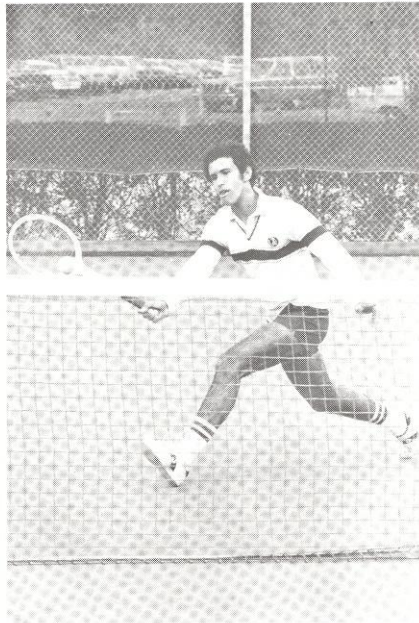
Location .....	Tallahassee, Florida
Nickname .....	Seminoles
Colors .....	Garnet and Gold
Enrollment .....	22,000
President .....	Dr. Bernard Sliger
Athletic Director .....	C. W. Ingram
Sports Information .....	Mark Carlson
	904/644-4038--work
	904/575-7637--home
Assistant Sports Information Director .....	Lisa Morton
	904/878-1531
Tennis SID .....	Glenn Greenspan
	904/385-9753
Tennis Coach .....	Randy Jobson
	904/644-3080
Courts .....	Tully
Assistant Tennis Coach .....	Tommy Williams
	Steve Layton

ON THE COVER: Super Sophomore John McLean hopes to defend his 1980 Metro Singles Crown.

## 1981 TENNIS OUTLOOK



**MARCO ABILHOA**



**HERNAN LUQUE**

With four of six starters returning, and eight of nine players having seen action for Florida State last season, the 1981 Seminole tennis calendar could be filled with many pleasant surprises.

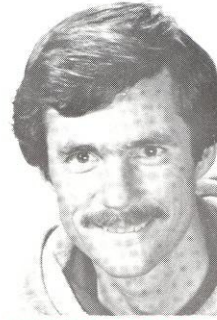
Lost are starters Jon Dwight and Steve Layton, last season's co-captains, but returning are Marco Abilhoa, Hernan Luque, John McLean and Peter Prinos. Toss in now-eligible Robert Burgess and Miami-Dade Community College transfer Darryl Weiner and the team appears even stronger than the squad that finished second in tough state competition last year.

In singles play, Abilhoa still has an edge on the No. 1 slot, but second seed Luque gained valuable playing experience in his initial season and appears to be a challenger for the top spot. McLean, only a sophomore, is expected to play No. 3, with Burgess, Prinos and Weiner all vying for the top slots. No. 7 last season, Kevin Green appears to be the most improved player on the squad and should have a good chance to break in to the top six. Back-ups Jack Heiss and Anthony Boule should add depth to the lower lineups positions.

In doubles competition, several combinations are possibilities at each position during the early part of the season in an effort to gain the strongest lineup. At the # 1 spot Abilhoa could see action with either Luque or Burgess. McLean and Weiner or McLean and Luque are both possibilities at the # 2 position. The third position remains open with combinations of captain Prinos, Weiner, Burgess and Heiss all possibilities.

While the prognosis appears healthy for the squad, the toughest Florida State schedule in history awaits the team. Matches against nationally ranked Georgia, South Carolina, Auburn, North Carolina and Alabama are mixed in with always difficult state play against Florida, Rollins and South Florida. A spring trip will be Florida State's greatest challenge when the Seminoles face also nationally ranked Princeton, Clemson and Michigan. Toss in Metro play (May 15-17) where the squad finished second in 1980 (the highest FSU finish ever) and the season is very competitive.

## RANDY JOBSON



**RANDY JOBSON**

When Florida State decided to restore Seminole tennis to its previous heights it looked back and called on the services of former head coach Randy Jobson. Now, in his second season, Jobson is well on his way to accomplishing that aim.

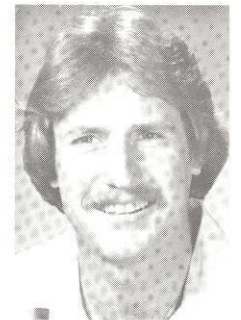
In his first season since his return, Jobson's 1980 squad amassed a 12-7 record and finished second in the Metro Conference Championship--the team's best finish ever.

Jobson returned to FSU after having coached the team from 1973-76 where he compiled an enviable 39-18 record. The personable mentor began his tennis career in Tallahassee playing varsity tennis for the Tribe from 1965-69 and earning a Bachelor of Science degree in Business Administration.

Prior to his coaching duties, Jobson served as head pro at Glen Arven Country Club in Thomasville, Georgia. After returning to the Seminoles in 1973 he continued his pro duties at Capital City Country Club. Jobson is currently the Tennis Director at Killlearn Golf and Country Club while handling the Seminole netters.

"I'm proud of what we accomplished last season, but we still have a ways to go," Jobson said. "A second place Metro finish was nice, but our goal is to win the title this year. If we can win the Metro and return FSU to the national spotlight, I'd say we had a fine year."

**TOMMY WILLIAMS**  
Assistant Coach



**STEVE LAYTON**  
Assistant Coach

Joining Jobson this season as assistant coaches are Tommy Williams and Steve Layton. Williams, like Jobson, is in his second season with the Tribe. Currently the assistant pro at Killlearn Golf and Country Club, Williams is a local product from Quincy, Florida and began his teaching career as an assistant pro for Jobson at Capital City Country Club in 1975. Williams is currently working on his biology degree at Florida State.

Layton, who finished his eligibility last season, returns to the Seminoles after his best season ever. The No. 5 Metro singles champion last season, Layton was voted the team's Most Valuable Player. Layton is continuing work on his physical education degree.

## SEMINOLE NETTERS

Pictured TOP - left to right - Lynn Aspinall, Kay Wacker, Kim Hood - Pictured BOTTOM - left to right - Amy Killridge, Phyllis Thompson, Kathleen Charles - Not pictured - Lynn Morton, Lori Smith, Nicole Yapsam, Neva Parrish.





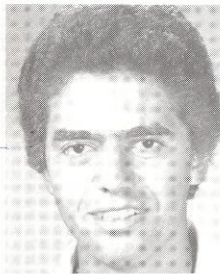
**FLORIDA STATE UNIVERSITY  
1981 Tennis Roster**

Marco Abilhoa, 6'1", 170 lbs, Sophomore, Parana, Brazil  
Anthony Boule, 5'10", 165 lbs, Junior, Durbin, South Africa  
Robert Burgess, 5'9", 150 lbs, Junior, McLean, Virginia

Kevin Green, 6'1", 170 lbs, Senior, Toronto, Ontario  
Jack Heiss, 5'8", 160 lbs, Junior, Falls Church, Virginia  
Hernan Luque, 5'9", 150 lbs, Sophomore, Guayaquil, Ecuador

John McLean, 6'3", 175 lbs, Sophomore, Stamford, Connecticut  
Peter Prinos, 6'3", 190 lbs, Senior, Clinton, Massachusetts (Captain)  
Darryl Weiner, 5'10", 150 lbs, Junior, Johannesburg, South Africa

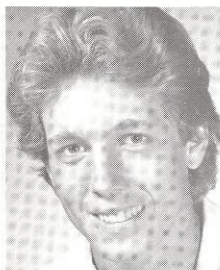
# SEMINOLE PROFILES...



## MARCO ABILHOA

SOPHOMORE  
PARANA, BRAZIL

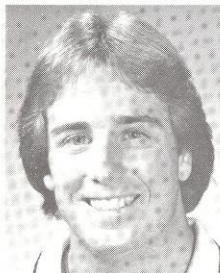
Personal ties with former Brazilian Florida State tennis players . . . formerly ranked No. 3 in Brazilian Junior Tennis . . . played in the No. 1 singles position as a freshman amassing an 11-8 record . . . No. 2 doubles player with a 12-7 mark . . . should improve this year with added experience . . . top serve and volley combination . . . possesses a steady baseline game . . . outstanding forehand drive . . . excellent student . . . 1980 Metro Conference doubles champion (No. 2). Major: Business Administration.



## ANTHONY BOULLE

JUNIOR  
DURBIN, SOUTH AFRICA

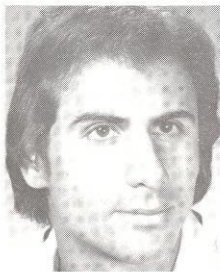
Transfer student from Navarra College, Texas . . . steadily improving serve and backhand . . . excellent 'touch' on volleys . . . good chance to break in to the Top 6. Major: Marine Biology



## ROBERT BURGESS

SENIOR  
McLEAN, VIRGINIA

Winter quarter transfer from Clemson . . . participated in Penn Circuit during winter and spring last season . . . gained eligibility in January . . . former No. 5 player in Junior Middle Atlantic Lawn Tennis Association . . . great speed and anticipation . . . utilizes speed to run down the most difficult shots . . . smart doubles player and outstanding playmaker . . . should play in one of the top slots in the Seminole lineup. Major: Economics.



## KEVIN GREEN

SENIOR  
TORONTO, ONTARIO

Transfer last season from Miami-Dade Community College . . . Had a 9-4 record last year playing No. 6 singles and 3-2 mark in No. 3 doubles . . . most improved player . . . steadily improving volley and backhand drive . . . most tenacious player on the team . . . has the ability to crack starting lineup with additional pace on his game. Major: Business Administration.



## JACK HEISS

JUNIOR  
FALLS CHURCH, VIRGINIA

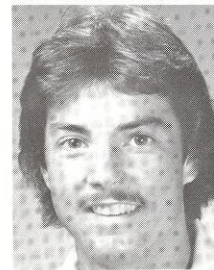
Made varsity squad as walk-on last season . . . improved consistency from last year . . . has gained needed match experience during fall competition . . . excellent doubles player utilizing crisp volleys . . . added confidence could give him a chance at making the Top 6. Major: Business Administration.



## HERNAN LUQUE

SOPHOMORE  
GUAYAQUIL, ECUADOR

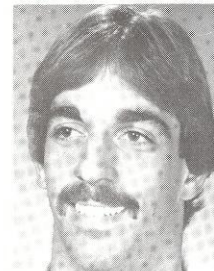
Played only spring quarter last season earning a 5-2 singles record . . . top percentage doubles player with a 6-1 mark in the No. 2 position . . . 1980 Metro Doubles Champion (No. 2) . . . greatly improved first service and backhand drive . . . top athlete on the squad . . . utilizes good speed to cover the court . . . able to hit every type of shot . . . has gained the needed experience to challenge for the No. 1 slot . . . present member of Ecuador's Davis Cup squad . . . held 1979 No. 30-30 World Junior Ranking. Major: Business Administration.



## JOHN MC LEAN

SOPHOMORE  
STAMFORD, CONNECTICUT

Former No. 4 player in New England Junior Tennis . . . competed in No. 2 slot last season as a freshman . . . earned 11-7 mark in singles play--second best on the team--and an 8-10 record playing No. 1 doubles . . . 1980 Metro Conference Champion playing No. 2 singles . . . consistent player with a winning attitude . . . improved forehand drive . . . has worked hard improving all aspects of game . . . with additional work could play in the No. 1 slot in singles and doubles. Major: Business Administration.



## PETER PRINOS

SENIOR  
CLINTON, MASSACHUSETTS

Played in the No. 3 and 4 singles position earning an even 9-9 record in 1980 . . . No. 3 doubles player with a 7-10 mark . . . has worked hard to make serve a dependable weapon . . . has greatly improved movement on the court . . . possesses excellent volley technique . . . has improved ground stroke consistency . . . very dedicated competitor . . . 1981 team captain . . . should be a consistent winner with improved concentration . . . former high school ice hockey star. Major: Business Administration.



## DARRYL WEINER

JUNIOR  
JOHANNESBURG, SOUTH AFRICA

Transfer student from Miami-Dade Community College South . . . former No. 3 singles player at the University of Utah . . . No. 1 singles and doubles player for Dade-South last season . . . 1980 Florida Junior College doubles champion . . . able to cover the court very quickly . . . solid ground stroker . . . has improved concentration and motivation during fall practice . . . consistent doubles player...capable of playing at the top of the Seminole lineup with continued improvement. Major: Business Administration.

# METRO CONFERENCE RESULTS — 1976-1980

## 1980 TENNIS CHAMPIONSHIPS

### Individual Results

- No. 1 Singles  
Jeff Player (VT) d. Roger Webb (MSU) 6-1, 6-4
- No. 2 Singles  
John McLean (FSU) d. Dean Chamnell (VT) 6-2, 7-6
- No. 3 Singles  
Keith Bogley (MSU) d. John Potter (VT) 2-6, 6-3, 6-0
- No. 4 Singles  
Steve Mansour (MSU) d. Jim Wingo (VT) 6-2, 6-4
- No. 5 Singles  
Steve Layton (FSU) d. Cliff Jones (MSU) 4-6, 6-4, 6-4
- No. 6 Singles  
George Dunklin (MSU) d. John Howerton (VT) 6-1, 6-1
- No. 1 Doubles  
Steve Mansour and Steve Mansour (Memphis State) d. Bob Krorange-Andy Porter (Cincinnati) 6-2, 6-1
- No. 2 Doubles  
Marco Athlhoa-Herman Luque (Florida State) d. Keith Bogley-Cliff Jones (Memphis State) 7-6, 1-6, 6-3
- No. 3 Doubles  
Scott Hale-Kob Hak (Memphis State) d. Jim Wingo-John Howerton (Virginia Tech) 6-4, 6-0

### TEAM SCORING

Memphis State	55
Virginia Tech	33
Florida State	33
Tulane	21
Cincinnati	9
St. Louis	6
Louisville	1

## 1977 TENNIS CHAMPIONSHIPS

### Individual Results

- No. 1 Singles  
Keith West (Memphis State) d. Jeff Crowne (Georgia Tech) 7-5, 4-6, 6-3
- No. 2 Singles  
Roger Webb (Memphis State) d. Tracey McDougal (Georgia Tech) 6-1, 6-0
- No. 3 Singles  
Mark Wilson (Memphis State) d. Mike Burke (Georgia Tech) 6-2, 6-1
- No. 4 Singles  
Peter Simpson (Memphis State) d. Steve Kohls (Cincinnati) 6-4, 7-6
- No. 5 Singles  
Scott Gilmore (Florida State) d. Jim Ladyman (Memphis State) 2-6, 6-4, 6-4
- No. 6 Singles  
George Dunklin (Memphis State) d. John Samuels (Cincinnati) 6-3, 6-1
- No. 1 Doubles  
Bob Krorange and Al Mathews (Cincinnati) d. Alan Bellamy and John Dwight (Florida State) 6-7, 6-1, 6-4
- No. 2 Doubles  
Jim Ladyman and Mark Wilson (Memphis State) d. Rob Edelman and Gary Dunay (Tulane) 6-1, 6-2
- No. 3 Doubles  
Bob Funder and Roger Webb (Memphis State) d. Bruce Knittle and Brad Lumsage (Florida State) 6-0, 6-0

### TEAM SCORING

Memphis State	74
Cincinnati	37
Florida State	34
Georgia Tech	30
Louisville	8
St. Louis	2

## 1979 TENNIS CHAMPIONSHIPS

### Individual Results

- No. 1 Singles  
Joe Neto and Jose Neto (Florida State) 7-6, 7-6
- No. 2 Singles  
Jan Bessan (Memphis State) d. John Mirlesna (Cincinnati) 6-1, 5-7, 6-4
- No. 3 Singles  
Alan Bellamy (Florida State) d. Bob McIntosh (Virginia Tech) 6-3, 7-6
- No. 4 Singles  
Stephen Mansour (Memphis State) d. Bill Hamilton (Virginia Tech) 6-0, 6-1
- No. 5 Singles  
Ron Paquette (Virginia Tech) d. Peter Simpson (Memphis State) 7-5, 7-5
- No. 6 Singles  
Dean Chamnell (Virginia Tech) d. Keith Bogley (Memphis State) 1-6, 6-4, 6-4
- No. 1 Doubles  
Joe Neto and Alan Bellamy (Florida State) d. Roger Webb and Stephen Mansour (Memphis State) 6-1, 3-6, 6-4
- No. 2 Doubles  
Jim Stein and Peter Simpson (Memphis State) d. Baber Khan and Scott Gilmore (Florida State) 6-4, 7-6
- No. 3 Doubles  
Cliffon Jones and Keith Bogley (Memphis State) d. Larry Richmond and Tom Lehman (Tulane) 6-7, 6-3, 6-2

### TEAM SCORING

Memphis State	40
Virginia Tech	33
Florida State	27
Cincinnati	20
Tulane	13
Louisville	4
St. Louis	4

## 1976 TENNIS CHAMPIONSHIPS

### Individual Results

- No. 1 Singles  
Keith West (Memphis State) d. John O'Bryan (Louisville) 6-2, 6-3
- No. 2 Singles  
Phil Chamberlain (Memphis State) d. Dick Hodnett (Georgia Tech) 6-4, 6-7, 6-1
- No. 3 Singles  
Buz Willett (Georgia Tech) d. Dan Lucas (Louisville) 7-5, 1-6, 6-1
- No. 4 Singles  
Scott Brown (Memphis State) d. Scott Irwin (Cincinnati) 6-4, 6-3
- No. 5 Singles  
Jim Kallenberger (Memphis State) d. Steve Kohls (Cincinnati) 6-3, 6-3
- No. 6 Singles  
Peter Simpson (Memphis State) d. Bob Graham (Georgia Tech) 2-6, 6-0, 6-4
- No. 1 Doubles  
Keith West and Phil Chamberlain (Memphis State) d. John O'Bryan and Kevin Walsh (Louisville) 6-3, 6-2
- No. 2 Doubles  
Jim Kallenberger and Peter Simpson (Memphis State) d. Bob Graham and Mike Burke (Georgia Tech) 6-1, 7-5
- No. 3 Doubles  
Steve Kohls and Mark Shapiro (Cincinnati) d. Jim Ladyman and Scott Brown (Memphis State) 6-4, 5-7, 6-4

### TEAM SCORING

Memphis State	48
Georgia Tech	35
Louisville	24
Cincinnati	16
St. Louis	0

## 1978 TENNIS CHAMPIONSHIPS

### Individual Results

- No. 1 Singles  
Mel Purcell (Memphis State) d. Bob Krorange (Cincinnati) 6-0, 6-2
- No. 2 Singles  
Chip Hooper (Memphis State) d. Jim Smith (Tulane) 7-5, 6-1
- No. 3 Singles  
Roger Webb (Memphis State) d. Tom Lehman (Tulane) 6-3, 6-4
- No. 4 Singles  
Peter Simpson (Memphis State) d. Chris Hagman (Florida State) 6-0, 6-0
- No. 5 Singles  
Jim Ladyman (Memphis State) d. Scott Gilmore (Florida State) 6-3, 6-0
- No. 6 Singles  
Steve Mansour (Memphis State) d. Gary Dunay (Tulane) 6-2, 6-1
- No. 1 Doubles  
Mel Purcell and Chip Hooper (Memphis State) d. Jose Neto and Scott Gilmore (Florida State) 6-0, 6-4
- No. 2 Doubles  
Peter Simpson and Jim Ladyman (Memphis State) d. Lee Blount and Steve Prince (St. Louis) 6-4, 6-0
- No. 3 Doubles  
Roger Webb and Steve Mansour (Memphis State) d. Al Kahn and Chris Hagman (Florida State) 6-3, 6-2

### TEAM SCORING

Memphis State	54
Florida State	39
Tulane	26
Georgia Tech	15
Cincinnati	9
Louisville	9
St. Louis	7

## 1980 FLORIDA STATE TENNIS RESULTS

Won: 12 Lost: 7

Florida State	5	South Florida	4	Florida State	5	Pan American	4
Florida State	7	Alabama-Birmingham	4	Florida State	8	Florida State	1
Florida State	6	Valdosta State	3	Florida State	2	Alabama	7
Florida State	4	Flagler	5	Florida State	2	Auburn	7
Florida State	2	Georgia Southern	4	Florida State	8	Valdosta State	1
Florida State	0	Miami (Fla.)	9	Florida State	7	Southeastern Louisiana	2
Florida State	3	Furman	6	Florida State	7	South Florida	2
Florida State	2	North Carolina	7	Florida State	7	Rollins College	2
Florida State	9	Illinois-Chicago Circle	0	Florida State	5	Florida	4
		Florida State	7	Flagler	0		

## THIS IS FLORIDA STATE

Florida State University — the home of more than 20,000 Seminoles — has a campus that starts at the top of one of Tallahassee's famed seven hills, and rolls gently downward and westward across 340-odd acres of pines, palms and pecan trees.

From the Gothic towers of Wescott at the eastern entrance to the campus, to the modern glass and steel structures of its Science Complex to the west, Florida State University has moved forward in time and growth more rapidly than many of its newer counterparts in the State University System. Its enrollment has quadrupled since it became coeducational in 1947, following nearly half a century as the Florida State College for Women.

Today, its 14 schools and colleges are spread through \$150 million worth of buildings, its annual budget exceeds \$100 million and it attracts more than \$18 million a year in research contracts and grants. Students can pick and choose from more than 100 career options offered in arts and sciences, business, communication, criminology, dance, education, home economics, law, library science, music, nursing, social sciences, social work, theater and visual arts programs.

The location of FSU in the Capital City of Florida offers unusual opportunities for study and research in the social and policy sciences, and an optimum environment for internships and on-the-job learning experiences for students in many fields of study.

A city within a city, Florida State has 1,200 faculty members, more than 6,000 additional employees and a construction program that will exceed \$50 million. The construction of a new civic center and a center for continuing education — both near the State Capitol — are destined for completion by the fall of 1981.

