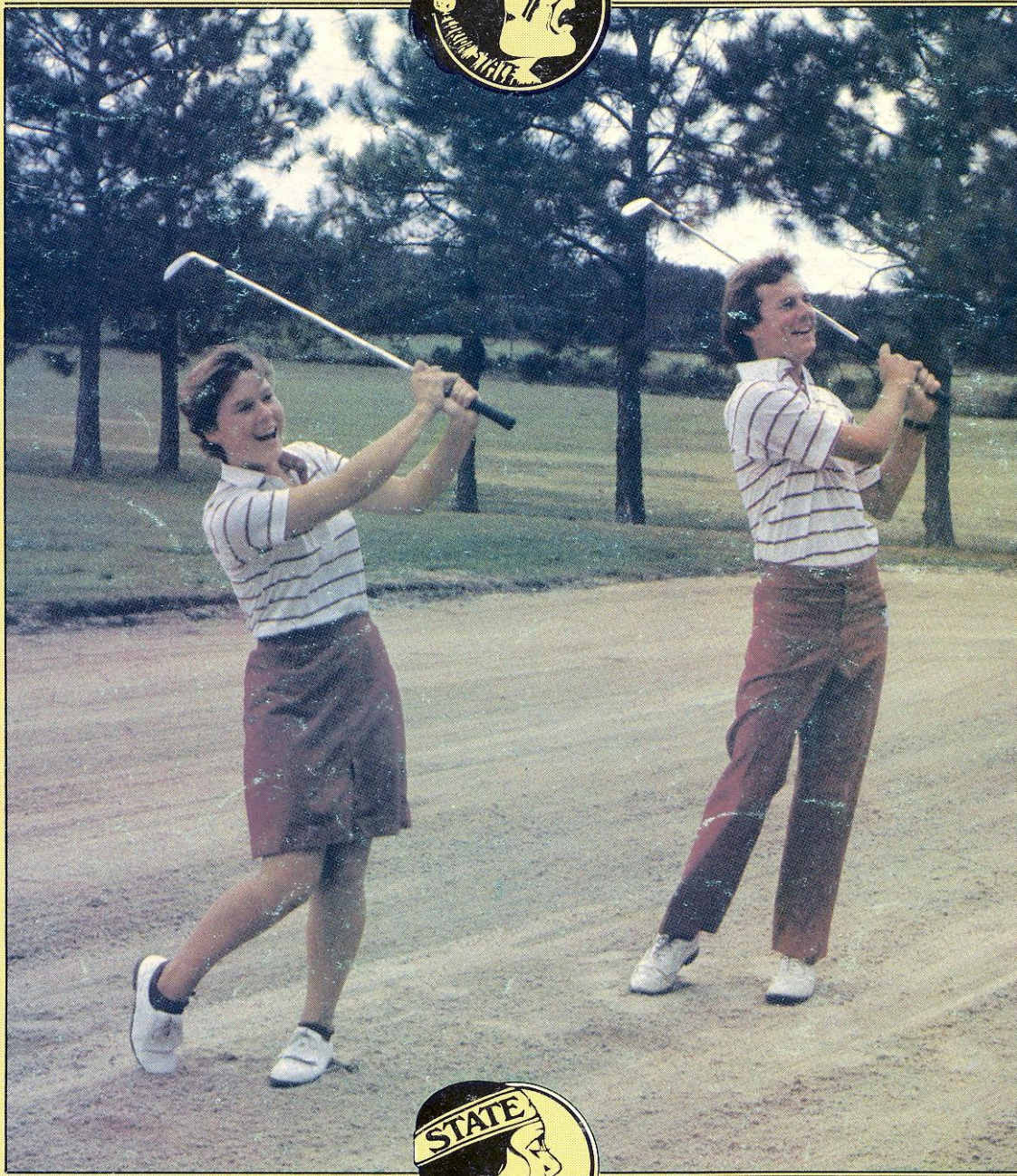


1986 FLORIDA STATE



GOLF MEDIA GUIDE



1985-86 Florida State Women's Spring Golf Schedule

FALL

September		
20-22	Lady Seminole Invitational	Tallahassee, Fla.
October		
6-8	Memphis State Invitational	Memphis, Tenn.
26-28	Alabama Seascape Invitational	Ft. Walton Beach, Fla.
November		
1-3	East Lake Invitational	Atlanta, Ga.
10-12	FIU Pat Bradley Invitational	Kay Biscayne, Fla.

SPRING

February		
21-23	Lady Gator Invitational	Gainesville, Fla.
28-3/2	LSU Lou Besson Invitational	Baton Rouge, La.
March		
7-9	Hudson Industries Lady Trojan	Eufala, Ala.
28-30	Lady Gamecock Invitational	Columbia, S.C.
April		
4-6	State Championships	TBA
May		
9-11	Metro Championships	TBA
20-24	NCAA Championships	TBA

1985-86 Florida State Men's Spring Golf Schedule

FALL

September		
27-29	Augusta College	Augusta, Ga.
October		
7-9	LSU National Invitational	Baton Rouge, La.
November		
8-10	State Championships	Daytona Beach, Fla.

SPRING

February		
14-16	Gator Invitational	Gainesville, Fla.
21-23	Seminole Invitational	Tallahassee, Fla.
28-3/2	Imperial Lakes Invitational	Lakeland, Fla.
March		
21-23	South Florida Invitational	Tampa, Fla.
or 21-23	Tiger Point Invitational	Pensacola, Fla.
28-30	Southeastern Invitational	Montgomery, Ala.
April		
25-27	Chris Schenkel Invitational	Statesboro, Ga.
May		
9-11	Metro Championships	Wild Dunes, S.C.
20-24	NCAA Championships	Bermuda Run, N.C.

1985-86 FLORIDA STATE GOLF

1985-86 Women's Golf Outlook

With four starters returning from FSU's 1984-85 team, head coach Verlyn Giles is expecting a new and improved version of the Lady Seminoles to tee it up in 1985-86.

Experience, which Giles did not possess last season, will be the team's biggest strength going into the current campaign. Each of the four returning letterwinners played in at least seven tournaments during 1984-85. Add to that group a highly-sought freshman with outstanding credentials and a senior letterwinner from two years ago and Florida State has more than hopes of a strong season.

The most severe handicap facing the Lady Seminoles will be a severe lack of depth. A total of seven golfers make up the FSU roster, and Giles has that as his major concern. "That lack of depth will hurt a great deal if we have any unforeseen problems with injuries or the like," he said. "The number we have is good enough; that is if everyone plays well."

Leading the Lady Seminole attack is All-American candidate Lorraine Elder. The winner of the 1985 LSU-Lou Besson Invitational, Elder enters her final season as both the team leader and number one player. Her consistency is necessary for a successful season.

A pair of sophomores could use 1985-86 as their breakthrough year. Both Coral Springs' Leigh Mills and Stourpott, England's Sarah Nicklin enjoyed fine freshman years with five top 20 finishes between them.

The final member of the returning starters is junior Kristin Ericson. Now in her third season with the Lady Seminoles, Ericson has been a regular in the top five since she first arrived.

Expected to make an immediate contribution in her initial season is Vanessa Castellucci of Orlando. With pages of achievements as a junior golfer, Castellucci should step almost immediately into a position in the top five.

Rounding out the Florida State roster are Kathy Grant, a freshman from Tampa, and transfer Vicki Crawford from Zephyrhills, Florida.

An extremely difficult schedule awaits the experienced but thin Lady Seminoles in 1985-86. Many of the top-ranked teams in the country play in a number of the same tournaments as FSU. One of those meetings is Florida State's Lady Seminole Invitational, which opens the fall schedule September 20-22.



**Former
Lady Seminole
Jane Geddes**

Credits

The 1985-86 Florida State Golf Guide was written and edited by former Sports Information Assistant Jonathan Dukes. Photography by the University Photo Lab, Kal Lunt, Bob O'Lary and Jim Moriarity.

1985-86 Men's Golf Outlook

For head golf coach Verlyn Giles, optimism is definitely a part of any conversation about the expected fortunes of his 1985-86 squad. Optimistic because he has five lettermen returning from last season. Optimistic because he has two golfers coming back who logged tournament victories in 1984-85. Optimistic because he very well could have nine golfers fighting for the top five spots all season.

Mixed with those high expectations, however, is a large measure of caution - which goes with the start of every new season. "This region is so strong that we are going to have to play up to our potential every time we tee it up," said Giles.

Depth and experience throughout the Seminole lineup will be the key to success in 1985-86. Returning All-American Nolan Henke leads the Florida State attack. Only a junior, Henke stepped to the forefront last year, winning two tournaments and playing in the NCAA Championships.

Two others who should anchor spots for the Seminoles are junior Tom Krystyn and sophomore Jeremy Robinson. Krystyn, a Jacksonville native, has been a regular in the top five since his arrival at FSU. Robinson captured the Metro title last year and has continued his strong play through the summer. He should have a quick impact on the lineup.

No less than a half a dozen others have an excellent chance of breaking into the top five during the season. This group is led by returning letterwinners Jeff LeMaster and Steve Greek. Both have tournament experience and should again see action.

Redshirt freshmen David Beck and Roger Kennedy and junior John Veghte add excellent depth to the Seminole lineup, and each will make a strong bid for a top position.

FSU's two new faces for the 1985-86 season are freshman Todd Spenla and J.C. Michael Warnock. Out of Sarasota's Riverview High School, Spenla has outstanding credentials and could be one of FSU's best ever with collegiate experience. Warnock comes to FSU after two years at junior college power Alexander City JC in Alabama.

Rounding out the Seminole roster and adding depth to a team which should again challenge for an NCAA bid are Ron Philo and Ray Ziats.

The Tribe's biggest obstacle to that invitation will come from playing in the strongest region in the country. In last year's NCAA Championships, four teams from Region III-South finished in the top ten in the country. This year's group should be no different.

With such a strong region from top to bottom, FSU's schedule will again be among the toughest in the nation. An early highlight of the spring campaign is Florida State's Seminole Classic, now in its 17th year, from February 21-23.

FSU Fingertip Facts

Location	Tallahassee, Florida
Enrollment	21,500
Founded	1857
Nickname	Seminoles, Lady Seminoles
Colors	Garnet and Gold
President	Dr. Bernard F. Slinger
Athletic Director	C.W. "Hootie" Ingram
Head Coach	Verlyn Giles
Years	Fourth with men, seventh with women
Assistant Coach	Debbie Miles
Home Course	Seminole Golf Course
Sports Information Director	Wayne Hogan
Athletic Department Phone	(904) 644-1060
Golf Course Phone	(904) 644-2582
Golf Publicist	Chris Sears



VERLYN GILES
Head Golf Coach

Now in his fourth year of coaching both the men's and women's golf teams at Florida State, Verlyn Giles has established himself as one of the finest collegiate coaches in the country.

Giles has served as women's head coach since 1979. He assumed the dual role four years ago when long-time men's coach Don Veller retired.

Giles was the head coach of the 1981 women's team which captured the AIAW National Championship. Three members of that squad were named All-Americans, and Giles was honored as Florida AIAW Coach of the Year for the team's accomplishments.

The Jacksonville native first came to Florida State in 1958. From 1961-63 he served as the assistant track coach under former coach Mike Long. Giles then moved on to Palmetto High School where he served as an assistant football coach, head track coach and head golf coach until 1965.

The coach then returned to Tallahassee where he accepted a position as offensive line coach under Gene Cox at Leon High School. Giles was also head golf coach in his seven seasons at Leon.

Giles received his associate degree in 1958 from South Georgia College where he played football under now FSU head coach Bobby Bowden. He earned his bachelor's degree from Florida State in 1961 in physical education.

In 1963, he was awarded his master's from FSU in physical education and student personnel work in higher education.

Giles is a Class A member of the PGA of America and was also a member of the Tournament Players Association in

1982. He is also a member of the Golf Coaches Association of America.

Giles is married to the former Kathy Moon and the couple have three children: Stephne, 21; Stacy, 16; and Kacci, 12.



DEBBIE MILES
Assistant Coach

Debbie Miles enters her second year as an assistant coach for the men's and women's golf teams at FSU.

A former Lady Seminole herself, Miles was a member of the 1981 team that captured the AIAW National Championship. She also played on the 1979-80 squad that was ranked nationally.

Her current responsibilities as assistant coach include handling many of the administrative duties and traveling with the women's team when conflicts in scheduling occur. Miles has also worked at FSU's Seminole Golf Course. While pursuing her degree in leisure services at Florida State from 1979-82, she was employed in various capacities at the course.

Interested in becoming a golf teacher and coach, Miles hopes to enter the PGA Apprentice Program, where she can be certified as a teaching professional. Miles has already gotten involved in that aspect of the sport by traveling to clubs in nearby Quincy and Monticello during the summer to work with junior golfers and ladies' organizations. She is also currently pursuing her degree in leisure services.

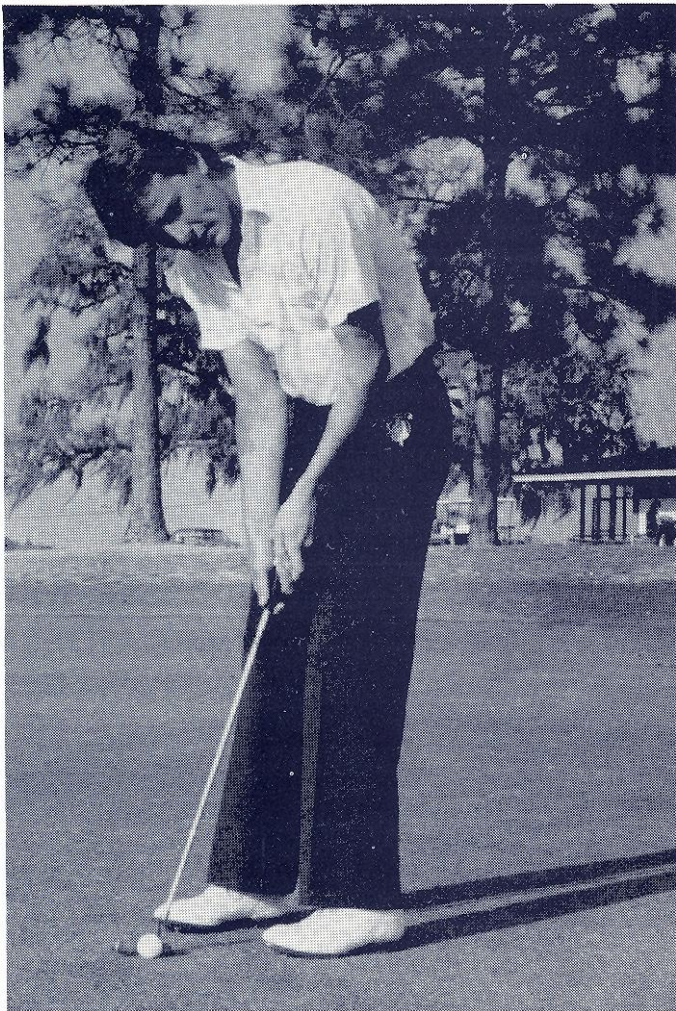
A native of Davison, Michigan, Miles grew up in a golfing family, with her parents involved in country club management. A standout golfer in high school, Miles was Davison High's team captain four years in a row. Twice the runnerup in the state championship, Miles won the region title her senior year while shooting a tournament record.

1985-86 Florida State Women's Golf Roster

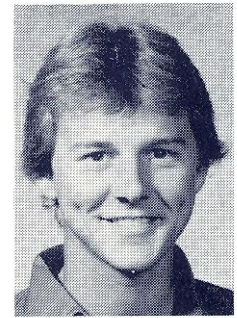
Name	Class	Height	Hometown/High School
Vanessa Castellucci	Fr.	5-5	Orlando, FL/Oak Ridge
Lorraine Elder	Sr.	5-3	Annandale, VA/W.T. Woodson
Kristin Ericson	Jr.	5-10	Bentonville, AR/East Cooper
Kathy Grant	Fr.	5-1	Tampa, FL/Chamberlain
Leigh Mills	So.	5-8	Coral Srping, FL/Coral Springs
Sarah Nicklin	So.	5-5	Stourport, England/Stourport
Debbie Zahand	Sr.	5-4	Vienna, VA/George C. Marshall

1985-86 Florida State Men's Golf Roster

Name	Class	Height	Weight	Hometown/High School
David Beck	Fr.	5-9	142	Tallahassee, FL/Leon
Steve Greek	Sr.	6-2	185	Fern Park, FL/Keystone
Nolan Henke	Jr.	5-11	140	Ft. Myers, FL/Ft. Myers
Roger Kennedy	Fr.	6-3	165	Pompano Beach, FL/Pompano Beach
Tom Krystyn	So.	6-0	180	Jacksonville, FL/Sandalwood
Jeff LeMaster	Jr.	6-0	170	Galloway, Ohio/Westland
Ron Philo	Jr.	6-0	170	Scotia, NY/Scotia-Glenville
Jeremy Robinson	So.	6-0	180	Woodhall Spa, England/Stowe School
Todd Spenla	Fr.	6-2	190	Sarasota, FL/Riverview
John Veghte	Jr.	5-10	150	Clearwater, FL/Tampa Prep
Michael Warnock	Jr.	6-0	155	Alpine Bay, AL/Ft. Walton Beach
Ray Ziats	Fr.	6-2	170	Clifton Springs, NY/Midlakes



NOLAN HENKE
Junior
 Ft. Myers, Fla.



All-American in 1984-85 ... kept alive an FSU streak now at seven years in which the Seminoles have had an All-American ... had an outstanding sophomore season participated in the NCAA Championships ... won two individual titles during the spring ... first won the Seminole Golf Classic, finishing only one shot off the tournament record ... three weeks later in the Panhandle Intercollegiate he and Ole Miss' Darren Cole ran away from the rest of a 15-team field ... Henke eventually won by a single shot over Cole and 11 strokes over the third-place finisher ... broke the course record for a 54-hole tournament at the Panhandle with a 70-69-69-208 ... had five more Top 10 finishes during the year ... still managed to come in third in the Metro Tournament after shooting a 77 on the opening day ... named to the All-Metro team two years in a row ... Florida state match-play champion in 1984 ... has qualified for the U.S. Amateur two years in a row ... ranked third among amateurs in Florida by *Florida Golf World* ... business major.

CAREER TOP FINISHES	
TOURNAMENT	FINISH
1983-84	
Pepsi-Budweiser-USF Golf Classic	5th
Metro Conference Championships	4th
1984-85	
LSU National Invitational	4th
State Championship	4th
Seminole Golf Classic	1st
Panhandle Intercollegiate	1st
Pepsi-Budweiser-USF Golf Classic	8th
Southeastern Intercollegiate	6th
Metro Conference Championships	3rd

FSU Lady Seminole All-Americans

- 1981 - Michele Guilbault
- Lisa Young
- 1982 - Barb Bunkowsky

Florida State All-Americans

- 1985 - Nolan Henke
- 1984 - Brian Kamm
- 1983 - Keith Kulzer
- Greg Fleischer
- 1982 - Steve Keppler
- 1981 - Grant Turner
- 1980 - Paul Downes
- 1979 - Grant Turner
- 1977 - Kenny Knox
- 1975 - Todd Crandall
- 1974 - Todd Crandall

LORRAINE ELDER
Senior
 Annandale, Va.



All-American candidate in 1984-85 ... established herself as the team leader during her junior season ... returns for her senior year as the Lady Seminoles number one player ... had an outstanding summer, winning both the Keefer Cup and Payne Cup ... finished as the low amateur and fourth overall in the North Carolina Women's Open ... missed qualifying for the U.S. Amateur by only one shot ... came to the forefront in 1984-85 when she won the LSU-Lou Besson Invitational early in the spring ... shot a one over par 145 to capture the rain-shortened tournament ... helped the team to a third-place finish, its best of the year ... Lady Seminoles' low scorer in four and their last seven tournaments ... besides her tournament victory, she has two other Top 15 finishes ... consistency from tee to green is the strong point of her game ... qualified for the 1984 U.S. Amateur ... 1984 Military Dependents Tournament champion ... member of the Virginia team in Virginia-Carolinas team matches that same year ... lettered in golf three times at W.T. Woodson High School ... also lettered in basketball ... named to Metro Conference Commissioner's List for student-athletes with a 3.0 or above grade point average ... majoring in psychology.

LADY SEMINOLE PROFILES



VICTORIA CRAWFORD
Junior
Zephyrhills, Fla.

Transfer student from University of Alabama ... should show results of experience gained during freshman year ... won Southern Jr. Golf Tournament in 1984 ... placed 2nd in 1984 Tarheel Junior Classic ... had 3rd place finish in 1983 Junior Citrus Classic ... three year letterman and district honors winner at Zephyrhills High School ... Accounting major ... born April 28, 1965.



VANESSA CASTELLUCCI
Freshman
Orlando, Fla.

Valuable addition for the Lady Seminoles ... should step in and contribute immediately ... outstanding record as a junior golfer ... named Central Florida Female Golfer of the Year two years in a row by the Orlando Amateur Athletic Association ... 1984 Florida State Golf Association champion ... finished as the low amateur in the LPGA's 1984 Orlando Classic ... winner of the 1985 Citrus Junior Tournament over the summer ... five-time Golf Magazine All-American as a junior golfer ... four-time North-South Junior champion ... MVP of the boy's golf team at Oak Ridge High School in 1985 ... enrolled in basic studies.



SARAH NICKLIN
Sophomore
Stourport, Worcestershire, England

Struggled at the beginning of last season but turned her game around quickly ... has the potential to be one of FSU's best ever ... well-schooled golfer ... her positive attitude may be her greatest asset ... lettered as a freshman and played in all but one tournament ... had a pair of Top 15 finishes in her initial campaign ... came in 13th in the state championship at the end of the season ... earlier she finished 15th in the LSU-Lou Besson Invitational to help FSU to a third-place team finish ... Worcestershire Schools Junior-Senior champion three years in a row ... Midland Schools Junior champion in both 1983 and 1984 ... captain of English Schools in 1983 ... physical education major.



KRISTIN ERICSON
Junior
Bentonville Ark.

Returns for her third season with the Lady Seminoles ... should play in the top five regularly again this year ... saw action in seven tournaments a year ago ... FSU's top finisher in the Lady Gator Invitational to open last spring ... won the National Junior Heritage in 1983 ... placed second in the Idaho Amateur as a high school senior ... selected to all-city and all-state golf teams while living in Spokane, Washington ... received same honors for basketball ... received athletic inspiration award in high school ... excellent student majoring in physical education.



LEIGH MILLS
Sophomore
Coral Springs, Fla.

Now in her third year at FSU after being redshirted her first season ... showed flashes of the talent she possesses during the 1984-85 season ... will be in the thick of the fight for a top position ... recorded three Top 20 finishes last year ... finished 14th in the LSU-Lou Besson Invitational and 18th in the Lady Trojan Invitational in consecutive weeks last spring ... also came in 17th in the state championship ... was low scorer for the Lady Seminoles twice ... long hitter ... Player of the Year at Coral Springs High School her senior year ... played five sports and earned 12 letters ... finished fourth in the state tournament in 1983 ... accounting major.



KATHY GRANT
Freshman
Tampa, Fla.

Will provide depth to a team that desperately needs some ... very good credentials as a junior golfer coming out of Chamberlin High in Tampa ... MVP of the golf team her senior year ... also named to the all-county team in 1985 ... finished third in the conference tournament and second in the district tournament this past year ... champion of the Babe Zaharias Junior Memorial played in August ... lettered for three years ... named to Who's Who in American high schools ... enrolled in basic studies.

SEMINOLE PROFILES



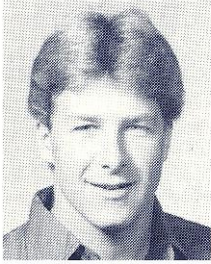
STEVE GREEK
Senior
Fern Park, Fla.

Academic All-American candidate ... would likely have won the award last year if injuries hadn't limited his tournament play ... came back to play in the last two tournaments of the year ... shot an opening round 70 at the Metro Conference Championships to help FSU to its eighth straight Metro title ... had a 77.1 average through nine rounds ... missed qualifying for the U.S. Amateur by only one shot ... won both the Dixie Amateur and Springtime Invitational in 1983 ... Jacksonville Golf Association (JAGA) champion in 1980 ... was an all-conference selection and team MVP each year from 1978-81 at Keystone Heights High School ... finance major.



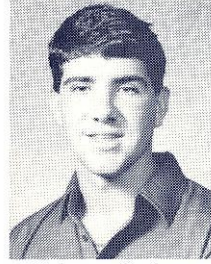
DAVID BECK
Freshman
Tallahassee, Fla.

Redshirted last season ... has an excellent chance of breaking into the top five this season ... qualified this season for the 1985 U.S. Amateur ... very dedicated player ... developed late but is playing consistently now ... possesses a well-balanced game ... played at local Leon High School ... All Big-Bend Player of the Year in both 1983 and 1984 ... undecided major.



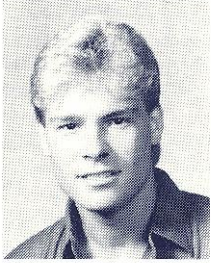
TOM KRYSTYN
Junior
Jacksonville, Fla.

One of the Seminoles' top returning players for 1985-86 ... struggled much of last year but still managed three Top 15 finishes ... came in fifth in both the Metro Conference Championships and the Panhandle Intercollegiate ... named to the All-Metro team for the second year in a row ... was the Metro runner-up in 1984 as a freshman ... qualified for the U.S. Amateur in 1984 ... was the 1982 Future Masters champion ... co-champion in the 1983 Florida Intercollegiate ... runnerup to Henke in state match-play competition in 1984 ... was Most Valuable Player at Sandalwood High School from 1980-82 ... business major.



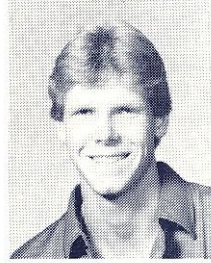
TODD SPENLA
Freshman
Sarasota, Fla.

Only true freshman on this year's team ... outstanding all-around player with tremendous potential ... could make a solid contribution in only his first year at Florida State ... was heavily recruited by several major schools ... chose FSU over perennial national power Oklahoma State ... winner of the Junior Tournament of Champions in 1984 ... champion of the Southern Juniors Tournament last year ... led Riverview High School to a second place finish in the state championship in 1984 ... attended the same high school as FSU football players Derek Schmidt and Pat Carter ... undecided major.



JEFF LEMASTER
Junior
Galloway, Ohio

Returning from last year with an excellent chance of making the top five ... played in five tournaments last season ... best finish was a tie for 23rd in the Panhandle Intercollegiate ... averaged 77.9 over 15 rounds during the season ... Ohio Player of the Year in 1981 ... originally attended Ohio State but transferred to FSU after his freshman year ... conference and state champion in both 1981 and 1982 while at Westland High School ... all-conference and all-state from 1980 to 1982 ... major is undecided.



ROGER KENNEDY
Freshman
Pompano Beach, Fla.

Redshirted last year ... tall and lanky player who will battle for a spot among the top five ... selected as the Broward County Player of the Year in 1983 ... all-county team in 1983 and 1984 ... played on state championship team as a freshman at Pompano Beach High ... major is undecided.



JEREMY ROBINSON
Sophomore
Woodhall Spa, England

Won the Metro Conference Championship individual title in only his fourth collegiate tournament ... led from start to finish and ended as the only golfer under par with his two-under 214 ... was also the Seminole top finisher in the Chris Schenkel Invitational ... has continued to play well over the summer and will be counted on as a regular this year ... won regional qualifying for the British Open in 1984 ... played on an international golf team for England and Great Britain both in under 18 and under 21 age groups ... winner of 1983 Peter McEvory Trophy ... business marketing major.



1981 NATIONAL CHAMPIONSHIP TEAM

The Florida State Lady Seminoles thought they could win. They had done so four times earlier in the season. They knew how to win, and that, coupled with a back-nine rally on the final day, is what gave the Lady Seminoles the AIAW (Association of Intercollegiate Athletics for Women) National Championship in 1981.

After the third round, FSU led by one stroke over the host Lady Bulldogs of Georgia. A stumble on the front nine of the final round saw FSU fall two shots back of Georgia at the turn. That turn, however, proved to be Florida State's turn of fortunes as four of the five Lady Seminoles birdied the 17th hole and FSU was on its way to its first national championship. FSU finished the tournament at 1,220, three shots better than Georgia at 1,223.

Three FSU golfers from that team were named All-Americans during their careers. Lisa Young was FSU's top finisher in the championship in third place. Barbara Bunkowsky, who was tabbed in 1982, did her part on the final day with birdies on the last five holes and came in in a tie for 14th. Michele Guilbault, who earlier in the season had easily won the prestigious Dick McGuire Invitational, was the other 1981 selection.

1981 AIAW National Golf Championships

Final Team Standings

1. Florida State	307-307-298-308—1220
2. Georgia	299-307-307-310—1223
3. S.M.U.	307-316-298-305—1226
4. Tulsa	303-307-316-302—1228
5. U.C.L.A.	307-314-309-302—1232
6. T.C.U.	315-309-298-311—1233
7. Texas	310-307-310-311—1238
8. Florida	308-319-305-309—1241
Texas A&M	310-316-307-308—1241
Miami	315-307-308-311—1241
11. Stanford	310-320-310-308—1248
12. Arizona State	311-313-322-303—1249
13. Oklahoma State	314-308-324-305—1251
14. Arizona	313-303-314-326—1256
15. Florida Int'l	318-315-314-314—1261
16. South Carolina	311-331-305-320—1267

FSU Individuals

Lisa Young	71-80-71-75—297
Barbara Bunkowsky	75-78-79-74—306
Jane Geddes	83-75-74-79—311
Michele Guilbault	83-74-78-80—315
Marla Anderson	78-84-75-83—320

The Metro Belongs To FSU

Florida State joined the Metro Conference in 1976. The following year the Seminoles began competing in the conference championships. That year FSU defeated Memphis State by eight strokes to win its first-ever Metro Conference Golf Championship. The streak that started in 1977 has yet to end. Over the last nine years, Florida State has won eight consecutive Metro Championships (the tournament was not held in 1983). The victories have come by the slimmest of margins - a one-shot win over Memphis State in 1978 - and also in seemingly easy fashion. In 1984 FSU topped second-place South Carolina by an incredible 49 strokes. But the victories have always come.

FSU individuals have not fared much worse, winning medalist honors six of the past eight years. In fact, perhaps an even more impressive streak in that for five years in a row, four of the five FSU golfers have finished in the top six of the tournament. Florida State Metro champions Kenny Knox (1977) and Paul Azinger (1981) are now regulars on the PGA Tour. Last year's champion Jeremy Robinson won the title as a freshman in only his fourth collegiate tournament.

1977	
Florida State	877
Memphis State	885
Georgia Tech	909
Louisville	910
Cincinnati	921
Tulane	924
St. Louis	972

1978	
Florida State	886
Memphis State	887
Cincinnati	899
Louisville	909
Georgia Tech	914
St. Louis	988

1979	
Florida State	882
Memphis State	900
Virginia Tech	906
Cincinnati	910
Louisville	910
Tulane	934
St. Louis	952

1980	
Florida State	858
Memphis State	890
Cincinnati	898
Virginia Tech	901
Louisville	916
Tulane	954
St. Louis	966

1981	
Florida State	878
Virginia Tech	918
Louisville	927
Memphis State	928
Cincinnati	970
Tulane	994
St. Louis	1,011

1982	
Florida State	856
Memphis State	884
Louisville	905
Virginia Tech	911
Cincinnati	912
Tulane	949
St. Louis	1,011

1984	
Florida State	857
South Carolina	906
Memphis State	929
Southern Miss	936
Virginia Tech	959
Louisville	962

1985	
Florida State	866
Virginia Tech	891
Memphis State	896
South Carolina	913
Southern Miss	938
Louisville	981



Seminole Golf Course

Florida State University boasts one of the best all-around collegiate golf facilities in the nation. The university-owned Seminole Golf Course is tough, long, and interesting.

The 18-hole, par-72 course measures 7,015 yards on the men's Championship tees and 5,930 yards from the women's team tees. The bermuda greens are of medium size and measure approximately 6,200 square feet each. Perhaps even more important, however, are the adjacent practice facilities with their superb surfaces. The practice driving range includes some 2,800 square feet of hitting area.

Located approximately two miles west of the university campus, the Seminole Golf Course was designed by William W. Amick. The first nine was completed in 1963 with the completion of the additional nine done in 1968.

The Seminole course is available for year-round play largely because of Tallahassee's moderate North Florida climate. The 80,000 square foot facility is for the exclusive use of students, course members and FSU golf team members.

In addition, each year the Seminole is the host course for two championship collegiate tournaments. In the fall, the women's team hosts the Lady Seminole Invitational in late September. For the men's team, one of the high points of its spring campaign is the Seminole Golf Classic in late February, now in its 17th year.



Seminoles on the Tour

PGA TOUR

Hubert Green -

- played at Florida State from 1966-68
- 10th on the men's all-time money winners list
- had earned \$2,023,240 through August of 1985
- became only the tenth golfer in PGA history to surpass the \$2 million mark in career earnings
- winner of the 1985 PGA Championship
- through August, he had earned \$215,383 in 1985, good for 12th on the money list
- U.S. Open champion in 1977
- PGA Rookie of the Year in 1971
- member of the FSU Hall of Fame

Florida State's other alumni, all with less than five years experience on the PGA Tour, are Paul Azinger, Jeff Sluman and Kenny Knox. Through the month of August, Azinger, the winner of the 1984 Qualifying Tournament, was 97th on the money list with earnings of \$66,089. Sluman, the 1985 Tallahassee Open champion, was close behind with \$58,770 and 102nd position on the money list. Not included in that total \$40,538 he had won from TPS Tour events, which gave him almost \$100,000 in earnings for 1985. Knox was 153rd with \$15,391 and still in good shape to retain his card.

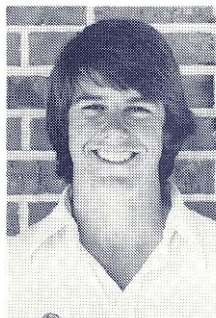
LPGA TOUR

LPGA Tour

On the LPGA Tour, the Florida State representatives are Jane Geddes, Lisa Young and Barb Bunkowsky. For Geddes, this year has been her best ever on the Tour. Through August, she was 14th on the money list with earnings of \$102,627 and 66th position. Her top finish was fourth in the Rochester International. Bunkowsky was 78th among money winners with \$23,344 and tenth place finishes in both the Samaritan-Turquoise Classic and the du Maurier Classic as her top showing.



1985
PGA Champion
Hubert Green



Paul Azinger



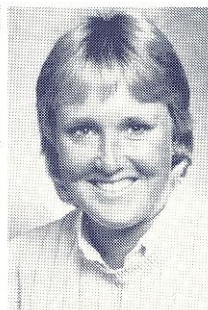
Kenny Knox



Jeff Sluman



Barb Bunkowsky



Jane Geddes



Lisa Young

1984-85 Women's Golf Results

Lady Seminole Invitational (9/23-25)

FSU: 309-299-309—917 (9 of 17)

Lavis	76-72-73-221—6
Elder	75-75-77-227—21
Mills	77-77-82-236—50
Grzywacz	81-75-84-240—60
Nicklin	90-80-77-247—74

Carrier-Memphis Intercollegiate (10/8-9)

FSU: 323-327-650 (9 of 17)

Grzywacz	74-79-154—5
Lavis	81-83-164
Nicklin	83-84-167
Elder	84-84-168
Mills	87-81-168

Seascape Invitational (11/4-6)

FSU 324-338-662 (14 of 18)

Mills	82-82-164—53
Ericson	80-85-165—54
Nicklin	82-84-166—57
Elder	80-87-167—60
Grzywacz	88-87-175—80

Pat Bradley Championship (11/11-13)

FSU: 332-338-329-999 (11 of 14)

Elder	78-85-83-246—34
Ericson	86-84-81-251—42
Grzywacz	81-87-85-253—47
Nicklin	89-82-84-255—51
Lavis	87-89-81-257—57

Lady Gator Invitational (2/22-3)

FSU: 302-313-304—937 (11 of 15)

Ericson	82-77-75-234—39
Mills	76-81-78-235—42
Elder	84-76-76-236—44
Lavis	80-82-75-237—48
Leonard	82-79-88-249—66

LSU - Lou Besson Invitational (3/1-3)

FSU: 302-309-611 (3 of 12)

Elder	72-73-145—1
Mills	76-78-154—14
Nicklin	77-78-155—15
Lavis	77-80-157—25
Ericson	80-85-165—44

Lady Trojan Invitational (3/8-10)

FSU: 309-312-312-933 (8 of 23)

Mills	78-78-74-230—18
Elder	76-77-79-232—24
Nicklin	82-75-79-236—35
Lavis	77-82-80-239—47
Ericson	78-85-81-244—68

Lady Paladin Invitational (3/21-23)

FSU: 328-338-324—990 (15 of 23)

Lavis	79-86-77-242
Elder	76-85-82-243
Mills	87-86-85-258
Nicklin	87-86-85-258
Ericson	86-89-83-258

South Carolina Invitational (3/29-31)

FSU: 325-319-310-954 (7 of 14)

Elder	77-73-79-229—6
Mills	78-83-80-241—31
Lavis	86-79-79-244—38
Nicklin	89-84-73-246—40
Grzywacz	84-84-79-247—5

State Championship (4/12-14)

FSU: 306-301-309—916 (5 of 7)

Elder	72-72-77-226—11
Nicklin	75-77-76-228—13
Lavis	79-71-80-230—17
Mills	75-81-76-232—20
Ericson	82-81-82-245—36

Southern Intercollegiate (4/26-28)

FSU: 334-316-328—978 (15 of 16)

Elder	79-77-78-234—23
Nicklin	87-77-88-252—68
Lavis	87-85-82-253—69
Mills	82-82-90-254—72
Ericson	96-80-80-256—76

1984-85 Men's Golf Results

LSU National Invitational (10/3-5)

FSU: 306-294-299—899 (10 of 12)

Henke	74-71-71-216—4
Kulzer	80-73-71-225
Garde	75-77-77-229
Krystyn	82-73-80-235
Morrow	77-78-82-237

Andy Bean Intercollegiate (10/12-14)

FSU: 303-307-296—906 (11 of 25)

Kulzer	74-73-73-220—12
Henke	78-77-72-227—37
Garde	75-77-76-228—42
Krystyn	76-80-75-231—61
LeMaster	79-82-82-243—107

Gator Invitational (2/15-17)

FSU: 298-289-296—883 (11 of 19)

Kulzer	75-69-73-217—23
Garde	73-75-75-223—49
Henke	79-74-71-224—51
Krystyn	75-74-77-226—63
Robinson	75-72-79-226—63

Seminole Golf Classic (2/22-24)

FSU: 287-287-290—864 (2 of 21)

Henke	68-68-71-207—1
Kulzer	74-72-68-214—3
Krystyn	76-73-74-223—27
Garde	73-74-77-224—31
LeMaster	72-76-78-226—42

Imperial Lakes Golf Classic (3/1-3)

FSU: 292-293-285—870 (12 of 21)

Kulzer	74-69-70-213—21
Garde	73-72-75-220
Krystyn	73-77-70-220
Henke	75-77-70-222
LeMaster	72-75-79-226

Panhandle Intercollegiate (3/13-15)

FSU: 292-295-295—879 (2 of 15)

Henke	70-69-69-208—1
Krystyn	73-73-75-221—5
Kulzer	74-76-73-223—9
LeMaster	75-77-77-229—23
Garde	78-78-75-231—27

Pepsi-Budweiser-USF Golf Classic (3/22-24)

FSU: 301-308-303—912 (8 of 14)

Henke	72-75-73-220—8
Kulzer	72-76-78-226—18
Krystyn	78-79-72-229
Garde	79-78-80-237
LeMaster	83-81-81-245

Southeastern Intercollegiate (3/29-31)

FSU: 293-289-308—890 (6 of 18)

Henke	71-79-75-215—6
Kulzer	72-71-74-217—9
Robinson	72-71-79-222—28
Morrow	78-78-80-236—70
Krystyn	84-82-81-247—82

Chris Schenkel Intercollegiate (4/26-28)

FSU: 297-298-309—904 (17 of 18)

Robinson	73-74-74-221—51
Henke	73-76-75-224—68
Greek	73-74-80-229—75
Garde	77-73-82-232—82
Kulzer	77-77-80-234—86

Metro Conference Championships (5/10-12)

FSU: 292-293-281—866 (1 of 6)

Robinson	69-75-70-214—1
Henke	77-71-71-219—3
Krystyn	78-74-68-220—5
Morrow	76-73-72-221—6
Greek	70-78-82-230—15

This is Florida State



Florida State University, a coeducational institution with an enrollment of 21,500 students, is located in Tallahassee, the capital of Florida.

The beautiful 345-acre campus is wrapped in greenery that combines the blossoms of camellias, azaleas and dogwoods with palm trees and moss-hung oaks. The campus looks enough like Ivy League schools, particularly around its older, Gothic buildings, that several times each winter New York

advertising agencies take summer scenes supposedly shot at Princeton or Harvard. On the west side of campus, the scene is dominated by the contemporary, high-rise science complex.

There are more than 1,300 faculty including four members of the National Academy of Sciences. Florida State is one of only five universities in the nation to have its own supercomputer.

Academic programs in the sciences (notably physics, chemistry, biology and meteorology) and the performing arts (music, theater, visual arts and dance) have high national rankings. Other strong departments among the 15 schools and colleges include criminology, hospitality administration, accounting, statistics and interior design. FSU's pre-med program has a much higher than average medical school placement rate for its graduates.

Today, FSU offers students the opportunity to choose from more than 100 career options in arts and sciences, business, communication, criminology, education, home economics, law, library and information studies, music, nursing, social sciences, social work, theater, visual arts and engineering, which operates in cooperation with Florida A&M University. The most popular majors at FSU are business, biology, computer science and communication.

Florida State has honors programs for its top students. Overseas study program in fields ranging from law to hotel and restaurant administration are offered in Florence, Italy; Oxford and London, England; Switzerland, Costa Rica, Yugoslavia and the Panama Canal Zone.

Social life for many centers around 24 fraternities and 20 sororities. Wind surfing, swimming and sunning are among the activities to be enjoyed at FSU's convenient lakeside "Reservation" or along the sandy beaches of nearby coasts.

A unique extracurricular activity is the Flying High Circus, the nation's only all-collegiate circus. Students from every academic major can become stars on the flying trapeze, on the highwire or in clown acts.

Fine entertainment is provided year-round by the FSU Schools of Music and Theater and the Department of Dance.

Student Campus Entertainment presents concerts, movies, lectures and other activities throughout the year and the Artist Series brings professional entertainers to campus.

Student government at FSU is one of the most powerful in the country. Elected students spend an annual budget of about \$1.7 million. Student government funds intramurals, activities at the Student Union and more than 200 interest organizations.



C.W. "HOOTIE" INGRAM *Athletic Director*

Cecil Ingram, known to most of his friends and associates as simply "Hootie," has headed the Florida State athletic department since 1981 after serving as associate commissioner of the Southeastern Conference for eight years.

Since his arrival in Tallahassee, Ingram has initiated a \$10 million dollar building program for athletic facilities, including the Moore Athletic Center - home of Florida State athletics.

A native of Tuscaloosa, Ala., Ingram played for the Crimson Tide from 1951 to 1954 and led the nation in interceptions as a sophomore. He also lettered in baseball as an infielder. Following a stint in the army, Ingram turned to coaching. After several years of high school coaching, Ingram moved into collegiate athletics; making assistant coaching stops at Wake Forest, Virginia Tech, Georgia and Arkansas.



BOB GOIN *Associate Athletic Director*

A member of the Florida State athletic staff since 1981, Bob Goin begins his fifth full year as Associate Athletic Director.

All men's non-revenue coaches report to Goin and he also assists in the day-to-day operations of the department. A large portion of football, basketball and baseball game-day operations fall under his leadership.

A 1959 graduate of Bethany College, Goin received his master's degree from West Virginia in 1961. From 1960-76, Goin served Bethany in several administrative and coaching capacities before moving on to West Virginia as an assistant athletic director. He was named athletic director at California (Pa.) State College in 1980, where he formed that institution's first scholarship fund for athletics and the college's first booster club.



CHARLES W. EHRHARDT *Faculty Athletic Committee Chairman*

A Florida State University professor of law, Charles W. Ehrhardt is in his second year as Chairman of the Athletic Committee.

He is currently in his second stint on the committee, having served 1969-71 and then being reappointed to the board in 1983. As chairman, Ehrhardt succeeded Dr. James Jones, who held that position since 1980. Ehrhardt becomes Florida State's representative to the NCAA and was also president of the Metro Conference in 1984-85.

A native of Elkader, Iowa, Ehrhardt received his bachelor's degree from Iowa in 1962 before earning a law degree at Iowa State two years later. He came to Florida State in 1967.

A widely respected expert in the field of Evidence, Ehrhardt is frequently called on to lecture on the subject by lawyers and judges nationwide.