

FLORIDA STATE GOLF



1983 MEDIA GUIDE

1983 MEN'S GOLF SCHEDULE

DATE	TOURNAMENT	SITE
Feb. 10-12	International Intercollegiate Invitational	Monterrey, Mex.
Feb. 18-20	Gator Invitational	Gainesville, Fla.
Feb. 25-27	Seminole Invitational	Tallahassee, Fla.
Mar. 4-6	Imperial Lakes	Lakeland, Fla.
Mar. 15-18	Panhandle Invitational	Ft. Walton Beach, Fla.
Mar. 25-27	Southern Junior-Senior Collegiate	Dadeville, Ala.
Apr. 1-3	Southeastern Intercollegiate	Montgomery, Ala.
Apr. 22-24	Chris Schenkel Invitational	Statesboro, Ga.
May 19-21	Southern Intercollegiate	Athens, Ga.
June 8-11	NCAA Men's Championship	Fresno, Cal.

1983 WOMEN'S GOLF SCHEDULE

DATE	TOURNAMENT	SITE
Feb. 11-13	Lady Gator Invitational	Gainesville, Fla.
Mar. 11-13	Betsy Rawls Invitational	Austin, TX
Mar. 24-26	Lady Paladin	Greenville, S.C.
Apr. 15-17	State Championship	Haines City, Fla.
Apr. 29-May 1	Women's Southern Intercollegiate	Athens, Ga.
May 26-28	Women's NCAA National Championship	Athens, Ga.

Men's 1982 Fall Results

Tournament	Site	Finish
LSU Invitational	Baton Rouge, La.	9th
Andy Bean	Haines City, Fla.	4th
Dixie Intercollegiate	Columbus, Ga.	2nd
State Championship	Sebring, Fla.	1st

Women's 1982 Fall Results

Tournament	Site	Finish
Lady Seminole	Tallahassee, Fla.	8th
Memphis State	Memphis, Tenn.	8th
Pat Bradley Invitational	Miami, Fla.	5th
Suncoast Invitational	Innisbruck, Fla.	11th

DIRECTORY

Golf Seminole Golf Course

Head Coach Verlyn Giles
 Years at FSU .. 4 as women's coach, first as men's coach
 Other duties .. General Manager of Seminole Golf Course
 Office Phone (904) 644-2582

Athletic Staff Tully Gymnasium

C. W. "Hootie" Ingram, Athletic Director .. 644-2793
 Bob Goin, Associate Athletic Director 644-2793
 Barbara Palmer, Associate Athletic Director 644-2087
 Claude Thigmen, Assistant to the Director 644-2793
 Larry Pendleton, Assistant to the Director 644-4070
 Jo Heath, Women's Administrative Assistant ... 644-1441

Sports Information 113 Wildwood

Wayne Hogan, Director 644-4038
 Lisa Morton, Assistant 644-4038
 Dan Pearson, Assistant 644-4038
 Donna Turner, Student Assistant 644-4038
 Judy Greve, Secretary 644-4038

CREDITS: The 1982-83 Golf Guide was written and edited by Sports Information Director Wayne Hogan. Photography by Tom Vogelgesang and the university Photo Lab. This Guide is published by the Florida State Department of Athletics.

1982-83 GOLF AT FLORIDA STATE

Table of Contents

Golf Results — Fall 1982	IFC
Staff Directory	IFC
Media Information	IFC
Head Coach Verlyn Giles	2-3
The Outlook:	
Men Could Be Strong	4
Women Are Rebuilding	5
Team Photo	6-7
Men's Roster	6
Women's Roster	7
Men's Profiles	8-9
Women's Profiles	10-11
Florida State Athletic Staff	12
This Is Florida State	IBC
Seminole Golf Course	IBC
1983 Men's and Women's Spring Schedules	BC

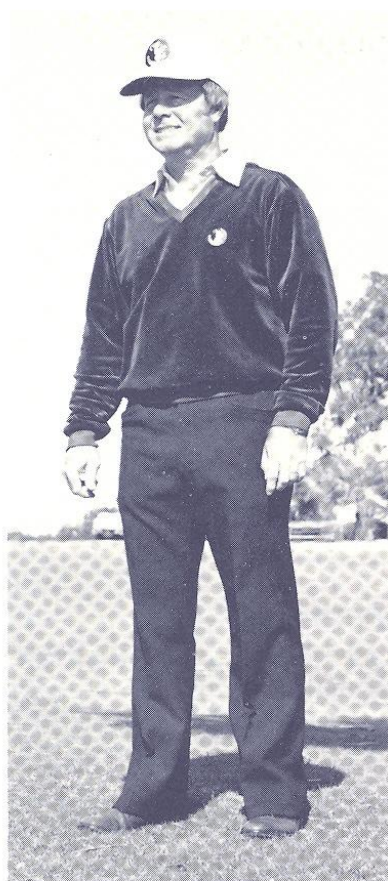
Florida State Facts

Location Tallahassee, Florida
 Enrollment 22,500
 Founded 1857
 Nickname Seminoles, Lady Seminoles
 Colors Garnet and Gold
 University President ... Dr. Bernard F. Sliger
 Faculty Representative . Dr. James P. Jones
 Home Course..... Seminole Golf Course
 Conference Metro
 Affiliation NCAA

Media Information

Florida State's 1983 Golf Guide has been designed for use by the media, prospective student-athletes and friends of the university. Any questions not covered in this brochure should be directed to the sports information office, P.O. Drawer 2195, Tallahassee, Fla. 32304. Additional information such as feature material and photographs, will be made available upon request.

Head Coach Verlyn Giles



Verlyn Giles, who led the Florida State University women's golf team to a national championship in 1981, was given the expanded duties of coaching the men's team last August.

Giles replaced three-time FSU golf coach Don Veller, who retired from coaching, but remains with the athletic department to handle special assignments.

Florida State Athletic Director C. W. Ingram in making the announcement said: "Verlyn has proven to be an outstanding teacher and coach at the college level. He is known throughout

the country and has a fine reputation on the collegiate golf scene — especially after taking his team to the national championship in such a short period of time.

"Coach Veller is leaving the team with a group of solid performers and has established a top-notch men's program here. We feel that this move will be a plus for both our men's and women's teams from a teaching and instructional standpoint."

In addition to handling both teams, Giles will continue in his position as General Manager of the Seminole Golf Course. He has held that post since 1971 and continued there since taking over the women's program in 1979.

"I think the entire golf scene at Florida State will be better coordinated and the total program will run smoother," said Giles, who has produced three first team all-Americans at FSU. "With the right kind of organization and with quality help this can be a much improved situation."



Giles said that he would begin making a search for an assistant coach as soon as possible.

The Jacksonville native first came to Florida State in 1958 to begin work on a master's degree. From 1961-63 he served as the assistant track coach under former coach Mike Long. He had earned his undergraduate degree from South Georgia College where he played football under now Florida State coach Bobby Bowden.

After earning his graduate degree Giles moved on to Manatee County where he was an assistant football coach as well as serving as head track and golf coach at Palmetto High School until 1965.

The coach then returned to Tallahassee where he accepted a position as offensive line coach under Gene Cox at Leon High School. He held that position until he became General Manager of the Seminole Course in 1971. Giles is married to the former Kathy Moon and the couple have three daughters: Stephne 17, Stacy 12 and Kacci 8.

Giles: Giving the Program Stability

Verlyn Giles on the combining of the men's and women's programs at Florida State: "Even though both our men's and women's teams are already recognized nationally I feel like the combining of the two programs will give us overall stability. This gives us the ability to coordinate the total golf program with the two being together. Once we get all the logistics worked out we will have a much better teaching approach for young players. I'm very fortunate that the men's program is in good shape with a great combination of experienced players and talented younger players. I suppose the whole transition would have been a lot easier had the women not been in a rebuilding year. I'm very excited about the prospects for the golf program at Florida State."

MEN COULD BE STRONG



With the return of All-American Steve Keppler and the solid challenge of Junior Greg Fleisher, the 1983 men's golf team could be very strong. And, if a couple of things fall into place, first year coach Verlyn Giles feels his team could possibly be in line for some

national recognition.

"If we can get a couple of our players back into school for the spring I believe that we could be very good," Giles said.

He was primarily speaking of junior Jonathan Morrow, who could probably figure in the top six players for the 1983 campaign.

Giles also will have the pleasure of working with another outstanding pair that gained some valuable experience on last year's Seminoles squad that earned a trip to the National Championships.

Keppler and the aforementioned Fleisher will definitely battle all year long at the top of the pack. Fleisher blistered the course at 12-under-par for nine rounds during the fall qualifying period and nudged ahead of Keppler based on that performance.

Senior Brian Kamm and junior Keith Kulzer both appear to have nailed down slots in the top five for 1983 along with Keppler and Fleisher. Those four players alone will give Florida State a solid group, but the status of Morrow will determine whether Giles can get the depth he needs to provide the competitive push.

"We need to have some people pushing for those top spots every day," said the coach. "Some good competition every week keeps your people sharp and that's what you've got to have. Otherwise they tend to relax — lose concentration."

The players that Giles will go with this year will certainly know what it takes to win. The team last season — the last under retired coach Don Veller — won five tournaments in a row at one stretch including their own Seminole Invitational.

While Giles can hope for a good year in 1983, he may be able to look for even brighter things down the road. Three players will be redshirted this year including freshman Tom Krystyn, a former Future Masters Champion, and classmate Nolan Henke.

WOMEN ARE REBUILDING

One could excuse Verlyn Giles for a couple of rebuilding years as the Florida State women's golf coach. After all, when you take your team to the very pinnacle — a national championship — you have a tough act to follow.

But while the Lady Seminoles may be rebuilding, don't think for a minute that they don't throw some pretty good talent at you. The only problem is, this team is so inexperienced you don't know where it might come from next.

"Our biggest problem with the ladies is that we just need to play in some tournaments and give these people the chance to develop," says the coach, whose team finished 10th overall last season while trying to defend its 1981 championship. "Some of our players have excellent junior records but just haven't been able to show us what they can do on this level."

Out of the pack, however, comes a pair of seniors who will lead the way. Unlike the others, they are experienced veterans. Marla Anderson is probably the team's most steady performer and Julie Kintz will challenge her for the top spot. After that, it's anyone's guess.

Freshman Debbie Moss, from Palm Beach, has an excellent set of credentials and Giles is expecting big things from her. Sophomore Lorraine Elder played very well during the fall and stands a chance to be among the top group this spring. Leslie Dennard is a senior but has practically no tournament experience. She has the tools and will also be a contender.

Giles also mentions Julie Flynn as a possible breakthrough. The South Carolina native had a couple of good showings in the fall.

"I certainly don't think we are ready to go back and win the whole thing again, yet," says Giles. "But I do think that we have enough quality players to qualify for nationals."

Giles explained that the system for qualifying women's teams in the NCAA this year would select the top 14 teams by computerized scores and that the remaining six teams would receive at-large bids as chosen by a selection committee.

Last year's Lady Seminoles qualified fifth on the basis of computerized scores and then finished 10th





1982 MEN'S GOLF ROSTER

NAME	HT	CLASS	HOMETOWN	NAME	HT	CLASS	HOMETOWN
ABBOTT, Robert	5-7	Fr.	Miami, Fla.	KAMM, Brian	5-6	Sr.	Spencerport, NY
AYCOCK, Tommy	6-0	So.	Atlantic Beach, Fla.	KEPPLER, Steve	6-0	Sr.	London, England
BAUMGARDNER, Brad	5-11	Jr.	Dayton, Oh.	KRYSTYN, Tom	6-2	Fr.	Jacksonville, Fla.
BLANTON, Buck	6-2	Sr.	Valdosta, Ga.	KULZER, Keith	5-10	Jr.	Ormond Beach, Fla.
FLEISHER, Greg	5-9	Jr.	Elberton, Ga.	McCRONE, Sean	5-10	Fr.	Pensacola, Fla.
GARDE, Greg	6-0	So.	Jacksonville, Fla.	MORROW, Jonothan	5-10	Jr.	Porthmadog, Wales
GREEK, Steve	6-2	So.	Fern Park, Fla.	SLAY, Kelley	6-0	Fr.	Quincy, Fla.
HENKE, Nolan	5-10	Fr.	Ft. Myers, Fla.	STEWART, Jeff	6-2	So.	Wooster, Oh.
HOMA, Tom	5-10	Jr.	Fairfield, Ct.	VEGHTE, John	5-10	Fr.	Clearwater, Fla.
HORTON, Mark	5-10	So.	Liverpool, England	WINTERS, Louis	5-7	So.	St. Petersburg, Fla.

1982 WOMEN'S GOLF ROSTER

NAME	HT	CLASS	HOMETOWN	NAME	HT	CLASS	HOMETOWN
ANDERSON, Marla	5-5	Sr.	Jacksonville, Fla.	KINTZ, Julie	5-8	Sr.	Atlantis, Fla.
CARSON, Elaine	5-2	Jr.	West Sunbury, Pa.	MOSS, Debbie	5-5	Fr.	Palm Beach, Fla.
DENNARD, Leslie	5-5	Sr.	Fernandina, Fla.	RHODES, Paige	5-6	Fr.	Jacksonville, Fla.
ELDER, Lorraine	5-2	So.	Annandale, Va.	ZAHAND, Debbie	5-4	Fr.	Vienna, Va.
FLYNN, Julie	5-9	Sr.	Marion, S.C.				

MEN'S PROFILES



BUCK BLANTON
Senior
Valdosta, Georgia

Has been a consistent performer for Florida State throughout his career which concludes in 1982 . . . combines a smooth swing with an excellent attitude both on and off the course . . . Experience will help his chances of seeing some playing time this spring . . . will push some of the leaders throughout the season . . . Marketing Major . . . born Dec. 21, 1959.



GREG FLEISHER
Junior
Elberton, Georgia

Will enter the spring as the No. 1 player after edging ahead of Steve Keppler in the fall. . . qualified in the fall at 12-under-par for nine rounds. . . won three collegiate tournaments in 1982. . . third team All-American selection. . . named to All-Metro Conference team in '82. . . all-around athlete in high school who played football and basketball as well as golf. . . was region and state medalist as a senior. . . Business Management major. . . born Dec. 23, 1961.



GREG GARDE
Sophomore
Jacksonville, Florida

Saw a considerable amount of playing time in the fall and could figure in plans for the spring. . . came to Florida State a year ago as one of the top prospects in the state. . . earned all-district and all-city honors in 1981 at Episcopal High School. . . good student majoring in Physics. . . born May 28, 1963.



STEVE GREEK
Sophomore
Fern Park, Florida

Is attending Florida State on an academic scholarship after attaining a perfect 4.0 average in high school. . . will be redshirted this season to give him another year of seasoning. . . came in as a district champion. . . was an all-conference selection and team Most-Valuable Player each year from 1978-81. . . won the 1980 Jacksonville Golf Association men's championship. . . Business major. . . born Oct. 1, 1963.

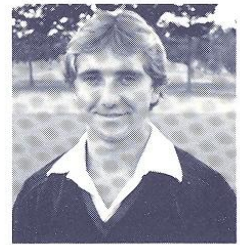


NOLAN HENKE
Freshman
Ft. Myers, Florida

Another newcomer with great competitive experience. . . came in ranked in the top 10 players in the state by Florida Golf World. . . will be redshirted in 1983 but will definitely contend for a slot in 1984. . . plans to major in Business. . . born Nov. 25, 1964.

BRIAN KAMM
Senior
Spenceport, New York

Will most definitely be in the top five players for 1983. . . has improved himself dramatically since coming to Florida State. . . was a 1981 U.S. Amateur qualifier. . . finished third in the New York State Amateur. . . great competitive attitude. . . born Sept. 3, 1961.



STEVE KEPPLER
Senior
London, England

Very well might be the finest player on this year's team. . . was a third team All-American in 1982. . . list of accomplishments goes on and on. . . all-Metro Conference in 1981. . . finished fifth in Metro that year. . . second place finisher in 1979 Grenelife Tournament. . . won the 1978 Doug Sanders World Junior Championship. . . will play either No. 1 or 2 this spring. . . Physical Education major. . . born Feb. 18, 1961.



TOM KRYSSTYN
Freshman
Jacksonville, Florida

Comes to Florida State with an excellent track record. . . is a former Future Masters Champion. . . will be redshirted in 1983 to allow him time to work on his game. . . will be a valuable player beginning in 1984 when the Seminoles lose several key veteran players. . . has a chance to step right into the top five or six next year. . . has an outstanding record as a junior while in high school . . . business major. . . born Dec. 16, 1963.



KEITH KULZER
Junior
Ormond Beach, Florida

Was the 1982 Metro Conference winner . . . earned all-conference honors. . . was a fine junior college player and won the Florida State JC Tournament. . . runner-up in the 1980 Future Masters. . . Indian River Collegiate Invitational winner as a freshman. . . 1979 North-South Junior champion. . . should be in the top five all spring. . . majoring in Hotel and Restaurant Management. . . born May 24, 1962.



JONOTHAN MORROW
Junior
Porthmadog, New Wales

Another player who would definitely make a difference in the performance of the 1983 Seminoles. . . has great potential as evidenced by his record as a junior player. . . was the Welsh Boys Champion 1976-78. . . British Youth Team member. . . member of the Welsh National Team. . . finished fourth in the European Amateur. . . Marketing major. . . born Nov. 3, 1960.



WOMEN'S PROFILES



MARLA ANDERSON
Senior
Jacksonville, Florida

Probably the steadiest player on this year's team. . .state champion as a freshman. . .was the recipient of the Jim Rochelle Memorial Foundation Scholarship presented to the most promising amateur golfer. . .attended Fletcher High School. . .has lettered all three years at FSU. . .Marketing major with a 3.0 GPA. . .born Feb. 10, 1961.



ELAINE CARSON
Junior
West Sunbury, Pennsylvania

Good attitude and a hard worker. . . trying to break into the top six. . .won district 9 tournament in 1980. . .senior class President and National Honor Society President as a high school senior. . .majoring in Marketing at Florida State. . .born Sept. 14, 1962.



LESLIE DENNARD
Senior
Fernandina Beach, Florida

Has an excellent chance to see a lot of tournament action this year for the first time in her career. . .has improved steadily every year and will get her chance as a senior. . .was Most Valuable Player on her high school golf team and played in the state tournament. . . Public Relations major. . .born Sept. 11, 1961.



LORRAINE ELDER
Sophomore
Annandale, Virginia

This sophomore made the biggest strides in the fall and was mentioned as a prime contender for tournament play this spring. . .with more tournament experience, could be a star of the future. . .listed in Who's Who in American High Schools in 1979-80 and 1980-81. . .majoring in Psychology. . .born July 10, 1963.



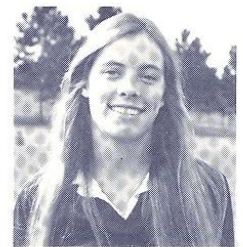
JULIE FLYNN
Senior
Marion, South Carolina

Also mentioned by Coach Giles as a possible breakthrough during the 1983 spring season. . .has played well enough to get a look as a top five candidate. . .played well in the Lady Seminole Invitational in the fall. . .Communication major. . .born Feb. 25, 1960.



JULIE KINTZ
Senior
Atlantis, Florida

Along with Marla Anderson, the most experienced player on the team. . . transfer from Palm Beach Junior College in 1981 after winning JC National Championship. . .Palm Beach Open medalist in 1981. . .Florida Open low amateur, finished third overall. . .U.S. Amateur qualifier. . .Early Childhood Education major. . .born June 28, 1961.



DEBBIE MOSS
Freshman
West Palm Beach, Florida

Comes to Florida State with excellent credentials. . .had an outstanding junior record. . .could see tournament action very early in her career. . .was counted on heavily in the fall and played well despite lack of collegiate experience. . .has as much or more potential than anyone on this year's team. . .Business major. . .born June 27, 1964.



PAIGE RHODES
Freshman
Jacksonville, Florida

Will be a good player with some college seasoning. . .good high school background. . .was named all-district and all-conference as a senior. . .will major in Communication. . .born July 19, 1963.



DEBBIE ZAHAND
Freshman
Vienna, Virginia

Another freshman who needs only to gain experience to become a fine collegiate player. . .joins Lorraine Elder as another great prospect from the state of Virginia. . .plans to major in Business at Florida State. . .born Dec. 18, 1964.

Florida State Athletic Staff



C.W. "Hootie" Ingram Athletic Director

C. W. "Hootie" Ingram is in his second year as Florida State's athletic director. He came to the post in 1981 after serving as associate commissioner of the Southeastern Conference.

Since coming to Florida State, Ingram has initiated a \$10 million dollar building program for athletic facilities that will include a new athletic administration building and improvements to the football stadium, baseball complex and swimming pool area.

Ingram had been associated with the SEC office for eight years. He was first an assistant commissioner before being named associate commissioner (1978).

A native of Tuscaloosa, Al., the home of the University of Alabama, Ingram played football for the Crimson Tide from 1951 through 1954. He was All-SEC as a sophomore when he led the nation in pass interceptions.

After an Army stint, Ingram turned to coaching. He started as an assistant at Bradenton (Fl.) Manatee High School and was later head coach at Tuscaloosa High School for three years.

He later moved into college coaching and had stops at Wake Forest, Virginia Tech, Georgia and Arkansas as an assistant. His only college football head coaching assignment began in 1970 when he succeeded the veteran Frank Howard as head coach at Clemson. Three years later he joined the SEC as assistant commissioner.



Barbara Palmer Associate Athletic Director

Barbara Palmer has been with the Florida State athletic program since 1977. As associate athletic director, Palmer is in charge of the women's athletic program.

Since her arrival on campus, the FSU women's program has grown to the point where it is now considered among the top five programs in the country.

All eight women's sports have turned in winning records over the past three years. There have been three national championships won, including back-to-back titles by the softball team in 1981 and 1982. And finally, last season Florida State sent every team to a national tournament, a feat accomplished by only one other school in the nation.

Simply put, Barbara Palmer has been the energy behind that climb toward national excellence. She was directly responsible for the funding FSU women's athletics receives from the legislature each year. It was Palmer's lobbying that pushed Title IX legislation through the state government in 1980.

So great has been Palmer's impact on the growth of women's athletics in the state of Florida that she was chosen to the inaugural Women's Florida Hall of Fame by Governor Bob Graham last summer. She was one of just six women elected from a field of 226 candidates.

Palmer joined Florida State after serving four years as executive director of a private leisure and recreation services organization. A 1/2 long-time resident of Tallahassee, Palmer graduated from FSU in 1970 and earned a master's degree in leisure services in 1974.

This Is Florida State



Florida State University — the home of more than 20,000 Seminoles — has a campus that starts at the top of one of Tallahassee's famed seven hills, and rolls gently downward and westward across 340-odd acres of pines, palms and pecan trees.

From the Gothic towers of Westcott at the eastern entrance to the campus, to the modern glass and steel structures of its Science Complex to the west, Florida State University has moved forward in time and growth more rapidly than many of its newer counterparts in the State University System. Its enrollment has quadrupled since it became coeducational in 1947, following nearly half a century as the Florida State College for Women.

Today, its 14 schools and colleges are spread through \$150 million worth of buildings, its annual budget exceeds \$100 million and it attracts more than \$18 million a year in research contracts and grants. Students can pick and choose from more than 100 career options, offered in arts and sciences, business, communication, criminology, dance, education, home economics, law, library science, music, nursing, social sciences, social work, theatre and visual arts programs.

The location of FSU in the Capital City of Florida offers unusual opportunities for study and research in the social and policy sciences, and an optimum environment for internships and on-the-job learning experiences for students in many fields of study.

A city within a city, Florida State has 1,200 faculty members, more than 6,000 additional employees and a construction program that exceeds \$50 million.

Seminole Golf Course

Florida State University boasts one of the best all-around collegiate golf facilities in the nation. The university-owned Seminole Golf Course is tough, long and interesting.

The 18-hole, par 72, course measures 7,015 yards. Perhaps, even more important, however, are the adjacent practice facilities with their superb surfaces. The practice driving range has 2,800 square feet of hitting area.

The Seminole course is available for year-round play largely because of Tallahassee's moderate North Florida climate. The 80,000 square foot facility is for the exclusive use of students, course members and FSU golf team members.

In addition to the Seminole Course, the FSU varsity members are privileged to play each Monday at Killearn CC (scene of the TPA Tallahassee Open), and once a week at the scenic, tight Capital City C.C.