

## 1981 FLORIDA STATE UNIVERSITY MEN'S FALL GOLF SCHEDULE

- Sept. 27 Capital City Country Club Benefit Tournament  
Tallahassee, Florida
- Oct. 7-9 LSU National Invitational - Sherwood Forest Country Club  
Baton Rouge, Louisiana
- Oct. 23-25 6th Annual Grenefe Intercollegiate - Grenefe Golf & CC  
Haines City, Florida
- Nov. 20-22 Dixie Intercollegiate - Bull Creek Country Club  
Columbus, Georgia

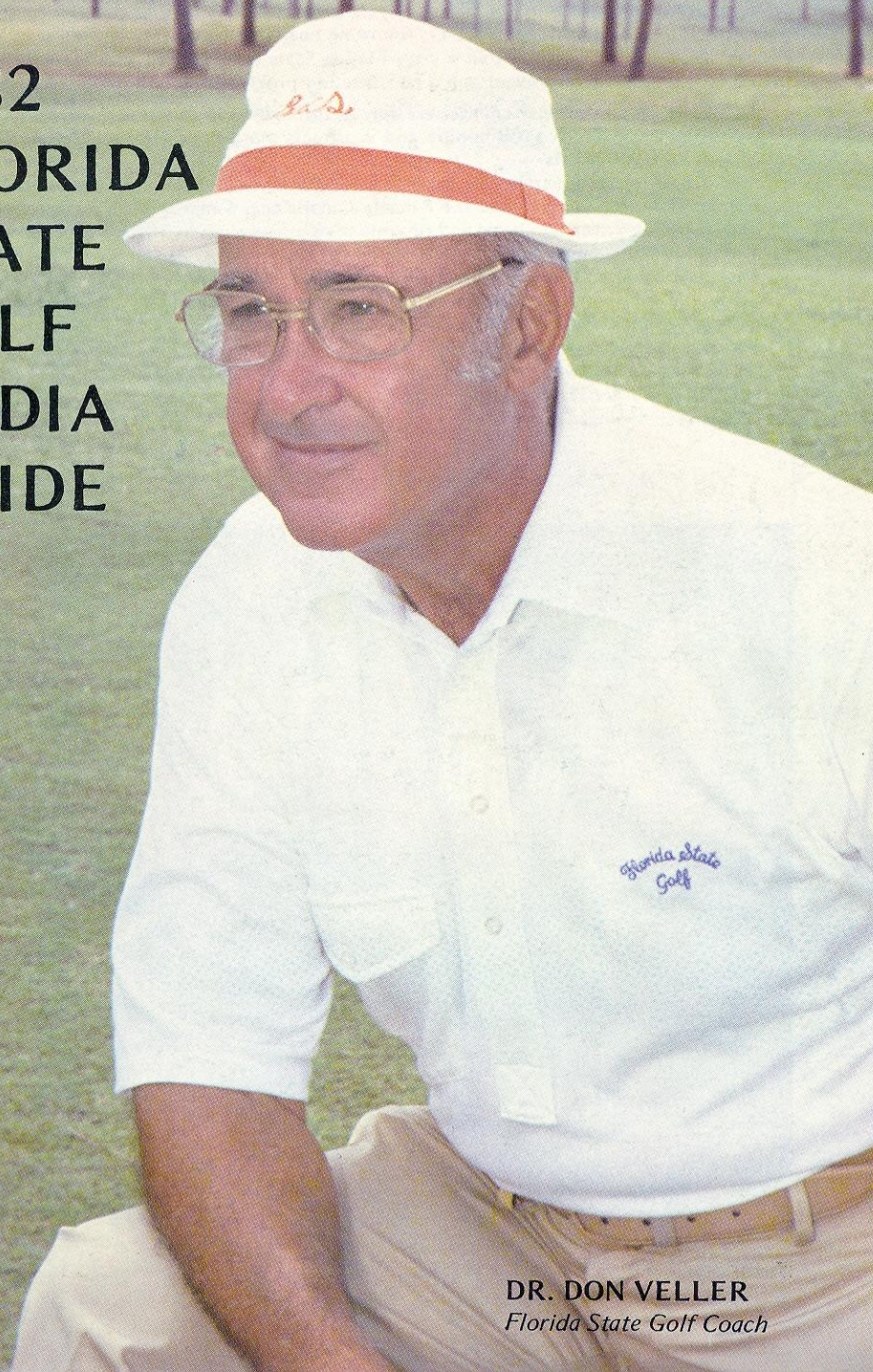
## FSU GOLF SCHEDULE SPRING 1982

- Feb. 5-7 Gator Invitational  
University of Florida Golf Course - Gainesville, Florida
- Feb. 11-13 10th Annual International Intercollegiate Tournament  
Club Compestre - Monterrey, Mexico
- Feb. 26-28 13th Annual Seminole Classic  
Seminole Course - Tallahassee, Florida
- Mar. 5-7 1st Annual Imperial Lakeland Classic  
Imperial Lakes Country Club - Lakeland, Florida
- Mar. 11-12 Spring Break
- Mar. 26-28 13th Annual Southern Junior-Senior Collegiate Golf Invitational  
Still Waters Country Club - Dadeville, Alabama
- Apr. 2-5 SE Intercollegiate Invitational Golf Tournament  
Rolling Hills Golf and Racquet Club - Montgomery, Alabama
- Apr. 23-25 12th Annual Chris Schenkel Intercollegiate Invitational  
Forest Heights Country Club - Statesboro, Georgia
- May 6-8 Southern Intercollegiate Tournament  
Athens Country Club - Athens, Georgia
- May 14-16 6th Annual Metro Conference Championships  
Killearn Golf & Country Club - Tallahassee, Florida
- May 26-29 NCAA CHAMPIONSHIP  
Pinehurst, North Carolina

## 1980-81 FLORIDA STATE UNIVERSITY GOLF RESULTS

- 9th Annual Intercollegiate International - 4th - Monterrey, Mexico
- Gator Invitational - 1st - Gainesville, Florida
- 12th Annual Seminole Intercollegiate Golf Classic - 2nd - Tallahassee, Florida
- Pinehurst Intercollegiate - 1st - Pinehurst, North Carolina
- Southern Junior-Senior - 1st - Dadeville, Alabama
- Southeastern Intercollegiate - 2nd - Montgomery, Alabama
- Chris Schenkel Intercollegiate - 9th - Statesboro, Georgia
- Metro Championship Tournament - 1st - Tallahassee, Florida
- NCAA Championship - 15th - Palo Alto, California

## 1982 FLORIDA STATE GOLF MEDIA GUIDE



**DR. DON VELLER**  
Florida State Golf Coach

## THIS IS FLORIDA STATE

Florida State University—the home of more than 22,000 Seminoles—was founded in 1857 as the Seminary West of the Suwannee. It ranks as one of the South's last, few bastions of campus greenery—the kind that combines the blossoms of camellias, azaleas and dogwoods with moss hung oaks within 340-odd acres.

Florida State University has moved forward in time and growth more rapidly than many of its newer counterparts in the State University System. Its enrollment has quadrupled since it became co-educational in 1947, following nearly half a century as the Florida State College for Women. A city within a city, Florida State has 1,200 faculty members, more than 6,000 additional employees and a construction program that will exceed \$50 million.

Today, its 14 schools and colleges are spread through \$150 million worth of buildings, its annual budget exceeds \$100 million and it attracts more than \$18 million a year in research contracts and grants.

The University is a member of the Academic Common Market and has overseas study centers in Florence, London and the Panama Canal Zone. Summer programs of study are offered in law at Oxford, in hotel and restaurant administration in Switzerland, and in comparative studies of economic and social systems in Yugoslavia.

The location of FSU in the Capital City offers unusual opportunities for study and research in the social and policy sciences, and an optimum environment for internships and on-the-job learning experiences for students in many fields of study.

The University operates major laboratory facilities for nuclear, marine and computer research in addition to a wide-ranging spectrum of institutes and research centers. A Regional Rehabilitation Center serves citizens in the tri-state area with diagnostic and remedial treatment of speech and hearing problems.



## TABLE OF CONTENTS

This is Florida State . . . . .	Inside Front Cover
1981-82 Season Outlook . . . . .	2
Dr. Don Veller, Head Coach . . . . .	3
1980-81 Season in Review . . . . .	3
1981-82 Golf Roster . . . . .	4-5
Player Profiles . . . . .	6-8
Seminole Golf Course . . . . .	Inside Back Cover
1981-82 Schedule . . . . .	Back Cover

## FLORIDA STATE FACTS

Location . . . . .	Tallahassee, Florida
Nickname . . . . .	Seminoles
Colors . . . . .	Garnet and Gold
Enrollment . . . . .	22,500
President . . . . .	Dr. Bernard Sliger
Athletic Director . . . . .	C. W. "Hootie" Ingram
Sports Information Director . . . . .	Mark Carlson
	904/644-4038 (O)
	904/575-7637 (H)
Assistant Sports Information Director . . .	Glenn Greenspan
	904/576-5530 (H)
Assistant Sports Information Director . . . . .	Lisa Morton
	904/575-4773 (H)
Golf Coach . . . . .	Dr. Don Veller
	904/644-1739
Home Course . . . . .	Seminole Golf Course
	(7,015 yards; men's championship; par 72)

## 1981-82 SEASON OUTLOOK

Like the weather, highs and lows are in the forecast for the 1981-82 Florida State golf team and head coach Dr. Don Veller. True, the linksmen lost three of their top golfers from last season and one of the most difficult schedules in FSU golf history looms on the horizon, but promising young players and excellent golfing facilities allow the prediction for sunny days ahead.

Lost from last seasons outstanding team are veteran golfers Mike Grant, Grant Turner and Paul Azinger.

But, the Seminoles are not short on potential. Back are three golfers who made appearances in the top five during the season. Leading the list is Stephen Keppler. Keppler, a recent qualifier for the 1981 British Open, carded three top ten individual finishes last season including a second place showing at the Pinehurst Intercollegiate. Returning with Keppler are seniors Paul Downes and David Boeff. A former English Amateur Champion Downes has also received Honorable All-America honors, while Boeff was a 1981 US Amateur qualifier and a former New York State junior champion.

Supporting the top three players are a list of newcomers and golfers who have seen limited tournament time with the Tribe. Wearing the garnet and gold for the first time this season are freshmen David Blakeman, Steve Greek, Jeff Stewart and Greg Garde. Blakeman, like countryman Downes, won the English Amateur championship and boasts a prominent career as a junior player in Great Britain. Greek gained honors as the Jacksonville Amateur champion, while Stewart is a two time all-state performer from Ohio and Garde earned all-district and all-state in the prep ranks.

The second year players on the squad represent a combination of newcomers and veterans. New to the Seminole team are Bob Gregorski and Jim Peters, and back for their sophomore seasons are Jon Morrow and Keith Kulzer. Gregorski was the Wisconsin state junior champion in 1978 and 1980. Morrow, who saw playing time in the fall, is a former Welsh National team member and a fourth place finisher in the European Amateur championship. Kulzer was the runner-up in the 1980 Future Masters Tournament.

The junior class on the squad also boasts a mixture of youth and experience. Joining the team are Jay Paquette and Buck Blanton, and returning to action for the Tribe are Brian Kamm and Mike Keymont. Paquette, the 1981 Silver Lake Invitational champion joins Blanton who saw extensive playing time in the fall. Former junior college All-America Keymont will join 1981 US Amateur qualifier Kamm and returnee Keppler to complete the third year linksmen.

Along with Downes and Boeff in the senior class is newcomer Neil Van Leeuwen. Van Leeuwen, low amateur at the Jim Lee Open, won the 1981 Tallahassee City Championship.

The Tribe will need all the help they can get from the new players and returnees when FSU faces its toughest schedule in recent history. Back on the schedule are two tournaments the Seminoles won -- the Gator Invitational and the Junior-Senior Collegiate. Toss in the International Intercollegiate at Monterrey, Mexico, the Imperial Lakeland Classic, the Southeastern Intercollegiate, the Chris Schenkel Intercollegiate and the Southern Intercollegiate Tournament and a top schedule is insured. Florida State also continues to be one of the few schools in the nation to host two top flight events. February 26-28, the Tribe will entertain 24 major universities in the nation at the 13th Annual Seminole Intercollegiate Golf Classic. Included in the list are Alabama, Auburn, Clemson, Georgia Southern, defending champion LSU, North Carolina, Mississippi, South Florida and Florida.

The Tribe will again host the Metro Conference Golf Tournament May 14-16 which is played at the Killlearn Golf and Country Club, the site of the TPA Tallahassee Open.

Florida State players will receive the work they need at the par 72 University-owned Seminole Golf Course while also playing at Killlearn and Capital City Country Club. The Tribe will also receive aid from touring pros and Tallahassee residents Rex Caldwell, Mark Lye, Forest Fezler and Greg Powers. The foursome joins the list of players who have lived in Tallahassee or who have taken advantage of the climate and courses and have played at Florida State. Pros who have competed for FSU are Hubert Green and recent graduates Kenny Knox and Paul Azinger, both of whom have qualified for the 1981 TPA tour. Other prominent players who spent their college days at FSU are Walker Cuppers, Downing Gray and Don Fischesser, and well known amateur Jack Veghte. Prominent club pros are scattered throughout the country.



PAUL DOWNES



DAVID BOEFF

(2)

## HEAD COACH DR. DON VELLER

It takes a certain type of individual to possess a doctorate and be a successful coach. Florida State golf coach Dr. Don Veller is just that.

The District III Coach of the Year last season, Veller is an accomplished writer, teacher and coach. Entering his eighth successive season, Veller took over the reigns of the FSU golf program for the third time in 1974. Veller's first stint as coach was from 1953-58 and his second tenure lasted two seasons beginning in 1967. Last season, the Veller led squad earned four first place titles and two second place finishes. Included in that ledger were consecutive wins within six days and a fifth straight Metro Conference crown. The squad was ranked fifth in the nation most of the season by *Golf World*.

Along with his excellent reputation as a golf coach, Veller also made a name for himself on the gridiron. His teams won 30 of 42 games between 1948-52 and authored the Tribe's first undefeated regular season in 1950.

Veller holds a bachelor's, master's and doctoral degree from Indiana University where he played football earning the 1934 Most Valuable Player Award and the Big 10 medal for scholarship and athletics. He holds the rank of professor emeritus at Florida State. His chief forte is in the area of coaching psychology where he has published over 40 articles.

Veller has been married to the former Frances Brindley for over 45 years. For over 21 years he has written a Sunday column that appears in the *Tallahassee Democrat* titled "Divot Diggins", and numerous poems he has authored appear in *Golf Digest*. Veller is a member of the Golf Writers Association of America.

## SEASON IN REVIEW

Winning two prestigious tournaments in six days and capturing four first place titles during the season highlighted the 1980-81 golf year for the Florida State linksmen and head coach Dr. Don Veller.

The Tribe opened the spring season on an international trek that took them to Monterrey, Mexico to compete in the Ninth Annual Intercollegiate International. Playing well on foreign soil, FSU began to get into the swing of things and finished fourth in a very difficult field. One week later, FSU made its second stop in Gainesville and impressed the golfing world with a four stroke victory in the Gator Invitational. The win was to mark the first of six tournaments where FSU would either finish first or second. In Gainesville, the Seminoles finished with a one-under par total 851 beating out a prestigious field of 23 teams to claim the title. FSU also boasted the individual winner, as Paul Azinger shot a three round card 209 finishing one stroke ahead of teammate Mike Grant. The linksmen then returned home to the 12th Annual Seminole Invitational finding almost equal success. Firing a final round 283, five under par and best of the tournament, the Tribe narrowed a seven stroke LSU lead and finished just three strokes behind the Tigers at 861. Individually, Azinger finished fourth at 210 and Grant Turner was sixth carding a 213.

The most impressive streak began in fabled Pinehurst, N.C. with a fairy tale ending. Trailing the Arkansas Razorbacks by two strokes going into the final round, sixth ranked Florida State vaulted into the lead when golfers Grant, Steve Keppler and Azinger shot birdies on the 17th hole to lift the team to the come-from-behind victory in the 24 team tournament. Keppler shot a 144 to finish in second place and Turner added a 147 for third. Six days and 1,600 miles later, the Seminoles were back in the winners circle. Playing in the Junior-Senior Invitational at Stillwaters, Ala., FSU pulled from the pack to record its second win in less than a week. Florida State shot a final round 287 to finish with a six under par 858, 13 strokes ahead of second place Georgia Southern. Individually, Turner captured third at 211, Grant was fifth at 216 and Keppler finished ninth at 219.

Continuing their winning ways, the Tribe next journeyed to Montgomery's Southeastern Intercollegiate to take on the top teams in the South. Placing two golfers in the top ten, FSU finished second to host Alabama shooting a three round total 879, just two strokes behind the Crimson Tide. Azinger again topped the Tribe hit parade with a 215 total to finish third, and Grant carded a 217 for seventh place. The second place showing gave the Tribe a ledger of two firsts and one second in an amazing two week period.

Following a ninth place showing in the Chris Schenkel, a tournament FSU had previously won, FSU again returned home this time to host the 1981 Metro Conference Golf Championship. Since entering the top conference in 1977 the Tribe had captured four straight titles and 1981 proved no exception. Boasting four of the top five individual finishers, the Seminoles ended the three day event at 878, 30 strokes ahead of Virginia Tech. The 30 stroke victory was the second largest margin FSU had ever won the Metro Title by. Completing the great season was a 15th place showing in the NCAA Tournament in Palo Alto, Cal. It marked the second consecutive year FSU had finished in the Top 15 in the country. Individually, graduated senior Grant Turner finished fifth.

(3)



Front Row: (left to right) Keith Horton, Greg Stewart, Neil Van Leeuwan, Rich Waller, Mike Keigh. Second Row: Tim Powley, Tom Homa, Dave Boeff, Rob Glisson, Grant Krueger, Steve Greek, Greg Garde, Keith Kulzer, Mike Keymont, Dr. Don Veller. Third Row: Howard Sheffield, Steve Roberts, Jay Paquette, John Hupp, Buck Blanton, Jim Peters, Brian Kamm, Tom Walters, David Wallace, Greg Vallet.

### 1981-82 FLORIDA STATE GOLF ROSTER

David Blakeman, 5'10", 150 lbs, Freshman, Newcastle, England  
 Buck Blanton, 6'2", 195 lbs, Junior, Valdosta, Georgia  
 David Boeff, 5'10", 185 lbs, Senior, Rochester, New York  
 Paul Downes, 5'9", 155 lbs, Senior, Coventry, England  
 Greg Garde, 6'0", 150 lbs, Freshman, Jacksonville, Florida  
 Steve Greek, 6'2", 170 lbs, Freshman, Jacksonville, Florida  
 Robert Gregorski, 6'1", 175 lbs, Junior, Manitowoc, Wisconsin  
 Thomas Homa, 5'10", 150 lbs, Sophomore, Fairfield, Connecticut

Keith Horton, 5'10", 165 lbs, Junior, Jacksonville, Florida  
 Brian Kamm, 5'6", 155 lbs, Junior, Spencerport, New York  
 Stephen Keppler, 5'11", 170 lbs, Junior, London England  
 Mike Keymont, 5'9", 155 lbs, Junior, Orlando, Florida  
 Keith Kulzer, 5'10", 150 lbs, Sophomore, Ormond Beach, Florida  
 Jonathon Morrow, 5'10", 145 lbs, Soph., Porthmadog, New Wales  
 Jay Paquette, 5'9", 160 lbs, Junior, Leesburg, Florida

Jim Peters, 6'2", 185 lbs, Junior, Glenwood, Minnesota  
 Tim Powley, 5'8", 155 lbs, Freshman, Morgantown, West Virginia  
 Steve Roberts, 5'10", 160 lbs, Freshman, Daytona Beach, Florida  
 Jeff Stewart, 6'3", 190 lbs, Freshman, Wooster, Ohio  
 Greg Vallet, 5'8", 155 lbs, Sophomore, Vitro, W. Virginia  
 Neil Van Leeuwen, 5'10", 150 lbs, Senior, St. Louis, Missouri  
 David Wallace, 5'10", 155 lbs, Freshman, Charleston, West Virginia  
 Tom Walters, 5'10", 180 lbs, Junior, Dayton, Ohio

# PLAYER PROFILES...



**DAVID BLAKEMAN**  
Freshman  
Newcastle, England

Prominent career as junior player in Britain . . . begins tenure with Florida State in spring . . . could earn an immediate spot in the Seminole top five . . . greatest triumph was the 1981 English Amateur Championship . . . very consistent player and a good putter.



**BUCK BLANTON**  
Junior  
Valdosta, Georgia

Received a large amount of playing time in the fall with FSU . . . qualified for the top five in fall competition . . . combines a smooth swing and an excellent attitude both on the course and off . . . could continue to play among the leaders in the spring.



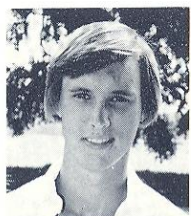
**DAVID BOEFF**  
Senior  
Rochester, New York

Qualified for the 1981 US Amateur Championship . . . former N.Y. State Junior Champion . . . played No. 1 in the fall for the Tribe . . . expected to provide senior leadership and to carry a big load for FSU in the spring . . . appears to have reached his potential after struggling past three seasons.



**PAUL DOWNES**  
Senior  
Coventry, England

Honorable Mention All-America 1980 . . . 1978 English Amateur Champion . . . Midland Open Champion three years . . . 1980 Berkshire Trophy recipient . . . has played in the top five the last two seasons . . . good competitor with a winning attitude . . . has excellent short game and a superior knowledge of golf swing and game . . . should have his best year ever.



**GREG GARDE**  
Freshman  
Jacksonville, Florida

One of the top prospects signed by the Tribe in 1981 . . . earned all-district honors in 1981 . . . 1981 all-city selection . . . with additional work could earn a spot in the Seminole lineup . . . good competitor.



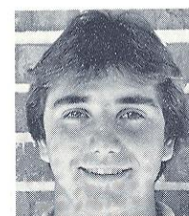
**STEVE GREEK**  
Freshman  
Jacksonville, Florida

Attending FSU on an academic scholarship earning a straight 4.0 average in high school . . . 1981 district champion . . . all-conference selection 1978-81 . . . Most Valuable Player 1978-81 . . . 1980 Jacksonville Golf Association Men's Champion.



**BOB GREGORSKI**  
Sophomore  
Manitowoc, Wisconsin

Wisconsin junior champion 1978 and 1980 . . . 1978 and 1979 conference champion . . . with additional hard work and dedication could earn a spot on the starting team.



**BRIAN KAMM**  
Junior  
Rochester, New York

One of the most improved players on the squad . . . 1981 US Amateur qualifier . . . finished third in the N.Y. State Amateur . . . bona fide first team prospect . . . great competitive attitude . . . with additional confidence could be very important to the team's success in 1981-82.



**STEVE KEPPLER**  
Junior  
London, England

Very successful year in 1980 . . . earned a second place finish at Pinehurst, fifth place at the 1981 Metro Conference Championship and ninth at the Junior-Senior Invitational . . . will be among the top five for FSU in spring . . . finished second in 1979 Grenelefe Tournament . . . 1978 Doug Sanders World Junior Championship winner . . . top athlete on the team.



**MIKE KEYMONT**  
Junior  
Orlando, Florida

Former junior college All-America . . . Brevard Junior College all-state selection two years . . . all district and all-central Florida in high school . . . good competitor . . . with more dedication and effort could earn a berth in starting lineup.



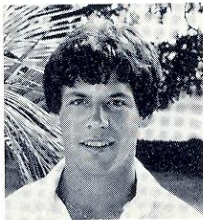
**KEITH KULZER**  
Sophomore  
Ormond Beach, Florida

Runner-up 1980 Future Masters . . . Indian River Collegiate Invitational winner as a freshman . . . 1979 North - South Junior Champion . . . great potential . . . with more maturity could be a top golfer for FSU.



**JONATHON MORROW**  
**Sophomore**  
**Porthmadog, New Wales**

Member Welsh National Team . . . Welsh Boys Champion 1976-78 . . . British Youth Team member . . . finished fourth in European Amateur . . . competed in two tournaments in the fall for the Tribe . . . with hard work and added consistency could earn a spot in the top five.



**JAY PAQUETTE**  
**Junior**  
**Leesburg, Florida**

1981 Silver Lake Invitational Champion . . . former junior college player . . . Lake County Champion 1980 and 1981 . . . 1980 Mission Inn Summer Invitational winner . . . all conference selection in high school . . . has shot low scores, but needs added consistency to earn a spot in the top five.



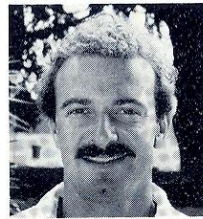
**JIM PETERS**  
**Sophomore**  
**Glenwood, Minnesota**

Earned all-conference honors 1976-78 . . . district champion 1976 and 1980 . . . dedication in practice a definite help . . . needs additional competitive experience . . . honors student.



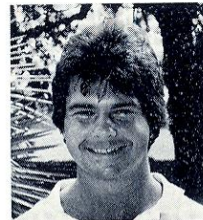
**JEFF STEWART**  
**Freshman**  
**Wooster, Ohio**

Ohio all-state at the prep level . . . top 32 in Western Junior ranking . . . 11th place finisher Insurance Youth Classic . . . US Junior Amateur Qualifier . . . all-conference four years in high school . . . potential to be a fine collegiate golfer . . . excellent student.



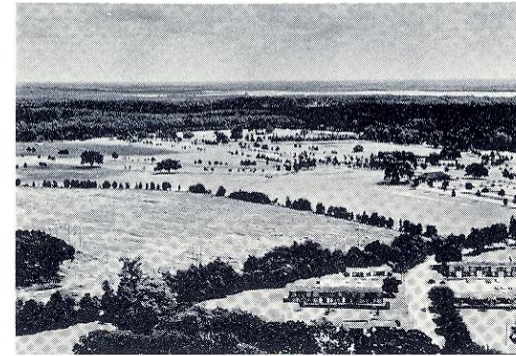
**NEIL VAN LEEUWEN**  
**Senior**  
**St. Louis, Missouri**

Tallahassee City Championship medalist . . . low amateur at Jim Lee Open . . . good short game . . . definite contender for top five slot . . . Missouri junior titlist in 17 and 18 year old competition . . . should provide the Tribe with help.



**TOM WALTERS**  
**Junior**  
**Dayton, Ohio**

Brevard Junior College transfer . . . earned ninth place finish at 1980 Junior College National Tournament.

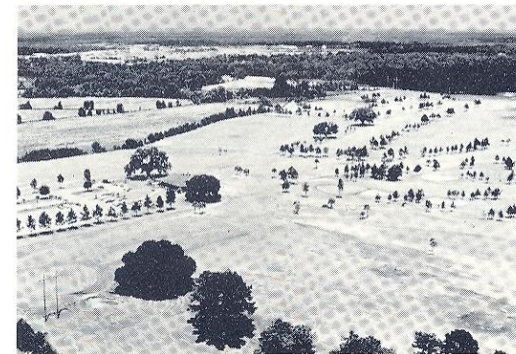


**SEMINOLE**  
**GOLF**  
**COURSE**

Florida State University boasts one of the best all-around collegiate golf facilities in the nation. The university-owned Seminole Golf Course is tough, long and interesting.

The 18-hole, par 72, course measures 7,015 yards.

Perhaps, even more important, however, are the adjacent practice facilities with their superb surfaces. The practice driving range has 2,800 square feet of hitting area.



The Seminole course is available for year-round play largely because of Tallahassee's moderate North Florida climate. The 80,000 square foot facility is for the exclusive use of students, course members and FSU golf team members.

In addition to the Seminole Course, the FSU varsity members are privileged to play each Monday at Killearn CC (scene of the TPA Tallahassee Open), and once a week at the scenic, tight Capital City C.C.

**TALLAHASSEE DAILY AVERAGE HIGH**

January	47.2	September	77.1
February	51.0	October	66.3
March	61.1	November	58.8
April	67.2	December	52.0
May	72.1	Annual Average:	68.5

SOURCE: Tallahassee Chamber of Commerce