



**FLORIDA
STATE
UNIVERSITY
FOOTBALL HANDBOOK 1975**



1975 SCHEDULE

DATE	OPPONENT	SITE	TIME
Sept. 13	Texas Tech	Lubbock, TX	7:30*
Sept. 20	UTAH STATE	TALLAHASSEE	7:30
Sept. 27	IOWA STATE	TALLAHASSEE	7:30
Oct. 4	Georgia Tech	Atlanta, GA	2:00
Oct. 11	Virginia Tech	Blacksburg, VA	1:30
Oct. 18	Florida	Gainesville	2:00
Oct. 25	AUBURN	TALLAHASSEE	7:30
Nov. 1	Clemson	Clemson, SC	1:00
Nov. 8	MEMPHIS STATE	TALLAHASSEE	7:30
Nov. 15	MIAMI	TALLAHASSEE	7:30
Nov. 22	Houston	Houston, TX	7:30*

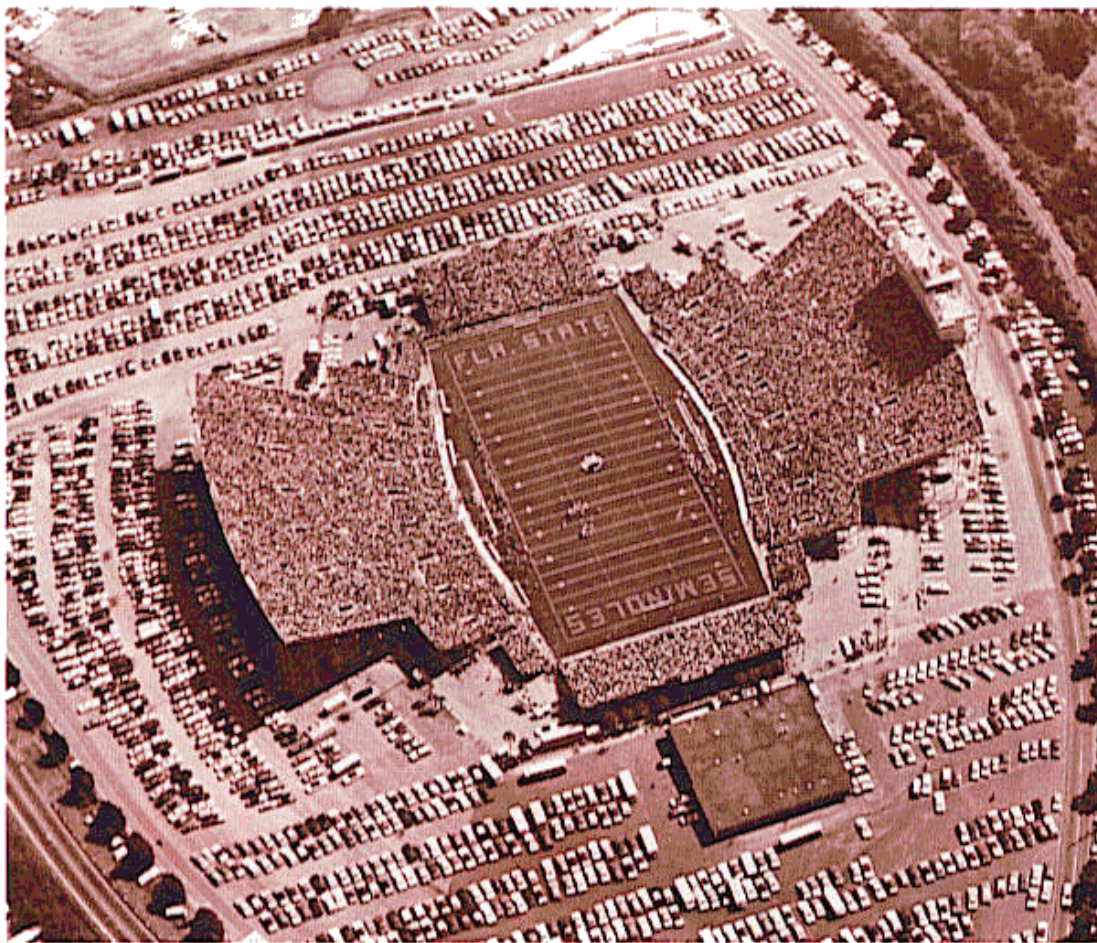
*Central Time, all others Eastern

1974 RESULTS

FSU	OPP	ATTEND.
6 Pittsburgh (H)	9	(30,076)
7 Colorado State (H)	14	(30,984)
9 Kansas (A)	40	(38,780)
17 Baylor (H)	21	(25,262)
7 Alabama (A)	8	(58,394)
14 Florida (H)	24	(42,451)
6 Auburn (A)	38	(58,709)
14 Memphis State (A)	42	(20,689)
21 Miami (A)	14	(19,785)
21 Virginia Tech (H)	56	(27,707)
8 Houston (H)	23	(18,195)
AVG. ATTENDANCE: Overall		33,728
Home		29,113

PHOTO CREDITS: We gratefully acknowledge and give special recognition to Barry Mittan, Joe Millard and Don Dughi; Doc Kokol and Gil Lawhon of the FSU photo lab and the Tallahassee Democrat for their contributions to this handbook.

ON THE COVER: Florida State All-America candidate, defensive tackle Greg Johnson is captured by the brush of Jim Grosvenor. The 6-4, 240-pound senior from Fruitland Park will be capping a career as a leader of the Seminoles' defensive line.



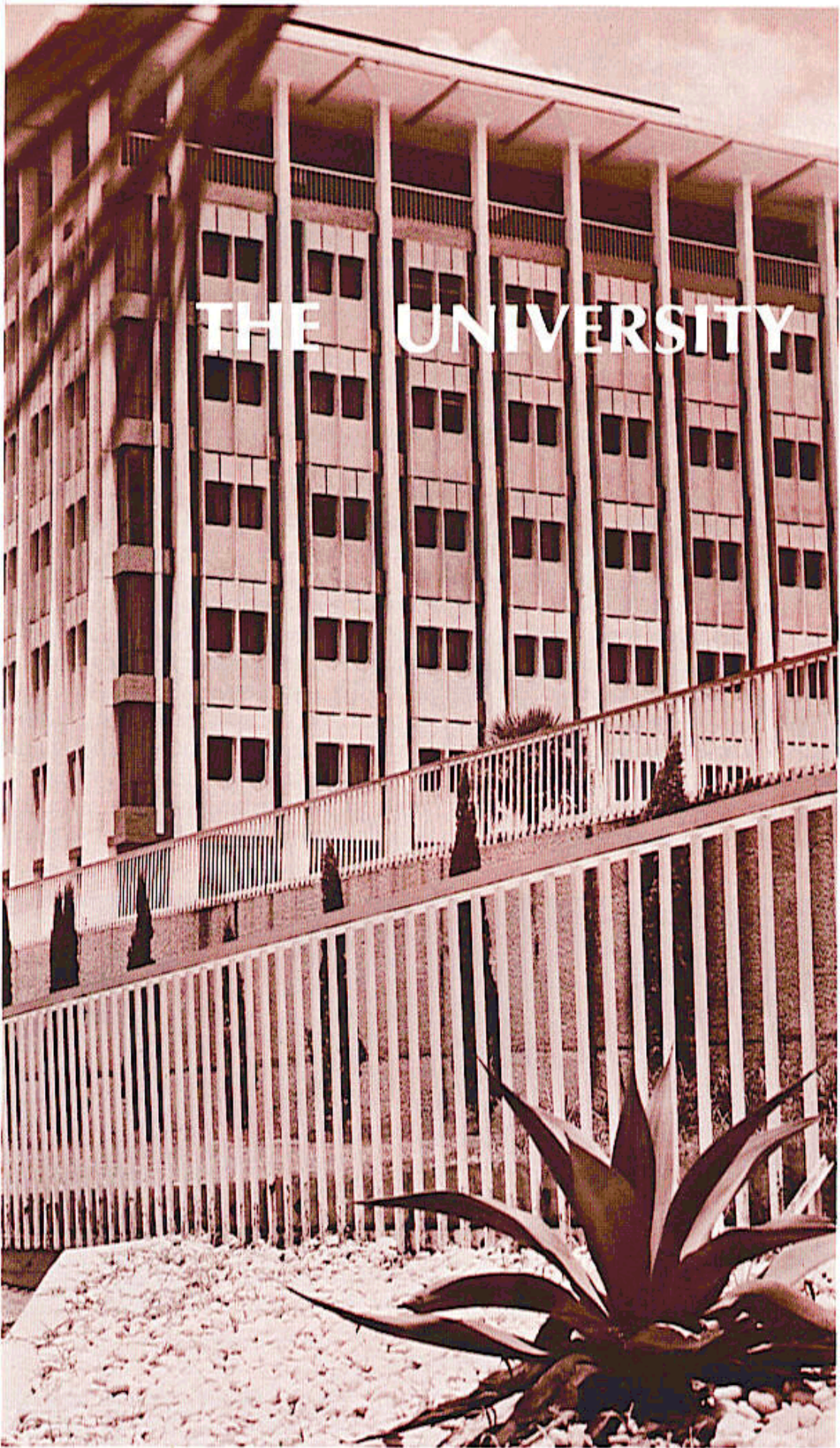
FLORIDA STATE UNIVERSITY

LOCATION: Tallahassee, Florida 32306
PRESIDENT: Dr. Stanley Marshall
ENROLLMENT: 21,000
CONFERENCE: Independent
COLORS: Garnet and Gold
NICKNAME: Seminoles
STADIUM: Doak S. Campbell (40,500)
BAND: Marching Chiefs
ATHLETIC DIRECTOR: John Bridgers
BUSINESS MANAGER: Claude Thigpen
SPORTS INFORMATION DIRECTOR: Lonnie Burt
ASSISTANT SID: Hank Schomber
HEAD FOOTBALL COACH: Darrell Mudra
ATHLETIC DEPARTMENT: (904) 644-2790
FOOTBALL OFFICE: (904) 644-2775

This public document was promulgated at an annual cost of \$5,289 or \$1.76 per copy to serve as a handbook for football to acquaint the media and fans with the 1975 Florida State University football program.

TABLE OF CONTENTS

All-Americans	38-39
Athletic Committee	11
Athletic Director—John Bridgers	8
Athletic Directory	11
Athletic Staff	9-10
1975-76 Basketball Schedule	Inside Back Cover
John Bridgers, Athletic Director	8
Career Records	67
Coaches and Captains Through The Years	71
Depth Chart	42
Florida State University	
History	4-5
President—Stanley Marshall	6
Football Staff	15-20
Future Schedules	44
Homecoming Game Scores	70
Junior Varsity Schedule	43
Largest Home Crowds	70
Longest Plays	68
Marching Chiefs	79
Stanley Marshall, President	6
Darrell Mudra, Head Coach	14
1975 Opponents	46-56
Opponents' Best	70
1975 Outlook	21-22
Photo Credits	Inside Front Cover
Player Profiles	23-37
Press Box Information	80
Radio Network	79
Record Book	64-76
Record vs. All Opponents	72-73
Results, 1947-1974	73-76
1974 Results	Inside Front Cover
1974 In Review	60-62
1975 Roster	40-41
1975 Schedule	Inside Front Cover
Season Records	66
Seminole Boosters	78
Signee List	43
Single Game Records	65
1974 Statistics	58-59
Travel Plans	12



FLORIDA STATE UNIVERSITY

Florida State University, with an enrollment of 21,000 students, naturally is very much attuned to the present; however, it continues to revere its historic past and set ever higher standards for the future.

As one of nine institutions in the State University System, and the second oldest, Florida State's traditions date back to its founding in 1857 as the Seminary West of the Suwanee.

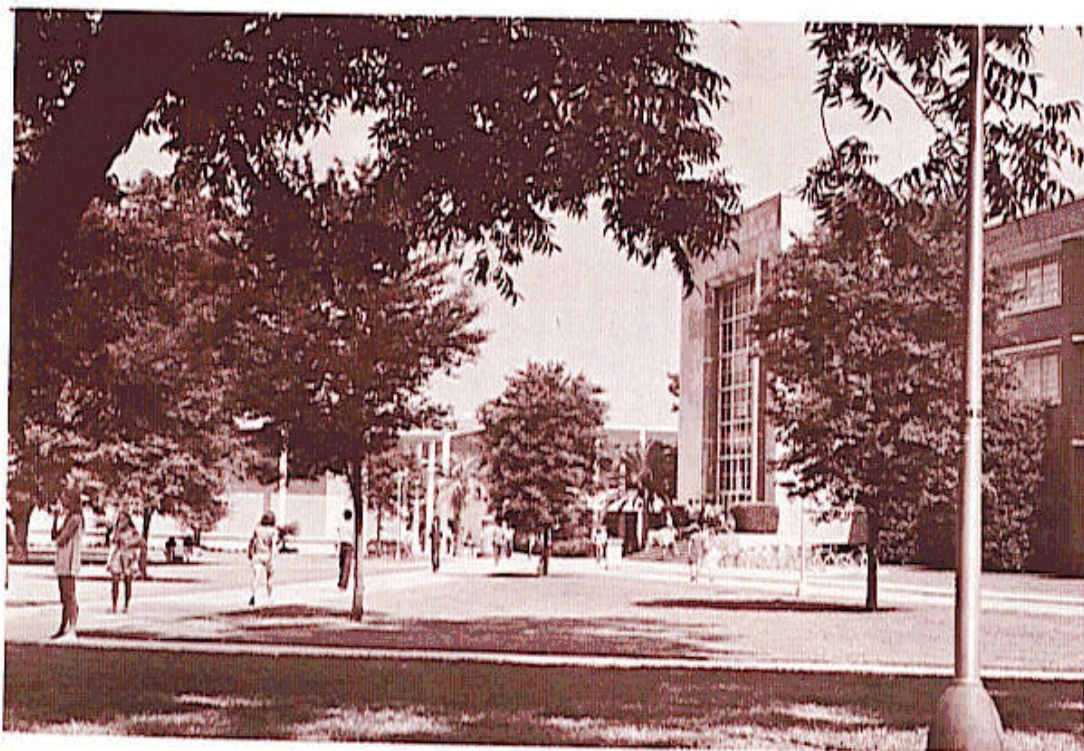
This year Alpha Chapter of Florida of Phi Beta Kappa celebrated its 40th anniversary at Florida State and charter members on hand recalled how hard they had to work to achieve this distinction for what was then Florida State College for Women. Eighty new members were initiated this year in recognition of their high academic standings.

In May, six years after fire gutted the south wing of Westcott, the historic building's restoration was completed and again occupied by administrative offices. The twin-towered landmark, built in 1909, was restored at a cost of \$2.1 million.

Supported by major grants from the National Science Foundation and other organizations, the University has attained national prominence in physics, statistics, chemistry and psychobiology.

During the past year, the chemistry faculty generated more than \$1.5 million in grants between the department and the Institute of Molecular Biophysics. Dr. Lloyd Beidler, professor of biological science, became the second member of the National Academy of Sciences elected for research done in Florida. The other, Dr. Michael Kasha, a professor of chemistry, also is on the University faculty. At commencement, the president of this distinguished academy, Dr. Phillip Handler, an internationally known scholar and scientist, accepted from the University an honorary Doctor of Humanities.

Commencement was a fitting climax to an outstanding year with the distinguished actress Miss Helen Hayes delivering the address to the grad-



uates and herself receiving an honorary Doctor of Humane Letters. The night before, she was present for the world premiere of her new Walt Disney movie, shown in Tallahassee as a benefit for the Charles MacArthur Center for American Theatre. The Center, housed temporarily in the Johnston Building, was named for Miss Hayes' late husband, the famous American playwright. The MacArthur Center will eventually be housed in a \$19.4 million complex located next to the Fine Arts Building.

Another movie premiere during the academic year boosted the University athletic program. Former Seminole football player Burt Reynolds was on hand for the Tallahassee showing of his film, "The Longest Yard," and he brought with him professional football star Larry Csonka and TV's "Million Dollar Man," Lee Majors.

King Hussein of Jordan was awarded an honorary doctorate in Humane Letters in special ceremonies in Ruby Diamond Auditorium. Hussein was cited for his voice of moderation and his work toward a Mid-East settlement and because of his leadership in advancing his country in the fields of health and education. Florida State President Stanley Marshall and Mrs. Marshall were guests in the royal box in Amman, Jordan, to watch the Marching Chiefs, FSU's band, perform just before the fall quarter started last year. The Chiefs were invited by the U.S. State Department to take part in the International Trade Fair in Damascus, Syria, and also stopped in Jordan before returning home.

Florida State University's School of Music continues to bring honors to the institution. Early in 1975, the University's Symphony Orchestra was invited to play at the Kennedy Center in Washington. In May, faculty member Carlisle Floyd's popular opera "Susannah" was presented in Washington, representing Florida in the nation's celebration of the Bicentennial.

Outstanding speakers come every year to the campus. During the past academic year, such varied notables as newsmen Mike Wallace and Dan Rather, seer Jeane Dixon, former Secretary of State Dean Rusk, *Star Trek* creator Gene Roddenberry and the presidents of all the major oil companies were University visitors.

One of Florida State's own, Michael Shaara, a member of the English department for a decade prior to his retirement two years ago, won the 1975 Pulitzer Prize for fiction for his civil war novel, "The Killer Angels."

Another faculty member, Dr. Seymour Hess, designed the meteorology equipment which was aboard the huge Titan Centaur rocket launched in August for America's first landing on Mars. Hess was one of 13 scientists chosen from around the country by NASA to design different experiments in the continuing planetary exploration program.

In addition to approximately 90 different baccalaureate fields of study at the undergraduate level, 58 doctoral programs and more than 85 master's degree areas, the University offers a variety of innovative and challenging special programs. Florida State maintains study centers in Florence, Italy, and London, England, which are open to all State University System students, and the University's Department of Hotel and Restaurant Administration annually conducts a summer program of study in Switzerland. There also are cooperative programs with Florida A&M University and Tallahassee Community College and courses geared to special students and honor students.

DR. STANLEY MARSHALL
President

Being Florida State University's "No. 1 Fan" is more than just an honorary title to President Stanley Marshall.

Despite the fact that his position often requires from him 12 or 15 hours a day, he still finds time to attend most of the athletic events at the University.

According to his wife, Shirley, he swims, plays tennis and participates in touch football games with friends at his Tallahassee residence, and enjoys horseback riding at the family farm in nearby Quincy. The entire family—Sue Ellen, 22; David, 26; John, 13; Kimberly Ann, 7; and Drew, 6—share in many of the athletic activities.

Dr. Marshall attended Pennsylvania State Teachers College at Slippery Rock until the middle of his junior year (February, 1943), when he entered the U.S. Army. During his military duty, he was a member of the Army Specialized Training Program, and served in the European Theater of World War II until his discharge in 1946. He returned to Slippery Rock and completed his bachelor's degree in 1947. He received the master's and doctor's degrees from Syracuse University in 1950 and 1956, respectively, both in the area of science education.

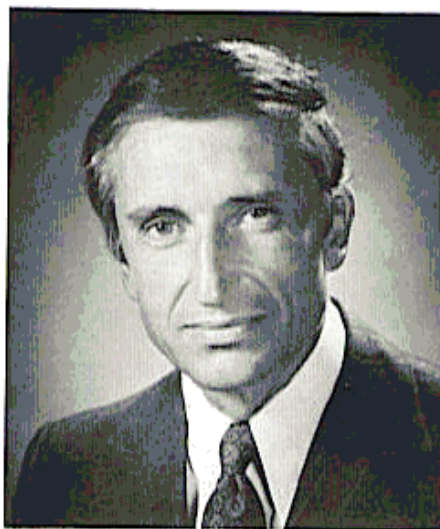
Chief administrative officer of the University since June 6, 1969, Dr. Marshall has been a member of the Florida State faculty since 1958. He served as head of the Department of Science Education until July, 1967, when he became dean of the College of Education. He was named Acting President of the University in February, 1969, and was officially designated as President June 6, 1969.

In 1963, he was invited by the Ford Foundation and the Turkish government to direct the National Science Project of Turkey in which he and other American educators undertook the establishment of a national science high school for gifted students in Ankara.

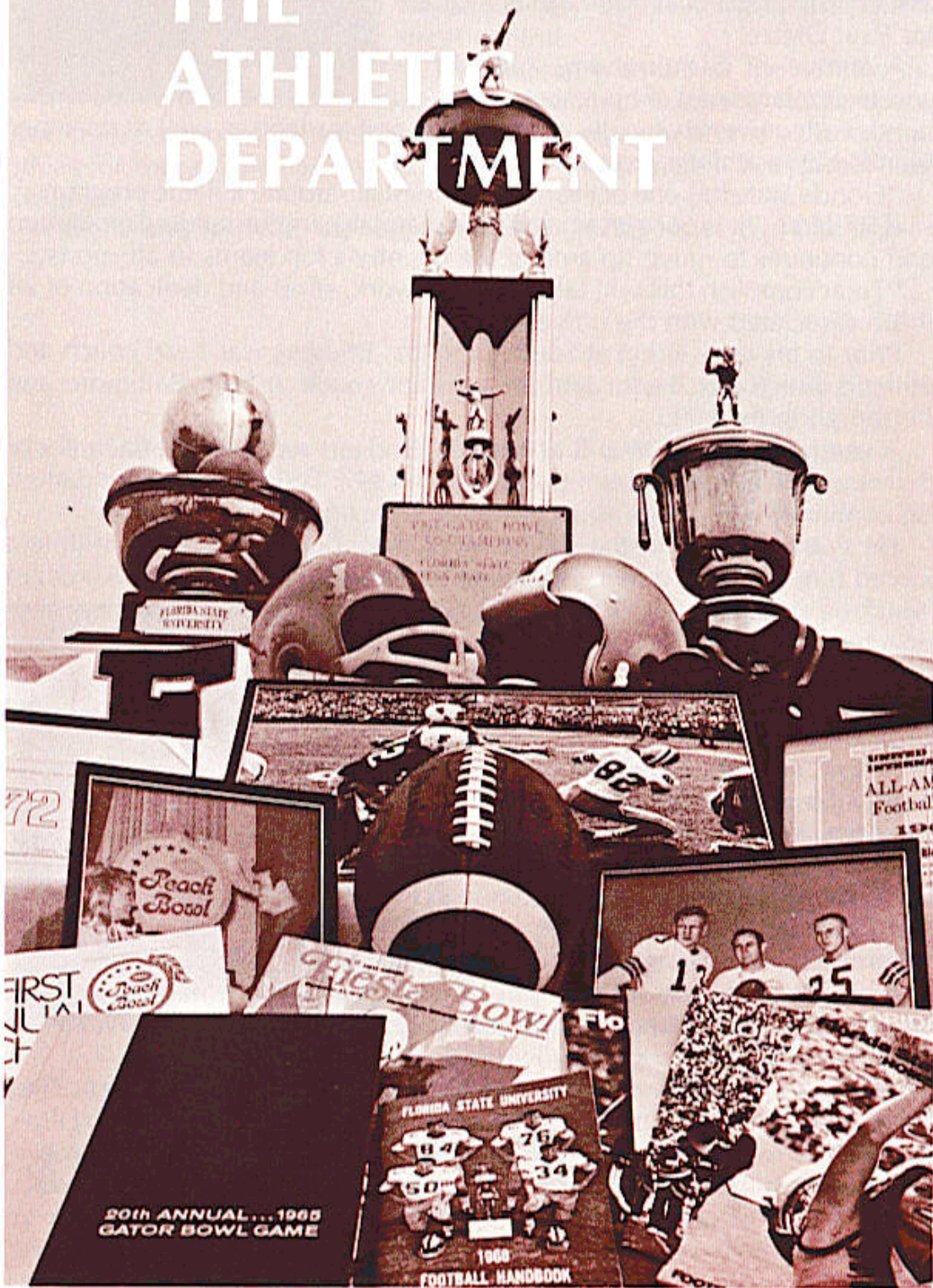
Dr. Marshall is a member of 13 national or state professional organizations and has been recognized by inclusion in "Who's Who in America" and "American Men of Science." He has been appointed to the Secretary of the Navy's Advisory Board on Education and Training and the U.S. Army Advisory Panel on ROTC Affairs.

In addition, he served a year as president of the Southern Association of State Universities and Land-Grant Colleges, is an ex-officio member of the Florida Council of 100 and was a member of the Board of Regents of the National Library of Medicine position for which he was nominated by the President of the United States and confirmed by the U.S. Senate.

Dr. Marshall is the co-author of three professional books and a widely-used series of elementary science textbooks. He served as editor of the "Journal of Research in Science Teaching" from 1962-66 and as a member of the editorial board of "Science World" from 1962-65. He also has written numerous journal articles and monographs.



THE ATHLETIC DEPARTMENT



JOHN BRIDGERS **Athletic Director**

John Bridgers brought many years of administrative and coaching experience with him when he assumed Florida State's Athletic Directorship in the spring of 1973.

A veteran coach in both collegiate and pro ranks, Bridgers came to the Seminoles from South Carolina where he served as an associate to Head Coach and Athletic Director Paul Dietzel.

A native of Birmingham, Ala., Bridgers feels a large part of his responsibility is to establish and maintain strong bonds with university faculty, staff, alumni and students as well as the other friends of the athletic program.

"Florida State has one of the nation's finest all-around athletic programs," said Bridgers. "It is our aim to see that it maintains its outstanding reputation and continues to move up among the country's top teams in all sports.

"To accomplish this will take the hard work, effort and dedication of all those associated with the university."

Prior to his association at South Carolina, Bridgers was head coach and athletic director at Baylor and an assistant coach at both Baltimore and Pittsburgh in the NFL.

A veteran of World War II and Korea, Bridgers received his Bachelor of Science degree from Auburn University in 1947. Following his graduation, he continued at Auburn as an instructor of economics.

He was accepted to the Yale Law School, but a service commitment forced him to turn it down. Following his two-year Army tour in Korea, in which he enrolled as a private and was discharged as a captain, he began his coaching career.

Bridgers' early coaching experience included tenures at the University of South at Sewanee, Tenn., and at Johns Hopkins, where he coached both football and track.

In 1957, he joined the staff of the Baltimore Colts and was a coach on the 1958 club which defeated the New York Giants, 23-17, in the now famous "sudden death" game.

He moved to Baylor in 1959 and for 10 years held the Athletic Director and Head Football Coach positions with the Bears. During this time he led the Bears to three bowl games and the third best won-loss record in the Southwest Conference behind Texas and Arkansas.

Following the 1968 season Bridgers left Baylor and was named offensive backfield coach for the Pittsburgh Steelers. He joined Dietzel's staff at South Carolina in 1970.

Bridgers is married to the former Frances Young of Florence, Ala. They have two sons, John Dixon and Donald Hamilton.





CLAUDE THIGPEN
Athletic Business Manager

Claude assumed his new position in the spring of 1974, after nearly two decades of working with the Athletic Department as accountant and ticket manager.

The Greenville, Fla. native continues to head the Seminoles' complex ticket operations as he has for more than 12 years, but has added new responsibility for budget and fiscal control.

The veteran member of the athletic department has organized the ticket operation into a smooth functioning unit and is constantly on the alert for new ideas for more expedient operation of the department's overall business dealings.

Claude and his wife, the former Carleen Lindley, have two children.



MARLENE FURNELL
Director,
Women's Intercollegiate Athletics

Marlene is entering her third year as Director of Florida State's fast growing Women's Intercollegiate Athletic Program, which last year became a division of Intercollegiate Athletics at FSU.

The first person to serve as Women's AD at FSU since the University's coed days, she has the difficult assignment of coordinating the activities of one of the fastest growing areas of intercollegiate athletics in the country. Currently at Florida State she directs

eight sports for women: basketball, golf, softball, swimming, tennis, track, volleyball and badminton.

A native of Pendleton, Ore., she lettered three years in tennis in high school and earned 12 letters in three sports at Phillips University, Enid, Ok., before receiving her BS in 1960. After eight years' coaching in high schools in Kansas and Florida, Marlene came to Florida State to work in graduate school.

LONNIE BURT
Sports Information Director

Coordinating press and public relations, and promoting Florida State's Athletic Program in general fall under Lonnie's far-ranging duties.

A member of the first group of men to enroll at Florida State following its conversion from a College for women, Lonnie brought a 16-year background of sports writing with him when he returned to his alma mater in 1966.

A native of Evergreen, Ala., Lonnie has directed publicity for the Seminoles throughout one of their finest eras—one which has included four bowl games and a number of post season invitations for the remainder of the Seminole sports teams.

Lonnie and his wife, the former Sally McLaughlin of Statesville, N.C., have two children.



HANK SCHOMBER
Assistant
Sports Information Director

Hank is now in his ninth year as fulltime assistant in the Sports Information Office and his 11th year of association with the Athletic Department overall. A 1967 graduate of Florida State, he first began working for the Athletic Department as a student assistant and became a fulltime staff member upon graduation.

While his duties run the full spectrum of the Sports Information Office responsibility, he is primarily responsible for the publications and statistical work in the department and the press box operations in football, basketball and baseball. A native of Westchester County, N.Y., and former resident of Pompano Beach, Hank recently developed a new Poster-Program concept which Florida State will introduce this fall in place of the more traditional football program.

He is an active member of the National Collegiate Baseball Writers Association, serving as a vice-president of that group and was recently elected Chairman of the Independent Sports Information Directors Association.

Hank and his wife Judy, who has a Ph.D. in Spanish from FSU, have a daughter, Tam.



ATHLETIC COMMITTEE

Dr. Richard Baker
Chairman
203 College of Business
644-3093

Members: John Bridgers, Athletic Director; Chris Griffin, Student; James Jones, Professor of History; William H. Long, Professor of Meteorology; Doyle Pope, Seminole Boosters, Inc., Representative; Walter Revell, Alumni Representative; Janet Wells, Professor, Physical Education; Ernest Williams, Director of Internal Control.

ATHLETIC DIRECTORY

NAME	POSITION	PHONE
Blake, Mary Jo	Softball Coach	(904) 644-2087
Bridgers, John	Athletic Director	2790
Burt, Lonnie	Sports Information Director	2790
Carlisle, Terry	Varsity Swimming Coach	3074
Dana, Steve	Accounting Clerk	2790
Debord, Frank	Football Equipment Manager	2775
Durbin, Charlie	Cinematographer/Bus Driver	1205
Durham, Hugh	Varsity Basketball Coach	3080
Frye, Dee	Secretary, Athletic Director	2790
Furnell, Marlene	Women's Athletic Director	2087
Gay, Larry	Assistant Basketball Coach	3080
Granger, Gene	Equipment Clerk	4734
Green, Evelyn	Secretary	2790
Grouwinkle, Gary	Assistant Football Coach	2775
Harbison, Bob	Assistant Football Coach	2775
Jobson, Randy	Varsity Tennis Coach	2790
Jones, Billie Jo	Women's Volleyball Coach	3078
Jones, Cal	Assistant Football Coach	2775
Lankford, Ann	Women's Tennis Coach	1447
Leach, Donna	Secretary, Football Office	2775
Lee, Marion	Assistant Ticket Manager	1830
Long, Mike	Varsity Track Coach	3836
Martin, Mike	Assistant Baseball Coach	4812
Maul, Terry	Women's Swimming Coach	3074
McDowell, Gene	Assistant Football Coach	2775
McHone, Morris	Assistant Basketball Coach	3080
Means, Helen	Secretary, Business Office	2790
Mudra, Darrell	Varsity Football Coach	2775
Pendleton, Larry	Assistant Football Coach, Academic Advisor	2775
Pollard, Don	Assistant Football Coach	2775
Powell, Barbara	Accountant	2790
Rich, Karen	Secretary, Sports Information	2790
Roberts, Dick	Varsity Cross Country Coach, Academic Advisor	3080
Rodriguez, Pete	Assistant Football Coach	2775
Ruckel, Rhonda	Secretary, Basketball Coach	3080
Saucier, Woody	Varsity Equipment Manager	4734
Scarborough, Ann	Women's Golf Coach	2087
Schomber, Hank	Assistant Sports Information Director	2790
Sheffield, John	Cashier	1830
Thigpen, Claude	Business Manager	2790
Toran, Paul	Women's Track Coach	2087
Usher, Millie	Women's Basketball Coach	2087
Wilson, Eddie	Assistant Football Coach	2775
Woodward, Woody	Varsity Baseball Coach	4812

1975 TRAVEL PLANS

TEXAS TECH, Sept. 13 — Depart Tallahassee Sept. 12 at 1:30 p.m. via Southern Airways charter jet, arriving in Lubbock at 3:30 CDT. Team headquarters will be Holiday Inn at 2600 Parkway Drive. Contact Mrs. Eloise Parker. Phone 806/765-7401. Seminoles will depart immediately following the game, arriving in Tallahassee at 3:30 a.m.

GEORGIA TECH, Oct. 4 — Depart Tallahassee Oct. 3 at 1:00 p.m. via Southern Airways charter jet, arriving in Atlanta at 1:45. Team headquarters will be Holiday Inn at 1944 Piedmont Central, NE. Contact Henry L. Parham. Phone 404/875-3571. Seminoles will depart immediately following the game, arriving in Tallahassee at 6:45.

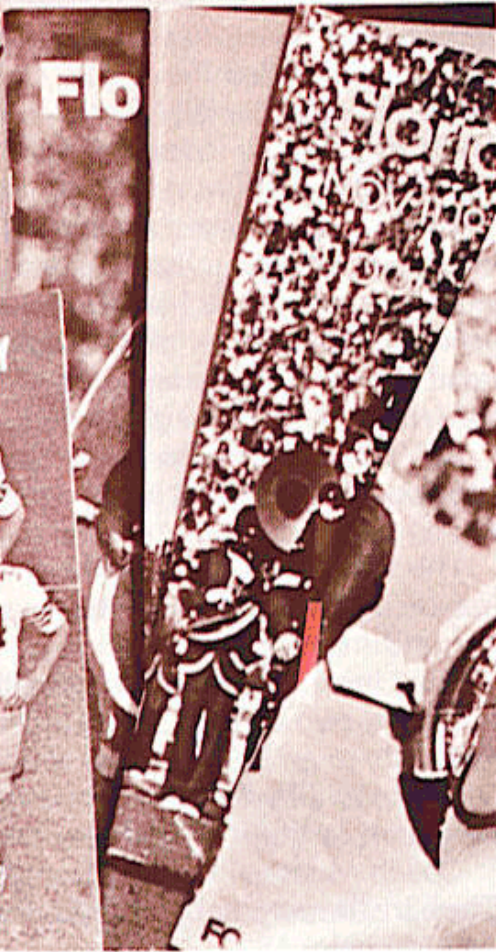
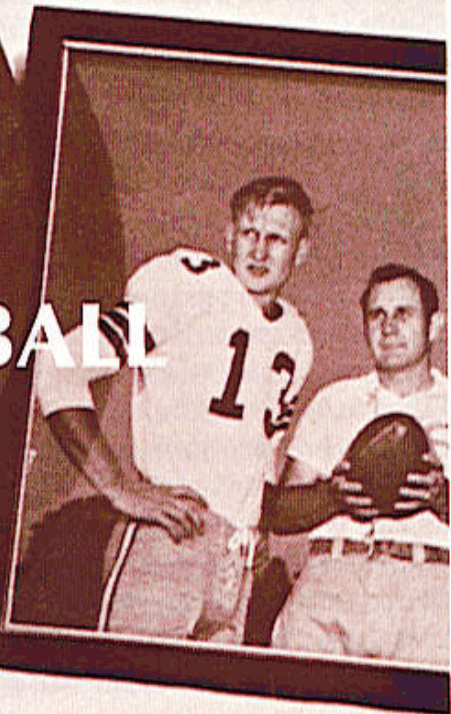
VIRGINIA TECH, Oct. 11 — Depart Tallahassee Oct. 10 at 1:00 p.m. via Southern Airways charter jet, arriving at Roanoke, VA at 2:25 p.m. Charter busses will meet the team at the airport for trip to Blacksburg, arriving there approximately 3:30 p.m. Team headquarters will be Holiday Inn on Route 460. Contact Gene Wittington. Phone 703/951-1330. Seminoles will depart immediately following the game, arriving in Tallahassee approximately 8:30 p.m.

FLORIDA, Oct. 18 — Depart Tallahassee Oct. 18 at 11:45 a.m. via Southern Airways charter jet, arriving in Gainesville at 12:15. Charter buses will take Seminoles directly to stadium. Team will return immediately following game, arriving in Tallahassee approximately 7:30 p.m.

CLEMSON, Nov. 1 — Depart Tallahassee Oct. 31 at 2:30 p.m. via Southern Airways charter jet, arriving in Greenville, SC at 3:30. Charter buses will meet team at airport for trip to Clemson, arriving there approximately 4:30. Team headquarters will be Holiday Inn Clemson (P.O. Box 512). Contact James R. Ensley. Phone 803/654-4450. Seminoles will depart immediately following the game, arriving in Tallahassee at 7 p.m.

HOUSTON, Nov. 22 — Depart Tallahassee Nov. 21 at 3 p.m. via Southern Airways charter jet, arriving in Houston at 3:45 p.m. CST. Team headquarters will be Holiday Inn, West Loop South. Contact Claire Turner. Phone 713/621-1900. Seminoles return following the game, arriving in Tallahassee approximately 2:15 a.m.

FOOTBALL STAFF



DARRELL MUDRA **Head Coach**

When Florida State set out to find a new coach following the 1972 season, the Seminoles knew they would have to find an extraordinary person. The Seminoles were coming off a winless season and it would take someone special to get the program turned around.

The "someone" they picked was Darrell Mudra who held the reputation of coming in and turning programs around, a point that was noted immediately.

The 45-year-old Omaha, Neb. native came to Florida State from Western Illinois with extremely high recommendations. "Darrell Mudra is one of the outstanding football coaches in the country," says former Nebraska Head Coach Bob Devaney, now that school's athletic director. "He has been able to win wherever he has gone and in many cases despite great obstacles."

Tommy Prothro, ex-college coaching standout, now boss of the San Diego Chargers, is another who thinks Mudra was the man for the Florida State job. "I believe Darrell Mudra is a very, very superior coach. I would have been surprised if any candidate for the Florida State job was the caliber of Darrell Mudra."

Coach Mudra's record speaks for itself. He has turned five losers into big winners. In 16 years of college coaching, the soft-spoken educator has recorded 107 victories against 42 losses and two ties.

Mudra attended Peru State College in Nebraska where he was an all-conference halfback. He received a masters degree from Omaha University and his doctorate from Colorado State. He served in the Air Force during 1950 and '51.

He was an assistant coach at Huron (S.D.) and Colorado State before becoming head coach at Adams State, Alamosa, Colo. in 1959. The previous season Adams State had gone 1-9 but in Mudra's first year the Colorado school gained eight victories against one loss. In four seasons there, Mudra-coached teams never lost more than two games in a single year and he led the Indians to a bowl game.

In 1963, he moved to North Dakota State, a team which had been 0-10 the previous year. In three seasons his records were 3-5, 10-1 and 11-0, including two bowl games.

The next challenge was the Montreal club of the Canadian professional league. In 1965 the Alouettes were 3-11 but under Mudra in '66 they went 7-7 and made the playoffs.

The University of Arizona was the next program Mudra turned around. It took him two seasons to do this, but in the second year he directed the Wildcats to an 8-3 record and a spot in the Sun Bowl.

Western Illinois gained his services in 1969 and in five years at the McComb institution Mudra's clubs went 39-13.

Coach Mudra is married to the former Jean Marie King of Omaha, Neb. They are the parents of four children, Darrell Jr., 21; Stephen, 20; Sherry, 19; and Michele, 15.





GENE McDOWELL
Administrative Assistant, Defensive Ends

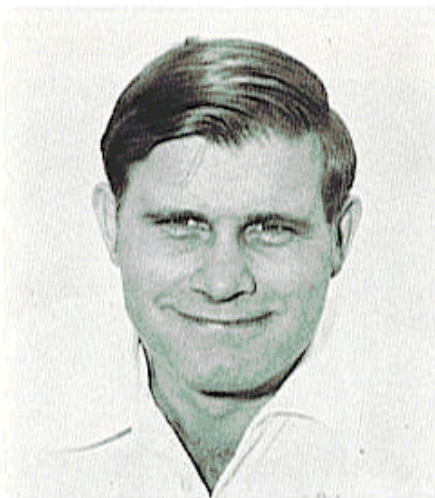
This former Florida State All-America has taken on new duties for Darrell Mudra, as he assumed the role of Administrative Assistant, in addition to working with the Tribe defensive ends.

Gene returned to Florida State last year after four seasons as an assistant at Kansas State, where he also tutored the defensive ends.

A native of Quincy, the 34-year-old McDowell was a prep standout at Waycross, Ga., High School before coming to FSU where he lettered three seasons (1960-62). He was named to the third team Associated Press All-America as a linebacker following his senior year. He was also named the State's Outstanding College Football Player in 1962 by the Daytona Beach Quarterback Club.

Following his graduation in 1963, Gene served in the military service for two years before returning to Florida State in 1965 as a graduate assistant. A year later he was named Head Freshman Coach. In 1969 he became the Seminoles' chief recruiter, a post he held until he left for Kansas State.

Gene is single.



GARY GROUWINKEL
Offensive Coordinator

This former University of Iowa offensive lineman and linebacker was brought to Florida State by Coach Mudra this spring to install the Seminoles' new Wing-T attack.

The 38-year-old native of Wamello, Iowa came to Florida State after being out of the coaching ranks and in private business. His last coaching assignment was at Northwestern and during his stint with the Wildcats they tied for second in the Big Ten Conference after both the 1970 and '71 seasons.

Previous to his assistant's job at Northwestern, he was the offensive line coach at his alma mater (Iowa) in 1968 and '69.

Grouwinkel served one season under Mudra at Arizona in 1967, the year that team beat Ohio State in Columbus. He spent two years at North Dakota and both those clubs were invited to college division bowl games.

At the University of Iowa, Grouwinkel was on the Rose Bowl teams which defeated Oregon State and California in 1957 and '59.

Previous to starting his college coaching career, he coached prep clubs in West Branch and Ottumwa, Iowa, where his teams won four conference championships and he was voted Iowa Prep Coach of the year.

He is married to the former Diane Elliott and they have three children, Kevin, Kristin and Kari.

PETE RODRIQUEZ
Defensive Coordinator, Linemen

Pete is one of four coaches who served previously with Coach Mudra at Western Illinois. The 35-year-old Chicago native first served with Mudra at Arizona and continues in the capacity of defensive coordinator and interior defensive line coach.

Mudra calls Rodriquez "one of the really great strategists in the game today." And his defensive unit with Arizona's 1968 Sun Bowl club was considered one of the nation's best that year.

Pete played his prep ball at Kelly High School in Chicago before gaining a scholarship to Western State College in Colorado. He received his B.A. at Western in 1963 and his M.A. a year later. His early coaching career included the defensive coordinator spot at Stratton (Colo.) High School in 1964 and a year as an assistant at Harrison High in Colorado Springs before taking over as head coach at that school in 1966. He joined Mudra at Arizona in 1968.

Pete and his wife Linda have two children.



FRANK DeBORD
Kickers, Equipment

Frank is now in his eighth season as a member of the Seminole staff. After several seasons serving as the equipment manager, he has added duties including the overseeing of upkeep of the practice field, working with the Tribe place-kickers and also helping with the weight program.

A native of Virginia, Frank attended Virginia Tech where he lettered in football and wrestling. Following graduation he served as an assistant coach at Franklin, Va., High School and also played two seasons for Norfolk in the Continental Football League.

Frank and his wife Marian have three children and they reside in nearby Quincy, Fla.





BOB HARBISON **Offensive Line**

Bob Harbison is beginning his 27th season as an assistant coach at Florida State. The Seminoles' modern football history numbers just 29 years, thus Harbie is "Mr. Seminole."

The veteran Tribe mentor "retired" from coaching following the 1972 season and entered private business, but found he could not get coaching out of his system and returned to FSU last year as Darrell Mudra began forming his new staff.

During his 26 seasons, Harbie has worked just about all facets of offense and defense and Mudra assigned him duties with the interior linemen.

During Harbie's career at Florida State, the Seminoles have been to eight bowl games. He has served under six head coaches. He first came to FSU as an assistant to Don Veller in 1947. Since then he has served under Tom Nugent, Perry Moss, Bill Peterson and Larry Jones.

Over the years he has developed many outstanding offensive and defensive linemen and long time Seminole observers agree there are few coaches who get the most from their charges as consistently as Harbie. His 1964 defensive line, which became known as the "Magnificent Seven", was considered by many to be Florida State's finest defensive unit.

Bob and his wife Jane have four children.



CAL JONES **Linebackers**

After serving as Coach Mudra's assistant at Western Illinois for three seasons, Cal accompanied his boss to Florida State.

In his first two years at Western, Cal coached one All-American, two All-State college selections and a Most Valuable Player.

Before going into college coaching, he was an extremely successful prep coach in California. At Central Union HS in El Centro, Cal., Cal's teams compiled a record of 43 victories against 13 defeats from 1966-70. His squads won conference championships in each of those seasons and he was named Imperial Valley Coach of the Year in 1968.

Cal, a Pittsburgh, Pa., native is a member of the National Association of Intercollegiate Athletics' Hall of Fame and was named first team NAIA All-America as a guard at Adams State in 1964.

He was captain of the Adams State clubs in both 1963 and '64. He received his B.A. and M.A. degrees from his alma mater and has done advance work at Northern Colorado.

He and his wife Elaine have two children.

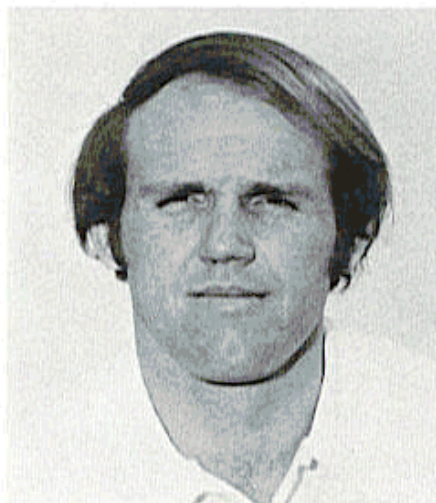
LARRY PENDLETON
Academic Advisor

Larry is now in his third season with the Seminoles and his second as a full-time staff member. The former Tribe standout returned to his alma mater in 1973 as a graduate assistant and last year took the position of Academic Advisor for the football squad.

A native of Winter Garden, he attended Lakeview High School where he earned 10 athletic letters. He attended Florida State from 1964-68 and during his three-year varsity career played on teams that competed in three bowl games—the Sun, Gator and Peach. Larry was a three-year starter for the Seminoles, two on offense and one on defense.

Following his graduation Larry served as an assistant coach at Colonial High School in Orlando from 1969-72.

He is married to the former Carolyn Chalk of Fort Walton Beach.



DONALD (DEEK) POLLARD
Defensive Backs

Deek is another member of the staff who had previously coached with Darrell Mudra. A 1961 graduate of Western Illinois, he returned to his alma mater in 1971 to serve with Mudra.

Prior to that move, Deek was considered one of Illinois' outstanding prep coaches. In six years as head coach at Pittsfield High School, he led his teams to a 55-4-3 record, a mark that ranks him as the winningest prep coach in Illinois' history. Pollard's Saukees were undefeated in their last 54 games, the longest unbeaten string in state history until the club extended it 10 more games into 1972.

He was named Illinois prep coach of the year in 1970.

His success as defensive secondary coach at Western is noted in the 1972 team which allowed opponents only 97 yards per game passing while intercepting 17 aerials.

Deek, who holds an M.A. from Northeast Missouri State, and his wife Brenda have two children.





RICK SCHACHNER
Running Backs, Punters

Rick is the latest addition to the Seminole varsity staff after serving last season as a graduate assistant. The 24-year-old Prospect Heights, Ill. native played his college football at Western Illinois under Coach Mudra.

He attended Wheeling High School before gaining a scholarship to Western. He earned six varsity prep letters in football and wrestling.

At Western, he was used primarily as a blocker in the backfield and was considered excellent in his specialty. During his three collegiate varsity seasons, Western teams had a combined record of 24-9 and were involved in the NCAA College Division playoffs.

Majoring in Physical Education, he graduated from Western in '73 and coached the defensive ends at his alma mater for two seasons. Last year at Florida State, Rick assisted with the defensive ends and backs along with doing the scouting for future opponents.

He is married to the former Rosemary Orton of McHenry, Ill.



EDDIE WILSON
Quarterbacks, Receivers

Eddie came to Florida State this spring with both professional and college experience.

The 34-year-old native of Redding, Cal., spent last season as an assistant on the Kansas City Chiefs staff, an NFL team for which he also played.

Wilson attended high school in Chandler, Ariz. prior to accepting a football scholarship at Arizona. Before graduating in 1962, his honors as a quarterback included third team All-America, Academic All-America and team co-captain.

Following graduation, he was drafted in the second round by the NFL Detroit Lions and the third by the old AFL Dallas Texans, who later became the Kansas City Chiefs.

When the Texans moved to Kansas City, Wilson became Len Dawson's understudy in 1963 and '64. He started some games for the Chiefs in 1963 before being traded to the Boston Pats in '65. The Miami Dolphins claimed him in the expansion draft before the 1966 season.

He injured a knee in a Miami exhibition game and in '67 joined Coach Mudra's staff at Arizona, where he stayed five years before going to Duke as an assistant in 1972 and '73.

Last year he rejoined the Chiefs as an assistant.

Eddie is married to the former Laura Ann MacNeill of San Marion, Cal. and they have four children.

DON FAULS **Head Trainer**

One of the most popular personalities in Florida State's athletic history, Don returns to the Seminoles after a three and a half year absence.

Known affectionately as "Rooster" by the more than 1,000 athletes he has treated in his 18 years of service, Fauls gave up his position to become general manager of a Tallahassee golf course. However, the call for working with athletes was strong and when the Seminole Trainer's post opened up for the second time since his departure in January, 1972, the 55-year-old veteran could resist no longer.

A native of Ithaca, N.Y., Don first came to Florida State in 1954 after serving as trainer for professional baseball teams in Greensboro, N.C. and Omaha, Neb. A member of the Athletic Trainers Association, he has served as trainer for the U.S. Pan American team and as a member of the Olympic Trainers Selection Committee.

Don attended Ithaca College where he lettered in baseball and basketball. He and his wife Marguerite have three children.



STUDENT TRAINERS

John Mooney
Dave Darovec

J. E. Gundersheimer

Roger Mosure
Richard Lies

STUDENT MANAGERS

Ray Parker

Jack McCambridge

GRADUATE ASSISTANT COACHES

Frank Vohun
Carl Wade
Jim Gladden
Jack Kiker
Larry Rayes
David Snell

Florida State
Kentucky State
William Jewel University
Florida State
Langston University
Florida State

THE OUTLOOK

Despite a pair of disheartening seasons, optimism burns bright in the bosoms of Florida State faithful.

This will be Coach Darrell Mudra's second year as the Seminole football boss and in the words of this man who has turned so many losing programs into winners, "we will be able to play with most people this fall."

There are several reasons Seminole fans think things are looking up. One of the first is that 39 lettermen return from last year's squad—the same one which bowed to Alabama 8-7 in the final minute, led Southwest Conference Champion Baylor 17-0 at halftime and played two other eventual bowl foes, Florida and Houston, much closer than most people thought.

Another reason Seminoles around the country figure things will get much better is the excellent recruiting year turned in by Mudra and his hard-working staff. Florida State surprised even its most ardent fans by signing some of the most highly-sought athletes in and out of state.

The recruiting crop was so good in fact that a number of these incoming freshmen figure to see action this fall. Even if this frosh crew isn't able to break into the starting lineup, it figures to push some of the front-liners and this makes for competition and depth—two things the Seminoles haven't been blessed with the last couple of seasons.

There are still some trouble spots to be filled, however. Even the biggest Seminole buff will admit that despite the fact that one pre-season football magazine took a deep plunge and ranked Florida State 19th nationally during the heat of the summer.

Following spring practice, there still was a question as to who would be the No. 1 quarterback. During spring drills, lettermen Steve Mathieson and Jimmy Black along with red-shirt Clyde Walker split the duties.

The biggest surprise was Walker, around for a couple of years but not attracting much attention. Both Mathieson and Black were part-time starters last season and the former was the quarterback of record during Florida State's 21-14 victory over Miami.

In Leon Bright, Larry Key and Rudy Thomas, the Seminoles are blessed with three of the best running backs in their history. But the list doesn't stop there since Jimmy Heggins had an outstanding spring and Bobby McKinnon showed some bright spots. This group should get some excellent help from the incoming freshmen.

In fact, the running back situation is in such good shape that some of the freshmen group could be switched to wide receiver where it would help that position's speed.

With the Seminoles switching from the Veer attack to the Wing-T, an abundance of running backs will be necessary. That doesn't mean Florida State will stick strictly to the ground—as attested to by those who watched spring scrimmages.

When the Seminoles do take to the air—and this could be more than most Wing-T teams like to—watch for the quarterbacks to be looking for junior Mike Shumann. This home-grown product was the team's leading receiver last year when he caught 43 for 515 yards and three touchdowns.

Only other returning lettermen who caught in double figures were backs Thomas and Bright. However, senior Jimmy Everett, who watched a lot from the bench in 1974, turned in a good spring practice and he should be helpful.

Of the 10 offensive linemen who lettered in 1974, nine are returning. That at least gives the Seminoles experience along the front line. Guard Jeff Gardner and center Smokey Ragins are two-year starters.

Billy McPhillips, Bruce Harrison and Wade Johnson are upcoming juniors and the first has lettered for two seasons. Starting positions will probably be decided during two-a-day sessions this fall with the prime qualifications being who has adjusted to the new Wing-T blocking assignments the easiest.

In the spring senior guard Tony Falvo made the greatest improvement.

The tight end situation was still unclear following spring drills although two-year letterman Ed Beckman is back. This is a position which is open for the taking and there still could be some personnel switching during two-a-days.

Defensively, the Seminoles should be much improved. Mainly, the improvement should come in the fact that only three starters were lost. Lack of depth may still pose a problem, but to a lesser extent than last season.

Headlining the defensive troops is tackle Greg Johnson, a senior from Fruitland Park. He's a bonafide All-America candidate and has the muscle and speed to prove it.

Phil Jones may have to be moved back to the other tackle spot although the coaches hope that he can play nose guard in the Seminoles' 50 defense.

Randy Coffield is rated by many observers as one of the South's better defensive ends. Rudy Maloy and Dave Porter are also returning lettermen at that spot but they'll have to argue with Aaron Carter as to who will be the starter opposite Coffield. Carter, who lettered at defensive back as a freshman last year, was switched to defensive end this spring and his adjustment was amazing. His lack of size is a handicap but even at 5-9, 180 pounds he's certainly quick and tough enough to think he can play the position. This is another case where there's not a great deal of disagreement among the defensive coaches.

Graduation took both starting linebackers in Bert Cooper, the team's leading tackler last year, and John Murphy. Brian Schmidt is back as a letterman after missing some spring drills because of injury. Detroit Reynolds has returned to linebacker after lettering as a sophomore at defensive end. Transfer Dickie Vasquez, red-shirted last season, could be a starter if his knee injury comes around.

The secondary looks like one of the Seminoles' strongest positions. Everyone returns and this includes such talent as Joe Camps, Bobby Jackson, who started and starred as a freshman last year, and Lee Nelson. They'll get help from red-shirt Gary Woolford along with last season's backup people.



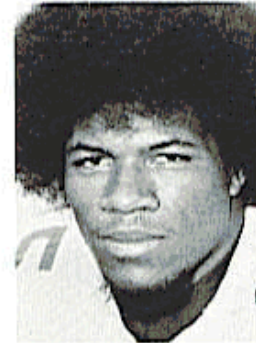
Mike Barnes



Ed Beckman



Jimmy Black



Leon Bright

MIKE BARNES, Wide Receiver, So., 20, 5-11, 180, Titusville, RS—A leg injury kept him out of action last season. He had to make a big transition during spring practice in switching from split end to Z back. Has fine receiving ability but must develop as a runner and blocker. His improvement during spring was gratifying.

ED BECKMAN, Tight End, Jr., 20, 6-5, 225, Miami, 2VL—Has been a part-time starter for two seasons, beginning with his freshman year. During his sophomore campaign, he caught only three passes, while as a freshman he had 10 receptions. During spring he showed development but coaches say he must become more consistent in both the running and passing games. His size is ideal for the position. When he gains the consistency necessary, he will become outstanding.

JIMMY BLACK, Quarterback, Jr., 20, 6-0, 180, Merritt Island, 1VL—Had one starting assignment as a sophomore and wound up the season with 33 completions in 61 attempts for 385 yards and two touchdowns. His 54.1 percent completions were tops among the three quarterbacks in 1974. He's listed as the No. 3 quarterback going into fall practice. However, he isn't that far behind the other two, Walker and Mathieson. Among the three, he's considered the best athlete in terms of quickness, agility and running ability. Leadership ability is a plus for this young man and he showed improvement last spring in the passing department. He is by far the best runner among the quarterbacks.

LEON BRIGHT, Running Back, So., 19, 5-9, 185, Merritt Island, 1VL—Considered one of the best running back prospects Florida State has ever had. Tremendous balance and quickness along with good speed. He was hampered last season because of injuries but still managed 296 yards in 61 carries for a 4.9 average. He scored twice on runs and once on a pass reception. Tremendous overall football ability has already been demonstrated by Leon. He not only runs extremely well but also is a good receiver and turned into a fine blocker during spring practice. Going into the fall, Bright is the Seminoles' best all around back and should be destined for stardom if he can stay healthy.



Joe Camps



Aaron Carter



Randy Coffield



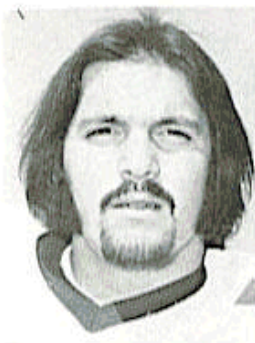
Jim Everett

JOE CAMPS, Defensive Back, Jr., 19, 6-1, 192, Gainesville, 1VL—One of the hardest hitters among defensive backs. Was a starter in 1974 and recorded 49 tackles and 36 assists. He was tied for the club lead in interceptions with two. His size is excellent for the strong safety position. His outstanding attitude has also helped him become a better player. He's an outstanding competitor and some of his "hits" during spring scrimmages enabled him to gain weekly awards.

AARON CARTER, Defensive End, So., 20, 5-8, 185, Gainesville, 1VL—Was switched this spring from defensive back to end where he turned out to be a most pleasant surprise. Despite his lack of size, coaches feel he can play his new position and challenge for a starting roll. Quickness and ability to hit are two of his greatest assets. As a freshman last season at defensive back, he made 24 tackles and was credited with 19 assists. He also possesses toughness and fine body control. During spring drills he was a welcome addition to the defensive end corps.

RANDY COFFIELD, Defensive End, Sr., 22, 6-3, 215, Hialeah, 2VL—One of the squad's top football players. Also, a defensive and team leader by performance. An all-star candidate who has the experience needed to inspire younger players. He's strong and has fine speed for his size. Loves to make contact and his competitive attitude makes him a pleasure to coach. As a sophomore he led team in recovered fumbles and last season he got another. His speed allows him to drop off for pass coverage when the occasion arises. "He's a winner," says his coach.

JIM EVERETT, Wide Receiver, Sr., 21, 6-3, 180, Tallahassee, 2VL—Wound up spring training as the No. 2 split end behind Mike Shumann. 1974 was sort of an off season for the hometown product. Last year he caught only four passes for 59 yards while in '73 he grabbed eight for 121 yards and two touchdowns. Had a fine spring with seven receptions coming during one scrimmage. Coaches say that at his best he compares favorably to Shumann. When consistency comes, he'll be even more valuable.



Tony Falvo



Jeff Gardner



Chris Griffin



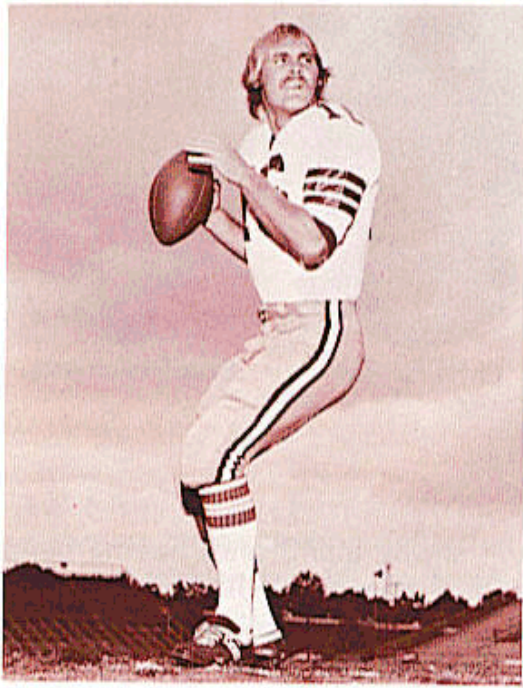
Bruce Harrison

TONY FALVO, Offensive Guard, Sr., 22, 6-0, 240, Wexford, Pa., 1VL—Appears to have found a home at strong guard after having been moved around during his red-shirt and junior seasons. He had been tried at middle guard before switching to offense. This junior college transfer had fine speed for his size and is very strong. He was a championship wrestler in high school and JC. He also was a weight man this spring on the Seminole track team.

JEFF GARDNER, Offensive Guard, Sr., 21, 5-11, 220, Miami, 2VL—The most dependable offensive lineman on the squad. Has been a two-year starter and this should make it No. 3. Makes up for his lack of height with quickness and determination. Good straight ahead blocker and pulls well on wide plays. Another senior who has definite leadership ability. Very durable, he had more playing time last season than any other offensive lineman.

CHRIS GRIFFIN, Defensive Back, Sr., 21, 5-10, 170, Tampa, 1VL—This young man is not only a fine football player but also one of the better students in the University. He has made a perfect 4.0 (all A's) during three years in the classroom while majoring in pre-law. Gained his letter last season, playing 186 defensive plays while being credited with six tackles and eight assists. Came out of spring practice as the No. 2 left cornerback.

BRUCE HARRISON, Offensive Tackle, Jr., 21, 6-2, 230, Vero Beach, 1VL—Another starter returning. He came to the front last season as a sophomore and turned into a dependable performer. Through a freak gunshot accident in high school, he still has pellet lodged in his forehead. Only has average size for a tackle and has to make up for his lack of size with hustle and agility. Solid in classroom as well as on the playing field. Good pass blocker.



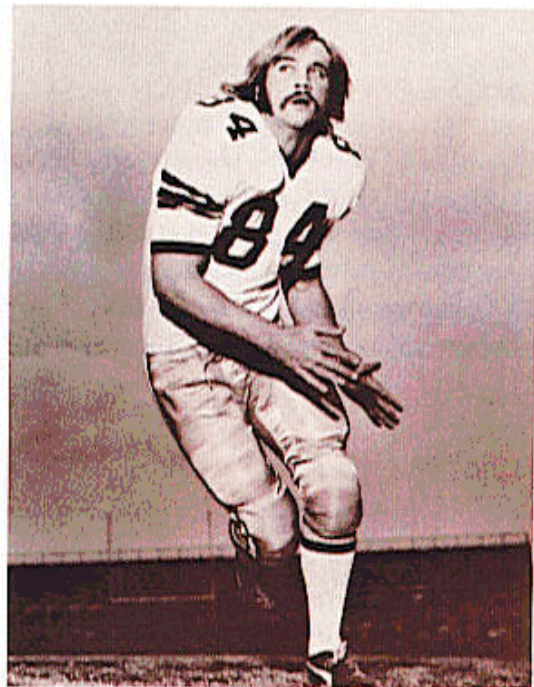
Jimmy Black



Leon Bright



Joe Camps



Randy Coffield



Len Harvey



Jimmy Heggins



Nat Henderson



Earl Humes

LEN HARVEY, Defensive Tackle, Jr., 20, 6-5, 230, Tallahassee, Squad—Showed much improvement this spring over sophomore season. Has frame to carry additional weight. Another Tallahassee Leon product who figures to have his best season in 1975.

JIMMY HEGGINS, Fullback, So., 19, 5-10, 193, Salisbury, N.C., 1VL—Lettered last season despite the fact he didn't carry the ball once from scrimmage. Was used on kickoff and return teams. As a KO returner, he averaged 25.1 yards and had one of 68 yards. This spring he showed outstanding running ability from the fullback slot in the newly installed wing-T formation. Going into the fall, he is No. 1 at his position. His speed compares favorably with any of the running backs. Great quickness showed up during spring drills.

NAT HENDERSON, Defensive Tackle, So., 19, 6-4, 240, Albany, Ga., Squad—Saw limited action last season as a freshman. Coaches asked him to lose weight and he responded by trimming down to 240 last spring. With experience, he has bright future. His mobility increased greatly last spring over his frosh season.

EARL HUMES, Defensive Back, Sr., 22, 6-0, 172, Miami Beach, Red Shirt—Started in 1973 and first game last season. However, on the second series of the Pittsburgh game he injured a knee and was out for the season. Thus he got a hardship ruling from the NCAA. His knee hampered his progress early last spring but he was returning to form near the end of drills. He came to Florida State as a "walk on" but gained a scholarship.



Bobby Jackson



Greg Johnson



Phil Jones



Larry Key

BOBBY JACKSON, Defensive Back, So., 19, 5-11, 175, Albany, Ga., 1VL—Stepped in as a freshman last season and became an outstanding cornerback. Was a starter and showed great ability despite normal freshman mistakes. Outstanding speed and quickness. Was in for 608 plays as a frosh and compiled 31 tackles and 16 assists. Graded out an amazing 84 percent for the season. Plays run well and has speed and quickness to react to the pass. A definite all-star candidate for this season as well as the future.

GREG JOHNSON, Defensive Tackle, Sr., 22, 6-4, 240, Fruitland Park, 2VL—He is Florida State's top All-America hopeful and pro prospect. He is extremely strong for such a big man with great quickness and natural football instinct. Was a solid steady performer during 1974 and had an outstanding game in the Seminoles' 21-14 victory over Miami. Was second on the team in tackles with 55 despite the fact that many of the enemy plays were steered to the other side. His 792 defensive plays were tops for the squad. Eight times he threw opposition ball carriers for losses. His 14 defensive "big plays" were also tops for his unit. His pass rush is the best among the down linemen. An outstanding, all around football player.

PHIL JONES, Middle Guard, Jr., 21, 6-3, 250, Miami Springs, 2VL—Another veteran although he is only a junior. Lettered as a freshman at linebacker and last season as defensive tackle. Was moved to middle guard this spring and made the transition with no problems. In fact, coaches say middle guard is his best position although he will still be available for tackle duty should he be needed. Fine speed and quickness for a man of his size. If he can stay healthy and at middle guard, Florida State's problems at that spot should be solved.

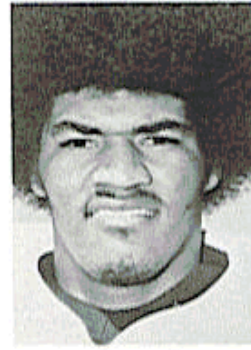
LARRY KEY, Z Back, So., 19, 5-9, 180, Inverness, 1VL—The other half of Florida State's outstanding freshman running back duo of 1974. During spring drills, this speedster was moved from fullback to Z back. However, he still might wind up at his former position. He made fine progress at the new spot but was at times hampered by the experiment. His qualifications as a runner were established last season when he was the team's leading runner with 602 yards in 123 attempts for three touchdowns and an average of 4.9 yards per carry. Great leg strength enables him to break tackles. Is an outstanding football player with a most promising future.



Jim Keyton



Mike Kissner



Rudy Maloy



Mark Marshall

JIM KEYTON, Offensive Tackle, So., 19, 6-5, 235, Thomasville, Ga., Fr.—Another pleasant surprise among the offensive linemen this spring. Wound up as the No. 2 quick tackle behind Harrison. Has fine size and good quickness. As did most of the offensive linemen, had to adjust to new assignments this spring when Seminoles switched from Veer to Wing-T. Fine potential.

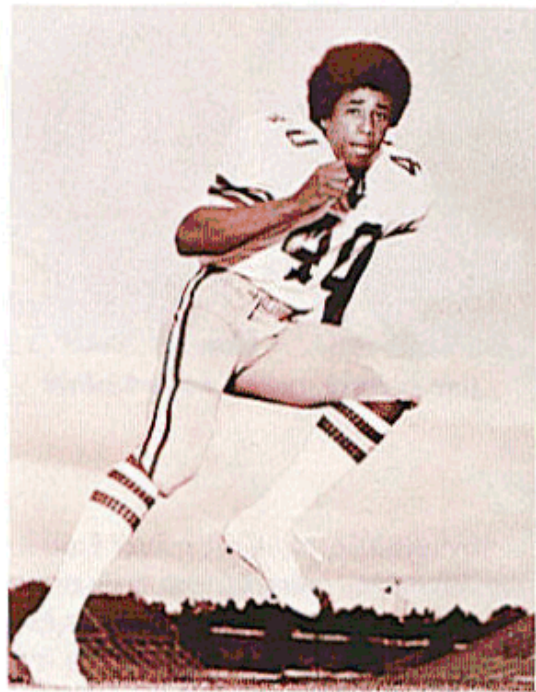
MIKE KISSNER, Offensive Guard, Jr., 20, 6-2, 230, Delray Beach, 1VL—Cut out of the same mold as a number of returning junior offensive linemen. Saw plenty of playing time last season and figures to repeat this fall. Tougher than most, he should develop with experience.

RUDY MALOY, Defensive End, Jr., 21, 6-4, 229, Frostproof, 2VL—Another junior who shared starting assignments in 1974 when he led the team with five fumble recoveries. He was slowed somewhat this spring by a hip injury but still figures to be in the middle of a battle for a starting berth. Has excellent physical tools, plus speed. Needs to develop consistency. In '74, he had 37 tackles and 27 assists. He was in for 516 defensive plays, season high among defensive ends.

MARK MARSHALL, Tight End, Sr., 21, 6-5, 215, Cape Coral, Squad—This late bloomer was the starter coming out of spring practice. Although he hasn't lettered, he appeared to come into his own during the spring, beating out Ed Beckman for the starting job. Now the question is, can he retain it this fall? Has excellent frame for tight end and has shown superior receiving ability. During spring practice he started off as defensive end before switching over to tight end. Once his blocking ability improves, along with his overall strength, he should do the job.



Larry Key



Robert Jackson



Steve Mathieson



Greg Johnson



Steve Mathieson



Bobby McKinnon



Billy McPhillips



Fred Miller

STEVE MATHIESON, Quarterback, Jr., 21, 6-5, 210, Rockville, Md., 1VL—Was a part time starter in 1974 after transferring from Virginia Tech and junior college. Was the “quarterback of record” in ‘74 when Seminoles registered their lone victory, 21-14 win over Miami. Has most experience among top three QBs. Completed 40 of 82 passes for 544 yards and three touchdowns in 1974. His 13.6 yards per completion was tops on team. Has strongest arm among quarterbacks and his size is definite asset in scrambling situation.

BOBBY McKINNON, Z Back, Sr., 20, 6-1, 182, Lake Worth, 2VL—A three-year veteran who was switched from running back to Z this spring. He was used sparingly last season after a very active sophomore year. In 1974, he carried the ball only eight times while during the campaign before he was the team’s second leading rusher with 57 carries for 229 yards. Seventy-four of those sophomore season yards came on a touchdown romp against Memphis State. During spring scrimmages he regained some of the running form which he exhibited as a soph. Definite leadership ability.

BILLY McPHILLIPS, Offensive Tackle, Jr., 20, 6-2, 233, Tampa, 2VL—Became a starter late in his freshman season and retained that honor during 1974. Dependable lineman, he excels in pass protection. During his freshman campaign, he was worked at tight end, and defensive end before becoming an offensive lineman. Has improved his strength through weight program and it figures that his best college football is in front of him.

FRED MILLER, Fullback, Jr., 21, 6-1, 216, Jacksonville, 2VL—Was the team’s fourth-leading rusher in 1974 with 140 yards in 26 carries and one score. He is team’s biggest back and thus he’s often called on in short yardage situations. Lettered as a freshman before sitting out his sophomore year due to an arm injury. During spring practice, he saw brief service at linebacker and defensive end before returning to fullback. A reliable performer.



Lee Nelson



Roger Overby



Dave Porter



Smokey Ragins

LEE NELSON, Defensive Back, Sr., 21, 5-10, 185, Melbourne, 1VL—Started during 1974 at cornerback and was the leading tackler among defensive backs with 51 and 35 assists. Very aggressive and one of the hardest hitters among the DBs. His 613 plays were also high in the secondary. After transferring from Pensacola Junior College, he came to Florida State without a scholarship before earning one. Has good speed and is considered a fine cornerback.

ROGER OVERBY, Wide Receiver, So., 19, 6-0, 175, Tampa, 1VL—Lettered as a freshman last year when he caught six passes for 67 yards. At times during spring he showed ability to get things done. Hard-nosed youngster who has ability to catch ball in a crowd. He's in competition for No. 2 split end.

DAVE PORTER, Defensive End, Jr., 20, 6-4, 200, St. Petersburg, 1VL—Saw limited service in 1974 when he made 10 tackles and had 22 assists in 198 plays. He's listed as Randy Coffield's backup and with more consistency he can be a big help. Must overcome lack of weight with quickness. Recovered two fumbles last season.

SMOKEY RAGINS, Center, Sr., 21, 6-2, 255, Plant City, 2VL—Started every game at center last season after moving from offensive tackle as a sophomore. Had a weight problem before spring practice started but corrected this. Keeping the pounds down will improve his effectiveness. His size gives him advantage in pass blocking. He must battle Bill Sawyer for the No. 1 center position this fall.



Detroit Reynolds



Jeff Ridings



Alan Risk



Vic Rivas

DETROIT REYNOLDS, Linebacker, Jr., 20, 6-1, 219, Tallahassee, 2VL—Had an excellent spring practice, returning to the position where he lettered as a freshman. Last season he worked at defensive end where he had 18 tackles and 17 assists. But at strong linebacker he figures to be much more effective. He's a natural athlete with fine quickness and speed, along with good lateral movement. Another Tallahassee Leon High School product.

LOUIS RICHARDSON, Defensive Tackle, Jr., 20, 6-5, 235, Crystal River, JC—He has been attending Tallahassee Junior College after transferring from Western New Mexico University where he lettered one year. He played his high school football at Crystal River. His excellent size is a big plus for the position and he also has good quickness. After watching films of his sophomore season, coaches feel he should be a big help this fall.

JEFF RIDINGS, Defensive Back, Jr., 21, 6-0, 183, Marietta, Ga., 1VL—This Georgian had a fine spring practice. A hard worker, he saw action in 251 defensive plays in 1974, coming up with 12 tackles and 20 assists. Also had a fumble recovery.

ALAN RISK, Middle Guard, Jr., 20, 6-3, 225, Miami, 1VL—Gained his 1974 monogram strictly as a kickoff specialist. Has good speed for his size and this enables him to cover well. Played his high school ball for a former Florida State linebacking great—Bill Dawkins.

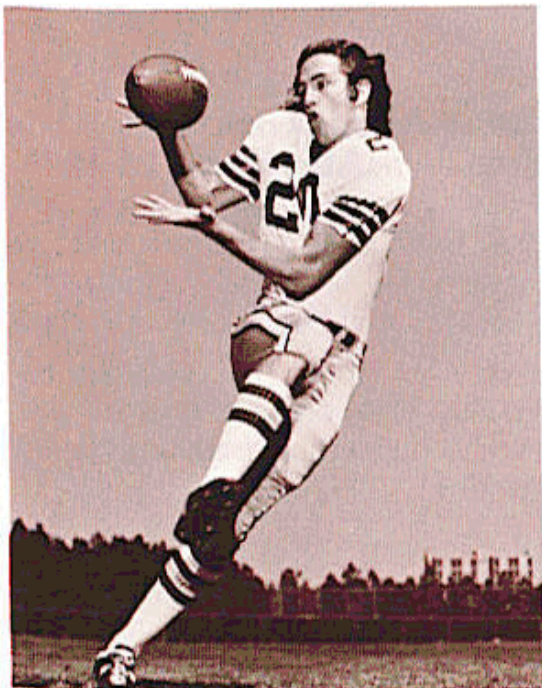
VIC RIVAS, Offensive Guard, Jr., 6-3, 245, Miami, 1VL—Another of those junior linemen who got their baptism of fire as sophomores. Has size and now experience to enable him to be valuable asset this fall.



Billy McPhillips



Lee Nelson



Mike Shumann



Clyde Walker



Gary Rose



Tom Rushing



Bill Sawyer



Brian Schmidt

GARY ROSE, Defensive Tackle, So., 19, 6-4, 238, East St. Louis, Ill., Fr.—One of Florida State's fine players and a star of the future. As a freshman last season coaches said he needed year to mature. His ability fits his size and now he is counted on as at least a backup this season.

TOM RUSHING, Offensive Tackle, Jr., 20, 6-4, 250, Blythe, Calif., RS—A junior college transfer who was held out a season to gain the maturity he needed. Was a pleasant surprise during spring drills and figures in the plans this fall. One of the biggest players on the squad.

BILL SAWYER, Center, Jr., 19, 6-4, 230, Cordele, Ga., 1VL—Another junior class member among the offensive linemen who gained much experience last season. In fact, he improved so much during spring practice that he will be challenging for the starting berth this fall. His improvement has been most noticeable with maturity. His size fits the position. This one could be a surprise.

BRIAN SCHMIDT, Linebacker, Jr., 20, 6-2, 215, Lehigh Acres, 1VL—Although only a junior, he is the veteran of the linebacking crew. Was in for 515 defensive plays during 1974 when he made 33 tackles and had 44 assists. A good hitter, three times during the season he forced enemy runners to fumble the ball. Another asset is his strength which allows him to play the run extremely well. A very dedicated player with good size for a linebacker.



Mike Shumann



Nat Terry



Jon Thames



Rudy Thomas

MIKE SHUMANN, Split End, Jr., 20, 6-0, 175, Tallahassee, 2VL—Called by his coaches "one of the two best offensive players on the squad." This home grown (Tallahassee Leon) performer has led the club in receptions for the past two seasons. As a freshman, he caught 21 for 380 yards and two touchdowns while last season he grabbed 43 for 515 yards and three scores. That puts him in eighth place among all time Florida State receivers and he needs only three to surpass the seventh place player, Don Floyd. His 895 yards in receptions also puts him in eighth spot with Floyd again being No. 7 at 901. As the records attest, he has great receiving ability and he made marked improvement as a blocker during spring practice.

NAT TERRY, Defensive Back, So., 19, 5-11, 158, Tampa, Squad—Used sparingly last season as a freshman but his great speed gives him outstanding potential. Saw action in only six plays in 1974.

JON THAMES, Middle Guard, Jr., 20, 6-0, 230, Gainesville, 2VL—Hopefully, this is the season this dedicated young man can stay healthy and play up to his potential. A broken ankle handicapped him this spring but he should have overcome this by fall practice. One of the tougher players on the squad and his strength is also above average. Saw action on 340 plays in '74 and came up with 19 tackles and 11 assists. His best football should be played in his junior and senior seasons.

RUDY THOMAS, Running Back, Jr., 20, 6-0, 190, Quincy, 1VL—Rudy wound up spring practice as the No. 2 tailback behind Bright. However, coaches still think he has as much running ability as anyone on the squad and could make a strong bid for a starting berth at some skill position. He was the team's second leading rusher in 1974 with 351 yards in 81 carries for a 4.3 yard average. He also was the squad's third leading receiver with 16 catches good for 109 yards. "He has the ability to be spectacular at times in both running and receiving," says his coach. His overall play improved throughout spring practice. When he gains consistency, he should be a super.



Clyde Walker



Waldo Williams



Gary Woolford

DICKIE VASQUEZ, Linebacker, Jr., 20, 6-2, 225, Blythe, Calif., Red Shirt—One of two transfers from Western Illinois who could wind up as a defensive starter this season. Was held out of spring practice but his former coaches at Western know what he can do.

CLYDE WALKER, Quarterback, So., 20, 6-3, 195, Chapel Hill, N.C., Squad—The most surprising performer to come out of spring practice. Was relegated to the scout squad last season after sitting out a year with an injury. Was far down the line when spring drills began but came to the front during scrimmages and going into the fall he's listed as the No. 1 quarterback. He was the most accurate passer during the spring with a smooth mechanical ability. During scrimmages he hit on 17 of 28 passes and five more were mishandled by receivers.

WALDO WILLIAMS, Linebacker, Fr., 21, 6-0, 220, Merritt Island—He originally signed a football scholarship with Florida State but instead went into pro baseball. He played baseball for two seasons before deciding to come to college. He had an excellent spring practice and going into the fall is listed as the No. 1 strong linebacker. Very quick he also has good speed. Coaches consider him a "big play" football player who also has consistency. A fine athlete.

GARY WOOLFORD, Defensive Back, Jr., 20, 6-0, 175, Joliet, Ill., Red Shirt—Red shirted last season after transferring from Western Illinois. In his prep days he set an Illinois High School record in the high hurdles. Considered by his coaches as one of the squad's best athletes with an excellent football mind. He also is a hitter with quick feet. An outstanding player with definite leadership qualities.

FOOTBALL ALL-AMERICAS

JIM MALKIEWICZ
1973 DEFENSIVE TACKLE
Detroit Sports Extra Third Team

GARY HUFF
1972 QUARTERBACK

Football Writers First Team
Gridiron First Team
Academic All-America First Team
Time Magazine

Churchman's First Team
Pro Football Weekly
Football News Second Team
UPI Second Team
AP Honorable Mention

BARRY SMITH
1972 WIDE RECEIVER

Football Coaches First Team
All-American Competitor First Team
Churchman's First Team
AP Second Team

UPI Second Team
Universal Sports Second Team
Football News Third Team
Gridiron Third Team

JAMES THOMAS
1972 DEFENSIVE BACK

Universal Sports First Team

Pro Football Weekly

Time Magazine

LARRY STRICKLAND
1972 LINEBACKER

AP Honorable Mention

RHETT DAWSON
1971 WIDE RECEIVER

AP Third Team

DALE McCULLERS
1968 LINEBACKER

NEA First Team

AP Third Team

RON SELLERS
1968 WIDE RECEIVER

AP First Team
Football Coaches First Team
Football News First Team
Sporting News

Time Magazine
UPI Second Team
NEA Second Team
Football Writers

1967 WIDE RECEIVER

AP First Team
Football Coaches First Team
NEA First Team

Football News First Team
UPI Second Team
Football Writers Second Team

KIM HAMMOND
1967 QUARTERBACK

AP Second Team

UPI Second Team

DEL WILLIAMS
1966 GUARD

AP Second Team

FRED BILETNIKOFF
1964 WIDE RECEIVER

AP First Team
Football Writers First Team
NEA First Team

Football News First Team
N.Y. Daily News First Team
UPI Second Team

Football Coaches Second Team

GENE McDOWELL
1962 GUARD

AP Third Team

BILL DAWKINS
1951 GUARD

Little All-America

RON SCHOMBERGER
1957 RECEIVER

Academic A-A Second Team

JERRY MORRICAL
1950 TACKLE

Little All-America

AL MAKOWIECKE
1954 GUARD

NAIA

HUGH McADAMS
1949 TACKLE

Little All-America

CURT CAMPBELL
1952 END

Little All-America

HUGH McADAMS
1948 TACKLE

Little All-America

1975 VARSITY ROSTER

NAME	POS.	HT.	WT.	CLASS	1974 STATUS	HOMETOWN	HIGH SCHOOL OR JC	COACH
Barnes, Charlie	OT	6-5	240	Fr.	HS	Thomasville, Ga.	Central	W. R. Cooley
Barnes, Mike	FL	5-11	180	So.	RS	Titusville	Titusville	Jack O'Brien
Beckman, Ed	TE	6-5	225	Jr.	2VL	Miami	South Miami	Charlie Yanda
Black, Jimmy	QB	6-0	180	Jr.	1VL	Merritt Island	Merritt Island	Eddie Feely
Blythe, Ricky	C	6-2	230	Sr.	Sq.	Winter Park	Winter Park	Bob Martin
Bright, Leon	HB	5-9	185	So.	1VL	Merritt Island	Merritt Island	Eddie Feely
Bennie, Cino	C	6-1	205	So.	Sq.	Orlando	Oak Ridge	Paul Adams
Brown, Herman	DT	6-3	224	Jr.	Sq.	Fort Lauderdale	Boyd Anderson	Lynn Fethrow
Camps, Joe	DB	6-1	192	Jr.	1VL	Gainesville	Gainesville	Wesley Dicks
Carter, Aaron	DE	5-8	185	So.	1VL	Gainesville	Gainesville	Wesley Dicks
Cashman, Dan	P	6-0	175	Jr.	Tr.	Baltimore, Md.	Liberty Union	Curry
Caven, Jay	OT	6-4	230	Jr.	Sq.	St. Petersburg Beach	Boca Ciega	Dan Wickline
Comer, Jossie	FB	5-11	200	Jr.	Sq.	Pensacola	Woodham	Jerry Henderson
Cheeseborough, Harold	MG	5-11	215	Sr.	Sq.	Jacksonville	Lee	Leon Barrett
Corfield, Randy	DE	6-3	215	Sr.	2VL	Hialeah	Hialeah	Bob Hipke
Corcoran, Dan	C	6-2	225	Sr.	Sq.	Holley, N.Y.	Mesa JC	Jack Perrin
Cunningham, Craig	TE	6-1	225	Jr.	Sq.	Daytona Beach	Seabreeze	Willie Lager
Dane, Doug	OT	6-5	230	Jr.	1VL	Alamonte Springs	Lyman	Copeland
Duley, Bill	P	6-0	165	So.	Fr.	Ocala	Vanguard	Springer
Everett, Jimmy	SE	6-3	180	Sr.	2VL	Tallahassee	Gooby	Wes Carter
Falvo, Tony	OG	6-0	240	Sr.	1VL	Westford, Pa.	Lees McRae JC	Mike Cook
Fucarino, Dan	C	6-2	215	Jr.	Sq.	Tampa	Hillsborough	Billy Turner
Galen, Clark	LB	6-1	215	Jr.	Sq.	Miami	Palmto	J.C. Davis
Gardner, Jeff	OG	5-11	220	Sr.	2VL	Miami	Columbus	Tom O'Neil
Greene, Danny	DE	6-2	191	Jr.	RS	Miami	South Miami	Charlie Yanda
Griffin, Chris	DB	5-10	170	Sr.	1VL	Tampa	Hillsborough	Billy Turner
Gavalas, George	PK	5-10	165	So.	Fr.	Tallahassee	Richards	Hector Hernandez
Hanks, David	LB	6-2	210	So.	RS	Orlando	Edgewater	Robert Dolce
Harder, Mike	SE	6-3	185	Jr.	Sq.	Bristol, Pa.	Wilson	Pat Picerello
Harmeling, John	TE	6-3	218	Jr.	Sq.	Winter Park	Winter Park	Larry Gergley
Harris, Curtis	DT	6-3	230	So.	Fr.	Dolton, Ill.	Thornridge	Wyne Lunak
Harrison, Bruce	OT	6-2	230	Jr.	1VL	Vero Beach	Vero Beach	Loren Giannamore
Harris, Andy	MG	6-5	220	So.	Fr.	Lehigh Acres	Rivendale	Charley Casey
Harvey, Len	DT	6-5	230	Jr.	Sq.	Tallahassee	Leon	Gene Cox
Higgins, Jimmy	FB	5-10	193	So.	1VL	Salisbury, N.C.	North Rowan	Larry Thomson
Henderson, Nat	DT	6-4	240	So.	Sq.	Albany, Ga.	Albany	Fennell Henry
Hicks, Jimmy	DT	6-2	236	Jr.	Sq.	Chapley	Chapley	Walter Henders
Hymic, Steve	OG	6-0	210	So.	Fr.	Lakeland	Lakeland	Paul Quinn
Humes, Earl	DB	6-0	172	Sr.	RS	Miami	Miami Beach	Vic Vaccaro
Jackson, Robert	DB	5-11	175	So.	1VL	Albany, Ga.	Albany	Fennell Henry
Johnson, Greg	DT	6-4	240	Sr.	2VL	Fruitland Park	Leesburg	Wilber Lofton
Johnson, Wade	OG	6-1	210	Jr.	1VL	Valdosta, Ga.	Valdosta	Charlie Greene
Jones, Phil	DT-MG	6-3	250	Jr.	2VL	Miami Springs	Miami Springs	John Sain
Joyner, Joe	DB	5-10	180	Jr.	Sq.	Orlando	Colonial	Terry Manfredi

Kerman, Mike	OG	6-0	230	Sr.	Sq.	Palos Park, Ill.	Joliet, Ill.	Jerry Yeit
Key, Larry	FL-FB	5-9	180	So.	1VL	Inverness	Citrus	Tom Swain
Keyton, Jim	OT	6-5	235	So.	Fr.	Thomasville, Ga.	Thomasville	Jim Hughes
Kilmurray, John	DE	6-1	200	Jr.	Sq.	Lanoka Harbor, N.J.	Central Regional	Joseph Boyd
Kincaid, Mike	DB	5-10	175	So.	Fr.	Waukegan, Ill.	Waukegan	Walter Bucks
Kissner, Mike	OG	6-2	230	Jr.	1VL	Lerfay, Wash	Cardinal Newman	Sam Boothby
Leggett, Jeff	HB	5-11	180	Jr.	1VL	Miami	Norland	Bill Dawkins
Matheson, Steve	QB	6-5	210	Jr.	1VL	Rockville, Md.	Robert E. Peary	John Cino
McKinnon, Bobby	FL	6-1	182	Sr.	2VL	Lake Worth	Lake Worth	Bill Humphrey
McPhillips, Billy	OT	6-2	233	Jr.	2VL	Tampa	King	Jerry Durmin
Maloy, Rudy	DE	6-4	229	Jr.	2VL	Frostproof	Frostproof	Paris Brannen
Marshall, Mark	TE	6-5	215	Sr.	Sq.	Cape Coral	Cypress Lake	Joe Kinnan
Miller, Fred	FB	6-1	216	Jr.	2VL	Jacksonville	Paxon	Ed Swartz
Norris, Russ	DB	6-1	170	So.	Fr.	Lakeland	Lakeland	Paul Quinn
Nelson, Lee	DB	5-10	185	Sr.	1VL	Melbourne	Pensacola JC	Vince Zappone
O'Leary, Pat	QB	6-0	180	Sr.	Sq.	Hallandale	Chummade	Tom Mahin
Ovenby, Roger	SE	6-0	175	So.	1VL	Tampa	Robinson	Elmer Coker
Pitman, Greg	DB	5-11	166	Jr.	Sq.	Monticello	Jefferson	Mike Basham
Pomer, Dave	DE	6-4	200	Jr.	1VL	St. Petersburg	Gibbs	Chester Norris
Prescott, Billy	QB	6-0	176	Jr.	Sq.	Fort Walton Beach	Fort Walton Beach	Ed Owens
Prior, Brad	QB	6-4	200	Jr.	Sq.	Lake Wales	Lake Wales	Hank Systma
Ragins, Smokey	C	6-2	255	Sr.	2VL	Plant City	Plant City	Gene Cox
Reynolds, Detroit	LB	6-1	219	Jr.	2VL	Tallahassee	Leon	John Brammlet
Richardson, Louis	OT	6-5	235	Jr.	Tr.	Crystal River	Crystal River	Carlton Kell
Ridings, Jeff	DB	6-0	183	Jr.	1VL	Marietta, Ga.	Wheeler	Bill Dawkins
Risk, Alan	MG	6-3	225	Jr.	1VL	Miami	Norland	Carl Mosso
Rivas, Vic	OG	6-3	245	Jr.	1VL	Miami	Coral Park	Cornius Perry
Rose, Gary	OT	6-4	238	So.	Fr.	East St. Louis, Ill.	East St. Louis	Phill Ramsey
Rushing, Tom	OT	6-4	250	Jr.	RS	Blythe, Calif.	Palo Verde	Tom Auret
Sawyer, Bill	C	6-4	230	Jr.	1VL	Condele, Ga.	Crisp County	Charlie Casey
Schmidt, Brian	LB	6-2	215	Jr.	2VL	Lehigh Acres	Riverdale	Earl Brown
Shaw, Gains	OT	6-2	240	Jr.	Sq.	Clearwater	Clearwater	Gene Cox
Shumann, Mike	SE	6-0	175	Jr.	2VL	Tallahassee	Leon	W.R. Cooley
Singletary, Keith	PK	6-2	190	Fr.	HS	Thomasville, Ga.	Central	Genold Odum
Spotts, Frank	OT	6-3	230	So.	Fr.	Merritt Island	Merritt Island	Dan Wickline
Stockton, Andy	DB	6-0	179	Sr.	1VL	St. Petersburg	Boca Ciega	Bobby Brown
Swygert, Sam	TE	6-3	218	Jr.	Sq.	Macon, Ga.	Stratford Academy	Tom Mahin
Terry, Nat	DB	5-11	158	So.	Sq.	Tampa	Robinson	Jim Niblack
Thames, Jon	MG	6-0	230	Jr.	2VL	Gainesville	Gainesville	Charlie Armstrong
Thomas, Rudy	TB	6-0	190	Jr.	1VL	Quincy	Shanks	Danny Doar
Turner, Robert	LB	6-0	215	Jr.	Sq.	Jacksonville	Edward White	Larry Mader
Tuten, Keith	DE	6-4	210	Jr.	Sq.	Indianatlantic	Melbourne	John Cobb
Vail, Tom	PK	5-11	170	So.	Fr.	Lynn Haven	Bly	Phill Ramsey
Vasquez, Dickie	LB	6-2	225	Jr.	RS	Blythe, Calif.	Palo Verde	Gerald Durmin
Vickers, Steve	DB	6-0	185	Sr.	Sq.	Tampa	King	W.D. Peerman
Walker, Clyde	QB	6-3	195	So.	RS	Chapel Hill, N.C.	Chapel Hill	Wynne Lunak
Willerson, Milt	OG	6-0	235	So.	Fr.	Phoenix, Ill.	Thornridge	Eddie Freely
Williams, Waldo	LB	6-0	220	Fr.	Tr.	Merritt Island	Merritt Island	Richard Johnson
Witcher, Danny	FB	6-1	192	So.	Fr.	Toledo, Ohio	Scott	Frank Miller
Woodford, Gary	DB	6-0	175	Jr.	RS	Joliet, Ill.	Joliet West	

TENTATIVE DEPTH CHART

(Based on early estimates; lettermen in bold type)

OFFENSE		DEFENSE	
SE	Mike Shumann Jim Everett	LE	Randy Coffield Dave Porter
ST	Billy McPhillips Tom Rushing	LT	Louis Richardson Nat Henderson
SG	Tony Falvo Vic Rivas	MG	Phil Jones Jon Thames
C	Smokey Ragins Bill Sawyer	RT	Greg Johnson Gary Rose Len Harvey
QG	Jeff Gardner Mike Kissner	RE	Rudy Maloy Aaron Carter
QT	Bruce Harrison Jim Keyton	SLB	Waldo Williams Detroit Reynolds
TE	Mike Marshall Ed Beckman	WLB	Brian Schmidt Dickie Vasquez
QB	Clyde Walker Steve Mathieson Jimmy Black	LC	Bobby Jackson Chris Griffin
TB	Leon Bright Rudy Thomas	RC	Lee Nelson Nat Terry
FB	Jimmy Heggins Fred Miller	SS	Joe Camps Andy Stockton
FL	Larry Key Mike Barnes Bobby McKinnon	FS	Gary Woolford Jeff Ridings

1975 SIGNEES

NAME	POS.	HT.	WT.	HOMETOWN
Charles Barnes	OL	6-5	230	Thomasville, Ga.
Gator Cherry	RB	6-0	190	Lake Wales
Mike Dix	TE-WR	6-3	190	Tampa
Victor Fowler	RB	6-0	190	Largo
Hector Gray	WR-DB	6-3	187	Miami Springs
Ray Howell	TE-OL	6-6	215	Mulberry
Ivory Joe Hunter	WR-DB	6-0	170	Tallahassee
Nat Italiano	DB-WR	6-0	175	Tampa
Lorenzo Jackson	LB	6-4	210	Macon, Ga.
Levon Jones	DB-WR	6-1	175	Miami Springs
Willie Jones	DL	6-4	205	Homestead
Lloyd Kelly	DB-WR	6-1	195	Miami
Ray Kemezys	DL	6-6	236	Belleville, Ill.
Mark Meseroll	OL	6-6	275	Piscataway, N.J.
Greg Ramsey	RB	5-11	175	Dothan, Ala.
Chip Sanders	RB	5-10	175	Macon, Ga.
Keith Singletary	PK-TE	6-0	195	Thomasville, Ga.
Curtis Sirmones	RB	6-0	175	Lake Butler
Abraham Smith	OL	6-1	225	Tallahassee
Jim Spivey	OL	6-3	225	Tampa
Mike Stewart	LB	6-1	195	Hazlehurst, Ga.
Rudy Thomas	DL	6-3	220	Ft. Valley, Ga.
Waldo Williams	LB	6-0	220	Merritt Island
Wally Woodham	QB	5-11	170	Tallahassee

1975 JUNIOR VARSITY SCHEDULE

Date	Opponent	Site	Time
Oct. 3—Sat.	Miami	Miami	8 p.m.
Oct. 17—Sat.	Troy State	Troy, AL	TBA
Nov. 17—Mon.	Florida	Tallahassee	4 p.m.

FUTURE SCHEDULES

1976

September 11	at Memphis State
September 18	at Miami
September 25	at Oklahoma
October 2	KANSAS STATE
October 9	at Boston College
October 16	FLORIDA
October 23	at Auburn
October 30	CLEMSON
November 6	SOUTHERN MISSISSIPPI
November 13	at North Texas State
November 20	VIRGINIA TECH

1977

September 10	at Southern Mississippi
September 17	at Kansas State
September 24	MIAMI
October 1	at Oklahoma State
October 8	CINCINNATI
October 15	at Florida
October 22	AUBURN
October 29	NORTH TEXAS STATE
November 5	at Virginia Tech
November 12	MEMPHIS STATE
November 19	at San Diego State

1978

September 9	at Syracuse
September 16	OKLAHOMA STATE
September 23	at Miami
September 30	HOUSTON
October 7	SOUTHERN MISSISSIPPI
October 14	at Mississippi State
October 21	at Pittsburgh
October 28	Open Date
November 4	at Memphis State
November 11	VIRGINIA TECH
November 18	NAVY
November 25	FLORIDA

THE OPPONENTS



FIRST GAME: September 13, 1975



TEXAS TECH

Site: Jones Stadium (47,000)

Lubbock, Texas

Kickoff: 7:30 p.m. CDT

SID: Ralph Carpenter
Phone: 806/747-7484
Home: 806/792-9358

ASST. SID: George Foster
HEAD COACH: Steve Sloan (First Year)
Phone: 806/742-4141

Location: Lubbock, TX 79409

Nickname: Red Raiders

President: Dr. Grover E. Murray

Athletic Director: J.T. King

Assistant AD: John Conley

Athletic Department Phone: 806/742-4141

Conference: Southwest

Lettermen: Back 28, Lost 22

Stars To Watch: Ecomet Burley, NG; Curtis Jordan, DB; Larry Issac, TB; Thomas Howard, LB; Tommy Lusk, OG.

Newcomers To Watch: Rodney Allison, QB; Jim Krahl, DT.

Enrollment: 21,929

Colors: Scarlet and Black

Stadium: Jones

Business Manager: John Conley

Ticket Manager: Carol Baker

1974 Record: 6-4-2

Starters: Back 11, Lost 11

1975 SCHEDULE

Sept. 13	Florida State
20	New Mexico
27	at Texas
Oct. 4	at Oklahoma State
11	Texas A&M
18	at Arizona
25	SMU
Nov. 1	Rice
8	at TCU
15	Baylor
22	at Arkansas

1974 RESULTS

	TT	OPP
24	Iowa State	3
21	New Mexico	21
26	Texas	3
14	Oklahoma State	13
7	Texas A&M	28
17	Arizona	8
20	SMU	17
7	Rice	21
28	TCU	0
10	Baylor	17
13	Arkansas	21
6	Vanderbilt (Peach Bowl)	6

**THE SERIES
FSU leads 2-0**

	FSU	TT
1966	42	33
1967	28	12

OFFICIALS: Referee—Vincent Buckley (SWC) Houston, TX; Umpire—James Pratt (SEC) Birmingham, AL; Linesman—H.M. Jones (SWC) Orange, TX; Line Judge—Lamar Moon (SEC) Birmingham, AL; Field Judge—C.O. Christian (SEC) Nashville, TN; Back Judge—Ed Ward (SWC) Austin, TX.

SECOND GAME: September 20, 1975



UTAH STATE

**Site: Doak Campbell Stadium (40,500)
Tallahassee, Florida
Kickoff: 7:30 p.m. EDT**

SID: Craig Hislop
Phone: 801/752-4100, Ext. 7434
Home: 801/752-7101

HEAD COACH: Phil Krueger (2 Years; 15-7)
Best Time To Contact Coach: 10:30-Noon
Phone: 801/752-4100, Ext. 7503

Location: Logan, Utah 84321 **Enrollment:** 8,890
Nickname: Aggies **Colors:** Navy Blue and White
President: Dr. Glen L. Taggart **Stadium:** Romney (20,000)
Athletic Director: LaDell Anderson **Business Manager:** Nog Hansen
Assistant AD: Nog Hansen **Ticket Manager:** Tom Moulton
Athletic Department Phone: 801/752-4100, Ext. 7501
Conference: NCAA Independent **1974 Record:** 8-3
Lettermen: Back 32, Lost 16 **Starters:** Back 11, Lost 11
Stars To Watch: Louis Giammona, TB; Scott Parrish, OT; Steve Maughan, DE; Al Bettman, LB; Bob Dzierzak, DT; Wayne Womack, DT.
Newcomers To Watch: Jim Hough, NG; Jamie Marsh, SS.

1975 SCHEDULE

1974 RESULTS

		US		OPP
Sept. 13	at Utah	17	Wyoming	7
20	at Florida State	9	Brigham Young	6
27	San Diego State	3	Oklahoma	72
Oct. 4	at Texas	24	Colorado State	23
11	West Texas State	27	Kent State	24
18	at Weber State	21	West Texas State	16
25	at Arkansas	17	Idaho	3
Nov. 1	Wyoming	3	Southern Mississippi	7
8	Brigham Young	34	Utah	0
15	at Boise State	20	Weber State	7
22	at Colorado State	6	San Diego State	34

**THE SERIES
First Meeting**

OFFICIALS: Referee—James Harper (SEC) Atlanta, GA; Umpire—John Griggs (SEC) Lexington, KY; Linesman—Robert Towns (SEC) Athens, GA; Line Judge—Edward Dudley (SEC) Atlanta, GA; Field Judge—John Foster (SEC) Gulfport, MS; Back Judge—Robert Patrick (SEC) Kennesaw, GA; ECO—Ned Wilford (SEC) Daytona Beach, FL.

THIRD GAME: September 27, 1975



IOWA STATE

Site: Doak Campbell Stadium (40,500)

Tallahassee, Florida

Kickoff: 7:30 p.m. EDT

SID: Harry G. Burrell
Phone: 515/294-3372
Home: 515/292-4139

ASST. SID: Rod Williamson
HEAD COACH: Earle Bruce (3 Years; 18-16)
Best Time To Contact Coach: 11:30 a.m.
Phone: 515/294-6720

Location: Ames, IA	Enrollment: 20,000
Nickname: Cyclones	Colors: Cardinal and Gold
President: Dr. W. Robert Parks	Stadium: Cyclone Stadium
Athletic Director: Lou McCullough	Business Manager: Jim Overturf
Associate AD: Bob Marcum	Ticket Manager: Dan Alford
Assistant AD: Max Urick	
Athletic Department Phone: 515/294-3662	
Conference: Big Eight	1974 Record: 4-7
Lettermen: Back 37, Lost 15	Starters: Back 12, Lost 10
Stars To Watch: Luther Blue, F; Mike Stensrud, DT; Bob Bos, OG; Buddy Hardeman, QB.	
Newcomers To Watch: Greg Pittman, LB; Otis Rodgers, DE; Dexter Green, TB.	

1975 SCHEDULE

1974 RESULTS

		IS		OPP
Sept. 13	at UCLA	3	Texas Tech	24
20	Air Force	28	Washington	31
27	at Florida State	34	Brigham Young	7
Oct. 4	at Utah	27	New Mexico	3
11	at Kansas State	7	Colorado	34
18	Kansas	23	Kansas State	18
25	at Oklahoma	22	Kansas	6
Nov. 1	Colorado	10	Oklahoma	28
8	Missouri	13	Nebraska	23
15	at Nebraska	7	Missouri	10
22	Oklahoma State	12	Oklahoma State	14

THE SERIES
First Meeting

OFFICIALS: Referee—John DuVal (SEC) Nashville, TN; Umpire—Cliff Squires (Big 8) Lincoln, NB; Linesman—Jack Jordan (SEC) Atlanta, GA; Line Judge—Tom Ehlers (Big 8) Lincoln, NB; Field Judge—Jerry Kleinsmith (Big 8) Woodbine, IA; Back Judge—John Buoni (SEC) Memphis, TN; ECO—Ron Gilbert (ISEC) Clearwater, FL.

FOURTH GAME: October 4, 1975



GEORGIA TECH
Site: Grant Field (58,121)
Atlanta, Georgia
Kickoff: 2:00 p.m. EDT

SID: Ned West
Phone: 404/894-5445
Home: 404/237-3167

ASST. SID: Dave Kaplan
HEAD COACH: Pepper Rodgers (8 Years; 45-39-1)

Best Time To Contact Coach: 10:30-Noon
Phone: 404/894-5420

Location: Atlanta, GA 30332

Nickname: Yellow Jackets

President: Dr. Joseph Mayo Pettit

Athletic Director: Bobby Dodd

Associate AD: John McKenna

Athletic Department Phone: 404/894-5400

Conference: Independent

Lettermen: Back 44, Lost 15

Stars To Watch: Lucius Sanford, LB; David Sims, HB; Leo Tierney, C.

Enrollment: 6,820

Colors: Old Gold and White

Stadium: Grant Field

Business Manager: John O'Neill

Ticket Manager: June Owens

1975 SCHEDULE

Sept. 13	at South Carolina
20	Miami
27	Clemson
Oct. 4	Florida State
11	VMI
18	Auburn
25	at Tulane
Nov. 1	Duke
8	at Notre Dame
18	Navy
27	Georgia

1974 RESULTS

GT		OPP
7	Notre Dame	31
35	South Carolina	20
17	Pittsburgh	27
17	Clemson	21
28	Virginia	24
29	North Carolina	28
22	Auburn	31
27	Tulane	7
0	Duke	9
22	Navy	0
34	Georgia	14

THE SERIES
Tech leads 6-0-1

	FSU	GT		FSU	GT
1952	0	30	1963	7	15
1955	0	34	1970	13	23
1958	3	17	1971	6	12
1962	14	14			

OFFICIALS: Referee—Joe Hicks (SEC) Birmingham, AL; Umpire—Pete Williams (SEC) Huntsville, AL; Linesman—Robert Towns (SEC) Athens, GA; Line Judge—W.H. Henderson (SEC) Tuscaloosa, AL; Field Judge—C.O. Christian (SEC) Nashville, TN; Back Judge—Bobby Skelton (SEC) Montgomery, AL; ECO—Joe Haynes (SEC) Jackson, MS.

FIFTH GAME: October 11, 1975



VIRGINIA TECH
Site: Lane Stadium (41,000)
Blacksburg, Virginia
Kickoff: 1:30 p.m. EDT

SID: Wendell Weisend
 Phone: 703/951-6726
 Home: 703/552-5401

ASST. SID: Wayne Block
HEAD COACH: Jimmy Sharpe (1 Year; 4-7)
Best Time To Contact Coach: 11 a.m.
Phone: 703/951-6368

Location: Blacksburg, VA

Nickname: Gobblers

President: William E. Lavery

Athletic Director: Frank Moseley

Assistant AD: Bill Matthews

Athletic Department Phone: 703/951-6721

Conference: Independent

Lettermen: Back 42, Lost 16

Stars To Watch: Phil Rogers, QB; Roscoe Coles, RB; Billy Hardee, DB; Keith McCarter, DE; Henry Bradley, DB; Kevin Dick, TE; George Heath, RB.

Newcomers To Watch: Bill Houseright, DL; Gerald Sheehan, LB; Dick Holway, RB.

Enrollment: 17,500

Colors: Orange and Maroon

Stadium: Lane Stadium

Business Manager: Don Perry

Ticket Manager: Tom McNeer

1974 Record: 4-7

Starters: Back 13, Lost 9

1975 SCHEDULE

Sept. 13	at Kentucky
20	at Kent State
27	Richmond
Oct. 4	at Auburn
11	Florida State
18	Virginia
25	at West Virginia
Nov. 1	at William & Mary
8	at Houston
15	VMI
22	Wake Forest

1974 RESULTS

VT	OPP
7	Kentucky 38
25	SMU 28
12	Houston 49
17	VMI 22
31	South Carolina 17
27	Virginia 28
41	Richmond 7
7	Miami 14
34	William & Mary 15
56	Florida State 21
21	West Virginia 22

THE SERIES

Series Tied 9-9-1

	FSU	VT		FSU	VT		FSU	VT			
1955	20	24	1962	20	7	1968	22	40
1956	7	20	1963	23	31	1969	10	10
1957	20	7	1964	11	20	1970	34	8
1958	20	0	1965	7	6	1971	17	3
1959	7	6	1966	21	23	1972	27	15
1961	7	10	1967	38	15	1973	13	36
								1974	21	56

OFFICIALS: Referee—Ernest Hackney (ACC) Wilson, NC; Umpire—John Griggs (SEC) Lexington, KY; Linesman—Tom Harris (ACC) Charlotte, NC; Line Judge—Erick Sauerbrey (SEC) Jonesboro, GA; Field Judge—Rom Gilbert (SEC) Clearwater, FL; Back Judge—Gil Rushton (ACC) Easley, SC.

SIXTH GAME: October 18, 1975



FLORIDA

Site: Florida Field (62,800)

Gainesville, Florida

Kickoff: 2:00 p.m. EDT

SID: Norm Carlson

Phone: 904/392-0641

Home: 904/372-7822

ASST. SID: Lee Tobin

HEAD COACH: Doug Dickey (5 Years; 31-25-5)

Best Time To Contact Coach: 11:30-Noon

Phone: 904/392-0651

Location: Gainesville, Fla. 32604

Nickname: Gators

President: Dr. Robert Q. Marston

Athletic Director: Ray Graves

Assistant AD: Norm Carlson

Enrollment: 27,600

Colors: Orange and Blue

Stadium: Florida Field

Business Manager: Bob Moore

Ticket Mgr.: Hardee McAlhaney

Athletic Department Phone: 904/392-0664

Conference: Southeastern

1974 Record: 8-4

Lettermen: Back 38, Lost 19

Starters: Back 11, Lost 11

Stars To Watch: Wayne Fields, DB; Alvin Cowans, DB; Tony Green, RB; Jimmy DuBose, FB; Don Gaffney, QB; Scott Hutchinson, DT.

Newcomers To Watch: Charlie Williams, LB; Henry Davis, DB; Earl Carr, RB; Ron Enclade, TE; Wes Chandler, SE.

1975 SCHEDULE

Sept. 13	Southern Methodist
20	at No. Carolina State
27	at Mississippi State
Oct. 4	at LSU
11	Vanderbilt
18	Florida State
25	Duke
Nov. 1	at Auburn
8	at Georgia
15	Kentucky
22	Open
29	at Miami

1974 RESULTS

UF	OPP
21	California 17
17	Maryland 10
29	Mississippi State 13
24	LSU 14
10	Vanderbilt 24
24	Florida State 14
30	Duke 13
25	Auburn 14
16	Georgia 17
24	Kentucky 41
31	Miami 7

THE SERIES

Florida leads 14-2-1

	FSU	UF		FSU	UF		FSU	UF
1958	7	21	1964	16	7	1970	27	38
1959	8	18	1965	17	30	1971	15	17
1960	0	3	1966	19	22	1972	13	42
1961	3	3	1967	21	16	1973	0	49
1962	7	20	1968	3	9	1974	14	24
1963	0	7	1969	6	21			

OFFICIALS: Referee—Boyce Smith (SEC) Kingston Springs, TN; Umpire—James Mosteller (SEC) Macon, GA; Linesman—Jack Jordan (SEC) Atlanta, GA; Line Judge—Robert Caldwell (SEC) Columbus, MS; Field Judge—John Fleming (SEC) Augusta, GA; Back Judge—William Teas (SEC) Atlanta, GA; ECO—Ronald Baynes (SEC) Tallassee, AL.

SEVENTH GAME: October 25, 1975



AUBURN

**Site: Doak Campbell Stadium (40,500)
Tallahassee, Florida
Kickoff: 7:30 p.m. EDT**

SID: Buddy Davidson
Phone: 205/826-4750
Home: 205/887-7160

ASST. SID: Mel Pulliam
HEAD COACH: Ralph "Shug" Jordan (25 Years;
172-77-5)
Best Time To Contact Coach: 10-11:30 a.m.
Phone: 205/826-4750

Location: Auburn, AL
Nickname: Tigers
President: Dr. Harry M. Philpott
Athletic Director: Lee R. Hayley
Ticket Manager: Bill Beckwith

Enrollment: 15,705
Colors: Burnt Orange and Navy Blue
Stadium: Jordan-Hare
Business Manager: Bill Beckwith

Athletic Department Phone: 205/826-4750

Conference: Southeastern
Lettermen: Back 35, Lost 19
Stars To Watch: Chuck Fletcher, OT; Rick Telhiard, DT; Liston Eddins, DE; Phil Gargis, QB; Secdrick McIntyre, FB; Mitzi Jackson, TB.
Newcomers To Watch: Kim Sellers, LB; Reese McCall, TE; John Crane, QB.

1975 SCHEDULE

Sept. 13	Memphis State
20	at Baylor
27	at Tennessee
Oct. 4	Virginia Tech
11	at Kentucky
18	at Georgia Tech
25	at Florida State
Nov. 1	Florida
8	Mississippi State
15	at Georgia
29	at Alabama

1974 RESULTS

AU	OPP
16	Louisville 3
52	UT-Chattanooga 0
21	Tennessee 0
3	Miami 0
31	Kentucky 13
31	Georgia Tech 22
38	Florida State 6
14	Florida 25
24	Mississippi State 20
17	Georgia 13
13	Alabama 17
27	Texas (Gator Bowl) 3

THE SERIES

Auburn leads 7-0-1

	FSU	AU		FSU	AU
1954	0	33	1962	14	14
1956	7	13	1963	15	21
1957	7	29	1972	14	27
1960	21	59	1974	6	38

OFFICIALS: Referee—James Harper (SEC) Atlanta, GA; Umpire—Harold Johnson (SEC) Jackson, TN; Linesman—D.L. Claborn (SEC) Atlanta, GA; Line Judge—Lea Paslay (SEC) Tupelo, MS; Field Judge—Armond Kitto (SEC) Houma, LA; Back Judge—Gordon Pettus (SEC) Alta, AL; ECO—Bobby Skelton (SEC) Montgomery, AL.

EIGHTH GAME: November 1, 1975



CLEMSON

**Site: Clemson Memorial Stadium (43,451)
Clemson, South Carolina
Kickoff: 1:00 p.m. EDT**

SID: Bob Bradley
Phone: 803/656-2101
Home: 803/654-5419

ASST. SID: Jerry Arp
HEAD COACH: Red Parker (2 Years; 12-10)
Best Time To Contact Coach: 10-11:00 a.m.,
Phone: 803/656-2101

Location: Clemson, S.C. **Enrollment:** 10,500
Nickname: Tigers **Colors:** Orange and Purple
President: Robert C. Edwards **Stadium:** Clemson Memorial
Athletic Director: H.C. McLellan **Business Manager:** Robert W. Robinson
Associate AD: Ralph Floyd **Ticket Manager:** Steve Gibert
Assistant AD: George Bennett

Athletic Department Phone: 803/656-2101

Conference: Atlantic Coast **1974 Record:** 7-4
Lettermen: Back 48, Lost 14 **Starters:** Back 13, Lost 9
Stars To Watch: Ken Callicutt, RB; Bennie Cunningham, TE; Peanut Martin, DB; Jimmy Williamson, LB.
Newcomers To Watch: Mike O'Cain, QB; Lacy Brumley, OG; Ronnie Smith, LB.

1975 SCHEDULE

Sept. 13	Tulane
20	at Alabama
27	at Georgia Tech
Oct. 4	at Georgia
11	Wake Forest
18	at Duke
25	No. Carolina State
Nov. 1	Florida State
8	at North Carolina
15	Maryland
22	at South Carolina

1974 RESULTS

CU	OPP
0	Texas A&M 24
10	No. Carolina State 31
21	Georgia Tech 17
28	Georgia 24
0	Maryland 41
17	Duke 13
28	Tennessee 29
21	Wake Forest 9
54	North Carolina 32
28	Virginia 9
39	South Carolina 21

**THE SERIES
FSU leads 1-0**

	FSU	CU
1970.....	38	13

OFFICIALS: Referee—Dayle Phillips (ACC) Raleigh, NC; Umpire—Charles Brown (SEC) Atlanta, GA; Linesman—A.B. Elliott (ACC) Springfield, VA; Line Judge—Robert Caldwell (SEC) Columbus, MS; Field Judge—John Foster (SEC) Gulfport, MS; Back Judge—Tommy Hunt (ACC) Durham, NC.

NINTH GAME: November 8, 1975



MEMPHIS STATE

**Site: Doak Campbell Stadium (40,500)
Tallahassee, Florida
Kickoff: 7:30 p.m. EST**

SID: Jack Bugbee
Phone: 901/454-2337
Home: 901/452-9648

ASST. SID: Bob Winn
HEAD COACH: Richard Williamson (First Year)
Best Time To Contact Coach: 8-11:30 a.m.
Phone: 901/454-2341

Location: Memphis, TN
Nickname: Tigers
President: Billy M. Jones
Athletic Director: Billy J. Murphy
Assistant AD: Ruffner Murray
Enrollment: 22,500
Colors: Blue and Gray
Stadium: Memphis Memorial
Business Manager: Danny Felker
Ticket Manager: J.W. Patrick
Athletic Department Phone: 901/454-2331
Conference: Independent NCAA
1974 Record: 7-4
Lettermen: Back 42, Lost 17
Starters: Back 16, Lost 9
Stars To Watch: Bob Rush, C; Keith Wright, F; Eary Jones, DT; Ken Niemaseck, DT; David Ligon, NG.
Newcomers To Watch: Elgin Stewart, QB; Ralph Griffin, LB; Mike Bates, RB; Leo Cage, RB.

1975 SCHEDULE

Sept.	6	Mississippi State
	14	at Auburn
	20	at Cincinnati
	27	Arkansas State
Oct.	4	North Texas State
	11	Southern Mississippi
	18	Louisville
	25	at Tulsa
Nov.	1	at Wichita State
	8	at Florida State
	15	Houston

1974 RESULTS

MS	OPP
16	Louisville 10
0	Southern Mississippi 6
15	Mississippi 7
20	Colorado State 18
13	Cincinnati 7
28	Mississippi State 29
41	North Texas State 0
42	Florida State 14
6	Tennessee 34
10	Houston 13
34	Wichita State 10

**THE SERIES
MSU leads 5-2**

	FSU	MS		FSU	MS
1959	6	16	1970	12	16
1967	26	7	1973	10	13
1968	20	10	1974	14	42
1969	26	28			

OFFICIALS: Referee—Boyce Smith (SEC) Kingston, TN; Umpire—John Griggs (SEC) Lexington, KY; Linesman—Robert Towns (SEC) Athens, GA; Line Judge—Robert Caldwell (SEC) Columbus, MS; Field Judge—William Stanton (SEC) North Haven, CT; Back Judge—Robert Patrick (SEC) Kenesaw, GA; ECO—Ronald Baynes (SEC) Tallassee, AL.

TENTH GAME: November 15, 1975



MIAMI

**Site: Doak Campbell Stadium (40,500)
Tallahassee, Florida
Kickoff: 7:30 p.m. EST**

SID: George Gallet
Phone: 305/284-3011 or 284-5802
Home: 305/661-2391

ASST. SID: Wilbert Bach
HEAD COACH: Carl Selmer (First Year)
Best Time To Contact Coach: 1:00 p.m.
Phone: 305/284-3822

Location: Coral Gables, FL **Enrollment:** 15,500
Nickname: Hurricanes **Colors:** Orange, Green and White
President: Dr. Henry King Stanford **Stadium:** Orange Bowl
Athletic Director: Pete Elliott **Business Manager:** Art Laskey
Assistant AD: Walter Kichefski **Ticket Manager:** Arnold Tucker
Athletic Department Phone: 305/284-3011
Conference: Independent **1974 Record:** 6-5
Lettermen: Back 32, Lost 14 **Starters:** Back 10, Lost 12
Stars To Watch: Gary Dunn, DT; Bert Camut, OG; Phil August, SE; Don Martin, IB; Tim Morgan, IB; Larry Bates, FB.
Newcomers To Watch: George Mason, QB.

1975 SCHEDULE

Sept. 20	at Georgia Tech
26	Oklahoma
Oct. 4	at Nebraska
10	Colorado
17	Houston
Nov. 1	at Boston College
7	Navy
15	at Florida State
22	Notre Dame
29	Florida

UM

20
28
0
35
21
7
14
14
7
14
7

1974 RESULTS

OPP

Houston	3
Tampa	26
Auburn	3
Pacific	6
West Virginia	20
Notre Dame	38
Virginia	7
Florida State	21
Alabama	28
Syracuse	7
Florida	31

THE SERIES
Series tied 9-9

	FSU	UM		FSU	UM		FSU	UM			
1951	13	35	1959	6	7	1969	16	14
1953	0	27	1960	7	25	1970	27	3
1955	0	34	1962	6	7	1971	20	17
1956	7	20	1963	24	0	1972	37	14
1957	13	40	1964	14	0	1973	10	14
1958	17	6	1966	23	20	1974	21	14

OFFICIALS: Referee—Richard Burleson (SEC) Birmingham, AL; Umpire—James Mosteller (SEC) Macon, GA; Linesman—Jack Jordan (SEC) Atlanta, GA; Line Judge—John Wilson (SEC) Birmingham, AL; Field Judge—Laurien Stapp (SEC) Birmingham, AL; Back Judge—John Buoni (SEC) Memphis, TN; ECO—Ned Wilford (SEC) Daytona Beach, FL.

ELEVENTH GAME: November 22, 1975



HOUSTON

Site: The Astrodome (55,000)

Houston, Texas

Kickoff: 7:30 p.m. CDT

SID: Ted Nance

Phone: 713/748-6844

Home: 713/353-4663

HEAD COACH: Bill Yeoman (14 Years; 87-46-6)

Best Time To Contact Coach: 8-12:00 Noon

Phone: 713/749-4274

Location: Houston, TX

Nickname: Cougars

President: Dr. Philip G. Hoffman

Athletic Director: Harry Fouke

Assistant AD: Guy V. Lewis

Athletic Department Phone: 713/749-2371

Conference: Southwest

Lettermen: Back 19, Lost 22

Stars To Watch: Val Belcher, OG; John Housman, FB; Wilson Whitley, DT; Donnie McGraw, RB; Paul Humphreys, MLB.

Newcomers To Watch: Don Bass, TE; Kevin Rollwage, OT; Ross Echols, DE; Reid Hansen, LB; Kenneth Perry, LB; Mike Spradlin, C.

Enrollment: 27,550

Colors: Scarlet and White

Stadium: The Astrodome

Business Manager: Ned Thompson

Ticket Manager: Ned Thompson

1974 Record: 8-3-1

Starters: Back 10, Lost 12

1975 SCHEDULE

Sept. 6	Lamar
13	Rice
27	Southern Methodist
Oct. 11	at North Texas State
17	at Miami
Nov. 1	at Cincinnati
8	Virginia Tech
15	at Memphis State
22	Florida State
29	Tulsa

1974 RESULTS

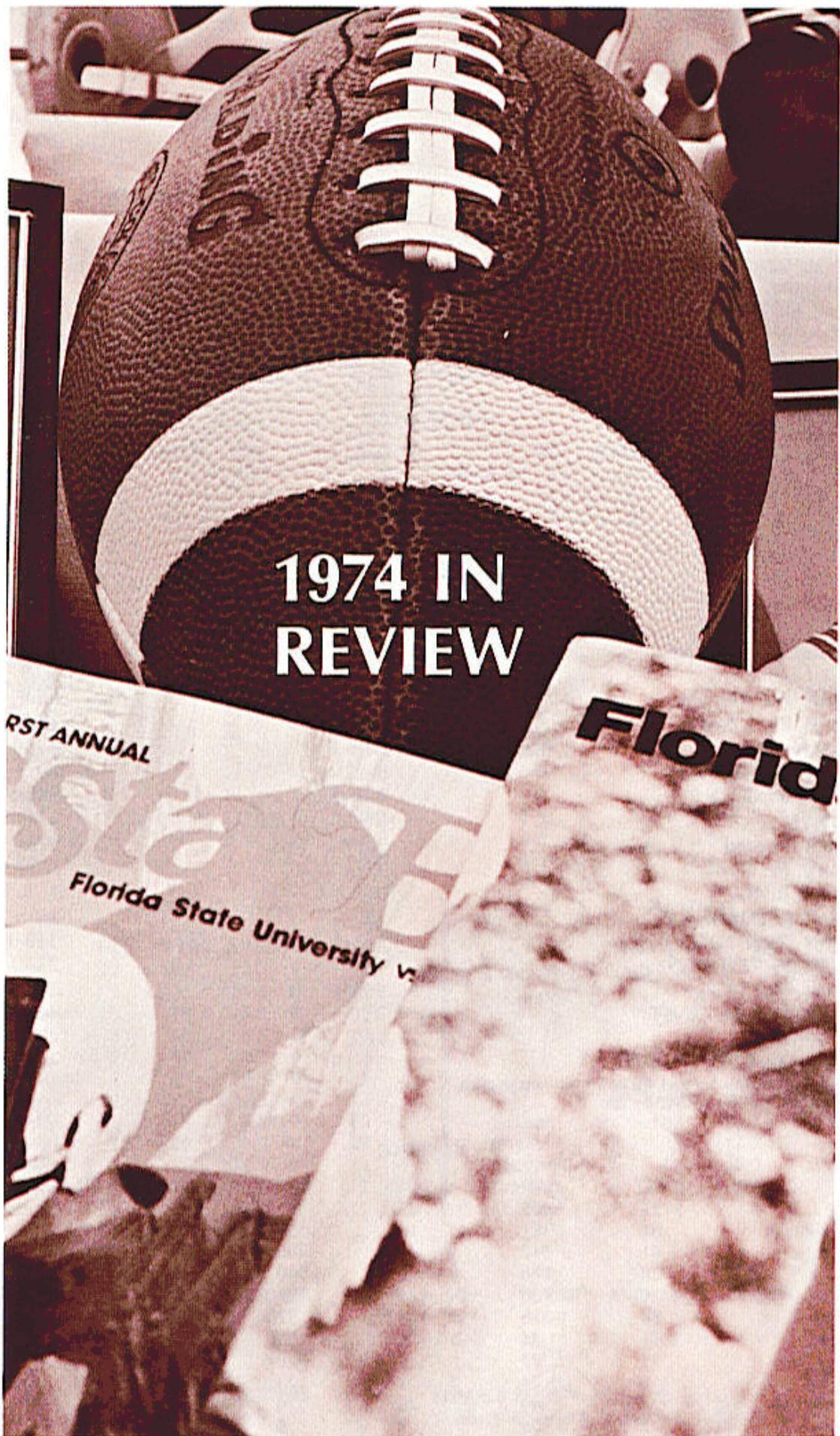
UH	OPP
9	Arizona State 30
21	Rice 0
3	Miami 20
49	Virginia Tech 12
24	South Carolina 14
35	Villanova 0
27	Cincinnati 6
31	Georgia 24
13	Memphis State 10
23	Florida State 8
14	Tulsa 30

THE SERIES

Houston leads 11-1-2

	FSU	UH		FSU	UH						
1960	6	7	1966	13	21	1971	7	14
1961	8	28	1967	13	33	1972	27	31
1962	0	7	1968	40	20	1973	3	34
1964	13	13	1969	13	41	1974	8	23
1965	16	16	1970	21	53				

OFFICIALS: Referee—Bill Begin (SWC) Conroe, TX; Umpire—Harold Johnson (SEC) Jackson, TN; Linesman—Bobby Ratliff (SWC) Hurst, TX; Line Judge—Butch Lambert, Sr. (SEC) Tupelo, MS; Field Judge—John Foster (SEC) Gulfport, MS; Back Judge—Ed Ward (SWC) Austin, TX.



**1974 IN
REVIEW**

Florida

FIRST ANNUAL

Florida State University

**1974 Final Football Statistics
(1-10; Home 0-6; Away 1-4)**

TEAM STATISTICS	FSU	OPP
TOTAL POINTS	130	289
Pts. Per Game	11.8	26.3
TD/Pass-Run-Rtn	7-8-2	10-27-1
XP Kick	14/15	35/38
XP Run or Pass	1/2	0/0
Field Goals	4/14	8/18
Safety	0	1
FIRST DOWNS	171	219
Rushing	82	151
Passing	80	53
Penalty	9	15
3rd Dn Consistency ¹	34.6	43.2
TOTAL YARDAGE	3472	4468
Yds. Per Game	315.6	406.2
Ball Control Plays	725	802
Yds. Per Play	4.8	5.6
% Yds. Rush-Pass	49-51	69-31
RUSHING YARDAGE	1703	3069
Yds. Per Game	154.8	279.0
Gained	1974	3379
Lost	271	310
Rushing Plays	432	641
Yds. Per Play	3.9	4.8
PASSING YARDS	1769	1399
Yds. Per Game	160.8	127.2
Attempt-Complete	293-153	161-81
% Completed	52.2	50.3
Yds. Per Attempt	6.04	8.69
Yds. Per Comp.	11.6	17.3
Incpn-% Incpd.	20-6.8	8-4.9
INTERCEPTIONS BY	8	20
Yds. Rtn-TD	121-0	211-0
PUNTS	61	47
Yds. Punted	2274	1760
Yds. Per Punt	37.3	37.4
Had Blkd.	0	1
PUNT RETURNS	18	25
Yds. Rtn-TD	245-1	318-1 ²
KICKOFF RETURNS	49	23
Yds. Rtn-TD	998-1	387-0
PENALTIES AGAINST	85	46
Yards	762	469
FUMBLES-LOST	33-19	42-24

¹Pct. of successful 3rd and 4th down scrimmage plays.

²78 yd. Return of Blkd. FG for TD.

RUSHING

	ATT	GAIN	LOSS	NET	AVG.	TD	LG
Key	123	625	23	602	4.9	3	20
R. Thomas	81	361	10	351	4.3	0	49
Bright	61	310	14	296	4.9	2	16
Miller	26	146	6	140	5.4	1	23
Black	26	156	21	135	5.2	0	18
Copess	70	236	144	92	1.3	1	16
Leggett	11	34	4	30	2.7	1	12
Davison	11	27	1	26	2.4	0	4
McKinnon	8	24	1	23	2.9	0	6
Mathieson	8	44	26	18	2.3	0	18
Goldsmith	2	3	3	0	0.0	0	3
Shumann	4	8	13	-5	—	0	7
Downey	1	0	5	-5	—	0	—

PASSING

	ATT	COMP	PERC	YARDS	TD	LG	INT	YDS/COMP	COMP/GAME
Coppess	145	78	53.8	817	2	31	7	10.5	7.1
Black	61	33	54.1	385	2	21	6	11.7	6.6
Mathieson	82	40	48.8	544	3	55	6	13.6	8.0
Downey	3	2	66.7	23	0	14	0	11.5	0.7
Goldsmith	2	0	0.0	0	0	0	1	—	—

³Blkd. FG—Cooper ⁴Blkd. Punt—Murphy

RECEIVING

	NO.	YARDS	AVG.	TD	LONG		NO.	YARDS	AVG.	TD	LONG
Shumann	43	515	12.0	3	52	Beckman	3	46	15.3	0	23
Goldsmith	42	525	12.5	2	48	Davison	3	41	13.7	0	18
R. Thomas	16	109	6.8	1	15	J. Thomas	3	31	10.3	0	15
Bright	12	201	16.8	1	55	Miller	3	17	5.7	0	7
Allen	6	86	14.3	0	22	Harder	3	12	4.0	0	5
Overby	6	67	11.2	0	17	Stockton	2	23	11.5	0	14
Key	5	22	4.4	0	11	Barnes	1	11	11.0	0	11
Everett	4	59	14.8	0	26	Leggett	1	4	4.0	0	4

INTERCEPTIONS

	NO.	YARDS	AVG.	TD	LONG		NO.	YARDS	AVG.	TD	LONG
Camps	2	37	18.5	0	19	Stockton	1	16	16.0	0	16
Jackson	2	12	6.0	0	12	Carter	1	9	9.0	0	9
Cooper	1	42	42.0	0	42	P. Jones	1	5	5.0	0	5

SCORING

	TD	FGM-A	KICK XPM-A	OTHER XPM-A	TP
Askin	0	4-14	14-15	0-0	26
Bright	4	0-0	0-0	0-0	24
Shumann	3	0-0	0-0	1-0	20
Key	3	0-0	0-0	0-0	18
Goldsmith	2	0-0	0-0	0-0	12
Coppess	1	0-0	0-0	0-0	6
Jackson	1	0-0	0-0	0-0	6
Leggett	1	0-0	0-0	0-0	6
Miller	1	0-0	0-0	0-0	6
R. Thomas	1	0-0	0-0	0-0	6
Black	0	0-0	0-0	0-2	0

KICKOFF RETURNS

	NO.	YARDS	AVG.	TD	LONG
Bright	22	499	22.7	1	100
Heggins	9	226	25.1	0	68
McKinnon	3	46	15.3	0	21
Leggett	3	43	16.3	0	19
Key	2	40	20.0	0	25
J. Thomas	2	39	19.5	0	21
Miller	2	21	10.5	0	12
Overby	2	18	9.0	0	10
Falana	1	29	29.0	0	29
Jackson	1	14	14.0	0	14
R. Thomas	1	12	12.0	0	12
Beckman	1	11	11.0	0	11

PUNTING

	NO.	YARDS	AVG.	LONG
Downey	60	2231	37.2	56
Coppess	1	43	43.0	43

PUNT RETURNS

	NO.	YARDS	AVG.	TD	LONG
Jackson	10	182	18.2	1	80
Bright	3	35	11.7	0	34
Goldsmith	3	15	5.0	0	14
Cooper ³	1	9	9.0	0	9
Murphy ⁴	1	4	4.0	0	0

FIELD GOALS

	10-29	30-39	40-49	50+	TOTAL	AVG. MADE	LONG	BLKD.
Askin	1-4	0-3	3-5	0-2	4-14	41.0	48	2
Opponents	3-5	3-5	2-5	0-4	8-19	33.1	47	1

SCORE BY QUARTERS

	1	2	3	4	TP
Florida State	46	35	7	42	130
Opponents	77	47	67	98	289

FUMBLE RECOV—Maloy 5, Camps 3, Burroughs 2, Carter 3, Cooper 2, Murphy 2, Porter 2, Coffield, G. Johnson, P. Jones, Ridings, Stockton.

PITTSBURGH 9, FLORIDA STATE 6

Tallahassee, September 14, 1974

	First Downs	Rushing No./Yds.	Passing Yds./Att/Cp/Int.	Fumbles No./Lost	Punting No./Yds.	Penalties No./Yds.	Score By Quarters
Florida State	12	38/140	122/22/10/0	6/3	8/289	10/91	6- 0- 0- 0— 6
Pittsburgh	20	50/121	135/19/10/1	4/2	5/146	4/31	0- 6- 3- 0— 9

SCORING SUMMARY: Florida State—Thomas 5-yard pass from Coppess (kick failed).
Pittsburgh—Dorsett 3-yard run (kick failed); Long 39-yard Field Goal. A—30,076.

COLORADO STATE 14, FLORIDA STATE 7

Tallahassee, September 21, 1974

	First Downs	Rushing No./Yds.	Passing Yds./Att/Cp/Int.	Fumbles No./Lost	Punting No./Yds.	Penalties No./Yds.	Score By Quarters
Florida State	14	37/140	103/21/12/1	4/1	5/193	6/56	0- 0- 0- 7—7
Colorado State	19	55/254	107/16/ 7/1	3/3	1/ 34	1/19	7- 0- 7- 0—14

SCORING SUMMARY: Florida State—Goldsmith 5-yard pass from Coppess (Askin kick). Colorado State—Miller 26-yard pass from Graham (Kemble kick); Harris 10-yard run (Kemble kick). A—30,984.

KANSAS 40, FLORIDA STATE 9

Lawrence, KS, September 21, 1974

	First Downs	Rushing No./Yds.	Passing Yds./Att/Cp/Int.	Fumbles No./Lost	Punting No./Yds.	Penalties No./Yds.	Score By Quarters
Florida State	19	40/179	158/27/16/2	1/1	5/197	6/ 50	3- 0- 0- 6— 9
Kansas	21	53/366	194/16/10/0	2/2	3/135	10/129	14-10- 3-13—40

SCORING SUMMARY: Florida State—Askin 42-yard Field Goal; Bright 6-yard run (run failed). Kansas—Smith 25-yard run (Love kick); Adams 18-yard pass from McMichael (Love kick); Miller 24-yard run (Hobbs kick); Hobbs 22-yard Field Goal; Swift 47-yard Field Goal; Prince 11-yard run (Hobbs kick); Campfield 27-yard run (Hobbs kick). A—38,780.

BAYLOR 21, FLORIDA STATE 17

Tallahassee, October 5, 1974

	First Downs	Rushing No./Yds.	Passing Yds./Att/Cp/Int.	Fumbles No./Lost	Punting No./Yds.	Penalties No./Yds.	Score By Quarters
Florida State	15	43/159	140/26/15/0	4/3	5/161	12/93	3-14- 0- 0—17
Baylor	18	48/227	116/20/ 9/2	6/2	5/160	4/49	0- 0-14- 7—21

SCORING SUMMARY: Florida State—Askin 48-yard Field Goal; Key 15-yard run (Askin kick); Miller 5-yard run (Askin kick). Baylor—Beaird 1-yard run (Hicks kick); Beaird 1-yard run (Hicks kick); Beaird 2-yard run (Hicks kick). A—25,262.

ALABAMA 8, FLORIDA STATE 7
Tuscaloosa, AL, October 12, 1974

	First Downs	Rushing No./Yds.	Passing Yds./Att/Cp/Int.	Fumbles No./Lost	Punting No./Yds.	Penalties No./Yds.	Score By Quarters
Florida State	19	50/207	138/20/13/0	2/2	4/106	7/55	7- 0- 0- 0— 7
Alabama	13	53/157	72/10/ 4/0	2/2	4/147	2/10	0- 0- 3- 5— 8

SCORING SUMMARY: Florida State—Key 6-yard run (Askin kick). Alabama—Berrey 44-yard Field Goal; Team Safety (FSU's Downey deliberately runs out of end zone with 1:27 left in game); Berrey 36-yard Field Goal (0:33 left in game). A—58,394.

FLORIDA 24, FLORIDA STATE 14
Tallahassee, October 19, 1974

	First Downs	Rushing No./Yds.	Passing Yds./Att/Cp/Int.	Fumbles No./Lost	Punting No./Yds.	Penalties No./Yds.	Score By Quarters
Florida State	15	41/204	149/27/13/3	4/2	9/355	10/109	0- 0- 7- 7—14
Florida	13	74/357	112/ 5/ 3/0	7/3	6/202	6/ 70	7- 3- 0-14—24

SCORING SUMMARY: Florida State—Coppess 3-yard run (Askin kick); Shumann 16-yard pass from Black (Askin kick). Florida—Dubose 31-yard run (Posey kick); Posey 21-yard Field Goal; Darby 63-yard pass from Gaffney (Posey kick); Green 12-yard run (Posey kick). A—42,541.

AUBURN 38, FLORIDA STATE 6
Auburn, AL, October 26, 1974

	First Downs	Rushing No./Yds.	Passing Yds./Att/Cp/Int.	Fumbles No./Lost	Punting No./Yds.	Penalties No./Yds.	Score By Quarters
Florida State	10	35/ 94	142/31/15/4	4/3	5/193	10/86	6- 0- 0- 0— 6
Auburn	25	57/291	117/16/ 7/2	3/3	2/ 90	5/54	7- 0-17-14—38

SCORING SUMMARY: Florida State—Askin 47-yard Field Goal; Askin 27-yard Field Goal. Auburn—Nugent 11-yard pass from Gargia (Wilson kick); Neel 8-yard run (Wilson kick); Gossom 48-yard pass from Gargis (Wilson kick); Wilson 31-yard Field Goal; Gargis 16-yard run (Wilson kick); Vacarella 14-yard run (Wilson kick). A—58,709.

MEMPHIS STATE 42, FLORIDA STATE 14
Memphis, TN, November 2, 1974

	First Downs	Rushing No./Yds.	Passing Yds./Att/Cp/Int.	Fumbles No./Lost	Punting No./Yds.	Penalties No./Yds.	Score By Quarters
Florida State	22	39/204	227/36/18/4	3/2	3/113	6/56	7- 0- 0- 7—14
Memphis State	20	59/290	121/14/ 9/0	5/3	5/193	5/43	21- 7- 0-14—42

SCORING SUMMARY: Florida State—Key 10-yard run (Askin kick); Shumann 22-yard pass from Mathieson (Askin kick). Memphis State—Fowler 2-yard run (Williams kick); Middleton 1-yard run (Williams kick); Fowler 1-yard run (Williams kick); Cacciola 78-yard punt return (Williams kick); Z. Butler 27-yard run (Williams kick); K. Wright 14-yard pass from Robb (Williams kick). A—20,689.

FLORIDA STATE 21, MIAMI 14

Miami, FL, November 8, 1974

	First Downs	Rushing No./Yds.	Passing Yds./Att/Cp/Int.	Fumbles No./Lost	Punting No./Yds.	Penalties No./Yds.	Score By Quarters
Florida State	18	50/232	172/22/12/2	0/0	5/229	8/67	7- 7- 0- 7—21
Miami	15	40/130	240/23/11/2	4/1	7/335	2/20	0- 0- 0-14—14

SCORING SUMMARY: Florida State—Bright 14-yard run (Askin kick); Goldsmith 48-yard pass from Mathieson (Askin kick); Leggett 1-yard run (Askin kick). Miami—Beckman 77-yard pass from Glover (Dennis kick); August 80-yard pass from Marcantonio (Dennis kick). A—19,785.

VIRGINIA TECH 56, FLORIDA STATE 21

Tallahassee, November 16, 1974

	First Downs	Rushing No./Yds.	Passing Yds./Att/Cp/Int.	Fumbles No./Lost	Punting No./Yds.	Penalties No./Yds.	Score By Quarters
Florida State	13	27/ 73	239/35/16/2	1/1	4/162	7/66	7-14- 0- 0—21
Virginia Tech	26	72/410	134/10/ 7/0	3/1	4/148	2/10	21-14-14- 7—56

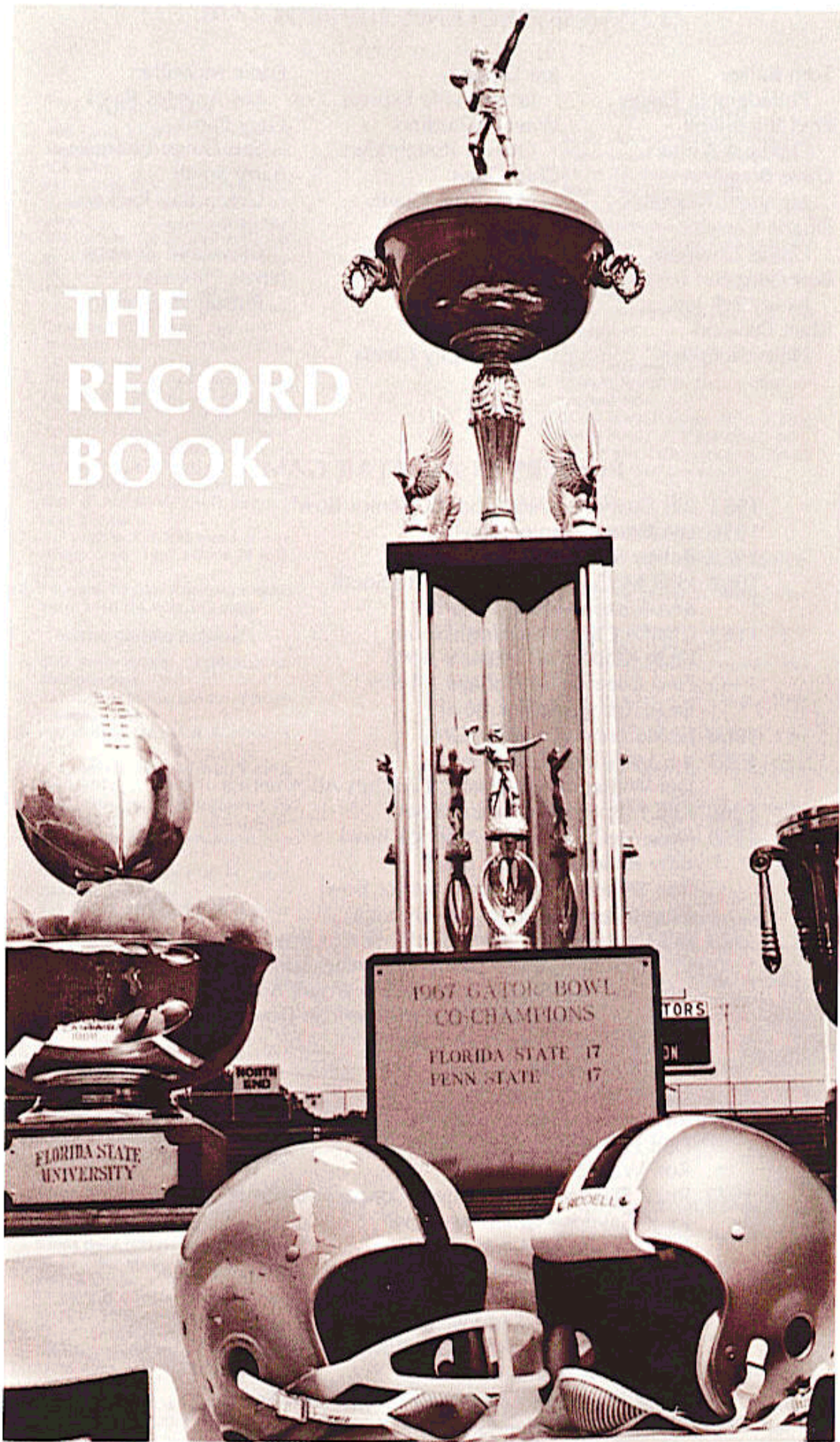
SCORING SUMMARY: Florida State—Bright 55-yard pass from Mathieson (Askin kick); Bright 100-yard kickoff return (Askin kick); Jackson 73-yard punt return (Askin kick). Virginia Tech—Adams 17-yard run (Latimer kick); Arians 1-yard run (Latimer kick); Scales 31-yard pass from Barnes (Latimer kick); Blueford 1-yard run (Latimer kick); Coles 73-yard run (Latimer kick); Dick 16-yard pass from Barnes (Latimer kick); Rogers 26-yard run (Latimer kick); Coles 1-yard run (Latimer kick). A—27,707.

HOUSTON 23, FLORIDA STATE 8

Tallahassee, November 23, 1974

	First Downs	Rushing No./Yds.	Passing Yds./Att/Cp/Int.	Fumbles No./Lost	Punting No./Yds.	Penalties No./Yds.	Score By Quarters
Florida State	14	32/ 71	179/26/13/2	4/1	8/296	2/23	0- 0- 0- 8— 8
Houston	29	80/466	51/12/ 4/0	3/2	5/170	3/28	0- 7- 6-10—23

SCORING SUMMARY: Florida State—Shumann 15-yard pass from Black (Shumann pass from Black). Houston—Cherry 4-yard run (Coplin kick); Housman 1-yard run (kick failed); Coplin 25-yard Field Goal; Cherry 3-yard run (Coplin kick). A—18,195.



THE RECORD BOOK

SEMINOLES IN THE PROS

Tom Bailey	Joe Downey	Eddie McMillan
Philadelphia Eagles	Jacksonville Express	Los Angeles Rams
Fred Biletnikoff	Wayne Giardino	Gary Parris
Oakland Raiders	Ottawa Roughriders	San Diego Chargers
Dave Braggins	Chip Glass	Barry Smith
Montreal Alouettes	New York Giants	Green Bay Packers
Duane Carrell	Grant Guthrie	Walt Sumner
Dallas Cowboys	Los Angeles Rams	Cleveland Browns
Bert Cooper	Gary Huff	James Thomas
New York Jets	Chicago Bears	Pittsburgh Steelers
Rhett Dawson	Bob Jones	
Houston Oilers	Kansas City Chiefs	

PLAYERS IN ALL-STAR GAMES

- 1953 Bill Dawkins—North-South, Senior Bowl
- 1956 Lee Corso—Senior Bowl
- 1959 Bobby Renn—Senior Bowl
- 1962 John McConnaughay—North-South
Ken Russom—North-South
- 1963 Charlie Calhoon—North-South
Keith Kinderman—Senior Bowl
- 1965 Fred Biletnikoff—College All-Star
Steve Tensi—Senior Bowl
- 1966 Jack Shinholser—Blue-Gray
- 1967 Jim Mankins—East-West
Del Williams—East-West, Coaches All-America
- 1968 Kim Hammond—Senior Bowl
- 1969 Dale McCullers—All-America Bowl
Billy Rhodes—Senior Bowl
Ron Sellers—Hula Bowl, Senior Bowl
Chip Glass—Coaches All-America
- 1970 Bill Cappleman—North-South, Senior Bowl, American Bowl
Phil Abaira—North-South, American Bowl
Jeff Curchin—North-South, Senior Bowl, American Bowl
Grant Guthrie—North-South, American Bowl
Stan Walker—American Bowl
- 1971 Robert McEachern—North-South
Tom Bailey—North-South
Bill Lohse—American Bowl
Don Pederson—Blue-Gray
Ron Wallace—Blue-Gray
- 1972 Rhett Dawson—Hula Bowl, Coaches All-America
Kent Gaydos—American Bowl
John Lanahan—American Bowl
- 1973 Barry Smith—East-West, Senior Bowl, College All-Star
Gary Huff—East-West, Senior Bowl
James Thomas—East-West, Senior Bowl, College All-Star
Larry Strickland—American Bowl, North-South
Gary Parris—American Bowl
Eddie McMillan—American Bowl, North-South
- 1974 Bert Cooper—Blue-Gray

BEST SINGLE GAME PERFORMANCES

TOTAL OFFENSE

1. 490 yards by Bill Cappleman vs. Memphis State, 1969 (minus 18 rush, 508 pass)
2. 431 yards by Bill Cappleman vs. South Carolina, 1968 (minus 6 rush, 437 pass)
3. 384 yards by Tommy Warren vs. Virginia Tech, 1970 (99 rush, 285 pass)
4. 383 yards by Gary Huff vs. Houston, 1972 (minus 26 rush, 409 pass)
5. 369 yards by Gary Huff vs. South Carolina, 1971 (3 rush, 366 pass)
369 yards by Joe Majors vs. Tampa, 1959 (56 rush, 313 pass)
7. 367 yards by Bill Cappleman vs. Wake Forest, 1968 (2 rush, 365 pass)
8. 357 yards by Gary Huff vs. Virginia Tech, 1971 (minus 17 rush, 374 pass)
9. 355 yards by Bill Cappleman vs. Tulsa (minus 17 rush, 372 pass)
10. 353 yards by Kim Hammond vs. Penn State (Gator Bowl, 1967) (minus 9 rush, 362 pass)
11. 349 yards by Kim Hammond vs. Mississippi State, 1967 (minus 20 rush, 369 pass)
12. 346 yards by Gary Pajcic vs. Virginia Tech, 1966 (34 rush, 312 pass)

YARDS GAINED PASSING

1. 508 yards by Bill Cappleman vs. Memphis State, 1969
2. 437 yards by Bill Cappleman vs. South Carolina, 1968
3. 409 yards by Gary Huff vs. Houston, 1972
4. 374 yards by Gary Huff vs. Virginia Tech, 1971
5. 372 yards by Bill Cappleman vs. Tulsa, 1969
6. 369 yards by Kim Hammond vs. Mississippi State, 1967
7. 366 yards by Gary Huff vs. South Carolina, 1971
8. 365 yards by Bill Cappleman vs. Wake Forest, 1968
9. 362 yards by Kim Hammond vs. Penn State (Gator Bowl, 1967)
10. 347 yards by Gary Huff vs. Arizona State (Fiesta Bowl, 1971)

PASSES ATTEMPTED

1. 58 by Gary Huff vs. Florida, 1972 (completed 27)
2. 53 by Kim Hammond vs. Penn State (Gator Bowl, 1967) (completed 37)
53 by Gary Pajcic vs. Virginia Tech, 1966 (completed 28)
4. 51 by Gary Huff vs. Houston, 1972 (completed 27)
5. 50 by Bill Cappleman vs. Memphis State, 1969 (completed 31)
6. 46 by Gary Huff vs. Arizona State (Fiesta Bowl, 1971) (completed 25)
7. 42 by Gary Huff vs. Kansas, 1972 (completed 26)
42 by Bill Cappleman vs. South Carolina, 1968 (completed 25)
42 by Bill Cappleman vs. Florida, 1969 (completed 20)
10. 41 by Gary Huff vs. Auburn, 1972 (completed 25)
41 by Gary Huff vs. Georgia Tech, 1971 (completed 20)

PASSES COMPLETED

1. 37 by Kim Hammond vs. Penn State (Gator Bowl, 1967) (attempted 53)
2. 31 by Bill Cappleman vs. Memphis State, 1969 (attempted 50)
3. 28 by Gary Pajcic vs. Virginia Tech, 1966 (attempted 53)
4. 27 by Gary Huff vs. Houston, 1972 (attempted 51)
27 by Gary Huff vs. Florida, 1972 (attempted 58)
6. 26 by Gary Huff vs. Kansas, 1972 (attempted 42)
26 by Gary Huff vs. South Carolina, 1971 (attempted 41)
8. 25 by Gary Huff vs. Auburn, 1972 (attempted 41)
25 by Gary Huff vs. Arizona State (Fiesta Bowl, 1971) (attempted 46)
25 by Bill Cappleman vs. South Carolina, 1968 (attempted 42)

PASSES CAUGHT

1. 16 by Ron Sellers vs. South Carolina, 1968 (259 yards)
2. 14 by Ron Sellers vs. Wake Forest, 1968 (260 yards)
14 by Ron Sellers vs. Penn State (Gator Bowl, 1967) (145 yards)
4. 13 by Kent Gaydos vs. Houston, 1969 (126 yards)
13 by Ron Sellers vs. Memphis State, 1968 (218 yards)
13 by Ron Sellers vs. Alabama, 1967 (165 yards)
13 by Ron Sellers vs. Virginia Tech, 1966 (135 yards)
13 by Fred Biletnikoff vs. Oklahoma (Gator Bowl, 1965) (192 yards)
9. 12 by Bill Moremen vs. Penn State (Gator Bowl, 1967) (106 yards)

YARDS RECEIVING PASSES

1. 260 yards by Ron Sellers vs. Wake Forest, 1968 (14 receptions)
2. 259 yards by Ron Sellers vs. South Carolina, 1968 (16 receptions)
3. 229 yards by Ron Sellers vs. Virginia Tech, 1967 (8 receptions)
4. 218 yards by Ron Sellers vs. Memphis State, 1968 (13 receptions)
5. 192 by Fred Biletnikoff vs. Oklahoma (Gator Bowl, 1965) (13 receptions)
6. 182 by Fred Biletnikoff vs. Virginia Tech, 1964 (11 receptions)

YARDS GAINED RUSHING

1. 161 by Buddy Strauss vs. Mississippi College, 1949
2. 155 by Mike Davison vs. Tulsa, 1972
3. 152 by Mike Sellers vs. Sul Ross, 1951
4. 150 by Bobby Renn vs. Abilene Christian 1957
5. 142 by Keith Kinderman vs. Richmond, 1961
142 by Phil Spooner vs. Houston, 1965
7. 141 by Bobby Fiveash vs. Tampa, 1953

BEST SEASON PERFORMANCES (Regular Season Only)

POINTS SCORED

1. 86 by Barry Smith, 1972
2. 72 by Ron Sellers, 1968
3. 69 by Frank Fontes, 1971
4. 68 by Fred Biletnikoff, 1964
5. 64 by Frank Fontes, 1970
6. 60 by Jim Mankins, 1966
7. 60 by Wyatt Parrish, 1949
8. 55 by Grant Guthrie, 1968
9. 54 by Mike Sellers, 1950
10. 53 by Grant Guthrie, 1967

TOUCHDOWNS SCORED

1. 14 by Barry Smith, 1972
2. 12 by Ron Sellers, 1968
3. 11 by Fred Biletnikoff, 1964
4. 10 by Jim Mankins, 1966
5. 9 by Wyatt Parrish, 1949
- 9 by Mike Sellers, 1950
7. 8 by Bill Moremen, 1967
- 8 by Bill Moremen, 1966
- 8 by Bobby Fivesh, 1953
- 8 by Ron Sellers, 1967

TOUCHDOWN PASSES THROWN

1. 25 by Gary Huff, 1972
- 25 by Bill Cappleman, 1968
3. 23 by Gary Huff, 1971
4. 15 by Kim Hammond, 1967
5. 14 by Bill Cappleman, 1969
- 14 by Steve Tensi, 1964
7. 11 by Tommy Warren, 1970
8. 10 by Harry Massey, 1954
9. 9 by Steve Tensi, 1963

YARDS RUSHING

1. 944 by Hodge Mitchell, 1972
2. 747 by Buddy Strauss, 1949
3. 669 by Hodges Mitchell, 1973
4. 630 by Tom Bailey, 1969
5. 615 by Fred Pickard, 1958
6. 609 by Stan Dobozy, 1952
7. 605 by Wyatt Parrish, 1949
8. 602 by Larry Key, 1974
9. 596 by Bobby Renn, 1956
10. 578 by Mike Sellers, 1950
11. 570 by Tom Bailey, 1968
12. 516 by Paul Magalski, 1971
13. 516 by Phil Spooner, 1964

TOUCHDOWN PASSES CAUGHT

1. 13 by Barry Smith, 1972
2. 12 by Ron Sellers, 1968
3. 11 by Fred Biletnikoff, 1964
4. 8 by Ron Sellers, 1967
5. 7 by Rhett Dawson, 1971
- 7 by Kent Gaydos, 1971
7. 6 by Barry Smith, 1971
- 6 by Barry Smith, 1970
- 6 by Tom Feamsler, 1954
10. 5 by Rhett Dawson, 1970
- 5 by Don Pederson, 1969
- 5 by Harry Bringer, 1950
- 5 by Bob Nellums, 1956

TIMES CARRIED

1. 192 by Hodges Mitchell, 1972
2. 188 by Buddy Strauss, 1949
3. 171 by Hodges Mitchell, 1973
4. 145 by Stan Dobozy, 1952
5. 144 by Tom Bailey, 1969
6. 136 by Bill Gunter, 1968
- 136 by Phil Spooner, 1964
8. 131 by Fred Pickard, 1959
9. 130 by Mike Sellers, 1950
10. 123 by Bill Moremen, 1966
- 123 by Larry Key, 1974

TOTAL OFFENSE (Rushing, Passing)

1. 2770 by Gary Huff, 1972 (123, 2893)
2. 2653 by Gary Huff, 1971 (83, 2736)
3. 2342 by Bill Cappleman, 1968 (68, 2410)
4. 2135 by Bill Cappleman, 1969 (332, 2467)
5. 2074 by Kim Hammond, 1967 (83, 1991)
6. 1777 by Tommy Warren, 1970 (164, 1613)
7. 1735 by Gary Pajcic, 1966 (145, 1590)
8. 1637 by Steve Tensi, 1964 (46, 1683)
9. 1455 by Ed Pritchett, 1965 (230, 1225)
10. 1141 by Joe Majors, 1959 (78, 1063)

PASSES ATTEMPTED

1. 387 by Gary Huff, 1972
2. 344 by Bill Cappleman, 1969
3. 327 by Gary Huff, 1971
4. 287 by Bill Cappleman, 1968
5. 247 by Ed Pritchett, 1965
6. 241 by Kim Hammond, 1967
7. 233 by Gary Pajcic, 1966
8. 204 by Steve Tensi, 1964
9. 190 by Tommy Warren, 1970
10. 168 by Joe Majors, 1959
11. 153 by Mark Orlando, 1973
12. 147 by Steve Tensi, 1963

PASSES CAUGHT

1. 80 by Ron Sellers, 1968
2. 70 by Ron Sellers, 1967
3. 69 by Barry Smith, 1972
4. 62 by Rhett Dawson, 1971
5. 57 by Fred Biletnikoff, 1964
6. 55 by Ron Sellers, 1966
7. 54 by Rhett Dawson, 1970
8. 49 by Gary Parris, 1972
- 49 by Jim Tyson, 1969
10. 43 by Mike Shumann, 1974
11. 42 by Joe Goldsmith, 1974

PASSES COMPLETED

1. 206 by Gary Huff, 1972
2. 184 by Gary Huff, 1971
3. 183 by Bill Cappleman, 1969
4. 162 by Bill Cappleman, 1968
5. 140 by Kim Hammond, 1967
6. 125 by Gary Pajcic, 1966
7. 121 by Steve Tensi, 1964
8. 110 by Ed Pritchett, 1965

YARDS PASSING

1. 2893 by Gary Huff, 1972
2. 2736 by Gary Huff, 1971
3. 2467 by Bill Cappleman, 1969
4. 2410 by Bill Cappleman, 1968
5. 1991 by Kim Hammond, 1967
6. 1683 by Steve Tensi, 1964
7. 1613 by Tommy Warren, 1970
8. 1590 by Gary Pajcic, 1966
9. 1225 by Ed Pritchett, 1965

YARDS RECEIVING

1. 1496 by Ron Sellers, 1968
2. 1243 by Barry Smith, 1972
3. 1220 by Ron Sellers, 1967
4. 987 by Fred Biletnikoff, 1964
5. 946 by Rhett Dawson, 1970
6. 874 by Ron Sellers, 1966
7. 817 by Rhett Dawson, 1971
8. 720 by Jim Tyson, 1969
9. 692 by Barry Smith, 1971
10. 629 by Gary Parris, 1972
11. 556 by Don Floyd, 1964
12. 525 by Joe Goldsmith, 1974
13. 515 by Mike Shumann, 1974

BEST CAREER PERFORMANCES (Includes Bowl Performances)

POINTS SCORED

1. 168 by Ron Sellers, 1966-68
2. 164 by Barry Smith, 1970-72
3. 162 by Grant Guthrie, 1967-69
4. 145 by Frank Fontes, 1970-71
5. 128 by Fred Biletnikoff, 1962-64
6. 108 by Bill Moremen, 1965-67
7. 99 by Bobby Renn, 1947-49
8. 96 by Rhett Dawson, 1969-71
96 by Wyatt Parrish, 1947-49
96 by Mike Sellers, 1950-51

TOUCHDOWNS

1. 28 by Ron Sellers, 1966-68
2. 27 by Barry Smith, 1970-72
3. 21 by Fred Biletnikoff, 1962-64
4. 18 by Bill Moremen, 1965-67
5. 16 by Bobby Renn, 1956-58
16 by Mike Sellers, 1950-51
7. 15 by Rhett Dawson, 1969-71
15 by Wyatt Parrish, 1947-49
9. 14 by Fred Pickard, 1957-59

TOUCHDOWNS PASSES THROWN

1. 54 by Gary Huff, 1970-72
2. 42 by Bill Cappleman, 1967-69
3. 33 by Steve Tensi, 1962-64
4. 22 by Kim Hammond, 1965-67
5. 17 by Nelson Italiano, 1950-51
6. 15 by Harry Massey, 1952-54
15 by Len Swantic, 1953-56

PASSES CAUGHT

1. 240 by Ron Sellers, 1966-68
2. 136 by Rhett Dawson, 1969-71
3. 127 by Barry Smith, 1970-72
4. 100 by Fred Biletnikoff, 1962-64
5. 81 by Jim Tyson, 1968-70
6. 78 by Kent Gaydos, 1969-71
7. 66 by Don Floyd, 1962-64
8. 64 by Mike Shumann, 1973-74
9. 61 by Joe Goldsmith, 1970-74
10. 59 by Billy Cox, 1966-68
11. 54 by Bud Whitehead, 1958-60

TOUCHDOWN PASSES CAUGHT

1. 28 by Ron Sellers, 1966-68
2. 25 by Barry Smith, 1970-72
3. 20 by Fred Biletnikoff, 1962-64
4. 15 by Rhett Dawson, 1969-71
5. 12 by Kent Gaydos, 1969-71
6. 10 by Jim Tyson, 1968-70
7. 8 by Tom Framster, 1954-55
8 by Ron Schomburger, 1954-57
9. 7 by Bob Nellums, 1956-57

PASSES ATTEMPTED

1. 841 by Gary Huff, 1970-72
2. 639 by Bill Cappleman, 1967-69
3. 508 by Steve Tensi, 1962-64
4. 419 by Kim Hammond, 1965-67
5. 405 by Gary Pajcic, 1966-68
6. 314 by Ed Pritchett, 1963-65
7. 288 by Joe Majors, 1957-58
8. 280 by Eddie Feely, 1960-62

PASSES COMPLETED

1. 461 by Gary Huff, 1970-72
2. 349 by Bill Cappleman, 1967-69
3. 275 by Steve Tensi, 1962-64
4. 242 by Kim Hammond, 1965-67
5. 203 by Gary Pajcic, 1966-68
6. 160 by Eddie Feely, 1960-62
7. 148 by Ed Pritchett, 1963-65
8. 136 by Joe Majors, 1957-59

YARDS GAINED PASSING

1. 6725 by Gary Huff, 1970-72
2. 5135 by Bill Cappleman, 1967-69
3. 3697 by Steve Tensi, 1962-64
4. 3344 by Kim Hammond, 1965-67
5. 2529 by Gary Pajcic, 1966-68
6. 1746 by Ed Pritchett, 1963-65
7. 1711 by Eddie Feely, 1960-62

TOTAL OFFENSE (Yards Rushing, Passing)

1. 6394 by Gary Huff, 1970-72
(-331, 6725)
2. 4713 by Bill Cappleman, 1967-69
(-422, 5135)
3. 3609 by Steve Tensi, 1962-64
(-88, 3697)
4. 3451 by Kim Hammond, 1965-67
(-107, 3344)
5. 2732 by Gary Pajcic, 1966-68
(203, 2529)
6. 2346 by Eddie Feely, 1960-62
(635, 1711)
7. 2298 by Ed Pritchett, 1963-65
(-452, 1746)
8. 2129 by Nelson Italiano, 1950-51
(986, 1140)

YARDS GAINED RUSHING (Carries)

1. 1791 by Tom Bailey (321) 1968-70
2. 1613 by Hodges Mitchell (363) 1972-73
3. 1580 by Fred Pickard (353) 1957-59
4. 1468 by Bobby Renn (270) 1956-58
5. 1317 by Lee Corso (328) 1953-56
6. 1190 by Bill Moremen (282) 1965-67
7. 1178 by Phil Spomer (288) 1962-65
8. 1170 by Buddy Strauss (245) 1948-49

YARDS RECEIVING PASSES

1. 3979 by Ron Sellers, 1966-68
2. 2535 by Barry Smith, 1970-72
3. 2023 by Rhett Dawson, 1969-71
4. 1955 by Fred Biletnikoff, 1962-64
5. 1235 by Jim Tyson, 1968-70
6. 1225 by Kent Gaydos, 1969-71
7. 958 by Joe Goldsmith, 1970-74
8. 901 by Don Floyd, 1962-64
9. 895 by Mike Shumann, 1973-74
10. 804 by Billy Cox, 1966-68

LONGEST PLAYS

LONGEST TOUCHDOWN RUNS FROM SCRIMMAGE

1. 81 yards by Fred Pickard vs. VPI, 1957
2. 80 yards by Phil Spooner vs. Houston, 1965
3. 78 yards by Buck Metts vs. Stetson, 1964
4. 74 yards by Bobby McKinnon vs. Memphis St., 1973
5. 68 yards by Bobby Fiveash vs. Tampa, 1958
6. 66 yards by Dave Synder vs. Furman, 1963

LONGEST RUNS FROM SCRIMMAGE WITHOUT SCORING

1. 76 yards by Roy Thompson vs. Stetson, 1951
2. 65 yards by Wayne Giardino vs. Oklahoma (Gator Bowl), 1965
3. 64 yards by Nelson Italiano vs. Troy State, 1951
4. 60 yards by Jim Mankins vs. Texas Tech, 1966
- 60 yards by Nelson Italiano vs. Tampa, 1950
- 60 yards by Lee Corso vs. N.C. State, 1956

LONGEST TOUCHDOWN PLAY, ANY SITUATION

1. 100 yards by Leon Bright vs. Virginia Tech, 1974 (KO return)
100 yards by Bill Moremen and T.K. Wetherell vs. Kentucky, 1965 (lateral on KO return)
3. 99 yards by Ted Hewitt vs. Stetson, 1958 (Pass interception return)
99 yards by Fred Biletznikoff vs. Miami, 1963 (Pass interception return)
5. 96 yards by David Snell vs. VPI, 1970 (KO return)
6. 94 yards by Bill Moremen and T.K. Wetherell vs. Miami, 1966 (lateral on KO return)
7. 93 yards by Eddie McMillan vs. Memphis State, 1970 (KO return)
8. 92 yards by Phil Abraira vs. North Carolina State, 1969 (Punt return)
9. 90 yards by Eddie McMillan vs. Miami, 1971 (KO return)
10. 89 yards by Bill Odom vs. VPI, 1955 (Punt return)
11. 88 yard pass from Gary Huff to Barry Smith vs. Kansas, 1971

LONGEST TOUCHDOWN PASS

1. 88 yards from Gary Huff to Barry Smith vs. Kansas, 1971
2. 86 yards from Gary Pajcic to Ron Sellers vs. Wake Forest, 1966
3. 82 yards from Gary Pajcic to Ron Sellers vs. Maryland, 1968
4. 80 yards from Bill Cappleman to Don Pederson vs. Memphis State, 1969
80 yards from Nelson Italiano to Eddie Gray vs. Newberry, 1950
6. 74 yards from Vic Prinzi to Tom Feamster vs. Louisville, 1954
7. 73 yards from Bill Cappleman to Don Pederson vs. Tulsa, 1969
- 73 yards from Kim Hammond to Ron Sellers vs. VPI, 1967
9. 71 yards from Gary Huff to Barry Smith vs. Pittsburgh, 1972
10. 69 yards from Buddy Strauss to Norman Eubanks vs. Tampa, 1949

LONGEST PUNT RETURN

1. 92 yards by Phil Abraira vs. North Carolina State, 1969 (TD)
2. 80 yards by Robert Jackson vs. Virginia Tech, 1974 (TD)
80 yards by Bill Odom vs. Stetson, 1954 (TD)
4. 75 yards by Walt Sumner vs. Alabama, 1967 (TD)
75 yards by Ralph Claudron vs. Whiting Field, 1949 (TD)
6. 71 yards by David Snell vs. Louisville, 1970 (TD)
7. 70 yards by Bill Campbell vs. Wake Forest, 1965 (TD)
8. 60 yards by Lee Corso vs. North Carolina State, 1956
9. 58 yards by Tommy Brown vs. Jacksonville Navy, 1951

LONGEST KICKOFF RETURN

1. 100 yards by Leon Bright vs. Virginia Tech, 1974 (TD)
100 yards by Bill Moremen and T.K. Wetherell vs. Kentucky, 1965 (TD, lateral)
3. 96 yards by David Snell vs. VPI, 1970 (TD)
4. 94 yards by Bill Moremen and T.K. Wetherell vs. Miami, 1966 (TD, lateral)
5. 93 yards by Eddie McMillan vs. Memphis State, 1970 (TD)
6. 90 yards by Eddie McMillan vs. Miami, 1971 (TD)
7. 89 yards by Bill Odom vs. VPI, 1955 (TD)
8. 84 yards by Fred Pickard vs. Tampa, 1958
9. 72 yards by Bobby Renn vs. Florida, 1958
10. 68 yards by Jim Heggins vs. Miami, 1974

LONGEST INTERCEPTION RETURN

1. 99 yards by Ted Hewitt vs. Stetson, 1958 (TD)
2. 99 yards by Fred Biletznikoff vs. Miami, 1963 (TD)
3. 86 yards by Tom Hillabrand vs. Auburn, 1960 (TD)
4. 81 yards by Bud Whitehead vs. Wake Forest, 1959 (TD)
5. 74 yards by Dale McCullers vs. Houston, 1967
6. 69 yards by Howard Ehler vs. Oklahoma (Gator Bowl), 1965 (TD)
7. 66 yards by Bill Dawkins vs. Wofford (Cigar Bowl), 1949

OTHER FLORIDA STATE RECORDS

PUNTS

Longest Punt—84 yards by Tommy Brown vs. Tampa, 1950
Most team punts in a single game—11 vs. Baylor, 1965
Most punts single game, individual—11 by John Hosack vs. Baylor, 1965
Most team punts in season—81 in 1973
Most punts by an individual in season—81 by Joe Downey, 1973
Most punts in career—169 by Charlie Calhoun, 1961-63
Best punting average, career—37.86 by Joe Downey, 1972-74
Best punting average, season—41.9 by Pat Versprille, 1955

FIELD GOALS AND EXTRA POINTS

Most Field goals, single game, team—four vs. Wake Forest, 1970
Most field goals, single game, individual—four by Frank Fontes vs. Wake Forest, 1970
Most field goals attempted, single game—8 by Frank Fontes vs. Wake Forest, 1970
Most field goals, season—14 by Frank Fontes, 1970
Most field goals in career—29 by Grant Guthrie, 1967-69
Longest field goal—53 yards by Grant Guthrie vs. Miami, 1969
Most extra points, season—31 by Grant Guthrie, 1968 (32 attempts)
Most extra points, career—75 by Grant Guthrie, 1967-69 (80 attempts)
Most points by kicking, season—69 by Frank Fontes in 1971

KICK-OFF AND PUNT RETURNS

Most punts returned season—40 by David Snell, 1970
Most punts returned game—10 by David Snell vs. South Carolina, 1970
Best punt return average season—18.2 by Robert Jackson, 1974 (10 ret.)
Best kick-off return average season—31.8 by Lee Corso, 1954
Most yards kick-offs returned game—184 by Leon Bright vs. Virginia Tech, 1974 (4 returns)
Most yards kick-offs returned game, team—205 vs. Virginia Tech, 1974 (5 returns)
Most return yardage game—218 by Leon Bright vs. Virginia Tech, 1974 (184 KO; 34 punt)

OFFENSE

Most victories in single season—8 in 1949, '50, '51, '54, '64, '68, '71
Most defeats in single season—11 in 1973 (0-11)
Most ties in single season—3 in 1962
Most points scored in season—287 in 1972
Fewest points scored in season—18 in 1947
Most points scored in single game—74 vs. Whiting Field, 1949
Most points scored in single game—individual—30 by Ron Sellers vs. Wake Forest, 1968
Most touchdowns scored in single game—5 by Ron Sellers vs. Wake Forest, 1968
Most touchdown passes thrown in single game, individual—5 by Steve Tensi vs. Okalahoma, Gator Bowl, 1965; by Bill Cappleman vs. Wake Forest, 1968; by Gary Huff vs. South Carolina, 1971
Most TD passes caught in single game—5 by Ron Sellers vs. Wake Forest, 1968
Greatest margin of victory—74Pts.: 74-0 vs. Whiting Field, 1949
Greatest margin of defeat—49 pts.: 0-49 vs. Georgia, 1959, and 0-49 vs. Florida, 1973
Total offense, season—4474 (2974 passing, 1500 rushing), 1972
Total yards passing, season—2974, 1972
Total yards rushing, season—2194, 1949
Total offense, single game—626 vs. Memphis State, 1969 (508 passing, 118 rushing)
Total yards passing, single game—508 vs. Memphis State, 1969
Total yards rushing, single game—383 vs. Abilene Christian, 1957
Touchdown responsibility, game—6 by Gary Huff vs. South Carolina, 1971 (5 passing, 1 scored)
Touchdown responsibility, season—26 by Bill Cappleman, 1968 (25 passing, 1 scored) and by Gary Huff, 1972 (25 passing, 1 scored)
Times rushing, individual, single game—29 by Fred Pickard vs. Georgia, 1959 and Larry Green vs. Memphis State, 1967
Passes attempted, season—389, 1972
Passes completed, season—209, 1972
Passes attempted, game—56 vs. VPI, 1966
Passes completed, game—38 by Penn State (Gator Bowl), 1967
Fewest passes had intercepted in season—7 in 1947
Most passes had intercepted, season—23, 1972
Longest winning streak—13 games (1949-51)
Longest losing streak—20 games (1972-74)
Most fumbles, game—10 vs. Wichita State, 1969
Most fumbles, lost in a game—7 (of 10) vs. Wichita State, 1969
Most fumbles season—42 in 1969 (lost 27)
Most fumbles lost season—27 in 1969 (42 fumbles)
Most passes had intercepted, game—6 vs. Virginia Tech, 1968

DEFENSE

Most fumbles recovered in a game—10 (of 17) vs. Wichita State, 1969
Most fumbles recovered, season—24 in 1974
Fewest points allowed, season—54 in 1950
Fewest yards rushing allowed, game—minus 34 by Millsaps in 1949
Most points allowed, season—331 in 1973
Most passes intercepted, individual—8 by Curt Campbell, 1951
Most passes intercepted, single game—7 vs. VPI, 1959
Most passes intercepted, game, individual—3 on five occasions, twice by Tommy Brown and most recently by James Thomas vs. Kansas State, 1970
Most opponents punts blocked, season—4 in 1951

BEST PERFORMANCE BY OPPONENTS

Individual

- MOST YARDS RUSHING**—197 by Ken Edwards, VPI, 1968
MOST TIMES CARRIED—34 by Robert Newhouse, Houston, 1971
MOST YARDS PASSING—324 by Tommy Suggs, South Carolina, 1968
MOST PASSES ATTEMPTED—48 by Doug Kendrick, Clemson, 1970
MOST PASSES COMPLETED—25 by Doug Kendrick, Clemson, 1970
MOST PASSES CAUGHT—12 by Larry Gilbert, Texas Tech, 1966
MOST YARDS RECEIVING PASSES—165 by Ben Hart, Oklahoma (Gator Bowl), 1965
MOST TOTAL OFFENSE—370 by Tommy Suggs, South Carolina, 1968 (46 rush, 324 pass)
LONGEST TD RUN FROM SCRIMMAGE—88 yards by Mike Veacchio, Miami, 1951 and Ken Edwards, VPI, 1968
LONGEST PUNT RETURN—86 yards by Daryl Cox, Kentucky, 1961 (TD)
LONGEST INTERCEPTION RETURN—70 yards by Alex Webster, N.C. State, 1952
LONGEST KICKOFF RETURN—92 yards by Warren McVea, Houston, 1965
LONGEST PASS PLAY—95 yards from Ronnie Fletcher to Ben Hart, Oklahoma (Gator Bowl), 1965
LONGEST PUNT—70 yards by Rod Huffman, Miami, 1974
LONGEST FIELD GOAL—50 yards by Ken Vinyard, Texas Tech, 1967

TEAM

- PASSES ATTEMPTED**—48 by Clemson, 1970
PASSES COMPLETED—26 by San Diego St., 1973
PASSING YARDAGE—359 by San Diego St., 1973
RUSHING YARDAGE—466 by Houston, 1974
TOTAL OFFENSE—590 by San Diego St., 1973
TIMES CARRIED—80 by Houston, 1974
POINTS SCORED—57 by Auburn, 1960
MOST FUMBLES—17 by Wichita State (10 lost), 1969

LARGEST HOME CROWDS

- 46,790 vs. Florida in 1966
 45,256 vs. Florida in 1968
 43,758 vs. Florida in 1972
 43,000 vs. Florida in 1964
 42,704 vs. Florida in 1970
 42,451 vs. Florida in 1974
 40,112 vs. Georgia in 1965
 35,400 vs. VPI in 1972
 35,519 vs. South Carolina in 1969
 35,494 vs. Texas A&M in 1968
 35,108 vs. Wake Forest in 1968
 34,784 vs. Kansas in 1971

HOMECOMING GAMES (Record: 19-7-1)

	FSU	OPP		FSU	OPP
1948—Tampa	33	12	1962—Houston	0	7
1949—Millsaps	40	0	1963—N.C. State	14	0
1950—Sewanee	14	8	1964—Kentucky	48	6
1951—Stetson	13	10	1965—Wake Forest	35	0
1952—Furman	0	9	1966—Wake Forest	28	0
1953—Stetson	13	6	1967—Texas Tech	28	12
1954—Furman	33	14	1968—Wake Forest	42	24
1955—Citadel	39	0	1969—South Carolina	34	9
1956—Wake Forest	14	14	1970—Virginia Tech	34	8
1957—Virginia Tech	20	7	1971—Mississippi State	27	9
1958—Tampa	43	0	1972—Colorado State	33	0
1959—William & Mary	0	9	1973—Memphis State	10	13
1960—Kentucky	0	23	1974—Virginia Tech	21	56
1961—Mississippi Southern	0	12			

COACHES AND CAPTAINS

Year	Coach	Captains	W	L	T	FSU PTS	OPP PTS
1947	Ed Williamson	Jack McMillan Phil Rountree	0	5	0	18	90
1948	Don Veller	Game Captains	7	1	0	152	64
1949*	Don Veller	Hugh Adams	9	1	0	291	59
1950	Don Veller	Duke Maltby	8	0	0	219	54
1951	Don Veller	Bill Dawkins	6	2	0	194	72
1952	Don Veller	Curtis Campbell Vic Szczepanik	1	8	1	101	261
1953	Tom Nugent	Game Captains	5	5	0	183	146
1954*	Tom Nugent	Game Captains	8	4	0	277	190
1955	Tom Nugent	Bob Crenshaw Don Powell	5	5	0	147	186
1956	Tom Nugent	Joe Holt Buck Metz	5	4	1	178	116
1957	Tom Nugent	Ron Schomburger	4	6	0	136	165
1958*	Tom Nugent	Vic Prinzi Bobby Renn	7	4	0	218	124
1959	Perry Moss	John Spivey Al Ulmer	4	6	0	149	132
1960	Bill Peterson	Tony Romeo	3	6	1	111	136
1961	Bill Peterson	Steve Klesius	4	5	1	93	128
1962	Bill Peterson	Gene McDowell	4	3	3	170	69
1963	Bill Peterson	Charlie Calhoun Chuck Robinson	4	5	1	167	93
1964*	Bill Peterson	Bill Dawson Fred Biletnikoff	9	1	1	263	85
1965	Bill Peterson	George D'Alessandro Bill McDowell Max Wettstein	4	5	1	121	119
1966*	Bill Peterson	Game Captains	6	5	0	224	214
1967*	Bill Peterson	Game Captains	7	2	2	250	187
1968*	Bill Peterson	Game Captains	8	3	0	308	211
1969	Bill Peterson	Game Captains	6	3	1	220	182
1970	Bill Peterson	Game Captains	7	4	0	254	195
1971*	Larry Jones	Rhett Dawson John Lanahan	8	4	0	309	174
1972	Larry Jones	Gary Huff Larry Strickland	7	4	0	287	224
1973	Larry Jones	Jim Malkiewicz Don Sparkman	0	11	0	98	331
1974	Darrell Mudra	Joe Goldsmith	1	10	0	130	289
		TOTALS	147	122	13	5,268	4,296

* Bowl Game Included

COACHES' CUMULATIVE RECORDS

Name	Tenure	Years	W-L-T	Pct.	FSU Pts.	OPP Pts.
Ed Williamson	1947	1	0 -5 -0	.000	18	90
Don Veller	1948-52	5	31-12 -1	.716	938	504
Tom Nugent	1953-58	6	34-28 -1	.548	1123	865
Perry Moss	1959	1	4 -6 -0	.400	149	132
Bill Peterson	1960-70	11	62-42-11	.587	2234	1602
Larry Jones	1971-73	3	15-19 -0	.441	407	505
Darrell Mudra	1974-	1	1-10-0	.091	130	289

RECORD AGAINST ALL OPPONENTS
(1975 Opponents in All Caps)

Team	First Meeting	LAST MEETING			FSU		
		Date	Site	Score	Won	Lost	Tied
Abilene Christian	1953	1957	H	34-7	1	2	0
Alabama	1965	1974	H	7-8	0	2	1
Arizona State	1971	1971	A	38-45	0	1	0
AUBURN	1954	1974	A	6-38	0	7	1
Baylor	1965	1974	H	17-21	1	2	0
Boston College	1957	1957	A	7-20	0	1	0
Citadel, The	1955	1962	H	49-0	4	0	1
CLEMSON	1970	1970	H	38-13	1	0	0
Colorado State	1972	1974	H	7-14	1	1	0
Cumberland	1947	1948	H	30-0	1	1	0
Delta State	1951	1951	H	34-0	1	0	0
Erskine	1948	1949	H	26-7	1	1	0
FLORIDA	1958	1974	H	14-24	2	13	1
Furman	1952	1963	H	49-6	7	2	0
George Washington	1961	1961	H	15-7	1	0	0
Georgia	1954	1965	H	10-3	4	5	0
GEORGIA TECH	1952	1971	A	6-12	0	6	1
HOUSTON	1960	1974	H	8-23	1	11	2
Howard	1950	1950	H	20-6	1	0	0
Jacksonville State (Alabama)	1947	1947	H	0-7	0	1	0
Jacksonville Navy	1951	1951	A	39-0	1	0	0
Kansas	1971	1974	A	9-40	2	2	0
Kansas State	1970	1970	H	33-7	1	0	0
Kentucky	1960	1965	A	24-26	1	3	1
Livingston State	1948	1949	A	6-13	1	1	0
Louisiana State (Peach Bowl)	1968	1968	N	27-31	0	1	0
Louisiana Tech	1952	1953	A	21-32	0	2	0
Louisville	1952	1970	H	9-7	3	1	0
Maryland	1966	1968	A	24-14	2	0	0
MEMPHIS STATE	1959	1974	A	14-42	2	5	0
MIAMI	1951	1974	A	21-14	9	9	0
Millsaps	1948	1949	H	40-0	2	0	0
Mississippi	1961	1961	A	0-33	0	1	0
Mississippi College	1948	1950	H	33-0	3	0	0
Mississippi State	1966	1973	H	12-37	6	1	0
Newberry	1950	1950	A	24-0	1	0	0
New Mexico State	1964	1964	H	36-0	1	0	0
North Carolina State	1952	1969	H	33-22	8	4	0
Ohio	1956	1956	H	47-7	1	0	0
Oklahoma (Gator Bowl)	1965	1965	N	36-19	1	0	0
Oklahoma State (Bluegrass Bowl)	1958	1958	N	6-15	0	1	0
Penn State (Gator Bowl)	1968	1968	N	17-17	0	0	1
Pittsburgh	1971	1974	H	6-9	2	1	0
Randolph Macon	1950	1950	H	40-7	1	0	0
San Diego St.	1973	1973	A	17-38	0	1	0
Sewanee	1949	1950	H	14-8	2	0	0
South Carolina	1966	1973	H	12-52	6	2	0

Southern Mississippi	1952	1971	N	24-9	4	6	1
Stetson	1947	1954	A	47-6	6	1	1
Sul Ross State	1951	1951	H	35-12	1	0	0
Syracuse	1966	1966	A	21-37	0	1	0
Tampa	1948	1959	A	33-0	9	2	0
Tennessee	1958	1958	A	10-0	1	0	0
Tennessee Tech	1947	1958	H	22-7	1	1	0
Texas A&M	1967	1968	H	20-14	2	0	0
Texas Christian	1963	1965	A	3-7	1	2	0
TEXAS TECH	1966	1967	H	28-12	2	0	0
Texas Western (Sun Bowl)	1954	1954	N	20-47	0	1	0
Troy State	1947	1951	H	40-0	4	1	0
Tulsa	1969	1972	H	23-21	3	0	0
Virginia Military	1952	1954	A	33-19	2	1	0
Villanova	1954	1957	A	7-21	3	1	0
VIRGINIA TECH	1955	1974	H	21-56	8	9	1
Wake Forest	1956	1973	A	7-9	7	2	1
Whiting Field	1949	1949	H	74-0	1	0	0
Wichita State	1969	1969	H	24-0	1	0	0
William & Mary	1959	1960	H	22-0	1	0	0
Wofford	1949	1952	A	27-13	3	0	0
Wyoming (Sun Bowl)	1966	1966	N	20-28	0	1	0

RESULTS 1947-1974

**Homecoming

1947 (0-5-0)	FSU	Foe	1950 (8-0-0)	FSU	Foe
Stetson (H)	6	14	Troy State (A)	26	7
Cumberland (A)	0	6	Randolph Macon (H)	40	7
Tennessee Tech (H)	6	27	Howard (H)	20	6
Troy State (H)	6	36	Newberry (A)	24	0
Jacksonville State (H)	0	7	Sewanee** (H)	14	8
			Stetson (A)	27	7
1948 (7-1-0)	FSU	Foe	Mississippi College (H)	33	0
Cumberland (H)	30	0	Tampa (H)	35	19
Erskine (A)	6	14			
Millsaps (A)	7	6	1951 (6-2-0)	FSU	Foe
Stetson (A)	18	7	Troy State (H)	40	0
Mississippi College (H)	26	6	Miami (Fla.) (A)	13	35
Livingston State (H)	12	6	Delta State (H)	34	0
Troy State (A)	20	13	Sul Ross State (H)	35	13
Tampa** (H)	33	12	Stetson** (H)	13	10
			Jacksonville Navy (A)	39	0
1949 (9-1-0)	FSU	Foe	Wofford (H)	14	0
Whiting Field (H)	74	0	Tampa (H)	6	14
Mississippi College (A)	33	12			
Erskine (H)	26	7	1952 (1-8-1)	FSU	Foe
Sewanee (A)	6	0	Louisiana Tech (H)	13	32
Stetson (H)	33	14	Louisville (H)	14	41
Livingston State (A)	6	13	VMI (H)	7	28
Millsaps** (H)	40	0	N. Carolina State (A)	7	13
Tampa (A)	34	7	Stetson (N)	6	6
Troy State (H)	20	0	Mississippi Southern (H)	21	50
Wofford* (N)	19	6	Furman** (H)	0	9
(*Cigar Bowl)			Georgia Tech (A)	0	30

Wofford (A)	27	13	Boston College (A)	7	20
Tampa (H)	6	39	Villanova (A)	7	21
1953 (5-5-0)	FSU	Foe	N. Carolina State (H)	0	7
Miami (Fla.) (A)	0	27	Abilene Christian (H)	34	7
Louisville (H)	59	0	Virginia Tech** (H)	20	7
Abilene Christian (H)	7	20	Miami (Fla.) (H)	13	40
Louisiana Tech (A)	21	32	Mississippi Southern (A)	0	20
VMI (H)	12	7	Auburn (H)	7	29
Mississippi Southern (A)	0	21	Tampa (A)	21	7
Furman (H)	7	14	1958 (7-4-0)	FSU	Foe
Stetson** (H)	13	6	Tennessee Tech (H)	22	7
N. Carolina State (H)	23	13	Furman (H)	42	6
Tampa (A)	41	6	Georgia Tech (A)	3	17
1954 (8-4-0)	FSU	Foe	Wake Forest (H)	27	24
Georgia (H)	0	14	Georgia (N)	13	28
Abilene Christian (H)	0	13	Virginia Tech (H)	28	0
Louisville (A)	47	6	Tennessee (A)	10	0
Villanova (H)	52	13	Tampa** (H)	43	0
N. Carolina State (A)	13	7	Miami (Fla.) (A)	17	6
Auburn (A)	0	33	Florida (A)	7	21
VMI (A)	33	19	Oklahoma State* (N)	6	15
Furman** (H)	33	14	(*Bluegrass Bowl)		
Stetson	47	6	1959 (4-6-0)	FSU	Foe
Mississippi Southern (H)	19	18	Wake Forest (H)	20	22
Tampa (A)	13	0	The Citadel (H)	47	6
Texas Western* (A)	20	47	Miami (Fla.) (H)	6	7
(*Sun Bowl)			Virginia Tech (A)	7	6
1955 (5-5-0)	FSU	Foe	Memphis State (A)	6	16
N.C. State (H)	7	0	Richmond (H)	22	6
Miami (Fla.) (A)	0	34	Georgia (A)	0	42
Virginia Tech (H)	20	24	William & Mary** (H)	0	9
Georgia (H)	14	47	Florida (A)	8	18
Georgia Tech (A)	0	34	Tampa (H)	33	0
Villanova (H)	16	13	1960 (3-6-1)	FSU	Foe
Furman (A)	19	6	Richmond (H)	28	0
Citadel** (H)	39	0	Florida (A)	0	3
Mississippi Southern (A)	6	21	Wake Forest (H)	14	6
Tampa (A)	26	7	The Citadel (A)	0	0
1956 (5-4-1)	FSU	Foe	Mississippi Southern (A)	13	15
Ohio University (H)	47	7	William & Mary (H)	22	0
Georgia (A)	0	3	Kentucky** (H)	0	23
Virginia Tech (H)	7	20	Miami (Fla.) (A)	7	25
N. Carolina State (A)	14	0	Houston (H)	6	7
Wake Forest** (H)	14	14	Auburn (A)	21	57
Villanova (A)	20	13	1961 (4-5-1)	FSU	Foe
Miami (Fla.) (A)	7	20	George Washington (A)	15	7
Furman (H)	42	7	Florida (A)	3	3
Mississippi Southern (H)	20	19	Mississippi (A)	0	33
Auburn (A)	7	13	Georgia (H)	3	0
1957 (4-6-0)	FSU	Foe	Richmond (H)	13	7
Furman (H)	27	7	Virginia Tech (A)	7	10
			Kentucky (A)	0	20

The Citadel (H)	44	8	Miami (A)	23	20
Mississippi Southern** (H)	0	12	Florida (H)	19	22
Houston (A)	8	28	Texas Tech (A)	42	33
1962 (4-3-3)	FSU	Foe	Mississippi State (H)	10	0
The Citadel	49	0	VPI (A)	21	23
Kentucky (A)	0	0	South Carolina (A)	32	10
Furman (H)	42	0	Syracuse (A)	21	37
Miami (Fla.) (A)	6	7	Wake Forest** (H) 	28	0
Georgia (A) 	18	0	Maryland (H)	45	21
VPI (H)	20	7	Wyoming* (N)	20	28
Houston** (H)	0	7	(*Sun Bowl)		
Georgia Tech (A)	14	14	1967 (7-2-2)	FSU	Foe
Florida (A)	7	20	Houston (A)	13	33
Auburn (A)	14	14	Alabama (A)	37	37
1963 (4-5-1)	FSU	Foe	N.C. State (H)	10	20
Miami (Fla.) (A)	24	0	Texas A & M (A)	19	18
Texas Christian	0	13	South Carolina (H)	17	0
Wake Forest (H)	35	0	Texas Tech** (H) 	28	12
Southern Mississippi (A)	0	0	Mississippi State (H)	24	12
Virginia Tech (H)	23	31	Memphis State (A)	26	7
Furman (H)	49	6	Virginia Tech (H)	38	15
Georgia Tech (A)	7	15	Florida (A)	21	16
N.C. State** (H)	14	0	Penn State* (N)	17	17
Auburn (A)	15	21	(*Gator Bowl)		
Florida (A)	0	7	1968 (8-3)	FSU	Foe
1964 (9-1-1)	FSU	Foe	Maryland (A)	24	14
Miami (A)	14	0	Florida (H)	3	9
TCU (A)	10	0	Texas A&M (H)	20	14
New Mexico State (H)	36	0	Memphis State (H)	20	10
Kentucky** (H)	48	6	South Carolina (A)	35	28
Georgia (A)	17	14	Virginia Tech (H)	22	40
Virginia Tech (A)	11	20	Mississippi State (A)	27	14
Southern Mississippi (H)	34	0	North Carolina State (A)	48	7
Houston (A)	13	13	Wake Forest** (H)	42	24
N.C. State (H)	28	6	Houston (N)	40	20
Florida (H)	16	7	LSU* (N)	27	31
Oklahoma* (N)	36	19	(*Peach Bowl)		
(*Gator Bowl)			1969 (6-3-1)	FSU	Foe
1965 (4-5-1)	FSU	Foe	Wichita State (H)	24	0
TCU (A)	3	7	Miami (A)	16	14
Baylor (H)	9	7	Florida (A)	6	21
Kentucky (A)	24	26	Tulsa (A)	38	20
Georgia (H)	10	3	Mississippi State (H)	20	17
Alabama (A)	0	21	South Carolina** (H)	34	9
VPI (H)	7	6	Virginia Tech (A)	10	10
Wake Forest** (H)	35	0	Memphis State (H)	26	28
N.C. State (A)	0	3	N.C. State (H)	33	22
Houston (H)	16	16	Houston (A)	13	41
Florida (A)	17	30	1970 (7-4)	FSU	Foe
1966 (6-5)	FSU	Foe	Louisville (H)	9	7
Houston (H)	13	21	Georgia Tech (A)	13	23
			Wake Forest (H)	19	14

Florida (H)	27	38
Memphis State (A)	12	16
South Carolina (A)	21	13
Miami (A)	27	3
Clemson (H)	38	13
Virginia Tech** (H)	34	8
Kansas State (H)	33	7
Houston (N)	21	53

1971 (8-4-0) FSU Foe

Southern Mississippi (N)	24	9
Miami (A)	20	17
Kansas (H)	30	7
Virginia Tech (A)	17	3
Mississippi State** (H)	27	9
Florida (A)	15	17
South Carolina (H)	49	18
Houston (A)	7	14
Georgia Tech (A)	6	12
Tulsa (H)	45	10
Pittsburgh (H)	31	13
Arizona State (A)*	38	45
(*Fiesta Bowl)		

1972 (7-4) FSU Foe

Pittsburgh (A)	19	7
Miami (A)	37	14
Virginia Tech (H)	27	15
Kansas (A)	44	22
Florida (H)	13	42
Mississippi State (N)	25	21

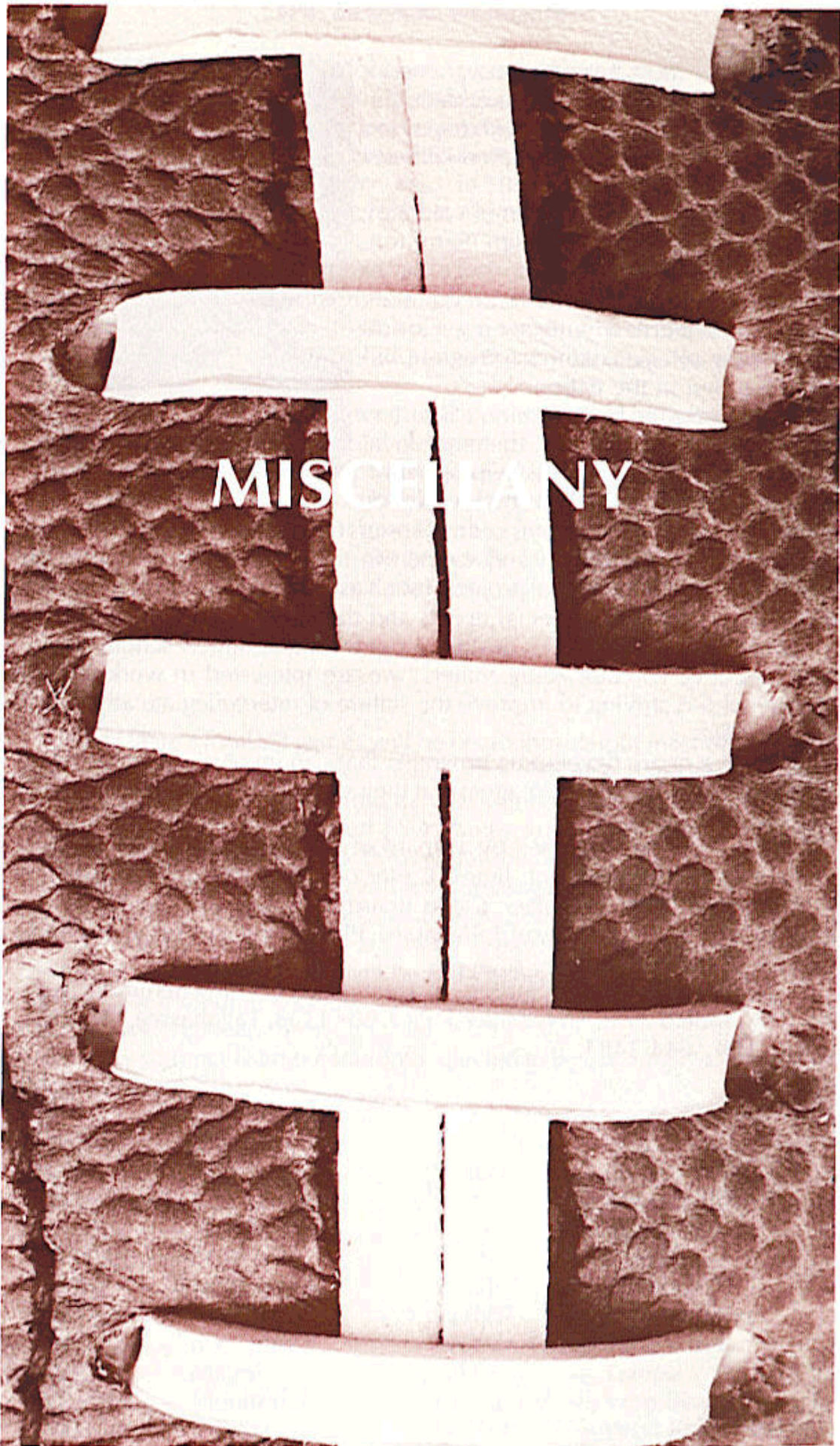
Colorado State** (H)	37	0
Auburn (A)	14	27
Houston (H)	27	31
Tulsa (H)	23	21
South Carolina (A)	21	24

1973 (0-11) FSU Foe

Wake Forest (A)	7	9
Kansas (H)	0	28
Miami (H)	10	14
Baylor (A)	14	21
Mississippi State (H)	12	37
Memphis State** (H)	10	13
San Diego State (A)	17	38
Houston (A)	3	34
Virginia Tech (A)	13	36
South Carolina (H)	12	52
Florida (A)	0	49

1974 (1-10-0) FSU Foe

Pittsburgh (H)	6	9
Colorado State (H)	7	14
Kansas (A)	9	40
Baylor (H)	7	21
Alabama (A)	7	8
Florida (H)	14	24
Auburn (A)	6	38
Memphis State (A)	14	42
Miami (A)	21	14
Virginia Tech** (H)	21	56
Houston (H)	8	23



SEMINOLE BOOSTERS, INC.

One of the most important programs affiliated with any intercollegiate athletic department is that which raises funds to pay the educational expenses of the student-athletes participating in all sports.

At Florida State that program of voluntary support is organized through Seminole Boosters, Inc. This group is made up of member representatives around the state who are concerned with seeing Florida State's Intercollegiate Athletic Program become the best in the nation.

In addition to the main Seminole Boosters Offices located on campus, there are local groups formed in many areas helping stimulate interest in the Seminoles on a local level.



Andy Miller

One of the more active arms of the Boosters is the Committee of 100 which is made up of young men and women in the Tallahassee area who are actively working on "special projects" such as ticket sales blitz, membership telefunds, coordinating special events and the like.

"While our ultimate goal is raising funds for student-athlete scholarships," said Executive Director Andy Miller, "we are interested in working with anyone who is striving to improve the stature of intercollegiate athletics at Florida State.

"We have or are developing programs that can involve all the friends of Florida State University, no matter what their status and we urge those friends to contact our office."

The Boosters are governed by a Board of Directors with Doyle Pope of Quincy serving as President; Jimmy Carter of Panama City, Treasurer; and Don Grant of Perry, Secretary. Other Board members are John Harllee of Bradenton, Tom Kinnebrew of Tallahassee, Phil Pomeroy of Tallahassee and Charlie Hill of Tallahassee.

Individuals interested in further information concerning Seminole Boosters, Inc., should write Andy Miller at P.O. Box 1353, Tallahassee, FL 32301, or call 904 / 644-3484.

THE MARCHING CHIEFS

One of the nation's more outstanding marching bands, the Marching Chiefs are an integral part of all Florida State home football games.

The 200-piece band has won acclaim from all parts of the world. They have made appearances on regional and national TV and have appeared in bowl games from Jacksonville to Texas. In 1970 they were runners-up in the ABC-TV National Band contest. In the summer of 1974, the Chiefs performed in Poland and Syria.

The Chiefs are under the direction of Richard Mayo, who begins his sixth season and his fourth as director. Snappily attired in their Garnet, Gold and Black uniforms, the Chiefs display a wide range of marching and musical talents which enable them to live up to their motto "We've never lost a halftime."

One of the prime reasons for the Chiefs spectaculars are the musical innovations and arrangements developed by Charles Carter, who works closely with Mayo developing the halftime shows.

The band's field leader is drum major Robert Duke, a senior from Leesburg. Nancy Hoffman, a junior from Daytona Beach, leads "the most beautiful forward wall in football"—the Seminole Majorette Corps. The 16 girls who form this prize winning unit come from as far as Texas and New York.

SEMINOLE RADIO NETWORK

Florida State's football games will be heard throughout most of the Southeast again this fall over the Seminole Radio Network. A nearly 30-station network will carry the games into parts of Georgia and Alabama, as well as throughout Florida. In addition FSU games are picked up by the wide-ranging Pick of Dixie network throughout the South.

WTNT in Tallahassee serves as the originating station for the network with Gene Deckerhoff, the Network Coordinator. Bob Shackleton will handle the play-by-play for the second year, after 19 seasons of doing Michigan State football. Color commentator will be Bill Owens, a veteran of Florida State announcing including football, basketball and baseball. Charlie Hunter is the network engineer.

An early summer listing of stations expected to be carrying FSU games this fall includes:

WTRL	— Bradenton	WFUZ-FM	— Ocala
WWFL	— Clearmont	WTLN	— Orlando
WMFJ	— Daytona	WPCF	— Panama City
WTRS	— Dunnellon	WNVY	— Pensacola
WHEW	— Ft. Myers	WCNH	— Quincy
WJNJ	— Jacksonville	WSPB	— Sarasota
WNER	— Live Oak	WTNT	— Tallahassee
WTYS	— Marianna	WOMA-FM	— Tallahassee
WKAT	— Miami	WFLA	— Tampa
WMGA	— Moultrie, Ga.	WGYL-FM	— Vero Beach
WMOP	— Ocala	WJNO	— West Palm Beach

MEMO TO THE MEDIA

This handbook has been prepared by the Florida State University Office of Sports Information to assist you during the Seminoles 1975 football season. For additional information contact:

LONNIE BURT or **HANK SCHOMBER**
Director of Sports Information **Assistant SID**

Room 200 Tully Gym
Florida State University
Tallahassee, Florida 32306
Area Code: 904
Office Phone: 644-2790

Home Phone: 385-4480 Home Phone: 576-8922

FACILITIES: Florida State's press box is located on the west side of Doak S. Campbell Stadium with elevator service from the ground to all three of its levels. All media representatives and scouts are asked to enter through the Press Gate north of the elevator.

- (1) **RADIO-TV DECK** with individual booths for radio and TV broadcasters, home and visiting team coaches and stadium operations. Each booth is fully enclosed and sound proofed.
- (2) **PRESS DECK** with space for 90 working press and scouts; Western Union and telecopier space. Also photographic darkroom and wire photo space. Glass enclosed.
- (3) **PHOTO DECK** offers an unobstructed view for TV, movie and still cameras. Photographers are also allowed on the sidelines. Film loading room adjacent to photo deck. Additional darkroom facilities can be provided at the stadium.

RESERVATIONS: Space for working press, radio, TV and scouts will be allocated by the Sports Information Office. All requests for working credentials should be directed to this office. Requests should be made, in writing, early enough to allow for mailing of all credentials.

TELECOPIER SERVICE will be available. Please contact the Sports Information Office for availability of telecopiers and/or operators. If you intend to use your own telecopier and phone please have them located in the Telecopier Area of the Press Deck. **TELECOPIERS ARE PROHIBITED AT THE PRESS TABLES AT ALL TIMES.**

TELEPHONE orders should be placed directly with **CENTRAL TELEPHONE COMPANY** in Tallahassee. Have them contact Hank Schomber for location.

SERVICE: Play-by-play, first quarter, halftime and complete final statistics are provided. Play-by-play announcements are broadcast on the press deck. When possible, post game comments from coaches and players are made available. Refreshments are available on all decks. Individuals will also be made available for work as spotters and/or telecopier operators if requests for the same are made at least five days prior to the game.

PARKING: Special parking is available at the stadium. Permits are issued on a game basis. They are distributed by the Sports Information Office and requests should be made at least two weeks in advance of a given game.

1975-76 BASKETBALL SCHEDULE

Date	Opponent	Site
Nov. 28—Fri.	ATHLETES IN ACTION	TALLAHASSEE
Dec. 2—Tues.	ROLLINS	TALLAHASSEE
Dec. 6—Sat.	Eastern Kentucky	Richmond, KY
Dec. 11—Thurs.	STETSON	TALLAHASSEE
Dec. 13—Sat.	PALM BEACH ATLANTIC	TALLAHASSEE
Dec. 19—Fri.	Big Sun Tournament	St. Petersburg
20—Sat.	South Florida, Alabama, Pittsburgh	
Dec. 26-30 Fri.-Tues.	Far West Classic Duquesne, Colorado Sate, Texas Tech, Northwestern, Oregon, Oregon State, Washington	Portland, OR
Jan. 8—Thurs.	WESTERN KENTUCKY	TALLAHASSEE
Jan. 10—Sat.	Jacksonville	Jacksonville
Jan. 14—Wed.	BAPTIST COLLEGE	TALLAHASSEE
Jan. 17—Sat.	MEMPHIS STATE	TALLAHASSEE
Jan. 20—Tues.	South Florida	Tampa
Jan. 24—Sat.	SOUTHWESTERN LOUISIANA	TALLAHASSEE
Jan. 31—Sat.	Georgia State	Atlanta
Feb. 2—Mon.	Illinois State	Normal, Ill.
Feb. 7—Sat.	SOUTH FLORIDA	TALLAHASSEE
Feb. 12—Thurs.	ILLINOIS STATE	TALLAHASSEE
Feb. 14—Sat.	Madison College	Harrisonburg,
Feb. 18—Wed.	JACKSONVILLE	TALLAHASSEE
Feb. 21—Sat.	GEORGIA STATE	TALLAHASSEE
Feb. 24—Tues.	VALDOSTA STATE	TALLAHASSEE
Feb. 28—Sat.	MERCER	TALLAHASSEE
Mar. 4—Thurs.	Southwestern Louisiana	Lafayette, LA
Mar. 6—Sat.	Dayton	Dayton, OH

