

# FLORIDA STATE UNIVERSITY

## FOOTBALL HANDBOOK 1974





## 1974 FOOTBALL SCHEDULE

DATE	OPPONENT	SITE	TIME
SEPT. 14	PITTSBURGH	TALLAHASSEE	7:30
SEPT. 21	COLORADO STATE	TALLAHASSEE	7:30
Sept. 28	Kansas	Lawrence, KA	1:30 CDT
OCT. 5	BAYLOR	TALLAHASSEE	7:30
Oct. 12	Alabama	Tuscaloosa, AL	1:30 CDT
OCT. 19	FLORIDA	TALLAHASSEE	7:30
Oct. 26	Auburn	Auburn, AL	1:30 CDT
Nov. 2	Memphis State	Memphis, TN	7:30 CDT
Nov. 8*	Miami	Miami	8:00
NOV. 16	VIRGINIA TECH (HC)	TALLAHASSEE	7:30
NOV. 23	HOUSTON	TALLAHASSEE	7:30

\*Friday

## 1974 TRAVEL PLANS

**KANSAS, Sept. 28** — Depart Tallahassee Sept. 27 at 3 p.m. via Southern Airways charter arriving at Kansas City 4:10 (CDT). Seminoles will then board buses for short trip to Lawrence. Team will stay at Ramada Inn, Sixth and Iowa. Manager is Jeff Mason and telephone is (913) 842-7030. Following game, team will board buses back to Kansas City Airport. Departure time is approximately 7 p.m. (CDT) with arrival in Tallahassee estimated at 10:10.

**ALABAMA, Oct. 12** — Depart Tallahassee Oct. 11 at 2:30 (EDT) via Southern charter arriving in Tuscaloosa at 2:10 (CDT). Seminoles will stay at the Holiday Inn North on U.S. 82 Bypass. Manager is Leo Tiernan and telephone is 759-2511. Estimated departure following game is 5 p.m., arriving in Tallahassee at approximately 6:40.

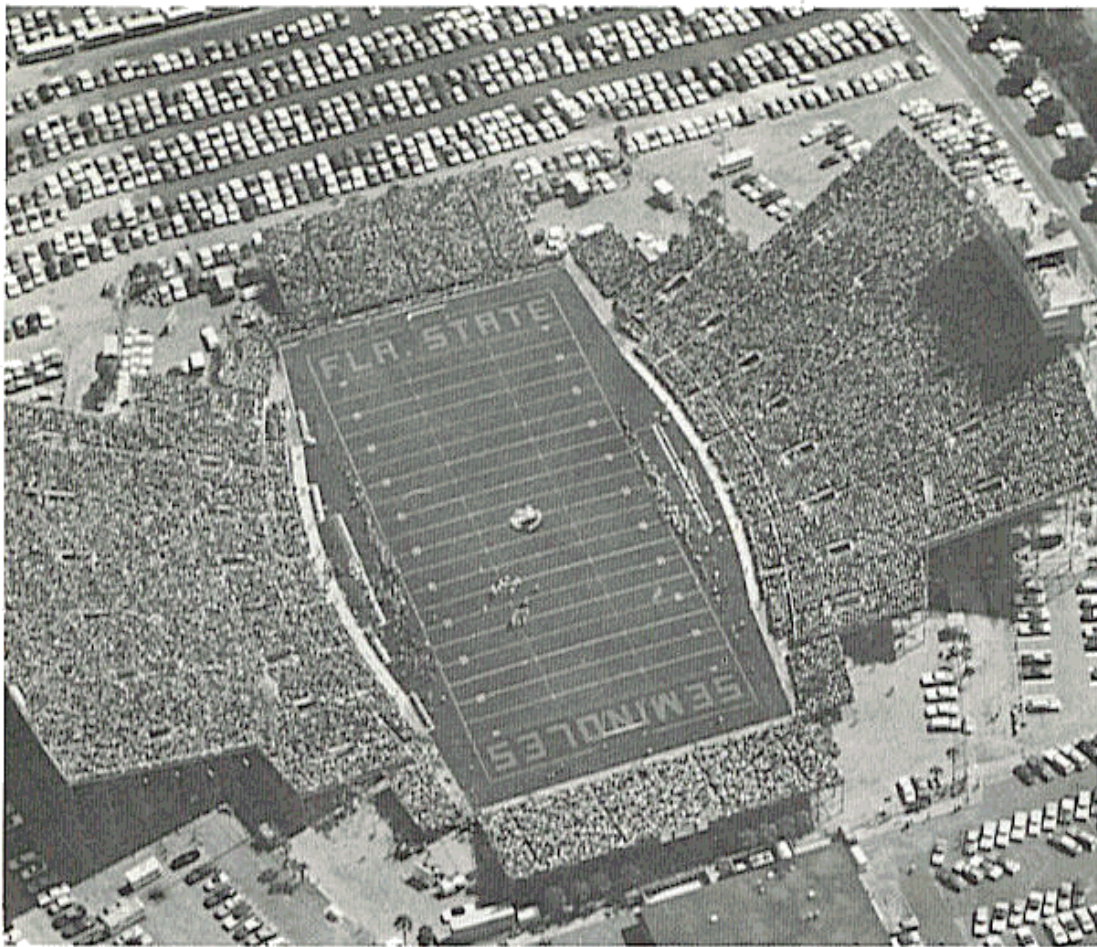
**AUBURN, Oct. 26** — Depart Tallahassee Oct. 25 on chartered buses for Columbus, Ga. Seminoles will stay at Martinique Motor Hotel in Columbus. Address is Fourth Ave. and 10th St. and phone is (404) 322-6641. On Saturday, team will board buses for Auburn approximately three hours before kickoff. Team will depart for Tallahassee approximately two hours after game.

**MEMPHIS STATE, Nov. 2** — Depart Tallahassee at 11 a.m. on day of game, arriving in Memphis at 11:10 (CDT). Team will rest briefly and eat pre-game meal at Sheraton Inn at the Memphis International Airport. Phone number is (901) 332-2370. Seminoles will depart Memphis at approximately 11:20 p.m., arriving in Tallahassee at 1:30 a.m., Nov. 3.

**MIAMI, Nov. 8** — Depart Tallahassee at 11 a.m. day of game, arriving in Miami at noon. Team will rest briefly and eat pre-game meal at Holiday Inn, 1170 N.W. 11th St. Phone number is (305) 324-0800. Seminoles will depart Miami at approximately 11:50 p.m., arriving in Tallahassee at 12:50 a.m., Nov. 9.

This public document was promulgated at an annual cost of \$5,125 or \$1.24 per copy to serve as a handbook for football to acquaint the media and fans with the 1974 Florida State University football program.





## FLORIDA STATE UNIVERSITY

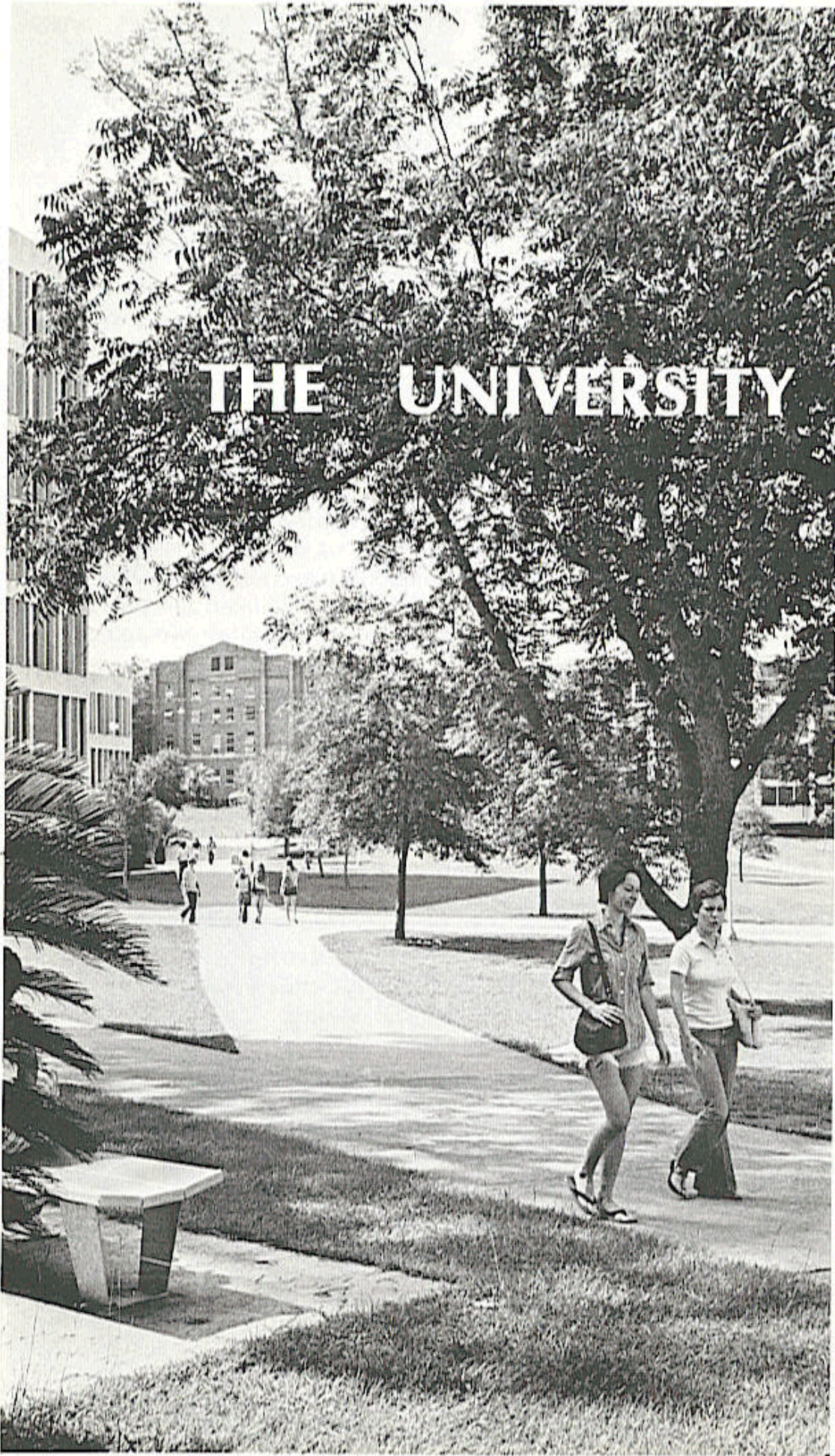
**LOCATION:** Tallahassee, Florida 32306  
**PRESIDENT:** Dr. Stanley Marshall  
**ENROLLMENT:** 20,363  
**CONFERENCE:** Independent  
**COLORS:** Garnet and Gold  
**NICKNAME:** Seminoles  
**STADIUM:** Doak S. Campbell (40,500)  
**BAND:** Marching Chiefs  
**ATHLETIC DIRECTOR:** John Bridgers  
**ASSISTANT AD:** Bill Rowe  
**ATHLETIC TICKET MANAGER:** Claude Thigpen  
**SPORTS INFORMATION DIRECTOR:** Lonnie Burt  
**HEAD FOOTBALL COACH:** Darrell Mudra  
**ATHLETIC DEPARTMENT:** (904) 644-2790  
**FOOTBALL OFFICE:** (904) 644-2775

**ON THE COVER:** A galaxy of Florida State's football tradition, including memorabilia of the Seminoles' past All-Americans and bowl game appearances. Pictured in the inset is Florida State's "Man of the Future", Head Coach Darrell Mudra whose goal is to return the Seminoles to the "pattern of excellence" of the past. The cover photo was taken by Irv Kokol; Darrell Mudra's picture was taken by Gil Lawhon, both of the FSU Photo Lab.

# TABLE OF CONTENTS

1974 Schedule .....	Inside Front Cover
1974 Travel Plans .....	Inside Front Cover
General Information .....	1
 <b>FLORIDA STATE UNIVERSITY</b>	
The University .....	4
Dr. Stanley Marshall, President .....	6
 <b>INTERCOLLEGIATE ATHLETICS</b>	
John Bridgers, Athletic Director .....	8
Bill Rowe, Assistant AD .....	9
Claude Thigpen, Business Manager .....	9
Athletic Staff .....	10-11
Personnel Directory .....	12
Athletic Committee .....	12
 <b>FOOTBALL STAFF</b>	
Darrell Mudra, Head Coach .....	14
The Mudra Record .....	15
The Mudra Philosophy .....	16
Assistant Coaches and Staff .....	17-22
 <b>1974 SEMINOLES</b>	
Outlook .....	24-25
Player Profiles .....	26-40
Personnel Analysis .....	41
Varsity Roster .....	42-43
Depth Chart .....	44
Freshman Signees .....	45
Junior Varsity Schedule .....	45
Future Varsity Schedules .....	46
 <b>THE OPPONENTS</b>	
Opponents' Outlooks .....	48-58
 <b>1973 IN REVIEW</b>	
Statistics .....	60-61
Game by-game .....	62-64
 <b>THE RECORD BOOK</b>	
Seminole All-Americans .....	66-67
Seminoles In The Pros .....	68
Seminoles In All-Star Games .....	68
Single Game Records .....	69
Season Records .....	70
Career Records .....	71
Longest Plays .....	72
Other Records .....	73
Best By Opponents .....	74
Coaches and Captains .....	75
Records vs. All Opponents .....	76-77
Results, 1947-1973 .....	77-80
 <b>MISCELLANY</b>	
Seminole Boosters .....	82
The Marching Chiefs .....	83
Seminole Radio Network .....	83
Memo To The Media .....	84
1974-75 Basketball Schedule .....	Inside Back Cover





# THE UNIVERSITY



## FLORIDA STATE UNIVERSITY

"A University, like its football team, must call its signals on the basis of teamwork and tested strategies, and yet be unafraid to try a new approach when—or even before—an old one fails," says Florida State's President Stanley Marshall.

Thus, Florida State is an ever-changing institution—proud of its past, influential in its present form, confident in its future—and, above all, actively concerned about each of the 20,000 students it is serving in 1975.

As one of nine institutions in the State University System, and the second oldest, Florida State's traditions date back to its founding in 1857 as the Seminary West of the Suwannee. Yet its vision encompasses the needs of mankind in the 21st Century. The University's faculty and administrators are alert to both the immediate and long-range problems of society which require solution and educational assistance.

Academically and athletically, Florida State continues to be a contender for top ranking among the nation's leading universities.

Although Seminole athletics can be traced back to the first decade of the 20th Century, the University's history includes a number of years when it was known as the Florida State College for Women (1905-47). The dynamic growth of intercollegiate athletics, since co-education and university status came to the campus in 1947, has paralleled the phenomenal physical and enrollment growth of the institution in the last two and one-half decades.

Supported by major grants from the National Science Foundation, the University has attained national prominence in physics, statistics, chemistry, and psychobiology. In athletics, the last decade has seen Seminole teams earn major bowl and tournament appearances and several bona fide All-America titles. In academics, the same period of time has seen two Nobel Laureates added to the faculty—one on a full time, the other on an annual winter quarter basis.







A pioneer in the field of oceanography for many years, Florida State is making marine studies (including the U.S. Sea Grant Program) one of its strong points of emphasis in the decade ahead. Facilities for oceanographic research are located both on the campus and in the Ed Ball Marine Laboratories on the Gulf of Mexico, south of Tallahassee.

Balancing its prestige in the sciences with academic achievements in the arts and humanities as well, Florida State is the home base for the State Theater, State Opera and State Symphony of Florida. Its role as an artistic and cultural pacesetter is long-standing and international in scope in art, music and theater.

Artists-in-residence this year will include two international known composers, Australian Malcolm Williamson and the Polish composer Krzysztof Penderecki. In recent years students have had an opportunity to study under such talents as composer Carlos Menotti and writer-in-residence, Dr. E.R. Braithwaite, author of the best selling, "To Sir, With Love."

The John MacArthur Center for American Theatre, a \$19.4 million project, announced last year, is envisioned as a home for American theatre, a focal point for the development of the art at both the educational and professional levels. Though still in the planning stages, the Center has already attracted major donations and promises to establish Florida State's preeminence in collegiate theatre.

At the undergraduate level, Florida State students have a choice of more than 87 different baccalaureate fields of study; and at the graduate level, a choice of more than 85 master's degree areas and 58 doctoral programs.

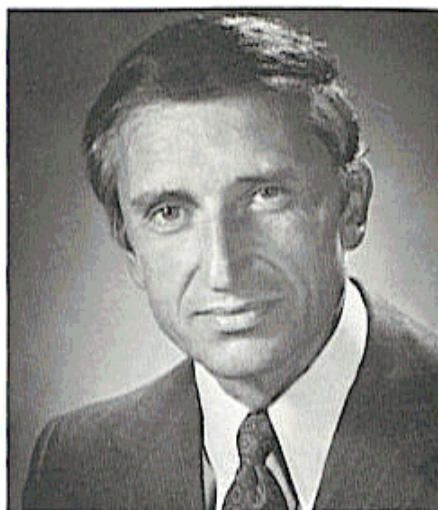
Rounding out the University's research resources are two nuclear accelerators, million-book library and special research facilities in geophysical fluid dynamics, educational research and technology, molecular biophysics social research, political research, psychobiology and psychology.



**DR. STANLEY MARSHALL**  
**President, Florida State University**

An active sportsman himself, Florida State's President Stanley Marshall is the University's most energetic and enthusiastic Seminole fan. He frequently plays as hard as he works, and that's saying something for a president whose daily agenda is often one that runs from 7 a.m. to midnight.

Nevertheless, according to his lovely wife Shirley, he still finds time to swim, to play tennis and touch football with friends, and ride horses on their farm in



Quincy, their nearby retreat from the formal presidential home on West Tennessee Street. Dr. Marshall's family shares his interest in frequent athletic activities—Sue Ellen, 21; David, 25; John, 12; Kimberly Ann, 6; and Drew, who was 5 in July.

Dr. Marshall attended Pennsylvania State Teachers College at Slippery Rock until the middle of his junior year in February, 1943, whereupon he entered the U.S. Army. During his military duty he was a member of the Army Specialized Training Program. He then served in the European Theatre of World War II until his discharge in 1946. He received the master's and doctor's degree from Syracuse University in 1950 and 1956 respectively both in the area of science education.

In 1963, Dr. Marshall was invited by the Ford Foundation and the Turkish Government to direct the National Science Project of Turkey in which he and other American educators undertook the establishment of a national science high school for gifted students in Ankara.

Dr. Marshall is the co-author of three professional books and a widely used series of elementary science textbooks. He served as editor of the *JOURNAL OF RESEARCH IN SCIENCE TEACHING* from 1962-66 and as a member of the editorial board of *Science World* from 1962-65.

He is a member of 13 national or state professional organizations and has been recognized by inclusion in *WHO'S WHO IN AMERICA* and *AMERICAN MEN OF SCIENCE*. He is a fellow of the American Association for the Advancement of Science, a member of the Board of Regents of the National Library of Medicine, and president of the Southern Association of State Universities and Land-Grant Colleges.



# THE ATHLETIC DEPARTMENT





## **JOHN BRIDGERS**

### **Athletic Director**

John Bridgers brought many years of administrative and coaching experience with him when he assumed Florida State's Athletic Directorship in the spring of 1973

A veteran coach in both collegiate and pro ranks, Bridgers came to the Seminoles from South Carolina where he served as an associate to Head Coach and Athletic Director Paul Dietzel.



A native of Birmingham, Ala., Bridgers feels a large part of his responsibility is to establish and maintain strong bonds with university faculty, staff, alumni and students as well as the other friends of the athletic program.

"Florida State has one of the nation's finest all-around athletic programs," said Bridgers. "It is our aim to see that it maintains its outstanding reputation and continues to move up among the country's top teams in all sports.

"To accomplish this will take the hard work, effort and dedication of all those associated with the university."

Prior to his association at South Carolina, Bridgers was head coach and athletic director at Baylor and an assistant coach at both Baltimore and Pittsburgh in the NFL.

A veteran of World War II and Korea, Bridgers received his Bachelor of Science degree from Auburn University in 1947. Following his graduation, he continued at Auburn as an instructor of economics.

He was accepted to the Yale Law School, but a service commitment forced him to turn it down. Following his two-year Army tour in Korea, in which he enrolled as a private and was discharged as a captain, he began his coaching career.

Bridgers' early coaching experience included tenures at the University of South at Sewanee, Tenn., and at Johns Hopkins, where he coached both football and track.

In 1957, he joined the staff of the Baltimore Colts and was a coach on the 1958 club which defeated the New York Giants, 23-17, in the now famous "sudden death" game.

He moved to Baylor in 1959 and for 10 years held the Athletic Director and Head Football Coach positions with the Bears. During this time he lead the Bears to three bowl games and the third best won-loss record in the Southwest Conference behind Texas and Arkansas.

Following the 1968 season Bridgers left Baylor and was named offensive backfield coach for the Pittsburgh Steelers. He joined Dietzel's staff at South Carolina in 1970.

Bridgers is married to the former Frances Young of Florence, Ala. They have two sons, John Dixon and Donald Hamilton.





**BILL ROWE**  
**Assistant Athletic Director**

Bill Rowe joined his former coaching associate John Bridgers on the Seminole administrative staff last spring, after a long and successful stint as an assistant under Paul Dietzel

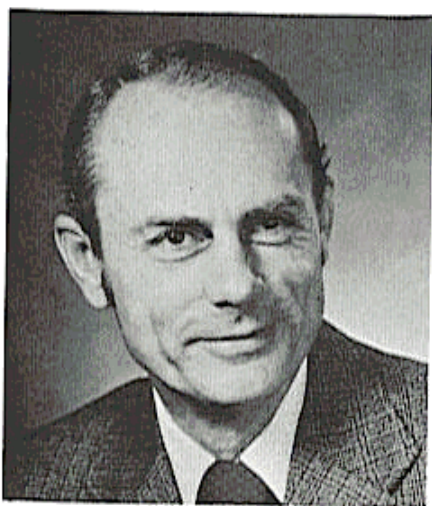
His duties with the Seminoles include the overseeing of Florida State's physical facilities and their operations.

A native of Pennsylvania, he received an appointment to the U.S. Military Academy at West Point, N. Y., where he

lettered three seasons as a center and linebacker. He received honorable mention All-America recognition and was voted the outstanding lineman his senior season. He played for the North in the North-South game in December 1958, and graduated in the spring of 1959 with a BS degree in Engineering.

In 1964, Rowe returned to West Point as an assistant coach. In 1966 he moved to South Carolina and from 1970-72 served as defensive coordinator.

A member of the Fellowship for Christian Athletes, Bill is married to the former Mary Lou Beittel of Carlisle, Pa. They have four children.



**CLAUDE THIGPEN**  
**Athletic Business Manager**

Claude assumed his new position in the spring of 1974, after nearly two decades of working with the Athletic Department as accountant and ticket manager.

The Greenville, Fla. native continues to head the Seminoles' complex ticket operations as he has for more than 12 years, but has added new responsibility for budget and fiscal control.

The veteran member of the athletic department has organized the ticket operation into a smooth functioning unit and is constantly on the alert for new ideas for more expedient operation of the department's overall business dealings.

Claude and his wife, the former Carleen Lindley, have two children.



**LONNIE BURT**  
**Sports Information Director**

Coordinating press and public relations and promoting Florida State's Athletic Program in general, fall under Lonnie's far-ranging duties.

A member of the first group of men to enroll at Florida State following its conversion from a College for Women, Lonnie brought a 16-year background of sports writing with him when he returned to his alma mater in 1966.

A native of Evergreen, Ala., Lonnie has directed publicity for the Seminoles throughout one of their finest eras—one which has included four bowl games and a number of post season invitations for the remainder of the Seminole sports.

Lonnie and his wife, the former Sally McLaughlin of Statesville, N.C., have two children.



**HANK SCHOMBER**  
**Assistant**  
**Sports Information Director**

A full time member of the Athletic staff since his graduation from Florida State in 1967, Hank is charged with much of the publication and statistical work for all Seminole sports.

A native of Westchester County, N.Y., and former resident of Pompano Beach, he serves as editor for the Athletic brochures, handbooks and programs. He is also in charge of overseeing the operations of the press boxes for football, basketball and baseball.

A member of the National Collegiate Baseball Writers Association, he was recently elected Third Vice President after serving a year as District Director in the Southeast.

Hank and his wife Judy, who should receive her Ph.D. degree from Florida State this fall, have a daughter, Tam.







## **CHARLIE DURBIN** **Cinematographer**

The proverbial "Jack of all trades" at the Athletic Department, only this 26-year veteran has a unique twist as he is also "master of most."

In addition to his photographic duties, which include turning out coaches' films, TV highlight films and daily practice films for football and basketball, this Havana, Fla., native fills a valuable role as Seminole bus driver. There are few Seminole athletes who have not "ridden behind Charlie" some time in their career.

Charlie and his wife, the former Leo Poppell of Havana, have five children.

---



### **SECRETARIES AND CLERICAL STAFF**

From left side around table: Karen Rich, Rhonda Ruckel, Barbara Powell, Lillian Gaines, Evelyn Green, Dee Frye, Helen Means, Marion Lee, Maureen Roemer, Donna Leach.



## THE ATHLETIC COMMITTEE

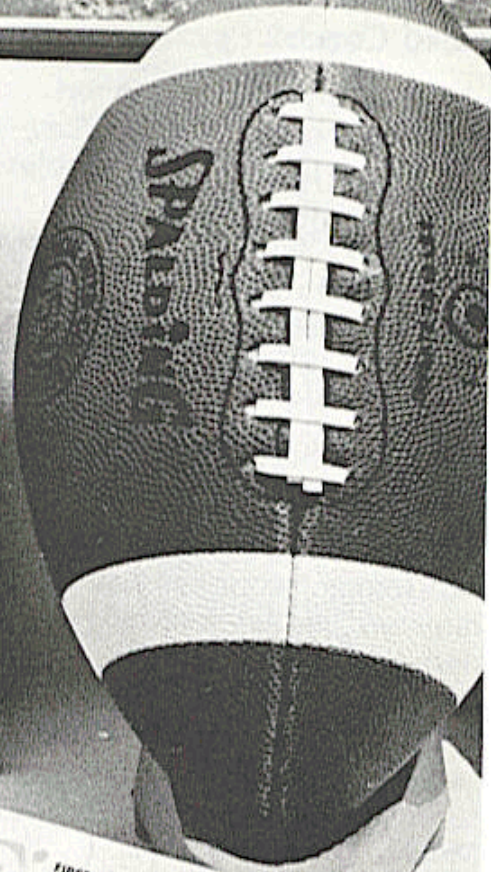
Dr. Richard Baker  
Chairman  
235 Business Building  
644-6458

Members: John Bridgers, Athletic Director; Ernest Burkman, Professor of Science Education; Vernon Fox, Professor and Chairman of Department of Criminology and Corrections; James Joanos, Alumni Representative; David Aronofsky, President of Student Body; William H. Long, Associate Professor of Meteorology; Joshua Morse, Dean of the College of Law; Walter Revell, Alumni Representative; Ron Schomburger, Alumni Representative; Janet Wells, Associate Professor of Physical Education and Recreation.

## ATHLETIC DIRECTORY

NAME	POSITION	PHONE
Baggett, Bill	Trainer	2775
Bolton, Bill	Assistant Basketball Coach	(904) 644-3080
Bridgers, John	Athletic Director	-2790
Burt, Lonnie	Sports Information Director	-2790
Carlisle, Terry	Varsity Swimming Coach	-3074
Debord, Frank	Football Equipment Manager	-2775
Durbin, Charlie	Cinematographer/Bus Driver	-1205
Durham, Hugh	Varsity Basketball Coach	-3080
Elliott, Sam	Assistant Football Coach	-2775
Feely, Ed	Assistant Football Coach	-2775
Ferdon, Sylvia	Women's Golf Coach	-2087
Fletcher, Scott	Varsity Golf Coach	-2790
Frye, Dee	Secretary, Athletic Director	-2790
Furnell, Marlene	Women's Athletic Director	-2087
Gaines, Lillian	Accounting Clerk	-2790
Granger, Gene	Equipment Clerk	-4734
Green, Evelyn	Secretary, Football Clerk	-2775
Harbison, Bob	Assistant Football Coach	-2775
Henning, Dan	Assistant Football Coach	-2775
Jobson, Randy	Varsity Tennis Coach	-2790
Jones, Billie Jo	Women's Volleyball Coach	-3078
Jones, Cal	Assistant Football Coach	-2775
Langford, Ann	Women's Tennis Coach	-1447
Lawson, Al	Assistant Basketball Coach	-3080
Leach, Donna	Secretary, Football Office	-2775
Long, Mike	Varsity Track Coach	-3836
Lee, Marion	Assistant Ticket Manager	-1830
McDowell, Gene	Assistant Football Coach	-2775
McHone, Morris	Assistant Basketball Coach	-3080
Means, Helen	Secretary, Business Office	-2790
Mudra, Darrell	Varsity Football Coach	-2775
Newman, Karren	Women's Track and Badminton Coach	-2087
Pendleton, Larry	Assistant Football Coach	-2775
Pollard, Deek	Assistant Football Coach	-2775
Pope, Mike	Assistant Football Coach	-2775
Powell, Barbara	Accountant	-2790
Rangeley, John	Women's Swimming Coach	-3074
Rich, Karen	Secretary, Sports Information	-2790
Roberts, Dick	Varsity Cross Country Coach	-3080
Rodriguez, Pete	Assistant Football Coach	-2775
Roemer, Maureen	Receptionist	-2790
Rowe, Bill	Assistant Athletic Director	-2790
Ruckel, Rhonda	Secretary, Basketball Office	-3080
Saucier, Woody	Varsity Equipment Manager	-4734
Schomber, Hank	Assistant Sports Information Director	-2790
Thigpen, Claude	Business Manager	-2790
Usher, Millie	Women's Basketball and Softball Coach	-2087
Watson, Snelling	Equipment Clerk	-2775





FIRST ANNUAL  
December 27, 1971  
Florida State University vs Arizona State University

# FOOTBALL STAFF

20th ANNUAL... 1965  
GATOR BOWL GAME





## **DARRELL MUDRA**

### **Head Coach**

Darrell Mudra is a winner!

He is the man Florida State University has picked to lead the Seminoles out of the wilderness of defeat.

One of Coach Mudra's strongest selling points was the fact that he has turned football programs around with almost instant success, something Florida State desperately needs.

The 44-year-old Omaha, Neb., native came to Florida State from Western Illinois with extremely high recommendations.

"Darrell Mudra is one of the outstanding football coaches in the country," says former Nebraska Head Coach Bob Devaney, now that school's athletic director. "He has been able to win wherever he has gone and in many cases despite great obstacles."

Tommy Prothro, ex-college coaching standout, now boss of the San Diego Chargers, is another who thinks Mudra was the man for the Florida State job. "I believe Darrell Mudra is a very, very superior coach. I would have been surprised if any candidate for the Florida State job was the caliber of Darrell Mudra."

Coach Mudra's record (next page) speaks for itself. He has turned five losers into big winners. In 15 years of college coaching, the soft-spoken educator has recorded 106 victories against only 32 loses and two ties.

Mudra attended Peru State College in Nebraska where he was an all-conference halfback. He received a masters degree from Omaha University and his doctorate from Colorado State. He served in the Air Force during 1950 and '51.

He was an assistant coach at Hurrion (S.D.) and Colorado State before becoming head coach at Adams State, Alamosa, Colo., in 1959. The previous season Adams State had gone 1-9 but in Mudra's first year the Colorado school gained eight victories against one loss. In four seasons there, Mudra-coached teams never lost more than two games in a single year and he led the Indians to a bowl game.

In 1963, he moved to North Dakota State, a team which had been 0-10 the previous year. In three seasons his records were 3-5, 10-1, and 11-0, including two bowl games.

The next challenge was the Montreal club of the Canadian professional league. In 1965 the Alouettes were 3-11 but under Mudra in '66 they went 7-7 and made the playoffs.

The University of Arizona was the next program Mudra turned around. It took him two seasons to do this, but in the second year he directed the Wildcats to an 8-3 record and a spot in the Sun Bowl.

Western Illinois gained his services in 1969 and in five years at the McComb institution Mudra's clubs went 39-13.

Coach Mudra is married to the former Jean Marie King of Omaha, Neb. They are the parents of four children, Darrell Jr., 20; Stephen, 19; Sherry, 18; and Michele, 14.





## THE MUDRA RECORD

Team	Previous Record	Mudra's Record
Adams State	1-9, 1958	1959 — 8-1 1960 — 7-0-1 1961 — 8-2 1962 — 9-1 (Mineral Bowl)
North Dakota State	0-10, 1962	1963 — 3-5 1964 — 10-1 (Mineral Bowl) 1965 — 11-0 (Pecan Bowl) Nat'l Champions
Montreal Alouettes	3-11, 1965	1966 — 7-7 (Made playoffs. Defeated Bud Grant's Winnipeg team)
University of Arizona	3-7, 1966	1967 — 3-6-1 (Defeated Ohio State at Columbus) 1968 — 8-4 (Sun Bowl)
Western Illinois	2-8, 1968	1969 — 8-2 1970 — 7-3 1971 — 8-2 1972 — 9-2 1973 — 7-4
Total 113 wins, 39 defeats, 2 ties		



## MUDRA PHILOSOPHY

Every coach would like to think that he is innovative and hopes to contribute something of value to his program. At Florida State, however, a pattern of excellence has already been set with the accomplishments of the past decade in the pro style passing game. When Bob Harbison, Dan Henning, Sam Elliott, and Eddie Feely agreed to join us, our link with the past was firmly established.

Defensively we will present a new style but we will not sacrifice the fierce competitive nature that has always been a Florida State trademark. We have a brilliant strategist in Pete Rodriguez. Gene McDowell and Cal Jones and Don Pollard give us a strong teacher with each segment.

We are going to be player centered. By that I mean that we will attempt to develop a system of football to fit our players rather than fit the players to the system. Our future depends on our doing a good job with the players who are already here. They are young but we are encouraged by their spirit and confident that they are a strong nucleus from which we can rebuild. We are going to use the adversity of the past season to our advantage. Each loss and each mistake left an indelible mark on the consciences of our squad. We will not rest until we fulfill each pledge to those whose faith and support we cherish.

We plan to build a program that has as its primary emphasis the needs and interests of players. We hope to emphasize in our teaching the similarities between our football family and the bigger family, our state and nation. In both, the key note is team play and respect for the worth and dignity of our fellow man.

Our doors are open to the students, the faculty and the community. We believe they all can give directions to the Florida State football program. This is not going to be "a" coaches team or "a" players team or a booster team or a faculty team or a students team. It is going to be a Florida State team in the truest **sense** of the title.





**PETE RODRIGUEZ**  
**Defensive Coordinator, Linemen**

Pete is one of three coaches Coach Mudra brought with him from Western Illinois. He assumes the same role at Florida State as he did at WIU, that of defensive coordinator along with tutoring the interior defensive line.

The 34-year-old Chicago native joined Mudra's staff at Arizona where he coached the linebackers. Arizona's 1968 Sun Bowl club was considered one of the nation's better defensive outfits.

Mudra calls Rodriguez "one of the really great strategists in the game today."

Pete played his prep ball at Kelly High School in Chicago before gaining a scholarship to Western State College in Colorado. He received his B.A. in 1963 and M.A. in 1964 from his alma mater.

Earlier in his career he was defensive coordinator at Stratton (Colo.) HS in 1964 before taking the same position in 1965 at Harrison HS in Colorado Springs. He served as head coach at Harrison in 1966-67 before going to Arizona the next season.

He and his wife, Linda, have two children.



**DAN HENNING**  
**Offensive Coordinator,**  
**Quarterbacks and Receivers**

The man who helped develop ex-Seminole quarterback Bill Cappleman returns for his second tour of duty at Florida State.

Henning was the Seminoles' offensive coordinator in 1968 and '69 before joining the Virginia Tech staff in 1970 in the same capacity.

Dan, 31 and a William and Mary graduate, left the Gobblers after one season to join Bill Peterson and the National Football

League Houston Oilers where he tutored the quarterbacks.

He returned to Virginia Tech in 1973 when he again headed up the Gobbler offense before rejoining the Seminoles.

Henning was standout quarterback at William and Mary before graduating in 1964. The New York City native spent the next four seasons dividing his time between the American Football League San Diego Chargers and two teams in the Continental League.

Dan and his wife, Sandy, have five children.



## **SAM ELLIOTT** **Offensive Backs**

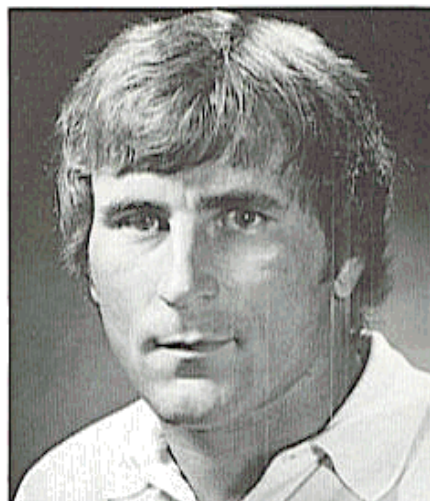
Sam comes to the Seminoles from Kent State where he coached under Don James, a former Florida State assistant.

The California native was at Kent State three seasons during which the football program became a winner. In 1972, Kent won the Mid-American Conference title and gained a berth in the Tangerine Bowl. In 1973, the Golden Flashes were again in contention for the title.

Elliott served as a graduate assistant at Florida State in 1969 after performing in the same capacity at his alma mater, Ohio State, for one year. During his coaching stint with the Buckeyes, Ohio State played in the Rose Bowl.

During his playing days, he lettered three seasons as a defensive back, being selected the Buckeyes' captain in his senior year.

Sam, 27, is married to the former Judy Wuille of Columbus, Ohio.



## **EDDIE FEELY** **JV Head Coach,** **Varsity Offensive Assistant**

Eddie is one of three assistants retained by Coach Darrell Mudra. The former Seminole quarterback joined the previous staff last spring after leading his Merritt Island High School team to the State 4A championship.

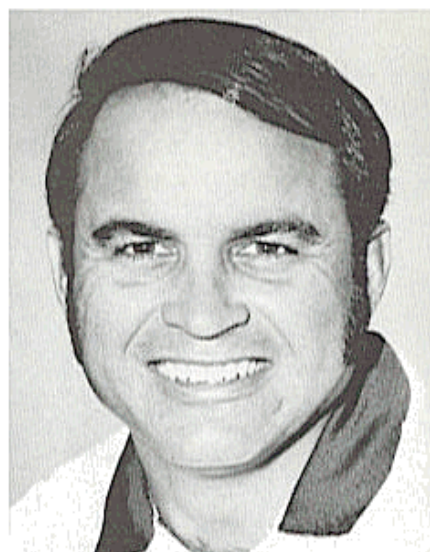
Feely's jayvee team scored a 27-7 victory over Florida in 1973.

Eddie played his final season for the Seminoles in 1962 and began his prep coaching career following graduation in 1963. After one year as an assistant at Samford University, he took over the head coaching spot at Cocoa Beach High School in 1964 and in 1966 moved to Merritt Island.

He led his Merritt Island teams to the State playoffs in 1970, '71 and '72, winning the title with a 13-0 record on his final try. In 1971 his club had an 11-0 record before losing to eventual champion Fort Pierce Central and in 1970 he was eliminated by state champ Tallahassee Leon.

At Florida State, Feely was the last scrambler style quarterback to direct the Seminoles before Steve Tensi ushered in the pro-style, dropback quarterback, the trademark of Florida State's defense.

Eddie and his wife Myra Lou, a former Florida State cheerleader, have four children.







## **CAL JONES** **Linebackers**

After serving as Coach Mudra's assistant at Western Illinois for three seasons, Cal accompanied his boss to Florida State.

In his first two years at Western, Cal coached one All-American, two All-State college selections and a most valuable player.

Before going into college coaching, he was an extremely successful prep coach in California. At Central Union HS in El Centro, Calif., Cal's teams compiled a record of 43 victories against 13 defeats

from 1966-70. His squads won conference championships in each of those seasons and he was named Imperial Valley Coach of the Year in 1968.

Cal, a Pittsburgh, Pa., native is a member of the National Association of Intercollegiate Athletic's Hall of Fame and was named first team NAIA All-America as a guard at Adams State in 1964.

He was captain of the Adams State clubs in both 1963 and '64. He received his B.A. and M.A. degrees from his alma mater and has done advance work at Northern Colorado.

He and his wife Elaine have two children.



## **BOB HARBISON** **Offensive Line**

"Mr. Seminole" is back and the Indians couldn't be happier.

Bob Harbison, associated with Florida State football for 25 of its 27 seasons, returns to the only football job he has ever known after leaving following the 1972 campaign to enter private business.

During Harbie's 25 seasons with the Seminoles he coached both offense and defense. He directed the offensive line during the 1972 campaign and Head Coach Darrell

Mudra has turned that assignment back over to him.

During Harbison's 25-year career at Florida State, the Seminoles were in eight bowl games. Mudra becomes the sixth Florida State head coach Harbie has served under. The one time University of Indiana guard came to the Seminoles in 1947 under Don Veller. He later worked with Tom Nugent, Perry Moss, Bill Peterson and Larry Jones.

A native of Evansville, Ind., Harbie was the defensive line coach in 1964 when his "Magnificent Seven" was considered by many to be Florida State's finest defensive outfit.

Bob and his wife, the former Jane McEntee of Washington, D.C., have four children.



**GENE McDOWELL**  
**Defensive Ends**

Gene returns to his alma mater after four seasons as an assistant at Kansas State.

He will coach the Seminole defensive ends, an assignment he also had at K. State.

McDowell, 33, is a native of Quincy although he was a prep standout at Waycross, Ga. High School. After coming to Florida State, he lettered three seasons (1960-62) and was named third string Associated Press All-America as a linebacker in his senior campaign. In 1962 he was named the State's

Most Outstanding College Player by the Daytona Beach Quarterback Club.

Following graduation in 1963 he spent two seasons in the service before returning to Florida State in 1965 as a graduate assistant. The next season he was named freshman coach and retained that post until 1969 when he became the Seminole's chief recruiter.



**LARRY PENDLETON**  
**Offensive Line, Academics**

Larry is the newest varsity assistant, joining the staff fulltime in June.

He will assist with the offensive line and also handle any of the gridgers' academic problems.

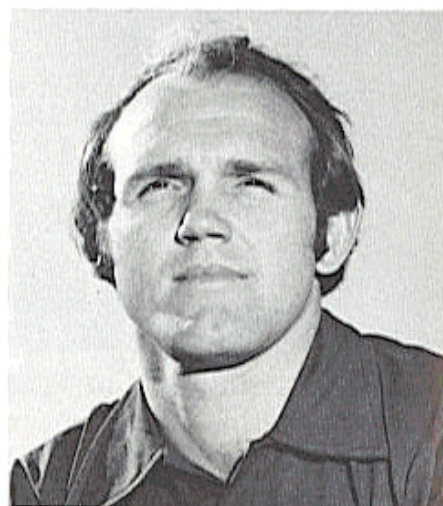
Larry returned to his alma mater in 1973 as a graduate assistant and last season tutored the junior varsity offensive line.

The Winter Garden native attended Lakeview High School in that city where he gained 10 letters before coming to Florida State from 1964-68. He was a three-year starter for the Seminoles, two on offense and one on defense.

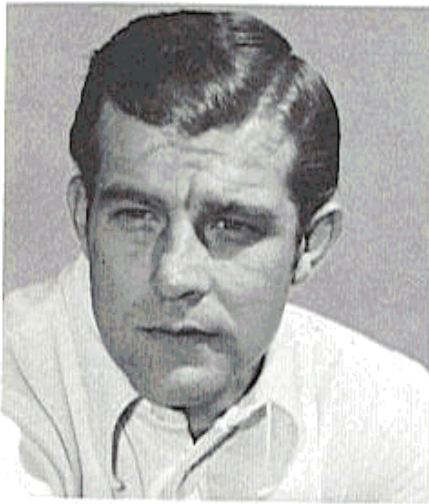
During his three-year varsity career the Seminoles were in three bowl games — the Sun, Gator and Peach.

After graduation, he was an assistant coach at Colonial High School in Orlando from 1969-72.

He is married to the former Carolyn Chalk of Fort Walton Beach.







**DONALD (DEEK) POLLARD**  
**Defensive Backs**

This newest member of Mudra's staff also served under the Seminole head coach at Western Illinois.

A former Illinois high school coaching standout, Deek is that state's winningest prep mentor. Before joining the Western staff in 1971, Pollard recorded a 55-4-3 record at Pittsfield (Ill.) High School after being named head coach in 1965.

Pollard's Saukees were undefeated in their last 54 games, a winning streak which repre-

sented the longest string in state history until the team stretched the record to 64 in 1972.

He was named Illinois' prep coach of the year in 1970.

While coaching the Western defensive backs in 1972, opponents averaged only 97 yards per game via the passing game and his defensive secondary registered 17 interceptions.

Deek received his B.S. degree from Western in 1961 and then gained a M.A. from Northeast Missouri State in 1968.

A Southern Illinois native, he and his wife Brenda have two children.



**MIKE POPE**  
**Assistant Coach**  
**In Charge of Recruiting**

For the last three seasons Mike has been in charge of Seminole recruiting. He will continue in this key role but at the same time will become more involved with on the field coaching.

Mike moved to the permanent staff in 1971 after spending the previous season working as a graduate assistant helping with the freshman squad.

The North Carolina native was born in Monroe and played his college ball at Lenoir

Rhyne where he performed at both quarterback and fullback in the Bears' single wing attack.

After three years as head coach in North Carolina high schools, he went to Jacksonville where he was offensive coordinator at Wolfson High. He became head coach and athletic director at Lake Wales High School in 1968 before coming to Florida State.

In college, Mike was the Lenoir Rhyne captain in 1963 and voted the team's most valuable player.

He is married to the former Lee Lambie of Arlington, Va.



**FRANK DeBORD**  
**Assistant Coach, Equipment**

Now in his seventh season with the Seminoles, Frank was elevated to assistant coach this past spring. He will help with the weight program as well as oversee the Florida State equipment room and practice fields.

A native of Virginia, he resides in Quincy.

Frank is a Virginia Tech graduate where he lettered in football and wrestling. He served as assistant football coach at Franklin, Va., High School and also played two seasons for Norfolk in the Continental League.

Frank and his wife, the former Marian Bradshaw of Franklin, Va., have three children.



**BILL BAGGETT**  
**Head Trainer**

Bill comes back to Florida State as head trainer following a one-year stint as assistant at Northern Arizona.

Before going to Arizona, the 24-year-old native of Panama City put in one year as a graduate assistant trainer at Florida State.

Bill spent most of his young life in Ozark, Ala., although he graduated from Miami Palmetto High School. He then attended Indiana State University, gaining his B.S. in 1972. He lettered as a baseball catcher while in college.

He is married to the former Marilyn Gann of Miami.



**GRADUATE ASSISTANTS**

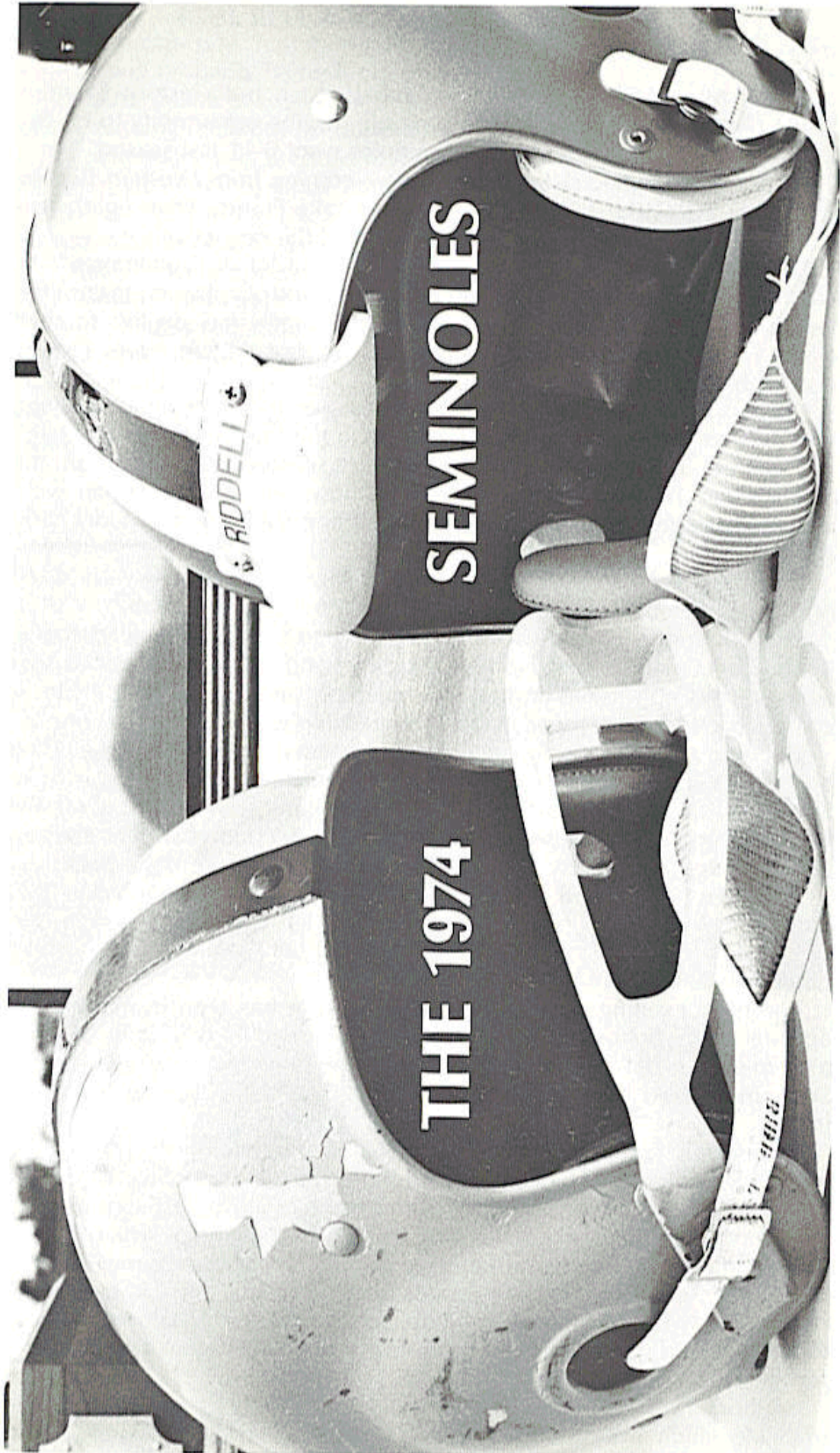
Billy Joe Breakhouse  
Mack Brown  
Rick Schachner

New Mexico State  
Florida State  
Western Illinois

**STUDENT MANAGERS**

Mel Brown                      Ray Parker  
Jack McCambridge







## THE SEMINOLE OUTLOOK FOR 1974

Darrell Mudra, Florida State's new football coach, has a history of turning losing programs into winners. He certainly has the opportunity to do this in his latest assignment since the Seminoles went 0-11 last season.

Mudra, who replaced Larry Jones after coming from Western Illinois, is excited about the 1974 Seminoles. "To take Florida State lightly this fall will be a mistake for our opponents," said the new coach.

"We'll be young and we'll be playing with a lot of sophomores," he continued. "But we have some talented coaches and our players are committed to be winners. We have some potential super stars on this football team. I'm not ready to name names just yet, but they're there. I know it's tough to come off an 0-11 year.

"However, we had a good recruiting year and there are some kids who will help us immediately. I think we'll be in the thick of things this fall."

There are 32 lettermen returning from last season's squad, 16 from the defense and 16 from offense. Eleven of those returning lettermen were freshmen last fall and those are the upcoming sophomores Mudra talks about.

During parts of spring practice, four of those sophomores were listed on the first defensive unit and six on the starting offensive club.

Most of spring practice was spent trying to settle on a quarterback. Junior Mark Orlando started some 1973 games and he returns. Junior college transfer Ron Coppess has impressive credentials and sophomore Billy Prescott is back. Prescott opened at QB in the Seminoles' final game last season.

There is a talented group of receivers headed by seniors Mike Allen and Joe Goldsmith along with junior Jim Everett plus sophomore Mike Shumann, all lettermen. Sophomore Mike Barnes, who came off the freshman squad, has caused some excitement. Second year tight ends Ed Beckman and Tom McDougal, both lettermen as freshmen, are back.

The offensive line will lack experience although sophomore tackle Billy McPhillips along with guards Bob Jones and Jeff Gardner started in '73. Coaches experimented during the spring to fill out the line and gain some depth.

The most exciting running back Florida State has seen in many years appears to be sophomore Rudy Thomas. He carried the ball only 15 times as a freshman but seems to have gained the confidence he needs now. Sophomore Fred Miller returns after sitting out last season with an arm injury.

Two-year letterman Mike Davison, a senior, was held out of spring rough work while he recovered from shoulder surgery and another letterman, junior Bobby McKinnon, was also hampered by injuries last spring.

Defensively, the new coaches must try to plug some holes which caused the Seminoles to give up an average of 30.1 points per game last fall.

At ends, senior Bert Cooper returns after sitting out the '73 season and he apparently has one flank locked up. Sophomore Rudy Maloy and junior Randy Coffield, both lettermen from last year, will wage a heated battle for the other spot.

Sophomore Phil Jones, a linebacker letterman in 1973, has been moved to tackle which gives another soph monogram winner, John Thames, com-



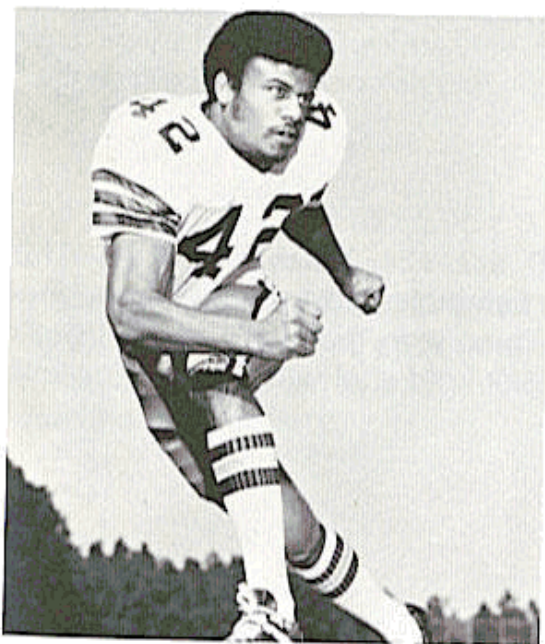
petition on one side. Junior letterman Greg Johnson and JC transfer Tom Rushing will probably battle it out on the other side.

The nose guard is a clash between junior college transfer Tony Falvo and ex-running back Brooks Burroughs.

The secondary was a battle royal during the spring, despite returning lettermen Earl Humes, Andy Stockton and Phil Cahoon. Sophomore Joe Camps was right in the thick of it as was Chris Griffin, Jeff Ridings, Greg Pittman, Danny Greene, Lee Nelson and freshman Robert Jackson.

The kicking game appears to be in good shape with Ahmet Askin returning for placement and senior Joe Downey back to do the punting.

Florida State's schedule is a toughie with six 1973 bowl teams on the slate. During mid-season the Seminoles must go against Alabama, Florida and Auburn on successive Saturdays. But Mudra has turned things around before and his players believe he can do it again at Florida State. Sooner than some people expect.







**Mike Allen**



**Ahmet Askin**



**Mike Barnes**



**Ed Beckman**

**MIKE ALLEN, Wide Receiver, Sr., 21, 6-4, 178, Willoughby, Ohio, 2VL**—A tested veteran, he falls in the mold of many former Seminole receivers. Not super quick but has outstanding moves. Was the second-leading receiver in '73 with 19 catches for 279 yards and one score. Height is a big help. Has fine knowledge of opponents' defensive schemes. Reminds coaches of former FSU standout Kent Gaydos. As a senior he has opportunity to have finest season.

**AHMET ASKIN, Place Kicker, Jr., 20, 6-2, 174, Tallahassee, 2VL**—This will be his third varsity season with the Seminoles. Last year he kicked four of nine field goals and hit on eight of nine extra points. Was the team's leading scorer with 20 points. His longest field goal was 52 yards against Miami. He also handled kickoff duties.

**MIKE BARNES, Wide Receiver, So., 19, 5-11, 174, Titusville, Fresh**—One of the most pleasant surprises of spring practice. Possesses fine speed. He's fastest of receiving corps. Excellent strength for WR despite lack of size. Showed ability during spring to make the great catch. However, he needs to be more consistent on routine reception. His speed is a big plus.

**ED BECKMAN, Tight End, So., 19, 6-5, 210, Miami, 1VL**—He was a starter in 1973 as a freshman when he caught 10 passes for 82 yards. Has excellent size for the position. Extremely motivated, he has his sights set to be a great one. Has fine hands and made much improvement during spring. With maturity, he will improve concentration. Physically, he is in the mold of other outstanding Florida State tight ends. Coaches figure he is further ahead at this stage of the game than ex-Seminoles Chip Glass and Jim Tyson because of playing time as a freshman.

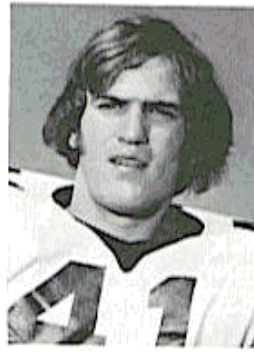




**Ricky Blythe**



**Brooks Burroughs**



**Phil Cahoon**



**Joe Camps**

**RICKY BLYTHE, Center, Jr., 21, 6-2, 216, Winter Park, Squad**—Switched from tight end to center during spring practice. Made great improvement despite limited time at new position. Improved enough to put himself in the starting picture. He's a team player with great desire to win. Has exceptional quickness and knowledge of the game. Can be a leader on the field as well as off. Saw some playing time last season as a tight end and caught a touchdown pass against South Carolina. He is president of the FSU chapter of the Fellowship of Christian Athletes.

**BROOKS BURROUGHS, Nose Guard, Sr., 22, 6-0, 227, Somerset, N. J., Squad**—This is his third position since coming to Florida State from Ferrum JC in Virginia. Moved to nose guard from fullback on scout squad. Has good quickness for his size.

**PHIL CAHOON, Defensive Back, Jr., 21, 5-10, 182, Mobile, Ala., 1VL**—Another returning 1973 starter. Can play either strong or free safety. Will most probably start fall as free safety. He increased size and strength this summer. An outstanding student of the game. With increased quickness he will be a complete player.

**JOE CAMPS, Defensive Back, So., 19, 6-2, 186, Gainesville, Frosh**—Despite his sophomore status, he's one of the defensive leaders. Had an outstanding spring. A hitter, he has great knack of getting to ball. Coaches consider him one of most competitive players on squad. Has a chance of being one of best defensive backs around. Better than average speed. Needs more body flexibility and work on footwork. He's dedicated and knows what it takes to win.





**Randy Coffield**



**Bert Cooper**



**Ron Coppess**



**Doug Dane**

**RANDY COFFIELD, Defensive End, Jr., 21, 6-3, 218, Hialeah, 1VL**—Another part time starter in 1973. He worked at defensive end early during spring practice and then was switched to linebacker near the end. Hampered somewhat by injuries. He is good enough athlete to play either position. Coaches indicate he may be used at both this fall. Has good size and is an excellent hitter. Led team in recovered fumbles last season with three.

**BERT COOPER, Defensive End, Sr., 22, 6-1, 236, Tallahassee, 2VL**—This fifth-year senior sat out last season after lettering in 1971 and '72. He runs a 4.8 40 which is a big help at the defensive end position. During spring practice he showed real dedication toward improving as a football player. He has the physical tools to be outstanding and he has already established himself as a good one. Showed leadership ability during spring. He's determined to do his part in putting Florida State back on the winning track. Best pass rusher among defensive ends. Is consistent—makes very few mistakes.

**RON COPPESS, Quarterback, Jr., 20, 6-3, 215, Escondido, Calif., JC**—Transfer from Palomar Junior College in San Marcos, Calif. Has excellent size and his ability to run Florida State's new offense (Veer-T) allowed him to finish No. 1 at end of spring. A good runner, he also handled the passing attack well for a newcomer. Needs to attain dedication that has become hallmark of former great Seminole quarterbacks. His strong arm allows him to throw deep.

**DOUG DANE, Defensive Tackle, So., 19, 6-5, 222, Fort Lauderdale, Fresh**—Has outstanding potential but was hampered this spring with nagging back injury. Still performed well despite pain. How well he recovers from back injury will determine how much he plays. He has fine size and good straight ahead speed. Another offensive line convert, he needs to improve agility and body strength.





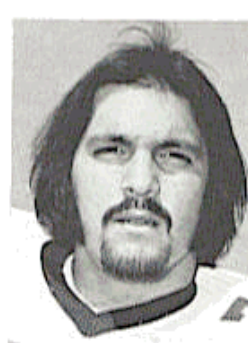
**Mike Davison**



**Joe Downey**



**Jim Everett**



**Tony Falvo**

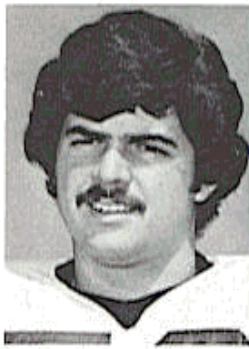
**MIKE DAVISON, Running Back, Sr., 21, 5-11, 197, Bradenton, 2VL**—A two-year starter, Mike underwent shoulder surgery after last season. He practiced every day during spring but until near the end he was in shorts and no pads. However, he did get in some rough work near the conclusion of spring drills. Pro scouts have him on their checklist. Hampered by injuries last season, he still managed to gain 170 yards in 55 carries. He was also the team's third-leading receiver in '73 with 15 catches for 75 yards. Does everything above the average. Has exceptional hands for a back.

**JOE DOWNEY, Punter, Sr., 22, 6-0, 193, Mobile, Ala., 2VL**—Handled punting duties last two seasons. In 1973, he averaged 38.2 yards on 81 boots. His longest was 80 yarder against Florida. That was within four years of Florida State record. Had the ball not gone into the end zone he would have broken school mark.

**JIM EVERETT, Wide Receiver, Jr., 20, 6-3, 177, Tallahassee, 1VL**—Another wide receiver who fits the Kent Gaydos mold. Smart and dedicated. Runs well defined moves. His good hands make him a fine target. Needs work on release when facing tough coverage. Could be outstanding. Caught eight passes in '73 for 121 yards and two touchdowns.

**TONY FALVO, Nose Guard, Jr., 21, 6-0, 240, Wexford, Pa., JC**—A junior college player recruited from Lees McRae in Banner Elk, N. C. Excellent physical tools for nose guard with good speed. Runs 40 in 4.75 and benches about 330 pounds. Has to develop mental toughness to live up to potential.





**Dan Fucarino**



**Jeff Gardner**



**Joe Goldsmith**



**Danny Greene**

**DAN FUCARINO, Center, So., 20, 6-2, 213, Tampa, RS**—Held out last season. Became starter part of spring practice. Needs to add weight and strength. Makes few mental mistakes. He has potential to play this fall.

**CLARK GALEN, Linebacker, So., 19, 6-1, 207, Miami, Frosh**—Did a good job on the scout squad and this earned him a promotion to the varsity this spring. Has average speed and strength. Needs work on lateral movement. His dedication makes up for a lot of things.

**JEFF GARDNER, Offensive Guard, Jr., 20, 5-11, 214, Miami, 1VL**—A part time starter in 1973, he is best one-on-one blocker among offensive linemen. Has strength, toughness and desire to be a winner. Had good spring practice. His lack of height proves a disadvantage but he overcomes this with quickness. Has inside track on one of the starting guard spots.

**JOE GOLDSMITH, Tight End, Sr., 22, 6-1, 180, Lakeland, 2VL**—This two-year varsity performer was moved from wide receiver to tight end during spring. He made the adjustment easily because of his ability to block and his quickness off the ball. A courageous senior, he has good hands and quick feet. He has definite leadership ability. In 1973, he caught seven passes for 131 yards. Was kickoff return man last season and he will continue work on the specialty units this fall.

**DANNY GREENE, Defensive Back, So., 19, 6-2, 191, Miami, Squad**—Was used last season as deep snapper on punts. His physical tools include both size and strength. Must improve agility and quickness. Has average speed. Is very tough in supporting run. A diligent worker.





**Chris Griffin**



**Mike Harder**



**Bruce Harrison**



**Donnie Holley**

**CHRIS GRIFFIN, Defensive Back, Jr., 20, 5-11, 168, Tampa, 1VL**—The squad's top classroom student. Has not made anything but A in the classroom while taking 92 hours majoring in pre-law. Voted "Co-Sophomore Of The Year" by honorary fraternity, Omicron Delta Kappa. He is equally talented on football field. Has as much experience as any defensive back. Coaches were concerned about his physical stature but he proved during spring that he could support run. If he picks up this fall where he left off in later stages of spring he'll be fighting for starting corner job.

**MIKE HARDER, Wide Receiver, So., 20, 6-3, 183, Bristol, Pa., RS**—Held out last season. Excellent size. He's coming off knee surgery which was successful. Worked his way up during spring practice from scout squad to become varsity candidate. Has great range and is highly motivated. Will be a factor among wide receivers.

**BRUCE HARRISON, Offensive Guard, So., 20, 6-2, 235, Vero Beach, Squad**—Has size and speed to be outstanding. Was a part time varsity performer as a freshman. Physically tough with fine strength. Good pass protector. Has leadership ability. Solid performer in classroom with an overall B average.

**NAT HENDERSON, Defensive Tackle, Fr., 18, 6-4, 257, Albany, Ga., HS**—Enrolled before spring practice and got maximum benefit out of drills. Coaches were pleased with his toughness and raw potential. Tremendous size although he'll be asked to cut weight to about 245. If he develops more strength he'll contribute this fall. He's a tough one-on-one player and it is difficult to run right at him.

**DONNIE HOLLEY, Running Back, Jr., 21, 5-11, 180, Elba, Ala., Squad**—Had his best spring practice ever. Was on the second unit behind Rudy Thomas. Didn't miss a practice during spring drills. Has toughness and gives 100% effort.





**Earl Humes**



**Greg Johnson**



**Wade Johnson**

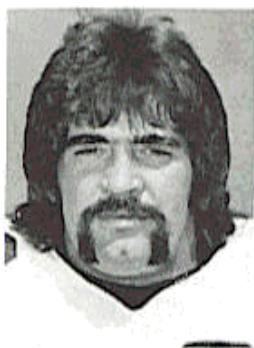
**EARL HUMES, Defensive Back, Sr., 21, 6-0, 166, Miami, 1VL**—Started last season and showed vast improvement during spring practice. Coaches were concerned about size and strength. However, he worked hard on these during summer and at one point had gained 11 pounds. A good hitter, he supports run very well. He came to Florida State as a “walkon” but showed enough talent to gain scholarship.

**ROBERT JACKSON, Defensive Back, Fr., 18, 5-10, 164, Albany, Ga., HS**—One of the more pleasant surprises of spring. He suffered two minor injuries early in the spring but came back to be impressive during latter stages. Excellent feet and super athletic skills. Naturally lacks experience since he’s fresh out of high school, but still should be a top contender for starting corner position. Has above average speed.

**GREG JOHNSON, Defensive Tackle, Jr., 21, 6-4, 236, Fruitland Park, 1VL**—Had one of the better spring practices on the squad. Made tremendous progress through dedication to off season work. Coaches consider him team’s finest defensive lineman. Excellent movement and pursuit. Good quickness helps pass rush. He made up his mind before spring to become an outstanding player. He’s just starting to develop his skills and has raw talent. His overall improvement from 1973 season to final spring game was tremendous.

**WADE JOHNSON, Offensive Guard, So., 19, 6-2, 213, Valdosta, Ga., Frosh**—Was probably the most outstanding lineman on last year’s freshman club. He is physically tough but needs to work on strength and agility. Had an outstanding spring practice and wound up as a starter. Overcomes lack of size with desire and toughness. A product of some great high school teams at Valdosta, he will battle for No. 1 spot this fall. Has leadership qualities.





**Bob Jones**



**Phil Jones**



**Randy Kaiser**

**BOB JONES, Offensive Guard, Sr., 22, 6-4, 233, Lighthouse Point, 2VL**—Has been a two-year starter and should be the leader along the offensive line. Injuries hampered him during spring drills. Has quick feet and good agility. Is one of the team's better pass protectors. Has outstanding size. Great things expected of him during senior season. His mental mistakes on the field are few and far between.

**LARRY JONES, Defensive Back, So., 19, 6-3, 190, Seminole, 1VL**—Lettered last season as wide receiver when he tied for fifth-place in receptions. Caught 11 for 127 yards. Missed spring practice since he was pitcher on varsity baseball team with 6-3 record. His 2.49 earned run average was best among starters. Was outstanding defensive back-wide receiver in high school so new position won't be entirely strange. Has good athletic ability.

**PHIL JONES, Defensive Tackle, So., 20, 6-2, 244, Miami, 1VL**—Excellent speed for his size. Runs 4.8 40. Lettered last season as a freshman at linebacker. Has improved his strength and is now benching over 300 pounds. Has great potential which hasn't been fulfilled yet. Football future is in front of him. He has the ability to make the big play. Moved from linebacker to tackle this spring. Still makes errors because of inexperience. An ankle injury hampered his progress during spring.

**RANDY KAISER, Defensive Back, Sr., 21, 6-0, 172, Oak Park, Ill., 1VL**—Started in 1973 and was tied for second in pass interceptions with three. Wrist injury handicapped him during spring drills. Another defensive back who concentrated on strength and weight during summer. Great football savvy. Will make definite contribution this fall.

**LARRY KEY, Running Back, Fr., 18, 5-9, 181, Inverness, HS**—Entered college before spring drills after exceptional high school career. Hampered by injuries during spring but when he was healthy he showed coaches enough that they figure he fits into plans this fall. Has real athletic ability but still lacks concentration and maturity. Coaches figure he is in about the same situation as was Rudy Thomas last season. However, they figure fall practice will make a world of difference. Has run a 9.8 100-yard dash. Was state prep weight-lifting champ in his class.

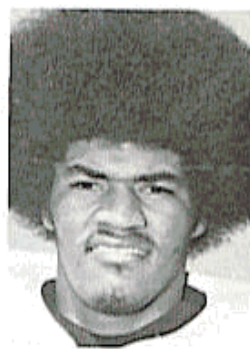




**Mike Kissner**



**Jeff Leggett**



**Rudy Maloy**



**Mark Marshall**

**MIKE KISSNER, Defensive Tackle, So., 19, 6-2, 239, Delray Beach, Frosh**—Started the spring as an offensive lineman before switching to defense. Was converted with two weeks remaining. He has good size and excellent upper body strength. Needs to work on agility and leg strength. Has good straight ahead speed. His eagerness to make switch from offense to defense helped his progress.

**JEFF LEGGETT, Running Back, So., 19, 5-11, 176, Miami, Frosh**—Was the second-leading ground gainer on the junior varsity squad last season, gaining 148 yards in 31 carries for a 4.7 average. Handicapped by size but has exceptional quickness. Makes very few mistakes. Plays up to his ability and sometimes beyond. Dedicated worker.

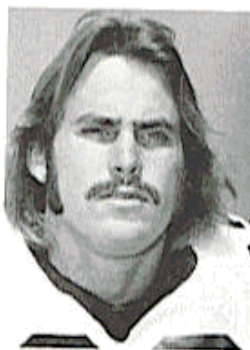
**RUDY MALOY, Defensive End, So., 20, 6-4, 208, Frostproof, 1VL**—Quickest of the defensive ends. A very intense player, he's highly motivated toward being a great one. Called by his coaches the "most productive end during spring." Didn't miss a practice despite some nagging injuries. Had a brief trial at linebacker in freshman season but has found a "home" at defensive end. Quickness enables him to do all things well in Florida State's scheme of defense. Needs to add weight to his 6-4 frame. Has outstanding potential.

**MARK MARSHALL, Tight End, Jr., 20, 6-5, 204, Cape Coral, Squad**—Worked at three positions during spring--tight end, defensive end and linebacker. Was voted the outstanding defensive player in Garnet and Gold game. It's a tossup where he'll line up this fall. He's too aggressive a player not to see considerable action this season.





**Tom McDougal**



**Bobby McKinnon**



**Billy McPhillips**



**Scott Meseroll**

**TOM MCDUGAL, Tight End, So., 19, 6-5, 218, Miami, 1VL**—Another sophomore who lettered as a freshman. Started spring practice as a tight end but because of his size and ability was tried at both defensive end and linebacker. He split playing time with Ed Beckman last season. Has good hands and will play somewhere.

**BOBBY MCKINNON, Running Back, Jr., 19, 6-1, 175, Lake Worth, 1VL**—Started most of the 1973 season and was the team's second-leading rusher behind Hodges Mitchell. Carried the ball 57 times for 224 yards and a 3.9 average. His one touchdown came on a 74-yard run against Memphis State. Was also the team's fourth-leading receiver with 13 catches good for 63 yards. Has outstanding hands for a running back and is a very intelligent performer.

**BILLY MCPHILLIPS, Offensive Tackle, So., 19, 6-2, 222, Tampa, 1VL**—Lettered as a freshman and became starter late in the season at offensive guard. Switched to tackle this spring. During last season he was moved to offensive lineman after opening as a defensive end. Adjusted well to new assignment. Injuries hampered him during spring practice. One of the fastest offensive linemen, he has the physical tools to become a starter. A good athlete and very intelligent. Needs to improve his strength through weightlifting.

**SCOTT MESEROLL, Defensive End, Sr., 23, 6-1, 210, Piscataway, N. J., 1VL**—Missed all of spring practice and part of last season due to ankle injury. However, he was part time starter in '73 and logged enough playing time for letter. Has good movement, size and determination. If he overcomes injury jinx, he'll help end corps.





**Fred Miller**



**John Murphy**



**Mark Orlando**

**FRED MILLER, Running Back, So., 20, 6-1, 207, Jacksonville, RS**—After lettering in his freshman season, he was red-shirted last year due to arm injury. In 1972, he gained 75 yards in 28 carries and scored one touchdown. He also caught nine passes for 70 yards and one TD. He is the biggest of the running backs and also the hardest runner. Excellent in short yardage situation. A steady performer, he's also a good blocker.

**JOHN MURPHY, Linebacker, Sr., 22, 5-10, 210, Albany, Ga., 2VL**—Florida State's most experienced linebacker. Was a starter in 1973 and saw much action as a sophomore in '72. Outstanding quickness. He had a fine spring practice. Some say he's too small for "52" defense. But he makes up for lack of size with tremendous effort. One of the better hitters on defense. He's the only upper classman among the linebacker corps.

**LEE NELSON, Defensive Back, So., 20, 5-10, 183, Melbourne, Trans.**—Transferred from Pensacola Junior College. Was out of football last season. A "walkon" who earned scholarship through his outstanding spring practice. He, along with freshman Robert Jackson, were the most pleasant surprises among defensive backs. A corner candidate, he has good speed and is a great hitter. Inexperience is his only drawback.

**MARK ORLANDO, Quarterback, Jr., 21, 6-1, 186, Westfield, N.Y., 1VL**—Split playing time with Billy Sexton in 1973 when he completed 71 of 153 passes for 709 yards and four touchdowns. He has smoothest delivery of all the quarterbacks. Showed improvement during spring practice in reading keys and picking up receivers. Is still in contention for starting berth. Is in the position of his career when a number of ex-Seminole QBs came out of the pack.





**Greg Pitt**



**Dave Porter**



**Greg Pounds**



**Billy Prescott**

**GREG PITT, Offensive Tackle, So., 21, 6-3, 207, Knoxville, Tenn., RS**—Held out last season. Needs to work on strength and gain weight. Has great desire for game. A tireless worker and tough player. Has a chance if he increases his size.

**DAVE PORTER, Defensive End, So., 19, 6-3, 200, St. Petersburg, Frosh**—Made most improvement of any defensive end during spring practice. Most dedicated among group. He didn't miss a single practice session during spring. Coaches figure him to battle Cooper and Maloy for starting berth. A real team player highly motivated. Needs to put on poundage through weight lifting. His greatest asset is motivation.

**GREG POUNDS, Linebacker, Jr., 20, 6-1, 206, Daytona Beach, 2VL**—One of the more experienced linebackers since he gained a monogram as a freshman. Had good spring while adjusting to Florida State's new defense. Had knee surgery following spring drills but should be 100% by the time fall practice begins. He started every game in 1973 when he was healthy. Worked on weights this summer to improve strength. Reads offenses very well and is a good tackler. He overcomes average speed with agility.

**BILLY PRESCOTT, Quarterback, So., 19, 6-0, 171, Fort Walton Beach, Squad**—Started the Florida game last year as a freshman. An excellent runner, he's a dedicated player. Has best total grasp of the offense among the quarterbacks. Real student of the game—a winner. Has quick feet. Needs a more relaxed throwing motion.

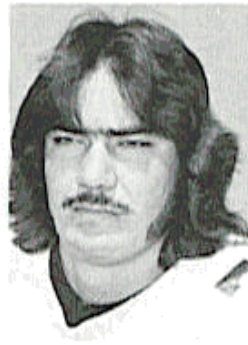




**Smokey Ragins**



**Jeff Ridings**



**Vic Rivas**



**Detroit Reynolds**

**SMOKEY RAGINS, Offensive Tackle, Jr., 20, 6-1, 245, Plant City, 1VL**—Started last year as a sophomore. Has the best size of any offensive lineman. His assets include speed and quickness. Missed spring practice because of personal problems. He is definitely a starting prospect.

**JEFF RIDINGS, Defensive Back, So., 20, 6-0, 178, Marietta, Ga., Fresh**—Another free safety candidate. Must improve coverage techniques. Has proven he will work to do this.

**VIC RIVAS, Offensive Tackle, So., 19, 6-2, 234, Miami, Fresh**—He has made great strides toward improving attitude over his freshman season. Hard work and dedication enable him to have shot at starting berth this fall. Has size and strength to play in this league. Needs to work on agility and toughness. Had an exceptional spring practice and became starter near the end of drills.

**DETROIT REYNOLDS, Linebacker, So., 19, 6-1, 213, Tallahassee, 1VL**—Another young linebacker who lettered as a freshman. By far quickest among the LBs. Started most games as a freshman. Has great natural athletic ability with tremendous potential. Needs to improve strength. Should be one of the defensive leaders. His speed helps on pass coverage. Speed and quickness are great assets along with lateral movement.





**Bill Sawyer**



**Brian Schmidt**



**Garis Shaw**



**Mike Shumann**

**BILL SAWYER, Center, So., 18, 6-4, 228, Cordele, Ga., Fresh**—Has improved tremendously since his freshman season. Biggest improvements came in the areas of agility and quickness. Was one of the most pleasant surprises of spring practice. A consistent, accurate deep snapper. Needs to increase strength in his upper body. Has outstanding size for his position. Maturity will make a big difference in this sophomore. Another product of south Georgia. Has flexibility to play either tackle or center.

**BRIAN SCHMIDT, Linebacker, So., 19, 6-1, 220, Lehigh Acres, 1VL**—Played much last year as a freshman. Great strength. Coaches consider him one of strongest in country. Could develop into one of Florida State's best linebackers. Needs work on lateral movement to improve footwork. Works hard on goal of becoming outstanding. Believes in doing something during every practice to improve. Has average speed. Had a good spring practice despite injuries. A good tackler, he has fine size. Was outstanding in spring game.

**GARIS SHAW, Nose Guard, So., 19, 6-2, 236, Clearwater, Squad**—He's most physically impressive lineman. Big, strong and has great speed. An ankle injury hampered his spring work. He must overcome lack of flexibility and agility. Has the physical tools to be a good one.

**MIKE SHUMANN, Wide Receiver, So., 19, 6-0, 163, Tallahassee, 1VL**—Was the leading varsity receiver as a freshman last season. Caught 21 passes for 380 yards and two touchdowns. Has ability to jump into class of three or four former great Seminole receivers. Is a game-day player. Dedication and concentration has to transfer to practice field. Reminds coaches of a smaller Ron Sellers. Has smooth hands and runs effortlessly. Can do wonders with the ball after he catches it.





**Andy Stockton**



**John Thames**



**Joe Thomas**



**Rudy Thomas**

**ANDY STOCKTON, Defensive Back, Jr., 21, 6-0, 176, St. Petersburg, Squad**—Saw some service last season. Got off to slow start during spring but then showed vast improvement. One of the stronger defensive backs. Needs to improve foot quickness and agility. He'll be competing for strong safety spot.

**JOHN THAMES, Nose Guard, So., 19, 5-11, 225, Gainesville, 1VL**—Another youngster who lettered as a freshman. Has been moved from tackle to nose guard. He was making excellent progress until he broke an ankle during fourth week of practice. He was a part time starter in 1973. Lacks great size and speed but makes up for it with quickness and toughness. Great heart and desire with excellent attitude. He's a winner, say his coaches. Very strong, he benches between 340 and 350 pounds.

**JOE THOMAS, Wide Receiver, Jr., 22, 6-1, 178, Tallahassee, Squad**—Worked some at running back last spring and could return to that position this fall. Finest feet among receivers. Excellent quickness. Tabbed "The Quiet Man." Great concentration. Because of position switch, he didn't get as many chances to show his worth at wide receiver. Will definitely be an asset at either wide receiver or running back.

**RUDY THOMAS, Running Back, So., 19, 5-11, 193, Quincy, Squad**—Voted most improved offensive performer following spring practice. He had an outstanding spring. During one scrimmage he scored three touchdowns. Has good speed--runs 4.6 40. Has strength to run over people and moves to make him a breakaway threat. His physical tools are all-star caliber. Great broken field runner and a better than average pass receiver. He showed 100% improvement this spring over freshman season when he lacked confidence. Didn't miss a spring practice session despite some nagging injuries. Now realizes what it takes to get the job done and knows he can do it. If things go well he could be at least one of best running backs in Florida State history. As a varsity performer in 1973, he carried ball 15 times for net of 58 yards.

**KEITH TUTEN, Defensive End, So., 19, 6-4, 209, Indianatlantic, Frosh**—Outstanding physical tools for position. When he matures, he'll be a fine player. Exceptional quickness.

## PERSONNEL ANALYSIS

Position	Lettermen Returning	Seniors	Juniors	Sophomores	Lettermen Lost
<b>Wide Receivers</b>	Shumann Allen Everett	Allen	J. Thomas Everett  Marshall	Shumann Barnes	Davis
<b>Tight Ends</b>	Beckman *Goldsmith McDougal	Goldsmith		Beckman McDougal	None
<b>Off. Tackles</b>	Ragins	None	Ragins	McPhillips Slagle Rivas Brodzik Pitt	Sparkman Harper
<b>Def. Tackles</b>	G. Johnson *P. Jones	None	G. Johnson	Kissner Dane **Henderson P. Jones	Malkiewicz Palermo Chandler
<b>Off. Guards</b>	Gardner B. Jones	B. Jones	Gardner Corcoran	W. Johnson Cunningham Harrison	Arnold
<b>Nose Guards</b>	*Thames	Burroughs	Falvo	Shaw *Thames	(New Position)
<b>Centers</b>	None	None	Blythe	Sawyer Fucarino	Saldana
<b>Linebackers</b>	Murphy Schmidt Pounds # *Cooper	Murphy # *Cooper	Pounds	Schmidt	Bell
<b>Def. Ends</b>	*Reynolds Maloy Coffield	None	Coffield	Porter Maloy *Reynolds	Passwaters Bratton
<b>Quarterbacks</b>	Orlando	None	Coppess Orlando	Prescott	Sexton
<b>Running Backs</b>	Davison McKinnon #Miller	Davison	McKinnon Holley	#Miller R. Thomas Leggett **Key	Mitchell Glosson
<b>Def. Backs</b>	Humes Griffin Cahoon Kaiser	Humes Kaiser	Griffin Stockton Cahoon	Camps Greene Jackson *L. Jones	Lewis McGinn
<b>Place Kickers</b>	Askin	None	Askin	None	None
<b>Punters</b>	Downey	Downey	None	None	None

\*Lettered at other positions

\*\*Freshman who went through spring practice

#Did not play in 1973



# 1974 FLORIDA STATE FOOTBALL ROSTER

NAME	POS.	HT.	WT.	CL.	AGE	1973 STATUS	HOMETOWN	HIGH SCHOOL (COACH)
Allen, Mike	WR	6-4	178	Sr.	21	2VL	Willoughby, Ohio	Willoughby (Jimmie Chapman)
Anderson, Bob	OG	6-1	219	Jr.	21	RS	Rockledge	Rockledge (Buster Rice)
Askin, Ahmet	PK	6-2	174	Jr.	20	2VL	Tallahassee	Goody (Wes Carter)
Burnes, Mike	WR	5-11	174	So.	19	Fr.	Titusville	Titusville (Jack O'Brien)
Beckman, Ed	TE	6-5	210	So.	19	1VL	Miami	South Miami (Charlie Yanda)
Bisler, Paul	LB	6-1	215	So.	19	Fr.	Sunrise	Piper (David Fee)
Black, Jimmy	QB	6-0	179	So.	19	Fr.	Merritt Island	Merritt Island (Eddie Feely)
Blythe, Ricky	C	6-2	216	Jr.	21	Squad	Winter Park	Winter Park (Bob Murfin)
Brodzik, Ed	OT	6-3	221	So.	19	Fr.	Tampa	Loto (John Rector)
Brown, Mike	OG	6-2	208	So.	19	Fr.	Auburndale	Auburndale (Larry Brinkley)
Burroughs, Brooks	NG	6-0	227	Sr.	22	Squad	Somerset, N.J.	Ferrum JC (Hank Norton)
Cahoon, Phil	DB	5-10	182	Jr.	21	1VL	Mobile, Ala.	Davidson (Glen Yancey)
Camps, Joe	DB	6-2	186	So.	19	Fr.	Gainesville	Gainesville (Jim Niblack)
Caven, Jay	OT	6-4	242	So.	20	RS	St. Petersburg	Boca Ciega (Dan Wickline)
Cheeseborough, Harold	OG	5-11	213	Jr.	20	Squad	Jacksonville	Lee (Leon Barrett)
Corfield, Randy	DE	6-3	218	Jr.	21	1VL	Hialeah	Hialeah (Bob Hipple)
Cooper, Bert	DE	6-1	236	Sr.	22	RS-2VL	Tallahassee	Florida High (Dick Flowers)
Copress, Ron	QB	6-3	215	Jr.	20	JC	Escondido, Calif.	Palomar JC (Mark Wiebe)
Corner, Jesse	FB	5-11	195	So.	19	Fr.	Pensacola	Woodburn (Jerry Henderson)
Corcoran, Dan	C	6-2	230	Jr.	21	JC	Holley, N.Y.	Mesa JC (Jack Perrin)
Cunningham, Craig	OG	6-1	207	So.	20	Fr.	Ormond Beach	Seabreeze (Willie Lager)
Dane, Doug	RB	5-11	197	So.	21	2VL	Bradenton	Manatee (Earl Bramlett)
Downey, Joe	P	6-0	222	So.	19	Fr.	Fort Lauderdale	South Plantation (Richard Coppeland)
Duncan, Rick	DE	6-0	193	Sr.	22	2VL	Mobile, Ala.	Theodore (Thomas Cain)
Everett, Jimmy	WR	6-3	189	So.	19	Fr.	Sarasota	Cardinal Mooney (John Heath)
Falvo, Tony	NG	6-0	240	Jr.	20	1VL	Tallahassee	Goody (Wes Carter)
Fucarino, Dan	C	6-2	213	Jr.	21	JC	Wexford, Pa.	Lees McRae JC (Mike Cook)
Gabriel, Kevin	WR	5-11	184	Jr.	20	RS	Tampa	Hillsborough (Billy Turner)
Galen, Clark	LB	6-1	207	So.	19	Fr.	Orlando	Edgewater (Bob Dolce)
Gardner, Jeff	OG	5-11	214	Jr.	20	1VL	Miami	Palmetto (J.C. Davis)
Gleason, Doug	DE	6-2	209	So.	20	1VL	Miami	Columbus (Tom O'Neill)
Goldsmith, Joe	TE	6-1	180	Sr.	22	2VL	Lexington, N.C.	West Davidson (Joe Young)
Graham, Ben	DB	6-2	187	Jr.	20	Squad	Punta Gorda	Kathleen (Tom Anwell)
Graziano, Rocky	LB	6-2	214	So.	19	Fr.	Freeport, N.Y.	Charlotte (Mike Lay)
Greene, Danny	DB	6-2	191	So.	19	Squad	Miami	Freeport (Joe Mainico)
Griffin, Chris	DB	5-11	168	Jr.	20	1VL	Tampa	South Miami (Charlie Yanda)
Halljare, Gerry	P	5-11	191	So.	19	Fr.	Cantonment	Hillsborough (Billy Turner)
Hanks, Steve	WR	5-11	184	So.	19	Fr.	Orlando	J.M. Tate (Carl Madison)
Harder, Mike	WR	6-3	183	So.	20	Fr.	Orlando	Edgewater (Bob Dolce)
Hammel, John	DE	6-3	218	So.	19	RS	Bristol, Pa.	Wilson (Pat Picciello)
Harrison, Kenny	OG	6-2	210	Jr.	21	Fr.	Winter Park	Winter Park (Larry Gergley)
Harrison, Bruce	OG	6-2	235	So.	20	Squad	Auburndale	Auburndale (Marvin Wiley)
Harvey, Len	DT	6-4	217	So.	19	Squad	Vero Beach	Vero Beach (Loren Giannamore)
Henderson, Nat	DT	6-4	257	Fr.	18	HS	Tallahassee	Leon (Gene Cox)
Hicks, Jimmy	OT	6-2	231	So.	19	Fr.	Albany, Ga.	Albany (Ferrell Henry)
Holcomb, John	LB	6-2	200	So.	19	Fr.	Chipley	Chipley (Walker Henders)
Holley, Donnie	FB	5-11	180	Jr.	21	Fr.	Tampa	Plant (Ken Russell)
Humes, Earl	DB	6-0	166	Jr.	21	Squad	Elba, Ala.	Elba (Leon Atkins)
Jackson, Robert	DB	5-10	164	Sr.	21	1VL	Miami	Miami Beach (Vic Vaccaro)
Jackson, Terry	RB	5-11	176	Fr.	18	HS	Albany, Ga.	Albany (Ferrell Henry)
Johnson, Greg	DT	6-4	236	Jr.	19	Fr.	Perry	Taylor (Glynn Watts)
					21	1VL	Fruitland Park	Leesburg (Wilbur Lofton)

Johnson, Wade	OG	6-2	213	So.	19	Fr.	Valdosta, Ga.
Jones, Bob	OG	6-4	233	So.	22	2VL	Pompano Beach (Jim Caldwell)
Jones, Larry	DB	6-3	190	So.	19	1VL	Seminole (Fred Robinson)
Jones, Phil	DT	6-2	244	So.	20	1VL	Miami Springs (John Sain)
Joyner, Joe	WR	5-10	168	So.	19	Fr.	Colonial (Terry Manfredi)
Kaiser, Randy	DB	6-0	172	So.	21	1VL	Oak Park River (Edward Zembal)
Kettman, Mike	OT	6-0	236	Jr.	20	JC	Joflet JC (Jerry Yost)
Key, Larry	RB	5-9	181	Fr.	18	HS	Citrus (Tom Swain)
Keyes, Robbie	OB	6-4	201	So.	20	RS	Central Regional (Joseph Boyd)
Kilmurray, John	TE	6-2	208	So.	20	RS	Central Regional (Joseph Boyd)
Kissner, Mike	OT	6-2	239	So.	19	Fr.	Cardinal Newman (Sam Bulfinch)
Leggett, Jeff	RB	5-11	176	So.	19	Fr.	Norland (Bill Dawkins)
Melroy, Rudy	DE	6-4	208	So.	20	1VL	Frostproof (Farris Brannen)
Marshall, Mark	TE	6-5	204	Jr.	20	Squad	Cypress Lake (Joe Kinnan)
McCowen, Sean	RB	6-1	200	So.	19	Fr.	Choctawhatchee (Wyman Townsell)
McCully, Walt	DB	6-0	171	Jr.	20	Squad	Edgewater (Bob Dolce)
McDougal, Tom	TE	6-5	218	So.	19	1VL	Palmato (Jesse Davis)
McKinnon, Bobby	RB	6-1	175	Jr.	19	1VL	Lake Worth (Bill Humphrey)
McPhillips, Billy	OT	6-2	222	So.	19	1VL	King (Jerry Durmin)
Meseroll, Scott	DE	6-1	210	So.	20	RS	Wesley JC (Bob Andrus)
Miller, Fred	RB	6-1	207	So.	20	2VL	Paxon (Ed Swartz)
Murphy, John	LB	5-10	210	So.	22	Albany (Fennell Henry)	
Nelson, Lee	DB	5-10	183	So.	20	Trans.	Pensacola JC
Oglesby, Paul	OG	6-3	241	So.	20	Squad	Paxon (Ed Swartz)
O'Leary, Pat	OB	6-1	175	Jr.	20	Squad	Charmade (Vince Zappone)
O'Randó, Mark	QB	6-1	186	Jr.	21	1VL	Mindrenty (Robert Moscato)
Payton, Lester	RB	6-1	178	Jr.	21	Squad	Oak Ridge (Paul Adams)
Petrillo, Ralph	DB	6-0	197	Jr.	21	RS	Free Academy (Charles Fornal)
Pitt, Greg	OT	6-3	207	So.	21	RS	Tenn. Military Institute (Dick Chestnut)
Pittman, Greg	DB	6-0	163	So.	19	Fr.	Jefferson (Elmer Coker)
Porter, Dave	DE	6-3	200	So.	19	Fr.	Gibbs (David Kimmell)
Pounds, Greg	LB	6-1	206	Jr.	20	2VL	Mainland (John Chura)
Prescott, Billy	QB	6-0	171	So.	19	Squad	Fl. Walton Beach (Chester Norris)
Prior, Brad	OB	6-4	189	So.	19	Fr.	Lake Wales (Ed Owen)
Ragins, Smokey	OT	6-1	245	Jr.	20	1VL	Plant City (Hank Systema)
Redings, Jeff	DB	6-0	178	So.	20	Fr.	Wheeler (Carlton Nell)
Risk, Alan	DT	6-2	216	So.	19	Fr.	Norland (Bill Dawkins)
Rivas, Vic	OT	6-2	234	So.	19	Fr.	Coral Park (Carl Moss)
Rushing, Tom	DT	6-4	255	Jr.	19	JC	Palo Verde JC (Clancy Osborne)
Reynolds, Detroit	LB	6-1	213	So.	19	1VL	Leon (Gene Cox)
Sawyer, Bill	C	6-4	228	So.	18	Fr.	Crisp, Co. (Tom Auzel)
Schmidt, Brian	LB	5-11	194	So.	19	1VL	Rivertide (Charlie Casey)
Scruggs, Melvin	NG	6-1	220	Jr.	21	Squad	Booker County (Conrad Harris)
Shaw, Garis	NG	6-2	236	So.	19	Squad	Clearwater (Earl Brown)
Shumann, Mike	WR	6-0	163	So.	19	1VL	Leon (Gene Cox)
Slagle, Harry	OT	6-5	220	So.	20	RS	Phenix City (Frank Sadler)
Smith, Fran	DB	6-1	186	So.	19	Fr.	Chattanooga (Vincent Zappone)
Stockton, Andy	DB	6-0	176	Jr.	21	Squad	Boca Ciega (Dan Wickline)
Szygert, Sam	OG	6-3	205	So.	18	Fr.	Stratford Academy (Bobby Brown)
Thames, John	NG	5-11	225	So.	19	1VL	Gainesville (Jim Niblack)
Thomas, Joe	WR	6-1	178	Jr.	22	Squad	Godby (Buddy Searry)
Thomas, Rudy	RB	5-11	193	So.	19	Squad	Shanks (Charlie Armstrong)
Tulen, Keith	DE	6-4	209	So.	19	Fr.	Melbourne (Larry Maden)
Vickers, Steve	DB	5-11	167	Jr.	20	Squad	King (Gerald Durmin)
Walker, Clyde	QB	6-3	193	So.	19	Fr.	Chapel Hill (W.D. Perman)
Valdosta, Ga.							
Lighthouse Point							
Seminole							
Miami Springs							
Oak Park, Ill.							
Palos Park, Ill.							
Inverness							
Ocean Gate, N.J.							
Lanoka Harbor, N.J.							
Delray Beach							
Miami							
Frostproof							
Cape Coral							
Fort Walton							
Orlando							
Miami							
Lake Worth							
Tampa							
Piscataway, N.J.							
Jacksonville							
Albany, Ga.							
Melbourne							
Jacksonville							
Hallandale							
Westfield, N.Y.							
Orlando							
Newburgh, N.Y.							
Knoxville, Tenn.							
Monticello							
St. Petersburg							
Daytona Beach							
Fl. Walton Beach							
Lake Wales							
Plant City							
Marietta, Ga.							
Miami							
Ehrenberg, Ariz.							
Tallahassee							
Cordele, Ga.							
Lehigh Acres							
Druc, Ga.							
Clearwater							
Tallahassee							
Phenix City, Ala.							
Fl. Lauderdale							
St. Petersburg							
Macon, Ga.							
Gainesville							
Tallahassee							
Quincy							
Indianapolis							
Tampa							
Chapel Hill, N.C.							



**TENTATIVE DEPTH CHART**  
(Based on early estimates; lettermen in bold type)

OFFENSE		DEFENSE	
WR	<b>Mike Shumann</b> <b>Mike Allen</b>	LE	Dave Porter <b>Detroit Reynolds</b>
LT	<b>Billy McPhillips</b> Harry Slagle <b>Smokey Ragins</b>	LT	<b>Phil Jones</b> Mike Kissner
LG	Wade Johnson <b>Jeff Gardner</b> Craig Cunningham	WILL	<b>Brian Schmidt</b> <b>Greg Pounds</b>
C	Bill Sawyer Ricky Blythe Dan Fucarino	NG	<b>John Thames</b> Brooks Burroughs Garis Shaw Tony Falvo
RG	<b>Bob Jones</b> Bruce Harrison Dan Corcoran	SAM	<b>Bert Cooper</b> <b>John Murphy</b>
RT	Vic Rivas Ed Brodzik Greg Pitt	RT	<b>Greg Johnson</b> Nat Henderson
TE	<b>Ed Beckman</b> <b>Joe Goldsmith</b> <b>Tom McDougal</b>	RE	<b>Rudy Maloy</b> <b>Randy Coffield</b>
QB	Ron Coppess <b>Mark Orlando</b> Billy Prescott	LC	<b>Earl Humes</b> Lee Nelson
RB	Rudy Thomas <b>Mike Davison</b> <b>Bobby McKinnon</b>	RC	<b>Chris Griffin</b> Robert Jackson
RB	<b>Fred Miller</b> Jeff Leggett Larry Key	SS	Joe Camps Andy Stockton
WR	Mike Barnes <b>Jimmy Everett</b> Joe Thomas	FS	<b>Phil Cahoon</b> <b>Randy Kaiser</b>

## 1974 FLORIDA STATE FRESHMAN SIGNEES

NAME	HT.	WT.	POS.	HOMETOWN	SCHOOL
Blaise Boscacay	6-3	225	OL	St. Charles, Ill.	St. Charles
Leon Bright	5-9	175	RB	Merritt Island	Merritt Island
Aaron Carter	5-9	180	LB	Gainesville	Gainesville
Marty Crosby	6-0	205	QB	Charleston, S.C.	James Island
Ely Falkenstein	6-2	210	RB-P	Jacksonville	Terry Parker
David Hanks	6-1	205	TE-LB	Orlando	Edgewater
Curtis Harris	6-3	230	DL	Dolton, Ill.	Thornridge
Jim Heggins	5-11	200	RB	Salisbury, N.C.	North Rowan
Nat Henderson	6-4	257	DL	Albany, Ga.	Albany
Roger Horton	6-1	180	RB-DB	St. Louis, Mo.	Soldan
Robert Jackson	5-10	164	DB	Albany, Ga.	Albany
Larry Key	5-9	181	RB	Inverness	Citrus
Jim Keyton	6-4	240	DL	Thomasville, Ga.	Thomasville
Mark Mercer	6-1	180	WR	St. Louis, Mo.	Parkway North
Roger Overby	6-0	175	WR	Tampa	Robinson
Frank Pavlovich	6-1	230	OL	Country Club Hills, Ill.	Hillcrest
Doug Redl	6-4	220	OL	Saskatoon, Saskatchewan	Evan Hardy
Gary Rose	6-4	225	DL	East St. Louis, Ill.	East St. Louis
Frank Spotts	6-3	230	OL	Merritt Island	Merritt Island
Nat Terry	6-0	175	DB	Tampa	Robinson
Milton Wilkerson	6-0	230	RB	Dolton, Ill.	Thornridge
Danny Witcher	6-2	215	RB	Toledo, Ohio	Toledo Scott

## 1974 JUNIOR VARSITY SCHEDULE

DATE	OPPONENT	SITE
September 23	Troy State	Tallahassee
October 3	Miami	Tallahassee
November 15	Florida	Gainesville



## FUTURE SCHEDULES

### 1975

September 13 .....at Texas Tech  
September 20 .....Open Date  
September 27 .....IOWA STATE  
October 4 .....at Georgia Tech  
October 11 .....at Virginia Tech  
October 18 .....at Florida  
October 25 .....AUBURN  
November 1 .....at Clemson  
November 8 .....MEMPHIS STATE  
November 15 .....MIAMI  
November 22 .....at Houston  
November 29 .....UTAH STATE

### 1976

September 11 .....Memphis State at Jax  
September 18 .....at Miami  
September 25 .....at Oklahoma  
October 2 .....KANSAS STATE  
October 9 .....at Boston College  
October 16 .....FLORIDA  
October 23 .....at Auburn  
October 30 .....CLEMSON  
November 6 .....Open Date  
November 13 .....at Tampa  
November 20 .....HOUSTON  
November 27 .....VIRGINIA TECH

### 1977

September 10 .....IOWA STATE  
September 17 .....at Kansas State  
September 24 .....MIAMI  
October 1 .....at Oklahoma State  
October 8 .....CINCINNATI  
October 15 .....at Florida  
October 22 .....AUBURN  
October 29 .....at Houston  
November 5 .....at Virginia Tech  
November 12 .....MEMPHIS STATE  
November 19 .....at San Diego

# THE OPPONENTS





**FIRST GAME: September 14, 1974 at Tallahassee, Florida**



**PITTSBURGH**

**Site: Doak Campbell Stadium (40,500)**

**Kickoff: 7:30 p.m.**

**SID: Dean Billick**

Phone: 412/624-4588

Home: 412/531-7701

**Head Coach: Johnny Majors (6 Years; 30-34-2)**

**Best time to contact coach: before 10 a.m.**

**Coach's Phone: 412/624-4576**

**Location:** Pittsburgh, Pa. 15213

**Nickname:** Panthers

**President:** Dr. Wesley Posvar

**Athletic Director:** Casimir Myslinski

**Business Manager:** Ken George

**Enrollment:** 11,861

**Colors:** Old Gold and Navy Blue

**Stadium:** Pitt Stadium (56,500)

**Assistant AD:** Albert Smith

**Ticket Manager:** Mel Cratsley

**Athletic Department Phone: 412/624-4571**

**Conference:** Independent

**1973 Record:** 6-4-1

**Lettermen:** Back 33; Lost 13

**Starters:** Back 15; Lost 7

**Stars to Watch:** Tony Dorsett, (RB); Gary Burley, (MG); Bill Daniels, (QB); Mike Bulino, (LB); Dave Janasek, (FB); Arnie Weatherington, (LB).

**Newcomers to Watch:** Karl Framer, (WR); Jinx Johnson, (TE); Randy Holloway, (TE).

**1974 SCHEDULE**

Sept. 14	at FSU
Sept. 21	at Georgia Tech
Sept. 28	So. California
Oct. 5	at North Carolina
Oct. 12	West Virginia
Oct. 19	Boston College
Oct. 26	at Navy
Nov. 2	at Syracuse
Nov. 9	Temple
Nov. 16	at Notre Dame
Nov. 23	Penn State

**1973 RESULTS**

UP	OPP
7 Georgia	7
14 Baylor	20
21 Northwestern	14
6 Tulane	24
35 West Virginia	7
28 Boston College	14
22 Navy	17
28 Syracuse	14
10 Notre Dame	31
34 Army	0
13 Penn State	35
7 Arizona State (Fiesta Bowl)	28

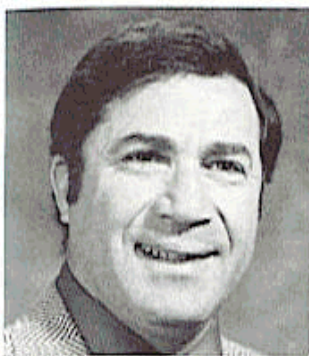
**THE SERIES**

**Florida State Leads, 2-0**

	FSU	Pitt
1971 .....	31	13
1972 .....	19	7

**OFFICIALS:** Referee—Joe Hicks (SEC) Birmingham, Ala.; Umpire—Foster Grose (ECAC) Pittsburgh, Pa.; Lineman—Joe Stephenson (SEC) Memphis, Tenn.; Field Judge—Joseph Brownlee (ECAC) Montclair, N.J.; Back Judge—Laurien Stapp (SEC) Birmingham, Ala.; ECO—John Foster (SEC) Gulfport, Miss.

**SECOND GAME: September 21, 1974 at Tallahassee**



**COLORADO STATE UNIVERSITY**

Site: Doak Campbell Stadium (40,500)

Kickoff: 7:30 p.m. (EDT)

**SID:** Tim Simmons

Phone: 303/491-5067

Home: 303/482-3295

**Head Coach:** Sark Arslanian (9 Years; 55-32-2)

**Best time to contact coach:** 10-12 a.m. (MDT)

**Coach's Phone:** 303/491-6131

**Location:** Fort Collins, Colo. 80523

**Nickname:** Rams

**President:** Dr. A. R. Chamberlain

**Athletic Director:** Dr. Jack O'Leary (acting)

**Business Manager:** Jim Martell

**Athletic Department Phone:** 303/491-5300

**Conference:** Western Athletic

**Lettermen:** Back 28; Lost 20

**Stars to Watch:** Mark Mullaney, (OT); Al Simpson, (OT); Loren Mulkins, (DT); Willie Miller, (FL); Dave Duncan, (DE); Dan O'Rourke, (SE).

**Newcomers to Watch:** Kevin McLain, (LB); Greg Poppino, (LB); Keith King, (SS); Bruce Johnson, (FS).

**Enrollment:** 16,800

**Colors:** Green and Gold

**Stadium:** Hughes (30,000)

**Ticket Manager:** Dean Bressler

**1973 Record:** 5-6

**Starters:** Back 16; Lost 8

**1974 SCHEDULE**

Sept. 14	at New Mexico
Sept. 21	at Florida State
Sept. 28	Memphis State
Oct. 5	Brigham Young
Oct. 12	at Utah State
Oct. 19	Nevada-Reno
Oct. 26	at Arkansas
Nov. 2	Wyoming
Nov. 9	at Arizona
Nov. 16	Texas-El Paso
Nov. 23	at Arizona State

**1973 RESULTS**

CSU	OPP
0 Arizona	31
21 Brigham Young	13
31 New Mexico State	27
14 Arizona State	67
33 Idaho	30
18 Utah State	34
3 Wyoming	35
76 Texas-El Paso	24
21 Toledo	14
20 Houston	28
13 New Mexico	30

**THE SERIES**

**FSU leads 1-0**

	FSU	CS
1972 .....	33	0

**OFFICIALS:** Referee—Morris Harrison (SEC) Decatur, Ga.; Umpire—Rudy Marich (WAC) Greeley, Colo.; Linesman—T. K. Winingder (SEC) Atlanta, Ga.; Field Judge—John Cobb (WAC) Lubbock, Texas; Back Judge—Laurien Stapp (SEC) Birmingham, Ala.; ECO—Butch Lambert, Jr. (SEC) Jackson, Miss.



**THIRD GAME: September 28, 1974 at Lawrence, Kansas**



**KANSAS**

Site: Memorial Stadium (51,500)

Kickoff: 1:30 p.m. (CDT)

**SID:** Don Baker

Phone: 913/864-3417

Home: 913/842-2314

**Head Coach:** Don Fambrough (3 Years; 15-18-1)

**Best time to contact coach:** 8:30-9:30 a.m.

**Coach's Phone:** 913/864-3124

**Location:** Lawrence, Kan. 66045

**Nickname:** Jayhawks

**Chancellor:** Dr. Archie Dykes

**Athletic Director:** Clyde Walker

**Business Manager:** Doug Messer

**Athletic Department**

**Conference:** Big Eight

**Lettermen:** Back 37; Lost 22

**Stars to Watch:** Emmett Edwards, (FL); Bruce Adams, (FL); Kurt Knoff, (FS); Dean Zook, (DE); Steve Towle, (LB); Robert Miller, (FB); Mike Lemon, (NG).

**Newcomers to Watch:** Scott McMichael, (QB); Laverne Smith, (RB); Terry Beeson, (DT); Don Pile, (LB).

**Enrollment:** 20,000

**Colors:** Crimson and Blue

**Stadium:** Memorial (51,500)

**Assistant AD:** John Novotny

Doug Messer, Gale Sayers

**Ticket Manager:** Mike Howard

**Phone:** 913/864-3143

**1973 Record:** 7-4-1

**Starters:** Back 15; Lost 7

**1974 SCHEDULE**

Sept. 14	at Washington State
Sept. 21	at Tennessee
Sept. 28	Florida State
Oct. 5	Texas A&M
Oct. 12	at Kansas State
Oct. 19	Nebraska
Oct. 26	Iowa State
Nov. 2	at Oklahoma State
Nov. 9	at Colorado
Nov. 16	Oklahoma
Nov. 23	at Missouri

**1973 RESULTS**

	<b>KU</b>	<b>OPP</b>
29	Washington	8
28	Florida State	0
34	Minnesota	19
27	Tennessee	28
25	Kansas State	18
9	Nebraska	10
22	Iowa State	20
10	Oklahoma State	10
17	Colorado	15
20	Oklahoma	48
14	Missouri	13
18	North Carolina St.	31

**THE SERIES**

**FSU leads 2-1**

	<b>FSU</b>	<b>KU</b>
1971	30	7
1972	44	22
1973	0	28

**OFFICIALS:** Referee—Dan Foley (Big 8) Denver, Colo.; Umpire—John Griggs (SEC) Lexington, Ky.; Linesman—Walt Hardt (Big 8) Seward, Neb.; Line Judge—Lea Paslay (SEC) Tupelo, Miss.; Field Judge—John Wilson (SEC) Birmingham, Ala.; Back Judge—Bill Haffey (Big 8) Omaha, Neb.

**FOURTH GAME: October 5, 1974, at Tallahassee, Florida**



**BAYLOR**

**Site:** Doak Campbell Stadium (40,500)

**Kickoff:** 7:30 p.m. (EDT)

**SID:** Don Oliver

Phone: 817/754-4648

Home: 817/753-2671

**Head Coach:** Grant Teaff (11 Years; 49-60-2)

**Best time to contact coach:** 9 a.m.

**Coach's Phone:** 817/754-4648

**Location:** Waco, Texas 76706

**Enrollment:** 8,000

**Nickname:** Fightin' Bears

**Colors:** Green and Gold

**President:** Judge Abner V. McCall

**Stadium:** Baylor Stadium (48,000)

**Athletic Director:** Jack Patterson

**Business Manager:** Marie Abel

**Ticket Manager:** Marie Abel

**Athletic Department Phone:** 817/754-4648

**Conference:** Southwest

**1973 Record:** 2-9

**Lettermen:** Back 29; Lost 20

**Starters:** Back 12; Lost 10

**Stars to Watch:** Neal Jeffrey, (QB); Steve Beard, (TB); Pat McNeil, (FB); Tim Black, (DE); Gary Greene, (CB); Joe Johnson, (DT).

**Newcomers to Watch:** Robert Burns, (DB); Jon Kramer, (OL); Robert Ingram, (OL).

**1974 SCHEDULE**

**1973 RESULTS**

		<b>BU</b>	<b>OPP</b>
Sept. 14	at Oklahoma	14 Oklahoma	42
Sept. 21	at Missouri	20 Pittsburgh	14
Sept. 28	Oklahoma State	28 Colorado	52
Oct.	at Florida State	21 Florida State	14
Oct. 12	at Arkansas	7 Arkansas	13
Oct. 26	Texas A&M	22 Texas A&M	28
Nov.  2	at TCU	28 TCU	34
Nov.  9	Texas	6 Texas	42
Nov. 16	Texas Tech	24 Texas Tech	55
Nov. 23	at SMU	22 SMU	38
Nov. 30	Rice	0 Rice	27

**THE SERIES**

**Tied at 1-1**

	<b>FSU</b>	<b>Baylor</b>
1965 .....	9	7
1973 .....	14	21

**OFFICIALS:** Referee—Jimmy Harper (SEC) Atlanta, Ga.; Umpire—Richard Stovall (SWC) Abilene, Texas; Linesman—N.M. Cavette (SEC) Avondale Estates, Ga.; Line Judge—Bobby Butler (SWC) San Antonio, Texas; Field Judge—Ronald L. Underwood (SWC) Little Rock, Ark.; Back Judge—Robert Patrick (SEC) Kennesaw, Ga.; ECO—James Mosteller (SEC) Macon, Ga.



**FIFTH GAME: October 12, 1974, at Tuscaloosa, Alabama**



**ALABAMA**

Site: Denny Stadium (59,000)

Kickoff: 1:30 p.m. (CDT)

**SID:** Charley Thornton  
 Phone: 205/348-6084  
 Home: 205/553-1731

**Head Coach:** Paul Bryant (29 Years; 231-70-16)  
**Best time to contact coach:** 9 a.m.-11 a.m. (CDT)  
**Coach's Phone:** 205/348-6161

**Location:** Tuscaloosa, Ala. 35486  
**Nickname:** Crimson Tide  
**President:** Dr. David Mathews  
**Athletic Director:** Paul W. Bryant  
**Business Manager:** C.D. Tatum

**Enrollment:** 13,835  
**Colors:** Crimson and White  
**Stadium:** Denny (59,000)  
**Associate AD:** Sam Bailey  
**Ticket Manager:** Ms. Alice Sandlin  
**Athletic Department Phone:** 205/348-6161

**Conference:** Southeastern  
**Lettermen:** Back 40; Lost 26

**1973 Record:** 11-1  
**Starters:** Back 12; Lost 12

**Stars to Watch:** Woodrow Lowe, (LB); Mike Washington, (DHB); Mike Dubose, (DE); Randy Billingsley, (OHB); Gary Rutledge, (QB); Calvin Culliver, (FB); George Pugh, (TE).

**Newcomers to Watch:** Gus White, (NG); Charles Hannah, (DT).

**1974 SCHEDULE**

Sept. 14	at Maryland
Sept. 21	Southern Miss. (Bham)
Sept. 28	Vanderbilt
Oct. 5	Ole Miss (Jackson)
Oct. 12	Florida State
Oct. 19	at Tennessee
Oct. 26	Texas Christian (Bham)
Nov. 2	Mississippi State
Nov. 9	LSU (Bham)
Nov. 16	at Miami
Nov. 29	Auburn (Bham)

**1973 RESULTS**

UA	OPP
66	California 0
28	Kentucky 14
44	Vanderbilt 0
28	Georgia 14
35	Florida 14
42	Tennessee 21
77	Virginia Tech 6
35	Mississippi State 0
43	Miami 13
21	LSU 7
35	Auburn 0
23	Notre Dame 24

**THE SERIES**

**Alabama leads, 1-0-1**

	FSU	UA
1965 .....	0	21
1967 .....	37	37

**OFFICIALS:** Referee—Johnny Cook (SEC) Rome, Ga.; Umpire—Harold Johnson (SEC) Jackson, Tenn.; Linesman—Jack Jordan (SEC) Atlanta, Ga.; Line Judge—Henry Hair (SEC) Atlanta, Ga.; Field Judge—John Fleming (SEC) Augusta, Ga.; Back Judge—Ted Thomas (SEC) Chattanooga, Tenn.; ECO—T.K. Winingder (SEC) Atlanta, Ga.

**SIXTH GAME: October 19, 1974, at Tallahassee, Florida**



**FLORIDA**

Site: Doak Campbell Stadium (40,500)

Kickoff: 7:30 p.m. (EDT)

**SID:** Norm Carlson

Phone: 904/392-0641

Home: 904/372-7822

**Head Coach:** Doug Dickey (10 Years; 69-36-5)

**Best time to contact coach:** 11:30-Noon, 1:30-2

**Coach's Phone:** 904/392-0651

**Location:** Gainesville, Fla. 32604

**Nickname:** Gators

**President:** Dr. Robert Marston

**Athletic Director:** Ray Graves

**Business Manager:** Bob Moore

**Enrollment:** 24,000

**Colors:** Orange and Blue

**Stadium:** Florida Field (62,800)

**Assistant AD:** Norm Carlson

**Ticket Manager:** Hardee McAlhane

**Athletic Department Phone:** 904/392-0664

**Conference:** Southeastern

**1973 Record:** 7-5

**Lettermen:** Back 40; Lost 22

**Starters:** Back 14; Lost 8

**Stars to Watch:** Ralph Ortega, (LB); Glenn Cameron, (LB); Preston Kendrick, (DE); Tyson Sever, (DB); Lee McGriff, (SE); Don Galfney, (QB); Paul Parker, (OT); Burton Lawless, (OG); Larry Brinson, (TB).

**Newcomers to Watch:** Darrell Carpenter, (DT); Dan Grebe, (DT); Melvin Flournoy, (LB); Alvin Cowans, (DB).

**1974 SCHEDULE**

Sept. 14	California
Sept. 21	Maryland (Tampa)
Sept. 28	Mississippi State
Oct. 5	LSU
Oct. 12	at Vanderbilt
Oct. 19	at Florida State
Oct. 26	Duke
Nov. 2	Auburn
Nov. 9	Georgia (Jax)
Nov. 16	at Kentucky
Nov. 30	Miami

**1973 RESULTS**

UF	OPP
21	Kansas State 10
14	So. Mississippi 13
12	Mississippi State 33
3	LSU 24
14	Alabama 35
10	Mississippi 13
12	Auburn 8
11	Georgia 10
20	Kentucky 18
14	Miami 7
49	Florida State 0

**THE SERIES**

**Florida leads, 13-2-1**

	FSU	UF		FSU	UF
1958	7	21	1966	19	22
1959	8	18	1967	21	16
1960	0	3	1968	3	9
1961	3	3	1969	6	21
1962	7	20	1970	27	38
1963	0	7	1971	15	17
1964	16	7	1972	13	42
1965	17	30	1973	0	49

**OFFICIALS:** Referee—Morris Harrison (SEC) Decatur, Ga.; Umpire—Robert Boylston (SEC) Atlanta, Ga.; Linesman—Joe Curtis (SEC) Birmingham, Ala.; Line Judge—Led Paslay (SEC) Tupelo, Miss.; Field Judge—Joe DeLany (SEC) Atlanta, Ga.; Back Judge—Charles Horton (SEC) Morganton, N.C.; ECO—Edward Cassidy (SEC) Columbus, Miss.



**SEVENTH GAME: October 26, 1974 at Auburn, Alabama**



**AUBURN**

Site: Jordan-Hare Stadium (61,261)

Kickoff: 1:30 p.m. (CDT)

**SID:** Buddy Davidson  
 Phone: 205/826-4750  
 Home: 205/887-7160

**Head Coach:** Ralph Jordan (24 Years; 162-75-5)  
**Best time to contact coach:** 10:00-12:00 Noon  
 1:30-2:30 p.m.

**Coach's Phone:** 205/826-4750

**Location:** Auburn, Ala. 36830  
**Nickname:** Tigers

**Enrollment:** 15,705  
**Colors:** Burnt Orange and  
 Navy Blue

**President:** Dr. Harry M. Philpott  
**Athletic Director:** Lee Hayley

**Stadium:** Jordan-Hare (61,261)  
**Business Manager:** Bill Beckwith

**Athletic Department Phone:** 205/826-4750

**Conference:** Southeastern  
**Lettermen:** Back 37; Lost 19

**1973 Record:** 6-5  
**Starters:** Back 12; Lost 10

**Stars to Watch:** Mike Fuller, (S); Ken Bernich, (LB); Lee Gross, (C); Secdrick McIntyre, (TB).

**Newcomers to Watch:** Chris Vacarella, (QB); Phil Gargis, (QB).

**1974 SCHEDULE**

Sept. 14	Louisville (Bham)
Sept. 21	UT-Chattanooga
Sept. 28	Tennessee
Oct. 4	at Miami
Oct. 12	Kentucky
Oct. 19	Georgia Tech
Oct. 26	Florida State
Nov. 2	at Florida
Nov. 9	at Mississippi State
Nov. 16	Georgia
Nov. 29	Alabama (Bham)

**1973 RESULTS**

AU	OPP
18 Oregon State	9
31 UT-Chattanooga	0
0 Tennessee	21
14 Mississippi	7
6 Louisiana State	20
24 Georgia Tech	10
7 Houston	0
8 Florida	12
31 Mississippi State	17
14 Georgia	28
0 Alabama	35

**THE SERIES**

**Auburn leads, 6-0-1**

	FSU	Auburn
1954	0	33
1956	7	13
1957	7	29
1960	21	59
1962	14	14
1963	15	21
1972	14	27

**OFFICIALS:** Referee—Morris Harrison (SEC) Decatur, Ga.; Umpire—Harvey Hardy (SEC) Lakeland, Fla.; Linesman—Joe Curtis (SEC) Birmingham, Ala.; Line Judge—Butch Lambert, Sr. (SEC) Tupelo, Miss.; Field Judge—Johnny Grace (SEC) Jackson, Miss.; Back Judge—Dick Pace (SEC) Maitland, Fla.; ECO—Robert Caldwell (SEC) Columbus, Miss.

**EIGHTH GAME: November 2, 1974 at Memphis, Tennessee**

**MEMPHIS STATE**

Site: Memphis Memorial Stadium (50,164)

Kickoff: 7:30 p.m. (CDT)



**SID:** Jack Bugbee

Phone: 901/454-2337

Home: 901/452-9648

**Head Coach:** Fred Pancoast (4 Years; 19-17-4)

**Best time to contact coach:** 1 p.m.

**Coach's Phone:** 901/454-2341

**Location:** Memphis, Tenn. 38152

**Nickname:** Tigers

**President:** Dr. Billy M. Jones

**Athletic Director:** Billy J. Murphy

**Business Manager:** J.W. Patrick

**Enrollment:** 22,000

**Colors:** Blue and Gray

**Stadium:** Memphis Memorial (50,164)

**Assistant AD:** Ruffner Murray

**Ticket Manager:** (to be named)

**Athletic Department Phone:** 901/454-2331

**Conference:** Independent

**1973 Record:** 8-3

**Lettermen:** Back 38; Lost 12

**Starters:** Back 19; Lost 10

**Stars to Watch:** David Fowler, (QB); Bobby Ward, (FL); Jerry Dandridge, (LB); Eric Harris, (DB).

**Newcomers to Watch:** Bob Rush, (C); Jimmy Lackey, (DB).

**1974 SCHEDULE**

Sept. 7	at Louisville
Sept. 14	Southern Mississippi
Sept. 21	Ole Miss
Sept. 28	at Colorado State
Oct. 12	Cincinnati
Oct. 19	Mississippi State
Oct. 26	at No. Texas State
Nov. 2	Florida State
Nov. 9	at Tennessee
Nov. 16	at Houston
Nov. 23	Wichita State

**1973 RESULTS**

	<b>MSU</b>	<b>OPP</b>
28	Louisville	21
24	North Texas State	3
17	Mississippi	13
21	Houston	35
16	Kansas State	21
28	Tulsa	16
13	Florida State	10
49	Virginia Tech	16
10	So. Mississippi	13
41	SW Louisiana	6
17	Cincinnati	13

**THE SERIES**

**MSU leads, 4-2**

	<b>FSU</b>	<b>MSU</b>		<b>FSU</b>	<b>MSU</b>
1959	6	16	1969	26	28
1967	26	7	1970	12	16
1968	20	10	1973	10	13

**OFFICIALS:** Referee—Johnny Cook (SEC) Rome, Ga.; Umpire—Robert Boylston (SEC) Atlanta, Ga.; Linesman—N.M. Cavette (SEC) Avondale Estates, Ga.; Line Judge—Edward Dudley (SEC) Atlanta, Ga.; Field Judge—Laurien Stapp (SEC) Birmingham, Ala.; Back Judge—Robert Patrick (SEC) Pinson, Ala.; ECO—Louis Richard (SEC) Thibodaux, La.



**NINTH GAME: November 8, 1974 at Miami, Florida**



**MIAMI**

Site: Orange Bowl (80,010)

Kickoff: 8:00 p.m. (EDT)

**SID:** George Gallet

Phone: 305/284-5802

Home: 305/661-2391

**Head Coach:** Pete Elliott (12 Years; 50-66-1)

**Best time to contact coach:** 12 Noon-1:00 p.m.

**Coach's Phone:** 305/284-3822

**Location:** Coral Gables 33124

**Nickname:** Hurricanes

**Enrollment:** 16,500

**Colors:** Orange, Green and White

**President:** Dr. Henry King Stanford

**Athletic Director:** Pete Elliott

**Business Manager:** Art Laskey

**Assistant AD:** Walter Kichefski

**Ticket Manager:** Arnold Tucker

**Athletic Department Phone:** 305/284-3011

**Conference:** Independent

**1973 Record:** 5-6

**Lettermen:** Back 40; Lost 14

**Starters:** Back 19; Lost 3

**Stars to Watch:** Rubin Carter, (MG); Dennis Harrah, (OT); Woody Thompson, (IB); Steve Marcantonio, (SE); Johnny Williams, (IB); Phil August, (TE); Rick Liddell, (LB); Rich Griffiths, (LB); Ernie Jones, (DB); Jose Gonzalez, (DT); Gary Dunn, (DT).

**Newcomers to Watch:** Don Martin, (IB); Tim Morgan, (WB); Larry Cain, (WB); Larry Wilson, (DE); Mike Fetrow, (DE); Frank Glover, (QB); Dennis Breckner, (DT); Gregg Wallick, (LB).

**1974 SCHEDULE**

Sept. 21	at Houston
Sept. 28	at Tampa
Oct. 4	Auburn
Oct. 11	Pacific
Oct. 19	at West Virginia
Oct. 26	at Notre Dame
Nov. 1	Virginia Tech
Nov. 8	Florida State
Nov. 16	Alabama
Nov. 22	Syracuse
Nov. 30	at Florida

**1973 RESULTS**

UM	OPP
20 Texas	15
14 Florida State	10
20 Oklahoma	24
15 Boston College	10
7 Houston	30
34 Syracuse	23
14 West Virginia	20
19 Army	7
13 Alabama	43
7 Florida	14
0 Notre Dame	44

**THE SERIES—Miami leads, 9-8**

FSU	Miami	FSU	Miami
1951.....13	35	1963.....24	0
1953.....0	27	1964.....14	0
1955.....0	34	1966.....23	20
1956.....7	20	1969.....16	14
1957.....13	40	1970.....27	3
1958.....17	6	1971.....20	17
1959.....6	7	1972.....37	14
1960.....7	25	1973.....10	14
1962.....6	7		

**OFFICIALS:** Referee—Boyce Smith (SEC) Kingston Springs, Tenn.; Umpire—James Pratt (SEC) Birmingham, Ala.; Linesman—Bobby Gaston (SEC) Atlanta, Ga.; Line Judge—Ed Dudley (SEC) Atlanta, Ga.; Field Judge—William Stanton (SEC) Hamden, Conn.; Back Judge—Bobby Skelton (SEC) Montgomery, Ala.; ECO—Rom Gilbert (SEC) Titusville.

**TENTH GAME: November 16, 1974 at Tallahassee, Florida**



**VIRGINIA TECH**

Site: Doak Campbell Stadium (40,500)

Kickoff: 7:30 p.m. (EDT)

**SID:** Wendell Weisend  
Phone: 703/951-6726  
Home: 703/552-5401

**Head Coach:** Jimmy Sharpe (First Season)  
**Best time to contact coach:** 12:45 p.m.  
**Coach's Phone:** 703/951-6368

**Location:** Blacksburg, Va. 24061  
**Nickname:** Gobblers  
**President:** Dr. T. Marshall Hahn  
**Athletic Director:** Frank Moseley  
**Business Manager:** Don Perry

**Enrollment:** 16,000  
**Colors:** Orange and Maroon  
**Stadium:** Lane (35,000)  
**Assistant AD:** Bill Matthews  
**Ticket Manager:** Tom McNeer  
**Athletic Department Phone:** 703/951-6721

**Conference:** Independent

**1973 Record:** 2-9

**Lettermen:** Back 32; Lost 29

**Starters:** Back 9; Lost 13

**Stars to Watch:** Ricky Scales, (WR); Phil Rogers, (RB); Ken Lambert, (DE); Larry Bearekman, (DT).

**Newcomers to Watch:** Tom Beasley, (DT); George Heath, (RB).

**1974 SCHEDULE**

**1973 RESULTS**

1974 SCHEDULE		VPI	OPP
Sept. 14	Kentucky	27	William and Mary 31
Sept. 21	at SMU	26	Kentucky 31
Sept. 28	Houston	10	West Virginia 24
Oct. 5	VMI (Richmond)	6	SMU 37
Oct. 12	at South Carolina	24	South Carolina 27
Oct. 19	at Virginia	27	Houston 54
Oct. 26	Richmond	27	Virginia 15
Nov. 1	at Miami	6	Alabama 77
Nov. 9	at William & Mary	16	Memphis State 49
Nov. 16	at Florida State	36	Florida State 13
Nov. 23	West Virginia	21	Virginia Military 22

**THE SERIES**

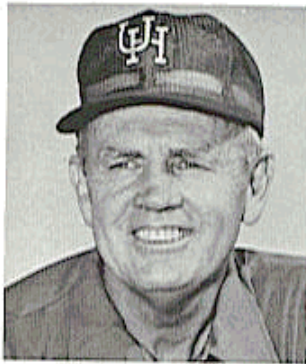
**FSU leads, 9-8-1**

FSU		VT	FSU		VT
1955	20	24	1965	7	6
1956	7	20	1966	21	23
1957	20	7	1967	38	15
1958	20	0	1968	22	40
1959	7	6	1969	10	10
1961	7	10	1970	34	8
1962	20	7	1971	17	3
1963	23	31	1972	27	15
1964	11	20	1973	13	36

**OFFICIALS:** Referee—Jimmy Harper (SEC) Atlanta, Ga.; Umpire—Tom Chambers (ACC) Winston-Salem, N.C.; Linesman—Robert Townes (SEC) Athens, Ga.; Line Judge—William Luper (ACC) Greensboro, N.C.; Field Judge—Weldon Waites (ACC) Columbia, S.C.; Back Judge—Louis Richard (SEC) Thibodaux, La.; ECO—Ronald Baynes (SEC) Talladega, Ala.



**ELEVENTH GAME: November 23, 1974 at Tallahassee, Florida**



**HOUSTON**

Site: Doak Campbell Stadium (40,500)

Kickoff: 7:30 p.m. (EDT)

**SID:** Ted Nance

Phone: 713/748-6844

Home: 713/353-4663

**Head Coach:** Bill Yeoman (12 Years; 79-43-5)

**Best time to contact coach:** 11a.m.

**Coach's Phone:** 713/749-4274

**Location:** Houston, Tex. 77004

**Nickname:** Cougars

**President:** Dr. Philip G. Hoffman

**Athletic Director:** Harry Fouke

**Business Manager:** Ned Thompson

**Athletic Department**

**Conference:** Southwest

**Lettermen:** Back 27; Lost 11

**Stars to Watch:** Robert Giblin, (CB); Mack Mitchell, (DE); Wilson Whitley, (DT); Harold Evans, (LLB); Bubba Broussard, (RLB); Marshall Johnson, (RB); Val Belcher, (OG); Donnie McGraw, (FB); Reggie Cherry, (RB).

**Newcomers to Watch:** David Husmann, (QB).

**Enrollment:** 27,000

**Colors:** Scarlet and White

**Stadium:** The Astrodome (48,000)

**Assistant AD:** Guy V. Lewis

**Ticket Manager:** Ned Thompson

**Phone:** 713/748-6588

**1973 Record:** 11-1-0

**Starters:** Back 16; Lost 6

**1974 SCHEDULE**

Sept. 7	at Arizona State
Sept. 14	at Rice
Sept. 21	Miami
Sept. 28	at Virginia Tech
Oct. 5	at South Carolina
Oct. 19	Villanova
Oct. 25	Cincinnati
Nov. 2	at Georgia
Nov. 16	Memphis State
Nov. 23	at Florida State
Nov. 30	at Tulsa

**1973 RESULTS**

	UH	OPP
24	Rice	6
27	South Carolina	19
35	Memphis State	21
14	San Diego State	9
54	Virginia Tech	27
30	Miami	7
0	Auburn	7
34	Florida State	3
28	Colorado State	20
35	Wyoming	0
35	Tulsa	16
47	Tulane	7

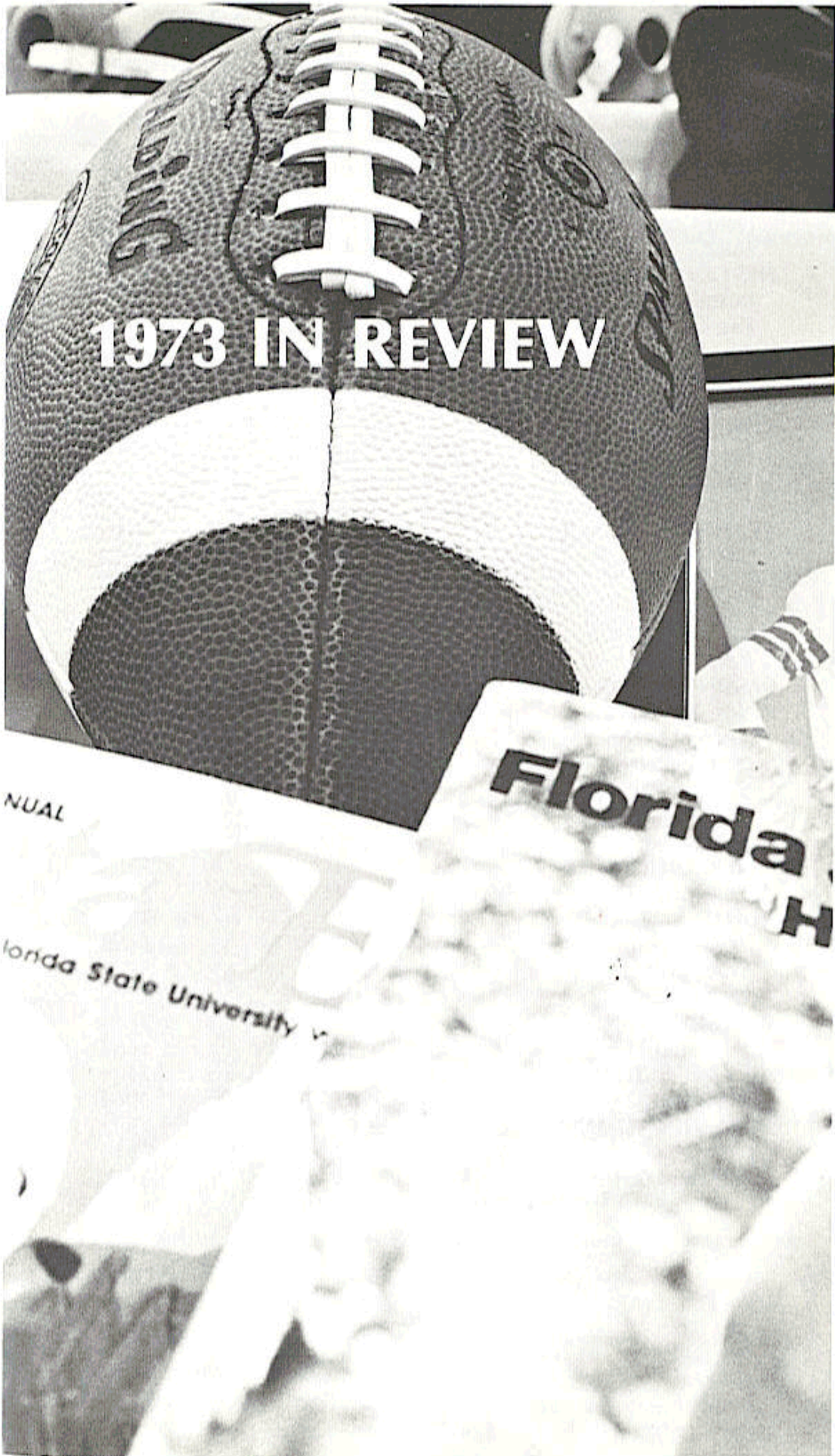
**THE SERIES**

Houston leads, 10-1-2

	FSU	UH		FSU	UH
1960	6	7			
1961	8	28	1968	40	20
1962	0	7	1969	13	41
1964	13	13	1970	21	53
1965	16	16	1971	7	14
1966	13	21	1972	27	31
1967	13	33	1973	3	34

**OFFICIALS:** Referee—Richard Burleson (SEC) Birmingham, Ala.; Umpire—Robert Knowles (SWC) Waco, Texas; Linesman—Joe Stephenson (SEC) Memphis, Tenn.; Line Judge—Horton Nesrsta (SWC) Marble Falls, Texas; Field Judge—Jime Evans (SWC) Waco, Texas; Back Judge—Edward Dudley (SEC) Atlanta, Ga.; ECO—Ned Wilford (SEC) Lakeland.





**1973 IN REVIEW**

**Florida**  
**H**

NUAL  
Florida State University



## 1973 FINAL STATISTICS

<b>TEAM STATISTICS</b>	<b>FSU</b>	<b>OPP</b>
<b>TOTAL POINTS</b>	98	331
Pts. Per Game	8.9	30.1
TD/Pass-Run-Rtn	9-4-0	14-28-1
XP Kick	8/9	38/42
XP Run or Pass	0/4	1/1
Field Goals	4/9	11/21
Safety	0	0
<b>FIRST DOWNS</b>	141	226
Rushing	51	143
Passing	73	76
Penalty	20	7
3rd Dn Consistency*	22.4	38.6
<b>TOTAL YARDAGE</b>	2864	4896
Yds. Per Game	260.3	445.1
Ball Control Plays	702	857
Yds. Per Play	4.1	5.7
% Yds. Rush-Pass	41-59	61-39
<b>RUSHING YARDAGE</b>	1166	3041
Yds. Per Game	106.0	276.5
Gained	1453	3339
Lost	287	298
Rushing Plays	377	605
Yds. Per Play	3.1	5.0
<b>PASSING YARDS</b>	1698	1855
Yds. Per Game	154.4	168.7
Attempt-Complete	325-138	252-130
% Completed	42.5	51.5
Yds. Per Attempt	5.2	7.4
Yds. Per Comp.	12.3	14.3
Incpn-% Incpd.	21-6.5	15-6.0
<b>INTERCEPTIONS BY</b>	15	21
Yds. Rtn-TD	101-0	245-1
<b>PUNTS</b>	81	53
Yds. Punted	3092	1959
Yds. Per Punt	38.2	37.0
Had Blkd.	0	1
<b>PUNT RETURNS</b>	20	37
Yds. Rtn-TD	52-0	166-0
<b>KICKOFF RETURNS</b>	56	24
Yds. Rtn-TD	973-0	508-0
<b>PENALTIES AGAINST</b>	63	75
Yards	570	791
<b>FUMBLES-LOST</b>	39-22	36-15

\*Pct. of successful 3rd and 4th down scrimmage plays.

### RESULTS

<b>FSU</b>	<b>OPP ATTEND.</b>	<b>FSU</b>	<b>OPP ATTEND.</b>
7 Wake Forest (A)	9 (18,000)	17 San Diego State (A)	38 (26,492)
0 Kansas (H)	28 (19,240)	3 Houston (A)	34 (27,587)
10 Miami (H)	14 (22,278)	13 Virginia Tech (A)	36 (25,000)
14 Baylor (A)	21 (29,000)	12 South Carolina (H)	52 (17,778)
12 Mississippi State (H)	37 (19,829)	0 Florida (A)	49 (62,233)
10 Memphis State (H)	13 (23,883)		

**RUSHING**

	NO.	GAIN	LOSS	NET	AVG.	TD	LG
Mitchell	171	714	45	669	3.7	2	18
McKinnon	57	238	14	224	3.9	1	74
Davison	55	186	16	170	3.1	0	20
R. Thomas	15	62	4	58	3.9	0	20
Prescott	17	74	25	49	2.9	1	11
Glosson	3	22	0	22	7.3	0	15
Sexton	40	130	119	11	0.3	0	24
Downey	1	0	1	-1	—	0	-1
Orlando	18	27	63	-36	—	0	11

**PASSING**

	ATT	COMP	PERC	YDS	TD	LG	INT	YDS/COMP	COMP/GAME
Orlando	153	71	46.4	709	4	44	8	10.0	11.8
Sexton	128	51	40.0	754	4	57	12	14.8	5.7
Prescott	43	16	37.2	235	1	34	1	14.7	5.3
Downey	1	0	0	0	0	0	0	—	0

**RECEIVING**

	NO.	YARDS	AVG.	TD	LONG		NO.	YARDS	AVG.	TD	LONG
Shumann	21	380	18.1	2	49	Goldsmith	7	131	18.7	0	39
Allen	19	279	14.7	1	57	McDougal	7	100	14.3	2	20
Davison	15	75	5.0	0	13	Davis	6	160	26.7	1	41
McKinnon	13	63	4.8	0	13	Blythe	3	43	14.3	1	17
L. Jones	11	127	11.6	0	20	Glosson	3	23	7.7	0	13
Mitchell	11	86	7.8	0	18	Booth	2	17	0	0	12
Beckman	10	82	8.2	0	15	J. Thomas	1	11	11.0	0	11
Everett	8	121	15.1	2	44	McPhillips	1	0	0.0	0	0

**INTERCEPTIONS**

	NO.	YARDS	AVG.	TD	LONG		NO.	YARDS	AVG.	TD	LONG
Lewis	4	27	6.8	0	14	Pounds	1	17	17.0	0	17
Kaiser	3	8	2.7	0	8	Passwaters	1	6	6.0	0	6
Humes	3	4	1.3	0	4	Malkiewicz	1	0	0.0	0	0
Cahoon	2	39	19.5	0	24						

**SCORING**

	TD	FGM-A	KICK XPA-M	OTHER XPA-M	TP
Askin	0	4-9	9-8	0-0	20
Everett	2	0-0	0-0	0-0	12
McDougal	2	0-0	0-0	0-0	12
Mitchell	2	0-0	0-0	0-0	12
Shumann	2	0-0	0-0	0-0	12
Allen	1	0-0	0-0	0-0	6
Davis	1	0-0	0-0	0-0	6
Blythe	1	0-0	0-0	0-0	6
McKinnon	1	0-0	0-0	0-0	6
Prescott	1	0-0	0-0	0-0	6

**KICKOFF RETURNS**

	NO.	YARDS	AVG.	TD	LONG
Goldsmith	29	538	18.6	0	31
L. Jones	8	184	23.0	0	54
R. Thomas	7	122	17.4	0	26
Shumann	2	40	20.0	0	32
Harper	2	22	11.0	0	14
Stockton	2	20	10.0	0	14
Mitchell	1	23	23.0	0	23
Davison	1	17	17.0	0	17
Beckman	1	7	7.0	0	7
Glosson	1	0	0.0	0	0
Green	1	0	0.0	0	0
P. Jones	1	0	0.0	0	0

**PUNTING**

	NO.	YARDS	AVG.	LONG
Downey	81	3092	38.2	80

**PUNT RETURNS**

	NO.	YARDS	AVG.	TD	LONG
Shumann	10	46	4.6	0	16
Stockton	3	10	3.3	0	0
McGinn	3	-6	-2.0	0	0
L. Jones	2	-15	-7.5	0	3
Murphy #	1	11	11.0	0	11
G. Johnson#	1	6	6.0	0	0

**FIELD GOALS**

	10-29	30-39	40-49	50+	Total	Long	Blkd.
Askin	1-1	1-2	0-1	2-5	4-9	52	0
Opponents	1,000	.500	.000	.400	.444	41	2
	.750	.500	.500	.000	.524		

**SCORE BY QUARTERS**

	1	2	3	4	TP
Florida State	20	26	20	32	98
Opponents	74	113	55	89	331

# BLOCKED FG —Murphy, G. Johnson,

**FUMBLES RECOV.** —Coffield 3, Meseroll 2; Bratton 2; Cahoon, P. Jones, Lewis, McGinn, Pounds, G. Johnson,

**BLOCKED PUNT** —Malkiewicz,



## WAKE FOREST 9, FLORIDA STATE 7

Winston Salem, NC September 15, 1973

	First Downs	Yards Rush	Yards Pass	Passing Att/Comp	Had Int.	Fumbles Lost	Punting No./Avg.	Penalties No./Yards	Score By Quarters
Florida State	9	97	163	35/14	4	2	6/37.3	4/30	0-0-7-0—7
Wake Forest	15	116	173	21/11	1	0	7/40.0	5/63	3-3-0-3—9

Scoring Summary: Florida State-Mitchell 5-yard run (Askin kick). Wake Forest-Ramsey 24-yard field goal; Ramsey 24-yard field goal; Ramsey 41-yard field goal.

## KANSAS 28, FLORIDA STATE 0

Tallahassee, September 22, 1973

	First Downs	Yards Rush	Yards Pass	Passing Att/Comp	Had Int.	Fumbles Lost	Punting No./Avg.	Penalties No./Yards	Score By Quarters
Florida State	7	17	134	27/9	5	3	7/40	1/5	0-0-0-0—0
Kansas	18	191	176	32/16	1	1	8/38.3	6/70	7-7-0-17—28

Scoring Summary: Kansas-Williams 24-yard run (Swift kick); Williams 7-yard run (Swift kick); Adams 28-yard pass from Jaynes (Swift kick); Smith 15-yard pass from Jaynes (Swift kick).

## MIAMI 14, FLORIDA STATE 10

Tallahassee, September 29, 1973

	First Downs	Yards Rush	Yards Pass	Passing Att/Comp	Had Int.	Fumbles Lost	Punting No./Avg.	Penalties No./Yards	Score By Quarters
Florida State	11	71	61	14/7	0	0	6/42.5	2/20	0-3-7-0—10
Miami	23	275	126	17/9	1	2	2/35.5	9/74	0-7-0-7—14

Scoring Summary: Florida State-Askin 51-yard field goal; Mitchell 1-yard run (Askin kick). Miami-Hall 1-yard run (Huffman kick); Thompson 4-yard run (Huffman kick).

## BAYLOR 21, FLORIDA STATE 14

Waco, TX October 6, 1973

	First Downs	Yards Rush	Yards Pass	Passing Att/Comp	Had Int.	Fumbles Lost	Punting No./Avg.	Penalties No./Yards	Score By Quarters
Florida State	14	183	179	29/12	3	4	6/38.1	5/57	0-7 -0-7—14
Baylor	12	307	45	8/4	0	3	9/36.7	9/93	0-14-0-7—21

Scoring Summary: Florida State-Everett 12-yard pass from Sexton (Askin kick); Allen 43-yard pass from Sexton (Askin kick). Baylor-Lacy 1-yard run (Hicks kick); White 11-yard run (Hicks kick); Lacy 9-yard run (Hicks kick).

## MISSISSIPPI STATE 37, FLORIDA STATE 12

Tallahassee, October 13, 1973

	First Downs	Yards Rush	Yards Pass	Passing Att/Comp	Had Int.	Fumbles Lost	Punting No./Avg.	Penalties No./Yards	Score By Quarters
Florida State	21	45	247	48/22	2	3	6/39	6/87	0 -6-0-6—12
Miss. St.	19	259	221	18/12	0	0	4/44	8/108	21-7-0-9—37

Scoring Summary: Florida State-Shumann 5-yard pass from Orlando (pass failed); Shumann 37-yard pass from Orlando (pass failed). Miss. St.-Murray 4-yard run (Nickels kick); Malone 4-yard pass from Felker (Nickels kick); Murray 1-yard run (Nickels kick); Buckley 50-yard pass from Felker (Nickels kick); Nickels 24-yard field goal; Buckley 33-yard pass from Monaghan (kick failed).

## MEMPHIS STATE 13, FLORIDA STATE 10

Tallahassee, October 20, 1973

	First Downs	Yards Rush	Yards Pass	Passing Att/Comp	Had Int.	Fumbles Lost	Punting No./Avg.	Penalties No./Yards	Score By Quarters
Florida State	9	202	68	22/14	0	1	6/36.5	4/36	7-3-0-0—10
Memphis St	17	222	108	27/15	2	2	4/33.7	6/70	0-7-6-0—13

Scoring Summary: Florida State-McKinnon 74-yard run (Askin kick); Askin 35-yard field goal. Memphis State-D. Harris 2-yard run (McGeorge kick); McGeorge 37-yard field goal; McGeorge 32-yard field goal.

## SAN DIEGO STATE 38, FLORIDA STATE 17

San Diego, CA October 27, 1973

	First Downs	Yards Rush	Yards Pass	Passing Att/Comp	Had Int.	Fumbles Lost	Punting No./Avg.	Penalties No./Yards	Score By Quarters
Florida State	22	130	283	47/22	1	3	6/29.0	4/30	3-7 -0 -7—17
San Diego St.	26	263	359	43/26	5	1	1/30	5/51	7-10-14-7—38

Scoring Summary: Florida State-Askin 30-yard field goal; Davis 35-yard run (Askin kick); Everett 9-yard pass from Sexton (Askin kick). San Diego St.-Denson 33-yard pass from Freitas (Ricardo kick); Ricardo 32-yard field goal; Boyer 10-yard pass from Freitas (Ricardo kick); Geary 6-yard run (Ricardo kick); Denson 4-yard pass from Freitas (Ricardo kick); Kramer 3-yard run (Ricardo kick).

## HOUSTON 34, FLORIDA STATE 3

Houston, TX November 3, 1973

	First Downs	Yards Rush	Yards Pass	Passing Att/Comp	Had Int.	Fumbles Lost	Punting No./Avg.	Penalties No./Yards	Score By Quarters
Florida State	7	123	65	24/6	1	2	12/38.8	11/93	3-0 -0-0—3
Houston	22	356	250	23/10	1	3	5/34.2	9/75	6-14-7-7—34

Scoring Summary: Florida State-Askin 52-yard field goal. Houston-Parker 1-yard run (kick failed); Parker 1-yard run (Nobles pass to Bassler); Willingham 83-yard pass from Nobles (kick failed); McGraw 5-yard run (Terrell kick); Cherry 26-yard run (Terrell kick).



## VIRGINIA TECH 36, FLORIDA STATE 13

Blacksburg, VA November 10, 1973

	First Downs	Yards Rush	Yards Pass	Passing Att/Comp	Had Int.	Fumbles Lost	Punting No./Avg.	Penalties No./Yards	Score By Quarters
Florida State	19	100	232	39/16	3	3	6/35.5	5/53	7-0 -6 -0—13
Virginia Tech	20	346	284	15/6	2	2	3/37	7/109	9-13-14-0—36

Scoring Summary: Florida State-McDougal 15-yard pass from Orlando (Askin kick); Prescott 1-yard run (run failed). Virginia Tech-Barber 19-yard run (kick failed); Latimer 30-yard field goal; Latimer 27-yard field goal; Latimer 28-yard field goal; Barber 1-yard run (Latimer kick); Scales 47-yard pass from Joyce (Latimer kick); Bell 33-yard pass interception (Latimer kick).

## SOUTH CAROLINA 52, FLORIDA STATE 12

Tallahassee, November 17, 1973

	First Downs	Yards Rush	Yards Pass	Passing Att/Comp	Had Int.	Fumbles Lost	Punting No./Avg.	Penalties No./Yards	Score By Quarters
Florida State	13	120	196	33/14	1	1	11/37.8	10/90	0-0 -0-12—12
South Carolina	24	382	183	13/8	1	0	6/39.5	2/20	7-17-7-21—52

Scoring Summary: Florida State-McDougal 5-yard pass from Sexton (kick failed); Blythe 10-yard pass from Prescott (pass failed). South Carolina-Spinks 10-yard run (Marino kick); Bass 1-yard run (Marino kick); Carter 12-yard run (Marino kick); Marino 32-yard field goal; Hodgins 5-yard run (Marino kick); Saldi 8-yard pass from Rushing (Marino kick); Carter 19-yard run (Marino kick); Chastain 18-yard pass from Rushing (Marino kick).

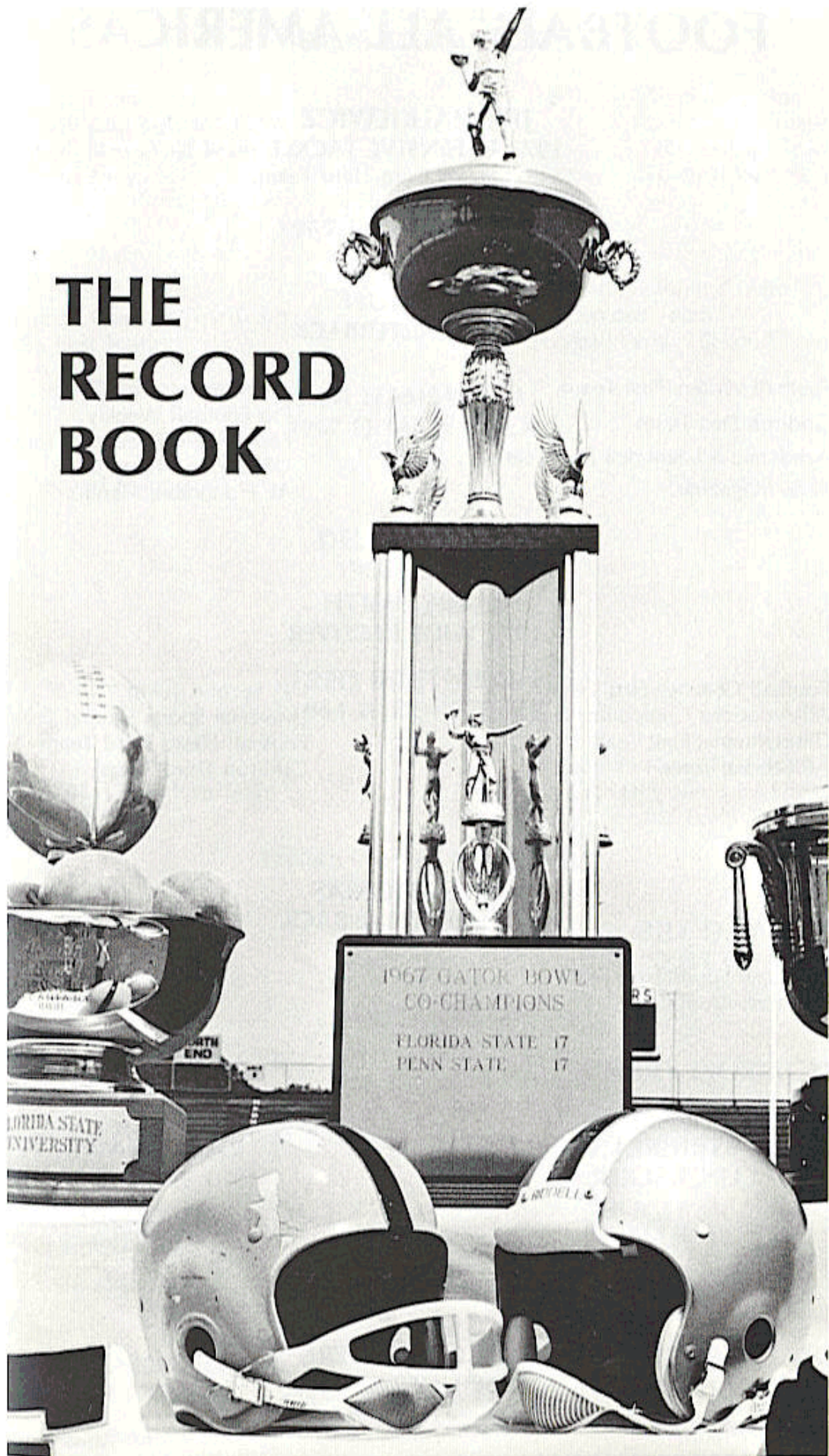
## FLORIDA 49, FLORIDA STATE 0

Gainesville, December 1, 1973

	First Downs	Yards Rush	Yards Pass	Passing Att/Comp	Had Int.	Fumbles Lost	Punting No./Avg.	Penalties No./Yards	Score By Quarters
Florida State	7	95	70	21/5	1	1	9/41.2	6/61	0-0 -0-0 —0
Florida	29	364	130	21/10	1	1	3/36.7	6/58	14-14-7-14—49

Scoring Summary: Florida-Moore 1-yard run (Williams kick); Moore 5-yard run (Williams kick); Richards 62-yard run (Williams kick); Kendrick 1-yard run (Williams kick); McGriff 31-yard pass from Gaffney (Aust kick); G. Sever 2-yard pass from Gaffney (Aust kick); Brinson 12-yard run (Aust kick).

# THE RECORD BOOK





# FOOTBALL ALL-AMERICAS

**JIM MALKIEWICZ**  
**1973 DEFENSIVE TACKLE**  
Detroit Sports Extra Third Team

**GARY HUFF**  
**1972 QUARTERBACK**

Football Writers First Team  
Gridiron First Team  
Academic All-America First Team  
Time Magazine

Churchman's First Team  
Pro Football Weekly  
Football News Second Team  
UPI Second Team  
AP Honorable Mention

**BARRY SMITH**  
**1972 WIDE RECEIVER**

Football Coaches First Team  
All-American Competitor First Team  
Churchman's First Team  
AP Second Team

UPI Second Team  
Universal Sports Second Team  
Football News Third Team  
Gridiron Third Team

**JAMES THOMAS**  
**1972 DEFENSIVE BACK**

Universal Sports First Team

Time Magazine

Pro Football Weekly

**LARRY STRICKLAND**  
**1972 LINEBACKER**

AP Honorable Mention

**RHETT DAWSON**  
**1971 WIDE RECEIVER**

AP Third Team

**DALE McCULLERS**  
**1968 LINEBACKER**

NEA First Team

AP Third Team

**RON SELLERS**  
**1968 WIDE RECEIVER**

AP First Team  
Football Coaches First Team  
Football News First Team  
Sporting News

Time Magazine  
UPI Second Team  
NEA Second Team  
Football Writers

**1967 WIDE RECEIVER**

AP First Team  
Football Coaches First Team  
NEA First Team

Football News First Team  
UPI Second Team  
Football Writers Second Team

**KIM HAMMOND**  
**1967 QUARTERBACK**

AP Second Team

UPI Second Team

**DEL WILLIAMS**  
**1966 GUARD**

AP Second Team

**FRED BILETNIKOFF**  
**1964 WIDE RECEIVER**

AP First Team  
Football Writers First Team  
NEA First Team

Football News First Team  
N.Y. Daily News First Team  
UPI Second Team

Football Coaches Second Team

**GENE McDOWELL**  
**1962 GUARD**

AP Third Team

**BILL DAWKINS**  
**1951 GUARD**

Little All-America

**RON SCHOMBERGER**  
**1957 RECEIVER**

Academic A-A Second Team

**JERRY MORRICAL**  
**1950 TACKLE**

Little All-America

**AL MacKOWIECKI**  
**1954 GUARD**

Little All-America

**HUGH McADAMS**  
**1949 TACKLE**

Little All-America

**CURT CAMPBELL**  
**1952 END**

Little All-America

**HUGH McADAMS**  
**1948 TACKLE**

Little All-America



## SEMINOLES IN THE PROS

Richard Amman Baltimore Colts	Chip Glass Cleveland Browns	Ron Sellers Miami Dolphins
Tom Bailey Philadelphia Eagles	Grant Guthrie Jacksonville Sharks	Bill Sexton Detroit Wheels
Fred Biletnikoff Oakland Raiders	Kim Hammond Jacksonville Sharks	Barry Smith Green Bay Packers
Dave Braggins Montreal Alouettes	Gary Huff Chicago Bears	Don Sparkman Detroit Wheels
Bill Cappleman Minnesota Vikings	Charlie Hunt San Francisco Giants	Walt Sumner Cleveland Browns
Duane Carrell Jacksonville Sharks	Jim Mankins New York Stars	James Thomas Pittsburgh Steelers
Rhett Dawson Houston Oilers	Eddie McMillan Los Angeles Rams	Del Williams New Orleans Saints
Wayne Giardino Ottawa Roughriders	Gary Parris San Diego Chargers	

## PLAYERS IN ALL STAR GAMES

- 1953 Bill Dawkins—North-South, Senior Bowl
- 1956 Lee Corso—Senior Bowl
- 1959 Bobby Renn—Senior Bowl
- 1962 John McConaughay—North-South  
Ken Russom—North-South
- 1963 Charlie Calhoon—North-South  
Keith Kinderman—Senior Bowl
- 1965 Fred Biletnikoff—College All-Star  
Steve Tensi—Senior Bowl
- 1966 Jack Shinholser—Blue-Gray
- 1967 Jim Mankins—East-West  
Del Williams—East-West, Coaches All-America
- 1968 Kim Hammond—Senior Bowl
- 1969 Dale McCullers—All-America Bowl  
Billy Rhodes—Senior Bowl  
Ron Sellers—Hula Bowl, Senior Bowl  
Chip Glass—Coaches All-America
- 1970 Bill Cappleman—North-South, Senior Bowl, American Bowl  
Phil Abaira—North-South, American Bowl  
Jeff Curchin—North-South, Senior Bowl, American Bowl  
Grant Guthrie—North-South, American Bowl  
Stan Walker—American Bowl
- 1971 Robert McEachern—North-South  
Tom Bailey—North-South  
Bill Lohse—American Bowl  
Don Pederson—Blue-Gray  
Ron Wallace—Blue-Gray
- 1972 Rhett Dawson—Hula Bowl, Coaches All-America  
Kent Gaydos—American Bowl  
John Lanahan—American Bowl
- 1973 Barry Smith—East-West, Senior Bowl, College All-Star  
Gary Huff—East-West, Senior Bowl  
James Thomas—East-West, Senior Bowl, College All-Star  
Larry Strickland—American Bowl, North-South  
Gary Parris—American Bowl  
Eddie McMillan—American Bowl, North-South

# BEST SINGLE GAME PERFORMANCES

## TOTAL OFFENSE

1. 490 yards by Bill Cappleman vs. Memphis State, 1969 (minus 18 rush, 508 pass)
2. 431 yards by Bill Cappleman vs. South Carolina, 1968 (minus 6 rush, 437 pass)
3. 384 yards by Tommy Warren vs. Virginia Tech, 1970 (99 rush, 285 pass)
4. 383 yards by Gary Huff vs. Houston, 1972 (minus 26 rush, 409 pass)
5. 369 yards by Gary Huff vs. South Carolina, 1971 (3 rush, 366 pass)  
369 yards by Joe Majors vs. Tampa, 1959 (56 rush, 313 pass)
7. 367 yards by Bill Cappleman vs. Wake Forest, 1968 (2 rush, 365 pass)
8. 357 yards by Gary Huff vs. Virginia Tech, 1971 (minus 17 rush, 374 pass)
9. 355 yards by Bill Cappleman vs. Tulsa (minus 17 rush, 372 pass)
10. 353 yards by Kim Hammond vs. Penn State (Gator Bowl, 1967) (minus 9 rush, 362 pass)
11. 349 yards by Kim Hammond vs. Mississippi State, 1967 (minus 20 rush, 369 pass)
12. 346 yards by Gary Pajcic vs. Virginia Tech, 1966 (34 rush, 312 pass)

## YARDS GAINED PASSING

1. 508 yards by Bill Cappleman vs. Memphis State, 1969
2. 437 yards by Bill Cappleman vs. South Carolina, 1968
3. 409 yards by Gary Huff vs. Houston, 1972
4. 374 yards by Gary Huff vs. Virginia Tech, 1971
5. 372 yards by Bill Cappleman vs. Tulsa, 1969
6. 369 yards by Kim Hammond vs. Mississippi State, 1967
7. 366 yards by Gary Huff vs. South Carolina, 1971
8. 365 yards by Bill Cappleman vs. Wake Forest, 1968
9. 362 yards by Kim Hammond vs. Penn State (Gator Bowl, 1967)
10. 347 yards by Gary Huff vs. Arizona State (Fiesta Bowl, 1971)

## PASSES ATTEMPTED

1. 58 by Gary Huff vs. Florida, 1972 (completed 27)
2. 53 by Kim Hammond vs. Penn State (Gator Bowl, 1967) (completed 37)  
53 by Gary Pajcic vs. Virginia Tech, 1966 (completed 28)
4. 51 by Gary Huff vs. Houston, 1972 (completed 27)
5. 50 by Bill Cappleman vs. Memphis State, 1969 (completed 31)
6. 46 by Gary Huff vs. Arizona State (Fiesta Bowl, 1971) (completed 25)
7. 42 by Gary Huff vs. Kansas, 1972 (completed 26)  
42 by Bill Cappleman vs. South Carolina, 1968 (completed 25)  
42 by Bill Cappleman vs. Florida, 1969 (completed 20)
10. 41 by Gary Huff vs. Auburn, 1972 (completed 25)  
41 by Gary Huff vs. Georgia Tech, 1971 (completed 20)

## PASSES COMPLETED

1. 37 by Kim Hammond vs. Penn State (Gator Bowl, 1967) (attempted 53)
2. 31 by Bill Cappleman vs. Memphis State, 1969 (attempted 50)
3. 28 by Gary Pajcic vs. Virginia Tech, 1966 (attempted 53)
4. 27 by Gary Huff vs. Houston, 1972 (attempted 51)  
27 by Gary Huff vs. Florida, 1972 (attempted 58)
6. 26 by Gary Huff vs. Kansas, 1972 (attempted 42)  
26 by Gary Huff vs. South Carolina, 1971 (attempted 41)
8. 25 by Gary Huff vs. Auburn, 1972 (attempted 41)  
25 by Gary Huff vs. Arizona State (Fiesta Bowl, 1971) (attempted 46)  
25 by Bill Cappleman vs. South Carolina, 1968 (attempted 42)

## PASSES CAUGHT

1. 16 by Ron Sellers vs. South Carolina, 1968 (259 yards)
2. 14 by Ron Sellers vs. Wake Forest, 1968 (260 yards)  
14 by Ron Sellers vs. Penn State (Gator Bowl, 1967) (145 yards)
4. 13 by Kent Gaydos vs. Houston, 1969 (126 yards)  
13 by Ron Sellers vs. Memphis State, 1968 (218 yards)  
13 by Ron Sellers vs. Alabama, 1967 (165 yards)  
13 by Ron Sellers vs. Virginia Tech, 1966 (135 yards)  
13 by Fred Biletznikoff vs. Oklahoma (Gator Bowl, 1965) (192 yards)
9. 12 by Bill Moremen vs. Penn State (Gator Bowl, 1967) (106 yards)

## YARDS RECEIVING PASSES

1. 260 yards by Ron Sellers vs. Wake Forest, 1968 (14 receptions)
2. 259 yards by Ron Sellers vs. South Carolina, 1968 (16 receptions)
3. 229 yards by Ron Sellers vs. Virginia Tech, 1967 (8 receptions)
4. 218 yards by Ron Sellers vs. Memphis State, 1968 (13 receptions)
5. 192 by Fred Biletznikoff vs. Oklahoma (Gator Bowl, 1965) (13 receptions)
6. 182 by Fred Biletznikoff vs. Virginia Tech, 1964 (11 receptions)

## YARDS GAINED RUSHING

1. 161 by Buddy Strauss vs. Mississippi College, 1949
2. 155 by Mike Davison vs. Tulsa, 1972
3. 152 by Mike Sellers vs. Sul Ross, 1951
4. 150 by Bobby Renn vs. Abilene Christian 1957
5. 142 by Keith Kinderman vs. Richmond, 1961  
142 by Phil Spooner vs. Houston, 1965
7. 141 by Bobby Fiveash vs. Tampa, 1953



## BEST SEASON PERFORMANCES (Regular Season Only)

### POINTS SCORED

1. 86 by Barry Smith, 1972
2. 72 by Ron Sellers, 1968
3. 69 by Frank Fontes, 1971
4. 68 by Fred Biletnikoff, 1964
5. 64 by Frank Fontes, 1970
6. 60 by Jim Mankins, 1966
7. 60 by Wyatt Parrish, 1949
8. 55 by Grant Guthrie, 1968
9. 54 by Mike Sellers, 1950
10. 53 by Grant Guthrie, 1967

### TOUCHDOWNS SCORED

1. 14 by Barry Smith, 1972
2. 12 by Ron Sellers, 1968
3. 11 by Fred Biletnikoff, 1964
4. 10 by Jim Mankins, 1966
5. 9 by Wyatt Parrish, 1949
- 9 by Mike Sellers, 1950
7. 8 by Bill Moremen, 1967
- 8 by Bill Moremen, 1966
- 8 by Bobby Fivesh, 1953
- 8 by Ron Sellers, 1967

### TOUCHDOWN PASSES THROWN

1. 25 by Gary Huff, 1972
- 25 by Bill Cappleman, 1968
3. 23 by Gary Huff, 1971
4. 15 by Kim Hammond, 1967
5. 14 by Bill Cappleman, 1969
- 14 by Steve Tensi, 1964
7. 11 by Tommy Warren, 1970
8. 10 by Harry Massey, 1954
9. 9 by Steve Tensi, 1963

### YARDS RUSHING

1. 944 by Hodge Mitchell, 1972
2. 747 by Buddy Strauss, 1949
3. 669 by Hodges Mitchell, 1973
4. 630 by Tom Bailey, 1969
5. 615 by Fred Pickard, 1958
6. 609 by Stan Dobo, 1952
7. 605 by Wyatt Parrish, 1949
8. 596 by Bobby Renn, 1956
9. 578 by Mike Sellers, 1950
10. 570 by Tom Bailey, 1968
11. 516 by Paul Magalski, 1971
- 516 by Phil Spooner, 1964
13. 514 by Tom Bailey, 1970

### TOUCHDOWN PASSES CAUGHT

1. 13 by Barry Smith, 1972
2. 12 by Ron Sellers, 1968
3. 11 by Fred Biletnikoff, 1964
4. 8 by Ron Sellers, 1967
5. 7 by Rhett Dawson, 1971
- 7 by Kent Gaydos, 1971
7. 6 by Barry Smith, 1971
- 6 by Barry Smith, 1970
- 6 by Tom Feamster, 1954
10. 5 by Rhett Dawson, 1970
- 5 by Don Pederson, 1969
- 5 by Harry Bringer, 1950
- 5 by Bob Nellums, 1956

### TIMES CARRIED

1. 192 by Hodges Mitchell, 1972
2. 188 by Buddy Strauss, 1949
3. 171 by Hodges Mitchell, 1973
4. 145 by Stan Dobo, 1952
5. 144 by Tom Bailey, 1969
6. 136 by Bill Gunter, 1968
- 136 by Phil Spooner, 1964
8. 131 by Fred Pickard, 1958
9. 130 by Mike Sellers, 1950
10. 123 by Bill Moremen, 1966
11. 122 by Fred Pickard, 1958

### TOTAL OFFENSE (Rushing, Passing)

1. 2770 by Gary Huff, 1972 (-123, 2893)
2. 2653 by Gary Huff, 1971 (-83, 2736)
3. 2342 by Bill Cappleman, 1968 (-68, 2410)
4. 2135 by Bill Cappleman, 1969 (-332, 2467)
5. 2074 by Kim Hammond, 1967 (83, 1991)
6. 1777 by Tommy Warren, 1970 (164, 1613)
7. 1735 by Gary Pajcic, 1966 (145, 1590)
8. 1637 by Steve Tensi, 1964 (-46, 1683)
9. 1455 by Ed Pritchett, 1965 (230, 1225)
10. 1141 by Joe Majors, 1959 (78, 1063)

### PASSES ATTEMPTED

1. 387 by Gary Huff, 1972
2. 344 by Bill Cappleman, 1969
3. 327 by Gary Huff, 1971
4. 287 by Bill Cappleman, 1968
5. 247 by Ed Pritchett, 1965
6. 241 by Kim Hammond, 1967
7. 233 by Gary Pajcic, 1966
8. 204 by Steve Tensi, 1964
9. 190 by Tommy Warren, 1970
10. 168 by Joe Majors, 1959
11. 153 by Mark Orlando, 1973
12. 147 by Steve Tensi, 1963

### PASSES CAUGHT

1. 80 by Ron Sellers, 1968
2. 70 by Ron Sellers, 1967
3. 69 by Barry Smith, 1972
4. 62 by Rhett Dawson, 1971
5. 57 by Fred Biletnikoff, 1964
6. 55 by Ron Sellers, 1966
7. 54 by Rhett Dawson, 1970
8. 49 by Gary Parris, 1972
- 49 by Jim Tyson, 1969
10. 41 by Don Floyd, 1964

### PASSES COMPLETED

1. 206 by Gary Huff, 1972
2. 184 by Gary Huff, 1971
3. 183 by Bill Cappleman, 1969
4. 162 by Bill Cappleman, 1968
5. 140 by Kim Hammond, 1967
6. 125 by Gary Pajcic, 1966
7. 121 by Steve Tensi, 1964
8. 110 by Ed Pritchett, 1965

### YARDS PASSING

1. 2893 by Gary Huff, 1972
2. 2736 by Gary Huff, 1971
3. 2467 by Bill Cappleman, 1969
4. 2410 by Bill Cappleman, 1968
5. 1991 by Kim Hammond, 1967
6. 1683 by Steve Tensi, 1964
7. 1613 by Tommy Warren, 1970
8. 1590 by Gary Pajcic, 1966
9. 1225 by Ed Pritchett, 1965

### YARDS RECEIVING

1. 1496 by Ron Sellers, 1968
2. 1243 by Barry Smith, 1972
3. 1228 by Ron Sellers, 1967
4. 987 by Fred Biletnikoff, 1964
5. 946 by Rhett Dawson, 1970
6. 874 by Ron Sellers, 1966
7. 817 by Rhett Dawson, 1971
8. 720 by Jim Tyson, 1969
9. 692 by Barry Smith, 1971
10. 629 by Gary Parris, 1972
11. 556 by Don Floyd, 1964
12. 453 by Barry Smith, 1970

## BEST CAREER PERFORMANCES (Includes Bowl Performances)

### POINTS SCORED

1. 168 by Ron Sellers, 1966-68
2. 164 by Barry Smith, 1970-72
3. 162 by Grant Guthrie, 1967-69
4. 145 by Frank Fontes, 1970-71
5. 128 by Fred Biletnikoff, 1962-64
6. 108 by Bill Moremen, 1965-67
7. 99 by Bobby Renn, 1947-49
8. 96 by Rhett Dawson, 1969-71  
96 by Wyatt Parrish, 1947-49  
96 by Mike Sellers, 1950-51

### TOUCHDOWNS

1. 28 by Ron Sellers, 1966-68
2. 27 by Barry Smith, 1970-72
3. 21 by Fred Biletnikoff, 1962-64
4. 18 by Bill Moremen, 1965-67
5. 16 by Bobby Renn, 1947-49  
16 by Mike Sellers, 1950-51
7. 15 by Rhett Dawson, 1969-71  
15 by Wyatt Parrish, 1947-49
9. 14 by Fred Pickard, 1957-59

### TOUCHDOWNS PASSES THROWN

1. 54 by Gary Huff, 1970-72
2. 42 by Bill Cappleman, 1967-69
3. 33 by Steve Tensi, 1962-64
4. 22 by Kim Hammond, 1965-67
5. 17 by Nelson Italiano, 1950-51
6. 15 by Harry Massey, 1952-54  
15 by Len Swantic, 1953-56

### PASSES CAUGHT

1. 240 by Ron Sellers, 1966-68
2. 136 by Rhett Dawson, 1969-71
3. 127 by Barry Smith, 1970-72
4. 100 by Fred Biletnikoff, 1962-64
5. 81 by Jim Tyson, 1968-70
6. 78 by Kent Gaydos, 1969-71
7. 66 by Don Floyd, 1962-64
8. 59 by Billy Cox, 1966-68
9. 54 by Bud Whitehead, 1958-60
10. 51 by Chip Glass, 1966-68
11. 50 by Tom Feamster, 1954-55

### TOUCHDOWN PASSES CAUGHT

1. 28 by Ron Sellers, 1966-68
2. 25 by Barry Smith, 1970-72
3. 20 by Fred Biletnikoff, 1962-64
4. 15 by Rhett Dawson, 1969-71
5. 12 by Kent Gaydos, 1969-71
6. 10 by Jim Tyson, 1968-70
7. 8 by Tom Feamster, 1954-55  
8 by Ron Schomburger, 1954-57
9. 7 by Bob Nellums, 1956-57

### PASSES ATTEMPTED

1. 841 by Gary Huff, 1970-72
2. 639 by Bill Cappleman, 1967-69
3. 508 by Steve Tensi, 1962-64
4. 419 by Kim Hammond, 1965-67
5. 405 by Gary Pajcic, 1966-68
6. 314 by Ed Pritchett, 1963-65
7. 288 by Joe Majors, 1957-58
8. 280 by Eddie Feely, 1960-62

### PASSES COMPLETED

1. 461 by Gary Huff, 1970-72
2. 349 by Bill Cappleman, 1967-69
3. 275 by Steve Tensi, 1962-64
4. 242 by Kim Hammond, 1965-67
5. 203 by Gary Pajcic, 1966-68
6. 160 by Eddie Feely, 1960-62
7. 148 by Ed Pritchett, 1963-65
8. 136 by Joe Majors, 1957-59

### YARDS GAINED PASSING

1. 6725 by Gary Huff, 1970-72
2. 5135 by Bill Cappleman, 1967-69
3. 3697 by Steve Tensi, 1962-64
4. 3344 by Kim Hammond, 1965-67
5. 2529 by Gary Pajcic, 1966-68
6. 1746 by Ed Pritchett, 1963-65
7. 1711 by Eddie Feely, 1960-62

### TOTAL OFFENSE (Yards Rushing, Passing)

1. 6394 by Gary Huff, 1970-72  
(-331, 6725)
2. 4713 by Bill Cappleman, 1967-69  
(-422, 5135)
3. 3609 by Steve Tensi, 1962-64  
(-88, 3697)
4. 3451 by Kim Hammond, 1965-67  
(107, 3344)
5. 2732 by Gary Pajcic, 1966-68  
(203, 2529)
6. 2346 by Eddie Feely, 1960-62  
(635, 1711)
7. 2298 by Ed Pritchett, 1963-65  
(452, 1746)
8. 2129 by Nelson Italiano, 1950-51  
(986, 1140)

### YARDS GAINED RUSHING (Carries)

1. 1791 by Tom Bailey (392) 1968-70
2. 1613 by Hodges Mitchell (363) 1972-73
3. 1580 by Fred Pickard (353) 1957-59
4. 1468 by Bobby Renn (270) 1956-58
5. 1317 by Lee Corso (328) 1953-56
6. 1190 by Bill Moremen (282) 1965-67
7. 1170 by Phil Spooner (288) 1962-65
8. 1170 by Buddy Strauss (245) 1948-49

### YARDS RECEIVING PASSES

1. 3979 by Ron Sellers, 1966-68
2. 2535 by Barry Smith, 1970-72
3. 2023 by Rhett Dawson, 1969-71
4. 1955 by Fred Biletnikoff, 1962-64
5. 1235 by Jim Tyson, 1968-70
6. 1225 by Kent Gaydos, 1969-71
7. 901 by Don Floyd, 1962-64
8. 804 by Billy Cox, 1966-68
9. 768 by Tom Feamster, 1954-55
10. 634 by Ron Schomburger, 1954-57



# LONGEST PLAYS

## LONGEST TOUCHDOWN RUNS FROM SCRIMMAGE

1. 81 yards by Fred Pickard vs. VPI, 1957
2. 80 yards by Phil Spooner vs. Houston, 1965
3. 78 yards by Buck Melts vs. Stetson, 1964
4. 74 yards by Bobby McKinnon vs. Memphis St., 1973
5. 68 yards by Bobby Fiveash vs. Tampa, 1958
6. 66 yards by Dave Synder vs. Furman, 1963

## LONGEST RUNS FROM SCRIMMAGE WITHOUT SCORING

1. 76 yards by Roy Thompson vs. Stetson, 1951
2. 65 yards by Wayne Giardino vs. Oklahoma (Gator Bowl), 1965
3. 64 yards by Nelson Italiano vs. Troy State, 1951
4. 60 yards by Jim Mankins vs. Texas Tech, 1966
- 60 yards by Nelson Italiano vs. Tampa, 1950
- 60 yards by Lee Corso vs. N.C. State, 1956

## LONGEST TOUCHDOWN PLAY, ANY SITUATION

1. 100 yards by Bill Moremen and T.K. Wetherell vs. Kentucky, 1965 (lateral on KO return)
2. 99 yards by Ted Hewitt vs. Stetson, 1958 (Pass interception return)
- 99 yards by Fred Biletnikoff vs. Miami, 1963 (Pass interception return)
4. 96 yards by David Snell vs. VPI, 1970 (KO return)
5. 94 yards by Bill Moremen and T.K. Wetherell vs. Miami, 1966 (lateral-on KO return)
6. 93 yards by Eddie McMillan vs. Memphis State, 1970 (KO return)
7. 92 yards by Phil Abraira vs. North Carolina State, 1969 (Punt return)
8. 90 yards by Eddie McMillan vs. Miami, 1971 (KO return)
9. 89 yards by Bill Odom vs. VPI, 1955 (Punt return)
10. 88 yard pass from Gary Huff to Barry Smith vs. Kansas, 1971
11. 86 yard pass from Gary Pajcic to Ron Sellers vs. Wake Forest, 1966

## LONGEST TOUCHDOWN PASS

1. 88 yards from Gary Huff to Barry Smith vs. Kansas, 1971
2. 86 yards from Gary Pajcic to Ron Sellers vs. Wake Forest, 1966
3. 82 yards from Gary Pajcic to Ron Sellers vs. Maryland, 1968
4. 80 yards from Bill Cappleman to Don Pederson vs. Memphis State, 1969
- 80 yards from Nelson Italiano to Eddie Gray vs. Newberry, 1950
6. 74 yards from Vic Prinzi to Tom Feamster vs. Louisville, 1954
7. 73 yards from Bill Cappleman to Don Pederson vs. Tulsa, 1969
- 73 yards from Kim Hammond to Ron Sellers vs. VPI, 1967
9. 71 yards from Gary Huff to Barry Smith vs. Pittsburgh, 1972
10. 69 yards from Buddy Strauss to Norman Eubanks vs. Tampa, 1949

## LONGEST PUNT RETURN

1. 92 yards by Phil Abraira vs. North Carolina State, 1969 (TD)
2. 80 yards by Bill Odom vs. Stetson, 1954 (TD)
3. 75 yards by Walt Sumner vs. Alabama, 1967 (TD)
- 75 yards by Ralph Claudron vs. Whiting Field, 1949 (TD)
5. 71 yards by David Snell vs. Louisville, 1970 (TD)
6. 70 yards by Bill Campbell vs. Wake Forest, 1965 (TD)
7. 60 yards by Lee Corso vs. North Carolina State, 1956
8. 58 yards by Tommy Brown vs. Jacksonville Navy, 1951

## LONGEST KICKOFF RETURN

1. 100 yards by Bill Moremen and T.K. Wetherell vs. Kentucky, 1965 (TD, lateral)
2. 96 yards by David Snell vs. VPI, 1970 (TD)
3. 94 yards by Bill Moremen and T.K. Wetherell vs. Miami, 1966 (TD, lateral)
4. 93 yards by Eddie McMillan vs. Memphis State, 1970 (TD)
5. 90 yards by Eddie McMillan vs. Miami, 1971 (TD)
6. 89 yards by Bill Odom vs. VPI, 1955 (TD)
7. 84 yards by Fred Pickard vs. Tampa, 1958
8. 72 yards by Bobby Renn vs. Florida, 1958
9. 58 yards by Johnny Hurst vs. Florida, 1966

## LONGEST INTERCEPTION RETURN

1. 99 yards by Ted Hewitt vs. Stetson, 1958 (TD)
2. 99 yards by Fred Biletnikoff vs. Miami, 1963 (TD)
3. 86 yards by Tom Hillabrand vs. Auburn, 1960 (TD)
4. 81 yards by Bud Whitehead vs. Wake Forest, 1959 (TD)
5. 74 yards by Dale McCullers vs. Houston, 1967
6. 69 yards by Howard Ehler vs. Oklahoma (Gator Bowl), 1965 (TD)
7. 66 yards by Bill Dawkins vs. Wofford (Cigar Bowl), 1949

## OTHER FLORIDA STATE RECORDS

### PUNTS

Longest Punt—84 yards by Tommy Brown vs. Tampa, 1950  
Most team punts in a single game—11 vs. Baylor, 1965  
Most punts single game, individual—11 by John Hosack vs. Baylor, 1965  
Most team punts in season—81 in 1973  
Most punts by an individual in season—81 by Joe Downey, 1973  
Most punts in career—169 by Charlie Calhoun, 1961-63  
Best punting average, career—37.6 by Bobby Renn, 1956-58  
Best punting average, season—41.9 by Pat Versprille, 1955

### FIELD GOALS AND EXTRA POINTS

Most Field goals, single game, team—four vs. Wake Forest, 1970  
Most field goals, single game, individual—four by Frank Fontes vs. Wake Forest, 1970  
Most field goals attempted, single game—8 by Frank Fontes vs. Wake Forest, 1970  
Most field goals, season—14 by Frank Fontes, 1970  
Most field goals in career—29 by Grant Guthrie, 1967-69  
Longest field goal—53 yards by Grant Guthrie vs. Miami, 1969  
Most extra points, season—31 by Grant Guthrie, 1968 (32 attempts)  
Most extra points, career—75 by Grant Guthrie, 1967-69 (80 attempts)  
Most points by kicking, season—69 by Frank Fontes in 1971

### KICK-OFF AND PUNT RETURNS

Most punts returned season—40 by David Snell, 1970  
Most punts returned game—10 by David Snell vs. South Carolina, 1970  
Best punt return average season—15.7 by Tommy Brown, 1951  
Best kick-off return average season—31.8 by Lee Corso, 1954

### OFFENSE

Most victories in single season—8 in 1949, '50, '51, '54, '64, '68, '71  
Most defeats in single season—11 in 1973  
Most ties in single season—3 in 1962  
Most points scored in season—287 in 1972  
Fewest points scored in season—18 in 1947  
Most points scored in single game—74 vs. Whiting Field, 1949  
Most points scored in single game—individual—30 by Ron Sellers vs. Wake Forest, 1968  
Most touchdowns scored in single game—5 by Ron Sellers vs. Wake Forest, 1968  
Most touchdown passes thrown in single game, individual—5 by Steve Tensi vs. Oklahoma, Gator Bowl, 1965; by Bill Cappleman vs. Wake Forest, 1968; by Gary Huff vs. South Carolina, 1971  
Most TD passes caught in single game—5 by Ron Sellers vs. Wake Forest, 1968  
Greatest margin of victory—74Pts.: 74-0 vs. Whiting Field, 1949  
Greatest margin of defeat—49 pts.: 0-49 vs. Georgia, 1959, and 0-49 vs. Florida, 1973  
Total offense, season—4474 (2974 passing, 1500 rushing), 1972  
Total yards passing, season—2974, 1972  
Total yards rushing, season—2194, 1949  
Total offense, single game—626 vs. Memphis State, 1969 (508 rushing, 118 passing)  
Total yards passing, single game—508 vs. Memphis State, 1969  
Total yards rushing, single game—383 vs. Abilene Christian, 1957  
Touchdown responsibility, game—6 by Gary Huff vs. South Carolina, 1971 (5 passing, 1 scored)  
Touchdown responsibility, season—26 by Bill Cappleman, 1968 (25 passing, 1 scored) and by Gary Huff, 1972 (25 passing, 1 scored)  
Times rushing, individual, single game—29 by Fred Pickard vs. Georgia, 1959 and Larry Green vs. Memphis State, 1967  
Passes attempted, season—389, 1972  
Passes completed, season—209, 1972  
Passes attempted, game—56 vs. VPI, 1966  
Passes completed, game—38 by Penn State (Gator Bowl), 1967  
Fewest passes had intercepted in season—7 in 1947  
Most passes had intercepted, season—23, 1972  
Longest winning streak—13 games (1949-51)  
Most fumbles, game—10 vs. Wichita State, 1969  
Most fumbles, lost in a game—7 (of 10) vs. Wichita State, 1969  
Most passes had intercepted, game—6 vs. Virginia Tech, 1968

### DEFENSE

Most fumbles recovered in a game—10 (of 17) vs. Wichita State, 1969  
Fewest points allowed, season—54 in 1950  
Fewest yards rushing allowed, game—5 by Citadel, 1962 and by Mississippi State, 1971  
Most points allowed, season—331 in 1973  
Most passes intercepted, individual—8 by Curt Campbell, 1951  
Most passes intercepted, single game—7 vs. VPI, 1959  
Most passes intercepted, game, individual—3 on five occasions, twice by Tommy Brown and most recently by James Thomas vs. Kansas State, 1970  
Most opponents punts blocked, season—4 in 1951



## BEST PERFORMANCE BY OPPONENTS

### Individual

- MOST YARDS RUSHING**—197 by Ken Edwards, VPI, 1968  
**MOST TIMES CARRIED**—34 by Robert Newhouse, Houston, 1971  
**MOST YARDS PASSING**—324 by Tommy Suggs, South Carolina, 1968  
**MOST PASSES ATTEMPTED**—48 by Doug Kendrick, Clemson, 1970  
**MOST PASSES COMPLETED**—25 by Doug Kendrick, Clemson, 1970  
**MOST PASSES CAUGHT**—12 by Larry Gilbert, Texas Tech, 1966  
**MOST YARDS RECEIVING PASSES**—165 by Ben Hart, Oklahoma (Gator Bowl), 1965  
**MOST TOTAL OFFENSE**—370 by Tommy Suggs, South Carolina, 1968 (46 rush, 324 pass)  
**LONGEST TD RUN FROM SCRIMMAGE**—88 yards by Mike Veacchio, Miami, 1951 and Ken Edwards, VPI, 1968  
**LONGEST PUNT RETURN**—86 yards by Daryl Cox, Kentucky, 1961 (TD)  
**LONGEST INTERCEPTION RETURN**—70 yards by Alex Webster, N.C. State, 1952  
**LONGEST KICKOFF RETURN**—92 yards by Warren McVea, Houston, 1965  
**LONGEST PASS PLAY**—95 yards from Ronnie Fletcher to Ben Hart, Oklahoma (Gator Bowl), 1965  
**LONGEST PUNT**—68 yards by Gene Etter, Tennessee, 1958  
**LONGEST FIELD GOAL**—50 yards by Ken Vinyard, Texas Tech, 1967

### TEAM

### LARGEST HOME CROWDS

<b>PASSES ATTEMPTED</b> —48 by Clemson, 1970	46,790 vs. Florida in 1966
<b>PASSES COMPLETED</b> —26 by San Diego St., 1973	45,256 vs. Florida in 1968
<b>PASSING YARDAGE</b> —359 by San Diego St., 1973	43,758 vs. Florida in 1972
<b>RUSHING YARDAGE</b> —388 by Miami, 1951	43,000 vs. Florida in 1964
<b>TOTAL OFFENSE</b> —590 by San Diego St., 1973	42,704 vs. Florida in 1970
<b>TIMES CARRIED</b> —65 by VPI, 1968	40,112 vs. Georgia in 1965
<b>POINTS SCORED</b> —59 by Auburn, 1958	35,400 vs. VPI in 1972
<b>MOST FUMBLES</b> —17 by Wichita State (10 lost), 1969	35,519 vs. South Carolina in 1969
	35,494 vs. Texas A&M in 1968
	35,108 vs. Wake Forest in 1968
	34,784 vs. Kansas in 1971

## HOMECOMING GAMES (Record: 19-6-1)

	FSU	OPP		FSU	OPP
1948—Tampa	33	12	1962—Houston	0	7
1949—Millsaps	40	0	1963—N.C. State	14	0
1950—Sewanee	14	8	1964—Kentucky	48	6
1951—Stetson	13	10	1965—Wake Forest	35	0
1952—Furman	0	9	1966—Wake Forest	28	0
1953—Stetson	13	6	1967—Texas Tech	28	12
1954—Furman	33	14	1968—Wake Forest	42	24
1955—Citadel	39	0	1969—South Carolina	34	9
1956—Wake Forest	14	14	1970—Virginia Tech	34	8
1957—Virginia Tech	20	7	1971—Mississippi State	27	9
1958—Tampa	43	0	1972—Colorado State	33	0
1959—William & Mary	0	9	1973—Memphis State	10	13
1960—Kentucky	0	23			
1961—Mississippi Southern	0	12			

## COACHES AND CAPTAINS

Year	Coach	Captains	W	L	T	FSU PTS	OPP PTS
1947	Ed Williamson	Jack McMillan Phil Rountree	0	5	0	18	90
1948	Don Veller	Game Captains	7	1	0	152	64
1949*	Don Veller	Hugh Adams	9	1	0	291	59
1950	Don Veller	Duke Maltby	8	0	0	219	54
1951	Don Veller	Bill Dawkins	6	2	0	194	72
1952	Don Veller	Curtis Campbell Vic Szczepanik	1	8	1	101	261
1953	Tom Nugent	Game Captains	5	5	0	183	146
1954*	Tom Nugent	Game Captains	8	4	0	277	190
1955	Tom Nugent	Bob Crenshaw Don Powell	5	5	0	147	186
1956	Tom Nugent	Joe Holt Buck Metz	5	4	1	178	116
1957	Tom Nugent	Ron Schomburger	4	6	0	136	165
1958*	Tom Nugent	Vic Prinzi Bobby Renn	7	4	0	218	124
1959	Perry Moss	John Spivey Al Ulmer	4	6	0	149	132
1960	Bill Peterson	Tony Romeo	3	6	1	111	136
1961	Bill Peterson	Steve Klesius	4	5	1	93	128
1962	Bill Peterson	Gene McDowell	4	3	3	170	69
1963	Bill Peterson	Charlie Calhoun Chuck Robinson	4	5	1	167	93
1964*	Bill Peterson	Bill Dawson Fred Biletnikoff	9	1	1	263	85
1965	Bill Peterson	George D'Allassandro Bill McDowell Max Wettstein	4	5	1	121	119
1966*	Bill Peterson	Game Captains	6	5	0	224	214
1967*	Bill Peterson	Game Captains	7	2	2	250	187
1968*	Bill Peterson	Game Captains	8	3	0	308	211
1969	Bill Peterson	Game Captains	6	3	1	220	182
1970	Bill Peterson	Game Captains	7	4	0	254	195
1971*	Larry Jones	Rhett Dawson John Lanahan	8	4	0	309	174
1972	Larry Jones	Gary Huff Larry Strickland	7	4	0	287	224
1973	Larry Jones	Jim Malkiewicz Don Sparkman	0	11	0	98	331
<b>TOTALS</b>			<b>146</b>	<b>112</b>	<b>13</b>	<b>5,138</b>	<b>4,007</b>

\* Bowl Game Included

## COACHES' CUMULATIVE RECORDS

Name	Tenure	Years	W-L-T	Pct.	FSU Pts.	OPP Pts.
Ed Williamson	1947	1	0 -5 -0	.000	18	90
Don Veller	1948-52	5	31-12 -1	.716	938	504
Tom Nugent	1953-58	6	34-28 -1	.548	1123	865
Perry Moss	1959	1	4 -6 -0	.400	149	132
Bill Peterson	1960-70	11	62-42-11	.587	2234	1602
Larry Jones	1971-73	3	15-19 -0	.441	407	505



**RECORD AGAINST ALL OPPONENTS  
(1974 Opponents in All Caps)**

Team	First Meeting	LAST MEETING			FSU		
		Date	Site	Score	Won	Lost	Tied
Abilene Christian	1953	1957	H	34-7	1	2	0
ALABAMA	1965	1967	N	37-37	0	1	1
Arizona State	1971	1971	A	38-45	0	1	0
AUBURN	1954	1972	A	13-28	0	6	1
BAYLOR	1965	1973	A	14-21	1	1	0
Boston College	1957	1957	A	7-20	0	1	0
Citadel, The	1955	1962	H	49-0	4	0	1
Clemson	1970	1970	H	38-13	1	0	0
COLORADO STATE	1972	1972	H	33-0	1	0	0
Cumberland	1947	1948	H	30-0	1	1	0
Delta State	1951	1951	H	34-0	1	0	0
Erskine	1948	1949	H	26-7	1	1	0
FLORIDA	1958	1973	A	0-49	2	12	1
Furman	1952	1963	H	49-6	7	2	0
George Washington	1961	1961	H	15-7	1	0	0
Georgia	1954	1965	H	10-3	4	5	0
Georgia Tech	1952	1971	A	6-12	0	6	1
HOUSTON	1960	1973	A	13-34	1	10	2
Howard	1950	1950	H	20-6	1	0	0
Jacksonville State (Alabama)	1947	1947	H	0-7	0	1	0
Jacksonville Navy	1951	1951	A	39-0	1	0	0
KANSAS	1971	1973	H	0-28	2	1	0
Kansas State	1970	1970	H	33-7	1	0	0
Kentucky	1960	1965	A	24-26	1	3	1
Livingston State	1948	1949	A	6-13	1	1	0
Louisiana State (Peach Bowl)	1968	1968	N	27-31	0	1	0
Louisiana Tech	1952	1953	A	21-32	0	2	0
Louisville	1952	1970	H	9-7	3	1	0
Maryland	1966	1968	A	24-14	2	0	0
MEMPHIS STATE	1959	1973	H	10-13	2	4	0
MIAMI	1951	1973	H	10-14	8	9	0
Millsaps	1948	1949	H	40-0	2	0	0
Mississippi	1961	1961	A	0-33	0	1	0
Mississippi College	1948	1950	H	33-0	3	0	0
Mississippi State	1966	1973	H	12-37	6	1	0
Newberry	1950	1950	A	24-0	1	0	0
New Mexico State	1964	1964	H	36-0	1	0	0
North Carolina State	1952	1969	H	33-22	8	4	0
Ohio	1956	1956	H	47-7	1	0	0
Oklahoma (Gator Bowl)	1965	1965	N	36-19	1	0	0
Oklahoma State (Bluegrass Bowl)	1958	1958	N	6-15	0	1	0
Penn State (Gator Bowl)	1968	1968	N	17-17	0	0	1
PITTSBURGH	1971	1972	A	19-7	2	0	0
Randolph Macon	1950	1950	H	40-7	1	0	0
San Diego St.	1973	1973	A	17-38	0	1	0
Sewanee	1949	1950	H	14-8	2	0	0
South Carolina	1966	1973	H	12-52	6	2	0

Southern Mississippi	1952	1971	N	24-9	4	6	1
Stetson	1947	1954	A	47-6	6	1	1
Sul Ross State	1951	1951	H	35-12	1	0	0
Syracuse	1966	1966	A	21-37	0	1	0
Tampa	1948	1959	A	33-0	9	2	0
Tennessee	1958	1958	A	10-0	1	0	0
Tennessee Tech	1947	1958	H	22-7	1	1	0
Texas A&M	1967	1968	H	20-14	2	0	0
Texas Christian	1963	1965	A	3-7	1	2	0
Texas Tech	1966	1967	H	28-12	2	0	0
Texas Western (Sun Bowl)	1954	1954	N	20-47	0	1	0
Troy State	1947	1951	H	40-0	4	1	0
Tulsa	1969	1972	H	23-21	3	0	0
Virginia Military	1952	1954	A	33-19	2	1	0
Villanova	1954	1957	A	7-21	3	1	0
VIRGINIA TECH	1955	1973	A	13-36	8	8	1
Wake Forest	1956	1973	A	7-9	7	2	1
Whiting Field	1949	1949	H	74-0	1	0	0
Wichita State	1969	1969	H	24-0	1	0	0
William & Mary	1959	1960	H	22-0	1	0	0
Wofford	1949	1952	A	27-13	3	0	0
Wyoming (Sun Bowl)	1966	1966	N	20-28	0	1	0

## RESULTS 1947-1973

### †Homecoming

<b>1947 (0-5-0)</b>	<b>FSU</b>	<b>Foe</b>	<b>1950 (8-0-0)</b>	<b>FSU</b>	<b>Foe</b>
Stetson (H) .....	6	14	Troy State (A) .....	26	7
Cumberland (A) .....	0	6	Randolph Macon (H) .....	40	7
Tennessee Tech (H) .....	6	27	Howard (H) .....	20	6
Troy State (H) .....	6	36	Newberry (A) .....	24	0
Jacksonville State (H) .....	0	7	Sewanee† (H) .....	14	8
			Stetson (A) .....	27	7
<b>1948 (7-1-0)</b>	<b>FSU</b>	<b>Foe</b>	Mississippi College (H) .....	33	0
Cumberland (H) .....	30	0	Tampa (H) .....	35	19
Erskine (A) .....	6	14			
Millsaps (A) .....	7	6	<b>1951 (6-2-0)</b>	<b>FSU</b>	<b>Foe</b>
Stetson (A) .....	18	7	Troy State (H) .....	40	0
Mississippi College (H) .....	26	6	Miami (Fla.) (A) .....	13	35
Livingston State (H) .....	12	6	Delta State (H) .....	34	0
Troy State (A) .....	20	13	Sul Ross State (H) .....	35	13
Tampat (H) .....	13	12	Stetson† (H) .....	13	10
			Jacksonville Navy (A) .....	39	0
<b>1949 (9-1-0)</b>	<b>FSU</b>	<b>Foe</b>	Wofford (H) .....	14	0
Whiting Field (H) .....	74	0	Tampa (H) .....	6	14
Mississippi College (A) .....	33	12			
Erskine (H) .....	26	7	<b>1952 (1-8-1)</b>	<b>FSU</b>	<b>Foe</b>
Sewanee (A) .....	6	0	Louisville (H) .....	14	41
Stetson (H) .....	33	14	Louisville Tech (H) .....	13	32
Livingston State (A) .....	6	13	VMI (H) .....	7	28
Millsaps† (H) .....	40	0	N. Carolina State (A) .....	7	13
Tampa (A) .....	34	7	Stetson (N) .....	6	6
Troy State (H) .....	20	0	Mississippi Southern (H) .....	21	50
Wofford* (N) .....	19	6	Furmant (H) .....	0	9
(*Cigar Bowl)			Georgia Tech (A) .....	0	30



Wofford (A) .....	27	13	Boston College (A) .....	7	20
Tampa (H) .....	6	39	Villanova (A) .....	7	21
<b>1953 (5-5-0)</b>	<b>FSU</b>	<b>Foe</b>	N. Carolina State (H) .....	0	7
Miami (Fla.) (A) .....	0	27	Abilene Christian (H) .....	34	7
Louisville (H) .....	59	0	Virginia Tech† (H) .....	20	7
Abilene Christian (H) .....	7	20	Mississippi Southern (A) .....	0	20
Louisiana Tech (A) .....	21	32	Miami (Fla.) (H) .....	13	40
VMI (H) .....	12	7	Auburn (H) .....	7	29
Mississippi Southern (A) .....	0	21	Tampa (A) .....	21	7
Furman (H) .....	7	14	<b>1958 (7-4-0)</b>	<b>FSU</b>	<b>Foe</b>
Stetson† (H) .....	13	6	Tennessee Tech (H) .....	22	7
N. Carolina State (H) .....	23	13	Furman (H) .....	42	6
Tampa (A) .....	41	6	Georgia Tech (A) .....	3	17
<b>1954 (8-4-0)</b>	<b>FSU</b>	<b>Foe</b>	Wake Forest (H) .....	27	24
Georgia (H) .....	0	14	Georgia (N) .....	13	28
Abilene Christian (H) .....	0	13	Virginia Tech (H) .....	28	0
Louisville (A) .....	47	6	Tennessee (A) .....	10	0
Villanova (H) .....	52	13	Tampa† (H) .....	43	0
N. Carolina State (A) .....	13	7	Miami (Fla.) (A) .....	17	6
Auburn (A) .....	0	33	Florida (A) .....	7	21
VMI (A) .....	33	19	Oklahoma State* (N) .....	6	15
Furman† (H) .....	33	14	(*Bluegrass Bowl)		
Stetson .....	47	6	<b>1959 (4-6-0)</b>	<b>FSU</b>	<b>Foe</b>
Mississippi Southern (H) .....	18	18	Wake Forest (H) .....	20	22
Tampa (A) .....	13	0	The Citadel (H) .....	47	6
Texas Western* (A) .....	20	47	Miami (Fla.) (H) .....	6	7
(*Sun Bowl)			Virginia Tech (A) .....	7	6
<b>1955 (5-5-0)</b>	<b>FSU</b>	<b>Foe</b>	Memphis State (A) .....	6	16
N.C. State (H) .....	7	0	Richmond (H) .....	22	6
Miami (Fla.) (A) .....	0	34	Georgia (A) .....	0	42
Virginia Tech (H) .....	20	24	William & Mary† (H) .....	0	9
Georgia (H) .....	14	47	Florida (A) .....	8	18
Georgia Tech (A) .....	0	34	Tampa (H) .....	33	0
Villanova (H) .....	16	13	<b>1960 (3-6-1)</b>	<b>FSU</b>	<b>Foe</b>
Furman (A) .....	19	6	Richmond (H) .....	28	0
Citadel† (H) .....	39	0	Florida (A) .....	0	3
Mississippi Southern (A) .....	6	21	Wake Forest (H) .....	14	6
Tampa (A) .....	26	7	The Citadel (A) .....	0	0
<b>1956 (5-4-1)</b>	<b>FSU</b>	<b>Foe</b>	Mississippi Southern (A) .....	13	15
Ohio University (H) .....	47	7	William & Mary (H) .....	22	0
Georgia (A) .....	0	3	Kentucky† (H) .....	0	23
Virginia Tech (H) .....	7	20	Miami (Fla.) (A) .....	7	25
N. Carolina State (A) .....	14	0	Houston (H) .....	6	7
Wake Forest† (H) .....	14	14	Auburn (A) .....	21	57
Villanova (A) .....	20	13	<b>1961 (4-5-1)</b>	<b>FSU</b>	<b>Foe</b>
Miami (Fla.) (A) .....	7	20	George Washington (A) .....	15	7
Furman (H) .....	42	7	Florida (A) .....	3	3
Mississippi Southern (H) .....	20	19	Mississippi (A) .....	0	33
Auburn (A) .....	7	13	Georgia (H) .....	3	0
<b>1957 (4-6-0)</b>	<b>FSU</b>	<b>Foe</b>	Richmond (H) .....	13	7
Furman (H) .....	27	7	Virginia Tech (A) .....	7	10
			Kentucky (A) .....	0	20

The Citadel (H) .....	44	8	Miami (A) .....	23	20
Mississippi Southern† (H) .....	0	12	Florida (H) .....	19	22
Houston (A) .....	8	28	Texas Tech (A) .....	42	33
<b>1962 (4-3-3)</b>	<b>FSU</b>	<b>Foe</b>	Mississippi State (H) .....	10	0
The Citadel .....	49	0	VPI (A) .....	21	23
Kentucky (A) .....	0	0	South Carolina (A) .....	32	10
Furman (H) .....	42	0	Syracuse (A) .....	21	37
Miami (Fla.) (A) .....	6	7	Wake Forest† (H) .....	28	0
Georgia (A) .....	18	8	Maryland (H) .....	45	21
VPI (H) .....	20	7	Wyoming* (N) .....	20	28
Houston† (H) .....	0	7	(*Sun Bowl)		
Georgia Tech (A) .....	14	14	<b>1967 (7-2-2)</b>	<b>FSU</b>	<b>Foe</b>
Florida (A) .....	7	20	Houston (A) .....	13	33
Auburn (A) .....	14	14	Alabama (A) .....	37	37
<b>1963 (4-5-1)</b>	<b>FSU</b>	<b>Foe</b>	N.C. State (H) .....	10	20
Miami (Fla.) (A) .....	24	0	Texas A & M (A) .....	19	18
Texas Christian .....	0	13	South Carolina (H) .....	17	0
Wake Forest (H) .....	35	0	Texas Tech† (H) .....	28	12
Southern Mississippi (A) .....	0	0	Mississippi State (H) .....	24	12
Virginia Tech (H) .....	23	31	Memphis State (A) .....	26	7
Furman (H) .....	49	6	Virginia Tech (H) .....	38	15
Georgia Tech (A) .....	7	15	Florida (A) .....	21	16
N.C. State† (H) .....	14	0	Penn State* (N) .....	17	17
Auburn (A) .....	15	21	(*Gator Bowl)		
Florida (A) .....	0	7	<b>1968 (8-3)</b>	<b>FSU</b>	<b>Foe</b>
<b>1964 (9-1-1)</b>	<b>FSU</b>	<b>Foe</b>	Maryland (A) .....	24	14
Miami (A) .....	14	0	Florida (H) .....	3	9
TCU (A) .....	10	0	Texas A&M (H) .....	20	14
New Mexico State (H) .....	36	0	Memphis State (H) .....	20	10
Kentucky† (H) .....	48	6	South Carolina (A) .....	35	28
Georgia (A) .....	17	14	Virginia Tech (H) .....	22	40
Virginia Tech (A) .....	11	20	Mississippi State (A) .....	27	14
Southern Mississippi (H) .....	34	0	North Carolina State (A) .....	48	7
Houston (A) .....	13	13	Wake Forest† (H) .....	42	24
N.C. State (H) .....	28	6	Houston (N) .....	40	20
Florida (H) .....	16	7	LSU* (N) .....	27	31
Oklahoma* (N) .....	36	19	(*Peach Bowl)		
(*Gator Bowl)			<b>1969 (6-3-1)</b>	<b>FSU</b>	<b>Foe</b>
<b>1965 (4-5-1)</b>	<b>FSU</b>	<b>Foe</b>	Wichita State (H) .....	24	0
TCU (A) .....	3	7	Miami (A) .....	16	14
Baylor (H) .....	9	7	Florida (A) .....	6	21
Kentucky (A) .....	24	26	Tulsa (A) .....	38	20
Georgia (H) .....	10	3	Mississippi State (H) .....	20	17
Alabama (A) .....	0	21	South Carolina† (H) .....	34	9
VPI (H) .....	7	6	Virginia Tech (A) .....	10	10
Wake Forest† (H) .....	35	0	Memphis State (H) .....	26	28
N.C. State (A) .....	0	3	N.C. State (H) .....	33	22
Houston (H) .....	16	16	Houston (A) .....	13	41
Florida (A) .....	17	30	<b>1970 (7-4)</b>	<b>FSU</b>	<b>Foe</b>
<b>1966 (6-5)</b>	<b>FSU</b>	<b>Foe</b>	Louisville (H) .....	9	7
Houston (H) .....	13	21	Georgia Tech (A) .....	13	23
			Wake Forest (H) .....	19	14



Florida (H) .....	27	38
Memphis State (A) .....	12	16
South Carolina (A) .....	21	13
Miami (A) .....	27	3
Clemson (H) .....	38	13
Virginia Tech† (H) .....	34	8
Kansas State (H) .....	33	7
Houston (N) .....	21	53

**1971 (8-4-0)**

**FSU   Foe**

Southern Mississippi (N) .....	24	9
Miami (A) .....	20	17
Kansas (H) .....	30	7
Virginia Tech (A) .....	17	3
Mississippi State† (H) .....	27	9
Florida (A) .....	15	17
South Carolina (H) .....	49	18
Houston (A) .....	7	14
Georgia Tech (A) .....	6	12
Tulsa (H) .....	45	10
Pittsburgh (H) .....	31	13
Arizona State (A)* .....	38	45
(*Fiesta Bowl)		

**1972 (7-4)**

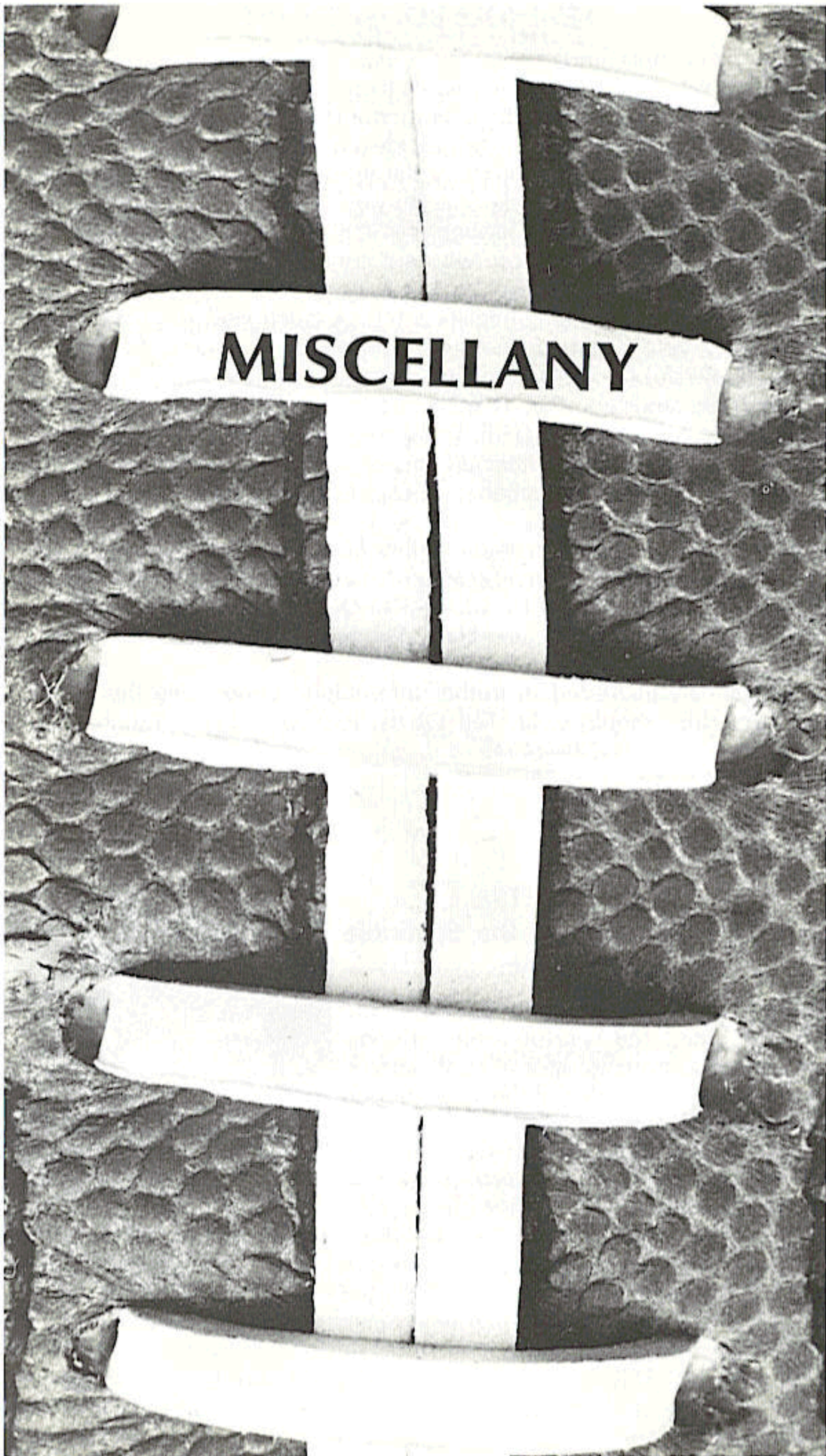
**FSU   Foe**

Pittsburgh (A) .....	19	7
Miami (A) .....	37	14
Virginia Tech (H) .....	27	15
Kansas (A) .....	44	22
Florida (H) .....	13	42
Mississippi State (N) .....	25	21
Colorado State† (H) .....	37	0
Auburn (A) .....	14	27
Houston (H) .....	27	31
Tulsa (H) .....	23	21
South Carolina (A) .....	21	24

**1973 (0-11)**

**FSU   Foe**

Wake Forest (A) .....	7	9
Kansas (H) .....	0	28
Miami (H) .....	10	14
Baylor (A) .....	14	21
Mississippi State (H) .....	12	37
Memphis State† (H) .....	10	13
San Diego State (A) .....	17	38
Houston (A) .....	13	34
Virginia Tech (A) .....	13	36
South Carolina (H) .....	12	52
Florida (A) .....	0	49





## SEMINOLE BOOSTERS, INC.

One of the most fundamental and important programs within any athletic department is that of providing funds to pay the educational expenses of student-athletes participating in all sports. Through voluntary support, the Seminole Boosters, Inc. hope to provide such funds.

Ted Ouzts, executive director of the group, said, "Now is the time for friends and alumni of Florida State to pull together. The potential of the University is tremendous. Through the Seminole Boosters, we hope to organize the thousands of those who are concerned with building the best athletic program in the nation.

"Whether they be intercollegiate or NCAA sanctioned programs, the final result of the best in athletic offerings is well within our reach, if we continue to be successful in our fund raising efforts."

Seminole Boosters, Inc. is made up of member representatives from throughout the state. Louis Hill, Tallahassee bank president, is chairman of the Board of Directors. Other officers of the Board include Doyle Pope, treasurer, Quincy businessman, and Don Grant, secretary, Perry businessman, Class of 1949.

In addition to the officers, four other Directors make up the executive committee. They are Jimmy Carter of Panama City, Class of 1958; Charles Booth of Orlando, Class of 1954; State Representative John Harlee of Bradenton, Class of 1964; and Harry Massey of West Palm Beach, Class of 1955.

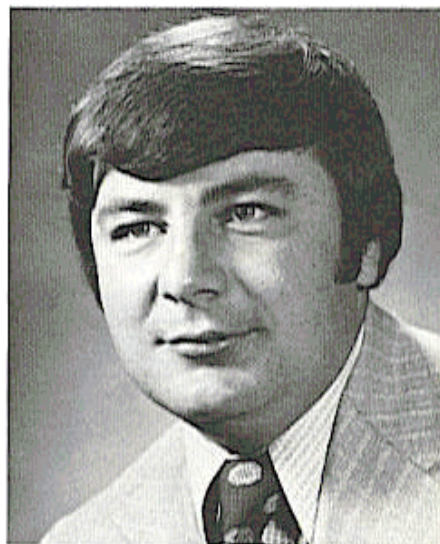
Individuals interested in further information concerning the Seminole Boosters, Inc. should write Ted Ouzts, P.O. Box 1353, Tallahassee, FL 32301, or call 904-224-4494.

### **TED J. OUZTS** **Executive Director of the Seminole** **Boosters, Inc.**

As executive director of the Seminole Boosters, Inc., Ted is responsible for coordinating the efforts to raise scholarship and private support funds for the total Florida State athletic program.

Joining Florida State in 1973 as Director of Annual Funds—he now wears two hats—Ted previously held various positions at the University of Georgia where he received the bachelor's degree in journalism and did graduate work. Included among his positions was three years of handling various duties for the Georgia Athletic Association.

A native of Cario, Ga., he has been extensively involved in fund raising for the past several years. Ted is married to the former Anne Phillips of Anderson, S.C. They have one son, Jason.





## THE MARCHING CHIEFS

One of the nation's more outstanding marching bands, the Marching Chiefs are an integral part of all Florida State home football games.

The 200-piece band has won acclaim from all parts of the world. They have made appearances on regional and national TV and have appeared in bowl games from Jacksonville to Texas. In 1970 they were runners-up in the ABC-TV National Band contest. In the summer of 1974, the Chiefs performed in Poland and Syria.

The Chiefs are under the direction of Richard Mayo, who begins his fifth season and his third as director. Snappily attired in their Garnet, Gold and Black uniforms, the Chiefs display a wide range of marching and musical talents which enable them to live up to their motto "We've never lost a halftime."

One of the prime reasons for the Chiefs spectaculars are the musical innovations and arrangements developed by Charles Carter, who works closely with Mayo developing the halftime shows. Also assisting with the band's direction is Harry Price, a graduate student in the School of Music.

The band's field leader is drum major Robert Duke, a junior from Leesburg. LuAnn Bailey leads "the most beautiful forward wall in football"—the Seminole Majorette Corps. The 16 girls who form this prize winning unit come from as far as Texas and New York.

## SEMINOLE RADIO NETWORK

Florida State's football games will be heard throughout most of the Southeast again this fall over the SEMINOLE RADIO NETWORK.

With WTNT in Tallahassee serving as the originating station, Florida State games are carried on a network of 30-35 stations in Florida, Georgia and Alabama. In addition, many of the Seminole games are broadcasted regularly over the wide-ranging Pick-Of-Dixie network.

Bob Shackleton, Florida State's director of Alumni Affairs, is the new "Voice of the Seminoles." Before coming to Florida State, Shackleton served for 19 years as the play-by-play announcer for Michigan State football.

Returning to do the "color", is Bill Owens, a veteran of Florida State announcing which includes football, basketball and baseball.

A 1948 graduate of Michigan State, Shackleton replaces Skip Caray, who did the play-by-play last season.



## MEMO TO THE MEDIA

This handbook has been prepared by the Florida State University Office of Sports Information to assist you during the Seminoles 1974 football season. For additional information contact:

**LONNIE BURT**

or

**HANK SCHOMBER**

**Director of Sports Information**

**Assistant SID**

Room 200 Tully Gym  
Florida State University  
Tallahassee, Florida 32306  
Area Code: 904  
Office Phone: 644-2790

Home Phone: 385-4480

Home Phone: 576-8922

**FACILITIES:** Florida State's press box is located on the west side of Doak S. Campbell Stadium with elevator service from the ground to all three of its levels. All media representatives and scouts are asked to enter through the Press Gate north of the elevator.

- (1) **RADIO-TV DECK** with individual booths for radio and TV broadcasters, home and visiting team coaches and stadium operations. Each booth is fully enclosed and sound proofed.
- (2) **PRESS DECK** with space for 90 working press and scouts; Western Union and telecopier space. Also photographic darkroom and wire photo space. Glass enclosed.
- (3) **PHOTO DECK** offers an unobstructed view for TV, movie and still cameras. Photographers are also allowed on the sidelines. Film loading room adjacent to photo deck. Additional darkroom facilities can be provided at the stadium.

**RESERVATIONS:** Space for working press, radio, TV and scouts will be allocated by the Sports Information Office. All requests for working credentials should be directed to this office. Requests should be made, in writing, early enough to allow for mailing of all credentials.

**TELECOPIER SERVICE** will be available. Please contact the Sports Information Office for availability of telecopiers and/or operators. If you intend to use your own telecopier and phone please have them located in the Telecopier Area of the Press Deck. **TELECOPIERS ARE PROHIBITED AT THE PRESS TABLES AT ALL TIMES.**

**TELEPHONE** orders should be placed directly with **CENTRAL TELEPHONE COMPANY** in Tallahassee. Have them contact Hank Schomber for location.

**SERVICE:** Play-by-play, first quarter, halftime and complete final statistics are provided. Play-by-play announcements are broadcast on the press deck. When possible, post game comments from coaches and players are made available. Refreshments are available on all decks. Individuals will also be made available for work as spotters and/or telecopier operators if requests for the same are made at least five days prior to the game.

**PARKING:** Special parking is available at the stadium. Permits are issued on a game basis. They are distributed by the Sports Information Office and requests should be made at least two weeks in advance of a given game.

**BASKETBALL SCHEDULE  
1974-75**

<b>DATE</b>	<b>OPPONENT</b>	<b>SITE</b>
Nov. 22—Fri.	Australia	Tallahassee
Nov. 30—Sat.	Valdosta State	Tallahassee
Dec. 3—Tues.	Illinois State	Tallahassee
Dec. 7—Sat.	Marshall	Tallahassee
Dec. 9—Mon.	Memphis State	Memphis, TN
Dec. 14—Sat.	Louisville	Tallahassee
Dec. 17—Tues.	Cal. State Bakersfield	Tallahassee
Dec. 21—Sat.	Ohio University	Tallahassee
Dec. 26—Thurs. 27—Fri.	Citizen's Invitational (Louisville, Purdue, W. Ky.)	Louisville, KY
Jan. 4—Sat.	Eastern Kentucky	Tallahassee
Jan. 7—Tues.	Wisconsin-Milwaukee	Tallahassee
Jan. 11—Sat.	Biscayne	Tallahassee
Jan. 15—Wed.	South Florida	Tampa
Jan. 18—Sat.	Hofstra	Tallahassee
Jan. 20—Mon.	Biscayne	Miami
Jan. 25—Sat.	Canisius	Buffalo, NY
Jan. 27—Mon.	New Mexico	Albuquerque, NM
Feb. 1—Sat.	UT Chattanooga	Tallahassee
Feb. 6—Thurs.	Jacksonville	Tallahassee
Feb. 9—Sun.	Georgia Southern	Savannah, GA
Feb. 13—Thurs.	Georgia State	Tallahassee
Feb. 19—Wed.	Jacksonville	Jacksonville
Feb. 22—Sat.	Georgia Southern	Tallahassee
Feb. 24—Mon.	Mercer	Tallahassee
Feb. 28—Fri.	South Florida	Tallahassee
March 5—Wed.	Stetson	Deland



# CHALLENGE '74 BE THERE!

September 14 ..... PITTSBURGH

September 21 ..... COLORADO STATE

September 28 ..... at Kansas

October 5 ..... BAYLOR

October 12 ..... at Alabama

October 19 ..... FLORIDA

October 26 ..... at Auburn

November 2 ..... at Memphis State

November 9 ..... at Miami

November 16 ..... VIRGINIA TECH

November 23 ..... HOUSTON