

**1966
FOOTBALL
HANDBOOK**

**FLORIDA STATE
UNIVERSITY**

THE FLORIDA STATE UNIVERSITY

1966 FOOTBALL SCHEDULE

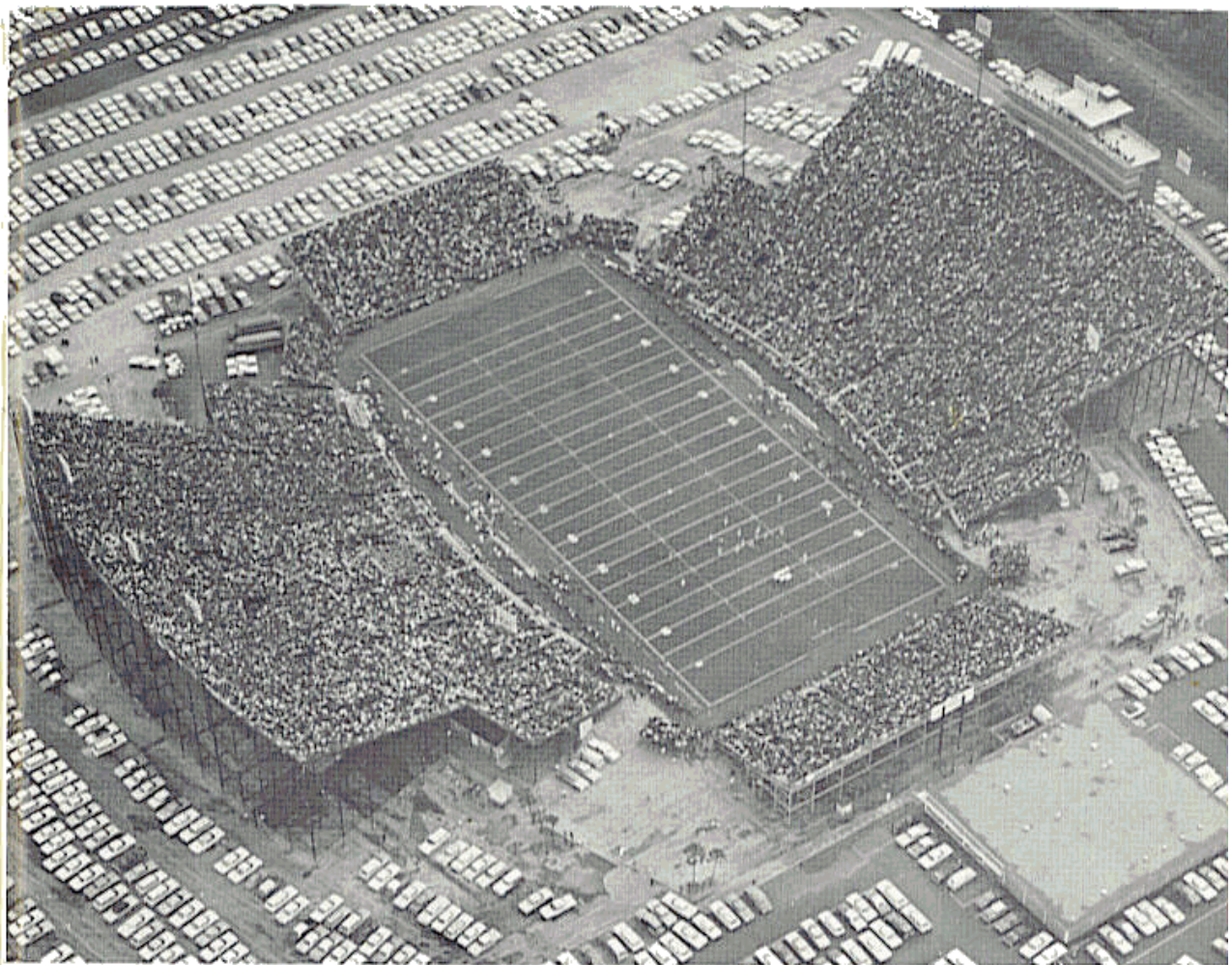
DATE	OPPONENT	SITE	TIME
Sept. 17	Houston	Tallahassee	8:00 p.m. EST
Sept. 24	Miami	Miami	8:00 p.m. EST
Oct. 1	Open Date		
Oct. 8	Florida	Tallahassee	2:00 p.m. EST
Oct. 15	Texas Tech	Lubbock, Texas	7:30 p.m. CST
Oct. 22	Mississippi State	Tallahassee	8:00 p.m. EST
Oct. 29	V.P.I.	Blacksburg, Virginia	2:00 p.m. EST
Nov. 5	South Carolina	Columbia, S. Carolina	2:00 p.m. EST
Nov. 12	Syracuse	Syracuse, New York	1:30 p.m. EST
Nov. 19	Wake Forest	Tallahassee	2:00 p.m. EST
Nov. 26	Maryland	Tallahassee	8:00 p.m. EST

1965 RESULTS (4-5-1)

	FSU	OPP.	CROWD
At Texas Christian	3	7	18,506
Baylor	9	7	28,900
At Kentucky	24	26	37,500
Georgia	10	3	40,112
At Alabama	0	21	43,936
Virginia Tech	7	6	22,536
Wake Forest	35	0	25,600
At N. C. State	0	3	22,000
Houston	16	16	25,135
At Florida	17	30	49,513
	<hr/> 121	<hr/> 119	<hr/> 313,738

1966 FRESHMAN FOOTBALL SCHEDULE

DATE	OPPONENT	SITE	TIME
Sept. 24	Miami	Sarasota	8:15 p.m.
Oct. 15	Florida	Gainesville	2:00 p.m.
Oct. 29	Southern Mississippi	Tallahassee	8:00 p.m.
Nov. 12	Georgia Tech	Moultrie, Georgia	8:00 p.m.



DOAK S. CAMPBELL STADIUM

FLORIDA STATE UNIVERSITY

LOCATION: Tallahassee, Florida

PRESIDENT: Dr. John E. Champion

ENROLLMENT: 14,500

COLORS: Garnet and Gold

NICKNAME: Seminoles

BAND: Marching Chiefs

ATHLETIC DIRECTOR: Vaughn Mancha

HEAD FOOTBALL COACH: Bill Peterson

ATHLETIC BUSINESS MANAGER: Ronald Melton

SPORTS INFORMATION DIRECTOR: Bill Bunker

STADIUM: Doak S. Campbell (40,500)

CONFERENCE: Independent

1966 FOOTBALL HANDBOOK

TABLE OF CONTENTS

1966 Schedule	Inside Front Cover
1965 Results	Inside Front Cover
1966 Freshman Schedule	Inside Front Cover
General Information	1
Road Headquarters	2
Florida State University	4
Dr. John E. Champion, President	5
Athletic Staff Directory	6
Athletic Committee	6
Vaughn Mancha, Athletic Director	8
Bill Peterson, Head Football Coach	9
Assistant Football Coaches	10-14
Athletic Staff	14-16
1966 Outlook	18-19
Personnel Analysis	20
Depth Chart	21
1966 Varsity Roster	22-23
Player Profiles	24-35
1966 Freshman Roster	36
Future Schedules	38
The 1966 Opponents	29-48
1965 In Review	50-59
1965 Statistics	60-61
Fred Biletnikoff	62
Awards	62
All Americans	63
Records, Best Performances	64-69
All-Time Results	70-71
Past Coaches, Captains, Records	72
Seminole Boosters, Inc.	74
The Seminole Football Network	75
The Marching Chiefs	75
Press Information	76
1966 Basketball Schedule	Inside Back Cover
Opponents' Composite Schedule	Back Cover

ROAD HEADQUARTERS

Miami	DeLido Hotel, Miami Beach
Texas Tech	Plainsman Hotel, Lubbock, Tex.
Virginia Tech	Roanoke Hotel, Roanoke, Va.
South Carolina	Fremont Motor Inn, Columbia, S.C.
Syracuse	Syracuse Hotel, Syracuse, N.Y.

THE UNIVERSITY



FLORIDA STATE UNIVERSITY

Now engaged in its 110th year of service to the citizens of Florida and the nation, Florida State University is a coeducational, public institution of higher learning with a 1966 fall enrollment of more than 14,000 students, and a projected enrollment of 25,000 students by 1975.

As one of the state's two senior universities in a rapidly expanding system of higher education, Florida State University plays a significant role at both the graduate and undergraduate levels of teaching, research and service to the state.

Located in the state's capital city of Tallahassee, Florida State's main campus comprises 332 highly-populated acres of land. Founded in 1875 as the Seminary West of the Suwanee, the institution marked its 109th birthday in February, 1966. Its evolution to full, coeducational university status in 1947 was marked by steady growth and strength — through several stages of development as a liberal arts college for women and/or men, as history dictated.

The University's academic divisions currently include the Graduate School (in which more than 2,200 students are currently enrolled), nine undergraduate schools and colleges, and professional College of Law which opened in September of 1966. The undergraduate divisions include the College of Arts and Sciences, the School of Education, School of Music, School of Home Economics, the Library School, School of Social Welfare, School of Business, School of Nursing and the School of Engineering Science. The Graduate School administers eight major research facilities and institutes of graduate research and faculty research programs. These facilities include the Institute of Government Research, Institute of Human Development, Institute of Human Learning, Institute of Social Research, Institute of Molecular Biophysics, the Oceanographic Institute, a Computing Center and a Nuclear Research Program.

Currently under construction on the northwest corner of the campus is a rapidly expanding network of modern facilities for space-age research known as the University's Science Center. This center will have 22 classrooms and laboratory buildings when completed under the 10 year plan which spans the current 1965-75 decade and projects some 55 major additions or improvements to the physical plant of the campus.

THE PRESIDENT

DR. JOHN E. CHAMPION



Dr. John E. Champion is the fourth distinguished educator to serve as full-time president of the Florida State University since it became coeducational and achieved university status in 1947. The youngest of 10 chief executives in the University's 110-year history, he has served as President since June 22, 1965.

Born on May 11, 1922, in Chipley, Ga., (now called Pine Mountain) the 44-year-old business educator began his professional career in college teaching at the University of Georgia's College of Business Administration, his alma

mater. From 1948 to 1956 he taught accounting there, leaving with the rank of associate professor to join the faculty at Florida State.

Dr. Champion's 10-year affiliation with Florida State has included service as professor of accounting, assistant dean of the School of Business and three years as vice president for administration — from August, 1962, until his appointment as acting president of the University, in 1965. As vice president, he supervised a \$26 million building program — largest in the history of the University.

He and Dr. Homer A. Black, a fellow professor of accounting at FSU, are authors of a textbook, *Accounting in Business Decision*, published by Prentice-Hall in 1961. This book, being revised this year, is widely used in colleges and universities.

The President holds the Ph.D in business administration from the University of Michigan, and the B.S. and M.S. degrees from the University of Georgia, which designated him, this year, as a "Distinguished Alumnus" of its College of Business Administration.

Dr. Champion was married on June 4, 1955, to Mary Lanier of West Point, Ga., the daughter of Mr. and Mrs. Cam B. Lanier and a kinswoman of the famous 19th Century poet, Sidney Lanier. She is a graduate of Auburn University. The Champions have two children, Sally Lanier, 9, and John E. Jr., 7.

Following graduation from the University of Georgia he entered the Army and during World War II served both in the infantry and as a quartermaster officer in the South Pacific. He was discharged as a captain in 1946.

Dr. Champion is a member of Phi Beta Kappa, Phi Kappa Phi, Beta Gamma Sigma, Omicron Delta Kappa, Gold Key, Alpha Phi Omega, Beta Alpha Psi, Delta Sigma Pi, American Accounting Association and the American Institute of Accountants. He was named an honorary member of the FSU Chapter of Kappa Delta Pi in February, 1966 — thus becoming one of only two honorary members in the 40-year history of the chapter.

Dr. Champion is a deacon in the Faith Presbyterian Church and is active in civic organizations among them the Tallahassee Rotary Club and the Tallahassee Chamber of Commerce, of which he is a board member and former vice president. He was chairman of the 1964 United Fund campaign in Leon County which exceeded its goal, and was vice president of the United Fund in 1965.

He has been active in several campus organizations at FSU, among them the Alpha of Florida Chapter of Phi Beta Kappa, which he served as president in 1961-62.

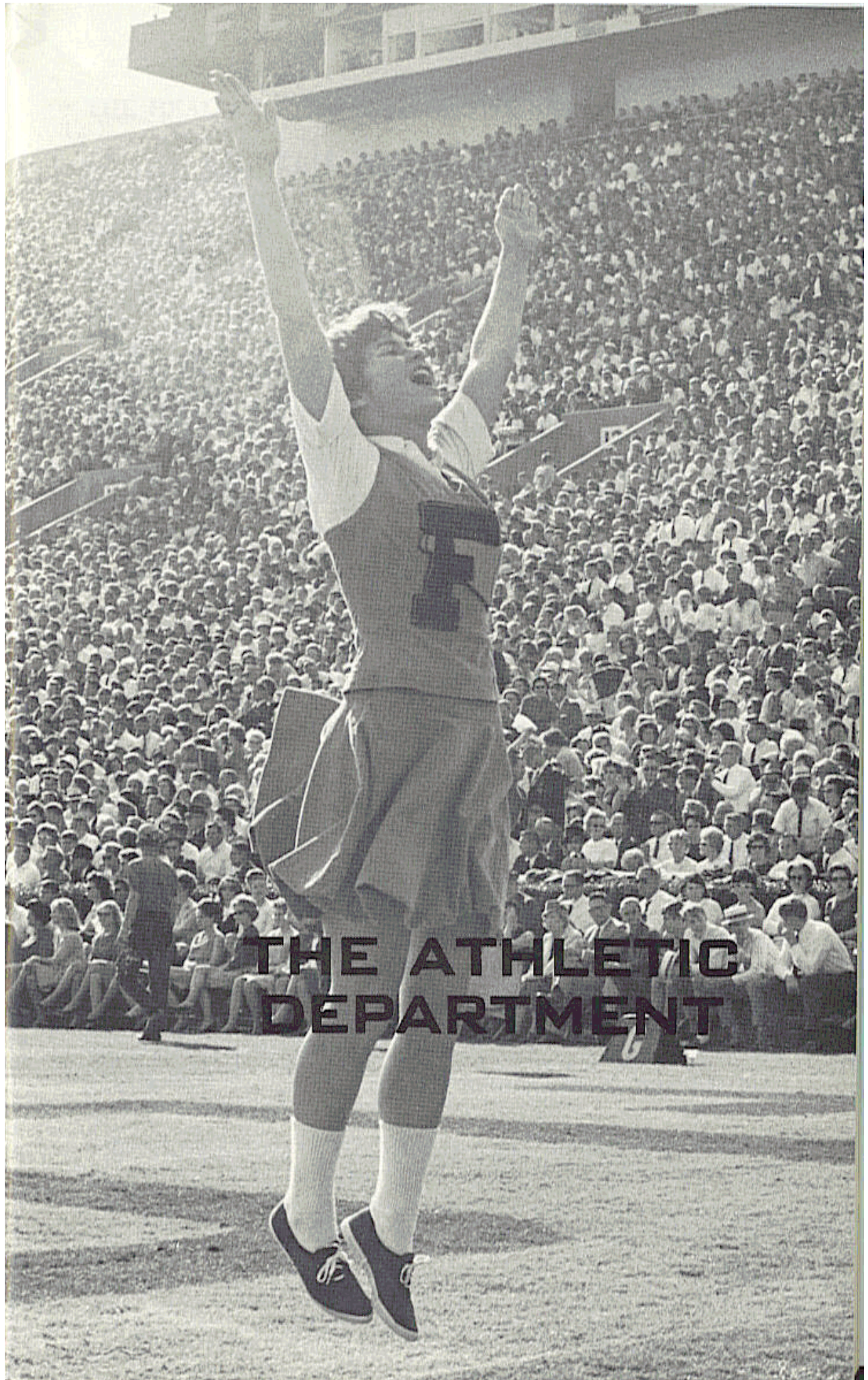
The FSU President lists his hobbies as hunting, fishing, gardening, bowling and coin collecting. One of his ambitions is to get back into the classroom to teach an undergraduate course.

ATHLETIC STAFF DIRECTORY

NAME	POSITION	PHONE
Bone, Jim	Assistant Trainer	599-2775
Breaux, Don	Assistant Football Coach	599-2775
Bunker, Bill	Sports Information Director	599-2095
Clendenin, Bill	Assistant Basketball Coach	599-5080
Crutchfield, Bill	Assistant Football Coach	599-2775
Dixon, Tillman	Equipment Manager	599-2775
Durham, Hugh	Head Basketball Coach	599-3080
Fauls, Don	Head Trainer	599-2775
Frye, Mrs. Dolores	Administrative Assistant	599-3413
Hatfield, Fred	Head Baseball Coach	599-2640
Harbison, Bob	Assistant Football Coach	599-2775
Jackson, Bobby	Assistant Football Coach	599-2775
Lanford, Ernie	Assistant Baseball Coach	599-2640
Long, Mike	Head Track Coach	599-2640
MacLean, Ken	Football Recruiter	599-2775
Mancha, Vaughn	Athletic Director	599-3413
McDowell, Gene	Freshman Football Coach	599-2775
Melton, Ronald	Athletic Business Manager	599-3413
Peterson, Bill	Head Football Coach	599-2775
Roberts, Ruth	Football Secretary	599-2775
Savage, Jeff	Academic Counselor	599-3080
Schmidt, Neil	Assistant Football Coach	599-2775
Stults, N. B. (Bim)	Head Swimming Coach	599-2640
Thigpen, Claude	Athletic Ticket Manager	599-3414
Wood, Lex	Head Tennis Coach	599-2640
Wyant, Gary	Assistant Football Coach	599-2775

FLORIDA STATE'S ATHLETIC COMMITTEE

MODE L. STONE, Chairman; CLAUDE FLORY, THOMAS WRIGHT, COYLE MOORE, J. M. PLANT, ELSTON ROADY, MARY ALEXANDER, ROBERT ERNEST.



**THE ATHLETIC
DEPARTMENT**



VAUGHN MANCHA

One of the best known and most popular figures in Southern football circles is Florida State's Athletic Director Vaughn Mancha.

Practically as legendary at the University of Alabama as Don Hutson and Harry Gilmer, Mancha assumed his present position as director of Florida State's seven-sport intercollegiate athletic program in November, 1959. He has tackled the job with all the fervor that characterized the performance that

made him a 240-pound All-Southeastern Conference center for an amazing four years at Alabama (1944-48), and everyone's All American.

Mancha, who gained wide popularity with Florida State officials and fans while serving as line coach from 1952 through 1956, returned as athletic director following three years at Columbia University where he served as line coach under Buff Donelli.

Born in Sugar Valley, Ga., in 1921, Mancha moved to Birmingham, Ala., at an early age, and entered Alabama in 1944. During Mancha's four seasons, Red Drew's Crimson Tide rolled up a 30-9-2 record and played in three major bowl games—against Duke in the 1945 Sugar Bowl, Southern California in the 1946 Rose Bowl and Texas in the 1948 Sugar Bowl.

He was such a standout in the '45 Sugar Bowl that he was named to the All-Time Sugar Bowl team (1945-52 period). In 1955 he was named to Alabama's All-Time Crimson Tide.

Mancha played with the professional Boston Yanks in 1948, then became head coach at Livingston (Ala.) State College in 1949 where his teams won 21 of 28 games in three years before he came to FSU in 1952.

He completed all work toward his doctorate except the dissertation while at Columbia.

Married to the former Sybil Little of Birmingham, he is the father of three children, Clare, 17; Nan, 14; and Dit, 7.

THE HEAD COACH



BILL PETERSON

Beginning his seventh year as Florida State's head coach, Bill Peterson is recognized as one of the profession's most imaginative members.

The 44-year old Ohioan was one of the first major college football coaches in the nation to install a wide-open pro-type attack, and though the first years were lean ones, Peterson held to his belief that the forward pass was far from its potential as a weapon on the college gridiron.

In 1964, playing with the first team recruited entirely by him and his staff, Peterson's football team rode the talents of passer Steve Tensi and All American flanker back Fred Biletnikoff to an 8-1-1 record and a 36-19 victory over Oklahoma in the Gator Bowl. That year Florida State also scored its first victory over down-state-rival Florida.

Peterson's belief in the forward pass has not led him to neglect other facets of the game. Opponents have found the Seminole defense among the nation's toughest in recent years.

As an organizer, Peterson runs his practice sessions with military precision. As a leader, he continues to drive home the old-fashioned elements for winning: desire, dedication, determination.

His leadership is not restricted to the football field. He is a member and prominent figure in the Fellowship of Christian Athletes, and continues to win friends and supporters for Florida State in an almost endless chain of personal appearances throughout the state of Florida and the Southeast.

Peterson graduated from Ohio Northern University, where he was an end and team captain, in 1946. After an eminently successful coaching tenure in Ohio high school football circles, he joined the staff of Louisiana State University as offensive line coach, and was credited with the procurement and development of many of the players on Paul Dietzel's 1958 national champions.

The Seminole head coach has done graduate work at both West Virginia and LSU. He is a member of the Methodist Church.

He and his wife Marjorie have five sons: Ron, 23, Tommy, 17, Jon, 13, Bill, 9 and David 8.



BILL CRUTCHFIELD

First Assistant

Offensive Chief

Florida State's wide-open offensive maneuvers are the responsibility of Bill Crutchfield, now in his second year on the Seminole staff.

A halfback at the University of North Carolina in the forties, Crutchfield began his coaching career at Atlantic Christian College in Wilson, N. C., in 1949. He was Bill Peterson's assistant

at Mansfield (Ohio) High School in 1951-52, then spent four years as head coach at Presbyterian College in Clinton, S. C.

From 1957-1959 he was backfield coach at Furman and Wake Forest. He assumed the same position at Miami in 1960, and remained there until coming to Florida State last year.

A native of Orangeburg, S. C., Crutchfield holds BA and MA degrees from North Carolina.

He and his wife Rachel have four children.

BOB HARBISON

Defensive Chief

Now in his 18th year as a member of the Florida State coaching staff, Bob Harbison holds the longevity record among Seminole coaches.

A native of Evansville, Ind., Harbison came to Florida State in 1948, just before the Seminoles fielded their second football team of the modern era. He has served under Don Veller, Tom Nugent, Perry Moss and Bill Peterson.



He was an outstanding guard under Bo McMillian at Indiana in 1945-47 and played in the 1947 Blue-Gray game in Montgomery, Ala.

After many years as an offensive coach, Harbison switched to defense in 1964 with outstanding results. His ability as a scout and recruiter has been of prime importance throughout Florida State's climb to a successful football program.

He and his wife, Jayne, have four Children.



DON POWELL

Offensive Line Coach

Don Powell is one of three Florida State alumni on the Seminole coaching staff.

Powell was a four year letterman at tackle under Tom Nugent and co-captained the 1955 Seminoles. Before coming to Florida State he was an All State tackle at Woodlawn High School in Birmingham, Ala.

He received his BS in 1956, then spent two years in Korea with the Army, returning to Florida State in 1959 for his MA.

After three years as offensive line coach at Tampa Chamberlain High School, he went to Wichita in the same capacity, returning to his alma mater in 1964.

He and his wife, Judy, have two children.

NEIL SCHMIDT

Defensive Secondary

Former Purdue star Neil Schmidt joined the Florida State staff in 1965.

While at Purdue, Schmidt was an outstanding football halfback and basketball guard.

He served with the Seabees in the South Pacific during World War II, was awarded a battle star on Okinawa, then returned to Bluffton, Ohio to finish high school. At Bluffton he made all-state in both football and basketball.

Schmidt received his bachelor's degree from Purdue in 1951, and his master's from Bowling Green in 1985.

During the 1950s he coached high school football, basketball and track in Ohio and Indiana. He was backfield coach at Wichita University in 1960-61, and held the same position at Texas A&M for two years before coming to Florida State.

Schmidt and his wife Rosemary have two children.





DON BREAU

Receivers

Don Breaux, former quarterback with San Diego in the American Football League, brings his valuable professional experience to work with Florida State's pass receivers.

As an undergraduate at McNease State College in Lake Charles, La., Breaux was an All Gulf States Conference Quarterback for three years, setting every passing record the school had.

Upon graduation in 1961 he signed with the Houston Oilers, but was released and played a year with the semi-pro Jacksonville, Fla. Robins. He went to San Diego in 1963 and was a member of the Chargers for three years. Last year he was back-up quarterback to John Hadl.

This is Breaux's first coaching job. He is the only coach on the Florida State staff with professional experience.

He and his wife Harleen have two daughters.

BOBBY JACKSON

Defensive Ends

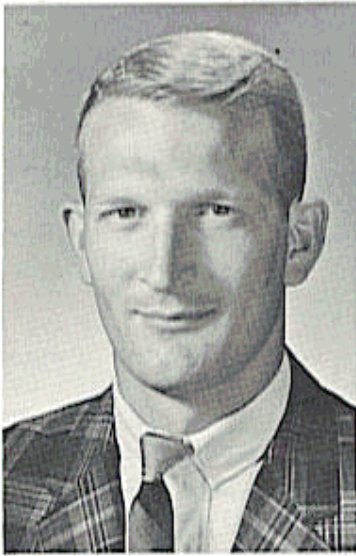
A Little All American halfback for two years at Howard College, Bobby Jackson begins his first season as a full-time assistant with the Seminoles.

In four years at the Birmingham, Ala., college (now Samford University), the Forsythe, Ga. native gained over 2,000 yards rushing and set numerous school records. Following graduation in 1962 he attended George Peabody College in Nashville, Tenn., and received his MA degree in physical education.



He spent two years as backfield coach at Shades Valley High School in Birmingham before joining the Florida State staff as a graduate assistant in 1965.

He and his wife Nancy have no children.



GARY WYANT

Linebackers

The newest addition to the Florida State coaching staff is Gary Wyant who came to the Seminoles after an outstanding tenure as a player and coach at the University of Wichita.

Wyant was a football, basketball and wrestling star at Wichita East High School. He quarterbacked his high school team to an Arkansas Valley championship as a sophomore in '56,

played third base on a state championship baseball team in '57, then won the state individual batting championship in '58.

He began his playing career at Wichita as a quarterback, but served as a defensive specialist on the Shocker teams which won the Missouri Valley championship in 1960-61 and the Sun Bowl in '61.

Following his graduation with a BA in education with a minor in English in 1961, he joined the Shocker staff as a graduate assistant and eventually moved into a full-time role. Last season he was first assistant and defensive chief.

He and his wife Betty have one child.

GENE McDOWELL

Freshman Coach

High on the list of great Seminole linebackers is the name of Gene McDowell, who begins his first year as a full time assistant coach this season.

McDowell, a native of Quincy who played his high school football at Waycross, Ga., was a third team All America selection by the Associated Press for Florida State in 1962, and was chosen as the Seminoles' Most Valuable Player that year.



A bachelor, McDowell spent a two year tour with the Army Military Police on Okinawa before returning to Florida State as a graduate assistant coach last year.



KEN MacLEAN

Head Recruiter

The drive and ability by which Ken MacLean became one of Florida's most successful high school coaches make him a natural choice to head up Florida State's hunt for young talent.

As coach of Florida High, adjacent to the Florida State campus, MacLean won 61 games, lost 17 and tied four. His 1961 team was undefeated and untied in ten games. A native of Quincy,

MacLean played for both Florida and Florida State. He was a regular at Florida in 1947, then transferred to FSU when it became co-educational. MacLean was the team's leading ground gainer, passer and punter here in 1948-49.

He coached at Chattahoochee High School for two years before returning to Florida State for an MA in 1952, during which time he also served as an assistant coach. He came to Florida High in 1955 after a year at Cocoa, and joined the Florida State staff in 1963 as freshman coach.

He and his wife, Bess, have four children.

RONALD MELTON

Athletic Business Manager

A former Seminole baseball standout, Ronald Melton has been Florida State's Athletic Business Manager since 1959. The varied aspects of Melton's job include supervision and promotion of ticket sales, coordination of Florida State's athletic travel plans, and to assist in the planning and execution of Florida State's athletic budget. A 1953 graduate of the School of Business, Melton held positions as Assistant Athletic Business Manager and Assistant Baseball Coach before assuming his present duties.



JEFF SAVAGE

Academic Counselor

A full time member of the Athletic Department, Jeff Savage performs an invaluable job in guiding Florida State athletes in their academic careers. A native of Germantown, N. C., Savage holds a BS and MA in history and physical education from Appalachian State Teachers College in Boone, N. C. and has done doctoral work at FSU. Internship coordinator for three years in the FSU School of Education before assuming his present position, Savage has taught and coached football, basketball in the public schools of North Carolina and Florida.



DON FAULS

Trainer

Popular Don Fauls begins his 11th year as chief overseer of Seminole aches and pains. A native of Ithaca, N. Y., he graduated in 1948 from Ithaca College with a degree in physiotherapy. He was associated with the Greensboro Patriots of the Carolina Baseball League and the St. Louis Cardinal chain in addition to extensive hospital and clinic work before joining the Florida State staff in 1954.

TILLMAN DIXON

Equipment Manager

Tillman Dixon, known as "Mr. Dix" to Florida State football players for the past 13 years, is charged with the procurement, issuance and maintenance of all Seminole equipment. Dixon, a native of Esto, designed the lockers which were located under Campbell Stadium, and played a major role in the design of FSU's ultra-modern facilities in the new Seminole field house.





BILL BUNKER

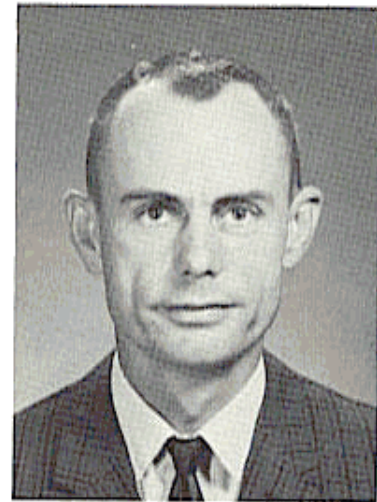
Sports Information Director

A 1959 graduate of Florida State, Bill Bunker wrote sports for the Tallahassee Democrat and the Houston (Texas) Press before becoming FSU's Sports Information Director in May of 1963. Following his graduation from FSU, Bunker served 3½ years in the Marine Corps, and is a captain in the Marine Reserves.

CLAUDE THIGPEN

Ticket Manager

Getting busier each year is Claude Thigpen, Florida State's ticket manager. The Greenville native handles ticket orders and sales for all Florida State sports and supervises the operation at the Campbell Stadium gates. A 1947 graduate of Greenville High School, Thigpen worked in the University accounting office for seven years before joining the athletic department.



MRS. DOLORES FRYE

Executive Secretary

Many and varied duties in the administration of Florida State's athletic program come under the supervision of Mrs. Dolores (Dee) Frye who is beginning her eleventh year in the department. A native of Quincy, Dee is married to Jim Frye, an account executive in the Tallahassee Democrat's advertising department. She is the mother of a daughter, Lisa, 3.





**THE 1966
SEMINOLES**

THE SEMINOLE

Florida State faces its toughest schedule in history with a team comprised of untried youngsters in key positions.

Although 22 lettermen return from last year's squad which finished with a 4-5-1 record, only nine starters are back and many of them will be playing unfamiliar positions. However, there is enough experience available to season the lineup and the graduates of the best freshman team in school history could make this one of the most exciting Seminole teams ever.

With two exceptions, the entire defensive team was erased by graduation. Most of these players had been starters for three years and formed the backbone of the great Seminole defensive unit of 1964.

There is no quarterback on the roster with over ten minutes playing time, indeed there is only one varsity returnee at this position. Kim Hammond who served as Ed Pritchett's substitute last season held off determined challenges by sophomores Bill Cappleman and Gary Pajcic during spring practice in a battle for the starting job which has still to be resolved.

Hammond is equipped with the all around skills necessary for a quarterback in Florida State's complicated pro-type attack. Cappleman has a good throwing arm, and Pajcic is a tremendous athlete who could start defensively if he doesn't win the quarterback position.

Whoever winds up at quarterback will find one of the finest groups of receivers in the nation awaiting his passes. Three lettermen — two ends and a flanker back — return from last year, and the flanks are deep in talented prospects.

Flanker Bill Cox, split end Lane Fenner and tight end Thurston Taylor are the pre-season picks to start ahead of an outstanding field which includes lettermen Jerry Jones and T. K. Wetherell, along with veteran Donovan Jones and sophomore prospects Chip Glass and Ron Sellers.

Two lettermen man the offensive tackle slots, although one, Larry Kissam, played guard last year. Kissam adapted well enough to the shift to be named the outstanding offensive performer in spring practice. David Braggins was a part-time starter last season and is expected to handle the other side. Depth here is a problem as it is throughout the interior line.

OUTLOOK IN 1966

Florida State Coach Bill Peterson considers guard Del Williams one of the nation's finest linemen. A starter at tackle for two years, Williams is playing guard as a senior in order to lend his considerable talents to shoring up the middle of the line. On the other side of center is Edwin Pope, another veteran blessed with outstanding speed. Behind Pope is Larry Williamson who has played two seasons as a reserve, lettering last year.

John Stephens played every minute at offensive center last year, and can probably do it again if he's not injured. However, Wayne McDuffie, on the shelf with injuries last year, is expected to give this position more depth.

The Seminole running game should be more than adequate with the M&M boys back in harness. Bruising fullback Jim Mankins was the leading ground gainer last year and halfback Bill Moreman had an exciting sophomore season. Mike Blatt lettered as a reserve on defense last year, but will back up Mankins this fall. Two year lettermen fullback Wayne Giardo can still be counted on for action in the backfield, but is currently scheduled to start at one defensive end. Larry Green, a letterman in '64 injured last season, is back, and sophomore John Hurst is a good prospect up from the freshman team.

Defensively, Charles Pennie and Bill Campbell are the only returning starters, while Pat Conway saw action between injuries. Pennie is solid gold at one tackle and Campbell is the team's punt return specialist who will also man one of the corners.

Neither Giardino nor Bob Menendez has played defensive end, but both are athletes. H. T. Waller, Jim Brown and Doug Gurr are the reserves.

Middle guard is well set with Mike Bugar threatening to be one of the outstanding Seminole performers.

Pennie and Jay Mac Matthews can operate successfully at the tackle positions, but little depth is there.

The biggest defensive problem is at perhaps the most important position. Three linebackers graduated, and these positions will be filled by sophomores. Dale McCullers will be a good one with experience, but it will take some experimentation in the fall to fill the other spot.

In addition to Campbell and Conway the defensive backfield will feature a wealth of untested talent. Marty Kolbus and Howell Montgomery both have the potentially outstanding label, and Butch Riser, Walter Sumner and Pajcic were also impressive in the spring.

Pete Roberts, last year's leading scorer, returns to handle kickoffs, conversions and field goals, and John Hosack is a better than adequate punter.

PERSONNEL ANALYSIS

Position	Lettermen Returning (22)	Seniors (15)	Juniors (19)	Sophomores (62)	Lettermen Lost (18)
Offensive ends	J. Jones Taylor	D. Jones	J. Jones Fenner Taylor	Glass Yeldell Carey Lewis	Wettstein Blankenship
Defensive ends	None	Giardino Menendez	Waller	Brown Gurr Archer Hanlon	D'Allessandro Garvin
Offensive tackles	Williams Braggins	Kissam Braggins	None	Rhodes Lohse Curchin Fenwick Johnson	Mangan
Defensive tackles	C. Pennie Matthews Bugar	C. Pennie Matthews	None	Douglass Kinnan Barton Dew Hlett Vistart	F. Pennie
Offensive guards	Kissam Williamson Pope	Pope Williams Williamson	None	Hart Walther Elliott Douglas Fields Lenker	Avezzano
Middle guards	None	None	Bugar	Pendleton Elliott Janes Vohun	Shinholser
Centers	Stephens McDuffie	Stephens McDuffie	None	Albritton Sewell Mosley J. Richardson Urich	None
Linebackers	Blatt	None	None	McCullers Chapman LaCour Zion McLean	McDowell Parrish Lurie
Quarterbacks	None	None	Hammond	Pajic Cappleman Burton Hiatt Burkhardt	Pritchett
Running backs	Moreman Green	None	Moreman Green	Hurst Crowe Williams Eagerton Gunter	Spooner Petko
Flanker backs	Wetherell	None	Wetherell	Cox Sellers	Revell
Fullbacks	Giardino Mankins	Mankins	Blatt	Benson Mercer	None
Defensive backs	Campbell Conway	Campbell Conway	Riser B. Richardson	Montgomery Kolbus Sumner Eason Whitehead Bailey Coley	Bibent Ehler Massey
Place kickers	Roberts	None	Roberts	Loner	None
Punter	Hosack	Hosack	Taylor	Chapman	None

TENTATIVE DEPTH CHART

(Based on early summer estimates; lettermen in bold type)

OFFENSE		DEFENSE	
SE	Lane Fenner Jerry Jones Donovan Jones	LE	Wayne Giardino H. T. Waller
LT	David Braggins Jack Fenwick	LT	Charles Pennie Rommy Vistart
LG	Edwin Pope Larry Williamson	LB	Dale McCullers Jeff Chapman
C	John Stephens Wayne McDuffie	MG	Mike Bugar Frank Vohun Billy Joe Janes
RG	Del Williams Ken Hart	LB	Jeff LaCour Richard McLean
RT	Larry Kissam Jeff Curchin	RT	Jay Mac Matthews John Douglass
TE	Thurston Taylor Chip Glass	RE	Bob Menendez Doug Gurr
QB	Kim Hamond Bill Cappleman Gary Pajcic	S	Marty Kolbus Gary Pajcic
LHB	Bill Moreman John Hurst Larry Green	S	Howell Montgomery Pat Conway
RHB	Bill Cox Ron Sellers T. K. Wetherell	CB	Bill Campbell Bill Richardson
FB	Jim Mankins Mike Blatt	CB	Butch Riser Walter Summer

WHERE THEY'RE FROM

Florida 61, Georgia 14, Ohio 9, Alabama 4,
Indiana 2, California 3, Nevada 1.

1966 FLORIDA STATE FOOTBALL ROSTER

Name	Pos.	Ht.	Wt.	Age	Class	Last Year's Status	Hometown	High School (Coach)
Albritton, Keith	C	6-3	210	18	Soph.	Frosh	Avon Park	Avon Park (Joe Fronza)
Archer, Ted	E	6-6	200	20	Soph.	Frosh	Pensacola	Escambia (Bill Gorday)
Bailey, Jim	HB	6-2	181	20	Soph.	RS	Wilmington, O.	Wilmington (Dean Waddell)
Barton, Dave	T	6-2	221	19	Soph.	Frosh	Winter Haven	Winter Haven (Cal Tripplett)
Benson, Joe	FB	5-10	192	21	Soph.	RS	Birmingham, Ala.	Shades Valley (Bill Legg)
Blatt, Mike	FB	5-11	200	20	Jr.	1VL	Key West	Key West (Harold Allen)
Braggins, David	T	6-2	223	21	Sr.	1VL	Lake Wales	Lake Wales (Wes Abrams)
Brown, Jim	E	6-1	220	18	Soph.	Frosh	Jacksonville	Ribault (Mikey Kelly)
Bugar, Mike	MG	6-1	208	20	Jr.	1VL	Youngstown, O.	Austintown Fitch (Bob Winterburn)
Burkhardt, Bill	QB	6-1	191	20	Soph.	RS	Rocky River, O.	St. Ignatius (John Wirtz)
Burton, Clint	QB	6-2	182	19	Soph.	Frosh	Atlanta, Ga.	Roosevelt (A. A. Hagan)
Calhoun, Charles	T	6-4	237	19	Soph.	Frosh	Jacksonville	Fletcher (Jack Taylor)
Campbell, Bill	HB	5-9	180	21	Sr.	1VL	Tampa	Chamberlain (John Adcock)
Cappleman, Bill	QB	6-3	199	19	Soph.	Frosh	Dunedin	Dunedin (Frank Griffin)
Carey, Jim	E	6-3	183	19	Soph.	Frosh	Sarasota	Sarasota (Charles Chelamd)
Chapman, Jeff	T	6-3	217	20	Soph.	Frosh	Sarasota	Sarasota (Charles Chelamd)
Coley, Ralph	HB	5-10	198	19	Soph.	Frosh	Jacksonville	DuPont (Joel Sharp)
Conway, Pat	HB	5-10	176	21	Sr.	2VL	Miami	Jackson (Roy French)
Coughlin, Pat	T	6-3	255	20	Jr.	Jr. Col.	Pasadena, Calif.	Pasadena City College (Don Hunt)
Cox, Bill	FL	6-1	182	20	Soph.	RS	Atlanta, Ga.	Henry Grady (Jack Fligg)
Crowe, John	HB	6-2	165	19	Soph.	Frosh	St. Cloud	St. Cloud (Burke Chisholm)
Curchin, Jeff	T	6-5	235	19	Soph.	Frosh	Ocala	Ocala (Bill Caton)
Davis, Scott	E	6-0	200	20	Jr.	Jr. Col.	Miami	Hialeah (Jim Powell)
Dew, Bill	T	6-1	200	19	Soph.	Frosh	Apopka	Apopka Memorial (L. T. Helton)
Douglas, Dan	G	6-0	220	19	Soph.	Frosh	Hialeah	Hialeah (Jim Powell)
Douglass, John	T	6-2	210	19	Soph.	Frosh	Panama City	Bay County (Len Register)
Eagerton, Terry	HB	5-10	185	19	Soph.	Frosh	Jacksonville	Lee (Virgil Dingman)
Eason, Chuck	FB	5-10	187	19	Soph.	Frosh	Tallahassee	Leon (Gene Cox)
Elliott, Chuck	G	6-0	194	20	Soph.	RS	Troy, O.	Tippecanoe (Allen Richards)
Fenner, Lane	E	6-5	202	21	Jr.	Sqd	Evansville, Ind.	North (Morris Riley)
Fenwick, Jack	T	6-4	212	20	Soph.	RS	Cincinnati, O.	Norwood (Bill Hoffeld)
Fields, Mike	G	5-11	190	19	Soph.	Frosh	Orlando	Boone (Tommy Bolen)
Giardino, Wayne	E	5-10	198	23	Sr.	2VL	West Palm Beach	Forest Hill (Bobby Riggs)
Glass, Chip	E	6-4	217	19	Soph.	Frosh	Tampa	Chamberlain (Ken Nuznoff)
Green, Larry	HB	5-10	180	21	Jr.	RS-1VL	Cairo, Ga.	Cairo (West Thomas)
Gunter, Bill	HB	6-0	174	19	Soph.	RS	Dothan, Ala.	Ashford (W. H. Brown)
Gurr, Doug	R	6-4	190	19	Soph.	Frosh	Albany, Ga.	Albany (Harold Dean Cook)
Hammond, Kim	QB	6-1	189	22	Jr.	Sqd	Meibourne	Meibourne (Bob Koontz)
Hanlon, Roger	E	6-0	187	19	Soph.	Frosh	Cincinnati, O.	Moeller (Jerry Faust)
Hart, Ken	G	6-3	203	20	Soph.	RS	Groveland	Groveland (Buck Collins)
Hiatt, Phil	QB	6-4	189	20	Soph.	Frosh	Tipp City, O.	Tippecanoe (Allen Richards)
Hiett, Roger	T	6-3	210	20	Soph.	Frosh	Heflin, Ala.	Cleburne (Wayne Keaky)
Hosack, John	HB	5-10	198	21	Sr.	1VL	Miami	Edison (Haywood Fowle)
Huggins, Charles	E	6-1	189	19	Soph.	Frosh	Titusville	Titusville (John Gaines)

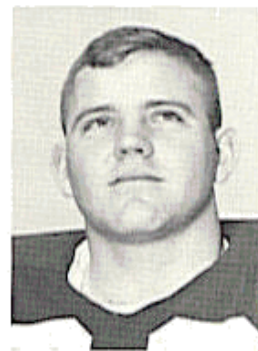
Hurst, John	HB	6-0	195	19	Soph.	Fresh	Live Oak	Suwannee (Wyman Townsil)
Janes, Billy Joe	G	6-1	215	19	Soph.	Fresh	Pensacola	Pensacola (Jim Haynes)
Johnson, Wayne	T	6-2	225	19	Soph.	Fresh	Macon, Ga.	Willingham (Billy Henderson)
Jones, Donovan	E	6-1	196	21	Sr.	Sqd	Lakeland	Lakeland (L. L. Nelson)
Jones, Jerry	E	6-1	181	21	Jr.	1VL	Jesup, Ga.	Wayne County (Clint Madray)
Kinnan, Joe	T	6-0	206	21	Jr.	Jr. Col.	Bradenton	Manatee (Bob Stewart)
Kissam, Larry	T	6-0	226	22	Sr.	1VL	Inglewood, Calif.	Inglewood (Bill Peters)
Kolbus, Marty	QB	6-2	185	20	Soph.	RS	R. Chicago, Ind.	Roosevelt (Pete Rucinski)
LaCour, Jeff	LB	6-1	195	19	Soph.	Fresh	Daytona Beach	Father Lopez (Frank Merretti)
Lenker, Mark	G	6-0	185	20	Soph.	RS	Jacksonville	Ribault (Mikey Kelly)
Lewis, Dale	E	6-1	190	21	Soph.	RS	Middletown, O.	L. Mon-Monre (Bob Saltmarsh)
Lohse, Henry	T	6-3	192	19	Soph.	Fresh	St. Petersburg	Admiral Farragut (Nic Hatzie)
Loner, Frank	PK	6-0	200	20	Soph.	RS	Atlanta, Ga.	Richmond Academy (Frank Inman)
Mankins, Jim	FB	6-2	226	22	Sr.	1VL	King City, Calif.	King City (Ernie Pipel)
Matthews, Jay Mac	T	6-1	225	22	Sr.	1VL	Chiefland	Chiefland (Doug McCall)
McDuffie, Wayne	G	6-2	210	22	Jr.	RS-1VL	Hawkinsville, Ga.	Hawkinsville (Bobby Gentry)
McLean, Richard	G	6-0	187	20	Soph.	RS	Daytona Beach	Mainland (Tom Owen)
McCullers, Dale	LB	6-2	194	19	Soph.	Fresh	Live Oak	Suwannee (Wyman Townsel)
Menendez, Bob	E	5-10	195	21	Sr.	Sqd	Key West	Key West (Harold Allen)
Mercer, Ron	FB	5-11	190	21	Soph.	RS	Densmore	Paxon (J. J. Jones)
Montgomery, Howell	HB	5-11	178	19	Soph.	Fresh	Blountstown	Blountstown (John Tomlinson)
Moreman, Bill	HB	5-11	182	21	Jr.	1VL	Drytona Beach	Mainland (Tom Owen)
Mosley, Ted	C	6-2	202	19	Soph.	Fresh	Tampa	Chamberlain (Ken Nuzwoff)
Pajcic, Gary	QB	6-2	192	19	Soph.	Fresh	Jacksonville	Paxon (Jack Jones)
Pendleton, Larry	G	6-0	201	20	Soph.	RS	Winter Garden	Lakeview (Vel Heckman)
Pennie, Charles	T	6-4	240	21	Sr.	1VL	Hollywood	South Broward (A. C. Fuller)
Rhodes, Billy	T	6-2	221	19	Soph.	Fresh	Eustis	Eustis (Dub Palmer)
Richardson, Bill	HB	6-0	189	21	Jr.	Sqd	Jesup, Ga.	Wayne County (Clint Madray)
Richardson, John	C	6-0	201	19	Soph.	Fresh	Jacksonville	Lee (Virgil Dingman)
Riser, Butch	HB	6-0	185	21	Jr.	Sqd	Sanford	Seminole (Jim Pigott)
Roberts, Pete	PK	6-0	202	21	Jr.	1VL	Gainesville	Gainesville (Jim Niblack)
Sellers, Ron	FL	5-11	184	19	Soph.	Fresh	Jacksonville	Paxon (Jack Jones)
Sewell, Tony	C	6-4	210	20	Soph.	Fresh	Union Springs, Ala.	Bullock County (Carlton Smith)
Stephens, John	C	6-1	195	21	Sr.	2VL	Tallahassee	Leon (Bill Sexton)
Stout, Ron	T	6-2	230	19	Jr. Col.	Jr. Col.	Las Vegas, Nev.	Choctawhatchee (Hal Wyatt)
Sumner, Walter	HB	6-1	172	19	Soph.	Fresh	Fitzgerald, Ga.	Irwin County (Ralph Cook)
Taylor, Thurston	E	6-2	220	20	Jr.	1VL	College Park, Ga.	North Clayton (Max Dowis)
Urich, Bob	C	6-2	198	20	Soph.	RS	Toronto, O.	Toronto (Robert Khorie)
Vistart, Rommy	T	6-3	270	20	Jr.	Sqd	Colquitt, Ga.	Miller County (Jim Tabb)
Vohun, Frank	T	6-3	225	19	Soph.	Fresh	Brooksville	Hernando (Buck Metts)
Waller, H. T.	E	6-1	190	21	Jr.	Sqd	Vernon	Vernon (Sam Mitchell)
Walther, Wayne	G	6-0	210	20	Soph.	RS	Cantonment	Tate (Ralph Chaudron)
Wetherell, T. K.	FL	5-10	185	21	Jr.	1VL	Daytona Beach	Mainland (Tom Owen)
Williams, Del	G	6-2	237	21	Sr.	2VL	Live Oak	Suwannee (Gene Cox)
Williams, Joe	HB	6-0	186	19	Soph.	Fresh	St. Petersburg	Boca Ceiga (Jerry Ramsburger)
Whitehead, Ron	HB	5-10	168	19	Soph.	Fresh	Marianna	Marianna (Mack Rooks)
Williamson, Larry	G	5-11	208	21	Sr.	1VL	Macon, Ga.	Lanier (Jim Nolan)
Yeldell, Bill	E	6-1	179	19	Soph.	Fresh	Jacksonville	Jackson (C. L. Thompson)
Zion, Harvey	LB	5-11	210	19	Soph.	Fresh	Atlanta, Ga.	Henry Grady (Jack Bush)



Fenner



Taylor



J. Jones



Glass

PLAYER PROFILES

OFFENSIVE ENDS

LANE FENNER, 20, Jr., 6-5, 202, Evansville, Ind, Sqd. This rangy lad was called upon late last season to put some life in the Seminole passing attack and responded with three catches good for 48 yards. He was immediately nicknamed "The Basket" by sportswriters. Fenner's height conceals great speed. He can run the 100 in around ten seconds. A receiver with a knack for getting clear, he ousted '65 starter Jerry Jones from the split end position during the spring. At North High School in Evansville he set a school shot put record, and was chosen the best blocker on the football team.

THURSTON TAYLOR, 20, Jr., 6-2, 220, College Park, Ga. IL. The number two tight end last season as a sophomore, Taylor showed his form in the spring to fight off a determined bid by several freshmen. He caught only one pass in '65, but is a sure-handed receiver who can hang on to the ball in a crowd. Tremendous blocker on sweeps. Also a fine punter and could be used in that capacity. Won 12 letters at North Clayton High School and was chosen the Most Valuable Player in the Georgia High School All Star game in 1963.

JERRY JONES, 20, Jr., 6-1, 181, Jesup, Ga. 1L. A starter most of the of the way in '65, Jones caught 19 passes for 223 yards. He's the man Florida State quarterbacks look for when a clutch reception is needed. His only touchdown last season brought the Seminoles from behind to lead Florida in the final game. Determination, toughness and hard work make up for a lack of size. A seasoned veteran who will play a big part in the Seminole passing attack this fall.

CHIP GLASS, 19, Soph., 6-4, 217, Tampa Frosh. One of several outstanding prospects from last year's freshman team. Glass almost won a starting role in the spring and may be there by the opening kickoff this fall. Good size, good speed and good hands. He hits hard and needs only experience.

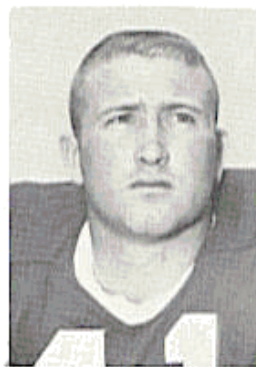
DONOVAN JONES, 21, Sr., 6-1, Lakeland, Sqd. This could be the year he finds himself a place on the football team. One of the squad's most versatile athletes, Jones has performed as a defensive back, offensive end, flanker back and running back during his time on the Florida State varsity. Excellent receiver and downfield blocker. Caught two passes least season for 34 yards.



D. Jones



Giardino



Menendez



Brown

DEFENSIVE ENDS

WAYNE GIARDINO, 22, Sr., 5-10, 198, West Palm Beach, 2L. They're still trying to find something Giardino can't do. A starter at fullback for two seasons, he now finds himself as a defensive end, and during spring practice it looked as though he'd played there all his life. Gained 256 yards as a sophomore and 201 last season. A native of Canada, Giardino was a high school quarterback at Forest Hill in West Palm Beach, then played in the defensive secondary as a freshman. Also an outstanding baseball player, he started several games at shortstop for the 1965 Florida State team. A good group of running backs and a need for experience at defensive end were the reasons for his position shift, though he still may be called on for duty as a fullback.

BOB MENENDEZ, 21, Sr., 5-11, 195, Key West, Sqd. A defensive back for two years, Menedez moved into the gap at defensive end last spring and found himself at home. Quick, tough, loves to hit. He's a hard worker with tremendous desire. A good tackler who can make the big play.

JIM BROWN, 19, Soph., 6-1, 226, Jacksonville, Frosh. Converted from fullback, a position where he was an All Southern performer at Jacksonville's Ribault High, Brown made the shift to defensive end with ease. His backfield quickness coupled with his size and strength make him a natural for this position. Another outstanding prospect up from last year's freshman squad.

DOUG GURR, 19, Soph., 6-0, 190, Albany, Ga., Frosh. Proved his outstanding credentials were not in error before he injured a knee in spring practice. He should be ready this fall and will give someone a fight for a starting job. Gurr was the Lineman of the Year in Georgia his senior year at Albany High, as well as All Southern and All Regional in the tough Georgia AAA league.

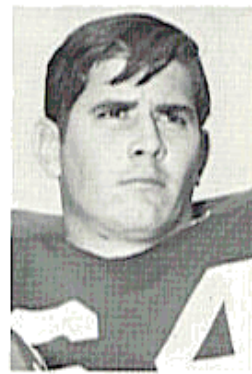
H. T. WALLER, 20, Jr., 6-1, 186, Vernon. A freshman quarterback, Waller worked at defensive safety during a redshirt year and played a reserve role last season . . . He was moved to defensive end last spring and took to the position immediately . . . Quick and aggressive . . . Fits in perfectly to FSU's style of end play.



Waller



Gurr



Braggins



Fenwick

OFFENSIVE TACKLES

DAVID BRAGGINS, 21, Sr., 6-2, 223, Lake Wales, 1L. After starting four games as a junior, Braggins should have one offensive tackle position all his own this fall despite some pressure from upcoming youngsters. A converted fullback, he has good speed and has improved each year. A two-sport man, he is also the number one man in the shot and discus on Florida State's track team and was state champion in both events at Lake Wales High School in 1962.

JACK FENWICK, 20, Soph., 6-4, 215, Cincinnati, O. RS. A former high school fullback, Fenwick was an end on the 1964 freshman team, and moved to tackle during a redshirt year. An outstanding athlete, he could be a starter. Earned 13 in football, basketball and track letters at Cincinnati's Norwood High. A hard worker and good competitor.

LARRY KISSAM, 21, Sr., 6-3, 226, Inglewood, Calif. 1L. Started at guard last season, but moved to tackle during the spring and was named the outstanding offensive performer in spring practice. The best line blocker on the squad. Came to Florida State from El Camino Junior College in California. Big, tough and quick, a solid performer.

JEFF CURCHIN, 18, Soph., 6-6, 235, Ocala, Frosh. Extremely quick for a big man, Curchin was a starter on Florida State's freshman football and basketball teams last year. An end at Ocala High, he was moved to tackle as a freshman to utilize his size. Need lots of experience, but he could be a good one.



Kissam



Curchin



Pennie



Matthews

DEFENSIVE TACKLES

CHARLES PENNIE, 21, Sr., 6-4, 240, Hollywood, 1L. Florida State's only returning starter in the defensive line begins his senior year in the spotlight. He and his brother Frank manned the tackle positions for the Seminoles last year, and Charles came on to gain recognition on the All Florida collegiate team. Strong, smart, aggressive, quick and experienced, he played throughout last season with an injured knee which has since had surgery. A healthy Pennie will put experienced teeth in Florida State's defensive line, and he should be one of the nation's best at this position.

JAY MAC MATTHEWS, 22, Sr., 6-1, 225, Chiefland, 1L. Injuries have plagued this former center throughout his career, but he seems to have shaken off this problem. Had a good spring after coming on strong in a reserve role last season. He has the experience, size and strength needed in the Seminole defensive line.

JOHN DOUGLASS, 19, Soph., 6-2, 223, Panama City, Frosh. A former all-state tackle at Panama City Bay High, Douglass is one of many promising sophomores who will play for the Seminoles this fall. He needs experience but could become a top performer in time. He also holds the Bay High, Big 5 Conference and District records in the shot put and discus.

ROMMY VISTART, 20, Soph., 6-3, 270, Colquitt, Ga. RS. Has amazing agility for his size. If he can find himself he could make a difference. Held out last season because of injuries. He could play either tackle or middle guard.



Douglass



Vistart



Williams



Pope

OFFENSIVE GUARDS

DEL WILLIAMS, 21, Sr., 6-2, 237, Live Oak, 2L. A starter at offensive tackle for two seasons, Williams has been moved to guard in order to beef up the middle of the Florida State line. An All Florida pick last season, he is the only remaining starter from the great Seminole offensive line of 1964. Tough and dedicated, Williams is a fine one on one blocker and tremendous on pass protection. He should be solidly in the running for post-season honors.

EDWIN POPE, 22, Sr., 6-0, 215, Waycross, Ga. 1L. Possibly the fastest interior lineman on the squad, this former high school halfback is a seasoned veteran who plays an important role in Florida State's running game. An outstanding blocker on sweeps, his pass blocking is also noteworthy. One of three returning starters in the offensive line.

LARRY WILLIAMSON, 21, Sr., 5-11, 208, Macon, Ga. 1L. This tough Georgia lad has the knack of being in the right place when it counts. He pounced on a desperation on-side kick in the fourth quarter against Florida in 1964 to kill any hopes of a Gator victory, and came up with several big fumble recoveries last season. Nicknamed "Bulldog" by coaches and teammates. Quick and smart with excellent techniques. Needs to shake a tendency towards injury.

KEN HART, 20, Soph., 6-3, 203, Groveland, RS. Another well-traveled athlete who has found a home, Hart carries credentials that few can match. As a pass catching end in high school he scored four touchdowns in one game and 19 during his career. He was a All Mid-Lakes conference choice in football, basketball and track, and won a total of 17 letters. He was state high school champion in the 220 yard dash. Played fullback as a freshman, but is tough enough to handle himself in the middle of the line.



Williamson



Hart



McCullers



LaCour

LINEBACKERS

DALE McCULLERS, 19, Soph., 6-2, 194, Live Oak, Frosh. A starter on last year's freshman team, McCullers has moved right into the top spot. A worthy successor to great Seminole linebackers of the past, he's a hard-nosed type who gives 100 per cent on every play. Has outstanding speed and agility. Knows how to get to the football.

RICHARD McLEAN, 20, Soph., 6-0, 185, Holly Hill, RS. One of the team's smallest linemen, McLean is also one of the fastest. As a track man at Daytona's Mainland High he finished second in the 100 yard dash and third in the 220 in the state meet. Needs game experience and must overcome his lack of size with drive and determination.

JEFF LaCOUR, 19, Soph., 6-1, 195, Daytona Beach, Frosh. A promising athlete off last year's freshman team, LaCour needs only experience and could push for a starting berth this fall. As a back at Father Lopez High he set school records for yards gained, touchdown scored, and passes caught. Received an honorable mention on the high school All America team his senior year. He was also an outstanding basketball player.

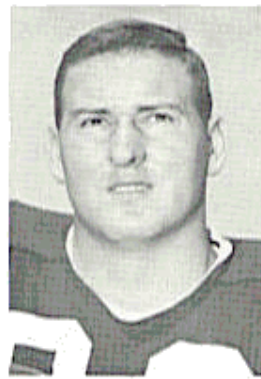
JEFF CHAPMAN, 20, Soph., 6-3, 220, Sarasota, Frosh. The biggest problem with Chapman is deciding where he'll play. A high school fullback and one of the nation's leading punters, Chapman was a tackle as a freshman last year, but has the agility of a linebacker. A good hard worker who could break in somewhere.



Chapman



Stephens



McDuffie



Bugar

OFFENSIVE CENTERS

JOHN STEPHENS, 21, Sr., 6-1, 195, Tallahassee, 2L. Stephens is Florida State's "Iron Man." Despite his lack of size, he played every minute at offensive center last year. One of only four on this year's squad with two letters to his credit. A quick, tough competitor who asks nothing and gives plenty in the middle of the Seminole line.

WAYNE McDUFFIE, 21, Jr., 6-2, 210, Hawkinsville, Ga. 1L, McDuffie's performance could be a big factor for the Seminoles this fall. He lettered as a defensive end in 1964, but missed all of last season and spring practice with injuries. Fast, strong and versatile, he can play any line position.

DEFENSIVE MIDDLE GUARDS

MIKE BUGAR, 19, Jr., 6-1, 208, Youngstown, O. 1L. No one expected the Seminoles to be able to replace Jack Shinholser any time soon, but Bugar moved into the middle guard position on the first day of spring practice and was named the outstanding defensive player of the spring session. A former high school quarterback, he lettered last season as a defensive tackle. Cat quick and tough, he can entertain the offensive center or drop back to a linebacker position. Has the speed to range from sideline to sideline and is a demon pass rusher. A key man in Florida State's defensive alignment and a candidate for All America.

FRANK VOHUN, 19, Soph., 6-3, 225, Brookville, Frosh. Although hampered by an ankle injury most of the spring, he showed the necessary stuff to figure importantly in plans this fall. An All Tampa Bay conference end under former Florida State halfback Buck Metts at Brookville. He can play either middle guard or defensive tackle.

BILLY JOE JANES, 19, Soph., 6-1, 200, Pensacola, Fros. An outstanding lineman from Northwest Florida, Janes started for last year's freshmen, but missed spring practice because of injury. He has outstanding speed and quickness and should help out this fall.



Vohun



Janes



Hammond



Cappleman

QUARTERBACKS

KIM HAMMOND, 22, Jr., 6-1, 189, Melbourne, Sqd. The only quarterback with any varsity experience and that limited to ten minutes against Wake Forest last fall. During that brief period, Hammond completed two passes for 44 yards and directed a touchdown drive. A fine all around athlete with size and speed to become outstanding. The hardest worker on any practice field, he has desire and determination in abundance. He has made remarkable improvement since last season and will provide mature leadership for a young team.

BILL CAPPLEMAN, 19, Soph., 6-3, 199, Dunedin, Frosh. Almost overlooked as a freshman, Cappleman became the big conversation piece of spring practice. Has the best throwing arm on the team, and fits perfectly into Florida State's style of play.

GARY PAJCIC, 18, Soph., 6-2, 192, Jacksonville, Frosh. An all state performer in both football and basketball at Jacksonville's Paxon High, Pajcic threw eight touchdown passes in four games as a freshman last year and was chosen on the Atlanta Journal's All Southeastern frosh team. Perhaps one of the best athletes ever to enter Florida State. A fiery competitor, Pajcic has that intangible leadership quality which gets points on the scoreboard. If he doesn't win the starting quarterback job, there's a good chance he'll play in the defensive secondary. A standout in the classroom, he graduated sixth in a class of 537 at Paxon.

BILL BURKHARDT, 20, Soph., 6-1, 191, Rocky River, O. RS. A big, strong, talented lad whose rapid improvement in the spring gives excellent depth to the quarterback position. He has enough ability to move into a starting role.



Pajcic



Moreman



Hurst



Green

RUNNING BACKS

BILL MOREMAN, 21, Jr., 5-11, 182, Daytona Beach, 1L. Finished the 1965 season as Florida State's most consistent running back after filling a reserve role for the injured Phil Spooner during the early part of the year. Gained 249 yards on 49 carries for a 5.1 rushing average, caught six passes for 72 yards, and led the team in kickoff returns with 11 for 227 yards. An exciting, explosive runner with an uncanny knack of finding an opening. His 20 yard touchdown run against Georgia last year was the utmost in determination. His balance and speed make him a threat to score from anywhere, and he's extremely hard to bring down. A tough competitor who has his best football ahead of him.

LARRY GREEN, 21, Jr., 5-10, 180, Cairo, Ga., 1L. After gaining 206 yards for Florida State's 1964 Gator Bowl champions, Green was forced out of competition last year with a back injury, and spent the spring readjusting to full participation. However, he showed flashes of the old form which made him one of the most celebrated runners ever to come out of Georgia high school circles, where he averaged over 12 yards a carry during his senior year. Outstanding in an open field, Green can still become a great collegiate performer.

JOHN HURST, 19, Soph., 6-0, 195, Live Oak, Frosh. Comes to the varsity with exceptional credits as a freshman. During the latter stages of spring practice he was the best running back on the squad. A tremendous competitor with speed and power. A constant threat to move up into a starting job.



Mankins



Blatt



Roberts



Hosack

FULLBACKS

JIM MANKINS, 22, Sr., 6-2, 222, King City, Calif., 1L. Florida State's leading ground gainer in 1965 with 336 yards on 85 carries for a 4.0 average. Mankins closed the season with tremendous performances against N. C. State and Houston, then had his best spring ever. Big Jim seems determined to make his senior season one to remember. With exceptional breakaway speed for a man his size, he is at his best once he clears the line of scrimmage. He was also the key blocker on numerous touchdown runs by other backs in '65. A former All American fullback in the tough California junior college league.

MIKE BLATT, 20, Jr., 5-11, 200, Key West, 1L. Lettered as a line-backer last year, but has an outstanding background as a ball carrier and blocker. A definite threat to Mankins for the starting job. Has speed, toughness and talent. His potential is limited only by the scope of his determination. An all state and honorable mention All American halfback at Key West.

SPECIALISTS

PETE ROBERTS, 21, Jr., 5-11, 202, Gainesville, 1L, Place kicker. Florida State's leading scorer last year with seven field goals and 10 of 15 conversions for a total of 31 points. He is only three short of Les Murdock's career record of ten field goals with two seasons left. An all around athlete at Gainesville High, Roberts was forced to give up fulltime football participation because of injuries, but he doesn't confine himself to kicking. Against Kentucky last year he blocked three men on a fake field goal attempt and won the coaches' "Tomahawk" award for blocking.

JOHN HOSACK, 21, Sr., 5-10, 198, Miami, 1L, Punter. Handled all of Florida State's punting last season, kicking 61 times for a 39.6 average. Hosack holds the school record for punts in a season and in a single game (11 vs. Baylor, 1965). Gets good distance and height. Earned nine letters in three sports at Miami Edison High School.



Cox



Sellers



Wetherell



Campbell

FLANKER BACKS

BILL COX, 20, **Soph.**, 6-1, 185, **Atlanta, Ga. RS.** This youngster was compared with Florida State All American Fred Biletnikoff as a freshman, and now seems ready to lay his talent on the line. Injured early last season and subsequently redshirted, he was one of the outstanding receivers during spring practice and heads the list of an impressive group of Seminole pass receivers ready for this fall. Good speed with sharp, quick moves. Figures importantly in offensive plans this fall. An All State halfback at Atlanta's Henry Grady during his high school days.

RON SELLERS, 19, **Soph.**, 6-4, 185, **Jacksonville, Frosh.** Sellers and his former high school teammate Gary Pajcic make one of the most attractive packages ever to come to Florida State. An unlikely looking football player because of his slender build, Sellers caught ten touchdown passes for the freshmen last year and joined Pajcic on the Atlanta Journal's All Southeastern Frosh team. He combines good speed with a deceptive gait to get open deep. He lacks experience but is potentially a great one. He was an All-Gateway Conference selection in football, basketball and baseball at Paxon and scored the basket which won the Eagles the state basketball title his senior year.

T. K. WETHERELL, 20, **Jr.**, 5-11, 185, **Daytona Beach, 1L.** Started every game at a flanker as a sophomore last year, but dislocated a hip on the first day of spring practice and missed the entire session. Will definitely be ready this fall, but has a fight on his hands to regain his starting berth. Last year he caught 19 passes for 234 yards and one touchdown — a 59 yarder against Baylor. He and former Mainland High teammate Bill Moreman combined for a 100 yard kickoff return against Kentucky, so his place in the record book is already secure. One of the fastest squad members, Wetherell is a tireless worker.

PAT CONWAY, 21, **Sr.**, 5-10, 175, **Miami, 2L.** Started most of last season and called the signals for the defensive secondary. Injured during the spring, but should be ready this fall. Good speed and toughness. Has more experience than any other member of the secondary. An All State performer at Miami Jackson during his high school days.



Riser



Montgomery



Conway



Kolbus

DEFENSIVE BACKS

BILL CAMPBELL, 20, Sr., 5-9, 180, Tampa, IL. The twelfth man in Florida State's offensive lineup is safety man Bill Campbell who returned 20 punts last season for 301 yards, including a 70 yard touchdown return against Wake Forest. Campbell will move up to man the left corner this season, but will still be deep on punts. He is the only seasoned secondary man returning off last year's team, but Seminole coaches feel he's one of the country's best. Has great speed and is a good tackler, despite his small stature. Campbell has earned two letters as a track man, specializing in the 440 and 220.

MARTY KOLBUS, 20, So., 6-2, 185, East Chicago, Ind., RS. A bright prospect with three years of eligibility remaining thanks to a red-shirt season last year. Kolbus was in the middle of the battle for quarterback, but it was felt his talents could be used better as a defensive safety. Good speed and sure hands. He's a hard, determined tackler and has the ability to make the big play.

BUTCH RISER, 20, Jr., 6-0, 185, Sanford, Sqd. Saw duty as a safety last year, but was moved to corner back in the spring. Made the switch easily and should be ready for a good season. A good solid performer with the quickness and speed to excel as a pass defender. A three-sport star at Sanford's Seminole High, Riser was the Most Valuable Player for the North team in the 1963 high school all-star game. One of the squad's few married players.

HOWELL MONTGOMERY, 19, So., 5-10, 180, Blountstown, Frosh. One of the most prolific athletes ever to come out of the Big Bend area, Montgomery earned 17 letters at Blountstown High. He comes from an athletic family. His older brother Earl played baseball at Florida and another brother was a Little All American at Westminster College in Utah. A high school quarterback, Howell could be the most outstanding member of the Florida State secondary in his first year. He was the most consistent performer in spring practice, leading the secondary in tackles. Good quickness and a love of contact.

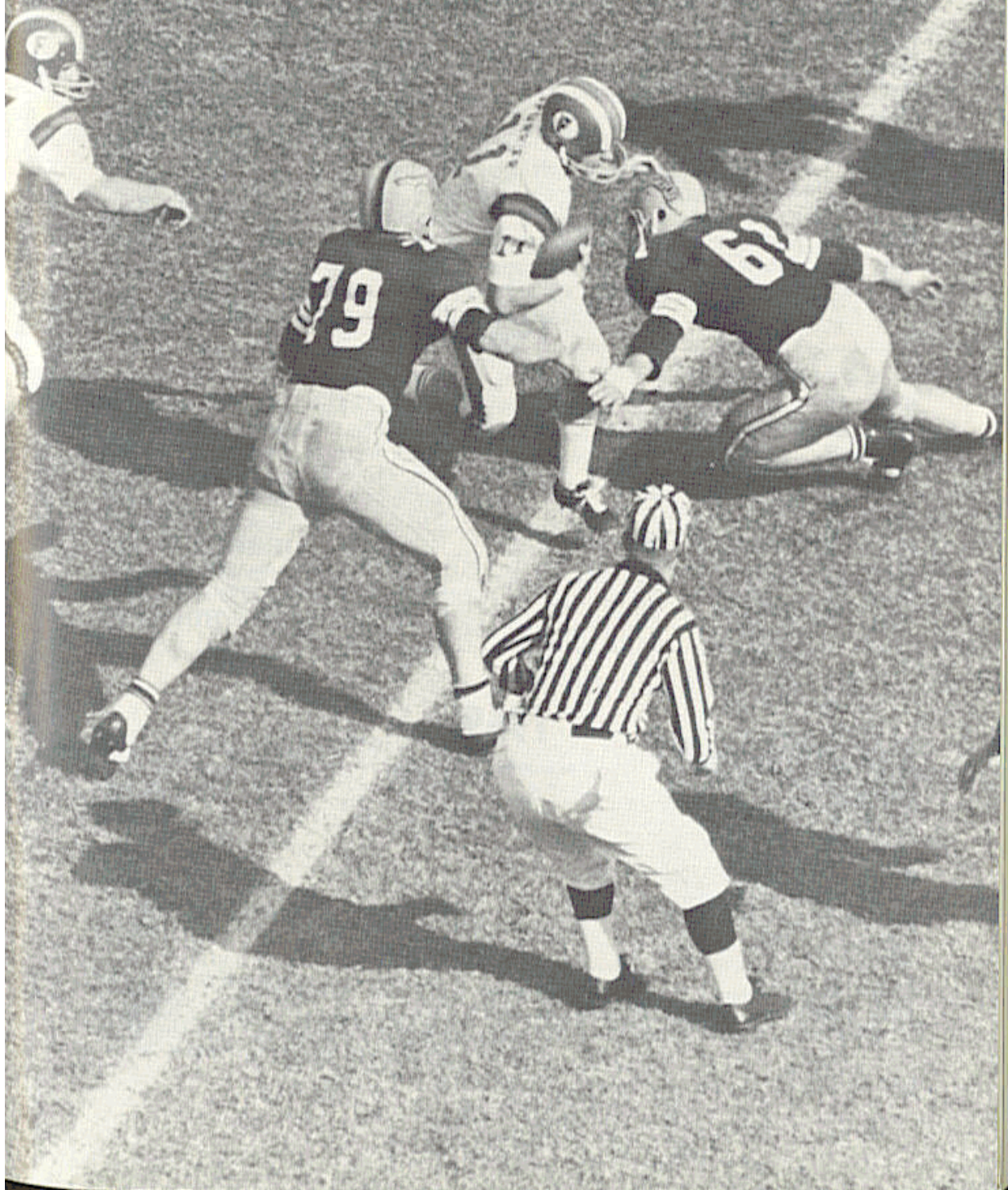
BILL RICHARDSON, 21, Jr., 6-0, 190, Jesup, Ga., Sqd. Played as a sophomore and is expected to fill an important reserve role again this season. He has desire, speed and quickness. He was an All State and All Southern choice when he led Wayne County High School to the South Georgia championship in '62 and '63.

TENTATIVE FRESHMAN ROSTER

Grants-in-aid as of July 1, 1966

NAME	POS.	HT.	WT.	HOMETOWN	HIGH SCHOOL
Abraira, Phil	FL	6-0	180	Ft. Lauderdale	Ft. Lauderdale
Anderson, Rick	QB	6-3	190	Winter Haven	Winter Haven
Bracken, Jim	T	6-2	215	Canton, Ohio	Perry
Burt, Bobby	E	6-0	185	Cairo, Georgia	Cairo
Chereshkoff, Ed	H B	5-10	180	Pembroke Pines	Miami McArthur
Cheshire, Bill	QB	6-2	180	Jesup, Georgia	Wayne County
Collins, John	E	6-2	195	Atlanta, Georgia	Avondale
Donohoe, Bill	HB	6-0	180	North Miami	North Miami
Eschelmann, Bob	E	6-2	215	Coral Gables	Coral Gables
Fisher, Terry	T	6-3	235	North Miami	North Miami
Flynn, Bob	QB	6-0	190	Akron, Ohio	Woodridge
Fuder, Paul	C	6-2	190	Marianna	Marianna
Gibson, Ed	FB	6-0	195	Orlando	Boone
Gray, Mike	E	6-3	180	Sanford	Seminole
Gruber, Bay	QB	6-1	175	Ft. Myers	Ft. Myers
Guthrie, Grant	FB	6-1	200	Claymont, Del.	Claymont
Hall, Randy	QB	6-4	200	Homestead	Homestead
Hodges, Randolph	HB	5-10	170	Tallahassee	Leon
Hughes, Bill	C	6-1	205	Cocoa	Cocoa
Johnson, Dick	G	6-1	180	Miami Springs	Miami Springs
Kleinbach, Keith	T	6-3	230	Green Lane, Penna.	Upper Perkiomen
Lee, Bill	C	6-3	220	Chipley	Chipley
Mitchell, Doug	QB	6-3	185	Williston	Williston
Montford, Ron	FB	6-0	195	Blountstown	Blountstown
Munroe, Lamar	HB	6-1	175	Quincy	Quincy
Page, Mike	HB	5-10	170	Winter Haven	Winter Haven
Paulk, Dana	E	6-1	195	Tifton, Ga.	Tift County
Ratliff, Floyd	FB	6-4	195	Jesup, Ga.	Wayne County
Rhein, Skip	HB	5-11	180	Cincinnati, O.	Anderson
Rice, Barry	HB	6-1	185	Fernandina Beach	Fernandina Beach
Rice, Beryl	HB	6-0	180	Fernandina Beach	Fernandina Beach
Roper, Roy	R	6-1	185	Thomasville, Ga.	Thomasville
Rupp, Pete	FL	5-10	180	Evansville, Ind.	Reitz Memorial
Rust, Jim	T	6-3	200	Ft. Lauderdale	Ft. Lauderdale
Walker, Stan	T	6-2	205	Tallahassee	Leon
Warren, Tommy	QB	5-11	175	Coral Gables	Coral Gables
Wenhold, Barry	HB	5-10	190	Souderton, Penna.	Souderton
White, Tom	T	6-1	240	West Palm Beach	Palm Beach

THE OPPONENTS



FUTURE SEMINOLE SCHEDULES

(Home Games in bold caps)

1967

Sept. 16	Houston
Sept. 23	Alabama
Sept. 30	N. C. STATE
Oct. 7	Texas A&M
Oct. 14	SOUTH CAROLINA
Oct. 21	TEXAS TECH
Oct. 28	MISSISSIPPI STATE
Nov. 4	Memphis State
Nov. 11	VIRGINIA TECH
Nov. 18	Open date
Nov. 25	Florida

1968

Sept. 21	Maryland
Sept. 28	FLORIDA
Oct. 5	TEXAS A&M
Oct. 12	Open date
Oct. 19	MEMPHIS STATE
Oct. 26	South Carolina
Nov. 2	VIRGINIA TECH
Nov. 16	N. C. State
Nov. 23	WAKE FOREST
Nov. 29	HOUSTON

1969

Sept. 20	WICHITA
Sept. 27	Miami
Oct. 4	Florida
Oct. 11	Open date
Oct. 18	Tulsa
Oct. 25	MISSISSIPPI STATE
Nov. 1	SOUTH CAROLINA
Nov. 8	Virginia Tech
Nov. 15	MEMPHIS STATE
Nov. 22	N.C. STATE
Nov. 29	Houston

FIRST GAME: SEPTEMBER 17 at TALLAHASSEE



Bill Yeoman

NICKNAME: Cougars
CONFERENCE: None
LETTERMEN LOST: 13
LETTERMEN RETURNING: 26
SERIES: Houston leads 3-0-2

1966 OUTLOOK: The Cougars have a solid nucleus of returning offensive and defensive veterans on the starting units. With flashy showboat Warren McVea running as flanker and quarterback Bo Burris pitching to him, Coach Bill Yeoman has come up with a top-flight aerial attack. Not only does Yeoman have McVea, but Ken Hebert and Tom Beer form a dangerous combination which will give any secondary troubles. Dick Post also returns for his final year as one of the best halfbacks in the Southwest.

HOUSTON

Game Site: Campbell Stadium

Kickoff: 8:00 p.m. EST

ATHLETIC DIRECTOR: Harry Fouke
HEAD COACH: Bill Yeoman, 4 years, 15-23-2
COACHING STAFF: O. A. Phillips, Chuck Fairbanks, Jim Dickey, Melvin Brown, Bobby Gill, Tom Boisture, Carroll Schultz
SPORTS PUBLICIST: Ted Nance
LOCATION: Houston, Texas
ENROLLMENT: 18,000
COLORS: Red and White

1966 SCHEDULE

Sept. 17	FLORIDA STATE at Tallahassee (N)
Sept. 23	Washington State at Houston (N)
Oct. 1	Oklahoma State at Houston (N)
Oct. 15	Mississippi State at Houston (N)
Oct. 22	Mississippi at Memphis (D)
Oct. 29	Tampa at Houston (N)
Nov. 5	Tulsa at Houston (N)
Nov. 12	Kentucky at Lexington (D)
Nov. 26	Memphis State at Houston (N)
Dec. 3	Utah at Houston (N)

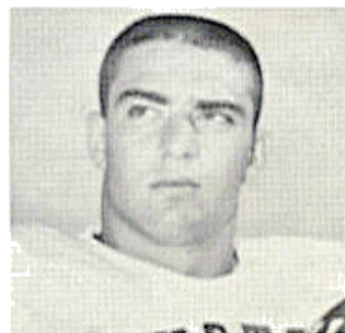
1965 SCORES (4-5-1)

0	Tulsa	14
0	Mississippi State	36
21	Cincinnati	6
7	Texas A&M	10
12	Miami (Fla.)	44
8	Tennessee	17
40	Chattanooga	7
17	Mississippi	3
38	Kentucky	21
16	FLORIDA STATE	16

**Left Halfback
Dick Post**

THE FSU-HOUSTON SERIES

	FSU	Houston
1960	6	7
1961	8	28
1962	0	7
1964	13	13
1965	16	16



OFFICIALS: Referee—R. P. (Pete) Williams, Miami — Umpire—Ralph Foster, Stillwater, Okla. — Linesman—David Scobey, Nashville, Tenn. — Field Judge—Dan Watson, Austin, Texas — Back Judge—Dick Pace, Maitland — ECO—W. H. (Bill) Henderson, Tuscaloosa, Ala.

SECOND GAME: SEPTEMBER 24 at MIAMI

MIAMI



Charlie Tate

Game Site: Orange Bowl (70,097)

Kickoff: 8:00 P.M. EST

ATHLETIC DIRECTOR: Andy Gustafson

HEAD COACH: Charlie Tate, 2 years, 9-9-2

COACHING STAFF: Otis Mooney, Kenneth Shipp, Walter Kichefski, Leroy Pearce, Bob Cummings, Jack Prater

SPORTS PUBLICIST: George Gallet, Wilbert Bach

LOCATION: Coral Gables, Florida

ENROLLMENT: 13,000

COLORS: Orange, Green, White

NICKNAME: Hurricanes

CONFERENCE: None

LETTERMEN LOST:

LETTERMEN RETURNING: 30

SERIES: Miami leads, 8-3

1966 OUTLOOK: Sophomores filled Coach Charlie Tate's Hurricane squad last season but the 'Cranes figure to be tougher this year with a little experience behind them. They finished in a rage last year by upsetting Sugar Bowl-bound Florida, tying nationally ranked Notre Dame, and uprooting Syracuse. Among the galaxy of returnees is the entire backfield which started in the season finale against the Fighting Irish. The strong spot on offense could be the quarterback position where Bill Miller will play. Miller, only a sophomore last year, stepped into the shoes of the injured Bob Biletnikoff and led the 'Canes to a winning season. Others who figure big in the picture for Miami include running back Doug McGee and defensive back Tom Beier.

1966 SCHEDULE

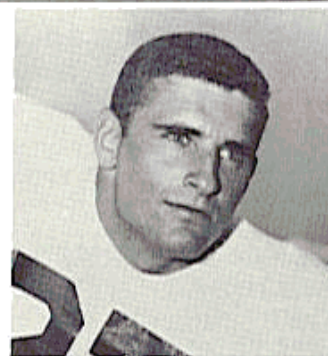
Sept. 17	Colorado at Boulder (D)
Sept. 24	FLORIDA STATE at Miami (N)
Oct. 1	L.S.U. at Baton Rouge (N)
Oct. 14	Georgia at Miami (N)
Oct. 21	Indiana at Miami (N)
Oct. 28	Southern California at Miami (N)
Nov. 5	Tulane at New Orleans (N)
Nov. 11	Pittsburgh at Miami (N)
Nov. 18	Iowa at Miami (N)
Nov. 26	Florida at Gainesville (D)

1965 SCORES (5-4-1)

3	SMU	7
24	Syracuse	0
16	Tulane	24
27	LSU	34
44	Houston	12
14	Pittsburgh	28
27	Boston College	6
28	Vanderbilt	14
16	Florida	13
0	Notre Dame	0

THE FSU-MIAMI SERIES

	FSU	Miami
1951	13	35
1953	0	27
1955	0	34
1956	7	20
1957	13	40
1958	17	6
1959	6	7
1960	7	25
1962	6	7
1963	24	0
1964	14	0



Tom Beier

OFFICIALS: Referee—Pat McHugh, Chattanooga, Tenn. — Umpire—George Hecht, Miami — Linesman—David Scobey, Nashville, Tenn. — Field Judge—Jack Langford, Atlanta, Ga. — Back Judge—Johnny Grace, West Helena, Ark. — ECO—Dick Pace, Maitland.

THIRD GAME: OCTOBER 8 at TALLAHASSEE

UNIVERSITY OF FLORIDA

Game Site: Campbell Stadium

Kickoff: 2:00 p.m. EST

ATHLETIC DIRECTOR: Ray Graves

HEAD COACH: Ray Graves, 6 years, 40-21-2

COACHING STAFF: Gene Ellenson, Don Brown, Dave Fuller, Ed Kensler, Billy Kinard, Bubba McGowan, Fred Pancoast, Rabbit Smith, Jack Thompson, Larry Travis

SPORTS PUBLICIST: Norm Carlson

LOCATION: Gainesville, Florida

ENROLLMENT: 16,000



Ray Graves

COLORS: Orange and Blue

NICKNAME: Gators

CONFERENCE: Southeastern

LETTERMEN LOST: 21

LETTERMEN RETURNING: 21

SERIES: Florida leads, 6-1-1

1966 OUTLOOK: With quarterback Steve Spurrier in the lineup the Gators will have one of the most potent passing attacks in the nation. The loss of All-American end Charles Casey will severely hamper the offensive efforts but Coach Ray Graves may have found new talent in Paul Ewaldsen and Richard Trapo. Florida will have to depend heavily on a number of sophomores if they plan to equal last year's record which sent them to the Sugar Bowl. As long as Spurrier stays healthy, Florida will mean trouble.

1966 SCHEDULE

Sept. 17	Northwestern at Gainesville (D)
Sept. 24	Miss. State at Gainesville (D)
Oct. 1	Vanderbilt at Nashville (N)
Oct. 8	FLORIDA STATE at Tallahassee (D)
Oct. 15	N.C. State at Raleigh (D)
Oct. 22	LSU at Baton Rouge (N)
Oct. 29	Auburn at Gainesville (D)
Nov. 5	Georgia at Jacksonville (D)
Nov. 12	Tulane at Gainesville (D)
Nov. 26	Miami at Gainesville (D)

1965 SCORES (7-4)

24	Northwestern	14
13	Miss. State	18
14	LSU	7
17	Mississippi	0
28	N.C. State	6
17	Auburn	28
14	Georgia	10
51	Tulane	13
13	Miami	16
30	FLORIDA STATE	17
	Sugar Bowl	
18	Missouri	20

THE FSU-FLORIDA SERIES

	FSU	Florida
1958	7	21
1959	8	18
1960	0	3
1961	3	3
1962	7	20
1963	0	7
1964	16	7
1965	17	30

**Quarterback
Steve Spurrier**



OFFICIALS: Referee—Charles W. Bowen, Ft. Lauderdale — Umpire—Harvey Hadry, Lakeland — Linesman—E. D. Cavette, Memphis, Tenn. — Field Judge—Doug Moseley, Memphis, Tenn. — Back Judge—Johnny Grace, West Helena, Ark. — ECO—Erich Sauerbrey, Jonesboro, Ga.

FOURTH GAME: OCTOBER 15 at LUBBOCK

TEXAS TECH

Game Site: Clifford B. and Audrey Jones Stadium (41,500)

Kickoff: 7:30 p.m. CST

ATHLETIC DIRECTOR: Polk F. Robinson

HEAD COACH: J. T. King, 5 years, 24-27-1

COACHING STAFF: John Conley, Matt Lair, Harry Buffington Burl Bartlett, Berl Huffman, Jim Wright, Bradley Mills.

SPORTS PUBLICIST: Bill Holmes

LOCATION: Lubbock, Texas

ENROLLMENT: 16,305

COLORS: Scarlet and Black

NICKNAME: Red Raiders

CONFERENCE: Southwest



J. T. King

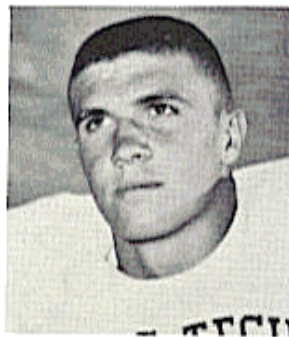
LETTERMEN LOST: 14

LETTERMEN RETURNING: 34

SERIES: First meeting

1966 OUTLOOK: If Texas Tech's efforts to develop quarterback and linebacking are successful, the Red Raiders should have another good team this season. They finished second in the SWC with and received a Gator Bowl berth. The Texans lost All-American Donny Anderson, who could do everything, but others are expected to step up. Lettermen Guy Griffis and Mike Leinert are expected to give offensive punch and tackle Phil Tucker and center Jerry Turner are the best bets for honors on defense. The Raiders are strong physically but much of the beef is of the sophomore variety.

1966 SCHEDULE		1965 SCORES (8-3)	
Sept. 17	Kansas at Lawrence (D)	26	Kansas 7
Sept. 24	Texas at Lubbock (N)	7	Texas 33
Oct. 1	Texas A&M at College Station (N)	20	Texas A&M 16
Oct. 8	Texas Christian at Fort Worth (N)	28	Texas Christian 24
Oct. 15	FLORIDA STATE at Lubbock (N)	17	Oklahoma State 14
Oct. 22	Southern Methodist at Lubbock (D)	26	Southern Methodist 24
Oct. 29	Rice at Houston (D)	27	Rice 0
Nov. 5	Oklahoma State at Lubbock (N)	48	New Mexico State 9
Nov. 12	Baylor at Lubbock (D)	34	Baylor 22
Nov. 19	Arkansas at Lubbock (D)	24	Arkansas 42
			Gator Bowl
		21	Georgia Tech 31



**Center
Jerry Turner**

OFFICIALS: Referee—Clifford Domingue, Port Arthur, Texas — Umpire—Charles H. Brown, Jr. — Linesman—W. W. McClendon, Lewisville, Arkansas — Field Judge—Paul Sprayberry, Shreveport, La. — Back Judge—Glenn Lippman, Texas — ECO—Norman.

FIFTH GAME: OCTOBER 22 at TALLAHASSEE

MISSISSIPPI STATE

Game Site: Campbell Stadium

Kickoff: 8:00 p.m. EST

ATHLETIC DIRECTOR: Wade H. Walker
HEAD COACH: Paul E. Davis, 4 years, 18-20-2

COACHING STAFF: Bob Ford, Vic Spooner, John Shelton, Bobby Proctor, Jim Carmody, Leonard McCullough, Jim Hilyer, Jesse Branch, David Owens, Henry Lee Parker

SPORTS PUBLICIST: Bob Hartley

LOCATION: State College, Mississippi

ENROLLMENT: 7,850

COLORS: Maroon and White



Paul Davis

NICKNAME: Bulldogs

CONFERENCE: Southeastern

LETTERMEN LOST: 23

LETTERMAN RETURNING: 28

SERIES: First meeting

1966 OUTLOOK: The Bulldogs surprised the football world last season by winning their first four games but injuries and plain bad luck struck the Maroon team. The offense is one of the youngest and most inexperienced systems the Bulldogs have fielded, but improvement on last year's 4-6 record is in the making chiefly due to a rugged defense. D. D. Lewis heads a splendid array of four outstanding linebackers and one of the top running threats in the South, Marcus Rhoden, is bound to pack a punch for the offense. Don Saget could quarterback and has a pair of able receivers in Harland Reed and Dave Nugent.

1966 SCHEDULE

Sept. 17	Georgia at Jackson (N)
Sept. 24	Florida at Gainesville
Oct. 1	Richmond at State College (D)
Oct. 8	Southern Miss. at State College (D)
Oct. 15	Houston at Houston (N)
Oct. 22	FLORIDA STATE at Tallahassee (N)
Oct. 29	Alabama at Tuscaloosa (D)
Nov. 5	Auburn at Jackson (D)
Nov. 12	LSU at Baton Rouge (N)
Nov. 26	Mississippi at Oxford (D)

1965 SCORES (4-6)

36	Houston	0
18	Florida	13
48	Tampa	7
27	Southern Miss.	9
13	Memphis State	33
15	Tulane	17
7	Alabama	10
18	Auburn	25
20	LSU	37
0	Mississippi	21



**Halfback
Marcus Rhoden**

OFFICIALS: Referee—Charles W. Bowen, Ft. Lauderdale — Umpire—George Hecht, Miami — Linesman—Robert W. Gaston, Atlanta, Ga. — Field Judge—A. C. (Butch) Lambert, Tupelo, Miss. — Back Judge—John H. O'Neill, Atlanta, Ga. — ECO—Erich Sauerbrey, Jonesboro, Ga.

SIXTH GAME: OCTOBER 29 at BLACKSBURG

VIRGINIA TECH

Game Site: Lane Stadium (35,000)

Kickoff: 2:15 EST

ATHLETIC DIRECTOR: Frank Moseley

HEAD COACH: Jerry Caliborne, 5 years, 30-19

COACHING STAFF: Bobby Collins, Bill Conde, John Devlin, Jerry Eisaman, Dick Redding, Alf Satterfield, Doug Shively

SPORTS PUBLICIST: Wendell Weisend

LOCATION: Blacksburg, Va.

ENROLLMENT: 8,000

COLORS: Orange and Maroon



Jerry Caliborne

NICKNAME: Gobblers

CONFERENCE: None

LETTERMEN LOST: 7

LETTERMEN RETURNING: 30

SERIES: Tied, 5-5

1966 OUTLOOK: The Gobblers have good reason to be optimistic about the 1966 campaign with 30 returning lettermen plus good potential among last year's freshmen. VPI has been an old nemesis for the Seminoles and this year the Gobblers have all but two starters returning to man the defensive unit. Jerry Claiborne has never had a loser at VPI and with a pair of finer runners like Tommy Francisco and Dickie Longerbeam returning the Techmen should pose a problem for any team.

1966 SCHEDULE

Sept. 17	Tulane at New Orleans (N)
Sept. 24	George Washington at Blacksburg (D)
Oct. 1	West Virginia at Blacksburg (D)
Oct. 8	Kentucky at Lexington (N)
Oct. 15	Vanderbilt at Richmond (D)
Oct. 22	Virginia at Charlottesville (D)
Oct. 29	FLORIDA STATE at Blacksburg (D)
Nov. 5	Wake Forest at Winston-Salem (D)
Nov. 12	William & Mary at Williamsburg (D)
Nov. 24	VMI at Roanoke (D)

1965 SCORES (7-3)

12	Wake Forest	3
25	Richmond	7
9	Wm. & Mary	7
17	George Washington	12
10	Vanderbilt	21
22	Virginia	14
6	FLORIDA STATE	7
22	West Virginia	31
21	Villanova	19
44	VMI	13

THE FSU-VIRGINIA TECH SERIES

	FSU	Va. Tech
1955	20	24
1956	7	20
1957	20	7
1958	20	0
1959	7	6
1961	7	10
1962	20	7
1963	23	31
1964	11	20
1965	7	6

Tailback Tommy Francisco



OFFICIALS: Referee—J. D. Hedrick, High Point, N.C. — Umpire—Charles H. Brown, Jr., Atlanta, Ga. — Linesman—W. H. Klein, Richmond, Va. — Field Judge—Paul Sprayberry, Shreveport, La. — Back Judge—C. L. Harper, Columbia, S.C. — ECO—J. W. Sarver, Bluefield, West Va.

SEVENTH GAME: NOVEMBER 5 at COLUMBIA



SOUTH CAROLINA

Game Site: Carolina Stadium (43,212)

Kickoff: 2:00 p.m. EST

ATHLETIC DIRECTOR: Paul F. Dietzel
HEAD COACH: Paul F. Dietzel, first year
COACHING STAFF: Larry Jones, George Terry, Bill Shalosky, Jim Valek, Bill Rowe, Jim Vickers, John Menger, Lou Holtz, Pride Patteree, Bob Patton
SPORTS PUBLICIST: Tom Price
LOCATION: Columbia, South Carolina
ENROLLMENT: 10,000
COLORS: Garnet and Black

Paul F. Dietzel

NICKNAME: Fighting Gamecocks

CONFERENCE: Atlantic Coast

LETTERMEN LOST: 17

LETTERMEN RETURNING: 35

SERIES: First Meeting

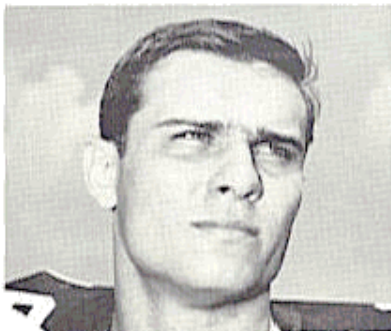
1966 OUTLOOK: A strong brigade of lettermen return to the Gamecock roster this year to bolster the line-up of the ACC co-champions. The Gamecocks will also experience a new look this year with Coach Paul Dietzel and his new staff who will be in their first year at South Carolina. The Gamecocks have a number of running backs with good credentials among them the "BG Boys", Bennie Galloway and Ben Garnto, both rising juniors. Galloway was an All-ACC choice last year as defensive back and figures to work well into Dietzel's plans. Quarterback Mike Fair set school passing records for the Gamecocks in his sophomore year and seems to have the quarterback position nailed down.

1966 SCHEDULE

Sept. 17	LSU at Baton Rouge (N)
Sept. 24	Memphis State at Columbia (N)
Oct. 1	Georgia at Columbia (N)
Oct. 8	N.C. State at Raleigh (D)
Oct. 15	Wake Forest at Columbia (N)
Oct. 22	Tennessee at Knoxville (D)
Nov. 5	FLORIDA STATE at Columbia (D)
Nov. 12	Alabama at Tuscaloosa (D)
Nov. 26	Clemson at Clemson (D)
Nov. 29	Maryland at College Park (D)

1965 SCORES (5-5)

13	The Citadel	3
15	Duke	20
13	N.C. State	7
3	Tennessee	24
38	Wake Forest	7
7	LSU	21
14	Maryland	27
17	Virginia	7
14	Alabama	35
17	Clemson	16



**Defensive Back
Stan Juk**

OFFICIALS: Referee—Donald C. Orr, Nashville, Tenn. — Umpire—Milton Hines, Elkin, N.C. — Linesman—Joseph F. Curtis, Birmingham, Ala. — Field Judge—W. R. Edwards, Winston-Salem, N.C. — Back Judge—Gil Rushton, Atlanta, Ga. — ECO—Reid Ingraham, Charleston, S. C.

EIGHTH GAME: NOVEMBER 12 at SYRACUSE



SYRACUSE

Game Site: Archbold Stadium (40,696)

Kickoff: 1:30 p.m. EST

ATHLETIC DIRECTOR: James H. Decker

HEAD COACH: Ben Schwartzwalder, 17 years, 108-53-2

COACHING STAFF: Bill Bell, Ted Dailey, Rocco Pirro, Jim Shreve, Roy Simmons, Joe Szombathy, Jim Ridlon

SPORTS PUBLICIST: Larry Kimball

LOCATION: Syracuse, New York

ENROLLMENT: 15,300

Ben Schwartzwalder

COLORS: Orange

NICKNAME: Orangemen; Saltine Warriors

CONFERENCE: none

LETTERMEN LOST: 20

LETTERMEN RETURNING: 23

SERIES: First meeting

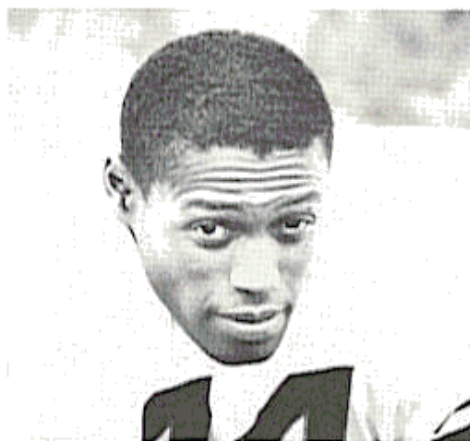
1966 OUTLOOK: The Orangemen's football fortunes for '66 are likely to hinge on Coach Ben Schwartzwalder's ability to refurbish the offensive line and to toughen up the defense. All-American halfback Floyd Little returns for his third year and with Little in the lineup the Orangemen have a chance of winning every time out. Little has a quality sidekick in fullback Larry Csonka and with this 1-2 punch Syracuse could be a surprise in '66.

1966 SCHEDULE

Sept. 10	Baylor at Waco
Sept. 24	UCLA at Syracuse (D)
Oct. 1	Maryland at Syracuse (D)
Oct. 8	Navy at Syracuse (D)
Oct. 15	Boston College at Chestnut Hill
Oct. 22	Holy Cross at Worcester
Oct. 29	Pittsburgh at Syracuse (D)
Nov. 5	Penn. State at University Park
Nov. 12	FLORIDA STATE at Syracuse (D)
Nov. 19	West Virginia at Morgantown

1965 SCORES (7-3)

14	Navy	6
0	Miami (Fla.)	24
24	Maryland	7
14	UCLA	24
28	Penn. State	21
32	Holy Cross	6
51	Pittsburgh	13
12	Oregon State	13
41	West Virginia	13
21	Boston College	13



**Halfback
Floyd Little**

OFFICIALS: Referee—Paul Bertha, Pittsburgh, Pa. — Umpire—Charles H. Brown, Jr., Atlanta, Ga. — Linesman—Wm. Douglass, Pittsburgh, Pa. — Field Judge—Jack Langford, Atlanta, Ga. — Back Judge—Raymond D. Menton, Ellicott City, Md. — ECO—

NINTH GAME: NOVEMBER 19 in TALLAHASSEE

WAKE FOREST

Game Site: Campbell Stadium

Kickoff 2:00 p.m. EST

ATHLETIC DIRECTOR: Dr. Gene Hooks

HEAD COACH: William L. (Bill) Tate, 2 years, 8-12

COACHING STAFF: Dick Anderson, Bill Davis, Beattie Feathers, Ken Karr, Joe Madden

SPORTS PUBLICIST: Marvin Francis

LOCATION: Winston-Salem, North Carolina

ENROLLMENT: 3,000

COLORS: Old Gold and Black



Bill Tate

NICKNAME: Demon Deacons

CONFERENCE: Atlantic Coast

LETTERMEN LOST: 10

LETTERMEN RETURNING: 19

SERIES: FSU leads 4-1-1

1966 OUTLOOK: Demon Deacon coach Bill Tate has predicted a first division berth for the Demons in '66. Although they finished last in the ACC last year a promising number of athletics will return for the squad. Andy Heck, who moved from the No. 1 position at fullback has taken over the halfback slot and is sure to add entertainment to the offense. Ken (Butch) Henry was last year's leading pass receiver and will return to his end position. One of the big linemen for two years running has been Lynn Nesbitt. The Demons should improve over last year's record but will need to find a signal caller.

1966 SCHEDULE

Sept. 17	Virginia at Charlottesville (D)
Sept. 24	Maryland at College Park (D)
Oct. 1	N.C. State at Winston-Salem (D)
Oct. 8	Auburn at Auburn (D)
Oct. 15	South Carolina at Columbia (N)
Oct. 22	North Carolina at Chapel Hill (D)
Oct. 29	Clemson at Winston-Salem (D)
Nov. 5	VPI at Winston-Salem (D)
Nov. 12	Memphis State at Winston-Salem (D)
Nov. 19	FLORIDA STATE at Tallahassee

1965 SCORES (3-7)

3	Virginia Tech	12
11	N.C. State	13
7	Vanderbilt	0
7	Maryland	10
7	South Carolina	38
12	North Carolina	10
13	Clemson	26
0	FLORIDA STATE	35
7	Duke	40
21	Memphis State	20

**Halfback
Andy Heck**

THE FSU-WAKE FOREST SERIES

	FSU	Wake Forest
1956	14	14
1958	27	24
1959	20	22
1960	14	6
1963	35	0
1965	35	0



OFFICIALS: Referee—R. P. (Pete) Williams, Miami — Umpire—Charles Ellinger, Lutherville, Md. — Linesman—A. C. Williams, Jr., Memphis, Tenn. — Field Judge—O. V. Player, Sumter, S. C. — Back Judge—Dick Pace, Maitland — ECO—C. E. Schroll, Montgomery, Ala.

TENTH GAME: NOVEMBER 26 in TALLAHASSEE



Lou Saban

MARYLAND

Game Site: Campbell Stadium

Kickoff: 8:00 p.m. EST

ATHLETIC DIRECTOR: William W. Cobey

HEAD COACH: Lou Saban, first year

COACHING STAFF: Bill Dovell, Dick MacPherson, Paul Massey, Bernie Reid, Sam Rutigliano, Dewey Wade

SPORTS PUBLICIST: Bill Dismer

LOCATION: College Park, Maryland

ENROLLMENT: 26,300

COLORS: Red and White, Black and Gold

NICKNAME: Terrapins, Terps

CONFERENCE: Atlantic Coast

LETTERMEN LOST: 14

LETTERMEN RETURNING: 32

SERIES: First meeting

1966 OUTLOOK: Lou Saban, the American Football League's coach-of-the-year with the Buffalo Bills, has replaced former FSU coach Tom Nugent as head Coach of the Terps. The prospects for '66 center around the presence of 32 lettermen. If Tom "Bo" Hickey the '64 sophomore who rushed for outstanding yardage is able to keep up his scholastic average, Maryland might develop into a top-flight ground-attack team. Fullbacks Whitey Marciniak and Ernie Torain could support a new pro-type "T" formation, while Dick Absher, labeled a "can't miss" for the pros will lead the defense.

1966 SCHEDULE

Sept. 17	Penn. State at University Park
Sept. 24	Wake Forest at College Park
Oct. 1	Syracuse at Syracuse
Oct. 8	Duke at College Park
Oct. 15	West Virginia at College Park
Oct. 22	Open
Oct. 29	South Carolina at College Park
Nov. 5	N.C. State at Raleigh
Nov. 12	Clemson at College Park
Nov. 19	Virginia at Charlottesville
Nov. 26	FLORIDA STATE at Tallahassee

1965 SCORES (4-6)

24	Maryland	7
7	Syracuse	24
10	Wake Forest	7
10	North Carolina	12
7	N.C. State	29
27	South Carolina	14
7	Navy	19
6	Clemson	0
27	Virginia	33
7	Penn State	19

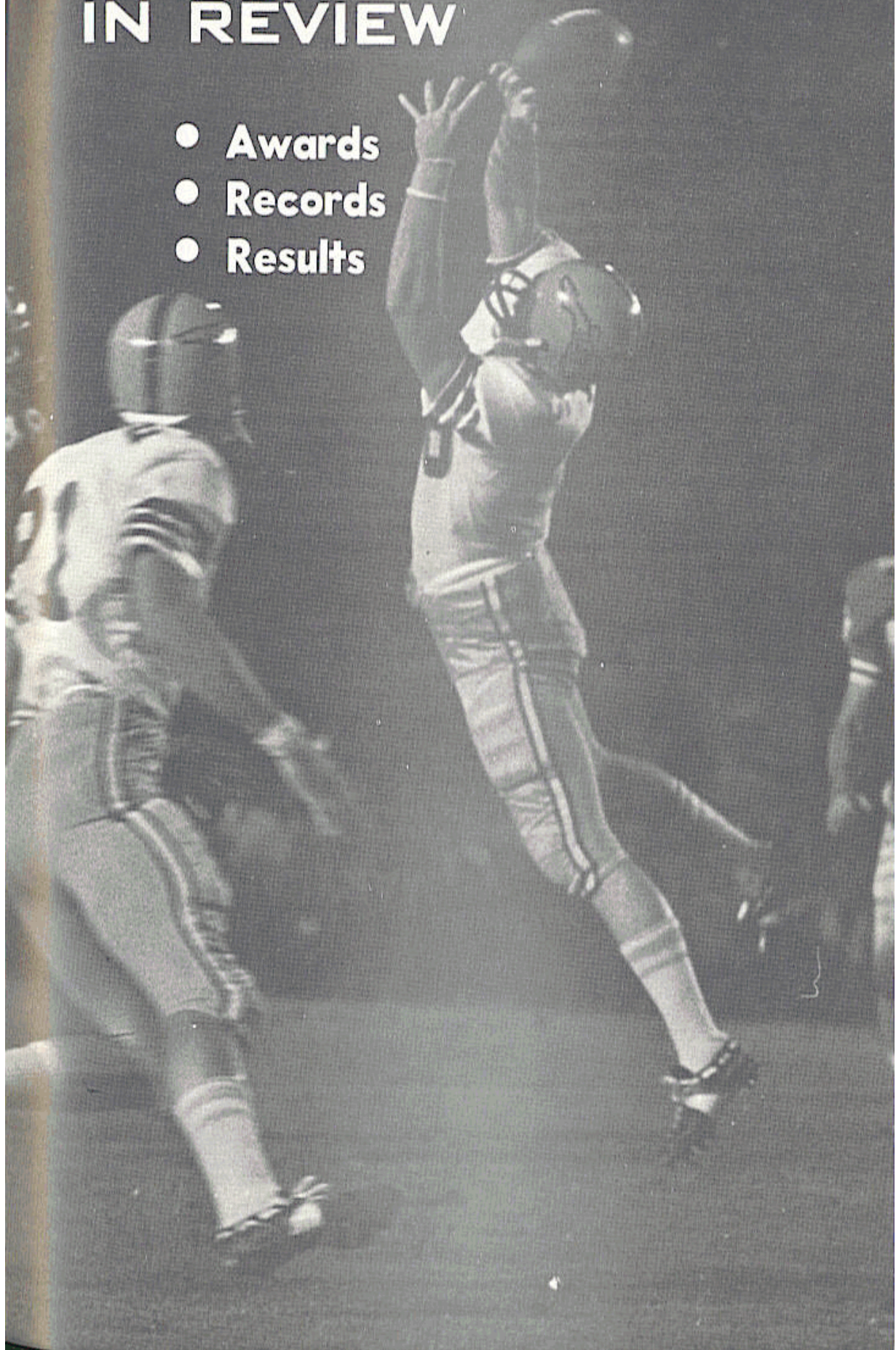


**End
Dick Absher**

OFFICIALS: Referee—W. C. Clary, Winston-Salem, N. C. — Umpire—George Hecht, Miami — Linesman Hugh M. Currin, Oxford, N. C. — Field Judge—Jack Langford, Atlanta, Ga. — Back Judge—Paul V. Hicks, Memphis, Tenn. — ECO—C. E. Schroll, Montgomery, Ala.

1965 IN REVIEW

- Awards
- Records
- Results



FLORIDA STATE 3, TEXAS CHRISTIAN 7

FORT WORTH, Sept. 25—Florida State left scoring opportunities strewn all over Amon Carter Stadium as TCU's Horned Frogs defeated the Seminoles in the season's opener, 7-3.

Seven times the Seminoles were stopped in TCU territory, finally on the four yard line as quarterback Ed Pritchett made a futile dash for the end zone in the closing seconds.

The Frogs were able to get past the fifty yard line only twice. Both forays took place in the third quarter and on the second sophomore quarterback P. D. Shabay led a 47 yard drive culminated by Ken Post's five yard scoring plunge.

The passing of Shabay to end Sonny Campbell who caught four passes during the drive was the telling factor.

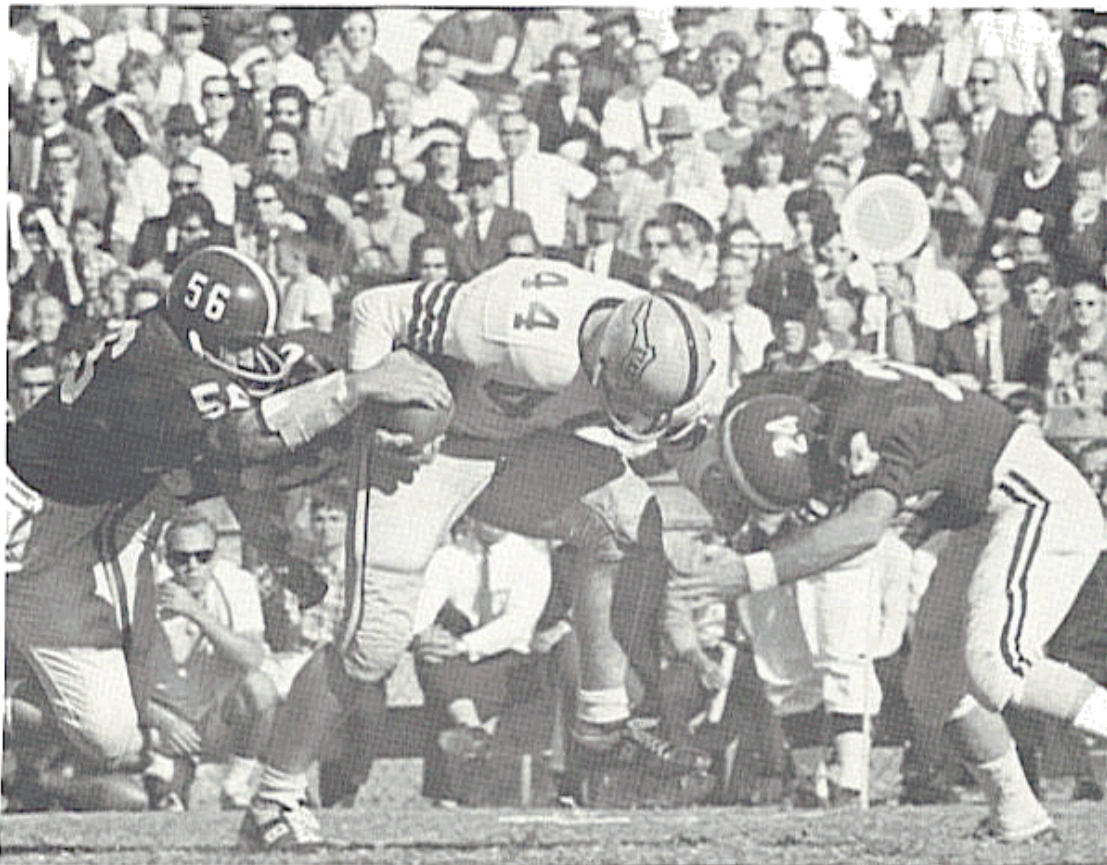
Florida State went 45 yards in nine plays in the second quarter but the drive stalled and Pete Roberts was called for a 23-yard field goal.

Except for the third quarter, Florida State's defense kept TCU under wraps. In fact, the final Seminole threat was formed when Bill McDowell recovered a fumble on the TCU 12 with less than a minute to play.

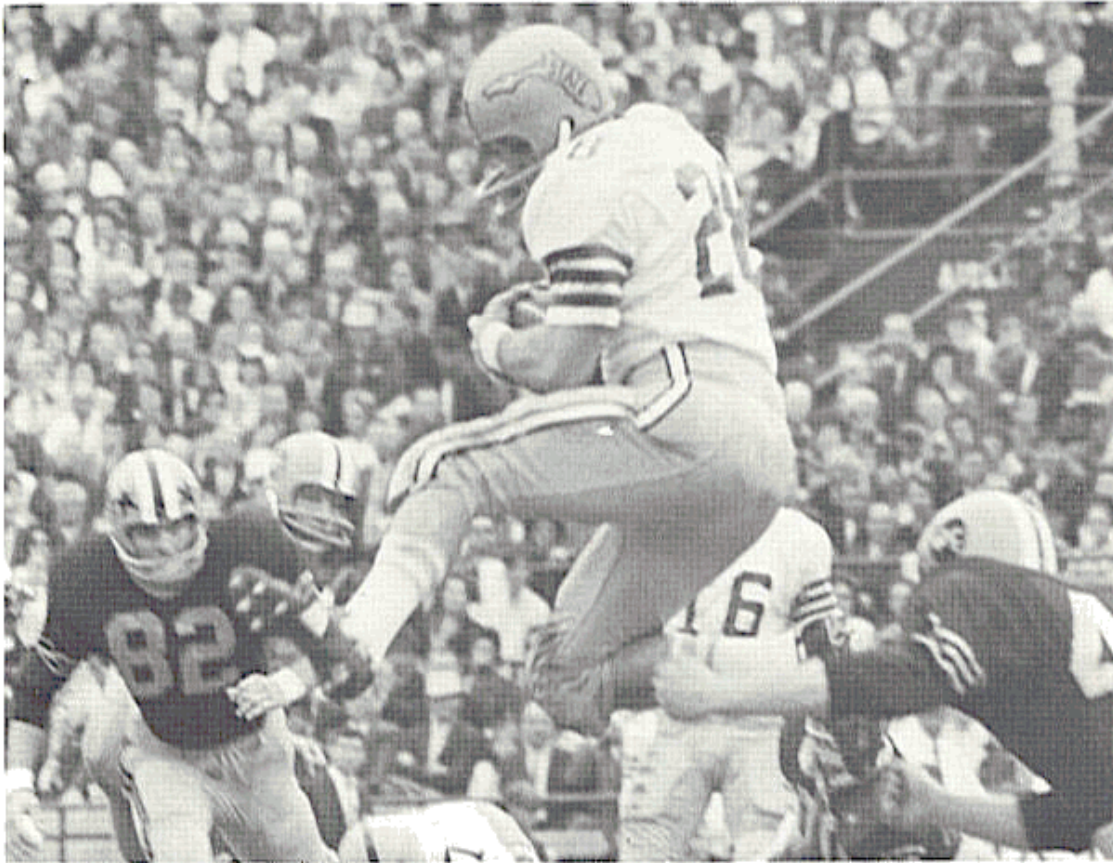
Joe Petko was the leading Seminole ground gainer with 40 yards in 11 tries. Pritchett completed 14 of 29 passes for 128 yards. Four of them found tight end Max Wettstein who gained 42 yards on the catches.

	First Downs	Yards Rush	Yards Pass	Passing Att./Comp.	Had Fumbles Int.	Lost	Punting Punts/Avg.	Penalties No./Yds.	Score by Quarters
Florida State	13	108	128	29-14	2	0	5-33.8	8-92	0-3-0-0
Texas Christian	12	91	118	20-13	1	5	5-34.2	7-74	0-0-7-0

Scoring Summary: Florida State-FG Roberts 23; Texas Christian-Post 5 run (Alford kick).
Attendance: 18,506. Weather: Cloudy, mild.



A beleaguered Jim Mankins powers his way towards a first down.



Flanker T. K. Wetherell leaps high to grab a pass.

FLORIDA STATE 9, BAYLOR 7

TALLAHASSEE, Oct. 2—A 59 yard pass from Ed Pritchett to T. K. Wetherell pulled victory out of the fire in the fourth quarter as Florida State edged Baylor, 9-7.

The game was billed as a passing show and fulfilled its promise despite the exit of Baylor throwing ace Terry Southall with a broken ankle in the first quarter.

Florida State called on kicking specialist Pete Roberts for a 38 yard field goal in the first quarter, but Baylor took the lead on its first possession after the kickoff on a 21 yard pass from Roger Mike Marshall to George Cheshire, and led 7-3 until the Pritchett-Wetherell bomb in the last quarter.

Florida State's offense was held down most of the game by a tenacious Baylor defense, and punter John Hosack was called time and again to boot the Seminoles out. Hosack responded with 11 punts for a 40.8 yard average, and thus gained entry into the record books for punting more times in a single game than any Seminole in history.

Fullback Wayne Giardino gained 30 yards in ten carries to lead the Seminoles on the ground. Pritchett hit on ten of 28 pass attempts for 160 yards.

	First Downs	Yards Rush	Yards Pass	Passing Att./Comp.	Had Fumbles Int.	Lost	Punting Punts/Avg.	Penalties No./Yds.	Score by Quarters
Baylor	15	146	151	33-12	2	2	12-35	8-106	7-0-0-0 7
Florida State	8	89	160	29-10	2	1	11-40.8	3-35	3-0-0-6 9

Scoring Summary: Florida State-FG Roberts 38; Baylor-Cheshire 21 pass from Marshall (Purvis kick); Florida State-Wetherell 59 pass from Pritchett (kick fails).

Attendance: 28,900. Weather: Cool, cloudy.

FLORIDA STATE 24, KENTUCKY 26

LEXINGTON, Oct. 9—Kentucky's Rick Norton and Florida State's Ed Pritchett joined in an aerial duel that provided one of the season's most exciting games as the Wildcats slipped by with a 26-24 victory at Stoll Field.

Each team scored twice in a wide-open first quarter. Florida State added a field goal in the third and another TD in the fourth, while Kentucky saved its scoring punch for two big touchdowns in the final quarter.

Florida State's Joe Petko started things with a 52 yard return of the opening kickoff, but the Seminoles were forced to punt after three plays gained nothing, and Kentucky punted back moments later. A ten yard pass from Tony Gero to Bill Moreman off a fake field goal attempt gave the Seminoles a first down deep in Wildcat territory and Pritchett scored the first touchdown on a one-yard sweep.

Kentucky scored on its next possession, riding Norton's arm 71 yards in nine plays with Rodger Bird scoring from the two, but the point failed and FSU held a 7-6 lead.



Kentucky jumped into the lead with 56 seconds remaining in the quarter on a Norton pass to Bob Windsor, then Norton hit Larry Seiple for a two point conversion.

Moreman took the ensuing kickoff in the Florida State end zone and lateraled to T. K. Wetherell at the 13. The Daytona Beach speedster cruised the rest of the way behind a wall of Seminole blockers to tie the score, a 100-yard touchdown play.

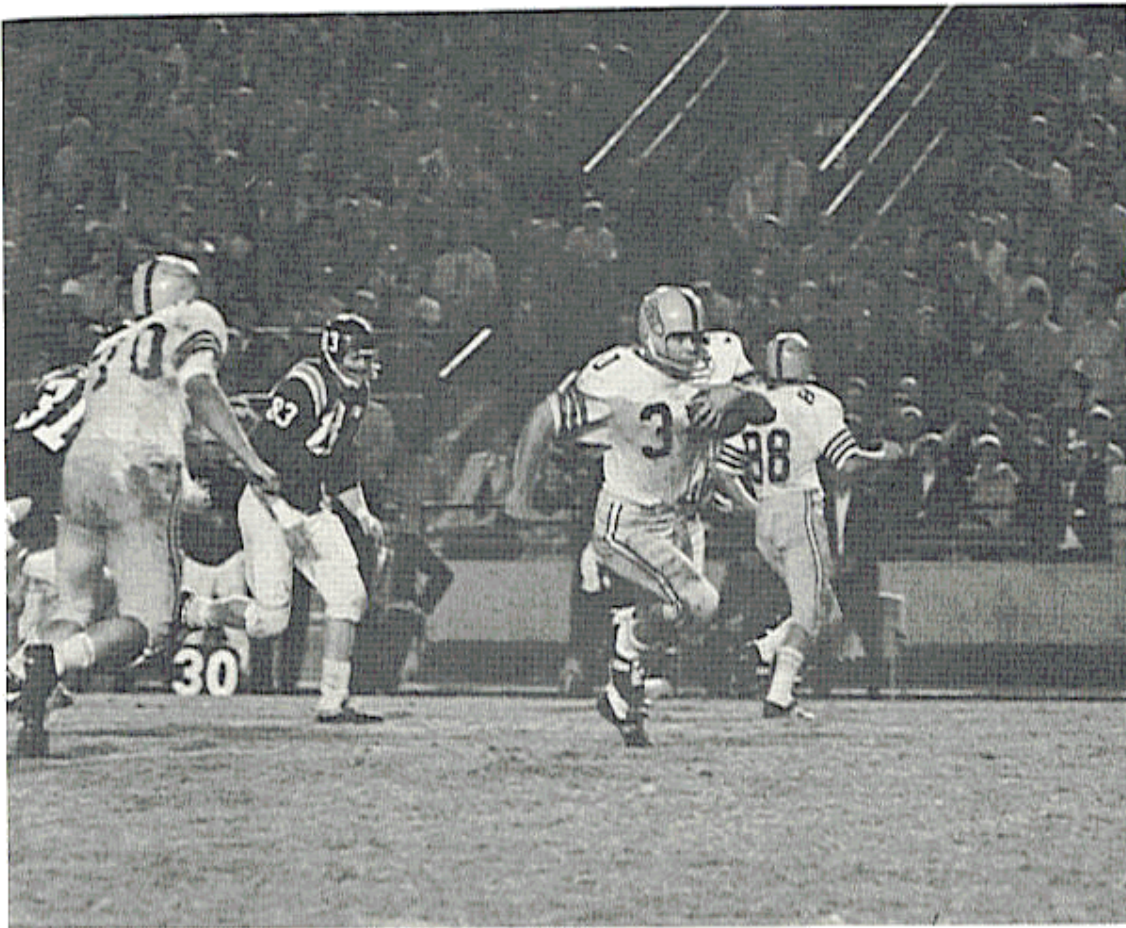
Pete Roberts' field goal put the Seminoles ahead in the third, but Kentucky's Bird got another touchdown early in the fourth to make the score 20-17.

Pritchett hit Max Wettstein with a nine-yard scoring strike and Roberts added the point after with 5:35 left and it looked as though the Seminoles were home free, but Norton brought the Wildcats back 75 yards in 13 plays with Bird scoring his third touchdown for the victory.

Quarterback Kim Hammond shows the form that could win him a starting job this season.

	First Downs	Yards Rush	Yards Pass	Passing Att./Comp.	Had Fumbles Int.	Lost	Punting Punts/Avg.	Penalties No./Yds.	Score by Quarters
Florida State	14	47	197	38-18	1	1	5-39	6-39	14-0-3-7 24
Kentucky	18	111	256	28-16	0	1	4-35.6	4-47	14-0-0-12 26

Scoring Summary: Florida State-Pritchett 3 run (Roberts kick); Kentucky-Bird 2 run (Andrighetti kick); Kentucky-Windsor 39 pass from Norton (Seiple pass from Norton); Florida State-Wetherell 100 kickoff return on lateral from Moreman (Roberts kick); Florida State-FG Roberts 35; Kentucky-Bird 1 run (pass fails); Florida State-Wettstein 9 pass from Pritchett (Roberts kick); Kentucky-Bird 1 run (kick fails). Attendance: 37,500. Weather: Dry.



A football, running room and Bill Moreman all add up to yardage for the Seminoles.

FLORIDA STATE 10, GEORGIA 3

TALLAHASSEE, Oct. 16—A remarkable 20-yard run by Bill Moreman on the first play of the fourth quarter brought Florida State from behind and the Seminoles went on to defeat nationally-ranked Georgia, 10-3.

The Bulldogs boasted one of the nation's strongest running games, but their only threat came after an intercepted pass in the second quarter. With a first down on the Florida State 12, Georgia was forced to settle for a field goal, as the Seminole defense played its best game of the year.

The Florida State defensive unit so dominated the action that Georgia was able to mount only one drive under its own power. That one started on the Georgia 18 and carried to the FSU 46.

Moreman's run was one of the most determined ever seen on any football field. The Daytona Beach sophomore shrugged off tackles by the bundle enroute to the end zone.

Linebacker Bill McDowell set up a field goal with a fumble recovery on the Georgia 20 late in the fourth quarter.

Wayne Giardino again led the Seminole ground attack with 74 yards on 17 carries.

	First Downs	Yards Rush	Yards Pass	Passing Att./Comp.	Had Fumbles Int.	Had Fumbles Lost	Punting Punts/Avg.	Penalties No./Yds.	Score by Quarters
Georgia	8	113	21	9-2	0	1	9-40.1	9-55	0-3-0-0 3
Florida State	15	171	111	23-9	1	0	8-35.3	9-116	0-0-0-10 10

Scoring Summary: Georgia-FG Etter 38; Florida State-Moreman 20 run (Roberts kick); FG Roberts 31. Attendance: 40,112. Weather: Cool, Clear.

FLORIDA STATE 0, ALABAMA 21

TUSCALOOSA, Oct. 23—Alabama used its Homecoming date with Florida State to display the power and precision which eventually gained the Crimson Tide its second straight national championship, and the Seminoles absorbed their worst defeat in several seasons, 21-0.

Alabama's Steve Bowman broke the game open in the first quarter with a 43 yard run to the Florida State seven yard line, then three line plunges by Leslie Kelly and a conversion by David Ray gave the Tide a 7-0 lead.

From then on it was all 'Bama, although the Seminoles mounted several major threats which were halted by penalties and pass interceptions.

Quarterback Steve Sloan took Alabama 81 yards in ten plays to increase the lead to 13-0 by halftime. A 42 yard pass to Tommy Tolleson was the big play with Sloan doing the scoring on a three yard keep.

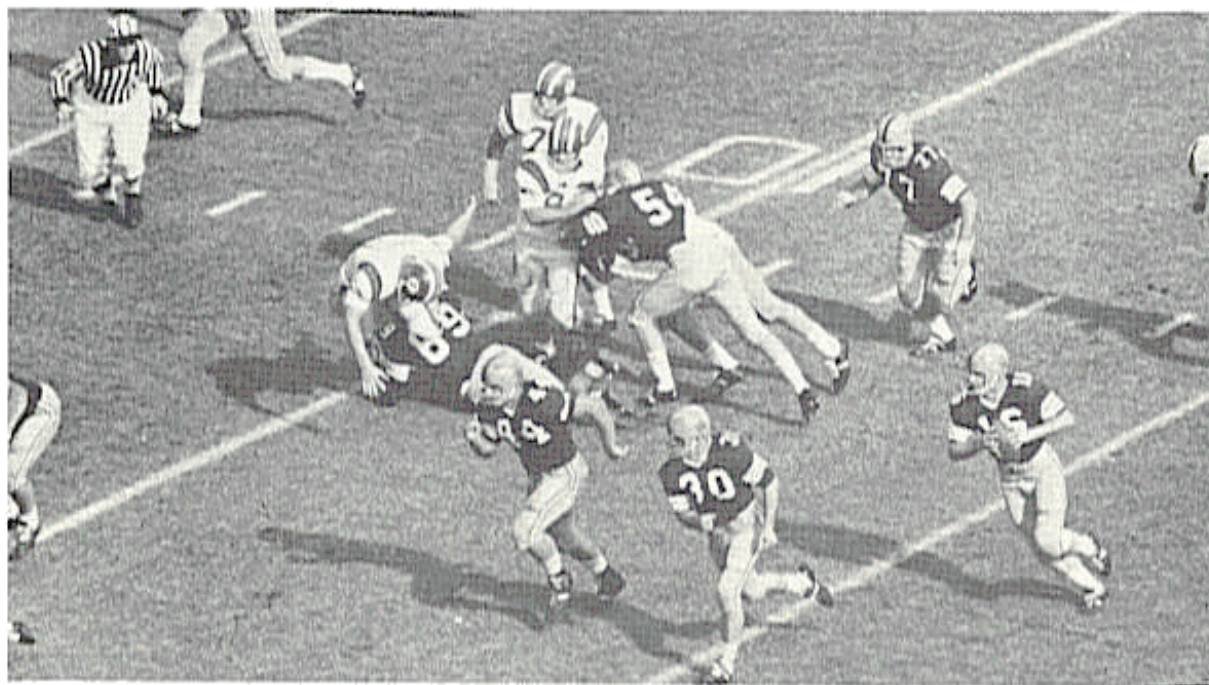
Bill Moreman moved the Seminoles to the Alabama 19 early in the second quarter but the Tide took over when two Ed Pritchett passes fell incomplete. Pritchett passed the Seminoles into scoring territory again in the third quarter, but the drive ended at the 25 on an interception by Bobby Johns.

Ken Stabler took over the quarterbacking for Alabama in the fourth quarter and set up the third touchdown with a 28 yard gain off a fake field goal attempt. Kelly scored his second touchdown on a one yard plunge and Stabler swept left end for a two-point conversion.

Pritchett moved the Seminoles to the Alabama 17 late in the game, but again a timely interception stopped the threat. The FSU quarterback was the Seminole offensive star, running for 64 yards and passing for 76. Moreman gained 51 yards on eight tries.

	First Downs	Yards Rush	Yards Pass	Passing Att./Comp.	Had Fumbles Int.	Lost	Punting Punts/Avg.	Penalties No./Yds.	Score by Quarters
Florida State	15	125	76	25-8	3	0	6-39	6-64	0-0-0-0
Alabama	15	222	87	9-5	0	0	6-42.1	5-66	7-6-0-8

Scoring Summary: Alabama-Kelley 1 run (Ray kicks); Sloan 3 run (kick fails); Kelley 1 run (Stabler run). Attendance: 43,936. Weather: Mild, clear.



Florida State's M&M boys on the move. Here Jim Jenkins (44)



Bill Campbell welcomes a two-point conversion pass attempt in the end zone to preserve Florida State's 7-6 victory over Virginia Tech.

FLORIDA STATE 7, VIRGINIA TECH 6

TALLAHASSEE, Oct. 30—Florida State shelved its passing attack and sent Jim Mankins and Bill Moreman into the middle of a tough Virginia Tech defense as the Seminoles outslugged the always dangerous Gobblers, 7-6.

Quarterback Ed Pritchett threw only ten passes, less than in any other game of the season. Mankins carried 20 times for 81 yards and Moreman gained 72 yards on 13 carries.

Two runs by Pritchett and an 11 yard sprint by Moreman set up Florida State's third quarter touchdown which Moreman scored on a two yard burst off tackle. Pete Roberts kicked the extra point which proved to be the victory margin.

VPI's scoring drive started on the Florida State 46 late in the third quarter. Eddie Bulheller went 18 yards for the touchdown.

The Gobblers gambled for two points but Florida State's Bill Campbell was on the spot for a big interception to preserve the Seminole lead.

VPI threatened twice in the first half, but field goal attempts failed each time. Florida State's defense toughened in the last quarter and held the Gobblers inside their own 30 after the touchdown.

	First Downs	Yards Rush	Yards Pass	Passing Att./Comp.	Had Int.	Fumbles Lost	Punting Punts/Avg.	Penalties No./Yds.	Score by Quarters
Virginia Tech	12	151	49	11-6	0	0	6-42.3	3-29	0-0-7-0 7
Florida State	16	229	37	10-5	2	2	4-41	2-10	0-0-0-6 6

Scoring Summary: Florida State—Moreman 2 run (Roberts kick); VPI—Bulheller 18 run (pass fails). Attendance: 22,536. Weather: Cloudy, chilly.

FLORIDA STATE 35, WAKE FOREST 0

TALLHASSEE, Nov. 6—Limited to a field goal in the first half, Florida State exploded for five touchdowns in the second and defeated Wake Forest, 35-0.

Two passes from Ed Pritchett to T. K. Wetherell set up the field goal early in the second quarter. Wake Forest made its only penetration into Florida State territory shortly thereafter, but the Deacons were forced to punt from the Seminole 37.

Florida State scored on its first possession in the second half. Pritchett got 37 yards to the 13, then scored moments later on a nine yard sweep.

Late in the third quarter Pritchett hit Max Wettstein with a 40-yard touchdown pass.

The Seminoles were threatening again as the quarter ended. A 17-yard pass from Tony Gero to Wettstein off a fake field goal attempt put Florida State down close and Phil Spooner dived over from the one for the third tuchdown.

Wayne Giardino got the fourth on a one yard plunge after a 35-yard pass from Kim Hammond to Lane Fenner and a 12 yard sweep by Spooner put the Seminoles in position.

With just over a minute remaining Bill Campbell took a Wake Forest punt on his own 30 and went all the way behind a wall of blockers.

Pritchett was the leading Seminole ground gainer with 45 yards on six carries. The Florida State quarterback completed ten of 18 pass attempts for 119 yards.

	First Downs	Yards Rush	Yards Pass	Passing Att./Comp.	Had Fumbles Int.	Lost	Punting Punts/Avg.	Penalties No./Yds.	Score by Quarters
Wake Forest	5	73	26	15-4	0	1	11-34.6	2-7	0-3-13-19 35
Florida State	16	153	180	25-13	0	0	6-44.3	6-60	0-0-0-0 0

Scoring Summary: Florida State-FG Roberts 30; Pritchett 10 run (kick fails); Wettstein 40 pass from Pritchett (Roberts kick); Spooner 1 run (kick fails); Giardino 1 run (kick fails); Campbell 70 punt return (Roberts kick).



Bill Campbell coasts into the end zone on a 70-yard punt return against Wake Forest.



Jim Mankins prepares to throw his 226-pound bulk into the line for another Seminole first down.

FLORIDA STATE 0, N. C. STATE 3

RALEIGH, Nov. 13—A 41 yard field goal by Harold Deters gave N. C. State a 3-0 victory over Florida State at the Wolfpack Homecoming.

In a stern defensive test, neither team could maintain an offensive threat. Floriad State, on the other hand, missed a field goal attempt just before halftime in the Seminoles' only excursion deep into Wolfpack territory. Pete Roberts made a 14-yard attempt which was wide to the right.

Deters' effort was the longest field goal ever picked against Florida State.

Jim Mankins carried the brunt of Florida State's running game, gaining 50 yards on 14 carries. Ed Pritchett passed 21 times, completing ten for 107 yards.

Tight end Max Wettstein played his greatest game as a Seminole, catching seven passes for 91 yards, but the Seminole offense misfired on too many occasions to be effective.

	First Downs	Yards Rush	Yards Pass	Passing Att./Comp.	Had Int.	Fumbles Lost	Punting Pts./Avg.	Penalties No./Yds.	Score by Quarters
Florida State	13	53	107	21-10	1	0	8-40.6	4-27	0-0-0-0
N. C. State	9	121	49	9-4	1	0	9-39.6	3-29	0-0-3-0

Scoring Summary: N. C. State-FG Deters 41. Attendance 22,000. Weather: Overcast, cool.

FLORIDA STATE 16, HOUSTON 16

TALLAHASSEE, Nov. 20—The home finale provided enough spectator thrills for an entire season, but two missed field goal attempts in the last two minutes forced Florida State to settle for a tie with Houston for the second straight year.

It seemed as though things were going the Seminole way when Florida State forced Houston to punt after three plays following the opening kickoff. Ed Pritchett used only one pass — a 28-yard completion to Buddy Blankenship — as he moved the Seminoles 46 yards in eight plays for the game's first touchdown. Jim Mankins plunged over from the one for the score, but Pete Roberts' conversion attempt was wide.

Florida State had no time to rest easy as Houston's Warren McVea took the kickoff and rambled 92 yards to tie the score. The Cougar extra point attempt also missed and the first quarter ended 6-6.

The Seminoles led again early in the second quarter when Phil Spooner started off tackle from his own 20, evaded practically the entire Cougar team and went 80 yards into the end zone. Robert's kick made the score 13-6.

The Seminoles had a chance to cushion their lead moments later when Maury Bibent intercepted a pass and returned to the Houston 13, however, Roberts missed a field goal try from the nine.

Houston went 80 yards in seven plays to tie the score on a 17-yard pass from Bo Burris to Tom Beer. Ken Hebert kicked the point.

Roberts made good on a 41-yard field goal try just before the half, but Houston's Hebert put a 37-yard kick through early in the third quarter to end the scoring, although the Seminoles missed two other opportunities in the final quarter.

Phil Spooner gained 142 yards on 16 carries to lead Florida State's running game which rolled up 306 yards. Buddy Blankenship was the pass receiving star with seven catches for 87 yards.

	First Downs	Yards Rush	Yards Pass	Passing Att./Comp.	Had Fumbles Int.	Lost	Punting Punts/Avg.	Penalties No./Yds.	Score by Quarters
Houston	12	92	181	19-9	1	2	6-39.8	3-40	6-7-3-0 16
Florida State	17	306	107	22-9	2	1	3-38	5-55	6-10-0-0 16

Scoring Summary: Florida State-Mankins 1 run (kick fails); Houston-McVea 92 kickoff runback (kick fails); Florida State-Spooner 80 run (Roberts kick); Houston-Beer 17 pass from Burris (Hebert kick); Florida State-FG Roberts 41; Houston-FG Hebert 37. Attendance: 25,135. Weather: Cool, clear.



A face in the crowd. Bill Moreman is at his best in congested areas.

FLORIDA STATE 17, FLORIDA 30

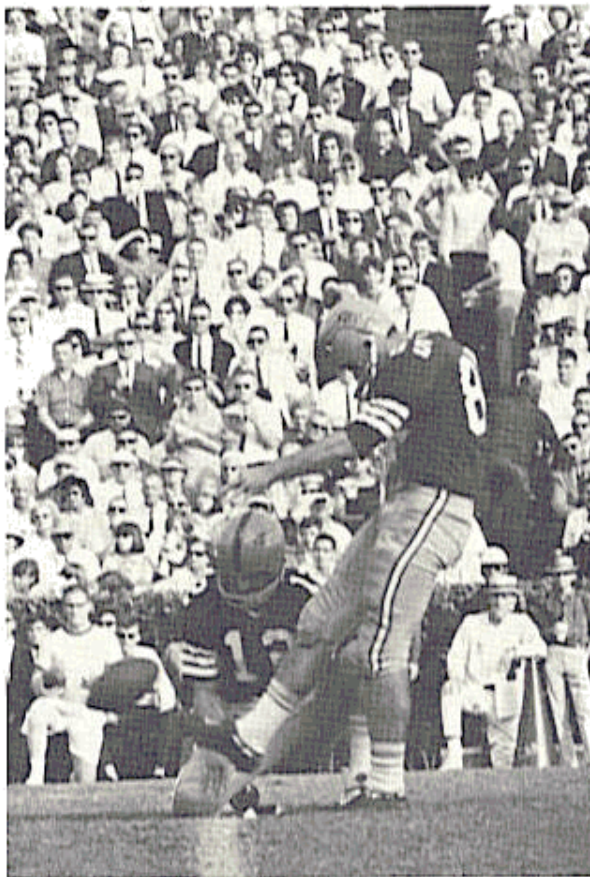
GAINESVILLE, Nov. 27—Florida's All American combination of Steve Spurrier and Charles Casey brought the Gators back in the final two minutes to defeat Florida State, 30-17.

Playing the greatest game of his career, Ed Pritchett had shocked the overflow crowd at Florida Field by leading the Seminoles on a tremendous surge from behind in the final quarter, but a Spurrier-Casey touchdown pass erased the one point FSU lead with 1:12 left.

Trailing 16-3 with eight minutes to go in the third quarter, Pritchett put the Seminole offense in passing gear. Gains of 28 by Phil Spooner and 13 by Joe Petko set up a 31 yard touchdown strike to Max Wettstein in the third period and Pete Roberts' kick made the score 16-10.

The Seminoles went ahead with 2:10 left in the game on a fourth down pass from Pritchett to Jerry Jones for 21 yards, and a conversion by Roberts.

The undaunted Spurrier brought Florida 71 yards in six plays, the payoff a 25-yard touchdown pass to Casey. Allen Trammell intercepted a Pritchett pass moments later and returned it 46 yards for a touchdown to give the Gators their final victory margin.



Probably the most damaging Gator was halfback Jack Harper, who scored two touchdowns in the first half on passes from Spurrier of 51 and 37 yards, and made an impossible catch to keep the fourth quarter touchdown drive alive.

Florida State got on the scoreboard first with a 21-yard field goal by Pete Roberts. Florida's Wayne Barfield kicked a 34-yard field goal in the third.

Spooner led the Florida State running attack with 59 yards in 11 carries. Pritchett hit 18 of 34 pass attempts for 193 yards. Max Wettstein caught five for 75 yards.

Place Kicker Pete Roberts led all Florida State scorers last year. Here he boots one true against Florida.

	First Downs	Yards Rush	Yards Pass	Passing Att./Comp.	Had Fumbles Int.	Lost	Punting Punts/Avg.	Penalties No./Yds.	Score by Quarters
Florida State	14	85	193	34-18	1	0	5-41	4-36	3-0-7-7 17
Florida	26	185	282	28-18	0	2	2-20.5	6-50	0-13-3-14 30

Scoring Summary: Florida State-FG Roberts 28; Florida-Harper 52 pass from Spurrier (Barfield kick); Florida-Harper 37 pass from Spurrier; Florida-FG Barfield 34; Florida State-Wettstein 39 pass from Pritchett (Roberts kick); Florida State-Jones 21 pass from Pritchett (Roberts kick); Florida-Casey 25 pass from Spurrier (Barfield kick); Florida-Trammell 46 pass int. (Barfield kick). Attendance: 49,513. Weather: Clear.

1965 FLORIDA STATE FOOTBALL STATISTICS

(Players in Bold Type Not Returning)

FSU	TEAM STATISTICS	OPP
71	First downs rushing	69
64	First downs passing	53
6	First downs penalties	10
141	Total first downs	132
384	Rushing attempts	436
1663	Yards gained rushing	2164
267	Yards lost rushing	329
1396	Net yards rushing	1835
256	Passes attempted	181
114	Passes completed	89
15	Passes had intercepted	5
1296	Net yards passing	1212
640	Plays from scrimmage	577
2692	Total offense yardage	2517
61	Number of punts	70
2404	Punting yardage	2620
0	Punts had blocked	1
39.6	Punting average	37.4
13	Fumbles	21
5	Fumbles lost	14
53	Times penalized	50
524	Yards penalized	503
8	Touchdowns rushing	8
5	Touchdowns passing	6
1	Touchdowns-kickoff return	1
1	Touchdowns-punt return	0
0	Touchdowns-interception return	1
10	P.A.T. kicks	7
0	P.A.T. runs	1
0	P.A.T. passes	1
7	Field goals	4
121	Total points	119

RUSHING					
Player	No.	Gain	Loss	Net	Avg.
Mankins	85	352	16	336	4.0
Spooner	76	341	18	323	4.3
Moreman	49	259	10	249	5.1
Pritchett	78	391	161	230	2.9
Giardino	66	220	19	201	3.0
Petko	23	79	18	61	2.7
Wetherell	4	19	12	7	1.8
Hammond	1	3	0	3	3.0
Gero	1	0	4	-4	-4.0

PASSING						
Players	Att.	Comp.	Int.	Yds.	Pctg	TDs
Pritchett	247	110	14	1225	.446	5
Hammond	6	2	0	44	.333	0
Gero	2	2	0	27	1.000	0
Giardino	1	0	1	0	.000	0

PUNTING			
Player	Punts	Yards	Avg.
Hosack	61	2404	39.6

PASS RECEIVING

Player	Caught	Yards	TDs
Wettstein	24	365	3
Wetherell	19	234	1
J. Jones	19	223	1
Blankenship	15	163	0
Giardino	9	52	0
Moreman	6	72	0
Mankins	5	31	0
Spooner	4	35	0
Fenner	3	48	0
Revell	3	30	0
Petko	3	-5	0
D. Jones	2	34	0
Taylor	1	4	0

PUNT RETURNS

Player	No.	Yards	TDs
Campbell	20	301	1
Bibent	15	97	0
D'Alessandro	1	24	0

KICKOFF RETURNS

Player	No.	Yards	TDs
Moreman	11	227	0
Wetherell	5	194*	1
Petko	3	74	0
Campbell	1	17	0
Giardino	1	4	0
Revell	0	22**	0

INTERCEPTION RETURNS

Player	No.	Yards	TDs
Bibent	2	9	0
Campbell	1	12	0
C. Pennie	1	5	0
Conway	1	0	0

SCORING

Player	TD	R-P-K	R-P-K	FG	TP
Roberts	0	0-0-15	0-0-10	7	31
Wettstein	3	0-0-0	0-0-0	0	18
Moreman	2	0-0-0	0-0-0	0	12
Pritchett	2	0-0-0	0-0-0	0	12
Spooner	2	0-0-0	0-0-0	0	12
Wetherell	2	0-0-0	0-0-0	0	12
Campbell	1	0-0-0	0-0-0	0	6
Giardino	1	0-0-0	0-0-0	0	6
J. Jones	1	0-0-0	0-0-0	0	6
Mankins	1	0-0-0	0-0-0	0	6

* 87 yards on lateral from Moreman

** 22 yards on reverse from Moreman



FLORIDA STATE RETIREES NO. 25

The jersey of Fred Biletnikoff, Florida State's All American flanker back in 1964, has been retired by the athletic department.

Biletnikoff, co-captain of the 1964 Seminoles, was the school's first consensus All American.

During the '64 season, the Erie, Pa., native caught 57 passes for 987 yards and 11 touchdowns. In the Gator Bowl against Oklahoma he caught 13 passes for 192 yards and four touchdowns, becoming the first major college football player to score four touchdowns on pass receptions in a major bowl game.

He and quarterback Steve Tensi were voted into the Gator Bowl Hall of Fame, the first time two players from the same team have been so honored. Biletnikoff was also named "Lineman of the Year in the Southeast" by the Atlanta Touchdown Club, and was chosen as the Outstanding Senior man for '64 by the Florida State student body.

The retirement of his jersey came as a result of a student body petition with concurrence by the FSU faculty committee, the athletic department, and the Alumni F club.

In the words of Athletic Director Vaughn Mancha: "1964 will go down as a year to remember at Florida State. We had our best season since becoming a major college, our first victory over Florida, a major bowl victory and our first All American. I'm sure there will be many future All Americans, but Fred Biletnikoff was the first. Therefore, we think it appropriate to retire his number, not only as a tribute to his ability, but as a symbol of a great Florida State football team."

MOST VALUABLE PLAYER

The Tallahassee Quarterback Club annually presents a trophy to the Florida State player selected by his teammates as having made the most valuable contribution to the team.

1957 Bob Nellums, Fullback	1961 Roy Bickford, Safety
1958 Bobby Renn, Halfback	1962 Gene McDowell, Guard
1959 Fred Pickard, Halfback	1963 Dave Snyder, Halfback
1960 Bud Whitehead, Halfback	1964 Fred Biletnikoff, Flanker
	1965 Jack Shinholser, Middle Guard

THE BOB CRENSHAW AWARD

Given in memory of Robert E. (Bob) Crenshaw, 1955 Florida State football captain and student leader who was killed in a jet crash in 1958, the plaque's inscription reads: "To the Football Player With The Biggest Heart." The recipient is chosen by his teammates as the man who best exemplifies the "qualities that made Bob Crenshaw an outstanding football player and person."

1958 Al Ulmer, Guard	1962 Jim Sims, Tackle
1959 Ramon Rogers, Center	1963 Larry Brinkley, Fullback
1960 Abner Bigbee, Guard	1964 Dick Hermann, Linebacker
1961 Paul Andrews, Fullback	1965 Howard Ehler, Defensive Back

FLORIDA STATE ALL AMERICANS

Fred Biletnikoff, Flanker, 1964

First team: Associated Press, Football Writers
Association, Newspaper Enterprises
Association, Football News, N. Y. Daily News

Second team: United Press International, Football
Coaches Association

Gene McDowell, Guard, 1962

Third team: Associated Press

LITTLE ALL AMERICAN (1947-1954)

Hugh Adams, tackle, 1948-49

Bill Dawkins, guard, 1951

Jerry Morrical, tackle, 1950

Curt Campbell, end, 1952

ACADEMIC ALL AMERICA

Ron Schomburger, end, 1957, second team

ALL TIME GATOR BOWL TEAM

First Team: Steve Tensi, QB, 1965

Fred Biletnikoff, Flanker, 1965

Second Team: Jack Shinholser, Middle Guard, 1965

NATIONAL BACK AND LINEMAN OF THE WEEK

Steve Tensi, QB, vs. Kentucky, 1964 (Associated Press, Sports
Illustrated)

Jack Shinholser, Middle guard, vs. Florida, 1964 (Associated Press)

FLORIDA STATE PLAYERS IN ALL STAR GAMES

Name	Position	Year	Game	Site
Bill Dawkins	Guard	1953	Senior Bowl North-South	Mobile, Ala. Miami
Lee Corso	Halfback	1956	Senior Bowl	Mobile, Ala.
Bobby Renn	Halfback	1959	Senior Bowl	Mobile, Ala.
Charlie Calhoun	Defensive Back	1964	North-South	Miami
Fred Biletnikoff	Flanker Back	1965	College All-Star	Chicago, Ill.
Steve Tensi	Quarterback	1965	Senior Bowl	Mobile, Ala.
Jack Shinholser	Middle Guard	1966	Blue-Gray	Montgomery, Ala.
Bill McDowell	Linebacker	1966	Blue-Gray	Montgomery, Ala.

FLORIDA STATE PLAYERS NOW ACTIVE IN PROFESSIONAL FOOTBALL

Tony Romeo, end, Boston Patriots, AFL (8th year)

Bud Whitehead, defensive back, San Diego Chargers, AFL (7th year)

Fred Biletnikoff, flanker back, Oakland Raiders, AFL (2nd year)

Steve Tensi, quarterback, San Diego Chargers, AFL (2nd year)

Les Murdock, place kicker, San Diego Chargers, AFL (2nd year)

FLORIDA STATE PLAYERS ENTERING PROFESSIONAL FOOTBALL THIS SEASON

Jack Shinholser, middle guard, Washington Redskins, NFL

Max Wettstein, end, Denver Broncos, AFL

Bill McDowell, linebacker, San Diego Chargers, AFL

Frank Pennie, Tackle, Detroit Lions, NFL

BEST SINGLE GAME PERFORMANCES BY FLORIDA STATE PLAYERS (1947-1965)

TOTAL OFFENSE

1. 369 yards by Joe Majors vs. Tampa, 1959 (56 rush, 313 pass)
2. 303 yards by Steve Tensi vs. Oklahoma (Gator Bowl), 1965 (0 rush, 303 pass)
3. 294 yards by Steve Tensi vs. VPI, 1964 (6 rush, 288 pass)
4. 225 yards by Nelson Italiano vs. Newberry, 1950
5. 209 yards by Steve Tensi vs. Wake Forest, 1963 (-18 rush, 227 pass)

YARDS GAINED RUSHING

1. 161 by Buddy Strauss vs. Mississippi College, 1949
2. 152 by Mike Sellers vs. Sul Ross, 1951
3. 150 by Bobby Renn vs. Abilene Christian, 1957
4. 142 by Keith Kinderman vs. Richmond, 1961
5. 142 by Phil Spooner vs. Houston, 1965
6. 141 by Bobby Fiveash vs. Tampa, 1953
7. 133 by Roy Thompson vs. Jacksonville Navy, 1951
8. 133 by Fred Pickard vs. Tennessee, 1958
9. 130 by Bobby Renn vs. Furman, 1958

YARDS GAINED PASSING

1. 313 by Joe Majors vs. Tampa, 1959
2. 303 by Steve Tensi vs. Oklahoma (Gator Bowl), 1965
3. 288 by Steve Tensi vs. VPI, 1964
4. 227 by Steve Tensi vs. Wake Forest, 1963
5. 226 by Len Swantic vs. Villanova, 1954

PASSES ATTEMPTED

1. 39 by Steve Tensi vs. VPI, 1964 (completed 21)
2. 37 by Ed Pritchett vs. Kentucky, 1965 (Completed 17)
3. 36 by Steve Tensi vs. Oklahoma (Gator Bowl), 1965 (Completed 23)
4. 34 by Ed Pritchett vs. Florida, 1965 (Completed 18)
5. 32 by Joe Majors vs. Tampa, 1959 (Completed 20)

PASSES COMPLETED

1. 23 by Steve Tensi vs. Oklahoma (Gator Bowl), 1965 (Att. 36)
2. 21 by Steve Tensi vs. VPI, 1964 (Att. 39)
3. 20 by Joe Majors vs. Tampa, 1959 (Att. 32)
4. 18 by Ed Pritchett vs. Florida, 1965 (Att. 34)
5. 17 by Steve Tensi vs. Wake Forest, 1963 (Att. 26)
6. 17 by Ed Pritchett vs. Kentucky, 1965 (Att. 37)

PASSES CAUGHT

1. 13 by Fred Biletnikoff vs. Oklahoma (Gator Bowl), 1965
2. 11 by Fred Biletnikoff vs. VPI, 1964
3. 10 by Fred Biletnikoff vs. Southern Mississippi, 1964
4. 9 by Bud Whitehead vs. VPI, 1959
5. 9 by Fred Biletnikoff vs. Miami, 1964
6. 8 by Max Wettstein vs. Wake Forest, 1963
7. 8 by Fred Biletnikoff vs. Georgia, 1964
8. 8 by Don Floyd vs. Houston, 1964

YARDS RECEIVING PASSES

1. 192 by Fred Biletnikoff vs. Oklahoma (Gator Bowl), 1965
2. 182 by Fred Biletnikoff vs. VPI, 1964
3. 170 by Fred Biletnikoff vs. Southern Mississippi, 1964
4. 165 by Fred Biletnikoff vs. Miami, 1964
5. 123 by Harry Bringger vs. Mississippi College, 1949



Tensi



Biletnikoff



Strauss



Majors

BEST SEASONAL PERFORMANCES BY FLORIDA STATE PLAYERS (1947-1965)

POINTS SCORED

1. 68 by Fred Biletnikoff, 1964
2. 60 by Wyatt Parrish, 1949
3. 54 by Mike Sellers, 1950
4. 49 by Les Murdock, 1964
5. 48 by Dick Peterson, 1949
6. 48 by Bobby Flveash, 1953
7. 48 by Bobby Renn, 1958
8. 44 by Fred Pickard, 1959
9. 42 by Mike Sellers, 1951

TOUCHDOWNS SCORED

1. 11 by Fred Biletnikoff, 1964
2. 9 by Wyatt Parrish, 1949
3. 9 by Mike Sellers, 1950
4. 8 by Bobby Flveash, 1953
5. 7 by Mike Sellers, 1951
6. 7 by Bobby Renn, 1958
7. 7 by Fred Pickard, 1959
8. 6 by Lee Corso, 1954
9. 6 by Tom Feamster, 1954

YARDS RUSHING

1. 747 by Buddy Strauss, 1949
2. 615 by Fred Pickard, 1958
3. 609 by Stan Dobo, 1952
4. 605 by Wyatt Parrish, 1949
5. 596 by Bobby Renn, 1956
6. 578 by Mike Sellers, 1950
7. 516 by Phil Spooner, 1964
8. 500 by Dave Snyder, 1963

TIMES CARRIED

1. 188 by Buddy Strauss, 1949
2. 145 by Stan Dobo, 1952
3. 136 by Phil Spooner, 1964
4. 131 by Fred Pickard, 1959
5. 130 by Mike Sellers, 1950
6. 122 by Fred Pickard, 1958

YARDS PASSING

1. 1683 by Steve Tensi, 1964
2. 1225 by Ed Pritchett, 1965
3. 1063 by Joe Majors, 1959
4. 915 by Steve Tensi, 1963
5. 796 by Steve Tensi, 1962
6. 769 by Eddie Feely, 1962
7. 750 by Harry Massey, 1954

PASSES ATTEMPTED

1. 247 by Ed Pritchett, 1965
2. 204 by Steve Tensi, 1964
3. 168 by Joe Majors, 1959
4. 147 by Steve Tensi, 1963
5. 121 by Steve Tensi, 1962
6. 99 by Eddie Feely, 1962
7. 98 by Eddie Feely, 1960

PASSES COMPLETED

1. 121 by Steve Tensi, 1964
2. 110 by Ed Pritchett, 1965
3. 90 by Joe Majors, 1959
4. 71 by Steve Tensi, 1963
5. 60 by Steve Tensi, 1962
6. 56 by Eddie Feely, 1960
7. 56 by Eddie Feely, 1962

TOUCHDOWN PASSES THROWN

1. 14 by Steve Tensi, 1964
2. 10 by Harry Massey, 1954
3. 9 by Steve Tensi, 1963
4. 8 by Nelson Italiano, 1950
5. 7 by Vic Prinzi, 1958
6. 6 by Len Swantic, 1956
7. 6 by Joe Majors, 1959
8. 6 by Ed Trancygier, 1960

PASSES CAUGHT

1. 57 by Fred Biletnikoff, 1964
2. 41 by Don Floyd, 1964
3. 31 by Bud Whitehead, 1959
4. 28 by Tom Feamster, 1954
5. 24 by Curt Campbell, 1952
6. 24 by Fred Biletnikoff, 1963
7. 24 by Max Wettstein, 1965
8. 23 by Bud Whitehead, 1960

YARDS RECEIVING PASSES

1. 987 by Fred Biletnikoff, 1964
2. 556 by Don Floyd, 1964
3. 442 by Tom Feamster, 1954
4. 365 by Max Wettstein, 1965
5. 358 by Fred Biletnikoff, 1963
6. 330 by Bob Whitmer, 1951
7. 320 by Bud Whitehead, 1959

TOUCHDOWN PASSES CAUGHT

1. 11 by Fred Biletnikoff, 1964
2. 6 by Tom Feamster, 1954
3. 5 by Harry Bringger, 1950
4. 5 by Bob Nellums, 1956
5. 4 by Curt Campbell, 1951
6. 4 by Fred Biletnikoff, 1963
7. 3 by Jim Daniel, 1959
8. 3 by Max Wettstein, 1965

TOTAL OFFENSE (Rushing, Passing)

1. 1637 by Steve Tensi, 1964 (-46, 1683)
2. 1455 by Ed Pritchett, 1965 (230, 1225)
3. 1141 by Joe Majors, 1959 (78, 1063)
4. 993 by Buddy Strauss, 1949 (747, 246)
5. 982 by Eddie Feely, 1962 (213, 769)
6. 883 by Nelson Italiano, 1950 (424, 459)
7. 852 by Steve Tensi, 1963 (-63, 915)



Pritchett



Pickard



Sellers



Feely

BEST CAREER PERFORMANCES BY FLORIDA STATE PLAYERS (1947-1965) (Including post-season games)

POINTS SCORED

1. 128 by Fred Biletnikoff, 1962-64
2. 99 by Bobby Renn, 1956-58
3. 96 by Wyatt Parrish, 1947-49
4. 96 by Mike Sellers, 1950-51
5. 86 by Lee Corso, 1953-56
6. 86 by Fred Pickard, 1957-59
7. 66 by Nelson Itallano, 1950-51
8. 66 by Bobby Fiveash, 1951-53

TOUCHDOWNS

1. 21 by Fred Biletnikoff, 1926-64
2. 16 by Bobby Renn, 1956-58
3. 16 by Mike Sellers, 1950-51
4. 15 by Wyatt Parrish, 1947-49
5. 14 by Fred Pickard, 1957-59
6. 13 by Lee Corso, 1953-56
7. 11 by Nelson Itallano, 1950-51
8. 11 by Bobby Fiveash, 1951-53

YARDS GAINED RUSHING (Carries)

1. 1580 by Fred Pickard (353), 1957-59
2. 1468 by Bobby Renn (270), 1956-58
3. 1317 by Lee Corso (328), 1953-56
4. 1178 by Phil Spooner (288), 1962-1965
5. 1170 by Buddy Strauss (245), 1948-49

PASSES ATTEMPTED

1. 508 by Steve Tensi, 1962-64
2. 314 by Ed Pritchett, 1963-65
3. 288 by Joe Majors, 1957-59
4. 280 by Eddie Feely, 1960-62
5. 198 by Harry Massey, 1952-54
6. 179 by Len Swantic, 1953-56
7. 179 by Vic Prinzi, 1954-55
8. 132 by Nelson Itallano, 1950-51

PASSES COMPLETED

1. 275 by Steve Tensi, 1962-64
2. 160 by Eddie Feely, 1960-62
3. 148 by Ed Pritchett, 1963-65
4. 136 by Joe Majors, 1957-59
5. 94 by Harry Massey, 1952-54
6. 94 by Len Swantic, 1953-56
7. 92 by Vic Prinzi, 1954-55
8. 61 by Nelson Itallano, 1950-51

YARDS GAINED PASSING

1. 3697 by Steve Tensi, 1962-64
2. 1746 by Ed Pritchett, 1963-65
3. 1711 by Eddie Feely, 1960-62
4. 1649 by Joe Majors, 1957-59
5. 1412 by Len Swantic, 1953-56
6. 1337 by Harry Massey, 1952-54
7. 1295 by Vic Prinzi, 1954-58
8. 1140 by Nelson Itallano, 1950-51

TOUCHDOWN PASSES THROWN

1. 33 by Steve Tensi, 1962-64
2. 17 by Nelson Itallano, 1950-51
3. 15 by Harry Massey, 1952-54
4. 15 by Len Swantic, 1953-56
5. 11 by Joe Majors, 1957-59

PASSES CAUGHT

1. 100 by Fred Biletnikoff, 1962-64
2. 66 by Don Floyd, 1962-64
3. 54 by Bud Whitehead, 1958-60
4. 50 by Tom Feamster, 1954-55
5. 42 by Jim Daniel, 1959-61
6. 41 by Curt Campbell, 1949-52
7. 41 by Ron Schomburger, 1954-57
8. 37 by Max Wettstein, 1963-65

YARDS RECEIVING PASSES

1. 1655 by Fred Biletnikoff, 1962-64
2. 901 by Don Floyd, 1962-64
3. 768 by Tom Feamster, 1954-55
4. 634 by Ron Schomburger, 1954-57
5. 554 by Curt Campbell, 1949-52
6. 547 by Jim Daniel, 1959-61
7. 532 by Bud Whitehead, 1958-60
8. 485 by Max Wettstein, 1963-65

TOUCHDOWN PASSES CAUGHT

1. 20 by Fred Biletnikoff, 1962-64
2. 8 by Tom Feamster, 1954-55
3. 8 by Ron Schomburger, 1954-57
4. 7 by Bob Nellums, 1956-57
5. 5 by Harry Bringger, 1949-52
6. 5 by Curt Campbell, 1949-52
7. 5 by Max Wettstein, 1963-65

TOTAL OFFENSE

- (Yards rushing, passing)
1. 3609 by Steve Tensi, 1962-64 (1-88, 3697)
 2. 2346 by Eddie Feely, 1960-62 (635, 1711)
 3. 2298 by Ed Pritchett, 1963-65 (452, 1746)
 4. 2129 by Nelson Itallano, 1950-51 (986, 1140)
 5. 1924 by Joe Majors, 1957-59 (159, 1765)
 6. 1844 by Lee Corso, 1953-56 (1317, 527)
 7. 1836 by Bobby Renn, 1956-58 (1468, 368)



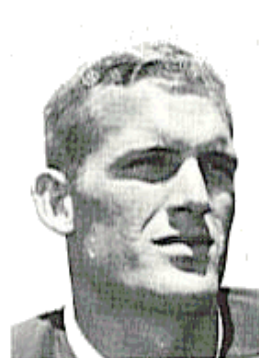
Renn



Corso



Itallano



Spooner

FLORIDA STATE'S LONGEST PLAYS (1947-1965)

LONGEST TOUCHDOWN RUNS FROM SCRIMMAGE

1. 81 yards by Fred Pickard vs. VPI, 1957
2. 80 yards by Phil Spooner vs. Houston, 1965
3. 78 yards by Buck Metts vs. Stetson, 1954
4. 72 yards by Bobby Renn vs. VPI, 1958
5. 68 yards by Bobby Fiveash vs. Tampa, 1953
6. 66 yards by Dave Snyder vs. Furman, 1963

LONGEST RUNS FROM SCRIMMAGE WITHOUT SCORING

1. 76 yards by Roy Thompson vs. Stetson, 1951
2. 65 yards by Wayne Giardino vs. Oklahoma (Gator Bowl), 1965
3. 64 yards by Nelson Italiano vs. Troy State, 1951
4. 60 yards by Nelson Italiano vs. Tampa, 1950
5. 60 yards by Lee Corso vs. N. C. State, 1956
6. 56 yards by Lee Corso vs. The Citadel, 1955
7. 53 yards by Larry Brinkley vs. VPI, 1963

LONGEST TOUCHDOWN PLAY, ANY SITUATION

1. 100 yards by Bill Moreman and T. K. Wetherell vs. Kentucky, 1965 (Lateral on KO return)
2. 99 yards by Ted Hewitt vs. Stetson, 1948 (Pass interception return)
3. 99 yards by Fred Biletnikoff vs. Miami, 1963 (Pass interception return)
4. 89 yards by Bill Odom vs. VPI, 1955 (Punt return)
5. 86 yards by Tom Hillabrand vs. Auburn, 1960 (Pass interception return)
6. 81 yards by Fred Pickard vs. VPI, 1957 (Run from scrimmage)

LONGEST TOUCHDOWN PASSES

1. 80 yards from Nelson Italiano to Eddie Gray vs. Newberry, 1950
2. 74 yards from Vic Prinzi to Tom Feamster vs. Louisville, 1954
3. 69 yards from Buddy Strauss to Norman Eubanks vs. Tampa, 1949
4. 66 yards from Steve Tensi to Fred Biletnikoff vs. Georgia Tech, 1962
5. 62 yards from Joe Majors to Fred Pickard vs. Tampa, 1959
6. 59 yards from Nelson Italiano to Tommy Brown vs. Miami, 1951
7. 59 yards from Ed Pritchett to T. K. Wetherell vs. Baylor, 1965

LONGEST PUNT RETURNS

1. 80 yards by Bill Odom vs. Stetson, 1954 (TD)
2. 75 yards by Ralph Chaudron vs. Whiting Field, 1949 (TD)
3. 70 yards by Bill Campbell vs. Wake Forest, 1965 (TD)
4. 60 yards by Lee Corso vs. N. C. State, 1956
5. 58 yards by Tommy Brown vs. Jacksonville Navy, 1951
6. 56 yards by Winfred Bailey vs. Auburn, 1963

LONGEST KICKOFF RETURNS

1. 100 yards by Bill Moreman and T. K. Wetherell vs. Kentucky, 1965 (TD, lateral)
2. 89 yards by Bill Odom vs. VPI, 1955 (TD)
3. 84 yards by Fred Pickard vs. Tampa, 1958
4. 72 yards by Bobby Renn vs. Florida, 1958
5. 54 yards by Marion Roberts vs. Southern Mississippi, 1963

LONGEST INTERCEPTION RETURNS

1. 99 yards by Ted Hewitt vs. Stetson, 1948 (TD)
2. 99 yards by Fred Biletnikoff vs. Miami, 1963 (TD)
3. 86 yards by Tom Hillabrand vs. Auburn, 1960 (TD)
4. 81 yards by Bud Whitehead vs. Wake Forest, 1959 (TD)
5. 69 yards by Howard Ehler vs. Oklahoma (Gator Bowl), 1965 (TD)
6. 66 yards by Bill Dawkins vs. Wofford (Cigar Bowl), 1949

BEST PERFORMANCES AGAINST FLORIDA STATE

(1947-1965)

INDIVIDUAL

- MOST YARDS RUSHING—149 by Laurin Pepper, Mississippi Southern, 1952
MOST TIMES CARRIED—31 by Larry Dupree, Florida, 1963
MOST YARDS PASSING—282 by Steve Spurrier, Florida, 1965
MOST PASSES ATTEMPTED—34 by Billy Lothridge, Georgia Tech, 1963
MOST PASSES COMPLETED—20 by Billy Lothridge, Georgia Tech, 1963
MOST PASSES CAUGHT—9 by Billy Martin, Georgia Tech, 1963
MOST YARDS RECEIVING PASSES—165 by Ben Hart, Oklahoma (Gator Bowl), 1965
MOST TOTAL OFFENSE—316 by Steve Spurrier, Florida, 1965 (34 rush, 282 pass)
LONGEST TD RUN FROM SCRIMMAGE—88 yards by Mike Vacchio, Miami, 1951
LONGEST PUNT RETURN—86 yards by Daryl Cox, Kentucky, 1961 (TD)
LONGEST INTERCEPTION RETURN—70 yards by Alex Webster, N. C. State, 1952
LONGEST KICKOFF RETURN—92 yards by Warren McVea, Houston, 1965
LONGEST PASS PLAY—95 yards from Ronnie Fletcher to Ben Hart, Oklahoma (Gator Bowl), 1965
LONGEST PUNT—68 yards by Gene Etter, Tennessee, 1958
LONGEST FIELD GOAL—41 yards by Harold Deters, N. C. State, 1965

TEAM

- PASSES ATTEMPTED—34 by Georgia Tech, 1963
PASSES COMPLETED—20 by Georgia Tech, 1963
PASSING YARDAGE—282 by Florida, 1965
RUSHING YARDAGE—388 by Miami, 1951
TOTAL OFFENSE—452 by Louisville, 1952
TIMES CARRIED—52 by Georgia, 1959
POINTS SCORED—42 by Georgia, 1959

OTHER FLORIDA STATE RECORDS

PUNTS

- Longest Punt—84 yards by Tommy Brown vs. Tampa, 1950
Most team punts in a single game—11 vs. Baylor, 1965
Most punts single game, individual—11 by John Hosack vs. Baylor, 1965
Most team punts season—61, 1965
Most punts by an individual in season, 61 by John Hosack, 1965
Most punts in career—169 by Charlie Calhoun, 1961-63
Best punting average, career—37.6 by Bobby Renn, 1956-58 (nine punts)
Best punting average, season—41.9 by Pat Versprille, 1955

FIELD GOALS AND EXTRA POINTS

- Most field goals in single game, team — 3 vs. Florida, 1964
Most field goals in single game, individual — 3 by Les Murock vs. Florida, 1964

Most field goals in season, individual—9 by Les Murdock, 1964
Most field goals in career—10 by Les Murdock, 1963-64
Longest field goal—44 yards by Les Murdock vs. Virginia Tech, 1963
Most extra points season—22 by Les Murdock, 1964 (26 attempts)
Most extra points career — 49 by Johnny Sheppard 1956-58 (55 attempts)

KICK-OFF AND PUNT RETURNS

Most punts returned season—20 by Bill Campbell, 1965
Best punt return average season—15.7 yards by Tommy Brown, 1951
Best kick-off return average season—31.8 by Lee Corso, 1954

OFFENSE

Most victories in single season — 8 in 1949, 50, 54, 64
Most defeats in single season — 8 in 1952
Most ties in single season — 3 in 1962
Most points scored in season — 272 in 1949
Fewest points scored in season — 18 in 1947
Most points scored in single game — 74 vs. Whiting Field, 1949
Most points scored in single game, individual — 24 by Fred Biletnikoff vs. Oklahoma, Gator Bowl, 1965
Most touchdowns scored in single game — 4 by Fred Biletnikoff vs. Oklahoma, Gator Bowl, 1965
Most touchdown passes thrown in single game, individual—5 by Steve Tensi vs. Oklahoma, Gator Bowl, 1965
Most touchdown passes caught in single game, individual — 4 by Fred Biletnikoff vs. Oklahoma, Gator Bowl, 1965
Greatest Margin of Victory — 74-0 vs. Whiting Field, 1949
Greatest Margin of Defeat — 0-49 vs. Georgia, 1959
Total offense, season — 3434 yards, 1954 (1689 rushing, 1745 passing)
Total yards passing season — 2029 in 1964
Total yards rushing season — 2194 in 1949
Total offense single game — 526 vs. Furman 1962 (277 rush, 239 pass)
Total yards passing single game — 355 vs. Villanova, 1954
Total yards rushing single game — 383 vs. Abilene Christian, 1957
Touchdown responsibility season — 15 by Steve Tensi, 1964 (14 passing, 1 scored)
Touchdown responsibility career — 34 by Steve Tensi, 1962-64 (33 passing, 1 scored)
Times rushing individual, single game — 29 by Fred Pickard vs. Georgia 1949
Passes attempted season — 252 in 1954
Passes completed season — 147 in 1964
Passes Attempted Game — 40 vs. Virginia Tech 1964
Passes completed game — 23 vs. Oklahoma, Gator Bowl, 1965
Fewest passes had intercepted in season — 7 in 1947
Most passes had intercepted in season — 21 in 1954

DEFENSE

Fewest points allowed season — 54 in 1950
Most points allowed, season — 261 in 1952
Most passes intercepted, season — 24 in 1949
Most passes intercepted, season, individual — 8 by Curt Campbell 1951
Most passes intercepted single game — 7 vs. Virginia Tech, 1959
Most passes intercepted game, individual — 3 by Tommy Brown vs. Stetson 1950 and Georgia 1952; Lee Corso vs. Georgia, 1954; and Bud Whitehead vs. Virginia Tech, 1959.
Most opponents punts blocked season — 4 in 1951

RESULTS

1947—1965

1947 (0-5-0)	FSU	Foe	1952 (1-8-1)	FSU	Foe
Stetson	6	14	Louisville	14	41
Cumberland	0	6	Louisiana Tech	13	32
Tennessee Tech	6	27	VMI	7	28
Troy State	6	36	N. Carolina State	7	13
Jacksonville State	0	7	Stetson	6	6
			Miss. Southern	21	50
			Furman	0	9
1948 (7-1-0)	FSU	Foe	Georgia Tech	0	30
Cumberland	30	0	Wofford	27	13
Erskine	6	14	Tampa	6	39
Millsaps	7	6			
Stetson	18	7	1953 (5-5-0)	FSU	Foe
Mississippi College	26	6	Miami (Fla.)	0	27
Livingston State	12	6	Louisville	59	0
Troy State	20	13	Abilene Christian	7	20
Tampa	33	12	Louisiana Tech	21	32
			VMI	12	7
1949 (9-1-0)	FSU	Foe	Miss. Southern	0	21
Whiting Field	74	0	Furman	7	14
Mississippi College	33	12	Stetson	13	6
Erskine	26	7	N. Carolina State	23	13
Sewanee	6	0	Tampa	41	6
Stetson	33	14			
Livingston State	6	13	1954 (8-4-0)	FSU	Foe
Millsaps	40	0	Georgia	0	14
Tampa	34	7	Abilene Christian	0	13
Troy State	20	0	Louisville	47	6
Wofford*	19	6	Villanova	52	13
(*Cigar Bowl)			N. Carolina State	13	7
			Auburn	0	33
1950 (8-0-0)	FSU	Foe	VMI	33	19
Troy State	26	7	Furman	33	14
RandolphMacon	40	7	Stetson	47	6
Howard	20	6	Miss. Southern	19	18
Newberry	24	0	Tampa	13	0
Sewanee	14	8	Texas Western*	20	47
Stetson	27	7	(*Sun Bowl)		
Mississippi College	33	0			
Tampa	35	19	1955 (5-5-0)	FSU	Foe
			N. C. State	7	0
1951 (6-2-0)	FSU	Foe	Miami (Fla.)	0	34
Troy State	40	0	Virginia Tech	20	24
Miami (Fla.)	13	35	Georgia	14	47
Delta State	34	0	Georgia Tech	0	34
Sul Ross State	35	13	Villanova	16	13
Stetson	13	10	Furman	19	6
Jacksonville Navy	39	0	Citadel	39	0
Wofford	14	0	Miss. Southern	6	21
Tampa	6	14	Tampa	26	7

1956 (5-4-1)	FSU	Foe
Ohio University	47	7
Georgia	0	3
Virginia Tech	7	20
N. Carolina State	14	0
Wake Forest	14	14
Villanova	20	13
Miami (Fla.)	7	20
Furman	42	7
Miss. Southern	20	19
Auburn	7	13

1957 (4-6-0)	FSU	Foe
Furman	27	7
Boston College	7	20
Villanova	7	21
N. Carolina State	0	7
Abilene Christian	34	7
Virginia Tech	20	7
Miami (Fla.)	13	40
Miss. Southern	0	20
Auburn	7	29
Tampa	21	7

1958 (7-4-0)	FSU	Foe
Tennessee Tech	22	7
Furman	42	6
Georgia Tech	3	17
Wake Forest	27	24
Georgia	13	28
Virginia Tech	28	0
Tennessee	10	0
Tampa	43	0
Miami (Fla.)	17	6
Florida	7	21
Oklahoma State*	6	15
(*Bluegrass Bowl)		

1959 (4-6-0)	FSU	Foe
Wake Forest	20	22
The Citadel	47	6
Miami (Fla.)	6	7
Virginia Tech	7	6
Memphis State	6	16
Richmond	22	6
Georgia	0	42
William & Mary	0	9
Florida	8	18
Tampa	33	0

1960 (3-6-1)	FSU	Foe
Richmond	28	0
Florida	0	3
Wake Forest	14	6
The Citadel	0	0
Miss. Southern	13	15
William & Mary	22	0
Kentucky	0	23
Miami (Fla.)	7	25
Houston	6	7
Auburn	21	57

1961 (4-5-1)	FSU	Foe
George Washington	15	7
Florida	3	3
Mississippi	0	33
Georgia	3	0
Richmond	13	7
Virginia Tech	7	10
Kentucky	0	20
The Citadel	44	8
Miss. Southern	0	12
Houston	8	28

1962 (4-3-3)	FSU	Foe
The Citadel	49	0
Kentucky	0	0
Furman	42	0
Miami (Fla.)	6	7
Georgia	18	0
VPI	20	7
Houston	0	7
Georgia Tech	14	14
Florida	7	20
Auburn	14	14

1963 (4-5-1)	FSU	Foe
Miami (Fla.)	24	0
Texas Christian	0	13
Wake Forest	35	0
So. Mississippi	0	0
Virginia Tech	23	31
Furman	49	6
Georgia Tech	7	15
N. C. State	14	0
Auburn	15	21
Florida	0	7

1964 (9-1-1)	FSU	Foe
Miami	14	0
TCU	10	0
New Mexico State	36	0
Kentucky	48	6
Georgia	17	14
Virginia Tech	11	20
So. Mississippi	34	0
Houston	13	13
N. C. State	28	6
Florida	16	7
Oklahoma*	36	19
(*Gator Bowl)		

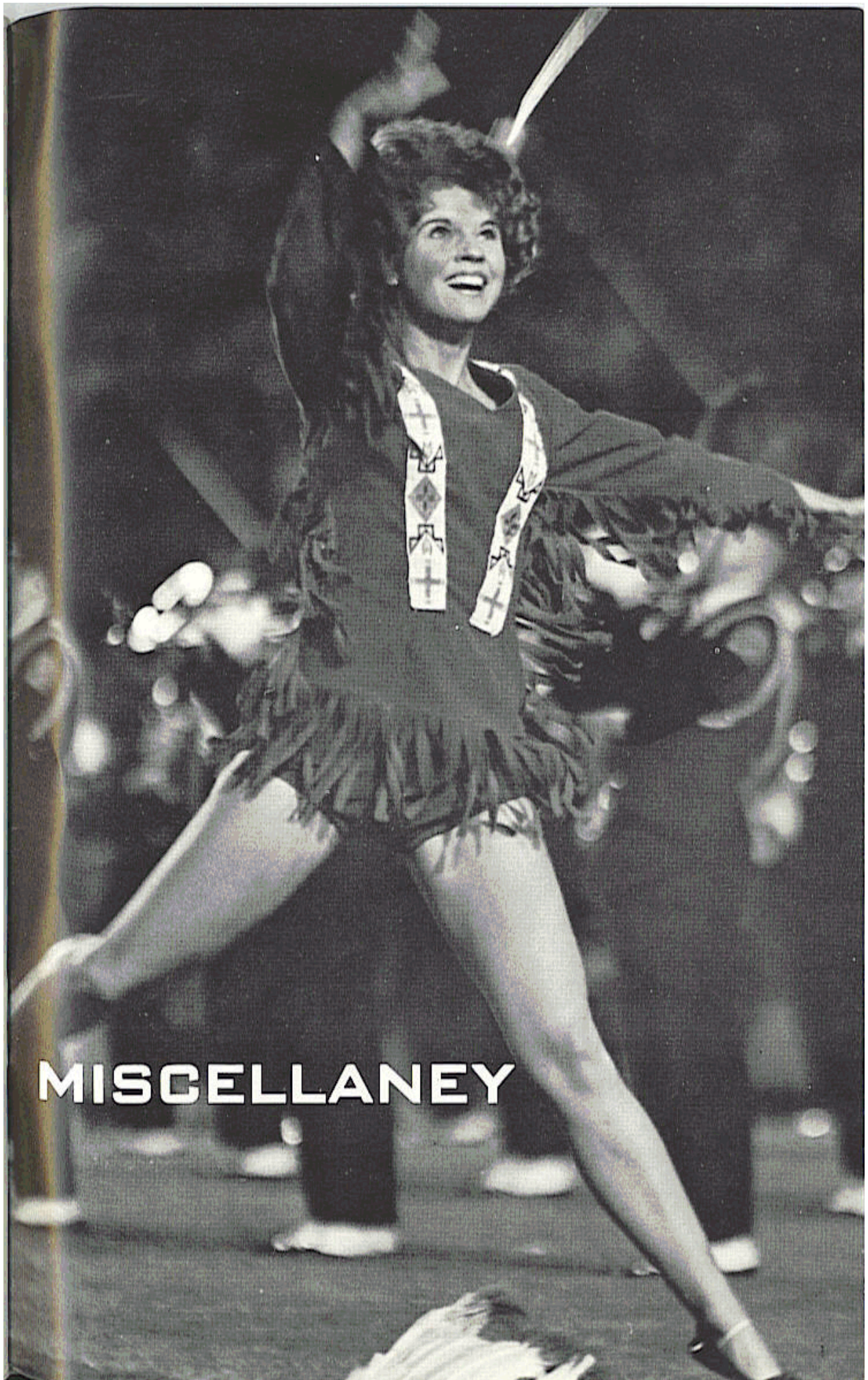
1965 (4-5-1)	FSU	Foe
TCU	3	7
Baylor	9	7
Kentucky	24	26
Georgia	10	3
Alabama	0	21
VPI	7	6
Wake Forest	35	0
N. C. State	0	3
Houston	16	16
Florida	17	30

FLORIDA STATE COACHES AND CAPTAINS 1947-1965

YEAR	COACH	CAPTAINS	W	L	T	FSU PTS.	OPP. PTS.
1947	Ed Williamson	Jack McMillan Phil Rountree	0	5	0	18	90
1948	Don Veller	Game Captains	7	1	0	152	64
1949	Don Veller	Hugh Adams	8	1	0	272	53
1950	Don Veller	Duke Maltby	8	0	0	219	54
1951	Don Veller	Bill Dawkins	6	2	0	194	72
1952	Don Veller	Curtis Campbell Vic Sczcepanik	1	8	1	101	261
1953	Tom Nugent	Games Captains	5	5	0	183	146
1954	Tom Nugent	Game Captains	8	3	0	257	143
1955	Tom Nugent	Bob Crenshaw Don Powell	5	5	0	147	186
1956	Tom Nugent	Joe Holt Buck Metz	5	4	1	178	116
1957	Tom Nugent	Ron Schomburger	4	6	0	136	165
1958	Tom Nugent	Vic Prinzi	7	3	0	212	109
1959	Perry Moss	Bobby Renn John Spivey	4	6	0	149	132
1960	Bill Peterson	Al Ulmer Tony Romeo	3	6	1	111	136
1961	Bill Peterson	Steve Klesius	4	5	1	93	128
1962	Bill Peterson	Gene McDowell	4	3	3	170	69
1963	Bill Peterson	Charlie Calhoun Chuck Robinson	4	5	1	167	93
1964	Bill Peterson	Bill Dawson Fred Biletnikoff	9	1	1	263	85
1965	Bill Peterson	George D'Alassandro Bill McDowell Max Wettstein	4	5	1	121	119
		TOTALS	96	74	10	3145	2221

COACHES' CUMULATIVE RECORDS

NAME	TENURE	W-L-T	FSU PTS.	OPP. PTS.
Ed Williamson	1947	0- 5-0	18	90
Don Veller	1948-52	30-12-1	938	504
Tom Nugent	1953-58	34-26-1	1123	865
Perry Moss	1959	4 -6-0	149	132
Bill Peterson	1960	28-25-8	925	640



MISCELLANEY

SEMINOLE BOOSTERS, INC.

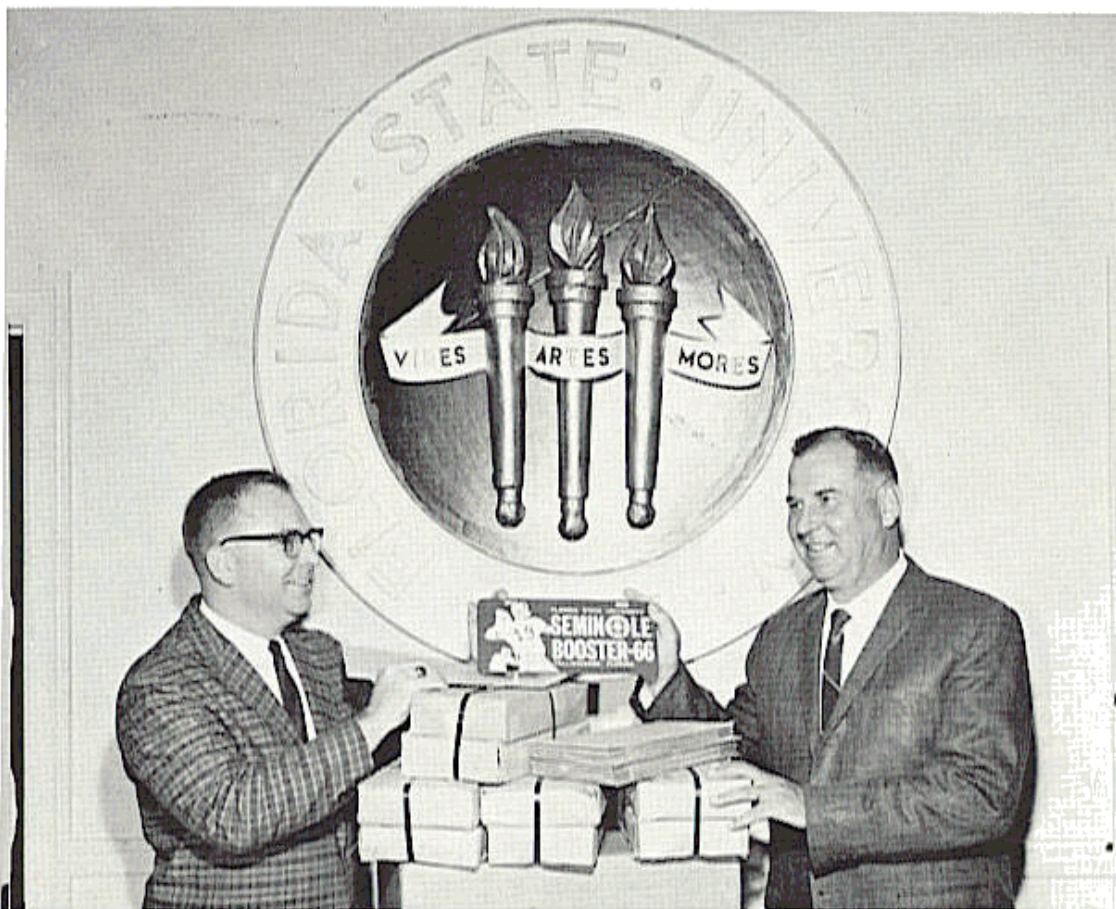
Seminole Boosters, Inc. is an organization devoted entirely to the support of the Florida State University athletic program with emphasis on football.

Membership in the Boosters — the group numbers approximately 1,400—is open to anyone with a sincere interest in the University's athletic progress. Minimum contribution for an individual membership is \$15. A business membership costs \$30.

Contributions are administered in accordance with NCAA regulations and in conjunction with the Florida State Department of Intercollegiate Athletics.

Boosters receive a colorful automobile license plate which can be used for admission to special reserved parking lot at the stadium, a membership card, a weekly fall publication, "The Grandstand Coach," and certain priorities on season and single game football tickets.

President of the group for 1966 is W.S. "Bill" Lee, president of W. S. Lee Hardware Co. The organization's executive secretary is Thomas A. Waits, Director of Alumni Affairs at Florida State University.

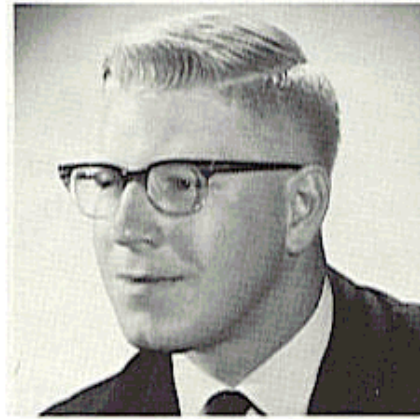


Thomas Waits

W. S. (Bill) Lee



Bo Mitchell



Bud Kaatz

The Seminole Football Network

Popular Bo Mitchell returns to the Seminole microphone for the fourth straight season, bringing play-by-play action to every corner of the Sunshine State.

The energetic Mitchell, an ex-naval aviator with more than 17 years broadcasting experience, is vice-president and station manager of station WCOA, Pensacola.

His partner at the mike this season will be Bud Kaatz, a native of Ohio who was formerly color man for the University of Michigan Football Network and play by play announcer for Ohio University and Marietta College. Kaatz will handle pre-game, halftime and time out commentary on the Seminoles.

Originating station for the Seminole Network is WTNT, Tallahassee. The network consisted of 26 stations in Georgia and Florida as of July 1 with several more expected to join before the opening game.

Persons desiring information concerning the network should contact Hurley Rudd, WTNT, Hotel Duval, Tallahassee, Florida.

The Marching Chiefs



Bob Braunagel

One of a young university's prized traditions is Florida State's 130-piece marching band, the fabulous Marching Chiefs.

Directed by Robert Braunagel, the Chiefs have been widely acclaimed for years as one of the nation's best.

Instrumental in their success along with Braunagel and Manly Whitcomb, who retired as director in 1963, is arranger Charles Carter whose striking musical innovations keep Seminole football fans in their seats and cheering during halftime intermission.

The band's field leader is drum major Camp Kirkland of Jacksonville. Head majorette Paulette Gergen of Miami leads a group which includes the Seminole Twins, Bookie Reynolds and Jerry Williams, and football's most attractive forward wall — the Seminole majorette corps.

The Marching Chiefs will perform at all home games in 1966, and will accompany the Seminoles on the road to Miami and South Carolina.

MEMO TO THE PRESS-RADIO-TV

This handbook is prepared to assist you during 1966 football season at Florida State University. For additional information or service contact:

BILL BUNKER

Director of Sports Information

Florida State University

Tallahassee, Florida 32306

Area Code: 904

Office Phone: 599-2095

Home Phone: 385-3180

FACILITIES: Florida State's press box is in three sections with elevator service to all levels.

- (1) The Radio-TV Deck consisting of eight booths for radio, television and public address; photographic darkroom and wire-photo facilities and an open balcony on either end.
- (2) The Press Deck of 78 working press seats and Western Union facilities.
- (3) The Photo Deck offering an unobstructed area for movie and still cameras. Photographers are also permitted on the sidelines.

RESERVATIONS: Space for working press, radio-TV scouts will be issued on an individual basis. Requests should be made soon enough to allow time for mailing. Arrangements for wire or telephone service should be made directly with Western Union or the Southeastern Telephone Company, Tallahassee.

SERVICE: Play-by-play, halftime and final statistics are provided. Play-by-play announcements are broadcast on the press deck. Refreshments are available.

PARKING: Special parking is available on the west side of Campbell Stadium. Permits are issued by the Sports Information Office.

1966-1967 Basketball Schedule

HEAD COACH: HUGH DURHAM

DATE	OPPONENT	SITE
Dec. 1	Valdosta	Tallahassee
Dec. 5	Rice	Tallahassee
Dec. 7	Florida	Gainesville
Dec. 9	SUNFLOWER CLASSIC-Kansas State	Manhattan, Kan.
Dec. 10	SUNFLOWER CLASSIC-Kansas	Lawrence, Kan.
Dec. 16	V.P.I. TOURNAMENT	Blacksburg, Va.
Dec. 17	V.P.I. TOURNAMENT	Blacksburg, Va.
Dec. 19	TAMPA INVITATIONAL	Tampa
Dec. 20	TAMPA INVITATIONAL-Columbia North Carolina & The Citadel	Tampa
Dec. 27	MOBILE INVITATIONAL	Mobile, Alabama
Dec. 28	MOBILE INVITATIONAL (Auburn Alabama & T.C.U.)	Mobile, Alabama
Jan. 7	Miami	Tallahassee
Jan. 14	Tulane	New Orleans, La.
Jan. 16	Memphis State	Memphis, Tenn.
Jan. 23	Jacksonville	Tallahassee
Jan. 25	Marshall	Tallahassee
Jan. 28	Georgia Tech	Tallahassee
Jan. 30	Tampa	Tallahassee
Feb. 4	Memphis State	Tallahassee
Feb. 8	Jacksonville	Jacksonville
Feb. 11	Tulane	Tallahassee
Feb. 18	Florida Southern	Lakeland
Feb. 22	Florida	Tallahassee
Feb. 25	Georgia Tech	Atlanta, Ga.
Feb. 27	Tampa	Tampa
Mar. 1	Miami	Miami

Composite Schedule - FSU's 1966 Opponents

DATE	HOUSTON	MIAMI	FLORIDA	TEXAS TECH	MISSISSIPPI STATE	VIRGINIA TECH	SOUTH CAROLINA	SYRACUSE	WAKE FOREST	MARYLAND
SEPT. 10								AT BAYLOR		
SEPT. 17	AT FLA. STATE	AT COLORADO	NOR. WESTERN	AT KANSAS	GEORGIA†	AT TULANE	AT L.S.U.		AT VIRGINIA	AT PENN STATE
SEPT. 24	(23rd) WASH. STATE	FLA. STATE	MISS. STATE	TEXAS	AT FLORIDA	GEORGE WASH.	MEMPHIS ST.	U.C.L.A.	AT MARYLAND	WAKE FOREST
OCT. 1	OKLA. STATE	AT L.S.U.	AT VANDERBILT	AT TEXAS A&M	RICHMOND	W. VIRGINIA	GEORGIA	MARYLAND	N. C. STATE	AT SYRACUSE
OCT. 8			AT FLA. STATE	AT T.C.U.	SOU. MISS.	AT KENTUCKY	AT N.C. STATE	NAVY	AT AUBURN	DUKE
OCT. 15	MISS. STATE	(14th) GEORGIA	AT N. C. STATE	FLA. STATE	AT HOUSTON	VANDERBILT††	WAKE FOREST	AT BOSTON COL.	AT S. CAROLINA	WEST VIRGINIA
OCT. 22	MISSISSIPPI#	(21st) INDIANA	AT L.S.U.	S.M.U.	AT FLA. STATE	AT VIRGINIA	AT TENNESSEE	AT HOLY CROSS	AT N. CAROLINA	
OCT. 29	TAMPA	(28th) S. CALIF.	AUBURN	AT RICE	AT ALABAMA	FLA. STATE	AT MARYLAND	PITTSBURGH	CLEMSON	S. CAROLINA
NOV. 5	TULSA	AT TULANE	GEORGIA*	OKLA. STATE	AUBURN†	AT WAKE FOREST	FLA. STATE	AT PENN STATE	V.P.I.	AT N.C. STATE
NOV. 12	AT KENTUCKY	(11th) PITTSBURGH	TULANE	BAYLOR	AT L.S.U.	AT WM. & MARY	AT ALABAMA	FLA. STATE	MEMPHIS ST.	CLEMSON
NOV. 19		(18th) IOWA		ARKANSAS				AT W. VIRGINIA	AT FLA. STATE	AT VIRGINIA
NOV. 26	MEMPHIS ST.	AT FLORIDA	MIAMI		AT MISSISSIPPI‡	VMI (24th)**	AT CLEMSON			AT FLA. STATE
DEC. 3	UTAH									

Neutral Sites: *Jacksonville, Fla. †Jackson, W.V. #Memphis, Tenn. ††Richmond, Va. **Roanoke, Va.

