

FLORIDA STATE UNIVERSITY



SEMINOLES

1965 FOOTBALL HANDBOOK

FLORIDA STATE UNIVERSITY

1965 FOOTBALL SCHEDULE

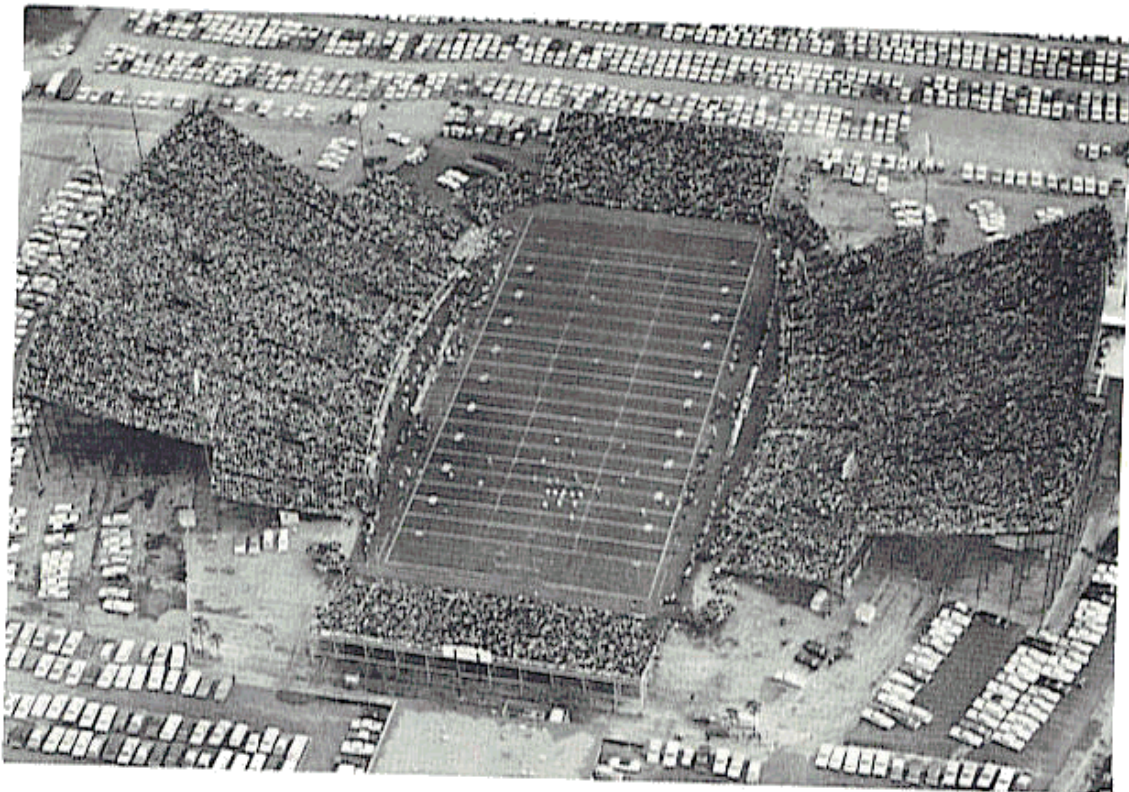
DATE	OPPONENT	SITE	TIME
Sept. 25	Texas Christian	Fort Worth, Texas	7:30 p.m. CST
Oct. 2	Baylor	Tallahassee	8:00 p.m. EST
Oct. 9	Kentucky	Lexington, Kentucky	8:00 p.m. EST
Oct. 16	Georgia	Tallahassee	8:00 p.m. EST
Oct. 23	Alabama	Tuscaloosa, Alabama	2:30 p.m. CST
Oct. 30	Virginia Tech	Tallahassee	8:00 p.m. EST
Nov. 6	Wake Forest (Homecoming)	Tallahassee	2:00 p.m. EST
Nov. 13	N. C. State	Raleigh, North Carolina	1:30 p.m. EST
Nov. 20	Houston	Tallahassee	8:00 p.m. EST
Nov. 27	Florida	Gainesville	2:00 p.m. EST

1964 RESULTS (9-1-1)

Opponent	FSU	Opp.	Crowd
Miami at Miami	14	0	51,605
Texas Christian at Fort Worth	10	0	18,167
New Mexico State at Tallahassee	36	0	25,352
Kentucky at Tallahassee	48	6	34,248
Georgia at Athens	17	14	31,000
Virginia Tech at Blacksburg	11	20	22,000
Southern Mississippi at Tallahassee	34	0	26,132
Houston at Houston	13	13	16,000
North Carolina State at Tallahassee	28	6	24,250
Florida at Tallahassee	16	7	43,000
Oklahoma at Jacksonville (Gator Bowl)	36	19	50,048
	<hr/>	<hr/>	<hr/>
	263	85	341,802

1965 FRESHMAN SCHEDULE

DATE	OPPONENT	SITE	TIME
Oct. 2	Miami	Orlando	8 p.m.
Oct. 23	Florida	Tallahassee	8 p.m.
Oct. 29	Southern Mississippi	Pensacola	8 p.m.
Nov. 13	Georgia Tech	Moultrie, Ga.	8 p.m.



DOAK S. CAMPBELL STADIUM

FLORIDA STATE UNIVERSITY

LOCATION: Tallahassee, Florida
PRESIDENT: Dr. John E. Champion
ENROLLMENT: 12,735
COLORS: Garnet and Gold
NICKNAME: Seminoles
BAND: Marching Chiefs
ATHLETIC DIRECTOR: Vaughn Mancha
HEAD FOOTBALL COACH: Bill Peterson
ATHLETIC BUSINESS MANAGER: Ronald Melton
SPORTS INFORMATION DIRECTOR: Bill Bunker
STADIUM: Doak S. Campbell (40,500)
CONFERENCE: Independent

1965 FOOTBALL HANDBOOK

TABLE OF CONTENTS

1965 Schedule	Inside Front Cover
1964 Results	Inside Front Cover
General Information	1
Road Headquarters	2
Florida State University	4
Dr. John E. Champion, President	5
Athletic Staff Directory	6
Athletic Committee	6
Athletic Director Vaughn Mancha	8
Coach Bill Peterson	9
Assistant Coaches	10-13
Athletic Staff	13-16
1965 Outlook	18-19
Personnel Analysis	20
Preseason Depth Chart	21
1965 Varsity Roster	22-23
Player Profiles	24-35
Tentative Freshman Roster	36
Future Schedules	38
Information on Opponents	39-48
1964 in Review	50-60
Fred Biletnikoff	61
Awards	61
1964 Final Statistics	62-63
All-Time Records	64-65
All-Time Results	66-67
Past Coaches and Captains	68
Seminole Boosters, Inc.	70
The Marching Chiefs	71
WTNT Seminole Radio Network	71
Press Information	72
1965 Basketball Schedule	Inside Back Cover
Opponents' Composite Schedule	Outside Back Cover

ROAD HEADQUARTERS

Texas Christian	Worth Hotel, Fort Worth, Tex.
Kentucky	Downtowner Motor Hotel, Lexington, Ky.
Alabama	Holiday Inn, Bessemer, Ala.
N. C. State	Holiday Inn, Raleigh, N. C.
Florida	Holiday Inn, Silver Springs, Fla.



THE UNIVERSITY

FLORIDA STATE UNIVERSITY

For 108 years Florida State University has been holding classes on the original campus. First as the co-educational Seminary West of the Suwannee, then for 42 years as Florida State College for Women and finally, since 1947, as Florida State University, the institution has developed a long academic tradition. Since the changeover to a coeducational university 18 years ago Florida State has gained a name for itself as one of the more dynamic universities in the South and nation. There are now more than 12,000 students.

The University presently is organized in eight divisions and a Graduate School. The divisions are the College of Arts and Sciences and the Schools of Education, Home Economics, Music, Library Work, Social Welfare, Business, Nursing and Engineering Science. The Graduate School alone enrolls more than 2,000 students and more than 100 doctorates are conferred yearly. Much of the advanced research and instruction is undertaken in such institutes as those for Molecular Biophysics, Oceanography, Human Development, Human Learning, Social Research and Governmental Research.

Florida State has had a multi-million dollar construction program under way, much of it in the northwest quadrangle of its 315-acre main campus. The types of buildings recently completed or now going up illustrate two kinds of emphasis which have marked the educational program at FSU: one directed toward the graduate student and the other toward the undergraduate. The laboratory approach figures importantly in both. In the Science Center the emphasis is on the discovery of new knowledge and laboratories comprise much of the new seven-story Physics Research Building now in use and the same will be true of the Biological Science and Chemistry buildings which will soon join it. Laboratories of a different kind are found across Woodward Street where, at the hub of the campus, the new University Union complex now is in use. Here undergraduate students try out in student government and publications work, discussion groups, forums and other activities the knowledge they have gained in the classroom.

THE PRESIDENT

DR. JOHN E. CHAMPION



John E. Champion, a 43-year-old native of Georgia, was appointed president of the University only on June 22, 1965, but he has had several years of administrative experience, three of them in the presidential office at FSU. He was selected from the faculty by former President Gordon W. Blackwell to become vice-president for administration in 1962 and when Blackwell left the presidency in February, 1965, Champion was named acting president by the Board of Regents.

As vice-president he supervised a \$26 million building program and as acting president he was faced immediately with direction of the University's 1965 legislative program, followed by preparation of the 1965-66 operating budget.

Professionally, Champion is an accountant. He received a bachelor of administration degree from the University of Georgia in 1942, a master of business administration from the same institution in 1949 and a Ph.D. degree in business administration from the University of Michigan in 1960. He taught accounting at the University of Georgia from 1948 to 1956, when he joined the accounting faculty at FSU. He and a fellow faculty member, Homer A. Black, are authors of a widely used college textbook, **Accounting in Business Decisions**.

Born May 11, 1922, at Chipley, now called Pine Mountain, Ga., Champion entered the University of Georgia in 1939 and after completing his undergraduate work served in the Army infantry and as a quartermaster officer in the South Pacific. He was discharged as a captain.

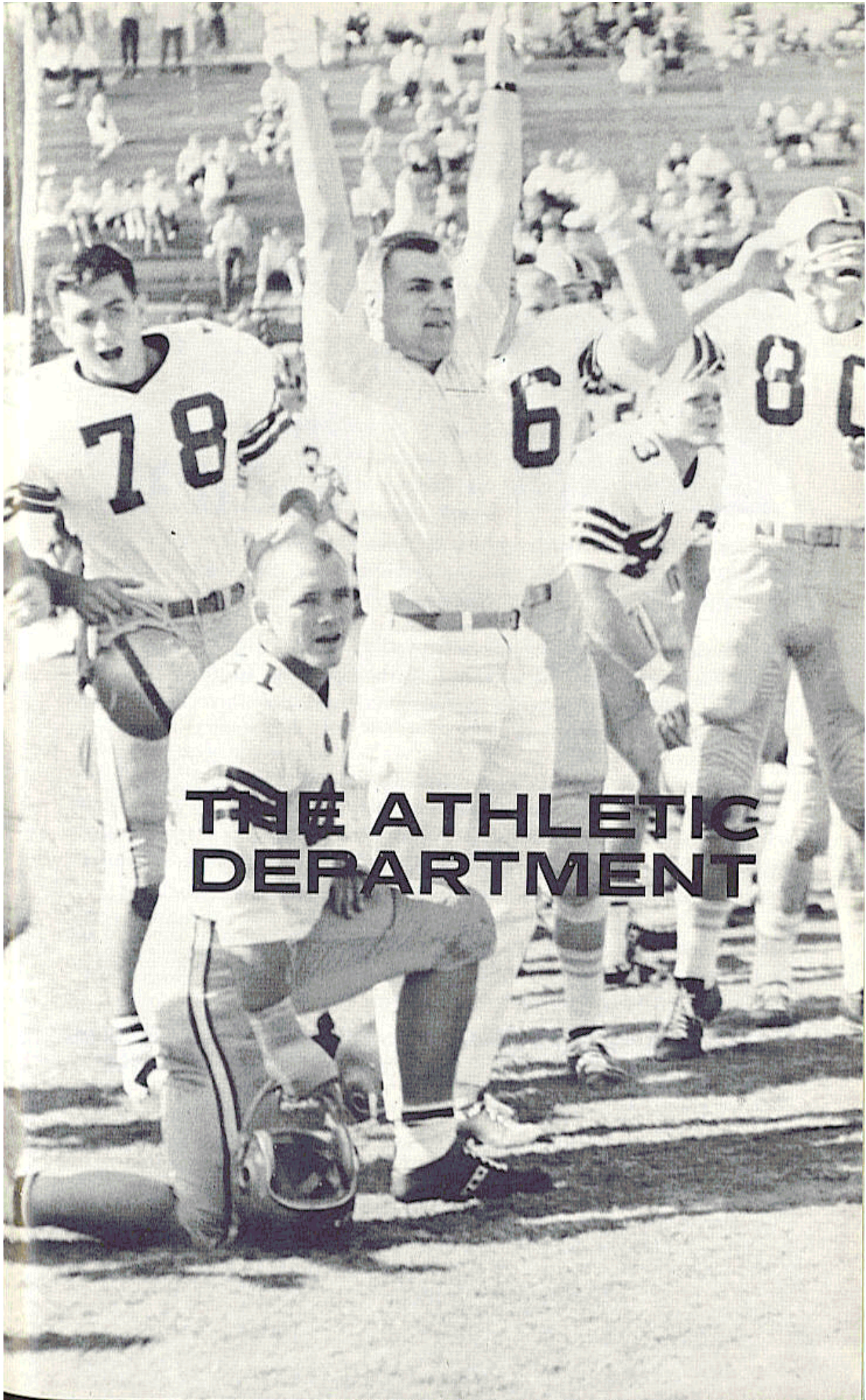
Mrs. Champion, the former Mary Lanier of West Point, Ga., is a kinswoman of the famous 19th century poet, Sidney Lanier. They have two children, Sally Lanier, 9, and John E. Jr., 7.

ATHLETIC STAFF DIRECTORY

NAME	POSITION	PHONE
Bowden, Bobby	Assistant Football Coach	599-2775
Bunker, Bill	Sports Publicity Director	599-2095
Callicutt, Phil	Assistant Trainer	599-2775
Crutchfield, Bill	Assistant Football Coach	599-2775
Dixon, Tillman	Equipment Manager	599-2775
Durham, Hugh	Assistant Basketball, Golf Coach	599-3080
Fauls, Don	Head Trainer	599-2775
Frye, Mrs. Delores	Administrative Assistant	599-3413
Hatfield, Fred	Baseball Coach	599-2640
Harbison, Bob	Assistant Football Coach	599-2775
James, Don	Assistant Football Coach	599-2775
Johnson, Dr. R. P.	Team Physician	599-3414
Kennedy, J. K. (Bud)	Head Basketball Coach	599-3080
Long, Mike	Track Coach	599-2640
MacLean, Ken	Football Recruiter	599-2775
Mancha, Vaughn	Athletic Director	599-3413
Melton, Ronald	Athletic Business Manager	599-3413
Peterson, Bill	Head Football Coach	599-2775
Powell, Don	Assistant Football Coach	599-2775
Proctor, Bill	Freshman Football Coach	599-2775
Savage, Jeff	Academic Counselor	599-3080
Schmidt, Neil	Assistant Football Coach	599-2775
Stults, N. B. (Bim)	Swimming Coach	599-2640
Thigpen, Claude	Athletic Ticket Manager	599-3414
Wood, Lex	Tennis Coach	599-2640

FLORIDA STATE'S ATHLETIC COMMITTEE

MODE L. STONE, Chairman; CLAUDE FLORY, THOMAS WRIGHT,
COYLE MOORE, J. M. PLANT, ELSTON ROADY, MARY ALEXANDER,
ROBERT ERNEST.



**THE ATHLETIC
DEPARTMENT**

THE ATHLETIC DIRECTOR

VAUGHN MANCHA



One of the best known and most popular figures in Southeastern football circles is Florida State's Athletic Director Vaughn Mancha.

Practically as legendary at the University of Alabama as Don Hutson and Harry Gilmer, Mancha assumed his present position as director of Florida State's seven-sport intercollegiate athletic program in November, 1959. He has tackled the job with all the fervor that characterized the performance that made him a 240-pound All-Southeastern Conference center for an amazing four years at Alabama (1944-48), and everyone's All American.

Mancha, who gained wide popularity with Florida State officials and fans while serving as line coach from 1952 through 1956, returned as athletic director following three years at Columbia University where he served as line coach under Buff Donelli.

Born in Sugar Valley, Ga., in 1921, Mancha moved to Birmingham, Ala., at an early age, and entered Alabama in 1944. During Mancha's four seasons, Red Drew's Crimson Tide rolled up a 30-9-2 record and played in three major bowl games — against Duke in the 1945 Sugar Bowl, Southern California in the 1946 Rose Bowl and Texas in the 1948 Sugar Bowl.

He was such a standout in the '45 Sugar Bowl that he was named to the All-Time Sugar Bowl team (1945-52 period). In 1955 he was named to Alabama's All-Time Crimson Tide.

Mancha played with the professional Boston Yanks in 1948, then became head coach at Livingston (Ala.) State College in 1949 where his teams won 21 of 28 games in three years before he came to FSU in 1952.

He completed all work toward his doctorate except the dissertation while at Columbia.

Married to the former Sybil Little of Birmingham, he is the father of three children, Clare, 16; Nan, 13; and Dit, 6.

THE HEAD COACH

BILL PETERSON



Bill Peterson became Florida State's fifth modern-day head football coach in 1960. He came with a purpose — to lift the struggling independent university from the ranks of Southeastern football mediocrity. It took the former LSU aide only five years to accomplish his goal.

In 1964, playing with the first team recruited entirely by his staff, Peterson coached the Seminoles to an 8-1-1 record and a 36-19 victory over Oklahoma in Jacksonville's Gator Bowl.

The 1964 team had the best record of any team since Florida State became a major college in 1955. It also produced the Seminoles' first victory over cross-state rival Florida, and the school's first consensus All American — Fred Biletnikoff.

While building a strong foundation for Florida State's gridiron future, Peterson has made the Seminoles one of the nation's most exciting football teams. He believes in a pass-oriented, pro-type offense, combined with a hard-nosed, gambling defense, and his Seminoles ranked high nationally in both categories last season.

During the past two seasons, Peterson has been named "Coach of the Week" twice by a major wire service. He received the honor following Florida State's 24-0 victory over Miami in the 1963 opener, and again when the Seminoles defeated the then fifth-ranked Kentucky Wildcats last season.

The 43-year old native of Toronto, Ohio was an end and team captain at Ohio Northern University, graduating in 1946.

Peterson was offensive line coach at Louisiana State University under Paul Dietzel and is credited with the procurement and development of many of the players on LSU's 1958 national champions.

His leadership is not restricted to the football field. He is a member and prominent figure in the Fellowship of Christian Athletes, and continues to win friends and supporters for Florida State in an almost endless chain of personal appearances throughout the state of Florida and the South.

The Seminole head coach has done graduate work at both West Virginia and LSU. He is a member of the Methodist Church.

He and his wife Marjorie have five sons: Ron, 22, Tommy, 16, Jon, 12, Billy, 8, and David, 7.

ASSISTANT COACHES

DON JAMES

First Assistant

Defensive Chief



Don James heads up the tough Seminole defense which has become a trademark of Florida State teams.

James played high school football in Ohio where he quarterbacked Massillon to two state championships in 1948-49. He attended the University of Miami, graduating in 1952. While there he set five passing records.

Following two years in the army, James became an assistant at Kansas under Chuck Mather, his former high school coach. He earned an MS in Educational Psychology and Guidance before moving to Southwest Miami High School in 1957 where he was backfield coach for two years.

He and his wife Carol, a former Miami cheerleader, have two children: Jeff, 10, and Jill, 8.

BILL CRUTCHFIELD

Offensive Chief

Florida State's wide-open offensive maneuvers are the responsibility of Bill Crutchfield, now in his second year on the Seminole staff.

A halfback at the University of North Carolina in the forties, Crutchfield began his coaching career at Atlantic Christian College in Wilson, N.C. in 1949. He was Bill Peterson's assistant at Mansfield (Ohio) High School in 1951-52, then spent four years as head coach at Presbyterian College in Clinton, S.C.



From 1957-1959 he was backfield coach at Furman and Wake Forest. He assumed the same position at Miami in 1960, and remained there until coming to Florida State last year.

A native of Orangeburg, S.C., Crutchfield holds BA and MA degrees from North Carolina.

He and his wife Rachel have four children: William J. III, 14, Karen, 11, Cherol, 8, and Blanc, 6.

BOB HARBISON

Defensive Line Coach



Now in his 18th year as a member of the Florida State coaching staff, Bob Harbison easily holds the longevity record among Seminole coaches.

A native of Evansville, Ind., Harbison came to Florida State in 1948, just before the Seminoles fielded their second football team of the modern era. He has served under Don Veller, Tom Nugent, Perry Moss and Bill Peterson.

He was an outstanding guard under Bo McMillian at Indiana in 1945-47 and played in the 1947 Blue-Gray game in Montgomery, Ala.

After many years as an offensive coach, Harbison switched to defense last season with outstanding results. His ability as a scout and recruiter has been of prime importance throughout Florida State's climb to a successful football program.

He and his wife, Jayne, have four children: Paula, 14, Susan, 11, Mary, 8, and Joe, 2.

DON POWELL

Offensive Line Coach

Don Powell is one of three Florida State alumni on the Seminole coaching staff.

Powell was a four year letterman at tackle under Tom Nugent and co-captained the 1955 Seminoles. Before coming to Florida State he was an All State tackle at Woodlawn High School in Birmingham, Ala.

He received his BS in 1956, then spent two years in Korea with the Army, returning to Florida State in 1959 for his MA.

After three years as offensive line coach at Tampa Chamberlain High School, he went to Wichita in the same capacity, returning to his alma mater in 1964.

He and his wife, Judy, have a son: Jon, 2.



BOBBY BOWDEN

Offensive End Coach



Personable Bobby Bowden joined the Florida State staff in 1963 after an eminently successful career in small college coaching.

As head coach at South Georgia Junior College and at Howard College in Birmingham, Ala., Bowden had records of 22-11, and 31-6. During Howard's domination of Alabama small college football, Bowden developed numerous Little All Americans.

A native of Birmingham, Bowden was a quarterback for Woodlawn High School in 1946-47, and later was Little All America and All Dixie at Howard in 1951. After graduation in 1953 he became an assistant under Earl Gartman, serving in that capacity for two years before going to South Georgia.

He and his wife, Julia Ann, have six children: Robyn, 13, Stephen, 12, Tommy, 10, Terry, 9, Jeffrey, 5, and Ginger, 3.

NEIL SCHMIDT

Defensive Ends and Linebackers

Former Purdue star Neil Schmidt joined the Florida State staff last summer.

While at Purdue, Schmidt was an outstanding football halfback and basketball guard.

He served with the Seabees in the South Pacific during World War II, was awarded a battle star on Okinawa, then returned to Bluffton, Ohio to finish high school. At Bluffton he made all-state in both football and basketball.

Schmidt received his bachelor's degree from Purdue in 1951, and his master's from Bowling Green in 1958.

During the 1950s he coached high school football, basketball and track in Ohio and Indiana. He was backfield coach at Wichita University in 1960-61, and held the same position at Texas A&M for two years before coming to Florida State.

Schmidt and his wife Rosemary have two children: Kim, 14, and Randy, 11.





BILL PROCTOR

Freshman Coach

As a Seminole tackle, Bill Proctor was drafted by the Cleveland Browns in 1956, but refused the offer to embark on a successful coaching career in Florida high schools.

He was line coach at Lyman High in Longwood and held a similar position at Orlando Boone in 1956-58. Proctor became head coach at Lyman in 1958 and compiled a four year record of 25 victories, 10 defeats and five ties, sending his team to three prep bowl games.

He became a full-time member of the Florida State staff in 1963 after serving as a graduate assistant in 1962.

Proctor, like MacLean, played varsity football at the University of Florida before becoming a Seminole standout.

He and his wife Pamela have one son: Samuel, 1½.

KEN MacLEAN

Head Recruiter

The drive and ability by which Ken MacLean became one of Florida's most successful high school coaches make him a natural choice to head up Florida State's hunt for young talent.

As coach of Florida High, adjacent to the Florida State campus, MacLean won 61 games, lost 17 and tied four. His 1961 team was undefeated and untied in ten games. A native of Quincy, MacLean played for both Florida and Florida State. He was a regular at Florida in 1947, then transferred to FSU when it became co-educational. MacLean was the team's leading ground gainer, passer and punter here in 1948-49.



He coached at Chattahoochee High School for two years before returning to Florida State for an MA in 1952, during which time he also served as an assistant coach. He came to Florida High in 1955 after a year at Cocoa, and joined the Florida State staff in 1963 as freshman coach.

He and his wife, Bess, have three boys: Ken, 8, Mark, 6, and John, 4.

RONALD MELTON

Athletic Business Manager



A former Seminole baseball standout, Ronald Melton has been Florida State's Athletic Business Manager since 1959. The varied aspects of Melton's job include supervision and promotion of ticket sales, coordination of Florida State's athletic travel plans, and to assist in the planning and execution of Florida State's athletic budget. A 1953 graduate of the School of Business, Melton held positions as Assistant Athletic Business Manager and Assistant Baseball Coach before assuming his present duties.

DON FAULS

Trainer

Popular Don Fauls begins his 11th year as chief overseer of Seminole aches and pains. A native of Ithaca, N. Y., he graduated in 1948 from Ithaca College with a degree in physiotherapy. He was associated with the Greensboro Patriots of the Carolina Baseball League and the St. Louis Cardinal chain in addition to extensive hospital and clinic work before joining the Florida State staff in 1954.



DR. R. P. JOHNSON

Team Physician



Dr. R. P. Johnson is a native New Yorker who moved to West Palm Beach in early childhood. He holds degrees from the University of Florida and Tulane Medical School. A LCDR in the U.S. Naval Reserve, Dr. Johnson worked at the University of Miami before coming to Florida State three years ago. He is an Associate Fellow in the American College of Sports Medicine.

JEFF SAVAGE

Academic Counselor

A full time member of the Athletic Department, Jeff Savage performs an invaluable job in guiding Florida State athletes in their academic careers. A native of Germantown, N.C., Savage holds a BS and MA in history and physical education from Appalachian State Teachers College in Boone, N.C. and has done doctoral work at FSU. Internship coordinator for three years in the FSU School of Education before assuming his present position, Savage has taught and coached football, basketball and baseball in the public schools of North Carolina and Florida.



PHIL CALLICUTT

Assistant Trainer

Phil Callicutt joined the Florida State staff last year, replacing Chris Patrick who left to become head trainer at Mississippi State. Born in Greensboro, N.C., Callicutt is a graduate of Iowa State University. He was head trainer at East Carolina College before joining the Seminoles.

TILLMAN DIXON

Equipment Manager

Tillman Dixon, known as "Mr. Dix" to Florida State football players for the past 12 years, is charged with the procurement, issuance and maintenance of all Seminole equipment. Dixon, a native of Esto, designed the lockers which were located under Campbell Stadium, and played a major role in the design of FSU's ultra-modern facilities in the new Seminole field house.



BILL BUNKER

Sports Information Director

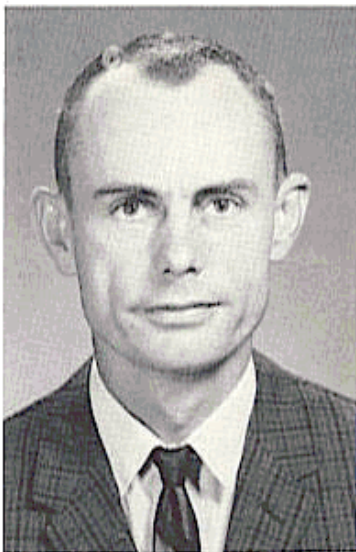


A 1959 graduate of Florida State, Bill Bunker wrote sports for the Tallahassee Democrat and the Houston (Texas) Press before becoming FSU's Sports Information Director in May of 1963. Following his graduation from FSU, Bunker served 3½ years in the Marine Corps, and is a captain in the Marine Reserves.

MRS. DELORES FRYE

Executive Secretary

Many and varied duties in the administration of Florida State's athletic program come under the supervision of Mrs. Delores (Dee) Frye who is beginning her tenth year in the department. A native of Quincy, Dee is married to Jim Frye, an account executive in the Tallahassee Democrat's advertising department. She is the mother of a daughter, Lisa, 2.



CLAUDE THIGPEN

Ticket Manager

Getting busier each year is Claude Thigpen, Florida State's ticket manager. The Greenville native handles ticket orders and sales for all Florida State sports and supervises the operation at the Campbell Stadium gates. A 1947 graduate of Greenville High School, Thigpen worked in the University accounting office for seven years before joining the athletic department.



**THE 1965
SEMINOLES**

THE 1965 OUTLOOK

Offense

This could be a rebuilding year for Florida State's offense. Seven starters have departed from the unit which ranked ninth nationally in total offense last season, including passing ace Steve Tensi and his All America receiver, Fred Biletnikoff.

Players of this caliber are virtually irreplaceable, but Coach Bill Peterson's big worry is nevertheless the interior offensive line which was stripped bare by graduation.

Only tackle Del Williams and guard Joe Avezzano return from the unsung unit that provided tremendous pass protection for Tensi last season. Avezzano and Williams are big, tough and capable, as is two-year letterman Bob Mangan who will man the other tackle, but injuries could send Seminole coaches searching for players to plug the gaps.

The ends are stronger than could be expected. Max Wettstein had an outstanding spring, and Buddy Blankenship, Donovan Jones and Jerry Jones all show great potential.

Behind Williams and Mangan at tackle are sophomore Thurston Taylor, and junior David Braggins. Taylor was moved from end in the spring in an effort to strengthen this position.

Behind Avezzano is Larry Williamson, a small, but tough varsity returnee. He and Ed Pope waged an all-out battle for the other guard spot during the spring, and Pope emerged with a slight edge. He'll be backed by sophomore Charlie McNeil, another youngster with potential.

Perhaps the sorest spot on the front line is center. John Stephens lettered behind Jack Edwards there last year, and Wayne McDuffie has been shifted from end to bolster this position which still remains a question mark.

Another big question mark appears at quarterback. Ed Pritchett has won two letters there, but a knee operation last December places him in the doubtful category. Junior Tony Gero and sophomore Kim Hammond directed operations in the spring. Both have potential, but neither is battle-tested.

Things are starting from scratch at the flanker back position where Biletnikoff cast a long shadow for the past two years. Elton Revell is a junior speedster who has the first shot, but he'll face tough opposition from sophs Bill Cox and T. K. Wetherell.

Probably the strongest offensive positions are left halfback and fullback. Two lettermen return at each position and some outstanding newcomers add depth.

Phil Spooner led all Seminole rushers last year. He's backed by letterman Larry Green, the team's top breakaway threat, and sophomore Bill Moreman.

Wayne Giardino started half of last season at fullback and had an outstanding spring. Joe Petko is a veteran who is looking better than ever, and big Jim Mankins could be a darkhorse here.

SUMMARY: Strong running backs, possibly weak line of scrimmage. Good receivers if a quarterback can be found who can get the ball to them. A lot of work needed before the first game.

THE 1965 OUTLOOK

Defense

Florida State's defense acquired national attention last season with the shaved heads of the "Seven Magnificents," and a high national ranking in virtually every category of defensive play.

If the Seminole offense was decapitated by graduation, the defense was barely touched.

Linebacker Dick Hermann, tackle Avery Sumner and safetyman Winfred Bailey will be hard to replace, but there are enough veterans on hand to give Florida State's defense that tough look which has become its trademark.

The hub of the defensive line is middle guard Jack Shinholser, one of the nation's best. He's flanked by the Pennic brothers, Frank and Charles.

At 6-4, 237, Frank is the biggest regular on the Seminole team. He's a veteran who has already been drafted by Detroit.

Younger brother Charlie played behind him last season, and he learned his lessons well. His improvement this spring was one of the more gratifying experiences the Seminole coaches had.

The Pennies will be backed by Jay Mac Matthews, Paul Williams and David Pitts.

On the flanks are two veterans who seem to have been turned from the same mold. George D'Alessandro and Terry Garvin, both seniors, are approximately the same size (5-11, 200) and play the same type of rugged football.

H. T. Waller is a recent convert to the end position and Stan Croley has been moved from offense to add depth.

Hermann was one of the nation's best linebackers, and his departure will hurt. However, three lettermen and a bright sophomore makes this position sound. Bill McDowell was Hermann's running mate for two years and is easily one of the team's outstanding players. Howard Lurie and Joe Parrish both earned letters last year, and Mike Blatt is regarded as a comer by FSU coaches.

The defensive secondary is solid with veterans and should be improved. Cornerbacks Maury Bibent and Howard Ehler are both hard tacklers and capable pass defenders. Letterman Jim Massey teams with junior Bill Campbell at safety. Campbell and Bibent are most likely to be deep on punt returns.

SUMMARY: Strong overall with eight returning starters.

PERSONNEL ANALYSIS

Position	Lettermen Returning (23)	Seniors (16)	Juniors (22)	Sophomores (46)	Lettermen Lost (14)
Offensive ends	Wettstein (1)	Wettstein (1)	Blankenship D. Jones (2)	Culliton Doyle Fenner Fenwick J. Jones (5)	Floyd Dawson Wachtel C. Gunter (4)
Defensive ends	D'Alessandro Garvin (2)	D'Alessandro Garvin (2)	None	Broxon Croley Waller (3)	None
Offensive tackles	Mangan D. Williams (2)	Mangan (1)	D. Williams Braggins Kissam (3)	Ellers Johnson Kramer Taylor (4)	West (1)
Defensive tackles	F. Pennie (1)	F. Pennie (1)	C. Pennie Matthews (2)	P. Williams Vistart (2)	Sumner (1)
Offensive guards	Avezzano (1)	Avezzano (1)	Hall Pope Williamson (3)	Bugar Holloway Hudson Lenker McLean McNeil Pendleton (7)	MacKenzie (1)
Middle guards	Shinholser Pitts (2)	Shinholser (1)	Pitts (1)	Daly (1)	None
Centers	Stephens McDuffie (2)	None	Stephens McDuffie (2)	Urich Walther (2)	Edwards (1)
Linebackers	McDowell Parrish Lurie (3)	McDowell Parrish Lurie (3)	None	Blatt McKinnon (2)	Hermann (1)
Quarterbacks	Pritchett (1)	Pritchett (1)	Gero (1)	Hammond Burkhardt B. Gunter Kolbus (4)	Tensi (1)
Running backs	Spooner Green (2)	Spooner (1)	Hosack Green (2)	Moreman Benson Mercer (3)	None
Flanker backs	None	None	Revell (1)	Cox Hart Wetherell (3)	Biletnikoff (1)
Fullbacks	Giardino Petko (2)	Petko (1)	Giardino Mankins (2)	DeLopez Elliott Flores Lewis (4)	Narramore (1)
Defensive backs	Bibent Conway Ehler Massey (4)	Bibent Ehler Massey (3)	Conway Campbell Menendez (3)	J. Bailey LaMarche Richardson Riser (4)	W. Bailey (1)
Place kickers	None	None	None	Loner Roberts (2)	Murdock (1)

TENTATIVE DEPTH CHART

(Based on early summer estimates; lettermen in bold type)

OFFENSE		DEFENSE	
LE	Buddy Blankenship Jerry Jones	LE	George D'Alessandro H. T. Waller
LT	Del Williams Thurston Taylor	LT	Frank Pennie Jay Mac Matthews
LG	Edwin Pope Carlie McNeil	LB	Joe Parrish Mike Blatt
C	John Stephens Wayne McDuffie	MG	Jack Shinholser John Daly David Pitts
RG	Joe Avezzano Larry Williamson	LB	Bill McDowell Howard Luric
RT	Bob Mangan David Braggins	RT	Charles Pennie Paul Williams
RE	Max Wettstein Donovan Jones	RE	Terry Garvin Stan Croley
QB	Ed Pritchett Tony Gero Kim Hammond	CB	Howard Ehler Bill Richardson
LHB	Phil Spooner Larry Green Bill Moreman	CB	Maury Bibent Bob Menendez
RFB	Elton Revell Bill Cox T. K. Wetherell	S	Jim Massey Pat Conway
FB	Wayne Giardino Joe Petko Jim Mankins	S	Bill Campbell Butch Riser

WHERE THEY'RE FROM

Florida 48, Georgia 15, Ohio 10, Alabama 5, California 3,
Indiana 2, New Jersey 1.

1965 FLORIDA STATE

OFFENSIVE ENDS

Name	Ht.	Wt.	Age	Class	High School	Hometown
Buddy Blankenship	6-3	203	21	Jr.	O'Keefe	Atlanta, Ga.
Tom Culliton	5-11	206	19	So.	Pasco	San Antonio
Dennis Doyle	6-2	196	19	So.	Jackson	Jacksonville
Lane Fenner	6-5	197	20	So.	North	Evansville, Ind.
Jack Fenwick	6-4	210	19	So.	Norwood	Cincinnati, O.
Donovan Jones	6-1	198	20	Jr.	Lakeland	Lakeland
Jerry Jones	6-1	184	20	So.	Wayne County	Jesup, Ga.
**Max Wettstein	6-3	204	21	Sr.	Leesburg	Leesburg

DEFENSIVE ENDS

Tim Broxon	6-4	185	19	So.	Milton	Milton
Stan Croley	6-2	192	20	So.	Pasco	Dade City
**George D'Alessandro	5-11	200	22	Sr.	Fort Myers	Fort Myers
*Terry Garvin	5-11	203	22	Sr.	Pensacola	Pensacola
H. T. Waller	6-1	186	20	So.	Vernon	Vernon

OFFENSIVE TACKLES

David Braggins	6-2	218	20	Jr.	Lake Wales	Lake Wales
Donnie Ellers	6-3	219	19	So.	Bessemer	Bessemer, Ala.
Ken Johnson	6-2	217	21	So.	Terry Parker	Jacksonville
Larry Kissam	6-0	230	20	Jr.	Los Angeles JC	Inglewood, Calif.
Jim Kramer	6-2	207	19	So.	Belmont	Dayton, O.
**Bob Mangan	6-1	238	23	Sr.	St. Pius X	Atlanta, Ga.
Thurston Taylor	6-2	223	19	So.	N. Clayton	College Park, Ga.
*Del Williams	6-2	230	20	Jr.	Live Oak	Live Oak

DEFENSIVE TACKLES

Jay Mac Matthews	6-1	226	21	Jr.	Chiefland	Chiefland
Charles Pennie	6-4	230	20	Jr.	S. Broward	Hollywood
**Frank Pennie	6-4	237	22	Sr.	S. Broward	Hollywood
Romney Vistart	6-3	267	20	So.	Miller County	Colquitt, Ga.
Paul Williams	6-1	201	20	So.	S. Broward	Hallandale

OFFENSIVE GUARDS

**Joe Avezzano	6-2	221	22	Sr.	Jackson	Miami
Mike Bugar	6-1	204	19	So.	Austintown	Youngstown, O.
David Hall	5-11	198	21	Jr.	Bay	Panama City
Gene Holloway	6-2	199	20	So.	Shades Valley	Homewood, Ala.
Fred Hudson	6-1	208	20	So.	Milton	Milton
Mark Lenker	6-0	184	19	So.	Ribault	Jacksonville
Richard McLean	6-0	186	19	So.	Mainland	Holly Hill
Carlie McNeil	6-1	201	19	So.	Willingham	Macon, Ga.
Larry Pendleton	6-0	187	19	So.	Winter Garden	Winter Garden
Ed Pope	6-1	208	21	Jr.	Ware County	Waycross, Ga.
Larry Williamson	5-11	204	20	Jr.	Lanier	Macon, Ga.

DEFENSIVE MIDDLE GUARDS

John Daly	5-10	185	20	So.	Bishop Kenny	Jacksonville
*David Pitts	5-9	220	21	Jr.	Blountstown	Blountstown
**Jack Shinholser	6-1	211	23	Sr.	Chamberlain	Tampa

OFFENSIVE CENTERS

*Wayne McDuffie	6-2	210	21	Jr.	Hawkinsville	Hawkinsville, Ga.
*John Stephens	6-1	198	20	Jr.	Leon	Tallahassee
Bob Urich	6-2	198	19	So.	Toronto	Toronto, O.
Wayne Walther	6-0	206	19	So.	Tate	Cantonment

FOOTBALL ROSTER

DEFENSIVE LINEBACKERS

Name	Ht.	Wt.	Age	Class	High School	Hometown
Mike Blatt	5-11	202	19	So.	Key West	Key West
*Howard Lurie	6-0	200	21	Sr.	Cleveland	Northridge, Calif.
**Bill McDowell	6-1	212	21	Sr.	Leon	Tallahassee
Phil McKinnon	5-11	199	20	So.	Ensley	Birmingham, Ala.
**Joe Parrish	6-1	196	23	Sr.	Auburndale	Auburndale

OFFENSIVE QUARTERBACKS

Bill Burkhardt	6-1	185	19	So.	St. Ignatius	Rocky River, O.
Tony Gero	5-10	184	21	Jr.	Madison	Madison, N. J.
Bill Gunter	6-0	167	20	So.	Ashford	Dothan, Ala.
Kim Hammond	6-1	188	21	So.	Melbourne	Melbourne
Marty Kolbus	6-2	185	19	So.	Roosevelt	E. Chicago, Ind.
**Ed Pritchett	6-2	176	24	St.	Avondale	Decatur, Ga.

OFFENSIVE LEFT HALFBACKS

Joe Benson	5-10	197	20	So.	Shades Valley	Birmingham, Ala.
*Larry Green	5-10	175	20	Jr.	Cairo	Cairo, Ga.
John Hosack	5-10	197	20	Jr.	Edison	Miami
Ron Mercer	5-11	190	20	So.	Paxon	Densmore
Bill Moreman	5-11	178	20	So.	Mainland	Daytona Beach
**Phil Spooner	5-11	183	22	Sr.	Fort Myers	Fort Myers

OFFENSIVE FLANKER BACKS

Bill Cox	6-1	180	19	So.	Henry Grady	Atlanta, Ga.
Ken Hart	6-3	196	19	So.	Groveland	Groveland
Elton Revell	6-0	175	21	Jr.	Florida	Tallahassee
T. K. Wetherell	5-10	171	20	So.	Mainland	Daytona Beach

OFFENSIVE FULLBACKS

Tom DeLopez	6-2	195	20	So.	Hialeah	Miami
Chuck Elliott	6-0	193	19	So.	Tippecanoe	Troy, O.
Chuck Flores	5-11	198	19	So.	Taylor County	Perry
*Wayne Giardino	5-10	195	22	Jr.	Forest Hill	West Palm Beach
Skip Lewis	6-1	188	19	So.	Lemon Monroe	Middletown, O.
Jim Mankins	6-2	233	21	Jr.	King City	King City, Calif.
**Joe Petko	5-9	189	22	Sr.	Shaker Heights	Shaker Heights, O.

DEFENSIVE BACKS

Jim Bailey	6-2	175	19	So.	Wilmington	Wilmington, O.
**Maury Bibent	6-0	196	23	Sr.	Western Hills	Cincinnati, O.
Bill Campbell	5-9	176	20	Jr.	Chamberlain	Tampa
*Pat Conway	5-10	189	20	Jr.	Jackson	Miami
**Howard Ehler	5-10	190	21	Sr.	Tavares	Tavares
Alan LaMarche	5-11	187	20	So.	S. Broward	Hollywood
**Jim Massey	5-11	171	22	Sr.	Cairo	Cairo, Ga.
Bob Menendez	5-10	190	20	Jr.	Key West	Key West
Bill Richardson	5-9	189	20	So.	Wayne County	Jesup, Ga.
Butch Riser	6-0	181	20	So.	Seminole	Sanford

KICKING SPECIALISTS

Frank Loner	5-9	170	19	So.	Thomasville	Thomasville, Ga.
Pete Roberts	5-11	180	20	So.	Gainesville	Gainesville

* Denotes Letters Won



Wettstein



Blankenship



J. Jones



D. Jones

PLAYER PROFILES

OFFENSIVE ENDS

MAX WETTSTEIN, 21, Sr., 6-3, 204, Leesburg, 2L. Played both offense and defense as a sophomore, but was a full time defensive man last year . . . Heavy losses at end make him a key man in FSU's pro-style attack this fall . . . As a soph he caught eight passes and scored two touchdowns in one game . . . Had a great spring, catching everything thrown his way . . . He has the speed and hands to become a great receiver.

BUDDY BLANKENSHIP, 21, Jr., 6-3, 203, Atlanta, Ga. A former quarterback who was moved to end as a sophomore . . . After a redshirt year, he performed capably in a relief role to Don Floyd . . . He'll play both split and tight end this year . . . Good speed, good moves and the ability to make the big catch . . . He has a big pair of shoes to fill and is working hard to get the job done.

JERRY JONES, 20, So., 6-1, 184, Jesup, Ga. Came to Florida State as a halfback but moved to split end after a redshirt year in '64 . . . One of the squad's hardest workers . . . Makes up for a lack of weight with determination and toughness . . . Developed into a good receiver last spring.

DONOVAN JONES, 20, Jr., 6-1, 198, Lakeland. One of the most versatile athletes on the squad . . . In one scrimmage last spring Donovan played both ends, defensive halfback and running back at various times . . . Big and fast, he has excellent hands and can run with the ball after making the catch . . . Was a defensive back last season, but figures importantly in offensive plans this fall.



D'Alessandro



Garvin



Waller



Croley

DEFENSIVE ENDS

GEORGE D'ALESSANDRO, 22, Sr., 5-11, 200, Fort Myers, 2L. As one of the original "Seven Magnificents," D'Alessandro started every game last fall . . . A tireless worker who hits with authority . . . Possibly one of the most underrated men on the defensive unit . . . Made several big plays in '64.

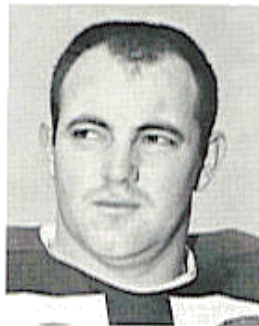
TERRY GARVIN, 22, Sr., 5-11, 206, Pensacola, 1L. Shook an injury jinx around mid-season last fall and moved into the starting lineup where he's been ever since . . . Has good speed and quickness . . . Garvin has built a reputation for toughness.

H. T. WALLER, 20, So., 6-1, 186, Vernon. A freshman quarterback, Waller worked at defensive safety during a redshirt year . . . He was moved to defensive end last spring and took to the position immediately . . . Quick and aggressive . . . Fits in perfectly to FSU's style of end play.

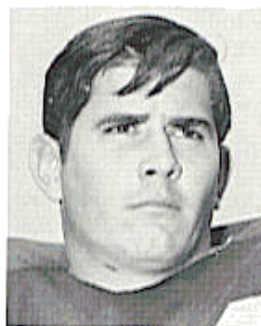
STAN CROLEY, 20, So., 6-2, 192, Dade City. A rangy youngster who may play either offense or defense . . . Improved steadily during a redshirt year . . . Good speed and will hit.



D. Williams



Mangan



Braggins



Taylor

OFFENSIVE TACKLES

DEL WILLIAMS, 20, Jr., 6-2, 230, Live Oak, FL. The only sophomore to start every game last fall . . . He was a big man in FSU's line and with continued improvement will be one of the South's top linemen before he's through . . . Has all the equipment to be great . . . Size, speed, toughness and desire.

BOB MANGAN, 23, Sr., 6-1, 238, Atlanta, 2L. One of the more experienced members of the offensive line corps . . . The Seminoles will rely heavily on his leadership this fall . . . Can handle all the techniques required of a blocker in FSU's pro style offense . . . Quick for his size and tough.

DAVID BRAGGINS, 20, Jr., 6-2, 224, Lake Wales. A returnee from last fall's second offensive unit . . . Has great potential and will be expected to carry his weight this season . . . A versatile athlete, Braggins was a weight man on the FSU track team last spring, earning a letter.

THURSTON TAYLOR, 19, So., 6-2, 223, College Park, Ga. An end on last year's freshman team, Taylor was moved to tackle in the spring . . . He learned quickly and moved to the second unit almost immediately . . . He may handle punting duties for the Seminoles this fall . . . Has a strong leg and is accurate.



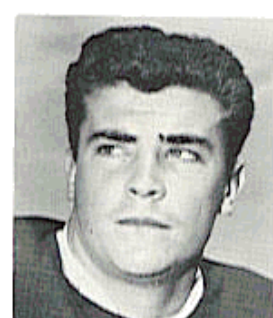
F. Pennie



C. Pennie



Matthews



P. Williams

DEFENSIVE TACKLES

FRANK PENNIE, 22, Sr., 6-4, 237, Hollywood, 2L. One of the top returnees from last year's "Seven Magnificents" . . . Ranks second on the squad in tackles made with a two-year total of 134 . . . Tremendous size and strength . . . Gives passers nightmares with his fierce rush . . . Has great quickness for his size . . . Batted down two passes at the line of scrimmage in the Gator Bowl . . . Drafted by Detroit of the NFL because of his play in the last three games.

CHARLES PENNIE, 20, Jr., 6-4, 230, Hollywood. Frank's younger brother, but destined to earn a reputation of his own this season . . . He played behind his brother last season, then was shifted to the other tackle to fill the gap left by Avery Sumner's graduation . . . Voted the most improved defensive lineman in the spring . . . Still growing and getting quicker.

JAY MAC MATTHEWS, 21, Jr., 6-1, 226, Chiefland. Injuries kept Matthews below par in the spring, but the coaching staff hopes he'll be ready for full-time duty this fall . . . Has tremendous potential and continued development could make him an important figure . . . Likes to hit and has the size to make it stick.

PAUL WILLIAMS, 20, So., 6-2, 201, Hollywood. Formerly an end, Williams was moved to the interior during a redshirt year . . . Played both tackle and middle guard during the spring and can give much-needed depth to either position . . . Good speed, quick and agile.



Avezzano



Pope



Williamson



McNeil

OFFENSIVE GUARDS

JOE AVEZZANO, 22, Sr., 6-2, 226, Miami, 2L. One of the unsung linemen who gave Steve Tensi tremendous protection last fall . . . An excellent pass blocker, Avezzano has good speed and does an outstanding job of pulling to trap and lead sweeps . . . He has leadership ability which will count heavily this fall.

ED POPE, 21, Jr., 6-1, 208, Waycross, Ga. Converted from end last fall, Pope played behind Dale MacKenzie last year and won a starting berth in the spring . . . Probably the fastest offensive lineman . . . Has tremendous explosive power and can run with the backs when pulling to block downfield . . . Needs game experience.

LARRY WILLIAMSON, 20, Jr., 5-11, 204, Macon, Ga. Another tough Georgia boy . . . Played as a soph and will see plenty of action this year . . . Good smart athlete . . . Made key play in last year's Florida game when he fell on an on-side kickoff attempt, thus halting the Gators' final scoring threat.

CARLIE McNEIL, 18, So., 6-1, 201, Macon, Ga. Had a good spring both offensively and defensively . . . One of the real good sophomores on this '65 team . . . Expected to be one of the Seminoles' top performers in the future . . . Hits with authority.



McDowell



Parrish



Lurie



Blatt

LINEBACKERS

BILL McDOWELL, 21, Sr., 6-1, 212, Tallahassee, 2L. He and Dick Hermann formed the fastest and one of the best linebacking duos in the nation for two straight years . . . Calls signals for the formidable Seminole defense . . . Has the ability to make the big play when needed . . . Blocked two field goal attempts last season . . . Has made 189 tackles in two years and will shoot for Hermann's career record of 287 . . . Won the coaches' defensive award in four games last season . . . A high school fullback, McDowell has added weight and strength each year without losing his great speed . . . Plays from sideline to sideline and hits with the best.

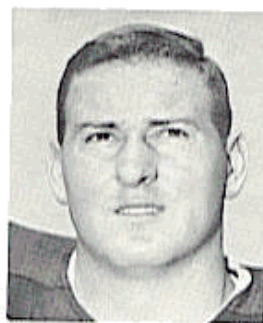
JOE PARRISH, 22, Sr., 6-0, 200, Auburndale, 2L. All-out effort and determination is the key to this senior's performance . . . After two years in a reserve role, he should be ready to step in and give a solid performance . . . Has adequate size and speed . . . One of the hardest tacklers on the team.

HOWARD LURIE, 21, Sr., 6-0, 200, Northridge, Calif., 1L. A junior college graduate, Lurie made the traveling squad last year and played on the kickoff team . . . Injuries kept him under wraps during the spring, but when he's well he will keep both McDowell and Parrish on their toes . . . Originally a halfback, he's a good athlete with fine speed.

MIKE BLATT, 19, So., 5-11, 202, Key West. An outstanding freshman halfback, Blatt took to defensive play as if he was born there . . . He already has a reputation for toughness, and is a great future prospect . . . Looking for a good first season.



Stephens



McDuffie



Shinholser



Pitts

OFFENSIVE CENTERS

JOHN STEPHENS, 19, Jr., 6-1, 198, Tallahassee, FL. One of the most determined athletes on the squad . . . Backed up Jack Edwards last year and played in nearly every game . . . Can block with the best despite his relatively small size . . . His performance will be of great importance this fall, since the center position is rather shallow . . . Has speed, quickness, and loves contact.

WAYNE McDUFFIE, 20, Jr., 6-2, 210, Hawkinsville, Ga., FL. Lettered last year as a defensive end, but was moved to center in the late spring to plug up a hole at that position . . . Good, tough football player who will see plenty of action in '65 . . . Has the ability to play any offensive or defensive line position.

DEFENSIVE MIDDLE GUARDS

JACK SHINHOLSER, 22, Sr., 6-1, 212, Tampa, FL. His teammates call him "The Wrecker," and what he does to opposing passers is hard to believe . . . Built a reputation last year as one of the toughest defensive linemen in the nation . . . Credited with possibly the biggest defensive play of the season when he caused a Florida fumble inside the FSU five . . . Named "Lineman of the Week" for his performance against the Gators . . . Also named the outstanding lineman to play against Sun Bowl champion Georgia in '64 . . . Made several other all-opponent teams . . . Ranks third in tackles with 131, despite playing offensive tackle in '63 . . . A great pass rusher, hard to take out of a play . . . A sixth sense for the ball and great second effort enable him to make plays all over the field . . . Probably the strongest man on the Seminole squad . . . A top candidate for All American.

JOHN DALY, 20, So., 5-11, 192, Jacksonville. Came from nowhere to win the number two job at his position in the spring . . . Brother to former FSU defensive standout Bill Daly . . . Not big, speed only adequate, but he has the ability to get around the ball carrier . . . Quick and plenty tough.

DAVID PITTS, 21, Jr., 5-9, 220, Blountstown. As tough as anyone when they run his way . . . Good lateral movement, but lacking in straight ahead speed . . . One of the squad's top hustlers . . . No worries about Pitts getting low, he's built that way . . . Can play tackle or middle guard.



Pritchett



Gero



Hammond



Spooner

OFFENSIVE QUARTERBACKS

ED PRITCHETT, 24, Sr., 6-2, 176, Decatur, Ga., 2L. Holds the key to Florida State's offensive plans this fall . . . A successful recovery from a December knee operation seems likely, and with a healthy Pritchett in the lineup, the Seminoles have all the quarterback anyone could want . . . Not only is he the only man at his position with varsity experience, he's also one of the most talented football players on the squad . . . Playing behind Steve Tensi last year he completed 21 of 36 passes for 295 yards and ran 36 times for 134 yards in addition to handling the punting duties . . . An excellent sprint-out quarterback who will probably have to become a drop-back passer because of his troublesome knee . . . An outstanding athlete with an abundance of determination and ability.

TONY GERO, 21, Jr., 5-10, 183, Madison, N. J. Has ability, lacks experience . . . He and Kim Hammond staged a battle for the starting job last spring with Pritchett on the sidelines . . . A bruised knee slowed Gero some, but he had an excellent spring . . . Strong arm, good runner . . . A hard worker with a tremendous desire to play.

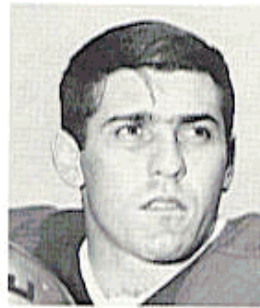
KIM HAMMOND, 21, So., 6-1, 190, Melbourne. The only one of seven freshman quarterbacks in '63 to remain at that position . . . Redshirted last year and ran the scout squad . . . Should develop into a fine quarterback . . . Good speed and strength . . . Can throw the drop back or sprint-out pass with equal ability.



Green



Moreman



Giardino



Petko

OFFENSIVE LEFT HALFBACKS

PHIL SPOONER, 21, Sr., 5-11, 182, Fort Myers, 2L. There are others with more size and speed, but none so consistent as Spooner . . . He came back after a year of injury to lead Florida State's rushers last season with 516 yards on 136 carries, then capped it off with a brilliant performance in the Gator Bowl . . . His 125 yard total is the fourth highest in the game's history . . . Intelligence, determination and a knack for finding daylight are Spooner's major assets . . . He's also an excellent pass receiver and his all-around talents provide good balance to FSU's pass-oriented attack.

LARRY GREEN, 20, Jr., 5-10, 182, Cairo, Ga., 1L. One of Georgia's most heralded high school athletes in '62, Green was one of few sophomores to break in with the Seminoles last season . . . Gained 229 yards on 50 carries for a 4.1 average, best on the team . . . He spent most of last spring as a flanker back, but was moved back to left half during the last week and will probably play there . . . His speed and ability in an open field make him a natural for punt and kickoff returns . . . An exciting runner who can go the distance.

BILL MOREMAN, 20, So., 5-11, 186, Daytona Beach. A redshirt in '64, Moreman was brought up from the "B" team at midseason and was ready to play in the event of injury to Green or Spooner . . . Had a fair spring and is counted on for heavy work this fall . . . A hardnosed type with good speed.

OFFENSIVE FULLBACKS

WAYNE GIARDINO, 21, Jr., 5-10, 195, West Palm Beach, 1L. A regular for most of last season, Giardino charted a strange course to the starting fullback position . . . As a high school quarterback he played in only two games his senior year, and played as a defensive back during his freshman year at FSU . . . He showed offensive potential in the spring of '64, and by midseason had won the job . . . Adequate speed, good balance and power . . . Better than average receiver and pass blocker . . . He had to fight for his job in the spring and came through brilliantly.



Mankins



Revell



Cox



Wetherell

JOE PETKO, 21, 5-9, 189, Shaker Heights, O., 2L. Gives depth to the offensive backfield with his ability to play halfback or fullback equally well . . . A veteran with tremendous blocking ability . . . When he's right, he's as good as any runner on the team . . . He has the power for short yardage situations and the speed and moves to go outside

JIM MANKINS, 21, Jr., 6-2, 233, Kings City, Calif. Sat out last year with a shoulder separation . . . Would have played considerably . . . Had a fine spring and may be the big strong back Seminole coaches have been looking for . . . Good speed for his size . . . Has the hands to become an excellent receiver . . . Plenty of power and not afraid to use it.

FLANKERS

ELTON REVELL, 21, Jr., 6-0, 175, Tallahassee. This slender speedster will step into the most awesome pair of shoes in Florida State history . . . Had little chance to play behind All American Fred Biletnikoff last season, but coaches say he learned his lessons well . . . Caught seven passes for 74 yards in '64 . . . A hard worker and one of the fastest men on the squad . . . A former quarterback for Tallahassee's Florida High.

BILL COX, 19, So., 6-1, 180, Atlanta, Ga. Although he has yet to appear in a varsity game, FSU fans are already comparing him to Biletnikoff . . . The comparison is premature, but Cox has the tools to become an outstanding pass receiver . . . Good speed, good moves and the ability to come up with the great catch . . . A dedicated athlete who likes contact.

T. K. WETHERELL, 20, So., 5-10, 171, Daytona Beach. After a redshirt year, Wetherell was given a shot at flanker and responded well . . . He has a sure pair of hands and good speed . . . Hard to tackle in an open field.



Massey



Bibent



Ehler



Campbell

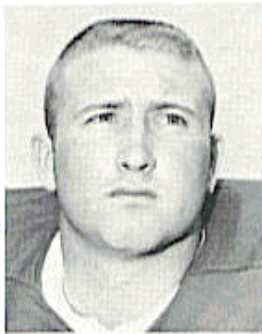
DEFENSIVE BACKS

JIM MASSEY, 22, Sr., 5-11, 171, Cairo, Ga., 2L. Calls the signals for FSU's defensive secondary and combines good football sense with an ability to diagnose plays, making him a key member of this unit . . . Had a fine year in '64 and made many key plays throughout the season . . . Backs up the line in the goal line defense and is credited with personally stopping six scoring attempts last fall . . . Two-year total of 88 tackles . . . A leader, he is president of the senior class.

MAURY BIBENT, 22, Sr., 6-0, 194, Cincinnati, O., 2L. Great things are expected from this veteran . . . He mans the left corner on FSU's 5-4 defense and has a two-year total of 109 tackles . . . Exceptional all around athlete who could probably be one of the team's best running backs were his defensive talents not so vital . . . A hard sure tackler . . . Will be deep on punt returns and should spell trouble for opponents in that category.

HOWARD EHLER, 22, Sr., 6-0, 194, Tavares, 2L. Best remembered for his 65-yard interception return in the Gator Bowl . . . Tremendous quickness and a desire for contact . . . Switched to defense after a good sophomore year as an offensive fullback . . . Made 68 tackles . . . Made a 4.0 or straight "A" average in the classroom last spring.

BILL CAMPBELL, 20, Jr., 5-9, 176, Tampa. Heir apparent to the job vacated by Winfred Bailey . . . Great speed and quickness . . . Had a busy spring, lettering in track in addition to his football duties . . . Returned five punts for 72 yards last year and will be used in this capacity again this fall . . . Received co-award with Charles Pennie as most improved defensive player last spring.



Menendez



Richardson



Conway



Riser

BOB MENENDEZ, 20, Jr., 5-10, 188, Key West. Played as a sophomore and is expected to fill an important reserve role again this year . . . Has good speed and is a hard tackler . . . Good solid performer.

BILL RICHARDSON, 20, So., 6-0, 189, Jesup, Ga. Held out last fall . . . Has bright prospects with three years of eligibility left . . . Good speed and quickness . . . Had an excellent spring.

PAT CONWAY, 20, Jr., 5-10, 185, Miami, IL. Played behind Jim Massey last year and got in a complete game against VPI . . . Nicknamed "Cowboy" for the way he jumps and rides receivers on pass defense . . . Good speed and is tough . . . Injured during spring drills but should be ready in September.

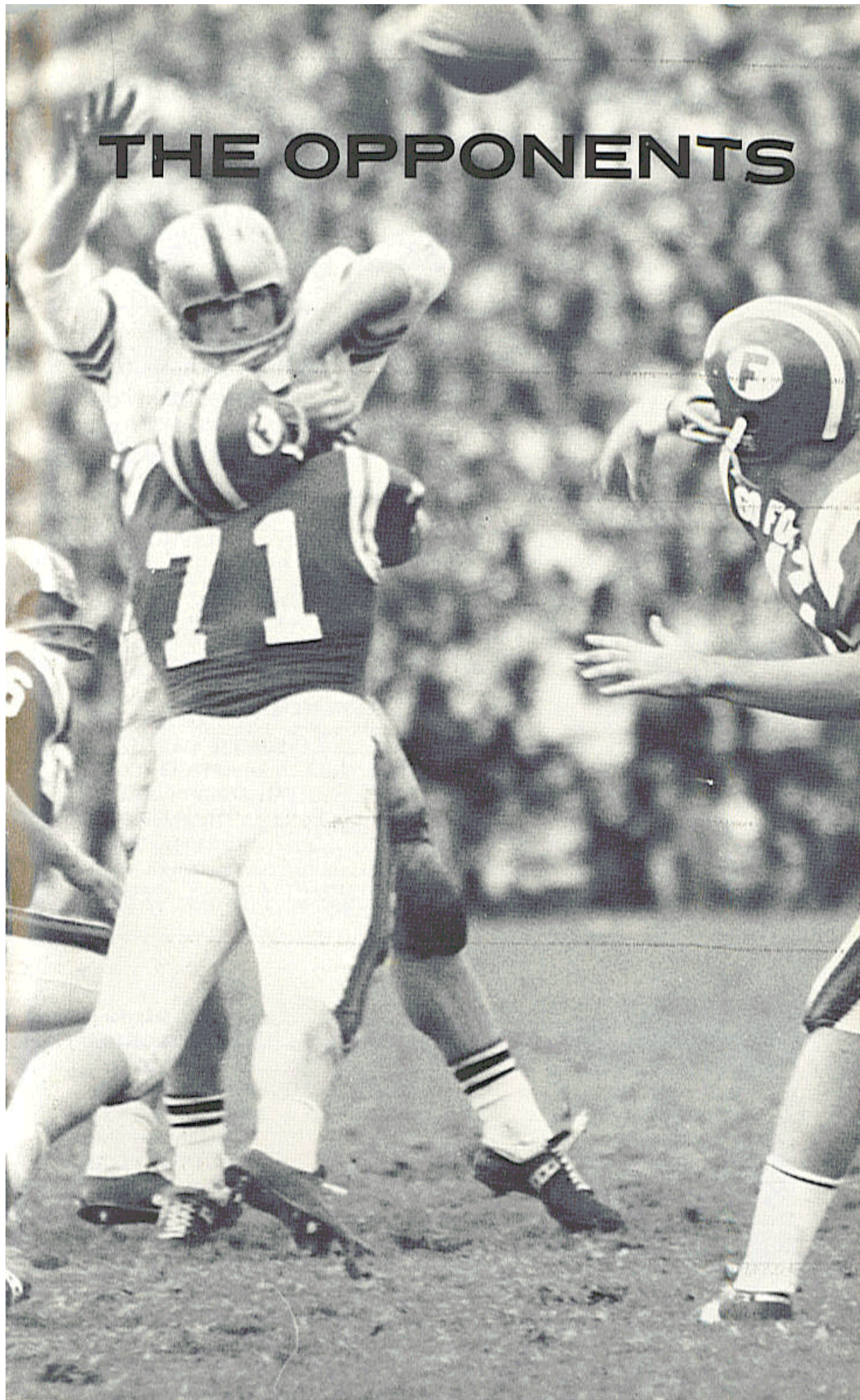
BUTCH RISER, 19, So., 6-0, 181, Sanford. Switched to defense last spring after a redshirt year . . . Finished fast, giving the Seminoles another excellent defensive prospect . . . Good speed . . . Has the ability to make the tough interception.

TENTATIVE FRESHMAN ROSTER

Grants-in-aid as of July 1, 1965

NAME	POS.	HT.	WT.	HOMETOWN	HIGH SCHOOL
Albritton, Keith	E	6-3	210	Avon Park	Avon Park
Archer, Ted	E	6-6	200	Pensacola	Escambia
Barton, Dave	G	6-2	221	Winter Haven	Winter Haven
Brown, Jimmy	FB	6-1	210	Jacksonville	Ribault
Burns, Joe	QB	6-1	173	North Miami	North Miami
Burton, Clint	QB	6-2	175	Atlanta, Ga.	Roosevelt
Calhoun, Charles	T	6-4	240	Jacksonville Bch.	Fletcher
Cappleman, Bill	QB	6-3	185	Clearwater	Dunedin
Carey, Jim	E	6-3	179	Sarasota	Sarasota
Chapman, Jeff	FB	6-3	200	Sarasota	Sarasota
Coley, Ralph	HB	5-10	190	Jacksonville	Dupont
Crowe, John	HB	6-2	165	St. Cloud	St. Cloud
Curchin, Jeff	E	6-6	225	Ocala	Ocala
Dew, Bill	T	6-1	205	Apopka	Apopka
Douglas, Dan	FB	6-0	205	Hialeah	Hialeah
Douglass, John	T	6-2	223	Panama City	Bay
Eagerton, Terry	HB	5-10	178	Jacksonville	Lee
Eason, Chuck	QB	5-10	173	Tallahassee	Leon
Edmunds, Frank	HB	5-10	165	Gulf Breeze	Pensacola
Fields, Mike	E	5-11	195	Orlando	Boone
Glass, Chip	E	6-4	210	Tampa	Chamberlain
Gurr, Doug	E	6-4	210	Albany, Ga.	Albany
Hiatt, Phil	QB	6-4	180	Tipp City, O.	Tippecanoe
Hiett, Roger	T	6-3	210	Heflin, Ala.	Cleburne County
Huggins, Charles	QB	6-1	185	Titusville	Titusville
Hurst, Johnnie	HB	6-0	200	Live Oak	Suwannee
Janes, Billy Joe	T	6-1	215	Pensacola	Pensacola
Johnson, Wayne	T	6-2	235	Macon, Ga.	Willingham
LaCour, Jeff	QB	6-1	190	Daytona Beach	Father Lopez
Lohse, Henry	C	6-3	200	St. Petersburg	Farragut Acad.
MacDonald, Bruce	G	6-3	192	Englewood	Venice
McCullers, Dale	E	6-2	190	Live Oak	Suwannee
Montgomery, Howell	QB	5-11	170	Blountstown	Blountstown
Mosley, Ted	C	6-2	200	Tampa	Chamberlain
Nuzzo, Mike	E	6-1	177	Miami	Miami Senior
Pajcic, Gary	QB	6-2	190	Jacksonville	Paxon
Porter, Andy	HB	6-1	180	Waycross, Ga.	Waycross
Rhodes, Billy	FB	6-2	205	Eustis	Eustis
Richardson, John	C	6-0	190	Jacksonville	Lee
Riddle, Larry	FB	6-0	198	Heflin, Ala.	Cleburne County
Sellers, Ron	E	6-4	172	Jacksonville	Paxon
Sewell, Tony	T	6-5	210	Union Spgs., Ala.	Bullock County
Sunner, Walter	QB	6-1	160	Fitzgerald, Ga.	Irwin County
Vohun, Frank	T	6-3	218	Brooksville	Hernando
Williams, Joe	HB	6-0	175	St. Petersburg	Boca Ciega
Yeldell, Bill	E	6-1	185	Jacksonville	Jackson
Zion, Harvey	FB	5-11	200	Atlanta, Ga.	Grady

THE OPPONENTS



FUTURE SEMINOLE SCHEDULES

(Home games in bold caps)

1966

Sept. 24	Miami
Oct. 1	RICHMOND
Oct. 8	FLORIDA
Oct. 15	Texas Tech
Oct. 22	HOUSTON
Oct. 29	Virginia Tech
Nov. 5	South Carolina
Nov. 12	Syracuse
Nov. 19	WAKE FOREST
Nov. 26	MARYLAND

1967

Sept. 16	Houston
Sept. 23	Alabama
Sept. 30	N. C. STATE
Oct. 7	Texas A. & M.
Oct. 14	SOUTH CAROLINA
Oct. 21	TEXAS TECH
Oct. 28	MISSISSIPPI STATE
Nov. 4	Memphis State
Nov. 11	VIRGINIA TECH
Nov. 18	(open date)
Nov. 25	Florida

1968

Sept. 21	Maryland
Sept. 28	FLORIDA
Oct. 5	HOUSTON
Oct. 12	TEXAS A. & M.
Oct. 19	MEMPHIS STATE
Oct. 26	South Carolina
Nov. 2	VIRGINIA TECH
Nov. 9	Mississippi State
Nov. 16	N. C. State
Nov. 23	WAKE FOREST

FIRST GAME: SEPTEMBER 25 at FORT WORTH



Abe Martin

TEXAS CHRISTIAN

Game Site: Amon Carter Stadium (47,000)

Kickoff: 7:30 p.m. CST

ATHLETIC DIRECTOR: Abe Martin

HEAD COACH: Abe Martin, 12 years, 66-51-7

COACHING STAFF: Allie White, Walter Roach, Hunter Enis, Don Jackson, Fred Taylor

SPORTS PUBLICIST: Jim Brock

LOCATION: Fort Worth, Texas

ENROLLMENT: 9000

COLORS: Purple and White

NICKNAME: Horned Frogs

CONFERENCE: Southwest

LETTERMEN LOST: 19

LETTERMEN RETURNING: 19

SERIES: Tied, 1-1

1965 OUTLOOK: The Frogs could be improved in 1965 despite sophomores who hold the key to several vital positions. Also, lack of over-all speed and depth and offensive tackle are top problems. Two sophs, P. D. Shabay and southpaw Larry Peel, moved ahead of veteran quarterback Kent Nix in spring drills. Defense could be the team strongpoint, especially in the backfield where starters John Richards, Dan Jones and Frank Horak return. Linebackers and middle men also looked good in the spring.

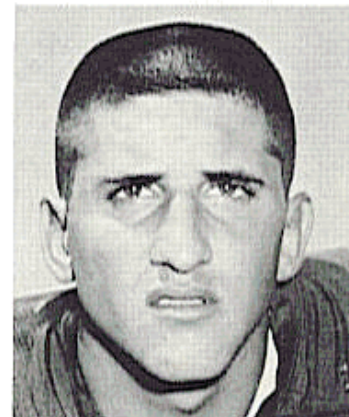
1965 SCHEDULE

Sept. 18	Nebraska at Lincoln (D)
Sept. 25	FLORIDA STATE at Ft. Worth (N)
Oct. 2	Arkansas at Little Rock (N)
Oct. 9	Texas Tech at Lubbock (N)
Oct. 16	Texas A&M at Ft. Worth (N)
Oct. 23	Clemson at Clemson (D)
Oct. 30	Baylor at Waco (D)
Nov. 13	Texas at Austin (D)
Nov. 20	Rice at Ft. Worth (D)
Nov. 27	SMU at Ft. Worth (D)

1964 SCORES (4-6)

3	Kansas	7
0	FLORIDA STATE	10
6	Arkansas	29
10	Texas Tech	25
14	Texas A&M	9
14	Clemson	10
17	Baylor	14
13	Texas	28
0	Rice	31
17	SMU	6

**Safety
Frank Horak**



THE FSU-TCU SERIES

	FSU	TCU
1963	0	13
1964	10	0

SECOND GAME: OCTOBER 2 at TALLAHASSEE

BAYLOR

Game Site: Campbell Stadium

Kickoff: 8:00 p.m. EST

ATHLETIC DIRECTOR: John D. Bridgers

HEAD COACH: John D. Bridgers, 7 years, 35-28-0

COACHING STAFF: Chuck Purvis, Jack Little, Herb Zimmerman, Pete McCulley, Taylor McNeel, Jack Thomas, Catfish Smith

SPORTS PUBLICIST: George Wright

LOCATION: Waco, Texas

ENROLLMENT: 5,409

COLORS: Green and Gold

NICKNAME: Bears

CONFERENCE: Southwest

1965 OUTLOOK: Baylor, third in the Southwest Conference last year behind Cotton Bowl Champion Arkansas and Orange Bowl Champion Texas; and second in 1963 behind National Champion Texas, could be in the first division again, especially if youngsters can fill in for departed veterans at linebacker and in the interior line on both offense and defense. The Bears will probably employ a good many sophomores on both platoons. Brightest star returning is quarterback Terry Southall, who had a great sophomore season with 118 completions out of 225 attempts for 1623 yards and ten TDs, second in SWC history only to Don Trull, Baylor passing great of 1962 and 1963. Despite the loss of All American Larry Elkins, the Bears expect a good passing attack again this season. Defense and the offensive interior line are the question marks.



John Bridgers

LETTERMEN LOST: 21

LETTERMEN RETURNING: 21

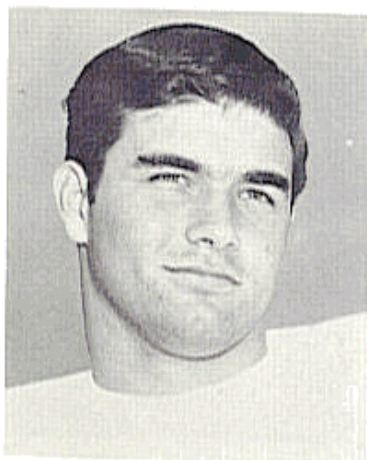
SERIES: First Meeting.

1965 SCHEDULE

Sept. 18	Auburn at Auburn (D)
Sept. 25	Washington at Waco (N)
Oct. 2	FLORIDA STATE at Tallahassee (N)
Oct. 9	Arkansas at Waco (N)
Oct. 23	Texas A&M at College Station (D)
Oct. 30	TCU at Waco (D)
Nov. 6	Texas at Austin (D)
Nov. 13	Texas Tech at Lubbock (D)
Nov. 20	SMU at Waco (D)
Nov. 27	Rice at Houston (D)

1964 SCORES (5-5)

14	Washington	35
6	Oregon State	13
6	Arkansas	17
28	Texas Tech	10
20	Texas A&M	16
14	TCU	17
14	Texas	20
17	Kentucky	15
16	SMU	13
27	Rice	20



**Quarterback
Terry Southall**

THIRD GAME: OCTOBER 9 at LEXINGTON

KENTUCKY

Game Site: Stoll Field (37,500)

Kickoff: 8:00 p.m. EST



Charlie Bradshaw

ATHLETIC DIRECTOR: Bernie A. Shively

HEAD COACH: Charlie Bradshaw, 3 years, 11-16-3

COACHING STAFF: Homer Rice, Bob Ford, George Boone, George Sengel, Ralph Hawkins, Ray Callahan, Charley Pell, Joe Moss, Phil Owen, and Leeman Bennett

SPORTS PUBLICIST: Ken Kuhn

LOCATION: Lexington, Ky.

ENROLLMENT: 15,000

COLORS: Royal Blue and White

NICKNAME: Wildcats

CONFERENCE: Southeastern

LETTERMEN LOST: 5

LETTERMEN RETURNING: 27

SERIES: Kentucky leads, 2-1-1

1965 OUTLOOK: Depth, experience and outstanding football talent combine to spell trouble for Kentucky's foes this fall. Only five lettermen departed from Charlie Bradshaw's '64 team which finished 5-5 and tied for second place in the SEC. Quarterback Rick Norton led the league in passing, halfback Rodger Bird was second in rushing with a 5.0 average per carry, and end Rick Kestner was the number two pass receiver. Of the 27 returning lettermen, 18 are seniors, giving the Wildcats a tough, experienced cadre of good football players.

1965 SCHEDULE

Sept. 18	Missouri at Columbia (D)
Sept. 25	Mississippi at Lexington (N)
Oct. 2	Auburn at Auburn (D)
Oct. 9	FLORIDA STATE at Lexington (N)
Oct. 16	Louisiana State at Baton Rouge (N)
Oct. 23	Georgia at Lexington (N)
Oct. 30	West Virginia (HC) at Lexington (D)
Nov. 6	Vanderbilt at Nashville (D)
Nov. 13	Houston at Houston (N)
Nov. 20	Tennessee (K Day) at Lexington (D)

1964 SCORES (5-5)

13	Detroit	6
27	Mississippi	21
20	Auburn	0
6	FLORIDA STATE	48
7	Louisiana State	27
7	Georgia	21
21	W. Virginia	26
22	Vanderbilt	21
15	Baylor	17
12	Tennessee	7

THE FSU-KENTUCKY SERIES

	FSU	Kentucky
1960	0	23
1961	0	20
1962	0	0
1964	48	6



Halfback
Rodger Bird

FOURTH GAME: OCTOBER 16 at TALLAHASSEE

GEORGIA

Game Site: Campbell Stadium

Kickoff: 8:00 p.m. EST

ATHLETIC DIRECTOR: Joel Eaves

HEAD COACH: Vince Dooley, 1 year, 6-3-1

COACHING STAFF: Bill Dooley, John Donaldson, Frank Inman, Erskine Russell, Cecil Ingram, Jim Pyburn, Howard Ayers, Ken Cooper, Sam Mrvos, Sterling DuPree

SPORTS PUBLICIST: Dan Magill, Loran Smith

LOCATION: Athens, Georgia

ENROLLMENT: 11,800

COLORS: Red and Black

NICKNAME: Bulldogs

CONFERENCE: Southeastern

LETTERMEN LOST: 14

LETTERMEN RETURNING: 23

SERIES: Georgia leads, 5-3

1965 OUTLOOK: In Vince Dooley's first season as head coach, Georgia's Bulldogs set the Southeastern football world on its ear. Dooley led the surprising Bulldogs to a 6-3-1 season, then ground out a 7-0 victory over Texas Tech in the Sun Bowl, and was named the SEC "Coach of the Year." Jim Wilson and Ray Rissmiller, two of the nation's top tackles, are gone from that team, but Georgia returns 23 lettermen. Losses were also heavy in the offensive backfield, but quarterback Preston Ridlehuber is back and a good year is expected from him. Plans call for the ground-minded Bulldogs to throw more this year with Ridlehuber and ends Pat Hodgeson and Frank Richter. Inexperience at key positions and a tough schedule could prevent Georgia from repeating its 1964 record.



Vince Dooley

1965 SCHEDULE

Sept. 18	Alabama at Athens (D)
Sept. 25	Vanderbilt at Athens (D)
Oct. 2	Michigan at Ann Arbor (D)
Oct. 9	Clemson at Athens (D)
Oct. 16	FLORIDA STATE at Tallahassee (N)
Oct. 23	Kentucky at Lexington (N)
Oct. 30	North Carolina at Chapel Hill (D)
Nov. 6	Florida at Jacksonville (D)
Nov. 13	Auburn at Athens (D)
Nov. 27	Georgia Tech at Atlanta (D)

1964 SCORES (7-3-1)

3	Alabama	31
7	Vanderbilt	0
7	South Carolina	7
19	Clemson	7
14	FLORIDA STATE	17
21	Kentucky	7
24	North Carolina	8
14	Florida	7
7	Auburn	14
7	Georgia Tech	0
7	Texas Tech	0
	(Sun Bowl)	

Quarterback Preston Ridlehuber



THE FSU-GEORGIA SERIES

	FSU	Georgia
1954	0	14
1955	14	47
1956	0	3
1958	13	28
1959	0	42
1961	3	0
1962	18	0
1964	17	14

FIFTH GAME: OCTOBER 23 at TUSCALOOSA



Paul Bryant

COLORS: Red and White

NICKNAME: Crimson Tide

CONFERENCE: Southeastern

LETTERMEN LOST: 19

LETTERMEN RETURNING: 17

SERIES: First meeting

1965 OUTLOOK: The national champions will be without much-publicized quarterback Joe Namath, but there are those who think Steve Sloan will be just as effective. Also returning is fullback Steve Bowman, one of the SEC's top running backs, plus halfback David Ray and ends Tommy Tolleson and Ray Perkins. It will be homecoming in Tuscaloosa when the Seminoles get their first crack at 'Bama. That fact combined with Coach Paul Bryant's winning habits make this the biggest obstacle in a tough FSU schedule.

ALABAMA

Game Site: Denny Stadium (43,000)

Kickoff: 2:00 p.m. CST

ATHLETIC DIRECTOR: Paul W. Bryant

HEAD COACH: Paul W. Bryant, 7 years, 60-10-5

COACHING STAFF: Sam Bailey, Carney Laslie, Howard Schnellenberger, Jimmy Sharpe, Richard Williamson, Ken Donahue, Ken Meyer, Dude Hennessey

SPORTS PUBLICIST: Charlie Thornton

LOCATION: Tuscaloosa, Alabama

ENROLLMENT: 15,500

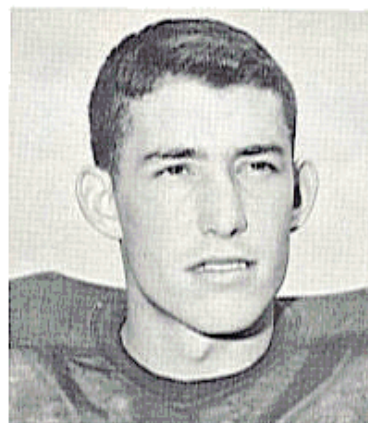
1965 SCHEDULE

Sept. 18	Georgia at Athens (D)
Sept. 25	Tulane at Mobile (N)
Oct. 2	Mississippi at Birmingham (N)
Oct. 9	Vanderbilt at Nashville (N)
Oct. 16	Tennessee at Birmingham (D)
Oct. 23	FLORIDA STATE at Tuscaloosa (D)
Oct. 30	Mississippi State at Jackson (N)
Nov. 6	Louisiana State at Baton Rouge (D)
Nov. 13	South Carolina at Tuscaloosa (D)
Nov. 27	Auburn at Birmingham (D)

1964 SCORES (10-0)

31	Georgia	3
36	Tulane	6
24	Vanderbilt	0
21	N. C. State	0
19	Tennessee	8
17	Florida	14
23	Mississippi State	6
17	Louisiana State	9
24	Georgia Tech	7
21	Auburn	14

**Quarterback
Steve Sloan**



SIXTH GAME: OCTOBER 30 at TALLAHASSEE

VIRGINIA TECH

Game Site: Campbell Stadium

Kickoff: 8:00 p.m.

ATHLETIC DIRECTOR: Frank Moseley
HEAD COACH: Jerry Claiborne, 4 years, 33-16-0
COACHING STAFF: Bobby Collins, Bill Conde, Dick Redding, Alf Satterfield, John Shelton, Doug Shively

SPORTS PUBLICIST: Wendell Weisend

LOCATION: Blacksburg, Virginia

ENROLLMENT: 6,900

COLORS: Orange and Maroon

NICKNAME: Gobblers

CONFERENCE: None

LETTERMEN LOST: 17

LETTERMEN RETURNING: 18

SERIES: Virginia Tech leads 5-4

1965 OUTLOOK: Gone from the Tech lineup is old nemesis Bob Schweickert but no one is taking the Gobblers lightly. Replacing All American quarterback Schweickert and fullback Sonny Utz will be a problem for Coach Jerry Claiborne, but 18 lettermen return. Seventeen were lost, however, from a team that has been a Seminole jinx for the last two years. VPI is playing its first season as an independent, having dropped from the rolls of the Southern Conference last spring.



Jerry Claiborne

1965 SCHEDULE

Sept. 18	Wake Forest at Roanoke (D)
Sept. 25	at University of Richmond (N)
Oct. 2	William & Mary at Blacksburg (D)
Oct. 9	at George Washington (D)
Oct. 16	at Vanderbilt (N)
Oct. 23	U. of Virginia at Blacksburg (HC) (D)
Oct. 30	FLORIDA STATE at Tallahassee (N)
Nov. 6	at West Virginia (D)
Nov. 13	Villanova at Blacksburg (D)
Nov. 25	VMI at Roanoke (D)

1964 SCORES (6-4)

18	Tampa	14
21	Wake Forest	38
17	U. of Virginia	20
33	George Washington	0
10	West Virginia	23
20	FLORIDA STATE	11
27	William & Mary	20
15	Syracuse	20
28	N. C. State	19
35	VMI	13

**Quarterback
Billy Edwards**



THE FSU-VIRGINIA TECH SERIES

	FSU	Va. Tech
1955	20	24
1956	7	20
1957	20	7
1958	20	0
1959	7	6
1961	7	10
1962	20	7
1963	23	31
1964	11	20

SEVENTH GAME: NOVEMBER 6 in TALLAHASSEE



Bill Tate

WAKE FOREST

Game Site: Campbell Stadium

Kickoff: 2:00 p.m.

ATHLETIC DIRECTOR: Dr. Gene Hooks

HEAD COACH: William L. (Bill) Tate,
1 year, 5-5

COACHING STAFF: Dick Anderson, Bill Davis,
Beattie Feathers, Ken Karr, Bill Sexton, Joe
Madden

SPORTS PUBLICIST: Marvin Francis

LOCATION: Winston-Salem, North Carolina

ENROLLMENT: 2,920

COLORS: Old Gold and Black

NICKNAME: Demon Deacons

CONFERENCE: Atlantic Coast

LETTERMEN LOST: 7

LETTERMEN RETURNING: 20

SERIES: FSU leads 3-1-1

1965 OUTLOOK: The Demon Deacons had won only one game in 20 outings before Bill Tate took over last year. They bounced back to a 5-5 season, and Tate was named Atlantic Coast Conference "Coach of the Year." National scoring leader and rusher Brian Piccolo will be a hard man to replace for the Deacons, but 20 lettermen return. Guard Lynn Nesbitt is a tough man up front. Experience could be a problem with seven starters lost.

1965 SCHEDULE

Sept. 18	Virginia Tech at Roanoke (D)
Sept. 25	N. C. State at Raleigh (D)
Oct. 2	Vanderbilt at Winston-Salem (D)
Oct. 9	Maryland at Winston-Salem (D)
Oct. 16	South Carolina at Columbia (N)
Oct. 23	N. Carolina at Winston-Salem (D)
Oct. 30	Clemson at Clemson (D)
Nov. 6	FLORIDA STATE at Tallahassee (D)
Nov. 13	Duke at Durham (D)
Nov. 20	Memphis State at Memphis (D)

1964 SCORES (5-5)

31	Virginia	21
38	Virginia Tech	21
0	North Carolina	23
6	Vanderbilt	9
2	Clemson	21
21	Maryland	17
14	Memphis State	23
20	Duke	7
13	South Carolina	23
27	N. C. State	13

**Linebacker
Lynn Nesbitt**

THE FSU-WAKE FOREST SERIES

	FSU	Wake Forest
1956	14	14
1958	27	24
1959	20	22
1960	14	6
1963	35	0



EIGHTH GAME: NOVEMBER 13 at RALEIGH

N. C. STATE

Game Site: Riddick Stadium (21,000)

Kickoff: 1:30 p.m.

ATHLETIC DIRECTOR: Roy B. Clogston

HEAD COACH: Earle Edwards, 11 years, 45-60-6

COACHING STAFF: Al Michaels, Bill Smaltz, Ernie Driscoll, Jim Tapp, H. B. McCullough, Carey Brewbaker, Johnny Clements

SPORTS PUBLICIST: Frank Weedon

LOCATION: Raleigh, North Carolina

ENROLLMENT: 8,300

COLORS: Red and White

NICKNAME: Wolfpack

CONFERENCE: Atlantic Coast

LETTERMEN LOST: 14

LETTERMEN RETURNING: 16

SERIES: Florida State leads 6-2

1965 OUTLOOK: The Wolfpack will field its youngest team in five years with most of the inexperience in the interior line. Earle Edwards lost 14 lettermen from his 1964 ACC champions, and ten of the 16 who return are backs. Quarterback Charlie Noggle leads a veteran backfield. Defense is expected to be a team strong point, but improvement will be necessary on offense if the Wolfpack is to repeat its title.



Earle Edwards

1965 SCHEDULE

Sept. 18	Clemson at Clemson (D)
Sept. 25	Wake Forest at Raleigh (D)
Oct. 2	South Carolina at Columbia (N)
Oct. 9	North Carolina at Raleigh (D)
Oct. 16	Florida at Gainesville (D)
Oct. 23	Maryland at College Park (D)
Oct. 30	Virginia at Charlottesville (D)
Nov. 6	Duke at Raleigh (D)
Nov. 13	FLORIDA STATE at Raleigh (D)
Nov. 20	Iowa at Iowa City (D)

1964 SCORES (5-5)

14	North Carolina	13
9	Clemson	0
14	Maryland	13
0	Alabama	21
3	Duke	35
24	Virginia	15
17	South Carolina	14
19	Virginia Tech	28
6	FLORIDA STATE	28
13	Wake Forest	27

Quarterback
Charlie Noggle



THE FSU-N. C. STATE SERIES

	FSU	N.C. State
1952	7	13
1953	23	13
1954	13	7
1955	7	0
1956	14	0
1957	0	7
1963	14	0
1964	28	6

NINTH GAME: NOVEMBER 20 in TALLAHASSEE



Bill Yeoman

HOUSTON

Game Site: Campbell Stadium

Kickoff: 8:00 p.m.

ATHLETIC DIRECTOR: Harry Fouke

HEAD COACH: Bill Yeoman, 3 years, 11-18-1

COACHING STAFF: O. A. Phillips, Chuck Fairbanks, Jim Dickey, Melvin Brown, Bobby Gill, Tom Boisture, Carroll Schultz

SPORTS PUBLICIST: Ted Nance

LOCATION: Houston, Texas

ENROLLMENT: 18,000

COLORS: Red and White

NICKNAME: Cougars

CONFERENCE: None

LETTERMEN LOST: 7

LETTERMEN RETURNING: 21

SERIES: Houston leads 3-0-1

1965 OUTLOOK: Sophomores did most of the damage in last year's 13-13 tie, and with 21 lettermen back, Coach Bill Yeoman has some depth for the first time in four years. Team captain Cotton Guerrant is a top lineman, quarterback Bo Burris is now a junior with a year's experience, and halfback Dick Post is one of the best in the Southwest. Add classy soph Warren McVea to lead a pack of good sophs and the Cougars could be trouble.

1965 SCHEDULE

Sept. 11	University of Tulsa in Houston (N)
Sept. 18	Mississippi State in Houston (N)
Sept. 24	U. of Cincinnati in Houston (N)
Oct. 9	Texas A&M at College Station (N)
Oct. 16	U. of Miami at Miami (Fla.) (N)
Oct. 23	U. of Tennessee at Knoxville (D)
Oct. 30	U. of Chattanooga in Houston (N)
Nov. 6	U. of Mississippi in Houston (N)
Nov. 13	U. of Kentucky in Houston (N)
Nov. 20	FLORIDA STATE at Tallahassee (N)

1964 SCORES (2-6-1)

34	Trinity	7
0	Auburn	30
10	Texas A&M	0
9	Ole Miss	31
23	Tulsa	31
13	Miss. State	18
13	FLORIDA STATE	13
7	Penn State	24
6	Cincinnati	20

**Guard
Charles Guerrant**



THE FSU-HOUSTON SERIES

	FSU	Houston
1960	6	7
1961	8	28
1962	0	7
1964	13	13

TENTH GAME: NOVEMBER 27 at GAINESVILLE

UNIVERSITY OF FLORIDA

Game Site: Florida Field
Kickoff: 2:00 p.m.

ATHLETIC DIRECTOR: Ray Graves
HEAD COACH: Ray Graves, 5 years, 33-17-2
COACHING STAFF: Assistant Head Football Coach: Gene Ellenson, Don Brown, John Eibner, Dave Fuller, Ed Kensler, Billy Kinard, Bubba McGowan, Fred Pancoast, Rabbit Smith, Larry Travis



Ray Graves

SPORTS PUBLICIST: Norm Carlson
LOCATION: Gainesville, Florida
ENROLLMENT: 15,500
COLORS: Orange and Blue
NICKNAME: Gators
CONFERENCE: Southeastern
LETTERMEN LOST: 11
LETTERMEN RETURNING: 33
SERIES: Florida leads 5-1-1

1965 OUTLOOK: If the Gators can get defensive line play to go with a wealth of offensive talent Coach Ray Graves could improve on last year's 7-3 record. Florida will have one of the nation's outstanding passing attacks with quarterback Steve Spurrier throwing to all-SEC end Charles Casey, Barry Brown, Jack Harper and Richard Trapp. The defensive secondary, best in the country last fall, returns virtually intact. Loss of fullback Larry Dupree shouldn't hurt too much. The Gators are extremely deep in the offensive backfield.

1965 SCHEDULE

Sept. 18	Northwestern at Evanston (D)
Sept. 25	Miss. State at Gainesville (D)
Oct. 2	L.S.U. in Gainesville (D)
Oct. 9	Mississippi at Oxford (D)
Oct. 16	N. C. State in Gainesville (D)
Oct. 30	Auburn at Auburn (D)
Nov. 6	Georgia in Jacksonville (D)
Nov. 13	Tulane in Gainesville (D)
Nov. 20	Miami in Miami (N)
Nov. 27	FLORIDA STATE in Gainesville (D)

1964 SCORES (7-3)

24	SMU	8
16	Miss. State	13
30	Mississippi	14
37	South Carolina	0
14	Alabama	17
14	Auburn	0
7	Georgia	14
7	FLORIDA STATE	16
12	Miami	10
20	LSU	6

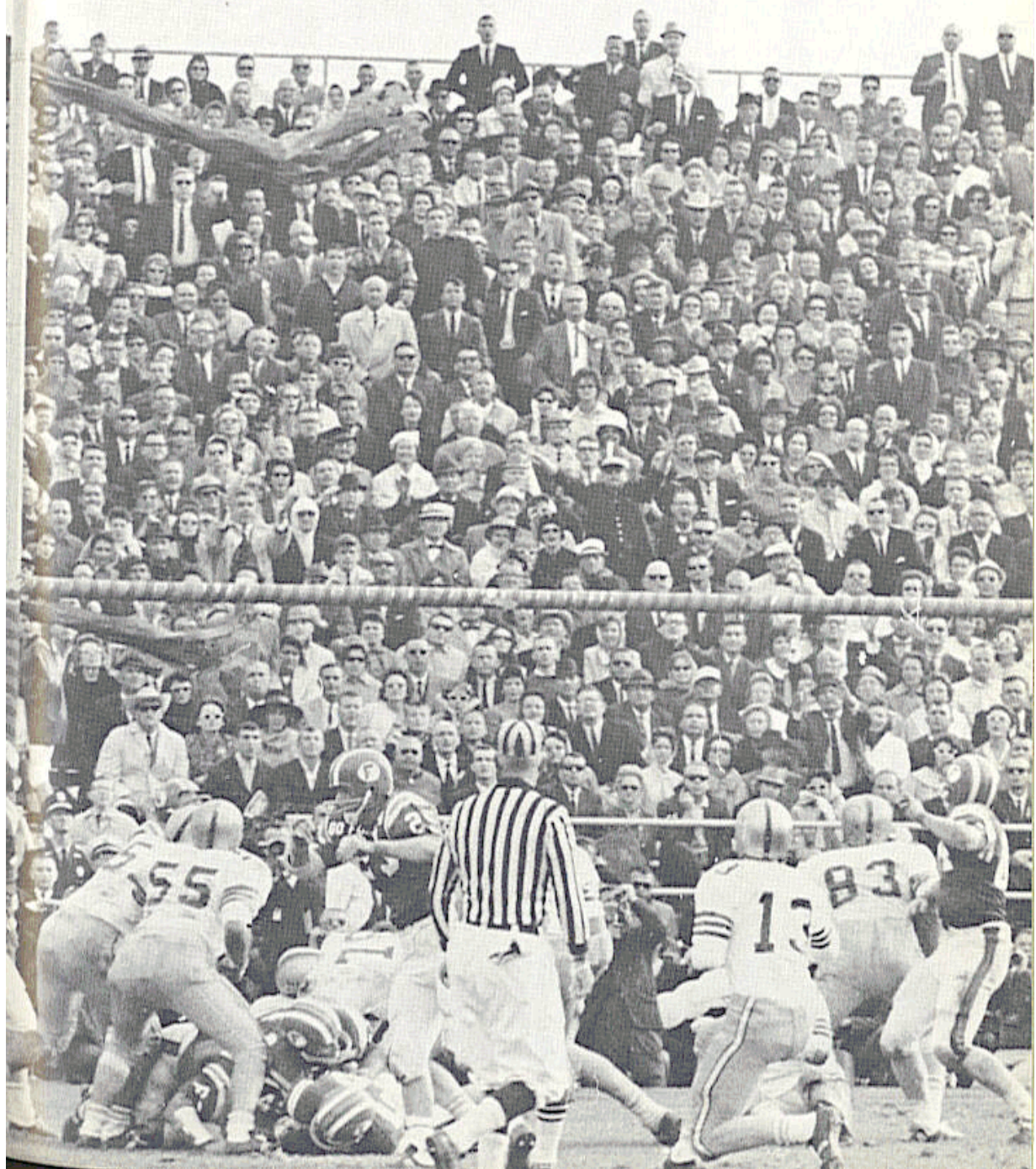
**Quarterback
Steve Spurrier**



THE FSU-FLORIDA SERIES

	FSU	Florida
1958	7	21
1959	8	18
1960	0	3
1961	3	3
1962	7	20
1963	0	7
1964	16	7

1964 IN REVIEW



THE 1965 GATOR BOWL

FLORIDA STATE 36, OKLAHOMA 19

JACKSONVILLE, Jan. 2—Florida State's 36-19 victory over Oklahoma in the Gator Bowl has been called "the greatest passing show in the history of collegiate football" by several veteran football observers.

In complete agreement were the 50,048 spectators and millions of TV viewers who saw towering Steve Tensi and All America Fred Biletnikoff completely rewrite the post-season classic's record books.

Tensi completed 23 of 36 passes for 303 yards and five touchdowns. Four of his scoring tosses found flankerback Biletnikoff, who caught a total of 13 passes for 192 yards.

Split end Don Floyd took the other touchdown pass from Tensi and cornerback Howard Ehler scored on a 63-yard interception return in the first quarter.

The victory was Florida State's first in a major bowl, and provided a fitting climax to the greatest season in the school's brief football history.

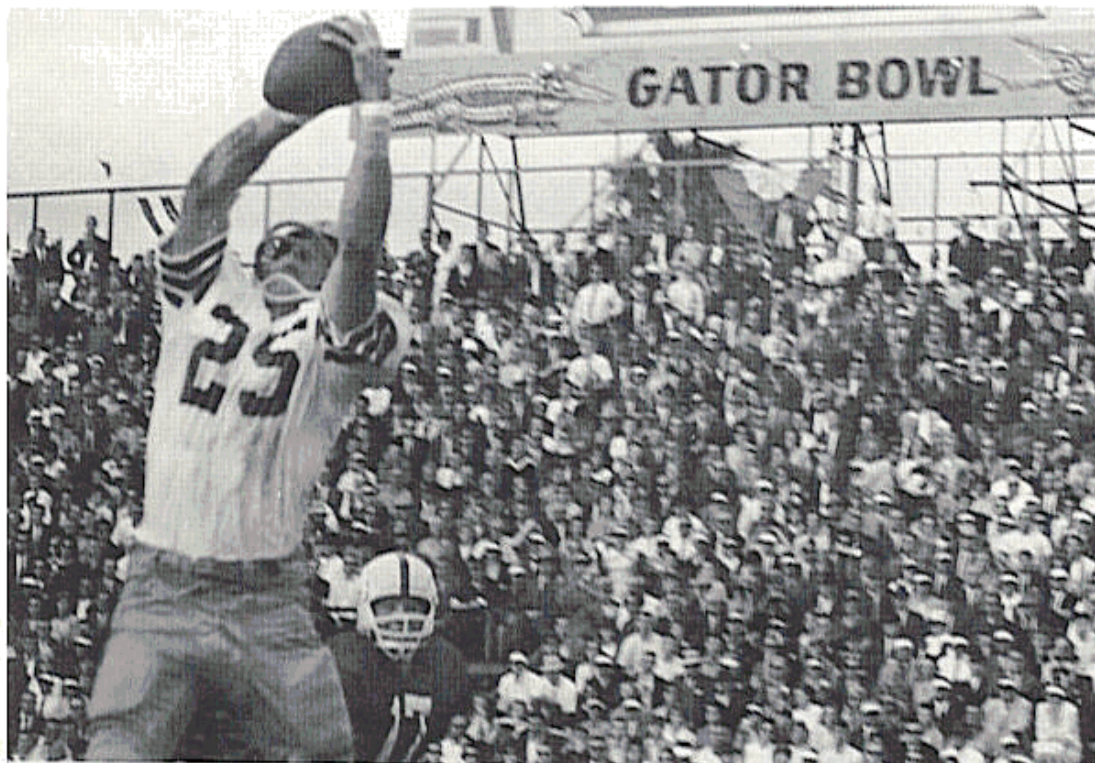
Tensi and Biletnikoff were named co-winners of the most valuable player award—the first time it has ever gone to two players on the same team. The two have also been named to the all-time Gator Bowl eleven.

Phil Spooner was the game's running standout with 125 yards on 27 carries. Wayne Giardino ran 65 yards in the fourth quarter to set up the final touchdown.

	First Downs	Yards Rush	Yards Pass	Passing Att./Comp.	Had Int.	Fumbles Lost	Punting Punts/Avg.	Penalties No./Yds.	Score By Quarters
Florida State	29	217	303	36-23	4	2	1-26.0	8-52	6-18-6-6 36
Oklahoma	13	74	209	22-10	1	1	6-38.0	3-35	7-0-6-6 19

Scoring Summary: Florida State—Ehler 69, interception; (kick failed); Biletnikoff 15, pass from Tensi, (pass failed); Biletnikoff 14, pass from Tensi (pass failed); Biletnikoff 10, pass from Tensi (pass failed); Floyd 13, pass from Tensi (pass failed); Biletnikoff 7, pass from Tensi (kick failed). Oklahoma—Kennedy 1, run (Metcalfe kick); Pennell 2, run (pass failed); Hart 95, pass from Fletcher (pass failed).

Fabulous Fred Biletnikoff leaps high to grab a touchdown pass from Steve Tensi in the Gator Bowl. The FSU All American caught 13 for 192 yards and four touchdowns against Oklahoma.





Fred Biletnikoff (left) and Steve Tensi were singularly honored when they became the first two players from one team in the same year to win the Gator Bowl's Most Valuable Player Award.

FLORIDA STATE 14, MIAMI 0

MIAMI, Sept. 19—Steve Tensi and Fred Biletnikoff turned Miami's beautiful Orange Bowl into their personal playground for the second straight year, as Florida State opened its second straight season with a shutout over Miami's Hurricanes.

Both Seminole touchdowns came on passes from Tensi to Biletnikoff, each covering 15 yards. Les Murdock kicked both extra points.

It was like Homecoming for Biletnikoff who had scored three touchdowns against the Hurricanes in 1963, taking two passes from Tensi and one from Miami's George Mira, returning it 99 yards in the fourth quarter.

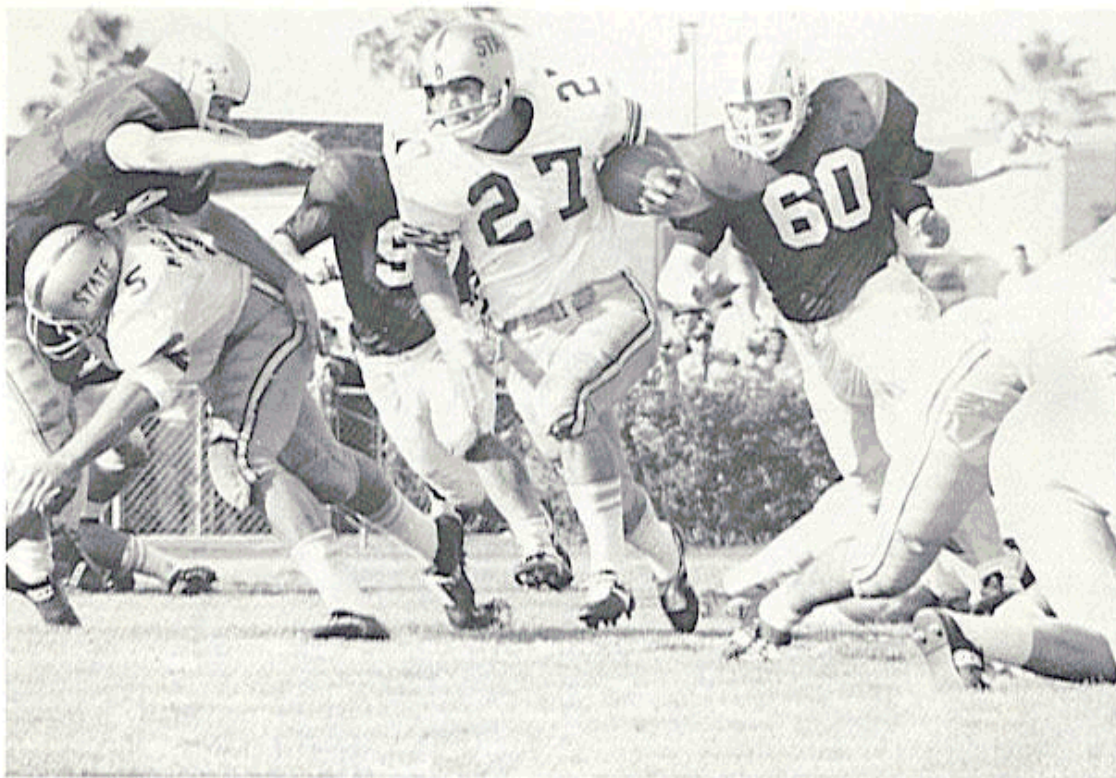
In opening his bid for 1964 All America honors, the "Bullet" broke a ten year old school record with nine receptions for 165 yards—a mark he was to top several times during the ensuing season.

Equally as important as the passing arsenal was a stern Seminole defense which allowed the Hurricanes past midfield only three times, choking off the threat each time. Linebacker Bill McDowell received the weekly "Savage" award for defensive excellence and guard Dale MacKenzie the "Tomahawk" or blocking award.

Sophomore fullback Lee Narramore was the leading rusher for Florida State with 56 yards in ten carries. Tensi hit nine of 12 passes and Ed Pritchett seven of nine for a total of 226 yards.

	First Downs	Yards Rush	Yards Pass	Pass Att./Comp.	Had Int.	Fumbles Lost	Punting Punts/Avg.	Penalties No./Yds.	Score By Quarters
Florida State	19	117	226	21-16	0	2	6-28.0	11-131	7-7-0-0 14
Miami	11	101	79	26-6	1	2	7-39.5	7-59	0-0-0-0 0

Scoring Summary: FSU—Biletnikoff, 15, (Tensi pass); Murdock kick. Biletnikoff 15 (Tensi pass); Murdock kick. Attendance: 51,605. Weather: 2nd half showers.



Halfback Phil Spooner (27), shown here cracking for sizeable gain against Oklahoma, led all FSU rushers in 1964, then capped the season with a tremendous 125 yards in the Gator Bowl.

FLORIDA STATE 10, TCU 0

FORT WORTH, Sept. 26—Bill McDowell crashed through to block a fourth quarter field goal attempt as Florida State showed its defensive muscle in a second straight shutout and the school's first victory over a major Texas team.

Leading with the "Seven Magnificents" all the way, the Seminoles negotiated a slippery field for a first quarter field goal and a fourth quarter touchdown. The TD drive started from the FSU 37 following McDowell's blocked kick.

Florida State's offense had yet to become a lethal scoring weapon and a containing TCU defense kept the Tensi-Biletnikoff combo under wraps for most of the game.

However, with his favorite target double and triple covered throughout most of the game, Tensi scattered ten completions to seven different receivers and accounted for 49 of the 63 yard touchdown drive.

Les Murdock kicked his first field goal of the year, a 33-yard effort with 2:20 remaining in the first quarter.

TCU's Jim Fauver's 93 yards on 19 carries earned him the individual rushing crown against the Seminoles last year. No other back and few teams were able to equal his yardage during the remainder of the season.

Linebacker Dick Hermann was the "Savage," and tight end Bill Dawson won "Tomahawk" laurels. Middle guard Jack Shinholser showed early form with his play against Ken Henson, the Frogs' 260 pound center.

Lee Narramore again led the Seminoles on the ground with 47 yards in 15 attempts.

	First Downs	Yards Rush	Yards Pass	Pass Att./Comp.	Had Int.	Fumbles Lost	Punting Punts/Avg.	Penalties No./Yds.	Score By Quarters
Florida State	10	91	135	21-11	1	0	4-25.5	7-77	3-0-0-7 10
Texas Christian	11	112	50	14-5	1	4	7-36.3	6-55	0-0-0-0 0

Scoring Summary: Murdock FG, 33. Spooner 6, run. Murdock kick. Attendance: 20,000. Weather: Cloudy, wet field.

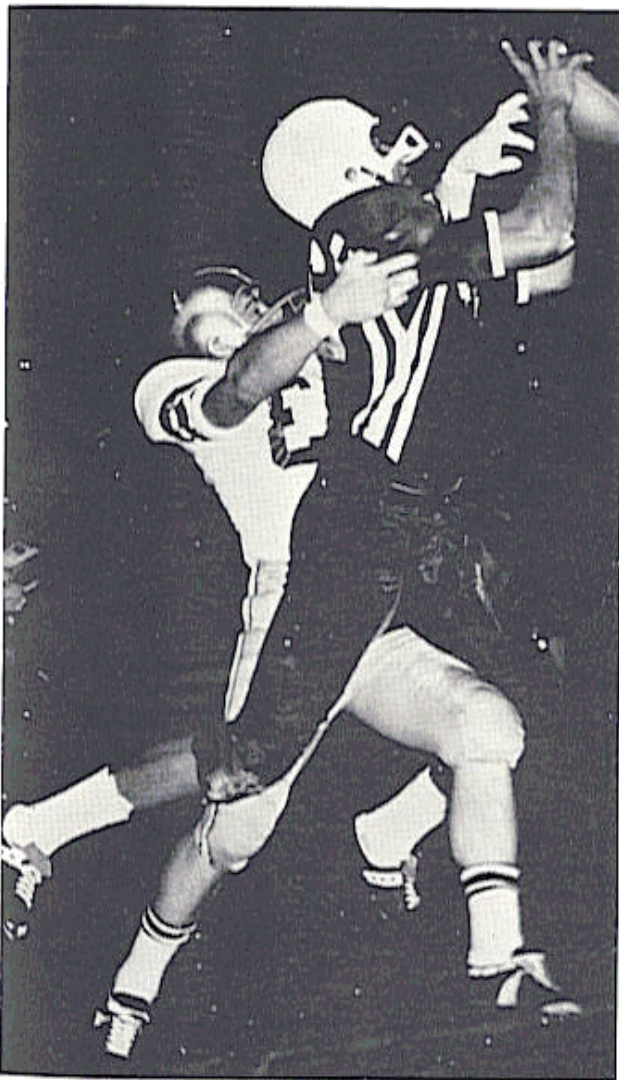
FLORIDA STATE 36, NEW MEXICO STATE 0

TALLAHASSEE, Oct. 3—Making their first home appearance of the season the Seminoles bombarded New Mexico State, 36-0, to become the only unscored-on team in the country.

Steve Tensi triggered the scoring spree with an eight yard pass to Fred Biletnikoff in the first quarter after Les Murdock had opened with a 12 yard field goal earlier in the period.

Tensi also hit Don Floyd for a touchdown, and finished with seven of ten completions for 124 yards in a part-time effort.

Number two quarterback Ed Pritchett handled most of the second half offense, rushing 44 yards and passing for 40. Sophomore halfback Larry Green made 86 yards in 20 carries, including a seven yard touchdown run in the fourth quarter.



Pritchett scored twice, and Phil Spooner once in Florida State's biggest offensive output so far. Murdock kicked three out of five conversions in addition to his field goal.

Bill McDowell and Dick Hermann again led the Seminole defense which gave up only five first downs and 59 yards rushing. McDowell was the "Savage" and Hermann recovered an Aggie fumble on the visitors' 36 to set up the first FSU touchdown. McDowell blocked his second field goal of the season when the Aggies reached scoring position on a 53 yard reception and run by Hartwell Menefee.

Phil Spooner led all Florida State rushers with 516 yards gained on 136 carries.

Cornerback Howard Ehler (white jersey) is a key man in Florida State's tough defensive secondary. Here he breaks up a pass against New Mexico State.

	First Downs	Yards Rush	Yards Pass	Pass Att./Comp.	Had Int.	Fumbles Lost	Punting Punts/Avg.	Penalties No./Yds.	Score By Quarters
Florida State	21	260	199	21-14	1	1	1-37.0	4-50	10-6-6-14 36
New Mexico State	6	63	111	20-8	1	2	7-43.7	8-83	0-0-0-0 0

Scoring Summary: Murdock FG, 12. Biletnikoff 8, pass from Tensi; Murdock kick. Floyd 37, pass from Tensi; kick fails. Spooner 1, run; kick fails. Pritchett 1 run; Murdock kick; Green 7 run; Murdock kick. Attendance: 25,352. Weather: Rain.



Quarterback Ed Pritchett (16) holds the key to Florida State's offense this year. Here he prepares to hand off to fullback Wayne Giardino.

FLORIDA STATE 48, KENTUCKY 6

TALLAHASSEE, Oct. 10—Giant-killer Kentucky came to town with victories over Ole Miss and Auburn, setting the stage for possibly the greatest football game ever played by a Florida State team.

The Seminoles exploded for three first quarter touchdowns before a Homecoming crowd, and again Steve Tensi and Fred Biletnikoff ignited the offensive fireworks.

The 6-5 Seminole quarterback had his best day, passing for three touchdowns with 10 of 15 completions for 122 yards. He so dominated play that he was named National "Back of the Week" by both the Associated Press and Sports Illustrated.

Two of his touchdown tosses found Biletnikoff—one a 53 yard bomb on Florida State's second possession. The fabulous Seminole flanker caught four passes for 104 yards in part-time duty.

Phil Spooner also hit for two touchdowns and was the leading Seminole rusher with 64 yards in 13 attempts.

Lee Narramore, Ed Pritchett and Wayne Giardino all scored for Florida State, and Les Murdock kicked six extra points.

The Seminoles also unveiled exciting sophomore Larry Green, who set up the first touchdown with a 15 yard first down run off a variation of the Statue of Liberty play.

The Florida State defense was never tougher giving up a total of 147 yards and forcing three Wildcat fumbles. Maury Bibent's alert recovery of a fumbled punt set up the third Seminole touchdown.

Ironically, it was a fumbled punt that stopped Florida State's shutout string at three. Kentucky's Frank Antonini plunged over with 1:08 remaining in the game.

	First Downs	Yards Rush	Yards Pass	Passing Att./Comp.	Had Int.	Fumbles Lost	Punting Punts/Avg.	Penalties No./Yds.	Score By Quarters
Florida State	21	178	165	19-13	1	0	6-45.8	6-41	21-6-7-14 48
Kentucky	11	24	123	33-11	2	1	11-38.0	5-31	0-0-0-6 6

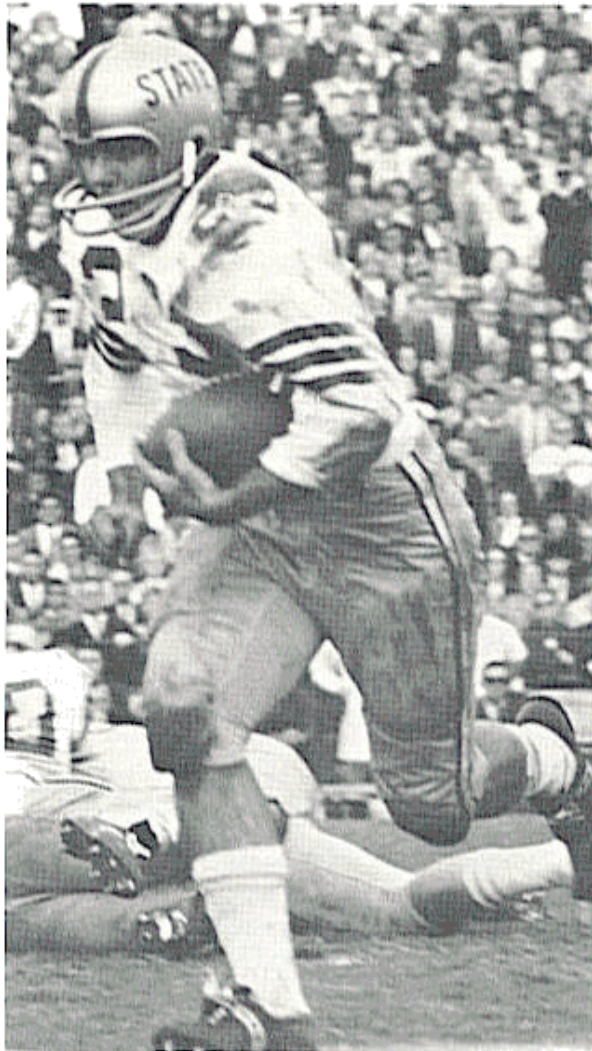
Scoring Summary: Narramore 2, pass from Tensi; Murdock kick. Biletnikoff 53, pass from Tensi; Murdock kick. Spooner 2, run; Murdock kick, Spooner 2, run; Murdock kick. Biletnikoff 7, pass from Tensi; Murdock kick. Giardino 3, run; Murdock kick. Pritchett 6, run; Murdock kick. Kentucky—Antonini 2 run, pass fails. Attendance: 34,248. Weather: Fair.

FLORIDA STATE 17, GEORGIA 14

ATHENS, Oct. 17—Trailing for the first time during the season, Steve Tensi and Fred Biletnikoff delivered a 79 yard drive in the closing minutes to rescue the Seminoles' fifth straight victory from a fired-up Georgia team.

Florida State had a 10-0 lead in the second quarter on a field goal by Les Murdock and a one yard touchdown by Lee Narramore. However, the Bulldogs came back with a touchdown by quarterback Preston Riddlehuber to cut the halftime lead to three points, then banged across another early in the fourth quarter.

The Seminoles went all the way after receiving the kickoff with Tensi mixing passes to Biletnikoff, Don Floyd and Bill Dawson along with runs by Narramore and Phil Spooner. Biletnikoff took the 20-yard payoff pitch between two defenders and fell into the end zone with 6:21 left.



Bill McDowell recovered two fumbles for Florida State, and Jack Shinholser won the Savage Award for his middle guard play. Center Jack Edwards won the blocking award.

Tensi hit 14 of 24 passes for 193 yards, while Biletnikoff caught eight for 114 yards. His performance against Georgia gave Biletnikoff perhaps his biggest boost toward All America honors.

Phil Spooner again led Seminole rushers with 62 yards in 14 carries.

Fullback Wayne Giardino came on strong in the latter part of '64. His ability to move in heavy traffic and his determined running style made him FSU's top sophomore back.

	First Downs	Yards Rush	Yards Pass	Passing Att./Comp.	Had Int.	Fumbles Lost	Punting Punts/Avg.	Penalties No./Yds.	Score By Quarters
Florida State	14	92	193	25-14	1	1	4-39.2	4-37	3-7-0-7 17
Georgia	14	167	73	11-5	0	2	6-43.5	8-85	0-7-0-7 14

Scoring Summary: Florida State—Narramore 1, run; Murdock kick. Murdock 23 FG, Biletnikoff 20 pass from Tensi (Murdock kick). Georgia—Riddlehuber 4 run (Etter kick); Barber 7 run (Etter kick). Attendance: 31,000. Weather: Clear.

FLORIDA STATE 11, VPI 20

BLACKSBURG, Oct. 24—A misplaced scoring punch and a one-man-gang named Bob Schweickert spelled disaster for Florida State, as Virginia Tech handed the Seminoles their only loss of the season before a wildly cheering homecoming crowd.

Record-breaking performances by Steve Tensi and Fred Biletnikoff were not enough. Neither was a Seminole defense which held the Gobblers to 77 yards rushing and 114 yards in the air.

The Seminoles ran up their second largest offensive total of the season—423 yards. Tensi accounted for 288 of these on 21 completions in 39 attempts, and Biletnikoff set a school record with 11 receptions for 182 yards.

The pair teamed up for the only FSU touchdown, however, it came in the final quarter with the score 20-3, VPI.

Florida State took the ball down for a 26-yard field goal by Les Murdock on the first Seminole possession, and it looked as though things were going to be easy.

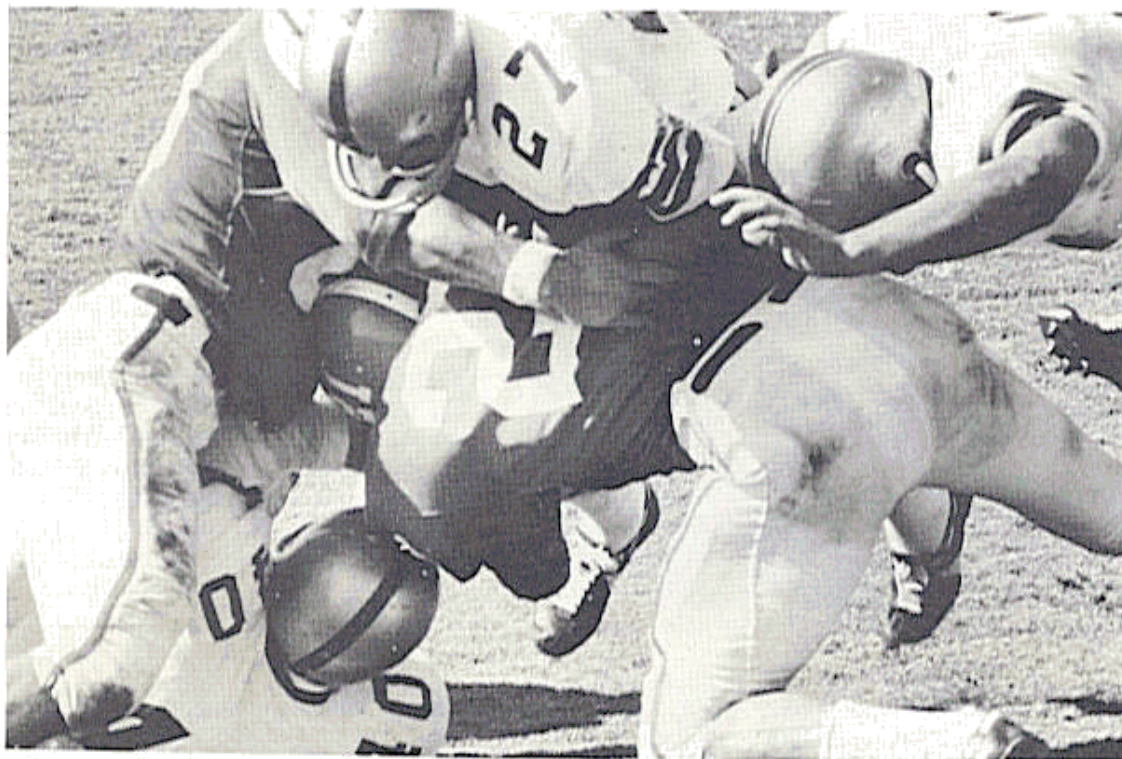
However, the first of two Gobbler pass interceptions gave VPI possession on the FSU 34 in the second quarter, and Schweickert pulled a tackle eligible pass out of the hat for the first score.

It remained 7-3 until the fourth quarter when another interception and a Schweickert-engineered drive got the Gobblers two more touchdowns. The All American quarterback ran for both.

Lee Narramore led Florida State rushers with 82 yards in 20 carries. Jack Shinholser and Dick Hermann shared the Savage Award, and guard Joe Avezzano won the blocking prize.

	First Downs	Yards Rush	Yards Pass	Pass Att./Comp.	Had Int.	Fumbles Lost	Punting Punts/Avg.	Penalties No./Yds.	Score By Quarters
Florida State	18	133	290	40-22	2	1	3-44.3	4-47	3-0-0-8 11
Virginia Tech	10	77	114	11-5	0	0	8-47.3	10-69	0-7-0-13 20

Scoring Summary: Florida State—FG Murdock 26; Biletnikoff 4 pass from Tensi (Biletnikoff pass from Pritchett). Virginia Tech—Johnson 19 pass from Schweickert (Cranwell kick); Schweickert 5 run (pass failed); Schweickert 5 run (Cranwell kick). Attendance: 22,000 Weather: Clear, sunny.



Phil Spooner crashes over for a touchdown against Kentucky.

FLORIDA STATE 34, SOUTHERN MISSISSIPPI 0

TALLAHASSEE, Oct. 31—Back in the familiar surroundings of Doak Campbell Stadium, Florida State regained its familiarity with the opposing end zone and registered its fourth shutout of the year.

The Seminole defense limited the Southerners to a total of 88 yards rushing and passing, one of the season's best efforts.

And like an old sweet song, the primary offensive show centered around Steve Tensi and Fred Biletnikoff. Tensi hit 13 of 17 passes for 165 yards and two touchdowns. Biletnikoff caught 10 for 170 yards and one touchdown.

The first Seminole touchdown came eight plays after Florida State received the opening kickoff. A screen pass from Tensi to Phil Spooner, went 17 yards for the score.

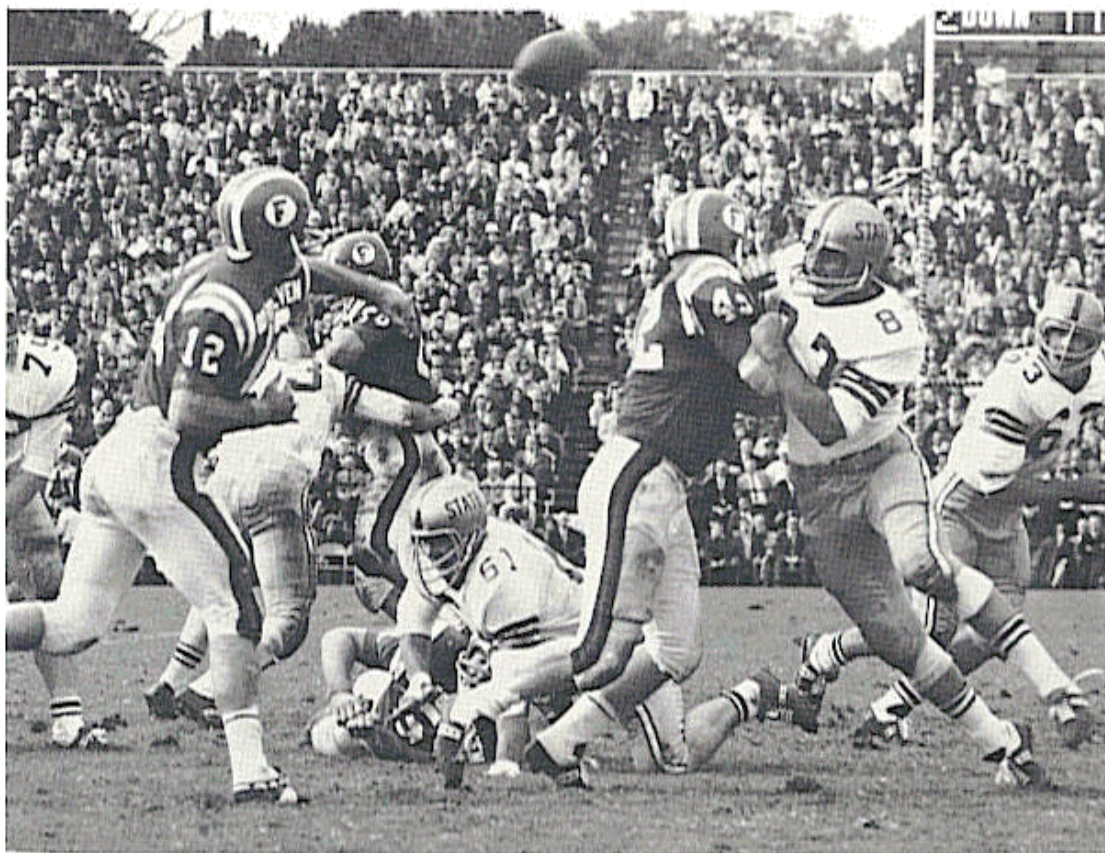
Tensi scored the second Seminole touchdown after Southern was forced to punt following the kickoff. His six yard run marked the only time the 6-5 passer scored during his college career.

Quarterback Ed Pritchett saw plenty of duty, scoring twice and passing to Biletnikoff for another. Tensi's other touchdown pass went to end Bill Dawson, and Larry Green added another TD on a 28 yard sprint.

Spooner again took rushing honors with 42 yards on 11 carries. Dick Hermann and Jack Edwards were the coaches' choice in the defensive and offensive line.

	First Downs	Yards Rush	Yards Pass	Passing Att./Comp.	Had Int.	Fumbles Lost	Punting Punts/Avg.	Penalties No./Yds.	Score By Quarters
Florida State	19	87	283	25-18	0	1	3-38.3	9-108	12-x7-15-0 34
Southern Mississippi	6	5	83	20-7	1	1	9-35.5	8-92	0-0-0-0 0

Scoring Summary: Florida State—Spooner 19 pass from Tensi (kick failed); Tensi 2 run (kick fail); Green 28 run (Murdock kick); Dawson 6 pass from Tensi (Pritchett run); Biletnikoff 39 pass from Pritchett (Murdock kick). Attendance: 26,132. Weather: Fair, cool.



Florida's Tom Shannon got this one away, but the determination shown in the faces of Frank Pennie (79), Jack Shinholser (61), Terry Garvin (87), and Bill McDowell (63), is typical of FSU's tough defense.



Larry Green (20) is considered one of the best breakaway threats in FSU history.

FLORIDA STATE 13, HOUSTON 13

HOUSTON, Nov. 7—Facing another inspired opponent at homecoming, Florida State gave up two last-quarter touchdowns which enabled Houston to gain a 13-13 tie.

Fred Biletnikoff sat this one out with a charley horse, and the Seminole offense suffered. However, split end Don Floyd took up the slack with eight pass receptions for 108 yards, and Tensi hit 13 of 22 for 149 yards.

Les Murdock kicked a field goal in each half before Wayne Giardino scored the first FSU touchdown on a one yard plunge in the third quarter—a touchdown which seemingly put the game on ice.

However, sophomore quarterback Bo Burris, playing one of the best games of the year against Florida State, pulled out two quick touchdowns for the Cougars.

A pass interference call early in the fourth quarter put Houston on the Seminole one, and on fourth down, Burris took it in and kicked the point.

Moments later, a Tensi pass was picked off by Houston's Tim Wright, who returned 33 yards to the Seminole 27. Three plays later, halfback Dick Post took a pitchout and went 18 yards down the sidelines to score the tying touchdown. It was the longest run from scrimmage against the Seminoles last season.

Bill McDowell won this third Savage Award of the season and Jack Edwards his third Tomahawk, sharing it this time with guard Dale MacKenzie.

Phil Spooner again led the Seminoles along the ground with 74 yards on 20 carries.

	First Downs	Yards Rush	Yards Pass	Pass Att./Comp.	Had Int.	Fumbles Lost	Punting Punts/Avg.	Penalties No./Yds.	Score By Quarters
Florida State	11	125	149	23-13	1	0	4-34.9	7-160	0-3-10-0 13
Houston	16	138	131	23-8	1	1	3-29.6	5-39	0-0-0-13 13

Scoring Summary: Florida State—FG Murdock 34; FG Murdock 25; Giardino 1 run (Murdock kick). Houston—Burris 1 run (Burris kick); Post 18 run (kick fails). Attendance: 16,000. Weather: Cool, clear.

FLORIDA STATE 28, N. C. STATE 6

TALLAHASSEE, Nov. 14—Florida State found the route to the scoreboard again and made N. C. State's Wolfpack the seventh victim of the season.

An alert Seminole defense held the Wolfpack to six bare yards on the ground and a total of 116. Three fumble recoveries and two pass interceptions completed an outstanding night for the "Seven Magnificents."

Like so many Florida State opponents, N. C. State fell prey to the now famous Seminole "Bomb." Steve Tensi found Fred Biletnikoff in the end zone twice during the game, one a 38 yard effort in the second quarter.

Wayne Giardino, a sophomore fullback who wrestled the starting role from Lee Narramore at midseason, was the running standout with 59 yards in 18 carries, followed by Phil Spooner with 44 yards on 13 tries. Each accounted for a Seminole touchdown in the first half.

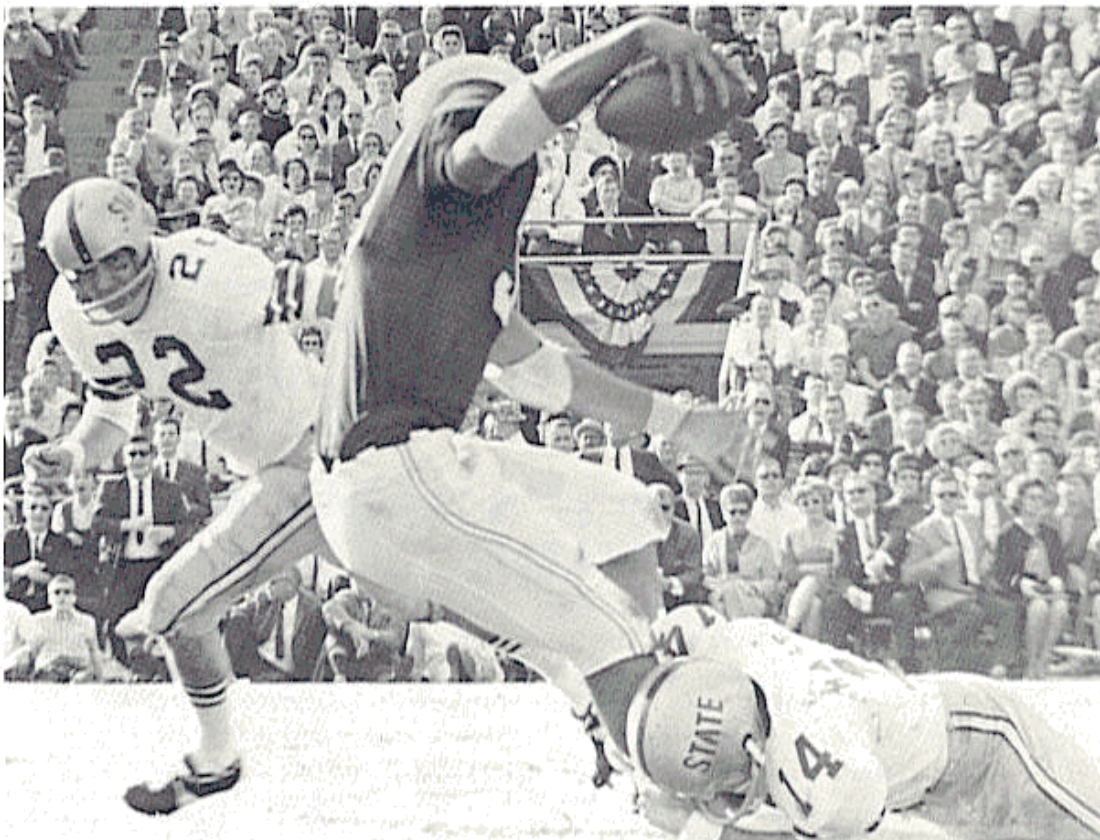
Tensi hit 13 of 25 passes for 175 yards. Biletnikoff caught seven for 100 yards. Don Floyd had five catches for 63 yards.

Huge Frank Pennie played an outstanding game at defensive tackle for the Seminoles and shared Savage honors with Dick Hermann. Bill Dawson was the outstanding blocker.

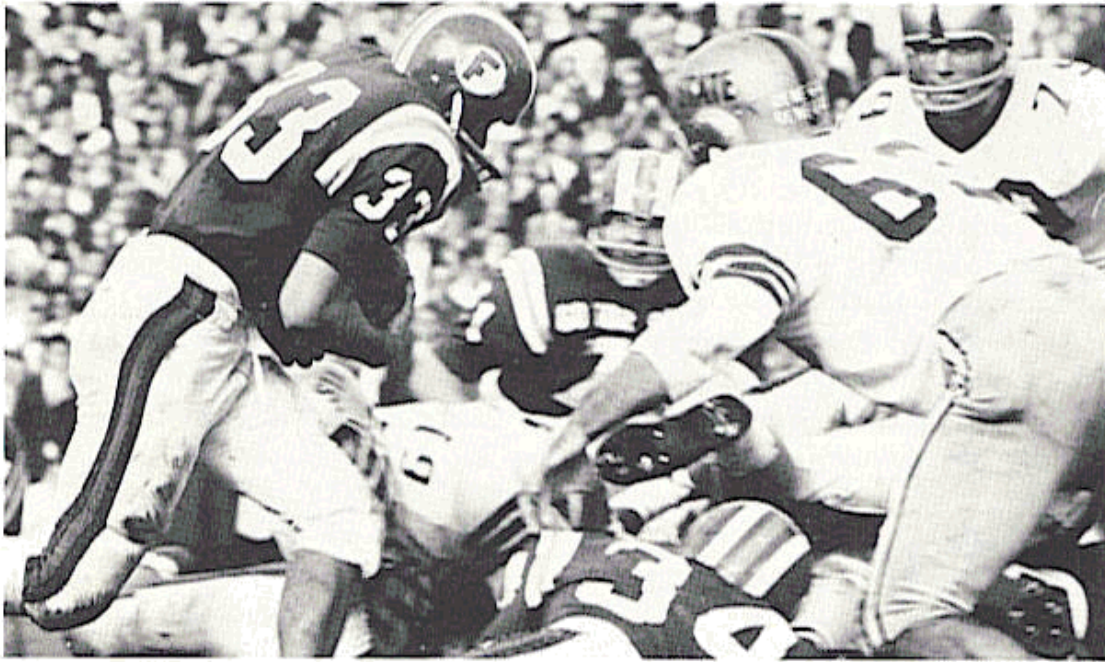
N. C. State scored in the fourth quarter on a 45 yard pass from Ron Skosnik to Wendell Coleman.

	First Downs	Yards Rush	Yards Pass	Passing Att./Comp.	Had Int.	Fumbles Lost	Punting Punts/Avg.	Penalties No./Yds.	Score By Quarters
Florida State	22	149	197	32-15	2	1	6-31.5	3-15	7-14-7-0 28
N. C. State	5	6	110	19-10	1	3	9-44.6	3-35	0-0-0-6 6

Scoring Summary: Florida State—Spooner 2 run (Murdock kick); Giardino 1 run (Murdock kick); Biletnikoff 38 pass from Tensi (Murdock kick); Biletnikoff 11 pass from Tensi (Murdock kick). N. C. State—Coleman 45 pass from Skosnik (pass fail). Attendance: 24,250. Weather: Fair.



Safetyman Jim Massey (14) collars an Oklahoma runner with a jarring tackle as teammate Maury Bibent (22) moves in to help.



Bill McDowell (63) and Frank Pennie (79) draw a bead on Florida's Jack Harper.

FLORIDA STATE 16, FLORIDA 7

TALLAHASSEE, Nov. 21—The largest crowd ever to see a football game here watched Florida State's Seminoles win their first game over cross-state rival Florida.

It was a red-letter day for Seminoles as the team dominated every phase of play and unanimously accepted a Gator Bowl invitation following the victory.

Steve Tensi riddled Florida's pass defense—first in the nation at the time—for 190 yards on 11 completions in 22 attempts.

Don Floyd was his favorite receiver with seven receptions for 85 yards. Fred Biletnikoff caught two for 78 yards, one a back-breaking 55-yard touchdown pass in the second quarter.

Heroes were numerous, not the least of which was Les Murdock who kicked field goals of 24, 36 and 40 yards to ice the game for the Seminoles.

Wayne Giardino and Phil Spooner gained 72 and 71 yards respectively. Each totaled more than the entire Gator effort on the ground.

Jack Shinholer's play in the middle of the line was so outstanding he was named "Lineman of the Week" by the Associated Press.

Dick Hermann played the greatest game of his career, making 13 tackles and assisting on six others.

The Seminoles made 15 first downs to eight for Florida, and outgained the Gators 332 to 244.

Florida's touchdown came in the fourth quarter on a six-yard run by Jack Harper and made the score 13-7.

The Gators' onside kick was recovered by guard Larry Williamson at the Florida 49. A Tensi pass to Floyd good for 27 yards set up Murdock's final field goal—a 40-yard kick into the wind with 6:42 remaining.

	First Downs	Yards Rush	Yards Pass	Passing Att./Comp.	Had. Int.	Fumbles Lost	Punting Punts/Avg.	Penalties No./Yds.	Score By Quarters
Florida State	15	142	190	22-11	1	2	4-32.5	4-24	0-7-3-6 16
Florida	9	57	187	24-12	2	4	4-34.2	2-10	0-0-0-7 7

Scoring Summary: Florida State—Biletnikoff 53 pass from Tensi (Murdock kick); FG Murdock 24; FG Murdock 40. Florida—Harper 6 run (Lyle kick). Attendance: 43,000. Weather: Cloudy, cool.



Mancha

Biletnikoff

FLORIDA STATE RETIRES NO. 25

The jersey of Fred Biletnikoff, Florida State's All American flanker back in 1964, has been retired by the athletic department.

Biletnikoff, co-captain of the 1964 Seminoles, was the school's first consensus All American.

During the '64 season, the Erie, Pa. native caught 57 passes for 987 yards and 11 touchdowns. In the Gator Bowl against Oklahoma he caught 13 passes for 192 yards and four touchdowns, becoming the first major college football player ever to score four touchdowns on pass receptions in a major bowl game.

He and quarterback Steve Tensi were voted into the Gator Bowl Hall of Fame, the first time two players from the same team have been so honored. Biletnikoff was also named "Lineman of the Year in the Southeast" by the Atlanta Touchdown Club, and was chosen as the Outstanding Senior man for '64 by the Florida State student body.

The retirement of his jersey came as a result of a student body petition with concurrence by the FSU faculty athletic committee, the athletic department, and the Alumni F club.

In the words of Athletic Director Vaughn Mancha: "1964 will go down as a year to remember at Florida State. We had our best season since becoming a major college, our first victory over Florida, a major bowl victory and our first All American. I'm sure there will be many future All Americans, but Fred Biletnikoff was the first. Therefore, we think it appropriate to retire his number, not only as a tribute to his ability, but as a symbol of a great Florida State football team."

MOST VALUABLE PLAYER

The Tallahassee Quarterback Club annually presents a trophy to the Florida State player selected by his teammates as having made the most valuable contribution to the team.

1957	Bob Nellums, Fullback	1961	Roy Bickford, Safety
1958	Bobby Renn, Halfback	1962	Gene McDowell, Guard
1959	Fred Pickard, Halfback	1963	Dave Snyder, Halfback
1960	Bud Whitehead, Halfback	1964	Fred Biletnikoff, Flanker

THE BOB CRENSHAW AWARD

Given in memory of Robert E. (Bob) Crenshaw, 1955 Florida State football captain and student leader who was killed in a jet crash in 1958, the plaque's inscription reads: "To the Football Player With The Biggest Heart." The recipient is chosen by his teammates as the man who best exemplifies the "qualities that made Bob Crenshaw an outstanding football player and person."

1958	Al Ulmer, Guard	1961	Paul Andrews, Fullback
1959	Ramon Rogers, Center	1962	Jim Sims, Tackle
1960	Abner Bigbee, Guard	1963	Larry Brinkley, Fullback
		1964	Dick Hermann, Linebacker

FINAL 1964 FLORIDA STATE FOOTBALL STATISTICS

FSU	Team Statistics	Opp.
73	First downs rushing	49
86	First downs passing	43
11	First downs penalties	10
170	Total first downs	102
409	Rushing attempts	349
1627	Yards gained rushing	1093
241	Yards lost rushing	343
1386	Net yards rushing	750
249	Passes attempted	195
147	Passes completed	76
10	Passes had intercepted	10
2029	Net yards passing	1061
658	Plays from scrimmage	545
3415	Total offense yardage	1811
41	Number of punts	74
1441	Punting yardage	2944
1	Punts had blocked	1
35.1	Punting average	39.9
17	Fumbles	32
9	Fumbles lost	23
58	Times penalized	62
690	Yards penalized	558
14	Touchdowns rushing	8
15	Touchdowns passing	2
22	P.A.T. kicks	6
1	P.A.T. runs	0
1	P.A.T. passes	0
9	Field goals	0
227	Total points	66

RUSHING

Player	No.	Gain	Loss	Net	Avg.
Spooner	136	557	41	516	3.7
Narramore	74	271	5	266	3.1
Giardino	70	271	15	256	3.6
Green	50	229	23	206	4.1
Pritchett	36	178	44	134	4.0
Petko	21	78	2	76	3.6
Bibent	3	19	0	19	6.1
Biletnikoff	2	6	4	2	1.0
Ehler	1	1	0	1	1.0
Gero	5	2	46	-44	-8.8
Tensi	11	15	61	-46	-4.1

PASSING

Player	Att.	Comp.	Int.	Yds.	Pct.	TD
Tensi	204	121	10	1683	.591	14
Pritchett	36	21	0	295	.596	1
Gero	9	5	0	51	.555	0

PUNTING

Player	No.	Yards	Avg.
Pritchett	35	1246	35.6
Hosack	6	195	32.5

FINAL 1964 FLORIDA STATE FOOTBALL STATISTICS

PASS RECEIVING

Player	Caught	Yards	TD
Biletnikoff	57	987	11
Floyd	41	556	1
Dawson	12	148	1
Spooner	10	74	1
Revell	7	74	0
Narramore	7	51	1
Wachtel	6	55	0
Green	4	36	0
Blankenship	1	10	0
Giardino	1	6	0
Wettstein	1	6	0

PUNT RETURNS

Player	No.	Yards	TD
Spooner	9	31	0
Biletnikoff	5	75	0
Campbell	5	72	0
Bailey	5	47	0
Bibent	3	4	0
Conway	1	0	0
Green	1	0	0
Revell	1	0	0

KICKOFF RETURNS

Player	No.	Yards	TD
Spooner	5	89	0
Biletnikoff	3	42	0
Green	2	47	0
Pritchett	2	43	0
Revell	1	26	0
Bailey	1	9	0

INTERCEPTION RETURNS

Player	No.	Yards	TD
Bailey	6	73	0
McDowell	1	32	0
Ehler	1	9	0
Jones	1	2	0
Massey	1	0	0

SCORING

	TD	P.A.T. ATT.		FG	TP
		R-P-K	P.A.T. MD.		
Biletnikoff	11	0-0-0	0-1-0	0	68
Murdock	0	0-0-26	0-0-22	9	49
Spooner	6	0-0-0	0-0-0	0	36
Giardino	3	0-0-0	0-0-0	0	18
Pritchett	2	2-1-0	1-0-0	0	14
Narramore	2	0-0-0	0-0-0	0	12
Green	2	0-0-0	0-0-0	0	12
Floyd	1	0-0-0	0-0-0	0	6
Tensi	1	0-0-0	0-0-0	0	6
Dawson	1	0-0-0	0-0-0	0	6

ALL TIME FLORIDA STATE RECORDS

SINGLE GAME

INDIVIDUAL

- TOUCHDOWNS SCORED—4 by Fred Biletnikoff vs. Oklahoma, Gator Bowl, 1965
- LONGEST TOUCHDOWN RUN FROM SCRIMMAGE—80 yards by Fred Pickard vs. Virginia Tech, 1957
- LONGEST TOUCHDOWN PASS—80 yards, Nelson Italiano to Eddie Gray vs. Newberry, 1950
- LONGEST TOUCHDOWN RUN ANY SITUATION—99 yards by Ted Hewitt vs. Stetson, 1948 and Fred Biletnikoff vs. Miami, 1963 (interception return)
- LONGEST RUN FROM SCRIMMAGE WITHOUT SCORING—76 yards by Roy Thompson vs. Stetson, 1951
- LONGEST INTERCEPTION RETURN—99 yards by Ted Hewitt vs. Stetson, 1948 and Fred Biletnikoff vs. Miami, 1963
- LONGEST PUNT RETURN—80 yards by Billy Odom vs. Stetson, 1954
- LONGEST KICKOFF RETURN—89 yards by Billy Odom vs. Va. Tech, 1955
- LONGEST PUNT—84 yards by Tommy Brown vs. Tampa, 1950
- LONGEST FIELD GOAL—44 yards by Les Murdock vs. Virginia Tech, 1963
- TIMES RUSHING—29 by Fred Pickard vs. Georgia, 1949
- YARDS RUSHING—161 by Buddy Strauss vs. Mississippi College, 1949
- PASSES ATTEMPTED—39 by Steve Tensi vs. Virginia Tech, 1964
- PASSES COMPLETED—23 by Steve Tensi vs. Oklahoma, Gator Bowl, 1965
- YARDS PASSING—313 by Joe Majors vs. Tampa, 1959
- TOUCHDOWN PASSES—5 by Steve Tensi vs. Oklahoma, Gator Bowl, 1965
- TOTAL OFFENSE—369 yards by Joe Majors vs. Tampa, 1959 (56 rush, 313 pass)
- PASSES CAUGHT—13 by Fred Biletnikoff vs. Oklahoma, Gator Bowl, 1965
- YARDS RECEIVING PASSES—192 by Fred Biletnikoff vs. Oklahoma, Gator Bowl, 1965
- TOUCHDOWN PASSES CAUGHT—4 by Fred Biletnikoff vs. Oklahoma, Gator Bowl, 1965
- PASSES INTERCEPTED—3 by Tommy Brown vs. Stetson, 1950; and Georgia Tech, 1952; Lee Corso vs. Georgia, 1954; and Bud Whitehead vs. Virginia Tech, 1959
- FIELD GOALS—3 by Les Murdock vs. Florida, 1964

TEAM

- POINTS SCORED—74 vs. Whiting Field, 1949
- MARGIN OF VICTORY—74-0 vs. Whiting Field, 1949
- MARGIN OF DEFEAT—0-42 vs. Georgia, 1959
- YARDS RUSHING—383 vs. Abilene Christian, 1957
- YARDS PASSING—355 vs. Villanova, 1954
- TOTAL OFFENSE—526 vs. Furman, 1962 (277 rush, 239 pass)
- PASSES ATTEMPTED—40 vs. Virginia Tech, 1964
- PASSES COMPLETED—23 vs. Oklahoma, Gator Bowl, 1965
- PASSES INTERCEPTED—7 vs. Virginia Tech, 1959
- PUNTS—10 vs. Georgia Tech and Stetson, 1955

SEASON

INDIVIDUAL

- POINTS SCORED—68 by Fred Biletnikoff, 1964
- TOUCHDOWNS SCORED—11 by Fred Biletnikoff, 1964
- TOUCHDOWN RESPONSIBILITY—15 by Steve Tensi, 1964 (scored 1, passed for 14)
- TIMES RUSHING—160 by Buddy Strauss, 1949
- RUSHING AVERAGE—6.6 by Bobby Fiveash, 1953
- YARDS RUSHING—747 by Buddy Strauss, 1949

TOTAL OFFENSE—1637 by Steve Tensi, 1964 (-46 rush, 1683 pass)
 PASSES ATTEMPTED—204 by Steve Tensi, 1964
 PASSES COMPLETED—121 by Steve Tensi, 1964
 YARDS PASSING—1683 by Steve Tensi, 1964
 TOUCHDOWN PASSES—14 by Steve Tensi, 1964
 PASSES CAUGHT—57 by Fred Biletnikoff, 1964
 YARDS RECEIVING PASSES—987 by Fred Biletnikoff, 1964
 TOUCHDOWN PASSES CAUGHT—11 by Fred Biletnikoff, 1964
 PUNTS—58 by Charlie Calhoun, 1961
 PUNTING AVERAGE—41.9 by Pat Versprille, 1955
 PUNTS RETURNED—19 by Tommy Brown, 1951
 PUNT RETURN AVERAGE—15.7 by Tommy Brown, 1951 (minimum ten returns)
 KICKOFF RETURN AVERAGE—31.8 by Lee Corso, 1954
 EXTRA POINTS—22 by Les Murdock, 1964 (26 attempts)
 FIELD GOALS—9 by Les Murdock, 1964
 PASSES INTERCEPTED—8 by Curt Campbell, 1951

TEAM

VICTORIES— 8 in 1949, 1950, 1954, 1964
 DEFEATS—8 in 1952
 YARDS RUSHING—2194 in 1949
 YARDS PASSING—1745 in 1954
 MOST DEFEATS—8 in 1952
 MOST VICTORIES—8 in 1949, 1950, 1954, 1964
 MOST TIES—3 in 1962
 YARDS RUSHING—2194 in 1949
 YARDS PASSING—2029 in 1964
 TOTAL OFFENSE—3434 yards in 1954 (1689 rush, 1745 pass)
 PASSES ATTEMPTED—252 in 1954
 PASSES COMPLETED—147 in 1964
 MOST PASSES HAD INTERCEPTED—21 in 1954
 FEWEST PASSES HAD INTERCEPTED—7 in 1947
 MOST PASSES INTERCEPTED—24 in 1949
 PUNTS—59 in 1959, 1961
 MOST OPPONENTS' PUNTS BLOCKED—4 in 1951
 POINTS SCORED—272 in 1949
 FEWEST POINTS ALLOWED—54 in 1950
 FEWEST POINTS SCORED—18 in 1947
 MOST POINTS ALLOWED—261 in 1952

CAREER

POINTS SCORED—128 by Fred Biletnikoff, 1962-64
 TOUCHDOWNS SCORED—21 by Fred Biletnikoff, 1962-64
 TOUCHDOWN RESPONSIBILITY—34 by Steve Tensi, 1962-64 (scored 1, passed for 33)
 TOTAL OFFENSE—3609 by Steve Tensi, 1962-64 (-88 rush, 3697 pass)
 TIMES RUSHING—339 by Fred Pickard, 1957-59
 YARDS RUSHING—1546 by Fred Pickard, 1957-59
 PASSES ATTEMPTED—508 by Steve Tensi, 1963-64
 PASSES COMPLETED—275 by Steve Tensi, 1962-64
 YARDS PASSING—3697 by Steve Tensi, 1962-64
 TOUCHDOWN PASSES—33 by Steve Tensi, 1962-64
 PASSES CAUGHT—100 by Fred Biletnikoff, 1962-64
 YARDS RECEIVING PASSES—1655 by Fred Biletnikoff, 1962-64
 TOUCHDOWN PASSES CAUGHT—20 by Fred Biletnikoff, 1962-64
 MOST PUNTS—169 by Charlie Calhoun, 1961-63
 BEST PUNTING AVERAGE—37.6 by Bobby Renn, 1956-58 (9 punts)
 EXTRA POINTS—49 by Johnny Shepard, 1956-58 (55 attempts)
 FIELD GOALS—10 by Les Murdock, 1963-64

RESULTS

1947-1964

1947 (0-5-0)	FSU	Foe	1952 (1-8-1)	FSU	Foe
Stetson	6	14	Louisville	14	41
Cumberland	0	6	Louisiana Tech	13	32
Tennessee Tech	6	27	VMI	7	28
Troy State	6	36	N. Carolina State	7	13
Jacksonville State	0	7	Stetson	6	6
1948 (7-1-0)	FSU	Foe	Miss. Southern	21	50
Cumberland	30	0	Furman	0	9
Erskine	6	14	Georgia Tech	0	30
Millsaps	7	6	Wofford	27	13
Stetson	18	7	Tampa	6	39
Mississippi College	26	6	1953 (5-5-0)	FSU	Foe
Livingston State	12	6	Miami (Fla.)	0	27
Troy State	20	13	Louisville	59	0
Tampa	33	12	Abilene Christian	7	20
1949 (8-1-0)	FSU	Foe	Louisiana Tech	21	32
Whiting Field	74	0	VMI	12	7
Mississippi College	33	12	Miss. Southern	0	21
Erskine	26	7	Furman	7	14
Sewanee	6	0	Stetson	13	6
Stetson	33	14	N. Carolina State	23	13
Livingston State	6	13	Tampa	41	6
Millsaps	40	0	1954 (8-3-0)	FSU	Foe
Tampa	34	7	Georgia	0	14
Troy State	20	0	Abilene Christian	0	13
Wofford*	19	6	Louisville	47	6
(*Cigar Bowl)			Villanova	52	13
1950 (8-0-0)	FSU	Foe	N. Carolina State	13	7
Troy State	26	7	Auburn	0	33
Randolph-Macon	40	7	VMI	33	19
Howard	20	6	Furman	33	14
Newberry	24	0	Stetson	47	6
Sewanee	14	8	Miss. Southern	19	18
Stetson	27	7	Tampa	13	0
Mississippi College	33	0	Texas Western*	20	47
Tampa	35	19	(*Sun Bowl)		
1951 (6-2-0)	FSU	Foe	1955 (5-5-0)	FSU	Foe
Troy State	40	0	N. C. State	7	0
Miami (Fla.)	13	35	Miami (Fla.)	0	34
Delta State	34	0	Virginia Tech	20	24
Sul Ross State	35	13	Georgia	14	47
Stetson	13	10	Georgia Tech	0	34
Jacksonville Navy	39	0	Villanova	16	13
Wofford	14	0	Furman	19	6
Tampa	6	14	Citadel	39	0
			Miss. Southern	6	21
			Tampa	26	7

1956 (5-4-1)	FSU	Foe
Ohio University	47	7
Georgia	0	3
Virginia Tech	7	20
N. Carolina State	14	0
Wake Forest	14	14
Villanova	20	13
Miami (Fla.)	7	20
Furman	42	7
Miss. Southern	20	19
Auburn	7	13
1957 (4-6-0)	FSU	Foe
Furman	27	7
Boston College	7	20
Villanova	7	21
N. Carolina State	0	7
Abilene Christian	34	7
Virginia Tech	20	7
Miami (Fla.)	13	40
Miss. Southern	0	20
Auburn	7	29
Tampa	21	7
1958 (7-3-0)	FSU	Foe
Tennessee Tech	22	7
Furman	42	6
Georgia Tech	3	17
Wake Forest	27	24
Georgia	13	28
Virginia Tech	28	0
Tennessee	10	0
Tampa	43	0
Miami (Fla.)	17	6
Florida	7	21
Oklahoma State*	6	15
(*Bluegrass Bowl)		
1959 (4-6-0)	FSU	Foe
Wake Forest	20	22
The Citadel	47	6
Miami (Fla.)	6	7
Virginia Tech	7	6
Memphis State	6	16
Richmond	22	6
Georgia	0	42
William & Mary	0	9
Florida	8	18
Tampa	33	0
1960 (3-6-1)	FSU	Foe
Richmond	28	0
Florida	0	3
Wake Forest	14	6
The Citadel	0	0
Miss. Southern	13	15
William & Mary	22	0
Kentucky	0	23
Miami (Fla.)	7	25
Houston	6	7
Auburn	21	57

1961 (4-5-1)	FSU	Foe
George Washington	15	7
Florida	3	3
Mississippi	0	33
Georgia	3	0
Richmond	13	7
Virginia Tech	7	10
Kentucky	0	20
The Citadel	44	8
Miss. Southern	0	12
Houston	8	28
1962 (4-3-3)	FSU	Foe
The Citadel	49	0
Kentucky	0	0
Furman	42	0
Miami (Fla.)	6	7
Georgia	18	0
VPI	20	7
Houston	0	7
Georgia Tech	14	14
Florida	7	20
Auburn	14	14
1963 (4-5-1)	FSU	Foe
Miami (Fla.)	24	0
Texas Christian	0	13
Wake Forest	35	0
So. Mississippi	0	0
Virginia Tech	23	31
Furman	49	6
Georgia Tech	7	15
N. C. State	14	0
Auburn	15	21
Florida	0	7
1964 (9-1-1)	FSU	Foe
Miami	14	0
TCU	10	0
New Mexico State	36	0
Kentucky	48	6
Georgia	17	14
Virginia Tech	11	20
So. Mississippi	34	0
Houston	13	13
N. C. State	28	6
Florida	16	7
Oklahoma*	36	19
(*Gator Bowl)		

FLORIDA STATE COACHES AND CAPTAINS 1947-1964

YEAR	COACH	CAPTAINS	W	L	T	FSU PTS.	OPP. PTS.
1947	Ed Williamson	Jack McMillan Phil Rountree	0	5	0	18	90
1948	Don Veller	Game Captains	7	1	0	152	64
1949	Don Veller	Hugh Adams	8	1	0	272	53
1950	Don Veller	Duke Maltby	8	0	0	219	54
1951	Don Veller	Bill Dawkins	6	2	0	194	72
1952	Don Veller	Curtis Campbell Vic Sczcepanik	1	8	1	101	261
1953	Tom Nugent	Game Captains	5	5	0	183	146
1954	Tom Nugent	Game Captains	8	3	0	257	143
1955	Tom Nugent	Bob Crenshaw Don Powell	5	5	0	147	186
1956	Tom Nugent	Joe Holt Buck Metz	5	4	1	178	116
1957	Tom Nugent	Ron Schomburger	4	6	0	136	165
1958	Tom Nugent	Vic Prinzi					
1959	Perry Moss	Bobby Renn John Spivey	7 4	3 6	0 0	212 149	109 132
1960	Bill Peterson	Al Ulmer Tony Romeo	3	6	1	111	136
1961	Bill Peterson	Steve Klesius	4	5	1	93	128
1962	Bill Peterson	Gene McDowell	4	3	3	170	69
1963	Bill Peterson	Charlie Calhoun Chuck Robinson	4	5	1	167	93
1964	Bill Peterson	Bill Dawson Fred Biletnikoff	9	1	1	263	85
TOTALS			92	69	9	3022	2102

COACHES' CUMULATIVE RECORDS

NAME	TENURE	W-L-T	FSU PTS.	OPP. PTS.
Ed Williamson	1947	0-5-0	18	90
Don Veller	1948-52	30-12-1	938	504
Tom Nugent	1953-58	34-26-1	1123	865
Perry Moss	1959	4-6-0	149	132
Bill Peterson	1960-	24-20-7	804	521



MISCELLANEY

SEMINOLE BOOSTERS, INC.

Seminole Boosters, Inc. is an organization devoted entirely to the support of the Florida State University athletic program with emphasis on football.

Membership in the Boosters—the group numbers approximately 1200—is open to anyone with a sincere interest in the University's athletic welfare. Minimum contribution for an individual membership is \$15. A business membership costs \$30.

Contributions are administered in accordance with NCAA regulations and in conjunction with the FSU Department of Intercollegiate Athletics.

Boosters receive a colorful automobile license plate which provides reserved parking at the stadium, a membership card, a weekly fall publication called "The Grandstand Coach," and certain priorities on season and individual football tickets.

President of the group for 1965 is Tallahassee physician Dr. E. G. Haskell, Jr. The organization's executive secretary is Thomas A. Waits, Director of Alumni Affairs at Florida State University.



Dr. E. G. Haskell, Jr.

T. A. Waits

Seminole Boosters Receive Parking Privileges at Campbell Stadium.



Harry Hughey

Bo Mitchell

WTNT SEMINOLE RADIO NETWORK

Popular Bo Mitchell returns to the Seminole microphone for the third straight season, bringing play-by-play action to every corner of the Sunshine State.

The energetic Mitchell, an ex-naval aviator with more than 16 years broadcasting experience, is vice-president and station manager of station WCOA, Pensacola.

His partner at the mike this season will be Harry Hughey, a former Florida State football player. Hughey, a civil defense instructor, is a veteran radio man. He will handle pre-game, half-time and time-out color commentary on the Seminoles.

Originating station for the Seminole Network is WTNT, Tallahassee. The network consisted of 19 stations in Georgia and Florida as of July 1, with several more expected to join.

Persons desiring information concerning the network should contact Hurley Rudd, WTNT, Hotel Duval, Tallahassee, Florida.

The Marching Chiefs



Bob Braunagle

One of a young university's prized traditions is Florida State's 120-piece marching band, the fabulous Marching Chiefs.

The Chiefs, directed by Robert Braunagle, have been widely acclaimed for years as the South's best.

Instrumental in their success along with Braunagle and Manly Whitcomb, who retired as director in 1963, is arranger Charles Carter whose striking musical innovations keep Seminole football fans in their seats and cheering during halftime intermissions.

The now famous "Band Ballet" and the successful use of "stereophonic sound" were both originated by Carter.

The Chiefs will perform at all home games in 1965, and will appear at the Alabama and Florida games on the road.

The band's field leader is drum major Camp Kirkland of Jacksonville. Head majorette Paulette Gergen of Miami leads a group which includes solo baton artist Cookie Winchester, the Seminole Twins, Bookie Reynolds and Jerry Williams; and football's most attractive forward wall—the Seminole majorette corps.

MEMO TO THE PRESS-RADIO-TV

This handbook is prepared to assist you during the 1965 football season at Florida State University. For additional information or services contact:

BILL BUNKER

Director of Sports Publicity

Florida State University

Tallahassee, Florida 32306

Area Code: 305

Office Phone: 599-2095

Home Phone: 385-3180

FACILITIES: Florida State's press box is in three sections with elevator service to all levels.

- (1) The Radio-TV Deck consisting of eight booths for radio, television and public address; photographic darkroom and wirephoto facilities and an open balcony on either end.
- (2) The Press Deck of 48 working press seats and Western Union facilities.
- (3) The Photo Deck offering an unobstructed area for movie and still cameras. Photographers are also permitted on the sidelines.

RESERVATIONS: Space for working press, radio-TV scouts will be issued on an individual game basis. Requests should be made soon enough to allow time for mailing. Arrangements for wire or telephone service should be made directly with Western Union or the Southeastern Telephone Company, Tallahassee.

SERVICES: Play-by-play, halftime and final statistics are provided. Play-by-play announcements are broadcast on the press deck. Refreshments are available.

PARKING: Special parking is available on the west side of Campbell Stadium. Permits are issued by the Sports Publicity Office.

1965-1966 BASKETBALL SCHEDULE

HEAD COACH: J. K. (Bud) Kennedy, 17 Years,

Won 219, Lost 197

DATE	OPPONENT	SITE
Dec. 1	Lamar Tech	Tallahassee
Dec. 2	Valdosta State	Tallahassee
Dec. 6	Tampa	Tallahassee
Dec. 8	Florida	Gainesville
Dec. 16	North Carolina	Chapel Hill, N.C.
Dec. 18	U. of Calif. (Santa Barbara)	Tallahassee
Dec. 20-21	Tampa Invitational Tournament	Tampa
Dec. 27	Auburn	Pensacola
Jan. 3	Georgia	Athens, Georgia
Jan. 7	Miami	Tallahassee
Jan. 10	Loyola (New Orleans)	Tallahassee
Jan. 15	Memphis State	Tallahassee
Jan. 18	Florida	Tallahassee
Jan. 24	Jacksonville	Jacksonville
Jan. 31	Georgia Tech	Tallahassee
Feb. 5	Memphis State	Memphis, Tenn.
Feb. 7	Loyola (New Orleans)	New Orleans, La.
Feb. 10	Jacksonville	Tallahassee
Feb. 14	Georgia Tech	Atlanta, Ga.
Feb. 19	Howard	Tallahassee
Feb. 24	Florida Southern	Tallahassee
Feb. 26	Tampa	Tampa
Feb. 28	Miami	Miami
Mar. 5	Georgia	Tallahassee

Composite Schedule - FSU's 1965 Opponents

DATE	T.C.U.	BAYLOR	KENTUCKY	GEORGIA	ALABAMA	VIRGINIA TECH	WAKE FOREST	N. C. STATE	HOUSTON	FLORIDA
SEPT. 11									TULSA	
SEPT. 18	AT NEBRASKA	AT AUBURN	AT MISSOURI	ALABAMA	AT GEORGIA	WAKE FOREST*	VIRGINIA TECH*	AT CLEMSON	MISS. STATE	AT NORWESTERN
SEPT. 25	FLA. STATE	WASHINGTON	MISSISSIPPI	VANDERBILT	TULANE†	AT RICHMOND	AT N. C. STATE	WAKE FOREST	CINCINNATI	MISS. STATE
OCT. 2	AT ARKANSAS	AT FLA. STATE	AT AUBURN	AT MICHIGAN	MISSISSIPPI#	WM. & MARY	VANDERBILT	AT S. CAROLINA		L.S.U.
OCT. 9	AT TEXAS TECH	ARKANSAS	FLA. STATE	CLEMSON	AT VANDERBILT	AT GEORGE WASHINGTON	MARYLAND	N. CAROLINA	AT TEXAS A&M	AT MISSISSIPPI
OCT. 16	TEXAS A&M		AT L.S.U.	AT FLA. STATE	TENNESSEE#	AT VANDERBILT	S. CAROLINA	AT FLORIDA	AT MIAMI (FLA.)	N. C. STATE
OCT. 23	AT CLEMSON	AT TEXAS A&M	GEORGIA	AT KENTUCKY	FLA. STATE	VIRGINIA	N. CAROLINA	AT MARYLAND	AT TENNESSEE	
OCT. 30	AT BAYLOR	T.C.U.	W. VIRGINIA	AT N. CAROLINA	AT MISS. STATE	AT FLA. STATE	AT CLEMSON	AT VIRGINIA	CHAT'ANO'GA	AT AUBURN
NOV. 6		AT TEXAS	AT VANDERBILT	FLORIDA*	AT L.S.U.	AT W. VIRGINIA	FLA. STATE	DUKE	MISSISSIPPI	GEORGIA*
NOV. 13	AT TEXAS	AT TEXAS TECH	AT HOUSTON	AUBURN	S. CAROLINA	VILLANOVA	AT DUKE	FLA. STATE	KENTUCKY	TULANE
NOV. 20	RICE	S.M.U.	TENNESSEE			V.M.I.*	MEMPHIS ST.	AT IOWA	AT FLA. STATE	AT MIAMI (FLA.)
NOV. 27	S.M.U.	AT RICE		AT GA. TECH	AUBURN#					FLA. STATE

Neutral Sites: * Jacksonville, Fla. † Mobile, Ala. # Birmingham, Ala. • Roanoke, Va.