

FLORIDA
STATE
1961

FLORIDA STATE



FOOTBALL HANDBOOK 1961

FLORIDA STATE UNIVERSITY

1961 FOOTBALL SCHEDULE

Sept. 16	George Washington	Tallahassee	8:00 P.M.
Sept. 30	Florida	Gainesville	2:00 P.M.
Oct. 7	Mississippi	Oxford	2:00 P.M.
Oct. 14	Georgia	Tallahassee	8:00 P.M.
Oct. 21	Richmond	Tallahassee	8:00 P.M.
Oct. 28	Virginia Tech	Blacksburg	2:00 P.M.
Nov. 4	Kentucky	Lexington	2:00 P.M.
Nov. 11	The Citadel	Tallahassee	8:00 P.M.
Nov. 18	Mississippi Southern (Homecoming)	Tallahassee	2:30 P.M.
Nov. 25	Houston	Houston	2:00 P.M.

1960 FOOTBALL RESULTS

28	Richmond	0
0	Florida	3
14	Wake Forest	6
0	The Citadel	0
13	Miss. Southern	15
22	William and Mary	0
0	Kentucky	23
7	Miami (Fla.)	25
6	Houston	7
21	Auburn	57

1961 FOOTBALL HANDBOOK

has been prepared to aid the press, radio, and television in its coverage of the Florida State University football team. Written and compiled by former Sports Publicity Director Pat Hogan and Assistant Neil LaBar, the material is based on an analysis of prospects through August 1. Changes that occur will be reported in subsequent releases.

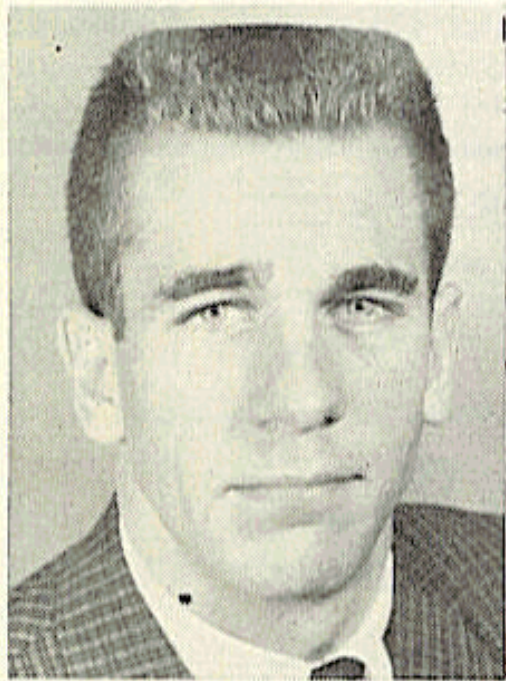
TABLE OF CONTENTS

MEMO TO THE PRESS - RADIO - TV	2
Press Accommodations	
THE UNIVERSITY	5
Florida State and its President	
THE ATHLETIC DEPARTMENT	8
The Director, the Coach, the Personnel	
THE 1961 SEMINOLES	22
Roster, Depth Chart, Player Profiles	
THE SEASON TO COME	32
Outlook, the Opposition and its Prospects	
THE SEASON PAST	44
Review of 1960, Statistics, Records	
BROADCASTS AND BOOSTERS	55-59
Tenneco-Seminole Network, Boosters, Inc.	
THE MARCHING CHIEFS	60
Best Band in the Land	
FLORIDA STATE'S FOOTBALL CLINIC	61
Stairway to Success	

ON THE COVER

BEHIND THE FANFARE and exuberance of 60 minutes of playing time lie weeks of diligent planning and practice. Patterns of play that create the electrifying atmosphere of football spring from the huddle. On the cover, junior quarterback **Eddie Feely** directs strategy in a Florida State huddle—captured in color by Staff Photographer **Jim Martin**.

MEMO TO PRESS - RADIO - TV



PAUL HEMPHILL

This handbook has been prepared to assist you during the 1961 football season. Should you desire additional material, information, or services, contact:

PAUL HEMPHILL

Director of Sports Publicity

Florida State University

Tallahassee, Florida

Telephone: 222-8000

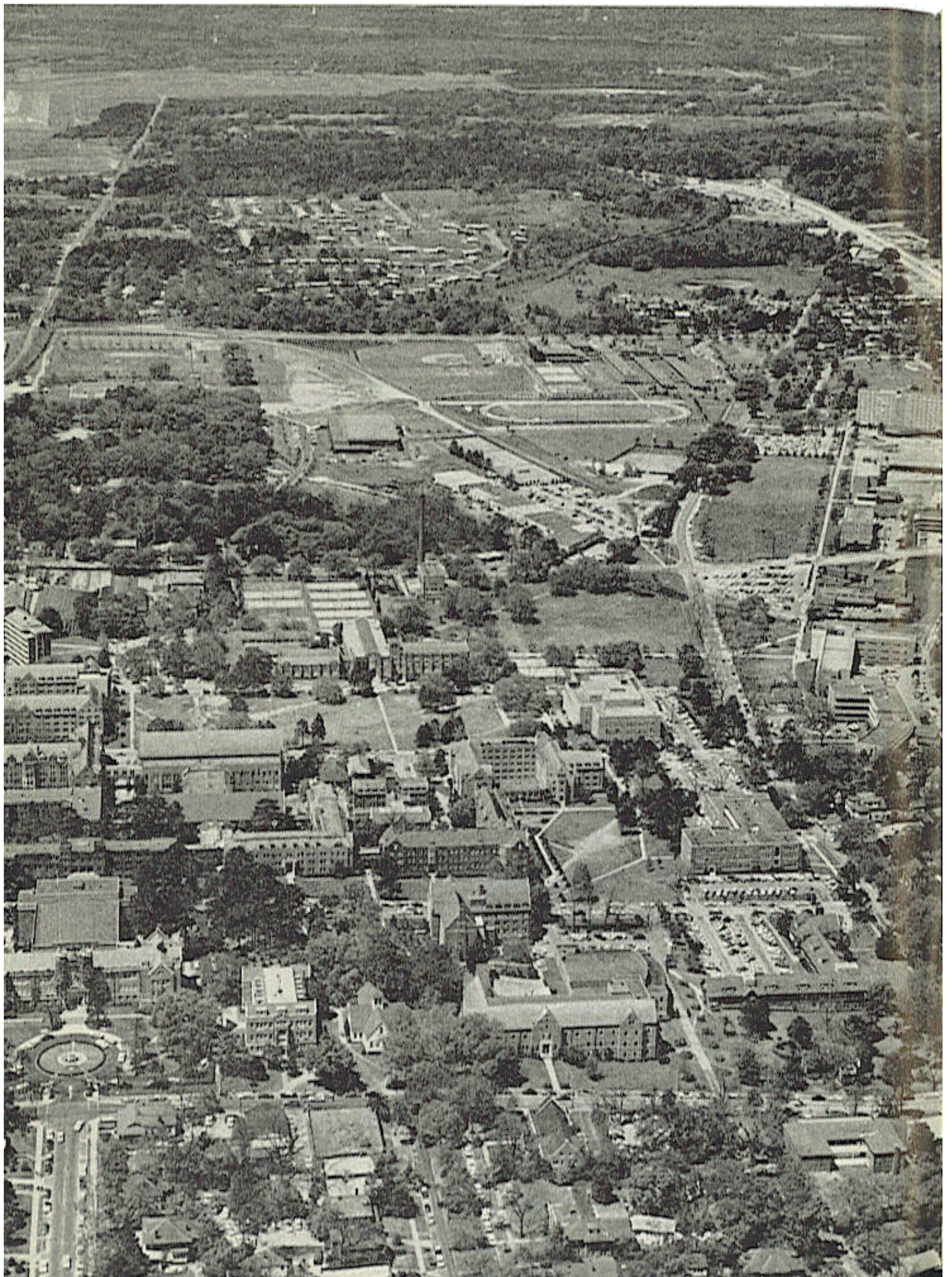
When making requests for working press tickets, allow time for mailing. It is suggested that space requests be forwarded at least one week prior to any home game. If wire or telephone service is required in your coverage of games, please make necessary arrangements through your local Western Union or telephone office.

Florida State is happy that a modern new three-level press box (with elevator) has been constructed atop the West Stand and that 5,100 new spectator seats have been added, bringing FSU's Campbell Stadium seating capacity to 25,000. The press box is in three sections: (1) the Radio-TV Deck, consisting of 8 booths for radio, television, and public address; photographic darkroom and wirephoto facilities, and 2 open balconies on either end. (2) the Press Deck of 48 working press seats and Western Union facilities. (3) the Photo Deck consisting of an unobstructed area for movie and still cameras. Working press space, radio booth assignments, and photo passes should be requested at least one week before any home game from the Director of Sports Publicity.



THE UNIVERSITY

- facts and figures
- the president



FLORIDA STATE UNIVERSITY

A senior member of Florida's system of higher education, Florida State University seeks to provide significant educational opportunities to greatly increasing numbers of promising students. Enrollment has risen from 6,442 only six years ago to an anticipated 9,500 this fall of whom about 1,500 will be graduate students.

The main campus occupies 300 acres near the western edge of Tallahassee, along U. S. Highway 90. The older Tudor Gothic buildings, used by Florida State College for Women until 1947, now are almost overshadowed by newer buildings of functional design.

The newer buildings reflect the specialized needs of modern higher education as well as the particular areas in which FSU has been moving to the forefront as an educational and research center. Being occupied this fall in the developing science center is a new building housing Mathematics, Meteorology, Statistics, and the Computing Center. The last is being equipped with the first large-scale, high-speed electronic digital computer (IBM 709) in Florida's educational institutions.

Now under construction is a million-dollar building to house the Institute of Molecular Biophysics. Funded by the Atomic Energy Commission, this Institute draws together scientists from several departments in a research program directed toward an examination of life on the molecular level, using the methods of chemistry and other physical sciences.

Strong programs are offered at Florida State University in all of the basic arts and sciences and in professional schools of business, education, home economics, library science, music, nursing and social welfare. The Graduate School offers master's degrees in each of these fields except nursing, and doctoral degrees in more than 25 disciplines.

The President . . .

DR. GORDON W. BLACKWELL

Dr. Gordon W. Blackwell is beginning his second year as president of Florida State University. FSU is the second institution he has headed. Dr. Blackwell served from 1957 to 1960 as chancellor of Woman's College of the University of North Carolina.

Before becoming a college administrator, he gained widespread acclaim as one of the South's best known sociologists and social science research directors. He has been the author or co-author of half a dozen books and of more than 50 articles in professional journals. For 14 years he headed the University of North Carolina's widely known Institute for Research in Social Science.

A native of South Carolina, Blackwell was the son of a Baptist minister. At Furman University, where he graduated summa cum laude in 1932, he played three years of varsity tennis and was both captain and No. 1 man for those three years. He went on to get a master's degree from North Carolina in 1933 and a Ph.D. degree from Harvard in 1940.

Dr. and Mrs. Blackwell, the former Elizabeth Blair Lyles of Spartanburg, S.C., are the parents of two sons and two daughters. Gordon, 22, is in Harvard Graduate School of Business and played varsity basketball at Furman. Randy, 20, is a junior at Furman and like his father is an athlete (varsity tennis and basketball). Blair, 15, and Millie, 13, are in school in Tallahassee and are active in tennis, swimming, and sailing.

After getting his master's degree in 1933, Blackwell did research for several years with government agencies and then served on the faculty of his Alma Mater, Furman, from 1937 to 1941. In 1941 he joined the faculty of UNC but he was called away for two years of war duty as a community organization specialist in the Office of Civilian Defense. In 1944 he returned to UNC as professor of sociology and director of the Institute for Research in Social Science and in 1955 he was appointed Kenan Professor of Sociology. In 1955 he lectured at Oxford University, England.

Dr. Blackwell, at 50, keeps up his tennis with a weekly set or two and last spring participated in the faculty-student mixed doubles, winning two matches before going down in defeat. The "tennis" which endeared him to his colleagues during his first year in office, however, involved a series of serves, back-hand strokes and close-to-the-net plays in which he kept constantly before state officials, the Legislature and the public the need for higher salaries to maintain a high quality university faculty.



INTERCOLLEGIATE ATHLETICS

A varied group of seven sports makes up the varsity athletic program at Florida State University. The finest facilities, equipment, and coaching talent are provided in football, basketball, baseball, golf, swimming, tennis, and track.

THE ATHLETIC STAFF

VAUGHN MANCHA	Director of Athletics
BILL PETERSON	Head Football Coach
KEN MEYER	Assistant Football Coach
BOB HARBISON	Assistant Football Coach
DICK FLOWERS	Assistant Football Coach
JOHN COATTA	Assistant Football Coach
DON JAMES	Assistant Football Coach
VINCE GIBSON	Assistant Football Coach
BUBBA McGOWAN	Assistant Football Coach
CHARLIE LaPRADD	Freshman Football Coach
J .K. (BUD) KENNEDY	Basketball Coach
HUGH DURHAM	Assistant Basketball Coach
DANNY LITWHILER	Baseball Coach
BILL ODENEAL	Golf Coach
N. B. (BIM) STULTS	Swimming Coach
EDDIE CUBBON	Tennis Coach
MIKE LONG	Track Coach
DON FAULS	Trainer
TILLMAN DIXON	Equipment Manager
RONALD MELTON	Athletic Business Manager
PAUL HEMPHILL	Sports Publicity Director
NEIL LaBAR	Assistant Sports Publicity Director
JIM MARTIN	Sports Photographer

ATHLETIC COMMITTEE

Chairman, Mode Stone; Donald Loucks, George Fortin, Coyle Moore, J. M. Plant, Elston Roady, Mary Alexander.



THE ATHLETIC DEPARTMENT

- the director
- the personnel



The Athletic Director . . .

VAUGHN MANCHA

Not many persons have enjoyed such a varied and successful career as Vaughn Hall Mancha, who has devoted unestimable time and energy to athletics as a player, coach, teacher, and administrator.

Practically as legendary in Alabama football circles as Don Hutson and Harry Gilmer, Mancha began his present pursuit as director of Florida State's seven-sport program of intercollegiate athletics in November, 1959. He has tackled his newest role with all the fervor that characterized the performances that made him a 240-pound All-Southeastern Conference center at Alabama for four seasons (1944-48) and everyone's All-America center.

Mancha, who gained wide popularity with FSU officials and fans while serving as line coach from 1952 through 1956, returned to FSU as athletic director following three years at Columbia University as an assistant football coach and associate member of the Department of Physical Education.

Born in Sugar Valley, Ga., in 1921, Mancha moved to Birmingham at an early age. He entered Alabama in 1944, when he was issued jersey No. 41, a number Alabama's football opponents tried to dodge for four years. During Mancha's four seasons, Alabama rolled up a 30-9-2 record and played in three major bowl games. Vauhgn was a starter when the Crimson Tide met Duke in the 1945 Sugar Bowl, Southern Cal in the 1946 Rose Bowl, and Texas in the 1948 Sugar Bowl.

He was such a standout in the '45 Sugar Bowl that he was named to the All-Time Sugar Bowl team (1945-52 period). In 1955, he was named to Alabama's All-Time Crimson Tide.

He sandwiched in a year of play with the professional Boston Yankees (1948) while earning BS and MA Degrees at Alabama. In 1949, he accepted an appointment as head coach and athletic director at Livingston (Ala.) State, where he put in a highly-successful three-year tenure.

Mancha first came to Florida State in 1952 as an assistant football coach and an assistant professor of Physical Education. In 1957, he left for Columbia, where in addition to his teaching and coaching duties he completed all work for the Doctorate with the exception of the dissertation.

Married to the former Sybil Little of Birmingham, he is the father of three children: Clare, 12; Nan, 10, and Dit, 2½.

The Head Coach . . .

BILL PETERSON

When personable Bill Peterson was named Florida State's fifth modern-day head football coach on Dec. 7, 1959, one of his first statements went something like this:

"We have to build pride and the will to win at Florida State, and we're going to do it."

Peterson inherited a demanding schedule and a predominantly sophomore squad for his first season as a college head coach. After a Texas hatfull of wrongway bounces and a deceiving 3-6-1 finish, FSU followers are convinced that Peterson has the Seminoles headed in the right direction. Three of the six Seminole losses in 1960 were by a total of six points. With 11 points spread in the right spots, FSU's record would have been 7-3.

What impressed Seminole fans most was the ardor and vivaciousness with which Peterson's first Florida State team went about its task, a full-speed demeanor that mirrored another Peterson comment:

"Good team morale is more important than a good system of play. You don't put on morale like a good suit of clothes. If you have proper morale, you'll win some games that you aren't supposed to win."

A former offensive line coach at Louisiana State University, Peterson is an intense, dedicated worker who has a talent for blending personal warmth and wit into just the right mixture for the occasion. Coach "Pete," as he is affectionately known by fans and fellow coaches, continues to impress Sunshine State football fanciers from Pensacola to Miami in the endless chain of personal appearances he makes.

Throughout his coaching career, this lookalike to television's Gene Barry (Bat Masterson) has been associated with success. A 1946 graduate of Ohio Northern University—he was a standout end and captain in his senior year—he coached high school teams at Forest, Wapakoneta, and Mansfield, O., to a combined 51-22-3 record over 10 years. Two of his Mansfield elevens won Ohio state high school championships.

In 1955, Peterson was the only assistant coach that LSU's Paul Dietzel brought with him to the LSU campus. Peterson was credited with obtaining many of the players who boosted LSU into college football's top ranks. LSU's 1958 team won the national championship and defeated Clemson in the 1959 Sugar Bowl.

Coach Peterson has done graduate work at both West Virginia and LSU. A native of Toronto, O., he is active in the Methodist Church. He and his wife, Marjorie, have five sons: Ronnie, 18; Tommy, 12; Jon, 8; Billy, 5, and David, 2½.



The Athletic Business Manager . . .

RONALD MELTON



Florida State's assistant athletic business manager for five years, Ronald H. Melton has been athletic business manager since June, 1959.

Born in Alabama but a long-time resident of Tallahassee, Ronald is a popular figure with athletic officials across the nation. He coordinates Florida State's athletic travel plans, seeing to it that Seminole athletes are as comfortable as possible on the road.

A 1953 graduate of Florida State's School of Business, Ronald was a baseball standout for the Seminoles for four years. During one season, he hit safely in 17 consecutive games. He has been

associated with Florida State's athletic business office since October, 1954.

Ronald and Mrs. Melton (Frances Nell) have three children: Kathryn, 8; Ronald Michael, 4, and Lynndee, 2½.

Assistant Sports Publicity Director . . .

NEIL LaBAR

Neil LaBar has served as assistant director of sports publicity at Florida State since June, 1959.

A 1957 graduate of Florida State, LaBar works closely with the Sports Publicity Director, with chief responsibilities of coordinating radio and television activities for the Department of Athletics.

A native of Binghamton, N. Y., LaBar, 32, specialized in radio and television while a student at Florida State. He produced, directed and handled play-by-play of Seminole baseball and basketball broadcasts for two years and assisted in production of games for the Seminole Football Network.

In his present position, Neil supervises technical arrangements for visiting stations and coordinates special programs for radio and television.



THE FOOTBALL STAFF

KEN MEYER

Assistant Coach



Ken Meyer, 35, is in his second season as a member of the Florida State football coaching staff. Ken joined the Seminoles after serving two years as assistant coach at Wake Forest and six years as backfield assistant at Denison University, Granville, O.

Meyer was a standout halfback at Denison for three years. During his first two seasons, Denison compiled a 19-game winning streak under Woody Hayes, now head coach at Ohio State.

Ken was born in Erie, Pa., but attended high school in Ashtabula, O. Following his graduation from Denison in 1950, he served two years as head coach at Johnstown, O., High School and East Palestine, O., High before returning

to Denison in 1952.

Coach and Mrs. Meyer (Helen) have four children: Cindy, 12; Karl, 9; Richard, 5, and Thomas, 3.

BOB HARBISON

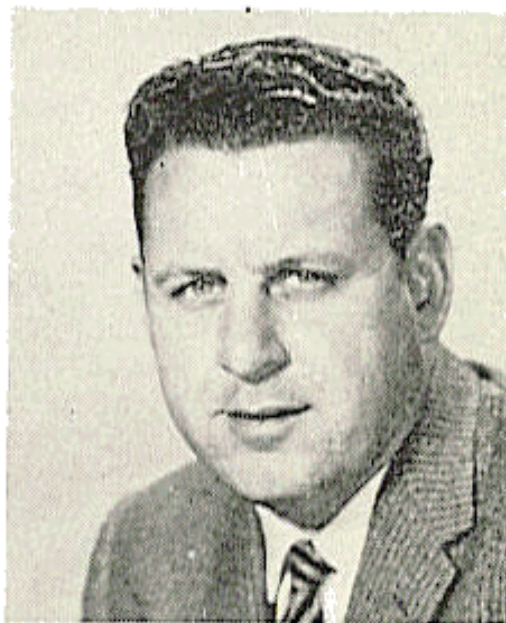
Assistant Coach

Recognized in football circles as a sound coach and an excellent scout, Bob Harbison, 34, is the real veteran of the Seminole coaching staff. Harbison begins his 14th full season with Florida State this fall.

Back in his playing days, Bob was an outstanding guard for the late Bo McMillin at Indiana University from 1945-47. He was chosen to play with the North squad in the annual Blue-Gray game at Montgomery, Ala., in 1947.

A native of Evansville, Ind., Harbison came to Florida State in 1948. He is credited with developing Little All-America guard Bill Dawkins in 1951 and former Seminole coach Hugh Adams, a Little All-America tackle, in 1949.

Coach and Mrs. Harbison (Jayne) have three daughters: Paula, 11; Susy, 8, and Mary, 5.



DICK FLOWERS

Assistant Coach

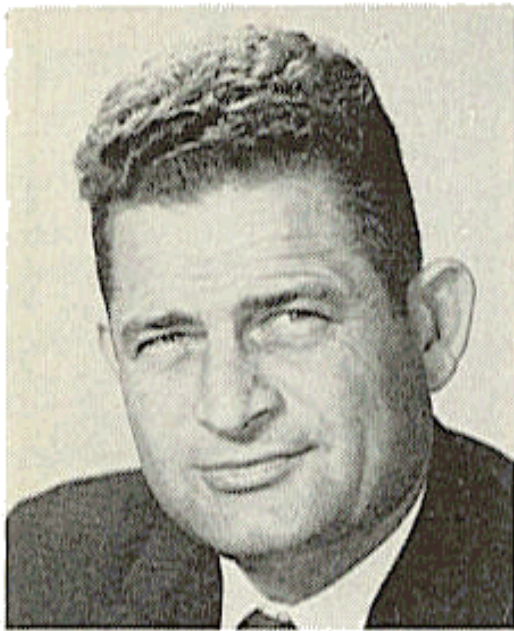
Personable Dick Flowers, 39, a native of Mobile, Ala., is in his third season as an assistant coach at FSU.

A graduate of Alabama, where he was a first-team tackle from 1945-48, Flowers is regarded as one of the best defensive coaches around. At Alabama, Dick was a teammate of Seminole Athletic Director Vaughn Mancha, and of Harry Gilmer. He played in the 1945 Rose Bowl and 1947 Sugar Bowl games.

Flowers was an assistant coach at Alabama in 1949-50 and at LSU in 1951-52. He coached one year at Live Oak, Fla., High School (1953) and was out of coaching in 1954 before taking over as head

coach and athletic director at Gainesville, Fla., High School. He compiled fine records at Gainesville before joining the Florida State staff in 1959.

Coach and Mrs. Flowers (Elizabeth) have two boys: Al, 11, and Woody, 8.



JOHN COATTA

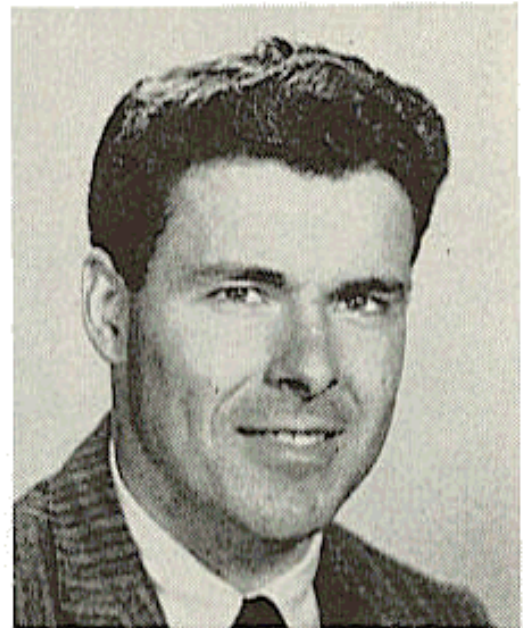
Assistant Coach

One of the sharpest passing quarterbacks in Big Ten history, 29-year-old John Coatta is starting his third year of coaching at Florida State. John came to the Seminole coaching staff from the University of Wisconsin. He was an assistant coach with the Badgers for four years.

A native of Dearborn, Mich., Coatta was a passing whiz for Coach Ivy Williamson at Wisconsin from 1949-51. In 1950, John set an all-time Big Ten pass completion record, connecting on 52 of 81 aeriels for 610 yards and a fancy .642 percentage. He was named to the All-Big Ten and All-Midwest honor teams following the 1951 season.

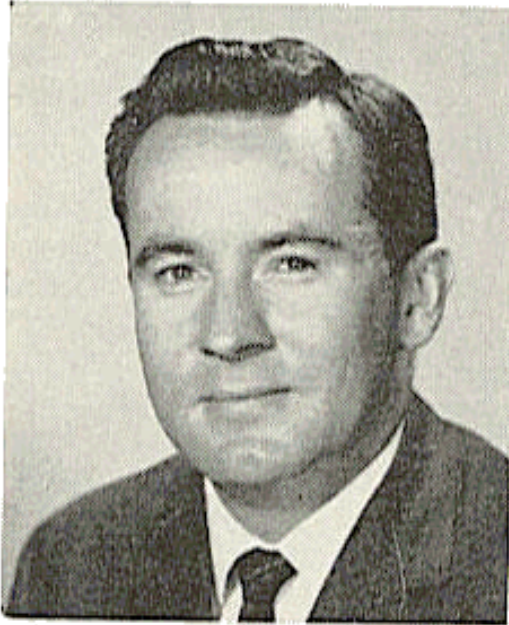
Coatta coached at Wisconsin in 1952 before entering the Army, where he played and coached at Fort Eustis, Va. He returned to Wisconsin as an assistant coach in 1955 and completed work on his master's degree there in January, 1959.

Coach and Mrs. Coatta (Jean) have four children: Jan, 8; Jeff, 5; John, 3; and Julie, 1.



DON JAMES

Assistant Coach



Donald Earl (Don) James has packed a lot of football experience into his 28 years. The Massillon, O., native came to Florida State two years ago from Southwest Miami High School, where he was backfield coach in 1957 and 1958.

Don was an outstanding high school quarterback at Massillon, O., playing under Chuck Mather and piloting Massillon to state championships in 1948 and 1949. He played quarterback for the University of Miami, lettering in 1952 and 1953.

Entering the Army in 1954, James played with fellow coach John Coatta at Ft. Eustis, Va. In 1956 Don was an as-

stant coach under his former high school coach, Chuck Mather, at Kansas. He obtained his master's degree at Kansas.

Coach and Mrs. James (Carol) have two children: Jeff, 6, and Jill, 4.

VINCE GIBSON

Assistant Coach

One of the toughest guards in Florida State's relatively brief football background is varsity assistant coach Vince Gibson. Vince, who served as assistant freshman coach in 1959, had the knack for recovering fumbles and slipping through to block punts when he performed for the Seminoles in 1954 and 1955.

Following his graduation from Florida State, Vince became line coach and basketball and track coach at South Georgia College. The Birmingham, Ala., native produced some outstanding results during three seasons at South Georgia (1956-58).

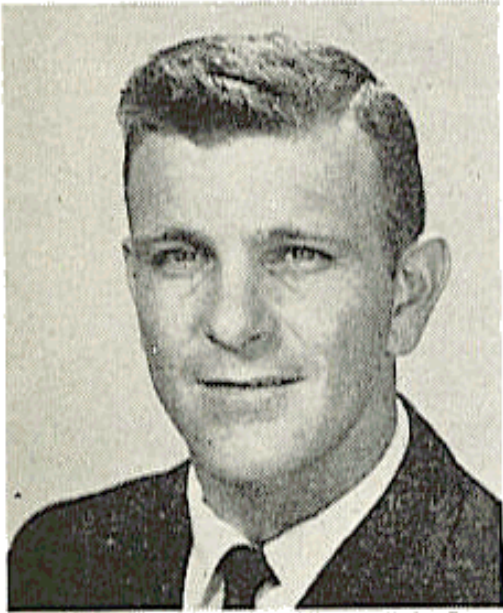
An excellent student, Gibson, 28, earned his master's degree at Florida State in 1956. He currently is working toward a doctorate degree.

Coach and Mrs. Gibson (Deane) have two children: Greg, 5, and Pam, 3.



BUBBA McGOWAN

Assistant Coach



William Albert (Bubba) McGowan has the distinction of being the first person to have coached football at both the University of Florida and Florida State University.

A former left halfback at Florida—he played as a freshman and sophomore under Bear Wolff, as a junior and senior under Bob Woodruff — McGowan was Florida's freshman backfield coach in 1952. The Dothan, Ala., native in 1953 and 1954 was football coach of the Fort Jackson, S. C., Army team.

McGowan, 32, was track coach and football assistant to fellow coach Dick Flowers at Gainesville High from 1955-58.

Coach and Mrs. McGowan (June) have one boy, William Albert, Jr., 2½.

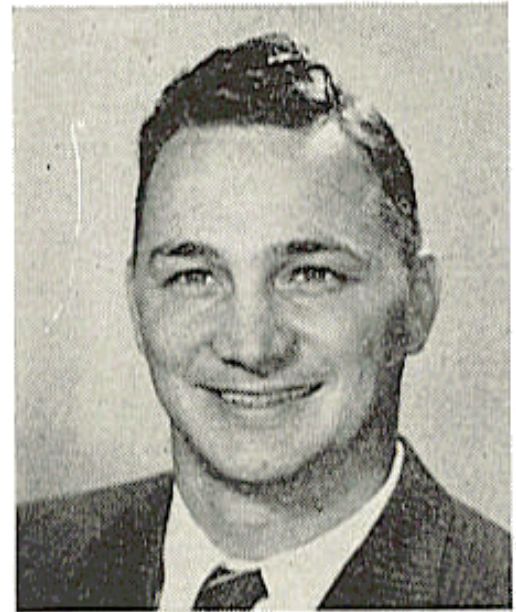
CHARLIE LaPRADD

Freshman Coach

One of the few undefeated football coaches in the country, Charlie LaPradd, a tall impressive person, has developed into an excellent football coach. Since becoming Florida State's head freshman football coach in 1959, LaPradd has led the Seminole freshmen to a 9-0 record. Charlie is quick to gain the respect of the young Seminoles.

LaPradd, All-America tackle at the University of Florida in 1952, is a native of St. Augustine. Charlie, 33, was graduated from the University of Florida in 1953 before serving in the Air Force. He was a graduate assistant at Florida State while working toward his master's degree in 1956. He became a full member of the staff in 1957. A keen student, LaPradd is handling the freshman team while working toward his doctorate degree.

Coach and Mrs. LaPradd (Nita) have two children: Charles Thomas, 9, and Lauren Lee, 7.



DON FAULS

Trainer



A native of Ithaca, N. Y., Don Fauls, 40, came onto the Florida State athletic scene in 1954. He has done an outstanding job easing Seminole aches and pains.

Starting his eighth year at Florida State, Fauls was graduated from Ithaca College in 1948 with a degree in physiotherapy and began his professional work with a hospital in Bath, N. Y. After serving as Bath for two years, Don went to Greensboro, N. C., as a trainer for the Greensboro Patriots of the Carolina Baseball League.

He worked during the off-season at the Gilmore Clinic in Greensboro and, after two years, joined the St. Louis

Cardinal chain as a trainer at Omaha, Neb.

Don and Mrs. Fauls (Marguerite) have three children: Donna, 10, and twins Danny and Jackie, 8.

TILLMAN DIXON

Equipment Manager

Florida State's "Mr. Dix" is Tillman Dixon, the hard-working equipment manager who has become so popular with Seminole athletes.

Beginning his ninth year in the position, Dixon is charged with the huge responsibility of keeping track of well over 5,000 pieces of football gear.

"Mr. Dix" formerly was on the staff of the Florida Industrial School for Boys. He is a native of Esto, Fla., and earned letters in football, basketball, and track at Madison, Fla., High School.

Florida State's equipment and locker-room setup, one of the most complete in the South, is all the design of Tillman. Seminole football players have access to 167 screened lockers, all of which he designed. Tillman is a Mason and a Shriner.



His wife's name is Johnnie.

1961 FRESHMAN FOOTBALL SCHEDULE

Date	Opponent	Site
Sept. 30	Miss. Southern	Columbus, Ga.
Nov. 4	Miami (Fla.)	St. Petersburg
Nov. 9	Furman	Tallahassee
Nov. 26	Fort Benning	Fort Benning, Ga.

1960 FRESHMAN RESULTS

FSU 26—Mississippi Southern	12
FSU 29—Furman	0
FSU 46—The Citadel	0
FSU 26—Florida	11
FSU 14—Miami	6

TICKET INFORMATION

Tickets for Florida State home football games may be purchased by letter enclosing check or money order covering price of tickets. Season tickets to all home games are \$21.00. A six-game season ticket, including five home games and the Florida (Gainesville) game, is \$25.00. All season tickets are preferred reserved seats.

Address ticket requests to:

ATHLETIC TICKET OFFICE

Florida State University

Tallahassee, Florida

Make all checks payable to Florida State University.

1961 TICKET PRICES

GEORGE WASHINGTON	\$4.00	FLORIDA	\$4.00
GEORGIA	\$5.00	MISSISSIPPI	\$4.00
RICHMOND	\$4.00	VIRGINIA TECH	\$4.00
THE CITADEL	\$4.00	KENTUCKY	\$4.00
MISS. SOUTHERN	\$4.00	HOUSTON	\$4.00

A black and white photograph capturing a moment of triumph for a football team. Several players in white jerseys and helmets are running through a tunnel formed by long, light-colored streamers. The player in the center foreground is wearing jersey number 70. To his right, another player wears number 5. On the far left, a player's jersey number 68 is partially visible. The background is filled with more players and spectators, all contributing to a sense of motion and celebration.

THE 1961 SEMINOLES

- the roster
- player profiles



1961 FLORIDA STATE

ENDS

No.	Name	Ht.	Wt.	Age	Cl.	High School	Hometown
86	**Jim Daniel	6-4	185	22	Sr.	Fulton	Atlanta, Ga.
---	Bill Dawson	6-3	198	18	So.	Valdosta	Valdosta, Ga.
89	Tony Franjesh	6-0	180	19	So.	St. Vincent	Akron, O.
85	**Fred Grimes	6-2	186	21	Sr.	Hialeah	Hialeah
88	Cliff Gunter	6-3	185	19	So.	Dothan	Dothan, Ala.
82	Bill Logay	6-1	195	18	So.	Southwest	Miami
87	Y. C. McNeese	6-0	210	25	Jr.	Leland	Leland, Miss.
83	Marv Riggs	6-1	185	19	So.	Bay	Panama City
84	Hank Sytsma	6-3	187	19	So.	Sarasota	Sarasota
81	Bill Tinsley	5-10	184	20	So.	Clay	Green Cove Springs
80	John Wachtel	6-0	188	19	So.	Canton Central	Massillon, O.

TACKLES

76	Max Andrews	6-2	190	19	So.	Rehobeth	Dothan, Ala.
79	*Mike Blazovich	6-0	220	20	Jr.	Bishop McDevitt	Utica, N. Y.
75	**Don Donatelli	6-2	233	20	Sr.	North Catholic	Pittsburgh, Pa.
73	**Steve Klesius	6-1	220	20	Sr.	Boca Ciega	St. Petersburg
70	*Tom Slicker	6-2	216	20	Jr.	Massillon	Massillon, O.
77	Ken Thompson	5-11	225	19	So.	Palatka	Palatka
74	Bill Tyre	6-2	206	21	Jr.	Seminole	Sanford
78	**Joe Verbinski	6-2	207	23	Sr.	Upper Moreland	Willow Grove, Pa.

GUARDS

67	Jerry Bruner	5-10	220	19	So.	North	Evansville, Ind.
68	Bill Daly	6-1	205	18	So.	Bishop Kenny	Jacksonville
66	*Frank DeFrancesco	5-11	203	21	Sr.	North	Miami
62	Ron Hammond	6-2	195	19	So.	Ironton	Ironton, O.
60	Ferrell Henry	6-1	192	19	So.	Miller	Colquitt, Ga.
61	Jeff Klores	6-0	208	20	So.	North	Miami
65	*John Levings	5-11	211	20	Jr.	Tech	Ft. Worth, Tex.
63	*Gene McDowell	5-11	184	21	Jr.	Waycross	Waycross, Ga.
64	*Jim Sims	6-0	195	22	Jr.	LaGrange	LaGrange, Ga.
69	Jim Wade	5-10	193	19	Jr.	Grady	Atlanta, Ga.

FOOTBALL ROSTER



CENTERS

No.	Name	Ht.	Wt.	Age	Cl.	High School	Hometown
54	Orrin Cope	6-1	220	19	So.	Pompano	Pompano Beach
50	*Bruce Darsey	5-11	208	20	Jr.	Largo	Largo
51	Larry Hood	6-0	194	21	Sr.	Lakeland	Lakeland
52	Chuck Robinson	5-11	210	19	So.	East Palestine	East Palestine, O.
53	Joe Rodgers	6-2	192	18	So.	John Carroll	Birmingham, Ala.

QUARTERBACKS

15	**Roy Bickford	6-0	178	21	Sr.	Bishop Curley	Miami
11	Charlie Calhoun	5-10	163	18	So.	Florida	Tallahassee
14	*Eddie Feely	5-7	159	20	Jr.	Gainesville	Gainesville
10	*Ed Trancygier	6-0	207	22	Jr.	Mt. Caramel	Wyandotte, Mich.

HALFBACKS

21	Larry Brinkley	6-0	175	19	So.	South	Willoughby, O.
13	*Happy Fick	5-9	173	20	Jr.	Edison	Miami
28	Don Floyd	6-1	180	19	So.	Madison	Madison
23	Jack Forehand	5-9	172	21	Sr.	Enterprise	Enterprise, Ala.
27	Tom Haney	6-1	170	19	So.	Bay	Panama City
29	*Tom Hillabrand	6-0	169	20	Jr.	Perrysburg	Perrysburg, O.
26	Keith Kinderman	6-0	195	21	Jr.	Crystal Lake	Chicago, Ill.
---	Doug Messer	6-0	182	19	So.	LaGrange	LaGrange, Ga.
---	Dick Raduenzel	6-2	175	19	So.	Highland	Highland, Ind.
22	*Ken Russom	6-0	170	20	Jr.	Gainesville	Gainesville
20	Dave Snyder	5-10	170	19	So.	Terry Parker	Jacksonville
25	Richie Weber	5-8	160	20	So.	Southwest	Miami
24	Buddy Yarbrough	6-2	185	20	So.	DeSoto	Arcadia

FULLBACKS

42	**Paul Andrews	5-9	185	20	Sr.	Greenville	Greenville
40	Buck Carlton	5-9	192	19	So.	Miami	Miami
43	*John McConnaughay	6-0	186	19	Jr.	Ocala	Ocala
41	Gene Roberts	6-1	205	19	So.	Santa Fe	High Springs
44	Marion Roberts	6-0	185	18	So.	Irwin	Ocilla, Ga.

*Denotes letters won.

THE TENTATIVE DEPTH CHART

(Based on Early Summer Estimates)

LE — Daniel	Gunter	McNeese
LT — Klesius	Slicker	Blazovich
LG — McDowell	Henry	Levings
C — Darsey	Robinson	Hood
RG — Sims	DeFrancesco	Bruner
RT — Donatelli	Tyre	Verbinski
RE — Grimes	Wachtel	Riggs
QB — Feely	Trancygier	Bickford
LH — Fick	Forehand	Weber
RH — Hillabrand	Yarbrough	Russom
FB — G. Roberts	M. Roberts	P. Andrews

NUMERICAL ROSTER

10 Trancygier	42 P. Andrews	73 Klesius
11 Calhoun	43 McConnaughay	74 Tyre
13 Fick	44 M. Roberts	75 Donatelli
14 Feely	50 Darsey	76 M. Andrews
15 Bickford	51 Hood	77 Thompson
20 Snyder	52 Robinson	78 Verbinski
21 Brinkley	53 Rodgers	79 Blazovich
22 Russom	54 Cope	80 Wachtel
23 Forehand	60 Henry	81 Tinsley
24 Yarbrough	61 Klores	82 Logay
25 Weber	62 Hammond	83 Riggs
26 Kinderman	63 McDowell	84 Sytsma
27 Haney	64 Sims	85 Grimes
28 Floyd	65 Levings	86 Daniel
29 Hillabrand	66 DeFrancesco	87 McNeese
--- Messer	67 Bruner	88 Gunter
--- Raduenzel	68 Daly	89 Franjesh
40 Carlton	69 Wade	--- Dawson
41 G. Roberts	70 Slicker	

PRONUNCIATION CHART

Blazovich	— BLAZE-o-vitch	Raduenzel	— Ra-DEN-zal
Donatelli	— Don-a-TELL-ee	Sytsma	— SITES-ma
Klesius	— KLEE-see-us	Trancygier	— TRAN-si-ger
Klores	— KLOR-is	Verbinski	— Ver-BIN-ski
Levings	— LEV-ings	Wachtel	— WOCK-tal
McConnaughay	— Ma-CONN-a-hay	Yarbrough	— YAR-bro

SEMINOLE PROFILES

LEFT ENDS



86 JIM DANIEL. Senior, 22, 6-4, 185, Atlanta, Ga. A gifted pass receiver who started as a soph, this experienced former Georgia All-Stater is looking toward a fine senior campaign. A versatile athlete who has posted a 12-3 career pitching record for FSU, Jim has been a top target for two years, snaring 32 passes for 434 yards and three TDs.

88 CLIFF GUNTER. Sophomore, 19, 6-3, 185, Dothan, Ala. A key performer on FSU's undefeated freshman team last year, Gunter is untested in varsity competition but shows good defensive promise. Has good range and will get early opportunity to play.



87 Y. C. McNEESE. Junior, 25, 6-0, 210, Leland, Miss. The "pappy" of the squad—he got late college start after service duty—this junior college grad will be counted on heavily as a defensive end. Showed in spring practice that he is big, strong, and willing.

RIGHT ENDS

85 FRED GRIMES. Senior, 21, 6-2, 186, Hialeah. Handicapped with leg injuries during much of career, Fred is one of college football's most "heads-up" defensive players who makes a habit of coming up with the BIG play. A constant harasser of opposing quarterbacks, Grimes also knows his way on offense, is a candidate for sectional and perhaps national honors.



80 JOHN WACHTEL. Sophomore, 19, 6-0, 188, Massillon, O. One of a number of first-year flankmen, Wachtel has potential to develop into one of the finest ends in FSU history. A freshman starter, he progressed rapidly in spring; needs game experience.

83 MARV RIGGS. Sophomore, 19, 6-1, 185, Panama City. A frequent starter as a yearling, Riggs shows talent as a possible fine receiver for future. The most valuable player on his Bay County High team in 1959, this math major will improve with hard work.



LEFT TACKLES



73 STEVE KLESIUS. Senior, 20, 6-1, 220, St. Petersburg. A "heady," experienced senior who has started for two years, Klesius has developed rapidly since a freshman. A former All-Stater at Boca Ciega in St. Petersburg, Steve has good speed for size, excellent attitude, is a solid team player.

70 TOM SLICKER. Junior, 20, 6-2, 216, Massillon, O. Regarded as perhaps the best offensive tackle on unbeaten '59 freshman squad, this hard-working product of football-wise Massillon has good future. Keen interest in game has brought Tom reward in steady improvement.



79 MIKE BLAZOVICH. Junior, 20, 6-0, 220, Utica, N. Y. An All-Conference choice as a high schooler at Euclid, O., Mike teamed with Slicker as "War Party" tackles in 1960. A fine straitaway blocker, he has great desire, wants to be a good one.

RIGHT TACKLES

75 DON DONATELLI. Senior, 20, 6-2, 233, Pittsburgh, Pa. A strong, consistent player with good initial charge, Don will be a starter for third straight year. A tireless worker, this stepping senior was a center as a freshman, has been a valuable team asset during past two seasons.



74 BILL TYRE. Junior, 21, 6-2, 206, Sanford. Surprisingly strong spring showing earned Bill plaudits as one of squad's most improved linemen. He served notice with tough, consistent play that he wants a front-line shot. He will get it.

78 JOE VERBINSKI. Senior, 23, 6-2, 207, Willow Grove, Pa. A big, fast, aggressive Pennsylvanian, Verbinski is one of swiftest FSU linemen. Two years experience should help Joe, who is agile and has excelled in the past as a demon on punt coverage.



LEFT GUARDS



63 GENE McDOWELL. Junior, 21, 5-11, 184, Waycross, Ga. The fastest lineman on Seminole squad, this Georgia product was named FSU's most valuable lineman during a brilliant spring. Equipped with the tools of speed and desire, Gene diagnoses plays well and will be an important linebacking key.

60 FERRELL HENRY. Sophomore, 19, 6-1, 192, Colquitt, Ga. Another fine former Georgia prep standout, Henry came along exceptionally fast in spring and should prove a valuable asset in the linebacking department. Needs game action, but could team with McDowell for solid linebacking duo.



65 JOHN LEVINGS. Junior, 20, 5-11, 211, Fort Worth, Tex. An excellent student, this Wisconsin-born athlete has fine speed and strength. Trimmed down from his 230-pound playing weight as a frosh tackle, Levings got early baptism under fire last year and could become standout, with determination and effort.

RIGHT GUARDS

64 JIM SIMS. Junior, 22, 6-0, 195, LaGrange, Ga. Consistency and all-out effort has been a trademark for this promising junior. A versatile Georgian who can play both guard and tackle, Jim may get a first-line crack at guard or could be called on for duty at tackle.



66 FRANK DeFRANCESCO. Senior, 21, 5-11, 203, Miami. They call this fellow "The Tank" and that about sums up the physical prowess of this former North Miami tackle-guard. A 1959 letterman, Frank is back after a year's absence and looked sharp on defense in spring despite the layoff.

67 JERRY BRUNER. Sophomore, 19, 5-10, 220, Evansville, Ind. This former Indiana All-Stater has good promise. A heavyweight wrestler in high school, Jerry has strength but needs to learn more through game experience.



CENTERS



50 BRUCE DARSEY. Junior, 20, 5-11, 208, Largo. Outstanding as a freshman center, Bruce will be back at old spot after turning in a fine job as a sophomore guard. An extremely consistent player, Darsey is key to difficult center problem and will carry heavy burden on his shoulders.



52 CHUCK ROBINSON. Sophomore, 19, 5-11, 210, East Palestine, O. A starting guard as a freshman. Robinson is a hard-nose type who gives 100 per cent on every play. Needs experience but proved potential with standout spring showing.



51 LARRY HOOD. Senior, 21, 6-0, 194, Lakeland. The only returning center with a minute's varsity experience, Larry got tested under fire last year. His experience should help and he will provide much-needed depth at the position.

QUARTERBACKS

14 EDDIE FEELY. Junior, 20, 5-7, 159, Gainesville. This former high school All-Stater electrified spring-game crowd with dazzling running, slick throwing. Smooth on the option play and as crafty as they come, Eddie overcomes small stature with tremendous desire. Hit 58 per cent of his passes last year as a soph, when he ran and passed for 642 yds.



10 ED TRANCYGIER. Junior, 22, 6-0, 207, Wyandotte, Mich. A powerful passer and runner, this red-haired Polish-German quarterback has the ability to hit the "home run" pass at any time, as he proved by throwing six TD aerals last year. Slowed in spring with an ankle injury, Ed was team's total-offense leader as a soph, running up 682 yards.



15 ROY BICKFORD. Senior, 21, 6-0, 178, Miami. A defensive specialist with the Renegades last year, Bickford is ticketed for more defensive duty this trip. He knows the offense, though, and is capable of stepping in to direct the attack on a moment's notice.



LEFT HALFBACKS



13 HAPPY FICK. Junior, 20, 5-9, 173, Miami. Hamstrung by injuries much of his sophomore season, Happy still finished as team's fourth best ground-gainer. He has great potential, with power and good speed. He could be a vital key to ground game.

23 JACK FOREHAND. Senior, 21, 5-9, 172, Enterprise, Ala. A fullback reserve last year, Jack was one of spring's biggest surprises, showing improved speed and running ability. He's determined to make his final year a good one.



25 RICHIE WEBER. Sophomore, 20, 5-8, 160, Miami. One of team's smallest backs, Richie is the swiftest. Named the most valuable freshman player last year, when he led the Baby Seminoles in rushing (6.4 average) and scoring (36 points), Weber is a breakaway type that needs very little daylight to slip through.



RIGHT HALFBACKS

29 TOM HILLABRAND. Junior, 20, 6-0, 169, Perysburg, O. An excellent receiver (No. 2 with 18 catches last year) who has a few wrinkles once he gets in open, Hillabrand has shown amazing improvement since a freshman. He was team's second best rusher in '60, averaging four yards a carry, but is most dangerous as a receiver.



24 BUDDY YARBROUGH. Sophomore, 20, 6-2, 185, Arcadia. A quarterback as a freshman, Buddy has good size and range for a halfback. Although untested and needing experience, he could come through as a capable pass receiver and runner.



22 KEN RUSSOM. Junior, 20, 6-0, 170, Gainesville. Coaches feel this former Gainesville teammate of Eddie Feely has great defensive potential. He moved in as a soph last year and did creditable job on defensive-gearred Renegades. He can catch passes, too.



FULLBACKS



41 GENE ROBERTS. Sophomore, 19, 6-1, 205, High Springs. A fearless runner who has the size, Gene also has the potential to become what many people believe will be one of the best fullbacks in Seminole history. As a soph, he will have major offensive responsibilities in helping make FSU's flexible T offense go.



44 MARION ROBERTS. Sophomore, 18, 6-0, 185, Ocilla, Ga. This wiry Georgian, no relation to Gene Roberts, is a fierce competitor who impressed coaches during spring with gutty determination despite injuries. He's already one of team's best blockers and could become a dependable runner.



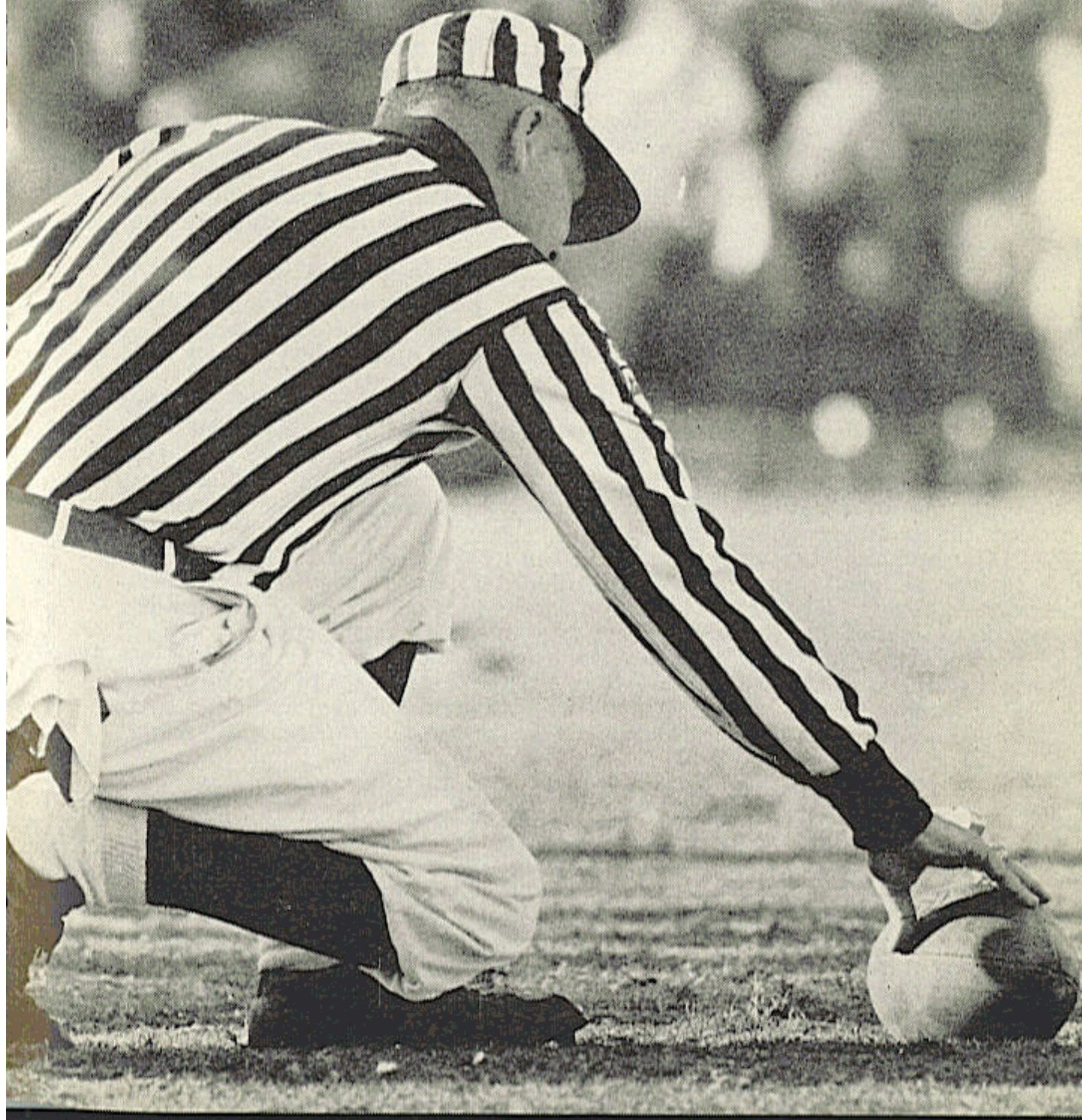
42 PAUL ANDREWS. Senior, 20, 5-9, 185, Greenville. A front-line player for two years, Paul is the squad's "Old Reliable." He is consistent, a good blocker, could perform some punting chores if called on, and a capable ball-carrier. Senior year could be his finest.

1961 TRAVEL PLANS

Date	Game	Travel	Team Quarters
Sept. 30	Florida	Bus	Holiday Inn Silver Springs, Fla.
Oct. 7	Mississippi	Air	To be determined
Oct. 28	Virginia Tech	Air	Patrick Henry Hotel Roanoke, Va.
Nov. 4	Kentucky	Air	Phoenix Hotel Lexington, Ky.
Nov. 25	Houston	Air	To be determined

THE COMING SEASON

- the outlook
- the opposition



THE OUTLOOK IN '61

By COACH BILL PETERSON

It is going to be a hurry-up assignment getting ready for our Sept. 16 opener against George Washington. We will have only 13 days of practice before the kickoff and we are not overlooking the fact that GW won its last four games last season and figures to ride into Tallahassee eager under a new coach.

Our 1961 team should be improved over our '60 squad, principally because our younger players have a year of experience. A great deal will depend on how we emerge from our first four games, a lineup I consider to be among the toughest "first four" in the country. We know how Dizzy Dean must have felt when facing "murderer's row." After GW, we must face (on successive Saturdays) Florida, Mississippi, and Georgia. The rest of the schedule—Richmond, Virginia Tech, Kentucky, The Citadel, Mississippi Southern, and Houston—presents virtually the same challenge. We can't help but be concerned about the mental and physical aspects of our '61 team, particularly through the first four games.

From what we saw in spring practice, our offense should be better. Much will depend on how our passing game develops. We could be greatly improved up the middle, with experienced senior Paul Andrews and very promising sophomores Gene Roberts and Marion Roberts at fullback.

Our quarterback position appears to be our best and could develop into as good as there is in the South. The passing and play-calling of both juniors Eddie Feely and Ed Trancygier is improved over last season. Our halfbacks should have better breakaway ability than last year. Happy Fick, Tom Hillabrand, Jack Forehand, and Richie Weber are the most promising runners.

Our end and center positions have the least experience. Only two lettermen, offensive specialist Jim Daniel and defense-wise Fred Grimes, return at end. Sophs must backstop those veterans. There are no lettermen at center, which we will fortify by moving guard Bruce Darsey to help converted guard Chuck Robinson and senior Larry Hood. Our interior line is more experienced than last year and should be adequate. Don Donatelli, Steve Klesius, and Joe Verbinski are senior tackles and guard Gene McDowell was named the most valuable lineman in spring drills.

I believe in using as many players as possible. We thought we got good mileage out of our three-team system in 1960, and definitely would like to continue the three-team idea this year. It depends, of course, upon the development of our sophomores, personnel adjustments, and a minimum of injuries.

Our players have the desire to become a good football team. One thing for sure. We're going to pass . . . pass . . . pass! And if you are watching from the stands this fall, we hope you'll see some Seminole connections in the end zone.

September 16:

GEORGE WASHINGTON

8:00 P.M.

At Tallahassee

COACHING STAFF: Jim Camp, head coach; Bobby Collins, backfield coach; Bill Dooley, line coach; Ray Hanken, end coach; Bob Frulla, head freshman coach.

NICKNAME: Colonials.

COLORS: Buff and Blue.

PUBLICITY DIRECTOR: Bill Dismer.

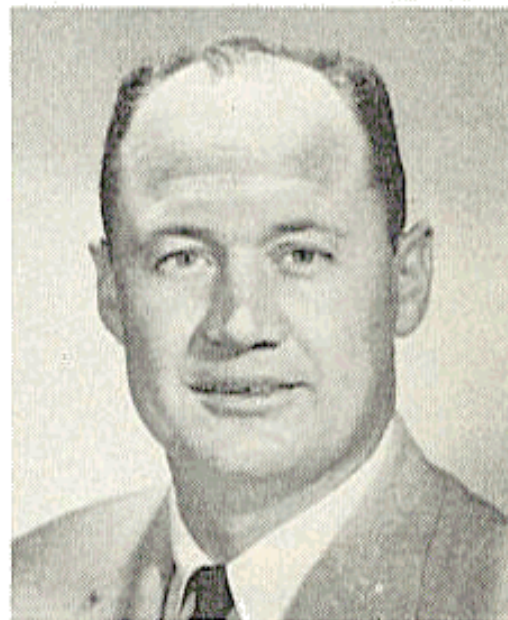
ENROLLMENT: 9,500.

RETURNING LETTERMEN: 14.

1960 RECORD: Won 5, Lost 3, Tied 1.

CONFERENCE: Southern.

SERIES: First Meeting.



1961 OUTLOOK: A strong defensive team, eager to resume where it left off last year with four straight victories, appears in the cards for George Washington. The Colonials impressed new coach Jim Camp, Murray Warmath's right-hand man for the last seven years at Minnesota, with unusual spring aggressiveness.

Fourteen lettermen are back from the 1960 team that fashioned a 5-3-1 record and yielded only 14 points in its last five games—single touchdowns to the Air Force and Virginia Tech. With three possible exceptions, GW will open against FSU with an all-veteran team.

Bill Hardy, last year's No. 1 signal-caller, and Frank Pazzaglia, potentially a great passer, will direct the winged-T attack. Dick Drummond, a transfer from Iowa, is a 208-pound halfback who gained 161 yards in 13 spring-game carries. End Andy Guida, an all-Southern Conference choice, and tackles Steve Bartnicki (captain) and 230-pound soph Dick Myers are solid linemen.

GW's 1961 SCHEDULE

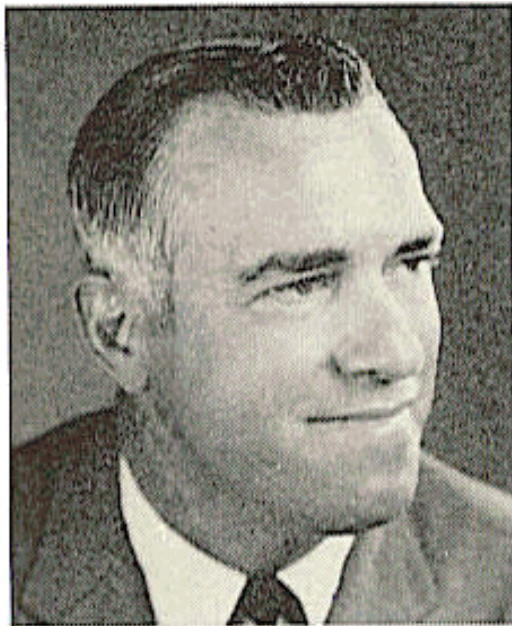
1960 RECORD (5-3-1)

Sept. 16	at FLORIDA STATE	7	Florida	30
Sept. 23	at The Citadel	19	The Citadel	14
Sept. 30	at Furman	9	William and Mary	19
Oct. 7	VMI	10	VMI	34
Oct. 14	at Richmond	0	Boston U.	0
Oct. 20	William and Mary	20	Air Force	6
Oct. 27	Boston U.	16	Richmond	0
Nov. 4	West Virginia	21	Virginia Tech	8
Nov. 18	at Virginia Tech	26	West Virginia	0

September 30:

FLORIDA At Gainesville

2:00 P.M.



COACHING STAFF: Ray Graves, head coach; Jack Green, Pepper Rodgers, Gene Ellenson, Jim Powell, John Donaldson, John Eibner, Earl Scarborough, Jimmy Dunn, Sterling DuPree, assistant coaches; Dave Fuller, head freshman coach.

NICKNAME: Fighting Gators.
COLORS: Orange and Blue.
PUBLICITY DIRECTOR: Jimmy Gay.
ENROLLMENT: 13,100.
RETURNING LETTERMEN: 23.
1960 RECORD: Won 9, Lost 2.
CONFERENCE: Southeastern.
SERIES: Florida leads, 3-0.

1961 OUTLOOK: A whopping 23 lettermen return from Florida's surprising 1960 team that won nine of 11 games that included a Gator Bowl triumph over Baylor. And if the Gators can hold the line defensively despite experience problems up front, they could be knocking on the SEC championship door again.

A great running game, provided by standout halfbacks Bob Hoover, Dick Skelly, Lindy Infante, Ron Stoner, and Bruce Starling, should cause opponents many anxious moments. Larry Libertore, 138-pound SEC "Sophomore of the Year" in '60, has a year of experience at quarterback and is ably supported by junior Bobby Dodd. Fullback is solid with all-star candidate Don Goodman and Cecil Ewell.

Captain Jim Beaver is an experienced tackle. Five letterman ends return, and soph end Russ Brown bids strongly for a starting role.

FLORIDA'S 1961 SCHEDULE

1960 RECORD (9-2)

Sept. 23	Clemson	30	George Washington	7
Sept. 30	FLORIDA STATE	3	FLORIDA STATE	0
Oct. 6	at Tulane	18	Georgia Tech	17
Oct. 14	at Rice	0	Rice	10
Oct. 21	at Vanderbilt	12	Vanderbilt	0
Oct. 28	LSU	13	LSU	10
Nov. 4	at Georgia Tech	7	Auburn	10
Nov. 11	..	Georgia at Jacksonville	22	Georgia	14
Nov. 25	at Auburn	21	Tulane	6
Dec. 2	Miami	18	Miami	0
			13	Baylor	12

October 7:

MISSISSIPPI
At Oxford

2:00 P.M.

COACHING STAFF: John H. Vaught, head coach; Frank M. Kinard, James E. Poole, Johnny Cain, John A. Hovious, J. W. Davidson, Tom K. Swayze, Ray S. Poole, Roland Dale, B. L. Graham, assistant coaches.

NICKNAME: Rebels.

COLORS: Cardinal Red and Navy Blue.

PUBLICITY DIRECTOR: Billy Gates.

ENROLLMENT: 5,702.

RETURNING LETTERMEN: 23.

1960 RECORD: Won 10, Lost 0, Tied 1.

CONFERENCE: Southeastern.

SERIES: First Meeting.



1961 OUTLOOK: Ole Miss last season struck pay dirt on three fronts—as the Football Writers national collegiate champions, the Southeastern Conference champions, and the 1961 Sugar Bowl champions. Although 23 lettermen return, the Rebels are rebuilding after the graduation loss of 1960's starting backfield, heading by All-America QB Jake Gibbs, and six key forwards, including end Johnny Brewer.

With a two-year 20-1-1 record as an impetus, this autumn's infantry attack should be more varied and the passing good. The interior defense will be rugged, with speed and quickness abounding on the flanks.

Team speed should match that of the unbeaten '60 Rebs. Because of the graduation of Gibbs and center Allen Green, Reb punting does not figure to approach 1960 effectiveness. A replacement for Green, the field goal and conversion kicker, will have to be developed.

MISSISSIPPI'S 1961 SCHEDULE

1960 RECORD (10-0-1)

Sept. 23 Arkansas at Jackson	42 Houston	0
Sept. 30 at Kentucky	21 Kentucky	6
Oct. 7 FLORIDA STATE	31 Memphis State	20
Oct. 14 Houston at Memphis	26 Vanderbilt	0
Oct. 21 Tulane at Jackson	26 Tulane	13
Oct. 28 Vanderbilt	10 Arkansas	7
Nov. 4 at LSU	6 LSU	6
Nov. 11 Chattanooga	45 Chattanooga	0
Nov. 18 Tennessee at Memphis	24 Tennessee	3
Dec. 2 at Mississippi State	35 Mississippi State	9
		14 Rice	6

October 14:

GEORGIA At Tallahassee

8:00 P.M.



COACHING STAFF: Johnny Griffith, head coach; John Gregory, Bob Ford, Bobby Proctor, Charley Trippi, Wyatt Posey, John Tillitski, assistant coaches.

NICKNAME: Bulldogs.

COLORS: Red and Black.

PUBLICITY DIRECTOR: Dan Magill.

ENROLLMENT: 7,500.

RETURNING LETTERMEN: 29.

1960 RECORD: Won 6, Lost 4.

CONFERENCE: Southeastern.

SERIES: Georgia leads, 5-0.

1961 OUTLOOK: Steamed up under new Coach Johnny Griffith, Georgia expects to be rugged in '61, improved on defense and in all phases of line play. Four regulars return from last year's No. 1 line and six of seven are back from last year's No. 2 line.

The backfield is not likely to be nearly as dangerous because graduation took All-America quarterback Francis Tarkenton and all-conference halfbacks Fred Brown and Bobby Walden, the punting star. Only three experienced backs return: Bill Godfrey, regular fullback in 1959 and 1960; alternate captain Bill McKenny, right half, and Wayne Taylor, No. 2 fullback last year.

Soph Larry Rakestraw (6-1, 190) is a fine quarterback prospect and if he catches on, the Bulldogs will again be a dangerous passing team. Junior quarterback Jake Saye will be the top punter. Georgia is counting heavily again on great place-kicker Durward Pennington, who led team in scoring the last two seasons.

GEORGIA'S 1961 SCHEDULE

1960 RECORD (6-4)

Sept. 23	Alabama	6.....	Alabama21
Sept. 30	Vanderbilt	18.....	Vanderbilt 7
Oct. 7	South Carolina	38.....	South Carolina 6
Oct. 14 ... at	FLORIDA STATE	3.....	Southern California10
Oct. 21 ...	Miss. State at Atlanta	20.....	Mississippi State17
Oct. 28	Kentucky	17.....	Kentucky13
Nov. 3	at Miami	45.....	Tulsa 7
Nov. 11 ...	Florida at Jacksonville	14.....	Florida22
Nov. 18	Auburn	6.....	Auburn 9
Dec. 2	at Georgia Tech	7.....	Georgia Tech 6

October 21:

**RICHMOND
At Tallahassee**

8:00 P.M.

COACHING STAFF: Edwin J. Merrick, head coach; Dick Humbert, end coach; Carl Wise, backfield coach; Hal Hunter, line coach.

NICKNAME: Spiders.

COLORS: Red and Blue.

PUBLICITY DIRECTOR: Walt Drewy.

ENROLLMENT: 4,968.

RETURNING LETTERMEN: 16.

1960 RECORD: Won 3, Lost 6, Tied 1.

CONFERENCE: Southern.

SERIES: Florida State leads, 2-0.



1961 OUTLOOK: With its largest squad and toughest schedule in history, Richmond will be deeper, faster, and more versatile. Eight of 16 lettermen will be in the starting lineup with sophs opening at three positions.

The greatest Spider asset is halfback depth. All-Southern halfback Earl Stoudt (173) is backed by such swifties as juniors Stewart Percy, Brent Vann, and Steve Stevenson. QB Mel Rideout is an excellent passer and soph Bill Sommers runs the option well. Sophs Larry Deco (215) and Tommy Peacock (205) are hard-running fullbacks who can block.

Co-captain Art McGee, George Rapp, and 6-5 soph John Hilton are capable ends. There's strength at center with senior Don Christman (215) and Jack Yaffa on hand. Senior Joe Pesansky (223) and soph Al Mitchell (217) are the best of the tackles. Junior Ben Davis is the lone experienced guard.

RICHMOND'S 1961 SCHEDULE

1960 RECORD (3-6-1)

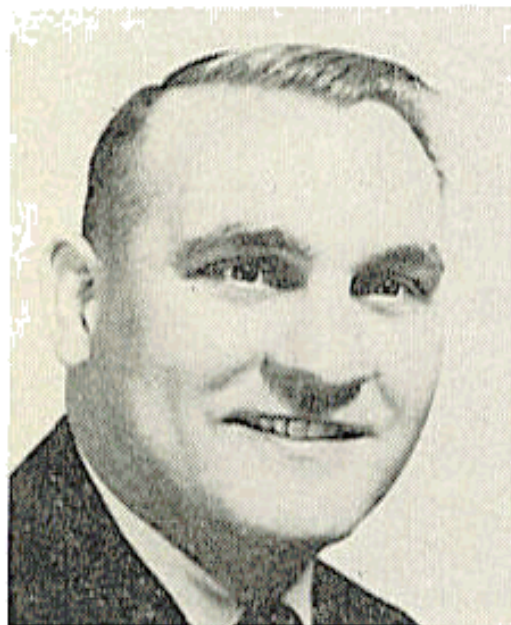
Sept. 16 at West Virginia	0.....	FLORIDA STATE 28
Sept. 23 at Army	6.....	VMI 21
Sept. 29 VMI	6.....	West Virginia 6
Oct. 7 at The Citadel	12.....	The Citadel 24
Oct. 14 George Washington	35.....	Davidson 6
Oct. 21 at FLORIDA STATE	0.....	Virginia Tech 20
Oct. 28 Davidson	0.....	George Washington 16
Nov. 4 Virginia Tech	35.....	Furman 28
Nov. 11 at Alabama	7.....	East Carolina 22
Nov. 23 William and Mary	19.....	William and Mary 0

October 28:

VIRGINIA TECH

2:00 P.M.

At Blacksburg



COACHING STAFF: Jerry Claiborne, head coach; Bill Conde, Cecil Ingram, Jack Prater, John Shelton, assistant coaches.

NICKNAME: Gobblers.

COLORS: Orange and Maroon.

PUBLICITY DIRECTOR: Wendell Weisend.

ENROLLMENT: 5,000.

RETURNING LETTERMEN: 15.

1960 RECORD: Won 6, Lost 4.

CONFERENCE: Southern.

SERIES: Florida State leads, 3-2.

1961 OUTLOOK: Virginia Tech's 1961 team will be the smallest—in numbers, size, and experience—of any Gobbler team during the past eight years. But new Coach Jerry Claiborne, erstwhile top aide of Bear Bryant of Alabama, instilled enough enthusiasm during the spring that the Techmen figure to give a good account of themselves.

Always a tough opponent for FSU, the Gobblers have scheduled the Seminoles for homecoming at Blacksburg. Tech's team speed will be fair, but the Gobblers lack depth and experience in the interior line. Gone is crackerjack guard-linebacker Mike Zeno.

Unless senior Warren Price returns to school and becomes eligible, there won't be an experienced quarterback. Six of the 15 lettermen are backs, however.

**VIRGINIA TECH'S
1961 SCHEDULE**

1960 RECORD (6-4)

Sept. 16	W. & M. at Roanoke
Oct. 7	at West Virginia
Oct. 14	at Tulane
Oct. 21	Virginia at Roanoke
Oct. 28	FLORIDA STATE
Nov. 4	at Richmond
Nov. 11	at Wake Forest
Nov. 18	George Washington
Nov. 23	VMI at Roanoke

14.....	North Carolina State	29
15.....	West Virginia	0
7.....	Clemson	13
22.....	Wake Forest	13
27.....	William and Mary	0
40.....	Virginia	6
20.....	Richmond	0
7.....	Davidson	9
8.....	George Washington	21
13.....	VMI	12

November 4:

**KENTUCKY
At Lexington**

2:00 P.M.

COACHING STAFF: Blanton Collier, head coach; Ermal Allen, John North, Bill Arnsparger, Chuck Knox, Ed Rutledge, George Sengel, Norm Deeb, Joe Shannon, assistant coaches.

NICKNAME: Wildcats.

COLORS: Blue and White.

PUBLICITY DIRECTOR: Ken Kuhn.

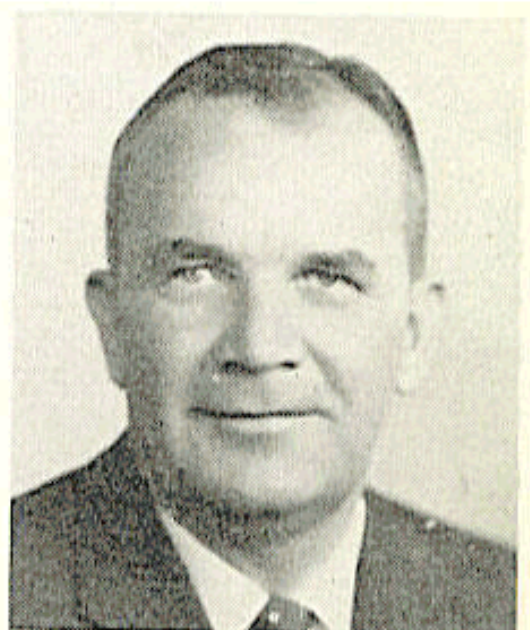
ENROLLMENT: 10,500.

RETURNING LETTERMEN: 17.

1960 RECORD: Won 5, Lost 4, Tied 1.

CONFERENCE: Southeastern.

SERIES: Kentucky leads, 1-0.



1961 OUTLOOK: Last year's Kentucky outfit was a good one, better than the 5-4-1 record might indicate, and there is a surprising amount of optimism in the Wildcat camp that a predominantly sophomore-junior group can improve on that chart.

Seventeen letter-winners return, including sparkling Jerry Woolum, heir apparent to the top quarterback job. Backing him up are much-improved junior John Rampulla and promising soph Elmer Jackson. The halfback posts likely will be held down by Bill Ransdell and Gary Steward, with Miamian Darrell Cox a bright soph prospect. Gary Cochran, a 200-pounder, furnishes experience at fullback.

The 'Cats have a solid front line of at least one letterman at every position. The roster of line veterans includes ends Tom Hutchinson and Dave Gash, tackles Junior Hawthorne, Bob Butler, and Wayne Dixon, centers Irv Goode and John Mutchler, and four letterman guards.

KENTUCKY'S 1961 SCHEDULE

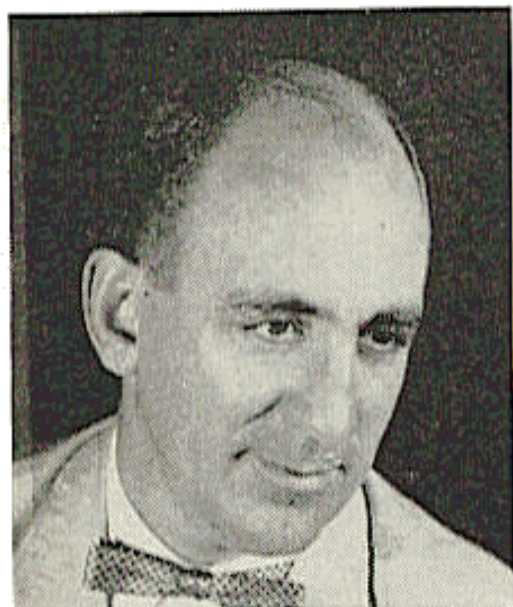
1960 RECORD (5-4-1)

Sept. 23 Miami (Fla.)	13 Georgia Tech	23
Sept. 30 Mississippi	6 Mississippi	21
Oct. 7 at Auburn	7 Auburn	10
Oct. 14 Kansas State	55 Marshall	0
Oct. 21 at LSU	3 LSU	0
Oct. 28 at Georgia	13 Georgia	17
Nov. 4 FLORIDA STATE	23 FLORIDA STATE	0
Nov. 11 at Vanderbilt	27 Vanderbilt	0
Nov. 18 Xavier	49 Xavier	0
Nov. 25 Tennessee	10 Tennessee	10

November 11:

THE CITADEL
At Tallahassee

8:00 P.M.



COACHING STAFF: Eddie Teague, head coach; Pride Ratterree, Hank Witt, John Guiton, Jim Newsome, Jack Hall and Bob Patton, assistant coaches.

NICKNAME: Bulldogs or Cadets.

COLORS: Blue and White.

PUBLICITY DIRECTOR: Bill Stewart.

ENROLLMENT: 2,000.

RETURNING LETTERMEN: 21.

1960 RECORD: Won 8, Lost 2, Tied 1.

CONFERENCE: Southern.

SERIES: Florida State leads, 2-0-1.

1961 OUTLOOK: The Citadel's Tangerine Bowl champions have won 16 games while losing only four over the past two campaigns and figure to make plenty of noise in '61.

Coach Eddie Teague can smile about an experienced backfield and veteran ends, but is not so chipper when it comes to the interior line, a major factor in the blanking of five opponents last season. Back in the fold are the first four halfbacks, led by Earley Eastburn and Tommy Edwards, and the top four ends, led by kicking specialist Bill Gilgo. Bill Whaley returns at quarterback and he can look to newcomer junior Sid Mitchell for help.

There should be good speed and adequate size, but the middle of the line is a problem. There are no experienced centers, but guard Ed Harrington could prove a solid anchor.

**THE CITADEL'S
1961 SCHEDULE**

Sept. 16 at Memphis State
Sept. 23 George Washington
Sept. 30 Davidson
Oct. 7 Richmond
Oct. 14 at William and Mary
Oct. 21 Furman
Oct. 28 at Xavier
Nov. 4 at VMI
Nov. 11 at FLORIDA STATE
Nov. 18 Arkansas State

1960 RECORD (8-2-1)

19 Newberry	0
14 George Washington	19
21 Davidson	15
0 FLORIDA STATE	0
24 Richmond	12
7 Furman	6
27 Presbyterian	0
14 William and Mary	0
6 VMI	20
22 Arkansas State	21
27 Tennessee Tech	0

November 18:

MISSISSIPPI SOUTHERN

2:30 P.M.

At Tallahassee (Homecoming)

COACHING STAFF: Thad Vann, head coach; C. J. Taylor, Maxie Lambright, Tom Pratt, assistant coaches.

NICKNAME: Southerners.

COLORS: Black and Gold.

PUBLICITY DIRECTOR: Ace Cleveland.

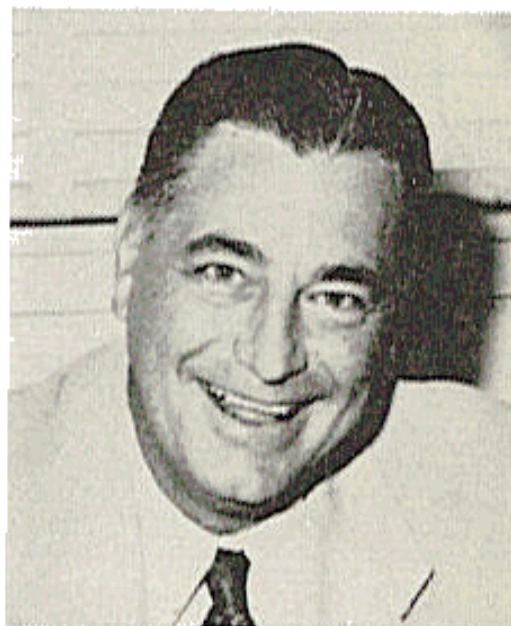
ENROLLMENT: 4,367.

RETURNING LETTERMEN: 18.

1960 RECORD: Won 6, Lost 4.

CONFERENCE: Independent.

SERIES: Mississippi Southern leads, 5-2.



1961 OUTLOOK: Coach Pie Vann, who has never experienced a losing season, said at the end of spring drills: "We should be improved. I liked the looks of our club in the spring game."

From its 1960 team that won six of 10 games, Southern will have virtually the same personnel at end, center, quarterback, and fullback. Seniors Don Fuell and Morris Meador, plus ex-junior college stickout Billy Coleman and redshirt Jim Berry, comprise an excellent corps of quarterbacks. Wendell (Moose) Campbell and Dan Pugh are senior fullbacks. Johnny Sklopan, Mike Olander, and Jim Harvard are strong halfbacks.

Up front, Vann sees it this way: Ends—"Added experience should help;" tackles—"Some stronger, depth better;" guards "Lost top four men but should be strong physically;" centers—"Definitely should be better."

MISSISSIPPI SOUTHERN'S

1961 SCHEDULE

Sept. 16	Arlington State
Sept. 30	.. at	S'western Louisiana
Oct. 7	Chattanooga
Oct. 14 at	Memphis State
Oct. 21	Arkansas State
Oct. 28	Abilene Christian
Nov. 4	N.C. State at Mobile
Nov. 11 at	Louisiana Tech
Nov. 18	... at	FLORIDA STATE
Nov. 25	Trinity

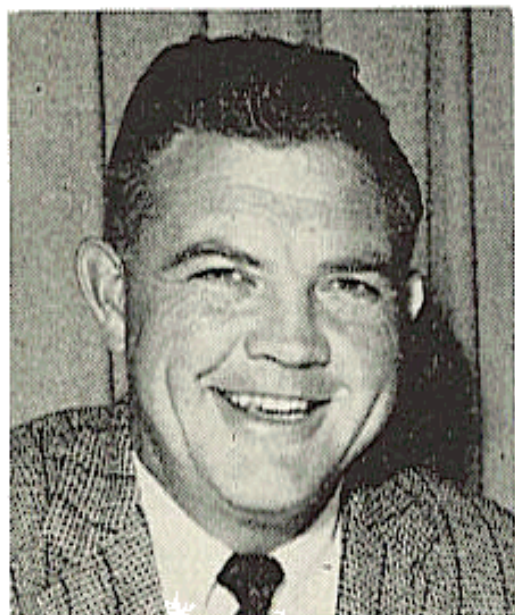
1960 RECORD (6-4)

27.....	Hardin-Simmons	0
28.....	West Texas State	18
16.....	Trinity	0
15.....	FLORIDA STATE	13
13.....	North Carolina State	20
34.....	Abilene Christian	8
13.....	Arkansas State	14
7.....	Louisiana Tech	10
6.....	Memphis State	7
30.....	Chattanooga	6

November 25:

HOUSTON At Houston

2:00 P.M.



COACHING STAFF: Harold Lahar, head coach; Jasper Flanakin, R. H. Hill, L. L. Hill, Pete McCulley, Don Watson, Andy Zobel, assistant coaches.

NICKNAME: Cougars.

COLORS: Scarlet and White.

PUBLICITY DIRECTOR: Ted Nance.

ENROLLMENT: 11,000.

RETURNING LETTERMEN: 27.

1960 RECORD: Won 6, Lost 4.

CONFERENCE: Independent.

SERIES: Houston leads, 1-0.

1961 OUTLOOK: Playing their toughest schedule ever, the Cougars have more experienced players and better backfield depth than last year, when they posted a 6-4 record. The interior line is a team strongpoint and, overall, the Cougars will be slightly smaller but faster.

Major problems appear to be lack of depth at guard and end, a shortage of experienced linebackers, and the necessity of using several offensive and defensive specialists. Standout newcomers are sophomores Clem Beard, a 6-3, 195-pound end, and Billy Smith, 6-1, 175-pound halfback.

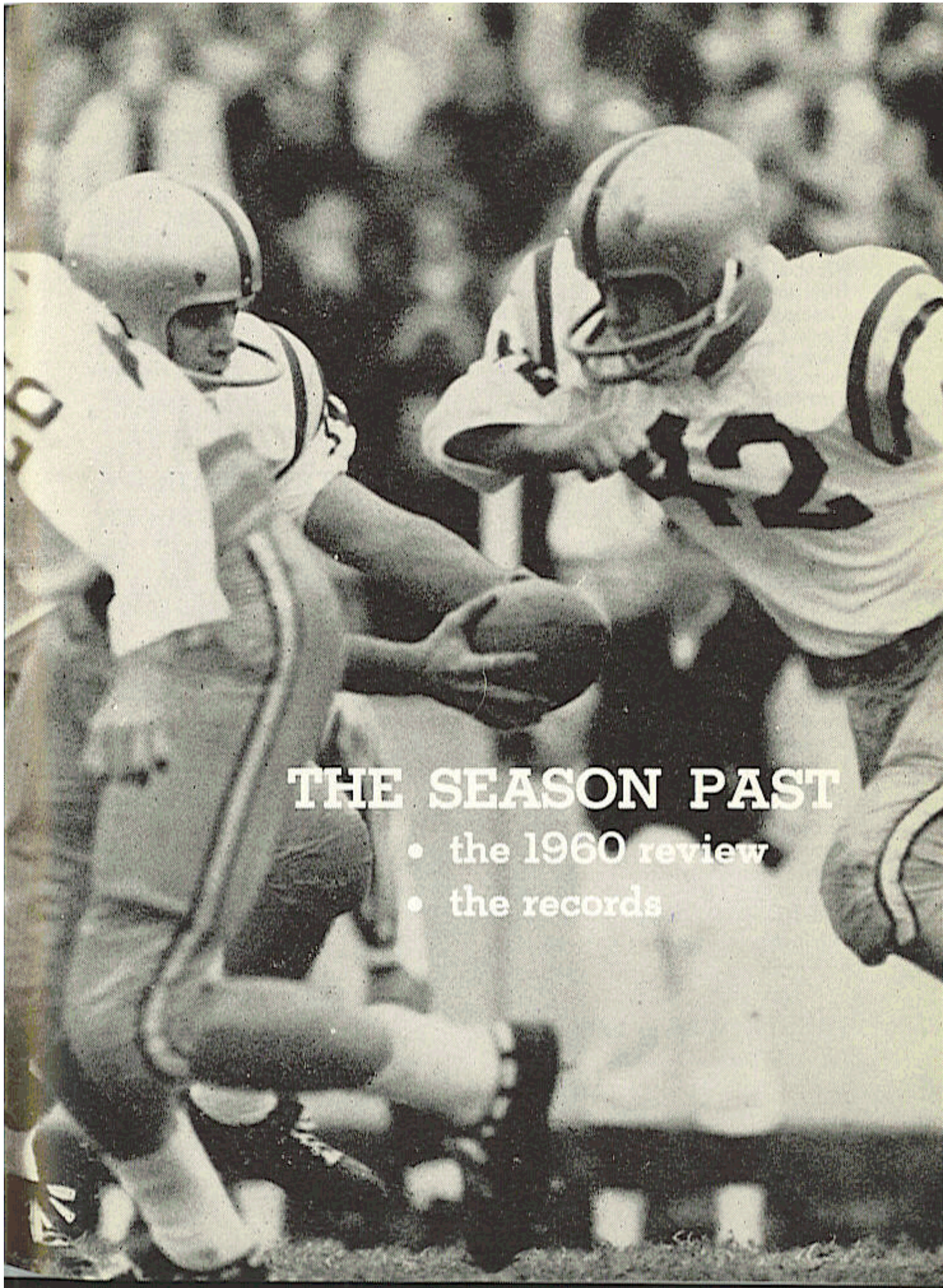
Top returning players are Danny Birdwell, 220-pound senior center; Ken Bolin, 165-pound breakaway threat at halfback; Murdoch Hooper, 225-pound senior tackle; Joe Bob Isbell, 215-pound senior guard, and Larry Lindsey, 185-pound halfback who played quarterback a year ago.

HOUSTON'S 1961 SCHEDULE

Sept. 23 at Texas A & M
Sept. 30 Mississippi State
Oct. 7 Boston College
Oct. 14	.. Mississippi at Memphis
Oct. 21 at Cincinnati
Oct. 28 Alabama
Nov. 11 at Tulsa
Nov. 18 at Oklahoma State
Nov. 25 FLORIDA STATE
Dec. 2 Oregon State

1960 RECORD (6-4)

0.....	Mississippi42
14.....	Mississippi State10
20.....	Oregon State29
17.....	Texas A & M 0
12.....	Oklahoma State 7
0.....	Alabama14
41.....	North Texas State16
14.....	Cincinnati 0
7.....	FLORIDA STATE 6
16.....	Tulsa26



THE SEASON PAST

- the 1960 review
- the records

1960 GAME-BY-GAME STATISTICS

FSU 28, RICHMOND 0

	FSU RICH.	
First Downs	19	10
Rushing Yardage	218	68
Passing Yardage	108	85
Passes	8-19	8-19
Passes Intercepted By	3	0
Punts	6-36.0	8-35.8
Fumbles Lost	1	1
Yards Penalized	60	82
FLA. STATE	0 7 8 13—28	
RICHMOND	0 0 0 0—0	

FSU scoring: Grimes 3 pass from Trancygier (Kestner kick); Feely 3 run (Feely run); Trancygier 1 run (Bronson kick); Romeo 36 pass from Trancygier (pass failed).

FSU 0, FLORIDA 3

	FSU FLA.	
First Downs	14	16
Rushing Yardage	108	262
Passing Yardage	99	18
Passes	11-26	3-10
Passes Intercepted By	0	2
Punts	6-33.3	6-26.8
Fumbles Lost	0	1
Yards Penalized	35	57
FLA. STATE	0 0 0 0—0	
FLORIDA	0 3 0 0—3	

Florida scoring: Cash, 35 field goal.

FSU 14, WAKE FOREST 6

	FSU WF	
First Downs	10	19
Rushing Yardage	103	136
Passing Yardage	73	135
Passes	6-9	13-22

Passes Intercepted By	0	0
Punts	6-33.7	4-30.3
Fumbles Lost	0	2
Yards Penalized	49	31
FLA. STATE	0 7 0 7—14	
WAKE FOREST	6 0 0 0—6	

FSU scoring: Tillman 17 pass from Trancygier (Kestner kick); B. Whitehead 1 run (Kestner kick).

Wake Forest scoring: Ball 3 pass from Snead (kick failed).

FSU 0, THE CITADEL 0

	FSU CIT.	
First Downs	16	16
Rushing Yardage	165	183
Passing Yardage	100	95
Passes	8-15	9-18
Passes Intercepted By	1	1
Punts	5-27.2	4-26.8
Fumbles Lost	0	1
Yards Penalized	60	45
FLA. STATE	0 0 0 0—0	
THE CITADEL	0 0 0 0—0	

FSU 13, MISS. SOUTH'N 15

	FSU MS	
First Downs	13	13
Rushing Yardage	121	232
Passing Yardage	123	99
Passes	10-20	7-12
Passes Intercepted By	1	1
Punts	4-33.5	3-28.0
Fumbles Lost	2	2
Yard Penalized	65	56
FLA. STATE	0 0 6 7—13	
MISS. SOUTH'N	7 8 0 0—15	

FSU scoring: Trancygier 1 run (pass failed); Andrews 1 run (Kestner kick).

Miss. Southern scoring: Morrow 19 run (Larson kick); Fuell 1 run (Dedwylder pass from Fuell).

FSU 22, WM. & MARY 0

	FSU W&M			
First Downs	14		5	
Rushing Yardage	194		137	
Passing Yardage	47		0	
Passes	7-17		0-7	
Passes Intercepted By	1		1	
Punts	6-39.5		9-31.0	
Fumbles Lost	2		1	
Yards Penalized	25		60	
FLA. STATE	14	0	0	8—22
WM. & MARY	0	0	0	0—0

FSU scoring: B. Whitehead 3 run (Kestner kick); Fick 7 run (Kestner kick); Fick 18 pass from Trancygier (Tillman pass from Trancygier).

FSU 0, KENTUCKY 23

	FSU KY.			
First Downs	12		21	
Rushing Yardage	78		258	
Passing Yardage	109		189	
Passes	9-25		12-21	
Passes Intercepted By	0		4	
Punts	6-38.0		2-39.0	
Fumbles Lost	2		2	
Yards Penalized	32		98	
FLA. STATE	0	0	0	0—0
KENTUCKY	7	7	0	9—23

Kentucky scoring; Bird 3 run (Mayfield kick); Hutchinson 37 pass from Eisaman (Mayfield kick); Mayfield 32 field goal; Hutchinson 10 interception return (pass failed).

FSU 7, MIAMI 25

	FSU MIA.			
First Downs	19		14	
Rushing Yardage	156		141	
Passing Yardage	169		111	
Passes	19-28		9-11	
Passes Intercepted By	0		2	
Punts	2-42.0		4-41.0	
Fumbles Lost	2		1	
Yards Penalized	29		60	
FLA. STATE	0	0	7	0—7
MIAMI	3	0	7	15—25

FSU scoring: Feely 21 run (Kestner kick).

Miami scoring: Dangel 42 field goal; Yanda 51 interception return (Dangel kick); Johns 5 run (Dangel kick); Miller 32 pass from Weaver (Vollenweider pass from Weaver).

FSU 6, HOUSTON 7

	FSU HOU.			
First Downs	12		16	
Rushing Yardage	98		172	
Passing Yardage	118		49	
Passes	10-20		6-10	
Passes Intercepted By	2		1	
Punts	7-33.0		4-31.3	
Fumbles Lost	0		5	
Yards Penalized	77		0	
FLA. STATE	0	0	0	6—6
HOUSTON	0	0	0	0—7

FSU scoring: Tillman 20 pass from Trancygier (pass failed).

Houston scoring: Bolin 12 pass from Sessions (Mitchamore kick).

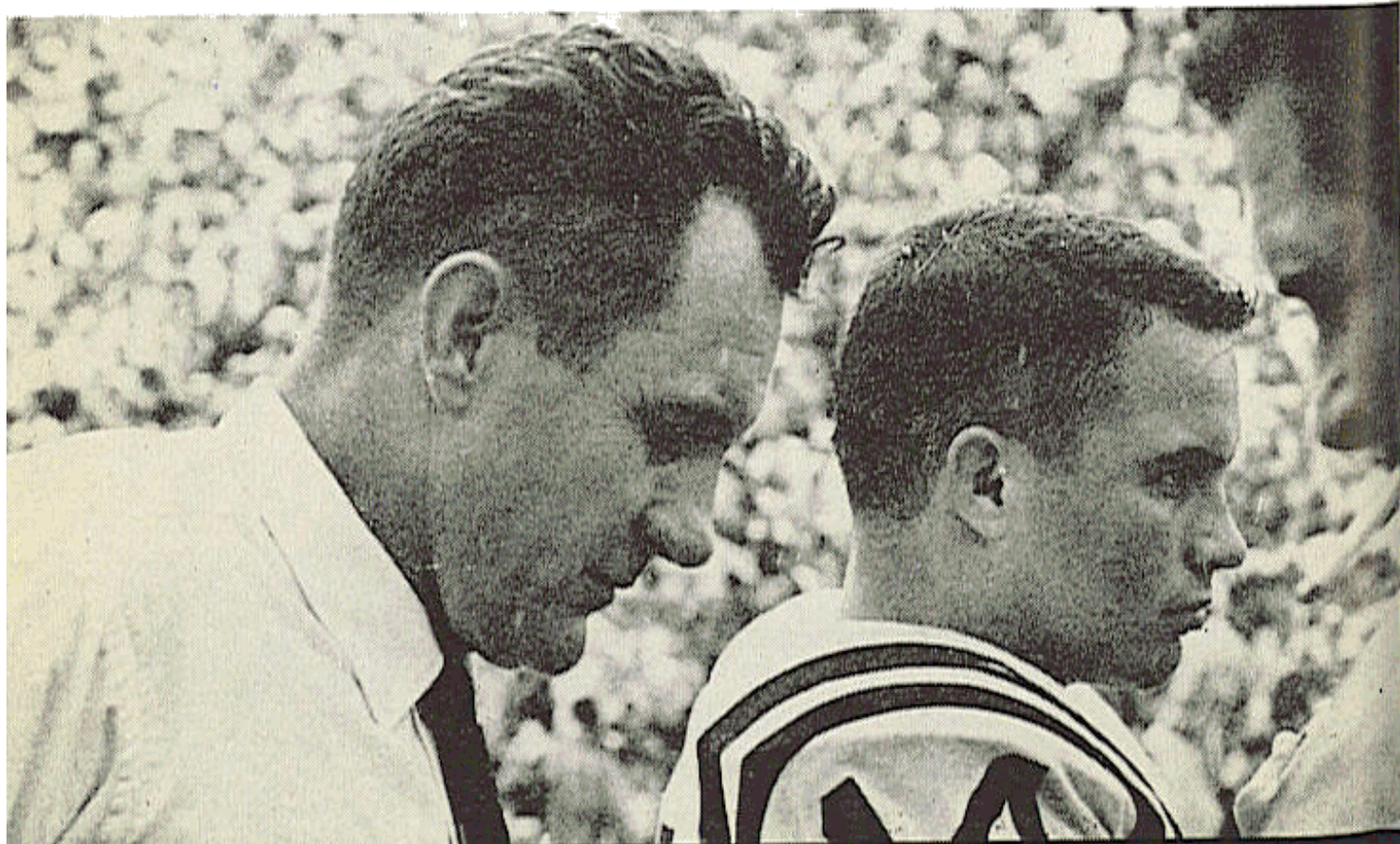
FSU 21, AUBURN 57

	FSU	AUB.
First Downs	8	21
Rushing Yardage	48	251
Passing Yardage	100	212
Passes	8-21	13-23
Passes Intercepted By	3	2
Punts	7-31.7	2-41.0
Fumbles Lost	3	0
Yards Penalized	30	85
FLA. STATE	0 7 0	14—21
AUBURN	14 7 10	26—57

FSU scoring: Trancygier 1 run (Kestner kick); B. Whitehead 51 pass from Trancygier (Hillabrand, pass from Trancygier); Hillabrand 86 interception return (pass failed).

Auburn scoring: Harvard 5 run (Dyas kick); Hunt 1 run (Dyas kick); Machen 17 pass from Harvard (Dyas kick); Dyas 21 field goal; Davis 23 pass from Hunt (Dyas kick); Burson 55 run (Wilkes kick); Downs 21 pass from Hunt (kick failed); Laster 1 run (Wilkes kick); Senn 28 pass from Overton (kick failed).

Coach Peterson, Quarterback Feely (14) Do Some Reflecting



1960 IN REVIEW

When he first arrived at Florida State in December, 1959, Coach Bill Peterson said he would strive to play as many boys as possible. When the 1960 season unfolded, Peterson's statement was echoed in the fact that some 40 Seminoles played regularly (35 earned letters).

Out of Coach Pete's philosophy was born a three-team system. He had the Chiefs, a first unit that went both ways. He had the Renegades, a gang of defensive dare-devils that specialized in miserly measures. He had the War Party, comprised in the main of sophomores whose job was nothing but to seek the goal line. All three units reaped measures of success. They were young, so they made mistakes. But they endeared themselves to Seminole fans through spirited performance.

It was not a calm season. Early there came a shocking bride attempt that gained national attention. There was another in a series of spine-tingling clashes with Wake Forest. And there was a nightmarish seven minutes at the end.

Here's the way it happened:

FSU 28, RICHMOND 0

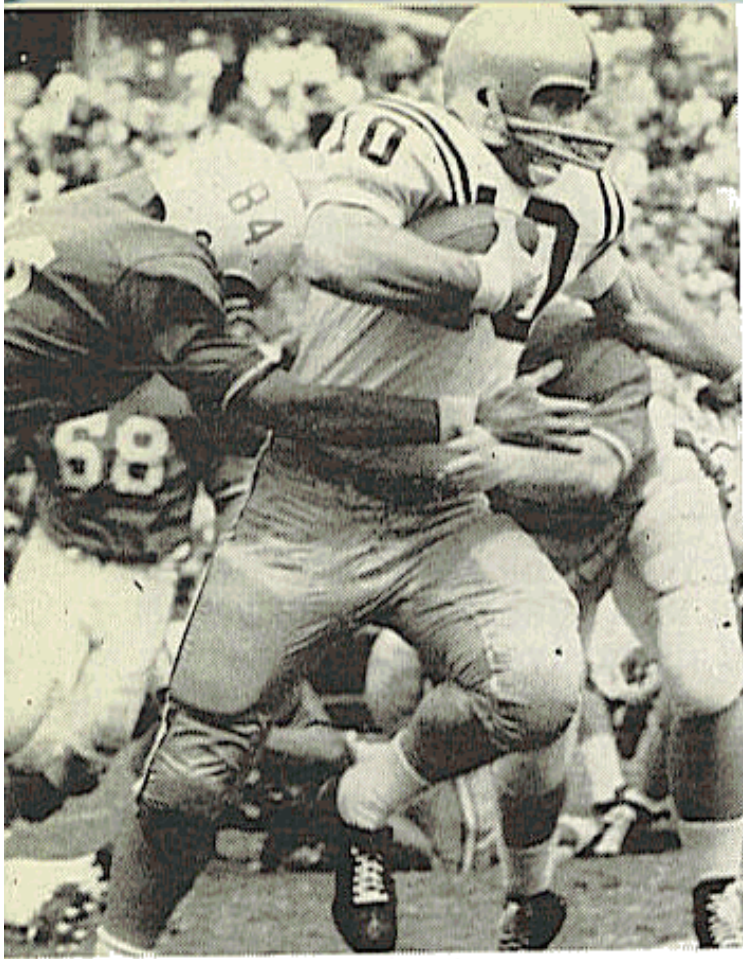
New Coach Bill Peterson couldn't have asked for a better first-night production if he had written the script himself. After a jittery few moments when the curtain went up before 17,200 fans (one being FSU's new No. 1 fan, President Gordon W. Blackwell), Peterson's three brigades settled down for a four-touchdown performance that made his premiere as a college football producer a bell-ringer.

The Chiefs looked good. The War Party looked good. And the Renegades looked good. Favored by a single touchdown over a brawnier opponent, the Seminoles

stashed away the season's first score with 15 seconds left in the first half, put away another score in the third quarter, and added two TDs in the final quarter.

For Richmond's Southern Conference Spiders, it was the first shutout they absorbed in 26 games dating back to the fifth game of the 1957 season.

FSU's first TD came on QB Ed Trancygier's three-yard pass to end Fred Grimes. The second came on QB Eddie Feely's run from the three. No. 3 was wrought by Trancygier on a one-yard sneak. The last was on Trancygier's 36-yard throw to end Tony Romeo.



Trancy on Tear vs. Florida

FSU 0, FLORIDA 3

Despite advance rains and a drizzle throughout the game, 38,000 showed at Florida Field for the third game in the FSU-Florida series. As it turned out, it was an 18-year-old Tallahassee sophomore, Billy Cash, who kicked the first field goal of his life and settled the issue, 3-0, for Florida.

It was a game the Seminoles might well have won, though the Gators were reckoned two touchdowns better before the kickoff. Statistics reflected a rather even game, with Florida's offense netting 290 yards to FSU's 209. Cash booted his three-pointer from the 25 with 6:31 left in the second quarter.

It was a game tarnished by the Saturday morning disclosure of an attempt to bribe Florida's full-

back, Jon MacBeth, of "seeing to it" that Florida did not win by more than 12 points. MacBeth told proper authorities of the bribery attempt, which originated on August 22, and cooperated with authorities in a counter-plot that led to the arrest of the two accused shortly before the game's kickoff.

Defenses on both sides buckled down when they had to. "I was tickled to death of our boys' performance," Peterson said. "They gave 100 per cent. There was nothing for them to be ashamed of." Said Florida Coach Ray Graves: "That was inspired football that Florida State played . . . I want to congratulate Coach Peterson again for the way he handled his team's substitution. We could never wear those teams down."

FSU 14, WAKE FOREST 6

It was just like old times. The Seminoles and Demon Deacons produced a carbon copy of their thrill-a-minute antics of recent seasons. When the smoke had cleared at Campbell Stadium, 19,100 fans were limp from another frantic FSU-Wake Forest finish and the Tribe had carved out an upset 14-6 victory over a team that was supposed to make a run for the blue chips in the tough Atlantic Coast Conference.

It was a night to remember. Unawed by a Wake Forest march that carried the Deacons to a TD on 13 plays after the opening kickoff, FSU's three fighting units united their talents to go ahead, 7-6, at the half and put an insurance seven points on the scoreboard in the closing minutes.

The War Party, with Ed Trancygier at the controls, moved FSU in front to stay early in the second quarter on Trancygier's 17-yard payoff pass to end George Tillman and Ken Kestner's conversion. The Renegades made a magnificent goal-line stand, slamming the door shut on the Deacons a foot short of the goal, that brought one of the most rousing receptions 11 FSU players ever received.

Bud Whitehead zipped across from the one with only 1:58 left. The Chiefs got the chance when Tony Romeo dropped Wake's Wayne Wolff, who fumbled the ball on a fourth-down punt attempt at the Deacon 15.

FSU 0, THE CITADEL 0

Hypnotized with inspiration, The Citadel got a richly-deserved tie with the favored Seminoles as 11,200 people hollered their heads off on a terribly humid night in Charleston, S. C.

Stung by 39-0 and 47-6 losses to FSU in two earlier skirmishes at Tallahassee, the Cadets played the Seminoles on quite even terms. The heat of The Citadel's fired-up force neutralized FSU's 3-team platooning for the first time. It was the first scoreless hassle in history for an FSU team. Only twice in history—in 1952 and 1956—had the Tribe been involved in a tie game.

Hamstrung by penalties in the first half, the Seminoles still had their scoring chances. There were two big crushers: (1) A 29-yard apparent FSU TD pass from QB Eddie Feely to end Vernon Ehlers

in the first quarter was wiped out by a holding penalty and (2) a second-down pass from The Citadel seven was intercepted by Cadet QB Jerry Nettles in the end zone with four minutes left.

FSU continued to guard its goal line in heroic fashion. After four games, the Tribe had permitted only one TD (to Wake Forest) and a field goal (to Florida) and sported an average yield of $2\frac{1}{4}$ points a game.

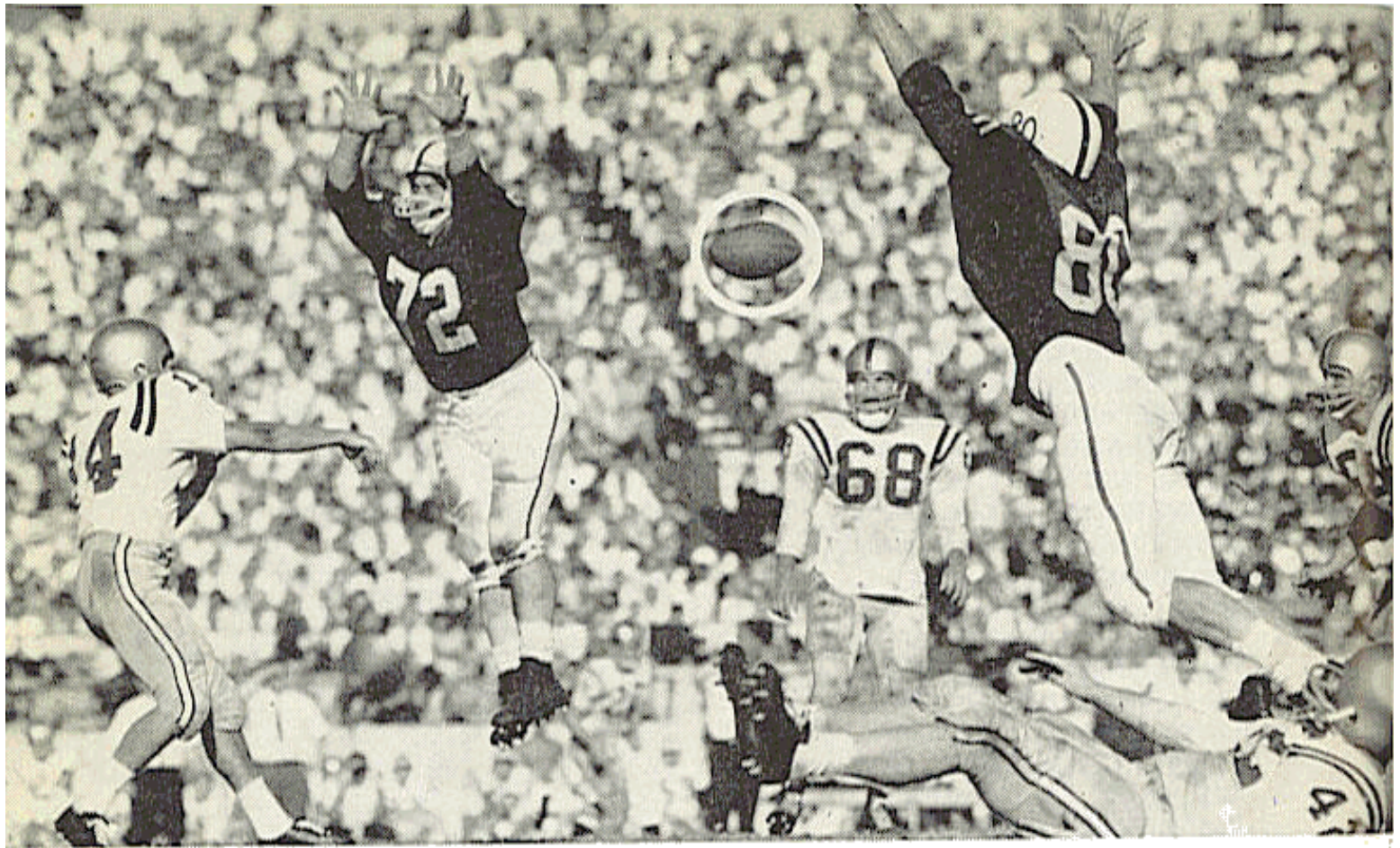
FSU 13, MISS. SOUTH'N 15

Behind 15-0 at the half, Florida State rallied big—but not enough—before 17,000 fans at Mobile, Ala. It was FSU's first game ever in Ladd Memorial Stadium.

The difference was a two-point pass that QB Don Fuell fired to end Charles Dedwylder after Sotuhern's second TD. Southern

TD—A Cheerleader's Delight





QB Eddie Feely (14) Fires Against Kentucky Wildcats

picked up an early score after recovering a fumble at FSU's 22. Tommy Morrow tore 19 yards for the touchdown. Fuell then manipulated the Mississippians on a 76-yard scoring march in the second quarter, getting the six-point-er himself from one-yard range.

After stopping Southern at its one on the last play of the opening half, FSU dominated the final two quarters. Ed Trancygier quarterbacked the Tribe on a 76-yard touchdown push, scored himself from a yard out. When he passed to Tony Romeo in a bid for two points, officials ruled Romeo caught the ball outside the end zone. Then Eddie Feely directed an 80-yard scoring drive

with FB Paul Andrews getting the TD from a half-yard out.

The Southern two-pointer that made the difference was the first scored against FSU in its previous 19 regular-season games. In fact, the Seminoles had allowed only one two-pointer (to Georgia) since the inception of the one-or-two option at the outset of the 1958 season.

FSU 22, WM. & MARY 0

On Friday night before the game, FSU's football team gathered in a small room room beneath Campbell Stadium for a private showing of a movie entitled "Massacre at Sandy Creek."

It was no Academy Award production, but the 70-minute saga of bows and arrows apparently had some affect on the Seminoles.

Less than 24 hours later, they went out and raided William and Mary's goal line twice in the opening minutes, tacked on a third TD after the final gun had sounded, and succeeded in scalping the up-country Indians, 22-0.

It was the third game of the season that FSU had defended its goal in perfect fashion against Southern Conference teams and gave FSU an all-time record of 15-6-1 against teams from that conference.

The touchdowns came on Bud Whitehead's three-yard run, Happy Fick's seven-yard scamper, and Trancygier's 18-yard pass, in the air after the gun went off, to Fick. W & M, which had scored 104 points in its first four games, managed only five first downs, one in the last half.

FSU 0, KENTUCKY 23

Stoutly superior Kentucky outmaneuvered stoutly scrambling FSU before the biggest (19,200) Homecoming crowd ever at Campbell Stadium. It was the 16th straight non-conference victory for the Southeastern Conference Wildcats.

The Wildcats, while accumulating a whopping 441 yards on the attack, couldn't breathe with complete freedom until the last quarter, when they struck for their final nine points. Those nine points spoiled FSU's proud record of not having given up a single last-half point in its first six

games. And it shattered FSU's fine national rating (second behind Tennessee the previous week) in defense against scoring.

Kentucky's scoring came on Cal Bird's three-yard dash in the first quarter, Jerry Eisaman's 37-yard pass to end Tom Hutchinson in the second quarter, Clark Mayfield's 32-yard field goal, and Hutchinson's late 10-yard run with an intercepted pass.

FSU 7, MIAMI 25

Behind a mere three points going into the last quarter, FSU's hard-luck team was finally wrestled down by a frustrating fate that dogged the Seminoles all the way. Miami players looked at the scoreboard that read 25-7 in their favor and counted their blessings.

Two fumbles paved 11 points for the Hurricanes. A pass interception gave them seven more. They marched 68 yards for another seven. Statistics tell the disappointing story of a supreme FSU effort in a game the players had quietly dedicated to their coach, Bill Peterson.

FSU out-first-downed Miami, 19-14; out-rushed Miami, 156 yards to 141; out-passed Miami, 169 yards to 111, on 19 completions in 28 throws.

A 42-yard field goal by Al Dangel gave Miami its 3-0 halftime lead. Charles Yanda's 51-yard interception return made it 10-0 in the third period. But Eddie Feely scored on a sparkling run of 21 yards to trim it to 10-7. A five-yard run by Edwin Johns and Bobby Weaver's 32-yard pass to end Bill Miller after a fumble completed Miami's scoring.

FSU 6, HOUSTON 7

For the second straight game, FSU got the best of a bigger adversary in various statistical categories, only to fall short in the column that counts—scoring. And the one-point loss was even more disheartening in that the Tribe had now lost three of its five setbacks by a total margin of six points.

The major Southwest independent won by virtue of a fourth-quarter touchdown and an extra point, a two-point FSU pass play that failed after the Seminoles stormed back for a six-pointer, and by FSU's own inability to cash in on a host of opportunities presented them by their own defensive alertness and some butterfingering Cougars.

Houston, which fumbled away the ball five times in the second quarter, went 52 yards for a last-period TD that came on Don Session's 12-yard pass to Ken Bolin. FSU scored with less than three minutes remaining as Ed Trancygier directed a payoff march of 87 yards. The TD came on Trancy's 20-yard pitch to end George Tillman. The Seminoles elected to go for two points and the lead. Trancygier's shot to Carl Meyer in the end zone was a trifle too high.

FSU 21, AUBURN 57

Auburn's powerful football team struck for 26 points in the closing seven minutes and overwhelmed FSU's sorely-bruised fighters, 57-21. With many players injured going into their final game, the Seminoles had pulled within 31-21 early in that wild fourth quarter.

Then halfback Jimmy Burson tore loose on a 55-yard payoff run. In rapid order, Auburn recovered a fumble and intercepted two passes that led to three more touchdowns.

The 57 points were the most ever scored against a Florida State team and the most racked up by an Auburn team since '44. FSU had some consolation in the fact it scored the most points on an Auburn team since Georgia Tech managed 28 in 1956.

FSU touchdowns came on Ed Trancygier's one-yard plunge after a 59-yard drive, on a 51-yard pass play from Trancygier to Bud Whitehead, and on Tom Hillabrand's 86-yard run with an intercepted pass. Auburn's All-America fullback, Ed Dyas, suffered a facial fracture in a collision with a bench. Earlier in the game he had preserved his record of kicking a field goal in every game during the season.

A FINAL TRIBUTE

As a fitting tribute to their fine contributions to FSU football, eight Seminoles were named to the All-Florida squad by Sunshine State sportswriters. Guard Abner Bigbie was a first-team selection. End Tony Romeo, center Jack Hardy, HB Bud Whitehead, and FB Paul Andrews drew second-team berths. End Fred Grimes, tackle Steve Klesius, and QB Ed Trancygier were named to the third team. Grimes and QB Eddie Feely earned honorable mention labels on various All-America teams. Whitehead was named most valuable player by his teammates and was a backfield starter in the North-South game.

THE 1960 STATISTICS

TEAM STATISTICS

FSU		OPP.
75	First downs, rush	98
56	First downs, pass	45
6	First downs, pen.	8
137	TOTAL 1ST DOWNS	151
1289	Yard rushing	1840
1046	Yards passing	993
2335	TOTAL NET YARDS	2833
200	Passes attempted	153
96	Passes completed	80
14	Passes had int.	10
55	Number punts	46
34.4	Punting average	32.3
18	Fumbles	32
12	Fumbles lost	16
49	Number penalties	51
462	Yards penalized	574
9	Touchdowns, rush	8
6	Touchdowns, pass	8
1	Touchdowns, pass int.	2
9-9	PAT kicks	12-15
1-1	PAT runs	0-0
2-6	PAT passes	2-3
0-4	Field goals	4-7
111	TOTAL POINTS	136

INDIVIDUAL RUSHING

Player	No.	Gain	Loss	Net	Av.
B. Whiteh'd	81	302	9	293	3.6
Hillabrand	44	182	4	178	4.0
Feely	90	296	125	171	1.9
Fick	45	176	9	167	3.7
Andrews	41	152	0	152	3.7
Trancygier	55	217	74	143	2.6
Parker	25	82	2	80	3.2
Meyer	21	57	6	51	2.4
Cone	8	37	0	37	4.6
McCon'hay	3	12	0	12	4.0
Russom	5	8	3	5	1.0
Bickford	1	1	0	1	1.0
W. Whiteh'd	1	0	0	0	0.0
Forehand	5	4	5	-1	-0.2
TOTALS	425	1526	237	1289	3.0

PASS INTERCEPTIONS

Player	No.	Yds.	Avg.	TD
Hillabrand	2	86	43.0	1
W. Whitehead	2	0	0.0	0
Russom	1	23	23.0	0
B. Whitehead	1	13	13.0	0
Sellers	1	10	10.0	0
Darsey	1	9	9.0	0
Cone	1	0	0.0	0
Grimes	1	0	0.0	0
TOTALS	10	141	14.1	1

INDIVIDUAL PASSING

Player	Att.	Comp.	Int.	Yds.	TD
Feely	98	56	4	471	0
Trancygier	96	37	10	539	6
Bickford	6	3	0	36	0
TOTALS	200	96	14	1046	6

INDIVIDUAL RECEIVING

Player	Caught	Yds.	Avg.	TD
B. Whitehead	23	212	9.2	1
Hillabrand	18	157	8.7	0
Daniel	10	138	13.8	0
Tillman	8	124	15.5	2
Romeo	8	95	11.9	1
Grimes	8	89	11.1	1
Meyer	6	64	10.7	0
Russom	3	52	17.3	0
Fick	3	25	8.3	1
Cone	2	21	10.5	0
Andrews	2	20	10.0	0
Parker	1	25	25.0	0
Feely	1	9	9.0	0
Elton	1	8	8.0	0
Ehlers	1	4	4.0	0
Forehand	1	3	3.0	0
TOTALS	96	1046	10.9	6

PUNTING

Player	No.	Yds.	Avg.
B. Whitehead	53	1862	35.1
Feely	2	28	14.0
TOTALS	55	1890	34.4

PUNT RETURNS			
Player	No.	Yds.	Avg.
Russom	6	49	8.2
B. Whitehead	4	33	8.3
Hillabrand	1	11	11.0
Fick	1	5	5.0
Feely	1	0	0.0
Darsey	1	0	0.0
TOTALS	14	98	7.0

KICKOFF RETURNS			
Player	No.	Yds.	Avg.
B. Whitehead	13	261	20.1
Hillabrand	3	101	33.7
Feely	3	49	16.3
Fick	2	47	23.5
Meyer	1	33	33.0
Trancygier	2	30	15.0
Cone	2	29	14.5
Parker	3	27	9.0

Andrews	1	18	18.0
Russom	1	14	14.0
TOTALS	31	609	19.6

INDIVIDUAL SCORING

Player	TD	Pat			FG	Pts.
		-k	-r	-p		
B. White'd	3	0-0	0-0	0	0-0	18
Trancygier	3	0-0	0-0	0	0-0	18
Feely	2	0-0	1-1	0	0-0	14
Tillman	2	0-0	0-0	1	0-0	14
Fick	2	0-0	0-0	0	0-0	12
Hillabrand	1	0-0	0-0	1	0-0	8
Kestner	0	8-8	0-0	0	0-4	8
Andrews	1	0-0	0-0	0	0-0	6
Romeo	1	0-0	0-0	0	0-0	6
Grimes	1	0-0	0-0	0	0-0	6
Bronson	0	1-1	0-0	0	0-0	1
TOTALS	16	9-9	1-1	2	0-4	111

SEMINOLE COACHES AND CAPTAINS

Year	Won	Lost	Tied	FSU Pts.	Opp. Pts.	Captain	Coach
1947	0	5	0	18	90	Jack McMillan and Phil Rountree	Ed Williamson
1948	7	1	0	152	64	Game Captains	Don Veller
1949	8	1	0	272	53	Hugh Adams	Don Veller
1950	8	0	0	219	54	Duke Maltby	Don Veller
1951	6	2	0	194	72	Bill Dawkins	Don Veller
1952	1	8	1	101	261	Curtis Campbell and Vic Szczepanik	Don Veller
1953	5	5	0	183	146	Game Captains	Tom Nugent
1954	8	3	0	257	143	Game Captains	Tom Nugent
1955	5	5	0	147	186	Bob Crenshaw and Don Powell	Tom Nugent
1956	5	4	1	178	116	Joe Holt and Buck Metz	Tom Nugent
1957	4	6	0	136	165	Ron Schomburger	Tom Nugent
1958	7	3	0	212	109	Vic Prinzi and Bobby Renn	Tom Nugent
1959	4	6	0	149	132	John Spivey and Al Ulmer	Perry Moss
1960	3	6	1	111	136	Tony Romeo	Bill Peterson
	71	55	3	2329	1727		

TENNECO-SEMINOLE NETWORK



HARVILLE

Florida State University's football games are broadcast over the fast-growing Tenneco-Seminole Network, which covers thousands of square miles in Florida and Georgia.

Play-by-play announcer for the games is Charlie Harville, sports director of WFMY-TV in Greensboro, N. C., who is recognized as one of the nation's best in his field. A native of High Point, N. C., Harville first called the action for Seminole games in 1959 after handling broadcasts for the University of Virginia, the Washington Redskins, and Atlantic Coast Conference regional television.

Back for the second year as Harville's co-worker is Walt Dunbar, veteran of 10 years of broadcasting sports in New England states and sports director for the past four years of WFGA-TV in Jacksonville, Fla. A native of Brockton, Mass., Dunbar does the pre-game, halftime, and "time-out" color commentary for the games.

The network is sponsored by Tenneco Oil Company with some 15 stations forming the basic portion of the network. Other stations are added, with the number varying with each game.

Broadcasts of the games are produced by Reach, McClinton & Company, Inc., 505 Park Ave., New York 22, N. Y. Radio stations interested in obtaining "feeds" of Seminole games should contact William Overmyer at Reach, McClinton & Co. for information and rates.



DUNBAR

MOST VALUABLE PLAYER AWARDS

Florida State University each year presents a trophy to the Florida State player selected by his teammates as having made the most valuable contribution to the team. Here are the winners of the Most Valuable Player Awards, a practice begun in 1957:

1957	Bob Nellums, End-Fullback
1958	Bobby Renn, Halfback
1959	Fred Pickard, Halfback
1960	Bud Whitehead, Halfback

THE ALL-TIME RECORDS

SINGLE GAME

INDIVIDUAL

- LONGEST TOUCHDOWN RUN FROM SCRIMMAGE—80 yards by Fred Pickard vs. Virginia Tech, 1957.
- LONGEST TOUCHDOWN PASS—80 yards, Nelson Italiano to Eddie Gray vs. Newberry, 1950.
- LONGEST TOUCHDOWN RUN, ANY SITUATION—99 yards by Ted Hewitt vs. Stetson, 1948 (interception return).
- LONGEST RUN FROM SCRIMMAGE WITHOUT SCORING—76 yards by Roy Thompson vs. Stetson, 1951.
- LONGEST INTERCEPTION RETURN—99 yards by Hewitt vs. Stetson, 1948.
- LONGEST PUNT RETURN—80 yards by Billy Odom vs. Stetson, 1954.
- LONGEST KICKOFF RETURN—89 yards by Odom vs. Virginia Tech, 1955.
- MOST TIMES RUSHING—29 by Pickard vs. Georgia, 1959.
- MOST YARDS RUSHING—161 by Buddy Strauss vs. Mississippi College, 1949.
- MOST YARDS PASSING—313 by Majors vs. Tampa, 1959.
- MOST TOTAL OFFENSE—369 yards (56 rushing, 313 passing) by Majors vs. Tampa, 1959.
- MOST PASSES ATTEMPTED—32 by Joe Majors vs. Tampa, 1959.
- MOST PASSES COMPLETED—20 by Majors vs. Tampa, 1959.
- MOST PASSES CAUGHT—9 by Bud Whitehead vs. Tampa, 1959.
- MOST YARDS RECEIVING PASSES—123 by Harry Bringger vs. Mississippi College, 1950.
- MOST PASSES INTERCEPTED—3 by Tommy Brown vs. Stetson, 1950, and vs. Georgia Tech, 1952; Lee Corso vs. Georgia, 1954; Whitehead vs. Virginia Tech, 1959.
- LONGEST PUNT—84 yards by Brown vs. Tampa, 1950.
- LONGEST FIELD GOAL—32 yards by Johnny Sheppard vs. Miami, 1958.

TEAM

- MOST POINTS—74 vs. Whiting Field 0, 1949.
- GREATEST MARGIN OF VICTORY—74-0 vs. Whiting Field, 1949.
- GREATEST MARGIN OF DEFEAT—0-42 vs. Georgia, 1959.
- MOST YARDS RUSHING—383 vs. Abilene Christian, 1957.
- MOST YARDS PASSING—355 vs. Villanova, 1954.
- MOST TOTAL OFFENSE—514 yards vs. The Citadel, 1959 (307 rushing, 207 passing).
- MOST PASSES ATTEMPTED—34 vs. Tampa 1959 (completed 20).
- MOST PASSES COMPLETED—20 vs. Tampa, 1959 (attempted 34).
- MOST PASSES INTERCEPTED—7 vs. Virginia Tech, 1959.
- MOST PUNTS—10 vs. Stetson, and Georgia Tech, 1955.
- MOST POINTS—60 by Red Parish, 1949.

SEASON INDIVIDUAL

MOST TOUCHDOWNS SCORED—9 by Mike Sellers, 1950.
MOST TOUCHDOWN RESPONSIBILITY—13 by Nelson Italiano, 1950 (Scored 5, passed for 8).
MOST TIMES RUSHING—160 by Buddy Strauss, 1949.
BEST RUSHING AVERAGE—6.6 by Bobby Fiveash, 1953.
MOST YARDS RUSHING—747 by Strauss, 1949.
MOST YARDS PASSING—1063 by Joe Majors, 1959.
MOST TOTAL OFFENSE—1141 yards (78 rushing, 1063 passing) by Majors, 1959.
MOST PASSES ATTEMPTED—168 by Majors, 1959.
MOST PASSES COMPLETED—90 by Majors, 1959.
MOST TOUCHDOWN PASSES—10 by Harry Massey, 1954.
MOST PASSES CAUGHT—31 by Bud Whitehead, 1959.
MOST YARDS RECEIVING PASSES—441 by Tom Feamster, 1954.
MOST TOUCHDOWN PASSES CAUGHT—6 by Feamster, 1954.
MOST PASSES INTERCEPTED—8 by Curt Campbell, 1951.
MOST PUNTS—53 by Bud Whitehead, 1960.
BEST PUNTING AVERAGE—41.9 by Pat Versprille, 1955.
MOST PUNTS RETURNED—19 by Brown, 1951.
BEST PUNT RETURN AVERAGE—15.7 by Brown, 1951.
BEST KICKOFF RETURN AVERAGE—31.8 by Lee Corso, 1954.
MOST EXTRA POINTS—20 by Ernie Huggett, 1950.
MOST FIELD GOALS—3 by Johnny Sheppard, 1958.

TEAM

MOST VICTORIES—8, 1949, 1950 and 1954.
MOST DEFEATS—8, 1952.
MOST YARDS RUSHING—2194, 1949.
MOST YARDS PASSING—1745, 1954.
MOST TOTAL OFFENSE—3434 yards, 1954 (1689 rushing, 1745 passing).
MOST PASSES ATTEMPTED—252, 1954.
MOST PASSES COMPLETED—107, 1954.
MOST PASSES HAD INTERCEPTED—21, 1954.
FEWEST PASSES HAD INTERCEPTED—7, 1947.
MOST PASSES INTERCEPTED—24, 1949.
MOST PUNTS—59, 1959.
MOST OPPONENT PUNTS BLOCKED—4, 1951.

CAREER INDIVIDUAL

MOST POINTS—99 by Bobby Renn, 1956-58.
MOST TOUCHDOWNS SCORED—16 by Renn, 1956-58, and Mike Sellers, 1950-51.
MOST TOUCHDOWN RESPONSIBILITY—28 Nelson Italiano, 1950-52 (11 scored, passed for 17).
MOST TIMES RUSHING—339 by Pickard, 1957-59.
MOST YARDS RUSHING—1546 by Fred Pickard, 1957-59.
MOST YARDS PASSING—1649 by Joe Majors, 1957-59.
MOST TOTAL OFFENSE—2129 yards by Italiano, 1950-52.
MOST PASSES ATTEMPTED—288 by Majors, 1957-59.
MOST PASSES COMPLETED—136 (attempted 288) by Majors, 1957-59.
MOST TOUCHDOWN PASSES—17 by Italiano, 1950-52.
MOST PASSES CAUGHT—54 by Bud Whitehead, 1958-60.
MOST YARDS RECEIVING PASSES—700 by Feamster, 1954-55.
MOST PUNTS—96 by Tommy Brown, 1950-52.
BEST PUNTING AVERAGE—37.9 (92 punts) by Renn, 1956-58.
MOST EXTRA POINTS—49 (attempted 55) by Johnny Sheppard, 1956-58.
MOST FIELD GOALS—3 by Sheppard, 1956-58.

THE YESTERYEARS

1947	(0-5-0)	FSU	Foe	Louisville	14	41
Stetson		6	14	VMI	7	28
Cumberland		0	6	North Carolina State	7	13
Tennessee Tech		6	27	Stetson	6	6
Troy State		6	36	Mississippi Southern	21	50
Jacksonville State		0	7	Furman	0	9
1948	(7-1-0)	FSU	Foe	Georgia Tech	0	30
Cumberland		30	0	Wofford	27	13
Erskine		6	14	Tampa	6	39
Millsaps		7	6	1953	(5-5-0)	FSU Foe
Stetson		18	7	Miami	0	27
Mississippi College		26	6	Louisville	59	0
Livingston State		12	6	Abilene Christian	7	20
Troy State		20	13	Louisiana Tech	21	32
Tampa		33	12	VMI	12	7
1949	(8-1-0)	FSU	Foe	Mississippi Southern	0	21
Whiting Field		74	0	Furman	7	14
Mississippi College		33	12	Stetson	13	6
Erskine		26	7	North Carolina State	23	13
Sewanee		6	0	Tampa	41	6
Stetson		33	14	1954	(8-3-0)	FSU Foe
Livingston State		6	13	Georgia	0	14
Millsaps		40	0	Abilene Christian	0	13
Tampa		34	7	Louisville	47	6
Troy State		20	0	Villanova	52	13
Wofford*		19	6	North Carolina State	13	7
(*Cigar Bowl Game)				Auburn	0	33
1950	(8-0-0)	FSU	Foe	VMI	33	19
Troy State		26	7	Furman	33	14
Randolph-Macon		40	7	Stetson	47	6
Howard		20	6	Mississippi Southern	19	18
Newberry		24	0	Tampa	13	0
Sewanee		14	8	Texas Western*	20	47
Stetson		27	7	(*Sun Bowl Game)		
Mississippi College		33	0	1955	(5-5-0)	FSU Foe
Tampa		35	19	N. C. State	7	0
1951	(6-2-0)	FSU	Foe	Miami (Fla.)	0	34
Troy State		40	0	Virginia Tech	20	24
Miami (Fla.)		13	35	Georgia	14	47
Delta State		34	0	Georgia Tech	0	34
Sul Ross State		35	13	Villanova	16	13
Stetson		13	10	Furman	19	6
Jacksonville Navy		39	0	Citadel	39	0
Wofford		14	0	Miss. Southern	6	21
Tampa		6	14	Tampa	26	7
1952	(1-8-1)	FSU	Foe	1956	(5-4-1)	FSU Foe
Louisiana Tech		13	32	Ohio University	47	7

Georgia	0	3	Georgia Tech	3	17
Virginia Tech	7	20	Wake Forest	27	24
North Carolina State	14	0	Georgia	13	28
Wake Forest	14	14	Virginia Tech	28	0
Villanova	20	13	Tennessee	10	0
Miami (Fla.)	7	20	Tampa	43	0
Furman	42	7	Miami (Fla.)	17	6
Mississippi Southern	20	19	Florida	7	21
Auburn	7	13	Oklahoma State*	6	15
1957 (4-6-0) FSU	Foe		(*Bluegrass Bowl Game)		
Furman	27	7			
Boston College	7	20	1959 (4-6-0) FSU	Foe	
Villanova	7	21	Wake Forest	20	22
North Carolina State	0	7	The Citadel	47	6
Abilene Christian	34	7	Miami (Fla.)	6	7
Virginia Tech	20	7	Virginia Tech	7	6
Miami (Fla.)	13	40	Memphis State	6	16
Mississippi Southern	0	20	Richmond	22	6
Auburn	7	29	Georgia	0	42
Tampa	21	7	William and Mary	0	9
1958 (7-3-0) FSU	Foe		Florida	8	18
Tennessee Tech	22	7	Tampa	33	0
Furman	42	6			

SEMINOLE BOOSTERS, INC.



STARRY

vides reserved parking at stadium), membership card, a weekly fall publication called "The Grandstand Coach," and certain priorities on season and individual football tickets.

Serving an unprecedented third term as president of Seminole Boosters, Inc., is Weldon G. (Babe) Starry, a Tallahassee attorney. Hard-working secretary-treasurer of the organization is Robert L. Bannerman, Jr., director of FSU alumni affairs.

This organization—devoted entirely to assisting FSU in athletic and scholarship programs, with particular emphasis on athletics—is comprised of persons interested in FSU athletics, many of whom never actually attended the school. Membership is open to everyone with a sincere interest in the University's athletic welfare.

Minimum annual dues are \$10, but many persons see fit to contribute more. This money is handled directly through the University treasurer's office. Members of Seminole Boosters receive a colorful automobile license plate (pro-



BANNERMAN

THE MARCHING CHIEFS



MANLEY WHITCOMB

Florida State University's famous Marching Chiefs band, the ultimate in marching music and on-the-field precision, will appear in seven halftime shows during the 1961 season.

Hailed by Atlanta and other newspapers as the best in the South, The Chiefs will appear at all home games—George Washington, Georgia, Richmond, The Citadel, and Mississippi Southern—plus games with Florida in Gainesville and Kentucky in Lexington.

Of the home games, the Richmond and Mississippi Southern games should provide the most colorful band entertainment. The Richmond game on Oct. 21 is FSU's annual Band Day, which will bring to Campbell Stadium many of the finest high school bands in Florida, Georgia, and Alabama. The Mississippi Southern game on Nov. 18 is Homecoming and The Chiefs always have something special for that occasion.

When The Chiefs journeyed to Philadelphia for Florida State's victory over Villanova in 1956, they were taken to the heart of the City of Brotherly Love. Then they proceeded to New York, where they appeared on several nationally-televised programs. In 1958, the Chiefs were seen on a coast-to-coast ABC hookup from Louisville as they performed in the Bluegrass Bowl, where Florida State met Oklahoma State.

Director of this outstanding marching group is Dr. Manley Whitcomb, who is every bit as colorful as his bands. He came to FSU after 17 years at Ohio State University, where he directed the Buckeye Band in the 1950 Rose Bowl.

Also a professor of music, Dr. Whitcomb has appeared as lecturer, guest conductor and adjudicator in some two dozen states. Students literally clamor to get into his classes.

The Marching Chiefs have a marching membership of 112 musicians and 8 majorettes and carry 148 persons in their company. Their trips at Florida State have carried them as far west as Texas and Mexico and as far north as New York.

FLORIDA STATE'S FOOTBALL CLINIC

Eight years ago Florida State University staged its first summertime football clinic with the idea of developing it into the best in the nation. After eight clinics, Florida State knows the measure of success.

Each June, hundreds of coaches and players from all corners of the nation flock to Tallahassee to hear the brightest names in college and professional football relate their success secrets. Headliners for the FSU clinics read like a football Blue Book. Instructors have included such names as Sammy Baugh, Doak Walker, Otto Graham, Bud Wilkinson, Bobby Dodd, Bowden Wyatt, Duffy Daugherty, Forest Evashevski, Joe Kuharich, Ray Eliot, Frank Howard, Sid Gilman, Frank Broyles, Paul Dietzel, Vince Lombardi, Dan Devine, John Bridgers, and Paul (Bear) Bryant.

The latter four headed up Florida State's clinic last June and all spouted superlatives about it. From an earlier clinic, Oklahoma Coach Bud Wilkinson had this praise: "It's probably the best clinic of its sort I've ever attended. I'd like to be quoted on that. I've never seen anything run so smoothly and professionally."

In addition to having so many "name" instructors at Florida State clinics, sports writers from all over Florida and Georgia attend. The Florida Sportswriters Assn. holds its annual summer business meeting in conjunction with the clinic.



Devine (left) at 1961 Clinic

Florida State plans to do everything it can to make next summer's clinic even better. Wheels already are in motion for the '62 clinic, one which promises more pleasant surprises.

There's no doubt about it. Florida State — and Tallahassee — has become the summertime football capital of the world.

Schedules of Florida State's Opponents

	GEO. WASH.	FLORIDA	MISSISSIPPI	GEORGIA	RICHMOND	VIRGINIA TECH	KENTUCKY	THE CITADEL	MISS. SOUTHERN	HOUSTON
SEPT. 16	AT FLORIDA STATE				at West Virginia	* Wm. & Mary		at Memphis State	Arlington State	
SEPT. 23	at The Citadel	Clemson	Arkansas	Alabama	at Army		Miami	George Washington		at Texas A. & M.
SEPT. 30	at Furman	FLORIDA STATE	at Kentucky	Vanderbilt	Sept. 29 VMI		Mississippi	Davidson	at Southwest La.	Miss. State
OCT. 7	VMI	Oct. 6 at Tulane	FLORIDA STATE	South Carolina	at The Citadel	at West Virginia	at Auburn	Richmond	Chattanooga	Boston College
OCT. 14	at Richmond	at Rice	● Houston	AT STATE	George Washington	at Tulane	Kansas State	at Wm. & Mary	at Memphis State	● Mississippi
OCT. 21	Oct. 20 Wm. & Mary	at Vanderbilt	at Tulane	* Miss. State	AT STATE	* Virginia	at LSU	Furman	Arkansas State	at Cincinnati
OCT. 28	Oct. 27 Boston U.	LSU	Vanderbilt	Kentucky	Davidson	FLORIDA STATE	at Georgia	at Xavier	Abilene Christian	Alabama
NOV. 4	West Virginia	at Georgia Tech	at LSU	Nov. 3 at Miami	Virginia Tech	at Richmond	FLORIDA STATE	at VMI	O.N. C. State	
NOV. 11		● Georgia	Chattanooga	● Florida	at Alabama	at Wake Forest	at Vanderbilt	AT FLORIDA STATE	at Louisiana Tech	at Tulsa
NOV. 18	at Virginia Tech		● Tennessee	Auburn	Nov. 23 Wm. & Mary	George Washington	Xavier	Arkansas State	AT FLORIDA STATE	at Okla. State
NOV. 25		at Auburn			Nov. 23 Wm. & Mary	Nov. 23 * VMI	Tennessee		Trinity	FLORIDA STATE
DEC. 2		Miami	at Miss. State	at Ga. Tech						Oregon State

● --Jacksonville, Fla. ● --Jackson, Miss. ● --Memphis, Tenn. * --Atlanta, Ga. * --Raleigh, Va. ● --Mobile, Ala.