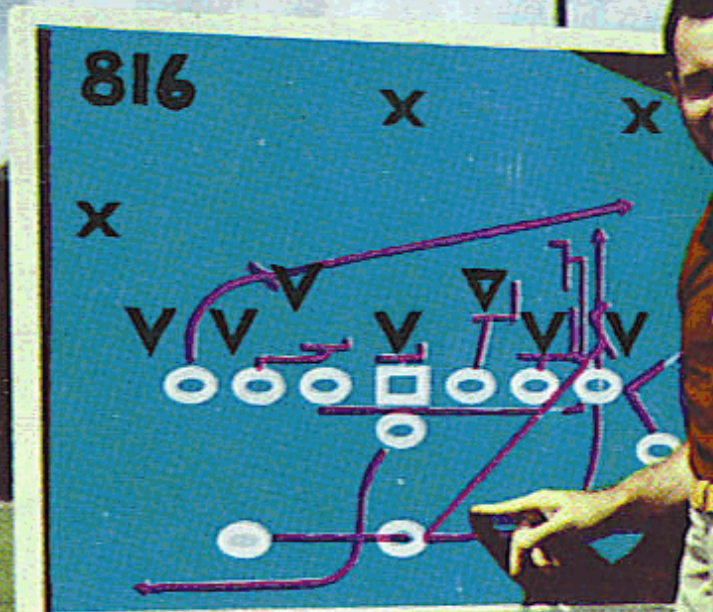


FLORIDA
STATE

FLORIDA STATE



1960 FOOTBALL HANDBOOK

FLORIDA STATE UNIVERSITY

1960 FOOTBALL SCHEDULE

Sept. 17	Richmond	Tallahassee	8:00 P.M.
Sept. 24	Florida	Gainesville	2:00 P.M.
Oct. 1	Wake Forest	Tallahassee	8:00 P.M.
Oct. 8	The Citadel	Charleston	8:00 P.M.
Oct. 15	Mississippi Southern	Mobile	8:00 P.M.
Oct. 22	William and Mary	Tallahassee	8:00 P.M.
Oct. 29	Kentucky (Homecoming)	Tallahassee	2:30 P.M.
Nov. 4	Miami (Fla.)	Miami	8:15 P.M.
Nov. 12	Houston	Tallahassee	2:00 P.M.
Nov. 19	Auburn	Auburn	2:00 P.M.

1959 FOOTBALL RESULTS

20	Wake Forest	22
47	The Citadel	6
6	Miami (Fla.)	7
7	Virginia Tech	6
6	Memphis State	16
22	Richmond	6
0	Georgia	42
0	William and Mary	9
8	Florida	18
33	Tampa	0

1960 FOOTBALL HANDBOOK

has been prepared to aid the press, radio and television in its coverage of the Florida State University football team. Written and compiled by Sports Publicity Director Pat Hogan and Assistant Neil LaBar, the material is based on an analysis of prospects through August 1. Changes that occur will be reported in subsequent releases.

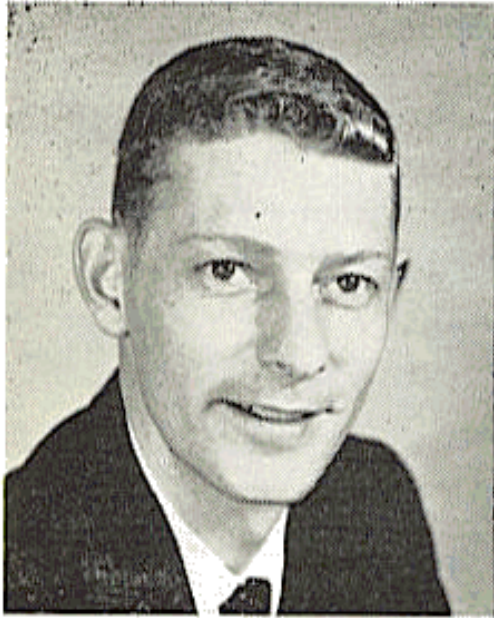
TABLE OF CONTENTS

MEMO TO THE PRESS-RADIO-TV	2
Press Accommodations and Ticket Information	
THE UNIVERSITY	3
Florida State and its President	
THE ATHLETIC DEPARTMENT	8
The Director and its Personnel	
THE 1960 SEMINOLES	22
Roster, Depth Chart, Outstanding Players	
THE SEASON TO COME	32
Outlook, The Opposition and its Prospects	
THE SEASON PAST	44
Review of 1959, Statistics, Records	
BROADCASTS AND BOOSTERS	55-59
Bay-Seminole Network, Seminole Boosters	
THE MARCHING CHIEFS	60
Best Band in the Land	
FLORIDA STATE'S FOOTBALL CLINIC	61
Stairway to Success	

ON THE COVER

THE COUNTDOWN has begun for new Florida State Coach **Bill Peterson**—captured in color by Staff Photographer **Jim Martin**—who gets his first Seminole team off the launching pad Sept. 17. A sincere, hard-working football scientist, Peterson and staff take off with a young squad, an intriguing "Flexible T" offense, and an imposing schedule.

MEMO TO PRESS-RADIO-TV



PAT HOGAN

This handbook has been prepared to assist you during the 1960 football season. Should you desire additional material, information, or services, contact:

PAT HOGAN

Director of Sports Publicity
Florida State University
Tallahassee, Florida

Telephone: Office—2-8000
Home—4-1559

When making requests for working press tickets, allow time for mailing. It is suggested that space requests be forwarded at least one week prior to any home game. If wire or telephone service is required in your coverage of games, please make necessary arrangements through your local Western Union or telephone office.

TICKET INFORMATION

Tickets for Florida State home football games may be purchased by letter, enclosing check or money order covering price of tickets. Season tickets to all home games are \$20.00. A six-game season ticket, including five home games and the Florida (Gainesville) game, is \$24.00. All season tickets are preferred reserved seats.

Address ticket requests to:

ATHLETIC TICKET OFFICE

Florida State University
Tallahassee, Florida

Make all checks payable to Florida State University

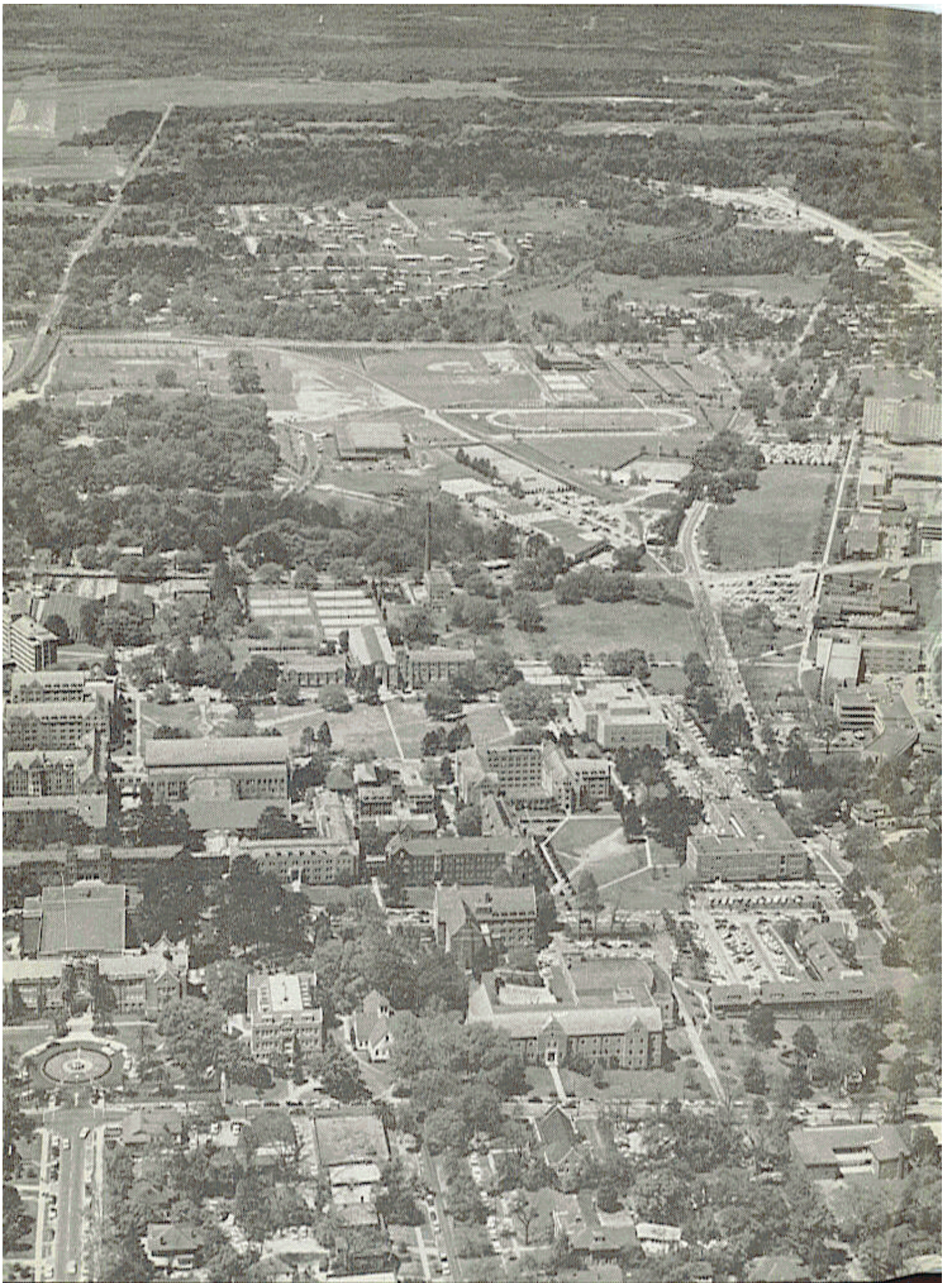
1960 TICKET PRICES

RICHMOND	\$4.00	FLORIDA	\$4.00
WAKE FOREST	\$4.00	THE CITADEL	\$3.25
WILLIAM AND MARY	\$4.00	MISSISSIPPI SOUTHERN	\$4.00
KENTUCKY	\$4.00	MIAMI (Fla.)	\$4.00
HOUSTON	\$4.00	AUBURN	\$4.00



THE UNIVERSITY

- facts and figures
- the president



FLORIDA STATE UNIVERSITY

Located in Tallahassee, fast-growing Florida State University has barely been able to keep up with the demands for additional classroom and living space of the increasing numbers of students seeking admission. University officials expect an enrollment of 8,900 by the fall of 1961.

The main campus of 300 acres, stretching for a half-mile along Highway 90, includes a cluster of older buildings of Tudor Gothic architecture, with many newer buildings of functional design to the west of these. A new 11-story men's dormitory was occupied last year to supplement one of like size which has been in use eight years. Together they house more than 1,100 students.

A new eight-story women's residence hall, along with an existing structure of the same size, takes care of more than 500 students.

Among newer buildings are a \$2,000,000 Library, the School of Education Building, School of Business Building, and Tully Gymnasium. A new Mathematics-Meteorology Building is being built and a Nuclear Research Building whose two Van de Graaff accelerators were dedicated last spring is being expanded to accommodate FSU's growing program of basic research and teaching in this field. The larger of the two accelerators is the third of its kind on this continent.

There will be a building to house a new Institute of Molecular Biophysics. The Atomic Energy Commission last spring agreed to provide FSU \$3 million during the next few years to support a research program in molecular biophysics.

Authorized by the 1851 Legislature, the institution was first established as the Seminary West of the Suwannee, and was opened on the present campus. The name was changed to Florida State College in 1901 but in 1905 became a college for women. By act of the 1947 Legislature, Florida State College for Women again became coeducational and was renamed Florida State University.

The Acting President . . .

DR. MILTON W. CAROTHERS

Dr. Milton W. Carothers calmly took over and held the University on its course as acting president following the tragic death of President Robert M. Strozier last April 20.

At that time, the 61-year-old native of Newbern, Ala., had been with FSU for 17 years. His first job here was as registrar at Florida State College for Women. In 1946, when the Tallahassee Branch of University of Florida was set up at FSCW to take care of an overflow of male students, Carothers was placed in charge of the Tallahassee Branch.

After FSU officially became coeducational in 1947, he was selected as first dean of the Graduate School. During his tenure as dean, graduate enrollments increased from about two dozen to nearly a thousand. In 1958, he was appointed associate dean of the faculties and last spring was named vice president.

Before entering the administrative ranks in higher education, Carothers had a long record of service in public school work. After getting a degree from the University of Alabama, he served as school principal at Carlowville in 1919, and then at Selma, Ala. He left Selma in 1927 for Tampa where he served for five years as principal of Plant High School and five years as supervising principal of Tampa schools. From 1937 to 1942, he was director of the Division of Instruction in the State Department of Education.

He has served as president of the Florida Education Association and twice has been elected president of the Florida Association of Colleges and Universities. He also has been president of the National Association of Directors of Teacher Education and Certification and of the Southern Conference on Teacher Education.

Dr. Carothers is a camellia-grower, collects old glassware and china, and loves deep sea fishing but is a little behind on it.



INTERCOLLEGIATE ATHLETICS

A varied group of seven sports makes up the varsity athletic program at Florida State University. The finest facilities, equipment, and coaching talent are provided in football, basketball, baseball, golf, swimming, tennis, and track.

THE ATHLETIC STAFF

VAUGHN MANCHA	Director of Athletics
BILL PETERSON	Head Football Coach
DICK FLOWERS	Assistant Football Coach
BOB HARBISON	Assistant Football Coach
KEN MEYER	Assistant Football Coach
JOHN COATTA	Assistant Football Coach
DON JAMES	Assistant Football Coach
VINCE GIBSON	Assistant Football Coach
BUBBA McGOWAN	Assistant Football Coach
CHARLIE LaPRADD	Freshman Football Coach
J. K. (BUD) KENNEDY	Basketball Coach
DANNY LITWHILER	Baseball Coach
BILL ODENEAL	Golf Coach
N. B. (BIM) STULTS	Swimming Coach
JOHN POWLESS	Tennis Coach
MIKE LONG	Track Coach
DON FAULS	Trainer
TILLMAN DIXON	Equipment Manager
EDDIE CUBBON	Director of Development
RONALD MELTON	Athletic Business Manager
PAT HOGAN	Sports Publicity Director
NEIL LaBAR	Assistant Sports Publicity Director
JIM MARTIN	Sports Photographer

ATHLETIC COMMITTEE

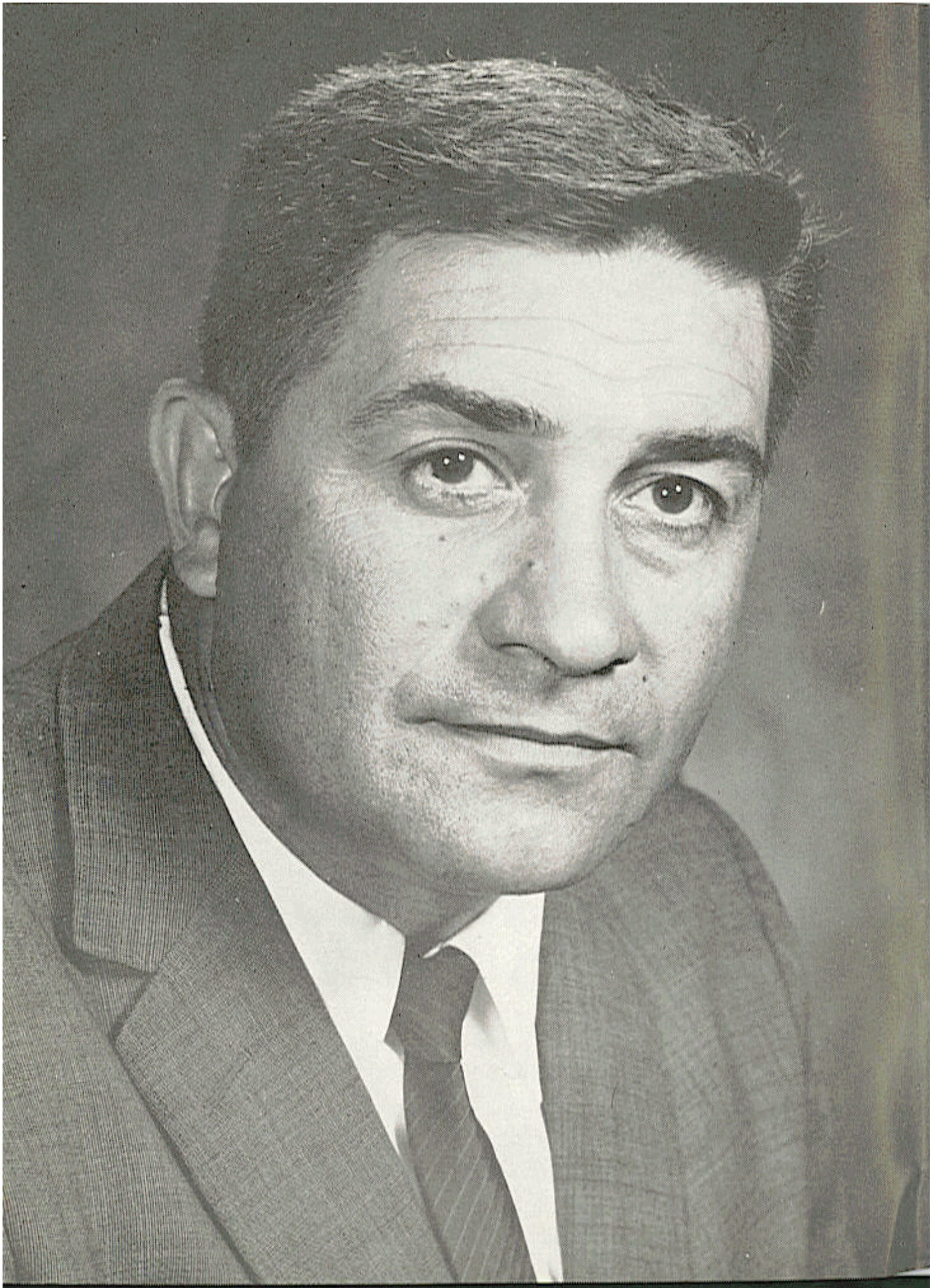
Chairman, Mode Stone; Donald Loucks, George Fortin, Coyle Moore, J. M. Plant, Mary Alexander.



THE ATHLETIC DEPARTMENT

- the director

- the personnel



The Athletic Director . . .

VAUGHN MANCHA

Whenever Alabama disciples gather to talk football, the conversation invariably gets around to Vaughn Hall Mancha, a living symbol of the Crimson Tide's great teams of the mid-forties.

Mancha is practically as legendary in Alabama football circles as Don Hutson and Harry Gilmer. For Florida State University's personable director of athletics was a 240-pound All-Southeastern Conference center at Alabama for four seasons (1944-47) and everyone's All-America center.

Mancha was a solid choice to return to FSU as athletic director in November, 1959, ending a three-year absence from the Seminole campus. He gained wide popularity with Florida State officials and fans while serving as line coach at FSU from 1952 through 1956.

Born in Sugar Valley, Ga., in 1921, Mancha moved to Birmingham at an early age. He entered Alabama in 1944, when he was issued jersey No. 41, a number Alabama's football opponents tried to dodge for four years. During Mancha's four seasons, Alabama rolled to a 30-9-2 record and played in three major bowl games. Vaughn was a starter when the Crimson Tide met Duke in the 1945 Sugar Bowl, Southern Cal in the 1946 Rose Bowl, and Texas in the 1948 Sugar Bowl.

He was such a standout in the '45 Sugar Bowl—on one sparkling play he threw Duke's great George Clark for an 18-yard loss—that he was named to the All-Time Sugar Bowl Team (1945-52 period). In 1955, he was named to Alabama's All-Time Crimson Tide.

Mancha earned a BS Degree in Education at Alabama in 1947 and played with the professional Boston Yankees in 1948. In 1949, he returned to Alabama to earn a Masters Degree in Education. Turning to coaching, Mancha put in a highly-successful three-year tenure as head coach and athletic director at Livingston (Ala.) State.

Mancha first came to Florida State in 1952 as assistant football coach and also served as an assistant professor of Physical Education. In 1957, he went to Columbia University as an assistant football coach and associate member of the Department of Physical Education, positions he held for three years. While at Columbia, he completed all work for the Doctorate with the exception of the dissertation.

Married to the former Sybil Little of Birmingham, he is the father of three children: Clare, 11; Nan, 9, and Vaughn, Jr., 1½.

The Head Coach . .

BILL PETERSON

Florida State University begins a new era of football this season under the leadership of 40-year-old Bill Peterson, one of the most personable head coaches in the game.

A former offensive line coach at Louisiana State University, Peterson was the highly-popular choice of Florida State officials and fans to become the Seminoles' fifth modern-day head football coach last Dec. 7. He has impressed Sunshine State football fans from Pensacola to Miami in scores of personal appearances since his arrival in Tallahassee.

Peterson, a sincere, straight-shooting person who bears a striking resemblance to television's Gene Barry (Bat Masterson), has been associated with success throughout his coaching career.

Following his graduation in 1946 from Ohio Northern University—he was a standout end and captain in his senior year—he was a successful high school coach for 10 years in Ohio. His teams at Forest, Wapakoneta, and Mansfield, O., sported a combined won-lost record of 51-22-3. Two of his Mansfield elevens won Ohio state high school championships.

In 1955, Peterson was the only assistant coach that LSU's Paul Dietzel brought with him to the LSU campus. Peterson was credited with obtaining many of the players who boosted Louisiana State into the top ranks of collegiate football.

LSU's 1958 team won the national championship and defeated Clemson in the 1959 Sugar Bowl. The 1959 Tigers compiled a 9-1 record and were ranked No. 3 nationally.

Coach Peterson has done graduate work at both West Virginia University and LSU.

A native of Toronto, O., Peterson is active in the Methodist Church. He and his wife, Marjorie, have five sons: Ronnie, 17; Tommy, 11; Jon, 8; Billy, 4, and David, 1½.



The Director of Development . . .

EDDIE CUBBON



Edward H. (Eddie) Cubbon was appointed Director of Development for Florida State's intercollegiate athletic program in June, 1959, after five years as FSU's athletic business manager.

In his new position, Cubbon supervises the promotion of tickets for all athletic events, primarily the sale of football tickets.

A 1932 graduate of West Virginia University and a native West Virginian, Eddie came to Florida State in 1954 from Morris Harvey College in Charleston, W. Va., where he was director of athletics for four years. Cubbon took over as supervisor of graduate teaching at West Virginia's Demonstration School in 1933, also serving as director of

athletics. In 1940, he continued his graduate work at Penn State and became director of athletics at California (Pa.) State Teachers College in 1941. He served in the Navy from 1942-45 and returned to California State in 1945. He remained there until 1950, when he moved to Morris Harvey.

Eddie and Mrs. Cubbon (Mina) have one daughter, Mrs. Michael Sheridan.

The Athletic Business Manager . . .

RONALD MELTON

Florida State's assistant athletic business manager for five years, Ronald H. Melton has been athletic business manager since June, 1959.

Born in Alabama but a long-time resident of Tallahassee, Ronald is a popular figure with athletic officials across the nation. He coordinates Florida State's athletic travel plans, seeing to it that Seminole athletes are as comfortable as possible on the road.

A 1953 graduate of Florida State's School of Business, Ronald was a baseball standout for the Seminoles for four years. During one season, he hit safely in 17 consecutive games. He has been associated with Florida State's athletic business office since October, 1954.

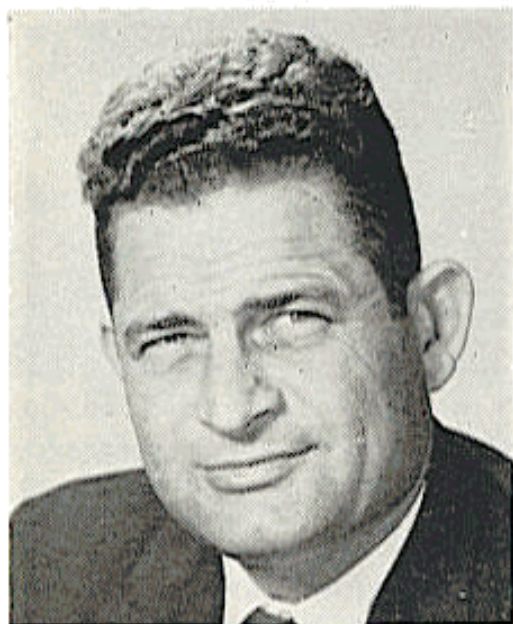
Ronald and Mrs. Melton (Frances Nell) have three children: Kathryn, 7; Ronald Michael, 3 and Lynndee, 1½.



THE FOOTBALL STAFF

DICK FLOWERS

Assistant Coach



Personable Dick Flowers, 38, a native of Mobile, Ala., is in his second season as an assistant coach at FSU.

A graduate of Alabama, where he was a first-team tackle from 1945-48, Flowers is regarded as one of the best defensive coaches around. At Alabama, Dick was a teammate of Seminole Athletic Director Vaughn Mancha, and of Harry Gilmer. He played in the 1945 Rose Bowl and 1947 Sugar Bowl games.

Flowers was an assistant coach at Alabama in 1949-50 and at LSU in 1951-52. He coached one year at Live Oak, Fla., High School (1953) and was out of coaching in 1954 before taking over as head coach and athletic director at Gainesville, Fla., High School. He compiled fine records at Gainesville before joining the

Florida State staff in 1959.

Coach and Mrs. Flowers (Elizabeth) have two boys: Al, 10, and Woody, 7.

BOB HARBISON

Assistant Coach

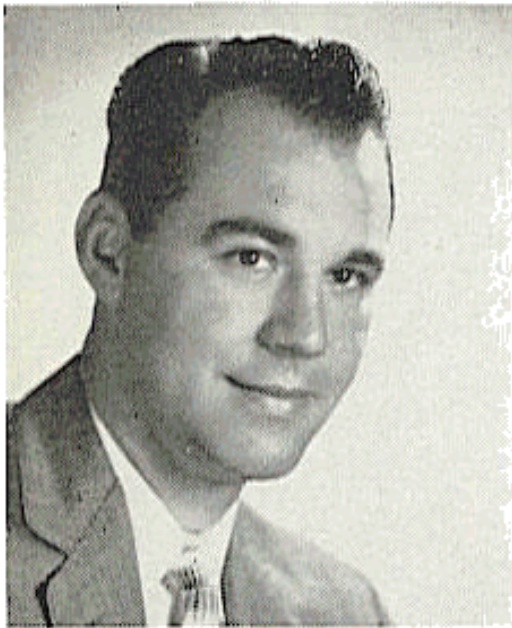
In terms of longevity, Bob Harbison, 33, is the real veteran of the Seminole coaching staff. Harbison begins his 13th full season with Florida State this fall.

Back in his playing days, Bob was an outstanding guard for the late Bo McMillin at Indiana University from 1945-47. He was chosen to play with the North squad in the annual Blue-Gray game at Montgomery, Ala., in 1947.

A native of Evansville, Ind., Harbison came to Florida State in 1948. He is credited with developing Little All-America guard Bill Dawkins in 1951 and former Seminole coach Hugh Adams, a Little All-America tackle, in 1949.



Coach and Mrs. Harbison (Jayne) have three daughters: Paula, 10; Susy, 7, and Mary, 4.



KEN MEYER

Assistant Coach

Ken Meyer, 34, is in his first season as a member of the Florida State football coaching staff. Ken joined the Seminoles prior to spring practice after serving two years as assistant coach at Wake Forest and six years as backfield assistant at Denison University, Granville, O.

Meyer was a standout halfback at Denison for three years. During his first two seasons, Denison compiled a 19-game winning streak under Woody Hayes, now head coach at Ohio State.

Ken was born in Erie, Pa., but attended high school in Ashtabula, O. Following his graduation from Denison in 1950, he served two years as head coach at Johnstown, O., High School and East Palestine, O., High before returning to Denison in 1952.

Coach and Mrs. Meyer (Helen) have four children: Cindy, 11; Karl, 8; Richard, 5, and Thomas, 3.

JOHN COATTA

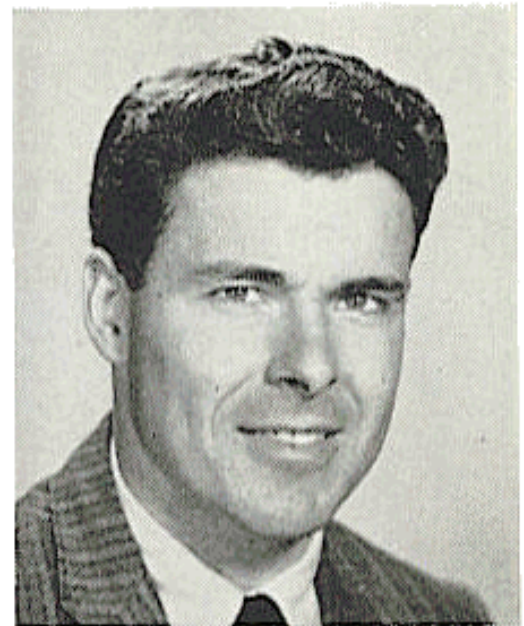
Assistant Coach

One of the sharpest passing quarterbacks in Big Ten history, 28-year-old John Coatta came to Florida State last year from the University of Wisconsin. He was an assistant coach with the Badgers for four years.

A native of Dearborn, Mich., Coatta was a passing whiz for Coach Ivy Williamson at Wisconsin from 1949-51. In 1950, John set an all-time Big Ten pass completion record, connecting on 52 of 81 aerials for 610 yards and a fancy .642 percentage. He was named to the All-Big Ten and All-Midwest honor teams following the 1951 season.

Coatta coached at Wisconsin in 1952 before entering the Army, where he played and coached at Fort Eustis, Va. He returned to Wisconsin as an assistant coach in 1955 and completed work on his masters degree there in January, 1959.

Coach and Mrs. Coatta (Jean) have four children: Jan, 7; Jeff, 4½; John, 2½, and Julie, 6 months.





DON JAMES

Assistant Coach

Donald Earl (Don) James has packed a lot of football experience into his 27 years. The Massillon, O., native came to Florida State last year from Southwest Miami High School, where he was backfield coach in 1957 and 1958.

Don was an outstanding high school quarterback at Massillon, O., playing under Chuck Mather and piloting Massillon to state championships in 1948 and 1949. He played quarterback for the University of Miami, lettering in 1952 and 1953.

Entering the Army in 1954, James played with fellow coach John Coatta at Ft. Eustis, Va. In 1956 Don was an assistant coach under his

former high school coach, Chuck Mather, at Kansas. He obtained his masters degree at Kansas.

Coach and Mrs. James (Carol) have two children: Jeff, 5, and Jill, 3½.

VINCE GIBSON

Assistant Coach

One of the toughest guards in Florida State's relatively brief football background is new varsity assistant coach Vince Gibson. Vince, who served as assistant freshman coach in 1959, had the knack for recovering fumbles and slipping through to block punts when he performed for the Seminoles in 1954 and 1955.

Following his graduation from Florida State, Vince became line coach and basketball and track coach at South Georgia College. The Birmingham, Ala., native produced some outstanding results during three seasons at South Georgia (1956-58).

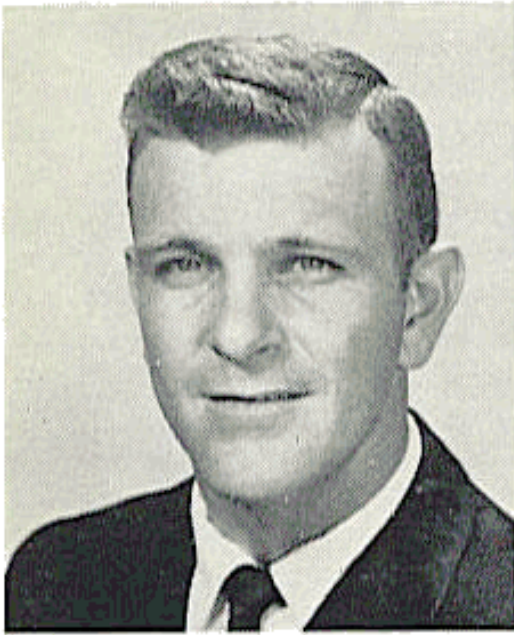
An excellent student, Gibson, 27, earned his masters degree at Florida State in 1956. He currently is working toward a doctorate degree.



Coach and Mrs. Gibson (Deane) have two children: Greg, 4, and Pam, 2.

BUBBA MCGOWAN

Assistant Coach



William Albert (Bubba) McGowan has the distinction of being the first person to have coached football at both the University of Florida and Florida State University.

A former left halfback at Florida—he played as a freshman and sophomore under Bear Wolff, as a junior and senior under Bob Woodruff—McGowan was Florida's freshman backfield coach in 1952. The Dothan, Ala., native in 1953 and 1954 was football coach of the Fort Jackson, S. C., Army team.

McGowan, 31, was track coach and football assistant to fellow coach Dick Flowers at Gainesville High School from 1955-58. Coach and Mrs. McGowan (June) have one boy, William Albert, Jr., 1½

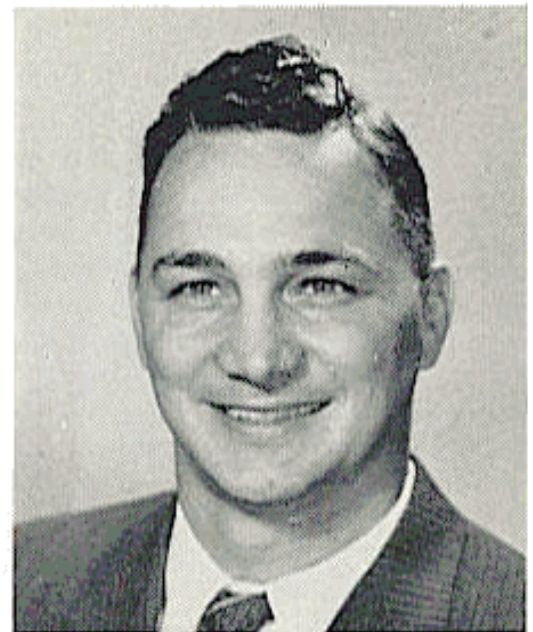
CHARLIE LaPRADD

Freshman Coach

The second oldest member—in terms of service—of Florida State's coaching staff is Charlie LaPradd, All-America tackle at the University of Florida in 1952.

A tall, impressive person, LaPradd has developed into an excellent football coach, primarily because of the way the young Seminoles respect him.

A native of St. Augustine, Charlie, 32, was graduated from the University of Florida in 1953 before serving in the Air Force. He was a graduate assistant at Florida State while working toward his masters degree in 1956. He became a full member of the staff in 1957. A keen student, LaPradd is handling the freshman team while working toward his doctorate degree.



Cosch and Mrs. LaPradd (Nita) have two children: Charles Thomas, 8, and Lauren Lee, 6.



DON FAULS

Trainer

A native of Ithaca, N. Y., Don Fauls, 39, came onto the Florida State athletic scene in 1954. He has done an outstanding job easing Seminole aches and pains.

Starting his seventh year at Florida State, Fauls was graduated from Ithaca College in 1943 with a degree in physio-therapy and began his professional work with a hospital in Bath, N. Y. After serving at Bath for two years, Don went to Greensboro, N. C., as a trainer for the Greensboro Patriots of the Carolina Baseball League.

He worked during the off-season at the Gilmore Clinic in Greensboro and, after two years, joined the St. Louis Cardinal chain as a trainer at Omaha, Neb.

Don and Mrs. Fauls (Marguerite) have three children: Donna, 9, and twins Danny and Jackie, 7.

TILLMAN DIXON

Equipment Manager

Florida State's "Mr. Dix" is Tillman Dixon, the hard-working equipment manager who has become so popular with Seminole athletes.

Beginning his eighth year in the position, Dixon is charged with the huge responsibility of keeping track of well over 5,000 pieces of football gear.

"Mr. Dix" formerly was on the staff of the Florida Industrial School for Boys. He is a native of Esto, Fla., and earned letters in football, basketball, and track at Madison, Fla., High School.

Florida State's equipment and lockerroom setup, one of the most complete in the South, is all the design of Tillman. Seminole football players have access to 167 screened lockers, all of which he designed. Tillman is a Mason and a Shriner. His wife's name is Johnnie.





NEIL LaBAR

Assistant Sports Publicity Director

Neil LaBar has served as assistant director of sports publicity at Florida State since June, 1959.

A 1957 graduate of Florida State, LaBar works closely with Sports Publicity Director Pat Hogan, with chief responsibilities of coordinating radio and television activities for the Department of Athletics.

A native of Binghamton, N.Y., LaBar, 30, specialized in radio and television while a student at Florida State. He produced, directed and handled play-by-play of Seminole baseball and basketball broadcasts for two years and assisted in production of games for the Seminole Football Network.

In his present position, Neil supervises technical arrangements for visiting stations and coordinates special programs for radio and television.

1960 FRESHMAN FOOTBALL SCHEDULE

Oct. 1	Mississippi Southern	Columbus, Ga.
Oct. 8	Furman	Thomasville, Ga.
Oct. 13	The Citadel	Albany, Ga.
Nov. 5	Miami	Orlando
Nov. 17	Florida	Tallahassee

1959 FRESHMAN RESULTS

FSU	15—The Citadel	0
FSU	29—Furman	0
FSU	18—Mississippi Southern	6
FSU	20—Miami	15



THE 1960 SEMINOLES

- the roster
- the outstanding



1960 FLORIDA STATE

ENDS

No.	Name	Ht.	Wt.	Age	Class	High School	Hometown
86	*Jim Daniel	6-4	185	21	Jr.	Fulton	Atlanta, Ga.
84	George Ehlers	6-2	190	22	Sr.	Moss Point	Moss Point, Miss.
85	*Fred Grimes	6-1	188	20	Jr.	Hialeah	Hialeah
88	Bill Lee	6-0	201	20	So.	Decatur	Decatur, Ga.
89	Jerry Lee	6-2	187	18	So.	Lakeview	Rossville, Ga.
80	* *Tony Romeo	6-1	200	22	Sr.	Hillsborough	Tampa
82	George Tillman	6-2	207	20	So.	Fairhope	Daphne, Ala.

TACKLES

73	Mike Blazovich	6-1	234	19	So.	McDevitt	Euclid, O.
76	Marion Bronson	6-4	232	20	So.	Gainesville	Gainesville
74	Bruce Darsey	6-0	217	19	So.	Largo	Largo
75	*Don Donatelli	6-2	231	19	Jr.	North Catholic	Pittsburgh, Pa.
77	Jessy Odom	6-3	222	18	So.	Bay	Panama City
70	Tom Slicker	6-1	207	19	So.	Massillon	Massillon, O.
71	* *Bob Swoszowski	6-3	205	20	Sr.	Edgewater	Orlando
78	*Joe Verbinski	6-1	208	22	Jr.	Upper Moreland	Willow Grove, Pa.

GUARDS

68	* *Abner Bigbie	5-10	183	22	Sr.	Palm Beach	West Palm Beach
60	Ferrell Henry	6-0	188	19	So.	Miller	Colquitt, Ga.
66	* *Ken Kestner	5-9	190	22	Sr.	Benedictine	Cleveland, O.
67	*Steve Klesius	6-1	217	19	Jr.	Boca Ciega	St. Petersburg
65	John Levings	6-0	230	19	So.	Tech	Ft. Worth, Tex.
63	Gene McDowell	5-11	191	20	So.	Waycross	Waycross, Ga.
62	Jim Sims	5-11	201	21	So.	LaGrange	LaGrange, Ga.
64	Bob Smith	5-11	200	19	So.	Woodlawn	Birmingham, Ala.
61	Dave Stanley	5-10	193	18	So.	Seminole	Sanford
69	Jim Wade	5-10	189	18	So.	Grady	Atlanta, Ga.

FOOTBALL ROSTER



CENTERS

No.	Name	Ht.	Wt.	Age	Class	High School	Hometown
53	Lamar Elton	5-11	193	18	So.	Umatilla	Umatilla
54	**Jack Hardy	5-11	197	21	Sr.	Senior	Miami
51	Larry Hood	6-0	194	20	Jr.	Lakeland	Lakeland
50	**Ray Lamb	6-0	181	22	Sr.	Murphy	Atlanta, Ga.
52	Don Sellers	6-2	210	23	Sr.	Barberton	Barberton, O.

QUARTERBACKS

12	Charlie Alexander	6-0	185	19	So.	Stark	Orange, Tex.
15	*Roy Bickford	5-11	181	20	Jr.	Bishop Curley	Miami
14	Eddie Feely	5-9	164	19	So.	Gainesville	Gainesville
11	a-Buddy Yarbrough	6-2	185	19	So.	DeSoto	Arcadia

HALFBACKS

28	Al Beccaccio	6-2	192	21	So.	Free Academy	Newburgh, N.Y.
24	*Ken Cone	6-1	180	21	Sr.	Lakeland	Lakeland
13	Happy Fick	5-9	166	19	So.	Edison	Miami
29	Tom Hillabrand	5-11	174	19	So.	Perrysburg	Perrysburg, O.
25	*Carl Meyer	5-11	181	21	Jr.	Melbourne	Melbourne
21	*Don Mustain	6-0	168	20	Jr.	Miami	Miami, Okla.
22	Ken Russom	6-0	170	19	So.	Gainesville	Gainesville
26	**Bud Whitehead	5-11	178	21	Sr.	Marianna	Marianna
20	Willie Whitehead	5-10	164	19	Jr.	Marianna	Marianna

FULLBACKS

42	*Paul Andrews	5-10	196	20	Jr.	Greenville	Greenville
43	John McConnaughay	5-11	193	18	So.	Ocala	Ocala
44	Ed Parker	6-4	214	20	Jr.	Leesburg	Leesburg
41	Denny Schou	5-9	190	21	Jr.	Ft. Lauderdale	Ft. Lauderdale
40	Doug Williams	6-0	205	21	So.	Waycross	Waycross, Ga.

*Denotes letters won. a—Will play quarterback and halfback.

THE TENTATIVE DEPTH CHART

(Based on Early Summer Estimates)

LE — Daniel	Grimes	J. Lee
LT — Bronson	Swoszowski	Slicker
LG — Levings	Sims	Smith
C — Sellers	Hardy	Lamb
RG — Klesius	Bigbie	McDowell
RT — Donatelli	Verbinski	Darsey
RE — Romeo	B. Lee	Tillman
QB — Alexander	Feely	Bickford
LH — B. Whitehead	Fick	Cone
RH — Meyer	Russom	Hillabrand
FB — Andrews	Parker	McConnaughay

NUMERICAL ROSTER

11 Yarbrough	29 Hillabrand	61 Stanley	74 Darsey
12 Alexander	40 Williams	62 Sims	75 Donatelli
13 Fick	41 Schou	63 McDowell	76 Bronson
14 Feely	42 Andrews	64 Smith	77 Odom
15 Bickford	43 McConnaughay	65 Levings	78 Verbinski
20 W. Whitehead	44 Parker	66 Kestner	80 Romeo
21 Mustain	50 Lamb	67 Klesius	82 Tillman
22 Russom	51 Hood	68 Bigbie	84 Ehlers
24 Cone	52 Sellers	69 Wade	85 Grimes
25 Meyer	53 Elton	70 Slicker	86 Daniel
26 B. Whitehead	54 Hardy	71 Swoszowski	88 B. Lee
28 Beccaccio	60 Henry	73 Blazovich	89 J. Lee

PRONUNCIATION CHART

Beccaccio — —	Ba-CASH-eo	Levings	—	LEV-ings
Bigbie —	BIG-bee	McConnaughay	—	Ma-Conn-a-hay
Blazovich —	BLAZE-o-vitch	Schou	—	SCOW
Donatelli —	Don-a-TELL-ee	Swoszowski	—	Swa-ZOW-ski
Ehlers —	ELL-ers	Verbinski	—	Ver-BIN-ski
Klesius —	KLEE-see-us	Yarbrough	—	YAR-bro

SEMINOLE PROFILES

LEFT ENDS



86 JIM DANIEL. Junior, 21, 6-4, 185, Atlanta, Ga. A gifted pass receiver who started as a soph, this experienced former Georgia All-Stater figures to be even better this trip. A versatile athlete who has posted a 6-2 pitching record in two seasons, Jim was second-best pass receiver in '59, snaring 22 for 296 yards, 3 TDs.



85 FRED GRIMES. Junior, 20, 6-1, 188, Hialeah. Knee injury kept Fred on sidelines much of last season. But he played enough to show real talent as receiver and heads-up defensive player who comes up with the "big" play. Caught 5 passes in spring game.



89 JERRY LEE. Sophomore, 18, 6-2, 187, Rossville, Ga. An erstwhile Georgia All-Stater who was president of all 4 of his high school classes, Jerry showed promise in spring. The pre-law student is a good-attitude, eager-to-learn prospect who needs experience.



LEFT TACKLES

76 MARION BRONSON. Sophomore, 20, 6-4, 232, Gainesville. A transfer student from Perkinson (Miss.) JC, Marion earned front-line berth in spring after sitting out last season. He is strong, smart, and tough, but needs offensive polish.



71 BOB SWOSZOWSKI. Senior, 20, 6-3, 205, Orlando. This two-year letterman, bothered as a soph with recurring injuries, has experience, good speed, worlds of spirit. A piano player of no mean ability, Bob could play vital role as field leader.



70 TOM SLICKER. Sophomore, 19, 6-1, 207, Massillon, O. Regarded as possibly best offensive tackle on fine '59 freshman squad, this hard-working product of football-wise Massillon has good future. Fine spring will earn him shot this fall.

LEFT GUARDS



65 JOHN LEVINGS. Sophomore, 19, 6-0, 230, Fort Worth, Tex. An excellent student, this Wisconsin-born athlete figures as FSU's most promising soph. Great speed, strength (230) have earned this convert from tackle a No. 1 spot. Needs game action.



62 JIM SIMS. Sophomore, 21, 5-11, 201, LaGrange, Ga. Consistency has been trademark for this promising soph. Tireless worker with much promise, Jim is good student who needs and will get game experience.



64 BOB SMITH. Sophomore, 19, 5-11, 200, Birmingham, Ala. Possessor of good speed and natural ability, Smith is another in line of promising soph guards. A steady performer as freshman, Bob needs work on fundamentals.

CENTERS

52 DON SELLERS. Senior, 23, 6-2, 210, Barberton, O. A transfer from South Georgia College, Don came along rapidly in spring after so-so junior year. Has experience, desire, leadership qualities and could be team's best linebacker.



54 JACK HARDY. Senior, 21, 5-11, 197, Miami. A steady competitor for two years, Hardy has gained much experience against tough opposition. Jack is the Tribe's best offensive center, excels in arrow-straight snaps to punters and hard-nose play.



50 RAY LAMB. Senior, 22, 6-0, 181, Atlanta, Ga. Ray got early baptism of fire two years back as young soph against Georgia Tech in Atlanta. Has been reliable guard for two years, was shifted to center for senior year. Could have finest season.



RIGHT GUARDS



67 STEVE KLESIOUS. Junior, 19, 6-1, 217, St. Petersburg. A some-time starter at tackle in '59, Steve was shifted to guard in spring. Developed rapidly last year, has good speed for size, excellent attitude, solid team player.



68 ABNER BIGBIE. Senior, 22, 5-10, 183, West Palm Beach. Showed in fine spring that he has regained standout form of two years ago. Small, but is quick, agile, and tough.



63 GENE McDOWELL. Sophomore, 20, 5-11, 191, Waycross, Ga. Improving as he learns techniques, "Mac" was starter for '59 freshmen. Needs game experience, but has the tools of speed and desire.

RIGHT TACKLES

75 DON DONATELLI. Junior, 19, 6-2, 231, Pittsburgh, Pa. Gained experience as frequent starter as a soph. Tremendous effort makes him valuable. A tireless worker, Don is big and tough. Still developing with two seasons ahead.



78 JOE VERBINSKI. Junior, 22, 6-1, 208, Willow Grove, Pa. Best forte is defense, but Joe also is one of swiftest FSU linemen. He is agile and excelled last season as demon on punt coverage. Will see plenty of action.



74 BRUCE DARSEY. Sophomore, 19, 6-0, 217, Largo. Outstanding as a freshman center, Bruce had good spring at guard and will get a full trial at tackle this fall. He has size and ability. Major item needed: experience.

RIGHT ENDS



80 TONY ROMEO. Senior, 22, 6-1, 200, Tampa. Much depends on this 1958 All-America honorable mention, whose chance for a bonafide All-America berth last year was wrecked by knee injury in very first half of first game. Missed spring practice because of critical knee operations. If knee holds up, could be tremendous. A gem in every phase.

88 BILL LEE. Sophomore, 20, 6-0, 201, Decatur, Ga. A full-back in high school, Bill is strong, hard-nosed defensive player who figures to improve with experience. A good blocker, Bill needs work on offense.



82 GEORGE TILLMAN. Sophomore, 20, 6-2, 207, Daphne, Ala. A young player with plenty of physical ability, George was front-line performer as freshman. Has bright future but polish, experience must come first.

QUARTERBACKS

12 CHARLIE ALEXANDER. Sophomore, 19, 6-0, 185, Orange, Tex. A strong passing arm, neat ball-handling, and general savvy earned this potentially-great soph the No. 1 signal-calling role in spring. Despite painful shoulder injury, hit 9 of 13 passes for 118 yards and 3 TDs as frosh. Has unusual poise for soph, but is untested under fire.



14 EDDIE FEELY. Sophomore, 19, 5-9, 164, Gainesville. Electrified spring-game crowd with dazzling running, slick throwing. Smooth on option play, Eddie is crafty and could overcome small stature with his tremendous desire.

15 ROY BICKFORD. Junior, 20, 5-11, 181, Miami. A fiery competitor, Bickford played No. 2 behind departed Joe Majors in '59. An average passer, Roy is best on defense, has more experience than other QB candidates.



LEFT HALFBACKS



26 BUD WHITEHEAD. Senior, 21, 5-11, 178, Marianna. Coaches look to this versatile senior as No. 1 player for 1960. An average runner who excels as punter, pass receiver and defender, Bud last year led nation in interception returns (6 for 111 yards), ranked 8th in pass catching (31 for 320 yards, 2 TDs).



13 HAPPY FICK. Sophomore, 19, 5-9, 166, Miami. An early spring-practice stickout, this quick halfback led 1959 freshman ground-gainers with whopping 8.0-yard average. Has all-the-way capabilities, great love for game. Needs experience.



24 KEN CONE. Senior, 21, 6-1, 180, Lakeland. Hampered throughout varsity career by various injuries, Ken could have banner year if trick knee holds up. Showed fine running ability between ailments in 1959.

RIGHT HALFBACKS



25 CARL MEYER. Junior, 21, 5-11, 181, Melbourne. Displaying shifty running ability as soph in '58, Carl is back after year's absence. When he rounds into top condition, he could give backfield needed offensive punch.



22 KEN RUSSOM. Sophomore, 19, 6-0, 170, Gainesville. Coaches say this former Gainesville teammate of QB Feely has great defensive potential, excellent pass-catching ability. Was third leading yardage-maker as frosh and bright spot in spring game.



29 TOM HILLABRAND. Sophomore, 19, 5-11, 174, Perrysburg, O. Blossomed in spring after playing in minor status as freshman. Devoted worker, Tom has good promise but must have experience.

FULLBACKS



42 PAUL ANDREWS. Junior, 20, 5-10, 196, Greenville. A steady, consistent player who is fine blocker, Paul developed quickly as soph, played No. 2 behind Jack Espenship. A strong competitor, he may help Bud Whitehead with punting chores.

44 ED PARKER. Junior, 20, 6-4, 214, Leesburg. This 1959 JC All-American at Coffeerville, Kans., has great offensive potential. Size makes him strong runner. Could become team's No. 1 offensive power runner.



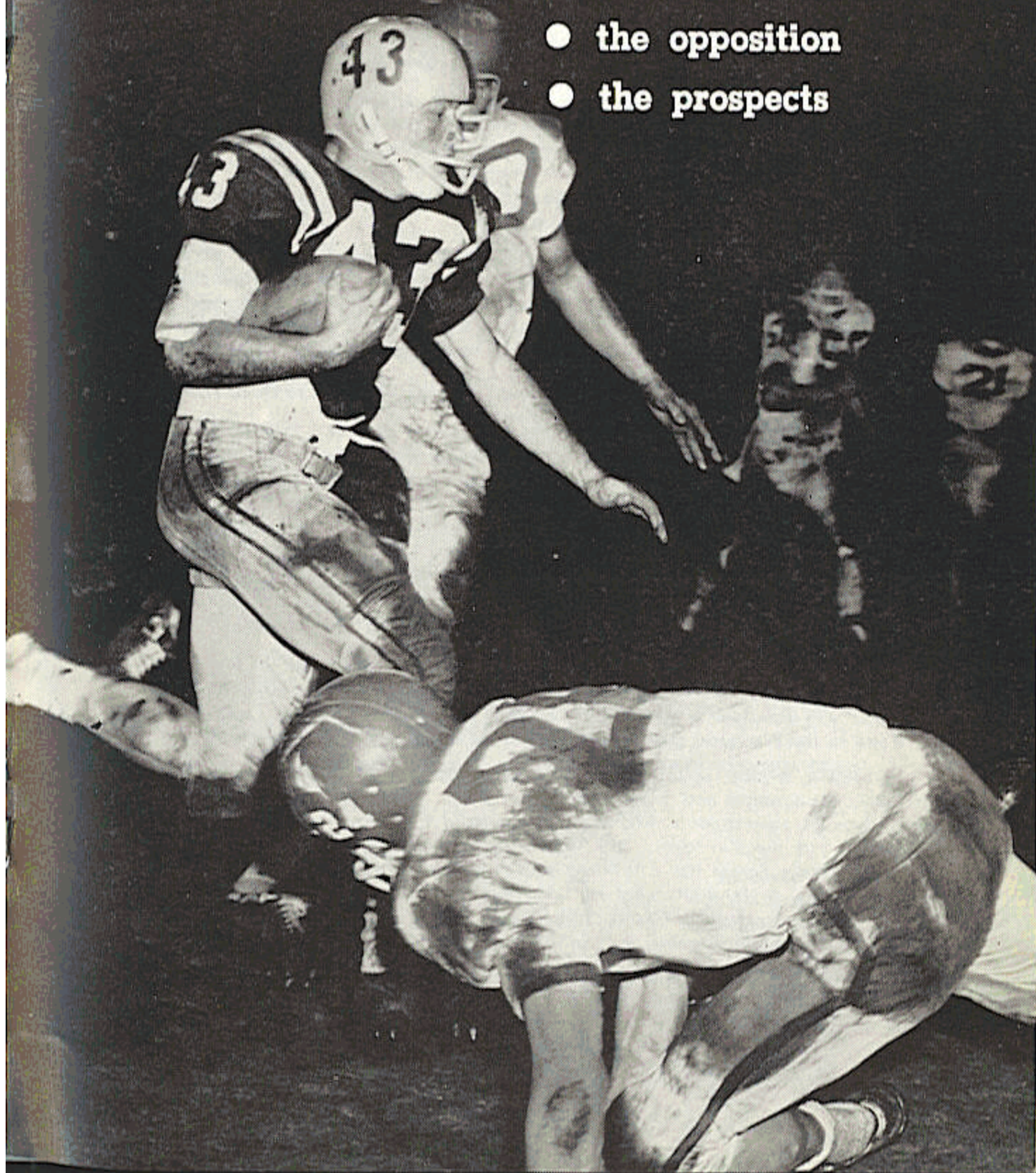
43 JOHN McCONNAUGHAY. Sophomore, 18, 5-11, 193, Ocala. A quarterback when he came to FSU, John is a tremendous tackler, maybe team's best. A defensive standout as a freshman, his defensive prowess makes him a candidate for a number of spots:

1960 TRAVEL PLANS

Date	Game	Travel	Team Quarters
Sept. 24	Florida	Bus	Shalimar Motel Silver Springs, Fla.
Oct. 8	The Citadel	Air	Francis Marion Hotel Charleston, S. C.
Oct. 15	Miss. Southern	Air	Battle House Mobile, Ala.
Nov. 4	Miami (Fla.)	Air	Hotel McAllister Miami, Fla.
Nov. 19	Auburn	Air	Ralston Hotel Columbus, Ga.

THE COMING SEASON

- the opposition
- the prospects



THE OUTLOOK IN '60

By BILL PETERSON

We are moving into the 1960 football season with plenty of enthusiasm despite the fact that we face a major-league schedule with a young, 48-man varsity squad that lists 25 sophomores and 17 lettermen.

Our enthusiasm springs from the hustle and determination our players displayed in spring practice. They have the ambition not only to get the job done, but to excel. If we are to have a good team, however, we must get outstanding field leadership and performance from experienced hands Bud Whitehead, Tony Romeo, Carl Meyer, Jack Hardy, Don Sellers, Jim Daniel, Ray Lamb, Don Donatelli, Steve Klesius, and Paul Andrews, among others.

For varying reasons, we have lost some promising football players since I came to Florida State last December. To have a good football team, we feel you must have a great halfback and a top-flight linebacker. Among our losses was right halfback Jack Espenship, a strong, 202-pound athlete who proved last spring that he could be a great halfback.

All is not lost, however. Our determined players are blessed with one of the most important ingredients in football—desire.

We will strive at Florida State to play as many boys as possible. Our immediate plan calls for the use of a three-team system of substitution. When a player knows that he definitely will play in a game, it adds immeasurably to team morale. Under a three-team system, a player begins preparing Monday for the Saturday game, rather than waiting until Thursday to start getting ready. If you can get 100 per cent effort in practice, we believe you will get the same effort on Saturday. Our use of a three-unit system will depend, of course, on injuries, scholastic stability, and young sophomores coming through in key positions.

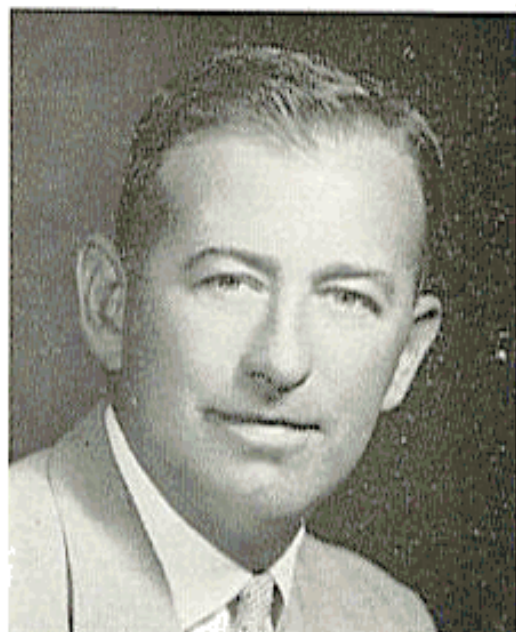
We will use a flexible offense based on a combination of winged-T and pro-type elements. We favor a passing game. Our sophomore quarterbacks will shoulder a tremendous burden, but if they develop rapidly we hope to have a good passing attack and an offense that the fans will like.

In regard to the schedule, I know what to expect from our Southeastern Conference opponents and from Miami. But I do not know the strengths of the other teams on our schedule. Richmond has a solid first team and some outstanding individuals. Florida, Kentucky, and Auburn all could challenge for the top level of the SEC. Wake Forest has a brilliant passer in Norman Snead and 24 other lettermen back from a standout team of last year. William and Mary and the Citadel will be well represented. Miami, Mississippi Southern, and Houston are among the leading independent teams.

It will be a tough, uphill climb. But, if I may speak for our players, we believe we will play interesting football and have a team in which our followers will be proud.

At Tallahassee

COACHING STAFF: Edwin J. Merrick, head coach; Dr. Richard E. Humbert, end coach; Carl Wise, backfield coach; Harold Hunter, line coach.



NICKNAME: Spiders.

COLORS: Red and Blue.

PUBLICITY DIRECTOR: Walt Drewy.

ENROLLMENT: 4,200.

RETURNING LETTERMEN: 12.

1959 RECORD: Won 4, Lost 5, Tied 1.

CONFERENCE: Southern.

SERIES: Florida State leads, 1-0.

1960 OUTLOOK: In the words of Coach Edwin Merrick, Richmond will have an excellent first eleven—fast, big, and experienced. But an old bugaboo, lack of depth, and a tough schedule will make it rugged to improve on last year's 4-5-1 record.

The Spiders' first unit is impressive enough. The line averages a solid 218 pounds and includes end Bob Coolbaugh, an outstanding pass receiver; Bob Buffman, big (6-3, 240) tough co-captain at tackle, and Don Christman, 225-pound center who may be the best linebacker in the Southern Conference.

There is experience in the backfield, with left half Earl Stoudt, a splendid broken-field runner; senior co-captain John Boggs at fullback, and Art D'Arrigo at right half. Best sophs appear to be Brent Vann, defensive halfback dandy, and George Rapp, swift, sticky-fingered end.

RICHMOND'S 1960 SCHEDULE

Sept. 17 at FLORIDA STATE
Oct. 1at VMI
Oct. 8at West Virginia
Oct. 15 The Citadel
Oct. 22 at Davidson
Oct. 29 Virginia Tech
Nov. 4 at George Washington
Nov. 11at Furman
Nov. 19 at East Carolina
Nov. 24 William and Mary

1959 RECORD (4-5-1)

3 Dayton	6
7 West Virginia	10
14 VMI	14
20 Davidson	7
7 The Citadel	8
6 FLORIDA STATE	22
29 Virginia Tech	51
27 George Washington	0
48 Furman	12
20 William and Mary	12

At Gainesville



COACHING STAFF: Ray Graves, head coach; Gene Ellenson, Pepper Rodgers, John Mauer, Jim Powell, John Donaldson, Jack Green, John Eibner, Earl Scarborough, Jimmy Dunn, assistant coaches; Dave Fuller, head freshman coach.

NICKNAME: Fighting Gators.

COLORS: Orange and Blue.

PUBLICITY DIRECTOR: Jimmy Gay.

ENROLLMENT: 12,710

RETURNING LETTERMEN: 22

1959 RECORD: Won 5, Lost 4, Tied 1.

CONFERENCE: Southeastern.

SERIES: Florida leads, 2-0.

1960 OUTLOOK: In his inaugural season as head coach, Ray Graves will have the services of 22 returning lettermen and will miss 14 of the 1959 Gators' finest.

Youngsters must prove their worth early if Florida is to be a good team in '60. Sophs figuring prominently in early speculation are quarterback Larry Libertore, halfbacks Lindy Infante, Bob Hoover and Dick Skelly, end Bruce Starling, and center Bruce Culpepper. Graves can bank on a number of key returnees, including tackles Danny Royal, Jim Beaver, and Ronnie Slack, center and captain Bill Hood, ends Pat Patchen and Nick Arfaras, halfbacks Don Deal and Doug Partin, and fullback Jon MacBeth.

Overall, the Gators appear to be well manned at end, tackle, halfback, and fullback. Florida lacks depth at center and experience at guard and quarterback.

FLORIDA'S 1960 SCHEDULE

1959 RECORD (5-4-1)

Sept. 17	... Ga. Wash. at Jacksonville
Sept. 24FLORIDA STATE
Oct. 1Georgia Tech
Oct. 8Rice at Miami
Oct. 15Vanderbilt
Oct. 22at LSU
Oct. 29Auburn
Nov. 5Georgia at Jacksonville
Nov. 12Tulane
Nov. 26at Miami

30 Tulane	0
14 Mississippi State	13
55 Virginia	10
13 Rice	13
6 Vanderbilt	13
0 Louisiana State	9
0 Auburn	6
10 Georgia	21
18 FLORIDA STATE	8
23 Miami	14

October 1:

WAKE FOREST

8:00 P.M.

At Tallahassee

COACHING STAFF: Billy Hildebrand, head coach; Elmer Barbour, Chuck Knox, Cecil Ingram, Richard Hunter, Ray Thornton, assistant coaches.

NICKNAME: Demon Deacons.

COLORS: Old Gold and Black.

PUBLICITY DIRECTOR: Marvin Francis.

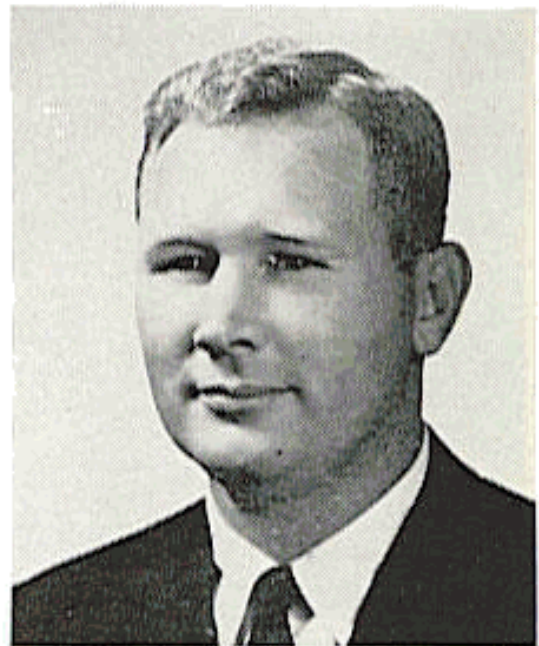
ENROLLMENT: 2,505.

RETURNING LETTERMEN: 25.

1959 RECORD: Won 6, Lost 4.

CONFERENCE: Atlantic Coast.

SERIES: Tied, 1-1-1.



1960 OUTLOOK: With at least two lettermen available at every position save left end and fullback, Wake Forest's 1960 outlook appears very promising. The Deacons should be as strong, if not stronger, than last year's team.

New Coach Billy Hildebrand, who replaced Paul Amen as head coach last January when the latter resigned to enter private business, inherits 25 lettermen, seven of whom drew starting assignments in the final game last fall. Major losses were LE Pete Manning, C Buck Jolly, RG Nick Patella, and FB Neil MacLean.

Heading the returnees is quarterback Norman Snead, 6-4, 200-pound senior who was fifth nationally in total offense in '59. Other starters back are RE Bobby Allen, the ACC's leading pass receiver; tackles Wayne Wolff and All Conover, guard Paul Martineau, and halfbacks Bobby Robinson and Jerry Ball. The Deacs will employ the same wide-open offense, featuring two lonely ends.

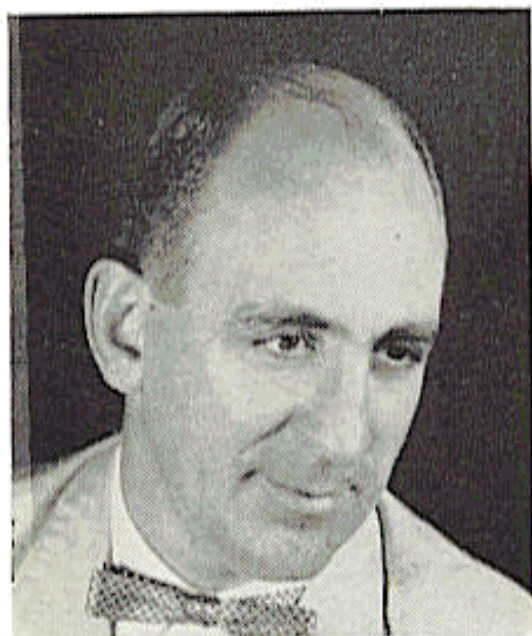
WAKE FOREST'S 1960 SCHEDULE

Sept. 24	Clemson
Oct. 1at	FLORIDA STATE
Oct. 8at	Virginia Tech
Oct. 15at	North Carolina
Oct. 22	Maryland
Oct. 29at	Virginia
Nov. 5	North Carolina State
Nov. 12	Duke
Nov. 19at	LSU
Nov. 26at	South Carolina

1959 RECORD (6-4)

22	FLORIDA STATE	20
27	Virginia Tech	18
0	Tulane	6
10	Maryland	7
17	N. C. State	14
19	North Carolina	21
34	Virginia	12
15	Duke	27
31	Clemson	33
43	South Carolina	20

At Charleston



COACHING STAFF: Eddie Teague, head coach; Pride Ratterree, Hank Witt, Mack Erwin, assistant coaches.

NICKNAME: Bulldogs.

COLORS: Blue and White.

PUBLICITY DIRECTOR: Bill Stewart.

ENROLLMENT: 2,100.

RETURNING LETTERMEN: 17.

1959 RECORD: Won 8, Lost 2.

CONFERENCE: Southern.

SERIES: Florida State leads, 2-0.

1960 OUTLOOK: Fast enough in 1959, the Cadets should present a faster team this season. Team speed will have to be better, however, to make up for lack of experience in the line. Five of six first-stringers lost were linemen.

The backfield should have short and long-range scoring potential with the passing of Jerry Nettles and the running of Early Eastburn, Tommy Edwards, and power runner Belton Dykes. The Cadets will look in the line to center George Garrison, guard Harry Rakowski, and tackle Ron Hitchcock for needed leadership and experience. Soph guard Jack Katz has tremendous potential.

Loss of All-America end Paul Maguire will hurt the kicking game, a big factor in success of last season. After fine 8-2 record in '59, The Citadel will be rebuilding somewhat.

THE CITADEL'S 1960 SCHEDULE

Sept. 17.....	Newberry
Sept. 24.....	at George Washington
Oct. 1.....	at Davidson
Oct. 8.....	FLORIDA STATE
Oct. 15.....	at Richmond
Oct. 22.....	at Furman
Oct. 29.....	Presbyterian
Nov. 5.....	William and Mary
Nov. 12.....	VMI
Nov. 19.....	at Arkansas State

1959 RECORD (8-2)

48.....	Newberry	0
6.....	FLORIDA STATE	47
13.....	Davidson	7
40.....	Wofford	8
8.....	Richmond	7
18.....	Furman	14
38.....	William and Mary	13
8.....	Presbyterian	0
8.....	VMI	32
20.....	West Virginia	14

October 15: MISSISSIPPI SOUTHERN 8:00 P.M.

At Mobile

COACHING STAFF: Thad Vann, head coach; C. J. Taylor, end coach; Jack Thomas, line coach; Maxie Lambright, backfield coach.



NICKNAME: Southerners.

COLORS: Black and Gold.

PUBLICITY DIRECTOR: Ace Cleveland.

ENROLLMENT: 4,000.

RETURNING LETTERMEN: 15.

1959 RECORD: Won 6, Lost 4.

CONFERENCE: Independent.

SERIES: Mississippi Southern leads, 4-2.

1960 OUTLOOK: Like many another team, Mississippi Southern is banking on sophomores to steer it to another winning season. The Southerners were 6-4 in '59 following the school's first undefeated season, in 1958.

There is no question about a good starting backfield, according to Coach Pie Vann, and if soph backs come through their speed could mean much in Southern plans. Interior line depth is major problem. Quarterback may be strongest position. Vann maintains he has three "first-string" signal callers in Don Fuell, Morris Meador, and Billy Larson. Three lettermen halfbacks and fullback Dan Pugh make for a rosy backfield picture.

End is well manned with rugged juniors Leon Akins and Charley Dedwylder. Buddy Long and George Hultz are strong tackles and guard Ray St. Pierre is a standout guard at 215 pounds.

MISS. SOUTHERN'S 1960 SCHEDULE

Sept. 23Hardin-Simmons	at Mobile
Oct. 1West Texas State	
Oct. 8	at Trinity
Oct. 15FLORIDA STATE	at Mobile
Oct. 22North Carolina State	
Oct. 29	at Abilene Christian
Nov. 5	at Arkansas State
Nov. 12Louisiana Tech	
Nov. 18Memphis State	
Nov. 24	at Chattanooga

1959 RECORD (6-4)

29 Trinity	8
3 Texas A & M	7
26 S. E. Louisiana	6
37 West Texas State	6
30 Abilene Christian	10
6 Memphis State	21
19 N. C. State	14
14 Chattanooga	6
7 Auburn	28
0 Louisiana Tech	16

October 22: WILLIAM & MARY 8:00 P.M.

At Tallahassee



COACHING STAFF: Milt Drewer, head coach; Jack Prater, offensive line coach; Ed Derringe, defensive line coach; Dave Nusz, defensive backfield coach; Bill Chambers, offensive backfield coach.

NICKNAME: Indians.

COLORS: Green, Gold and Silver.

PUBLICITY DIRECTOR: Bill Bryant.

ENROLLMENT: 2,200.

RETURNING LETTERMEN: 16.

1959 RECORD: Won 4, Lost 6.

CONFERENCE: Southern.

SERIES: William & Mary leads, 1-0.

1960 OUTLOOK: With more lettermen (16) returning than at any time in recent years, Coach Milt Drewer feels the Indians will be an improved club. There are problems at center and tackle, but W & M has more experience and depth than in '59 and an experienced backfield brings smiles.

Eight of the Tribe's top 10 runners of last season are back, led by Roger Hale, Jim Porach, Jon Stephenson, and fullback H. C. Thaxton. There's good depth at quarterback, where veteran Bob Stoy and Floridian Calvin Cox, both excellent passers, return. With added experience, W & M will try some new offensive wrinkles.

Leading lights in the line are end Joe Poist, tackle Loye Bechtold, and guards Wayne Woolwine and Dave Gatti. Pass defense, a weakness last year, showed signs of coming to life during the latter stages of '59.

WM. & MARY'S 1960 SCHEDULE

Sept. 17 VMI
Sept. 24 Virginia at Norfolk
Oct. 1 George Washington
Oct. 8at Furman
Oct. 15 Virginia Tech
Oct. 22 at FLORIDA STATE
Oct. 29 at Tulane
Nov. 5 at The Citadel
Nov. 12 at Vanderbilt
Nov. 24 at Richmond

1959 RECORD (4-6)

37.....	Virginia 0
2.....	Navy29
14.....	Virginia Tech20
7.....	Furman 8
7.....	VMI26
14.....	George Washington 7
13.....	The Citadel38
25.....	Davidson 7
9.....	FLORIDA STATE 0
12.....	Richmond20

October 29:

KENTUCKY

2:30 P.M.

At Tallahassee (Homecoming)

COACHING STAFF: Blanton Collier, head coach; Ermal Allen, defensive coach; John North, offensive coach; Bill Arnsparger, offensive line coach; Bob Cummings, defensive line coach; Ed Rutledge, offensive backfield coach; Howard Schnellenberger, end coach; Norm Deeb, freshman coach; Joe Shannon, recruiting assistant.

NICKNAME: Wildcats.

COLORS: Blue and White.

PUBLICITY DIRECTOR: Ken Kuhn.

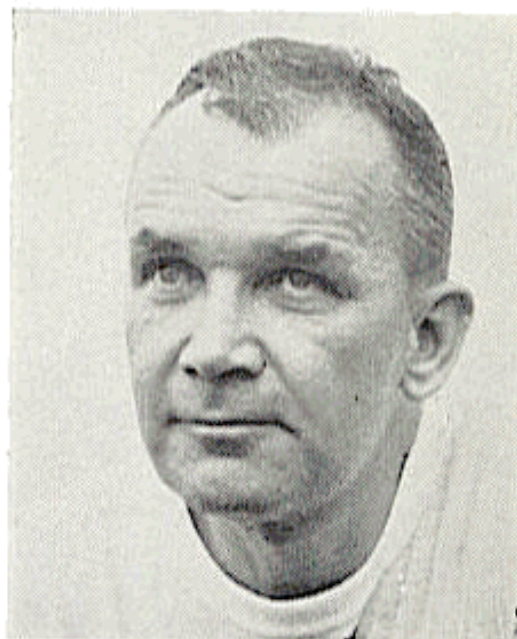
ENROLLMENT: 11,000.

RETURNING LETTERMEN: 19.

1959 RECORD: Won 4, Lost 6.

CONFERENCE: Southeastern.

SERIES: First Meeting.



1960 OUTLOOK: Kentucky's 1959 Wildcats probably were the best non-winning combination in the nation. Although throwing scares into several powerhouses, injuries and an inability to put together two good halves led to a 4-6 record and a 10th-place finish in the SEC.

Things should be better for the Wildcats this trip. Nineteen lettermen are back and the Kentucky backfield is regarded as one of the best around. Major problems are the replacement of interior linemen, finding a fullback, and the development of adequate reserve strength.

Bidding for top individual honors will be ace linebacker Lloyd Hodge, a convert from center to guard; halfbacks Calvin Bird and Charley Sturgeon, the starters last season; quarterback Jerry Eisaman, center Irv Goode, and end Dickie Mueller. New faces to watch include end Tom Hutchinson, quarterbacks Pat Counts and Jerry Woolum, and tackle Bob Gebhart.

KENTUCKY'S 1960 SCHEDULE

Sept. 17	at Georgia Tech
Sept. 24	Mississippi at Memphis
Oct. 1	Auburn
Oct. 8	Marshall
Oct. 15	LSU
Oct. 22	Georgia
Oct. 29	at FLORIDA STATE
Nov. 5	Vanderbilt
Nov. 12	Xavier
Nov. 19	at Tennessee

1959 RECORD (4-6)

12	Georgia Tech	14
0	Mississippi	16
32	Detroit	7
0	Auburn	33
0	LSU	9
7	Georgia	14
22	Miami (Fla.)	3
6	Vanderbilt	11
41	Xavier	0
20	Tennessee	0

At Miami



COACHING STAFF: Andy Gustafson, head coach; Walter Kichefski, assistant head coach; Jim Root, backfield coach; Bill Crutchfield, backfield coach; Tom O'Boyle, line coach; Armand Vari, line coach; Tom Pratt, line coach.

NICKNAME: Hurricanes.

COLORS: Orange, Green and White.

PUBLICITY DIRECTOR: George Gallet, Wilbert Bach.

ENROLLMENT: 14,000.

RETURNING LETTERMEN: 24.

1959 RECORD: Won 6, Lost 4.

CONFERENCE: Independent.

SERIES: Miami leads, 6-1.

1960 OUTLOOK: There is a pause in any over-enthusiastic predictions for Miami's Hurricanes. The 'Canes return a whopping total of 24 lettermen, but face their greatest schedule challenge in 35 years.

Miami tackles its giant schedule minus the services of All-America quarterback Fran Curci, No. 1 left half Bob Rosbaugh, and its two top centers of 1959. Curci's quarterback job likely will fall on the shoulders of two newcomers—junior college transfer Bobby Weaver, a talented passer, and soph Eddie Johns, 194-pounder with running ability.

James Vollenweider, ace right half, has been shifted to left half. Fullbacking looks solid with Frank Bouffard, Stan Markowski, and Doug Davis. Big guns in the line are guard Jack Novak, tackles Charles Linning and John O'Day, and ends Bill Miller, Larry Wilson, and Frank Reinhart. The "lonesome end" will be a new wrinkle to Miami's colorful multiple offense.

MIAMI'S 1960 SCHEDULE

Sept. 30	North Carolina
Oct. 8	at Pittsburgh
Oct. 14	South Carolina
Oct. 22	at Auburn
Oct. 28	Boston College
Nov. 4	FLORIDA STATE
Nov. 12	Notre Dame
Nov. 18	Syracuse
Nov. 25	Florida
Dec. 2	Air Force Academy

1959 RECORD (6-4)

26	Tulane	7
7	FLORIDA STATE	6
3	LSU	27
23	Navy	8
6	Auburn	21
3	Kentucky	22
14	North Carolina	7
26	South Carolina	6
18	Michigan State	13
14	Florida	23

At Tallahassee

COACHING STAFF: Harold Lahar, head coach; Jasper Flanakin, R. H. Hill, Pete McCulley, Don Watson, Andy Zubel, assistant coaches.

NICKNAME: Cougars.

COLORS: Scarlet and White.

PUBLICITY DIRECTOR: Ted Nance.

ENROLLMENT: 11,000.

RETURNING LETTERMEN: 21.

1959 RECORD: Won 3, Lost 7.

CONFERENCE: Independent.

SERIES: First Meeting.



1960 OUTLOOK: Wading into one of the toughest schedules anywhere, the Cougars will play an an independent this season after resigning its membership in the Missouri Valley Conference.

Houston sums up its own capabilities as average in experience, good in size, average in depth, and above average in speed. The ground offense should be rugged with fine-running fullbacks and quarterbacks. Quarterbacks Don Sessions and Larry Lindsey both are talented passers. The line looks potentially strong with anticipated development of guards. Lack of experienced guards and halfbacks are biggest problems.

Fullback Charlie Rieves (5-11, 200) is an All-America candidate and tackles Joe Bob Isbell and Murdoch Hooper are all-sectional candidates. Top newcomers are RH Mike Carew, LH Billy Richardson, and RG Ronnie Johnson.

HOUSTON'S 1960 SCHEDULE

Sept. 17	Mississippi
Sept. 24	at Mississippi State
Oct. 1	at Oregon State
Oct. 8	Texas A & M
Oct. 15	Oklahoma State
Oct. 22	at Alabama
Oct. 29	at North Texas State
Nov. 5	Cincinnati
Nov. 12	at FLORIDA STATE
Nov. 26	Tulsa

1959 RECORD (3-7)

0	Mississippi	16
0	Alabama	3
13	Cincinnati	12
6	Texas A & M	28
12	Oklahoma State	19
6	North Texas	7
22	Tulsa	13
28	Wichita	13
0	Texas Tech	27
18	Washington State	32

November 19:

AUBURN

2:00 P.M.

At Auburn



COACHING STAFF: Ralph Jordan, head coach; Buck Bradberry, backfield coach; Hal Herring, defensive coach; Joel Eaves, defensive ends; Gene Lorendo, offensive ends; Shot Senn, offensive line; Joe Connally, assistant line coach; Vince Dooley, assistant backfield coach; Erskine Russell, freshman coach; George Atkins, freshman line coach; Dick McGowen, assistant coach.

NICKNAME: Tigers.

COLORS: Orange and Blue.

PUBLICITY DIRECTOR: Norm Carlson.

ENROLLMENT: 8,700.

RETURNING LETTERMEN: 17.

1959 RECORD: Won 7, Lost 3.

CONFERENCE: Southeastern.

SERIES: Auburn leads, 3-0.

1960 OUTLOOK: Auburn will have more inexperienced players on its first two units—six sophomores—than there has been in years. But there are 17 lettermen back and a number of promising redshirts and sophomores eager for action.

Coach Ralph Jordan looks for an abundance of spirit and determination but is not satisfied with the depth situation at guard, center, halfback, and quarterback. There is good front-line strength in these spots, but a lack of manpower to back up the starters. Strong points are at tackle and fullback.

Standout performers are fullback Ed Dyas, All-America tackle Ken Rice, and quarterback Bobby Hunt, who led SEC last season in average gain per carry (5.6 yards). Key losses from '59 team that won seven of 10 games were All-Americans Zeke Smith at left guard and Jackie Burkett at center.

AUBURN'S 1960 SCHEDULE

1959 RECORD (7-3)

Sept. 24	Tennessee	at Birmingham
Oct. 1		at Kentucky
Oct. 8		Chattanooga
Oct. 15	Georgia Tech	at Birmingham
Oct. 22		Miami (Fla.)
Oct. 29		at Florida
Nov. 5		Mississippi State
Nov. 12		Georgia
Nov. 19	FLORIDA STATE	
Nov. 26	Alabama	at Birmingham

0	Tennessee	3
35	Hardin-Simmons	12
33	Kentucky	0
7	Georgia Tech	6
21	Miami	6
6	Florida	0
31	Mississippi State	0
13	Georgia	14
28	Mississippi Southern	7
0	Alabama	10



THE SEASON PAST

- the 1959 review
- the records

1959 GAME-BY-GAME STATISTICS

FSU 20, WAKE FOREST 22

	FSU	WF
First Downs	13	13
Rushing Yardage	138	200
Passing Yardage	111	137
Passes	11-20	7-19
Passes Intercepted by	2	1
Punts	4-33.3	6-28.5
Fumbles Lost	2	0
Yards Penalized	135	102
FLORIDA STATE	0 0 7	13-20
WAKE FOREST	0 9 0	13-22

Florida State scoring: Pickard 30, interception return (Brown, kick); B. Whitehead 81, interception return (run failed); Daniel 15, pass from Majors (Brown, kick).

Wake Forest scoring: Patella 29, field goal; B. Hull 11, pass from Snead (run failed); Allen 19, pass from Snead (kick failed); Robinson 5, run (MacLean, kick).

FSU 47, CITADEL 6

	FSU	Citadel
First Downs	25	5
Rushing Yardage	307	25
Passing Yardage	207	76
Passes	13-23	4-11
Passes Intercepted by	0	0
Punts	3-31.6	8-44.7
Fumbles Lost	0	2
Yards Penalized	70	67
FLORIDA STATE	15 8 12	12-47
CITADEL	0 0 0	6-6

Florida State scoring: B. Whitehead 52, pass from Majors (Brown, kick). Bickford 1, sneak (Cone pass from Bickford); Pickard 4, run (B. Whitehead, pass from Majors); B. Whitehead 2, pass from Majors (pass failed); Cone

6, run (pass failed); Espenship 3, run (run failed); Andrews 1, run (pass failed).

Citadel scoring: Maguire 43, pass from Sharpe (run failed).

FSU 6, MIAMI 7

First Downs	8	10
Rushing Yardage	56	173
Passing Yardage	92	54
Passes	9-19	6-15
Passes Intercepted by	0	1
Punts	8-37.8	9-29.8
Fumbles Lost	1	1
Yards Penalized	20	40
FLORIDA STATE	0 0 0	6-6
MIAMI	0 7 0	0-7

Florida State scoring: Pickard 8, run (run failed).

Miami scoring: Rosbaugh 9, pass from Curci (Dangel, kick).

FSU 7, VA. TECH 6

	FSU	Va.
		Tech
First Downs	7	11
Rushing Yardage	43	166
Passing Yardage	65	72
Passes	5-14	6-19
Passes Intercepted by	7	1
Punts	9-34.8	9-34.8
Fumbles Lost	3	0
Yards Penalized	55	140
FLORIDA STATE	0 0 0	7-7
VA. TECH	0 0 0	6-6

Florida State scoring: Hinson 10, pass from Bickford (Brown, kick).

Va. Tech scoring: Vaught 1, run (run failed).

FSU 6, MEMPHIS ST. 16

	FSU	MS
First Downs	13	15
Rushing Yardage	114	236
Passing Yardage	92	105
Passes	10-21	4- 8
Passes Intercepted by	1	1
Punts	4-37.0	4-26.3
Fumbles Lost	2	1
Yards Penalized	20	55
FLORIDA STATE	0 0 0	6- 6
MEMPHIS STATE	7 9 0	0-16

Florida State scoring: Majors 1, run (pass failed).

Memphis State scoring: Buoni 4, run (Carter kick); Carter 5, run (kick failed); Carter 22, field goal.

FSU 22, RICHMOND 6

Rich-

	FSU	mond
First Downs	15	9
Rushing Yardage	131	82
Passing Yardage	93	105
Passes	8-18	9-23
Passes Intercepted by	0	0
Punts	7-39.3	8-30.1
Fumbles Lost	2	1
Yards Penalized	35	35
FLORIDA STATE	8 0 6	8-22
RICHMOND	0 0 6	0- 6

Florida State scoring: Pickard 8, run (Pickard, run), Daniel 5, pass from Majors (Daniel, pass), Pickard 2, run (kick failed).

Richmond scoring: Dunnington 12, pass from Gagliano (pass failed).

FSU 0, GEORGIA 42

	FSU	GA
First Downs	10	22
Rushing Yardage	113	246
Passing Yardage	85	187
Passes	10-20	15-24
Passes Intercepted by	1	3
Punts	6-37.2	6-41.0
Fumbles Lost	1	0
Yards Penalized	26	89
FLORIDA STATE	0 0 0	0- 0
GEORGIA	7 14 7	14-42

Georgia scoring: Taylor 1, run (Pennington, kick); Lewis 6, run (Pennington, kick); Brown 4, pass from Tarkenton (Pennington, kick); Vickers 28, pass from Britt (Pennington, kick); Kelley 9, pass from Tarkenton (Pennington, kick); Guisler 12, pass from Williams (Pennington, kick).

FSU 0, WM. & MARY 9

	FSU	W&M
First Downs	13	15
Rushing Yardage	126	228
Passing Yardage	74	101
Passes	8-20	9-14
Passes Intercepted by	0	0
Punts	4-41.3	6-35.2
Fumbles Lost	2	0
Yards Penalized	65	103
FLORIDA STATE	0 0 0	0- 0
WILLIAM & MARY	0 0 6	3- 9

William & Mary scoring: Hale 41, run (kick failed); Barton 21, field goal.

FSU 8, FLORIDA 18

	FSU	FLA.
First Downs	11	21
Rushing Yardage	49	214
Passing Yardage	90	163
Passes	10-23	8-16
Passes Intercepted by	1	3
Punts	9-37.4	5-37.4
Fumbles Lost	1	4
Yards Penalized	42	58
FLORIDA STATE	0 0 0	8- 8
FLORIDA	6 0 6	6-18

Florida State scoring: Majors 1, run (Majors, run).

Florida scoring: Westbrook 1, run (kick failed); Westbrook 10, run (pass failed); Goodman 2, run (pass failed).

FSU 33, TAMPA 0

	FSU	Tampa
First Downs	27	7
Rushing Yardage	190	21
Passing Yardage	313	90
Passes	20-34	7-14
Passes Intercepted by	2	0
Punts	5-31.4	8-39.3
Fumbles Lost	2	0
Yards Penalized	30	60
FLORIDA STATE	7 6 6	14-33
TAMPA	0 0 0	0- 0

Florida State scoring: Pickard 62, pass from Majors (Kestner, kick); Daniel 30, pass from Majors (pass failed); Pickard 2, run (run failed); B. Whitehead 2, run (Majors, kick); Majors 5, run (Kestner, kick).

Shoeless Fred Pickard on called-back TD run vs. Wake Forest



1959 IN REVIEW

Through the years, Florida State football teams have a reputation for being colorful and interesting. The 1959 Seminoles set no woods on fire—they finished with 4-6 record—but fans and writers agreed they were interesting.

It was indeed a colorful season, opening with another in a series of spine-tingling Wake Forest-FSU clashes, and ending with a record-shattering barrage of passes against state-rival Tampa. Sandwiched between were close decisions that went both ways and a unique announcement with two games still to play that the head coach was moving on to a professional job.

It was a year of critical injuries. All-America end candidate Tony Romeo was injured early in the opening game and No. 2 end Fred Grimes joined him on the sidelines in the third game. By late season, no fewer than 13 players on a thinly-manned squad were nursing leg injuries.

Here's the way it happened:

FSU 20, Wake Forest 22

On a fair, warm night, a home crowd of 19,300 watched a third straight thriller between the Seminoles and Demon Deacons. Behind 9-0, then ahead 20-9, the scrambling Tribe lost a fierce game of breaks when quarterback Norman Snead, a superb clutch passer, got Wake Forest two touchdowns in the final six minutes.

It was a 29-yard, second-quarter field goal by Nick Patella that proved the difference, however. Wake's first touchdown came on a Snead to Bill Hull pass with 20 seconds left in the first half after pass interference was ruled at the FSU 11.

FSU's three touchdowns came on halfback Fred Pickard's 30-yard run-back of a Snead pass, Bud Whitehead's nifty 81-yard run after intercepting another Snead toss, and Joe

Majors' 15-yard pass to end Jim Daniel after tackle John Spivey blocked a Deacon punt at the 17.

Then came Wake Forest's winning charge. Snead's 19-yard pitch to Bobby Allen got the Deac's No. 2 TD and a 34-yard connection by the same combo set up the winning TD. Bobby Robinson scored it from five yards out with only 1:56 left. The rash of injuries that would plague FSU all season started early. All-America end candidate Tony Romeo was helped out with a severe knee injury in the first half.

FSU 47, THE CITADEL 6

Hungry for all the exercise they could get before taking on Miami the following week, the Seminoles poured it on in a game which was to be the worst of the year for The Citadel and

one of only two losses all season for the Bulldogs.

In the wake of a seven-touchdown parade, FSU set a school record for total offense, netting 514 yards with 307 rushing and 207 passing. The defenders allowed The Citadel 25 yards on the ground and 74 in the air.

Six Seminoles scored touchdowns. FSU payoffs came on 52 and two-yard passes from Joe Majors to Bud Whitehead, Roy Bickford's one-yard sneak, Fred Pickard's four-yard smash, Ken Cone's six-yard run, Jack Espenship's three-yard push, and Paul Andrews' one-yard buck.

The Bulldogs scored their touchdown in the last quarter on Bucky Sharpe's 43-yard pass to All-America end Paul Maguire. The Citadel was hampered by the loss of fine passing quarterback Jerry Nettles, who was hurt early and didn't return.

FSU 6, MIAMI 7

Thumbing their bruised noses at a fine chance for a tie, the Seminoles went for broke in a spirited bid for a second straight conquest of the state-rival Hurricanes. They failed—by less than a foot.

Denied a first down in the middle two periods and manhandled by a brawnier opponent during an 83-yard Miami scoring march in the second quarter, the Seminoles came alive in a tingling final period. They pushed 52 yards for a touchdown, which Fred Pickard scored from eight-yards range.

Behind 7-6 with 2:52 left, FSU faced the big decision. A kick for one point and a tie? Or a run or pass for two points and victory? From the ranks of 18,600 Campbell Stadium observers came the dominant cry and showing of fingers: Two! Two!" Pickard, 165 pounds, took a pitchout, ran wide,

and met 225-pound guard Jim Crawford and other Hurricanes. He was stopped six inches short.

In the final analysis, the difference was quarterback Fran Curci, whose running and passing sparked the 83-yard TD drive. The scoring play was Curci's nine-yard pass to Bob Rosbaugh. Al Dangel kicked the decisive extra point.

FSU 7, VPI 6

With 15,000 fans watching in Blacksburg and thousands more looking in via a 33-station regional television network, the Seminoles became thriving opportunists to hand Virginia Tech its first Homecoming loss in four years.

Tech threw its normal caution to the winds and the Seminoles intercepted a stunning, school-record total of seven passes. Bud Whitehead tied a school mark by swiping three. FSU's attack was mired by a boggy field and a gap-shooting Gobbler defense.

Finally, after interception No. 5, the Tribe managed its touchdown. Paul Andrews' runback of the interception set up FSU at Tech's 26. On the opening play of the final quarter, Roy Bickford passed 10 yards to Ron Hinson for the TD. Bill Brown kicked what proved to be the decisive point.

Tech was presented with a big chance on a fumble at midfield. Don Vaught crashed over on fourth down from the one-foot line with 2:15 left. Alger Pugh, a mighty man all day, tried to run for two points. Brown hit him at the two and Romeo, back in action after his knee injury, reinforced the lick. FSU was now 2-2 with three of the games having been decided by a total of four points.

FSU 6. MEMPHIS ST. 16

An aroused bunch of Memphis State Tigers that had lost only to Ole Miss in four starts thrilled a Homecoming crowd of 10,000 in Crump Stadium by shattering the Seminoles with 16 first-half points.

Quarterback Nickey Buoni, playing with both knees braced by tape, passed and ran FSU dizzy in the first 16 minutes, providing the Tigers a 13-0 lead. Buoni capped an 84-yard drive with a scoring dash from the four the first time the eager Tigers got their mitts on the ball.

Memphis State grabbed a fumble a bit later and maneuvered 54 yards for a TD. Jack Carter scored from five yards out on the second play of the second quarter. Carter kicked a 22-yard field goal a minute before half-time to close the Tiger scoring.

FSU got its lone touchdown midway in the last quarter, Joe Majors scoring from the one after a 33-yard push.

FSU 22, RICHMOND 6

Freddy was ready—as one writer put it—and the Seminoles punched out a difficult 22-6 victory before a band-day crowd of 15,200 in Tallahassee.

The Tribe's little Tennessee terror, Fred Pickard, had his liveliest moments of the season, scoring FSU's first two touchdowns and totaling, in a dozen runs, 94 of the 131 yards the Seminoles netted against a red-dogging defense.

It was closer than 22-6. Ahead 8-0 at the half, FSU nursed an 8-6 margin with a minute left in the third quarter and counted a final touchdown with 40 seconds to go. FSU's offense came alive in the third quarter on Pickard's running and the slick throw-

ing of Joe Majors, who hit on eight of 15 for 93 yards.

Pickard scored from the eight and later capped a 79-yard drive with a plunge from the two. FSU went 67 yards for its final score, with Majors throwing five yards to Jim Daniel. Frank Gagliano's 12-yard pass to Bob Dunnington provided Richmond's six-pointer.

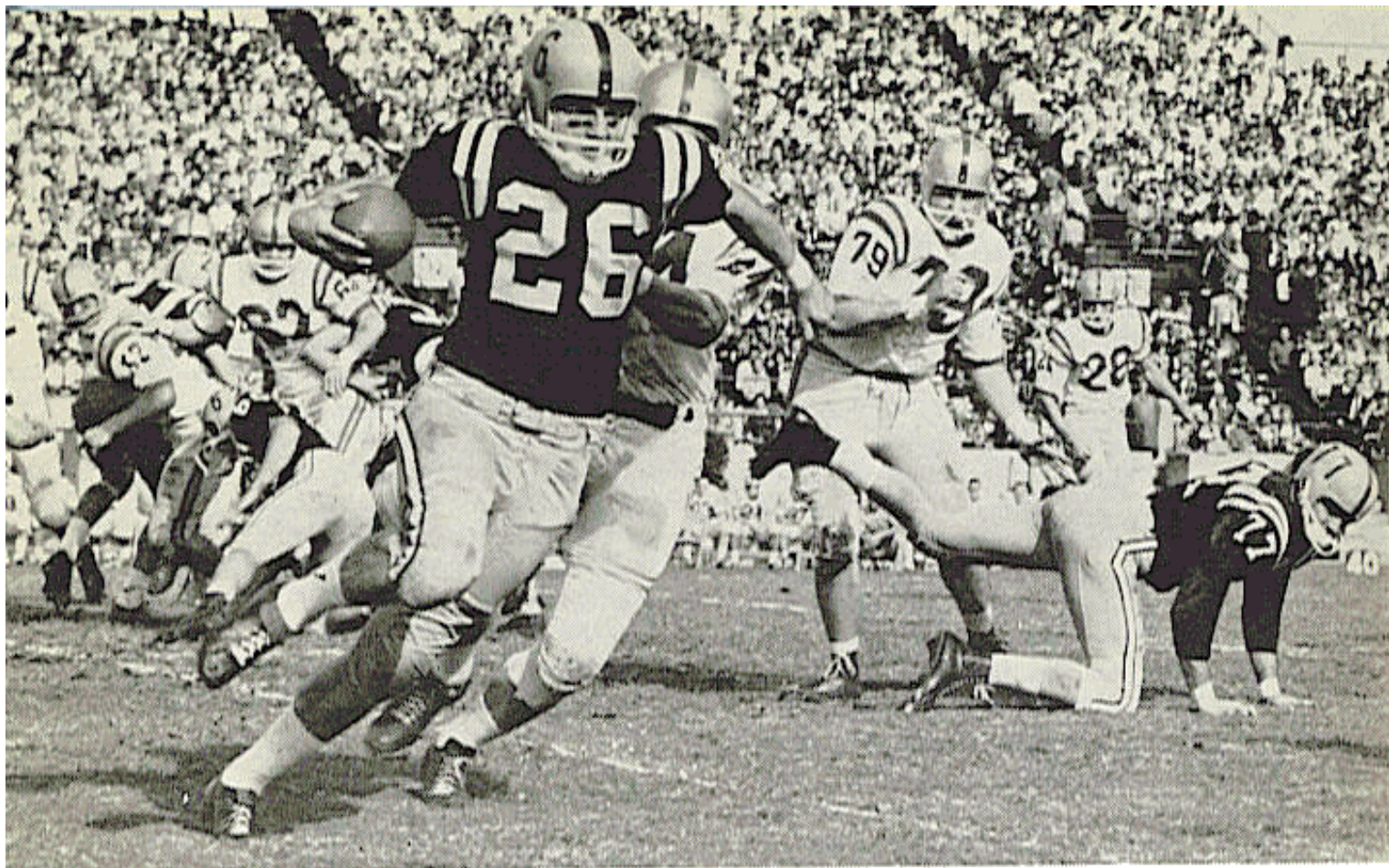
FSU 0, GEORGIA 42

Playing their third road Homecoming game in four weeks, the sorely bruised Seminoles never had a chance against the relentless pounding of a foe hungry for the glory of yesteryear.

Georgia's most powerful team in years racked up 21 points in each half as 30,000 fans whooped it up in Athens. Hot on the scent of a bowl

**Ulmer (62) and Espenship (27)
jolt Richmond back.**





Bud Whitehead (26) turns corner against William & Mary

bid—they wound up as the Orange Bowl victor—the Southeastern Conference champs dealt FSU its biggest margin of defeat ever.

Georgia's six TDs came in succession on Wayne Taylor's one-yard smash, Francis Tarkenton's four-yard pass to Fred Brown, Jimmy Vickers' catch of a 28-yard pass from Charley Britt, Tarkenton's nine-yard pass to Gordon Kelley, Tommy Lewis' five-yard run, and Dale Williams' 12-yard pass to George Guisler.

FSU was not without proud moments as little Fred Pickard ran at the big Georgia line a school-record 29 times for 98 yards. Not since Buddy Strauss carried 27 times against Sewanee in 1949 had an FSU back been called on so much.

FSU 0, WM. & MARY 9

William and Mary, in its first game

ever with FSU, simply was a superior football team on a warm, sunny Saturday afternoon before 16,700 Homecoming fans in Tallahassee.

The upset—FSU was a solid favorite—came on the heels of disclosure that Coach Perry Moss would be leaving to take over as head coach of Canada's professional Montreal Alouettes.

It was FSU's first Homecoming defeat since 1952 and ended the Seminoles' long dominance over Southern Conference opposition. FSU had won nine straight games from members of that circuit.

The W & M Indians broke loose with a rugged running game, most effective in the last half. Swift half-back Roger Hale scampered 41 yards down the sideline for the game's only touchdown late in the third quarter. Dan Barton wrapped it up with a field

goal, kicked from the 11 with three minutes left.

In his final home appearance, Fred Pickard hung up a career rushing record, getting 74 yards on 22 carries to bring his total to 1,488 yards, surpassing Bobby Renn's old mark of 1,455.

FSU 8, FLORIDA 18

Lady luck carried on an outrageous flirtation with FSU's courageous cripples but the fickle gal sidestepped the Seminoles when it appeared they might catch her. With FSU running star Fred Pickard on the bench with a bad ankle and knee, Florida's heavily-favored Gators won a tough game, 18-8, before 41,000 at Gainesville.

There were times when the fates were kind. FSU recovered four Florida fumbles and intercepted a pass. But the Seminoles absorbed some bad moments, too. Harshest turn was the cancellation by penalty of a 30-yard apparent touchdown pass from Joe Majors to Bud Whitehead. The second-

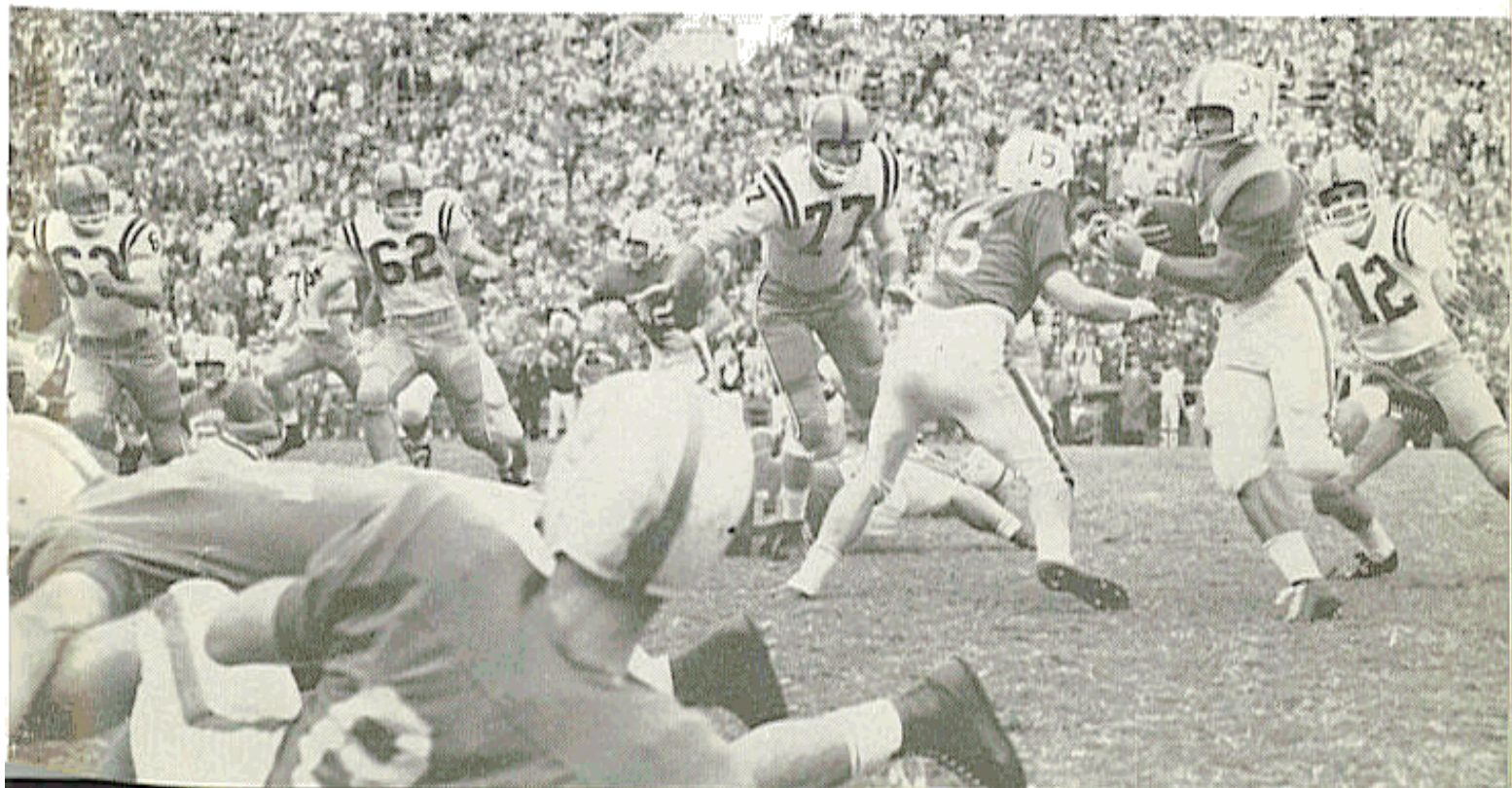
quarter payoff would have tied the score, 6-6, and the Tribe might have gone ahead by virtue of an extra point.

Florida moved 69 yards in 10 plays to score the first time it got the ball in the first half and pushed 30 yards in five plays after a pass interception to score the first time it had the ball after intermission. Jack Westbrook, voted the game's individual standout by writers, got both of these TDs, the first from one yard and the second from 10. Don Goodman crossed over from two yards out for the final Florida TD, with four minutes left. Majors took FSU on a 71-yard scoring drive in the final seconds, scoring from the one with 38 seconds remaining. Majors ran for the two extra points.

FSU 33, TAMPA 0

Saving his best for his last, Joe Majors had the best game an FSU passer ever had. The Tennessee senior com-

Jack Westbrook (34) was MVP in second Gator-Seminole hassle.



pleted 20 of 32 passes for 313 yards as the Seminoles riddled Tampa with five touchdowns.

Majors' hot effort—he passed for two TDs and his aerals set up the others—helped him notch 10 individual school records. Bud Whitehead caught nine passes to run his season total to 31, both school records. Some 8,000 fans watched the brilliant aerial display on a bitterly cold night in Tampa.

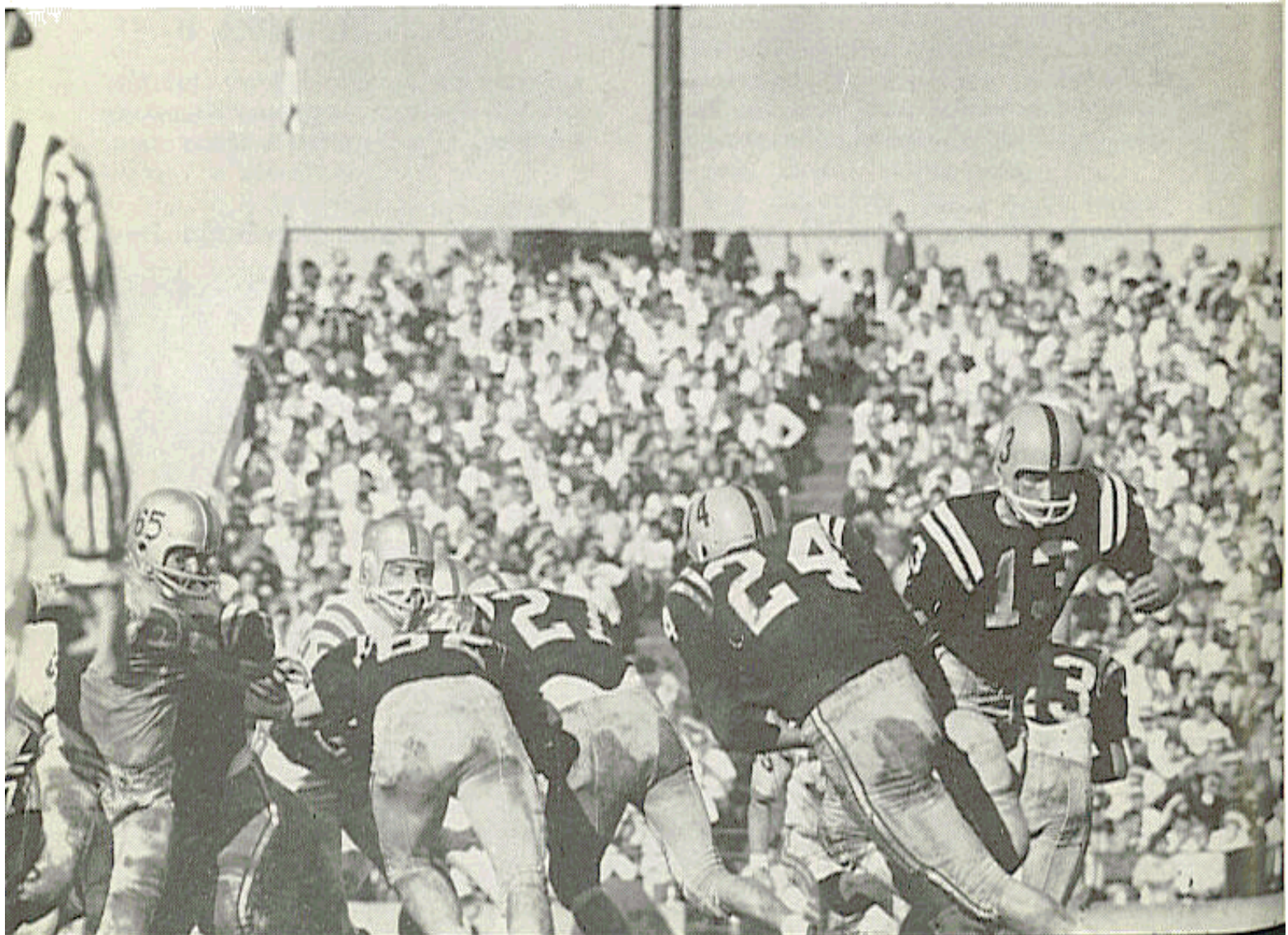
Majors got FSU going late in the first period with a short pass to Fred Pickard that was converted into a 62-yard TD play on the halfback's sparkling running. Majors whipped a 30-

yard strike to Jim Daniel to make it 13-0 at the half. Other TDs came on Packard's three-yard smash, Whitehead's three-yard buck, and Majors' five-yard sweep.

A FINAL SALUTE

As a fitting tribute to their fine contributions to FSU football, Florida sportswriters named three Seminole seniors—halfback Fred Pickard, guard Al Ulmer, and tackle John Spivey—to their first-team All-Florida squad. For Ulmer, it was the third straight year and the second year in a row for Pickard, named the Seminoles' most valuable player by his teammates.

Ken Cone (24) takes handoff from Joe Majors (13) with blockers ahead



THE 1959 STATISTICS

TEAM STATISTICS

5U		OPP.
75	First downs, rush	76
58	First downs, pass	45
9	First downs, pen.	7
142	TOTAL FIRST DOWNS	128
1267	Yards rushing	1591
1222	Yards passing	1090
2489	TOTAL NET YARDS	2681
212	Passes attempted	163
104	Passes completed	75
10	Passes had int.	14
59	Number punts	67
36.4	Punting average	34.6
27	Fumbles	17
16	Fumbles lost	9
42	Number penalties	74
506	Yards penalized	749
13	Touchdowns, rush	10
7	Touchdowns, pass	9
2	Touchdowns, pass int.	0
7-8	PAT kicks	9-13
2-6	PAT runs	0-3
3-8	PAT passes	0-3
0-3	Field goals	3-7
149	TOTAL POINTS	132

INDIVIDUAL RUSHING

Player	No.	Gain	Loss	Net	Avg
Pickard	131	499	18	481	3.7
Espenship	75	240	9	231	3.1
B. Whitehead	46	163	15	148	3.2
Hinson	22	107	6	101	4.6
Andrews	27	88	2	86	3.2
Majors	59	204	126	78	1.3
Cone	21	75	19	56	2.7
Bickford	36	114	73	41	1.1
Mustain	4	14	0	14	3.5
Schou	2	13	0	13	6.5
Calhoun	8	18	9	9	1.1
Daniel	1	7	0	7	7.0
McCormick	3	14	12	2	0.7
FSU TOTALS	435	1556	289	1267	2.9

PASS INTERCEPTIONS

Player	No.	Yds.	Avg.	TD
a-B. Whitehead	6	111	18.5	1
Majors	2	33	16.5	0
Pickard	2	30	15.0	1
Cone	2	30	15.0	0
Andrews	1	21	21.0	0
Bickford	1	4	4.0	0
FSU TOTALS	14	229	16.4	2

INDIVIDUAL PASSING

Player	Att.	Comp.	Int.	Yds.	TD
b-Majors	168	90	7	1063	6
Bickford	43	14	3	159	1
Pickard	1	0	0	0	0
FSU TOTALS	212	104	10	1222	7

INDIVIDUAL RECEIVING

Player	Caught	Yds.	Avg.	TD
c-B. Whitehead	31	320	10.3	2
Daniel	22	296	13.5	3
Romeo	10	129	12.9	0
Hinson	10	115	11.5	1
Pickard	8	138	17.3	1
Espenship	8	90	11.3	0
Grimes	5	52	10.4	0
Cone	5	43	8.6	0
Mustain	3	27	9.0	0
Hooks	1	7	7.0	0
W. Whitehead	1	5	5.0	0
FSU TOTALS	104	1222	11.8	7

PUNT RETURNS

Player	No.	Yds.	Avg.
Pickard	10	102	10.2
B. Whitehead	9	64	7.1
Cone	6	42	7.0
Hinson	7	40	5.7
Majors	5	29	5.8
Moran	2	15	7.5
Spivey	1	9	9.0
Bickford	1	8	8.0
Schou	1	8	8.0
FSU TOTALS	42	317	7.5

PUNTING

Player	No.	Yds.	Avg.
Espenship	16	593	37.1
B. Whitehead	29	1070	36.9
Andrews	11	388	35.3
Calhoun	3	97	32.3
FSU TOTALS	59	2148	36.4

KICKOFF RETURNS

Player	No.	Yds.	Avg.
d-Pickard	14	289	20.6
B. Whitehead	3	64	21.3
Espenship	4	63	15.8
Hinson	4	63	15.8
McCormick	1	22	22.0
Andrews	1	19	19.0
Bigbie	1	8	8.0
Daniel	1	7	7.0
DeFrancesco	1	0	0.0
FSU TOTALS	30	535	17.8

INDIVIDUAL SCORING

Player	TD	Pat-k	Pat-r	Pat-p	FG	TP
Pickard	7	0-0	1-2	0	0-0	44
B. Whitehead	4	0-0	0-0	1	0-0	26
Majors	3	1-1	1-3	0	0-0	21
Daniel	3	0-0	0-0	1	0-0	20
Cone	1	0-0	0-1	1	0-0	8
Espenship	1	0-0	0-0	0	0-0	6
Hinson	1	0-0	0-0	0	0-0	6
Andrews	1	0-0	0-0	0	0-0	6
Bickford	1	0-0	0-0	0	0-0	6
Brown	0	4-5	0-0	0	0-2	4
Kestner	0	2-2	0-0	0	0-1	2
FSU TOTALS	22	7-8	2-6	3	0-3	149

a-1st in nation.
 b-11th in nation.
 c-8th in nation.
 d-15th in nation.

SEMINOLE COACHES AND CAPTAINS

Year	FSU			Opp.		Coach	Captain
	Won	Lost	Tied	Pts.	Pts.		
1947	0	5	0	18	90	Ed Williamson	Jack McMillan and Phil Rountree
1948	7	1	0	152	64	Don Veller	Game Captains
1949	8	1	0	272	53	Don Veller	Hugh Adams
1950	8	0	0	219	54	Don Veller	Duke Maltby
1951	6	2	0	194	72	Don Veller	Bill Dawkins
1952	1	8	1	101	261	Don Veller	Curtis Campbell and Vic Szczepanik
1953	5	5	0	183	146	Tom Nugent	Game Captains
1954	8	3	0	257	143	Tom Nugent	Game Captains
1955	5	5	0	147	186	Tom Nugent	Bob Crenshaw and Don Powell
1956	5	4	1	178	116	Tom Nugent	Joe Holt and Buck Metz
1957	4	6	0	136	165	Tom Nugent	Ron Schomburger
1958	7	3	0	212	109	Tom Nugent	Vic Prinzi and Bobby Renn
1959	4	6	0	149	132	Perry Moss	John Spivey and Al Ulmer
	68	49	2	2218	1591		

BAY-SEMINOLE NETWORK



CHARLIE HARVILLE

Florida State University's football games are broadcast over the fast-growing Bay-Seminole Network, which covers thousands of square miles in Florida and Georgia.

Play-by-play announcer for the games is Charlie Harville, sports director of WFMY-TV in Greensboro, N. C., who is recognized as one of the nation's finest in his field. A native of High Point, N. C., Harville first called the action for Seminole games in 1959 after handling broadcasts for the University of Virginia, the Washington Redskins, and Atlantic Coast Conference regional television.

Harville's co-worker is Walt Dunbar, a veteran of 10 years of broadcasting sports in New England states and sports director for the past three years of WFGA-TV in Jacksonville, Fla. A native of Brockton, Mass., Dunbar will do the pre-game, halftime, and "time-out" color commentary for the games.

The network is sponsored by Bay Petroleum Co. with some 15 stations forming the basic portion of the network. Other stations are added, with the number varying with each game.

Broadcasts of the games are produced by the Galen E. Broyles Co. of Denver, Colo. Radio Stations interested in obtaining "feeds" of Seminole games should contact Mr. Jay Tallant at Galen E. Broyles Co., Denver, for information and rates.



WALT DUNBAR

MOST VALUABLE PLAYER AWARDS

Florida State University each year presents a trophy to the Florida State player selected by his teammates as having made the most valuable contribution to the team. Here are the winners of the Most Valuable Player Awards, a practice begun in 1957:

1957	Bob Nellums
1958	Bobby Renn
1959	Fred Pickard

THE ALL-TIME RECORDS

SINGLE GAME

INDIVIDUAL

LONGEST TOUCHDOWN RUN FROM SCRIMMAGE—80 yards by Fred Pickard vs. Virginia Tech, 1957.

LONGEST TOUCHDOWN PASS—80 yards, Nelson Italiano to Eddie Gray vs. Newberry, 1950.

LONGEST TOUCHDOWN RUN, ANY SITUATION—99 yards by Ted Hewitt vs. Stetson, 1948 (interception return).

LONGEST RUN FROM SCRIMMAGE WITHOUT SCORING—76 yards by Roy Thompson vs. Stetson, 1951.

LONGEST INTERCEPTION RETURN—99 yards by Hewitt vs. Stetson, 1948.

LONGEST PUNT RETURN—80 yards by Billy Odom vs. Stetson, 1954.

LONGEST KICKOFF RETURN—89 yards by Odom vs. Virginia Tech, 1955.

MOST TIMES RUSHING—29 by Pickard vs. Georgia, 1959.

MOST YARDS RUSHING—161 by Buddy Strauss vs. Mississippi College, 1949.

MOST YARDS PASSING—313 by Majors vs. Tampa, 1959.

MOST TOTAL OFFENSE—369 yards (56 rushing, 313 passing) by Majors vs. Tampa, 1959.

MOST PASSES ATTEMPTED—32 by Joe Majors vs. Tampa, 1959.

MOST PASSES COMPLETED—20 by Majors vs. Tampa, 1959.

MOST PASSES CAUGHT—9 by Bud Whitehead vs. Tampa, 1959.

MOST YARDS RECEIVING PASSES—123 by Harry Bringger vs. Mississippi College, 1950.

MOST PASSES INTERCEPTED—3 by Tommy Brown vs. Stetson, 1950 and vs. Georgia Tech, 1952; Lee Corso vs. Georgia, 1954; Whitehead vs. Virginia Tech, 1959.

LONGEST PUNT—84 yards by Brown vs. Tampa, 1950.

LONGEST FIELD GOAL—32 yards by Johnny Sheppard vs. Miami, 1958.

TEAM

MOST POINTS—74 vs. Whiting Field 0, 1949.

GREATEST MARGIN OF VICTORY—74-0 vs. Whiting Field, 1949.

GREATEST MARGIN OF DEFEAT—0-42 vs. Georgia, 1959.

MOST YARDS RUSHING—383 vs. Abilene Christian, 1957.

MOST YARDS PASSING—355 vs. Villanova, 1954.

MOST TOTAL OFFENSE—514 yards vs. The Citadel, 1959 (307 rushing, 207 passing).

MOST PASSES ATTEMPTED—34 vs. Tampa, 1959 (completed 20).

MOST PASSES COMPLETED—20 vs. Tampa, 1959 (attempted 34).

MOST PASSES INTERCEPTED—7 vs. Virginia Tech, 1959.

MOST PUNTS—10 vs. Stetson, 1949, and Georgia Tech, 1955.

SEASON

INDIVIDUAL

MOST POINTS—60 by Red Parish, 1949.

MOST TOUCHDOWNS SCORED—9 by Mike Sellers, 1950.

MOST TOUCHDOWN RESPONSIBILITY—13 by Nelson Italiano, 1950 (Scored 5, passed for 8).

MOST TIMES RUSHING—160 by Buddy Strauss, 1949.
 BEST RUSHING AVERAGE—6-6 by Bobby Fiveash, 1953.
 MOST YARDS RUSHING—747 by Strauss, 1949.
 MOST YARDS PASSING—1063 by Joe Majors, 1959.
 MOST TOTAL OFFENSE—1141 yards (78 rushing, 1063 passing) by Majors, 1959.
 MOST PASSES ATTEMPTED—168 by Majors, 1959.
 MOST PASSES COMPLETED—90 by Majors, 1959.
 MOST TOUCHDOWN PASSES—10 by Harry Massey, 1954.
 MOST PASSES CAUGHT—31 by Bud Whitehead, 1959.
 MOST YARDS RECEIVING PASSES—441 by Tom Feamster, 1954.
 MOST TOUCHDOWN PASSES CAUGHT—6 by Feamster, 1954.
 MOST PASSES INTERCEPTED—8 by Curt Campbell, 1951.
 MOST PUNTS—42 by Tommy Brown, 1952.
 BEST PUNTING AVERAGE—41.9 by Pat Versprille, 1955.
 MOST PUNTS RETURNED—19 by Brown, 1951.
 BEST PUNT RETURN AVERAGE—15.7 by Brown, 1951.
 BEST KICKOFF RETURN AVERAGE—31.8 by Lee Corso, 1954.
 MOST EXTRA POINTS—20 by Ernie Huggett, 1950.
 MOST FIELD GOALS—3 by Johnny Sheppard, 1958.

TEAM

MOST VICTORIES—8, 1949, 1950 and 1954.
 MOST DEFEATS—8, 1952.
 MOST YARDS RUSHING—2194, 1949.
 MOST YARDS PASSING—1745, 1954.
 MOST TOTAL OFFENSE—3434 yards, 1954 (1689 rushing, 1745 passing).
 MOST PASSES ATTEMPTED—252, 1954.
 MOST PASSES COMPLETED—107, 1954.
 MOST PASSES HAD INTERCEPTED—21, 1954.
 FEWEST PASSES HAD INTERCEPTED—7, 1947.
 MOST PASSES INTERCEPTED—24, 1949.
 MOST PUNTS—59, 1959.
 MOST OPPONENT PUNTS BLOCKED—4, 1951.

CAREER

INDIVIDUAL

MOST POINTS—99 by Bobby Renn, 1956-58.
 MOST TOUCHDOWNS SCORED—16 by Renn, 1956-58, and Mike Sellers, 1950-51.
 MOST TOUCHDOWN RESPONSIBILITY—28 by Nelson Italiano, 1950-52 (11 scored, passed for 17).
 MOST TIMES RUSHING—339 by Pickard, 1957-59.
 MOST YARDS RUSHING—1546 by Fred Pickard, 1957-59.
 MOST YARDS PASSING—1649 by Joe Majors, 1957-59.
 MOST TOTAL OFFENSE—2129 yards by Italiano, 1950-52.
 MOST PASSES ATTEMPTED—288 by Majors, 1957-59.
 MOST PASSES COMPLETED—136 (attempted 288) by Majors, 1957-59.
 MOST TOUCHDOWN PASSES—17 by Italiano, 1950-52.
 MOST PASSES CAUGHT—46 by Tom Feamster, 1954-55.
 MOST YARDS RECEIVING PASSES—700 by Feamster, 1954-55.
 MOST PUNTS—96 by Tommy Brown, 1950-52.
 BEST PUNTING AVERAGE—37.9 (92 punts) by Renn, 1956-58.
 MOST EXTRA POINTS—49 (attempted 55) by Johnny Sheppard, 1956-58.
 MOST FIELD GOALS—3 by Sheppard, 1956-58.

THE YESTERYEARS

1947	(0-5-0)	FSU	Foe	1952	(1-8-1)	FSU	Foe
Stetson		6	14	Louisiana Tech		13	32
Cumberland		0	6	Louisville		14	41
Tennessee Tech		6	27	VMI		7	28
Troy State		6	36	North Carolina State		7	13
Jacksonville State		0	7	Stetson		6	6
1948	(7-1-0)	FSU	Foe	Mississippi Southern		21	50
Cumberland		30	0	Furman		0	9
Erskine		6	14	Georgia Tech		0	30
Millsaps		7	6	Wofford		27	13
Stetson		18	7	Tampa		6	39
Mississippi College		26	6	1953	(5-5-0)	FSU	Foe
Livingston State		12	6	Miami		0	27
Troy State		20	13	Louisville		59	0
Tampa		33	12	Abilene Christian		7	20
1949	(8-1-0)	FSU	Foe	Louisiana Tech		21	32
Whiting Field		74	0	VMI		12	7
Mississippi College		33	12	Mississippi Southern		0	21
Erskine		26	7	Furman		7	14
Sewanee		6	0	Stetson		13	6
Stetson		33	14	North Carolina State		23	13
Livingston State		6	13	Tampa		41	6
Millsaps		40	0	1954	(8-3-0)	FSU	Foe
Tampa		34	7	Georgia		0	14
Troy State		20	0	Abilene Christian		0	13
Wofford*		19	6	Louisville		47	6
(*Cigar Bowl Game)				Villanova		52	13
1950	(8-0-0)	FSU	Foe	North Carolina State		13	7
Troy State		26	7	Auburn		0	33
Randolph-Macon		40	7	VMI		33	19
Howard		20	6	Furman		33	14
Newberry		24	0	Stetson		47	6
Sewanee		14	8	Mississippi Southern		19	18
Stetson		27	7	Tampa		13	0
Mississippi College		33	0	Texas Western *		20	47
Tampa		35	19	(*Sun Bowl Game)			
1951	(6-2-0)	FSU	Foe	1955	(5-5-0)	FSU	Foe
Troy State		40	0	N. C. State		7	0
Miami (Fla.)		13	35	Miami (Fla.)		0	34
Delta State		34	0	Virginia Tech		20	24
Sul Ross State		35	13	Georgia		14	47
Stetson		13	10	Georgia Tech		0	34
Jacksonville Navy		39	0	Villanova		16	13
Wofford		14	0	Furman		19	6
Tampa		6	14	Citadel		39	0
				Miss. Southern		6	21
				Tampa		26	7

1956 (5-4-1)		FSU	Foe			
Ohio University	47	7		Miami (Fla.)	13	40
Georgia	0	3		Mississippi Southern	0	20
Virginia Tech	7	20		Auburn	7	29
North Carolina State	14	0		Tampa	21	7
Wake Forest	14	14		1958 (7-3-0)		
Villanova	20	13		Tennessee Tech	22	7
Miami (Fla.)	7	20		Furman	42	6
Furman	42	7		Georgia Tech	3	17
Mississippi Southern	20	19		Wake Forest	27	24
Auburn	7	13		Georgia	13	28
1957 (4-6-0)		FSU	Foe	Virginia Tech	28	0
Furman	27	7		Tennessee	10	0
Boston College	7	20		Tampa	43	0
Villanova	7	21		Miami (Fla.)	17	6
North Carolina State	0	7		Florida	7	21
Abilene Christian	34	7		Oklahoma State*	6	15
Virginia Tech	20	7		(*Bluegrass Bowl Game)		



SMITH

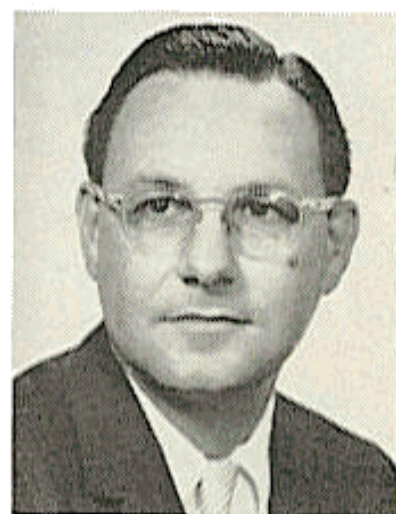
Minimum annual dues are \$10, but many persons see fit to contribute more. This money is handled directly through the University treasurer's office. Members of Seminole Boosters receive a colorful automobile license plate (provides reserved parking at stadium), membership card, a publication called "The Grandstand Coach," and certain priorities on season and individual football tickets.

Godfrey Smith is current president of Seminole Boosters, Inc. Hard-working secretary-treasurer of the organization is Robert L. Bannerman, Jr., director of FSU alumni affairs.

SEMINOLE BOOSTERS, INC.

One of the big factors in the success of Florida State University athletics is the support given by the school's booster organization, Seminole Boosters, Inc.

This organization—devoted entirely to assisting FSU in athletic and scholarship programs, with particular emphasis on athletics—is comprised of persons interested in FSU athletics, many of whom never actually attended the school. Membership is open to everyone with a sincere interest in the University's athletic welfare.



BANNERMAN

THE MARCHING CHIEFS



MANLEY WHITCOMB

Florida State University's famous Marching Chiefs band, the ultimate in marching music and on-the-field precision, will appear in at least eight halftime shows during the 1960 season.

Hailed by Atlanta and other newspapers as the best in the South, The Chiefs will appear at all home games—Richmond, Wake Forest, William and Mary, Kentucky, and Houston—plus games with Mississippi Southern in Mobile, Miami in Miami, and Florida in Gainesville.

Of the home games, the Wake Forest and Kentucky games should provide the most colorful band entertainment. The Wake Forest game on Oct. 1 is FSU's annual Band Day, which will bring to Campbell Stadium many

of the finest high school bands in Florida, Georgia, and Alabama. The Kentucky game on Oct. 29 is Homecoming and The Chiefs always have something special for that occasion.

When The Chiefs journeyed to Philadelphia for Florida State's victory over Villanova in 1956, they were taken to the heart of the City of Brotherly Love. Then they proceeded to New York, where they appeared on several nationally-televised programs. In 1958, the Chiefs were seen on a coast-to-coast ABC hookup from Louisville as they performed in the first Bluegrass Bowl, where Florida State met Oklahoma State.

Director of this outstanding marching group is Dr. Manley Whitcomb, who is every bit as colorful as his bands. He came to FSU after 17 years at Ohio State University, where he directed the Buckeye Band in the 1950 Rose Bowl.

Also a professor of music, Dr. Whitcomb has appeared as lecturer, guest conductor and adjudicator in some two dozen states. Students literally clamor to get into his classes.

The Marching Chiefs have a marching membership of 112 musicians and 8 majorettes and carry 148 persons in their company. Their trips at Florida State have carried them as far west as Texas and Mexico and as far north as New York.

Florida State's Football Clinic

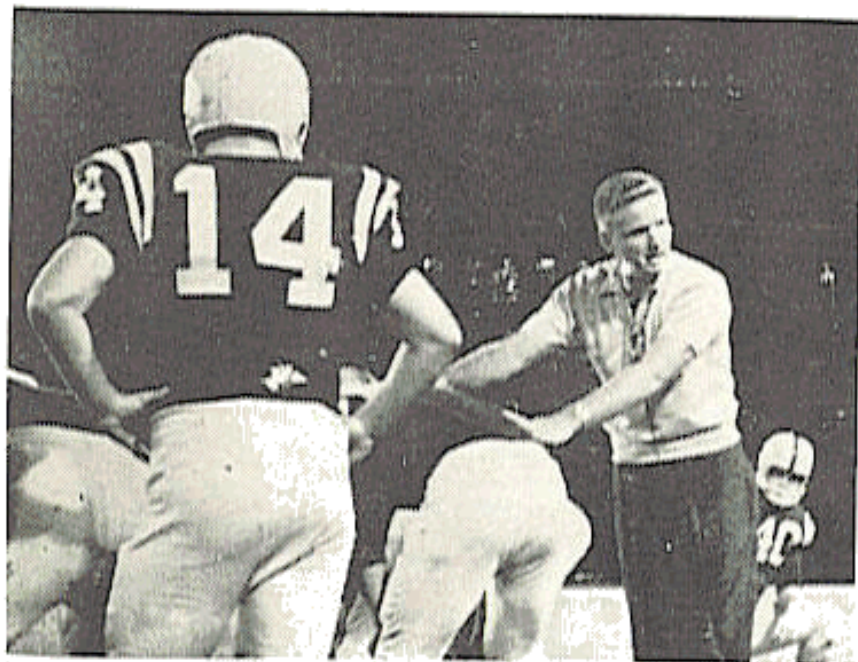
Seven years ago Florida State University staged its first summertime football clinic with the idea of developing it into the best in the nation. After seven clinics, Florida State knows the measure of success.

Each June, hundreds of coaches and players from all corners of the nation flock to Tallahassee to hear the brightest names in college and professional football relate their success secrets. Headliners for the FSU clinics read like a football Blue Book. Instructors have included Sammy Baugh, Doak Walker, Otto Graham, Bud Wilkinson, Bobby Dodd, Bowden Wyatt, Paul (Bear) Bryant, Duffy Daugherty, Forest Evashevski, Joe Kuharich, Ray Eliot, Frank Howard, Sid Gilman, Frank Broyles, Paul Dietzel, Dave Nelson, Tom Landry, and Pat Summerall.

The latter five headed up Florida State's clinic last June and all five spouted superlatives about it. From an earlier clinic, Oklahoma Coach Bud Wilkinson had this praise: "It's probably the best clinic of its sort I've ever attended. I'd like to be quoted on that. I've never seen anything run so smoothly and professionally."

In addition to having so many "name" instructors at Florida State clinics, sports writers from all over Florida and Georgia attend. The Florida State Sportswriters Assn. holds its annual summer business meeting in conjunction with the clinic.

Dietzel at 1960 Clinic



Florida State plans to do everything it can to make next summer's clinic even better. Wheels already are in motion for the '61 clinic, one which promises more pleasant surprises.

There's no doubt about it. Florida State — and Tallahassee — has become the summertime football capital of the world.

Schedules of Florida State's Opponents

	RICHMOND	FLORIDA	WAKE FOREST	THE CITADEL	MISS. SOUTHERN	WM. & MARY	KENTUCKY	MIAMI	HOUSTON	AUBURN
SEPT. 17	AT FLORIDA STATE	¹ George Washington		Newberry		VMI	at Georgia Tech		Mississippi	
SEPT. 24		FLORIDA STATE	Clemson	at George Washington	Sept. 23 ² Hardin-Simmons	⁴ Virginia	⁵ Mississippi		at Miss. State	⁴ Tennessee
OCT. 1	at VMI	Georgia Tech	AT FLORIDA STATE	at Davidson	W. Texas State	George Washington	Auburn	Sept. 30 North Carolina	at Oregon State	at Kentucky
OCT. 8	at West Virginia	Rice	at Virginia Tech	FLORIDA STATE	at Trinity	at Furman	Marshall ⁶	at Pittsburg	Texas A&M	Chattanooga
OCT. 15	The Citadel	Vanderbilt	at North Carolina	at Richmond	FLORIDA STATE	Virginia Tech	LSU	Oct. 14 South Carolina	Okla. State	⁶ Georgia Tech
OCT. 22	at Davidson	at LSU	Maryland	at Furman	N. C. State	AT FLORIDA STATE	Georgia	at Auburn	at Alabama	Miami
OCT. 29	Virginia Tech	Auburn	at Virginia	Presbyterian	at Abilene Christian	at Tulane	AT FLORIDA STATE	Oct. 28 Boston College	at N. Texas State	at Florida
NOV. 5	Nov. 4 at Ga. Wash.	¹ Georgia	N. C. State	Wm. & Mary	at Arkansas State	The Citadel	Vanderbilt	Nov. 4 FLORIDA STATE	Cincinnati	Miss. State
NOV. 12	Nov. 11 at Furman	Tulane	Duke	VMI	Louisiana Tech	at Vanderbilt	Xavier	Notre Dame	AT FLORIDA STATE	Georgia
NOV. 19	at East Carolina		at LSU	at Arkansas State	Nov. 18 Memphis State		at Tennessee	Nov. 18 Syracuse		FLORIDA STA.
NOV. 26	Nov. 24 Wm. & Mary	at Miami	at South Carolina	Arkansas State	Nov. 24 at Chattanooga	Nov. 24 at Richmond		Florida Dec. 2 Air Force	Tulsa	⁴ Alabama

1—Jacksonville, Fla. 2—Miami, Fla. 3—Mobile, Ala. 4—Norfolk, Va. 5—Memphis, Tenn. 6—Birmingham, Ala.

