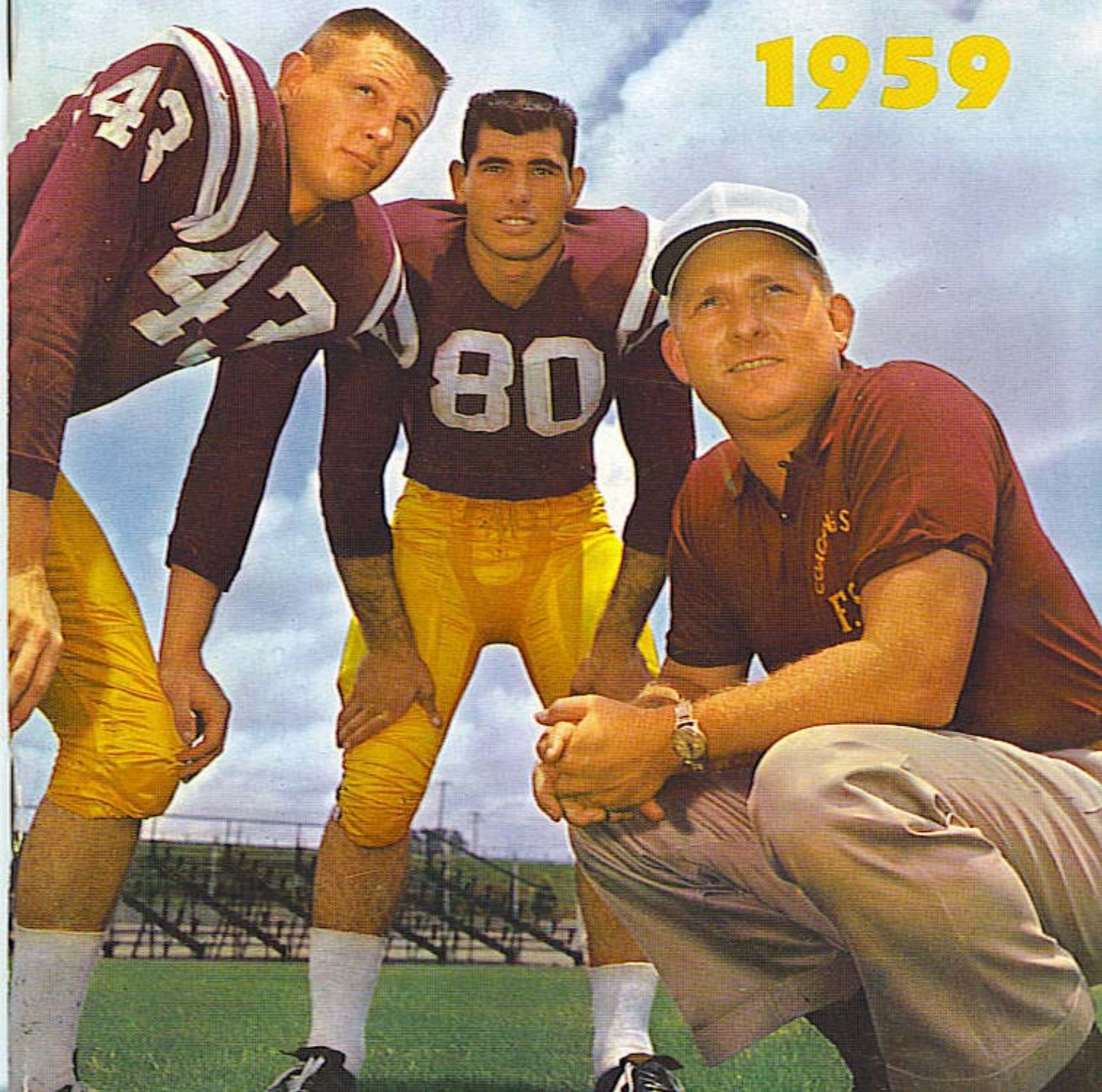


FLORIDA STATE

FOOTBALL HANDBOOK

1959



FLORIDA STATE UNIVERSITY

1959 FOOTBALL SCHEDULE

Sept. 19	Wake Forest	Tallahassee	8:00 P.M.
Sept. 26	The Citadel	Tallahassee	8:00 P.M.
Oct. 3	Miami (Fla.)	Tallahassee	8:00 P.M.
Oct. 10	Virginia Tech	Blacksburg	2:00 P.M.
Oct. 17	Memphis State	Memphis	8:00 P.M.
Oct. 24	Richmond	Tallahassee	8:00 P.M.
Oct. 31	Georgia	Athens	2:00 P.M.
Nov. 14	William and Mary (Homecoming)	Tallahassee	2:30 P.M.
Nov. 21	Florida	Gainesville	2:00 P.M.
Nov. 28	Tampa	Tampa	8:00 P.M.

1958 FOOTBALL RESULTS

22	Tennessee Tech	7
42	Furman	6
3	Georgia Tech	17
27	Wake Forest	24
13	Georgia	28
28	Virginia Tech	0
10	Tennessee	0
43	Tampa	0
17	Miami (Fla.)	6
7	Florida	21
6	*Oklahoma State	15
<hr/>		<hr/>
218	*Bluegrass Bowl	124

1959 FOOTBALL HANDBOOK

has been prepared to aid the press, radio and television in its coverage of the Florida State University football team. Written and compiled by Sports Publicity Director Pat Hogan and assistant Neil LaBar, the material is based on an analysis of prospects through July 1. Changes that occur will be reported in subsequent releases.

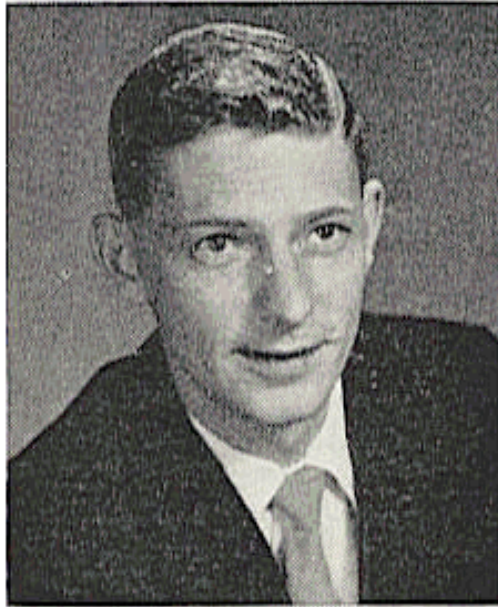
TABLE OF CONTENTS

MEMO TO THE PRESS—RADIO—TV	2
Press Accommodations and Ticket Information	
THE UNIVERSITY	3
Florida State and its President	
THE ATHLETIC DEPARTMENT	8
The Director and its Personnel	
THE 1959 SEMINOLES	19
Roster, Depth Chart, Outstanding Players	
THE SEASON TO COME	29
The Opposition and its Prospects	
THE SEASON PAST	41
Review of 1958, Statistics, Records	
THE MARCHING CHIEFS	56
Best Band in the Land	
FLORIDA STATE'S FOOTBALL CLINIC	57
Stairway to Success	

ON THE COVER

SOLID CANDIDATES for national honors—posing in color for Staff Photographer Jim Martin—are senior halfback **Fred Pickard** (43) of Columbia, Tenn., and junior end **Tony Romeo** (80) of Tampa. FSU's promising young new head coach, **Perry Moss** (right), says Pickard, who already has gained 1,065 yards for the Seminoles, and Romeo, a defensive whiz who caught 14 passes in '58, rank with college football's finest performers.

MEMO TO PRESS-RADIO-TV



PAT HOGAN

This handbook has been prepared to assist you during the 1959 football season. Should you desire additional material, information or services, contact:

PAT HOGAN

Director of Sports Publicity
Florida State University
Tallahassee, Florida

Telephone: { Office—2-8000
 { Home—4-1559

When making requests for working press tickets, allow time for mailing. It is suggested space requests be forwarded at least one week prior to any home game. If wire or telephone service is required in your coverage of games, please make necessary arrangements through your local Western Union or telephone office.

arrangements through your local

TICKET INFORMATION

Tickets for Florida State home football games may be purchased by letter, enclosing check or money order covering price of tickets. Season tickets to all home games are \$20.00. A six-game season ticket, including five home games and the Florida (Gainesville) game, is \$24.00. All season tickets are preferred reserved seats.

Address ticket requests to:

ATHLETIC TICKET OFFICE

Florida State University
Tallahassee, Florida

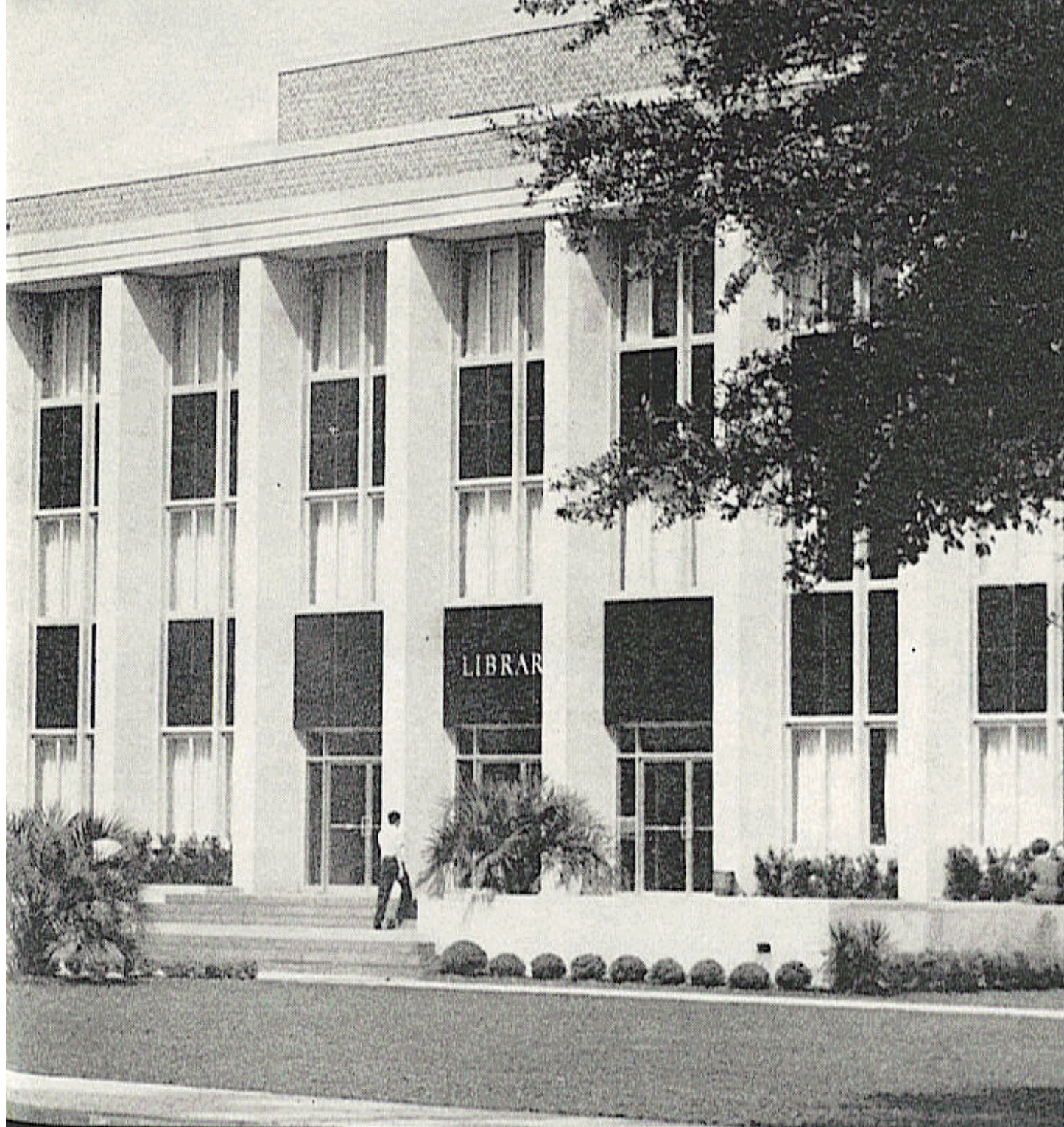
Make all checks payable to Florida State University.

1959 TICKET PRICES

WAKE FOREST	\$4.00	VIRGINIA TECH	\$4.00
THE CITADEL	\$4.00	MEMPHIS STATE	\$3.00
MIAMI (Fla.)	\$4.00	GEORGIA	\$4.00
RICHMOND	\$4.00	FLORIDA	\$4.00
WILLIAM AND MARY	\$4.00	TAMPA	\$3.75

THE UNIVERSITY

- facts and figures
- the president





FLORIDA STATE UNIVERSITY

Located in Tallahassee, Florida State University is one of the fastest growing universities in the country. Already it is bursting at its seams with an estimated 10,000 students expected by 1961.

The main campus of 300 acres, stretching for a half-mile along Highway 90, includes a cluster of older buildings of Tudor Gothic architecture, with many newer buildings of functional design to the west of these. There is an 11-story dormitory for men and work is being completed on a second 11-story dormitory to house 563 more men students. A new eight-story women's dormitory housing 270 is being put into use this year.

There's a new library, School of Education and School of Business buildings, along with a new million-dollar physical education building, Tully Gymnasium.

Among the newer structures are underground vaults with thick concrete walls which are housing two nuclear accelerators the university is installing this year. The larger of the accelerators is the third of its type to be installed on this continent and scientists, already with more than a million dollars in contracts for nuclear research, are planning to use these and other new tools in a bold program of basic research.

Authorized by the 1851 Legislature, the institution was first established as the "Seminary West of the Suwannee," and was opened on a portion of its present campus. The name was changed to "Florida State College" in 1901 and the school remained coeducational until 1905. Then it became the "Florida Female College" and was renamed in 1909, "The Florida State College for Women."

By act of the 1947 Legislature, the institution again became coeducational as The Florida State University.

The President

DR. ROBERT M. STROZIER

Florida State University's President, Dr. Robert M. Strozier, is a football enthusiast who will be "playing" his third year for the Seminoles.

When Dr. Strozier came to Florida State in Sept., 1957, it was homecoming for the popular new president. Born in McRae, Ga., he was reared in Moultrie, Ga., and was graduated from Emory University. He earned his Ph.D. at the University of Chicago.

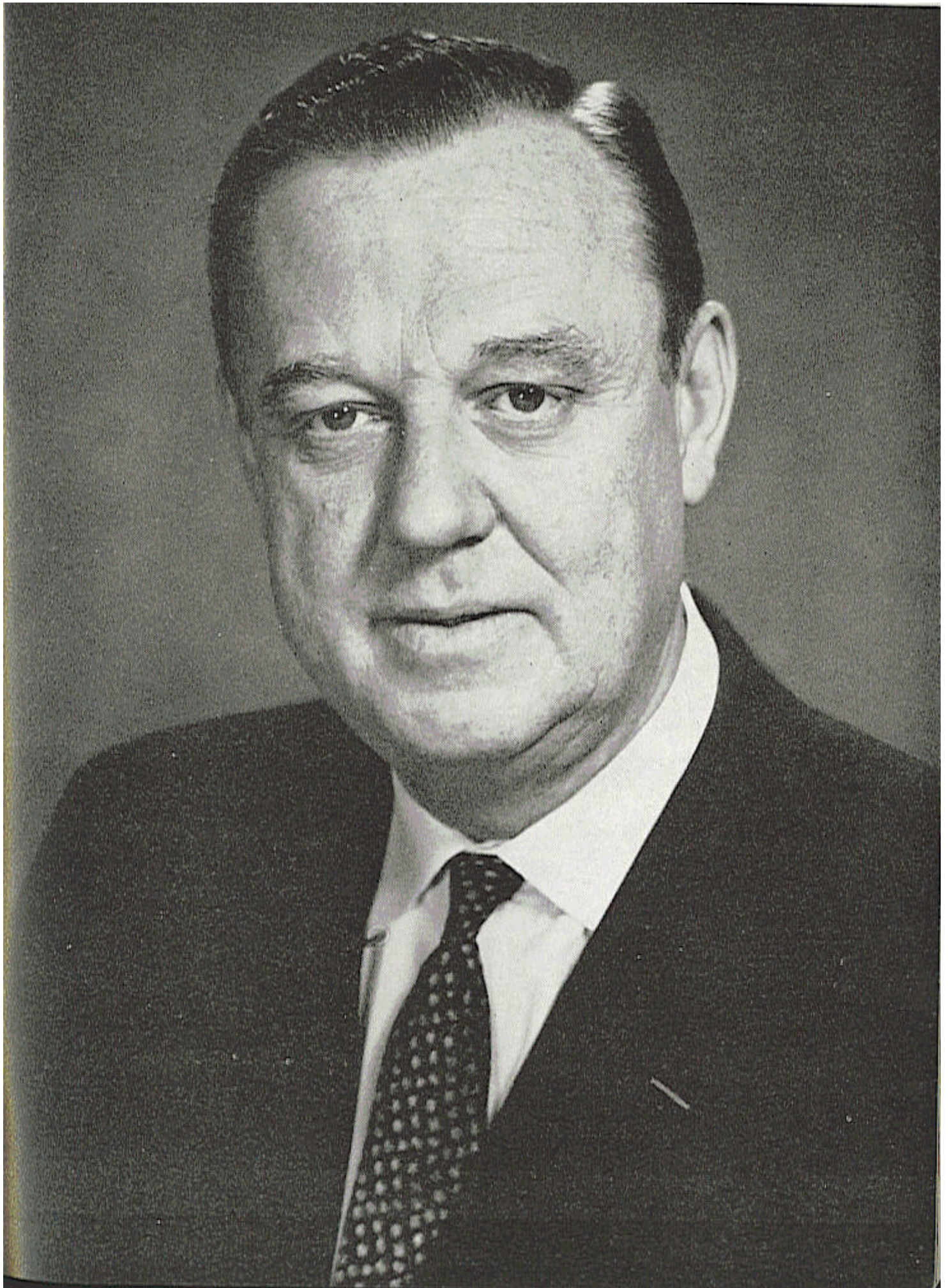
President Strozier began his professional career as professor of romance languages at Georgia State College for Men at Tifton. From 1933-1940 he served as professor of French and dean of men at West Georgia College.

In 1940 he went to the University of Georgia as associate dean of students and associate professor of romance languages. Later he served as director of the Army Special Training Program unit there.

In May, 1945, he joined the University of Chicago faculty as associate director of International House and in 1946 he became dean of students.

President Strozier's first two years at Florida State have been years of accomplishment. Faculty and staff morale has mounted with his enthusiasm. Alumni have rallied to the support of Florida State in increasing numbers and alumni giving is on the increase.

At Commencement last June he reported gifts and grants to the University totaling \$3,230,000 since the beginning of the academic year 1957. This compared with \$2,250,000 received between 1948 and 1957.



INTERCOLLEGIATE ATHLETICS

A varied group of eight sports makes up the varsity athletic program at Florida State University. The finest facilities, equipment, and coaching talent are provided in football, basketball, baseball, golf, gymnastics, swimming, tennis, and track.

THE ATHLETIC STAFF

PERRY MOSS	Director of Athletics, Head Football Coach
DICK FLOWERS	Assistant Football Coach
BOB HARBISON	Assistant Football Coach
WILL WALLS	Assistant Football Coach
JOHN COATTA	Assistant Football Coach
DON JAMES	Assistant Football Coach
KENNETH SHIPP	Assistant Football Coach
BUBBA McGOWAN	Assistant Football Coach
CHARLIE LaPRADD	Freshman Football Coach
VINCE GIBSON	Assistant Freshman Football Coach
J. K. (BUD) KENNEDY	Basketball Coach
DANNY LITWHILER	Baseball Coach
BILL ODENEAL	Golf Coach
HARTLEY PRICE	Gymnastics Coach
N. B. (BIM) STULTS	Swimming Coach
JOHN POWLESS	Tennis Coach
MIKE LONG	Track Coach
DON FAULS	Trainer
TILLMAN DIXON	Equipment Manager
EDDIE CUBBON	Director of Development
RONALD MELTON	Athletic Business Manager
PAT HOGAN	Sports Publicity Director
NEIL LaBAR	Assistant Sports Publicity Director
JIM MARTIN	Sports Photographer

ATHLETIC COMMITTEE

Chairman, Mode Stone; Donald Loucks, George Fortin, Benjamin Rogers, Coyle Moore, J. M. Plant, Mary Alexander.

An aerial photograph of a large athletic complex. The image shows several large open fields, some of which appear to be used for sports like football or soccer. There are also several smaller fields, possibly for baseball or softball, and a few buildings scattered throughout the complex. The overall scene is a wide, open area dedicated to sports and physical education.

THE ATHLETIC DEPARTMENT

- the director
- the personnel



Athletic Director and Head Coach

PERRY MOSS

Before and since he pitched a surprise 44-yard pass to Julie Rykovich on the opening play of the 1947 Rose Bowl game, thereby starting a Big Ten domination at Pasadena, Perry Moss has been making headlines.

A tireless worker who was a unanimous selection to become head coach at Florida State last January, Moss has enjoyed a varied career as a player and as a coach. And, not unlike the mythical King Midas, just about everything Moss has touched has turned to success.

Only 33 years old, Moss was graduated from Tulsa's Central High School in 1944. He played one semester of football at Tulsa University in the fall of that year, playing in the Orange Bowl. After two years in the Air Force, he enrolled at Illinois in the autumn of 1946 and piloted the Illini to a Big Ten championship that year, playing a vital part in the 45-14 trouncing Illinois handed UCLA in the inaugural (1947) Rose Bowl game between the Big Ten and Pacific Coast Conferences. While at Illinois, he was an All-Big Ten quarterback for the 1946 and 1947 seasons. He won honorable mention on various All-American teams in 1944, 1946, and 1947.

In 1947, Moss became the first recipient of the Nelson Award for Sportsmanship. Illinois and Iowa were deadlocked, 0-0, in a key late-season game, with the Illini driving for a touchdown. Just before the snap of the ball, an Iowa guard fainted. Moss immediately called time out to allow the opposing player to be removed from the field, thus eliminating the possibility of injury.

After his collegiate career, Moss played one season with the professional Green Bay Packers. His coaching experience dates from 1949, when he was freshman coach for Ray Eliot at Illinois. In 1950 and 1951 he was backfield coach at the University of Washington (Seattle) and served in the same capacity at LSU in 1952 and 1953. From 1954 through 1956, Moss was backfield coach at the University of Miami, where he also served as an assistant coach of the South team in the Shrine All-Star North-South game in 1955, and as assistant with the Hamilton Tiger Cats of the Canadian League in the summer of 1955. During the 1957 and 1958 seasons, Perry molded smooth backfields at the University of Wisconsin.

Moss has had a hand in the development of numerous "name" players, including Tommy O'Connell at Illinois, Don Heinrich and Hugh McElhenny at Washington, Don Bosseler and Whitey Rouviere at Miami, and Dale Hackbart at Wisconsin.

An optimist, Moss has a wide reputation for his ingenuity on offense. The Seminoles this fall will spring from Perry's own "Finesse Drive" attack, a composite of several types of offenses.

Perry holds a B.S. degree from Illinois and a Master's degree from Washington. He and his lovely wife (Jane) have two sons: Calvin Eugene, 8, and Perry Lee, Jr., 6.

The Director of Development . . .

EDDIE CUBBON



Edward H. (Eddie) Cubbon was appointed Director of Development for Florida State's intercollegiate athletic program last June after five years as FSU's athletic business manager.

In his new position, Cubbon will supervise the promotion of tickets for all athletic events, primarily the sale of football tickets.

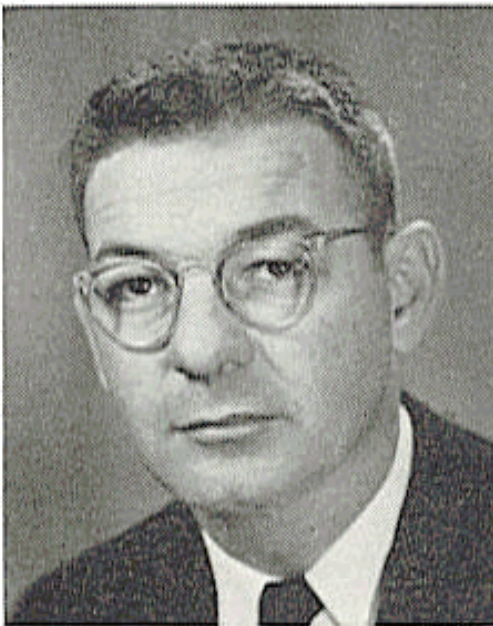
A 1932 graduate of West Virginia University and a native West Virginian, Eddie came to Florida State in 1954 from Morris Harvey College in Charleston, W. Va., where he was director of athletics for four years. Cubbon took over as supervisor of graduate teaching at West Virginia's Demonstration School in 1933, also serving as director of athletics.

In 1940, he continued his graduate work at Penn State and became director of athletics at California (Pa.) State Teachers College in 1941. He served in the Navy from 1942-45 and returned to California State in 1945. He remained there until 1950, when he moved to Morris Harvey.

Eddie and Mrs. Cubbon (Mina) have one daughter, Mrs. Michael Sheridan.

The Athletic Business Manager . . .

RONALD MELTON



Florida State's assistant athletic business manager for five years, Ronald H. Melton was named athletic business manager last June.

Born in Alabama but a long time resident of Tallahassee, Ronald is a popular figure with athletic officials across the nation. He coordinates Florida State's athletic travel plans, seeing to it that Seminole athletes are as comfortable as possible on the road.

A 1953 graduate of Florida State's School of Business, Ronald was a baseball standout for the Seminoles for four years. During one season, he hit safely in 17 consecutive games. He has been associated with Florida

State's athletic business office since October, 1954.

Ronald and Mrs. Melton (Frances Nell) have three children: Kathryn, 6; Ronald Michael, 2, and Lynndee, 9 months.

THE FOOTBALL STAFF



DICK FLOWERS

Assistant Coach

Personable Dick Flowers, 37, a native of Mobile, Ala., is in his first season as one of Coach Perry Moss' right-hand men.

A graduate of Alabama, where he was a first-team tackle from 1945-48, Flowers is regarded as one of the best defensive coaches around. At Alabama, Dick was a teammate of former Seminole coach Vaughn Mancha, and of Harry Gilmer. He played in the 1945 Rose Bowl and 1947 Sugar Bowl games.

Flowers was an assistant coach at Alabama in 1949-50 and at LSU in 1951-52, where he was associated with Moss. He

coached one year at Live Oak, Fla., High School (1953) and was out of coaching in 1954 before taking over as head coach and athletic director at Gainesville, Fla., High School. He compiled fine records at Gainesville before joining the Florida State staff this year.

Coach and Mrs. Flowers (Elizabeth) have two boys: Al, 9, and Woody, 6.

BOB HARBISON

Assistant Coach

In terms of longevity, Bob Harbison, 32, is the real veteran of the Seminole coaching staff. Harbison begins his 12th full season with Florida State this fall.

Back in his playing days, Bob was an outstanding guard for the late Bo McMillin at Indiana University from 1945-47. He was chosen to play with the North squad in the annual Blue-Gray game at Montgomery, Ala., in 1947.

A native of Evansville, Ind., Harbison came to Florida State in 1948. He is credited with developing Little All-America guard Bill Dawkins in 1951 and former Seminole coach Hugh Adams, a Little All-America tackle, in 1949.

Coach and Mrs. Harbison (Jayne) have three daughters: Paula, 9; Susy, 6, and Mary, 3.





WILL WALLS

Assistant Coach

Line Coach at the University of Colorado for the past three years, strapping Will Walls, 43, is one of the newest Seminole coaches.

A native of Lonoke, Ark., likable, easy-going Will was a favorite target of Slingin' Sammy Baugh while the two were teammates at TCU from 1934-36. The 6-4, 240-pound former end played seven seasons for the professional New York Giants and five baseball campaigns as a good-hitting minor-league outfielder.

Walls was line coach at CCNY in 1943. He served as head coach at Kilgore, Tex., JC from 1946-48, where his team won 29 of 31 games. As end coach of the pro Dallas

Texans in 1952, Will coached Gino Marchetti, the Baltimore Colts' all-pro end. In 1953 and '54, Walls was an assistant coach at LSU, where he was credited with the development of Sid Fournel, an All-America tackle. Will was in private business in 1955 before joining the Colorado staff in 1956.

Coach and Mrs. Walls (Francys) have two children: Bill, 16, and Mary Francys, 13.

JOHN COATTA

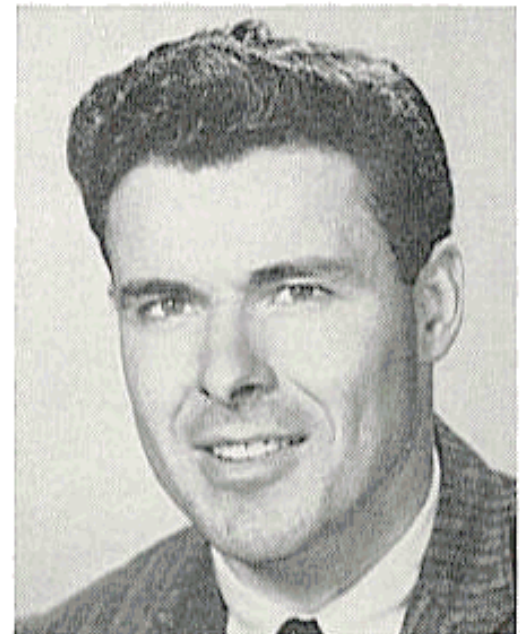
Assistant Coach

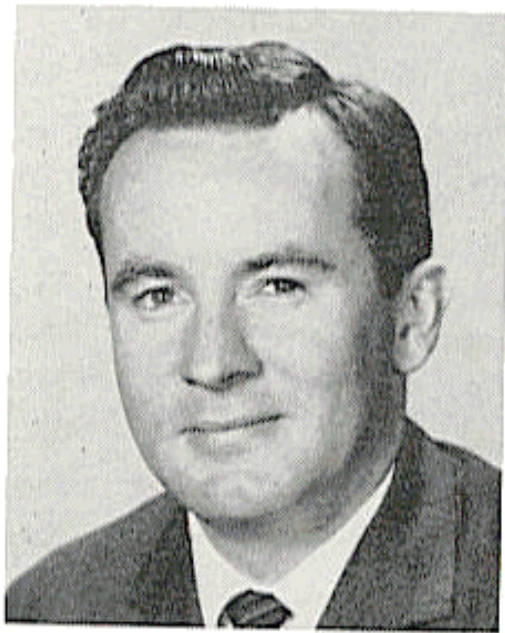
One of the sharpest passing quarterbacks in Big Ten history, 28-year-old John Coatta came to Florida State this year from the University of Wisconsin. He had been an assistant coach with the Badgers for the past four years.

A native of Dearborn, Mich., Coatta was a passing whiz for Coach Ivy Williamson at Wisconsin from 1949-51. In 1950, John set an all-time Big Ten pass completion record, connecting on 52 of 81 aerials for 610 yards and a fancy .642 percentage. He was named to the All-Big Ten and All-Midwest honor teams following the 1951 season.

Coatta coached at Wisconsin in 1952 before entering the Army, where he played and coached at Fort Eustis, Va. He returned to Wisconsin as an assistant coach in 1955 and completed work on his masters degree there last January.

Coach and Mrs. Coatta (Jean) have three children: Jan, 5; Jeff, 2½, and John, 1½.





DON JAMES

Assistant Coach

Donald Earl (Don) James has packed a lot of football experience into his 26 years. The Massillon, O., native came to Florida State this year from Southwest Miami High School, where he was backfield coach for the past two years.

Don was an outstanding high school quarterback at Massillon, O., playing under Chuck Mather and piloting Massillon to state championships in 1948 and 1949. He played quarterback for the University of Miami, lettering in 1952 and 1953.

Entering the Army in 1954, James played with fellow coach John Coatta at Ft. Eustis, Va. In 1956 Don was an assistant coach under his former high school coach, Chuck Mather, at Kansas. He obtained his masters degree at Kansas.

Coach and Mrs. James (Carol) have two children: Jeff, 4, and Jill, 2½.

KENNETH SHIPP

Assistant Coach

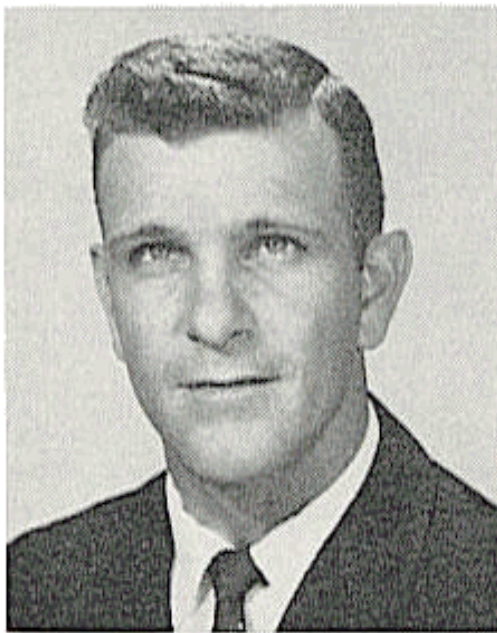
An erstwhile halfback standout at Middle Tennessee State College, Kenneth Shipp came to Florida State this year after two campaigns as backfield coach at Trinity University, San Antonio, Tex.

Shipp, 29, grew up at Murfreesboro, Tenn., and attended Baylor Prep School at Chattanooga, Tenn. From 1946-49, Ken was a hard-running halfback at Middle Tennessee State. He earned a master's degree at Peabody College in Nashville in 1950.

That same year, Shipp was assistant coach at Gallatin, Tenn., High School. From 1951 to 1953, he was head football coach at Fayetteville, Tenn., High School, then returned to his alma mater as backfield coach from 1954-56. He moved from Middle Tennessee State to Trinity in 1957.

Coach Shipp is single.





BUBBA McGOWAN

Assistant Coach

William Albert (Bubba) McGowan has the distinction of being the first person to have coached football at both the University of Florida and Florida State University.

A former left halfback at Florida — he played as a freshman and sophomore under Bear Wolff, as a junior and senior under Coach Bob Woodruff — McGowan was Florida's freshman backfield coach in 1952. The Dothan, Ala., native in 1953 and 1954 was football coach of the Fort Jackson, S. C., Army team.

More recently, McGowan, 30, has been track coach and football assistant to fellow coach Dick Flowers at Gainesville High School.

Coach and Mrs. McGowan (June) have one boy, William Albert, Jr., 8 months.

CHARLIE LaPRADD

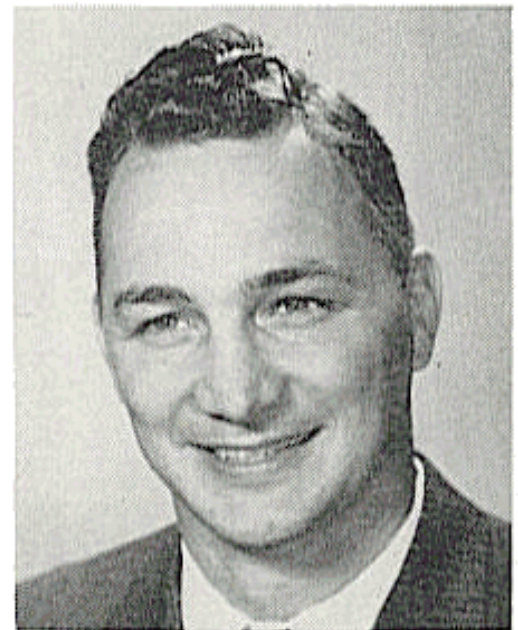
Freshman Coach

The second oldest member—in terms of service—of Florida State's coaching staff is Charlie LaPradd, All-America tackle at the University of Florida in 1952.

A tall, impressive person, LaPradd has developed into an excellent football coach, primarily because of the way the young Seminoles respect him.

A native of St. Augustine, Charlie, 31, was graduated from the University of Florida in 1953 before serving in the Air Force. He was a graduate assistant at Florida State while working toward his masters degree in 1956. He became a full member of the staff in 1957. A keen student, LaPradd will handle the freshman team this season while working toward his doctorate degree.

Coach and Mrs. LaPradd (Nita) have two children: Charles Thomas, 7, and Lauren Lee, 5.





VINCE GIBSON

Assistant Freshman Coach

One of the toughest guards in Florida State's relatively brief football background is new assistant freshman coach Vince Gibson. Vince had the knack for recovering fumbles and slipping through to block punts when he performed for the Seminoles in 1954 and 1955.

Following his graduation from Florida State, Vince became line coach and basketball and track coach at South Georgia College. The Birmingham, Ala., native produced some outstanding results during the past three seasons at South Georgia.

An excellent student, Gibson, 26, earned his masters degree at Florida State in 1956. He currently is working toward a doctorate degree.

Coach and Mrs. Gibson (Deane) have two children: Greg, 3, and Pam, 1.

DON FAULS

Trainer

A native of Ithaca, N. Y., Don Fauls, 38, came onto the Florida State athletic scene in 1954. He has done an outstanding job easing Seminole aches and pains.

Starting his sixth year at Florida State, Fauls was graduated from Ithaca College in 1948 with a degree in physio-therapy and began his professional work with a hospital in Bath, N. Y. After serving at Bath for two years, Don went to Greensboro, N. C., as trainer for the Greensboro Patriots of the Carolina Baseball League.

He worked during the off-season at the Gilmore Clinic in Greensboro and, after two years, joined the St. Louis Cardinal chain as a trainer at Omaha, Neb.

Don and Mrs. Fauls (Marquerite) have three children: Donna, 8, and twins Danny and Jackie, 6.





TILLMAN DIXON

Equipment Manager

Florida State's "Mr. Dix" is Tillman Dixon, the hard-working equipment manager who has become so popular with Seminole athletes.

Beginning his seventh year in the position, Dixon is charged with the huge responsibility of keeping track of well over 5,000 pieces of football gear.

"Mr. Dix" formerly was on the staff of the Florida Industrial School for Boys. He is a native of Esto, Fla., and earned letters in football, basketball, and track at Madison, Fla., High School.

Florida State's equipment and lockerroom setup, one of the most complete in the South, is all the design of Tillman. Seminole football players have access to 167 screened lockers, all of which he designed. Dixon's wife's name is Johnnie.

NEIL LaBAR

Assistant Sports Publicity Director

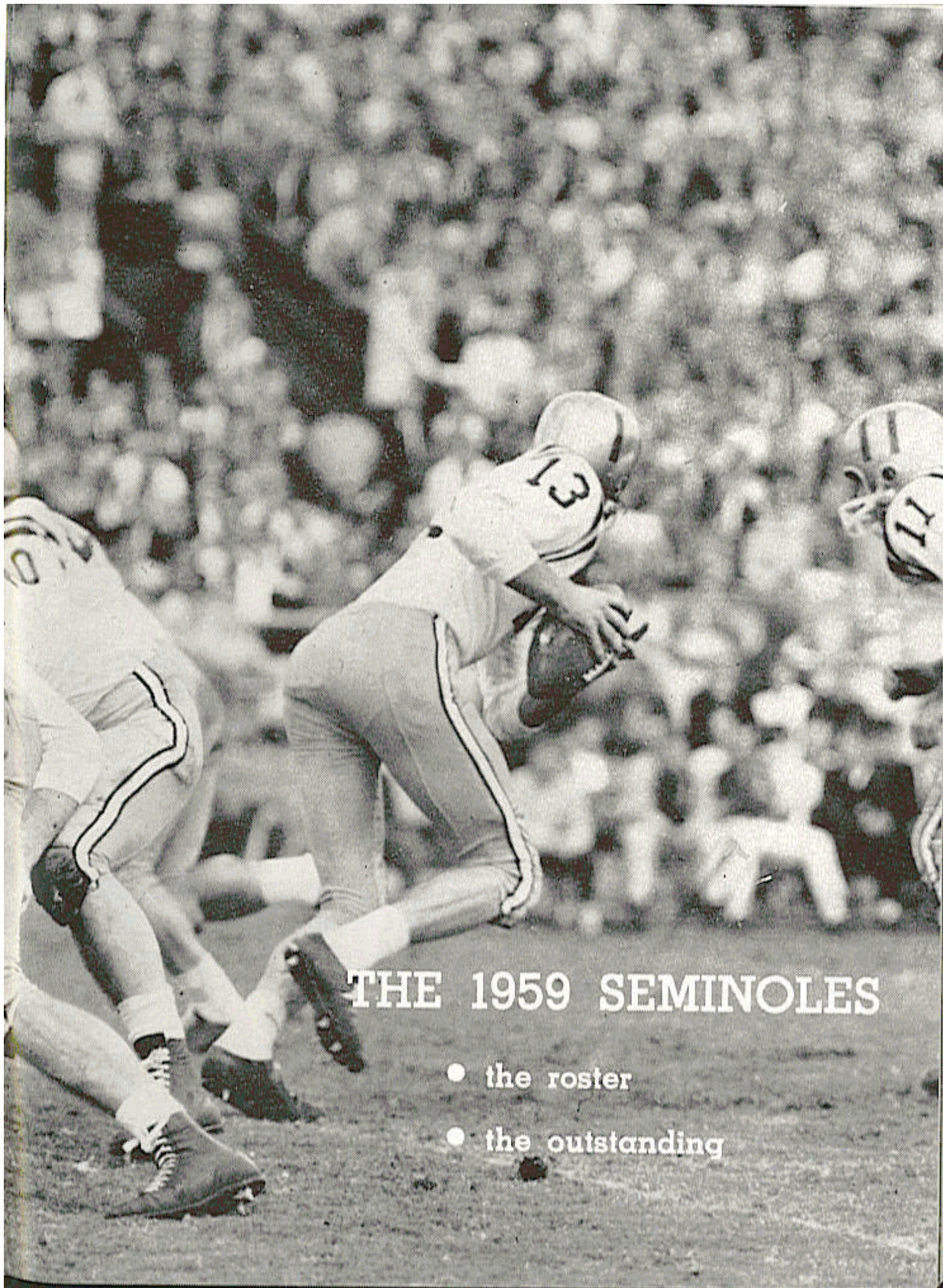
Neil LaBar was appointed assistant director of sports publicity at Florida State in June.

A 1957 graduate of Florida State, LaBar will work closely with Sports Publicity Director Pat Hogan, with chief responsibilities of coordinating radio and television activities for the Department of Athletics.

A native of Binghamton, N. Y., LaBar, 29, specialized in radio and television while a student at Florida State. He produced, directed and handled play-by-play of Seminole baseball and basketball broadcasts for two years and assisted in production of games for the Seminole Football Network. In his new position, Neil will handle technical arrangements for visiting stations and coordinate special programs for radio and television.

LaBar is single.





THE 1959 SEMINOLES

- the roster
- the outstanding



1959 FLORIDA STATE

ENDS

No.	Name	Age	Ht.	Wt.	Class	Hometown
86	Jim Daniel	19	6-3	185	So.	Atlanta, Ga.
88	*Jim Hooks	23	5-9	178	Sr.	West Palm Beach
83	Paul Raulerson	19	5-11	185	So.	Okeechobee
80	*Tony Romeo	21	6-0	196	Jr.	Tampa
82	John Slaton	19	6-1	184	So.	Coral Gables
81	Bill Tyre	19	6-0	205	So.	Sanford

TACKLES

76	*Bill Brown	24	6-0	210	Sr.	Orlando
75	Don Donatelli	18	6-2	215	So.	Pittsburgh, Pa.
79	Jerry Garman	19	6-1	235	So.	Miami
73	Steve Klesius	19	6-1	197	So.	St. Petersburg
77	*John Spivey (Co-Capt.)	21	6-2	214	Sr.	Panama City
71	*Bob Swoszowski	19	6-3	196	Jr.	Orlando
70	Bob Thomas	22	6-0	200	Jr.	Mansfield, Mass.
78	Joe Verbinski	21	6-1	210	So.	Willow Grove, Pa.

GUARDS

68	*Abner Bigbie	21	5-9	182	Jr.	West Palm Beach
60	Frank DeFrancesco	18	5-10	200	So.	Miami
66	*Ken Kestner	21	5-9	190	Jr.	Cleveland, O.
64	*Ray Lamb	21	6-0	179	Jr.	Atlanta, Ga.
69	Jessie Lane	19	6-0	185	So.	Orlando
63	*Terry Moran	19	5-9	186	Jr.	New Orleans, La.
65	Bob Morrow	23	5-10	190	So.	Tallahassee
62	*Al Ulmer (Co-Capt.)	20	5-10	178	Sr.	Clearwater

FOOTBALL ROSTER



CENTERS

No.	Name	Age	Ht.	Wt.	Class	Hometown
54	*Jack Hardy	20	5-10	192	Jr.	Miami
53	*Ramon Rogers	21	5-11	191	Sr.	Pensacola
51	Jim Worthington	21	6-1	205	So.	Oak Ridge, Tenn.

QUARTERBACKS

15	Roy Bickford	18	5-10	170	So.	Miami
13	*Joe Majors	21	6-0	177	Sr.	Huntland, Tenn.
12	*Gene McCormick	23	5-9	160	Jr.	Miami

HALFBACKS

24	Ken Cone	20	6-0	180	Jr.	Lakeland
23	Fred Grimes	19	6-1	184	So.	Hialeah
29	*Ron Hinson	20	6-0	191	Jr.	Waycross, Ga.
43	*Fred Pickard	21	5-9	165	Sr.	Columbia, Tenn.
26	*Bud Whitehead	20	5-10	178	Jr.	Marianna
20	Willie Whitehead	18	5-11	165	So.	Marianna

FULLBACKS

42	Paul Andrews	18	5-11	186	So.	Greenville
44	Jim Calhoon	24	6-1	195	Jr.	Winslow, Ariz.
27	*Jack Espenship	20	6-2	190	Jr.	Lake City
41	Denny Schou	19	5-9	187	So.	Fort Lauderdale

*Denotes letterman.

THE TENTATIVE DEPTH CHART

(Based on Early Summer Estimates)

LE — Daniel	Slaton	Hooks
LT — Swoszowski	Verbinski	Brown
LG — Ulmer	Lamb	Morrow
C — Hardy	Rogers	Worthington
RG — DeFrancesco	Moran	Kestner
RT — Spivey	Donatelli	Thomas
RE — Romeo	Raulerson	Tyre
QB — Majors	Bickford	McCormick
LH — B. Whitehead	Grimes	W. Whitehead
RH — Pickard	Hinson	Cone
FB — Espenship	Schou	Andrews

NUMERICAL ROSTER

12 McCormick	42 Andrews	65 Morrow	77 Spivey
13 Majors	43 Pickard	66 Kestner	78 Verbinski
15 Bickford	44 Caihoon	68 Bigbie	79 Garman
20 W. Whitehead	51 Worthington	69 Lane	80 Romeo
23 Grimes	53 Rogers	70 Thomas	81 Tyre
24 Cone	54 Hardy	71 Swoszowski	82 Slaton
26 B. Whitehead	60 DeFrancesco	73 Klesius	83 Raulerson
27 Espenship	62 Ulmer	75 Donatelli	86 Daniel
29 Hinson	63 Moran	76 Brown	88 Hooks
41 Schou	64 Lamb		

PRONUNCIATION CHART

Bigbie	—	BIG-bee	Pickard	—	PICK-ard
DeFrancesco	—	Dee-fran-CESS-co	Romeo	—	ROME-oo
Donatelli	—	Don-a-TELL-ee	Schou	—	SCOW
Espenship	—	ES-pen-ship	Spivey	—	SPY-vee
Klesius	—	KLEE-see-us	Swoszowski	—	Sw-a-ZOW-ski
Moran	—	More-AN	Verbinski	—	Ver-BIN-ski

SEMINOLE PROFILES

LEFT END



86 JIM DANIEL. Sophomore, 19, 6-3, 185, Atlanta, Ga. One of Florida State's most promising newcomers, this slender former Georgia All-Stater from Atlanta's Fulton High could become great pass receiver. A versatile athlete who posted a 3-1 pitching record for the Seminoles last spring, Jim was a spring-practice standout, nailing down a front-line position while catching two TD passes in series of spring games.



82 JOHN SLATON. Sophomore, 19, 6-1, 184, Coral Gables. A victim of injuries that forced him to sidelines last season, this Coral Gables product showed marked improvement during spring. Needs experience and hard work to get in top playing condition. A strong left-footed kicker, John's ability in this department could earn him some punting chores.

LEFT TACKLE



78 JOE VERBINSKI. Sophomore, 21, 6-1, 210, Willow Grove, Pa. A big, fast, aggressive Pennsylvanian, Verbinski could step into starting role if letterman Bob Swaszowski is forced to sideline because of recurring injury. One of more promising sophs, Joe is extremely capable but has never played a second of varsity college football.

76 BILL BROWN. Senior, 24, 6-0, 210, Orlando. A letterman at this position, versatility could make this husky senior a dependable utility player. Can go at center, as he demonstrated in spring, and very likely will be called on for spot duty there. Bill has experience and is promising kickoff and field goal man. He booted 26-yard field goal for spring game winners.



LEFT GUARD



62 AL ULMER. Senior, 20, 5-10, 178, Clearwater. This amazing "watch-charm" guard—perhaps the best little lineman in America—has befuddled opposition with some 150 tackles and 50 assists during two brilliant seasons. Named to AP and UPI honorable mention All-America teams in '58, he will co-captain Seminoles this fall. Courage and sound defensive linebacking earned him state "Lineman of the Week" accolades and first team All-Florida honors in '57 and '58. Despite small stature, tireless effort and desire make the ex-Clearwater All-Stater a bright prospect for All-Sectional and All-America honors.

64 RAY LAMB. Junior, 21, 6-0, 179, Atlanta, Ga. With two seasons in front of him, quick, eager-to-learn Ray Lamb got his baptism of fire as a young soph last year. An improving linebacker, Ray could develop into steady, reliable performer. Turned in sparkling effort before hometown crowd of 40,000-plus when Seminoles met Georgia Tech in '58.



CENTER



54 JACK HARDY. Junior, 20, 5-10, 192, Miami. A sometime starter in 1958, Hardy made rapid improvement in spring to emerge as top center candidate for '59. A hard-nosed competitor who earned three letters as a center-linebacker at Miami Senior High, Jack needs more experience, but could develop into top prospect.

53 RAMON ROGERS. Senior, 21, 5-11, 191, Pensacola. A guard at Pensacola High School, determination keeps him in front-line center contention. Had good spring practice culminated by outstanding defensive showing for winning team in final spring game. A diligent worker, Ramon spends most of his free time in religious activities.



RIGHT GUARD



60 FRANK DeFRANCESCO. Sophomore, 18, 5-10, 200, Miami. They call this fellow "The Tank" and that about sums up the physical prowess of this highly-regarded soph. So impressed coaching staff during spring drills they have tabbed him for almost certain future stardom. A former North Miami High tackle and guard, Frank has tools but needs game action.

63 TERRY MORAN. Junior, 19, 5-9, 186, New Orleans, La. Pulling frequent defensive gems last season, he earned respect from opponents as irksome hustler. Injuries caused him to miss spring practice but he'll be challenging newcomer DeFrancesco for No. 1 right guard spot. Dogged spirit makes this former All-Southern, All-Louisiana battler excellent prospect despite relatively small stature.



RIGHT TACKLE



77 JOHN SPIVEY. Senior, 21, 6-2, 214, Panama City. One of only seven seniors on squad, this steady performer was chosen by teammates to co-captain them this campaign. A team captain at Panama City's Bay High and in the 1956 Florida All-Star game, John has made successful transition from end, where he performed in high school and his first two years at Florida State. Good size and mobility with experience.

75 DON DONATELLI. Sophomore, 18, 6-2, 215, Pittsburgh, Pa. Still growing at 18, this strapping soph out of Pittsburgh's North Catholic High School was bothered by injuries as a freshman. Made switch from center to tackle in spring, showed promise of better things to come. Has size, but hasn't been tested under fire.



RIGHT END



80 TONY ROMEO. Junior, 21, 6-0, 200, Tampa. A gifted pass receiver who likes defense even better, Anthony Lamar (Tony) Romeo is one of best ends in America. In '58, Tony was a demon on defense, caught 14 passes for 274 yards and 3 TDs to rank as one of all-time best FSU sophs. Twice won "Lineman of Week" honors, earned first-team All-Florida spot, and named to AP and UPI honorable mention All-America squads. Best bet to become State's first major All-America first-teamer.

83 PAUL RAULERSON. Sophomore, 19, 5-11, 185, Okeechobee. One of nine yearlings among first 22, Paul learned a lot about football during tough spring drills. Needs defensive polishing and game experience. Fair speed and growing, he could develop into reliable flankman.



QUARTERBACK



13 JOE MAJORS. Senior, 21, 6-0, 177, Huntland, Tenn. A talented passer, Joe earned applause with scintillating performance (12 of 22 attempts) against national champion Auburn in 1957, closed out regular 1958 season by hitting 12 of 26 aerials for 147 yards in FSU-Florida inaugural. Has courage and experience, could develop into finest all-around quarterback Seminoles ever had. His speed will fool you. Eager to learn, the erstwhile Tennessee prep All-Stater had excellent spring, once completing 15 of 19 passes.

15 ROY BICKFORD. Sophomore, 18, 5-10, 170, Miami. Though he earned five letters in three sports at Miami's Archbishop Curley High School, Roy William Bickford had no college offers, enrolled at FSU with no thought of playing football. Couldn't resist coming out in spring and became overnight "find". Displaying much poise for soph, Roy hit better than 50 per cent of passes in spring, guided winning team in spring finale. This thick-legged 18-year-old needs experience, but watch him.



LEFT HALFBACK



26 BUD WHITEHEAD. Junior, 20, 5-10, 178, Marianna. One of Tribe's best rushers last campaign (5.0-yard average), Ruben Angus (Bud) Whitehead could blossom into capable replacement for graduated halfback Bobby Renn. Despite medium weight, he's good power runner and more than capable on defense. One of spring game's leading ground-gainers, this junior should have bright future.

23 FRED GRIMES. Sophomore, 19, 6-1, 184, Hialeah. A quarterback and end while earning seven football and baseball letters at Hialeah High, Fred Joseph Grimes moved solidly into halfback picture in spring. Good height and speed make him fine prospect, but needs work both offensively and defensively.



RIGHT HALFBACK



43 FRED PICKARD. Senior, 21, 5-9, 165, Columbia, Tenn. Touted as hardest-running little back in America, Fred Neil Pickard could smash FSU career rushing mark in final season. Already the Tennessee dandy, who missed major All-America honors by one vote last year, has amassed 1,065 yards, 390 yards shy of Bobby Renn's school mark. Possessor of remarkable balance and desire, the AP and UPI honorable mention All-American amazed rivals by gaining 602 yards as 160-pound full-back in '58. Switched to right half in spring.

29 RON HINSON. Junior, 20, 6-0, 191, Waycross, Ga. A frequent starter as a sophomore end, Ronald Edward Hinson pitched in at center, then at right half in spring drills. The solidly-constructed junior has size and ability to make him candidate for almost any position. Ron has good hands, likes it rugged, and combines with Pickard to give Seminoles outstanding 1-2 punch at this position.



FULLBACK



27 JACK ESPENSHIP. Junior, 20, 6-2, 190, Lake City. A talented junior who couldn't make starting 11 as a freshman, John M. (Jack) Espenship developed so rapidly he became vital cog in '58 starting backfield. As a right half, he was precision blocker and led pass receivers with 18 catches for 200 yards. Sidelined most of spring with shoulder ailment, he could be even more pleasant surprise at new position.



41 DENNY SCHOU. Sophomore, 19, 5-9, 187, Fort Lauderdale. This former All-State high school guard has put on nearly 30 pounds since coming to Florida State and is still growing. Fine spring at new position bolstered idea he could be fine fullback in future. This skin-diving enthusiast has no experience, but is learning fast.

1959 TRAVEL PLANS

Date	Game	Travel	Team Quarters
Oct. 10	Virginia Tech	Air	Patrick Henry Hotel Roanoke, Va.
Oct. 17	Memphis State	Air	Gayoso Hotel Memphis, Tenn.
Oct. 31	Georgia	Bus	Georgian Hotel Athens, Ga.
Nov. 21	Florida	Bus	Shalimar Motel Silver Springs, Fla.
Nov. 28	Tampa	Bus	To be determined



THE COMING SEASON

- the opposition
- the prospects

THE 1959 OUTLOOK

By PERRY MOSS

The 1959 "Fighting Seminoles" will be my first football team. I am convinced, after the tough spring practice we had, this team is capable of doing well.

I realize we will have one of the smallest and most inexperienced squads in the nation (only seven seniors). Many of our young players will play against some of the best teams in the country without having participated in a college game. Even though we are a small, inexperienced squad, I am confident this football team can win any game on our schedule.

With proper luck—no key injuries or other things that happen to football teams—we could have the finest record that a Florida State football team has ever had. This statement is based on our spring practice. We had the toughest spring practice I have experienced. I believe our team is conditioned for tough, rugged, aggressive football. If the enthusiasm and desire to play the game of football continues as it did this spring, we will have an enthusiastic, fast, hard-hitting team.

Our schedule is a good one. Wake Forest undoubtedly will be one of the best Atlantic Coast Conference teams. All reports coming out of Miami indicate that their team compares with the one they had a few years back. Of course, our Southeastern Conference opponents, Georgia and Florida, both are power houses. The rest of our schedule is comprised of teams that are as strong physically as we are.

Who will do the job for us? Several outstanding new players will bear watching. These include end Jim Daniel, Atlanta sophomore who is a fine pass receiver; Joe Verbinski, a big, fast, aggressive tackle from Pennsylvania; Frank DeFrancesco, sophomore guard from Miami who has great potential, and Roy Bickford, sophomore quarterback from Miami who had a fine spring practice. These sophomores, mixed with such proven individuals as the potentially great Tony Romeo, Co-Captain John Spivey, Co-Captain Al Ulmer, fine passer Joe Majors, and great runner Fred Pickard, should give us an interesting team.

This squad can think, hit, and run. It is capable of playing 60 minutes of rough, tough football. The big question marks are injuries to key players and how our young players play up to their ability when under fire.

There is enthusiasm on the coaching staff and the players are enthusiastic. **We shall start fall practice Sept. 1st expecting to win our first 10 games!**

September 19: WAKE FOREST 8:00 P.M.

At Tallahassee

COACHING STAFF: Paul J. Amen, head coach; Billy Hildebrand, Elmer Barbour, Ken Meyer, Bill Crutchfield, Charles Knox.

NICKNAME: Demon Deacons.

COLORS: Old Gold and Black.

PUBLICITY DIRECTOR: Marvin Francis.

ENROLLMENT: 2,321.

RETURNING LETTERMEN: 20.

1958 RECORD: Won 3, Lost 7.

CONFERENCE: Atlantic Coast.

SERIES: Florida State leads, 1-0-1.



1959 OUTLOOK: With 10 lettermen, including six who were regulars at the close of the '58 campaign, set for starting assignments this fall, Wake Forest's outlook appears most promising.

Coach Paul Amen, starting his fourth season as Deacon coach, says, "we'll be bigger and stronger and have a little more depth," but has warned that lack of experience among reserves could be a big problem. Interior line positions, especially at guard, caused biggest concern during spring practice. Veteran Nick Patella is the lone experienced guard. End Pete Manning, second team All-ACC choice last year; center Buck Jolly, and Patella are expected to anchor the line.

Fine passer Norman Snead, another second-team All-ACC choice who now packs 200 pounds on his 6-4 frame, heads a backfield which is bigger and faster. Four letterman halfbacks will cavort with veteran fullback Neil MacLean, the club's leading scorer and groundgainer the past two seasons.

WAKE FOREST'S 1959 SCHEDULE

Sept. 19.....	at FLORIDA STATE
Sept. 26.....	Virginia Tech
Oct. 3.....	at Tulane
Oct. 10.....	at Maryland
Oct. 17.....	at N. C. State
Oct. 24.....	North Carolina
Oct. 31.....	Virginia
Nov. 14.....	at Duke
Nov. 21.....	at Clemson
Nov. 28.....	South Carolina at Charlotte

1958 RECORD (3-7)

34.....	Maryland	0
13.....	Virginia Tech	6
24.....	FLORIDA STATE	27
13.....	N. C. State	7
7.....	Villanova	9
7.....	North Carolina	26
12.....	Clemson	14
0.....	Duke	29
7.....	Auburn	21
7.....	South Carolina	24

September 26: THE CITADEL 8:00 P.M.

At Tallahassee



COACHING STAFF: Eddie L. Teague, head coach; Hank Witt, Pride Ratteree, John Gupton, Mac Erwin, Bill Dellastatious.

NICKNAME: Bulldogs.

COLORS: Blue and White.

PUBLICITY DIRECTOR: Bill Stewart.

ENROLLMENT: 2,200.

RETURNING LETTERMEN: 15.

1958 RECORD: Won 4, Lost 6.

CONFERENCE: Southern.

SERIES: Florida State leads, 1-0.

1959 OUTLOOK: After a disappointing '58 season, The Citadel is hoping for better things. Coach Eddie Teague and his staff have the advantage this trip of knowing their starters for the opening game.

The Bulldogs will have good speed and a solid first eleven. On offense, they'll show a more wide-open style. One glaring weakness is lack of experienced depth. The running backs all can scat and quarterback Jerry Nettles throws the long and short pass equally well. He'll have good support from halfbacks Bob Daugherty and Bill Hughes and two promising fullbacks—Barry Thomas and Belton Dykes.

Jim Gulliford and Pete Davidson are two solid tackles. George Garrison is the top center candidate with ends Paul Maguire and Tom Hemingway and guards Bill Johnson and Ron Hitchcock having inside tracks. If reserves come through, The Citadel could spring some shockers.

THE CITADEL'S 1959 SCHEDULE

Sept. 19.....	Newberry
Sept. 26.....	at FLORIDA STATE
Oct. 3.....	Davidson
Oct. 9.....	at Wofford
Oct. 17.....	Richmond
Oct. 24.....	Furman
Oct. 31.....	at William and Mary
Nov. 7.....	Presbyterian
Nov. 14.....	at VMI
Nov. 21.....	at West Virginia

1958 RECORD (4-6)

0.....	Newberry	16
6.....	Davidson	8
6.....	Wofford	18
28.....	Memphis State	26
24.....	Furman	6
0.....	Richmond	20
38.....	Presbyterian	0
14.....	VMI	6
0.....	Georgia	76
14.....	George Washington	20

October 3:

MIAMI

8:00 P.M.

At Tallahassee

COACHING STAFF: Andy Gustafson, head coach; Walter Kichefski assistant head coach; Henry Stram, backfield coach; Whitey Campbell, backfield coach; Armand Vari, line coach; Tom O'Boyle, line coach.

NICKNAME: Hurricanes.

COLORS: Orange, Green and White.

PUBLICITY DIRECTORS: George Gallet, Wilbert Bach.

ENROLLMENT: 13,000.

RETURNING LETTERMEN: 14.

1958 RECORD: Won 2, Lost 8.

CONFERENCE: Independent.

SERIES: Miami leads, 5-1.



1959 OUTLOOK: There's a new look—new faces, new coaches, new offense—at Miami, where the Hurricanes are girding for what may be the toughest schedule in 34 years of football at the school.

Miami is changing over from the "Drive Series" to a new multiple offense, a wide-open attack featuring slot backs and ends set as wide flankers. Some split-T will be used and some of the Belly Series will be retained. Only two 1958 starters, quarterback Fran Curci and center Jim Otto, figure to be in the opening lineup when the 1959 bell rings. Three quarterbacks, two halfbacks, two fullbacks, two centers, two guards, two tackles, and one end are numbered among 14 returning lettermen.

Team speed is good. Passing and receiving is better. Quarterback, a shallow spot for past two years, could be strongest position, with Curci, senior Theron Mitchell, George MacIntyre, and soph "find" Bill McClain. Big surprise of spring was emergence of hard-hitting halfback-fullback Jim Vollenweider, 197-pounder from Schofield, Wis.

MIAMI'S 1959 SCHEDULE

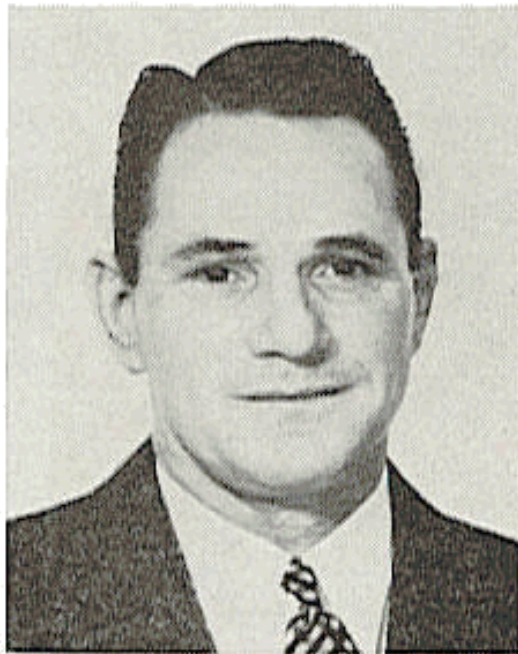
Sept. 25Tulane
Oct. 3at FLORIDA STATE
Oct. 10at LSU
Oct. 16Navy
Oct. 23Auburn
Oct. 30Kentucky
Nov. 6North Carolina
Nov. 13South Carolina
Nov. 20Michigan State
Nov. 28Florida at Jacksonville

1958 RECORD (2-8)

0.....	Wisconsin20
14.....	Baylor8
0.....	LSU41
2.....	Boston College6
15.....	Vanderbilt28
6.....	FLORIDA STATE17
14.....	Maryland26
26.....	Houston37
9.....	Florida12
2.....	Oregon0

October 10: VIRGINIA TECH 2:00 P.M.

At Blacksburg



COACHING STAFF: Frank Moseley, head coach; Macauley McEver, Buck Chapman, Dick Redding, Don Watson, Jack Prater.

NICKNAME: Gobblers.

COLORS: Maroon and Orange.

PUBLICITY DIRECTOR: Wendell Weisend.

ENROLLMENT: 5,000.

RETURNING LETTERMEN: 17.

1958 RECORD: Won 5, Lost 4, Tied 1.

CONFERENCE: Southern.

SERIES: Tied, 2-2.

1959 OUTLOOK: Led by captain and All-America end candidate Carroll Dale, Virginia Tech should have another winning season in '59. Coach Frank Moseley's ninth Gobbler eleven will have fair speed, a much better running game, and the best overall depth in years.

Experienced passer Billy Holesclaw is gone, but excellent receivers headed by Dale comprise the threat of a good passing attack. Don Oakes tops a good array of tackles and the Techmen have such guard strength that Moseley switched veteran Mike Zeno to tackle. Senior Chuck Stephens leads an adequate center corps.

Backfield success will depend largely on performances of potentially fine sophomores. Soph Charlie Speck could be the starting quarterback, though junior Frank Eastman sparkled in spring. Junior Pat Henry will hold down right half, with letterman Sam Shaffer getting the nod at fullback. The Gobblers need maturity, but shape up as a highly respectable threat.

VIRGINIA TECH'S 1959 SCHEDULE

Sept. 19N. C. State at Norfolk
Sept. 26at Wake Forest
Oct. 3Wm. & Mary at Roanoke
Oct. 10FLORIDA STATE
Oct. 17Virginia at Richmond
Oct. 24at Villanova
Oct. 31Richmond
Nov. 7at West Texas State
Nov. 14at West Virginia
Nov. 26VMI at Roanoke

1958 RECORD (5-4-1)

28 West Texas State12
6 Wake Forest13
27 William and Mary15
22 Virginia13
0 FLORIDA STATE28
20 West Virginia21
14 N. C. State14
27 Richmond23
0 Mississippi Southern41
21 VMI16

October 17: MEMPHIS STATE 8:00 P.M.

At Memphis

COACHING STAFF: Billy (Spook) Murphy, head coach; Ray Malavasi, line coach; Tom Morris, line coach; Paul Davis, backfield coach; Roger French, end coach; John Cobb, freshman coach.

NICKNAME: Tigers.

COLORS: Blue and Gray.

PUBLICITY DIRECTOR: Jack Bugbee.

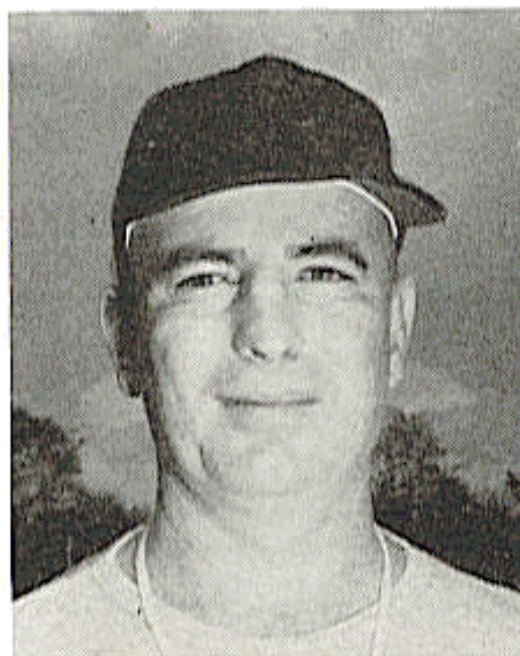
ENROLLMENT: 4,500.

RETURNING LETTERMEN: 20.

1958 RECORD: Won 4, Lost 5.

CONFERENCE: Independent.

SERIES: First meeting.



1959 OUTLOOK: Coach Billy (Spook) Murphy starts his second year under Memphis State's new football building program and the Tigers this fall will play the school's toughest schedule ever.

Twenty of 29 lettermen from last year's aggressive team are back. Most of the returnees are sophomores and juniors, however, and the Tigers still lack experience and depth in some positions. Paramount weaknesses are at end, where three lettermen return, and fullback. Quarterback and tackle are the team's strongest spots.

Seniors Fred Hearn and Nickey Buoni and sophs James Earl Wright and Jack Carter, both spring practice stickouts, make for a solid quarterback situation. Wayne Armstrong, Don McKinnon, Bill Hudson, and Larry Heathcott are lettermen tackles. There are three veteran guards: Paul Hathcock, Geddes Self, and Miller Mathews. Four halfbacks, including Victor Wimpee, are back in the fold.

MEMPHIS STATE'S 1959 SCHEDULE

Sept. 19Stephen F. Austin
Sept. 26Tennessee Tech
Oct. 3at Mississippi
Oct. 10Abilene Christian
Oct. 17FLORIDA STATE
Oct. 24at Mississippi State
Oct. 31Mississippi Southern
Nov. 14at Louisiana Tech
Nov. 21at Alabama
Nov. 26at Chattanooga

1958 RECORD (4-5)

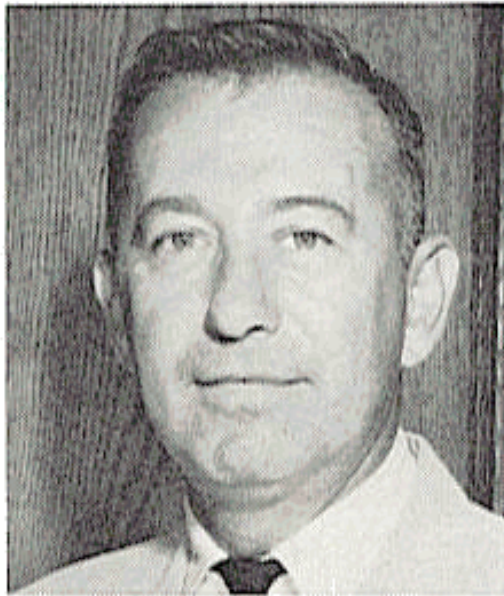
0..... Mississippi17
13..... Tennessee Tech 0
22..... Mississippi Southern24
6..... Mississippi State28
26..... The Citadel28
22..... Chattanooga 7
26..... Louisiana Tech12
27..... Louisiana College14
0..... Alabama14

October 24:

RICHMOND

8:00 P.M.

At Tallahassee



COACHING STAFF: Edwin J. Merrick, head coach; Robert L. Sgro, line coach; Dr. Richard E. Humbert, end coach.

NICKNAME: Spiders.

COLORS: Red and Blue.

PUBLICITY DIRECTOR: Bob Gates.

ENROLLMENT: 4,000.

RETURNING LETTERMEN: 14.

1958 RECORD: Won 3, Lost 7.

CONFERENCE: Southern.

SERIES: First meeting.

1959 OUTLOOK: Coach Edwin Merrick, the 1958 Southern Conference "Coach of the Year," is looking forward to improvement on last year's deceiving 3-7 record. One more Richmond score in each of five losses would have given the Spiders a glittering 8-2 record.

Richmond figures to field two "quite representative" squads. Major headaches are (1) replacement of sticky-fingered end Joe Biscaha, (2) finding a successor to dependable fullback Buddy Davis, and (3) solving the only acute depth problem, at tackle. Ed Wood, transfer end from Clemson, and Joe Pesansky are the most likely newcomers to attain stardom.

Return of two of the best 1957 Richmond operatives should help immeasurably. David Ames, returning after a year's absence, is an elusive halfback. Pat Lamberti, who won post-season honors as a tackle in 1957, is now at fullback and should add power to an already better-than-average running game. Most likely candidates for all-star honors are tackle Fred Caravetta, center Chuck Boone, and halfbacks Ames and Earl Stoudt.

RICHMOND'S 1959 SCHEDULE

Sept. 19at Dayton
Sept. 26at West Virginia
Oct. 3VMI at Portsmouth
Oct. 10Davidson
Oct. 17at The Citadel
Oct. 24at FLORIDA STATE
Oct. 31at Virginia Tech
Nov. 7George Washington
Nov. 14Furman
Nov. 26William and Mary

1958 RECORD (3-7)

22.....	West Virginia66
12.....	Dayton13
6.....	VMI12
12.....	Rutgers23
26.....	George Washington6
6.....	Villanova13
20.....	The Citadel0
23.....	Virginia Tech27
27.....	Davidson22
15.....	William and Mary18

October 31:

GEORGIA

2:00 P.M.

At Athens

COACHING STAFF: Wallace Butts, head coach; J. B. Whitworth, line coach; Wyatt Posey, line coach; Jim Whatley, line coach; Quinton Lumpkin, line coach; John Gregory, end coach; Charley Trippi, backfield coach; Sterling DuPree, backfield coach; Johnny Griffith, backfield coach.

NICKNAME: Bulldogs.

COLORS: Red and Black.

PUBLICITY DIRECTOR: Dan Magill, Jr.

ENROLLMENT: 7,000.

RETURNING LETTERMEN: 23.

1958 RECORD: Won 4, Lost 6.

CONFERENCE: Southeastern.

SERIES: Georgia leads, 4-0.



1959 OUTLOOK: Smarting from a 4-6 season in 1958 when they felt their record should have been more like 7-3, the Bulldogs expect to give every 1959 opponent a fight to the wire. On the comeback trail, Georgia returns a whopping total of 23 lettermen, has plenty of depth and talent.

Jimmy Vickers, Bill Herron, and Gordon Kelley, top three ends in '58, all are back. So are three of the top four guards—Pat Dye, Billy Roland, and Carter Ramsey. Larry Lancaster is only veteran tackle, but soph Pete Case is bright prospect. At center, veteran Phil Ashe and Billy Joe Thompson figure to handle the job adequately.

Georgia's quarterback corps is probably best in SEC. Seniors Charley Britt and Tommy Lewis (who will play some at fullback) will have plenty of signal-calling support from junior Francis Tarkenton. Fellows like Fred Brown, Bobby Walden, Don Soberdash, George Guisler, and Bobby Towns give Bulldogs halfback confidence.

GEORGIA'S 1959 SCHEDULE

1958 RECORD (4-6)

Sept. 19Alabama
Sept. 26Vanderbilt
Oct. 3at South Carolina
Oct. 10Hardin-Simmons
Oct. 17Miss. State at Atlanta
Oct. 24at Kentucky
Oct. 31FLORIDA STATE
Nov. 7Florida at Jacksonville
Nov. 14Auburn
Nov. 28at Georgia Tech

8.....	Texas13
14.....	Vanderbilt21
14.....	South Carolina24
28.....	FLORIDA STATE13
28.....	Kentucky0
0.....	Alabama12
6.....	Florida7
6.....	Auburn21
76.....	The Citadel0
16.....	Georgia Tech3

November 14: WILLIAM & MARY 2:30 P.M.

At Tallahassee (Homecoming)



COACHING STAFF: Milt Drewer, head coach; Ed Derringe, Joe Mark, Dave Nusz, Bill Chambers.

NICKNAME: Indians.

COLORS: Green, Gold and Silver.

PUBLICITY DIRECTOR: Frank Simmons.

ENROLLMENT: 2,000.

RETURNING LETTERMEN: 13.

1958 RECORD: Won 2, Lost 6, Tied 1.

CONFERENCE: Southern.

SERIES: First meeting.

1959 OUTLOOK: A switch to the winged-T and possibly the strongest backfield in years should help the Indians improve considerably on their 1958 record.

The first team will be reasonably strong, with the only real weakness at one end spot. The interior line, anchored by 215-pound tackle Mike Lashley, will be big and strong. Despite the loss of the entire starting backfield, flashy running halfbacks Jim Porach and Roger Hale bring smiles to the faces of William and Mary coaches. Both are dangerous all-the-way runners.

Depth-shy and loaded with sophomores, the offensive punch should be strong enough, but much work remains to be done on defense. Punting, a sore spot last year, should be improved with Porach and Dan Barton doing the kicking. Passing of quarterback Bob Stoy will be big offensive threat. The second team, where only two lettermen return, is big question mark.

WM. & MARY'S 1959 SCHEDULE

Sept. 19at Virginia
Sept. 26at Navy
Oct. 3	...Virginia Tech at Roanoke
Oct. 10Furman
Oct. 17VMI at Norfolk
Oct. 24George Washington
Oct. 31The Citadel
Nov. 7at Davidson
Nov. 14at FLORIDA STATE
Nov. 26at Richmond

1958 RECORD (2-6-1)

0.....	Navy14
15.....	Virginia Tech27
6.....	VMI6
13.....	N. C. State6
0.....	George Washington7
7.....	Boston U.33
7.....	Davidson16
6.....	West Virginia55
18.....	Richmond15

November 21: FLORIDA 2:00 P.M. At Gainesville

COACHING STAFF: Bob Woodruff, head coach; Hobe Hooser, defensive line coach; John Mauer, defensive ends and linebackers; Hank Foldberg, offensive line coach; Harvey Robinson, head backfield coach; Dave Fuller, assistant backfield coach; Mac Cara, assistant backfield coach; John Eibner, head scout and assistant coach; Dick Jones, assistant coach; Jim Powell, assistant coach; Earl Scarborough, freshman coach.

NICKNAME: Fighting Gators.
COLORS: Orange and Blue.
PUBLICITY DIRECTOR: Norris Anderson.
ENROLLMENT: 11,130.
RETURNING LETTERMEN: 18.
1958 RECORD: Won 6, Lost 4, Tied 1.
CONFERENCE: Southeastern.
SERIES: Florida leads, 1-0.



1959 OUTLOOK: One of the top-drawer teams in the Southeastern Conference for the past two seasons, Florida could be even tougher in '59.

Captain and end Dave Hudson heads a list of 16 returning lettermen. The Gators have seven lettermen backs returning, including fullback Bob Milby, who led the team in rushing last season. Halfbacks coming back are junior Don Deal, senior Bobby Joe Green, and juniors Doug Partin and Jack Westbrook. Green is one of nation's top punters. Quarterbacks Mickey Ellenburg and Wayne Williamson are back and junior college graduate Jack Jones is a fine passer.

Ends are well stocked with lettermen Hudson, Nick Arfaras, Dan Edgington, Pat Patchin, and Perry McGriff. All-America tackle Vel Heckman is gone, but lettermen tackles Ronnie Slack, Dick Brantley, and Danny Royal are tough customers. Asa Cox and Lawrin Giannamore return at guards.

FLORIDA'S 1959 SCHEDULE

Sept. 18at Tulane
Sept. 26Mississippi State
Oct. 3Virginia
Oct. 10at Rice
Oct. 17at Vanderbilt
Oct. 24LSU
Oct. 31at Auburn
Nov. 7Georgia at Jacksonville
Nov. 21FLORIDA STATE
Nov. 28Miami at Jacksonville

1958 RECORD (6-4-1)

34.....	Tulane14
7.....	Mississippi State14
21.....	UCLA14
6.....	Vanderbilt6
7.....	LSU10
5.....	Auburn6
7.....	Georgia6
51.....	Arkansas State7
21.....	FLORIDA STATE7
12.....	Miami9
3.....	Mississippi (Gator Bowl)7

November 28:

TAMPA

8:00 P.M.

At Tampa



COACHING STAFF: Marcelino Huerta, head coach; Sam Bailey, line coach; Fred Panccast, backfield coach.

NICKNAME: Spartans.

COLORS: Red, Gold and Black.

PUBLICITY DIRECTOR: Al Gomez.

ENROLLMENT, 1,200.

RETURNING LETTERMEN: 14.

1958 RECORD: Won 6, Lost 4.

CONFERENCE: Independent.

SERIES: Florida State leads, 8-2.

1959 OUTLOOK: The outlook in 1959 is another bright one for Coach Marcelino Huerta's University of Tampa Spartans. Only seven players from the 1958 squad were lost through graduation, but these included Fred (Moose) Cason, the 245-pound fullback, and fine ends Ken Belliveau and Charlie Coleman.

Despite these losses, Tampa figures to be big and fast, with 14 lettermen back in the field. Experience, or lack of it, is the main problem. Billy Turner will be handling Spartan quarterback chores for the fourth year and he is capable. Turner last year completed 37 of 68 passes for 766 yards. Helping Tampa's passing game will be end Charles Bailey, a flankman coaches figure can fill the shoes of either Belliveau or Coleman. Dave Davenport is a returning end.

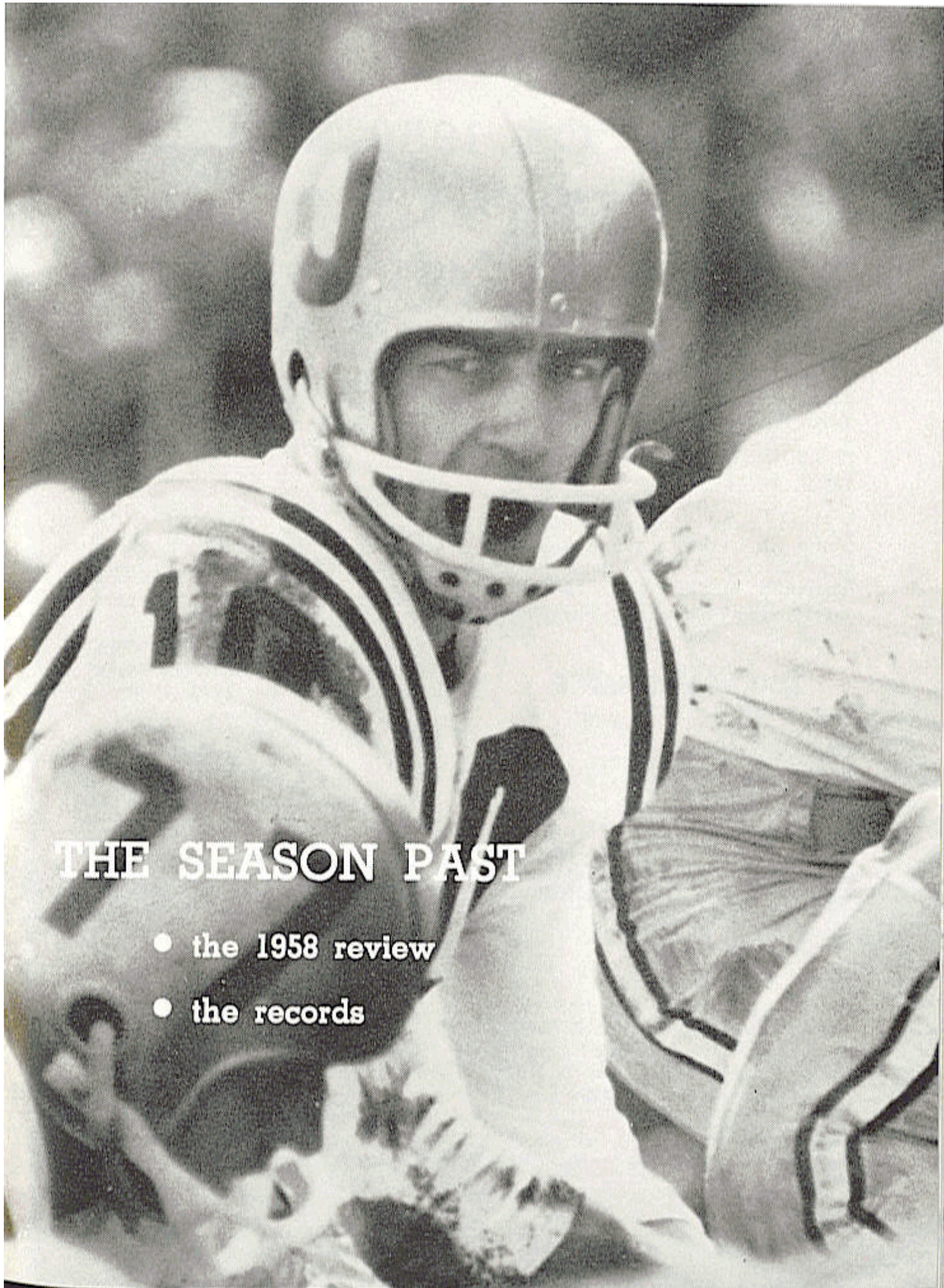
Don Econe and Gil Rodriguez will comprise the bulk of the line at tackles. In the backfield, Tampa will count heavily on Buddy Williams, hard-running ace who engineered Tampa's '58 upset of Chattanooga. Another top backfield prospect is Tony Booth, a transfer from the University of Kentucky.

TAMPA'S 1959 SCHEDULE

Sept. 26Troy State
Oct. 3Western Carolina
Oct. 10at McNeese
Oct. 17at Wofford
Oct. 24Presbyterian
Oct. 31	... at Southeastern Louisiana
Nov. 7Arkansas State
Nov. 14McMurry
Nov. 21Appalachian
Nov. 28FLORIDA STATE

1958 RECORD (6-4)

39.....	Troy State	6
19.....	Western Carolina	12
20.....	Arkansas State	14
12.....	VMI	13
18.....	Presbyterian	6
0.....	FLORIDA STATE	43
12.....	Jacksonville	6
25.....	Chattanooga	19
26.....	Appalachian	34
0.....	Southeastern Louisiana	19



THE SEASON PAST

- the 1958 review
- the records

REVIEW OF 1958 SEASON

FSU 22, TENNESSEE TECH 7

	FSU	Tech
First Downs	19	7
Rushing Yardage	224	110
Passing Yardage	93	25
Passes	6-15	2-7
Passes Intercepted by..	0	3
Punts	3-42.9	8-33.7
Fumbles Lost	2	1
Yards Penalized	95	47
FLORIDA STATE.....	8 7 7	0—22
TENN. TECH	0 7 0	0—7

Florida State scoring: Prinzi 3, run (Prinzi, run); Prinzi 5, run (Sheppard, kick); Romeo 15, pass from Renn (Sheppard, kick).

Tennessee Tech scoring: Moorhead 2, run (Cate, kick).

FSU 42, FURMAN 6

	FSU	Fur.
First Downs	27	12
Rushing Yardage	351	134
Passing Yardage	104	59
Passes	8-17	4-12
Passes Intercepted by..	1	1
Punts	4-34.7	8-32.2
Fumbles Lost	1	2
Yards Penalized	72	56
FLORIDA STATE.....	8 20 7	7—42
FURMAN	0 0 0	6—6

Florida State scoring: Renn 50, run (Prinzi, run); Conrad 4, run (Sheppard, kick); Renn 10, run (Sheppard, kick); Pickard 3, run (run failed); Kimber 15, pass from Majors (Sheppard, kick); Whitehead 20, run (Sheppard, kick).

Furman scoring: Nery 19, pass from Canty (run failed).

FSU 3, GEORGIA TECH 17

	FSU	Ga. Tech
First Downs	9	16
Rushing Yardage	72	192
Passing Yardage	63	56
Passes	7-16	6-12
Passes Intercepted by..	0	1
Punts	5-36.8	5-42.6
Fumbles Lost	1	2
Yards Penalized	30	25
FLORIDA STATE.....	3 0 0	0—3
GEORGIA TECH ...	3 0 7	7—17

Florida State scoring: Sheppard 31, field goal.

Georgia Tech scoring: Wells 22, field goal; Nix 6, run (Wells, kick); Logan 5, run (Wells, kick).

FSU 27, WAKE FOREST 24

	FSU	WF
First Downs	17	19
Rushing Yardage	151	188
Passing Yardage	111	209
Passes	9-14	11-23
Passes Intercepted by..	4	1
Punts	5-38.4	2-40.5
Fumbles Lost	0	0
Yards Penalized	58	51
FLORIDA STATE.....	0 21 0	6—27
WAKE FOREST.....	3 7 12	2—24

Florida State scoring: Renn 5, pass from Prinzi (kick failed); Pickard 25, run (Sheppard, kick); H. Brown 55, pass interception (Prinzi, run); Kimber 20, pass from Prinzi (pass failed).

Wake Forest scoring: MacLean 22, field goal; Robinson 40, pass from Snead (MacLean, kick); MacLean 3, run (kick failed); Futch 4, run (pass failed). Safety, Majors tackled in end zone.

FSU 13, GEORGIA 28

	FSU	Ga.
First Downs	17	16
Rushing Yardage	109	278
Passing Yardage	176	33
Passes	12-28	3-8
Passes Intercepted by..	0	1
Punts	4-38.5	5-38.2
Fumbles Lost	0	0
Yards Penalized	25	45
FLORIDA STATE.....	0 0 7	6—13
GEORGIA	6 8 0	14—28

Florida State scoring: Romeo 42, pass from Prinzi (Sheppard, kick); Kavanaugh 5, pass from Renn (pass failed).

Georgia scoring: Lewis 6, run (pass failed); Britt 2, run (King, pass from Britt); Brown 7, run (Manning, kick); Britt 4, run (Manning, kick).

FSU 28, VIRGINIA TECH 0

	FSU	Tech
First Downs	14	7
Rushing Yardage	188	134
Passing Yardage	86	28
Passes	6-9	3-8
Passes Intercepted by..	1	1
Punts	5-35.2	8-33.6
Fumbles Lost	5	5
Yards Penalized	60	20
FLORIDA STATE.....	7 8 0	13—28
VIRGINIA TECH.....	0 0 0	0—0

Florida State scoring: Espenship 8, pass from Prinzi (Sheppard, kick); Renn 72, run (Renn, pass from Sheppard); Romeo 24, pass from Prinzi (Sheppard, kick); Majors 3, run (kick failed).

FSU 10, TENNESSEE 0

	FSU	Tenn.
First Downs	14	8
Rushing Yardage	230	29
Passing Yardage	77	82
Passes	6-19	6-12
Passes Intercepted by..	2	2
Punts	8-29.0	10-37.3
Fumbles Lost	2	0
Yards Penalized	0	45
FLORIDA STATE.....	0 0 10	0—10
TENNESSEE	0 0 0	0—0

Florida State scoring: Sheppard 26, field goal; Renn 1, run (Sheppard, kick).

FSU 43, TAMPA 0

	FSU	Tampa
First Downs	14	12
Rushing Yardage	219	170
Passing Yardage	100	47
Passes	7-18	6-17
Passes Intercepted by..	1	2
Punts	2-43.0	1-19.0
Fumbles Lost	1	5
Yards Penalized	57	64
FLORIDA STATE.....	14 14 7	8—43
TAMPA	0 0 0	0—0

Florida State scoring: Renn 1, run (Sheppard, kick); Fountain 13, pass from Majors (Sheppard, kick); Pickard 21, run (Sheppard, kick); Meyer 36, pass from Majors (Sheppard, kick); Renn 11, pass from Prinzi (Sheppard, kick); Rozman 3, run (McCormick, run).

FSU 17, MIAMI (Fla.) 6

	FSU	Miami
First Downs	9	20
Rushing Yardage	132	192
Passing Yardage	44	117
Passes	5-10	8-22
Passes Intercepted by..	3	1
Punts	5-34.8	1-25.0
Fumbles Lost	1	3
Yards Penalized	99	65
FLORIDA STATE.....	7 7 0	3—17
MIAMI (Fla.)	6 0 0	0— 6

Florida State scoring: Majors 42, pass interception (Sheppard, kick); Fickard 8, pass from Prinzi (Sheppard, kick); Sheppard 32, field goal.

Miami scoring: Plevel 1, run (run failed).

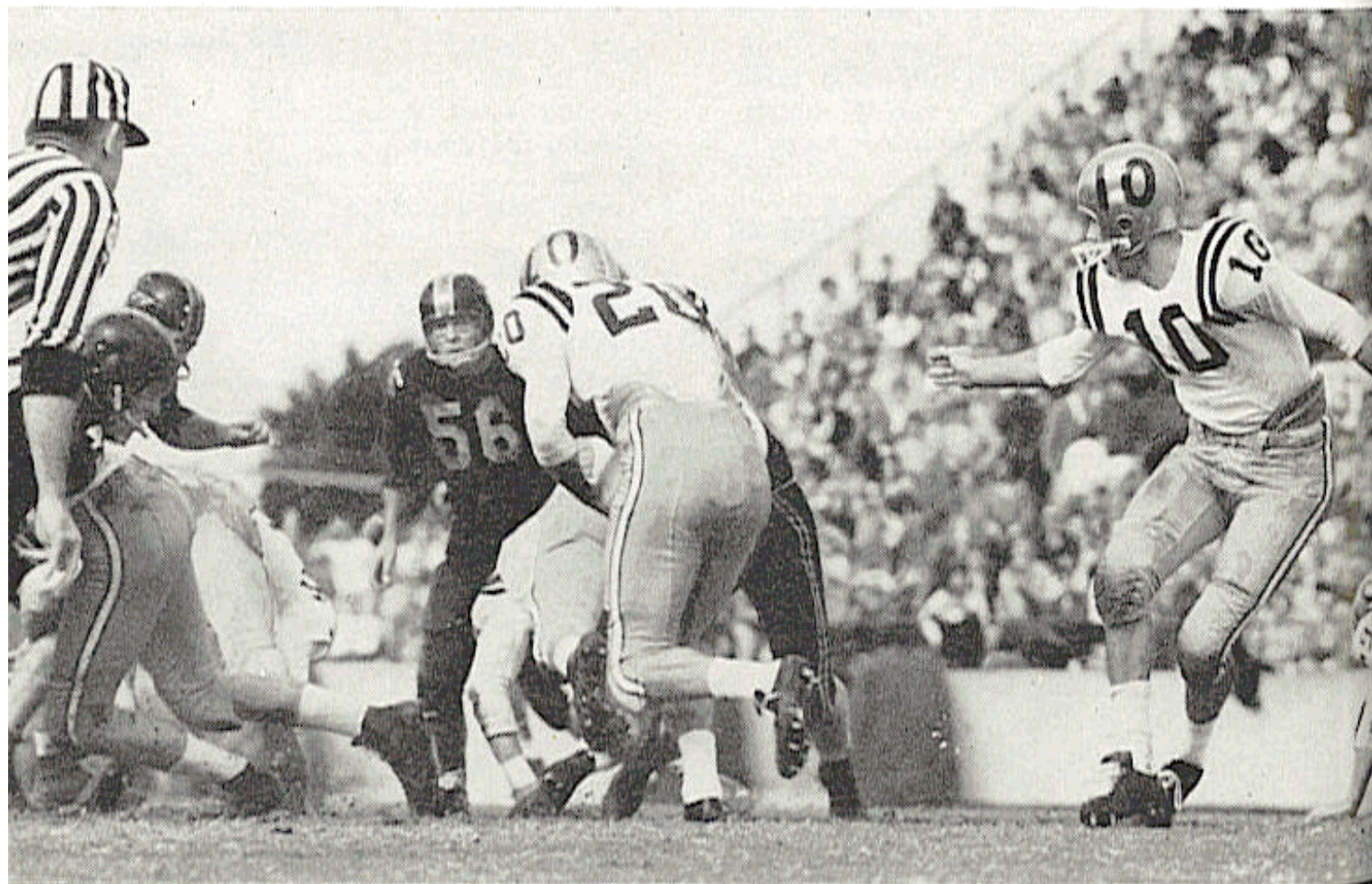
FSU 7, FLORIDA 21

	FSU	Fla.
First Downs	15	14
Rushing Yardage	97	219
Passing Yardage	198	19
Passes	14-30	2-5
Passes Intercepted by..	1	2
Punts	5-23.0	7-39.0
Fumbles Lost	3	1
Yards Penalized	82	77
FLORIDA STATE.....	7 0 0	0— 7
FLORIDA	7 14 0	0—21

Florida State scoring: Pickard 1, run (Sheppard, kick).

Florida scoring: Hudson 6, run with blocked kick (Booker, kick); Dunn 9, run (Booker, kick); Dunn 11, run (Booker, kick).

A familiar sight: Vic Prinzi (10) to Bobby Renn (20) and daylight ahead.



1958 IN REVIEW

As sports writers from Knoxville to Miami wrote on more than one occasion last season, you had to see the 1958 Seminole team to believe it. A team given little chance of winning more than three games, the featherweight Seminoles combined lightning speed, courage, and desire to reverse the script and become one of college football's Cinderella teams.

It was a team that averaged but 182 pounds a man. As one writer put it, "anybody, anywhere—no matter how much physically superior they're supposed to be—had better look out in any wrestle with these brilliant little battlers."

It was that kind of season. Outweighed in every game, the Seminoles overcame the element of size with the element of surprise and unshakeable faith in themselves.

Here's the way it happened:

FSU 22, TENN. TECH 7

Senior quarterback Vic Prinzi made a vigorous comeback after a year's convalescence from a spleen removal, scoring the Seminoles' first 14 points. Two of them were the first in collegiate football history under the new '58 after-touchdown rule that permitted two points on a successful pass or run and one point on a kick through the goal posts.

Prinzi got FSU's opening TD on a 3-yard run, climaxing a push from the Tech 46. The game was only 7

minutes old when he circled the left side—driving into the end zone for college football's first 2-pointer—after the Tribe had shifted dramatically to the right. Prinzi scored in the second quarter on a 5-yard sweep. The third Seminole touchdown came near the end of the third quarter on Bobby Renn's 15-yard pass to Tony Romeo.

The thoroughly game Golden Eagles breathed fire just once, when John Moorhead hammered 2 yards off left tackle for a TD late in the first half.

FSU 42, FURMAN 6

Renn, who had racked up four TDs in two previous games with Furman, was again the villain, setting off a 6-touchdown torch with a 50-yard sprint the second time the Tribe touched the ball. Before it was over, Bobby had scored another TD, his sixth in three cracks at the 'Canes, and wound up with 130 yards on only 7 rushes.

In all, FSU rambled to a season-high 27 first downs with a total-offense chart of 455 yards. Furman was never in it after Renn's 50-yard dash. The Seminoles used the end sweep to perfection, hanging up a 28-0 cushion by halftime and tacking on two more TDs after intermission. Furman averted a shutout with a freshman combination in the dying minutes—a 19-yard pass from Bill Canty to Tom Nery.

Scouting in the stands that night, Georgia Tech assistant Bob Cummings said "they won't be a push-over for anybody."

FSU 3, GEORGIA TECH 17

Coach Bob Cummings was dead right. The following week, FSU's fighting sophomores led Georgia Tech for eight wonderful minutes, held the Engineers to a 3-3 deadlock for over half the game, but finally stumbled over their own inexperience.

A near-record Grant Field assembly of 40,391 in Atlanta awoke

to the fact Tech had a serious struggle on its hands when Renn hauled a punt 51 yards to the Jackets' 25 after 4 minutes. That set up a 31-yard, fourth-down field goal by specialist Johnny Sheppard, the first in FSU history and the first points FSU had ever scored on Tech.

Shep's field goal stood up until Tech, presented with a fumble at the FSU 8, settled for a tying 3 pointer by Tommy Wells with 2 minutes left in the quarter. Well-defensed for Renn, who entered the game with an 11.6 rushing average, Tech struck for last-half TDs on a 6-yard run by Frank Nix and a 5-yard dash by Reggie Logan that came with only 1:55 left. That clincher came after a golden FSU opportunity—a fourth-period first-down at the Tech 5—had turned to ashes.

FSU 27, WAKE FOREST 24

Ahead 21-10 at the half, FSU was obliged to get a last-quarter TD to kayo previously unbeaten Wake Forest in possibly the wildest game ever played in Campbell Stadium. A record home crowd of 19,700 paid no mind to a misting rain as the lead changed hands 5 times.

Neither did quarterbacks mind the rain. Wake Forest passers, led by 6-4 Norman Snead, completed 11 of 23. FSU hit on 9 of 14. Heroes were multiple but the big one had to be Prinzi, who completed 9 of 12 throws for 111 yards and 2 touchdowns.

Fullback Neil MacLean put the Deacons ahead, 3-0, on a 22-yard field goal. Prinzi put FSU ahead on a 5-yard pass to Renn. Snead's 40-yard shot to Robinson put the Deacons out front. Fred Pickard's 25-yard romp and Herman Brown's 55-yard interception return made it 21-10, FSU, at the half. WF led, 22-21, after TDs by MacLean and Futch. Prinzi's last-period 20-yarder to end Bill Kimber put the Tribe ahead to stay. Joe Majors, however, took a safety to preserve the victory when Wake Forest backed FSU in the hole with 34 seconds left.

FSU 13, GEORGIA 28

Georgia, which lost six fumbles and had six passes intercepted in its three losses going into this game, made no mistakes. Unable to cash in on some early golden moments, the Tribe finally yielded to a grim Bulldog team in the Gator Bowl.

Behind, 14-0, at the half, FSU cut the score to 14-7. And later behind 21-7, they whacked it 21-13. Able to connect on only 2 of 13 passes in the first half, the Tribe hit on 10 of 15 in the closing half, including a fantastic 10 of 12 by Prinzi. Both FSU scores came on aeriols, the first a 42-yarder from Prinzi to Tony Romeo, the second a 5-yarder from Renn to Bob Kavanaugh.

Renn set an FSU career record of 1,279 yards, passing Lee Corso's old standard of 1,267. Fred Pickard was warming up for bigger things,

ramming the huge Georgia line for 79 yards.

FSU 28, VPI 0

"We never got into the game," VPI Coach Frank Moseley said, and that about summed it up. A field soaked from an all-night rain didn't slow the Seminoles. With less than 5 minutes gone, the Tribe drove 74 yards to score on an 8-yard pass from Prinzi to Jack Espenship. Pickard carried 8 of 11 plays during the march.

On the first play of the second quarter, Renn faked a third-down punt and sailed 72 yards for a 15-0 FSU halftime edge. The Tribe punched across two more scores, on Prinzi's 24-yard aerial to Romeo, the game's hero, and Majors' 3-yard run, in the final period.

VPI quarterback Billy Holesclaw entered the game as the nation's total offense leader. A stout defense held him to a puny 3 yards on the ground and 21 in the air.

FSU 10, TENNESSEE 0

It was fitting that little Fred Pickard, a Tennessean, fired the upset heard 'round the nation. And it was most satisfying that FSU should get its first Southeastern Conference victory at the expense of Tennessee, the winningest team in the SEC and one of the top winners of all time in the entire realm of college football.

While Vol fans sat in Knoxville's Shields-Watkins Field in stunned silence, the Seminoles held the once-proud Vols to 29 yards rushing and 111 yards overall. Meantime, FSU was piling up 307 yards, 133 of them from the flying feet of Pickard, who entered the game as the nation's 10th leading rusher. One of the most surprising facts was that the Tribe didn't draw a single yard in penalties.

The first half was a scoreless battle, with Ken Kestner missing a 28-yard field-goal attempt for FSU with 15 seconds to go. On the fourth play of the second half, Pickard tore loose for 51 yards right up the middle. The Vols stiffened at their 10, but Sheppard kicked a 26-yard field goal. Five plays later, thanks to an Al Ulmer pass interception, Renn busted over right guard from 1 yard out, Shep kicked the point, and it was 10-0 history.

. . . of a Tennessee pow wow.



Down from the clouds . . .

FSU 43, TAMPA 0

Seven Seminoles scored two or more points as the Tribe scored in every quarter before a large Homecoming crowd. Renn got a pair of touchdowns that ran his FSU career total to a school-record 99 points. Joe Majors threw 4 passes, completed 2 of them — both for touchdowns.

The score provided the most one-sided margin in the 10-year history of the series, FSU's biggest margin of triumph since Louisville went down, 59-0, in the second game of the 1953 campaign, and a third straight shutout for the Seminoles, something no other team in the school's history accomplished.

It also gave the Tribe a clean sweep of home games for the year and stirred fans' hopes for an upset of Miami the coming week.



Facial reflections of an historic inaugural.

FSU 17, MIAMI 6

An unbelieving Orange Bowl audience of 31,879 watched the opportunistic Seminoles score their first triumph over Miami after five frustrating experiences.

Despite statistical domination by Miami—the Hurricanes rolled up 20 first downs to 9, 309 yards to 176—FSU won its fourth straight game by cashing in its chances. Miami had plenty of opportunities, but the alert Seminoles stopped 'em when it counted. Renn recovered a Miami fumble at the FSU 11, intercepted a Miami pass at the FSU 8.

The Tribe scored in the first period when Joe Majors intercepted a pass and raced 42 yards. Shep added the point and FSU never trailed. Miami came back to get its one and only, on Joe Plevel's 1-yard smash. FSU upped it to 14-6 in the second quarter on Prinzi's 8-yard pass to Pickard. Insurance came in the fourth period when Sheppard kicked a 32-yard field goal, his third of the year.

FSU 7, FLORIDA 21

The Seminoles had a brief glimpse of heaven, leading 7-0 with the game barely 3 minutes old, but Florida's plenty-good linemen took charge to give the Gators the BIG Inaugural, 21-7.

Renn electrified the SRO record crowd of 43,000 at Florida Field with a stunning 78-yard return of the game-opening kickoff. FSU never looked better than it did marching 15 yards to a touchdown. On the fifth play from scrimmage, Pickard barrelled into the end zone from 1-yard out and Sheppard made it 7-0. That was it for the Seminoles.

Moments later, a high snap precipitated a blocked punt by end Dave Hudson and Florida scored. An intercepted pass derailed an FSU goalward express, and Florida scored with a splendid march of 89 yards. A fumble was lost on the FSU 19 and Florida scored. Brilliant Jimmy Dunn got the latter two second-period Gator TDs on runs of 9 and 11 yards. Justly, Dunn was named the game's MVP. The second half was a stalemate, though

Joe Majors kept the crowd loose by completing 9 of 20 passes for a game total of 12 of 26.

FSU 6, OKLA. STATE 15 (Bluegrass Bowl)

While many thousands across the nation comfortably watched the first Bluegrass Bowl on television, only 7,000 braved the marrow-chilling 10-degree weather of Louisville's Fairgrounds Stadium. Both the Seminoles and Cowboys were sneakers to combat the frozen turf.

Hard-running OSU backs handed the Cowboys a 15-0 lead going into the last quarter, but FSU made a stretch bid on Joe Majors' slick throwing. But despite Carl Meyer's touchdown catch on a 38-yard pass,

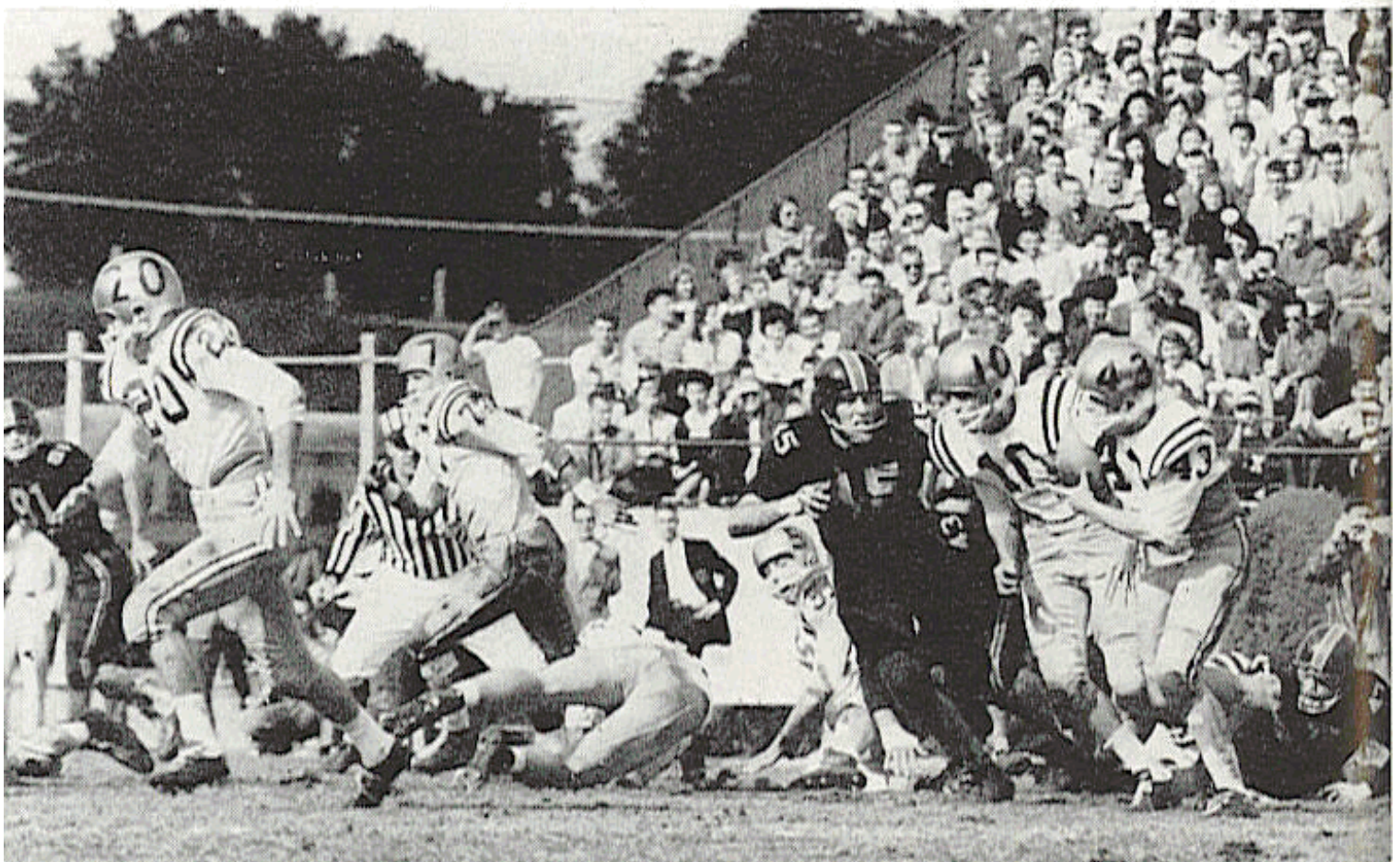
and Bobby Renn's 40-yard grab for a first down on the Cowboy 6, FSU couldn't catch up.

Duane Wood got 14 of the 15 Cowboy points, slashing 17 yards for a second-quarter TD, pounding over from the 1 in the third period, and taking a pass from Dick Soergel for two points after the second TD.

A FITTING TOUCH

As a fitting tribute to a fine season, Florida sportswriters named four Seminoles — halfback Bobby Renn, end Tony Romeo, fullback Fred Pickard, and guard Al Ulmer — to their first-team All-Florida squad. For Renn, it was the third straight year and the second year in a row for Ulmer.

America's best little back—Fred Pickard (43) in flight.



THE 1958 STATISTICS

TEAM STATISTICS

FSU		Opp.
106	First downs, rush	96
45	First downs, pass	28
4	First downs, pen.	7
155	TOTAL FIRST DOWNS	131
1773	Yards rushing	1646
1043	Yards passing	675
2816	TOTAL NET YARDS	2321
176	Passes attempted	126
80	Passes completed	51
15	Passes had int.	14
46	Number punts	55
34.3	Punting average	35.9
26	Fumbles	31
16	Fumbles lost	20
64	Number penalties	53
578	Yards penalized	495
15	Touchdowns, rush	12
12	Touchdowns, pass	2
2	Touchdowns, pass int.	0
0	Touchdowns, blocked punt	1
19-21	PAT kicks	9-10
4-5	PAT runs	0-2
1-3	PAT passes	1-3
3-4	Field goals	2-3
0	Safeties	1
212	TOTAL POINTS	109

PUNT RETURNS

Player	No.	Yds.	Avg.
Renn	6	121	20.1
Majors	4	32	8.0
Espenship	3	25	8.3
Whitehead	4	23	5.8
McCormick	3	18	6.0
Calhoon	1	18	18.0
Levy	2	17	8.5
Pasquale	1	9	9.0
Pickard	2	4	2.0
TOTALS	26	267	10.3

INDIVIDUAL RUSHING

Player	Runs	Gain	Loss	Net	Avg.
Pickard	122	615	13	602	4.9
Renn	69	487	45	442	6.4
Other	39	155	4	151	3.9
Pasquale	30	122	1	121	4.0
Prinzi	54	202	85	117	2.2
Whitehead ...	22	111	0	111	5.0
Majors	43	162	69	93	2.2
Meyer	6	61	2	59	9.8
McCormick ...	11	45	0	45	4.1
Rozman	8	35	0	35	4.4
Calhoon	10	27	2	25	2.5
Conrad	10	40	24	16	1.6
Espenship ...	4	15	0	15	3.8
Cone	2	11	0	11	5.5
Levy	2	4	1	3	1.5
Carnes	1	0	2	-2	-2.0
Springer	4	4	17	-13	-3.3
Bad Pass.....	4	0	58	-58	-14.5
TOTALS	441	2096	323	1773	4.0

INDIVIDUAL PASSING

Player	Att.	Comp.	Int.	Yds.	TD
Prinzi	71	40	5	480	7
Majors	71	26	6	380	3
Conrad	10	6	1	67	0
Renn	12	5	0	84	2
McCormick	10	3	3	32	0
Springer	1	0	0	0	0
Sheppard	1	0	0	0	0
TOTALS	176	80	15	1043	12

PUNTING

Player	No.	Yds.	Blkd.	Avg.
Renn	35	1213	0	34.7
Kimber	5	192	0	38.4
Conrad	2	70	0	35.0
Whitehead	2	67	0	33.5
Springer	1	37	0	37.0
Team	1	0	1	00.0
TOTALS	46	1579	1	34.3

PASS INTERCEPTIONS

Player	Caught	Yds.	Avg.	TD
Prinzi	3	32	10.7	0
Majors	2	42	21.0	1
Whitehead	2	15	7.5	0
H. Brown	1	55	55.0	1
Ulmer	1	9	9.0	0
Renn	1	6	6.0	0
R. Rogers	1	6	6.0	0
Romeo	1	2	2.0	0
Espenship	1	0	0.0	0
Kavanaugh	1	0	0.0	0
TOTALS	14	167	11.9	2

INDIVIDUAL SCORING

Player	TD	PAT-k	PAT-r	PAT-p	FG	TP
Renn	7	0-0	0-0	1	0-0	44
Pickard	5	0-0	0-0	0	0-0	30
Sheppard	0	19-21	0-0	0	3-3	28
Romeo	3	0-0	0-0	0	0-0	18
Prinzi	2	0-0	3-3	0	0-0	18
Majors	2	0-0	0-1	0	0-0	12
Kimber	2	0-0	0-0	0	0-0	12

Espenship, H. Brown, Conrad, Meyer, Fountain, Kavanaugh, Rozman, B. Whitehead scored 1 TD each.

McCormick	0	0-0	1-1	0	0-0	2
Kestner	0	0-0	0-0	0	0-1	0
TOTALS	29	19-21	4-5	1	3-4	212

INDIVIDUAL RECEIVING

Player	Caught	Yds.	Avg.	TD
Espenship	18	200	11.1	1
Romeo	14	274	19.6	3
Renn	14	136	9.7	2
Kimber	7	88	12.6	2
Pickard	7	68	9.7	1
Kavanaugh	6	78	13.0	1
Pasquale	4	63	15.8	0
Meyer	3	55	18.3	1
Hooks	3	39	13.0	0
Fleming	1	13	13.0	0
Fountain	1	13	13.0	1
Levy	1	9	9.0	0
Other	1	7	7.0	0
TOTALS	30	1043	13.0	12

SEMINOLE COACHES AND CAPTAINS

Year	Won	Lost	Tied	FSU Pts.	Opp. Pts.	Coach	Captain
1947	0	5	0	18	90	Ed Williamson	Jack McMillan and Phil Rountree
1948	7	1	0	152	64	Don Veller	Game captains
1949	8	1	0	272	53	Don Veller	Hugh Adams
1950	8	0	0	219	54	Don Veller	Duke Maltby
1951	6	2	0	194	72	Don Veller	Bill Dawkins
1952	1	8	1	101	261	Don Veller	Curtis Campbell and Vic Szezepanik
1953	5	5	0	183	146	Tom Nugent	Game captains
1954	8	3	0	257	143	Tom Nugent	Game captains
1955	5	5	0	147	186	Tom Nugent	Bob Crenshaw and Don Powell
1956	5	4	1	178	116	Tom Nugent	Joe Holt and Buck Metz
1957	4	6	0	136	165	Tom Nugent	Ron Schomburger
1958	7	3	0	212	109	Tom Nugent	Vic Prinzi and Bobby Renn
	64	43	2	2069	1459		

THE YESTERYEARS

1947	(0-5-0)	FSU	Foe	1953	(5-5-0)	FSU	Foe
Stetson		6	14	Miami		0	27
Cumberland		0	6	Louisville		59	0
Tennessee Tech		6	27	Abilene Christian		7	20
Troy State		6	36	Louisiana Tech		21	32
Jacksonville State		0	7	VMI		12	7
1948	(7-1-0)	FSU	Foe	Mississippi Southern		0	21
Cumberland		30	0	Furman		7	14
Erskine		6	14	Stetson		13	6
Millsaps		7	6	North Carolina State		23	13
Stetson		18	7	Tampa		41	6
Mississippi College		26	6	1954	(8-3-0)	FSU	Foe
Livingston State		12	6	Georgia		0	14
Troy State		20	13	Abilene Christian		0	13
Tampa		33	12	Louisville		47	6
1949	(8-1-0)	FSU	Foe	Villanova		52	13
Whiting Field		74	0	North Carolina State		13	7
Mississippi College		33	12	Auburn		0	33
Erskine		26	7	VMI		33	19
Sewanee		6	0	Furman		33	14
Stetson		33	14	Stetson		47	6
Livingston State		6	13	Mississippi Southern		19	18
Millsaps		40	0	Tampa		13	0
Tampa		34	7	Texas Western*		20	47
Troy State		20	0	(*Sun Bowl Game)			
Wofford*		19	6	1955	(5-5-0)	FSU	Foe
(*Cigar Bowl Game)				N. C. State		7	0
1950	(8-0-0)	FSU	Foe	Miami (Fla.)		0	34
Troy State		26	7	Virginia Tech		20	24
Randolph-Macon		40	7	Georgia		14	47
Howard		20	6	Georgia Tech		0	34
Newberry		24	0	Villanova		16	13
Sewanee		14	8	Furman		19	6
Stetson		27	7	Citadel		39	0
Mississippi College		33	0	Miss. Southern		6	21
Tampa		35	19	Tampa		26	7
1951	(6-2-0)	FSU	Foe	1956	(5-4-1)	FSU	Foe
Troy State		40	0	Ohio University		47	7
Miami (Fla.)		13	35	Georgia		0	3
Delta State		34	0	Virginia Tech		7	20
Sul Ross State		35	13	North Carolina State		14	0
Stetson		13	10	Wake Forest		14	14
Jacksonville Navy		39	0	Villanova		20	13
Wofford		14	0	Miami (Fla.)		7	20
Tampa		6	14	Furman		42	7
1952	(1-8-1)	FSU	Foe	Mississippi Southern		20	19
Louisiana Tech		13	32	Auburn		7	13
Louisville		14	41	1957	(4-6-0)	FSU	Foe
VMI		7	28	Furman		27	7
North Carolina State		7	13	Boston College		7	20
Stetson		6	6	Villanova		7	21
Mississippi Southern		21	50	North Carolina State		0	7
Furman		0	9	Abilene Christian		34	7
Georgia Tech		0	30	Virginia Tech		20	7
Wofford		27	13	Miami (Fla.)		13	40
Tampa		6	39	Mississippi Southern		0	20
				Auburn		7	29
				Tampa		21	7

THE ALL TIME RECORDS

Most successful season: 8-0-0 in 1950.

Most points, one season: 272 in 1949 (8-1-0).

Most points, one game: FSU 74, Whiting Field 0 in 1949.

Greatest margin of victory: FSU 74, Whiting Field 0 in 1949.

Greatest margin of defeat: FSU 0, Miami (Fla.) 34, and FSU 0, Georgia Tech 34 in 1955.

Bowl game victories: FSU 19, Wofford 6 in 1950 Cigar Bowl.

Bowl game losses: FSU 20, Texas Western 47 in 1955 Sun Bowl. FSU 6, Oklahoma State 15 in 1958 Bluegrass Bowl.

Number of games held opponents scoreless: 19.

Number of games FSU held scoreless: 13.

Most yards rushing, one game: 383 vs. Abilene Christian in 1957.

Most yards rushing, one season: 2194 in 1949.

Most passes attempted, one game: 30 vs. Florida in 1958 (completed 14).

Most passes completed, one game: 18 vs. Villanova in 1954.

Most yards passing, one game: 355 vs. Villanova in 1954.

Most passes attempted, one season: 252 in 1954.

Most passes completed, one season: 107 in 1954.

Most yards passing, one season: 1745 in 1954.

Most passes had intercepted, one season: 21 in 1954.

Fewest passes had intercepted, one season: 7 in 1947.

Most opponents passes intercepted, one season: 24 in 1949.

Most total offense, one game: 489 vs. Whiting Field in 1949 (378 rushing, 111 passing) and vs. Citadel in 1955 (359 rushing, 130 passing).

Most total offense, one season: 3434 in 1954 (1689 rushing, 1745 passing).

Most punts, one game: 10 vs. Stetson in 1949 and Georgia Tech in 1955.

Most punts, one season: 57 in 1952.

Most opponents punts blocked, one season: 4 in 1951.

INDIVIDUAL PERFORMANCES

Most points in playing career: 99 by Bobby Renn (1956-57-58).

Most points in one season: 60 by Red Parrish in 1949.

Longest touchdown run from scrimmage: 80 yards by Fred Pickard in 1957 vs. Virginia Tech.

Longest touchdown pass: 80 yards Nelson Italiano to Eddie Gray in 1950 vs. Newberry.

Longest touchdown run, any situation: 99 yards by Ted Hewitt in 1948 vs. Stetson (interception return).

Longest run from scrimmage without scoring: 76 yards by Roy Thompson in 1951 vs. Stetson.

Longest interception return: 99 yards by Ted Hewitt in 1948 vs. Stetson.

Longest punt return: 80 yards by Billy Odom in 1954 vs. Stetson.

Longest kickoff return: 89 yards by Billy Odom in 1955 vs. Virginia Tech.

Most times carried, one game: 27 by Buddy Strauss in 1949 vs. Sewanee.

Most times carried, one season: 160 by Buddy Strauss in 1949.

Most yards rushing, one season: 747 by Buddy Strauss in 1949.

Most yards rushing, career: 1,455 by Bobby Renn in 1956-58.

Most passes attempted, one game: 26 by Joe Majors vs. Florida in 1958.

Most passes completed, one game: 13 by Len Swantic in 1954 vs. Villanova.

Most yards passing, one game: 226 by Len Swantic in 1954 vs. Villanova.

Most passes attempted, one season: 91 by Harry Massey in 1953.

Most passes completed, one season: 50 by Harry Massey in 1954.

Most yards passing, one season: 750 by Harry Massey in 1954.

Most touchdown passes, one season: 10 by Harry Massey in 1954.

Most passes attempted, career: 181 by Harry Massey in 1953-54.

Most passes completed, career: 91 (attempted 178) by Vic Prinzi in 1954-58.

Most passes caught, one game: 7 by Lee Corso in 1954 vs. Furman.

Most yards receiving passes, one game: 123 by Harry Bringger in 1950 vs. Mississippi College.

Most passes caught, one season: 28 by Tom Feamster in 1954.

Most yards receiving passes, one season: 441 by Tom Feamster in 1954.

Most touchdown passes caught, one season: 6 by Tom Feamster in 1954.

Most passes caught, career: 46 by Tom Feamster in 1954-55.

Most yards receiving passes, career: 700 by Tom Feamster in 1954-55.

Most passes intercepted, one game: 3 by Tommy Brown in 1950 vs. Stetson and 1952 vs. Georgia Tech, and Lee Corso vs. Georgia in 1954.

Most passes intercepted, one season: 8 by Curt Campbell in 1951.

Longest punt: 84 yards by Tommy Brown in 1950 vs. Tampa.

Best punting average, one season: 41.9 by Pat Versprille in 1955.

Best punting average, career: 37.9 (92 punts) by Bobby Renn in 1956-58.

Most punts returned, one season: 19 by Tommy Brown in 1951.

Best punt return average, one season: 15.7 by Tommy Brown in 1951.

Best kickoff return average, one season: 31.8 by Lee Corso in 1954.

Most total offense, one game: 225 yards by Nelson Italiano in 1950 vs. Newberry.

Most total offense, one season: 973 by Buddy Strauss in 1949.

Most total offense, career: 2129 yards by Nelson Italiano in 1950-51-52.

Most extra points, one season: 20 by Ernie Huggett in 1950.

Most extra points, career: 49 (attempted 55) by Johnny Sheppard in 1956-58.

Most field goals, one game: 1 by Johnny Sheppard vs. Georgia Tech, Tennessee, Miami in 1958.

Most field goals, one season: 3 by Johnny Sheppard in 1958.

Most field goals, career: 3 by Johnny Sheppard in 1956-58.

THE MARCHING CHIEFS

The Florida State University's famous Marching Chiefs band, the ultimate in marching music and on-the-field precision, will appear in at least seven halftime shows during the 1959 season.

Hailed by Atlanta and other newspapers as the best in the South, The Chiefs will appear at all home games—Wake Forest, The Citadel, Miami, Richmond and William and Mary—plus games with Georgia in Athens and Florida in Gainesville.

Of the home games, the Richmond and William and Mary games should provide the most band entertainment. The Richmond game on Oct. 24 is Florida State's annual Band Day, which will bring together at Doak S. Campbell Stadium many of the finest high school bands in Florida, Georgia, and Alabama. The William and Mary game on Nov. 14 is Homecoming and The Chiefs always have something special for that occasion.

When The Chiefs journeyed to Philadelphia for Florida State's victory over Villanova three seasons ago, they were taken to the heart of the City of Brotherly Love. Then they proceeded to New York, where they appeared on several nationally-televised programs. Last fall The Chiefs were seen on a coast-to-coast ABC hookup from Louisville as they performed in the first annual Bluegrass Bowl, where Florida State met Oklahoma State.

Director of this outstanding marching group is Manley Whitcomb, who is every bit as colorful as his bands. He came to Florida State after 17 years at Ohio State University, where he directed the Buckeye Band in the 1950 Rose Bowl.

Also a professor of music, Whitcomb has appeared as lecturer, guest conductor and adjudicator in a dozen states. Students literally clamor to get into his classes.

Whitcomb saw service as a combat infantryman in World War II and was twice awarded the Bronze Star for meritorious service in combat in France.

The Marching Chiefs have a marching membership of 112 musicians and 8 majorettes and carry 148 persons in their company. Their trips at Florida State have carried them as far west as Texas and Mexico and as far north as New York.



MANLEY WHITCOMB

FLORIDA STATE'S FOOTBALL CLINIC

Six years ago Florida State University staged its first summertime football clinic with the idea of developing it into the best in the nation. After six clinics, Florida State knows the measure of success.

Each June, some 500 coaches and players from all corners of the nation flock to Tallahassee to hear such football names as Sammy Baugh, Doak Walker, Otto Graham, Bud Wilkinson, Bobby Dodd, Bowden Wyatt, Paul (Bear) Bryant, Duffy Daugherty, Forest Evashevski, Joe Kuharich, Frank Howard and Ray Eliot relate their success secrets.

The latter four headed up Coach Perry Moss' clinic last June and all four spouted superlatives about it. From an earlier clinic, Oklahoma Coach Bud Wilkinson had this praise: "It's probably the best clinic of its sort I've ever attended. I'd like to be quoted on that. I've never seen anything run so smoothly and professionally."

In addition to having so many "name" coaches at Florida State clinics, sports writers from all over Florida and Georgia attend. The Florida State Sportswriters Assn. holds its annual summer business meeting in conjunction with the clinic.

Moss plans to do everything he can to make next summer's clinic even better. Already he has set the wheels in motion for the '60 clinic, one which promises more pleasant surprises.

After the clinic just past, Moss had his staff prepare a brochure which contains material on everything that took place—lectures and diagrams of various phases of football outlined by the instructional staff. These Clinic Notes, priced at \$5, still are available to interested persons who will write for it.

There's no doubt about it. Florida State — and Tallahassee — has become the summertime football capital of the world.



FOREST EVASHEVSKI

Schedules of Florida State's Opponents

	WAKE FOREST	THE CITADEL	MIAMI	VIRGINIA TECH	MEMPHIS STATE	RICHMOND	GEORGIA	WM. & MARY	FLORIDA	TAMPA
SEPT. 19	AT FLORIDA STATE	Newberry		N. C. State	Stephen F. Austin	at Dayton	Alabama	at Virginia	Sept. 18 at Tulane	
SEPT. 26	VPI	AT FLORIDA STATE	Sept. 25 Tulane	at Wake Forest	Tennessee Tech	at West Virginia	Vanderbilt	at Navy	Mississippi State	Troy State
OCT. 3	at Tulane	Davidson	AT FLORIDA STATE	Wm. & Mary	at Mississippi	VMI	at South Carolina	Virginia Tech	Virginia	Western Carolina
OCT. 10	at Maryland	Oct. 9 at Wofford	at LSU	FLORIDA STATE	Ablene Christian	Davidson	Hardin-Simmons	Furman	at Rice	at McNeese
OCT. 17	at N. C. State	Richmond	Oct. 16 Navy	Virginia	FLORIDA STATE	at The Citadel	Mississippi State	VMI	at Vanderbilt	at Wofford
OCT. 24	North Carolina	Furman	Oct. 23 Auburn	at Villanova	at Mississippi State	AT FLORIDA STATE	at Kentucky	George Washington	LSU	Presbyterian
OCT. 31	Virginia	at Wm. & Mary	Oct. 30 Kentucky	Richmond	Mississippi Southern	at Virginia Tech	FLORIDA STATE	The Citadel	at Auburn	at SE Louisiana
NOV. 7		Presbyterian	Nov. 6 North Carolina	at West Texas State		George Washington	Florida	at Davidson	Georgia	Arkansas State
NOV. 14	at Duke	at VMI	Nov. 13 South Carolina	at West Virginia	at Louisiana Tech	Furman	Auburn	AT FLORIDA STATE		McMurry
NOV. 21	at Clemson	at West Virginia	Nov. 20 Michigan State		at Alabama				FLORIDA STATE	Appalachian
NOV. 28	at South Carolina		FLORIDA	Nov. 26 VMI	Nov. 26 at Chattanooga	Nov. 26 Wm. & Mary	at Georgia Tech	Nov. 26 at Richmond	MIAMI	FLORIDA STATE

1—Jacksonville, Fla. 2—Charlotte, N. C. 3—Norfolk, Va. 4—Raleigh, Va. 5—Richmond, Va. 6—Atlanta, Ga. 7—Portsmouth, Va.