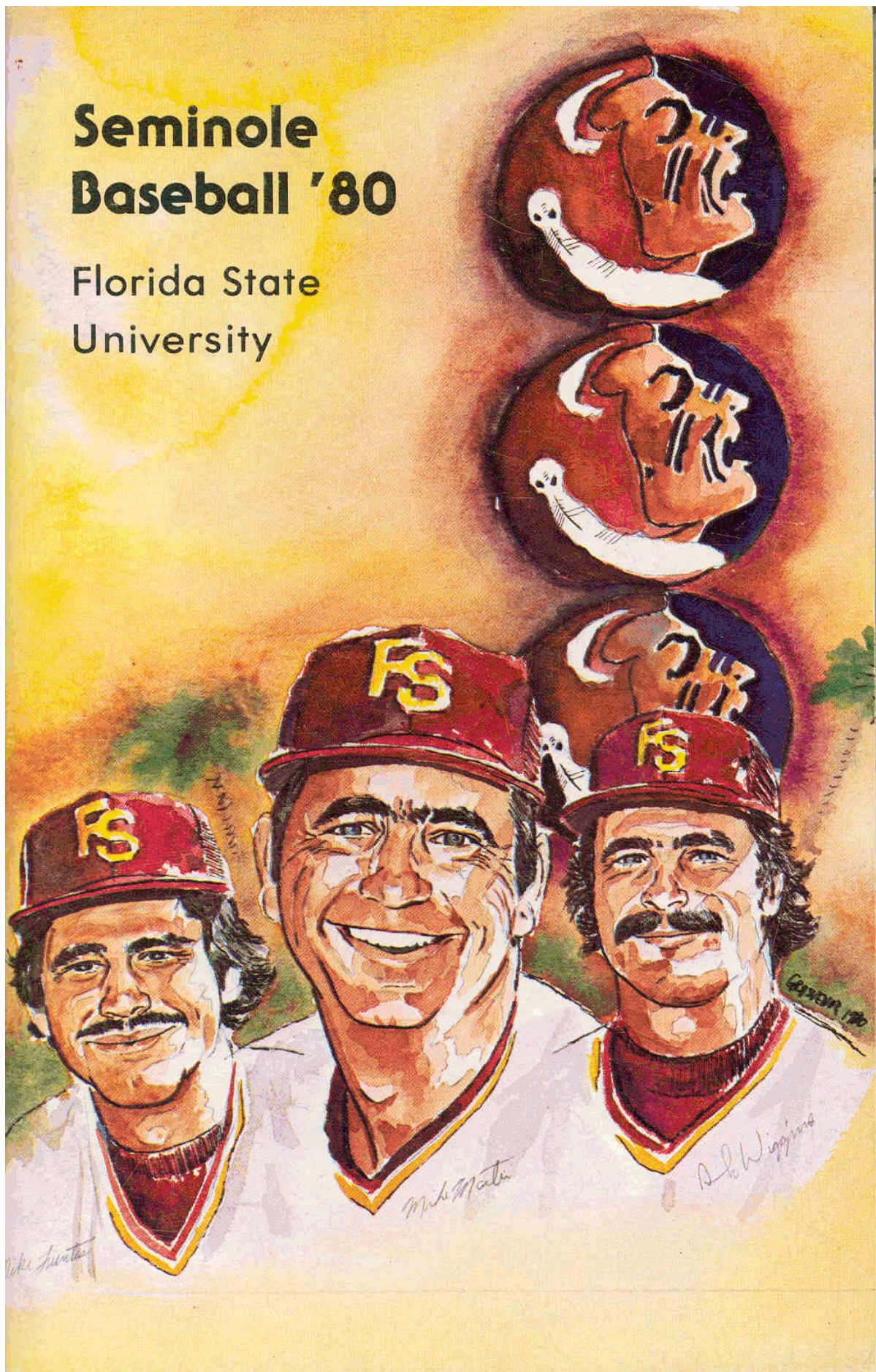


# Seminole Baseball '80

Florida State  
University





# Florida State University

# SEMINOLE BASEBALL

## CONTENTS

Best in College Baseball .....	2-3
Mike Martin, Head Coach .....	4-5
Jim Morris, Assistant Coach .....	6
Seminole Outlook .....	7
Summer Program .....	8-9
1979 Statistics .....	10-11
1979 Game-By-Game .....	12-13
FSU Batgirls .....	14
Seminole Field .....	14
1980 Seminoles .....	15-31
Alphabetical, Numerical Roster .....	28-29
Metro Conference .....	32
Seminole Record Book .....	33-48
Seminole in the Pros .....	34-35
All-Stars .....	36
All-Americans .....	37
Honor Roll .....	38
All-Time Teams .....	39
Leading Hitters .....	39
Team Records .....	40-41
Individual Records .....	42-43
Record vs. All Opponents .....	44-46
Record Through The Years .....	47
Coaches' Records .....	47
Championship Play .....	48
This is Florida State .....	50-51
Bernard Sliger, President .....	52
Phillip Fordyce, Interim Athletic Director .....	52
Athletic Staff .....	53-55
Media Information .....	56
1980 Schedules .....	IFC, IBC

## ABOUT FLORIDA STATE

Location .....	Tallahassee, Fla.
Enrollment .....	22,000
Nickname .....	Seminole
Colors .....	Garnet & Gold
Baseball Stadium .....	Seminole Field
Conference .....	Metro
President .....	Dr. Bernard Sliger
Interim Athletic Director .....	Phillip Fordyce
Head Baseball Coach .....	Mike Martin
Assistant Coach .....	Jim Morris
Sports Information Director .....	Mark Carlson
Athletic Department Phone .....	904/644-2790
Baseball Office Phone .....	904/644-4812
Sports Information Phone .....	904/644-4038

# Florida State

## THE BEST IN COLLEGE BASEBALL

Few college baseball teams have had the success the Florida State squads have maintained since 1948.

But this is no surprise to those close to the college baseball scene. Long a dominant force not only in the southeast but from coast to coast, the Seminoles year in and out live up to the tradition of "The Best in College Baseball."

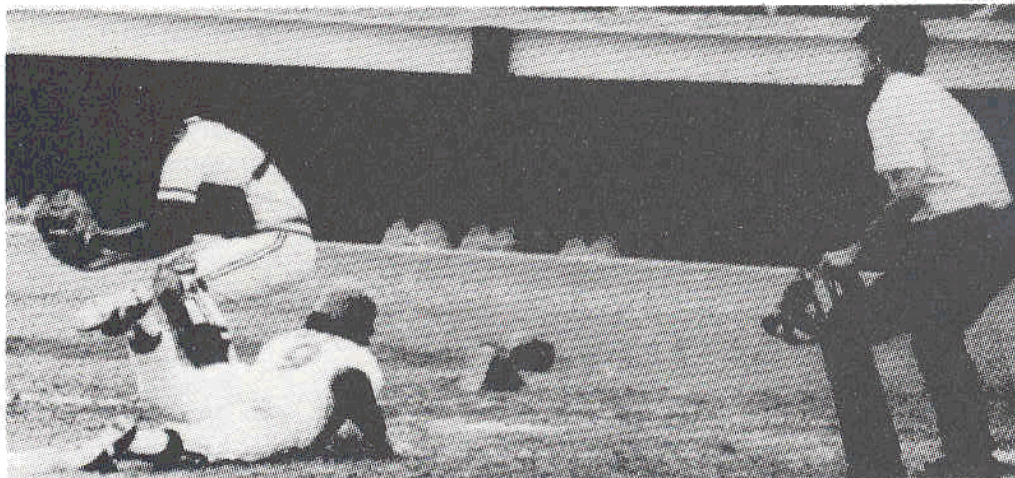
Florida State's most recent trip to the College World Series in 1975 marked the sixth appearance in the NCAA Tournament for the Seminoles. Only six other teams have equaled that mark. FSU's 42 victories in championship play is the third most recorded.

Florida State's baseball excellence is widely recognized around the nation. Many Seminole players are recommended to FSU coaches from pro scouts who have said, "If there is a boy who is determined to get an education before turning pro we do not hesitate to recommend Florida State. He is going to get as much or more training and experience there as he will anywhere in the country." High school and junior college coaches are also well aware of the Florida State program and the Seminole roster generally reflects this fact with young players from every part of the country.

For the Florida State athlete, baseball truly has a year round season. The mild Florida winters make it possible for the Seminoles to begin work upon arrival in the fall and continue through June. Following the completion of the regular season, Seminole baseball players take one week off and return to play a 45 game summer schedule. There are also always openings for Florida State players with many collegiate teams and leagues from Alaska to Cape Cod. The year round schedule will give the varsity baseball player a chance to play in over 135 games. Florida State's fall season ends with the "Oldtimers Game" against the Alumni at Homecoming. Although the emphasis is on instruction during this period, a schedule of 30 informal games is played. An extensive conditioning program continues into December.

Following the holiday break, practice resumes early in January as preparations are made for the upcoming spring season. The preseason practice sessions are highlighted by the appearance of many ballplayers who stop by on their way to spring training at major league camps downstate. Many of these players are former Seminoles and offer invaluable tips and coaching to current players. Of course, even without his "bonus coaching" the Florida State player receives the finest tutoring anywhere. Throughout the years, Florida State has had the nation's finest coaching staffs.

A 60 to 70 game schedule begins in late February. Many of their southeastern rivals are ranked annually with the Seminoles among the na-



tion's Top 20 teams and established series with these clubs create a schedule second to none.

Once the spring collegiate season is over and final exams are through, the Seminole baseball player takes a one week break and has the opportunity to play in a competitive 45 game schedule. Other Seminole players head for the summer leagues and independent semi-pro teams around the country. In past years many Seminole players have had the opportunity to travel internationally with the United States All-Star teams in South and Central America, Europe and Japan. In all, it is not unusual for a Florida State player to perform in more than 150 games a year.

All this opportunity to play does not mean there is not an emphasis on academics. Florida State's athletic program includes an outstanding academic advisement office that is prepared to meet just about any need the student athlete may have. Academic counselors and coaches are not only interested in seeing the athlete remain eligible to play, but that he is making genuine progress towards a degree.

Facilities are another big factor in the Seminoles' program. Few colleges can boast of the on-campus facilities at Florida State. Seminole Field is the site of all Florida State home games. Night games, which became popular in the mid-1960's, will become more a part of Florida State baseball with the construction of new permanent lights scheduled for completion in the 1980 season. A new "pro type" scoreboard is now in operation. The field itself is equivalent to many of the finest minor league parks. It is kept in condition year round by the FSU Department of Grounds under the supervision of Bruce Nelson and Hugh and Robert Barrett. In addition to the main field, the Seminoles also have at their disposal, two full diamonds, along with several batting cages, a jugs speed gun, pitching mounds and pitching machines.

One of the finest equipped Nautilus facilities is also available to the Seminole athlete as the year round conditioning program continues. A highly experienced group of FSU trainers assist the player with any medical needs.

Seminole coaches in all sports call Florida State fans, "the finest anywhere" and that is certainly true in baseball. The Seminoles are supported by large enthusiastic groups of campus and community fans at nearly every game. The average home attendance is 2,000, and often the 3,300 seat bleachers are filled to capacity. But fan support does not stop with home game attendance, many follow the Tribe to away games as well. A Seminole Dugout Club has been formed by one group of long time followers and the enthusiastic student fans have formed their own "bleacher bum" sections.

An additional treat awarded the players and fans is another visit by the former World Champion New York Yankees. Under the direction of new skipper Dick Howser, the Yankees will make their second trip in three years to the capital city.





# MIKE MARTIN

Head Coach

When Mike Martin was named head baseball coach on November 27, 1979, the love affair between him and Florida State was finally consummated in marriage.

An assistant under Woody Woodward and current New York Yankee manager Dick Howser, Martin joined the FSU staff in 1975 as an assistant to Woodward. Showing his skill in both on the field coaching and recruiting, Martin was named full-time assistant in 1978. Following the departure of Woodward, Howser immediately asked the talented coach to remain on the staff. When Howser returned to the Yankees, Martin was not only the most likely choice, but the most qualified.

"This is one of the top five collegiate baseball coaching positions in the country," said Martin at the time of his selection. I look forward to accepting the challenge of continuing the great baseball tradition that has been established at Florida State."



Martin enjoyed a two year career at Florida State in 1965-66 after coming from Wingate Junior College where he earned JC All-American honors in two consecutive years. At Florida State, he established himself as an outstanding outfielder and twice was selected to the All-District team.

Following his collegiate career, the Charlotte, N.C., native had a three year professional stint with the New York Mets and Detroit Tigers organizations before returning to the Tallahassee area to teach and coach.

His coaching records include several seasons as basketball and baseball coach at the junior high level, then a year as head basketball coach at Tallahassee Community College and finally a four year stay as basketball coach at Tallahassee Godby High School.

He guided the 1978 Tallahassee Federals, now the Coloneys, a local semi-pro summer team, to the National Furniture City Championship two summers ago in Lenoir, N.C. While coaching at the semi-pro level, Martin has won an enviable 80 per cent of his contests. Last summer Martin guided the Tallahassee Coloneys to a 27-14 record and a second place national finish.

A popular speaker as well as coach, Martin has spoken at several national meetings including the Florida High School Coaches Clinic, The Charlotte, N.C., Coaches Clinic and the Atlanta Baseball Instructional Service.

Known as "No.11" to those who watched him coach third base, Martin will remain at that position and delegate the in-dugout coaching responsibilities to assistant Jim Morris.



A 1966 graduate of Florida State, Martin earned his master's degree in 1971 from Florida A&M. He and his wife Carol have three children — Mary Beth, 10, Mike Jr., 7, and Melanie 4.

# JIM MORRIS

## Assistant Coach

When head coach Mike Martin tabbed DeKalb South Junior College coach Jim Morris to be his assistant at Florida State, Martin picked one of the finest college baseball coaches in the country.

Morris, who also served as the athletic director at DeKalb South, founded the school's baseball program. In the 1977 season, DeKalb finished second in the National Junior College Tournament and ended the season with a 41-7 record. Last year the team ranked first in the country much of the year but was upset in the playoffs. The 1977 squad also attained the honor of conference champion, state champion, region champion and southeastern champion.

Morris had 31 players drafted during his time at DeKalb. Numerous other players also advanced to the college ranks, including several to FSU.

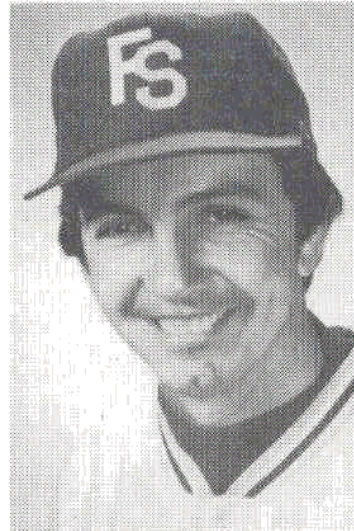
"I'm really excited about the opportunity to coach at Florida State," Morris said following his appointment. "The type of schedule played by Florida State and the caliber of ball players we have here would excite any coach interested in college baseball."

Morris, who compliments Martin perfectly, is an excellent teacher of fundamentals and has a great rapport with the young ball players.

The former head coach compiled a 142-38 record in his tenure at DeKalb. Morris graduated from Elon College in North Carolina. Following graduation he played two years in the Boston Red Sox organization as an infielder, but was also listed in seven different positions.

After leaving the Red Sox, Morris went to Appalachian State College where he earned his masters' degree in physical education. He was also an assistant baseball coach for a year. He has begun doctoral work at the University of Georgia.

Morris has been married to Denise Miller Morris for six years.



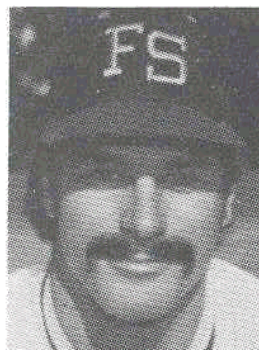


# OUTLOOK

While not being one of the most experienced teams to play at Florida State, the 1980 baseball squad promises to be one of the most exciting.

The Seminoles take the field with new faces at first, second and third base, and left and right field. Toss in the loss to graduation of pitchers Rick Holloway, Jim Riley and Joe Nichols, and first year head coach Mike Martin has his work ahead of him.

The Seminoles worked hard during the summer program with the Tallahassee Coloneys to replace the lost starters from last year's roster. After some



Dick Wiggins



Mike Fuentes

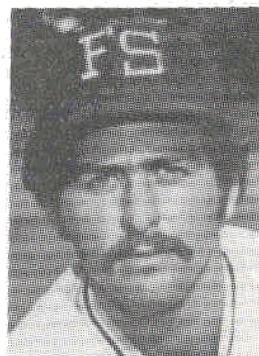
juggling and repositioning, the starting lineup appears almost set.

The infield reads Roy Alvarez, a transfer student from Palm Beach Community College, at first base, Lionel Martinez from Indian River Community College at second and freshman Rick Figueredo at third. Also new on the Seminole squad is Manatee transfer Jim Weaver in left and either former South Alabama player Mike Cullen or freshman Mike Yaztrzemski in right.

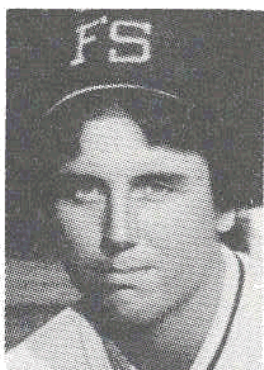
Catching is secure with returnees Jack Emerick and Craig Ramsey back for another year. All-

American candidates Mike Fuentes and Dick Wiggins return to centerfield and the mound respectively, and an untouched (9-0) John Wolfer rejoins the pitching staff. Ace relief pitcher Ken Smith also returns, and along with Wiggins and Wolfer provides the senior leadership a young team needs.

Shortstop is set with the return of starter Don DeLoach. DeLoach, a local product of Tallahassee Leon, demonstrated great progress last season and should provide valuable experience to the rookie infield.



Don DeLoach



Jeff Ledbetter

One area where question marks arise is pitching. Junior college transfers Ed Schneider, Allen Swindle, Jay Keeler, Keith Parenteau and Tim Phillips remain untested, but supply unlimited potential. Also on the staff are returnees Rick Hatcher, a top pitcher for the Tallahassee Coloneys this summer, Ken Fischer, converted outfielder John Gagnon and freshman David Smalley.

"We hope to continue to improve as the season progresses," said head coach Mike Martin. "I would like for the team to hit its peak as the Metro Conference Tournament approaches."



## **SUMMER PROGRAM AIDS SEMINOLES**

Though Florida State baseball only officially stretches into May, Seminole players can enjoy a full schedule of games throughout the summer, thanks to the Wayne Coloney Company.

Many Florida State players remain in Tallahassee during the summer months to play for the Coloneys, a semi-pro team managed by head coach Mike Martin. The added playing experience has been a great asset to the Florida State program.

Florida State baseball would not have a summer program if it wasn't for Wayne Coloney. With his sponsorship, the Seminoles, known as the Coloneys during the summer months, play a competitive 45-game schedule. The additional summer games give returning players a chance to continue to develop their skills. The squad annually participates along with other semi-pro clubs in tournaments from Central Florida to North Carolina.

"This program is extremely important to us," said Coloney five year coach Mike Martin. "The players enjoy a relaxed atmosphere and learn baseball the Florida State way."

Last season, the Coloneys emerged with a 27-14 record and a second place finish in the Annual Lenoir North Carolina National Furniture City Championships. The squad also boasted a second place finish in the Valdosta Azalea Tournament, and a first place finish in the host Wayne Coloney Tournament. The team compiled win streaks of nine and six games and finished the year with a .300 plus team batting average.

Leading the squad last season was transfer first baseman Roy Alvarez. Hailing from Palm Beach Community College, Alvarez batted .374 in 41 games while knocking in 37 runs and collecting a team-leading 55 hits. Tops on the mound was no stranger to Seminole baseball although the position may have been somewhat of a shock. Converted outfielder — turned pitcher John Gagnon topped the staff with a 6-1 record and a lowly 2.56 earned run average. Also finishing high on the staff was outfielder / pitcher Jeff Ledbetter. Ledbetter not only finished second on the staff in ERA (2.74), but also placed second on the team in hitting (.344).

The Coloney support team is spearheaded by Ken Creely, President of Killlearn Golf and Country Club. Among the key work force are Chad Benedict, President of Wayne Coloney Company; Gary Cliett, Director of Administration; Richard Gardner of Sun Federal Savings and Loan; Jim Jones of State Office Supply; Judges Charles Miner and Charles McClure and Mike Sheidy of Western Steer Restaurant.

# COLONEY BASEBALL FINAL RECORD 27-14

HITTING		G	AB	R	H	2B	3B	HR	RBI	SB	CS	BB	SO	HBPS/SF	AVG.
Roy Alvarez		41	147	30	55	5	2	4	37	9	1	9	6	0	0/1 .374
Jeff Ledbetter		31	96	23	33	7	2	10	24	2	1	22	16	2	0/2 .344
Jack Emerick		37	126	26	43	6	4	5	20	19	3	8	11	1	0/0 .341
Bobby Pierce		29	82	18	28	3	0	6	24	4	1	18	4	0	0/2 .341
Mike Cullen		41	125	38	42	7	4	0	12	12	2	30	15	15	0/2 .336
Don DeLoach		41	139	21	44	6	1	3	30	11	3	32	15	2	1/0 .316
Rick Figueredo		37	114	14	34	6	1	1	15	3	0	13	10	0	0/2 .298
Jay Johnson		16	28	9	8	2	0	1	8	0	0	6	8	0	0/0 .285
Eddie Howser		36	98	19	22	4	0	0	8	1	1	16	13	6	0/2 .224
Mike Yastrzemski		17	25	10	5	0	0	1	3	1	0	24	5	1	0/0 .200
Jim Weaver		28	86	17	17	3	1	3	17	4	0	19	15	0	1/2 .197

PITCHING		APP	GS	CG	W	L	SA	IP	R	ER	H	BB	SO	HBP	WP	SHO	7 ERA	9 ERA
John Gagnon		10	6	3	6	1	0	49.1	20	18	41	26	32	1	2	1	2.56	3.29
Jeff Ledbetter		14	9	3	5	4	0	56.1	27	22	46	34	41	2	2	2	2.74	3.53
Rick Hatcher		20	7	3	7	3	4	74	36	33	73	27	30	0	1	1	3.12	4.01
Keith Parenteau		12	9	5	6	2	0	69	49	31	81	30	39	6	1	0	3.14	4.04
Alan Swindle		13	7	3	3	3	0	42.2	24	21	37	38	29	0	3	2	3.48	4.47
Mike Bretz		6	3	0	0	1	0	9.1	18	16	11	23	9	0	3	0	12.00	15.42

## GAMES

- |                                       |  |
|---------------------------------------|--|
| 1. Atlanta Yankees 9, Coloneys 6      | 22. Coloneys 15, Atlanta Buckhead 9    |
| 2. Atlanta Yankees 8, Coloneys 4      | 23. Coloneys 2, Atlanta Buckhead 0     |
| 3. Atlanta Yankees 12, Coloneys 7     | # 24. Valdosta Red Socs 8, Coloneys 4  |
| 4. Valdosta Red Socs 8, Coloneys 4    | # 25. Coloneys 10, Tampa Pirates 5     |
| @ 5. Tampa Pirates 2, Coloneys 0      | # 26. Coloneys 10, Valdosta Red Socs 0 |
| @ 6. Warner Robins Reds 5, Coloneys 0 | # 27. Valdosta Red Socs 11, Coloneys 2 |
| 7. Coloneys 5, Buddys SG 4            | * 28. Coloneys 2, Buddys SG 1          |
| 8. Coloneys 4, Valdosta Red Socs 3    | * 29. Tampa Pirates 11, Coloneys 2     |
| 9. Coloneys 12, Lakeland Dukes 3      | * 30. Coloneys 2, Tampa Hawks 1        |
| 10. Lakeland Dukes 8, Coloneys 7      | * 31. Coloneys 11, Tampa Pirates 1     |
| 11. Coloneys 6, Lakeland Dukes 3      | * 32. Coloneys 4, Tampa Pirates 0      |
| 12. Lakeland Dukes 8, Coloneys 7      | 33. Coloneys 15, Capitals 0            |
| 13. Coloneys 7, Tampa Pirates 4       | 34. Coloneys 4, Geo. State Blazers 3   |
| 14. Coloneys 4, Tampa Pirates 3       | 35. Coloneys 4, Buddys SG 3            |
| 15. Coloneys 3, Tampa Pirates 2       | 36. Coloneys 11, Buddys SG 3           |
| 16. Coloneys 6, Tampa Pirates 4       | 37. Coloneys 10, Capitals 0            |
| 17. Coloneys 11, Buddys SG 6          | \$ 38. Coloneys 14, Rock Hill SC 13    |
| 18. Coloneys 5, Valdosta Red Socs 3   | \$ 39. Coloneys 10, Atlanta Yankees 8  |
| 19. Atlanta Buckhead 5, Coloneys 3    | \$ 40. Atlanta Yankees 8, Coloneys 3   |
| 20. Coloneys 16, Atlanta Buckhead 3   | \$ 41. Atlanta Yankees 4, Coloneys 3   |
| 21. Atlanta Buckhead 3, Coloneys 1    |  |

@ Jacksonville Invitational Tournament

# Valdosta Azalea Tournament — Second Place

\* Wayne Coloney Invitational Tournament — First Place

\$ Lenoir North Carolina National Furniture City Championships — Second Place

# 1979 BASEBALL STATISTICS

Won 43, Lost 17, Tie 1

**HOME:** W-34, L-9 (.791); **AWAY:** W-9, L-8, T-1 (.529); **NEUTRAL:** W-0, L-0 (.000); **DAY:** W-28, L-12, T-1 (.683); **NIGHT:** W-15, L-5 (.750); **EXTRA INNINGS:** W-2, L-0, T-1 (.667); **ONE RUN GAMES:** W-3, L-3 (.500); **DOUBLEHEADERS:** W-2-8, L-2-0, S-4 (.750); **AGAINST DIVISION I:** W-27, L-13 (.675); **AGAINST THE METRO:** W-4, L-2 (.667); **ATTENDANCE (AVG.):** H-34d/44, 397 (1306); A-16d/13,603 (850); T-50d/58, 850 (1177).

## HITTING

NAME	AVG.	G	AB	R	H	2B	3B	HR	BI	SB-CS	BB	SO	HBP	S-SF	FA
Patterson, 2b	.397	61	239	67	95	11	5	10	64	10-1	32	10	1	0-6	.974
Fuentes, of	.366	61	213	63	78	13	3	16	70	23-0	43	46	1	1-5	.973
Ledbetter, dh	.351	49	148	37	52	10	3	13	54	3-2	33	20	1	1-4	1.000
B. Huff, of	.328	45	134	40	44	4	0	0	11	23-3	46	11	1	3-0	.972
DeLoach, ss	.325	61	231	59	75	11	2	9	46	12-5	35	33	3	0-1	.913
Traylor, of	.313	50	150	29	47	10	0	7	36	1-0	17	9	4	0-2	.986
Milner, lb	.278	54	176	47	49	10	2	7	36	5-1	38	26	6	0-4	.989
Mobley, 3b	.266	55	192	34	51	5	0	9	39	2-0	14	35	0	1-5	.957
Ramsey, c	.265	38	113	20	30	10	1	3	22	3-0	13	21	0	2-2	.972
Emerick, c	.262	39	130	30	34	10	1	4	25	6-1	10	19	2	0-2	.988
Casey, 3b	.361	31	61	18	22	3	0	0	8	0-0	16	4	0	1-1	.909
Schimchak, of	.354	29	99	30	35	6	0	4	16	3-3	15	10	2	2-0	.957
Gagnon, of	.227	27	44	11	10	2	1	0	6	2-0	12	11	1	0-1	1.000
Bartlett, c	.211	15	19	3	4	0	0	0	2	0-0	5	4	0	0-2	1.000
K. Huff, of	.000	17	9	3	0	0	0	0	0	0-0	4	5	0	0-0	1.000
Johnson, c	.000	4	1	1	0	0	0	0	0	0-0	1	0	0	0-0	1.000
Parker, 1b	.000	3	1	0	0	0	0	0	0	0-0	0	0	0	0-0	.800
Others			10	2	3	0	0	0	0	1-0	1	2	0	0-0	.944
FSU TOTALS	.319	61	1970	494	629	105	18	82	435	94-16	335	266	22	11-35	.965
OPP TOTALS	.277	61	1943	272	538	77	26	38	243	53-18	193	314	11	24-15	.955

**LOB:** FSU 433    **SLUG AVG:** FSU .512    **DP:** FSU 56    **PASSED BALLS:** Bartlett (3), Ramsey (3)  
 OPP 409    **ERA:** OPP .405    **OPP 41**    **CAUGHT STEALING:** Emerick (9), Ramsey (8), Bartlett (1)  
**GAME WINNING RBI:** Ledbetter (7), Milner (5), Patterson (4), Traylor (4), Emerick (3), Mobley (3), Fuentes (2), DeLoach (1), B. Huff (1),  
 Ramsey (1), Schimchak (1)  
**CURRENT HITTING STREAKS:** Ledbetter (11), Fuentes (7), B. Huff (6)

**PITCHING**

NAME	W-L	ERA	APP	GS	CG	IP	H	R	ER	BB	SO	HB	WP	2B	3B	HR
Nichols, r	3-0	2.64	10	1	1	30.2	32	14	9	12	27	0	4	2	0	2
Wiggins, r	11-4	3.33	16	15	10	121.1	124	52	45	29	78	3	5	18	5	11
Wolfer, r	9-0	3.60	12	11	4	75.0	72	31	30	28	45	0	4	5	10	3
Smith, r	2-2	3.63	24	2	0	44.2	47	26	18	14	29	2	4	7	4	2
Fischer, l	1-0	4.40	11	0	0	14.1	17	7	7	8	10	0	0	4	1	1
Riley, r	8-4	4.84	14	14	5	87.1	98	52	47	33	48	4	1	16	5	8
Holloway, r	5-5	4.87	11	10	3	68.1	74	41	37	37	37	2	4	13	1	5
Hatcher, r	2-1	5.08	19	3	1	39.0	47	25	22	15	24	0	1	6	0	4
Long, r *	0-0	0.00	1	0	0	1.0	0	0	0	0	0	0	0	0	0	0
Fombard, r	2-0	8.25	5	2	0	12.0	12	11	11	11	9	0	1	3	0	1
Ledbetter, l	0-1	13.50	4	3	0	8.0	15	13	12	6	7	0	4	3	0	1
FSU TOTALS	43-17-1	4.27	127	61	24	501.2	538	272	238	193	314	11	28	77	26	38
OPP TOTALS	17-43-1	8.06	134	61	19	480.1	629	494	430	335	266	22	38	105	18	82

**SHUTOUTS:** Wolfer (Valdosta), Nichols (Austin-Peay), Riley (Wright State), Wiggins (Jacksonville).

**SAVES:** Smith (4), Fischer (3), Hatcher (1)      **PICKOFFS:** Wolfer (6), Riley (3)

# 1979 GAME-BY-GAME

NO.	GAME	WINNER	LOSER	ATTD	RECORD
1	(H) FSU 6, Troy State 4	Holloway (1-0)	Harrison (0-1)	(DH)	1-0
2	(H) FSU 12, Troy State 0	Wiggins (1-0)	Elsberry (0-1)	1,390	2-0
3	(H) FSU 7, Mercer 5	Riley (1-0)	Fitzsimmons (0-1)	1,124	3-0
4	(A) Valdosta 2, FSU 0	Wall (1-0)	Holloway (1-1)	308	3-1
5	(H) Valdosta 14, FSU 12	Scott (1-0)	Hatcher (0-1)	(DH)	3-2
6	(H) FSU 6, Valdosta 0	Wolfer (1-0)	Kelley (1-2)	1,420	4-2
7	(A) FSU 4, Florida 3	Wiggins (2-0)	Grant (1-1)	1,372	5-2
8	(A) Florida 16, FSU 3	Teixeira (2-1)	Holloway (1-2)	1,630	5-3
9	(H) FSU 18, St. Leo 2	Riley (2-0)	Leach (0-1)	1,016	6-3
10	(H) FSU 5, St. Leo 2	Wolfer (2-0)	Cushing (1-2)	768	7-3
11	(H) FSU 4, St. Francis 1	Wiggins (3-0)	Pesaunto (0-1)	(DH)	8-3
12	(H) St. Francis 5, FSU 2	Gimbel (1-0)	Ledbetter (0-1)	1,040	8-4
13	(H) FSU 7, Tulane 3	Holloway (2-2)	Francinques (2-1)	(DH)	9-4
14	(H) FSU 9, Tulane 2	Riley (3-0)	Wills (2-1)	730	10-4
15	(H) FSU 14, St. Francis 5	Wolfer (3-0)	Batty (0-1)	(DH)	11-4
16	(H) FSU 8, St. Francis 1	Hatcher (1-1)	Armstrong (0-1)	693	12-4
17	(H) FSU 4, Austin-Peay 2	Bombard (1-0)	Gilliam (1-2)	(DH)	13-4
18	(H) FSU 12, Austin-Peay 0	Nichols (1-0)	Zmudowsky (0-2)	473	14-4
19	(H) FSU 14, W. Kentucky 4	Smith (1-0)	Glasscock (1-2)	470	15-4
20	(H) FSU 8, Jacksonsville 3	Wiggins (4-0)	Pustay (3-1)	763	16-4
21	(H) FSU 21, Jacksonsville 8	Holloway (3-2)	Coughlin (2-3)	792	17-4
22	(H) FSU 4, Mercer Atlanta 2	Hatcher (2-1)	Hudson (0-1)	335	18-4
23	(A) FSU 6, South Florida 4	Riley (4-0)	Krsnich (2-1)	478	19-4
24	(A) FSU 12, South Florida 4	Wiggins (5-0)	Moon (0-1)	256	20-4
25	(H) FSU 4, Tennessee-Martin 1	Holloway (4-2)	Chaney (1-1)	(DH)	21-4
26	(H) FSU 10, Tennessee-Martin 4	Bombard (2-0)	Kelley (0-1)	853	22-4
27	(H) FSU 12, Wright State 0	Riley (5-0)	Lochner (2-2)	(DH)	23-4
28	(H) FSU 13, Wright State 6	Nichols (2-0)	Pollard (1-1)	515	24-4
29	(H) Stetson 14, FSU 9	Swaggerty (5-3)	Wiggins (5-1)	721	24-5
30	(H) FSU 13, Oakland 4	Wolfer (4-0)	Smith (0-1)	(DH)	25-5
31	(H) FSU 13, Oakland 6	Nichols (3-0)	Seagraves (0-1)	1,043	26-5

32	(A)	Miami 4, FSU 3	Batter (7-1)	Wiggins (5-2)	3,811	26-6
33	(A)	Miami 5, FSU 3	Morrison (8-0)	Riley (5-1)	2,476	26-7
34	(A)	FSU 11, St. Leo 5	Wolfer (5-0)	Cimorelli (4-2)	(DH)	27-7
35	(A)	St. Leo 5, FSU 1	Newton (4-1)	Holloway (4-3)	253	27-8
36	(H)	FSU 13, Florida A&M 1	Riley (6-1)	Thorpe (2-3)	1,891	28-8
37	(H)	FSU 12, Florida 7	Wiggins (6-2)	Perkins (2-1)	2,446	29-8
38	(H)	FSU 9, Miami 2	Riley (7-1)	Guerra (4-3)	3,542	30-8
39	(H)	FSU 3, Miami 2	Wiggins (7-2)	Heaton (4-1)	2,832	31-8
40	(A)	FSU 6, Ga. Southern 4	Smith (2-0)	Colon (2-1)	576	32-8
41	(A)	Ga. Southern 7, FSU 4	Willis (8-1)	Riley (7-2)	(DH)	32-9
42	(A)	FSU 5, Ga. Southern 4	Fischer (1-0)	Rodriguez (6-3)	470	33-9
43	(A)	FSU 3, Jacksonville 0	Wiggins (8-2)	Pustay (5-4)	378	34-9
44	(A)	Jacksonville 10, FSU 9	Devine (2-2)	Smith (2-1)	400	34-10
45	(H)	FSU 3, South Florida 1	Wolfer (6-0)	Fossas (3-4)	840	35-10
46	(H)	FSU 10, South Florida 1	Wiggins (9-2)	Jones (4-2)	832	36-10
47	(A)	FSU 14, Valdosta State 14	None	None	150	36-10-1
48	(H)	FSU 20, Florida A&M 4	Wolfer (7-0)	LaCount (4-2)	1,675	37-10-1
49	(A)	Mercer 4, FSU 2	Fitzsimmons (5-4)	Wiggins (9-3)	225	37-11-1
50	(A)	FSU 5, Georgia Tech 2	Holloway (5-3)	Porsten (5-1)	521	38-11-1
51	(A)	FSU 11, Georgia Tech 4	Riley (8-2)	Gee (1-4)	308	39-11-1
52	(H)	FSU 9, Florida A&M 1	Wolfer (8-0)	Christie (4-3)	1,085	40-11-1
53	(H)	FSU 20, Florida 7	Wiggins (10-3)	Teixeira (7-4)	1,372	41-11-1
54	(H)	Ga. Southern 8, FSU 3	Lusted (9-0)	Riley (8-3)	589	41-12-1
55	(H)	Ga. Southern 8, FSU 1	Kilimonis (8-2)	Holloway (5-4)	1,010	41-13-1
*56	(H)	FSU 13, Cincinnati 3	Wiggins (11-3)	Martini (9-3)	1,538	42-13-1
*57	(H)	Tulane 10, FSU 5	Pursell (4-2)	Riley (8-4)	(DH)	42-14-1
58	(H)	FSU 11, Memphis State 1	Wolfer (9-0)	Smith (4-1)	2,534	43-14-1
*59	(H)	Tulane 5, FSU 2	Francinques (13-1)	Holloway (5-5)	2,122	43-15-1
#60	(H)	Florida 9, FSU 5	Dale (8-4)	Wiggins (11-4)	4,640	43-16-1
#61	(H)	Delaware 7, FSU 6	Young (9-3)	Smith (2-2)	1,303	43-17-1

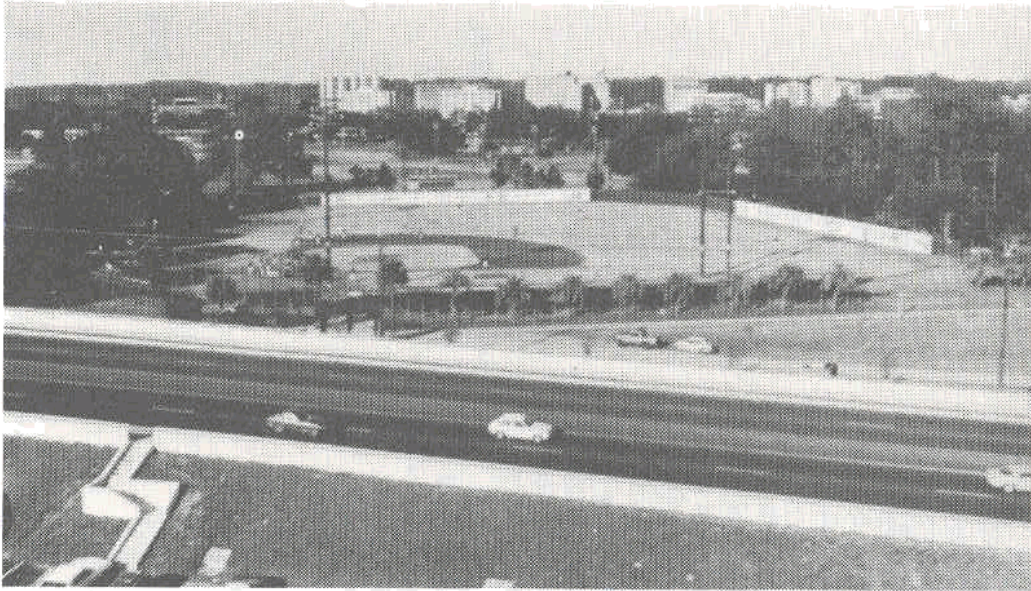
\* Metro Tournament, Tallahassee, Fla.

# NCAA East Regional Tournament, Tallahassee, Fla.



## FSU BATGIRLS

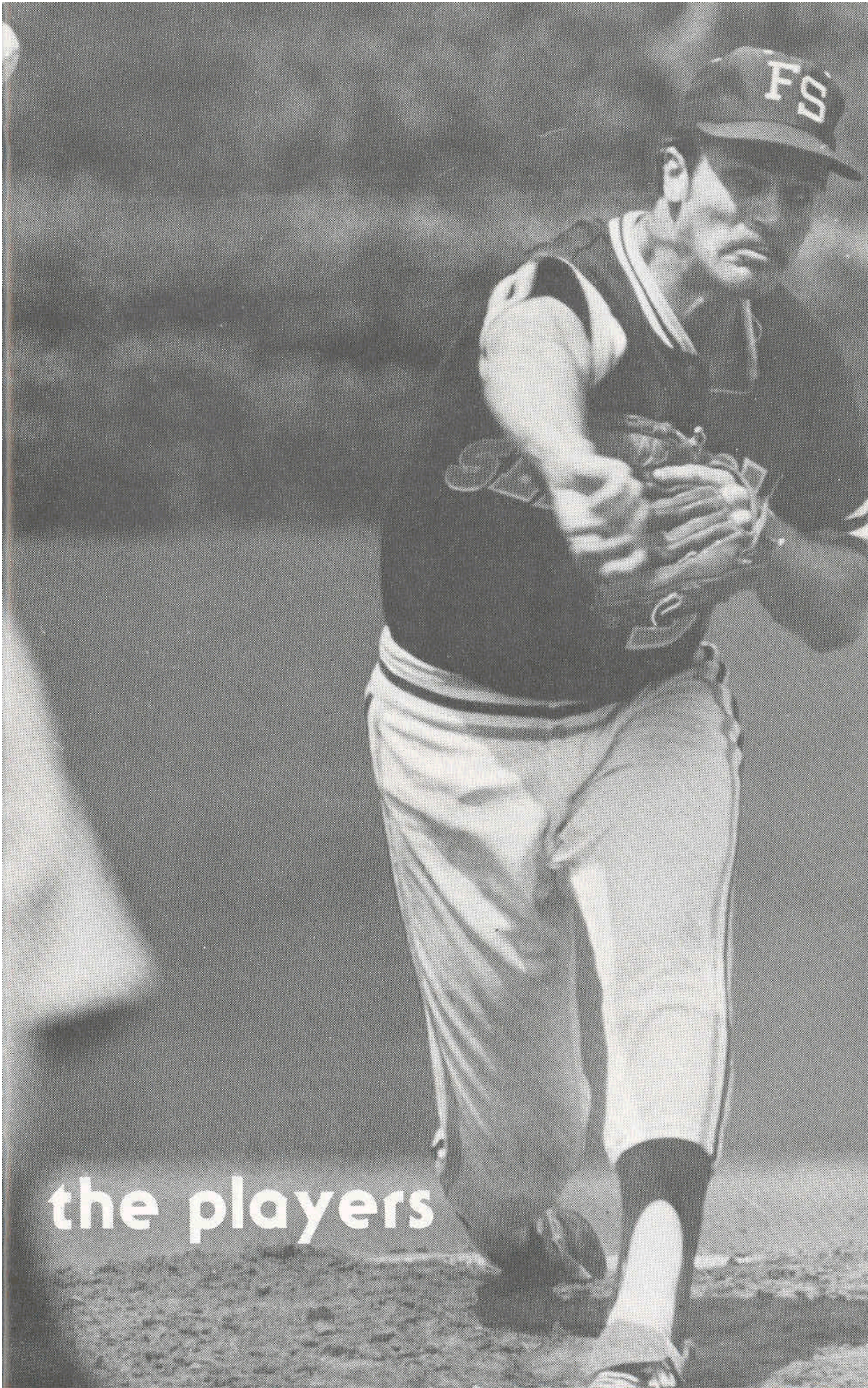
Bottom Row(L to R): Debbie Browning, Barbara Jaicks, Patty Stovrojohn, Joy Hart, Peggy O'Neill, Mary Kay. Top Row (L to R): Beth Browning, Tracey McCaw, Terry Tomassi, Jenny Novtney, Debbie Green, C. Jim Morris, C. Mike Martin, Gayle Mixwell, Teri Tully, Cheri Williams, Cathy Fitzgerald, Suzanne Tatum. Not Pictured: Theresa Beans, Carolyn Horton, Diane Titus, Lori Jo Vino.



## SEMINOLE FIELD

Located in the heart of the Florida State campus, Seminole Field is one of the south's outstanding baseball parks. The facility is fully lighted with permanent concrete structures and has a seating capacity of 3,000. The outfield wall measures 321 feet at the right field line, 346 to right-center, 411 to center, 363 to left-center and 340 down the left field line. Two other diamonds are adjacent to Seminole Field along with a practice batting cage.





the players



## 15 ROY ALVAREZ

Ht. 6-0                                      Wt. 185                                      Junior

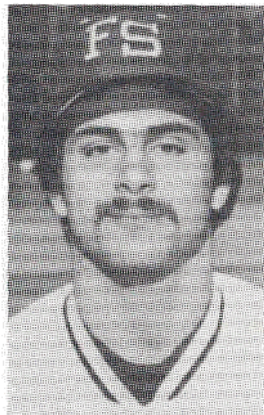
Bats: Right                                      Throws: Right

West Palm Beach, Fla. First Base

- All-State Junior College performer
- Led Tallahassee Coloneys in hitting (.375) and runs-batted-in (37)
- A steady fielder at first with good speed
- Will be a base stealing threat which is a plus for Seminole first basemen
- Durable and can play every day
- An outstanding hitter with good power
- Will probably bat third in the FSU lineup

PERSONAL: Parents — Mrs. Elena Alvarez. High School — Cardinal Newman. High School Coach — Jack Kokinda. Junior College — Palm Beach Community College. FSU Major — Marketing.

1979      PALM BEACH COMMUNITY COLLEGE



## 42 MIKE CULLEN

Ht. 5-8                                      Wt. 180                                      Senior

Bats: Left                                      Throws: Left

Detroit, Mich.                                      Outfield

- Good speed on the basepaths
- Batted .336 for the Coloneys in summer ball
- A starter for South Alabama prior to transferring to FSU
- Showed scrappiness by leading Coloneys in being hit by the pitch with 15
- All-State performer in both baseball and football in Michigan
- A hard worker who will do what it takes to win
- A good leader for the young Seminole squad
- Will battle Mike Yastrzemski for starting right field spot

PERSONAL: Parents — Mr. and Mrs. John Cullen. High School — Brother Rice. High School Coach — Al Fracassa. College — South Alabama. FSU Major — Business.

1978      UNIVERSITY OF SOUTH ALABAMA



## 20 DON DeLOACH

Ht. 5-10 Wt. 170 Junior  
 Bats: Right Throws: Right  
 Tallahassee, Fla. Shortstop

- Started every game for the Tribe last season at shortstop
  - Hit a solid .325 with nine homeruns last year
  - Steady fielder with a .900 plus career fielding average
  - Made a grand slam homerun against Florida last year on the way to a 12-7 Seminole win
  - One of the best hustlers on the team earning him the nickname 'Pigpen'
  - Excellent chance of breaking the consecutive game record barring injury (123)
- Opened the 1978 South Atlantic Regional on the mound for the Tribe
  - Played quarterback at Leon High School following Wally Woodham and Jimmy Jordan and prior to current Seminole Blair Williams
  - Plans to play Semi-Pro baseball this summer

PERSONAL: Parents — Mr. and Mrs. Walter DeLoach. High School — Leon. High School Coach — Harold Barwick. FSU Major — Business.

	avg.	g	ab	r	h	2b	3b	hr	bi	sb-cs	bb	so	hp	s-sf	fa
1979	.325	61	231	59	75	11	2	9	46	12-5	35	33	3	0-1	.913
1978	.325	20	40	7	13	2	0	0	7	1-0	4	7	0	0-1	.875
TOT.	.325	81	271	66	88	13	2	9	53	13-5	39	40	3	0-1	.912
	w-1	era	app	gs	cg	ip	h	r	er	bb	so				
1978	2-2	5.73	8	4	1	33.0	31	24	21	23	38				



## 9 JACK EMERICK

Ht. 5-11 Wt. 185 Senior  
 Bats: Right Throws: Right  
 Waukegon, Ill. Catcher

- All-State performer at Pensacola Junior College prior to transferring to FSU
  - Split catching chores with Craig Ramsey last season
  - Exceptional speed for a catcher
  - Had two big homeruns against Miami last season putting the Tribe ahead in both contests
  - Solid defensive catcher evidenced by his .988 fielding percentage
  - Led the team in gunning down opposing base stealers (9)
  - Hit .341 for the Coloneys this past summer
  - All-Conference for two seasons in high school
- PERSONAL: Parents — Mr. and Mrs. Brent Emerick. High School — Waukegon-East. High School Coach — Jack Mallory. Junior College — Pensacola. Junior College Coach — Buddy Kisner. FSU Major — Speech Communications.

	avg.	g	ab	r	h	2b	3b	hr	bi	sb-cs	bb	so	hp	s-sf	fa
1979	.262	39	130	30	34	10	1	4	25	6-1	10	19	2	0-2	.988



## 12 RICK FIGUEREDO

Ht. 5-11                      Wt. 175                      Freshman  
 Bats: Right                      Throws: Right  
 Tampa, Fla.                      Third Base

- All-Conference three years for Tampa Plant including a selection as All-County quarterback
- Hit .298 for the Coloneys this past summer
- First freshman to start at third base since Guillermo Bonilla
- Has improved tremendously with the bat
- As good a defensive player as Florida State has had at third base in the last ten years
- A very mature player for only being a freshman

PERSONAL: Parents — Mr. and Mrs. Lou Figueredo. High School — Tampa Plant. High School Coach — David Fyfe. FSU Major — Mass Communications.

1979 TAMPA PLANT HIGH SCHOOL



## 49 KEN FISCHER

Ht. 5-9                      Wt. 160                      Junior  
 Bats: Left                      Throws: Left  
 Lincoln, Mass.                      Pitcher

- Saw extensive action as a freshman in 1978
- Played ball in the Cape Cod League last summer
- Can be either used as a starter or out of the bullpen
- Tabbed MVP at Tabor Academy in 1977
- Picked up his lone win over Georgia Southern in a 5-4 decision

PERSONAL: Parents — Mr. and Mrs. Ken Fischer. High School — Tabor Academy. High School Coach — Dick Duffy. FSU Major — Marketing.

	w-l	era	app	gs	cg	ip	h	r	er	bb	so
1979	1-0	4.40	11	0	0	14.1	17	7	7	8	10
1978	3-2	6.76	18	1	0	38.2	48	31	29	24	26
TOT.	4-2	6.11	19	1	0	53.0	65	38	36	32	36



## 29 MIKE FUENTES

Ht. 6-3 Wt. 190 Junior  
 Bats: Right Throws: Right  
 Coral Gables, Fla. Outfield

- All-Metro First team in 1979
- All-Metro Tournament last season
- First team All-South
- Led team with 16 homeruns and broke three year old rbi record with 70
- Played in every game in centerfield for the Seminoles last season
- Was not caught stealing in 23 attempts last spring
- Broke single game rbi record against Jacksonville with nine
- Played in the Alaskan Summer League this year with teammate Dick Wiggins
- Potential All-American candidate
- One of the fastest players on the squad with great range
- First team All-Dade County as a senior in high school

PERSONAL: Parents — Kaethe D. Fuentes. High School — Coral Gables. High School Coach — Marvin Williams. FSU Major — Accounting.

	avg.	g	ab	r	h	2b	3b	hr	bi	sb-cs	bb	so	hp	s-sf	fa
1979	.366	61	213	63	78	13	3	16	70	23-0	43	46	1	1-5	.973
1978	.333	8	6	5	2	1	0	0	2	0-0	3	1	1	0-0	1.000
TOT.	.365	69	219	68	80	14	3	16	72	23-0	46	47	2	1-5	.973



## 22 JOHN GAGNON

Ht. 5-11 Wt. 180 Junior  
 Bats: Right Throws: Right  
 Lantana, Fla. Outfield

- Moved from outfield to pitcher this summer
- A walk-on outfielder who joined the Seminoles after a two year career at Palm Beach Community College
- Led Coloneys with a 6-1 record and a 2.56 earned run average
- A scholar athlete at Palm Beach C. C.
- Struck out 32 batters in ten appearances this summer
- Will give the Seminoles additional depth from the right side of the mound

PERSONAL: Parents — Mr. and Mrs. John Gagnon. Sr. High School — Lake Worth. High School Coach — Jack Marcum. Junior College Coach — Dusty Rhodes. FSU Major — Physical Education.

	avg.	g	ab	r	h	2b	3b	hr	bi	sb-cs	bb	so	hp	s-sf	fa
1979	.227	27	44	11	10	2	1	0	6	2-0	12	11	1	0-1	1.000



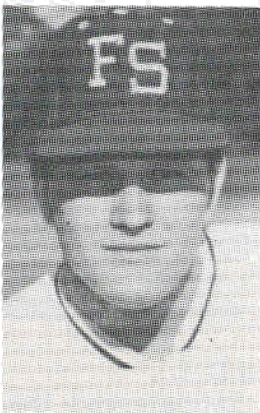
### 33 RICK HATCHER

Ht. 6-0                      Wt. 195                      Junior  
 Bats: Right              Throws: Right  
 Marianna, Fla.              Pitcher

- Second on the team in appearances with 19
- Was used in both a starting and relief role last season
- Excellent high school athlete who received a football scholarship to Nebraska but opted to leave after one semester
- Led the Colonies in wins and appearances this summer
- Older brother of Seminole recruit Tim Hatcher
- Will be counted on as one of the Seminoles' top pitchers this season
- Transfer from George Wallace Community College where he was tabbed Most Valuable Player

PERSONAL: Parents — Mr. Woodrow W. Hatcher. High School — Marianna. High School Coach — Jerry Lewter. Junior College — George Wallace C. C. FSU Major — Physical Education.

	w-l	era	app	gs	cg	ip	h	r	er	bb	so
1979	2-1	5.08	19	3	1	39.0	47	25	22	15	24



### 13 TIM HATCHER

Ht. 5-9                      Wt. 195                      Junior  
 Bats: Right              Throws: Right  
 Marianna, Fla.              Catcher

- Transfer from George Wallace Community College
- Brother of Seminole pitcher Rick Hatcher
- Will back-up catchers Craig Ramsey and Jack Emerick behind the plate
- Made excellent progress during fall and spring training drills
- A dedicated player with an excellent attitude
- One of the most popular members on the team

PERSONAL: Parents — Mr. and Mrs. Woodrow W. Hatcher. High School — Port St. Joe. High School Coach — Gerry Lewter. FSU Major — Criminology.

1979              GEORGE WASHINGTON COMMUNITY COLLEGE



## 47 ED HOWSER

Ht. 5-10                      Wt. 160                      Junior

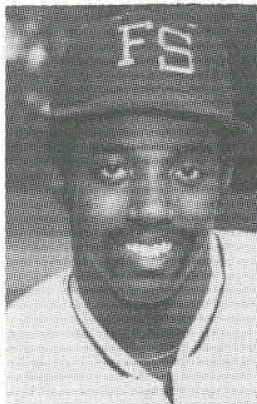
Bats: Right                      Throws: Right

West Palm Beach, Fla. Second Base

- Nephew of former FSU head coach and new Yankee manager Dick Howser
- Will battle Lionel Martinez for starting second base spot
- Able to play every position in the infield
- Very intelligent and poised player
- Possesses one of the better arms on the team
- When not starting will be a valuable utility player
- Good competitive attitude
- Gives the Seminoles additional depth in the infield

PERSONAL: Parents — Mr. Ronald Benhart. High School — Forrest Hills. High School Coach — Jim Heaton. Junior College — Palm Beach Community College. FSU Major — Criminology.

1979 PALM BEACH COMMUNITY COLLEGE



## 10 KEN HUFF

Ht. 5-10                      Wt. 170                      Junior

Bats: Switch                      Throws: Right

Columbus, Ga.                      Outfield

- One of the fastest players on the Seminole squad
- Saw limited action as a sophomore in the Seminole outfield
- Athlete of the Year at Hardaway High School in Columbus, Ga.
- Younger brother of four year starter Bruce Huff
- Played for the National Invitational Champion Atlanta Yankees
- One of the few switch hitters on the Seminole squad
- Walked on as a freshman for the Tribe in 1978

PERSONAL: Parents — Mr. and Mrs. Charles E. Huff. High School — Hardaway High School. High School Coach — Bob Benette. FSU Major — Business Administration.

	avg.	g	ab	r	h	2b	3b	hr	bi	sb-cs	bb	so	hp	s-sf	fa
1979	.000	17	9	3	0	0	0	0	0	0-0	4	5	0	0-0	1.000
1978	.333	8	3	5	1	0	0	0	0	1-0	2	2	0	0-0	1.000
TOT.	.083	25	12	8	1	0	0	0	0	1-0	6	7	0	0-0	1.000



## 43 JAY KEELER

Ht. 6-1                                      Wt. 175                                      Junior  
 Bats: Right                                      Throws: Right  
 Miami, Fla.                                      Pitcher

- Drafted by the St. Louis Cardinals after his first year at Miami-Dade South
- A walk-on who may be counted on heavily
- Considered Dade-South's No. 1 pitcher last season
- Has exceptional control over a variety of pitches
- The possible darkhorse on the FSU staff

PERSONAL: Parents — Mr. and Mrs. Curtis Keeler. High School — Palmetto Senior High. High School Coach — Bobby Delgado. Junior College — Miami-Dade South. FSU Major — Physical Education.

1979 MIAMI-DADE COMMUNITY COLLEGE SOUTH



## 6 JEFF LEDBETTER

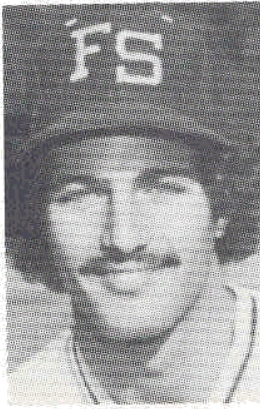
Ht. 6-2                                      Wt. 210                                      Sophomore  
 Bats: Left                                      Throws: Left  
 Largo, Fla.                                      Pitcher-Outfield

- 1979 All-Metro Tournament team member
- 1979 Second team All-South
- All Metro Conference player as a designated hitter
- Drafted out of high school by the New York Yankees
- Possesses potentially the strongest arm on the team
- Second on the team in homeruns with 13 as a freshman
- Places his name on the Seminole All-Time team as a designated hitter in homeruns (13), hitting (.351) and rbi's (54)
- Is expected to see action on the mound and in the outfield
- Hit a homerun in his first at-bat against Florida in the NCAA East Regional
- Led the team with game winning hits at seven
- Had a .344 average and a team leading 10 homeruns for the Tallahassee Colonies this past summer
- Also led the Coloneys in strike outs with 41 in 14 appearances

PERSONAL: Parents — Mr. and Mrs. Steve Ledbetter. High School — Largo High School. High School Coach — Don Machen. FSU Major — Business Administration.

	avg.	g	ab	r	h	2b	3b	hr	bi	sb-cs	bb	so	hp	s-sf	fa
1979	.351	49	148	37	52	10	3	13	54	3-2	33	20	1	1-4	1.000
	w-1	era	app	gs	cg	ip	h	r	er	bb	so				
1979	0-1	13.50	4	3	0	8.0	15	13	12	6	7				





## 4 LIONEL MARTINEZ

Ht. 5-9                      Wt. 160                      Junior  
Bats: Right                      Throws: Right  
Tampa, Fla.                      Second Base

- Most Valuable Player on State Champion Indian River Community College Team
- Has big shoes to fill with the graduation of All-American second baseman Craig Patterson
- Excellent range and possessing a fine glove
- Definite threat on the basepaths
- Always seems to make contact with the ball
- Candidate for the lead-off position for the Seminoles this season

PERSONAL: Parents — Mr. Lionel Martinez. High School — Tampa Catholic. High School Coach — Pete Mulry. Junior College — Indian River Community College. FSU Major — Business.

1979      INDIAN RIVER COMMUNITY COLLEGE



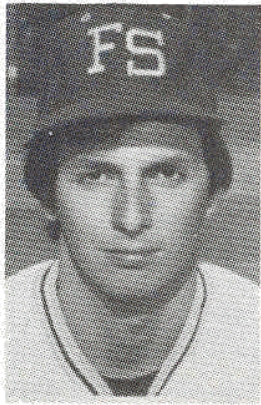
## 30 KEITH PARENTEAU

Ht. 5-11                      Wt. 180                      Junior  
Bats: Right                      Throws: Right  
N. Palm Beach, Fla.      Pitcher

- Earned a 6-2 record this summer with the Coloneys
- Utilizes many pitches, but relies mainly on the slider
- Intelligent pitcher with excellent poise
- Should add much needed depth to Florida State's young staff
- Only third year pitching after having formerly played high school shortstop
- Will be counted on heavily towards the end of the season

PERSONAL: Parents — Mr. and Mrs. Joseph R. Parenteau. High School — Cardinal Newman. High School Coach — Jack Kokinda. Junior College — Palm Beach Community College. FSU Major — Criminology.

1979      PALM BEACH COMMUNITY COLLEGE



## 44 TIM PHILLIPS

Ht. 5-11                      Wt. 170                      Sophomore  
 Bats: Right                      Throws: Right  
 Tallahassee, Fla.                      Pitcher

- Discovered during summer baseball playing for cross-town rivals Buddies
- Exhibited excellent potential in fall drills
- Transfer student from George Wallace Community College
- Possesses a good sinker and curve
- Will be used mostly in relief for the Seminoles
- A very dedicated and hard working player
- A surprise addition to the FSU staff

PERSONAL: Parents — Mr. and Mrs. Ed Phillips. High School — Tallahassee Godby. High School Coach — Frank Kisel. Junior College — George Wallace C. C. FSU Major — Physical Education.

1979      GEORGE WASHINGTON COMMUNITY COLLEGE



## 21 CRAIG RAMSEY

Ht. 5-10                      Wt. 175                      Senior  
 Bats: Right                      Throws: Right  
 Atlanta, Ga.                      Catcher

- Split the catching duties last season with Jack Emerick
- One of the scrappiest players on the team
- Was an All-State player in high school
- Had 30 hits for the Tribe last year — 14 for extra bases
- Gunned down eight opposing baserunners trying to steal
- Went two-for-two including two rbi's in an early season win over Metro rival Tulane
- One of the team leaders on the young squad
- Had three rbi's and a homerun against Georgia Tech in front of his hometown fans

PERSONAL: Parents — Mr. and Mrs. Bill Ramsey. High School — North Springs. High School Coach — Dick Prindle. FSU Major — Finance and Real Estate.

	avg.	g	ab	r	h	2b	3b	hr	bi	sb-cs	bb	so	hp	s-sf	fa
1979	.265	38	113	20	30	10	1	3	22	3-0	13	21	0	2-2	.972
1978	.194	21	31	9	6	3	1	1	2	0-0	5	8	1	0-0	.946
TOT.	.250	59	144	29	36	13	2	4	24	3-0	18	29	1	2-2	.965



## 17 ED SCHNEIDER

Ht. 6-1                      Wt. 190                      Junior  
Bats: Left                      Throws: Left  
Cincinnati, OH                      Pitcher

- Has previously been drafted by the Detroit Tigers, Houston Astros and Oakland A's
- Keeps the hitters off stride with a very lively fastball
- Has had arm trouble, but has progressed well during spring drills
- If healthy, could be the key to the pitching rotation
- Has worked hard to improve himself

PERSONAL: Parents — Mr. and Mrs. Ed Schneider. High School — Oak Hills High School. High School Coach — Clack Eads. Junior College — Indian River Community College. FSU Major — Physical Education.

1979      INDIAN RIVER COMMUNITY COLLEGE



## 46 DAVID SMALLEY

Ht. 6-0                      Wt. 170                      Freshman  
Bats: Left                      Throws: Left  
Ft. Lauderdale, Fla.                      Pitcher

- All-County at Ft. Lauderdale Stranahan
- Former Ft. Lauderdale Player of the Year
- Highly touted prospect who was heavily recruited
- Suffered a broken arm in a freak accident off the field making him unable to participate in fall drills
- Could work his way to becoming one of the best left handed pitchers to ever play at FSU before he graduates
- Has unlimited potential and good desire

PERSONAL: Parents — Mr. James F. Smalley. High School — Stranahan. High School Coach — Peter Cavori. FSU Major — Business.

1979      FT. LAUDERDALE STRANAHAN





## 18 GEORGE TEBBETTS

Ht. 5-11                      Wt. 155                      Sophomore  
Bats: Right                      Throws: Right  
Anna Maria, Fla.                      Infield

- Son of former Cleveland Indian manager Bernie Tebbetts
- Will back-up Don DeLoach and Rick Figueredo at infield positions
- Very valuable part of infield with the ability to play three positions
- Excellent mobility and range in the infield
- Transfer student from Valencia Community College
- An All-City, All-County baseball player at Manatee High School

PERSONAL: Parents — Mr. George Tebbetts, Sr. High School — Manatee High School. High School Coach — John Ensor. Junior College — Valencia Community College. FSU Major — Business.

1979      VALENCIA COMMUNITY COLLEGE



## 2 JAMES WEAVER

Ht. 6-4                      Wt. 200                      Junior  
Bats: Left                      Throws: Left  
Holmes Beach, Fla.                      Outfield

- One of the fastest Seminoles.
- Possesses a strong and accurate throwing arm.
- Will add much needed speed to the Florida State left field position.
- Transfer from Manatee Community College
- All-City in three sports in high school
- A complete player with good power to go along with exceptional speed

PERSONAL: Parents — Dr. and Mrs. Charles A. Weaver. High School — Cardinal Mooney. High School Coach — Lloyd Hankinson. Junior College — Manatee C.C. FSU Major — Physical Education.

1979      MANATEE COMMUNITY COLLEGE

# FLORIDA STATE

## 1980 BASEBALL

NO.	NAME	POS.	B-T	AGE	DOB	HGT.	WGHT.
15	Roy Alvarez	lb	R-R	20	8/15/59	6-0	185
34	Keith Craig	c	R-R	18	3/23/61	6-1	170
42	Mike Cullen	of	L-L	21	7/22/58	5-8	180
20	Don DeLoach	ss	R-R	21	1/06/59	5-10	170
9	Jack Emerick	c	R-R	21	3/18/58	5-11	185
12	Rick Figueredo	3b	R-R	19	6/26/60	5-11	175
49	Ken Fischer	p	L-L	21	10/20/58	5-9	160
29	Mike Fuentes	cf	R-R	21	7/11/58	6-3	190
22	John Gagnon	p	R-R	22	11/29/57	5-11	180
33	Rick Hatcher	p	R-R	21	3/07/58	6-0	195
13	Jim Hatcher	c	R-R	20	6/26/59	5-9	195
47	Ed Howser	2b	R-R	21	5/19/58	5-9	160
10	Ken Huff	of	S-R	20	10/17/59	5-10	170
43	Jay Keeler	p	R-R	20	5/23/59	6-1	175
6	Jeff Ledbetter	p-of	L-L	20	12/25/59	6-2	210
4	Lionel Martinez	2b	R-R	20	2/13/59	5-9	160
30	Keith Parenteau	p	R-R	20	10/28/59	5-11	180
44	Tim Phillips	p	R-R	20	10/08/59	5-11	170
21	Craig Ramsey	c	R-R	21	6/03/58	5-10	175
17	Ed Schneider	p	L-L	20	9/22/59	6-1	190
46	David Smalley	p	L-L	18	8/16/61	6-0	170
26	Ken Smith	p	R-R	21	7/10/58	6-3	200
32	Allen Swindle	p	L-L	20	11/28/59	6-2	185
18	George Tebbetts	inf	R-R	21	10/08/58	5-11	155
2	Jim Weaver	of	L-L	20	10/10/59	6-4	200
39	Dick Wiggins	p	R-R	21	5/20/58	6-3	205
25	John Wolfer	p	R-R	21	11/11/58	6-0	180
8	Mike Yastrzemski	of	S-R	18	8/16/61	5-10	160

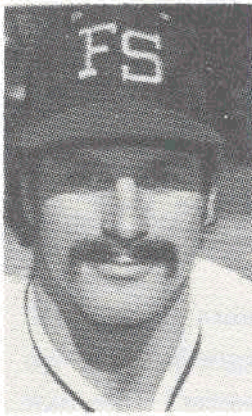
11 Mike Martin, Head Baseball Coach  
 3 Jim Morris, Asst. Baseball Coach  
 5 Bill Fuller, Graduate Assistant

Glenn Baker, Equipment Manager  
 Bob Sikes, Student Trainer

# E UNIVERSITY

## ALL ROSTER

CL.	HOMETOWN	NO.	NAME	POS.
Jr.	West Palm Beach, Fl	2	Jim Weaver	of
Fr.	Laurel Springs, N.J.	4	Lionel Martinez	2b
Jr.	Detroit, Mich.	6	Jeff Ledbetter	p-of
Jr.	Tallahassee, Fl	8	Mike Yastrzemski	of
Sr.	Waukegan, Ill.	9	Jack Emerick	c
Fr.	Tampa, Fl	10	Ken Huff	of
Jr.	Lincoln, Mass.	12	Rick Figueredo	3b
Jr.	Coral Gables, Fl	13	Tim Hatcher	c
Sr.	Lantana, Fl	15	Roy Alvarez	1b
Jr.	Marianna, Fl	17	Ed Schneider	p
Jr.	Marianna, Fl	18	George Tebbetts	inf
Jr.	West Palm Beach, Fl	20	Don DeLoach	ss
Jr.	Columbus, Ga.	21	Craig Ramsey	c
Jr.	Miami, Fl	22	John Gagnon	p
So.	Largo, Fl	25	John Wolfer	p
Jr.	Tampa, Fl	26	Ken Smith	p
Jr.	N. Palm Beach, Fl	29	Mike Fuentes	cf
Jr.	Tallahassee, Fl	30	Keith Parenteau	p
Sr.	Atlanta, Ga.	32	Allen Swindle	p
Jr.	Cincinnati, Ohio	33	Rick Hatcher	p
Fr.	Ft. Lauderdale, Fl	34	Keith Craig	c
Sr.	Hollywood, Fl	39	Dick Wiggins	p
Jr.	Clewiston, Fl	42	Mike Cullen	of
So.	Anna Maria, Fl	43	Jay Keeler	p
Jr.	Holmes Beach, Fl	44	Tim Phillips	p
Sr.	St. Petersburg, Fl	46	David Smalley	p
Sr.	West Palm Beach, Fl	47	Ed Howser	2b
Fr.	Highland Beach, Fl	49	Ken Fischer	p



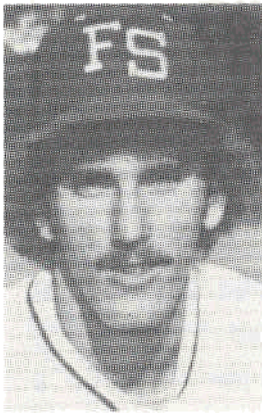
## 35 DICK WIGGINS

Ht. 6-3 Wt. 205 Senior  
 Bats: Right Throws: Right  
 St. Petersburg, Fla. Pitcher

- Led Seminole staff with an 11-4 record
- Second on the squad with a 3.33 era
- Also led the team in innings pitched with 121
- Strikeout leader with 78
- Earned Third Team All-South honors
- Played in Alaskan Summer League with teammate Mike Fuentes
- Pitched a seven-hit shutout against Jacksonville late last season
- Defeated Florida three times and No. 2 ranked Miami once last year
- MVP in Florida Junior College Baseball Tournament in 1978
- Has the dubious distinction of allowing the most homeruns in one season (11)

PERSONAL: Parents — Mr. and Mrs. Richard K. Wiggins. High School — Lakewood. High School Coach — Mike Jacobs. Junior College — Valencia Community College. Junior College Coach — Floyd Perry. FSU Major — Mass Communications.

	w-l	era	app	gs	cg	ip	h	r	er	bb	so
1979	11-4	3.33	16	15	10	121.1	124	52	45	29	78



## 25 JOHN WOLFER

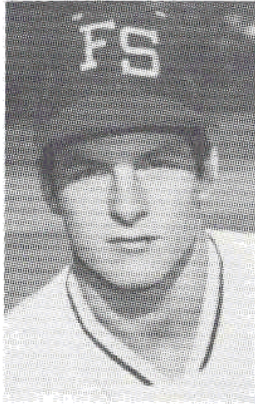
Ht. 6-0 Wt. 180 Senior  
 Bats: Right Throws: Right  
 West Palm Beach, Fla. Pitcher

- Had a perfect 9-0 record for the Seminoles last season
- Third on the squad in era with a 3.60 average
- Earned a 6-0 shutout against Division II National Champion Valdosta State
- Led the pitching staff in pickoffs with six
- Relies on good control and a variety of pitches to keep opposing hitters off stride
- Transfer from Miami-Dade North where he was primarily used as a relief pitcher
- Worked his way into the starting rotation last season
- Proved to be one of the most valuable hurlers on the squad

PERSONAL: Parents — Mr. and Mrs. Hans Wolfer. High School — Forrest Hills. High School Coach — Jim Heaton. Junior College Coach — Demie Mainieri. FSU Major — Physical Education.

	w-l	era	app	gs	cg	ip	h	r	er	bb	so
1979	9-0	3.60	12	11	4	75.0	72	31	30	28	45





## 8 MIKE YASTRZEMSKI

Ht. 5-10                      Wt. 160                      Freshman  
Bats: Switch                      Throws: Right  
Highland Beach, Fla.      Outfield

- Younger son of baseball immortal Carl Yastrzemski
- Will battle for right field starting position
- Quick reactions and good range in the outfield
- Switch hitter with better than average speed
- Played summer ball for the Tallahassee Coloneys
- Potential base stealing threat
- Very intelligent player

PERSONAL: Parents — Mr. and Mrs. Carl Yastrzemski. High School — Cardinal Gibbons High School. High School Coach — Robert Saxon. FSU Major — Pre-Med.

1979      CARDINAL GIBBONS HIGH SCHOOL



**GLENN BAKER**  
Student Manager



**BOB SIKES**  
Student Trainer

# metro

**Metropolitan Collegiate Athletic Conference**

Four years ago the Metropolitan Collegiate Athletic Conference was the new kid on the college sports block.

Now, simply known as Metro to its fans, it is recognized as one of the nation's top athletic conferences.

The Metro Conference was formed in 1975, under the direction of commissioner Larry Albus, with Cincinnati, Georgia Tech, Louisville, Memphis State, St. Louis and Tulane as charter members. Since then, Florida State joined the league in 1976 and when Georgia Tech relinquished its Metro membership in 1978, the league wasted no time in adding Virginia Tech as a seventh team.

The conference was formed primarily as a basketball league (with Louisville, Virginia Tech and Florida State earning the most recent tournament bids) but is quickly becoming respected for its baseball. In 1978 the Metro received an automatic bid to the NCAA South Regional Baseball Tournament for its tournament winner. The practice has continued since.

Last spring, two conference schools — Tulane and Florida State — participated in post season play. Tulane, the conference champion received its automatic bid to the South Regionals while Florida State remained at home and played host to the East Regionals. In the 1978 season, Florida State again earned an at-large bid while Conference champion Memphis State happily accepted its bid for post season play.

The Seminoles captured the 1977 Metro baseball title by defeating Tulane in the final game. Memphis State won the initial Metro crown in 1976.

New head coach Mike Martin will have a chance to show off the fine Florida State facilities again this spring when the Seminoles host the 1980 Metro Spring Sports Championship again this year on the FSU campus. Athletes representing baseball, golf, tennis and track from all seven schools will gather in Tallahassee in May.

Baseball at Metro Conference schools is growing with Florida State and Tulane ranked in the Top 20 most of the 1979 season. Louisville, perennial power Memphis State and newcomer Virginia Tech, a regular visitor to post season competition, will also vie for 1980 crown.

**1979 Championship**  
(Tallahassee, Fla.)

FLORIDA .....	.000	020	000-5	10	3
TULANE .....	.002	200	100-2	7	1

HOLLOWAY, Smith (9) and Ramsey; FRANCINQUES and Morse.

**1978 Championship**  
(Tallahassee, Fla.)

FLORIDA STATE .....	.010	000	206-9	10	0
MEMPHIS STATE .....	.102	000	223-10	13	1

Riley, Fischer (7), Brooks (7), JONES (8), and McDonald; Thetford, Lea (7), Gilbert (8), BRESHEARS (9), and Webster.

**1977 Championship**  
(Tallahassee, Fla.)

FLORIDA STATE .....	.520	002	100-11	12	1
TULANE .....	.000	001	000-1	4	2

CAREY and Kennedy; BUTERA, Francingues (3), Herbert (6), Barnett (7), Falk (7), and Maher.

**1976 Championships**  
(Memphis, Tenn.)

TULANE .....	.000	100	000-1	6	1
MEMPHIS STATE .....	.132	103	14x-15	17	0

DEGROUTTOLLA, Butera (2), Snell (4), and Gaudet; LEE and Mitchell.



the records

## SEMINOLE PLAYERS ARE GETTING NOTICED IN THE PROS

Perhaps no institution in America has provided a pipeline to professional baseball like Florida State University. A total of 68 Seminoles have signed pro contracts in the last 13 seasons. And an amazing 16 former Seminoles have done time in the major leagues since 1958.

More than 20 Florida State players are still active in the professional ranks and six of those finished last season in the major leagues. Catcher Terry



Dick Howser



Joe Nichols

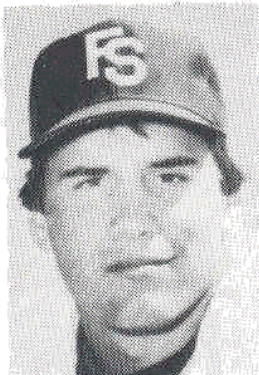
Kennedy and pitcher Danny O'Brien were the latest to join baseball's elite when they were called up by the St. Louis Cardinals at the end of the 1978 season. Among the still active big league players are John Grubb, Rick Langford, Craig Skok and former Seminole manager and now New York Yankee skipper Dick Howser.

The 1978 season was a good year for Seminoles entering the professional ranks. All-American Blane McDonald became the fourth FSU catcher to sign a pro contract in two seasons. Last season the Seminoles sent pitchers Rick Holloway and Joe Nichols and hitting leader Craig Patterson on their way to a professional career.

Florida State's biggest year for signees was in 1977 when an amazing 11 Seminoles inked pro contracts. Florida State has long been known as a hot bed for aspiring professional talent with pro scouts recommending the Tallahassee campus as an excellent place for additional seasoning. A large contingent of scouts see nearly every FSU game.



Craig Patterson



Rick Holloway

Howser was Florida State's first major leaguer when he broke in with the Kansas City Athletics in 1961. He made quite a hit in his rookie season by winning the American League Rookie of the Year Award. Both Howser and Grubb have played in a major league All-Star game — Howser in 1961 and Grubb in 1974. Woody Woodward, a 1964 signee and Rick Langford, a 1973 graduate, have played in a World Series each.

## SEMINOLES IN THE PROS

The following former Seminoles have played in the major leagues or have signed major league contracts.

Name	Affiliation	Name	Affiliation
Gene Ammann	Milwaukee	Dave Moates	Texas
Randy Brown	California	Danny O'Brien	St. Louis
Ron Cash	Detroit	Pat Osburn	Cincinnati
John Grubb	Cleveland	Mac Scarce	Philadelphia
Dick Howser	N.Y. Yankees	Craig Sholey	Boston
Terry Kennedy	St. Louis	Ken Suarez	Texas
Jim Lyttle	Montreal	Woody Woodward	Cincinnati
Rick Langford	Pittsburgh	Bill Zeigler	Texas
<b>1979</b>		<b>1971</b>	
Craig Patterson	Kansas City	Ron Cash	Detroit
Joe Nichols	Montreal	Al Cleveland	Detroit
Rick Holloway	Oakland	Greg Gromek	Detroit
<b>1978</b>		Mike Leber	Boston
Blane McDonald	Atlanta	Harry Saferight	Philadelphia
Mark Gilbert	Chicago Cubs	Mac Scarce	Philadelphia
Brooks Carey	Baltimore	<b>1970</b>	
Bob Benda	Detroit	Gene Ammann	Milwaukee
<b>1977</b>		John Grubb	San Diego
Guillermo Bonilla	Cleveland	Tom Henson	Cincinnati
Ben Curry	Cleveland	Dick Nichols	Boston
Larry Jones	Baltimore	Mike Slade	Texas
Terry Kennedy	St. Louis	Pat Osburn	Cincinnati
Carlos Lezcano	Chicago Cubs	<b>1969</b>	
Jim McArdle	Cincinnati	Mike Easom	Montreal
Rick McGlone	Kansas City	Jim Gurzynski	Los Angeles
Mike McLeod	N.Y. Yankees	Chuck Hines	Pittsburgh
Jackie Smith	Chicago White Sox	Jeff Hogan	Detroit
Joe Hicks	Chicago Cubs	George Lott	Montreal
<b>1976</b>		Dave Moates	Texas
Craig Eaton	Kansas City	Craig Skok	Boston
Jeff Hardy	Chicago Cubs	Dick Gold	Cubs
Bob Mayer	Cincinnati	Chuck Cone	San Diego
<b>1975</b>		<b>1968</b>	
Jim Busby	Pittsburgh	Tom Cook	Oakland
Randy Davidson	Cincinnati	Steve Mastin	Oakland
Danny O'Brien	St. Louis	Wayne Vincent	Seattle
Larry Rothschild	Cincinnati	LaDon Boyd	Oakland
Steve Tebbetts	California	<b>1966</b>	
<b>1974</b>		Jim Lyttle	N.Y. Yankees
Ron Herring	Montreal	Gary Sprague	Cleveland
Marty Maier	Kansas City	Eddie Howell	Kan. City A's
<b>1973</b>		Dick Fernandez	Kan. City A's
John LiBrandi	Pittsburgh	Randy Brown	California
Rick Colzie	Cincinnati	Pete Sarron	Cleveland
Roger Smith	California	Mike Martin	New York Mets
Rick Snyder	Minnesota	Maury Hopkins	New York Mets
Rick Langford	Kansas City	<b>1972</b>	
<b>1972</b>		Dave Nichols	Minnesota
Dan Roatche	Boston	Herb Sikes	St. Louis

# SEMINOLE ALL-STARS

## ALL-REGION SELECTIONS

Bill Campbell, 2b	1955	Ron Cash, 3b	1970
Tony Avitable, p	1956	Gene Ammann, p	1970
Dick Howser, ss	1957	Pat Osburn, p	1970
Dick Howser, ss	1958	Ron Cash, 3b	1971
Mike Copps, of	1958	Harry Safewright, c	1971
Frank Slusher, p	1958	Mac Scarce, p	1971
Dale Koch, 3b	1958	John Librandi, of	1972
Bob Clem, 2b	1959	Tom Rosa, 2b	1972
Jack Dull, 2b	1961	John Librandi, of	1973
Buddy Teagle, c	1962	Tom Rosa, 2b	1973
Mike Augustine, of	1963	Randy Davidson, 2b	1974
Woody Woodward, ss	1963	Randy Davidson, 2b	1975
Ken Suarez, c	1964	Danny O'Brien, p	1975
Jim Lyttle, of	1966	Jim Busby, of	1975
Mike Martin, of	1966	Steve Tebbetts, of	1975
Randy Brown, c	1966	Guillermo Bonilla, 3b	1975
LaDon Boyd, p	1967	Guillermo Bonilla, 3b	1976
Tom Cook, c	1968	Jeff Hardy, ss	1976
Steve Mastin, p	1968	Joe Hicks, 1b	1976
Mike Easom, 1b	1968	Terry Kennedy, c	1976
Dick Gold, 2b	1968	Blane McDonald, c	1978
Dick Gold, 2b	1969	Craig Patterson, 2b	1979
George Lott, p	1969	Mike Fuentes, of	1979
Dick Nichols, 2b	1970		

## ALL-METRO TOURNAMENT SELECTIONS

Terry Kennedy (MVP), catcher	1977
Joe Hicks, designated hitter	1977
Chip Bifano, outfielder	1977
Larry Jones, pitcher	1977
Bob Benda, shortstop	1978
David Mobley, third baseman	1978
Ron Traylor, outfielder	1978
Brooks Carey, pitcher	1978
Ken Huff, outfielder	1979
Mike Fuentes, outfielder	1979
Jeff Ledbetter, designated hitter	1979
Craig Patterson, second baseman	1979

## VARSITY-ALUMNI GAME

A traditional part of Florida State's homecoming festivities for more than a decade, the Varsity-Alumni Game attracts many former Seminoles back to the campus each year.

Year	Varsity	Alumni	Year	Varsity	Alumni
1965	5	4	1973	2	6
1966	6	1	1974	5	1
1967	5	3	1975	1	3
1968	1	3	1976	1	3
1969	6	1	1977	8	5
1970	(Rain)		1978	3	2
1971	3	3	1979	11	5
1972	1	3			

## SEMINOLE ALL-AMERICANS

Dick Howser	1957 First Team	Shortstop	.364
	1958 First Team	Shortstop	.337
Bob Clem	1959 Second Team	Second baseman	.436
Jack Dull	1961 Third Team	Second baseman	.370
Buddy Teagle	1962 First Team	Catcher	.325
Mike Augustine	1963 First Team	Outfielder	.399
Woody Woodward	1963 Third Team	Shortstop	.305
Ken Suarez	1964 First Team	Catcher	.404
Jim Lyttle	1966 First Team	Outfielder	.324
	1966 Sporting News (1st)		
Gary Sprague	1966 Sporting News (2nd)	Shortstop	.379
Tom Cook	1968 Third Team	Catcher	.384
Dick Gold	1969 First Team	Second baseman	.317
Dick Nichols	1970 Second Team	Second baseman	.338
	1970 Sporting News (1st)		
John Grubb	1970 Sporting News (HM)	Outfielder	.303
Ron Cash	1970 Sporting News (HM)	Third baseman	
Pat Osburn	1970 Sporting News (HM)	Pitcher	12-1
Greg Gromek	1970 Academic First Team	Shortstop	.300
Carl Gromek	1970 Academic First Team	Pitcher	5-0
Greg Gromek	1971 Academic First Team	Shortstop	.292
John Librandi	1972 Third Team	Outfielder	.318
Danny O'Brien	1975 Academic First Team	Pitcher	15-2
	1975 Coaches (HM)	Pitcher	
Randy Davidson	1975 Coaches (HM)	Second baseman	.321
Steve Tebbetts	1975 Sporting News (HM)	Outfielder	.374
Jim Busby	1975 Sporting News (HM)	Outfielder	.271
Terry Kennedy	1976 Sporting News (1st)	Catcher	.364
Guillermo Bonilla	1976 Coaches (1st)	Third baseman	.346
Terry Kennedy	1977 Sporting News (1st)	Catcher	.333
	1977 Sporting News (MVP)	Catcher	
Blane McDonald	1978 Coaches (2nd)	Catcher	.393
Craig Patterson	1979 Coaches (2nd)	Second baseman	.397



# SEMINOLE HONOR ROLL

## All-Time Leading Hitters

(226 or MORE AT-BATS AND MINIMUM .327 AVERAGE)	(50-125 AT-BATS AND MINIMUM .350 AVERAGE)	
.397 Craig Patterson	1979 (95-239)	.436 Bob Clem 1959 (44-102)
.351 G. Bonilla	1974 (81-232)	.422 Dick Howser 1956 (38- 90)
.347 Craig Patterson	1978 (79-228)	.414 Riley SeEVERS 1955 (27- 65)
.338 Dick Nichols	1970 (80-237)	.403 Bob Russell 1956 (25- 62)
.330 G. Bonilla	1975 (77-233)	.392 Fred Twoomey 1955 (29- 74)
(126-225 AT-BATS AND MINIMUM .350 AVERAGE)		.391 Joe Hicks 1976 (45-115)
.399 M. Augustine	1963 (65-163)	.383 Bob Clem 1960 (36- 94)
.393 B. McDonald	1978 (79-201)	.370 Jack Dull 1961 (50-108)
.386 Mike Easom	1968 (56-145)	.368 Cooter Mills 1954 (32- 87)
.384 Tom Cook	1968 (53-138)	.367 Doug Casey 1979 (22- 60)
.379 Gary Sprague	1966 (74-195)	.365 Owen McCarron 1958 (35- 96)
.374 Steve Tebbetts	1975 (76-203)	.364 Dick Howser 1957 (32- 88)
.373 Mike Martin	1966 (68-185)	.361 Ronald Melton 1950 (30- 83)
.366 Mike Fuentes	1979 (78-213)	.3563 Ray Bazzell 1960 (31- 87)
.365 Woody Woodward	1962 (54-148)	.3555 Billy Campbell 1955 (32- 90)
.3641 Terry Kennedy	1976 (71-195)	.353 Owen McCarron 1952 (36-102)
.3636 Bill Williamson	1962 (56-154)	
.352 Ron Cash	1971 (58-165)	
.351 Jeff Ledbetter	1979 (52-148)	

### No Hitters

Mike McLeod vs. Olivet (23-0) . . . . .	1977
Gene Ammann vs. South Florida (7-0) . . . . .	1970
Gene Ammann and Lin Garrett vs. Wake Forest (3-0) . . . . .	1968*
Jeff Hill vs. Springfield (18-0) . . . . .	1968*
Wayne Vincent vs. Ga. Southern (7-1) . . . . .	1967
Frank Slusser vs. Miami (18-0) . . . . .	1958

\*These two no-hitters occurred on the same day.

### One Hitters

Mike McLeod-Jim Miller vs. Otterbein (12-2, 7 innings) . . . . .	1976
Larry Jones vs. St. Leo (1-0, 7 innings) . . . . .	1975
Larry Jones vs. Jacksonville (8-0) . . . . .	1975
Larry Jones vs. Mercer (4-0) . . . . .	1975
Horne-O'Brien vs. Mercer-Atl. (3-1) . . . . .	1974
Farmer, O'Brien, Price, Rice vs. Florida Int'l. (7-4) . . . . .	1973
Terry Farmer vs. Fairleigh Dickinson (5-0, 7 innings) . . . . .	1973
Terry Farmer vs. Florida (8-0, 7 innings) . . . . .	1973
Robin Flake, Mike Scarce, Mac Scarce vs. Union (5-0) . . . . .	1971
Ammann, Gromek, Flake vs. Union (5-1) . . . . .	1970
Pat Osburn vs. So. Alabama (4-0) . . . . .	1970
Gene Ammann vs. So. Alabama (11-0) . . . . .	1970
Osburn, Harbaugh vs. S. Florida (8-0) . . . . .	1970
Gene Ammann vs. So. Alabama (9-0) . . . . .	1970
Marvin Stringfellow vs. Auburn . . . . .	1965
Jerry Boxer vs. Yale (7-0) . . . . .	1957
Jerry Boxer vs. Rollins (5-0) . . . . .	1957
Tony Avitable vs. Furman (6-1) . . . . .	1956
Max Long vs. Furman (20-2) . . . . .	1956
Bristol, Avitable, Long vs. Rollins (9-0) . . . . .	1956



## All-Time Teams

HITTING TEAM				HOME RUN TEAM			
Pos.	Name	Year	Avg. (H-AB)	Pos.	Name	Year	HR Avg.
C	Ken Suarez	1964	.404 (44-109)	C	Terry Kennedy	1976	21 .364
1B	Fred Twoomey	1955	.392 (29- 74)	1B	Mark Coulter	1976	9 .272
2B	Craig Patterson	1979	.397 (95-239)	2B	Craig Patterson	1979	10 .397
3B	Ron Cash	1971	.352 (58-165)	3B	David Mobley	1978	13 .320
SS	Dick Howser	1956	.422 (38- 90)	SS	Jeff Hardy	1976	11 .301
OF	Bob Clem	1959	.436 (44-101)	OF	Jim Lyttle	1966	13 .324
OF	Riley Seevers	1955	.414 (27- 65)	OF	C. Lezcano	1977	10 .346
OF	Bob Rosel	1956	.403 (25- 62)	OF	Mike Fuentes	1979	16 .366
DH	Jeff Ledbetter	1979	.351 (52-148)				
P	R. Colzie	1972	.370 (10- 27)				

RBI TEAM				FIELDING TEAM			
Pos.	Name	Year	RBI Avg.	Pos.	Name	Year	Avg. E-TC
C	Terry Kennedy	1976	64 .364	C	L. Lee	1973	1.000 ( 0-120)
1B	Herby Sikes	1972	53 .317	1B	J. Foxwell	1973	.996 ( 1-242)
2B	Craig Patterson	1979	64 .397	2B	Craig Patterson	1979	.981 ( 5-264)
3B	G. Bonilla	1976	54 .346	3B	David Mobley	1978	.970 (11-349)
SS	Bob Benda	1978	59 .321	SS	W. Higginbotham	1975	.946 (10-186)
OF	John Librandi	1972	58 .318	OF	K. Doria	1971	1.000 ( 0- 72)
OF	Jim Lyttle	1966	51 .324	OF	B. Hudson	1951	1.000 ( 0- 51)
OF	C. Lezcano	1977	46 .346	OF	N. Martin	1959	1.000 ( 0- 40)
DH	Jeff Ledbetter	1979	54 .351				

## Leading Hitters

1948	Jack Wilson	.298	(20- 67)
1950	Ronald Melton	.361	(30- 83)
1951	Lee Bailey	.352	(32- 91)
1952	Ralph Blinn	.317	(20- 63)
1953	Cooter Mills	.319	(29- 91)
1954	Cooter Mills	.368	(32- 87)
1955	Riley Seevers	.415	(27- 65)
1956	Dick Howser	.422	(38- 90)
1957	Dick Howser	.364	(32- 88)
1958	Owen McCarron	.365	(35- 96)
1959	Bob Clem	.436	(44-101)
1960	Bob Clem	.383	(36- 94)
1961	Jack Dull	.370	(40-108)
1962	Woody Woodward	.365	(54-148)
1963	Mike Augustine	.399	(65-163)
1964	Ken Suarez	.404	(44-109)
1965	Gary Nichols	.333	(29- 87)
1966	Gary Sprague	.369	(74-195)
1967	Bob Canty	.340	(18- 53)
1968	Mike Easom	.386	(56-145)
1969	Dick Nichols	.336	(45-138)
1970	Dick Nichols	.338	(80-237)
1971	Ron Cash	.352	(58-165)
1972	Tom Rosa	.338	(69-204)
1973	Tom Rosa	.317	(66-208)
1974	Guillermo Bonilla	.351	(82-232)
1975	Steve Tebbetts	.374	(76-203)
1976	Joe Hicks	.391	(45-115)
1977	Carlos Lezcano	.346	(63-182)
1978	Blane McDonald	.393	(79-201)
1979	Craig Patterson	.397	(95-239)

# TEAM RECORDS

## GAMES PLAYED

Most — 68 in 1972 (W45-L23)  
Fewest — 17 in 1948 (W9-L8)

## VICTORIES

Most — 49 in 1970 (L9-T1) and 1975 (L10)  
Fewest — 9 in 1948 (L8)

## LOSSES

Most — 25 in 1974 (W37-T1)  
Fewest — 4 in 1952 (W17)

## WINNING PERCENTAGE

Highest — .854 in 1968 (35-6)  
Lowest — .529 in 1948 (9-8)

## WINNING STREAK

Longest — 21 in 1968 (Mar. 23-Apr. 4) and  
1969 (Mar. 29-Apr. 24)

## LOSING STREAK

Longest — 5 in 1974

## ATTENDANCE

Home — 4,640 vs. Florida, 1979

## SHUTOUTS

Most Times Have Been — 5 in 1974 (63  
games)  
Fewest Times Been — None in 1970 (59  
games) and other seasons with fewer  
games  
Longest Streak Without Being — 90 over  
four seasons from 1962 through 1965

## BATTING AVERAGE

Highest — .321 in 1955 (23 games)  
Lowest — .237 in 1967 (46 games)

## EXTRA INNING GAMES

Most — 6 in 1974  
Longest — 15 innings on several occasions

## AT BATS

Game — 53 vs. Hawaii, 1977 (15 innings)  
Both Teams — 107 vs. Hawaii, 1977 (15  
innings, FSU 53, UH 54)  
Most in Season — 2,305 in 1972 (68 games)  
Fewest in Season — 692 in 1951 (18  
games)  
Plate Appearances — inning — 19 vs. JU,  
1976

## RUNS SCORED

Inning — 13 vs. JU, 1976 (8th)  
Game — 24 vs. Miss. St., 1966 (24-2),  
vs. Jacksonville St., 1954 (24-0), vs. Ohio  
State, 1978 (24-0)  
Both Teams — 37 vs. Ohio State, 1978  
(24-13)  
Fewest in Season — 101 in 1948 (17  
games)  
Winning Margin — 24 vs. Jacksonville St.,  
1954 (24-0)  
Most in Season — 494 in 1979 (61 games)

## HITS

Inning — 11 vs. JU, 1976 (8th)  
Game — 23 vs. Miss. St., 1966, vs.  
Florida, 1979  
Both Teams — 36 vs. Florida, 1979  
(FSU 23, Fla. 13)  
Most in Season — 670 in 1972 (68 games)  
Fewest in Season — 186 in 1952 (21  
games)

## DOUBLES

Game — 7 vs. Niagara, 1975, Kentucky,  
1966, FAMU, 1971  
Both Teams — 9 vs. Auburn, 1972 (FSU  
4, AU 5)  
Most in Season — 105 in 1979 (61 games)  
Fewest in Season — 24 in 1951 (18  
games)

## TRIPLES

Game — 5 vs. Ky. Wesleyan, 1968  
Both Teams — 5 vs. Ky. Wesleyan, 1968  
Most in Season — 35 in 1969 (52 games)  
and 1972 (68 games)  
Fewest in Season — 9 in 1959 (33 games)

## HOME RUNS

Game — 6 vs. Memphis St., 1979  
Both Teams — 7 vs. Valdosta St., 1978  
(Valdosta 4, FSU 3)  
Grand Slams — 5 in 1979  
Most in Season — 82 in 1979 (61 games)  
Fewest in Season — 3 in 1954 (21 games)

## TOTAL BASES

Game — 42 vs. Miss. St., 1966  
Both Teams — 55 vs. Miss. St., 1966  
(FSU 42, MSU 13)  
Most in Season — 1008 in 1979 (61 games)  
Fewest in Season — 250 in 1952 (21  
games)

## SLUGGING AVERAGE

Highest in Season — .512 in 1979  
(61 games)

## RUNS BATTED IN

Game — 23 vs. Olivet, 1977  
Both Teams — 27 vs. Wake Forest, 1969  
(FSU 14, WF 13), 27 vs. Jacksonville,  
1979 (FSU 21, JU 8)  
Most in Season — 435 in 1979 (61 games)

## BASES ON BALLS

Game — 18 vs. Ithaca College, 1957  
Both Teams — 23 vs. Miami, 1956 (7 by  
FSU, 16 by UM)  
Most in Season — 349 in 1976 (56 games)  
Fewest in Season — 93 in 1955 (22 games)

#### **STRIKEOUTS**

Game — 17, Fla. Southern, 1972  
Both Teams — 29 vs. Ga. Southern, 1970  
(16 by GSC, 13 by FSU) and vs. Georgia  
1968 (18 by FSU, 11 by Georgia)  
Most in Season — 336 in 1969 (22 games)  
Fewest in Season — 93 in 1955 (22 games)

#### **STOLEN BASES**

Game — 11 vs. Stetson, 1957  
Both Teams — 13 vs. Stetson, 1973  
Most in Season — 118 in 1975 (59 games)  
Fewest in Season — 20 in 1954 (21 games)  
Allowed in Game — 13 vs. Stetson, 1973  
Most Allowed in Season — 76 in 1972 (68  
games)  
Fewest Allowed in Season — 7 in 1962 (28  
games) and 1968 (41 games)

#### **PUTOUTS**

Most in Season — 1,728 in 1972 (68  
games)

#### **ASSISTS**

Most in Season — 810 in 1972 (68 games)  
Fewest in Season — 226 in 1960 (22  
games)

#### **ERRORS**

Most in Season — 123 in 1972 (68 games)  
Fewest in Season — 43 in 1955 (22 games)

#### **FIELDING AVERAGE**

Highest — .965 in 1979 (77 errors in  
2210 chances)  
Lowest — .915 in 1959 (33 games)

#### **DOUBLE PLAYS**

Most in Season — 59 in 1974 (63 games)  
Most in Game — 4 vs. South Fla., 1979

#### **PITCHERS APPEARED**

Most in Season — 157 in 1972 (68 games)

#### **COMPLETE GAMES**

Most in Season — 27 in 1969 (52 games)

#### **INNINGS PITCHED**

Most in Season — 594 2/3 in 1972 (68  
games)

#### **SAVES**

Most in Season — 27 in 1971 (57 games)

#### **SHUTOUTS**

Most in Season — 15 in 1975 (59 games)  
and 1970 (59 games)  
Most consecutively — 4 in 1970 (USA  
4-0; UDA 11-0; USF 7-0; USF 8-0) and  
1973 (Cumberland 3-0; Cumberland 9-0;  
St. Leo 3-0; St. Leo 11-0)  
Consecutive Scoreless Innings — 40 in  
1973 (six games, including four shutouts)

#### **NO HITTERS**

Season — 2 in 1968 (vs. Wake Forest  
and Springfield on the same day)

#### **ONE HITTERS**

Most in Season — 6 in 1970

#### **TWO HITTERS**

Most in Season — 6 in 1970 and 1976

#### **EARNED RUN AVERAGE**

Lowest in Season — 1.49 in 1970 (59  
games)  
Highest in Season — 4.27 in 1962 (37  
games)

#### **BATTING AVERAGE ALLOWED**

Lowest in Season — .186 in 1970 (59  
games)  
Highest in Season — .277 in 1979 (61  
games)

#### **RUNS ALLOWED**

Most in Season — 325 in 1972 (68 games)  
Fewest in Season — 72 in 1952 (21  
games)  
Most in Game — 24 to Clemson, 1959  
(24-2)

#### **EARNED RUNS**

Most Allowed in Season — 235 in 1974  
(63 games)  
Consecutive Innings without giving up —  
48 in 1976

#### **HITS ALLOWED**

Most in Season — 578 in 1972 (68 games)  
Fewest in Season — 130 in 1952 (21  
games)  
Most in Game — 23 by Nevada-Las Vegas,  
1978  
Consecutively — 7 by So. Florida, 1974

#### **STRIKEOUTS RECORDED**

Most in Game — 24 vs. Furman, 1956  
Most in Season — 528 in 1970 (59 games)  
Fewest in Season — 126 in 1954 (21  
games)

#### **WALKS ALLOWED**

Most in Season — 340 in 1972 (68 games)  
Fewest in Season — 85 in 1953 (24 games)  
Most in Game — 18 vs. Stetson, 1976

#### **HOME RUNS ALLOWED**

Most in Season — 38 in 1979 (61 games)  
Fewest in Season — 4 in 1951 (18 games)  
Most in Game — 4 by Valdosta State, 1978

# INDIVIDUAL RECORDS

## GAMES PLAYED

Most in Season — 67, John Librandi, 1972  
Most in Career — 222, Carlos Lezcano, 1974-1977  
Consecutively — 63, Randy Davidson, 1974; Windle Higginbotham, 1974  
Consecutively in Career — 123, Craig Patterson, 1978-79

## BATTING AVERAGE

Highest Season — .436, Bob Clem, 1959  
Highest Career — .410, Bob Clem, 1959-60

## SLUGGING AVERAGE

Highest Season — .810, Terry Kennedy, 1976 (158 TB 195 AB)

## AT BATS

Game — 7, by a number of players  
Season — 244, Randy Davidson, 1974  
Career — 804, Guillermo Bonilla, 1974-77

## RUNS SCORED

Game — 6, Mark Gilbert vs. Ohio State, 1978  
Inning — 2, by several players  
Season — 73, Mark Gilbert, 1978  
Career — 165, Guillermo Bonilla, 1974-77

## HITS

Inning — 2, several players  
Game — 5, Steve Tebbetts vs. Army, 1975; John Librandi vs. Auburn, 1972; Bob Benda vs. Ohio State, 1978; Blane McDonald vs. Cincinnati, 1978; Craig Patterson vs. Valdosta, 1979  
Season — 95, Craig Patterson, 1979  
Career — 281, Guillermo Bonilla, 1974-77

## HITTING STREAKS

Consecutive Games — 19, Dick Gold, 1969  
Consecutive Hits — 8, Guillermo Bonilla, 1976  
Consecutive Times on Base — 12, Guillermo Bonilla, 1976; Mark Gilbert, 1978

## DOUBLES

Game — 3, Maury Hopkins vs. Kentucky, 1966; Tom Thomas vs. Kentucky, 1966; Jeff Hardy vs. Auburn, 1976  
Season — 18, Guillermo Bonilla and Terry Kennedy, 1976  
Career — 52, Guillermo Bonilla, 1974-77

## TRIPLES

Game — 2, by five players, most recently by Ron Cash vs. So. Florida, 1970  
Season — 9, Dick Gold, 1969  
Career — 12, Dick Gold, 1967-69; Bob Hudson, 1953-55

## HOME RUNS

Game — 2, 17 players  
Season — 21, Terry Kennedy, 1976  
Career — 32, Terry Kennedy, 1975-77  
Grand Slams, Game — 2, Craig Patterson vs. Wright State, 1979  
Grand Slams, Season — 5 in 1979

## TOTAL BASES

Game — 11, John Librandi vs. Ga. Southern, 1972  
Season — 158, Terry Kennedy, 1976  
Career — 395, Guillermo Bonilla, 1974-77

## RUNS BATTED IN

Game — 9, Mike Fuentes vs. JU, 1979  
Season — 70, Mike Fuentes, 1979  
Career — 150, Guillermo Bonilla, 1974-77

## WALKS

Game — 5, Mike Leber vs. Valdosta State, 1971; Dick Howser vs. Miami, 1956; Mark Gilbert vs. Ohio State, 1978  
Season — 62, Mike Gilbert, 1978  
Career — 97, Bruce Huff, 1976-79

## STRIKEOUTS

Fewest Season — 1, Cooter Mills, 1954 (87 AB)  
Most Season — 58, Walt Sumner, 1969  
Most in Game — 5, Dick Nichols vs. Ga. Southern, 1970 and vs. So. Cal., 1970 (both 15 Innings)  
Most Career — 131, Carlos Lezcano, 1974-1977

## STOLEN BASES

Game — 6, Chip Bifano vs. Kearney St., 1977  
Season — 48, Mark Gilbert, 1978  
Career — 64, Randy Davidson, 1974-75

## PUTOUTS

Season — 506, Windle Higginbotham, 1974  
Career — 675, Harry Saferight, c. 1970-71

## ASSISTS

Season — 188, Dick Nichols, 2b, 1970  
Career — 418, Guillermo Bonilla, 3b, 1974-77

## ERRORS

Most Season — 28, Greg Gromek, ss, 1970 (265 chances, .865)  
Most Career — 74, Guillermo Bonilla, 3b, 1974-77  
Fewest Season — None, Steve Tebbetts, of, 1975 (92 chances); Larry Lee, c, 1973 (120 chances); Ken Doria, of, 1972 (72 chances)

## APPEARANCES

Season — 29, Mac Scarce, 1971  
Career — 63, Larry Jones, 1974-77

## STARTS

Season — 18, Marty Rice, 1972  
Career — 55, Larry Jones, 1974-77

## RELIEF APPEARANCES

Season — 29, Mac Scarce, 1971  
Career — 45, Mac Scarce, 1970-71

## COMPLETE GAMES

Season — 12, Danny O'Brien, 1975 (17 starts); Brooks Carey, 1978 (15 starts)  
Career — 23, Wayne Vincent, 1966-68

## INNINGS PITCHED

Season — 142 1/3, Marty Rice, 1972  
Career — 399, Larry Jones, 1974-77

## SAVES

Season — 18, Mac Scarce, 1972 (29 App.)  
Career — 30, Mac Scarce, 1970-71 (45 App.)

## SHUTOUTS

Season — 8, Gene Ammann, 1970  
Career — 11, Gene Ammann, 1968-70  
Consecutive — 4, Gene Ammann, 1970 (Auburn 5-0; Florida 1-0 in 10 Innings; E. Carolina 2-0 at Dist. 3; Arizona 4-0 at CWS)  
Consecutive Scoreless Innings — 41 1/3 Gene Ammann, 1970 (five games including four shutouts)

#### VICTORIES

Season — 15, Larry Jones, 1975 (15-1);  
Danny O'Brien, 1975 (15-2); Gene  
Ammann, 1970 (15-0)  
Career — 39, Larry Jones, 1974-77  
(39-10)  
Consecutive in Season — 15, Larry Jones,  
1975; Gene Ammann, 1970  
Consecutive in Career — 18, Larry Jones,  
1974 (3) and 1975 (15)

#### LOSSES

Fewest Season — None by Gene Ammann  
in 15 decisions, 1970 and several  
others in fewer decisions  
Fewest Career — 2, Gene Ammann,  
1968-70 (33 decisions)  
Most Season — 6, Danny O'Brien, 1974  
(13 decisions); Marty Howell, 1964  
Most Career — 13, Marv Stringfellow,  
1965-67 (29 decisions)

#### EARNED RUN AVERAGE

Lowest Season — 0.66, Gene Ammann,  
1970 (10 ER in 137 innings)  
Lowest Career — 1.45, Wayne Vincent,  
1966-68 (58 ER in 292 innings)  
Highest Season — 5.55, Chuck Sanders,  
1953  
Highest Career — 4.22, Marty Howell,  
1962-64

#### RUNS ALLOWED

Fewest Season — 18, Steve Mastin,  
1968 (107 innings)  
Most Season — 60, Marty Rice, 1972,  
(142 2/3)  
Most Career — 152, Larry Jones,  
1974-77 (399 innings)

#### EARNED RUNS ALLOWED

Fewest Season — 8, Max Long, 1956  
(45 innings)  
Most Season — 47, Dave Fernald, 1972,  
(105 2/3 innings)  
Most Career — 104, Larry Jones,  
1974-77, (399 innings)

#### HITS ALLOWED

Fewest Per 9 Innings Season — 3.51,  
Mac Scarce, 1971 (13 in 33 1/3)  
Most Season — 127, Marty Rice, 1972  
(142 2/3)  
Most Career — 279, Bill Fuller, 1970-  
73 (293 1/3)

#### HOME RUNS ALLOWED

Most Season — 11, Dick Wiggins, 1979

#### STRIKEOUTS

Game — 24, Tony Avitable vs. Furman,  
1956  
Season — 154, Pat Osburn, 1970  
Career — 345, Larry Jones, 1974-77

#### WALKS ALLOWED

Most Season — 72, Dave Fernald, 1972  
(105 2/3 innings)  
Most Career — 236, Larry Jones, 1974-  
77



Former Florida State All-American Craig Patterson will be one of the players the Seminoles will have to replace this season. Last year, the durable second baseman led the team in hits (95) and average (.397) and was selected by the Kansas City Royals in the 1979 draft.

## RECORD AGAINST ALL OPPONENTS

Team	First	Last Meeting	Series	Standing	
	Meeting	Year		FSU	OPP
Alabama	1967	1968	6-1	2	1
Amherst	1952	1964	5-0	7	1
Arizona	1963	1970	4-0	1	1
Army	1975	1975	7-4	1	0
Auburn	1954	1976	1-2	43	34
Austin-Peay	1979	1979	12-0	2	0
Belmont Abbey	1969	1969	8-4	2	0
Biscayne	1976	1976	17-6	4	0
Bowling Green	1970	1970	17-8	1	0
Bradley	1950	1950	1-10	1	1
Brown	1971	1971	6-1	5	1
Chicago-State	1972	1972	11-2	3	0
Cincinnati	1953	1979	13-3	6	0
Clemson	1958	1974	5-3	19	14
Columbus College	1974	1976	1-0	5	0
Connecticut	1957	1957	3-5	0	1
Cumberland	1973	1973	9-0	2	0
Dartmouth	1970	1970	6-0	1	0
Davidson	1954	1954	7-1	1	0
Delaware	1979	1979	6-7	0	1
Duke	1954	1959	2-6	15	9
East Carolina	1962	1970	2-0	4	2
East Tennessee	1978	1978	7-4	2	0
Eastern Michigan	1975	1975	1-2	0	1
Fairleigh Dickinson	1973	1973	2-1	2	0
Florida	1956	1979	5-9	52	44
Florida A & M	1971	1979	9-1	12	0
Fla. International	1973	1975	12-4	5	1
Florida Southern	1949	1974	2-4	29	13
Furman	1955	1969	7-2	12	1
George Washington	1958	1959	3-2	2	0
Georgia	1951	1971	2-4	25	1
Georgia Southern	1948	1979	1-8	74	27
Ga. Southwestern	1976	1976	10-4	3	1
Georgia Tech	1959	1979	11-4	18	5
Hawaii	1977	1977	5-2	1	1
Holy Cross	1970	1970	3-0	2	0
Howard	1976	1976	9-1	1	1
Illinois	1956	1970	10-0	5	0
Indiana	1956	1956	14-10	2	0
Ithaca	1957	1962	5-4	3	0
Jacksonville State	1953	1973	13-5	3	0
Jacksonville Univ.	1964	1979	9-10	37	13
Kearney State	1977	1977	11-1	2	0
Kentucky	1965	1977	6-4	6	1
Kentucky Wesleyan	1968	1968	15-5	2	0
Kenyon	1952	1952	11-2	2	0
Lafayette	1971	1971	2-1	3	0
Lewis	1974	1974	5-7	0	3
LSU	1955	1975	4-2	2	2
Louisville	1977	1978	7-5	2	1
Loyola (La.)	1952	1968	4-1	10	0

Team	First	Last Meeting		Series Standing	
	Meeting	Year	Score	FSU	OPP
Marietta	1973	1977	8-2	1	1
Marshall	1978	1978	4-0	0	1
Maryland	1965	1970	10-1	4	0
Memphis State	1977	1979	11-1	3	0
Mercer	1948	1979	2-4	15	5
Mercer-Atlanta	1974	1979	4-2	3	0
Miami (Fla.)	1951	1979	3-2	53	26
Michigan	1959	1962	7-10	1	1
Michigan State	1957	1975	11-3	9	6
Middle Georgia	1948	1948	7-6	2	0
Millsaps	1949	1949	10-8	1	0
Mississippi	1949	1972	3-8	6	1
Mississippi College	1948	1951	7-8	13	4
Mississippi State	1964	1970	5-4	5	2
Morehead State	1978	1978	3-2	2	0
Navy	1960	1966	0-1	3	4
New York University	1970	1970	4-2	2	0
Nevada-Las Vegas	1977	1978	6-13	2	4
Niagara	1974	1976	15-4	7	0
North Carolina	1956	1970	3-2	14	4
North Carolina State	1962	1968	1-4	2	4
UNC-Wilmington	1974	1974	10-4	3	0
Northeast La.	1964	1964	7-4	1	0
Northern Illinois	1971	1971	7-1	1	0
North Central	1977	1977	14-3	3	0
Notre Dame	1956	1958	3-2	3	0
Oakland	1978	1979	13-6	4	0
Oglethorpe	1949	1949	5-7	0	1
Ohio	1970	1974	3-6	1	1
Ohio State	1960	1978	7-4	3	3
Olivet	1977	1977	16-1	2	0
Otterbein	1976	1976	10-3	2	0
Parsons	1967	1967	4-16	0	2
Penn State	1957	1969	8-4	7	2
Richmond	1972	1972	10-5	1	0
Rider College	1970	1974	6-1	2	0
Rollins	1948	1973	5-0	11	11
Rose Hulman	1978	1978	13-1	4	0
Rutgers	1966	1966	18-10	1	0
Santa Clara	1962	1962	6-11	1	1
Savannah	1948	1948	8-3	1	1
Seton Hall	1975	1975	0-11	0	1
South Alabama	1969	1978	7-3	19	16
South Carolina	1969	1974	0-1	1	2
South Florida	1969	1979	10-1	8	0
Southeastern La.	1953	1953	5-4	1	1
Southern California	1963	1977	3-2	1	3
Southern Illinois	1968	1970	6-1	6	1
Southwestern La.	1976	1976	13-10	2	0
Springfield	1967	1968	18-0	4	0
Springhill	1966	1966	14-2	4	0
St. Francis (Ill.)	1979	1979	8-1	3	1
St. Joseph's	1972	1973	9-4	9	4
St. Leo	1969	1979	1-5	28	3

Team	First Meeting	Last Meeting		Series Standing	
		Year	Score	FSU	OPP
St. Louis	1965	1965	3-5	0	1
Stetson	1949	1979	9-14	29	18
Tampa	1949	1975	10-2	22	4
Tennessee	1951	1974	0-2	4	3
Tennessee-Martin	1979	1979	10-4	2	0
Texas	1965	1970	11-2	2	1
Troy State	1948	1979	12-0	7	1
Tulane	1967	1979	2-5	12	6
Union University	1970	1970	8-6	5	0
Valdosta State	1963	1979	14-14	16	4
Vanderbilt	1972	1972	19-4	2	1
Virginia	1972	1972	14-7	2	0
Virginia Tech	1967	1967	7-2	1	0
Wake Forest	1962	1969	10-1	15	5
Western Kentucky	1978	1979	14-4	3	0
Western Michigan	1959	1974	2-4	6	8
West Virginia	1956	1962	6-5	3	2
William & Mary	1967	1967	5-4	1	0
Wisconsin	1955	1958	3-1	8	1
Wright State	1979	1979	13-6	2	0
Yale	1957	1957	11-8	2	0
<b>OTHER AMATEURS</b>					
Camp Lejune	1949	1954	5-6	3	1
Jacksonville					
Naval Air Station	1953	1954	7-4	2	2
Pensacola Navy	1965	1965	10-2	3	0
Valdosta Red Sox	1968	1968	3-1	4	0
<b>PRO TEAMS</b>					
Birmingham (AA)	1968	1968	5-6	0	3
Knoxville (A)	1958	1958	3-2	1	0
Pittsfield (AA)	1968	1968	0-1	0	3
Tallahassee Citizens (A)	1951	1951	16-6	1	0
Tallahassee Rebels (A)	1954	1954	2-5	1	1
Pawtucket (AAA)	1970	1970	3-14	0	1
Baltimore (AL)	1970	1970	5-10	0	1
New York (AL)	1978	1978	5-10	0	1



**Although they're all wearing different uniforms, they're all still Seminoles: Old Timers Day, an annual fall event, brings back many past Florida State players who have since made it in the pros or who have obtained coaching positions in the college ranks.**



# THROUGH THE YEARS

Year	Coach	Captain	W	L	T	Runs	Opp	BA	Opp
1948	Charlie Armstrong	Ron Nettles	9	9	0	101	121		
1949	Charlie Armstrong	Sam Cox	11	8	0	126	103		
1950	Charlie Armstrong	Bob Trowbridge	11	7	0	122	104		
1951	Charlie Armstrong	Augie Pompelia	13	6	0	161	97	.292	.234
1952	Ralph Matherly	Bob Trowbridge	17	4	0	158	72	.266	.188
1953	Ralph Matherly	Cooter Mills	13	10	1	156	254		
1954	Ralph Matherly	Bob Hudson	13	8	0	164	102	.269	
1955	Danny Litwhiler	Billy Campbell							
		Bob Hudson	17	6	0	189	98	.321	
1956	Danny Litwhiler	Max Long	24	6	0	244	121	.295	
1957	Danny Litwhiler	Carlee Hendrix	22	9	0	232	120	.297	
1958	Danny Litwhiler	Dick Howser	20	7	0	198	104	.295	.208
1959	Danny Litwhiler	Dale Koch	22	11	0	258	166	.282	.231
1960	Danny Litwhiler	Ray Bazzell	13	9	0	183	136	.313	.254
1961	Danny Litwhiler	Frank Davis							
		Jack Dull	21	7	0	203	238	.301	.256
1962	Danny Litwhiler	Ray McShane							
		Bob Madison	23	14	0	254	221	.296	.258
1963	Danny Litwhiler	Al Beccaccio	26	13	0	250	151	.278	.213
1964	Fred Hatfield	Jim Reed	23	13	1	244	171	.273	.247
1965	Fred Hatfield	Gerry Chmielewski	32	11	1	305	179	.281	.253
1966	Fred Hatfield	Dick Fernandez	39	13	0	417	192	.294	.214
1967	Fred Hatfield	Roy Mewbourne	32	14	0	214	155	.234	.220
1968	Fred Hatfield	Chuck Cone							
		Bob Canty	35	6	0	291	120	.284	.215
1969	Jack Stallings	Dick Gold							
		Mike Easom	38	13	1	303	158	.273	.219
1970	Jack Stallings	Dick Nichols	49	9	1	261	144	.277	.186
1971	Jack Stallings	Harry Saferight							
		Ron Cash	41	16	0	341	208	.282	.208
1972	Jack Stallings	Ken Doria	45	23	0	473	325	.291	.251
		Mike Scarce							
1973	Jack Stallings	John Librandi	38	21	0	331	218	.239	.218
		Denny Williams							
1974	Jack Stallings	Randy Davidson	37	25	0	320	269	.268	.232
1975	Woody Woodward	Randy Davidson	49	10	0	371	162	.300	.198
1976	Woody Woodward	Craig Eaton	40	16	0	467	228	.302	.210
1977	Woody Woodward	Larry Jones	37	13	0	459	375	.271	.231
1978	Woody Woodward	Brooks Carey	44	18	0	457	303	.309	.269
		Greg Jones							
1979	Dick Howser	Craig Patterson	43	17	1	494	272	.319	.277

# COACHES' RECORDS

Name	Tenure	Years	Won	Lost	Tie	Pct.
Charlie Armstrong	1948-51	4	44	29	0	.6027
Ralph Matherly	1952-54	3	43	22	1	.6591
Danny Litwhiler	1955-63	9	188	82	0	.6963
Fred Hatfield	1964-68	5	161	57	1	.7374
Jack Stallings	1969-74	6	248	107	3	.6969
Woody Woodward	1975-78	4	170	57	0	.7489
Dick Howser	1979	1	43	17	1	.7049

## SEMINOLES IN CHAMPIONSHIP PLAY

Florida State has won six championships since 1957 in the region generally considered the toughest overall in the country. The merit of that accomplishment is best noted in the fact that only one other team has been able to win as many as three titles during that period. The Seminoles' 42 victories are the third most recorded in NCAA Championship play and only six teams in the nation can match their half dozen trips to the College World Series.

	App.	Won	Lost	Pct.	1st	2nd	3rd	4th
College World Series . . . . .	6	8	12	.400	0	1	0	1
South Regional . . . . .	15	42	34	.553	6	3	5	1
South Atlantic Regional . . . . .	1	0	2	.000	0	0	0	1
East Regional . . . . .	1	0	2	.000	0	0	0	0*

\* 6 team regional

### College World Series Scores

<p>1957 Penn State 7, FSU 0 Connecticut 5, FSU 3</p> <p>1962 FSU 5, Santa Clara 1 FSU 5, Ithaca 4 Michigan 10, FSU 7 Santa Clara 11, FSU 6</p> <p>1963 FSU 5, Michigan 2 Arizona 4, FSU 3 (11 inn.) So. Cal. 4, FSU 3</p>	<p>1965 Ohio State 2, FSU 1 FSU 3, Texas 2 St. Louis 5, FSU 3</p> <p>1970 FSU 4, Arizona 0 FSU 6, Dartmouth 0 Texas 5, FSU 1 FSU 2, Ohio 0 FSU 11, Texas 2 So. Cal. 2, FSU 1 (15 inn.)</p> <p>1975 E. Mich. 2, FSU 1 (10 inn.) Seton Hall 11, FSU 0</p>
---	---

### Regional Tournament Record

1956 1-2, Third	1966 3-2, Second
1957 3-1, First	1967 1-2, Third
1958 1-2, Third	1968 3-2, Second
1959 2-2, Second	1970 3-0, First
1961 1-2, Third	1972 1-2, Fourth
1962 4-1, First	1975 3-0, First
1963 3-1, First	1976 1-2, Third
1965 4-1, First	1978 0-2, Third
	1979 0-2, Fifth

### College World Series Outstanding Player

Gene Ammann, 1970

Gene pitched two complete games, beating Arizona, 4-0, and Texas 11-2. In 18 innings, he gave up eight hits, walked 2 and struck out 18.

### CWS All-Tournament Team Selections

Woody Woodward, ss, 1963; Gene Ammann, p., 1970; John Grubb, of, 1970.

### NCAA Tournament Records

(Florida State has set the following NCAA Tournament records in District or CWS play)

**MOST STOLEN BASES** — Single Game, 5, Dave Nichols vs. Richmond 6-2-72, District 3.

**MOST RUNS SCORED** — Single Game, 5, Bill Westendick vs. Georgia Tech 6-9-59, District 3, (tied with two others)

**MOST TIMES AT BAT, BOTH TEAMS** — 102 vs. Southern California, 15 innings, 6-18-70 (USC 52, FSU 50)

**MOST STOLEN BASES, TEAM** — 10 vs. Richmond, 6-2-72, District 3

**MOST DOUBLES** — Single game, 3, Jeff Hardy vs. Auburn, 5-24-76, South Region (tied with several others)



**the university**

## THIS IS FLORIDA STATE

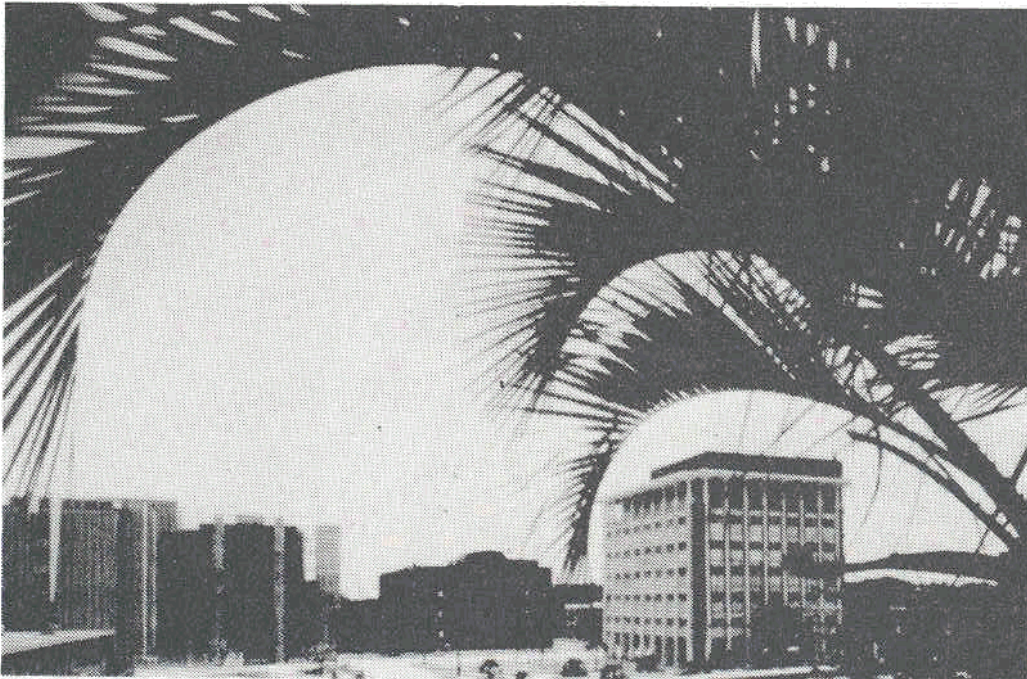
Florida State University — the home of more than 20,000 Seminoles — has a campus that starts at the top of one of Tallahassee's famed seven hills, and rolls gently downward and westward across 340-odd acres of pines, palms and pecan trees.

Founded in 1857 as the Seminary West of the Suwannee, its heritage is evidenced in the wide range of architectural struggles to preserve history and keep up with modern times and air conditioning. Yet it still ranks as one of the South's last, few bastions of campus greenery — the kind that combines the blossoms of camellias, azaleas and dogwoods with moss-hung oaks that are, in some cases, as old as the University itself, if not older.

From the Gothic towers of Westcott at the eastern entrance to the campus, to the modern glass and steel structures of its Science Complex to the west, Florida State University has moved forward in time and growth more rapidly than many of its newer counterparts in the State University System. Its enrollment has quadrupled since it became coeducational in 1947, following nearly half a century as the Florida State College for Women.

Today, its 14 schools and colleges are spread through \$150 million worth of buildings, its annual budget exceeds \$100 million and it attracts more than \$18 million a year in research contracts and grants. Students can pick and choose from more than 100 career options offered in arts and sciences, business, communication, criminology, dance, education, home economics, law, library science, music, nursing, social sciences, social work, theater and visual arts programs.

The University is a member of the Academic Common Market and has overseas study centers in Florence, London and the Panama Canal Zone. Summer programs of study are offered in law at Oxford, in hotel and



restaurant administration in Switzerland, and in comparative studies of economic and social systems in Yugoslavia.

The location of FSU in the Capital City of Florida offers unusual opportunities for study and research in the social and policy sciences, and an optimum environment for internships and on-the-job learning experiences for students in many fields of study.

The University operates major laboratory facilities for nuclear, marine and computer research. In addition, it has a wide-ranging spectrum of institutes and research centers, each of which deals with specialized aspects of the following fields of study: government, geophysical fluid dynamics, molecular biophysics, educational research, American theater, gerontology, social research, community mental health, employee relations, economic development, analysis of resources and environment, Southern culture and religion, statistical consultation, educational technology and instructional systems, population studies, multi-campus systems, educational tax policy, urban and regional planning, criminological and correctional research, and the study of women in educational management systems. A Regional Rehabilitation Center serves citizens in the tri-state area with diagnostic and remedial treatment of speech and hearing problems.

A city within a city, Florida State has 1,200 faculty members, more than 6,000 additional employees and a construction program that will exceed \$50 million between now and 1981. The construction of a new civic center and a center for continuing education — both near the State Capitol — are destined for completion by the fall of 1980.





## **DR. BERNARD F. SLIGER**

**FSU President**

Dr. Bernard F. Sliger, Florida State University's president since 1977, is one of the most ardent fans in Seminole sports history.

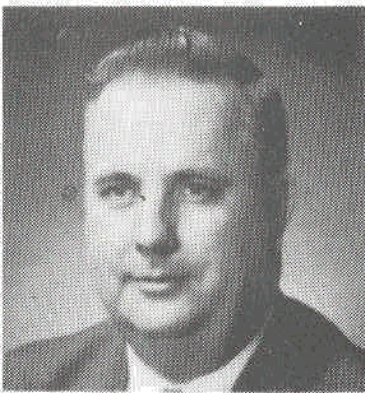
Known as "Bernie" to nearly all the student athletes, Dr. Sliger makes no secret of his sentiments about athletics at Florida State. He says he wants a "spot in the Top 20" for every Seminole team, including those who compete in the arenas of academe. And there's no one on campus prouder than he is of the records set in honor of that tradition last year by more than one team in each category.

At the 1978 NCAA South Atlantic Regional baseball tournament, Sliger was a member of the Seminole faithful who traveled to Miami to watch FSU play.

Dr. Sliger, who came to Florida State as its executive vice president in 1972, was formerly executive director of the Louisiana Coordinating Council for Higher Education. His background as an educator includes 19 years as a faculty member and administrator and sports fan at LSU.

An economist and scholar in the special fields of economic theory and public finance, he frequently serves as a consultant to private and public commissions. He also authored several publications dealing with public finance.

Dr. Sliger and his wife, Greta, have four children.



## **PHILLIP R. FORDYCE**

**Interim Athletic Director**

As interim athletic director for Florida State, Phillip R. Fordyce is responsible for the administration of all intercollegiate athletics at FSU.

Fordyce accepted the temporary post after the resignation of former AD John Bridgers.

Currently, Fordyce is the chief executive officer for Dr. Bernard Sliger. Before assuming this position, he served as provost for the Division of Professional Schools and Colleges for three years.

In his role as special assistant and assistant chief executive officer, Fordyce is responsible for the general administration and policy formulation for such areas as Strozier Library, all international programs and the Seminole Booster Club. He also represents the University on the SUS Collective Bargaining Advisory Committee and represents the President's Office on numerous standing committees of the University.

Fordyce, born in Lyons, Ind., holds a M.S. and B.S. degree from Butler University where he majored in botany and zoology and specialized in graduate studies at Indiana and Purdue University.

Fordyce is married to the former Marilyn Lamb of Amboy, Ind. They have five children: Deborah, Natalie, Marilyn, Kerry and Timothy.

## **CLAUDE THIGPEN**

### **Assistant to the Director**



Claude Thigpen, who has been a member of the Florida State staff for the past 25 years, serves as an assistant to the athletic director. He oversees the ticket sales and promotions for the department.

Prior to assuming his present duties in November 1978, Thigpen served as athletic business manager, accountant and ticket manager. Through the years he has organized the entire FSU ticket operation and directs season ticket drives for football, basketball, baseball and track.

Thigpen, a native of Greenville, Fla., is married to the former Carleen Lindley.

## **LARRY PENDLETON**

### **Assistant to the Director**



Larry Pendleton oversees the guidance and counseling of all Seminole athletes and is responsible for special athletic events as assistant to the athletic director.

This is Pendleton's sixth year as a full-time member of the FSU athletic staff and his third in his present position. He returned to his alma mater in 1973 as a member of the football staff.

A native of Winter Haven, Fla., Pendleton played football for the Seminoles. He graduated in 1969.

He is married to the former Carolyn Chalk.

## **JOE LABAT**

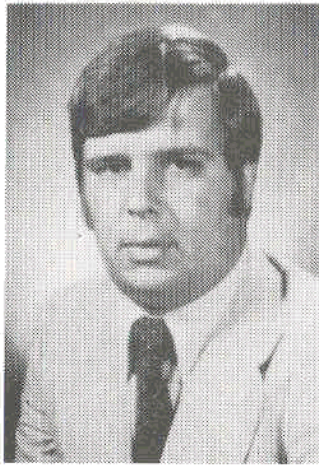
### **Athletic Business Manager**



The newest member of the Florida State athletic staff is Joe Labat who serves as the Seminoles' business manager. He oversees the accounting and financial affairs of the athletic department.

For nearly two years he worked in the accounts payable portion of the University comptroller's office.

A 1967 graduate of FSU, Labat coached football and track at Rickards High School in Tallahassee for two years.



## **MARK CARLSON**

### **Sports Information Director**

Mark Carlson is in his fourth year as the Seminoles' sports information director. At FSU he is responsible for all publicity and public relations matters concerning the athletic department.

Carlson joined the Florida State staff in 1973 after previous SID assignments at the University of Tampa (1972-75), Tennessee Tech (1975) and the University of Tennessee at Chattanooga (1976-1977).

The Hibbing, Minn., native is a graduate of St. Leo College and a former sports editor of the Fremont (Ohio) News-Messenger before taking the Tampa position.

Carlson is a bachelor.



## **GENE GRANGER**

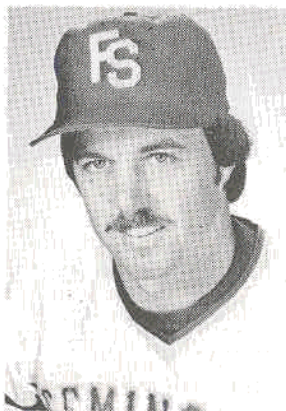
### **Athletic Equipment Manager**

Gene Granger is in his third year as equipment manager at Florida State. Gene came to FSU in 1971 and worked as assistant equipment manager for four years before becoming head equipment manager in 1977.

A native of Dade City, Florida, Gene attended Bethune Cookman College where he played varsity baseball from 1969 thru 1971.

His duties as equipment manager include the purchasing of equipment and uniforms and the handling of all equipment for every sport except football.

Gene and his lovely wife Alberta have a little four year old daughter named Apryl.



## **BILL FULLER**

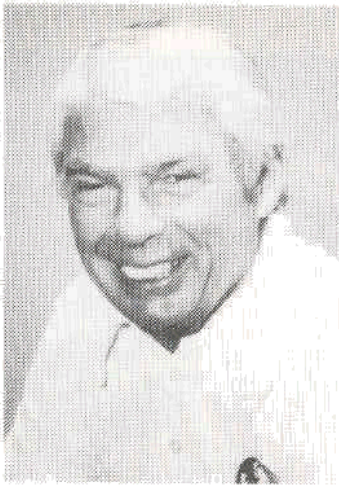
### **Graduate Assistant**

Former varsity player Bill Fuller joins the Seminole staff as a graduate assistant this season.

Fuller, who played for the Tribe from 1970-74, will handle the pitchers along with assistant coach Jim Morris. Prior to returning to Florida State he was head baseball coach at Tallahassee Lincoln High School where he earned an enviable 80-20 record in only four years of competition. In his varsity days, Fuller pitched to a 27-9 mark in four years including a win in the 1972 NCAA South Regionals.

Having earned a B.A. in history from FSU, Fuller plans to continue his education and is currently seeking his masters' in Educational Administration. Someday the personable coach hopes to either work in baseball at the junior college or collegiate level.





## **DON FAULS**

### **Head Athletic Trainer**

Athletic trainers are known for being very popular with the athletes they work with and Florida State's Don Fauls is no exception.

To Seminole players and coaches since 1954, including new head coach Mike Martin, Fauls has been a respected friend and confidant as well as the man who cares for their injuries.

A native of Ithaca, N.Y., and a graduate of Ithaca College, Fauls came to FSU after serving as trainer for professional baseball teams in Greensboro, N.C., and Omaha, Neb.

Fauls and his wife, Marguerite, have three children.

## **JOHN MOONEY**

### **Assistant Athletic Trainer**

John Mooney is in his third year on the training staff at Florida State.

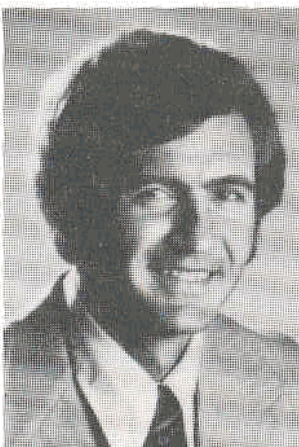
Besides his close association with the Seminole football team, Mooney works directly with the FSU basketball and baseball teams.

A 1976 graduate of Florida State, Mooney spent his undergraduate years as a student assistant learning the trade from head trainer Don Fauls. He became a full-time assistant shortly after graduation.

Mooney, a native of Rogersville, Tenn., is married to the former Marilyn West, and they have one child.



## **TEAM DOCTORS**



**DR. TOM HANEY**  
Team Physician



**DR. DOUG HENDERSON**  
Team Physician



**DR. EMORY CAIN**  
Team Dentist

## MEMO TO THE MEDIA

This handbook has been prepared by the Florida State University Department of Intercollegiate Athletics to assist you during the Seminoles' 1980 baseball season. For additional information contact Mark Carlson, Glenn Greenspan or Liam Sullivan in the Sports Information Office:

Sports Information Office, Room 200 Tully Gym, Florida State University, Tallahassee, Florida 32306. Office Phone: 904 / 644-4038.



**FACILITIES:** Florida State's baseball press box is located above the Seminoles' third base dugout.

**RESERVATIONS:** Space for working press, radio and television will be allocated by the Sports Information Office. All requests for working credentials should be directed to this office.

**RADIO BROADCASTS:** Florida State grants permission for the visiting radio station to broadcast games at no charge. Stations should contact the Central Telephone Company in Tallahassee to order broadcast lines. Have the telephone company contact the Sports Information Office regarding location. Florida State does offer a phone line on a reciprocal agreement.

Special thanks to Judy Ross for her contribution in the production of this guide.

# 1980 SCHEDULE

Date	Opponent	Site	Time
2-22	Miami	Away	7:30
2-23	Miami	Away	7:30
2-24	Miami	Away	2:00
2-27	Troy State 2 (7)	Home	1:00
3-01	Georgia Southern 2 (7)	Home	1:00
3-02	Georgia Southern	Home	1:00
3-03	Lenoir Rhyne	Home	1:00
3-04	Jacksonville University	Away	3:00
3-05	Jacksonville University 2 (7)	Away	1:00
3-08	University of Florida	Home	2:00
3-09	University of Florida	Home	1:00
3-11	Wingate College 2 (7)	Home	1:00
3-13	University of Missouri-Rolla 2 (7)	Home	1:00
3-16	Brooklyn College	Home	1:00
3-17	Northern Kentucky	Home	3:00
3-18	Mercer University-Macon	Home	3:00
3-19	Monmouth College-Illinois	Home	5:00
3-21	Otterbein College-Ohio 2 (7)	Home	1:00
3-22	Wright State 2 (7)	Home	2:00
3-24	Tulane University	Away	2:30
3-25	University of New Orleans	Away	7:30
3-27	Eastern Illinois	Home	1:00
*3-28	New York Yankees	Home	1:00
3-29	Dayton University	Home	2:00
3-31	Mercer University-Macon	Away	3:00
4-02	Valdosta State	Away	7:30
4-05	Jacksonville University (2)	Home	2:00-7:30
4-06	Jacksonville University	Home	1:00
4-08	Auburn University	Home	7:30
4-09	Auburn University	Home	7:30
4-11	University of South Florida	Away	7:30
4-12	University of South Florida 2 (7)	Away	2:00
4-15	University of Florida	Away	7:30
4-16	University of Florida	Away	3:30
4-19	Tulane University 2 (7)	Home	1:00
4-20	Flagler College	Home	1:00
4-22	Auburn University	Away	7:00
4-23	Auburn University	Away	7:00
4-25	University of South Florida	Home	7:30
4-26	University of South Florida 2 (7)	Home	2:00 - 7:30
4-29	Troy State 2 (7)	Away	1:00
4-30	Valdosta State	Home	7:30
5-03	Miami	Home	7:30
5-04	Miami	Home	2:00
5-05	Miami	Home	7:30
**5-08	<b>Metro Conference Tournament</b>	<b>Florida State University</b>	
5-11			
5-13	Georgia Southern	Away	7:30
5-14	Georgia Southern	Away	3:00

\*New York Yankees game

\*\*Metro Conference Tournament



# N.Y. YANKEES



metro