

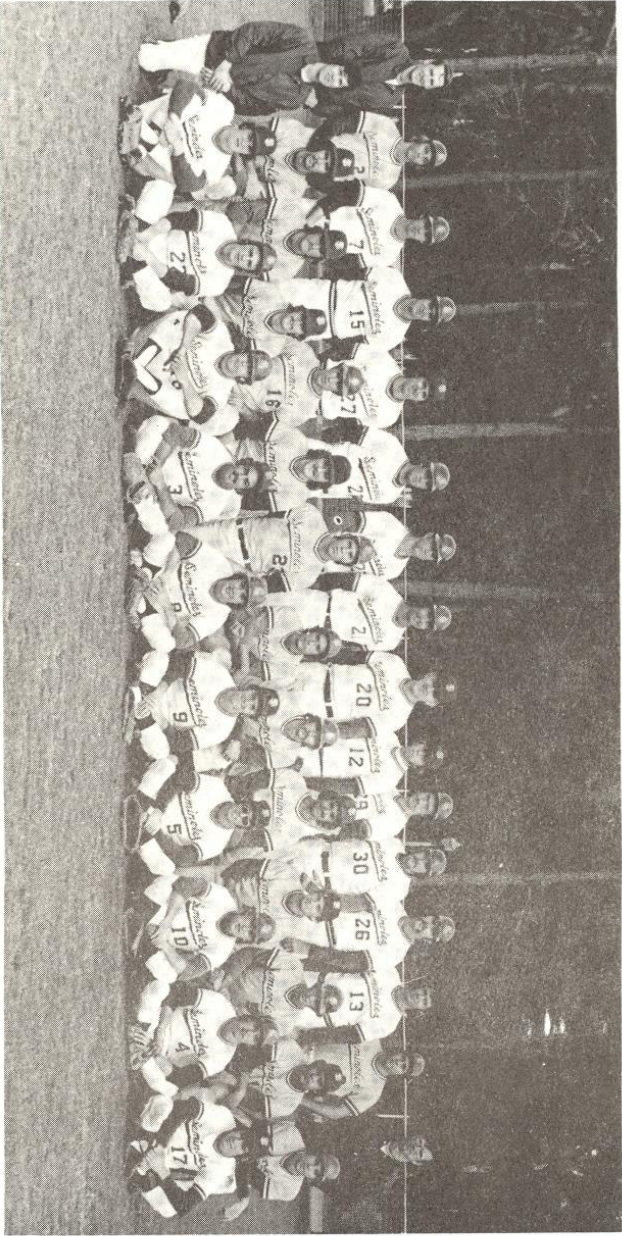
FLORIDA STATE UNIVERSITY



1975
BASEBALL
HANDBOOK



1975 SEMINOLEES



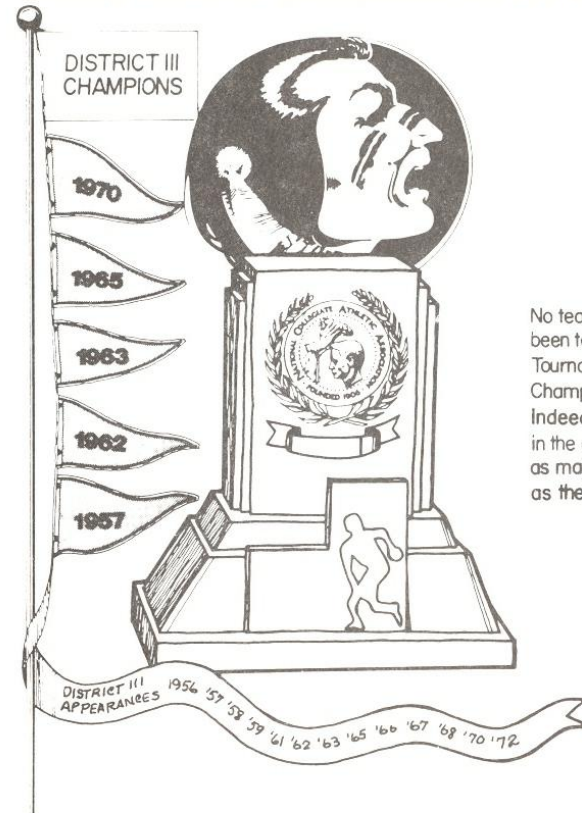
1975 SCHEDULE

Date	Opponent	Site	Time
FEB.			
25-Tue.	St. Leo	Saint Leo	3:30
26-Wed.	St. Leo	Saint Leo	3:30
MAR.			
1-SAT.	FLORIDA	TALLAHASSEE	1:30
2-SUN.	FLORIDA	TALLAHASSEE	2:00
6-THUR.	JACKSONVILLE (2)	TALLAHASSEE	3:30
7-FRI.	JACKSONVILLE	TALLAHASSEE	3:30
8-SAT.	VALDOSTA STATE	TALLAHASSEE	1:30
9-Sun.	Valdosta State	Valdosta, Ga.	2:00
12-WED.	MERCER-MACON	TALLAHASSEE	8:00
13-THUR.	MERCER-MACON	TALLAHASSEE	3:30
15-SAT.	FLORIDA INTERNATIONAL	TALLAHASSEE	2:00
16-SUN.	FLORIDA INTERNATIONAL	TALLAHASSEE	2:00
20-THUR.	ST. LEO (2)	TALLAHASSEE	5:00
22-Sat.	Florida International	Miami	2:00
23-Sun.	Michigan State	Miami	4:30
24-Mon.	Army	Miami	3:00
	Michigan State	Miami	7:30
25-Tue.	Miami	Miami	7:30
26-Wed.	Miami (2)	Miami	3:00-7:30
28-Fri.	Tampa vs. Niagara	Tallahassee	3:30
28-FRI.	NIAGARA	TALLAHASSEE	7:30
29-SAT.	TAMPA (2)	TALLAHASSEE	1:30
30-Sun.	Niagara vs. Tampa	Tallahassee	1:30
31-MON.	NIAGARA (2)	TALLAHASSEE	3:30-7:30
APR			
2-WED.	COLUMBUS	TALLAHASSEE	7:30
4-FRI.	MIAMI	TALLAHASSEE	7:30
5-SAT.	MIAMI	TALLAHASSEE	7:30
8-TUE.	SOUTH ALABAMA (2)	TALLAHASSEE	3:30-7:30
9-WED.	SOUTH ALABAMA	TALLAHASSEE	3:30
12-SAT.	GEORGIA TECH	TALLAHASSEE	7:30
13-SUN.	GEORGIA TECH	TALLAHASSEE	2:00
15-TUE.	AUBURN	TALLAHASSEE	7:30
16-WED.	AUBURN	TALLAHASSEE	3:30
17-THUR.	STETSON	TALLAHASSEE	7:30
18-FRI.	STETSON	TALLAHASSEE	3:30
22-Tue.	Jacksonville	Jacksonville	3:30
23-Wed.	Jacksonville	Jacksonville	3:30
25-Fri.	Mercer-Macon	Macon, Ga.	8:00
26-Sat.	Mercer-Macon	Macon, Ga.	1:30
29-Tue.	Florida (2)	Gainesville	2:00
30-Wed.	Florida	Gainesville	3:30
MAY			
2-FRI.	GEORGIA SOUTHERN	TALLAHASSEE	7:30
3-SAT.	GEORGIA SOUTHERN	TALLAHASSEE	1:30
4-Sun.	Georgia Southern (2)	Statesboro, Ga.	1:30
5-Mon.	Georgia Southern	Statesboro, Ga.	3:00
7-Wed.	South Alabama	Mobile, Ala.	2:30 CDT
8-Thur.	South Alabama	Mobile, Ala.	2:30 CDT
11-Sun.	Columbus	Columbus, Ga.	2:00
12-Mon.	Auburn (2)	Auburn, Ala.	1:30 CDT

(2) Indicates Doubleheader

ALL TIMES EASTERN UNLESS NOTED

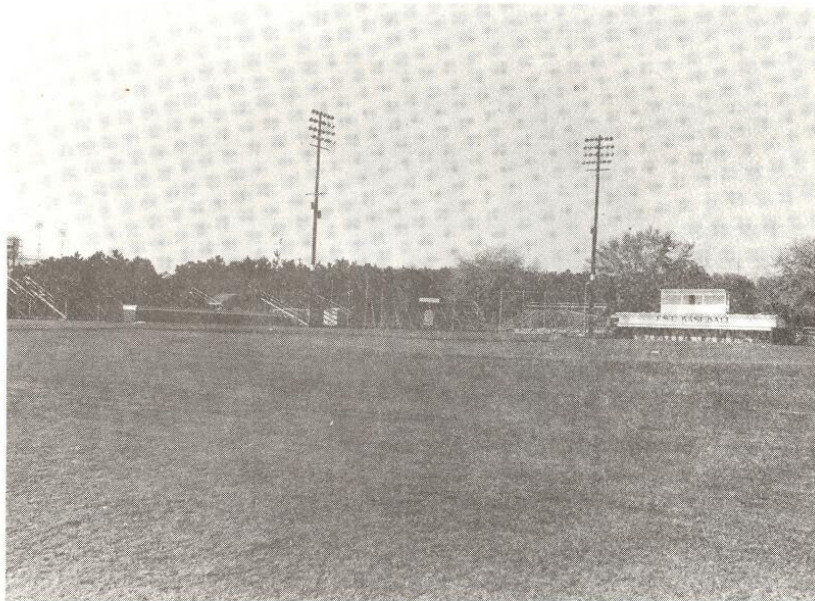
CHAMPIONSHIP BASEBALL AT ITS BEST



No team in the Southeast has been to more District III Tournaments or has had more Championships than FSU. Indeed only two teams in the country have as many wins in the playoffs as the Seminoles.

FLORIDA STATE UNIVERSITY

LOCATION	Tallahassee, Florida 32306
ENROLLMENT	20,500
NICKNAME	Seminoles
COLORS	Garnet and Gold
BASEBALL STADIUM	Seminole Field (3,300)
CONFERENCE	Independent
PRESIDENT	Dr. Stanley Marshall
ATHLETIC DIRECTOR	John Bridgers
HEAD BASEBALL COACH	Woody Woodward
ASSISTANT COACH	Mike Martin
GRADUATE ASSISTANTS	Mike Easom
SPORTS INFORMATION DIRECTOR	Lonnie Burt
ASSISTANT SID	Hank Schomber
ATHLETIC DEPARTMENT PHONE	904/644-2790
BASEBALL OFFICE PHONE	904/644-4812



SEMINOLE BASEBALL

Florida State's baseball program is one of people — people who care, who want to see that its longstanding tradition of "The Best in College Baseball" continues into the future. From coaches, to trainers, to publicists, to ground crew, Florida State's program is staffed with "baseball people."

This fact is widely recognized by followers of college baseball around the nation and is a primary reason that Florida State is considered to have one of the top collegiate baseball programs in the country. This is especially true among the nation's high school coaches and pro scouts. "If we find a boy who is determined to get an education before turning pro, we don't hesitate to recommend Florida State," says one scout. "He is going to get as much or more training and experience there, as he will anywhere in the country." And it is not just the scouts in the Southeast who are high on Florida State's program. Young players from all over the country are recommended to the Seminole coaches by the scouts and the Florida State program is in turn recommended to the player.

Baseball at Florida State has a 12-month season. The mild Florida winters make it possible for the Seminoles to begin work upon arrival in the fall and continue through June. In the summer there are almost always openings for Florida State players in the many collegiate leagues and teams from Alaska to Cape Cod. Florida State's "Fall Season" commences with the opening of classes and concludes with the annual Oldtimers Game against the alumni at Homecoming. Although the emphasis is on instruction during this period, a schedule of 30 games, against area junior colleges and informal intrasquad contests, are played.

Following the holiday break, practice resumes early in January as preparations are made for the upcoming spring season. The preseason practice sessions are highlighted by the appearance of the many pro ballplayers who stop by on their way to spring training at major league camp sites downstate. Many of these players are former Seminoles and offer invaluable tips and coaching to current players

Of course even without this "bonus coaching" the Florida State player receives the finest tutoring anywhere. Throughout the years, Florida State has had the nation's finest coaching staffs. In 1975 for example, there are four coaches who will be working with the players. This allows players to receive instruction not only in groups, but also on an individual basis.

A 60 to 70 game schedule usually begins in late February or the first of March. The Seminoles are an independent in NCAA District III which is generally considered the strongest in the country. Many of their district rivals are ranked annually with the Seminoles among the nation's top 20 teams and established series with many of these same clubs creates an atmosphere deep in tradition.

Once the spring collegiate season is over and final exams are through, many Florida State players head for the summer leagues and independent semi-pro teams around the country. In past years many Seminole players have had the opportunity to travel internationally with United States All-Star teams in South and Central America, Europe and Japan. In all, it is not unusual for a Florida State player to have the opportunity to perform in more than 150 games a year.

All this opportunity to play does not mean there is not an emphasis on academics. Just the opposite is true. Florida State's athletic program includes an outstanding academic advisement office that is prepared to meet just about any need the student-athlete may have, from schedule advisement to tutoring. Academic counselors and coaches are not only interested in seeing the athlete remains eligible to play, but also that he is making genuine progress toward a degree. Even the fact that the Seminoles play nearly 100 games from September to June, does not alter the emphasis on academics. The advent of night baseball (Seminole Field was one of the nation's first collegiate ballparks to have lights) has also made available more study time than players had a decade ago.

Facilities are another big factor in the Seminole program. Few colleges can boast of the "on campus" facilities available to the Florida State baseball players. Seminole Field is the site of all Florida State home games. Since the lights went up in the mid-1960's, night baseball has become part of the "way of life" of the Tallahassee community. Crowds average more than 1,000 per game and many times during the year the bleachers are filled to the 3,300 capacity. In the last four years nearly 125,000 spectators have seen the Seminoles play at home.

The field itself is equivalent to many of the finest minor league parks. It is kept in top condition year round by the Florida State Department of Grounds under the supervision of Henry Martin and Robert Barrett. Seminole Field is just one of three full diamonds available, on campus, for the Seminoles. Scattered throughout this complex are several batting cages, pitching mounds and pitching machines.

HEAD COACH
Woody Woodward

A former Seminole and big leaguer, Woody Woodward brought with him a unique combination of experience and familiarity with the program that perhaps no other candidate for the Florida State Head Coach position possibly could have offered when it became available following Jack Stallings' resignation last summer.

The 31-year old Miami native has been popular among Seminole fans ever since he first came to Florida State in the early 1960's. Even during his tenure in pro ball he kept close ties with the University, first donating a part of his bonus to establish a fund for lighting Seminole Field and later playing a principal part in organizing the annual Varsity-Alumni Game at Homecoming.

"I'm thrilled at being back at my alma mater and involved in such an excellent athletic program," said the veteran of nine major league seasons with the Milwaukee Braves, Atlanta Braves and Cincinnati Reds.

"I realize Florida State has had an honorable past under such outstanding coaches as Danny Litwhiler, Fred Hatfield and Jack Stallings," said Woodward. "I intend to continue in that tradition.

"I'm glad to be back in baseball, especially at the university level. I think my professional contacts and experience will be helpful to our program."

Woodward has already had a number of major league players and coaches come to Florida State during fall practice to give special instruction. They also volunteered to stop off at Florida State on their way to spring training.

Woodward came to Florida State as an undergraduate in 1960 after graduating from Coral Gables High School. He played with the Seminoles for three seasons before signing a bonus contract with the Milwaukee Braves in 1963.

His play helped the Seminoles to two straight College World Series appearances — a school record — in 1962 and '63. He was named the All-American shortstop in 1963.

After spending part of the 1963 season in AAA, he advanced to the majors with Milwaukee in the September of that year. He was with Milwaukee in 1964 and '65 and moved with the club to Atlanta before the 1966 campaign.

He was traded to Cincinnati during the early part of the '68 season and finished his career there. "My biggest thrill in my professional career was being a starter in the 1970 World Series against Baltimore," the former infielder said.

His two best seasons were 1966 with Atlanta when he played in 142 games and hit .269 and '67 when he lead National League second basemen in fielding. During his stay with Cincinnati he was the Reds' player Representative.

After leaving baseball he went with a Tallahassee business firm and currently is doing the color commentary for the Reds' television network. Woodward gained his B.S. degree at Florida State in 1966 during the off-season and completed his M.S. degree in 1970.

Woody is married to the former Pamela Terrell of Jacksonville. They have two children, Natalie 6 and Emily 4.



ASSISTANT COACH
Mike Martin

A former Seminole All-District performer, Mike Martin has an extensive coaching background at the prep and junior college level.

After starring two seasons for the Tribe, Martin had a three year pro career with the Mets and Tigers organizations, before returning to Tallahassee to assume fulltime teaching and coaching duties in area schools.

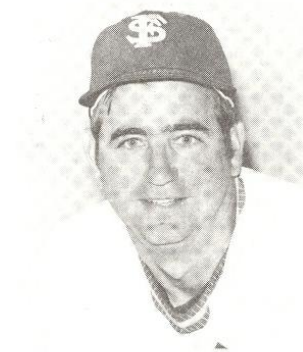
After several years at the junior high level, Mike served as Head Basketball Coach at Tallahassee Community College in 1970 and most recently has been the Head Coach at Godby High School from 1970-74.

During that period he also worked closely with the baseball programs at the schools and served as the Director of the Woody Woodward Baseball Camp from 1970 through the present.

A native of Charlotte, NC, Mike attended Wingate Junior College where he played basketball and earned All-America status in baseball, before coming to Florida State in 1964.

He received his bachelors degree at Florida State in 1966, and earned an MA from Florida A&M in 1971.

Mike and his wife Carol have two children.

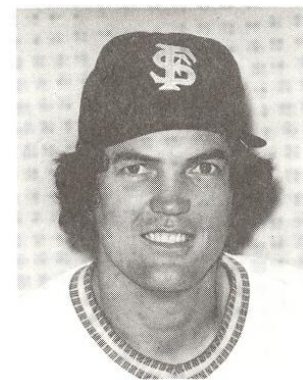


GRADUATE ASSISTANT
Mike Easom

A native of Tallahassee, Mike Easom brings a year of high school coaching and two seasons of work with American Legion teams with him to the graduate assistants post.

A former Seminole standout performer, Mike signed with the Cleveland Indians following the 1969 season and played three years of pro ball in both the Indians and Expos organizations. He turned down a player-coach position to return to Tallahassee.

Mike is married to the former Linda Clendenin of Tampa.



1975 OUTLOOK

Florida State's 1975 baseball outlook can be summed up briefly as follows:

- New Coach
- New Enthusiasm
- Young but Veteran Team
- Rugged Schedule

Altogether it probably leaves the Seminoles, a 37-25-1 unit — and just out of the playoff picture last year under Jack Stallings — somewhat of a questionmark, but definitely not to be counted out of this year's playoff picture.

"If we can survive our schedule," says new mentor Woody Woodward, "we should be capable of competing successfully in the post season playoffs."

"We will be playing more of the top independent teams in this district than anyone and we meet most of them on a home and home basis. This schedule is as tough as any that Florida State has played and it is a real challenge to our players."

It is also plain to see that Woodward feels his team can "survive" the rugged slate that includes a stretch run of 15 of the final 17 games on the road against the likes of Georgia Southern, South Alabama, Florida and Auburn.

"We have the makings of a good team," said Woodward. "In a lot of ways we will look young with a number of sophomores and juniors, but most of them have a full year's experience and that will be a plus."

Leading the returnees is All-District Secondbaseman Randy Davidson. Last year as a junior he set Florida State records for at-bats, hits and fewest strikeouts per at-bat, while finishing second in the batting race with a .340 average.

In the field he will team with Windle Higginbotham as the Seminoles' new keystone combination and this duo should be as strong a double play team as any in the South. Higginbotham is moving back to shortstop, a position at which he earned JC All-America ranking, after a year at firstbase.

Guillermo Bonilla, who led the team with a .351 average as a freshman, is back at third and his fielding is picking up each day. The firstbase job on the other hand is a scramble with three candidates who are likely to see a lot of action. Veterans Bill Daniel, and Jim Foxwell and freshman Ben Curry are adequate defensively and carry big sticks. In addition to seeing action at first they will also be splitting time as the Seminoles' designated hitter along with freshman Terry Kennedy.

Catching, a weak spot for the Seminoles the last couple of years, has been greatly improved with the addition of junior college All-America Wayne Mears. A solid receiver he has a good arm with a quick release and the savvy to handle the pitchers. Backing him up are Rick McGlone and Kennedy, giving the Seminoles a solid trio of catchers.

All three starting outfielders return, in the persons of Jim Busby, Steve Tebbetts and Carlos Lezcano. This trio gives the Seminoles an above average defensive alignment and with Lezcano showing signs of reaching his potential at the plate, a big offensive threat as well. Sophomore Curt Kole is the number one reserve and he shows a lot of raw talent that could be honed into becoming an outstanding performer with a little experience.

The pitching staff shows a good balance of veteran and new talent. Five hurlers are gone from last year's staff, but the losses are not overwhelming. Among the returning veterans are Danny O'Brien (7-6), Larry Jones (6-3), Larry Rothschild (5-2) and Mike Kelley (4-3, 7 saves). Those four along with JC transfer Craig Eaton and lefty Bob Mayer who saw limited varsity action late last spring, will be battling for three regular spots in the rotation, plus spot starter and long relief duties.

Slated for short relief duties are Mike McLeod, who hurled two no-hitters last year at Middle Georgia JC and John Nicholas, a walk-on from Manatee JC who has been impressive.

SEMINOLE PROFILES

GUILLERMO BONILLA—INFIELD, Sophomore, Rio Piedras P.R., Bats and Throws Right, 5-8, 165 . . . best natural hitter on the ball club . . . led last year's team with a solid .351 average, collecting 81 hits including 13 doubles and five home runs . . . has ability to hit to all fields and has good power for player his size . . . has worked hard to improve his play defensively at thirdbase . . . was a member of the 1973 Puerto Rican team which won the American Legion National Championship . . . was captain and twice most valuable player for his high school team . . . one of five Puerto Rican players on this year's team.

JIM BUSBY—OUTFIELD, Sophomore, Yalaha, FL, Bats and Throws Left, 5-10, 155 . . . son of Atlanta Braves Coach Jim Busby, he shows the instinct and knowledge of a solid baseball background . . . was a third leading hitter on 1974 team with a .300 average . . . can do many things with a bat, has good power, can hit for average and knows how to take advantage of good speed . . . defensively he is a solid player with fine arm and speed . . . was a pitcher as well as an outfielder at Leesburg High School . . . led his high school team in batting for two years and was voted most valuable player three years in a row . . . turned down a pro offer to play at Florida State, "because it is a school I have always wanted to come to."

BEN CURRY—INFIELDER, Freshman Tallahassee, FL, Bats and Throws Right, 6-4, 226, . . . impressive looking ballplayer from Seminoles' own back yard . . . has good size and outstanding power . . . had a superb high school career . . . hit five home runs and carried a .464 average in 1974 . . . will be primarily a firstbaseman with the Seminoles, although he pitched and played some at third at Godby High School . . . will also see some duty as the Seminoles' designated hitter . . . he is making strides as a defensive player and may be the best defensive firstbaseman by the end of the year.

BILL DANIEL—INFIELD, Senior, Yazoo City, MS, Bats and Throws Left, 6-0, 185 . . . a real "sleeper" who came on strong last year . . . got off to a torrid start when called upon to replace injured Steve Tebbetts in the outfield last spring . . . cooled some as the season progressed, but still finished with a respectable .275 average . . . came up through the Seminole system and responded well when he finally got his chance . . . will be platooned at firstbase this year as well as the DPH.

RANDY DAVIDSON—INFIELD, Senior, Huntsville, AL, Bats both and Throws Right, 5-9, 156 . . . best all around ball player on the team and one of the best in Florida State history . . . was named team captain at the end of the year last season and carries that duty with him into this year as well . . . team's best baserunner, stole 25 bases last year and could do better this season . . . defensively he is the best infielder on squad . . . at the plate the only thing he cannot do is deliver the long ball . . . collected a record 83 hits last year and was in the running for the team batting title until the final day of the season before settling for a .340 average in the number two spot . . . also holds school record with 244 at-bats, is an excellent "contact" man with just 10 strikeouts all last season . . . will be ideal number one or two place hitter . . . a JC All-America at Columbia State in Tennessee, he was twice named to the All-National JC Tournament team . . . played a key role on the U.S. team which won the World Amateur Baseball Tournament in 1973 . . . in high school, he was a teammate of Tennessee's Conrdege Holloway.

CRAIG EATON—PITCHER, Junior, Lake Worth, FL, Bats and Throws Right, 6-0, 170 . . . impressive junior college player from Miami-Dade North CC . . . had a good fall session and picked up in preseason where he left off . . . is expected to fill a starting role for the Seminoles . . . has a good assortment of pitches and good control.

JIM FOXWELL—INFIELDER, Senior, Martinsville, NJ, Bats and Throws Right, 6-2, 205 . . . big impressive looking player who has yet to reach his potential . . . was used exclusively as designated hitter in 1974 but will add first base duties to that this spring . . . had highest batting average on team as a sophomore, but slumped to a .252 mark last year . . . had a good summer at Cape Cod League where he hit .310 and made the all-star squad . . . a hard worker with an excellent attitude.

WINDLE HIGGINBOTHAM—INFIELDER, Senior Fernandina Beach, FL, Bats Left, Throws Right, 6-2, 170 . . . was an All-America shortstop at Chipola JC two years ago, but played first base for the Seminoles last spring . . . will move back to short this year and has looked good working there during fall and preseason . . . teamed with secondbaseman Randy Davidson should give the Seminoles outstanding strength up the middle . . . a Seminole Scholar-Athlete . . . set a Chipola record for hits while compiling a .371 average two years ago and is a much better hitter than last year's lackluster .250 mark reflects . . . has good power.

LARRY JONES—PITCHER, Sophomore Seminole, FL, Bats and Throws Right, 6-2, 185 . . . surprise of the pitching staff last year, compiling a 6-3 record and a team leading 2.49 ERA . . . big and strong, he is a power pitcher . . . is expected to be one of the top two in the rotation this spring . . . has effective slider and change to go with a "big league" fast ball . . . could be best pro prospect on the squad . . . originally came to Florida State on a combination baseball-football grant, but dropped the latter sport after his freshman season to concentrate on baseball . . . was a talented wide receiver who caught 11 passes for 127 yards in 1973.

MIKE KELLEY—PITCHER, Senior, Tallahassee, FL, Bats and Throws Right, 5-8, 155 . . . local product who went down state to Seminole Junior College for two years before returning last year . . . was used primarily in relief and did a fine job, chalking up a 4-3 record and seven saves . . . a real competitor who likes to battle you when he is on the mound . . . not an overpowering pitcher, but throws harder than his size would indicate . . . averaged a strikeout an inning last season . . . had a two season mark of 18-3 in junior college and was 11-1 for the 1973 state semi-pro champion team . . . will be counted on for long relief and starting assignments this year.

TERRY KENNEDY—CATCHER, Freshman, Mesa, AR, Bats Left, Throws Right, 6-3, 200 . . . the son of former major league player, coach, manager and now Director of Player Personnel for the St. Louis Cardinals Bob Kennedy, coach Woody Woodward calls Terry, "the best looking lefthanded freshman hitter I have ever seen at Florida State" . . . a good catching prospect who has the tools . . . will be used as reserve catcher and in designated hitter roles this year.

CURT KOLE—OUTFIELDER, Sophomore, Stamford, CN, Bats and Throws Left, 5-7, 155 . . . moves up to varsity after a fine season with the Seminole B-team last year . . . came to Florida State on a combination football-baseball grant, but has decided to concentrate on baseball . . . has outstanding natural ability, the best among this year's outfielders, but lacks experience and playing time . . . goes from home to first in less than four seconds . . . has strongest arm among outfielders . . . should see considerable playing time.

CARLOS LEZCANO—OUTFIELDER, Sophomore, Rio Piedras, PR, Bats and Throws Right, 6-2, 170 . . . could prove to be the best defensive outfielder on club . . . has good speed and a good arm with the potential to become an outstanding college player . . . he should hit better than the .218 average he carried as a freshman regular . . . member of Puerto Rican National Championship team in 1973.

BOB MAYER—PITCHER, Sophomore, Somerset, PA, Bats and Throws Left, 6-2, 175 . . . saw limited action last spring, but had bright moments . . . had a 2.08 ERA in 17 innings work . . . will be counted on to fill much needed spot for a lefthander on staff . . . has potential to be a good one if he overcomes control inconsistency problems.

RICK McGLONE—CATCHER, Sophomore, Portsmouth, OH, Bats and Throws Right, 6-2, 200 . . . good defensive catcher with a strong arm and excellent attitude . . . listed as reserve catcher going into the season opener, but should see action during the year.

MIKE McLEOD—PITCHER, Sophomore, Tallahassee, FL, Bats and Throws Right, 5-11, 180 . . . a sinker ball pitcher who brings excellent credentials . . . comes back to Tallahassee after just one season of junior college ball at Middle Georgia where he had an 8-2 record and two no-hitters last year . . . had a fine prep career at Godby High and led his team to American Legion Playoffs three straight years with a combined 23-6 record and three no-hitters . . . turned down pro offer following last June's draft to continue college career . . . will be used in relief and as spot starter this spring . . . earned All-State and All-Region JC honors last year.

WAYNE MEARS—CATCHER, Junior, Cyprus, FL, Bats and Throws Right, 5-11, 180 . . . Junior College All-America from Chipola . . . counted on to strengthen a spot that gave the Seminoles trouble a year ago . . . a service veteran who brings maturity with him . . . good defensive catcher with a quick release and good arm . . . could also play third or short.

OSCAR NEGRON—PITCHER, FRESHMAN, San Juan, PR, Bats and Throws Right, 5-10, 175 . . . freshman pitcher who could see considerable action this year . . . comes with good credentials from Puerto Rico where he was a member of the American Legion National Championship team . . . has a good assortment of pitches, including sinker . . . if he does not break into regular work this spring, is definitely expected to be a factor in the future.

JOHN NICHOLAS—PITCHER, Junior, Bradenton, FL, Bats and Throws Left, 6-2, 185 . . . non scholarship performer who has earned a spot on the staff as left handed reliefer . . . may also see some duty as a spot starter . . . came to Florida State from Manatee JC where he was used exclusively in relief . . . has ability to throw strikes and excellent moving fastball.

DANNY O'BRIEN—PITCHER, Junior, St. Petersburg, FL, Bats and Throws Right, 6-2, 215 . . . had a somewhat disappointing 7-6 season last year after an excellent freshman year when he served as a reliefer . . . can be very tough, but struggled most of last year giving up 89 hits and 41 walks in 96 innings work . . . versatile athlete who lettered 10 times in four sports in high school . . . brother-in-law of Bill Freehan . . . was the Amateur Athlete of the Year in his hometown in 1972 and a member of U.S. World Amateur Championship team in 1973.

DAN OWEN—PITCHER, Junior, Lake Worth, FL, Bats and Throws Right, 6-2, 195 . . . junior college transfer from Miami Dade North . . . has good credentials from MDN where he built an excellent record . . . could be a good one.

CARLOS RODRIQUEZ—INFIELDER, Freshman, Morovis, PR, Bats and Throws Right, 5-10, 165 . . . freshman infielder with ability although he may be a year away from a substantial contribution with seniors Randy Davidson and Windle Higginbotham ahead of him . . . good infielder with adequate arm and good range . . . needs experience . . . was a member of the 1973 and '74 Puerto Rican National Champion American Legion team . . . won the Louisville Slugger award as the tournament's best hitter in 1973.

LARRY ROTHSCHILD—PITCHER, Junior, Flossmoor, IL, Bats and Throws Right, 6-1, 185 . . . hard working righthander who is making steady progress and could become one of the mainstays of this year's staff . . . had a 5-2 record last year despite a 4.60 ERA . . . smart and poised on the mound . . . has good control . . . should see duty as long relief man and spot starter . . . one of the hardest workers on the staff.

STEVE TEBBETTS—OUTFIELDER, Junior, Westfield, NJ, Bats and Throws Left, 6-0, 170 . . . a starter at the beginning of last season, he missed a good part of the year with a broken hand . . . is expected to be back in a starting slot this spring . . . finished 1974 with a .272 average . . . has good speed and is a good enough hitter that coaches figure he will be number three man in line-up . . . with year's experience and added confidence he should be a threat to better his 15 stolen bases of a year ago.

SEMINOLE ALL-AMERICAS

	DICK HOWSER	
1957 First Team	Shortstop	.364
1958 First Team	Shortstop	.337
	BOB CLEM	
1959 Second Team	Secondbaseman	.436
	JACK DULL	
1961 Third Team	Secondbaseman	.370
	BUDDY TEAGLE	
1962 First Team	Catcher	.325
	MIKE AUGUSTINE	
1963 First Team	Outfielder	.399
	WOODY WOODWARD	
1963 Third Team	Shortstop	.305
	KEN SUAREZ	
1964 First Team	Catcher	.404
	JIM LYTTLE	
1966 First Team	Outfielder	.324
1966 Sporting News (1st)		
1966 Sporting News (2nd)	Shortstop	.379
	TOM COOK	
1968 Third Team	Catcher	.384
	DICK GOLD	
1969 First Team	Secondbaseman	.317
	DICK NICHOLS	
1970 Second Team	Secondbaseman	.338
1970 Sporting News (1st)		
1970 Sporting News (HM)	Outfielder	.303
	RON CASH	
1970 Sporting News (HM)	Thirdbaseman	.335
	PAT OSBURN	
1970 Sporting News (HM)	Pitcher	12-1
	GREG GROMEK	
1970 Academic First Team	Shortstop	.300
1971 Academic First Team	Shortstop	.292
	CARL GROMEK	
1970 Academic First Team	Pitcher	5-0
	JOHN LIBRANDI	
1972 Third Team	Outfielder	.318

1975 VARSITY ROSTER

NO.	NAME	POS.	B-T	AGE (DOB)	HT.	WT.	CL.	HOMETOWN	SCHOOL (COACH)
3	Guillermo Bonilla	INF	R-R	20 (1/12/55)	5-8	165	So.	Villa Granada, PR	Liceo Int. Castro (Lebron)
4	Jim Busby	OF	L-L	21 (10/7/53)	5-10	155	So.	Yalaha	Leesburg HS(Lowe)
19	Brooks Carey	P-OF	L-L	19 (3/18/56)	6-0	170	Fr.	Key West	Key West HS (Tufenjian)
20	Ben Curry	INF	R-R	19 (8/13/55)	6-4	226	Fr.	Tallahassee	Godby HS(Smith)
30	Bill Daniel	INF	L-L	21 (1/31/54)	6-0	185	Sr.	Yazoo City, MS	Yazoo City HS (Prine)
1	Randy Davidson	INF	S-R	21 (5/22/53)	5-9	156	Sr.	Huntsville, AL	Columbia State (Hall)
16	Craig Eaton	P	R-R	20 (9/7/54)	6-0	170	Jr.	Lake Worth	Miami-Dade N. JC (Mainieri)
29	Jim Foxwell	INF	R-R	22 (1/14/53)	6-2	205	Sr.	Martinsville, NJ	Brigdwater-Raritan-East (Koperwhats)
	Mark Gilbert	P	R-R	18 (8/22/56)	6-0	160	Fr.	Pompano Beach	Ft. Lauderdale Pine Crest
	Joe Gilbert	C	R-R	20 (9/1/54)	6-2	205	Jr.	Tampa	Robinson (Garcia)
7	Windle Higginbotham	INF	L-R	21 (7/4/53)	6-2	170	Sr.	Fernandina Beach	Chipola JC (Dungan)
13	Larry Jones	P	R-R	20 (2/6/55)	6-2	185	So.	Seminole	Seminole
5	Mike Kelley	P	R-R	21 (10/4/53)	5-8	155	Sr.	Miccosukee	Seminole JC (Bergman)
17	Bob Kellogg	OF	R-R	21 (9/20/53)	6-0	190	Sr.	Tallahassee	Godby HS (Smith)
25	Terry Kennedy	C	L-R	18 (6/4/56)	6-3	200	Fr.	Mesa, AZ	St. Marys HS (Sanford)
8	Curt Kole	OF	L-L	21 (4/7/54)	5-7	155	So.	Stamford, CT	Stamford HS (Pike)
21	Carlos Lezcano	OF	R-R	19 (9/30/55)	6-2	170	So.	Rio Piedras, PR	San Jose (Gandara)
	Jose Lugo	C	R-R	19 (12/7/55)	5-10	175	So.	Rio Piedras, PR	Our Lady of Pilar (Velilla)
15	Bob Mayer	P	L-L	20 (4/2/55)	6-2	175	So.	Somerset, PA	Somerset Area HS (Maslak)
23	Rick McGlone	P	R-R	20 (9/22/54)	6-2	200	So.	Portsmouth, OH	Portsmouth HS (Ondrous)
24	Mike McLeod	P	R-R	19 (9/1/55)	5-11	180	Jr.	Tallahassee	Godby HS (Smith)
18	Wayne Mears	C	R-R	25 (4/11/50)	5-11	180	Jr.	Cyprus	Marianna HS (Frank)
9	Mitch Moyer	P	R-R	22 (4/11/53)	5-7	155	Sr.	Deland	Deland HS (Bush)
	Oscar Negron	P	R-R	18 (9/29/56)	5-10	175	Fr.	San Juan, PR	Grabiela Mistral
26	Harvey Nemeroff	OF	R-R	21 (11/18/53)	5-11	160	Sr.	Miami	Miami Beach
28	John Nicholas	P	L-L	21 (1/20/54)	6-2	185	Jr.	Bradenton	Cardinal Mooney (Hammon)
27	Danny O'Brien	P	R-R	21 (4/22/54)	6-2	215	Jr.	St. Petersburg	Bishop Barry (Vigue)
2	Dan Owen	P	R-R	21 (3/16/54)	6-2	195	Jr.	Lake Worth	Lake Worth HS (Marcum)
2	Carlos Rodriguez	INF	R-R	19 (3/10/56)	5-10	165	Fr.	Morovis, PR	Colegio Maristas (Maldonado)
12	Larry Rothschild	P	R-R	21 (3/12/54)	6-1	165	Sr.	Flossmoor, IL	Homewood-Flossmoor (Cahill)
	Ken Silvestri	P	R-R	23 (4/10/52)	6-0	185	Sr.	Chicago, IL	Gordon Technical (Desheves)
10	Richard Steed	INF	R-R	22 (9/14/52)	5-9	160	Jr.	Honeoye Falls, NY	Honeoye Falls HS (Starwald)
22	Steve Tebbetts	OF	L-L	20 (9/4/54)	6-0	170	Jr.	Westfield, NJ	Westfield HS (Cito)

6 Head Coach: Woody Woodward

11 Assistant Coach: Mike Martin

14 Assistant Coach: Mike Easom

Assistant Coach: Rick Smith

NUMERICAL ROSTER

- 1 Randy Davidson, inf
- 2 Carlos Rodriguez, inf
- 3 Guillermo Bonilla, inf
- 4 Jim Busby, of
- 5 Mike Kelley, p
- 6 Woody Woodward, Coach
- 7 Windle Higginbotham, inf
- 8 Curt Kole, of
- 9 Mitch Moyer, p
- 10 Richard Steed, inf
- 11 Mike Martin, coach
- 12 Larry Rothschild, p
- 13 Larry Jones, p
- 14 Mike Easom, coach
- 15 Bob Mayer, p
- 16 Craig Eaton, p
- 17 Bob Kellogg, of
- 18 Wayne Mears, c
- 19 Brooks Carey, p-of
- 20 Ben Curry, inf
- 21 Carlos Lezcano, of
- 22 Steve Tebbetts, of
- 23 Rick McGlone, c
- 24 Mike McLeod, p
- 25 Terry Kennedy, c
- 26 John Nicholas, p
- 27 Dan Owen, p
- 28 Danny O'Brien, p
- 29 Jim Foxwell, inf
- 30 Bill Daniel, inf

PRONUNCIATION GUIDE

Guillermo Bonilla — ge YER mo bo KNEE yuh
 Lezcano — leyz cah no
 Lugo — loo go
 McLeod — Mc Loud
 Negrone — nay groan
 Easom — ee sum

1974 RESULTS

OPPONENT	FSU	OPP	Lewis	RAIN
@Jacksonville	0	2	Mercer-Atlanta	3 1
@Jacksonville	5	4	Mercer-Atlanta	14 2
@Jacksonville	3	2	Tampa	7 4
Troy State	11	2	Tampa	11 1
Troy State	9	2	Mercer	5 0
UNC-Wilmington	5	4	Mercer	13 11
UNC-Wilmington	15	5	Florida International	2 0
UNC-Wilmington	10	4	Florida International	4 5
Clemson	6	3		(9 inn. scheduled7)
Clemson	5	7	Miami	2 1
Clemson	5	3	Miami	7 4
@Miami	2	3	Miami	3 17
@Miami	3	4	@Georgia Southern	3 13
@Florida International	5	2	@Georgia Southern	4 2
@Florida Southern	9	7	Florida Southern	2 4
@Tampa	5	6	Valdosta State	1 15
@Tampa	9	5	South Florida	2 1
Tennessee	4	7	South Florida	9 8
Tennessee	0	2	Auburn	11 1
Ohio	3	6	Auburn	3 6 (11 inn.)
South Carolina	1	4	Georgia Southern	7 6 (10 inn.)
South Carolina	0	1	Georgia Southern	6 1
Rider	6	1	Georgia Southern	3 2 (10 inn.)
Western Michigan	3	7	@Columbus	7 2
Western Michigan	2	4	@Auburn	4 5 (11 inn.)
@Valdosta State	6	3	@Auburn	1 7
Columbus College	3	0	Jacksonville	9 2
Niagara	4	2	Jacksonville	8 6 (11 inn.)
Lewis	11	12	Florida Rain	0 0 (5 inn.)
Lewis	0	4	Florida	2 6
Lewis	5	7	Florida	4 3
			Florida	4 5
			Florida	4 3

THE SEMINOLES IN CHAMPIONSHIP PLAY

Florida State's NCAA playoff and College World Series record is surpassed by very few schools around the country. In the last 19 years, the Seminoles have made 13 playoffs, only Texas and Northern Colorado can claim that many trips in the same period. In the entire 28 year history of the playoffs, only five teams have had more trips than the Seminoles. The Seminoles' 38 victories in championship play are more than have been recorded by all the participating teams, except Southern Cal's 101 and Texas' 63. Of the 78 teams which have appeared in the College World Series, only eight have been more than the five years the Tribe has made an appearance, and only 13 have recorded more victories. The Seminoles' .559 winning percentage is 25th among all tournament teams, and is 11th among the teams that have been to the playoffs at least six times in their 28 year history.

In the Seminoles' 13 trips to the District III playoffs, they have finished either first or second eight times. In CWS play the Seminoles have reached the third round twice, the semi-finals once and the finals once.

Florida State's NCAA Tournament Record:

Year Participated (CWS)	Record Including District Playoffs			College World Series Records				
	Yrs.	Won	Lost	Pct.	Yrs.	Won	Lost	Pct.
1956-(57)-48-49-61-(62)- (63)-(65)-66-67-68-(70)-72	13	38	30	.559	5	8	10	.444

1974 FINAL STATISTICS

Won 37 Lost 25 (.597)

HOME: W-28 L-17 (.622) AWAY: W-9 L-8 (.527) DAY: W-25 L-19 (.568) NIGHT: W-12 L-6 (.667)
EXTRA INNINGS: W-3 L-3 (.500) ONE RUN GAMES: W-10 L-8 (.556) DOUBLEPLAYERS: W-4 L-3 S-3

HITTING

NAME	G*	AB	R	H	2B	3B	HR	TB	RBI	SB-CS	BB	SO	HBP	S-SF	AVG.
Dave Chappell	7	5	0	2	0	0	0	2	1	0-0	1	2	1	0-0	.400
Guillermo Bonilla	61	232	37	81	13	0	5	109	44	4-1	14	20	2	0-3	.351
Randy Davidson	63	244	47	83	8	1	0	93	24	25-2	30	10	1	0-1	.340
Jim Busby	62	220	39	66	7	4	6	98	30	8-5	31	23	1	3-2	.300
Bill Daniel	32	80	19	22	3	1	3	36	18	0-0	13	13	0	1-0	.275
Steve Tebbetts	42	136	31	37	4	1	0	43	10	15-4	27	12	2	0-0	.272
Jim Foxwell	61	218	31	55	11	3	6	90	28	1-0	30	23	1	0-2	.252
Mike Eisey	41	88	13	22	4	0	0	26	9	1-3	20	17	2	1-0	.250
Windle Higginbotham	63	212	33	53	7	3	4	79	36	1-1	36	20	1	0-1	.250
Marty Maier	48	142	12	32	1	0	0	33	16	3-4	19	20	0	3-2	.225
Carlos Lezcano	60	211	28	46	12	1	2	66	32	4-1	13	44	0	0-4	.218
John Drews	30	70	6	14	2	0	0	16	5	1-0	11	15	1	0-1	.200
Jose Lugo	33	103	9	20	0	0	0	20	12	1-0	8	9	1	0-1	.194
Jeff Tandlich	17	45	3	8	1	0	1	12	9	0-0	6	2	0	2-2	.178
Mike Givens	28	19	11	3	0	0	0	3	2	4-1	10	3	0	0-1	.158
Karl Szymanski	12	7	0	1	0	0	0	2	3	0-0	2	5	0	0-1	.143
Harvey Nemeroff	6	0	1	0	0	0	0	0	0	0-0	0	0	0	0-0	-
Bob Kellogg	1	0	0	0	0	0	0	0	0	0-0	0	0	0	0-0	-
FLORIDA STATE	63	2032	320	545	74	14	27	728	279	68-22	271	238	13	10-21	.268
OPPONENTS	63	1981	269	460	54	16	19	611	211	67-26	280	401	18	27-17	.232

*includes one tie game

SCORE BY INNINGS

FLORIDA STATE	42	46	34	37	32	43	37	27	17	2	3				320
OPPONENTS	49	25	32	28	20	34	32	25	18	0	5				269

LOB: FSU 493, OPP 436; DP: FSU 59, OPP 53; ATTEND: Home - 21,268 Away - 9,638

ERRORS: FSU 121, OPP 137; F. AVG.: FSU .951, OPP .944

PINCH HITTERS (NO-H-RBI-BB): Chappell (7-200-3), Givens (3-1-0-0), Szymanski (7-0-0-2), Tandlich (1-0-0-0), Lugo (2-0-0-0), Daniel (2-0-0-0), Maier (1-0-0-0), OPP (23-6-2-3).

GAME WINNING RBI: Bonilla 5, Lezcano 5, Busby 4, Foxwell 3, Maier 3, Tebbetts 3, Daniel 2, Eisey 2, Davidson, Drews, Lugo, Tandlich.

HITTING STREAKS: Higginbotham 11, Bonilla 9, Davidson 9, Foxwell 9, Davidson 7 (twice), Bonilla 7, Davidson 6, Busby 6, Foxwell 6 (twice), Higginbotham 6, Lugo 6, Tandlich 6.

PITCHING

PITCHING

NAME	APP	GS*	CG	W	L	SAV	IP	R	ER	H	BB	SO	HBP	WP	ERA
Bill Horne	3	1	0	0	0	0	5 2/3	1	0	0	5	6	0	0	0.00
Mitch Moyer	6	0	0	0	0	0	7	2	1	3	6	1	0	0	1.29
Bob Mayer	4	0	0	0	0	0	17 1/3	7	4	11	10	6	1	2	2.08
Larry Jones	14	13	6	7	3	1	90 1/3	37	25	57	52	68	2	8	2.49
Terry Farmer	15	14	5	6	4	0	88	44	28	82	48	58	3	2	2.86
Mike Kelley	22	0	0	4	3	7	37	15	12	29	18	37	2	0	2.91
Marty Rice	5	1	0	2	0	1	18	8	6	17	12	4	1	3	3.00
Ron Herring	13	12	6	6	5	0	87 2/3	44	34	73	41	84	1	4	3.49
Dan O'Brien	16	13	4	7	6	0	96 2/3	54	38	89	41	82	7	4	3.54
Larry Rothschild	15	9	2	5	2	0	60 2/3	37	31	70	35	39	0	6	4.60
Dave Brown	14	0	0	1	2	1	27	20	14	29	12	16	1	2	4.67
FLORIDA STATE	127	63	23	37	25	10	535 1/3	269	195	460	280	401	18	31	3.28
OPPONENTS	111	63	28	25	37	5	517 2/3	320	238	545	271	238	13	34	4.14

PASSFD BALLS: Drews 6, Lugo 5, Tandlich 2; OPPONENTS 23.

BALKS: Kelley 2, Farmer 1; OPPONENTS 1.

PICKOFFS: Jones 8, O'Brien 4, Farmer 3, Rothschild 3, Brown 2, Herring 2, Mayer; OPP 10.

HOMERUNS OFF: Farmer 5, Herring 3, O'Brien 3, Kelley 2, Rothschild 2, Brown, Jones, Moyer, Rice.

SHUTOUTS: Larry Jones 2, Mike Kelley 2, Ron Herring 2.

FLORIDA STATE'S MAJOR LEAGUERS

The following former Seminoles have played in the major leagues or have signed major league contracts:

Name	Affiliation	Name	Affiliation
Gene Ammann	Milwaukee	Dave Moates	Texas
Randy Brown	California	Pat Osburn	Milwaukee
Ron Cash	Detroit	Mac Scarce	New York Mets
John Grubb	San Diego	Craig Skok	Boston
Dick Howser	New York Yankees	Ken Suarez	Texas
Jim Lyttle	Montreal	Woody Woodward	Cincinnati
		Bill Zeigler	Texas

SEMINOLES IN THE PROS

The more recent Seminoles to join the list of more than 100 former Florida State players in the pros:

Name	Affiliation	Year	Name	Affiliation	Year
Ron Herring	Montreal	1974	Ron Cash	Detroit	1971
Marty Maier	Kansas City	1974	Al Cleveland	Detroit	1971
John LiBrandi	Pittsburgh	1973	Greg Gromek	Detroit	1971
Rick Colzie	Cincinnati	1973	Mike Leber	Boston	1971
Roger Smith	California	1973	Harry Saferight	Philadelphia	1971
Rick Snyder	Minnesota	1973	Mac Scarce	Philadelphia	1971
Rick Langford	Kansas City	1973	Gene Ammann	Milwaukee	1970
Dave Nichols	Minnesota	1972	John Grubb	San Diego	1970
Dan Roatche	Boston	1972	Tom Henson	Cincinnati	1970
Herb Sikes	St. Louis	1972	Dick Nichols	Boston	1970
			Mike Slade	Texas	1970
			Pat Osburn	Cincinnati	1970

ALL-STAR SELECTIONS

ALL-DISTRICT THREE

1955 – Bill Campbell, 2b; 1956 – Tony Avitable, p; 1957 – Dick Howser, ss; 1958 – Mike Copps, of and Dick Howser, ss (first team); Frank Slusser, p and Dale Koch, 3b (second team); 1959 – Bob Clem, 2b; 1961 – Jack Dull, 2b; 1962 – Buddy Teagle, c; 1963 – Mike Augustine, of; Woody Woodward, ss; 1964 – Ken Suarez, c; 1966 – Jim Lyttle, of; Mike Martin, of; Randy Brown, c; 1967 – LaDon Boyd, p (second team); 1968 – Tom Cook, c and Steve Mastin, p (first team) Mike Easom, 1b (second team), Dick Gold, 2b (third team); 1969 – Dick Gold, 2b and George Lott, p; 1970 – Dick Nichols, 2b and Ron Cash, 3b (first team), Gene Ammann, p (second team), Pat Osburn, p (third team); 1971 – Ron Cash, of (first team), Harry Saferight, c; Mac Scarce, p (third team); 1972 – John LiBrandi, of (first team); 1973 – John LiBrandi, of (third team); 1974 – Randy Davidson, 2b (first team);

ALL-SOUTHEASTERN INDEPENDENT (First Selected in 1974)

1974 – Randy Davidson, 2b (first team); Jim Busby, of (second team), Guillermo Bonilla, Carlos Lezcano, Larry Jones (HM);

COLLEGE WORLD SERIES OUTSTANDING PLAYER AWARD

Gene Ammann, 1970 – Pitched two complete games, winning both, giving up two runs, both earned. Gene beat Arizona, 4-0, on a two hitter and came back to defeat Texas 11-2 in the game that put the Seminoles in the finals. For the tournament he gave up eight hits, two walks and struckout 18, in 18 innings of work.

NO-HITTERS

The last no-hitter pitched by Florida State was fashioned by **Gene Ammann** against South Florida in 1970. The most memorable no-hitters in Florida State history came in 1968, when **Ammann**, then a freshman, and **Lin Garrett** combined to pull off the feat against Wake Forest, after **Jeff Hill**, had turned the trick against Springfield earlier the same day. Also on that day, **Mike Slade** pitched a no-hitter for the Renegades, B-team. **Wayne Vincent** tossed a no-hitter at Georgia Southern in 1967.

ALL TIME LEADING HITTERS

(50-99 At-Bats and minimum .350 Avg.)	(100 or more At-Bats and min. .350 Avg.)
.422 Dick Howser 1956 (38-90)	.436 Bob Clem 1959 (44-101)
.414 Riley SeEVERS 1955 (27-65)	.404 Ken Suarez 1964 (44-109)
.403 Bob Rosell 1956 (25-62)	.399 Mike Augustine 1963 (65-163)
.392 Fred Twoomey 1955 (29-74)	.386 Mike Easom 1968 (56-145)
.383 Bob Clem 1960 (36-94)	.384 Tom Cook 1968 (53-138)
.368 Cooter Mills 1954 (32-87)	.379 Gary Sprague 1966 (74-195)
.365 Owen McCarron 1958 (35-96)	.373 Mike Martin 1966 (68-185)
.364 Dick Howser 1957 (32-88)	.370 Jack Dull 1961 (40-108)
.361 Ronald Melton 1950 (30-83)	.365 Woody Woodward 1962 (54-148)
.3563 Ray Bazzell 1960 (31-87)	.364 Bill Williamson 1962 (56-154)
.3555 Billy Campbell 1955 (32-90)	.353 Owen McCarron 1957 (36-102)
	.352 Ron Cash 1971 (58-165)
	.351 Guillermo Bonilla 1974 (82-232)

SEASON BATTING CHAMPIONS

1948 Jack Wilson .298 (20-67)	1961 Jack Dull .370 (40-108)
1949 Not Available	1962 Woody Woodward .365 (54-148)
1950 Ronald Melton .361 (30-83)	1963 Mike Augustine .399 (65-163)
1951 Lee Bailey .352 (32-91)	1964 Ken Suarez .404 (44-109)
1952 Ralph Blinn .317 (20-63)	1965 Gary Nichols .333 (29-87)
1953 Cooter Mills .319 (29-91)	1966 Gary Sprague .369 (74-195)
1954 Cooter Mills .368 (32-87)	1967 Bob Canty .340 (18-53)
1955 Riley SeEVERS .415 (27-65)	1968 Mike Easom .386 (56-145)
1956 Dick Howser .422 (38-90)	1969 Dick Nichols .336 (45-138)
1957 Dick Howser .364 (32-88)	1970 Dick Nichols .338 (80-237)
1958 Owen McCarron .365 (35-96)	1971 Ron Cash .352 (58-165)
1959 Bob Clem .436 (44-101)	1972 Tom Rosa .338 (69-204)
1960 Bob Clem .383 (36-94)	1973 Tom Rosa .317 (66-208)
	1974 Guillermo Bonilla .351 (82-232)

TEAM RECORDS

GAMES PLAYED

Most—68 in 1972 (W45-L23)
 Fewest—17 in 1948 (W9-L8)

VICTORIES

Most—49 in 1970 (Lost 9, Tied 1)
 Fewest—9 in 1948 (Lost 8)

LOSSES

Fewest—4 in 1952 (Won 17)
 Most—25 in 1974 (Won 37, Tied 1)

LOSSES

Fewest—4 in 1952 (Won 17)
 Most—25 in 1974 (Won 37, Tied 1)

WINNING PERCENTAGE

Highest—.854 in 1968 (35-6)
 Lowest—.529 in 1948 (9-8)

WINNING STREAK

Longest—21 in 1968 (Mar. 23-Apr. 4) and 1969 (Mar. 29-Apr. 24)

LOSING STREAK

Longest—5 in 1974

SHUTOUTS

Most Times Have Been—5 in 1974 (63 games)
 Fewest Times Been—None in 1970 (59 games) and other seasons with fewer games
 Longest Streak Without Being—90 over four seasons from 1962 through 1965

BATTING AVERAGE

Highest—.321 in 1955 (23 games)
 Lowest—.237 in 1967 (46 games)

EXTRA INNING GAMES

Most—6 in 1974
 Longest—15 innings on several occasions

AT BATS

Game—51 vs. Tampa, 1973 (14 inn., TU 48) 47 vs. St. Leo, 1973 (9 inn., St. Leo 32)
 Both Teams—105 vs. Ga. South., 1970 (15 inn. 55 GSC, 50 FSU); 82 vs. So. Florida, 1974 (9 inn., 43 USF, 39 FSU)
 Most in Season—2,305 in 1972 (68 games)
 Fewest in Season—692 in 1951 (18 games)
 Most Per Game-Season—36.545 in 1955
 Fewest Per Game-Season—32.254 in 1974

RUNS SCORED

Inning—12 vs. Miss. St., 1966 (2nd)
 Game—24 vs. Miss. St., 1966 (24-2) and vs. Jacksonville St., 1954 (24-0)
 Both Teams—33 vs. Stetson, 1959 (21-12, FSU) and vs. Fla. South, 1952 (22-11, FSU)
 Most in Season—473 in 1972 (68 games)
 Fewest in Season—101 in 1948 (17 games)
 Most Per Game, Season—8.591 in 1955
 Fewest Per Game, Season—4.864 in 1967
 Winning Margin—24 vs. Jacksonville State, 1954 (24-0)

HITS

Inning—9 vs. Mississippi St., 1966 (2nd)
 Game—23 vs. Mississippi St., 1966

Both Teams—35 vs. Wake Forest (FS 19, WF 16)
 Most in Season—670 in 1972 (68 games)
 Fewest in Season—186 in 1952 (21 games)
 Most Per Game-Season—11.727 in 1955
 Fewest Per Game-Season—7.841 in 1967

DOUBLES

Game—7 vs. FAMU, 1971 & Kentucky, 1966
 Both Teams—9 vs. Auburn, 1972 (FS 4, AU 5)
 Most in Season—101 in 1972 (68 games)
 Fewest in Season—24 in 1951 (18 games)
 Most Per Game-Season—1.784 in 1963
 Fewest Per Game-Season—0.583 in 1953

TRIPLES

Game—5 vs. Ky. Wesleyan, 1968
 Both Teams—5 vs. Ky. Wesleyan, 1968
 Most in Season—35 in 1969 (52 games) and 1972 (68 games)
 Fewest in Season—9 in 1959 (33 games)
 Most Per Game-Season—0.739 in 1954
 Fewest Per Game-Season—0.194 in 1964

HOMERUNS

Game—4 on several occasions
 Both Teams—5 on several occasions
 Most in Season—52 in 1966 (52 games)
 Fewest in Season—3 in 1954 (21 games)
 Most Per Game-Season—1.000 in 1966
 Fewest Per Game-Season—0.130 in 1954

TOTAL BASES

Game—42 vs. Miss. St., 1966
 Both Teams—55 vs. Miss. St., 1966 (FSU 42, MSU 13)
 Most in Season—979 in 1972 (68 games)
 Fewest in Season—250 in 1952 (21 games)
 Most Per Game-Season—16.318 in 1960
 Fewest Per Game-Season—10.841 in 1967

SLUGGING AVERAGE

Highest in Season—.464 in 1966 (52 games)

RUNS BATTED IN

Game—20 vs. Miss. St., 1966
 Both Teams—27 vs. Wake Forest, 1969 (FSU 14, WF 13)
 Most in Season—403 in 1972 (68 games)
 Most Per Game-Season—7.000 in 1955
 Fewest Per Game-Season—3.932 in 1967

BASES ON BALLS

Game—18 vs. Ithaca College, 1957
 Both Teams—23 vs. Miami, 1956 (7 by FSU, 16 by UM)
 Most in Season—340 in 1972 (68 games)
 Fewest in Season—93 in 1955 (22 games)
 Most Per Game-Season—6.875 in 1953
 Fewest Per Game-Season—3.795 in 1963

STRIKEOUTS

Game—17 by Fla. Southern, 1972
 Both Teams—29 vs. Ga. South., 1970 (16 by GSC, 13 by FSU) and vs. Georgia 1968 (18 by FSU, 11 by Ga.)

Most in Season—336 in 1969 (52 games)
 Fewest in Season—93 in 1955 (22 games)
 Most Per Game-Season—6.462 in 1969
 Fewest Per Game-Season—2.423 in 1966

STOLEN BASES

Game—11 vs. Stetson, 1957
 Both Teams—13 vs. Stetson, 1973
 Most in Season—105 in 1966 (52 games)
 Fewest in Season—20 in 1954 (21 games)
 Allowed in Game—13 vs. Stetson, 1973
 Most Allowed in Season—76 in 1972 (68 games)
 Fewest Allowed in Season—7 in 1962 (28 games) and 1968 (41 games)
 Most Per Game-Season—2.520 in 1957
 Fewest Per Game-Season—0.870 in 1954
 Fewest Allowed Per Game-Season—0.171, 1968
 Most Allowed Per Game-Season—1.288 in 1973

PUTOUTS

Most in Season—1,728 in 1972 (68 games)

ASSISTS

Most in Season—810 in 1972 (68 games)
 Fewest in Season—226 in 1960 (22 games)

ERRORS

Most in Season—123 in 1972 (68 games)
 Fewest in Season—48 in 1955 (22 games)

FIELDING AVERAGE

Highest—.9552 in 1970 (105 E., in 2346 chances)
 Lowest—.915 in 1959 (33 games)

DOUBLE PLAYS

Most in Season—59 in 1974 (63 games)

PITCHERS APPEARED

Most in Season—157 in 1972 (68 games)
 Most Per Game-Season—2.576 in 1973
 Fewest Per Game-Season—1.263 in 1951

COMPLETE GAMES

Most in Season—27 in 1969 (52 games)
 Most Per Game-Season—0.568 in 1967

INNINGS PITCHED

Most in Season—594-2/3 in 1972 (68 games)

SAVES

Most in Season—27 in 1971 (57 games)
 Most Per Game-Season—0.474 in 1971

SHUTOUTS

Most in Season—15 in 1970 (59 games)
 Most Consecutively—4 in 1970 (USA 4-0; USA 11-0; USF 7-0; USF 8-0) and 1973 (Cumberland 3-0; Cumberland 9-0; St. Leo 3-0; St. Leo 11-0)
 Consecutive Scoreless Innings—40 in 1973 (six games, including four shutouts)
 Most Per Game-Season—0.254 in 1970
 Fewest Per Game-Season—0.000 in '60 & '62

NO-HITTERS

Season—Two in 1968 (vs. Wake Forest and Springfield on the same day)

ONE HITTERS

Most in Season—6 in 1970

TWO HITTERS

Most in Season—6 in 1970

EARNED RUN AVERAGE

Lowest in Season—1.49 in 1970 (59 games)
 Highest in Season—4.27 in 1962 (37 games)

BATTING AVERAGE ALLOWED

Lowest in Season—.186 in 1970 (59 games)
 Highest in Season—.258 in 1962 (37 games)

RUNS ALLOWED

Fewest in Season—72 in 1952 (21 games)
 Most in Season—325 in 1972 (68 games)
 Most in Game—24 to Clemson, 1959 (24-2)
 Most Per Game-Season—6.182 in 1962
 Fewest Per Game-Season—2.441 in 1970

EARNED RUNS ALLOWED

Most in Season—238 in 1974 (63 games)
 Most Per Game-Season—4.216 in 1962

HITS ALLOWED

Fewest in Season—130 in 1952 (21 games)
 Most in Season—578 in 1972 (68 games)
 Most in Game—21 to Auburn, 1971
 Consecutively—7 by So. Fla., 1974
 Most Per Game-Season—9.036 in 1961
 Fewest Per Game-Season—5.915 in 1970

STRIKEOUTS RECORDED

Most in Game—24 vs. Furman, 1956
 Most in Season—528 in 1970 (59 games)
 Fewest in Season—126 in 1954 (21 games)
 Most Per Game-Season—9.000 in 1968
 Fewest Per Game-Season—4.923 in 1963

WALKS ALLOWED

Most in Game—12 vs. Miami, 1973
 Fewest in Season—85 in 1953 (24 games)
 Most in Season—340 in 1972 (68 games)
 Most Per Game-Season—6.762 in 1952
 Fewest Per Game-Season—2.981 in 1969

HOMERUNS ALLOWED

Most in Game—3 on several occasions, most recently to Ga. South., 1974
 Most in Season—29 in 1971 (57 games)
 Fewest in Season—4 in 1951 (18 games)
 Most Per Game-Season—0.676 in 1962
 Fewest Per Game-Season—0.192 in 1952

INDIVIDUAL RECORDS

GAMES PLAYED

Most in Season—67 John LiBrandi, 1972
 Most in Career—135 Rick Snyder, 1971-73
 Consecutively—63 Randy Davidson, 1974; Windle Higginbotham, 1974.
 Consecutively in Career—91 John LiBrandi, 1972-73.

BATTING AVERAGE

Highest Season—.436 Bob Clem, 1959
 Highest Career—.410 Bob Clem, 1959-60

SLUGGING AVERAGE

.770 Fred Twomey, 1955(57TB/74AB)

AT-BATS

Game—7 Dave Grimes vs. So. Florida, 1971

Season—244 Randy Davidson, 1974
Career—511 Dick Gold, 1967-69

RUNS SCORED

Game—5 Herb Sikes, vs. FAMU, 1971;
Randy Brown vs. Miss. St., 1966.
Inning—2 by several players
Season—69 Gary Sprague, 1966
Career—101 John LiBrandi, 1972-73

HITS

Inning—2 by several players
Game—5 John LiBrandi vs. Auburn, 1972
Season—83 Randy Davidson, 1974
Career—151 Dick Gold, 1967-69

HITTING STREAKS

Consecutive Games—19 Dick Gold, 1969
Consecutive Hits—7 Tom Cook, 1968
Consecutive Times On Base—11 Mike Easom, 1968 (4 walks, 6 hits, 1 FC)

DOUBLES

Game—3 Maury Hopkins vs. Kentucky, 1966; Tom Thomas vs. Kentucky, 1966 (Hopkins in first game, Thomas in second of same doubleheader)

Season—17 Dick Nichols, 1970; John LiBrandi 1972.

Career—30 John LiBrandi, 1972-73

TRIPLES

Game—2 by five players, most recently by Ron Cash vs. So. Fla., 1970
Season—9 Dick Gold, 1969
Career—12 Dick Gold, 1967-69; Bob Hudson, 1953-55

HOMERUNS

Game—2 by 12 players, most recently by Tim Sherill vs. So. Fla., 1972
Season—13 by Jim Lyttle, 1966
Career—17 Mike Easom, 1967-69

TOTAL BASES

Game—11 John LiBrandi vs. Ga. South, 1972

Season—131 Jim Lyttle, 1966
Career—227 Mike Easom, 1967-69

RUNS BATTED IN

Game—7 John LiBrandi vs. Auburn, 1972
Season—58 John LiBrandi, 1972
Career—95 John LiBrandi, 1972-73

WALKS

Game—5 Dick Howser vs. Miami, 1956
Season—50 Dave Nichols, 1972
Career—87 Denny Williams, 1972-73

STRIKEOUTS

Fewest Season—1, Cooter Mills, 1954 (87 AB)
Most Season—58 Walt Sumner, 1969
Most in Game—5 Dick Nichols vs. Ga. So., 1970

Most Career—85 Walt Sumner, 1968-69; Dick Gold, 1967-69

Fewest/AB—(50-99 AB) 1/87 Cooter Mills (one in 87 ABs) 1954; (100-199 AB) 1/27.4 Mike Augustine (5 in 135); 1964; (200 + AB) 1/24.4 Randy Davidson (10 in 244) 1974

Most/AB—1/3 Ralph Blinn, 1952 (21 in 63)

STOLEN BASES

Game—5 Dave Nichols vs. Richmond, 1972

Season—34 Dick Nichols, 1970

Career—52 Randy Brown, 1965-66

FIELDING RECORDS

FIELDING AVERAGE

Highest Season—(50-99 chances) 1.000 Ken Doria, of, 1971 (0/72)

(100-149)—1.000 Larry Lee c, 1973 (0/120)

(150-199) .981 Larry Cocks, 2b, 1971 (3/159)

(200-249) .996 Jim Foxwell, 1b, 1973 (1/242)

(250-299) .982 Doug Kasimier, 1b, 1971 (5/274)

(300+) .987 Dan Roatche, c-ab, 1972 (4/300)

Lowest Season—.823 Rick Colzie, 3b-of, 1973 (23/130)

PUTOUTS

Season—506 Windle Higginbotham, 1b, 1974

Career—675 Harry Saferight, c, 1970-71

ASSISTS

Season—188 Dick Nichols, 2b, 1970

Career—297 Roger Smith, ss, 1972-73

ERRORS

Most Season—28 Greg Gromek, ss, 1970 (265 chances, .865)

Most Career—50 Greg Gromek, ss-of, 1969-70

Fewest Season—None, Larry Lee, c, 1973 (120 chances); Ken Doria, of, 1971 (72 chances)

PITCHING RECORDS

APPEARANCES

Season—29 Mac Scarce, 1971

Career—56 Bill Fuller, 1970-73

STARTS

Season—18 Marty Rice, 1972

Career—36 Gene Ammann, 1968-70

RELIEF APPEARANCES

Season—29 Mac Scarce, 1971

Career—45 Mac Scarce, 1970-71

COMPLETE GAMES

Season—11 Wayne Vincent, 1967

Career—23 Wayne Vincent, 1966-68

INNINGS PITCHED

Season—142-2/3 Marty Rice, 1972

Career—295-1/3 Gene Ammann, 1968-70

SAVES

Season—18 Mac Scarce, 1971 (29 App.)

Career—30 Mac Scarce, 1970-71 (45 App.)

SHUTOUTS

Season—8 Gene Ammann, 1970

Career—11 Gene Ammann, 1968-70

Consecutive—4 Gene Ammann, 1970 (Auburn 5-0; Florida 1-0 in 10 inn; E Carolina 2-0 at Dist. 3; Arizona 4-0 at CWS)

Consecutive Scoreless Innings—41-1/3 Gene Ammann, 1970 (five games including four shutouts)

VICTORIES

Season—15 Gene Ammann, 1970 (15-0)

Career—31 Gene Ammann, 1968-70 (31-2)

Consecutive in Season—15 Gene Ammann, 1970 (15-0)

Consecutive in Career—15 Gene Ammann, (all in 1970) 1968-70 (31-2)

LOSSES

Fewest Season—None by Gene Ammann in 15 decisions, 1970 and several others in fewer decisions

Fewest Career—2 Gene Ammann, 1968-70 (33 decisions)

Most Season—6 Danny O'Brien, 1974 (13 decisions); Marty Howell, 1964

Most Career—13 Marv Stringfellow, 1965-67. 29 decisions)

WIN PERCENTAGE

Season—1.000 Gene Ammann, 1970 (15 decisions and seven others with fewer wins)

Career—.939 Gene Ammann, 1968-70 (31-2)

NO-HIT GAMES

Season—One on several occasions, most recently by Gene Ammann vs. So. Fla., in 1970)

Career—One by several players

ONE-HIT GAMES

Season—2, Gene Ammann, 1970

TWO-HIT GAMES

Season—3, Gene Ammann, 1970

EARNED RUN AVERAGE

Lowest Season—0.66 Gene Ammann, 1970 (10 ER in 137-1/3 inn.)

Lowest Career—1.45 Wayne Vincent, 1966-68 (58 ER in 292 inn.)

Highest Season—5.55 Chuck Sanders, 1953

Highest Career—4.22 Marty Howell, 1962-64

RUNS ALLOWED

Fewest Season—18 Steve Mastin, 1968 (107 inn.)

Most Season—60 Marty Rice, 1972 (142-2/3)

Most Career—125 Bill Fuller, 1970-73, (293-1/3)

EARNED RUNS ALLOWED

Fewest Season—8 Max Long, 1956 (45 inn.)

Most Season—47 Dave Fernald, 1972 (105-2/3)

Most Career—91 Marty Rice, 1971-74 (286)

HITS ALLOWED

Fewest Per 9 innings season—3.51 Mac Scarce 1971 (13 in 33-1/3)

Most Season—127 Marty Rice, 1972 (142-2/3)

Most Career—279 Bill Fuller, 1970-73 (293-1/3)

HOME RUNS ALLOWED

Most Season—7 Bill Fuller, 1973

STRIKEOUTS

Game—24 Tony Avitable vs. Furman, 1956
Season—154 Pat Osburn, 1970

Career—318 Gene Ammann, 1968-70

Most Per 9 innings season—15.0 Mac Scarce 1971 (60 in 36 innings)

WALKS ALLOWED

Most Season—72 Dave Fernald, 1972 (105-2/3)

Most Career—148 Marty Rice, 1971-74 (248)

Fewest Per 9 innings Season—1.33 George Lott, 1969 (14 in 94-2/3)

Fewest Per 9 innings Career—1.70 Frank Davis, 1959-61 (48 in 249-1/3)

NCAA TOURNAMENT RECORDS

(Florida State has set the following NCAA Tournament records in District or CSW play)

MOST STOLEN BASES—Single Game, 5 Dave Nichols vs. Richmond, 6-2-72, District 3.

MOST RUNS SCORED—Single Game, 5 Bill Westendick vs. Georgia Tech 6-9-59, District 3 (tied with two others)

MOST TIMES AT-BAT, BOTH TEAMS—102 vs. Southern California, 15 innings, 6-18-70 (USC 52, FSU 50)

MOST STOLEN BASES, TEAM—10 vs. Richmond, 6-2-72, District 3.

SOUTHEASTERN INDEPENDENT RECORDS

(The following Southeastern Independent Records are held by Florida State)

TEAM RECORDS

GAMES PLAYED—68 in 1972

WINNING PERCENTAGE, 24-49 Games—.854, 1968

MOST SHUTOUTS—15 in 1970

MOST CONSECUTIVE SCORELESS INNINGS—40 in 1973

MOST AT BATS—2,305 in 1972

MOST HITS—Season—670, in 1972

MOST TRIPLES, Season-35 in 1969 and 1972
 MOST TRIPLES, Game-5 vs. Kentucky Wesleyan, 1968
 TOTAL BASES, Season-979 in 1972
 RUNS BATTED IN, Season-403 in 1972
 MOST WALKS, Game-18 vs. Ithaca Coll., 1957
 MOST STRIKEOUTS, Season-336, in 1969
 INNINGS PITCHED, Season-594-2/3 in 1972
 COMPLETE GAMES, Season-27 in 1969
 LOWEST EARNED RUN AVERAGE-1.40 in 1970
 MOST RUNS ALLOWED-325 in 1972
 MOST EARNED RUNS ALLOWED-578 in 1972
 MOST STRIKEOUTS, Season-528 in 1970
 MOST STRIKEOUTS, Game-24 vs. Furman, 1956
 MOST WALKS ALLOWED-Season-340 in 1972
 MOST PUTOUPS, Season-1,728 in 1972
 MOST ASSISTS, Season-810 in 1972
 MOST ERRORS, Season-123 in 1972
 MOST TOTAL CHANCES, Season-2,661 in 1972

INDIVIDUAL RECORDS

GAMES PLAYED, Season-67 John Librandi, 1967
 PUTOUPS, Season-506 Windle Higginbotham, 1974
 ASSISTS, Season-188 Dick Nichols, 1970
 AT-BATS, Season-244 Randy Davidson, 1974
 AT-BATS, 9 inn. Game-7 Dave Grimes, 1971 (tie)
 RUNS SCORED-69 Gary Sprague, 1966
 HITS, Season-83 Randy Davidson, 1974
 TRIPLES, Career-12 Bob Hudson, Dick Gold (tie)
 HITTING STREAK-19 Dick Gold, 1969 (tie)
 STOLEN BASES, Game-5 Dave Nichols vs. Richmond, 1972 (tie)
 WALKS, Game-5 Dick Howser, 1956, vs. Miami (tie)
 STRIKEOUTS, Career-85 Dick Gold, Walt Sumner
 STRIKEOUTS, Season-58 Walt Sumner, 1969
 STRIKEOUTS, Game-5 Dick Nichols, 1970 (15 inn.)
 APPEARANCES, Season-29 Mac Scarce, 1971
 RELIEF APPEARANCES, Season-29 Mac Scarce, 1971
 WINS, Career-31 Gene Ammann, 1968-70
 SAVES, Career-30 Mac Scarce, 1970-71
 SAVES, Season-18 Mac Scarce, 1971
 WIN PERCENTAGE, Career-Gene Ammann, .939, 1968-

WIN PERCENTAGE, Season-1.000 Gene Ammann, 1970
 SHUTOUTS, Career-11 Gene Ammann, 1968-70
 SHUTOUTS, Season-8 Gene Ammann, 1970
 LOWEST ERA, Career-1.45 Wayne Vincent, 1966-68
 MOST EARNED RUNS, Career-91 Marty Rice, 1971-74
 MOST EARNED RUNS, Season-47 Dave Fernald, 1972
 RUNS ALLOWED, Season-60 Marty Rice, 1972
 STRIKEOUTS, Career-318 Gene Ammann, 1968-70
 STRIKEOUTS, Season-154 Pat Osburn, 1970
 STRIKEOUTS, Game-24 Tony Avitable vs. Furman, 1956
 WALKS ALLOWED, Career-148 Marty Rice, 1971-74

RECORDS VS. ALL OPPONENTS

Team	First Meeting	Last Meeting	Score	Series Standing	
	Year	Year		FSU	OPP
Alabama	1967	1968	6-1	2	1
Amherst	1952	1964	5-0	7	1
Arizona	1963	1970	4-0	1	1
Auburn	1954	1974	1-7	39	32
Belmont Abbey	1969	1969	8-4	2	0
Bradley	1950	1950	1-10	1	1
Bowling Green	1970	1970	17-8	1	0
Brown	1971	1971	6-1	5	1
Chicago State	1972	1972	11-2	3	0
Cincinnati	1953	1956	8-2	2	0
Clemson	1958	1974	5-3	19	14
Columbus College	1974	1974	7-2	2	0
Connecticut	1957	1957	3-5	0	1
Cumberland College	1973	1973	9-0	2	0
Dartmouth	1970	1970	6-0	1	0
Davidson	1954	1954	7-1	1	0
Duke	1954	1959	2-6	15	9
East Carolina	1962	1970	2-0	4	2
Fairleigh Dickinson	1973	1973	2-1	2	0
Florida	1956	1974	4-3	37	37
Florida A&M	1971	1973	8-1	9	0
Florida International	1973	1974	4-5	3	1
Florida Southern	1949	1974	2-4	29	13
Furman	1955	1969	7-2	12	1
Georgia	1951	1971	2-4	25	15
Georgia (Savannah)	1948	1948	8-3	1	1
Georgia Southern	1948	1974	3-2	60	16
Georgia Tech	1959	1973	2-3	11	4
George Washington	1958	1959	3-2	2	0
Holy Cross	1970	1970	3-0	2	0
Illinois	1956	1970	10-0	5	0
Indiana	1956	1956	14-10	2	0
Ithaca	1957	1962	5-4	3	0
Jacksonville (Ala.) St.	1953	1973	13-5	3	0
Jacksonville (Fla.) Univ.	1964	1974	8-6	20	7
Kentucky	1965	1966	20-1	5	0
Kentucky Wesleyan	1968	1968	15-5	2	0
Kenyon	1952	1952	11-2	2	0
Lafayette	1971	1971	2-1	3	0
Lewis	1974	1974	5-7	0	3
LSU	1955	1966	1-2	1	2
Loyola (La.)	1952	1968	4-1	10	0
Marietta College	1973	1973	5-7	0	1
Maryland	1965	1970	10-1	4	0
Mercer	1948	1974	13-11	7	2
Mercer-Atlanta	1974	1974	14-2	2	0
Miami	1951	1974	3-17	42	16
Michigan	1959	1962	7-10	1	1
Michigan State	1957	1971	9-5	8	5
Middle Georgia	1948	1948	7-6	2	0
Millsaps	1949	1949	10-8	1	0
Mississippi	1949	1972	3-8	6	1
Mississippi College	1948	1951	7-8	13	4
Mississippi State	1964	1970	5-4	5	2
Navy	1960	1956	0-1	3	4
New York University	1970	1970	4-2	2	0
Niagara	1974	1974	4-2	1	0
North Carolina	1956	1970	3-2	14	4

North Carolina State	1962	1968	1-4	2	4
UNC-Wilmington	1974	1974	10-4	3	0
Northeast Louisiana	1964	1964	7-4	1	0
Northern Illinois	1971	1971	7-1	1	0
Notre Dame	1956	1958	3-2	3	0
Oglethorpe	1949	1949	5-7	0	1
Ohio	1970	1974	3-6	1	1
Ohio State	1960	1971	1-9	0	3
Parsons	1967	1967	4-16	0	2
Penn State	1957	1969	8-4	7	2
Richmond	1972	1972	10-5	1	0
Rider College	1970	1974	6-1	2	0
Rollins	1948	1973	5-0	11	11
Rutgers	1966	1966	18-10	1	0
Santa Clara	1962	1962	6-11	1	1
South Alabama	1969	1973	2-3	12	11
South Carolina	1969	1974	0-1	1	2
South Florida	1969	1974	9-8	10	2
Southeastern Louisiana	1953	1953	5-4	1	1
Southern California	1963	1970	1-2	0	2
Southern Illinois	1968	1970	6-1	6	1
Springfield	1967	1-68	18-0	4	0
Springhill	1966	1966	14-2	4	0
St. Josephs	1972	1973	9-4	9	4
St. Leo	1969	1973	11-0	13	1
St. Louis	1965	1965	3-5	0	1
Stetson	1949	1973	4-5	25	15
Tampa	1949	1974	11-1	20	4
Tennessee	1951	1974	0-2	4	3
Texas	1965	1970	11-2	2	1
Troy State	1948	1974	9-2	3	1
Tulane	1967	1969	0-1	5	1
Union University	1970	1971	8-6	5	0
Valdosta State	1963	1974	1-15	7	2
Vanderbilt	1972	1972	19-4	2	1
Virginia	1972	1972	14-7	2	0
Virginia Tech	1967	1967	7-2	1	0
Wake Forest	1962	1969	10-1	15	5
Western Michigan	1959	1974	2-4	6	8
West Virginia	1956	1962	6-5	3	2
William & Mary	1967	1967	5-4	1	0
Wisconsin	1955	1958	3-1	8	1
Yale	1957	1957	11-8	2	0

OTHER AMATEURS

Camp Lejune (USMC)	1949	1954	5-6	3	1
Jacksonville Naval Air Sta.	1953	1954	7-4	2	2
Pensacola Navy	1965	1965	10-2	3	0
Valdosta Red Sox	1968	1968	3-1	4	0

PRO TEAMS

Birmingham (AA)	1968	1968	2-6	0	3
Knoxville (A)	1958	1958	3-2	1	0
Pittsfield (AA)	1968	1968	0-1	0	3
Tallahassee (Citizens) (A)	1951	1951	16-6	1	0
Tallahassee (Rebels) (A)	1954	1954	2-5	1	1
Pautuckett	1970	1970	3-14	0	1
Baltimore	1970	1970	5-10	0	1

THROUGH THE YEARS

Year	Coach	Captain	W	L	T	Rns	Opp	BA	Opp
1948	Charlie Armstrong	Ron Nettles	9	8	0	101	121		
1949	Charlie Armstrong	Sam Cox	11	8	0	126	103		
1950	Charlie Armstrong	Bob Trowbridge	11	7	0	122	104		
1951	Charlie Armstrong	Augie Pompelia	13	6	0	161	97	.292	.234
1952	Ralph Matherly	Bob Trowbridge	17	4	0	158	72	.266	.188
1953	Ralph Matherly	Cooter Mills	13	10	1	156	111	.254	
1954	Ralph Matherly	Bob Hudson	13	8	0	164	101	.269	
1955	Danny Litwhiler	Billy Campbell							
		Bob Hudson	17	6	0	189	98	.321	
1956	Danny Litwhiler	Max Long	24	6	0	244	121	.295	
1957	Danny Litwhiler	Carlee Hendrix	22	9	0	232	120	.297	
1958	Danny Litwhiler	Dick Howser	20	7	0	198	104	.294	.208
1959	Danny Litwhiler	Dale Koch	22	11	0	258	166	.282	.231
1960	Danny Litwhiler	Ray Bazzell	13	9	0	183	136	.312	.254
1961	Danny Litwhiler	Frank Davis							
		Jack Dull	21	7	0	203	238	.301	.256
1962	Danny Litwhiler	Ray McShane							
		Bob Madison	23	14	0	254	221	.296	.258
1963	Danny Litwhiler	Al Beccaccio	26	13	0	250	151	.278	.213
1964	Fred Hatfield	Jim Reed	23	13	0	244	171	.273	.247
1965	Fred Hatfield	Gerry Chmielewski	32	11	1	305	179	.281	.253
1966	Fred Hatfield	Dick Fernandez	39	13	0	417	192	.294	.214
1967	Fred Hatfield	Roy Mewbourne	32	14	0	214	155	.234	.220
1968	Fred Hatfield	Chuck Cone							
		Bob Canty	35	6	0	291	120	.284	.215
1969	Jack Stallings	Dick Gold							
		Mike Easom	38	13	1	303	158	.273	.219
1970	Jack Stallings	Dick Nichols	49	9	1	361	144	.277	.186
1971	Jack Stallings	Harry Saferight							
		Ron Cash	41	16	0	341	208	.282	.208
1972	Jack Stallings	Ken Doria	45	23	0	473	325	.291	.251
		Mike Scarce							
1973	Jack Stallings	John LiBrandi	38	21	0	331	218	.289	.218
		Denny Williams							
1974	Jack Stallings	Randy Davidson	37	25	0	320	269	.268	.232

COACHES CUMULATIVE RECORD

NAME	TENURE	YEARS	WON	LOST	TIE	PCT.
Charlie Armstrong	1948-51	4	44	29	0	.6027
Ralph Matherly	1952-54	3	43	22	1	.6591
Danny Litwhiler	1955-63	9	188	82	0	.6963
Fred Hatfield	1964-68	5	161	57	1	.7374
Jack Stallings	1969-74	6	248	107	3	.6969

This public document was promulgated at an annual cost of \$544.25 or \$1.10 per copy to serve as a handbook for baseball and acquaint the media and fans with the 1975 Florida State University Baseball Team.