

FLORIDA STATE UNIVERSITY



BASEBALL
1972

MEMO TO THE MEDIA AND SCOUTS

This brochure was prepared by the Florida State University Sports Information Office in your use. For more information concerning the Seminole Baseball team, contact the **Sports Information Office**, Room 200, Tully Gym, Tallahassee, 32306; phone (AC 904) 599-2790, **Lonnie Burt** (home phone 385-4480), Director or **Hank Schomber** (home phone 576-8922), Assistant Director.

ATHLETIC DIRECTORY

NAME	POSITION	PHONE
		(AC 904)
Dr. Richard Baker	Chairman, Athletic Board	599-3520
Dr. C. R. Bickerstaff	Ass't. Athletic Director	599-2790
Scott Bristol	Academic Advisor and Tennis Coach	599-3080
Lonnie Burt	Sports Information Director	599-2790
Frank DeBord	Football Equipment Manager	599-2775
Charlie Durbin	Lab Technician and Driver	599-2164
Hugh Durham	Head Basketball Coach	599-3080
Scott Fletcher	Head Golf Coach	599-2790
Larry Jones	Head Football Coach	599-2775
Mike Long	Head Track Coach	599-2640
Doug May	Ass't. Trainer	599-2640
Doug Messer	Athletic Business Manager	599-2790
Dick Milder	Head Trainer	599-2775
Woody Saucier	Equipment Manager	599-2640
Hank Schomber	Ass't. Sports Information Director	599-2790
Jack Stallings	Head Baseball Coach	599-2640
Clay Stapleton	Athletic Director	599-2790
N. B. Bim Stults	Head Swimming Coach	599-3213
Claude Thigpen	Athletic Ticket Manager	599-4625
Jim Wiggans	Assistant Equipment Manager	599-2640

ON THE COVER: A trio of Seminoles who were the individual batting leaders in three summer leagues in 1971. From the left, Ken Doria, the Cape Cod League Champion with a .346 average; Herb Sikes, the Shenandoah Valley League king with a .348 mark and Rick Colzie, who led the Basin League with a .355 average although he did not have enough at-bats to qualify for the title. (Photo by Barry Mittan)



FLORIDA STATE UNIVERSITY

LOCATION	Tallahassee, Florida
ENROLLMENT	18,000
PRESIDENT	Dr. Stanley Marshall
CONFERENCE	Independent
COLORS	Garnet and Gold
NICKNAME	Seminoles
HOME FIELD	Seminole Field (3,300)

FOUNDED in 1857 as Seminary West of the Suwannee, the University has moved successfully through phases in its history as a small liberal arts college for women; a seminary for men and since 1947 as one of the most rapidly developing centers of public coeducation in the country. The first baseball team was fielded in 1948 and won nine of 17 games.



SEMINOLE BASEBALL

"The Best in College Baseball" is a tradition of longstanding at Florida State. The Seminole baseball program is recognized as one of the nation's very best by the fans, high school coaches and the pro scouts. "If we find a boy who is set on a college education before turning pro, we don't hesitate to recommend Florida State," says one scout. "He is going to get as much or more training and experience there as he will anywhere in the country."

And it is not just the scouts in the Southeast who are high on Florida State. Young players from all over the country are recommended to the Florida State Seminoles by their area scouts and Florida State is in turn recommended to the player. There are many reasons for the scouts' confidence in the Seminole Baseball Program, but foremost is the coaching.

Through the years the Seminoles have had the nation's finest coaching staffs. The instruction of these outstanding head coaches is supplemented by invaluable tutoring from the many professional ball players who come to Florida State in the offseason. Often the instruction given by these pros, many of whom are former Seminoles who have gone on to the major leagues, is on an individual basis. The contribution this type of "coaching" makes, not only to the individual but also the overall program, is immeasurable.

Facilities is another big factor in the Seminole program. Few colleges can boast of the "on campus" facility the Seminoles have for baseball. Beautiful Seminole Field is the site of all Florida State home games, but it is just one of three complete fields available to the FSU baseball player. Scattered around this complex are several batting cages and pitching mounds ensuring everyone a place to work. One of the most recent additions to the complex was a "Curvemaster" pitching machine, for extra long and individual batting practice sessions.

Seminole Field itself is one of the first "on-campus" lighted playing fields. Night baseball has become part of the "way of life" of the Tallahassee community in the spring and crowds of 2000 or more are not uncommon at the Seminole home games. Many times each season the Seminole Field bleachers are filled to their 3,300 capacity with several hundred more fans scattered around the outfield fences. In the last two seasons more than 70,000 fans have seen the Tribe play at Seminole Field alone.

The field itself is the equivalent to many of the finest minor league parks. The basepath's and outfield warning tracks are of clay and the entire complex is kept in tip-top condition year round by the Florida State Department of Grounds.

Keeping the field in top shape year-round is not coincidental, since the Florida State baseball program is virtually a 12-month a year operation. The mild Florida winters make it possible for the Seminoles to work out regularly from the first day of classes in September until the final out of the season in June—a factor that pleases Seminole coaches and players alike.

Seminole players report for their workouts soon after classes begin in the fall and have an extensive "fall season" that usually climaxes in the annual "homecoming Oldtimers Game" in which the Tribe varsity plays a team of former Seminoles, many of whom have gone on to the major leagues. Preparations for the new season begin early in January. The spring season starts on or about March 1 and continues through June. In addition to their play at Florida State, many Seminoles take part in the various summer leagues around the country. With 30 games in the fall, another 70 in the spring and 50 or more in the summer, it is not unusual for a player in the Florida State program to have the opportunity to play 150 games a year.

All this opportunity to play, however, does not mean that there is no emphasis on academic work. Even though a Florida State baseball player will play more than 100 games from September to June, his primary emphasis is on his studies. During the 1972 spring season he will be excused from classes only eight days. That is over two different quarters and well under the University allowed maximum. "In fact," says Seminole Coach Jack Stallings, "with the advent of night games and Sunday play, our players actually have more free time for their studies than players did five or six years ago. There is no reason why the academically oriented boy cannot play 100 games and continue to put emphasis on his studies at Florida State."

HEAD COACH Jack Stallings

A large part of Florida State's baseball tradition centers around outstanding coaching and with Jack Stallings at the Seminole helm that is exactly what they have. There are few collegiate coaches who have gained more respect from either their colleagues at the collegiate level or in the pro ranks than the Tribe mentor. Stallings' record pretty well tells his story. In three seasons at Florida State he has led the Seminoles to 128 wins in 166 games. The Tribe reached the finals of the NCAA College World Series in his second season. Seven of his players have been named to All-American teams and 10 have been named to the District All-Star squad. A dozen have been selected to play pro ball.



Before coming to the Seminoles in 1969, Stallings had built an enviable record at Wake Forest, his alma-mater. In nine seasons there, he led his teams to a 152-109-2 record, including a pair of Atlantic Coast Conference championships, two District III titles and strong showings in the College World Series.

A keen baseball tactician, Stallings' on-the-field capabilities are unsurpassed. His teams are marked by sound fundamentals and a daring, but calculated style. His fall and early preseason workouts are marked by several classroom "bull sessions" as well as team workouts and individual tutoring. As a result it is rare that a Seminole team will "beat itself" either mentally or physically.

In this way and in almost all the others, Stallings' approach to the game is strictly pro. While the "pro way" has long been the trademark of Florida State's program it has received new emphasis from Stallings. "At Florida State we want the same caliber player that the pros are seeking and that kind of boy is going to be looking for a pro style program," says Stallings.

A former pro himself, Stallings has many close friends among the nation's scouts. These relationships help the program in many ways, not the least of which is the scouts' willingness to recommend a boy to the Seminoles and the Seminoles to the boy. Also because of these acquaintanceships, a Stallings' recommendation to the scouts is highly regarded.

Stallings' promising pro career was cut short by a polio attack in 1954. Although he recovered fully, he turned his attention to coaching where he has been ever since. At Wake Forest he captained the Deacons' 1951 team which represented the United States at the Pan American Games. He signed a pro contract in 1952, but returned to Wake Forest in 1955 to complete work on his bachelors degree. In 1956 he was graduate assistant at North Carolina while obtaining his Masters. He became the Deacon's head coach in 1959.

Stallings' first season at Florida State, 1969, was highly successful with the Seminoles winning 38 of 51 games. In 1970, the Tribe chalked up a 49-9 record including a 2-1, 15-inning loss to Southern California in the NCAA finals. Last year the Seminoles were 41-16. Following the 1970 season he was named "Coach of the Year" in District III, which covers the Southeast from Maryland to Louisiana.

In addition to his Seminole coaching duties, Stallings has also served as a coach in Nova Scotia and the Basin League during the summer months. The last two summers he has taken all-star teams to South America. He was recently reelected President of the National Association of Summer Baseball Teams.

Stallings is married to the former Norma Dean Griffin and they have three sons.

VARSITY ASSISTANT COACH
Paul Dirks



This will be Paul's second season as an assistant to Coach Jack Stallings.

The 1964 graduate returned to his alma-mater after a highly successful tenure as baseball coach at John I. Leonard High School in Lake Worth. His teams at Leonard compiled a 58.22 record. He was voted "Coach of the Year" in 1968 and 1969 by the Miami Herald and Palm Beach Post Times. His 1969 club chalked up a 20-6 record losing to Key West in the State District finals.

Dirks returned to Florida State in the fall of 1970 as Director of Men's Intramurals and to work with the baseball program.

He and his wife Marrilee have two children.

ASSISTANTS

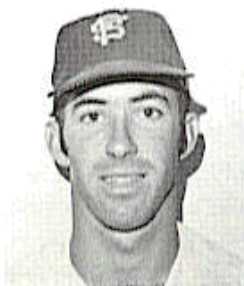
Four other coaches will also be working with the Seminole program this spring.

Bobby Simpson comes to the Seminoles after three years as head coach at Tift County High. In addition to his coaching duties there, he also served as a scout for the Cincinnati Reds. A Georgia native, Simpson played his college ball at Valdosta State. His primary duties will be with the Renegade B-team.

LaDon Boyd is one of four former Seminoles working with the staff this year. Boyd was a pitching star with the Seminoles three years before signing a pro contract with the Oakland Athletics. Among his honors was being selected to the Southern League All-Star team. He was a teammate of the A's Vida Blue for a couple of seasons. He will serve as pitching coach.

Lonnie Mathis returns to his alma-mater after several years of high school coaching in Georgia. Another former Seminole pitcher, he will be working with the Renegades.

Greg Zera moves up to a coaching position after serving the last four years as a player-manager for the Tribe. Many of the former catcher's duties will be the all important chores surrounding equipment upkeep as well as the road-trip preparations.



SIMPSON



BOYD



MATHIS



ZERA



BANKSTON



BEAN



COLZIE



CONE

SEMINOLE PROFILES

JEFF BANKSTON— Outfield, Junior, Dadeville, Ala., Bats Left, Throws Right, 5-8, 147, Miami-Dade South JC ... the most valuable player in the 1970 State JUCO Tournament ... solid all-around player ... has good speed and plays a good defensive outfield ... is reminiscent of former Seminole All-America Mike Augustine ... should be a starter ... one of three married players on squad ... starred in football, basketball and baseball at Lake Worth, Fla. High School ... hit .327 in two seasons at MDS.

Team	Yrs	AB	R	H	2B	3B	HR	TB	RBI	SB	BB	SO	AVG
Miami-Dade S	2	248	33	81	10	3	0	97	41	17	34	39	.327

MASON BEAN— Catcher, Junior, Fernandina Beach, Bats and Throws Right, 5-11, 170, South Georgia JC ... all district catcher at South Georgia ... has been away from baseball since June 1970 and needs playing time to regain his old form ... good hitter ... quick arm.

RICK COLZIE— Pitcher, Junior, Miami, Fla. Bats and Throws Right, 6-0, 180, Miami-Dade South JC ... fine athlete ... converted to pitcher at Miami-Dade South and won 21 of 24 decisions ... also hit .351 ... led the Basin League with a .355 average as a pitcher-outfielder for Chamberlain last summer, but did not qualify for batting title ... was third in league in ERA ... may be the fastest player on team ... has been drafted twice by the pros ... is expected to be in regular rotation for Seminole mound staff.

Team	Yrs	APP	GS	CG	W	L	IP	R	ER	H	BB	SO	ERA
Miami-Dade S	2	36	26	13	21	3	222 1/3	65	43	145	109	183	1.74
Summer League	1	11	x	4	4	2	70 2/3	29	18	60	41	55	2.29

SKIP CONE— Catcher, Junior, Orlando, Fla., Bats and Throws Right, 6-1, 185, Bishop Moore H.S. ... a solid defensive receiver ... one of the hardest working players on squad ... played with B-team Renegades for two seasons and is making debut with varsity ... a good hitter, he has worked hard to become a good reliable catcher ... will see considerable action.



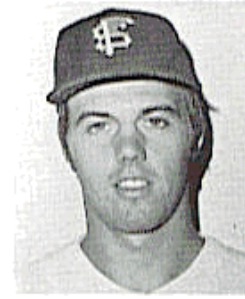
DORIA



FERNALD



FOXWELL



FULLER

KEN DORIA— Infield, Senior, Jacksonville, Fla., Bats and Throws Right, 5-10, 185, Gulf Coast JC, 1VL . . . one of only three regulars to return from last year's club . . . one of most versatile players on squad . . . played third base in junior college, outfield last year and will start at first this season . . . plays all with authority . . . consistent hitter with good power . . . led the Cape Cod League last summer with a .346 average . . . in two seasons of summer ball he is hitting .315 and had a .264 career average at Gulf Coast . . . hit .301 for Seminoles last spring with six homeruns.

Team	Yrs	AB	R	H	2B	3B	HR	TB	RBI	SB	BB	SO	AVG
Gulf Coast	2	251	61	69	21	2	3	103	39	6	49	58	.264
Summer Leagues	2	336	45	106	24	5	12	176	60	4	x	x	.315
1971 Fla. St.		196	31	59	5	1	6	84	40	9	24	24	.301

DAVE FERNALD— Pitcher, Junior, Cape Nedick, Me., Bats and Throws Right, 6-3, 190, York H.S., 1VL . . . has improved more than any player on the squad . . . had good summer in Cape Cod League . . . reported back with a tougher attitude . . . is more willing to challenge hitters . . . was best looking hurler in fall workouts . . . with added maturity is expected to be a big winner.

Team	Yrs	APP	GS	CG	W	L	IP	R	ER	H	BB	SO	ERA
1971 Fla. St.		11	7	2	5	2	51 2/3	28	22	52	30	47	3.88
Summer League	1	12	7	1	3	4	52	29	21	40	41	47	3.63

JIM FOXWELL— Infield, Freshman, Martinsville, N.J., Bats and Throws Right, 6-2, 205, Bridewater-Raritan-East H.S. . . . impressive freshman who has won spot on varsity squad . . . big strong youngster who swings a good bat . . . has potential to be an outstanding hitter . . . needs experience in good competition . . . if he does not land regular spot with varsity, he may also see action with Renegades to get experience . . . needs playing time.

BILL FULLER— Pitcher, Junior, Great Neck, N.Y., Bats and Throws Left, 6-2, 190, South H.S., 1VL . . . had best winning record on club last year at 9-2 . . . his 2.26 ERA was also best among the regular rotation . . . tough lefthander with good control, issued 22 walks and 111 strikeouts in 107 innings . . . arm trouble during the summer limited his action and in fall workouts . . . "but when he did throw, he was impressive," said Coach Jack Stallings. "He was not throwing hard, but was still getting people out and making the ball do things" . . . drafted out of high school and turned down good offer to come to Florida State . . . has good self discipline and works hard at improving.

Team	Yrs	APP	GS	CG	W	L	IP	R	ER	H	BB	SO	ERA
1970 Renegades		7	6	3	2	3	36	15	11	31	10	49	2.75
1971 Fla. St.		17	15	2	9	2	107 1/3	44	27	101	22	111	2.26
Summer League	1	6	6	1	2	1	38	8	5	30	7	29	1.18



GAILEY



GUEMPLE



HUFF



LiBRANDI

RANDY GAILEY— Outfield, Junior, Lake Wales, Bats Left, Throws Right, 5-10, 185, Manatee JC . . . missed last season due to injury sustained in early game . . . NCAA has granted an extra year of eligibility . . . has worked extremely hard to overcome injury and lost experience . . . was most impressive hitter during the fall season, leading team in hits, rbi, homeruns, triples, and doubles . . . well organized and disciplined worker . . . good lefthanded hitter with power . . . adequate defensive player.

Team	Yrs	AB	R	H	2B	3B	HR	TB	RBI	SB	BB	SO	AVG
Manatee JC	2	246	44	79	14	3	3	109	38	19	16	31	.321

RANDY GUEMPLE— Pitcher, Junior, Maitland, Bats and Throws Right, 6-2, 150, Valencia JC . . . side arm righthander who is still developing physically . . . if he continues to improve at present rate he may become top relief man, especially against right-handed hitters.

GARY HUFF— Infield, Junior, Tampa, Bats and Throws Right, 6-1, 185, Leto H.S. IVL . . . superb athlete who made impressive showing last year while splitting time between football practice and baseball . . . led team in hitting last spring although he had not played baseball for almost two years . . . consistent infielder with outstanding arm . . . good hitter with power . . . one night following a football scrimmage he walloped a pinch hit homerun to spark a win . . . in football he quarterbacked the Seminoles to Fiesta Bowl where he was named the "Outstanding Offensive Player" . . . led the nation in total offense in 1971 and is a leading All-America and Heisman Trophy candidate for '72 . . . "Gary is a tremendous athlete," says Baseball Coach Jack Stallings, "only thing that keeps him from being an outstanding baseball player is a lack of experience" . . . Head Football Coach Larry Jones has left decision about spring football practice up to Gary.

Team	AB	R	H	2B	3B	HR	TB	RBI	SB	BB	SO	AVG
1971 Fla. St.	43	7	16	1	0	1	20	5	4	3	5	.372

JOHN LiBRANDI— Outfield, Junior, Jacksonville, Throws Left, Switch Hitter, 5-10, 180, Manatee JC . . . best defensive outfielder on the club . . . outstanding arm . . . coming off a fine season in the tough Basin League . . . good hitter from both sides of the plate . . . his value is accentuated by good all-around play.

Team	Yrs	AB	R	H	2B	3B	HR	TB	RBI	SB	BB	SO	AVG
Manatee JC	2	271	53	79	13	3	3	107	15	54	29	26	.292
Summer League	1	182	27	57	12	1	0	71	24	3	x	x	.313



NICHOLS



PRICE



RICE



ROATCHE

DAVE NICHOLS— Infield, Senior, Jacksonville, Bats and Throws Right, 5-8, 160, Gulf Coast JC, 1VL . . . brother of former Seminole all-star Dick . . . plays the same type of smart, scrappy game as his brother . . . one of the more versatile players on the squad, can play short, second or the outfield . . . played summer ball in Shenandoah Valley League where he hit a respectable .280 . . . after a slow start finished strong for the Seminoles last spring . . . hit .317 last fall . . . will see plenty of action . . . runs bases well.

Team	AB	R	H	2B	3B	HR	TB	RBI	SB	BB	SO	AVG
1971 Fla. St.	159	38	43	5	1	2	56	17	21	33	34	.270

DAVE PRICE— Pitcher, Junior, Johnstown, Pa., Bats and Throws Right, 6-2, 185, Westmont Hilltop H.S. . . . developing into a fine pitcher . . . gained much needed experience in Shenandoah Valley League last summer . . . if he gains some more consistency, he will be a good one . . . is expected to see a lot of action.

MARTY RICE— Pitcher, Sophomore, Tallahassee, Bats and Throws Right, 6-2, 195, Leon H.S. . . . a very pleasant surprise as a freshman last year when he exceeded all expectations, winning 11 games . . . added experience of summer league and all-star play in South America should make him better this year . . . missed fall workouts with leg injury, but looked good in early preseason work . . . has size to be a good one . . . works hard and is anxious to improve . . . paired with Fuller, gives the Seminoles strong one-two, right-left punch.

Team	Yrs	APP	GS	CG	W	L	IP	R	ER	H	BB	SO	ERA
1971 Fla. St.		17	12	2	11	3	96 1/3	32	26	56	50	57	2.43
Summer League	1	12	10	4	2	8	71	57	39	77	48	43	4.94

DAN ROATCHE— Catcher, Senior, Hatboro, Pa., Bats and Throws Right, 6-0, 205, Hatboro-Horsham H.S., 3VL . . . highest drafted Seminole in 1971 . . . strong arm and outstanding power . . . can play catcher or first . . . if he puts it all together, will challenge for starting spot.



ROSA



SCARCE



SHERRILL



SIKES

TOM ROSA— Infield, Junior, Miami, Bats and Throws Right, 5-10, 165, Miami-Dade South JC . . . outstanding junior college player for Miami-Dade, South . . . five times a draft choice . . . his father was an outstanding pro baseball player for Brooklyn Dodgers organization . . . can play short or second . . . intelligent baseball player . . . good hitter.

Team	Yrs	AB	R	H	2B	3B	HR	TB	RBI	SB	BB	SO	AVG
Miami-Dade S	2	373	72	114	17	8	0	146	28	45	54	28	.306

MIKE SCARCE— Pitcher, Senior, Richmond, Va., Bats and Throws Right, 6-3, 170, Manatee JC . . . saw limited action last year, but got needed experience in summer ball . . . has developed his speed this fall and is making his move . . . will be counted on for needed depth . . . brother of former Seminole Mac Scarce, 1971 NCAA strikeout king.

TIM SHERRILL— Catcher, Junior, Miami, Bats and Throws Right, 6-0, 170, Miami-Dade South JC . . . very good catching prospect from Miami-Dade South . . . good defensive catcher with a quick arm . . . missed a couple of weeks of fall practice with broken nose but looked good when he was playing . . . has power at plate and swings bat well.

Team	Yrs	AB	R	H	2B	3B	HR	TB	RBI	SB	BB	SO	AVG
Miami-Dade S	2	365	60	107	20	2	6	149	76	15	71	69	.293

HERB SIKES— Infield, Senior, Tallahassee, Bats Left, Throws Right, 5-10, 195, Leon H.S. 1VL . . . appears settled at third . . . did a good job there late last season when he filled in for Ron Cash . . . can also play first . . . has worked hard on defense . . . good hitter with good power . . . led Shenandoah Valley League in hitting last summer with .348 average after a .327 season with the Seminoles . . . good pro potential.

Team	AB	R	H	2B	3B	HR	TB	RBI	SB	BB	SO	AVG
1970 Renegades	57	11	15	5	0	2	26	18	0	5	5	.263
1971 Fla. St.	168	29	55	6	4	8	93	44	3	6	14	.327



SMITH



SNYDER



SILVESTRI



WILLIAMS

ROGER SMITH— Infield, Junior, Sykesville, Md., Throws Right, Switch Hitter, 6-0, 170, Cantonville (Md.) JC . . . excellent defensive infielder . . . has good range, strong arm and sound fundamentals . . . one of team's most consistent players . . . played two years of summer ball for Leone's of Baltimore, one of top ABA Summer Teams.

RICK SNYDER— Outfield, Junior, Oconomowoc, Wis., Bats and Throws Right, 5-10, 175, Oconomowoc H.S., IVL . . . has excellent potential and ability to be outstanding player . . . one of fastest men on club, good baserunner . . . has shown marked improvement, but still needs work defensively . . . needs to gain consistency and eliminate little mistakes.

Team	AB	R	H	2B	3B	HR	TB	RBI	SB	BB	SO	AVG
1970 Renegades	57	13	16	4	0	0	20	1	5	5	7	.280
1971 Renegades	28	6	15	4	1	0	20	8	3	2	2	.536
1971 Fla. St.	19	12	3	3	0	0	6	4	3	3	2	.158

KEN SILVESTRI— Pitcher, Sophomore, Chicago, Ill., Bats and Throws Right, 6-0, 190, Gordon Tech . . . throwing harder and progressing well as a pitcher . . . should be ready to step in and help the Seminole staff . . . his father is a coach with the Atlanta Braves . . . learned to throw a knuckle ball from Hoyt Wilhelm and used it extensively last year, but now has developed a good assortment of pitches to use with it.

DENNY WILLIAMS— Infield, Junior, Chester, Va., Bats and Throws Right, 5-7, 155, Manatee JC . . . another versatile ball player . . . played shortstop for Manatee JC, but can also play second or the outfield . . . right-handed spray hitter . . . has good speed and runs the bases well . . . aggressive player, forces other side to make the play . . . will see a lot of action.

FLORIDA STATE
1972 BASEB

NO	NAME	POS	T-B	AGE (DOB)	HT	WT
5	Jeff Bankston	OF	R-L	21 (3/8/51)	5'8"	147
22	Mason Bean	C	R-R	22 (4/22/50)	5'11"	170
28	Rick Colzie	P	R-R	20 (7/14/51)	6'0"	180
10	Skip Cone	C	R-R	20 (9/23/51)	6'1"	185
16	Ken Doria	INF	R-R	21 (7/5/50)	5'10"	185
27	Dave Fernald	P	R-R	20 (8/23/51)	6'3"	190
24	Jim Foxwell	INF	R-R	19 (1/14/53)	6'2"	205
21	Bill Fuller	P	L-L	21 (9/20/50)	6'2"	190
3	Randy Gailey	OF	R-R	21 (9/12/50)	5'10"	185
9	Randy Guemple	P	R-R	20 (11/14/51)	6'2"	150
19	Gary Huff	INF	R-R	21 (4/27/51)	6'1"	185
13	John LiBrandi	OF	L-B	20 (10/10/51)	5'10"	180
2	Dave Nichols	INF-CF	R-R	21 (11/19/50)	5'8"	160
20	Dave Price	P	R-R	21 (12/27/50)	6'2"	185
23	Marty Rice	P	R-R	19 (6/22/52)	6'2"	195
17	Dan Roatche	C	R-R	21 (6/3/50)	6'0"	205
7	Tom Rosa	INF	R-R	21 (1/5/51)	5'10"	165
11	Mike Scarce	P	R-R	23 (4/8/49)	6'3"	170
12	Tim Sherrill	C	R-R	21 (3/21/51)	6'0"	170
30	Herb Sikes	INF	R-L	21 (11/3/50)	5'10"	195
18	Ken Silvestri	P	R-R	20 (4/10/52)	6'0"	190
8	Roger Smith	INF	R-B	20 (9/21/51)	6'0"	170
15	Rick Snyder	OF	R-R	20 (7/24/51)	5'10"	175
6	Denny Williams	INF-OF	R-R	22 (6/28/49)	5'7"	155

Head Coach: Jack Stallings
 Assistants: Paul Dirks
 Lonnie Mathis
 Bob Simpson
 Greg Zera
 LaDon Boyd

NUMERICAL ROSTER

1	Jack Stallings	Head Coach	15	Rick Snyder	OF
2	Dave Nichols	INF	16	Ken Doria	INF
3	Randy Gailey	OF	17	Dan Roatche	C
4	Paul Dirks	Ass't Coach	18	Ken Silvestri	P
5	Jeff Bankston	OF	19	Gary Huff	INF
6	Denny Williams	OF	20	Dave Price	P
7	Tom Rosa	INF	21	Bill Fuller	P
8	Roger Smith	INF	22	Mason Bean	C
9	Randy Guemple	P	23	Marty Rice	P
10	Skip Cone	C	24	Jim Foxwell	INF
11	Mike Scarce	P	27	Dave Fernald	P
12	Tim Sherrill	C	28	Rick Colzie	P
13	John LiBrandi	OF	30	Herb Sikes	INF
14	Greg Zera	Ass't Coach			

**FE UNIVERSITY
ALL ROSTER**

CLASS	EXP	HOMETOWN	HIGH SCHOOL (COACH)
Junior	JC	Dadeville, Ala.	Miami-Dade JC (Greene)
Junior	JC	Fernandina Beach	S. Georgia (Bedingfield)
Junior	JC	Miami	Miami-Dade JC (Greene)
Junior	Reneg	Orlando	Bishop-Moore (Phillips)
Senior	1VL	Jacksonville	(Wolfson (Crook)
Junior	1VL	Cape Neddick, Me.	York High School (Lapham)
Frosh		Martinsville, N.J.	Bridewater-Raritan-East (Koperwhats)
Junior	1VL	Great Neck, N.Y.	Great Neck South (Greene)
Junior	JC	Lake Wales	Manatee JC (Wynn)
Junior	JC	Maitland	Valencia JC (Garcia)
Junior	1VL	Tampa	Leto High School (Howell)
Junior	JC	Jacksonville	Manatee JC (Wynn)
Senior	1VL	Jacksonville	Gulf Coast JC (Frazier)
Junior	1VL	Johnstown, Pa.	Westmont Hilltop H.S. (Balough)
Soph.	1VL	Tallahassee	Leon H.S. (Barwick)
Senior	3VL	Hatboro, Pa.	Hatboro-Horsham (Ledyard)
Junior	JC	Miami	Miami-Dade JC (Greene)
Senior	1VL	Richmond, Va.	Manatee JC (Wynn)
Junior	JC	Miami	Miami-Dade JC (Polk)
Senior	1VL	Tallahassee	Leon H.S. (Wilcox)
Soph	Reneg	Chicago, Ill.	Gordon Tech (Frank)
Junior	JC	Sykesville, Md.	Catonsville Comm. Coll. (Workman)
Junior	1VL	Oconomowoc, Wis.	Oconomowoc H.S. (Sorenson)
Junior	JC	Chester, Va.	Manatee JC (Wynn)

BY POSITION

PITCHERS		OUTFIELDERS		INFIELDERS		CATCHERS	
No.	Name	No.	Name	No.	Name	No.	Name
28	Rick Colzie	5	Jeff Bankston	16	Ken Doria	22	Mason Bean
27	Dave Fernald	3	Randy Gailey	24	Jim Foxwell	10	Skip Cone
21	Bill Fuller	13	John LiBrandi	19	Gary Huff	17	Dan Roatche
9	Randy Guemple	2	Dave Nichols	2	Dave Nichols	12	Tim Sherrill
20	Dave Price	15	Rick Snyder	7	Tom Rosa		
23	Marty Rice	6	Denny Williams	30	Herb Sikes		
11	Mike Scarce			8	Roger Smith		
18	Ken Silvestri			6	Denny Williams		

1972 OUTLOOK

The pro look has long been a trademark of Florida State's baseball program, but perhaps never in the past has it been as evident as it is this year. "This team approaches a pro club more than any collegiate team I have ever been associated with," says Coach Jack Stallings. "It is not a team of 12 or 13 ballplayers. We have about 20 people who can play."

Depth is the overriding plus factor of the 1972 Seminole baseball team. At every position the Seminoles have several potential starters. In fact Stallings sees his biggest problem in figuring out how to get everybody to play. "We have too many good ballplayers for anyone to be sitting on the bench all season," he notes.

A big help in that regard will be the Tribe's schedule. With 69 games on tap, there should be plenty of opportunity for everyone to see action. "I don't know if we will platoon, but we certainly aren't going to worry about making a change if someone gets hurt or is not playing up to par for some reason."

This situation may seem somewhat ironic, since most observers felt the 1972 season would be a "rebuilding year" for the Tribe with only two regulars returning from 1971's 41-16 club. But Stallings went out into the junior college ranks and picked up several good ones. Together with a few reserves back from last season they make a solid club.

Included on the roster are the batting leaders of three summer leagues. Ken Doria, who was the Seminoles' regular leftfielder last year, won the Cape Cod title. Herb Sikes, the other returning regular, was the batting champion in the Shenandoah Valley League. Rick Colzie had the highest average in the Basin League, but failed to get enough at-bats to qualify for the championship. He split his time as a pitcher and outfielder.

In addition to depth, Stallings sees overall speed, power and good defense as strong points for this year's club. "In fact," he adds, "it is hard to put a finger on an area you would call weak."

The closest thing to a weakness may be pitching, but with the top three hurlers from last season back, plus the addition of one of the top two or three junior college pitchers, Stallings is not worried. "We lost one pitcher we were counting on," said the Tribe mentor referring to Barry McQueen, who broke his leg in a motorcycle accident last fall. "He would have given us a fifth starter and long relief man. Now one of the others will have to come through for us."

The top three are veterans Bill Fuller (9-2), Marty Rice (11-3) and Dave Fernald (5-2). They will be joined by Miami-Dade, South star Colzie in the regular rotation. Behind them are Dave Price, Mike Scarce, Randy Guemple and Ken Silvestri. "The one thing we won't have," said Stallings, "is a Mac Scarce. He only comes once in a lifetime and you don't replace him." Scarce was an outstanding "stopper" for the Seminoles. He led the nation in strikeouts per nine innings with 15 and set school records with 18 saves in a single season and 30 in a career (just two years). "Our starters will probably have to go the distance more often than last year, but with a year's experience they should be able to."

The infield will be all new. Although Doria and Sikes return, they are playing new positions. Sikes who finished the year at third will move to first, Doria who played in the outfield, moves to third. Dave Nichols, Denny Williams and Tom Rosa are vying for the second base job. All are on equal footing. At short, Gary Huff, who led the nation in total yards in football last fall and is prime All-America candidate this year, is in a tight race with Roger Smith for a starting spot.

In the outfield, Randy Gailey, who was hurt early in the season and has been granted another year's eligibility by the NCAA, Rick Snyder, a reserve last season, Jeff Bankston and John LiBrandi a pair of new comers, give Stallings a foursome from which to choose. In addition, Doria, Williams or Nichols could also play out there.

All-State juco transfer Tim Sherrill is the top catching prospect, but he is being pushed by Skip Cone, Dan Roatche and Mason Bean.

"We have set our goal to win at least 50 games during the regular season," said Stallings. "I don't think that it is an unrealistic goal. Overall this could be a better team than our 1970 group which lost the national championship in 15-innings to Southern California."

**1971 RESULTS
41-16 (.719)**

FSU	OPPONENTS		FSU	OPPONENTS	
13	Valdosta State	1	7	Northern Illinois	1
5	Union University	0	7	Miami	5
14	Union University	0	4	Miami	7
7	Union University	6	13	Auburn	8
9	St. Leo College	8	8	Auburn	11
7	St. Leo College (11 inn)	6	17	@ Valdosta State	3
3	Lafayette College	0	0	@ Clemson	11
1	Lafayette College	0	7	@ Clemson	12
2	Lafayette College	1	2	@ Clemson	3
5	@ Miami (10 inn)	4	6	@ Georgia	0
4	@ Miami (10 inn)	5	2	@ Georgia	4
1	Ohio State *	9	9	South Alabama	7
9	Michigan State *	5	4	South Alabama	5
14	@ St. Leo College	2	9	South Alabama	4
FSU TOURNAMENT			10	South Florida	6
5	Western Michigan	7	4	South Florida (14 inn)	3
2	Florida A&M	1	2	Stetson	0
21	Florida A&M	1	1	Stetson	0
7	Western Michigan	5	1	Georgia Southern	2
1	Western Michigan	5	6	Georgia Southern	1
7	Florida A&M	1	7	@ South Alabama	3
0	Brown University	2	1	@ Georgia Southern	0
5	Brown University	1	9	@ Auburn	4
3	Brown University	1	6	@ Auburn	5
12	Brown University	1	7	@ Florida	2
4	Brown University	1	2	@ Florida	0
6	Brown University	1	3	@ Florida	4
4	@ Jacksonville	13	1	Florida	4
8	@ Jacksonville	6	7	Florida	0

* at Miami

THE SEMINOLES IN CHAMPIONSHIP PLAY

Florida State's NCAA playoff and College World Series record is surpassed by very few schools around the country. In the last 16 years, the Seminoles have made 12 playoffs, only Texas and Northern Colorado can claim that many trips in the same period. In the entire history of the playoffs, only those two teams, Texas with 19 and North Colorado with 18 trips each and Southern California with 14 have been more than the Seminoles. The Seminoles' 37 victories in championship play are more than have been recorded than all the 128 participating teams, except Southern Cal's 76 and Texas' 49. Of the 72 teams which have appeared in the College World Series, only seven have been more than the five years the Tribe has made an appearance, and only 12 have recorded more victories. The Seminoles' .569 winning percentage is 24th among all tournament teams, and is ninth among the teams that have been to the playoffs at least six times in their 25 year history.

In the Seminoles' 13 trips to the District III Playoffs, they have finished either first or second eight times. In CWS play the Seminoles have reached the third round twice, the semi-finals once and the finals once.

Florida State's NCAA Tournament Record:

Years Participated (CWS)	Record Including District Playoffs			College World Series Record				
	Yrs.	Won	Lost	Pct.	Yrs.	Won	Lost	Pct.
1956-(57)-58-59-61-(62)-(63)-(65)-66-67-68-(70)	12	37	28	.569	5	8	10	.444

1971 BASEBALL STATISTICS

HITTING

NAME - Pos.	G	AB	R	H	2B	3B	HR	TB	SB	RBI	BB	SO	AVG
Ron Cash, INF	50	165	43	58	10	6	4	92	0	29	33	11	.352
Herb Sikes, INF	47	168	29	55	6	4	8	93	3	44	6	14	.327
Ken Doria, OF	56	196	31	59	5	1	6	84	9	40	24	24	.301
Harry Saferight, C	54	192	36	58	9	3	8	97	1	43	25	19	.300
Doug Kasimier, 1B	51	143	28	43	9	3	5	73	3	25	17	24	.300
Greg Gromek, SS	53	168	20	49	9	2	4	74	9	26	25	10	.292
Mike Leber, OF	37	117	23	33	3	0	2	42	6	15	24	12	.282
Dave Nichols, OF	54	159	38	43	5	1	2	56	21	17	33	34	.270
Dave Grimes, INF	40	125	21	33	4	2	4	53	3	15	14	19	.264
Larry Cocks, 2B	44	136	27	30	7	2	0	41	13	13	15	12	.221

Less than 100 at-bats

Gary Huff, INF	17	43	7	16	1	0	1	20	4	5	3	5	.372
Dan Routche, C	20	51	6	14	2	1	1	21	0	7	5	11	.275
Randy Gailey, OF	8	23	5	6	0	0	1	9	0	4	2	4	.261
Rick Moss, OF	4	4	3	1	0	0	0	1	0	0	2	2	.250
Greg Zera, C	7	5	1	1	0	0	0	1	0	0	1	1	.200
Rick Snyder, OF	19	19	12	3	3	0	0	6	3	4	3	2	.158

Pitchers

Don Harbaugh	8	10	1	3	0	0	0	3	0	1	1	2	.300
Dave Fernald	12	21	1	6	0	1	0	8	0	2	1	9	.286
Robin Flake	10	14	1	4	0	0	0	4	0	4	2	3	.286
Mac Scarce	29	4	0	1	0	0	0	1	0	0	0	2	.250
Mike Scarce	15	5	0	1	0	0	0	1	0	0	0	2	.200
Dave Price	11	7	0	1	0	0	0	1	0	0	2	3	.143
Marty Rice	17	34	2	5	0	0	0	5	0	3	2	6	.147
Mike Vasquez	7	8	2	1	0	0	0	1	0	1	0	3	.125
Bill Fuller	17	33	4	4	1	0	0	5	0	3	8	11	.121
Barry McQueen	13	17	1	0	0	0	0	0	0	0	3	7	.000
John Keith	10	6	0	0	0	0	0	0	0	0	0	1	.000
Ken Silvestri	1	1	0	0	0	0	0	0	0	0	0	0	.000

FLORIDA STATE	57	1875	341	528	74	26	46	792	75	301	251	253	.282
OPPONENTS	57	1808	208	376	34	6	29	505	38	179	242	424	.208

PITCHING

NAME	G	GS	CG	W	L	IP	R	ER	H	BB	SO	SHO	SAV	ERA
Dave Price	11	2	0	2	0	29 2/3	5	3	13	19	16	9	1	0.91
Mac Scarce	29	9	9	3	1	36	10	4	15	15	60	0	18	1.00
Barry McQueen	12	8	1	3	3	56	20	13	38	29	45	1	1	2.08
Bill Fuller	17	15	2	9	2	107 1/3	44	27	101	22	111	1	0	2.26
Marty Rice	17	12	2	11	3	96 1/3	32	26	56	50	57	1	0	2.43
Ken Silvestri	1	0	0	0	0	3	1	1	3	0	1	0	1	3.00
Don Harbaugh	8	4	1	3	0	27	17	11	17	23	20	0	0	3.67
Dave Fernald	11	7	2	5	2	51 2/3	28	22	52	30	47	0	0	3.88
Robin Flake	11	9	1	5	4	50	26	22	39	30	40	0	0	3.96
Mike Scarce	15	0	0	0	1	23 1/3	17	13	31	15	22	0	4	5.02
John Keith	8	0	0	0	0	8 1/3	5	5	10	9	5	0	1	5.40
Mike Vasquez	2	0	0	0	0	1	3	3	1	0	0	0	1	27.00
FLORIDA STATE	142	57	9	41	16	489 2/3	208	150	376	242	424	10	27	2.76
OPPONENTS	132	57	21	16	41	467	341	274	528	251	253	2	4	5.22

SEMINOLE ALL-AMERICAS

	DICK HOWSER	
1957 First Team	Shortstop	.364
1958 First Team	Shortstop	.337
	BOB CLEM	
1959 Second Team	Secondbaseman	.436
	JACK DULL	
1961 Third Team	Secondbaseman	.370
	BUDDY TEAGLE	
1962 First Team	Catcher	.325
	MIKE AUGUSTINE	
1963 First Team	Outfielder	.399
	WOODY WOODWARD	
1963 Third Team	Shortstop	.305
	KEN SUAREZ	
1964 First Team	Catcher	.404
	JIM LYTTLE	
1966 First Team	Outfielder	.324
1966 Sporting News (1st)		
	GARY SPRAGUE	
1966 Sporting News (2nd)	Shortstop	.379
	TOM COOK	
1968 Third Team	Catcher	.384
	DICK GOLD	
1969 First Team	Secondbaseman	.317
	DICK NICHOLS	
1970 Second Team	Secondbaseman	.338
1970 Sporting News (1st)		
	JOHN GRUBB	
1970 Sporting News (HM)	Outfielder	.303
	RON CASH	
1970 Sporting News (HM)	Thirdbaseman	.335
	PAT OSBURN	
1970 Sporting News (HM)	Pitcher	12-1
	GREG GROMEK	
1970 Academic First Team	Shortstop	.300
1971 Academic First Team	Shortstop	.292
	CARL GROMEK	
1970 Academic First Team	Pitcher	5-0

DISTRICT THREE ALL-STAR SELECTIONS

1955 – Bill Campbell, 2b; 1956 – Tony Auitable, p; 1957 – Dick Howser, ss; 1958 – Mike Copps, of and Dick Howser, ss (first team); Frank Slusser, p and Dale Koch, 3b (second team); 1959 – Bob Clem, 2b; 1961 – Jack Dull, 2b; 1962 – Buddy Teagle, c; 1963 – Mike Augustine, of; Woody Woodward, ss; 1964 – Ken Suarez, c; 1966 – Jim Lyttle, of; Mike Martin, of; Randy Brown, c; 1967 – LaDon Boyd, p (second team); 1968 – Tom Cook, c and Steve Mastin, p (first team; Mike Easom, 1b (second team); Dick Gold, 2b (third team; 1969 – Dick Gold, 2b and George Lott, p; 1970 – Dick Nichols, 2b and Ron Cash, 3b (first team), Gene Ammann, p (second team), Pat Osburn, p (third team); 1971 – Ron Cash, of (first team), Harry Saferight, c; Mac Scarce, p (third team).

SEMINOLES IN THE PROS

The ever-growing list of former Seminoles who have entered professional baseball has topped the century mark. On the average more than five Seminoles per year go into professional baseball. There are few college teams that can match that figure.

The most recent Seminoles to join that list their last year of collegiate competition and their affiliation are listed below:

NAME	YEAR	AFFILIATION
Ron Cash	1971	Detroit
Al Cleveland	1971	Detroit
Greg Gromek	1971	Detroit
Mike Leber	1971	Boston
Harry Saferight	1971	Philadelphia
Mac Scarce	1971	Philadelphia
Gene Ammann	1970	Milwaukee
John Grubb	1970	San Diego
Tom Henson	1970	Cincinnati
Dick Nichols	1970	Boston
Mike Slade	1970	Texas
Pat Osburn	1970	Cincinnati
Mike Easom	1969	Montreal
Jim Gurzynski	1969	Los Angeles
Chuck Hines	1969	Pittsburgh
Jeff Hogan	1969	Detroit
George Lott	1969	Montreal
Dave Moates	1969	Texas
Craig Skok	1969	Boston

Dick Howser is the "granddaddy" of former Seminoles in the major leagues. A two-time All-America, Howser was a player at Kansas City, Cleveland and New York and is now a Yankee Coach. Woody Woodward, who gave part of his bonus money to initiate a fund to install the lights at Seminole Field, has been a regular for both Atlanta and Cincinnati. Other Seminoles on major league rosters include Jim Lyttle (Yankees and White Sox), Ken Suarez (Cleveland and Texas) and Randy Brown (California). Going into this spring several other former Seminoles will have signed "major league contracts." They include: Dave Moates (Texas), Mac Scarce (Philadelphia), Pat Osburn (Cincinnati), Gene Ammann (Milwaukee) and John Grubb (San Diego).

NO-HITTERS

The last no-hitter pitched by Florida State was fashioned by Gene Ammann against South Florida in 1970. The most memorable no-hitters in Florida State history came in 1968, when Ammann, then a freshman, and Lin Garrett combined to pull off the feat against Wake Forest, after Jeff Hill had turned the trick against Springfield earlier the same day. Also on that day, Mike Slade pitched a no-hitter for the Renegades, B-team. Wayne Vincent tossed a no-hitter at Georgia Southern in 1967.

THE 400 CLUB

(players with 50 or more AB's)

Name	Year	Hits	At-bats	Avg.
Bob Clem	1959	44	101	.436
Dick Howser	1956	38	90	.422
Riley SeEVERS	1955	27	65	.415
Ken Suarez	1964	44	109	.404
Bob Rosell	1956	25	62	.403

ALL TIME LEADING HITTERS

(50-99 At-Bats and minimum .350 Avg.)		(100 or more At-Bats and min. .350 Avg.)	
.422 Dick Howser	1956 (38-90)	.436 Bob Clem	1959 (44-101)
.414 Riley SeEVERS	1955 (27-65)	.404 Ken Suarez	1964 (44-109)
.403 Bob Rosell	1956 (25-62)	.399 Mike Augustine	1963 (65-163)
.392 Fred Twoomey	1955 (29-74)	.386 Mike Easom	1968 (56-145)
.383 Bob Clem	1964 (36-94)	.384 Tom Cook	1968 (53-138)
.368 Cooter Mills	1954 (32-87)	.379 Gary Sprague	1966 (74-195)
.365 Owen McCarron	1958 (35-96)	.373 Mike Martin	1966 (68-185)
.364 Dick Howser	1957 (32-88)	.370 Jack Dull	1961 (40-108)
.361 Ronald Melton	1950 (30-83)	.365 Woody Woodward	1962 (54-148)
.3563 Ray Bazzell	1960 (31-87)	.364 Bill Williamson	1962 (56-154)
.3555 Billy Campbell	1955 (32-90)	.353 Owen McCarron	1957 (36-102)
		.352 Ron Cash	1971 (58-165)

SEASON BATTING CHAMPIONS

(Minimum 50 at-bats)

(1948-1969)

1948 Jack Wilson	.298 (20-67)	1960 Bob Clem	.383 (36-94)
1949 Not Available		1961 Jack Dull	.370 (40-108)
1950 Ronald Melton	.361 (30-83)	1962 Woody Woodward	.365 (54-148)
1951 Lee Bailey	.352 (32-91)	1963 Mike Augustine	.399 (65-163)
1952 Ralph Blinn	.317 (20-63)	1964 Ken Suarez	.404 (44-109)
1953 Cooter Mills	.319 (29-91)	1965 Gary Nichols	.333 (29-87)
1954 Cooter Mills	.368 (32-87)	1966 Gary Sprague	.369 (74-195)
1955 Riley SeEVERS	.415 (27-65)	1967 Bob Canty	.340 (18-53)
1956 Dick Howser	.422 (38-90)	1968 Mike Easom	.386 (56-145)
1957 Dick Howser	.364 (32-88)	1969 Dick Nichols	.336 (45-134)
1958 Owen McCarron	.365 (35-96)	1970 Dick Nochols	.338 (80-237)
1959 Bob Clem	.436 (44-101)	1971 Ron Cash	.352 (58-165)

INDIVIDUAL RECORDS

BATTING

- Highest Batting Average (season) – .436 by Bob Clem in 1959
Highest Batting Average (career) – .410 by Bob Clem 1959-60 (two years)
.361 by Dick Howser 1956-58 (three years)
Most Hits (season) – 80 by Dick Nichols (1970)
(career) – 151 Dick Gold (1967-69)
Most Doubles (season) – 17 by Dick Nichols (1970)
(career) – 24 by Dick Nichols (1968-70)
Most Triples (season) – Nine by Dick Gold (1969)
(career) – 12 by Bob Hudson (1953-55) and Dick Gold (1967-69)
Most Homeruns (season) – 13 by Jim Lyttle (1966)
(career) – 17 by Mike Easom (1967-69)
Most RBI (season) – 51 by Jim Lyttle (1966)
(career) – 83 by Dick Gold (1967-69) and Mike Easom (1967-69)
Most Walks (season) – 48 by Randy Brown (1966)
(career) – 84 by Randy Brown (1965-66)
Most Strikeouts (season) – 58 by Walt Sumner (1969)
(career) – 85 by Walt Sumner (1968-69) and Dick Gold (1967-69)
Most Stolen Bases (season) – 34 by Dick Nichols (1970)
(career) – 52 by Randy Brown (1965-66)
Most Runs Scored (season) – 69 by Gary Sprague (1966)
(career) – 98 by Dick Gold (1967-69)
Most Total Bases (season) – 131 by Jim Lyttle (1966)
(career) – 227 by Mike Easom (1967-69)
Most At-bats (season) – 237 by Dick Nichols (1970)
(career) – 511 by Dick Gold (1967-69)

PITCHING

- Most Appearances (season) – 29 by Mac Scarce (1971)
(career) – 45 by Mac Scarce (1970-71)
Most Starts (season) – 17 by Gene Ammann (1970)
(career) – 36 by Gene Ammann (1968-70)
Most Relief Appearances (season) – 29 by Mac Scarce (1971)
(career) – 45 by Mac Scarce (1970-71)
Most Complete Games (season) – 11 by Wayne Vincent (1967)
(career) – 23 by Wayne Vincent (1966-68)
Most Innings Pitched (season) – 137 1/3 by Gene Ammann (1970)
(career) – 295 1/3 by Gene Ammann (1968-70)
Most Wins (season) – 15 by Gene Ammann (1970) (lost none)
(career) – 31 by Gene Ammann (1968-70) (lost two)
Most Saves (season) – 18 by Mac Scarce in 1971
(career) 30 by Mac Scarce (1970-71)
Most Shutouts (season) – eight by Gene Ammann (1970)
(career) – 11 by Gene Ammann (1968-70)
Most Consecutive Shutouts – four by Gene Ammann (1970) (Auburn, 5-0; Florida 1-0, 10 inn.; East Carolina, 2-0; Arizona, 4-0)
Most Consecutive Scoreless Innings – 41 1/3 by Gene Ammann in 1970 (five games, including four shutouts)
Lowest ERA (season) – (50-100 innings pitched) 1.15 by Jack Bristol (1958) (77 2/3 (100 or more innings) 0.66 by Gene Ammann (137 1/3)
Fewest Runs Allowed (season) – 18 by Steve Mastin in 107 inn. (1968)
Most Strikeouts (game) – 25 by Tony Avitable vs. Furman in 1956
(season) – 154 by Pat Osburn in 1970
(career) – 318 by Gene Ammann in 1970
Most Strikeouts Per Nine Innings Pitched – 15 by Mac Scarce (60 strikeouts in 36 innings) in 1971 (National Leader)
Most Walks Issued (season) – 65 by Gene Ammann (1970)
(career) – 141 by Gene Ammann (1968-70)
Most Runs Allowed (season) – 55 by Ray McShane in 92 1/3 inn. (1962)
(career) – 100 by Ray McShane in 165 2/3 (1960-62)
Most Hits Allowed (season) – 101 by Bill Fuller (1971)
(career) – 200 by Marv Stringfellow (1965-67)
Most Losses (season) – Six by Marty Howell (1964) (won six)
(career) – 13 by Marv Stringfellow (1965-67) (won 16)

TEAM RECORDS

Most Games Played – 59 in 1970
Most Victories – 49 in 1970 (59 games)
Highest Win Percentage – .854 in 1968 (35-6)
Fewest Losses – Four in 1952 (21 games)
Longest Winning Streak – 21 in 1968 (Mar. 23-May 4) and 1969 (Mar. 29-Apr. 24)
Longest Losing Streak – Four in 1959
Most Runs Scored (season) – 417 in 1966 (52 games)
Game – 24 vs. Jacksonville (Ala) State in 1954 (24-0) and Miss. State in 1966 (24-2)

Highest Batting Average – .321 in 1955
Most Hits (season) – 553 in 1970 (59 games)
Game – 23 vs. Miss. State in 1966 (24-2)

Most Homeruns – 52 in 1966 (52 games)
Most Triples – 52 in 1966 (52 games)
Most Doubles – 80 in 1966 (52 games)
Most Total Bases – 828 in 1966 (52 games)
Highest Slugging Avg. – .454 in 1966
Most Stolen Bases – 105 in 1966 (52 games)
Fewest Victories – Nine in 1948 (17 games)
Most Losses – 16 in 1971 (57 games)
Lowest Win Percentage – .529 in 1948 (9-8)
Fewest Runs Scored (season) – 101 in 1948 (17 games)
Lowest Batting Average – .237 in 1967
Fewest Hits (season) – 186 in 1952 (21 games)
Fewest Homeruns – Three in 1954 (21 games)
Fewest Triples – Nine in 1959 (33 games)
Fewest Doubles – 24 in 1951 (18 games)
Fewest Total Bases – 250 in 1952 (21 games)
Fewest Stolen Bases – 20 in 1954 (21 games)
Fewest Opponents Stolen Bases – Seven in 1961 (28 games) and 1968 (41 games)
Most Opponents Stolen Bases – 38 in 1961 (57 games)
Fewest Runs Allowed (season) – 62 in 1952 (21 games)
Fewest Hits Allowed (season) – 130 in 1952 (21 games)
Most Runs Allowed (season) – 221 in 1962 (37 games)
Game – 24 vs. Clemson in 1959 (24-2)

Most Hits Allowed (season) – 376 in 1966 (52 games) and in 1971 (57 games)
Lowest ERA – 1.49 in 1970 (59 games)
Most Strikeouts – 528 in 1970 (59 games)
Fewest Walks Allowed – 85 in 1953 (24 games)
Most Shutouts – 15 in 1970 (59 games)
Most Consecutive Shutouts – Four in 1970
Most Consecutive Scoreless Innings – 37 in 1970 (5 games)
Lowest Opponent Batting Avg. – .186 in 1970 (59 games)
Highest Opponent Batting Avg. – .258 in 1962
Fewest Strikeouts – 126 in 1954 (21 games)
Most Walks Allowed – 278 in 1970 (59 games)
Highest ERA – 4.27 in 1962 (37 games)

THROUGH THE YEARS

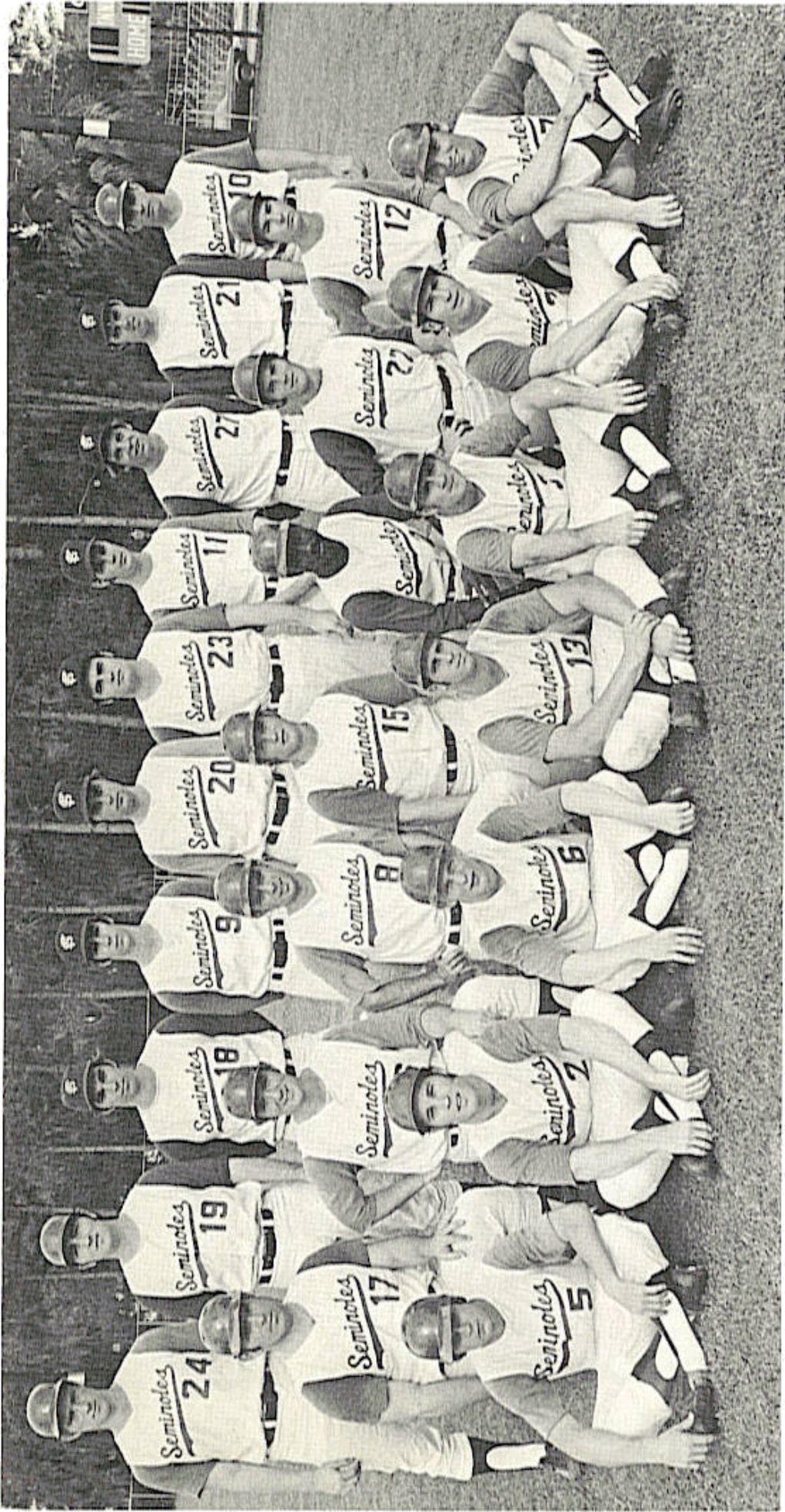
Year	Coach	Captain	W	L	T	Rns	Opp	BA	OPP
1948	Charlie Armstrong	Ron Nettles	9	8	0	101	121		
1949	Charlie Armstrong	Sam Cox	11	8	0	126	103		
1950	Charlie Armstrong	Bob Trowbridge	11	7	0	122	104		
1951	Charlie Armstrong	Augie Pompelia	13	6	0	161	97	.292	.234
1952	Ralph Matherly	Bob Trowbridge	17	4	0	158	72	.266	.188
1953	Ralph Matherly	Cooter Mills	13	10	1	156	111	.254	
1954	Ralph Matherly	Bob Hudson	13	8	0	164	101	.269	
1955	Danny Litwhiler	Billy Campbell							
		Bob Hudson	17	6	0	189	98	.321	
1956	Danny Litwhiler	Max Long	24	6	0	244	121	.295	
1957	Danny Litwhiler	Carlee Hendrix	22	9	0	232	120	.297	
1958	Danny Litwhiler	Dick Howser	20	7	0	198	104	.294	.208
1959	Danny Litwhiler	Dale Kock	22	11	0	258	166	.282	.231
1970	Danny Litwhiler	Ray Bazzell	13	9	0	183	136	.312	.254
1961	Danny Litwhiler	Frank Davis							
		Jack Dull	21	7	0	203	238	.301	.256
1962	Danny Litwhiler	Ray McShane							
		Bob Madison	23	14	0	254	221	.296	.258
1963	Danny Litwhiler	Al Beccaccio	26	13	0	250	151	.278	.213
1964	Fred Hatfield	Jim Reed	23	13	0	244	171	.273	.247
1965	Fred Hatfield	Gerry Chmielewski	32	11	1	305	179	.281	.253
1966	Fred Hatfield	Dick Fernandez	39	13	0	417	192	.294	.214
1967	Fred Hatfield	Roy Mewbourne	32	14	0	214	155	.234	.220
1968	Fred Hatfield	Chuck Conc							
		Bob Canty	35	6	0	281	120	.284	.215
1969	Jack Stallings	Dick Gold							
		Mike Easom	38	13	1	303	158	.273	.219
1970	Jack Stallings	Dick Nichols	49	9	1	361	144	.277	.186
1971	Jack Stallings	Harry Saferight							
		Ron Cash	41	16	0	341	208	.282	.208

RECORD VS. ALL-OPPONENTS

TEAM (collegiate)	FIRST MEETING	LAST YEAR	MEETING SCORE	SERIES FSU	STANDING OPP
Alabama	1967	1968	6-1	2	1
Amherst	1952	1964	5-0	7	1
Arizona	1963	1970	4-0	1	1
Auburn	1954	1971	6-5	34	25
Belmont Abbey	1969	1969	8-4	2	0
Bradley	1950	1950	1-10	1	1
Bowling Green	1970	1970	17-8	1	0
Brown	1971	1971	6-1	5	1
Cincinnati	1953	1956	8-2	2	0
Clemson	1958	1971	2-3	12	12
Connecticut	1957	1957	3-5	0	1
Dartmouth	1970	1970	6-0	1	0
Davidson	1954	1954	7-1	1	0
Duke	1954	1959	2-6	15	9
East Carolina	1962	1970	2-0	4	2
Florida	1956	1971	7-0	28	32
Florida A&M	1971	1971	7-1	3	0
Florida Southern	1949	1970	7-6	27	10
Furman	1955	1969	7-2	12	1
Georgia	1951	1971	2-4	25	15
Georgia (Savannah)	1948	1948	8-3	1	1
Georgia Southern	1948	1971	1-0	51	10
Georgia Tech	1959	1969	5-8	9	2
George Washington	1958	1959	3-2	2	0
Holy Cross	1970	1970	3-0	2	0
Illinois	1956	1970	10-0	5	0
Indiana	1956	1956	14-10	2	0
Ithaca	1957	1962	5-4	3	0
Jacksonville (Ala) St.	1953	1954	24-0	2	0
Jacksonville (Fla) Univ.	1964	1971	8-6	13	2
Kentucky	1965	1966	20-1	5	0
Kentucky Wesleyan	1968	1968	15-5	2	0
Kenyon	1952	1952	11-2	2	0
Lafayette	1971	1971	2-1	3	0
LSU	1955	1966	1-2	1	2
Loyola (la)	1952	1968	4-1	10	0
Maryland	1965	1970	10-1	4	0
Mercer	1948	1950	11-7	5	2
Miami	1951	1971	4-7	35	9
Michigan	1959	1962	7-10	1	1
Michigan State	1957	1971	9-5	8	5
Middle Georgia	1948	1948	7-6	2	0
Millsaps	1949	1949	10-8	1	0
Mississippi	1949	1966	5-3	6	0
Mississippi College	1948	1951	7-8	13	4
Mississippi State	1964	1970	5-4	5	2
Navy	1960	1965	0-1	3	4
New York University	1970	1970	4-2	2	0
North Carolina	1956	1970	3-2	14	4
North Carolina State	1962	1968	1-4	2	4
Northeast Louisiana	1964	1964	7-4	1	0
Northern Illinois	1971	1971	7-1	1	0
Notre Dame	1956	1958	3-2	3	0
Oglethorpe	1949	1949	5-7	0	1
Ohio	1970	1970	2-0	1	0
Ohio State	1960	1971	1-9	0	3

Record vs All Opponents (Collegiate) – Continued)

TEAM (collegiate)	FIRST MEETING	LAST YEAR	MEETING SCORE	SERIES FSU	STANDING OPP
Parsons	1967	1967	4-16	0	2
Penn State	1957	1969	8-4	7	2
Rider College	1970	1970	8-1	1	0
Rollins	1948	1958	7-6	7	11
Rutgers	1966	1966	18-10	1	0
St. Leo	1969	1971	14-2	7	1
Santa Clara	1962	1962	6-11	1	1
South Alabama	1969	1971	7-3	9	2
South Carolina	1969	1969	4-3	1	0
South Florida	1969	1971	4-3	6	0
Southeastern Louisiana	1953	1953	5-4	1	1
Southern California	1963	1970	1-2	0	2
Southern Illinois	1968	1970	6-1	6	1
Springhill	1966	1966	14-2	4	0
Springfield	1967	1968	18-0	4	0
St. Louis	1965	1965	3-5	0	1
Stetson	1949	1971	1-0	23	13
Tampa	1949	1959	19-1	13	3
Tennessee	1951	1966	8-2	4	1
Texas	1965	1970	11-2	2	1
Troy State	1948	1948	6-5	1	1
Tulane	1967	1969	0-1	5	1
Union University	1970	1971	7-6	5	0
Valdosta State	1963	1971	17-3	3	0
Virginia Tech	1967	1967	7-2	1	0
Wake Forest	1962	1969	10-1	15	5
Western Michigan	1959	1971	1-5	4	4
West Virginia	1956	1962	6-5	3	2
William & Mary	1967	1967	5-4	1	0
Wisconsin	1955	1958	3-1	8	1
Yale	1957	1957	11-8	2	0
(Other Amateur)					
Camp Lejune (USMC)	1949	1954	5-6	3	1
Jacksonville Naval Air Sta.	1953	1954	7-4	2	2
Pensacola Navy	1965	1965	10-2	3	0
Valdosta Red Sox	1968	1968	3-1	4	0
(Pro Teams)					
Birmingham (AA)	1968	1968	2-6	0	3
Knoxville (A)	1958	1958	3-2	1	0
Pittsfield (AA)	1968	1968	0-1	0	3
Tallahassee					
(Citizens) (A)	1951	1951	16-6	1	0
(Rebels) (A)	1954	1954	2-5	1	1
Pautucket	1970	1970	3-14	0	1
Baltimore "B"	1970	1970	5-10	0	1



1972 SEMINOLES

1972 SCHEDULE

MARCH			1	2	3	4
				Stetson 3 P.M.	Stetson 3 P.M.	Rollins 1:30
5	6	7	8	9	10	11
Rollins 1:30	St. Josephs 3 P.M.	St. Josephs 3 P.M.	St. Josephs 3 P.M.		Clemson 3 P.M.	Clemson 1:30
12	13	14	15	16	17	18
Clemson 1:30						Fla Southern 1:30
19	20	21	22	23	24	25
Miami 1:30	Miami 3:15	So. Florida 1:30	So. Florida 1:30	St. Leo 3:30	Auburn 7:30	Auburn 1:30 Vanderbilt 7:30
26	27	28	29	30	31	
Vanderbilt 1:30	Vanderbilt 3 P.M.		Middle Tenn State 3 P.M.	W. Michigan (2) 3 P.M. & 7:30	Fla Southern 7:30	

APRIL						1
						W. Michigan (2) 1:30 & 7:30
2	3	4	5	6	7	8
W. Michigan 1:30		Virginia 7:30	Virginia 3 P.M.	Valdosta St. 3 P.M.	Jacksonville 3:15	Jacksonville 3 P.M.
9	10	11	12	13	14	15
Georgia Southern 2 P.M.	Georgia Southern 3 P.M.			Florida A&M 7:30	St. Leo 7:30	St. Leo 1:30
16	17	18	19	20	21	22
			Florida A&M 7:30			So. Alabama (2) 1:30 & 7:30
23	24	25	26	27	28	29
So. Alabama 1:30			Chicago St. 7:30	Chicago St. (2) 3 P.M. & 7:30		Georgia Tech 5 P.M.
30						
Georgia Tech 1:30						

MAY	1	2	3	4	5	6
		Florida A&M 2 P.M.	Florida A&M 2 P.M.	Jacksonville 7:30	Jacksonville 7:30	Ga. Southern (2) 1:30 & 7:30
7	8	9	10	11	12	13
Ga. Southern 1:30	Columbus (2) 6 P.M.	Valdosta St. 7:30	Miami 7:30	Miami 7:30		So. Alabama (2) 3 P.M.
14	15	16	17	18	19	20
So. Alabama 4 P.M.	Auburn 3 P.M.	Auburn 3 P.M.			Florida 3 P.M.	Florida 2 P.M.
21	22	23	24	25	26	27
					Florida 7:30	Florida (2) 1:30 & 7:30
28	29	30	31			

All times listed as Eastern Time
Shaded Dates Indicate Home Games