

FLORIDA STATE UNIVERSITY



BASEBALL 1971

FLORIDA STATE UNIVERSITY

General Information

Location	Tallahassee, Florida 32306	
Enrollment	17,252	
President	Dr. Stanley Marshall	
Conference	Independent	
Colors	Garnet and Gold	
Nickname	Seminoles	
Home Field	Seminole Field (3,300)	

ATHLETIC STAFF

	(AC 904)
Athletic Director – Vaughn Mancha	599-3413
Athletic Business Manager – Doug Messer	599-3414
Sports Information Director – Lonnie Burt	599-2095
Assistant SID – Hank Schomber	599-2095
Baseball Coach – Jack Stallings	599-2640
Assistant Coaches – Bob Smith, Roy Mewbourne	599-2640
Trainer – Don Fauls	599-2775
Assistant Trainer – Doug May	599-2640
Head Coaches:	
Basketball – Hugh Durham	599-3080
Football – Larry Jones	599-2775
Golf – Scott Fletcher	576-5325
Swimming – Bim Stults	599-2640
	Pool 599-3213
Tennis – Pete Barizon	599-2640
Track – Mike Long	599-2640

ATHLETIC BOARD:

Mode Stone (Chairman); Richard Baker, Ernest Burkman, Charles H. Calhoun, Jack Dobson, Charles Ehrhardt, Vernon Fox, Harold Goldstein, Kenneth Gatlin, Joshua Morse, Janet Wells. Ex Officio Members: Tommy Waits, Ray Gross, Arthur Munroe, Athletic Director, Executive Vice President.

MEMO TO THE MEDIA AND SCOUTS

This brochure was prepared by the Florida State Sports Information Office for your use. For more information concerning the Seminole baseball team, please contact either Lonnie Burt (AC 904 – 599-2095 or home 385-4480) or Hank Schomber (599-2095 or home 576-8922).

THE COVER

Florida State Coach Jack Stallings displays the “spoils” of the Seminoles 1970 season. In front of Stallings is the NCAA Tournament Trophy, while beside him stands the Championship Trophy from the Seminole Invitational Tournament. In the foreground, lying on the No. 2 Tribe uniform (indicating the Seminoles second place finish at the College World Series) is the District III Championship plaque.

(Cover Photo by Barry Mittan, Spts. Info.)



SEMINOLE BASEBALL

"The best in college baseball," is more than a motto at Florida State — it is a fact. From pro scouts to high school coaches, Florida State University's baseball program is recognized as one of the very best in the country.

At the Seminoles' Tallahassee campus baseball and springtime are synonymous. Day and night, thousands of university and local fans turn out at beautiful Seminole Field to watch the Tribe in action.

Many of the Florida State ball players are recommended by pro scouts, who in turn have recommended Florida State to the individual. "If we find a boy who is set on a college education before he becomes a pro, we don't hesitate to suggest Florida State," says one area scout.

There are many reasons. Foremost is the coaching. Through the years the Seminoles have had the finest coaching staffs available anywhere. In addition to the instruction of outstanding head coaches, Florida State baseball players also receive invaluable and often individual tutoring from major league ballplayers who come to the campus in the off-season to work on their undergraduate and graduate degrees. Many of these ballplayers are former Seminoles who have gone on to national stardom. The contribution of these returning players to the Seminole program, in both the success of the teams as well as of the individuals, is immeasurable.

Florida State's baseball "season" is practically year round. The mild weather conditions make outside work possible 12 months a year — a fact that pleases coaches and players alike. The Seminoles report for practice soon after returning to the campus in the fall. These workouts are climaxed with the annual "old timers" game at homecoming. Preparations then begin for the new season in January, which starts the first week of March and runs until June. During the summer months many of the undergraduates play for the organized summer leagues around the country. With more than 60 games in the regular season, another 15 or 20 "exhibitions" during the fall and 40 or more in a summer league, it is not at all unusual for a boy in the Florida State program to be playing more than 100 games a year.

FLORIDA STATE UNIVERSITY



DR. MARSHALL

Florida State University this year celebrates its 113th year as an institution of higher learning but is just now reaching the age of 24 as a major coeducational public university.

For almost 40 years the University was a college for women. It achieved university status and its present name in 1947, and its growth during the past 24 years has been termed "an educational miracle."

The University was founded in 1857 as the Seminary West of the Suwannee. It went successively through a series of name changes and primary missions until it became Florida State College for Women early in the 1900's.

The enrollment in the fall of 1971 is expected to surpass 18,000 and it is one of 24 institutions in the country which confers more than 100 Ph.D. degrees in a year. (More than 200 yearly in recent years.)

The growth and leadership of the University in the areas of graduate research and instruction have been dramatic over the last dozen years — from expenditures of approximately \$1 million for research in 1957 to the current annual figure of some \$17 million. Since its inception in 1957, the University's Nuclear Science Program has gained international prominence as the earliest, and to date, largest interdisciplinary program of its kind to be initially equipped with state funds. Although the graduate research programs involve all of the natural and physical sciences, the social and behavioral sciences, the humanities and the arts, the University's largest grouping of physical facilities for scientific research is to be found in its Science Complex. Calling for a score of buildings upon its completion, hopefully in 1975, the Science Complex provides a built-in proximity for interdisciplinary research with a network of arcades that join some of the larger buildings. Here, the University's chemists, physicists, geologists, biologists, psychologists, engineering scientists, molecular biophysicists, statisticians and nuclear scientists are at work on projects of mutual concern. A \$4.8 million grant from the National Science Foundation has provided for the development of centers of excellence at Florida State in the specific areas of physics, chemistry, statistics, and psychobiology; and the State of Florida has provided \$2 million in matching funds for these endeavors.

A pioneer in the field of oceanography for many years, Florida State's seniority and leadership role in the State University System have made marine studies one of its strong points in the decade ahead. Facilities for research are located both on the campus and in the new Ed Ball Marine Laboratories on the Gulf of Mexico, south of Tallahassee at Turkey Point.

Rounding out the University's research efforts are two nuclear accelerators; a library containing more than 820,000 books and periodicals, 376,000 government documents and 78,000 maps; and special research institutes in geophysical fluid dynamics, molecular biophysics, political research, social research, human development and educational concepts and courses destined for widespread usage in the nation's public schools.

Overseeing the operation of the second largest of the nine universities comprising the State University System of Florida is Dr. Stanley Marshall. Energetic and enthusiastic, Dr. Marshall brought a "fight-to-win" frame of mind with him to the presidency, which he assumed in June 1969.

He is a firm believer in and a supporter of athletics as a means of building character and releasing the tensions of modern living — not to mention those of a university president in this era. "Athletics contribute a great deal to the development of the individual," says Marshall. One of his favorite expressions is: "When you enter the fray, expect to take whatever wounds the game involves; and if you don't want to get hurt, don't play the game."

THE OUTLOOK

Last year the Seminoles had a veteran pitching staff, but just one regular returning and at the start of the season the Tribe was said to be "rebuilding." The re-construction was swift and by the end of June the Seminoles were the number two team in the nation.

This season Florida State is again "rebuilding", but this time it is the mound corps. Only three pitchers return from the 1970 College World Series Runners-up, and among them, Robin Flake, Don Harbaugh and Mac Scarce saw only 66 innings of work.

The outfield is another area where Coach Jack Stallings is going to have to come up with a major patch job if the Seminoles are to have a shot at repeating their CWS performance. Graduation, the pro draft and a position switch have opened all three outfield positions.

The infield, however, is an all veteran unit and the Seminoles herein have a strong nucleus to build around. Behind the plate, **Harry Saferight**, **John Keith** and **Dan Roatche** give the Seminoles perhaps the strongest all-around receivers corps they have ever had. Saferight and Keith split the chores last year and are both solid performers. Roatche was used mostly as a pinch hitter (a role in which he hit .333) but is a capable backstop if called upon.

Doug Kasimier, returns at first and has added about 20 pounds which he needed. Early indications are that he will pick up with the strong performance he made at Omaha last June.

Larry Cocks moves in from the outfield to take All-America Dick Nichols vacated spot at second. The Seminoles do not expect a drop in the defensive capabilities with the change as Cocks was moved to the outfield last year after he just-failed to beat Nichols out for the infield job. Nichols, coincidentally, was in much the same spot last spring after playing the outfield in 1969.

The shortstop will be **Greg Gromek**. It has been quite some time since the Tribe has had anyone who could match this youngster's arm. With the experience he had last spring and summer in the Basin League, he should be ready for an outstanding season. A strong indicator was his brilliant performance at the World Amateur Tournament last fall. At third will be All-District performer **Ron Cash**. The Basin League's leading hitter last summer, Cash looks ready to have his best season.

JC transfers **Ken Doria**, **Dave Nichols** and **Randy Gailey**, and Renegade graduates **Mike Leber** and **Rick Snyder** along with **Gary Huff** who also quarterbacks the Seminole football team, are the leading candidates for out field spots. All are capable of landing a starting spot and each will probably see a lot of action.

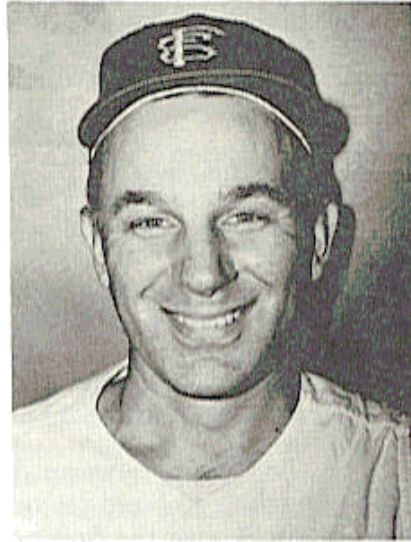
The pitching chores will probably rest with several youngsters. Flake and Harbaugh need only to acquire consistency to be topflight performers. If they do the Tribe could be well on its way to another title chase. Scarce, at least in the eyes of Seminole followers, is the premier relief pitcher in college ball. For short inning work last year he was outstanding. He worked all fall to strengthen his arm and may be ready for longer appearances.

The bulk of the staff, however, is a group of untried sophomores and freshmen. **Bill Fuller**, **Dave Fernald** and **Dave Price** saw action for last year's Renegade team, but Fuller's one inning is the extent of the varsity experience. Along with this group is freshman **Marty Rice**. All have good arms but need experience. Also figuring to see considerable duty are JC products **Barry McQueen** and **Mike Scarce**.

HEAD COACH Jack Stallings

In just two seasons Jack Stallings has taken Florida State's baseball team farther than any Seminole Coach before him had been able to do. After missing a District III Tournament bid in his first season (thus falling victim to a "jinx" that had befallen his predecessors, Danny Litwhiler and Fred Hatfield), Stallings took the Seminoles to the NCAA playoffs in his second season and came within an eyelash of bringing the first National Championship Trophy back to the Southeast since 1955.

In acknowledging those accomplishments, Stallings' fellow coaches named him Coach of the Year in District III. But that recognition is really only a visible showing of the respect that his contemporaries have long held for Stallings' successful programs.



Before coming to the Seminoles in 1969, Stallings had built an enviable record at Wake Forest, his alma-mater. In nine seasons there, he led his teams to a 152-109-2 record, including a pair of Atlantic Coast Conference championships, two District III titles and strong showings in the College World Series.

A keen baseball tactician, Stallings' on-the-field capabilities are unsurpassed. His teams are marked by sound fundamentals and a daring, but calculated style. His fall and early preseason workouts are marked by several classroom "bull sessions" as well as team workouts and individual tutoring. As a result it is rare that a Seminole team will "beat itself" either mentally or physically.

In this way and in almost all the others, Stallings' approach to the game is strictly pro. While the "pro way" has long been the trademark of Florida State's program, it has received new emphasis from Stallings. "At Florida State we want the same caliber player that the pros are seeking and that kind of boy is going to be looking for a pro style program," says Stallings.

A former pro himself, Stallings has many close friends among the nation's scouts. These relationships help the program in many ways, not the least of which is the scouts' willingness to recommend a boy to the Seminoles and the Seminoles to the boy. Also because of these acquaintanceships, a Stallings' recommendation to the scouts is highly regarded.

Stallings' promising pro career was cut short by a polio attack in 1954. Although he recovered fully, he turned his attention to coaching where he has been ever since. At Wake Forest he captained the Deacons' 1951 team which represented the United States at the Pan American Games. He signed a pro contract in 1952, but returned to Wake Forest in 1955 to complete work on his bachelors degree. In 1956 he was graduate assistant at North Carolina while obtaining his Masters. He became the Deacon's head coach in 1959.

Stallings first season at Florida State, 1969, was highly successful, with the Seminoles winning 38 of 51 games. Last year the Tribe went 49-9-1 enroute to the second place in the NCAA tournament. Last fall he coached the United State's entry in the World Amateur Baseball Tournament at Cartegena, Colombia. Since 1962 he has served as coach of the Pierre, S.D. entry in the Basin League.

Stallings is married to the former Norma Dean Griffin and they have three sons.

BOB SMITH

Assistant Coach



This will be Bob's second year with the Seminole program. The highly regarded coach at Greenville (Illinois) College is on leave of absence while he completes work toward a doctorate at Florida State.

Last season Bob served as an invaluable aid to Coach Jack Stallings, assisting with the varsity and heading the Renegades, Florida State's B-team. His lifetime record at both Greenville and Taylor Universities, 160-69, is a strong indication of his fine ability. He earned "Coach of the Year" honors in the NAIA in 1969, when his Greenville team ran up a 21-5 record.

Stallings calls the Dallas, Tex. native, "one of the nation's finest young coaches." But Smith admits "to learning a great deal about baseball and coaching" from Stallings as well. "I don't think there is a better coach or program in the country than what Jack Stallings has here at Florida State," said Smith.

Smith and his wife Joanna have two children.

ROY MEWBOURNE

Assistant Coach



Roy is in his second season as an assistant coach since returning to his alma-mater.

A three year-lettermen for Seminole baseball teams from 1966-68, Mewbourne was commissioned an Army Lieutenant following his graduation. He served at Ft. Bragg, N.C. where he directed the camp's intra-mural program.

He has returned to Florida State to obtain a masters degree and hopes to go into coaching. "I couldn't think of a better place to get started," said the Birmingham, Ala. native.

Roy and his wife Dee have no children.

PAUL DIRKS

Assistant Coach



Paul returned to his alma-mater after several very successful seasons as a high school coach in Palm Beach County.

The Arlington, Va. native was a three year lettermen for the Seminoles from 1962-64 as a catcher. Following his graduation he became head baseball coach at Leonard High School where his teams had a 57-23 record. In 1969 his club finished second in the state and Dirks was named Palm Beach County Coach of the Year.

In addition to his duties with baseball, Dirks is also working with the intra-mural program at Florida State.

Paul and his wife Marrilee have two children.



RON CASH

THIRD BASE

Senior . . . Decatur, Ga. . . Bats Right . . . Throws Right . . . 6-0, 175 . . . 1VL . . . transfer from Manatee JC . . . leading returning hitter . . . made all-district team last year when he hit .335 . . . was the Basin League's leading hitter and led that circuit in RBI as well . . . steady defensive player, is not flashy, but comes up with the big play . . . looks ready for a big season . . . has definite pro future.

Year/Club	AB	R	H	2B	3B	HR	TB	SB	RBI	BB	SO	AVG
1968 Manatee	173	43	58	10	6	4	92	21	40	6	4	.335
1969 Manatee	153	32	53	8	5	0	71	10	28	11	9	.346
1969 Mobridge (Basin)	156	11	54	5	3	2	71	1	26	NA	NA	.346
1970 Fla. St.	215	47	72	8	6	3	101	5	47	42	18	.335
1970 Mobridge Basin League	173	27	66	10	0	5	91	3	50	-	-	.382

LARRY COCKS

SECOND BASE

Senior . . . Oklahoma City, Okla. . . Bats Right . . . Throws Right . . . 5-11, 170 . . . 1VL . . . moves in from outfield to take All-America Dick Nichols spot at second . . . came on strong after a slow start last spring, finished at .292 . . . was an infielder before making switch to outfield last year . . . is following the same path that Nichols took behind 1969 A-A second baseman Dick Gold - going to outfield, then to second . . . played summer ball in mid-west and had outstanding season . . . another in a line of adequate if not flashy Seminole second basemen. Should hit for good average and has the power to reach the fences . . . had several clutch hits last year.



Year/Club	AB	R	H	2B	3B	HR	TB	SB	RBI	BB	SO	AVG
1969 Fla. St.	3	3	3	0	1	0	4	0	1	0	0	.667
1970 Fla. St.	202	34	59	6	0	2	71	7	32	22	22	.292



KEN DORIA

OUTFIELD

Junior . . . Jacksonville . . . Bats Right . . . Throws Right . . . 5-10, 185 . . . transfer from Gulf Coast JC . . . good dependable ball player . . . cut much from the same mold as Ron Cash . . . is a good hitter with good power . . . played third for Gulf Coast, but has made switch to outfield . . . has been doing well in early work . . . regular for two seasons at GCJC and was captain of 1970 squad.

Year/Club	AB	R	H	2B	3B	HR	TB	SB	RBI	BB	SO	AVG
1969 Gulf Coast	122	28	35	12	2	1	54	3	14	11	18	.287
1970 Gulf Coast	129	33	34	9	0	2	49	3	25	38	40	.264
1970 Pierre Basin League	183	18	53	15	2	8	96	2	39	-	-	.290



ROBIN FLAKE

PITCHER

Senior... College Park, Ga... Bats Left... Throws Left... 5-8, 163... 1VL... transfer from Manatee... could be mainstay of this year's staff... lack of consistency hurt last year... had an 18-2 record at Manatee, including 12-0 season as a freshman... injured leg prior to 1969 season and has never really regained his form... appears to be stronger than ever now, however... had a good season in the Shennandoah Valley League last summer... has good assortment of pitches.

Year/Club	APP	GS	CG	W	L	INN	R	ER	H	BB	SO	ERA
1968 Manatee	NA	NA	NA	12	0	114 1/3	39	18	68	74	160	1.42
1968 Sturgis (Basin)	7	6	4	3	2	43 2/3	21	14	37	19	40	2.88
1969 Manatee	NA	NA	NA	6	2	67	28	13	49	30	70	1.75
1970 Fla. St.	5	3	1	1	1	22 1/3	14	9	18	19	19	3.65

BILL FULLER

PITCHER

Sophomore... Great Neck, N.Y.,... Bats Left... Throws Left... 6-2, 190... could be one of the best among the young pitchers... had best ERA on last year's Renegade squad... was drafted out of high school, but turned down good offer to come to FSU... has size and arm to be a top hurler... hard worker who wants to improve... very coachable... with experience should be pro prospect.



Year/Club	APP	GS	CG	W	L	INN	R	ER	H	BB	SO	ERA
1970 Fla. State Renegades	7	6	3	2	3	36	15	11	31	10	49	2.75



RANDY GAILEY

OUTFIELD

Junior... Lake Wales... Bats Right... Throws Right... 5-10, 185... transfer from Manatee JC... another in a long line of quality ball players to come to the Seminoles from Manatee... good hitter, but needs to improve his fielding... worked hard on his defensive play during fall and is gaining consistency... could be a starter.

Year/Club	AB	R	H	2B	3B	HR	TB	SB	RBI	BB	SO	AVG
1969 Manatee	103	15	28	4	1	2	39	8	13	3	13	.272
1970 Manatee	143	29	51	10	2	1	70	11	25	13	18	.357

GREG GROMEK

SHORTSTOP



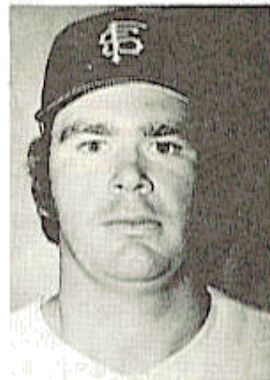
Senior . . . Birmingham, Mich., . . . Bats Right . . . Throws Right . . . 5-11, 167 . . . 2VL . . . an outstanding prospect at short . . . has very strong arm . . . has good range and year's experience has done wonders . . . fourth leading hitter on last year's club . . . hit .335 with seven HRs in Basin League . . . was USA's most valuable player in 1970 World Amateur Tournament . . . hit 400' home run that beat Cuba in regular play . . . impressed coaches and scouts alike . . . has been looking better than ever in early workouts . . . brother Carl was pitcher on last year's team . . . father, Steve, was major league pitcher for Cleveland and Detroit . . . definite all-around pro prospect.

Year/Club	AB	R	H	2B	3B	HR	TB	SB	RBI	BB	SO	AVG
1969 Fla. St.	17	2	6	2	0	0	8	0	6	1	3	.375
1970 Fla. St.	210	38	63	5	1	2	76	5	35	21	21	.300
1970 Mobridge Basin League	197	41	66	10	2	7	101	3	35	-	-	.335

DON HARBAUGH

PITCHER

Junior . . . Toledo, O., . . . Bats Right . . . Throws Right . . . 6-1, 195 . . . 1VL . . . fine young prospect who is just now finding himself . . . all he lacked last year was consistency . . . if he can gain that, he should be a good one . . . had moments of excellence last year . . . fine assortment of pitches . . . only needs experience.



Year/Club	APP	GS	CG	W	L	INN	R	ER	H	BB	SO	ERA
1970 Fla. St.	9	0	0	2	1	10 2/3	8	8	10	8	11	6.74

GARY HUFF

SHORTSTOP

Sophomore . . . Tampa . . . Bats Right . . . Throws Right . . . 6-1, 185 . . . appearance was a pleasant surprise at the start of practice and has been bringing smiles to coaches ever since . . . his first time out for baseball after highly successful freshman and sophomore seasons with the Seminole football squad . . . was an outstanding high school baseball player and could have a future in it, if he wants . . . has good arm, runs well, and has power at the plate . . . played infield throughout high school, but may move to outfield where there are more openings among the Seminoles . . . still readjusting to game after being away from it for nearly two years . . . will probably miss part of season during spring football practice under new coach Larry Jones.



DOUG KASIMIER

FIRST BASE

Senior . . . Ft. Lauderdale . . . Bats Left . . . Throws Left . . . 6-3, 195 . . . 2VL . . . has added 15 to 20 badly needed pounds . . . is playing better than ever . . . extra weight has given him more strength . . . was hitting the ball the best of anyone during preseason . . . looks like he is picking up with hot pace he set in College World Series . . . gives the Seminoles a solid lefthanded threat . . . is an excellent defensive first baseman . . . with a good season he could be a top pro prospect.

Record of Doug Kasimier Cont.

Year/Club	G	AB	R	H	2B	3B	HR	TB	SB	RBI	BB	SO	AVG
1968 Fla. St.	3	6	0	1	1	0	0	2	0	0	1	2	.167
1969 Fla. St.		29	3	3	0	0	0	3	0	1	2	9	.103
1969 Bourne (Cape Cod)	31	70	5	13	5	0	1	21	0	6	8	27	.186
1970 Fla. St.	153	17	39	3	2	2	52	5	19	12	27		.255



JOHN KEITH

CATCHER

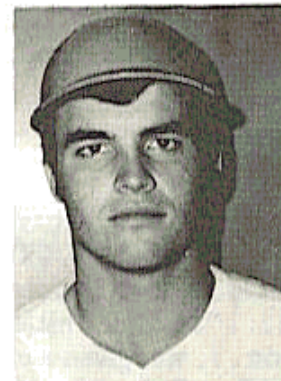
Senior ... Huntington Valley, Pa. ... Bats Right ... Throws Right ... 6-1, 200 ... 2VL ... most knowledgeable player on the team ... a real student of the game ... solid behind the plate, he handles the pitchers well and is a big asset to them ... makes few mental mistakes and is quick to catch those of others ... take charge type player.

Year/Club	G	AB	R	H	2B	3B	HR	TB	SB	RBI	BB	SO	AVG
1968 Yarmouth (Cape Cod)	41	101	9	24	3	0	3	36	0	13	9	18	.238
1969 Fla. St.		44	6	10	0	1	1	15	0	5	2	5	.227
1969 Yarmouth	41	127	12	34	5	0	0	39	1	9	7	29	.268
1970 Fla. St.		101	8	22	3	0	0	25	0	11	9	19	.218

MARTY RICE

PITCHER

Freshman ... Tallahassee ... Bats Right ... Throws Right ... 6-2, 195 ... big strong righthander with unlimited future ... has lots of potential but badly lacks experience ... very coachable and learns quickly ... first freshman to get varsity assignment since Gene Ammann ... could be one of top pitchers before season is over ... went very high in pro draft but turned down sizeable offer to play with the Seminoles ... was considered one of the best two or three high school prospects in the state.



HARRY SAFERIGHT

CATCHER

Senior ... Richmond, Va. ... Bats Left ... Throws Right ... 5-11, 195 ... 1VL ... transfer from Manatee JC ... came out this spring ready to play ... hardest working player on squad during preseason practice ... had inconsistent year last season, but looks ready to put it all together ... hits the ball with authority ... is solid behind the plate ... top competitor.

Year/Club	G	AB	R	H	2B	3B	HR	TB	RBI	SB	BB	SO	AVG
1968 Manatee	40	158	31	51	9	3	6	76	31	1	12	21	.323
1969 Manatee	39	143	21	38	5	2	2	48	22	1	11	11	.266
1969 Pierre (Basin)	46	178	20	43	9	1	3	63	24	0	NA	NA	.242
1970 Fla. St.		167	22	45	3	4	4	68	3	38	15	23	.269
1970 Pierre Basin League		133	16	26	2	1	3	39	1	11	-	-	.195

MAC SCARCE

PITCHER

Senior . . . Richmond, Va. . . Bats Left . . . Throws Left . . . 6-3, 175 . . . 1VL . . . transfer from Manatee JC . . . this youngster was "Mr. Clutch" for the Seminoles last year . . . his relief performances would have been labeled superb in any league . . . in 16 appearances he registered 12 saves for a new school record . . . cool, hard throwing left hander "just comes in and gets people out" . . . teammates call him "Mac the Knife" because "he keeps a sharp edge" . . . struck out 49 in 33 innings last season . . . had CWS crowd buzzing with a brilliant seven inning relief stint that ended only when he developed a blister on his throwing hand during the final game . . . if therapy on his arm is successful he may be available for longer turns this year . . . if he has another season like the last he could be a first round draft pick.



Year/Club	APP	GS	CG	W	L	INN	R	ER	H	BB	SO	ERA
1968 Manatee	NA	NA	NA	2	0	31 1/3	13	10	19	16	46	2.85
1969 Manatee	NA	NA	NA	5	2	54 2/3	4	3	21	18	88	0.49
1969 Pierre (Basin)	9	3	1	2	2	30 1/3	24	18	29	19	40	5.34
1970 Fla. St.	16	0	0	1	2	33 1/3	7	6	13	13	49	1.62
1970 Pierre Basin League	9	0	0	0	0	15 2/3	7	6	13	10	23	3.45

HERB SIKES

THIRD BASE

Junior . . . Tallahassee . . . Bats Left . . . Throws Right . . . 5-10, 175 . . . left-handed swinger up from the Renegades . . . lost 25 pounds since last season and is better for it . . . "a natural hitter" . . . should see a good deal of action . . . was given a chance to show his stuff while subbing for Ron Cash who underwent knee surgery in January.



Year/Club	AB	R	H	2B	3B	HR	TB	SB	RBI	BB	SO	AVG
1970 Fla. St. Renegades	57	11	15	5	0	2	26	0	18	5	5	.263



RICK SNYDER

OUTFIELD

Sophomore . . . Oconomowoc, Wisc. . . Bats Right . . . Throws Right . . . 5-10, 175 . . . another product of the Renegade B-Team . . . was third leading hitter on Renegades last season . . . can hit to all fields but doesn't have great power . . . needs improvement defensively . . . may see considerable duty in outfield and should improve rapidly with the experience.

Year/Club	AB	R	H	2B	3B	HR	TB	SB	RBI	BB	SO	AVG
1970 Fla. St. Renegades	57	13	16	4	0	0	20	5	1	5	7	.280

FLORIDA STATE INVITATIONAL TOURNAMENT

The Seminoles, with a 6-0 record, dominated the 1970 Invitational Tournament, but Illinois, Maryland and Holy Cross received just as much, if not more benefit from the week of "play and fun in the Sun."

Florida State's generosity as hosts stopped with the cry of "play ball" and the Tribe swept to the tourney title ahead of Maryland (3-3), Illinois (3-3) and Holy Cross (0-6).

Nevertheless, the three visiting team coaches were in agreement that their respective clubs prospered greatly from the experience. "It was a great tournament," was the concensus.

"The biggest thing," said Maryland's Jack Jackson, "was that we got all the games in. The weather here was perfect. We weren't outside much before coming down and this certainly helps prepare you for your regular season. "And the competition was as strong as you could have hoped for." The Tournament must have done the Terps some good as they went on to win the Atlantic Coast Conference title and faced the Seminoles again at the District III tournament.

Illinois Coach Lee Eilbrect was also pleased with tourney play. "There is no way we could have gotten this kind of work in at Champaign. We called home last night and there was three inches of snow on the ground."

And even though his young Crusader club did not win, Holy Cross Coach Bob Curran was pleased with the improvement they showed. "We made a lot of mistakes in the first couple of games, but not many of them were repeated. There is no substitute for experience and there is no other way we could have gotten this kind of experience."

And the coaches were not the only ones pleased with what they saw. The tournament drew pro scouts from throughout the Southeast. And with many spring training camps still going, there were quite a few.

The Results:

Wednesday	Md.	12	Ill.	11	FSU	5
	HC	3	Md.	10	Ill.	4
Thursday	Ill.	9	FSU	6	FSU	11
	HC	5	Md.	2	HC	4
Friday	Md.	13	Md.	7	FSU	10
	HC	2	Ill.	6	Ill.	0
Saturday	Ill.	4	FSU	3	FSU	4
	HC	8	HC	0	Md.	3

All Tournament Team:

Infielders: Rick D'Angelis, H.C.; Dick Nichols, FSU; Dave Sauve, Md.; Mike Beier, Md.; Ron Cash, FSU; Bob Windmiller, Ill.;

Outfielders: Jim Norris, Md.; Harry Saferight, FSU; John Grubb, FSU;

Pitchers: Pat Osburn, FSU; Mike Pazik, HC; John Ferguson, FSU;

Most Valuable Player: Dick Nichols, FSU.

1971 BASE

NO.	NAME	POS.	T-B	AGE	HT.	WT.	CLASS
12	Ron Cash	IF	R-R	22	6-0	175	Sr.
6	Larry Cocks	IF	R-R	22	5-11	170	Sr.
16	Ken Doria	OF	R-R	20	5-10	185	Jr.
27	Dave Fernald	P	R-R	19	6-3	190	Soph.
7	Robin Flake	P	L-L	23	5-9	163	Sr.
21	Bill Fuller	P	L-L	20	6-2	190	Soph.
9	David Grimes	IF	R-L	21	5-10	160	Sr.
3	Randy Gailey	OF	R-R	20	5-10	185	Jr.
5	Greg Gromek	IF	R-R	22	5-11	167	Sr.
18	Don Harbaugh	P	R-R	22	6-1	195	Jr.
19	Gary Huff	OF	R-R	19	6-1	185	Soph.
28	Doug Kasimier	IF	L-L	21	6-3	175	Sr.
24	John Keith	C	R-R	22	6-1	200	Sr.
29	Mike Leber	OF	L-L	20	5-10	180	Jr.
10	Barry McQueen	P	R-R	21	6-0	185	Jr.
4	Rick Moss	OF	R-R	21	5-10	165	Sr.
2	Dave (Nick) Nichols	IF-OF	R-R	20	5-8	160	Jr.
20	Dave Price	P	R-R	20	6-2	185	Soph.
23	Marty Rice	P	R-R	18	6-2	195	Fr.
17	Dan Roatche	C	R-R	20	6-0	205	Jr.
13	Harry Saferight	C	R-L	22	5-11	195	Sr.
22	Mac Scarce	P	L-L	22	6-3	175	Sr.
11	Mike Scarce	P	R-R	22	6-3	170	Jr.
30	Herb Sikes	IF	R-L	20	5-10	195	Jr.
15	Rick Snyder	OF	R-R	20	5-10	175	Soph.
8	Mike Vasquez	IF	R-L	21	6-1	185	Sr.
14	Greg Zera	C	R-L	21	5-9	180	Sr.

NUMERICAL ROSTER

No.	Name	Pos.	No.	Name	Pos.
2	Dave Nichols	IF-OF	16	Ken Doria	OF
3	Randy Gailey	OF	17	Dan Roatche	C
4	Rick Moss	OF	18	Don Harbaugh	P
5	Greg Gromek	INF	19	Gary Huff	OF
6	Larry Cocks	INF	20	Dave Price	P
7	Robin Flake	P	21	Bill Fuller	P
8	Mike Vasquez	INF	22	Mac Scarce	P
9	David Grimes	INF	23	Marty Rice	P
10	Barry McQueen	P	24	John Keith	C
11	Mike Scarce	P	27	Dave Fernald	P
12	Ron Cash	INF	28	Doug Kasimier	INF
13	Harry Saferight	C	29	Mike Leber	OF
14	Greg Zera	C	30	Herb Sikes	INF
15	Rick Snyder	OF			

BALL ROSTER

EXP	HOMETOWN	HIGH SCHOOL (Coach)
JC-1VL	Decatur, Ga.	Manatee JC (Wynn)
1VL	Oklahoma City, Okla.	Enterprise, Ala. (Shoemaker)
JC	Jacksonville	Gulf Coast JC (Frazier)
Reng.	Cape Neddick, Me.	York, Me. (Laoham)
JC-1VL	College Park, Ga.	Manatee JC (Wynn)
Reng.	Great Neck, N.Y.	Great Neck South (Greene)
JC-1VL	Lakeland	Polk JC (White)
JC	Lake Wales	Manatee JC (Wynn)
2VL	Birmingham, Mich.	Bro. Rice (Br. Wieltz)
1VL	Toledo, Ohio	St. Francis DeSales (Kubacki)
None	Tampa	Leto (Howell)
2VL	Ft. Lauderdale	Ft. Lauderdale (Trainor)
2VL	Huntington Valley, Pa.	Upper Moreland (Hoffman)
Reng.	Newport, R.I.	Rogers (Abbruzzi)
JC	Charleston, S.C.	Gulf Coast JC (Frazier)
JC-1VL	Lakeland	Polk JC (Morrison)
JC	Jacksonville	Gulf Coast JC (Frazier)
Reng.	Johnstown, Pa.	Westmont Hilltop (Balough)
-	Tallahassee	Leon (Barwick)
2VL	Hatboro, Pa.	Hatboro-Horsham (Ledyard)
JC-1VL	Richmond, Va.	Manatee JC (Wynn)
JC-1VL	Richmond, Va.	Manatee JC (Wynn)
JC	Richmond, Va.	Manatee JC (Wynn)
Reng.	Tallahassee	Leon (Wilcox)
Reng.	Oconomowoc, Wisc.	Oconomowoc (Sorenson)
1VL	St. Louis, Mo.	DuBourg (Hannerrink)
1VL	Lincolnwood, Ill.	Niles West (Phippes)

BY POSITIONS

No.	Name	No.	Name
PITCHERS		INFIELDERS	
7	Robin Flake	2	Dave Nichols
10	Barry McQueen	5	Greg Gromek
11	Mike Scarce	6	Larry Cocks
18	Don Harbaugh	8	Mike Vasquez
20	Dave Price	9	David Grimes
21	Bill Fuller	12	Ron Cash
22	Mac Scarce	28	Doug Kasimier
23	Marty Rice	30	Herb Sikes
27	Dave Fernald	OUTFIELDERS	
CATCHERS		3	Randy Gailey
		4	Rick Moss
13	Harry Saferight	15	Rick Snyder
14	Greg Zera	16	Ken Doria
17	Dan Roatche	19	Gary Huff
24	John Keith	29	Mike Leber

1970 COLLEGE WORLD SERIES

Southern California Barr(ed) the door to Florida State's championship hopes in the 1970 College World Series, but even veteran observers agreed that rarely in the long history of the prestigious Omaha playoffs had two so evenly matched teams met in the finals.

During the post game awards presentation a remark was made that "it was a shame two champions could not be honored." But the Trojans, behind big Jim Barr's second eight inning relief stint in three nights, edged the Seminoles, 2-1, in a brilliantly played finale to the CWS.

The Seminoles were not without heroes of their own. Mac Scarce, who had not worked more than three innings in any one game, pitched 7 1/3 innings of superb relief ball before a blister forced him to the sidelines in the 15th.

USC won the title without getting the ball out of the infield. Scarce walked Cal Meier before the blister forced him out. Carl Gromek replaced him and walked Dan Stoligrosz. Dave Kingman slapped a hard bunt between the mound and third that went unfielded filling the bases. Frank Alfano then bounced a ball in the same general area and just as Gromek was about to field it, he slipped on the damp grass and Meier came in with the winning run.

The Seminoles began their quest with a pair of shutouts behind Gene Ammann and Pat Osburn. Arizona, 4-0, and Dartmouth, 6-0, were the victims. Southern Cal, meanwhile had lost its opener to Ohio, but bounced back with wins over Delaware and Dartmouth.

Florida State and Texas met in a battle of the unbeaten, with the Longhorns winning 5-1. The Series was now down to four clubs. FSU met Ohio in the elimination game and the Seminoles prevailed, 2-0, behind the pitching of Tom Henson and Scarce. USC, with Barr pitching another eight innings of victorious relief, toppled Texas, 8-7 in 14 innings to make it a three-way fight.

Ammann pitched the Seminoles to an 11-2 win over the Longhorns the next night, after USC drew the coveted "bye" into the finals.

Pat Osburn started the championship game for the Tribe, but had to leave in the fifth when his knee gave out after reaching first on a run-producing error. Southern Cal tied the game in the seventh and that's the way it stayed until the fateful 15th.

Ammann, with 18 innings of work, a shutout and a 1.00 tourney ERA, was named the CWS Most Outstanding Player, edging out Barr in a vote of the writers covering the Series. It was the first time since 1964 that a player from other than the championship team had won that honor. Ammann was also named to the All-Tournament team as was Tribe outfielder John Grubb.

1970 BASEBALL RESULTS

FSU	OPPONENTS		FSU	OPPONENTS	
5	Union University	1	8	@ St. Leo College	3
6	Union University	2	7	Florida Southern	6
6	St. Leo College	1	9	South Alabama	0
5	St. Leo Coll. (10 In)	4	3	South Alabama	5
1	@ Florida Southern	0	2	South Alabama	2
10	@ Miami	1	12	Georgia Southern	5
5	(N) Michigan State	6	8	Georgia Southern	4
8	@ Miami	3	4	Jacksonville	1
1	@ Stetson	0	9	Jacksonville	2
17	Bowling Green	8	11	Miami	4
6	New York Univ.	1	6	Miami	2
8	Rider College	1	1	@ Florida	3
4	New York Univ.	2	4	@ Florida	5
6	Southern Illinois	1	8	@ Georgia Southern	3
15	North Carolina	6	1	@ Ga. So. (15 Inn)	2
5	North Carolina	4	5	@ Auburn	0
3	North Carolina	2	7	@ Auburn	6
			3	Florida	4
			1	Florida (10 Inn)	0
			9	Florida	4
FLORIDA STATE INVITATIONAL TOURNAMENT			DISTRICT III		
5	Illinois	4	2	East Carolina	0
6	Maryland	2	10	Maryland	1
11	Holy Cross	4	5	Mississippi State	4
10	Illinois	0			
3	Holy Cross	0			
4	Maryland	3			
10	Auburn	4	COLLEGE WORLD SERIES		
3	Auburn	5	4	Arizona	0
8	@ South Alabama	4	6	Dartmouth	0
4	@ South Alabama	0	1	Texas	5
11	@ South Alabama	0	2	Ohio	0
7	@ South Florida	0	11	Texas	2
8	@ South Florida	0	1	Southern Cal (15 Inn)	2

Florida State's Low Hit Games in 1970

No-Hitter – Gene Ammann vs. South Florida (7-0). *One-Hitters* – Ammann, Gromek and Flake vs. Union (5-1); Ammann and Scarce vs. Florida Southern (1-0); Osburn vs. South Alabama (4-0); Ammann vs. South Alabama (11-0); Osburn and Harbaugh vs. South Florida (8-0); Ammann vs. South Alabama (9-0). *Two-Hitters* – Osburn, Harbaugh and Slade vs. Union (6-2); Osburn vs. Illinois (10-0); Ferguson vs. Holy Cross; Osburn vs. Jacksonville (4-1); Ammann vs. Auburn (5-0); Ammann vs. East Carolina (2-0); Ammann vs. Arizona (4-0).

Florida State's Shutouts in 1970

Ammann and Scarce vs. Florida Southern (1-0); Ammann vs. Stetson (1-0); Osburn vs. Illinois (10-0); Ferguson vs. Holy Cross (3-0); Osburn vs. South Alabama (4-0); Ammann vs. South Alabama (11-0); Ammann vs. South Florida (7-0); Osburn and Harbaugh vs. South Florida (8-0); Ammann vs. South Alabama (9-0); Ammann vs. Auburn (5-0); Ammann vs. Florida (1-0); Ammann vs. East Carolina (2-0); Ammann vs. Arizona (4-0); Osburn vs. Dartmouth (6-0); Henson and Scarce vs. Ohio (2-0).

1970 BASEBALL STATISTICS

49-9-1 (.839)

	AB	R	H	2B	3B	HR	TB	SB	RBI	BB	SO	AVG.
Dick Nichols, 2B	237	64	80	17	6	2	115	34	35	42	31	.338
Ron Cash, 3B	215	47	72	8	6	3	101	5	47	42	18	.335
John Grubb, OF	231	52	70	5	3	3	90	14	35	30	25	.303
Greg Gromek, SS	210	38	63	5	1	2	76	5	35	21	21	.300
Larry Cocks, OF	202	34	59	6	0	2	71	7	32	22	22	.292
Greg Schnute, OF	174	33	48	9	4	2	71	12	20	43	33	.276
Harry Saferight, C-OF-1B	167	22	45	3	4	4	68	3	38	15	23	.269
Doug Kasimier, 1B	153	17	39	3	2	2	52	5	19	12	27	.255
John Keith, C	101	8	22	3	0	0	25	0	11	9	19	.218

(less than 100 at-bats)

Dan Roatche, C	9	2	3	0	0	1	6	0	3	3	1	.333
Tom Porter, IF	41	13	11	2	1	0	14	8	7	16	8	.268
David Grimes, IF	4	1	1	1	0	0	2	0	1	0	1	.250
Greg Zera, C	5	0	1	0	0	0	1	0	0	0	1	.200
Jim Scheller, IF	33	4	5	1	0	0	6	0	3	6	3	.152
Rick Moss, OF	8	2	1	0	0	0	1	1	0	3	4	.125
Mike Vasquez, IF	35	3	4	0	0	1	7	0	4	8	4	.114
Mike Leber, OF	1	0	0	0	0	0	0	0	0	0	1	.000

(Pitchers)

Al Cleveland	4	2	2	0	0	0	2	0	2	1	0	.500
John Ferguson	5	1	2	0	1	0	4	0	2	0	1	.400
Gene Ammann	49	8	12	0	1	0	14	0	3	6	8	.245
Mike Slade	27	4	5	1	1	1	11	0	2	6	1	.185
Pat Osburn	42	5	7	1	0	0	8	0	1	7	8	.167
Mac Scarce	7	0	1	0	0	0	1	0	0	0	1	.143
Carl Gromek	17	0	0	0	0	0	0	0	1	0	2	.000
Tom Henson	9	0	0	0	0	0	0	0	0	0	2	.000
Robin Flake	7	1	0	0	0	0	0	0	1	1	3	.000
Don Harbaugh	2	0	0	0	0	0	0	0	0	0	1	.000
Bill Fuller	0	0	0	0	0	0	0	0	0	0	0	—

FLORIDA STATE	1995	361	553	65	30	23	747	90	302	293	268	.277
OPPONENTS	1881	144	349	43	5	15	445	36	118	278	528	.186

PITCHING

	APP	GS	CG	W	L	IP	R	ER	H	BB	SO	SHO	ERA
Tom Henson	7	3	1	4	0	29 1/3	4	1	19	14	18	0	0.31
Gene Ammann	18	17	10	15	0	137 1/3	22	10	67	65	150	8	0.66
Pat Osburn	18	17	6	12	2	126 2/3	23	13	73	61	154	3	0.92
John Ferguson	9	2	1	1	1	25	7	3	17	11	20	1	1.08
Mac Scarce	16	0	0	1	2	33 1/3	7	6	13	13	49	0	1.62
Mike Slade	17	11	2	7	2	88 2/3	39	21	82	43	67	0	2.12
Carl Gromek	13	5	1	5	0	44 2/3	16	13	42	30	28	0	2.62
Al Cleveland	8	0	0	1	0	13 2/3	4	4	8	10	12	0	2.63
Robin Flake	5	3	1	1	1	22 1/3	14	9	18	19	19	0	3.65
Don Harbaugh	9	0	0	2	1	10 2/3	8	8	10	8	11	0	6.74
Bill Fuller	1	0	0	0	0	1	0	0	0	1	0	0	0.00

FLORIDA STATE	121	59	22	49	9	532 1/3	144	88	349	278	528	15	1.49
OPPONENTS	144	59	14	9	49	506 1/3	361	275	546	293	268	0	4.89

SEMINOLE HALL OF FAME

THE 400 CLUB

(players with 50 or more AB's)

Name	Year	Hits	At-bats	Avg.
Bob Clem	1959	44	101	.436
Dick Howser	1956	38	90	.422
Riley SeEVERS	1955	27	65	.415
Ken Suarez	1964	44	109	.404
Bob Rosell	1956	25	62	.403

ALL TIME LEADING HITTERS

(50-99 At-Bats and minimum .350 Avg.)	(100 or more At-Bats and min. .350 Avg.)
.422 Dick Howser 1956 (38-90)	.436 Bob Clem 1959 (44-101)
.414 Riley SeEVERS 1955 (27-65)	.404 Ken Suarez 1964 (44-109)
.403 Bob Rosell 1956 (25-62)	.399 Mike Augustine 1963 (65-163)
.392 Fred Twoomey 1955 (29-74)	.386 Mike Easom 1968 (56-145)
.383 Bob Clem 1964 (36-94)	.384 Tom Cook 1968 (53-138)
.368 Cooter Mills 1954 (32-87)	.379 Gary Sprague 1966 (74-195)
.365 Owen McCarron 1958 (35-96)	.373 Mike Martin 1966 (68-185)
.364 Dick Howser 1957 (32-88)	.370 Jack Dull 1961 (40-108)
.361 Ronald Melton 1950 (30-83)	.365 Woody Woodward 1962 (54-148)
.3563 Ray Bazzell 1960 (31-87)	.364 Bill Williamson 1962 (56-154)
.3555 Billy Campbell 1955 (32-90)	.353 Owen McCarron 1957 (36-102)

SEASON BATTING CHAMPIONS

(Minimum 50 at-bats)

(1948-1969)

1948 Jack Wilson .298 (20-67)	1959 Bob Clem .436 (44-101)
1949 Not Available	1960 Bob Clem .383 (36-94)
1950 Ronald Melton .361 (30-83)	1961 Jack Dull .370 (40-108)
1951 Lee Bailey .352 (32-91)	1962 Woody Woodward .365 (54-148)
1952 Ralph Blinn .317 (20-63)	1963 Mike Augustine .399 (65-163)
1953 Cooter Mills .319 (29-91)	1964 Ken Suarez .404 (44-109)
1954 Cooter Mills .368 (32-87)	1965 Gary Nichols .333 (29-87)
1955 Riley SeEVERS .415 (27-65)	1966 Gary Sprague .379 (74-195)
1956 Dick Howser .422 (38-90)	1967 Bob Canty .340 (18-53)
1957 Dick Howser .364 (32-88)	1968 Mike Easom .386 (56-145)
1958 Owen McCarron .365 (35-96)	1969 Dick Nichols .336 (45-134)
	1970 Dick Nichols .338 (80-237)

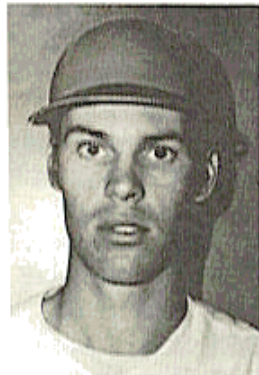
SEMINOLE ALL-AMERICAS

Since 1957 15 Florida State Seminoles have been named to the All-America rolls. The list is a veritable "Who's Who" of Seminole Baseball.

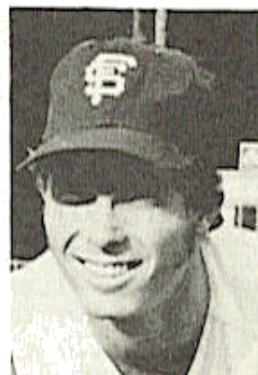
	DICK HOWSER	
1957 First Team	Shortstop	.364
1958 First Team	Shortstop	.337
	BOB CLEM	
1959 Second Team	Secondbaseman	.436
	JACK DULL	
1961 Third Team	Secondbaseman	.370
	BUDDY TEAGLE	
1962 First Team	Catcher	.325
	MIKE AUGUSTINE	
1963 First Team	Outfielder	.399
	WOODY WOODWARD	
1963 Third Team	Shortstop	.305
	KEN SUAREZ	
1964 First Team	Catcher	.404
	JIM LYTTLE	
1966 First Team	Outfielder	.324
1966 Sporting News (1st)		
	GARY SPRAGUE	
1966 Sporting News (2nd)	Shortstop	.379
	TOM COOK	
1968 Third Team	Catcher	.384
	DICK GOLD	
1969 First Team	Secondbaseman	.317
	DICK NICHOLS	
1970 Second Team	Secondbaseman	.338
1970 Sporting News (1st)		
	JOHN GRUBB	
1970 Sporting News (HM)	Outfielder	.303
	RON CASH	
1970 Sporting News (HM)	Thirdbaseman	.335
	PAT OSBURN	
1970 Sporting News (HM)	Pitcher	12-2



D. GOLD



J. GRUBB



D. NICHOLS



P. OSBURN

ALL-DISTRICT III SELECTIONS

1955 – Bill Campbell, 2b; 1956 – Tony Avitable, p; 1957 – Dick Howser, ss; 1958 – Mike Copps, of and Dick Howser, ss (first team); Frank Slusser, p and Dale Koch, 3b (second team); 1959 – Bob Clem, 2b; 1961 – Jack Dull, 2b; 1962 – Buddy Teagle, c; 1963 – Mike Augustine, of; Woody Woodward, ss; 1964 – Ken Suarez, c; 1966 – Jim Lyttle, of; Mike Martin, of; Randy Brown, c; 1967 – LaDon Boyd, p (second team); 1968 – Tom Cook, c and Steve Mastin, p (first team); Mike Eason, 1b (second team), Dick Gold, 2b (third team); 1969 – Dick Gold, 2b and George Lott, p; 1970 – Dick Nichols, 2b and Ron Cash, 3b (first team), Gene Ammann, p (second team), Pat Osburn, p (third team).

SEMINOLES IN THE PROS

Five members of Florida State's 1970 National Runners-up have joined the ever growing list of Seminoles in professional baseball.

Pitchers **Pat Osburn**, **Gene Ammann** and **Mike Slade** as well as outfielder **John Grubb** gave up their final year of collegiate eligibility to join the professional ranks, while **Dick Nichols**, was a senior and made the move following his graduation.

Dick Howser is the "granddaddy" of former Seminole stars in professional ball. The two-time All-America was an active player at Kansas City, Cleveland and New York and is now a coach for Ralph Houk of the Yankees.

Woody Woodward, who gave part of his professional bonus to initiate a fund to put lights on Seminole field, has played with Atlanta and Cincinnati where he is presently that club's player representative.

Other Seminoles, who are either in or have seen major league action, include **Jim Lyttle**, **Ken Suarez** and **Randy Brown**. Many other young players, like **Osburn**, **Grubb**, **Gary Sprague**, **Tom Cook** and **LaDon Boyd**, have been to Spring Training with the "big club" and are given a good chance of making the majors in the near future.

Since 1955 approximately 100 Seminoles have either been drafted or signed as free agents – an average of more than six a year. At present there are between 25 and 30 former Seminoles still active in pro ball.

TEAM RECORDS

Most Games Played – 59 in 1970
Most Victories – 49 in 1970 (59 games)
Highest Win Percentage – .854 in 1968 (35-6)
Fewest Losses – Four in 1952 (21 games)
Longest Winning Streak – 21 in 1968 (Mar. 23-May 4) and 1969 (Mar. 29-Apr. 24)
Longest Losing Streak – Four in 1959
Most Runs Scored (season) – 417 in 1966 (52 games)
Game – 24 vs. Jacksonville (Ala) State in 1954 (24-0) and Miss. State in 1966 (24-2)

Highest Batting Average – .321 in 1955
Most Hits (season) – 553 in 1970 (59 games)
Game – 23 vs. Miss. State in 1966 (24-2)

Most Homeruns – 52 in 1966 (52 games)
Most Triples – 52 in 1966 (52 games)
Most Doubles – 80 in 1966 (52 games)
Most Total Bases – 828 in 1966 (52 games)
Highest Slugging Avg. – .454 in 1966
Most Stolen Bases – 105 in 1966 (52 games)
Fewest Victories – Nine in 1948 (17 games)
Most Losses – 14 in 1962 (37 games) and 1967 (46 games)
Lowest Win Percentage – .529 in 1948 (9-8)
Fewest Runs Scored (season) – 101 in 1948 (17 games)
Lowest Batting Average – .237 in 1967
Fewest Hits (season) – 186 in 1952 (21 games)
Fewest Homeruns – Three in 1954 (21 games)
Fewest Triples – Nine in 1959 (33 games)
Fewest Doubles – 24 in 1951 (18 games)
Fewest Total Bases – 250 in 1952 (21 games)
Fewest Stolen Bases – 20 in 1954 (21 games)
Fewest Opponents Stolen Bases – Seven in 1961 (28 games) and 1968 (41 games)
Most Opponents Stolen Bases – 31 in 1969 (52 games)
Fewest Runs Allowed (season) – 72 in 1952 (21 games)
Fewest Hits Allowed (season) – 130 in 1952 (21 games)
Most Runs Allowed (season) – 221 in 1962 (37 games)
Game – 24 vs. Clemson in 1959 (24-2)

Most Hits Allowed (season) – 376 in 1966 (52 games)
Lowest ERA – 1.49 in 1970 (59 games)
Most Strikeouts – 528 in 1970 (59 games)
Fewest Walks Allowed – 85 in 1953 (24 games)
Most Shutouts – 15 in 1970 (59 games)
Most Consecutive Shutouts – Four in 1970
Most Consecutive Scoreless Innings – 37 in 1970 (5 games)
Lowest Opponent Batting Avg. – .186 in 1970 (59 games)
Highest Opponent Batting Avg. – .258 in 1962
Fewest Strikeouts – 126 in 1954 (21 games)
Most Walks Allowed – 278 in 1970 (59 games)
Highest ERA – 4.27 in 1962 (37 games)

INDIVIDUAL RECORDS

BATTING

- Highest Batting Average (season) – .436 by Bob Clem in 1959
- Highest Batting Average (career) – .410 by Bob Clem 1959-60 (two years)
.361 by Dick Howser 1956-58 (three years)
- Most Hits (season) – 80 by Dick Nichols (1970) (career) – 151 Dick Gold (1967-69)
- Most Doubles (season) – 17 by Dick Nichols (1970)
(career) – 24 by Dick Nichols (1968-70)
- Most Triples (season) – Nine by Dick Gold (1969)
(career) – 12 by Bob Hudson (1953-55) and Dick Gold (1967-69)
- Most Homeruns (season) – 13 by Jim Lyttle (1966)
(career) – 17 by Mike Easom (1967-69)
- Most RBI (season) – 51 by Jim Lyttle (1966)
(career) – 83 by Dick Gold (1967-69) and Mike Easom (1967-69)
- Most Walks (season) – 48 by Randy Brown (1966)
(career) – 84 by Randy Brown (1965-66)
- Most Strikeouts (season) – 58 by Walt Sumner (1969)
(career) – 85 by Walt Sumner (1968-69) and Dick Gold (1967-69)
- Most Stolen Bases (season) – 34 by Dick Nichols (1970)
(career) – 52 by Randy Brown (1965-66)
- Most Runs Scored (season) – 69 by Gary Sprague (1966)
(career) – 98 by Dick Gold (1967-69)
- Most Total Bases (season) – 131 by Jim Lyttle (1966)
(career) – 227 by Mike Easom (1967-69)
- Most At-bats (season) – 237 by Dick Nichols (1970)
(career) – 511 by Dick Gold (1967-69)

PITCHING

- Most Appearances (season) – 18 by Gene Ammann in 1970 (15-0)
(career) – 44 by Gene Ammann 1968-70 (31-2)
- Most Wins (season) – 15 by Gene Ammann in 1970 (lost none)
(career) – 31 by Gene Ammann 1968-70 (lost two)
- Most Strikeouts (game) – 25 by Tony Avitable vs. Furman in 1956
(season) – 154 by Pat Osburn in 1970 (career) – 318 by Gene Ammann in 1970
- Most Walks Issued (season) – 65 by Gene Ammann (1970)
(career) – 141 by Gene Ammann (1968-70)
- Lowest ERA (season) – (50-100 innings pitched) 1.15 by Jack Bristol in 1958 (77 2/3)
-(100 or more innings) 0.66 by Gene Ammann (137 1/3)
(career) – 1.43 by Gene Ammann (295 1/3) 1968-70
- Most Runs Allowed (season) – 55 by Ray McShane in 92 1/3 inn. (1962)
(career) – 100 by Ray McShane in 165 2/3 (1960-62)
- Fewest Runs Allowed (season) – 18 by Steve Mastin in 107 inn. (1968)
- Most Starts (season) – 17 by Gene Ammann in (1970)
(career) – 36 by Gene Ammann (1968-70)
- Most Losses (season) – Six by Marty Howell in 1964 (won six)
(career) – 13 by Marv Stringfellow, 1965-67 (won 16)
- Most Innings Pitched (season) – 137 1/3 by Gene Ammann in 1970
(career) – 295 1/3 by Gene Ammann (1968-70)
- Most Hits Allowed (season) – 95 by Marty Howell in 1964
(career) – 200 by Marv Stringfellow (1965-67)
- Most Complete Games (season) – 11 by Wayne Vincent in 1967
(career) – 23 by Wayne Vincent (1966-68)
- Most Saves (season) – 12 by Mac Scarce in 1970
- Most Shutouts (season) – eight by Gene Ammann in 1970
(career) – 11 by Gene Ammann (1968-70)
- Most Consecutive Scoreless Innings – 41 1/3 by Gene Ammann in 1970 (five games, including four shutouts)
- Most Consecutive Shutouts – four by Gene Ammann in 1970 (Auburn, 5-0; Florida 1-0, 10 inn.; East Carolina, 2-0; Arizona, 4-0)

RECORD VS. ALL-OPPONENTS (Collegiate)

TEAM	FIRST MEETING	LAST MEETING		SERIES STANDING	
		YEAR	SCORE	FSU	OPP
Alabama	1967	1968	6-1	2	1
Amherst	1952	1964	5-0	7	1
Arizona	1963	1970	4-0	1	1
Auburn	1954	1970	7-6	31	24
Belmont Abbey	1969	1969	8-4	2	0
Bradley	1950	1950	1-10	1	1
Bowling Green	1970	1970	17-8	1	0
Cincinnati	1953	1956	8-2	2	0
Clemson	1958	1969	3-1	12	9
Connecticut	1957	1957	3-5	0	1
Dartmouth	1970	1970	6-0	1	0
Davidson	1954	1954	7-1	1	0
Duke	1954	1959	2-6	15	9
East Carolina	1962	1970	2-0	4	2
Florida	1956	1970	9-4	25	29
Florida Southern	1949	1970	7-6	27	10
Furman	1955	1969	7-2	12	1
Georgia	1951	1969	12-3	24	14
Georgia (Savannah)	1948	1948	8-3	1	1
Georgia Southern	1948	1970	1-2	49	9
Georgia Tech	1959	1969	5-8	9	2
George Washington	1958	1959	3-2	2	0
Holy Cross	1970	1970	3-0	2	0
Illinois	1956	1970	10-0	5	0
Indiana	1956	1956	14-10	2	0
Ithaca	1957	1962	5-4	3	0
Jacksonville (Ala) St.	1953	1954	24-0	2	0
Jacksonville (Fla) Univ.	1964	1970	9-2	12	1
Kentucky	1965	1966	20-1	5	0
Kentucky Wesleyan	1968	1968	15-5	2	0
Kenyon	1952	1952	11-2	2	0
LSU	1955	1966	1-2	1	2
Loyola (La)	1952	1968	4-1	10	0
Maryland	1965	1970	10-1	4	0
Mercer	1948	1950	11-7	5	2
Miami	1951	1970	6-2	33	7
Michigan	1959	1962	7-10	1	1
Michigan State	1957	1970	5-6	7	5
Middle Georgia	1948	1948	7-6	2	0
Millsaps	1949	1949	10-8	1	0
Mississippi	1949	1966	5-3	6	0
Mississippi College	1948	1951	7-8	13	4
Mississippi State	1964	1970	5-4	5	2
Navy	1960	1965	0-1	3	4
New York University	1970	1970	4-2	2	0
North Carolina	1956	1970	3-2	14	4
North Carolina State	1962	1968	1-4	2	4
Northeast Louisiana	1964	1964	7-4	1	0
Notre Dame	1956	1958	3-2	3	0
Oglethorpe	1949	1949	5-7	0	1
Ohio	1970	1970	2-0	1	0
Ohio State	1960	1965	1-2	0	2
Parsons	1967	1967	4-16	0	2

Record vs All Opponents (Collegiate) – Continued –

TEAM	FIRST MEETING	LAST YEAR	MEETING SCORE	SERIES STANDING	
				FSU	OPP
Penn State	1957	1969	8-4	7	2
Rider College	1970	1970	8-1	1	0
Rollins	1948	1958	7-6	7	11
Rutgers	1966	1966	18-10	1	0
St. Leo	1969	1970	8-3	4	1
Santa Clara	1962	1962	6-11	1	1
South Alabama	1969	1970	2-2	6	1
South Carolina	1969	1969	4-3	1	0
South Florida	1969	1970	8-0	4	0
Southeastern Louisiana	1953	1953	5-4	1	1
Southern California	1963	1970	1-2	0	2
Southern Illinois	1968	1970	6-1	6	1
Springhill	1966	1966	14-2	4	0
Springfield	1967	1968	18-0	4	0
St. Louis	1965	1965	3-5	0	1
Stetson	1949	1970	1-0	21	13
Tampa	1949	1959	19-1	13	3
Tennessee	1951	1966	8-2	4	1
Texas	1965	1970	11-2	2	1
Troy State	1948	1948	6-5	1	1
Tulane	1967	1969	0-1	5	1
Union University	1970	1970	6-2	2	0
Valdosta State	1963	1963	14-0	1	0
Virginia Tech	1967	1967	7-2	1	0
Wake Forest	1962	1969	10-1	15	5
Western Michigan	1959	1963	5-2	3	2
West Virginia	1956	1962	6-5	3	2
William & Mary	1967	1967	5-4	1	0
Wisconsin	1955	1958	3-1	8	1
Yale	1957	1957	11-8	2	0
(Other Amateur)					
Camp Lejune (USMC)	1949	1954	5-6	3	1
Jacksonville Naval Air Sta.	1953	1954	7-4	2	2
Pensacola Navy	1965	1965	10-2	3	0
Valdosta Red Sox	1968	1968	3-1	4	0
(Pro Teams)					
Birmingham (AA)	1968	1968	2-6	0	3
Knoxville (A)	1958	1958	3-2	1	0
Pittsfield (AA)	1968	1968	0-1	0	3
Tallahassee					
(Citizens) (A)	1951	1951	16-6	1	0
(Rebels) (A)	1954	1954	2-5	1	1
Pautuckett	1970	1970	3-14	0	1
Baltimore "B"	1970	1970	5-10	0	1

THROUGH THE YEARS

Year	Coach	Captain	W	L	T	Rns.	Opp.	BA	OPP
1948	Charlie Armstrong	Ron Nettles	9	8	0	101	121		
1949	Charlie Armstrong	Sam Cox	11	8	0	126	103		
1950	Charlie Armstrong	Bob Trowbridge	11	7	0	122	104		
1951	Charlie Armstrong	Augie Pompelia	12	6	0	122	104	.292	.234
1952	Ralph Matherly	Bob Trowbridge	17	4	0	158	72	.266	.188
1953	Ralph Matherly	Cooter Mills	13	10	1	156	111	.254	
1954	Ralph Matherly	Bob Hudson	13	8	0	164	101	.269	

THROUGH THE YEARS (cont.)

Year	Coach	Captain	W	L	T	Rns.	Opp.	BA	OPP
1955	Danny Litwhiler	Billy Campbell	17	6	0	189	98	.321	
1956	Danny Litwhiler	Bob Hudson	24	5	0	244	121	.295	
1957	Danny Litwhiler	Max Long	22	9	0	232	120	.297	
1958	Danny Litwhiler	Carlee Hendrix	20	7	0	198	104	.294	.208
1959	Danny Litwhiler	Dick Howser	22	11	0	258	166	.282	.231
1960	Danny Litwhiler	Dale Kock	13	9	0	183	136	.312	.254
1961	Danny Litwhiler	Ray Buzzell							
		Frank Davis	21	7	0	203	238	.301	.256
1962	Danny Litwhiler	Jack Dull							
		Ray McShane	23	14	0	254	221	.296	.258
		Bob Madison	26	13	0	250	151	.278	.213
1963	Danny Litwhiler	Al Beccaccio	23	13	0	244	171	.273	.247
1964	Fred Hatfield	Jim Reed	32	11	1	305	179	.281	.253
1965	Fred Hatfield	Gerry Chmielewski	39	13	0	417	192	.294	.214
1966	Fred Hatfield	Dick Fernandez	32	14	0	214	155	.234	.220
1967	Fred Hatfield	Roy Mewbourne							
		Chuck Cone	35	6	0	281	120	.284	.215
1969	Jack Stallings	Bob Cauty							
		Dick Gold	38	13	1	303	158	.273	.219
1970	Jack Stallings	Mike Easom	49	9	1	361	144	.277	.186
		Dick Nichols							

THE SEMINOLES IN CHAMPIONSHIP PLAY

Florida State's NCAA playoff and College World Series record is surpassed by very few schools around the country. In the last 15 years, the Seminoles have made 12 playoffs, only Texas and Northern Colorado can claim that many trips in the same period. In the entire history of the playoffs, only those two teams, with 18 trips each and Southern California with 13 have been more than that Seminoles. The Seminoles' 37 victories in championship play are more than have been recorded than all the 128 participating teams, except Southern Cal's 69 and Texas' 48. Of the 72 teams which have appeared in the College World Series, only seven have been more than the five years the Tribe has made an appearance, and only 12 have recorded more victories. The Seminoles .569 winning percentage is 24th among all tournament teams, and is ninth among the teams that have been to the playoffs at least six times in their 24 year history.

In the Seminoles 13 trips to the District III Playoffs, they have finished either first or second eight times. In CWS play the Seminoles have reached the third round twice, the quarterfinals once and the finals once.

Florida State's NCAA Tournament Record:

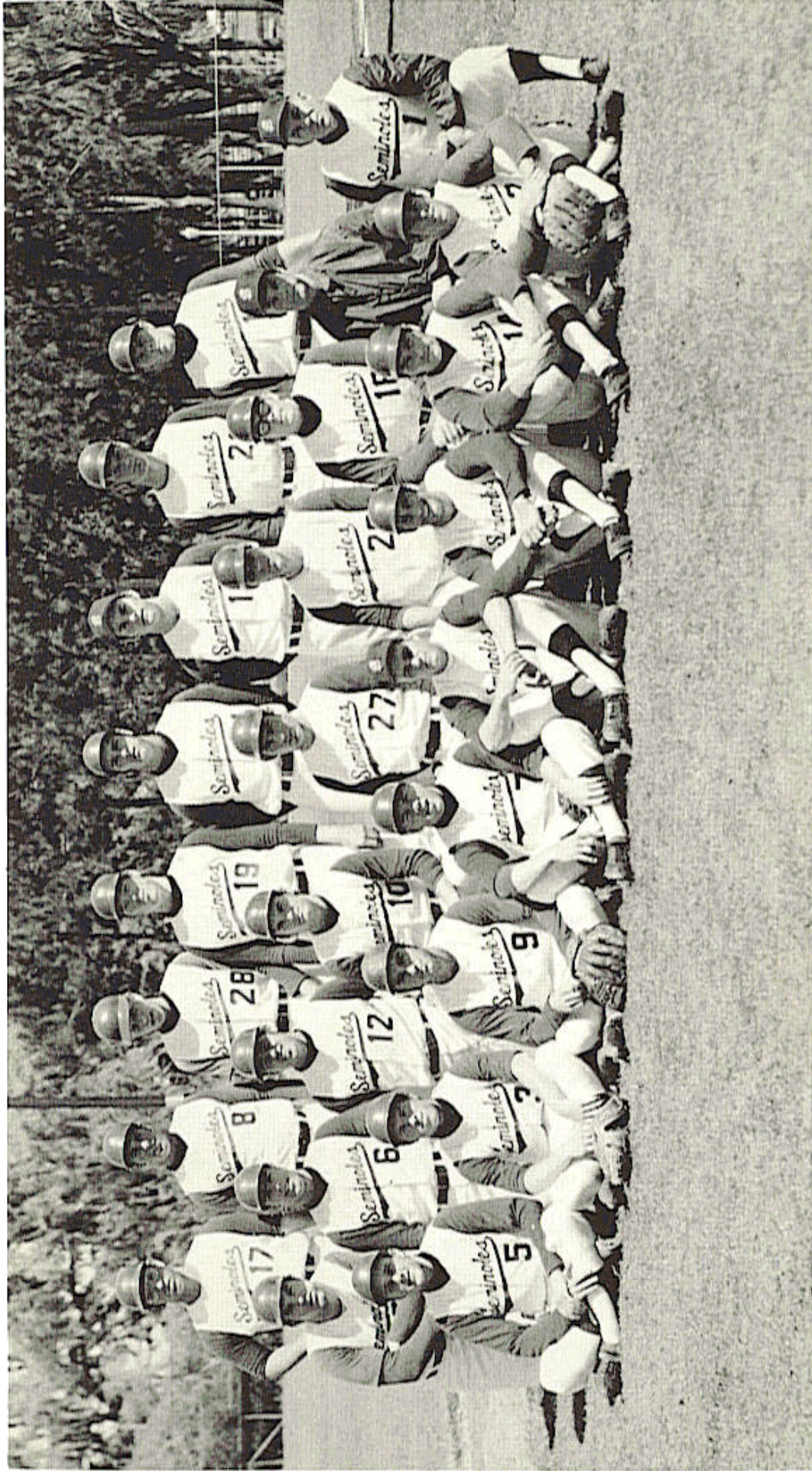
Years Participated (CWS)	Record Including District Playoffs			College World Series Record				
	Years Won	Lost	Pct.	Years Won	Lost	Pct.		
1956-(57)-58-59-61-(62)-(63)-(65)-66-67-68-(70)	12	37	28	.569	5	8	10	.444

SEMINOLE FIELD

All of Florida State's home games are played at Seminole Field, on campus. One of the nation's first on-campus fields to have lights, many of the Tribes games are played at night and several times throughout the season the 3,300 bleacher seats are filled to capacity. Last year more than 34,000 people turned out to see the Tribe in action.

The field is one of three diamonds that the Seminoles have at their disposal. Scattered around this complex are nine batting cages and several pitching mounds to ensure adequate facilities for even the largest of squads.

Seminole Field itself is equal to the best "triple-A" professional fields. The basepaths and warning tracks are of clay and the field is kept in tip-top condition year round by the Florida State University Department of Grounds.



FLORIDA STATE'S 1970 NCAA – COLLEGE WORLD SERIES RUNNERS-UP

MARCH	1	2	3	4	5	6
		Valdosta State 3 P.M.	Union Univ. (2) 1 P.M.	Union Univ. 3 P.M.	St. Leo 3 P.M.	St. Leo 1:30
7	8	9	10	11	12	13
				Lafayette 3 P.M.	Lafayette 3 P.M.	Lafayette (2) 1:30
14	15	16	17	18	19	20
						Miami 3 P.M.
21	22	23	24	25	26	27
Miami 3 P.M.	Ohio State at Miami 9:30 A.M.	Mich. State at Miami 12:15 P.M.	St. Leo 3:30	FLORIDA STATE INVITATIONAL TOURNAMENT FSU, W. Michigan, Fla. A&M Games at 1:00, 3:30, 7:30, Daily		
28	29	30	31			
Fla. State Invitational Tourney			Brown Univ. 7:30			

APRIL				1	2	3
				Brown (2) 3:00 and 7:30	Brown 7:30	Brown (2) 1:30 & 7:30
4	5	6	7	8	9	10
		Jacksonville 3:15	Jacksonville 3:15	N. Illinois 7:30	Miami 7:30	Miami 7:30
11	12	13	14	15	16	17
	Auburn 7:30	Auburn 3:00	Valdosta St. 3 P.M.			Clemson (2) 2:30
18	19	20	21	22	23	24
Clemson 3 P.M.	Georgia (2) 2 P.M.					South Alabama (2) 1:30 & 7:30
25	26	27	28	29	30	
South Ala. 1:30	South Florida 7:30	South Florida 3 P.M.			Stetson 7:30	

MAY						1
						Stetson 1:30 Ga. South. 7:30
2	3	4	5	6	7	8
Ga. South. 1:30						South Alabama (2) 2 P.M.
9	10	11	12	13	14	15
South Alabama 3 P.M.					Ga. South. 7:30	Ga. South. 7:30
16	17	18	19	20	21	22
	Auburn 4 P.M.	Auburn 4 P.M.			Florida 3 P.M.	Florida (2) 1 P.M.
23	24	25	26	27	28	29
30	31				Florida 7:30	Florida 7:30

SHADED DATES INDICATE HOME GAMES