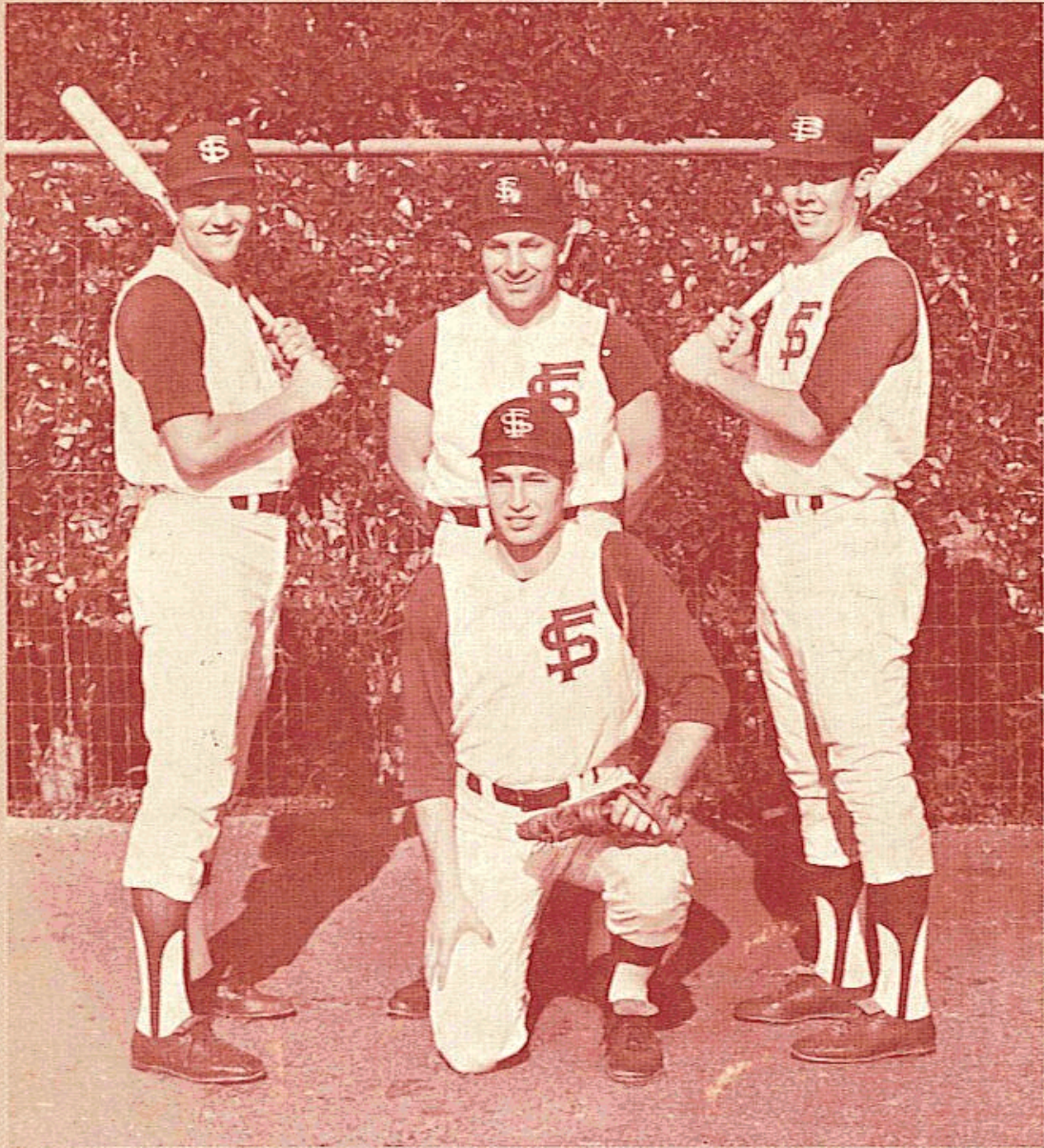


FLORIDA STATE UNIVERSITY



1969

BASEBALL HANDBOOK

FLORIDA STATE UNIVERSITY GENERAL INFORMATION

Location	Tallahassee, Florida
Enrollment	16,303
Acting President	J. Stanley Marshall
Conference	Independent
Colors	Garnet and Gold
Nickname	Seminoles

Athletic Staff

Athletic Director—Vaughn Mancha	599-3413
Adm. Ass't. to Ath. Dir.—Ken MacLean	599-3414
Sports Information Director—Lonnie Burt	599-2095
Assistant SID—Hank Schomber	599-2095
Baseball Coach—Jack Stallings	599-2640
Trainer—Don Fauls	599-2775
Ass't. Trainer—Bill Zeigler	599-2640
Head Coaches:	
Basketball—Hugh Durham	599-3080
Football—Bill Peterson	599-2775
Golf—Don Veller	599-2640
Swimming—Bim Stults	599-3213
Tennis—Lex Wood	599-2640
Track—Mike Long	599-2640

Athletic Committee:

Robert Ernest (Chairman), Dr. Ralph A. Bradley, William Rogers, Charles Grigg, William H. Long, Dr. John J. Carey, Charles Ehrhardt, Dr. Harold Goldstein, Dr. J. Stanley Marshall, Dr. Fred W. Metzke.

SEMINOLE FIELD

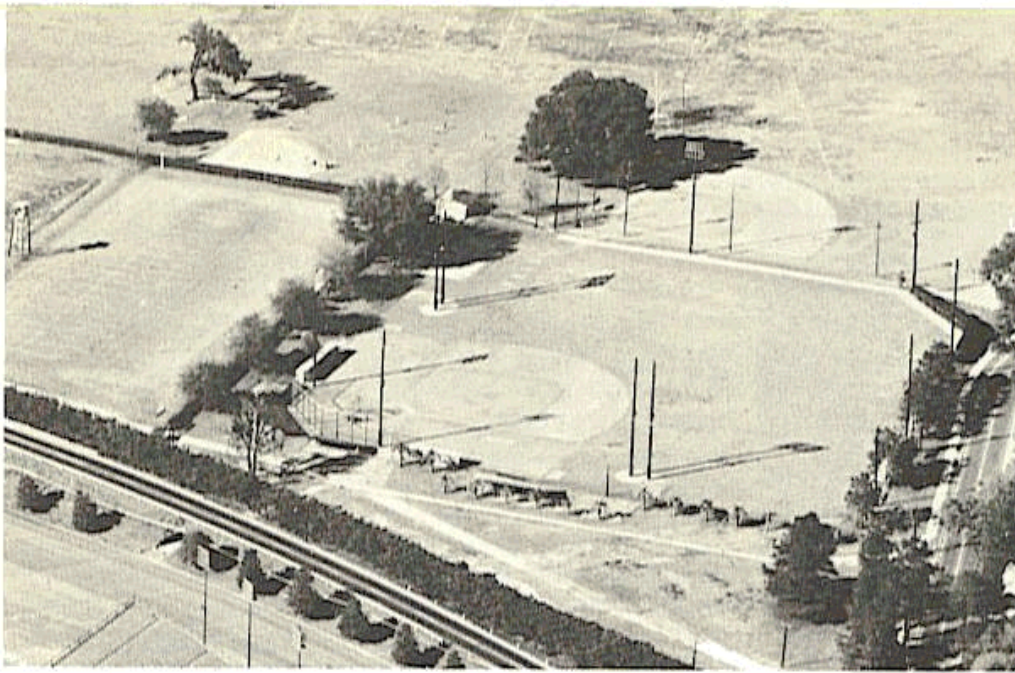
Home games are played on beautiful Seminole Field, one of the few on campus, lighted, college ball parks. Since the lights were installed the Seminoles have been averaging nearly 2,000 fans at the evening contests.

ADDITIONAL INFORMATION

The 1969 Florida State Baseball Brochure was prepared to help the press, radio and TV media with their coverage of the Seminoles during the season. The brochure was compiled and published by the Florida State Sports Information Department and edited by Hank Schomber. If you desire additional information contact the Sports Information Office (Room 200 Tully Gym, Tallahassee, 32306), AC 904 599-2095, Lonnie Burt, Director (Home Phone: 385-4480) or Hank Schomber, Ass't. Dir. (224-9906). Press Credentials are issued on a game basis—requests should be made in time to allow mailing.

COVER

The cover shows the big reasons Florida State has high hopes for another successful season. All-District III performers Mike Easom and Dick Gold flank the Basin League's 1968 Most Valuable Player Jeff Hogan (kneeling) while new Coach Jack Stallings looks on.



BASEBALL AT ITS BEST

"The best in college baseball," is more than a motto at Florida State—it is a fact. From pro scouts to high school coaches, Florida State University's baseball program is recognized as one of the very best in the country.

At the Seminoles' Tallahassee campus baseball and springtime are synonymous. Day and night, thousands of university and local fans turn out at beautiful Seminole Field to watch the Tribe in action.

Many of the Florida State ball players are recommended by pro scouts, who in turn have recommended Florida State to the individual. "If we find a boy who is set on a college education before he becomes a pro, we don't hesitate to suggest Florida State," says one area scout.

There are many reasons. Foremost is the coaching. Through the years the Seminoles have had the finest coaching staffs available anywhere. Danny Litwhiler, then Fred Hatfield—both former major leaguers—and now Jack Stallings, another former pro and one of the nation's most respected collegiate coaches while at Wake Forest, have led the Seminoles to national prominence.

Florida State which has never had a losing season, has been to the NCAA District III tournament 11 of the last 13 years and four times to the College World Series—a record surpassed by few schools.

In addition to the instruction of outstanding head coaches, Florida State baseball players also receive invaluable tutoring from major league ballplayers who come to the campus in the off-season to work on their undergraduate and graduate degrees.

Many of these ballplayers are former Seminoles who have gone on to national stardom. The contribution of these returning players to the Seminole program, in both the success of the teams as well as of the individuals, is immeasurable.

Officials at the university feel that the facilities at Florida State are unsurpassed anywhere in the United States. Seminole Field is the equal to most Triple-A ballfields. When lights were installed prior to 1967 season Florida State became one of the two or three colleges to have its own lighted field, a trend others are now following.

In addition to Seminole field the Tribe has two other on campus diamonds at its disposal. There are six batting practice cages, allowing several players to be swinging, at the same time intra-squad games are being played.

The Seminole facilities annually attract several northern teams to Tallahassee for a week of practice and play in the Florida sunshine. These teams gather for the annual Florida State Spring Invitational Tournament which attracts most of the South's top major league scouts for a week of watching and evaluating.

The Seminole style of play, from the practice sessions to the road trips to the playing field is strictly pro. "The pros are at the top and have worked out the best way to do things," say the Seminole coaches, "and we see no reason not to follow in their footsteps. This also gives the boys who want to play pro ball an idea of what is in store for them when they leave school."

Because of the mild winters practice is nearly year round for the Tribe—a factor that pleases the coaches and players alike. The fall session begins shortly after classes resume in September and continues until the annual Homecoming Old-Timers Game. Spring workouts start in January as the club prepares for the new season, which begins in early March.



HEAD COACH JACK STALLINGS

Jack Stallings becomes Florida State's fifth baseball coach, taking over from Fred Hatfield, who returned to pro ball after leading the Seminoles to four tournaments in five years.

A native of Durham, N.C., Stallings brings outstanding credentials from Wake Forest, where in nine years he led the Deacons to a 152-109-2 record, including two conference championships. On both of those occasions he led the Deacs to the District III championships and the College World Series.

Stallings played two years of varsity baseball for Wake Forest (1951-52) and captained the 1951 club that represented the United States in the Pan-American Games at Buenos Aires. He signed a professional contract in 1952, before completing his eligibility.

In 1953, he played with Roanoke, Va., of the Piedmont League. A year later he split his time between Greensboro of the Carolina League and Bluefield of the Appalachian League. He was stricken with polio in 1954 and was forced to give up pro ball.

Returning to Wake Forest in 1955, he completed work on his BS degree while serving as an assistant coach. In 1956, he served as an assistant at North Carolina where he earned his Masters.

After two years as coach at Hanes High School in Winston-Salem, Stallings returned to Wake Forest as assistant coach in 1958. A year later he took charge of the Deacon baseball program.

Since 1962, Stallings has spent his summers as coach of the Pierre, S.D., entry in the Basin League, in which his clubs have been extremely successful.

He is married to the former Norma Dean Griffin and they are the parents of three sons.

ASSISTANT COACHES

Assisting Coach Jack Stallings this season will be Tom Richards and Dave Miller.

Miller is a former student of Stallings' at Wake Forest. He played for the Deacons in 1963-64 and was a third team All-America at second base in '64. He played pro ball in the Mets organization, and also earned his Masters at North Carolina where he was a graduate-assistant coach. The Woodruff, S.C. native returned to his junior college alma mater, Wilmington, N.C. in 1966. As a player there, he earned JC All-America status. Miller is a doctoral student at Florida State.

Richards has a half-dozen years of pro experience with the Dodger organization. In addition he spent three years in the Peace Corps—two in Venezuela—where among other duties he was charged with setting up baseball programs. He coached for a year at Largo Jr. High School, before coming to Florida State where he is working on his Masters degree in Latin American Affairs.

OUTLOOK

Four regulars and two top pitchers are gone, along with head coach Fred Hatfield and assistant Ernie Lanford, but Florida State is still looking forward to another fine season.

In 1968, the Seminoles were rated number one club in the nation for a month. They compiled a 35-6 record and had a 21-game winning streak. At the District III NCAA tournament in Gastonia, N.C., they went to the finals—through the losers bracket—only to fall 6-4 to North Carolina State.

The new coach is Jack Stallings, one of the nations' most respected mentors, from Wake Forest. He inherits a sound nucleus from the '68 squad, and with the newcomers on hand he is looking forward to another big year for the Tribe.

The three leading returnees are Mike Easom, Dick Gold and Jeff Hogan. Easom and Gold were all-district selections last year and Hogan, who also starts for the Seminole basketball varsity, was the Basin League's Most Valuable player.

It will be tough to replace pitchers of the calibre of Steve Mastin and Wayne Vincent, but Stallings has a big corps of moundsmen on hand and is confident they can do the job.

Tom Cook was another of the Seminoles' fine catchers in the same cut with Buddy Teagle and Ken Suarez. His loss will hurt, but Mike English is a fine backstop in his own right and could surprise a lot of people.

Chuck Cone is gone from short, and Bob Canty from third, but Hogan split the duties at both spots and will settle at third this season. The shortstop will be a rookie, but the two to choose from—Greg Gromek and Tom Porter—are good ones.

In the outfield, only Walt Sumner returns, but he will be joined by junior college transfer Dave Moates, one of the most sought-after JC boys in the country last season. The other spot will go to Greg Schnute, who was the "fourth" outfielder on last year's team.

The schedule is the most ambitious ever undertaken by the Seminoles. There are 54 games, including the South's best opposition with 24 on the road. At one point the Tribe will be playing seven doubleheaders in nine days, with single contests (on the road, yet) on the "off" days.

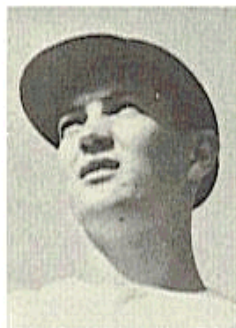
Says new coach Stallings, "It is a real challenge to come to Florida State. It is almost like the old saying 'if you can't lick 'em, join 'em.' We have a lot of talent on this club. The schedule is almost terrifying, but it is one almost any coach would be happy to face.

"We have a good number of pitchers, and we are going to need all of them. When you play 16 games in nine days your regular rotation won't go too far.

"Florida State has a tradition of fine baseball teams, and I think this year's club will be no exception. It could be one of the best."



HOGAN



EASOM



GOLD



AMMANN



MOATES



NICHOLS



HILL



ENGLISH

SCOUTING REPORT PITCHING

Once again the Seminoles will have an outstanding corps of pitchers on hand. Coach Jack Stallings has tapped 14 hurlers for varsity duty. Missing from last year's staff will be Wayne Vincent and Steve Mastin—a big loss for any team—but everyone else is back. The staff may lack that “big stopper” which every coach would like to have, but Stallings will have a half dozen hurlers he can throw at any team on the schedule. Sophomore **Gene Ammann** is the leading hurler. As a freshman last year he won all five of his decisions, had three shutouts and a no-hitter. He is not an overpowering pitcher but is sneaky fast and has a lot of baseball sense. He will not beat himself often. Senior **Mike Reibling** may have the strongest arm on the team. Nicknamed “The Machine” he will often be throwing as hard in the ninth as when he started. A lefty, he has a good assortment of pitches but will not overpower. Another lefty is **Craig Skok**. Like Reibling and Ammann, he is small in stature and has that sneaky quick fastball. Good baseball sense makes him tough to beat on the mound. Righthanders **Jeff Hill** and **Tom Henson** look like they are ready to come into their own and should make a big contribution. **Hill** is a smart senior who was spotty in his first two seasons. He appears to have gained that needed consistency which will make him a winner. **Henson** is a big, hard-throwing hurler with just a touch of wildness. Although it may get him into occasional trouble, there won't be many batters willing to “dig in” against this sophomore. Bullpen chores will be handled by **George Lott**, **John Franks** and **Mike Slade**. **Lott**, a senior lefty, has an assortment of breaking pitches and a good fastball. **Franks**, another hard-throwing righthander with a touch of wildness, has that ability to come in and get the big out. **Slade** may be the most promising young pitcher on the club. He throws hard, but lacks experience. When he gets it he could join the regular rotation. Has good breaking ball and fastball.

DEFENSE

This could be the best defensive club at Florida State in quite some time, even though the Seminoles have never really suffered through weak defensive play. Three-fourths of the infielders are two-year veterans, and the newcomers, are exceptional with gloves. The outfield boasts of speed and strong arms and men who will come up with the big play. Behind the plate, **Mike English** will be more than adequate with a good arm and quickness. **English**, a two year veteran, was plagued by injuries his sophomore season and last year was forced to take a back seat to All-America **Tom Cook**, but this appears to be his year. A smart ball player, not many pitches are likely to get by him, and his arm will challenge most runners. With the big schedule, which includes a week of doubleheaders, **English** will receive help from sophomore **John Keith**. A young ballplayer with ability, **Keith** will get better as he adds experience. **Mike Easom** will open the season at third base this year, moving back to his old high school spot after two years as the Seminoles' firstsacker. The move is only temporary, however. The regular thirdsacker will be **Jeff Hogan**, but he is not expected to be ready for the first

of series. A starter for the Seminole basketball team, Hogan did not report to the baseball field until the first of March, and Coach Stallings wants to be sure he has ample time to get ready. When Hogan returns, Easom will move back to his spot at first. In the meantime the chores on the right side will be handled by either Doug Kasimer, Graig Brown, or Jim Gurzynski. Secondbaseman Dick Gold probably has the most secure spot on the team. A two-year veteran, he is not the flashy type player, but he gets the job done and comes up with the big play. A well-schooled second-baseman, he presents a steadying influence to the rest of the infield. Backing up Gold is Dick Nichols, "the littlest Seminole" at 5-6. He packs a lot of ability, however, and Coach Stallings says he is going to play somewhere. On the other side of second is a battle royal for the starting spot vacated by Chuck Cone's graduation. Junior Tom Porter and sophomore Greg Gromek are in a dog-fight for the honors. Both are fine fielders with strong arms and range. In addition they both work well with Gold on the double play combination. They are so close in their field abilities, the one who starts will probably qualify by virtue of his work with the bat. The starting outfield appears to be set with Dave Moates, Walt Sumner and Greg Schnute from left to right. All can fly, while Schnute has one of the strongest arms on the team. They all have accurate arms and it is unlikely that too many extra bases will be gained at the outfield's advantage. Al Cleveland, a Chipola JC product, has the best arm seen at Florida State since Jim Lyttle, and if his bat comes around strong he may move somebody out.

OFFENSE

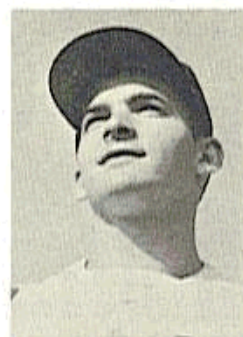
At the plate the Seminoles will offer a balance of power, speed and the "guy who just plain gets good wood." If there is a weakness it is probably in the power hitters, but there are several with the potential and a couple should come around. The "good wood" hitters start with Hogan and Gold. Both are capable of hitting above .300. Gold, an all-district third team selection in 1968, more often than not comes up with the big hit to spark or cap a rally. Hogan batted .331 for the Seminoles last year, then hit .340 in the Basin League and was voted the league's MVP award. Easom led the club in batting last season with a .386 average. He is capable of hitting the long ball and had 14 extra-base hits among his team-leading 56 safeties last spring. English could be the power hitter needed. Big and strong, he has all the tools and with regular playing time this year, his bat is expected to come around. Outfielders Sumner and Moates should get their share of hits. In addition they can pick up a few infield safeties because of their speed. Schnute is another of the "good wood" hitters and will spark the attack. The biggest bat question marks are at shortstop. Porter and Gromek both have been slow starting. Last season Gromek was one of the Renegades' leading hitters, but he has not regained his old form. Porter, too, has shown ability, but has not yet come around. From the bench, Gurzynski and Cleveland could supply power, while Nichols, outfielder Dan Buckley and firstbaseman Doug Kasimier can come up with the big hit. On the bases the Seminoles should show good speed with Moates and Sumner leading the way. Hit-and-run, sacrifice and squeeze will all work into the Tribe's attack, along with the long ball.



SKOK



SCHNUTE



REIBLING



GROMEK

FLORIDA STATE UNIVERSITY 1969 BASEBALL ROSTER

NAME	POSITION	THROWS	BATS	AGE	HT.	WT.	CLASS	STATUS	HOMETOWN	HIGH SCHOOL (Coach)
Ammann, Gene	P	R	R	20	5-10	165	Soph	1VL	Atlanta, Ga.	Lakeside (C.E. Steen)
Baxter, Joe	C	R	L	20	6-0	185	Soph	Sq.	Denmark, S. C.	Denmark-Oler (Bob Thomas)
Brooks, Terry	P	R	R-L	18	6-1	185	Fr.		Arlington, Va.	Washington-Lee (Del Norwood)
Brown, Craig	1B	R	L	20	6-3	212	Jr.	JC	Albany, Ga.	Chipola J.C. (Jim Duncan)
Browning, Tom	P	R	R	21	6-2	185	Soph.	Sq.	Jacksonville	Forest (Fred Gergis)
Burger, Jeff	P	R	R	19	6-3	180	Fr.		Merritt Island	Merritt Island (Bill McGinn)
Burns, Joe	C	R	R	18	5-8	175	Fr.		Dunedin	Lincoln Pk (Mich) (Tom Noland)
Chabot, Bob	C	R	R	20	6-1	185	Jr.	JC	St. Petersburg	Bishop Barry (John Ash)
Cleveland, Al	OF	R	R	21	6-2	180	Jr.	JC	Albany, Ga.	Chipola J.C. (Jim Duncan)
Cocks, Larry	IF	R	R	20	5-10	165	Soph.	Fr.	Tulsa, Okla.	Enterprise (Ala) (Johnny Shoemaker)
Delany, Tom	1B	L	L	18	5-10	170	Fr.		Gainesville, Fla.	Gainesville (Spec Miller)
Easom, Mike	IF	R	L	21	6-0	180	Sr.	2VL	Tallahassee	Leon (Joe Wilcox)
English, Mike	C	R	R	21	6-1	200	Sr.	2VL	Pensacola	Escambia (Chris Banakas)
Ferguson, John	P	R	R	21	6-0	165	Jr.	Sq.	Desota, Ga.	ABAC (Van Brackin)
Franks, John	P	R	R	20	6-0	175	Jr.	JC	Jacksonville Beach	Chipola J.C. (Jim Duncan)
Givens, Rodney	OF	R	L	19	5-11	155	Fr.		Tallahassee	Leon (Joe Wilcox)
Gold, Dick	2B	R	R	21	6-1	180	Sr.	2VL	Grover, N. C.	Kings Mountain (Bill Bates)
Green, John	C	R	R	18	5-10	170	Fr.		Tallahassee	Leon (Harold Barwick)
Gromek, Carl	P	R	R	21	5-10	170	Soph.	Sq.	Birmingham, Mich.	Brother Rice (Bro. Wielitz)
Gromek, Greg	IF	R	R	19	5-10	165	Soph.	Fr.	Birmingham, Mich.	Brother Rice (Bro. Wielitz)
Gurzynski, Jim	IF-C	R	R	21	6-1	210	Sr.	1VL	Lighthouse Point	Broward J.C. (Leroy Wheat)
Harbaugh, Don	P	R	R	20	6-1	190	Soph.	Fr.	Toledo, Ohio	St. Francis (Jim Kubacki)
Henson, Tom	P	R	R	20	6-3	210	Soph.	Sq.	Evansville, Ind.	North (Ed Wessell)
Hill, Jeff	P	R	R	21	6-1	180	Sr.	2VL	Delray Beach	Seacrest (John Northern)
Hogan, Jeff	IF	R	R	21	6-0	170	Sr.	2VL	Akron, Ohio	Ellet (Ray Baker)
Horn, Mike	P	R	R	21	6-2	180	Soph.	Sq.	Florence, Ky.	Boone County (Lloyd Weaver)
Kasimier, Dave	P	R	R	20	6-4	180	Soph.	Sq.	Ft. Lauderdale	Ft. Lauderdale (Jack Trainer)
Kasimier, Doug	1B-OF	L	L	19	6-3	165	Soph.	Fr.	Ft. Lauderdale	Ft. Lauderdale (Jack Trainer)
Keith, John	C	R	R	19	6-2	195	Soph.	Fr.	Philadelphia, Pa.	Upper Moreland (Fred Hoffman)
Kimrev, Lance	P	R	R	19	6-6	220	Soph.	Fr.	Norman, Okla.	Norman (Jim Bondfer)
Leber, Mike	OF	L	L	18	5-10	170	Fr.		Newport, R. I.	Rogers (Duke Abbruzzi)
Lott, George	P	L	L-R	21	6-2	180	Sr.	1VL	Lake Park, Fla.	Palm Beach JC (Jack Stockton)
McNees, Pat	SS	R	R-L	19	6-1	175	Fr.		Vernon, Ala.	Lamar County (George Bell)
Mathis, Lonnie	P	R	R	21	6-0	170	Jr.	Sq.	Albany, Ga.	Chipola J.C. (Jim Duncan)
Matthews, Floyd	OF	R	L	19	5-10	160	Soph.	Fr.	Jacksonville	Forest (Ralph Bennett)
Moates, David	OF	L	L	21	5-9	165	Jr.	JC	Smyrna, Ga.	Manatee J. C. (Bob Wynn)
Nichols, Dick	2B	R	R	21	5-6	150	Jr.	Sq.	Jacksonville	Wolfson (Jim Daniels)

Porter, Tom	IF	R	R	20	5-10	160	Jr.	Sq.	Zephyrhills	Zephyrhills (John Clements)
Reibling, Mike	P	L	L	21	5-10	170	Sr.	2VL	Florence, Ky.	Boone County (Lloyd Weaver)
Roatche, Dan	C	R	R	18	6-0	205	Fr.		Hatboro, Pa.	Horsham (Dick Ledyard)
Rohr, Jeff	OF	R	R	19	5-10	170	Fr.		Toledo, Ohio	St. Francis (Jim Kubacki)
Scheller, Jim	1B-C	R	R	18	6-4	193	Fr.		Evansville, Ind.	Memorial (Jack Calvin)
Schnute, Greg	OF	R	R	20	5-11	180	Jr.	1VL	Huntingburg, Ind.	Ft. Branch (Jim Pegrarn)
Sikes, Herb	3B	R	L	18	5-11	190	Fr.		Tallahassee	Leon (Harold Barwick)
Skok, Craig	P	L	R	21	6-0	177	Sr.	1VL	Schenectady, N. Y.	Broward J.C. (Leroy Wheat)
Slade, Mike	P	R	R	20	6-1	190	Soph.	Fr.	Arlington, Va.	Washington-Lee (Del Norwood)
Stricks, Mark	P	L	R	18	6-0	175	Fr.		Freehold, N. J.	So. Freehold Reg. (Bernie Goldwater)
Sumner, Walt	OF	R	R	21	6-1	178	Jr.	1VL	Ocilla, Ga.	Irwin County (Ralph Cook)
Thomas, Stan	P	R	R	19	6-2	180	Soph.	Fr.	Mexico, Maine	Mexico (Jay Blagdon)
Vasquez, Mike	IF	R	L	19	6-1	176	Soph.	Fr.	St. Louis, Mo.	Dubourg (John Hannebrink)
Vihlen, Bobby	OF	R	L	18	5-10	170	Fr.		Homestead	South Dade (Don Cartwright)
Zera, Greg	C	R	R	19	5-9	180	Soph.	Fr.	Lincolnwood, Ill.	Niles West (Jim Phipps)

VARSITY NUMERICAL ROSTER

No.	Name	Pos.	No.	Name	Pos.
2	Tom Porter	SS	27	Jeff Hogan	3B
3	Dick Nichols	2B	28	Mike Easom	1B-3B
4	Dave Moates	OF	29	Jeff Hill	P
5	Greg Gromek	SS	31	John Keith	C
7	Lonnie Mathis	P	32	Dick Gold	2B
8	Joe Baxter	C	33	Craig Skok	P
9	George Lott	P	34	John Franks	P
10	Stan Thomang	P	36	Mike Horn	P
11	Dave Kasimier	P	37	Mike Slade	P
12	Carl Gromek	P	38	Craig Brown	1B
14	Greg Schnute	OF	39	Jim Gurzynski	1B
15	Gene Ammann	P			
16	Doug Kasimier	1B	1	Head Coach Jack Stallings	
17	Mike Reibling	P			
18	Walt Sumner	OF	6	Coach Dave Miller	
19	Mike English	C	40	Coach Tom Richards	
26	Tom Henson	P	24	Manager Jim Wiggins	
21	John Ferguson	P			
22	Al Cleveland	OF			

VARSITY DEPTH CHART

Catchers		14	Greg Schnute
8	Joe Baxter	18	Walt Sumner
19	Mike English	22	Al Cleveland
31	John Keith	23	Dan Buckley
First Basemen		39	Jim Gurzynski
16	Doug Kasimier	Pitchers	
28	Mike Easom	7	Lonnie Mathis
38	Craig Brown	9	George Lott
39	Jim Gurzynski	10	Stan Thomas
Second Basemen		11	Dave Kasimier
3	Dick Nichols	12	Carl Gromek
32	Dick Gold	15	Gene Ammann
Third Basemen		17	Mike Reibling
27	Jeff Hogan	26	Tom Henson
28	Mike Easom	21	John Ferguson
Shortstops		29	Jeff Hill
2	Tom Porter	33	Craig Skok
5	Greg Gromek	34	John Franks
Outfielders		36	Mike Horn
4	Dave Moates	37	Mike Slade

FLORIDA STATE UNIVERSITY
1968 FINAL BASEBALL STATISTICS
41 GAMES — Won 35 Lost 6

	G	AB	R	H	2B	3B	HR	TB	SB	RBI	BB	SO	AVG.
Mike Easom, 1b	41	145	38	56	6	4	4	82	6	30	31	20	.386
Tom Cook, c	41	138	33	53	5	4	9	93	1	47	23	25	.384
Jeff Hogan, ss	37	139	23	46	6	3	0	55	2	20	7	12	.331
Dick Gold, 2b	38	146	28	43	5	3	1	56	3	16	18	25	.295
Bob Canty, 3b	38	133	24	37	3	1	0	42	6	16	18	18	.278
Chuck Cone, ss	32	102	21	27	4	2	0	35	6	13	20	9	.265
Tom Whitacker, of	35	107	17	28	5	1	1	38	0	16	20	9	.262
John Mason, of	33	103	21	26	1	3	4	45	5	18	9	22	.252
Walt Sumner, of	29	82	23	19	3	2	1	29	6	7	14	27	.232
(less than 82 at-bats)													
Mike Reibling, p	4	6	0	2	0	0	0	2	0	0	1	0	.333
Craig Skok, p	2	3	0	1	0	0	0	1	0	1	0	0	.333
Wayne Vincent, p	10	20	0	6	1	0	0	7	0	5	1	2	.300
Tom Porter, if	6	10	3	3	0	0	0	3	1	0	1	1	.300
Lin Garrett, p	14	29	6	8	3	0	1	14	0	4	4	5	.276
Jim Gurzynski, of	23	47	10	12	2	0	4	25	0	14	12	14	.255
Mike English, c	7	8	3	2	0	0	1	5	0	2	2	0	.250
Dick Nichols, if	8	4	0	1	0	0	0	1	0	1	2	0	.250
Gene Ammann, p	6	13	1	3	0	0	0	3	0	0	2	3	.231
Ross Skelton, of	11	24	4	5	0	2	1	12	1	7	4	12	.208
Steve Mastin, p	14	35	7	7	4	1	1	16	0	6	6	14	.200
Jeff Hill, p	6	11	4	2	0	0	0	2	0	1	1	3	.182
Doug Kasimier, of	3	6	0	1	1	0	0	2	0	0	1	2	.167
Dave Cook, of	13	33	5	4	0	0	1	7	1	5	3	18	.118
Greg Schnute, of	17	25	4	2	1	0	0	3	2	3	5	6	.080
Lance Hitchcock, of	5	7	0	0	0	0	0	0	0	0	1	2	.000
Jim Helm, p	5	6	0	0	0	0	0	0	0	0	0	1	.000
Pedro Fraga, c	3	3	0	0	0	0	0	0	0	1	0	0	.000
Ed Camposano, p	1	1	0	0	0	0	0	0	0	0	0	1	.000
Mike Slade, p	2	0	1	0	0	0	0	0	0	0	1	0	.000
OTHERS	12	11	0	2	0	0	0	2	0	0	0	3	.182
FLORIDA STATE	41	1398	281	397	49	26	29	585	50	233	216	260	.284
OPPONENTS	41	1379	120	296	29	3	12	375	7	100	149	369	.215

	APP	GS	CG	W	L	ShO	IP	R	ER	H	BB	SO	ERA
Craig Skok	4	0	0	1	0	0	9	1	1	4	3	7	1.00
Mike Reibling	8	4	1	2	0	1	26	3	3	20	8	26	1.04
Steve Mastin	15	11	8	11	0	2	106	18	15	82	22	115	1.27
Lin Garrett	15	10	1	6	1	0	80	25	18	53	48	70	2.03
Gene Ammann	10	4	2	5	0	2	37 1/3	10	9	16	21	48	2.17
Jeff Hill	8	2	1	2	1	1	29	10	8	29	6	19	2.48
Wayne Vincent	11	7	2	5	4	0	51	23	16	48	27	47	2.82
Mike Slade	2	1	0	0	0	0	4	2	2	3	1	3	4.50
George Lott	4	0	0	2	0	0	3 1/3	2	2	2	1	4	5.41
Jim Helm	9	1	0	0	0	0	18 1/3	18	12	21	8	14	5.95
Ed Camposano	3	0	0	1	0	0	5 1/3	8	8	9	4	2	13.51
FLORIDA STATE	90	41	14	35	6	9	372 2/3	120	94	296	149	369	2.27
OPPONENTS	94	41	8	6	35	0	346	281	194	398	216	260	5.05
SCORE-BY-INNINGS	1	2	3	4	5	6	7	8	9	10	11	12	13
OPPONENTS	6	7	10	8	18	13	12	23	14	0	0	0	2
FLORIDA STATE	27	27	28	21	28	20	33	33	12	2	0	0	0

1968 FLORIDA STATE UNIVERSITY RESULTS
35 — 6 — .880

DATE	FSU	OPPONENT	FSU PITCHER (Record)
March 8	7	Valdosta Red Sox 0	Steve Mastin (1-0)
9	11	Valdosta Red Sox 3	Wayne Vincent (1-0)
19	2	Georgia 0	Steve Mastin (2-0)
20	2	Georgia 3	Wayne Vincent (1-1)
23	10	Penn State 5	Lin Garrett (1-0)
25	10	Springfield (Mass) 9 (10 innings)	George Lott (1-0)

	26	7	Penn State 2	Steve Mastin (3-0)
	27	18	Springfield (Mass) 0 (no hitter)	Jeff Hill (1-0)
	27	3	Wake Forest 0 (no hitter)	Gene Ammann (1-0)
	28	7	Wake Forest 4	Wayne Vincent (2-1)
	29	6	Southern Illinois 0	Mike Reibling (1-0)
	30	8	Southern Illinois 4	Lin Garrett (2-0)
April	1	5	Southern Illinois 3	Steve Mastin (4-0)
	8	15	Kentucky Wesleyan 1	Steve Mastin (5-0)
	9	15	Kentucky Wesleyan 5	Lin Garrett (3-0)
	13	18	Valdosta Red Sox 3	Steve Mastin (6-0)
	13	3	Valdosta Red Sox 1	Wayne Vincent (3-1)
	19	4	Miami 1	Steve Mastin (6-0)
	20	7	Miami 6 (10 innings)	Ed Camposano (1-0)
	22	2	Auburn 1	Wayne Vincent (4-1)
	23	7	Auburn 3	George Lott (2-0)
	26	5	Loyola (La) 1	Steve Mastin (7-0)
	27	4	Loyola (La) 1	Wayne Vincent (5-1)
May	3	12	Georgia Southern 6	Steve Mastin (8-0)
	4	4	Georgia Southern 1	Gene Ammann (2-0)
	7	2	Florida 3 (13 innings)	Jeff Hill (1-1)
	8	2	Florida 3	Wayne Vincent (5-2)
	10	10	Georgia Southern 2	Linn Garrett (4-0)
	11	9	Georgia Southern 4	Jeff Hill (2-1)
	13	3	Auburn 2	Mike Reibling (2-0)
	14	1	Auburn 18	Wayne Vincent (5-3)
	15	4	Jacksonville 0	Gene Ammann (3-0)
	16	9	Jacksonville 4	Lin Garrett (5-0)
	24	1	Florida 0	Steve Mastin (10-0)
	25	5	Florida 0	Lin Garrett (6-0)
		5	Florida 0	Gene Ammann (4-0)
			DISTRICT III	
	30	1	East Carolina 2	Wayne Vincent (5-4)
	31	6	Alabama 1	Steve Mastin (11-0)
June	1	3	East Carolina 2	Craig Skok (1-0)
	1	15	North Carolina State 12	Gene Ammann (5-0)
	3	1	North Carolina State 4	Lin Garrett (6-1)

FLORIDA STATE'S ALL-AMERICAS

The list of All-America baseball players at Florida State now numbers nine and one of them, Dick Howser, made the list an unprecedented two consecutive years. There are six first team selections, one second and three third.

First Team

Dick Howser, ss, 1957
 Dick Howser, ss, 1958
 Buddy Teagle, c, 1962
 Mike Augustine, of, 1963
 Ken Suarez, c, 1964
 Jim Lyttle, of, 1966

Second Team

Bob Clem, 2b, 1959

Third Team

Jack Dull, 2b, 1961
 Woody Woodward, ss, 1963
 Tom Cook, C, 1968

The latest Seminole to join the list is catcher Tom Cook. Only at Florida State one year, Cook established himself in the same class with two other Tribe All-America catchers—Buddy Teagle and Ken Suarez. Cook batted .385 and allowed less than a half-dozen passed balls in his 41 games. He was one of four Seminoles to be named to the All-District III team.

FLORIDA STATE'S MAJOR LEAGUERS

The list of former Florida State players in pro ball grows with each passing season. Three members of the 1968 team joined the expanding list—catcher Tom Cook and pitchers Steve Mastin and Wayne Vincent.

Each Seminole game draws many scouts with as many as a dozen or more on hand for some contests.

Former Seminoles now under pro contracts include New York Yankee coach Dick Howser, also Yankee outfielder Jim Lyttle, who is in his second spring on the major league roster. Woody Woodward started with the Braves and presently is with Cincinnati. Ken Suarez is with Cleveland, as is Gary Sprague. Other former Florida State stars playing in the pros are Tom Cook, LaDon Boyd and Steve Mastin in the Oakland organization. Wayne Vincent is in the new Seattle organization.

RECORD VS.ALL-OPPONENTS (Collegiate)

Team	First Meeting	Last Meeting Year	Score	Series Standing	
				FSU	OPP
Alabama	1967	1968	6-1	2	1
Amherst	1952	1964	5-0	7	1
Arizona	1963	1963	3-4	0	1
Auburn	1954	1968	1-18	26	21
Bradley	1950	1950	1-10	1-	1
Cincinnati	1953	1956	8-2	2	0
Clemson	1958	1967	4-6	10	9
Connecticut	1957	1957	3-5	0	1
Davidson	1954	1954	7-1	1	0
Duke	1954	1959	2-6	15	9
East Carolina	1962	1968	3-2	3	2
Florida	1956	1968	5-0	21	23
Fla. South.	1949	1965	4-3	25	10
Furman	1955	1966	15-2	10	1
Georgia	1951	1968	2-3	22	14
Ga. (Savannah)	1948	1948	8-3	1	1
Ga. Southern	1960	1968	9-4	27	4
Ga. Teachers	1948	1959	4-5	17	2
Georgia Tech	1959	1964	3-2	8	1
Geo. Washington	1958	1959	3-2	2	0
Illinois	1956	1959	16-9	3	0
Indiana	1956	1956	14-10	2	0
Ithaca	1957	1962	5-4	3	0
Jacksonville (Ala.) State	1953	1954	24-0	2	0
Jacksonville (Fla.) Univ.	1964	1968	9-4	9	0
Kentucky	1965	1966	20-1	5	0
Ky Wesleyan	1968	1968	15-5	2	0
Kenyon	1952	1952	11-2	2	0
LSU	1955	1966	1-2	1	2
Loyola (La.)	1952	1968	4-1	10	0
Maryland	1965	1965	7-3	1	0
Mercer	1948	1950	11-7	5	2
Miami	1951	1968	7-6	27	7
Michigan	1959	1962	7-10	1	1
Mich. State	1957	1966	5-4	7	4
Middle Ga.	1948	1948	7-6	2	0
Millsaps	1949	1949	10-8	1	0
Mississippi	1949	1966	5-3	6	0
Miss. Col.	1948	1951	7-8	13	4
Miss. St.	1964	1966	7-0	4	2
Navy	1960	1965	0-1	3	4
N. Carolina	1956	1967	2-1	11	4
N.C. State	1962	1968	1-4	2	4
Northeast La.	1964	1964	7-4	1	0
Notre Dame	1956	1958	3-2	3	0
Oglethorpe	1949	1949	5-7	0	1
Ohio State	1960	1965	1-2	0	2
Parsons	1967	1967	4-16	0	2
Penn State	1957	1968	7-2	3	2
Rollins	1948	1958	7-6	7	11
Rutgers	1966	1966	18-10	1	0
Santa Clara	1962	1962	6-11	1	1
Southeastern La.	1953	1953	5-4	1	1
So. Calif.	1963	1963	3-4	0	1
So. Ill.	1968	1968	5-3	3	0

Springhill	1966	1966	14-2	4	0
Springfield	1967	1968	18-0	4	0
St. Louis	1965	1965	3-5	0	1
Stetson	1949	1959	21-12	20	13
Tampa	1949	1959	19-1	13	3
Tennessee	1951	1966	8-2	4	1
Texas	1965	1965	3-2	1	0
Troy State	1948	1948	6-5	1	1
Tulane	1967	1967	7-5	4	0
Valdosta St.	1963	1963	14-0	1	0
Va. Tech	1967	1967	7-2	1	0
Wake Forest	1962	1968	7-4	11	5
West. Mich.	1959	1963	5-2	3	2
West Va.	1956	1962	6-5	3	2
William & Mary	1967	1967	5-4	1	0
Wisconsin	1955	1958	3-1	8	1
Yale	1957	1957	11-8	2	0
	(Other Amateur)				
Camp Lejune (USMC)	1959	1963	5-6	3	1
Jacksonville					
Naval Air Sta	1953	1954	7-4	2	2
Pensacola Navy	1965	1965	10-2	3	0
Valdosta Red Sox	1968	1968	3-1	4	0
	(Pro Teams)				
Birmingham (AA)	1968	1968	2-6	0	3
Knoxville (A)	1958	1958	3-2	1	0
Pittsfield (AA)	1968	1968	0-1	0	3
Tallahassee					
(Citizens) (A)	1951	1951	16-6	1	0
(Rebels) (A)	1954	1954	2-5	1	1

THROUGH THE YEARS

Year	Coach	Captain	W	L	T	Rns.	Opp.	BA	OPP
1948	Charlie Armstrong	Ron Nettles	9	8	0	101	121		
1949	Charlie Armstrong	Sam Cox	11	8	0	126	103		
1950	Charlie Armstrong	Bob Trowbridge	11	7	0	122	104		
1951	Charlie Armstrong	Augie Pompelia	12	6	0	122	104	.292	.234
1952	Doug Matherly	Bob Trowbridge	17	4	0	158	72	.266	.188
1953	Doug Matherly	Cooter Mills	13	10	1	156	111	.254	
1954	Doug Matherly	Bob Hudson	13	8	0	164	101	.269	
1955	Danny Litwhiler	Billy Campbell							
		Bob Hudson	17	6	0	189	98	.321	
1956	Danny Litwhiler	Max Long	24	5	0	244	121	.295	
1957	Danny Litwhiler	Carlee Hendrix	22	9	0	232	120	.297	
1958	Danny Litwhiler	Dick Howser	20	7	0	198	104	.294	.208
1959	Danny Litwhiler	Dale Kock	22	11	0	258	166	.282	.231
1960	Danny Litwhiler	Ray Bazzell	13	9	0	183	136	.312	.254
1961	Danny Litwhiler	Frank Davis							
		Jack Dull	21	7	0	203	238	.301	.256
1962	Danny Litwhiler	Ray McShane							
		Bob Madison	23	14	0	254	221	.296	.258
1963	Danny Litwhiler	Al Beccaccio	26	13	0	250	151	.278	.213
1964	Fred Hatfield	Jim Reed	23	13	0	244	171	.273	.247
1965	Fred Hatfield	Gerry Chmielewski	32	11	1	305	179	.281	.253
1966	Fred Hatfield	Dick Fernandez	39	13	0	417	192	.294	.214
1967	Fred Hatfield	Roy Mewbourne	32	14	0	214	155	.234	.220
1968	Fred Hatfield	Chuck Cone							
		Bob Canty	35	6	0	281	120	.284	.215

FLORIDA STATE TEAM BASEBALL RECORDS

Most games played—52 in 1966.
Most Victories—39 in 1966 (52 games)
Highest Win Percentage—.854 in 1968 (35-6)
Fewest Losses—Four in 1952 (21 games)
Most Losses—14 in 1962 (37 games) and 1967 (46 games)
Fewest Victories—Nine in 1948 (17 games)
Lowest Win Percentage—.529 in 1948 (9-8)
Longest Winning Streak—21 in 1968 (Mar. 23-May 4)
Longest Losing streak—Four in 1959
Most Runs scored (season)—417 in 1966 (52 games)
Most Runs scored (Game)—24 vs. Jacksonville (Ala.) State in 1954 (24-0) and
Miss. State in 1966 (24-2)
Fewest Runs Scored (season)—101 in 1948 (17 games)
Most Runs Allowed (season)—221 in 1962 (37 games)
Most Runs Allowed (game)—24 vs. Clemson in 1959 (24-2)
Fewest Runs Allowed (season)—72 in 1952 (21 games)
Highest Batting Average—.321 in 1955
Lowest Batting Average—.237 in 1967
Most Hits (season)—541 in 1966 (52 games)
Most Hits (game)—23 vs. Miss. State in 1966 (24-2)
Fewest Hits (season)—186 in 1952 (21 games)
Most Hits Allowed (season)—376 in 1966 (52 games)
Fewest Hits Allowed (season)—130 in 1952 (21 games)
Most Homeruns—52 in 1966 (52 games)
Most Triples—52 in 1966 (52 games)
Most Doubles—80 in 1966 (52 games)
Most Total Bases—828 in 1966 (52 games)
Fewest Homeruns—Three in 1954 (21 games)
Fewest Triples—Nine in 1959 (33 games)
Fewest Doubles—24 in 1951 (18 games)
Fewest Total Bases—250 in 1952 (21 games)
Highest Slugging Avg.—.454 in 1966
Most Stolen Bases—105 in 1966 (52 games)
Fewest Stolen Bases—20 in 1954 (21 games)
Fewest Opponents Stolen Bases—Seven in 1961 (28 games) and 1968 (41 games)
Most Opponents Stolen Bases—24 in 1967 (46 games)
Lowest ERA—2.27 in 1968 (52 games)
Highest ERA—4.27 in 1962 (37 games)
Most Strikeouts—411 in 1966 (52 games)
Fewest Strikouts—126 in 1954 (21 games)
Most Walks Allowed—200 in 1962 (37 games)
Fewest Walks Allowed—85 in 1953 (24 games)
Most Shutouts—Nine in 1966 (52 games) and 1968 (41 games)
Lowest Opp. Batting Avg.—.188 in 1952 (21 games)
Highest Opp. Batting Avg.—.258 in 1962

FLORIDA STATE INDIVIDUAL BATTING RECORDS

- Highest Batting Average (season)—.436 by Bob Clem in 1959
Highest Batting Average (career)—.410 by Bob Clem 1959-60 (two years)
.361 by Dick Howser 1956-58 (three years)
Most Hits Season (season)—74 by Gary Sprague (1966)
(career)—116 by Dick Fernandez (1965-66)
Most Doubles (season)—13 by Gary Sprague (1966)
(career)—20 by Maury Hopkins (1965-66)
Most Triples (season)—Seven by Doug Walker (1961)
(career)—12 by Bob Hudson (1953-55)
Most Homeruns (season)—13 by Jim Lyttle (1966)
(career)—15 by Jack Dull (1959-61)
Most RBI (season)—51 by Jim Lyttle (1966)
(career)—82 by Randy Brown (1965-66) and Dick Fernandez (1965-66)
Most Walks (season)—48 by Randy Brown (1966)
(career)—84 by Randy Brown (1965-66)
Most Strikeouts (season)—34 by Jim Lyttle (1966)
(career)—57 by Maury Hopkins (1965-66)
Most Stolen Bases (season)—24 by Randy Brown (1966)
(career)—42 by Randy Brown (1965-66)
Most Runs Scored (season)—69 by Gary Sprague (1966)
(career)—85 by Dick Fernandez (1965-66)
Most Total Bases (season)—131 by Jim Lyttle (1966)
(career)—181 by Dick Fernandez (1965-66)
Most At-bats (season)—202 by Jim Lyttle (1966)
(career)—383 by Dick Fernandez (1965-66)

FLORIDA STATE UNIVERSITY INDIVIDUAL PITCHING RECORDS

- Most Appearances (season)—17 by Ken Creely in 1964 (4-0)
(career)—42 by Wayne Vincent, 1966-68 (25-10)
Most Wins (season)—12 by Al Beccaccio in 1963 (12-1)
(career)—25 by Wayne Vincent, 1966-68 (25-10)
Best Record—11-0 by Steve Mastin in 1968
Most Strikeouts (game)—25 by Tony Avitable vs. Furman in 1956
(season)—129 by Wayne Vincent in 1966
(career)—289 by Wayne Vincent, 1966-68
Most Walks Issued (season)—51 by Ed Lockard in 1951
(career)—125 by Ed Lockard (1950-53)
Lowest ERA (season)—(50-100 innings pitched) 1.15 by Jack Bristol in 1958 (77 2/3)
(100 or more innings) 1.27 by Steve Mastin in 1968 (107)
(career)—1.59 by Jack Bristol (146 2/3 inn. 1956-58)
Most Runs Allowed (season)—55 by Ray McShane in 92 1/3 inn. (1962)
(career)—100 by Ray McShane in 165 2/3 (1960-62)
Fewest Runs Allowed (season)—18 by Steve Mastin in 107 inn. (1968)
Most Starts (season)—13 by Wayne Vincent in 1967
(career)—34 by Wayne Vincent (1966-68)
Most Losses (season)—Six by Marty Howell in 1964 (won six)
(career)—13 by Marv Stringfellow, 1965-67 (won 16)
Most Innings Pitched (season)—124 2/3 by Wayne Vincent in 1966
(career)—292 by Wayne Vincent (1966-68)
Most Strikeouts (season)—129 by Wayne Vincent in 1966
(career)—289 by Wayne Vincent (1966-68)
Most Hits Allowed (season)—95 by Marty Howell in 1964
(career)—200 by Marv Stringfellow (1965-67)

FLORIDA STATE UNIVERSITY

1969 VARSITY BASEBALL SCHEDULE

DATE	OPPONENT	SITE	TIME
Mar. 6	Florida Southern College	Lakeland	3:00 P. M.
Mar. 7	Miami University	Miami	3:00
Mar. 8	Miami University	Miami	3:00
Mar. 9	St. Leo College	St. Leo	3:30
Mar. 14	Auburn University	Tallahassee	3:00
Mar. 15	Auburn University	Tallahassee	3:00
Mar. 21	Loyola University	New Orleans, La.	7:30
Mar. 22	Loyola University	New Orleans, La.	2:00
Mar. 23	Tulane University	New Orleans, La.	2:00
Mar. 24	Tulane University	New Orleans, La.	2:30
Mar. 25	Penn State University	Tallahassee	7:30
Mar. 26	Penn State University	Tallahassee	7:30
Mar. 27	Penn State University	Tallahassee	7:30
Mar. 28	Penn State University	Tallahassee	3:00
Mar. 28	Southern Illinois	Tallahassee	7:30
Mar. 29	Southern Illinois	Tallahassee	1:30
Mar. 29	Southern Illinois	Tallahassee	7:30
Mar. 30	Boston Red Sox Farm Team	Ocala	3:00
Mar. 31	Boston Red Sox Farm Team	Ocala	3:00
Apr. 1	Boston Red Sox Farm Team (2)	Tallahassee	1:30
Apr. 2	Belmont Abbey	Tallahassee	3:00
Apr. 2	Wake Forest	Tallahassee	7:30
Apr. 3	Belmont Abbey	Tallahassee	3:00
Apr. 3	Wake Forest	Tallahassee	7:30
Apr. 4	Wake Forest	Tallahassee	3:00
Apr. 4	South Carolina	Tallahassee	7:30
Apr. 5	Wake Forest	Tallahassee	1:30
Apr. 5	South Carolina	Tallahassee	7:30
Apr. 7	Furman	Tallahassee	7:30
Apr. 8	Furman	Tallahassee	7:30
Apr. 9	Kentucky Wesleyan	Tallahassee	7:30
Apr. 10	Kentucky Wesleyan	Tallahassee	7:30
Apr. 11	University of South Florida	Tallahassee	7:30
Apr. 12	University of South Florida	Tallahassee	1:30
Apr. 18	Georgia Tech	Atlanta, Ga.	3:00
Apr. 19	Clemson University (2)	Clemson, S. C.	1:30
Apr. 21	Georgia	Athens, Ga.	3:00
Apr. 22	Georgia	Athens, Ga.	3:00
Apr. 24	St. Leo College	Tallahassee	7:30
Apr. 28	University of Florida	Tallahassee	7:30
Apr. 29	University of Florida	Tallahassee	3:00
Apr. 30	Georgia Southern	Tallahassee	7:30
May 1	Georgia Southern	Tallahassee	3:00
May 2	Georgia Tech	Tallahassee	7:30
May 3	Georgia Tech	Tallahassee	1:30
May 7	Jacksonville University	Jacksonville	7:30
May 8	Jacksonville University	Jacksonville	3:00
May 9	Georgia Southern College	Statesboro, Ga.	7:30
May 10	Georgia Southern College	Statesboro, Ga.	7:30
May 16	University of South Alabama	Tallahassee	7:30
May 17	University of South Alabama	Tallahassee	1:30
May 19	Auburn University	Auburn, Ala.	3:00
May 20	Auburn University	Auburn, Ala.	3:00
May 23	University of Florida	Gainesville	3:00
May 24	University of Florida (2)	Gainesville	1:00