



FLORIDA STATE  
UNIVERSITY  
1966

39  
15

# BASEBALL

## 1966 FLORIDA STATE BASEBALL SCHEDULE

DATE	OPPONENT	SITE
March		
14-17	Kentucky	Tallahassee
18	Kentucky	Tallahassee
	Tennessee	
	S.E.C. Mississippi State	
	Open Invitational	
	Tournament	
19	Kentucky	Tallahassee
	Tennessee	
	Mississippi State	
21-22	Auburn	Tallahassee
23-26	Mississippi	Tallahassee
28-31	Open Wake Forest	Tallahassee
	Invitation-Michigan State	
	al Tourn. Rutgers	
April		
1- 2	Wake Forest	Auburn, Alabama
	Auburn	
4- 5	Spring Hill	Tallahassee
7	North Carolina	Tallahassee
8- 9	North Carolina	Tallahassee
	Miami	
13-14	Furman	Tallahassee
22-23	L.S.U.	Baton Rouge, La.
25	Loyola	New Orleans, La.
26-27	Spring Hill	Mobile, Alabama
29-30	Georgia Southern	Statesboro, Ga.
May		
6- 7	Florida	Gainesville
9-10	Georgia Southern	Tallahassee
13	Jacksonville	Jacksonville
20-21	Florida	Tallahassee
23	Jacksonville	Tallahassee
24-25	Clemson	Tallahassee

All home games on weekdays begin at 3 p.m. Saturday games begin at 1:30. Tournament pairings and starting times to be announced.

## 1965 STATISTICAL LEADERS

### HITTING

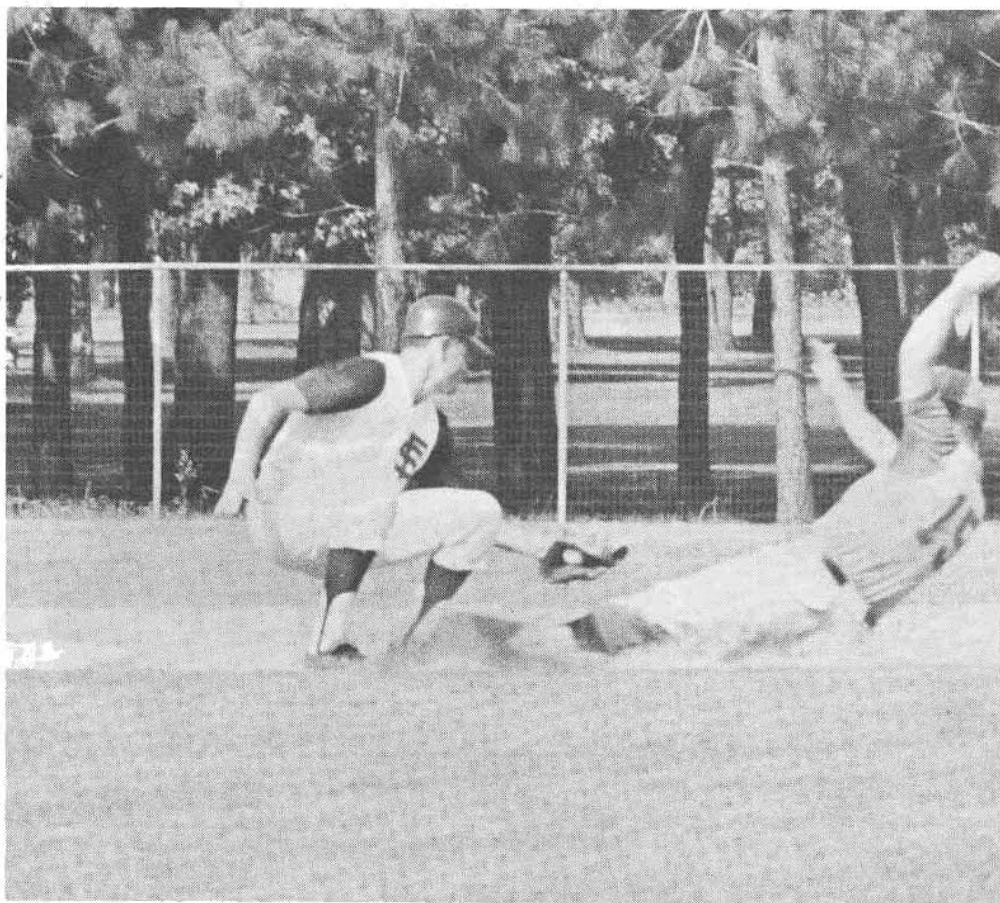
Runs: Dick Fernandez, 41  
 Hits: Fernandez, 55  
 Doubles: Maury Hopkins, 10  
 Triples: Fernandez, 4  
 Home Runs: Maury Hopkins, 8  
 Total Bases: Fernandez, 84  
 Runs Batted In: Randy Brown, 37  
 Bases on Balls: Brown, 36  
 Best Average: Gary Nichols, .333

Stolen Bases: Brown, 18  
 Most Strikeouts: Hopkins, 31

### PITCHING

Games Won: Cliff Ranew, 10  
 Best Record: Steve Marks, 4-0  
 Strikeouts: Ranew, 77  
 Best Earned Run Average: Marks, 1.20  
 Most Innings Pitched: Ranew, 115  
 Bases on Balls: Ranew, 44

ON THE COVER -- Catcher Randy Brown circles the bases on one of his seven home runs last season. The Ocala senior led Florida State in RBIs and stolen bases, and is regarded as one of the nation's best defensive backstops.



## GENERAL INFORMATION

LOCATION: Tallahassee, Florida

PRESIDENT: Dr. John E. Champion

ENROLLMENT: 13,500

COLORS: Garnet and Gold

NICKNAME: Seminoles

ATHLETIC DIRECTOR: Vaughn Mancha

BASEBALL COACH: Fred Hatfield, Third Year

ASSISTANTS: Ernie Lanford, Al Flintcraft,  
Gerry Chmielewski

HEAD COACHES, OTHER SPORTS:

Football - Bill Peterson, Basketball - Bud Kennedy,

Swimming - Bim Stults, Track - Mike Long,

Tennis - Lex Wood, Golf - Hugh Durham

TRAINER: Don Fauls, Phil Callicutt

SPORTS INFORMATION DIRECTOR: Bill Bunker

200 Tully Gym Phone: 599-2095

BASEBALL FACILITIES:

Baseball stadium and three practice fields; latest in  
baseball training equipment.

## **FRED HATFIELD, Head Coach**



His free-wheeling style of play and his hometown of Birmingham, Ala. earned Fred Hatfield the nickname "Scrap Iron" when he was one of the American League's top third basemen.

Now 40, but still trim enough to be an active player, Hatfield is in his third year as head coach at Florida State University.

The former major league infielder inherited a winning tradition when he accepted the Florida State job. In nine years his predecessor, Danny Litwhiler, compiled a record of 189 victories against 89 losses and took the Seminoles to the College World Series three times.

In his first season as coach the Seminoles had a respectable 23-13 record. Last year the team won 32 of 43 games and advanced to the third round of the of the College World Series.

Hatfield, a graduate of Troy State College in Troy, Alabama, brought 23 years of professional baseball experience to the FSU job. He broke into the majors with the Boston Red Sox in 1950, moved to Detroit in 1952, then to Chicago in 1956. He finished his major league career in 1957.

During his first year with the Tigers, Hatfield led the American League in fielding.

In 1960 he became manager of the Little Rock, Ark., Travelers of the Southern Association, won the league pennant and was named "Manager of the Year". He has also managed minor league clubs in the Houston and Detroit chains.

At Troy State he was an outstanding football and basketball player. During WW II he was a physical education instructor in the paratroopers.

A native of Tallassee, Ala. Hatfield was a resident of Birmingham from 1954 until he came to Florida State. He has been a high school teacher, an assistant basketball coach at Birmingham Southern College and a Southeastern Conference basketball official.

He and his wife Dorothy have a son, Jimmy, 19, who attends Birmingham's Samford University.

In the short space of two years, Hatfield has developed a reputation that has attracted outstanding baseball prospects throughout the South's high schools and junior colleges.

## **Assistant Coach Ernie Lanford**

Assistant baseball coach Ernie Lanford has been on the FSU coaching staff since his graduation in 1960. The 28-year old native of Shellman, Georgia, was a Seminole infielder and made two NCAA tournament trips as a player under Danny Litwhiler. He will be assisted by former professional baseball player Alan Flintcraft and last year's baseball captain Gerry Chmielewski, both doing graduate study at Florida State.

## 1966 OUTLOOK

There are eight big reasons why Florida State's baseball team expects to make a return trip to Omaha, Neb. this June.

That's the number of starters returning from last year's team which won the District III championship and advanced to the third round of the College World Series.

In a word, the Seminoles are loaded, and Coach Fred Hatfield makes no pretense about the fact.

"I think we'll be stronger at every position this year," he says.

Only two players are missing who may be missed. Right hander Cliff Ranew had a classy 10-3 record last year and first baseman Gary Nichols was the team's leading hitter with a .333 average.

Otherwise, the lineup will look about the same unless some talented sophomores up from last year's freshman team which finished with a 17-5 record can break in as starters.

Two are given a good chance to do just that. Short-stop Gary Sprague is tagged as a can't miss prospect, along with outfielder Jim Lyttle, leading hitter for last year's frosh.

Seven Florida State players have received All American acclaim since 1957. Any of several returning veterans could make it this year.

Catcher Randy Brown hit seven home runs, batted in 37 runs and set an FSU record with 18 stolen bases last season.

Pete Sarron, a .300 hitter last year, is expected to move to first base from the outfield. As a part-time performer there last season, he proved he can handle the job.

Second base has Dick Fernandez who hit .307 in a leadoff role last year. Fernandez has the tools of an All American and is one of the top Seminole returnees.

Mike Martin (.325) considered the best defensive centerfielder in FSU history, including 1963 All American Mike Augustine. A mid-season injury probably kept him from the rolls last season. He'll be flanked by Tom Thomas (.303) and possibly Lyttle, although returning letterman Roy Mewbourne (.265) will make a determined run for one outfield post.

Gary Lawrence (.318) is back at third, but someone will have to give way for Maury Hopkins, last year's regular shortstop who tied a school record with eight home runs despite a .224 average. Hopkins, a switch-hitter, is probably the team's most versatile player.

Stylish left hander Marvin Stringfellow (7-4) returns to lead a pitching staff which features Chuck Hawkins (2-1), Steve Marks (4-0), Eddie Howell (2-1), and Jim Ward (2-1) from last year's squad, plus promising newcomers Wayne Vincent, Jim Mathers and Jim Helm.

## FLORIDA STATE UNIVERSITY 1966 VARSITY

NAME	POS.	B-T
Brewer, Wayne	P	R-R
Brooks, Marty	P	L-L
Brown, Randy	C	L-R
Cafaro, Nick	P	R-R
Canty, Bob	3B	L-R
Cone, Chuck	2B	S-R
Cook, Dave	LF	R-R
Craft, Robert	P	L-L
Duchak, Dean	3B	L-R
Easom, Mike	3B	L-R
Fernandez, Dick	2B	R-R
Green, Lane	LF	R-R
Hammond, Bill	C	R-R
Hawkins, Chuck	P	R-R
Hearn, Philip	P	L-L
Helm, Jim	P	R-R
Hitchcock, Lance	CF	R-R
Hopkins, Maurice	SS	S-R
Howell, Eddie	P	L-L
Jordan, Robert	C	R-R
Lawrence, Gary	IF	R-R
Lytte, Jim	RF	L-R
Marks, Steve	P	R-R
Martin, Mike	CF	R-R
Mathers, Jim	P	R-R
McKinney, Joe	P	R-R
McMahan, Dale	P	R-R
Mewbourne, Roy	LF	R-L
Sarron, Peter	LF	R-R
Sloan, Ken	P	R-R
Sprague, Gary	SS	L-R
Stewart, Darrel	C	R-R
Stringfellow, Marvin	P	L-L
Sutton, Bob	1B	L-L
Taff, Houston	2B	R-R
Thomas, Tom	RF	L-R
Vincent, Wayne	P	L-L
Ward, Jim	P	R-R
Wooley, John	CF	R-R
Yarnell, Ed	C	R-R
Zeigler, William	IF	R-R

## BASEBALL ROSTER

HGT.	WGT.	CLASS	HOMETOWN
6-0	155	Jr.	Melbourne
6-0	170	Jr.	Bradenton
5-8	180	Sr.	Leesburg
5-11	180	Sr.	Sarasota
5-9	145	So.	Pascagoula, Miss.
5-9	145	So.	West Palm Beach
6-2	180	So.	Lake Worth
6-1	129	So.	Fort Walton Beach
5-8	160	Jr.	Midland Park, N.J.
6-0	170	So.	Tallahassee
5-11	170	Sr.	Tampa
6-3	175	So.	Tallahassee
6-0	185	Sr.	Melbourne
6-0	180	Sr.	Crestview
5-10	165	So.	Lake Wales
6-3	180	So.	Louisville, Ken.
6-0	180	So.	Mableton, Ga.
5-11	180	Sr.	Palmetto
6-0	185	Sr.	Sarasota
5-7	165	Jr.	Tampa
6-0	170	Sr.	West Palm Beach
6-0	173	So.	Harrison, O.
5-11	190	Jr.	Verona, N.J.
6-0	180	Sr.	Charlotte, N.C.
5-11	182	So.	Eau Gallie
6-0	190	Sr.	Panama City
6-2	180	Jr.	Pensacola
5-8	155	Jr.	Birmingham, Ala.
6-2	185	Sr.	Miami
6-2	160	So.	West Palm Beach
5-10	165	So.	Taylorsport, Ken.
6-1	170	So.	Seelyville, Ind.
5-11	165	Jr.	Birmingham, Ala.
6-0	180	So.	Ocala
5-10	155	Sr.	Crawfordville
6-1	185	Sr.	Detroit, Mich.
5-8	165	So.	Birmingham, Ala.
5-10	185	Jr.	Melbourne
5-8	160	Jr.	Dunedin
6-0	196	Jr.	Miami
6-0	180	Jr.	Newcastle, Pa.



# PROFILES

**RANDY BROWN, C.** A left handed power hitter who can break up a game at any time. Batted in the clean-up slot against right handers last season and led the team in runs batted in. Also set a school record with 18 stolen bases and hit seven home runs. Excellent catcher with a strong arm. Should hit for a better average this season.

**DEAN DUCHAK, OF-3B.** Good power from the left side. Used almost exclusively as a pinch hitter last season, but is working for a starting position. Can play either third base or in the outfield.

**DICK FERNANDEZ, 2B.** On the basis of last season's performance he must be considered a top candidate for post-season honors. As FSU's leadoff hitter he led the team runs, hits, triples and total bases. Hit five home runs. An excellent defensive player, he ranks as one of the country's best at his position.

**CHUCK HAWKINS, P.** This right handed strong man figures importantly in FSU's mound picture. Pitched an outstanding game against St. Louis in the College World Series last year only to lose, 5-3. The oldest player on the squad at 27.

**MAURY HOPKINS, Util.** A regular last year at short-stop, the opening game could find Hopkins at first, third or in the outfield. Hopkins tied a school record for home runs last year with eight, also led the team in doubles (10), and was second in total bases (74) and RBIs (32), despite a sub-par .224 batting average. A switch hitter with power from either side.

**EDDIE HOWELL, P.** A strong left hander whose performance this season can make a big difference in the Seminole record. Whether Howell draws a starting assignment or is used in relief, his arm is valuable. Had a 2-0 record last year.

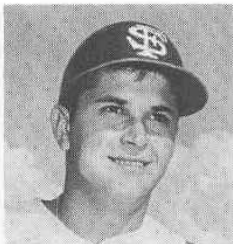
**GARY LAWRENCE, 3B.** Although he wasn't listed on last year's pre-season roster, Lawrence quickly made a place for himself at third and finished the season with the team's third highest batting average (.318). Short on power, he nevertheless can deliver the timely hit to start a rally or keep one going.

**JIM LYTTLE, OF.** One of several talented sophomores who could break into the starting lineup. Led last year's

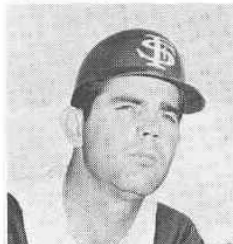
BROWN



FERNANDEZ



HAWKINS







HOPKINS



HOWELL



MARTIN

freshman team with a .342 average. Good arm, good speed, good power. A starter on FSU's basketball team, Lyttle will get a late start this spring, but the Seminoles are counting on his contribution.

**STEVE MARKS, P.** Last year was one of seasoning for Marks, but he won four games without a defeat and had the team's lowest earned run average (1.21). A strong righthander with good control, he should move into a starting role this year.

**MIKE MARTIN, CF.** Perhaps the finest center fielder ever to play for Florida State, Martin's bid for All America honors last year was halted at mid-season with a broken arm. His timely hitting carried the Seminoles during the early part of last season and he was leading the team in several offensive categories at the time of his injury. A top pro prospect, Martin patrols his position as few college players can.

**ROY MEWBOURNE, OF.** This stocky junior is FSU's "Mr. Hustle." Mewbourne will be ready to play, and his hard work and desire could win him a starting berth. Plenty of power at the plate.

**PETE SARRON, OF-1B.** If Mewbourne works hard, Sarron slaves. An intense type of player who loves to get his cuts at the plate. Sarron probably works harder on his hitting than any other Seminole. Hit an even .300 last year with 23 RBIs. Will probably start at first base.

**GARY SPRAGUE, SS.** An outstanding prospect who will make a strong varsity bid after a good freshman season last year. Top choice to start at shortstop where he is expected to shore up the FSU defense. Could be a great one before he is finished.

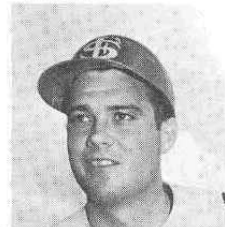
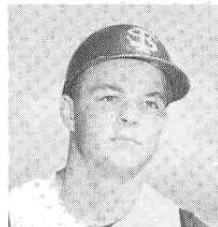
**MARVIN STRINGFELLOW, P.** A stylish left hander with great control who cracked the starting rotation as a sophomore last season. Stringfellow walked only 23, struck out 65, and compiled a 7-4 record for the Seminoles last year, including a one-hitter against Auburn. The top returnee from last year's pitching staff.

**TOM THOMAS, OF.** A consistent hitter with occasional power. Thomas is the returning starter in right field where he did an excellent job last season. He hit .303 in 1965 and batted in 18 runs.

SARRON

STRINGFELLOW

THOMAS



## 1965 STATISTICS

### Pitching

NAME	G	W-L	IP	R	ER	H	BB	SO	ERA
Don Murray	1	0-0	5	2	0	2	3	2	0.00
Steve Marks	6	4-0	30	7	4	20	10	13	1.20
Cliff Ranew	15	10-3	115	40	29	84	44	77	2.27
M. Stringfellow	14	7-4	89	35	28	79	23	65	2.83
Chuck Hawkins	15	2-1	51 2/3	25	22	46	19	44	3.83
Eddie Howell	11	2-0	23 1/3	14	11	19	18	23	4.30
Jim Ward	9	2-1	23 1/3	16	14	30	7	8	5.48
Ken Creely	13	2-2	21 2/3	17	17	26	14	15	6.65
John McCune	10	2-0	12 1/3	14	9	12	12	14	6.75

### Hitting

NAME, POS.	G	AB	R	H	2B	3B	HR	TB	RBI	SB	BB	SO	AVG
Gary Nichols, 1b	36	87	21	29	6	2	1	42	13	1	11	14	.333
Mike Martin, cf	22	83	18	27	1	2	4	44	17	1	6	8	.325
Gary Lawrence, 3b	34	88	12	28	3	2	0	35	16	3	10	10	.318
Dick Fernandez, 2b	44	179	41	55	6	4	5	84	32	4	24	19	.307
Tom Thomas, rf	35	119	30	36	5	3	2	53	18	2	11	19	.303
Pete Sarron, lf	39	130	19	39	7	2	2	54	23	1	12	11	.300
Bob Wilcox, of	30	95	13	28	6	1	0	36	14	0	10	10	.295
Monty McBryde, of	27	66	16	19	2	1	2	29	13	3	8	14	.288
Randy Brown, c	42	122	35	33	1	1	7	55	37	18	36	15	.270
Maury Hopkins, ss	44	170	34	38	10	1	8	74	32	3	16	31	.224
(Less than 50 at bats)													
Eddie Howell, p	4	4	0	2	1	0	0	3	0	0	2	2	.500
Rich Hutchinson, of	9	9	3	3	1	0	0	4	1	0	1	1	.333
Chuck Hawkins, p	8	13	3	4	1	0	0	5	4	0	3	3	.308
Wayne Giardino, ss	9	28	5	8	0	0	1	11	6	0	1	2	.286
Roy Mewbourne, cf	23	49	12	13	2	1	2	23	11	2	6	7	.265
Cliff Ranew, p	15	44	7	1	3	1	0	14	7	0	4	8	.250
Bill Hammond, c	12	21	1	5	1	1	0	8	5	0	1	3	.238
Marv Stringfellow, p	14	35	2	8	1	0	0	9	7	0	2	3	.229
Gerry Chmielewski, 3b	17	31	2	8	1	0	0	9	6	0	0	7	.226
Bill Bearse, lf	14	9	4	2	1	0	0	3	1	2	1	2	.222
Dean Duchak, 3b	21	23	0	5	0	0	1	8	2	0	2	6	.217
Steve Marks, p	6	11	1	2	0	0	0	2	0	0	0	1	.182
Joe McKinney, 3b	14	29	5	5	1	1	1	11	5	0	3	3	.172
Jim Ward, p	5	7	1	0	0	0	0	0	0	0	1	1	.000
Ken Creely, p	3	3	1	0	0	0	0	0	0	0	1	2	.000
Bob Kull, p	2	2	0	0	0	0	0	0	0	0	0	0	.000
OTHERS	*	19	6	5	0	0	0	5	3	1	6	1	.263
Totals	44	1475	301	414	60	24	37	633	273	44	188	217	.281

## FLORIDA STATE'S ALL-AMERICANS

Dick Howser was Florida State's first All-American baseball player, making the NCAA first team at short-stop for an unprecedented two straight years in 1957-58. Since that time, a Seminole has appeared on one of the three teams each year except 1960. Florida State has had an All-American first teamer for the past three years.

Howser, now with the Cleveland Indians, was chosen "Rookie of the Year" by the Sporting News when he broke in with Kansas City in 1960. Shortstop Woody Woodward of the 1961-62 FSU teams filled a utility role for Milwaukee last year and is considered one of the most promising youngsters on the Brave team. The Seminole to join the pro ranks was Ken Suarez. An All-American catcher for FSU in 1964, Suarez signed with Kansas City after touring Japan with the U.S. Olympic exhibition team.

Dick Howser, ss, 1957-58	First Team
Bob Clem, 2b, 1959	Second Team
Jack Dull, 2b, 1961	Third Team
Buddy Teagle, c, 1962	First Team
Mike Augustine, cf, 1963	First Team
Woody Woodward, ss, 1963	Third Team
Ken Suarez, c, 1964	First Team

### All-Time Baseball Records

Best won-lost record (1956)	24.5 (.828)
Most wins, season (1965)	32
Most losses, season (1962)	14
Most runs scored (1965)	307
Most runs allowed (1962)	221
Most runs, game (vs Jacksonville, Alabama State, 1954)	24
Most hits, season (1965)	412
Most doubles, season (1962)	66
Most triples, season (1965)	24
Most homeruns, season (1965)	37
Most runs batted in, season (1965)	271
Most stolen bases, season (1962)	71
Most double plays, season (1962)	36
Longest winning streak (1958)	13
Longest losing streak (1959)	4

### Individual Records

Best batting average, season (Bob Clem, 1959)	.436
Most hits, season (Mike Augustine, 1963)	65
Most 2b hits, season (Maury Hopkins, 1965)	10
Most 3b hits, season (Doug Walker, 1961)	7
Most home runs, season (Billy Williamson, 1962; Maury Hopkins, 1965)	8
Most runs batted in, season (Jack Dull, 1959; Randy Brown, 1965)	37
Most walks, season (Neil Martin, 1959)	38
Most times struck out, season (Maury Hopkins, 1965)	31
Most stolen bases, season (Randy Brown, 1965)	18
Best pitching record, season (Max Long, 1956)	7-0
Most pitching wins, season (Al Beccaccio)	12
Most pitching wins, career (Frank Davis, 1959-61)	22
Most strikeouts, game (Tony Avitable vs Furman, 1956)	25
Most strikeouts, season (Avitable, 1956)	112
Most strikeouts, career (Davis, 1959-61)	191
Most bases on balls, season (Ed Lockard, 1951)	51
Most bases on balls, career (Lockard, 1950-53)	125

### 1965 RESULTS (Won 32, Lost 11, Tied 1)

FSU 7, Miami 4	FSU 13, Clemson 11
FSU 9, Miami 4	FSU 16, Clemson 3
FSU 9, Miami 9 (darkness)	FSU 10, Pensacola Navy 1
FSU 4, Florida Southern 3	FSU 12, Pensacola Navy 2
FSU 2, Kentucky 0	FSU 7, Loyola 6
FSU 0, Navy 1	FSU 18, Loyola 14
FSU 0, Navy 1	FSU 10, Ga. Southern 4
FSU 11, Michigan St. 8	FSU 6, Ga. Southern 2
FSU 11, Duke 1	FSU 8, Jax. Univ. 2
FSU 8, Wake Forest 1	FSU 6, Univ. of Fla. 8
FSU 5, Wake Forest 3	FSU 3, Univ. of Fla. 2
FSU 2, Michigan St. 4	FSU 10, Pens. Navy 2
FSU 9, Duke 4	*FSU 3, Miss. St. 6
FSU 11, Wake Forest 4	*FSU 7, Maryland 3
FSU 9, Auburn 1	*FSU 6, Miss St. 2
FSU 12, Auburn 0	*FSU 2, Furman 1
FSU 4, Ga. Southern 2	*FSU 7, Furman 5
FSU 6, Ga. Southern 3	FSU 5, Univ. of Fla. 4
FSU 11, Duke 2	FSU 10, Univ. of Fla. 11
FSU 2, N.C. State 7	+FSU 1, Ohio State 2
FSU 1, N.C. State 12	+FSU 2, Texas 2
FSU 8, Clemson 9	+FSU 3, St. Louis 5

\*District III NCAA Tournament + College World Series

### FLORIDA STATE'S BASEBALL HISTORY

Year	Coach	Captain	W	L	T	Runs	Opp.
1948	Armstrong	Ron Nettles	9	8	0	101	121
1949	Armstrong	Sam Cox	11	8	0	126	103
1950	Armstrong	Bob Trowbridge	11	7	0	122	104
1951	Armstrong	Augie Pompelia	13	6	0	161	97
1952	Matherly	Bob Trowbridge	17	4	0	158	72
1953	Matherly	Cooter Mills	13	10	1	156	111
1954	Matherly	Bob Hudson	14	9	0	164	101
1955	Litwhiler	Billy Campbell	17	6	0	189	98
		Bob Hudson					
1956	Litwhiler	Max Long	24	5	0	244	121
1957	Litwhiler	Carlee Hendrix	22	9	0	232	120
1958	Litwhiler	Dick Howser	21	7	0	198	104
1959	Litwhiler	Dale Koch	22	11	0	258	166
1960	Litwhiler	Ray Bazzell	13	9	0	183	136
1961	Litwhiler	Frank Davis	21	7	0	167	121
		Jack Dull					
1962	Litwhiler	Ray McShane	23	14	0	254	221
		Bob Madison					
1963	Litwhiler	Al Beccaccio	26	13	0	253	152
1964	Hatfield	Jim Reed	23	13	0	251	169
1965	Hatfield	Gerry Chmielewski	32	11	1	307	181

331 157 2 3524 2298

### Series Standings

#### With 1965 Opponents

	Won	Lost
Auburn	9	1
Clemson	7	5
Florida	13	17
Furman	7	1
Georgia Southern	13	4
Jacksonville	3	0
Kentucky	1	0
L.S.U.	First Meeting	
Loyola	4	0
Miami	17	7
Michigan State	3	3
Mississippi	First Meeting	
Mississippi State	2	1
North Carolina	6	1
Rutgers	First Meeting	
Spring Hill	First Meeting	
Wake Forest	8	3