

Florida State

1978-79 Basketball



Florida State University

General Information

Location	Tallahassee, Florida 32306
Founded	1857
Enrollment	22,000
President	Dr. Bernard F. Sliger
Conference	Metropolitan Collegiate Athletic Conference
Nickname	Seminoles
Colors	Garnet and Gold
Home Court	Tully Gym (3,000)

Staff Directory

Area Code 904

Head Coach

Joe Williams 644-3080

Assistant Coaches

Bob Dotson 644-3080

John Jones 644-3080

Athletic Director

John Bridgers 644-2790

Faculty Representative

Dr. Richard Baker 644-3093

Athletic Business Manager

Joe Labat 644-1883

Assistant to the Director

Larry Pendleton 644-2790

Claude Thigpen 644-2790

Ticket Manager

Marian Lee 644-1830

Head Trainer

Don Fauls 644-2775

Basketball Trainer

John Mooney 644-2775

Sports Information Director

Mark Carlson 644-4038

Home 575-7637

Assistant Sports Information Director

Mike Parsons 644-4038

Press Information

Space for the working press, radio, TV and scouts will be allocated by the Sports Information Office. All requests for credentials should be directed to this office in writing at least two weeks prior to the game.

Credentials will be issued according to the following criteria: a) local newspapers, wire services, national publications, newspapers from opponent's area and student newspapers from FSU and opponent's school; b) other daily newspapers with preference to those which regularly cover FSU; c) radio and television personnel not actually broadcasting, but considered reporting (seats will be provided in the stands); and d) scouts.

FLORIDA STATE SEMINOLES

1978-79 Basketball Press Guide



Contents

Outlook	2
Player Biographies	4
Administration	15
Head Coach Joe Williams	17
Coaching Staff	19
1977-78 Statistics	23
Opponents	27
1978-79 Roster.....	36
Game-by-Game Scores	68
Schedule	Back Cover

On The Cover

Top returnees for the Seminoles this season are veteran guards Tony Jackson (left) and Mickey Dillard.

Outlook

Rebuilding

That one word describes the pre-season outlook for the 1978-79 Florida State basketball team.

After all what more can be said for a team that . . .

(A) Has lost four starters from a club that won the regular season Metro Conference championship, finished 23-6 and advanced to the NCAA Regionals before losing to eventual champion Kentucky, 85-76;

(B) Has just three players who are 6-6 or taller;

(C) Has just four players with more than 200 minutes of varsity playing time;

(D) Has lost its head coach of 12 years.

"Rebuilding is the best word to describe the job we have ahead of us," says new coach Joe Williams, who comes to the Seminoles from Furman where his team went 19-11 last season and like FSU advanced to the NCAA playoffs.

"I don't have any idea what type of club we're going to have," says Williams. "And, I'm not sure that it won't be until January before I can accurately describe the pulse of this team."

So, where does Williams begin?

The answer: Mickey Dillard and Tony Jackson.

Dillard (6-3) and Jackson (6-0), who will serve as co-captains, form one of the quickest guard combinations in the country. Dillard played a sixth man role last season while Jackson was the starting point guard, the team quarterback. Despite the sixth man role, Dillard finished the season as the second leading scorer with a 13.7 average.

Jackson was not the high scorer, but contributed in many other ways. He was the floor leader, who dished out 166 assists - tops in the Metro Conference. He was also a demon on defense, always drawing the opponent's best scoring guard.

"Mickey and Tony should form one of the most outstanding guard combinations in the country," says Williams. "It's certainly going to be hard for anyone to find a quicker pair of guards than those two."

After Dillard and Jackson there is a tremendous drop off in squad members with major college playing time.

Forward Murray Brown (6-8) played 402 minutes as the seventh man last winter. Next comes guard-forward Hank Mann (281) followed by guard Jerry Cox, forward Donnie Kuhl, forward James Bozeman and guard Bobby Parks, who each played just 28 minutes or less in 29 games.

That group sizes up in the following manner:

Brown: Destined to start in the low post this season for the Seminoles. An aggressive, hard-working player who has all the tools to become outstanding.

Mann: Has played since coming to Florida State but only sparingly. He has never been consistent, but must become that way if Seminoles are to have a winning program.

Kuhl: A player who has never really been given a chance to show what he can do. He will receive that opportunity this winter. He has the size FSU coaches want in forwards and centers.

Bozeman: Untested in the collegiate ranks thus far, the coaches expect him to contribute heavily this season. He will receive long look in the forward position.

Parks: Should improve back court with stability. Again, because of the strong depth situation Florida State enjoyed last season Bobby did not have much opportunity to play. He will get that chance this season.

Cox: Jerry sustained a broken foot last season. He was able to play in just two games. Coaches are not sure how well he is going to come back off that injury. Hopefully he will come back strong and help Parks give depth to the guard positions.

Because he arrived in mid-April Williams and his staff had difficulty in recruiting replacements for the departing seniors. Still they came up with two freshmen - Greg Collinsworth (6-5½) and Pernel Tookes (6-6) plus junior college transfer Ed Chatman (6-3).

Now, the question. With all the apparent problems he is faced with in his first season does Williams regret leaving Furman, a team that probably will begin the season among the Top 29 and be a favorite to win its conference championship?

"No way," Williams emphatically answers.

"I think Florida State has more potential now than it has ever had in its past. In the past there were great teams, but the only recruiting advantage Florida State enjoyed was the climate.

"Now we have the Metro Conference, one of the two best leagues in the country. It provides our players with great media exposure and the teams are always playing in outstanding facilities.

"And, finally we are going to get started on building a new basketball facility at Florida State. I've been promised that coliseum will be started in the very near future and by the time our season is underway our current players, fans and recruits will be able to monitor its progress.

"The Metro, a new facility and the climate give Florida State the potential to have one of the best collegiate basketball programs in the country. Florida State has now finally got the potential to go all the way to the top. This program has its best days ahead!"



James Bozeman

Forward
6-5
199
Sophomore
Tallahassee, Fla.



James came to Florida State following a brilliant high school career. After his senior year in high school he was Florida High School Player of the Year in Class A. He averaged 23 points and 14 rebounds during his senior season.

Bozeman after signing with the Seminoles called it a "dream come true. Ever since I can remember I've wanted to play basketball for Florida State."

Last year was a learning experience for James. He played in 10 games and had 28 minutes on the floor for the Seminoles. During that span he scored 10 points and pulled down seven rebounds.

Quickness is one of Bozeman's prime assets. In fact, he has the quickness to play guard in the Seminole attack, but will be used, because of his height, at a forward slot.

The new Seminole coaching staff is hoping James can quickly figure into their plans. He has worked hard in the off-season to make the adjustment to full-time collegiate play.

As a junior in high school, James helped the Baby Rattlers capture the Class A Florida high school championship. The team went 20-6 while Bozeman averaged 20 points per game and 13 rebounds. Overall, Bozeman led his high school team to a 38-11 record in his two seasons as a starter. His senior team bowed in the state championship game.

Bozeman, who was recruited by new Seminole head coach Joe Williams for Furman after his senior season, was a member of the National Honor Society in high school. The President of his high school senior class, James participated in Florida's North South High School All-Star game after his high school career was completed.

Year	G	FGM-FGA	PCT	FTM-FTA	PCT	REB	AVG	A	PTS	AVG
1977-78	10	2-8	.250	1-4	.250	7	0.7	3	0.7	

Murray Brown

Center/Forward
6-8
205
Junior
Tampa, Fla.



Murray was the leading substitute at both forward and center for the Seminoles in their 23-6 campaign of 1977-78. He finished the season with 168 points, a 6.0 average per game.

Brown has earned the nickname of "Mule" during his first two seasons with the Seminoles. The nickname came because he was compared to the mules who work hard on the farms, but are over-shadowed by the race horses. That is the same story with Brown, who is one of the hardest workers in practice and games, but receives little recognition.

During last year's regular Metro Conference season, Brown took just 21 shots, but connected on 17 and also hit a neat 17 of 20 free throws.

Thus far the biggest scoring night of Brown's career came while he was a freshman. Playing only 16 minutes in a Seminole rout (139-72) of Baptist College, he scored 27 points and pulled down five rebounds.

He has performed extremely well in clutch situations. As a freshman he scored eight of his 10 points in the overtime period of an 87-80 Seminole victory at Stetson. Each of those points came on rebound buckets. Last season at Oral Roberts he hit both free throws in a one-and-one situation that helped insure a Seminole overtime victory. At the time, FSU had just a two-point lead (78-76) with five seconds remaining.

Brown's best game statistically in 1977-78 came against Troy state where he scored 16 points and pulled down 11 rebounds. He scored in double figures seven different times. His second best rebounding effort was 10 in the 88-75 Tully Gym victory over St. Louis.

Murray is known for always being around the basket. He picks up many points on rebounding efforts. For a big man he is a very accurate shooter from the field, hitting a neat .668 percentage in his first two seasons.

Year	G	FGM-FGA	PCT	FTM-FTA	PCT	REB	AVG	A	PTS	AVG
1976-77	18	38-50	.760	18-28	.642	47	2.6	22	94	5.2
1977-78	28	61-98	.622	46-65	.707	111	3.9	49	168	6.0
Totals	46	99-148	.668	64-93	.688	158	3.4	71	262	5.6

Ed Chatman

Forward

6-3

190

Sophomore

Leesburg, Fla.



Ed is one of three new scholarship players for the Seminoles in 1977-78. He comes to Florida State from Gulf Coast Junior College.

At Gulf Coast, Chatman played for Dick Danford, the captain of the '68 basketball Seminoles. Danford was recruited for Florida State by present head coach Joe Williams while he was a graduate assistant here for the late Bud Kennedy.

"Ed Chatman is one of the most consistent players I've ever coached," Danford says. "In one game last season he scored 38, but most of the time he was in the 18-22 range."

Chatman finished the season as Gulf Coast's second leading scorer with a 20.5 average. He also claimed an average of 10.8 rebounds per game in Gulf Coast's 20-7 season. Chatman was a 60.5 percent shooter from the floor, making 226 of 373, and hit for 67 percent at the foul stripe, making 94 of 139.

Chatman played at Leesburg High School for former Florida State assistant coach Bill Clendenin. In Ed's senior year, Leesburg won the Class 3-A state championship. Chatman was the most valuable player of that team.

Among Chatman's honors were a first team all-state selection, being picked to play in the Junior Olympics and also earning a spot in Florida's North-South High School all-star game.

"Ed is a quiet, personable and dependable young man," Clendenin says. "He is the type of player who seems to play better under pressure."

Jerry Cox

Guard
6-4
180
Senior
Indianapolis, Ind.



Jerry was expected to play a key role as a backup at guard for the Seminoles last season but broke his foot in mid-December during a pickup game and was lost for the remainder of the season.

Cox came to the Seminoles from Wabash Valley Junior College in Mt. Carmel, Ill. He was Florida State's first signee of 1977.

Jerry came to Florida State with the reputation of being a good outside shooter and ball handler. As a sophomore at Wabash he averaged 13 points per game and seven rebounds. In his first year at the junior college, he picked up 12 points per game and seven rebounds.

Jerry, a business management major, is a native of Indianapolis, Ind. He played high school ball at Brook Ripple for head coach William Smith, Sr. He carried a 3.0 grade point average in junior college and was vice president of the student body.

Year	G	FGM-FGA	PCT	FTM-FTA	PCT	REB	AVG	A	PTS	AVG
1977-78	2	0-5	.000	2-2	1.000	3	1.5	3	2	1.0

Greg Collinsworth

Forward

6-5½

195

Freshman

Titusville, Fla.



Greg is expected to play the wing position for the Seminoles.

He comes to Florida State with impressive senior year credentials. In his final season at Titusville Astronaut he averaged 24.6 points per game and picked off an average of 12.1 rebounds. He was a 52 percent shooter from the field and hit 80 percent at the free throw line.

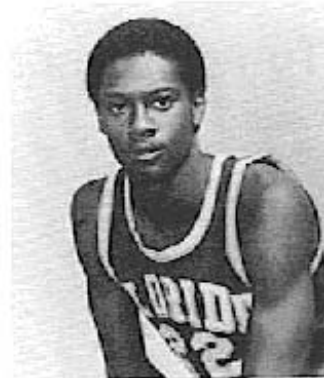
Astronaut, which was coached by John Davenport, compiled a 24-5 record in Greg's senior year and was runnerup in 3-A district play. Collinsworth was selected second team all-state and was also picked to play for Florida's AAU team in the national tournament last summer.

During his high school competition Greg displayed great ability to find the open man on the fast break. He was also adept at working offensively against a pressing defense.

Greg hails from a very athletic family. His father was the sixth man on the 1958 University of Kentucky national championship team that defeated Seattle, 84-72, in the title game. His brother Cris is presently an offensive backfield star with the University of Florida football team.

Mickey Dillard

Guard
170
Junior
Dania, Fla.



New head coach Joe Williams believes Mickey may be the quickest guard in the country this season. He is certainly the quickest player on the Seminole squad.

Dillard, who will serve as co-captain with Tony Jackson, started just one game during the 1977-78 season but ranked with the two starters in playing time. He was regarded as the "sixth starter" not the "sixth man" in Seminole scheme.

Mickey always seems to give his best performance before big crowds and good competition. His favorite arena appears to be Louisville's Freedom Hall. As a freshman he scored 19 there against Kentucky and last season he tallied a career high 24 vs. Louisville in a 70-66 Seminole upset victory.

Twice last season he scored 23 for the Garnet and Gold. The first 23-game performance came against Minnesota in the finals of the Pillsbury Classic. He had the same number in the opening round of the post-season Metro Conference Tournament against Georgia Tech.

Despite not starting, Mickey was still the second leading scorer for the Seminoles last season, averaging 13.7. An excellent free throw shooter, Mickey had the best individual effort of the season (nine for nine) against Texas A & M in the first round of the Vulcan Classic.

Mickey contributes in many other areas besides scoring. Last season he was credited with 64 assists and 31 steals for the Garnet and Gold. His aggressive play at times can cause problems. He totaled 92 personal fouls and was disqualified from three games last season.

Basketball has been in Mickey's blood since he was born. His father is the athletic director and assistant basketball coach at Fort Lauderdale Nova High School. Mickey is also the cousin of graduated Seminole guard Carlton Byrd, who is now the head basketball coach at Broward Community College.

Season	G	FGM-FGA	PCT	FTM-FTA	PCT	REB	AVG	A	PTS	AVG
1976-77	25	53-110	.481	40-61	.655	29	1.1	53	146	5.8
1977-78	29	153-282	.542	92-119	.773	74	2.5	92	398	13.7
Totals	54	206-392	.525	132-180	.733	103	1.9	145	544	10.0

Tony Jackson

Guard
6-0
165
Junior
Lexington, Ky.



Tony will join fellow guard Mickey Dillard in serving as co-captain for the 1978-79 Seminoles.

Because Tony did not display the eye-popping scoring statistics of most guards, many overlooked his performance last season when the Seminoles won the regular season Metro Conference championship and earned an invitation to the NCAA playoffs. Tony led all Metro Conference players in assists (166) and steals (73) last year. He started each game in the 29 contest schedule.

Jackson appears to perform best in clutch situations. He hit the winning field goal in Seminoles' 87-85 victory in the Metro Conference TV Game of the Week and also canned two critical free throws to protect a narrow lead in the second Georgia Tech victory.

Seminole fans like to compare Tony with former standout Otto Petty as a field general. Like Petty, Jackson has an uncanny knack for finding the open man.

Jackson's assist statistics and the Seminole record (23-6) of last season clearly indicate he has the potential to be one of the finest playmaking guards in the country in the next two seasons.

The junior business major, who is probably one of the best dressed Seminole players, constantly draws the assignment of guarding the leading opponent guard. Tony's quickness has caused many of those guards to have the worst nights of their careers. Unlike many of today's major college basketball players, Tony enjoys the challenge of playing defense.

Tony grew up in the shadows of the University of Kentucky, playing his high school basketball for Bryan Station and coach Bob Barlow. Following his senior season he was selected to play for a Kentucky High School all-star team that toured Spain and Russia.

Year	G	FGM-FGA	PCT	FTM-FTA	PCT	REB	AVG	A	PTS	AVG
1976-77	19	8-24	.333	12-22	.545	13	0.6	13	28	1.4
1977-78	29	68-193	.352	36-64	.562	79	2.7	58	172	5.9
Totals	48	76-217	.350	48-86	.558	92	1.9	71	200	4.1

Donnie Kuhl

Forward
6-9
235
Junior
Orlando, Fla.



In his first two seasons with the Seminoles, Donnie has seen limited action. Overall he has just 70 minutes of playing time in two years.

The limited playing time wasn't a surprise to either Donnie or the Seminole coaching staff. They knew when the likeable youngster signed an FSU athletic scholarship it would probably be two years before he could contribute to the program. Kuhl was behind most of the other freshmen basketball players who started school in 1976 since he missed much of his senior year of high school ball with a knee injury.

Because of that knee injury Kuhl was not heavily recruited out of high school. However, FSU decided to offer a scholarship based on his performance as a junior.

Donnie spent a lot of time during the spring and summer working on his strength. He increased his weight from 220 to 135 but has not lost any of his floor speed. He has also played a lot in the gyms of Orlando with a former high school teammate - Darryl Dawkins, the outstanding center of the Philadelphia 76ers.

This Orlando Evans graduate, who played for head coach Fred Pennington, is a physical education major. He was a member of the Florida High School All-Star team.

Year	G	FGM-FGA	PCT	FTM-FTA	PCT	REB	AVG	A	PTS	AVG
1976-77	12	5-11	.454	4-4	1.000	19	1.5	13	14	1.1
1977-78	8	0-5	.000	5-11	.454	13	1.6	6	5	0.6
Totals	20	5-16	.312	9-15	.600	32	1.6	19	19	0.9

Hank Mann

Forward
6-5
185
Senior
Chester, Pa.



Hank was a starter until mid-season last year and then moved into a key substitute role for the Seminoles.

His career has been an up-and-down one. Nagging injuries have seriously hampered his efforts to contribute on a full-time basis.

Hank is the only member of this year's squad with three years playing experience. He played in 25 of 27 games as a freshman and junior, but saw action in just five games of his sophomore campaign.

Last season Hank's best single game point production came in the finals of St. Petersburg's Big Sun Classic where he scored 11 vs. Seton Hall. He had 10 point efforts against Troy State and Missouri, but managed just six points in the final 13 games of the season.

Coach Joe Williams and his new staff hope Hank can pick up the scoring slack that now exists with the departure of Harry Davis and David Thompson from the squad. Combined, those two averaged better than 33 points last season.

Mann was a consensus prep All-American following his senior season at Chester (Pa.) High School. He played for the Pennsylvania squad in the famed Pittsburgh Dapper Dan Classic.

Year	G	FGM-FGA	PCT	FTM-FTA	PCT	REB	AVG	A	PTS	AVG
1975-76	25	58-117	.496	16-25	.640	59	2.4	58	132	5.3
1976-77	5	15-29	.517	11-16	.687	5	0.7	17	41	5.1
1977-78	27	49-117	.418	10-41	.243	55	2.1	50	108	1.0
Totals	57	122-263	.463	37-82	.451	119	2.0	120	281	4.9

Bobby Parks

Guard
5-11
160
Sophomore
Clearwater, Fla.



Bobby is regarded as the "sleeper" on this year's 11-man varsity roster.

He did not receive much playing time - just 23 minutes last season, but when he did appear on the floor he had firm control while directing the offense and also played strong defense. The coaches are looking for him to become a strong backup at the point guard position.

Florida State coaches did not actively recruit Bobby until after his senior year in high school. They became interested in him after watching him perform once in the National AAU Tournament where he led the Florida team to a second place finish. That was the highest a Florida basketball team had ever finished in AAU competition. Also on the Florida team was Ed Chatman, who transfers to FSU this year.

Parks is not a real flashy player. He is very consistent, however, and makes very few mental mistakes on the floor. He has excellent endurance and in the mold of Mickey Dillard and Tony Jackson displays excellent speed.

Bobby has shown that he is one of the better perimeter shooters on the squad. He has a great leaping ability and can "dunk" right along with the centers and forwards on the roster.

His father was a Little All-American selection while playing for Eastern Kentucky. A business management major, Bobby was married during the summer months.

Year	G	FGM-FGA	PCT	FTM-FTA	PCT	REB	AVG	A	PTS	AVG
1977-78	9	1-6	.166	3-7	.428	9	1.9	1	5	0.5

Pernell Tookes

Forward
6-6
185
Freshman
Orlando, Fla.



After the National AAU Junior Olympic basketball championships in Jacksonville this summer, major college coaches all agreed that Florida State "may have gotten a real good one" in Pernell Tookes.

Even though his team was eliminated in the first two games of the tournament, Tookes had the college recruiters talking. In those two games Tookes had scored 77 points, enough to earn all-tournament honors.

He hit 10 in a row in a seven-minute span in his 38-point splurge against Dayton, Ohio. He hit seven in succession against Pittsburgh. He scored 14 points in a four-minute blitz against a group of former and current collegians in an AAU tournament. He averaged 26 points through nine exhibition and tournament games.

His AAU coach Doug Walsted of Lakeland High School said: "When he gets more weight on him he will be something. He has good stamina and hardly gets tired now. When FSU gets him and gets an opportunity to teach him the role of forward, he'll continue to get better. He has the quickest release I've ever seen. He wants to play so badly that you have to run him out of the gym."

Tookes comes to Florida State from Orlando Boone High School. Last year he played in 32 games, averaging better than 21 points per game with a 10.1 rebound average. Overall, he connected on 291 of 500 field goal attempts (58 percent) and 88 of 129 free throws (68 percent). He was selected the Orlando Tipoff Club's High School Player of the Year.

Tookes, who led Boone to the state 4-A championship in 1977, was selected first team All-State at that level last season. He was also an All-Southeast honorable mention choice. In addition to those honors, Tookes was selected first team in the Orlando Sentinel Star and Cypress Gardens Christmas Tournaments as a junior and senior.

Dr. Bernard F. Sliger

President



Dr. Bernard F. Sliger, Florida State University's president since 1977, is one of the most ardent fans in Seminole sports history.

Known as "Bernie" to nearly all of the student athletes, Dr. Sliger makes no secret of his sentiments about athletics at Florida State University. He says he wants a "spot in the Top Twenty" for every Seminole team, including those who compete in the arenas of academe. And there's no one on campus prouder than he is of the records set in honor of that tradition last year by more than one team in each category.

Although President Sliger now classifies himself as "an energetic spectator," during his high school days in his hometown of Trout Creek, Mich., he was a member of the basketball, track and football teams. He later returned to coach the latter two teams and teach math there, following a three-year tour of duty with the Army during World War II.

Dr. Sliger, who came to FSU as its executive vice president in the late spring of 1972, was formerly executive director of the Louisiana Coordinating Council for Higher Education.

An economist and scholar in the special fields of economic theory and public finance, he frequently serves as a consultant to private and public commissions, most recently as chairman of Gov. Reubin Askew's Economic Advisory Council. He was a member and chief consultant of the Governor of Louisiana's tax study committee in 1968, and served a year as Louisiana Commissioner of Administration and Chief Budget Officer. In the latter capacity, he had to oversee the costs of constructing Louisiana's Superdome.

Dr. Sliger is the author of a text on "Public Finance," first issued in 1964 and revised in 1970, and presently used in a number of colleges and universities.

He and his wife, Greta, have two sons and two daughters: Nan, Paul, Greta and Sten.

John Bridgers

Athletic Director



Since John Bridgers took over as Florida State's athletic director in the spring of 1973, the program has been on a constant upward trend.

The trend climaxed last year with startling results. Three Seminole squads—football, basketball and baseball—participated in post season events. Only one other school in the country was able to do the same. The basketball team was the regular season Metro Conference champion while the golf, swimming and track and field teams also won conference titles.

During his stay in Florida's capital city, Bridgers has also:

(1) instigated and worked to conclusion the cancellation of a \$378,000 debt on Doak S. Campbell Stadium;

(2) been primarily responsible for Florida State's admission to the Metropolitan (Metro) Athletic Conference through his personal friendship with conference athletic directors;

(3) made the decision to schedule night home football games which has increased attendance to the record-breaking mark of 39,401 per game in 1977;

(4) scheduled Auburn, Georgia Tech, South Carolina and Tulane for football dates giving future Seminole schedules a more regional flavor;

(5) solicited additional funds through Student Government for construction of a new home baseball dugout, restroom, press box, concession stand and storage facility at Seminole Field;

(6) solicited additional funds and transfer of designated funds based on donor's evaluation which made possible the purchase of Coble Terrace, a student athlete housing facility, by the Florida State Foundation.

A native of Birmingham, Ala., Bridgers came to Florida State from South Carolina. Previously he had spent 10 years as athletic director and head football coach at Baylor University, a period during which the Bears participated in three bowl games.

Joe Williams

Head Basketball Coach



Joe Williams, who began his collegiate basketball coaching career at Florida State, has returned to become the Seminoles fourth head coach in the 31-year history of the school.

Williams, with previous coaching stints at Jacksonville and Furman, replaced 12 year coach Hugh Durham who resigned to take the head coaching job at Georgia.

Florida State was Williams' first coaching assignment in 1962 when he was the freshman coach for the late Bud Kennedy. He went to Furman in 1963 as an assistant coach before assuming the reigns as head coach at Jacksonville in 1964.

During his first season at Jacksonville, the Dolphins advanced to the NAIA national playoffs in Kansas City. Five years after that, Jacksonville found itself in the NCAA championship game against powerful UCLA and finished with a 27-2 record. In a short span Williams had made the Jacksonville program one of the nation's most respected. His six year coaching record with the Dolphins was 92-61.

At Furman, Williams wasted no time becoming the school's winningest coach. The Paladins enjoyed a winning record in seven of eight seasons as Williams ran up a 142-87 record.

Five times in eight years, Furman won the Southern Conference championship with Williams at the helm. The most recent title came last winter when the Paladins compiled a 19-11 record and advanced to the first round of the NCAA tournament before bowing by a single point (63-62) to Indiana.

His record at Furman also included a 15-0 record against Southern Conference competition—its first undefeated record ever in league play—in 1974-75 and three consecutive 20 game win seasons.

Williams' overall ledger during his 14 years as a head coach reads 234-148, or .612 percent.

"My goal is to put a team on the floor where a group can enjoy playing basketball and enjoy play-

ing well," says Williams. "I want the players to be unselfish, give good effort and winning will take care of itself.

"I'm basically interested in team oriented playing that still gives players a chance to do things they do best."

Realizing a personal dream to someday return to Florida, Williams set forward a goal to strengthen collegiate basketball in the Sunshine State.

"I want to play as many teams in the state as I can," he explains. "I want to help improve basketball in the state and will do anything I can to achieve that goal. Florida State will resume its series with Florida and Jacksonville this season and I hope to add South Florida next year."

William's coaching career began in 1960 when he guided Jacksonville's Terry Parker High School to the county championship. The following season he coached Ribault High to the Gateway Conference title.

Williams is a native of Morton, Miss., but he grew up in Oklahoma, graduating from Durant High School in 1952. He played and learned basketball under Abe Lemmons (now head coach at Texas) at Oklahoma City College. Williams received his bachelor's degree in English from Southern Methodist University in 1956. He later earned a master's degree in English from the University of Florida in 1968.

Williams enjoys outdoor activities, and he spends time playing basketball and fishing with his two sons, Joey, 13, and Patrick, 11.

Joe Williams' Coaching Record Jacksonville

Year	Won	Lost	Pct.	
1964-65	15	11	.577	NAIA National Playoff
1965-66	12	11	.522	
1966-67	8	17	.320	
1967-68	13	13	.500	
1968-69	17	7	.708	
1969-70	27	2	.931	NCAA National Runner-up

Furman

1970-71	15	12	.556	Southern Conference Champ
1971-72	17	11	.607	
1972-73	20	9	.690	Southern Conference Champ
1973-74	22	9	.710	Southern Conference Champ
1974-75	22	7	.759	Southern Conference Champ
1975-76	9	18	.333	
1976-77	18	10	.643	
1977-78	19	11	.633	Southern Conference Champ
14 years	234	148	.612	

Bob Dotson
Assistant Basketball
Coach



A top recruiter with a keen sense of the game, Bob Dotson is in his ninth year as an aide to head coach Joe Williams.

Dotson made the move to Florida State from Furman shortly after Williams was appointed the Seminole's new head coach. At FSU he will head the recruiting program as well as his on-the-floor duties.

Dotson was involved in the Furman cage program even before Williams arrived on the scene in 1970. The Louisville, Ky., native joined the Paladin staff in 1968 as freshman coach where he served for two years before being promoted to varsity assistant upon Williams' arrival. Along with his coaching duties at Furman, Dotson was responsible for forming the Paladin's radio network.

Dotson toiled in the prep ranks for two years at Butler High School in Louisville where his teams compiled a 28-21 mark. After six losing seasons, Dotson took Butler to the regional finals his first year and was tabbed Region Six coach of the year.

A graduate of Lindsey Wilson Junior College and Western Kentucky University in 1963, Dotson also holds a master's degree in mathematics from Western Kentucky.

Dotson is an avid tennis player and he also remodels antique automobiles. He is married to the former Bobby Monroe of Greer, S.C., and they have one child, Kelly Leigh, 1.

John Jones

***Assistant Basketball
Coach***



A man with a versatile background in the field of athletics, John Jones made the move to Florida State from Furman along with head coach Joe Williams.

Jones, who joined Williams' coaching staff eight years ago, has played and coached in the high school and collegiate ranks and spent several years playing professional baseball.

A native of Mobile, Ala., Jones graduated from Alabama State College in 1967 where he played both basketball and baseball.

Following his graduation, he played in the Philadelphia Phillies' farm organization until he was forced to retire with an arm injury.

After he concluded his baseball stint, Jones began a high school coaching career which culminated with the Georgia state championship in 1971. During his three years at Carver High School in Columbus, Ga., Jones' teams accumulated a 73-14 record. All three years he was selected coach of the year in the Columbus-Phenix City area.

Jones, who will be primarily responsible for recruiting and scouting, has developed a number of outstanding high school players including 7-1 center Fessor Leonard, who later became one of Furman's all-time leading rebounders.

Jones and his wife, Mattie, have one son, Fernez, 11.

Frank Gilmore

Assistant
Basketball Coach



Frank Gilmore, after spending the last three years playing professional basketball in Europe, has returned as the Seminoles' part-time assistant coach.

Gilmore, the younger brother of former Jacksonville University All-American and Chicago Bulls star Artis Gilmore, played two years in Karkkila, Finland, and one season at Salo, Finland, before returning to the United States last summer.

Playing a strong guard position, Gilmore played two years at Martin (Tenn.) Junior College and two at the College of Charleston. At Charleston he was selected all-conference in 1973.

As a new member of Joe Williams' staff, Gilmore will be involved in the daily practice sessions and in recruiting. The Panama City, Fla., native is currently completing work on his degree at Florida State.

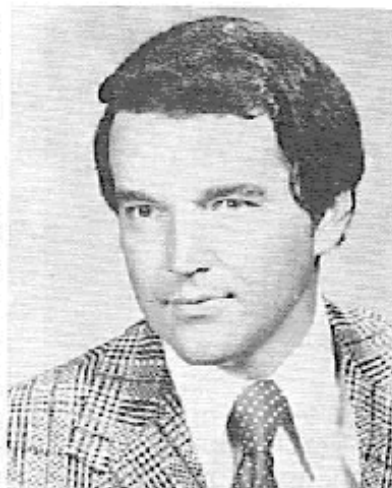


The Metro Conference

Three years ago, the Metropolitan Collegiate Athletic Conference was the new kid on the college basketball block.

Now, known simply as the Metro to fans, friends and foes, it is recognized as one of the nation's top college basketball conferences.

Metro Conference Commissioner Larry Albus envisioned the league while he was director of athletics at St. Louis University. His dream became a reality in June



Larry Albus

of 1975 when six schools - Cincinnati, Georgia Tech, Louisville, Memphis State, St. Louis and Tulane - announced they had officially formed the Metro Conference.

In 1976, the Metro expanded to bring Florida State into the fold. When Georgia Tech relinquished its Metro membership after the 1977-78 season, the league wasted no time filling the void with Virginia Tech, which went to the NCAA tourney in 1976, won the National Invitation tournament in 1973 and returned to the NIT in 1977.

Metro schools have played an active role in national post-season tournaments the last three years, sending a pair of teams to the National Collegiate Basketball Championship tournament every season - Cincinnati and Memphis State in 1976, Louisville and Cincinnati in 1977 and Florida State and Louisville in 1978. In addition, the Metro had a representative at the NIT in both 1976 (Louisville) and 1977 (Memphis State).

The Metro conducts a post-season tournament each year to determine its representative in the NCAA tournament. This year's tournament will be held at Memphis, Tenn., March 1-3. The winner will advance to the second round of the NCAA Midwest regional starting March 11. Louisville is the defending Metro tournament champion.

Albus, the only commissioner the Metro has ever known, is assisted by Joe Mitch, the league's information director; Jerry Lovelace, director of events; Joe Shosid, supervisor of officials; and Bob Macauley, director of marketing. League headquarters are located in St. Louis, Mo.

Final 1977-78 Metro Conference Standings

	LEAGUE GAMES			ALL GAMES		
	W	L	PCT	W	L	PCT
Florida State	11	1	.915	23	6	.793
+ Louisville	9	3	.750	23	7	.767
Memphis State	7	5	.583	19	9	.679
Cincinnati	6	6	.500	17	10	.630
Georgia Tech	6	6	.500	17	12	.556
St. Louis	2	10	.167	7	20	.259
Tulane	1	11	.083	5	22	.185

+ Won Metro Conference post-season tournament

1977-78 Statistics, Won 23, Lost 6, (Home 10-1, Away 7-2, Neutral 6-3)

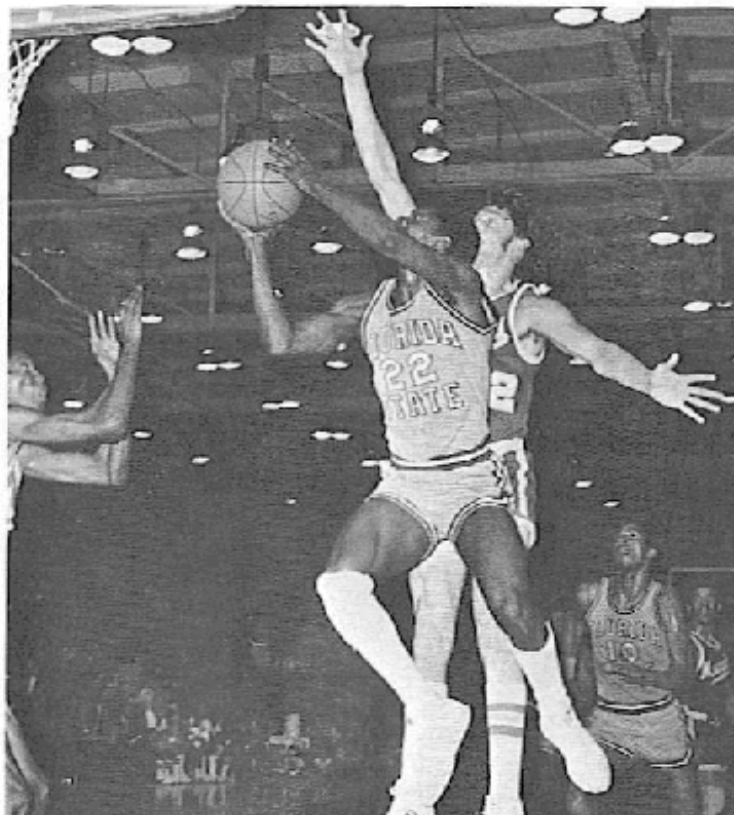
NAME	G	MIN	FG-FGA	PCT.	FT-FTA	PCT.	RBS	AVG	BS	AST	STE	PF-D	PTS	AVG
Harry Davis	28	941	217-376	.577	112-178	.629	208	7.4	14	36	34	73-2	546	19.5
David Thompson	29	850	175-362	.483	49-69	.710	211	7.2	13	28	52	83-1	399	13.7
Mickey Dillard	29	661	153-282	.542	92-119	.773	74	2.5	8	64	31	92-3	398	13.7
Eugene Harris	28	724	153-314	.487	33-51	.647	85	3.0	2	56	40	73-3	339	12-1
Kris Anderson	29	905	93-167	.556	49-60	.816	193	6.6	11	36	26	72-1	235	8.1
Murray Brown	28	402	61-98	.622	46-65	.707	111	3.9	4	4	5	49-1	168	6.0
Tony Jackson	29	864	68-193	.352	36-64	.562	79	2.7	1	166	73	58-0	172	5.9
Hank Mann	27	281	49-117	.418	10-41	.243	55	2.1	2	4	7	50-1	108	4.0
James Smith	23	113	14-21	.666	4-9	.444	26	1.1	0	9	2	12-0	32	1.4
Jerry Cox	2	6	0-5	.000	2-2	1.000	3	1.5	0	0	0	3-0	2	1.0
Donnie Kuhl	8	24	0-5	.000	5-11	.454	13	1.6	2	0	0	6-0	5	0.6
Bobby Parks	9	23	1-6	.166	3-7	.428	9	1.0	0	3	4	1-0	5	0.6
James Bozeman	10	28	2-8	.250	1-4	.250	7	0.7	0	0	2	3-0	5	0.5
Others	--	3	0-3	.000	2-3	.666	5		0	0	0	1-0	2	
Team Rebounds							82							
FSU Totals	29	5825	986-1957	.503	444-653	.650	1161	40.0	67	408	276	576-12	2416	83.3
OPP Totals	29	5825	861-1875	.459	368-532	.691	1045	36.0	75	282	191	621-23	2090	72.0

Dead Ball Rebounds - (not included in team totals): FSU 91, Opponents 91

1977-78 Results

FSU/Foe	Opponent (Site)	Attendance	Scoring Leaders
83 59	Rollins (H)	1,304	Davis 23, Harris 14
110 82	Troy State(H)	1,156	Davis 18, Dillard 16, Brown 16
90 49	St. Leo (H)	1,018	Anderson 18, Dillard 18
76 67	South Florida (A)*	4,800	Davis 25, Dillard 14
94 63	Seton Hall (N)*	3,500	Davis 22, Harris 16
100 77	Texas A & M (N)#	2,300	Dillard 21, Thompson 19
82 55	Navy (N)#	2,000	Davis 16, Harris 16
97 64	Missouri (N)	2,000	Davis 20, Thompson 16
75 77	Cincinnati (A)	8,921	Davis 22, Dillard 18
71 58	Tulane (N)+	12,513	Thompson 12
74 88	Minnesota (A) +	7,707	Dillard 23, Davis 15
87 85	Tulane (A)	1,500	Davis 29, Harris 16
85 43	Fairleigh Dickinson (H)	1,640	Davis 23, Thompson 20
103 85	Tulane (H)	2,928	Thompson 26, Harris 15
76 66	Cincinnati (A)	3,607	Davis 22, Harris 15
70 66	Louisville (A)	14,954	Dillard 24, Harris 11
88 75	St. Louis (H)	2,513	Anderson 21, Davis 17
58 58	South Alabama (H)	2,136	Davis 14
72 68	St. Louis (A)	3,743	Davis 32
95 89	Memphis State (A)	11,200	Davis 23, Dillard 19
89 82	Memphis State (H)	3,910	Davis 31, Dillard 17
79 88	UNC-Charlotte (A)	9,825	Davis 27, Thompson 18
81 70	Louisville (H)	4,296	Harris 24, Thompson 22
78 72	Georgia Tech (H)	2,850	Davis 22, Thompson 20
85 82	Georgia Tech (A)	6,273	Thompson 25, Jackson 17
80 78	Oral Roberts (A)	9,567	Davis 24
71 89	Georgia Tech (N)@	10,818	Dillard 23, Davis 18
93 94	Louisville (N)@	10,267	Harris 24, Anderson 18
78 85	Kentucky (N)%	12,700	Dillard 21, Thompson 15

- * Big Sun Tournament
- # Birmingham Classic
- + Pillsbury Classic
- @ Metro Tournament
- % NCAA Tournament



1977-78 Game-by-Game Scoring

FSU	Opp.	Thompson	Davis	Anderson	Harris	Jackson	Dillard	Brown	Mann	Smith	Kuhl	Paris	Bazeman	Cox
83	Rollins	8	23	6	14	6	5	10	8	0	0	0	0	2
110	Troy State	12	18	12	13	8	15	16	10	0	2	1	0	0
90	S. Loc	4	12	16	12	2	15	9	9	2	3	0	2	0
67	South Florida	5	13	8	4	6	14	6	6	0	0	0	0	0
94	Seton Hall	5	22	3	16	6	11	6	11	3	0	0	0	0
100	Texas A&M	19	16	2	14	5	21	9	9	4	0	0	0	0
32	Navy	12	16	10	15	9	10	3	1	7	0	0	0	0
97	Missouri	18	20	4	12	7	13	12	10	3	0	0	0	0
75	Cincinnati	6	22	10	0	10	18	0	9	0	0	0	0	0
71	Tulane	12	21	8	0	4	23	9	6	4	0	0	0	0
74	Minnesota	12	5	2	—	7	1	2	2	0	0	0	0	0
87	Tulane	14	29	4	5	7	1	2	2	0	0	0	0	0
85	Fairleigh Dickinson	20	23	5	10	3	8	8	7	0	0	0	0	0
85	Tulane	26	17	14	15	4	14	10	4	0	0	0	0	0
76	Cincinnati	9	22	11	5	6	10	2	4	0	0	0	0	0
70	Louisville	8	—	0	11	7	14	08	0	0	0	0	0	0
88	St. Louis	17	17	21	10	7	14	08	4	0	0	0	0	0
56	South Alabama	13	14	2	12	5	6	4	0	0	0	0	0	0
72	St. Louis	32	14	5	12	4	5	0	0	0	0	0	0	0
86	Memphis State	18	23	10	16	9	19	2	2	0	0	0	0	0
89	Memphis State	14	31	15	6	4	17	4	4	0	0	0	0	0
79	UNC-Charlotte	18	27	2	12	0	15	2	2	0	0	0	0	0
81	Louisville	22	14	5	24	3	11	2	2	0	0	0	0	0
78	Georgia Tech	20	22	5	8	2	18	6	0	0	0	0	0	0
85	Georgia Tech	25	8	5	10	17	5	10	3	0	0	0	0	0
80	Oral Roberts	14	24	2	12	4	6	14	0	0	0	0	0	0
71	Georgia Tech	3	18	2	12	2	23	3	0	0	0	0	0	0
93	Louisville	14	10	15	24	14	13	0	0	0	0	0	0	0
94	Louisville	14	10	15	24	14	13	0	0	0	0	0	0	0
85	Kentucky	15	11	8	9	10	21	4	4	0	0	0	0	0

Auburn

Tiger Facts:

Location: Auburn, Ala.
Nickname: Tigers
Conference: Southeastern
Enrollment: 18,333
Home Court: Memorial Coliseum (13,000)
Colors: Burnt Orange & Navy Blue
Athletic Director: Lee Hayley
Head Coach: Sonny Smith (Milligan '58)
Coach's Record: 30-23, 2 years
Assistants: Herbert Green,
Herman Williams
Sports Info Director: Buddy Davidson (office
205/826-4750, home
205/821-3333)

1978-79 Roster

Name	Pos.	Ht.	Wt.	Yr.	Hometown
Jeff Adams	C	6-9	240	Sr.	Wiersdale, Fla.
Benny Anthony	F	6-7	215	Jr.	Bainbridge, Ga.
Earl Banks	F	6-7	220	So.	Birmingham, Ala.
Mark Barnhizer	G	6-2	190	Sr.	Lapel, Ind.
Lewis Card	G	6-3	195	Fr.	Auburn, Ala.
Bobby Cattage	C	6-9	250	So.	Huntsville, Ala.
Ken Dean	F	6-8	190	So.	Atlanta, Ga.
Tony Ellison	F	6-7	195	Fr.	Birmingham, Ala.
Taylor Hart	G	6-2	180	Fr.	Eufaula, Ala.
Roy McGrew	F	6-5	185	Fr.	Fairfield, Ala.
Kirk Powers	G	6-0	178	Sr.	Auburn, Ala.
Bubba Price	G	6-3	175	Jr.	Birmingham, Ala.
Eric Stringer	G	6-1	185	So.	Hobson City, Ala.
Rich Valavicius	F	6-5	220	Jr.	Hammond, Ind.

1978-79 Schedule

Dec. 1	S.W. Louisiana (Birmingham)	Jan. 22	Mississippi State
Dec. 4	Florida State	Jan. 25	Kentucky
Dec. 9	Iona College	Jan. 27	at Vanderbilt
Dec. 12	at Richmond	Jan. 29	at Kentucky
Dec. 15-16	at Big Sun Tournament	Feb. 3	at Florida
Dec. 21	Georgia Tech (Birmingham)	Feb. 7	at Tennessee
Jan. 3	Vanderbilt	Feb. 10	Mississippi
Jan. 6	Florida	Feb. 12	LSU
Jan. 8	at Oral Roberts	Feb. 17	at Alabama
Jan. 11	at Georgia	Feb. 19	at Mississippi State
Jan. 13	at Mississippi	Feb. 22	Georgia
Jan. 15	at LSU	Feb. 24	Tennessee
Jan. 20	Alabama	Feb. 28	SEC Tournament
		Mar. 3	

Alabama - Birmingham

Blazer Facts:

Location: Birmingham Ala.
Nickname: Blazers
Conference: Sun Belt
Enrollment: 13,000
Home Court: Birmingham Coliseum
 (17,000)
Colors: Green & Gold
Athletic Director: Gene Bartow
Head Coach: Gene Bartow (N.E. Missouri
 '53)
Coach's Record: 282-149, 16 years
Assistants: Lee Hunt, Larry Finch, Jim
 Nelson
Sports Info Director: Pete Derzis (office
 205/934-3402, home
 205/942-6458)

1978-79 Roster

Name	Pos.	Ht.	Wt.	Yr.	Hometown
Tim Almquist	F	6-6	185	So.	Forest Lake, Minn.
Derrick Bentley	G	6-4	220	Fr.	Birmingham, Ala.
Daryl Braden	F	6-9	185	Sr.	Memphis, Tenn.
Raymond Gause	G	6-4	205	Fr.	Memphis, Tenn.
George Jones	G	6-1	175	Jr.	Memphis, Tenn.
Greg Leet	G	6-2	175	Jr.	Flat River, Mo.
Bill McCammon	G	6-3	180	Jr.	Palm Springs, Cal.
Leon Morris	F	6-6	185	Jr.	Memphis, Tenn.
Doug Owens	F-C	6-7	210	Jr.	Plainfield, Ind.
Stan Scalos	F	6-7	210	Jr.	Chicago, Ill.
Scott Simcik	G	6-2	170	Fr.	Simi Valley, Cal.
Donnie Speer	C	6-8	215	Fr.	Sylacauga, Ala.
Larry Spicer	F	6-8	180	Jr.	Memphis, Tenn.
Oliver Robinson	G	6-4	175	Fr.	Birmingham, Ala.

1978-79 Schedule

Nov. 24	Nebraska	Jan. 25	at So. Florida
Nov. 25	San Francisco State	Jan. 27	Jacksonville
Nov. 29	Oklahoma City	Jan. 29	at So. Mississippi
Dec. 1-2	Show-Me Classic	Jan. 31	St. Josephs
Dec. 8	Windeor	Feb. 2	Hawaii
Dec. 14	Georgia State	Feb. 5	South Florida
Dec. 18	So. Alabama	Feb. 8	at So. Alabama
Dec. 20	Inwa State	Feb. 12	at Jacksonville
Dec. 23	St. Louis	Feb. 16-17	at Hawaii
Dec. 30	Florida State	Feb. 20	at San Diego
Jan. 5	at Georgia State	Feb. 22	at U.S. Air Force Academy
Jan. 6	Illinois College	Feb. 24	Houston Baptist
Jan. 10	So. Mississippi	Feb. 27	DePaul
Jan. 20	at Iowa		

Bucknell

Bison Facts:

Location: Lewisburg, Pa.
Nickname: Bisons
Conference: East Coast
Enrollment: 3,040
Home Court: Davis Gymnasium (2,000)
Colors: Orange and Blue
Athletic Director: Dr. Bruce A. Corrie
Head Coach: Charlie Woolum (William and Mary, '62)
Coach's Record: 36-43, (4 years)
Assistants: George R. Petrie, Thomas A. Thompson
Sports Info Director: Dennis R. O'Shea (office 717/524-1221, home 717/524-7727)

1978-79 Roster

Name	Pos.	Ht.	Wt.	Yr.	Hometown
Paul Adkins	G	5-9	160	So.	Bethesda, Md.
Bob Barry	C	6-7	210	Jr.	Towson, Md.
Pat Flannery	G	5-8	160	Jr.	Pottsville, Pa.
Mike Hepburn	G	5-11	155	Jr.	Langhorne, Pa.
George Kachulis	G	6-0	175	Fr.	Pittsburgh, Pa.
Len Klebanoff	F	6-5	190	Sr.	Bethesda, Md.
Tom Knuth	F	6-1	190	Jr.	Fairfield, Conn.
Al Leslie	F	6-3	185	So.	Baltimore, Md.
Steve O'Brien	G	6-3	160	Jr.	Hoboken, N.J.
Deb Okorodudu	C	6-7	215	Fr.	West Deptford, N.J.
Mike Page	C	6-5	195	So.	West Deptford, N.J.
Ted Schoeck	F	6-2	165	So.	Hagerstown, Md.
Dave Shehadi	G	6-0	180	So.	Pawlet, Vt.
Steve Sigl	F	6-8	190	Jr.	Union, N.J.
Joe Vullo	F	6-2	175	So.	West Pittston, Pa.

1978-79 Schedule

Nov. 24	at Maryland	Jan. 27	Rider
Nov. 29	at LaSalle	Jan. 29	Hofstra
Dec. 2	Carnegie-Mellon	Jan. 31	at Lehigh
Dec. 5	at Colgate	Feb. 3	at Lafayette
Dec. 9	Bloomsburg	Feb. 7	Delaware
Dec. 11	Cornell	Feb. 10	West Chester
Jan. 5-6	at Old Dominion Classic	Feb. 12	Gullysburg
Jan. 10	St. Joseph's	Feb. 14	at Rider
Jan. 13	at American	Feb. 17	at Rider
Jan. 15	Drexel	Feb. 21	Lafayette
Jan. 18	at Temple	Feb. 24	at Delaware
Jan. 20	at Rochester	Feb. 28	at East Coast
Jan. 24	at West Chester		Conference Tour.

Cincinnati

Cincinnati Facts:

Location:	Cincinnati, Ohio
Nickname:	Bearcats
Conference:	Metro
Enrollment:	38,239
Colors:	Red and Black
Athletic Director:	William F. Jenike
Head Coach:	Ed Badger
Assistants:	Ken Banaszek, Al Hmiel, and Don Smith
Sports Info. Director:	Mike Ricciardi

1978-78 Roster

Name	Pos.	Ht.	Wt.	Yr.	Hometown (High School)
Bobby Austin	G	6-3	190	Fr.	Cincinnati, OH
Jeff Bentley	G-F	6-4	185	Jr.	Mason, OH
Pat Cummings	F-C	6-9½	230	Sr.	Johnstown, PA
Tom Cvitkovic	G	6-2	165	Fr.	Ambridge, PA
David Duarte	F-C	6-8½	200	Fr.	Providence, R.I.
Jeff Golsteyn	F	6-8	210	Jr.	West Aills, WI
Lionel Harvey	F	6-5	205	So.	West Hempstead, NY
Keith Hemans	G	6-3	175	Jr.	Flushing, NY
David Kennedy	G	6-2	185	So.	Pittsburgh, PA
Eddie Lee	G-F	6-4	180	Jr.	Queens, NY
Doug Schloemer	F-G	6-5	195	Fr.	Edgewood, KY
Bobby Sherlock	G	5-11	170	Sr.	Watervliet, NY
Mick Shoemaker	G	6-0	175	Sr.	Bourneville, OH

1978-79 Schedule

Nov. 30	at Athletes In Action	Jan. 20	St. Louis
Dec. 2	at Long Beach State	Jan. 22	at Memphis State
Dec. 6	at Miami (Ohio)	Jan. 24	at West Virginia
Dec. 9	Duquesne	Jan. 27	Florida State
Dec. 16	at Holy Cross (Boston Gardens)	Jan. 29	at Georgia Tech
Dec. 19	at Michigan State (Pontiac Silverdome)	Feb. 3	at Louisville
Dec. 22	North Carolina	Feb. 5	Georgia Tech
Jan. 2	at St. Louis (Checkerdome)	Feb. 7	Dayton
Jan. 6	at Virginia Tech	Feb. 10	Memphis State
Jan. 8	Virginia Commonwealth	Feb. 12	at Xavier
Jan. 10	at Pittsburgh	Feb. 15	Tulane
Jan. 13	at Tulane (Superdome)	Feb. 17	at Florida State
Jan. 16	Louisville	Feb. 19	Virginia Tech
		Feb. 22	at Seton Hall (Madison Square Garden)
		Mar. 1-3	Metro Tournament

Dayton

Flyer Facts:

Location: Dayton Ohio
Nickname: Flyers
Conference: Independent
Enrollment: 5,700
Home Court: Dayton Arena (13,458)
Colors: Red and Blue
Athletic Director: Don Donoher
Head Coach: Don Donoher (Dayton '54)
Coach's Record: 253-137, 14 years
Assistants: Jack Butler, Pat Haley
Sports Info Director: Gene Schill (office
 513/229-4421, home
 513/298-3310)

1978-79 Roster

Name	Pos.	Ht.	Wt.	Yr.	Hometown
Dave Abel	F	6-7	185	So.	Orchard Lake, Mich.
Dan Bockhorn	G	6-2	175	Fr.	Kettering, Ohio
Mike Gorney	C	6-9	225	Fr.	Chicago, Ill.
Doug Harris	G	6-1	175	Sr.	Kettering, Ohio
Willie Johnson	F	6-8	215	So.	Chicago, Ill.
Mike Karleski	F	6-10	200	Fr.	Cleveland, Ohio
Mike Lee	G	6-3	180	Sr.	Dayton, Ohio
Sean McNally	G	6-6	185	Fr.	Cleveland, Ohio
Richard Montague	C-F	6-9	205	So.	Elyria, Ohio
George Morrison	C	6-10	225	Fr.	Lawrenceburg, Ind.
Jim Paxson	G-F	6-5	200	Sr.	Kettering, Ohio
Tim Pohlman	F	6-8	190	Jr.	Delphos, Ohio
Jim Rhoden	F	6-6	210	So.	Lebanon, Ohio
Jack Zimmerman	G	6-2	175	Jr.	Kettering, Ohio

1978-79 Schedule

Nov. 29	Wittenberg	Jan. 16	Louisville
Dec. 2	McNeese	Jan. 20	DePaul
Dec. 4	at Eastern Kentucky	Jan. 24	Western Kentucky
Dec. 9	Michigan	Jan. 27	Ashland
Dec. 11	California Poly	Jan. 31	Miami
Dec. 13	at Miami	Feb. 3	at Notre Dame
Dec. 16	Baldwin Wallace	Feb. 7	at Cincinnati
Dec. 22-23	Dayton Invitational	Feb. 10	at Xavier
Dec. 30	Xavier	Feb. 14	Toledo
Jan. 3	Butler	Feb. 17	Rollins
Jan. 6	Duquesne	Feb. 21	at Biscayne
Jan. 10	at New Orleans	Feb. 24	at Temple
Jan. 13	at Memphis State	Mar. 3	at Loyola

Eckerd

Triton Facts:

Location:	St. Petersburg, Florida
Nickname:	Tritons
Conference:	Sunshine State
Enrollment:	900
Home Court:	McArthur Center (2,000)
Colors:	Red, White and Black
Athletic Director:	Jim Harley
Head Coach:	Jim Harley (Georgia Southern '55)
Coach's Record:	274-182 (22 years)
Assistants:	Tim Thorton

1978-79 Roster

Name	Pos.	Ht.	Yr.	Hometown
Pete Anton	F	6-2	Jr.	Waterbury, CT
Brad Bolton	F	6-4	So.	Satellite Beach, FL
Al Braithwaite	F	6-4	Sr.	Commack, NY
Dennis Cox	G	6-2	Jr.	Orlando, FL
Vernon Halr	G	6-0	Sr.	Orlando, FL
Bob Kumpfbeck	G	6-2	Jr.	Commack, NY
Keith McLachlan	F	6-4	Jr.	Waterbury, CT
Bill Perkins	F	6-4	Sr.	Lebanon, IL
Gregg Welsh	G	6-0	So.	New Smyrna Beach, FL
Mike Wingate	G	6-0	Fr.	Keystone Heights, FL

1978-79 Schedule

Nov. 27	at Florida State	Jan. 20	at Biscayne College
Nov. 28	at South Florida	Jan. 24	at Rollins College
Dec. 1-2	Tip-Off Tournament	Jan. 27	at Florida Tech
Dec. 6	Flagler College	Jan. 30	Florida Southern College
Dec. 9	Whittenburg	Feb. 3	St. Leo College
Dec. 13	Georgia Southwestern	Feb. 6	at Florida Southern College
Dec. 20-22	at Lake Shore Classic	Feb. 7	Florida Institute of Technology
Jan. 1	St. Anselms College	Feb. 10	Rollins College
Jan. 5-6	Suncoast Classic Tournament	Feb. 17	Biscayne College
Jan. 8	Haverford College	Feb. 20	Florida Tech
Jan. 17	Connecticut College	Feb. 24-26	Sunshine State Conf. Tournament
Jan. 18	St. Leo College		

Florida

Gator Facts:

Location:	Gainesville, Fla.
Nickname:	Gators
Conference:	Southeastern
Enrollment:	29,200
Home Court	Florida Gym (5,454)
Colors:	Orange and Blue
Athletic Director:	RAY Graves
Head Coach:	John Lotz (East Texas '57)
Coach's Record:	71-62, 5 years
Assistants:	Dick Grubar, James Brown
Sports Info Director:	Norm Carlson (office 904/392-0641, home 904/375-6382)

1978-79 Roster

Name	Pcs.	Ht.	Wt.	Yr.	Hometown
John Adamson	F	6-5	201	Sr.	Denver, Col.
Mike Aldridge	G	6-1	165	Fr.	Wantagh, N. Y.
Jerry Bellamy	F	6-6	192	so.	Beaver, Pa.
Malcolm Cesare	F	6-9	220	Sr.	Hicksville, N. Y.
Ric Clarson	F-G	6-6	205	Sr.	Jacksonville, Fla.
John Corso	F	6-6	215	Fr.	Westbury, N. Y.
Jimmy Colton	G	6-3	160	So.	Gulf Breeze, Fla.
Mark Giombetti	G	6-2	165	Jr.	Cocoa, Fla.
Reggie Hannah	F	6-8	210	So.	Titusville, Fla.
Nino Lyons	G	6-0	165	Fr.	Cocoa, Fla.
Maurice McDaniel	F	6-8	208	Fr.	Temple, Tex.
Mike Milligan	F-G	6-5	195	Fr.	Uniondale, N. Y.
Robert Van Noy	F	6-8	195	So.	Brentwood, N. Y.

1978-79 Schedule

Nov. 18	So. Australia (Exhib)	Jan. 20	Mississippi State
Nov. 30	Ohio University	Jan. 22	Alabama
Dec. 2	at UNC-Wilmington	Jan. 24	Vanderbilt
Dec. 9	Florida State (Jacksonville)	Jan. 27	at Kentucky
Dec. 15-16	at Industrial Nat. Classic	Jan. 29	at Vanderbilt
Dec. 19	at Hofstra	Feb. 3	Auburn
Dec. 26-27	at Gator Bowl Tournament	Feb. 7	at Georgia
Jan. 3	Kentucky	Feb. 10	Louisiana State
Jan. 6	at Auburn	Feb. 12	Mississippi
Jan. 11	at Tennessee	Feb. 17	at Mississippi State
Jan. 13	at Louisiana State	Feb. 19	at Alabama
Jan. 15	at Mississippi	Feb. 22	Tennessee
		Feb. 24	Georgia
		Feb. 28	at SEC Tournament
		Mar. 3	

Florida Southern

Moccasin Facts:

Location: Lakeland, Florida
Nickname: Moccasins
Conference: Sunshine State
Enrollment: 1600
Home Court: George Jenkins Fieldhouse
 (3,500)
Colors: Scarlet and White
Athletic Director: Hal Smeltzly
Head Coach: Dr. Hal Wissel
Coach's Record: 13-14, (1 year)
Assistant: Wes Aldrich
Sports Info Director: Mike Pachik

1978-79 Roster

Name	Pos.	Ht.	Wt.	Yr.	Hometown
Kurt Alston	G	6-1	170	Jr.	Yonkers, N.Y.
Buddy Bailey	G	6-3	175	Fr.	Brant Beach, N.J.
Joe Brown	F	6-7	189	Sr.	Seminole, Fla.
Reggie Burns	F	6-4	190	So.	Dunnellon, Fla.
Warren Butler	G	6-1	182	Jr.	Miami, Fla.
Bob Dolan	C	6-7	200	Jr.	Pinellas Park, Fla.
Keith Duncan	F	6-6	180	So.	New Castle, Del.
John Ebeling	F	6-7	220	Fr.	Trenton, N.J.
Cesar Odio	F	6-4	180	So.	Miami, Fla.
Brian Radon	F	6-4	184	Fr.	Center Valley, Pa.
Al Thurston	F	6-4	192	Sr.	Pompano Beach, Fla.
Drew Tucker	G	6-1	165	Sr.	Niceville, Fla.
Gino Warner	G	6-3	180	Fr.	Tallahassee, Fla.
Lester Wright	F	6-4	190	Fr.	Orlando, Fla.

1978-79 Schedule

Nov. 27	Ursinus	Jan. 17	at Biscayne
Dec. 3	at Holy Cross	Jan. 20	Florida Tech
Dec. 8-9	Citrus Tournament	Jan. 22	at South Carolina
Dec. 16	Bethel	Jan. 27	at Rollins
Dec. 18	at Florida Southern	Jan. 30	at Eckerd
Dec. 21	LaSalle	Feb. 1	St. Leo
Dec. 28-29	at Lafayette Tournament	Feb. 6	Eckerd
Jan. 5-6	Florida Southern Festival	Feb. 10	Biscayne
Jan. 8	Columbia	Feb. 13	at St. Leo
Jan. 10	Haverford	Feb. 15	at Florida Tech
Jan. 13	Old Dominion	Feb. 20	Rollins
		Feb. 23-25	Sunshine State Conference Tourn.

George Washington

Colonial Facts:

Location:	Washington, D.C.
Nickname:	Colonials
Conference:	Eastern Eight
Enrollment:	16,000
Home Court:	Smith Center (5,000)
Colors:	Buff and Blue
Athletic Director:	Robert Faris
Head Coach:	Bob Tallent (George Washington '69)
Coach's Record:	66-40, (4 years)
Assistants:	Tom Schneider, Len Baltimore
Sports Info Director:	Doug Gould (office 202/676-6654, home 301/948-5584)

1978-79 Roster

Name	Pos.	Ht.	Wt.	Yr.	Hometown
Daryl Charles	G	6-0	170	Sr.	Jersey City, N.J.
Glenn Dixon	F-C	6-7	200	Jr.	Buffalo, N.Y.
Tom Glenn	F-C	6-8	200	Jr.	Youngstown, Ohio
Paul Fracza	F	6-6	175	Fr.	Annandale, Va.
Curtis Jeffries	G	6-0	175	So.	Louisville, Ky.
Bob Lindsay	G-F	6-4	195	Sr.	Louisville, Ky.
Brian Bagid	G	6-2	180	Jr.	Silver Spring, Md.
Bucky Roman	G-F	6-4	185	Jr.	Springfield, Va.
Mike Samson	F	6-5	185	Sr.	Louisville, Ky.
Jimmy Stepp	G	6-3	170	Fr.	Inez, Ky.
Tom Tate	G	6-0	165	Sr.	Louisville, Ky.
Dave Thornton	F-C	6-8	200	Fr.	Pittsburgh, Pa.
Mike Zagardo	C	6-10	210	Jr.	Timonium, Md.

1978-78 Schedule

Nov. 24-25	at Virginia Tipoff Tourn.	Jan. 20	at Villanova
Nov. 28	Washington College	Jan. 25	Florida State
Dec. 2	Villanova	Jan. 27	at Stetson
Dec. 5	Dickinson	Jan. 31	at Penn State
Dec. 6-9	at First Union Invitational	Feb. 3	Rutgers
Dec. 22	Catholic University	Feb. 7	Navy
Jan. 3	at Maryland	Feb. 10	Richmond
Jan. 9	Loyola	Feb. 14	at Duquesne
Jan. 11	at Rutgers	Feb. 17	at Massachusetts
Jan. 13	Pittsburgh	Feb. 19	at Boston University
Jan. 15	at American University	Feb. 21	Georgetown
Jan. 17	Massachusetts	Feb. 24	West Virginia
		Feb. 27	Eastern Eight Tournament

Georgia Southern

Eagle Facts:

Location:	Statesboro, Ga.
Nickname:	Eagles
Conference:	Independent
Enrollment:	6,200
Home Court:	W.S. Hanner Fieldhouse
Colors:	Royal Blue and White
Athletic Director:	George A. Cook
Head Coach:	J.B. Searce (Eastern Kentucky '36)
Coach's Record:	433-208
Assistants:	John Nelson, Pat Blenke, Tommy Taylor
Sports Info Director:	Larry Albright (office 912/681-5522, home 912/764-9359)
1977-78 Record:	12-15

1978-79 Roster

Name	Pos.	Ht.	Wt.	Yr.	Hometown
Jerome Anderson	F	6-7	190	So.	St. Matthews, S.C.
Kevin Anderson	F	6-5	195	Sr.	Louisville, Ky.
Donald Barber	F	6-7	205	Fr.	Bainbridge, Ga.
Reggie Coferer	G	6-1	169	Fr.	Augusta, Ga.
John Fowler	C	6-8	205	Jr.	Opelika, Ala.
Robert Jahn	F	6-5	195	Fr.	Greenwood, Ind.
Tim James	G	6-0	150	Fr.	Putney, Ga.
Phil Leisure	G	6-1	190	Sr.	Elwood, Ind.
Matt Simpkins	F	6-4	200	Sr.	Aiken, S.C.
Steve Taylor	C	6-7	195	Fr.	Macon, Ga.
Caesar Williams	C	6-8	235	Jr.	Atlanta, Ga.

1978-79 Schedule

Nov. 19	South Australia	Jan. 20	Georgia State
Nov. 27	at Georgia State	Jan. 21	North Carolina-Wilmington
Nov. 29	Armstrong State	Jan. 24	at South Carolina
Dec. 2	Austin Peay	Jan. 27	Augusta College
Dec. 11	at South Alabama	Jan. 31	at Mercer
Dec. 16	at Tennessee-Chattanooga	Feb. 3	at Valdosta State
Dec. 20	North Carolina-Charlotte	Feb. 7	at Colunary
Dec. 28-29	at Polnsottle Classic	Feb. 8	at N.E. Louisiana
Jan. 5-6	at Old Dominion Classic	Feb. 12	Mercer
Jan. 10	Valdosta State	Feb. 15	at Wake Forest
Jan. 13	at North Carolina-Wilmington	Feb. 17	at Virginia Tech
Jan. 17	Tennessee-Chattanooga	Feb. 19	N.E. Louisiana
		Feb. 24	at Campbell
		Feb. 28	North Carolina-Charlotte

Florida State 1978-79 Basketball

NO.	NAME	POS.	HT.
20	James Bozeman	F	6-5
34	Murray Brown	C-F	6-8
30	Ed Chatman	F	6-3
24	Greg Collinsworth	F	6-5½
35	Jerry Cox	G	6-4
22	Mickey Dillard	G	6-3
23	Tony Jackson	G	6-0
33	Donnie Kuhl	C	6-9
14	Hank Mann	F	6-5
11	Bobby Parks	G	5-11
54	Pernell Tookes	F	6-6

1978-79 Nomenclature

NO.	NAME	POS.	HT.
11	Bobby Parks	G	5-11
14	Hank Mann	F	6-5
20	James Bozeman	F	6-5
22	Mickey Dillard	G	6-3
23	Tony Jackson	G	6-0
24	Greg Collinsworth	F	6-5½
30	Ed Chatman	F	6-3
33	Donnie Kuhl	C	6-9
34	Murray Brown	C-F	6-8
35	Jerry Cox	G	6-4
54	Pernell Tookes	F	6-6

Pronunciation Guide

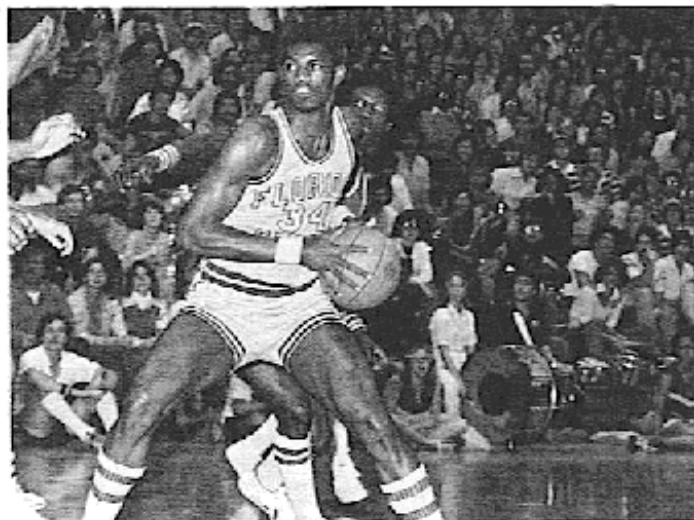
James Bozeman BOZ - man
 Mickey Dillard DIL - ard
 Donnie Kuhl Cool
 Pernell Tookes as in Cooks

University Netball Roster

WT.	CLASS	HOMETOWN
199	So.	Tallahassee, Fla.
205	Jr.	Tampa, Fla.
190	So.	Leesburg, Fla.
195	Fr.	Titusville, Fla.
180	Sr.	Indianapolis, Ind.
170	Jr.	Dania, Fla.
165	Jr.	Lexington, Ky.
235	Jr.	Orlando, Fla.
185	Sr.	Chester, Pa.
160	So.	Clearwater, Fla.
185	Fr.	Orlando, Fla.

Physical Roster

WT.	CLASS	HOMETOWN
160	So.	Clearwater, Fla.
185	Sr.	Chester, Pa.
199	So.	Tallahassee, Fla.
170	Jr.	Dania, Fla.
165	Jr.	Lexington, Ky.
195	Fr.	Titusville, Fla.
190	So.	Leesburg, Fla.
235	Jr.	Orlando, Fla.
205	Jr.	Tampa, Fla.
180	Sr.	Indianapolis, Ind.
185	Fr.	Orlando, Fla.



Georgia Tech

Yellow Jacket Facts:

Location: Atlanta, Georgia
Nickname: Yellow Jackets
Conference: Atlantic Coast
Enrollment: 10,000
Home Court: Alexander Memorial Coliseum
 (6,966)
Colors: Old Gold and White
Athletic Director: Doug Weaver
Head Coach: Dwane Morrison (South
 Carolina, '54)
Coach's Record: 62-72, (5 years)
Assistants: Jay Nidiffer, Benny Dees
Sports Info Director: Jim Schultz (office
 404/894-5445, home
 404/433-0281)

1978-79 Roster

Name	Pos.	Ht.	Wt.	Yr.	Hometown
Tico Brown	G-F	6-5	193	Sr.	Kokomo, Ind.
Dave Cole	C	6-10	225	Fr.	Latham, N.Y.
Sammy Drummer	F	6-5	211	Sr.	Muncie, Ind.
Lenny Horton	F	6-7	192	Jr.	Union, N.J.
John Mann	G-F	6-4	198	Jr.	Normal, Ill.
Steve Neal	C	6-11	220	Fr.	Tampa, Fla.
Toby Nidiffer	G	5-10	174	Jr.	Marietta, Ga.
Rob Noyes	C	6-7	226	Jr.	Marion, N.C.
Kerry O'Brien	G	6-1	176	Sr.	Louisville, Ky.
Billy Smith	G	6-1	178	Sr.	Benton, Ill.

1978-78 Schedule

Nov. 24	at Seton Hall	Jan. 20	Morris Harvey
Nov. 27	Baptist College	Jan. 23	at Florida State
Dec. 1	Georgia	Jan. 27	East Carolina
Dec. 12	Biscayne College	Jan. 29	Cincinnati
Dec. 14	Tennessee Tech	Feb. 1	Western Carolina
Dec. 16	at East Tennessee	Feb. 5	at Cincinnati
Dec. 21	at Auburn	Feb. 10	Florida State
Dec. 29-30	at Pillsbury Holiday Classic	Feb. 13	at Georgia
Jan. 2	at DePaul	Feb. 17	at East Carolina
Jan. 6	Newberry	Feb. 19	College of Charleston
Jan. 11	at Western Carolina	Feb. 22	Memphis State
Jan. 13	Troy State	Feb. 26	Campbell College
Jan. 16	at Memphis State		

Jacksonville

Dolphin Facts:

Location:	Jacksonville, Fla.
Nickname:	Dolphins
Conference:	Sun Belt
Enrollment:	2,300
Home Court	Memorial Coliseum (10,000)
Colors:	Green, Gold and White
Athletic Director:	Dr. Judson B. Harris
Head Coach:	Taylor "Tates" Locke (Ohio Wesleyan '59)
Coach's Record:	159-127, 11 years
Assistants:	Tom Barrise, Mike Rodgers
Sports Info Director:	Bill Goldring (office 904/744-3950, home 904/744-2250)

1978-79 Roster

Name	Pos.	Ht.	Wt.	Yr.	Hometown
Pete Boyle	F	6-6	200	Fr.	Centerville, Ohio
Stan Conley	G	6-0	170	Fr.	Brandon, Fla.
Paul DeVito	G	6-3	175	Fr.	Hyattsville, Md.
Singh Guram	F-G	6-6	200	Fr.	W. Columbia, S.C.
Mike Hackett	F	6-5	220	Fr.	Orangeburg, S.C.
Greg Harris	G	6-0	160	Jr.	Jacksonville, Fla.
Frankie Lemmons	G	6-5	180	So.	Cordele, Ga.
Jimmy Martin	G	6-3	180	So.	Tampa, Fla.
Phil Parisi	G	5-10	150	So.	Hollywood, Fla.
Wadell Perry	F-C	6-8	225	Fr.	Seale, Ala.
James Ray	F-C	6-8	215	Jr.	New Orleans, La.
Dwayne Smith	F	6-5	185	So.	Louisville, Ky.
Barlow Taylor	C	6-9	225	Fr.	Patterson, N.J.
Anthony Williams	G	6-0	175	Sr.	Washington, D.C.

1978-79 Schedule

Nov. 27	Georgia College	Jan. 20	at New Orleans
Nov. 29	Augusta College	Jan. 22	at South Alabama
Dec. 2	Memphis State	Jan. 27	at Alabama- Birmingham
Dec. 4	Cameron	Jan. 30	at North Carolina- Charlotte
Dec. 6	at Stetson	Feb. 1	at Georgia State
Dec. 9	at North Carolina	Feb. 3	at Florida State
Dec. 16	North Park	Feb. 10	South Alabama
Dec. 19	Georgia	Feb. 12	Alabama- Birmingham
Dec. 26-27	Gator Bowl Tourn.	Feb. 17	at South Florida
Jan. 3	Florida State	Feb. 21	South Carolina
Jan. 6	Hartford	Feb. 23-25	at Sun Belt Con- ference Tournament
Jan. 8	Upsala	Mar. 3	
Jan. 13	New Orleans		
Jan. 15	South Florida		
Jan. 17	North Carolina- Charlotte		

Louisville

Cardinal Facts:

Location:	Louisville, Ky.
Nickname:	Cardinals
Conference:	Metro
Enrollment:	18,000
Home Court	Freedom Hall (16,433)
Colors:	Cardinal red, black and white
Athletic Director:	Howard Hohman
Head Coach:	Denny Crum (UCLA '58)
Coach's Record:	162-44, 7 years
Assistants:	Bill Olsen, Jerry Jones, Wade Houston
Sports Info Director:	Joe Yates (office 502/588-6581)

1978-79 Roster

Name	Pos.	Ht.	Wt.	Yr.	Hometown
Bob Albertson	F	6-5	190	So.	Plymouth, Ind.
Tony Branch	G	6-0	175	Jr.	Michigan City, Ind.
Wiley Brown	F-C	6-8	220	Fr.	Sylvester, Ga.
Roger Burkman	G	6-5	175	So.	Indianapolis, Ind.
Daryl Cleveland	F	6-7	190	So.	Thomasville, Ga.
Greg Deuser	G	6-0	170	So.	New Albany, Ind.
Jerry Eaves	G	6-4	180	Fr.	Louisville, Ky.
Darrell Griffith	G	6-4	190	Jr.	Louisville, Ky.
Scooter McCray	F-C	6-8	185	Fr.	Mt. Vernon, N. Y.
Marty Pulliam	C	6-9	225	So.	Harrodsburg, Ky.
Derek Smith	F	6-6	185	Fr.	Hogansville, Ga.
Bobby Turner	F	6-4	205	Jr.	Louisville, Ky.
Larry Williams	F	6-8	190	Sr.	Chicago, Ill.

1978-79 Schedule

Nov. 24-26	at Alaska Tournament	Jan. 18	at Cincinnati
Dec. 2	Tennessee	Jan. 20	at Florida State
Dec. 6	Michigan	Jan. 24	St. Louis
Dec. 9	Idaho	Jan. 28	Virginia Tech
Dec. 12	at Ohio State	Feb. 1	Florida State
Dec. 16	West Virginia	Feb. 3	Cincinnati
Dec. 23	Providence	Feb. 5	Memphis State
Dec. 28-29	Holiday Classic	Feb. 8	at Tulane
Jan. 4	Tennessee	Feb. 10	at Marquette
	Chattanooga	Feb. 15	at St. Louis
Jan. 6	S. W. Louisiana	Feb. 17	at Memphis State
Jan. 8	Marshall	Feb. 18	Duke
Jan. 13	at Maryland	Feb. 25	Tulane
Jan. 16	at Dayton	Mar. 13	at Metro Tournament

Memphis State

Tiger Facts:

Location:	Memphis, Tenn.
Nickname:	Tigers
Conference:	Metro
Enrollment:	22,500
Home Court	Mid-South Coliseum (11,200)
Colors:	Blue and Gray
Athletic Director:	Billy J. Murphy
Head Coach:	Wayne Yates (Memphis State '62)
Coach's Record:	80-34, 5 years
Assistants:	John Robinson, Verties Sails
Sports Info Director:	Jack Bugbee (office 901/454-2337, home 901/452-9648)

1978-79 Roster

Name	Pos.	Ht.	Wt.	Yr.	Hometown
Arthur Banks	G	6-3	178	Jr.	Forrest City, Ark.
Jeffery Balle	F	6-5	175	Fr.	Rocky Mount, N. C.
James Bradley	F	6-8	215	Sr.	Memphis, Tenn.
Kevin Fromm	G	6-3	190	So.	Raytown, Mo.
Buster Hancock	G	6-0	175	Sr.	Memphis, Tenn.
Otis Jackson	G	6-1	173	Fr.	Arlington, Tenn.
Carey Kelly	F	6-8	198	Fr.	Canton, Miss.
John Kilzer	F	6-6	196	Sr.	Jackson, Tenn.
Rodney Lee	F	6-6	192	Sr.	Philadelphia, Pa.
Tommy Lowery	C	6-11	188	Jr.	Winona, Miss.
Hank McDowell	F-C	6-9	198	So.	Memphis, Tenn.
Steve Meacham	F-C	6-8	220	Sr.	Philadelphia, Pa.
Greg Moore	G	6-4	180	So.	Memphis, Tenn.
Tony Rufus	C	6-9	215	Sr.	Memphis, Tenn.

1978-79 Schedule

Nov. 28	at Missouri Western	Jan. 13	Dayton
Dec. 2	at Jacksonville	Jan. 16	Georgia Tech
Dec. 5	Kentucky Wesleyan	Jan. 18	Florida State
Dec. 7	Mississippi State	Jan. 20	at Tulane
Dec. 9	Southern Mississippi	Jan. 22	Cincinnati
Dec. 12	University of Missouri-KC	Jan. 27	St. Louis
Dec. 14	Valdosta State	Feb. 3	Tulane
Dec. 16	at Drake	Feb. 5	at Louisville
Dec. 23	Murray State	Feb. 10	at Cincinnati
Dec. 26	at Ole Miss	Feb. 17	Louisville
Dec. 28	Eastern Michigan	Feb. 22	at Georgia Tech
Dec. 30	at Arkansas	Feb. 24	at Florida State
Jan. 6	at St. Louis	Mar. 1-3	Metro Conference Tournament
Jan. 9	Heidleberg		

Old Dominion

Monarch Facts:

Location: Norfolk, Virginia
Nickname: Monarchs
Conference: Eastern College
Enrollment: 14,516
Home Court: Norfolk Scope (10,258)
Colors: Blue and White
Athletic Director: Dr. Jim Jarrett
Head Coach: Paul Webb (William and Mary, '51)
Coach's Record: 360-189, (22 years)
Assistants: Mile Bollio, Oliver Purnell, Steve Dodge
Sports Info Director: Joe M. Law (office 804/489-6405, home 805/547-7719)

1978-79 Roster

Name	Pos.	Ht.	Wt.	Yr.	Hometown
Ricky Adams	G	6-2	170	Fr.	Richmond, Va.
Jay Atchison	G	6-0	170	So.	Springfield, W. Va.
Tommy Branch	F	6-5	180	Fr.	Seat Pleasant, Md.
Tommy Conrad	G	6-0	170	Sr.	McSherrystown, Pa.
Tony Ellis	F	6-7	215	Sr.	Newport News, Va.
Erik Griekspoor	C	6-10	235	Fr.	Santpoort, The Netherlands
Bobby Halthcock	G	6-4	180	Jr.	Arlington, Va.
Rick Kresinske	G	6-4	190	So.	Norfolk, Va.
Billy Mann	G	6-4	188	Fr.	Norfolk, Va.
Ronnie McAdoo	F	6-6	210	Fr.	Mebane, N.C.
Mike Ray	C-F	6-8	205	Jr.	Arlington, Va.
Ronnie Valentine	F	6-7	210	Jr.	Norfolk, Va.
Bobby Vaughan	G	6-2	170	So.	Elizabeth, City, N.C.

1978-79 Schedule

Nov. 29	George Mason	Jan. 20	William and Mary
Dec. 2	at Virginia	Jan. 24	James Madison
Dec. 6	Baptist College	Jan. 27	at Naval Academy
Dec. 9	St. Bonaventure	Jan. 31	Boston U.
Dec. 16	Virginia Tech	Feb. 3	at East Carolina
Dec. 19	at Austin Peay	Feb. 5	Stetson
Dec. 29-30	at Times-Dispatch Tournament	Feb. 7	at Virginia Tech
Jan. 5-6	Old Dominion Classic	Feb. 13	Southeastern
Jan. 10	Norfolk State	Feb. 15	at Virginia Commonwealth
Jan. 13	at Florida Southern	Feb. 17	Maine
Jan. 17	Virginia Commonwealth	Feb. 19	East Carolina
		Feb. 21	St. Francis (Pa.)
		Feb. 24	at William and Mary

Penn State

Nittany Lion Facts:

Location: University Park, Pa.
Nickname: Nittany Loins
Conference: Eastern Eight
Enrollment: 26,796
Home Court: Recreation Hall (7,200)
Colors: Blue and White
Athletic Director: Edward Czepak
Head Coach: Dick Harter (Pennsylvania, 1953)
Coach's Record: 217-134, 13 years
Assistants: Perry Clark, Ray Edelman, Dick Stewart
Sports Info Director: John Morris (office 814/865-1757, home 814/237-6321)

1978-79 Roster

Name	Pos.	Ht.	Wt.	Yr.	Hometown
Frank Brickowski	F	6-8	223	So.	Bayville, N.Y.
Craig Buffie	G	6-3	185	Fr.	Bloomington, Ind.
Mike Edelman	G	6-3	180	Fr.	Havertown, Pa.
Mike Ice	F	6-8	210	So.	Winchester, Va.
Carvin Jefferson	C	6-8	196	Sr.	Washington, D.C.
Mike Jeffress	F	6-5	185	Fr.	Danbury, Conn.
Gary Korkowski	F	6-7	230	Jr.	Solon, Ohio
Steve Kuhn	F	6-6	201	Jr.	Lebanon, Pa.
Rob O'Connor	G	6-0	185	Sr.	Towson, Md.
Mike Owens	F	6-7	212	Fr.	Wilmington, Del.
Mike Power	G	5-10	170	Jr.	Doylestown, Pa.
Tom Wilkinson	G	6-0	163	Jr.	Lynbrook, N.Y.
Scott Wolz	F	6-6	210	Fr.	Silver Spring, Md.
Jud Wood	G	6-3	180	Sr.	Columbus, Ohio
Walter Young	G	6-3	180	Sr.	Columbus, Ohio

1978-79 Schedule

Nov. 16	Polish National Team	Jan. 13	at Virginia Tech
		Jan. 17	West Virginia
Nov. 24-26	at Suawolf Classic	Jan. 20	Duquesne
Nov. 29	at Delaware	Jan. 27	Pittsburgh
Dec. 3	Vermont	Jan. 31	George Washington
Dec. 7	Meryland (Hurshey, Pa.)	Feb. 3	Villanova
		Feb. 7	at Temple
Dec. 9	at West Virginia	Feb. 10	Navy
Dec. 13	St. Francis	Feb. 14	at Pittsburgh
Dec. 16	Syracuse	Feb. 17	Army
Dec. 18	Colgate	Feb. 21	at Massachusetts
Dec. 22-23	at Dayton Classic	Feb. 25	at Duquesne
Dec. 29	at N.C. State	Feb. 27	Eastern Eight Playoffs
Jan. 3	at Richmond		
Jan. 4	Ursinus	Mar. 3	
Jan. 10	at Syracuse		

South Alabama

Jaguar Facts:

Location:	Mobile, Alabama
Nickname:	Jaguars
Conference:	Sun Belt
Enrollment:	8,000
Home Court:	Jaguar Gym (3,500)
Colors:	Red, White, Blue
Athletic Director:	Dr. Mel Lucas
Head Coach:	Dr. Mel Lucas
Coach's Record:	53-29, (3 years)
Assistants:	Drayton Miller, Larry Cone
Sports Info Director:	Jeff Jones (office 205/460-7121, home 205/344-5656)

1978-79 Roster

Name	Pos.	Ht.	Wt.	Yr.	Hometown
Bill Anderson	G	6-5	175	Fr.	E. Cleveland, Ohio
John Bennett	G-F	6-5	190	Fr.	Plantation, Fla.
Ronnie Davis	F	6-7	195	Jr.	Pompano Beach, Fla.
Joe Hampton	G	6-2	190	Jr.	Macon, Ga.
Randy Hampton	G	6-2	180	So.	Elizabethtown, Ky.
Don Hogan	G	5-11	165	Jr.	N. Babylon, N.Y.
Lonnie Legette	G	6-1	170	Sr.	Syracuse, N.Y.
John May	F-C	6-8	210	So.	Gulfport, Miss.
Ed Rains	G-F	6-6	185	So.	Ocala, Fla.
Dennis Still	C	6-8	210	Fr.	Camden, N.J.
Troy Taylor	C	6-10	190	Fr.	Waycross, Ga.
Rory White	F	6-8	210	So.	Tuskegee, Ala.
Scott Williams	G	6-5	190	So.	Warner Robins, Ga.

1978-79 Schedule

Nov. 25	So. Illinois-Edwardsville	Jan. 18	at New Orleans
Nov. 30	at Mississippi State	Jan. 22	Jacksonville
Dec. 9	at Northwestern State	Jan. 25	New Orleans
Dec. 11	Georgia Southern	Jan. 29	at Georgia State
Dec. 14	Norfolk Park	Feb. 1	South Florida
Dec. 18	at Alabama-Birmingham	Feb. 6	Florida State
Dec. 27-28	Senior Bowl Tournament	Feb. 8	Alabama-Birmingham
Dec. 30	Wisconsin-Whitewater	Feb. 10	at Jacksonville
Jan. 4	UNCC	Feb. 12	at South Florida
Jan. 8	Houston Baptist	Feb. 15	Illinois State
Jan. 13	UNCC	Feb. 17	at UNC-Wilmington
Jan. 15	Georgia State	Feb. 19	at Campbell
		Feb. 23-25	at Sun Belt Conference Tournament
		Feb. 28	Northwestern State

St. Louis

Billiken Facts:

Location: St. Louis, Mo.
Nickname: Billikens
Conference: Metro
Enrollment: 11,500
Colors: Blue and White
Athletic Director: Dick McDonald
Head Coach: Ron Ekker (Winona State '62)
Coach's Record: First Year
Assistants: Herb Slate, Bob Bone
Sports Info. Director: Dick O'Connor (office
 314/658-3187, home
 314/965-6722)

1978-79 Roster

Name	Pos.	Ht.	Wt.	Yr.	Hometown
Everne Carr	G	6-2	175	Sr.	Orangeburg, S.C.
Jim Glass	G	6-2	170	Jr.	Pacific, Mo.
Kelvin Henderson	F-G	6-7	180	Jr.	St. Louis, Mo.
Willie Horne	G	6-2	170	Fr.	New York, NY
Dick Missavage	F	6-5	195	Fr.	St. Louis, Mo.
Bob Mueller	F-C	6-8	190	Fr.	St. Louis, Mo.
Rick Plate	F	6-5	175	Jr.	St. Louis, Mo.
Mark Rhode	F	6-6	205	Jr.	St. Louis, Mo.
Craig Shaver	F-G	6-4	175	Jr.	Louisville, Ky.
Henry Tiggs	F	6-5	180	Jr.	Chicago, Ill.
Milt Wiley	G	5-11	165	Jr.	Belleville, Ill.

1978-79 Schedule

Nov. 24	Roosevelt	Jan. 20	at Cincinnati#
Nov. 29	Southern Illinois- Carbondale	Jan. 24	at Louisville#
Dec. 1-2	Wisconsin Invitational	Jan. 27	at Memphis State#
Dec. 9	at Illinois State	Feb. 2	Marquette
Dec. 11	Missouri - St. Louis	Feb. 5	at Wisconsin- Milwaukee
Dec. 20-21	Roanoke-Times World Tournament	Feb. 10	at Tulane#
Dec. 23	at Alabama- Birmingham	Feb. 12	at Florida State#
Dec. 29-30	Blade-Grass Tournament	Feb. 15	Louisville#
Jan. 2	Cincinnati#	Feb. 17	Tulane#
Jan. 7	Memphis State#	Feb. 19	Northern Iowa
Jan. 10	Rockhurst	Feb. 24	Southern Illinois- Edwardsville
Jan. 12	Florida State#	Mar. 1-3	Metro Tournament

#Metro Conference games

Tulane

Green Wave Facts:

Location:	New Orleans, La.
Nickname:	Green Wave
Conference:	Metro
Enrollment:	9,048
Home Court	Superdome (30,000)
Colors:	Olive Green and Sky Blue
Athletic Director:	Hindman Wall
Head Coach:	Roy Danforth (So. Mississippi '62)
Coach's Record:	163-110, 10 years
Assistants:	Tom Green, Jim Lewis, John Bobzien
Sports Info Director:	M.L. LaGarde (office 504/865-4393, home 504/885-7967)

1978-79 Roster

Name	Pos.	Ht.	Wt.	Yr.	Hometown
Micah Blunt	F	6-9	195	Fr.	Melairie, La.
Mike Danforth	G	6-1	180	Sr.	Anderson, Ind.
Eric Dozier	F	6-7	200	So.	Washington, D.C.
Reggie Duke	G	6-2	165	Fr.	Pittsburgh, Pa.
Jack Fletcher	G	6-2	165	Sr.	Santa Anna, Cal.
Marc Fletcher	G	6-5	190	Sr.	Collinsville, Ill.
Craig Harris	G	5-9	150	So.	Alexandria, Va.
Joe Holston	G	6-4	175	Fr.	Washington, D. C.
Keith Houston	G	6-8	210	Sr.	Morrisville, Pa.
Jim Hurd	G-F	6-4	185	So.	New Orleans, La.
Clarence James	F	6-6	195	So.	Tampa, Fla.
Bobby Jones	F	6-7	200	Jr.	Gulfport, Miss.
George Kloak	F	6-8	210	Sr.	Chicago, Ill.
Gary Lorio	F	6-5	200	Jr.	New Orleans, La.
Carlos Zuniga	F	6-5	195	Jr.	New Orleans, La.

1978-79 Schedule

Nov. 28	Roosevelt University	Jan. 18	Mercer
Nov. 29	S.M.U.	Jan. 20	Memphis State
Dec. 2	Illinois	Jan. 22	at Florida State
Dec. 4	at LSU	Feb. 3	at Memphis State
Dec. 8	Pennsylvania	Feb. 8	Louisville
Dec. 9	LSU	Feb. 10	St. Louis
Dec. 22-23	at Dayton Tournament	Feb. 12	at Southern Mississippi
Jan. 2	Colgate	Feb. 15	at Cincinnati
Jan. 5	at North Carolina State	Feb. 17	at St. Louis
Jan. 6	at Duke	Feb. 22	Southern Mississippi
Jan. 10	Florida State	Feb. 25	at Louisville
Jan. 13	Cincinnati	Mar. 1-3	at Metro Tournament
Jan. 15	New Orleans		

Western Kentucky

Hilltopper Facts:

Location:	Bowling Green, Kentucky
Nickname:	Hilltoppers
Conference:	Ohio Valley
Enrollment:	13,500
Home Court:	E.A. Diddle Arena (13,508)
Colors:	Red and White
Athletic Director:	John Oldham
Head Coach:	Gene Keady (Kansas St. '58)
Coach's Record:	First Year
Assistants:	Clem Haskins, Ray Hite
Sports Info Director:	Paul Just (office 502/745-4295, home 502/781-1777)

1978-79 Roster

Name	Pos.	Ht.	Wt.	Yr.	Hometown
Greg Burbach	G	6-4	185	Jr.	Dickeyville, Wis.
Kevin Dildy	G	6-3	190	Fr.	Chicago, Ill.
Kenny Ellis	G-F	6-4	195	Fr.	Winter Haven, Fla.
Greg Jackson	F	6-5	195	Sr.	Atlanta, Ga.
Joel May	F	6-5	200	Fr.	New Trier, Ill.
Craig McCormick	C-F	6-9	205	Fr.	Ottawa, Ill.
Mike Prince	G-F	6-5	190	Jr.	Dearborn, Mich.
John Rahn	F-C	6-7	220	So.	Burlington, Iowa
Mike Reese	G	6-3	175	So.	Hopkinsville, Ky.
Don Thomas	G	6-1	170	So.	Elizabethtown, Ky.
Kurtis Townsend	G	6-1	160	Jr.	San Jose, Calif.
Trey Trumbo	G	6-5	185	Jr.	Fayetteville, Ark.
Jack Washington	F	6-5	190	So.	Bainbridge, Ga.
Rick Wray	C-F	6-8	200	So.	Hickman, Ky.

1978-79 Schedule

Nov. 25	Duke	Jan. 17	Murchison State
Nov. 27	Jacksonville State	Jan. 20	at Murray State
Nov. 30	at Florida State	Jan. 22	Austin Peay
Dec. 2	Bowling Green	Jan. 24	at Dayton
	College	Jan. 27	Middle Tennessee
Dec. 4	Mississippi College	Jan. 29	Eastern Kentucky
Dec. 7	at Louisiana Tech	Feb. 1	CCNY
Dec. 9	at Evansville	Feb. 3	at Morehead State
Dec. 15	Davidson	Feb. 5	at Eastern Kentucky
Dec. 18	Illinois State	Feb. 10	at East Tennessee
Dec. 30	at Butler	Feb. 12	Tennessee Tech
Jan. 6	Wisconsin	Feb. 17	at Austin Peay
	Milwaukee	Feb. 19	Murray State
Jan. 10	at LaSalle	Feb. 24	at Middle Tennessee
Jan. 15	at Tennessee Tech		

Series Records

Team	1st		Date	Site	Score
	W	L			
Air Force	0	1	1983 12-26-83	N	53-78
Alabama	5	7	1959 12-20-75	N	72-76
Arizona	2	0	1970 12-31-70	H	95-85
Arkansas State	1	1	1953 02-20-54	H	78-68
Army	1	2	1958 12-29-76	N	71-72
Auburn	3	14	1950 12-20-66	A	59-67
Austin Peay	1	0	1976 12-04-76	H	97-86
Baptist	2	0	1976 02-05-77	H	139-72
Baylor	2	0	1964 12-16-72	N	85-67
Beloit	0	1	1955 03-09-55	N	88-110
Birmingham Southern	0	2	1949 01-21-50	A	45-55
Biscayne	0	0	1970 01-20-75	A	95-85
Boston University	1	0	1965 12-20-55	N	86-52
Bradley	0	1	1958 12-08-56	A	60-90
Brigham Young	0	1	1972 12-29-72	N	77-80
California-Irvine	1	0	1971 01-30-71	H	82-69
California Santa Barbara	1	0	1965 12-18-65	H	62-61
California State Bakersfield	1	0	1974 02-18-74	H	96-66
Canisius	1	1	1974 01-25-75	A	74-81
Centenary	2	3	1957 02-08-64	A	72-79
Central (Mo.)	0	2	1940 12-15-52	H	59-62
Charleston	2	0	1949 12-09-50	A	74-54
Chattanooga	2	0	1963 02-01-75	H	111-70
Cincinnati	2	3	1972 01-17-78	H	76-66
Citadel	4	4	1958 02-07-58	A	93-50
Clemson	5	6	1951 11-27-76	A	92-108
Colorado State	1	0	1975 12-30-75	N	84-54
Connecticut	1	0	1972 01-06-73	H	91-55
Connecticut St. Teachers	1	0	1950 12-14-50	H	76-68
Creighton	0	1	1964 12-29-61	N	77-65
Culver-Stockton	0	1	1951 12-08-51	H	56-59
Dayton	3	1	1969 02-18-77	N	76-71
David Lipscomb	1	1	1950 01-05-71	A	73-88
Denver	1	0	1972 01-03-72	N	88-70
DePaul	0	1	1964 12-28-64	N	44-52
Drury	0	1	1949 12-20-49	A	52-59
Duke	0	1	1954 01-03-54	A	75-97
Duquesne	1	1	1956 02-04-65	N	62-68
East Carolina	1	0	1958 02-03-68	H	110-100
East Tennessee State	1	3	1955 01-08-72	H	106-63
Eastern Kentucky	6	1	1966 12-06-75	A	65-69
Erskine	1	1	1948 02-28-48	H	49-48
Evansville	0	1	1987 12-30-67	A	67-76
Fairleigh Dickinson	2	0	1974 01-11-78	H	85-43
Florida	5	18	1951 12-30-59	N	88-63
Florida Presbyterian	1	0	1967 12-02-67	A	90-66
Florida Southern	19	9	1948 01-29-72	H	84-63
Furman	5	2	1957 02-06-64	H	57-48
Georgetown	2	0	1969 01-08-72	H	101-70
George Washington	1	0	1967 12-29-67	N	94-69
Georgia	18	9	1951 03-05-66	H	87-89
Georgia-Savannah State	0	2	1948 02-12-48	H	42-44
Georgia Southern (Ga. Teachers)	12	4	1947 02-27-75	H	104-71
Georgia State	3	0	1975 02-21-78	H	92-70
Georgia Tech	13	9	1963 03-03-78	N	71-69
Hawaii	1	2	1969 12-22-71	A	76-81
Hofstra	3	0	1968 01-18-75	H	107-71
Houston	2	3	1962 01-05-74	A	74-79
Illinois State	2	3	1962 01-05-74	A	74-79
Indiana	0	1	1975 12-08-75	A	59-63
Indiana State	0	1	1973 12-27-73	N	92-93
Jacksonville (Ala.) State	2	0	1953 12-04-54	H	103-78
Jacksonville	18	12	1959 02-23-77	H	64-70
Kansas	0	1	1966 12-09-66	A	48-62
Kansas State	0	1	1966 12-10-66	A	58-61
Kent State	1	1	1980 02-05-70	A	80-79
Kentucky	2	4	1948 03-11-78	N	76-86
Lambuth	0	2	1946 02-26-49	N	49-85

Lamar Tech	1	0	1965	12-01-65	H	73-68
Louisiana State	2	2	1957	12-16-67	N	130-100
Louisville	3	0	1968	03-04-78	N	93-94
Loyola of New Orleans	8	13	1951	03-04-78	N	93-94
Madison	2	0	1976	01-12-77	H	69-66
Manhattan	2	0	1983	01-11-71	H	98-98
Marquette	0	1	1967	12-15-67	A	58-78
Marshall	1	3	1958	12-07-74	H	90-63
Memphis State	9	12	1953	02-11-76	H	69-62
Mercer	12	8	1948	01-31-77	A	66-65
Miami (Ohio)	0	1	1970	12-19-70	N	64-67
Miami	23	21	1952	02-27-71	A	94-100
Milikin	0	1	1951	03-15-51	N	60-91
Millsaps	2	0	1949	01-26-50	N	62-45
Minnesota	1	1	1972	12-31-77	A	74-88
Mississippi	1	1	1951	02-14-51	A	75-79
Mississippi College	5	1	1948	02-15-51	A	77-54
Mississippi State	3	3	1951	12-21-56	N	71-79
Missouri	1	1	1978	12-23-77	N	97-84
Missouri Western	1	0	1976	11-30-76	H	109-80
Montana State	1	0	1955	03-07-55	N	93-84
Murdoch State	1	1	1957	01-30-60	H	70-75
Morningside	1	0	1955	12-16-55	H	104-83
Murray State	1	1	1957	02-09-59	A	71-98
Navy	1	0	1977	12-17-77	N	82-55
New Hampshire	1	0	1960	12-31-60	H	104-52
New Mexico	1	1	1974	01-27-75	A	78-84
New York University	1	0	1955	12-30-55	N	85-83
North Carolina	1	8	1965	02-16-74	N	84-104
North Carolina State	0	2	1955	01-10-57	A	59-64
North Carolina Charlotte	0	2	1977	02-13-78	A	79-88
Northwestern	1	0	1972	12-23-72	N	91-73
Oglethorpe	2	1	1949	12-01-71	H	112-89
Ohio State	0	3	1961	12-28-68	H	80-93
Ohio University	1	1	1958	12-21-74	H	67-60
Oklahoma City	4	2	1958	12-30-72	A	94-80
Oklahoma State	0	1	1964	12-18-64	N	56-80
Oral Roberts	2	0	1977	02-27-78	A	80-76
Oregon	1	0	1969	12-04-69	H	100-84
Oregon State	3	0	1960	12-29-75	N	75-78*
Palm Beach Atlantic	1	0	1975	12-13-75	H	100-52
Panama Nationals	1	0	1966	01-28-66	H	96-73
Pan American	2	0	1970	01-31-72	H	109-83
Parris Island Marines	0	2	1951	01-25-52	H	62-64
Penn State	1	0	1972	12-28-72	N	70-60
Pepperdine	3	0	1951	01-02-71	H	101-82
Phillips 66 Oilers	0	2	1955	02-16-63	H	73-82
Pittsburgh	0	1	1973	12-08-73	A	60-82
Princeton	0	1	1972	12-15-72	N	59-61
Purdue	1	0	1974	12-25-75	N	69-68
Rice	3	2	1961	01-20-69	A	80-83
Richmond	1	3	1962	12-20-67	A	114-91
Rollins	20	2	1951	11-28-77	H	83-59
Rutgers	1	0	1967	12-22-67	H	87-77
St. Leo	1	0	1977	12-05-77	H	90-49
St. Louis	3	0	1972	02-01-78	A	72-68
Samford (Howard)	9	0	1950	01-25-73	A	47-34
San Francisco	0	1	1976	12-18-76	A	87-93
Santa Clara	1	1	1956	12-17-76	N	94-80
Seton Hall	2	0	1972	12-10-77	N	94-63
Sewanee	3	3	1948	12-17-52	A	50-69
South Alabama	6	1	1972	02-02-78	H	56-58
South Carolina	2	1	1960	01-28-69	H	87-78
South Dakota	1	0	1970	12-05-70	H	125-65
South Dakota State	1	0	1951	03-31-51	N	85-70
South Florida	9	2	1973	12-09-77	A	76-67
Southern California	1	2	1968	12-18-70	N	85-94
Southern Illinois	1	1	1973	01-21-74	A	73-77
Southern Mississippi	3	3	1951	12-07-70	N	117-84
Southwestern (Memphis)	0	1	1948	12-30-48	A	47-54
Southwestern Louisiana	2	0	1976	03-04-76	A	68-65
SW Missouri State	0	1	1949	12-21-49	A	52-70
Spring Hill	3	3	1947	01-18-55	A	81-72
Stetson	27	11	1947	02-12-77	A	87-80

Series Records

Team	1st		Date	Site	Score	
	W	L				
Steubenville	0	1	1956	12-03-56	A	64-79
Tampa	28	8	1959	02-27-67	A	87-84
Tennessee	1	4	1957	12-22-64	N	43-65
Tennessee Tech	1	0	1957	12-02-57	H	74-71
Texas	2	0	1969	12-01-70	A	80-78
Texas A & M	2	1	1956	12-16-77	N	100-77
Texas Christian	0	1	1963	12-12-63	A	60-66
Toledo	1	0	1976	11-26-77	N	70-68
Troy State	8	1	1947	12-01-77	H	110-82
Tulane	9	2	1967	01-14-78	H	103-85
Tulsa	2	0	1963	12-28-64	A	74-72
UCLA	0	1	1972	02-25-72	A	70-81
Union (Tenn.)	0	1	1948	12-29-48	A	52-56
Valdosta State	14	0	1961	02-21-78	H	106-61
Vanderbilt	0	1	1960	12-05-60	A	55-75
Vermont	1	0	1976	12-30-76	A	76-67
Virginia Military	2	1	1964	12-20-65	N	65-64
Virginia Tech	2	2	1968	01-10-74	H	85-80
Washington	1	1	1971	12-28-75	N	54-69
Washington State	1	0	1971	12-30-71	N	85-81
Wake Forest	1	1	1958	12-22-73	N	66-48
West Virginia	0	3	1955	01-30-58	A	51-103
Western Kentucky	3	0	1973	01-05-77	A	93-73
Wisconsin	0	1	1961	12-04-61	A	63-64
Wisconsin-Milwaukee	3	0	1971	01-07-75	H	104-82
Wofford	0	2	1948	02-06-48	A	38-77
Xavier (Ohio)	0	1	1958	02-04-58	A	60-76

* forfeited



Scores Against 1978-79 Opponents

Eckerd		1949-50 (A).....	48	59
First Meeting		1949-50 (N).....	56	68
Western Kentucky (3-0)		1950-51 (A).....	86	55
1973-74 (N).....	107 87	1950-51 (H).....	44	41
1975-76 (H).....	88 80	1951-52 (A).....	51	54
1976-77 (A).....	93 73	1951-52 (H).....	72	53
Auburn (3-14)		1952-53 (A).....	71	69
1958-59 (A).....	74 95	1952-53 (H).....	79	77
1958-59 (H).....	62 69	1953-54 (A).....	98	80
1959-60 (A).....	58 62	1953-54 (H).....	99	71
1959-60 (H).....	63 76	1954-55 (A).....	73	69
1960-61 (A).....	57 74	1954-55 (H).....	84	63
1960-61 (H).....	67 74	1955-56 (H).....	92	73
1961-62 (A).....	56 52	1955-56 (A).....	85	81
1961-62 (H).....	57 62	1956-57 (A).....	83	78
1962-63 (A).....	47 65	1956-57 (H).....	67	73
1962-63 (H).....	70 77	1956-57 (H).....	99	54
1963-64 (H).....	89 67	1966-67 (A).....	84	76
1963-64 (A).....	59 63	1967-68 (H).....	104	82
1964-65 (A).....	68 92	1968-69 (A).....	84	70
1964-65 (H).....	58 55	1968-70 (H).....	98	74
1965-66 (A).....	58 59	1970-71 (A).....	74	66
1965-66 (H).....	58 59	1971-72 (H).....	84	63
1966-67 (A).....	59 57	Dayton (3-1)		
Florida (5-18)		1968-69 (H).....	79	71
1951-52 (N).....	51 81	1969-70 (A).....	62	76
1954-55 (N).....	79 82	1975-76 (A).....	81	95
1956-57 (A).....	65 67	1976-77 (A).....	78	71
1957-58 (A).....	70 71	Penn State (1-0)		
1958-59 (H).....	82 80	1972-73 (N).....	70	60
1959-60 (A).....	71 81	Tulane (9-2)		
1960-61 (H).....	67 74	1966-67 (A).....	85	87
1962-61 (A).....	74 75	1966-67 (H).....	100	90
1961-62 (A).....	85 71	1968-69 (A).....	97	94
1961-62 (H).....	79 56	1968-69 (H).....	99	90
1962-63 (H).....	59 80	1969-70 (A).....	82	77
1962-63 (A).....	86 94	1969-70 (H).....	112	77
1963-64 (A).....	55 78	1970-71 (A).....	69	88
1963-64 (H).....	50 52	1971-72 (H).....	94	84
1964-65 (H).....	51 50	1977-78 (N).....	71	56
1964-65 (A).....	65 77	1977-78 (A).....	87	85
1965-66 (A).....	62 75	1977-78 (H).....	103	85
1965-66 (H).....	65 74	Alabama-Birmingham		
1966-67 (A).....	30 50	First Meeting		
1966-67 (H).....	75 90	Jacksonville (18-12)		
1967-68 (H).....	87 95	1959-60 (A).....	88	69
1967-68 (A).....	64 89	1964-65 (H).....	101	77
1969-70 (N).....	88 63	1964-65 (H).....	97	74
Florida Southern (19-9)		1965-66 (A).....	86	80
1947-48 (H).....	55 48	1965-66 (A).....	78	49
1948-49 (H).....	46 38	1966-67 (H).....	81	70
1948-49 (H).....	63 45	1966-67 (A).....	68	67
1949-50 (A).....	85 71	1967-68 (H).....	92	79

1967-68 (A).....	106	65	1965-66 (H).....	67	63
1968-69 (A).....	93	88	1965-66 (A).....	66	81
1968-69 (A).....	68	76	1966-67 (A).....	42	46
1968-69 (H).....	93	89	1966-67 (H).....	55	51
1969-70 (H).....	89	83	1973-74 (H).....	88	80
1969-70 (A).....	81	85	1974-75 (A).....	69	70
1970-71 (A).....	108	114	1975-76 (H).....	100	71
1970-71 (A).....	65	83	1976-77 (A).....	75	81
1971-72 (A).....	90	83	1977-78 (A).....	95	89
1971-72 (H).....	72	84	1977-78 (H).....	85	82
1971-72 (A).....	70	61			
1972-72 (A).....	66	70			
1972-73 (H).....	83	74			
1973-74 (H).....	78	74			
1973-74 (A).....	89	113			
1974-75 (H).....	63	55			
1974-75 (A).....	71	76			
1975-76 (A).....	77	57			
1975-76 (H).....	74	65			
1976-77 (A).....	70	77			
1976-77 (H).....	76	71			

Louisville (3-6)

1968-69 (A).....	78	79
1969-70 (H).....	79	69
1973-74 (A).....	78	90
1974-75 (H).....	75	84
1974-75 (A).....	61	79
1976-77 (A).....	75	78
1977-78 (A).....	70	66
1977-78 (H).....	81	70
1977-78 (N).....	93	94

Old Dominion

First Meeting

Bucknell

First Meeting

Georgia Southern (12-4)

1947-48 (H).....	56	60
1947-48 (A).....	47	65
1950-51 (N).....	69	87
1951-52 (H).....	75	93
1952-53 (A).....	68	63
1953-54 (H).....	66	58
1953-54 (A).....	89	85
1954-55 (H).....	75	67
1954-55 (H).....	91	83
1955-56 (A).....	81	90
1962-63 (N).....	79	60
1970-71 (A).....	113	81
1972-73 (H).....	109	97
1973-74 (N).....	82	89
1974-75 (N).....	101	77
1974-75 (H).....	104	71

St. Louis (3-0)

1971-72 (N).....	63	62
1977-78 (H).....	88	75
1977-78 (A).....	72	88

Memphis State (9-12)

1952-53 (A).....	73	87
1957-58 (A).....	56	59
1957-58 (H).....	51	68
1958-59 (H).....	72	75
1958-59 (A).....	69	93
1959-60 (A).....	71	88
1959-60 (H).....	67	83
1963-64 (H).....	91	90
1963-64 (A).....	72	84
1964-65 (H).....	74	61
1964-65 (A).....	81	70

Georgia Tech (13-9)

1962-63 (A).....	55	70
1963-64 (A).....	73	77
1964-65 (H).....	72	65
1964-65 (A).....	76	77
1965-66 (H).....	71	66
1965-66 (A).....	88	95
1966-67 (H).....	68	75
1966-67 (A).....	84	102
1967-68 (A).....	73	57
1967-68 (H).....	72	67
1968-69 (H).....	76	84
1968-69 (A).....	98	80
1969-70 (A).....	89	83
1969-70 (H).....	97	80
1970-71 (H).....	67	85
1970-71 (A).....	81	76
1971-72 (A).....	71	69
1971-72 (H).....	108	50
1976-77 (N).....	67	72
1977-78 (H).....	78	72
1977-78 (A).....	85	82
1977-78 (N).....	71	69

Cincinnati (2-3)

1971-72 (A).....	64	68
1972-73 (H).....	78	74
1972-73 (A).....	62	88
1977-78 (A).....	75	77
1977-78 (H).....	76	86

South Alabama (6-1)

1971-72 (H).....	105	72
1971-72 (A).....	104	81
1972-73 (A).....	86	69
1973-74 (H).....	105	83
1973-74 (A).....	96	91
1976-77 (H).....	115	86
1977-78 (H).....	56	58

Individual Single Game Records

Points

- 46, Ron King vs. Georgia Southern, 1970-71
- 43, Hugh Durham vs. Stetson, 1956-57
- 43, Dave Fedor vs. Miami, 1959-60
- 42, Jim Oler vs. Morningside, 1952-53
- 38, Ham Wernke vs. Tampa, 1952-53
- 38, Dave Fedor vs. Tampa, 1961-62
- 38, David Thompson vs. South Alabama, 1976-77
- 37, Dave Fedor vs. Rollins, 1959-60
- 36, Hugh Durham vs. Georgia, 1958-59
- 35, Larry Warren vs. South Alabama, 1973-74
- 35, Larry Warren vs. South Florida, 1973-74
- 35, Ham Wernke vs. Montana State, 1954-55
- 35, Vernell Ellzy vs. Biscayne, 1970-71
- 35, Reggie Royals vs. UC-Irvine, 1970-71
- 35, Benny Clyde vs. Oklahoma City, 1972-73

Field Goals Made

- 21, Ron King vs. Georgia Southern, 1970-71
- 17, Ron King vs. Pan Am, 1970-71
- 17, Ron King vs. Miami, 1970-71
- 17, David Thompson vs. South Alabama, 1976-77
- 16, Larry Warren vs. Marshall, 1974-75
- 16, Dave Fedor vs. Miami, 1959-60
- 15, Dave Fedor vs. Rollins, 1959-60
- 15, Ray Swain vs. Tampa, 1961-62
- 15, Reggie Royals vs. UC-Irvine, 1970-71

Field Goals Attempted

- 37, Ham Wernke vs. Tampa, 1952-53
- 32, Rick Benson vs. Beloit, 1954-55
- 32, Ron King vs. Georgia Southern, 1970-71
- 31, Ian Morrison vs. Tampa, 1966-67
- 30, Burt Deckel vs. Furman, 1957-58
- 30, Don Bates vs. Stetson, 1958-59
- 29, Don Bates vs. Auburn, 1958-59
- 29, Ron King vs. Miami, 1970-71
- 28, Rick Benson vs. Georgia Teachers, 1954-55
- 28, Hugh Durham vs. Auburn, 1958-59
- 28, David Thompson vs. Jacksonville, 1976-77
- 28, David Thompson vs. UNC-Charlotte, 1976-77

Free Throws Made

- 22, Jim Oler vs. Rollins, 1954-55
- 22, Jim Oler vs. Morningside, 1955-56
- 16, Jim Oler vs. Montana State, 1954-55
- 15, Hugh Durham vs. Georgia, 1957-58
- 15, Hugh Durham vs. Stetson, 1958-57
- 14, Hugh Durham vs. Murray State, 1957-58
- 14, Hugh Durham vs. Kentucky, 1958-59
- 13, Jim Oler vs. Spring Hill, 1954-55

Free Throws Attempted

- 30, Jim Oler vs. Morningside, 1955-56
- 29, Jim Oler vs. Rollins, 1954-55
- 20, Hugh Durham vs. Georgia, 1957-58
- 19, Gary Schull vs. Memphis State, 1965-66
- 19, Harry Davis vs. Memphis State, 1977-78
- 18, Jim Oler vs. Stetson, 1954-55
- 17, Jim Oler vs. Montana State, 1954-55
- 17, Jim Oler vs. Miami, 1954-55

Rebounds

- 32, Rick Benson vs. Florida Southern, 1954-55
- 31, Dave Cowens vs. LSU, 1967-68
- 30, Dave Cowens vs. Citadel, 1967-68
- 28, Dave Fedor vs. Rollins, 1959-60
- 27, Gary Schull vs. Jacksonville, 1965-66
- 27, Dave Cowens vs. Stetson, 1968-69
- 26, Dave Cowens vs. Hawaii, 1968-69
- 26, Don Boltz vs. Stetson, 1958-59
- 25, Dave Cowens vs. Clemson, 1959-60
- 23, Lawrence McCray vs. Connecticut, 1972-73
- 23, Dave Cowens vs. Florida Southern, 1967-68
- 23, Don Boltz vs. Miami, 1958-59

Assists

- 16, Otto Petty vs. South Alabama, 1971-72
- 15, Otto Petty vs. Pan Am, 1970-71
- 15, Otto Petty vs. Samford, 1971-72
- 15, Carlton Byrd vs. Stetson, 1976-77
- 14, Wayne Smalls vs. Cal. State-Bakersfield, 1974-75
- 14, Otto Petty vs. Northwestern, 1972-73
- 14, Otto Petty vs. Biscayne, 1970-71
- 13, Otto Petty vs. Seton Hall, 1972-73
- 13, Otto Petty vs. Stetson, 1972-73
- 13, Carlton Byrd vs. South Florida, 1973-74
- 12, Otto Petty vs. Arizona, 1970-71
- 12, Tony Jackson vs. Navy, 1977-78



1,000 Point Club

The following Florida State players have scored at least 1,000 points in their varsity careers.

Name	Years	Games	FG	FT	Pts.	Avg.
Jim Oler	1952-56	91	529	762	1820	20.0
Harry Davis	1974-78	108	640	234	1514	14.0
Dave Cowens	1966-70	78	582	315	1479	19.0
Dave Fedor	1959-62	72	585	283	1453	20.2
Ham Wernke	1951-55	73	508	393	1409	19.3
Reggie Royals	1970-73	84	580	242	1402	16.7
Hugh Durham	1956-59	73	470	441	1281	18.9
Ron King	1970-73	64	542	168	1352	19.6
David Thompson	1975-78	83	571	147	1289	15.5
Jeff Hogan	1966-69	79	466	232	1164	14.8
Gary Schull	1963-66	76	403	316	1122	14.3
Lawrence McCray	1972-74	84	492	127	1111	13.2
Larry Warren	1973-76	78	473	162	1108	14.2
Wayne Smalls	1973-77	104	457	101	1015	9.8
Ray Swain	1959-62	72	403	194	1000	13.9

500 Point Club

The following Florida State players have scored at least 500 points during one season.

Name	Year	Points
Jim Oler	1955-56	743
Ron King	1970-71	589
Ron King	1971-72	573
Jim Oler	1954-55	549
Harry Davis	1977-78	546
Dave Fedor	1959-60	527
Ham Wernke	1954-55	512
Hugh Durham	1956-57	509
Dave Cowens	1967-68	508
Dave Cowens	1968-69	508
Hugh Durham	1958-59	504
David Thompsom	1976-77	500

500 Board Club

The following Florida State players have scored at least 500 career rebounds. Records are incomplete prior to 1957.

Name	Years	Rebounds
Dave Cowens	1967-70	1,340
Reggie Royals	1970-73	1,006
Dave Fedor	1959-62	969
Greg Grady	1972-76	793
Gary Schull	1963-66	769
Lawrence McCray	1971-74	759
Harry Davis	1974-78	734
David Thompson	1975-78	619
Dan Boltz	1957-59	567
Willie Williams	1968-70	534
Ray Swain	1959-62	534
Rowland Garrett	1969-72	525
Jerry Shirley	1962-65	522

Individual Season Records

Top Field Goal Scorers

Name	Year	FG-FGA	Pct.
Harry Davis	1975-76	143-224	.638
William Williams	1969-70	185-291	.636
Jan Gies	1968-69	80-129	.620
Kris Anderson	1976-77	65-105	.619
Greg Grady	1974-75	154-265	.581
Lawrence McCray	1972-73	170-293	.580
Harry Davis	1977-78	217-376	.577
Ray Swaln	1961-62	157-274	.573
Harry Davis	1976-77	176-310	.567
Harry Davis	1974-75	104-185	.562
Jan Gies	1967-68	128-231	.554
Dale Ricketts	1961-62	63-112	.553
Lawrence McCray	1971-72	166-300	.553

Top Free Throw Shooters

Name	Year	FT-FTA	Pct.
Ken Macklin	1969-70	51-57	.895
Jerry Shirley	1963-64	59-68	.868
Ron Harris	1969-70	46-54	.852
Ron Malmen	1964-65	58-69	.841
Randy Cable	1967-68	42-50	.840
Wayne Smalls	1976-77	26-31	.838
Jeff Hogan	1967-68	91-110	.827
Carlton Byrd	1976-77	96-116	.827
Jim Oler	1955-56	311-350	.818
Kris Anderson	1977-78	49-60	.816
Jerry Shirley	1964-65	57-70	.814
Eugene Harris	1973-74	43-59	.813
Pete Gonzalez	1963-64	59-73	.808

Top Rebounders

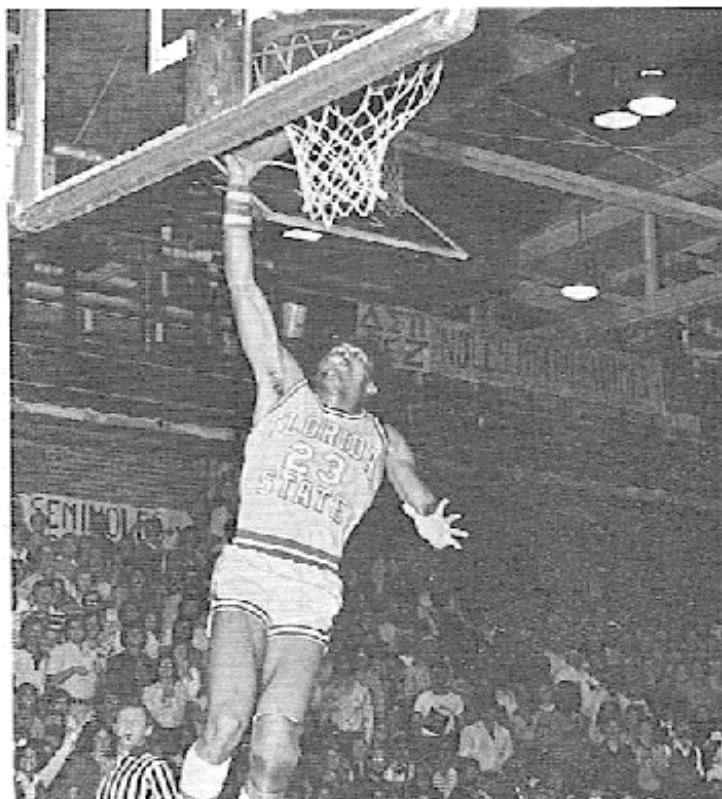
Name	Year	Rebounds	Avg.
Dave Cowens	1967-68	456	17.5
Rick Benson	1954-55	451	17.3
Dave Cowens	1969-70	447	17.2
Dave Cowens	1968-69	437	17.0
Dave Fedor	1959-60	400	16.0
Reggie Royals	1970-71	390	15.0
Reggie Royals	1971-72	351	11.0
Dave Fedor	1960-61	336	14.0
Gary Schull	1965-66	317	12.7
Don Boltz	1957-58	303	12.1

Assists

Name	Year	Assists
Otto Petty	1970-71	227
Otto Petty	1972-73	202
Otto Petty	1971-72	173
Tony Jackson	1977-78	166
Carlton Byrd	1976-77	159
Skip Young	1968-69	155
Skip Young	1969-70	127
Greg Samuel	1971-72	120
Wayne Smalls	1974-75	110
Otis Cole	1973-74	95
Carlton Byrd	1975-76	91
Carlton Byrd	1973-74	91

Scoring Average

Name	Year	Avg.
Jim Oler	1955-56	29.7
Ron King	1970-71	22.7
Hugh Durham	1958-59	21.9
Ham Wernke	1952-53	21.3
Jim Oler	1954-55	21.1
Dave Fedor	1959-60	21.1
Dave Fedor	1961-62	20.4
Dave Cowens	1967-68	20.3
Ham Wernke	1954-55	19.7
Hugh Durham	1956-57	19.6



Individual Career Records

Field Goals Made

Name	Years	Goals
Harry Davis	1974-78	640
Dave Fedor	1959-62	585
Dave Cowens	1967-70	582
Reggie Royals	1970-73	580
David Thompson	1975-78	571
Ron King	1970-73	542
Jim Oler	1952-56	529
Ham Wernke	1951-55	508
Lawrence McCray	1971-74	492
Larry Warren	1973-76	473
Hugh Durham	1956-59	470
Jeff Hogan	1966-69	466

Field Goals Attempted

Name	Years	Attempts
Ham Wernke	1951-55	1308
Jim Oler	1952-56	1303
Hugh Durham	1956-59	1230
David Thompson	1975-78	1213
Reggie Royals	1970-73	1181
Dave Fedor	1959-62	1174
Ron King	1970-73	1170
Dave Cowens	1967-70	1122
Rick Benson	1951-55	1104
Harry Davis	1974-78	1095
Larry Warren	1973-76	1069
Dave Artmeier	1952-56	1050

Field Goal Percentages

Name	Years	FGM-FGA	Pct.
Harry Davis	1974-78	640-1095	.585
Jan Gies	1967-70	245-428	.572
Greg Grady	1972-75	300-532	.564
Willie Williams	1968-70	268-482	.556
Lawrence McCray	1971-74	492-896	.549
Dave Cowens	1967-70	582-1122	.519
Ray Swain	1959-62	403-793	.508
Vernell Ellzy	1969-71	240-477	.503
Dave Fedor	1959-62	585-1174	.498
Eugene Harris	1973-78	395-795	.497

Free Throw Percentage

Name	Years	FTM-FTA	Pct.
Jerry Shirley	1962-65	161-198	.813
Jim Oler	1952-56	762-975	.782
Dave Fedor	1959-62	283-363	.780
Hugh Durham	1956-59	441-569	.777
Larry Warren	1973-76	162-212	.762
Randy Cable	1967-70	106-139	.763
Jim Liteky	1957-59	135-181	.751
Wayne Smalls	1973-77	101-135	.748
Jeff Hogan	1966-69	232-305	.748
Carlton Byrd	1973-77	186-249	.747
Jan Gies	1967-70	153-206	.743

Scoring Average

Name	Years	Games/Points	Avg.
Dave Fedor	1959-62	72-1453	20.2
Jim Oler	1952-56	91-1820	20.0
Ron King	1970-73	64-1252	19.6
Ham Wernke	1951-55	73-1409	19.3
Dave Cowens	1967-70	78-1479	19.0
Hugh Durham	1956-59	73-1381	18.9
Reggie Royals	1970-73	84-1402	16.7
Larry Warren	1972-75	51-840	16.5
David Thompson	1975-78	83-1289	15.5
Gary Schull	1963-66	76-1122	14.8
Jeff Hogan	1966-69	79-1164	14.7
Larry Warren	1973-76	78-1108	14.2

Games Played

Name	Years	Games
Harry Davis	1974-78	108
Eugene Harris	1973-78	107
Carlton Byrd	1973-77	105
Wayne Smalls	1973-77	104
Greg Grady	1972-76	100
Jim Oler	1952-56	91
Otis Cole	1971-74	84
Lawrence McCray	1971-74	84
Reggie Royals	1970-73	84
Ron Harris	1969-72	84
David Thompson	1975-78	83
Zach Perkins	1972-76	82
Otto Petty	1970-73	82
Jeff Hogan	1966-69	79
Larry Warren	1973-76	78
Dave Cowens	1967-70	78
Jan Gies	1967-70	78

Team Single Game Records

Most Points - Home

139, Baptist 72, 1976-77
134, Valdosta 65, 1971-72
125, South Dakota 65, 1970-71
122, Samford 79, 1970-71
122, Clemson 80, 1969-70
122, Miami 93, 1967-68

Most Points - Away

123, Tampa 92, 1961-62
121, Pepperdine 83, 1969-70
116, Tampa 95, 1960-61
112, Miami 96, 1969-70
111, Miami 84, 1968-69

Most Points - Neutral

130, LSU 100, 1967-68
117, Southern Miss 84, 1970-71
108, Furman 96, 1956-57
107, W. Kentucky 87, 1973-74
99, Texas A&M 79, 1973-74
97, Georgia 87, 1954-55

Most Points - Both Teams

230 - FS 130, LSU 100, 1968-69
222 - FS 108, Jacksonville 114, 1970-71
220 - FS 114, Miami 106, 1970-71
215 - FS 122, Miami 93, 1967-68
215 - FS 123, Tampa 92, 1961-62
211 - FS 116, Tampa 95, 1960-61
211 - FS 139, Baptist 72, 1976-77
210 - FS 110, E. Carolina 100, 1967-68

Winning Margin

69 - FS 134, Valdosta 65, 1971-72
67 - FS 139, Baptist 72, 1976-77
64 - FS 121, Tampa 57, 1965-66
60 - FS 125, South Dakota 65, 1970-71
58 - FS 108, Georgia Tech 50, 1971-72
57 - FS 110, Rollins 53, 1961-62
57 - FS 109, PB Atlantic 52, 1975-76

Fewest Points Allowed

21 vs. Mississippi College, 1948-49
24 vs. Mississippi College, 1949-50
27 vs. Troy State, 1949-50
34 vs. Samford, 1972-73
36 vs. Spring Hill, 1947-48
36 vs. Stetson, 1948-49
37 vs. Troy State, 1947-48
37 vs. Charleston, 1949-50

Field Goals Attempted

115 vs. LSU, 1965-66
111 vs. Valdosta, 1968-69
110 vs. Valdosta, 1971-72
109 vs. Valdosta, 1970-71

Field Goals Made

56 vs. Baptist, 1976-77
55 vs. Valdosta, 1971-72
54 vs. South Dakota, 1970-71
54 vs. Samford, 1970-71
53 vs. Valdosta, 1968-69
52 vs. Tampa, 1961-62
52 vs. LSU, 1965-66

Free Throws Attempted

53 vs. Stetson, 1957-58
48 vs. Georgia, 1957-58
46 vs. Memphis State, 1965-66
46 vs. Missouri Western, 1976-77
43 vs. Georgia, 1959-60
43 vs. North Carolina, 1971-72
42 vs. Mississippi Southern, 1959-60
42 vs. Tampa, 1959-60

Free Throws Made

38 vs. Stetson, 1956-57
36 vs. Georgia, 1957-58
33 vs. Memphis State, 1964-65
33 vs. Hofstra, 1967-68
32 vs. Georgia Tech, 1971-72
32 vs. Miami, 1953-54

Rebounds

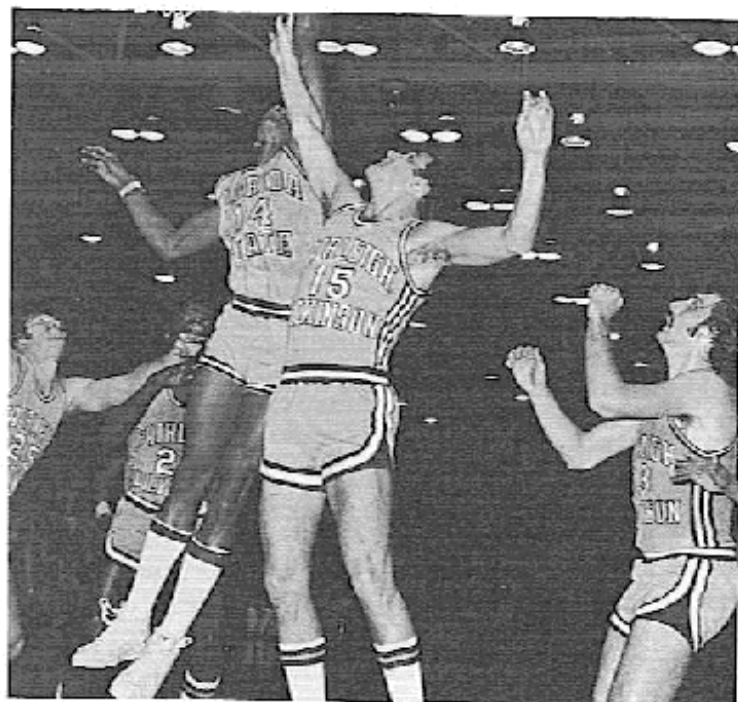
86 vs. LSU, 1967-68
82 vs. Valdosta, 1970-71
79 vs. Valdosta, 1968-69
76 vs. Georgetown, 1969-70
76 vs. Wisconsin-Milwaukee, 1970-71
75 vs. Clemson, 1969-70
75 vs. Miami, 1969-70
75 vs. South Dakota, 1970-71
75 vs. Valdosta, 1971-72

Most Fouls

35 vs. Florida, 1964-65
34 vs. Memphis State, 1959-1960
32 vs. Alabama, 1964-65
32 vs. Florida, 1967-68
32 vs. Missouri, 1976-77
31 vs. Miami, 1958-59

Fewest Fouls

7 vs. Connecticut, 1972-73
9 vs. Stetson, 1971-72
10 vs. Auburn, 1961-62
10 vs. Georgia, 1964-65
10 vs. Florida, 1964-65
10 vs. Dayton, 1968-69
10 vs. UC-Irvine, 1970-71
10 vs. Samford, 1972-73



Team Season Records

Field Goals Attempted

2372—1971-72 (32 games)
2164—1954-55 (28 games)
2082—1970-71 (26 games)
2055—1973-74 (26 games)
1965—1968-69 (26 games)
1960—1967-68 (27 games)
1957—1977-78 (29 games)
1950—1969-70 (26 games)

Field Goals Made

1110—1971-72 (32 games)
990—1970-71 (26 games)
988—1977-78 (29 games)
971—1973-74 (26 games)
956—1975-76 (27 games)
956—1967-68 (27 games)
945—1976-77 (27 games)
939—1969-70 (26 games)
938—1972-73 (26 games)
932—1974-75 (26 games)
925—1968-69 (26 games)

Free Throws Attempted

982—1954-55 (26 games)
800—1971-72 (32 games)
799—1956-57 (26 games)
722—1967-68 (27 games)
720—1965-66 (25 games)
713—1959-60 (25 games)

Free Throws Made

707—1954-55 (26 games)
561—1971-72 (32 games)
543—1956-57 (26 games)
526—1967-68 (27 games)
507—1969-70 (26 games)

Rebounds

1608—1971-72 (32 games)
1451—1969-70 (26 games)
1422—1954-55 (26 games)
1388—1967-68 (27 games)
1388—1970-71 (26 games)

Rebounds Per Game

55.8—1969-70 (26 games)
54.6—1954-55 (26 games)
53.4—1970-71 (26 games)
52.2—1959-60 (25 games)
52.0—1958-59 (23 games)

Fewest Points Allowed

1427—1949-50 (25 games)
1567—1961-62 (23 games)
1595—1951-52 (23 games)

1678—1952-53 (22 games)
1680—1962-63 (25 games)

Fewest Points Per Game Allowed

57.1—1949-50 (25 games)
63.6—1950-51 (27 games)
67.2—1962-63 (25 games)
67.8—1964-65 (26 games)
68.1—1961-62 (23 games)

Most Points Scored

2781—1971-72 (32 games)
2438—1967-68 (27 games)
2416—1977-78 (29 games)
2385—1969-70 (26 games)
2380—1970-71 (26 games)
2295—1954-55 (26 games)

Most Points Per Game

91.7—1969-70 (26 games)
91.5—1970-71 (26 games)
90.3—1967-68 (27 games)
88.3—1954-55 (26 games)
88.0—1973-74 (26 games)
86.9—1968-69 (27 games)
86.9—1971-72 (32 games)

Highest Point Margin

16.5—1969-70 (26 games)
15.5—1971-72 (32 games)
15.0—1975-76 (27 games)
11.9—1967-68 (27 games)
11.4—1974-75 (26 games)
11.3—1970-71 (26 games)
11.3—1977-78 (29 games)
10.1—1972-73 (26 games)

Highest Field Goal Percentage

.512—1961-62 (23 games)
.503—1977-78 (29 games)
.502—1974-75 (26 games)
.500—1976-77 (27 games)
.498—1972-73 (26 games)
.491—1975-76 (27 games)
.490—1967-68 (27 games)
.481—1969-70 (26 games)
.476—1970-71 (26 games)

Highest Free Throw Percentage

.729—1967-68 (27 games)
.727—1963-64 (28 games)
.719—1957-58 (25 games)
.718—1969-70 (26 games)
.716—1964-65 (26 games)

Miscellaneous Team Records

Single Game

- Largest Winning Margin at Home—67 vs. Baptist (139-72), 1976-77
Largest Winning Margin on the Road—41 vs. Jacksonville (106-65), 1967-68
Largest Winning Margin at a Neutral Site—36 vs. Stetson (90-54), 1971-72
Most Points Scored in First Half—70 vs. Pepperdine (121-83), 1969-70
Most Points Scored in Second Half—78 vs. LSU (130-100), 1967-68
Fewest Points Allowed at Home—21 vs. Mississippi College (53-21), 1948-49
Fewest Points Allowed on the Road—34 vs. Samford (47-34), 1972-73
Fewest Points Allowed at a Neutral Site—46 vs. Mercer (52-46), 1948-49
Most Points Allowed at Home—106 vs. Miami (114-106), 1970-71
Most Points Allowed on the Road—115 vs. North Carolina (115-80), 1965-66
Most Points Allowed at a Neutral Site—110 vs. Beloit (110-88), 1954-55
Worst Defeat at Home—21 vs. Florida (80-59), 1962-63
Worst Defeat on the Road—52 vs. West Virginia (103-51), 1957-58
Worst Defeat at a Neutral Site—31 vs. Millikin (91-60), 1950-51
Fewest Points Scored at Home—35 vs. Sewanee (43-35), 1948-49
Fewest Points Scored on the Road—30 vs. Florida (50-30), 1966-67
Fewest Points Scored at a Neutral Site—43 vs. Tennessee (65-43), 1964-65
Highest Field Goal Percentage—.724 vs. Georgia Southern (42 of 58), 1974-75
Highest Field Goal Percentage in a Half—.792 vs. Georgia Southern (19 of 24), 1974-75

Season

- Most Games Played—33, 1971-72
Fewest Games Played—18, 1957-58
Most Victories—27, 1971-72
Longest Winning Streak—11, 1969-70
Fewest Defeats—3, 1969-70
Highest Winning Percentage—.885 (23-3), 1969-70

Most 100 Point Games—9, 1967-68 and 1970-71
 Fewest Victories—5, 1947-48 and 1951-52
 Lowest Winning Percentage—.200 (5-20), 1951-52
 Longest Losing Streak—13, 1947-48
 Fewest Points—850 (18 games), 1947-48
 Fewest Points Per Game—47.2 (18 games), 1947-48
 Most Points Allowed—2,286 (33 games), 1971-72
 Most Points Allowed Per Game—81.9 (23 games),
 1959-60
 Highest Field Goal Percentage—.512 (709 of
 1,386), 1961-62, national leader
 Highest Free Throw Percentage—.729 (526 of 722),
 1967-68
 Lowest Field Goal Percentage—.203, 1951-52
 Lowest Free Throw Percentage—.586 (406 of 693),
 1950-51
 Fewest Personal Fouls—383 (23 games), 1961-62
 Most Personal Fouls—597 (25 games), 1949-50

Coaches' Records

Coach	Years	Wins	Losses	Pct.
Don Loucks	1947-48	5	13	.278
J.K. "Bud" Kennedy	1948-66	234	208	.529
Hugh Durham	1966-78	230	95	.708

Year-By-Year Record

Year	Coach	W	L	Pct.
1947-48	Don Loucks	5	13	.277
1948-49	J.K. "Bud" Kennedy	12	12	.500
1949-50	J.K. "Bud" Kennedy	15	10	.600
1950-51	J.K. "Bud" Kennedy	18	9	.667
1951-52	J.K. "Bud" Kennedy	5	20	.200
1952-53	J.K. "Bud" Kennedy	11	11	.500
1953-54	J.K. "Bud" Kennedy	13	7	.619
1954-55	J.K. "Bud" Kennedy	22	4	.846
1955-56	J.K. "Bud" Kennedy	16	9	.640
1956-57	J.K. "Bud" Kennedy	9	17	.346
1957-58	J.K. "Bud" Kennedy	9	16	.360
1958-59	J.K. "Bud" Kennedy	8	15	.347
1959-60	J.K. "Bud" Kennedy	10	15	.400
1960-61	J.K. "Bud" Kennedy	14	10	.583
1961-62	J.K. "Bud" Kennedy	15	8	.651
1962-63	J.K. "Bud" Kennedy	15	10	.600
1963-64	J.K. "Bud" Kennedy	11	14	.444
1964-65	J.K. "Bud" Kennedy	16	10	.620
1965-66	J.K. "Bud" Kennedy	15	11	.577

1966-67	Hugh Durham	11	15	.423
1967-68	Hugh Durham	19	8	.704
1968-69	Hugh Durham	18	8	.692
1969-70	Hugh Durham	23	3	.885
1970-71	Hugh Durham	17	9	.654
1971-72	Hugh Durham	27	6	.818
1972-73	Hugh Durham	18	8	.692
1973-74	Hugh Durham	18	8	.692
1974-75	Hugh Durham	18	8	.692
1975-76	Hugh Durham	22	5	.815
1976-77	Hugh Durham	16	11	.593
1977-78	Hugh Durham	23	6	.793
31 Years		469	316	.597

Tournament History

All Tournament

App.	Games	Won	Lost	Pct.	Championships	Second	Third
58	119	65	54	.546	12	17	12

In-Season Tournaments

41	89	48	41	.539	8	12	11
----	----	----	----	------	---	----	----

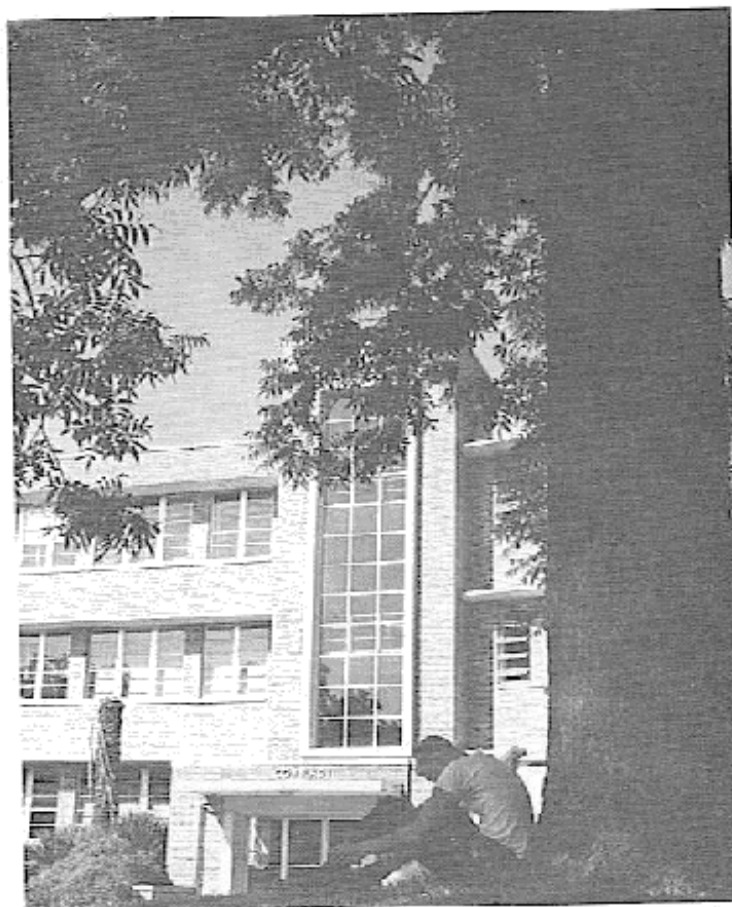
Post Season Tournaments

15	30	17	13	.567	3	5	1
----	----	----	----	------	---	---	---

Championships

1948-49	Dixie Conference (1-2, Fourth)
1949-50	Dixie Conference (1-1, Third)
1950-51	Dixie Conference (1-1, Second)
1950-51	NAIB District 25 (2-0, Champ)
1950-51	NAIB Nationals (2-1, Quarterfinals)
1951-52	Gator Bowl (0-3, round robin)
1951-52	NAIB District 25 (1-1, Second)
1952-53	NAIB District 25 (1-1, Second)
1954-55	Gator Bowl (1-1, Third)
1954-55	NAIB District 25 (2-0, Champ)
1954-55	NAIB Nationals (1-1, Second Round)
1955-56	Carousel Tournament (1-2, Sixth)
1955-56	Orange Bowl (1-2, Seventh)
1956-57	Senior Bowl (1-1, Third)
1957-58	Senior Bowl (1-1, Third)
1958-59	Citadel Invitational (0-2, Fourth)
1959-60	Gator Bowl (1-1, Second)
1960-61	Gator Bowl (0-1)
1962-63	Savannah Invitational (3-0, Champ)
1963-64	Gator Bowl (1-1, Third)
1964-65	Vanderbilt Invitational (1-1, Third)
1964-65	All College Tournament (1-2, Seventh)
1965-66	Tampa Invitational (1-1, Second)
1966-67	VPI Tournament (0-2)
1966-67	Tampa Invitational (1-1, Second)
1967-68	Milwaukee Classic (1-1, Third)
1967-68	Evansville Tournament (1-1, Second)
1967-68	NCAA Mideast (0-1)

1968-69 Civitan Classic (2-0, Champ)
 1969-70 Gator Bowl (2-0, Champ)
 1970-71 Civitan Classic (1-1, Second)
 1970-71 Sun Bowl (0-2)
 1971-72 Civitan Classic (2-0, Champ)
 1971-72 Far West Classic (3-0, Champ)
 1971-72 Senior Bowl (2-0, Champ)
 1971-72 NCAA Mideast (3-0, Champ)
 1971-72 NCAA Championship (1-1, Second)
 1972-73 Marshall Memorial Classic (1-1, Third)
 1972-73 Dayton Invitational (1-1, Third)
 1972-73 All-College (2-1, Third)
 1973-74 Steel Bowl (1-1, Second)
 1973-74 Mercer Bear Classic (1-1, Third)
 1973-74 Bluebonnet Classic (1-1, Second)
 1973-74 Big Sun (2-0, First)
 1974-75 Louisville Holiday (1-1, Second)
 1975-76 Big Sun (1-1, Second)
 1975-76 Far West Classic (1-2, Seventh)
 1976-77 IPTAY Tournament (1-1, Second)
 1976-77 Cable Car Classic (1-1, Second)
 1976-77 Vermont Classic (1-1, Third)
 1976-77 Metro Tournament (0-1)
 1977-78 Big Sun (2-0, First)
 1977-78 Birmingham Classic (2-0, First)
 1977-78 Pillsbury Classic (1-1, Second)
 1977-78 Metro Tournament (1-1, Second)
 1977-78 NCAA Mideast (0-1)



All-Time Florida State Scores

FSU	Opp.	FSU	Opp.
1947-48—Won 5, Lost 13 (.277)			
39	Spring Hill (H)	65	Stelton (N)
57	Troy State (H)	69	Georgia Teachers (N)
45	Wofford (A)	65	So. Dakota State (N)
56	Stetson (A)	61	Pepperdine (N)
58	Georgia Teachers (H)	60	Milken (N)
46	Georgia (A)		
48	Mercer (H)		
54	Spring Hill (A)		
48	Troy State (A)		
43	Mercer (A)		
45	Enslin (A)		
38	Wofford (A)		
42	Georgia (H)		
41	Florida Southern (A)		
17	Georgia Teachers (A)		
55	Florida Southern (H)		
41	Stetson (H)		
49	Enslin (H)		
1948-49—Won 12, Lost 12 (.500)			
53	Mississippi College (H)		
53	Florida Southern (H)		
64	Troy State (A)		
50	Lambuth (A)		
52	Union (A)		
47	Southwestern (A)		
49	Stelton (H)		
40	Stetson (A)		
50	Tampa (A)		
56	Mercer (H)		
63	Troy State (H)		
52	Oglethorpe (A)		
59	Mercer (A)		
60	Tampa (H)		
46	Mississippi College (A)		
49	Milken (A)		
47	Oglethorpe (H)		
35	Swetson (H)		
44	Birmingham S. (H)		
52	Mercer (N)		
47	Tampa (N)		
49	Lambuth (N)		
1949-50—Won 15, Lost 10 (.600)			
43	Mississippi College (H)		
51	Mississippi College (H)		
61	Troy State (H)		
72	Charleston (H)		
50	Central (Mo.) (A)		
57	Drury (A)		
52	S. W. Mo. State (A)		
60	Tampa (A)		
65	Florida Southern (A)		
48	Florida Southern (A)		
63	Mixer (H)		
59	Wayard (A)		
4	Birmingham So. (A)		
65	Miscner (H)		
61	Stelton (H)		
61	Mercer (A)		
50	Howard (H)		
57	David Lipscomb (H)		
58	Tampa (H)		
79	Troy State (A)		
65	Sewanee (A)		
74	Sewanee (A)		
58	Florida Southern (N)		
74	Mississippi College (N)		
1950-51—Won 18, Lost 9 (.667)			
74	Charleston (A)		
55	Mercer (A)		
76	Conn. St. Teachers (H)		
60	Howard (H)		
66	Florida Southern (A)		
61	Miami (A)		
73	David Lipscomb (A)		
63	Mississippi (H)		
66	Stelton (H)		
44	Florida Southern (H)		
60	Tampa (H)		
58	Howard (A)		
69	Tampa (A)		
57	Stetson (A)		
60	Rollins (A)		
65	Loyola of N.O. (H)		
75	Mississippi (A)		
77	Mississippi College (A)		
67	Morris (H)		
62	Rollins (H)		
64	Howard (N)		
65	Mercer (A)		
1951-52—Won 5, Lost 20 (.200)			
46	Parris Is. Marines (A)		
58	Culver Stockton (H)		
47	Mississippi State (A)		
43	Mississippi So. (A)		
78	Mississippi So. (H)		
51	Spring Hill (A)		
48	Sewanee (N)		
50	Georgia (N)		
56	Glenham (N)		
51	Florida (H)		
52	Loyola of N.O. (A)		
56	Miami (A)		
72	Tampa (A)		
51	Florida Southern (A)		
46	Georgia Teachers (H)		
72	Florida Southern (H)		
62	Parris Is. Marines (H)		
74	Rollins (H)		
48	Stelton (A)		
55	Rollins (A)		
63	Miami (H)		
70	Tampa (H)		
64	Stelton (H)		
73	Miami (N)		
57	Tampa (N)		
1952-53—Won 11, Lost 11 (.500)			
62	Mercer (A)		
68	Georgia Teachers (A)		
90	Rollins (H)		
77	Mercer (H)		
59	Central (Mo.) (H)		
58	Sewanee (A)		
82	Mississippi State (H)		
66	Loyola of N.O. (H)		
65	Miami (A)		
73	Tampa (A)		
71	Florida Southern (A)		
79	Rollins (A)		
73	Memphis State (A)		
77	Arkansas State (A)		
76	Stetson (H)		
71	Florida Southern (A)		
63	Tampa (H)		
77	Loyola of N.O. (A)		
61	Miami (H)		
63	Stetson (A)		
87	Mercer (N)		
61	Stetson (A)		
1953-54—Won 13, Lost 7 (.619)			
75	Mississippi State (A)		
72	Mercer (H)		
66	Georgia Teachers (H)		
72	Jacksonville St. (Fla.) (H)		
74	Stetson (H)		
60	Spring Hill (H)		
74	Tampa (H)		
76	Loyola of N.O. (H)		
61	Miami (A)		
82	Rollins (A)		
73	Tampa (A)		
98	Florida Southern (A)		
60	Stetson (A)		
85	Rollins (H)		
99	Florida Southern (H)		
63	Mercer (A)		
78	Miami (H)		
72	Loyola of N.O. (A)		
89	Georgia Teachers (A)		
78	Arkansas State (H)		

1954-55—Won 22, Lost 4 (.845)

103 Jacksonville St. (A) (H)	76
75 Georgia Teachers (H)	67
90 Tampa (H)	62
91 Stetson (H)	94
71 Miami (H)	66
79 Florida (N)	82
97 Georgia (N)	87
75 Duke (A)	77
73 Florida Southern (A)	69
96 Tampa (A)	81
90 Georgia (H)	81
81 Spring Hill (A)	72
91 Mississippi State (A)	76
84 Stetson (A)	73
86 Rollins (H)	74
81 Florida Southern (H)	83
88 Georgia (A)	79
110 Rollins (A)	82
95 Loyola of N.O. (A)	101
102 Mississippi State (H)	85
87 Loyola of N.O. (H)	84
86 Miami (A)	80
86 Stetson (H)	77
91 Georgia Teachers (H)	83
93 Marquette State (N)	84
88 Belmont (N)	110

1955-56—Won 16, Lost 9 (.640)

83 North Carolina (A)	88
51 E. Tennessee St. (A)	80
101 Rollins (H)	67
91 Stetson (H)	70
89 Tampa (A)	67
104 Morningside (H)	83
76 Clemson (N)	94
80 Boston University (N)	52
71 Mississippi State (N)	79
09 West Virginia (N)	78
59 Santa Clara (H)	61
85 New York Univ. (N)	83
78 Miami (H)	76
71 Rollins (A)	70
79 Georgia (A)	76
81 Georgia Teachers (A)	90
85 Loyola of N.O. (H)	75
90 Troy State (H)	69
88 Tampa (H)	73
92 Florida Southern (H)	73
85 Florida Southern (N)	81
89 Stetson (A)	83
85 Miami (A)	91
72 Loyola of N.O. (A)	75
80 Georgia (H)	73

1956-57—Won 9, Lost 17 (.345)

55 Duquesne (A)	70
64 Staubenville (A)	79
54 West Virginia (A)	88
66 Bradley (A)	90
85 Florida (A)	67
74 Texas A&M (H)	83
59 E. Tennessee St. (H)	65
88 Georgia (H)	72
75 Morehead State (N)	67
108 Furman (H)	96
59 N. Carolina State (A)	64
77 Miami (H)	85
70 Stetson (A)	97
101 Stetson (H)	86
86 Georgia (A)	63
82 Tampa (A)	67
97 Rollins (A)	94
83 Florida Southern (A)	78
87 Florida Southern (H)	71
96 Rollins (H)	79
81 Mississippi So. (H)	77
79 Loyola of N.O. (H)	77
82 Miami (A)	98
88 Tampa (H)	57
74 Centenary (A)	82
56 Loyola of N.O. (A)	82

1957-58—Won 9, Lost 16 (.360)

74 Tennessee Tech (H)	71
84 Murray State (H)	60
57 Tennessee (A)	71
70 Florida (A)	71
89 Furman (A)	95
76 Loyola of N.O. (A)	82
65 Louisiana State (A)	67
57 Citadel (N)	59
92 Georgia (N)	80
67 Loyola of N.O. (H)	79
72 Tampa (H)	53
58 Memphis State (A)	59
77 Stetson (H)	60
71 Miami (H)	70
51 West Virginia (A)	103
68 Marshall (A)	109

66 Ohio University (A)	86
80 Xavier of Ohio (A)	76
62 Army (H)	71
57 Oklahoma City (H)	52
88 Rollins (H)	61
51 Memphis State (H)	68
66 Miami (A)	86
56 Tampa (A)	79
85 Georgia (H)	77

1958-59—Won 8, Lost 15 (.347)

68 Kentucky (A)	91
73 Furman (H)	72
100 Spring Hill (H)	70
64 Wake Forest (A)	73
82 Florida (H)	60
74 Auburn (A)	85
79 Miami (N)	85
72 Georgia (N)	83
82 Louisiana State (H)	67
82 Auburn (H)	69
65 Mississippi So. (H)	67
72 Memphis State (H)	75
93 Miami (H)	69
91 Georgia (A)	94
75 Oklahoma City (A)	103
83 Centenary (A)	87
61 Loyola of N.O. (H)	80
71 Murray State (A)	96
80 Memphis State (A)	93
84 Oklahoma City (H)	88
91 Stetson (A)	98
94 Rollins (A)	93
85 Miami (A)	92

1959-60—Won 10, Lost 15 (.400)

78 Louisiana State (A)	89
64 Loyola of N.O. (A)	71
71 Florida (A)	81
58 Auburn (A)	62
86 Alabama (A)	74
61 Clemson (A)	68
63 Auburn (H)	76
86 Jacksonville Univ. (A)	69
66 Georgia (N)	69
93 South Carolina (H)	75
74 Citadel (H)	76
81 Centenary (H)	71
78 Mississippi So. (A)	87
71 Memphis State (A)	88
72 Tampa (H)	67
91 Miami (H)	93
78 Morehead State (H)	75
68 Tampa (A)	83
67 Memphis State (H)	83
101 Rollins (H)	58
115 Furman (A)	98
90 Citadel (A)	100
89 Loyola of N.O. (H)	50
89 Miami (A)	107
95 Georgia (H)	82

1960-61—Won 14, Lost 10 (.583)

88 Tampa (H)	60
63 Kentucky (A)	58
55 Vanderbilt (A)	75
57 Auburn (A)	74
74 Clemson (H)	47
67 Florida (H)	74
72 South Carolina (A)	82
74 Clemson (A)	57
56 Georgia (N)	62
Tennessee (A)	
73 Loyola of N.O. (H)	55
89 Miami (H)	78
67 Auburn (N)	74
78 Rollins (A)	70
68 Alabama (H)	57
83 Citadel (H)	77
86 Valparaiso State (H)	65
77 Georgia (A)	68
99 Furman (H)	57
74 Florida (A)	75
95 Tampa (A)	116
75 Miami (A)	75
72 Loyola of N.O. (A)	68

1961-62—Won 15, Lost 9 (.651)

57	Ohio State (A)	72
63	Wisconsin (A)	64
76	Rice (H)	66
86	Florida (A)	71
56	Auburn (A)	56
77	Clemson (H)	62
69	Tennessee (A)	67
57	Auburn (H)	62
99	Oklahoma City (H)	74
84	Furman (A)	67
80	Clemson (A)	75
110	Pullias (H)	53
65	Miami (H)	60
57	Alabama (A)	72
81	Oklahoma City (A)	79
76	Kinston (A)	64
73	Valdosta State (H)	42
91	Tampa (H)	71
71	Georgia (A)	62
70	Florida (H)	56
83	Miami (A)	80
123	Tampa (A)	92
101	Georgia (H)	69

1962-63—Won 15, Lost 10 (.600)

92	Tampa (H)	68
65	Valdosta State (H)	42
59	Florida (H)	68
47	Auburn (A)	65
72	Alabama (H)	63
54	Kentucky (A)	63
70	Auburn (H)	77
56	Richmond (H)	62
77	Georgia (H)	69
49	Alabama (H)	78
79	Georgia Southern (H)	60
65	Tennessee (A)	65
72	Chattanooga (A)	55
77	Miami (H)	74
98	Georgia (H)	51
76	Georgia (A)	90
55	Georgia Tech (A)	70
86	Florida (A)	44
78	Russell (H)	69
60	Alabama (A)	61
61	Valdosta State (A)	36
73	Stetson (H)	57
82	Georgetown (H)	66
73	Phillips 66 Oilers (H)	87
70	Miami (A)	99
80	Tampa (A)	58

1963-64—Won 11, Lost 14 (.444)

55	Florida (A)	78
69	Auburn (H)	67
53	Alabama (A)	69
61	Rice (A)	102
60	Texas Christian (A)	66
107	Tampa (H)	61
91	Tulsa (H)	76
53	Air Force (H)	78
65	Manhattan (H)	81
65	Richmond (A)	69
72	Virginia Military (A)	83
80	Miami (H)	78
91	Memphis State (H)	98
64	Georgia (H)	63
90	Florida (H)	52
50	Auburn (A)	63
95	Alabama (H)	77
57	Furman (H)	48
72	Centenary (A)	79
72	Memphis State (A)	81
73	Georgia Tech (A)	77
101	Jacksonville (H)	77
80	Stetson (A)	60
80	Miami (A)	87
78	Georgia (A)	85

1964-65—Won 18, Lost 10 (.620)

57	Valdosta State (H)	57
76	Virginia Military (H)	72
68	Auburn (A)	92
73	Alabama (A)	76
51	Florida (H)	58
58	Oklahoma State (H)	68
62	Baylor (H)	61
43	Tennessee (H)	65
74	Tulsa (A)	72
44	DePaul (H)	52
77	Orrington (H)	65
81	Rice (H)	56
64	Georgia (H) (A)	55
67	Miami (H)	66
74	Memphis State (H)	61
72	Georgia Tech (H)	65
58	Auburn (H)	55

66	Alabama (H)	75
87	Duquesne (H)	68
81	Memphis State (A)	70
97	Jacksonville (H)	74
76	Georgia Tech (A)	77
71	Tampa (A)	61
65	Florida (A)	77
75	Miami (A)	82
63	Georgia (H)	83

1965-66—Won 13, Lost 11 (.577)

73	Lamar Tech (H)	68
69	Valdosta (H)	68
121	Tulsa (H)	57
62	Florida (A)	76
80	North Carolina (A)	115
62	Calif.-Santa Barbara (H)	61
65	V.M.I. (A)	64
58	Auburn (A)	59
64	Auburn (A)	88
57	Georgia (A)	63
70	Miami (H)	62
73	Lynch of N.O. (H)	93
67	Memphis (H)	63
65	Florida (H)	74
88	Jacksonville (A)	98
96	Panama Natwols (H)	73
71	Georgia Tech (H)	69
68	Memphis (A)	61
67	Lynch of N.O. (A)	63
78	Jacksonville (A)	49
63	Georgia Tech (A)	95
77	Samford (H)	66
97	Florida Southern (H)	74
69	Tulsa (A)	70
90	Miami (A)	112
67	Georgia (H)	69

1966-67—Won 11, Lost 15 (.423)

62	Valdosta State (H)	58
76	Rice (H)	72
30	Florida (H)	58
46	Kansas (A)	62
50	Kansas State (A)	61
76	Richmond (A)	88
59	Eastern Kentucky (A)	61
83	Citadel (A)	67
55	North Carolina (A)	81
79	Alabama (A)	88
59	Auburn (A)	67
61	Miami (H)	68
85	Tulsa (A)	87
42	Memphis State (A)	46
87	Jacksonville (H)	70
71	Marshall (H)	77
68	Georgia Tech (H)	75
109	Tampa (H)	72
55	Memphis State (H)	51
68	Jacksonville (A)	67
100	Tulane (H)	98
81	Florida Southern (A)	76
75	Florida (H)	98
84	Georgia Tech (A)	102
87	Tampa (A)	84
98	Miami (A)	118

1967-68—Won 19, Lost 8 (.701)

98	Rice Presbyterian (A)	66
69	Ohio State (A)	76
87	Florida (H)	95
101	Samford (H)	89
58	Marquette (A)	78
138	Louisiana State (H)	108
114	Richmond (H)	91
87	Rutgers (H)	77
94	Geo. Washington (A)	69
67	Evansville (A)	76
96	Citadel (A)	75
111	Stetson (H)	81
122	Miami (H)	93
92	Jacksonville (H)	79
73	Georgia Tech (A)	57
109	Notre Dame (H)	71
81	Valdosta State (H)	71
80	North Carolina (A)	66
110	East Carolina (H)	103
83	Citadel (H)	58
104	Florida Southern (H)	87
106	Jacksonville (A)	68
64	Florida (A)	69
77	Georgia Tech (H)	67
72	Stetson (A)	68
84	Miami (A)	96
69	East Tenn. State (A)*	79

* NCAA Mid East Regionals

1968-69—Won 18, Lost 8 (.692)

120	Valdosta State (H)	75
111	Miami (A)	84
93	Jacksonville (A)	88
74	Virginia Tech (A)	77
78	Louisville (A)	79
70	So. California (H)	88
86	Ohio State (H)	93
104	New Hampshire (H)	92
88	Jacksonville (A)	76
97	Tulane (A)	94
96	Miami (H)	81
67	Kent State (H)	76
99	Tulane (H)	90
80	Rice (A)	83
92	Hawaii (H)	60
87	South Carolina (H)	78
93	Jacksonville (H)	89
84	Valdosta State (A)	83
79	Clemson (A)	97
82	North Carolina (A)	100
95	Stetson (H)	67
79	Dayton (H)	71
76	Georgia Tech (H)	81
98	Georgia Tech (A)	80
84	Florida Southern (A)	70
89	Miami (A)	90

1969-70—Won 23, Lost 3 (.885)

69	Oregon State (H)	88
100	Oregon (H)	84
107	Rutgers (A)	86
70	North Carolina (A)	86
98	Georgetown (H)	85
79	Louisville (H)	69
82	Texas (H)	61
86	Army (N)	51
88	Honda (N)	63
121	Pepperdine (A)	83
88	So. California (A)	71
87	Arizona (N)	78
104	Miami (H)	63
82	Tulane (A)	77
122	Clemson (H)	80
89	Georgia Tech (A)	83
89	Jacksonville (H)	83
83	Virginia Tech (H)	73
80	Kent State (A)	79
82	Dayton (A)	76
98	Florida Southern (H)	74
112	Tulane (H)	77
81	Jacksonville (A)	85
97	Georgia Tech (H)	80
94	Stetson (A)	64
112	Miami (A)	90

1970-71—Won 17, Lost 9 (.654)

80	Texas (A)	78
106	Biscayne (H)	70
125	South Dakota (H)	65
117	Southern Miss. (H)	81
108	Jacksonville (A)	114
111	Valdosta State (H)	83
85	So. California (N)	94
64	Miami (Dayton) (N)	67
95	Pan American (A)	90
85	Arkans. (H)	85
101	Pepperdine (H)	82
114	Miami (H)	106
96	Marquette (H)	68
69	Tulane (A)	88
122	Samford (H)	79
70	Stetson (H)	71
67	Georgia Tech (H)	85
65	Jacksonville (A)	83
82	California-Irvine (H)	69
98	Wisconsin-Milw. (H)	61
81	Georgia Tech (A)	76
113	Georgia Southern (A)	81
79	Jacksonville (H)	90
61	North Carolina (A)	70
74	Honda Southern (A)	66
94	Miami (A)	100

1971-72—Won 22, Lost 6 (.818)

112	Ogden (H)	69
98	Eastern Kentucky (H)	83
90	Stetson (N)	54
90	Jacksonville (A)	80
134	Valdosta State (H)	85
(10)	Hawaii (A) (Forfeit)	(30)
78	Hawaii (A)	81
81	Washington (N)	77
78	Oregon State (N)	77
83	Washington State (N)	61
88	Denver (N)	70

63	St. Norris (N)	67
106	E. Tennessee State (H)	63
96	Mercer (H)	78
86	Houston (H)	79
105	South Alabama (H)	72
71	Georgia Tech (A)	69
72	Jacksonville (H)	84
64	Florida Southern (H)	83
109	Pan American (H)	83
86	Houston (A)	94
101	South Alabama (A)	81
94	Tulane (H)	84
106	Georgia Tech (H)	50
70	Jacksonville (A)	61
49	Stetson (A)	47
91	Biscayne (A)	60
64	Cincinnati (A)	88
	(NCAA Tournament)	
83	Eastern Kentucky (N)	81
70	Minnesota (N)	56
73	Kentucky (N)	54
79	North Carolina (N)	75
76	UCLA (A)	81

1972-73—Won 18, Lost 8 (.692)

102	Georgia Southern (H)	97
87	Eastern Kentucky (N)	70
97	Rutgers (H)	62
59	Princeton (N)	61
85	Baylor (N)	67
68	Alabama (N)	74
91	Northwestern (N)	73
70	Penn. State (N)	60
77	Ungahm Young (N)	80
94	Rutgers City (A)	80
91	Connecticut (H)	59
101	Georgetown (H)	70
78	Cincinnati (H)	74
84	Stetson (H)	67
66	Jacksonville (A)	70
47	Samford (A)	34
78	Southern Ill. (H)	73
95	South Florida (H)	53
82	Virginia Tech (A)	91
60	Seton Hall (N)	61
62	Cincinnati (A)	89
83	Jacksonville (H)	74
79	North Carolina (N)	91
86	South Alabama (A)	69
59	Marshall (H)	71
112	Mercer (H)	94

1973-74—Won 18, Lost 8 (.692)

92	Hofstra (H)	63
109	Biscayne (H)	71
65	Clemson (N)	58
60	Pittsburgh (N)	82
93	Eastern Kentucky (A)	60
78	Louisville (A)	90
88	Memphis State (H)	80
107	W. Kentucky (N)	87
66	Wake Forest (N)	48
92	Indiana State (N)	93
81	Wisc.-Milw. (N)	82
99	Texas A&M (N)	79
74	Houston (A)	79
85	Virginia Tech (N)	80
92	Georgia Southern (N)	80
91	South Florida (A) (OT)	95
73	South Illinois (A)	77
78	Jacksonville (H)	74
90	New Mexico (H)	71
91	Centers (H)	74
110	South Florida (H)	84
89	Jacksonville (A)	113
85	North Carolina (N)	104
105	South Alabama (H)	61
85	Fairleigh Dickinson (H)	58
96	South Alabama (A)	91

1974-75—Won 18, Lost 8 (.692)

81	Valdosta State (H)	74
72	Illinois State (H)	70
90	Marshall (H)	63
69	Memphis State (A)	70
75	Louisville (H)	84
96	Cal. State-Bakersfield (H)	66
67	Ohio II (H)	60
69	Purdue (N)	69
61	Louisville (A)	74
107	Eastern Kentucky (H)	75
104	Wisconsin Milw. (H)	82
88	Biscayne (A)	59
71	South Florida (A)	77
107	Huldra (H)	71
95	Biscayne (A)	85
75	Carroll (A)	81
78	New Mexico (A) (OT)	84
111	UI-Chattanooga (H)	70
63	Jacksonville (H)	55
101	Georgia Southern (H)	77
81	Georgia State (H)	77
71	Jacksonville (A)	76
101	Georgia Southern (H)	71
91	Mercer (H)	68
77	South Florida (H)	64
54	Stetson (A)	63

1975-76—Won 21, Lost 6 (.776)

90	Rollins (H)	47
65	Eastern Kentucky (A)	59
59	Indiana (A)	63
81	Stetson (H)	71
109	Palm Beach Atlantic (H)	52
78	South Florida (H)	71
72	Alabama (N)	76
54	Washington (N)	69
75	Oregon State (N)	78
84	Colorado State (N)	51
88	Western Kentucky (H)	80
77	Jacksonville (A)	57
107	Baptist College (H)	54
100	Memphis State (H)	79
76	South Florida (A)	72

110	Southwestern La. (H)	70
66	Georgia State (A)	58
80	Illinois State (A)	58
80	Illinois State (A) (OT)	62
88	South Florida (H)	62
109	Illinois State (H)	81
65	Madison (A)	65
74	Jacksonville (H)	66
52	Georgia State (H)	70
106	Valdosta State (H)	61
90	Mercer (H)	78
63	Southwestern La. (A)	65
81	Dayton (A)	55

1976-77 (16-11)

70	Tolson (N)	60
92	Clemson (A)	108
109	Missouri Western (H)	80
97	Austin Peay (H)	86
63	Missouri (A)	69
94	Santa Clara (H)	80
87	San Francisco (A)	93
71	Army (N)	72
76	Vermont (A)	67
75	Louisville (A)	78
93	Western Kentucky (A)	73
83	Troy State (H)	69
69	Madison (H)	66
75	Memphis State (A)	81
97	South Florida (A)	84
115	South Alabama (H)	86
70	Jacksonville (A)	77
66	N. Carolina Charlotte (H)	76
66	Mercer (A)	65
139	Baptist (H)	72
57	Kentucky (A)	97
87	Stetson (A)	60
76	Dayton (A)	71
76	Jacksonville (H)	71
103	South Florida (H)	72
91	Dral Roberts (H)	87
72	Georgia Tech (N)*	67

*Metro Tournament



Florida State University

Florida State University—the home of more than 20,000 Seminoles—has a campus that starts at the top of one of Tallahassee's famed seven hills, and rolls gently downward and westward across 340-odd acres of pines, palms and pecan trees.

Founded in 1857 as the Seminary West of the Suwannee, its heritage is evidenced in the wide range of architectural struggles to preserve history and keep up with modern times and air conditioning. Yet it still ranks as one of the South's last, few bastions of campus greenery—the kind that combines the blossoms of camellias, azaleas and dogwoods with moss-hung oaks that are, in some cases, as old as the University itself. If not older.

From the Gothic towers of Wescott at the eastern entrance to the campus, to the modern glass and steel structures of its Science Complex to the west, Florida State University has moved forward in time and growth more rapidly than many of its newer counterparts in the State University system. Its enrollment has quadrupled since it became coeducational in 1947, following nearly half a century as the Florida State College for Women.

Today, its 14 schools and colleges are spread through \$150 million worth of buildings, its annual budget exceeds \$100 million and it attracts more than \$18 million a year in research contracts and grants. Students can pick and choose from more than 100 career options offered in arts and sciences, business, communication, criminology, dance, education, home economics, law, library science, music, nursing, social sciences, social work, theater and visual arts programs.

The University is a member of the Academic Common Market and has overseas study centers in Florence, London and the Panama Canal Zone. Summer programs of study are offered in law at Oxford, in hotel and restaurant administration in Switzerland, and in comparative studies of economic and social systems in Yugoslavia.

A city within a city, Florida State has 1,200 faculty members, more than 6,000 additional employees and a construction program that will exceed \$50 million between now and 1981. The construction of a new civic center and a center for continuing education—both near the State Capitol—are destined for completion by the fall of 1980.

Florida State 1978-79 Schedule

NOVEMBER

Thu. 16	Australia	Tallahassee, FL	8:05 EST
Mon. 27	Eckerd	Tallahassee, FL	8:05 EST
Thu. 30	Western Kentucky	Tallahassee, FL	8:05 EST

DECEMBER

Mon. 4	Auburn	Auburn, Ala.	7:30 CST
Sat. 9	Florida	Jacksonville, FL	8:00 EST
Mon. 18	Florida Southern	Tallahassee, FL	8:05 EST
Fri. 22	Dayton Invitational (Dayton, Penn State, Tulane)	Dayton, OH	7 or 9 EST
Sat. 23	Dayton Invitational		7 or 9 EST
Sat. 30	Alabama- Birmingham	Birmingham, Ala.	8:00 CST

JANUARY

Wed. 3	Jacksonville	Jacksonville, FL	7:35 EST
Fri. 5	Old Dominion Classic (Old Dominion vs FSU)	Norfolk, VA	7:00 EST
Sat. 6	Old Dominion Classic (Ga. Southern, Bucknell)	Norfolk, VA	7 or 9 EST
Wed. 10	Tulane* (Radio)	New Orleans, LA (Superdome)	7:00 CST
Fri. 12	St. Louis*	St. Louis, MO	8:05 CST
Thu. 18	Memphis State*	Memphis, TN	8:05 CST
Sat. 20	Louisville* (TV)	Tallahassee, FL	1:30 EST
Tue. 23	Georgia Tech	Tallahassee, FL	8:05 EST
Thu. 25	George Washington	Washington, D.C.	8:00 EST
Sat. 27	Cincinnati*	Cincinnati, OH	8:05 EST
Mon. 29	Tulane* (Radio)	Tallahassee, FL	8:05 EST

FEBRUARY

Thu. 1	Louisville*	Louisville, KY	8:05 EST
Sat. 3	Jacksonville	Tallahassee, FL	8:05 EST
Tue. 6	South Alabama	Mobile, Ala.	7:35 CST
Sat. 10	Georgia Tech	Atlanta, GA	8:00 EST
Mon. 12	St. Louis* (Radio)	Tallahassee, FL	8:06 EST
Sat. 17	Cincinnati*	Tallahassee, FL	8:05 EST
Sun. 26	Memphis State (TV)	Tallahassee, FL	1:30 EST

MARCH

Th-S 1-3	Metro Tournament	Memphis, TN	
----------	------------------	-------------	--

*Metro Conference Games