



**FLORIDA STATE UNIVERSITY  
1975-76 BASKETBALL HANDBOOK**

## 1975-76 SCHEDULE

DATE	OPPONENT	SITE
Nov. 28—Fri.	Athletes in Action	Tallahassee
Dec. 2 — Tues.	Rollins	Tallahassee
Dec. 6 — Sat.	Eastern Kentucky	Richmond, Ky.
Dec. 8 — Mon.	Indiana	Indianapolis, In.
Dec. 11 — Thurs.	Stetson	Tallahassee
Dec. 13 — Sat.	Palm Beach Atlantic	Tallahassee
Dec. 19 — Fri.	Big Sun Tournament	St. Petersburg
20 — Sat.	South Florida, Alabama, Pittsburgh	
Dec. 26-30	Far West Classic	Portland, Or.
Fri. — Tues.	Duquense, Colorado State, Texas Tech, Northwestern, Oregon, Oregon State, Washington	
Jan. 8 — Thurs.	Western Kentucky	Tallahassee
Jan. 10 — Sat.	Jacksonville	Jacksonville
Jan. 14 — Wed.	Baptist College	Tallahassee
Jan. 17 — Sat.	Memphis State	Tallahassee
Jan. 20 — Tues.	South Florida	Tampa
Jan. 24 — Sat.	Southwestern Louisiana	Tallahassee
Jan. 31 — Sat.	Georgia State	Atlanta
Feb. 2 — Mon.	Illinois State	Normal, Ill.
Feb. 7 — Sat.	South Florida	Tallahassee
Feb. 12 — Thurs.	Illinois State	Tallahassee
Feb. 14 — Sat.	Madison College	Harrisonburg, Va.
Feb. 18 — Wed.	Jacksonville	Tallahassee
Feb. 21 — Sat.	Georgia State	Tallahassee
Feb. 24 — Tues.	Valdosta State	Tallahassee
Feb. 28 — Sat.	Mercer	Tallahassee
Mar. 4 — Thurs.	Southwestern Louisiana	Lafayette, La.
Mar. 6 — Sat.	Dayton	Dayton, Oh.



## FLORIDA STATE UNIVERSITY

Florida State University, with an enrollment of 21,000 students, naturally is very much attuned to the present; however, it continues to revere its historic past and set ever higher standards for the future.

As one of nine institutions in the State University System, and the second oldest, Florida State's traditions date back to its founding in 1857 as the Seminary West of the Suwanee.

This year Alpha Chapter of Florida of Phi Beta Kappa celebrated its 40th anniversary at Florida State and charter members on hand recalled how hard they had to work to achieve this distinction for what was then Florida State College for Women. Eighty new members were initiated this year in recognition of their high academic standings.

In May, six years after fire gutted the south wing of Westcott, the historic building's restoration was completed and again occupied by administrative offices. The twin-towered landmark, built in 1909, was restored at a cost of \$2.1 million.

Supported by major grants from the National Science Foundation and other organizations, the University has attained national prominence in physics, statistics, chemistry and psychobiology.

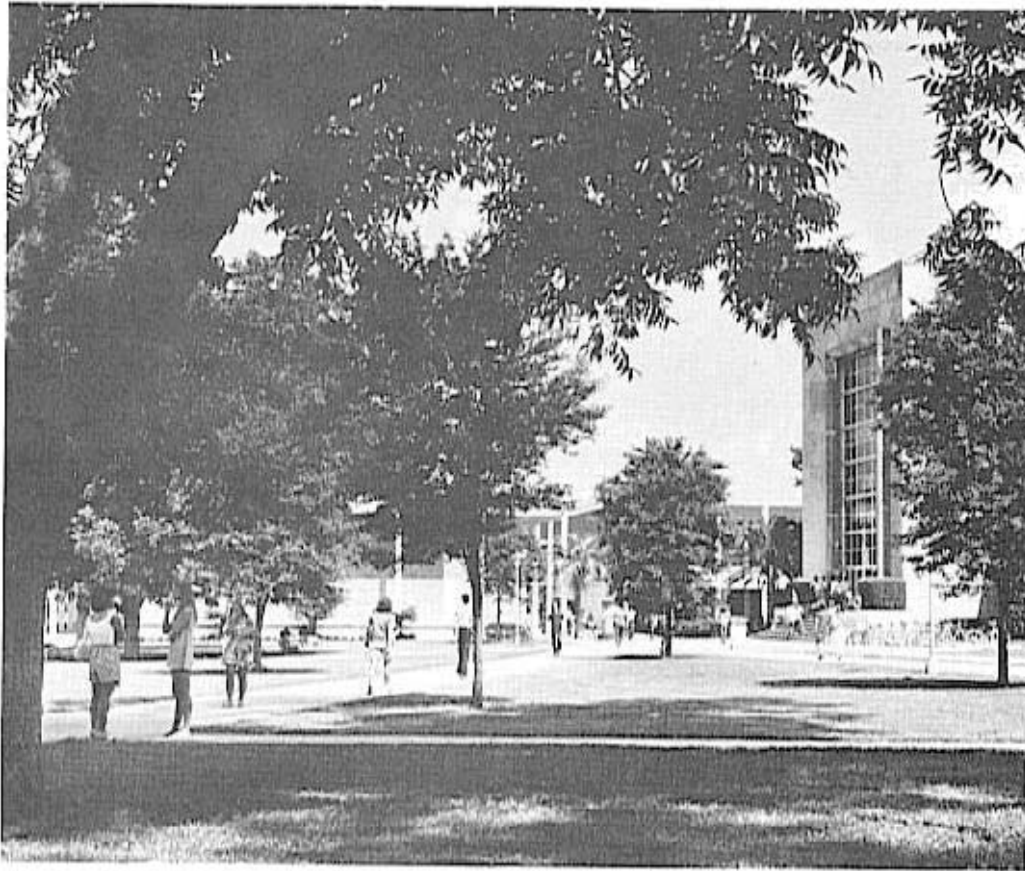
During the past year, the chemistry faculty generated more than \$1.5 million in grants between the department and the Institute of Molecular Biophysics. Dr. Lloyd Beidler, professor of biological science, became the second member of the National Academy of Sciences elected for research done in Florida. The other, Dr. Michael Kasha, a professor of chemistry, also is on the University faculty. At commencement, the president of this distinguished academy, Dr. Phillip Handler, an internationally known scholar and scientist, accepted from the University an honorary Doctor of Humanities.

Commencement was a fitting climax to an outstanding year with the distinguished actress Miss Helen Hayes delivering the address to the graduates and herself receiving an honorary Doctor of Humane Letters. The night before, she was present for the world premiere of her new Walt Disney movie, shown in Tallahassee as a benefit for the Charles MacArthur Center for American Theatre. The Center, housed temporarily in the Johnston Building, was named for Miss Hayes' late husband, the famous American playwright. The MacArthur Center will eventually be housed in a \$19.4 million complex located next to the Fine Arts Building.

Another movie premiere during the academic year boosted the University athletic program. Former Seminole football player Burt Reynolds was on hand for the Tallahassee showing of his film, "The Longest Yard," and he brought with him professional football star Larry Csonka and TV's "Million Dollar Man," Lee Majors.

King Hussein of Jordan was awarded an honorary doctorate in Humane Letters in special ceremonies in Ruby Diamond Auditorium. Hussein was cited for his voice of moderation and his work toward a Mid-East settlement and because of his leadership in advancing his country in the fields of health and education. Florida State President Stanley Marshall and Mrs. Marshall were guests in the royal box in Amman, Jordan, to watch the Marching Chiefs, FSU's band, perform just before the fall quarter started last year. The Chiefs were invited by the U.S. State Department to take part in the International Trade Fair in Damascus, Syria, and also stopped in Jordan before returning home.

Florida State University's School of Music continues to bring honors to the institution. Early in 1975, the University's Symphony Orchestra was invited to play at the Kennedy Center in Washington. In May,



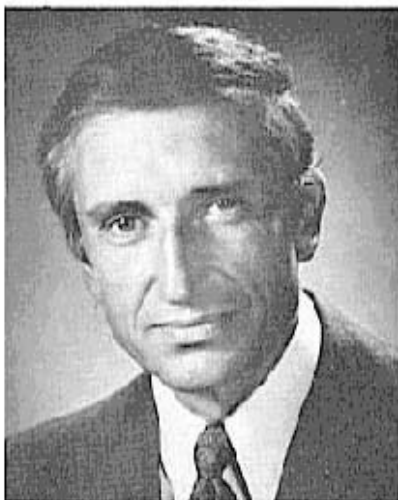
faculty member Carlisle Floyd's popular opera "Susannah" was presented in Washington, representing Florida in the nation's celebration of the Bicentennial.

Outstanding speakers come every year to the campus. During the past academic year, such varied notables as newsmen Mike Wallace and Dan Rather, seer Jeane Dixon, former Secretary of State Dean Rusk, *Star Trek* creator Gene Roddenberry and the presidents of all the major oil companies were University visitors.

One of Florida State's own, Michael Shaara, a member of the English department for a decade prior to his retirement two years ago, won the 1975 Pulitzer Prize for fiction for his civil war novel, "The Killer Angels."

Another faculty member, Dr. Seymour Hess, designed the meteorology equipment which was aboard the huge Titan Centaur rocket launched in August for America's first landing on Mars. Hess was one of 13 scientists chosen from around the country by NASA to design different experiments in the continuing planetary exploration program.

In addition to approximately 90 different baccalaureate fields of study at the undergraduate level, 58 doctoral programs and more than 85 master's degree areas, the University offers a variety of innovative and challenging special programs. Florida State maintains study centers in Florence, Italy, and London, England, which are open to all State University System students, and the University's Department of Hotel and Restaurant Administration annually conducts a summer program of study in Switzerland. There also are cooperative programs with Florida A&M University and Tallahassee Community College and courses geared to special students and honor students.



## DR. STANLEY MARSHALL President

Being Florida State University's "No. 1 Fan" is more than just an honorary title to President Stanley Marshall.

Despite the fact that his position often requires from him 12 or 15 hours a day, he still finds time to attend most of the athletic events at the University.

According to his wife, Shirley, he swims, plays tennis and participates in touch football games with friends at his Tallahassee residence, and enjoys horse-

back riding at the family farm in nearby Quincy. The entire family—Sue Ellen, 22; David, 26; John, 15; Kimberly Ann, 7; and Drew, 6—share in many of the athletic activities.

Dr. Marshall attended Pennsylvania State Teachers College at Slippery Rock until the middle of his junior year (February, 1943), when he entered the U.S. Army. During his military duty, he was a member of the Army Specialized Training Program, and served in the European Theater of World War II until his discharge in 1946. He returned to Slippery Rock and completed his bachelor's degree in 1947. He received the master's and doctor's degrees from Syracuse University in 1950 and 1956, respectively, both in the area of science education.

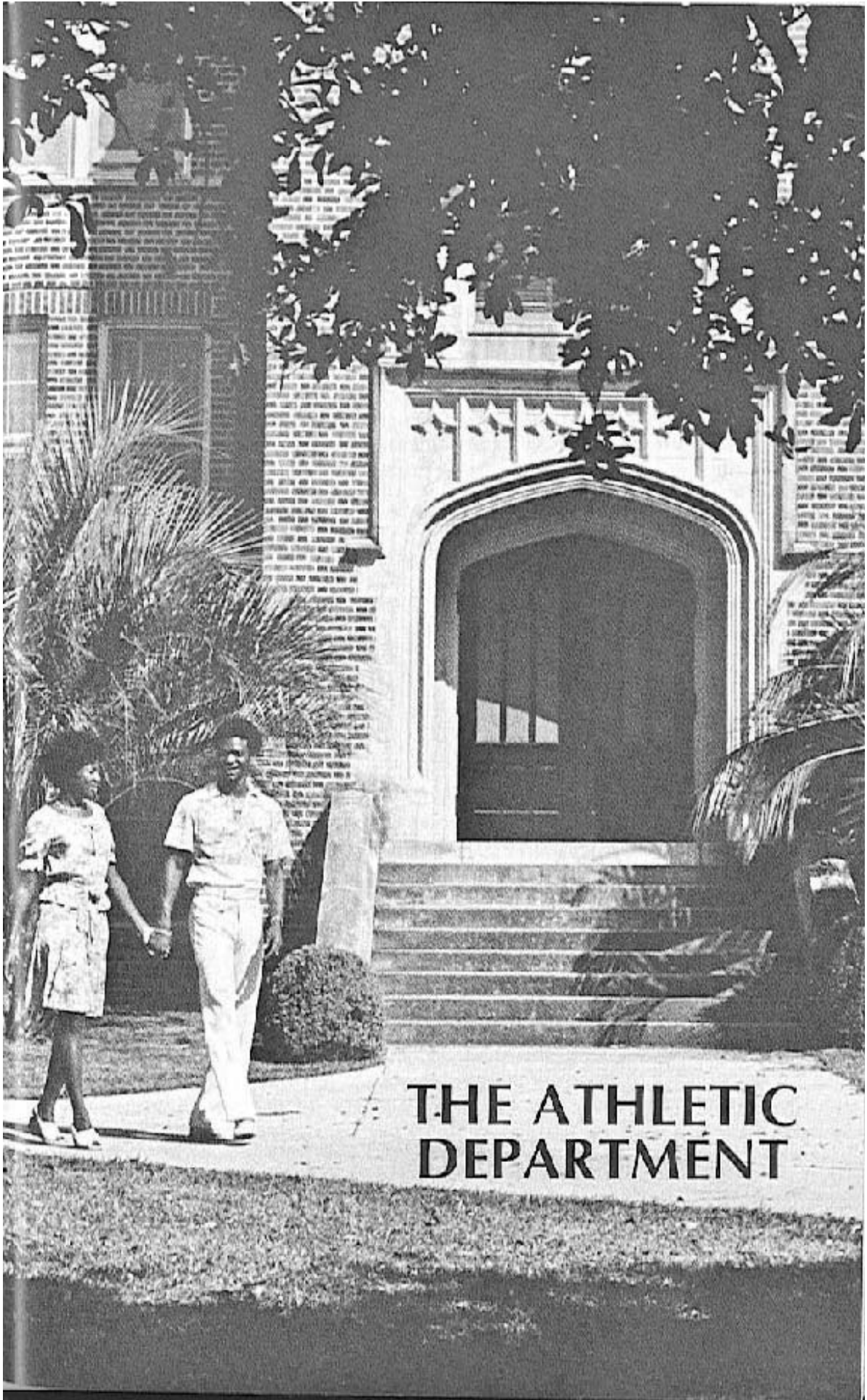
Chief administrative officer of the University since June 6, 1969, Dr. Marshall has been a member of the Florida State faculty since 1958. He served as head of the Department of Science Education until July, 1967, when he became dean of the College of Education. He was named Acting President of the University in February, 1969, and was officially designated as President June 6, 1969.

In 1963, he was invited by the Ford Foundation and the Turkish government to direct the National Science Project of Turkey in which he and other American educators undertook the establishment of a national science high school for gifted students in Ankara.

Dr. Marshall is a member of 13 national or state professional organizations and has been recognized by inclusion in "Who's Who in America" and "American Men of Science." He has been appointed to the Secretary of the Navy's Advisory Board on Education and Training and the U.S. Army Advisory Panel on ROTC Affairs.

In addition, he served a year as president of the Southern Association of State Universities and Land-Grant Colleges, is an ex-officio member of the Florida Council of 100 and was a member of the Board of Regents of the National Library of Medicine, a position for which he was nominated by the President of the United States and confirmed by the U.S. Senate.

Dr. Marshall is the co-author of three professional books and a widely-used series of elementary science textbooks. He served as editor of the "Journal of Research in Science Teaching" from 1962-66 and as a member of the editorial board of "Science World" from 1962-65. He also has written numerous journal articles and monographs.



**THE ATHLETIC  
DEPARTMENT**



## JOHN BRIDGERS

Athletic Director

Since taking over the reins of Florida State's athletic program in the spring of 1973, John Bridgers has led the Seminoles to accomplishments that, in some respects, border on phenomenal. Since coming to FSU he has been faced by the same general financial woes that beset the economy in general and intercollegiate athletics in particular nationwide. However, these have been compounded by the fact that the Tribe football program — the department's prime source of revenue generation — has been suffering through its leanest years since the University resumed intercollegiate athletics in 1947.

In his quiet, soft-spoken style, Bridgers has met these problems head-on. In most cases he comes away from the problems he tackles a winner. The reorganized athletic scholarship program has made strong gains each season and, in 1974-75, Seminole Booster contributions increased 80% over the previous year. In addition, the average attendance for 1974 home games increased 8,000 over 1973 and a vigorous season ticket drive set new records in 1975.

Perhaps the most outstanding accomplishment of Bridgers' leadership is that at the close of the last budget year the Seminole program not only avoided going into the red, but actually showed a profit. At a time when even the most healthy programs are finding it difficult to keep their heads above water, it is truly an outstanding achievement.

Physical improvements have also been many during Bridgers' tenure. The fieldhouse at Campbell Stadium has been renovated and enlarged with an indoor practice area and a weight room. A complete set of Nautilus weights has been added. Still another addition, that of a training table area, is currently underway at the fieldhouse. Also in progress is a renovation of Tully Gym—that is adding heating and air conditioning and the long awaited dream of a new campus or civic coliseum is now near reality.

Not all these things were accomplished through the singular efforts of the Seminoles' athletic director, of course, but much of the success can be credited to his untiring devotion to making the Florida State program one of the nation's best. Bridgers himself, however, is quick to point out that none of these things would have been possible without the dedication and understanding of a great many people, including his athletic department staff, coaches, boosters and an interested and supportive administration.

A native of Birmingham, Alabama, Bridgers came to Florida State from South Carolina. Previously he had spent 10 years as athletic director and head football coach at Baylor University, a period during which the Bears attended three bowl games and recorded the third best won-loss record in the Southwest Conference.

A 1947 graduate of Auburn, he served two years with the Army in Korea, being discharged as a captain after enlisting as a private. His early coaching experience includes service at the University of The South and Johns Hopkins. He has also served with the Baltimore Colts and Pittsburgh Steelers of the NFL.

Bridgers is married to the former Frances Young of Florence, Alabama. They have two sons, John Dixon and Donald Hamilton.





## CLAUDE THIGPEN

### Athletic Business Manager

Claude assumed his new position in the spring of 1974, after nearly two decades of working with the Athletic Department as accountant and ticket manager.

The Greenville, Fla. native continues to head the Seminoles' complex ticket operations as he has for more than 12 years, but has added new responsibility for budget and fiscal control.

The veteran member of the athletic department has organized the ticket operation into a smooth functioning unit and is constantly on the alert for new ideas for more expedient operation of the department's overall business dealings.

Claude and his wife, the former Carleen Lindley, have two children.



## LONNIE BURT

### Sports Information Director

Coordinating press and public relations, and promoting Florida State's Athletic Program in general fall under Lonnie's far-ranging duties.

A member of the first group of men to enroll at Florida State following its conversion from a College for women, Lonnie brought a 16-year background of sports writing with him when he returned to his alma mater in 1966.

A native of Evergreen, Ala., Lonnie has directed publicity for the Seminoles throughout one of their finest eras.

Lonnie and his wife, the former Sally McLaughlin of Statesville, N.C., have two children.



## HANK SCHOMBER

### Assistant SID

Hank is now in his ninth year as fulltime assistant in the Sports Information Office and his 11th year of association with the Athletic Department overall.

While his duties run the full spectrum of the Sports Information Office responsibility, he is primarily responsible for the publications and statistical work in the department and the press box operations in football, basketball and baseball. A native of Westchester County, N.Y., and former resident of Pompano Beach, Hank developed the new Poster-Program concept which Florida State introduced this fall in place of the more traditional football program.

He is an active member of the National Collegiate Baseball Writers Association, serving as a vice-president of that group and was recently elected Chairman of the Independent Sports Information Directors Association.

Hank and his wife Judy, who is an instructor in Spanish at FSU, have one daughter.



## DICK ROBERTS Academic Advisor

A former Florida State athlete Dick is in his fourth year as Academic Advisor to the Seminole athletes in all sports except football. The St. Petersburg native is charged with helping Seminole student-athletes in all areas involving their academic life on campus. He provides

counseling, assists in their class scheduling, provides tutoring when called for and maintains the required eligibility records.

In addition to his work in the academic counselor's office, Dick also serves as coach of the FSU Cross-country team and an assistant track coach. He returned to Florida State in those dual capacities following a successful tenure as track and cross-country coach at Dunedin High School, where his teams captured one state championship, 10 individual state titles and set 13 state records.

He and his wife Judy have no children.

## DON FAULS Head Trainer

One of the most popular personalities in Florida State's athletic history, Don returns to the Seminoles after a three and a half year absence.

Known affectionately as "Rooster" by the more than 1,000 athletes he has treated in his 18 years of service, Fauls gave up his position to become general manager of a Tallahassee golf course. However, the call for working with athletes was strong and when the Seminole Trainer's post opened up for the second time since his departure in January, 1972, the 55-year-old veteran could resist no longer.

A native of Ithaca, N.Y., Don first came to Florida State in 1954 after serving as trainer for professional baseball teams in Greensboro, N.C. and Omaha, Neb. A member of the Athletic Trainers Association, he has served as trainer for the U.S. Pan American team and as a member of the Olympic Trainers Selection Committee.

Don attended Ithaca College where he lettered in baseball and basketball. He and his wife Marguerite have three children.



## CHARLIE DURBIN Cinematographer

The proverbial "Jack of all trades" at the Athletic Department only this 26-year veteran has a unique twist as he is also "master of most."

In addition to his photographic duties, which include turning out coaches' films, TV highlight films and daily practice films for football and basketball, this

Havana, Fla., native fills a valuable role as Seminole bus driver. There are few Seminole athletes who have not "ridden behind Charlie" some time in their career.

Charlie and his wife, the former Leo Poppell of Havana, have five children.





**BASKETBALL  
STAFF**



## HUGH DURHAM

### Head Basketball Coach

Over the last nine years, Florida State's basketball program has become recognized as one of the most successful in the nation. It is no coincidence that the same period marks the tenure of Hugh Durham as Head Coach. Actually, there may be no better measure of the Seminoles' success than the fact that Durham's lifetime coaching record of 169-73 has placed him 13th among all active coaches with a .698 percentage.

Winning on the court is only part of Durham's story however. During his tenure Florida State has become a favored recruiting ground for the pros. No fewer than nine Seminoles have been drafted by the pros with several now active, including NBA All-Star and MVP, Dave Cowens, of the Boston Celtics. Those players who choose not to go into professional ball have also met with success, with several going on to graduate school, medical school or law school, and others starting on coaching careers of their own. "We make a total commitment to the individual," says Durham, who has seen well over 80% of his players earn at least bachelor's degrees. "We realize that for many of our players, basketball is not going to be a career. While we are trying to develop the playing ability of all our athletes, especially those with the potential to play pro ball, we also try to see that all of them are prepared in other areas as well."

Durham teams have been winners in all but his first season as head coach. That first year saw an injury-riddled Tribe struggle to an 11-15 record. Since that time, no Durham-coached team has won fewer than 17 games. The 1969-70 squad finished 23-3 and the 1971-72 Seminoles went all the way to the NCAA finals before settling for a 27-9 record.

The Florida State head man has been associated with the Seminoles for 19 years as either a player or a coach. He came to Tallahassee from Louisville, Kentucky, where he was an outstanding prep athlete earning 14 letters in four sports. His enthusiasm for all sports is strong and he can be found regularly as a spectator at nearly all Seminole home events. He is an avid racquetball player, having won several state titles, and plays golf and tennis as time allows. For the last several years he has served as director of his own highly successful basketball camp.

As a Florida State player, Durham was one of the finest guards to play for the Seminoles. His three-year varsity scoring total of 1,381 points ranks sixth on the all-time list. He was as much a leader off the court as on, earning membership in the Gold Key Honorary and being named to Who's Who Among American Colleges and Universities. Following his graduation he was named coach of the freshman team and still holds the record for best winning percentage with a 9-1 record. He became a fulltime assistant to Bud Kennedy in 1961 and was named head coach in 1966 following Kennedy's death. During his tenure as an assistant coach, Durham also served as coach of the FSU golf team and his squads were also highly successful, winning 48 of 54 dual matches. One of Durham's recruits in golf was Hubert Green, former PGA Rookie of the Year.

Durham graduated from Florida State with Bachelor's and Master's degrees in Business. He and his wife Malinda have three sons, David, 15, Doug, 11 and Jim, 7.

## THE DURHAM RECORD

YEAR	WON	LOST	POST SEASON TOURNAMENTS			
			YEAR	TOURNAMENT	WON	LOST
1966-67	11	15	1968	NCAA Midwest	0	1
1967-68	19	8	1972	NCAA Midwest	3	0
1968-69	18	8	1972	NCAA Nationals	1	1 (2nd)
1969-70	23	3				
1970-71	17	9				
1971-72	27	6				
1972-73	18	8				
1973-74	18	8				
1974-75	18	8				
9 Years	159	73 (.598)				

### IN SEASON TOURNAMENTS

YEAR	TOURNAMENTS	WON	LOST
1966-67	VPI, Tampa	1	3
1967-68	Milwaukee, Evansville	2	2
1968-69	Jacksonville Civitan	2	0
1969-70	Gator Bowl	2	0
1970-71	Civitan, Sun Bowl	1	3
1971-72	Civitan, Far West, Senior Bowl	7	0
1972-73	Marshall, Dayton, All-College	4	3
1973-74	Steel Bowl, Big Sun, Bear Classic, Bluebonnet	5	3
1974-75	Holiday Classic, Louisville	1	1

Six Championships: Six seconds; Five thirds.

### DURHAM MILESTONES

VICTORY	OPPONENT	SCORE	DATE
1	Valdosta State	62- 58	Dec. 1, 1966
25	East Carolina	110-100	Feb. 3, 1968
50	Oregon	100- 84	Dec. 4, 1969
75	So. Mississippi	117- 84	Dec. 7, 1970
100	Mercer	96- 78	Jan. 11, 1972
125	Cincinnati	78- 74	Jan. 13, 1973
150	Fairleigh Dickinson	86- 58	Feb. 26, 1974

### DURHAM TEAM RECORDS vs. 1975-76 OPPONENTS

OPPONENT	FSU WON	FSU LOST	OPPONENT	FSU WON	FSU LOST
Alabama	0	2	Oregon	1	0
Baptist	0	0	Oregon State	2	0
Colorado State	0	0	Palm Beach Atlantic	0	0
Dayton	2	3	Pittsburgh	0	1
Duquense	0	0	Rolins	1	0
Eastern Kentucky	5	1	South Florida	3	2
Georgia State	1	0	Southwestern Louisiana	0	0
Illinois State	1	0	Stetson	8	1
Jacksonville	12	9	Texas Tech	0	0
Madison College	0	0	Valdosta State	7	0
Memphis State	2	2	Washington	1	0
Mercer	3	0	Western Kentucky	1	0
Northwestern	1	0			



## MORRIS McHONE

### Assistant Coach

A six-year veteran of Florida State's basketball program, Morris McHone is establishing himself as one of the finest assistant coaches in the country.

McHone aids Head Coach Hugh Durham in all areas, but most especially as the Seminoles' chief recruiter. While he spends a good portion of his time on the road scouting the top high school and junior college prospects in the country, he is also a valuable on-the-court member of the staff. A knowledgeable student of the game, he is especially able to work with younger players developing sound fundamentals.

An area in which McHone makes an especially strong contribution is recognizing opposition plays and techniques and developing changes to combat them. "Morris is continually making strong, sound adjustments on the bench during a game," says Durham. "He picks up opponents' moves very quickly and his contribution in this area cannot be overemphasized."

A native of Marion, N.C., McHone is a graduate of Florida State and also attended Wingate Junior College. Following his graduation, he served two seasons coaching at Zephyrhills High School. He then moved to Nova High School in Fort Lauderdale and was named Broward County Coach of the Year.

Morris returned to Florida State in 1969 as a graduate assistant and assumed fulltime duties a year later. He became Durham's number one assistant in 1974.

He and his wife Sharon have one son, Kimble, nine.



## LARRY GAY

### Assistant Basketball Coach

A former Seminole player, Larry Gay is now in his second season as an assistant to Head Coach Hugh Durham.

Larry was a three year varsity performer for the Seminoles, including the 1971-72 squad which played UCLA in the finals of the NCAA Championships. A versatile player, he played an important role as a reserve at both wing and post. Under Coach Durham's rotation system of substitution, he gained considerable playing time and often made key contributions to the Seminoles' success.

His versatility as a player has proven to be a big aid in his coaching as well, enabling him to relate to the Seminole big men at both the post and wing spots. This experience will be even more pronounced this season with several players rotating in the two positions.

Larry, who is single, graduated from Florida State in 1973 with a degree in Social Work.



Basketball secretary Rhonda Ruckel and Coach Durham



Equipment Supervisors Woody Saucier and Gene Granger

## ATHLETIC COMMITTEE

Dr. Richard Baker  
Chairman  
203 College of Business  
644-3093

Members: John Bridgers, Athletic Director; Chris Griffin, Student;  
James Jones, Professor of History; William H. Long, Professor of  
Meteorology; Doyle Pope, Seminole Boosters, Inc., Representa-  
tive; Walter Revell, Alumni Representative; Janet Wells, Professor,  
Physical Education; Ernest Williams, Director of Internal Control.

### ATHLETIC DIRECTORY

NAME	POSITION	PHONE
Blake, Mary Jo	Softball Coach	(904) 644-2087
Bridgers, John	Athletic Director	2790
Burt, Lonnie	Sports Information Director	2790
Carlisle, Terry	Varsity Swimming Coach	3074
DeLaMare, Rosemarie	Secretary, Football Office	2775
Eam, Steve	Accounting Clerk	2790
Echard, Frank	Football Equipment Manager	2775
Eubin, Charlie	Cinematographer/Bus Driver	1205
Eurnam, Hugh	Varsity Basketball Coach	3080
Fair, Doc	Trainer	2775
Frye, Dee	Secretary, Athletic Director	2790
Furnell, Marlene	Women's Athletic Director	2087
Gay, Larry	Assistant Basketball Coach	3080
Granger, Gene	Equipment Clerk	4734
Green, Evelyn	Secretary	2790
Gronwinkle, Gary	Assistant Football Coach	2775
Harrison, Bob	Assistant Football Coach	2775
Jones, Billie Jo	Women's Volleyball Coach	3078
Jones, Cal	Assistant Football Coach	2775
Leach, Donna	Secretary, Football Office	2775
Lee, Marion	Assistant Ticket Manager	1830
Long, Mike	Varsity Track Coach	3836
Martin, Mike	Assistant Baseball Coach	4812
Maul, Terry	Women's Swimming Coach	3074
McDewell, Gene	Assistant Football Coach	2775
McHone, Morris	Assistant Basketball Coach	3080
Mearis, Helen	Secretary, Business Office	2790
Mudra, Dorell	Varsity Football Coach	2775
Pendleton, Larry	Academic Advisor, Football	2775
Pollard, Don	Assistant Football Coach	2775
Powell, Barbara	Accountant	2790
Rich, Karen	Secretary, Sports Information	2790
Roberts, Dick	Varsity Cross Country Coach, Academic Advisor	3080
Rodriguez, Pete	Assistant Football Coach	2775
Ruckel, Rhonda	Secretary, Basketball Coach	3080
Saucier, Woody	Varsity Equipment Manager	4734
Schachner, Rick	Assistant Football Coach	2775
Scarborough, Ann	Women's Golf Coach	2087
Schomler, Hank	Assistant Sports Information Director	2790
Sheffield, John	Cashier	1830
Thigpen, Claude	Business Manager	2790
Toran, Paul	Women's Track Coach	2087
Usher, Millie	Women's Basketball Coach	2087
Veler, Don	Golf Coach	1738
Wilson, Eddie	Assistant Football Coach	2775
Woodward, Woody	Varsity Baseball Coach	4812



An architectural rendering of a large building complex. The central feature is a tall, multi-story tower with a distinctive patterned facade, possibly representing a clock tower or a central office building. This tower is surrounded by several lower-rise, rectangular buildings with flat roofs. The entire complex is set within a landscaped area with trees and a paved plaza. The rendering is in black and white, with a grainy, stippled texture.

**1975-1976  
THE SEMINOLES**

TALLAHASSEE CIVIC CENTER

## 1975-76 OUTLOOK

For the past three seasons, Florida State University's basketball team has registered 18 victories and suffered eight defeats. "For some people these records might be all right," said Coach Hugh Durham, "but to me it's been frustrating." What made it more frustrating to Durham is that Florida State hasn't been invited to a tournament.

Will the 1975-76 season be different? Durham is not ready to commit himself one way or the other. But there is one thing that he is sure of — he'll have more depth this season than anytime since 1969-70 when Dave Cowens was a senior and the club went 23-3. "Going into this season we will have 11 players who can play," said Durham.

The Seminoles' top eight players return from last season and there were no losses which will appreciably detract from the 1975-76 team. Among the returnees are seniors Greg Grady (6-9), Larry Warren (6-4) and Zach Perkins (6-7), juniors Eugene Harris (6-0), Wayne Smalls (6-2) and Carlton Byrd (5-8) along with sophomores Harry Davis (6-7) and Hank Mann (6-5).

There will be three talented newcomers added to this group. Junior college transfer David Thompson (6-8), red shirt James Smith (6-5), and prep standout Herbie Allen (6-5) are the additions.

Durham says there will be some definite offensive changes made before the start of the season, adding also. "We'll continue to play pressure defense, but we'll put more emphasis on rebounding. I thought our defense was good last season since we averaged giving up only 71.6 points per game, but our offensive and defensive rebounding must improve."

As it presently breaks down, Harris (8.6 PPG), Byrd (4.9), Smalls (12.1), Warren (16.0), and Allen will compete at guard.

Fighting it out for the front court positions will be Grady (13.3), Perkins (11.6), Davis (9.0), Mann (5.3), Thompson, and Smith.

Grady and Perkins are the two top returning rebounders with averages of 10.3 and 7.3 respectively, and Davis, as a freshman, pulled down 5.7.

As Durham looks ahead, he sees three factors that will be keys to the Seminoles' success this season: dedication and enthusiasm; improved rebounding; and how quickly the players pick up the changes.

"We are not going into the season with anything in mind other than putting the best possible ballclub on the floor. From there we will let the wins and losses take care of themselves."

## GREG GRADY

Senior Center

Height: 6-9 Weight: 215

Age: 22 (9-22-53)

Hometown: Brooklyn, NY

High School: Eastern District

Coach: Jerry Berner

Major: Communications



... the only "true" center on the club ... a lot of the rebounding and defensive play in the middle will depend on Grady ... because he is the only center, Seminoles will probably change from 1-3-1 offensive alignment used the last few years ... has gained more bulk and added strength in off season Nautilus weight program ... has an excellent attitude, wants to work hard and do well ... worked hard all last year ... the mistakes he makes often brought about by his desire to do right ... saw duty as a reserve as a freshman and has been a starter the last two seasons ... ranks sixth among career rebound leaders and with a good year could move into the top two or three ... increased his shooting percentage from .551 two years ago to .581 last season ... that is third best mark in school's history ... career percentage of .5639 also ranks third ... scoring average jumped by three points per game over sophomore year ... should continue to improve in both areas ... showed improvement last year in getting the ball out of the post ... shows more understanding of what is expected from center in Seminole system - not only scoring, but also getting ball to open man ... showed much improvement in this area ... enthusiastic player with a good shot at the pros.

	G	FGM-FGA	Pct.	FTM-FTA	Pct.	Reb.-Avg.	PF	Pts.	Avg.
1972-73 (JV)	4	40-71	.563	32-41	.780	64-18.0	13	112	28.0
1972-73 (V)	21	88-58	.655	23-42	.548	73- 3.5	17	99	4.7
1973-74 (V)	26	115-209	.551	45-65	.692	250- 9.6	51	275	10.6
1974-75	26	154-265	.581	37-65	.559	267-10.3	72	345	13.3



## ZACH PERKINS

Senior Forward

Height: 6-7 Weight: 155

Age: 22 (1-18-54)

Hometown: Crestview, FL

High School: Crestview Senior

Coach: Lyndell Davis

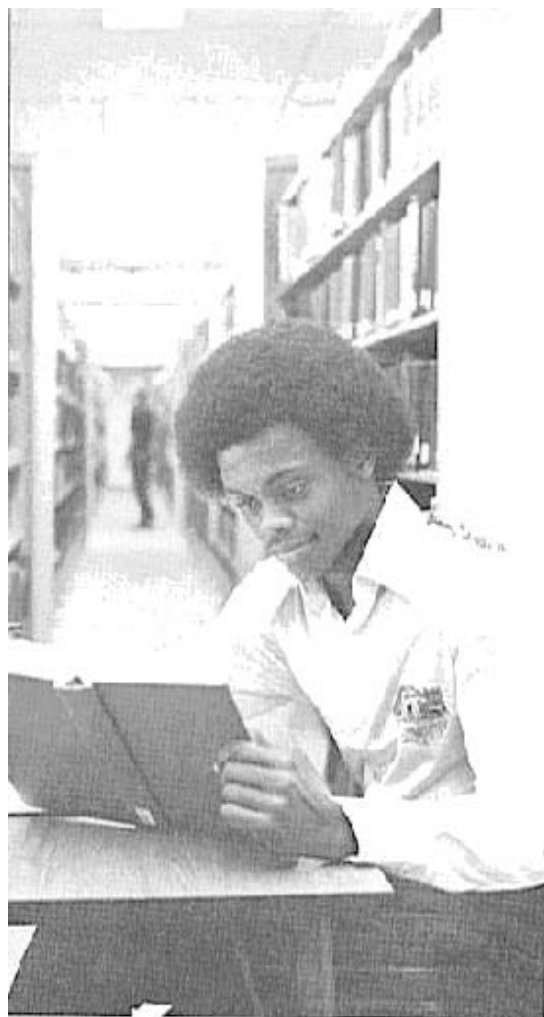
Major: Speech Communications



... moved up to starting role last year after a fine sophomore season as a reserve ... had good year last year, improving throughout ... needs to continue to show same improvement to fulfill his potential ... has excellent speed and stamina ... quickest player on squad ... must learn to eliminate some of the excess movement that turns his assets into liabilities ... has improved his scoring average while holding his shooting percentage steady at 48-49% level ... will improve shooting percentage by learning better shot selection ... rebounding fell off last year from 8.0 to 7.3 per game ... needs to improve in this area ... with his quickness and strength there is no reason he cannot improve his board production ... will be counted on to bolster rebounding and his production here will be a key to team success ... has developed fine shot from 14-15-foot range ... cut from same mold as former Seminole Rowland Garrett, now with NBA Chicago Bulls.

	G	FGM-FGA	Pct.	FIM-FTA	Pct.	Reb.-Avg.	PF	Pts.	Avg.
1972-73 (JV)	13	96-188	.441	19-41	.463	164-12.5	26	211	16.1
1972-73 (V)	3	0-2	.000	0-0	-	1- 0.3	0	0	0.0
1973-74 (V)	26	98-203	.482	34-51	.667	207- 8.0	62	230	8.8
1974-75	26	126-255	.494	49-79	.620	191- 7.3	70	301	11.5





## CARLTON BYRD

Junior Guard

Height: 5-8 Weight: 140

Age: 20 (1-3-56)

Hometown: Dania, FL

High School: Ft. Lauderdale Nova

Coach: Mike McNamara

Major: Physical Education



... was a starter as a freshman, but lost his spot a year ago when preseason injury slowed him early ... nevertheless he had a good year, increasing his shooting percentage and his all around play ... opposing guards learned they could no longer drop off as shooting average jumped to .481 from .439 a year ago ... now better than adequate shooter for point guard ... defense also improving and has ability to overcome his lack of size against bigger players ... intelligent player and a Seminole scholar athlete with a 3.14 GPA ... picks up system quickly and made fine adjustments to pressures of point position and Seminole man-on-man defense ... has exceptional court discipline, made only 30 fouls in 26 games last year and just 35 the year before ... plays hard and gives full effort on floor at all times ... his enthusiasm carries over to other players and makes him a leader ... was Broward County Prep player of the Year after his senior season ... his father, Chester Byrd, is an assistant principal in Hallandale.

	G	FGM-FGA	Pct.	FTM-FTA	Pct.	Reb.-Avg.	PF	Pts.	Avg.
1975-74 (V)	26	58-132	.439	27-37	.730	39-1.5	35	143	5.5
1974-75	26	52-108	.481	23-41	.561	15-0.6	30	127	4.9

**EUGENE HARRIS**

Junior Guard

Height: 6-0 Weight: 185

Age: 20 (8-22-55)

Hometown: Scottsboro, AL

High School: Scottsboro

Coach: Q.K. Carter

Major: Government



... had a fine season last year, running Seminole attack ... took starting spot away from Carlton Byrd with whom he shared point guard duties as freshman ... has proven to be a consistent 50% shooter from the field, but does not have the reputation of being a "shooter" ... has good shot selection and is a threat when defense falls back even slightly ... is an excellent defensive player, one of Seminoles' best ever defensive guards ... his on the ball defense is especially strong and he is able to put a lot of pressure on opposing ball handlers ... off the ball defense needs improvement, but that should prove to be no problem for this hard working youngster ... he is willing to take whatever time is necessary to make himself a better player in whatever area the coaches outline ... is exceptionally strong for person his size and this enables him to be stronger than usual rebounder for man his size ... averaged over three rebounds per game last year ... began to play more relaxed and more fluid at point last year as he realized what his role was and what team philosophy was trying to accomplish ... this understanding enables him to play with less "robot thought processes" and allows his physical abilities to take charge ... earned reputation as "man who made things happen" as a freshman and did more of the same last year ... an exciting player and a favorite with the crowd ... plays with confidence and desire and is a good on-the-floor leader ... was all-state and all-southern prep performer.

	G	FGM-FGA	Pct.	FTM-FTA	Pct.	Reb.-Avg.	PF	Pts.	Avg.
1973-74 (V)	26	65-128	.508	48-59	.814	50-1.9	68	175	6.8
1974-75	26	91-179	.508	41-61	.672	80-3.1	77	223	8.6



## WAYNE SMALLS

Junior Guard

Height: 6-2 Weight: 170

Age: 22 (11-13-53)

Hometown: Camden, NJ

High School: Camden

Coach: Clarence Turner

Major: Business



... hard worker who continues to improve each year ... is developing into one of the finest all around players in Florida State history ... was third leading scorer last year after a fine freshman season in a reserve role ... worked exceptionally hard in the off-season and is much stronger this year ... his defense continues to improve and the added strength should help him improve more ... when teamed with Eugene Harris, they give the Seminoles one of the strongest defensive guard combinations in school history ... improved his shooting percentage last season to 45%, but still needs improvement in shot selection ... "He is a fine shooter," say Seminole coaches, "it is a matter of choosing the shots that are best for him" ... improved markedly in his ability to feed the ball last year and has become an excellent passer ... does an especially good job off the break and feeds well inside ... needs to play hard with more consistency ... was all-state and All-America prep basketball star and all-city baseball performer.

	G	FGM-FGA	Pct.	FTM-FTA	Pct.	Reb.-Avg.	PF	Pts.	Avg.
1973-74 (V)	26	105-244	.430	23-30	.767	54-2.1	48	235	9.0
1974-75	26	141-314	.449	33-43	.767	68-2.6	61	315	12.1



## HARRY DAVIS

Sophomore Forward-Ctr.

Height: 5-7 Weight: 220

Age: 20 (1-27-56)

Hometown: Cleveland, OH

High School: Cathedral Latin

Coach: Joe Perella

Major: Mass Communications



... this big youngster was the most pleasant surprise on the squad last year ... "there just are not enough good things to say about him," says Hugh Durham ... Davis stepped in and provided some badly needed depth last season and the coaches admit that had it not been for his contribution, it might have been a less than successful year ... Durham describes him as "a Paul Silas type" big, strong and mobile with an excellent attitude ... "he'll do whatever is necessary for FSU to win," says the Tribe coach ... he is a good shooter but has no allusions of being a 30-points a game scorer ... exceptionally quick for a man his size as well as strong, he is going to pose problems for people inside ... if bigger people go outside with him his quickness will be an even bigger factor ... an intelligent player, he picks up things very quickly ... he will challenge for a starting forward spot and is also expected to be top back-up at the post ... has exceptional hands and is a good passer ... aggressive off the boards and gets the ball out well ... an excellent all-around basketball player ... was all-city high school performer in Cleveland where he played for former FSU football graduate assistant Joe Perella ... heavily recruited, he chose Florida State over several Big 10 and Pac-8 schools.

	G	FGM-FGA	Pct.	FTM-FTA	Pct.	Reb.-Avg.	PF	Pts.	Avg.
1974-74	26	104-185	.562	27-41	.659	147-5.7	53	235	9.0



HANK MANN

Sophomore Forward

Height: 6-5½ Weight: 185

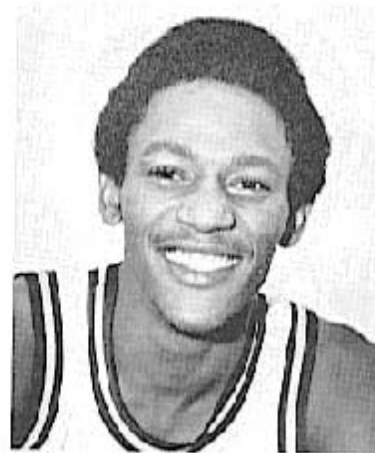
Age: 20 (5-12-55)

Hometown: Chester, PA

High School: Chester

Coach: Juan Baughn

Major: Mass Communications



...beset by injuries for the first time in his career, Hank was disappointed by his performance last season . . . he pulled a hamstring muscle just before the start of practice and was continually plagued by nagging injuries after that throughout year . . . nevertheless he shot nearly 50% for the season and averaged over five points a game . . . he indicated a strong inside scoring ability . . . is an aggressive rebounder with a "nose for the ball" . . . needs to learn to take more advantage of his inside playing ability, when he does he will play more . . . defensive play needs improvement both on and off the ball . . . consensus prep All-America, played in Dapper Dan Classic against Moses Malone . . . showed good speed when not hobbled last year.

	G	FGM-FGA	Pct.	FTM-FTA	Pct.	Reb.-Avg.	PF	Pts.	Avg.
1974-75	25	58-117	.496	16-25	.640	59-2.4	53	132	5.3

## JAMES SMITH

Sophomore Forward

Height: 6-6 Weight: 190

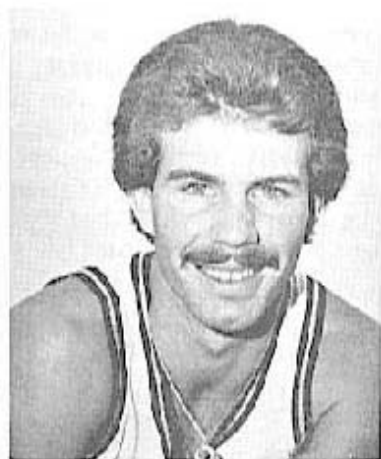
Age: 20 (9-26-55)

Hometown: Lake Worth

High School: Lake Worth

Coach: Harry Kinnan

Major: Humanities and Sociology



... those who watched him in the Seminole workouts last year would have thought he was a starter instead of a redshirt if they did not know better ... a hard playing and aggressive player who is all over the floor and sometimes on the floor after loose balls ... this attitude rubbed off on the others last year, if it continues this season it will be a strong factor ... a lot like former Seminole Ron Harris, he plays an intelligent game ... has excellent ability to see the open man and get the ball to him ... is quick to pick up opponent weaknesses ... is an outstanding student with a 3.80 overall average and hopes to be a Rhodes Scholar ... his strengths include attitude, intelligence and good hands ... transferred to Florida State from North Carolina and is reunited now with former high school teammate Larry Warren ... was all-state and All-America his final year in high school.

### DAVID THOMPSON

Sophomore Forward

Height: 6-8 Weight: 195

Age: 19

Hometown: Boston, MA

High School: Stoughton

Coach: Don Edmonston

Major: Undecided



... comes to Florida State after one year of JC ball where he was called by at least one selector the "outstanding junior college player in Florida" ... has outstanding ability to hit from outside ... is a "finesse forward" ... stands 6-8 and has excellent hands ... his defense needs improvement, but that will come ... he wants to be a good player, has a good attitude ... he will be a strong outside scoring threat among the "inside" people, and should make the other players that much more effective ... was an all-state high school player in Boston.

### HERBIE ALLEN

Freshman Guard

Height: 6-5 Weight: 185

Age: 19

Hometown: Tampa

High School: Robinsen

Coach: Herman Valdez

Major: Undecided



... as talented a freshman player as the Seminoles have recruited in some time ... he is expected to play an important role in the big guard spot ... at 6-5, he has good size, jumps well and has all the tools to play as a freshman ... he should play from the start although it may take time for him to really settle in ... he should pick up offense fast but it may take a little longer for him to get accustomed to the Seminoles' pressure defensive tactics ... has the quickness and strength to handle the ball ... is a good passer and one of the few high school scorers with ability not only to see the open man, but also to get the ball to him ... shoots well from the perimeter ... lacks only experience, but he will get that early ... all-state performer in high school, led his team to the state finals ... was named Outstanding Player for the South squad in state all-star game.



**Woodard**



**Kundid**



**Kabboord**

**ALVIN HOLDER** – Freshman; guard; 5-8; 170; age, 19; hometown, Tampa; high school, Robinson; Coach, Herman Valdez; major, undecided. . . . played his prep ball with Seminoles' Herbie Allen . . . fine all round athlete . . . was recruited by several schools in football as well as basketball . . . was a guard on high school football team . . . has good quickness for his size . . . good student.

**WAYNE WOODARD** – Junior; guard, 5-10; 155; age, 21; hometown, Greensburg, IN; high school, Greensburg; Coach, Keith Grave; major, Accounting . . . solid, steady player who has shown continued improvement . . . is competing at a position with a number of talented players and the amount of playing time he will see is a questionmark . . . good student, has a 3.03 GPA.

**MIKE KUNDID** – Sophomore; guard; 6-1; 175; age, 19; hometown, Daytona Beach; high school, Father Lopez; Coach, Bruce Tramon; major, Business . . . another performer up from the B-squad last year . . . a hard worker who is in excellent condition and is strong . . . works hard defensively . . . with continued improvement he could see appreciable playing time.

**MARK KABBOORD** – Sophomore; guard; 6-2; 185; age, 19; hometown, Cocoa Beach; high school, Cocoa Beach; Coach, Don Flick; major, Physical Education . . . played B-team ball last season . . . has excellent attitude and provides aggressive competition in practice . . . has good strength . . . coaches' type player.



**Team Managers:** Head Manager Jim Towey and Brad Bell are kneeling with Tom Mortensen and Larry Evans standing.

Pictured on page 15 is the architect's rendition of the proposed Tallahassee Civic Center to be located at the east end of the Florida State campus. The multi purpose, joint city, county, state and university center will seat 11,000 for basketball. Current projections are to start construction next spring and for completion in time for the 1977-78 basketball season.

## SEMINOLES IN THE PROS

Florida State's basketball program, under the direction of Head Coach Hugh Durham, has become a favorite of the pros. The reason is Coach Durham's philosophy which closely follows pro thinking. Following Dave Cowens' great senior season with the Seminoles, Boston Coach, Tom Heinsohn, watched him play in a Celtics rookie session and said, "Cowens is the best prepared rookie that I have seen - he's a pro now!" Cowens proved Heinsohn right as he went out and earned NBA Rookie of the Year honors in 1971.

## RECENT SEMINOLE DRAFT CHOICES

- \*Benny Clyde - Boston Celtics
- \*Dave Cowens - Boston Celtics
- Vernell Elzy - Phoenix Suns
- \*Rowland Garrett - Chicago Bulls
- Ron King - Kentucky Colonels
- Ken Macklin - New York Nets
- \*Reggie Royals - San Diego Conquistadors
- Willie Williams - Cincinnati Royals
- Skip Young - Boston Celtics

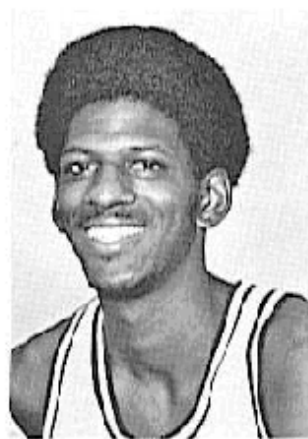
\*Active as of October 1975



Cowens



Garrett



Royals

1975-76 ROSTER

NO.	NAME	POS.	YR.	HT	WT	AGE	VL	HOMETOWN	HIGH SCHOOL OR JC (Coach)
8	Allen, Herbie	G-F	Fr.	6-5	185	19		Tampa, FL	Robinson High (Herman Valdez)
11	Byrd, Carlton	G	Jr.	5-8	140	19	2	Dania, FL	Nova High (Mike MacNamara)
44	Davis, Harry	F-C	So.	6-7	220	19	1	Cleveland, OH	Cathedral Latin (Joe Perella)
13	Gaddy, Greg	C	Sr.	6-9	215	21	3	Brooklyn, NY	E. District High (Jerry Berner)
32	Harris, Eugene	G	Jr.	6-0	185	20	2	Scottsboro, AL	Scottsboro High (O.K. Carter)
15	Holder, Alvin	G	Fr.	5-11	170	19	-	Tampa, FL	Robinson High (Herman Valdez)
21	Kabboard, Mark	F	So.	6-2	185	19	-	Cocoa Beach, FL	Cocoa Beach High (Don Flick)
33	Kundid, Mike	G	So.	6-1	175	19	-	Daytona Beach, FL	Father Lopez High (Bruce Tramont)
14	Mann, Hank	F	So.	6-5½	185	20	1	Chcster, PA	Chester High (Juan Baughin)
23	Perkins, Zach	F	Sr.	6-7	195	21	3	Crestview, FL	Crestview High (Lyndell Davis)
34	Smalls, Wayne	G	Jr.	6-2	170	22	2	Camden, NJ	Camden High (Clarence Turner)
24	Smith, James	F	So.	6-6	190	20	-	Lake Worth, FL	Lake Worth High (Harry Kinnan)
10	Thompson, David	F	So.	6-8	195	19	-	Boston, Mass	Stoughton (Don Edmonston)
40	Wascu, Larry	G	Sr.	6-4	190	21	2	Lake Worth, FL	Brevard JC (Jim Oler)
35	Woodard, Wayne	G	Jr.	5-10	155	21	-	Greensburg, IN	Greensburg High (Keith Greve)

FLORIDA STATE UNIVERSITY

FINAL 1974-75 BASKETBALL STATISTICS

18-8 .692 (H 15-1; A 3-7)

NAME	G	FGM-FGA	PCT.	FTM-FTA	PCT.	SM	REB-AVG.	ASST.	PF-D	PTS.	AVG.	HI
WARREN	25	172-363	.474	56-72	.778	207	139-5.6	60	82-4	400	16.0	33
GRADY	26	151-265	.581	37-65	.569	139	267-10.3	23	72-2	345	13.3	25
SMALLS	26	141-314	.449	33-43	.767	183	68-2.6	110	61-2	315	12.1	32
PERKINS	26	126-255	.494	49-79	.620	159	191-7.3	42	70-0	301	11.6	18
DAVIS	26	104-185	.562	27-41	.659	95	147-5.7	34	53-1	235	9.0	20
HARRIS	26	91-179	.508	41-61	.672	108	80-3.1	73	77-4	223	8.6	16
MANN	25	58-117	.496	16-25	.640	68	59-2.4	17	53-3	132	5.3	14
BYRD	26	52-108	.481	23-41	.561	74	15-0.6	60	30-0	127	4.9	17
CHASSE	19	17-31	.548	8-18	.444	24	38-2.0	6	12-0	42	2.2	9
SHITT	12	12-26	.462	0-1	.000	15	2-0.2	0	2-0	24	2.0	4
GILBERT	6	3-2	1.000	3-7	.429	4	1-0.2	0	0-0	7	1.2	4
HARRISON	4	2-5	.400	0-2	.000	5	6-1.5	0	2-0	4	1.0	2
BRODIE	4	1-8	.125	1-1	1.000	7	6-1.5	0	3-0	3	0.8	3

TEAM

80

FLORIDA STATE	932-1858	.502	294-456	.645	1088	1099-42.3	425	517-16	2158	83.0	111
OPPONENTS	766-1732	.442	330-474	.696	1110	1019-39.2	335	521-16	1862	71.6	85
					Rebound Margin	3.1		Scoring Margin		11.4	



DEADBALL REBOUNDS (not included above) FSU 41; OPP 39

**TURNOVERS MINUTES PLAYED**

FSU 472	GRADY 799.5	PERKINS 731.0	BYRD 449.0	STITT 33.0	BRODIE 7.0
OPP 548	WARREN 794.5	HARRIS 625.0	MANN 290.5	HARRISON 13.0	
	SMALLS 781.5	DAVIS 566.5	CHASSE 123.0	GILBERT 11.5	

**SEASON SUPERLATIVES**

Most Points	111	UT-Chattanooga (70)	Best FT Pct.	85.7	Georgia Southern (6/7)
	33	Warren vs. Marshall		85.0	Canisius (17/20)
Most Rebounds	58	Hofstra (56 + 2)		1.000	Smalls vs. GSC (6/6)
	17	Grady vs. ISU, Chatta.			Warren vs. Can. (6/6)
Most Assists	32	Cal State		72.4	Georgia So. (A) (42/58)
	14	Smalls vs. Cal State	Best FG Pct. (Game)	79.2	Georgia So. (A) (19/24) 2nd
Most FG Made	51	UT-Chattanooga	(5-10 atts.)	1.000	Davis vs. E. Ky. (6/6)
	16	Warren vs. Marshall	(11-19 atts.)	.857	Grady vs. Biscayne (12/14)
Most FG Attempts	92	Georgia Southern (H)	(20+ atts.)	.727	Warren vs. Mars. (16/22)
	22	Warren vs. Marshall	Turnovers: Most	27	Marshall, Biscayne
Most FT Made	22	Wisconsin-Milwaukee	Personals: Most	8	Jacksonville
	7	Perkins vs. Mercer (7/8)	Fewest	30	New Mexico
Most FT Attempts	33	Hofstra	Fewest	13	UT-Chattanooga
	9	Perkins vs. GSC (5/9)			

**OPPONENT LOWS**

Field Goals Made	24	Ohio U.	Free Throws Att.	8	UT-Chattanooga, Ga. St.
Field Goals Att.	50	Ohio U.	Rebounds	23	Cal State (19 + 4)
Field Goals Pct.	37.0	Memphis State (27/73)	Assists	5	UT-Chattanooga, Mercer
Free Throws Made	5	Biscayne, Jacksonville (H)	Points	55	Jacksonville (H)

FLORIDA STATE UNIVERSITY  
1974-75 RESULTS AND SCORING SUMMARY

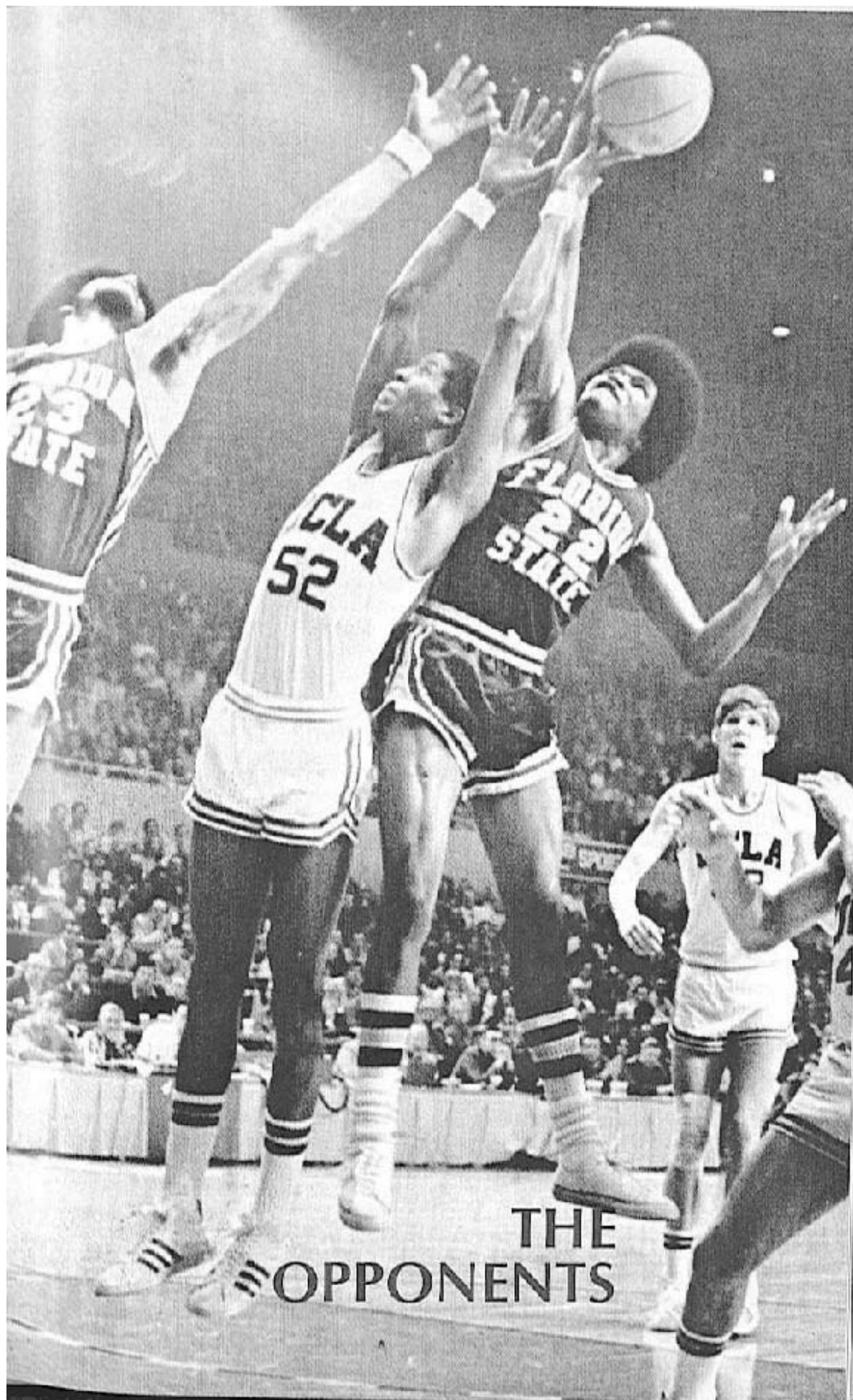
OPONENTS	FSU	OPP	HALF	Warn	Grdy	Smts	Pkns	Davis	Hris	Mann	Byrd	Chsc	Stit	Gil	Brod	Hrsn
#St. Kilda (Australia) (H)	81	63	45-33	10	15	7	15	10	13	7	*	2	-	-	-	3
Valdosta State (H)	81	74	38-37	16	15	14	15	4	5	6	5	1	-	-	-	*
Illinois State (H)	72	70	36-30	21	14	8	15	2	10	-	2	-	-	-	-	*
Marshall (H)	90	63	46-34	33	5	13	12	2	3	6	7	9	0	-	-	*
Memphis State (A)	69	70	30-29	9	11	14	13	7	3	10	2	0	-	-	-	*
Louisville (H)	75	84	38-37	19	10	4	16	9	12	5	0	-	-	-	-	*
Cal State-Bakersfield (H)	96	66	46-28	14	12	10	14	12	14	10	4	4	2	-	-	*
Ohio U. (H)	67	60	39-27	12	18	10	6	6	8	4	1	2	-	-	-	*
•Purdue (N)	69	66	34-30	11	15	10	10	10	7	0	6	0	-	-	-	*
•Louisville (A)	61	79	32-34	12	11	11	8	8	11	0	0	0	-	-	-	*
Eastern Kentucky (H)	107	75	53-35	15	17	16	10	14	4	11	10	4	2	4	0	0
Wisconsin-Milw. (H)	104	82	52-45	25	16	16	12	6	13	4	7	5	0	-	-	-
Biscayne (H)	88	59	46-29	18	11	10	8	11	16	2	4	4	2	-	-	2
South Florida (A)	71	77	36-37	19	15	6	18	2	5	2	4	0	-	-	-	-
Hofstra (H)	107	71	47-30	16	17	20	10	12	6	8	10	3	4	1	0	0
Biscayne (A)	95	85	41-33	9	25	12	11	4	16	8	10	-	-	-	-	-
Canisius (A)	75	81	50-38	18	10	12	8	14	4	4	5	-	-	-	-	-
New Mexico (A) (OT)	78	84	27-35	11	17	12	5	5	15	4	9	-	-	-	-	0
UT-Chatanooga (H)	111	70	53-39	22	10	18	9	10	13	9	11	0	3	2	3	4
Jacksonville (H)	63	55	27-29	14	6	4	15	15	7	2	0	-	-	-	-	-
Georgia Southern (N@)	101	77	52-27	*	10	32	11	20	13	4	8	1	4	0	-	-
Georgia State (H)	81	72	38-31	13	16	10	16	2	6	14	2	0	2	-	-	-
Jacksonville (A)	71	76	28-34	20	6	4	10	8	6	7	6	4	-	-	-	-
Georgia Southern (H)	104	71	56-29	23	15	16	12	12	6	8	4	2	4	-	-	-
Mercer (H)	91	68	50-44	16	12	12	17	18	7	2	4	3	0	2	0	-
South Florida (H)	77	64	52-33	12	21	17	7	10	8	0	2	0	0	-	-	-
Stetson (A)	54	63	25-30	2	10	4	13	12	7	2	4	0	-	-	-	-

= Exhibition not included in stats

@ at Savannah

\* Holiday Classic at Louisville

\* Injured/Sick



THE  
OPPONENTS

**GAME ROLLINS COLLEGE at Tallahassee, Florida**

**1** December 2, 1975 Tipoff: 7:30 p.m.  
Location: Winter Park, Fl. Enrollment: 3,700  
Colors: Royal Blue & Gold Nickname: Tars  
Conference: Sunshine State Home Court: Enyart FH  
President: Dr. Jack B. Critchfield Athletic Dir.: Joe Justice  
Basketball Coach: Ed Jucker Assistant: Mark Fieldinger  
(14 yrs, 232-94)  
SID: Randy Zenakis Phone: 305/646-2202  
Home: 305/671-3982  
Series Standing: 18-2, FSU 1974-75 Record: 16-7  
Starters: Back 4, Lost 1 Lettermen: Back 9, Lost 2  
**TOP RETURNEES:** Bruce Howland (Sr., F, 6-5); Gary Parsons (Jr., F, 6-5); Steve Heis (Sr., G, 6-6); Tom Klusman (Sr., G, 6-2). **TOP NEWCOMERS:** Bill Brandon (Jr., G-F, 6-3); Tom Durkee (Fr., F, 6-4).

**GAME EASTERN KENTUCKY at Richmond, Kentucky**

**2** December 6, 1975 Tipoff: 7:30 p.m.  
Location: Richmond, KY Enrollment: 12,571  
Colors: Maroon & White Nickname: Colonels  
Conference: Ohio Valley Home Court: Alumni Col.  
President: Dr. Robert R. Martin Athletic Dir.: Don Combs  
Basketball Coach: Bob Mulcahy Assistant: Ed Byhre  
(8 yrs, 102-102)  
SID: Karl Park Phone: 606/622-2301  
Home: 606/623-3961  
Series Standing: 5-1, FSU 1974-75 Record: 7-18  
Starters: Back 5, Lost 0 Lettermen: Back 9, Lost 1  
**TOP RETURNEES:** Carl Brown (Sr., F, 6-4); Mike Oliver (So., C, 6-8); Jimmy Segar (Sr., F, 6-4); Darryl Davis (So., G, 6-3); Tyrone Jones (So., G, 5-9); Bill Dwane (So., C, 6-10); Darryl Young (So., F, 6-7); Greg Schepman (Jr., G, 6-2); Mike Dyer (Jr., F, 6-3). **TOP NEWCOMERS:** Denny Fugate (So., G, 5-11); Vic Merchant (Fr., F, 6-5); Billy Owens (Jr., F, 6-4); Pete Tucker (Jr., C, 6-7).

**GAME INDIANA at Indianapolis, Indiana**

**3** December 8, 1975 Tipoff: 8:05 p.m.  
Location: Bloomington, IN Enrollment: 32,651  
Colors: Cream & Crimson Nickname: Hoosiers  
Conference: Big Ten Home Court: Assembly Hall  
President: John W. Ryan Athletic Dir.: Paul Dietzel  
Basketball Coach: Bob Knight Assistants: Bob Donewald,  
(4 yrs, 93-20) Bob Weltlich, Harold Andreas  
SID: Tom Miller Asst. SID: Kit Klingelhoffer  
SID Phone: 812/337-2421  
SID Home Phone: 812/332-9880  
Series Standing: First meeting 1974-75 Record: 31-1  
Starters: Back 4, Lost 1 Lettermen: Back 9, Lost 6  
**TOP RETURNEES:** Scott May (Sr., F, 6-7); Tom Abernethy (Sr., F, 6-7); Kent Benson (Jr., 6-11, C); Quinn Buckner (Sr., G, 6-3); Bobby Wilkerson (Sr., G, 6-6); Jim Crews (Sr., G, 6-5); Wayne Radford (So., G, 6-3); Mark Haymore (So., F, 6-9); Jim Wisman (So., G, 6-2). **TOP NEWCOMERS:** Bob Bender (Fr., G, 6-2); Rich Valavicius (Fr., F, 6-5); Scott Eells (Fr., F, 6-9).

**GAME STETSON at Tallahassee, Florida**

**4** December 11, 1975 Tipoff: 7:30 p.m.  
 Location: Deland, FL Enrollment: 2,000  
 Colors: Green, White & Gold Nickname: Hatters  
 Conference: Independent Home Court: Edmunds Center  
 President: Dr. John E. Johns Athletic Dir.: Dr. Glenn Wilkes  
 Basketball Coach: Glenn Wilkes Assistants: Jay Hoover  
 (18 yrs. 287-196) Glen Korobov  
 SID: Fred H. Cooper Phone: 904/734-4121,  
 Home: 305/295-0857  
 Series Standing: 25-11, FSU 1974-75 Record: 22-4  
 Starters: Back 2, Lost 3 Lettermen: Back 8, Lost 3

**TOP RETURNEES:** Dave Stowers (Sr., W, 6-7); Paul Morris (Sr., W, 6-5); Buzzy O'Connell (Jr., P, 5-10); Todd Lee, (So., W, 6-7); Pete Nordhorn (Sr., P, 6-7); Levan Anderson (Sr., P, 6-2); J.C. Bridges (Sr., P, 6-0); Phil Pratt (Jr., W, 6-6). **TOP NEWCOMERS:** Issac Coats (Jr., W, 6-4); Curt Forrester (Jr., W, 6-5); Steve Sellers (Jr., P, 6-7); Aaron Teixeira (Jr., P, 6-9); Alan Schwartz (Fr., P, 6-9).

**GAME PALM BEACH ATLANTIC at Tallahassee, Florida**

**5** December 13, 1975 Tipoff: 7:30 p.m.  
 Location: West Palm Beach, FL Enrollment: 450  
 Colors: Aqua & White Nickname: Sailfish  
 Conference: Independent Home Court: Twin Lakes  
 President: Dr. Warner E. Fusselle Athletic Dir.: George Perides  
 Basketball Coach: George Perides Assistants: Alphonso James  
 (3 yrs. 62-85) Tom Howard  
 SID: Ray Morgan Asst. SID: Paul Rich  
 SID Phone: 305/833-8592  
 Series Standing: 1st Meeting 1974-75 Record: 22-4  
 Starters: Back 2, Lost 3 Lettermen: Back 5, Lost 6

**TOP RETURNEES:** Willie Fedd (Sr., F, 6-3); Tom Braxton (Sr., G, 6-1); Jerry Troutman (So., G, 6-2); Keeroaha Stevenson (Sr., P, 5-9); Clifford Williams (F, 6-3). **TOP NEWCOMERS:** Charles Fedd (Jr., F, 6-5); Reginald Williams (Sr., G, 6-4); Danny Fuhum (Fr., G, 5-10); Carlos McSwain (Sr., C, 6-11); Dennis Mobley (Fr., G, 6-1).

**GAMES BIG SUN TOURNAMENT at St. Petersburg, Florida**

**6-7** December 19-20, 1975  
 Alabama, Pittsburgh and South Florida

**ALABAMA**

Location: Tuscaloosa, AL Enrollment: 15,000  
 Colors: Crimson & White Nickname: Crimson Tide  
 Conference: Southeastern Hm. Crt.: Memorial  
 Exec. VP: Richard Thigpen Athletic Dir.: Paul W. Bryant  
 Basketball Coach: C.M. Newton Assistants: Wimp Sanderson,  
 (19 yrs. 275-217) John Bostick, Wendell Hudson  
 SID: Charley Thornton Asst. SID: Kirk McNair  
 SID Phone: 205/348-6084

SID Home Phone: 205/553-1731  
 Series Standing: 6-6, Tied 1974-75 Record: 22-5  
 Starters: Back 3, Lost 2 Lettermen: Back 4, Lost 3

**TOP RETURNEES:** Leon Douglas (Sr., C, 6-1); T.R. Dunn (Jr., F-G, 6-4); Anthony Murray (So., G, 6-3); Rickey Brown (Jr., F-C, 6-8).

## PITTSBURGH

Location: Pittsburgh, PA  
Colors: Gold & Blue  
Conference: Independent  
Chancellor: Dr. Wesley W. Posvar  
Basketball Coach: Tim Grgurich  
(First Year)  
SID: Dean Billick

Enrollment: 12,042  
Nickname: Panthers  
Home Court: Fitzgerald FH  
Athletic Dir.: Cas Myslinski  
Assistants: Fran Webster,  
Bob Hill, Kirk Bruce  
Asst. SID: Vince DiNardo

SID Phone: 412/624-4588

SID Home Phone: 412/531-7701

Series Standing: 1-0, Pittsburgh  
Starters: Back 3, Lost 2

1974-75 Record: 18-11, NIT  
Lettermen: Back 12, Lost 6

**TOP RETURNEES:** Keith Starr (Sr., G-F, 6-7); Tom Richards (Sr., G, 6-0); Larry Harris (So., F, 6-6).

**SOUTH FLORIDA** (See Game 15)

**GAMES** FAR WEST CLASSIC at Portland, Oregon

December 26-30, 1975

# 8-10

Duquesne, Texas Tech, Oregon, Oregon State,  
Colorado State, Northwestern, Washington

## DUQUESNE

Location: Pittsburgh, PA  
Colors: Red & Blue  
Conference: Independent

Enrollment: 8,080  
Nickname: Dukes  
Home Court: Civic Arena  
(16,000)

President: Rev. Henry J. McNulty  
Basketball Coach: John L. Ciricola  
(1 yr, 14-11)

AD: John M. "Red" Manning  
Assistants: Jarrett Durham,  
Jim Sims

SID: Clair N. Brown

Phone: 412/434-6564

Home: 412/929-5391

Series Standing: 1-1, Tied

1974-75 Record: 14-11

Starters: Back 3, Lost 2

Lettermen: Back 7, Lost 4

**TOP RETURNEES:** Roland Jones (Sr., G, 6-5); Ray Milligan (Sr., C, 6-9); Norm Nixon (Jr., G, 6-2); Jesse Hubbard (So., C, 6-9); Hosea Champine (So., G, 6-3); Mickey Davila (So., G, 6-3).

## TEXAS TECH

Location: Lubbock, TX  
Colors: Scarlet & Black  
Conference: Southwest  
President: Dr. Grover E. Murray  
Basketball Coach: Gerald Myers  
(7 yrs, 108-85)

Enrollment: 22,000  
Nickname: Red Raiders  
Home Court: Municipal Col.  
Athletic Dir.: J.T. King  
Assistants: George Davidson,  
Rob Evans

SID: Ralph Carpenter

Asst. SID: George Foster

SID Phone: 806/742-4141

SID Home Phone: 806/797-2541

Series Standing: 1st Meeting

1974-75 Record: 18-8

Starters: Back 3, Lost 2

Lettermen: Back 8, Lost 4

**TOP RETURNEES:** Steve Dunn (Jr., G, 6-2); Grady Newton (Sr., F, 6-6); Rick Bullock (Sr., C, 6-9).

## OREGON

Location: Eugene, OR  
Colors: Emerald Green &  
Lemon Yellow

Enrollment: 16,270  
Nickname: Ducks,  
Webfoots, Kamikaze Kids

Conference: Pacific 8  
President: Dr. William B. Boyd  
Basketball Coach: Dick Harter  
(10 yrs, 162-103)  
SID: Chuck Niemi

Series Standing: 0-1, FSU  
Starters: Back 4, Lost 1

TOP RETURNNEES: Ron Lee (Sr., G, 5-4); Greg Ballard (Jr., F, 6-7);  
Geoff Nelson (Sr., C, 6-10).

Home Court: McArthur Court  
Athletic Dir.: Norv Ritchey  
Assistants: Dick Stewart,  
Jim Haney, Ron Billingslea  
Phone: 503/686-5494  
Home: 503/345-7984  
1974-75 Record: 21-9  
Lettermen: Back 10, Lost 3

#### OREGON STATE

Location: Corvallis, OR  
Colors: Orange & Black  
Conference: Pacific 8  
President: Dr. Robert MacVicar  
Basketball Coach: Ralph Miller  
(24 yrs, 392-244)  
SID: John Eggers

Series Standing: 2-6, FSU  
Starters: Back 3, Lost 2

TOP RETURNNEES: Paul Miller (Sr., F, 6-8); George Tucker (Jr., G,  
6-4); Don Smith (Jr., F, 6-7); Rickey Lee (So, F, 6-6); Tim Hennessey  
(Sr., G, 6-4); Roosevelt Daniel (Jr., F, 6-6).

Enrollment: 15,900  
Nickname: Beavers  
Home Court: Gill Coliseum  
Athletic Dir.: Jim Barratt  
Assistants: Jim Anderson,  
Dave Leach  
Phone: 503/754-2611  
Home: 503/753-6178  
1974-75 Record: 19-12  
Lettermen: Back 7, Lost 4

#### COLORADO STATE

Location: Fort Collins, CO  
Colors: Green & Gold  
Conference: Western Athletic  
President: Dr. A.R. Chamberlain  
Basketball Coach: Jim Williams  
(21 yrs, 290-223)  
SID: Tim Simmons

SID Home Phone: 303/482-3295

Series Standing: 1st Meeting  
Starters: Back 3, Lost 2

TOP RETURNNEES: Barry Sabas (Sr., G, 6-5); Tery Larrew (Sr., G,  
6-4); Ron Bouldin (Sr., F, 6-4); Lorenzo Cash (Sr., F, 6-6); Fred  
Anzures (Jr., G, 6-0).

Enrollment: 17,000  
Nickname: Rams  
Hm. Crt.: Auditorium-Gym  
Athletic Dir.: Dr. Jack O'Leary  
Assistants: Dan Carnevale,  
Floyd Kerr  
Asst. SID: Ted Roche

SID Phone: 303/491-5067

1974-75 Record: 14-12  
Lettermen: Back 5, Lost 4

#### NORTHWESTERN

Location: Evanston, IL  
Colors: Purple & White  
Conference: Big Ten  
President: Robert H. Strotz  
Basketball Coach: Tex Winter  
(22 yrs, 347-212)  
SID: Jerry Ashby

Series Standing: 1-0, FSU  
Starters: Back 3, Lost 2

Enrollment: 6,500  
Nickname: Wildcats  
Home Court: McGaw  
Athletic Dir.: John Pont  
Assistants: Rich Falk,  
Walt Perrin  
Phone: 312/492-7503  
Home: 312/398-0318  
1974-75 Record: 4-14  
Lettermen: Back 10, Lost 4

**TOP RETURNNEES:** Billy McKinney (Jr., G, 6-0); Tim Teasley (Sr., G, 6-1); James Wallace (Sr., C, 6-10); Brad Cartwright (Jr., F, 6-6); Larry Dennis (Sr., G, 6-3); David Fields (Jr., F-C, 6-9); Bob Hildebrand (Jr., G, 6-1); David Hiser (Jr., F, 6-6); Dick Milam (Jr., G, 6-2).

#### WASHINGTON

Location: Seattle, WA  
Colors: Purple & Gold  
Conference: Pacific  
President: John Hogness  
Basketball Coach: Mary Harshman  
(30 yrs, 466-339)  
SID: Don Smith  
Enrollment: 33,000  
Nickname: Huskies  
Home Court: Hec Edmundson  
Athletic Dir.: Joe Kearney  
Assistants: Denny Huston,  
Robert Johnson  
Asst. SID: George Hill  
SID Phone: 206/543-4976

SID Home Phone: 206/747-5100

Series Standing: 1-0, FSU

1974-75 Record: 16-10

Starters: Back 4, Lost 1

Lettermen: Back 11, Lost 2

**TOP RETURNNEES:** Clarence Ramsey (Sr., G, 6-4); Chester Dorsey (Jr., G, 6-1); James Edwards (Jr., C, 6-11); Lars Hansen (Sr., C, 6-11).

#### GAME WESTERN KENTUCKY at Tallahassee, Florida

**11** January 8, 1976

Tipoff: 7:30 p.m.

Location: Bowling Green, KY  
Colors: Red & White  
Conference: Ohio Valley Conference  
President: Dr. Dero G. Downing  
Basketball Coach: Jim Richards  
(4 yrs, 56-45)  
SID: Ed Given  
Enrollment: 12,500  
Nickname: Hilltoppers  
Hm. Crt.: E.A. Diddle Arena  
Athletic Dir.: John Oldham  
Assistants: Lanny Van Eman,  
Bobby Rascoe  
Phone: 502/745-4295  
Home: 502/842-4661

Series Standing: 1-0, FSU

1974-75 Record: 16-8

Starters: Back 3, Lost 2

Lettermen: Back 9, Lost 4

**TOP RETURNNEES:** Steve Ashby (So., G, 5-0); Gary Gregory (So., G, 5-10); Chuck Rawlings (Sr., G, 6-1); Johnny Britt (Sr., G-F, 6-2); Bill Scillian (Jr., G-F, 6-4); David Beckner (Sr., G, 5-10); Mike Warner (Sr., F-C, 6-7); Wilson James (Sr., F, 6-5); Mike Gilbert (Jr., C, 6-8). **TOP NEWCOMERS:** James Johnson (So., F-C, 6-8); Rob Dunbar (Fr., F, 6-6); Julio Davila (Fr., G-F, 6-6); Jerry Britt (Fr., G, 5-8).

#### GAME: JACKSONVILLE at Jacksonville, Florida

**12** January 10, 1976

Tipoff: 8:00 p.m.

Location: Jacksonville, FL  
Colors: Green & Gold  
Conference: NCAA Independent  
President: Dr. Robert M. Spiro  
Basketball Coach: Don Brasley  
(1st Year)  
SID: Larry Lium  
Enrollment: 1,800  
Nickname: Dolphins  
Home Court: Memorial Col.  
AD: Dr. Judson B. Harris  
Asst. SID: Randy Hart

SID Phone: 904/744-3950 Ext. 223

Series Standing: 16-10, FSU

1974-75 Record: 15-11

Starters: Back 3, Lost 2

Lettermen: Back 7, Lost 4

**TOP RETURNNEES:** Marvin Lloyd (Sr., P, 6-9); Bobby Alvarez (Jr., W, 6-5); Randy Williams (So., W, 6-6); Manny Suarez (So., P, 6-6). **TOP NEWCOMERS:** Felton Young (So., P, 7-0); Kent Glover (Jr., P-G, 6-1); Joan Richards (Fr., P, 7-1); Henry Patterson (Jr., W, 6-3).



**GAME BAPTIST COLLEGE at Tallahassee, Florida**

**13** January 14, 1976 Tipoff: 7:30 p.m.  
Location: Charleston, SC Enrollment: 2,000  
Colors: Indigo & Gold Nickname: Buccaneers  
Conference: None Home Court: B.C. Gymnasium  
President: Dr. John A. Hamrick Athletic Dir.: Howard Bagwell  
Basketball Coach: Danny Monk  
(2 yrs, 9-38)  
SID: Boyd Bridges Phone: 803/797-4117  
Home: 803/873-5297

Series Standing: 1st Meeting  
Starters: Back 4, Lost 1  
1974-75 Record: 4-16  
Lettermen: Back 8, Lost 3

**TOP RETURNEES:** Mike Henry (So., W, 6-6); Denny Fields (So., P, 6-8); Mike Whiteside (So., W-P, 6-6); Jimmy Howell (Jr., G, 5-9); Tyler Lawrence (So., G, 6-2); Tom Wright (Jr., W, 6-1); Larry McKeegan (Sr., W, 6-3); Scott Hall (So., G, 6-0). **TOP NEWCOMERS:** Buddy Woods (Jr., W-P, 6-6); Dan McCarthy (Jr., G, 5-10); Bobby Hampton (Fr., G-W, 6-0); Mike Akers (So., W, 6-2).

**GAME MEMPHIS STATE at Tallahassee, Florida**

**14** January 17, 1976 Tipoff: 7:30 p.m.  
Location: Memphis, TN Enrollment: 22,500  
Colors: Blue & Gray Nickname: Tigers  
Conference: MCAC or METRO 6 Home Court: Mid-South Col.  
President: Dr. Billy M. Jones Athletic Dir.: Billy J. Murphy  
Basketball Coach: Wayne Yates Assistants: M.K. Turk,  
(1 yr, 29-7) Verties Sails  
SID: Jack Bugbee Asst. SID: Bob Winn

SID Phone: 901/454-2337  
SID Home Phone: 901/452-9648  
Series Standing: 11-6, MSC 1974-75 Record: 20-7  
Starters: Back 5, Lost 0 Lettermen: Back 11, Lost 3

**TOP RETURNEES:** Bill Cook (Sr., G, 6-5); Dexter Reed (Jr., G, 6-4); Marion Hillard (Sr., G, 6-9); John Gunn (So., G-F, 6-9); John Tunstall (Sr., F, 6-7); David Brown (Sr., F, 6-8); Ed Wilson (Sr., F, 6-7); Alvin Wright (So., G, 5-10); Bob Corn (Jr., G, 6-2); Clarence Jones (Sr., G-F, 6-6); John Washington (Jr., G, 6-10). **TOP NEWCOMERS:** John Kilzer (Fr., G-F, 6-6); Bill Butcher (Fr., G, 6-3); Rodney Lee (Fr., F, 6-7); Steve Meacham (Fr., G, 6-9); Mark Selent (Fr., G, 6-1).

**GAME SOUTH FLORIDA at Tampa, Florida**

**15** January 20, 1976 Tipoff: 8:00 p.m.  
Location: Tampa, FL Enrollment: 21,000  
Colors: Green & Gold Nickname: Golden Brahmins  
Conference: NCAA Independent Home Court: Curtis Hixon  
President: Dr. M. Cecil Mackey AD: Dr. Richard T. Bowers  
Basketball Coach: Chip Conner Assistants: Phil Collins,  
(1st Year) Scott McCandlish  
SID: John Renneker Phone: 813/974-2125  
Home: 813/526-6730

Series Standing: 3-2, FSU  
Starters: Back 3, Lost 2  
1974-75 Record: 15-10  
Lettermen: Back 8, Lost 2

**TOP RETURNEES:** Doug Aplin (Sr., G, 6-2); Eddie Davis (Sr., F, 6-8); Ric Butner (Sr., F, 6-8). **TOP NEWCOMERS:** Mike Dickerson (Jr., F, 6-5); Jerome Gray (Jr., F, 6-5).

**GAME SOUTHWESTERN LOUISIANA at Tallahassee, Florida**

**16** January 24, 1976 Tipoff: 7:30 p.m.  
Location: Lafayette, LA Enrollment: 12,000  
Colors: Vermilion Red & White Nickname: Ragin Cajuns  
Conference: Southland Conference Home Court: Blackham Col.  
President: Dr. Ray Authement Athletic Dir.: Toby Warren  
Basketball Coach: Jim Hatfield Assistants: Bobby Paschal,  
(1st Year) Bud Collins  
SID: Bill Miller Asst. SID: Al Guidry  
SID Phone: 318/233-0655  
SID Home Phone: 318/981-0897  
Series Standing: 1st Meeting 1974-75 Record: 0-0 (1st Year)  
**TOP NEWCOMERS:** Calvin Crews (6-11); Myron Wilkins (6-9); Terry  
Ripka (6-5).

**GAME GEORGIA STATE at Atlanta, Georgia**

**17** January 31, 1976 Tipoff: 8:00 p.m.  
Location: Atlanta, GA Enrollment: 19,000  
Colors: Scarlet & Grey Nickname: Panthers  
Conference: Independent Home Court: GSU Fld. Hsc.  
President: Dr. Noah Langdale AD: Dr. Francis J. Bridges  
Basketball Coach: Jack Waters Assistant: Al Dickson  
(9 yrs, 63-128)  
SID: Jim Robinson Phone: 404/658-3168  
Series Standing: 1-0, FSU 1974-75 Record: 8-18  
Starters: Back 6, Lost 1 Lettermen: Back 6, Lost 3  
**TOP RETURNEES:** Pete Culver, James Atkinson, Eddie Young, Robert  
Pierson, Don Tyson, Mayce Choates. **TOP NEWCOMERS:** Miguel  
Poyastro, Doug Scott, George Pendleton.

**GAME ILLINOIS STATE at Normal, Illinois**

**18** February 2, 1976 Tipoff: 7:30 p.m. CST  
Location: Normal- Enrollment: 19,000  
Bloomington, IL  
Colors: Red & White Nickname: Redbirds  
Conference: Independent Hrn. Cr.: Horton F.H.  
President: Dr. Gene A. Budig Athletic Dir.: Warren Schmackel  
Basketball Coach: Gene Smithson Assistant: Bill Flanagan  
(1st Year)  
SID: Roger Gushman Asst. SID: Lynda Miller  
SID Phone: 309/438-5631  
SID Home Phone: 309/452-5170  
Series Standing: 1-0, FSU 1974-75 Record: 16-10  
Starters: Back 3, Lost 2 Lettermen: Back 9, Lost 2  
**TOP RETURNEES:** Mike Bonczyk (Sr., G, 5-10); John Crossen (Jr., F,  
6-2); Randy Henry (Sr., G, 6-8); Richard Jones (Sr., F, 6-3); Billy Lewis  
(So., F, 6-5); Roger Powell (Sr., F, 6-5); George Tometich (Sr., G, 6-2);  
Jeff Wiedel (Jr., F, 6-6); Jeff Wilkins (Jr., C, 7-0). **TOP NEWCOMERS:**  
Rick Ferina (Fr., G, 6-4); Derrick Mayes (Fr., G, 6-1).

**GAME SOUTH FLORIDA at Tallahassee, Florida**

**19** February 7, 1976 Tipoff: 7:30 p.m.  
(see Game 15 for team summary)

**GAME ILLINOIS STATE at Tallahassee, Florida**

**20**

February 12, 1976

Tipoff: 7:30 p.m.

(see Game 17 for team summary)

**GAME MADISON COLLEGE at Harrisonburg, Virginia**

**21**

February 14, 1976

Tipoff: 8:30 p.m.

Location: Harrisonburg, VA

Enrollment: 7,200

Colors: Purple & Gold

Nickname: Dukes

Conference: Independent

Hm. Crt.: Godwin Hall

President: Dr. Ronald E. Carrier

Athletic Dir.: Dean Ehlers

Basketball Coach: Lou Campanelli

Assistant: Mike Fratello

(3 yrs, 55-22)

SID: Rich Murray

Phone: 703/433-6154

Home: 703/433-1591

Series Standing: 1st Meeting

1974-75 Record: 19-6

Starters: Back 5, Lost 0

Lettermen: Back 16, Lost 2

**TOP RETURNNEES:** Leon Baker (So., G, 5-10); John Cadman (Jr., C, 6-9); David Correll (Sr., F, 6-6); Sherman Dillard (Jr., F, 6-4); Pat Dosh (So., F, 6-4); Wilbert Mills (Sr., G, 5-0); Joe Pfahler (Sr., G, 6-0); Jim Phillips (Sr., F, 6-5); Van Snowden (Jr., G, 5-9); David Van Alstyne (Jr., G, 6-1). **TOP NEWCOMERS:** Dick Duckett (Fr., G, 6-2); Roger Hughett (Fr., G, 6-2); Gerard Maturine (Fr., C-F, 6-7).

**GAME JACKSONVILLE at Tallahassee, Florida**

**22**

February 18, 1976

Tipoff: 7:30 p.m.

(see Game 11 for team summary)

**GAME GEORGIA STATE at Tallahassee, Florida**

**23**

February 21, 1976

Tipoff: 7:30 p.m.

(see Game 16 for team summary)

**GAME VALDOSTA STATE at Tallahassee, Florida**

**24**

February 24, 1976

Tipoff: 7:30 p.m. EST

Location: Valdosta, GA

Enrollment: 5,100

Colors: Red & Black

Nickname: Blazers

Conference: South Atlantic

Hm. Crt.: Blazer F.H.

President: S. Walter Martin

Athletic Dir.: Bill Grant

Basketball Coach: James Dominey

Assistants: Donnie Veal,

(4 yrs, 65-39)

Bob Lamphier

SID: Steve Roberts

Phone: 912/247-3317 or

Home: 912/244-6560

244-1880

Series Standing: 13-0, FSU

1974-75 Record: 15-12

Starters: Back 3, Lost 2

Lettermen: Back 5, Lost 3

**TOP RETURNNEES:** Larry Miller (Jr., G, 6-2); James Fletcher (Sr., G, 6-0); Mike Clyde (Sr., F, 6-6); Mike Patrick (Sr., F, 6-4); Mark Hesser (So., F, 6-4). **TOP NEWCOMERS:** Mark Patrick (Jr., F, 6-6); Larry Brooks (Jr., G, 6-3); Chuck Waggener (Jr., C, 6-9); Jack Mennel (Jr.).

**GAME MERCER at Tallahassee, Florida**

**25** February 28, 1976 Tipoff: 7:30 p.m.  
Location: Macon, GA Enrollment: 2,000  
Colors: Orange & Black Nickname: Bears  
Conference: Independent Home Court: Macon Col.  
President: Dr. Rufus C. Harris Athletic Dir.: John Mitchell  
Basketball Coach: Bill Bibb Assistant: Larry Riley  
(1 yr, 9-17)  
SID: Jack Pigott Phone: 912/745-6811,  
Home: 912/743-7398  
Series Standing: 11-7, FSU 1974-75 Record: 9-17  
Starters: Back 2, Lost 3 Lettermen: Back 5, Lost 5

**TOP RETURNNEES:** Andre Brown (Sr., C, 6-8); Jerry Thruston (Jr., F, 6-7); Steve Hendrickson (Jr., G, 5-11); Joe Everetty (Jr., G, 5-11); Leroy Turner (Sr., C, 6-7); Phil Cochran (Sr., F, 6-5). **TOP NEWCOMERS:** David Mock (Jr., F, 6-8); Vernon Whitney (Jr., G, 6-3); Jay Eiche (Fr., C, 6-8). **KEY LOSSES:** Geary Taylor (G, 6-1, 17.8); Teko Wynder (G, 6-5, 20.5).

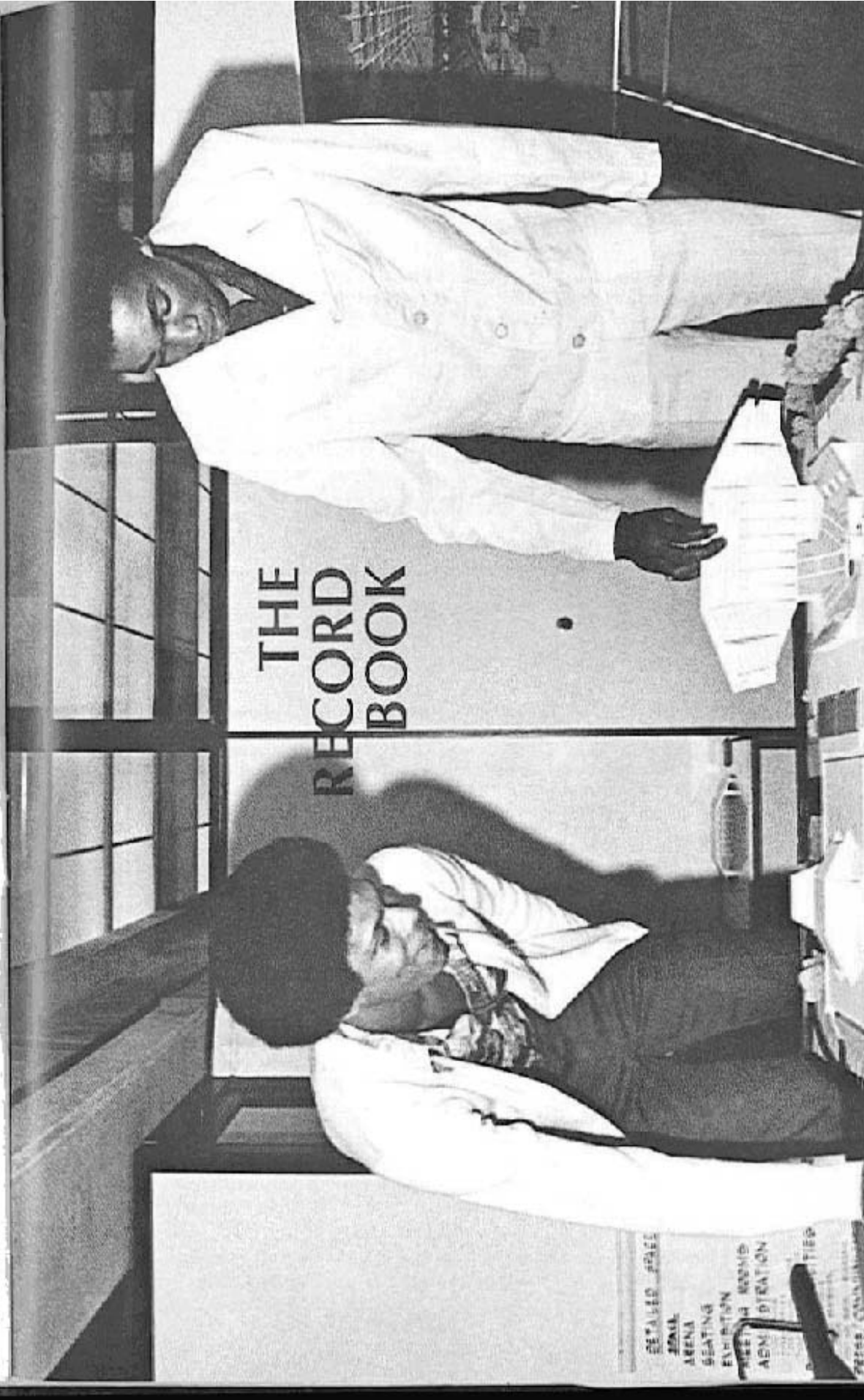
**GAME SOUTHWESTERN LOUISIANA at Lafayette, Louisiana**

**26** March 4, 1976 Tipoff: 7:30 p.m. CST  
(see Game 15 for team summary)

**GAME DAYTON at Dayton, Ohio**

**27** March 6, 1976 Tipoff: 8:15 p.m.  
Location: Dayton, OH Enrollment: 5,200  
Colors: Red & Blue Nickname: Flyers  
Conference: Independent Home Court: Dayton Arena  
President: Very Rev. Raymond Roesch Athletic Dir.: Dr. Dale W. Foster  
Basketball Coach: Don Donoher Assistants: Bill Cassidy,  
(12 yrs, 204-103) Jack Butler, Jim Ehler  
SID: Joe Mitch Asst. SID: Brian Urguhart  
SID Phone: 513/229-4421  
SID Home Phone: 513/433-8376  
Series Standing: 2-0, FSU 1974-75 Record: 10-16  
Starters: Back 2, Lost 5 Lettermen: Back 6, Lost 5

**TOP RETURNNEES:** Rocky Coleman (Jr., G-F, 6-4); Johnny Davis (Jr., G, 6-1); Ervin Giddings (So., F, 6-7); Leighton Moulton (Sr., G, 6-4); Terry Ross (So., C, 6-9); Joe Siggins (So., G, 6-4). **TOP NEWCOMERS:** Jim Paxson (Fr., F, 6-5); Fred Eckert (Fr., C, 6-10); James Wells (Fr., C, 6-9); Mike Wilson (Jr., F-C, 6-7); Mike Lee (Fr., G, 6-3); Doug Harris (Fr., G, 6-1). **KEY LOSSES:** Allen Elijah (F, 6-8, 12.8); Joe Fisher (C, 6-8, 7.3).



THE  
RECORD  
BOOK

- DETAILED PRICES
- FOOD
- ARENA
- SEATING
- EXHIBITION
- FREEING ROOMS
- ADMINISTRATION
- POSTERS
- FREE CONSIGNMENTS

## 1,000 POINT CLUB

The following Florida State players have scored at least 1,000 points in their varsity careers.

NAME	YEARS	FG	FT	PTS.	G	AVG.
Jim Oler	4 (1952-56)	529	762	1820	91	20.0
Dave Cowens	3 (1967-70)	582	315	1479	78	19.0
Dave Fedor	3 (1959-62)	585	283	1453	72	20.2
Ham Wernke	4 (1951-55)	508	393	1409	73	19.3
Reggie Royals	3 (1970-73)	580	242	1402	84	16.7
Hugh Durham	3 (1956-59)	470	441	1381	73	18.9
Ron King	3 (1970-73)	542	168	1252	64	19.6
Jeff Hogan	3 (1966-69)	466	232	1164	79	14.8
Gary Schull	3 (1963-66)	403	316	1122	76	14.3
Lawrence McCray	3 (1971-74)	492	127	1111	84	13.2
Ray Swain	3 (1959-62)	403	194	1000	72	13.9

## THE 500 BOARD

The following Florida State players have at least 500 Career Rebounds. (Records are incomplete prior to 1957.)

NAME	YEAR	REBOUNDS
Dave Cowens	1967-70	1,340
Reggie Royals	1970-73	1,006
Dave Fedor	1959-62	969
Gary Schull	1963-66	769
Lawrence McCray	1971-74	759
Greg Grady*	1972-75	590
Dan Boltz	1957-59	567
Willie Williams	1968-70	534
Ray Swain	1959-62	534
Rowland Garrett	1969-72	525
Jerry Shirley	1962-65	522

\*Still active

## THE DEFENDERS

A major factor of the Florida State basketball philosophy concerns defense and the Seminoles under Hugh Durham have had many fine defensive performers whose contributions are not as easily measured, but certainly are as important as the "pointmakers." The ten individuals listed here are Coach Durham's choices as the top defensive players during his tenure as Head Coach.

Center:	Dave Cowens	Willie Williams
Forward:	Ron Harris	Reggie Royals
Forward:	Rowland Garrett	John Burt
Guard:	Greg Samuel	Darrell Stewart
Guard:	Skip Young	Randy Cable

## INDIVIDUAL CAREER RECORDS

### Field Goals Made

585—Dave Fedor, 1959-62  
 582—Dave Cowens, 1967-70  
 580—Reggie Royals, 1970-73  
 542—Ron King, 1970-73  
 529—Jim Oler, 1952-56  
 508—Ham Wernke, 1951-55  
 492—Lawrence McCray, 1971-74  
 470—Hugh Durham, 1956-59  
 466—Jeff Hogan, 1966-69  
 403—Ray Swain, 1959-62  
 403—Gary Schull, 1963-66  
 401—Bob McLaughlin, 1948-52

### Free Throw Percentage

.8131—Jerry Shirley, 1962-65 (161/198)  
 .7885—Larry Warren, 1973-75 (138/175)  
 .7815—Jim Oler, 1952-56 (762/975)  
 .7796—Dave Fedor, 1959-62 (283/363)  
 .7768—Hugh Durham, 1956-59 (441/569)  
 .7626—Randy Cable, 1967-70 (106/139)  
 .7514—Jim Liteky, 1957-59 (135/181)  
 .7475—Jeff Hogan, 1966-69 (232/305)  
 .7427—Jan Gies, 1967-70 (153/206)  
 .7417—Eugene Harris, 1973-75 (89/120)  
 .7374—Ham Wernke, 1951-55 (393/533)  
 .7366—Tom Garcia, 1954-58 (151/205)  
 .7304—Ron King, 1970-73 (168/230)

### Field Goal Percentage

.5724—Jan Gies, 1967-70 (245/428)  
 .5639—Greg Grady, 1972-75 (300/532)  
 .5560—Willie Williams, 1968-70 (258/482)  
 .5491—Lawrence McCray, 1971-74 (492/896)  
 .5187—Dave Cowens, 1967-70 (582/1122)  
 .5082—Ray Swain, 1959-62 (403/793)  
 .5051—Vernell Ellzy, 1969-71 (240/477)  
 .4983—Dave Fedor, 1959-62 (585/1174)  
 .4974—Bob Lovell, 1962-65 (176/356)  
 .4953—Charlie Long, 1960-63 (370/750)  
 .4927—Dick Danford, 1965-68 (204/414)  
 .4911—Reggie Royals, 1970-73 (580/1181)  
 .4903—Gary Schull, 1963-66 (403/822)

### Average Points Scored (Games/Points)

20.18—Dave Fedor, 1959-62 (72/1453)  
 20.00—Jim Oler, 1952-56 (91/1820)  
 19.56—Ron King, 1970-73 (64/1252)  
 19.30—Ham Wernke, 1951-55 (73/1409)  
 18.96—Dave Cowens, 1967-70 (78/1479)  
 18.91—Hugh Durham, 1956-59 (75/1381)  
 16.69—Reggie Royals, 1970-73 (84/1402)  
 16.47—Larry Warren, 1972-75 (51/840)  
 14.76—Gary Schull, 1963-66 (76/1122)  
 14.68—Jeff Hogan, 1966-69 (79/1164)  
 13.88—Ray Swain, 1959-62 (72/1000)  
 13.23—Lawrence McCray, 1971-74 (84/1111)  
 13.00—Charlie Long, 1960-63 (69/897)

### Field Goals Attempted

1308—Ham Wernke, 1951-55  
 1303—Jim Oler, 1952-56  
 1230—Hugh Durham, 1956-59  
 1181—Reggie Royals, 1970-73  
 1174—Dave Fedor, 1959-62  
 1170—Ron King, 1970-73  
 1122—Dave Cowens, 1967-70  
 1104—Rick Benson, 1951-55  
 1050—Dave Artmeier, 1952-56  
 975—Jeff Hogan, 1966-69  
 896—Lawrence McCray, 1971-74  
 822—Gary Schull, 1963-66

### Free Throws Attempted

975—Jim Oler, 1952-56  
 569—Hugh Durham, 1956-59  
 533—Ham Wernke, 1951-55  
 461—Gary Schull, 1963-66  
 379—Al Wold, 1952-56  
 364—Dave Cowens, 1967-70  
 363—Dave Fedor, 1959-62  
 349—Reggie Royals, 1970-73  
 327—Dave Artmeier, 1952-56  
 305—Jeff Hogan, 1966-69  
 304—Ray Swain, 1959-62

### Free Throws Made

762—Jim Oler, 1952-56  
 441—Hugh Durham, 1956-59  
 393—Ham Wernke, 1951-55  
 316—Gary Schull, 1963-66  
 315—Dave Cowens, 1967-70  
 283—Dave Fedor, 1959-62  
 263—Al Wold, 1952-56  
 242—Reggie Royals, 1970-73  
 232—Jeff Hogan, 1966-69  
 229—Dave Artmeier, 1952-56

### Games Played

91—Jim Oler, 1952-56  
 84—Otis Cole, 1971-74  
 84—Lawrence McCray, 1971-74  
 84—Reggie Royals, 1970-73  
 84—Ron Harris, 1969-72  
 82—Otto Petty, 1970-73  
 79—Jeff Hogan, 1966-69  
 78—Dave Cowens, 1967-70  
 78—Jan Gies, 1967-70  
 77—Darrell Stewart, 1966-69  
 76—Gary Schull, 1963-66  
 76—Randy Cable, 1967-70  
 76—Rowland Garrett, 1969-72

## INDIVIDUAL SEASON RECORDS

### Field Goals Made

262—Ron King, 1970-71  
 239—Ron King, 1971-72  
 216—Jim Oler, 1955-56  
 214—Dave Fedor, 1959-60  
 206—Dave Cowens, 1967-68  
 202—Dave Cowens, 1968-69  
 196—Reggie Royals, 1971-72  
 193—Reggie Royals, 1972-73  
 193—Bob Hartman, 1950-51  
 191—Reggie Royals, 1970-71  
 190—Ham Wernke, 1954-55

### Free Throw Percentage

.895—Ken Macklin, 1969-70 (51/57)  
 .868—Jerry Shirley, 1963-64 (59/68)  
 .852—Ron Harris, 1959-70 (46/54)  
 .841—Ron Malmen, 1964-65 (58/69)  
 .840—Randy Cable, 1967-68 (42/50)  
 .827—Jeff Hogan, 1967-68 (91/110)  
 .818—Jim Oler, 1955-56 (311/350)  
 .8143—Jerry Shirley, 1964-65 (57/70)  
 .8135—Eugene Harris, 1973-74 (48/59)  
 .808—Pete Gonzalez, 1963-64 (59/73)  
 .806—Hugh Durham, 1958-59 (162/201)

### Field Goal Percentage

.636—Willie Williams, 1969-70 (185/291)  
 .620—Jan Gies, 1968-69 (80/129)  
 .581—Greg Grady, 1974-75 (154/265)  
 .580—Lawrence McCray, 1972-73 (170/293)  
 .573—Ray Swain, 1961-62 (157/274)  
 .562—Harry Davis, 1974-75 (104/185)  
 .5541—Jan Gies, 1967-68 (128/231)  
 .5535—Dale Ricketts, 1961-62 (63/112)  
 .5533—Lawrence McCray, 1971-72 (166/300)  
 .551—Greg Grady, 1973-74 (115/209)  
 .5384—Dale Reeves, 1962-63 (70/130)  
 .5378—Dave Cowens, 1966-67 (206/383)  
 .5367—Ray Swain, 1960-61 (168/313)

### Assists

227—Otto Petty, 1970-71  
 202—Otto Petty, 1972-73  
 173—Otto Petty, 1971-72  
 155—Skip Young, 1968-69  
 127—Skip Young, 1969-70  
 120—Greg Samuel, 1971-72  
 110—Wayne Smalls, 1974-75  
 96—Otis Cole, 1973-74  
 91—Carlton Byrd, 1973-74  
 85—Reggie Royals, 1971-72  
 84—Ken Macklin, 1969-70  
 81—Reggie Royals, 1972-73

### Scoring Average

29.7—Jim Oler, 1955-56  
 22.7—Ron King, 1970-71  
 21.9—Hugh Durham, 1958-59  
 21.5—Ham Wernke, 1952-53  
 21.1—Jim Oler, 1954-55  
 21.1—Dave Fedor, 1959-60  
 20.4—Dave Fedor, 1961-62  
 20.3—Dave Cowens, 1967-68  
 19.7—Ham Wernke, 1954-55  
 19.6—Hugh Durham, 1956-57

### Field Goals Attempted

558—Ron King, 1971-72  
 521—Ron King, 1970-71  
 495—Don Bates, 1958-59  
 471—Rick Benson, 1954-55  
 461—Ham Wernke, 1954-55  
 457—Burt Deckel, 1957-58  
 453—Dave Fedor, 1959-60  
 438—Hugh Durham, 1956-57  
 422—Ham Wernke, 1952-53  
 415—Hugh Durham, 1958-59  
 415—Reggie Royals, 1971-72

### Free Throws Attempted

330—Jim Oler, 1955-56  
 289—Jim Oler, 1954-55  
 237—Gary Schull, 1965-66  
 213—Hugh Durham, 1956-57  
 201—Hugh Durham, 1958-59  
 193—Ham Wernke, 1952-53  
 169—Dave Cowens, 1969-70  
 169—Ham Wernke, 1954-55  
 164—Dave Cowens, 1968-69  
 159—Reggie Royals, 1971-72

### Free Throws Made

311—Jim Oler, 1955-56  
 221—Jim Oler, 1954-55  
 154—Gary Schull, 1965-66  
 152—Hugh Durham, 1958-59  
 155—Hugh Durham, 1956-57  
 134—Ham Wernke, 1952-53  
 132—Ham Wernke, 1954-55  
 124—Hugh Durham, 1957-58  
 115—Dave Cowens, 1969-70  
 109—Reggie Royals, 1971-72

### Rebounds

456—Dave Cowens, 1967-68  
 451—Rick Benson, 1954-55  
 447—Dave Cowens, 1969-70  
 437—Dave Cowens, 1968-69  
 400—Dave Fedor, 1959-60  
 390—Reggie Royals, 1970-71  
 351—Reggie Royals, 1971-72  
 336—Dave Fedor, 1960-61  
 317—Gary Schull, 1965-66  
 303—Don Boltz, 1957-58

### Rebound Average

17.5—Dave Cowens, 1968-69  
 17.5—Rick Benson, 1954-55  
 17.2—Dave Cowens, 1969-70  
 17.0—Dave Cowens, 1967-68  
 16.0—Dave Fedor, 1959-60  
 15.0—Reggie Royals, 1970-71  
 14.0—Dave Fedor, 1960-61  
 12.1—Don Boltz, 1957-58  
 11.5—Don Boltz, 1958-59  
 11.0—Reggie Royals, 1971-72



## INDIVIDUAL SINGLE GAME RECORDS

### Points Scored

46 by Ron King vs. Georgia So., 1970-71  
 43 by Hugh Durham vs. Stetson, 1956-57  
 43 by Dave Fedor vs. Miami, 1959-60  
 42 by Jim Oler vs. Morningside, 1955-56  
 38 by Ham Wernke vs. Tampa, 1952-53  
 38 by Dave Fedor vs. Tampa, 1961-62  
 37 by Dave Fedor vs. Rollins, 1959-60  
 36 by Hugh Durham vs. Georgia, 1958-59  
 35 by Larry Warren vs. South Ala., 1973-74  
 35 by Larry Warren vs. South Fla., 1973-74  
 35 by Ham Wernke vs. Montana St., 1954-55  
 35 by Vernell Elizy vs. Biscayne, 1970-71  
 35 by Reggie Royals vs. UC Irvine, 1970-71  
 35 by Benny Clyde vs. Okla. City, 1972-73

### Field Goals Made

21 by Ron King vs. Georgia So., 1970-71  
 17 by Ron King vs. Pan Am., 1970-71  
 17 by Ron King vs. Miami, 1970-71  
 16 by Larry Warren vs. Marshall, 1974-75  
 16 by Dave Fedor vs. Miami, 1959-60  
 15 by Dave Fedor vs. Rollins, 1959-60  
 15 by Ray Swain vs. Tampa, 1961-62  
 15 by Reggie Royals vs. UC Irvine, 1970-71  
 14 on eight occasions

### Free Throw

30 by Jim Oler vs. Morningside, 1955-56  
 29 by Jim Oler vs. Rollins, 1954-55  
 20 by Hugh Durham vs. Georgia, 1957-58  
 19 by Gary Schull vs. Memphis St., 1965-66  
 18 by Jim Oler vs. Stetson, 1954-55  
 17 by Jim Oler vs. Montana St., 1954-55  
 17 by Jim Oler vs. Miami, 1954-55  
 15 on six occasions

### Assists

16 by Otto Petty vs. So. Ala., 1971-72  
 15 by Otto Petty vs. Pan Am., 1970-71  
 15 by Otto Petty vs. Sanford, 1970-71  
 14 by Wayne Smalls vs. Cal. St. BkC, 1975-76  
 14 by Otto Petty vs. Northwestern, 1972-73  
 14 by Otto Petty vs. Biscayne, 1970-71  
 13 by Otto Petty vs. Seton Hall, 1972-73  
 13 by Otto Petty vs. Stetson, 1972-73  
 13 by Carlton Byrd vs. South Fla., 1973-74  
 12 by Otto Petty vs. Arizona, 1970-71  
 11 on three occasions  
 10 on 13 occasions

### Rebounds

32 by Rick Benson vs. Florida So., 1954-55  
 31 by Dave Cowens vs. LSU, 1967-68  
 30 by Dave Cowens vs. Citadel, 1967-68  
 28 by Dave Fedor vs. Rollins, 1959-60  
 27 by Gary Schull vs. Jacksonville, 1965-66  
 27 by Dave Cowens vs. Stetson, 1958-69  
 26 by Dave Cowens vs. Hawaii, 1968-69  
 26 by Don Boltz vs. Stetson, 1958-59  
 25 by Dave Cowens vs. Clemson, 1969-70  
 23 by Lawrence McCray vs. Conn., 1972-73  
 23 by Dave Cowens vs. Florida So., 1967-68  
 23 by Don Boltz vs. Miami, 1958-59

### Field Goals Attempted

37 by Ham Wernke vs. Tampa, 1952-53  
 32 by Rick Benson vs. Beloit, 1954-55  
 32 by Ron King vs. Georgia So., 1970-71  
 31 by Ian Morrison vs. Tampa, 1966-67  
 30 by Bert Dezel vs. Kansas, 1957-58  
 30 by Don Bates vs. Stetson, 1958-59  
 29 by Don Bates vs. Auburn, 1958-59  
 29 by Ron King vs. Miami, 1970-71  
 28 by Rick Benson vs. Ga. Techs., 1954-55  
 28 by Hugh Durham vs. Auburn, 1958-59

### Free Throws Made

22 by Jim Oler vs. Rollins, 1954-55  
 22 by Jim Oler vs. Morningside, 1955-56  
 16 by Jim Oler vs. Montana St., 1954-55  
 15 by Hugh Durham vs. Georgia, 1957-58  
 15 by Hugh Durham vs. Stetson, 1956-57  
 14 by Hugh Durham vs. Murray St., 1957-58  
 14 by Hugh Durham vs. Kentucky, 1958-59  
 13 by Jim Oler vs. Spring Hill, 1954-55  
 12 on eight occasions

## 500 POINT CLUB

The following Florida State players have scored at least 500 points during one season.

NAME	YEAR	POINTS
Jim Oler	1955-56	743
Ron King	1970-71	589
Ron King	1971-72	573
Jim Oler	1954-55	549
Dave Fedor	1959-60	527
Ham Wernke	1954-55	512
Hugh Durham	1956-57	509
Dave Cowens	1967-68	508
Dave Cowens	1968-69	508
Hugh Durham	1958-59	504

## TEAM SEASON RECORDS

### Field Goals Attempted

2372-1971-72 (32 games)  
2164-1954-55 (26 games)  
2082-1970-71 (26 games)  
2055-1973-74 (26 games)  
1965-1968-69 (26 games)  
1960-1967-68 (27 games)  
1950-1969-70 (26 games)

### Field Goals Made

1110-1971-72 (32 games)  
990-1970-71 (26 games)  
971-1973-74 (26 games)  
956-1967-68 (27 games)  
939-1969-70 (26 games)  
938-1972-73 (26 games)  
932-1974-75 (26 games)  
925-1968-69 (26 games)

### Free Throws Attempted

982-1954-55 (26 games)  
800-1971-72 (32 games)  
799-1956-57 (26 games)  
722-1967-68 (27 games)  
720-1965-66 (25 games)  
713-1959-60 (25 games)

### Free Throws Made

707-1954-55 (26 games)  
561-1971-72 (32 games)  
543-1956-57 (26 games)  
526-1967-68 (27 games)  
507-1969-70 (26 games)

### Rebounds

1608-1971-72 (32 games)  
1451-1969-70 (26 games)  
1422-1954-55 (26 games)  
1388-1967-68 (27 games)  
1388-1970-71 (26 games)

### Rebounds Per Game

55.8-1969-70 (26 games)  
54.6-1954-55 (26 games)  
53.4-1970-71 (26 games)  
52.2-1959-60 (25 games)  
52.0-1958-59 (23 games)

### Fewest Points Allowed

1427-1949-50 (25 games)  
1567-1961-62 (23 games)  
1595-1951-52 (23 games)  
1678-1952-53 (22 games)  
1680-1962-63 (25 games)

### Fewest Points Per Game Allowed

57.1-1949-50 (25 games)  
63.6-1950-51 (27 games)  
67.2-1962-63 (25 games)  
67.8-1964-65 (26 games)  
68.1-1961-62 (23 games)

### Most Points Scored

2781-1971-72 (32 games)  
2438-1967-68 (27 games)  
2385-1969-70 (26 games)  
2380-1970-71 (26 games)  
2295-1954-55 (26 games)

### Most Points Per Game

91.7 -1969-70 (26 games)  
91.5 -1970-71 (26 games)  
90.3 -1967-68 (27 games)  
88.3 -1954-55 (26 games)  
88.0 -1973-74 (26 games)  
86.92-1968-69 (27 games)  
86.91-1971-72 (32 games)

### Highest Point Margin

16.5-1969-70 (26 games)  
15.5-1971-72 (32 games)  
11.9-1967-68 (27 games)  
11.4-1974-75 (26 games)  
11.3-1970-71 (26 games)  
10.1-1972-73 (26 games)

### Highest Field Goal Percentage

.512-1961-62 (23 games)  
.502-1974-75 (26 games)  
.498-1972-73 (26 games)  
.490-1967-68 (27 games)  
.481-1969-70 (26 games)  
.476-1970-71 (26 games)

### Highest Free Throw Percentage

.729-1967-68 (27 games)  
.727-1963-64 (28 games)  
.719-1957-58 (25 games)  
.718-1969-70 (26 games)  
.716-1964-65 (26 games)

## TEAM RECORDS – Single Game

### Most Points—Home

134, 71-72 vs. Valdosta (65)  
125, 70-71 vs. S. Dakota (65)  
122, 70-71 vs. Sanford (79)  
122, 69-70 vs. Clemson (80)  
122, 67-68 vs. Miami (93)

### Most Points—Away

123, 51-62 vs. Tampa (92)  
121, 59-70 vs. Pepperdine (83)  
116, 60-61 vs. Tampa (95)  
112, 69-70 vs. Miami (96)  
111, 68-69 vs. Miami (84)

### Most Points—Neutral

130, 67-68 vs. LSU (100)  
117, 70-71 vs. So. Miss. (84)  
108, 56-57 vs. Furman (96)  
107, 73-74 vs. W. Kentucky (87)  
99, 73-74 vs. Texas A&M (79)  
97, 54-55 vs. Georgia (87)

### Most Points—Both Teams

230, FS 130, LSU 100, 68-69 (N)  
222, FS 108, Jacksonville 114, 70-71 (A)  
220, FS 114, Miami 106, 70-71 (H)  
215, FS 122, Miami 93, 57-68 (H)  
215, FS 123, Tampa 92, 61-62 (A)  
211, FS 116, Tampa 95, 60-61 (A)  
210, FS 110, E. Carolina 100, 67-68 (H)

### Winning Margin

69, FS 134, Valdosta 65 (71-72, H)  
64, FS 121, Tampa 57 (65-66, H)  
60, FS 125, S. Dakota 65 (70-71, H)  
58, FS 108, Georgia Tech 50 (71-72, H)  
57, FS 110, Rollins 53 (61-62, H)

### Fewest Points Allowed

21, Mississippi College (FS 53) 48-49 (H)  
24, Mississippi College (FS 43) 49-50 (H)  
27, Troy State (FS 61) 49-50 (H)  
34, Sanford (FS 47) 72-73 (A)  
36, Spring Hill (FS 39) 47-48 (H)  
36, Stetson (FS 40) 48-49 (A)  
37, Troy State (FS 57) 47-48 (H)  
37, Charleston (FS 72) 49-50 (H)

### Field Goals Attempted

115, LSU, 12-16-65  
111, Valdosta State 12-2-68  
110, Valdosta State 12-11-71  
109, Valdosta State 12-12-70

### Field Goals Made

55, Valdosta State 12-11-71  
54, South Dakota 12-5-70  
54, Sanford 1-15-71  
53, Valdosta State 12-2-68  
52, Tampa 2-26-62  
52, LSU 12-16-65  
52, South Florida, 2-9-74

### Free Throws Attempted

53, Stetson 10-19-57  
48, Georgia 1-2-58  
46, Memphis State 1-15-66  
43, Georgia 2-29-60  
43, North Carolina 2-23-72  
42, Mississippi Southern 1-9-60  
42, Tampa 2-1-60

### Free Throws Made

38, Stetson 1-19-57  
36, Georgia 1-2-58  
33, Memphis State 1-6-65  
33, Hofstra 1-26-68  
32, Georgia Tech 2-19-72  
32, Miami 2-5-54

### Most Fouls

35, Florida 2-23-65  
34, Memphis State 1-11-60  
32, Alabama 12-7-64  
32, Florida 12-7-67  
31, Miami 2-28-59

### Fewest Fouls

7, Connecticut 1-6-73  
9, Stetson 2-26-72  
10, Auburn 2-15-62  
10, Georgia 1-7-65  
10, Florida 2-23-65  
10, Dayton 2-15-69  
10, U. Cal.-Irvine 1-30-71  
10, Sanford 1-25-73

### Rebounds

86 vs. LSU 67-68  
82 vs. Valdosta 70-71  
79 vs. Valdosta 68-69  
76 vs. Georgetown 69-70  
76 vs. Wisconsin-Milwaukee 70-71  
75 vs. Clemson 69-70  
75 vs. Miami 69-70  
75 vs. South Dakota 70-71  
75 vs. Valdosta 71-72

## HIGHEST SCORING GAMES

134 vs. Valdosta St., 65 (12-11-71, H)	114 vs. Miami, 106 (1-8-71, H)
130 vs. LSU, 106 (12-16-67, N)	114 vs. Richmond, 91 (12-20-67, H)
125 vs. S. Dakota, 65 (12-5-70, H)	113 vs. Georgia So., 81 (2-11-71, H)
123 vs. Tampa, 92 (2-26-62, A)	112 vs. Mercer, 94 (3-3-73, H)
122 vs. Samford, 79 (1-16-71, H)	112 vs. Oglethorpe, 69 (12-1-71, H)
122 vs. Miami, 93 (1-12-68, H)	112 vs. Miami, 96 (2-28-70, A)
122 vs. Clemson 80 (1-22-70, H)	112 vs. Tulane, 77 (2-14-70, H)
121 vs. Pepperdine, 83 (1-2-70, A)	111 vs. UT Chattanooga, 70 (2-1-75, H)
121 vs. Tampa, 57 (12-6-54, H)	111 vs. Valdosta St., 63 (12-12-70, H)
120 vs. Valdosta St., 75 (12-2-68, H)	111 vs. Miami, 84 (12-6-68, N)
118 vs. S. Florida, 84 (2-9-74, H)	111 vs. Stetson, 81 (1-6-68, H)
117 vs. S. Mississippi, 84 (12-7-70, N)	110 vs. Rollins, 53 (1-11-62, H)
116 vs. Tampa, 95 (2-24-61, A)	110 vs. Rollins, 82 (1954-55)

## OTHER FLORIDA STATE RECORDS

### SINGLE GAME

- Largest Winning Margin: Away—41 vs. Jacksonville, 1967-68 (106-65); Neutral—36 vs. Stetson, 1971-72 (90-54).
- Most Points Scored, First Half—70 vs. Pepperdine, 1969-70 (Final 121-83, FSU).
- Most Points Scored, Second Half—78 vs. LSU, 1967-68 (Final 130-100, FSU).
- Fewest Points Allowed: Away—54 vs. Samford, 1972-73; Neutral—46 vs. Mercer, 1948-49.
- Most Points Allowed: Away—115 vs. North Carolina (FSU 80); 1965-66; Neutral—110 vs. Beloit (FSU 88), 1954-55; Home—106 vs. Miami (FSU 114), 1970-71.
- Worst Defeat: Away—52 vs. West Virginia, 1957-58 (103-51); Neutral—31 vs. Millikin, 1950-51 (91-60); Home—21 vs. Florida, 1962-63 (80-59).
- Fewest Points Scored: Away—30 vs. Florida, 1966-67; Home—35 vs. Sewanee, 1948-49; Neutral—43 vs. Tennessee, 1965-66.
- Highest Fieldgoal Percentage: 72.4 vs. Georgia Southern (42/58); 1974-75.
- Highest Fieldgoal Percentage in Half: 79.2 vs. Georgia Southern (19/24) 1974-75.

### SEASON

- Most Games Played—33 in 1971-72; 27 in 1950-51 and 1967-68.
- Fewest Games Played—18 in 1957-58.
- Most Victories—27 in 1971-1972; 23 in 1969-70, 22 in 1954-55.
- Longest Winning Streak—11 in 1969-70; 10 in 1971-72 and 1954-55.
- Fewest Defeats—3 in 1969-70; 4 in 1954-55; 6 in 1971-72, 7 in 1953-54.
- Highest Winning Percentage—.885 in 1969-70 (23-3); .845 in 1954-55 (22-4); .818 in 1971-72 (27-6).
- Most 100 Point Games—9 in 1967-68 and 1970-71; 7 in 1971-72 and 1969-70; 6 in 1974-75.
- Fewest Victories—5 in 1947-48 and 1951-52.
- Lowest Winning Percentage—.200 in 1951-52 (5-20).
- Longest Losing Streak—13 games in 1947-48.
- Fewest Points—850 in 1947-48 (18 games)
- Fewest Points Per Game—47.2 in 1947-48 (18 games).
- Lowest Average Scoring Margin—Minus 10.8 in 1951-52 (25 games).
- Most Points Allowed—2,286 in 1971-72 (33 games, 71.4 PPG).
- Most Points Allowed Per Game—81.9 in 1959-60 (23 games).
- Highest Field Goals Percentage—51.2 in 1961-62 (709 of 1386) National Leader.
- Highest Free Throw Percentage—72.9 in 1967-68 (27 games, 526 of 722).
- Lowest Field Goal Percentage—.203 in 1951-52.
- Lowest Free Throw Percentage—.586 in 1950-51 (27 games, 406 of 693).
- Fewest Personal Fouls—383 in 1961-62 (23 games).
- Most Personal Fouls—597 in 1949-50 (25 games).

## COACHES & CAPTAINS THROUGH THE YEARS

Year	Coach	Captain(s)	W	L	Points	
					FSU	Opp.
1947-48	Don Loucks	Jim Pavy	5	13	850	979
1948-49	J.K. "Bud" Kennedy	Art Adams	12	12	1,220	1,211
1949-50	J.K. "Bud" Kennedy	Dick Trobaugh and Benjamin Lee	15	10	1,508	1,427
1950-51	J.K. "Bud" Kennedy	Bob Hartman	18	9	1,792	1,716
1951-52	J.K. "Bud" Kennedy	Bob Whitmer	5	20	1,404	1,683
1952-53	J.K. "Bud" Kennedy	Game Captains	11	11	1,647	1,698
1953-54	J.K. "Bud" Kennedy	Ham Wernke	13	7	1,505	1,448
1954-55	J.K. "Bud" Kennedy	Ham Wernke	22	4	2,295	2,051
1955-56	J.K. "Bud" Kennedy	Jim Oler	16	9	2,023	1,914
1956-57	J.K. "Bud" Kennedy	Game Captains	9	17	1,949	2,071
1957-58	J.K. "Bud" Kennedy	Larry Strom & Bob Waits	9	16	1,689	1,848
1958-59	J.K. "Bud" Kennedy	Hugh Durham	8	15	1,770	1,785
1959-60	J.K. "Bud" Kennedy	Game Captains	10	15	1,928	1,950
1960-61	J.K. "Bud" Kennedy	Dave Feder & Jack Davis	14	10	1,786	1,670
1961-62	J.K. "Bud" Kennedy	Dave Feder & Ray Swain	15	8	1,781	1,567
1962-63	J.K. "Bud" Kennedy	Charlie Long	15	10	1,744	1,680
1963-64	J.K. "Bud" Kennedy	Pete Rogers	14	14	1,835	1,838
1964-65	J.K. "Bud" Kennedy	Pete Gonzalez	16	10	1,819	1,763
1965-66	J.K. "Bud" Kennedy	Gary Schull	15	11	1,993	1,850
1966-67	Hugh Durham	Brian Murphy	11	15	1,844	1,936
1967-68	Hugh Durham	Darrell Stewart and Dick Danford	19	8	2,438	2,118
1968-69	Hugh Durham	Jeff Hogan and Dave Cowens	18	8	2,260	2,056
1969-70	Hugh Durham	Dave Cowens and Skip Young	23	3	2,385	1,955
1970-71	Hugh Durham	Skip Young, Vernell Ellzy and John Bert	17	9	2,380	2,085
1971-72	Hugh Durham	Ron Harris and Rowland Garrett	27	6	2,781	2,286
1972-73	Hugh Durham	Reggie Royals and Otto Petty	18	8	2,120	1,860
1973-74	Hugh Durham	Otis Cole and Lawrence McGray	18	8	2,289	2,045
1974-75	Hugh Durham	Game Captains	18	8	2,158	1,862
<b>28 YEAR TOTALS</b>			<b>408</b>	<b>294</b>	<b>53,193</b>	<b>50,352</b>

## SEMINOLE RECORD AGAINST ALL OPPONENTS

Team	FSU		First Meeting	LAST MEETING		
	Won	Lost		Date	Site	Score
Air Force	0	1	1963	12-26-63	N	53- 78
Alabama	6	6	1959	12-22-72	N	68- 74
Arizona	2	0	1970	12-31-70	H	95- 85
Arkansas State	1	1	1953	2-20-54	H	78- 68
Army	1	1	1958	12-29-59	N	86- 51
Auburn	3	14	1958	12-28-66	A	59- 67
Baylor	2	0	1964	12-16-72	N	85- 67
Beloit	1	1	1955	3-9-55	N	88-110
Birmingham Southern	0	2	1949	1-21-50	A	45- 55
Biscayne	6	0	1970	1-20-75	A	95- 85
Boston University	1	0	1955	12-20-55	N	86- 52
Bradley	0	1	1956	12-8-56	A	66- 90
Brigham Young	0	1	1972	12-29-72	N	77- 80
California-Irvine	1	0	1971	1-30-71	H	82- 69
California-Santa Barbara	1	0	1965	12-18-65	H	62- 61
Calif. State-Bakersfield	1	0	1974	2-18-74	H	96- 66
Canisius	1	0	1974	2-6-74	H	91- 74
Centenary	2	3	1957	2-8-64	A	72- 79
Central (Mo.)	0	2	1949	12-45-52	H	59- 62
Charleston	2	0	1949	12-9-50	A	74- 54
Chattanooga	2	0	1963	2-1-75	H	111- 70
Cincinnati	1	2	1972	2-10-73	A	62- 89
Citadel	4	4	1958	2-7-68	A	93- 50
Clemson	5	5	1951	12-7-73	N	65- 58
Connecticut	1	0	1972	1-6-73	H	91- 55
Connecticut St. Teachers	1	0	1950	12-14-50	H	76- 68
Creighton	0	1	1964	12-29-64	N	77- 85
Culver-Stockton	0	1	1951	12-8-51	H	56- 59
Dayton	2	0	1969	2-7-70	A	82- 76
David Lipscomb	1	1	1950	1-5-51	A	73- 88
Denver	1	0	1972	1-3-72	N	88- 70
DePaul	0	1	1964	12-28-64	N	44- 52
Drury	0	1	1949	12-20-49	A	52- 59
Duke	0	1	1954	1-3-54	A	75- 97
Duquesne	1	1	1956	2-4-65	N	62- 58
East Carolina	1	0	1958	2-3-58	H	110-100
East Tennessee State	1	3	1955	1-8-72	H	106- 63
Eastern Kentucky	5	1	1966	1-4-75	H	107- 75
Erskine	1	1	1948	2-28-48	H	49- 48
Evansville	0	1	1967	12-30-67	A	67- 76
Fairleigh-Dickinson	1	0	1974	2-26-74	H	86- 58
Florida	5	18	1951	12-30-69	N	88- 63
Florida Presbyterian	1	0	1967	12-2-67	A	90- 66
Florida Southern	20	8	1948	1-29-72	H	84- 63
Furman	5	2	1957	2-6-64	H	57- 48
Georgetown	2	0	1969	1-8-72	H	101- 70
George Washington	1	0	1967	12-29-67	N	94- 69
Georgia	18	9	1951	3-5-66	H	87- 69
Ga. (Savannah Branch)	0	2	1948	2-12-48	H	42- 44
Georgia Southern	12	4	1947	2-27-75	H	104- 71
Georgia State	1	0	1975	2-13-75	H	81- 72
Georgia Tech	10	3	1963	2-17-73	H	108- 50
Hawaii	1	2	1969	12-22-71	A	76- 81
Hofstra	3	0	1968	1-18-75	H	107- 71
Houston	2	3	1962	1-5-74	A	74- 79
Illinois State	1	0	1974	12-3-75	H	72- 70
Indiana State	0	1	1973	12-27-73	N	92- 93
Jacksonville (Ala.) State	2	0	1953	12-4-54	H	103- 75

Team	FSU	FSU	First	LAST MEETING		
	Won	Lost	Meeting	Date	Site	Score
Jacksonville	16	10	1959	2-19-75	A	71- 76
Kansas	0	1	1966	12-9-66	A	48- 62
Kansas State	0	1	1966	12-10-66	A	58- 81
Kent State	1	1	1969	2-5-70	A	80- 79
Kentucky	2	2	1948	3-18-72	N	73- 54
Lambuth	0	1	1949	2-28-49	N	49- 65
Lamar Tech	1	0	1965	12-1-65	H	73- 68
Louisiana State	2	2	1957	12-16-67	N	130-100
Louisville	1	4	1968	12-27-74	A	61- 79
Loyola of New Orleans	3	15	1951	3-5-66	A	52- 63
Manhattan	2	0	1963	1-11-71	H	96- 68
Marquette	0	1	1967	12-15-67	A	58- 78
Marshall	1	3	1958	12-7-74	H	90- 63
Memphis State	6	11	1953	12-9-74	A	69- 70
Mercer	10	8	1948	2-24-75	H	91- 68
Miami (Ohio)	0	1	1970	12-19-70	N	54- 67
Miami	23	21	1952	2-27-71	A	94-100
Milikin	0	1	1951	3-15-51	N	50- 91
Millsaps	2	0	1949	1-26-50	N	52- 45
Minnesota	1	0	1972	3-16-72	N	70- 56
Mississippi	1	1	1951	2-14-51	A	75- 79
Mississippi College	5	1	1948	2-15-51	A	77- 54
Mississippi State	3	3	1951	12-21-56	N	71- 79
Montana State	1	0	1955	3-7-55	N	93- 84
Merchead State	1	1	1957	1-30-60	H	78- 75
Morningside	1	0	1955	12-16-55	H	104- 83
Murray State	1	1	1957	2-9-59	A	71- 96
New Hampshire	1	0	1968	12-31-68	H	104- 52
New Mexico	1	1	1974	1-27-75	A	78- 84
New York University	1	0	1955	12-30-55	N	85- 83
North Carolina	1	8	1965	2-16-74	N	85-104
North Carolina State	0	2	1955	1-10-57	A	59- 64
Northwestern	1	0	1972	12-23-72	N	91- 73
Oglethorpe	2	1	1949	12-1-71	H	112- 69
Ohio State	0	3	1961	12-28-68	H	86- 93
Ohio University	1	1	1958	12-21-74	H	67- 60
Oklahoma City	4	2	1958	12-30-72	A	94- 80
Oklahoma State	0	1	1964	12-18-64	N	56- 60
Oregon	1	0	1969	12-4-69	H	100- 84
Oregon State	2	0	1969	12-29-71	N	73- 72
Panama Nationals	1	0	1966	1-28-66	H	96- 73
Pan American	2	0	1970	1-31-72	H	109- 83
Parris Island Marines	0	2	1951	1-26-52	H	62- 64
Penn State	1	0	1972	12-28-72	N	70- 60
Pepperdine	3	1	1951	1-2-71	H	101- 82
Phillips 66 Oilers	0	2	1955	2-16-63	H	73- 82
Pittsburgh	0	1	1973	12-8-73	A	60- 82
Princeton	0	1	1972	12-15-72	N	59- 61
Purdue	1	0	1974	12-26-75	N	59- 66
Rice	3	2	1961	1-20-69	A	80- 83
Richmond	1	3	1962	12-20-67	A	114- 91
Rollins	18	2	1951	12-8-69	A	107- 86
Rutgers	1	0	1967	12-22-67	H	87- 77
St. Louis	1	0	1972	1-4-72	N	63- 62
Saraford	9	0	1950	1-25-73	A	47- 34
Santa Clara	0	1	1955	12-29-55	N	59- 61
Seton Hall	1	0	1972	2-3-73	N	80- 61
Sewanee	3	3	1949	12-17-52	A	58- 69
South Alabama	5	0	1972	3-4-74	A	96- 91
South Carolina	2	1	1960	1-28-69	H	87- 76

Team	FSU Won	FSU Lost	First Meeting	LAST MEETING		
				Date	Site	Score
South Dakota	1	0	1970	12-5-70	H	125- 65
South Dakota State	1	0	1951	3-31-51	N	85- 70
South Florida	3	2	1973	2-28-75	H	77- 66
Southern California	1	2	1968	12-18-70	N	85- 94
Southern Illinois	1	1	1973	1-21-74	A	73- 77
Southern Mississippi	4	3	1951	12-7-70	N	117- 84
Southwestern (Memphis)	0	1	1948	12-30-48	A	47- 54
SW Missouri State	0	1	1949	12-21-49	A	52- 79
Spring Hill	3	3	1947	1-18-55	A	81- 72
Stetson	25	11	1947	3-5-75	A	54- 63
Steubenville	0	1	1956	12-3-56	A	64- 79
Tampa	28	9	1959	2-27-67	A	87- 84
Tennessee	1	4	1957	12-22-64	N	43- 65
Tennessee Tech	1	0	1957	12-2-57	H	74- 71
Texas	2	0	1969	12-1-70	A	80- 78
Texas A&M	1	1	1956	1-4-74	N	99- 79
Texas Christian	0	1	1963	12-12-63	A	60- 66
Troy State Teachers	6	1	1947	2-6-56	H	90- 65
Tulane	6	2	1967	2-12-72	H	94- 84
Tulsa	2	0	1963	12-26-64	A	74- 72
UCLA	0	1	1972	2-25-72	A	76- 81
Union (Tenn.)	0	1	1948	12-29-48	A	52- 56
Valdosta State	13	0	1961	11-30-74	H	81- 74
Vanderbilt	0	1	1960	12-5-60	A	55- 75
V.M.I.	2	1	1964	12-20-65	N	65- 64
Virginia Tech	2	2	1968	1-10-74	H	85- 80
Washington	1	0	1971	12-27-72	N	85- 77
Washington State	1	0	1971	12-30-71	N	85- 61
Wake Forest	1	1	1958	12-22-73	N	66- 48
West Virginia	0	3	1955	1-30-58	A	51-103
Western Kentucky	1	0	1973	12-21-73	N	107- 87
Wisconsin	0	1	1961	12-4-61	A	63- 64
Wisconsin-Milwaukee	3	0	1971	1-7-75	H	164- 82
Wofford	0	2	1948	2-6-48	A	38- 77
Xavier of Ohio	0	1	1958	2-4-58	A	60- 76



ALL-TIME FLORIDA STATE SCORES, 1947-1973

1947-48—Won 5, Lost 13 (.277)

Opponent	FSU	Opp.	Howard (H)	50	39	Tampa (H)	79	60
Spring Hill (H)	39	36	David Lipscomb (H)	57	53	Stetson (H)	64	66
Troy State (H)	57	57	Tampa (H)	53	56	Miami (N)	73	70
Wofford (A)	45	48	Troy State (A)	79	71	Tampa (N)	57	78
Stetson (A)	56	65	Sewanee (A)	85	65			
Georgia Teachers (H)	56	60	Sewanee (A)	74	68			
Georgia (A)	46	65	Florida Southern (N)	56	58			
Mercer (H)	48	61	Mississippi College (N)	74	63			
Spring Hill (A)	54	76						
Troy State (A)	43	49						
Mercer (A)	43	68						
Erskine (A)	45	47						
Wofford (A)	33	77						
Georgia (H)	42	46						
Florida Southern (A)	41	47						
Georgia Teachers (A)	47	65						
Florida Southern (H)	55	48						
Stetson (H)	41	38						
Erskine (H)	49	48						

1948-49—Won 12, Lost 12 (.500)

Opponent	FSU	Opp.	Opponent	FSU	Opp.	Opponent	FSU	Opp.
Mississippi College (H)	53	21	Charleston (A)	74	54	Mercer (A)	62	78
Florida Southern (H)	53	45	Mercer (A)	55	52	Georgia Teachers (A)	68	65
Troy State (A)	68	64	Conn. State Teachers (H)	76	68	Rollins (H)	90	83
Lambuth (A)	50	57	Howard (H)	60	44	Mercer (H)	77	76
Union (A)	52	55	Florida Southern (A)	86	55	Central (Mo.) (H)	59	62
Southwestern (A)	47	54	Miami (A)	61	80	Sewanee (A)	53	69
Stetson (H)	49	43	David Lipscomb (A)	73	58	Mississippi State (H)	82	62
Stetson (A)	40	35	Mississippi (H)	63	58	Loyola of N.O. (H)	66	72
Tampa (A)	56	54	Stetson (H)	66	67	Miami (A)	65	93
Mercer (H)	56	65	Florida Southern (H)	44	41	Tampa (A)	73	77
Troy State (H)	63	45	Tampa (H)	30	69	Florida Southern (A)	71	89
Oglethorpe (A)	52	64	Howard (A)	58	51	Rollins (A)	79	82
Mercer (A)	59	62	Tampa (A)	65	76	Memphis State (A)	75	87
Tampa (H)	60	58	Stetson (A)	53	71	Arkansas State (A)	77	98
Mississippi College (A)	46	57	Rollins (A)	63	57	Stetson (H)	76	66
Millsaps (A)	49	46	Loyola of N.O. (H)	65	72	Florida Southern (A)	71	89
Oglethorpe (H)	47	46	Mississippi (A)	75	79	Tampa (H)	83	74
Sewanee (H)	35	43	Mississippi College (A)	77	54	Loyola of N.O. (A)	77	85
Birmingham S. (H)	44	50	Mercer (H)	69	66	Miami (H)	81	75
Mercer (N)	52	46	Rollins (H)	62	45	Stetson (A)	83	79
Tampa (N)	47	56	Howard (N)	64	54	Mercer (N)	87	77
Lambuth (N)	49	65	Mercer (A)	65	59	Stetson (A)	81	94
			Stetson (N)	65	58			
			Georgia Teachers (N)	69	57			
			S. Dakota State (N)	85	70			
			Pepperdine (N)	61	59			
			Milikin (N)	60	31			

1949-50—Won 15, Lost 10 (.600)

Opponent	FSU	Opp.	Opponent	FSU	Opp.	Opponent	FSU	Opp.
Mississippi College (H)	43	24	Earris Is. Marines (A)	46	73	Opponent <td>FSU</td> <td>Opp.</td>	FSU	Opp.
Mississippi College (H)	51	45	Culver-Stockton (H)	56	59	Mississippi State (A)	75	37
Troy State (H)	61	27	Mississippi State (A)	47	75	Mercer (H)	72	70
Charleston (H)	72	37	Mississippi So. (A)	45	84	Georgia Teachers (H)	66	38
Central (Mo.) (A)	53	62	Mississippi So. (H)	70	78	Jacksonville (Ala.) State (H)	72	61
Drury (A)	52	59	Spring Hill (A)	54	64	Stetson (H)	74	71
S.W. Mo. State (A)	52	79	Sewanee (N)	48	58	Spring Hill (H)	60	69
Tampa (A)	60	80	Georgia (N)	50	79	Tampa (H)	74	53
Florida Southern (A)	65	71	Clemson (N)	56	62	Loyola of N.O. (H)	76	83
Florida Southern (A)	48	59	Florida (N)	51	61	Miami (A)	61	78
Mercer (H)	65	45	Loyola of N.O. (A)	52	74	Rollins (A)	82	72
Howard (A)	59	58	Miami (A)	56	93	Tampa (A)	73	63
Birmingham So. (A)	45	55	Tampa (A)	72	66	Florida Southern (A)	98	80
Millsaps (H)	62	45	Florida Southern (A)	51	54	Stetson (A)	60	82
Stetson (H)	61	70	Georgia Teachers (H)	75	53	Rollins (H)	85	68
Mercer (A)	61	59	Florida Southern (H)	72	53	Florida Southern (H)	59	71
			Parris Is. Marines (H)	62	64	Mercer (A)	63	70
			Rollins (H)	74	71	Miami (H)	76	69
			Stetson (A)	43	58	Loyola of N.O. (A)	72	88
			Rollins (A)	55	69	Georgia Teachers (A)	89	85
			Miami (H)	63	76	Arkansas State (H)	78	68

1954-55—Won 22, Lost 4 (.846)

Opponent	FSU	Opp.
Jacksonville (Ala.) State (H)	103	76
Georgia Teachers (H)	75	67
Tampa (H)	90	62
Stetson (H)	94	79
Miami (H)	71	66
Florida (N)	79	82
Georgia (N)	97	87
Duke (A)	75	97
Florida Southern (A)	73	69
Tampa (A)	56	61
Georgia (H)	50	81
Spring Hill (A)	81	72
Mississippi State (A)	91	76
Stetson (A)	84	73
Rollins (H)	86	74
Florida Southern (H)	84	68
Georgia (A)	88	79
Rollins (A)	110	82
Loyola of N.O. (A)	95	101
Mississippi State (H)	102	86
Loyola of N.O. (H)	87	84
Miami (A)	85	80
Stetson (H)	85	77
Georgia Teachers (H)	91	83
Montana State (N)	93	84
Beloit (N)	38	110

1955-56—Won 16, Lost 9 (.640)

Opponent	FSU	Opp.
North Carolina (A)	63	88
E. Tennessee St. (A)	54	80
Rollins (H)	101	67
Stetson (H)	91	78
Tampa (A)	89	67
Morningside (H)	104	83
Clemson (N)	76	94
Boston University (N)	86	52
Mississippi State (N)	71	79
West Virginia (N)	69	78
Santa Clara (N)	59	61
New York Univ. (N)	85	89
Miami (H)	78	75
Rollins (A)	71	70
Georgia (A)	79	76
Georgia Teachers (A)	81	90
Loyola of N.O. (H)	85	75
Troy State (H)	90	55
Tampa (H)	33	73
Florida Southern (H)	92	73
Florida Southern (A)	85	81
Stetson (A)	89	83
Miami (A)	85	91
Loyola of N.O. (A)	72	75
Georgia (H)	80	75

1956-57—Won 9, Lost 17 (.346)

Opponent	FSU	Opp.
Duquesne (A)	55	70
Steubenville (A)	64	79
West Virginia (A)	54	88
Bradley (A)	66	50
Florida (A)	65	67
Texas A&M (H)	74	83

E. Tennessee St. (H)	59	65
Georgia (H)	53	72
Morehead State (N)	75	97
Furman (N)	108	96
N. Carolina State (A)	59	64
Miami (H)	77	85
Stetson (A)	70	97
Stetson (H)	104	86
Georgia (A)	86	63
Tampa (A)	82	67
Rollins (A)	97	94
Florida Southern (A)	63	73
Florida Southern (H)	67	73
Rollins (H)	96	79
Mississippi So. (H)	81	72
Loyola of N.O. (H)	79	77
Miami (A)	82	98
Tampa (H)	88	57
Centenary (A)	74	92
Loyola of N.O. (A)	56	82

1957-58—Won 9, Lost 15 (.360)

Opponent	FSU	Opp.
Tennessee Tech (H)	74	71
Murray State (H)	34	60
Tennessee (A)	57	74
Florida (A)	70	71
Furman (A)	89	95
Loyola of N.O. (A)	56	82
Louisiana State (A)	65	67
Citadel (N)	57	59
Georgia (N)	92	80
Loyola of N.O. (H)	67	75
Tampa (H)	72	58
Memphis State (A)	56	59
Stetson (H)	77	60
Miami (H)	71	70
West Virginia (A)	51	103
Marshall (A)	68	109
Ohio University (A)	66	86
Xavier of Ohio (A)	60	76
Army (H)	62	71
Oklahoma City (H)	57	52
Rollins (H)	80	61
Memphis State (H)	51	68
Miami (A)	66	86
Tampa (A)	56	79
Georgia (H)	85	77

1958-59—Won 3, Lost 15 (.167)

Opponent	FSU	Opp.
Kentucky (A)	68	91
Furman (H)	75	72
Spring Hill (H)	100	73
Wake Forest (A)	64	73
Florida (H)	82	60
Auburn (A)	74	95
Miami (N)	79	85
Georgia (N)	72	33
Louisiana State (H)	82	67
Auburn (H)	62	59
Mississippi So. (H)	65	62
Memphis State (H)	72	75
Miami (H)	93	69

Georgia (A)	91	94
Oklahoma City (A)	75	103
Centenary (A)	63	87
Loyola of N.O. (H)	61	60
Murray State (A)	71	96
Memphis State (A)	69	93
Oklahoma City (H)	84	98
Stetson (A)	91	93
Rollins (A)	94	93
Miami (A)	85	92

1959-60—Won 10, Lost 15 (.400)

Opponent	FSU	Opp.
Louisiana State (A)	78	89
Loyola of N.C. (A)	64	71
Florida (A)	71	81
Auburn (A)	58	62
Alabama (A)	86	74
Clemson (A)	64	68
Auburn (H)	65	76
Jacksonville Univ. (A)	86	69
Georgia (N)	66	69
South Carolina (H)	95	75
Citadel (H)	74	76
Centenary (H)	81	71
Mississippi So. (A)	78	87
Memphis State (A)	71	88
Tampa (H)	72	67
Miami (H)	91	93
Morehead State (H)	78	75
Tampa (A)	68	83
Memphis State (H)	67	83
Rollins (H)	101	58
Furman (A)	105	98
Citadel (A)	60	100
Loyola of N.O. (H)	69	50
Miami (A)	89	107
Georgia (H)	95	82

1960-61—Won 14, Lost 10 (.583)

Opponent	FSU	Opp.
Tampa (H)	88	60
Kentucky (A)	63	58
Vanderbilt (A)	55	75
Auburn (A)	57	74
Clemson (H)	74	47
Florida (H)	67	74
South Carolina (A)	72	82
Clemson (A)	74	57
Georgia (N)	56	62
Tennessee (A)		
Loyola of N.O. (H)	79	55
Miami (H)	89	78
Auburn (N)	67	74
Rollins (A)	78	70
Alabama (H)	68	57
Citadel (H)	88	77
Valdosta State (H)	86	66
Georgia (A)	77	68
Furman (H)	99	57
Florida (A)	74	75
Tampa (A)	116	95
Miami (A)	73	75
Loyola of N.O. (A)	72	68

1961-62—Won 15, Lost 9 (.681)

Opponent	FSU	Opp.
Ohio State (A)	57	72
Wisconsin (A)	63	64
Rice (H)	76	66
Florida (A)	85	71
Auburn (A)	56	52
Clemson (H)	77	82
Tennessee (A)	69	62
Auburn (H)	57	62
Oklahoma City (H)	99	74
Furman (A)	64	67
Clemson (A)	69	75
Rollins (H)	110	53
Miami (H)	65	60
Alabama (A)	57	72
Oklahoma City (A)	81	79
Houston (A)	76	84
Valdosta State (H)	73	42
Tampa (H)	91	71
Georgia (A)	71	62
Florida (H)	79	56
Miami (A)	83	80
Tampa (A)	129	92
Georgia (H)	101	69

1962-63—Won 15, Lost 10 (.600)

Opponent	FSU	Opp.
Tampa (H)	92	60
Valdosta State (H)	65	42
Florida (H)	59	80
Auburn (A)	47	65
Alabama (H)	72	63
Kentucky (A)	54	83
Auburn (H)	70	77
Richmond (H)	56	62
Georgia (N)	77	69
Alabama (N)	49	48
Georgia Southern (N)	79	60
Tennessee (A)	65	66
Chattanooga (A)	72	55

Miami (H)	77	74
Georgia (H)	98	54
Georgia (A)	76	90
Georgia Tech (A)	55	70
Florida (A)	86	94
Houston (H)	76	69
Alabama (A)	63	61
Valdosta State (A)	61	56
Stetson (H)	73	57
Centenary (H)	82	68
Phillips '66' Oilers (H)	73	82
Miami (A)	70	39
Tampa (A)	80	58

1963-64—Won 11, Lost 14 (.444)

Opponent	FSU	Opp.
Florida (A)	55	78
Auburn (H)	69	67
Alabama (A)	53	62
Rice (A)	81	102
Texas Christian (A)	60	66
Tampa (H)	107	61
Tulsa (H)	91	76
Air Force (N)	53	78
Marhattar (N)	85	81
Richmond (A)	65	69
Virginia Military (A)	72	83
Miami (H)	80	78
Memphis State (H)	91	90
Georgia (H)	64	68
Florida (H)	50	52
Auburn (A)	59	68
Alabama (H)	95	77
Furman (H)	57	48
Centenary (A)	72	79
Memphis State (A)	72	84
Georgia Tech (A)	73	77
Jacksonville (H)	101	77
Stetson (A)	80	60
Miami (A)	80	82
Georgia (A)	70	85

1964-65—Won 16, Lost 10 (.620)

Opponent	FSU	Opp.
Valdosta State (H)	81	57
Virginia Military (H)	76	72
Auburn (A)	68	92
Alabama (A)	73	76
Florida (H)	51	50
Oklahoma State (N)	56	69
Baylor (N)	82	64
Tennessee (N)	43	65
Tulsa (A)	74	72
DePaul (N)	44	52
Creighton (N)	77	85
Rice (N)	81	56
Georgia (OT) (A)	64	55
Miami (H)	67	66
Memphis State (H)	74	61
Georgia Tech (H)	72	68
Auburn (H)	58	55
Alabama (H)	66	75
Duquesne (N)	62	58
Memphis State (A)	81	70
Jacksonville (H)	97	74
Georgia Tech (A)	76	77

Tampa (A)	71	64
Florida (A)	55	77
Miami (A)	75	82
Georgia (H)	85	88

1965-66—Won 15, Lost 11 (.577)

Opponent	FSU	Opp.
Lamar Tech (H)	79	68
Valdosta (H)	69	68
Tampa (H)	121	57
Florida (A)	62	75
North Carolina (A)	80	115
Univ. of California (Santa Barbara) (H)	62	61
Y.M.I. (A)	65	64
Auburn (A)	58	55
Auburn (A)	64	80
Georgia (A)	57	68
Miami (H)	78	62
Loyola of N.O. (H)	79	58
Memphis (H)	67	68
Florida (H)	65	74
Jacksonville (A)	86	90
Panama Nationals (H)	96	78
Georgia Tech (H)	71	66
Memphis (A)	66	81
Loyola of N.O. (A)	62	68
Jacksonville (H)	78	49
Georgia Tech (A)	88	95
Samford (H)	77	66
Florida Southern (H)	99	54
Tampa (A)	99	70
Miami (A)	90	112
Georgia (H)	87	69

1966-67—Won 11, Lost 15 (.423)

Opponent	FSU	Opp.
Valdosta State (H)	62	58
Rice (H)	76	72
Florida (A)	30	50
Kansas (A)	48	52
Kansas State (A)	58	81
Richmond (A)	76	30
Eastern Kentucky (A)	59	81
Citadel (A)	83	67
North Carolina (A)	55	81
Alabama (A)	79	80
Auburn (A)	59	67
Miami (H)	61	60
Tulane (A)	85	87
Memphis State (A)	42	46
Jacksonville (H)	81	70
Marshall (H)	71	77
Georgia Tech (H)	68	75
Tampa (H)	109	72
Memphis State (H)	55	51
Jacksonville (A)	68	67
Tulane (H)	100	90
Florida Southern (A)	84	76
Florida (H)	75	90
Georgia Tech (A)	84	102
Tampa (A)	87	84
Miami (A)	90	110

## 1967-68—Won 19, Lost 8 (.704)

Opponent	FSU	Opp.
Fla. Presbyterian (A)	90	66
Ohio State (A)	69	76
Florida (H)	87	95
Samford (H)	104	85
Marquette (A)	58	78
Louisiana State (N)	130	100
Richmond (H)	114	91
Rutgers (H)	87	77
Geo. Washington (A)	94	69
Evansville (A)	67	76
Citadel (A)	96	75
Stetson (H)	111	81
Miami (H)	122	98
Jacksonville (H)	92	79
Georgia Tech (A)	73	57
Hofstra (H)	109	71
Valdosta State (H)	81	71
North Carolina (A)	80	86
East Carolina (H)	110	100
Citadel (H)	93	50
Florida Southern (H)	104	82
Jacksonville (A)	106	65
Florida (A)	64	89
Georgia Tech (H)	72	67
Stetson (A)	72	60
Miami (A)	84	96
East Tenn. State (A)*	69	79

\*NCAA Mid East Regionals

## 1969-70—Won 23, Lost 5 (.885)

Opponent	FSU	Opp.
Oregon State (H)	69	63
Oregon (H)	100	84
Rollins (A)	107	85
North Carolina (A)	75	85
Georgetown (H)	98	65
Louisville (H)	79	69
Texas (H)	82	61
Army (N)	86	51
Florida (N)	88	63
Pepperdine (A)	121	83
So. California (A)	68	71
Arizona (A)	87	78
Miami (H)	104	63
Tulane (A)	82	77
Clemson (H)	122	80
Georgia Tech (A)	89	83
Jacksonville (H)	89	83
Virginia Tech (H)	83	73
Kent State (A)	80	79
Dayton (A)	82	76
Florida Southern (H)	98	74
Tulane (H)	112	77
Jacksonville (A)	81	85
Georgia Tech (H)	97	80
Stetson (A)	94	64
Miami (A)	112	96

## 1971-72—Won 27, Lost 6 (.818)

Opponent	FSU	Opp.
Oglethorpe (H)	112	69
Eastern Kentucky (H)	96	83
Stetson (N)	90	54
Jacksonville (A)	90	83
Valdosta State (H)	134	65
Hawaii (A) (Forfeit)	(10)	(30)
Hawaii (A)	76	81
Washington (N)	85	77
Oregon State (N)	73	72
Washington State (N)	85	51
Denver (N)	88	70
St. Louis (N)	65	62
E. Tennessee State (H)	106	63
Mercer (H)	96	78
Houston (H)	86	79
South Alabama (H)	105	72
Georgia Tech (A)	71	69
Jacksonville (H)	72	84
Florida Southern (H)	84	53
Pan American (H)	109	83
Houston (A)	86	94
South Alabama (A)	104	81
Tulane (H)	94	84
Georgia Tech (H)	108	50
Jacksonville (A)	70	51
Stetson (A)	49	47
Biscayne (A)	94	66
Cincinnati (A)	64	88
(NCAA Tournament)		
Eastern Kentucky (N)	85	81
Minnesota (N)	79	66
Kentucky (N)	78	64
North Carolina (N)	79	75
UCLA (A)	75	81

## 1968-69—Won 18, Lost 8 (.692)

Opponent	FSU	Opp.
Valdosta State (H)	120	73
Miami (A)	111	84
Jacksonville (A)	93	83
Virginia Tech (A)	74	77
Louisville (A)	78	79
So. California (H)	70	68
Ohio State (H)	86	93
New Hampshire (H)	104	52
Jacksonville (A)	63	76
Tulane (A)	97	94
Miami (H)	95	81
Kent State (H)	67	76
Tulane (H)	99	90
Rice (A)	80	83
Hawaii (H)	92	60
South Carolina (H)	87	76
Jacksonville (H)	98	89
Valdosta State (A)	84	81
Clemson (A)	70	67
North Carolina (A)	82	100
Stetson (H)	95	67
Dayton (H)	79	71
Georgia Tech (H)	75	84
Georgia Tech (A)	98	80
Florida Southern (A)	84	70
Miami (A)	89	86

## 1970-71—Won 17, Lost 9 (.654)

Opponent	FSU	Opp.
Texas (A)	80	78
Biscayne (H)	106	70
South Dakota (H)	125	55
Southern Miss. (N)	117	84
Jacksonville (A)	108	114
Valdosta State (H)	111	63
So. California (N)	85	94
Miami (Ohio) (N)	64	67
Pan American (A)	95	90
Arizona (H)	95	85
Pepperdine (H)	101	82
Miami (H)	114	106
Manhattan (H)	95	68
Tulane (A)	69	88
Samford (H)	122	79
Stetson (H)	73	71
Georgia Tech (H)	67	85
Jacksonville (A)	55	83
California-Irvine (H)	82	69
Wisconsin-Milw. (H)	98	61
Georgia Tech (A)	81	76
Georgia Southern (H)	113	81
Jacksonville (H)	79	90
North Carolina (A)	61	70
Florida Southern (A)	74	66
Miami (A)	94	100

## 1972-73—Won 18, Lost 8 (.692)

Opponent	FSU	Opp.
Georgia Southern (H)	109	97
E. Kentucky (N)	87	70
Biscayne (H)	97	62
Princeton (N)	59	61
Baylor (N)	85	67
Alabama (N)	68	74
Northwestern (N)	91	73
Penn. State (N)	70	60
Brigham Young (N)	77	80
Oklahoma City (A)	94	80
Connecticut (H)	91	55
Georgetown (H)	101	70
Cincinnati (H)	78	74
Stetson (H)	84	67
Jacksonville (A)	66	70
Samford (A)	47	34
Southern Ill. (H) (I)	78	73
South Florida (H)	95	53
Virginia Tech (A)	82	91
Seton Hall (N)	80	51
Cincinnati (A)	62	39
Jacksonville (H)	83	74
North Carolina (N)	79	91
South Alabama (H)	85	59
Marshall (H)	59	71
Mercer (H)	112	94

1973-74—Won 18, Lost 8 (.692)

Opponent	FSU	Opp.
Hofstra (H)	92	53
Biscayne (H)	109	71
Glenon (N)	65	53
Pittsburgh (N)	60	82
E. Kentucky (A)	93	50
Louisville (A)	78	90
Memphis State (H)	88	80
W. Kentucky (N)	107	87
Wake Forest (N)	66	43
Indiana State (N)	92	93
Wisc.-Milw. (N)	84	82
Texas A&M (N)	99	79
Houston (A)	74	79
Virginia Tech (N)	85	80
Georgia Southern (N)	92	89
South Florida (A) (OT)	94	95
South Illinois (A)	73	77
Jacksonville (H)	78	74
New Mexico (H)	90	71
Canisius (H)	51	74
South Florida (H)	118	84
Jacksonville (A)	89	113
North Carolina (N)	85	104
South Alabama (H)	105	63
Fairleigh Dickinson (H)	86	53
South Alabama (A)	96	91

1974-75—Won 15, Lost 8 (.692)

Opponent	FSU	Opp.
Valdosta State (H)	81	74
Illinois State (H)	72	70
Marshall (H)	90	63
Memphis State (A)	69	70
Louisville (H)	75	84
Cal. State-Bakersfield (H)	96	66
Ohio U. (H)	67	60
Purdue (N)	69	66
Louisville (A)	61	79
Eastern Kentucky (H)	107	75
Wisconsin-Milw. (H)	104	82
Biscayne (H)	88	59
South Florida (A)	71	77
Hofstra (H)	107	71
Biscayne (A)	95	85
Canisius (A)	75	81
New Mexico (A) (OT)	78	84
Utah-Chattanooga (H)	111	70
Jacksonville (H)	53	55
Georgia Southern (N)	101	77
Georgia State (H)	81	72
Jacksonville (A)	71	76
Georgia Southern (H)	104	71
Mercer (H)	91	68
South Florida (H)	77	64
Stetson (A)	54	69



1971-72 Seminoles: NCAA Runners-up.

## TOURNAMENT HISTORY

### ALL TOURNAMENTS

APP. GAMES	WON	LOST	PCT.	CHAMPS	SECOND	THIRD
45 98	54	44	55.1	10	12	11

### IN-SEASON TOURNAMENTS

APP. GAMES	WON	LOST	PCT.	CHAMPS	SECOND	THIRD
33 72	38	34	52.8	6	8	10

### POST-SEASON TOURNAMENTS

APP. GAMES	WON	LOST	PCT.	CHAMPS	SECOND	THIRD
12 26	16	10	61.5	3	4	1

## CHAMPIONSHIPS

NAIB DISTRICT 25 – 1950-51  
 NAIB DISTRICT 25 – 1954-55  
 Savannah Invitational – 1962-63  
 Civitan Classic – 1968-69  
 Gator Bowl – 1969-70

Civitan Classic – 1971-72  
 Far West Classic – 1971-72  
 Senior Bowl – 1971-72  
 NCAA Mideast – 1971-72  
 Big Sun – 1973-74

## Tournament Appearances

1948-49 Dixie Conference (1-2, Fourth) 1949-50 Dixie Conference (1-1, Third) 1950-51 Dixie Conference (1-1, Second) 1950-51 NAIB District 25 (2-0, Champ) 1950-51 NAIB Nationals (2-1, Quarterfinals) 1951-52 Gator Bowl (0-3, round robin) 1951-52 NAIB District 25 (1-1, Second) 1952-53 NAIB District 25 (1-1, Second) 1954-55 Gator Bowl (1-1, Third) 1954-55 NAIB District 25 (2-0, Champ) 1954-55 NAIB Nationals (1-1, Second round) 1955-56 Carousel Tournament (1-2, Sixth) 1955-56 Orange Bowl (1-2, Seventh) 1955-57 Senior Bowl (1-1, Third) 1957-58 Senior Bowl (1-1, Third) 1958-59 Citadel Invitational (0-2, Fourth) 1959-60 Gator Bowl (1-1, Second) 1960-61 Gator Bowl (0-1) 1962-63 Savannah Invitational (3-0, Champ) 1963-64 Gator Bowl (1-1, Third) 1964-65 Vanderbilt Invitational (1-1, Third) 1964-65 All College Tournament (1-2, Seventh)	1955-66 Tampa Invitational (1-1, Second) 1956-67 VPI Tournament (0-2) 1956-67 Tampa Invitational (1-1, Second) 1957-68 Milwaukee Classic (1-1, Third) 1967-68 Evansville Tournament (1-1, Second) 1967-68 NCAA Mideast (0-1) 1968-69 Civitan Classic (2-0, Champ) 1969-70 Gator Bowl (2-0, Champ) 1970-71 Civitan Classic (1-1, Second) 1970-71 Sun Bowl (0-2) 1971-72 Civitan Classic (2-0, Champ) 1971-72 Far West Classic (3-0, Champ) 1971-72 Senior Bowl (2-0, Champ) 1971-72 NCAA Mideast (3-0, Champ) 1971-72 NCAA Championship (1-1, Second) 1972-73 Marshall Memorial Classic (1-1, Third) 1972-73 Dayton Invitational (1-1, Third) 1972-73 All-College (2-1, Third) 1973-74 Steel Bowl (1-1, Second) 1973-74 Mercer Bear Classic (1-1, Third) 1973-74 Buehonne Classic (1-1, Second) 1973-74 Big Sun (2-0, First) 1974-75 Louisville Holiday (1-1, Second)
--	--

## FLORIDA STATE ROAD HEADQUARTERS

- EASTERN KENTUCKY** — Holiday Inn at I-75 and Lancaster Eastern By-Pass. Phone: 606/623-9220. Contact Janet Podsiadio. Seminoles will arrive Friday, Dec. 5 and depart for Indianapolis, Dec. 7.
- INDIANA** — Hilton Hotel, Meridan and Ohio Streets, Indianapolis, IN. Phone: 317/635-2000. Contact Vicky Johnson. Seminoles will arrive Sunday, Dec. 7 and leave Tuesday, Dec. 9.
- BIG SUN TOURNAMENT** — Hilton Hotel, 333 First Street South, St. Petersburg, FL. Phone: 813/896-1111. Contact Joan Bayless. Seminoles will arrive Thursday, Dec. 18 and leave Sunday, Dec. 21.
- FAR WEST CLASSIC** — Travelodge 1441 N.E. 2nd Avenue, Portland, OR. Phone: 503/233-2401. Contact Mr. Maxwell. Seminoles will arrive Wednesday, Dec. 24, and depart Dec. 31.
- JACKSONVILLE** — Hilton Hotel, 565 South Main Street, Jacksonville, FL. Phone: 904/393-5561. Contact: Marie Taylor. Seminoles will arrive Saturday, Jan. 10 and depart Sunday, Jan. 11.
- SOUTH FLORIDA** — Sheraton Motor Hotel, Cass and Morgan Streets, Tampa, FL. Phone: 813/229-6431. Contact: Cecelia Pardo. Seminoles will arrive Monday, Jan. 19 and depart Wednesday, Jan. 21.
- GEORGIA STATE** — White House Motor Inn, 70 Houston Street, NE, Atlanta, GA. Phone: 404/659-2660. Contact: Vivian Keller. Seminoles will arrive Friday, Jan. 30 and depart Sunday, Feb. 1.
- ILLINOIS STATE** — Ramada Inn for Bloomington, IL. Interstate 55 and 74 at Route 9 Interchange, Bloomington, IL. Phone: 209/829-7602. Contact: John R. Ogden. Seminoles will arrive Sunday, Feb. 1 and depart Tuesday, Feb. 3.
- MADISON COLLEGE** — Howard Johnson's I-81 and US11 By-Pass, Harrisonburg, VA. Phone: 703/434-6771. Contact: Wayne B. Wenger. Seminoles will arrive Friday, Feb. 13 and depart Sunday, Feb. 15.
- SOUTHWESTERN LOUISIANA** — Howard Johnson's, 1421 Evangeline Thruway, Lafayette, LA. Phone: 318/234-8321. Contact: Joe Roach. Seminoles will arrive Wednesday, Mar. 3 and depart for Dayton, OH, Friday, Mar. 5.
- DAYTON** — Holiday Inn—Downtown, I-75 and First Street, Dayton, OH. Phone: 513/224-9911. Contact: W.A. Dillon. Seminoles will arrive Friday, Mar. 5 and depart Sunday, Mar. 7.

This public document was promulgated at an annual cost of \$2,421.12 or \$1.61 per copy to serve as a handbook for basketball to acquaint the media and the fans with the 1975-76 FSU Basketball program.



**THE 1975-1976 SEMINOLES**