



1968 - 1969

BASKETBALL HANDBOOK

**FLORIDA STATE UNIVERSITY
1968-69 BASKETBALL SCHEDULE**

**1967-68
RESULTS**

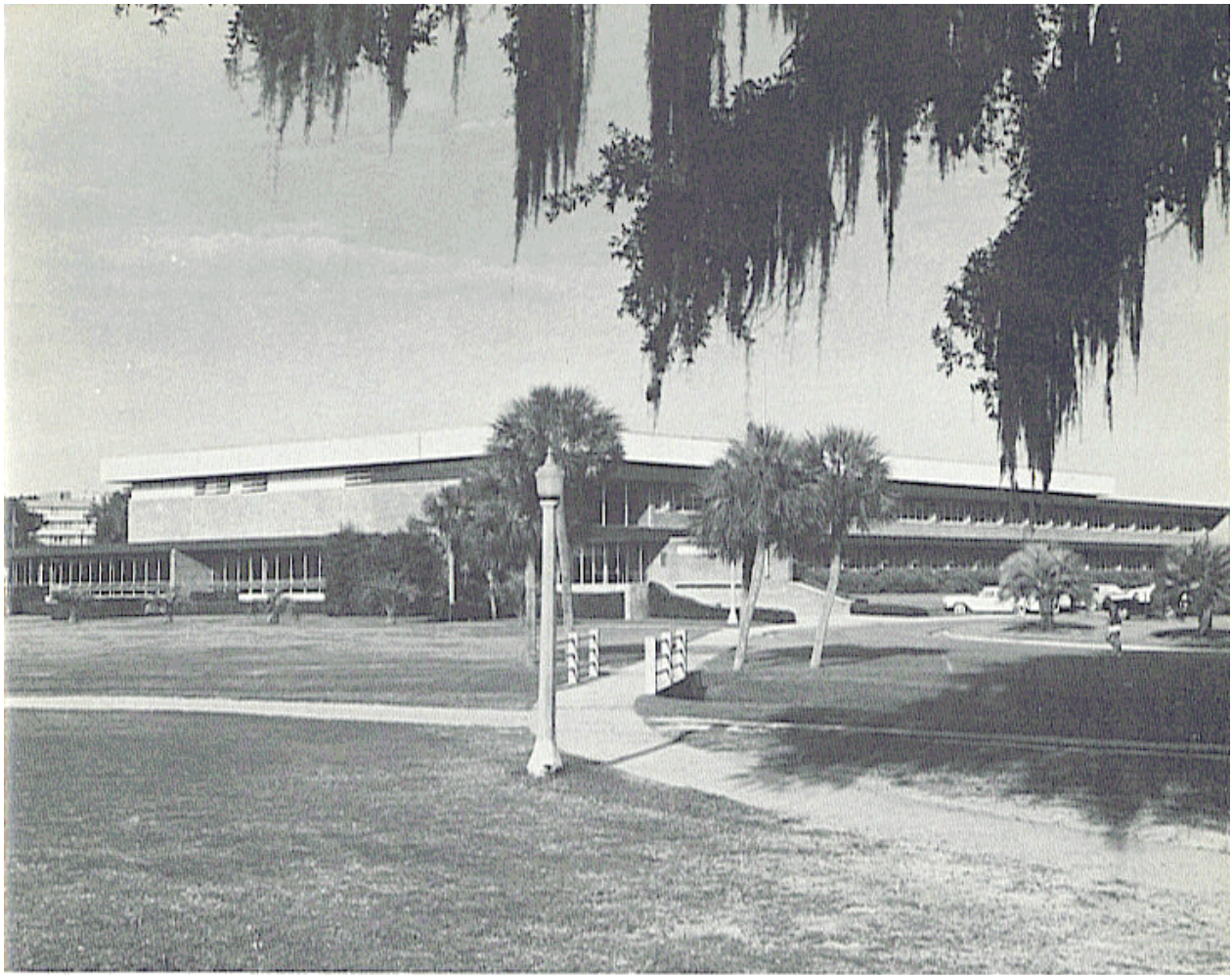
DATE	TEAM	SITE	OPPONENT	FSU	OPP.
			Florida Presbyterian (A)	90	66
Nov. 16	GARNET & GOLD GAME	TALLAHASSEE	Ohio State (A)	69	76
Dec. 2	VALDOSTA STATE	TALLAHASSEE	Florida (H)	87	95
Dec. 6-7	Florida Sunshine Classic	Jacksonville	Sanford (H)	104	89
Dec. 14	Virginia Tech	Blacksburg, Va.	Marquette (A)	58	78
Dec. 16	Louisville	Louisville, Ky.	Louisiana State (N)	130	100
Dec. 21	SOUTHERN CALIFORNIA	TALLAHASSEE	Richmond (H)	114	91
Dec. 27	OHIO STATE	TALLAHASSEE	Rutgers (H)	87	77
Dec. 30	NEW HAMPSHIRE	TALLAHASSEE	George Washington (N)	94	69
Jan. 4	Jacksonville University	Jacksonville	Evansville (A)	67	76
Jan. 8	Tulane	New Orleans, La.	The Citadel (A)	96	75
Jan. 10	MIAMI	TALLAHASSEE	Stetson (H)	111	81
Jan. 13	KENT STATE	TALLAHASSEE	Miami (H)	122	93
Jan. 18	TULANE	TALLAHASSEE	Jacksonville (H)	92	79
Jan. 20	Rice	Houston, Tex.	Georgia Tech (A)	73	57
Jan. 23	HAWAII	TALLAHASSEE	Hofstra (H)	109	71
Jan. 28	SOUTH CAROLINA	TALLAHASSEE	Valdosta State (H)	81	71
Feb. 1	JACKSONVILLE UNIVERSITY	TALLAHASSEE	North Carolina (A)	80	86
Feb. 3	Valdosta State	Valdosta, Ga.	East Carolina (H)	110	100
Feb. 7	Clemson	Clemson, S.C.	The Citadel (H)	93	50
Feb. 8	North Carolina	Greensboro, N.C.	Florida Southern (H)	104	82
Feb. 10	STETSON	TALLAHASSEE	Jacksonville (A)	106	65
Feb. 15	DAYTON	TALLAHASSEE	Florida (A)	64	89
Feb. 18	GEORGIA TECH	TALLAHASSEE	Georgia Tech (H)	72	67
Feb. 22	Georgia Tech	Atlanta, Ga.	Stetson (A)	72	60
Feb. 27	Florida Southern	Lakeland	Miami (A)	84	96
March 1	Miami	Miami	East Tennessee State (N)	*69	79

*NCAA Mid East Regionals

**1968-69
FRESHMEN BASKETBALL SCHEDULE**

**1967-68
FRESHMAN GAME SCORES**

DATE	TEAM	SITE	OPPONENT	FSU	OPP.
Nov. 29	MIAMI-DADE NORTH TOURNEY	Miami	Palm Beach JC (A)	96	74
Nov. 30	MIAMI-DADE NORTH TOURNEY	Miami	North Miami Dade JC (A)	63	78
Dec. 2	Valdosta State - "B" Team	Tallahassee	St. Petersburg JC (A)	95	97
Dec. 6	Chipola Junior College	Marianna	Florida (H)	88	82
Jan. 10	Pensacola Navy	Tallahassee	North Florida JC (H)	125	114
Jan. 13	North Florida Junior College	Tallahassee	Gulf Coast (H)	74	72
Jan. 18	Albany Navy	Tallahassee	Tyndall AFB (Forefeit)	2	0
Jan. 21	Gulf Coast Junior College	Panama City	Pensacola (H)	101	100
Jan. 23	Physics Department	Tallahassee	Jacksonville (H)	98	69
Jan. 25	Norfolk Navy	Tallahassee	Georgia Tech (A) (2 OT)	82	83
Jan. 28	Chipola Junior College	Tallahassee	Gulf Coast (A)	94	104
Feb. 1	Charter Company	Tallahassee	Pensacola Navy (H)	72	87
Feb. 3	Miami Dade North J.C.	Tallahassee	Chipola JC (A)	74	99
Feb. 10	Gulf Coast Junior College	Tallahassee	Lake City (H) (OT)	96	97
Feb. 13	North Florida Junior College	Madison, Fla.	Chipola (H)	85	88
Feb. 15	Seminole Junior College	Tallahassee	Jacksonville (A)	82	71
Feb. 18	Georgia Tech Frosh	Tallahassee	Florida (A)	82	95
Feb. 22	Georgia Tech Frosh	Atlanta, Ga.	Georgia Tech (H)	70	52



TULLY GYM

**FLORIDA STATE UNIVERSITY
AT A GLANCE**

LOCATION Tallahassee, Florida
PRESIDENT Dr. John E. Champion
ENROLLMENT 16,303
CONFERENCE Independent
NICKNAME Seminoles
COLORS Garnet & Gold
BAND Marching Chiefs
ATHLETIC DIRECTOR Vaughn Mancha
HEAD BASKETBALL COACH Hugh Durham
ASSISTANT TO A.D. Ken MacLean
SPORTS INFORMATION DIRECTOR Lonnie Burt
FIELD HOUSE Tully Gymnasium (5,000)

TABLE OF CONTENTS

1968-69 Varsity Schedule	Inside Front Cover
1968-69 Freshman Schedule	Inside Front Cover
1967-68 Varsity Results	Inside Front Cover
1967-68 Freshman Results	Inside Front Cover
General Information	1
Florida State University	4
President John E. Champion	6
Athletic Director Vaughn Mancha	8
Head Coach Hugh Durham	9
Assistant Coach Bill Clendinen	10
Freshman Coach Cleve Branscum	10
Department Personnel	11
Athletic Directory	12
Athletic Committee	12
1968-69 Outlook	14
Varsity Profiles	15-23
1968-69 Varsity Roster	24
1967-68 Varsity Statistics	25
1967-68 Freshman Statistics	25
1968-69 Freshman Roster	27
Freshman Profiles	28-29
Philosophy of the Florida State Basketball Program	30
Academic Program	30
1968-69 Opponents	31-36
The Record Book	38-47
1,000 Point Club	38-39
Team Records	40
Individual Records	41
All-Time Top Scorers	42
Record Against All-Opponents	42-43
All-Time Scores	44-47
Coaches and Captains	47
The Tipoff Club	48
Memo to the Press	Inside Back Cover

ON THE COVER

Colorful photos by Gil Lawhon of the Florida State Photo Lab show Seminole All-America candidate Dave Cowens and Coach Hugh Durham on the front cover and the 1968-69 Seminole Varsity on the back.

THE UNIVERSITY



FLORIDA STATE



Florida State University's basketball team is but one of many University functions which has achieved national acclaim in recent years.

Florida State does not measure its true value in headlines or prize winners, but it considers among its greatest assets the equally talented and unsung athletes, professors and students. It is to this goal that Florida State is firmly committed—the best possible education for each and every one of its students.

It is this dedication which has transformed the institution in just a few years from a strong liberal arts college for women (until 1947) to a University of demonstrated national stature.

Florida State was founded in 1857 and while it is proud of its rich heritage and traditions, the emphasis today is on the future and role it must play in preparing students who will be state and national leaders of tomorrow.

The current fall enrollment stands at more than 16,500 students, and by 1975, the expected enrollment is 28,000. This will include an estimated 7,500 graduate students, emphasizing the University's designated role of leadership as a senior university in Florida's system of public high education.

UNIVERSITY

Florida State today is one of only two dozen institutions granting more than 100 doctoral degrees each year. It was just 15 years ago that the first doctorate was given and in 1967 the 1,000th Ph.D. was awarded.

Currently under construction on the northwest corner of the campus is a rapidly expanding network of modern facilities for space-age research known as the University's Science Center. It will have connected buildings for the various sciences with the famed Institute of Molecular Biophysics (which attracted a Nobel Prize Winner) at the center.

Ten colleges and schools comprise the academic organization with each offering courses leading to the baccalaureate degree and nine offering programs leading to the master's and/or doctoral degrees in more than 40 fields of study.

These units are the College of Arts and Sciences, College of Education, School of Home Economics, School of Music, Library School, School of Social Welfare, School of Business, School of Nursing, School of Engineering Science and the College of Law.





DR. JOHN E. CHAMPION

President, Florida State University

One of the growing number of young university presidents in America, Dr. John E. Champion, at 46, is the youngest of 10 chief executives in the University's 111-year history and the fourth distinguished educator to serve as full-time president of the institution since it achieved university status in 1947.

Appointed to the presidency on June 22, 1965, Dr. Champion has been associated with Florida State since 1956—serving first as a professor of accounting and assistant dean of

the School of Business, and prior to the presidency, as the University's first vice president for administration.

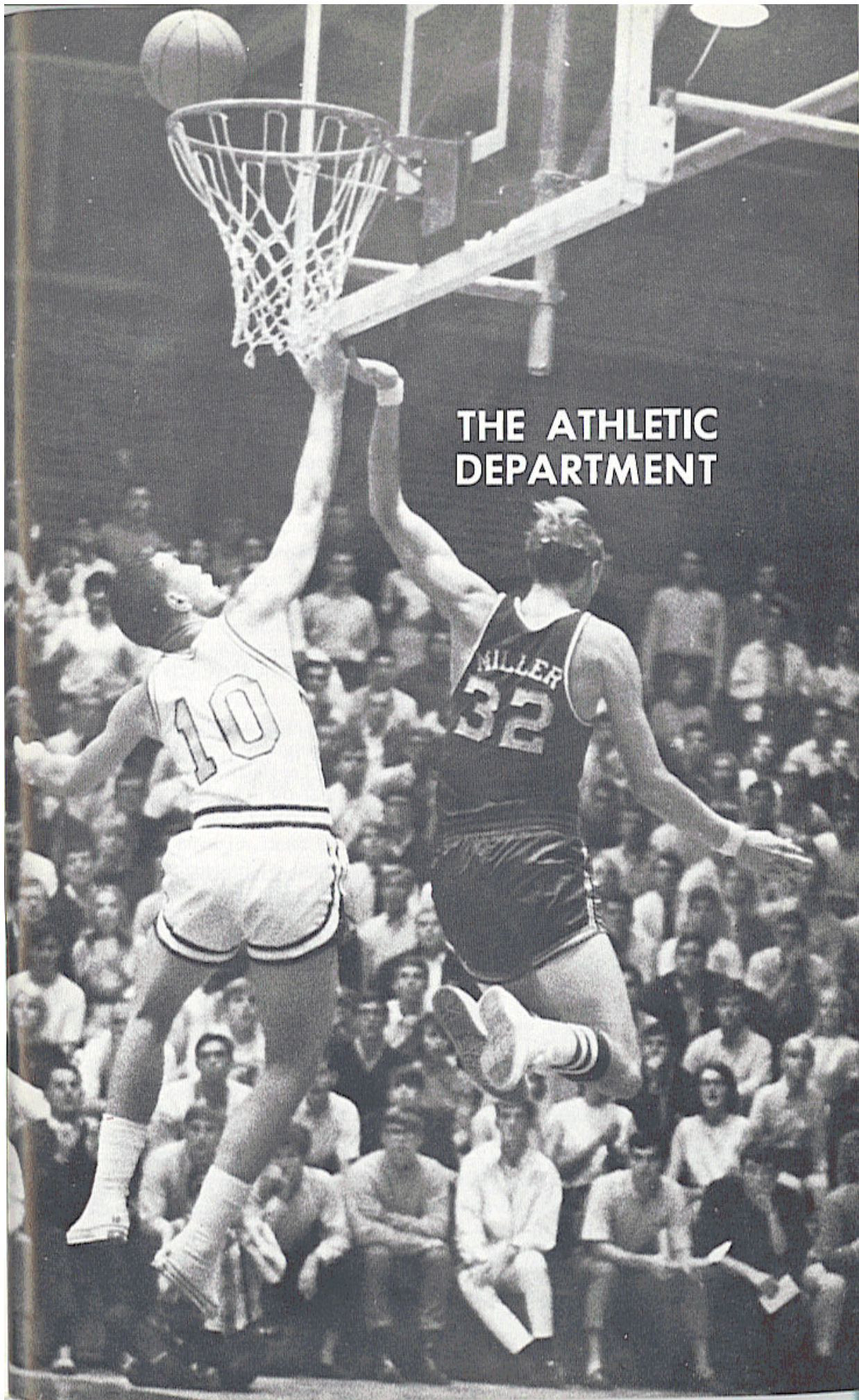
The president's academic background includes bachelor's (1942) and master's (1949) degrees in business administration from the University of Georgia, which honored him in 1966 with a Distinguished Alumnus Award from its Graduate School of Business Administration. He also holds the Ph.D. degree in business administration from the University of Michigan (1960), and professional memberships in the American Accounting Association and the American Institute of Accountants. He has been a Certified Public Accountant since 1952. He is co-author of a principal textbook, *Accounting in Business Decisions*, with Dr. Homer A. Black, a fellow Florida State professor.

Among the expanding list of honors accorded to Dr. Champion in his teaching and administrative careers at the University of Georgia (1948 to 1956) and at Florida State are memberships in Phi Beta Kappa, Phi Kappa Phi, Beta Gamma Sigma, Omicron Delta Kappa, Gold Key, Alpha Phi Omega, Beta Alpha Psi, Delta Sigma Pi and Kappa Delta Pi. Active in numerous campus organizations at Florida State, he served as president of the Alpha of Florida Chapter of Phi Beta Kappa in 1961-62.

Dr. Champion was born in Chipley (now called Pine Mountain), Ga., on May 11, 1922, and was valedictorian of the 1939 graduating class of Chipley High School. Following graduation from the University of Georgia, he served in the U.S. Army infantry and as a quartermaster officer, receiving a special commendation for outstanding service performed with the South Pacific Base Command.

Married on June 4, 1955, Dr. and Mrs. Champion (the former Mary Lanier of West Point, Ga.) have two children—Sally Lanier, 12, and John E. Jr., 10.

Active in civic organizations, President Champion is a deacon in the Faith Presbyterian Church in Tallahassee and a member of the Tallahassee Rotary Club, Tallahassee Chamber of Commerce and the Tallahassee chapter of the Torch Club—an international society devoted to interchange of opinion and understanding among men of different professional groups. He has been an active officer in several United Fund campaigns in Leon County and is a member of the Board of Directors of the Tallahassee Bank and Trust Co.



**THE ATHLETIC
DEPARTMENT**



Director of Athletics

VAUGHN MANCHA

Since Vaughn Mancha returned to Florida State University as Athletic Director, he has been the guiding hand in building a balanced, nationally-prominent athletic program.

Under Mancha, Florida State athletics reached a pinnacle in 1967-68 when four Seminole teams were invited to NCAA post season events.

Last season, Florida State's football team played in the Gator Bowl, its basketball team received an NCAA Mid-East Tournament bid, its baseball team went to the NCAA District III tourney for the 11th time in 13 years and Seminole golfers competed in the NCAA Nationals.

During his time at Florida State the scholarship program, the sports schedule and playing facilities have been greatly improved.

When Mancha returned to Florida State in 1959, he was primarily concerned with improvement of staff, program and facilities. In his tenure, Doak S. Campbell Stadium has grown from 15,000 to 40,500 seating capacity with a modern press box. Hopefully, the Stadium can be increased to 50,000 in the near future.

Under Mancha, a football field house was constructed and his latest project was the installation of lights for the baseball diamond. Florida State is one of the few universities in the country which has a lighted baseball field.

Future planning has the construction of a large coliseum for basketball.

Mancha's ultimate goal is to provide Florida State students, alumni and supporters with the strongest over-all athletic program in the nation.

The Sugar Valley, Ga., native graduated from the University of Alabama in 1948 where he was a football All-America center and played on three Crimson Tide bowl teams.

He came to Florida State in 1952 as an assistant football coach under Tom Nugent. After five years, he went to Columbia as an assistant while working on his doctorate. Following two seasons at the New York institution, Mancha returned to Florida State as Athletic Director.

Married to the former Sybil Little of Birmingham, Ala., Mancha and his wife have two daughters, Clare and Nan, and a son, Dit.



Head Basketball Coach

HUGH DURHAM

If Hugh Durham was still a college athlete, coaches would tag him "a winner." Instead, he's Florida State University's third head basketball coach and this bundle of energy finds losing a ball game his greatest challenge.

The Louisville, Ky., native succeeded the late Bud Kennedy as the Seminole cage boss and immediately set three goals for Florida State. Durham said he would consider his job well done only when the Tribe consistently gained a top 10 ranking, went to a national tournament and finally won the national championship.

Last season, Durham hit on one of these goals when Florida State gained a berth in the Mid-East NCAA Regionals—the first such bid for the Seminoles and only the second to be offered a Sunshine State club.

This is the Seminoles' 22nd basketball season and Durham has been associated with Florida State for more than half that time—either as a player or coach.

The Seminoles inaugurated the sport in 1947 under Don Loucks. In 1948 Kennedy became the head coach and guided Florida State through the obstacles of its basketball youth to a position of respect before his death in 1966.

During much of this time Durham was the man Coach Kennedy relied upon most. He became freshman coach at the start of the 1960 season, posting a 9-1 record that still stands as Florida State's top, one-year frosh mark. In 1961 he was named Kennedy's full-time assistant and continued in that post until he became head coach.

Considered the finest guard in Seminole history, Durham came to the school as a freshman out of Louisville's Eastern High in 1955. During three varsity seasons he scored 1,381 points, with two 500-plus seasons when he received All-America mention.

Though basketball is his game—one that he has discussed many times with the country's top coaches—Durham has an active interest in many sports and many things.

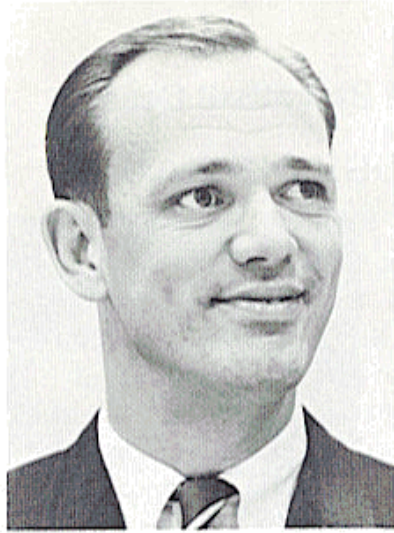
He earned 14 letters in high school, four each in basketball and baseball and three each in football and track. An outstanding prep halfback, he turned down college scholarship offers from several schools to accept Kennedy's offer to play basketball at Florida State.

While an assistant coach in basketball, Durham doubled for four years as head Seminole golf coach with his teams recording a 48-6 record.

He found time to become Tallahassee badminton champion and now shoots golf in the 70s.

Durham is married to the former Malinda Dixon of Jacksonville and they have three sons.

An outstanding recruiter, Durham won't be satisfied until Florida State is a national power—something that may not be too far away.



Assistant Basketball Coach

BILL CLENDINEN

Bill Clendinen became Florida State's Assistant Basketball Coach when Hugh Durham moved up to the Head Coaching position in the summer of 1966.

The former Seminole returned to his alma-mater after earning outstanding records in the high school and junior college basketball circles in Florida.

After receiving his BS degree in 1959 and his MA in 1961, Clendinen took his first coaching job at Clewiston High School. In his

only season there he was named Suncoast Conference "Coach of the Year."

The following season Clendinen moved to Pensacola Junior College, where he produced four winning teams, including one State Championship club. In 1963 he was named Florida's Junior College Coach of the Year.

Before coming to Florida State he served as assistant basketball coach at Jacksonville University for a year.

"Florida State has always had a great basketball potential, and I have always anticipated the time when I could help build a dynamic basketball program here," said Clendinen.

Head Coach Durham has high praise for his assistant. "Bill is one of the hardest working and most thoroughly organized young coaches in the field. His knowledge of the game, and ability to recruit are an invaluable asset to our total program."

While a student at Florida State, Clendinen was president of his freshman and sophomore classes, and was elected to Omicron Delta Kappa, Gold Key and Who's Who in American Colleges and Universities.

Clendinen is married to the former Carlyn Donath, a former Seminole cheer-leader. They have two children.

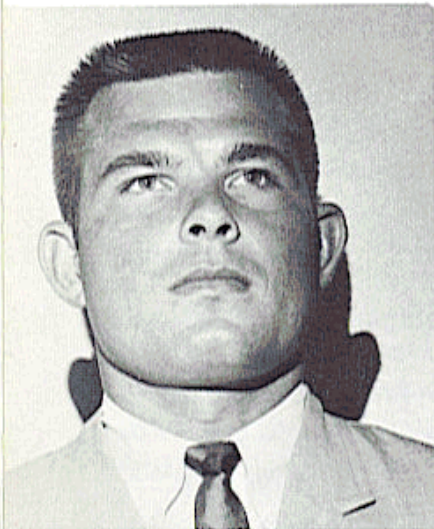
Freshman Coach

CLEVE BRANSCUM

This will be Cleve's second year as coach of the Seminole frosh following four years as head coach at Little Rock (Arkansas) University. Last season he directed the Baby Seminoles to a 9-9 record while developing such outstanding yearlings as Skip Young, John Burt and Denny Parker.

A 1961 graduate at Little Rock, he guided their freshman teams to 17-2 and 18-1 seasons before being elevated to the varsity spot. In his first season at the varsity helm, his club gained 15 victories—a high for the University.

Cleve is working on his doctorate in physical education.





KEN MACLEAN

Assistant to the Athletic Director

This is Ken's second year in the administrative end of Florida State athletics. Prior to moving into administration, he was head football recruiter for three seasons.

Following graduation, he was a successful state high school football coach. Florida High in Tallahassee had a 61-17-4 record under MacLean's direction. His 1961 Demons were undefeated and unscored on in 10 games.

He and wife Bess have four children.



LONNIE BURT

Sports Information Director

This is Lonnie's third year at his alma mater after 16 years as a sports writer for the St. Petersburg Times.

He joined The Times in 1950 where he wrote major league baseball and college sports (Florida State) primarily.

He was among the first group of men to enroll at Florida State.

He and wife Sally have two children.



HANK SCHOMBER

Assistant Sports Information Director

Hank is the first full-time assistant in the Sports Information Department. He assumed his duties following graduation in 1967.

He served as a correspondent for several of the state's newspapers and was sports editor of The Flambeau while in college.

He and wife Judy have a daughter, Tam.



DON FAULS

Head Trainer

Don is serving his 13th year as head trainer at Florida State.

A native of Ithaca, N.Y., Don was formerly a trainer in the St. Louis Cardinal baseball organization before coming to Tallahassee.

He graduated from Ithaca College with a degree in physiotherapy. Don also did hospital and clinic work before coming to Florida State.

He and wife Marg have three children.



BILL ZEIGLER

Assistant Trainer

Bill moved in as Don Fauls' assistant following his graduation in August 1968.

A native of Greencastle, Pa., he attended Manatee Junior College in Bradenton on a basketball and baseball scholarship before coming to Florida State to play baseball.

His background as a trainer includes a year as a student trainer and a summer's work in the Gulf Coast Rookie Baseball League.

He and wife Pat have one son, Ted Williams Zeigler, named for the former Boston star.

ATHLETIC STAFF DIRECTORY

NAME	POSITION	PHONE
Burt, Lonnie	Sports Information Director	599-2095
Clendinen, Bill	Assistant Basketball Coach	599-3080
Conover, Al	Assistant Football Coach	599-2775
Dixon, Tillman	Equipment Manager	599-2775
Durham, Hugh	Head Basketball Coach	599-3080
Fauls, Don	Head Trainer	599-2775
Frye, Mrs. Dee	Administrative Assistant	599-3413
Gibbs, Joe	Assistant Football Coach	599-2775
Gruenewald, Mrs. Margareta	Athletic Accountant	599-3414
Hafner, Doug	Chief Football Recruiter	599-2775
Harbison, Bob	Assistant Football Coach	599-2775
Henning, Dan	Assistant Football Coach	599-2775
Jackson, Bobby	Assistant Football Coach	599-2775
Long, Mike	Head Track Coach	599-2640
MacLean, Ken	Assistant to the Athletic Director	599-3414
Mancha, Vaughn	Athletic Director	599-3413
McDowell, Gene	Freshman Football Coach	599-2775
Peterson, Bill	Head Football Coach	599-2775
Schomber, Hank	Assistant Sports Information	599-2095
Stults, N. B. (Bim)	Head Swimming Coach	599-2640
Thigpen, Claude	Athletic Ticket Manager	599-4625
Tigges, Mrs. Jean A.	Sports Information Secretary	599-2095
Veller, Don	Head Golf Coach	599-2640
Wetherell, T.K.	Academic Advisor	599-3080
Whitman, Mrs. Kathryn	Administrative Secretary	599-3414
Wolfe, Mrs. Shelia	Basketball Secretary	599-3080
Wood, Lex	Head Tennis Coach	599-2640
Wyant, Gary	Assistant Football Coach	599-2775

FLORIDA STATE ATHLETIC COMMITTEE

Robert Earnest, Professor, Business (Chairman); Dr. Ralph A. Bradley, Professor and Dept. Head, Statistics; William W. Rogers, Associate Professor History; Charles Grigg, Professor of Sociology & Director of Institute for Social Research; William H. Long, Assistant Professor Department of Meteorology; Dr. John J. Carey, Professor of Religion; Mr. Charles Ehrhardt, Assistant Professor of Law; Dr. Harold Goldstein, Dean, Library School; Dr. J. Stanley Marshal, Dean, College of Education; Dr. Fred W. Metzke, Professor, Art Education.

THE SEMINOLES



1968-69 BASKETBALL OUTLOOK

The talent is deeper but the schedule is tougher.

This about sums up the 1968-69 prospects for the Florida State University Seminoles.

Hugh Durham, starting his third season as Seminole head basketball coach, is quick to admit that his club has more talent than any other Florida State team he's been around—either as a player or coach.

However, he's just as quick to counter with the fact this is the toughest schedule a Seminole five has been asked to go against.

"When you play people like Virginia Tech, Louisville, Southern California, Ohio State, Miami, South Carolina, North Carolina and Dayton, you had better have some talent," said the ex-Seminole star.

To continue the point, he explained that three Florida State foes—North Carolina, Dayton and Ohio State—have been in the NCAA Eastern finals during the past two years.

Last season, North Carolina was runnerup to champion UCLA in the NCAA finals, Dayton won the NIT while Ohio State copped the Big 10 and Louisville claimed the Missouri Valley Conference.

On the plus side, this year's Florida State club will have good overall team speed and depth. On the other side of the ledger, Durham is counting heavily on a pair of performers who have never played a varsity contest for Florida State—Junior college transfer Willie Williams and sophomore Skip Young.

"Our inexperienced players must come through early for us to have a good year," said Durham. "I don't mean in January, I mean in December."

Headlining the Seminole cage corps this season is All-America center candidate Dave Cowens, the 6-9 red-head from Newport, Ky. As a sophomore last season, Cowens averaged 22.5 points per contest and his 16.9 rebounds made him eighth in the country. There is no doubt in either opponents' or teammates' minds, Cowens is a super performer.

Cowens will spark a Seminole attack which once again will be of the run and shoot variety. This was in evidence last season when Florida State's 90.3 average made the Seminole fifth in the nation among scoring teams.

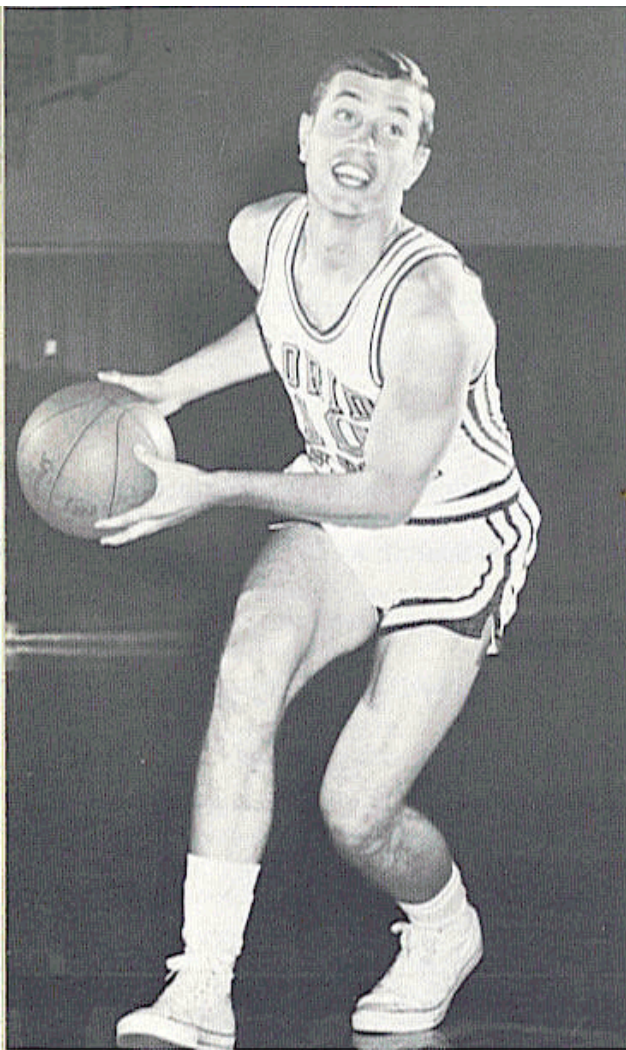
Backing up Cowens will be Dave Macomber, a 6-9 red shirt sophomore and 6-6 Lance Kimrey, off the freshman team. Macomber has some raw talent and shoots well from the outside for a big man.

The forward spots will have good depth although there is not great size among the five top candidates. Returning starter Jan Gies (6-6) was the club's third leading scorer last season with a 12.7 average. Williams, who red shirted last year after transferring from North Miami-Dade JC, is 6-7 and should complement Cowens in the rebounding department. He averaged 23.6 points and 19 rebounds in his final year of JC competition.

Although only 6-2, Dale Klay was the Seminoles' sixth man last season, averaging 8.2 points while John Burt (6-3) was the frosh's leading scorer (22.5) and rebounder (18.6), Ken Bush (6-4½) is another JC transfer—Chipola—where he averaged 22 points and nine rebounds.

Senior Jeff Hogan tops the guard contingent. The Akron, Ohio, shooter averaged 15.8 during 1967-68 and needs only 201 to join the Seminole 1,000-point club. Skip Young has the potential to be one of the country's best sophomores. The Columbus, Ohio, native has great speed and averaged 18.7 points as a freshman.

Lettermen Randy Cable, an excellent shooter, and Carl Reynolds add more depth. Junior college transfer Ken Macklin (Morristown, Tenn., JC) averaged 29.4 last season and Denny Parker is an interesting prospect off the freshman squad.



JEFF HOGAN

Senior Guard

Height: 6-0 Weight: 165

Age: 21 (8-18-47)

Hometown: Akron, Ohio

High School: Ellet

Coach: Gene Vinciguerra

Major: Physical Education



... Florida State's next 1,000-Point Club member. . . needs only 201 points to join this select group of six former Seminoles, including Hogan's coach, Hugh Durham. . . an outstanding athlete, he was also a starter on Seminoles' NCAA Tournament baseball team. . . during summer, he played baseball and was Basin League's Most Valuable Player and led loop with .340 batting average. . . one of few college athletes that can boast he started in NCAA post season tournaments in two sports—basketball and baseball. . . great shooter. . . had his best game last season against NCAA finalist North Carolina when he hit first seven shots from field. . . wound up with 25 points as Tribe bowed 86-80. . . last year he played "point" in Seminole attack. . . this season he'll be relieved of many ball-handling chores to concentrate on shooting. . . led regulars in free throw percentage during 1967-68. . . has two years of experience and has been able to handle pressure situations. . . defensively, lacks raw quickness to be super player. . . his experience and desire has helped him improve defensively. . . should have his biggest nights against zone defense.

	G	FG-FGA	Pct.	FT-FTA	Pct.	Rb.	Avg.	PF	Dq.	Pts.	Avg.
1965-66 (FR)	16	151-NA	—	71- 92	.772	NA	—	55	0	374	23.3
1966-67 (V)	26	143-292	.490	81-115	.739	81	3.1	59	1	372	14.3
1967-68 (V)	27	168-348	.483	91-110	.827	60	2.2	64	3	427	15.8

JAN GIES

Junior Forward

Height: 6-6 Weight: 190

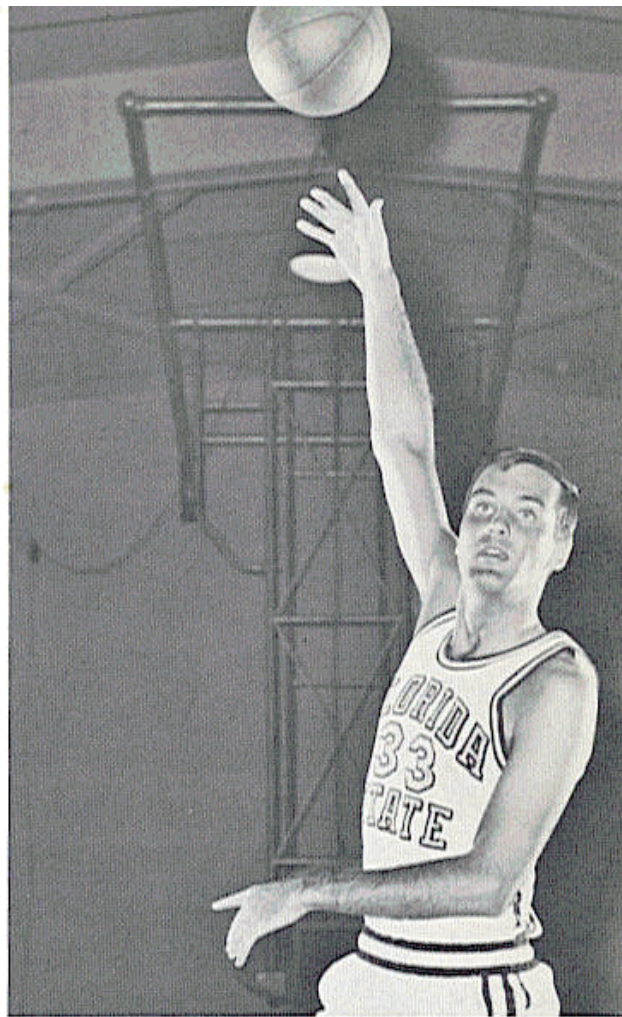
Age: 20 (12-19-48)

Hometown: Deerfield Beach, Fla.

High School: Pompano Beach

Coach: Tucker Morris

Major: Business



...biggest surprise on the varsity last season. . .figured to be a year away, but instead started 26 of 27 games as a sophomore. . .biggest asset was his consistent play. . .he performed equally well against all type of competition. . . scored 17 points against Big 10 champion Ohio State in his second varsity game. . .hit 21 points in second half against Stetson when Seminoles were having their troubles . . .tied for second in rebounding, averaging 8.2. . .team's third leading scorer with 12.7 average. . .extremely coachable. . .very hard worker. . .didn't foul out of single game last season. . .not exceptionally strong jumper, but gets excellent rebounding position. . .good offensive rebounder. . .led varsity in field goal percentage. . .had fine game against Georgia Tech in Seminoles' victory on television.

	G	FG-FGA	Pct.	FT-FTA	Pct.	Rb.	Avg.	PF	Dq.	Pts.	Avg.
1966-67 (FR)	18	77-170	.453	41- 55	.745	183	10.2	62	6	195	10.8
1967-68 (V)	27	128-231	.555	86-108	.796	221	8.2	54	0	342	12.7

DALE KLAY

Senior Forward

Height: 6-2 Weight: 175

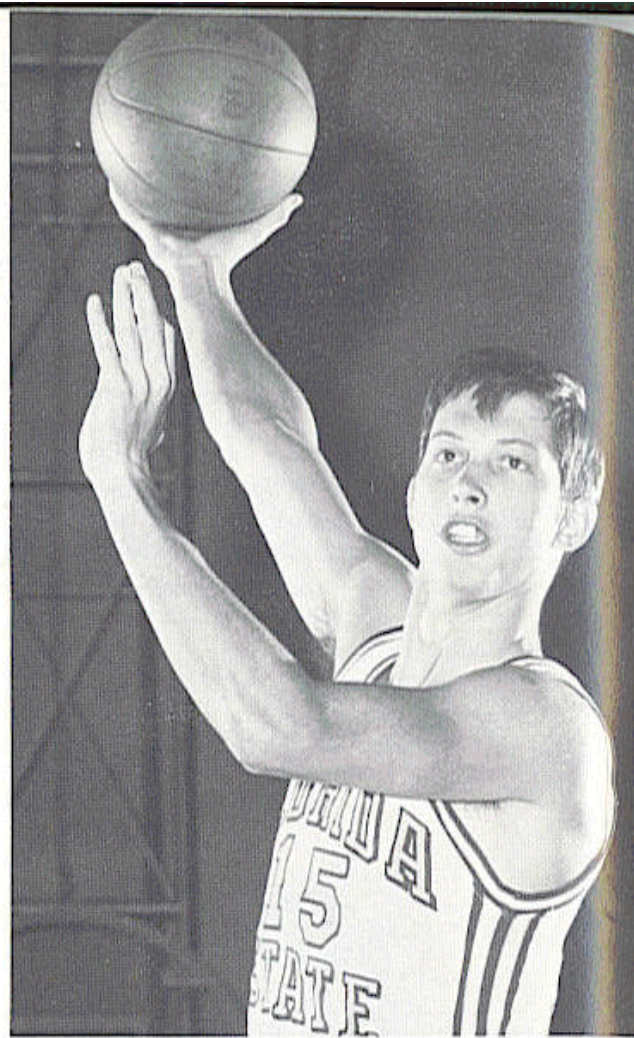
Age: 21 (7-15-47)

Hometown: Tampa, Florida

High School: Hillsborough

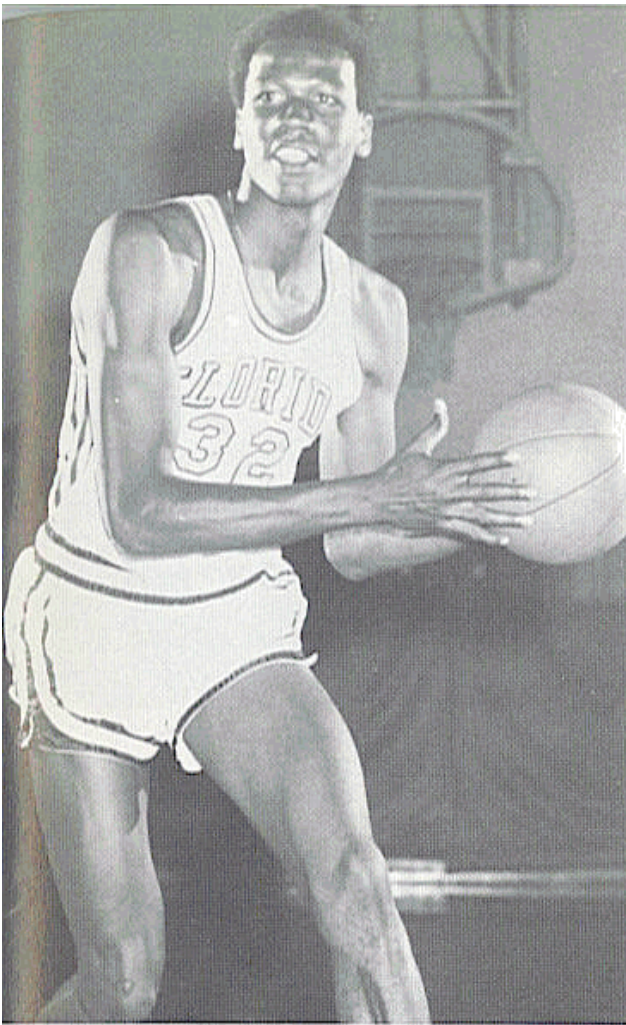
Coach: Bob Shivers

Major: Physical Education



... "Sixth starter" in 1967-68 after transferring from Chipola Junior College. . . did excellent job as scoring reserve. . . gave Seminoles big lift during middle of last season when averaged in double figures during 10-game span after coming off bench. . . great jumping ability. . . good offensive rebounder. . . speed enables him to do good job on press. . . should be more effective this season after year's experience in Florida State system. . . better than average outside shooter. . . has chance to start.

	G	FG-FGA	Pct.	FT-FTA	Pct.	Rb.	Avg.	PF	Dq	Pts.	Avg.
Dale Klay (V)	27	99-220	.450	24- 34	.706	98	3.6	44	0	222	8.2



WILLIE WILLIAMS

Junior Forward

Height: 6-7 Weight: 195

Age: 21 (7-28-47)

Hometown: Miami, Florida

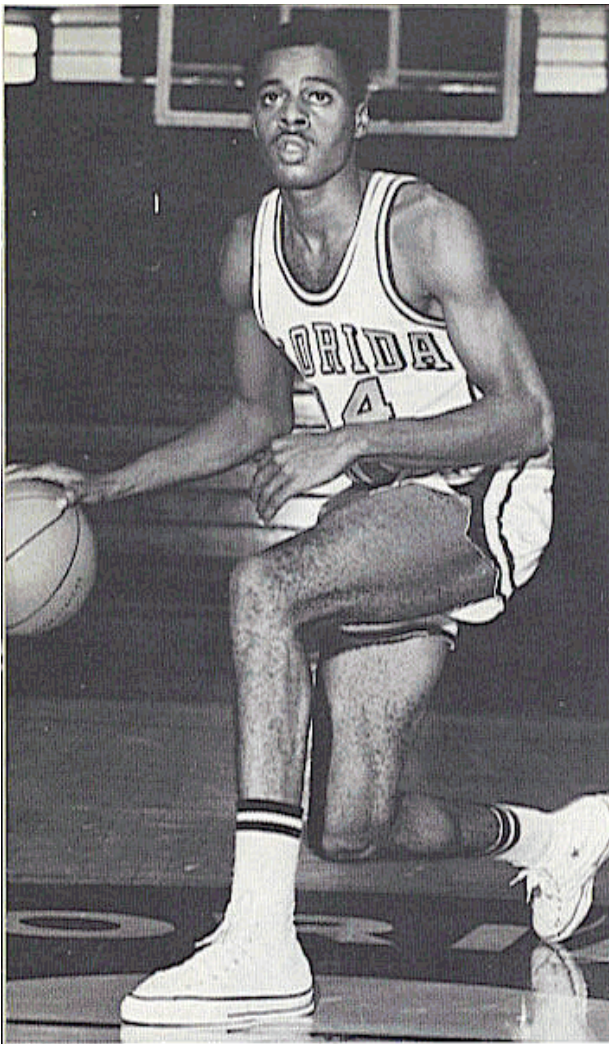
High School: Booker T.
Washington

Coach: Walter Caldwell

Major: Physical Education



...transfer from Miami Dade North Junior College who red shirted last season
...as a sophomore at MDJC he averaged 23 points and 19 rebounds. .has the
highest academic average on the team. .an exceptional rebounder. .has good
speed and quickness for a 6-7 man. .counted on to complement Dave Cowens on
the boards. .and will share his part of the scoring load. .good, strong driver
...will take the ball to the basket. .sees open man well. .his speed an asset on
defensive press. .good shot from 18 feet. .in scrimmages last season, he caused
varsity many problems because of his great shot-blocking ability.



SKIP YOUNG

Sophomore Guard

Height: 6-3 Weight: 155

Age: 19 (1-9-49)

Hometown: Columbus, Ohio

High School: Linden McKinley

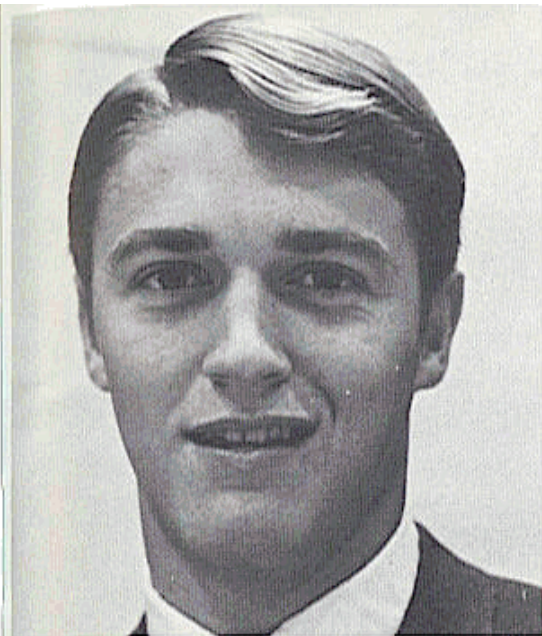
Coach: Vince Chickerilla

Major: Psychology



...quickest guard on the squad. . .led his high school team to the Ohio State championship and was leading city scorer. . .exceptional freshman season when he averaged 18.7 points and 8.3 rebounds. . .has physical ability to become Florida State's finest all round backcourt performer. . .quickness and competitiveness make him outstanding defensive player. . .takes ball to the hole extremely well . . .very good dribbler. . .one of the keys to Seminoles' fast break attack. . . excellent middle man on break—feeds well. . .outstanding leaping ability and can be fourth man on the boards. . .apparent starter as a sophomore.

	G	FG-FGA	Pct.	FT-FTA	Pct.	Rb.	Avg.	PF	Dq.	Pts.	Avg.
1967-68 (FR)	17	122-257	.475	74- 88	.841	141	8.3	59	4	317	18.7



CARL REYNOLDS

Junior Guard

Height: 6-2 Weight: 175

Age: 21

Hometown: Fairborn, Ohio

High School: Fairborn

Coach: Jack Gayheart

Major: Business

...vast improvement in all phases of game, especially on defense. . .runs patterns well and continues to be fine shooter. . .shows spurts of being good ball handler . . .can be asset on fast break. . .good hustler.

	G	FG-FGA	Pct.	FT-FTA	Pct.	Rb.	Avg.	PF	Dq.	Pts.	Avg.
1966-67 (FR)	18	76-186	.408	43- 50	.860	72	4.0	35	2	195	10.8
1967-68 (V)	15	13- 36	.361	16- 26	.615	7	.5	11	0	42	2.8



RANDY CABLE

Junior Guard

Height: 5-11 Weight: 170

Age: 20

Hometown: Masillon, Ohio

High School: Jackson Memorial

Coach: Rich Thomas

Major: Physical Education

...one of the best shooters on the squad. . .good outside shot. . .capable of hot streak. . .had 20 points in second half against Miami last season. . .when he enters game it doesn't hurt Seminole guard play. . ."I have no reservations about playing him at anytime," says Coach Durham. . .has shown defensive improvement . . .came back with fine attitude. . .good quickness and speed. . .hits well at end of fast break.

	G	FG-FGA	Pct.	FT-FTA	Pct.	Rb.	Avg.	PF	Dq.	Pts.	Avg.
1966-67 (FR)	18	141-273	.517	77- 90	.856	62	3.4	53	3	359	20.0
1967-68 (V)	26	62-126	.492	42- 50	.840	26	1.0	36	0	166	6.4



KEN BUSH

Junior Forward

Height: 6-5 Weight: 195

Age: 20

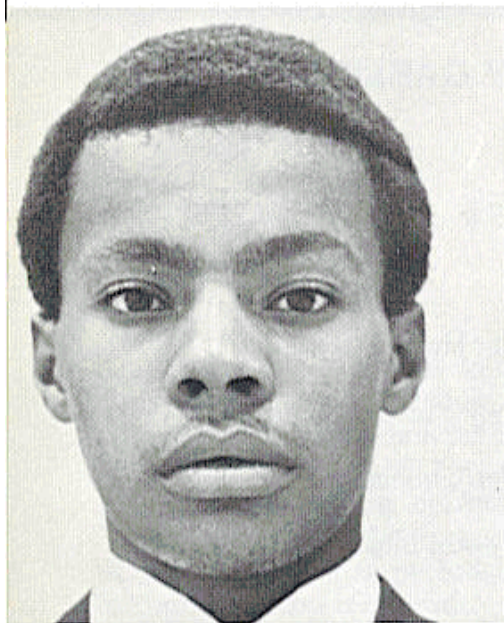
Hometown: Middletown, Ohio

High School: Middletown

Coach: Paul Walker

Major: Business

...Chipola Junior College transfer where he averaged 22 points and 10 rebounds
...exceptional ability on fast break...finishes break very strong...takes ball to
bucket hard...hits outside consistently...will make bid for starting job...good
shot for big man...with defensive improvement, he's definite starter...fine
moves inside...deceptive speed.



KEN MACKLIN

Junior Guard

Height: 6-3 Weight: 187

Age: 20

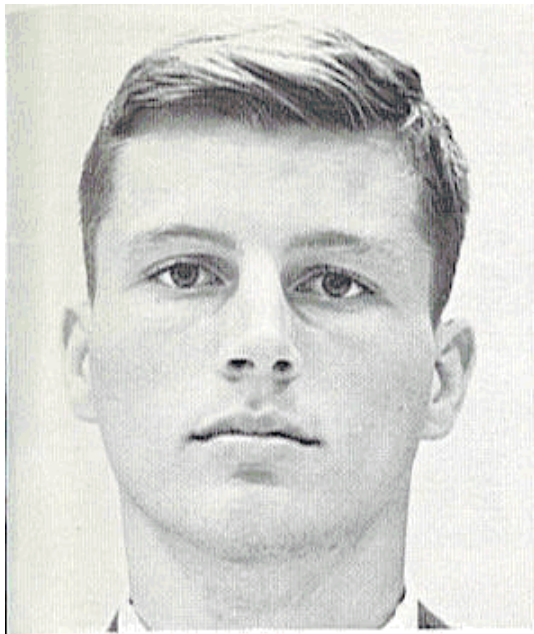
Hometown: East Orange, N.J.

High School: East Orange

Coach: Frank Milner

Major: Physical Education

...another junior college transfer...came from Morristown, Tenn., JC where
averaged 29 points per game...exceptional offensive guard...fine outside
shooter...leads fast break well...ability to hit open man on break...will be
definite plus against zone defenses...as soon as he learns Seminole patterns, he'll
be big asset.



DENNY PARKER

Sophomore Guard

Height: 6-2 Weight: 170

Age: 19

Hometown: Columbus, Ohio

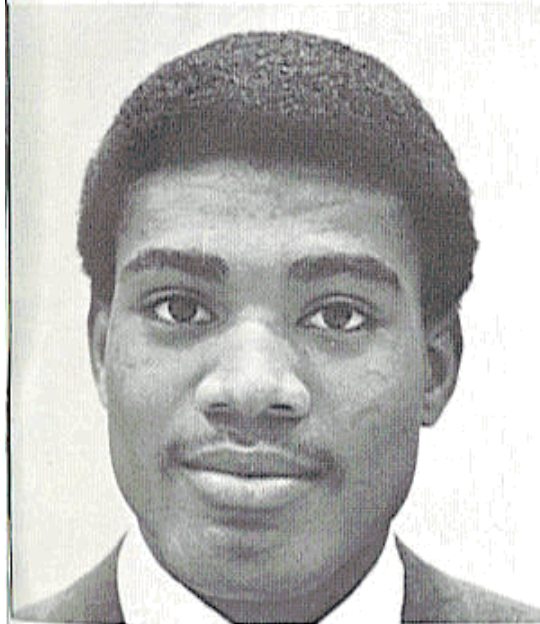
High School: Bishop Hartley

Coach: Richard Geyer

Major: Physical Education

...quarterbacked last year's frosh team. ...will be used as backup point man this season. ...comes from basketball family. ...has brother starting for Ohio University and younger brother who is on Florida State freshman team. ...exceptional passer ...plays hard and takes game seriously.

	G	FG-FGA	Pct.	FT-FTA	Pct.	Rb.	Avg.	PF	Dq.	Pts.	Avg.
1967-68 (FR)	17	101-216	.468	23- 53	.434	78	4.6	55	5	218	12.8



JOHN BURT

Sophomore Forward

Height: 6-3 Weight: 180

Age: 19

Hometown: Ft. Wayne, Ind.

High School: Central

Coach: Bob Dille

Major: Political Science

...led freshman team last season with 22.5 points per game and 18.6 rebounds ...great leaping ability. ...quickest forward on squad. ...has rebounded 11-8 on rebound machine. ...good moves inside. ...if outside shot improves, he'll be hard to keep out of the starting lineup. ...definite plus on fast break.

	G	FG-FGA	Pct.	FT-FTA	Pct.	Rb.	Avg.	PF	Dq.	Pts.	Avg.
1967-68 (FR)	17	165-346	4.77	53- 78	.679	317	18.6	48	3	383	22.5

FLORIDA STATE UNIVERSITY
1968-69 VARSITY
BASKETBALL ROSTER

NO	NAME	POS	HT	WT	YEAR	AGE	HOMETOWN	HIGH SCHOOL or J. C. (Coach)
10	Jeff Hogan	G	6-0	165	Sr.	21	Akron, Ohio	Ellet (Gene Vinciguerra)
12	Ken Bush	F	6-5	195	Jr.	20	Middletown, Ohio	Chipola JC (Milton Johnson)
13	Dave Cowens	C	6-9	218	Jr.	20	Newport, Kentucky	Catholic (James Connor)
14	Skip Young	G	6-3	155	Soph.	19	Columbus, Ohio	Linden McKinley (Vince Chickerilla)
15	Dale Klay	F	6-2	175	Sr.	21	Tampa	Hillsborough (Bob Shivers)
20	Kenneth Macklin	G	6-3	187	Jr.	20	East Orange, N. J.	Morristown (Tenn) JC (Sam Bundy)
21	Carl Reynolds	G	6-2	175	Jr.	21	Fairborn, Ohio	Fairborn (Jack Gayheart)
22	John Burt	F	6-3	180	Soph.	19	Ft. Wayne, Ind.	Central (Bob Dille)
23	Denny Parker	G	6-2	170	Soph.	19	Columbus, Ohio	Bishop Hartley (Dick Geyer)
30	David Macomber	C	6-9	210	Jr.	20	Port St. Joe	Port St. Joe (Bobby Brown)
32	Willie Williams	F	6-7	195	Jr.	21	Miami	Miami-Dade North JC (Bill Alheim)
33	Jan Gies	F	6-6	190	Jr.	20	Deerfield Beach	Pompano Bch (Tucker Morris)
34	Randy Cable	G	5-11	170	Jr.	20	Masillon, Ohio	Jackson Mem. (Rich Thomas)
44	Lance Kimrey	C	6-6	220	Soph.	19	Norman, Oklahoma	Norman (Max Marquardt)

1967-68 FLORIDA STATE UNIVERSITY
FINAL BASKETBALL STATISTICS
(Won 19 - Lost 8 .704)

PLAYERS GA FG-FGA PCT PF-FTA PCT S M REB AVG PF DISQ PTS AVG

COWENS	27	206-383	.538	96-131	.733	212	456-17.0	103	8	508	18.8
HOGAN	27	168-348	.483	91-110	.827	199	60- 2.2	64	3	427	15.8
GIES	27	128-231	.555	86-108	.796	125	221- 8.2	54	0	342	12.7
STEWART	27	103-223	.462	60- 82	.732	142	93- 3.4	88	4	266	9.9
DANFORD	27	96-189	.508	48- 80	.600	125	222- 8.2	86	5	240	8.9
KLAY	27	99-220	.450	24- 34	.706	131	98- 3.6	44	0	222	8.2
CABLE	26	62-126	.492	42- 50	.840	72	26- 1.0	36	0	166	6.4
DEPATHY	27	53-123	.431	24- 40	.600	86	46- 1.7	27	0	130	4.8
ROSS	23	22- 66	.333	34- 56	.607	66	74- 3.2	40	2	78	3.4
REYNOLDS	15	13- 36	.361	16- 26	.615	33	7- .5	11	0	42	2.8
DOYLE	17	5- 13	.385	5- 11	.455	8	24- 1.4	7	0	15	.9
BARROW	3	1- 2	.500	0- 0	.000	1	0- 0	1	0	2	.67
TEAM REBOUNDS						61					
FSU TOTALS		956-1960	.490	526-722	.730	1200	1388-51.4	561	22	2438	90.3
OPPONENTS		793-1911	.415	532-736	.723	1322	1134-42.0	534	25	2118	78.4

1967-68 FINAL FRESHMAN STATISTICS

PLAYERS	GA	FG-FGA	PCT	FT-FTA	PCT	SM	REB AVG	PF	DISQ	PTS	AVG
BURT	17	165-346	.477	53-78	.679	206	317-18.6	48	3	383	22.5
YOUNG	17	122-257	.475	74-88	.841	149	141- 8.3	59	4	317	18.7
KIMREY	17	86-178	.484	50-73	.685	115	170-10.0	65	4	222	13.1
PARKER	17	101-216	.468	23-53	.434	145	78- 4.6	55	5	218	12.8
HASTWELL	17	62-153	.405	34-50	.680	108	140- 8.2	62	3	158	9.3
OTHERS (7)	64	70-188	.372	33-54	.611	139	84- 1.3	56	1	176	2.7
TEAM REBOUNDS						35					
FSU TOTALS		606-1337	.453	267-396	.674	860	965-56.8	347	20	1479	87.0
OPPONENTS		573-1304	.439	316-458	.690	883	768-45.2	293	8	1462	86.0



12

45

44

30

21

34

3

14

5

10

3

14

5

10

21

34

THE FLORIDA STATE UNIVERSITY
1968-69 FRESHMAN BASKETBALL ROSTER

NO.	NAME	POS.	HEIGHT	WEIGHT	HOME TOWN	HIGH SCHOOL (Coach)
3	Pat Fitzgerald	G	6-2	175	Appleton, Wisc.	Xavier (Gene Clark)
10	Ron Harris	F	6-4	190	Key West	Key West (Dave Fedor)
12	Don Bowles	F	6-4	190	Green Cove Springs	Clay (Thomas Hogans)
13	Butch Kummer	F	6-6	195	Winter Park	Winter Park (Bob MacHardy)
14	Rod Parker	G	6-3	190	Columbus, O.	Bishop Hartley (Richard Geyer)
20	Roy Glover	G	6-0	175	Pompano Beach	Blanche Ely (Ernest Bullard)
21	John Kobboord	G	6-3	180	Cocoa Beach	Cocoa Beach (Rudy Moberg)
23	Rowland Garrett	F	6-6	190	Canton, Miss.	Rogers (Tevester Anderson)
30	Jeff Trammell	C	6-6	185	Blountstown	Blountstown (James Dunn)
32	Jim Gosink	C	6-10	215	Reading, O.	Moeller (Jerome Doerger)
33	Bob Phillips	F	6-4	175	Orlando	Boone (Ivan Repass)
34	Denny Williamson	G	5-11	165	Jacksonville	Bishop Kenny (John Baldwin)



PATRICK FITZGERALD

Height: 6-2

Weight: 175

Hometown: Appleton, Wisconsin

High School (Coach): Xavier (Gene Clark)

...All-State player from Wisconsin...was player of the year in his conference...averaged 25 points a game...sound fundamentally...led high school team to 64-7 three-year record.



ROD PARKER

Height: 6-3

Weight: 190

Hometown: Columbus, Ohio

High School (Coach): Bishop Hartley (Richard Geyer)

...younger brother of Seminole guard Denny...was leading scorer in Columbus and fourth leading scorer in the state...averaged 26.2 points a contest...holds 16 of his high school's records.



JIM GOSINK

Height: 6-10

Weight: 215

Hometown: Reading, Ohio

High School (Coach): Moeller High (Jerome Doerger)

...biggest man on the squad...has potential to develop into strong post man...has good inside soft hook...averaged 14 rebounds...should improve as year progresses.



DON BOWLES

Height: 6-4

Weight: 190

Hometown: Green Cove Springs, Florida

High School (Coach): Clay County High
(Thomas Hogans)

...fine athlete, was All-State in both football and basketball...led football team to state class-B championship...averaged 25 ppg and 19 rebounds a contest.

PHILOSOPHY OF FSU BASKETBALL PROGRAM

by Hugh Durham, Head Basketball Coach

"In all areas of endeavor, strive to reach the ultimate of your abilities." This, in essence, is the philosophy of the basketball program at Florida State University.

Although our players are individuals and each has his own interests and goals, there are four areas, academic, athletic, social and moral, in which all our young men should strive for excellence. And, not only are we interested in outstanding individual achievement, but we are dedicated to excellence in our total basketball program.

What contribution will our basketball program have made to each player upon his graduation? At Florida State, we feel athletic letters and school records are not enough. Pride, self-discipline, perseverance, and loyalty are not letters to be forgotten or records to be broken. We feel it is important that our young men develop these qualities, and using them as a foundation, they will be prepared to strive successfully for excellence in their chosen fields. This carry-over value is an integral part of our basketball program at Florida State University.

As interested as we are in the individual, we are dedicated to the development of a winning basketball team. Winning is important—our society dictates this. As coach, I have established three goals for our basketball team. They are for Florida State to be represented in one of the national tournaments, for Florida State to be listed consistently in the top ten, and for Florida State to win the National Championship.

Florida State University is recognized nationally for excellence in the fields of accounting, chemistry, marine biology, mathematics, music and physics. In recent months, new academic programs at Florida State have been acclaimed in national magazines and Dr. Mulliken, of our Chemistry and Physics Department, was awarded the Nobel Prize.

Academically, Florida State has earned national prominence, and at our university, academics come first. Now it is time for our basketball program to obtain the same prominence. To do this, our men must learn to compete, meet the challenge, and pay the price to be a winner. I believe it can be done.

ACADEMIC PROGRAM



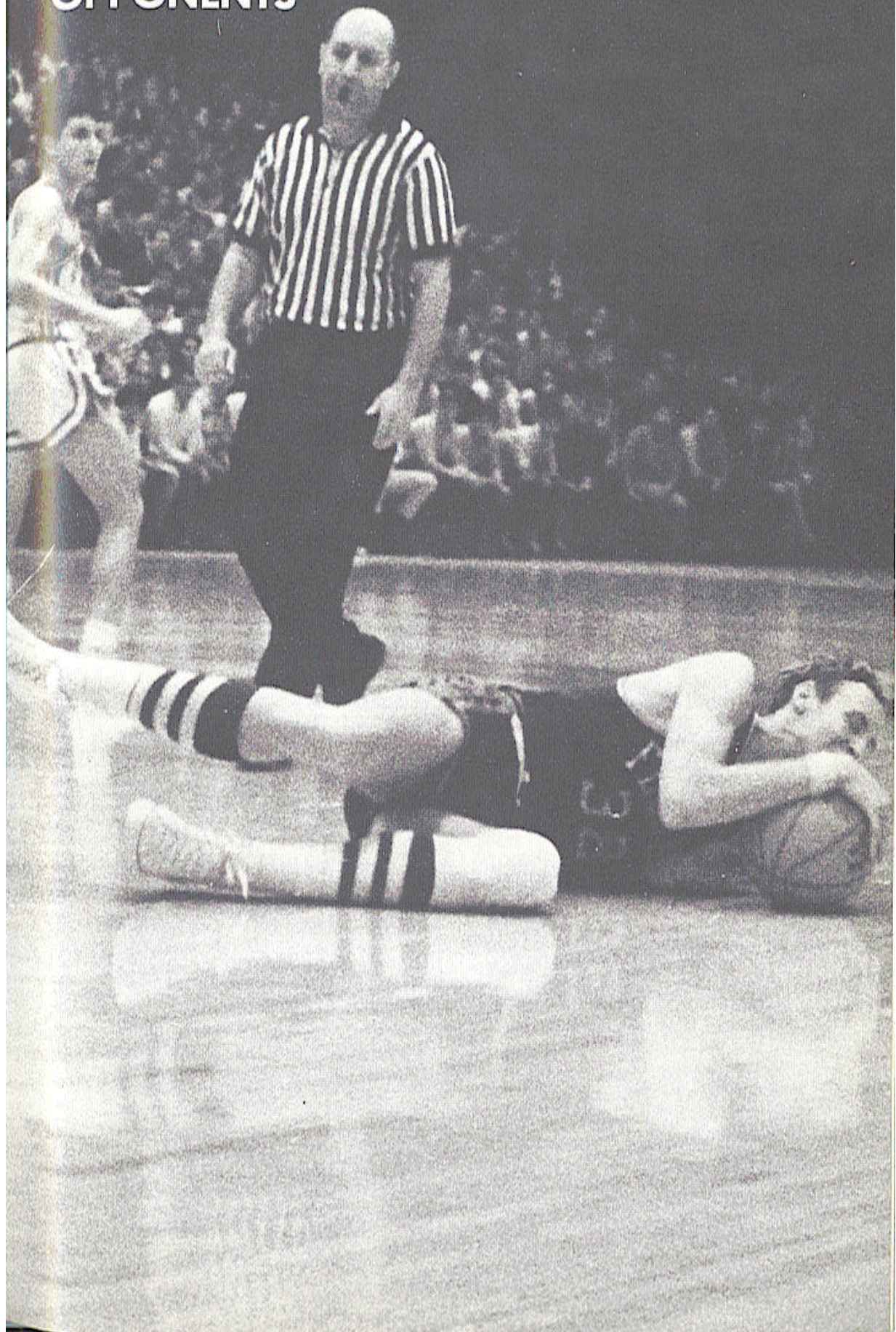
Wetherell

Florida State University is exceptionally proud of the academic success of the members of the basketball team. The team's overall grade point average is 2.3 which is equivalent to the overall men's average at Florida State. At the beginning of the 1968-69 school year Willie Williams had the highest grade point average of anyone on the basketball team.

The academic program for athletes at Florida State University is somewhat unique because it has a full-time academic counselor, Mr. T. K. Wetherell. His main responsibility is to see that the athletes are making adequate progress toward their degree. He also helps in planning their majors as well as in the selection of courses.

The Athletic Department requires that all full scholarship athletes spend at least five nights a week studying during their freshman year. All necessary study aids are provided and tutors are available when needed. Textbooks are furnished at all times, and many students check them out over the summer holidays as well.

OPPONENTS



VALDOSTA STATE Game 1: Dec. 2, 1968, Tallahassee, 7:30 P.M. EST

Game 18: Feb. 3, 1969, Valdosta, Ga. 8:15 P.M. EST

Location: Valdosta, Ga. Nickname: Rebels
Conference: GIAC Colors: Red and Black
President: Dr. S. Walter Martin Enrollment: 2,700
Athletic Director: William Grant Home Court: College Gym (2,500)
Sports Info. Director: Fluker Steward 1967-68 Records: 23-10
Head Coach: James Melvin Series Standing: 8-0 FSU
Assistant Coach: James Dominey

Lettermen Returning: Four Lettermen Lost: Five

Leading Returnees:	POS	HT.	PT. AVG.	REB. AVG.
John Trimnell	G	6-2	6.7	4.9
Dale Croft	F	6-4	3.5	2.2
Paul O'Brian	G	6-1	4.3	1.7

MIAMI-CIVITAN CLASSIC Game 2: Dec. 6, 1968, Jacksonville

Game 11: Jan. 10, 1969, Tallahassee, 7:30 P.M. EST

Game 26: Mar. 1, 1969, Miami, 8:00 P.M. EST

Location: Miami Nickname: Hurricanes
Conference: Independent Colors: Orange, Green and White
President: Dr. Henry K. Stanford Enrollment: 17,000
Athletic Director: Charlie Tate Home Court: Miami Beach
Sports Info. Director: George Gallet Convention Hall (6,500)
Head Coach: Ron Godfrey (1 yr 17-11) 1967-68 Record: 17-11
Assistant Coach: Dick Hickox Series Standing: 20-17, Miami

Lettermen Returning: Six Lettermen Lost: Four

Leading Returnees:	POS	HT.	PT. AVG.	REB. AVG.
Don Curnutt	G	6-2	22.7	2.3
Jerry Stevenson	F	6-7	9.1	7.9
Tom Green	G	6-0	3.2	1.6

JACKSONVILLE-CIVITAN CLASSIC Dec. 6-7, 1968, Jacksonville

Game 9: Jan. 4, 1969, Jacksonville, 8:00 P.M. EST

Game 17: Feb. 1, 1969, Tallahassee, 7:30 P.M. EST

Location: Jacksonville Nickname: Dolphins
Conference: Independent Colors: Green, White, Gold
President: Dr. Robert Spirio Enrollment: 3,000
Athletic Director: Judson Harris Home Court: Jacksonville Coliseum
Sports Info. Director: Frank Casey (10,000)
Head Coach: Joe Williams 1967-68 Record: 13-13
Assistant Coaches: Tom Wasdin and Bill Curtis Series Standing: 8-1, FSU
Lettermen Lost: One

Lettermen Returning: Six

Leading Returnees:	POS	HT.	PT. AVG.	REB. AVG.
Rod McIntyre	C	6-8	21.2	14.
Tom Erney	G	6-1	8.	3.
Mike Kellam	G	6-0	5.	2.

FLORIDA-CIVITAN CLASSIC Dec. 6-7, 1968, Jacksonville

Location: Gainesville Nickname: Gators
Conference: Southeastern Colors: Orange and Blue
President: Stephen C. O'Connell Enrollment: 20,600
Athletic Director: Ray Graves Home Court: Florida Gym (7,000)
Sports Info. Director: Norm Carlson 1967-68 Record: 15-10
Head Coach: Tommy Bartlett Series Standing: 18-4, Fla.
Assistant Coaches: Dick Davis and Jim McCachren

Lettermen Returning: Seven Lettermen Lost: Four

Leading Returnees:	POS	HT.	PT. AVG.	RBD. AVG.
Neal Walk	C	6-10	26.5	19.8
Andy Owens	F	6-5	14.2	7.1
Mike Leatherwood	G	6-0	5.2	2.4

VIRGINIA TECH Game 4: Dec. 14, 1968, Blacksburg, Va. 8:00 P.M. EST
 Location: Blacksburg, Va. Nickname: Gobblers, Hokies
 Conference: Independent Colors: Orange and Maroon
 President: Dr. T. Marshall Hahn, Jr. Enrollment: 10,400
 Athletic Director: Frank O. Moseley Home Court: Tech Coliseum (10,000)
 Sports Info. Director: Wendell H. Weisend
 Head Coach: Howie Shannon (1967-68 Record: 14-11)
 (5 yrs 66-33) Series Standing: 0-0
 Assistant Coach: Jim Hartbarger Lettermen Lost: Three
 Lettermen Returning: Six
 Leading Returnees: POS HT. PT. AVG. RBD. AVG.
 Chris Ellis G-F 6-4 13.5 4.2
 Dan Wetzel C-F 6-8 7.3 7.5
 W. R. Deskins G 6-1 5.3 1.8
 Stan Kerrick F-G 6-3 6.7 3.8
 Top Newcomers: John Blessing, Loyd King, Wayne Lockett

LOUISVILLE Game 5: Dec. 16, 1968, Louisville, Ky., 8:00 P.M. EST
 Location: Louisville, Ky. Nickname: Cardinals
 Conference: Missouri Valley Colors: Red, White
 President: Dr. Woodrow Strickler Enrollment: 9,000
 Athletic Director: Bernard L. Hickman Home Court: Freedom Hall (18,800)
 Sports Info. Director: Jerald R. Smith 1967-68 Record: 21-7
 Head Coach: John Dromo (1 yr 21-7) Series Standing: 0-0
 Assistant Coach: Howard Stacey Lettermen Lost: Four
 Lettermen Returning: Eight
 Leading Returnees: POS HT. PT. AVG. RBD. AVG.
 Butch Beard G 6-3 16.0 4.9
 Jerry King F 6-5 14.4 5.7
 Marv Selvy F 6-4 7.2 3.7
 Mike Grosso (5 games) C 6-9 5.8 7.0
 Top Newcomers: John Studer, Bill Perkins, Greg Neely

SOUTHERN CALIFORNIA Game 6: Dec. 21, 1968, Tallahassee 7:30 P.M. EST
 Location: Los Angeles, Calif. Nickname: Trojans
 Conference: AAWU Colors: Cardinal and Gold
 President: Dr. Norman Topping Enrollment: 10,300
 Athletic Director: Jess Hill Home Court: Los Angeles Sports Arena
 Sports Info. Director: Don Andersen (14,795)
 Head Coach: Bob Boyd (2 yrs 31-20) 1967-68 Record: 18-8
 Assistant Coach: Bob Wilhelm Series Standing: 0-0
 Lettermen Returning: Five Lettermen Lost: Four
 Leading Returnees: Mack Calvin, Bob Clemo, Steve Jennings, Vince Mannino
 and Ron Taylor
 Top Newcomers: Don Crenshaw, Ivan Browning, Dana Pagett

OHIO STATE Game 7: Dec. 27, 1968, Tallahassee 7:30 P.M. EST
 Location: Columbus, Ohio Nickname: Buckeyes
 Conference: Big Ten Colors: Scarlet and Gray
 President: Dr. Novice G. Fawcett Enrollment: 39,800
 Athletic Director: Richard C. Larkins Home Court: St. John Arena (13,497)
 Sports Info. Director: Wilbur E. Snynn 1967-68 Record: 21-8
 Head Coach: Fred Taylor (10 yrs 182-73) Series Standing: 0-2, OSU
 Assistant Coaches: Bob Burkholder and Jack Graf
 Lettermen Returning: Eleven Lettermen Lost: Two
 Leading Returnees: PTS AVG RBDS AVG
 Steve Howell 507 17.5 157 5.4
 Dave Sorenson 474 16.3 289 9.9
 Denny Meadors 270 9.3 98 3.4
 Jody Finney 154 6.7 66 2.9
 Ed Smith 85 3.2 93 3.7
 Top Newcomers: Jim Clemons

NEW HAMPSHIRE Game 8: Dec. 30, 1968, Tallahassee, 7:30 P.M. EST
 Location: Durham, N. H. Nickname: Wildcats
 Conference: Yankee Colors: Blue and White
 Athletic Director: Andrew Mooradian Enrollment: 5,500
 Sports Info. Director: Bill Stearns Home Court: University Field House
 Head Coach: F. William Haubrich (3,500)
 (2 yr 11-31) 1967-68 Record: 1-22
 Lettermen Returning: Four Series Standing: 0-0
 Lettermen Lost: Two

Leading Returnees:	POS	HT.	PTS.	AVG.	RBDS	AVG
Scott Sargent	F	6-3	280	15.6	74	4.1
Bob Glover	C	6-5	207	9.0	155	6.7
Tom Cushman	F	6-3	95	5.0	59	3.1
Jim Kerschner	G	6-0	58	2.9	22	1.1

Top Newcomers: Paul Shepard, Frank Davis and Doug Wilson

TULANE Game 10: Jan. 8, 1969, New Orleans, Louisiana 9:00 P.M. EST
 Game 13: Jan. 18, 1969, Tallahassee, Florida 7:30 P.M. EST
 Location: New Orleans, La. Nickname: Green Wave
 Conference: Independent Colors: Olive Green, Sky Blue
 President: Dr. Herbert E. Longenecker Enrollment: 6,000
 Athletic Director: Dr. Rix N. Yard Home Court: Tulane Gym (5,000)
 Sports Info. Director: Bill Curl 1967-68 Record: 12-12
 Head Coach: Ralph Pedersen (4 yrs 38-60) Series Standing: 1-1
 Assistant Coach: Dick Longo Lettermen Lost: Two
 Lettermen Returning: 12

Leading Returnees:	POS	HT.	PTS	AVG.	REBS	AVG.
Johnny Arthurs	F	6-4		19.4		6.7
Terry Habig	G	6-2		17.2		4.1
Bill Fitzgerald	C	6-4		13.7		5.7
Drew Madar	G	6-0		6.2		1.8
Bob Spurck	G-F	6-4		6.5		5.5

Top Newcomers: John Sutter, Harold Sylvester, Mike Billingsley

KENT STATE Game 12: Jan. 13, 1969, Tallahassee 7:30 P.M. EST
 Location: Kent, O. Nickname: Golden Flashes
 Conference: Mid-American Colors: Blue and Gold
 President: Dr. Robert I. White Enrollment: 20,000
 Athletic Director: Dr. Carl E. Erickson Home Court: Memorial (7,500)
 Sports Info. Director: Paul P. Schlemmer 1967-68 Record: 9-15
 Head Coach: Frank Truitt (2 yr 14-33) Series Standing: 0-0
 Assistant Coaches: Art Welch, Paul Walker, Jim Brown
 Lettermen Returning: Eight Lettermen Lost: Three

Leading Returnees:	POS	HT.	PTS.	AVG.	RBDS.	AVG.
Doug Grayson	F	6-5	16.1		7.2	
Tom Lagodich	F	6-7	12.9		7.7	
Bob Bell	C-F	6-5	10.1		5.7	

Top Newcomers: Dan Sager, Larry Wilson

RICE UNIVERSITY Game 14: Jan. 20, 1969, Houston, Tex. 9:00 P.M. EST
 Location: Houston, Texas Nickname: Owls
 Conference: Southwest Colors: Blue and Gray
 President: Dr. Kenneth S. Pitzer Enrollment: 2,800
 Athletic Director: Harold B. Hagan Home Court: Autry Court (6,200)
 Sports Info. Director: Bill Whitmore 1967-68 Record: 8-16
 Head Coach: Don Knodel (2 yr 15-33) Series Standing: 3-1, FSU
 Assistant Coach: Bo Brickels Lettermen Lost: Six
 Lettermen Returning: Five

Leading Returnees:	POS	HT	PTS.	AVG.	RBDS.	AVG.
Greg Williams	G	5-9	16.5		2.8	
Bob Rule	G	6-4	4.3		2.3	
Jim Hubenak	C-F	6-7	6.1		3.2	
Steve Wendel	C	6-7	5.0		4.0	
Don Sturr	C-F	6-8	2.8		1.4	

Top Newcomers: Gary Reist, Marty Tendler, Jim Naples, Chuck Helson,
 Tom Myer, Darrell Halloran, Terry Timmerman

STETSON UNIVERSITY Game 21: Feb. 10, 1969, Tallahassee, 7:30 P.M. EST

Location: DeLand, Fla. Nickname: Hatters
 Conference: NCAA Colors: Green and White
 President: Dr. Paul F. Green Enrollment: 2,000
 Athletic Director: Dr. Glenn Wilkes Home Court: National Guard Armory
 Sports Info. Director: Fred York (1,400)
 Head Coach: Dr. Glenn Wilkes (12 yrs) 1967-68 Record: 8-18
 Assistant Coach: Jerry Gray Series Standing: 19-10, FSU
 Lettermen Returning: Seven Lettermen Lost: Three

Leading Returnees:	POS	HT.	PTS. AVG.	RBDS. AVG
Derrel Boone	F	6-6	14.0	6.2
Ken Showers	F	6-5	7.2	7.3

Top Newcomer: Ernest Killum

DAYTON Game 22: Feb. 15, 1969, Tallahassee 7:30 P.M. EST

Location: Dayton, Ohio Nickname: Flyers
 Conference: Independent Colors: Red and Blue
 President: Very Rev. Raymond Roesch Enrollment: 10,000
 Athletic Director: Thomas J. Frericks Home Court: UD Fieldhouse (5,882)
 Sports Info. Director: Gene Schill 1967-68 Record: 21-9
 Head Coach: Don Donoher (5 yr 91-28) Series Standing: New Series
 Assistant Coaches: Chuck Grigsby, Bill Cassidy and Pat Haley
 Lettermen Returning: Six Lettermen Lost: Five

Leading Returnees:	POS	HT	PTS. AVG	RBDS. AVG
Dan Sadlier	F	6-6	6.5	4.5
Dan Obrouac	C	6-10	6.7	5.4
Jim Gottschall	G	6-2	6.4	2.1
George Janky	C-F	6-8	9.5	6.8
Jerry Gottschall	G	6-2	2.1	1.1

Top Newcomers: Ken May and Tom Crosswhite

GEORGIA TECH Game 23: Feb. 18, 1969, Tallahassee 7:30 P.M. EST

Game 24: Feb. 22, 1969, Atlanta, Ga., 8:00 P.M. EST
 Location: Atlanta, Ga. Nickname: Yellow Jackets
 Conference: Independent Colors: Old Gold and White
 President: Dr. Edwin D. Harrison Enrollment: 8,000
 Athletic Director: R. L. (Bobby) Dodd Home Court: Alexander Memorial
 Sports Info. Director: Ned West Coliseum (6,966)
 Head Coach: John C. Hyder (17 yrs 227-201) 1967-68 Record: 12-13
 Assistant Coaches: Byron Gilbreath, Dwane Morrison and Eddie Jackel
 Lettermen Returning: Seven Series Standing: 6-4, Ga. Tech
 Lettermen Lost: Six

Leading Returnees:	POS	HT	PTS. AVG	RBDS. AVG
Bob Seemer	C	6-7	9.3	6.0
Ted Tomasovich	G-F	6-3	10.6	3.6

Top Newcomers: Rich Yunkus

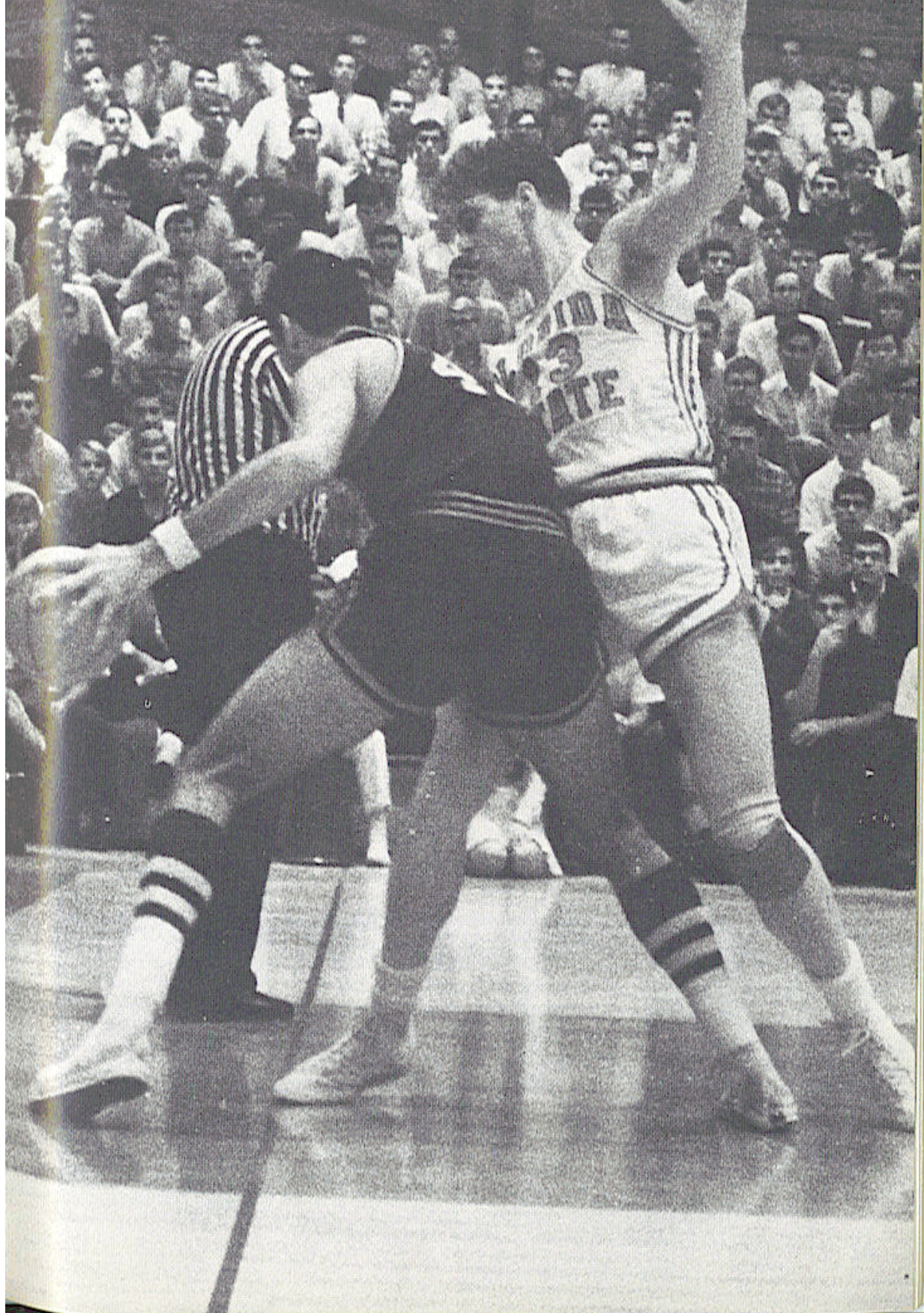
FLORIDA SOUTHERN Game 25: Feb. 27, 1969, Lakeland 8:00 P.M. EST

Location: Lakeland, Fla. Nickname: Moccasins
 Conference: NCAA Colors: Scarlet and White
 Athletic Director: Tom Greene Home Court: George Jenkins (4,500)
 Sports Info. Director: Bill Daniels 1967-68 Record: 15-9
 Head Coach: Tom Greene (232-192) Series Standing: 16-8, FSU
 Assistant Coach: Jim Jarrett

Leading Returnees:	POS	HT	PTS. AVG	REBS. AVG
John Schweisthal	G	6-5	16.3	15.4
Gary McGriff	F	6-2	15.2	5.0
Fred Lewis	G	5-10	9.0	2.6

Top Newcomers: Ron Varner and Glenn Merkel

THE RECORD BOOK



1,000 POINT



JIMMY OLER (1952-56)

A guard during the Seminoles' final years as a small college team, Jimmy Oler amassed 1,820 points in four varsity seasons. His 762 free throws still stand as a career record. The 743 points he scored in his senior year is also the pacesetter in that category.

Years	FG	FT	Pts.	Games	Aver.
4 (1952-56)	529	762	1820	91	20.0



DAVE FEDOR (1959-62)

Dave Fedor was one of the finest field shooters ever to wear the Garnet and Gold, and his record 20.2 lifetime score average and 72 game-string of double figure games attest to that. A forward from 1959-62, Fedor started every game the Seminoles played during his eligibility. The 16 field goals he made against Miami in 1959 still stand as a Seminole record.

Years	FG	FT	Pts.	Games	Aver.
3 (1959-62)	585	283	1453	72	20.2



HAM WERNKE (1951-55)

Another four-year varsity veteran, Ham Wernke, totaled 508 field goals and 393 free throws during his career. He and Jimmy Oler shared the honor of becoming the Seminoles' first 1,000 Point Clubbers in 1955.

Years	FG	FT	Pts.	Games	Aver.
4 (1951-55)	508	393	1409	73	19.3

CLUB



HUGH DURHAM (1956-59)

Hugh Durham's 1,381 points rank him fourth among the Seminoles' all-time scorers. A guard from 1956-59, Durham averaged nearly 19 points a game for Florida State. During his sophomore season, Durham hit a record high of 43 points in a single game, a mark he holds jointly with Dave Fedor who equaled that output three years later.

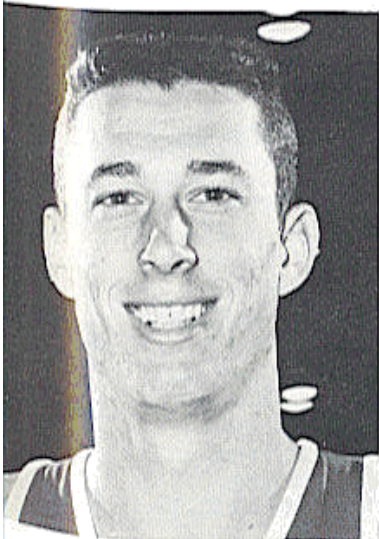
Years	FG	FT	Pts.	Games	Aver.
3 (1956-59)	470	441	1381	73	18.9



GARY SCHULL (1963-66)

One of the finest big men ever to play for Florida State, Gary Schull became the latest member of the 1,000 Point Club with a 1,090 point total in 76 games from 1963-66.

Years	FG	FT	Pts.	Games	Aver.
3 (1963-66)	393	304	1090	76	14.3



RAY SWAIN (1959-62)

Ray Swain almost did not make the 1,000 Point Club. Near the end of his last varsity game, Coach Bud Kennedy took the three-year Seminole center-forward out of the game for a well-earned rest. With a little over a minute to play, Kennedy was informed that Swain lacked only a single field goal of joining the golden circle of Seminole scorers. Kennedy immediately returned Swain to the floor, and as the final seconds of his Florida State career ticked away, Swain made the all-important shot.

Years	FG	FT	Pts.	Games	Aver.
3 (1959-62)	403	194	1000	73	13.8

ALL-TIME FLORIDA STATE TEAM BASKETBALL RECORDS

SEASON

- Most games played—27 in 1950-51 (18-9) and 1967-68 (19-8)
- Most Victories—22 by 1954-55 team (Lost 4, .846 pctg.)
- Most Defeats—20 by 1951-52 team (Won 5, .200 pctg.)
- Fewest Victories—5 by 1947-48 team (Lost 13, .277 pctg.) and by 1951-52 team (Lost 20, .200 pctg.)
- Fewest Defeats—4 by 1954-55 team (Won 22, .846 pctg.)
- Longest Win Streak—7 games, 1961-62 (Feb. 8 to Mar. 2, 1962) and 1967-68 (Jan. 2-30, 1968)
- Longest Losing Streak—13 straight in 1947-48 (Jan. 10, to Feb. 20, 1948)
- Most Points—2438 by 1967-68 team in 27 games (90.3 ppg.)
- Fewest Points—850 by 1947-48 team, 18 games (47.2 ppg.)
- Highest Scoring Average—90.3 by 1967-68 team in 27 games.
- Lowest Scoring Average—47.2 by 1947-48 team, 18 games
- Best Winning Percentage—.846 by 1954-55 team (Won 22, Lost 4)
- Worst Winning Percentage—.200 by 1951-52 team (Won 5, Lost 20)
- Most Field Goal Attempts—2,164 by 1954-55 team, 26 games, made 794 (36.7 pctg.)
- Most Field Goals Made—956 by 1967-68 team in 27 games.
- Highest Field Goal Percentage—51.2 in 1961-62 (709 of 1386), 23 games (National Leader)
- Most Free Throws Attempted—799 in 1956-57, 26 games, made 543 (67.9 pctg.)
- Most Free Throws Made—707 in 1954-55, 26 games
- Highest Free Throw Percentage—.729 by 1967-68 team in 27 games (526-722).
- Most Rebounds—1,422 in 1954-55, 26 games
- Best Rebound Average—54.6 in 1954-55, 26 games, total, 1,422
- Most Personal Fouls—597 in 1949-50, 25 games
- Fewest Personal Fouls—383 in 1961-62, 23 games
- Most Points Allowed Opponents—2,118 by 1967-68 team in 27 games.
- Fewest Points Allowed Opponents—979 in 1947-48 (54.3 ppg.), 18 games
- Most Games Scoring 100 Points or more—8 in 1967-68.

SINGLE GAME

- Most Points—130 vs. LSU (100), Dec. 16, 1967 (Milwaukee Classic).
- Most Points, Both Teams—230, FSU 130 - LSU 100, Dec. 16, 1967 (Milwaukee Classic).
- Most Points, Home—122 vs. Miami (93), Jan. 12, 1968
- Most Points, Away—123 vs. Tampa, 92, Feb. 26, 1962 (A)
- Most Points, Half—78 in second half vs. LSU (Final 130-100) Dec. 16, 1967 (Milwaukee Classic).
- Most Points, Neutral Floor—130 vs. LSU (100), Dec. 16, 1967 (Milwaukee Classic).
- Fewest Points—30 vs. Florida (50) Dec. 7, 1966 (A)
- Biggest Victory Margin—64, FSU 121, Tampa 57, Dec. 6, 1965
- Worst Defeat—52, FSU 51, West Virginia 103, Jan. 30, 1958 (A)
- Most Points Allowed—115, North Carolina, Dec. 16, 1965
- Most Field Goals Attempted—115 vs. LSU, Dec. 16, 1967 (Milwaukee Classic), made 52.
- Most Field Goals Made—52 vs. Tampa, Feb. 26, 1962 and vs. LSU, Dec. 16, 1967 (Milwaukee Classic).
- Most Free Throws Attempted—53 vs. Stetson, Jan. 19, 1957 (H)
- Most Free Throws Made—38, vs. Stetson, Jan. 19, 1957 (H)
- Most Rebounds—88 vs. LSU, Dec. 16, 1967 (Milwaukee Classic) (80 ind., 8 team).
- Most Personal Fouls—34, vs. Memphis State, Jan. 11, 1960 (A)

ALL-TIME FLORIDA STATE INDIVIDUAL BASKETBALL RECORDS

SEASON

Most Points—743 by Jimmy Oler in 25 games, 1955-56
 Highest Scoring Average—29.7 by Jimmy Oler, 1955-56, 743 pts. in 25 games
 Most Rebounds—456 by Dave Cowens in 27 games, 1967-68
 Best Rebound Average—17.4 by Rick Benson, 1954-55, total 451 in 26 games
 Most Field Goal Attempts—495 by Don Bates, 1958-59 (made 179), 23 games
 Most Field Goals Made—216 by Jimmy Oler, 1955-56
 Most Free Throws Attempted—380 by Jimmy Oler, 1955-56 (made 311), 25 games
 Most Free Throws Made—311 by Jimmy Oler, 1955-56
 Highest Field Goal Percentage—57.3 by Ray Swain, 1961-62 (157 of 274)
 Highest Free Throw Percentage—86.8 by Jerry Shirley, 1963-64 (59 of 68)
 Most Personal Fouls—103 by Dick Danford, 1966-67 (26 games) and by Dave Cowens, 1967-68 (27 games)

SINGLE GAMES

Most Points—43 twice, by Hugh Durham (soph) vs. Stetson, Jan. 19, 1957 (14 FG, 15 FT) (H); and by Dave Fedor (soph) vs. Miami, Feb. 27, 1959 (16 FG, 11 FT) (A)
 Most Field Goals Attempted—37 by Ham Wernke vs. Tampa, Jan. 12, 1953 (made 14)
 Most Field Goals Made—16 by Dave Fedor vs. Miami, Feb. 27, 1959 (A)
 Most Free Throws Attempted—30 by Jimmy Oler vs. Morningside, Dec. 16, 1955 (H)
 Most Free Throws Made—22 by Jimmy Oler vs. Morningside, Dec. 16, 1955 (H)
 Most Rebounds—32 by Rick Benson vs. Florida Southern, Feb. 7, 1955 (H)

CAREER

Most Games Played—91 by Jimmy Oler, 1952-56 (Note: Oler played in 22 games as a freshman in 1952-53)
 Most Points—1,820 by Jimmy Oler in 91 games, 1952-56
 Highest Scoring Average—20.2 by Dave Fedor, 1959-62 (1,453 pts. in 72 games)
 Most Field Goals Attempted—1,174 by Dave Fedor, 1959-62, 72 games
 Most Field Goals Made—585 by Dave Fedor, 1959-62, 72 games
 Most Free Throws Attempted—975 by Jimmy Oler, 1952-56, 91 games
 Most Free Throws Made—761 by Jimmy Oler, 1952-56, 91 games
 Highest Field Goal Percentage—50.08 by Ray Swain, 1959-62 (403 of 793)
 Highest Free Throw Percentage—81.3 by Jerry Shirley, 1962-65 (161 of 198)
 Most Rebounds—969 by Dave Fedor, 1959-62, 72 games
 Best Rebound Average—13.4 by Dave Fedor, 1959-62, total 969 in 72 games
 Most Personal Fouls—324 by Tom McLaughlin, 1949-52, 77 games
 Most Consecutive Games Started—72 by Dave Fedor, 1959-62
 Longest String of Consecutive Double-Figure Games—72 by Dave Fedor, Dec. 1, 1959, to March 2, 1962 (Fedor's entire varsity career)

TOP FSU REGULAR SEASON SCORERS—ALL TIME (450 Points or more)

Player-Position	Class	Year	Games	FG	FT	TP	Avg.
Jimmy Oler-G	(Sr.)	1955-56	25	216	311	743	29.7
Jimmy Oler-G	(Jr.)	1954-55	26	164	221	549	21.1
Dave Fedor-F	(Soph)	1959-60	25	214	99	527	21.1
Ham Wernke-G	(Sr.)	1954-55	26	190	132	512	19.7
Hugh Durham-G	(Soph)	1956-57	26	177	155	509	19.6
Hugh Durham-G	(Sr.)	1958-59	23	171	162	504	21.9
Bob Hartman-G	(Sr.)	1950-51	27	193	107	493	18.2
Gary Schull-C	(Sr.)	1965-66	25	155	164	474	19.0
Dave Fedor-F	(Sr.)	1961-62	23	186	98	470	20.4
Ham Wernke-G	(Soph)	1952-53	22	167	134	468	21.3
Dave Fedor-F	(Jr.)	1960-61	24	185	86	456	19.0

SEMINOLES' RECORD AGAINST ALL OPPONENTS

(1968-69 Opponents appear in all capitals)

TEAM	FSU Won	FSU Lost	First Meeting	LAST MEETING		
				Date	Site	Score
Air Force	0	1	1963	12/26/63	N	53- 78
Alabama	6	5	1959	12/27/66	A	79- 80
Arkansas State	1	1	1953	2/20/54	H	78- 68
Army	0	1	1958	2/ 7/58	H	62- 71
Auburn	3	4	1958	12/28/66	A	59- 67
Baylor	1	0	1964	12/19/64	N	82- 64
Beloit	0	1	1955	3/ 9/55	N	88-110
Birmingham Southern	0	2	1949	1/21/50	A	45- 55
Boston University	1	0	1955	12/20/55	N	86- 52
Bradley	0	1	1956	12/ 8/56	A	66- 90
California, University of (Santa Barbara)	1	0	1965	12/18/65	H	62- 61
Centenary	2	3	1957	2/ 8/64	A	72- 79
Central (Mo.)	0	2	1949	12/15/52	H	59- 62
Charleston	2	0	1949	12/ 9/50	A	74- 54
Chattanooga	1	0	1963	1/ 3/63	A	72- 55
The Citadel	4	4	1958	2/ 7/68	H	93- 50
CLEMSON	2	5	1951	1/ 8/62	A	69- 75
Connecticut St. Teachers	1	0	1950	12/14/50	H	76- 68
Creighton	0	1	1964	12/29/64	N	77- 85
Culver-Stockton	0	1	1951	12/ 8/51	H	56- 59
David Lipscomb	1	1	1950	1/ 5/51	A	73- 88
DePaul	0	1	1964	12/28/64	N	44- 52
Drury	0	1	1949	12/20/49	A	52- 59
Duke	0	1	1954	1/ 3/54	A	75- 97
Duquesne	1	1	1956	2/ 4/65	N	62- 58
East Carolina	1	0	1968	2/ 3/68	H	110-100
East Tennessee State	0	3	1955	3/ 9/68	N	69- 79
Eastern Kentucky	0	1	1966	12/17/66	A	59- 81
Erskine	1	1	1948	2/28/48	H	49- 48
Evansville	0	1	1967	12/30/67	A	67- 76
FLORIDA	4	18	1951	2/21/68	A	64- 89
Florida Presbyterian	1	0	1967	12/ 2/67	A	90- 66
FLORIDA SOUTHERN	16	8	1948	2/10/68	H	104- 82
Furman	5	2	1957	2/ 6/64	H	57- 48
George Washington	1	0	1967	12/29/67	N	94- 69
Georgia	18	9	1951	3/ 5/66	H	87- 69
Ga. (Savannah Branch)	0	2	1948	2/12/48	H	42- 44
Georgia Southern	1	0	1962	12/29/62	N	79- 60
Ga. State Teachers	6	4	1947	1/14/64	A	81- 90
GEORGIA TECH	4	6	1963	2/24/68	H	72- 67
Hofstra	1	0	1968	1/26/68	H	109- 71
Houston	1	1	1962	1/26/63	H	76- 69
Jacksonville (Ala.) State	2	0	1953	12/ 4/54	H	103- 76
JACKSONVILLE	8	1	1959	2/16/68	A	106- 65
Kansas	0	1	1966	12/ 9/66	A	48- 62
Kansas State	0	1	1966	12/10/66	A	58- 81
Kentucky	1	2	1948	12/12/62	A	54- 83
Lambuth	0	1	1949	2/28/49	N	49- 65
Lamar Tech	1	0	1965	12/ 1/65	H	73- 68
Loyola of New Orleans	8	13	1951	3/ 5/66	A	62- 63
Louisiana State	2	2	1957	12/16/67	N	130-100
Manhattan	1	0	1963	12/27/64	N	85- 81
Marquette	0	1	1967	12/15/67	A	58- 78
Marshall	0	2	1958	1/25/67	H	71- 77
Memphis State	5	10	1953	2/ 4/67	H	55- 51
Mercer	7	8	1948	1/30/54	A	63- 70

RECORD vs. OPP.—Cont.

TEAM	FSU Won	FSU Lost	First Meeting	LAST MEETING		
				Date	Site	Score
MIAMI	17	20	1952	3/ 1/68	A	48- 96
Millikin	0	1	1951	3/15/51	N	60- 91
Millsaps	2	0	1949	1/26/50	H	62- 45
Mississippi	1	1	1951	2/14/51	A	75- 79
Mississippi College	5	1	1948	2/15/51	A	77- 54
Mississippi Southern	3	3	1951	1/ 9/60	A	78- 87
Mississippi State	3	3	1951	12/21/56	N	71- 79
Montana State	1	0	1955	3/ 7/55	N	93- 84
Morehead State	1	1	1957	1/30/60	H	78- 75
Morningside	1	0	1955	12/16/55	H	104- 83
Murray State	1	1	1957	2/ 9/59	A	71- 96
New York University	1	0	1955	12/30/55	N	85- 83
NORTH CAROLINA	0	3	1965	2/ 1/68	A	80- 86
North Carolina State	0	2	1955	1/10/57	A	59- 64
Oglethorpe	1	1	1949	2/12/49	H	47- 46
OHIO STATE	0	2	1961	12/ 4/67	A	67- 76
Ohio University	0	1	1958	2/ 3/58	A	66- 86
Oklahoma City	3	2	1958	2/ 3/62	A	81- 79
Oklahoma State	0	1	1964	12/18/64	N	56- 60
Panama Nationals	1	0	1966	1/28/66	H	96- 73
Parris Island Marines	0	2	1951	1/26/52	H	62- 64
Pepperdine	1	1	1951	3/14/51	N	61- 59
Phillips 66 Oilers	0	2	1955	2/16/63	H	73- 82
RICE	3	1	1961	12/ 5/66	N	76- 72
Richmond	1	3	1962	12/20/67	A	114- 91
Rollins	17	2	1951	1/11/62	H	110- 53
Rutgers	1	0	1967	12/22/67	H	87- 77
Samford (Howard)	7	0	1950	12/ 9/67	H	104- 89
Santa Clara	0	1	1955	12/29/55	N	59- 61
Sewanee	3	3	1949	12/17/52	A	58- 69
SOUTH CAROLINA	1	1	1960	12/17/60	A	72- 82
South Dakota State	1	0	1951	3/13/51	N	85- 70
Southwestern (Memphis)	0	1	1948	12/30/48	A	47- 54
SW Missouri State	0	1	1949	12/21/49	A	52- 79
Spring Hill	3	3	1947	1/18/55	A	81- 72
STETSON	19	10	1947	2/29/68	A	72- 60
Steuubenville	0	1	1956	12/ 3/56	A	64- 79
Tampa	28	9	1949	2/27/67	A	87- 84
Tennessee	1	4	1957	12/22/64	N	43- 65
Tennessee Tech	1	0	1957	12/ 2/57	H	74- 71
Texas A & M	0	1	1956	12/13/56	H	74- 83
Texas Christian	0	1	1963	12/12/63	A	60- 66
Troy State Teachers	6	1	1947	2/ 6/56	H	90- 65
TULANE	1	1	1967	2/11/67	H	100- 90
Tulsa	2	0	1963	12/26/64	A	74- 72
Union (Tenn)	0	1	1948	12/29/48	A	52- 56
VALDOSTA STATE	8	0	1961	1/30/68	H	81- 71
Vanderbilt	0	1	1960	12/ 5/60	A	55- 75
V.M.I.	2	1	1964	12/20/65	N	65- 64
Wake Forest	0	1	1958	12/11/58	A	64- 73
West Virginia	0	3	1955	1/30/58	A	51-103
Wisconsin	0	1	1961	12/ 4/61	A	63- 64
Wofford	0	2	1948	2/ 6/48	A	38- 77
Xavier of Ohio	0	1	1958	2/ 4/58	A	60- 76

ALL-TIME FLORIDA STATE SCORES, 1947-1967
(20 Seasons, Won 253, Lost 236)

1947-48—Won 5, Lost 13 (.277)			1948-49—Won 12, Lost 12 (.500)			1949-50—Won 15, Lost 10 (.600)		
Opponent	FSU	Opp.	Opponent	FSU	Opp.	Opponent	FSU	Opp.
Spring Hill (H)	39	36	Mississippi College (H)	53	21	Mississippi College (H)	43	24
Troy State (H)	57	37	Florida Southern (H)	46	38	Mississippi College (H)	51	45
Wofford (A)	45	48	Florida Southern (H)	53	45	Troy State (H)	61	27
Stetson (A)	56	65	Troy State (A)	68	64	Charleston (H)	72	37
Georgia Teachers (H)	56	60	Lambuth (A)	50	57	Central (Mo.) (A)	50	62
Georgia (A)	46	65	Union (A)	52	56	Drury (A)	52	59
Mercer (H)	48	61	Southwestern (A)	47	54	S.W. Mo. State (A)	52	79
Spring Hill (A)	54	76	Stetson (H)	49	40	Tampa (A)	60	80
Troy State (A)	48	49	Stetson (A)	40	36	Florida Southern (A)	65	71
Mercer (A)	43	68	Tampa (A)	56	58	Florida Southern (A)	48	59
Erskine (A)	45	47	Mercer (H)	56	65	Mercer (H)	63	45
Wofford (A)	38	77	Troy State (H)	63	45	Howard (A)	59	58
Georgia (H)	42	44	Oglethorpe (A)	52	64	Birmingham So. (A)	45	55
Florida Southern (A)	41	47	Mercer (A)	59	62	Millsaps (H)	62	45
Georgia Teachers (A)	47	65	Tampa (H)	60	58	Stetson (H)	61	70
Florida Southern (H)	55	48	Mississippi College (A)	46	57	Mercer (A)	61	69
Stetson (H)	41	38	Millsaps (A)	49	46	Howard (H)	50	39
Erskine (H)	49	48	Oglethorpe (H)	47	46	David Lipscomb (H)	57	53
			Sewanee (H)	35	43	Tampa (H)	58	56
			Sewanee (H)	47	39	Troy State (A)	79	71
			Birmingham So. (H)	44	50	Sewanee (A)	85	65
			Mercer (N)	52	46	Sewanee (A)	74	68
			Tampa (N)	47	56	Florida Southern (N)	56	68
			Lambuth (N)	49	65	Mississippi College (N)	74	63
1950-51—Won 18, Lost 9 (.667)			1951-52—Won 5, Lost 20 (.200)			1952-53—Won 11, Lost 11 (.500)		
Opponent	FSU	Opp.	Opponent	FSU	Opp.	Opponent	FSU	Opp.
Charleston (A)	74	54	Parris Is. Marines (A)	46	78	Mercer (A)	62	78
Mercer (A)	55	52	Culver-Stockton (H)	56	59	Georgia Teachers (A)	68	63
Conn. State Teachers (H)	76	68	Mississippi State (A)	47	75	Rollins (H)	90	83
Howard (H)	60	44	Mississippi So. (A)	43	84	Mercer (H)	77	76
Florida Southern (A)	86	55	Mississippi So. (H)	70	78	Central (Mo.) (H)	59	62
Miami (A)	61	80	Spring Hill (A)	54	64	Sewanee (A)	58	69
David Lipscomb (A)	73	88	Sewanee (N)	48	58	Mississippi State (H)	82	52
Mississippi (H)	63	58	Georgia (N)	50	79	Loyola of N.O. (H)	66	72
Stetson (H)	66	67	Clemson (N)	56	62	Miami (A)	65	93
Florida Southern (H)	44	41	Florida (N)	51	61	Tampa (A)	73	77
Tampa (H)	80	69	Loyola of N.O. (A)	52	74	Florida Southern (A)	71	89
Howard (A)	58	51	Miami (A)	56	93	Rollins (A)	79	82
Tampa (A)	66	76	Tampa (A)	72	66	Memphis State (A)	73	87
Stetson (A)	53	71	Florida Southern (A)	51	54	Arkansas State (A)	77	88
Rollins (A)	60	57	Georgia Teachers (H)	75	93	Stetson (H)	76	66
Loyola of N.O. (H)	65	75	Florida Southern (H)	72	53	Florida Southern (A)	71	89
Mississippi (A)	75	79	Parris Is. Marines (H)	62	64	Tampa (H)	83	74
Mississippi College (A)	77	54	Rollins (H)	74	71	Loyola of N.O. (A)	77	85
Mercer (H)	69	64	Stetson (A)	48	58	Miami (H)	81	75
Rollins (H)	62	45	Rollins (A)	55	69	Stetson (A)	83	79
Howard (N)	64	54	Miami (H)	63	76	Mercer (N)	87	77
Mercer (A)	65	69	Tampa (H)	79	60	Stetson (A)	81	94
Stetson (N)	65	58	Stetson (H)	64	66			
Ga. Teachers (N)	69	67	Miami (N)	73	70			
So. Dakota State (N)	85	70	Tampa (N)	57	78			
Pepperdine (N)	61	59						
Millikin (N)	60	91						

ALL-TIME SCORES—Cont.

1953-54—Won 13, Lost 7 (.619)			1954-55—Won 22, Lost 4 (.846)			1955-56—Won 16, Lost 9 (.640)		
Opponent	FSU	Opp.	Opponent	FSU	Opp.	Opponent	FSU	Opp.
Mississippi State (A)	75	87	Jacksonville (Ala.)			North Carolina St. (A)	63	88
Mercer (H)	72	70	St. (H)	103	76	E. Tennessee St. (A)	54	80
Georgia Teachers (H)	66	58	Georgia Teachers (H)	75	67	Rollins (H)	101	67
Jacksonville (Ala.)			Tampa (H)	90	62	Stetson (H)	91	78
St. (H)	72	61	Stetson (H)	94	79	Tampa (A)	89	67
Stetson (H)	74	71	Miami (H)	71	66	Morningside (H)	104	83
Spring Hill (H)	60	69	Florida (N)	79	82	Clemson (N)	76	94
Tampa (H)	74	58	Georgia (N)	97	87	Boston University (N)	86	52
Loyola of N.O. (H)	76	80	Duke (A)	75	97	Mississippi State (N)	71	79
Miami (A)	61	78	Florida Southern (A)	73	69	West Virginia (N)	69	78
Rollins (A)	82	72	Tampa (A)	96	61	Santa Clara (N)	59	61
Tampa (A)	73	63	Georgia (H)	90	81	New York Univ. (N)	85	83
Florida Southern (A)	98	80	Spring Hill (A)	81	72	Miami (H)	78	76
Stetson (A)	60	82	Mississippi State (A)	91	76	Rollins (A)	71	70
Rollins (H)	85	68	Stetson (A)	84	73	Georgia (A)	79	76
Florida Southern (H)	99	71	Rollins (H)	86	74	Georgia Teachers (A)	81	90
Mercer (A)	63	70	Florida Southern (H)	84	63	Loyola of N.O. (H)	85	75
Miami (H)	76	69	Georgia (A)	88	79	Troy State (H)	90	65
Loyola of N.O. (A)	72	88	Rollins (A)	110	82	Tampa (H)	88	73
Georgia Teachers (A)	89	85	Loyola of N.O. (A)	95	101	Florida Southern (H)	92	74
Arkansas State (H)	78	68	Mississippi State (H)	102	86	Florida Southern (A)	85	81
			Loyola of N.O. (H)	87	84	Stetson (A)	89	83
			Miami (A)	86	80	Miami (A)	85	91
			Stetson (H)	86	77	Loyola of N.O. (A)	72	75
			Georgia Teachers (H)	91	83	Georgia (H)	80	75
			Montana State (N)	93	84			
			Beloit (N)	88	110			

1956-57—Won 9, Lost 17 (.346)			1957-58—Won 9, Lost 16 (.360)			1958-59—Won 8, Lost 15 (.347)		
Opponent	FSU	Opp.	Opponent	FSU	Opp.	Opponent	FSU	Opp.
Duquesne (A)	55	70	Tennessee Tech (H)	74	71	Kentucky (A)	68	91
Steubenville (A)	64	79	Murray State (H)	84	60	Furman (H)	73	72
West Virginia (A)	54	88	Tennessee (A)	57	74	Spring Hill (H)	100	70
Bradley (A)	66	90	Florida (A)	70	71	Wake Forest (A)	64	73
Florida (A)	65	67	Furman (A)	89	95	Florida (H)	82	60
Texas A & M (H)	74	83	Loyola of N.O. (A)	56	82	Auburn (A)	74	95
E. Tennessee St. (H)	59	65	Louisiana State (A)	65	67	Miami (N)	79	85
Georgia (H)	68	72	The Citadel (N)	57	59	Georgia (N)	72	83
Morehead State (N)	75	97	Georgia (N)	92	80	Louisiana State (H)	82	67
Furman (N)	108	96	Loyola of N.O. (H)	67	79	Auburn (H)	62	69
N. Carolina State (A)	59	64	Tampa (H)	72	53	Mississippi So. (H)	65	62
Miami (H)	77	85	Memphis State (A)	56	59	Memphis State (H)	72	75
Stetson (A)	70	97	Stetson (H)	77	60	Miami (H)	93	69
Stetson (H)	104	86	Miami (H)	71	70	Georgia (A)	91	94
Georgia (A)	86	63	West Virginia (A)	51	103	Oklahoma City (A)	75	103
Tampa (A)	82	67	Marshall (A)	68	109	Centenary (A)	63	87
Rollins (A)	97	94	Ohio University (A)	66	86	Loyola of N.O. (H)	61	60
Florida Southern (A)	63	78	Xavier of Ohio (A)	60	76	Murray State (A)	71	96
Florida Southern (H)	67	73	Army (H)	62	71	Memphis State (A)	69	93
Rollins (H)	96	79	Oklahoma City (H)	57	52	Oklahoma City (H)	84	98
Mississippi So. (H)	81	72	Rollins (H)	80	61	Stetson (A)	91	98
Loyola of N.O. (H)	79	77	Memphis State (H)	51	68	Rollins (A)	94	93
Miami (A)	82	98	Miami (A)	66	86	Miami (A)	85	92
Tampa (H)	88	57	Tampa (A)	56	79			
Centenary (A)	74	92	Georgia (H)	85	77			
Loyola of N.O. (A)	56	82						

ALL-TIME SCORES—Cont.

1959-60—Won 10, Lost 15 (.400)			1960-61—Won 14, Lost 10 (.583)			1961-62—Won 15, Lost 8 (.651)		
Opponent	FSU	Opp.	Opponent	FSU	Opp.	Opponent	FSU	Opp.
Louisiana State (A)	78	89	Tampa (H)	88	60	Ohio State (A)	57	72
Loyola of N.O. (A)	64	71	Kentucky (A)	63	58	Wisconsin (A)	63	64
Florida (A)	71	81	Vanderbilt (A)	55	75	Rice (H)	76	66
Auburn (A)	58	62	Auburn (A)	57	74	Florida (A)	85	71
Alabama (A)	86	74	Clemson (H)	74	57	Auburn (A)	56	52
Clemson (A)	64	68	Florida (H)	67	74	Clemson (H)	77	82
Auburn (H)	63	76	South Carolina (A)	72	82	Tennessee (A)	69	62
Jacksonville Univ. (A)	86	69	Clemson (A)	65	64	Auburn (H)	57	62
Georgia (N)	66	69	Georgia (N)	56	62	Oklahoma City (H)	99	74
South Carolina (H)	93	75	Tennessee (A)	68	70	Furman (A)	64	67
The Citadel (H)	74	76	Loyola of N.O. (H)	73	55	Clemson (A)	69	75
Centenary (H)	81	71	Miami (H)	89	78	Rollins (H)	110	53
Mississippi So. (A)	78	87	Auburn (N)	67	74	Miami (H)	65	60
Memphis State (A)	71	86	Rollins (A)	78	70	Alabama (A)	57	72
Tampa (H)	72	67	Alabama (H)	68	57	Oklahoma City (A)	81	79
Miami (H)	91	93	The Citadel (H)	83	77	Houston (A)	76	84
Morehead State (H)	78	75	Valdosta State (H)	86	66	Valdosta State (H)	72	42
Tampa (A)	68	83	Georgia (A)	77	68	Tampa (H)	91	71
Memphis State (H)	67	83	The Citadel (A)	66	79	Georgia (A)	71	62
Rollins (H)	101	58	Furman (H)	99	57	Florida (H)	79	56
Furman (A)	105	98	Florida (A)	74	75	Miami (A)	83	80
The Citadel (A)	60	100	Tampa (A)	116	95	Tampa (A)	123	92
Loyola of N.O. (H)	69	50	Miami (A)	73	75	Georgia (H)	101	69
Miami (A)	89	107	Loyola of N.O. (A)	72	68			
Georgia (H)	95	82						

1962-63—Won 15, Lost 10 (.600)			1963-64—Won 14, Lost 14 (.500)			1964-65—Won 16, Lost 10 (.620)		
Opponent	FSU	Opp.	Opponent	FSU	Opp.	Opponent	FSU	Opp.
Tampa (H)	92	60	Florida (A)	55	78	Valdosta State (H)	81	57
Valdosta State (H)	65	42	Auburn (H)	69	67	Virginia Military (H)	76	72
Florida (H)	59	80	Alabama (A)	53	62	Auburn (A)	68	92
Auburn (A)	47	65	Rice (A)	81	102	Alabama (A)	73	76
Alabama (H)	72	63	Texas Christian (A)	60	66	Florida (H)	51	50
Kentucky (A)	54	83	Tampa (H)	107	61	Oklahoma State (N)	56	60
Auburn (H)	70	77	Tulsa (H)	91	76	Baylor (N)	82	64
Richmond (H)	56	62	Air Force (N)	53	78	Tennessee (N)	43	65
Georgia (N)	77	69	Manhattan (N)	85	81	Tulsa (A)	74	72
Alabama (N)	49	48	Richmond (A)	65	69	DePaul (N)	44	52
Ga. Southern (N)	79	60	Virginia Military (A)	72	83	Creighton (N)	77	85
Tennessee (A)	65	66	Miami (H)	80	78	Rice (N)	81	56
Chattanooga (A)	72	55	Memphis State (H)	91	90	Georgia (OT) (A)	64	55
Miami (H)	77	74	Georgia (H)	64	63	Miami (H)	67	66
Georgia (H)	88	54	Florida (H)	50	52	Memphis State (H)	74	61
Georgia (A)	76	90	Auburn (A)	59	63	Georgia Tech (H)	72	65
Georgia Tech (A)	55	70	Alabama (H)	95	77	Auburn (H)	58	55
Florida (A)	86	94	Furman (H)	57	48	Alabama (H)	66	75
Houston (H)	76	69	Centenary (A)	72	79	Duquesne (N)	62	58
Alabama (A)	63	61	Memphis State (A)	72	84	Memphis State (A)	81	70
Valdosta State (A)	61	56	Georgia Tech (A)	73	77	Jacksonville (H)	97	74
Stetson (H)	73	57	Jacksonville (H)	101	77	Georgia Tech (A)	76	77
Centenary (H)	82	68	Stetson (A)	80	60	Tampa (A)	71	64
Phillips '66" Oilers (H)	73	82	Miami (A)	80	82	Florida (A)	65	77
Miami (A)	70	99	Georgia (A)	70	85	Miami (A)	75	82
Tampa (A)	80	58				Georgia (H)	85	83

ALL-TIME SCORES—Cont.

1965-66—Won 15, Lost 11 (.577)			1966-67—Won 11, Lost 15 (.423)			1967-68—Won 19, Lost 8 (.704)		
Opponent	FSU	Opp.	Opponent	FSU	Opp.	Opponent	FSU	Opp.
Lamar Tech (H)	73	68	Valdosta State (H)	62	58	Fla. Presbyterian (A)	90	66
Valdosta (H)	69	68	Rice (H)	76	72	Ohio State (A)	69	76
Tampa (H)	121	57	Florida (A)	30	50	Florida (H)	87	95
Florida (A)	62	75	Kansas (A)	48	62	Samford (H)	104	89
North Carolina (A)	80	115	Kansas State (A)	58	81	Marquette (A)	58	78
Univ. of California (Santa Barbara) (H)	62	61	Richmond (A)	76	80	Louisiana State (A)	130	100
V.M.I. (A)	65	64	Eastern Kentucky (A)	59	81	Richmond (H)	114	91
Auburn (A)	58	59	The Citadel (A)	83	67	Rutgers (H)	87	77
Auburn (A)	64	80	North Carolina (A)	54	81	Geo. Washington (A)	94	69
Georgia (A)	57	63	Alabama (A)	79	80	Evansville (A)	67	76
Miami (H)	78	62	Auburn (A)	59	67	The Citadel (A)	96	75
Loyola of N.O. (H)	73	53	Miami (H)	61	60	Stetson (H)	111	81
Memphis (H)	67	63	Tulane (A)	85	87	Miami (H)	122	93
Florida (H)	65	74	Memphis State (A)	42	46	Jacksonville (H)	92	79
Jacksonville (A)	86	90	Jacksonville (H)	81	70	Georgia Tech (A)	73	57
Panama Nationals (H)	96	73	Marshall (H)	71	77	Hofstra (H)	109	71
Georgia Tech (H)	71	66	Georgia Tech (H)	68	75	Valdosta State (H)	81	71
Memphis (A)	66	81	Tampa (H)	109	72	North Carolina (A)	80	86
Loyola of N.O. (A)	62	63	Memphis State (H)	55	51	East Carolina (H)	110	100
Jacksonville (H)	78	49	Jacksonville (A)	68	67	The Citadel (H)	93	50
Georgia Tech (A)	88	95	Tulane (H)	100	90	Fla. Southern (H)	104	82
Samford (H)	77	66	Florida Southern (A)	84	76	Jacksonville (A)	106	65
Florida Southern (H)	99	54	Florida (H)	75	90	Florida (A)	64	89
Tampa (A)	99	70	Georgia Tech (A)	84	102	Georgia Tech (H)	72	67
Miami (A)	90	112	Tampa (A)	87	84	Stetson (A)	72	60
Georgia (H)	87	69	Miami (A)	90	110	Miami (A)	84	96
						East Tenn. State (A)*	69	79

*NCAA Mid East Regionals

COACHES, CAPTAINS AND RECORDS

Year	Coach	Captain(s)	W	L	Points	
					FSU	Opp.
1947-48	Don Loucks	Jim Pavy	5	13	850	979
1948-49	J.K. "Bud" Kennedy	Art Adams	12	12	1220	1211
1949-50	J.K. "Bud" Kennedy	Dick Trobaugh & Benjamin Lee	15	10	1508	1427
1950-51	J.K. "Bud" Kennedy	Bob Hartman	18	9	1792	1716
1951-52	J.K. "Bud" Kennedy	Bob Whitmer	5	20	1404	1683
1952-53	J.K. "Bud" Kennedy	Game Captains	11	11	1647	1698
1953-54	J.K. "Bud" Kennedy	Ham Wernke	13	7	1505	1448
1954-55	J.K. "Bud" Kennedy	Ham Wernke	22	4	2295	2051
1955-56	J.K. "Bud" Kennedy	Jimmy Oler	16	9	2023	1914
1956-57	J.K. "Bud" Kennedy	Game Captains	9	17	1949	2071
1957-58	J.K. "Bud" Kennedy	Larry Strom & Bob Waits	9	16	1689	1848
1958-59	J.K. "Bud" Kennedy	Hugh Durham	8	15	1770	1785
1959-60	J.K. "Bud" Kennedy	Game Captains	10	15	1928	1950
1960-61	J.K. "Bud" Kennedy	Dave Fedor & Jack Davis	14	10	1786	1670
1961-62	J.K. "Bud" Kennedy	Dave Fedor & Ray Swain	15	8	1781	1567
1962-63	J.K. "Bud" Kennedy	Charlie Long	15	10	1744	1680
1963-64	J.K. "Bud" Kennedy	Pete Rogers	14	14	1835	1838
1964-65	J.K. "Bud" Kennedy	Pete Gonzalez	16	10	1819	1763
1965-66	J.K. "Bud" Kennedy	Gary Schull	15	11	1993	1850
1966-67	Hugh Durham	Brian Murphy	11	15	1844	1936
1967-68	Hugh Durham	Darrell Stewart & Dick Danford	19	8	2438	2118
		TOTALS	272	244	36,820	36,203



Tipoff Club President James E. Joanos (l) and Head Coach Hugh Durham (r) are ready for the season opening tipoff. Honorary member, Florida Governor, Claude R. Kirk Jr., tosses up the first ball.

SEMINOLE TIPOFF CLUB

The Seminole Tipoff Club is an organization dedicated to providing funds for basketball recruiting. There are about 300 members. Membership is open to all alumni and friends of the University. A minimum contribution of \$15 is required in order to extend the contributor full membership privileges, which include priority on ticket purchases and reserved parking at home games.

All contributions are handled in accordance with NCAA regulations. The head basketball coach is responsible for use of the funds, which are administered through the University.

In addition to its regular solicitation program, the Tipoff Club has sponsored several special projects for fund-raising purposes, including the Harlem Globetrotters' appearances the last two years.

The president of the club is Tallahassee attorney, James E. Joanos. Florida State's Director of Alumni Affairs, Tom Waits, serves as Executive Secretary. The Tipoff Club office is located at 114 Longmire Alumni Building, Florida State University, Tallahassee, Florida.

MEMO TO THE PRESS—RADIO—TV

This handbook is prepared to assist you during the 1968-69 basketball season at Florida State University. For additional information or service contact:

Lonnie Burt

Director of Sports Information

Florida State University

Tallahassee, Florida 32306 or

Area Code: 904

Office Phone: 599-2095

Home Phone: 385-4480

Hank Schomber

Assistant Director Sports Information

Florida State University

Tallahassee, Florida 32306

Area Code: 904

Office Phone: 599-2095

Home Phone: 224-9906

FACILITIES: Press Box is located above the floor on the south side of Tully Gymnasium with ample facilities for Press and Radio. Floor level space is also available. Space for working press will be issued on an individual basis. Requests should be made soon enough to allow time for mailing. Arrangements for wire or telephone hook-ups should be made directly to Western Union or Southeastern Telephone Company, Tallahassee.

SERVICE: Half-time and final statistics are provided.



1968 - 69 SEMINOLE TEAM