

FLORIDA STATE UNIVERSITY



1966-67

BASKETBALL HANDBOOK

FLORIDA STATE UNIVERSITY

1966-1967 BASKETBALL SCHEDULE

DATE	OPPONENT	SITE
Dec. 1	Valdosta	Tallahassee
Dec. 5	Rice	Tallahassee
Dec. 7	Florida	Gainesville
Dec. 9	SUNFLOWER CLASSIC	Manhattan, Kan.
Dec. 10	SUNFLOWER CLASSIC (Kansas & Kansas State)	Lawrence, Kan.
Dec. 16	V. P. I. TOURNAMENT	Blacksburg, Va.
Dec. 17	V. P. I. TOURNAMENT	Blacksburg, Va.
Dec. 19	TAMPA INVITATIONAL	Tampa
Dec. 20	TAMPA INVITATIONAL (Columbia, North Carolina & the Citadel)	Tampa
Dec. 27	MOBILE INVITATIONAL	Mobile, Ala.
Dec. 28	MOBILE INVITATIONAL (Auburn, Alabama)	Mobile, Ala.
Jan. 7	Miami	Tallahassee
Jan. 14	Tulane	New Orleans, La.
Jan. 16	Memphis State	Memphis, Tenn.
Jan. 23	Jacksonville	Tallahassee
Jan. 25	Marshall	Tallahassee
Jan. 28	Georgia Tech	Tallahassee
Jan. 30	Tampa	Tallahassee
Feb. 4	Memphis State	Tallahassee
Feb. 8	Jacksonville	Jacksonville
Feb. 11	Tulane	Tallahassee
Feb. 18	Florida Southern	Lakeland
Feb. 22	Florida	Tallahassee
Feb. 25	Georgia Tech	Atlanta, Ga.
Feb. 27	Tampa	Tampa
Mar. 1	Miami	Miami



ROBERT TULLY GYMNASIUM

Home of the Seminoles since its completion in 1956. Tully Gym seats 5,000 for home basketball games and has floor space for three basketball courts. In addition it provides office space for the athletic department and physical education.

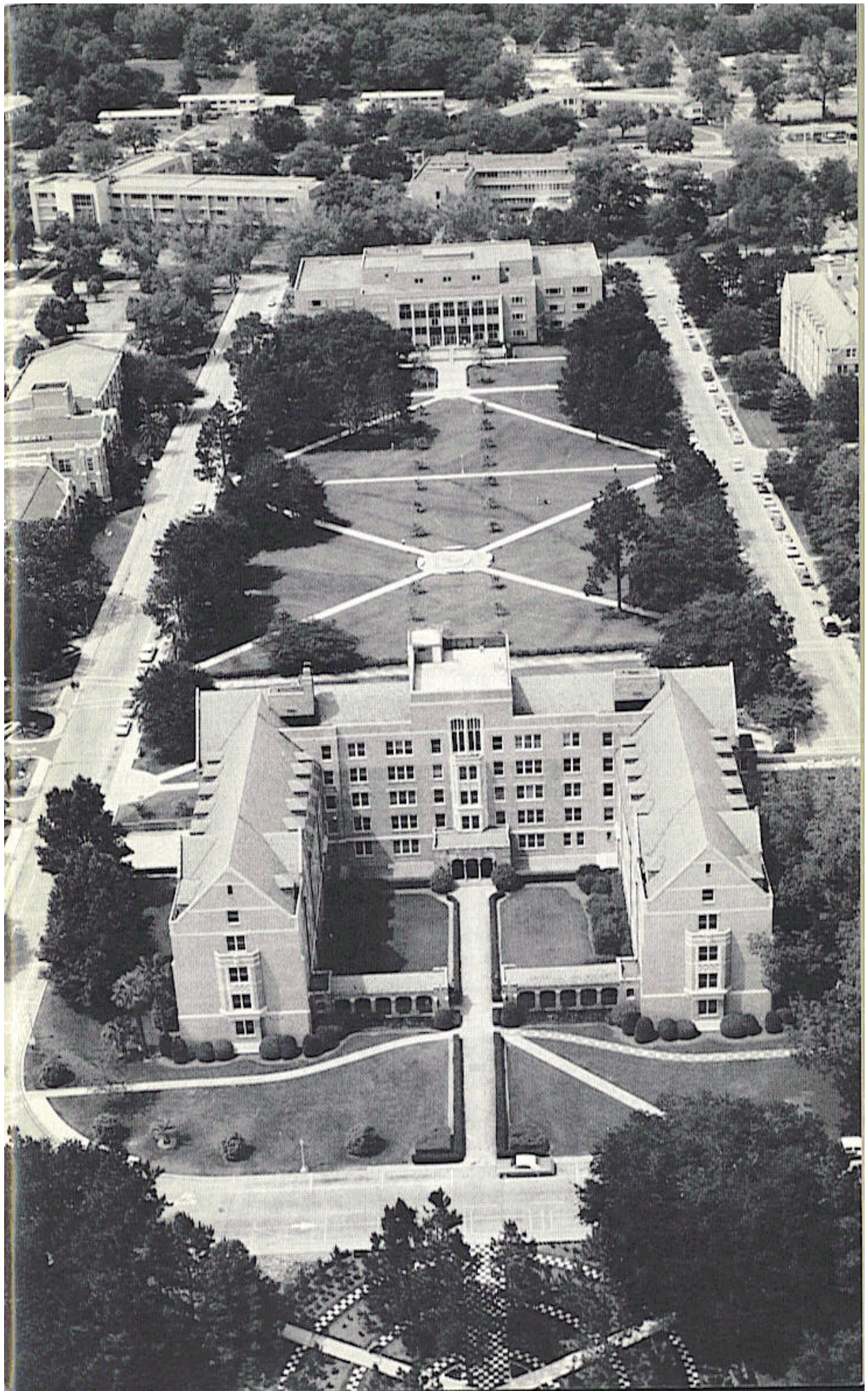
FLORIDA STATE UNIVERSITY

LOCATION: Tallahassee, Florida
PRESIDENT: Dr. John E. Champion
ENROLLMENT: 14,500
COLORS: Garnet and Gold
NICKNAME: Seminoles
BAND: Marching Chiefs
ATHLETIC DIRECTOR: Vaughn Mancha
TICKET MANAGER: Claude Thigpen
HEAD BASKETBALL COACH: Hugh Durham
SPORTS INFORMATION DIRECTOR: Lonnie Burt
FIELD HOUSE: Tully Gymnasium (5,000)
CONFERENCE: Independent

TABLE OF CONTENTS

1966-67 Schedule	Inside Front Cover
General Information	1
Florida State University.	4
Dr. John E. Champion, President	5
Dedication, J. K. (Bud) Kennedy	6
Athletic Department Directory	7
Athletic Committee	7
Vaughn Mancha, Athletic Director	8
Hugh Durham, Head Basketball Coach	9
Bill Clendinen, Asst. Basketball Coach	10
Dennis Clifford, Freshman Basketball Coach	10
Philosophy of the Florida State Basketball Program	11
Athletic Academic Program	11
1966-67 Varsity Basketball Roster	13
1966-67 Outlook	14
Varsity Player Profiles	15-22
1965-66 Varsity Results.	23
1965-66 Varsity Statistics	24
1966-67 Freshman Roster	26
1966-67 Freshman Schedule	26
Freshman Player Profiles.	27-28
The Opponents	30-34
The Record Book.	35-44
1,000 Point Club	36
Team Records	37
Individual Records	38
Record Against All Opponents	39-40
All-Time Season High Scorers	40
All-Time Scores.	41-45

COMPILED AND EDITED BY FLORIDA STATE UNIVERSITY
SPORTS INFORMATION OFFICE



FLORIDA STATE UNIVERSITY

Now engaged in its 110th year of service to the citizens of Florida and the nation, Florida State University is a coeducational, public institution of higher learning with a 1966 fall enrollment of more than 14,000 students, and a projected enrollment of 25,000 students by 1975.

As one of the state's two senior universities in a rapidly expanding system of higher education, Florida State University plays a significant role at both the graduate and undergraduate levels of teaching, research and service to the state.

Located in the state's capital city of Tallahassee, Florida State's main campus comprises 332 highly-populated acres of land. Founded in 1875 as the Seminary West of the Suwannee, the institution marked its 109th birthday in February, 1966. Its evolution to full, coeducational university status in 1947 was marked by steady growth and strength — through several stages of development as a liberal arts college for women and/or men, as history dictated.

The University's academic divisions currently include the Graduate School (in which more than 2,200 students are currently enrolled), nine undergraduate schools and colleges, and professional College of Law which opened in September of 1966. The undergraduate divisions include the College of Arts and Sciences, the School of Education, School of Music, School of Home Economics, the Library School, School of Social Welfare, School of Business, School of Nursing and the School of Engineering Science. The Graduate School administers eight major research facilities and institutes of graduate research and faculty research programs. These facilities include the Institute of Government Research, Institute of Human Development, Institute of Human Learning, Institute of Social Research, Institute of Molecular Biophysics, the Oceanographic Institute, a Computing Center and a Nuclear Research Program.

Currently under construction on the northwest corner of the campus is a rapidly expanding network of modern facilities for space-age research known as the University's Science Center. This center will have 22 classroom and laboratory buildings when completed under the 10 year plan which spans the current 1965-75 decade and projects some 55 major additions or improvements to the physical plant of the campus.

DR. JOHN E. CHAMPION



Dr. John E. Champion is the fourth distinguished educator to serve as full-time president of the Florida State University since it became coeducational and achieved university status in 1947. The youngest of 10 chief executives in the University's 110-year history, he has served as President since June 22, 1965.

Born on May 11, 1922, in Chipley, Ga., (now called Pine Mountain) the 44-year-old business educator began his professional career in college teaching at the University of Georgia's College of Business Administration, his alma mater. From 1948 to 1956 he taught accounting there, leaving with the rank of associate professor to join the faculty at Florida State.

Dr. Champion's 10-year affiliation with Florida State has included service as professor of accounting, assistant dean of the School of Business and three years as vice president for administration — from August, 1962, until his appointment as acting president of the University, in 1965. As vice president, he supervised a \$26 million building program — the largest in the history of the University.

He and Dr. Homer A. Black, a fellow professor of accounting at FSU, are authors of a textbook, *Accounting in Business Decision*, published by Prentice-Hall in 1961. This book, being revised this year, is widely used in colleges and universities.

The President holds the Ph.D in business administration from the University of Michigan, and the B.S. and M.S. degrees from the University of Georgia, which designated him, this year, as a "Distinguished Alumnus" of its College of Business Administration.

Dr. Champion was married on June 4, 1955, to Mary Lanier of West Point, Ga., the daughter of Mr. and Mrs. Cam B. Lanier and a kinswoman of the famous 19th Century poet, Sidney Lanier. She is a graduate of Auburn University. The Champions have two children, Sally Lanier, 9, and John E. Jr., 7.

Following graduation from the University of Georgia he entered the Army and during World War II served both in the infantry and as a quartermaster officer in the South Pacific. He was discharged as a captain in 1946.

Dr. Champion is a member of Phi Beta Kappa, Phi Kappa Phi, Beta Gamma Sigma, Omicron Delta Kappa, Gold Key, Alpha Phi Omega, Beta Alpha Psi, Delta Sigma Pi, American Accounting Association and the American Institute of Accountants. He was named an honorary member of the FSU Chapter of Kappa Delta Pi in February, 1966 — thus becoming one of only two honorary members in the 40-year history of the chapter.

J. K. (BUD) KENNEDY (1907-1966)



Florida State Basketball Coach J. K. (Bud) Kennedy died of cancer June 24, 1966. With his passing an era ended, and a legend began.

Kennedy, 59, coached at Florida State for 18 years. His teams compiled a record of 234 victories and 208 defeats.

He appeared on the Florida State athletic scene shortly after the school became coeducational in 1947. As a coach he quickly advanced the Seminoles into the top echelon of small-college basketball, and soon had his teams playing on even terms with a major schedule.

His birthplace was Lawrence, Kansas, and in the year of his birth, his father, A. R. (Bert) Kennedy, coached the University of Kansas football team to its only undefeated season. Bud was an athlete at

Kansas, Baker and Kansas State Teachers College.

He had a basketball background that few could match. While at Kansas he became a personal friend of Dr. James A. Naismith, the game's founder who was a physical education instructor there at the time. He gained wide experience in teaching and coaching in the Midwest and during a three-year Navy hitch during WWII before coming to Florida State as athletic business manager and assistant basketball coach in January of 1948. He became head coach the following season.

By 1954-55 Kennedy fielded a team that had a 22-4 record. In 1956-57 he attacked Florida State's first big-time schedule, moved into Tully Gym, and first met rival Florida.

However vital and illuminating statistics may be, the essence of a Bud Kennedy is found in the relationships he formed and the friends he made.

He was a coach by strict definition, one of whom it can honestly be said: He cared more for his players than he did for points on the scoreboard. He demanded hard work and loyalty, and returned an equal measure of both.

His players were real to him, and he adopted a paternal attitude towards his boys which transcended their college careers. Each year his former players received a thick packet of mimeographed material which contained information—names, addresses, career and family notices on every basketball player and student manager who had ever served under Kennedy at Florida State.

The door to his home was open at all hours to friends, coaches and players, and many a game was previewed and reviewed on his coffee table.

On the court he was a competitor, and no one relished the uplift of victory or felt the despair of defeat more sharply. He battled with every tool at his command, and several officials will remember the sting of Kennedy's tongue, and the vigorous shake of his white thatched head. However, he never carried the game off the floor, and Seminole opponents could always expect praise regardless of the score.

Bud Kennedy was Florida State basketball's best promotor, its greatest ambassador. His vision, for which he worked tirelessly, was of a great coliseum for the Seminoles. Although he won't see it, it will surely be built one day, and his efforts in its behalf will be remembered.

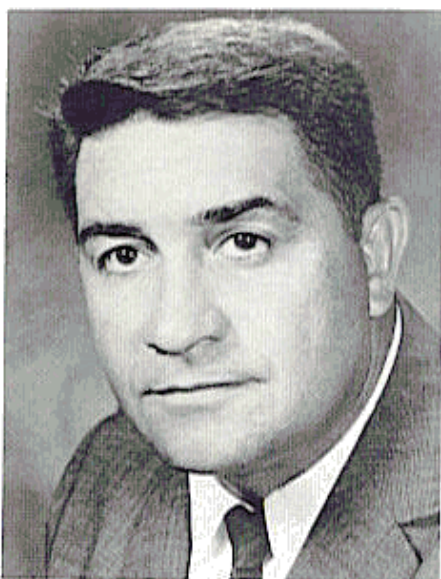
ATHLETIC DIRECTORY

NAME	POSITION	PHONE
Breaux, Don	Assistant Football Coach	599-2775
Burt, Lonnie	Sports Information Director	599-2095
Clendenin, Bill	Assistant Basketball Coach	599-3080
Crutchfield, Bill	Assistant Football Coach	599-2775
Deming, Shelia	Basketball Secretary	599-3080
Dixon, Tillman	Equipment Manager	599-2775
Durham, Hugh	Head Basketball Coach	599-3080
Fauls, Don	Head Trainer	599-2775
Frye, Mrs. Dolores	Administrative Assistant	599-3413
Hatfield, Fred	Head Baseball Coach	599-2640
Harbison, Bob	Assistant Football Coach	599-2775
Jackson, Bobby	Assistant Football Coach	599-2775
Lanford, Ernie	Assistant Baseball Coach	599-2640
Long, Mike	Head Track Coach	599-2640
MacLean, Ken	Football Recruiter	599-2775
Mancha, Vaughn	Athletic Director	599-3413
McDowell, Gene	Freshman Football Coach	599-2775
Peterson, Bill	Head Football Coach	599-2775
Roberts, Ruth	Football Secretary	599-2775
Savage, Jeff	Academic Counselor	599-3080
Schmidt, Neil	Assistant Football Coach	599-2775
Stults, N. B. (Bim)	Head Swimming Coach	599-2640
Thigpen, Claude	Athletic Ticket Manager	599-3414
Wilson, Roy Don	Assistant Trainer	599-2775
Wood, Lex	Head Tennis Coach	599-2640
Wyant, Gary	Assistant Football Coach	599-2775

FLORIDA STATE'S ATHLETIC COMMITTEE

ROBERT ERNEST, Chairman; MODE L. STONE, CLAUDE FLORY, THOMAS WRIGHT, COYLE E. MOORE, J. M. PLANT, ELSTON ROADY, MARK ALEXANDER, JOHN CAREY, MASON LADD.

VAUGHN MANCHA



Vaughn Mancha is in his seventh year as Director of Florida State's broad Inter-collegiate Athletic Program. Since his appointment in 1959 to this important responsibility the athletic program has grown and prospered to the point of bringing Florida State's athletics to National prominence.

In his time the scholarship program, the sports schedule, as well as the facilities have been greatly improved.

One of Mancha's chief concerns has been improvement of staff, program and facilities. In his tenure Campbell Stadium has grown from 15,000 to 42,000 capacity with a modern press box; an athletic field house and the latest project, furnishing Florida State with the installation of a modern lighted baseball field which is to be completed this spring. Future attention is being given to a large coliseum for basketball.

In his short tenure one of his chief goals was the upgrading of the scholarship program to match the other institutions in the country, as well as build a sports schedule with the best competition possible in the Southeast.

Mancha's ultimate goal is to provide the University Students, Alumni and Supporters with the strongest over-all athletic program in the country.

Mancha graduated from the University of Alabama in 1948 where he received All-America football honors and played on three Crimson Tide Bowl teams.

He first came to Florida State in 1952, and served as an assistant football coach for five years. After two years at Columbia University where he worked on his doctorate, and was an assistant coach, Mancha returned to Florida State as Athletic Director.

Married to the former Sybil Little, of Birmingham, Alabama, Mancha is the father of three children, Clare, 17, Nan, 14, and Dit, 7.

HUGH DURHAM



One of the most versatile and vigorous athletes ever to enroll at Florida State, Hugh Durham was an "automatic choice" to become the third head basketball coach in school history.

This is the Seminoles' 20th season of basketball, and Durham has been energetically associated with more than half of Florida State's basketball history.

The Seminoles inaugurated the sport in 1947 under Don Loucks. In 1948 Bud Kennedy became the head coach and guided Florida State through the great obstacles of its basketball youth to a position of high respect and competence before his death last year.

During much of this time Durham was the man Coach Kennedy most relied upon in the forward fight. He became freshman coach at the start of the 1960 season, posting a 9-1 record that still stands as FSU's top one-year freshman mark. In 1961 he was named Kennedy's full-time assistant coach, and continued in that position until he became head coach.

Considered the finest guard in Florida State history, Durham came to the school as a freshman out of Eastern High in Louisville, Ky., in 1955. During three varsity seasons he scored 1,381 points, with two 500-plus seasons, and received All-America mention.

Though basketball is firmly his game — one that he has frequently discussed with many of the nation's great coaches until the wee hours—Durham has a lively interest in many sports and many things.

He earned 14 letters in high school at Louisville—four each in basketball and baseball, three each in football and track. An outstanding half-back, he turned down college scholarship offers from several schools to accept Kennedy's offer to play basketball at Florida State.

During his student days here, Durham made Gold Key, the Dean's List and was named to Who's Who in American Colleges and Universities. While an assistant coach in basketball, Durham doubled for four years as head golf coach of the Seminoles, with his teams notching an outstanding record of 48-6 during that span. He found time, too, to become city badminton champion. He started playing golf himself five years ago, now shoots consistently in the 70's.

The 29-year-old Durham is married to the former Malinda Dixon of Jacksonville. They have two sons, David, 6, and Doug, 2.

Durham's coaching quest is for basketball of high excellence at Florida State, and those who have observed his intense progress rate him one of the most knowledgeable, hardest working men in the game.

BILL CLENDINEN, ASSISTANT COACH



Bill Clendinen, 28, holds BS and MA degrees from Florida State and has an outstanding coaching record in Florida high school and junior college ranks.

Clendinen, a native of Evansville, Ind., graduated from Fort Lauderdale High. He received his BS degree in education from Florida State in 1959 and his MA in 1961.

His first coaching job was at Clewiston High where he was named "coach of the year" in the Suncoast Conference after his only season there.

He then moved to Pensacola Junior College where he produced four winning teams, including one state championship club. He was named Florida's JC "coach of the year" in 1963.

He was at Jacksonville University as assistant basketball coach and assistant professor of physical education for one year.

"I have always realized the potential of Florida State University and wanted to have a part in building a dynamic basketball program," said Clendinen.

Head Coach Hugh Durham is highly complimentary of his assistant. "Bill is one of the most thoroughly organized and hardest working young coaches in the field. His knowledge of the game and ability to recruit will be of invaluable assistance in our total program."

While a student at Florida State, Clendinen was president of his freshman and sophomore classes and was elected to Omicron Delta Kappa, Gold Key and Who's Who in American Colleges and Universities.

Clendinen is married to the former Carlyn Donath, a former Seminole cheerleader. They have a son, Billy, 5.

DENNIS CLIFFORD, FRESHMAN COACH

Dennis Clifford, a graduate assistant, comes to Florida State after lettering three years at the University of Louisville.

Clifford, 24 and single, will coach the Seminole freshman while working on a Master's Degree in education.



PHILOSOPHY OF FSU BASKETBALL PROGRAM

by Hugh Durham, Head Basketball Coach

"In all areas of endeavor, strive to reach the ultimate of your abilities." This, in essence is the philosophy of the basketball program at Florida State University.

Although our players are individuals and each has his own interests and goals, there are four areas, academic, athletic, social, and moral, in which all our young men should strive for excellence. And, not only are we interested in outstanding individual achievement, but we are dedicated to excellence in our total basketball program.

What contribution will our basketball program have made to each player upon his graduation? At Florida State, we feel athletic letters and school records are not enough. Pride, self-discipline, perseverance, and loyalty are not letters to be forgotten or records to be broken. We feel it is important that our young men develop these qualities, and using them as a foundation, they will be prepared to strive successfully for excellence in their chosen fields. This carry-over value is an integral part of our basketball program at Florida State University.

As interested as we are in the individual, we are dedicated to the development of a winning basketball team. Winning is important—our society dictates this. As coach, I have established three goals for our basketball team. They are for Florida State to be represented in one of the national tournaments, for Florida State to be listed consistently in the top ten, and for Florida State to win the National Championship.

Florida State University is recognized nationally for excellence in the fields of accounting, chemistry, marine biology, mathematics, music and physics. In recent months, new academic programs at Florida State have been acclaimed in four national magazines and Dr. Mulliken, of our Chemistry and Physics Department, was awarded the Nobel Prize in November.

Academically, Florida State has earned national prominence, and at our university, academics come first. Now it is time for our basketball program to obtain the same prominence. To do this, our men must learn to compete, meet the challenge, and pay the price to be a winner. I believe it can be done.

ACADEMIC PROGRAM

Florida State University is exceptionally proud of the academic success of the members of its basketball team. The team grade average is better than a 2.5, which is higher than the overall men's average at Florida State.

Bill Glenn and Ian Morrison lead the team, with better than 3.5 grade averages, academically. Glenn is a member of Who's Who in American Colleges and Universities and is President of ODK. Brian Murphy, the team captain, is also a member of ODK.

The Academic program for athletes at Florida State University is somewhat unique because it has a full-time academic counselor. His main responsibility is to see that the athletes are making adequate progress toward their degree. He also helps in planning their majors as well as in the selection of courses.

The Athletic Department requires that all full scholarship athletes spend at least five nights a week studying during their freshman year. All necessary study aids are provided and tutors are available when needed. Textbooks are furnished at all times, and many students check them out over the summer holidays as well. No stone is left unturned in seeing to it that a Florida State University athlete gets a quality education.



1966-67 VARSITY BASKETBALL ROSTER

<u>NO.</u>	<u>NAME</u>	<u>POS.</u>	<u>HT.</u>	<u>WT.</u>	<u>YEAR</u>	<u>AGE</u>	<u>HOMETOWN</u>	<u>HIGH SCHOOL & COACH</u>
3	DON BIGGS	C	6-5	205	Jr.	22	Macon, Ga.	Lanier (Henry Middlebrooks)
4	JIM GELLER	F	6-4	220	Soph.	20	Youngstown, O.	Boardman (Richard Selly)
5	STEVE SUMMERS	F	6-4	205	Soph.	19	Bradenton	Southeast (Jim Vincent)
10	JEFF HOGAN	G	6-0	165	Soph.	19	Akron, O.	Ellet (Gene Vinciguerra)
12	DAVE ROSS	F	6-4	180	Soph.	21	Erie, Pa.	Lawrence Park (Tom Barringer)
14	LENNY HALL	F	6-3	190	Jr.	23	Camden, N.J.	Camden (Tony Alfrono)
32	DICK DANFORD	C	6-8	215	Jr.	21	Clearwater	Clearwater (Jim Karr)
41	DON HILSMIER	G	6-1	180	Soph.	20	Ft. Wayne, Ind.	South Side (Donald Reichart)
25	BRIAN MURPHY	G	5-10	170	Sr.	21	Pompano Beach	Palm Beach (Joe Cerauolo)
30	IAN MORRISON	F	6-1	175	Jr.	21	St. Petersburg	St. Petersburg (Gene Jenkins)
21	RUSS FORKEY	F	6-3	180	Soph.	19	Spencer, Mass.	David Prouty (Dan Gearin)
34	DARREL STEWART	G	6-1	175	Jr.	20	Sellyville, Ind.	Gerstmeyer (Howard Sharp)
23	BILL GLENN	F	6-4	190	Jr.	21	Tallahassee	Leon (Claude Stoutamire)
45	BOB COMPARATO	G	6-0	165	Jr.	21	Titusville	Titusville (Art Tolis)
50	KEN DOYLE	C	6-8	245	Jr.	22	Tampa	Plant (Fred Lapper)

Head Coach — Hugh Durham
 Asst. Coach — Bill Clendinen
 Manager — Charles Funk

THE 1966-67 OUTLOOK

This is definitely a rebuilding year at Florida State since there is only one senior on the squad.

Coach Hugh Durham, who took over the head job following Bud Kennedy's death, isn't kidding himself—or any Seminole fans. "We know we have a long, long way to go because of our inexperience," said the former Florida State star.

"Just how much we progress during the season will determine our record. I don't expect too much out of our kids until mid-season at least. We have a number of boys who have never played together and it will take some time until they learn our system."

The Seminoles have seven lettermen returning, but only one starter in guard Darrel Stewart. The 6-1 junior from Seelyville, Ind., is the squad's top defensive performer.

Florida State will play a deliberate type game because of its lack of speed. There will be times when the Seminoles will run, but these won't come often.

Two transfers have excellent chances of gaining starting spots. Ian Morrison, a former high school All-America from St. Petersburg, apparently will join Stewart in the backcourt. Morrison played his sophomore year at North Carolina before switching to Florida State and sitting out a season.

Lenny Hall comes to Florida State from St. Petersburg Junior College following an outstanding season. The 6-3 Camden, N.J., native has fine rebounding ability for his size and is counted on for some scoring. Hall is the first Negro basketball player to perform on the Seminole varsity.

Dick Danford, 6-8 junior from Clearwater, has the inside track for the pivot spot. The big center has added 20 pounds—he's up to 220—since his sophomore year and this extra weight hopefully will be thrown around on the backboards.

His top competition comes from another junior, 6-8, 245-pound Ken Doyle.

Hall's front court playmate is expected to be Bill Glenn, 6-4, 190-pound junior from Tallahassee, who is an outstanding shot.

The squad's lone senior, Brian Murphy, figures as the squad's sixth man while sophomore Jeff Hogan (6-0, 165 pounds) could make a run for one of the backcourt spots.

"Defense has to be our byword this season," says Coach Durham. "We can't stand many mistakes. We'll try to control the ball and make sure we only take good shots. We plan to use the shuffle offense but hopefully we'll get our shots off a little sooner than in previous seasons."



BRIAN MURPHY

Senior Guard

Height: 5-10 Weight: 170

Age: 21 (3-5-45)

Hometown: Pompano Beach

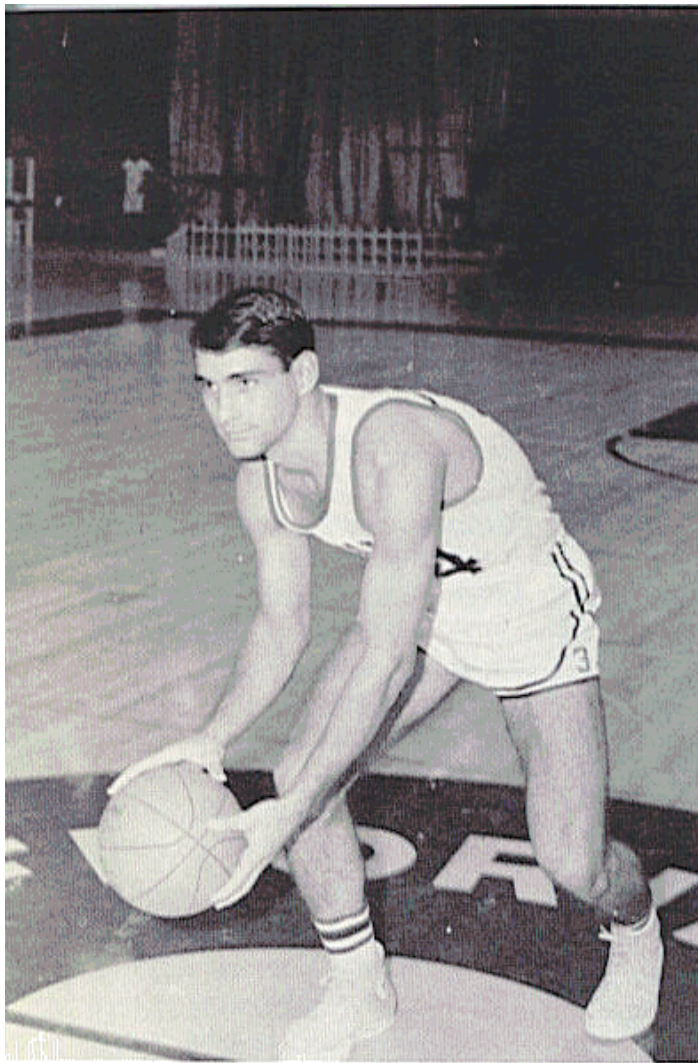
High School: Palm Beach

Coach: Joe Cerauolo

Major: Marketing

High School Honors: Athlete of week; MVP Christmas Tourney

... is the lone senior on this year's Seminole basketball team. Murphy's strong point is his defensive ability, and even though he has never been a regular starter for the Tribe, he has been one of the team's most dependable performers. When he is on the floor the 5-10 Pompano Beach native can be counted on to give 100%. Although he will probably be the Seminoles' No. 1 back-up man again this year, his aggressiveness and leadership abilities made him the team's unanimous choice for captain.



DARREL STEWART

Junior Guard

Height: 6-1 Weight: 175

Age: 20 (6-19-46)

Hometown: Seelyville, Ind.

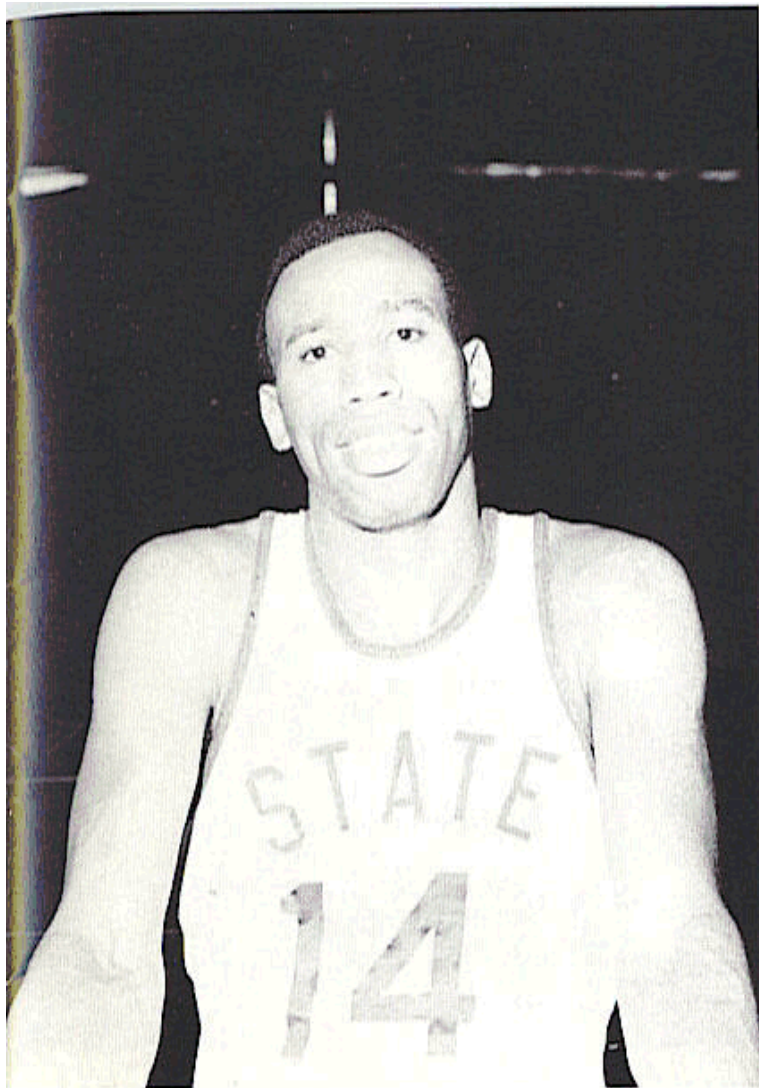
High School: Gerstmeyer

Coach: Howard Sharp

Major: Math Ed.

High School Honors: MVP
'63, '64, Outstanding
Player

... is the lone 1965-66 starter who returns to the Seminole fold this season. The junior guard was the team's leading defensive ball player last season and had the job of containing the opposition's most potent offensive guard — a role he is likely to reassume this year. Coach Hugh Durham describes Stewart as "a coach's ball player" who gives 100% every game. A great competitor, Stewart is quick to analyze a situation and take the challenge. In addition to his ability on the basketball court, he is in the running for the starting catcher's spot on the Seminole baseball team.



LENNY HALL

Junior Forward

Height: 6-3 Weight: 190

Age: 23 (7-10-43)

Hometown: Camden, N. J.

High School: Camden

Coach: Tony Alfrono

Major: Phys. Ed.

High School Honors: All-City, Conference, Y, State and Tourney

. . . a Junior College All-America last year at St. Petersburg J.C., is the first Negro athlete to perform in varsity competition at Florida State. An excellent team player, Hall fits into the Seminole pattern of play extremely well. He is an above average shooter, but is more concerned with winning than personal point achievement and will pass off frequently. A strong jumper with big sure hands, Hall is expected to play a big role under the boards for the Seminoles this season also.



IAN MORRISON

Junior Forward

Height: 6-1 Weight: 175

Age: 21 (8-6-45)

Hometown: St. Petersburg

High School: St. Petersburg

Coach: Gene Jenkins

Major: Crim. & Corr.

High School Honors: High
School All-America

. . . comes to Florida State after playing one season of varsity ball with North Carolina. A red shirt last year under NCAA regulations, Morrison is expected to be a strong addition to the Seminoles this year. An outstanding shooter, he can pick a zone defense apart with deadly accuracy from 30 feet or more. Morrison has a keen desire and dedication to excel, and spent the entire summer improving his play. His quickness and competitive spirit should make him an outstanding defensive player as well.



BILL GLENN

Junior Forward

Height: 6-4 Weight: 190

Age: 21 (2-25-45)

Hometown: Tallahassee

High School: Leon

Coach: Claude Stoutamire

Major: English

High School Honors: MVP,
Cpt., All-Star team and
conference.

... one of the Seminoles' key reserves last season. Glenn is expected to win the starting forward spot opposite Lenny Hall. The Tallahassee native was slowed by an ankle injury early last season, but came on strong through the latter part of the season and should be ready to make a big contribution this year. A dedicated ball player, Glenn passed up an opportunity to study in Florence, Italy, this year in order to play basketball. An excellent shooter, he is one of the best basketball players to come from Florida's "Big Bend" area. He is also president of Florida State's chapter of Omicron Delta Kappa, a national leadership honorary fraternity. Glenn was recently named a candidate for a Rhodes Scholarship.



DICK DANFORD

Junior Center

Height: 6-8 Weight: 220

Age: 21 (11-1-45)

Hometown: Clearwater

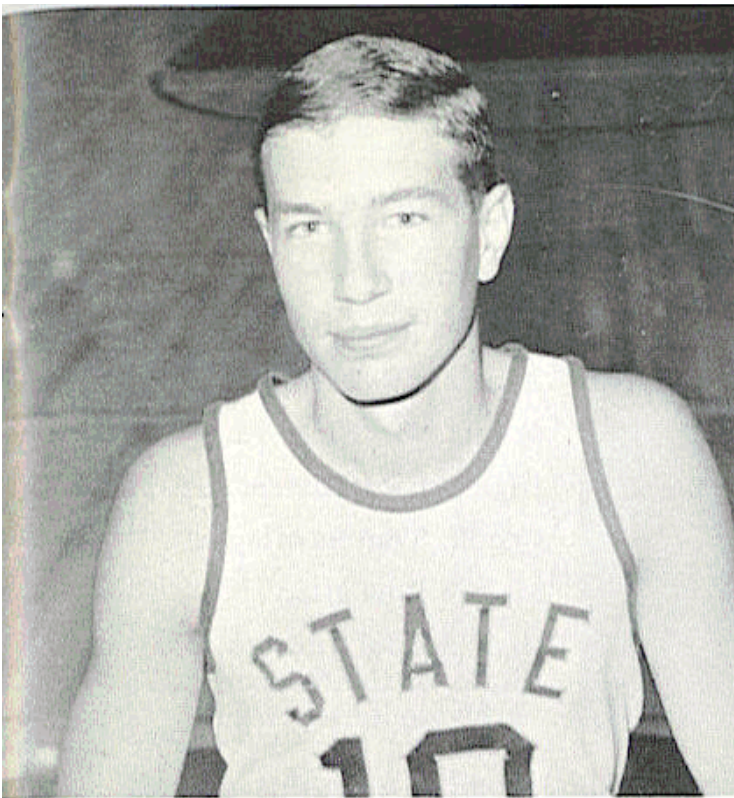
High School: Clearwater

Coach: Jim Karr

Major: Ind. Arts Edu.

High School Honors: All-
State and Conference,
Outstanding Athlete

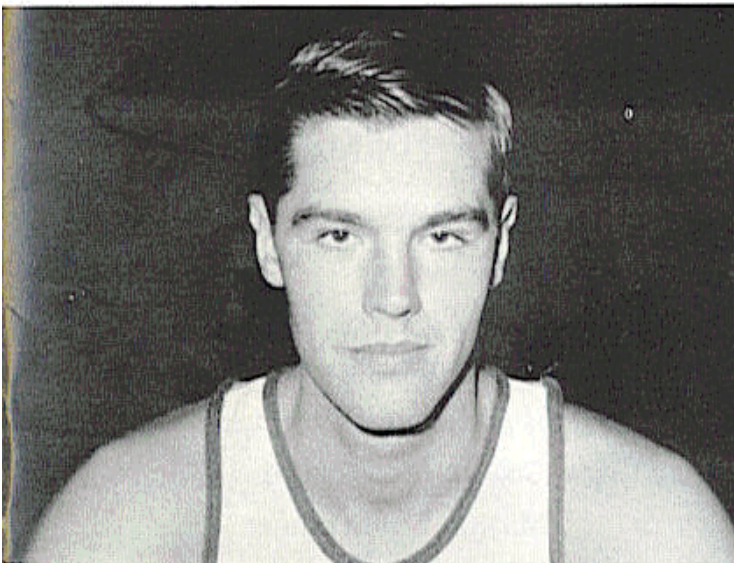
. . . faces one of the Seminoles' toughest jobs, taking over for Gary Schull who left via graduation. Danford has an unusually soft touch for a big man, and can be counted on to score from anywhere within 20 feet. His big contribution, however, will be as a rebounder. His ability on the boards could be the key to Seminoles' success this season. He worked hard over the summer and added 25 pounds to his lanky 6-8 frame. If his hard work and dedication carry over he should have a good season.



JEFF HOGAN

Sophomore Guard
Height: 6-0 Weight: 165
Age: 19 (8-18-47)
Hometown: Akron, Ohio
High School: Ellet
Coach: Gene Vinciguerra
Major: Business
High School Honors: All-Metro, All District

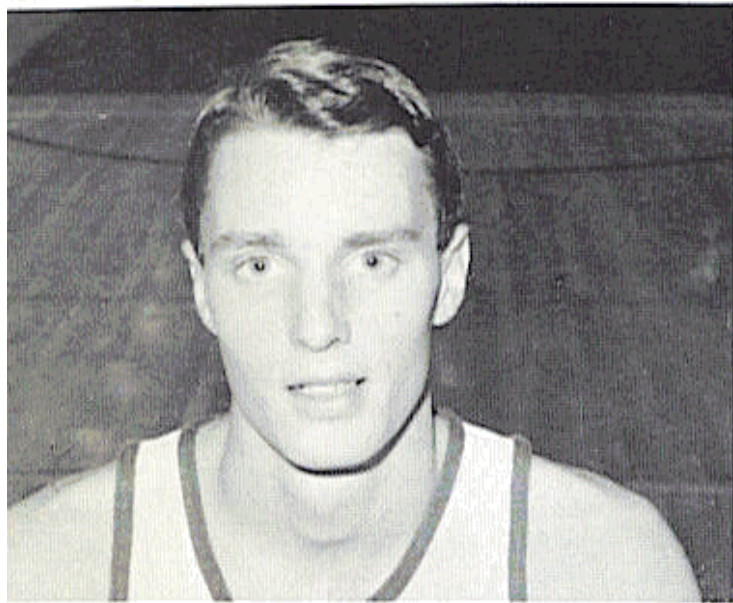
... joins the Seminole varsity after leading the freshmen in scoring last year. Hogan was drawn to Florida State by the strong basketball-baseball program here and should be a leading contender for the Seminole shortstop position in the spring. An excellent outside shooter Hogan will see a lot of action against zone defenses. He must improve his defensive play before becoming a regular, however.



KEN DOYLE

Junior Center
Height: 6-8 Weight: 245
Age: 22 (11-14-44)
Hometown: Tampa
High School: Plant
Coach: Fred Lapper
Major: Business
High School Honors: All-State, South, Conference, District, City & All-America

... is the "other" big man on the Seminoles' roster. Doyle is expected to fill a big reserve role behind Dick Danford. He has the necessary size and strength to make him a strong rebounder, but needs to improve his defensive ability. A strong competitor Doyle showed a desire to give Danford a run for the center position when he reported in top physical condition. Should improve rapidly with experience.



DAVE ROSS

Sophomore Forward

Height: 6-4 Weight: 180

Age: 21 (9-20-45)

Hometown: Erie, Pa.

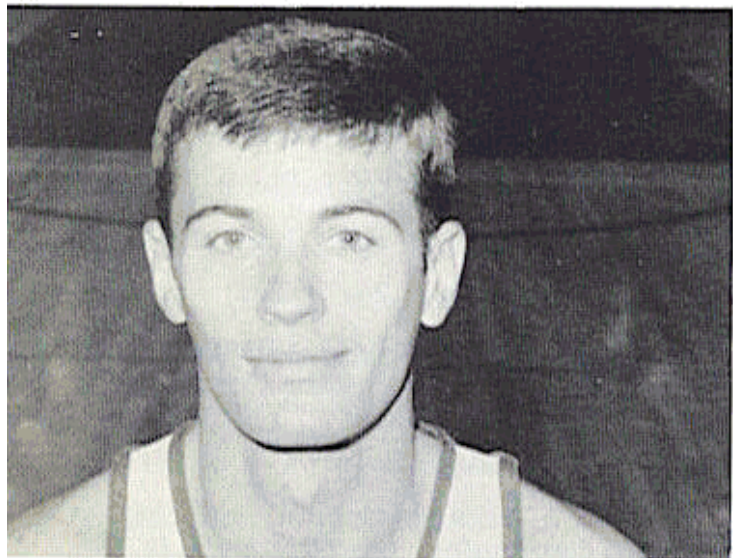
High School: Lawrence Park

Coach: Tom Barringer

Major: Education

High School Honors: All-State & Conference, MVP & Player of the Week

... is one of the biggest question marks on the team this season. A strong jumper and with the quickness to play college ball, Ross has yet to reach his potential. He will be used a lot on the press to take advantage of his speed and quickness. Must improve to give needed depth at forward.



RUSS FORKEY

Sophomore Forward

Height: 6-3 Weight: 180

Age: 19 (1-16-47)

Hometown: Spencer, Mass.

High School: David Prouty

Coach: Dan Gearin

Major: Government

High School Honors: All-Western Mass.

... moves up to the varsity after a year on the red shirt team. He is a smart ball player, but so far lacks speed and jumping ability. A good shooter, he will be counted on to add depth at forward.

VARSITY RESULTS 1965-66

Dec. 1	73	Lamar Tech	68	(H)
Dec. 2	69	Valdosta	68	(H)
Dec. 6	121	Tampa	57	(H)
Dec. 8	62	Florida	75	(A)
Dec. 16	80	North Carolina	115	(A)
Dec. 18	62	University of California (Santa Barbara)	61	(N)
Dec. 20	65	V. M. I.	64	(N)
Dec. 21	58	Auburn	59	(N)
Dec. 27	64	Auburn	80	(A)
Jan. 3	57	Georgia	63	(A)
Jan. 7	78	Miami	62	(H)
Jan. 10	73	Loyola (New Orleans)	53	(H)
Jan. 15	67	Memphis	63	(H)
Jan. 18	65	Florida	74	(H)
Jan. 24	86	Jacksonville	90	(A)
Jan. 28	96	Panama Nationals	73	(H)
Jan. 31	71	Georgia Tech	66	(H)
Feb. 5	66	Memphis	81	(A)
Feb. 7	62	Loyola (New Orleans)	63	(A)
Feb. 10	78	Jacksonville	49	(H)
Feb. 14	88	Georgia Tech	95	(A)
Feb. 19	77	Samford	66	(H)
Feb. 24	99	Florida Southern	54	(H)
Feb. 26	99	Tampa	70	(A)
Feb. 28	90	Miami	112	(A)
Mar. 5	87	Georgia	69	(H)

FINAL 1965-66 FLORIDA STATE BASKETBALL STATISTICS

Won 15, Lost 11

<u>Name</u>	<u>G</u>	<u>FG-FGA</u>	<u>Pct.</u>	<u>FT-FTA</u>	<u>Pct.</u>	<u>Reb-Avg.</u>	<u>PF</u>	<u>Disq.</u>	<u>Points</u>	<u>Avg.</u>	<u>Hlgh</u>
Gary Schull	25	155- 302	.514	164-237	.687	317-12.7	62	3	474	19.0	32
Jim Lyttle	25	116- 254	.457	88-116	.759	57- 2.3	65	4	320	12.8	23
Bill Peacock	25	122- 257	.475	59- 78	.756	131- 5.2	74	3	303	12.1	25
Darrel Stewart	24	77- 159	.484	58- 82	.716	65- 2.7	90	9	212	8.8	18
Bill Glenn	23	58- 130	.446	16- 20	.800	58- 2.4	29	0	132	5.5	15
Ron Malmen	13	44- 104	.423	9- 17	.529	48- 3.7	32	2	97	7.5	12
Bill Phillips	18	29- 66	.439	21- 40	.525	67- 3.7	45	1	79	4.4	13
Brian Murphy	25	21- 55	.382	23- 35	.657	42- 1.7	39	2	65	2.6	12
Ken Leakey	14	19- 56	.339	21- 25	.840	14- 1.0	12	0	59	4.2	14
Don Biggs	21	20- 43	.465	13- 18	.722	59- 3.0	28	0	53	2.7	9
Dick Danford	17	16- 43	.372	13- 19	.684	54- 3.0	24	0	45	2.4	8
Ken Doyle	12	11- 27	.407	9- 17	.529	30- 2.7	16	0	31	2.8	7
Chas. Fairchild	9	6- 27	.269	10- 15	.714	17- 1.9	21	0	22	2.4	10
John Bloodworth	7	2- 12	.167	1- 1	1.000	7- 1.0	5	0	5	0.7	4
TEAM REBOUNDS						141					
FSU Totals	25	696-1533	.454	505-720	.701	1109-44.4	553	24	1897	75.9	
Opponents	25	647-1462	.443	483-714	.676	991-39.6	542	27	1777	71.1	

INDIVIDUAL HIGHS

Total Points Scored—32 Gary Schull vs. Georgia (10 FG, 12 FT)
March 4.

Field Goals Scored—11 Gary Schull vs. Loyola Jan. 10 (att. 15)
Bill Peacock vs. Ga. Tech Feb. 14 (att. 17)

Free Throws Scored—12 Gary Schull vs. Georgia March 4 (att. 17)

Free Throws Attempted—19 Gary Schull vs. Memphis State Jan. 15
(made 10)

Rebounds—27 Gary Schull vs. Jacksonville Feb. 10

TEAM HIGHS

Field Goals vs. Tampa Dec. 6 45 (att. 81)

FG Attempted vs. Fla. Southern Feb. 24 86 (made 40)

FT Attempted vs. Memphis State Jan. 15 46 (made 25)

FT Made vs. Tampa Dec. 6 31 (att. 41)

Most Points vs. Tampa Dec. 6 121

Most Rebounds vs. Fla. Southern Feb. 24 73 (66 indiv., 7 team)



1966-67 FRESHMAN BASKETBALL ROSTER

<u>No.</u>	<u>Name</u>	<u>Age</u>	<u>Ht.</u>	<u>Wt.</u>	<u>Town</u>
3	John Morton	18	6-0	165	Winter Park
4	Dave Cowens	17	6-7	200	Newport, Ky.
10	Randy Cable	18	6-0	160	Massillon, O.
14	David Macomber	18	6-8	190	Port St. Joe
21	Carl Reynolds	19	6-2	175	Fairborn, O.
23	Bob DePathy	18	6-2	175	W. Palm Beach
25	Tom Porter	18	5-9	140	Zephyr Hills
30	Larry Moore	24	6-2	190	South Bend, Ind.
32	Jan Gies	18	6-5	190	Deerfield Beach
34	Tim Barrow	18	6-2	175	Newport, Ky.

1966-67 FRESHMAN BASKETBALL SCHEDULE

<u>Date</u>	<u>Opponent</u>	<u>Site</u>	<u>Time</u>
Dec. 1	Valdosta State College	Tallahassee	5:45 EST
Dec. 5	Chipola Junior College	Tallahassee	5:45 EST
Dec. 7	University of Florida	Gainesville	5:45 EST
Jan. 9	Valdosta State College	Valdosta, Ga.	8:00 EST
Jan. 13	Miami-Dade Junior College	Tallahassee	8:00 EST
Jan. 14	Pensacola Junior College	Pensacola	8:00 CST
Jan. 19	Chipola Junior College	Marianna	8:00 CST
Jan. 21	North Florida Junior College	Madison	8:00 EST
Jan. 23	Jacksonville University	Tallahassee	5:45 EST
Jan. 25	North Florida Junior College	Tallahassee	5:45 EST
Jan. 28	Georgia Tech University	Tallahassee	5:45 EST
Jan. 30	Gulf Coast Junior College	Tallahassee	5:45 EST
Feb. 2	Gulf Coast Junior College	Panama City	8:00 CST
Feb. 4	Pensacola Navy	Tallahassee	5:45 EST
Feb. 8	Jacksonville University	Jacksonville	5:45 EST
Feb. 11	Pensacola Junior College	Tallahassee	5:45 EST
Feb. 22	University of Florida	Tallahassee	5:45 EST
Feb. 25	Georgia Tech University	Atlanta, Georgia	6:00 EST

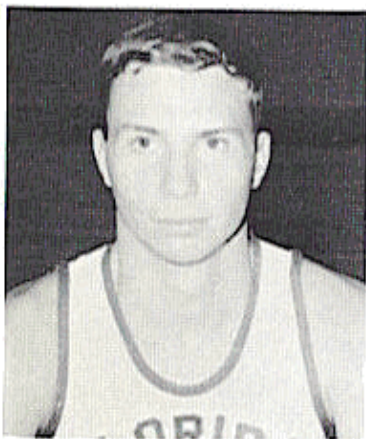
FRESHMAN PROFILES



LARRY MOORE

Freshman
Height: 6-2 Weight: 190
Hometown: South Bend, Indiana
High School (Coach): John Adams (Warren Seaborg)

...one of the finest prospects Florida State has had...experienced...played on AAU All-Service championship team...great quickness...fine ball handler and variety of shots...led service team in scoring with a 27.8 point average.



RANDY CABLE

Freshman
Height: 6-0 Weight: 160
Hometown: Massillon, Ohio
High School (Coach): Jackson Memorial (Rich Thomas)

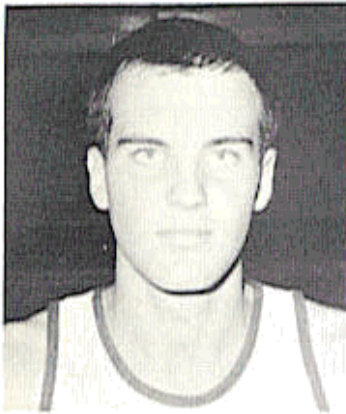
...one of Ohio's top prospects...selected Florida State over many of the country's top basketball schools...deadly shooter from outside and drives well enough to keep defense honest...he'll probably "quarterback" this year's frosh club.



DAVE COWENS

Freshman
Height: 6-7 Weight: 200
Hometown: Newport, Kentucky
High School (Coach): Newport (James Connor)

...tremendous desire plus outstanding ability on defense...he should be one of the South's best when experience catches up with ability...pulled down 567 rebounds in senior year. Team lost only two games in Cowens' final season.



JAN GIES

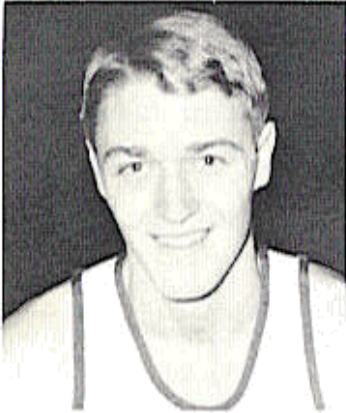
Freshman

Height: 6-5 Weight: 190

Hometown: Deerfield Beach, Florida

High School (Coach): Pompano Beach (Tucker Morris)

...came highly recommended...unusual shot, but hits with regularity...his prep team was fast break club...has potential...should be a good one. Came from same high school as Gary Schull...broke many of Schull's records.



CARL REYNOLDS

Freshman

Height: 6-2 Weight: 175

Hometown: Fairborn, Ohio

High School (Coach): Fairborn (Jack Gayheart)

...should do well making adjustment from forward to guard...has good speed and outside shot...sound fundamental basketball player...was All-Dayton selection.



BOB DePATHY

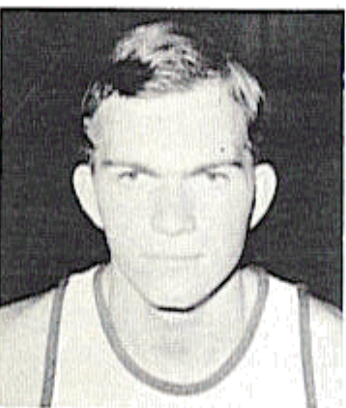
Freshman

Height: 6-2 Weight: 175

Hometown: West Palm Beach

High School (Coach): Chaminade (Andy Tonkovitch)

...averaged 31 points per game in high school and has ability to be a high scorer in college...has ability to drive as well as shoot from outside...was Catholic All-America.



DAVE MACOMBER

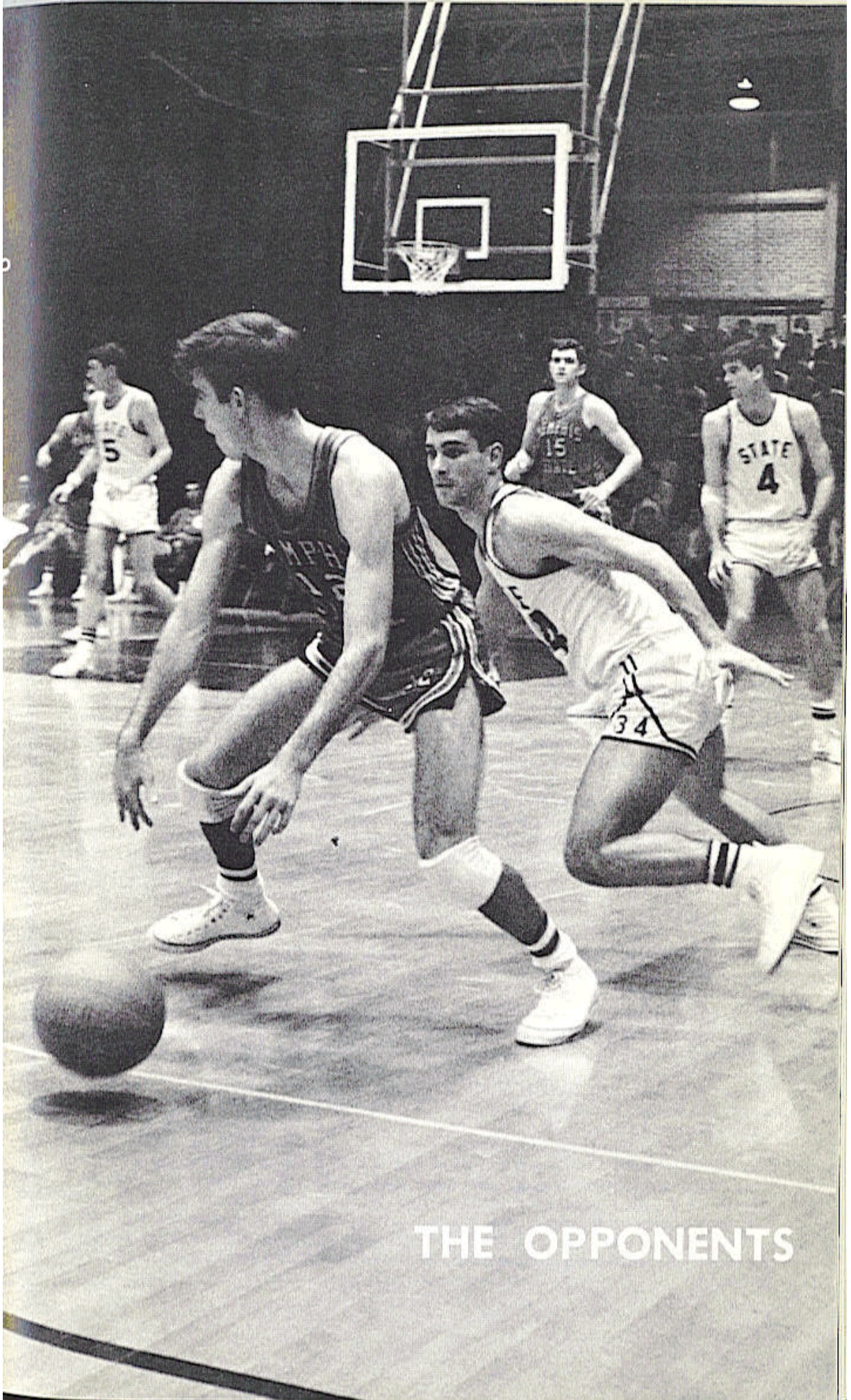
Freshman

Height: 6-8 Weight: 190

Hometown: Port St. Joe

High School (Coach): Port St. Joe (Bobby Brown)

...very good shooter for big man...needs experience to blend with desire...must put on weight to go with height.



THE OPPONENTS

VALDOSTA STATE

Dec. 1, 1966
Tallahassee
Tully Gym (5,000)
8:00 p.m.

Nickname: Rebels
Location: Valdosta, Georgia
Athletic Director: Gary Colson
Coach: Gary Colson, 8 years, 137-54
Enrollment: 2,000

Conference: Georgia Intercollegiate
Athletic
Series: 6-0, Florida State
1965-66 Record: 25-5
Lettermen Returning: Five

OUTLOOK: Valdosta State lost the services of Bobby Ritch (All-America), Letson Plant (All-Conference), Ray McCully (All-Conference), Tom Johnson and Paul Weitman. With the loss of these five athletes VSC will definitely be at a handicap but will hope to overcome this with red shirts and with some of last year's holdovers.

RICE

Dec. 5, 1966
Tallahassee
Tully Gym (5,000)
8:00 p.m.

Nickname: Owls
Location: Houston, Texas
Athletic Director: Jess C. Neely
Coach: Don Knodel, first year
Enrollment: 2,488

Conference: Southwest
Series: 2-1, Florida State
1965-66 Record: 1-22
Lettermen Returning: Five

OUTLOOK: Don Knodel takes over the reins of the Owls following the resignation of George Carlisle in March and faces a big rebuilding job. Eight veterans including five lettermen return from last year's team, but with a "new regime" the Owls will remain a "mystery" team through their early games. The veterans are led by 6-6 senior Bill Doty, who averaged 13.8 points last year. 6-7 Jim Hubenak, who averaged nearly 20 points a game as a freshman, could be a valuable starter.

FLORIDA

Dec. 7, 1966
Gainesville
Florida Gym (6,920)
7:30 p.m.

Nickname: Gators
Location: Gainesville
Athletic Director: Ray Graves
Basketball Coach: Tommy Bartlett,
first year

Feb. 22, 1967
Tallahassee
Tully Gym (5,000)
8:00 p.m.

Enrollment: 16,890
Conference: Southeastern
Series: 14-4, Florida
1965-66 Record: 16-10
Lettermen Returning: Eight

OUTLOOK: Although they are led by a new coach, the Florida Gators are looking forward to the 1966-67 season with much anticipation. Tommy Bartlett inherits a team loaded with experienced personnel at every position. With veterans Gary Keller (6-9), and Jeff Ramsey (6-11) on the floor along with sophomore Neal Walk (6-11), Florida will boast one of the nation's tallest teams. Captain Skip Higley is the team's floor leader at guard, and is rated one of the best little men (6-0) in the South.

KANSAS STATE

Dec. 9, 1966

Lawrence, Kansas

Allen Fieldhouse (17,000)

7:30 p.m., CST

Nickname: Wildcats

Location: Manhattan, Kansas

Athletic Director: Bebe Lee

Basketball Coach: Tex Winter, 13 yrs.,
226-100

Enrollment: 11,000

Conference: Big Eight

Series: First meeting

1965-66 Record: 14-11

Lettermen Returning: Seven

OUTLOOK: Seven lettermen are back, all of them starters under Coach Tex Winter's "try everybody" system—and among them are four of the top five scorers of last season. But it was a low scoring year for Wildcat individuals, and only Nick Pino (7-1) hit double figures (10.9). Two JC transfers and a pair of players from last year's "red shirts" should add the speed and quickness that was missing from the Wildcats last season.

KANSAS

Dec. 10, 1966

Manhattan, Kansas

Ahearn Fieldhouse (12,500)

7:05 p.m., CST

Nickname: Jayhawkers

Location: Lawrence, Kansas

Athletic Director: Wade R. Stinson

Basketball Coach: Ted Owens, 2 years,
40-12

Enrollment: 15,000

Conference: Big Eight

Series: First meeting

1965-66 Record: 23-4

Lettermen Returning: Five

OUTLOOK: Last March Kansas lost an 81-80 double overtime verdict to eventual national champion Texas Western in the Western Regional Finals. Although the three top scorers are gone from that Jayhawker club, Kansas expects to have another Big Eight Conference champion contender. Ted Owens, who is in his third year as Jayhawker coach, has four top veterans back this season, including Ron Franz (6-7) and Jo-Jo White, who averaged better than 20 points a game between them.

AUBURN

Dec. 27, 1966

Mobile, Alabama

Mobile Municipal Auditorium

8:30 p.m., CST

Nickname: Tigers

Location: Auburn, Alabama

Athletic Director: Jeff Beard

Basketball Coach: Bill Lynn, 4 years,
48-33

Enrollment: 12,600

Conference: Southeastern

Series: 13-3, Auburn

1965-66 Record: 16-10

Lettermen Returning: Six

OUTLOOK: The Tigers should sport a more balanced attack this season and an improved defense. Sophomores Larry Cantrell, David Hurt and Rex Etheredge should provide Auburn with strength on the boards. The guard play should be as good as any in the SEC but the front line will be inexperienced.

ALABAMA

Dec. 28, 1966
Mobile, Alabama
Mobile Municipal Auditorium
7:15 p.m., CST

Nickname: Crimson Tide
Location: Tuscaloosa, Alabama
Athletic Director: Paul W. Bryant
Basketball Coach: Hayden Riley, 6 yrs.,
81-75

Enrollment: 13,300
Conference: Southeastern
Series: 6-4, Florida State
1965-66 Record: 16-10
Lettermen Returning: Five

OUTLOOK: Hayden Riley has five lettermen returning and they will form the Crimson Tide's first team. The reserves will all lack experience and Alabama's strength will depend on how fast they come along. A good season this year could mean two in a row for 'Bama. The entire squad will be made up of Sophomores and Juniors.

MIAMI

Jan. 7, 1967
Tallahassee
Tully Gym (5,000)
8:00 p.m.

Mar. 1, 1967
Miami Beach
Miami Beach Auditorium (4,000)
8:15 p.m.

Nickname: Hurricanes
Location: Coral Gables
Athletic Director: Andy Gustafson
Basketball Coach: Bruce Hale, 12 years,
205-101

Enrollment: 14,500
Conference: Independent
Series: 18-15, Miami
1965-66 Record: 15-11
Lettermen Returning: Six

OUTLOOK: Miami returns four of the five starters that built a 15-11 record last year and Coach Bruce Hale expects to be tournament-bound at season's end. The Hurricanes have two-year veterans Junior Gee and Rick Jones returning to the guard spots and Mike Wittman and Rusty Parker at forward. Four centers left the Hurricane camp via graduation but Charles Soens, a 6-8 transfer from Villanova, is expected to pick up the slack there.

TULANE

Jan. 14, 1967
New Orleans, La.
Tulane Gymnasium (5,000)
8:00 p.m., CST

Feb. 11, 1967
Tallahassee
Tully Gym (5,000)
8:00 p.m.

Nickname: Green Wave
Location: New Orleans, La.
Athletic Director: Dr. Nix R. Yard
Basketball Coach: Ralph Pedersen, 2
years, 12-38

Enrollment: 8,000
Conference: Independent
Series: First Meeting
1965-66 Record: 9-16
Lettermen Returning: Nine

OUTLOOK: The Green Wave is looking to make a big improvement in its 9-16 record of last year as Tulane returns its six top scorers from 1965 and a crop of talented sophomores who failed to lose a single ball game in 19 outings last season. The Greenies will rely on the sophomores to spark their running game through a tough schedule.

MEMPHIS STATE

Jan. 16, 1967
Memphis, Tennessee
Mid-South Coliseum (12,500)
8:00 p.m. CST

Nickname: Tigers
Location: Memphis, Tennessee
Athletic Director: Billy Murphy
Basketball Coach: Henry (Moe) Iba,
first year

Feb. 4, 1967
Tallahassee
Tully Gym (5,000)
8:00 p.m.

Enrollment: 13,500
Conference: Missouri Valley
Series: 9-4, Memphis State
1965-66 Record: 10-15
Lettermen Returning: Nine

OUTLOOK: Nine lettermen, including the club's top five scorers, met new coach Henry (Moe) Iba this fall as the Tigers began preparation for the 1966 campaign. Junior Guard Mike Butler was Memphis State's leading scorer last year with a 19.2 average, and will be expected to lead a predominately junior team this year. The Tigers will be young by most standards, but their starters will be experienced.

JACKSONVILLE

Jan. 23, 1967
Tallahassee
Tully Gym (5,000)
8:00 p.m.

Nickname: Dolphins
Location: Jacksonville
Athletic Director: Roland L. Rourke
Basketball Coach: Joe L. Williams, 2
years, 27-22

Feb. 8, 1967
Jacksonville
Jacksonville Coliseum (10,000)
8:00 p.m.

Enrollment: 2,700
Conference: Independent
Series: 4-1, Florida State
1965-66 Record: 12-11
Lettermen Returning: Four

OUTLOOK: Florida State graduate Joe Williams will have four of his five starters returning this year at Jacksonville, but the roughest schedule in the school's history faces the Dolphins. Dick Pruett, 6-9 senior center, is the top returnee. Last year Pruett averaged 19.4 points a game and pulled in 10.6 rebounds per contest. He is expected to make a strong bid for national honors. Pruett will be flanked by 6-6 forwards Gene Martineau and Don Lee. Both are seniors. Junior Wayne Kruer returns at the guard spot.

MARSHALL

Jan. 25, 1967
Tallahassee
Tully Gym (5,000)
8:00 p.m.

Nickname: Thundering Herd
Location: Huntington, West Virginia
Athletic Dir.: Neal B. (Whitey) Wilson
Basketball Coach: Ellis T. Johnson, 3
years, 22-49

Enrollment: 8,000
Conference: Mid-American
Series: 1-0, Marshall
1965-66 Record: 12-12
Lettermen Returning: Eight

OUTLOOK: Marshall returns the nucleus of a squad that has played together the last two years and posted a 12-12 record against a strong schedule last season. The team's top three scorers are among those returning along with 6-9 center Bob Allen. The Thundering Herd should be stronger on the boards and their shooting ability is above average. With an improved defensive game and Allen providing more assistance on the boards, it could be an outstanding year for Marshall.

GEORGIA TECH

Jan. 28, 1967
Tallahassee
Tully Gym (5,000)
8:00 p.m.

Nickname: Yellow Jackets
Location: Atlanta, Georgia
Athletic Director: R. L. (Bobby) Dodd
Basketball Coach: John (Whack) Hyder,
15 years, 198-169

Feb. 25, 1967
Atlanta, Georgia
Alexander Memorial Coliseum (6,966)
8:00 p.m.

Enrollment: 7,500
Conference: Independent
Series: 4-2, Georgia Tech
1965-66 Record: 13-13
Lettermen Returning: Ten

OUTLOOK: The Yellow Jackets are expecting this year's team to be one of the most exciting in Tech history. Coach John (Whack) Hyder will have the "finest group of shooters" Tech has had, but the team will be handicapped by a lack of height. Starters from last year's club who will return are Pres Judy, Phil Wagner and Pete Thorpe. Also back are Dave Clark, Charles Kenny and Stan Guth, who all played big reserve roles for the Jackets.

TAMPA

Jan. 30, 1967
Tallahassee
Tully Gym (5,000)
8:00 p.m.

Nickname: Spartans
Location: Tampa
Athletic Director: Sam Bailey
Basketball Coach: Dana Kirk, first year

Feb. 27, 1967
Tampa
George B. Howell Field House (2,000)
8:00 p.m.

Enrollment: 2,000
Conference: Florida Intercollegiate
Series: 26-9, Florida State
1965-66 Record: 18-7
Lettermen Returning: Four

OUTLOOK: Tampa returns only one senior to this year's starting five, but the younger players in the Spartans' fold are all talented and show potential. Dana Kirk, who is in his first year as Spartan coach, has two juniors and a sophomore returning from last year's starting five. Several fine freshmen will be in the running for the starting berths also. A rugged December schedule may season the Spartans early and make them tough in the final stretches of the schedule.

FLORIDA SOUTHERN

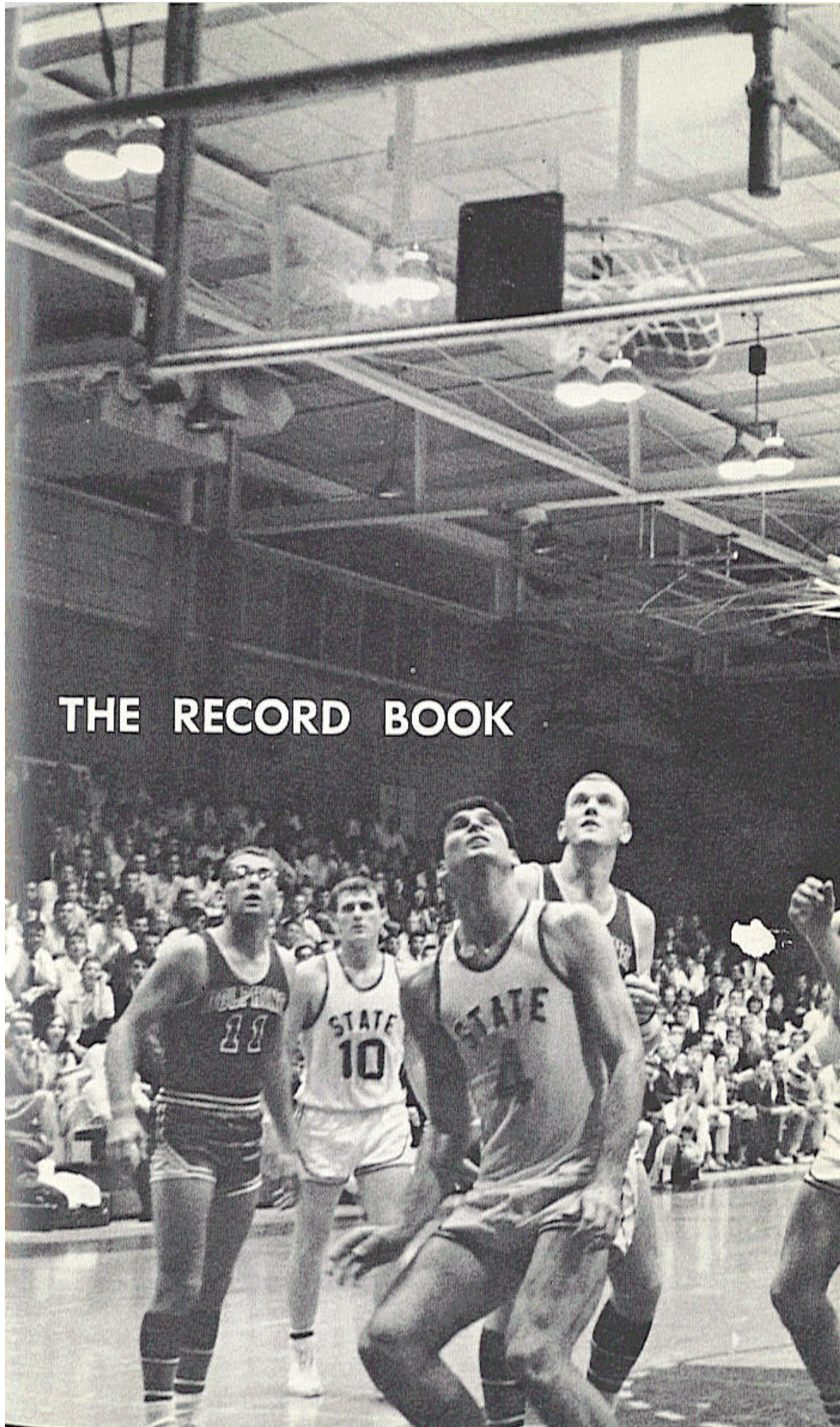
Feb. 18, 1967
Lakeland
George W. Jenkins Field House (4,500)
8:00 p.m.

Nickname: Moccasins
Location: Lakeland
Athletic Director: Thomas H. Greene
Basketball Coach: Tom Greene

Enrollment: 1,525
Conference: Florida Intercollegiate
Series: 14-8, Florida State
1965-66 Record: 16-9
Lettermen Returning: Eight

OUTLOOK: Eight returning lettermen, led by senior guard Bobby Bowman, give the Moccasins a large group of experienced personnel. Bowman, considered a strong "Little All-America" candidate, is a three-year veteran. He missed last season because of an injury. The team's top two rebounders are gone and it could be a problem this season.

THE RECORD BOOK



1,000 POINT CLUB

JIMMY OLER (1952-56)

A guard during the Seminoles' final years as a small college team, Jimmy Oler amassed 1,820 points in four varsity seasons. His 762 free throws still stand as a career record. The 743 points he scored in his senior year is also the pacesetter in that category.

Years	FG	FT	Pts.	Games	Aver.
4 (1952-56)	529	762	1820	91	20.0

DAVE FEDOR (1959-62)

Dave Fedor was one of the finest field shooters ever to wear the Garnet and Gold, and his record 20.2 lifetime score average and 72 game-string of double figure games attest to that. A forward from 1959-62, Fedor started every game the Seminoles played during his eligibility. The 16 field goals he made against Miami in 1959 still stand as a Seminole record.

Years	FG	FT	Pts.	Games	Aver.
3 (1959-62)	585	283	1453	72	20.2

HAM WERNKE (1951-55)

Another four-year varsity veteran, Ham Wernke, totaled 508 field goals and 393 free throws during his career. He and Jimmy Oler shared the honor of becoming the Seminoles' first 1,000 Point Clubbers in 1955.

Years	FG	FT	Pts.	Games	Aver.
4 (1951-55)	508	393	1409	73	19.3

HUGH DURHAM (1956-59)

Hugh Durham's 1,381 points rank him fourth among the Seminoles' all-time scorers. A guard from 1956-59, Durham averaged nearly 19 points a game for Florida State. During his sophomore season, Durham hit a record high of 43 points in a single game, a mark he holds jointly with Dave Fedor who equaled that output three years later.

Years	FG	FT	Pts.	Games	Aver.
3 (1956-59)	470	441	1381	73	18.9

GARY SCHULL (1963-66)

One of the finest big men ever to play for Florida State, Gary Schull became the latest member of the 1,000 Point Club with a 1,090 point total in 76 games from 1963-66.

Years	FG	FT	Pts.	Games	Aver.
3 (1963-66)	393	304	1090	76	14.3

RAY SWAIN (1959-62)

Ray Swain almost did not make the 1,000 Point Club. Near the end of his last varsity game, Coach Bud Kennedy took the three-year Seminole center-forward out of the game for a well-earned rest. With a little over a minute to play, Kennedy was informed that Swain lacked only a single field goal of joining the golden circle of Seminole scorers. Kennedy immediately returned Swain to the floor, and as the final seconds of his Florida State career ticked away, Swain made the all-important shot.

Years	FG	FT	Pts.	Games	Aver.
3 (1959-62)	403	194	1000	73	13.8

ALL-TIME FSU TEAM BASKETBALL RECORDS

SEASON

Most Games Played—27 in 1950-51 (Won 18, Lost 9)
Most Victories—22 by 1954-55 team (Lost 4, .846 pctg.)
Most Defeats—20 by 1951-52 team (Won 5, .200 pctg.)
Fewest Victories—5 by 1947-48 team (Lost 13, .277 pctg.) and by 1951-52 team (Lost 20, .200 pctg.)
Fewest Defeats—4 by 1954-55 team (Won 22, .846 pctg.)
Longest Win Streak—7 straight in 1961-62 (Feb. 8 to Mar. 2, 1962)
Longest Losing Streak—13 straight in 1947-48 (Jan. 10, to Feb. 20, 1948)
Most Points—2295 by 1954-55 team, 26 games (88.3 ppg.)
Fewest Points—850 by 1947-48 team, 18 games (47.2 ppg.)
Highest Scoring Average—88.3 by 1954-55 team, 26 games
Lowest Scoring Average—47.2 by 1947-48 team, 18 games
Best Winning Percentage—.846 by 1954-55 team (Won 22, Lost 4)
Worst Winning Percentage—.200 by 1951-52 team (Won 5, Lost 20)
Most Field Goal Attempts—2,164 by 1954-55 team, 26 games, made 794 (36.7 pctg.)
Most Field Goals made—794 in 1954-55, 26 games
Highest Field Goal Percentage—51.2 in 1961-62 (709 of 1386), 23 games (National Leader)
Most Free Throws Attempted—799 in 1956-57, 26 games, made 543 (67.9 pctg.)
Most Free Throws Made—707 in 1954-55, 26 games
Highest Free Throw Percentage—72.7 in 1963-64 (387 of 532), 25 games
Most Rebounds—1,422 in 1954-55, 26 games
Best Rebound Average—54.6 in 1954-55, 26 games, total 1,422
Most Personal Fouls—597 in 1949-50, 25 games
Fewest Personal Fouls—383 in 1961-62, 23 games
Most Points Allowed Opponents—2,071 in 1956-57 (79.6 ppg.), 26 games
Fewest Points Allowed Opponents—979 in 1947-48 (54.3 ppg.), 18 games
Most Games Scoring 100 or More Points—3 in 1954-55 and 1961-62

SINGLE GAME

Most Points—123 vs. Tampa, 92, Feb. 26, 1962 (A)
Most Points, Both Teams—215, FSU 123, Tampa 92, Feb. 26, 1962 (A)
Most Points, Home—121 vs. Tampa, Dec. 6, 1965
Most Points, Away—123 vs. Tampa, 92, Feb. 26, 1962 (A)
Most Points, Half—67, 2nd vs. Tampa (Final 123-92), Feb. 26, 1962 (A)
Most Points, Neutral Floor—108 vs. Furman, 96, Jan. 3, 1957—Senior Bowl Tournament (2nd Round), Mobile, Alabama
Fewest Points—35 vs. Suwanee, 43, Feb. 18, 1949 (H)
Biggest Victory Margin—64, FSU 121, Tampa 57, Dec. 6, 1965
Worst Defeat—52, FSU 51, West Virginia 103, Jan. 30, 1958 (A)
Most Points Allowed—115, North Carolina, Dec. 16, 1965
Most Field Goals Attempted—96 vs. Miami, Jan. 9, 1953 (A), made 22
Most Field Goals Made—52 vs. Tampa, Feb. 26, 1962 (A)
Most Free Throws Attempted—53 vs. Stetson, Jan. 19, 1957 (H)
Most Free Throws Made—38, vs. Stetson, Jan. 19, 1957 (H)
Most Rebounds—73 vs. Florida Southern, Feb. 24, 1966 (66 ind., 7 team)
Most Personal Fouls—34, vs. Memphis State, Jan. 11, 1960 (A)

ALL-TIME FSU INDIVIDUAL BASKETBALL RECORDS

SEASON

Most Points—743 by Jimmy Oler in 25 games, 1955-56
 Highest Scoring Average—29.7 by Jimmy Oler, 1955-56, 743 pts. in 25 games
 Most Rebounds—451 by Rick Benson in 26 games, 1954-55
 Best Rebound Average—17.4 by Rick Benson, 1954-55, total 451 in 26 games
 Most Field Goal Attempts—495 by Don Bates, 1958-59 (made 179), 23 games
 Most Field Goals Made—216 by Jimmy Oler, 1955-56
 Most Free Throws Attempted—380 by Jimmy Oler, 1955-56 (made 311), 25 games
 Most Free Throws Made—311 by Jimmy Oler, 1955-56
 Highest Field Goal Percentage—57.3 by Ray Swain, 1961-62 (157 of 274)
 Highest Free Throw Percentage—86.8 by Jerry Shirley, 1963-64 (59 of 68)
 Most Personal Fouls—102 by Danny Boltz, 1957-58, 25 games

SINGLE GAMES

Most Points—43 twice, by Hugh Durham (soph) vs. Stetson, Jan. 19, 1957 (14 FG, 15 FT) (H); and by Dave Fedor (soph) vs. Miami, Feb. 27, 1959 (16 FG, 11 FT) (A)
 Most Field Goals Attempted—37 by Ham Wernke vs. Tampa, Jan. 12, 1953 (made 14)
 Most Field Goals Made—16 by Dave Fedor vs. Miami, Feb. 27, 1959 (A)
 Most Free Throws Attempted—30 by Jimmy Oler vs. Morningside, Dec. 16, 1955 (H)
 Most Free Throws Made—22 by Jimmy Oler vs. Morningside, Dec. 16, 1955 (H)
 Most Rebounds—32 by Rick Benson vs. Florida Southern, Feb. 7, 1955 (H)

CAREER

Most Games Played—91 by Jimmy Oler, 1952-56 (Note: Oler played in 22 games as a freshman in 1952-53)
 Most Points—1,820 by Jimmy Oler in 91 games, 1952-56
 Highest Scoring Average—20.2 by Dave Fedor, 1959-62 (1,453 pts. in 72 games)
 Most Field Goals Attempted—1,174 by Dave Fedor, 1959-62, 72 games
 Most Field Goals Made—585 by Dave Fedor, 1959-62, 72 games
 Most Free Throws Attempted—975 by Jimmy Oler, 1952-56, 91 games
 Most Free Throws Made—761 by Jimmy Oler, 1952-56, 91 games
 Highest Field Goal Percentage—50.08 by Ray Swain, 1959-62 (403 of 793)
 Highest Free Throw Percentage—81.3 by Jerry Shirley, 1962-65 (161 of 198)
 Most Rebounds—969 by Dave Fedor, 1959-62, 72 games
 Best Rebound Average—13.4 by Dave Fedor, 1959-62, total 969 in 72 games
 Most Personal Fouls—324 by Tom McLaughlin, 1949-52, 77 games
 Most Consecutive Games Started—72 by Dave Fedor, 1959-62
 Longest String of Consecutive Double-Figure Games—72 by Dave Fedor, Dec. 1, 1959, to March 2, 1962 (Fedor's entire varsity career)

TOP FSU REGULAR SEASON SCORERS—ALL TIME

(450 Points or more)

Player—Position	Class	Year	Games	FG	FT	TP	Avg
Jimmy Oler-G	(Sr.)	1955-56	25	216	311	743	29.7
Jimmy Oler-G	(Jr.)	1954-55	26	164	221	549	21.1
Dave Fedor-F	(Soph)	1959-60	25	214	99	527	21.1
Ham Wernke-G	(Sr.)	1954-55	26	190	132	512	19.7
Hugh Durham-G	(Soph)	1956-57	26	177	155	509	19.6
Hugh Durham-G	(Sr.)	1958-59	23	171	162	504	21.9
Bob Hartman-G	(Sr.)	1950-51	27	193	107	493	18.2
Gary Schull-C	(Sr.)	1965-66	25	155	164	474	19.0
Dave Fedor-F	(Sr.)	1961-62	23	186	98	470	20.4
Ham Wernke-G	(Soph)	1952-53	22	167	134	468	21.3
Dave Fedor-F	(Jr.)	1960-61	24	185	86	456	19.0

SEMINOLES' RECORD AGAINST ALL OPPONENTS
(1966-67 Opponents appear in all capitals)

TEAM	FSU Won	FSU Lost	First Meeting	LAST MEETING		
				Date	Site	Score
Air Force	0	1	1963	12-26-63	N	53- 78
ALABAMA	6	4	1959	1-29-65	H	66- 75
Arkansas State	1	1	1953	2-20-54	H	78- 68
Army	0	1	1958	2- 7-58	H	62- 71
AUBURN	3	13	1958	12-27-65	N	64- 80
Baylor	1	0	1964	12-19-64	N	82- 64
Beloit	0	1	1955	3- 9-55	N	88-110
Birmingham Southern	0	2	1949	1-21-50	A	45- 55
Boston University	1	0	1955	12-20-55	N	86- 52
Bradley	0	1	1956	12- 8-56	A	66- 90
California, Univ. of (Santa Barbara)	1	0	1965	12-18-65	H	62- 61
Centenary	2	3	1957	2- 8-64	A	72- 79
Central (Mo.)	0	2	1949	12-15-52	H	59- 62
Charleston	2	0	1949	12- 9-50	A	74- 54
Chattanooga	1	0	1963	1- 3-63	A	72- 55
The Citadel	1	4	1958	2-18-61	A	66- 79
Clemson	2	5	1951	1- 8-62	A	69- 75
Connecticut St. Teachers	1	0	1950	12-14-50	H	76- 68
Creighton	0	1	1964	12-29-64	N	77- 85
Culver-Stockton	0	1	1951	12- 8-51	H	56- 59
David Lipscomb	1	1	1950	1- 5-51	A	73- 88
DePaul	0	1	1964	12-28-64	N	44- 52
Drury	0	1	1949	12-20-49	A	52- 59
Duke	0	1	1954	1- 3-54	A	75- 97
Duquesne	1	1	1956	2- 4-65	N	62- 58
East Tennessee State	0	2	1955	12-15-56	H	59- 65
Erskine	1	1	1948	2-28-48	H	49- 48
FLORIDA	4	14	1951	1-18-66	H	65- 74
FLORIDA SOUTHERN	14	8	1948	2-24-66	H	99- 54
Furman	5	2	1957	2- 6-64	H	57- 48
Georgia	18	9	1951	3- 5-66	H	87- 69
Ga. (Savannah Branch)	0	2	1948	2-12-48	H	42- 44
Georgia Southern	1	0	1962	12-29-62	N	79- 60
Ga. State Teachers	6	4	1947	1-14-64	A	81- 90
GEORGIA TECH	2	4	1963	2-14-66	A	88- 95
Houston	1	1	1962	1-26-63	H	76- 69
Howard (Samford)	6	0	1950	2-19-66	H	77- 66
Jacksonville (Ala.) State	2	0	1953	12- 4-54	H	103- 76
JACKSONVILLE	4	1	1959	2-10-66	H	78- 49
Kentucky	1	2	1948	12-12-62	A	54- 83
Lambuth	0	1	1949	2-28-49	N	49- 65
Lamar Tech	1	0	1965	12- 1-65	H	73- 68
LOYOLA OF NEW ORLEANS	8	13	1951	3- 5-66	A	62- 63
Louisiana State	1	2	1957	12- 1-59	A	78- 89
Manhattan	1	0	1963	12-27-64	N	85- 81
MARSHALL	0	1	1958	2- 1-58	A	68-109
MEMPHIS STATE	4	9	1953	2- 5-66	A	66- 81
Mercer	7	8	1948	1-30-54	A	63- 70
MIAMI	15	18	1952	2-28-66	A	95-112
Millikin	0	1	1951	3-15-51	N	60- 91

RECORD vs. OPP.—Cont.

TEAM	FSU Won	FSU Lost	First Meeting	LAST MEETING		
				Date	Site	Score
Millsaps	2	0	1949	1-26-50	H	62- 45
Mississippi	1	1	1951	2-14-51	A	75- 79
Mississippi College	5	1	1948	2-15-51	A	77- 54
Mississippi Southern	3	3	1951	1- 9-60	A	78- 87
Mississippi State	3	3	1951	12-21-56	N	71- 79
Montana State	1	0	1955	3- 7-55	N	93- 84
Morehead State	1	1	1957	1-30-60	H	78- 75
Morningside	1	0	1955	12-16-55	H	104- 83
Murray State	1	1	1957	2- 9-59	A	71- 96
New York University	1	0	1955	12-30-55	N	85- 83
North Carolina	0	1	1965	12-16-65	A	80-115
North Carolina State	0	2	1955	1-10-57	A	59- 64
Oglethorpe	1	1	1949	2-12-49	H	47- 46
Ohio State	0	1	1961	12- 1-61	A	57- 72
Ohio University	0	1	1958	2- 3-58	A	66- 86
Oklahoma City	3	2	1958	2- 3-62	A	81- 79
Oklahoma State	0	1	1964	12-18-64	N	56- 60
Panama Nationals	1	0	1966	1-28-66	H	96- 73
Parris Island Marines	0	2	1951	1-26-52	H	62- 64
Pepperdine	1	0	1951	3-14-51	N	61- 59
Phillips 66 Oilers	0	2	1955	2-16-63	H	73- 82
RICE	2	1	1961	12-30-64	N	81- 56
Richmond	0	2	1962	1- 2-64	A	65- 59
Rollins	17	2	1951	1-11-62	H	110- 53
Santa Clara	0	1	1955	12-29-55	N	59- 61
Sewanee	3	3	1949	12-17-52	A	58- 69
South Carolina	1	1	1960	12-17-60	A	72- 82
South Dakota State	1	0	1951	3-13-51	N	85- 70
Southwestern (Memphis)	0	1	1948	12-30-48	A	47- 54
SW Missouri State	0	1	1949	12-21-49	A	52- 79
Spring Hill	3	3	1947	1-18-55	A	81- 72
Stetson	17	10	1947	2-27-64	A	80- 60
Steubenville	0	1	1956	12- 3-56	A	64- 79
TAMPA	26	9	1949	2-26-66	A	99- 70
Tennessee	1	4	1957	12-22-64	N	43- 65
Tennessee Tech	1	0	1957	12- 2-57	H	74- 71
Texas A & M	0	1	1956	12-13-56	H	74- 83
Texas Christian	0	1	1963	12-12-63	A	60- 66
Troy State Teachers	6	1	1947	2- 6-56	H	90- 65
Tulsa	2	0	1963	12-26-64	A	74- 72
Union (Tenn.)	0	1	1948	12-29-48	A	52- 56
VALDOSTA STATE	6	0	1961	12- 2-65	H	69- 68
Vandervilt	0	1	1960	12- 5-60	A	55- 75
V.M.I.	2	1	1964	12-20-65	N	65- 64
Wake Forest	0	1	1958	12-11-58	A	64- 73
West Virginia	0	3	1955	1-30-58	A	51-103
Wisconsin	0	1	1961	12- 4-61	A	63- 64
Wofford	0	2	1948	2- 6-48	A	38- 77
Xavier of Ohio	0	1	1958	2- 4-58	A	60- 76

ALL-TIME FLORIDA STATE SCORES, 1947-1966
(19 Seasons, Won 242, Lost 221)

1947-48—Won 5, Lost 13 (.277)

COACH: Don Loucks

CAPTAIN: Jim Pavy

Date	Opponent	Site	FSU	Foe
12-10	Spring Hill	(H)	39	36
12-12	Troy State	(H)	57	37
1-10	Wofford	(H)	45	48
1-13	Stetson	(A)	56	65
1-15	Georgia Teachers	(H)	56	60
1-17	Georgia	(A)	46	65
1-23	Mercer	(H)	48	61
1-24	Spring Hill	(A)	54	76
1-30	Troy State	(A)	48	49
2- 3	Mercer	(A)	43	68
2- 5	Erskine	(A)	45	47
2- 6	Wofford	(A)	38	77
2-12	Georgia	(H)	42	44
2-13	Florida Southern	(A)	41	47
2-20	Georgia Teachers	(A)	47	65
2-21	Florida Southern	(H)	55	48
2-24	Stetson	(H)	41	38
2-28	Erskine	(H)	49	48

850 979

1948-49—Won 12, Lost 12 (.500)

COACH: J. K. (Bud) Kennedy

CAPTAIN: Art Adams

Date	Opponent	Site	FSU	Foe
12- 7	Mississippi College	(H)	53	21
12-10	Florida Southern	(H)	46	38
12-11	Florida Southern	(H)	53	45
12-15	Troy State	(A)	68	64
12-28	Lambuth	(A)	50	57
12-29	Union	(A)	52	56
12-30	Southwestern	(A)	47	54
1- 5	Stetson	(H)	49	40
1-14	Stetson	(A)	40	36
1-15	Tampa	(A)	56	58
1-18	Mercer	(H)	56	65
1-21	Troy State	(H)	63	45
1-27	Oglethorpe	(A)	52	64
1-28	Mercer	(A)	59	62
2- 2	Tampa	(H)	60	58
2- 4	Mississippi College	(A)	46	57
2- 5	Millsaps	(A)	49	46
2-12	Oglethorpe	(H)	47	46
2-18	Sewanee	(H)	35	43
2-19	Sewanee	(H)	47	39
2-23	Birmingham So.	(H)	44	50
2-26	Mercer	(NA)	52	46
2-27	Tampa	(N)	47	56
2-28	Lambuth	(N)	49	65

1220 1211

1949-50—Won 15, Lost 10 (.600)

COACH: J. K. (Bud) Kennedy

CAPTAINS: Dick Trobaugh, Lee Benjamin

Date	Opponent	Site	FSU	Foe
12- 5	Mississippi College	(H)	43	24
12- 6	Mississippi College	(H)	51	45
12-10	Troy State	(H)	61	27
12-15	Charleston	(H)	72	37
12-19	Central (Mo.)	(A)	50	62
12-20	Drury	(A)	52	59
12-21	S.W. Mo. State	(A)	52	79
1-12	Tampa	(A)	60	80
1-13	Florida Southern	(A)	65	71
1-14	Florida Southern	(A)	48	59
1-17	Mercer	(H)	63	45
1-20	Howard	(A)	59	58
1-21	Birmingham So.	(A)	45	55
1-26	Millsaps	(H)	62	45
1-28	Stetson	(H)	61	70
2- 1	Mercer	(A)	61	69
2- 4	Howard	(H)	50	39
2-10	David Lipscomb	(H)	57	53
2-11	Tampa	(H)	58	56
2-15	Troy State	(A)	79	71
2-17	Sewanee	(A)	85	65
2-18	Sewanee	(A)	74	68
2-27	Florida Southern	(N)	56	68
2-28	Mississippi College	(N)	74	63

1508 1427

1950-51—Won 18, Lost 9 (.667)

COACH: J. K. (Bud) Kennedy

CAPTAIN: Bob Hartman

Date	Opponent	Site	FSU	Foe
12- 9	Charleston	(A)	74	54
12-11	Mercer	(A)	55	52
12-14	Conn. State Teachers	(H)	76	68
12-15	Howard	(H)	60	44
12-16	Florida Southern	(A)	86	55
12-19	Miami	(A)	61	80
1- 5	David Lipscomb	(A)	73	88
1- 9	Mississippi	(H)	63	58
1-12	Stetson	(H)	66	67
1-13	Florida Southern	(H)	44	41
1-17	Tampa	(H)	80	69
1-19	Howard	(A)	58	51
1-25	Tampa	(A)	66	76
1-27	Stetson	(A)	53	71
2- 1	Rollins	(A)	60	57
2- 9	Loyola of N.O.	(H)	65	75
2-14	Mississippi	(A)	75	79
2-15	Mississippi College	(A)	77	54
2-17	Mercer	(H)	69	64
2-20	Rollins	(H)	62	45
2-26	Howard	(N)	64	54
2-27	Mercer	(A)	65	69
3- 2	Stetson	(N)	65	58
3- 3	Ga. Teachers	(N)	69	67
3-13	So. Dakota State	(N)	85	70
3-14	Pepperdine	(N)	61	59
3-15	Milikin	(N)	60	91

1792 1716

ALL-TIME SCORES—Cont.

1951-52—Won 5, Lost 20 (.200)

COACH: J. K. (Bud) Kennedy

CAPTAIN: Bob Whitmer

Date	Opponent	Site	FSU	Foe
11-26	Parris Isl. Marines	(A)	46	78
12- 8	Culver-Stockton	(H)	56	59
12-10	Mississippi State	(A)	47	75
12-11	Mississippi So.	(A)	43	84
12-14	Mississippi So.	(H)	70	78
12-19	Spring Hill	(A)	54	64
12-21	Sewanee	(N)	48	58
12-27	Georgia	(N)	50	79
12-28	Clemson	(N)	56	62
12-29	Florida	(N)	51	61
1- 5	Loyola of N. O.	(A)	52	74
1-11	Miami	(A)	56	93
1-15	Tampa	(A)	72	66
1-16	Florida Southern	(A)	51	54
1-19	Georgia Teachers	(H)	75	93
1-23	Florida Southern	(H)	72	53
1-26	Parris Isl. Marines	(H)	62	64
2- 1	Rollins	(H)	74	71
2- 7	Stetson	(A)	48	58
2- 8	Rollins	(A)	55	69
2-11	Miami	(H)	63	76
2-15	Tampa	(H)	79	60
2-23	Stetson	(H)	64	66
2-28	Miami	(N)	73	70
2-29	Tampa	(N)	57	78

N1—Tampa, Florida 1404 1683

1953-54—Won 13, Lost 7 (.619)

COACH: J. K. (Bud) Kennedy

CAPTAIN: Ham Wernke

Date	Opponent	Site	FSU	Foe
12- 4	Mississippi State	(A)	75	87
12- 8	Mercer	(H)	72	70
12-11	Georgia Teachers	(H)	66	58
12-16	Jacksonville (Ala.) St.	(H)	72	61
12-18	Stetson	(H)	74	71
12-19	Spring Hill	(H)	60	69
1- 6	Tampa	(H)	74	58
1- 7	Loyola of N. O.	(H)	76	80
1- 9	Miami	(A)	61	78
1-11	Rollins	(A)	82	72
1-12	Tampa	(A)	73	63
1-13	Florida Southern	(A)	98	80
1-16	Stetson	(A)	60	82
1-19	Rollins	(H)	85	68
1-21	Florida Southern	(H)	99	71
1-30	Mercer	(A)	63	70
2- 5	Miami	(H)	76	69
2-13	Loyola of N. O.	(A)	72	88
2-17	Georgia Teachers	(A)	89	85
2-20	Arkansas State	(H)	78	68

1505 1448

1952-53—Won 11, Lost 11 (.500)

COACH: J. K. (Bud) Kennedy

CAPTAIN: Game Captains

Date	Opponent	Site	FSU	Foe
12- 5	Mercer	(A)	62	78
12- 6	Georgia Teachers	(A)	68	63
12-12	Rollins	(H)	90	83
12-13	Mercer	(H)	77	76
12-15	Central (Mo.)	(H)	59	62
12-17	Sewanee	(A)	58	69
12-20	Mississippi State	(H)	82	52
1- 6	Loyola of N. O.	(H)	66	72
1- 9	Miami	(A)	65	93
1-12	Tampa	(A)	73	77
1-13	Florida Southern	(A)	71	89
1-31	Rollins	(A)	79	82
2- 2	Memphis State	(A)	73	87
2- 4	Arkansas State	(A)	77	88
2-10	Stetson	(H)	76	66
2-13	Florida Southern	(A)	71	89
2-14	Tampa	(H)	83	74
2-21	Loyola of N. O.	(A)	77	85
2-23	Miami	(H)	81	75
2-25	Stetson	(A)	83	79
3- 4	Mercer	(N)	87	77
3- 5	Stetson	(A)	81	94

1647 1698

1954-55—Won 22, Lost 4 (.846)

COACH: J. K. (Bud) Kennedy

CAPTAIN: Ham Wernke

Date	Opponent	Site	FSU	Foe
12- 4	Jacksonville (Ala.) St.	(H)	103	76
12- 6	Georgia Teachers	(H)	75	67
12-14	Tampa	(H)	90	62
12-18	Stetson	(H)	94	79
12-20	Miami	(H)	71	66
12-27	Florida	(N)	79	82
12-28	Georgia	(N)	97	87
1- 3	Duke	(A)	75	97
1- 7	Florida Southern	(A)	73	69
1- 8	Tampa	(A)	96	61
1-15	Georgia	(H)	90	81
1-18	Spring Hill	(A)	81	72
1-19	Mississippi State	(A)	91	76
1-28	Phillips "66" Oilers	(H)	--	--
1-29	Stetson	(A)	84	73
1-31	Rollins	(H)	86	74
2- 7	Florida Southern	(H)	84	63
2-14	Georgia	(A)	88	79
2-16	Rollins	(A)	110	82
2-19	Loyola of N. O.	(A)	95	101
2-21	Mississippi State	(H)	102	86
2-22	Loyola of N. O.	(H)	87	84
2-26	Miami	(A)	86	80
2-28	Stetson	(H)	86	77
3- 1	Georgia Teachers	(H)	91	83
3- 7	Montana State	(N)	93	84
3- 9	Beloit	(N)	88	110

2295 2051

ALL-TIME SCORES—Cont.

1955-56—Won 16, Lost 9 (.640)

COACH: J. K. (Bud) Kennedy

CAPTAIN: Jimmy Oler

Date	Opponent	Site	FSU	Foe
12- 1	North Carolina St.	(A)	63	88
12- 3	E. Tennessee State	(A)	54	80
12- 5	Rollins	(H)	101	67
12-10	Stetson	(H)	91	78
12-13	Tampa	(A)	89	67
12-16	Morningside	(H)	104	83
12-19	Clemson	(N)	76	94
12-20	Boston University	(N)	86	52
12-21	Mississippi State	(N)	71	79
12-28	West Virginia	(N)	69	78
12-29	Santa Clara	(N)	59	61
12-30	New York Univ.	(N)	85	83
1- 7	Miami	(H)	78	76
1- 9	Rollins	(A)	71	70
1-13	Georgia	(A)	79	76
1-14	Georgia Teachers	(A)	81	90
1-16	Loyola of N. O.	(H)	85	75
2- 6	Troy State	(H)	90	65
2- 7	Tampa	(H)	88	73
2-13	Florida Southern	(H)	92	74
2-18	Florida Southern	(A)	85	81
2-20	Stetson	(A)	89	83
2-25	Miami	(A)	85	91
3- 3	Loyola of N. O.	(A)	72	75
3- 5	Georgia	(H)	80	75

2023 1914

1956-57—Won 9, Lost 17 (.346)

COACH: J. K. (Bud) Kennedy

CAPTAIN: Game Captains

Date	Opponent	Site	FSU	Foe
12- 1	Duquesne	(A)	55	70
12- 3	Steubenville	(A)	64	79
12- 4	West Virginia	(A)	54	88
12- 8	Bradley	(A)	66	90
12-10	Florida	(A)	65	67
12-13	Texas A & M	(H)	74	83
12-15	E. Tennessee State	(H)	59	65
1- 1	Georgia	(H)	68	72
1- 2	Morehead State	(N)	75	97
1- 3	Furman	(N)	108	96
1-10	N. Carolina State	(A)	59	64
1-12	Miami	(H)	77	85
1-14	Stetson	(A)	70	97
1-19	Stetson	(H)	104	86
1-21	Georgia	(A)	86	63
2- 2	Tampa	(A)	82	67
2- 4	Rollins	(A)	97	94
2- 5	Florida Southern	(A)	63	78
2-11	Florida Southern	(H)	67	73
2-16	Rollins	(H)	96	79
2-18	Mississippi So.	(H)	81	72
2-20	Loyola of N. O.	(H)	79	77
2-23	Miami	(A)	82	98
2-25	Tampa	(H)	88	57
3- 1	Centenary	(A)	74	92
3- 2	Loyola of N. O.	(A)	56	82

1949 2071

1957-58—Won 9, Lost 16 (.360)

COACH: J. K. (Bud) Kennedy

CAPTAINS: Larry Strom, Bob Waits

Date	Opponent	Site	FSU	Foe
12- 2	Tennessee Tech	(H)	74	71
12- 7	Murray State	(H)	84	60
12- 9	Tennessee	(A)	57	74
12-11	Florida	(A)	70	71
12-14	Furman	(A)	89	95
12-17	Loyola of N. O.	(A)	56	82
12-18	Louisiana State	(A)	65	67
1- 1	The Citadel	(N)	57	59
1- 2	Georgia	(N)	92	80
1- 6	Loyola of N. O.	(H)	67	79
1- 9	Tampa	(H)	72	53
1-13	Memphis State	(A)	56	59
1-16	Stetson	(H)	77	60
1-18	Miami	(H)	71	70
1-30	West Virginia	(A)	51	103
2- 1	Marshall	(A)	68	109
2- 3	Ohio University	(A)	66	86
2- 4	Xavier of Ohio	(A)	60	76
2- 7	Army	(H)	62	71
2-12	Oklahoma City	(H)	57	52
2-13	Rollins	(H)	80	61
2-18	Memphis State	(H)	51	68
2-22	Miami	(A)	66	86
2-24	Tampa	(A)	56	79
3- 3	Georgia	(H)	85	77

1689 1848

1958-59—Won 8, Lost 15 (.347)

COACH: J. K. (Bud) Kennedy

CAPTAIN: Hugh Durham

Date	Opponent	Site	FSU	Foe
12- 1	Kentucky	(A)	68	91
12- 6	Furman	(H)	73	72
12- 9	Spring Hill	(H)	100	70
12-11	Wake Forest	(A)	64	73
12-13	Florida	(H)	82	60
12-17	Auburn	(A)	74	95
12-19	Miami	(N)	79	85
12-20	Georgia	(N)	72	83
12-27	Louisiana State	(H)	82	67
12-29	Auburn	(H)	62	69
1- 6	Mississippi So.	(H)	65	62
1-13	Memphis State	(H)	72	75
1-17	Miami	(H)	93	69
1-19	Georgia	(A)	91	94
1-31	Oklahoma City	(A)	75	103
2- 2	Centenary	(A)	63	87
2- 7	Loyola of N. O.	(H)	61	60
2- 9	Murray State	(A)	71	96
2-10	Memphis State	(A)	69	93
2-16	Oklahoma City	(H)	84	98
2-21	Stetson	(A)	91	98
2-23	Rollins	(A)	94	93
2-28	Miami	(A)	85	92

1770 1785

ALL-TIME SCORES—Cont.

1959-60—Won 10, Lost 15 (.400)

COACH: J. K. (Bud) Kennedy

CAPTAIN: Game Captains

Date	Opponent	Site	FSU	Foe
12- 1	Louisiana State	(A)	78	89
12- 2	Loyola of N. O.	(A)	64	71
12- 5	Florida	(A)	71	81
12-12	Auburn	(A)	58	62
12-14	Alabama	(A)	86	74
12-18	Clemson	(A)	64	68
12-28	Auburn	(H)	63	76
12-29	Jacksonville Univ.	(A)	86	69
12-30	Georgia	(N)	66	69
1- 4	South Carolina	(H)	93	75
1- 5	The Citadel	(H)	74	76
1- 7	Centenary	(H)	81	71
1- 9	Mississippi So.	(A)	78	87
1-11	Memphis State	(A)	71	86
1-14	Tampa	(H)	72	67
1-16	Miami	(H)	91	93
1-30	Morehead State	(H)	78	75
2- 1	Tampa	(A)	68	83
2- 9	Memphis State	(H)	67	83
2-11	Rollins	(H)	101	58
2-13	Furman	(A)	105	98
2-15	The Citadel	(A)	60	100
2-22	Loyola of N. O.	(H)	69	50
2-27	Miami	(A)	89	107
2-29	Georgia	(H)	95	82

1928 1950

1960-61—Won 14, Lost 10 (.583)

COACH: J. K. (Bud) Kennedy

CAPTAINS: Dave Fedor, Jack Davis

Date	Opponent	Site	FSU	Foe
12- 1	Tampa	(H)	88	60
12- 3	Kentucky	(A)	63	58
12- 5	Vanderbilt	(A)	55	75
12-10	Auburn	(A)	57	74
12-12	Clemson	(H)	74	57
12-14	Florida	(H)	67	74
12-17	South Carolina	(A)	72	82
12-19	Clemson	(A)	65	64
12-28	Georgia	(N)	56	62
1- 4	Tennessee	(A)	68	70
1- 9	Loyola of N. O.	(H)	73	55
1-14	Miami	(H)	89	78
1-17	Auburn	(N)	67	74
1-28	Rollins	(A)	78	70
1-31	Alabama	(H)	68	57
2- 6	The Citadel	(H)	83	77
2- 9	Valdosta State	(H)	86	66
2-16	Georgia	(A)	77	68
2-18	The Citadel	(A)	66	79
2-20	Furman	(H)	99	57
2-22	Florida	(A)	74	75
2-24	Tampa	(A)	116	95
2-25	Miami	(A)	73	75
2-28	Loyola of N. O.	(A)	72	68

1786 1670

1961-62—Won 15, Lost 8 (.651)

COACH: J. K. (Bud) Kennedy

CAPTAINS: Dave Fedor, Ray Swain

Date	Opponent	Site	FSU	Foe
12- 2	Ohio State	(A)	57	72
12- 4	Wisconsin	(A)	63	64
12- 6	Rice	(H)	76	66
12- 7	Florida	(A)	85	71
12- 9	Auburn	(A)	56	52
12-14	Clemson	(H)	77	82
12-16	Tennessee	(A)	69	62
12-30	Auburn	(H)	57	62
1- 4	Oklahoma City	(H)	99	74
1- 6	Furman	(A)	64	67
1- 8	Clemson	(A)	69	75
1-11	Rollins	(H)	110	53
1-13	Miami	(H)	65	60
1-31	Alabama	(A)	57	72
2- 3	Oklahoma City	(A)	81	79
2- 5	Houston	(A)	76	84
2- 8	Valdosta State	(H)	72	42
2-12	Tampa	(H)	91	71
2-15	Georgia	(A)	71	62
2-21	Florida	(H)	79	56
2-24	Miami	(A)	83	80
2-26	Tampa	(A)	123	92
3- 2	Georgia	(H)	101	69

1781 1567

1962-63—Won 15, Lost 10 (.600)

COACH: J. K. (Bud) Kennedy

CAPTAIN: Charlie Long

Date	Opponent	Site	FSU	Foe
12- 1	Tampa	(H)	92	60
12- 3	Valdosta State	(H)	65	42
12- 6	Florida	(H)	59	80
12- 8	Auburn	(A)	47	65
12-10	Alabama	(H)	72	63
12-12	Kentucky	(A)	54	83
12-21	Auburn	(H)	70	77
12-22	Richmond	(H)	56	62
12-27	Georgia	(N)	77	69
12-28	Alabama	(N)	49	48
12-29	Ga. Southern (championship)	(N)	79	60
1- 2	Tennessee	(A)	65	66
1- 3	Chattanooga	(A)	72	55
1-12	Miami	(H)	77	74
1-14	Georgia	(H)	88	54
1-17	Georgia	(A)	76	90
1-19	Georgia Tech	(A)	55	70
1-23	Florida	(A)	86	94
1-26	Houston	(H)	76	69
1-28	Alabama	(A)	63	61
2- 5	Valdosta State	(A)	61	56
2- 9	Stetson	(H)	73	57
2-11	Centenary	(H)	82	68
2-16	Phillips "66" Oilers	(H)	73	82
2-23	Miami	(A)	70	99
2-25	Tampa	(A)	80	58

1744 1680

ALL-TIME SCORES—Cont.

1963-64—Won 14, Lost 14 (.500)

COACH: J. K. (Bud) Kennedy

CAPTAIN: Pete Rogers

Date	Opponent	Site	FSU	Foe
12- 3	Florida	(A)	55	78
12- 7	Auburn	(H)	69	67
12- 9	Alabama	(A)	53	62
12-11	Rice	(A)	81	102
12-12	Texas Christian	(A)	60	66
12-21	Tampa	(H)	107	61
12-23	Tulsa	(H)	91	76
12-26	Air Force	(N)	53	78
12-27	Manhattan	(N)	85	81
1- 2	Richmond	(A)	65	69
1- 4	Virginia Military	(A)	72	83
1-11	Miami	(H)	80	78
1-16	Memphis State	(H)	91	90
1-18	Georgia	(H)	64	63
1-23	Florida	(H)	50	52
1-28	Auburn	(A)	59	63
1-29	Alabama	(H)	95	77
2- 6	Furman	(H)	57	48
2- 8	Centenary	(A)	72	79
2-10	Memphis State	(A)	72	84
2-15	Georgia Tech	(A)	73	77
2-22	Jacksonville	(H)	101	77
2-27	Stetson	(A)	80	60
2-29	Miami	(A)	80	82
3- 3	Georgia	(A)	70	85

The Seminoles had 3 wins
on a South American Tour.

1835 1838

1964-65—Won 16, Lost 10 (.620)

COACH: J. K. (Bud) Kennedy

CAPTAIN: Pete Gonzalez

Date	Opponent	Site	FSU	Foe
12- 1	Valdosta State	(H)	81	57
12- 3	Virginia Military	(H)	76	72
12- 5	Auburn	(A)	68	92
12- 7	Alabama	(A)	73	76
12- 9	Florida	(H)	51	50
12-18	Oklahoma State	(N)	56	60
12-19	Baylor	(N)	82	64
12-22	Tennessee	(N)	43	65
12-26	Tulsa	(A)	74	72
12-28	DePaul	(N)	44	52
12-29	Creighton	(N)	77	85
12-30	Rice	(N)	81	56
1- 7	Georgia (OT)	(A)	64	55
1- 9	Miami	(H)	67	66
1-16	Memphis State	(H)	74	61
1-20	Georgia Tech	(H)	72	65
1-25	Auburn	(H)	58	55
1-29	Alabama	(H)	66	75
2- 4	Duquesne	(N)	62	58
2- 6	Memphis State	(A)	81	70
2-10	Jacksonville	(H)	97	74
2-15	Georgia Tech	(A)	76	77
2-21	Tampa	(A)	71	64
2-23	Florida	(A)	65	77
3- 1	Miami	(A)	75	82
3- 6	Georgia	(H)	85	83

1819 1763

1965-66—Won 15, Lost 11 (.577)

COACH: J. K. (Bud) Kennedy

CAPTAIN: Gary Schull

Date	Opponent	Site	FSU	Foe
12- 1	Lamar Tech	(H)	73	68
12- 2	Valdosta	(H)	69	68
12- 6	Tampa	(H)	121	57
12- 8	Florida	(A)	62	75
12-16	North Carolina	(A)	80	115
12-18	Univ. of California (Santa Barbara)	(H)	62	61
12-20	V.M.I.	(A)	65	64
12-21	Auburn	(A)	58	59
12-27	Auburn	(A)	64	80
1- 3	Georgia	(A)	57	63
1- 7	Miami	(H)	78	62
1-10	Loyola of N. O.	(H)	73	53
1-15	Memphis	(H)	67	63
1-18	Florida	(H)	65	74
1-24	Jacksonville	(A)	86	90
1-28	Panama Nationals	(H)	96	73
1-31	Georgia Tech	(H)	71	66
2- 5	Memphis	(A)	66	81
2- 7	Loyola of N. O.	(A)	62	63
2-10	Jacksonville	(H)	78	49
2-14	Georgia Tech	(A)	88	95
2-19	Samford	(H)	77	66
2-24	Florida Southern	(H)	99	54
2-26	Tampa	(A)	99	70
2-28	Miami	(A)	90	112
3- 5	Georgia	(H)	87	69

1993 1850

