

FSU

GOLF



1984 Media Guide

Women's 1983 Fall Results

Tournament	Site	Place
Lady Seminole Inv.	Tallahassee, Fla.	10th
Memphis State Inv.	Memphis, Tenn.	9th
Alabama Seascape Inv.	Destin, Fla.	11th
Pat Bradley Inv.	Miami, Fla.	9th
Sun Coast Inv.	Innisbruck, Fla.	13th

Men's 1983 Fall Results

Tournament	Site	Place
LSU National Inv.	Baton Rouge, La.	2nd
Andy Bean Inv.	Haines City, Fla.	7th
Dixie International	Columbus, Ga.	5th
State Championship	Sebring, Fla.	Div. 1 winner

DIRECTORY

Golf

Seminole Golf Course

Head Coach.....Verlyn Giles
Years at FSU....fifth as women's coach, second as men's
Other duties...General Manager of Seminole Golf Course
Office Phone.....(904) 644-2582

Athletic Staff

C. W. "Hootie" Ingram, Athletic Director.....644-1060
Bob Goin, Associate Athletic Director.....644-1060
Barbara Palmer, Associate Athletic Director.....644-2087
Claude Thigpen, Assistant to the Director.....644-1060
Larry Pendleton, Assistant to the Director.....644-1060
Jo Heath, Women's Administrative Assistant.....644-1441

Sports Information

Athletic Field House

Wayne Hogan, Director.....644-1060
Lisa Morton, Associate.....644-1060
Dan Pearson, Assistant.....644-1060
Rob Wilson, Graduate Assistant.....644-1060
Judy Greve, Secretary.....644-1060

Credits: The 1983-84 Golf Guide was written and edited by Rob Wilson, Sports Information Graduate Assistant with editorial assistance from Lisa Morton. Cover by Russ Wilson. Photographs used in this guide were supplied by the University Photo Lab.

1983-84 GOLF AT FLORIDA STATE Table of Contents

Golf Results — Fall 1983.....	IFC
Staff Directory.....	IFC
Media Information.....	1
Head Coach Verlyn Giles.....	2
Women's Outlook.....	5
Women's Profiles.....	6-7
Team Photo.....	8-9
Women's Roster.....	8
Men's Roster.....	9
Men's Outlook.....	11
Men's Profiles.....	12-13
Florida State Athletic Staff.....	14
This is Florida State.....	IBC
Seminole Golf Course.....	IBC
1984 Women's and Men's Spring Schedules.....	BC

Florida State Facts

Location.....	Tallahassee, Florida
Enrollment.....	22,000
Founded.....	1857
Nickname.....	Seminoles, Lady Seminoles
Colors.....	Garnet and Gold
University President.....	Dr. Bernard F. Sliger
Faculty Representative.....	Dr. James P. Jones
Home Course.....	Seminole Golf Course
Conference	
Women.....	independent
Men.....	Metro
Affiliation.....	NCAA.

Media Information

Florida State's 1984 Golf Guide has been designed for use by the media, prospective student-athletes and friends of the university. Any questions not covered in this brochure should be directed to the sports information office, P. O. Drawer 2195, Tallahassee, FL 32304. Additional information such as feature material and photographs, will be made available upon request.

Head Coach Verlyn Giles



Verlyn Giles is in his second year of coaching both the men's and women's golf teams at Florida State.

Giles had coached the FSU women for three years before taking over for retiring men's coach Don Veller. The Lady Seminoles won the national championship in 1981 under Giles' direction.

Florida State Athletic Director C. W. Ingram described Coach Giles in the following manner: "Verlyn has proven to be an outstanding teacher and coach

at the college level. He is known throughout the country and has a fine reputation on the collegiate golf scene — especially after his team advanced to the national championship in such a short period of time."

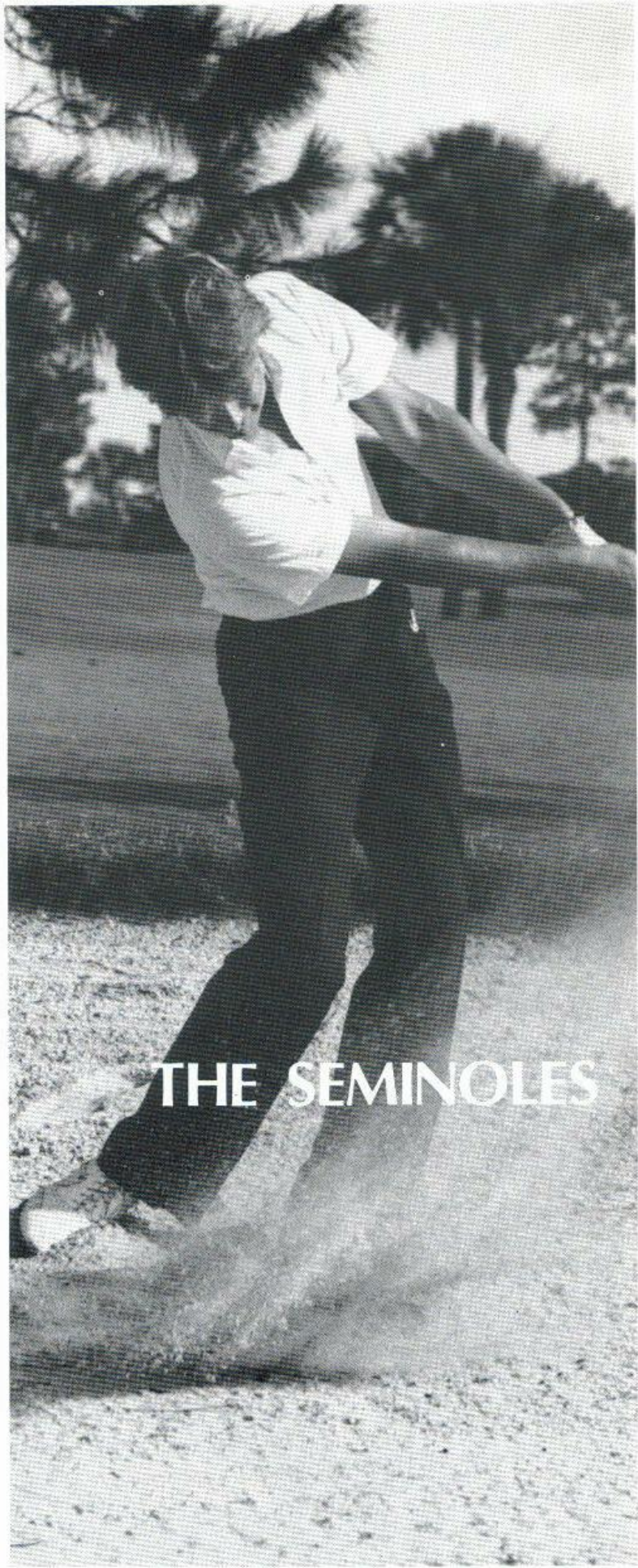
In addition to handling both teams, Giles will continue in his position as General Manager of the Seminole Golf Course. He has held that post since 1971 and continues there since taking over the women's program in 1979.

"I think the golf program at Florida State is really becoming one of the best," said Giles. "We're starting to establish ourselves as one of the strongest teams and that helps our recruiting," added Giles, who has produced three first team all-americans at FSU.

The Jacksonville native first came to Florida State in 1958 to begin work on a master's degree. From 1961-63 he served as the assistant track coach under former coach Mike Long. He had earned his undergraduate degree from South Georgia College where he played football under now Florida State coach Bobby Bowden.

After earning his graduate degree Giles moved on to Manatee County where he was an assistant football coach in addition to serving as head track and golf coach at Palmetto High School until 1965.

The coach then returned to Tallahassee where he accepted a position as offensive line coach under Gene Cox at Leon High School. He held that position until he became General Manager of the Seminole Golf Course in 1971. Giles is married to the former Kathy Moon and the couple have three daughters: Stephne, 18; Stacy, 13; and Kacci, 9.



THE SEMINOLES



DEBBIE MOSS

WOMEN COULD BE STRONG

Although the fall season showed the results of a young and inexperienced team, head coach Verlyn Giles feels like his 1983-84 women's team could produce some fine individual efforts.

The reason for Giles' optimism comes from the competitive attitude and drive that he has seen in the Lady Seminoles.



LAVIS

"These girls are working hard," he said. "I think if they keep pushing one another and get some experience, we could have a very successful year."

If Debbie Moss plays like she did as a freshman last year, the women do indeed have a bright future. Moss placed 6th in the Memphis State Invitational and was FSU's most consistent lady golfer last season. Moss will be joined by Lorraine Elder in the top 5. Should Elder return to last year's form, Coach Giles feels she could become "one of FSU's finest ever."

The strong competition among team members is, in Giles opinion, one of the strengths of this year's Seminole squad.

"If you have your own players pressuring each other to get better then the whole team will improve and that is going to mean a more successful record," said Giles.

The Lady Seminoles also welcome transfer Ann Lavis to the roster. Lavis was the low qualifier for the year among FSU women and should be Florida State's number one player. Lavis was not eligible for the fall season, however, she brings impressive credentials to Tallahassee.

Adding to the bright spots are the improved play of junior, Shari Lindsey and freshman, Debbie Zahand.

Coach Giles had this to say about the 1984 fall season; "I think the lack of experience in the fall could possibly jeopardize a bid to the NCAA Tournament. However, with some improvement we could see a lot of success on an individual basis."

Coach Giles is one man that knows what it takes to win. In 1981, he led his Lady Seminoles to the national championship.

"You've really got to play well going into the NCAA's," said Giles. "You've got to have a group of dedicated kids that will push each other toward that goal. Our group has to play as a team, with every player contributing, if we hope to get anywhere."

With the returning talent at FSU and the promise showing in some of the younger players, the Lady Seminoles figure to be in the heat of the race for another national title.

WOMEN'S PROFILES



ELAINE CARSON
Senior
West Sunbury, Pennsylvania

Great attitude and hard work have earned her most improved player honors . . . should play in top 5 . . . won district 9 tournament in 1980 . . . senior class president as a high school senior . . . majoring in Marketing . . . born September 14, 1962.



LORRAINE ELDER
Sophomore
Annandale, Virginia

Should show results of experience gained during last two seasons . . . figures to be one of teams strongest players . . . finished 13th overall in last year's Memphis State Invitational . . . will add depth to Lady Seminole top 5 . . . could be one of FSU's finest ever . . . runner-up in Virginia Junior Amateur . . . Psychology major . . . born July 10, 1963.



CHRISTIN ERICSON
Freshman
Spokane, Washington

A relative unknown in high school expected to have bright future at Florida State . . . needs to gain tournament experience at the collegiate level . . . placed 2nd in Idaho Amateur as high school senior . . . won National Junior Heritage during 1983 . . . received athletic inspiration award in high school . . . plans to major in Law . . . born June 20, 1965.



ANN LAVIS
Junior
Uxbridge, Ontario, Canada

Transfer student who was not eligible for the fall season . . . low qualifier for the year among FSU women . . . expected to play No. 1 on the Lady Seminole squad . . . has good swing and has gained valuable experience . . . should have an excellent career . . . rated in top 10 in junior Canada in 1980 . . . low qualifier in state amateur team competition that same year . . . Marketing major . . . born December 18, 1962.

LYNN LEONARD
Junior
Lynn Haven, Florida

Very intense competitor . . . should be a strong contender for the top 5 . . . tied for 2nd in Michigan State Invitational . . . 3rd in Illinois State Invite . . . won high school district tournament and placed 6th in high school state competition . . . majoring in Nursing . . . born June 27, 1962.



SHARI LINDSEY
Junior
Vero Beach, Florida

Lack of tournament experience held her back during 1983 season . . . should be a strong player this spring . . . was in and out of top 5 last spring and added experience should put her there for good . . . player of the year at Vero Beach High School her senior year . . . all Space Coast and Cape Coast team for 3 years . . . Physical Education major . . . born April 4, 1962.



DEBBIE MOSS
Sophomore
West Palm Beach, Florida

Most consistent player on the team last year as a freshman . . . 2nd best scoring average among FSU women during the 1983 season . . . had a 6th place overall finish in the Memphis State Invitational last year . . . should be one of the nation's finest with the experience gained during freshman year . . . majoring in Communications . . . born July 19, 1963.



LEIGH ANN MILLS
Freshman
Coral Springs, Florida

May be red-shirted this spring to allow her to gain collegiate experience . . . great potential . . . excellent golf swing and knowledge of the game . . . player of the year at Coral Springs High School . . . finished 8th in Tournament of Champions in 1983 . . . plans to major in Accounting . . . born October 25, 1965.



DEBBIE ZAHAND
Freshman
Vienna, Virginia

Great desire should lead her to much success . . . great all-around athlete who figures to have very successful career at Florida State . . . was Most Valuable Player as a sophomore and again as a senior on her high school boys golf team . . . hopes to major in Business . . . born December 18, 1964.



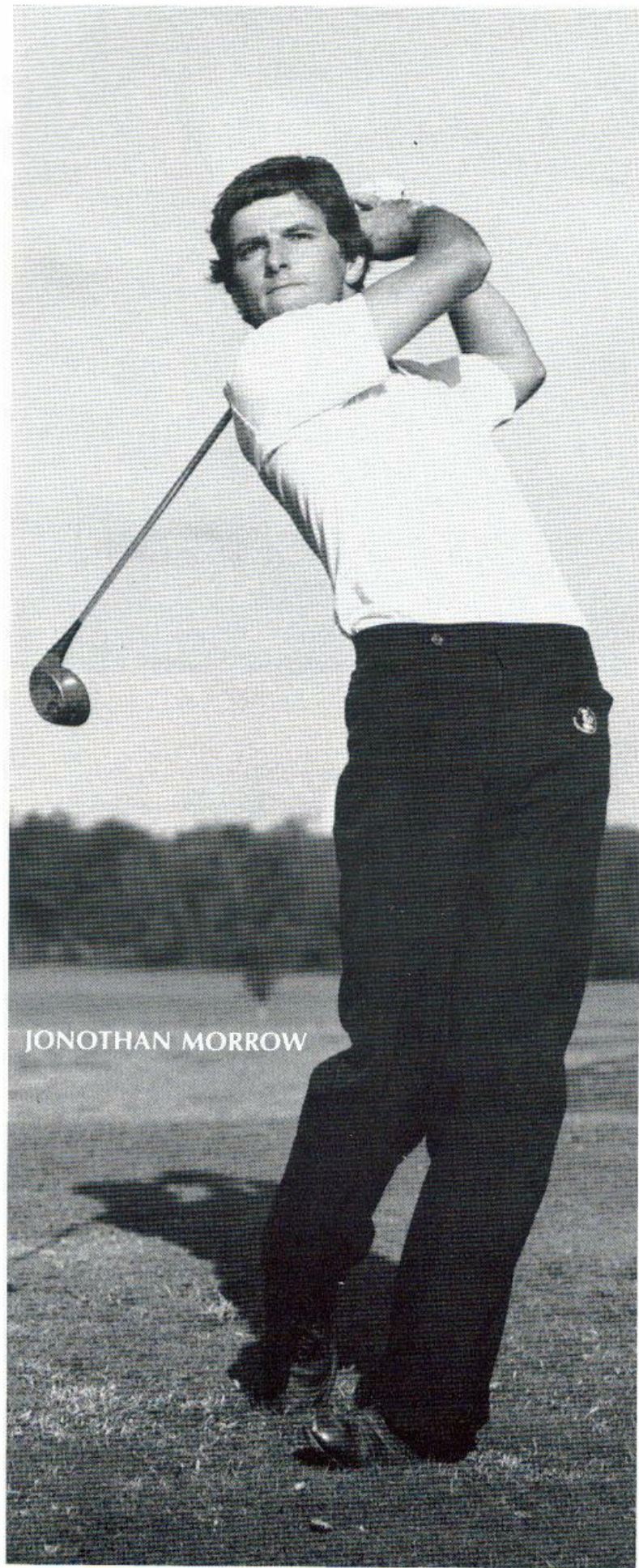


1983-84 WOMEN'S GOLF ROSTER

NAME	CLASS	HOMETOWN	NAME	CLASS	HOMETOWN
CARSON, Elaine	Sr.	W. Sunberg, PA	LEONARD, Lynn	Jr.	Lynn Haven, FL
ELDER, Lorraine	Jr.	Annandale, VA	LINDSEY, Shari	Jr.	Vero Beach, FL
ERICKSON, Cristin	Fr.	Bentonville, AR	MILLS, Leigh	Fr.	Coral Springs, FL
GRYZWACZ, Jacquelyn	Fr.	Mt. Clemens, MI	MOSS, Debbie	So.	Palm Beach, FL
LAVIS, Ann	Jr.	Uxbridge, Ontario, Canada	ZAHAND, Deborah	So.	Vienna, VA

1983-84 MEN'S GOLF ROSTER

NAME	CLASS	HOMETOWN	NAME	CLASS	HOMETOWN
BAUMGARDNER, Brad	Sr.	Dayton, OH	KRYSTYN, Tom	Fr.	Jacksonville, FL
FLEISCHER, Greg	Sr.	Elberton, GA	KULZER, Keith	Sr.	Ormond Beach, FL
FRALEIGH, Ashley	Jr.	Tallahassee, FL	LONG, Robert	Fr.	Jacksonville, FL
GARDE, Greg	Jr.	Jacksonville, FL	MCCRONE, Sean	So.	Pensacola, FL
GREEK, Steve	So.	Fern Park, FL	MORROW, Jonathan	Sr.	N. Wales, U.K.
HENKE, Nolan	Fr.	Fort Myers, FL	PAULK, John	Fr.	Jekyll Island, FL
HORTON, Mark	So.	Liverpool, England	SWEENEY, Thomas	So.	E. Williston, NY
KAMM, Brian	Sr.	Spenceport, NY	VEGHTE, John	Fr.	Clearwater, FL



JONOTHAN MORROW

MEN SHOW EXPERIENCE

With the return of four of their top five players of last year, the FSU men's team should be one of the most experienced in the nation.

Returning for the Seminoles are two Honorable Mention All-Americans, Greg Fleischer and Keith Kulzer, as well as seniors, Brian Kamm and top tournament finisher Jonothan Morrow.



KULZER

"It's obvious that we'll have more depth than we've had since I've been here," said head coach Verlyn Giles. "We should have sufficient depth to compete with the best in the country."

Adding to that depth is the return of two red-shirted players to the line-up. Greg Garde and Steve Greek should be battling for top five position all season.

Coach Giles is pleased with the inner-squad competition saying, "With the depth we have, the competition will be great for the top 5 positions leading to an atmosphere of a much improved team for the stretch to the NCAA Nationals."

With all the returning talent, the Seminole men have set their goals high for the 1983-84 season.

"Our goal is a bid to the NCAA National Tournament," according to Giles. "We also want to play well in the tournaments leading up to the NCAA's. We've got to play well when it counts to have the momentum needed to meet our goals."

Maybe the biggest plus of all for this year's men's squad is the fact that no one's sure who the best player will be. With the unprecedented depth of the team, Giles must wonder just who will be his "number one" player.

Surely high on the list should be Morrow. Morrow finished as FSU's most consistent golfer last spring with top 10 finishes in most of the tournaments in which he was entered.

A good argument could be made for last year's Imperial Lakes Tournament winner Keith Kulzer, as well as Greg Fleischer, winner of 1983 Dixie Tournament.

Clearly, the Seminoles should be strong in experience and talent for the 1983-84 campaign, and it is those factors that prompt the FSU men to shoot for such lofty goals.

MEN'S PROFILES



GREG FLEISCHER

Senior
Elberton, Georgia

Should battle for No. 1 player during spring season . . . won the Jr.-Sr. Tournament in 1982, in addition to being named to the third team All-American squad . . . made the All Collegiate Golf Team in 1982 . . . was an All-Conference performer in 1982 and was listed as an Honorable Mention All-American that same year . . . all-around athlete in high school who played football and basketball as well as golf . . . Business Management Major . . . born December 23, 1961.



GREG GARDE

Junior
Jacksonville, Florida

Should make strong bid for top 5 in 83-84 after being red-shirted last year . . . was co-medalist of 1983 NCAA tournament . . . earned all-district and all-city honors in 1981 at Episcopal High School . . . majoring in Physics . . . born May 28, 1963.



STEVE GREEK

Junior
Fern Park, Florida

Was red-shirted last year to give him another year of seasoning . . . attends Florida State on an academic scholarship after maintaining a 4.0 average in high school . . . Won 1983 Dixie Amateur Champion . . . Won the 1980 Jacksonville Golf Assoc. championship . . . was an all-conference selection and team MVP each year from 1978-81 at Keystone Heights High School . . . business major . . . born October 1, 1963.



NOLAN HENKE

Sophomore
Ft. Myers, Florida

Has an excellent game and added experience should prove him to be one of the top players in the country . . . was red-shirted last year to gain experience . . . came to Florida State ranked in the top 10 players in the state by Florida Golf World . . . plans to major in business . . . born November 25, 1964.

BRIAN KAMM
Senior
Spenceport, New York

Expected to be in top 5 for the spring 1984 . . . was ineligible in fall but should return to previous form in spring . . . one of Florida State's most improved golfers . . . was 1981 U.S. Amateur qualifier . . . finished third in New York State Amateur . . . great competitive attitude . . . born September 3, 1961.



TOM KRYSZYN
Junior
Jacksonville, Florida

Red-shirted in 1983 to allow him to work on his game . . . will be a valuable asset to Seminole top 5 in 83-84 . . . with experience could be one of the top collegiate golfers in the nation . . . former Future Masters Champion . . . was most valuable golfer at Sandlewood High School from 1980 to '82 . . . business major . . . born December 16, 1983.



KEITH KULZER
Senior
Ormond Beach, Florida

Comes into 83-84 season as the Seminoles' top player . . . won 1983 Imperial Lakes Tournament . . . Honorable Mention All-American in 1983 . . . was the 1982 Metro Conference Winner . . . won the Florida State Junior College Tournament . . . runner-up in 1980 Future Masters . . . Indian River Collegiate Invitational winner as a freshman . . . 1979 North-South Junior champion . . . majoring in government . . . born May 24, 1962.



JONOTHAN MORROW
Senior
Portmadog, New Wales

Held low scoring average for the entire team last year . . . 1982 Southeastern Intercollegiate champ . . . placed fifth at Imperial Lakes Classic in 1983 . . . among the top 10 finishers in last year's LSU National Invitational . . . also finished in top 10 of Metro Tournament in 1982 . . . tied for second at LSU National Invitational in 1983 . . . Welsh Boys Champion 1976-78 . . . British Youth Team Member . . . member of Welsh National Team . . . finished fourth in the European Amateur . . . marketing major . . . born November 3, 1960.



Florida State Athletic Staff



C. W. "Hootie" Ingram
Athletic Director

C. W. "Hootie" Ingram is in his third year as Florida State's athletic director. He came to the post in 1981 after serving as associate commissioner of the Southeastern Conference.

Since coming to Florida State, Ingram has initiated a ten million dollar building program for athletic facilities that will include a new athletic administration building and improvements to the football stadium, baseball complex and swimming pool area.

Ingram had been associated with the SEC office for eight years. He was first an assistant commissioner before being named associate commissioner (1978).

A native of Tuscaloosa, Al., the home of the University of Alabama, Ingram played football for the Crimson Tide from 1951 through 1954. He was All-SEC as a sophomore when he led the nation in pass interceptions.

After an Army stint, Ingram turned to coaching. He started as an assistant at Bradenton (Fl.) Manatee High School and was later head coach at Tuscaloosa High School for three years.

He later moved into college coaching and had stops at Wake Forest, Virginia Tech, Georgia and Arkansas as an assistant. His only college football head coaching assignment began in 1970 when he succeeded the veteran Frank Howard as head coach at Clemson. Three years later he joined the SEC as assistant commissioner.



Barbara Palmer
Associate Athletic Director

Barbara Palmer has been with the Florida State athletic program since 1977. As associate athletic director, Palmer is in charge of the women's athletic program.

Since her arrival on campus, the FSU women's program has grown to the point where it is now considered among the top five programs in the country.

All eight women's sports have turned in winning records over the past three years. There have been three national championships won, including back-to-back titles by the softball team in 1981 and 1982. And finally, during 1981-82 season, Florida State sent every team to a national tournament, a feat accomplished by only one other school in the nation.

Simply put, Barbara Palmer has been the energy behind that climb toward national excellence. She was directly responsible for the funding FSU women's athletics receives from the legislature each year. It was Palmer's lobbying that pushed Title IX legislation through the state government in 1980.

So great has been Palmer's impact on the growth of women's athletics in the state of Florida that she was chosen to the inaugural Women's Florida Hall of Fame by Governor Bob Graham last summer. She was one of just six women elected from a field of 226 candidates.

Palmer joined Florida State after serving four years as executive director of a private leisure and recreation services organization. A long-time resident of Tallahassee, Palmer graduated from FSU in 1970 and earned a master's degree in leisure services in 1974.

This Is Florida State

Florida State University — the home of more than 20,000 Seminoles — has a campus that starts at the top of one of Tallahassee's famed seven hills, and rolls gently downward and westward across 340-odd acres of pines, palms and pecan trees.

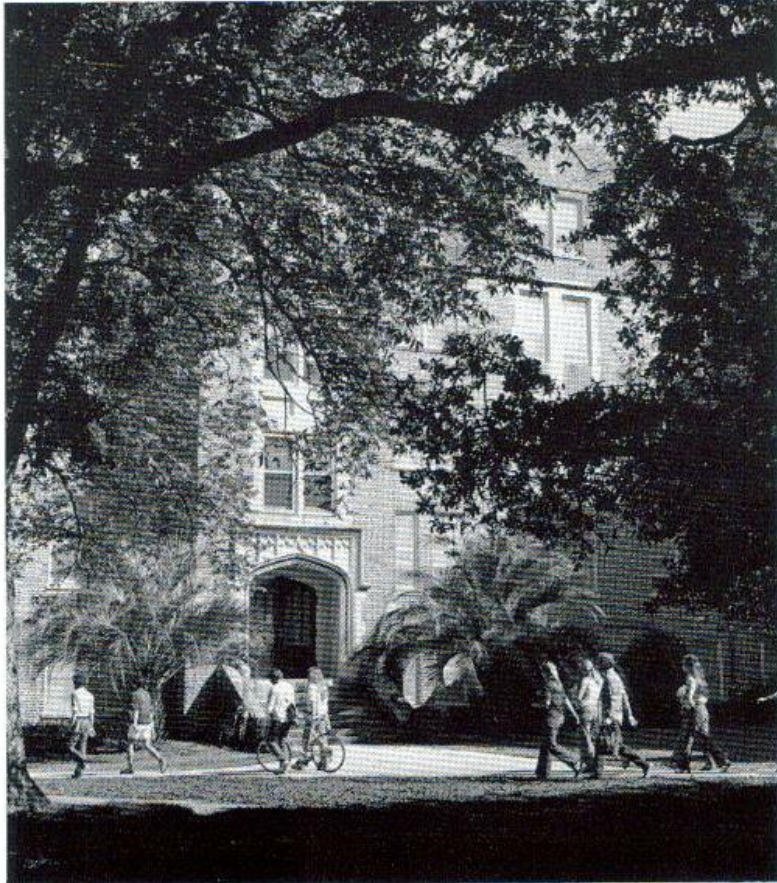


From the Gothic towers of Westcott at the eastern entrance to the campus, to the modern glass and steel structures of its Science Complex to the west, Florida State University has moved forward in time and growth more rapidly than many of its newer counterparts in the State University System. Its enrollment has quadrupled since it became coeducational in 1947, following nearly half a century as the Florida State College for Women.

Today, its 14 schools and colleges are spread through \$150 million worth of buildings, its annual budget exceeds \$100 million and it attracts more than \$18 million a year in research contracts and grants. Students can pick and choose from more than 100 career options, offered in arts and sciences, business, communication, criminology, dance, education, home economics, law, library science, music, nursing, social sciences, social work, theatre and visual arts programs.

The location of FSU in the Capital City of Florida offers unusual opportunities for study and research in the social and policy sciences, and an optimum environment for internships and on-the-job learning experiences for students in many fields of study.

A city within a city, Florida State has 1,200 faculty members, more than 6,000 additional employees and a construction program that exceeds \$50 million.



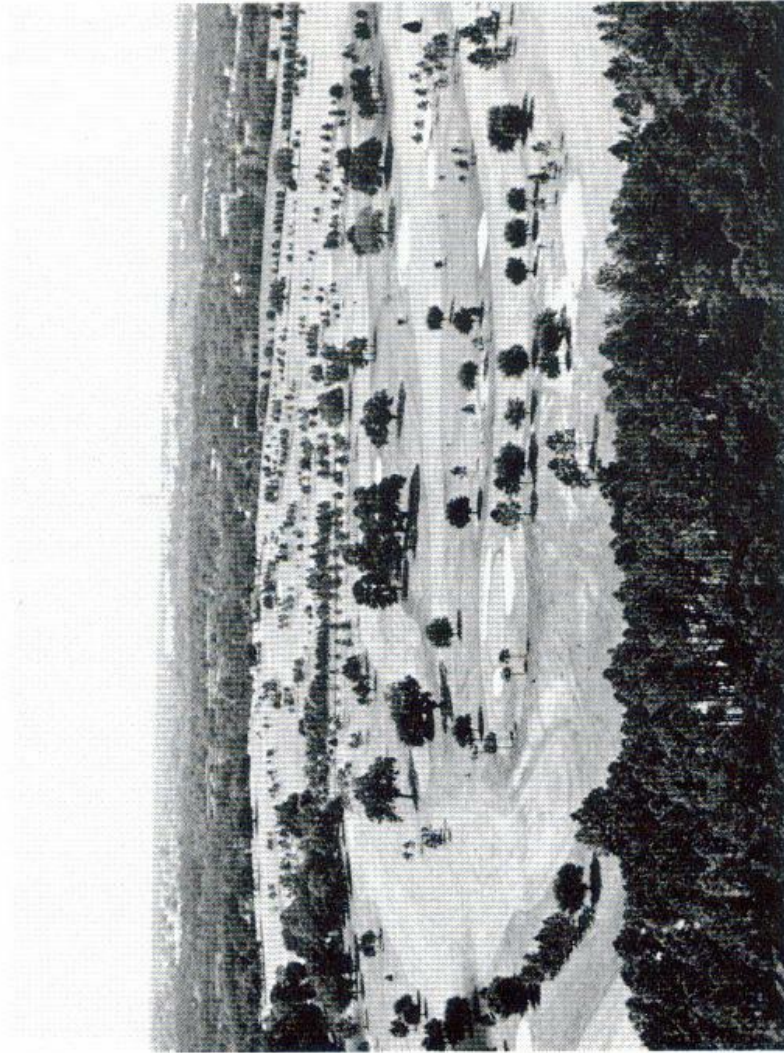
Seminole Golf Course

Florida State University boasts one of the best all-around collegiate golf facilities in the nation. The university-owned Seminole Golf Course is tough, long and interesting.

The 18-hole, par 72, course measures 7,015 yards. Perhaps even more important, however, are the adjacent practice facilities with their superb surfaces. The practice driving range has 2,800 square feet of hitting area.

The Seminole course is available for year-round play largely because of Tallahassee's moderate North Florida climate. The 80,000 square foot facility is for the exclusive use of students, course members and FSU golf team members.

In addition to the Seminole Course, the FSU varsity members are privileged to play each Monday at Killlearn CC (scene of the TPA Tallahassee Open), and once a week at the scenic, tight Capital City C.C.



NOTES

1983-84 MEN'S GOLF SCHEDULE

DATE	TOURNAMENT	LOCATION
February 9-11	International Intercollegiate	Monterrey, Mexico
February 17-19	Gator Invitational	Gainesville, Florida
February 24-26	15th Annual Seminole Classic	Falshaussee, Florida
March 2-4	3rd Annual Imperial Lakes	Lakeland, Florida
March 14-16	Panhandle Intercollegiate	F. Walton Beth, Florida
March 23-25	South Florida Invitational	Tampa, Florida
Mar. 29-April 1	50. East Intercollegiate	Montgomery, Alabama
April 27-29	Chris Schenkel Metro Conference Championship	Statesboro, Georgia
May 17-19	S.I.C. Championship	Isle of Palms, Charleston, S.C.
May 23-26	N.C.A.A. Championship	Wild Dunes, Athens, Georgia Houston, Texas

1983-1984 LADY SEMINOLE GOLF SCHEDULE

DATE	TOURNAMENT	LOCATION
February 24-26	Lady Gator	Gainesville, Florida
March 2-4	Fairwood Invitational	Baton Rouge, La.
March 9-11	Lady Trojan	Eufala, Alabama
March 22-24	Lady Paladin Invitational	Greenville, South Carolina
April 1-3	Peggy Kirk Bell State Championship	Winter Park, Florida
April 13-15	Women's Southern Intercollegiate	Mission Inn
April 27-29	National Championship	Athens, Georgia
May 23-26		Innisbrook Resort